

EXISTING FLOOR
EL. 37.78'

EXISTING STATION 'B'

SOUTH COLUMN ROW STATION

EVAPORATOR
DEAERATING
HEATER

CONDENSATE
HEAD TANK

BOILER #1

SEALING
HEATER

BOILER #1

WALKWAY ELEV 8.75' APPROX

WALKWAY ELEV 6.75' APPROX

HOT AIR DUCT

TURBINE GAUGE
PANEL
(FOR UNIT #1)

CONTROL PANEL
(FOR UNIT #1)

CONTROL PANEL
(FOR UNIT #2)

TURBINE GAUGE
PANEL FOR UNIT #2

CONTROL PANEL
(FOR UNIT #2)

EVAPORATOR
DEAERATING
HEATER

BOILER #2

WALKWAY ELEV 8.75' APPROX

WALKWAY ELEV 8.75' APPROX

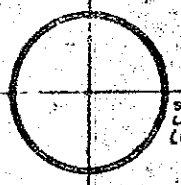
WALKWAY ELEV 8.75' APPROX

WALKWAY ELEV 8.75' APPROX

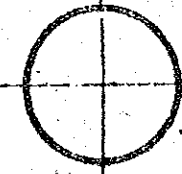
WALKWAY ELEV 8.75' APPROX

WALKWAY ELEV 8.75' APPROX

WALKWAY ELEV 8.75' APPROX



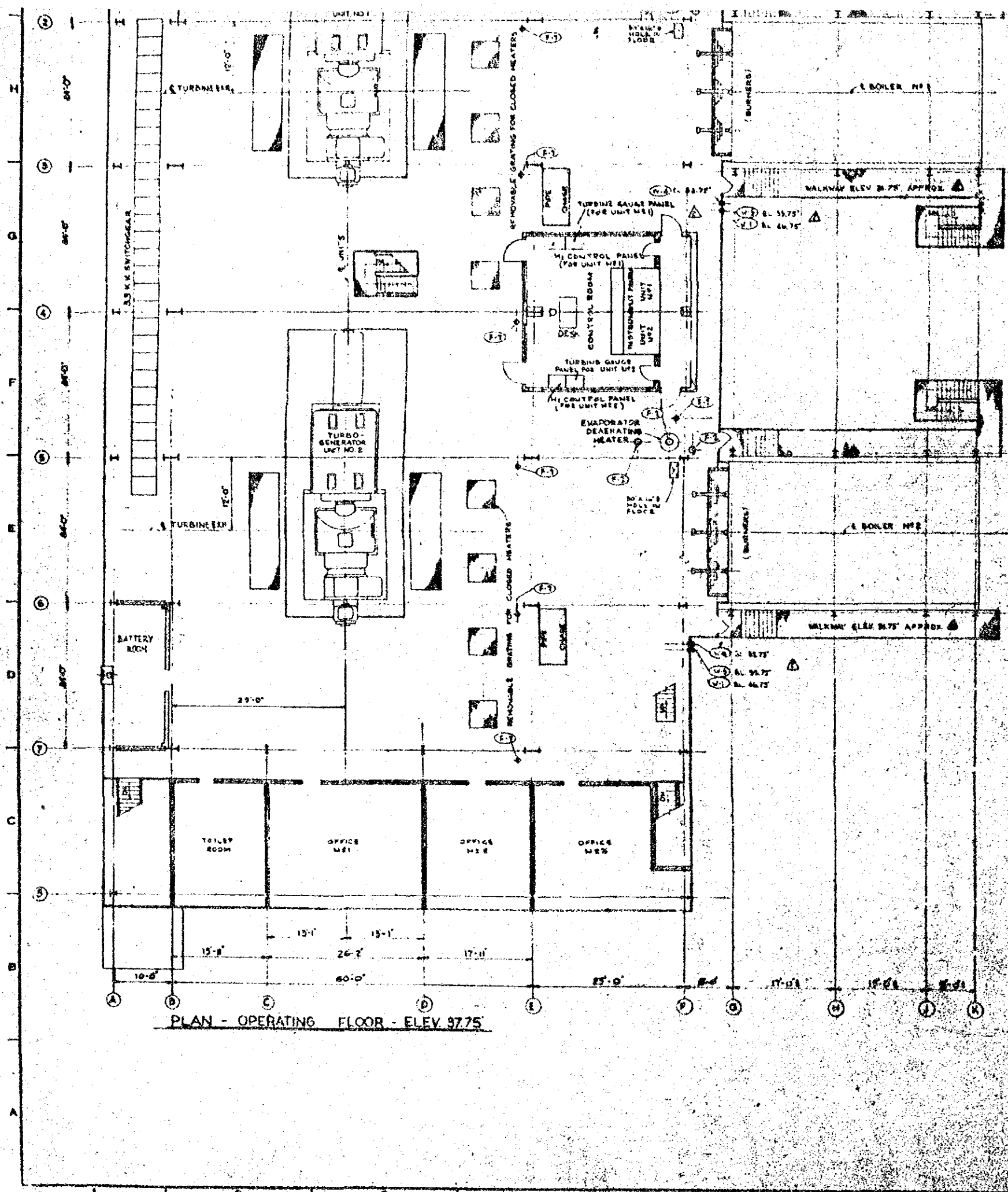
SELF SUPPORTING STEEL OR
CONCRETE STACK
(FOR TWO UNITS)



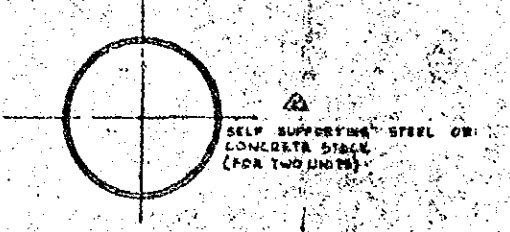
SELF SUPPORTING STEEL OR
CONCRETE STACK
(FOR TWO UNITS)

10
11
12
13
14
15
1
2
3
4
5
6
7

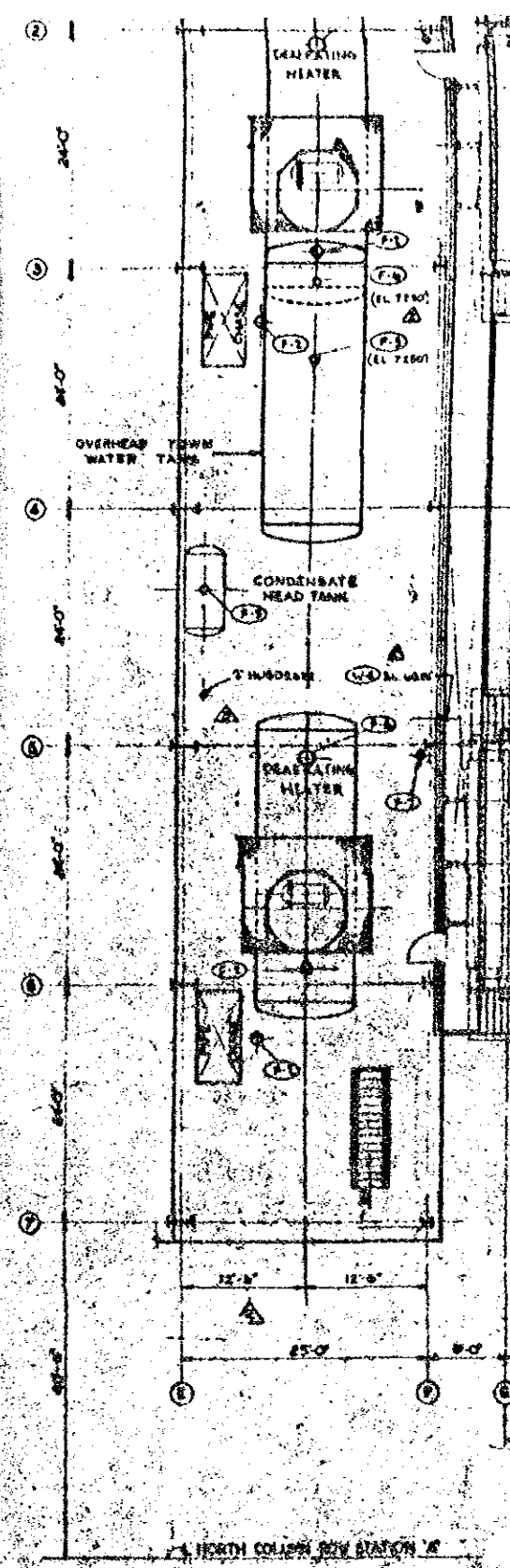
A
B
C
D
E
F
G
H
I
J
K
L
M
N
O
P
Q
R
S
T
U
V
W
X
Y
Z



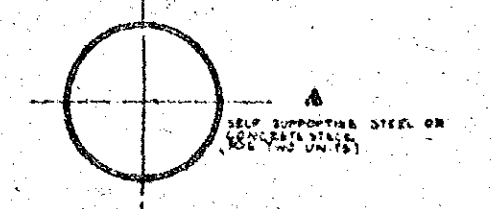
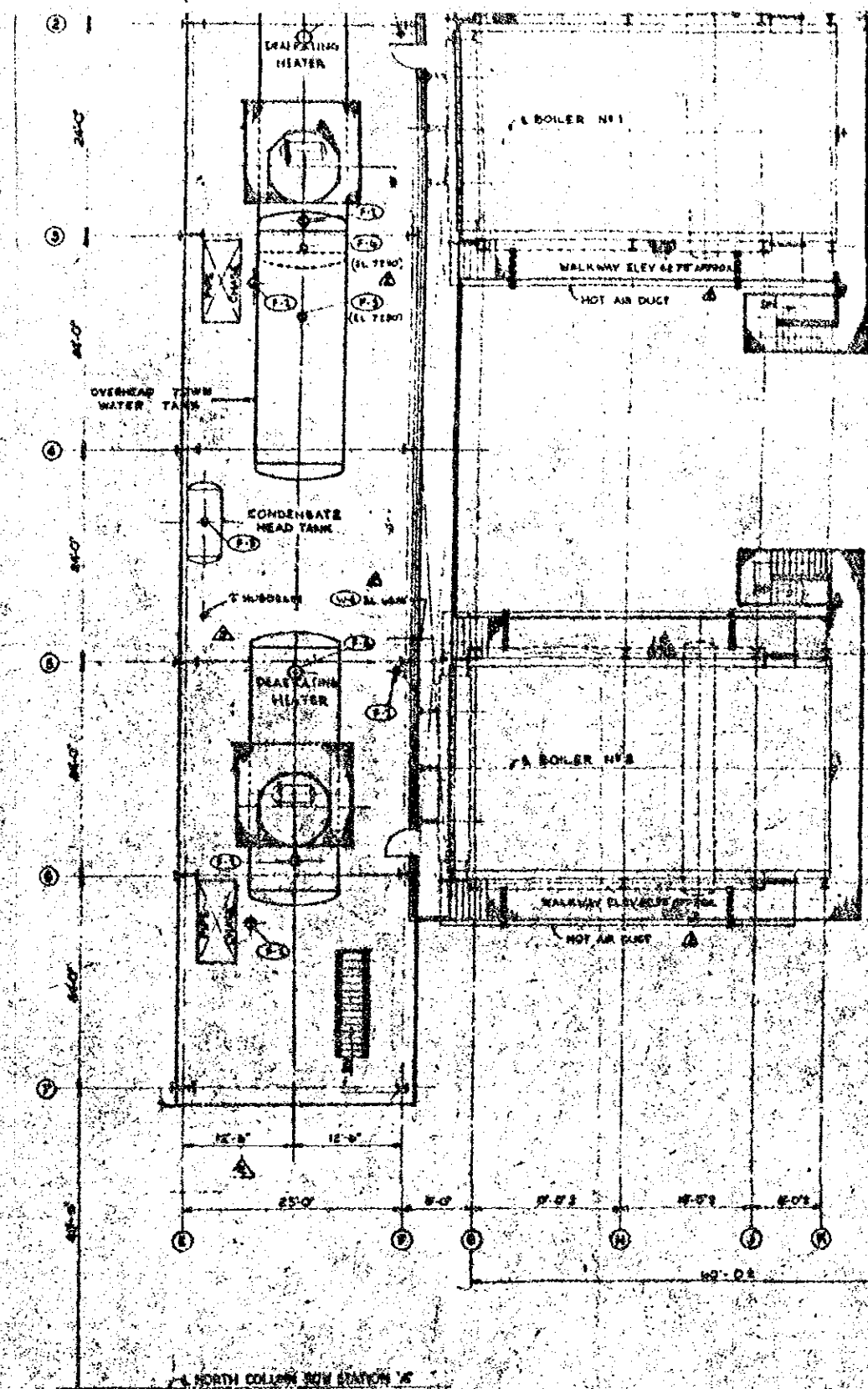
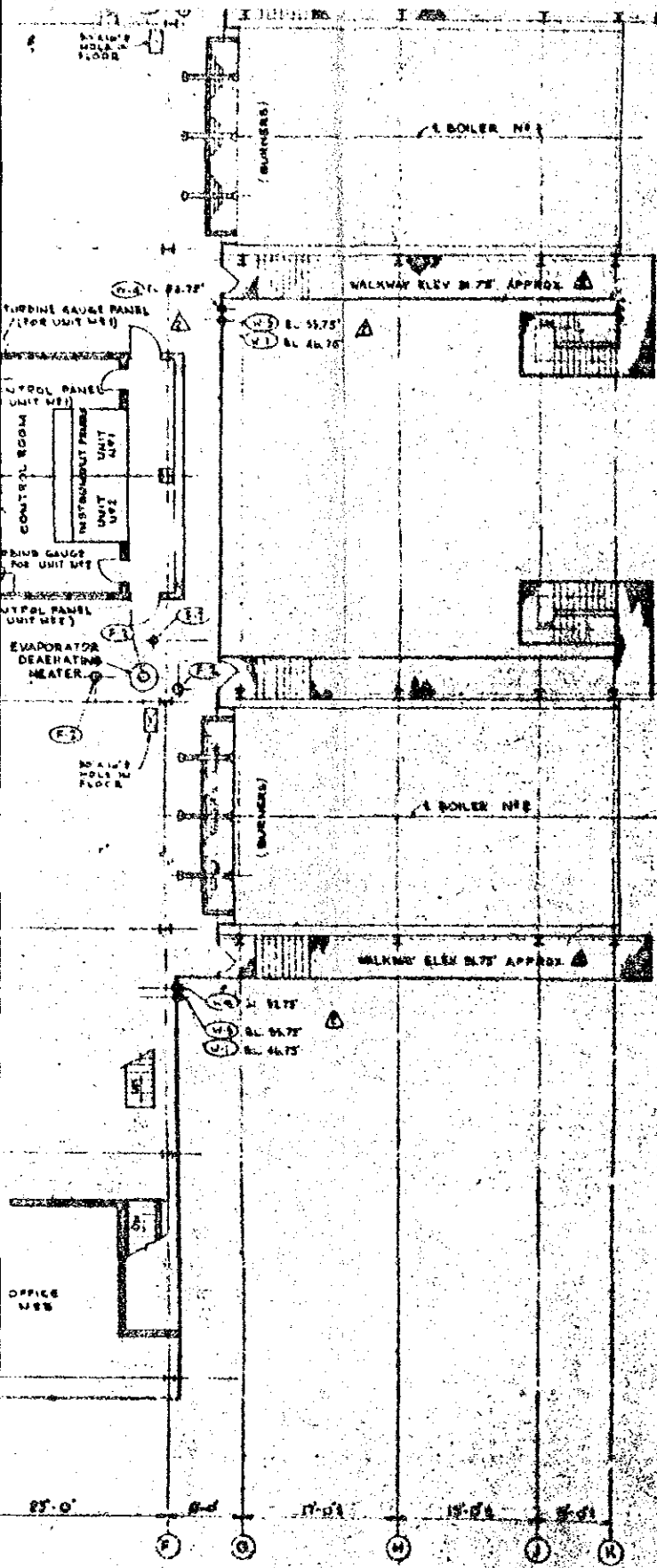
PLAN - OPERATING FLOOR - ELEV. 97.75'



SELF SUPPORTING STEEL OR CONCRETE STACK (FOR TWO UNITS)



PLAN - ELEV. 94.75'

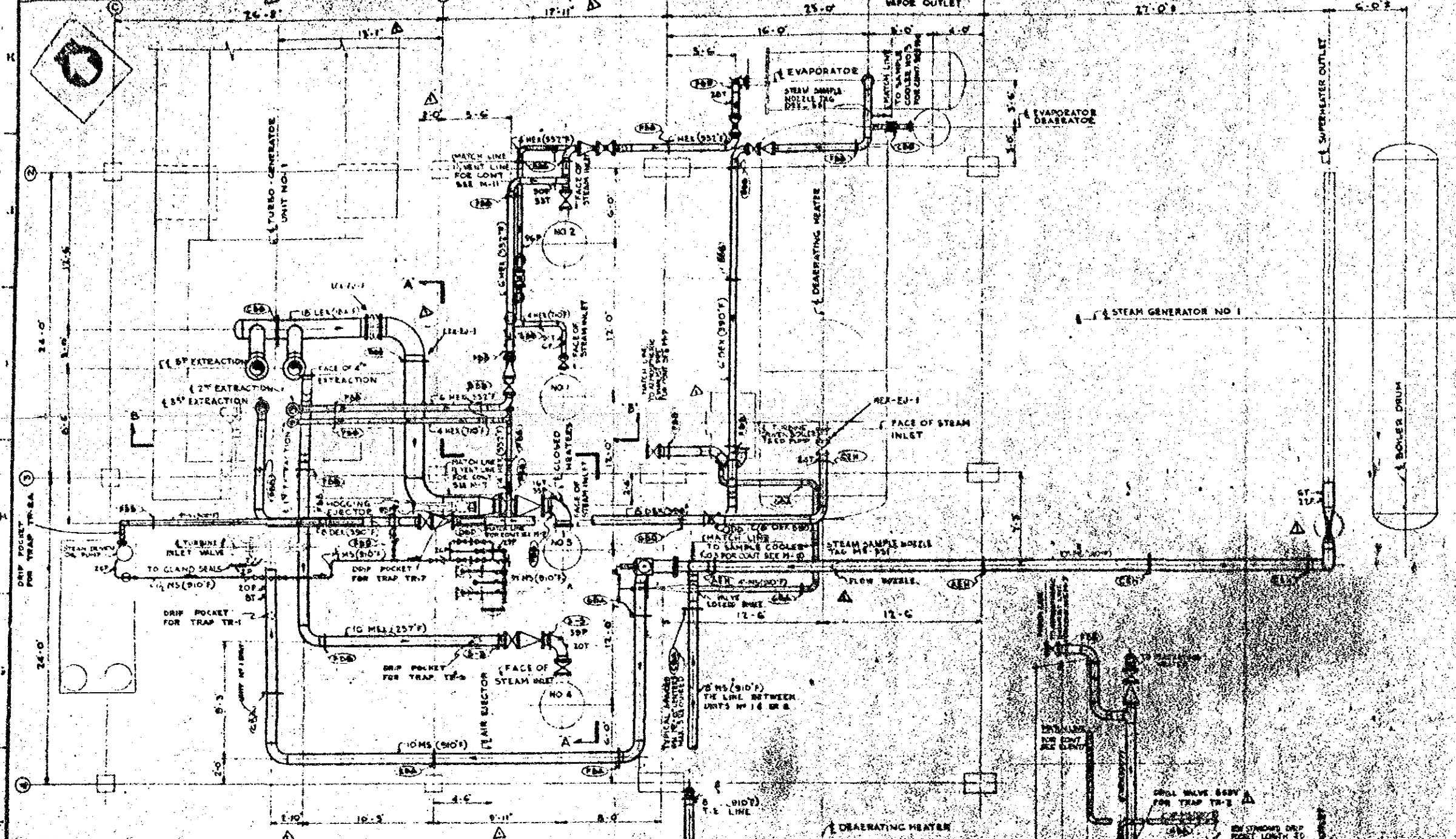


EXISTING STATION W
PLAN - ELEV DATA

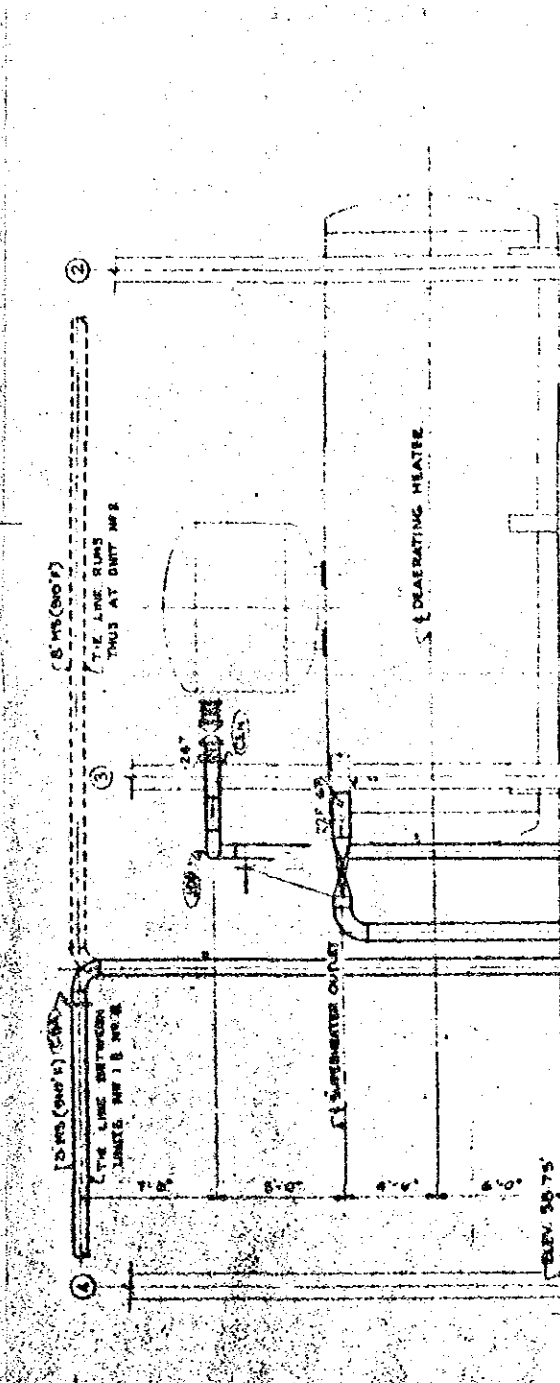
NOTES
 FOR GENERAL NOTES SEE DRAWING M-89

REVISED
 Destroy all Previous Prints

DATE	BY	REVISION	APP'D BY
MACHINE LOCATION PLANS (PART 2 OF 2)			
KAPACKS ELECTRIC SUPPLY CORPORATION LTD			
2-30 W 4th STATION, EXTENSION, WEST WHARF			
PHILADELPHIA, PA.			
THE KULJIAN CORPORATION			
ENGINEERS & CONSTRUCTORS			
PHILADELPHIA, PA.			
SCALE	DATE	PROJECT	NO.

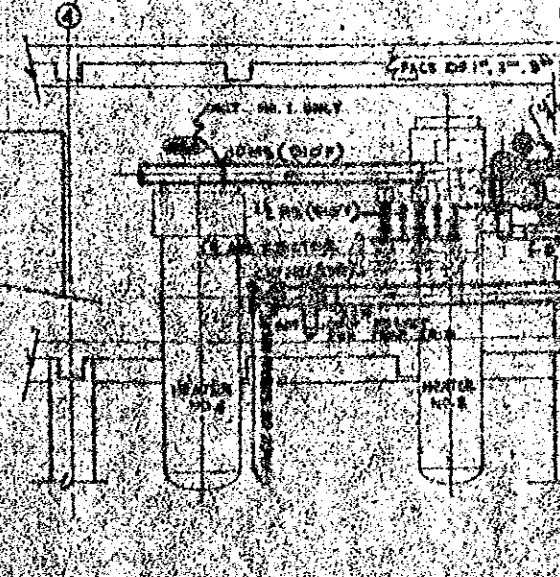
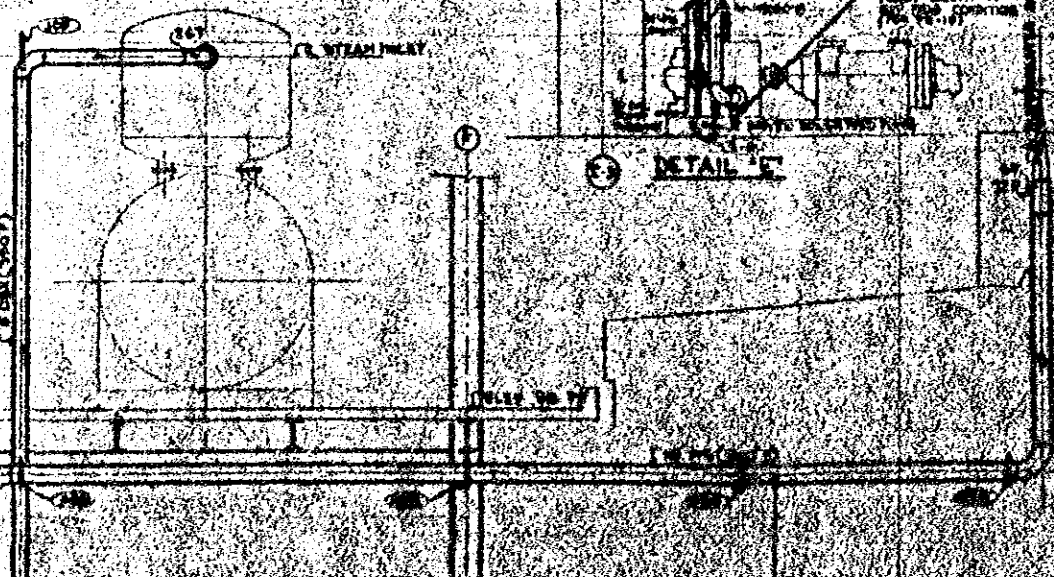


PLAN

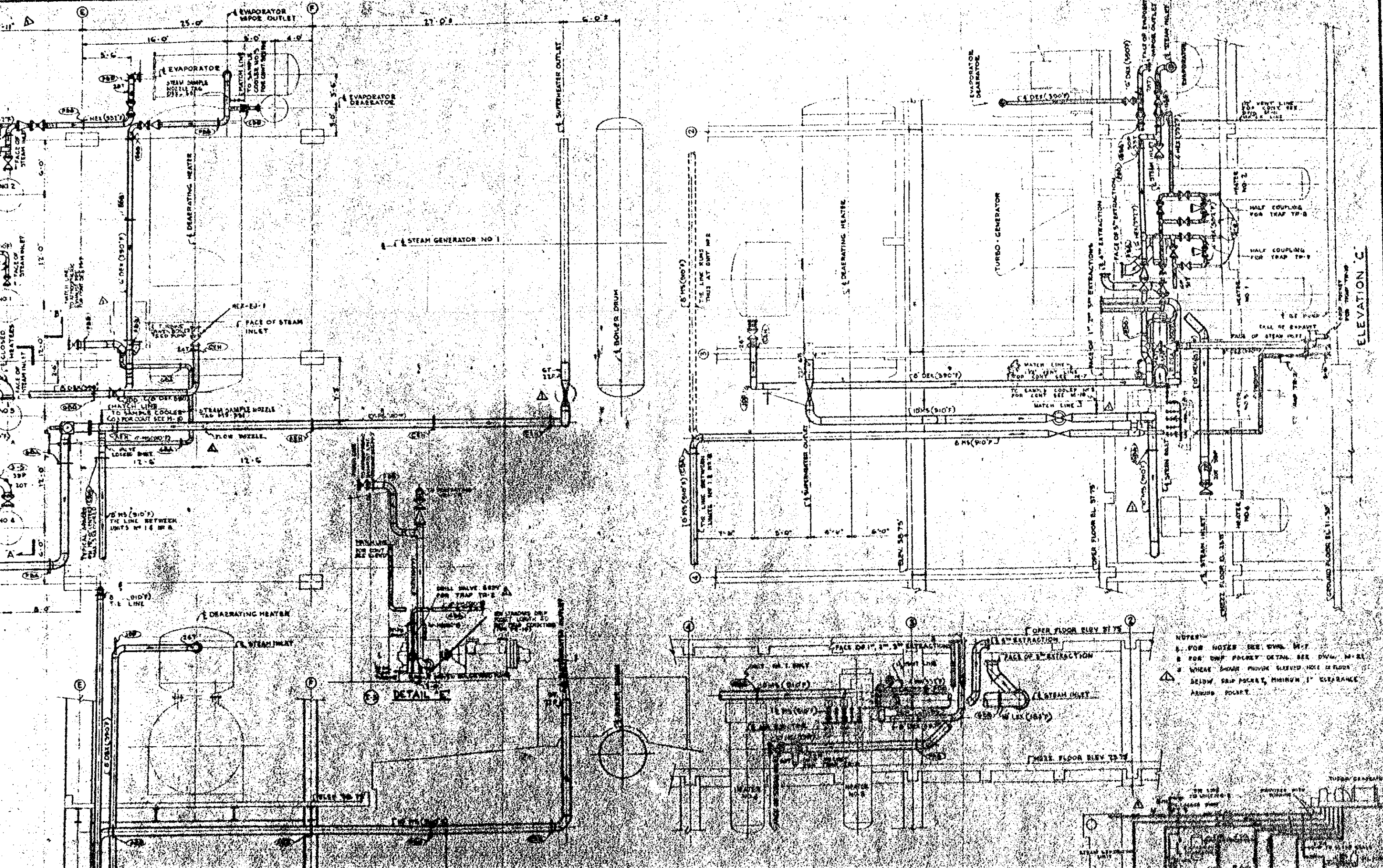


SECTION

DETAIL E



5 6 7 8 9 10 11 12 13 14 15 16



NOTES:
 1. FOR NOTES SEE DWG. W-1
 2. FOR UNIT POLICY DETAIL SEE DWG. W-2
 3. WHERE SHOWN PROVIDE SLEEVED HOSE IN FLOOR
 4. SLEEVES SHIP POCKET, MINIMUM 1" CLEARANCE
 AROUND POCKET.

ELEVATION C

DETAIL E

OPPER FLOOR ELEV 81' 7 1/2"

FACE OF 1" 3" EXTRACTION

FACE OF 1" 3" EXTRACTION

FACE OF 1" 3" EXTRACTION

FACE OF 1" 3" EXTRACTION

FACE OF 1" 3" EXTRACTION

FACE OF 1" 3" EXTRACTION

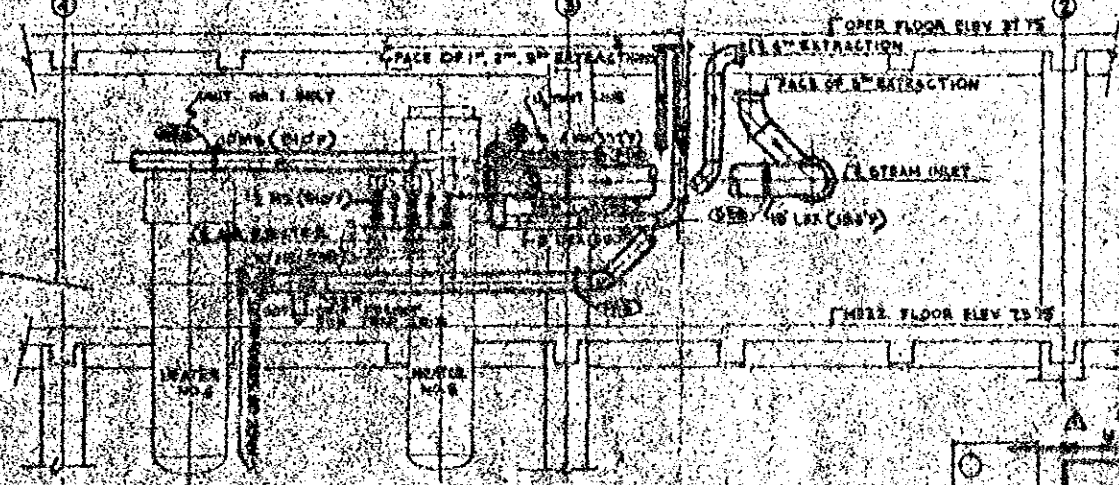
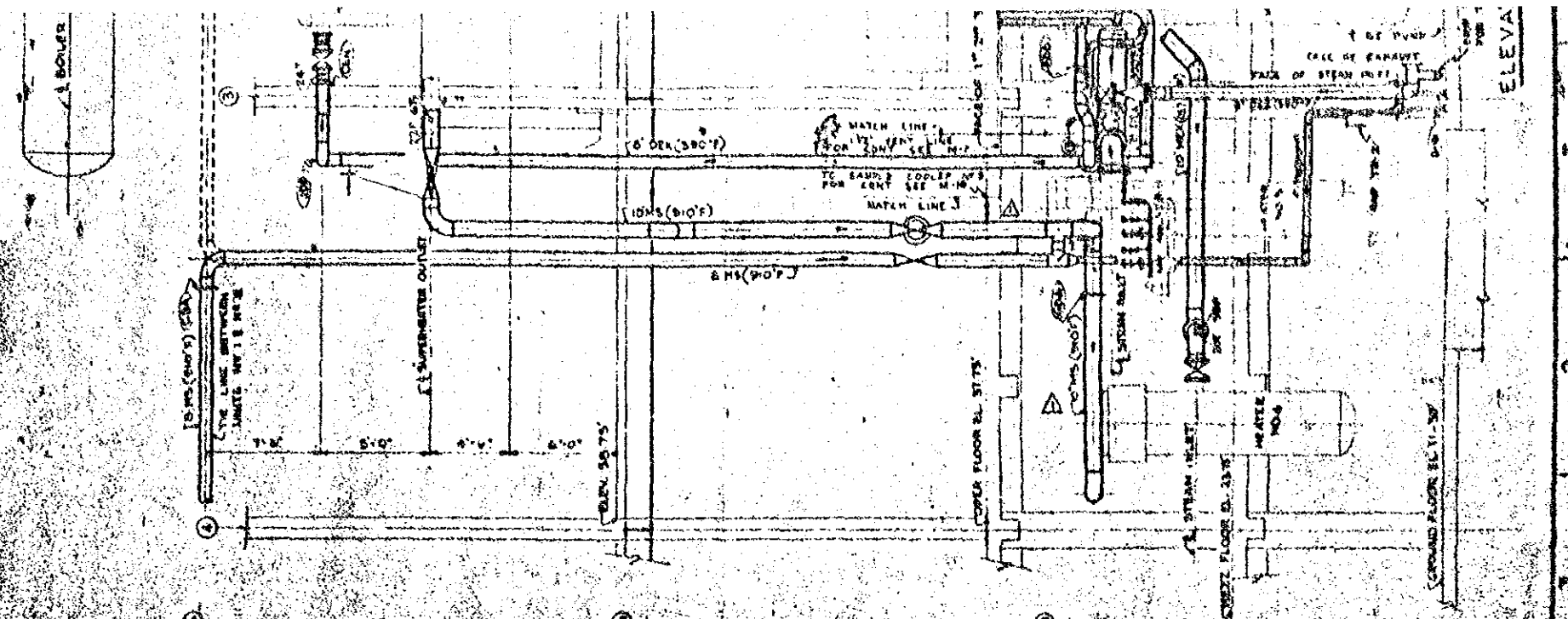
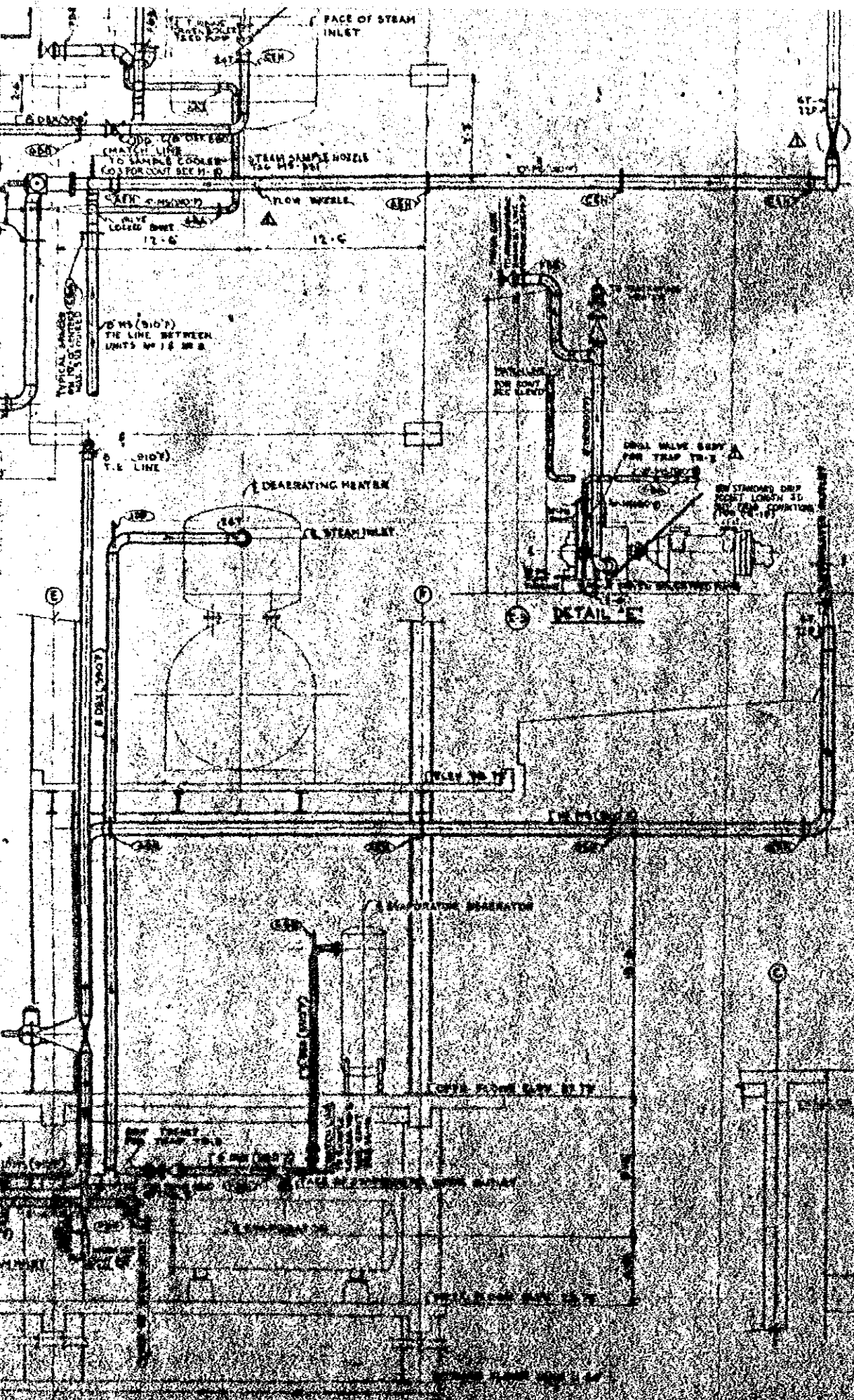
FACE OF 1" 3" EXTRACTION

FACE OF 1" 3" EXTRACTION

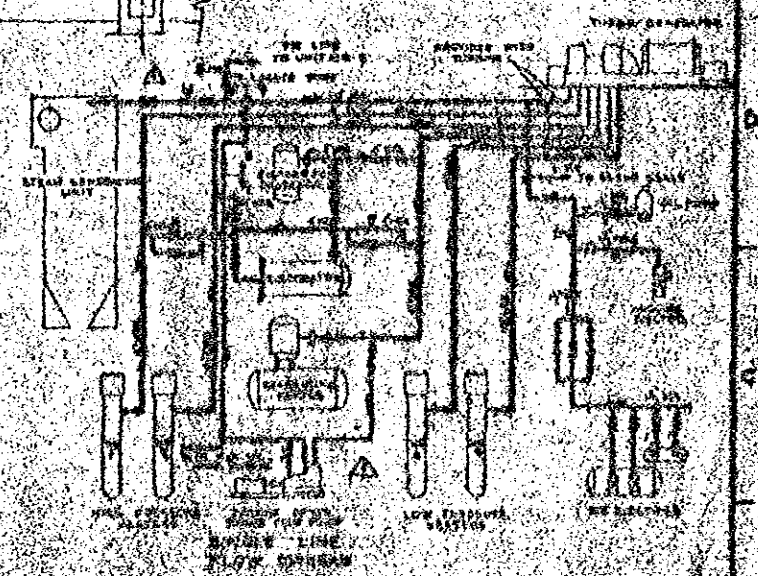
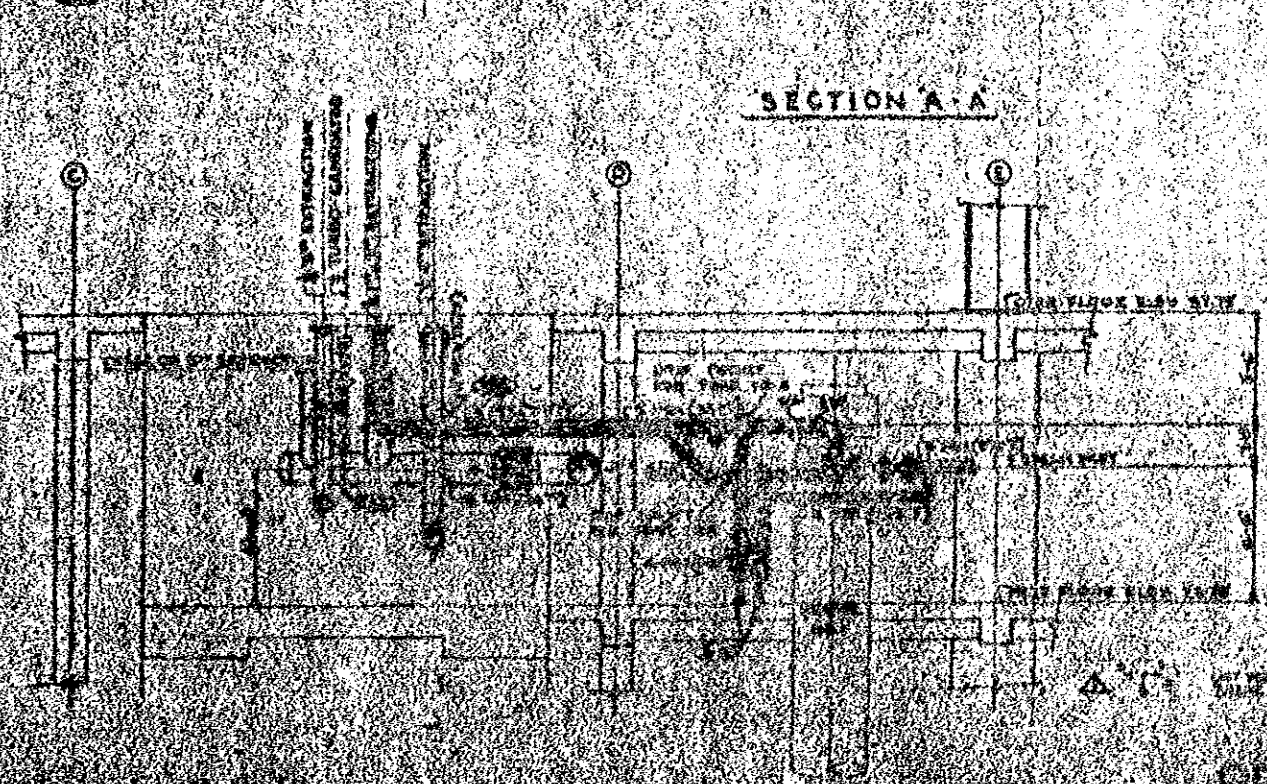
FACE OF 1" 3" EXTRACTION

FACE OF 1" 3" EXTRACTION

FACE OF 1" 3" EXTRACTION



NOTES:
 1. FOR NOTES SEE DWG. NO. 1
 2. FOR DRAIN POCKET DETAIL SEE DWG. NO. 2
 3. WHERE SHOWN ABOVE FLOOR, HERE IS FLOOR BELOW. DRAIN POCKET, MINIMUM 1" CLEARANCE AROUND POCKET.



THE KURJAN CORPORATION
 ENGINEERS & ARCHITECTS