

REPORT  
ON  
THE COOPERATIVE MINERAL EXPLORATION  
IN  
THE CURRAIS NOVOS AREA  
FEDERATIVE REPUBLIC OF BRAZIL

(PHASE I)

MARCH, 1990

JAPAN INTERNATIONAL COOPERATION AGENCY  
METAL MINING AGENCY OF JAPAN

REPORT ON THE COOPERATIVE MINERAL  
EXPLORATION IN THE CURRAIS NOVOS AREA  
FEDERATIVE REPUBLIC OF BRAZIL  
(PHASE I) MARCH, 1990

M P N  
CR 5  
90-35

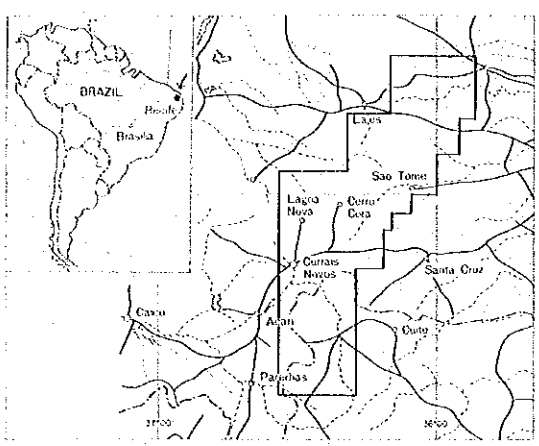
M J  
1 1  
1 1  
1 1

JICA LIBRARY  
1080058191

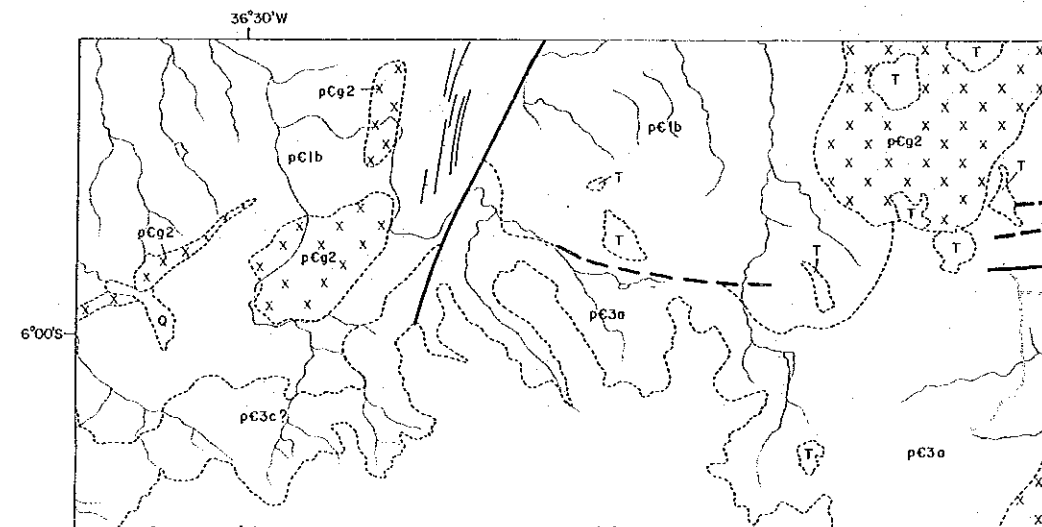
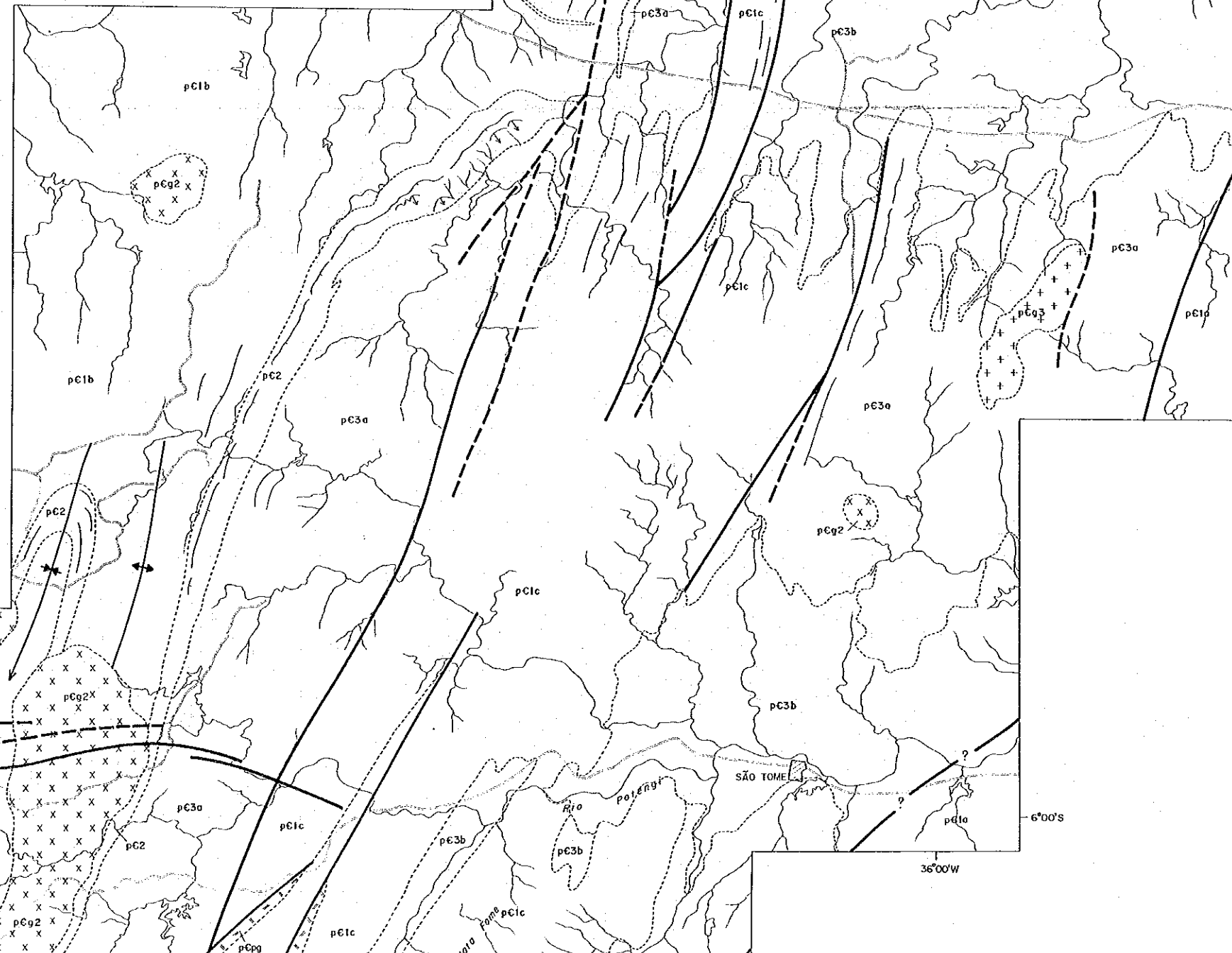
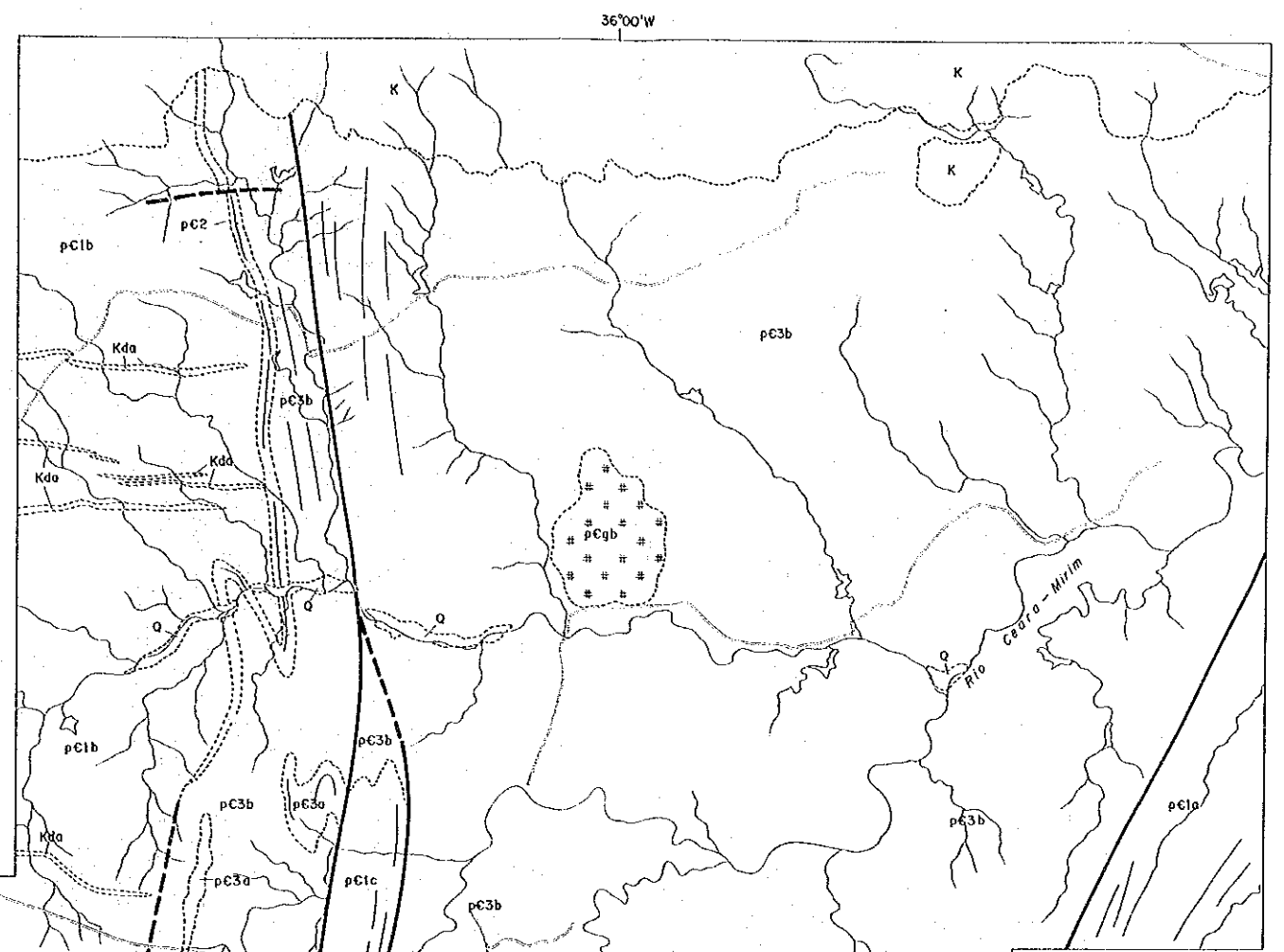
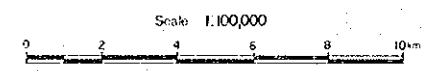
国際協力事業団  
20612

MINERAL EXPLORATION  
IN THE CURRAIS NOVOS AREA  
FEDERATIVE REPUBLIC OF BRAZIL  
PHASE I

Geologic Interpretation of LANDSAT Image



JAPAN INTERNATIONAL COOPERATION AGENCY  
METAL MINING AGENCY OF JAPAN  
FEB. 1990



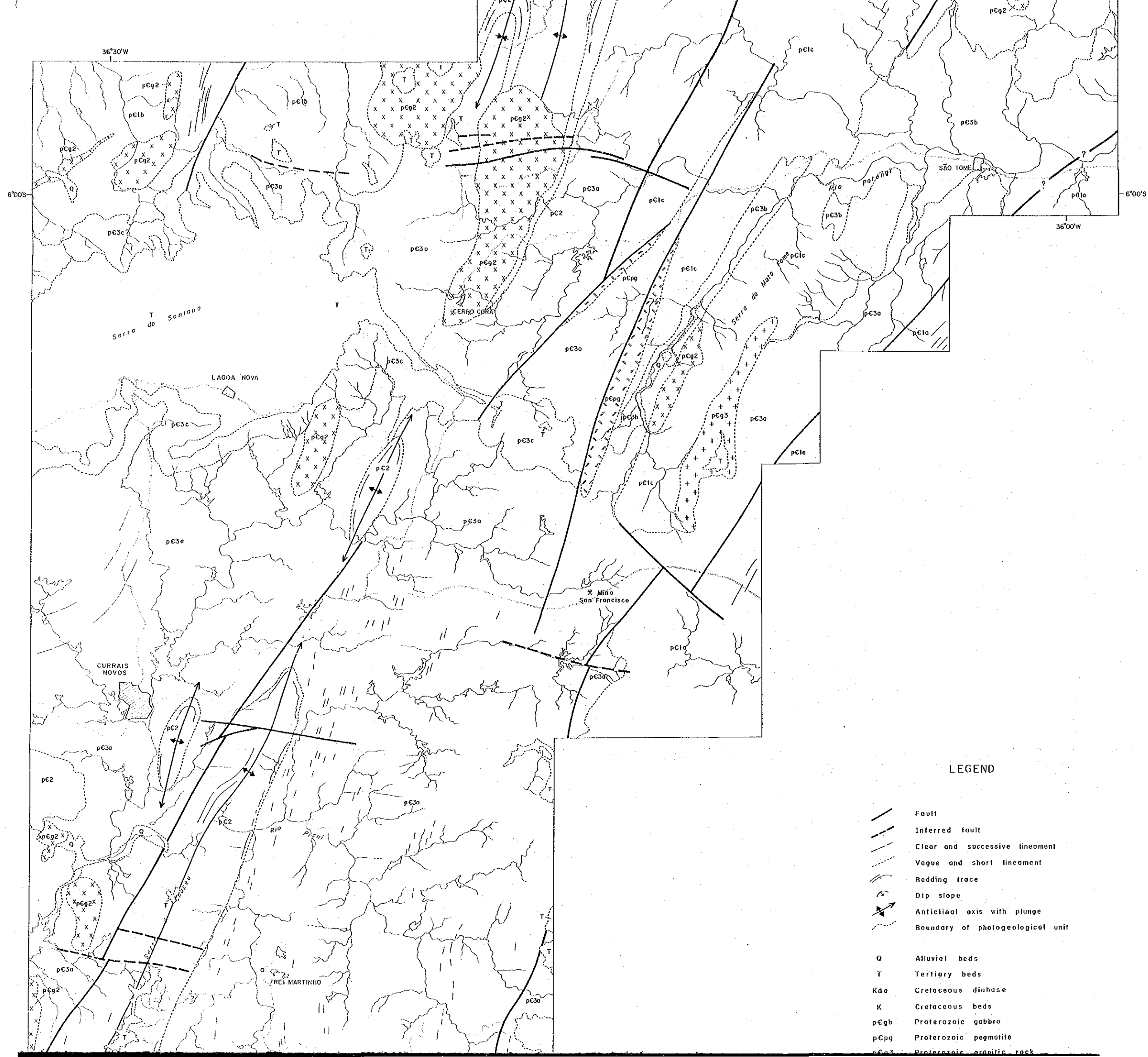
36°00'W

36°30'W

6°00'S

6°00'S

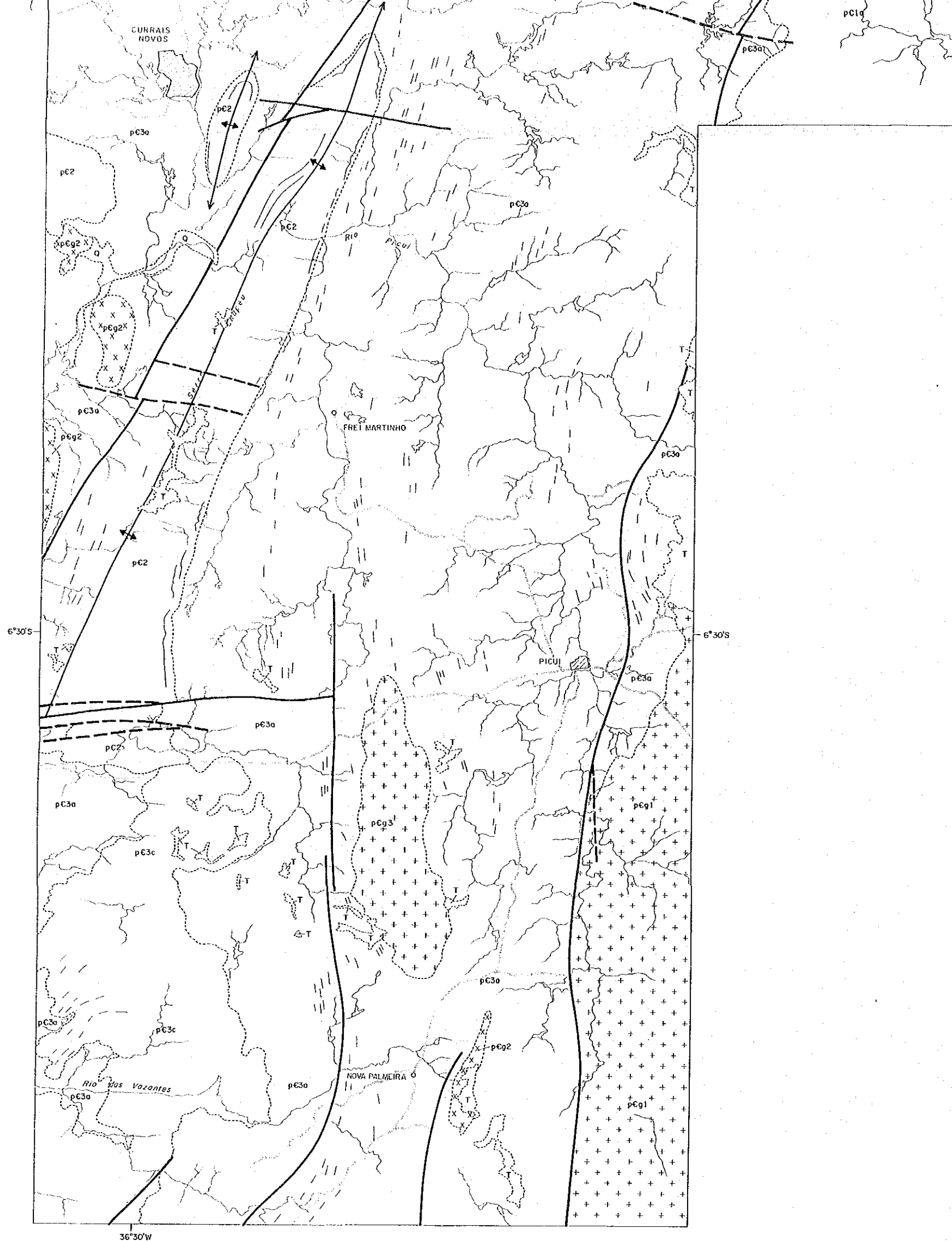
36°00'W






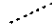

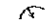

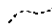
LEGEND

- Fault
- Inferred fault
- Clear and successive lineament
- Vague and short lineament
- Bedding trace
- Dip slope
- Anticlinal axis with plunge
- Boundary of photogeological unit

- Q Alluvial beds
- T Tertiary beds
- Kda Cretaceous diabase
- K Cretaceous beds
- pCgb Proterozoic gabbro
- pCpg Proterozoic pegmatite
- pCg3 Proterozoic granitic rock



LEGEND

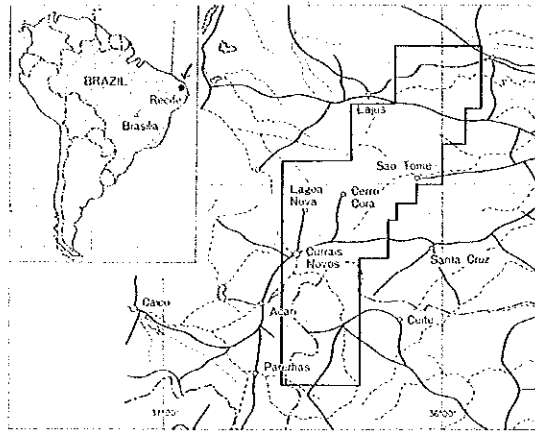
-  Fault
-  Inferred fault
-  Clear and successive lineament
-  Vague and short lineament
-  Bedding trace
-  Dip slope
-  Anticlinal axis with plunge
-  Boundary of photogeological unit
  
- Q** Alluvial beds
- T** Tertiary beds
- Kda** Cretaceous diabase
- K** Cretaceous beds
- pCgb** Proterozoic gabbro
- pCpg** Proterozoic pegmatite
- pCg3** Proterozoic granitic rock
- pCg2** Proterozoic granitic rock
- pC3c** Serido Formation
- pC3b** Serido Formation
- pC3a** Serido Formation
- pC2** Equador and Jucurutu Formations
- pCg1** Caico complex
- pC1c** Caico complex
- pC1b** Caico complex
- pC1a** Caico complex

36°30'W

MINERAL EXPLORATION  
IN THE CURRAIS NOVOS AREA  
FEDERATIVE REPUBLIC OF BRAZIL  
PHASE I

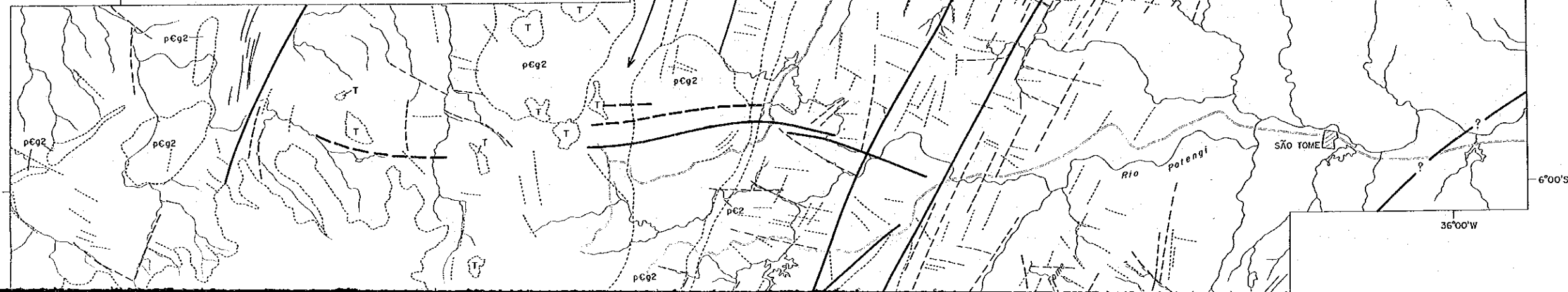
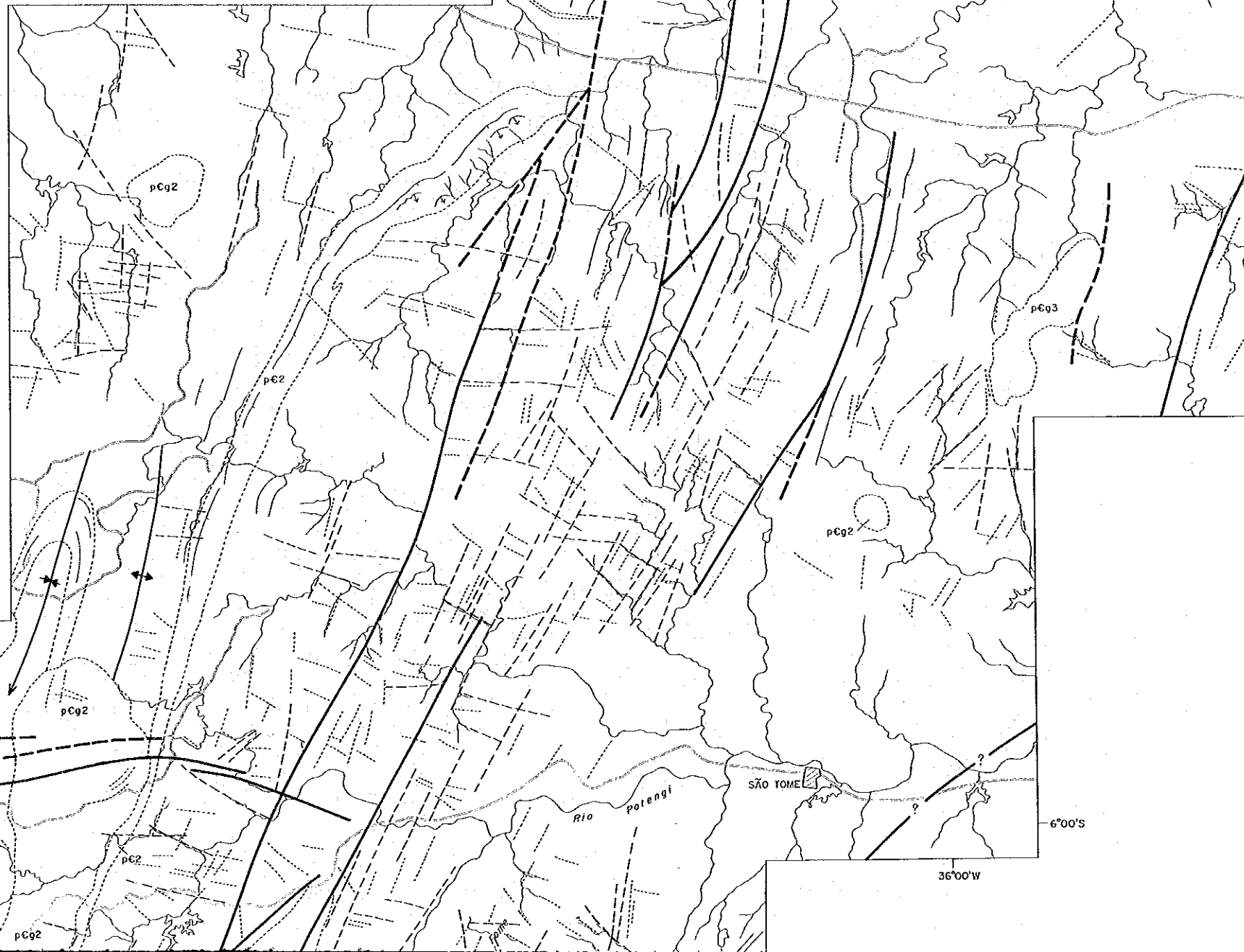
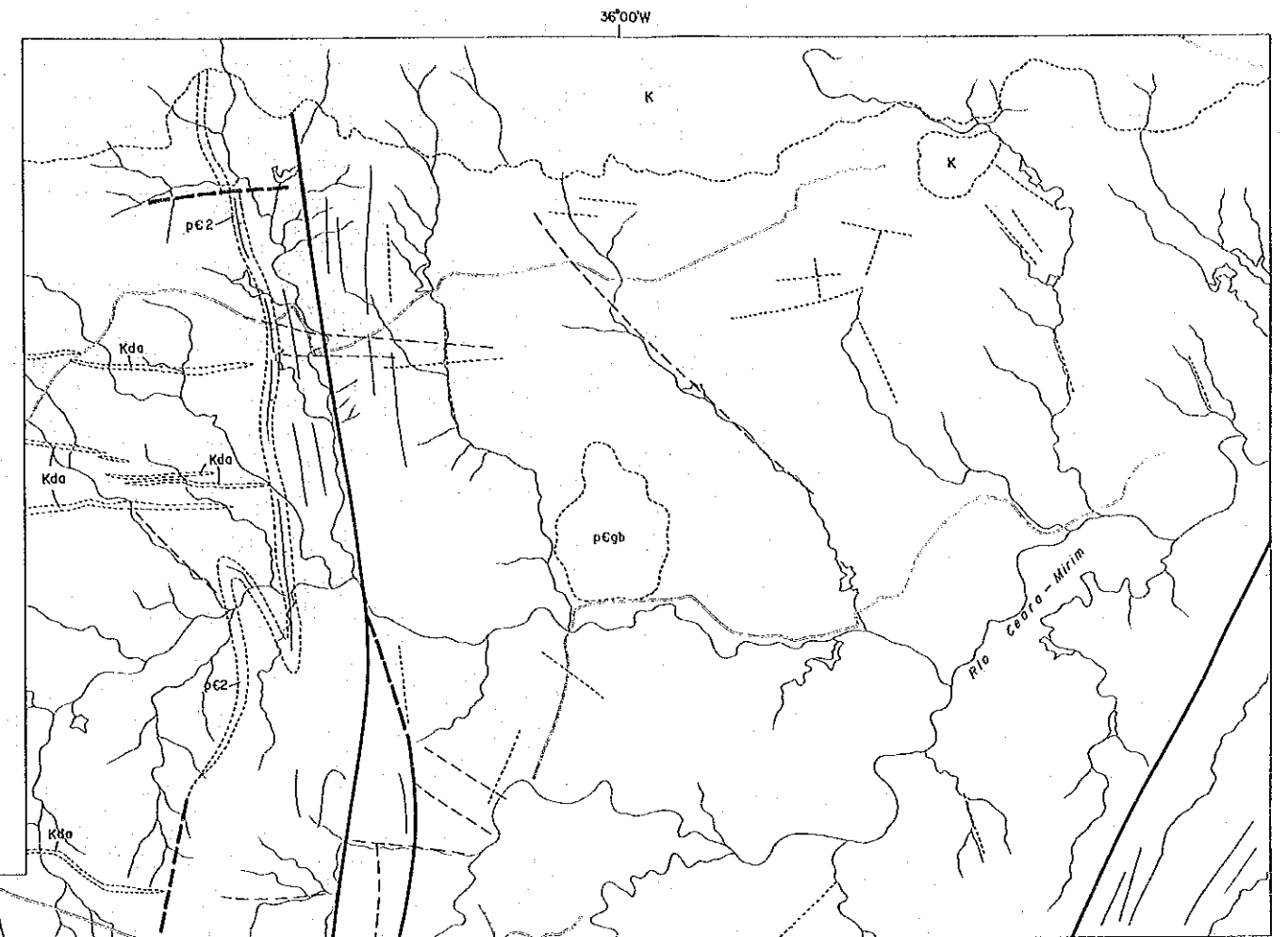
PL. II-2-2

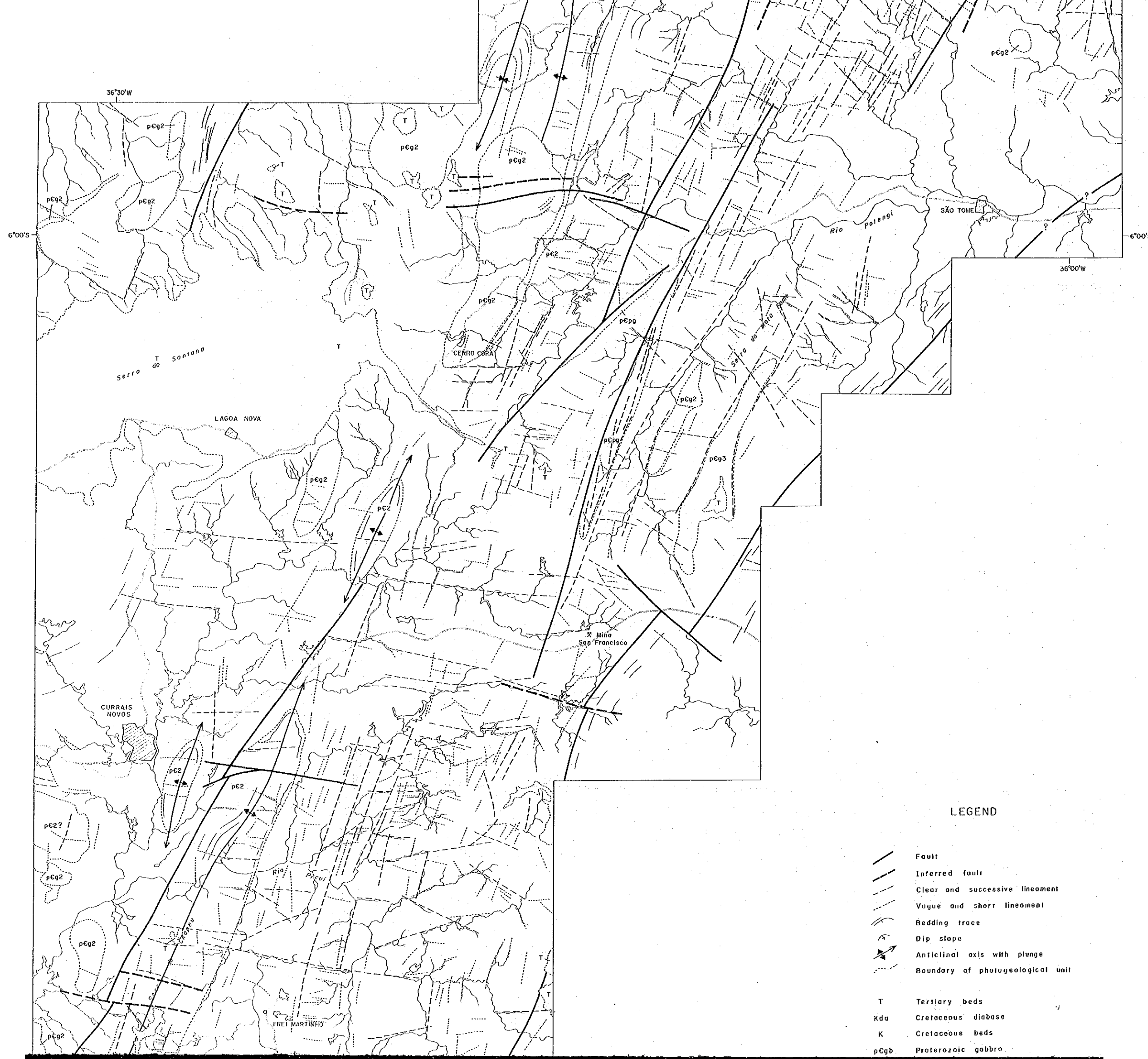
Lineament Interpretation of LANDSAT Image





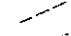
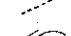
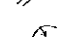

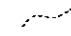

JAPAN INTERNATIONAL COOPERATION AGENCY  
METAL MINING AGENCY OF JAPAN  
FEB. 1990

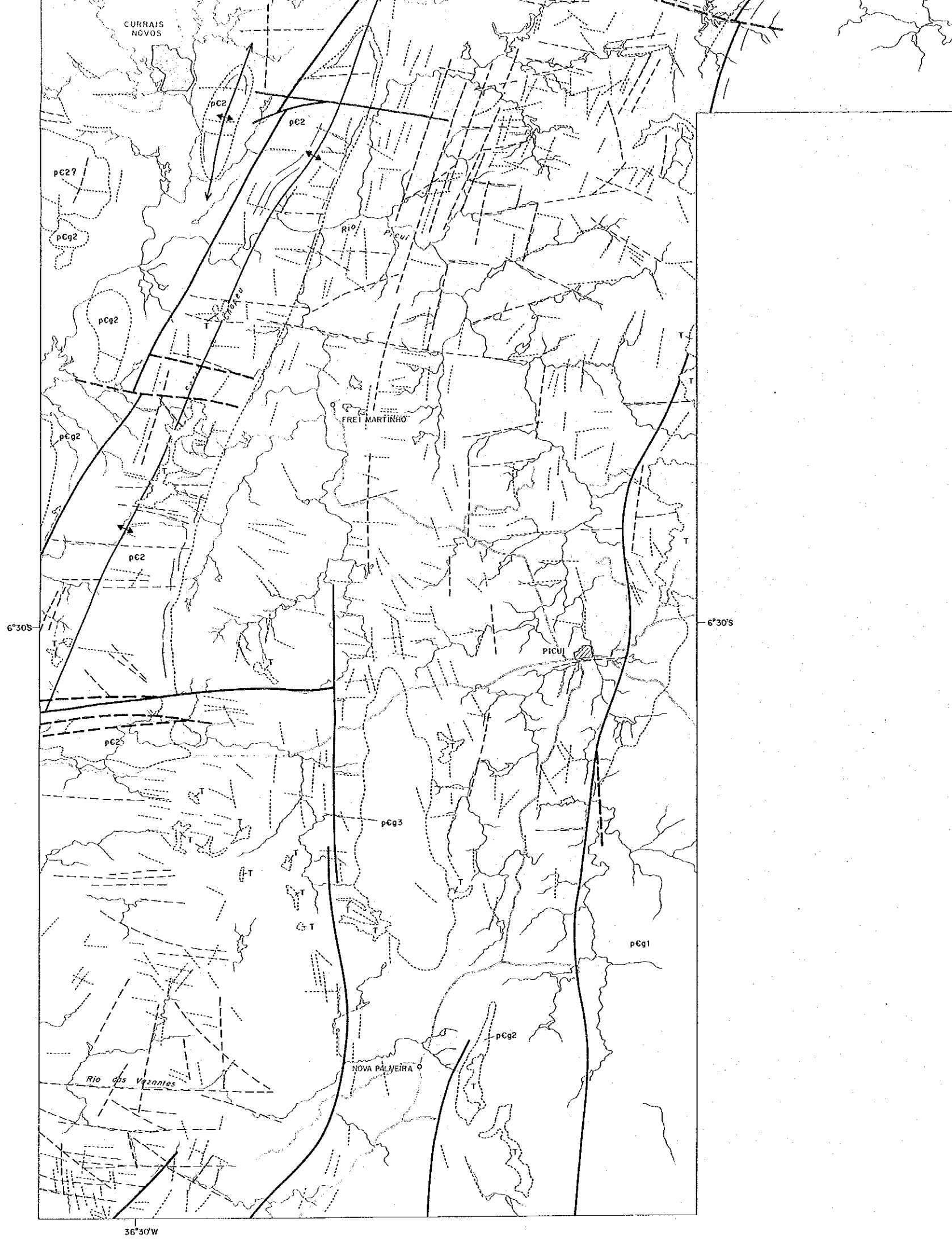
Scale 1:100,000  
0 2 4 6 8 10 km





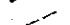
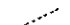



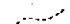


LEGEND

-  Fault
-  Inferred fault
-  Clear and successive lineament
-  Vague and short lineament
-  Bedding trace
-  Dip slope
-  Anticlinal axis with plunge
-  Boundary of photogeological unit
  
- T Tertiary beds
- Kda Cretaceous diabase
- K Cretaceous beds
- pCgb Proterozoic gabbro



LEGEND

-  Fault
-  Inferred fault
-  Clear and successive lineament
-  Vague and short lineament
-  Bedding trace
-  Dip slope
-  Anticlinal axis with plunge
-  Boundary of photogeological unit
  
- T Tertiary beds
- Kda Cretaceous diabase
- K Cretaceous beds
- pCgb Proterozoic gabbro
- pCpg Proterozoic pegmatite
- pCg3 Proterozoic granitic rock
- pCg2 Proterozoic granitic rock
- pC2 Equador and Jucurutu Formations
- pCg1 Caico complex