

4. Circuit elements
  - a. Coils
  - b. Capacitors
  - c. Resistors
  - d. Rhoestat
5. Measuring and controlling devices

#### SHIPBUILDING AND SHIPBREAKING

1. Coastwise, deep-sea fishing and ocean-going vessels (NP)
2. Shipbreaking (P)

#### AUTOMOTIVE PARTS AND COMPONENTS

1. Vehicle axles (P)
2. Automotive grade iron casting (P)
3. Ignition coils (NP)
4. Automotive gauges and instruments (NP)
5. Automotive switches (NP)
6. Monocoque bus bodies (NP)
7. Rims for bicycles and motorcycles (NP)
8. Sprockets for bicycles and motorcycles (NP)
9. Roller chains for bicycles and motorcycles (NP)
10. New parts identified under the Car Development Program, Commercial Vehicle Development Program, and Motorcycle Development Program (P/NP)

#### RATIONALIZATION/REHABILITATION/MODERNIZATION OF INDUSTRIAL PLANTS

Note: Not entitled to income tax holiday.

1. Plywood plants (NP)
2. Veneer plants (NP)
3. Pulp and paper mills (P/NP)
4. Textile mills (NP)
5. Rationalization Program for the Coconut Industry
  - a. Conversion of existing manufacturing facilities to the use of locally-produced cocochemical feedstocks (P)
  - b. Production of cocochemical-based surfactants for the soap and detergent industry (P)
  - c. Coconut oil mills and desiccated coconut plants (NP)
6. Basic chemical plants, e.g. methanol, caustic soda, synthetic resins, sacrochemicals, plasticizers, nylon yarn, rubber processing, etc. (NP)
7. Cement plants (NP)
8. Metalworking shops such as:
  - a. Foundries (NP)
  - b. Forge plants (NP)
  - c. Metal fabrication and machine shops (NP)

- d. Heat treating plants (NP)
  - e. Electroplating plants (NP)
9. Shipbuilding and shiprepair (NP)
  10. Product test laboratories (NP)
  11. Other industrial plants as determined by the BOI after thorough study (P/NP)

#### VI. ENERGY-RELATED PROJECTS

1. Ethanol production for fuel, with or without integration with agricultural production of raw materials therefor. (P)
2. Production of fuel or energy through the conversion or transformation of biomass materials, coal and charcoal into more usable forms of fuel, such as briquettes, powders or pellets, gaseous and liquid fuels, including handling activities and facilities related thereto. (P/NP)
3. Installation of power-generating facilities for new or expanding manufacturing plants substantially using coal, geothermal or other non-conventional fuels; or the conversion of existing manufacturing plants/equipment for the use of coal and non-conventional fuels; subject to certain conditions. (P)

Note: Not entitled to income tax holiday.

4. Energy co-generating plants (NP)

Note: Not entitled to income tax holiday.

5. Power-generating plants (P/NP)
6. Manufacture of equipment necessary for the production and/or utilization of solar energy, power, alcohol, biogas, geothermal steam or geothermal hot water, wind, coal-derived fuels and other fuels of non-conventional nature. (P/NP)

#### VII. PROJECTS PROMOTING THE CONSERVATION AND MORE EFFICIENT USE OF ENERGY

1. Installation of waste energy recovery system (e.g. recycling of waste hot water) (NP)  
Note: Not entitled to income tax holiday.
2. Manufacture of equipment for specific use in energy conservation projects (P)

#### VIII. PUBLIC UTILITIES

Note: Not entitled to income tax holiday

1. Interisland shipping and directly related facilities essential to the efficient operation of ships including modernization of existing shipping lines (NP)

Note: Modernization shall include vessel replacement; repowering/replacement of engine; vessel conversion, acquisition of

on-board support and cargo handling equipment, excluding containers; and acquisition of communication and navigational equipment.

2. Overseas shipping (NP)  
Note. Excluding full-time chartering of vessels.
3. All-cargo airlines (NP)
4. Telephone and telegraph services in less developed areas (NP)

#### IX. INDUSTRIAL AND HAZARDOUS WASTE MANAGEMENT SERVICES (NP)

#### X. COMMON SERVICE FACILITIES (NP)

- Note: 1. Not entitled to income tax holiday.
2. The following criteria must be met:
    - a. The project serves the common needs of the industry in the locality;
    - b. The project is owned or operated by a group of at least five cottage, small or medium entrepreneurs in the same industry;
    - c. The project would improve the relative status and competitive advantages of the industry; and

d. The industry would contribute to the economic recovery program.

1. Testing and quality control laboratories
2. Training and demonstration centers
3. Tool-shops and similar facilities
4. Bulk-buying centers for raw materials and components
5. Metalworking
  - a. Electroplating
  - b. Foundry
  - c. Forging
  - d. Machining
  - e. Heat treatment
6. Furniture
  - a. Kiln drying
  - b. Treatment and processing facilities
7. Ceramics
  - a. Kiln
  - b. Glazing
8. Food
  - a. Cold-storage facilities
  - b. Canning

#### XI. EXPORT TRADERS (NP)

Note: Limited to export trading of non-traditional products and subject to certain conditions to be imposed by the BOI.

## XII. SERVICE EXPORTERS (NP)

Note: Limited to services in the export service list and subject to certain conditions to be imposed by BOI.

## XIII. INDUSTRIES SUPPORTING EXPORTERS (NP)

1. Support services to exporters, such as operation of Customs-bonded manufacturing/trading warehouses for the raw material requirements of exporters.

Note: Limited to non-fiscal incentives.

2. Subcontracting activities for exporters

Note: Not entitled to income tax holiday.

## XIV. TOURISM-ORIENTED SERVICES (NP)

Note: Subject to limitations on the region/area/investment centers and on the capacity requirements to be set by the Department of Tourism and the Board of Investments.

1. Tourist accommodation facilities such as tourist inns, pension houses, hotels, etc.
2. Resorts
3. Transport facilities for tourists

## LIST OF PRIORITY PRODUCTS FOR EXPORT

### I. Agriculture

#### 1. Spices (P/NP)

- a. Cloves
- b. Garlic
- c. Ginger
- d. Pepper
- e. Onion
- f. Mints
- g. Others

#### 2. Vegetables (NP)

- a. Okra
- b. Squash

#### 3. Fruits (NP)

- a. Avocado
- b. Papaya
- c. Pineapple

#### 4. Ornamental plants

- a. Cut flowers such as orchids, roses, anthurium, etc. (NP)
- b. Landscape/indoor plants (NP)

### II. Manufacturing

#### 1. Processed foods

- a. Processed coffee (NP)
- b. Health beverages and other health preparations (NP)
- c. Fruits, vegetables and root-crops (NP)

- i. Purees, concentrates and others (such as mangoes, guava, papaya, tomato, guyabano, banana, citrus, etc.)
- ii. Dehydrated products (such as mangoes, papaya, pineapple, banana, coconut, etc.)
- iii. Other preserves (such as canned, pickled, sweetened, etc.)

Notes: Manufacturers of processed fruits are encouraged to set up processing plants integrated with the suppliers of raw materials to assure steady and continuous supply. Integration may be in the form of plantations wholly-owned by the manufacturing plant or by a cooperative venture with groups of growers, or in the form of a contractual agreement with growers to supply raw materials.

- d. Fish and other marine products (NP)
  - a) Processed marine products (such as fish and other seafoods)
  - b) Seaweeds and other algae-based foods

- e. Other processed foods such as cereal-based products, cocoa products, etc. (P/NP)
- f. Vegetable oils (except coconut oil) (NP)
  - a) Castor oil
  - b) Palm oil

## 2. Wood products (NP)

- a. Builder's woodwork, including prefabricated and sectional buildings and other components of wood (NP)

Note: Saw milling and kiln drying operations may be included only if integrated with wood manufacturing operations.

- b. Blockboard

Note: Must be integrated with primary wood processing plants.

- c. Particle board

Note: Processing of wood waste or timber from plantations

- d. Other wood products such as toys, chopsticks, lacquered wood products, etc., including combinations of wood and other materials.

3. Furniture (excluding rattan)

Note: Includes modernization of existing facilities.

4. Paper Products (NP)

- a. Fiberboard from indigenous raw materials
- b. Packing containers
- c. Paper products such as notebooks, diaries, albums, stationeries, etc.
- d. Printed matters such as books, pamphlets, magazines, etc.

5. Textile Products (NP)

- a. Abaca yarns and ropes
- b. Garments

Note: Only new and expanding firms exporting to non-quota countries shall be entitled to income tax holiday.

- c. Made-up articles of textile

6. Footwear (made of leather, rubber, plastic, wood and other materials, or combination thereof) (NP)

7. Leather

- a. Leather tanning (NP)
- b. Made-up articles of leather (such as travel goods, handbags, wallets, purses, camera and lens cases, gloves and mittens, coats and other garment items) (NP)

8. Chemical Products

- a. Nicotine sulfate (NP)
- b. Refined glycerine (NP)
- c. Fatty alcohols (NP)
- d. Acetylene black (NP)
- e. Di-octyl phthalate (NP)
- f. Sodium sulfate (NP)
- g. Tellurium dioxide (NP)
- h. Essential oils (P)
- i. Activated carbon (NP)
- j. Palm oil chemicals (P)
- k. Shark liver oil (P)
- l. Medicated and non-medicated cosmetics (NP)

9. Pharmaceuticals

- a. Hard gelatin capsules (P)

10. Petroleum Products

- a. Other basic/intermediate petrochemicals (NP)

11. Made-up articles of rubber (such as inner tubes, latex round rubber, gloves, etc.) (NP)

12. Plastic Products (NP)

- a. Made-up articles of plastic (such as plastic containers, raincoats, housewares, hooks, coat hangers, office and school supplies, and plastic sheets/tapes/film)
- b. Polyethylene film bags
- c. Plastic twines
- d. Other plastic products

13. Construction materials (NP)
14. Ceramic bathroom accessories (NP)
15. Packaging materials (NP)
16. Metalworking (NP)
  - a. Expeller press flights, pre-breaker anvil, disintegrator shaft, etc.
  - b. Reconditioning of heavy and industrial equipment
  - c. Recovery of precious metals from scrap, waste, etc.
  - d. Flatware
17. Pleasure boats (NP)
18. Aircraft, parts and accessories (P)
  - a. Aircraft, hovercraft and gliders
  - b. Aero-engines, propellers and parts
  - c. Aircraft parts and auxiliary equipment, instruments, electrical, electronics and hydraulic equipment
19. Automotive parts and components
  - a. Automotive gasoline engines (P)
    - b. Electric motors for automotive use (NP)
    - c. Automotive lighting and signalling equipment (NP)
    - d. Flasher units (NP)
    - e. Custom-built vintage cars (NP)
    - f. Other automotive parts and components (NP)
    - g. Other motorcycle parts and components (NP)
20. Consumer durable products (P/NP)
 

Note: Subject to compliance with the Development Program for Consumer Durables.
21. Health care products (NP)
22. Sporting goods (NP)
23. Scientific instruments (NP)
24. Gifts, housewares and handicrafts (NP)
25. Fashion accessories, fine jewelry and gemstone cutting (NP)

---

**NOTES:**

1. Producers of non-traditional export products, whether or not listed in the Investment Priorities Plan, may be registered for incentives under the Omnibus Investments Code of 1987.
2. BOI reserves the right to change the status of an area from "NP" to "P/NP" and vice-versa, after public hearing, based on the criteria for the grant of pioneer status under Article 17 of the Omnibus Investments Code of 1987.
3. Firms engaged in any of the activities listed in the IPP (excluding mining and forestry) and registered under Book I of the 1987 Omnibus Investments Code shall be entitled to pioneer incentives if they locate in any of the less developed areas determined by BOI, in consultation with NEDA.

(3) フィリピン経済諸指標 (1989年)

	1983	1984	1985	1986	1987	1988	1989.1	年平均Uniding Rate <sup>(*)</sup>	年平均レート <sup>(*)</sup>
実質GNP成長率(%)	1.1	-7.1	-4.1	2.0	5.7	6.69			
名目GNP(百万ドル)	34082	31581	32125	30399	34338	38641			
名目GNP(億ペソ)	3787	5274	5977	6197	7062	8161			(1米ドル相当の円額)
人口(万人)	5196	5317	5467	5600	5736	5872	1968	n.a.	36047
人口増加率(%)	2.4	2.3	2.8	2.4	2.4	2.6		n.a.	35830
一人当りGNP(ドル)	656	594	588	543	599	660	69	n.a.	35806
経常収支(百万ドル)	-2750	-1116	8	996	-539				
貿易収支(百万ドル)	-2481	-679	-482	-202	-1017		70	n.a.	
輸出	5005	5391	4629	4842	5720				
対日貿易	7487	6070	5111	5044	6737		71	64259	34757
輸入	-243	232	142	-16	-137				
輸出	1023	1046	876	853	984		72	67621	30319
輸入	1266	815	735	868	1121				
総合収支	-2118	243	2301	1242	264		73	67565	27175
外貨準備高(百万ドル)	865	886	1061	2459	1959				
ペソの対ドルレート	11.11	16.70	18.61	20.39	20.57	21.12			29208
リザ-ブマネ(百万ペソ)	27.7	33.4	38.0	50.0	56.8		74	67875	29685
M1(百万ペソ)	32.5	33.6	35.8	42.9	52.4		75	72579	29660
M1増加率(%)	38.3	3.5	6.5	19.6	22.2				26855
M3(百万ペソ)	113.0	121.2	132.9	149.8	159.9				21049
ペソ普通預金(%)	9.7	9.9	10.8	8.0	4.5		76	74407	21925
ト-ビ(%)	12.8	33.7	26.5	16.0	12.9				22680
銀行貸出金利(%)	21.5	27.0	23.9	18.9	14.5				22065
消費者物価上昇率(%)	10.0	50.3	23.1	0.8	3.8	8.76	77	74028	24910
対外債務残高(十億ドル)	24.8	25.4	26.3	28.3	28.6				23752
うち中長期債務(含IMF)	15.4	15.9	17.7	22.8	24.9		78	73659	23759
中長期比率(%)	62.1	62.7	67.3	81.0	86.8				23860
DSR(IMF方式)	32.7	35.0	35.0	32.5	35.3		79	73733	
財政赤字	16.2	17.6	18.9	17.6	na				
対GDP比	45.6	56.9	69.0	79.2	103.1		80	75051	
外債入国者数(万人)	53.1	56.7	80.1	107.2	122.7				
うち日本人	-7.4	-9.8	-11.2	-28.1	-19.6		81	79051	
完全失業率(%)	2.0	1.9	1.9	4.5	2.8				
新規スト発生数	86.1	81.7	77.3	78.2	79.5		82	85103	
B O I承認投資額(百万ペソ)	17.7	15.7	14.9	13.3	12.7				
うち外国企業	5.4	6.2	11.1	11.1	9.5		83	111101	
うち日本企業	155	282	371	581	436				
S E C投資総額(百万ペソ)	5217	6114	4701	3146	8369				
うち外国企業	2978	3901	2450	1594	3427		84	166960	
うち日本企業	56	568	485	455	591				
S E C投資総額(百万ペソ)	5537	3577	6527	4646	8110	14140	85	186065	
うち外国企業	429	581	1492	885	1569				



(4) その他

1987年オムニバス投資法の下での外資登録申請ガイドライン (500万ペソ以下の投資の場合)

(500万以上の投資の場合)

GUIDELINES IN THE FILING OF APPLICATION  
REGISTRATION UNDER THE OMNIBUS INVESTMENT CODE OF 1987  
( Executive Order No. 226 )

1. OFFICIAL FILING

A. An application is considered officially filed upon submission of the complete set of documents ( prescribed application form duly accomplished, project report and such other documents which may be required and upon payment of the required filing fee ).

B. Required number of copies

1. For enterprises wishing to register with the Board of Investment;

i. Two (2) copies of BOI Application Form No. 501

ii. Two (2) copies of project report and supporting documents

2. For existing enterprises covered by rationalization, rehabilitation and/or modernization programs;

Application requirement is to be determined on a sector by sector basis at the time of implementing each program;

II. FEES

A. For Project Cost Not Exceeding P5M :

Filing Fee	P500.00
Registration Fee	P500.00

B. For Project Cost Exceeding P5M :

Filing Fee	P1,000.00
Registration Fee	P1,000.00

ADDITIONAL P10.00 per P.D. 200 as amended by P.D. 1856

REPUBLIC OF THE PHILIPPINES  
BOARD OF INVESTMENTS

APPLICATION FOR REGISTRATION  
UNDER THE OMNIBUS INVESTMENTS CODE OF 1987  
(EXECUTIVE ORDER NO. 226)

APPLICANT:

NAME OF ENTITY: \_\_\_\_\_  
OFFICE ADDRESS: \_\_\_\_\_ PLANT/FARM LOCATION: \_\_\_\_\_  
TELEPHONE NO.: \_\_\_\_\_ TELEPHONE NO.: \_\_\_\_\_

APPLICANTS REPRESENTATIVE TO BOI:

Name: \_\_\_\_\_  
Address: \_\_\_\_\_ Tel. N. : \_\_\_\_\_

NATURE OF BUSINESS ENTITY:

Sole Proprietorship       Corporation  
 Existing       Proposed       Existing       Proposed  
 Partnership       Cooperative  
 Existing       Proposed       Existing       Proposed  
 Others (Specify) \_\_\_\_\_

TYPE OF REGISTRATION APPLIED FOR:

1. TYPE OF ACTIVITY
- Activity engaged in or to be engaged in is listed in the Investments Priorities Plan (IPP).
  - Activity is not listed in the IPP but production intended for export is at least 50% (if a Phil. national) or 70%. (if foreign owned)
  - Activity produces goods to be used or to form part of export product. (Indirect Exports)
  - Activity proposed will engage in the sale abroad of export products bought from one or more export producers. (Export Trader)
  - Activity proposed will engage in rendering service to domestic and foreign tourists, technical, professional or other services or in exporting television and motion pictures and musical recordings made or produced in the Phils., either directly or through an export trader.
  - Activity engaged in is a user of energy-efficient equipment.

2. STATUS	
<input type="checkbox"/> Pioneer	<input type="checkbox"/> Non-Pioneer
3. TYPE OF PROJECT	
<input type="checkbox"/> New	<input type="checkbox"/> Rationalization & modernization
<input type="checkbox"/> Expansion	<input type="checkbox"/> Existing

AREA OF INVESTMENT APPLIED FOR:

Activity as listed in the IPP: \_\_\_\_\_

Specific Products/Services:      Attainable Capacity/Year (Vol.)

\_\_\_\_\_

\_\_\_\_\_

SOLE PROPRIETORSHIP, PARTNERSHIP, OTHERS: CAPITAL, OWNERSHIP AND CONTROL

Name	Nationality	Country of Residence	Capital (In ₱)
_____	_____	_____	_____
_____	_____	_____	_____

CORPORATION: CAPITAL, OWNERSHIP AND CONTROL

CAPITAL STOCK	Voting		Non-Voting	
	Number	Total Value (₱)	Number	Total Value (₱)
AUTHORIZED:				
SUBSCRIBED:				
Filipino				
Non-Filipino				
(of w/c specify Nat.)				
a.				
b.				
c.				
Total Subscribed				
PAID-UP:				

APPLICANT'S PRINCIPAL OFFICERS  
AND MAJOR STOCKHOLDERS

(For Corporation Only)

A. PRINCIPAL OFFICERS

<u>NAME</u>	<u>DESIGNATION</u>

B. MAJOR STOCKHOLDERS

<u>NAME</u>	<u>Nationality</u>	<u>Country of Residence</u>	<u>Subscribed of No.</u>	<u>Shares Held</u>	<u>Value (P)</u>

C. DIRECTORS

<u>NAME</u>	<u>Nationality</u>	<u>Country of Residence</u>	<u>Subscribed of No.</u>	<u>Shares Held</u>	<u>Value (P)</u>

The applicant has read the Omnibus Investments Code of 1987 and the Rules and Regulations adopted by the BOI and commits itself to abide by the provisions thereof.

DONE IN THE CITY/PROVINCE OF \_\_\_\_\_ THIS \_\_\_\_\_ DAY  
OF \_\_\_\_\_, 19\_\_\_\_\_.

\_\_\_\_\_  
Applicant

REPUBLIC OF THE PHILIPINES  
CITY/PROVINCE OF \_\_\_\_\_ )  
MUNICIPALITY OF \_\_\_\_\_ ) S. S.

SUBSCRIBED AND SWORN to before me this \_\_\_\_\_ day of \_\_\_\_\_  
\_\_\_\_\_, 19\_\_\_\_\_ in the City/Province of \_\_\_\_\_ affiant  
exhibited to me his Residence Certificate No. \_\_\_\_\_ issued  
at \_\_\_\_\_ on \_\_\_\_\_ 19\_\_\_\_\_.

NOTARY PUBLIC  
Until December 31, 19\_\_\_\_\_

Doc. No. \_\_\_\_\_  
Page No. \_\_\_\_\_  
Book No. \_\_\_\_\_  
Series of \_\_\_\_\_

13343

Documents To Be Attached

1. Copy of Applicant's Articles of Incorporation/Partnership and By-Laws; SEC Certificate of Registration;

For new project, this maybe submitted as part of pre-registration requirements.

For existing and expanding project whose existing operation is not registered with the Board, this must be submitted.

For expanding project whose existing operation is registered with the Board, this requirement is waived.

2. Copy of company Audited Financial Statements (AFS) and Income Tax Return (ITR) for the past three (3) years or for the period the applicant has been in operation if less than three (3) years.

For domestic existing and expanding projects whose existing operations are not registered with the Board, this must be submitted, otherwise this maybe waived.

3. Copy of company's Board resolution authorizing officer to sign on behalf of applicant enterprise.

All applications are required to submit this.

4. Project Report:

- 4.1 For activities listed in the IPP (new)
- 4.2 For activities listed in the IPP (Expansion, Different Product Line)
- 4.3 For activities listed in the IPP (Expansion, Same Product Line)
- 4.4 Existing Projects

\* Projections required may vary from one industry to the other.  
Please inquire with respective industry group.

**NOTE:**

Proof of financial capacity (Sworn Statement of Assets and Liabilities and latest Income Tax Return) of principal Stockholders may be required only for new projects and on a case to case basis.

13347

BOARD OF INVESTMENTS  
 Republic of the Philippines  
 SIMPLIFIED PROJECT STUDY  
 For Small Scale Projects  
 (Total Project Cost of not more than P5 million)

SIMPLIFIED PROJECT STUDY

-----  
 : I. TOTAL PROJECT COST: :  
 -----

: LAND	P	
: LAND IMPROVEMENTS		
: BUILDINGS		
: MACHINERY AND EQUIPMENT		
: INSTALLATION AND OTHER COSTS		
: FINANCIAL CHARGES		
: OTHERS (SPECIFY)		

: SUB-TOTAL	P	
: ADD: WORKING CAPITAL		
: TOTAL PROJECT COST		

-----  
 : II. SOURCES OF FINANCING: :  
 -----

: EQUITY	P	
: Local		
: Foreign		
: LOANS		
: OTHERS		
: TOTAL	P	
: Sub-total		
: Total		

\* Specify Sources and Terms of Loans

NOTE: Where necessary, use additional sheets.

III. TECHNICAL ASPECTS:

1. Brief description of production process:

2. Major machineries and other capital equipment requirements (Please attach one (1) quotation for those to be imported).

Name of Equipment	Number of Units	Cost (Pesos)
-------------------	-----------------	--------------

IMPORTED:

LOCAL

3. Utilities Required.

	Volume	Total Cost (In Pesos)
a. Power		
b. Electricity		
c. Water		
d. Others		

SIMPLIFIED PROJECT STUDY  
Page Three

-----  
: 4. Expected attainable volume of production: :  
-----

Year	1st	2nd	3rd	4th	5th

-----  
: RAW MATERIALS AND SUPPLIES (IMPORTED/LOCAL): :  
-----

	Usage Rate	Current CIF Price/Domestic Price	Other Costs	Factory Delivered Price

a. Raw Mat.				
Local				
1.				
2.				
Imported				
1.				
2.				
b. Supplies				
Local				
1.				
2.				
Imported				
1.				
2.				

-----  
: PROJECT TIMETABLE: :  
-----

(If applicable, present status of the project)

-----  
: LABOR REQUIREMENTS :  
-----

Type of Labor	Number	Total Payroll (In Pesos)
1. Direct Labor		
2. Indirect Labor		
3. Administrative/ Sales		



SIMPLIFIED PROJECT STUDY  
Page 4

II. MARKET:

1. Describe products to be produced. Specify by-products resulting from the operation, if any.
2. Projected annual volume of and value of domestic and overseas sales for each product for the first five (5) years of the project's life. If existing, indicate past three (3) years performance (export and local), (volume and value)
3. Proposed selling price, domestic on export or both as the case may be.

SIMPLIFIED PROJECT STUDY  
Page 5

PROJECTED INCOME STATEMENT	WITHOUT ROI INCENTIVES					
	Actual	1st Year	2nd Year	3rd Year	4th Year	5th Year
SALES						
Local						
Export						
TOTAL SALES						
COST OF SALES						
GROSS PROFIT ON SALES						
SELLING & ADMINISTRATIVE EXPENSES						
NET PROFIT ON OPERATIONS						
TOTAL PROFIT ON OPERATIONS:						
Local						
Foreign						
NET PROFIT (LOSS)						
Before Income Tax						
ADDITIONAL DEDUCTIONS						
NET INCOME SUBJECT TO INCOME TAX						
PROVISION FOR INCOME TAX						
NET PROFIT (LOSS) AFTER TAX						

(500万以上の投資の場合)

GUIDELINES IN THE FILING OF APPLICATION  
REGISTRATION UNDER THE OMNIBUS INVESTMENT CODE OF 1987  
( Executive Order No. 226 )

1. OFFICIAL FILING

A. An application is considered officially filed upon submission of the complete set of documents ( prescribed application form duly accomplished, project report and such other documents which may be required and upon payment of the required filing fee ).

B. Required number of copies

1. For enterprises wishing to register with the Board of Investment;
  - i. Two (2) copies of BOI Application Form No. 501
  - ii. Two (2) copies of project report and supporting documents
2. For existing enterprises covered by rationalization, rehabilitation and/or modernization programs;

Application requirement is to be determined on a sector by sector basis at the time of implementing each program;

II. FEES

A. For Project Cost Not Exceeding P5M :

Filing Fee	P500.00
Registration Fee	P500.00

B. For Project Cost Exceeding P5M :

Filing Fee	P1,000.00
Registration Fee	P1,000.00

ADDITIONAL P10.00 per P.D. 200 as amended by P.D. 1856

REPUBLIC OF THE PHILIPPINES  
BOARD OF INVESTMENTS

APPLICATION FOR REGISTRATION  
UNDER THE OMNIBUS INVESTMENTS CODE OF 1987  
(EXECUTIVE ORDER NO. 226)

APPLICANT

NAME OF ENTITY: \_\_\_\_\_  
OFFICE ADDRESS: \_\_\_\_\_ PLANT/FARM LOCATION: \_\_\_\_\_  
TELEPHONE NO.: \_\_\_\_\_ TELEPHONE NO.: \_\_\_\_\_

APPLICANTS REPRESENTATIVE TO BOI

Name: \_\_\_\_\_  
Address: \_\_\_\_\_ Tel. No.: \_\_\_\_\_

NATURE OF BUSINESS ENTITY

<input type="checkbox"/> Sole Proprietorship	<input type="checkbox"/> Corporation
<input type="checkbox"/> Existing <input type="checkbox"/> Proposed	<input type="checkbox"/> Existing <input type="checkbox"/> Proposed
<input type="checkbox"/> Partnership	<input type="checkbox"/> Cooperative
<input type="checkbox"/> Existing <input type="checkbox"/> Proposed	<input type="checkbox"/> Existing <input type="checkbox"/> Proposed
<input type="checkbox"/> Others (Specify) _____	

TYPE OF REGISTRATION APPLIED FOR

1. TYPE OF ACTIVITY

- Activity engaged in or to be engaged in is listed in the Investments Priorities Plan (IPP).
- Activity is not listed in the IPP but production intended for export is at least 50% (if a Phil. national) or 70%. (if foreign owned)
- Activity produces goods to be used or to form part of export product. (Indirect Exports)
- Activity proposed will engage in the sale abroad of export products bought from one or more export producers. (Export Trader)
- Activity proposed will engage in rendering service to domestic and foreign tourists, technical, professional or other services or in exporting television and motion pictures and musical recordings made or produced in the Phils., either directly or through an export trader.
- Activity engaged in is a user of energy-efficient equipment.

2. STATUS	
<input type="checkbox"/> Pioneer	<input type="checkbox"/> Non-Pioneer
3. TYPE OF PROJECT	
<input type="checkbox"/> New	<input type="checkbox"/> Rationalization & modernization
<input type="checkbox"/> Expansion	<input type="checkbox"/> Existing

AREA OF INVESTMENT APPLIED FOR:

Activity as listed in the IPP: \_\_\_\_\_

Specific Products/Services:      Attainable Capacity/Year (Vol.)

\_\_\_\_\_

\_\_\_\_\_

SOLE PROPRIETORSHIP, PARTNERSHIP, OTHERS: CAPITAL, OWNERSHIP AND CONTROL

Name	Nationality	Country of Residence	Capital (In ₱)
_____	_____	_____	_____
_____	_____	_____	_____

CORPORATION: CAPITAL, OWNERSHIP AND CONTROL

CAPITAL STOCK	Voting		Non-Voting	
	Number	Total Value (₱)	Number	Total Value (₱)
AUTHORIZED:				
SUBSCRIBED:				
Filipino				
Non-Filipino				
(of w/c specify Nat.)				
a.				
b.				
c.				
Total Subscribed				
PAID-UP:				

APPLICANT'S PRINCIPAL OFFICERS AND MAJOR STOCKHOLDERS (For Corporation Only)

A. PRINCIPAL OFFICERS					
NAME	DESIGNATION				
B. MAJOR STOCKHOLDERS					
NAME	Nationality	Country of Residence	Subscribed No.	Shares Held	Value (P)
C. DIRECTORS					
NAME	Nationality	Country of Residence	Subscribed No.	Shares Held	Value (P)

The applicant has read the Omnibus Investments Code of 1987 and the Rules and Regulations adopted by the BOI and commits itself to abide by the provisions thereof.

DONE IN THE CITY/PROVINCE OF \_\_\_\_\_ THIS \_\_\_\_\_ DAY OF \_\_\_\_\_, 19\_\_\_\_\_.

\_\_\_\_\_  
Applicant

REPUBLIC OF THE PHILIPINES  
CITY/PROVINCE OF \_\_\_\_\_ )  
MUNICIPALITY OF \_\_\_\_\_ ) S. S.

SUBSCRIBED AND SWORN to before me this \_\_\_\_\_ day of \_\_\_\_\_, 19\_\_\_\_\_ in the City/Province of \_\_\_\_\_ affiant exhibited to me his Residence Certificate No. \_\_\_\_\_ issued at \_\_\_\_\_ on \_\_\_\_\_ 19\_\_\_\_\_.

NOTARY PUBLIC  
Until December 31, 19\_\_\_\_\_

Doc. No. \_\_\_\_\_  
Page No. \_\_\_\_\_  
Book No. \_\_\_\_\_  
Series of \_\_\_\_\_

Documents To Be Attached

1. Copy of Applicant's Articles of Incorporation/Partnership and By-Laws; SEC Certificate of Registration;

For new project, this maybe submitted as part of pre-registration requirements.

For existing and expanding project whose existing operation is not registered with the Board, this must be submitted.

For expanding project whose existing operation is registered with the Board, this requirement is waived.

2. Copy of company Audited Financial Statements (AFS) and Income Tax Return (ITR) for the past three (3) years or for the period the applicant has been in operation if less than three (3) years.

For domestic existing and expanding projects whose existing operations are not registered with the Board, this must be submitted, otherwise this maybe waived.

3. Copy of company's Board resolution authorizing officer to sign on behalf of applicant enterprise.

All applications are required to submit this.

4. Project Report:

- 4.1 For activities listed in the IPP (new)
- 4.2 For activities listed in the IFP (Expansion, Different Product Line)
- 4.3 For activities listed in the IPP (Expansion, Same Product Line)
- 4.4 Existing Projects

\* Projections required may vary from one industry to the other.

Please inquire with respective industry group.

**NOTE:**

Proof of financial capacity (Sworn Statement of Assets and Liabilities and latest Income Tax Return) of principal Stockholders may be required only for new projects and on a case to case basis.

PROJECT REPORT FORMAT  
FOR ACTIVITIES LISTED IN THE IPP  
(New Project)

1. Description/Specification/Application of Product
2. Justification For Pioneer Status For Projects Deemed Pioneer
3. Project Timetable
4. Project Cost
  - 4.1 Local
  - 4.2 Foreign
5. Sources and Terms and Financing
  - 5.1 Equity
  - 5.2 Loan
6. Raw Materials and Supplies
  - 6.1 Usage Rate Per Unit of Product
  - 6.2 Sources
    - 6.2.1 Local
    - 6.2.2 Imported
  - 6.3 Unit Cost
    - 6.3.1 Local
    - 6.3.2 Imported, include CIF cost and tariff rate
7. Labor Generation
  - 7.1 Direct Labor
  - 7.2 Indirect Labor
  - 7.3 Administrative/Sales
8. Plant Location
  - 8.1 Justification if located within Metro Manila Area
9. Production Schedule
  - 9.1 No. of shifts per day
  - 9.2 No. of working days per year
  - 9.3 Projected production volume
10. Proposed Selling Price
  - 10.1 Local
  - 10.2 Export

13359



11. Sales Schedule, Volume and Value

- 11.1 Local
- 11.2 Export

12. Machineries and Equipment

12.1 Classification

- 12.1.1 Production
- 12.1.2 Spare Parts
- 12.1.3 Transport
- 12.1.4 Maintenance
- 12.1.5 R and D Quality Control

12.2 Quotation (submit one (1) only) only for equipment for importation.

13. Projected Income Statement for Five (5) Years

Additional Requirements

A. Marine and Aquaculture Projects

1. Deep Sea Fishing

- 1.1 Homeport
- 1.2 Catch per unit of fishing vessel; and,

2. Prawn Culture

- 2.1 Proof of ownership or control over the project site
- 2.2 Pond layout
- 2.3 Production assumptions
  - 2.3.1 Yield per unit area
  - 2.3.2 Stocking rate
  - 2.3.3 Survival rate
  - 2.3.4 No. of croppings per year
  - 2.3.5 Average weight per piece
  - 2.3.6 Feed conversion ratio
  - 2.3.7 Productive area

3. Pearl culture

- 3.1 Proof of control over the project site
- 3.2 Production assumptions
  - 3.2.1 Culture period
  - 3.2.2 No. of mother pearl
  - 3.2.3 No. of nucleus per mother of pearl
  - 3.2.4 Success rate

13360

B. Seed and Crop Projects

1. Plant Location

1.1 Justification as to adoptability to crop plantation

1.2 Plant development program, including particular practices

1.3 Production assumptions

1.3.1 Area developed, planted and harvested

1.3.2 Yield per unit area

1.3.3 Number of cropping seasons

C. Mining Projects:

1. Copy of mine lease contract

2. Copy of operating agreement

3. Copy of evaluation report on the property, preferably by Bureau of Mines or any licensed geologist

D. Cement and Concrete Products (Rationalization, Rehabilitation and Modernization)

1. Increase in production capacity

2. Production cost savings

E. Services

1. Trading

1.1 Market

1.2 List of local suppliers, their corresponding products and selling prices

1.3 World market selling price for product which is new and unique

1.4 PSCC code for each product

2. Customs Bonded Trading Warehouse

2.2 ITR and statement of networth of major stockholders

2.2 Demand and supply analysis of products to be re-exported made out of raw materials imported thru CBTW, including projected market share of the operator

2.3 Market overview of the sector to be serviced

3. Service

3.1 Description of service

3.2 Service contracts

13361

4. Inter-island and overseas shipping
  - 4.1 ITR and statement of networth of company and major stockholders
  - 4.2 Volume and value of cargoes
  - 4.3 Indorsement from MARINA
  - 4.4 Machinery and equipment
    - 4.4.1 Vessel specification
    - 4.4.2 Support equipment and justification for acquiring
  - 4.5 Routes to be serviced

Note: Presentation of information should be on a per vessel basis.
5. Airline Cargo (Domestic and Regional)
  - 5.1 Demand/supply analysis, including projected market share
  - 5.2 Routes to be serviced
  - 5.3 Ground and hangar equipment and their justification for acquiring
  - 5.4 ITR and statement of networth of company and major stockholders
6. Tourism
  - 6.1 Tourist Accomodation Facilities (hotels and the like)
    - 6.1.1 Indorsement from DOT under PD 381
    - 6.1.2 Classification as to deluxe, first class and economy for hotels and pensionne houses, resorts, apartelles, lodging house for others
  - 6.2 Tourist transport facilities
    - 6.2.1 Indorsement from DOT

DRM: MVFM:carrie

PROJ.REP  
Diskette No. 5  
Fujitsu

13362



# The OMNIBUS INVESTMENTS CODE of 1987

Executive Order No. 226

Including Executive Order No. 136 creating the  
"Investment One-Stop Action Center"

Board of Investments  
Department of Trade and Industry  
Republic of the Philippines  
July 1987

## THE OMNIBUS INVESTMENTS CODE OF 1987

### TABLE OF CONTENTS

In the Mainstream of Growth By President Corason C. Aquino .....	iii	Book Three	
Yes, the Filipino Can! By Secretary Jose Concepcion, Jr. ....	vi	Incentives to Multinational Companies Establishing Regional Or Area Headquarters in the Philippines	
Executive Order No. 226 -- The Omnibus Investments Code of 1987 .....	1	Chapter I. -- Licensing of the Multinational Company .....	36
		Chapter II. -- Incentives to Expatriates .....	37
		Chapter III. -- Incentives to the Regional Headquarters .....	39
			Book Four
		Incentives To Multinational Companies Establishing Regional Warehouses To Supply Spare Parts or Manufactured Components and Raw Materials To The Asia-Pacific Region And Other Foreign Markets .....	41
			Book Five
		Special Investors Resident Visa .....	47
			Book Six
		Incentives of Export Processing Zone Enterprises .....	48
		Final Provisions .....	51
		Executive Order No. 136 -- Establishing the Council for Investments .....	53
			Book One
Investments With Incentives			
Title I. Preferred Areas of Investments .....	9		
Chapter I. -- Definition of Terms .....	9		
Chapter II. -- Investment Priorities Plan .....	14		
Chapter III. -- Registration of Enterprises .....	16		
Title II. Basic Rights and Guarantees .....	19		
Title III. Incentives to Registered Enterprises .....	21		
Title IV. Incentives to Less Developed Area Registered Enterprise .....	26		
Title V. General Provisions .....	27		
Foreign Investments without Incentives			
Title I. -- Definitions and Scope of this Book ..	28		
Chapter II. -- Investments .....	28		
Chapter III. -- License To Do Business .....	30		
Title II. General Provisions .....	33		



**Rules  
And  
Regulations  
To  
Implement Executive  
Order No. 226  
Otherwise Known As The  
Omnibus Investments  
Code Of 1987**

Board of Investments  
 Department of Trade and Industry  
 Republic of the Philippines  
 April 1988

**RULES AND REGULATIONS TO IMPLEMENT  
EXECUTIVE ORDER NO. 226 OTHERWISE KNOWN  
AS THE OMNIBUS INVESTMENTS CODE  
OF 1987**

**TABLE OF CONTENTS**

<b>PART I –</b> Rule I.	<b>GENERAL PROVISIONS</b> ..... 1 Definitions and Basic Guidelines ..... 1	Rule XVIII. Multinational Companies Establishing Regional Warehouses ..... 39
<b>PART II –</b> Rule II. Rule III. Rule IV. Rule V. Rule VI. Rule VII. Rule VIII. Rule IX. Rule X. Rule XI. Rule XII. Rule XIII.	<b>INVESTMENTS WITH INCENTIVES</b> .... 9 Qualifications for Applicant ..... 9 Application for Registration ..... 10 Board Action. .... 10 Certificate of Registration. .... 11 Incentives to Registered Enterprises ..... 11 Transferability of Tax Credit Certificate ..... 26 Public Participation Requirement ..... 26 Conditions for Availment of Incentives in General ..... 29 Duration of Incentives. .... 29 Submission of Reports and Other Documents ..... 30 Automatic Cancellation, Withdrawal from Business or Suspension of Operations ..... 31 Non-Registered Activities ..... 32	<b>PART V –</b> SPECIAL INVESTOR'S RESIDENT VISA. .... 44 Nature and Procedure ..... 44 <b>FINAL PROVISIONS</b> ..... 48 Scope of These Rules ..... 48 Appeal. .... 48 Cancellation Under Book II. .... 49 Vested Rights ..... 49 Violations of the Provisions of the Code. . 50 Reckoning of Dates. .... 51 Notices ..... 51 Rule XXVII. .... 51 Fines ..... 52 Effectivity ..... 54
<b>PART III –</b> Rule XIV. Rule XV. Rule XVI.	<b>FOREIGN INVESTMENTS WITHOUT INCENTIVES</b> ..... 32 Permitted Investments. .... 32 Permissible Investments. .... 32 Doing Business in the Philippines ..... 33	<b>PART VI –</b> Rule XIX.
<b>PART IV –</b> Rule XVII.	<b>INCENTIVES TO MULTINATIONAL COMPANIES ESTABLISHING REGIONAL OR AREA HEADQUARTERS IN THE PHILIPPINES</b> ..... 35 Application for Registration ..... 35	<b>PART VII.</b>

アバカ主要産地域における気候条件の比較 (1951-85年平均値)

地方(観測地)	年間降雨量 (mm, 平均)	年間平均気温	湿度 (%)	平均風向	風力 (mps)
ピコール (レガスビ)	3,300	26.9°C	83	NE	4
ピサヤ (タクロバン)	2,215.6	27.2°C	82	NW	3
ミンダナオ (ダバオ)	1,792.7	27.2°C	81	N	2

(出典) Climatological Normals/Averages of the Philippines (1951-1985).

National Institute of Climatology, PAGASA

月間降雨量の比較 (1951-85年平均値)

(単位°C)

地方(観測地)	1	2	3	4	5	6	7	8	9	10	11	12
ピコール (レガスビ)	296.9	195.6	192.6	152.1	181.3	240.9	251.3	264.2	259.9	325.5	483.7	456.0
ピサヤ (タクロバン)	261.8	205.2	137.6	121.2	146.1	154.7	167.0	129.1	146.8	184.4	244.8	316.9
ミンダナオ (ダバオ)	114.7	99.0	77.9	144.9	206.7	190.1	175.9	173.2	180.1	174.8	145.7	109.7

(出典) 同上

気象条件 (レガスピ、1951-85年平均値)

<CLIMATOLOGICAL NORMALS>

STATION : LEGASPI		PERIOD OF RECORDS - 1951 - 1985												
COORDINATES: 13 09 N 123 43 E														
MONTH	RAIN- FALL RAINY (mm)	T E M P E R A T U R E (deg C)				M E A N S E A L E V E L P R E -		P R E V A I L I N G W I N D		D A Y S W I T H				
		MAX- INUM	MIN- INUM	MEAN	DRY BULB	WET BULB	DEW PT.	RH (%)	SSURE (mbs)	DIREC- TIDN	SPEED (mps)	CLOUD (octa)	TSTM LGH	
JAN	296.9	28.6	22.1	25.3	25.1	23.0	22	84	1012.9	NE	4	6	1	0
FEB	195.6	17	29.1	25.6	25.4	23.1	22	82	1013.1	NE	4	6	0	0
MAR	192.6	17	29.9	26.3	26.1	23.7	23	82	1012.8	NE	4	5	0	0
APR	152.1	16	31.1	27.3	27.2	24.7	24	81	1011.6	NE	4	5	2	1
MAY	181.3	14	32.1	28.1	28.0	25.4	25	81	1009.8	NE	3	5	7	9
JUN	240.9	16	32.2	28.1	27.8	25.4	25	82	1009.1	NE	3	5	11	12
JUL	251.3	19	31.8	27.7	27.3	25.1	24	84	1008.6	SW	3	6	10	10
AUG	264.2	20	31.6	27.6	27.2	25.1	24	84	1008.2	SW	3	6	10	8
SEP	259.9	20	31.5	27.5	27.0	25.0	24	85	1008.9	W	3	6	11	11
OCT	325.5	21	31.1	27.3	27.2	24.7	24	84	1009.4	NE	3	6	9	10
NOV	483.7	22	30.1	26.6	26.4	24.4	24	85	1010.2	NE	4	6	6	5
DEC	456.0	23	29.0	25.9	25.7	23.8	23	85	1011.7	NE	4	6	2	2
ANNUAL	3300.0	225	30.7	26.9	26.7	24.5	24	83	1010.5	NE	4	6	69	68

気象条件 (タクロハン、1951-85年平均値)

<CLIMATOLOGICAL NORMALS>

STATION : TACLOBAN CITY		PERIOD OF RECORDS - 1951 - 1985													
COORDINATES: 11 15 N 125 00 E															
MONTH	RAIN- FALL RAINY (mm) DAYS	T E M P E R A T U R E (deg C)			M E A N S E A L L E V E L P R E - S S U R E (mbs)			P R E V A I L I N G W I N D D I R E C T I O N		D A Y S W I T H S P E E D C L O U D (octa) T S T M L I G H T					
		MAX- INUM	MIN- YUM	MEAN	DRY BULB	WET BULB	DEW PT.	RH (%)	DIREC-	SPEED (mps)	CLOUD	TSTM	LIGHT		
JAN	261.8	28.8	22.8	25.8	25.3	23.2	22	84	1011.9	NW	3	6	6	1	1
FEB	205.2	18	29.1	22.7	25.4	23.1	22	82	1012.0	NW	3	6	6	1	1
MAR	137.6	16	30.0	23.2	26.6	23.6	23	82	1012.0	NW	3	5	5	2	1
APR	121.2	15	30.8	24.1	27.4	24.5	24	81	1010.8	NW	3	5	5	6	6
MAY	146.1	15	31.1	24.8	27.9	25.1	24	81	1009.6	SE	3	5	5	13	15
JUN	154.7	16	31.2	24.6	27.9	25.1	24	82	1009.3	SE/SSE	3	6	6	15	19
JUL	167.0	17	31.1	24.4	27.7	24.8	24	82	1008.7	NW	3	6	6	16	19
AUG	129.1	15	31.4	24.5	27.9	24.8	24	80	1008.5	NW	3	6	6	15	15
SEP	146.8	16	31.3	24.5	27.9	24.8	24	81	1008.9	NW	3	6	6	15	19
OCT	184.4	19	31.0	24.2	27.6	24.7	24	83	1009.2	NW	3	6	6	16	19
NOV	244.8	20	30.3	23.9	27.1	24.4	24	84	1009.3	NW	3	6	6	10	11
DEC	316.9	23	29.5	23.4	26.5	23.9	23	95	1010.7	NW	3	6	6	6	5
ANNUAL	2215.6	210	30.5	23.9	27.2	26.7	24.3	82	1010.1	NW	3	6	6	116	131



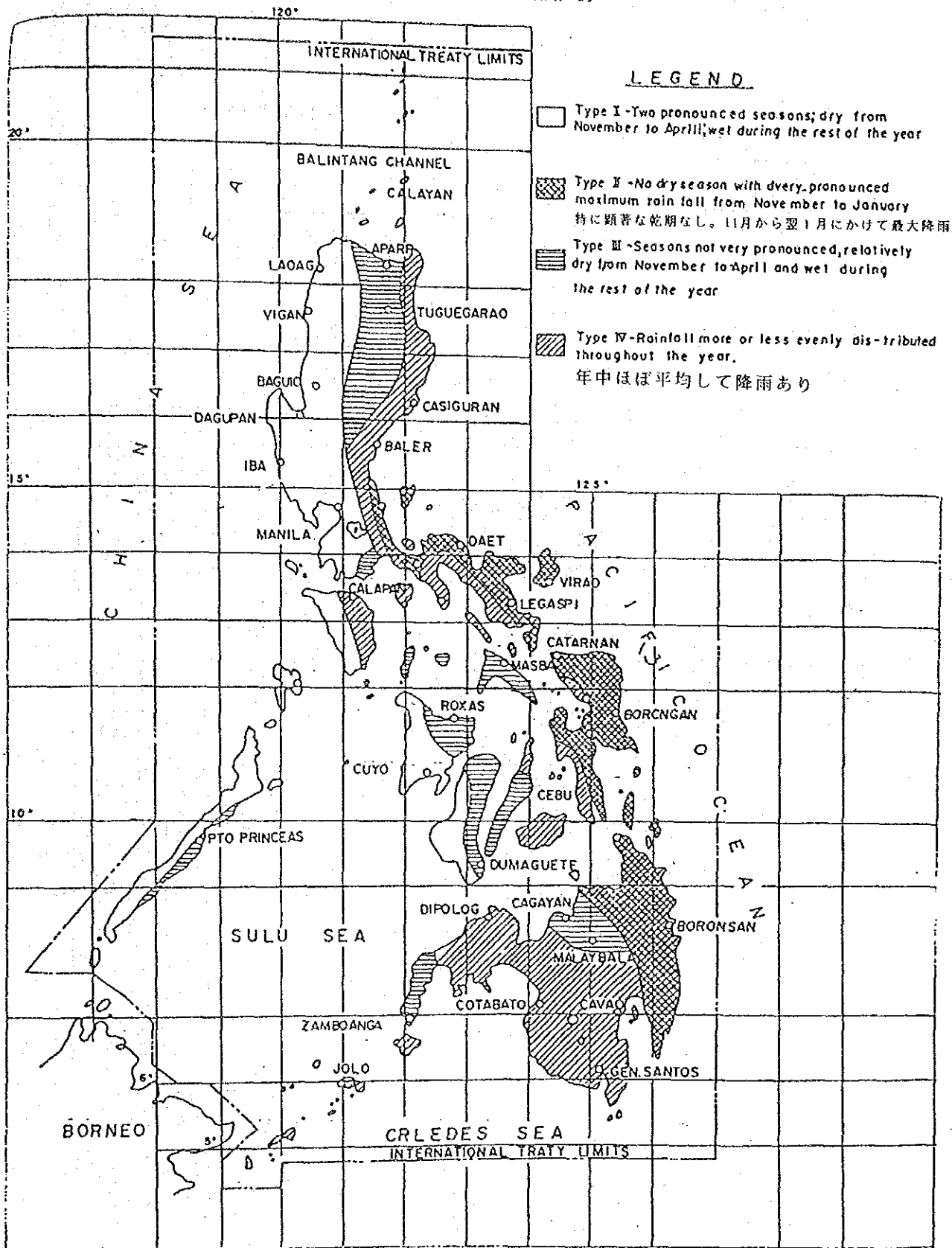
気象条件 (ダバオ、1951-85年平均値)

<CLIMATOLOGICAL NORMALS>

STATION : DAVAO CITY  
 COORDINATES: 07 05 N 125 37 E / PERIOD OF RECORDS - 1951 - 1985 (34年間)

MONTH	RAIN- FALL RAINY (mm)		T E M P E R A T U R E (deg C)				W E T D E W B U L B P T. (%)		M E A N S E A L E V E L P R E - S S U R E (mbs)		P R E V A I L I N G W I N D D I R E C - T I O N		S P E E D C L O U D (mps) (octa)		DAYS WITH T S T M L I G H T
	DAYS	MAX- MINUM	MIN-	MEAN	DRY BULB	WET BULB	RH	SSURE	DIREC-	SPEED	CLOUD	TSTM	LIGHT		
JAN	114.7	17	30.9	21.9	26.4	26.0	23.5	23	81	1010.6	N	3	6	3	
FEB	99.0	14	31.2	22.0	26.6	26.2	23.6	23	80	1010.8	N	3	6	2	
MAR	77.9	12	32.3	22.3	27.3	26.9	23.9	23	78	1010.8	N	3	5	3	
APR	144.9	11	33.0	23.0	28.0	27.6	24.6	24	78	1009.0	N	2	5	6	
MAY	206.7	15	33.0	23.0	28.0	27.6	25.0	24	81	1009.4	N	2	6	9	
JUN	190.1	19	31.6	22.9	27.2	27.1	24.6	24	81	1009.7	N	2	6	13	
JUL	175.9	18	31.4	22.7	27.0	26.9	24.5	24	82	1009.6	N	2	6	12	
AUG	173.2	17	31.6	22.7	27.1	27.0	24.5	24	81	1009.6	S	2	6	12	
SEP	180.1	17	31.8	22.8	27.3	27.1	24.5	24	81	1009.7	N	2	6	13	
OCT	174.8	19	32.1	22.8	27.4	27.2	24.5	24	80	1009.7	N	2	6	14	
NOV	145.7	20	32.1	22.7	27.4	27.0	24.5	24	81	1009.6	N	2	6	10	
DEC	109.7	20	31.4	22.4	26.9	26.5	24.1	23	82	1010.7	N	2	6	5	
ANNUAL	1792.7	199	31.9	22.6	27.2	26.9	24.3	24	81	1009.9	N	2	6	111	

フィリピン・コロナ気候区分

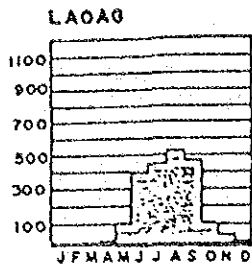


Climate Map of the Philippines

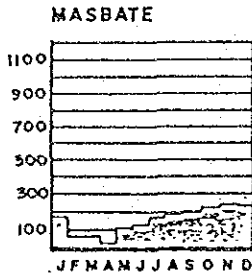
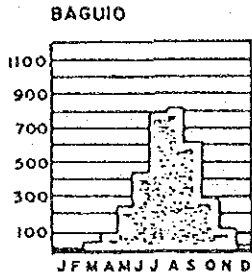
主要都市における月別降雨量パターン

SCALE. 1:8,000,000

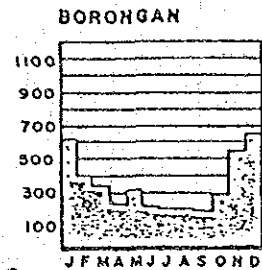
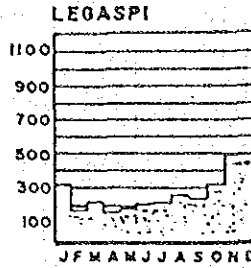
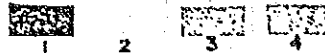
レガスピ (ビコール地方)  
 ボロンガン (東サマール地方)  
 ダバオ (ミンダナオ地方)



AUG. 13/10 yrs  
 JULY 11/10 yrs

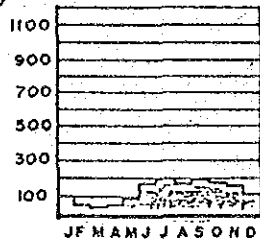
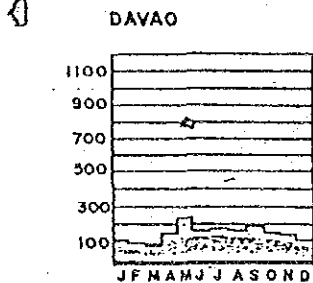


CLIMATIC TYPES



TROPICAL CYCLONE TRACKS WITH PROBABILITY OF OCCURRENCE

FEB/MAR. 1/50 yrs.  
 JAN. 1/10 yrs.

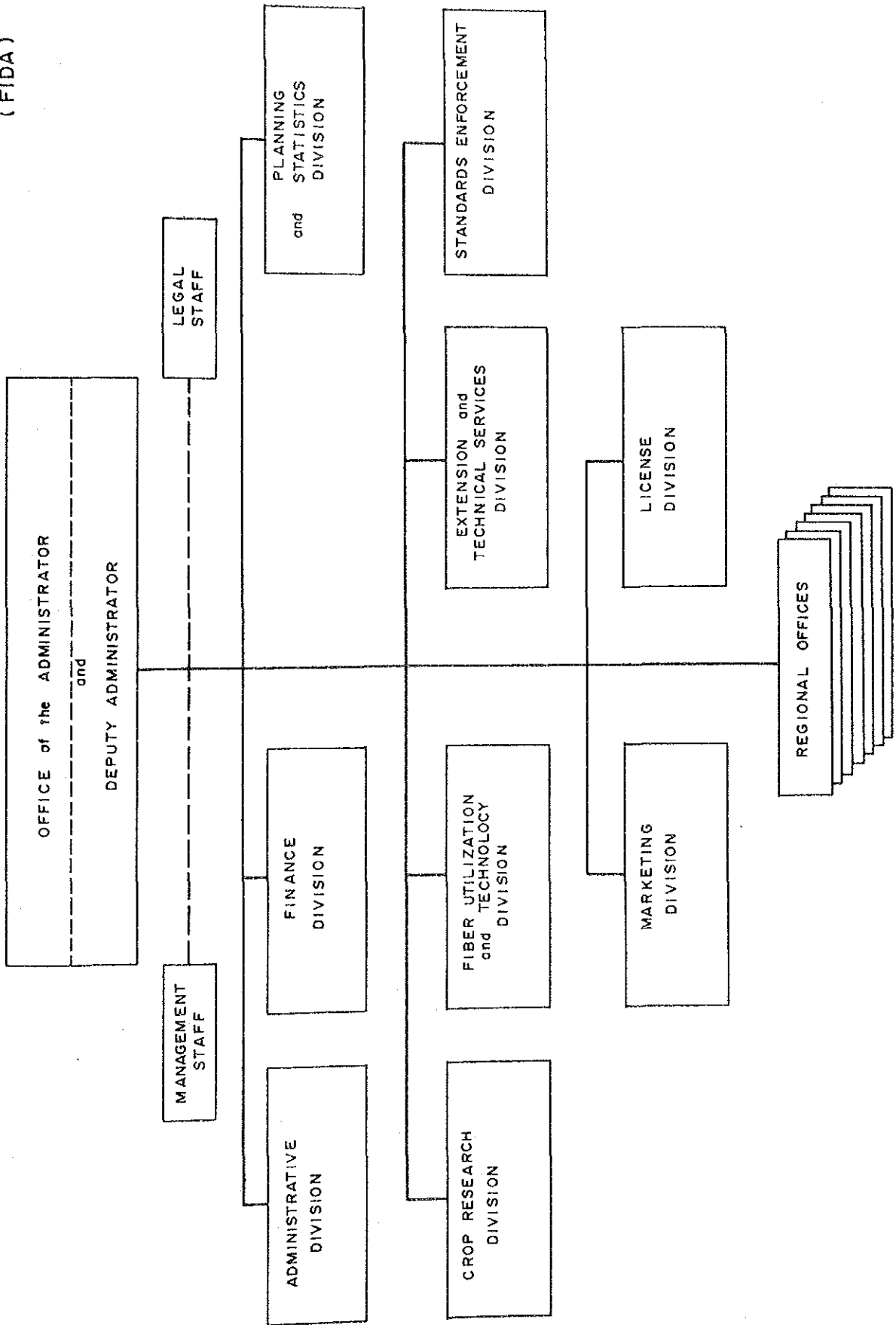


TAMI-TAMI GROUP

VALUES ARE IN MILLIMETERS RAINFALL

FIDA ORGANIZATIONAL STRUCTURE

FIBER DEVELOPMENT AUTHORITY  
( FIDA )



JICA