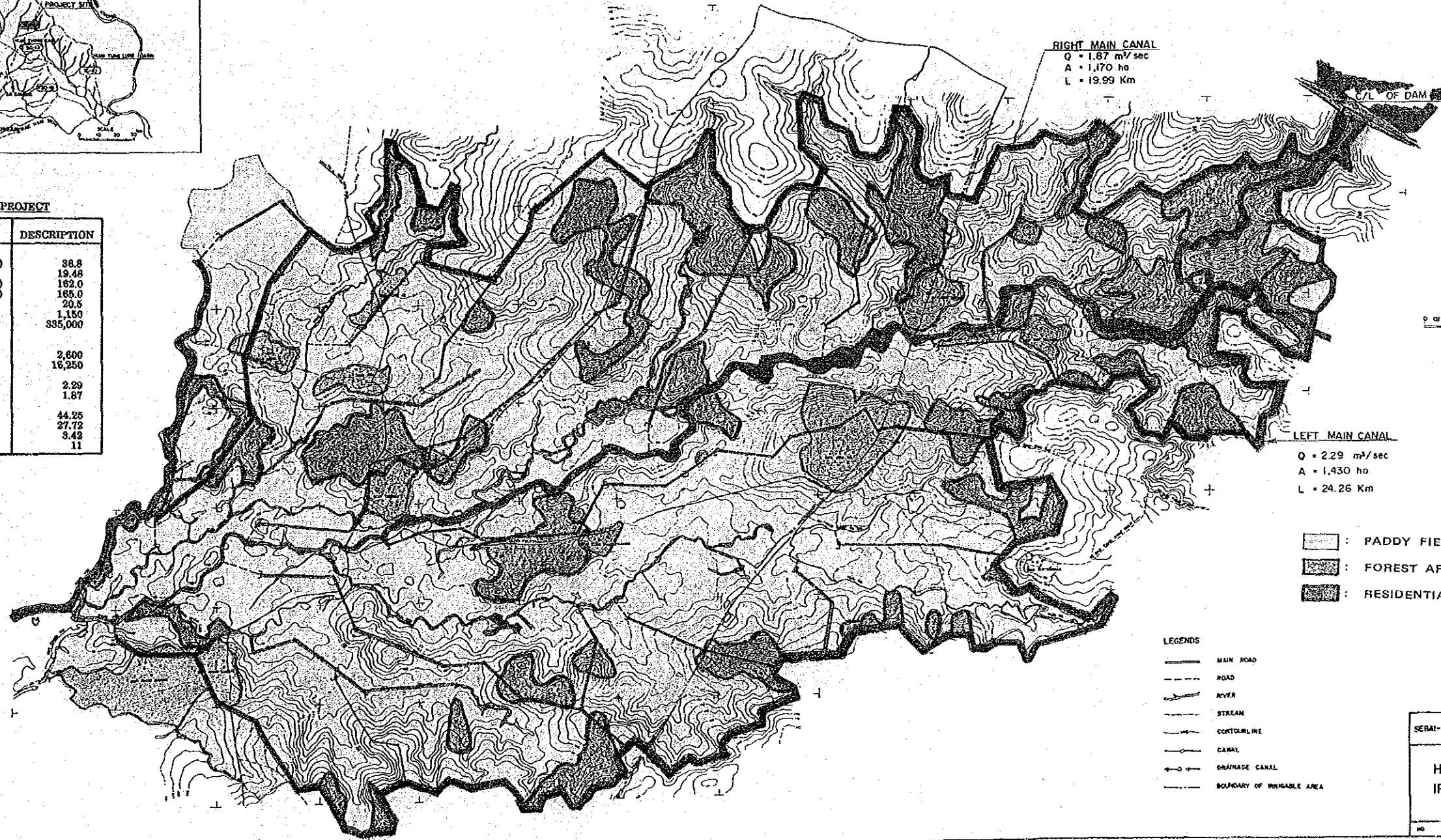


**MAJOR FEATURES OF THE PROJECT**

ITEM	DESCRIPTION	
(1) RESERVOIR		
a) WATERSHED	(Km <sup>2</sup> )	36.8
b) EFFECTIVE STORAGE	(MCM)	19.48
c) NWL	(MSL)	182.0
d) DAM CREST EL	(MSL)	185.0
e) DAM HEIGHT	(m)	20.5
f) CREST LENGTH	(m)	1,150
g) EMBANKMENT	(m)	385,000
(2) SERVICE AREA		
a) IRRIGABLE AREA	(ha)	2,600
	(ra)	16,250
b) MAX DISCHARGE	(cms)	
- LEFT MAIN CANAL		2.29
- RIGHT MAIN CANAL		1.87
c) CANAL LENGTH	(Km)	
- MAIN CANAL		44.25
- LATERAL CANAL		27.72
- DRAINAGE CANAL		3.42
d) VILLAGE POND	(No)	11



**RIGHT MAIN CANAL**  
 $Q = 1.87 \text{ m}^3/\text{sec}$   
 $A = 1,170 \text{ ha}$   
 $L = 19.99 \text{ Km}$

**LEFT MAIN CANAL**  
 $Q = 2.29 \text{ m}^3/\text{sec}$   
 $A = 1,430 \text{ ha}$   
 $L = 24.26 \text{ Km}$

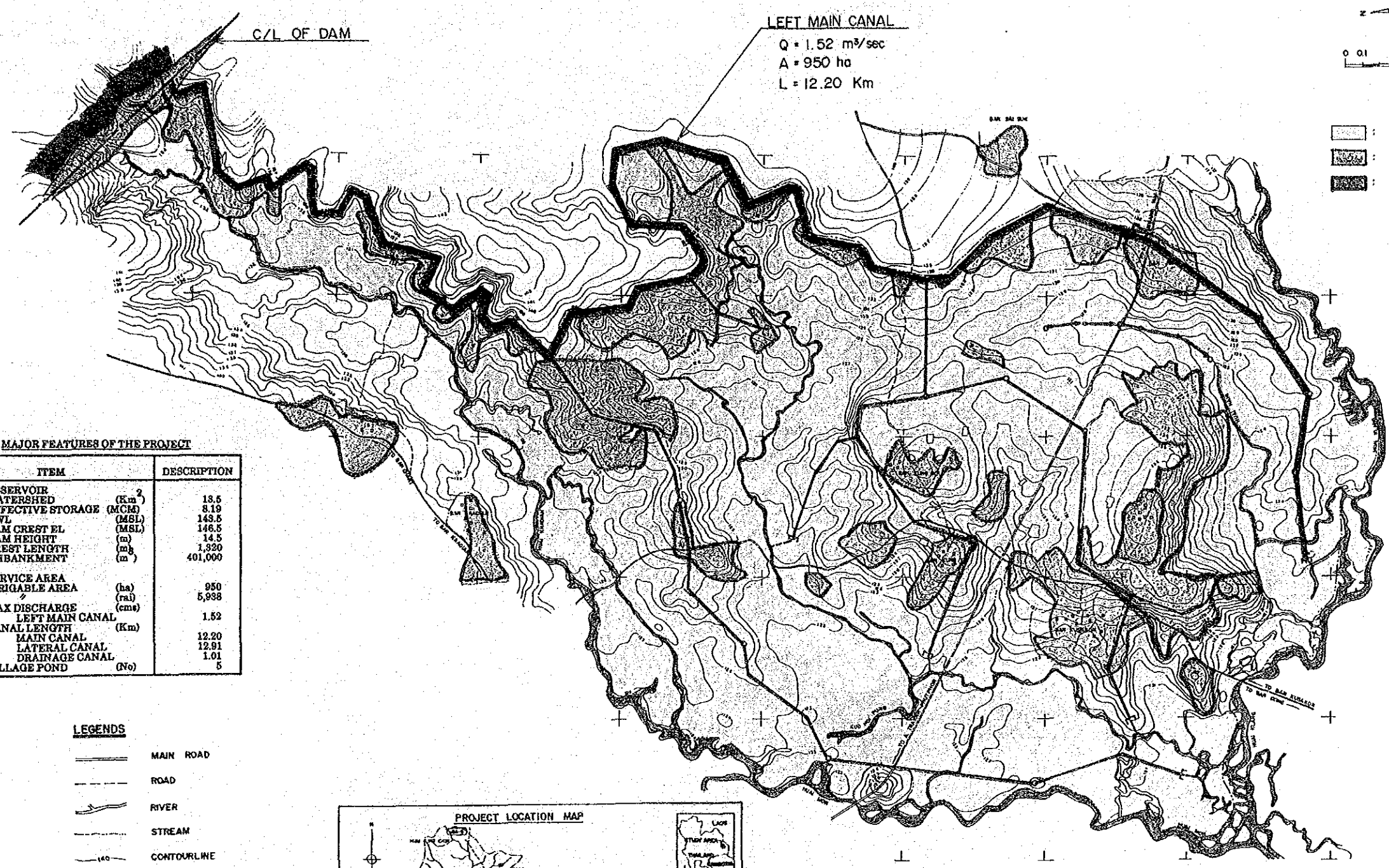
- : PADDY FIELD
- : FOREST AREA & OTHERS
- : RESIDENTIAL AREA

- LEGENDS**
- MAIN ROAD
  - ROAD
  - RIVER
  - STREAM
  - CONTOURLINE
  - CANAL
  - DRAINAGE CANAL
  - BOUNDARY OF IRRIGABLE AREA

THE FEASIBILITY STUDY OF  
 SEBAI-SEBOK BASIN DEVELOPMENT PROJECT  
 IN THE NORTHEAST REGION (NO. 1)

**HUAI KHUM KHAM  
 IRRIGATION PROJECT**

NO. 2 JAPAN INTERNATIONAL COOPERATION AGENCY

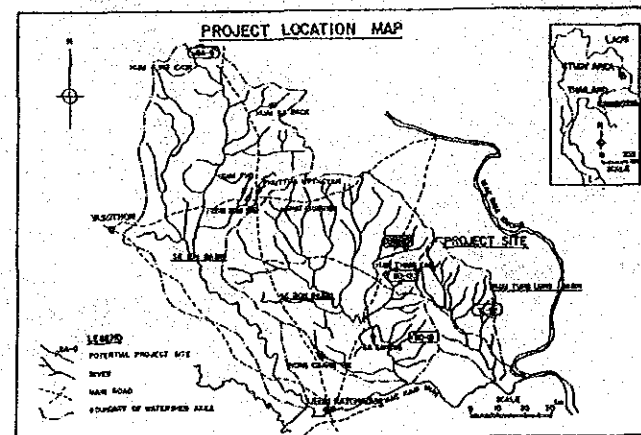


**MAJOR FEATURES OF THE PROJECT**

ITEM	DESCRIPTION	
(1) RESERVOIR	(Km <sup>2</sup> )	13.5
a) WATERSHED	(MCM)	8.19
b) EFFECTIVE STORAGE	(MSL)	143.5
c) NWL	(m)	146.5
d) DAM CREST EL	(m)	14.5
e) DAM HEIGHT	(m)	1.320
f) CREST LENGTH	(m)	401,000
g) EMBANKMENT	(m)	
(2) SERVICE AREA		950
a) IRRIGABLE AREA	(ha)	5,938
b) MAX DISCHARGE	(cms)	1.52
c) CANAL LENGTH	(Km)	12.20
- LEFT MAIN CANAL		12.91
- MAIN CANAL		1.01
- LATERAL CANAL		5
- DRAINAGE CANAL		
d) VILLAGE POND	(No)	

**LEGENDS**

- ==== MAIN ROAD
- ROAD
- ~ RIVER
- STREAM
- CONTOURLINE
- CANAL
- DRAINAGE CANAL
- BOUNDARY OF IRRIGABLE AREA



THE FEASIBILITY STUDY OF  
 SEBAI-SEBOK BASIN DEVELOPMENT PROJECT  
 BY THE NORTHEAST REGION (RID)

**HUAI KHAM PHAK WAN  
 IRRIGATION PROJECT**

NO 3 JAPAN INTERNATIONAL COOPERATION AGENCY

MAJOR FEATURES OF THE PROJECT

ITEM	DESCRIPTION
(1) RESERVOIR	
a) WATERSHED (Km <sup>2</sup> )	31.3
b) EFFECTIVE STORAGE (MCM)	16.11
c) NWL (MSL)	187.00
d) DAM CREST EL. (MSL)	140.00
e) DAM HEIGHT (m)	17.5
f) CREST LENGTH (m)	2,750
g) EMBANKMENT (m)	600,000
(2) SERVICE AREA	
a) IRRIGABLE AREA (ha)	2,100
b) MAX DISCHARGE (cms)	13,125
CONVEYANCE CANAL	
LEFT MAIN CANAL	8.36
RIGHT MAIN CANAL	2.45
c) CANAL LENGTH (Km)	
MAIN CANAL	28.77
LATERAL CANAL	21.14
DRAINAGE CANAL	
d) VILLAGE POND (No)	10

LEGENDS

- MAIN ROAD
- - - ROAD
- RIVER
- - - STREAM
- CONTOURLINE
- CANAL
- DRAINAGE CANAL
- - - BOUNDARY OF IRRIGABLE AREA

RIGHT MAIN CANAL

Q = 0.91 m<sup>3</sup>/sec  
 A = 570 ha  
 L = 6.72 Km

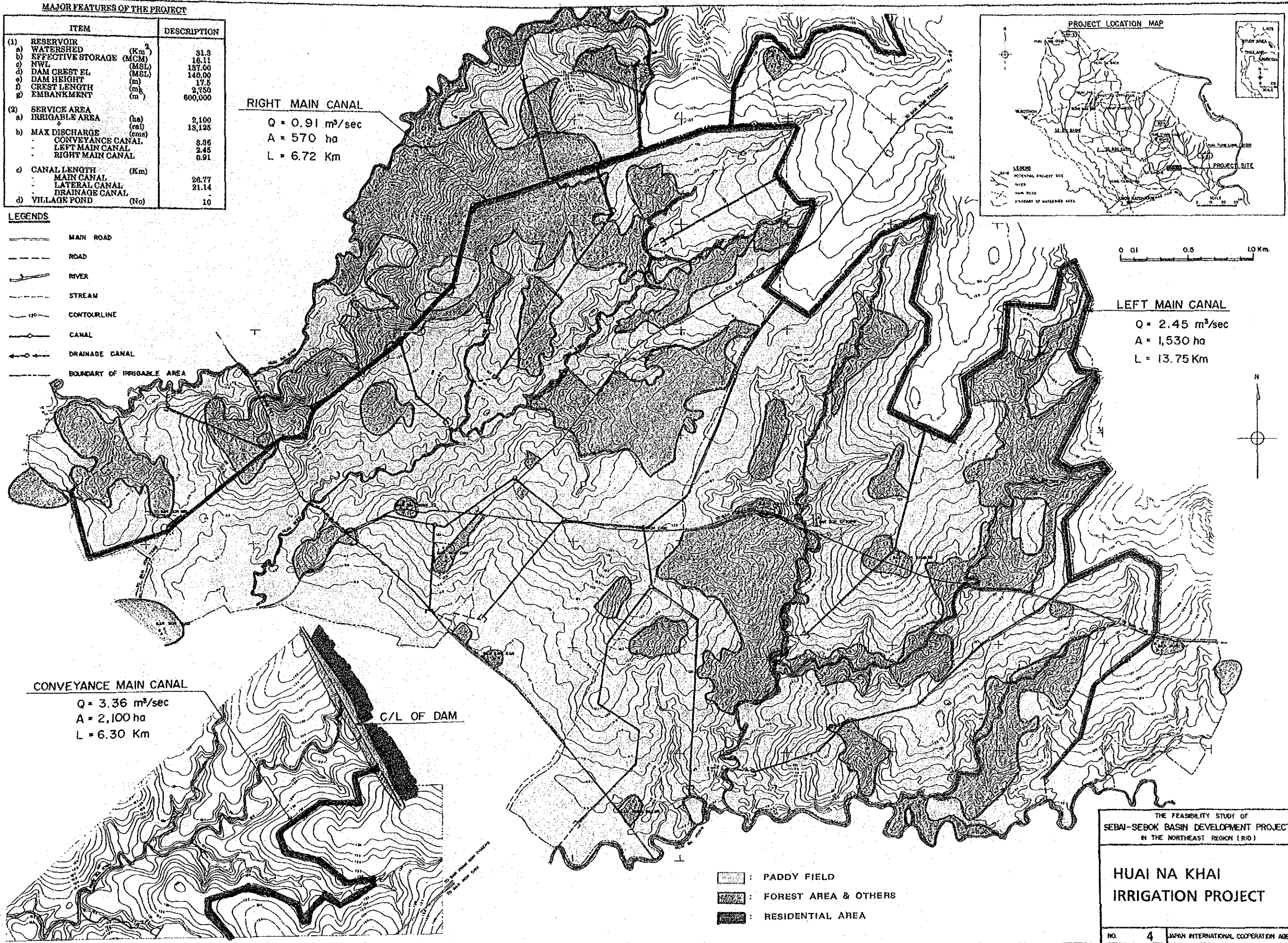
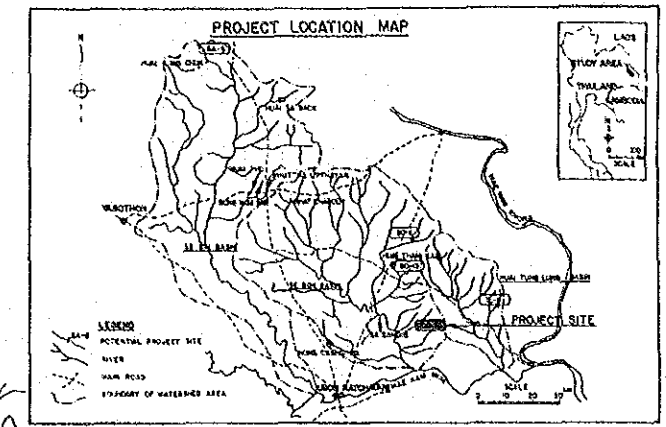
LEFT MAIN CANAL

Q = 2.45 m<sup>3</sup>/sec  
 A = 1,530 ha  
 L = 13.75 Km

CONVEYANCE MAIN CANAL

Q = 3.36 m<sup>3</sup>/sec  
 A = 2,100 ha  
 L = 6.30 Km

C/L OF DAM

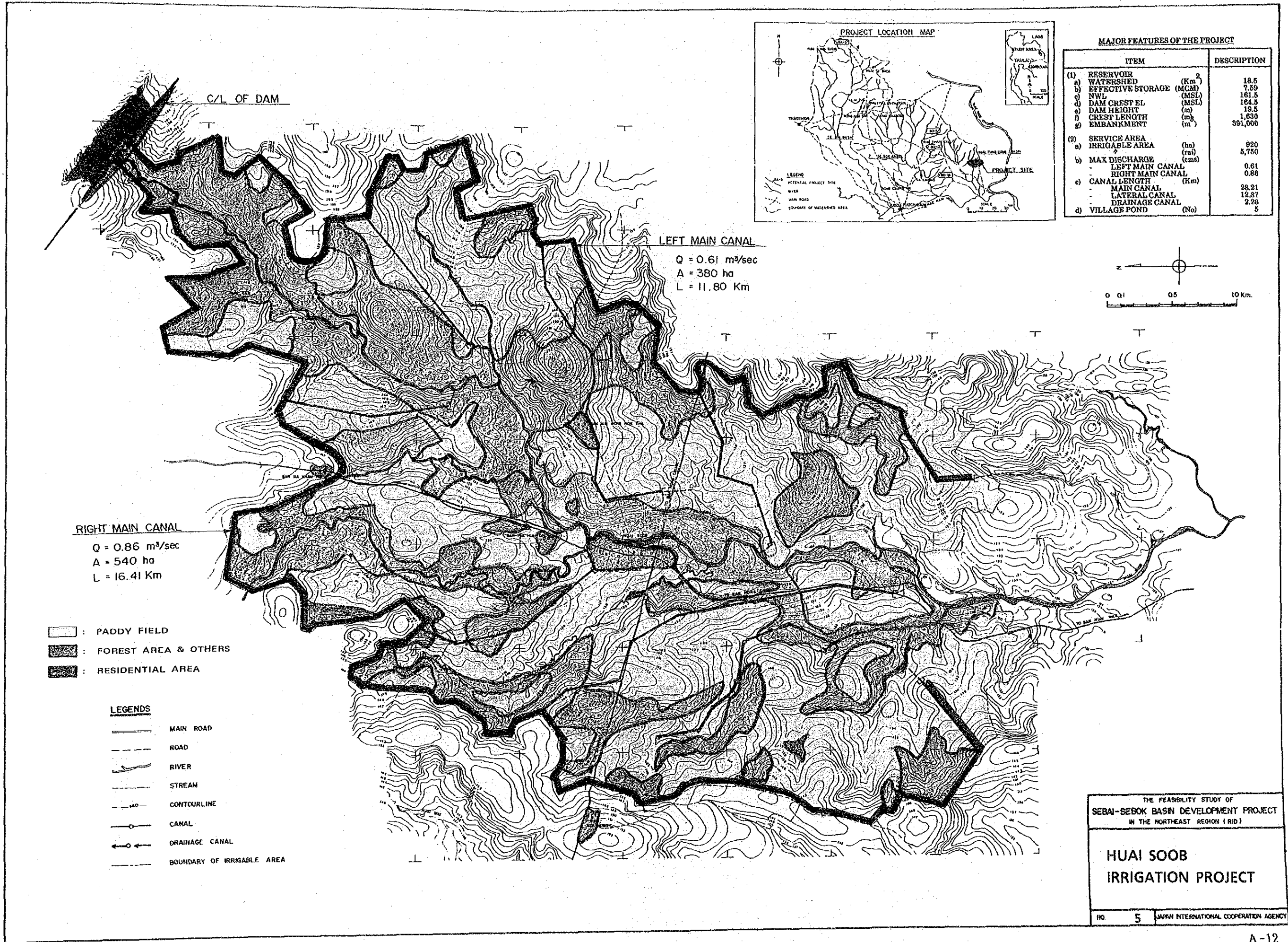


- : PADDY FIELD
- ▨ : FOREST AREA & OTHERS
- : RESIDENTIAL AREA

THE FEASIBILITY STUDY OF  
 SEBAI-SEBOK BASIN DEVELOPMENT PROJECT  
 IN THE NORTHEAST REGION (RID)

HUAI NA KHAI  
 IRRIGATION PROJECT

NO. 4 JAPAN INTERNATIONAL COOPERATION AGENCY



C/L OF DAM

LEFT MAIN CANAL

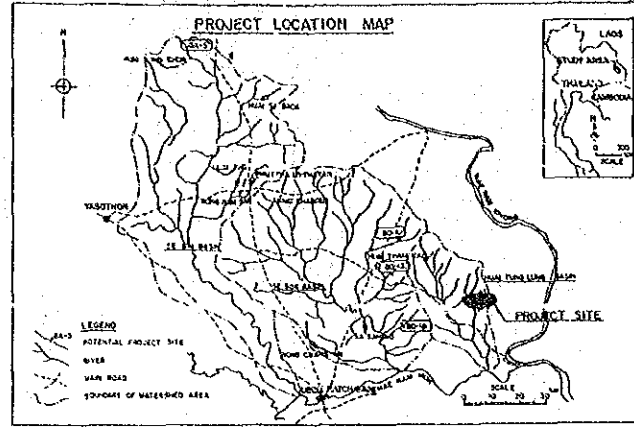
Q = 0.61 m<sup>3</sup>/sec  
 A = 380 ha  
 L = 11.80 Km

RIGHT MAIN CANAL

Q = 0.86 m<sup>3</sup>/sec  
 A = 540 ha  
 L = 16.41 Km

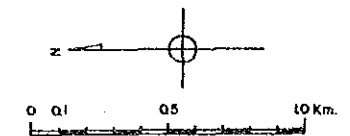
- : PADDY FIELD
- ▨ : FOREST AREA & OTHERS
- ▩ : RESIDENTIAL AREA

- LEGENDS**
- MAIN ROAD
  - - - ROAD
  - ~ RIVER
  - - - STREAM
  - CONTOURLINE
  - CANAL
  - ← DRAINAGE CANAL
  - - - BOUNDARY OF IRRIGABLE AREA



**MAJOR FEATURES OF THE PROJECT**

ITEM	DESCRIPTION
(1) RESERVOIR	(Km <sup>2</sup> ) 18.5
a) WATERSHED	(Km <sup>2</sup> ) 7.59
b) EFFECTIVE STORAGE (MCM)	161.5
c) NWL (MSL)	164.5
d) DAM CREST EL (m)	19.5
e) DAM HEIGHT (m)	1,630
f) CREST LENGTH (m)	391,000
g) EMBANKMENT (m)	
(2) SERVICE AREA	(ha) 920
a) IRRIGABLE AREA (rai)	5,750
b) MAX DISCHARGE (cms)	
- LEFT MAIN CANAL	0.61
- RIGHT MAIN CANAL	0.86
c) CANAL LENGTH (Km)	
- MAIN CANAL	28.21
- LATERAL CANAL	12.87
- DRAINAGE CANAL	2.28
d) VILLAGE POND (No)	5



THE FEASIBILITY STUDY OF  
 SEBAI-SEBOK BASIN DEVELOPMENT PROJECT  
 IN THE NORTHEAST REGION (RID)

**HUAI SOOB  
 IRRIGATION PROJECT**

NO. 5 JAPAN INTERNATIONAL COOPERATION AGENCY

JICA