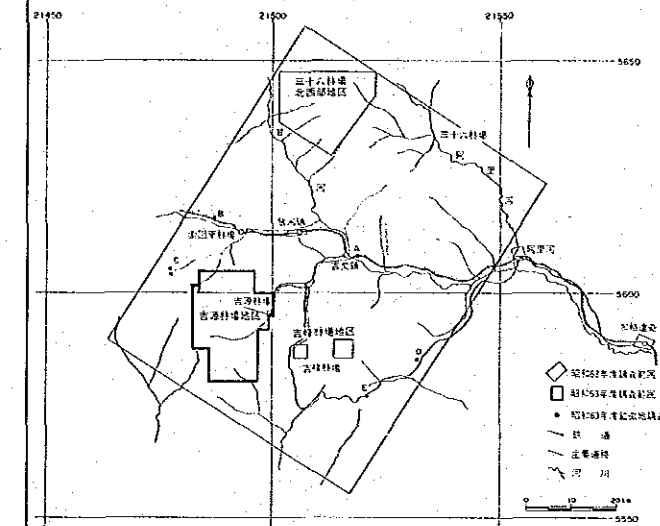


付図 9-6

中華人民共和国レアメタル総合開発調査
 資源開発協力基礎調査
 黒竜江西北部地域
 第2年次
 地化学探査解析結果図(第1主成分)

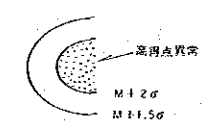


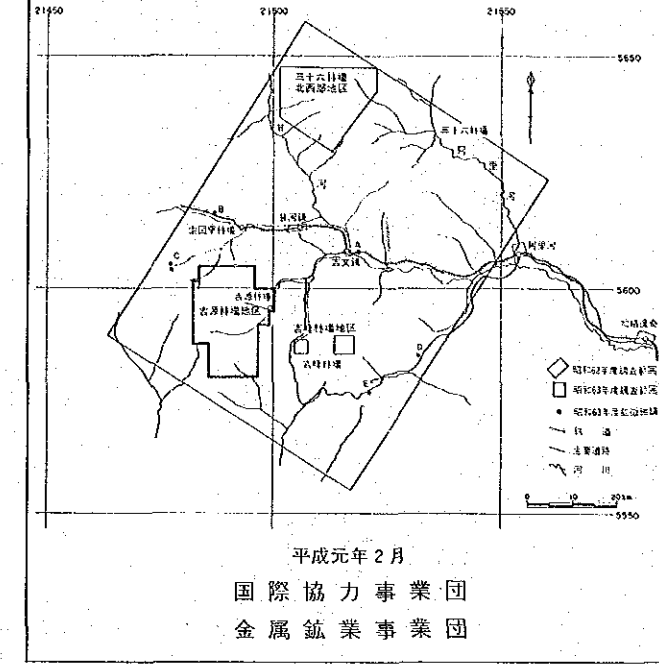
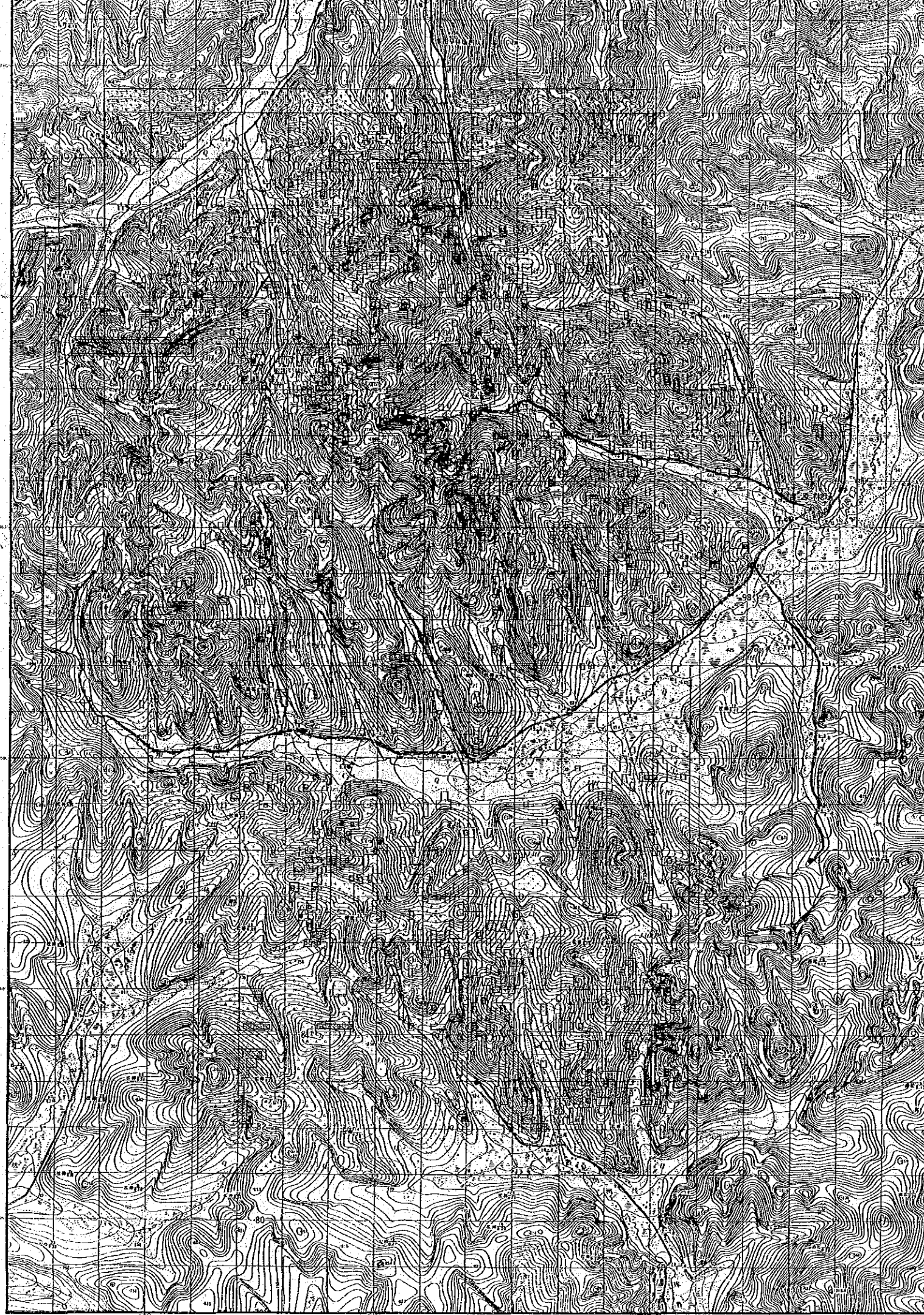
平成元年2月
 国際協力事業団
 金属鉱業事業団

総尺 1:50,000



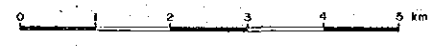
凡 例



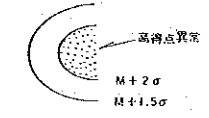


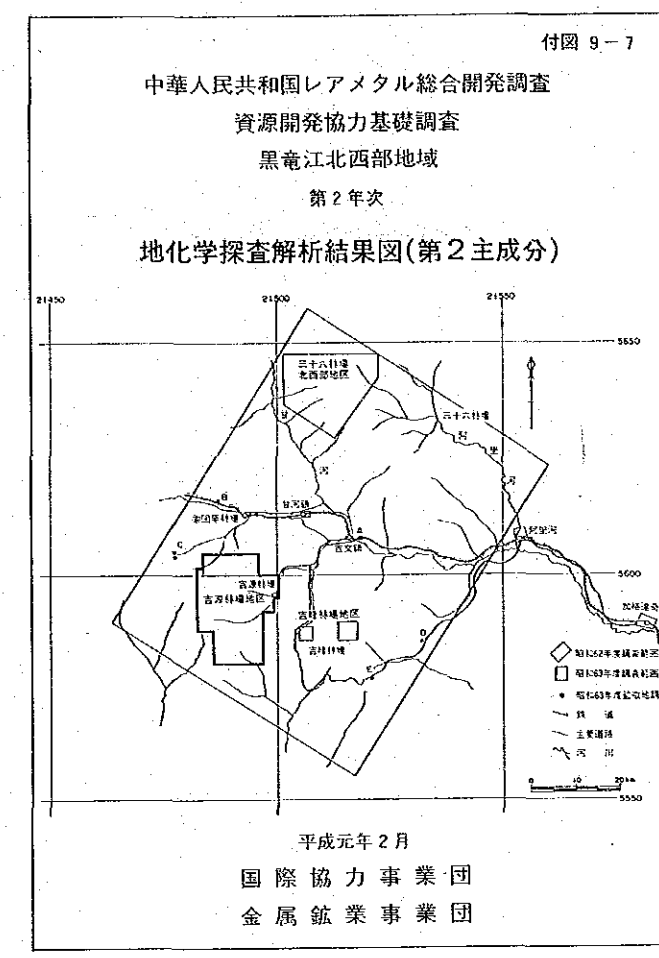
平成元年2月
 国際協力事業団
 金属鉱業事業団

縮尺 1:50,000

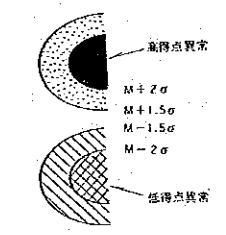


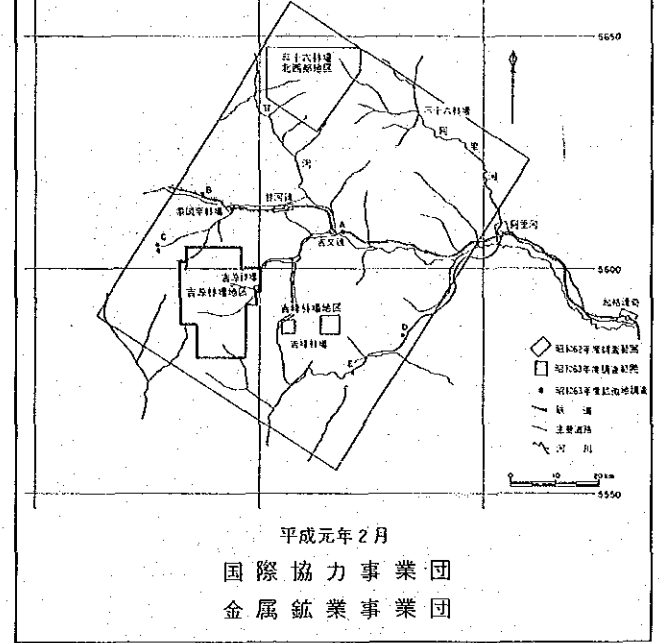
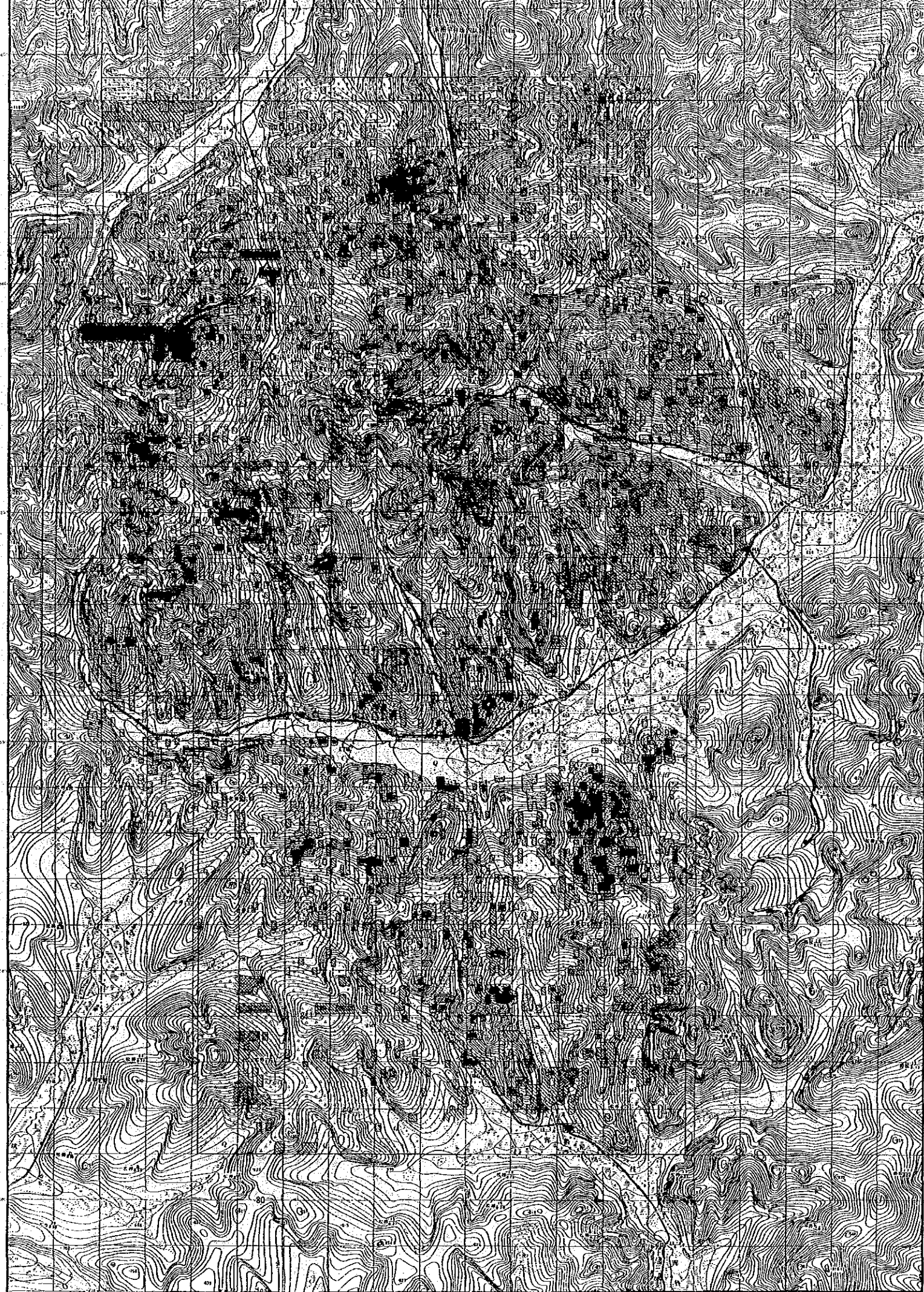
凡例



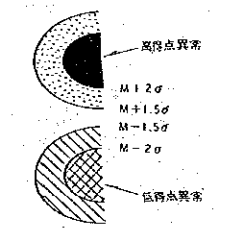


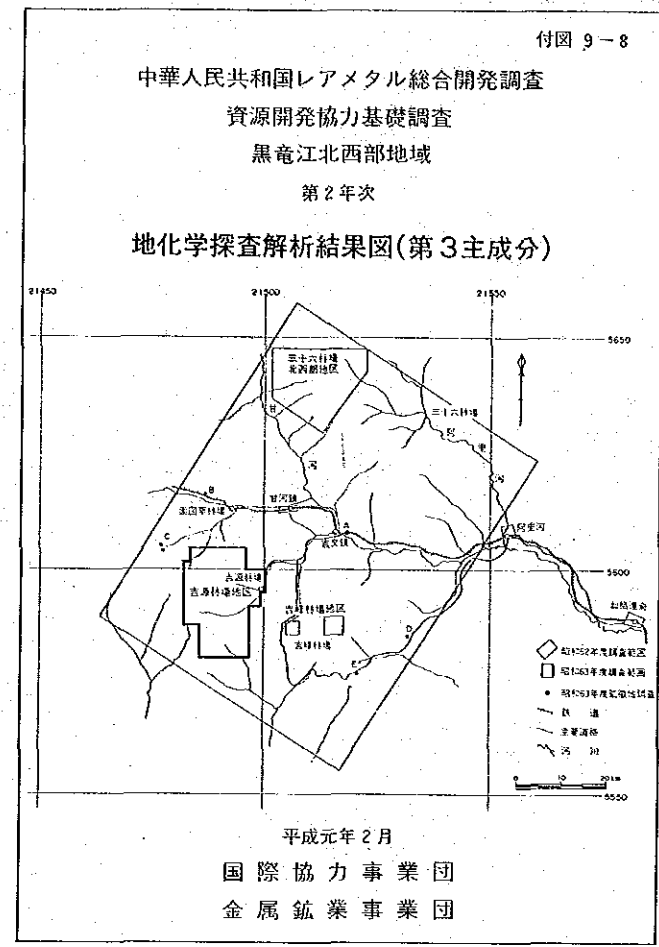
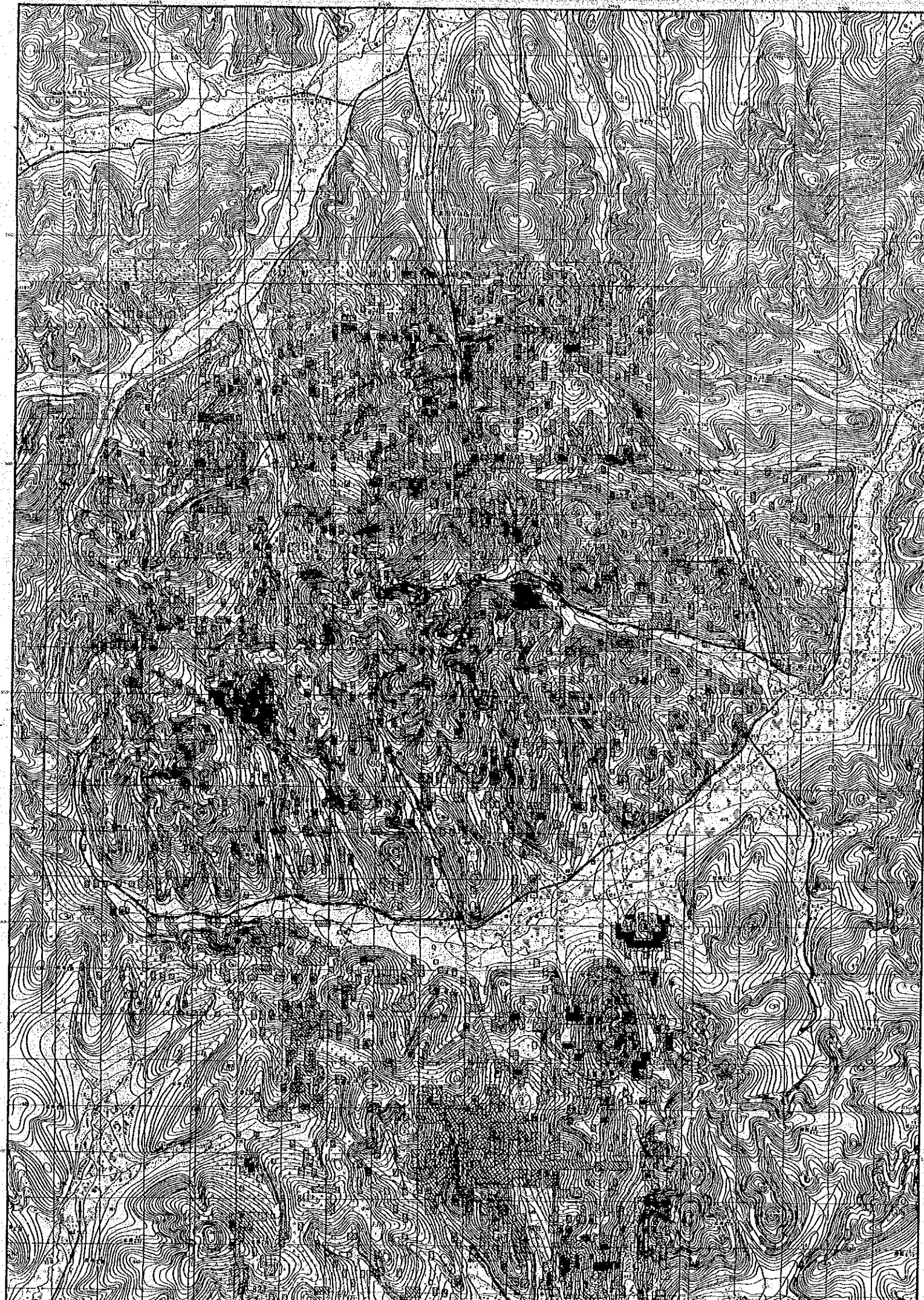
凡 例



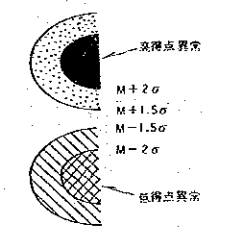


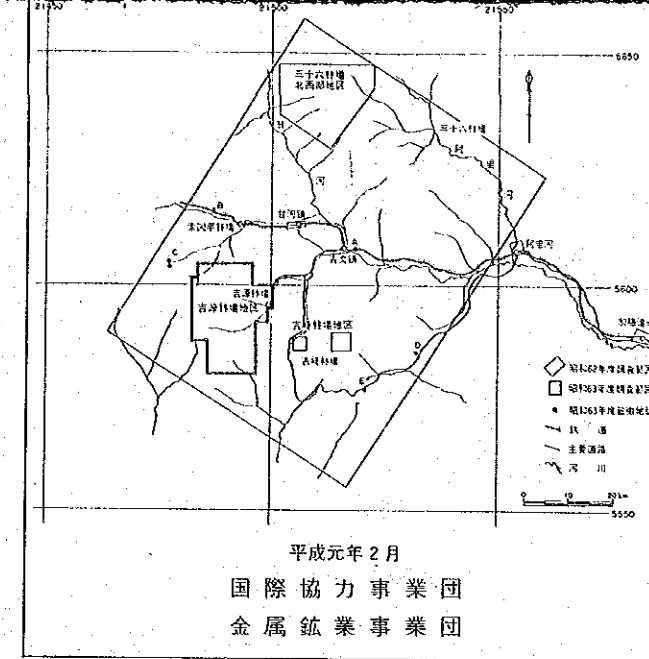
凡例





凡例



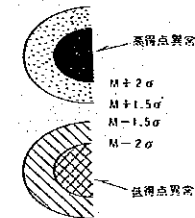


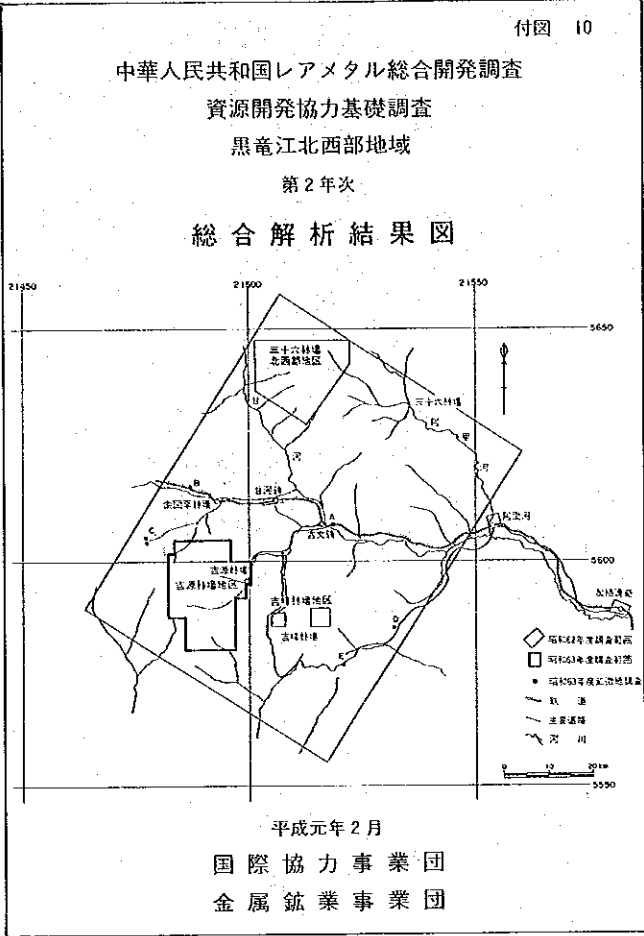
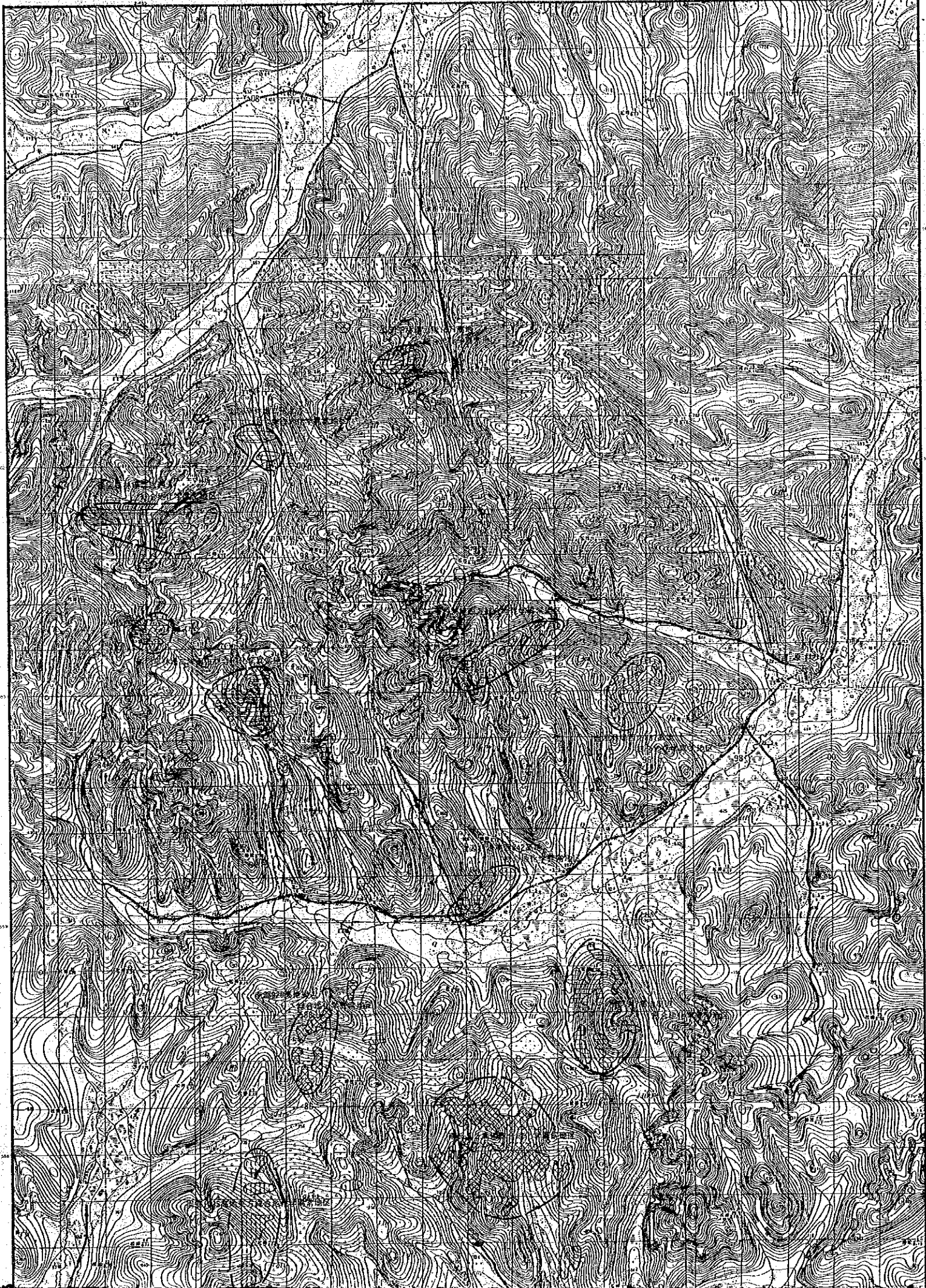
平成元年2月
 国際協力事業団
 金属鉱業事業団

縮尺 1:50,000







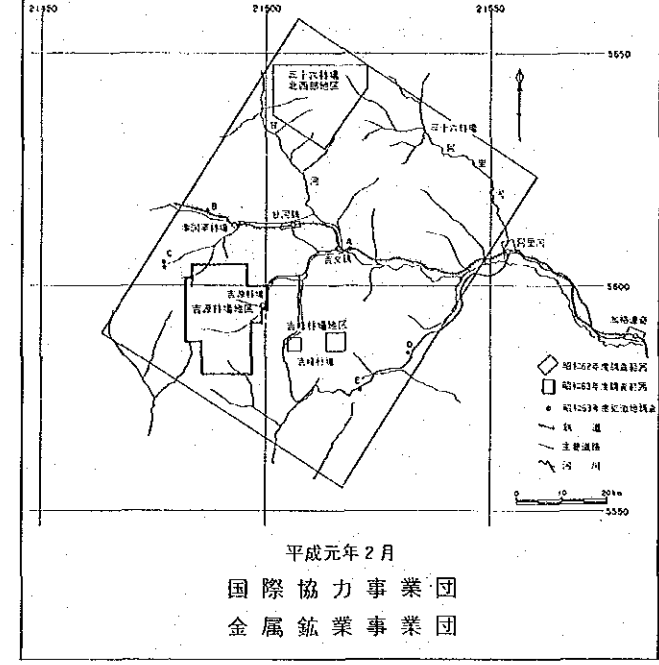
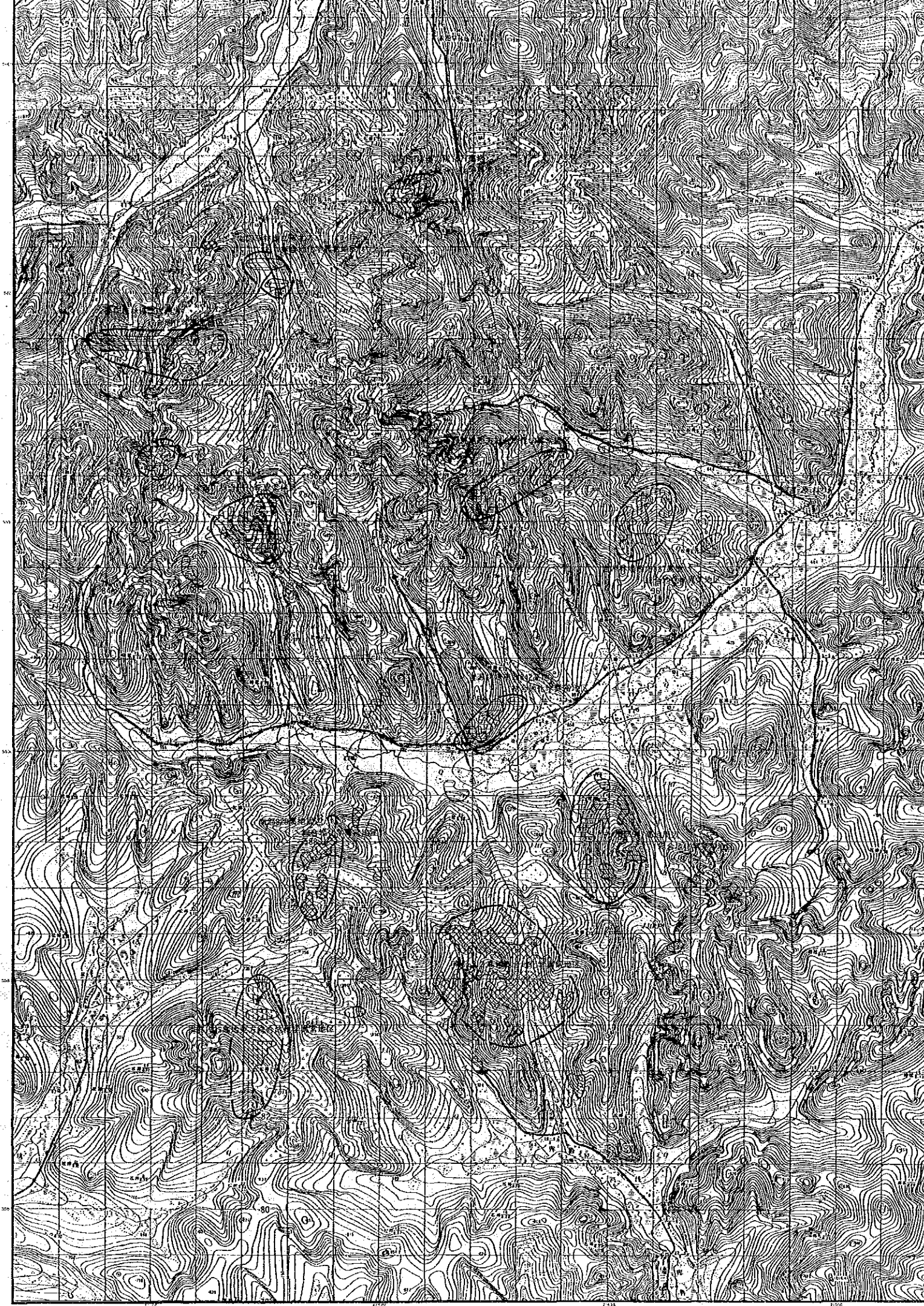
凡例









凡 例

-  Cu-Mo型総合地化学異常
-  Mo-As型総合地化学異常
-  Zn-Pb型総合地化学異常
-  総合地化学異常地区



凡例

-  Cu-Mo型総合地化学異常
-  Mo-As型総合地化学異常
-  Zn-Pb型総合地化学異常
-  総合地化学異常地区

