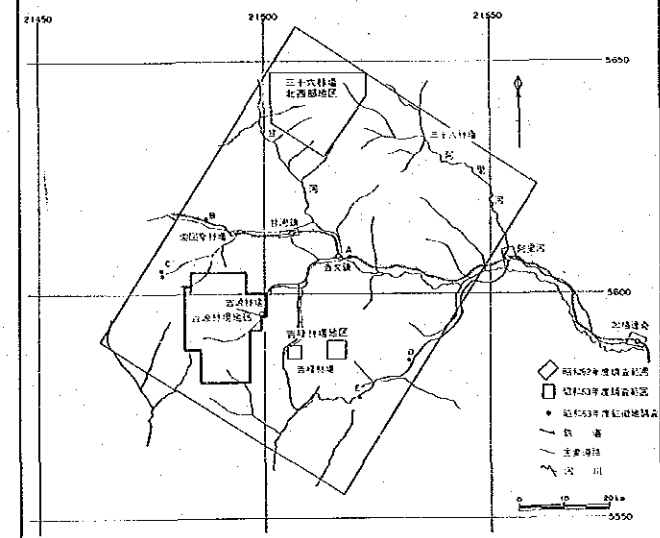


中華人民共和国レアメタル総合開発調査  
 資源開発協力基礎調査  
 黒竜江西北部地域  
 第2年次  
 地化学探査解析結果図(Pb)

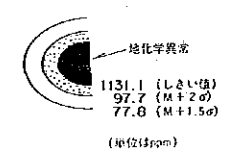


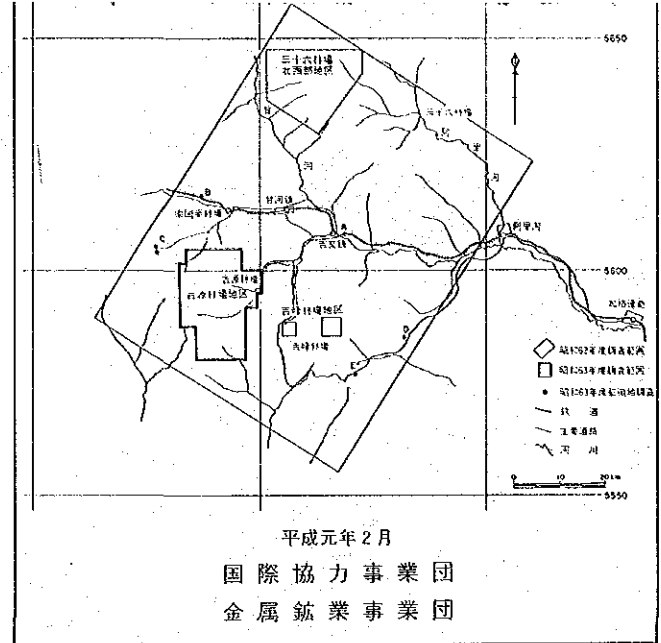
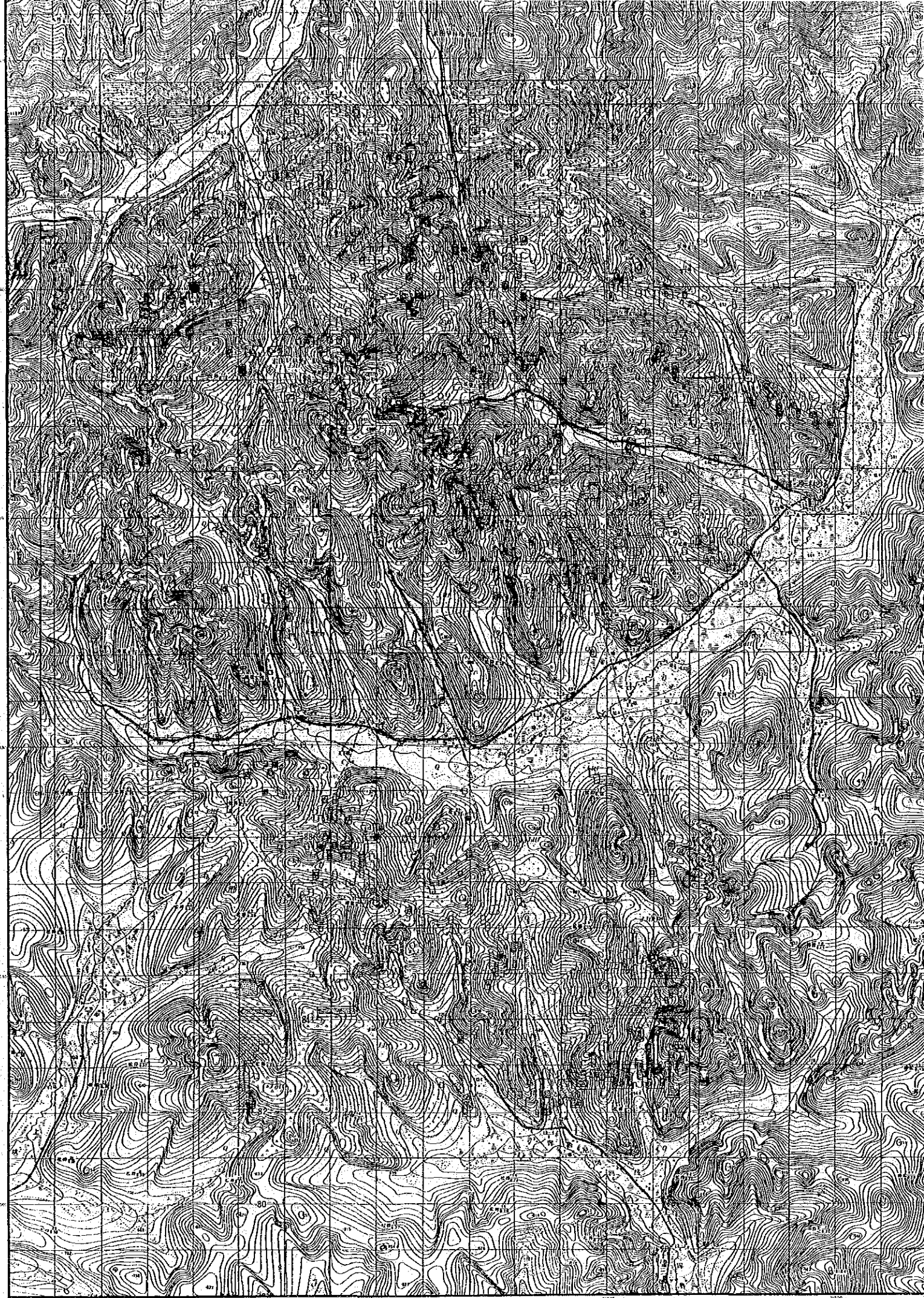
平成元年2月  
 国際協力事業団  
 金属鉱業事業団

縮尺 1:50,000



凡 例

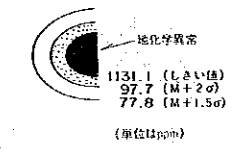


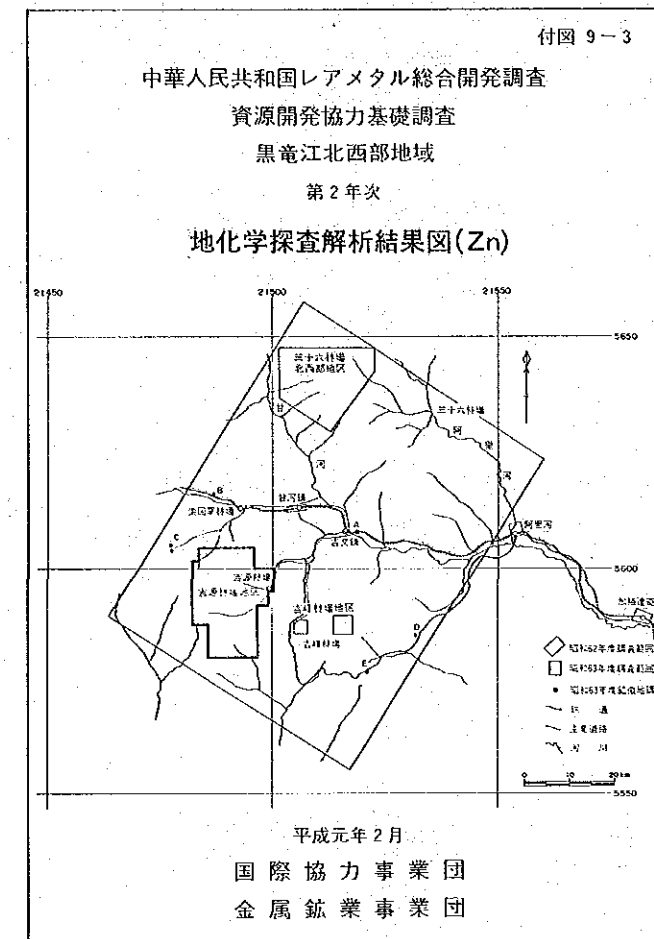
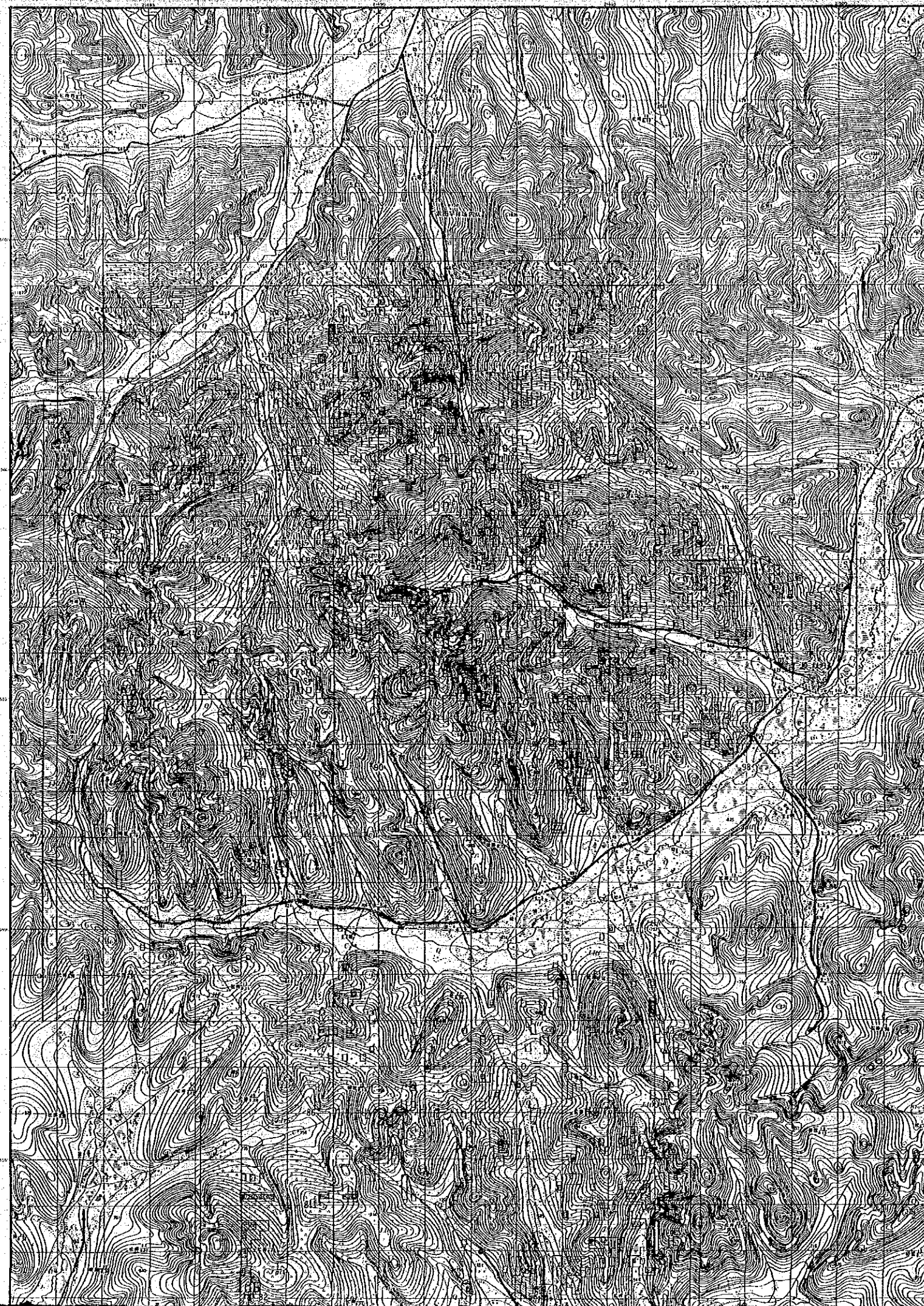


縮尺 1:50,000

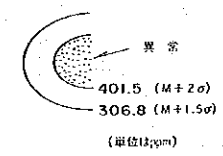
0 1 2 3 4 5 km

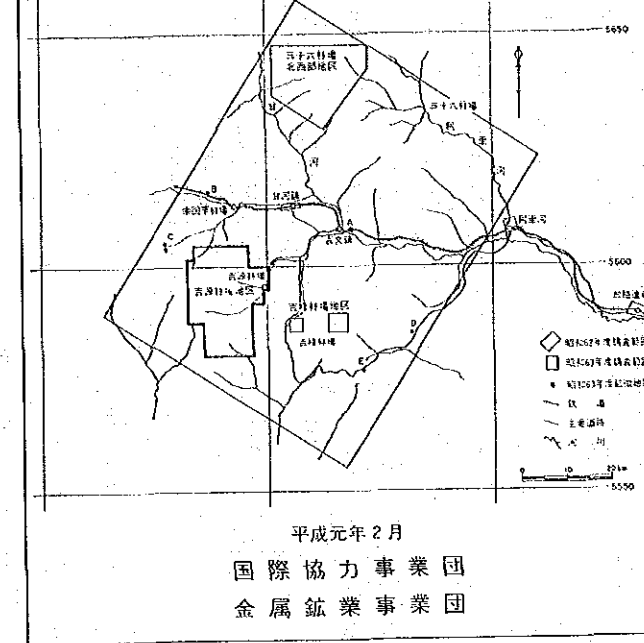
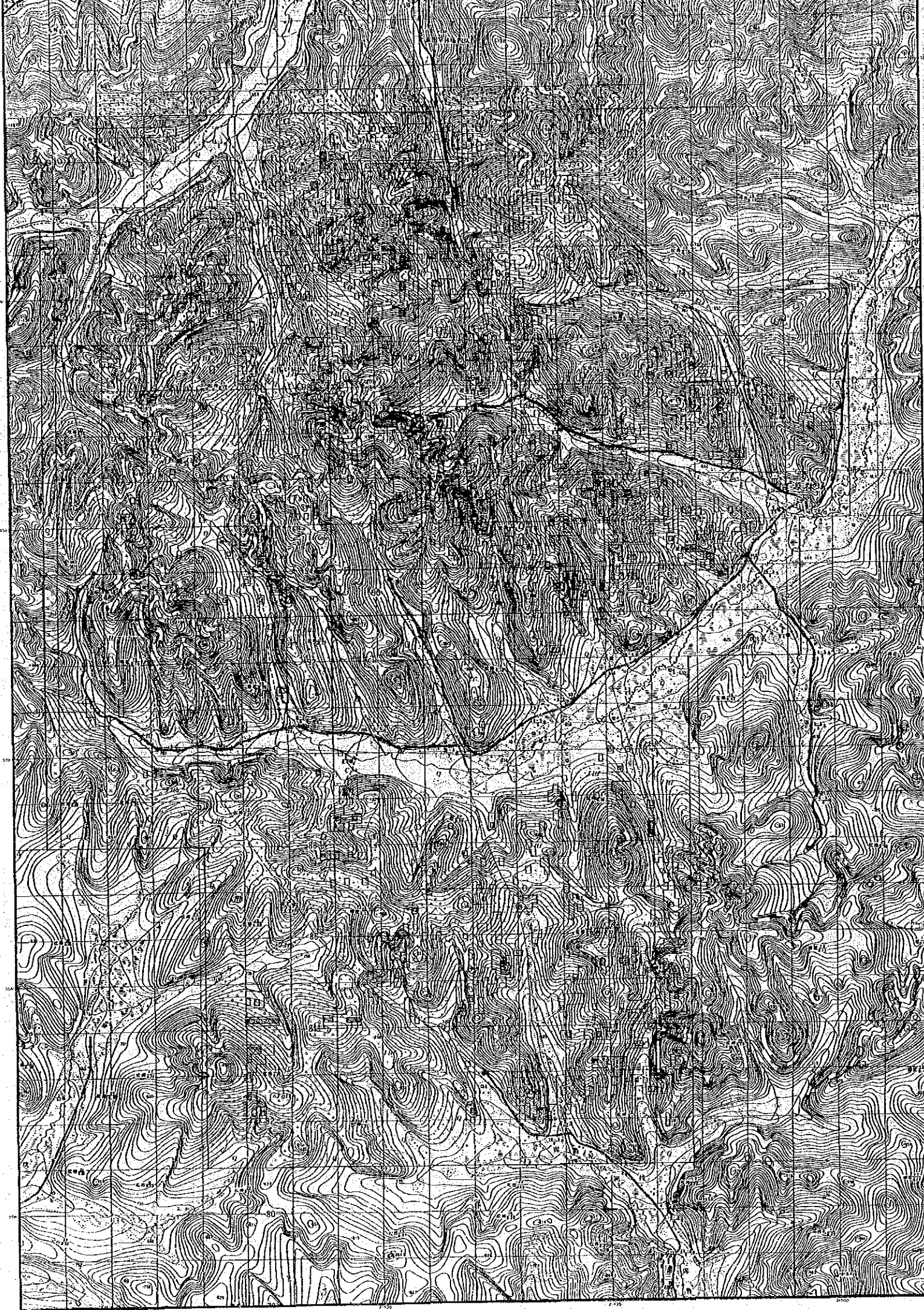
凡例





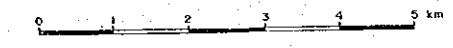
凡 例



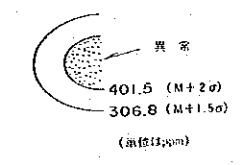


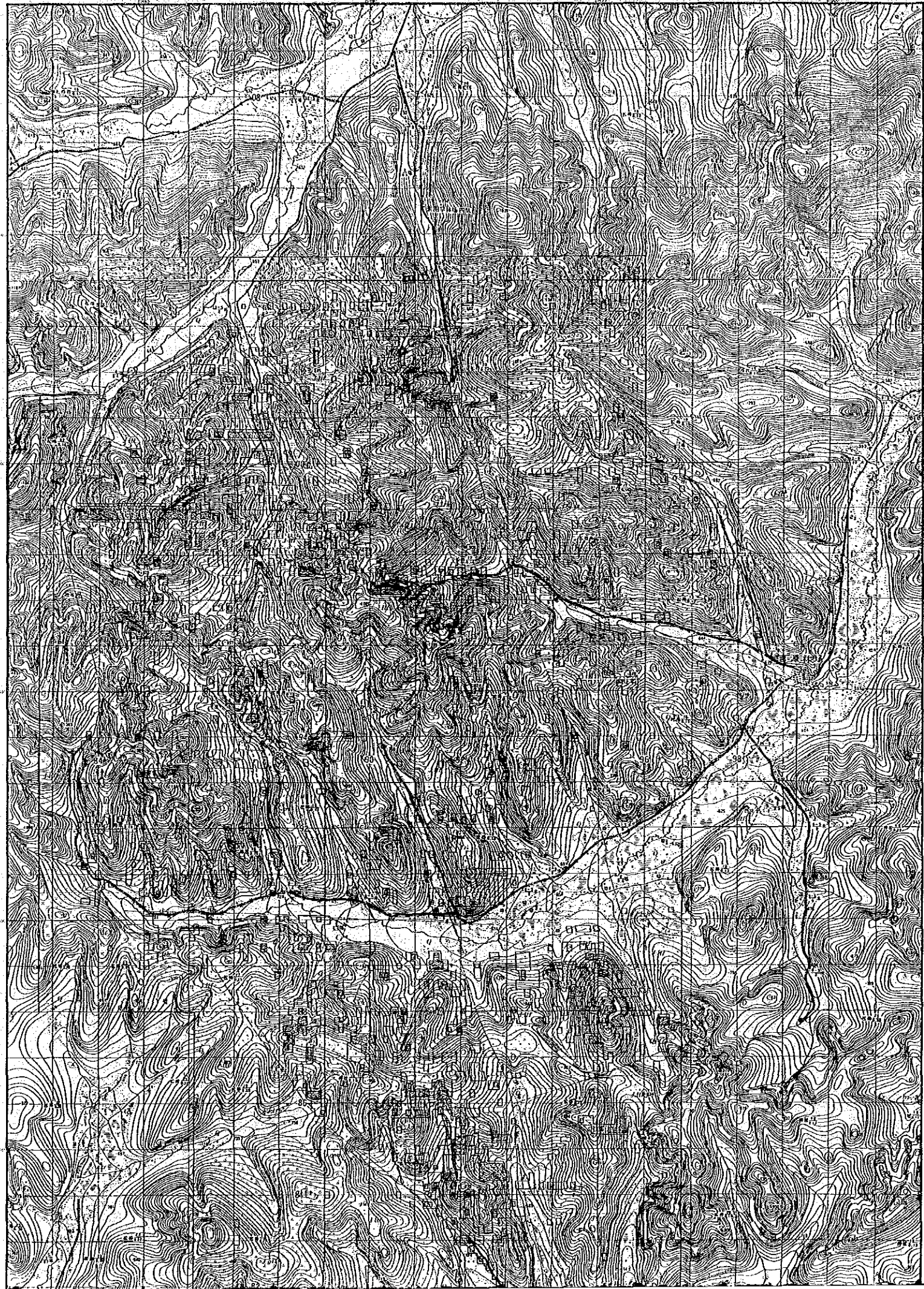
平成元年2月  
 国際協力事業団  
 金属鉱業事業団

縮尺 1:50,000



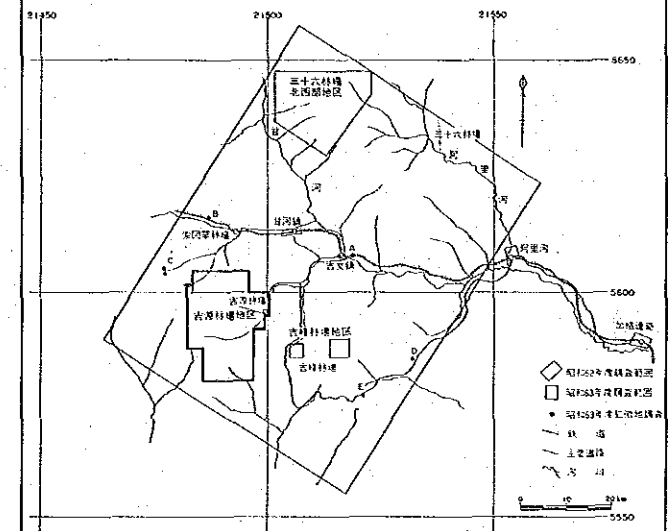
凡例





付図 9-4

中華人民共和国レアメタル総合開発調査  
 資源開発協力基礎調査  
 黒竜江西北部地域  
 第2年次  
 地化学探査解析結果図(Mo)

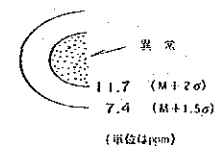


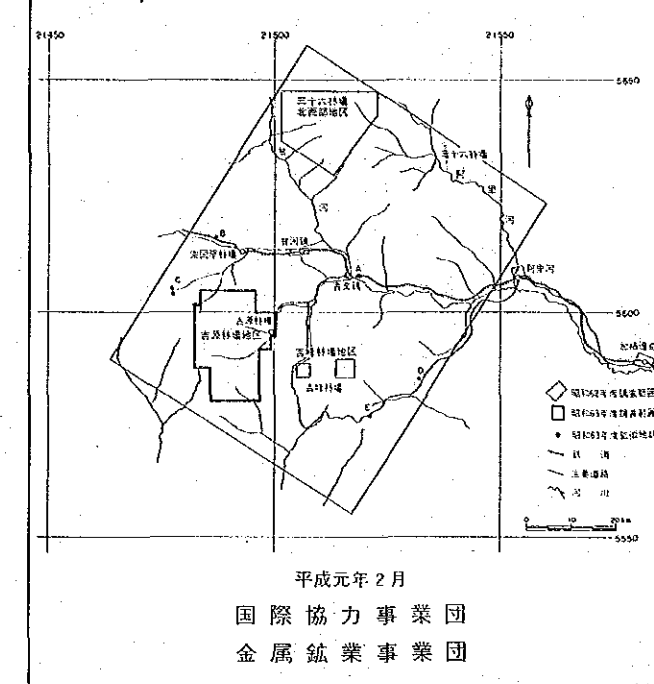
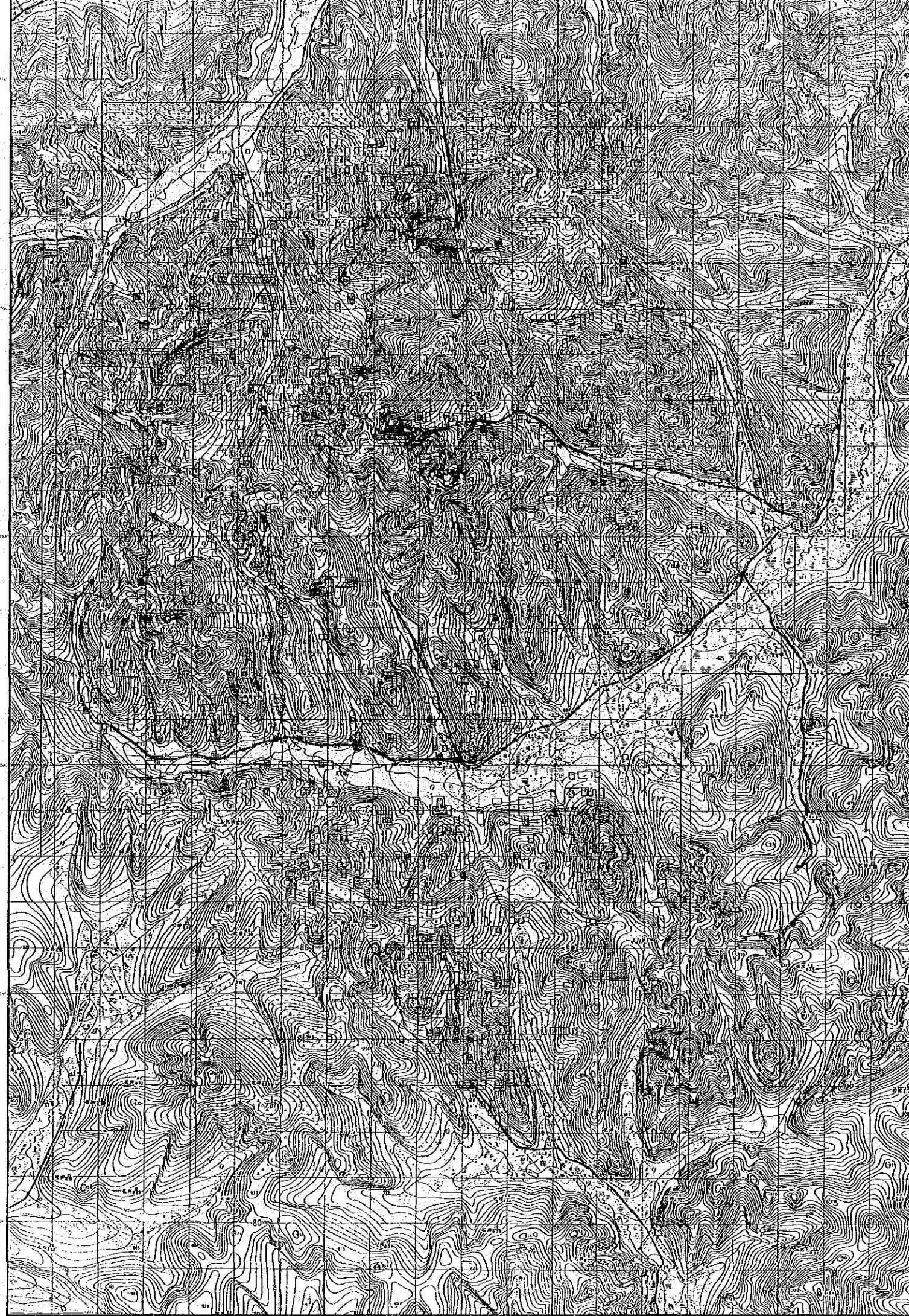
平成元年2月  
 国際協力事業団  
 金属鉱業事業団

縮尺 1:50,000

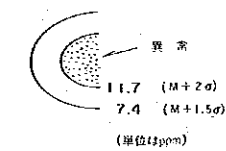


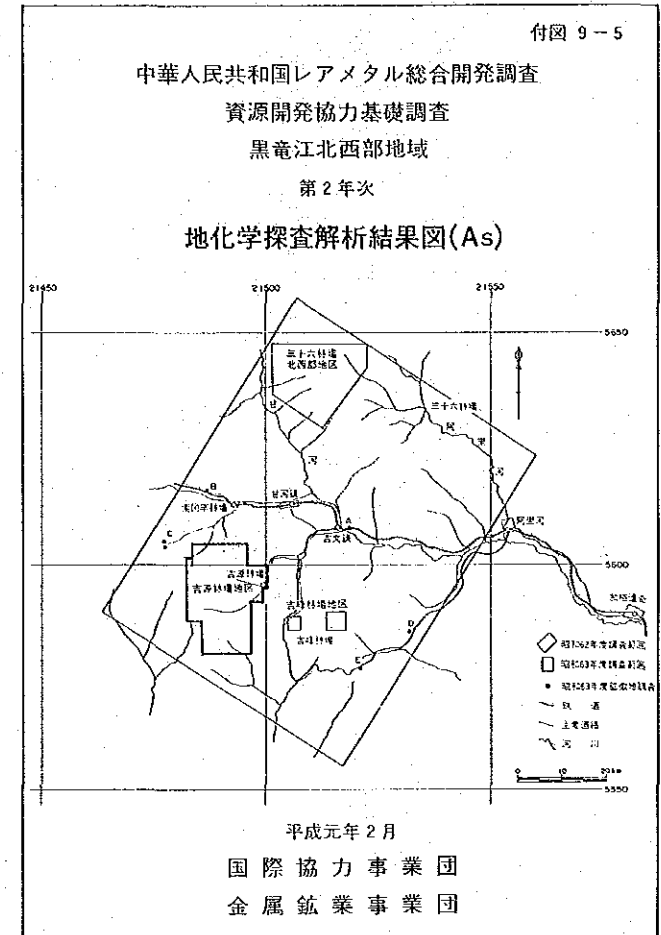
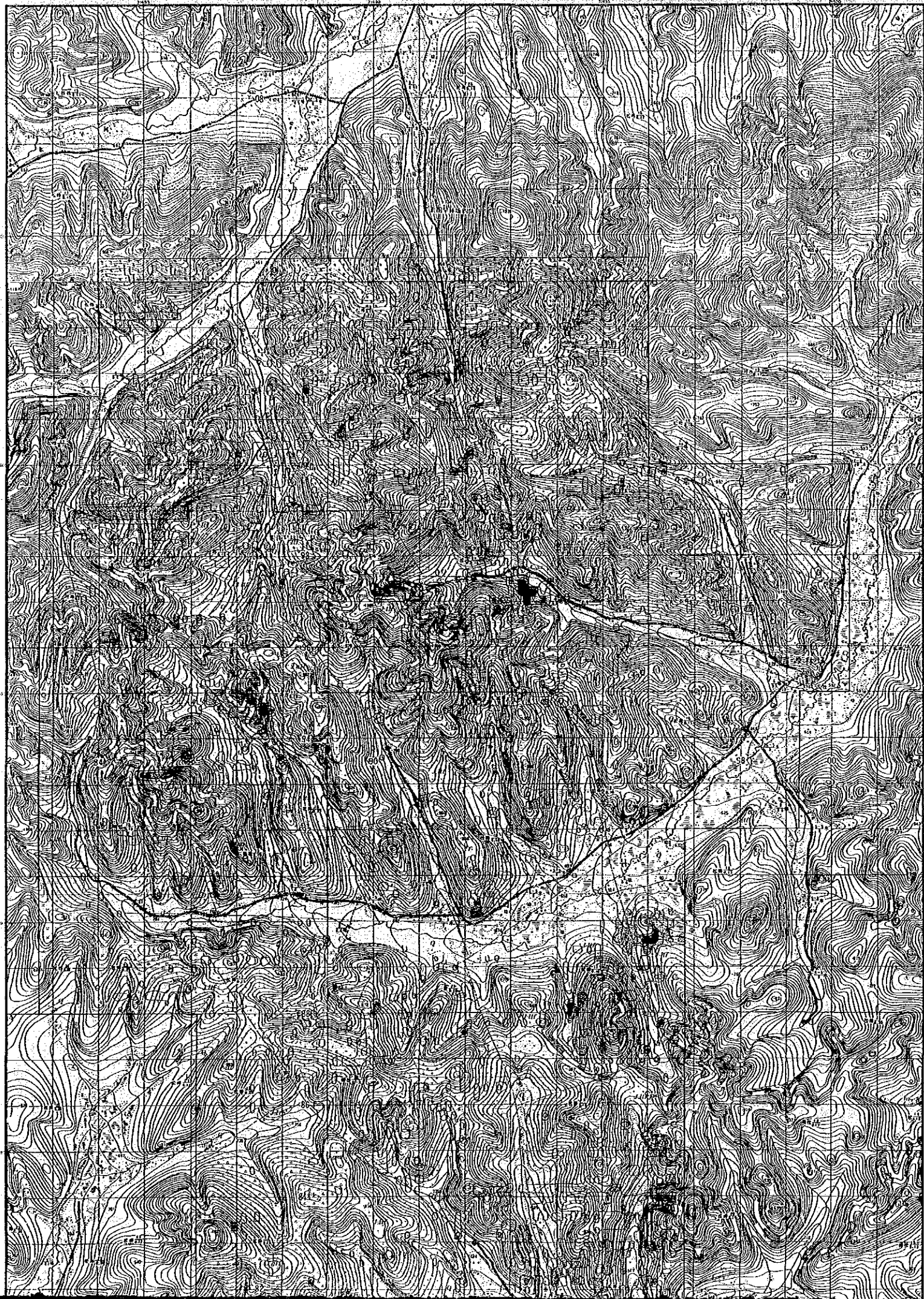
凡 例



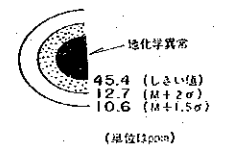


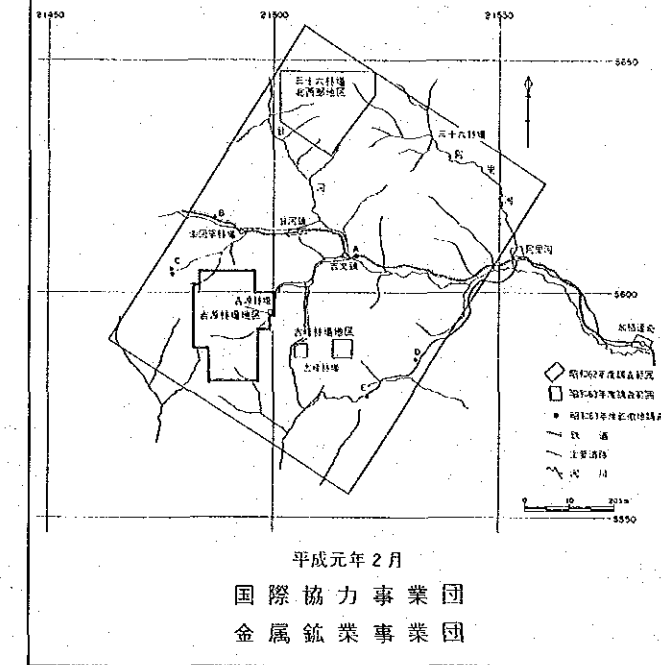
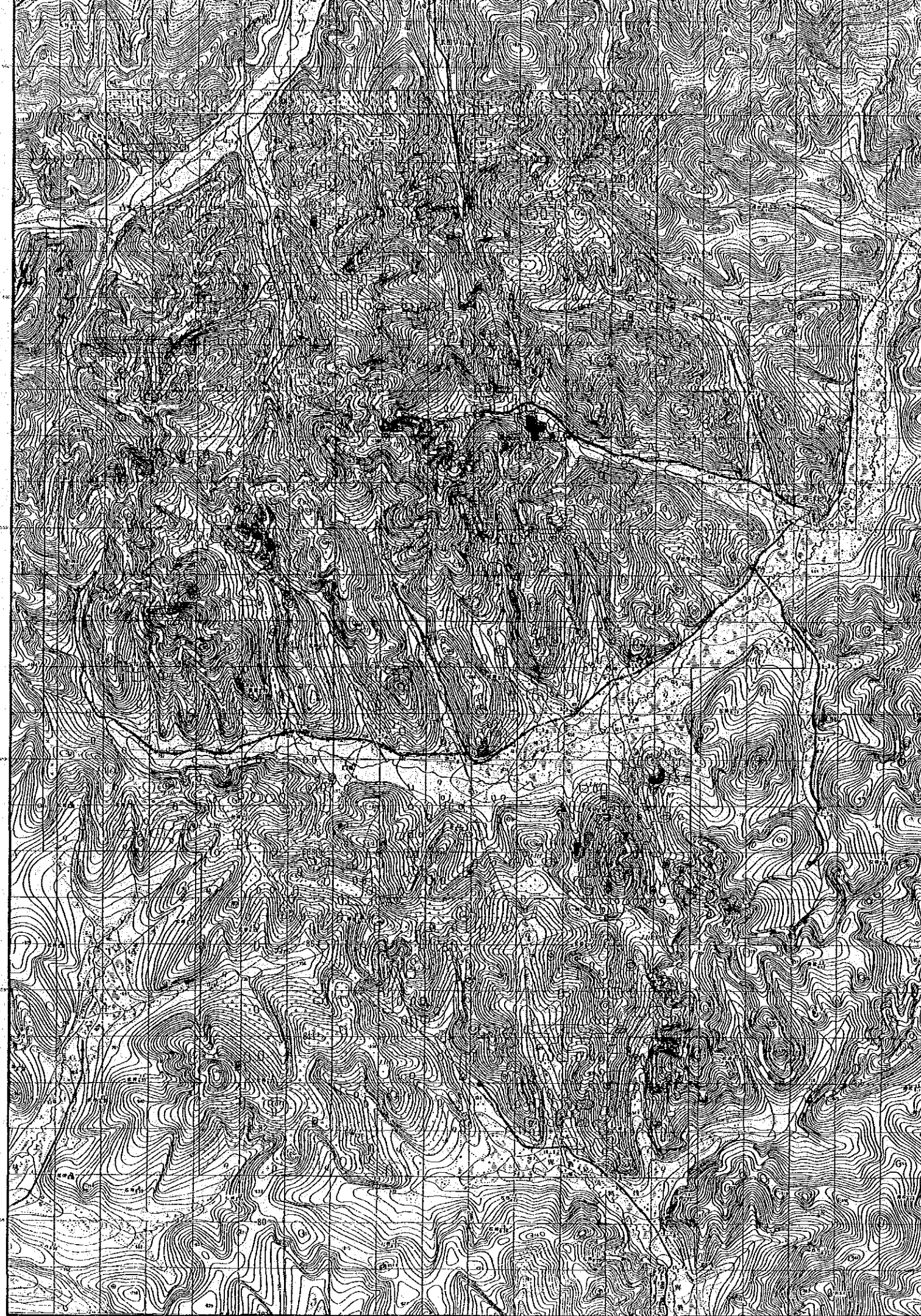
凡例





凡 例





縮尺 1:50,000

0 1 2 3 4 5 km

凡例

