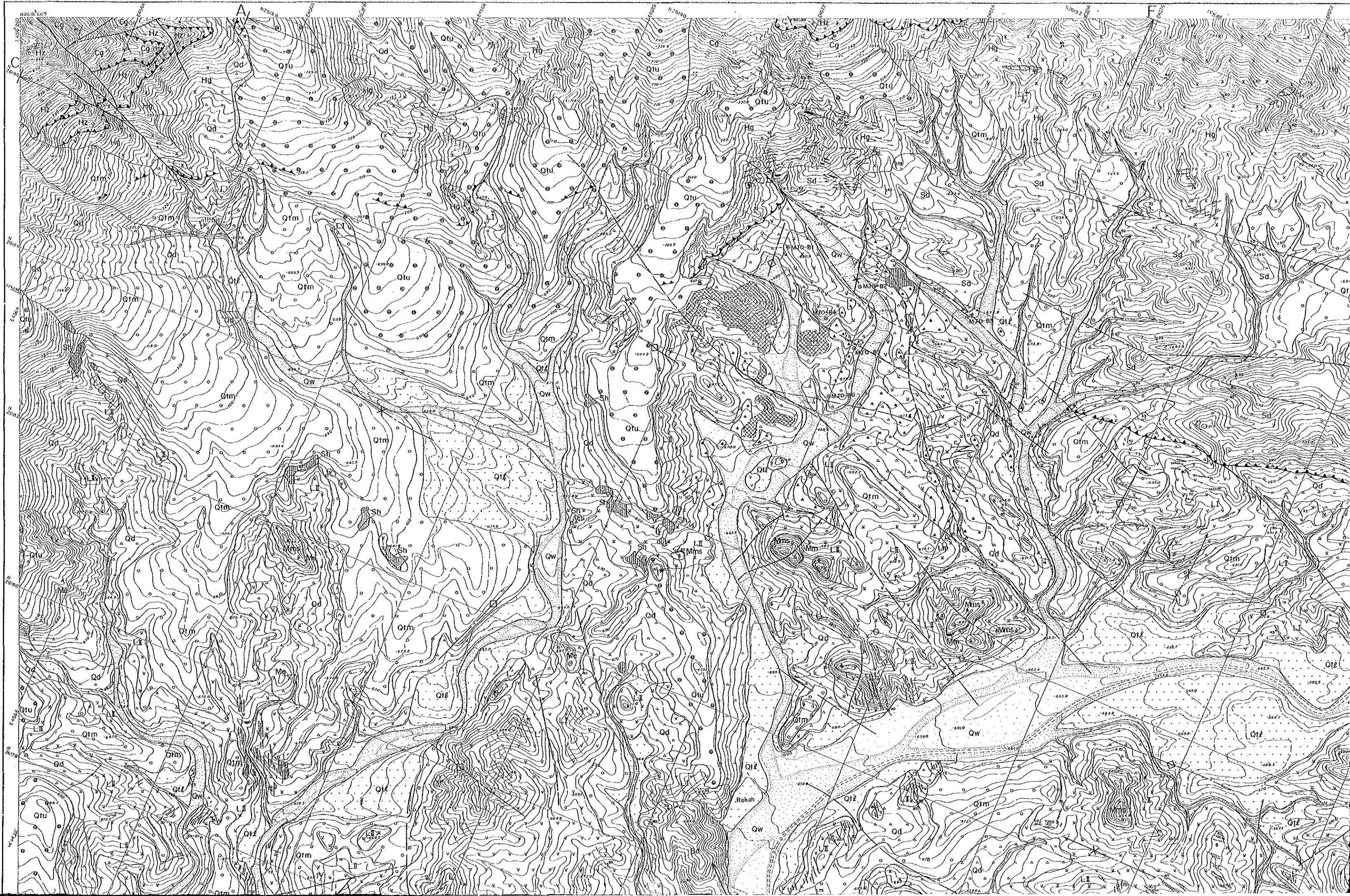
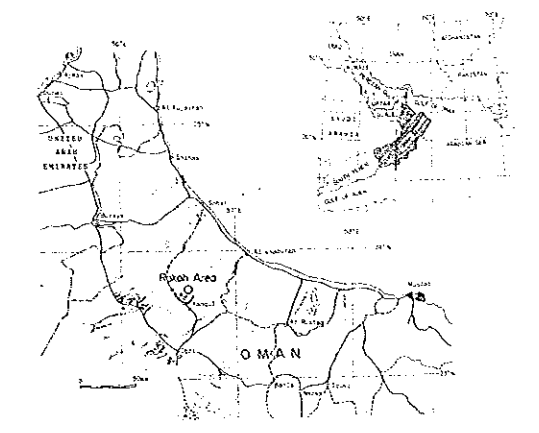


# RAKAH B AREA

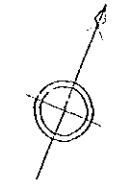
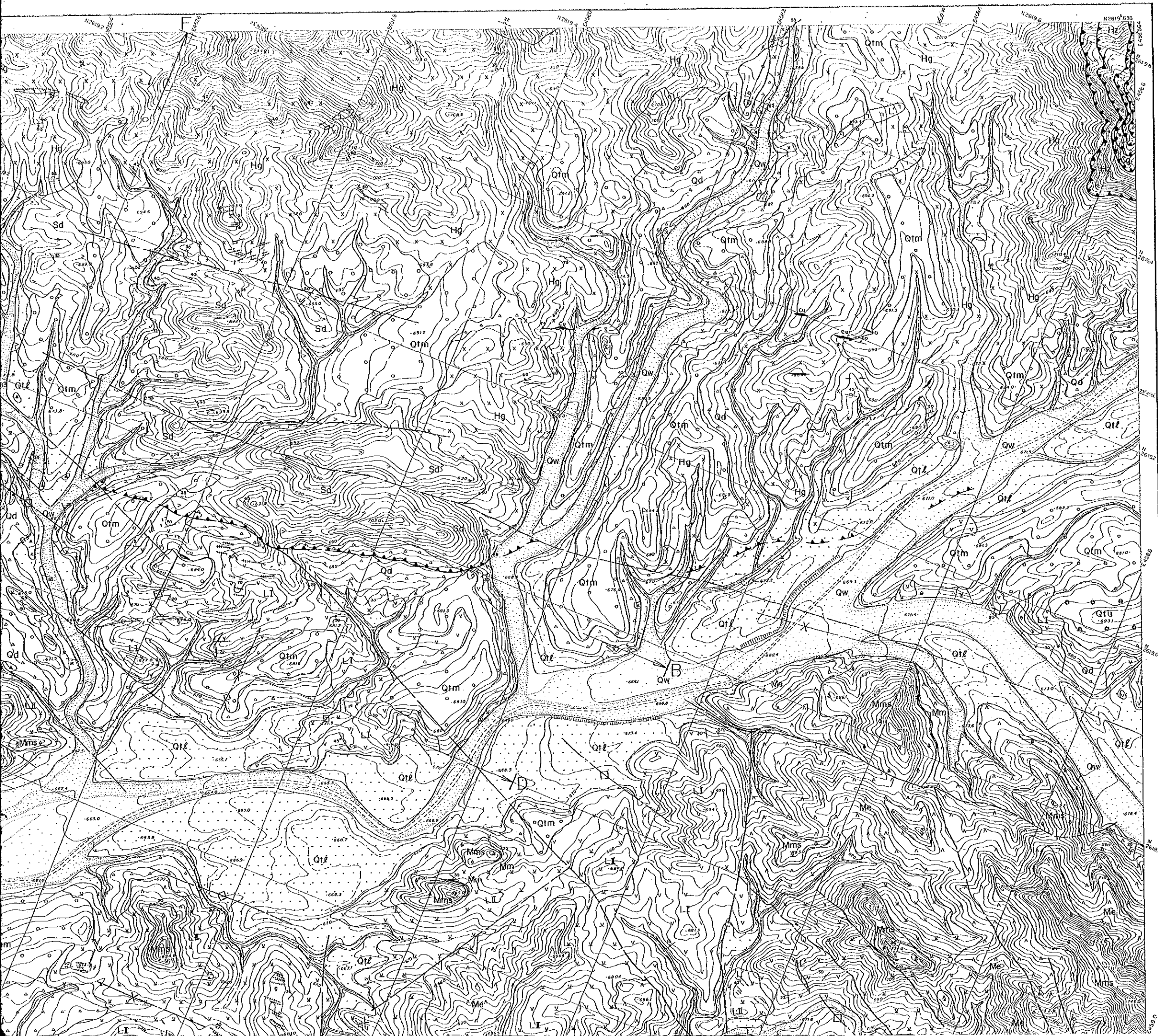
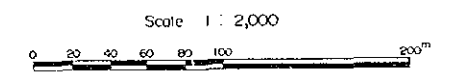


REPORT ON THE MINERAL EXPLORATION  
IN  
THE RAKAH AREA, SULTANATE OF OMAN  
PHASE I

GEOLOGIC MAP OF AREA B



JAPAN INTERNATIONAL COOPERATION AGENCY  
METAL MINING AGENCY OF JAPAN  
FEBRUARY, 1989

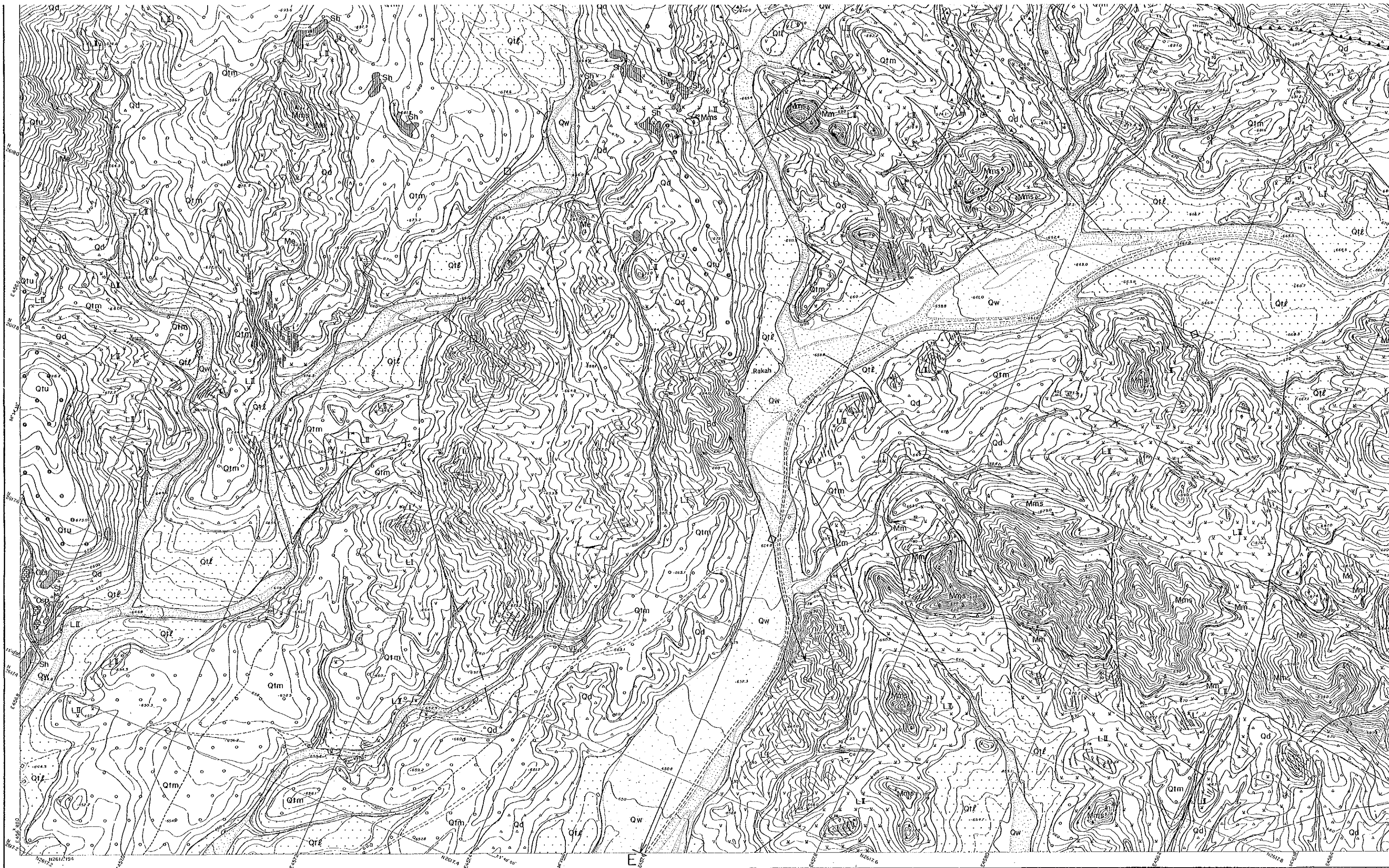


LEGEND

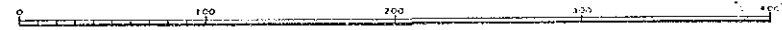
Quaternary	Holocene	Wadi Sediments	Qw, Gravel, sand	
		Debris	Qd, Talus breccia	
Pleistocene	Superficial Deposits	Lower Terrace Deposits	Qtl, Gravel, sand	
		Middle Terrace Deposits	Qtm, Gravel, sand	
		Upper Terrace Deposits	Qtu, Gravel, sand	
Late Cretaceous	Supra-orbitate Sediments	Batinash Olistostrome	Ols, Olistolith of limestone	
		Subaylah Formation	Ocb, Olistolith of chert	
Samail Nappe	Early to Middle Cretaceous	Samail Volcanic Rocks	Sp, Serpentine	
			Sh, Chert	
		Lower Volcanic Rocks	Me, Pillow lavas	
			Mms, Massive lavas	
		Lower Extrusives II	Mm, Metalliferous sediments	
			LH, Pillow and massive lavas	
		Lower Extrusives I	Lm, Metalliferous sediments	
			LJ, Pillow lavas	
		Samail Ophiolite	Sheeted dyke Complex	Sd, Sheeted-dykes
				Hg, High-level gabbro
Cg, Cumulate layered gabbro				
Hr, Harzburgite				
Intrusive Rocks	Tectonites	D, Dykes		
		L, Late dykes		

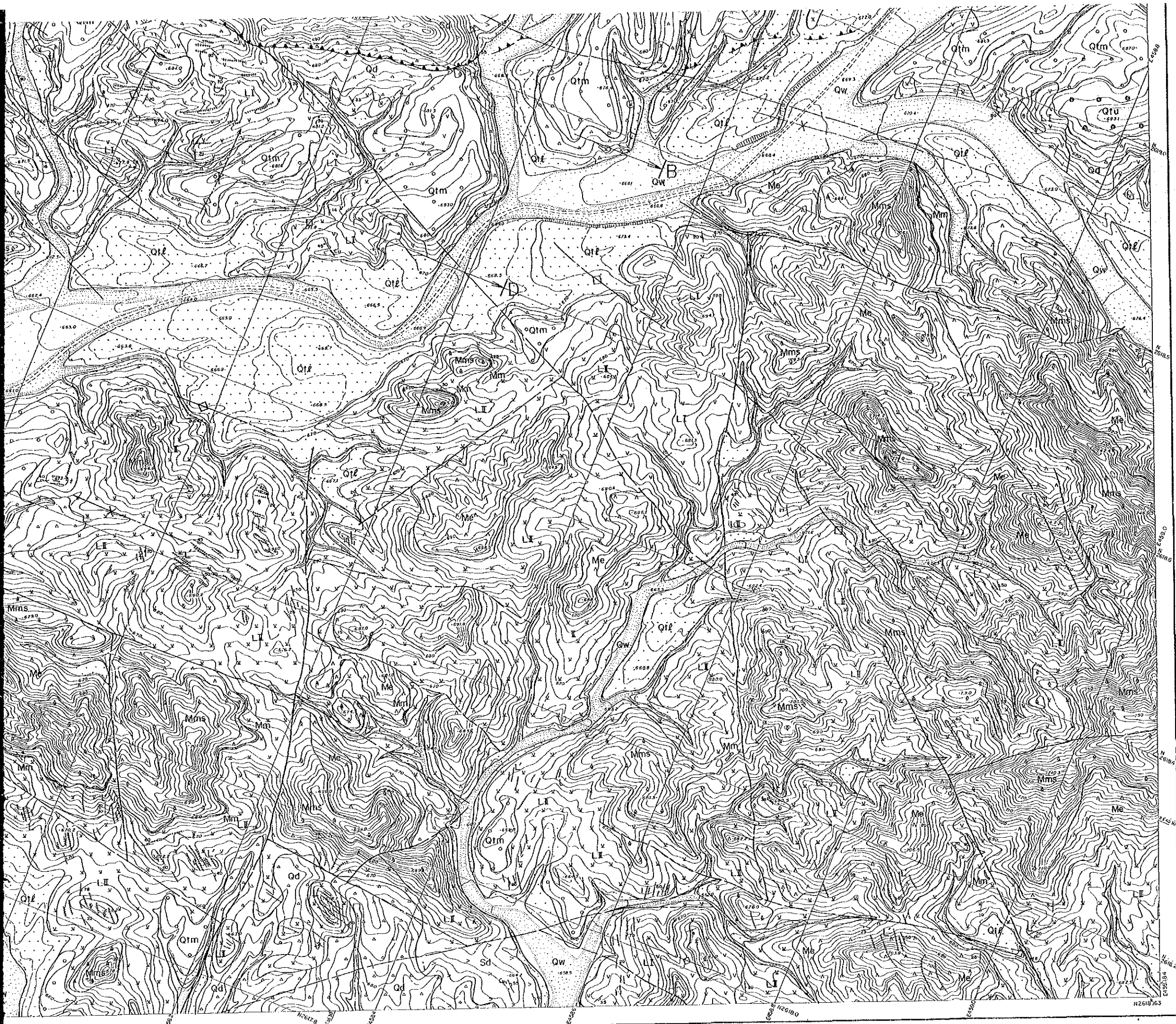
  

Stratification, inclined	Fault, dashed where inferred or concealed
Stratification of pillow lavas, inclined	Thrust fault; saw-teeth, showing dip
Layering, inclined	Vein
Foliation, inclined	Gosgan
Dyke, inclined	Drill hole
Shear zone	Slag dump
Contact	Section



1:2,000



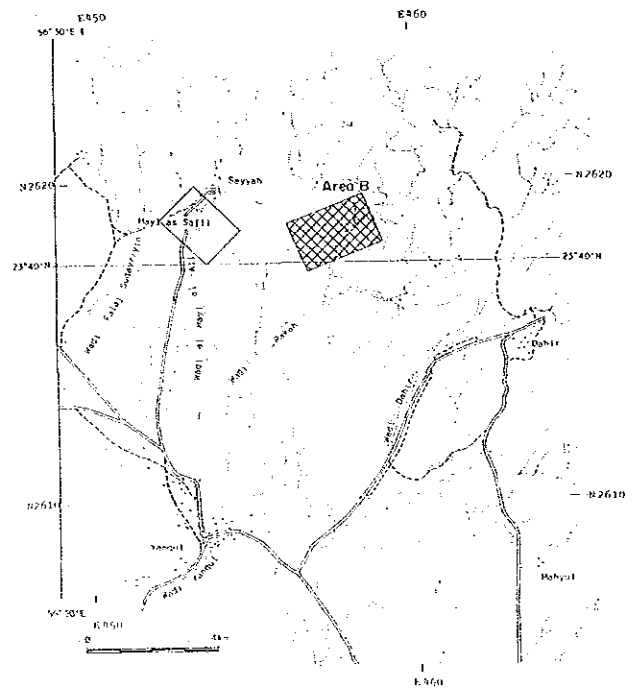


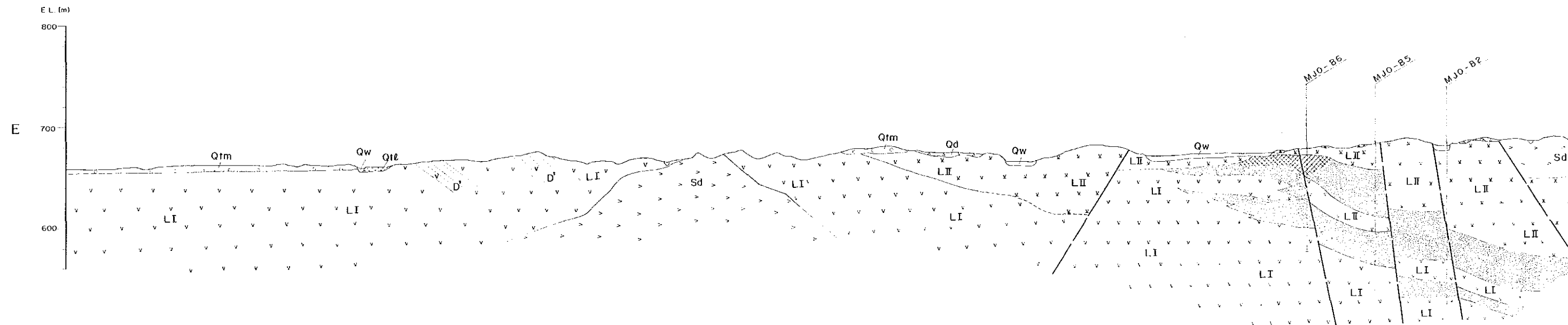
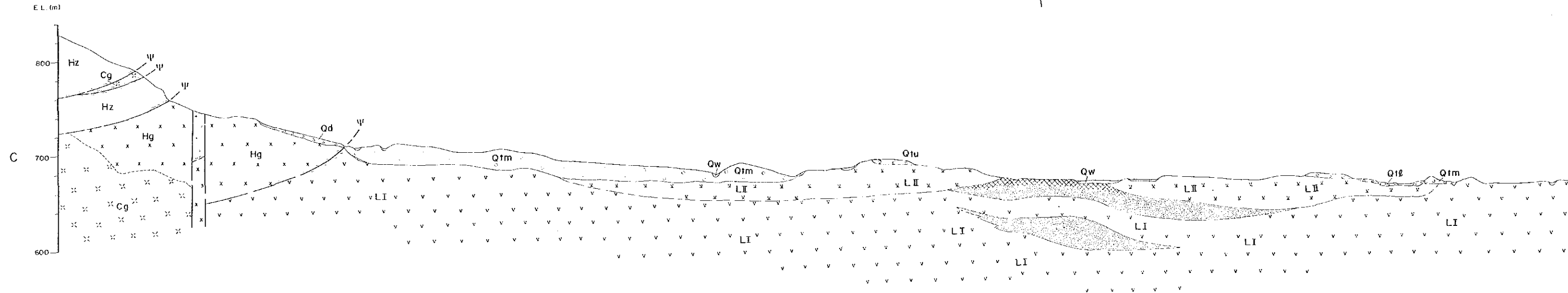
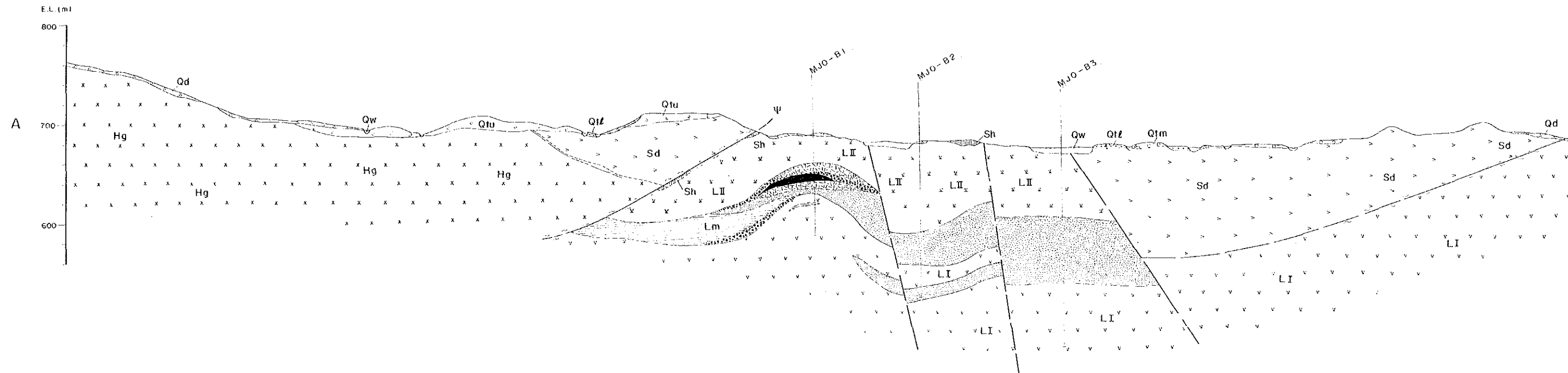
LEGEND

Quaternary	Holocene	Wadi Sediments	Qw, Gravel, sand		
	Pleistocene	Debris	Qd, Talus breccia		
		Terrace Deposits	Qtl, Gravel, sand		
Late Cretaceous	Samaritanian	Lower Terrace Deposits	Qtm, Gravel, sand		
		Middle Terrace Deposits	Qtl, Gravel, sand		
		Upper Terrace Deposits	Qtu, Gravel, sand		
	Samaritanian	Batinah Olistostrome	Ols, Olistolith of limestone		
		Subaylah Formation	Och, Olistolith of chert		
	Samaritanian	Samaritanian Volcanic Rocks	Middle Volcanic Rocks	Sp, Serpentine	
			Lower Volcanic Rocks	Sh, Chert	
		Samaritanian	Samaritanian	Lower Extrusives II	Me, Pillow lavas
				Lower Extrusives I	Mms, Massive lavas
		Samaritanian	Samaritanian	Lower Extrusives II	Mm, Metalliferous sediments
Lower Extrusives I				Lj, Pillow and massive lavas	
Samaritanian		Samaritanian	Lower Extrusives II	Lm, Metalliferous sediments	
			Lower Extrusives I	Lj, Pillow lavas	
Samaritanian		Samaritanian	Lower Extrusives II	Sd, Sheeted dykes	
			Lower Extrusives I	Hg, High-level gabbro	
Samaritanian	Samaritanian	Lower Extrusives II	Cg, Cumulate layered gabbro		
		Lower Extrusives I	Hz, Harzburgite		
Samaritanian	Samaritanian	Lower Extrusives II	D, Dykes		
		Lower Extrusives I	L, Late dykes		

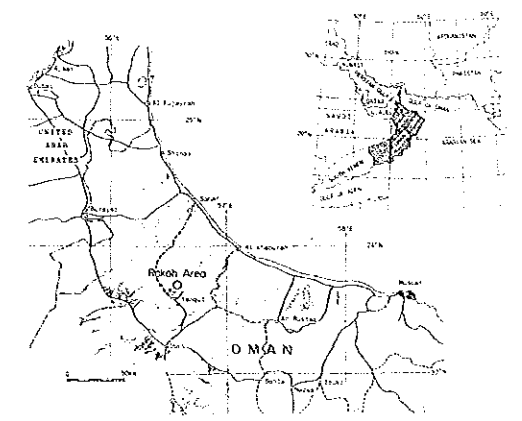
Stratification; inclined	Fault; dashed where inferred or concealed
Stratification of pillow lavas; inclined	Thrust fault; saw-teeth, showing dip
Layering; inclined	Vein
Pollution; inclined	Gorgan
Dyke; inclined	Drill hole
Shear zone	Slag dump
Contact	Section





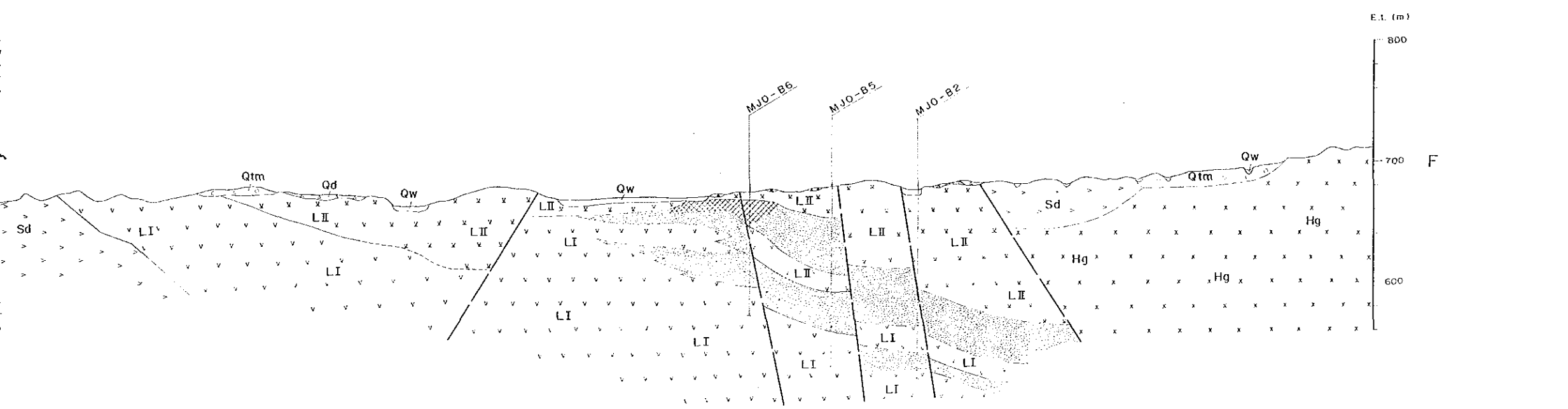
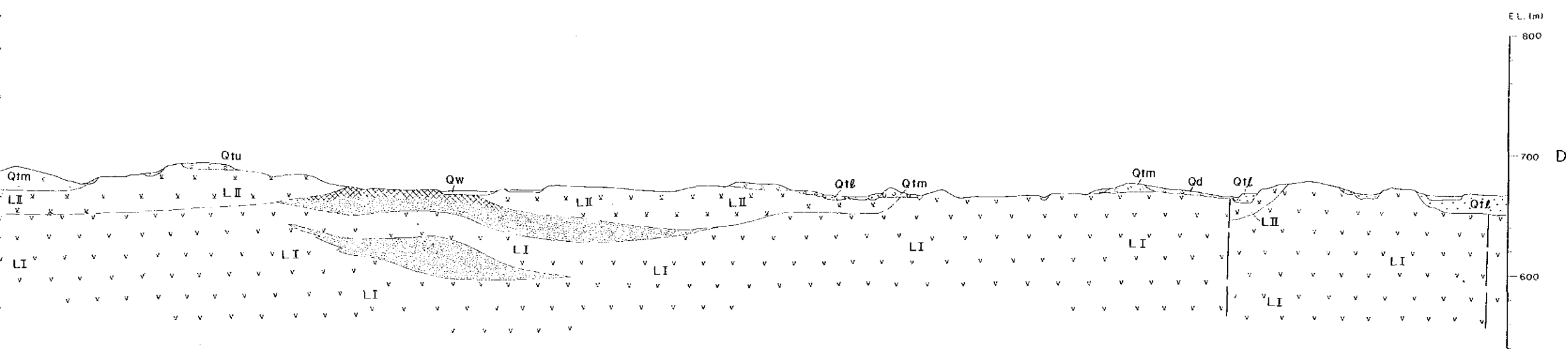
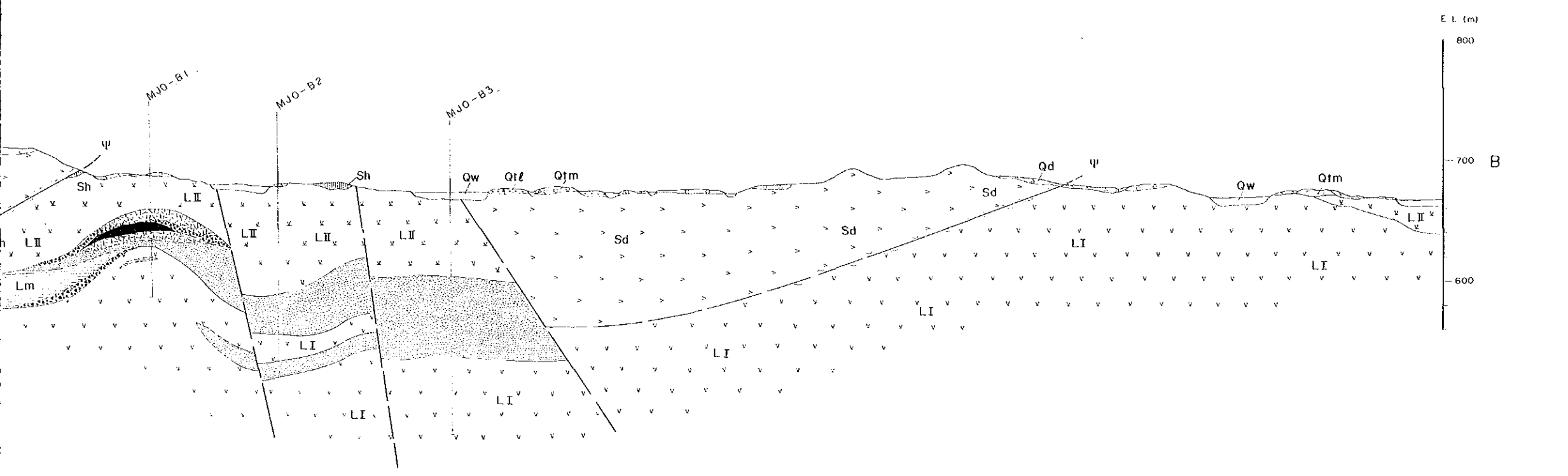
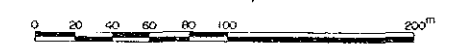
REPORT ON THE MINERAL EXPLORATION  
IN  
THE RAKAH AREA, SULTANATE OF OMAN  
PHASE I

GEOLOGIC SECTIONS OF AREA B



JAPAN INTERNATIONAL COOPERATION AGENCY  
METAL MINING AGENCY OF JAPAN  
FEBRUARY, 1989

Scale 1:2,000



**LEGEND**

Quaternary	Holocene	Wadi Sediments	Qw, Gravel, sand	
		Debris	Qd, Talus breccia	
		Terrace Deposits	Lower Terrace Deposits	Ql, Gravel, sand
	Middle Terrace Deposits		Qm, Gravel, sand	
	Upper Terrace Deposits		Qu, Gravel, sand	
	Pleistocene	Suhayiah Formation		Sh, Chert
		Sama'il Volcanic Rocks		Lower Extrusives II Lm, Metalliferous sediments Lower Extrusives I LI, Pillow lavas Sd, Sheeted dykes Hg, High-level gabbro
	Early to Middle Cretaceous	Sheeted-dyke Complex		Hg, High-level gabbro
		Cumulate Sequence		Cg, Cumulate layered gabbro
		Tectonites		Hr, Harzburgite
Intrusive Rocks	Dykes		D, Dykes	

**Mineralization**

Contact	Gossanized zone
Fault, dashed where inferred or concealed	Siliceous ore zone
Thrust fault, saw-teeth, shawing dip	Brecciated ore zone
Shear zone	Massive ore zone
Slag dump	Stockwork ore zone
Drill hole	



