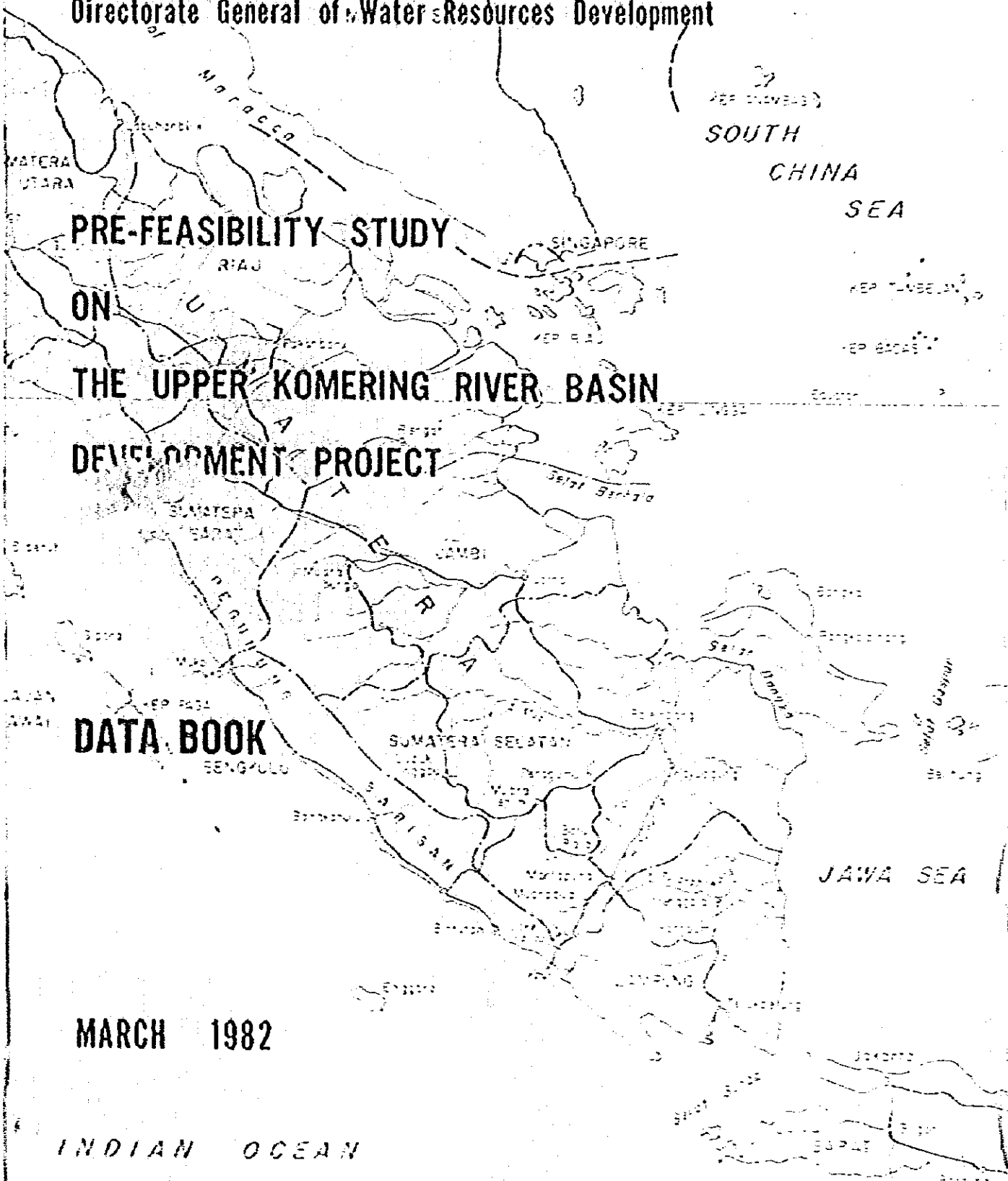


No. 56

7 5 7 0
7 5 2 2 (1) 82

REPUBLIC OF INDONESIA
Ministry of Public Works
Directorate General of Water Resources Development



**PRE-FEASIBILITY STUDY
ON
THE UPPER KOMERING RIVER BASIN
DEVELOPMENT PROJECT**

DATA BOOK

MARCH 1982

INDIAN OCEAN

JAPAN INTERNATIONAL COOPERATION AGENCY

TOKYO, JAPAN

AFT
82-24

REPUBLIC OF INDONESIA
Ministry of Public Works
Directorate General of Water Resources Development

PRE-FEASIBILITY STUDY

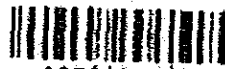
ON

THE UPPER KOMERING RIVER BASIN

DEVELOPMENT PROJECT

19916

JICA LIBRARY



1076961(10)

DATA BOOK

MARCH 1982

JAPAN INTERNATIONAL COOPERATION AGENCY
TOKYO, JAPAN



国際協力事業団

19916

INTRODUCTION

This data book consists of Meteorological data, Hydrological data, Soil profile, Results of Syllinder Intake Rate and Soil Mechanical Test Result. The Meteorological data covers the rainfall, evaporation, relative humidity, temperature, sunshine duration, solar radiation, and wind velocity in and around the project area. The Hydrological data comprises water stage record, water level-discharge conversion table, and daily discharge records. The Hydrological and Meteorological data were collected mainly at SUB P.3.S.A. Sumatera Selatan, P.U. Belitang, Agricultural office in Palembang and Baturaja, and SUB P.3.S.A. Lampung in Lampung State. These data is available since the start of observation by FAO in 1972.

The data of Soil profile observed during the survey period are also compiled in this book. The area surveyed covers about 225,800 ha comprising three areas, namely Muncak Kabau, Lempuing and Tulangbawang areas. The sites for soil profile surveys are selected taking into account the parent material, land form, and relief and further referring to topographic map on a scale of 1:50,000.

Soil analyses are made at the Soil Research Institute in Bogor for 50 soil samples taken from representative soil horizons. The profile data attached hereto are prepared referring to "the Guidelines for Soil Profile Description" published by FAO.

CONTENTS

	Page
INTRODUCTION	
I. METEOROLOGY	
I.1	Daily Rainfall
I.1.1	Daily Rainfall Record at Bandung Agung I-1
I.1.2	Daily Rainfall Record at Gunung Raya I-9
I.1.3	Daily Rainfall Record at Muaredua I-14
I.1.4	Daily Rainfall Record at Simpang I-23
I.1.5	Daily Rainfall Record at Martapura I-31
I.1.6	Daily Rainfall Record at Buay Madang I-39
I.1.7	Daily Rainfall Record at Kurungan Nyawa I-47
I.1.8	Daily Rainfall Record at Belitang BK IX I-69
I.1.9	Daily Rainfall Record at Belitang BK X I-91
I.1.10	Daily Rainfall Record at Belitang BK XVII I-102
I.1.11	Daily Rainfall Record at Cempaka I-107
I.1.12	Daily Rainfall Record at Tanjung Lubuk I-116
I.1.13	Daily Rainfall Record at Pedamaran I-126
I.1.14	Daily Rainfall Record at Kayu Agung I-136
I.1.15	Daily Rainfall Record at Baturaja I-146
I.1.16	Daily Rainfall Record at Palembang Airport I-156
I.1.17	Daily Rainfall Record at Menggala I-166
I.1.18	Daily Rainfall Record at Padang I-175
I.1.19	Daily Rainfall Record at Pengandonan I-178
I.1.20	Daily Rainfall Record at Raksajiva I-179
I.1.21	Daily Rainfall Record at Peninjawan I-183
I.1.22	Daily Rainfall Record at Tanjung Raja I-185
I.1.23	Daily Rainfall Record at Tanjung Batu I-188
I.1.24	Daily Rainfall Record at Indralaya I-191
I.1.25	Daily Rainfall Record at Prabumulih I-194
I.1.26	Daily Rainfall Record at Gelumbang I-196
I.1.27	Daily Rainfall Record at Talang Putri I-199
I.1.28	Daily Rainfall Record at Sekojo I-201
I.1.29	Daily Rainfall Record at Pampangan I-204

	Page
I.1.30	Daily Rainfall Record at Pendopo I-207
I.1.31	Daily Rainfall Record at Nuara Kuang I-210
I.1.32	Daily Rainfall Record at Tulung Selapan I-213
I.1.33	Daily Rainfall Record at Lahat I-215
I.1.34	Daily Rainfall Record at Sinar Ogan I-218
I.1.35	Daily Rainfall Record at Rantau Tamiang I-220
I.1.36	Daily Rainfall Record at Tahmi Tj. Agung I-222
I.1.37	Daily Rainfall Record at Purajaya I-224
I.1.38	Daily Rainfall Record at Gihan I-226
I.1.39	Daily Rainfall Record at Tahmi Lumut I-228
I.1.40	Daily Rainfall Record at Bukit Kemuning I-230
I.1.41	Daily Rainfall Record at Kasui I-232
I.1.42	Daily Rainfall Record at Baradatu I-234
I.1.43	Daily Rainfall Record at Sumber Jaya I-236
I.1.44	Daily Rainfall Record at Mesir Hilir I-238
I.2	Monthly Rainfall
I.2.1	Monthly Rainfall Record at Muaradua I-240
I.2.2	Monthly Rainfall Record at Martapura I-242
I.2.3	Monthly Rainfall Record at Kurungan Nyawa I-243
I.2.4	Monthly Rainfall Record at Nuncak Kabau I-245
I.2.5	Monthly Rainfall Record at Belitang I-246
I.2.6	Monthly Rainfall Record at Cempaka I-250
I.2.7	Monthly Rainfall Record at Tanjung Lubuk I-251
I.2.8	Monthly Rainfall Record at Pedamaran I-252
I.2.9	Monthly Rainfall Record at Kayu Agung I-253
I.2.10	Monthly Rainfall Record at Tanjung Raja I-255
I.3	Climatology
I.3.1	Climatological Record at Bandung Agung I-257
I.3.2	Climatological Record at Belitang I-355
I.3.3	Climatological Record at Palembang Airport I-505
I.3.4	Climatological Record at Menggala I-612
I.3.5	Climatological Record at Kasui I-623
I.3.6	Monthly Climatological Record at Palembang Airport I-646
I.3.7	Monthly Climatological Record at Menggala I-652

		Page
I.3.8	Monthly Climatological Record at Bandung Agung	I-658
I.3.9	Monthly Climatological Record at Belitang	I-660

II. HYDROLOGY

II.1	Water Level Record	
II.1.1	Water Level Record at Kurungan Nyawa	II-1
II.2	Conversion Table	
II.2.1	Conversion Table for the Komering River at Martapura	II-16
II.3	Daily Discharge	
II.3.1	Selabung River at Bandung Agung	II-17
II.3.2	Komering River at Martapura	II-31
II.3.3	Ogan River at Baturaja	II-50
II.3.4	Ogan River at TG Raja	II-71
II.3.5	Rambang River at Tj. Rambeng	II-75
II.4	Water Level Data	
II.4.1	Komering River at Muncak Kabau	II-91
II.4.2	Komering River at Menanga	II-93
II.4.3	Komering River at Cempaka	II-95
II.4.4	Komering River at Kayu Agung	II-100
II.4.5	Randu River at Suka Bumi	II-107
II.4.6	Arisan River at Gunung Batu	II-113
II.4.7	Jambu River at Tj. Lubuk	II-120
II.4.8	Sigonang River at Sukaraja	II-127
II.4.9	Anyar River at Anyar	II-130
II.4.10	Lempuing River at Sri Nanti	II-136
II.4.11	Macek River at Cahaya Bumi	II-142
II.4.12	Belitang River at Cahaya Bumi	II-145

III. SOIL

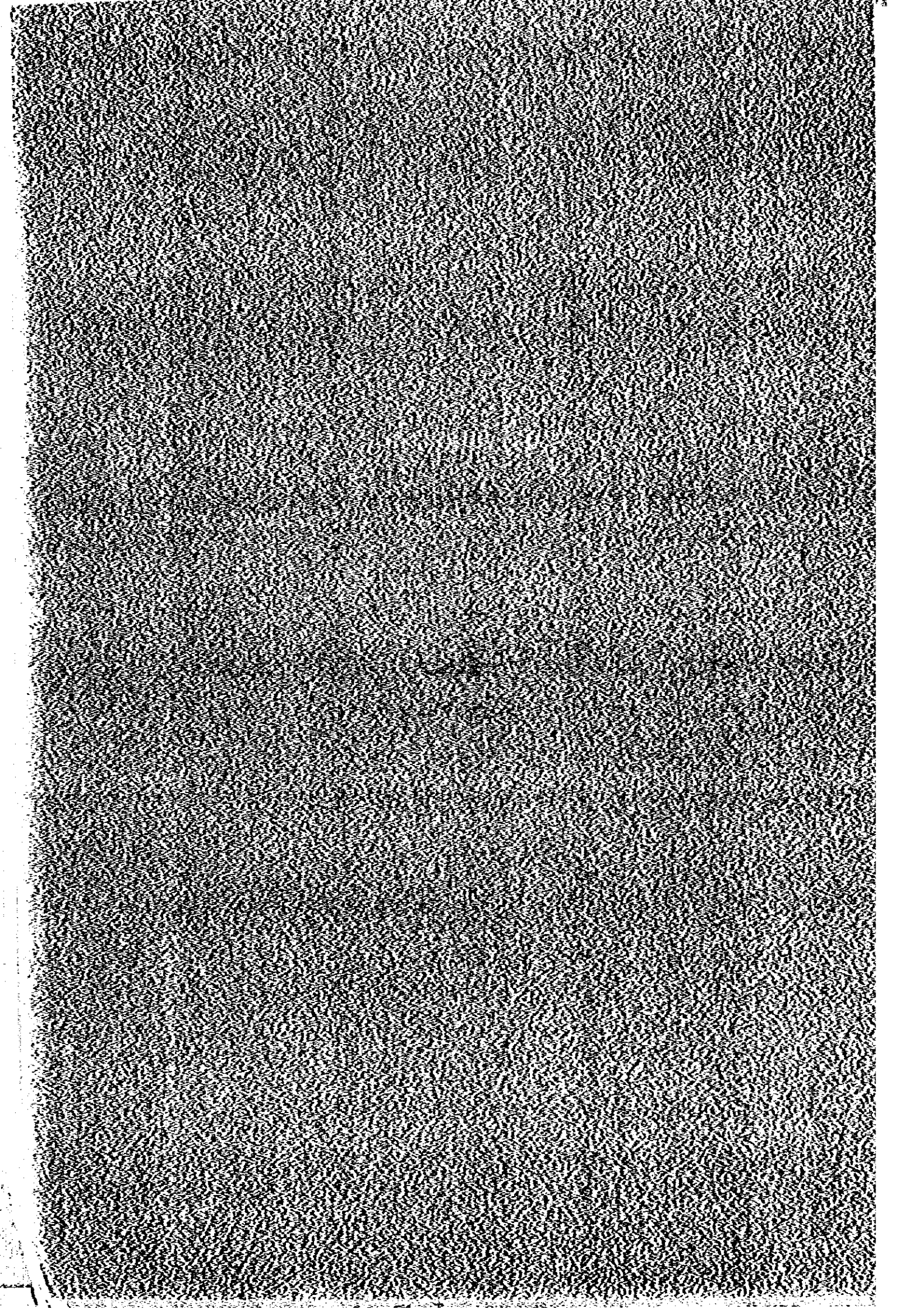
III.1	Location of Test Pit Site	
III.1.1	Location of Test Pit Site in the Lempuing Area	III-1
III.1.2	Location of Test Pit Site in the Muncak Kabau Area	III-2
III.1.3	Location of Test Pit Site in the Tulangbawang Area	III-3

		Page
III.2	Soil Profile	
III.2.1	Soil Description	III-4
III.3	Soil Analyses	
III.3.1	Chemical and Physical Properties of the Soil	III-58
III.4	Basic Intake Rate	
III.4.1	Equipment for Intake Rate	III-61
III.4.2	Time and Volume Measurement for Intake Rate	III-62
III.4.3	Experimental Result for Basic Intake Rate	III-63
III.4.4	Results of Basic Intake Rate for Each Irrigation Area	III-64

IV. SOIL MECHANICS

IV.1	Soil Mechanical Test Result	
IV.1.1	Results of Mechanical Property Tests	IV-1
IV.1.2	Results of Index Property Test	IV-3
IV.1.3	Compaction Test	IV-7

METEOROLOGY



/ DAILY RAINFALL RECORD

Station: _____

River Basin _____ Basin # _____ Station # _____ Location N. ° ' E. ° ' E.L. _____

Station Site BANDING AGUNG Drainage Area _____ Km² Year 1973

Month Day	Jan	Feb	Mar	Apr	May	June	Jul	Aug	Sept	Oct	Nov	Dec	Annual
	1		11.8	46.7	43.2	-	6.5		1.5	3.7	-	-	-
2		7.8	-	-	-	-	2.3	11.7	0.2	-	6.9	-	
3		2.3	-	-	47.5	-	19.3	2.4	-	2.0	5.5	-	
4		10.1	29.9	6.0	0.3	16.0	7.2	7.8	1.2	2.1	40.0	2.9	
5		8.7	0.6	0.7	1.2	-	-	3.7	-	-	26.8	2.8	
6		1.5	-	39.2	-	11.8	6.5	-	6.7	0.2	9.0	49.2	
7		16.5	16.1	-	-	-	-	-	-	-	-	7.0	
8		16.0	-	9.2	8.8	3.2	-	-	44.9	1.7	-	-	
9		2.1	6.1	32.9	6.5	21.9	-	17.5	-	-	-	1.5	
10		9.4	20.0	-	-	-	-	-	-	-	-	44.3	
11		39.4	10.2	6.3	0.4	-	-	-	28.2	18.2	-	-	
12		2.7	-	0.9	9.2	-	0.3	-	2.2	-	-	2.0	
13		4.5	-	-	-	-	-	3.0	-	0.8	-	0.2	
14		12.3	-	22.8	0.3	-	-	7.8	-	-	-	13.1	
15		6.8	-	4.7	-	-	-	43.5	21.2	-	-	-	
16		10.5	0.9	42.5	1.9	8.6	-	8.5	21.0	1.8	-	4.1	
17		6.4	-	0.2	9.3	-	-	0.5	73.0	-	0.3	42.0	
18		53.7	-	-	0.5	-	-	-	-	-	0.2	49.1	
19		26.1	12.5	-	0.4	7.8	-	0.5	12.2	19.0	-	27.8	
20		-	8.0	0.3	-	1.6	2.2	-	0.2	-	-	4.6	
21		26.5	-	64.5	8.3	0.2	-	-	9.1	32.6	-	-	
22		22.4	6.9	1.8	-	2.9	22.2	-	17.6	14.0	16.6	1.2	
23		11.9	1.8	9.0	-	15.3	-	-	-	32.8	4.6	-	
24		-	0.2	1.0	-	-	1.6	-	4.6	10	-	-	
25		19.8	-	-	4.2	12.5	-	-	9.8	23.2	-	-	
26		-	14.1	-	2.9	5.6	-	0.2	2.1	10.8	-	-	
27		-	65.0	-	-	3.1	-	33.9	0.1	0.8	-	-	
28		7.5	4.1	-	3.1	11.0	-	-	1.5	1.4	-	-	
29		-	7.4	-	3.3	2.6	-	5.5	6.6	12.8	1.2	1.8	
30		-	-	-	-	-	28.5	2.4	-	8.4	2.0	-	
31		-	0.1	-	4.6	-	-	3.9	-	-	-	-	
Total		342.7	250.6	285.2	112.7	130.6	76.1	154.3	257.1	185.6	113.1	251.2	
Number of rainy day		24	18	17	18	16	9	17	20	18	11	16	
Max. within one recorded day (Date)	()	()	()	()	()	()	()	()	()	()	()	()	()
Max. in 24-hr (Date)	6 hr (Date)	()	()	()	()	()	()	()	()	()	()	()	()
	3 hr (Date)	()	()	()	()	()	()	()	()	()	()	()	()
	1 hr (Date)	()	()	()	()	()	()	()	()	()	()	()	()
Summary of all recorded years starting from 19 ~ 19													
Average													
Max. (Year)	()	()	()	()	()	()	()	()	()	()	()	()	()
Min. (Year)	()	()	()	()	()	()	()	()	()	()	()	()	()
Daily Max.	1-day			2-day			3-day			Original			

DAILY RAINFALL RECORD

Station: _____

River Basin _____ Basin # _____ Station # _____ Location N. ° ' E. ° ' E.L. _____

Station Site **BANDING AGUNG** Drainage Area _____ km² Year **1974**

Month Day	Jan	Feb	Mar	Apr	May	June	Jul	Aug	Sept	Oct	Nov	Dec	Annual
	1	1.4	16.8	37.0	2.8	-	21.9	-	13.3	-	1.9	24.2	10.3
2	2.5	11.5	29.8	13.6	-	2.5	-	3.8	7.3	0.8	2.2	4.6	
3	1.2	1.2	10.0	14.3	19.4	-	-	-	0.2	12.7	1.2	7.1	
4	1.7	-	-	22.3	2.4	6.4	-	-	4.5	-	-	6.9	
5	0.8	17.3	-	5.0	24.8	-	-	-	5.5	-	-	6.3	
6	-	-	-	8.3	18.6	-	-	-	2.7	24.8	1.5	15.0	
7	-	6.0	-	4.4	6.0	-	-	-	7.4	-	14.8	5.6	
8	11.8	0.5	4.3	-	9.8	-	3.3	-	-	-	-	-	
9	-	49.0	-	1.1	17.8	-	-	-	23.4	-	-	4.4	
10	-	10.0	-	50.7	44.1	-	8.0	-	-	-	18.4	1.1	
11	-	-	-	-	38.5	-	-	2.7	-	-	28.0	1.6	
12	-	-	23.5	6.4	16.5	3.0	-	24.9	3.7	-	-	-	
13	-	-	-	2.5	1.3	-	4.0	-	9.8	-	61.2	12.0	
14	-	-	-	16.6	-	-	-	1.8	12.2	-	12.2	-	
15	-	33.4	-	0.8	2.5	-	-	4.8	14.9	27.9	15.9	-	
16	1.6	32.9	14.0	31.1	-	1.3	-	1.1	-	-	8.8	-	
17	1.8	-	-	13.3	20.9	-	18.6	-	-	-	-	-	
18	2.3	-	0.1	-	6.9	-	20.1	-	1.5	-	12.8	-	
19	-	-	-	-	20.2	21.5	-	7.9	65.0	0.3	-	3.0	
20	0.3	-	-	5.7	0.9	18.5	-	-	7.2	-	2.3	6.5	
21	-	-	-	-	0.8	9.5	-	33.0	2.0	1.9	5.7	-	
22	1.3	2.7	0.4	-	-	-	0.4	0.8	-	-	-	3.6	
23	1.3	-	2.2	-	-	14.1	11.8	-	-	-	-	13.7	
24	4.5	-	-	22.2	-	-	1.6	10.5	-	2.4	10.0	26.8	
25	-	-	-	-	-	-	14.7	-	0.8	0.8	-	4.5	
26	2.4	-	5.3	-	-	15.2	-	0.9	4.7	2.7	-	4.9	
27	0.9	3.0	2.5	-	1.5	2.3	-	5.0	4.2	0.9	5.4	2.2	
28	5.6	5.6	-	-	-	-	3.0	2.2	20.2	14.0	12.0	1.1	
29	-	-	22.6	12.1	-	6.8	-	1.1	1.2	-	-	-	
30	17.1	-	5.6	-	12.0	-	-	-	20.9	-	7.3	-	
31	20.1	-	-	-	1.5	-	-	7.1	-	-	-	-	
Total	127.6	189.9	197.3	233.2	283.4	123.0	95.5	120.9	227.6	100.4	244.2	141.2	2044.2
Number of rainy day	18	13	13	18	20	12	10	16	21	12	18	20	191
Max. within one recorded day (Data)	()	()	()	()	()	()	()	()	()	()	()	()	()
Max. intensity	6 hr (Data)	()	()	()	()	()	()	()	()	()	()	()	()
	3 hr (Data)	()	()	()	()	()	()	()	()	()	()	()	()
	1 hr (Data)	()	()	()	()	()	()	()	()	()	()	()	()
Summary of all recorded years starting from 19 ~ 19													
Average													
Max. (Year)	()	()	()	()	()	()	()	()	()	()	()	()	()
Min. (Year)	()	()	()	()	()	()	()	()	()	()	()	()	()
Daily Max.	1-day			2-day			3-day			Original			

DAILY RAINFALL RECORD

Station: _____

River Basin _____ Basin No. _____ Station No. _____ Location N. ° ' E. ° ' EL. _____

Station Site **BANDING AGUNG** Drainage Area _____ km² Year **1975**

Day \ Month	Jan	Feb	Mar	Apr	May	June	Jul	Aug	Sept	Oct	Nov	Dec	Annual
	Jan	Feb	Mar	Apr	May	June	Jul	Aug	Sept	Oct	Nov	Dec	
1	10.0	9.7	2.4	8.0	-	-	-	-	11.0	-	20.0	-	
2	13.4	6.4	-	27.0	-	-	-	-	-	-	9.0	-	
3	17.8	46.8	2.4	-	-	-	-	21.0	3.0	-	-	-	
4	27.0	30.8	3.6	9.0	-	-	-	6.0	-	6.0	-	15.0	
5	0.9	12.9	24.5	-	-	-	-	-	4.0	8.0	-	-	
6	16.9	40.5	-	-	-	-	-	-	17.0	-	-	-	
7	6.3	0.7	0.8	-	-	-	-	9.0	-	10.0	22.0	-	
8	2.2	-	6.3	4.0	19.0	-	-	-	1.0	15.0	-	-	
9	-	1.2	2.2	-	24.0	-	-	-	-	20.0	-	-	
10	1.2	-	-	79.0	-	-	-	-	41.0	14.0	-	-	
11	3.4	32.2	4.2	23.0	-	-	-	-	7.0	7.0	-	-	
12	-	-	6.0	63.0	-	-	-	-	-	-	-	25.0	
13	-	16.5	20.5	-	-	-	-	13.0	-	-	-	-	
14	-	2.0	5.1	-	-	13.0	-	-	-	3.0	-	-	
15	-	-	0.9	22.0	32.0	-	-	45.0	7.0	10.0	20.0	20.0	
16	4.0	-	5.1	23.0	17.0	-	-	-	-	-	-	10.0	
17	13.4	2.0	-	8.0	35.0	-	8.0	-	-	35.0	41.0	8.0	
18	-	-	-	-	-	-	19.0	13.0	-	25.0	11.0	-	
19	4.7	27.2	-	-	-	-	10.0	-	-	1.0	-	-	
20	4.3	18.0	-	-	-	-	20.0	-	-	-	53.0	-	
21	34.2	-	10.0	-	-	-	13.0	-	-	-	-	10.0	
22	-	36.2	24.9	-	-	-	50.0	-	-	-	-	-	
23	3.0	2.2	2.1	-	-	-	20.0	-	-	-	4.0	-	
24	14.4	-	4.1	-	-	-	-	-	-	4.0	-	-	
25	3.9	-	-	7.0	-	4.0	-	-	-	24.0	-	18.0	
26	4.3	-	-	-	23.0	-	-	-	-	-	15.0	-	
27	12.2	-	2.3	-	15.0	-	36.0	19.0	14.0	-	9.0	-	
28	12.4	-	1.2	11.0	-	-	3.0	3.0	8.0	-	-	-	
29	47.9	-	-	-	-	9.0	-	-	-	5.0	2.0	20.0	
30	16.5	-	-	31.0	-	-	-	-	-	30.0	-	12.0	
31	3.2	-	15.0	-	13.0	-	-	21.0	-	-	-	28.0	
Total	207.5	285.3	143.5	321.0	166.0	26.0	179.0	151.0	113.0	217.0	206.0	176.0	2261.3
Number of rainy day	24	16	20	13	8	3	9	9	10	16	11	10	149
Max. with no. recorded day (Date)	()	()	()	()	()	()	()	()	()	()	()	()	()
Max. intensity 6 hr (Date)	()	()	()	()	()	()	()	()	()	()	()	()	()
3 hr (Date)	()	()	()	()	()	()	()	()	()	()	()	()	()
1 hr (Date)	()	()	()	()	()	()	()	()	()	()	()	()	()
Summary of all recorded years starting from 19 ~ 19													
Average													
Max. (Year)	()	()	()	()	()	()	()	()	()	()	()	()	()
Min. (Year)	()	()	()	()	()	()	()	()	()	()	()	()	()
Daily Max.	1-day		2-day		3-day					Original			

DAILY RAINFALL RECORD

Station: BANDING NGONG

River Basin _____ Basin # _____ Station # _____ Location N. ° ' E. ° ' E.L. _____
 Station Site _____ Drainage Area _____ Sq. _____ Year 1976

Day	Month	Jan	Feb	Mar.	Apr	May	June	Jul	Aug	Sept	Oct	Nov	Dec	Annual
1		—	—	—	—	—	—	—	—	—	—	15	—	
2		—	—	—	—	—	—	—	—	—	13	23	16	
3		28	—	10	—	—	—	—	—	—	—	6	—	
4		22	9	—	—	—	—	—	—	—	—	—	—	
5		15	—	—	—	—	—	—	—	—	—	14	21	
6		—	—	10	15	—	—	—	—	—	25	21	—	
7		—	—	—	—	—	—	—	—	—	—	25	—	
8		—	—	—	—	—	—	—	—	—	27	—	—	
9		11	12	—	—	—	—	—	—	—	19	—	15	
10		17	—	—	—	—	—	—	—	—	—	—	18	
11		13	16	—	—	—	—	—	—	—	—	11	—	
12		—	—	—	—	—	—	—	—	—	—	—	—	
13		28	—	5	—	—	—	—	—	—	24	40	—	
14		21	—	3	—	—	—	—	—	—	—	23	—	
15		20	—	—	—	—	—	—	—	—	21	—	12	
16		—	24	—	—	—	—	—	—	—	40	—	—	
17		—	—	—	—	—	—	—	—	—	—	—	—	
18		25	—	—	—	—	—	—	—	—	—	—	—	
19		34	17	10	—	—	—	—	—	—	—	3	—	
20		—	—	7	—	—	—	—	—	—	15	19	—	
21		27	—	25	—	—	—	—	—	—	—	41	—	
22		—	—	—	11	—	—	—	—	—	25	22	—	
23		41	29	30	—	—	—	—	—	—	—	5	—	
24		—	—	31	—	—	—	—	—	—	—	—	27	
25		35	—	—	—	—	—	—	5	—	—	—	—	
26		18	—	10	—	—	—	—	46	—	—	—	—	
27		—	—	4	—	—	—	—	—	—	—	15	—	
28		23	41	—	—	—	—	134	—	—	30	13	8	
29		15	—	7	23	—	—	6	—	—	—	2	—	
30		—	—	—	—	—	—	16	—	—	25	—	19	
31		—	—	—	—	—	—	116	—	—	—	—	—	
Total		413	148	152	49		0	272	51		274	218	136	
Number of rainy day		17	7	12	3		0	4	2		11	17	8	
Max. within one recorded day (Data)		()	()	()	()	()	()	()	()	()	()	()	()	()
Max. intensity	6 hr (Data)	()	()	()	()	()	()	()	()	()	()	()	()	()
	3 hr (Data)	()	()	()	()	()	()	()	()	()	()	()	()	()
	1 hr (Data)	()	()	()	()	()	()	()	()	()	()	()	()	()
Summary of all recorded years starting from 19 ~ 19														
Average														
Max. (Year)		()	()	()	()	()	()	()	()	()	()	()	()	()
Min. (Year)		()	()	()	()	()	()	()	()	()	()	()	()	()
Daily Max.	1-day													
	2-day													
	3-day													
	Original													

DAILY RAINFALL RECORD

Station: BANDING AGUNG

River Basin _____ Basin No. _____ Station No. _____ Location N. ° ' E. ° ' EL. _____
 Station Site _____ Drainage Area _____ Sq. _____ Year 1977

Month Day	Jan	Feb	Mar	Apr	May	June	Jul	Aug	Sept	Oct	Nov	Dec	Annual
	1	—	—			—	—	—	—	—	—	—	—
2	—	—			—	—	—	—	—	—	—	—	
3	—	5			—	—	—	—	—	—	—	30	
4	—	17			—	24	—	—	—	—	—	—	
5	—	—			—	—	—	—	—	—	—	—	
6	—	14			—	—	—	—	—	—	17	—	
7	—	28			24	—	—	—	—	—	29	—	
8	13	—			—	21	—	—	—	—	—	—	
9	56	—			—	—	—	—	—	—	15	—	
10	—	—			—	—	—	—	—	—	—	—	
11	—	—			18	25	—	—	—	—	—	—	35
12	10	—			—	43	—	—	—	—	—	—	
13	—	44			—	27	—	—	26	—	—	—	
14	—	—			—	—	—	—	—	—	—	—	
15	8	—			17	—	—	—	—	—	—	—	
16	31	35			—	—	—	—	—	—	14	21	
17	—	—			—	18	21	—	—	—	—	—	
18	4	11			—	—	—	—	—	—	—	—	
19	15	15			29	—	—	—	—	—	—	—	
20	—	—			—	15	—	—	—	—	—	—	27
21	—	—			—	—	—	—	32	—	—	—	
22	—	20			21	32	—	—	—	—	25	—	
23	46	—			—	—	—	—	—	—	—	16	
24	—	—			—	—	—	31	—	—	—	—	
25	—	32			—	9	—	—	—	27	11	—	
26	—	24			25	—	—	—	—	—	—	—	
27	—	—			—	—	—	—	—	—	—	25	
28	—	18			—	—	—	26	—	—	32	19	
29	—	—			—	—	—	—	—	29	—	—	
30	6	—			—	—	—	36	—	—	—	—	
31	—	—			—	—	—	—	—	—	—	—	
Total	189	263			184	214	21	91	52	56	153	239	
Number of rainy day	9	12			6	9	1	3	2	2	7	8	
Max. within one recorded day (Date)	()	()	()	()	()	()	()	()	()	()	()	()	()
Max. intensity	6 hr (Date)	()	()	()	()	()	()	()	()	()	()	()	()
	3 hr (Date)	()	()	()	()	()	()	()	()	()	()	()	()
	1 hr (Date)	()	()	()	()	()	()	()	()	()	()	()	()
Summary of all recorded years starting from 19 ~ 19													
Average													
Var. (Year)	()	()	()	()	()	()	()	()	()	()	()	()	()
Min. (Year)	()	()	()	()	()	()	()	()	()	()	()	()	()
Daily Max.	1-day			2-day			3-day			Original			

DAILY RAINFALL RECORD

Station: BANDING A&LMT

River Basin _____ Basin # _____ Station # _____ Location N. ° ' E. ° ' E.L. _____

Station Site _____ Drainage Area _____ Sq. _____ Year 1978

Month Day	Jan	Feb	Mar	Apr	May	June	Jul	Aug	Sept	Oct	Nov	Dec	Annual
	1	-	-	-	27	-	-				11	10	23
2	-	-	-	-	-	-				-	5	1	
3	15	25	26	-	-	-				3	2	1	
4	21	21	9	-	25	-				1	-	-	
5	-	-	11	-	-	-				-	13	-	
6	13	-	41	-	13	-				2	-	16	
7	-	-	46	-	-	-				-	-	24	
8	-	-	51	-	23	-				1	26	10	
9	-	-	-	-	-	-				-	-	5	
10	32	-	-	-	11	-				-	-	22	
11	-	-	18	-	-	-				-	52	-	
12	-	11	-	-	21	-				3	30	51	
13	27	-	18	-	-	-				-	5	1	
14	-	17	-	-	26	-				-	8	31	
15	25	-	-	-	32	-				24	44	-	
16	-	-	3	-	-	-				28	4	5	
17	-	-	-	-	11	-				16	71	-	
18	-	3	36	-	-	-				14	-	45	
19	-	1	3	-	-	-				-	-	-	
20	-	-	49	33	-	-				-	6	57	
21	-	-	25	25	-	-				26	1	11	
22	-	7	3	-	-	-				1	6	11	
23	-	-	-	-	-	-				4	-	41	
24	-	7	20	-	-	-				7	-	7	
25	-	-	-	-	-	30				7	-	4	
26	-	-	15	-	-	-				10	-	5	
27	-	-	-	-	-	-				14	-	-	
28	-	-	5	22	25	-				15	2	-	
29	-	-	-	30	47	-				19	-	26	
30	-	-	-	3	21	25				3	-	7	
31	-	-	-	-	-	-				15	-	50	
Total	133	102	439	150	271	55				224	290	464	
Number of rainy day	6	8	17	6	11	2				21	15	23	
Max. rain on recorded day (Date)	()	()	()	()	()	()	()	()	()	()	()	()	()
Max. in 24-hr (Date)	6 hr (Date)	()	()	()	()	()	()	()	()	()	()	()	()
	3 hr (Date)	()	()	()	()	()	()	()	()	()	()	()	()
	1 hr (Date)	()	()	()	()	()	()	()	()	()	()	()	()
Summary of all recorded years starting from 19 ~ 19													
Average													
Max. (Year)	()	()	()	()	()	()	()	()	()	()	()	()	()
Min. (Year)	()	()	()	()	()	()	()	()	()	()	()	()	()
Daily Max.	1-day			2-day			3-day			Original			

DAILY RAINFALL RECORD

Station: _____

River Basin _____ Basin No. _____ Station No. _____ Location N. ° ' E. ° ' E.L. _____

Station Site BANDING AGUNG Drainage Area _____ In² _____ Year 1979

Day \ Month	Jan	Feb	Mar	Apr	May	June	Jul	Aug	Sept	Oct	Nov	Dec	Annual
	1	-	-	4.9	11.0	6.3	11.7	4.7	-	1.8	-	2.3	-
2	-	8.2	15.2	-	1.7	2.4	2.4	-	-	48.7	15.2	1.8	
3	-	-	1.7	9.0	12.6	7.2	9.3	1.4	3.2	-	51.9	3.3	
4	-	4.3	-	49.0	9.6	3.7	3.5	-	-	-	21.2	5.1	
5	3.7	-	4.1	2.7	-	-	-	15.1	6.3	-	3.5	0.6	
6	2.9	-	-	1.6	3.2	-	-	-	-	-	0.3	-	
7	19.5	-	2.7	-	-	-	-	4.6	17.3	-	7.5	4.5	
8	-	-	21.3	-	-	17.5	-	11.0	26.0	13.6	1.1	11.6	
9	-	-	3.3	-	-	-	16.7	-	-	22.2	0.1	0.6	
10	2.1	6.7	1.9	22.0	-	-	-	-	9.3	6.6	-	-	
11	-	8.2	-	4.0	19.1	-	-	7.4	-	11.5	0.8	-	
12	-	1.9	-	7.2	12.3	-	-	-	-	-	0.1	-	
13	-	3.0	-	6.1	-	2.2	3.0	-	-	-	0.1	4.2	
14	-	39.5	-	-	-	3.7	7.8	-	-	-	9.8	-	
15	-	-	-	0.9	7.3	7.2	3.8	-	0.1	-	-	-	
16	13.6	-	6.7	-	11.5	-	8.5	-	-	-	-	14.1	
17	4.3	-	11.2	-	16.1	-	0.3	1.1	1.3	-	42.7	7.3	
18	0.9	-	3.5	19.2	-	-	3.7	-	-	-	6.7	40.9	
19	-	4.7	-	6.3	-	-	4.0	-	-	10.2	7.1	42.1	
20	-	-	10.3	18.0	-	-	-	-	0.2	1.5	15.6	14.1	
21	-	-	-	-	-	0.5	-	0.2	-	29.9	-	21.9	
22	14.1	-	-	-	-	0.4	-	0.5	-	14.5	16.8	-	
23	5.6	15.2	-	-	-	3.2	-	-	-	1.7	15.1	-	
24	3.2	9.7	-	-	-	4.7	0.2	0.2	17.3	-	1.7	11.1	
25	15.5	-	-	-	-	2.4	13.9	13.0	30.2	0.9	1.5	20.4	
26	-	-	-	12.7	-	3.5	-	-	22.9	2.1	-	0.8	
27	-	-	15.9	12.0	9.3	3.9	3.5	15.2	54.1	-	-	4.1	
28	4.0	13.0	-	-	3.4	-	2.4	-	-	19.0	0.7	0.5	
29	2.5	-	-	-	-	-	3.9	-	-	11.7	16.8	-	
30	-	-	17.2	26.3	-	-	-	1.2	-	-	1.7	2.3	
31	-	-	37.0	-	-	-	-	-	-	8.8	-	-	
Total	91.9	114.7	157.9	209.5	115.4	78.2	91.6	70.9	183.6	202.5	243.3	215.3	
Number of rainy day	13	11	15	16	12	15	17	12	13	15	24	20	
Max. within one recorded day (Date)	()	()	()	()	()	()	()	()	()	()	()	()	()
Max. Intensity	6 hr (Date)	()	()	()	()	()	()	()	()	()	()	()	()
	3 hr (Date)	()	()	()	()	()	()	()	()	()	()	()	()
	1 hr (Date)	()	()	()	()	()	()	()	()	()	()	()	()
Summary of all recorded years starting from 19__ ~ 19__													
Average													
Max. (Year)	()	()	()	()	()	()	()	()	()	()	()	()	()
Min. (Year)	()	()	()	()	()	()	()	()	()	()	()	()	()
Daily Max.	1-day			2-day			3-day			Original			

DAILY RAINFALL RECORD

Station: _____

River Basin _____ Basin No. _____ Station No. _____ Location N. ° ' E. ° ' S. _____

Station Site **BANDING AGUNG** Drainage Area _____ Year **1980**

Month Day	Jan	Feb	Mar	Apr	May	June	Jul	Aug	Sept	Oct	Nov	Dec	Annual
	1	-	8.8	0.8	-	-	-	-	-	6.3	-	-	-
2	48.4	-	20.8	-	-	-	-	14.2	16.2	-	-	-	-
3	28.2	-	2.3	21.7	-	-	-	-	21.4	-	-	9.4	-
4	9.1	-	13.1	0.8	-	-	21.3	-	45.9	-	-	22.3	-
5	28.4	9.7	-	10.3	-	-	-	-	9.0	-	-	2.2	-
6	1.7	-	-	15.2	-	-	-	12.6	5.4	-	-	0.6	-
7	29.5	-	-	2.4	-	-	-	15.0	13.1	-	-	2.8	-
8	20.8	-	1.6	40.8	-	-	14.6	-	14.1	-	-	-	-
9	4.7	-	-	6.4	-	-	-	10.8	20.2	-	-	11.9	-
10	38.9	29.8	-	-	-	-	9.3	-	-	-	-	13.0	-
11	8.3	9.8	-	7.5	-	-	-	-	0.7	-	-	2.8	-
12	29.0	8.7	2.3	14.4	-	-	12.4	-	-	-	-	23.6	-
13	5.6	9.6	13.2	11.2	-	-	15.6	-	-	-	-	23.5	-
14	3.2	5.5	26.0	17.4	-	-	-	10.3	-	-	-	6.0	-
15	27.8	1.7	-	41.3	-	-	-	24.0	-	-	-	1.9	-
16	39.2	27.4	3.8	-	-	-	6.0	-	-	-	-	3.6	-
17	39.3	2.0	10.8	2.9	-	-	-	4.2	-	-	-	3.7	-
18	31.0	2.1	-	-	-	-	-	4.8	-	-	-	-	-
19	-	24.1	-	17.6	-	-	-	-	-	-	-	4.0	-
20	-	15.3	-	-	-	-	-	-	-	-	-	0.1	-
21	-	17.3	2.8	-	-	-	13.8	-	-	-	-	15.2	-
22	9.5	14.6	-	-	-	-	27.3	-	-	-	-	29.4	-
23	2.2	20.0	20.1	81.3	-	-	22.2	-	-	-	-	0.5	-
24	-	0.7	9.5	-	-	-	-	-	-	-	-	-	-
25	-	0.5	24.7	-	-	-	0.6	-	-	-	-	0.6	-
26	-	1.9	0.8	-	-	-	-	-	-	-	-	5.9	-
27	-	42.4	10.2	21.3	-	-	-	-	21.2	-	-	2.8	-
28	-	0.9	12.3	52.6	-	-	-	-	-	-	-	11.0	-
29	-	-	-	34.8	-	-	-	-	9.3	-	-	56.8	-
30	-	-	-	-	-	-	-	-	-	-	-	5.8	-
31	12.2	-	-	-	-	-	-	-	-	-	-	-	-
Total	415.2	253.8	177.1	411.9	-	-	177.4	145.9	202.5	-	-	202.0	-
Number of rainy day	20	21	17	18	-	-	10	8	12	-	-	25	-
Max. within one recorded day (Data)	()	()	()	()	()	()	()	()	()	()	()	()	()
Max. intensity 6 hr (Data)	()	()	()	()	()	()	()	()	()	()	()	()	()
Max. intensity 3 hr (Data)	()	()	()	()	()	()	()	()	()	()	()	()	()
Max. intensity 1 hr (Data)	()	()	()	()	()	()	()	()	()	()	()	()	()
Summary of all recorded years starting from 19 ~ 19													
19	()	()	()	()	()	()	()	()	()	()	()	()	()
20	()	()	()	()	()	()	()	()	()	()	()	()	()
21	()	()	()	()	()	()	()	()	()	()	()	()	()
22	()	()	()	()	()	()	()	()	()	()	()	()	()
23	()	()	()	()	()	()	()	()	()	()	()	()	()
24	()	()	()	()	()	()	()	()	()	()	()	()	()
25	()	()	()	()	()	()	()	()	()	()	()	()	()
26	()	()	()	()	()	()	()	()	()	()	()	()	()
27	()	()	()	()	()	()	()	()	()	()	()	()	()
28	()	()	()	()	()	()	()	()	()	()	()	()	()
29	()	()	()	()	()	()	()	()	()	()	()	()	()
30	()	()	()	()	()	()	()	()	()	()	()	()	()
31	()	()	()	()	()	()	()	()	()	()	()	()	()
Day Max.	1-day	2-day		3-day			Original						

2 DAILY RAINFALL RECORD

Station: _____

River Basin _____ Basin No. _____ Station No. _____ Location N. ° ' E. ° ' E.L. _____

Station Site GUNUNG RAYA Drainage Area _____ Sq. _____ Year 1975

Month Day	Jan	Feb	Mar	Apr	May	June	Jul	Aug	Sept	Oct	Nov	Dec	Annual
	1			1	20	0.5	-	1	0	5	-	7	-
2			3	7.5	-	-	-	2	10	-	-	-	
3			7.5	2	-	8.5	-	-	-	-	-	7	
4			2.5	1	-	1.5	4	-	16	-	-	-	
5			20.5	1	3.5	12	-	-	-	5	-	-	
6			4.5	-	-	-	-	0	-	21	6	-	
7			-	17.5	-	0.5	-	0	6	-	9	-	
8			1.5	2	26	-	-	1	-	18	-	-	
9			3	10	22.5	-	-	-	15	-	20	-	
10			22.5	52	17.5	-	1	-	13	-	-	-	
11			0.5	10	-	-	-	-	-	8	25	-	
12			1.5	19.5	3	0.5	-	-	0	3	15	3	
13			0.5	19.5	7.5	10	4	20	16	-	-	7	
14			5.5	39	25.5	2.5	12	16	0	-	-	5	
15			2	6	20	-	4	2	0	-	30	-	
16			0.5	48	10.5	-	13	-	-	22	16	9	
17			15.5	7.5	-	-	-	-	-	1	13	-	
18			-	-	-	1.5	4	9	-	-	-	-	
19			-	-	-	-	1	-	-	-	7	3	
20			-	1	4	-	6	2	-	-	-	6	
21			0.5	10.5	-	-	20	-	-	-	10	5	
22			3	-	13.5	-	13	-	-	-	15	-	
23			1	-	14	-	-	-	-	-	12	6	
24			0.5	3.5	5.5	-	-	-	-	-	17	10	
25			5.5	-	17	-	10	1	-	16	30	-	
26			5.5	-	5	-	69	-	25	1	6	-	
27			0.5	-	-	-	0	-	0	9	-	4	
28			-	6.5	-	-	-	-	-	-	-	11	
29			2	9.5	-	4.5	-	-	-	-	4	-	
30			0.5	13.5	-	54.5	-	13	-	-	6	4	
31			-	-	-	-	-	54	-	18	-	8	
Total			111	307	195.5	136.5	162	120	106	122	254	88	
Number of rainy day			25	22	16	10	15	13	12	11	18	14	
Max. with in one recorded day (Date)	()	()	()	()	()	()	()	()	()	()	()	()	()
Max. Intensity 6hr (Date)	()	()	()	()	()	()	()	()	()	()	()	()	()
3hr (Date)	()	()	()	()	()	()	()	()	()	()	()	()	()
1hr (Date)	()	()	()	()	()	()	()	()	()	()	()	()	()
Summary of all recorded years starting from 19 ~ 19													
Average													
Max. (Year)	()	()	()	()	()	()	()	()	()	()	()	()	()
Min. (Year)	()	()	()	()	()	()	()	()	()	()	()	()	()
Daily Max.	1-day			2-day			3-day			Original			

DAILY RAINFALL RECORD

Station: _____

River Basin _____ Basin No. _____ Station No. _____ Location N. ° ' E. ° ' Elevation _____

Station Site GUNUNG RAYA Drainage Area _____ Km² Year 1976

Month Day	Jan	Feb	Mar	Apr	May	June	Jul	Aug	Sept	Oct	Nov	Dec	Annual
	1	-	10	-	-	-	-	-	36	-	-	150	-
2	4	-	-	-	-	-	-	-	-	-	10	-	
3	7	-	10	-	-	-	-	-	-	-	3	-	
4	-	60	-	50	-	-	-	-	-	-	-	-	
5	10	80	-	38	-	-	-	-	-	20	-	-	
6	7	50	10	40	-	-	-	-	-	-	-	10	
7	15	-	-	20	-	-	-	-	-	27	-	12	
8	20	-	-	-	-	-	-	-	-	-	-	8	
9	25	30	-	-	3	-	-	-	-	-	42	2	
10	40	26	-	-	-	5	-	-	-	24	-	3	
11	30	-	-	-	5	-	-	-	-	-	6	6	
12	20	-	-	-	-	-	-	-	-	-	7	9	
13	25	50	5	-	2	-	-	-	-	66	-	25	
14	15	-	-	-	-	-	-	-	-	-	60	72	
15	10	-	-	-	-	-	-	33	-	11	40	50	
16	17	40	-	6	-	-	-	1	-	38	10	60	
17	-	30	-	35	-	-	-	45	-	47	13	9	
18	30	-	-	10	-	-	-	-	-	4	39	5	
19	50	15	10	-	-	-	-	-	-	-	6	10	
20	7	13	7	-	-	-	-	-	-	-	1	5	
21	8	-	25	-	-	-	-	-	-	11	15	10	
22	-	-	-	-	-	-	-	-	-	-	-	9	
23	7	-	30	15	-	-	-	-	5	-	-	-	
24	20	-	31	-	-	-	-	-	18	-	-	35	
25	15	10	-	10	-	-	-	-	-	-	36	-	
26	40	-	10	40	-	-	-	3	-	-	3	-	
27	35	-	4	5	-	5	-	27	24	-	-	24	
28	20	7	-	15	-	10	-	2	-	-	-	7	
29	-	-	7	30	3	-	-	10	-	42	-	15	
30	15	-	-	-	-	-	-	20	-	25	-	-	
31	-	-	-	-	1	-	-	-	-	16	-	-	
Total	492	421	149	314	14	20		177	47	331	491	386	
Number of rainy day	25	13	11	13	5	3		9	3	12	16	21	
Max. within one recorded day (Date)	()	()	()	()	()	()	()	()	()	()	()	()	()
Max. intensity 6 hr (Date)	()	()	()	()	()	()	()	()	()	()	()	()	()
3 hr (Date)	()	()	()	()	()	()	()	()	()	()	()	()	()
1 hr (Date)	()	()	()	()	()	()	()	()	()	()	()	()	()
Summary of all recorded years starting from 19 ~ 19													
Average													
Max. (Year)	()	()	()	()	()	()	()	()	()	()	()	()	()
Min. (Year)	()	()	()	()	()	()	()	()	()	()	()	()	()
Daily Max.	1-437			2-437				3-437				Original	

DAILY RAINFALL RECORD

Station: _____

River Basin _____ Basin No. _____ Station No. _____ Location N. ° ' E. ° ' EL. _____

Station Site GUNUNG RAJA Drainage Area _____ In² _____ Year 1977

Month Day	Jan	Feb	Mar	Apr	May	June	Jul	Aug	Sept	Oct	Nov	Dec	Annual
	1	5	4	-	20	-	-	50	-	-	-	-	
2	-	2	-	5	25	-	25	-	-	-	-	8	
3	53	13	1	30	-	25	15	-	2	-	15	10	
4	15	4	-	10	10	15	3	-	-	-	5	17	
5	-	19	47	4	4	26	-	-	1	-	-	13	
6	-	26	-	15	15	12	-	-	-	-	25	-	
7	2	24	-	-	-	-	-	-	-	-	-	4	
8	23	8	-	-	-	-	-	1	-	-	-	1	
9	-	7	8	25	-	7	-	2	1	-	-	-	
10	-	11	15	-	-	-	-	-	-	-	10	-	
11	3	-	20	-	5	30	4	-	-	-	5	35	
12	7	16	16	-	7	32	2	-	-	-	7	40	
13	3	5	38	10	12	10	1	-	-	-	-	2	
14	1	5	25	14	-	3	-	-	-	-	-	4	
15	25	2	10	17	-	-	-	-	-	-	-	8	
16	5	4	-	5	-	-	-	-	-	-	8	-	
17	-	1	15	-	25	-	-	-	-	-	-	-	
18	24	-	25	2	17	-	-	-	-	-	15	22	
19	24	-	30	4	22	-	-	-	-	-	8	30	
20	2	-	20	30	2	-	2	-	-	-	7	-	
21	51	-	40	-	-	4	8	-	-	-	-	17	
22	60	-	10	20	-	7	-	-	-	-	-	3	
23	-	-	5	-	10	8	-	-	-	-	-	8	
24	-	-	12	-	7	-	-	-	-	-	9	21	
25	-	-	125	35	20	-	-	2	-	-	6	-	
26	22	3	-	15	6	8	7	5	-	-	-	18	
27	-	-	10	-	5	3	4	-	-	-	10	5	
28	26	5	35	20	-	35	-	-	-	-	2	9	
29	1	-	-	5	9	40	-	-	-	-	3	-	
30	10	-	15	-	10	45	-	-	-	-	-	-	
31	12	-	75	-	-	-	-	-	-	-	-	-	
Total	384	159	597	286	211	304	121	10	4		135	300	
Number of rainy day	21	18	22	19	18	17	11	4	3		15	21	
Max. within one recorded day (Date)	()	()	()	()	()	()	()	()	()	()	()	()	()
Max. intensity	6 hr (Date)	()	()	()	()	()	()	()	()	()	()	()	()
	3 hr (Date)	()	()	()	()	()	()	()	()	()	()	()	()
	1 hr (Date)	()	()	()	()	()	()	()	()	()	()	()	()
Summary of all recorded years starting from 19 ~ 19													
Average													
Max. (Year)	()	()	()	()	()	()	()	()	()	()	()	()	()
Min. (Year)	()	()	()	()	()	()	()	()	()	()	()	()	()
Daily Max.	1-day			2-day			3-day				Original		

DAILY RAINFALL RECORD

Station: _____

River Basin _____ Basin No. _____ Station No. _____ Location N. ° ' E. ° ' E.L. _____ m

Station Site GUNUNG RAYA Drainage Area _____ Km² Year 1978

Month Day	Jan	Feb	Mar	Apr	May	June	Jul	Aug	Sept	Oct	Nov	Dec	Annual
	1	-	-	40	-	-	10	-	8	10	18	4	
2	10	29	32	-	-	-	2	15	2	15	15	10	
3	17	-	6	-	20	-	-	-	1	3	10	8	
4	-	-	46	-	50	-	3	-	-	-	6	12	
5	-	-	40	-	25	-	-	10	5	-	25	4	
6	-	-	-	-	20	10	-	2	-	-	-	15	
7	25	-	24	-	35	5	-	1	7	-	-	10	
8	25	25	14	-	-	5	-	-	-	-	10	8	
9	-	38	10	-	40	-	7	-	6	-	15	20	
10	25	8	50	39	-	-	6	-	-	-	20	58	
11	-	9	12	-	-	-	-	7	-	-	14	39	
12	25	-	20	6	25	-	10	4	-	10	-	28	
13	24	-	-	7	39	4	5	5	4	14	10	16	
14	29	-	-	41	40	6	30	-	2	7	30	10	
15	8	33	14	-	-	-	-	3	10	15	15	3	
16	6	-	27	-	-	-	10	2	-	-	10	8	
17	7	27	37	-	-	-	-	4	-	8	11	7	
18	1	63	12	-	-	5	-	-	-	10	15	21	
19	9	-	24	26	-	-	8	-	5	-	6	14	
20	6	13	13	32	-	-	15	10	10	20	3	20	
21	8	22	-	-	-	5	25	-	-	6	10	27	
22	29	-	-	-	25	-	-	3	-	5	-	-	
23	4	-	-	4	5	-	-	-	8	15	-	15	
24	3	15	-	-	10	5	5	15	-	4	-	20	
25	-	-	40	-	-	-	15	3	3	10	-	30	
26	1	12	5	2	15	-	-	11	4	18	-	8	
27	20	9	-	-	20	-	6	-	7	15	-	15	
28	12	7	-	-	4	2	-	3	-	10	-	10	
29	-	-	-	-	30	3	-	-	6	-	-	5	
30	-	-	-	-	-	5	2	-	10	4	-	-	
31	-	-	39	-	15	-	-	-	-	10	-	-	
Total	294	310	535	157	428	65	147	106	100	217	229	448	3038
Number of rainy day	21	14	20	8	17	12	15	17	17	20	18	28	207
Max. within one recorded day (Data)	()	()	()	()	()	()	()	()	()	()	()	()	()
Max. intensity	6hr (Data)	()	()	()	()	()	()	()	()	()	()	()	()
	3hr (Data)	()	()	()	()	()	()	()	()	()	()	()	()
	1hr (Data)	()	()	()	()	()	()	()	()	()	()	()	()
Summary of all recorded years starting from 19 ~ 19													
Average													
Max. (Year)	()	()	()	()	()	()	()	()	()	()	()	()	()
Min. (Year)	()	()	()	()	()	()	()	()	()	()	()	()	()
Daily Max.	1-day				2-day			3-day				Original	

DAILY RAINFALL RECORD

Station: O.K.U.

River Basin _____ Basin No. _____ Station No. _____ Location N. ° ' E. ° ' E.L. _____

Station Site GUNUNG RAYA Drainage Area _____ Sq² Year 1979

Day	Month	Jan	Feb	Mar	Apr	May	June	Jul	Aug	Sept	Oct	Nov	Dec	Annual
1		-	26	30	-			-	15					
2		20	30	27	22			-	6					
3		-	24	-	23			-	-					
4		14	-	30	-			-	-					
5		16	-	25	-			-	2					
6		25	26	30	26			-	-					
7		-	15	22	25			-	-					
8		10	25	-	-			-	-					
9		25	-	-	27			20	-					
10		9	19	28	-			15	-					
11		-	-	24	24			7	7					
12		15	-	25	22			10	-					
13		-	-	-	-			-	-					
14		20	25	20	18			-	-					
15		19	20	25	22			4	-					
16		7	-	-	29			6	-					
17		-	17	21	-			12	-					
18		13	28	29	-			11	3					
19		20	-	-	25			17	-					
20		-	20	24	-			-	-					
21		13	11	-	-			-	-					
22		19	-	-	24			-	-					
23		10	-	25	23			-	-					
24		16	-	-	-			-	-					
25		10	-	30	26			-	-					
26		-	-	28	24			-	-					
27		10	24	-	-			-	-					
28		-	-	37	20			-	-					
29		6	-	27	20			-	-					
30		17	-	-	21			-	-					
31		10	-	28	-			-	-					
Total		324	310	535	421			103	33					
Number of rainy day		22	14	20	18			9	5					
Max. within one recorded day (Date)		()	()	()	()	()	()	()	()	()	()	()	()	()
Max. intensity	6 hr (Date)	()	()	()	()	()	()	()	()	()	()	()	()	()
	3 hr (Date)	()	()	()	()	()	()	()	()	()	()	()	()	()
	1 hr (Date)	()	()	()	()	()	()	()	()	()	()	()	()	()
Summary of all recorded years starting from 19 ~ 19														
Average														
Max. (Year)		()	()	()	()	()	()	()	()	()	()	()	()	()
Min. (Year)		()	()	()	()	()	()	()	()	()	()	()	()	()
Daily Max.	1-day													
	2-day													
	3-day													
	Original													

3 DAILY RAINFALL RECORD

Station: D.K.U

River Basin _____ Basin No. _____ Station No. _____ Location N. ° ' E. ° ' E.L. _____ m

Station Site MUARA DUA Drainage Area _____ km^2 Year 1972

Day \ Month	Jan	Feb	Mar	Apr	May	June	Jul	Aug	Sept	Oct	Nov	Dec	Annual
	1	-	-	-	-	-							
2	-	-	-	-	30								
3	40	-	-	15	40								
4	-	-	-	-	-								
5	-	-	-	-	35								
6	10	-	-	-	-								
7	15	20	-	-	9								
8	-	-	-	-	-								
9	15	19	-	23	10								
10	20	-	-	20	-								
11	-	30	25	-	20								
12	-	-	-	-	-								
13	15	-	20	30	-								
14	40	30	30	5	-								
15	-	-	-	-	-								
16	-	-	-	-	-								
17	-	-	-	20	10								
18	-	15	-	-	-								
19	5	20	-	15	-								
20	30	25	-	30	38								
21	10	25	30	90	50								
22	-	-	-	-	-								
23	28	20	28	50	-								
24	10	-	48	25	2								
25	25	10	28	-	-								
26	-	-	-	20	-								
27	10	-	30	-	-								
28	5	5	-	-	60								
29	-	-	24	-	-								
30	-	-	180	15	-								
31	20	-	-	-	-								
Total	298	219	443	358	204								
Number of rainy day	16	11	10	13	11								
Max. within one recorded day (Date)	()	()	()	()	()	()	()	()	()	()	()	()	()
Max. intensity	6 hr (Date)	()	()	()	()	()	()	()	()	()	()	()	()
	3 hr (Date)	()	()	()	()	()	()	()	()	()	()	()	()
	1 hr (Date)	()	()	()	()	()	()	()	()	()	()	()	()
Summary of all recorded years starting from 19 ~ 19													
Average													
Max. (Year)	()	()	()	()	()	()	()	()	()	()	()	()	()
Min. (Year)	()	()	()	()	()	()	()	()	()	()	()	()	()
Daily Max.	1-day			2-day			3-day						Original

DAILY RAINFALL RECORD

Station: D.K.V

River Basin _____ Basin No. _____ Station No. _____ Location N. ° ' E. ° ' E.L. _____

Station Site MUARADUA Drainage Area _____ Sq. _____ Year 1973

Month Day	Jan	Feb	Mar	Apr	May	June	Jul	Aug	Sept	Oct	Nov	Dec	Annual
	1	-	-	-	-	-	-	19	-	-	-	-	-
2	3	-	34	44	-	18	-	-	-	12	-	-	-
3	23	-	5	-	-	-	-	31	-	-	-	-	-
4	-	16	-	7	-	-	-	6	-	-	-	-	-
5	1	-	-	-	-	-	-	-	-	-	-	-	-
6	3	15	-	-	-	-	-	-	-	4	-	-	-
7	-	6	-	9	-	-	-	-	-	-	-	-	-
8	-	5	10	18	-	-	-	-	-	26	-	-	-
9	-	7	-	-	-	-	-	-	49	-	-	-	-
10	-	-	3	40	-	16	-	-	-	20	-	-	-
11	-	2	-	-	-	-	-	-	-	-	-	-	-
12	-	3	-	-	-	-	-	24	-	-	-	-	-
13	-	8	21	16	-	-	-	-	19	-	-	-	-
14	5	4	-	-	-	-	14	-	-	-	-	-	-
15	-	25	-	-	-	-	-	15	-	-	-	-	-
16	10	-	30	11	-	9	-	-	-	-	-	-	-
17	-	11	-	54	-	-	-	-	11	-	-	-	-
18	-	10	-	-	-	4	-	-	22	-	-	-	-
19	-	14	6	2	-	-	-	-	-	15	-	-	-
20	-	-	-	-	-	7	-	-	37	-	-	-	-
21	-	8	17	19	-	-	-	-	-	-	-	-	-
22	-	66	-	-	-	6	-	-	-	11	-	-	-
23	3	8	11	10	-	13	-	-	-	19	-	-	-
24	10	6	-	-	-	9	-	-	-	25	-	-	-
25	13	8	-	-	-	-	-	-	-	-	-	-	-
26	15	33	-	-	-	3	-	-	-	-	-	-	-
27	-	-	-	-	-	10	-	-	-	-	-	-	-
28	-	-	22	-	-	-	-	73	-	-	-	-	-
29	-	-	-	-	-	-	-	4	-	-	-	-	-
30	-	-	-	-	-	-	6	-	-	-	-	-	-
31	-	-	-	-	-	-	-	-	-	-	-	-	-
Total	86	255	159	230		95	39	153	138	132			
Number of rainy day	10	19	10	11		10	3	6	5	8			
Max. within one recorded day (Date)	()	()	()	()	()	()	()	()	()	()	()	()	()
Max. Intensity	6 hr (Date)	()	()	()	()	()	()	()	()	()	()	()	()
	3 hr (Date)	()	()	()	()	()	()	()	()	()	()	()	()
	1 hr (Date)	()	()	()	()	()	()	()	()	()	()	()	()
Summary of all recorded years starting from 19 ~ 19													
Average													
Max. (Year)	()	()	()	()	()	()	()	()	()	()	()	()	()
Min. (Year)	()	()	()	()	()	()	()	()	()	()	()	()	()
Daily Max.	1-day			2-day			3-day			Original			

DAILY RAINFALL RECORD

Station: _____

River Basin _____ Basin # _____ Station # _____ Location N. ° ' E. ° ' E.L. _____ m

Station Site MUARA DUA Drainage Area _____ km² Year 1974

Month Day	Jan	Feb	Mar	Apr	May	June	Jul	Aug	Sept	Oct	Nov	Dec	Annual
	1	3	15	10	-	-	-	18	7	29	-	-	-
2	-	21	29	-	-	-	-	6	9	-	-	-	
3	-	14	-	34	-	-	-	-	-	-	-	17	
4	-	-	-	78	-	-	-	-	8	21	-	5	
5	2	10	25	4	44	-	-	-	-	-	-	6	
6	-	27	-	33	6	-	-	-	6	-	-	3	
7	6	30	-	7	2	-	-	-	23	9	-	-	
8	-	10	7	-	19	-	-	-	13	-	19	-	
9	12	23	-	-	32	-	-	-	32	-	5	-	
10	-	5	-	29	-	-	-	-	28	-	-	11	
11	-	-	-	-	-	-	-	-	11	-	25	-	
12	-	-	-	-	5	-	-	-	12	-	18	4	
13	13	-	-	64	10	-	5	20	17	-	-	5	
14	11	-	-	-	-	-	6	5	27	-	-	-	
15	-	-	-	29	3	10	-	-	3	-	-	-	
16	-	-	-	23	3	-	-	-	68	93	22	-	
17	-	12	-	10	-	25	-	-	-	-	-	-	
18	-	-	-	25	-	-	52	-	-	-	-	-	
19	-	2	-	-	-	-	7	-	-	3	-	-	
20	5	7	-	-	38	-	-	-	-	-	-	25	
21	-	6	-	-	43	14	-	-	-	8	-	-	
22	-	-	-	-	-	-	-	-	24	-	-	5	
23	16	-	-	-	-	-	6	-	-	-	-	75	
24	-	-	-	-	-	-	-	-	-	31	5	-	
25	22	-	30	26	-	-	70	-	17	-	-	12	
26	-	-	-	-	-	-	-	-	-	3	-	3	
27	21	-	10	-	-	19	-	-	-	13	21	-	
28	-	-	-	20	14	-	50	-	-	-	-	-	
29	14	-	-	-	-	-	10	-	-	-	-	2	
30	4	-	-	-	-	-	15	-	-	46	-	-	
31	-	-	-	-	-	-	60	-	-	-	-	-	
Total	129	182	111	380	219	68	299	38	327	227	115	173	2268
Number of rainy day	12	13	6	13	12	4	11	4	16	9	7	13	120
Max. within one recorded day (Date)	()	()	()	()	()	()	()	()	()	()	()	()	()
Max. intensity by (Date)	6 hr (Date)	()	()	()	()	()	()	()	()	()	()	()	()
	3 hr (Date)	()	()	()	()	()	()	()	()	()	()	()	()
	1 hr (Date)	()	()	()	()	()	()	()	()	()	()	()	()
Summary of all recorded years starting from 19 ~ 19													
Average													
Max. (Year)	()	()	()	()	()	()	()	()	()	()	()	()	()
Min. (Year)	()	()	()	()	()	()	()	()	()	()	()	()	()
Daily Max.	1-day			2-day			3-day					Original	

DAILY RAINFALL RECORD

Station: _____

River Basin _____ Basin No. _____ Station No. _____ Location N. _____ E. _____ S. _____

Station Site MUARADUA Drainage Area _____ Sq. _____ Year 1975

Month Day	Jan	Feb	Mar	Apr	May	June	Jul	Aug	Sept	Oct	Nov	Dec	Annual
	1	-	-	5	-	-	-	-	-	-	-	12	-
2	-	8	12	27	-	-	-	-	-	-	-	-	
3	4	9	-	4	-	-	-	8	-	-	-	17	
4	-	-	21	10	-	-	9	-	2	-	-	-	
5	11	7	-	-	-	14	-	6	-	-	-	-	
6	10	-	-	8	-	9	-	-	12	67	40	-	
7	14	71	-	10	35	-	-	2	-	-	26	5	
8	24	16	-	-	-	-	-	-	15	3	8	-	
9	19	-	11	-	-	-	-	-	-	-	-	-	
10	-	10	10	28	-	-	-	-	-	-	9	-	
11	20	5	2	15	-	-	-	21	14	3	3	-	
12	-	4	16	11	-	-	6	12	13	-	-	-	
13	-	6	31	3	-	24	-	24	-	-	-	-	
14	-	-	-	4	-	-	-	23	33	-	-	7	
15	-	5	-	25	-	5	-	-	3	-	-	-	
16	13	-	28	4	24	-	4	-	11	-	-	5	
17	18	24	-	15	-	-	-	-	-	32	12	-	
18	4	-	-	4	-	-	-	-	-	-	-	3	
19	9	-	-	6	-	-	-	-	4	-	-	-	
20	-	-	-	-	-	-	-	-	-	22	41	-	
21	-	-	-	22	-	-	-	-	-	-	4	-	
22	-	-	13	-	-	-	5	-	16	-	3	6	
23	-	10	8	-	3	-	-	-	-	-	2	-	
24	22	2	-	-	-	6	6	-	4	3	-	-	
25	16	8	2	-	-	-	-	3	-	25	5	-	
26	10	-	-	-	-	-	-	-	-	44	36	15	
27	11	-	-	-	6	-	-	-	22	-	5	-	
28	10	25	-	-	-	-	-	15	4	-	-	-	
29	8	-	-	-	-	-	-	11	-	3	-	18	
30	17	-	-	-	-	2	-	22	-	-	-	-	
31	27	-	-	-	14	-	-	16	-	-	-	-	
Total	267	210	159	196	82	60	30	163	153	202	206	76	1804
Number of rainy day	19	15	12	16	5	6	5	12	13	9	14	8	134
Max. within 24 hr recorded day (Date)	()	()	()	()	()	()	()	()	()	()	()	()	()
Max. intensity													
6 hr (Date)	()	()	()	()	()	()	()	()	()	()	()	()	()
3 hr (Date)	()	()	()	()	()	()	()	()	()	()	()	()	()
1 hr (Date)	()	()	()	()	()	()	()	()	()	()	()	()	()
Summary of all recorded years starting from 19 ~ 19													
Average													
Max. (Year)	()	()	()	()	()	()	()	()	()	()	()	()	()
Min. (Year)	()	()	()	()	()	()	()	()	()	()	()	()	()
Daily Max.	1-day			2-day			3-day			Original			

DAILY RAINFALL RECORD

Station: O. K. U.

River Basin _____ Basin # _____ Station # _____ Location N. ° ' E. ° ' E.L. _____ m

Station Site MUARA DUA Drainage Area _____ Km² Year 1976

Month Day	Jan	Feb	Mar	Apr	May	June	Jul	Aug	Sept	Oct	Nov	Dec	Annual
	1	-		2	9	10	-	-	-	-	-	-	
2	-		-	4	16	-	-	-	-	16	-	20	
3	-		-			-	-	-	-	-	10	35	
4	15		18	10	-	-	-	-	-	18	-	-	
5	6		28	11	-	-	-	-	-	7	-	-	
6	-		-	5	-	-	2	-	-	32	-	-	
7	-		3	9	-	9	-	-	-	-	-	-	
8	10		2	-	-	-	1	-	-	-	-	12	
9	-		-	-	-	-	-	-	-	-	109	-	
10	11		-	-	-	-	-	14	-	86	-	-	
11	-		-	-	60	-	-	-	9	-	-	-	
12	-		-	-	-	-	-	-	-	8	28	13	
13	-		22	-	-	-	-	-	-	50	27	47	
14	12		-	9	-	-	-	-	-	-	-	16	
15	-		27	-	-	-	-	-	-	-	16	2	
16	7		3	-	-	-	-	7	-	-	2	62	
17	9		-	25	-	-	-	-	-	18	18	1	
18	-		-	29	-	-	-	-	-	46	-	-	
19	11		-	-	-	-	-	-	-	18	42	-	
20	10		21	4	-	-	-	-	-	-	7	-	
21	11		24	5	-	-	-	-	-	-	14	-	
22	12		-	3	-	-	-	-	3	-	-	-	
23	7		8	8	-	-	-	-	-	-	-	-	
24	-		-	6	3	-	-	-	-	-	-	10	
25	6		29	2	-	-	-	6	-	4	32	55	
26	-		21	11	-	-	-	19	-	-	10	-	
27	9		15	-	-	-	-	-	7	3	35	-	
28	-		16	21	-	-	15	2	-	-	-	21	
29	-		20	12	-	-	24	19	5	-	-	11	
30	-		-	14	-	-	-	-	7	3	2	12	
31	-		-	-	-	-	34	-	-	-	-	14	
Total	136		261	197	89	9	76	67	31	309	352	331	
Number of rainy day	14		16	19	4	1	5	6	5	13	14	15	
Max. within one recorded day (Data)	()	()	()	()	()	()	()	()	()	()	()	()	()
Max. intensity	6 hr (Data)	()	()	()	()	()	()	()	()	()	()	()	()
	3 hr (Data)	()	()	()	()	()	()	()	()	()	()	()	()
	1 hr (Data)	()	()	()	()	()	()	()	()	()	()	()	()
Summary of all recorded years starting from 19 ~ 19													
Average													
Var. (Year)	()	()	()	()	()	()	()	()	()	()	()	()	()
Min. (Year)	()	()	()	()	()	()	()	()	()	()	()	()	()
Daily Max.	1-day		2-day		3-day		Original						

DAILY RAINFALL RECORD

Station: _____

River Basin _____ Basin # _____ Station # _____ Location N. ° ' E. ° ' E.L. _____

Station Site MVARA DUA Drainage Area _____ In² _____ Year 1977

Day \ Month	Jan	Feb	Mar	Apr	May	June	Jul	Aug	Sept	Oct	Nov	Dec	Annual
	Jan	Feb	Mar	Apr	May	June	Jul	Aug	Sept	Oct	Nov	Dec	
1	-	-	-	63	7	41	-	-	-	-	-	17	
2	10	25	-	-	-	-	-	-	-	-	-	23	
3	-	34	-	-	-	-	-	-	-	-	7	26	
4	19	14	-	3	25	-	-	-	-	-	19	8	
5	16	37	8	-	-	-	-	-	-	-	15	4	
6	1	11	6	15	-	-	-	-	-	-	-	-	
7	-	-	-	-	23	109	-	-	-	-	-	15	
8	-	10	-	-	-	17	-	-	-	-	27	-	
9	16	2	-	12	-	8	-	-	5	-	-	16	
10	-	-	-	47	-	7	-	-	-	2	-	4	
11	-	43	-	-	36	-	-	-	-	-	-	10	
12	11	-	5	42	-	-	5	-	23	-	-	-	
13	18	-	-	-	-	-	-	-	75	-	-	20	
14	20	5	13	-	3	-	-	-	-	-	-	22	
15	-	34	23	17	47	-	10	-	-	-	-	15	
16	16	5	2	10	-	-	-	-	-	4	-	23	
17	-	34	5	7	-	-	-	-	-	-	-	12	
18	-	55	-	10	-	-	-	-	-	-	-	19	
19	-	-	-	18	-	-	-	-	-	-	-	24	
20	47	-	-	38	-	-	-	-	-	-	-	-	
21	6	-	35	55	-	-	-	-	-	-	-	19	
22	-	-	-	-	-	23	38	-	-	-	4	11	
23	12	-	-	37	-	9	-	-	6	-	13	-	
24	14	4	4	23	-	-	-	15	-	-	-	17	
25	-	-	3	-	-	-	2	-	-	-	15	-	
26	-	-	9	-	7	-	-	-	-	-	13	-	
27	-	-	-	-	-	-	-	-	-	-	22	21	
28	41	6	17	5	-	-	-	-	-	-	20	13	
29	-	-	-	-	-	-	-	-	-	11	2	4	
30	-	-	4	-	3	-	-	-	-	-	25	18	
31	6	-	-	-	-	-	-	-	-	-	-	19	
Total	253	319	134	402	153	214	55	15	109	17	182	280	2233
Number of rainy day	15	15	13	16	8	7	4	1	4	3	12	24	122
Max. within one recorded day (Date)	()	()	()	()	()	()	()	()	()	()	()	()	()
Max. Intensity 6 hr (Date)	()	()	()	()	()	()	()	()	()	()	()	()	()
Max. Intensity 3 hr (Date)	()	()	()	()	()	()	()	()	()	()	()	()	()
Max. Intensity 1 hr (Date)	()	()	()	()	()	()	()	()	()	()	()	()	()
Summary of all recorded years starting from 19 ~ 19													
Average													
Max. (Year)	()	()	()	()	()	()	()	()	()	()	()	()	()
Min. (Year)	()	()	()	()	()	()	()	()	()	()	()	()	()
Daily Max.	1-day			2-day			3-day			Original			

DAILY RAINFALL RECORD

Station: OKU

River Basin _____ Basin # _____ Station # _____ Location N. ° ' E. ° ' Elevation _____ m

Station Site MUARA DUA Drainage Area _____ Km² Year 1978

Day	Month	Jan	Feb	Mar	Apr	May	June	Jul	Aug	Sept	Oct	Nov	Dec	Annual
1		24	-	-	-	41	-	-	-	21	-	-	-	
2		12	25	3	-	-	-	-	-	-	-	2	29	
3		-	15	22	-	-	-	-	-	-	-	6	22	
4		-	2	-	6	55	38	-	7	6	-	-	7	
5		-	-	15	15	26	-	-	16	3	-	-	-	
6		-	-	47	-	29	-	-	-	9	-	9	5	
7		-	2	-	-	-	-	8	-	2	-	-	10	
8		17	2	28	-	32	15	-	-	-	-	-	-	
9		-	3	13	3	-	-	26	-	16	-	7	-	
10		-	46	-	-	-	-	-	-	-	-	2	26	
11		37	-	21	93	-	-	9	-	-	-	-	21	
12		-	-	-	-	29	-	-	11	-	-	-	17	
13		-	8	14	-	39	-	41	-	28	-	-	3	
14		-	3	-	8	26	-	32	-	-	-	24	24	
15		-	-	-	-	5	-	28	-	-	-	26	2	
16		-	-	-	-	-	-	-	4	-	-	31	-	
17		1	-	29	4	8	32	16	-	-	-	3	-	
18		15	21	5	-	-	-	-	-	-	-	-	-	
19		-	-	3	-	-	-	-	-	-	-	-	28	
20		-	-	-	-	-	-	11	32	-	-	-	5	
21		11	24	16	2	-	-	-	-	4	-	-	24	
22		14	24	24	-	-	-	-	-	18	-	-	21	
23		25	-	-	-	-	12	-	-	19	-	16	-	
24		-	12	-	-	1	-	-	-	-	-	-	7	
25		15	-	-	-	-	-	35	-	-	-	-	-	
26		-	-	9	-	-	33	11	-	21	-	-	-	
27		-	-	-	10	-	-	-	-	-	-	-	20	
28		20	-	-	10	-	-	-	-	-	-	28	-	
29		-	-	-	-	15	34	-	-	16	-	12	6	
30		-	-	-	5	-	26	-	-	21	-	-	4	
31		-	-	-	-	-	-	-	-	-	-	-	-	
Total		191	187	259	156	304	190	217	70	190		166	287	
Number of rainy day		11	13	14	10	12	7	10	5	13		12	19	
Max. within one recorded day (Date)		()	()	()	()	()	()	()	()	()	()	()	()	()
Max. Intensity	6 hr (Date)	()	()	()	()	()	()	()	()	()	()	()	()	()
	3 hr (Date)	()	()	()	()	()	()	()	()	()	()	()	()	()
	1 hr (Date)	()	()	()	()	()	()	()	()	()	()	()	()	()
Summary of all recorded years starting from 19 ~ 19														
Average														
Max. (Year)		()	()	()	()	()	()	()	()	()	()	()	()	()
Min. (Year)		()	()	()	()	()	()	()	()	()	()	()	()	()
Daily Max.	1-day				2-day			3-day			Original			

DAILY RAINFALL RECORD

Station: _____

River Basin _____ Basin No. _____ Station No. _____ Location N. ° ' E. ° ' E.L. _____

Station Site HUARADUA Drainage Area _____ Sq. _____ Year 1979

Month Day	Jan	Feb	Mar	Apr	May	June	Jul	Aug	Sept	Oct	Nov	Dec	Annual
	1	-	-	-	24	-	-	-	-	-	-	-	
2	2	-	19	-	-	-	-	-	-	-	10	-	
3	-	6	-	-	35	-	6	-	-	6	-	4	
4	2	-	-	-	36	-	-	46	7	-	-	-	
5	9	-	-	-	22	-	4	-	-	-	-	-	
6	7	39	-	40	12	-	-	32	16	2	-	-	
7	33	8	24	-	-	21	42	-	-	-	8	4	
8	-	4	-	-	-	-	31	4	-	-	-	-	
9	-	2	-	8	11	-	-	-	-	-	-	3	
10	11	10	-	-	3	3	-	-	2	-	-	-	
11	21	-	-	-	-	-	3	6	-	-	5	3	
12	-	5	-	9	41	61	-	-	-	24	-	-	
13	19	-	-	-	-	40	-	-	-	-	-	-	
14	-	-	-	13	-	-	7	-	4	-	-	-	
15	26	37	10	-	-	-	-	9	-	-	-	-	
16	22	-	-	22	-	4	-	12	-	-	-	-	
17	-	21	25	-	4	-	-	3	-	-	-	-	
18	-	41	-	19	-	-	5	-	-	-	-	-	
19	-	24	-	-	-	-	-	-	-	-	25	-	
20	-	20	-	61	16	-	-	8	-	19	-	-	
21	-	19	-	43	-	-	13	-	-	13	-	-	
22	-	-	19	-	-	-	-	5	-	22	-	-	
23	-	-	-	-	-	-	26	-	7	-	-	-	
24	26	-	-	82	28	-	-	18	-	-	1	5	
25	10	18	116	-	31	-	-	-	-	-	-	-	
26	-	-	7	-	-	-	3	-	-	14	-	-	
27	-	-	-	45	23	-	-	22	24	11	-	6	
28	-	32	28	-	-	-	2	-	25	10	-	-	
29	3	-	3	-	-	-	-	-	-	-	6	6	
30	-	-	8	60	-	-	15	-	-	-	-	-	
31	-	-	-	-	6	-	-	-	-	-	-	-	
Total	193	281	259	426	268	129	157	165	85	127	55	31	
Number of rainy day	13	15	10	12	13	5	12	11	7	9	6	7	
Max. within one recorded day (Date)	()	()	()	()	()	()	()	()	()	()	()	()	()
Max. Intensity	6 hr (Date)	()	()	()	()	()	()	()	()	()	()	()	()
	3 hr (Date)	()	()	()	()	()	()	()	()	()	()	()	()
	1 hr (Date)	()	()	()	()	()	()	()	()	()	()	()	()
Summary of all recorded years starting from 19 ~ 19													
Average													
Max. (Year)	()	()	()	()	()	()	()	()	()	()	()	()	()
Min. (Year)	()	()	()	()	()	()	()	()	()	()	()	()	()
Daily Max.	1-day			2-day			3-day			Original			

DAILY RAINFALL RECORD

Station: _____

River Basin _____ Basin No. _____ Station No. _____ Location N. _____ E. _____ S. _____

Station Site MUARADUA Drainage Area _____ Year 1980

Month Day	Jan	Feb	Mar	Apr	May	June	Jul	Aug	Sept	Oct	Nov	Dec	Annual
	1	-	-	-	13	-	-	-	-	-	-	-	
2	-	-	7	14	-	-	-	-	-	-	17	40	
3	3	6	-	3	-	-	-	3	-	-	70	66	
4	-	-	-	8	-	-	-	10	20	-	100	30	
5	-	2	-	24	-	-	-	-	-	-	15	10	
6	-	-	-	15	-	5	-	-	-	30	-	40	
7	-	-	5	12	-	-	-	-	-	-	-	20	
8	-	-	-	4	-	-	-	25	-	-	-	-	
9	-	-	4	-	-	-	-	-	50	-	-	8	
10	-	-	-	-	-	-	-	120	-	-	-	-	
11	-	-	-	15	10	8	-	-	-	-	18	20	
12	-	-	4	-	-	-	-	67	-	110	58	30	
13	-	-	16	4	-	-	-	60	-	-	-	34	
14	-	-	13	5	-	-	5	-	7	-	-	40	
15	-	-	20	19	-	-	-	-	10	60	40	-	
16	-	-	4	5	-	-	-	26	-	10	50	-	
17	-	-	-	15	-	-	-	20	-	5	40	-	
18	20	-	-	-	-	-	-	-	-	-	50	35	
19	-	-	-	10	-	-	-	23	-	-	25	40	
20	-	5	-	-	-	-	-	30	-	-	-	-	
21	-	-	-	-	-	-	40	35	-	60	-	20	
22	5	-	36	-	-	17	10	-	-	-	-	45	
23	-	-	21	-	-	3	15	-	-	45	-	13	
24	-	5	16	-	-	-	10	-	-	8	-	-	
25	-	-	12	-	-	-	20	-	-	5	-	40	
26	-	-	-	-	7	-	25	-	-	-	5	8	
27	-	5	-	-	-	-	80	-	-	6	-	-	
28	-	-	-	10	-	-	-	-	-	-	-	8	
29	-	-	-	4	-	-	-	-	-	25	-	28	
30	-	-	-	-	-	-	-	-	-	27	-	15	
31	-	-	-	-	-	-	15	-	-	-	-	40	
Total	20	23	178	180	17	33	220	477	87	411	230	615	
Number of rainy day	3	5	12	17	2	4	8	11	4	12	12	23	
Max. within one recorded day (Date)	()	()	()	()	()	()	()	()	()	()	()	()	()
Max. intensity	6 hr (Date)	()	()	()	()	()	()	()	()	()	()	()	()
	3 hr (Date)	()	()	()	()	()	()	()	()	()	()	()	()
	1 hr (Date)	()	()	()	()	()	()	()	()	()	()	()	()
Summary of all recorded years starting from 19 ~ 19													
Average													
Var. (Year)	()	()	()	()	()	()	()	()	()	()	()	()	()
Min. (Year)	()	()	()	()	()	()	()	()	()	()	()	()	()
Daily Max.	1-day			2-day			3-day			Original			

4. DAILY RAINFALL RECORD

Station: O.K.U

River Basin _____ Basin # _____ Station # _____ Location N. ° ' E. ° ' E.L. _____

Station Site Simpang Drainage Area _____ km² Year 1973

Day \ Month	Jan	Feb	Mar	Apr	May	June	Jul	Aug	Sept	Oct	Nov	Dec	Annual
	1	-	-	-	-	-	56	-	-	-	-	4	
2	18	-	50	75	-	11	-	-	-	-	-		
3	-	-	-	-	-	-	-	14	-	-	-		
4	-	-	-	21	-	-	-	6	-	-	-		
5	-	-	12	33	-	19	-	44	34	39	80		
6	-	63	-	7	112	-	-	7	-	23	-		
7	12	5	-	-	7	-	-	-	-	-	21		
8	24	-	-	-	-	-	-	-	-	-	24		
9	15	-	-	16	46	-	-	-	-	-	-		
10	11	-	-	14	-	32	-	17	-	19	-		
11	7	-	-	4	-	-	-	6	-	-	-		
12	-	-	-	-	-	-	-	-	126	-	-		
13	-	-	-	27	16	-	-	-	42	-	-		
14	-	17	-	-	11	-	-	-	-	12	-		
15	-	130	-	-	-	-	52	-	-	13	40		
16	26	-	-	20	8	-	-	-	16	18	-		
17	11	62	-	17	-	8	-	-	-	-	-		
18	-	34	-	88	38	16	-	-	-	65	-		
19	28	-	-	-	-	-	-	-	-	-	38		
20	20	25	6	-	22	-	-	-	61	-	-		
21	-	-	46	33	-	-	-	-	55	19	-		
22	6	44	-	-	-	50	-	-	-	47	-		
23	-	73	-	-	-	62	24	-	32	22	21		
24	-	-	-	-	-	-	-	-	13	-	-		
25	12	-	-	-	-	-	27	-	-	-	-		
26	21	58	-	-	-	-	-	-	-	-	-		
27	-	8	92	-	-	-	-	-	-	-	-		
28	-	-	-	-	-	-	11	-	-	-	-		
29	-	-	-	-	-	45	-	16	-	-	-		
30	-	-	-	-	-	-	-	4	-	-	-		
31	-	-	-	-	-	-	-	-	-	-	-		
Total	214	519	206	355	260	299	114	114	379	277	228		
Number of rainy day	13	11	5	12	8	9	4	8	8	10	7		
Max. within one recorded day (Date)	()	()	()	()	()	()	()	()	()	()	()	()	()
Max. amount by	6 hr (Date)	()	()	()	()	()	()	()	()	()	()	()	()
	3 hr (Date)	()	()	()	()	()	()	()	()	()	()	()	()
	1 hr (Date)	()	()	()	()	()	()	()	()	()	()	()	()
Summary of all recorded years starting from 19 ~ 19													
Average													
Max. (Year)	()	()	()	()	()	()	()	()	()	()	()	()	()
Min. (Year)	()	()	()	()	()	()	()	()	()	()	()	()	()
Daily Max.	1-day			2-day			3-day			Original			

DAILY RAINFALL RECORD

Station: _____

River Basin _____ Basin # _____ Station # _____ Location N. ° ' E. ° ' E.L. _____ m

Station Site Simpang Drainage Area _____ Km² Year 1974

Day	Month	Jan	Feb	Mar	Apr	May	June	Jul	Aug	Sept	Oct	Nov	Dec	Annual
1		-	28	3	13	-	-	-	-	-	94	-	73	
2		-	-	5	-	4	-	-	46	-	-	-	69	
3		-	30	-	7	-	-	-	-	34	-	-	28	
4		-	-	-	9	-	-	31	-	-	71	-	31	
5		-	20	-	6	-	-	-	-	12	-	-	-	
6		21	-	-	-	-	-	-	-	-	-	13	-	
7		3	11	-	20	9	-	-	-	-	26	2	24	
8		-	46	7	16	-	-	-	-	39	-	-	-	
9		-	11	6	-	19	-	-	-	-	-	-	74	
10		16	-	9	40	-	-	-	-	112	-	-	41	
11		9	3	-	-	-	-	-	-	21	-	39	-	
12		-	-	-	37	24	-	-	-	17	-	43	-	
13		-	-	6	12	-	5	-	-	-	-	-	-	
14		-	-	-	-	47	-	-	-	-	34	37	-	
15		-	2	-	-	33	-	-	-	-	-	23	-	
16		-	-	-	42	72	-	-	-	89	39	-	-	
17		-	9	41	12	-	-	-	-	-	-	-	37	
18		-	10	49	-	-	-	-	-	43	-	-	16	
19		-	4	-	-	-	-	-	-	-	-	-	-	
20		-	12	-	-	-	-	-	-	51	4	13	21	
21		-	14	2	-	86	-	-	-	-	22	26	-	
22		-	-	-	57	-	-	-	-	-	-	-	-	
23		-	-	-	39	11	9	17	-	-	-	-	44	
24		-	-	-	-	-	6	43	47	-	46	49	-	
25		-	-	-	-	-	-	2	-	31	32	18	-	
26		-	-	-	-	-	-	-	-	-	-	-	-	
27		25	5	-	-	-	23	-	-	24	7	22	-	
28		16	36	-	-	-	-	4	71	-	-	34	-	
29		-	-	-	-	-	-	69	-	-	19	-	56	
30		-	-	-	30	-	28	-	-	-	-	-	-	
31		-	-	-	-	-	-	-	-	-	-	-	-	
Total		90	241	128	350	305	71	166	164	413	374	319	514	3215
Number of rainy day		6	15	9	14	9	5	6	3	11	11	12	12	113
Max. within one recorded day (Data)		()	()	()	()	()	()	()	()	()	()	()	()	()
Max. intensity 6 hr (Data)		()	()	()	()	()	()	()	()	()	()	()	()	()
Max. intensity 3 hr (Data)		()	()	()	()	()	()	()	()	()	()	()	()	()
Max. intensity 1 hr (Data)		()	()	()	()	()	()	()	()	()	()	()	()	()
Summary of all recorded years starting from 19 ~ 19														
Average														
Var. (Year)		()	()	()	()	()	()	()	()	()	()	()	()	()
Min. (Year)		()	()	()	()	()	()	()	()	()	()	()	()	()
Daily Max.	1-day				2-day			3-day			Original			

DAILY RAINFALL RECORD

Station: O.K.U

River Basin _____ Basin No. _____ Station No. _____ Location N. ° ' E. ° ' E.L. _____
 Station Site Simpang Drainage Area _____ Sq² _____ Year 1975

Day \ Month	Jan	Feb	Mar	Apr	May	June	Jul	Aug	Sept	Oct	Nov	Dec	Annual
	1	10	-	-	-	-	24	-	-	-	-	9	-
2	-	-	-	-	-	-	-	-	-	-	2	-	-
3	7	24	-	-	-	-	-	-	-	-	-	-	-
4	9	31	-	-	-	31	6	-	-	15	-	-	-
5	-	-	-	-	-	19	8	-	-	-	-	-	-
6	2	21	9	-	-	-	-	-	-	-	3	-	-
7	-	3	6	-	-	57	-	-	-	98	9	9	-
8	-	16	-	-	-	38	-	-	-	-	-	-	-
9	-	26	33	-	-	-	-	-	-	26	-	-	-
10	38	25	12	-	-	-	-	-	-	41	16	-	-
11	11	12	-	-	-	-	-	-	-	-	4	6	-
12	20	-	24	-	-	-	-	-	-	-	12	-	-
13	-	31	11	-	-	13	21	-	-	-	15	3	-
14	12	-	-	-	-	9	-	-	-	48	3	-	-
15	-	25	13	-	-	15	-	-	-	-	-	-	-
16	-	-	3	-	-	-	-	-	-	19	-	-	-
17	-	22	22	-	13	-	-	-	-	-	15	-	-
18	29	32	9	-	-	17	11	-	-	20	11	18	-
19	17	-	-	-	-	-	13	-	-	-	2	5	-
20	-	-	9	-	-	-	17	-	-	-	4	2	-
21	-	19	-	-	-	-	24	-	-	-	12	8	-
22	-	-	17	-	-	-	19	-	-	-	3	-	-
23	-	4	-	-	-	-	8	-	-	-	4	-	-
24	7	6	31	-	-	-	-	-	-	-	5	-	-
25	27	14	-	-	-	41	-	-	-	27	22	-	-
26	-	8	-	-	-	-	-	-	-	19	40	-	-
27	-	-	6	-	16	-	32	-	-	20	6	27	-
28	-	-	-	-	-	-	-	-	-	-	-	-	-
29	14	-	-	-	-	-	-	-	-	9	-	2	-
30	-	-	-	-	9	16	-	-	-	2	3	11	-
31	-	-	-	-	-	-	-	-	-	5	-	-	-
Total	211	319	205	-	38	280	159	-	-	347	260	91	-
Number of rainy day	13	17	14	-	3	11	10	-	-	13	21	16	-
Max. within one recorded day (Date)	()	()	()	()	()	()	()	()	()	()	()	()	()
Max. intensity	6 hr (Date)	()	()	()	()	()	()	()	()	()	()	()	()
	3 hr (Date)	()	()	()	()	()	()	()	()	()	()	()	()
	1 hr (Date)	()	()	()	()	()	()	()	()	()	()	()	()
Summary of all recorded years starting from 19 ~ 19													
Average													
Max. (Year)	()	()	()	()	()	()	()	()	()	()	()	()	()
Min. (Year)	()	()	()	()	()	()	()	()	()	()	()	()	()
Daily Max.	1-day				2-day			3-day		Original			

DAILY RAINFALL RECORD

Station: _____

River Basin _____ Basin % _____ Station % _____ Location N. ° ' E. ° ' E.L. _____ m

Station Site Simpang Drainage Area _____ km² Year 1976

Month Day	Jan	Feb	Mar	Apr	May	June	Jul	Aug	Sept	Oct	Nov	Dec	Annual
	1	10	-	-	19	7	-	-	8	2	-	1	
2	3	-	-	7	-	11	-	3	5	-	3	-	
3	-	-	-	-	-	-	-	-	2	-	66	22	
4	17	8	2	4	-	-	-	-	-	23	-	1	
5	-	-	-	47	-	-	-	-	-	2	-	-	
6	-	-	-	12	-	-	2	-	-	-	-	-	
7	69	-	32	7	-	2	-	6	-	-	-	-	
8	1	4	-	-	-	-	-	-	-	43	-	35	
9	1	-	-	-	-	-	-	-	-	3	59	15	
10	-	-	-	-	-	-	-	7	-	51	-	-	
11	-	-	-	-	49	-	-	-	-	-	19	1	
12	-	-	-	-	3	-	-	-	-	2	16	7	
13	-	-	119	-	-	-	-	-	-	35	7	120	
14	-	-	-	20	11	-	-	19	-	-	-	12	
15	-	-	31	-	-	-	-	-	-	6	-	-	
16	19	-	6	-	-	-	-	-	-	43	20	93	
17	-	18	-	14	-	-	-	-	-	-	28	20	
18	12	-	-	23	-	-	-	-	-	17	38	-	
19	3	-	-	-	-	-	-	-	-	-	41	-	
20	-	-	17	52	-	-	-	-	-	-	-	25	
21	1	5	5	20	-	-	-	-	-	-	36	-	
22	1	17	-	-	-	-	-	-	-	-	-	-	
23	3	10	4	11	-	-	-	-	14	-	17	14	
24	4	-	-	-	-	-	-	-	-	-	-	1	
25	-	23	73	3	-	-	-	-	-	-	57	-	
26	-	31	27	-	-	-	-	-	20	-	11	-	
27	-	2	6	31	-	-	-	14	-	7	37	29	
28	12	32	4	-	-	4	6	18	-	-	-	78	
29	-	-	2	3	-	7	-	3	-	-	-	4	
30	-	-	2	1	11	-	12	-	1	22	1	-	
31	-	-	-	-	-	-	14	-	-	-	-	-	
Total	156	150	330	274	81	24	34	78	44	254	454	477	2356
Number of rainy day	14	10	14	16	5	4	4	8	6	12	17	16	126
Max. within one recorded day (Date)	()	()	()	()	()	()	()	()	()	()	()	()	()
Max. intensity	6 hr (Date)	()	()	()	()	()	()	()	()	()	()	()	()
	3 hr (Date)	()	()	()	()	()	()	()	()	()	()	()	()
	1 hr (Date)	()	()	()	()	()	()	()	()	()	()	()	()
	()	()	()	()	()	()	()	()	()	()	()	()	()
Summary of all recorded years starting from 19 ~ 19													
Average													
Max. (Year)	()	()	()	()	()	()	()	()	()	()	()	()	()
Min. (Year)	()	()	()	()	()	()	()	()	()	()	()	()	()
Daily Max.	1-day		2-day		3-day		Original						

DAILY RAINFALL RECORD

Station: OKU

River Basin Basin No. Station No. Location N. ° ' E. ° ' E.L. m

Station Site Simpang Drainage Area L² Year 1941

Month Day	Jan	Feb	Mar	Apr	May	June	Jul	Aug	Sept	Oct	Nov	Dec	Annual
	1	4	16	7	111	-	49	-	-	-	-	6	11
2	-	-	-	15	12	-	-	-	-	-	15	6	
3	-	6	-	-	-	-	-	-	-	-	12	10	
4	13	9	-	-	27	-	11	-	-	-	22	3	
5	19	22	-	-	-	-	-	-	-	-	6	2	
6	4	6	-	10	-	-	-	-	-	-	-	5	
7	2	1	-	2	23	12	-	-	-	8	-	8	
8	8	-	-	4	2	-	-	-	-	-	-	-	
9	-	2	-	16	-	16	-	-	-	-	4	40	
10	-	-	-	14	-	-	-	-	-	-	8	53	
11	2	9	-	4	7	-	-	-	-	-	-	14	
12	30	-	-	12	-	2	-	-	-	-	-	5	
13	18	-	-	23	4	29	-	-	48	-	-	36	
14	8	-	54	4	9	-	-	-	-	-	-	33	
15	-	28	4	-	32	-	-	-	-	25	-	31	
16	7	3	-	-	-	-	42	-	-	-	-	-	
17	-	-	2	13	-	-	9	-	11	-	-	-	
18	-	-	3	9	-	-	-	-	26	-	-	6	
19	4	-	-	21	-	-	-	-	-	-	8	-	
20	40	-	13	13	-	-	-	-	-	-	-	-	
21	5	-	-	148	-	-	-	-	9	-	-	-	
22	-	2	-	16	-	56	18	-	-	-	11	-	
23	17	-	-	-	-	-	-	-	-	-	-	3	
24	21	-	2	36	6	-	-	-	-	-	-	-	
25	-	-	9	29	-	13	-	-	-	-	9	-	
26	-	6	49	5	-	-	-	-	-	-	5	-	
27	-	11	10	-	-	-	14	-	-	-	-	-	
28	-	-	22	-	27	-	-	-	-	-	20	4	
29	2	-	26	-	13	-	-	74	7	-	26	-	
30	5	-	5	-	8	-	-	19	-	45	7	43	
31	4	-	95	-	19	-	-	61	-	6	-	-	
Total	208	121	301	505	189	177	94	144	101	84	159	313	2396
Number of rainy day	19	13	14	20	13	7	5	3	5	4	14	18	135
Max. within one recorded day (Date)	()	()	()	()	()	()	()	()	()	()	()	()	()
Max. intensity	6 hr (Date)	()	()	()	()	()	()	()	()	()	()	()	()
	3 hr (Date)	()	()	()	()	()	()	()	()	()	()	()	()
	1 hr (Date)	()	()	()	()	()	()	()	()	()	()	()	()
Summary of all recorded years starting from 19 ~ 19													
Average													
Max. (Year)	()	()	()	()	()	()	()	()	()	()	()	()	()
Min. (Year)	()	()	()	()	()	()	()	()	()	()	()	()	()
Daily Max.	1-day			2-day			3-day			Original			

DAILY RAINFALL RECORD

Station: O.K.U

River Basin _____ Basin No. _____ Station No. _____ Location N. _____ E. _____ S. _____

Station Site Simpang Drainage Area _____ sq. _____ Year 1978

Month Day	Jan	Feb	Mar	Apr	May	June	Jul	Aug	Sept	Oct	Nov	Dec	Annual
	1	11	2	9		27	-	-	-	5	16	-	
2	-	4	-		-	-	18	-	-	-	-	33	
3	51	-	52	55	18	-	15	-	15	-	-	-	
4	3	-	6	-	9	45	-	-	31	-	12	12	
5	-	-	-	-	53	40	-	7	54	-	-	-	
6	-	-	4	-	-	-	6	4	6	-	-	25	
7	-	9	56	-	-	-	-	-	-	-	-	11	
8	52	-	53	-	29	15	-	-	4	28	-	-	
9	20	61	-	-	34	-	16	-	23	-	6	4	
10	16	62	10	-	4	-	3	-	-	-	22	8	
11	61	-	60	69	-	4	4	-	-	-	-	-	
12	-	2	20	10	-	-	4	-	-	-	-	-	
13	-	10	40	-	100	-	-	-	-	-	-	-	
14	8	57	-	-	5	-	15	5	-	-	15	44	
15	-	-	-	-	-	-	-	-	-	18	18	-	
16	15	-	-	-	5	-	-	3	-	-	6	-	
17	39	-	66	18	1	-	-	-	-	20	37	-	
18	50	20	55	-	-	5	-	5	30	-	10	-	
19	-	45	25	-	-	15	-	5	-	40	-	45	
20	2	-	22	-	-	-	-	-	-	-	-	-	
21	9	-	-	7	-	-	-	-	15	-	-	32	
22	-	-	-	-	-	23	-	-	20	-	6	43	
23	4	24	-	3	-	-	-	-	-	17	7	10	
24	-	3	75	4	-	-	-	-	-	101	4	21	
25	-	6	-	-	-	20	13	-	-	14	14	-	
26	5	-	20	-	-	-	63	-	20	10	3	-	
27	-	-	3	40	-	-	-	-	-	40	-	20	
28	-	8	-	31	20	-	-	-	-	-	-	-	
29	-	-	2	42	-	60	-	-	21	-	38	-	
30	-	-	-	22	-	-	-	-	53	37	3	-	
31	-	-	-	-	-	-	-	6	-	-	-	-	
Total	346	303	578	301	305	227	157	35	297	341	201	308	3399
Number of rainy day	15	14	18	11	12	9	10	7	13	11	15	13	148
Max. within one recorded day (Date)	()	()	()	()	()	()	()	()	()	()	()	()	()
Max. intensity	6 hr (Date)	()	()	()	()	()	()	()	()	()	()	()	()
	3 hr (Date)	()	()	()	()	()	()	()	()	()	()	()	()
	1 hr (Date)	()	()	()	()	()	()	()	()	()	()	()	()
Summary of all recorded years starting from 19 ~ 19													
Average													
Max. (Year)	()	()	()	()	()	()	()	()	()	()	()	()	()
Min. (Year)	()	()	()	()	()	()	()	()	()	()	()	()	()
Daily Max.	1-day			2-day			3-day						Original

DAILY RAINFALL RECORD

Station: _____

River Basin _____ Basin No. _____ Station No. _____ Location N. ° ' E. ° ' E.L. _____

Station Site SIMPANG MARTAPURA Drainage Area _____ km² Year 1979

Month Day	Jan	Feb	Mar	Apr	May	June	Jul	Aug	Sept	Oct	Nov	Dec	Annual
	1	-	-	-	-	-	11	-	-	-	-	-	-
2	-	33	25	-	-	-	-	-	5	-	-	-	-
3	-	-	-	-	26	-	-	-	-	20	-	-	-
4	-	-	-	-	12	-	-	-	-	-	-	-	-
5	38	-	-	9	-	-	-	-	-	-	-	-	-
6	12	32	-	34	-	-	-	24	20	-	-	-	-
7	12	-	4	10	6	85	-	-	6	-	-	-	-
8	-	8	27	65	11	-	-	-	4	-	-	-	-
9	20	-	-	20	-	-	4	45	-	-	-	-	-
10	10	-	-	5	29	-	-	-	-	16	-	-	-
11	-	17	-	-	-	-	-	-	-	-	-	-	-
12	-	51	-	20	20	14	-	-	-	-	-	-	-
13	-	-	-	-	-	-	24	19	36	-	-	-	-
14	-	7	3	-	-	-	83	-	-	-	-	-	-
15	8	18	17	10	-	-	51	-	-	-	-	-	-
16	10	-	-	27	-	-	-	-	-	-	-	-	-
17	-	-	21	4	17	-	-	-	-	-	-	-	-
18	-	-	-	-	-	-	-	-	-	-	-	-	-
19	-	11	11	-	-	-	-	-	10	-	-	-	-
20	-	-	5	-	10	-	9	-	-	-	-	-	-
21	-	94	14	16	-	-	-	4	-	12	-	-	-
22	-	-	47	-	-	-	-	-	9	65	-	-	-
23	31	-	-	12	-	-	13	-	-	-	-	-	-
24	3	-	-	16	-	-	-	-	-	-	-	-	-
25	-	-	110	9	3	-	-	-	17	-	-	-	-
26	-	46	10	6	14	-	-	-	-	-	-	-	-
27	8	-	-	10	-	4	20	-	6	-	-	-	-
28	23	11	-	14	-	-	-	20	22	-	-	-	-
29	43	-	20	-	-	-	-	-	-	5	-	-	-
30	-	-	4	-	-	39	7	-	-	-	-	-	-
31	-	-	-	-	-	-	1	-	-	3	-	-	-
Total	218	328	320	287	148	152	212	112	135	127			
Number of rainy day	12	11	14	17	10	5	9	5	10	6			
Max. within one recorded day (Date)	()	()	()	()	()	()	()	()	()	()	()	()	()
Max. Intensity	6hr (Date)	()	()	()	()	()	()	()	()	()	()	()	()
	3hr (Date)	()	()	()	()	()	()	()	()	()	()	()	()
	1hr (Date)	()	()	()	()	()	()	()	()	()	()	()	()
Summary of all recorded years starting from 19 ~ 19													
Average													
Var. (Year)	()	()	()	()	()	()	()	()	()	()	()	()	()
Min. (Year)	()	()	()	()	()	()	()	()	()	()	()	()	()
Daily Max.	1-day	2-day		3-day			Original						

DAILY RAINFALL RECORD

Station: _____

River Basin _____ Basin No. _____ Station No. _____ Location N. _____ E. _____ S. _____

Station Site SIMPANG MARTAPURA Drainage Area _____ In³ _____ Year 1980

Day \ Month	Jan	Feb	Mar	Apr	May	June	Jul	Aug	Sept	Oct	Nov	Dec	Annual
	Jan	Feb	Mar	Apr	May	June	Jul	Aug	Sept	Oct	Nov	Dec	
1	12	-	24	31	5	-	-	29	-	-	-	-	
2	2	-	-	55	8	4	15	6	-	-	5	-	
3	-	-	62	-	13	-	31	-	-	-	23	-	
4	-	3	-	45	-	-	-	7	6	-	30	12	
5	-	16	-	12	-	-	-	-	28	-	124	-	
6	115	-	-	27	-	12	-	-	-	-	-	-	
7	-	-	81	14	-	-	-	-	-	-	16	-	
8	22	-	18	50	27	-	-	65	-	-	-	-	
9	-	-	21	3	18	-	-	2	-	-	-	-	
10	2	-	4	18	-	35	19	-	35	-	-	-	
11	5	-	2	-	70	-	-	66	-	-	-	-	
12	-	-	9	-	16	-	-	-	-	31	-	-	
13	6	-	-	3	-	-	-	58	12	-	7	-	
14	19	-	7	13	-	6	-	-	-	-	8	-	
15	-	-	102	-	6	-	-	-	-	-	17	-	
16	-	-	-	45	-	20	-	-	-	22	55	-	
17	-	19	-	20	-	-	48	-	-	-	-	-	
18	-	6	-	-	-	6	-	24	-	-	8	-	
19	-	-	-	-	-	-	-	-	-	-	19	-	
20	-	-	-	-	-	-	-	-	-	14	18	-	
21	-	-	-	-	-	-	-	36	-	23	-	-	
22	-	71	-	-	-	84	-	31	13	-	-	-	
23	16	3	-	13	-	-	21	-	-	2	23	-	
24	16	15	33	-	-	-	-	-	-	21	-	-	
25	-	-	3	24	-	-	32	-	-	-	9	-	
26	-	-	11	-	-	-	-	-	-	-	81	-	
27	-	2	-	-	12	-	47	-	3	22	5	-	
28	-	5	7	6	7	-	2	-	69	51	-	-	
29	-	-	-	-	-	6	-	-	-	5	-	-	
30	-	-	7	7	-	5	-	-	16	59	-	-	
31	-	-	6	-	-	-	-	-	-	25	-	-	
Total	215	140	317	386	228	178	215	324	182	295	410		
Number of rainy day	10	9	16	17	10	9	7	10	8	11	16		
Max. within one recorded day (Date)	()	()	()	()	()	()	()	()	()	()	()	()	()
Max. intensity	6 hr (Date)	()	()	()	()	()	()	()	()	()	()	()	()
	3 hr (Date)	()	()	()	()	()	()	()	()	()	()	()	()
	1 hr (Date)	()	()	()	()	()	()	()	()	()	()	()	()
Summary of all recorded years starting from 19 ~ 19													
Average													
Max. (Year)	()	()	()	()	()	()	()	()	()	()	()	()	()
Min. (Year)	()	()	()	()	()	()	()	()	()	()	()	()	()
Daily Max.	1-day		2-day		3-day		Original						

5 DAILY RAINFALL RECORD

Station: O. K. V

River Basin Basin No. Station No. Location N. ° ' E. ° ' E.L. M.

Station Site MARTAPURA Drainage Area sq Year 1972

Day	Month	Jan	Feb	Mar	Apr	May	June	Jul	Aug	Sept	Oct	Nov	Dec	Annual
1		4	15	1	26	-	-	-	-	-	-	-	-	
2		5	-	36	18	18	-	-	-	-	-	-	-	
3		2	-	3	1	-	-	-	-	-	-	-	-	
4		10	0	1	-	-	-	-	-	-	-	-	-	
5		23	-	0	-	-	-	-	-	-	-	-	-	
6		51	10	-	-	55	-	-	-	-	-	-	-	
7		20	11	1	-	10	-	-	-	-	-	-	-	
8		45	1	19	13	9	-	-	42	-	-	-	-	
9		18	33	60	22	-	-	-	-	-	-	-	-	
10		7	4	24	-	3	8	-	0	3	-	-	-	
11		4	39	15	53	1	1	-	5	13	-	-	-	
12		16	37	-	1	-	-	-	-	-	-	-	-	
13		5	-	40	8	-	-	-	17	-	-	-	-	
14		8	9	6	6	2	-	-	12	9	-	-	-	
15		18	51	-	10	1	-	-	-	-	-	-	-	
16		1	0	51	-	13	-	-	-	-	-	-	-	
17		1	57	14	2	-	2	-	-	-	-	-	-	
18		-	4	5	-	-	-	-	-	-	-	-	-	
19		1	16	0	23	6	3	-	-	-	-	-	-	
20		3	-	-	49	-	3	-	-	-	-	-	-	
21		2	10	25	-	14	-	-	-	-	-	-	-	
22		1	14	5	8	-	-	-	-	15	-	-	-	
23		3	15	20	6	-	-	-	-	-	-	-	-	
24		-	2	115	80	5	-	-	-	12	-	-	-	
25		-	15	8	-	-	-	-	-	-	-	-	-	
26		9	1	0	-	-	-	-	-	-	-	-	-	
27		5	20	50	74	-	-	-	-	-	-	-	-	
28		24	5	5	-	-	-	-	-	2	-	-	-	
29		3	0	26	-	-	-	-	-	0	-	-	-	
30		29	-	13	10	-	37	3	-	-	-	-	-	
31		-	-	26	-	55	-	-	-	-	-	-	-	
Total		318	369	569	410	192	54	3	76	54	0			
Number of rainy day		27	24	27	18	13	6	1	5	7	0			
Max. r/f in one recorded day (Date)		()	()	()	()	()	()	()	()	()	()	()	()	()
Max. intensity	6 hr (Date)	()	()	()	()	()	()	()	()	()	()	()	()	()
	3 hr (Date)	()	()	()	()	()	()	()	()	()	()	()	()	()
	1 hr (Date)	()	()	()	()	()	()	()	()	()	()	()	()	()
	Summary of all recorded years starting from 19 ~ 19													
Average														
Max. (Year)		()	()	()	()	()	()	()	()	()	()	()	()	()
Min. (Year)		()	()	()	()	()	()	()	()	()	()	()	()	()
Daily Max.	1-day													
	2-day													
	3-day													
	Original													

DAILY RAINFALL RECORD

Station: _____

River Basin _____ Basin # _____ Station # _____ Location N. ° ' E. ° ' E.L. _____

Station Site MARTAPURA Drainage Area _____ km² Year 1973

Day	Month	Jan	Feb	Mar	Apr	May	June	Jul	Aug	Sept	Oct	Nov	Dec	Annual
1		28	-	39	0	-	29	1	-	8	-	3	3	
2		11	-	10	9	-	16	-	5	-	-	-	-	
3		-	-	-	5	-	0	-	22	2	-	-	6	
4		-	-	-	6	19	-	-	2	1	-	7	1	
5		-	-	42	10	-	-	-	128	2	45	16	2	
6		-	55	0	4	23	-	-	18	0	-	21	-	
7		28	9	-	-	2	-	-	22	0	-	-	11	
8		16	3	-	15	5	-	-	-	0	-	8	0	
9		3	-	8	-	20	2	-	15	97	-	13	4	
10		12	-	-	8	44	88	-	39	-	2	0	1	
11		-	-	4	5	0	-	-	-	71	1	-	5	
12		-	26	-	24	4	0	-	-	4	37	-	19	
13		-	7	-	30	9	-	-	10	-	-	-	8	
14		-	4	-	-	9	-	-	14	16	-	-	3	
15		10	11	0	3	3	-	-	34	3	-	-	17	
16		24	-	-	29	-	3	-	1	30	11	-	-	
17		-	-	-	0	78	9	5	59	5	1	0	0	
18		57	31	-	6	-	67	-	10	4	-	-	51	
19		8	-	-	2	13	-	-	-	20	-	8	26	
20		-	20	-	5	25	0	-	-	35	20	3	19	
21		-	7	8	28	33	3	-	-	9	1	0	28	
22		-	-	-	12	0	15	-	-	8	3	0	0	
23		-	26	-	9	-	-	-	-	6	4	-	-	
24		47	6	-	26	0	-	1	2	-	3	4	-	
25		31	-	-	0	-	-	12	3	-	34	-	-	
26		-	4	-	-	115	-	9	-	-	-	0	-	
27		-	8	-	5	5	0	2	-	-	20	2	-	
28		-	-	0	-	1	-	-	52	-	-	1	-	
29		-	-	14	0	15	-	-	17	-	18	7	0	
30		-	-	-	-	-	-	0	-	-	-	0	-	
31		-	-	2	-	-	-	-	-	-	-	-	0	
Total		275	217	127	241	423	232	30	453	321	200	93	234	2846
Number of rainy day		12	14	11	24	21	13	7	18	20	14	18	21	
Max. within one recorded day (Date)		()	()	()	()	()	()	()	()	()	()	()	()	()
Max. intensity	6 hr (Date)	()	()	()	()	()	()	()	()	()	()	()	()	()
	3 hr (Date)	()	()	()	()	()	()	()	()	()	()	()	()	()
	1 hr (Date)	()	()	()	()	()	()	()	()	()	()	()	()	()
	1 hr (Date)	()	()	()	()	()	()	()	()	()	()	()	()	()
Summary of all recorded years starting from 19 ~ 19														
Average														
Max. (Year)		()	()	()	()	()	()	()	()	()	()	()	()	()
Min. (Year)		()	()	()	()	()	()	()	()	()	()	()	()	()
Daily Max.	1-day				2-day			3-day			Original			

DAILY RAINFALL RECORD

Station: _____

River Basin _____ Basin No. _____ Station No. _____ Location N. ° ' E. ° ' E.L. _____

Station Site MARTAPURA Drainage Area _____ Km² Year 1974

Day	Month	Jan	Feb	Mar	Apr	May	June	Jul	Aug	Sept	Oct	Nov	Dec	Annual
1			-	9	-	-	0							
2			15	0	25	-	-							
3			21	1	2	-	0							
4			2	-	7	-	-							
5			29	3	32	8	20							
6			3	0	15	26	-							
7			20	0	3	1	-							
8			207	2	-	-	-							
9			0	0	1	14	-							
10			-	-	1	14	5							
11			7	-	6	-	-							
12			1	-	0	10	-							
13			-	-	42	58	-							
14			0	-	5	0	-							
15			-	-	33	6	-							
16			2	-	0	12	-							
17			5	20	11	5	-							
18			2	35	5	-	-							
19			34	0	-	-	-							
20			8	0	-	-	10							
21			2	-	-	-	0							
22			0	-	-	-	-							
23			-	-	3	-	-							
24			26	76	-	-	5							
25			4	1	0	7	-							
26			-	0	-	1	-							
27			5	-	0	-	-							
28			5	10	-	-	-							
29			-	0	0	-	2							
30			-	3	16	-	10							
31			-	-	-	0	-							
Total			398	159	209	171	52							
Number of rainy day			22	12	21	14	9							
Max. within one record day (Date)	()	()	()	()	()	()	()	()	()	()	()	()	()	()
Max. intensity														
6 hr (Date)	()	()	()	()	()	()	()	()	()	()	()	()	()	()
3 hr (Date)	()	()	()	()	()	()	()	()	()	()	()	()	()	()
1 hr (Date)	()	()	()	()	()	()	()	()	()	()	()	()	()	()
Summary of all recorded years starting from 19 ~ 19														
Average														
Max. (Year)	()	()	()	()	()	()	()	()	()	()	()	()	()	()
Min. (Year)	()	()	()	()	()	()	()	()	()	()	()	()	()	()
Daily Max.	1-day				2-day			3-day					Original	

DAILY RAINFALL RECORD

Station: _____

River Basin _____ Basin No. _____ Station No. _____ Location N. ° ' E. ° ' R.L. _____

Station Site MARTAPURA Drainage Area _____ km² Year 1975

Day \ Month	Jan	Feb	Mar	Apr	May	June	Jul	Aug	Sept	Oct	Nov	Dec	Annual
	1	-	3	13	9	-	24						
2	22	2	-	14	-	-							
3	-	5	-	8	-	-							
4	34	-	32	4	-	31							
5	8	1	10	1	-	19							
6	16	65	-	2	-	-							
7	-	99	-	-	-	57							
8	-	50	4	-	-	38							
9	11	4	5	-	119	-							
10	4	12	1	42	-	-							
11	-	4	6	47	-	-							
12	2	15	8	-	-	-							
13	-	10	2	5	1	13							
14	-	1	11	-	-	9							
15	-	-	13	20	20	15							
16	-	-	16	-	24	-							
17	2	19	15	19	-	-							
18	74	-	1	-	-	17							
19	15	7	1	5	-	-							
20	4	4	-	-	5	-							
21	-	5	-	-	-	-							
22	7	-	62	-	-	-							
23	17	-	1	-	-	-							
24	3	7	1	5	-	-							
25	5	-	-	-	-	41							
26	12	4	1	-	-	-							
27	23	-	-	-	5	-							
28	2	2	-	-	-	-							
29	6	-	-	-	-	-							
30	36	-	4	-	-	-							
31	2	-	28	-	-	-							
Total	305	319	235	181	174	264							
Number of rainy day	21	20	21	13	6	10							
Max. within one recorded day (Date)	()	()	()	()	()	()	()	()	()	()	()	()	()
Max. intensity	6 hr (Date)	()	()	()	()	()	()	()	()	()	()	()	()
	3 hr (Date)	()	()	()	()	()	()	()	()	()	()	()	()
	1 hr (Date)	()	()	()	()	()	()	()	()	()	()	()	()
Summary of all recorded years starting from 19 ~ 19													
Average													
Max. (Year)	()	()	()	()	()	()	()	()	()	()	()	()	()
Min. (Year)	()	()	()	()	()	()	()	()	()	()	()	()	()
Daily Max.	1-day			2-day			3-day						Original

DAILY RAINFALL RECORD

Station: _____

River Basin _____ Basin No. _____ Station No. _____ Location N. ° ' E. ° ' E.L. _____
 Station Site **MARTAPURA** Drainage Area _____ sq. _____ Year **1977**

Month Day	Jan	Feb	Mar	Apr	May	June	Jul	Aug	Sept	Oct	Nov	Dec	Annual
1	15	6	-	45	7	3	-	-	0	-	-	-	-
2	9	3	-	0	-	2	-	-	-	-	-	-	-
3	0	11	-	-	3	0	-	-	-	-	-	-	-
4	37	19	-	2	5	-	-	-	-	-	-	-	-
5	42	21	-	-	-	-	-	0	-	-	-	-	-
6	18	18	-	-	-	-	-	-	-	-	-	-	-
7	7	7	-	-	2	0	-	-	-	-	-	-	-
8	5	13	-	19	-	-	-	9	0	-	-	-	-
9	-	0	-	31	0	-	-	6	-	-	-	-	-
10	-	15	-	0	0	-	-	15	-	-	-	-	-
11	-	15	-	5	-	-	-	-	-	-	-	-	-
12	8	9	1	48	-	-	-	-	-	-	-	-	-
13	26	25	1	52	-	-	-	4	117	-	-	-	-
14	2	4	31	19	13	-	-	-	-	-	-	-	-
15	0	6	2	15	16	-	-	-	3	-	-	-	-
16	2	17	17	14	-	-	-	2	-	-	-	-	-
17	5	5	-	122	-	0	-	-	-	-	-	-	-
18	3	-	-	2	-	28	-	-	-	-	-	-	-
19	2	-	-	0	-	21	-	-	-	-	-	-	-
20	11	-	-	8	-	-	-	-	-	-	-	-	-
21	5	0	11	174	-	-	-	-	-	-	-	-	-
22	0	-	35	93	-	-	-	-	5	-	-	-	-
23	8	-	-	1	-	13	-	20	-	-	-	-	-
24	19	-	3	0	-	-	-	-	0	-	-	-	-
25	5	5	2	2	-	-	-	-	-	-	-	-	-
26	21	-	-	-	6	-	-	-	-	-	-	-	-
27	0	-	-	-	3	2	-	-	-	-	-	-	-
28	8	-	5	-	14	8	-	-	-	-	-	-	-
29	7	-	-	-	0	-	-	-	-	-	-	-	-
30	15	-	2	-	60	-	-	-	7	-	-	-	-
31	9	-	11	-	-	-	-	42	-	-	-	-	-
Total	289	199	124	650	129	77		98	132				
Number of rainy day	28	19	12	21	13	10		8	7				
Max. within 24 hr recorded day (Date)	()	()	()	()	()	()	()	()	()	()	()	()	()
Max. in 24 hr	6 hr (Date)	()	()	()	()	()	()	()	()	()	()	()	()
	3 hr (Date)	()	()	()	()	()	()	()	()	()	()	()	()
	1 hr (Date)	()	()	()	()	()	()	()	()	()	()	()	()
	Summary of all recorded years starting from 19 ~ 19												
Average													
Var. (Year)	()	()	()	()	()	()	()	()	()	()	()	()	()
Min. (Year)	()	()	()	()	()	()	()	()	()	()	()	()	()
Daily Max.	1-day			2-day			3-day			Original			

DAILY RAINFALL RECORD

Station: _____

River Basin _____ Basin No. _____ Station No. _____ Location N. _____ E. _____ S. _____

Station Site MARTA PURA Drainage Area _____ Km² Year 1977

Day \ Month	Jan	Feb	Mar.	Apr	May	June	Jul	Aug	Sept	Oct	Nov	Dec	Annual
1				-	-	-	9	-	-	-	16	-	
2				-	-	-	35	-	-	-	9	-	
3				-	-	-	10	-	-	59	20	-	
4				-	35	-	-	-	-	-	5	-	
5				-	-	-	-	-	-	-	35	-	
6				-	7	-	-	-	-	-	-	-	
7				19	9	55	-	-	-	-	-	-	
8				18	-	-	-	-	-	7	70	-	
9				-	6	-	-	-	-	41	5	-	
10				5	3	-	-	-	-	85	-	-	
11				-	47	-	-	-	-	34	8	12	
12				-	-	-	-	-	-	19	10	9	
13				7	-	-	-	-	-	-	-	18	
14				-	8	-	-	-	-	-	-	11	
15				-	-	-	15	-	-	-	26	3	
16				13	-	-	-	-	-	-	-	-	
17				1	1	-	-	-	-	-	-	-	
18				-	-	-	-	-	-	-	-	20	
19				9	-	-	-	-	7	-	-	72	
20				-	1	-	-	-	7	-	-	-	
21				-	-	-	-	-	-	-	-	4	
22				20	-	-	-	-	-	28	-	-	
23				-	-	-	-	-	-	20	-	-	
24				1	-	-	-	-	-	-	-	17	
25				-	35	-	-	-	-	-	15	-	
26				-	-	-	-	-	9	-	-	18	
27				-	-	-	-	-	-	-	-	-	
28				19	-	-	-	-	70	-	-	28	
29				-	-	-	-	-	-	-	-	-	
30				-	-	-	-	-	-	-	52	-	
31				-	-	-	-	-	-	-	-	-	
Total				112	152	55	99	0	93	353	261	212	
Number of rainy day				10	10	1	4	0	4	8	12	11	
Max. within one recorded day (Date)	()	()	()	()	()	()	()	()	()	()	()	()	()
Max. intensity	6 hr (Date)	()	()	()	()	()	()	()	()	()	()	()	()
	3 hr (Date)	()	()	()	()	()	()	()	()	()	()	()	()
	1 hr (Date)	()	()	()	()	()	()	()	()	()	()	()	()
Summary of all recorded years starting from 19 ~ 19													
Average													
Max. (Year)	()	()	()	()	()	()	()	()	()	()	()	()	()
Min. (Year)	()	()	()	()	()	()	()	()	()	()	()	()	()
Daily Max.	1-day			2-day			3-day			Original			

DAILY RAINFALL RECORD

Station: _____

River Basin _____ Basin No. _____ Station No. _____ Location N. ° ' E. ° ' E.L. _____

Station Site MORIN PURA Drainage Area _____ Sq. _____ Year 1950

Day \ Month	Jan	Feb	Mar	Apr	May	June	Jul	Aug	Sept	Oct	Nov	Dec	Annual
	Jan	Feb	Mar	Apr	May	June	Jul	Aug	Sept	Oct	Nov	Dec	
1	20	-	-	-	12	-	-	41	-	4	36	44	
2	25	-	-	-	20	24	-	-	-	-	-	-	
3	4	-	-	-	4	-	3	1	-	2	14	75	
4	16	-	-	-	17	-	-	-	-	-	20	-	
5	9	44	3	-	-	-	-	-	-	-	-	-	
6	14	-	-	-	-	-	-	-	-	20	-	-	
7	12	-	-	-	-	-	-	-	47	5	-	-	
8	48	-	21	-	-	-	-	-	-	-	-	-	
9	-	-	-	-	-	-	-	-	-	3	-	-	
10	-	-	-	-	-	60	-	-	-	2	-	-	
11	-	1	-	-	33	-	-	-	22	10	-	-	
12	-	-	-	-	64	16	-	-	-	-	-	-	
13	-	-	-	-	-	-	-	-	-	-	-	14	
14	3	14	4	-	-	-	-	33	-	5	4	7	
15	-	11	3	55	-	-	-	38	-	5	-	10	
16	5	20	-	-	-	-	-	-	-	-	-	6	
17	10	-	-	61	-	-	-	-	-	-	-	-	
18	-	1	-	14	-	-	-	72	-	-	-	36	
19	-	-	-	-	-	-	-	-	-	-	40	12	
20	-	-	27	-	-	-	-	-	-	-	5	25	
21	-	16	-	-	-	-	-	-	-	-	7	-	
22	-	10	-	-	-	-	-	-	-	-	3	-	
23	13	-	-	-	-	-	-	28	-	-	6	14	
24	1	-	45	14	-	29	-	-	-	25	-	30	
25	-	5	2	-	-	-	-	-	-	-	-	3	
26	-	-	-	-	-	-	-	-	-	68	-	50	
27	-	-	-	3	17	-	-	-	-	10	-	24	
28	-	-	-	-	-	-	-	-	26	26	-	26	
29	-	-	-	-	-	-	-	-	8	75	-	17	
30	-	-	95	-	-	-	-	-	-	80	-	-	
31	-	-	-	-	-	-	-	-	-	21	-	-	
Total	180	122	206	147	227	129	3	213	163	361	135	393	
Number of rainy day	13	9	8	5	7	4	1	6	4	16	9	16	
Max. rain in one recorded day (Date)	()	()	()	()	()	()	()	()	()	()	()	()	()
Max. intensity	6 hr (Date)	()	()	()	()	()	()	()	()	()	()	()	()
	3 hr (Date)	()	()	()	()	()	()	()	()	()	()	()	()
	1 hr (Date)	()	()	()	()	()	()	()	()	()	()	()	()
Summary of all recorded years starting from 19 ~ 19													
Average													
Max. (Year)	()	()	()	()	()	()	()	()	()	()	()	()	()
Min. (Year)	()	()	()	()	()	()	()	()	()	()	()	()	()
Daily Max.	1-day			2-day			3-day			Original			

DAILY RAINFALL RECORD

Station: _____

River Basin _____ Basin # _____ Station # _____ Location N. _____ E. _____ S. _____

Station Site MARTAPURA Drainage Area _____ Km² Year 1981

Month Day	Jan	Feb	Mar	Apr	May	June	Jul	Aug	Sept	Oct	Nov	Dec	Annual
	1	-	2	6	-	-	-						
2	24	1	4	-	2	-							
3	25	4	9	-	-	-							
4	-	5	11	-	-	-							
5	53	-	-	-	-	-							
6	-	-	15	-	98	-							
7	-	-	-	29	-	-							
8	5	3	26	-	-	-							
9	-	-	-	-	-	-							
10	-	-	13	-	-	-							
11	-	1	5	-	-	-							
12	12	-	-	-	3	-							
13	-	1	40	-	-	-							
14	25	-	18	-	6	-							
15	10	-	-	-	-	-							
16	5	-	25	2	-	-							
17	-	6	-	-	-	80							
18	-	-	66	-	17	25							
19	-	-	-	-	-	-							
20	30	9	-	-	-	-							
21	-	-	-	-	13	-							
22	10	-	-	-	-	-							
23	35	-	-	32	-	-							
24	19	-	-	-	-	-							
25	60	18	-	-	17	-							
26	-	49	-	-	70	-							
27	19	-	-	-	-	-							
28	-	-	-	-	-	-							
29	-	-	-	-	-	-							
30	-	-	-	-	-	-							
31	-	-	25	-	-	-							
Total	331	99	263	69	226	117							
Number of rainy day	14	11	13	3	8	2							
Max. within one recorded day (Date)	()	()	()	()	()	()	()	()	()	()	()	()	()
Max. intensity	6 hr (Date)	()	()	()	()	()	()	()	()	()	()	()	()
	3 hr (Date)	()	()	()	()	()	()	()	()	()	()	()	()
	1 hr (Date)	()	()	()	()	()	()	()	()	()	()	()	()
Summary of all recorded years starting from 19 ~ 19													
Average													
Max. (Year)	()	()	()	()	()	()	()	()	()	()	()	()	()
Min. (Year)	()	()	()	()	()	()	()	()	()	()	()	()	()
Daily Max.	1-day			2-day			3-day						Original