

社会開発協力部

No 2

**TOPOGRAPHIC MAPPING
OF
BANGKOK METROPOLITAN AREA
KINGDOM OF THAILAND**

GENERAL REPORT

MARCH 1989

JAPAN INTERNATIONAL COOPERATION AGENCY

S D F

J R

89-047

**TOPOGRAPHIC MAPPING
OF
BANGKOK METROPOLITAN AREA
KINGDOM OF THAILAND**

GENERAL REPORT

19 / 0

JICA LIBRARY



1073656[9]

JAPAN INTERNATIONAL COOPERATION AGENCY

国際協力事業団

19110

PREFACE

In response to a request from the Government of the Kingdom of Thailand, the Government of Japan decided to conduct the Topographic Mapping of Bangkok Metropolitan Area and entrusted the project to the Japan International Cooperation Agency (JICA).

JICA sent to Thailand a study team headed by Mr. Tositomo Kanakubo comprised of members from International Engineering Consultants Association and Kokusai Kogyo Co., Ltd. from September, 1986 to March, 1989.

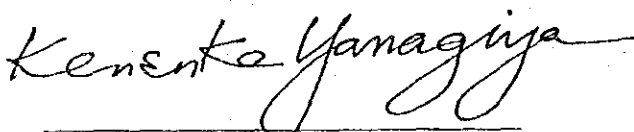
The team conducted the field surveys including taking of aerial photographs in close cooperation with the authorities concerned of Thailand.

After the team returned to Japan, such works as aerial triangulation, stereoplotting, compilation and drafting were carried out and original topographic maps of 1/4,000, composite negative films of 1/10,000 and the present report were prepared. Further, the printing of maps was carried out in Thailand in response to the request of the Government of Thailand.

I hope that this report together with the above maps will be used effectively for formulating development plans of the region and contribute to the promotion of the friendly relations between our two countries.

I wish to express my sincere appreciation to officials concerned of the Government of the Kingdom of Thailand for their close cooperation extended to the team.

March 29, 1989



Kensuke Yanagiya
President
Japan International Cooperation Agency

March 1989

His Excellency Mr. Kensuke Yanagiya
President
Japan International Cooperation Agency
Tokyo, Japan

Letter of Transmittal

Dear Sir:

In response to your request, we are pleased to formally submit herewith the general report on "Topographic Mapping of Bangkok Metropolitan Area" which has been conducted since F.Y. 1986.

This report generalizes the progress of study and the technical aspects. The study was undertaken by International Engineering Consultants Association in a joint-venture with Kokusai Kogyo Co., Ltd. from September 1986 to March 1989.

The outcome of study was two kinds of 61 multi-color composite negatives (for an English and a Thai version) of the 1:10,000 topographic map for Bangkok Metropolitan area and two kinds of 40 drafting sheets (for an English and a Thai version) of the central area of Bangkok on the basis of the 1:20,000 aerial photographs.

We are convinced that the report would, together with these results, be fully utilized as the basic materials for urban development of Bangkok and contribute to the future development of Thailand.

We wish to express my sincere appreciation to the officials concerned of the Japanese Government for giving their appropriate direction during the study as well as to the officials concerned of the Bangkok Metropolitan Administration, the Royal Thai Survey Department and the Japanese Embassy in Thailand for their close cooperation during the study.

Very truly yours




Tositomo Kanakubo

Tositomo Kanakubo

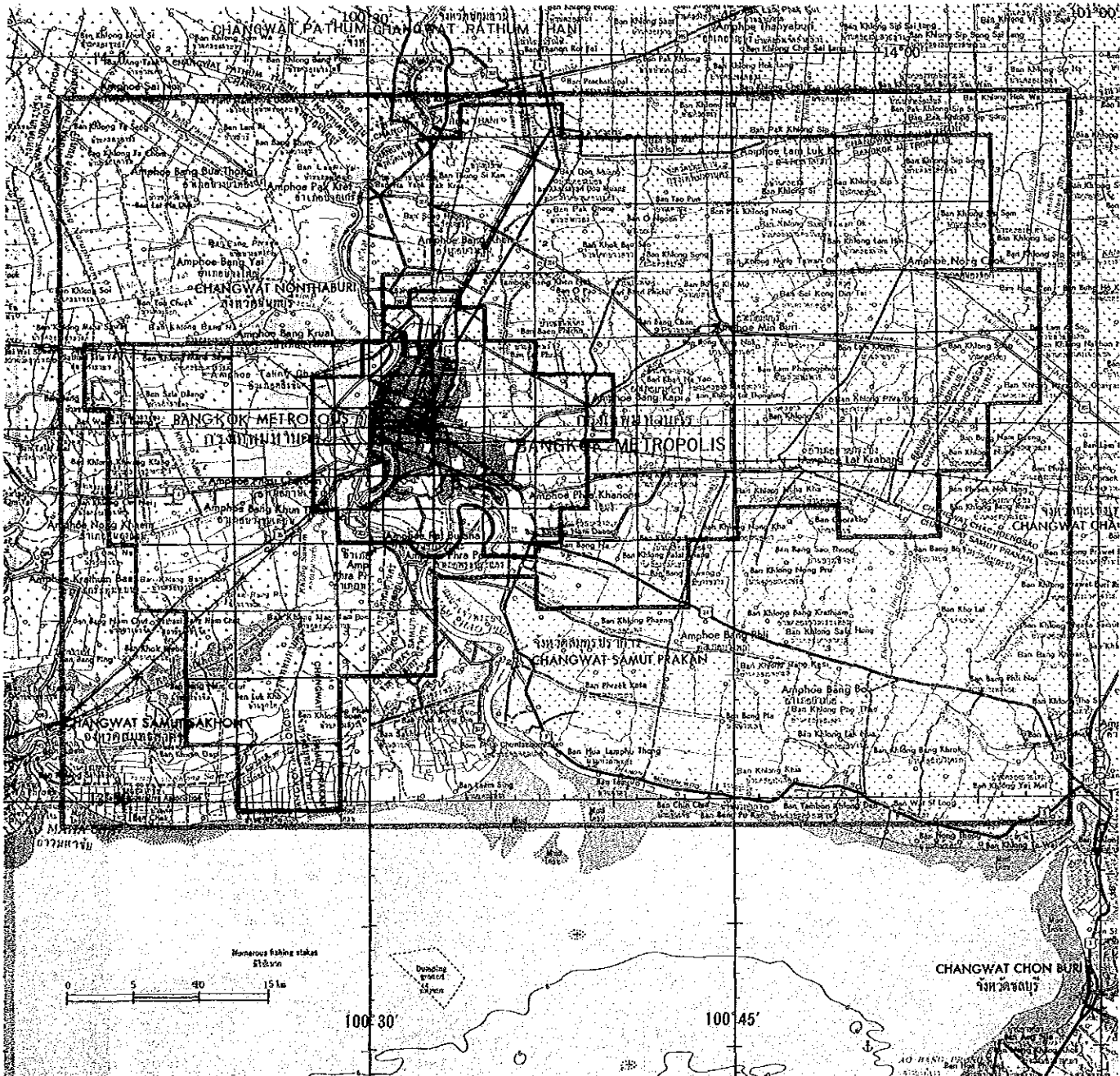
Team Leader

The Topographic Mapping of Bangkok
Metropolitan Area

Location Map for Topographic Mapping
of Bangkok Metropolitan Area, Thailand

-  Aerial Photography
-  1 : 10,000 Topographic Map
-  1 : 4,000 Topographic Map

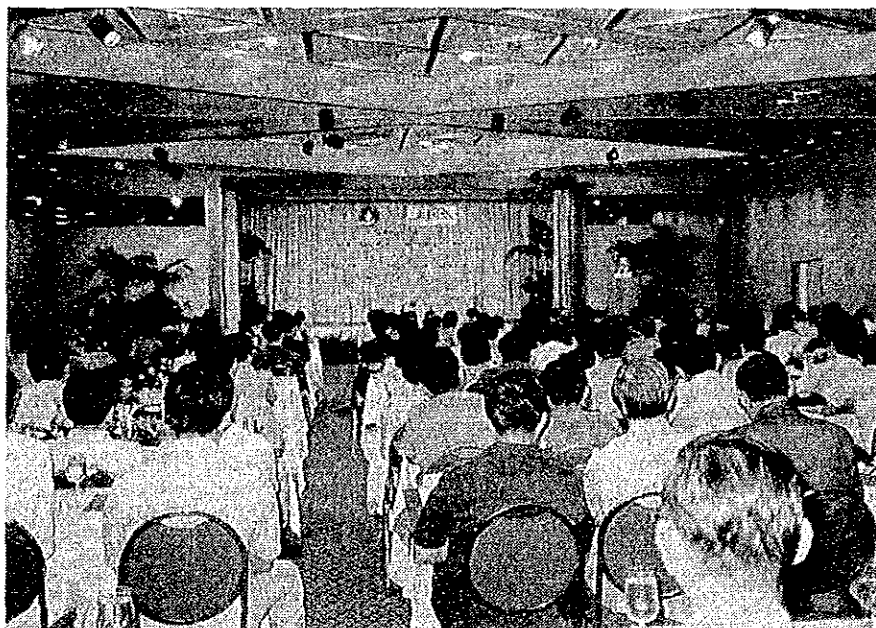
Index



Seminar



Map Presentation Ceremony
H.E. Mr. Hisahiko Okazaki
Presents Bangkok Metropolis
Map to Maj-Gen
Chamlong Srimuang
on March 10, 1989 at
Siam Inter-continental Hotel



Coference Room

Meeting



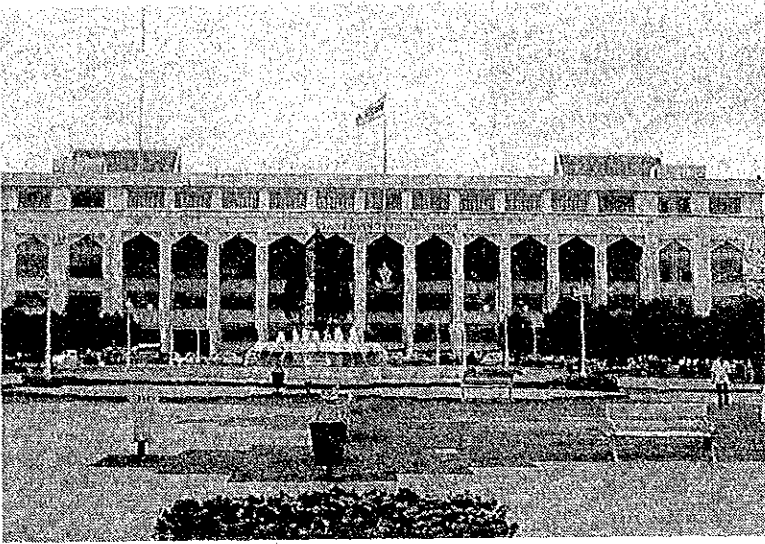
Signing on Minutes
of Discussion

Technical Meeting
at BMA



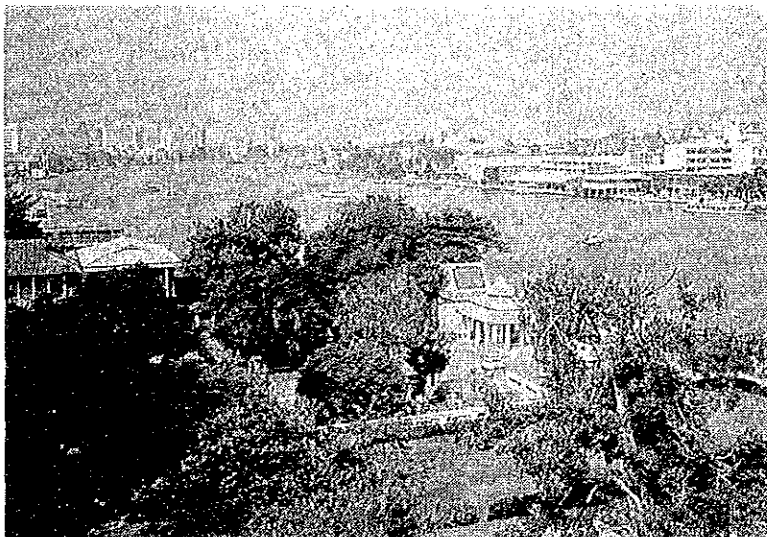
Technical Meeting
of RTSD

Bangkok Metropolitan Area (City Area 1)



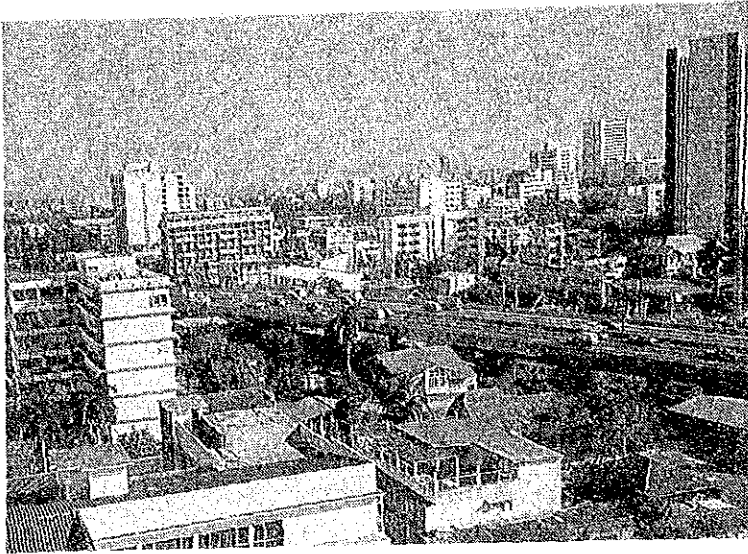
Bangkok Metropolitan
Administration (BMA)

Business Area



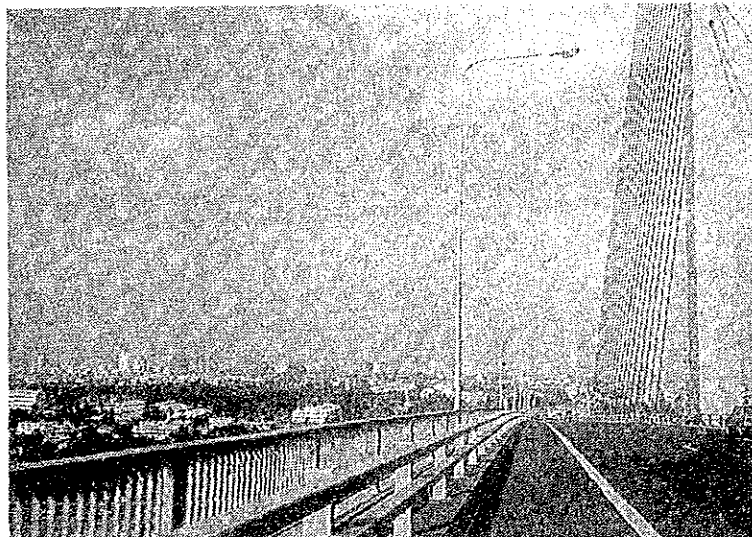
Chaophraya River

Bangkok Metropolitan Area (City Area 2)



Expressway

Shopping Area



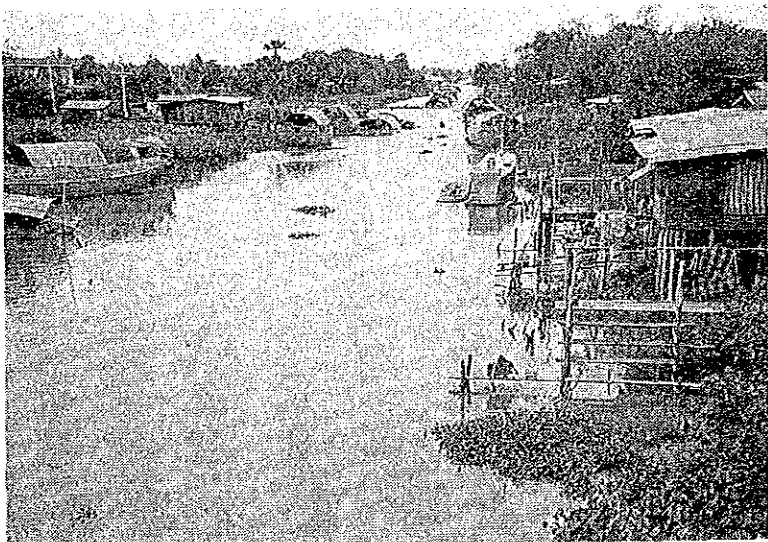
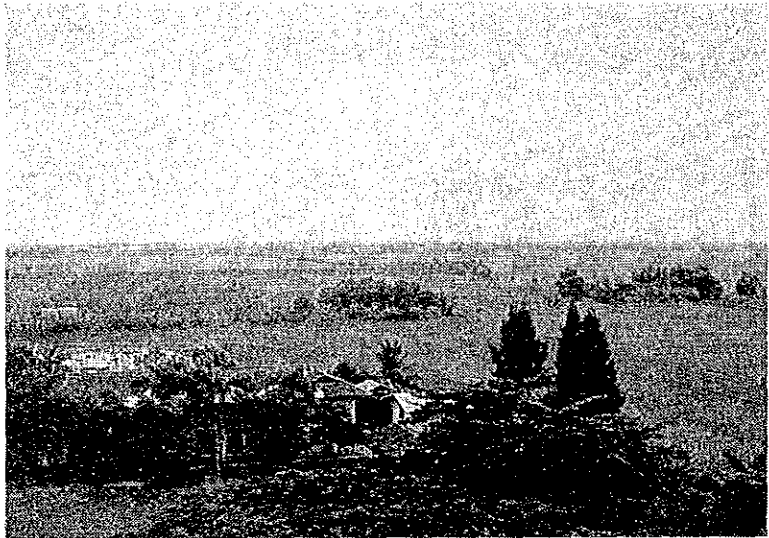
View of the
Central area
from Rama 9
Bridge

Bangkok Metropolitan Area (Suburbs)



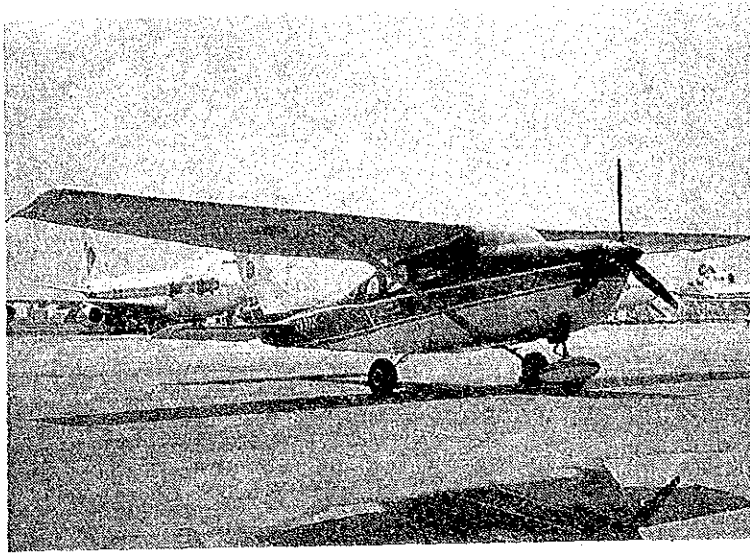
Residential Area
(Northwest Bangkok)

Rice Field
(Eastern Part of
Bangkok)



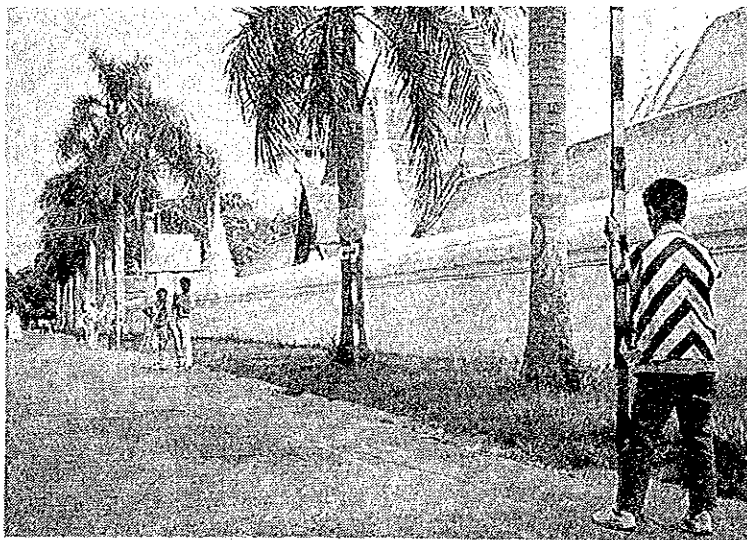
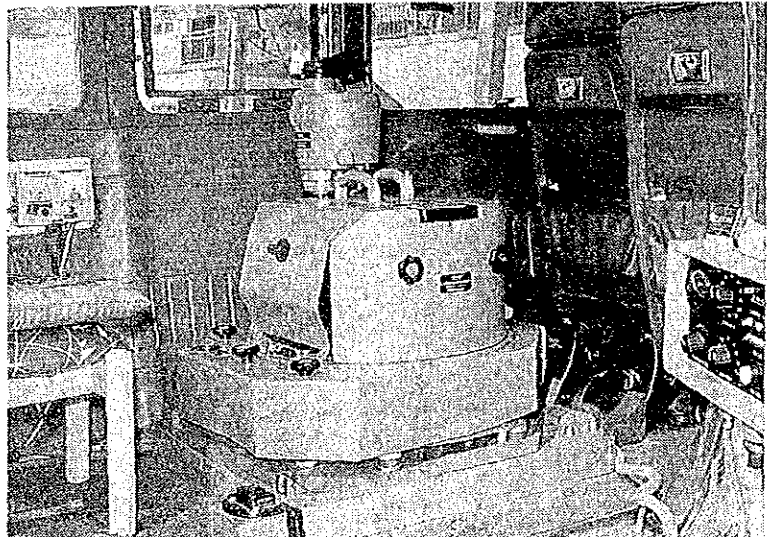
Channel

Aerial Photography



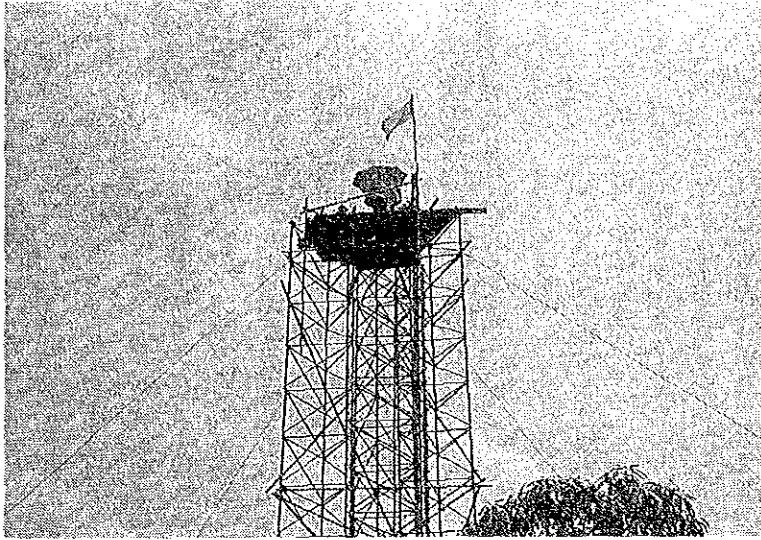
Aircraft
(CESSNA TU-206F)

Aerial Camera
(WILD RC-10)



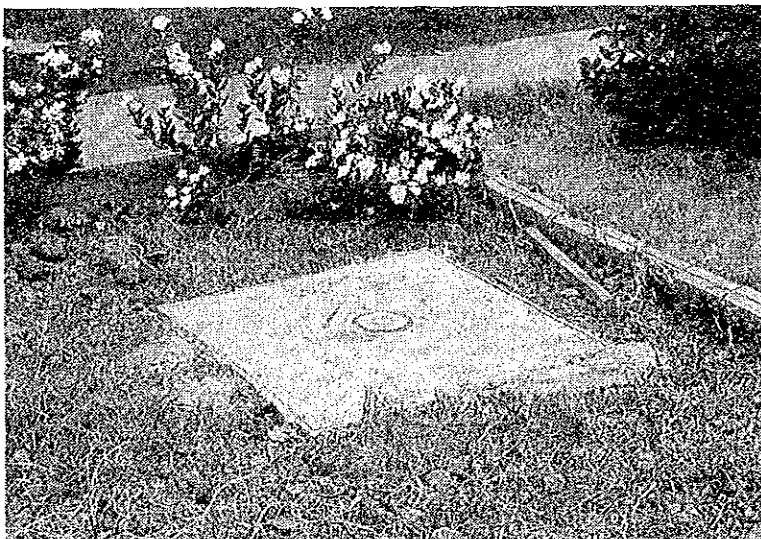
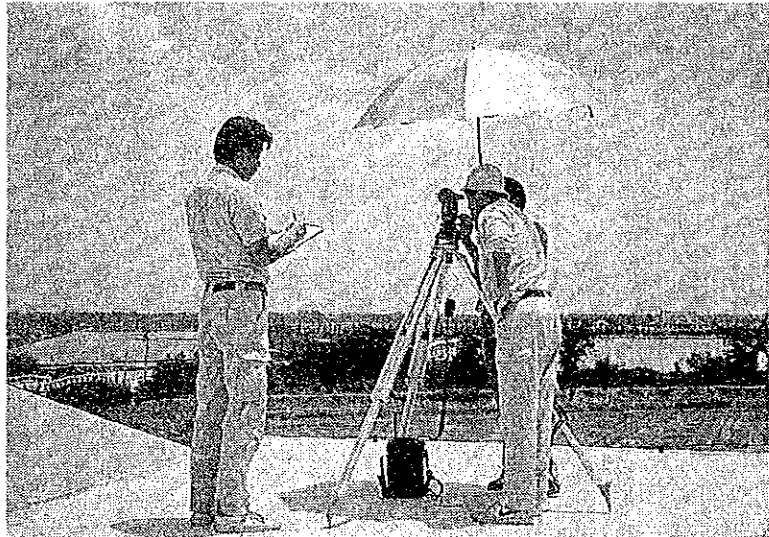
Leveling

Ground Control Point Survey



Work at
High Observation Tower

Observation at
Roof Point



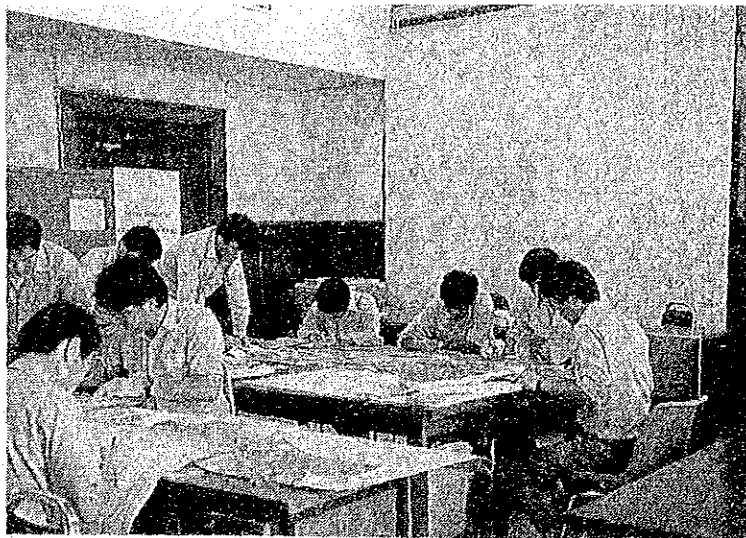
Monument on
the Ground

Field Completion



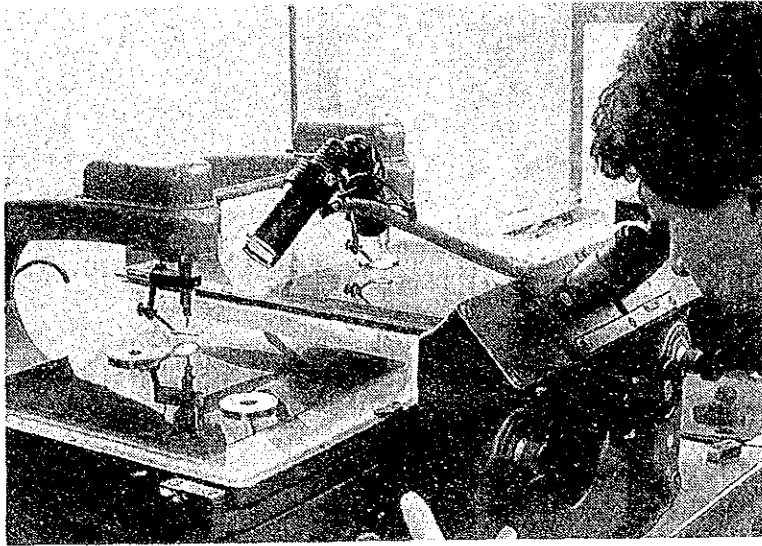
Checking of
Road Width

Confirmation of
Building Name



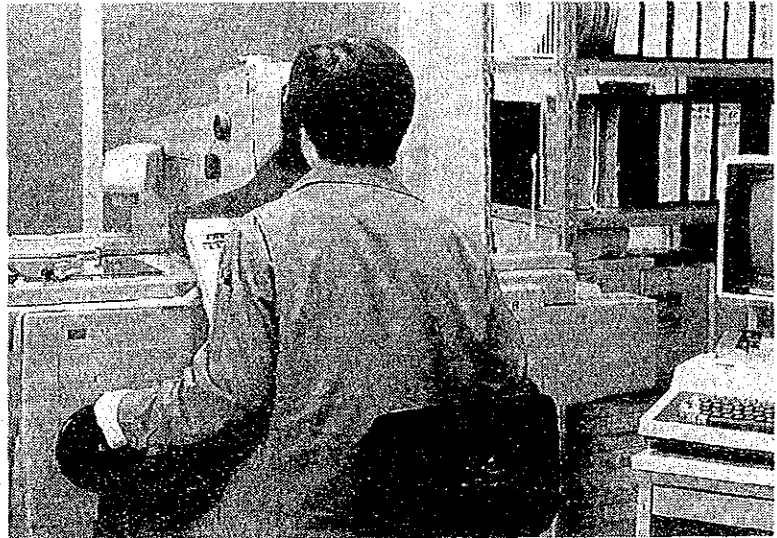
Data Arrangement
and Confirmation
of Geographical
Name (Headquarters
at BMA)

Aerial Triangulation and Plotting



Pricking Device
(PUG-II)

Stereo Comparator
(STECOMETER)

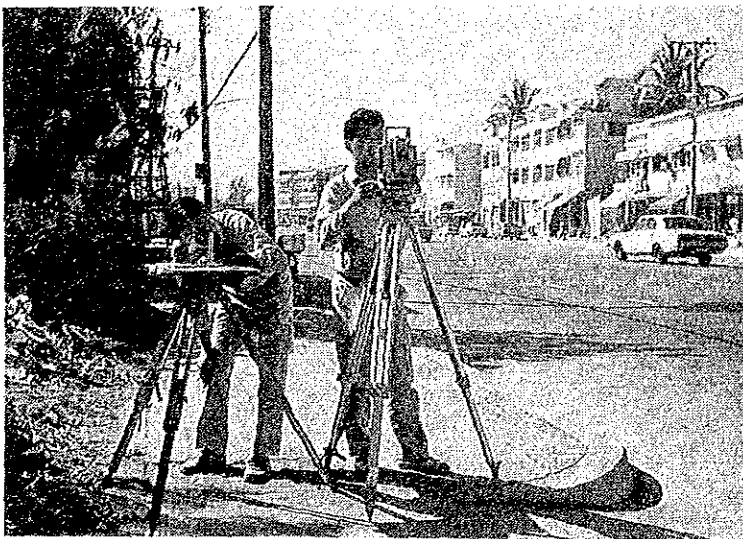
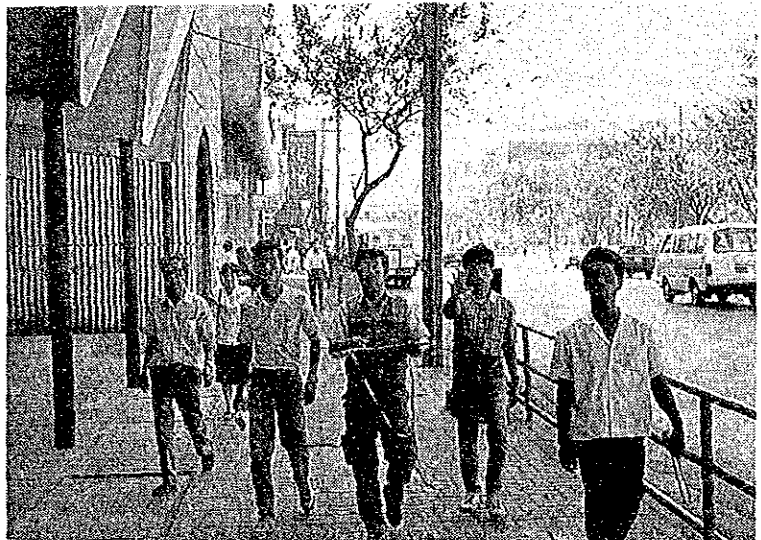


Stereo Plotter
(STEREO PLOTTER A8)



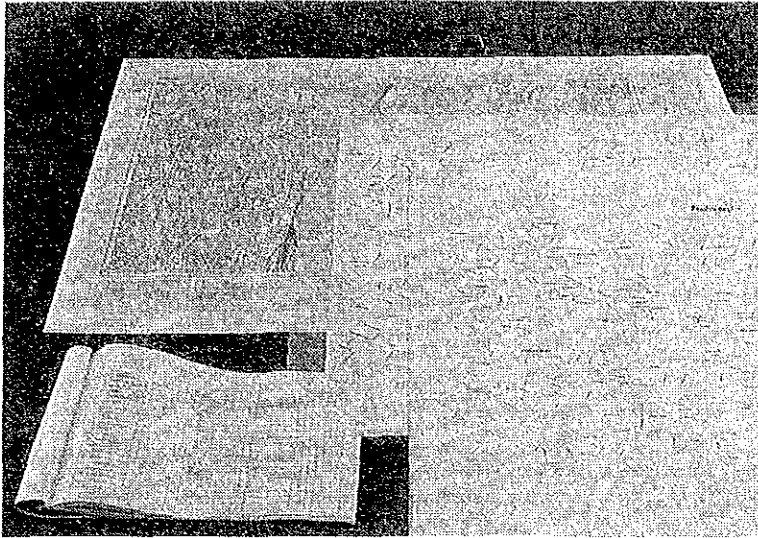
Compilation Work
for 1:4,000
Topographic Map

Field Confirmation
of Planimetric
Features



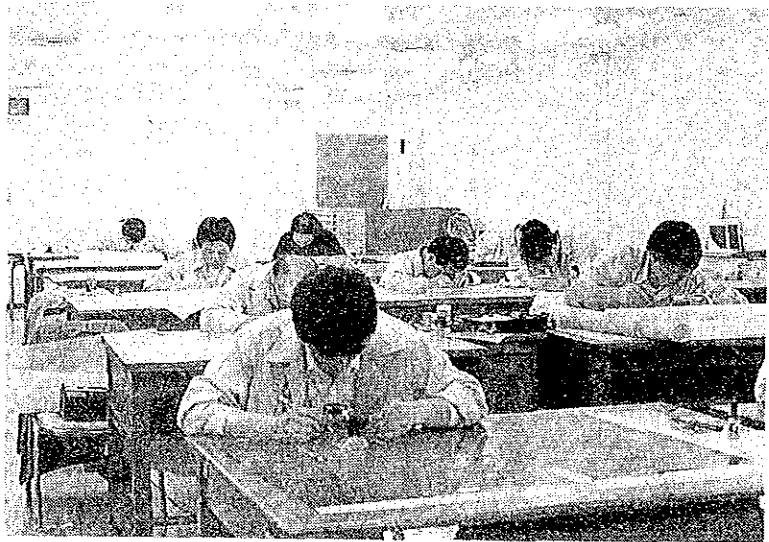
Checking of Planimetry
(TOTAL STATION SET-III
and Plane Table)

Drafting

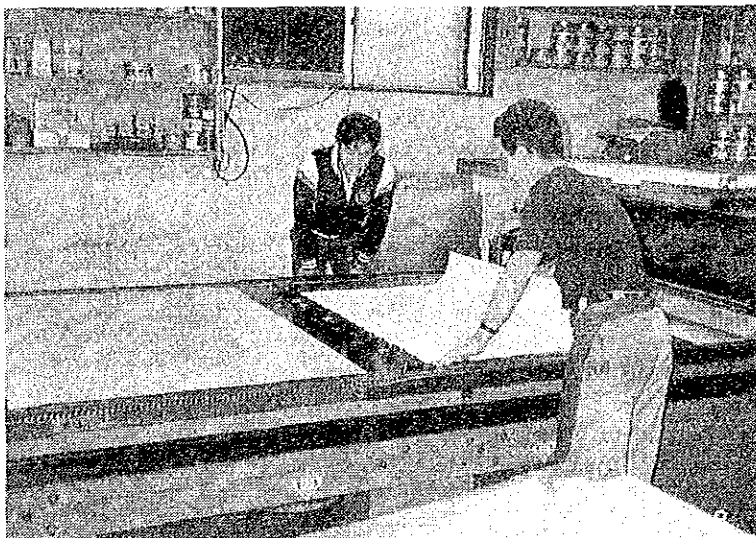


1:4,000 Topographic Map
Final drafting Sheet,
English Annotation Sheet,
Thai Annotation Sheet,
and Annotation List

Drafting of 1:10,000
Topographic Map
(Scribing)



Printing Plate Making



Proofing Copy

