

DAILY WATER LEVEL

station SMA II year 1985

MONTH DAY	1	2	3	4	5	6	7	8	9	10	11	12
1	40	48	38	48	20	62	52	20	15	30	34	46
2	92	42	32	42	20	42	40	40	15	26	34	76
3	50	52	20	48	20	38	30	26	20	24	32	33
4	42	68	38	50	15	23	20	20	18	18	29	39
5	32	42	40	30	20	20	20	15	20	21	54	40
6	60	40	48	20	20	20	20	11	20	20	35	34
7	80	55	58	20	20	20	20	20	20	22	50	26
8	58	48	40	30	20	52	18	20	38	24	34	24
9	80	78	32	30	20	28	18	25	28	21	31	23
10	78	50	30	22	15	20	25	25	20	30	58	20
11	88	45	40	20	52	20	15	20	20	51	46	34
12	55	45	32	31	26	40	15	20	20	48	55	23
13	50	72	20	40	32	28	15	20	20	66	32	24
14	70	50	20	20	22	20	20	15	20	35	52	17
15	65	40	40	20	20	20	20	39	15	25	31	12
16	72	35	40	16	25	20	20	50	15	35	32	11
17	62	32	40	18	22	20	16	20	15	71	64	8
18	78	35	32	20	68	52	12	20	20	29	40	15
19	48	35	32	16	32	25	20	20	20	49	30	30
20	55	30	42	20	20	22	38	16	20	42	31	32
21	58	30	30	28	20	22	38	19	20	72	35	24
22	50	35	30	16	20	20	30	15	20	36	29	32
23	48	35	24	12	20	20	34	15	20	25	56	52
24	58	40	20	15	20	20	20	15	20	78	62	40
25	50	62	20	28	16	32	22	15	20	58	61	23
26	40	40	60	22	15	25	20	15	30	50	80	18
27	45	62	30	32	15	20	20	15	45	30	62	14
28	40	110	32	28	20	28	18	15	68	30	82	18
29	45		25	20	16	20	18	20	30	96	86	11
30	52		65	18	36	28	28	20	68	52	79	12
31	70		42		25	20	20	20		31		13
MAX	92	110	65	48	68	62	52	50	68	96	86	46
TOTAL	1803	1406	1098	760	732	602	622	646	740	784	1436	784
											TOTAL	11,913

DAILY WATER LEVEL

station SMA II year 1984

MONTH DAY	1	2	3	4	5	6	7	8	9	10	11	12
1	18	31	42	15	29	33	22	22	22	22	76	16
2	21	37	24	22	45	16	20	20	28	18	82	42
3	36	28	48	29	33	9	15	15	26	56	37	55
4	23	19	36	20	21	2	11	11	46	29	56	65
5	67	73	17	19	29	50	14	14	26	18	48	26
6	37	73	36	36	10	48	19	19	46	11	31	36
7	64	16	37	50	6	25	7	17	26	28	61	24
8	53	29	26	33	8	29	40	17	30	10	34	44
9	38	28	27	32	14	37	45	50	40	37	71	18
10	33	30	32	26	5	27	48	27	42	30	69	15
11	24	20	22	81	4	30	18	18	25	43	39	33
12	28	29	21	41	22	22	23	22	52	60	35	45
13	17	24	36	117	15	19	12	28	22	52	56	12
14	18	24	30	26	4	12	5	59	53	32	25	38
15	12	14	22	30	4	104	10	59	57	24	21	40
16	10	20	20	38	4	26	5	36	92	35	17	-20
17	8	14	16	63	5	33	18	24	132	25	42	20
18	7	12	18	36	5	21	22	15	38	19	93	14
19	6	12	13	25	3	15	14	13	31	12	61	-10
20	8	10	20	21	6	22	42	14	36	12	37	-8
21	8	7	34	22	4	14	40	8	30	14	26	75
22	9	7	21	35	4	11	18	8	68	12	22	16
23	12	6	31	30	8	44	14	8	80	37	34	9
24	12	14	30	22	7	34	37	12	43	16	85	-5
25	13	28	30	11	50	50	68	34	31	26	31	-20
26	11	22	42	6	75	36	26	30	40	79	54	-30
27	12	81	50	38	29	23	74	18	24	36	27	-30
28	19	33	22	35	16	16	41	13	57	42	65	9
29	17	17	14	21	24	9	33	12	28	42	24	30
30	17	17	12	12	24	61	29	14	22	60	18	40
31	55		13		37		24	9		78		16
MAX	67	99	48	117	75	104	74	59	132	80	99	65
TOTAL	697	685	840	977	496	935	1265	847	1311	1035	1412	673
											TOTAL	1118

DAILY WATER LEVEL

Jamb. station Ci Kuning year 1986

MONTH DAY	1	2	3	4	5	6	7	8	9	10	11	12
1	0.20	0.20	0.30	0.30	0.20	0.21		1.04	1.04	1.05	0.80	0.70
2	0.20	0.20	0.20	0.28	0.20	0.20		1.04	1.04	1.04	0.77	0.75
3	0.20	0.25	0.20	0.33	0.20	0.28		1.05	1.04	1.02	0.78	0.75
4	0.20	0.20	0.20	0.22	0.20	0.31		1.04	1.03	1.02	0.80	0.80
5	0.20	0.25	0.40	0.20	0.20	0.31		1.04	1.04	1.03	0.75	0.78
6	0.32	0.20	0.20	0.20	0.20	0.23		1.05	1.04	1.04	0.72	0.68
7	0.20	0.25	0.28	0.20	0.20	0.20		1.05	1.04	1.04	0.77	0.68
8	0.28	0.20	0.30	0.20	0.20	0.20		1.04	1.04	1.04	0.80	0.80
9	0.20	0.20	0.40	0.20	0.35	0.20		1.05	1.01	1.03	0.80	0.80
10	0.20	0.20	0.20	0.20	0.20	0.20		1.05	1.01	1.03	0.80	0.80
11	0.25	0.20	0.20	0.20	0.20	0.20		1.06	1.02	0.90	0.78	0.80
12	0.32	0.20	0.20	0.35	0.20	0.31		1.05	1.04	1.04	0.72	0.80
13	0.25	0.30	0.20	0.20	0.25	0.30		1.04	1.04	1.03	0.77	0.80
14	0.20	0.20	0.20	0.28	0.20	0.23		1.04	1.04	1.02	0.77	0.73
15	0.28	0.25	0.25	0.20	0.20	0.20		1.04	1.04	1.00	0.75	0.78
16	0.25	0.20	0.20	0.20	0.20	0.20		1.05	1.02	0.89	0.80	0.80
17	0.25	0.20	0.25	0.20	0.20	0.20		1.05	1.04	0.96	0.77	0.80
18	0.20	0.30	0.28	0.20	0.20	0.25		1.04	1.04	0.83	0.73	0.71
19	0.20	0.20	0.20	0.20	0.20	0.25		1.04	1.03	1.02	0.72	0.75
20	0.20	0.20	0.20	0.25	0.20	0.30		1.04	1.02	1.03	0.71	0.77
21	0.28	0.25	0.20	0.35	0.20	0.25		1.04	1.02	0.79	0.78	0.78
22	0.25	0.25	0.20	0.20	0.20	0.35		1.05	1.01	0.90	0.80	0.78
23	0.20	0.20	0.20	0.25	0.20	0.33		1.04	1.03	0.80	0.77	0.80
24	0.25	0.30	0.20	0.20	0.20	0.25		1.04	1.01	0.80	0.73	0.80
25	0.20	0.30	0.20	0.35	0.20	0.21		1.05	1.02	0.80	0.77	0.72
26	0.20	0.20	0.40	0.20	0.33	0.20		1.05	1.02	0.84	0.73	0.80
27	0.35	0.20	0.20	0.30	0.20	0.20		1.04	1.02	1.03	0.78	0.72
28	0.25	0.30	0.20	0.20	0.20	0.20		1.05	0.83	0.78	0.77	0.80
29	0.20		0.25	0.20	0.20	0.15		1.04	0.83	1.03	0.72	0.80
30	0.20		0.28	0.20	0.20	0.15		1.06	1.02	1.03	0.63	0.90
31	0.25		0.25	0.20	0.20	0.17		1.04		0.99		0.70
MAX	0.35	0.30	0.40	0.35	0.35	0.30		1.06	1.04	1.06	0.70	0.80
TOTAL		6.40	6.41	7.06	6.53	7.24		52.7	52.7	52.7	TOTAL	52.7

DAILY WATER LEVEL

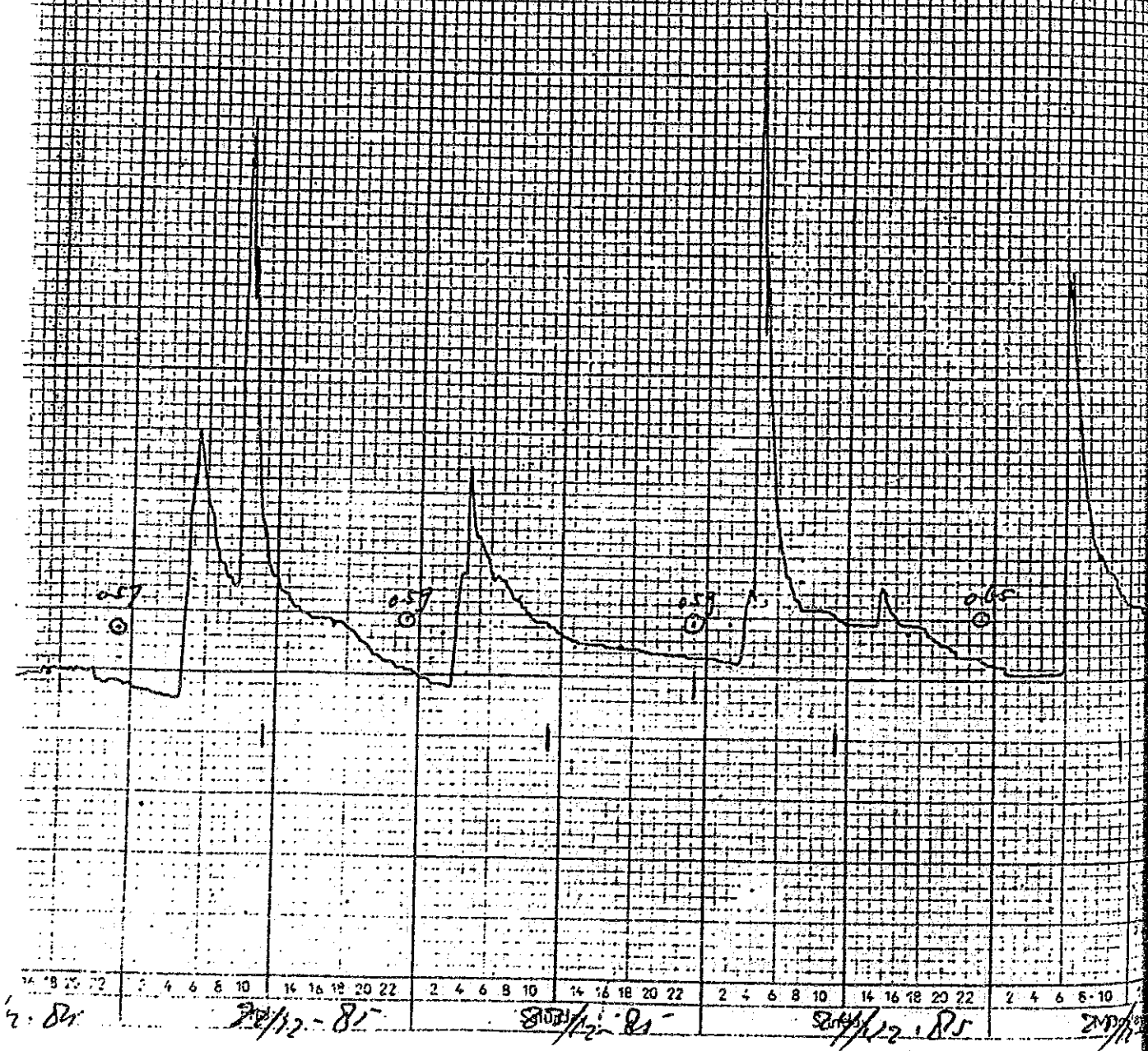
Jemb.
station Cikambar year 1986

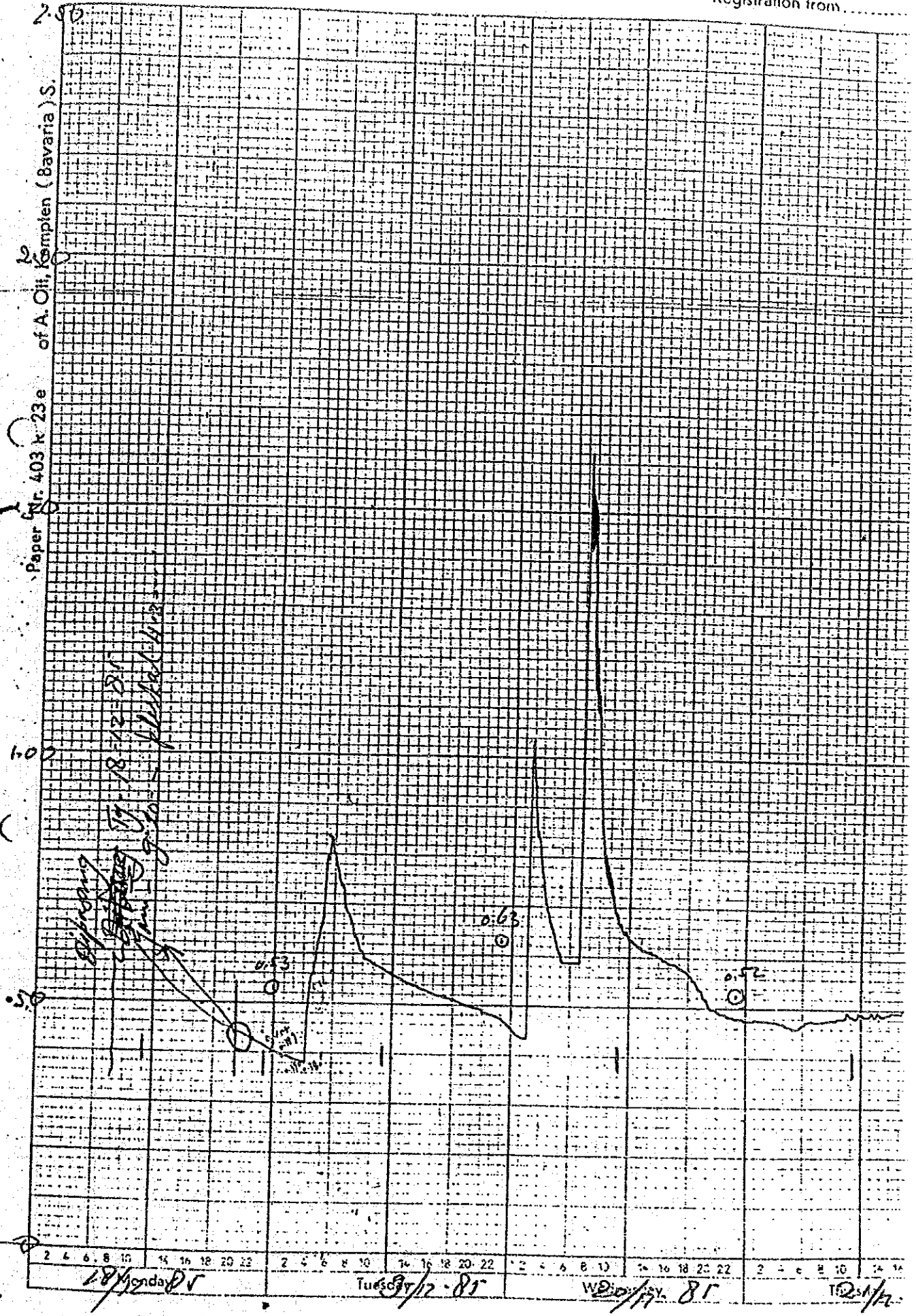
MONTH DAY	1	2	3	4	5	6	7	8	9	10	11	12
1	0.90	0.86	0.80	0.70	0.60	0.53	0.80	1.13	1.16	0.93	0.83	0.90
2	0.80	0.80	0.75	0.60	0.50	0.48	0.86	1.18	1.15	0.90	0.79	0.91
3	0.75	0.80	0.80	0.70	0.60	0.58	0.84	1.14	1.12	0.88	0.86	0.92
4	0.80	0.80	0.80	0.70	0.60	0.50	0.84	1.14	1.16	0.88	0.80	0.91
5	0.90	0.70	0.58	0.60	0.50	0.40	0.90	1.17	1.16	0.51	0.83	0.97
6	0.76	0.80	0.53	0.60	0.50	0.55	0.86	1.24	1.16	0.08	0.82	0.91
7	0.80	0.78	0.58	0.60	0.55	0.55	0.90	1.17	1.16	0.10	0.79	0.92
8	0.80	0.80	0.58	0.60	0.55	0.55	0.86	1.17	1.10	0.06	0.89	0.94
9	0.75	0.78	0.58	0.60	0.55	0.50	0.80	1.15	1.14	0.06	0.90	0.97
10	0.64	0.71	0.68	0.60	0.58	0.60	0.90	1.15	1.15	0.88	0.88	1.07
11	0.80	0.70	0.58	0.60	0.50	0.45	0.90	1.16	1.21	0.45	0.70	1.06
12	0.72	0.55	0.58	0.60	0.48	0.48	0.88	1.17	1.15	0.78	0.91	1.05
13	0.80	0.73	0.70	0.60	0.58	0.60	0.81	1.17	0.92	0.64	0.92	0.94
14	0.80	0.73	0.55	0.60	0.58	0.58	0.75	1.19	1.15	0.78	0.88	0.88
15	0.90	0.80	0.65	0.60	0.60	0.60	0.81	1.16	1.12	0.75	0.94	0.84
16	0.80	0.70	0.58	0.60	0.56	0.60	0.88	1.14	1.09	0.74	1.01	0.91
17	0.75	0.76	0.58	0.60	0.53	0.60	0.83	1.11	1.10	0.86	0.93	0.91
18	0.76	0.80	0.78	0.60	0.60	0.60	0.88	1.10	1.10	0.20	0.95	0.93
19	0.76	0.80	0.78	0.60	0.60	0.60	0.74	1.14	0.99	0.83	0.69	0.92
20	0.80	0.80	0.45	0.60	0.60	0.50	0.70	1.14	0.94	0.31	0.84	1.03
21	0.78	0.80	0.54	0.60	0.60	0.60	0.68	1.13	0.90	0.18	0.87	1.05
22	0.69	0.80	0.60	0.60	0.60	0.43	0.69	1.15	0.63	0.23	0.92	1.17
23	0.80	0.80	0.58	0.60	0.60	0.48	0.71	1.16	0.84	0.49	0.52	1.10
24	0.65	0.80	0.58	0.60	0.60	0.45	0.78	1.13	0.90	0.51	0.75	1.01
25	0.76	0.80	0.58	0.60	0.60	0.45	0.88	1.16	0.98	0.84	0.44	1.12
26	0.80	0.80	0.60	0.60	0.60	0.49	0.88	1.12	0.65	0.23	0.84	1.07
27	0.80	0.80	0.60	0.60	0.45	0.45	0.88	1.15	0.60	0.73	0.91	1.10
28	0.78	0.80	0.60	0.60	0.45	0.48	0.91	1.14	0.53	0.83	0.96	1.22
29	0.90	0.80	0.60	0.60	0.40	0.35	0.88	1.14	0.81	0.63	0.95	1.04
30	0.80	0.80	0.54	0.60	0.35	0.35	0.90	1.13	0.25	0.61	0.44	1.14
31	0.66	0.80	0.62	0.60	0.35	0.35	0.92	1.13	0.79	0.79	1.00	1.00
MAX	0.90	0.80	0.80	0.60	0.60	0.60	0.93	1.34	0.94	0.93	1.01	1.23
TOTAL	23.92	19.55	18.74	16.56	16.72	15.42	26.17	35.81	29.96	16.24	25.16	30.65
											TOTAL	274.71

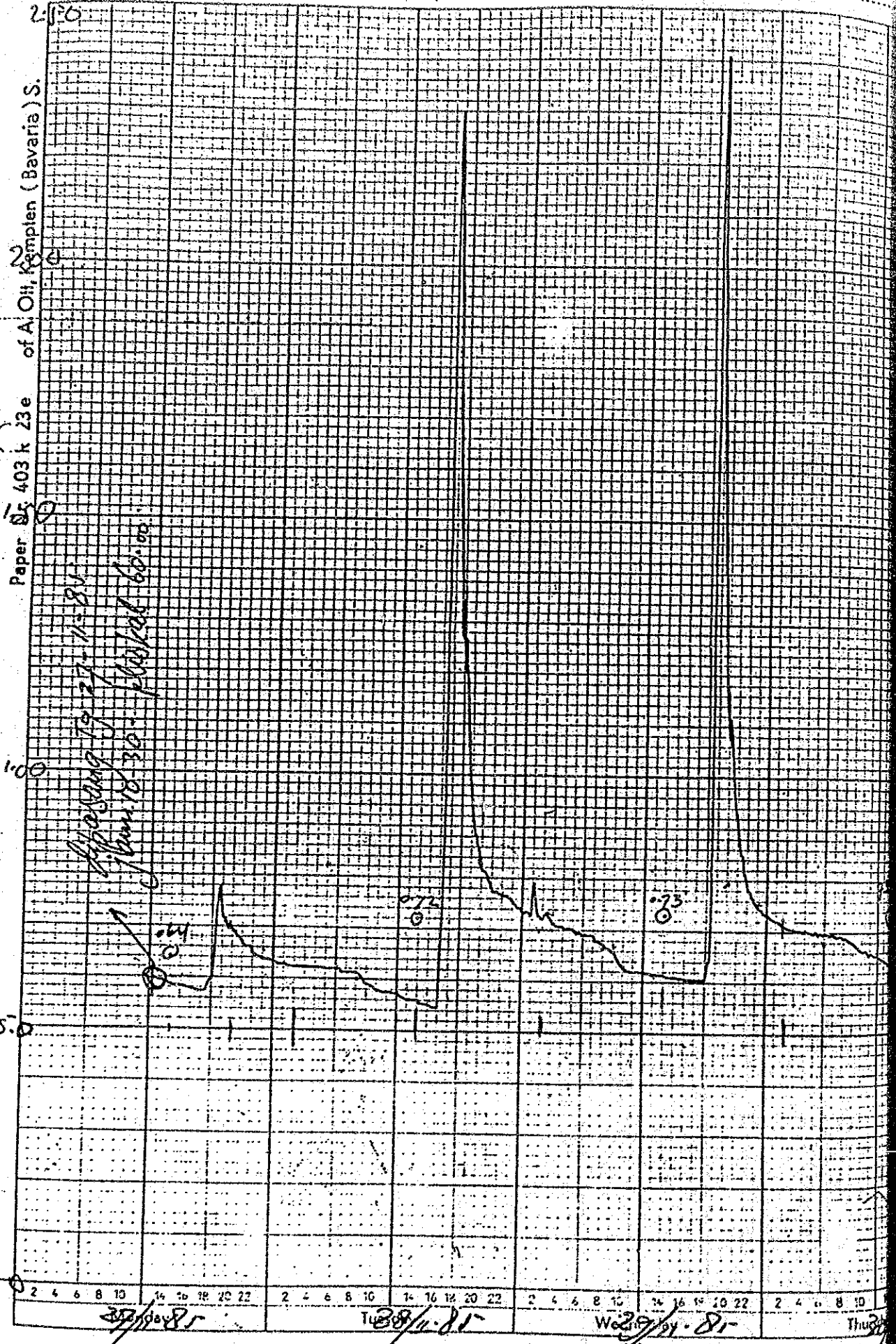
Janb. station C/160117 year 1987

DAILY WATER LEVEL

MONTH DAY	1	2	3	4	5	6	7	8	9	10	11	12
1	1.08	1.15	1.11			1.22	1.22					
2	1.12	1.07	1.04			1.21	1.25					
3	1.12	1.15	0.90			1.24	1.24					
4	1.07	1.19	1.10			1.28	1.26					
5	1.09	1.15	1.02			1.23	1.31					
6	1.14	1.11	1.05			1.19	1.14					
7	1.15	1.07	1.10			1.16	1.18					
8	1.09	1.15	1.11			1.17	1.23					
9	1.13	1.10	1.14			1.14	1.21					
10	1.07	1.18	1.16			1.23	1.20					
11	1.10	1.13	1.23			1.25	1.25					
12	1.13	1.10	1.23			1.25	1.27					
13	1.14	1.03	1.10			1.24	1.28					
14	1.16	1.06	1.12			1.26	1.19					
15	1.05	1.13	1.10			1.27	1.17					
16	1.12	1.07	1.16			1.28	1.09					
17	1.13	1.18	1.12			1.27	1.12					
18	1.15	1.19	1.17			1.30	1.07					
19	1.05	1.14	1.20			1.31	1.11					
20	1.15	1.19	1.10			1.31	1.16					
21	1.65	1.13	1.10			1.22	1.19					
22	1.18	1.15	1.11			1.23	1.10					
23	1.17	1.19	1.12			1.35	1.24					
24	1.13	1.10	1.14			1.13	1.24					
25	1.12	1.10	1.15			1.14	1.26					
26	0.45	1.04	1.12			1.16	1.26					
27	1.07	1.09	1.14			1.09	1.28					
28	1.07	1.08	1.18			1.13	1.28					
29	1.11		1.19			1.15	1.31					
30	1.12		1.17			1.19	1.32					
31	1.11		1.18				1.32					
MAX	1.18	1.19	1.23			1.35	1.32					
TOTAL	34.56	31.51	34.70			36.80	36.38					
												TOTAL

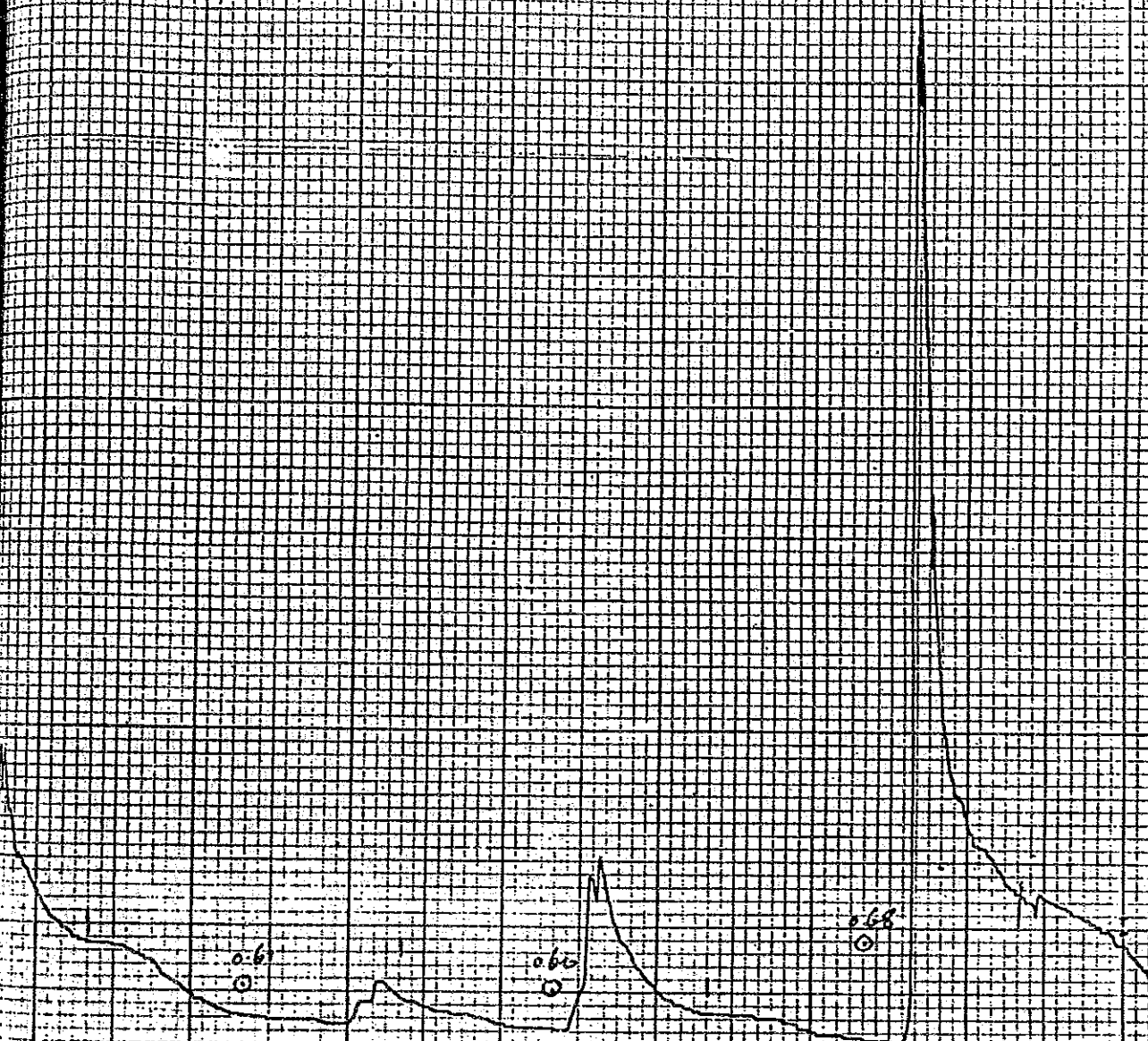






F 18655

15



2 4 6 8 10 14 16 18 20 22

Fri 27/10-85

2 4 6 8 10 14 16 18 20 22

Sat 28/10-85

2 4 6 8 10 14 16 18 20 22

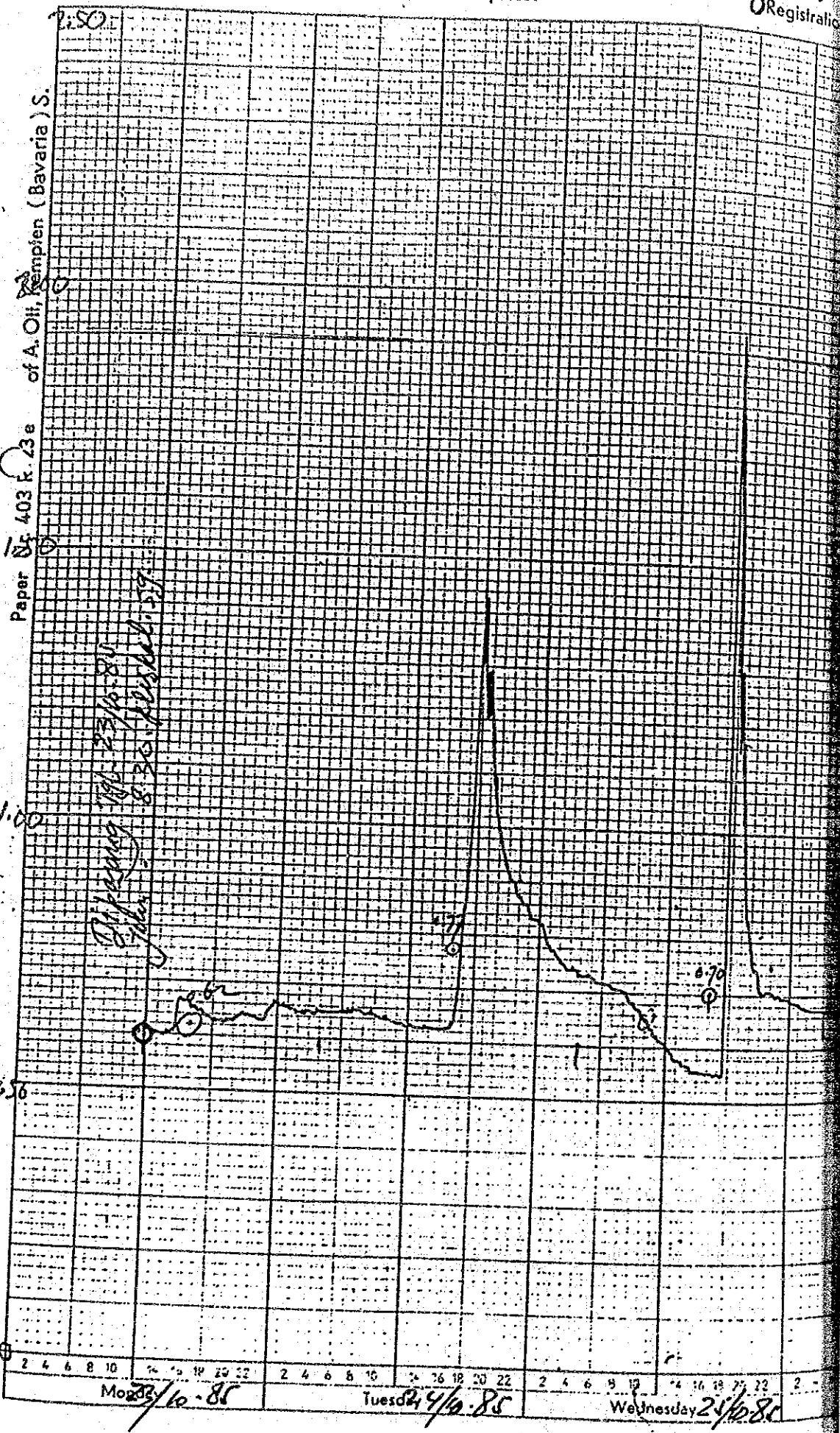
Sund 29/10-85

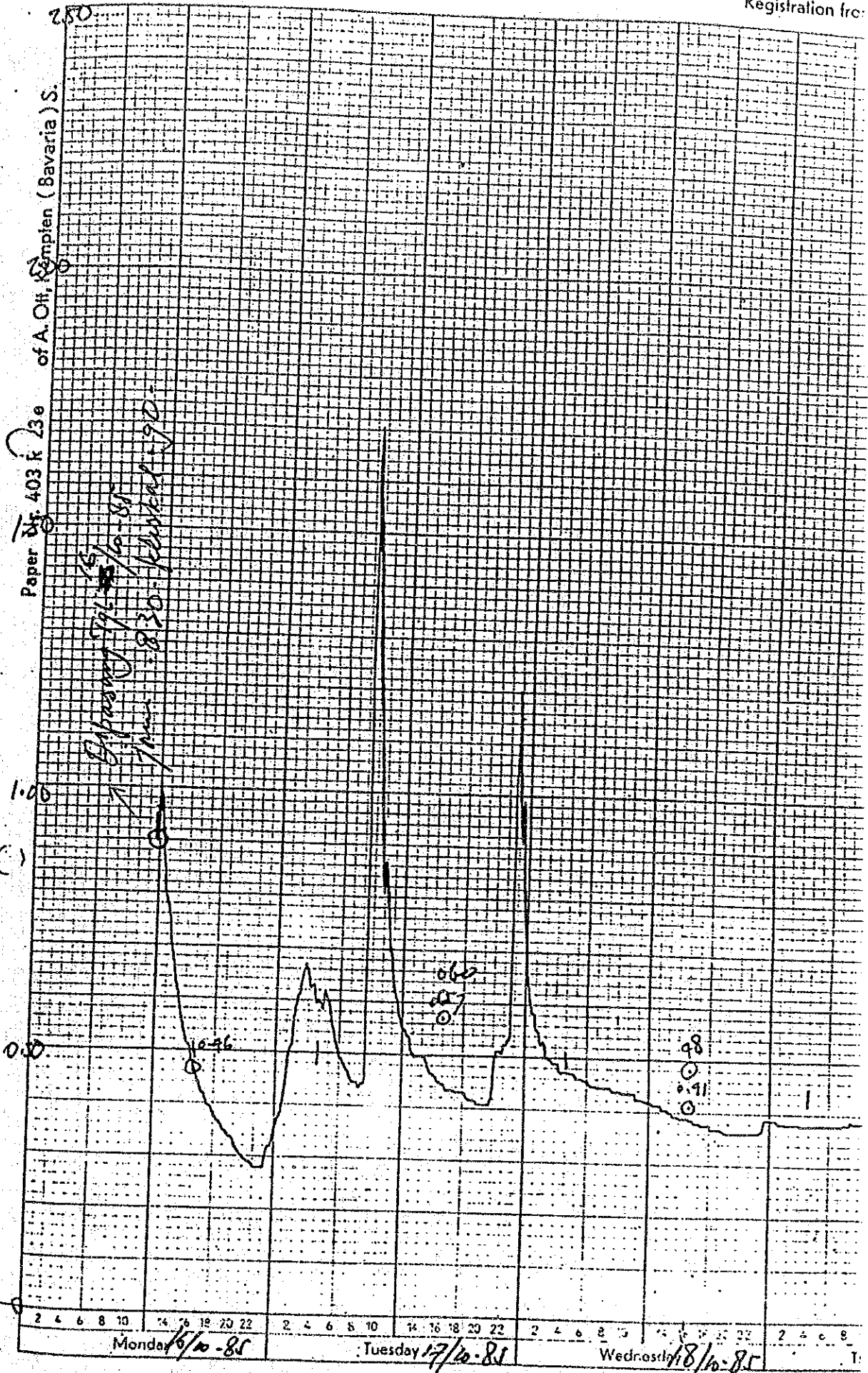
2 4 6 8 10 14 16

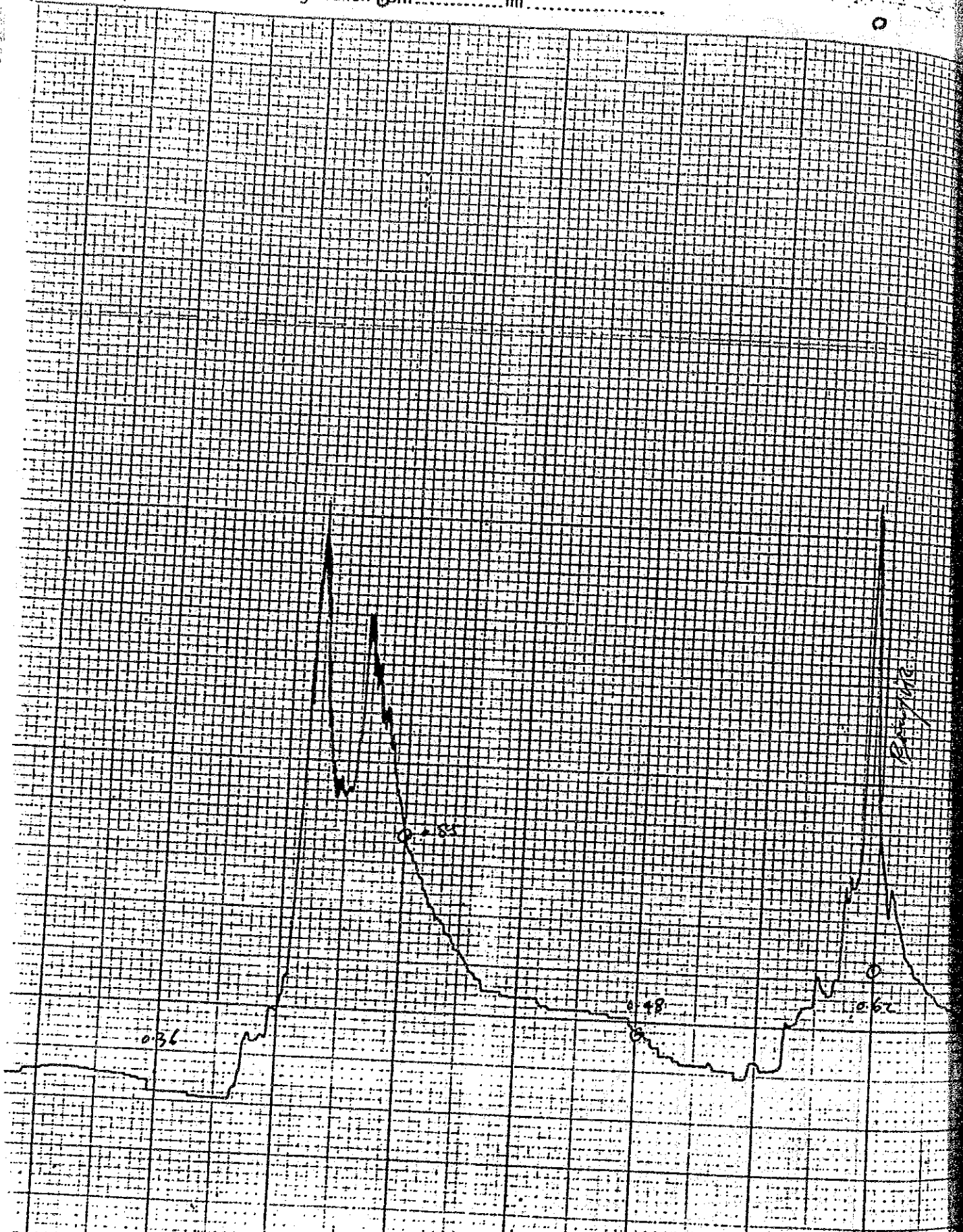
Mon 30/10-85

Station Sukaratu River e.loseh

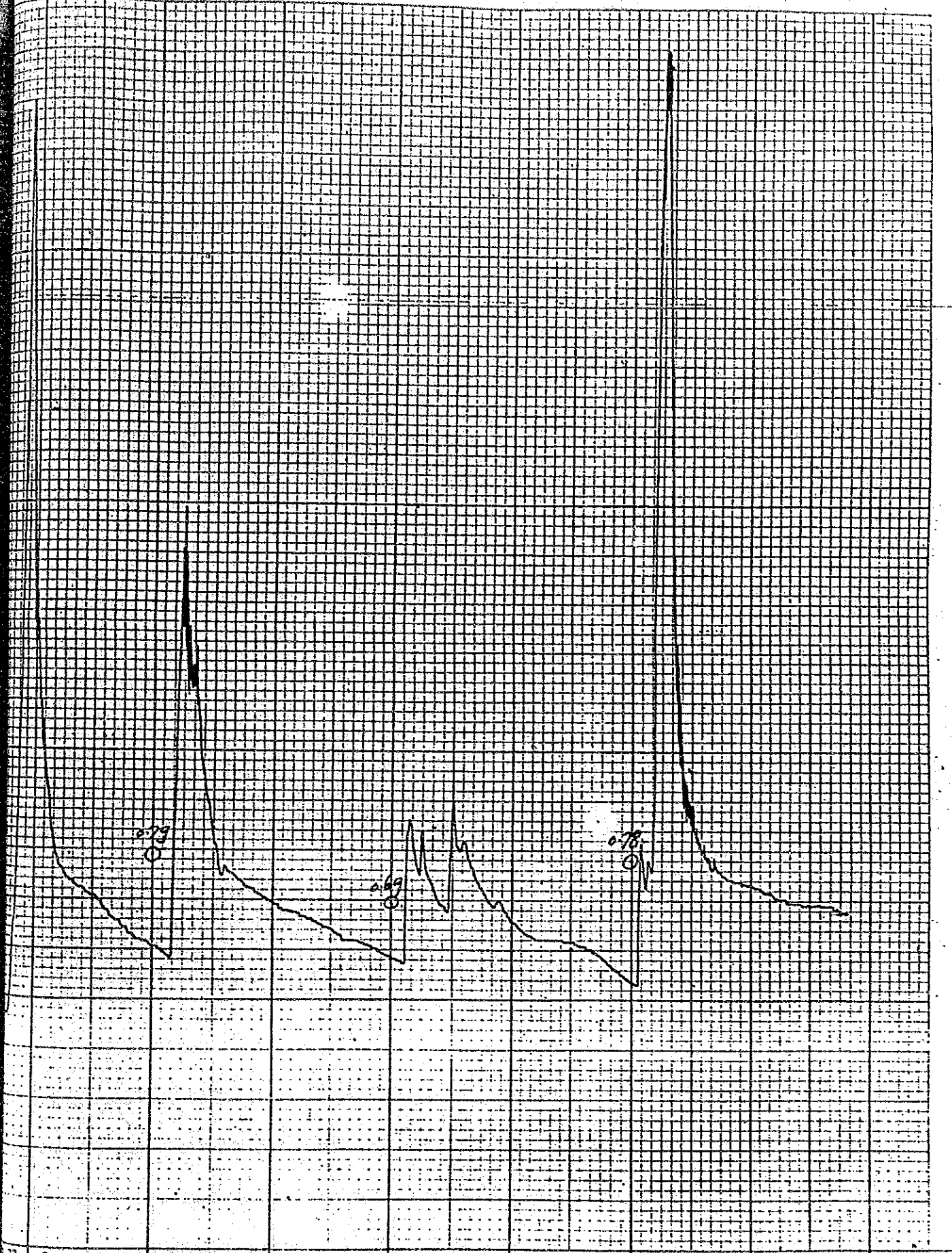
Registration



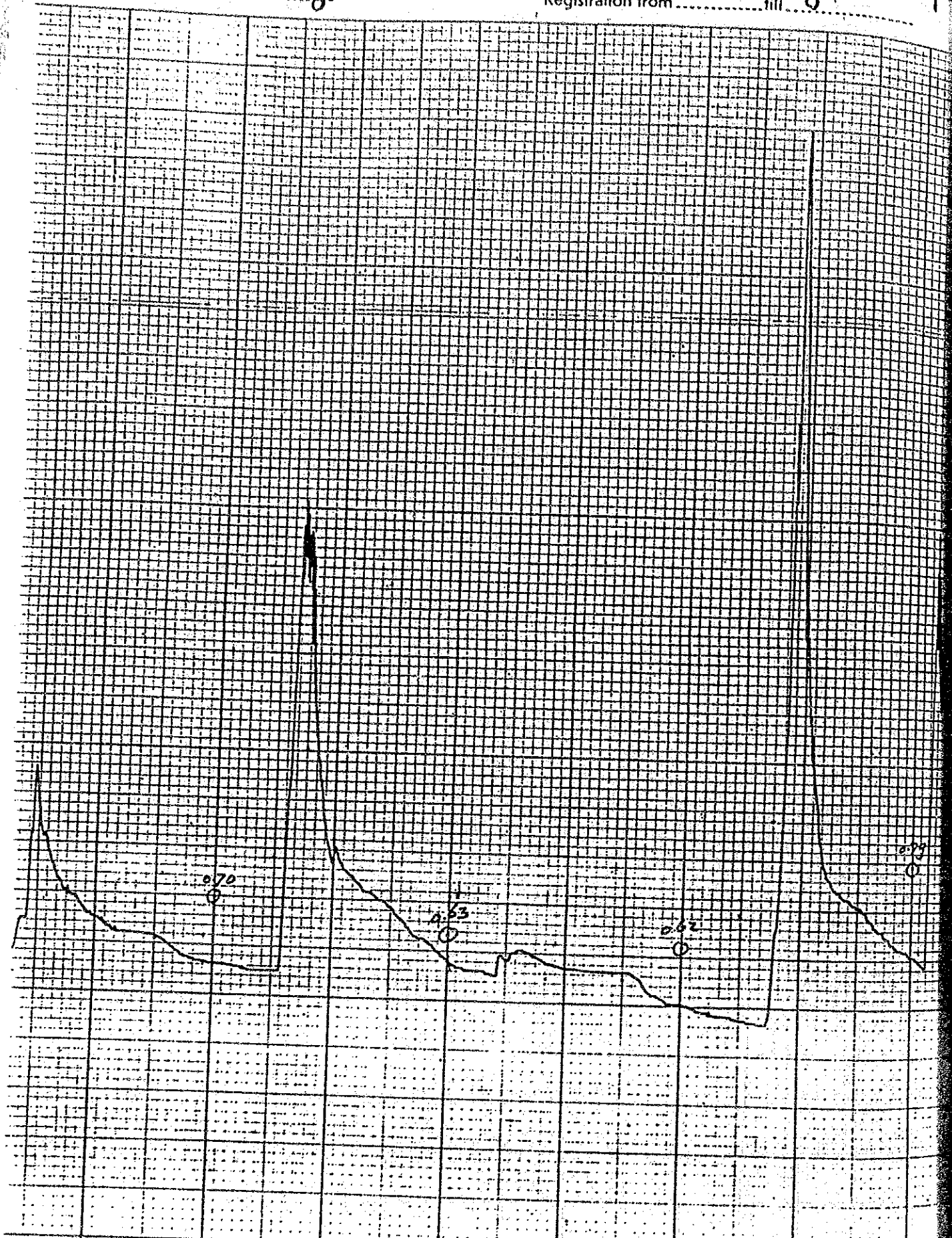




2 4 6 8 10 12 14 16 18 20 22
 Wed 29/9-85
 2 4 6 8 10 12 14 16 18 20 22
 Thu 30/9-85
 2 4 6 8 10 12 14 16 18 20 22
 Fri 30/9-85
 2 4 6 8 10 12 14 16 18 20 22
 Sat 1/10-85

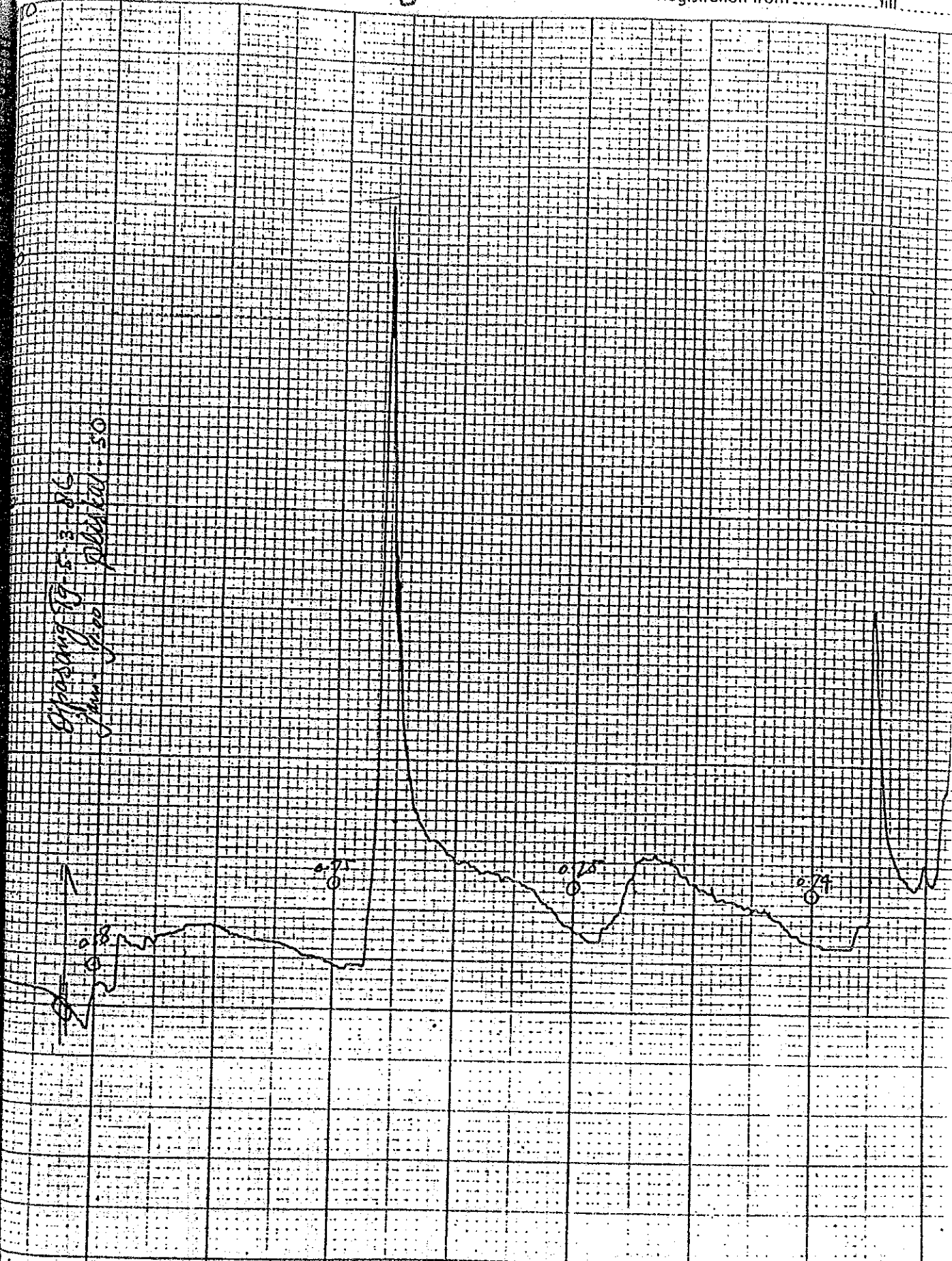


72 2 4 6 8 10 14 16 18 20 22 2 4 6 8 10 14 16 18 20 22 2 4 6 8 10 14 16 18 20 22 2 4 6 8 10 14 16
Friday - 86 Saturday 86 Sunday 86 Monday 86

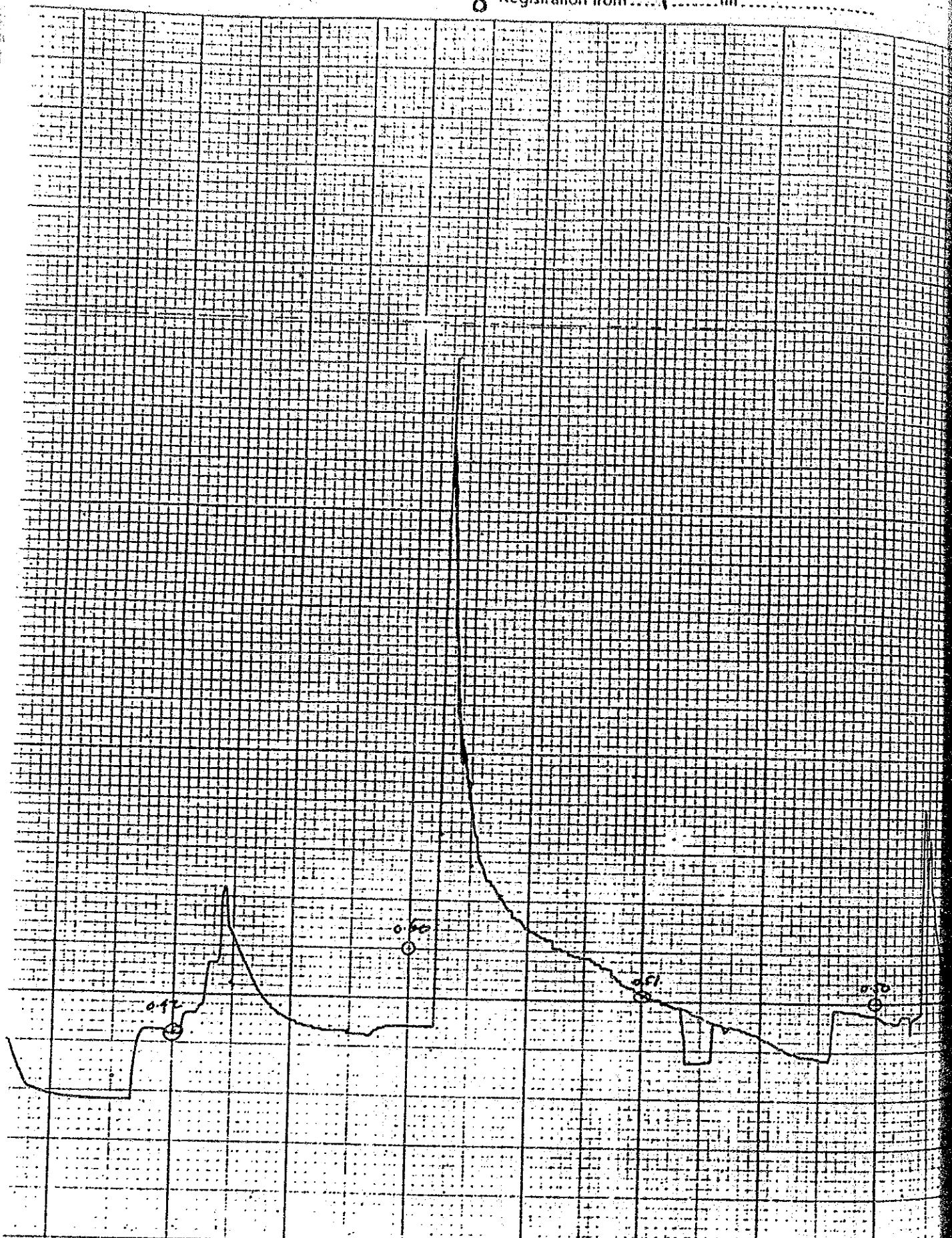


18 20 22	2 4 6 8 10	14 16 18 20 22	2 4 6 8 10	14 16 18 20 22	2 4 6 8 10	14 16 18 20 22	2 4 6 8 10
Tue 3/29/86		Wed 3/30/86		Thu 3/31/86		Fri 4/1/86	

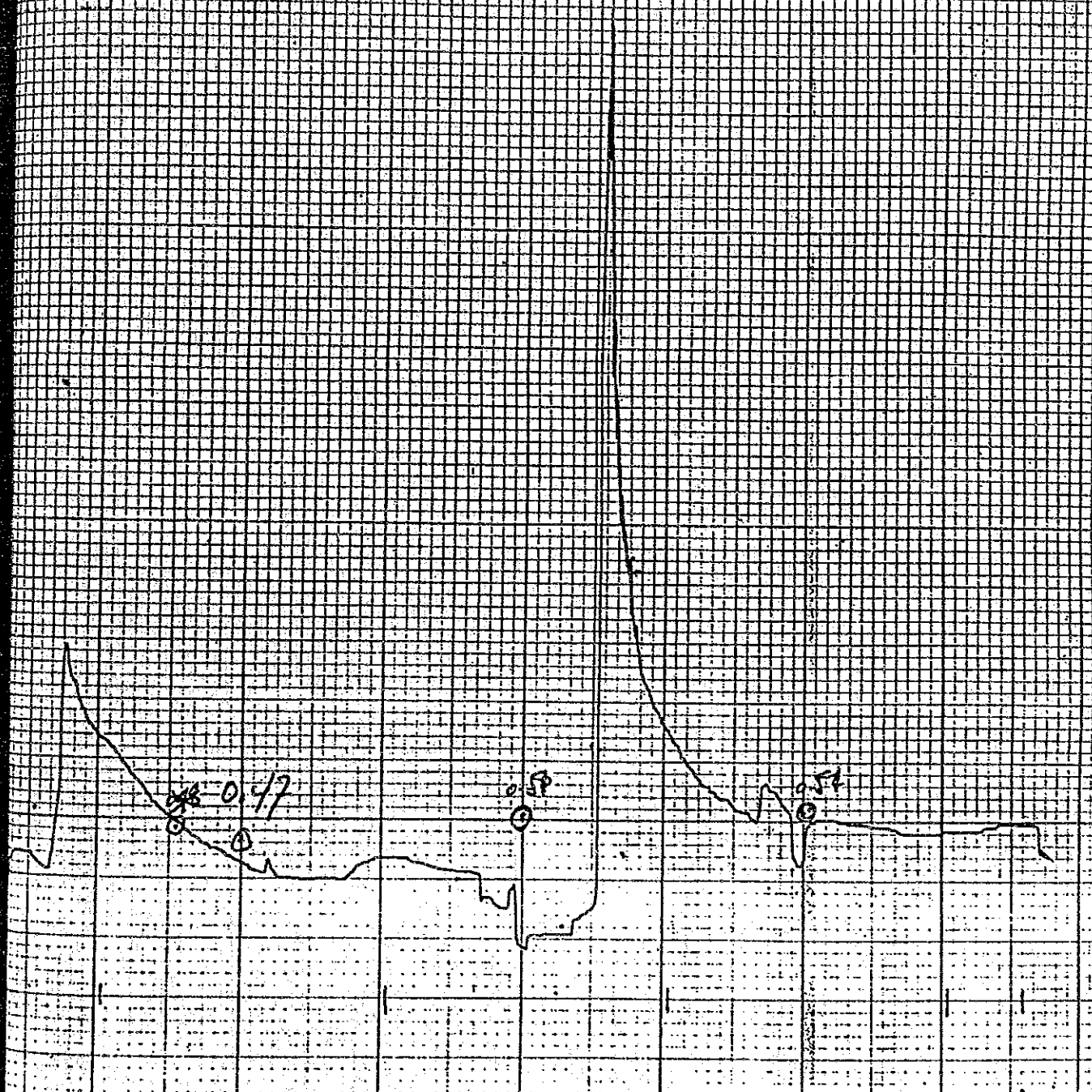
1986
 10/23
 10/24
 10/25
 10/26
 10/27
 10/28
 10/29
 10/30
 10/31
 11/1
 11/2
 11/3
 11/4
 11/5
 11/6
 11/7
 11/8
 11/9
 11/10
 11/11
 11/12
 11/13
 11/14
 11/15
 11/16
 11/17
 11/18
 11/19
 11/20
 11/21
 11/22
 11/23
 11/24
 11/25
 11/26
 11/27
 11/28
 11/29
 11/30
 12/1
 12/2
 12/3
 12/4
 12/5
 12/6
 12/7
 12/8
 12/9
 12/10
 12/11
 12/12
 12/13
 12/14
 12/15
 12/16
 12/17
 12/18
 12/19
 12/20
 12/21
 12/22
 12/23
 12/24
 12/25
 12/26
 12/27
 12/28
 12/29
 12/30
 12/31



6 8 10 14 16 18 20 22 2 4 6 8 10 14 16 18 20 22 2 4 6 8 10 14 16 18 20 22 2 4 6 8 10 14 16 18 20 22
 Monday 86 Tuesday 86 Wednesday 86 Thursday 86

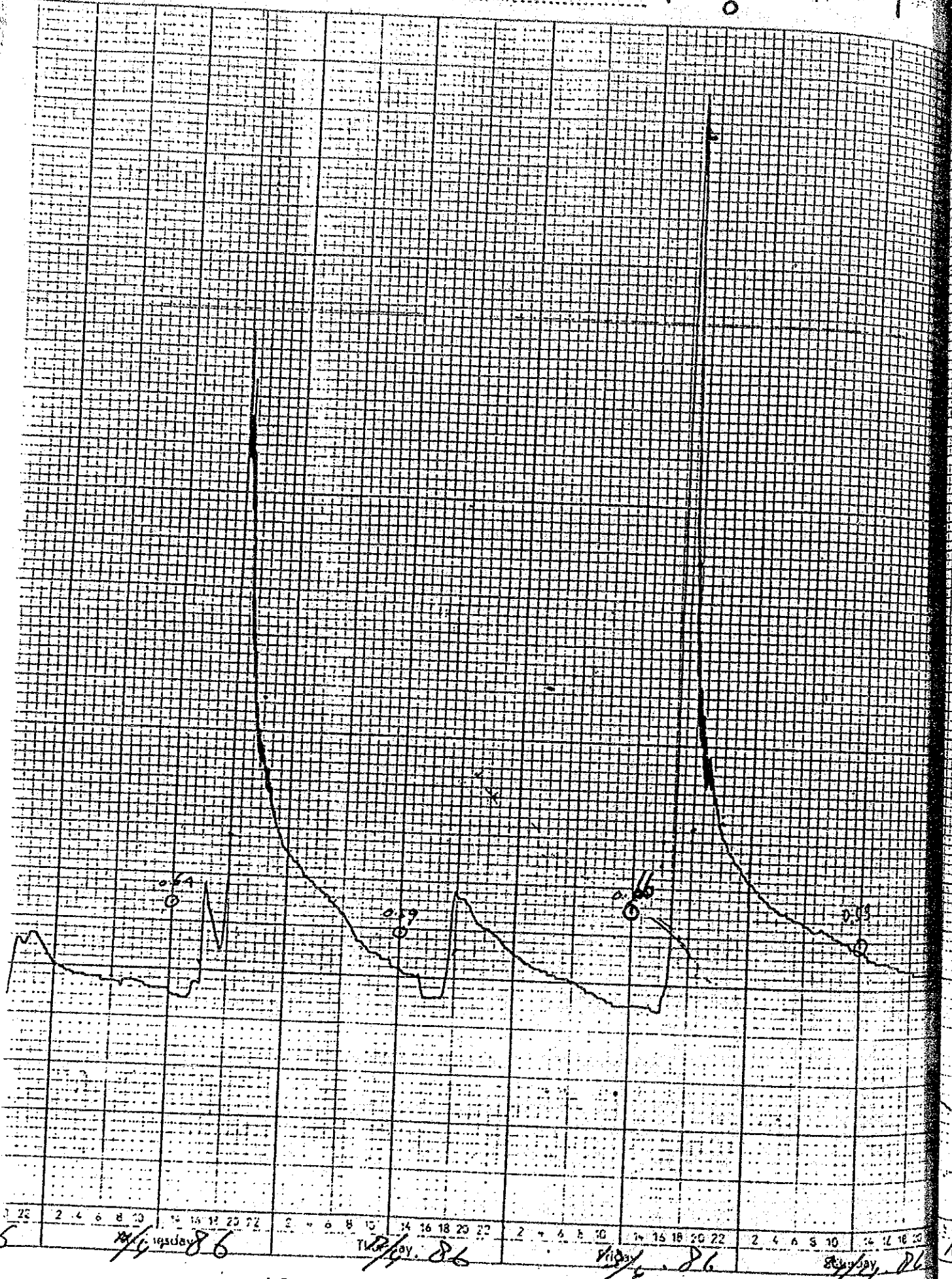


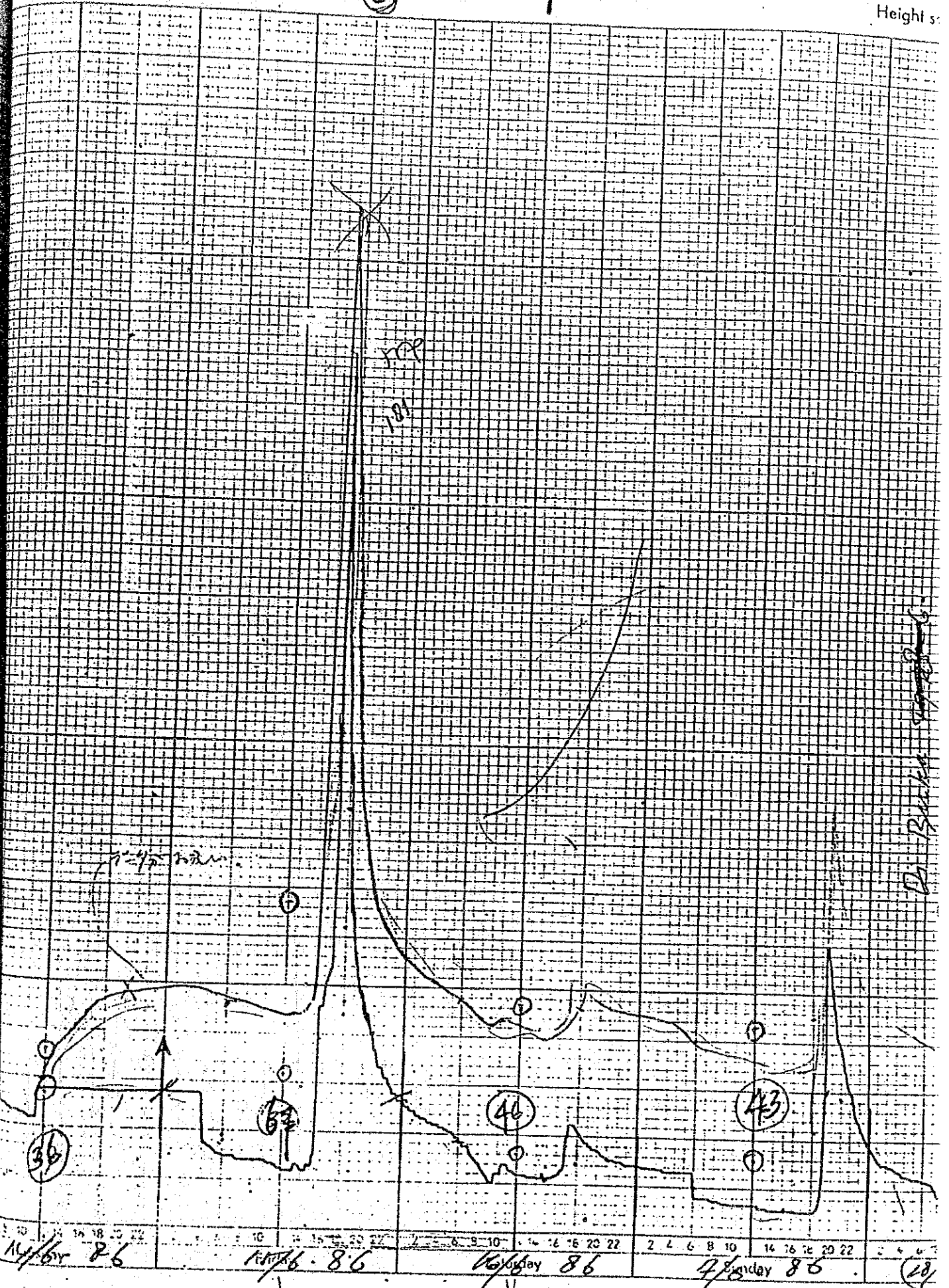
6
Tues 20/3-86
Wed 21/3-86
Thu 22/3-86
Fri 23/3-86
6



8 18 20 22 2 4 6 8 10 12 14 16 18 20 22 2 4 6 8 10 12 14 16 18 20 22 2 4 6 8 10 12 14 16 18 20 22 2 4 6 8 10 12 14 16 18 20 22

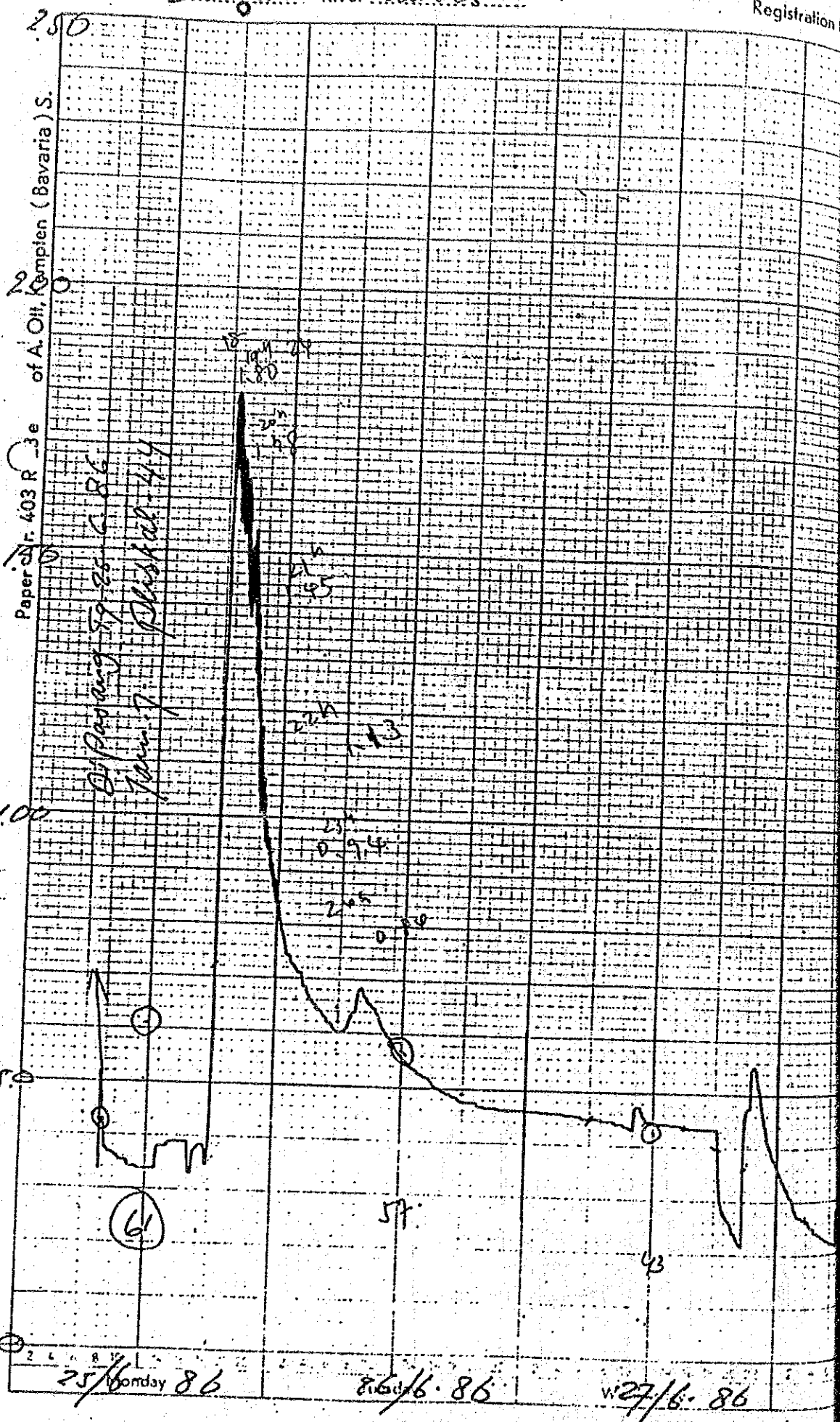
86 Fida 86 86 86 86





D. B. ...

14/6/86	15/6/86	16/6/86	17/6/86	(18)
---------	---------	---------	---------	------



F 18165