

REPORT
ON
THE MINERAL EXPLORATION
IN
PERAK, MALAYSIA

(PHASE I)

MARCH 1989

JAPAN INTERNATIONAL COOPERATION AGENCY
METAL MINING AGENCY OF JAPAN

MPN
CR(3)
89-19



REPORT ON THE MINERAL EXPLORATION
IN PERAK, MALAYSIA

(PHASE I)

MARCH 1989

M
I
C

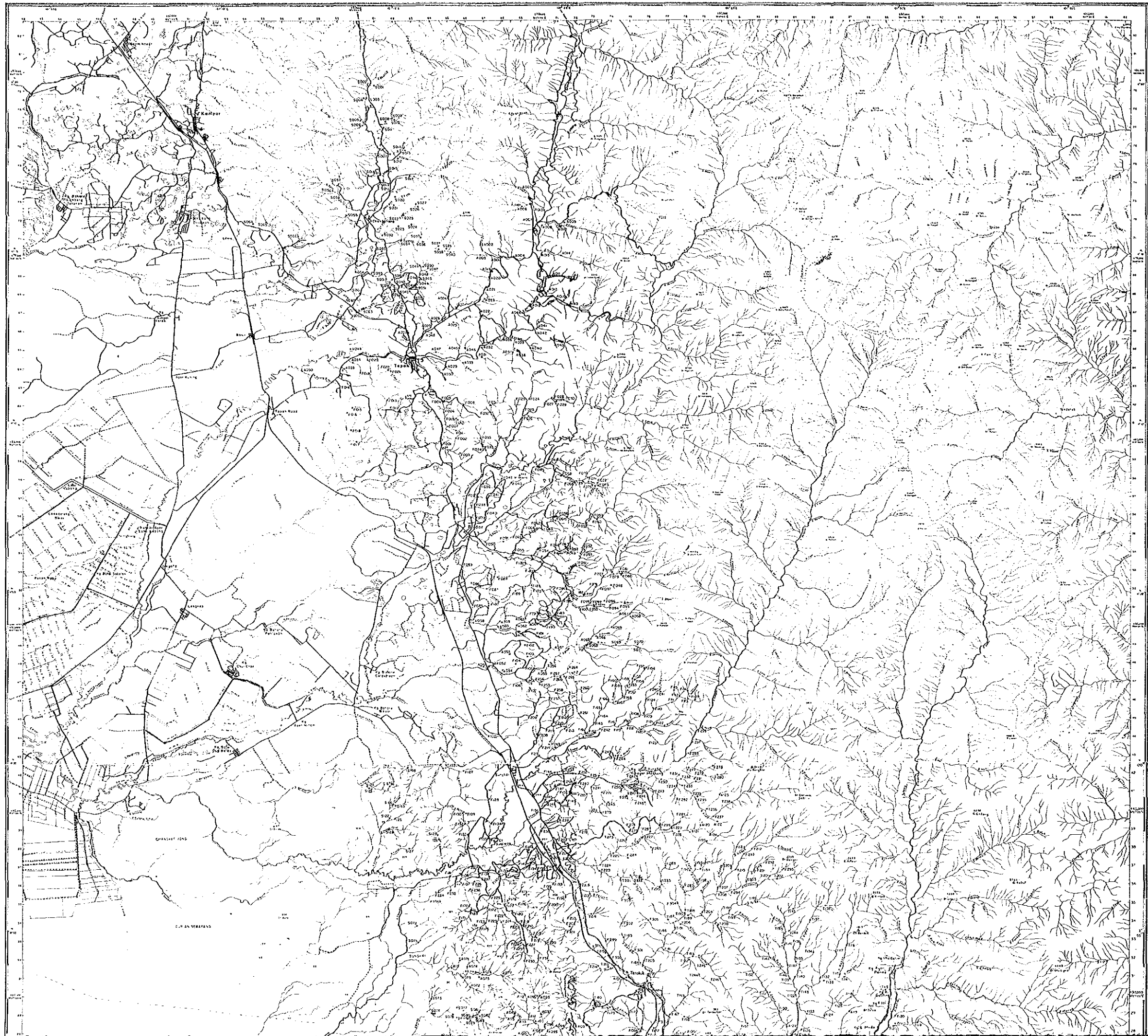
JICA
113
66.1
MPN
LIBRARY



JICA LIBRARY

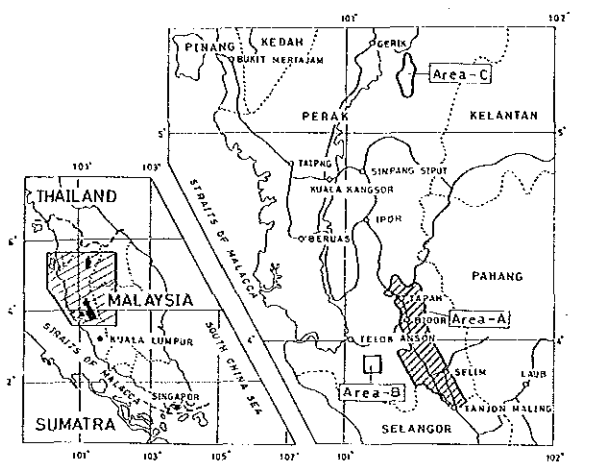


107248053

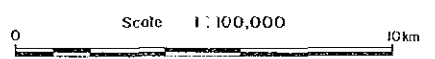


MINERAL EXPLORATION
IN
PERAK, MALAYSIA
PHASE I

Location Map of the Stream Sediment Samples
(Concentrates and Silts), Area A



JAPAN INTERNATIONAL COOPERATION AGENCY
METAL MINING AGENCY OF JAPAN
GEOLOGICAL SURVEY OF MALAYSIA



LEGEND

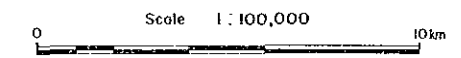
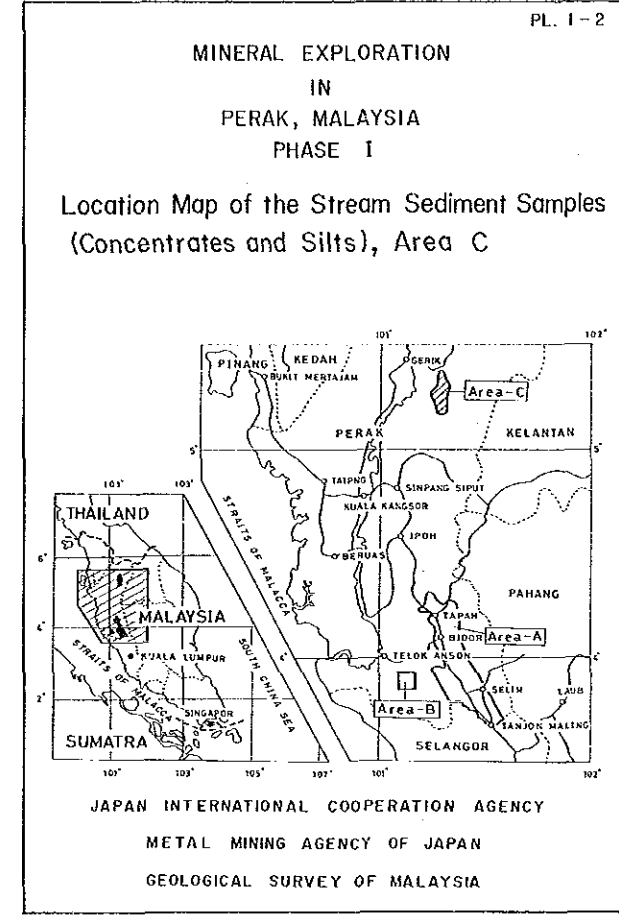
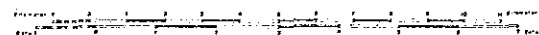
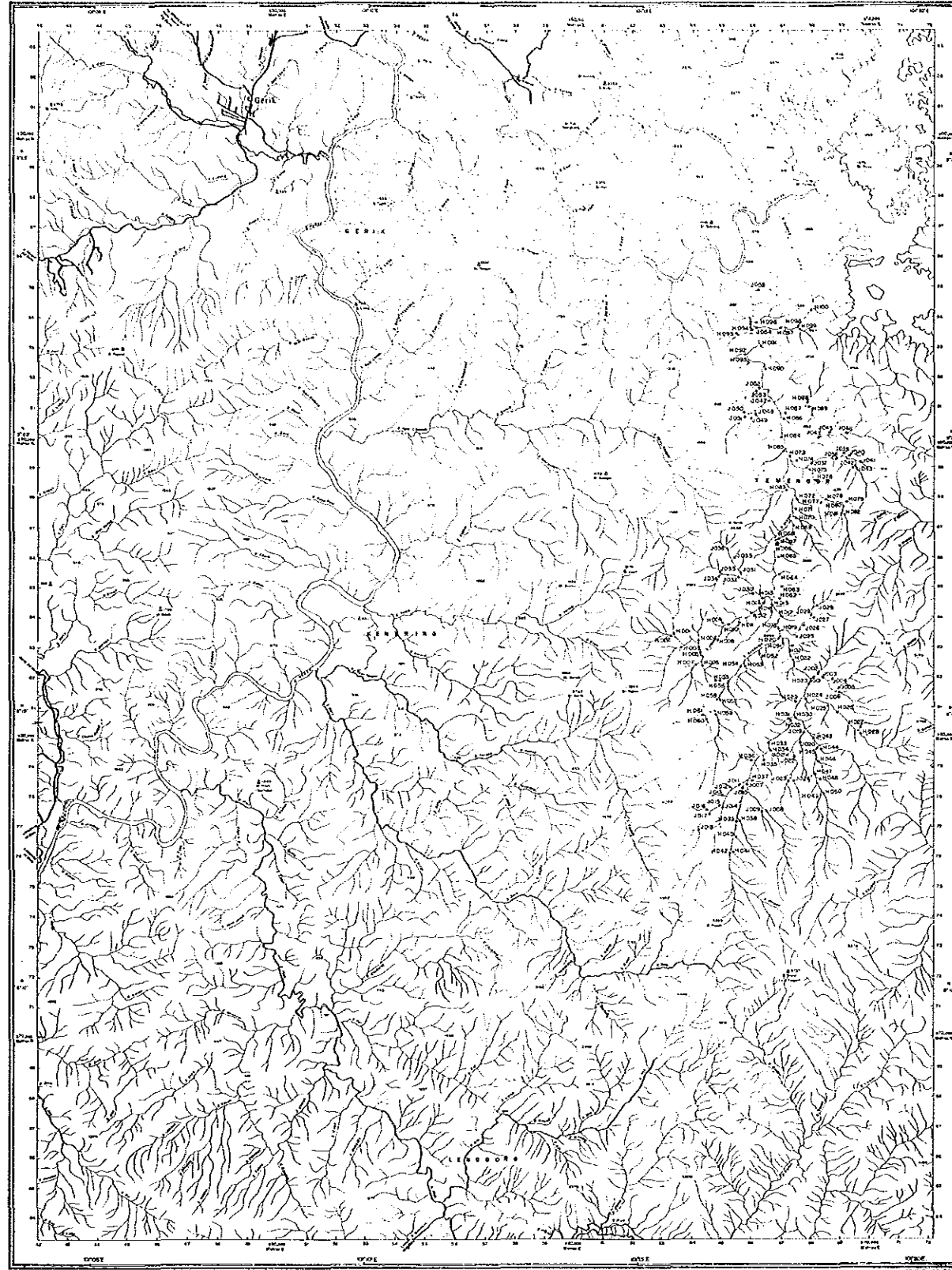
- A 001 Sampling point and Sample number

LEGEND

• A 001 Sampling point and Sample number

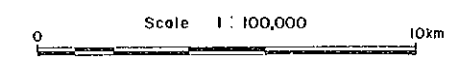
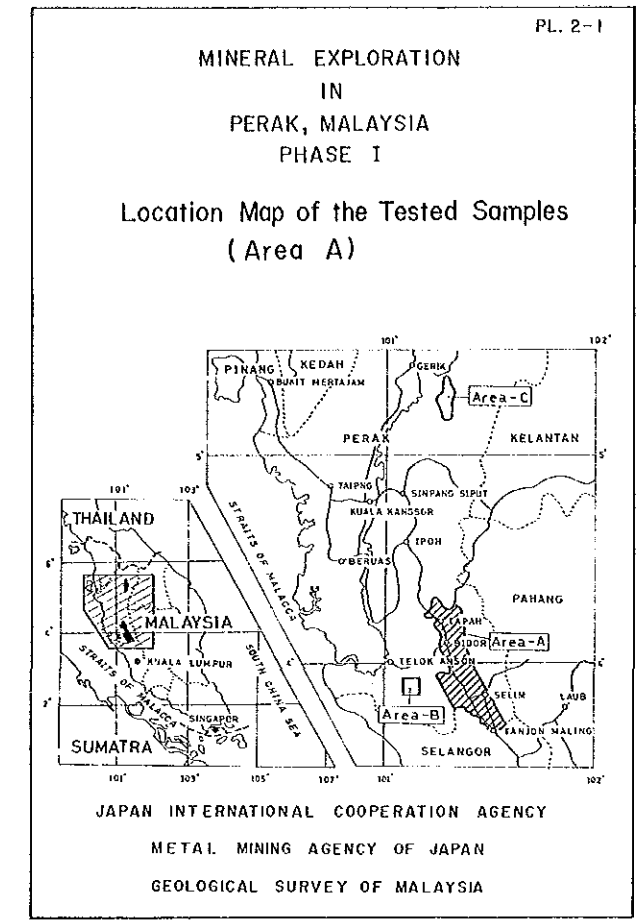


Saka Satu Insi Satu Berantai 1



LEGEND

- H 001 Sampling point and Sample number



LEGEND

- A-01 : Sampling point and sample number
- A : Ore analysis
- C : Rock geochemical analysis
- P : Polished section
- T : Thin section
- W : Chemical analysis of whole rock
- X : X-ray diffractive analysis

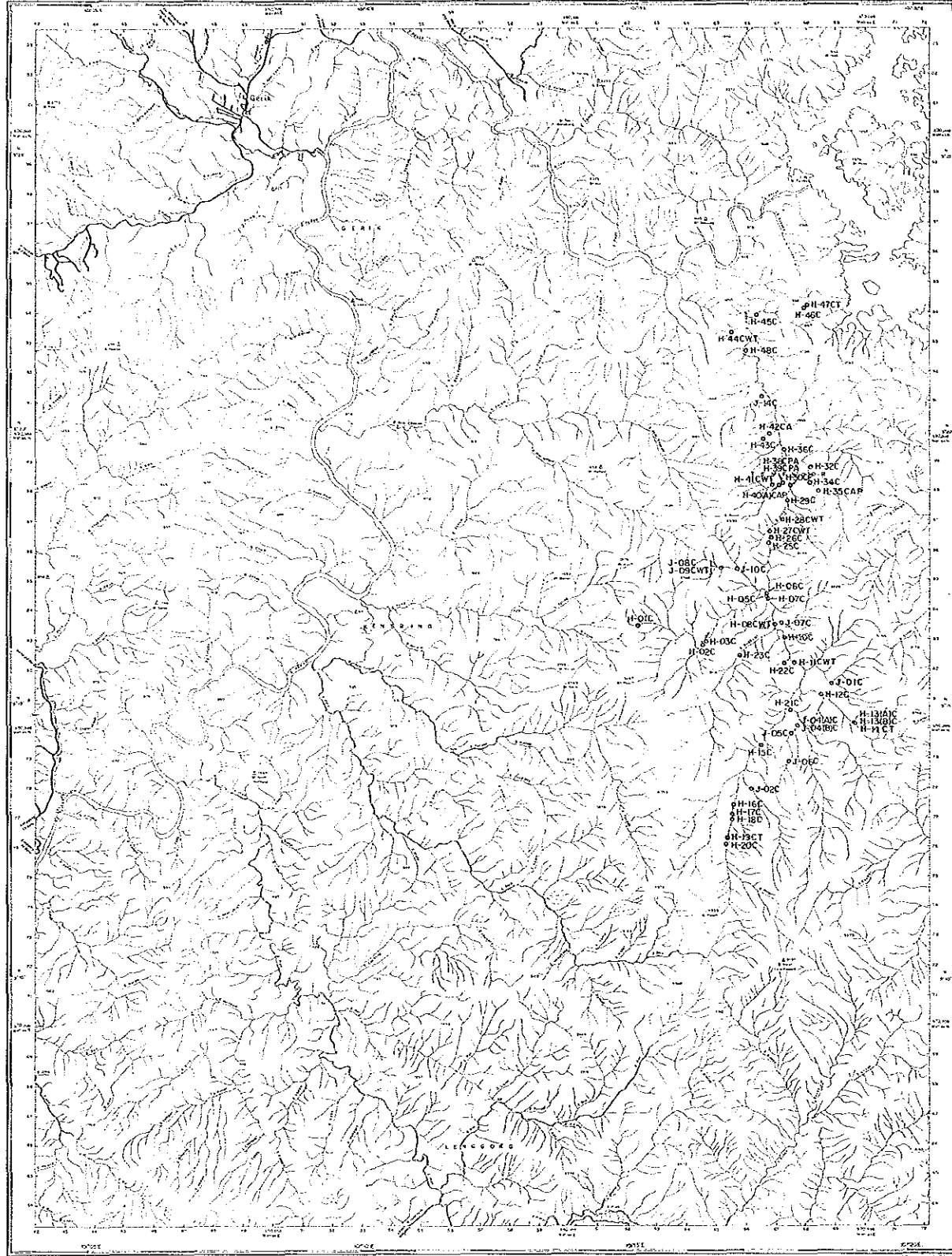


LEGEND

- o A-01 : Sampling point and sample number
- A : Ore analysis
- C : Rock geochemical analysis
- P : Polished section
- T : Thin section
- W : Chemical analysis of whole rock
- X : X-ray diffractive analysis

Map scale: 1:50,000

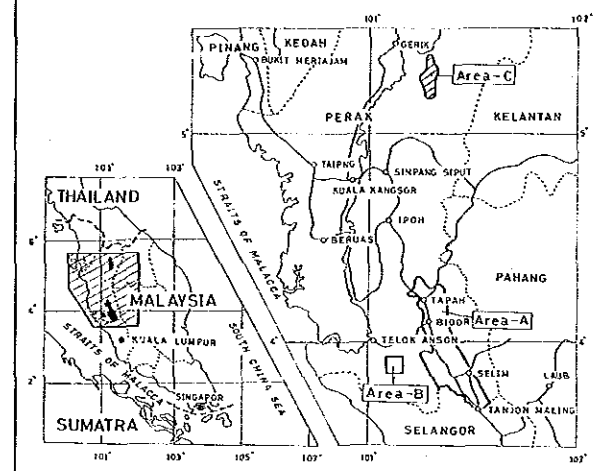
Scale bar: 0 to 1000 meters



Scale 1:100,000

MINERAL EXPLORATION
IN
PERAK, MALAYSIA
PHASE I

Location Map of the Tested Samples
(Area C)



JAPAN INTERNATIONAL COOPERATION AGENCY
METAL MINING AGENCY OF JAPAN
GEOLOGICAL SURVEY OF MALAYSIA

Scale 1:100,000 10km

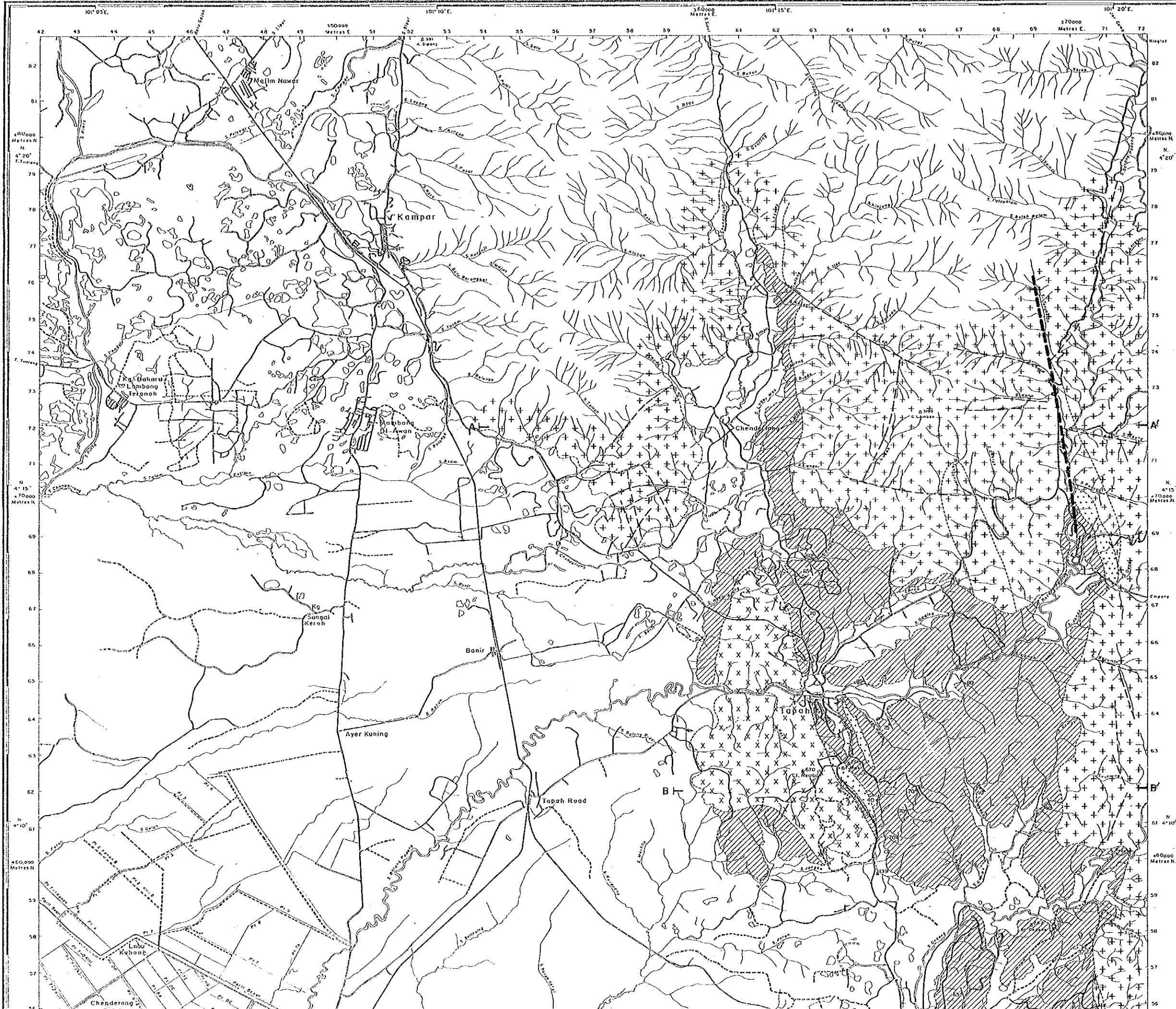
LEGEND

- o H-01 : Sampling point and sample number
- A : Ore analysis
- C : Rock geochemical analysis
- P : Polished section
- T : Thin section
- W : Chemical analysis of whole rock
- X : X-ray diffractive analysis

1:50,000

TAPAH

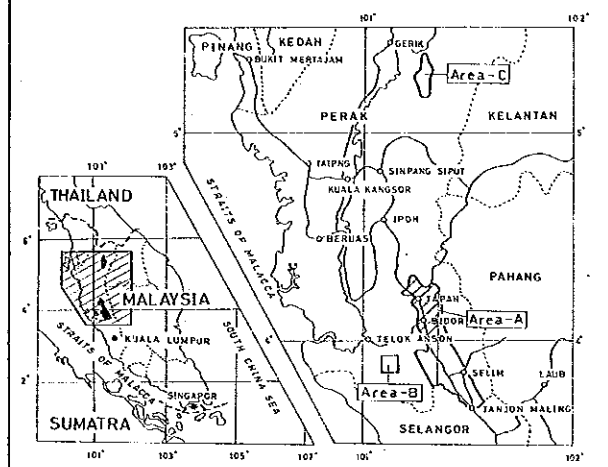
SYIT 65



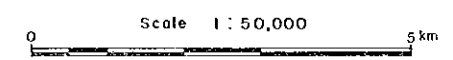
PL. 3-1(1)

MINERAL EXPLORATION
IN
PERAK, MALAYSIA
PHASE I

Geological Map of the Area A
(Tapah)



JAPAN INTERNATIONAL COOPERATION AGENCY
METAL MINING AGENCY OF JAPAN
GEOLOGICAL SURVEY OF MALAYSIA



LEGEND

- Quaternary Formation
 - Clay, sand, gravel
- Belata Formation
 - Phyllite
 - Metasandstone
- Terolak Formation
 - Green Schist
 - Phyllite
 - Metasandstone, psammitic schist
- (Intrusive Rocks)
 - Porphyritic granite
 - Equigranular granite
 - Granite porphyry
 - Equigranular granite
 - Major quartz vein
- Main Range Granite
 - Porphyritic granite
 - Equigranular granite
 - Granite porphyry
- Changkat Rembian Granite
 - Equigranular granite
- Dip and strike of schistosity
- Geological boundary
- Inferred fault
- Anticline
- Syncline



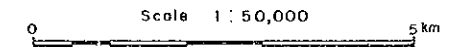
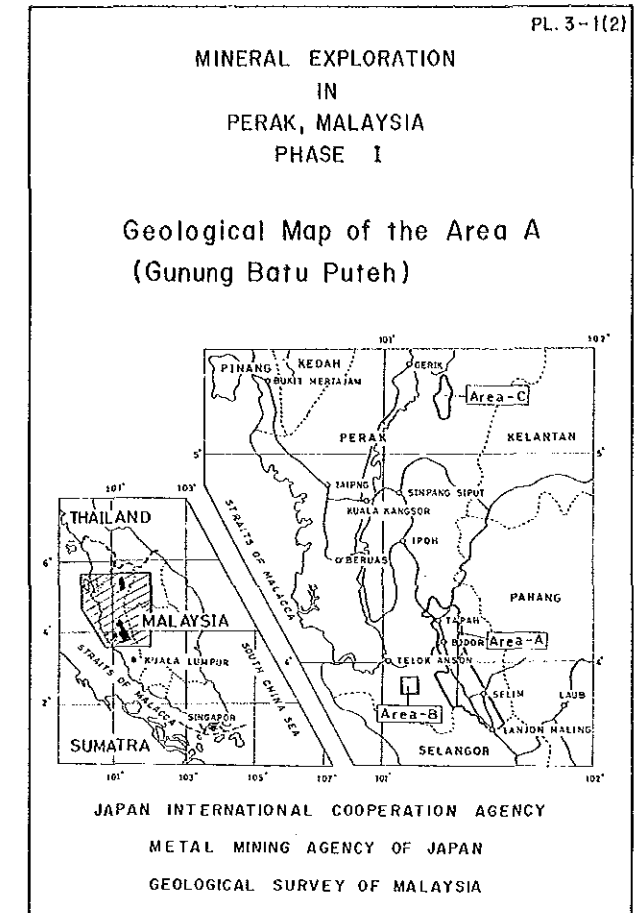
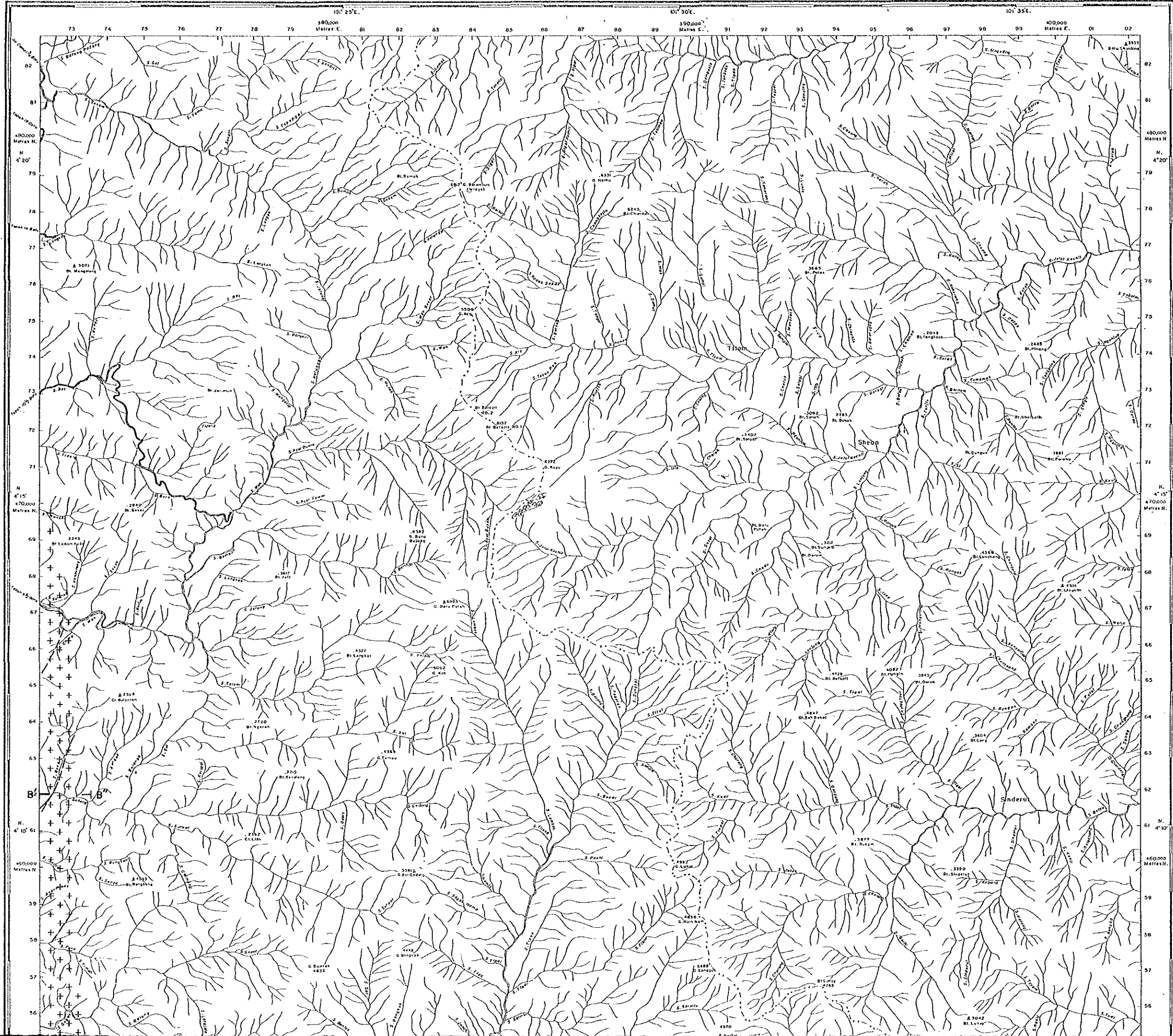
LEGEND

Quaternary Formation		Clay, sand, gravel
Belata Formation		Phyllite
		Metasandstone
Teratak Formation		Green Schist
		Phyllite
		Metasandstone, psammitic schist
(Intrusive Rocks)		
Main Range Granite		Porphyritic granite
		Equigranular granite
		Granite porphyry
Chongkat Rembian Granite		Equigranular granite
		Major quartz vein
	40	Dip and strike of schistosity
		Geological boundary
		Inferred fault
		Anticline
		Syncline
		Lineament extracted from aerial photographs
	A-A'	Section

Sekil Satu Inchi Satu Batu atau 1:50,000

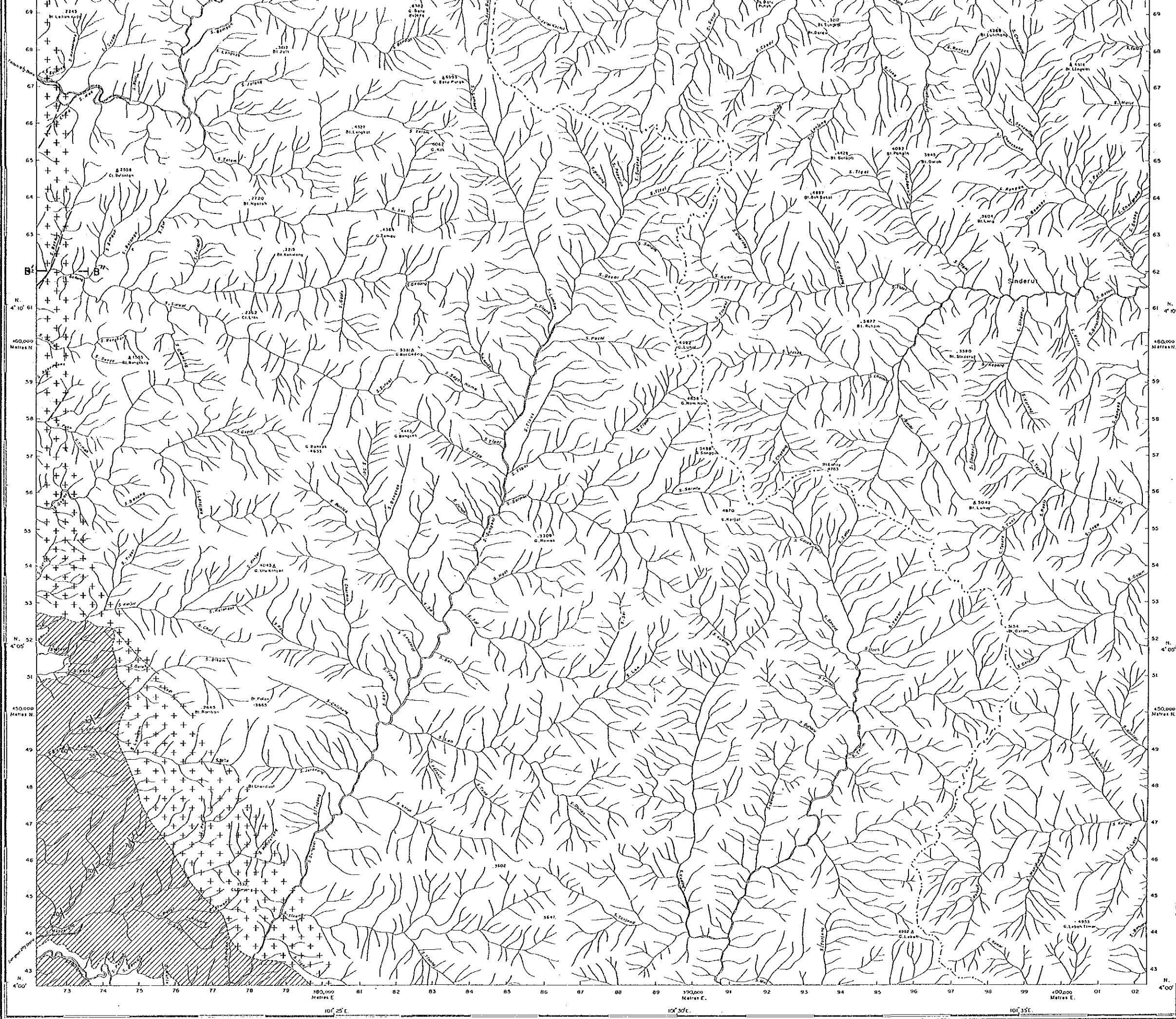
KBM (Rm) A-10-85





LEGEND

- | | | |
|--------------------------|--|---|
| Quaternary Formation | | Clay, sand, gravel |
| Belata Formation | | Phyllite |
| | | Metasandstone |
| Terolak Formation | | Green Schist |
| | | Phyllite |
| | | Metasandstone, psammitic schist |
| (Intrusive Rocks) | | |
| Main Range Granite | | Porphyritic granite |
| | | Equigranular granite |
| | | Granite porphyry |
| Chongkat Ramban Granite | | Equigranular granite |
| | | Major quartz vein |
| | | Dip and strike of schistosity |
| | | Geological boundary |
| | | Inferred fault |
| | | Anticline |
| | | Syncline |
| | | Lineament extracted from aerial photographs |

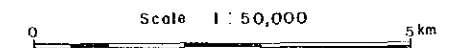
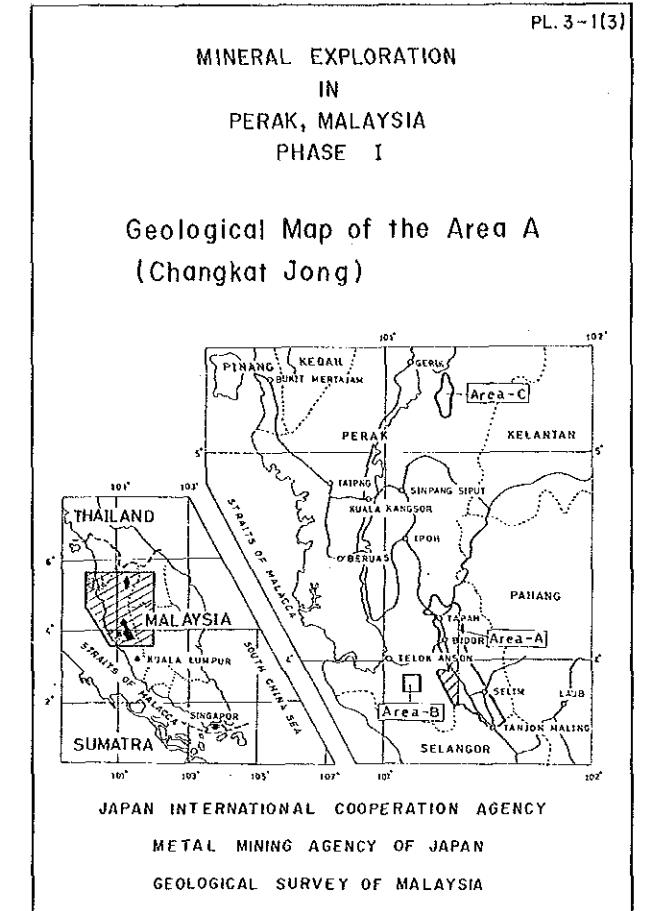


LEGEND

- Quaternary Formation Clay, sand, gravel
- Belata Formation Phyllite
 Metasandstone
- Terolak Formation Green Schist
 Phyllite
 Metasandstone, psammitic schist
- (Intrusive Rocks)
- Main Range Granite Porphyritic granite
 Equigranular granite
 Granite porphyry
- Changkat Remban Granite Equigranular granite
- Major quartz vein
- Dip and strike of schistosity
- Geological boundary
- Inferred fault
- Anticline
- Syncline
- Lineament extracted from aerial photographs
- A-A' Section

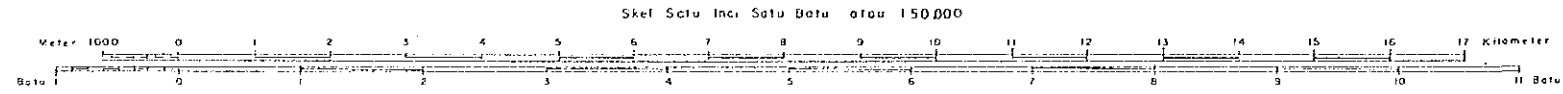
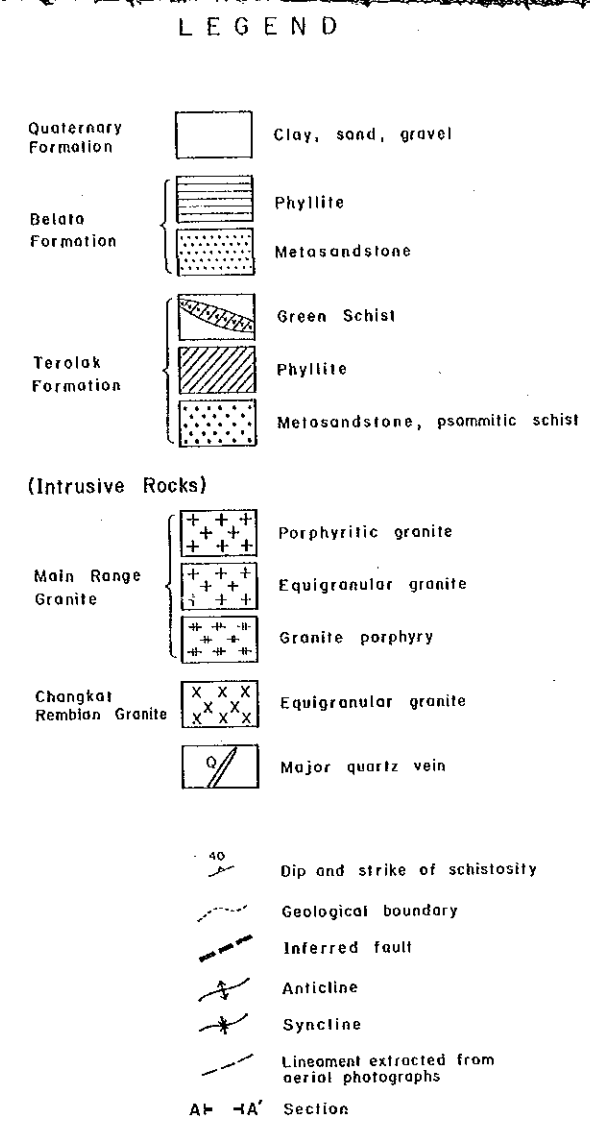
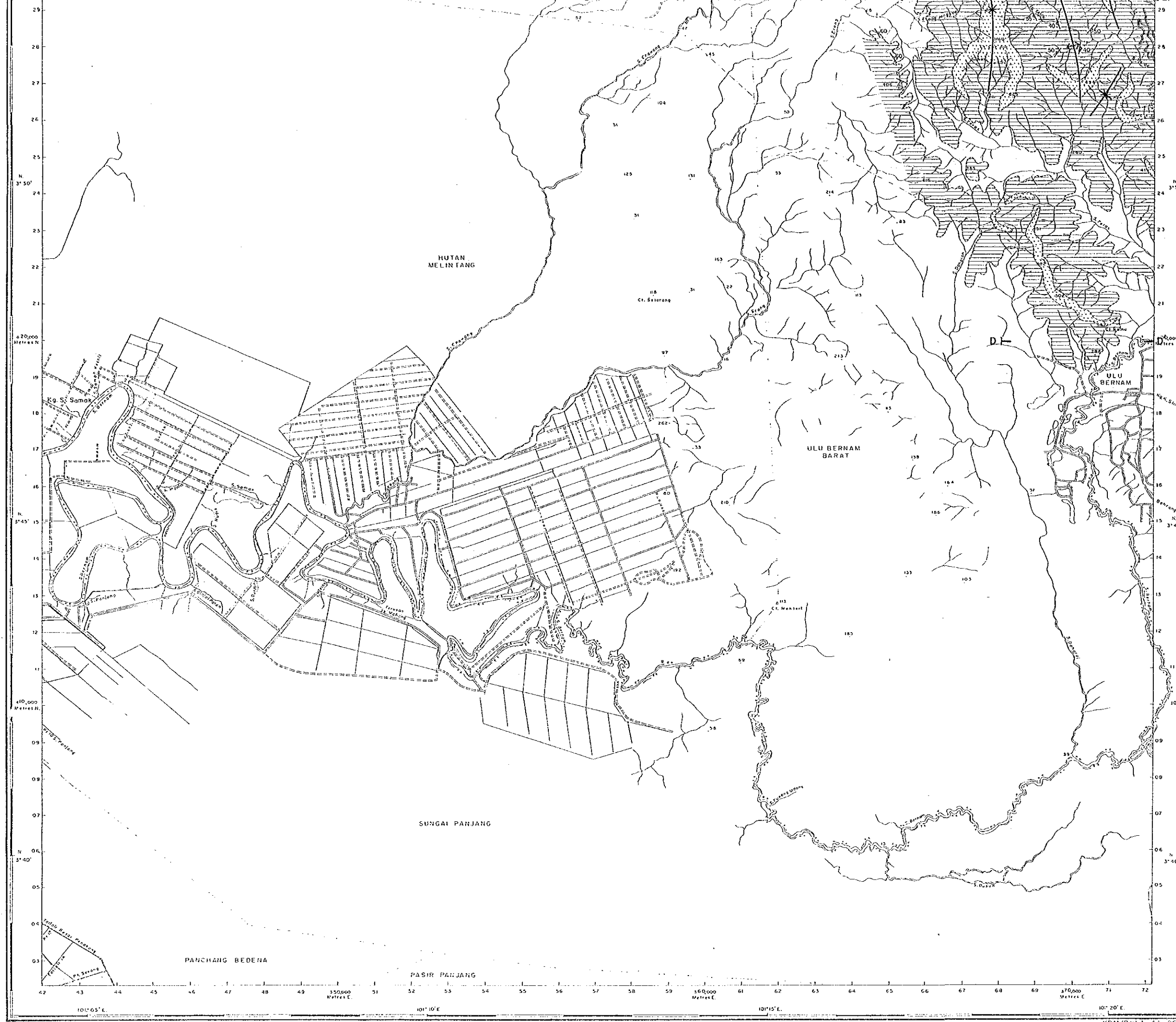
Sekil Satu Inchi Satu Batu otou 1: 50,000



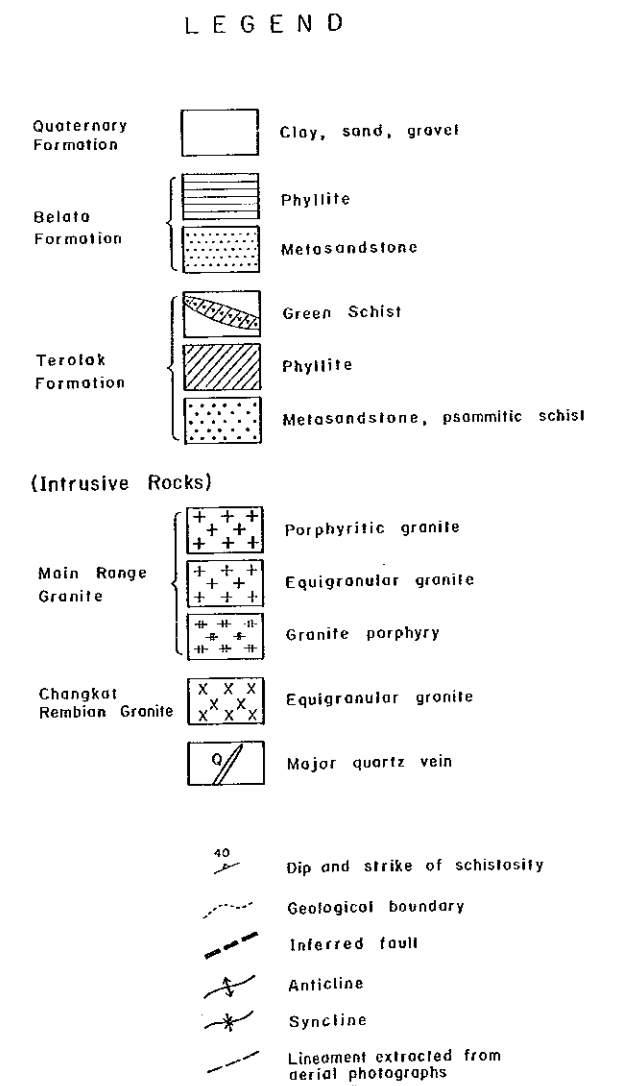
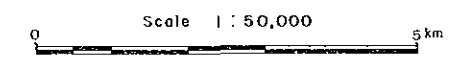
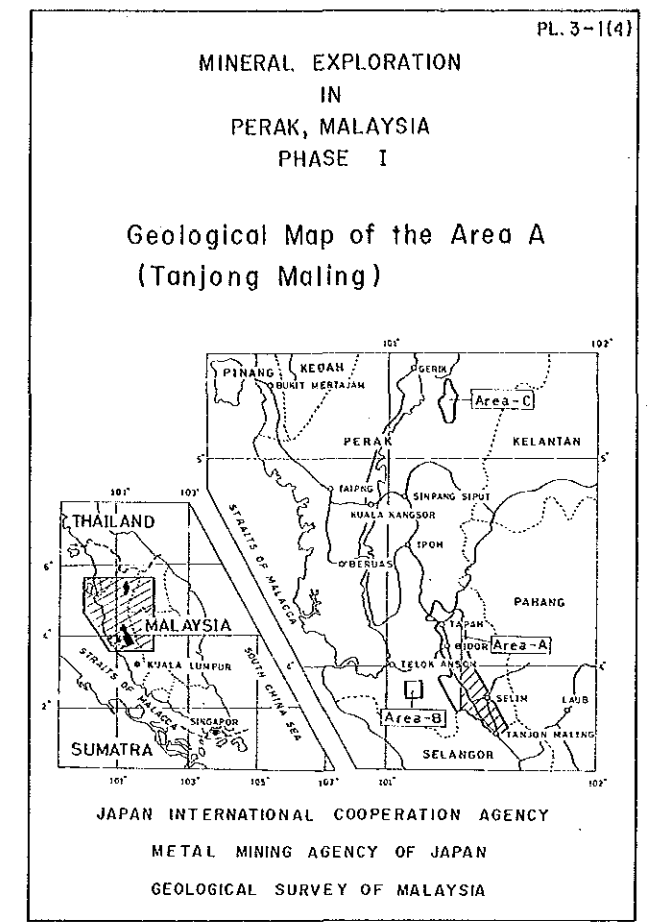
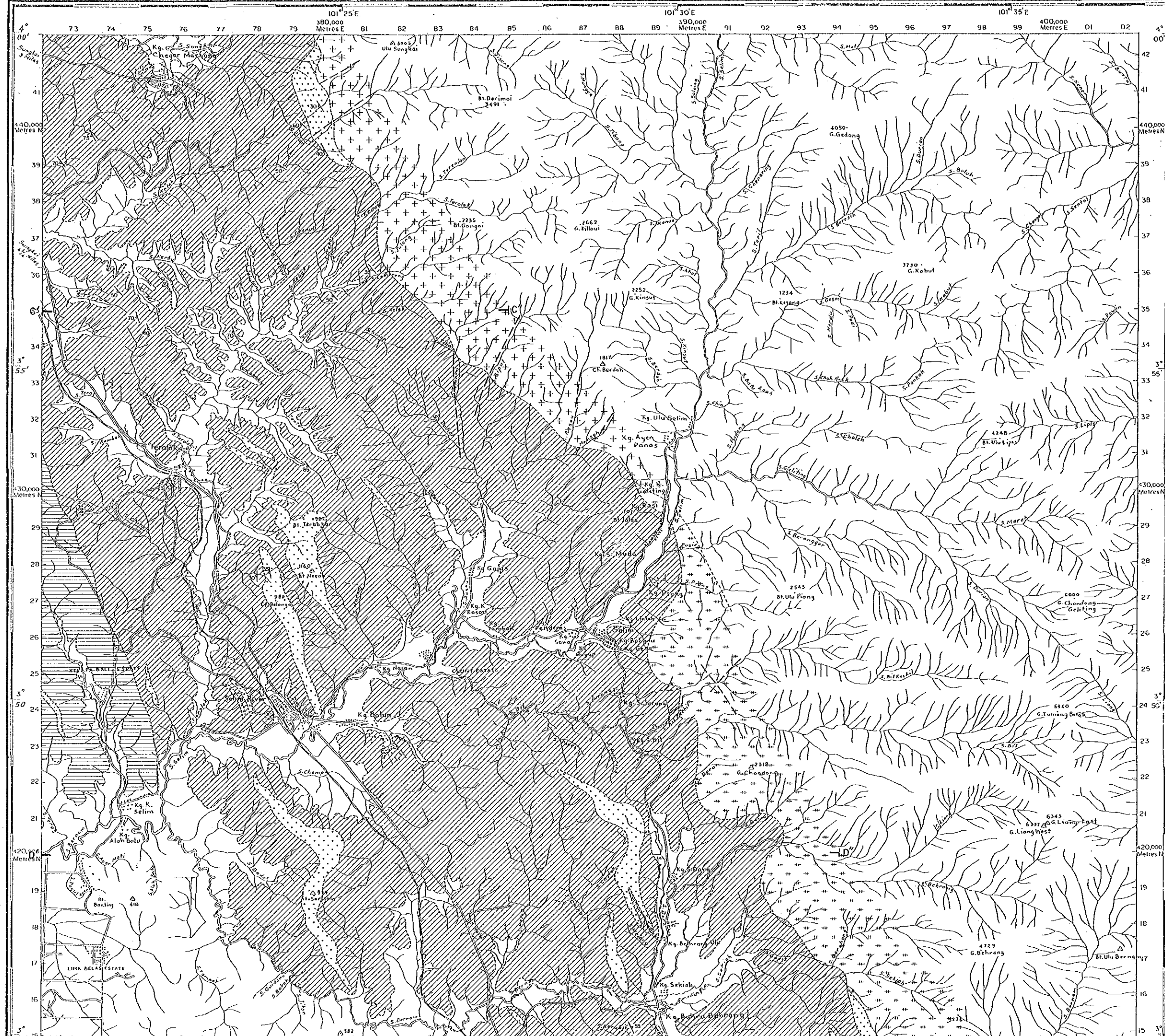


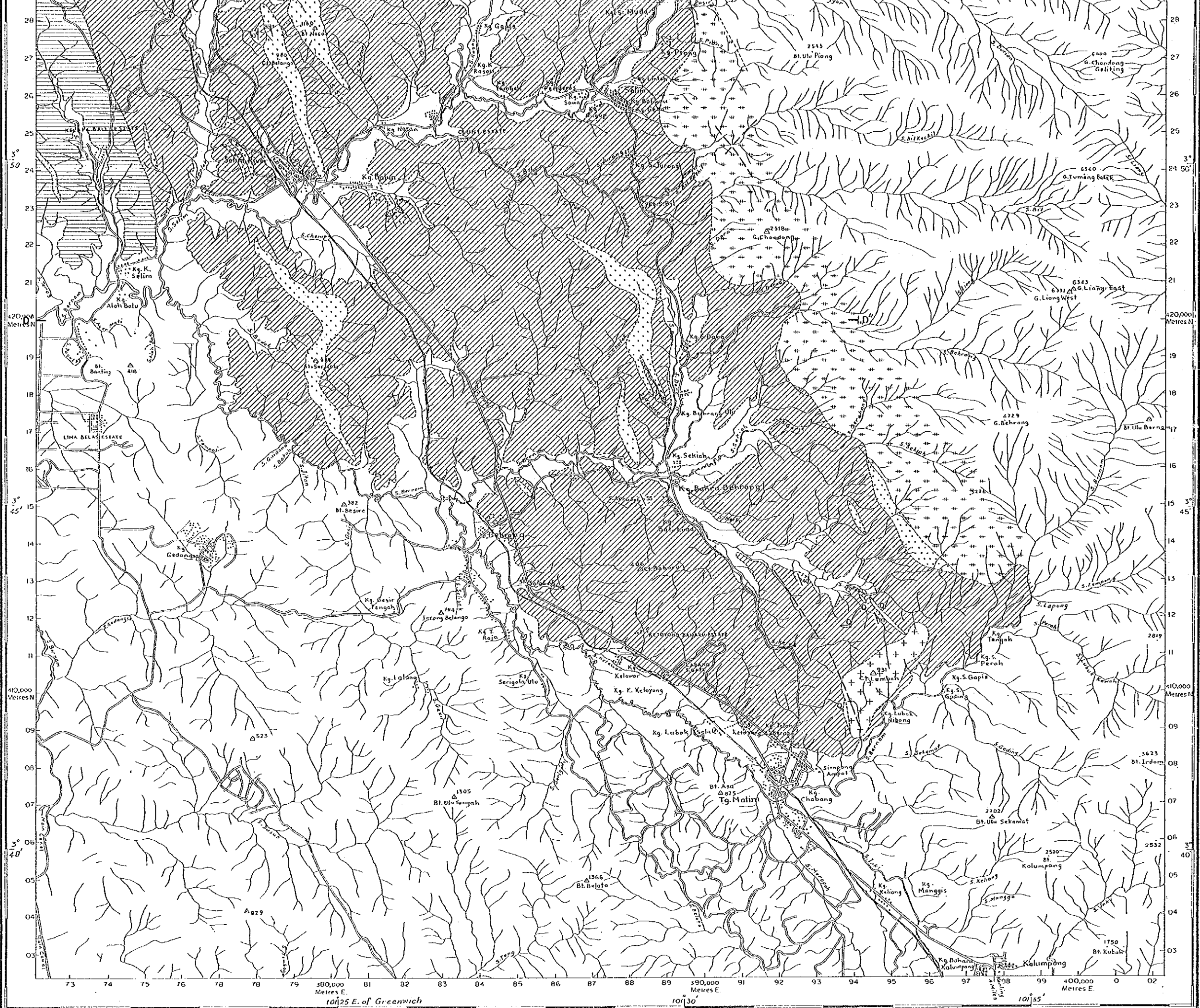
LEGEND

- | | | |
|--------------------------|--|---|
| Quaternary Formation | | Clay, sand, gravel |
| Belata Formation | | Phyllite |
| | | Metasandstone |
| Terolok Formation | | Green Schist |
| | | Phyllite |
| | | Metasandstone, psammitic schist |
| (Intrusive Rocks) | | |
| Main Range Granite | | Porphyritic granite |
| | | Equigranular granite |
| | | Granite porphyry |
| Changkat Rembian Granite | | Equigranular granite |
| | | Major quartz vein |
| | | Dip and strike of schistosity |
| | | Geological boundary |
| | | Inferred fault |
| | | Anticline |
| | | Syncline |
| | | Lineament extracted from aerial photographs |



KBIA (RM) A-44-06

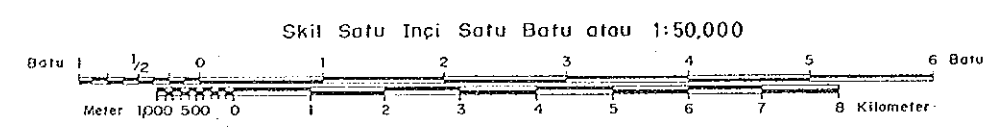


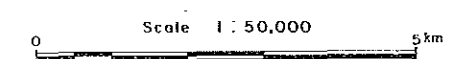
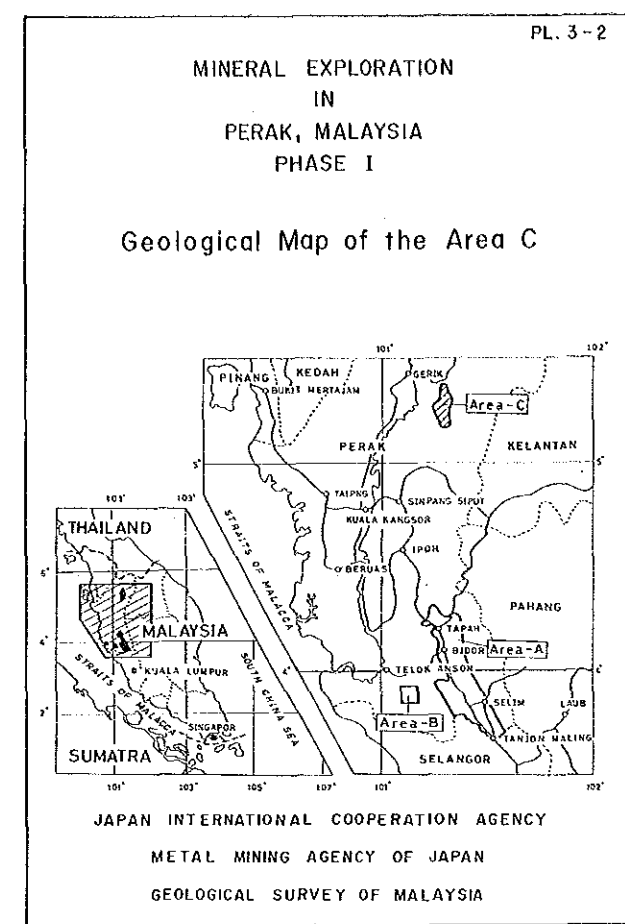


- Quaternary Formation Clay, sand, gravel
- Belata Formation Phyllite
- Metasandstone
- Teraiak Formation Green Schist
- Phyllite
- Metasandstone, psammitic schist
- (Intrusive Rocks)
- Main Range Granite Porphyritic granite
- Equigranular granite
- Granite porphyry
- Chongkat Rembian Granite Equigranular granite
- Major quartz vein
- Dip and strike of schistosity
- Geological boundary
- Inferred fault
- Anticline
- Syncline
- Lineament extracted from aerial photographs
- A-A' Section

Anuar / aziz

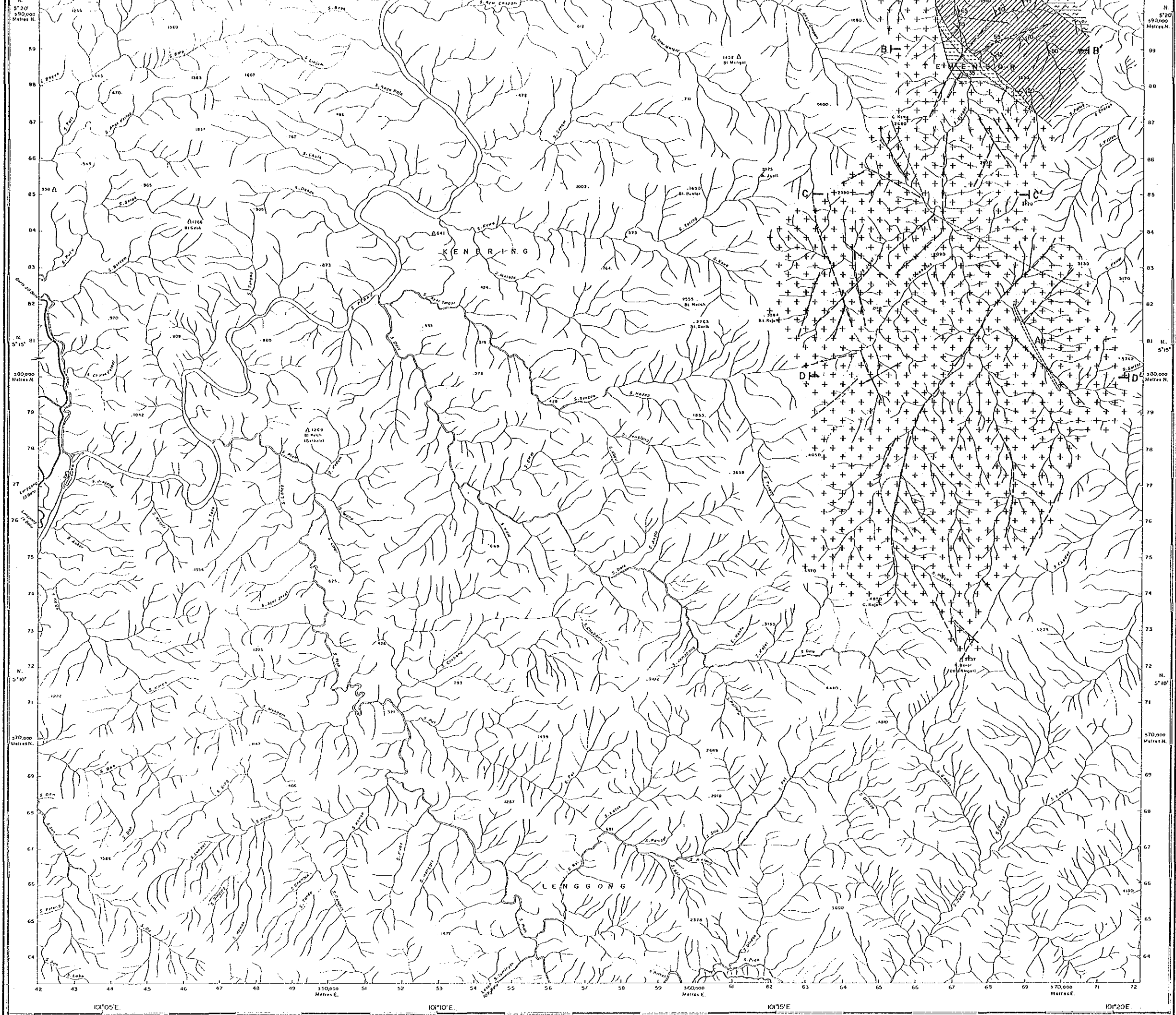
KBM (Rm) A - 14 - 88





LEGEND

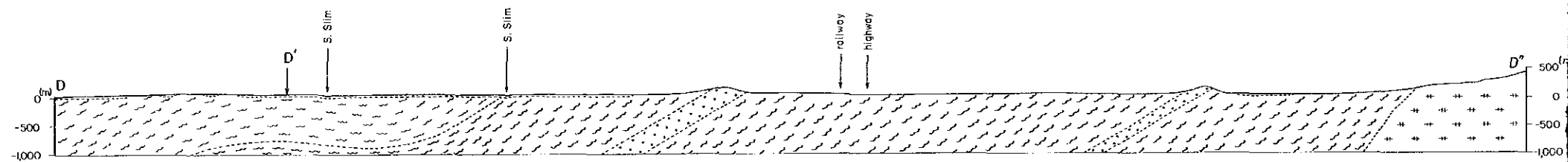
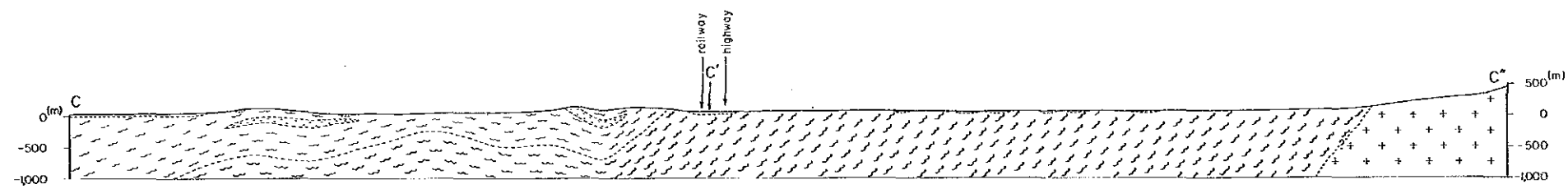
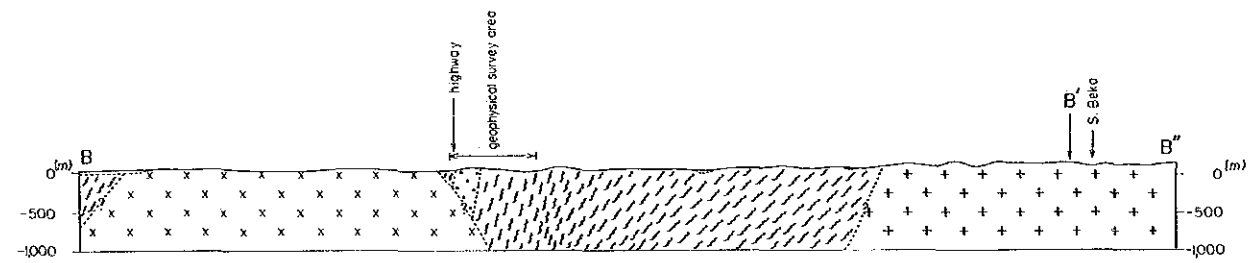
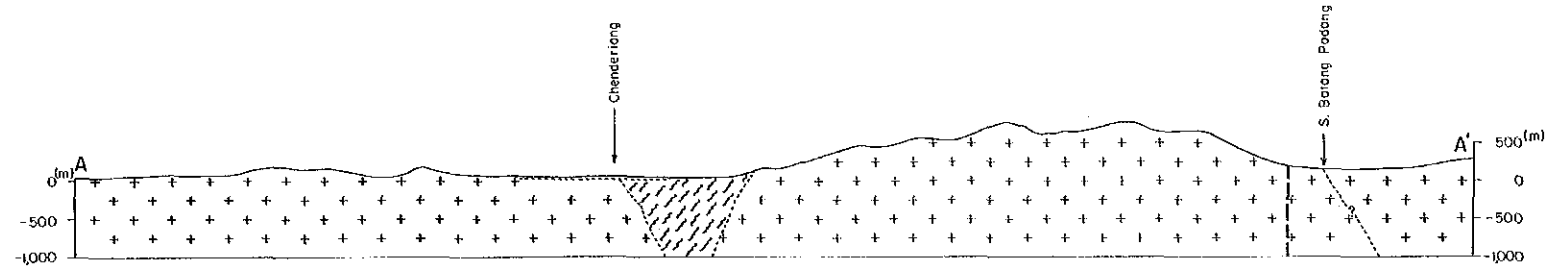
- Quaternary Formation
 - Clay, sand, gravel
- Paleozoic Formation
 - Mico schist - phyllite
 - Chlorite predominant mico schist
 - Metaquartzite
 - Mico quartz schist
- (Intrusive Rocks)
 - Porphyritic granite
 - Equigranular granite
 - Major quartz vein
 - Major apilite vein
- Dip and strike of schistosity
 - Geological boundary
 - Lineament extract from aerial photographs
 - Section A-A'



LEGEND

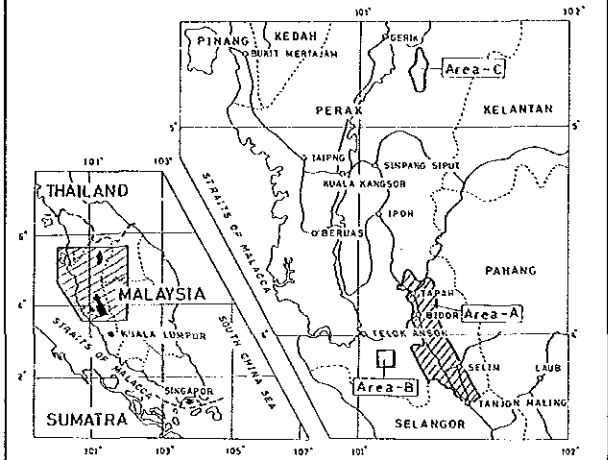
- Quaternary Formation
 - Clay, sand, gravel
- Paleozoic Formation
 - Mica schist ~ phyllite
 - Chlorite predominant mica schist
 - Metaquartzite
 - Mica quartz schist
- (Intrusive Rocks)
 - Porphyritic granite
 - Equigranular granite
 - Major quartz vein
 - Major apilite vein
- Dip and strike of schistosity
- Geological boundary
- Lineament extract from aerial photographs
- A-A' Section



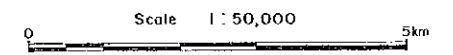


MINERAL EXPLORATION
IN
PERAK, MALAYSIA
PHASE I

Geological Profile of the Area A

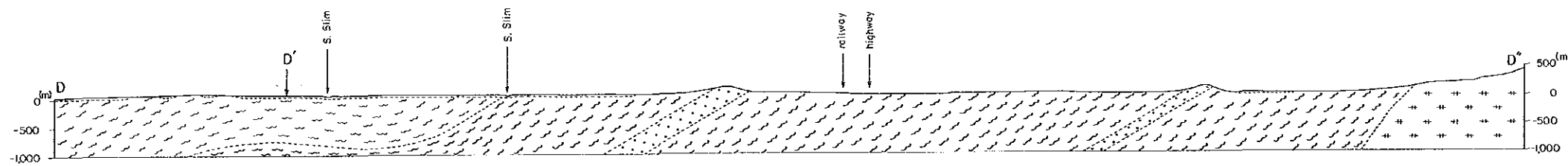
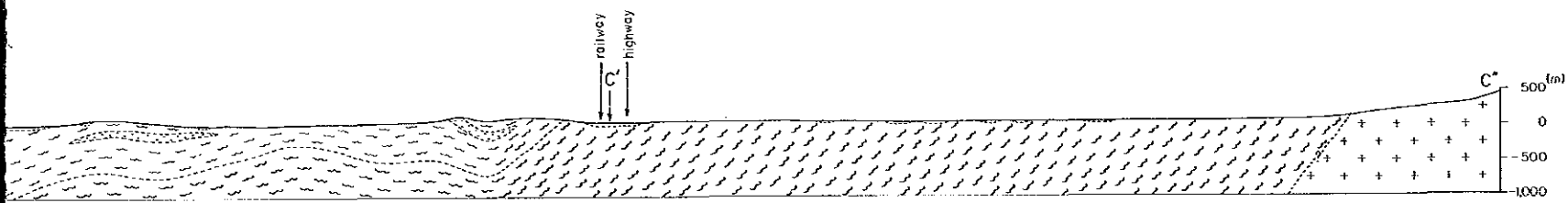
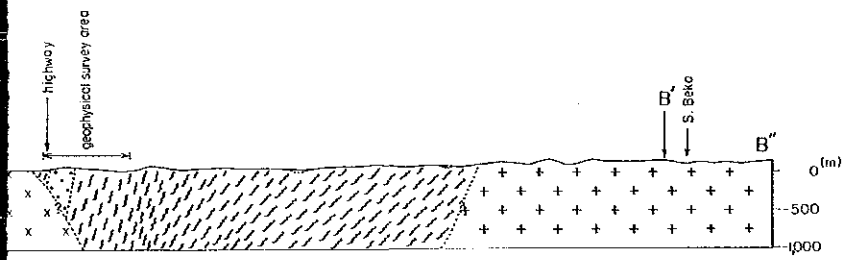
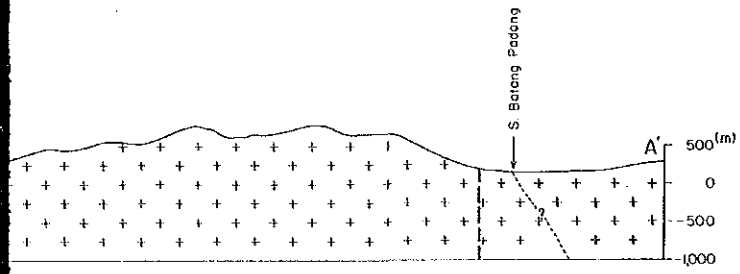


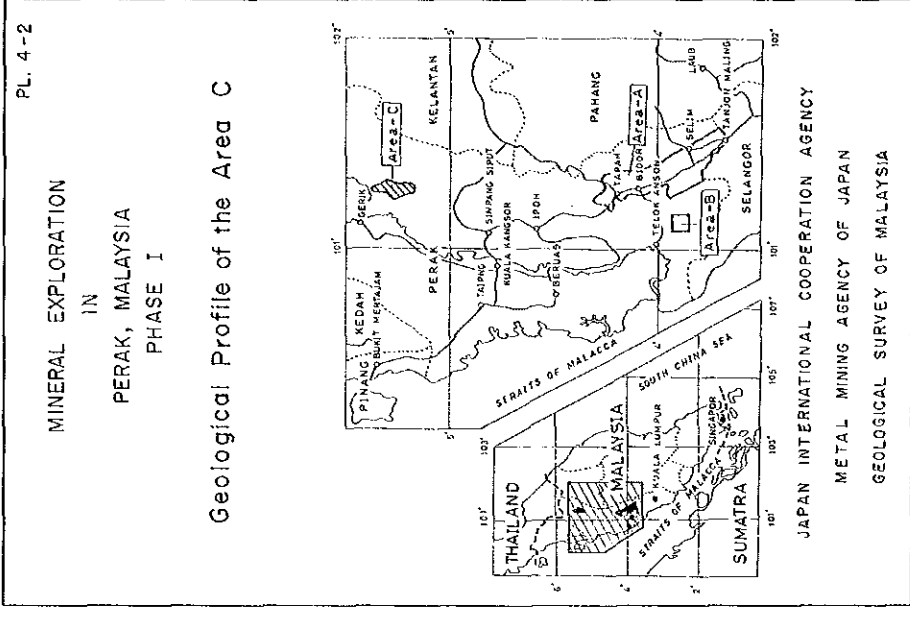
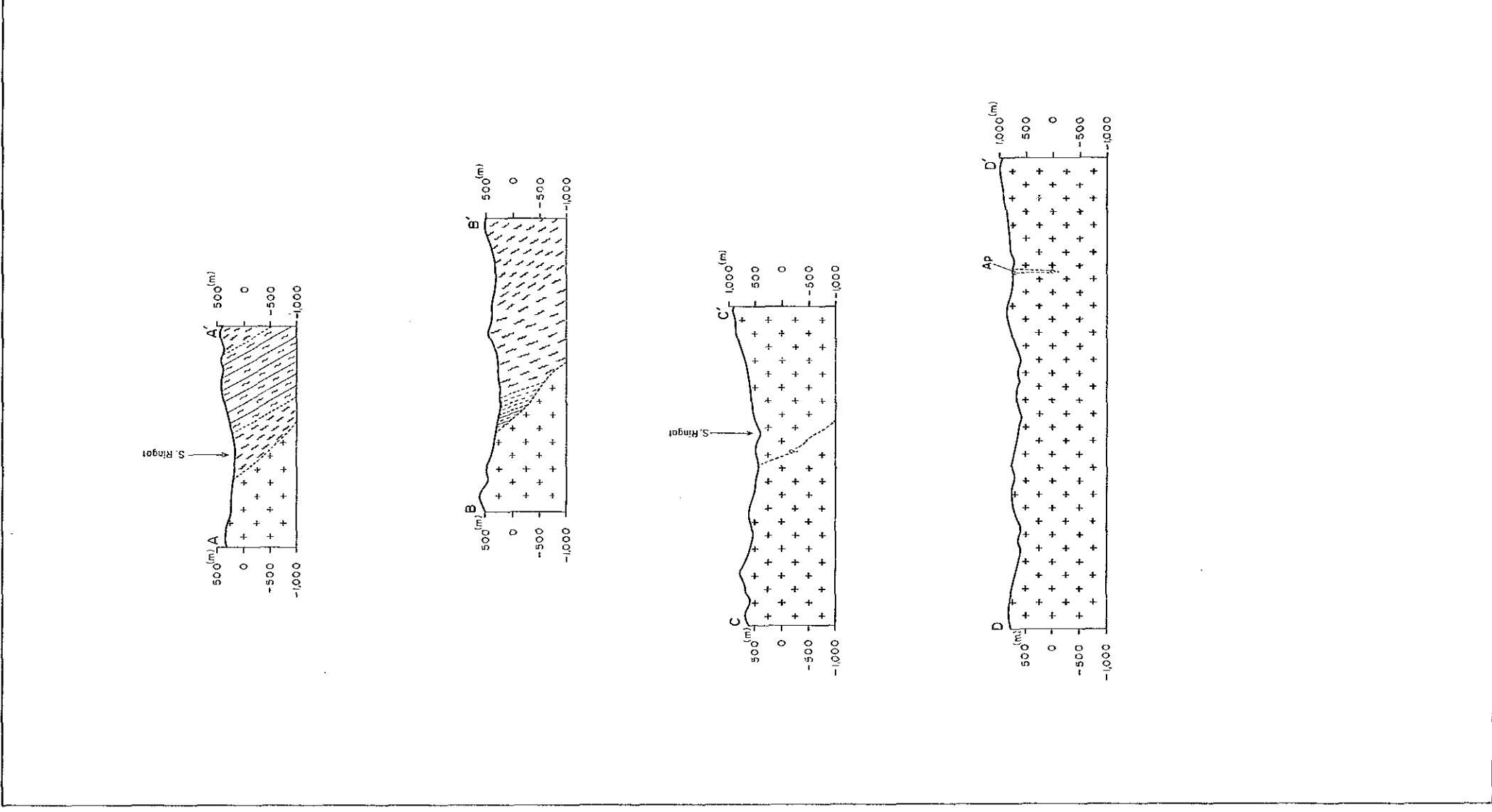
JAPAN INTERNATIONAL COOPERATION AGENCY
METAL MINING AGENCY OF JAPAN
GEOLOGICAL SURVEY OF MALAYSIA



LEGEND

Quaternary Formation		Clay, sand, gravel
Belata Formation		Phyllite
		Metasandstone
Terelok Formation		Phyllite
		Metasandstone, psammitic schist
(Intrusive Rocks)		
Main Range Granite		Porphyritic granite
		Equigranular granite
		Granite porphyry
Changkat Rembian Granite		Equigranular granite





Scale 1 : 50,000

LEGEND

- Paleozoic Formation
- Mica schist ~ phyllite
- Chlorite predominant mica schist
- Metaquartzite
- Mica quartz schist
- (Intrusive Rocks)
- Main Range Granite
- Equigranular granite
- Major aplite vein