

REPORT  
ON  
THE COOPERATIVE MINERAL EXPLORATION  
IN  
THE PALMEIROPOLIS AREA  
FEDERATIVE REPUBLIC OF BRAZIL

(PHASE I)

MARCH 1989

JAPAN INTERNATIONAL COOPERATION AGENCY  
METAL MINING AGENCY OF JAPAN

MPN
CR(3)
89-21

M J  
M I  
A G  
703  
66.1  
MPN

REPORT ON THE COOPERATIVE MINERAL EXPLORATION  
IN THE PALMEIROPOLIS AREA  
FEDERATIVE REPUBLIC OF BRAZIL  
(PHASE I)

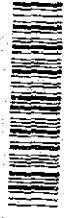
(PHASE I)

MARCH 1989

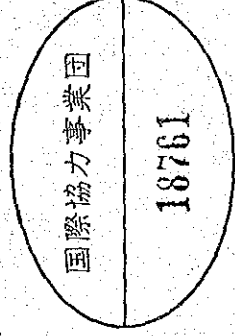
M J  
M I  
A G



JICA LIBRARY

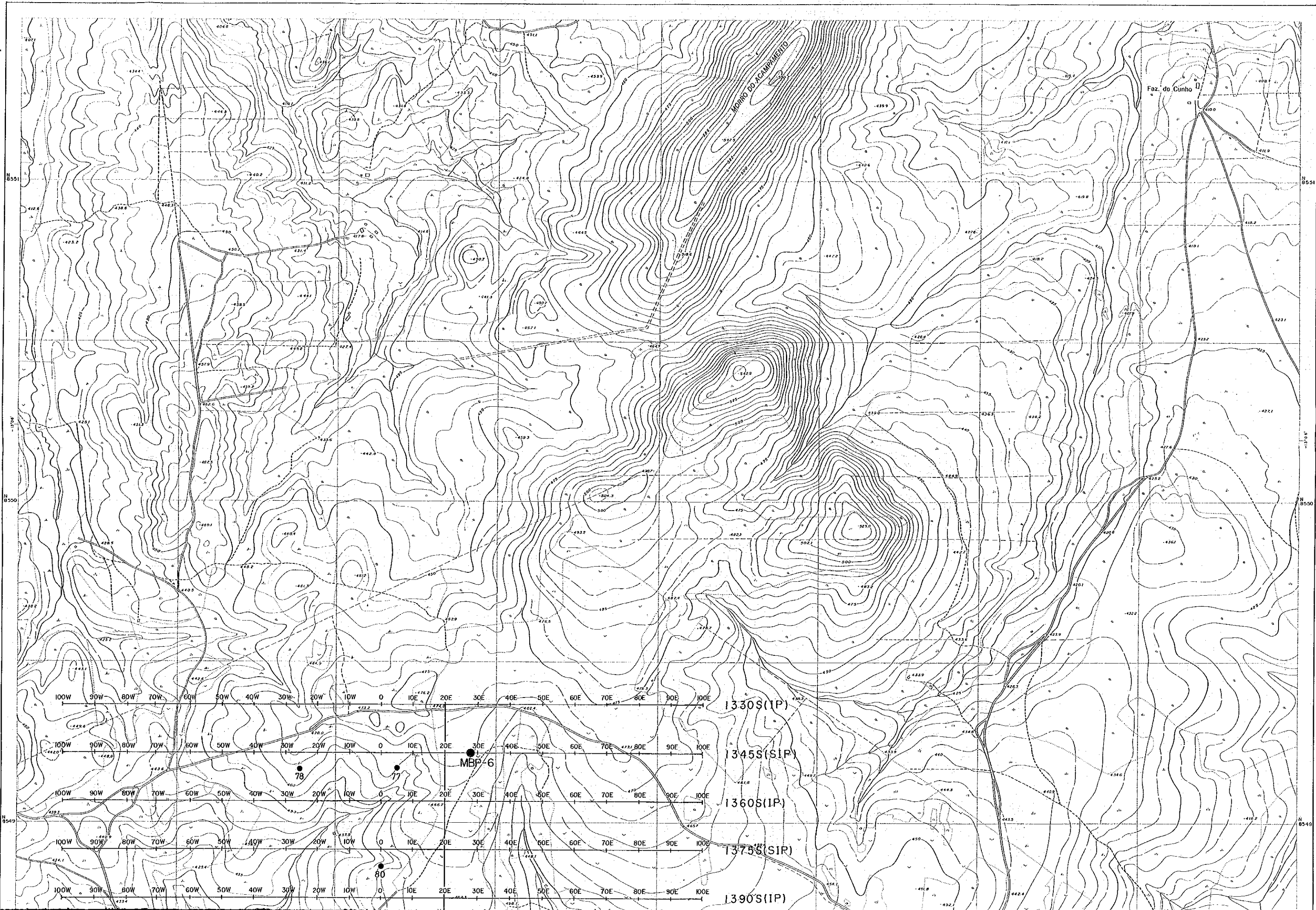


1072472123



国際協力事業団

18761



LOC

1330S(IP)  
1345S(SIP)  
1360S(IP)  
1375S(SIP)  
1390S(IP)

MBP-6

78

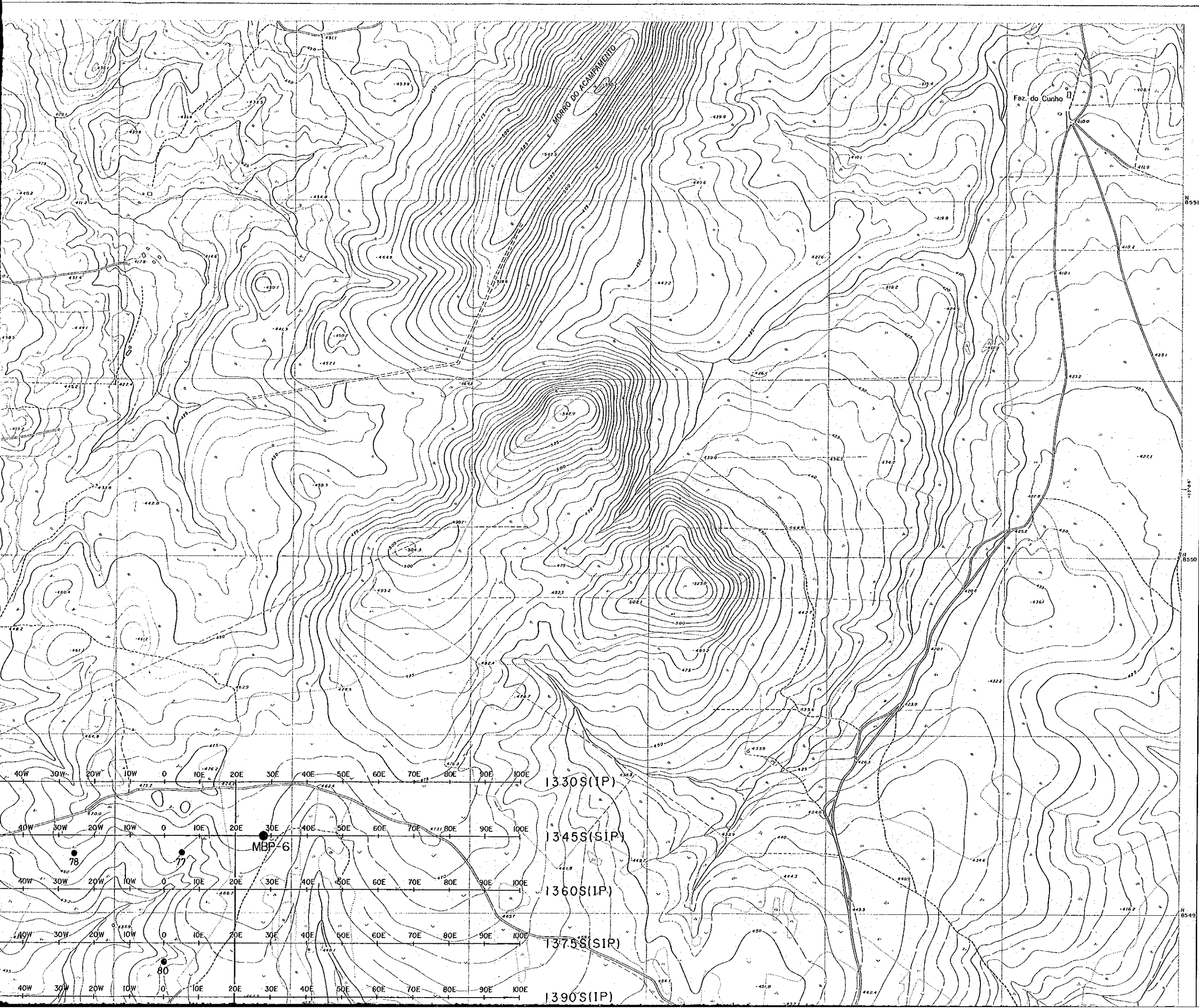
77

80

Faz. do Cinho

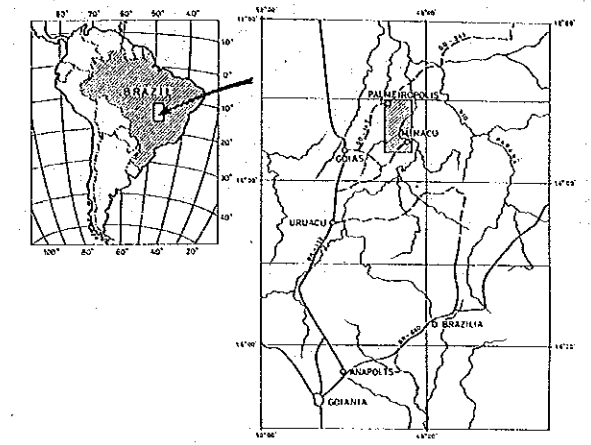
MORRO DO ACAMPAMENTO



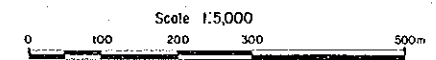


GEOLOGICAL SURVEY  
IN  
PALMEIROPOLIS, BRAZIL  
PHASE III

Location Map of SIP-IP Survey and Drilling Holes

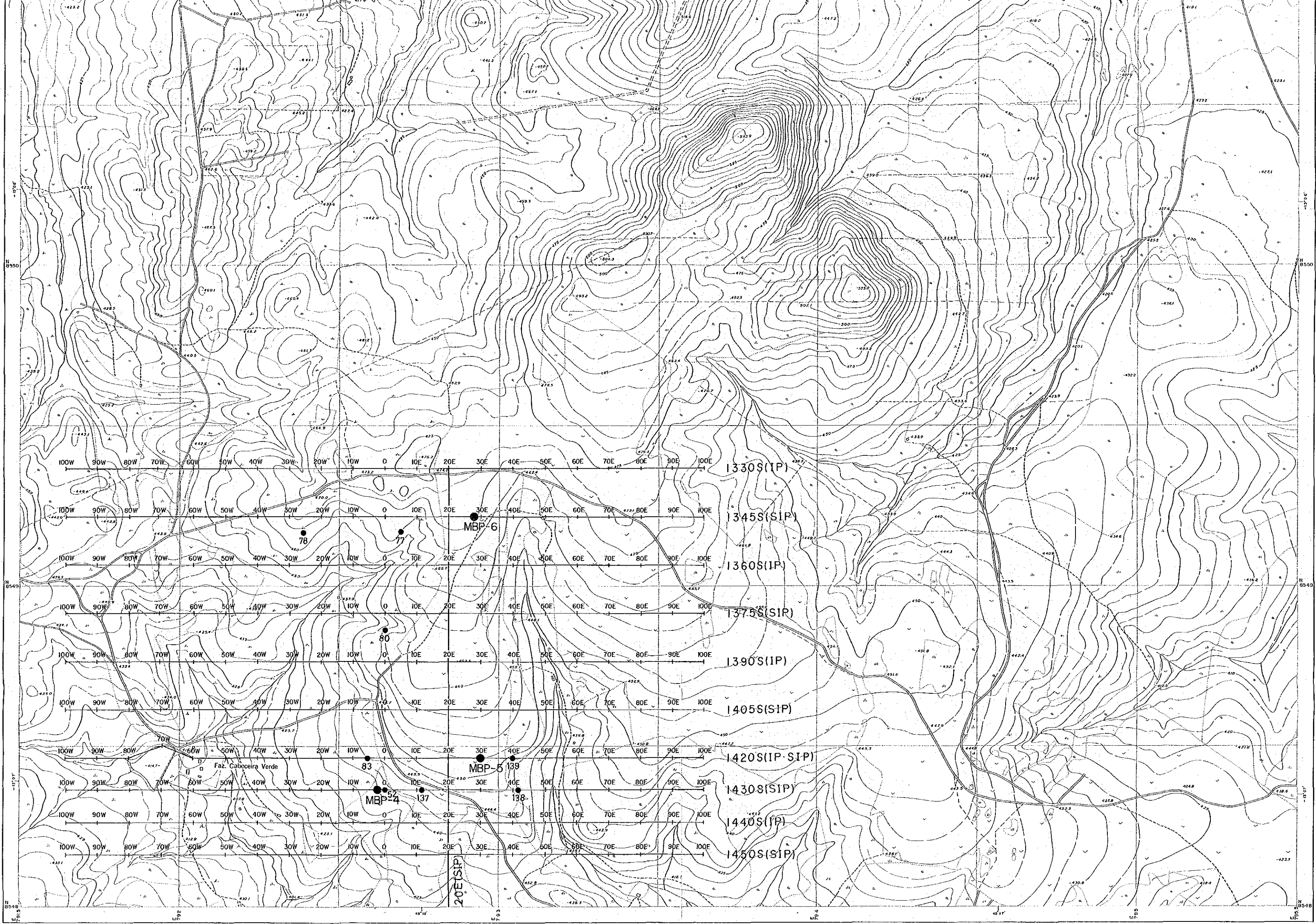


JAPAN INTERNATIONAL COOPERATION AGENCY  
METAL MINING AGENCY OF JAPAN  
FEB. 1989

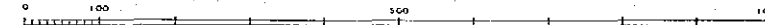


LEGEND

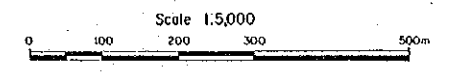
- +—+— SIP and IP Line
- Drilling Point of MMAJ
- Drilling Point of CPRM



1:5,000

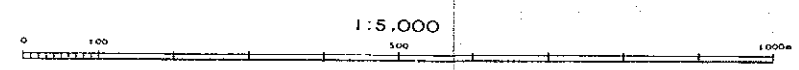
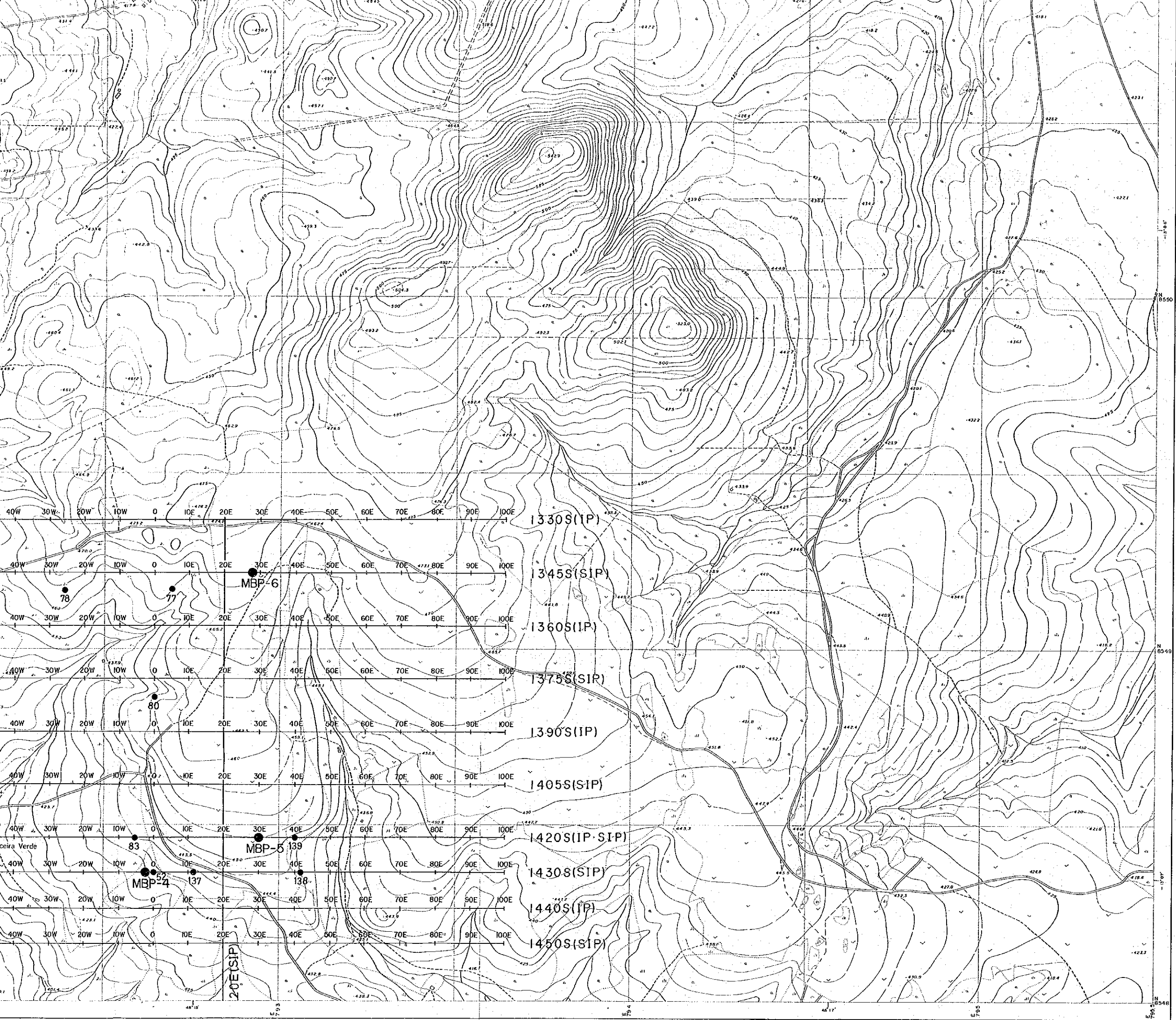


JAPAN INTERNATIONAL COOPERATION AGENCY  
METAL MINING AGENCY OF JAPAN  
FEB. 1989



LEGEND

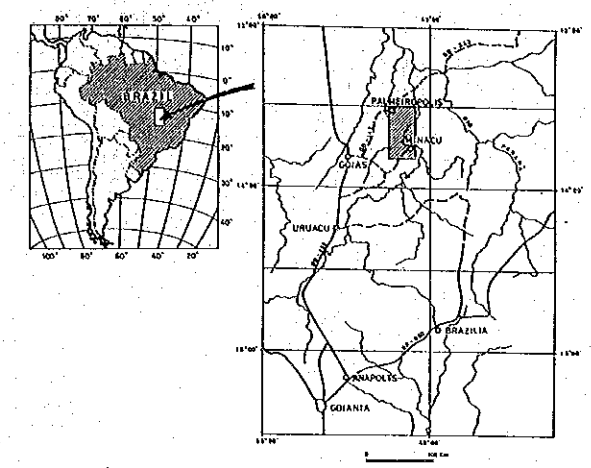
- +—+— SIP and IP Line
- Drilling Point of MMAJ
- Drilling Point of CPRM



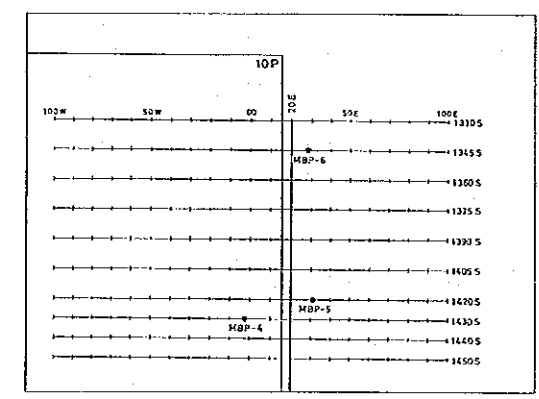
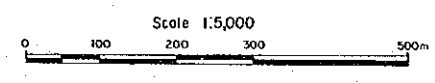


GEOLOGICAL SURVEY  
IN  
PALMEIROPOLIS, BRAZIL  
PHASE III

SIP Pseudo-Section (Line-1345S)

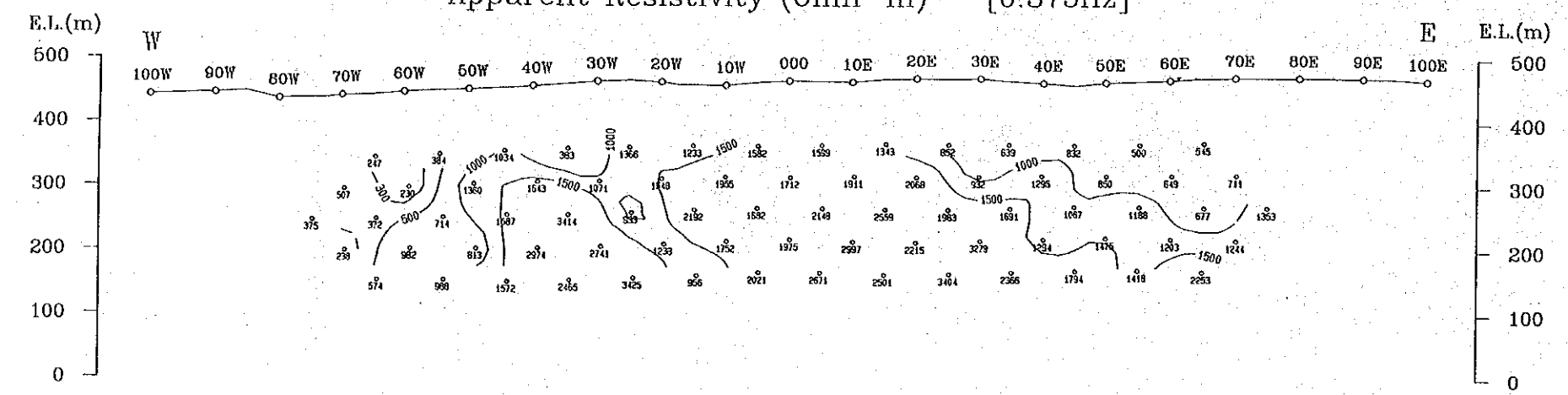


JAPAN INTERNATIONAL COOPERATION AGENCY  
METAL MINING AGENCY OF JAPAN  
FEB. 1989

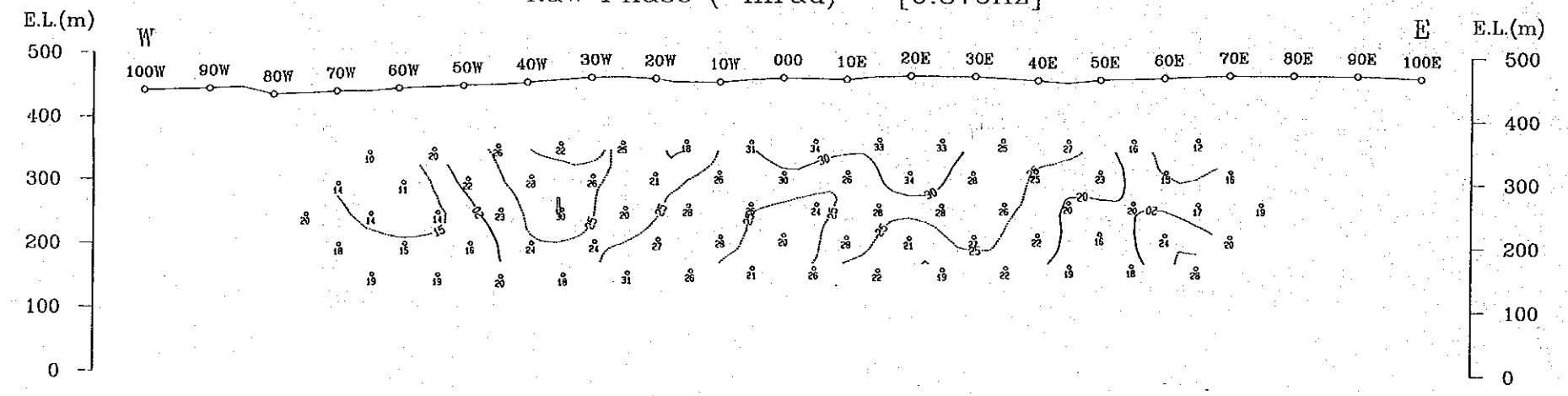


Line-1345S

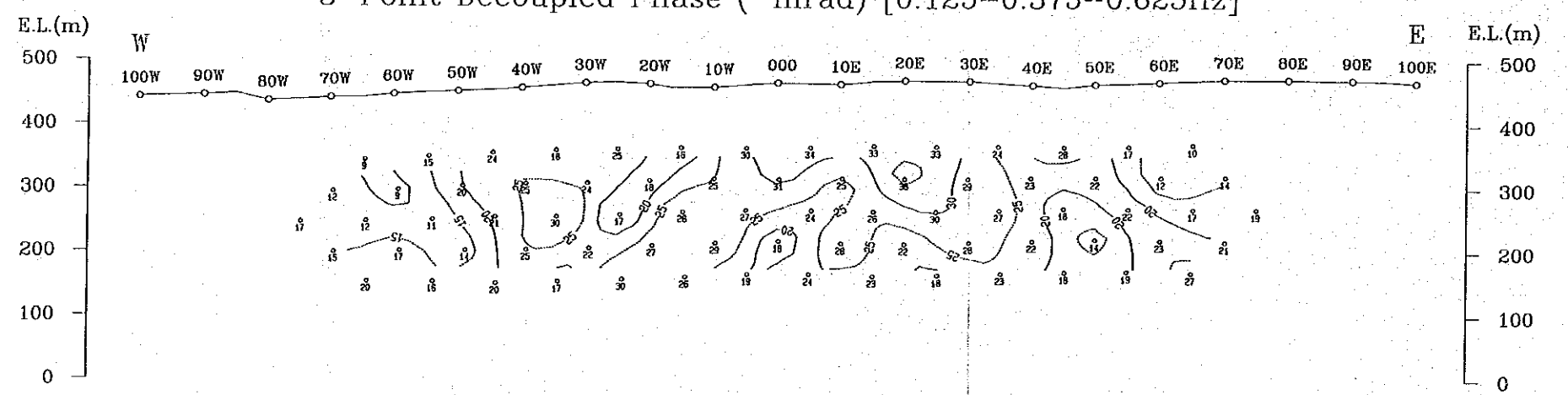
Apparent Resistivity (Ohm-m) [0.375Hz]



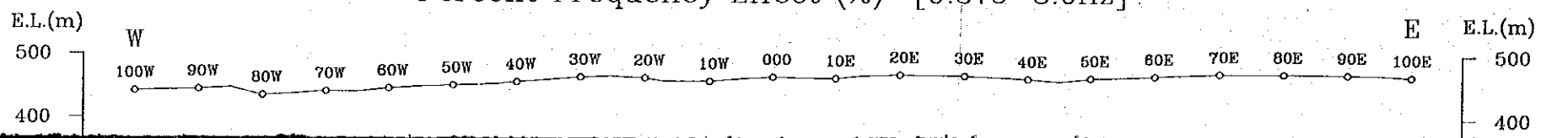
Raw Phase (-mrad) [0.375Hz]

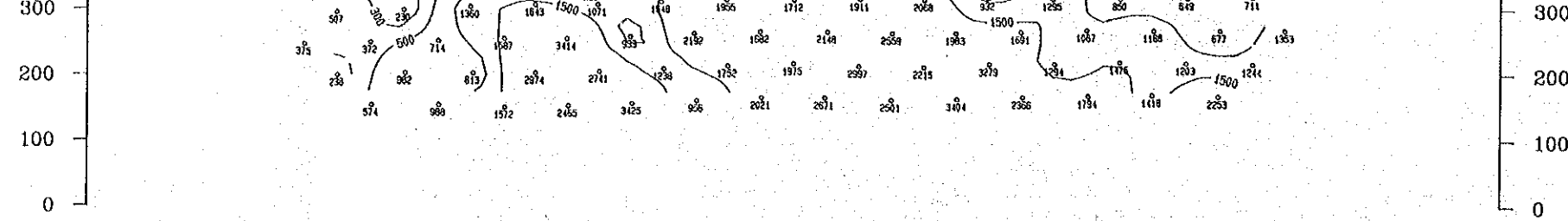


3-Point Decoupled Phase (-mrad) [0.125-0.375-0.625Hz]

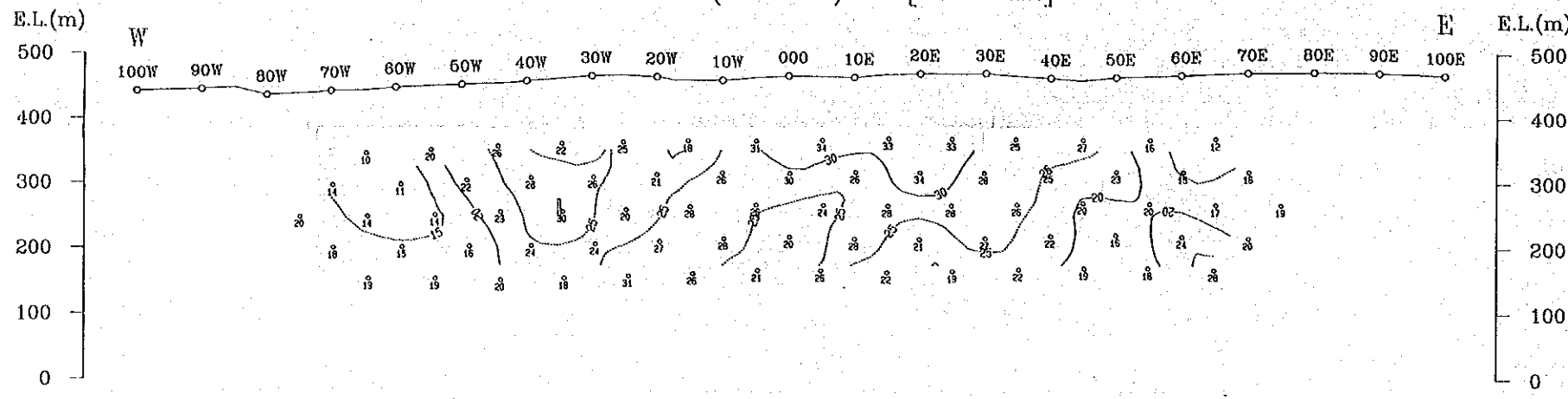


Percent Frequency Effect (%) [0.375-3.0Hz]

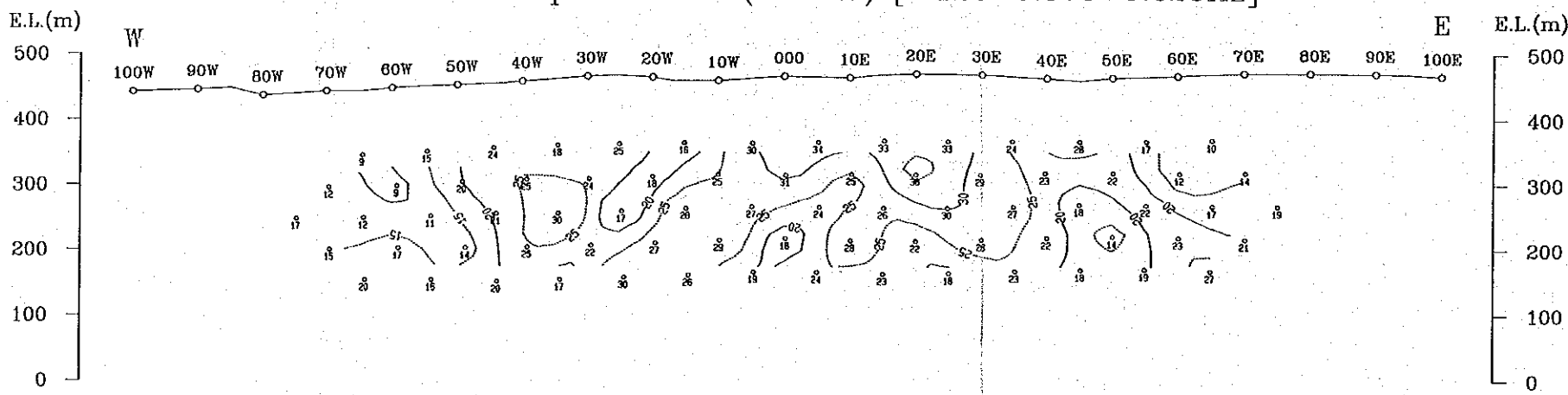




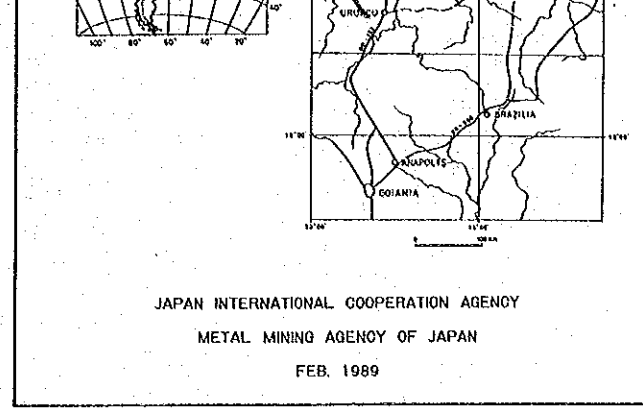
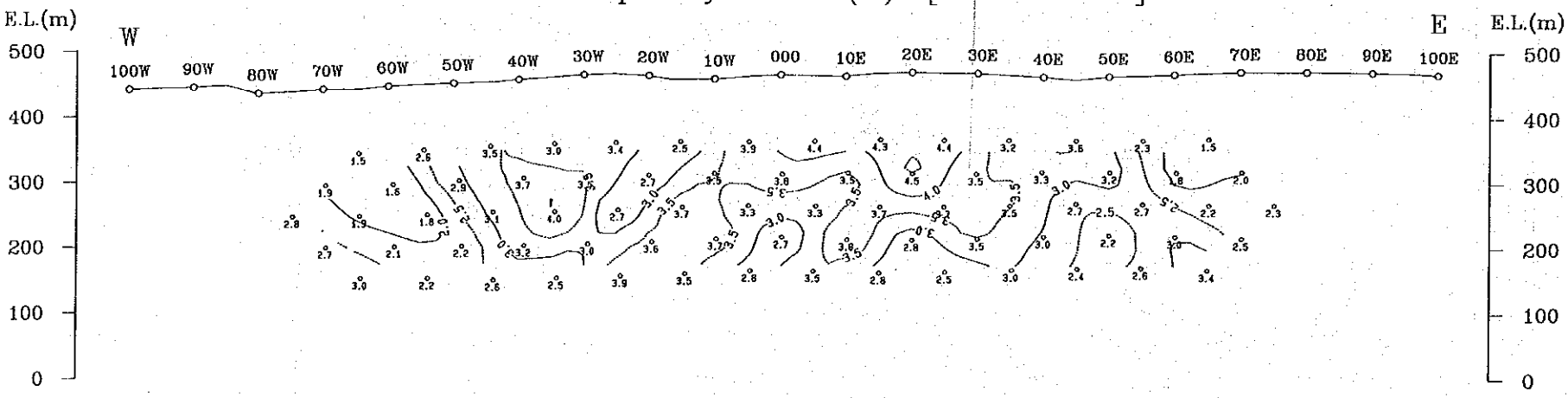
Raw Phase (-mrad) [0.375Hz]



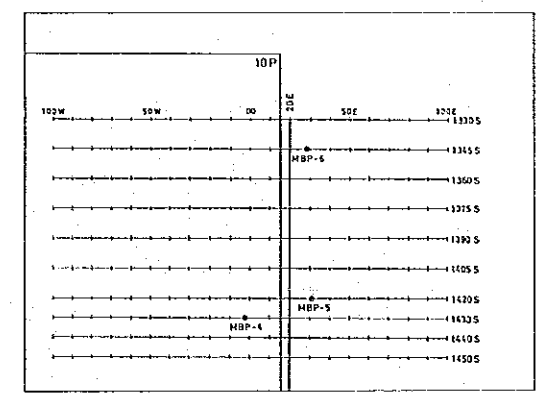
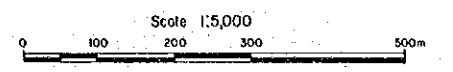
3-Point Decoupled Phase (-mrad) [0.125--0.375--0.625Hz]



Percent Frequency Effect (%) [0.375--3.0Hz]

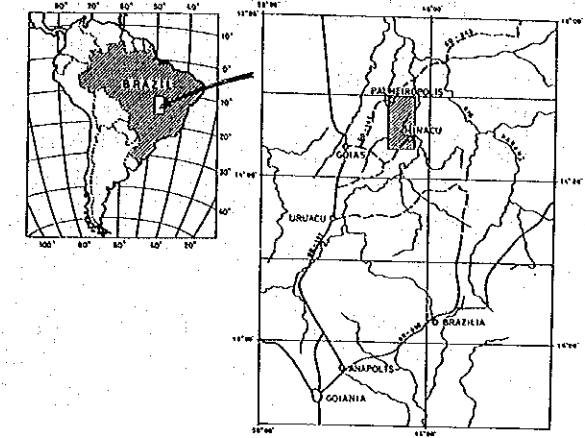


JAPAN INTERNATIONAL COOPERATION AGENCY  
METAL MINING AGENCY OF JAPAN  
FEB. 1989

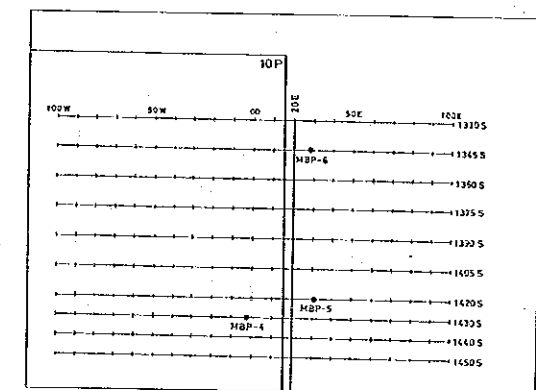
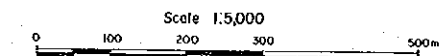




SIP Pseudo-Section (Line-1375S)

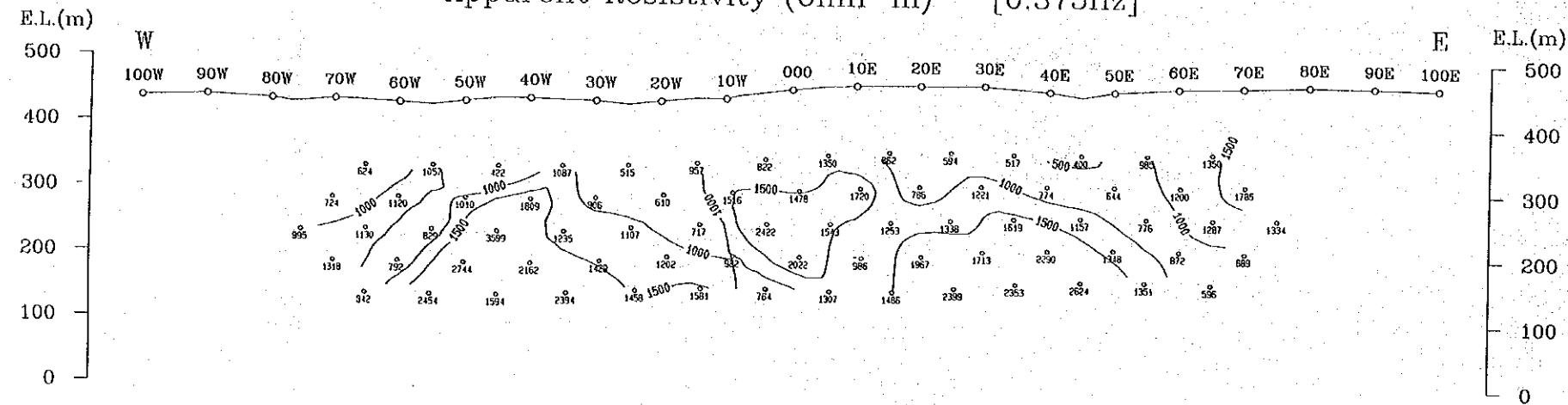


JAPAN INTERNATIONAL COOPERATION AGENCY  
METAL MINING AGENCY OF JAPAN  
FEB. 1989

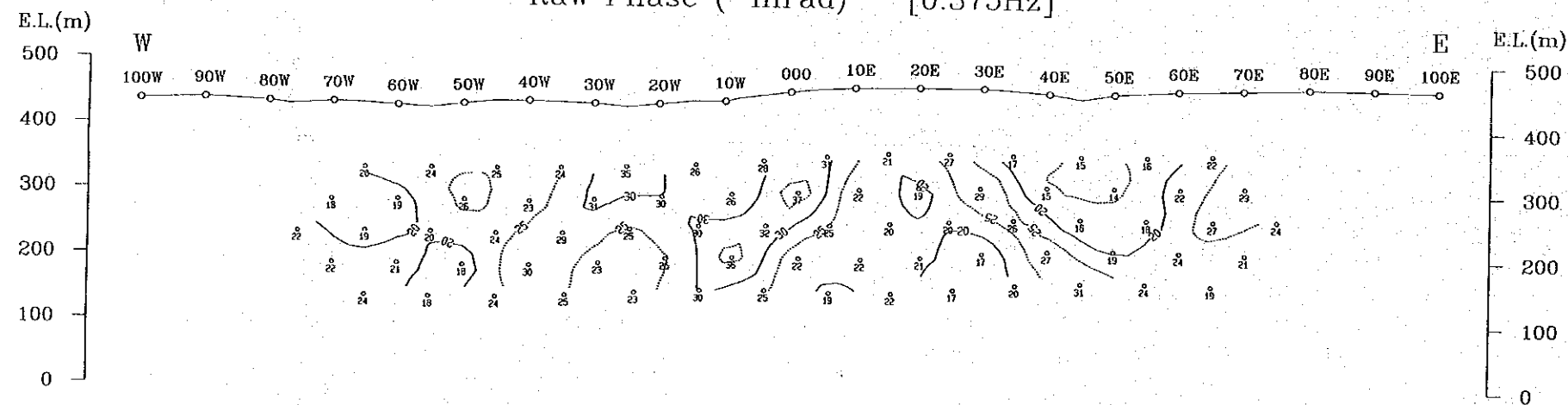


Line-1375S

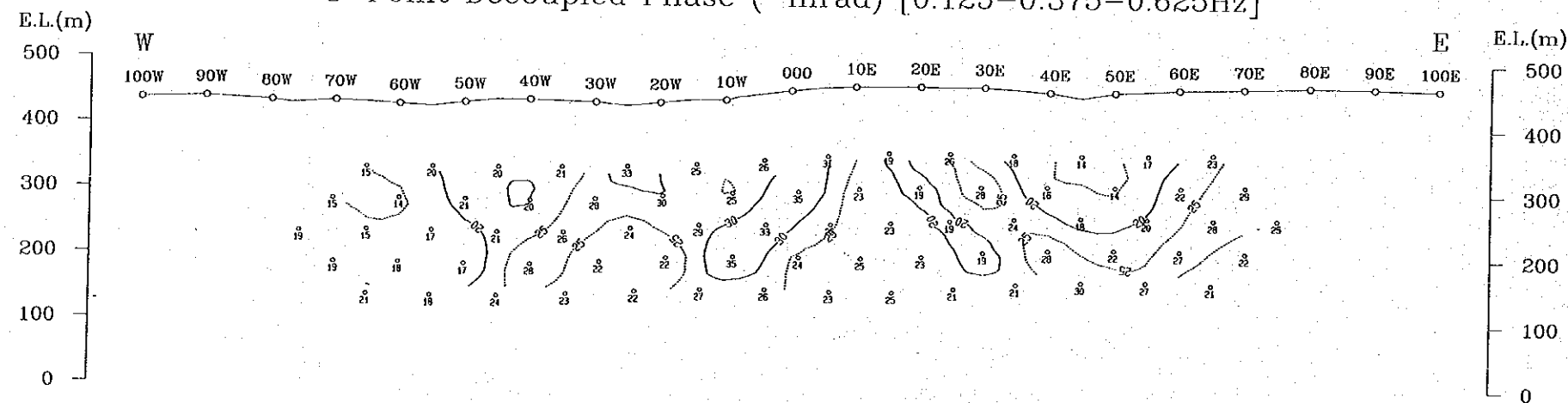
Apparent Resistivity (Ohm-m) [0.375Hz]



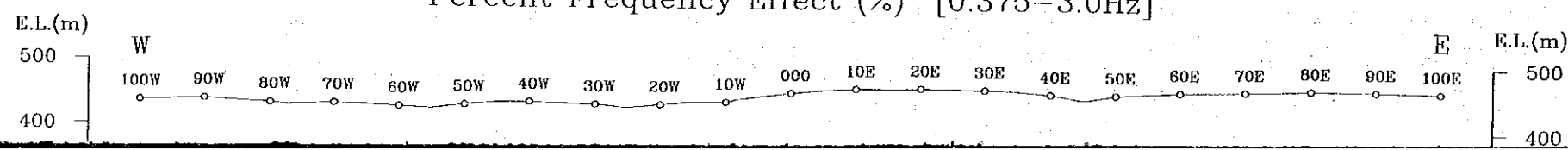
Raw Phase (-mrad) [0.375Hz]

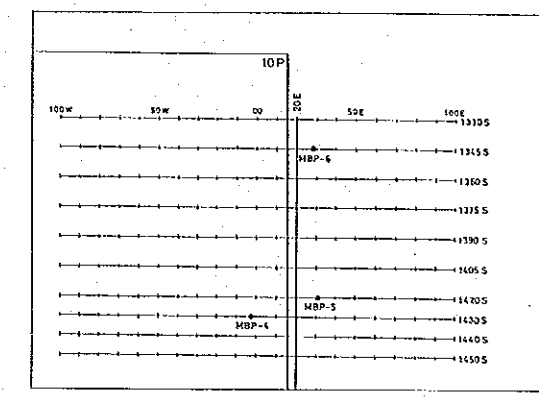
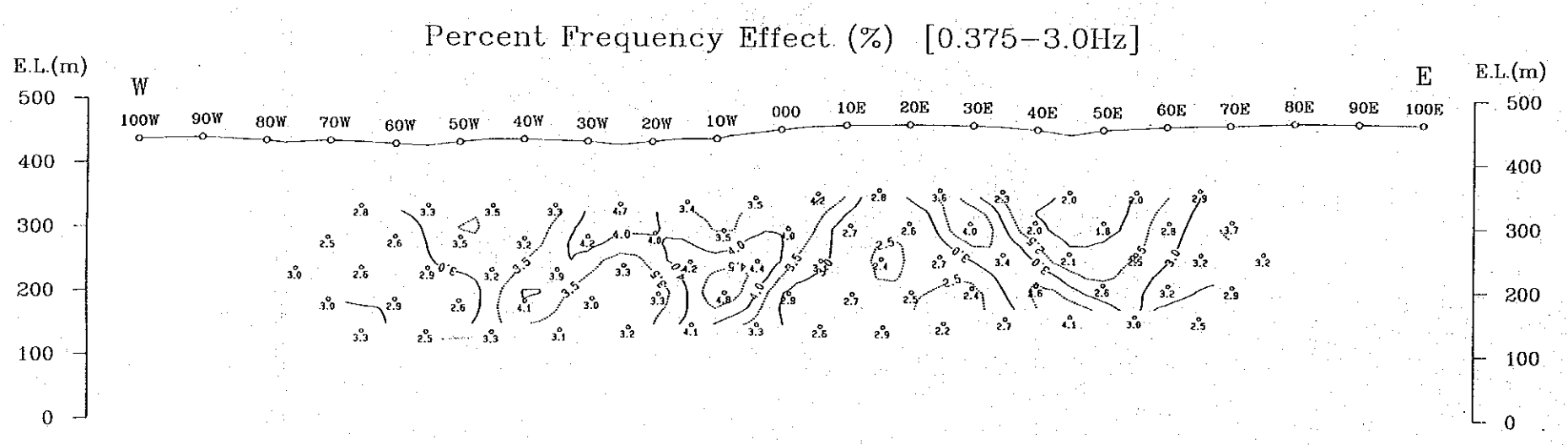
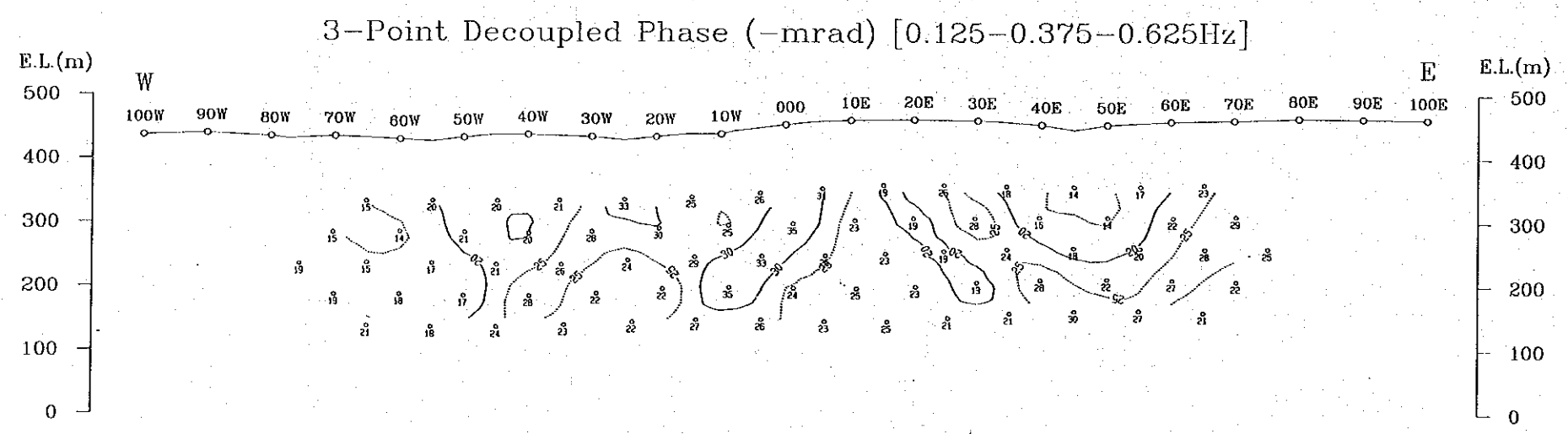
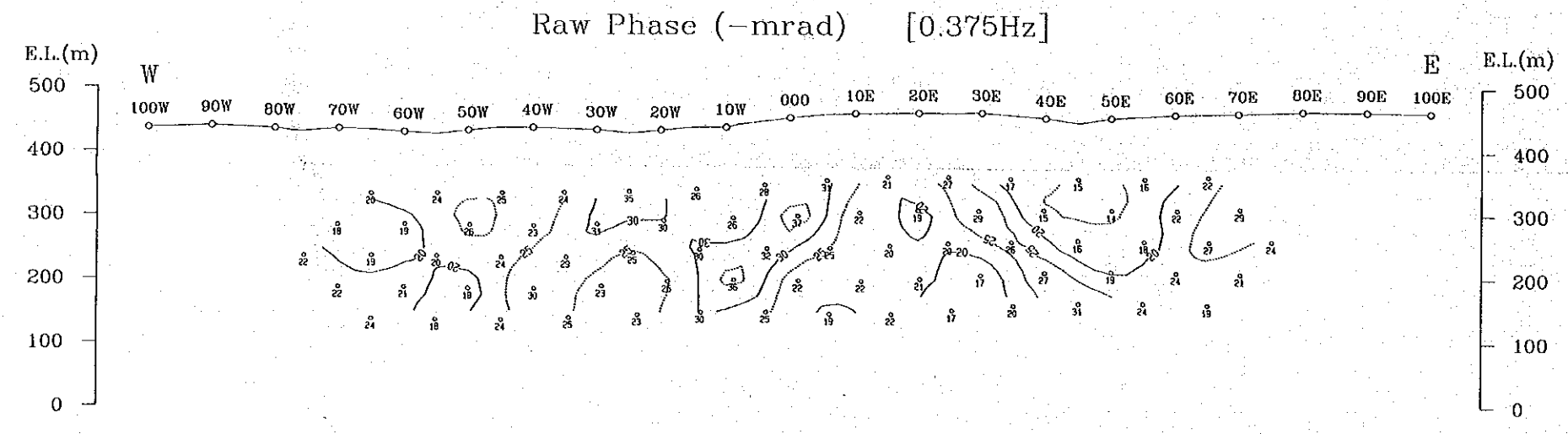
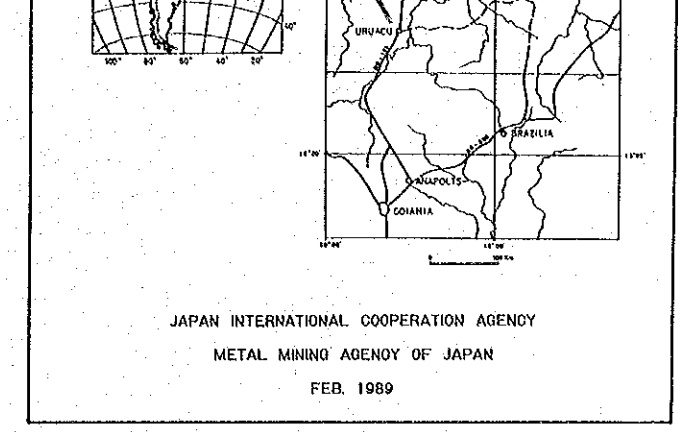
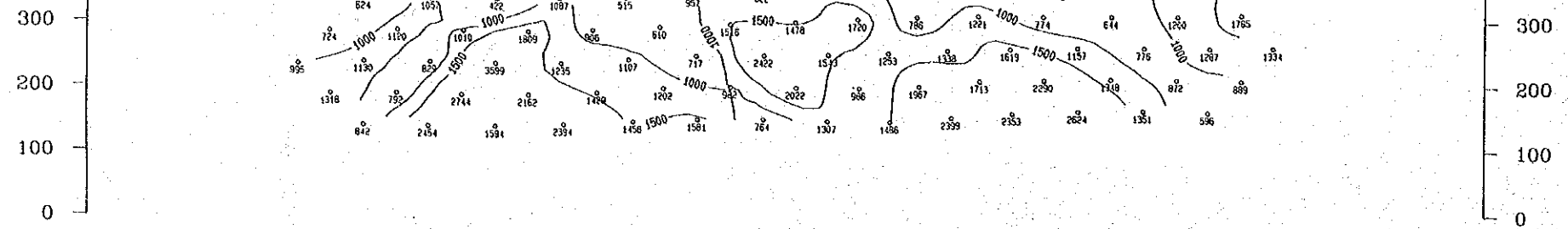


3-Point Decoupled Phase (-mrad) [0.125-0.375-0.625Hz]



Percent Frequency Effect (%) [0.375-3.0Hz]



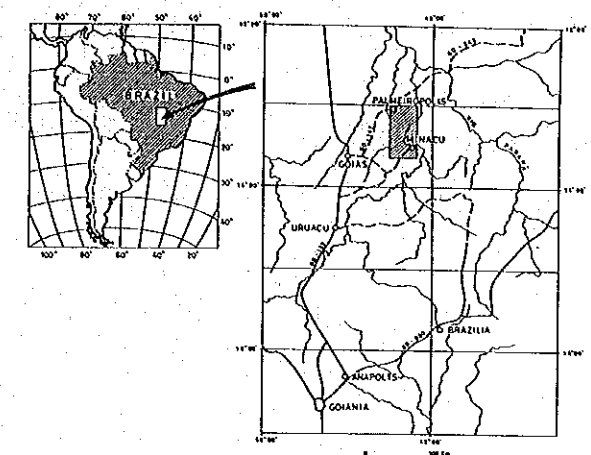




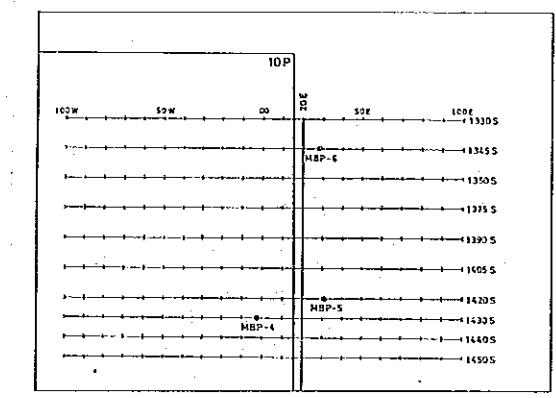
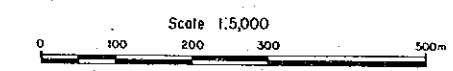
GEOLOGICAL SURVEY  
IN  
PALMEIROPOLIS, BRAZIL  
PHASE III

PL. II-2-3

SIP Pseudo-Section (Line-1405S)

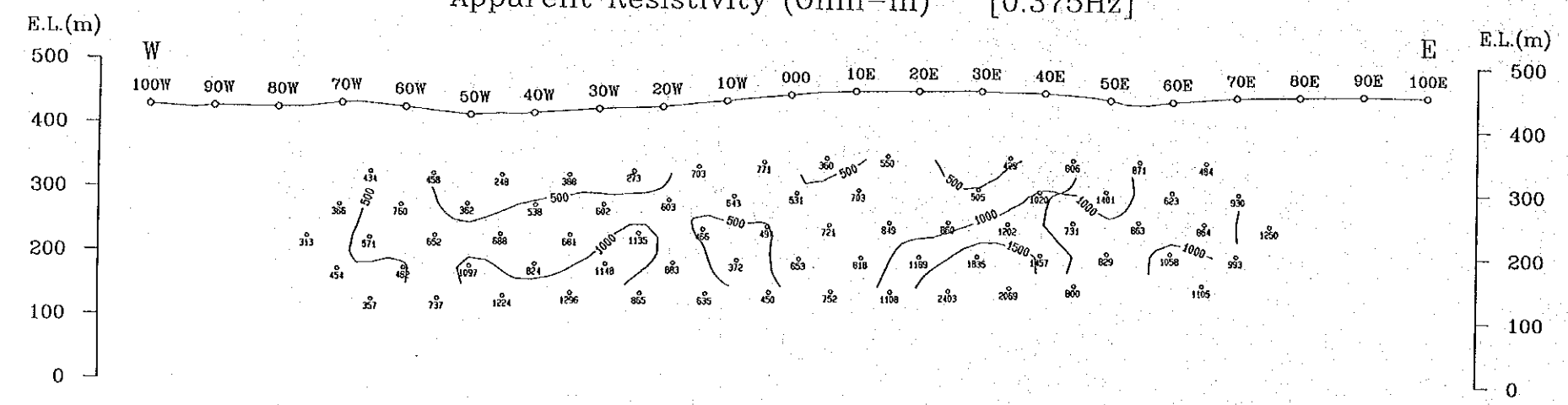


JAPAN INTERNATIONAL COOPERATION AGENCY  
METAL MINING AGENCY OF JAPAN  
FEB. 1989

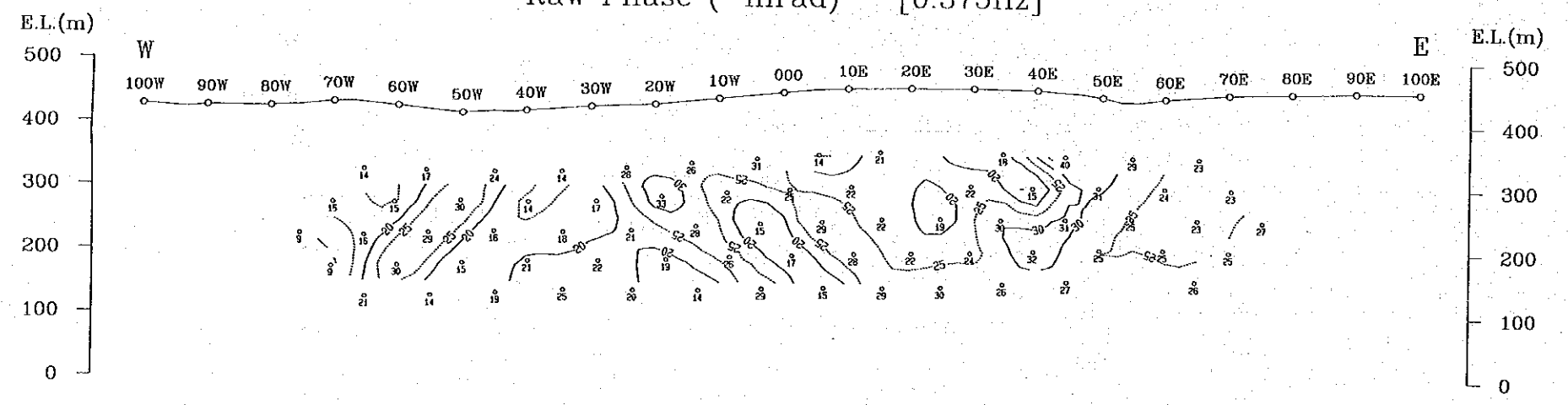


Line-1405S

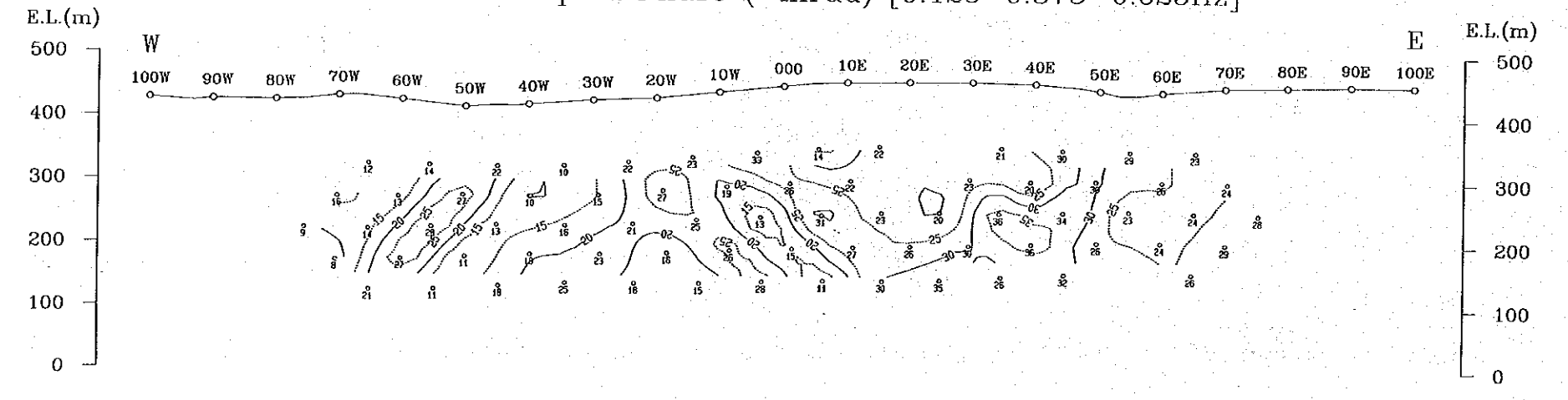
Apparent Resistivity (Ohm-m) [0.375Hz]



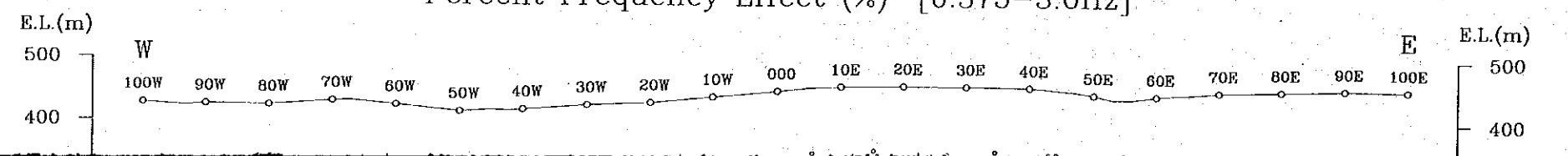
Raw Phase (-mrad) [0.375Hz]

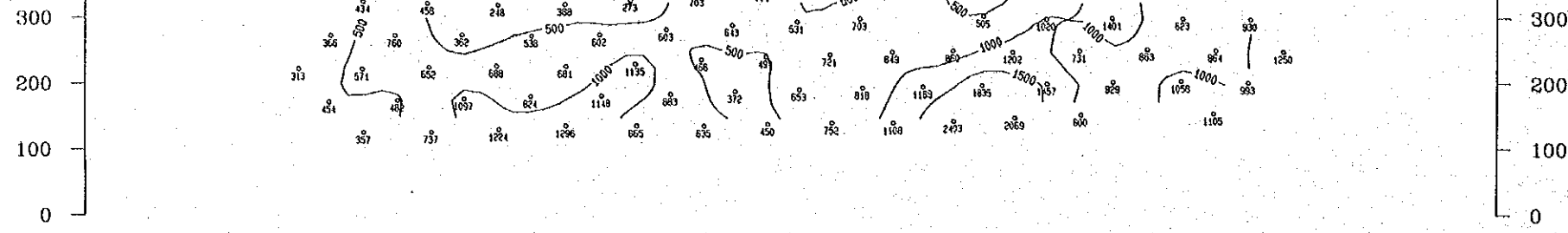


3-Point Decoupled Phase (-mrad) [0.125-0.375-0.625Hz]

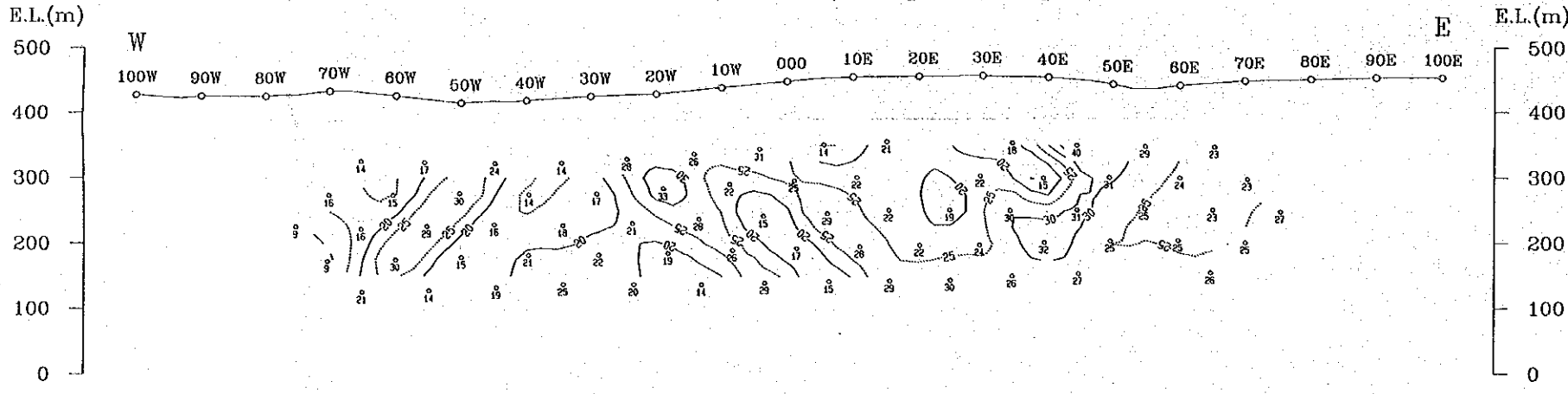


Percent Frequency Effect (%) [0.375-3.0Hz]

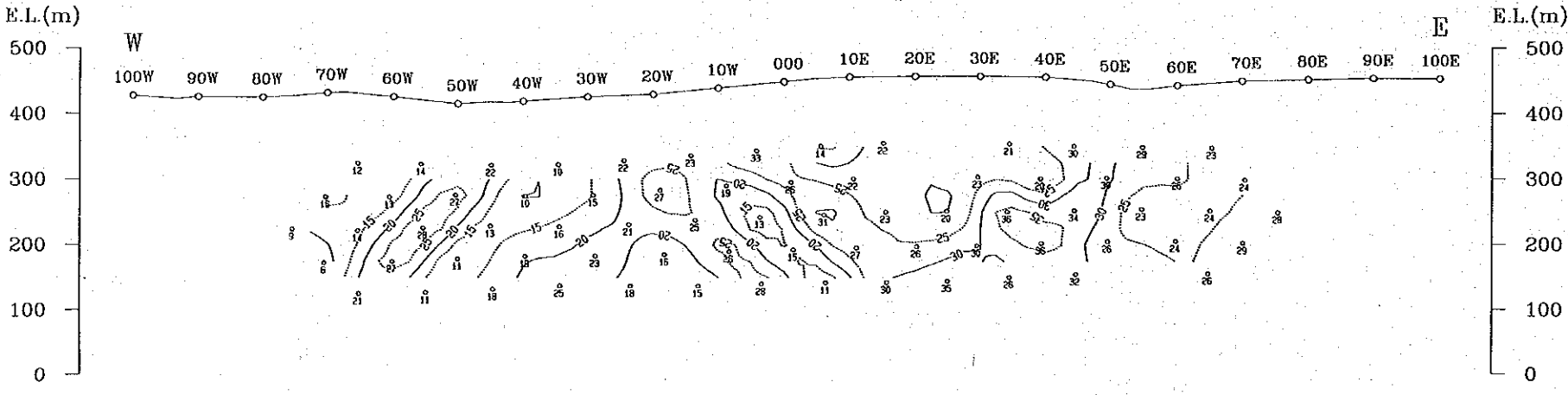




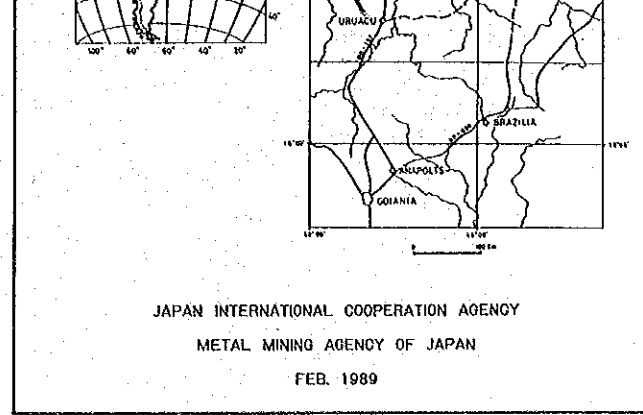
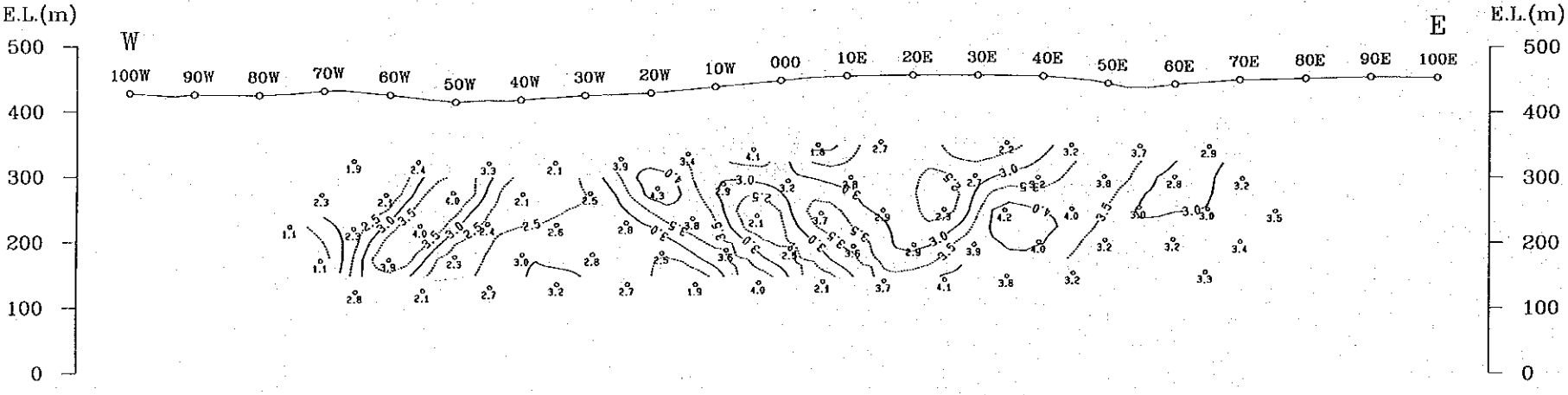
Raw Phase (-mrad) [0.375Hz]



3-Point Decoupled Phase (-mrad) [0.125-0.375-0.625Hz]

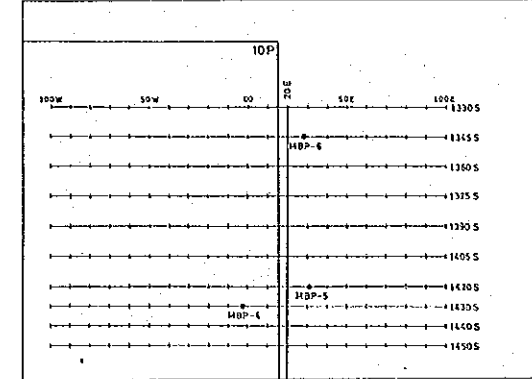


Percent Frequency Effect (%) [0.375-3.0Hz]



JAPAN INTERNATIONAL COOPERATION AGENCY  
METAL MINING AGENCY OF JAPAN  
FEB. 1989

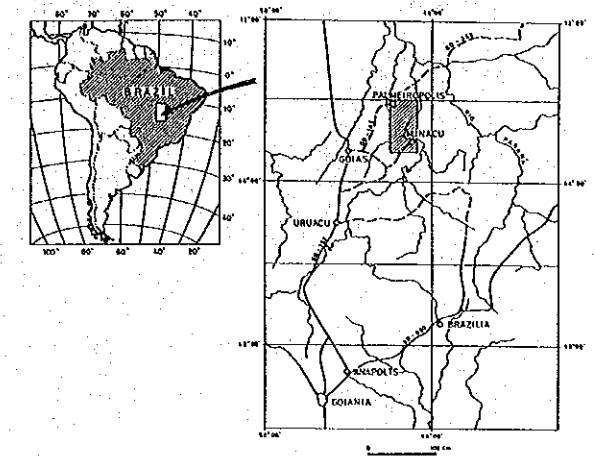
Scale 1:5,000  
0 100 200 300 500m



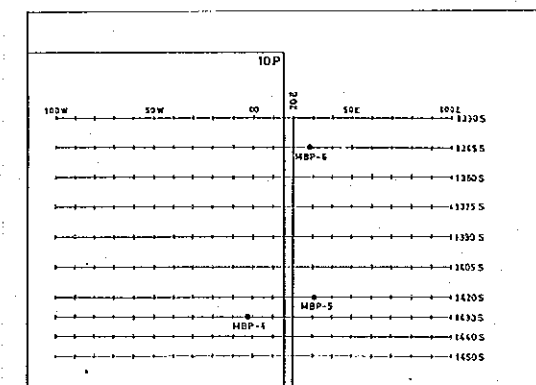
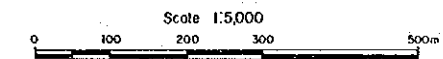


GEOLOGICAL SURVEY  
IN  
PALMEIROPOLIS, BRAZIL  
PHASE III

SIP Pseudo-Section (Line-1405S)

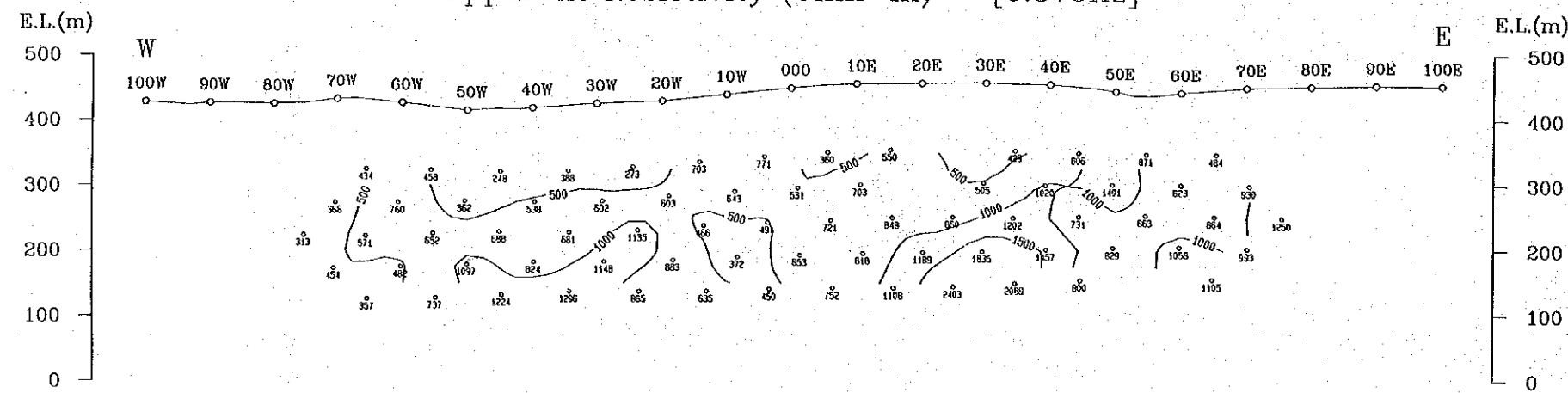


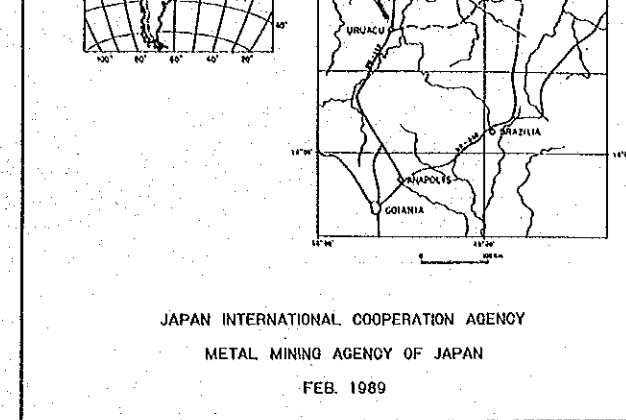
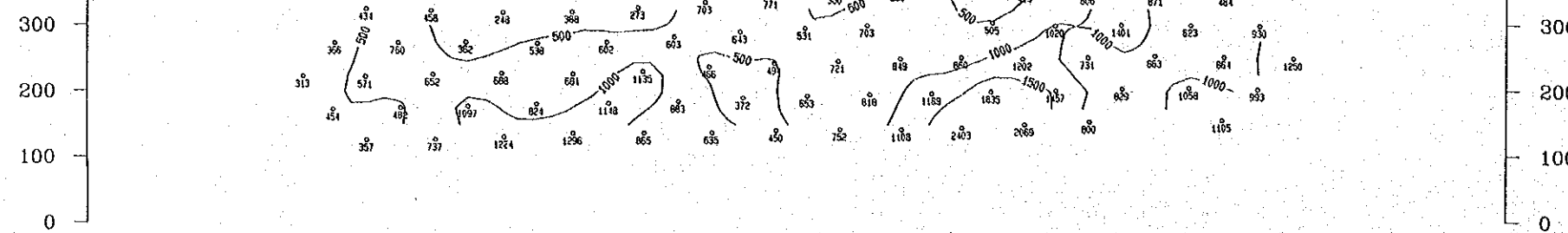
JAPAN INTERNATIONAL COOPERATION AGENCY  
METAL MINING AGENCY OF JAPAN  
FEB. 1989



Line-1405S

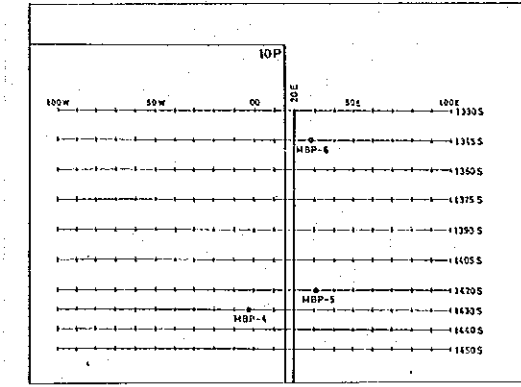
Apparent Resistivity (Ohm-m) [0.375Hz]



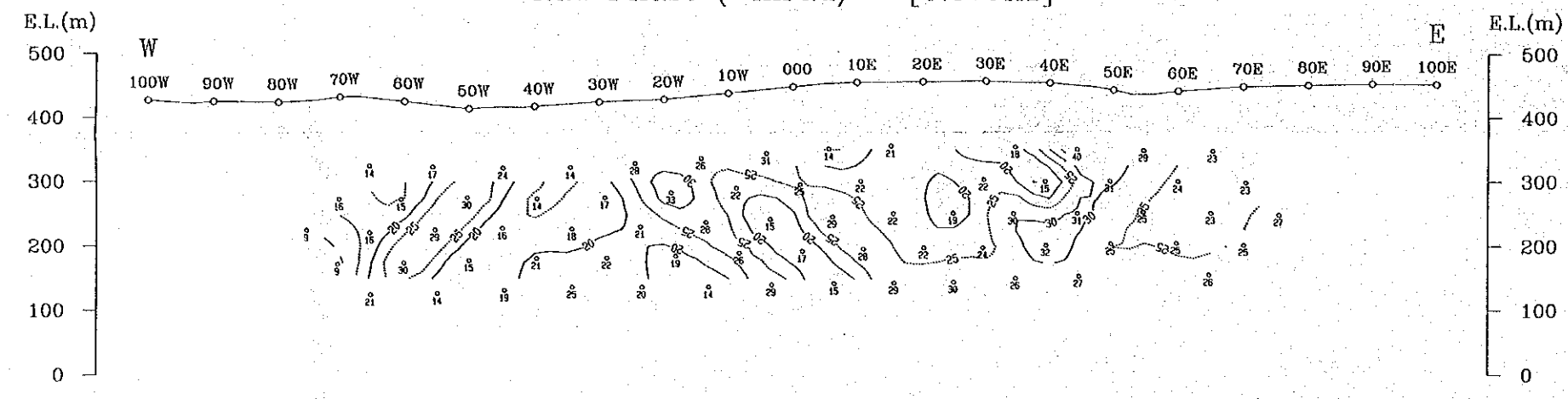


JAPAN INTERNATIONAL COOPERATION AGENCY  
METAL MINING AGENCY OF JAPAN  
FEB. 1989

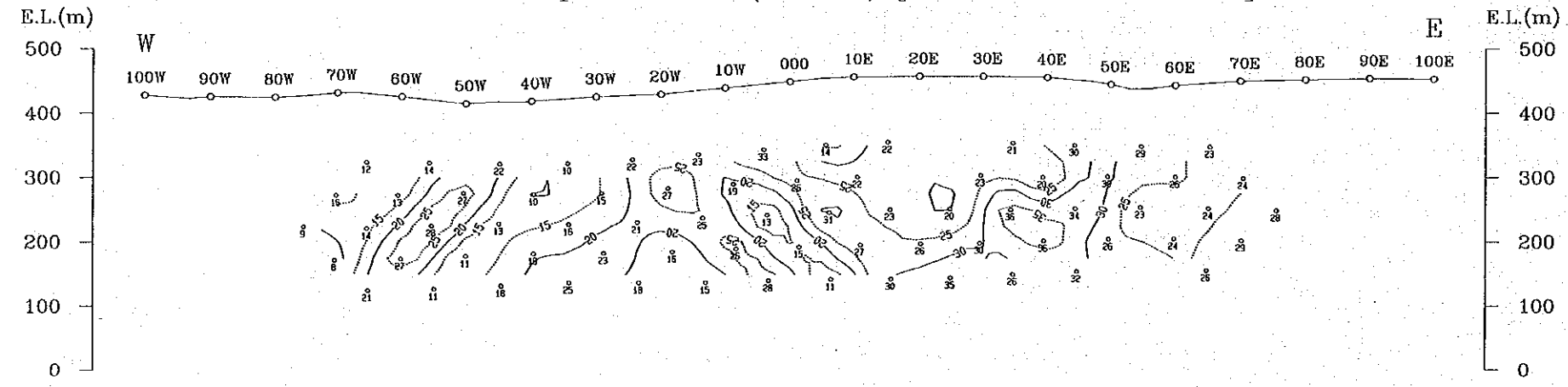
Scale 1:5,000  
0 100 200 300 500m



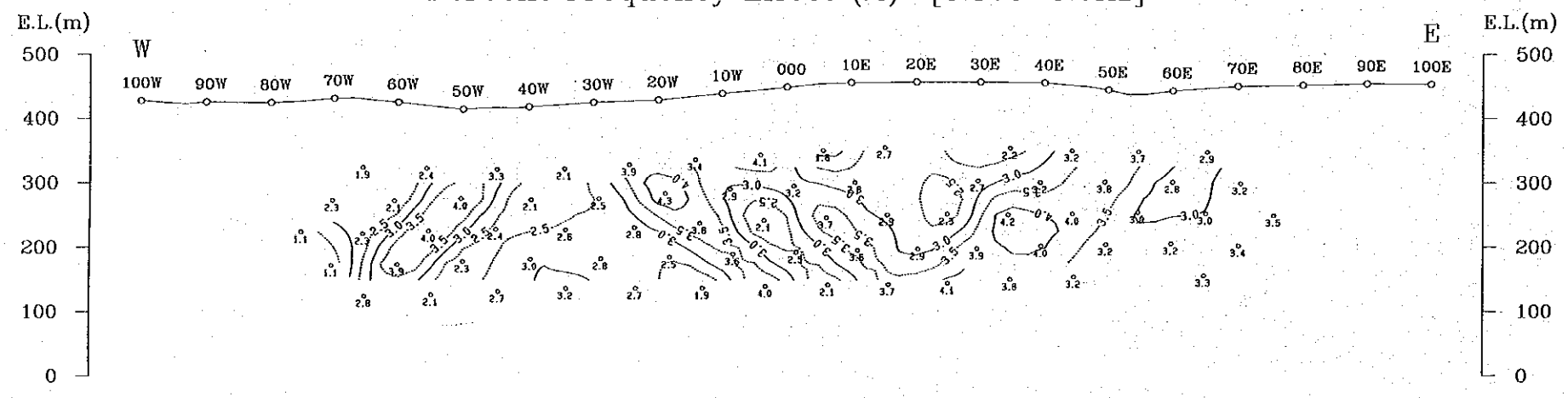
Raw Phase (-mrad) [0.375Hz]



3-Point Decoupled Phase (-mrad) [0.125-0.375-0.625Hz]

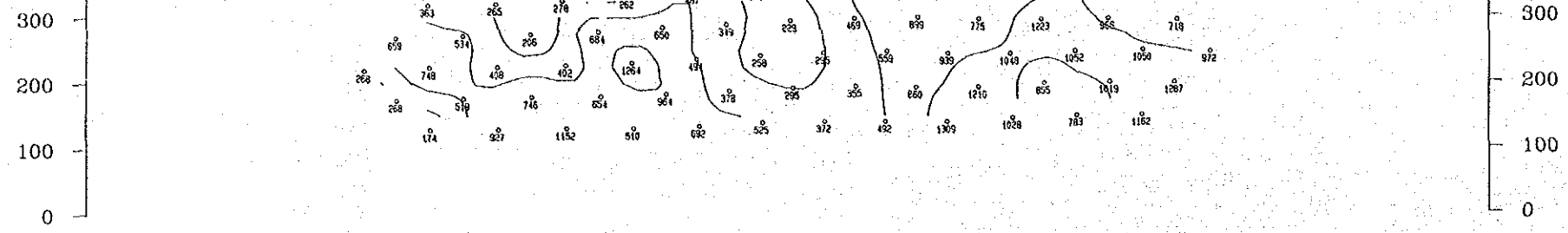


Percent Frequency Effect (%) [0.375-3.0Hz]

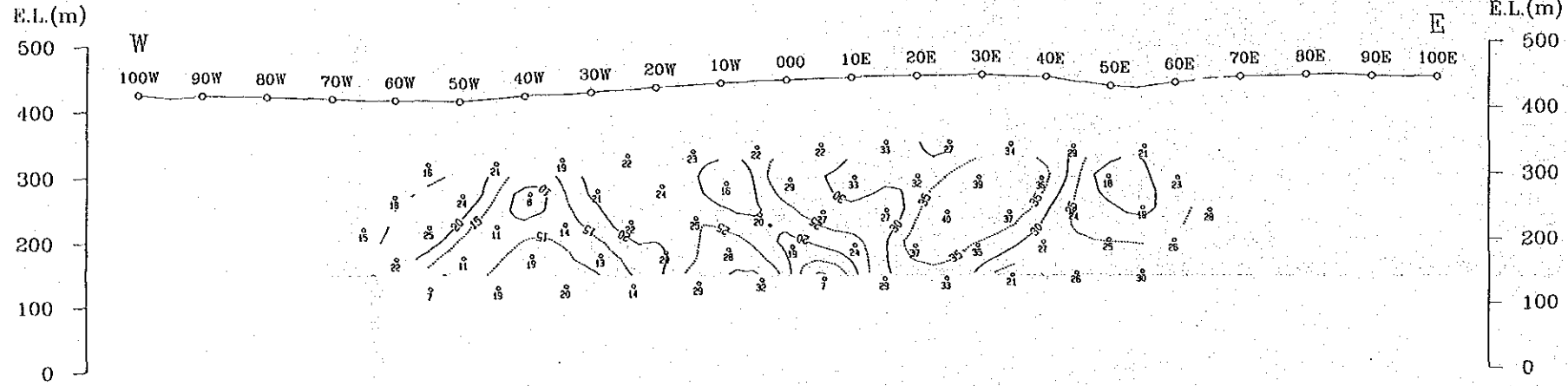




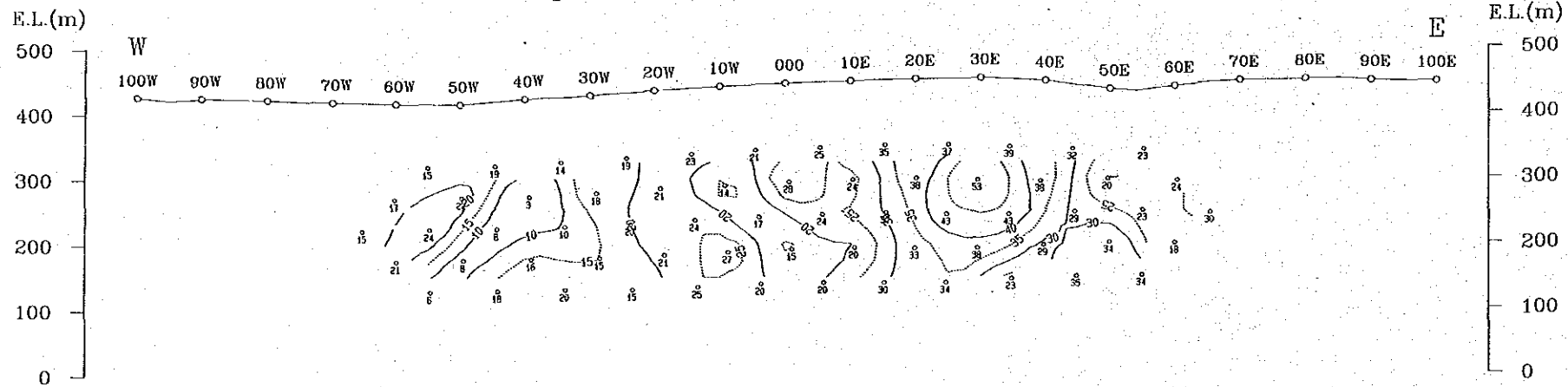




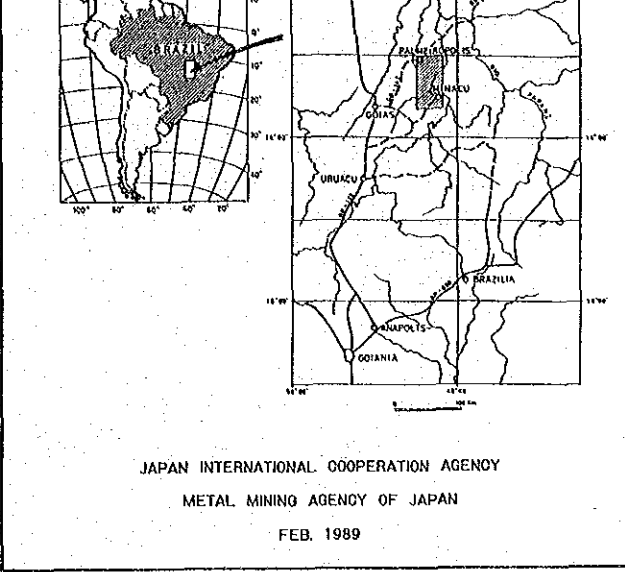
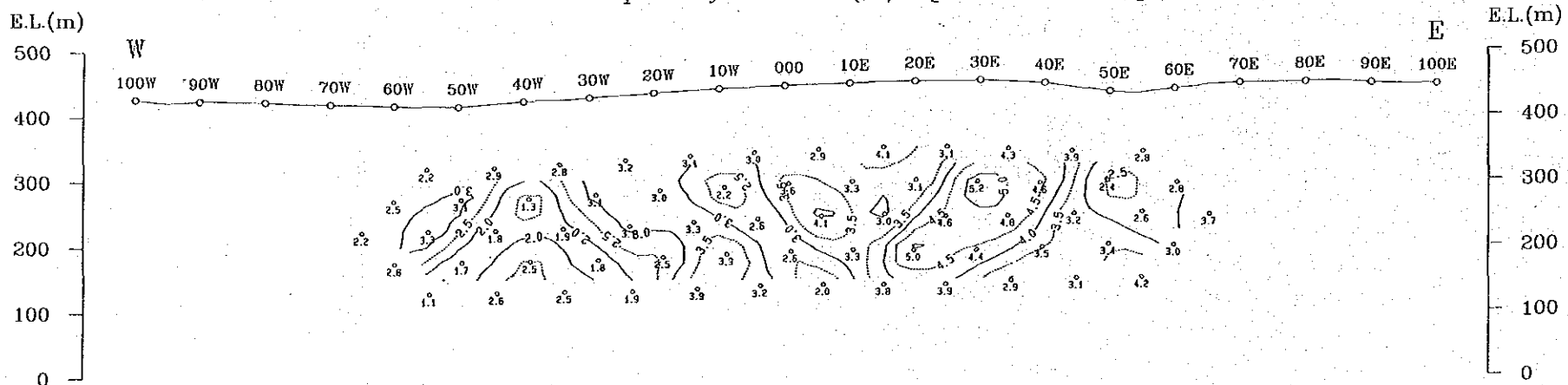
Raw Phase (-mrad) [0.375Hz]



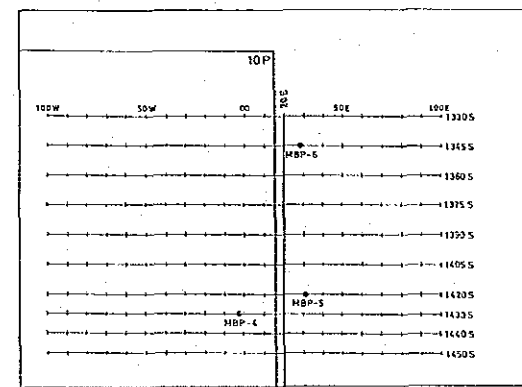
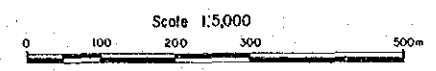
3-Point Decoupled Phase (-mrad) [0.125-0.375-0.625Hz]



Percent Frequency Effect (%) [0.375-3.0Hz]



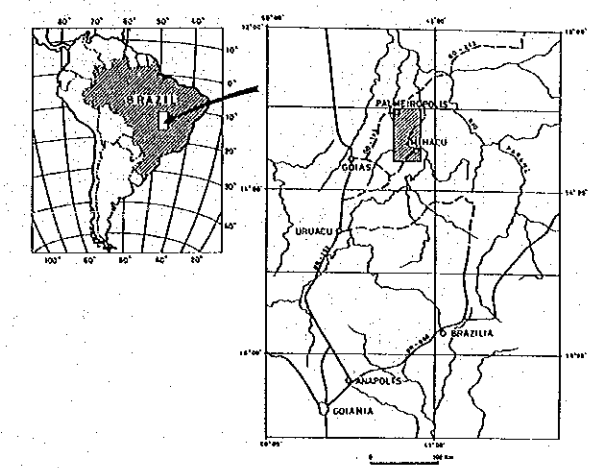
JAPAN INTERNATIONAL COOPERATION AGENCY  
METAL MINING AGENCY OF JAPAN  
FEB. 1989



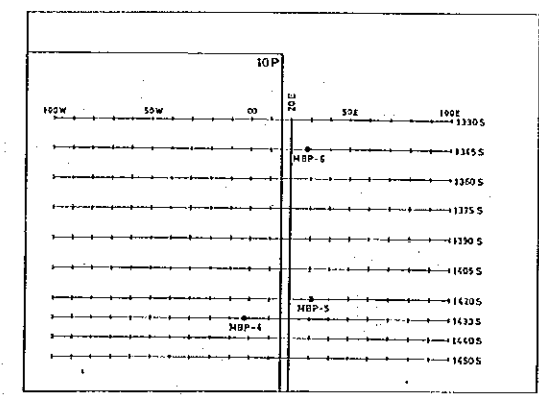
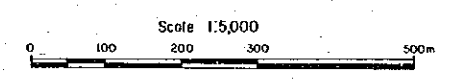


GEOLOGICAL SURVEY  
IN  
PALMEIROPOLIS, BRAZIL  
PHASE III

SIP Pseudo-Section (Line-1430S)

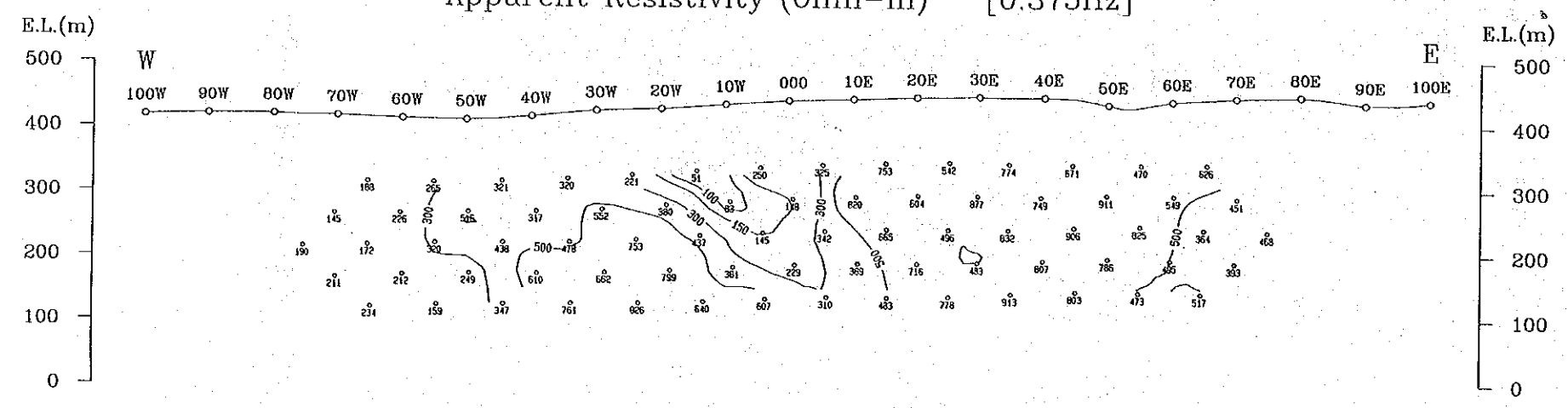


JAPAN INTERNATIONAL COOPERATION AGENCY  
METAL MINING AGENCY OF JAPAN  
FEB. 1989

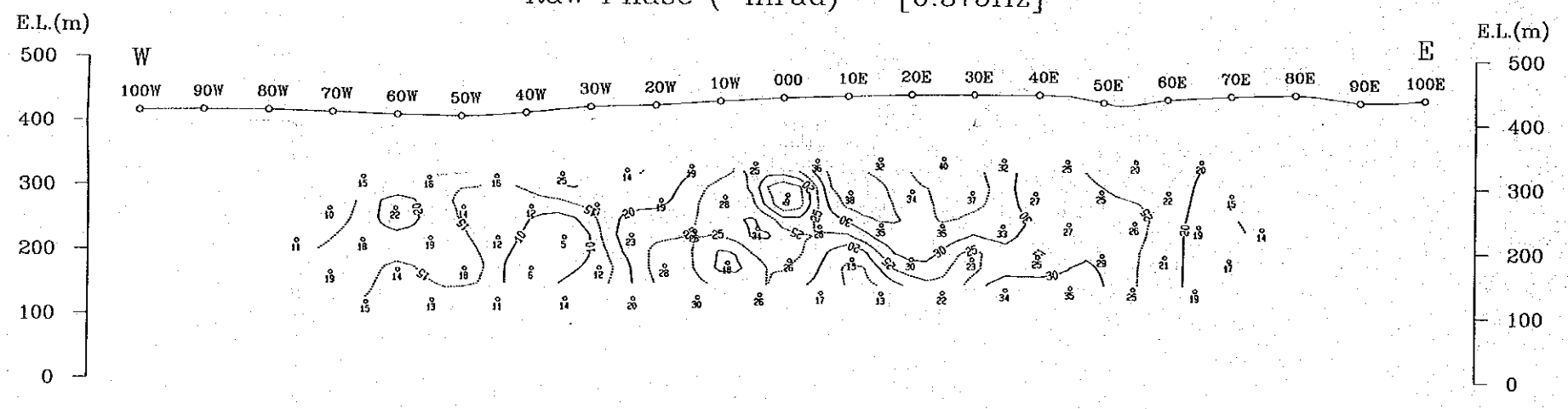


Line-1430S

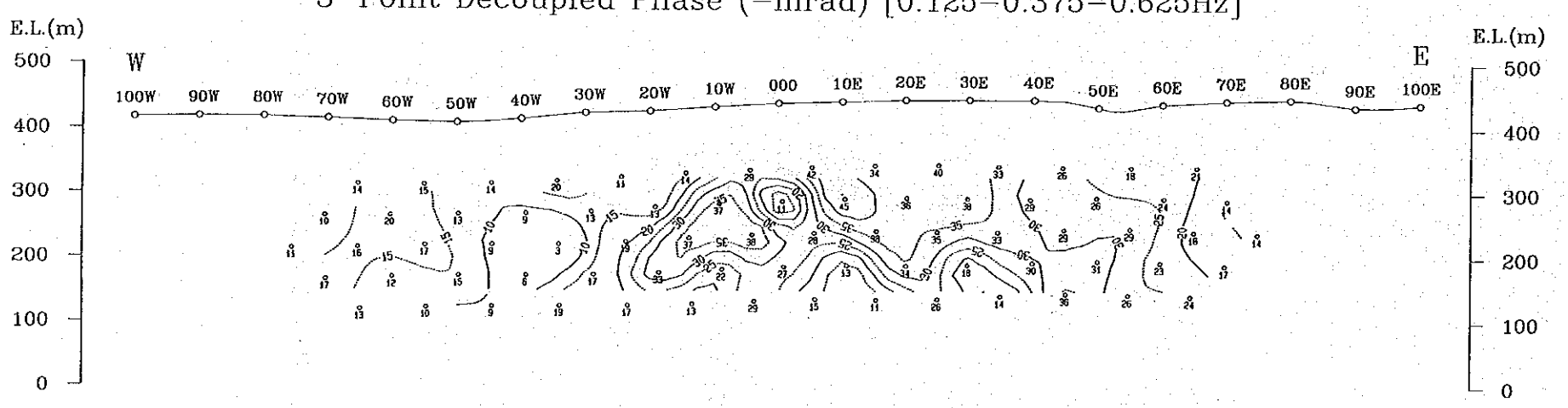
Apparent Resistivity (Ohm-m) [0.375Hz]



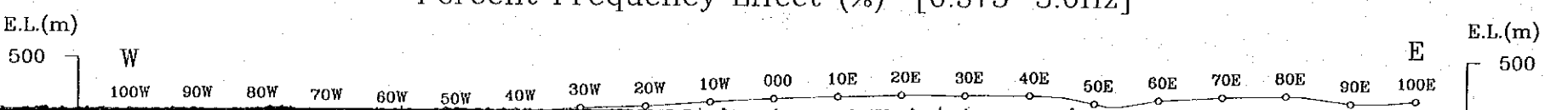
Raw Phase (-mrad) [0.375Hz]

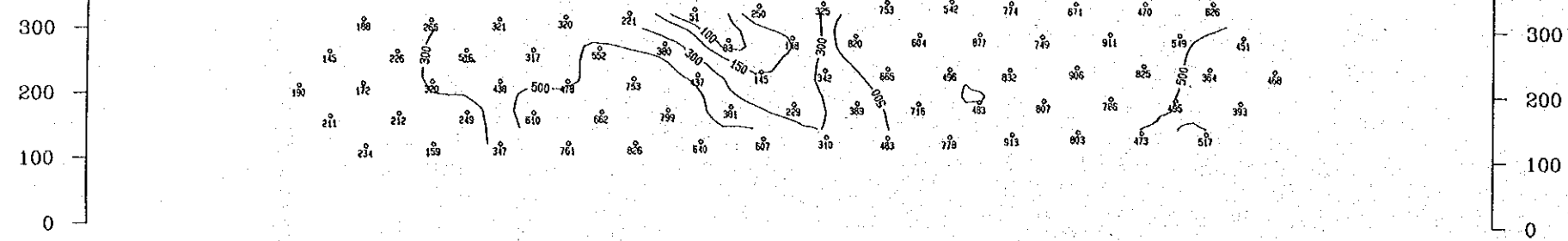


3-Point Decoupled Phase (-mrad) [0.125-0.375-0.625Hz]

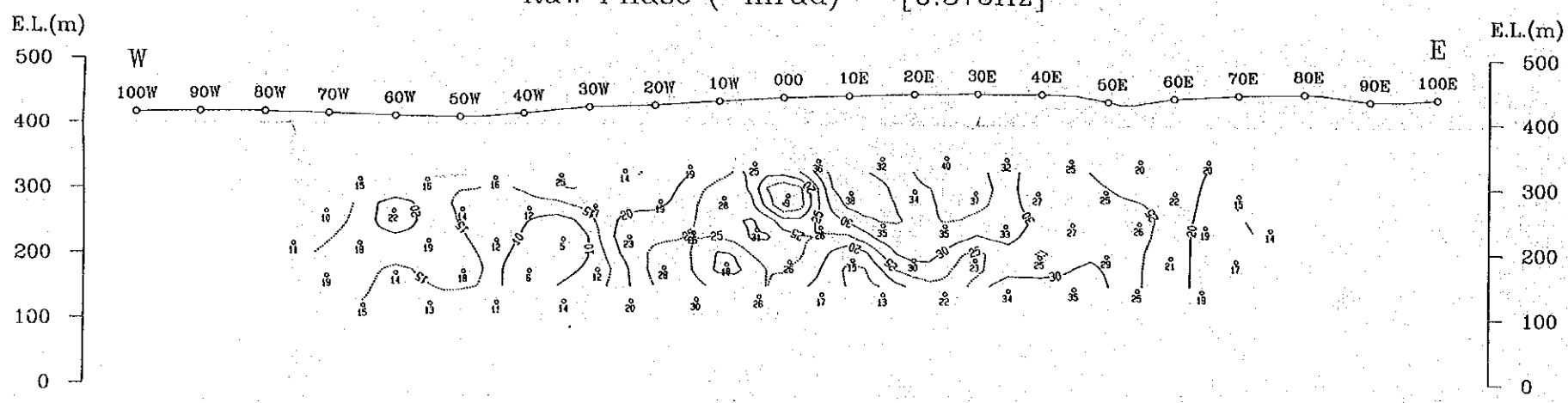


Percent Frequency Effect (%) [0.375-3.0Hz]

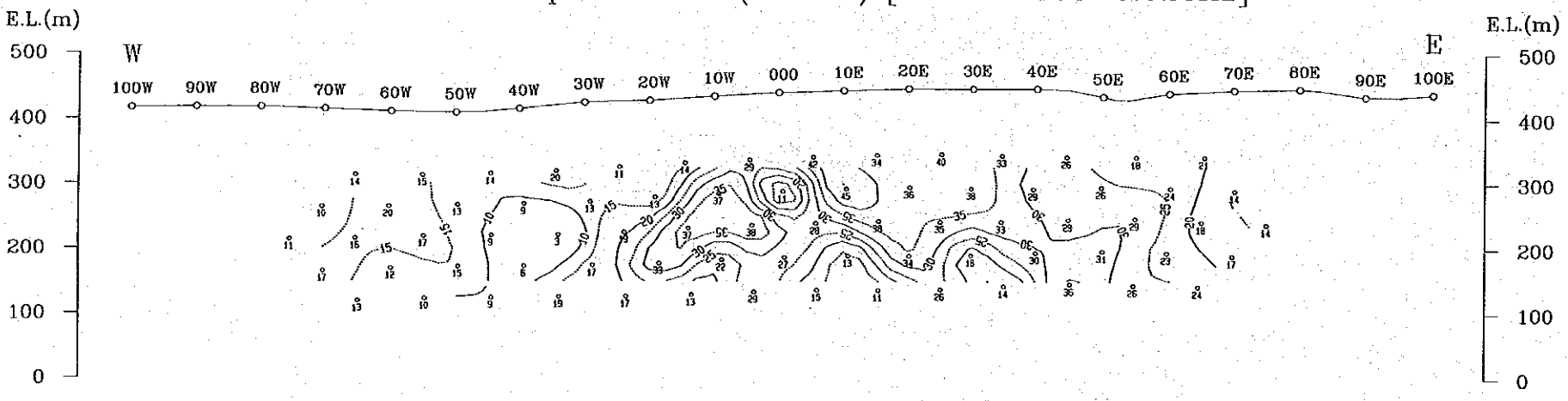




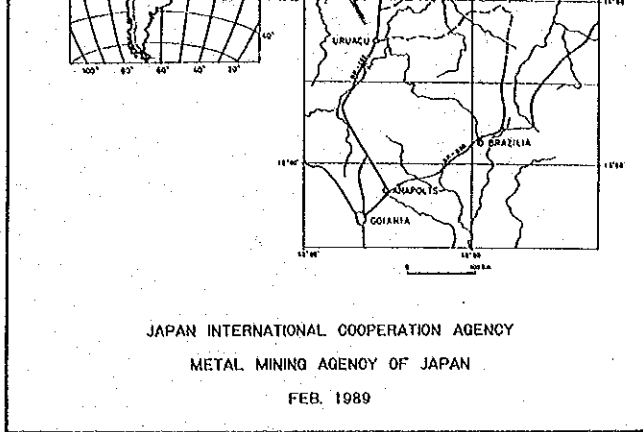
Raw Phase (-mrad) [0.375Hz]



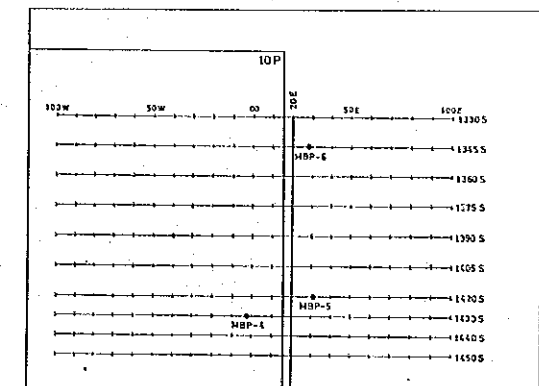
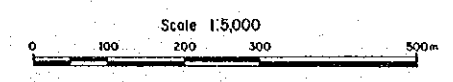
3-Point Decoupled Phase (-mrad) [0.125-0.375-0.625Hz]



Percent Frequency Effect (%) [0.375-3.0Hz]



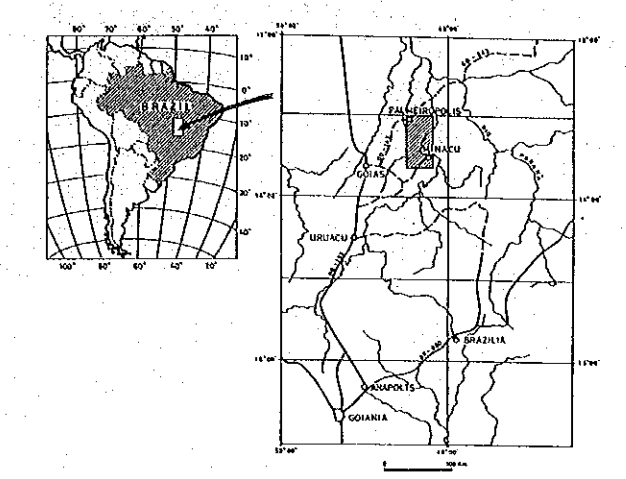
JAPAN INTERNATIONAL COOPERATION AGENCY  
METAL MINING AGENCY OF JAPAN  
FEB. 1989



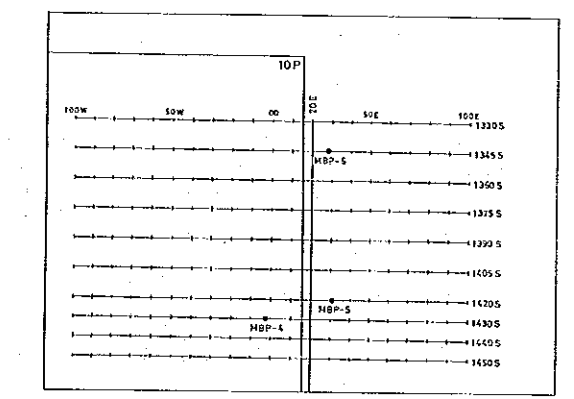
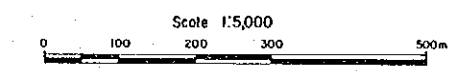
GEOLOGICAL SURVEY  
IN  
PALMEIROPOLIS, BRAZIL  
PHASE III

PL. II-2-6

SIP Pseudo-Section (Line-1450S)

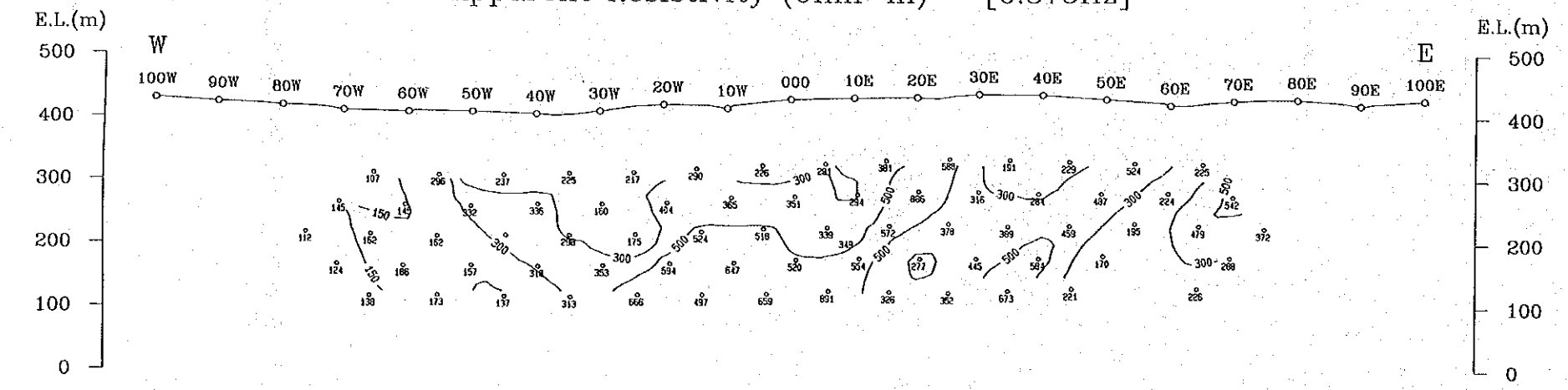


JAPAN INTERNATIONAL COOPERATION AGENCY  
METAL MINING AGENCY OF JAPAN  
FEB. 1989

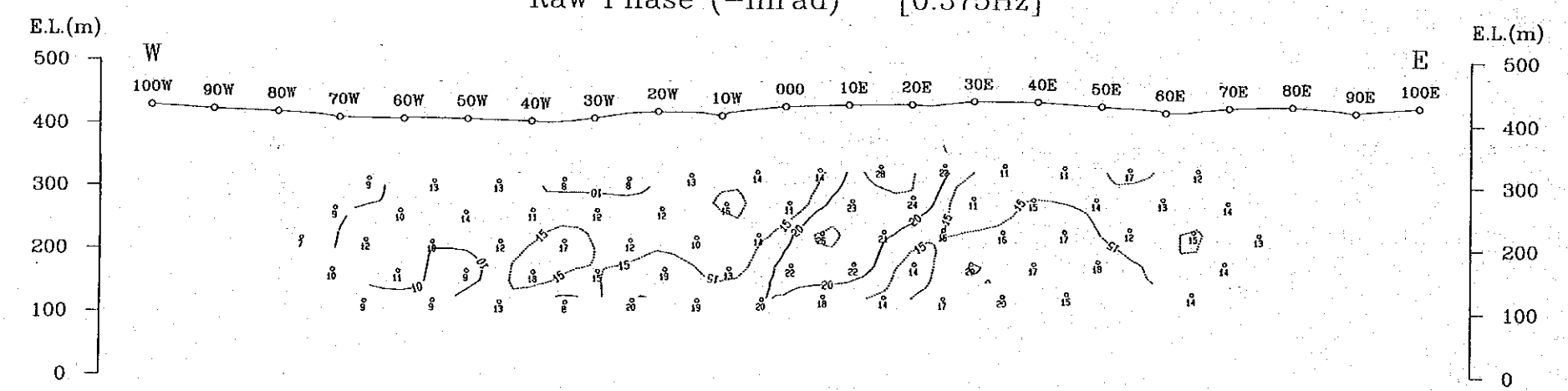


Line-1450S

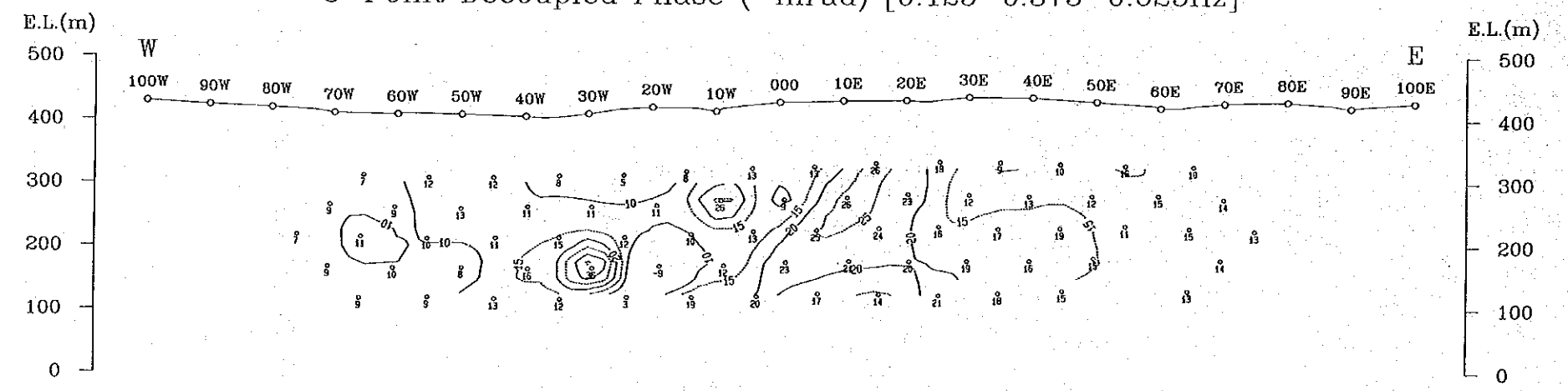
Apparent Resistivity (Ohm-m) [0.375Hz]



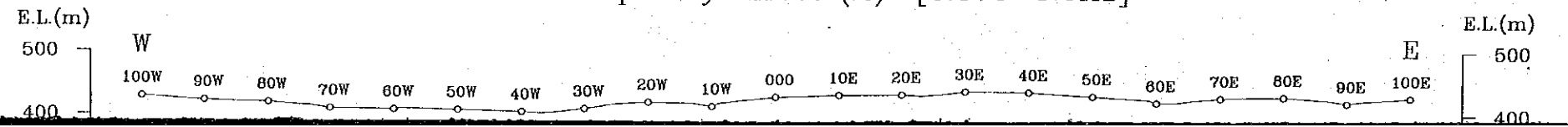
Raw Phase (-mrad) [0.375Hz]



3-Point Decoupled Phase (-mrad) [0.125-0.375-0.625Hz]

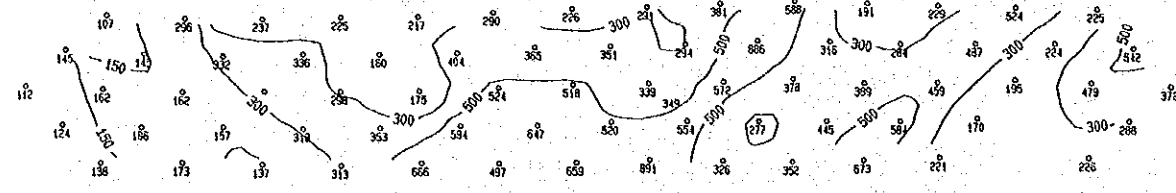


Percent Frequency Effect (%) [0.375-3.0Hz]





300  
200  
100  
0

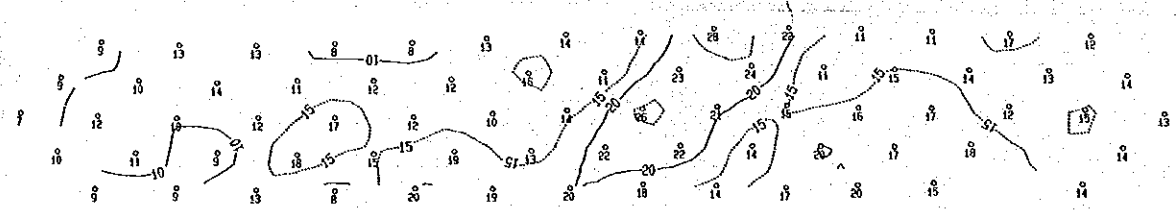


300  
200  
100  
0

Raw Phase (-mrad) [0.375Hz]

E.L.(m)  
500  
400  
300  
200  
100  
0

W 100W 90W 80W 70W 60W 50W 40W 30W 20W 10W 000 10E 20E 30E 40E 50E 60E 70E 80E 90E 100E E

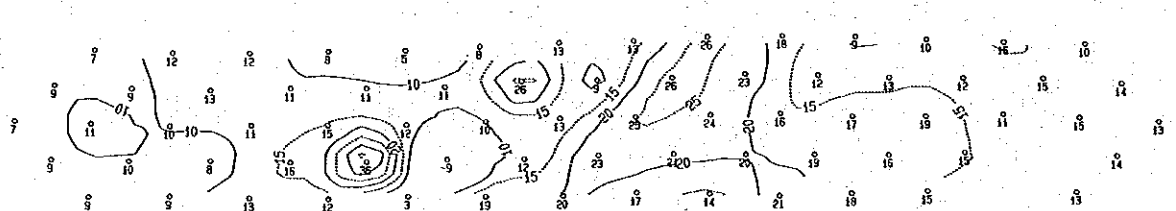


E.L.(m)  
500  
400  
300  
200  
100  
0

3-Point Decoupled Phase (-mrad) [0.125-0.375-0.625Hz]

E.L.(m)  
500  
400  
300  
200  
100  
0

W 100W 90W 80W 70W 60W 50W 40W 30W 20W 10W 000 10E 20E 30E 40E 50E 60E 70E 80E 90E 100E E

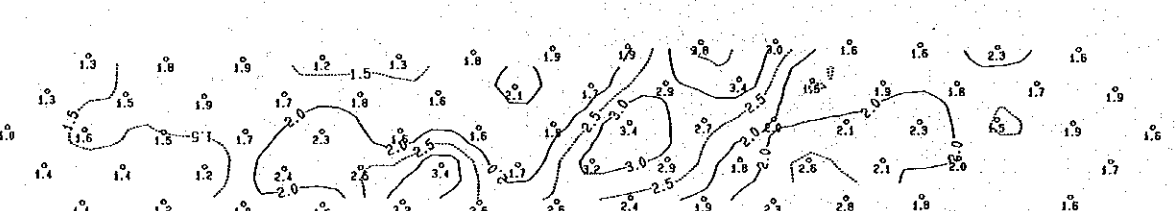


E.L.(m)  
500  
400  
300  
200  
100  
0

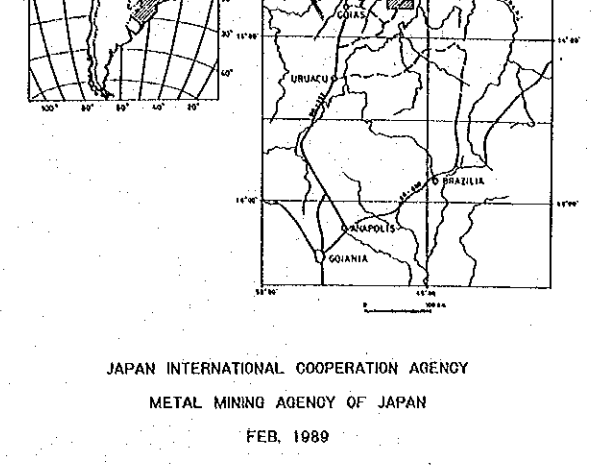
Percent Frequency Effect (%) [0.375-3.0Hz]

E.L.(m)  
500  
400  
300  
200  
100  
0

W 100W 90W 80W 70W 60W 50W 40W 30W 20W 10W 000 10E 20E 30E 40E 50E 60E 70E 80E 90E 100E E



E.L.(m)  
500  
400  
300  
200  
100  
0



JAPAN INTERNATIONAL COOPERATION AGENCY  
METAL MINING AGENCY OF JAPAN  
FEB. 1989

