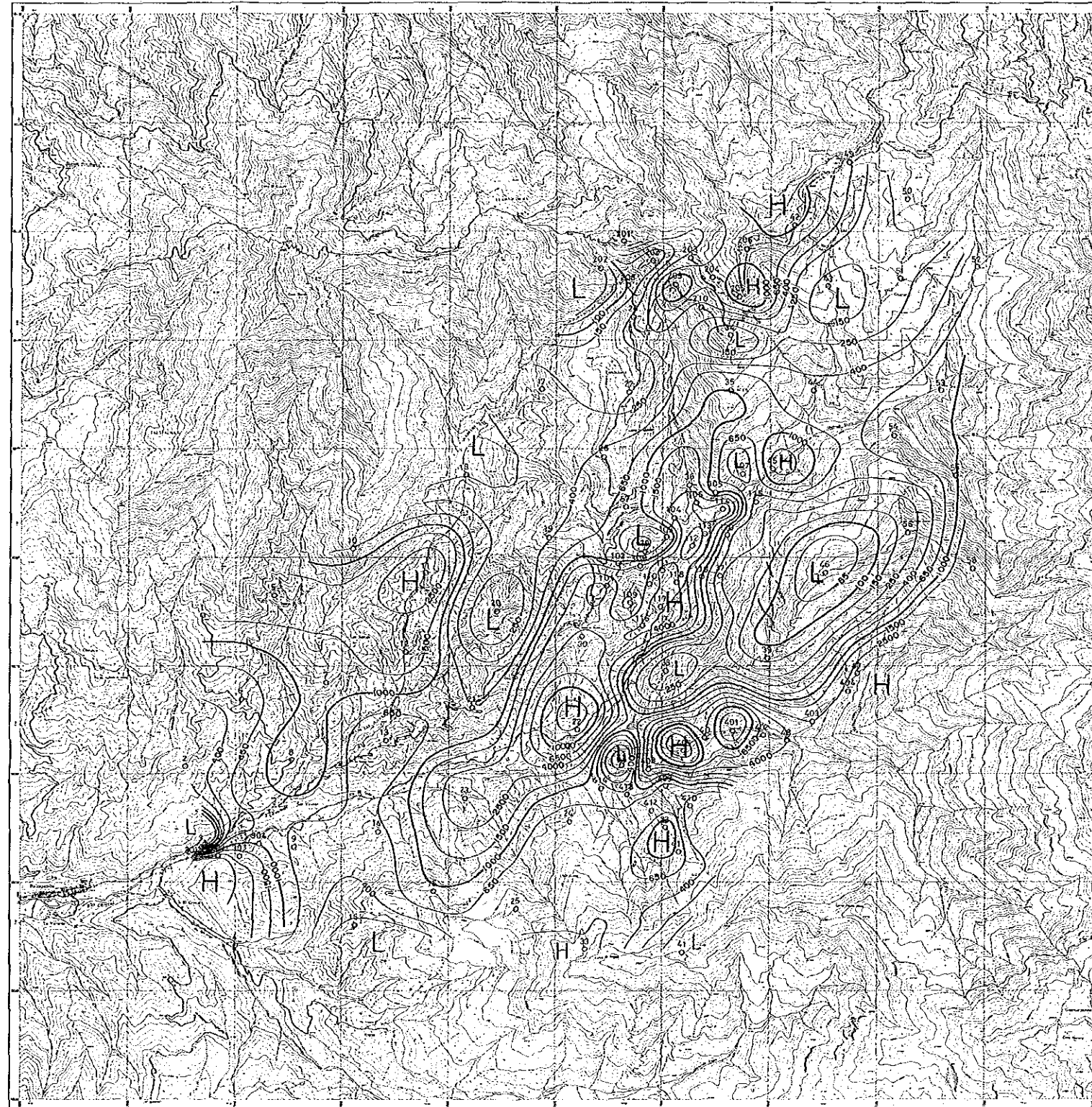


BALZAPAMBA



PL. 1-1-8

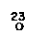

REPORT ON THE MINERAL EXPLORATION
IN
THE BOLIVAR AREA, REPUBLIC OF ECUADOR
PHASE I

Apparent Resistivity Plan Map (128Hz)

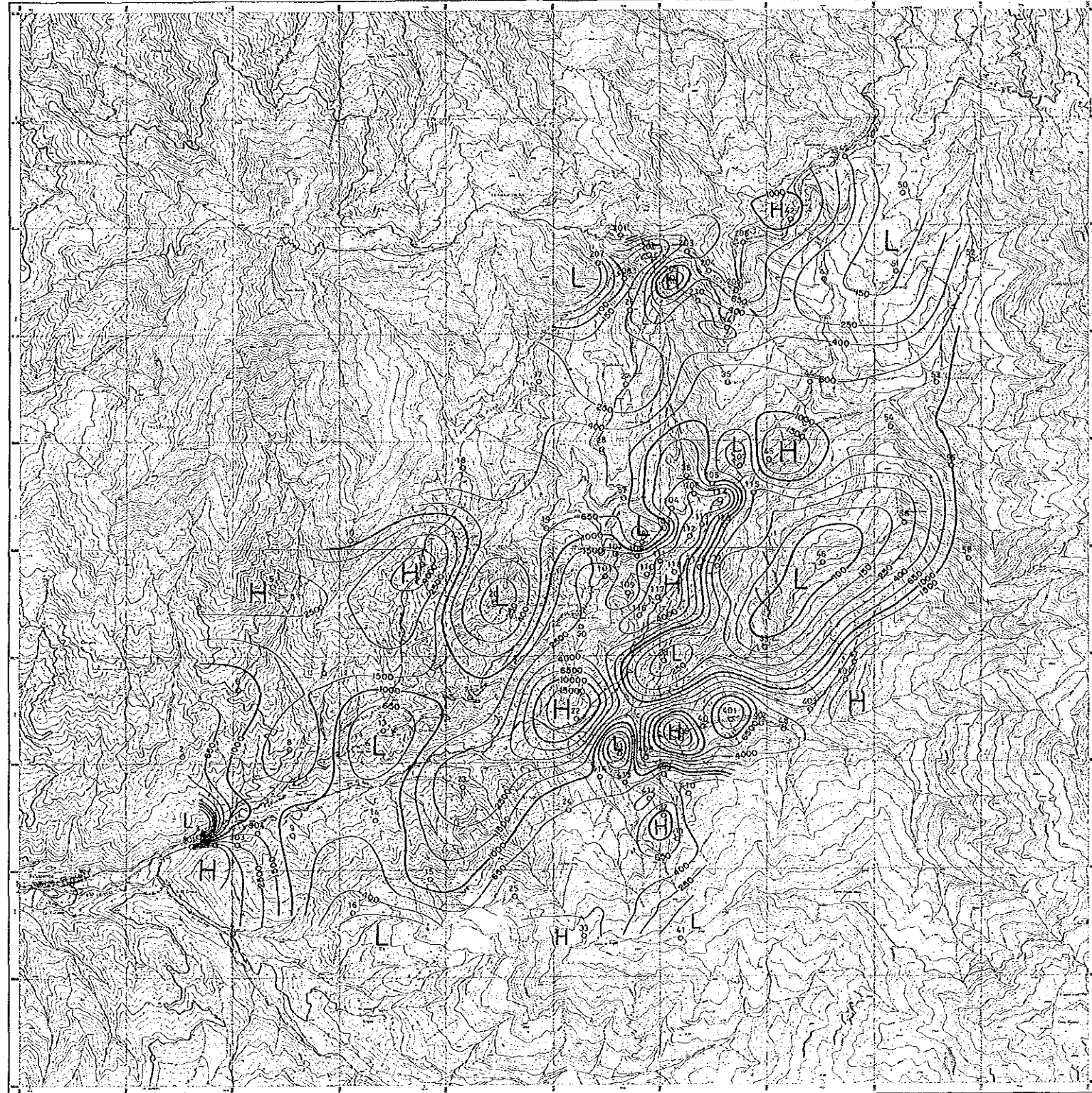
JAPAN INTERNATIONAL COOPERATION AGENCY.
METAL MINING AGENCY OF JAPAN
FEBRUARY 1989

Scale 1:25,000

LEGEND

-  Station and No.
-  Apparent Resistivity Contour ($\Omega \cdot m$)
- H** High Apparent Resistivity
- L** Low Apparent Resistivity

BALZAPAMBA



PL. 0-1-9

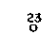

REPORT ON THE MINERAL EXPLORATION
IN
THE BOLIVAR AREA, REPUBLIC OF ECUADOR
PHASE I

Apparent Resistivity Plan Map (64Hz)

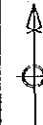
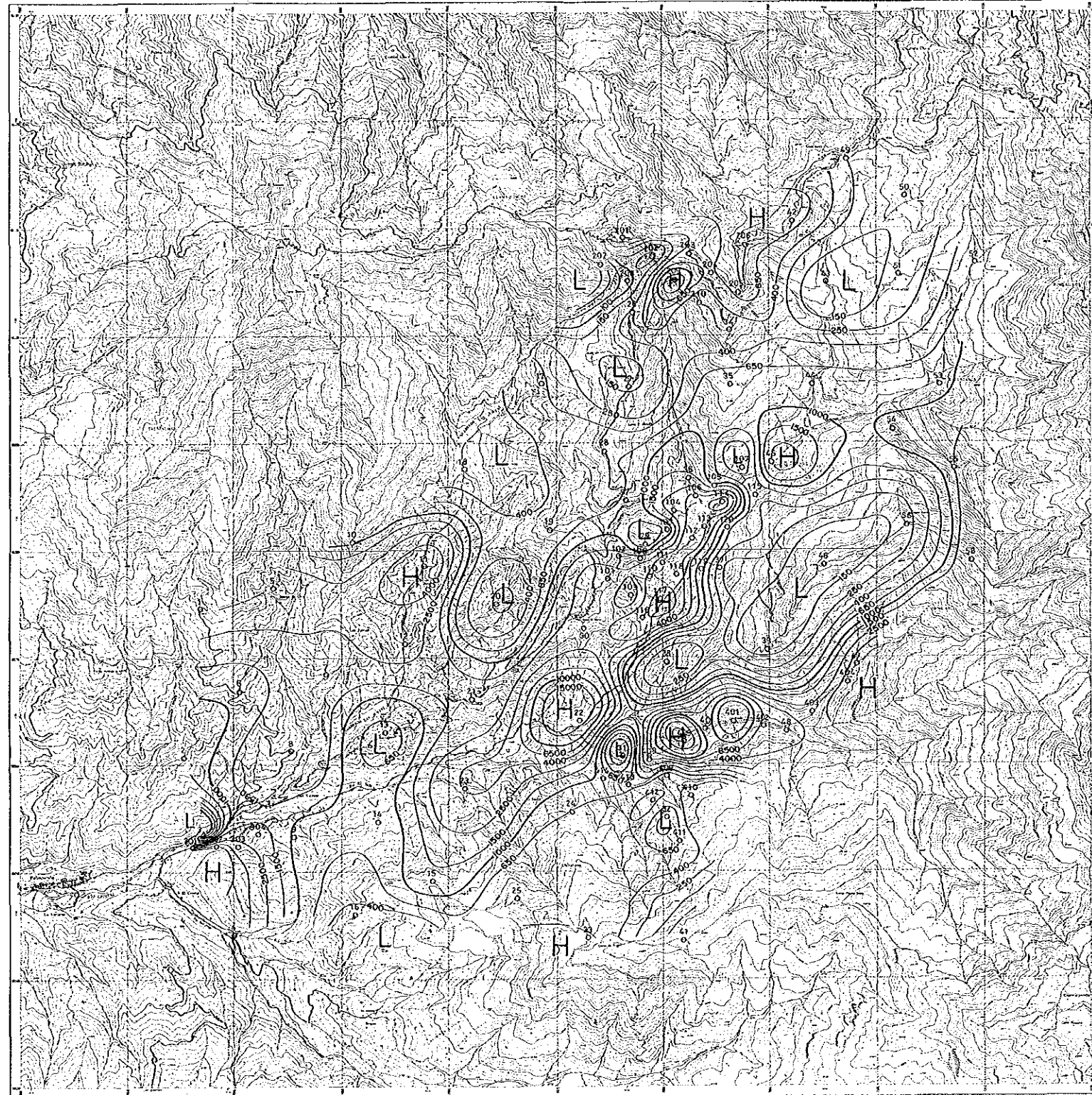
JAPAN INTERNATIONAL COOPERATION AGENCY
METAL MINING AGENCY OF JAPAN
FEBRUARY 1989

Scale 1:25,000

LEGEND

-  Station and No.
-  Apparent Resistivity Contour ($\Omega\cdot m$)
- H** High Apparent Resistivity
- L** Low Apparent Resistivity

BALZAPAMBA



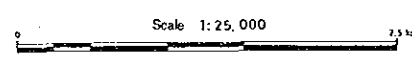
PL. II-1-10

REPORT ON THE MINERAL EXPLORATION
IN
THE BOLIVAR AREA, REPUBLIC OF ECUADOR
PHASE I

Apparent Resistivity Plan Map (32 Hz)

The inset map shows the Bolivar area in Ecuador, with various provinces and towns labeled: IMBURSA, PICHINCHA, COTACACHI, NAPO, LOS RIOS, BOLIVAR, TUNDURUAGA, MORONA SANTIAGO, SUAYAS, CHUMBAZUO, and CANAR. A shaded rectangle indicates the location of the study area. A scale bar and north arrow are also present.

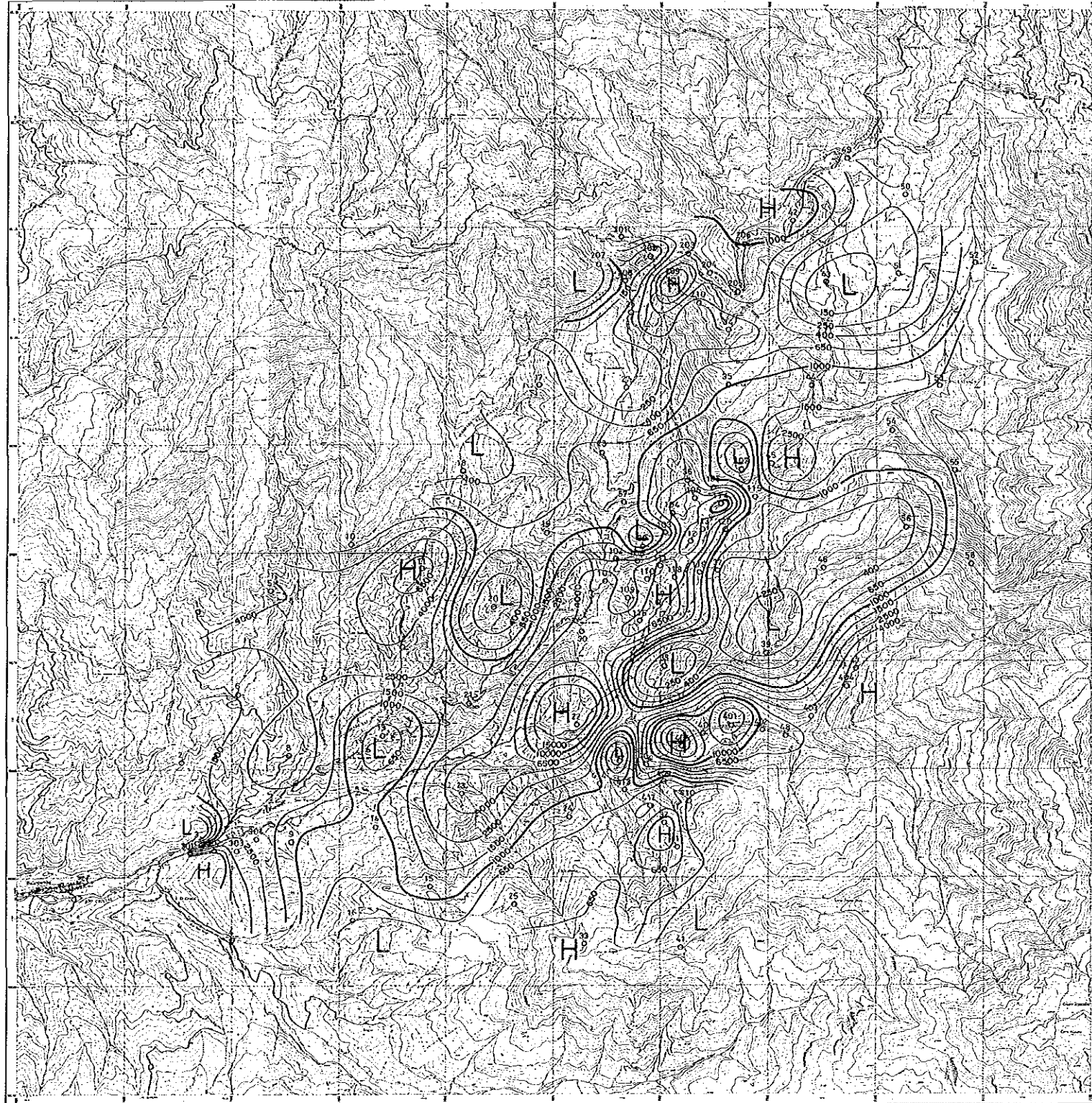
JAPAN INTERNATIONAL COOPERATION AGENCY
METAL MINING AGENCY OF JAPAN
FEBRUARY 1989



LEGEND

- Station and No.
- Apparent Resistivity Contour (Ω-m)
- H** High Apparent Resistivity
- L** Low Apparent Resistivity

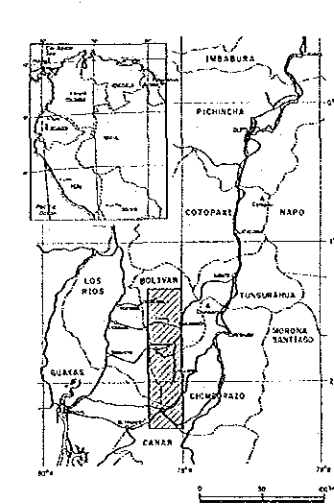
BALZAPAMBA



REPORT ON THE MINERAL EXPLORATION
IN
THE BOLIVAR AREA, REPUBLIC OF ECUADOR
PHASE I

PL II-1-11

Apparent Resistivity Plan Map (16 Hz)



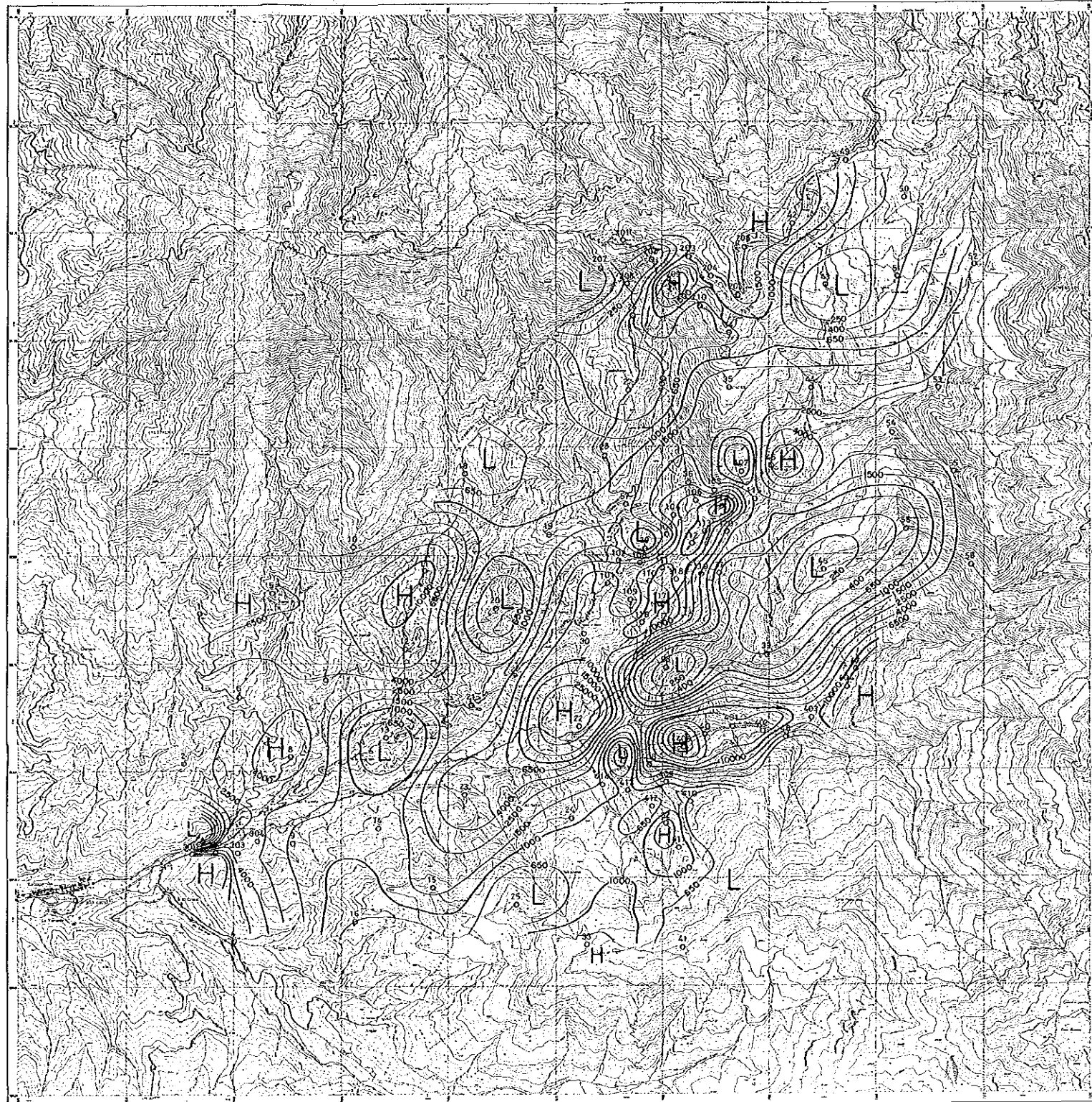
JAPAN INTERNATIONAL COOPERATION AGENCY
METAL MINING AGENCY OF JAPAN
FEBRUARY 1989

Scale 1:25,000
0 2.5 km

LEGEND

- Station and No.
- Apparent Resistivity Contour (Ω-m)
- H High Apparent Resistivity
- L Low Apparent Resistivity

BALZAPAMBA

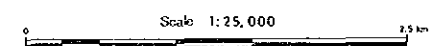


PL. II-1-12

REPORT ON THE MINERAL EXPLORATION
IN
THE BOLIVAR AREA, REPUBLIC OF ECUADOR
PHASE I

Apparent Resistivity Plan Map (8 Hz)

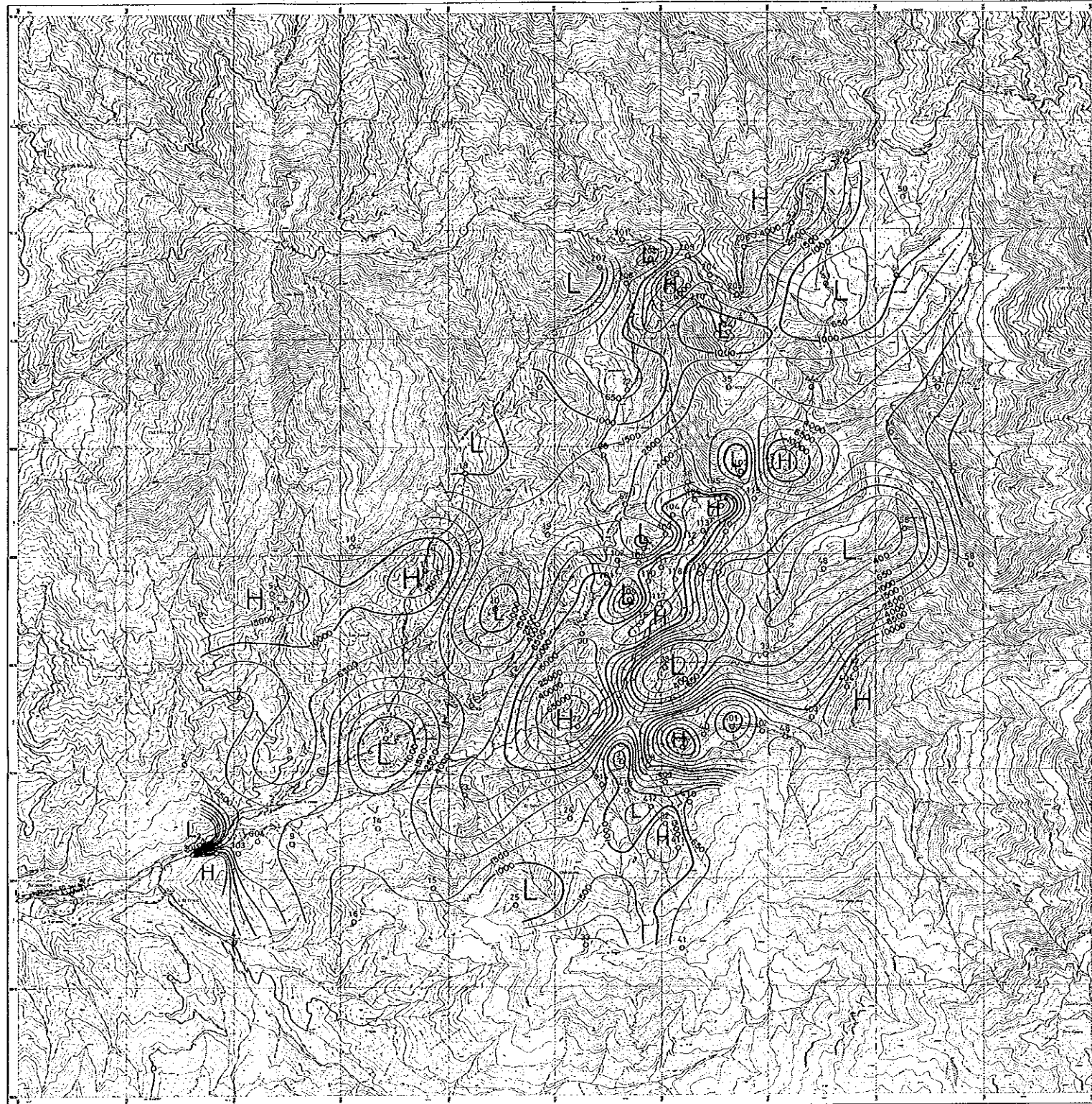
JAPAN INTERNATIONAL COOPERATION AGENCY
METAL MINING AGENCY OF JAPAN
FEBRUARY 1989



LEGEND

- Station and No.
- Apparent Resistivity Contour ($\Omega\cdot m$)
- H High Apparent Resistivity
- L Low Apparent Resistivity

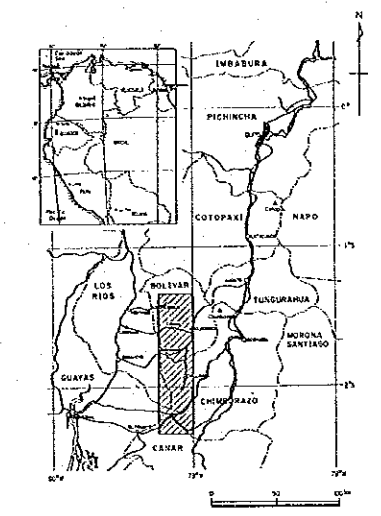
BALZAPAMBA



REPORT ON THE MINERAL EXPLORATION
IN
THE BOLIVAR AREA, REPUBLIC OF ECUADOR
PHASE I

PL. II-1-13

Apparent Resistivity Plan Map (4Hz)



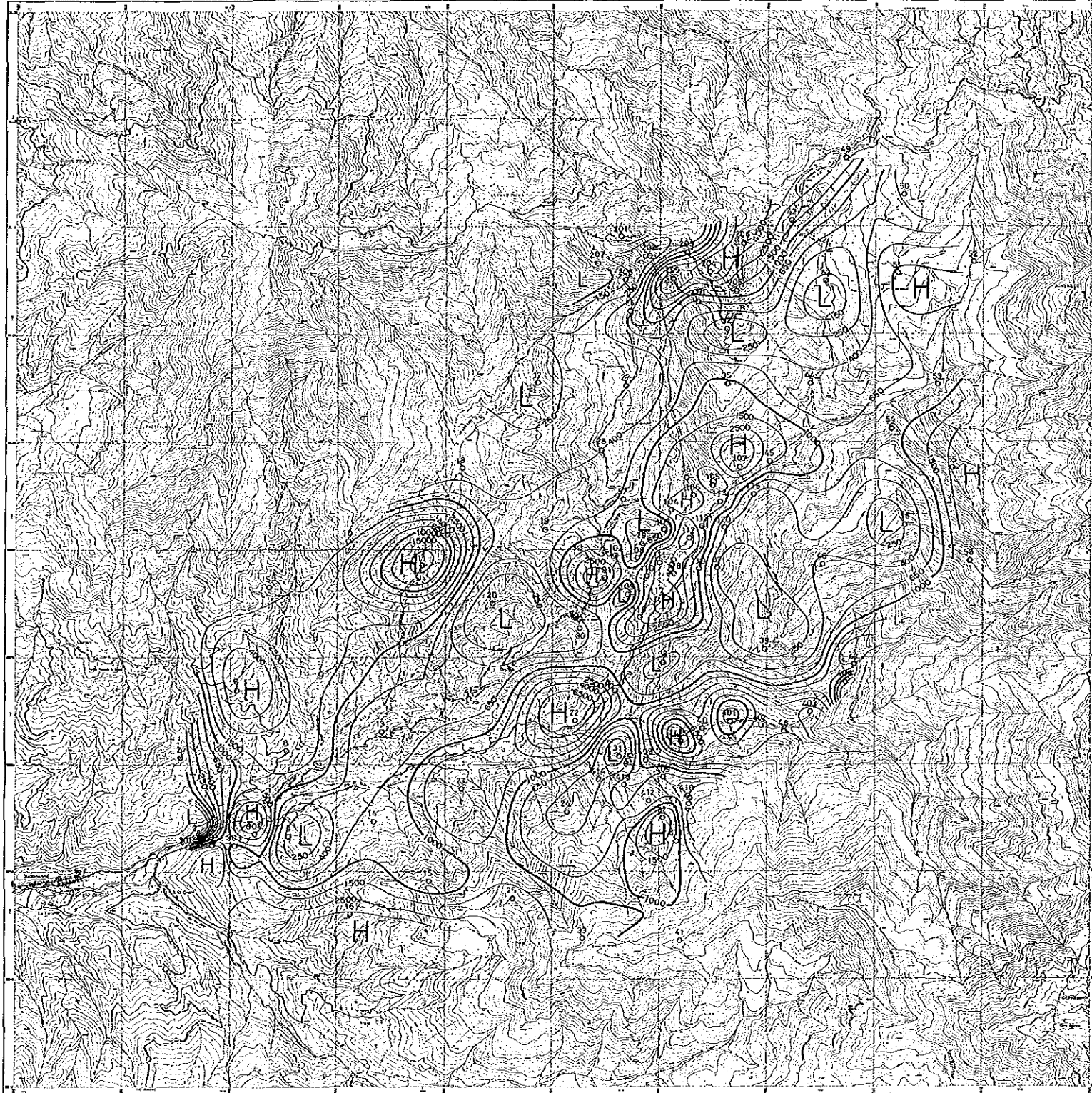
JAPAN INTERNATIONAL COOPERATION AGENCY
METAL MINING AGENCY OF JAPAN
FEBRUARY 1989

Scale 1:25,000

LEGEND

- Station and No.
- ⊖ Apparent Resistivity Contour (Ω-m)
- H High Apparent Resistivity
- L Low Apparent Resistivity

BALZAPAMBA

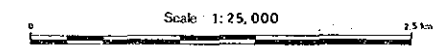


PL. II-1-14

REPORT ON THE MINERAL EXPLORATION
IN
THE BOLIVAR AREA, REPUBLIC OF ECUADOR
PHASE I

Analyzed Resistivity Plan Map (100m depth)

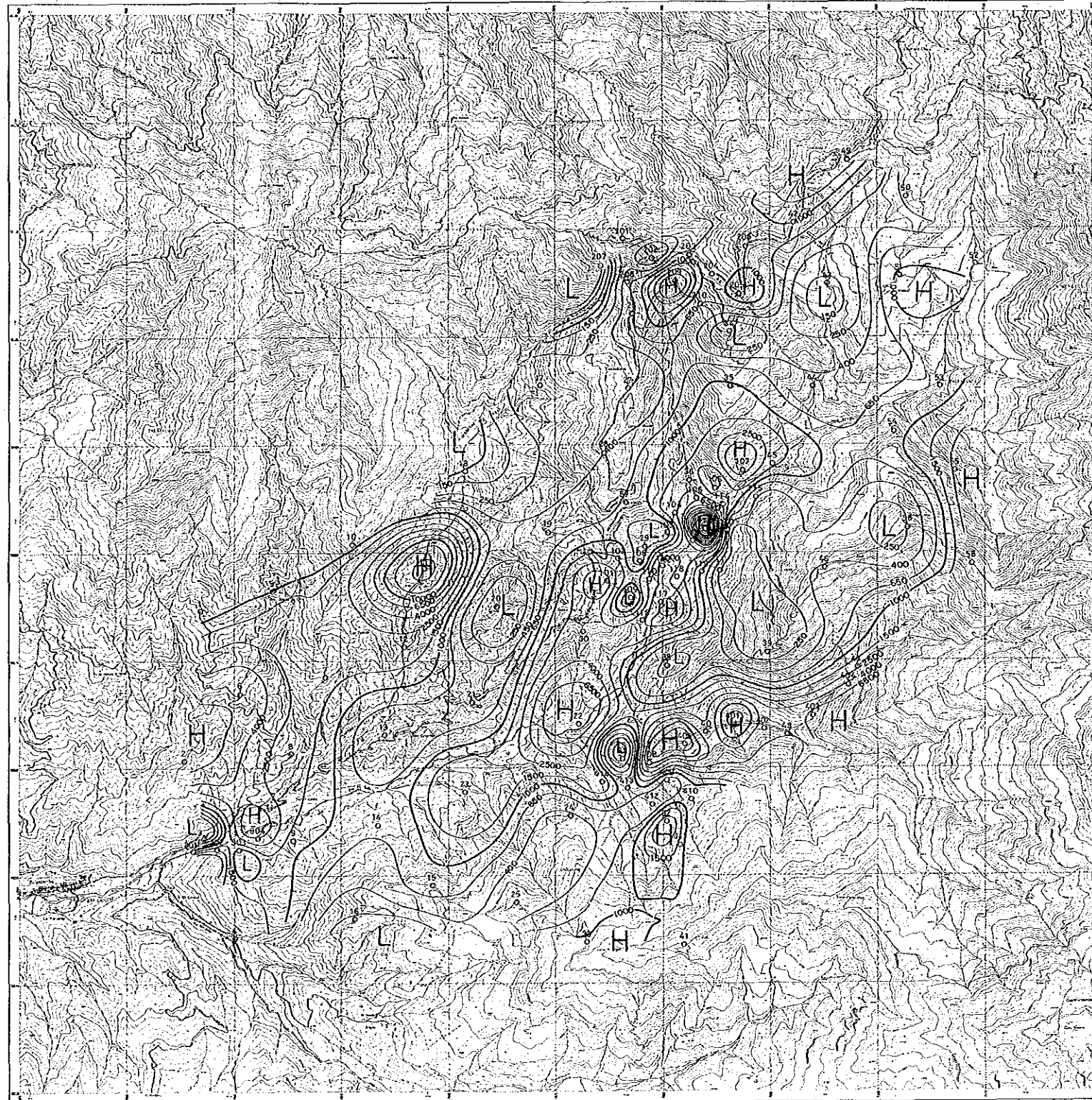
JAPAN INTERNATIONAL COOPERATION AGENCY
METAL MINING AGENCY OF JAPAN
FEBRUARY 1989



LEGEND

- Station and No.
- ⊖ Analyzed Resistivity Contour (Ω·m)
- H High Analyzed Resistivity
- L Low Analyzed Resistivity

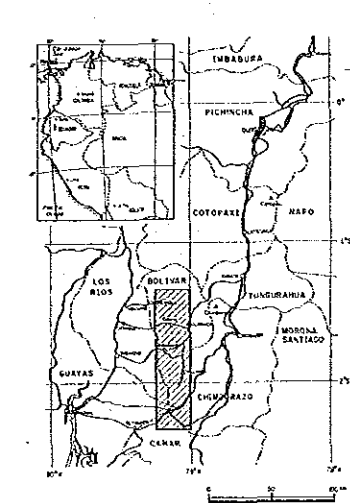
BALZAPAMBA



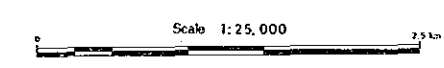
REPORT ON THE MINERAL EXPLORATION
IN
THE BOLIVAR AREA, REPUBLIC OF ECUADOR
PHASE I

PL. II-1-15

Analyzed Resistivity Plan Map (200m depth)



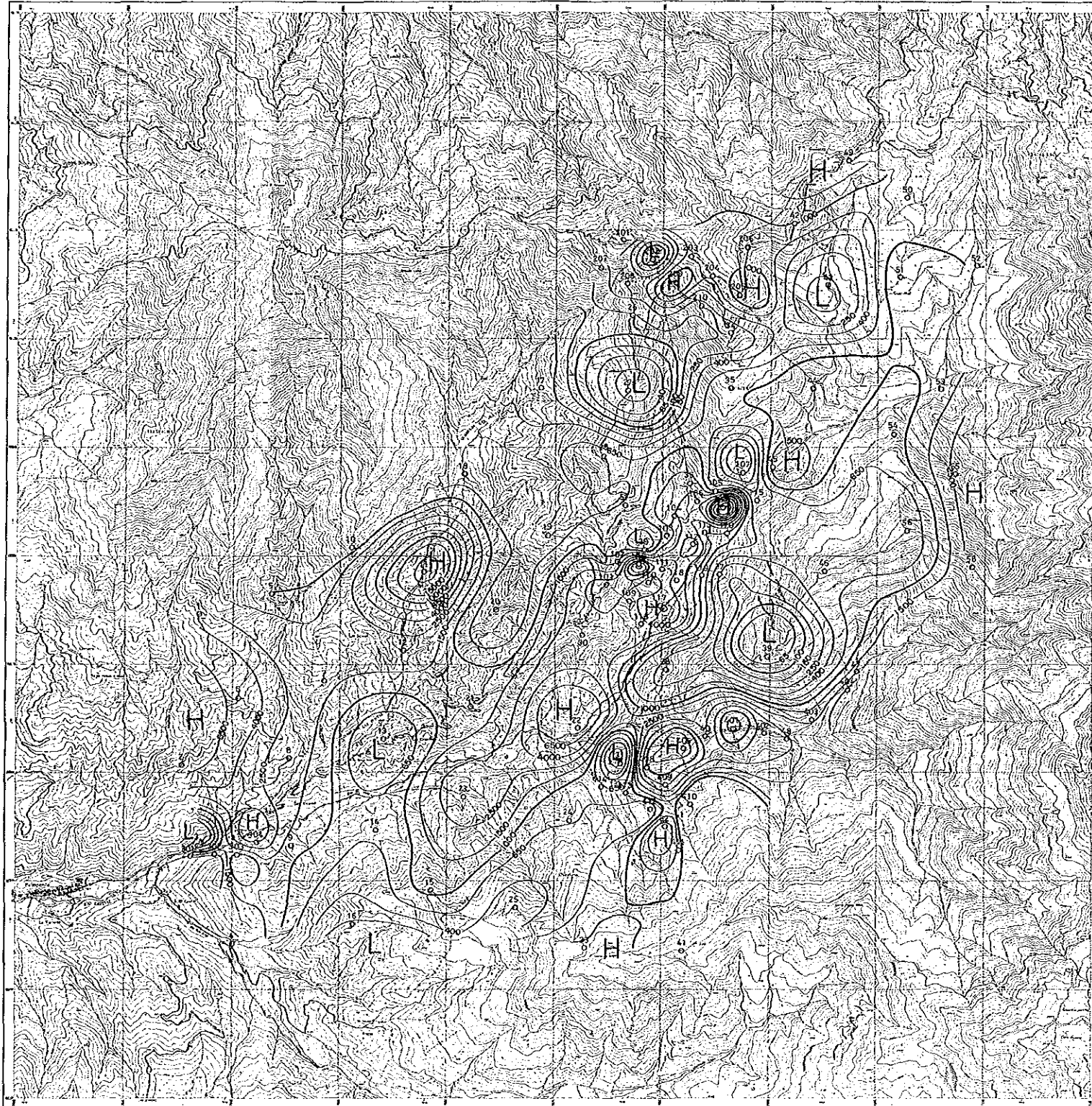
JAPAN INTERNATIONAL COOPERATION AGENCY.
METAL MINING AGENCY OF JAPAN
FEBRUARY 1989



LEGEND

- Station and No.
- Analyzed Resistivity Contour ($\Omega \cdot m$)
- H High Analyzed Resistivity
- L Low Analyzed Resistivity

BALZAPAMBA



PL. II-1-16

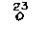

REPORT ON THE MINERAL EXPLORATION
IN
THE BOLIVAR AREA, REPUBLIC OF ECUADOR
PHASE I

Analyzed Resistivity Plan Map (500m. depth)

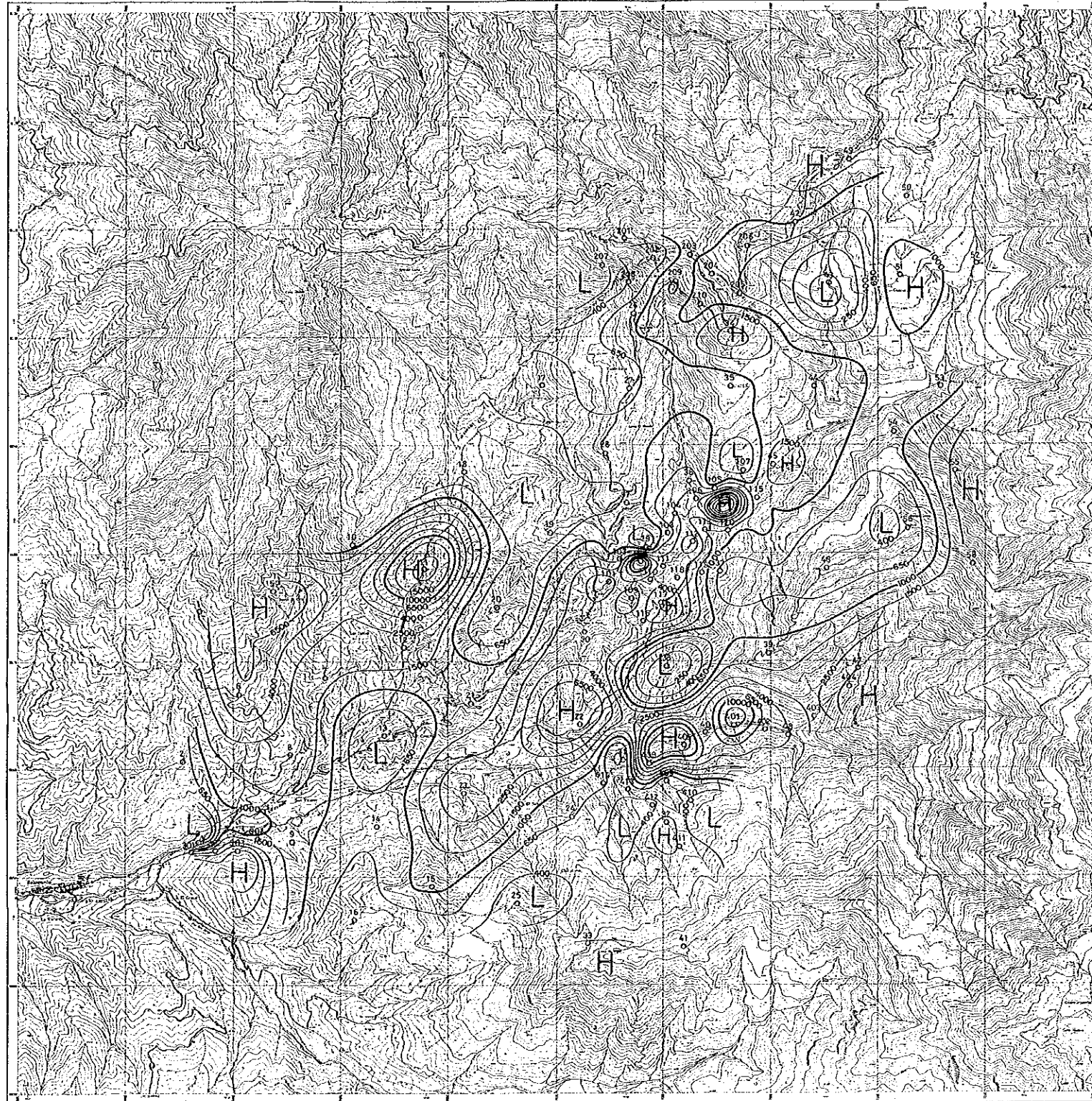
JAPAN INTERNATIONAL COOPERATION AGENCY.
METAL MINING AGENCY OF JAPAN
FEBRUARY 1989

Scale 1:25,000

LEGEND

-  Station and No.
-  Analyzed Resistivity Contour (Ω-m)
- H** High Analyzed Resistivity
- L** Low Analyzed Resistivity

BALZAPAMBA



PL. II-1-17

REPORT ON THE MINERAL EXPLORATION
IN
THE BOLIVAR AREA, REPUBLIC OF ECUADOR
PHASE I

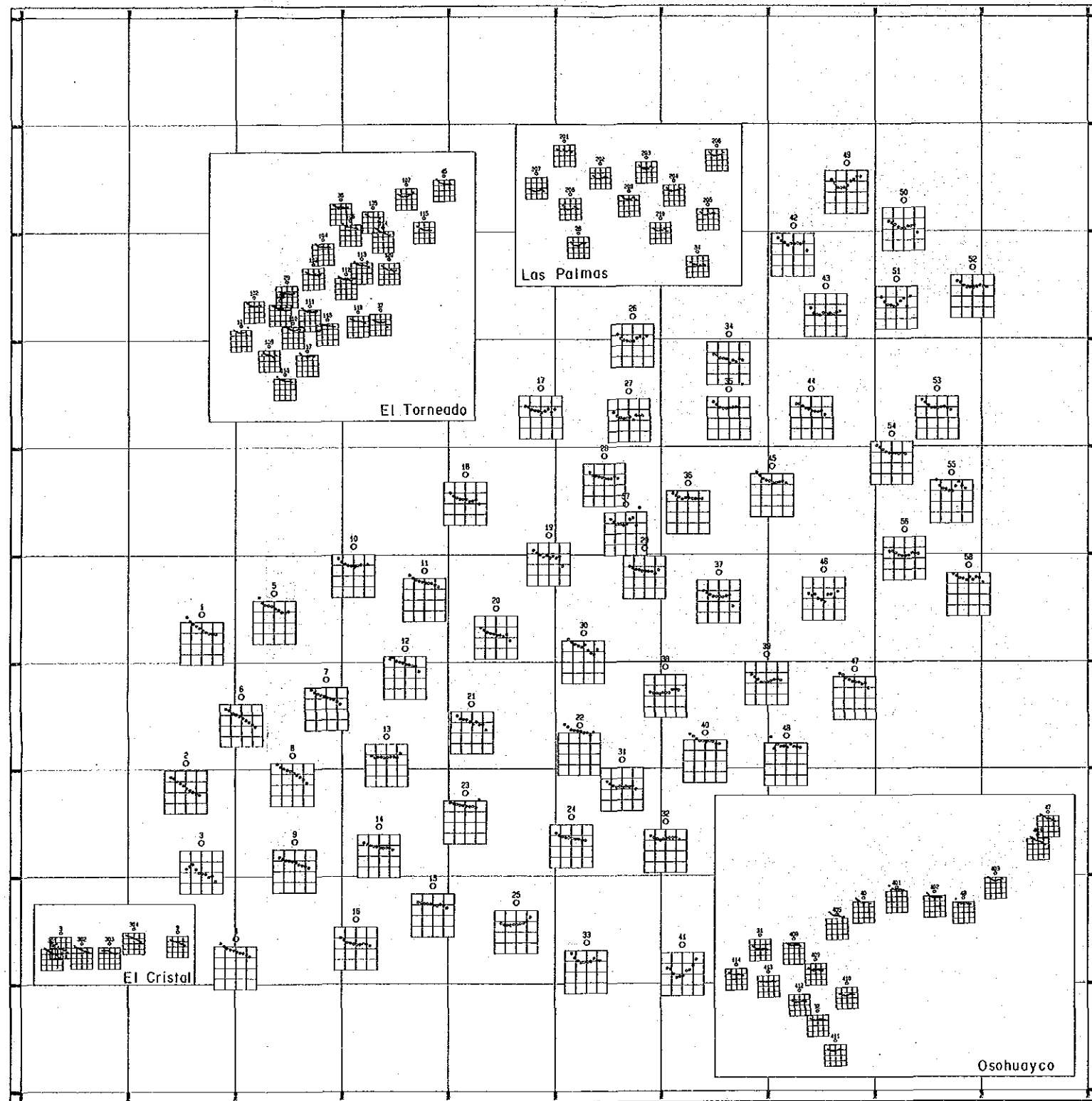
Analyzed Resistivity Plan Map (1,000m depth)

JAPAN INTERNATIONAL COOPERATION AGENCY.
METAL MINING AGENCY OF JAPAN
FEBRUARY 1989

Scale 1:25,000
0 2.5 km

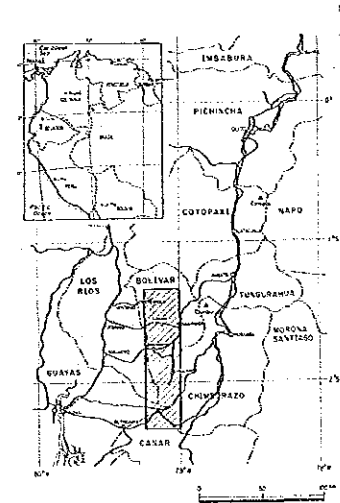
LEGEND

- Station and No.
- ⊖ Analyzed Resistivity Contour (Ω-m)
- H High Analyzed Resistivity
- L Low Analyzed Resistivity

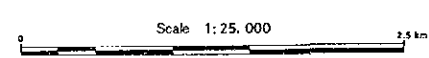


REPORT ON THE MINERAL EXPLORATION
IN
THE BOLIVAR AREA, REPUBLIC OF ECUADOR
PHASE I

$\rho_a - f$ Spectra



JAPAN INTERNATIONAL COOPERATION AGENCY
METAL MINING AGENCY OF JAPAN
FEBRUARY 1989



LEGEND

