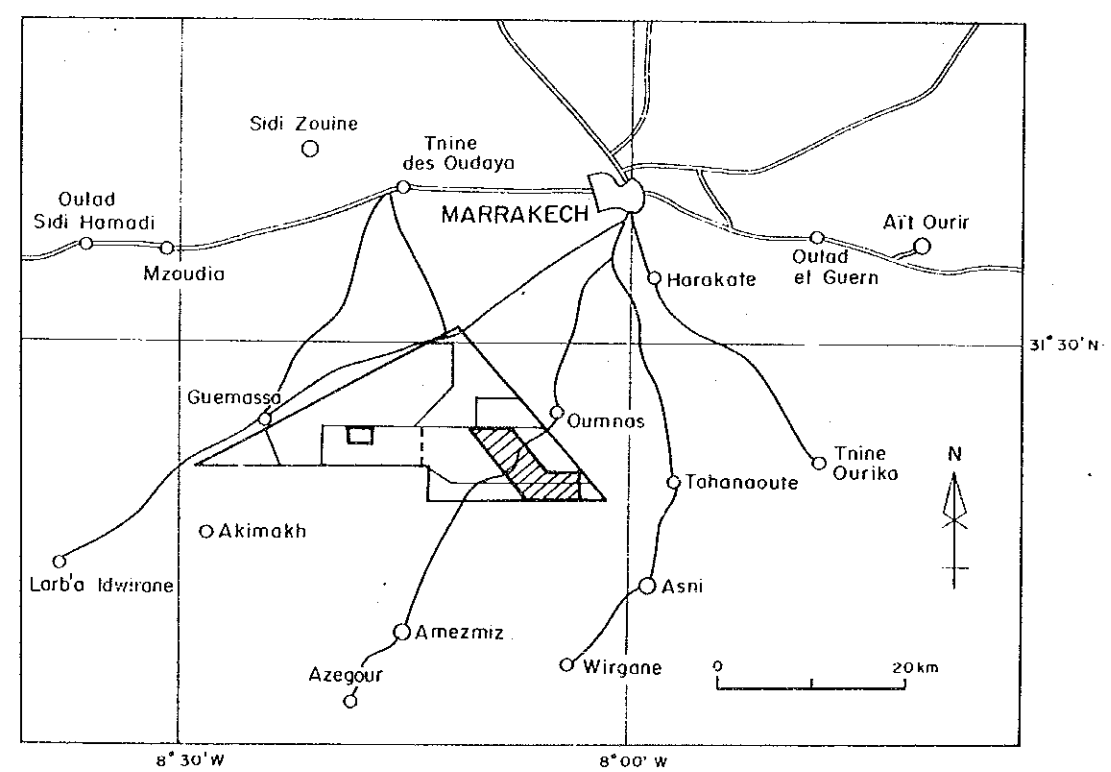


COOPERATIVE MINERAL EXPLORATION
IN
HAOUZ CENTRAL AREA, MOROCCO
(PHASE I)

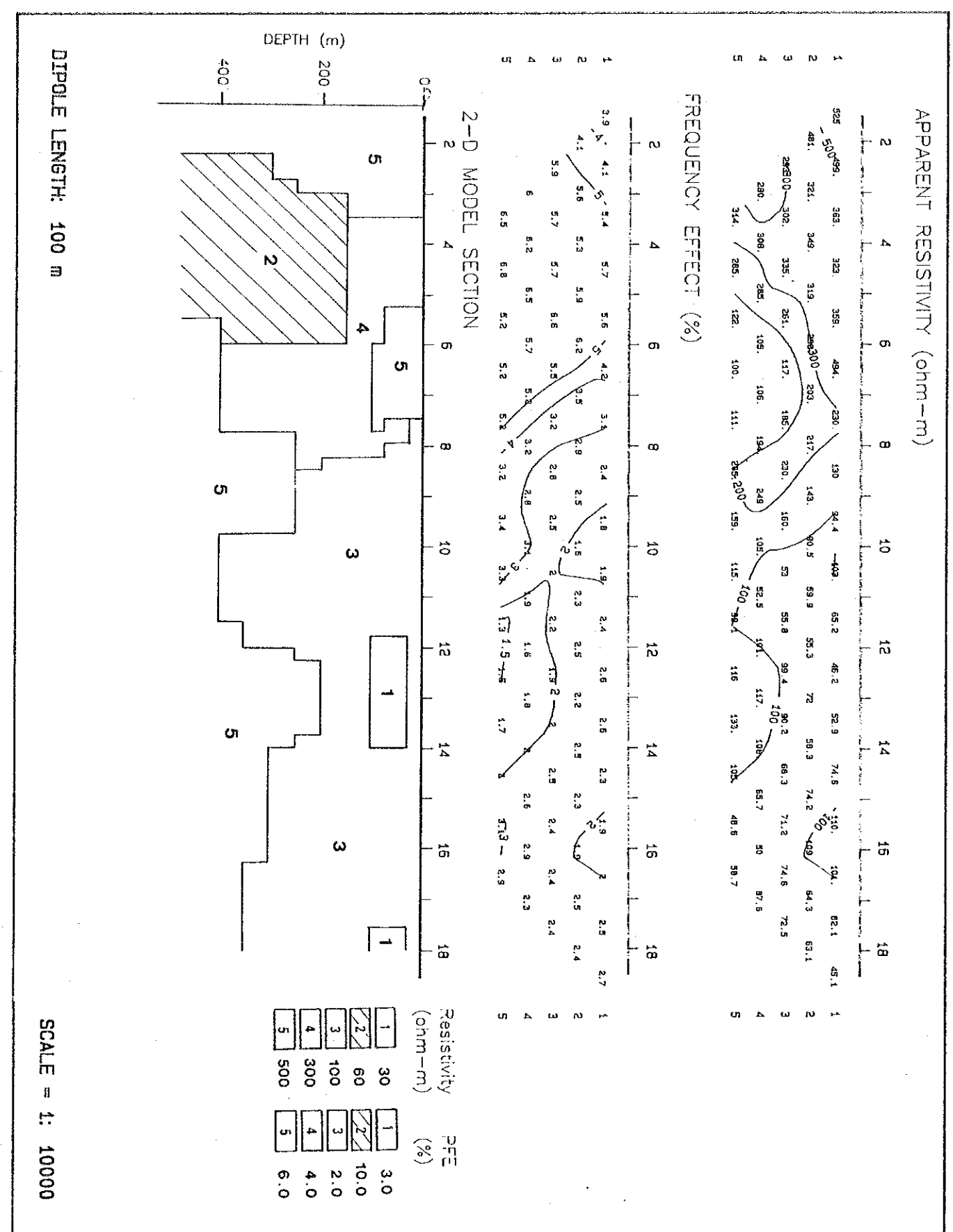
RESULTS OF IP MODELING (LINE FZ-2)



JAPAN INTERNATIONAL COOPERATION AGENCY
METAL MINING AGENCY OF JAPAN
FEBRUARY 1989
Prepared by MINDECO



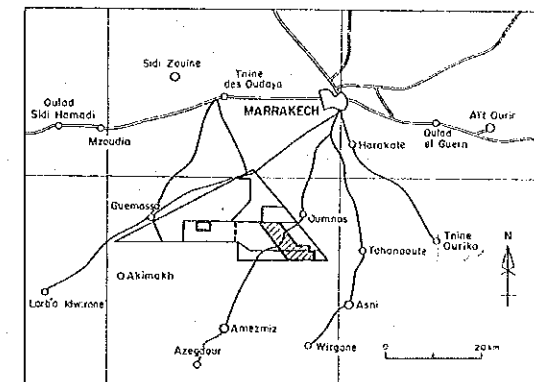
Scale 1 : 10,000



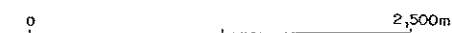
COOPERATIVE MINERAL EXPLORATION
IN
HAOUZ CENTRAL AREA, MOROCCO
(PHASE II)

GRAVITY CONTOUR MAP

($\rho = 2.67 \text{ g/cm}^3$)



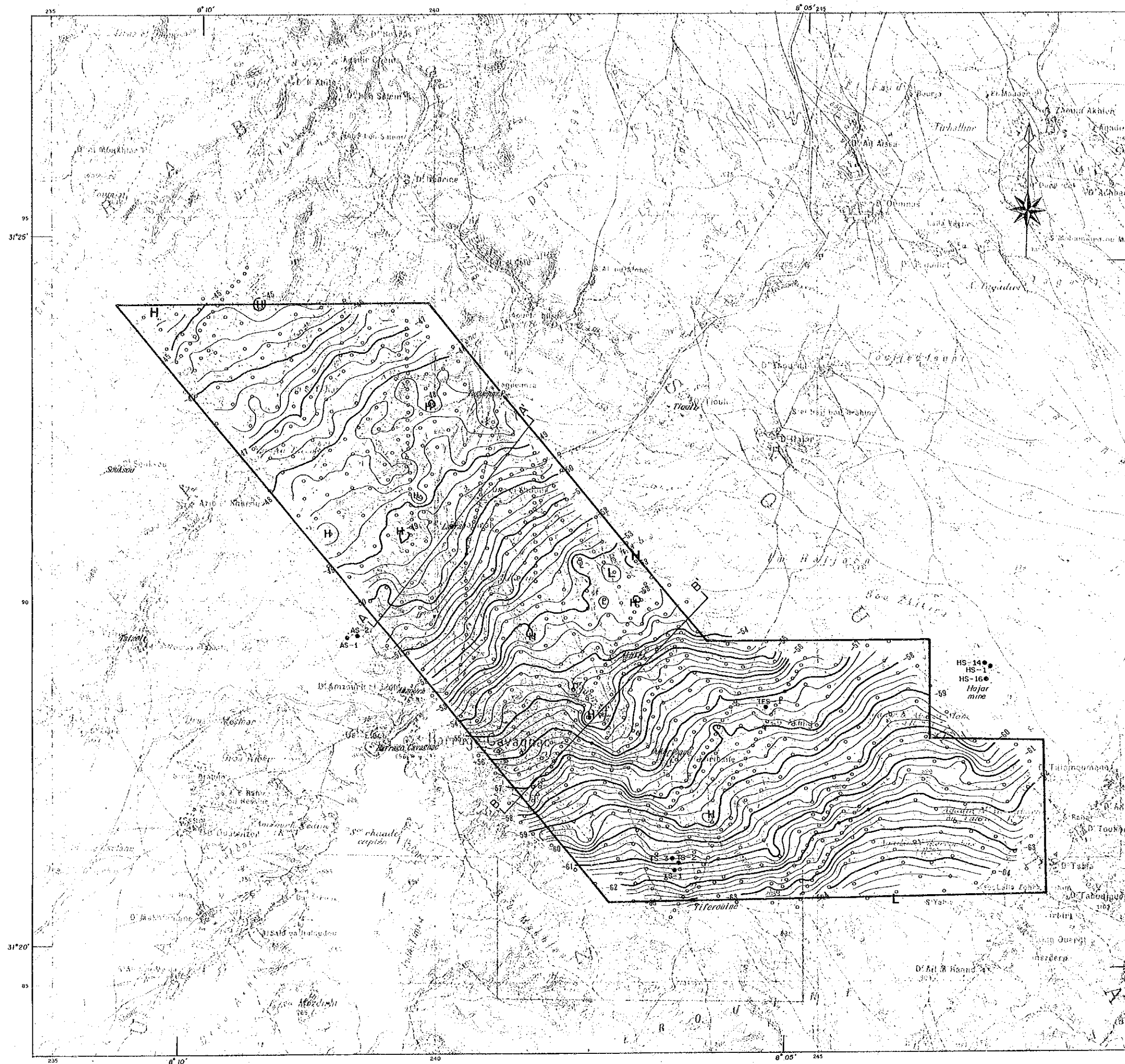
JAPAN INTERNATIONAL COOPERATION AGENCY
METAL MINING AGENCY OF JAPAN
FEBRUARY 1969
Prepared by MINDECO



Scale 1 : 25,000

LEGEND

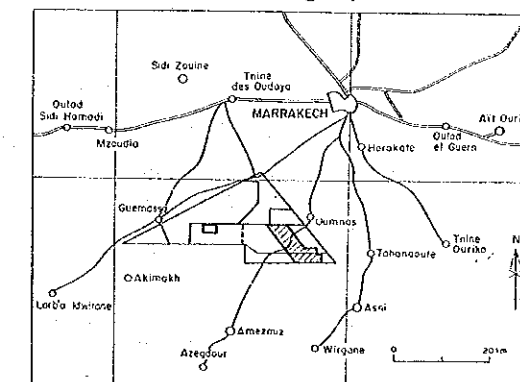
- HS - 1 Boring Site
- Gravity Station
- 40
— 45 Gravity Contour (milligal)
- (H) High Gravity Zone
- (L) Low Gravity Zone



COOPERATIVE MINERAL EXPLORATION
IN
HAOUZ CENTRAL AREA, MOROCCO
(PHASE II)

GRAVITY CONTOUR MAP

($\rho = 2.40 \text{ g/cm}^3$)



JAPAN INTERNATIONAL COOPERATION AGENCY
METAL MINING AGENCY OF JAPAN

FEBRUARY 1989

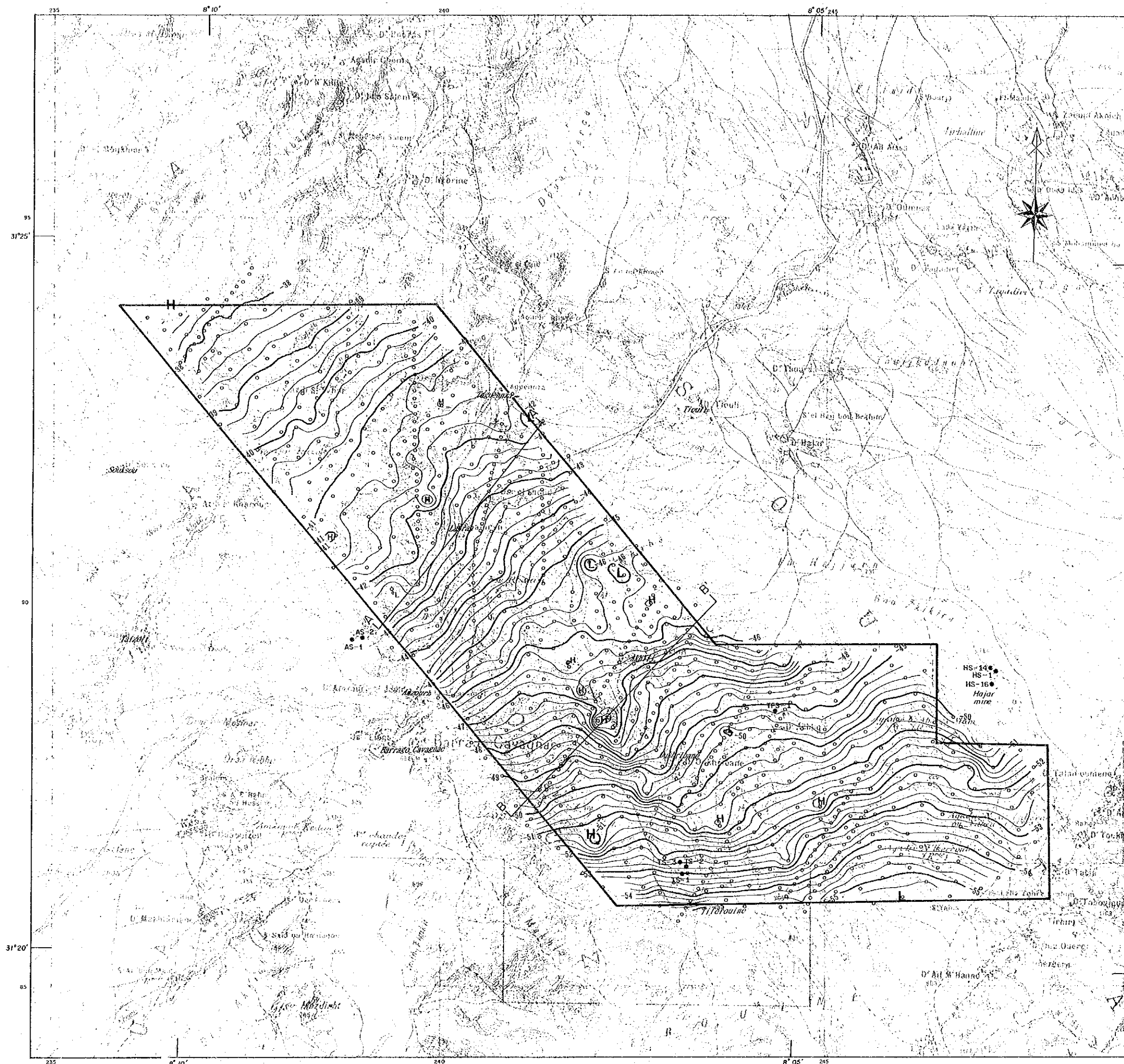
Prepared by MINDECO

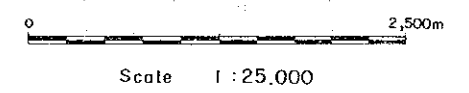
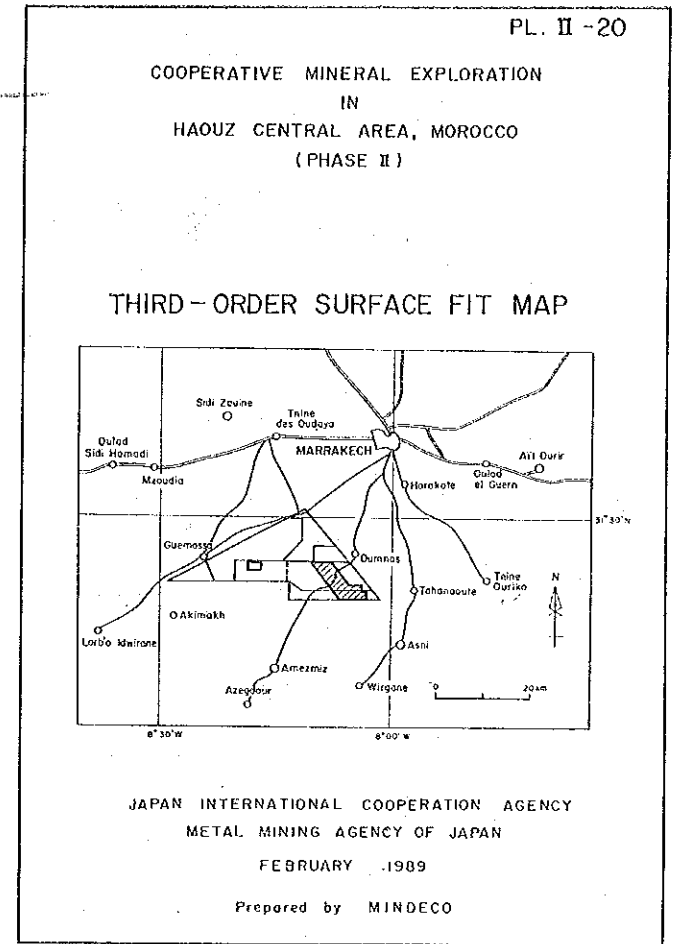
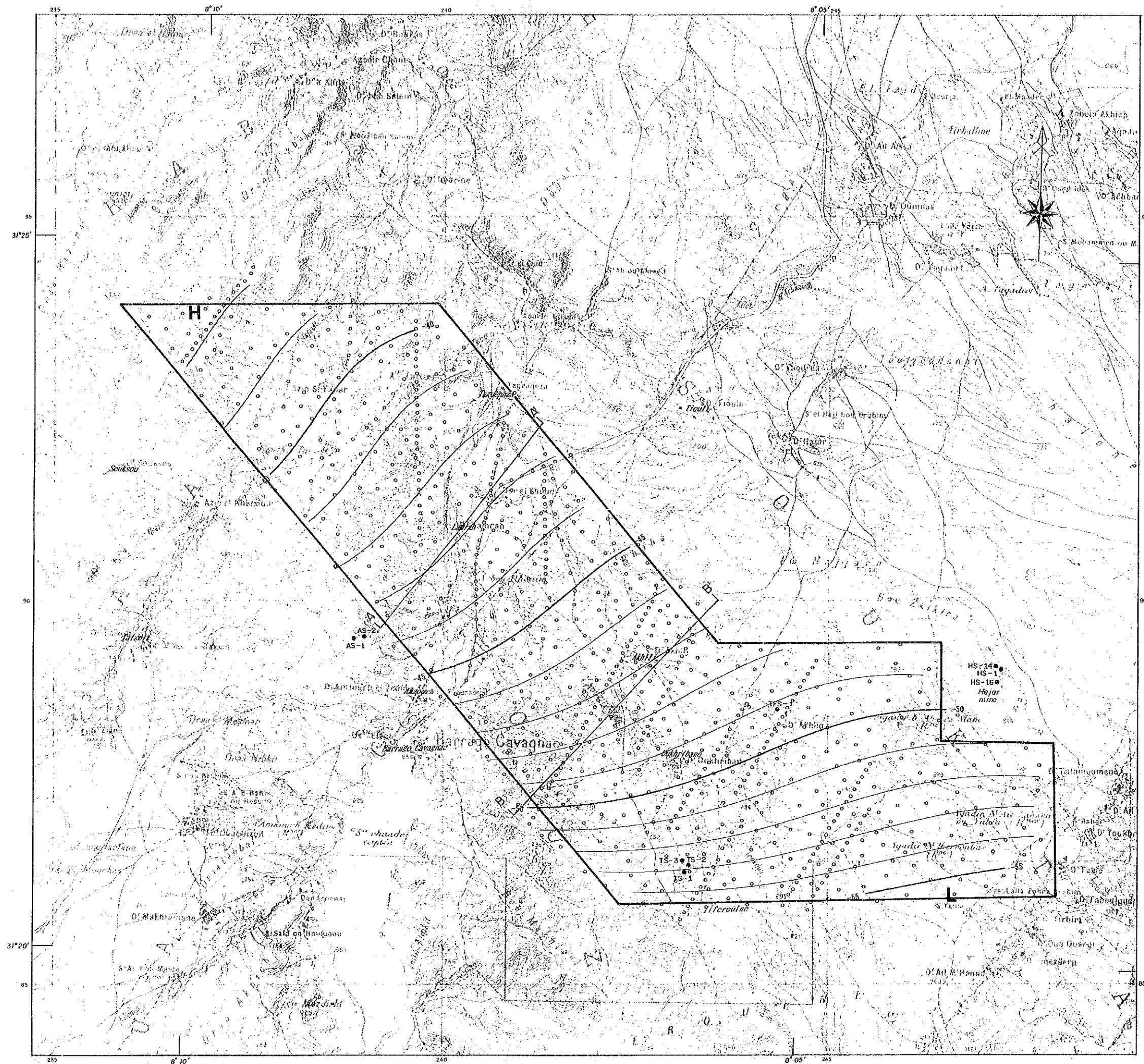


Scale 1 : 25,000

LEGEND

- HS - 1 Boring Site
- Gravity Station
- ▬ -40
▬ -45 Gravity Contour (milligal)
- (H) High Gravity Zone
- (L) Low Gravity Zone

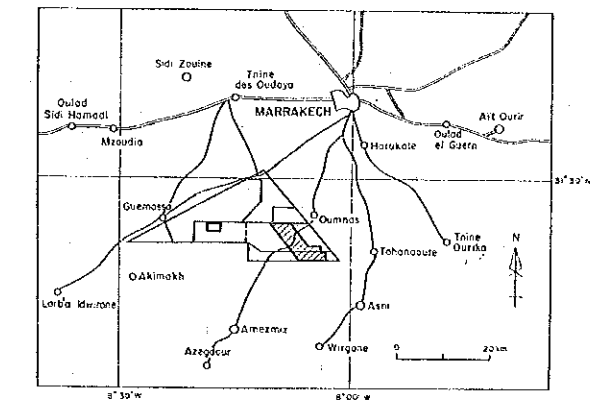




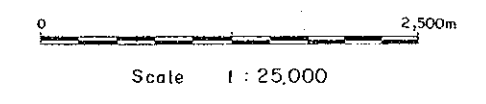
- LEGEND
- HS - 1 Boring Site
 - Gravity Station
 - Gravity Contour (milligal)
 - H High Gravity Zone
 - L Low Gravity Zone

COOPERATIVE MINERAL EXPLORATION
IN
HAOUZ CENTRAL AREA, MOROCCO
(PHASE II)

THREE-ORDER RESIDUAL MAP

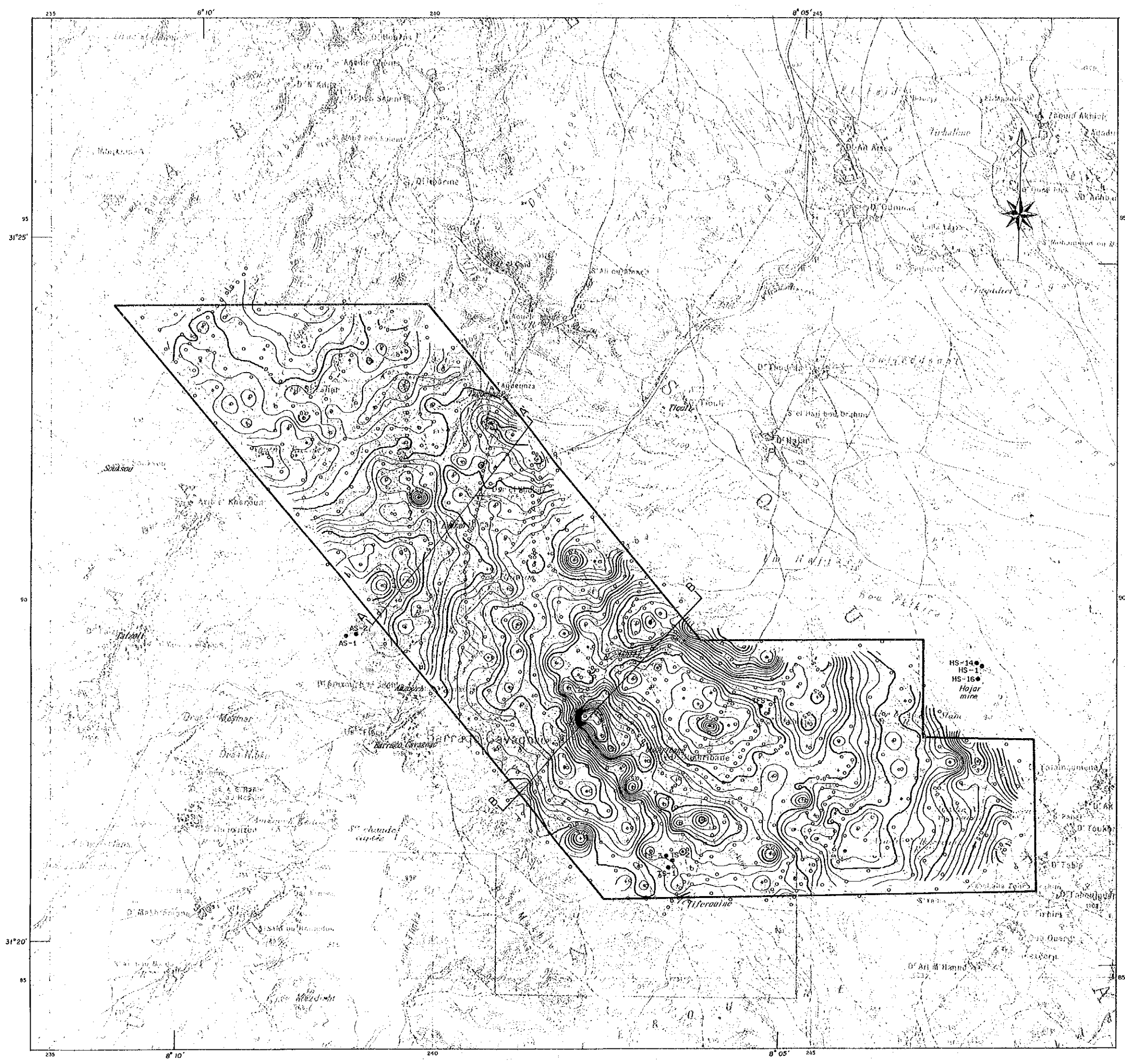


JAPAN INTERNATIONAL COOPERATION AGENCY
METAL MINING AGENCY OF JAPAN
FEBRUARY 1989
Prepared by MINDECO



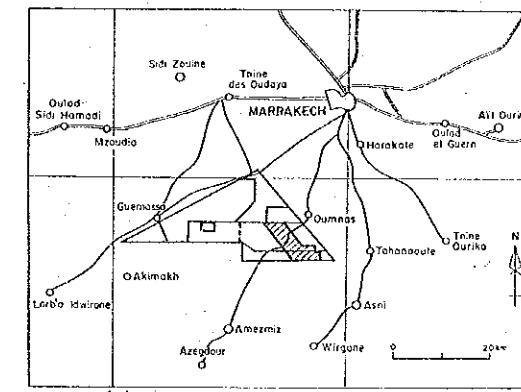
LEGEND

- HS - 1 Boring Site
- Gravity Station
- 1.0
0.5 Gravity Contour (milligal)
- ⊕ High Gravity Zone
- ⊖ Low Gravity Zone

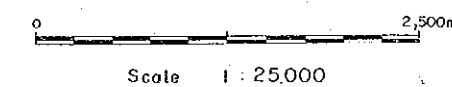


COOPERATIVE MINERAL EXPLORATION
IN
HAOUZ CENTRAL AREA, MOROCCO
(PHASE II)

SECOND VERTICAL DERIVATIVES MAP
(S = 150m)

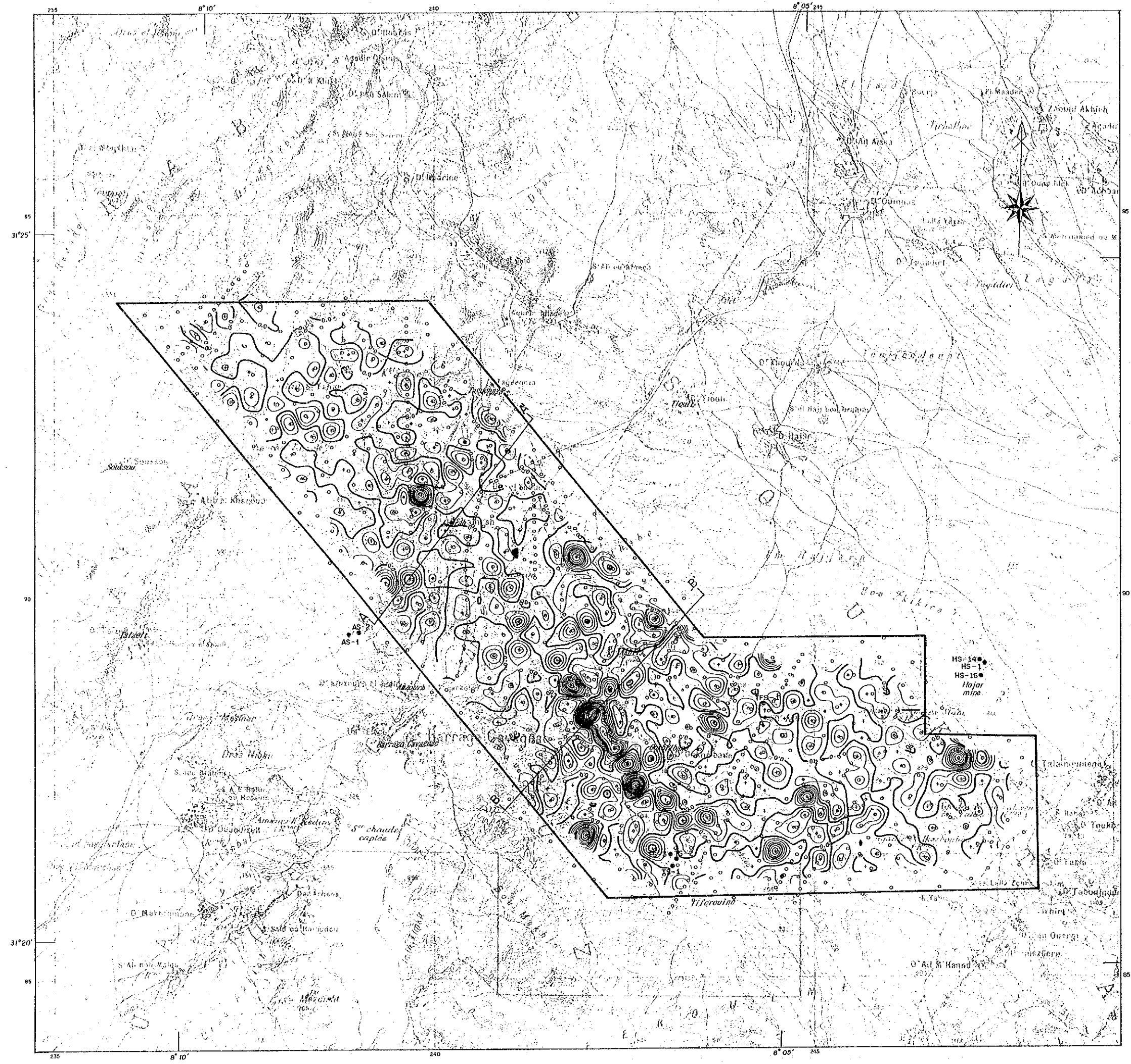


JAPAN INTERNATIONAL COOPERATION AGENCY
METAL MINING AGENCY OF JAPAN
FEBRUARY 1989
Prepared by MINDECO



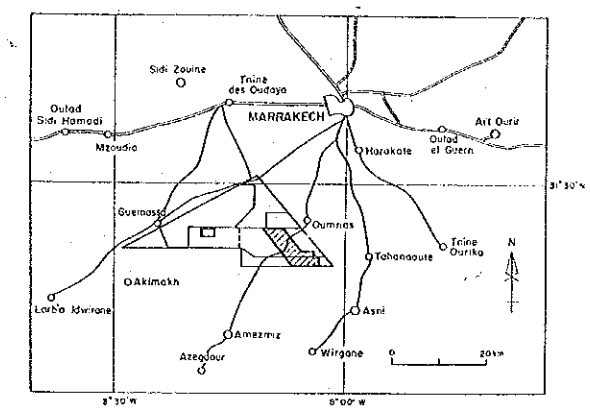
LEGEND

- HS - 1 Boring Site
- Gravity Station
- ≡ Contour of Second Vertical Derivatives (mgal/Km²)
- (+) High zone
- (-) Low zone

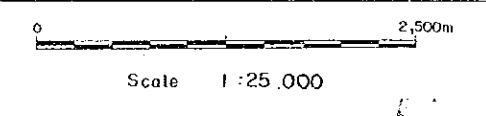


COOPERATIVE MINERAL EXPLORATION
IN
HAOUZ CENTRAL AREA, MOROCCO
(PHASE II)

RESULTS OF SPECTRAL ANALYSIS
(SHALLOW STRUCTURE)

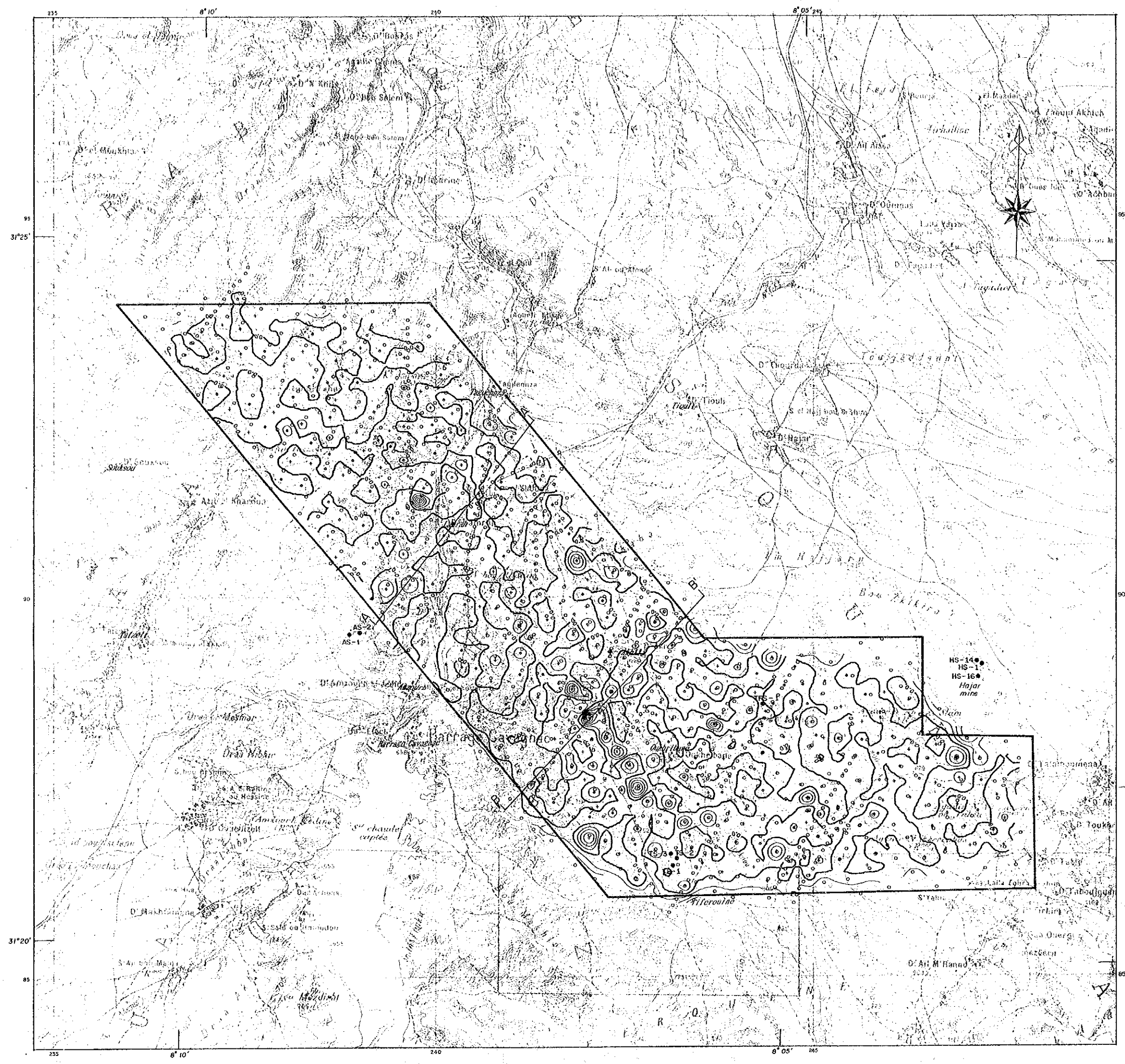


JAPAN INTERNATIONAL COOPERATION AGENCY
METAL MINING AGENCY OF JAPAN
FEBRUARY 1989
Prepared by MINDECO



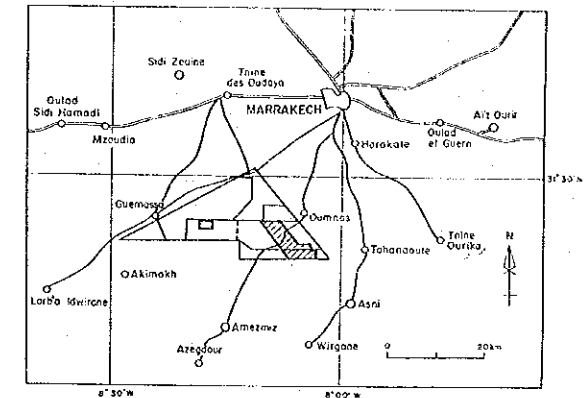
LEGEND

- HS-1 Boring Site
- Gravity Station
- ▭ Gravity Contour (milligal)
- ⊕ High Gravity Zone
- ⊖ Low Gravity Zone



COOPERATIVE MINERAL EXPLORATION
IN
HAOUZ CENTRAL AREA, MOROCCO
(PHASE II)

RESULTS OF SPECTRAL ANALYSIS
(DEEP STRUCTURE)



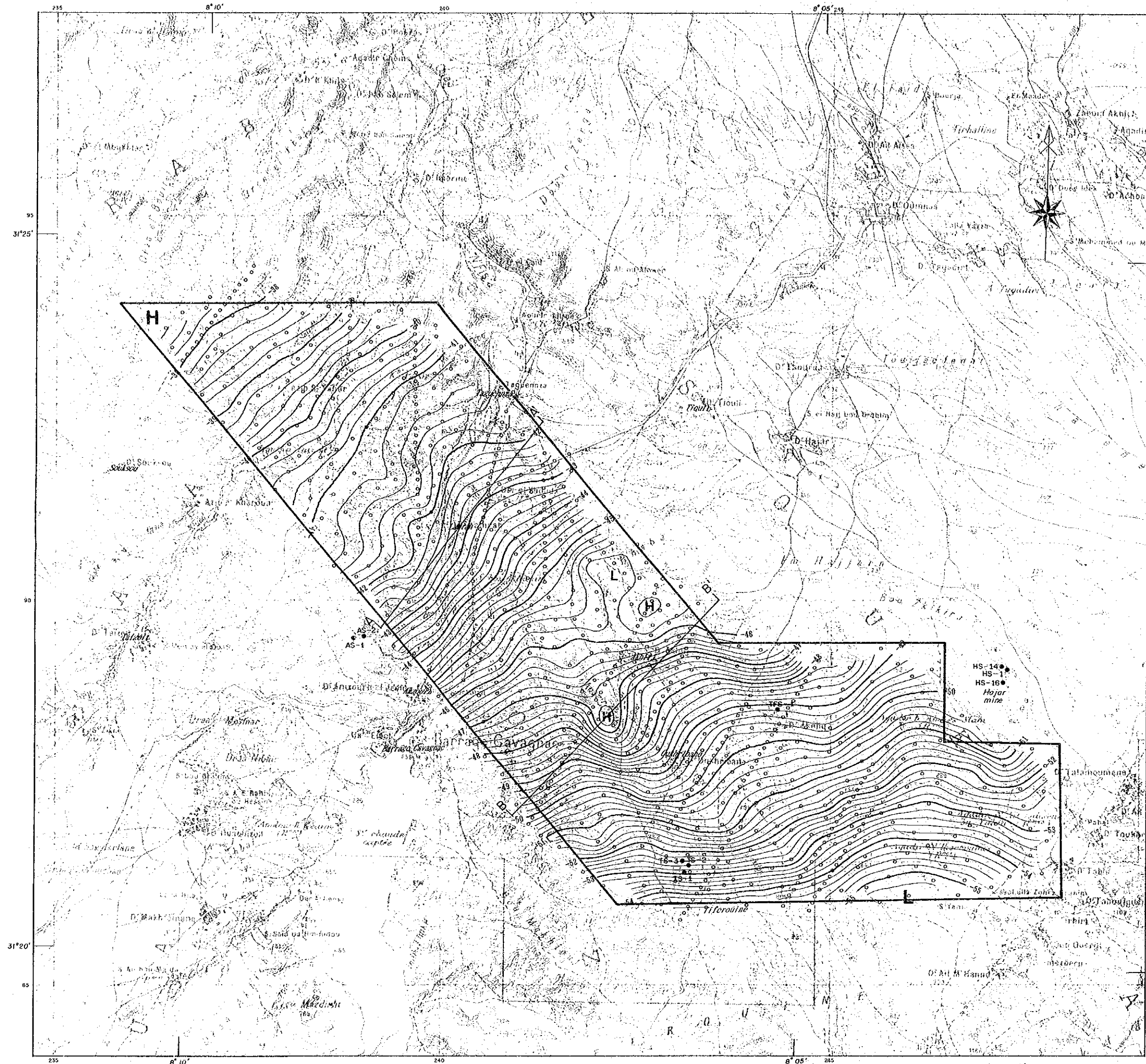
JAPAN INTERNATIONAL COOPERATION AGENCY
METAL MINING AGENCY OF JAPAN
FEBRUARY 1989
Prepared by MINDECO



Scale 1:25,000

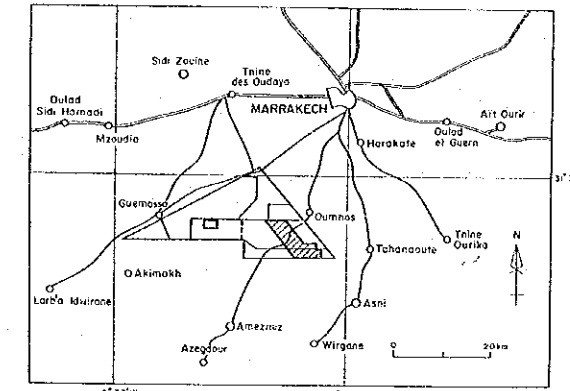
LEGEND

- HS-1 Boring Site
- Gravity Station
- ▬ Gravity Contour (milligal)
- H High Gravity Zone
- L Low Gravity Zone



COOPERATIVE MINERAL EXPLORATION
IN
HAOUZ CENTRAL AREA, MOROCCO
(PHASE II)

STRUCTURE CONTOUR MAP ON THE
TOP OF THE BASEMENT



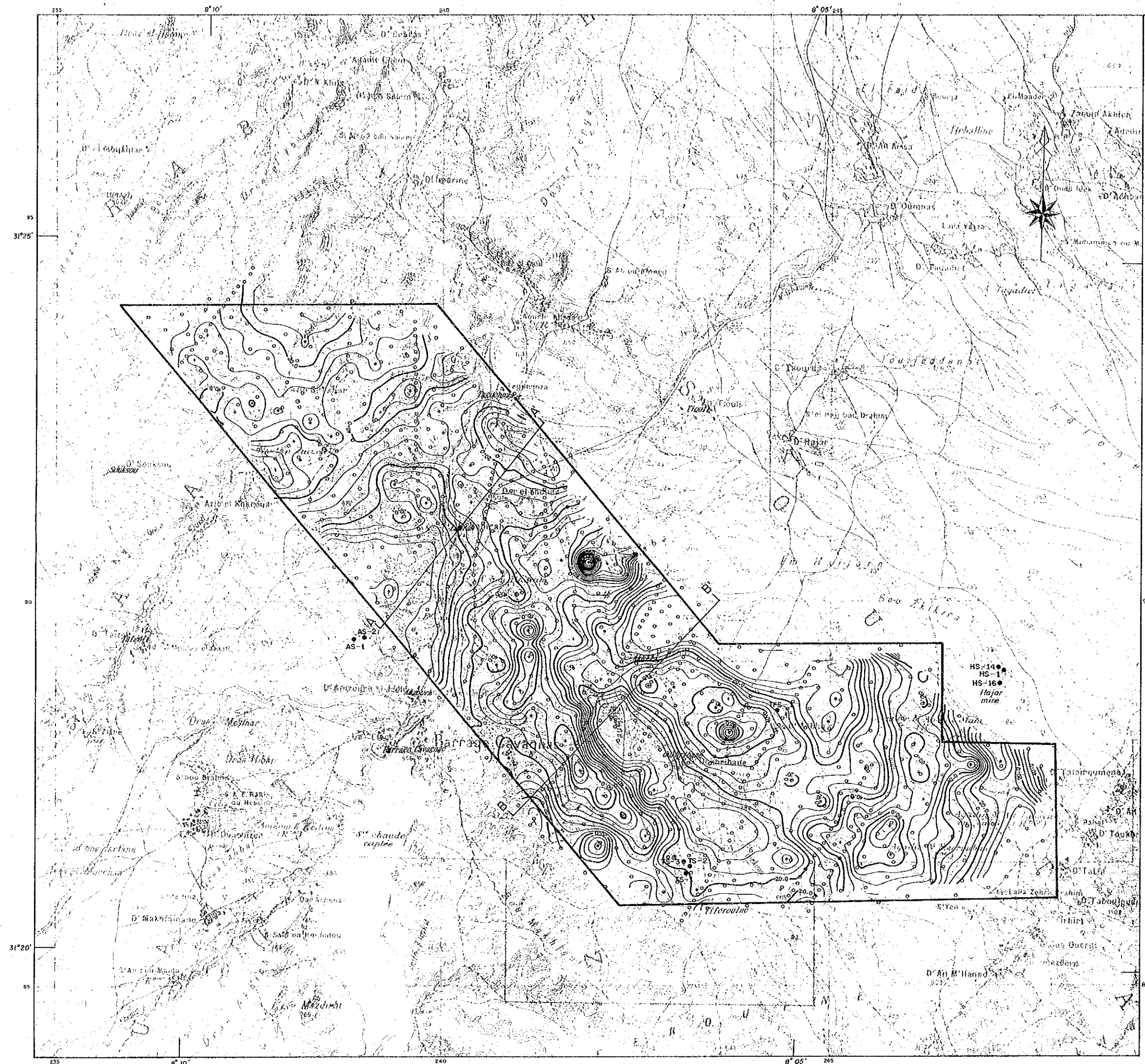
JAPAN INTERNATIONAL COOPERATION AGENCY
METAL MINING AGENCY OF JAPAN
FEBRUARY 1989
Prepared by MINDECO



Scale 1 : 25,000

LEGEND

- HS - 1 Boring Site
- Gravity Station
- ▨ Depth of Basement (meter)
- ⊕ Deep
- ⊖ Shallow



HS-14
HS-7
HS-16
Hajar mine

31°25'

30

31°20'

235

8° 10'

240

8° 05'

245

235

8° 10'

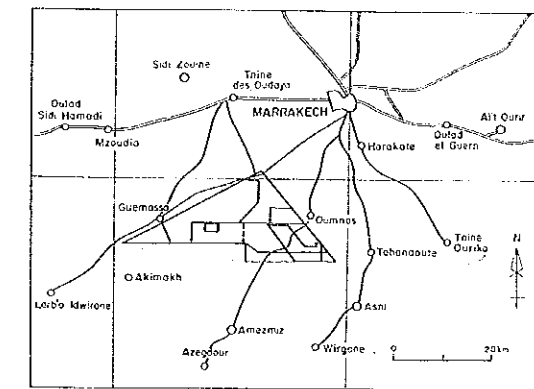
240

8° 05'

245

COOPERATIVE MINERAL EXPLORATION
IN
HAOUZ CENTRAL AREA, MOROCCO
(PHASE II)

MAP OF GEOPHYSICAL INTERPRETATION



JAPAN INTERNATIONAL COOPERATION AGENCY
METAL MINING AGENCY OF JAPAN
FEBRUARY 1989
Prepared by MINDECO



Scale 1 : 25,000

LEGEND

- | | | |
|--|----------------------------------|------|
| | Station Number | |
| | Survey Line | |
| | Hojar | } IP |
| | Tiferouine | |
| | Akhlij - Oukhribane | |
| | Lamrah | |
| | Frizem | |
| | IP Anomaly (n = 5, > 3.0 %) | |
| | Low Resistivity (n = 5, < 35Ω-m) | |
| | High Gravity Anomaly (> 0.5mgal) | |
| | High Magnetic Anomaly | |
| | Low Magnetic Anomaly | |
| | Low Resistivity (CSAMT) | |

