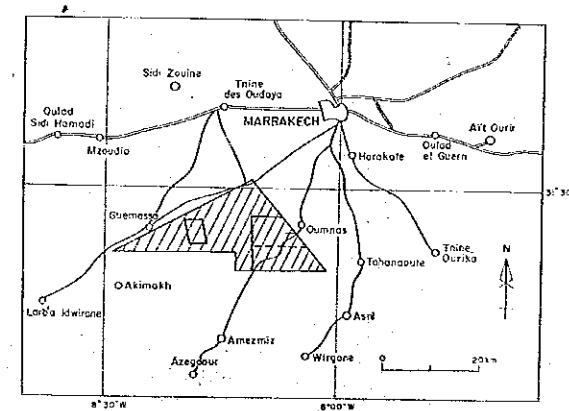
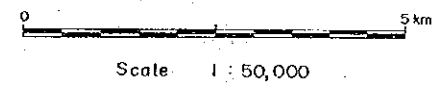


COOPERATIVE MINERAL EXPLORATION
IN
HAOUZ CENTRAL AREA, MOROCCO
(PHASE II)
LOCATION MAP OF ROCK
AND ORE SAMPLES



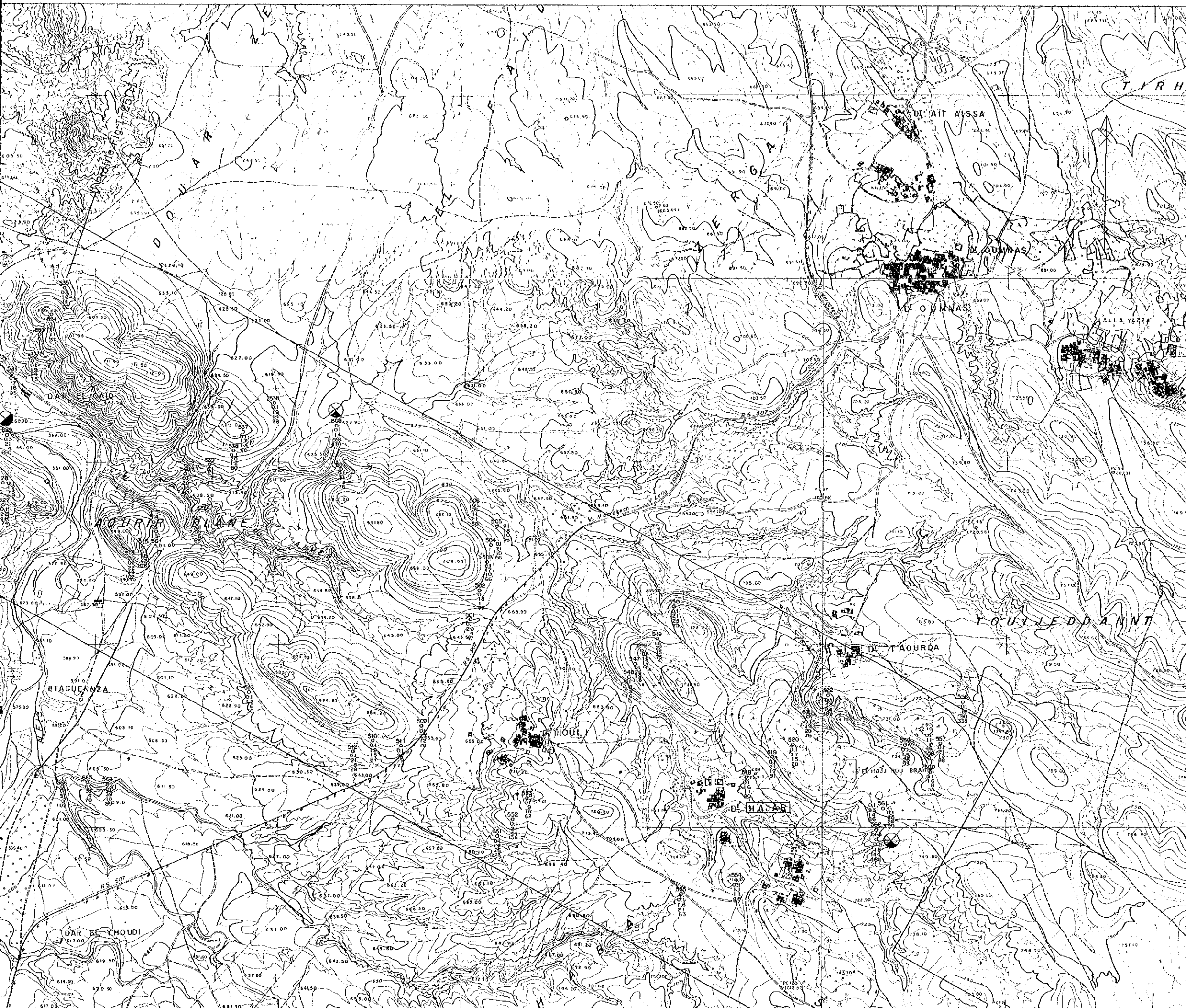
JAPAN INTERNATIONAL COOPERATION AGENCY
METAL MINING AGENCY OF JAPAN
FEBRUARY 1989
Prepared by MINDECO.



LEGEND

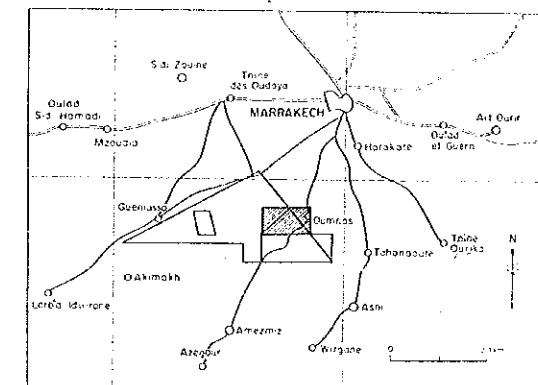
- 326 - O Sampling location for ore analysis
- .121 - T Sampling location for thin section
- 334 - P Sampling location for polished section
- 242 - X Sampling location for x-ray analysis
- 58 - R Sampling location for whole rock analysis
- 803 - D Sampling location for dating
- o Sampling site of Phase I
- Δ Sampling site of Phase II





COOPERATIVE MINERAL EXPLORATION
IN
HAOUZ CENTRAL AREA, MOROCCO
(PHASE I)

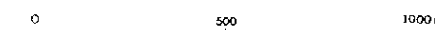
GEOCHEMICAL MAP OF SAMPLING LOCATION,
ASSAY RESULTS AND ANOMALIES,
THE HAJAR-AMZOURH AREA
(I) NORTHERN PART



JAPAN INTERNATIONAL COOPERATION AGENCY
METAL MINING AGENCY OF JAPAN

FEBRUARY 1989

Prepared by MINDECO



Scale 1 : 10,000

LEGEND

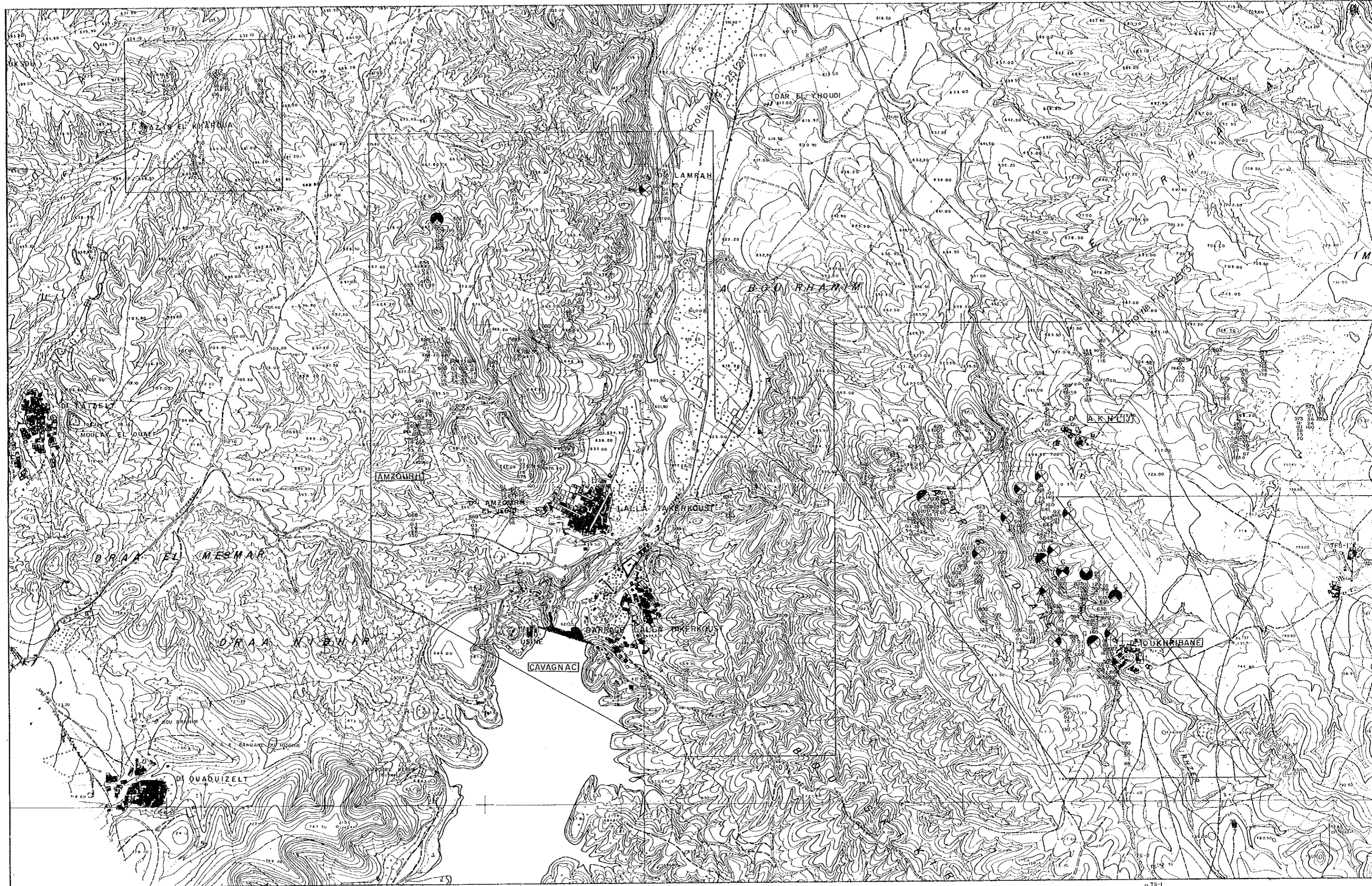
Geochemical Anomaly

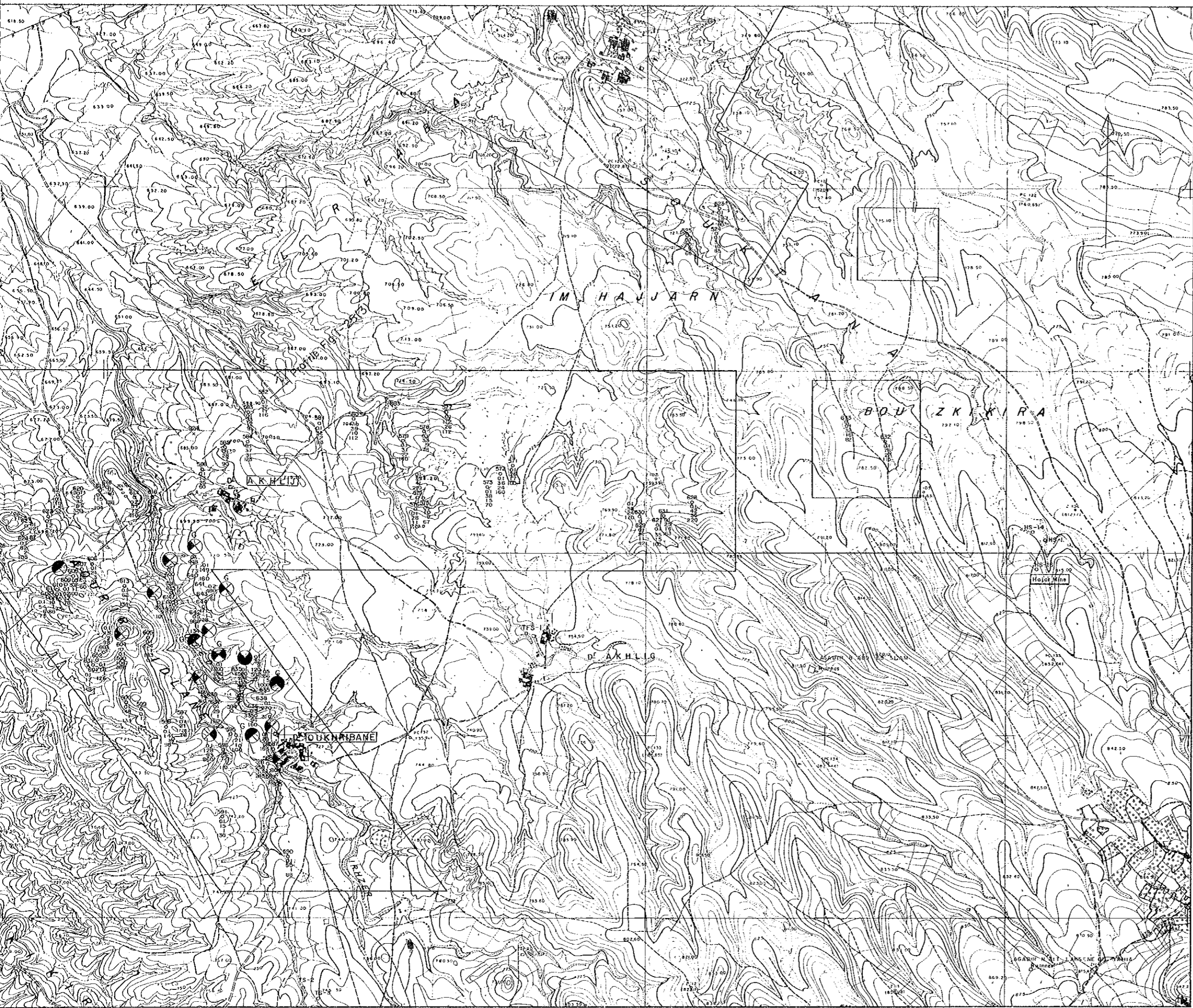
- Ag \geq 0.21 ppm
- Cu \geq 166 ppm
- Pb \geq 130 ppm
- Zn \geq 527 ppm

- 401 Sampling location for chemical analysis
- 01 Ag (ppm)
- 11 Cu (ppm)
- 63 Pb (ppm)
- 328 Zn (ppm)

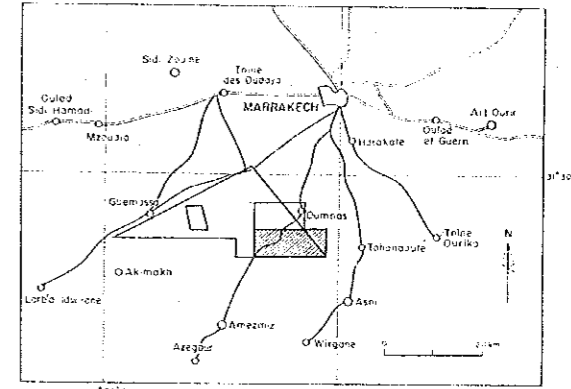
G Gossan samples

- 779 Sampling location for mineralogical studies

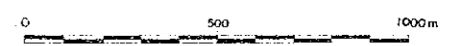




COOPERATIVE MINERAL EXPLORATION
 IN
 HAOUZ CENTRAL AREA, MOROCCO
 (PHASE II)
 GEOCHEMICAL MAP OF SAMPLING LOCATION,
 ASSAY RESULTS AND ANOMALIES,
 THE HAJAR-AMZOURH AREA
 (2) SOUTHERN PART



JAPAN INTERNATIONAL COOPERATION AGENCY
 METAL MINING AGENCY OF JAPAN
 FEBRUARY 1989
 Prepared by MINDECO



Scale 1:10,000

LEGEND

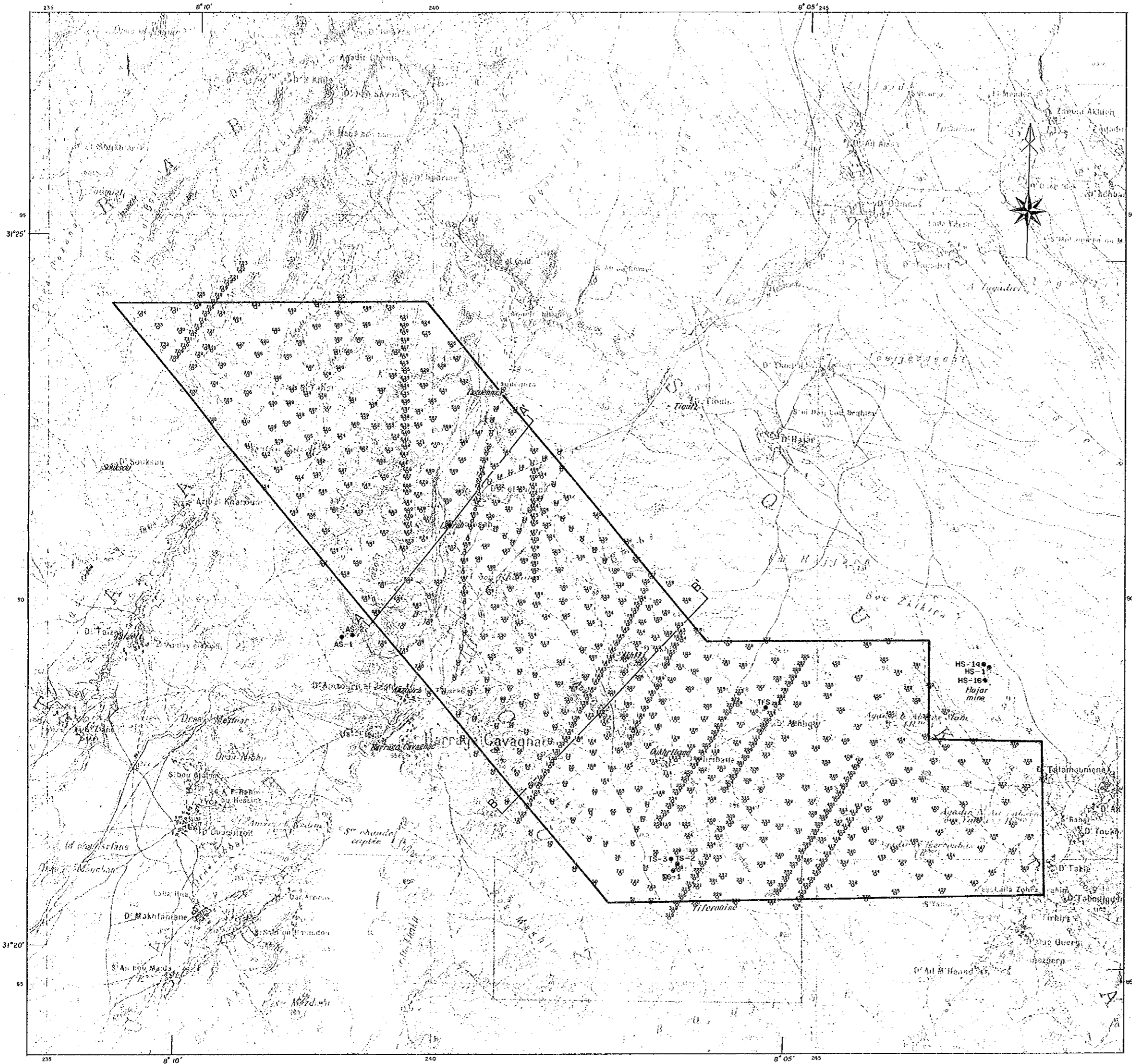
Geochemical Anomaly

- Ag ≅ 0.21 ppm
- Cu ≅ 166 ppm
- Pb ≅ 130 ppm
- Zn ≅ 527 ppm

- 401 Sampling location for chemical analysis
- 01 Ag (ppm)
- 11 Cu (ppm)
- 63 Pb (ppm)
- 328 Zn (ppm)

G Gossan samples

778 X Sampling location for mineralogical studies

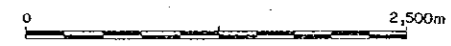


PL. II - I

COOPERATIVE MINERAL EXPLORATION
IN
HAOUZ CENTRAL AREA, MOROCCO
(PHASE II)

LOCATION MAP OF GRAVITY SURVEY

JAPAN INTERNATIONAL COOPERATION AGENCY
METAL MINING AGENCY OF JAPAN
FEBRUARY - 1989
Prepared by MINDECO



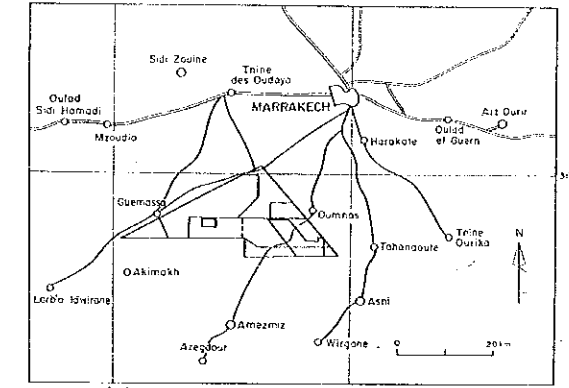
Scale 1 : 25,000

LEGEND

- HS - 1 Boring Site
- 3/5 Station Number
- Gravity Station

COOPERATIVE MINERAL EXPLORATION
IN
HAOUZ CENTRAL AREA, MOROCCO
(PHASE II)

IP SURVEY AREA WITH
SURVEY LINES

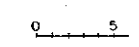


JAPAN INTERNATIONAL COOPERATION AGENCY
METAL MINING AGENCY OF JAPAN
FEBRUARY 1989
Prepared by MINDECO



Scale 1 : 25,000

LEGEND



- Station Number
- Survey Line
- HJ Hajar
- TF Tiferouine
- AK Akhlij - Oukhribane
- LM Lamrah
- FZ Frizem

