



1320

1310

1300

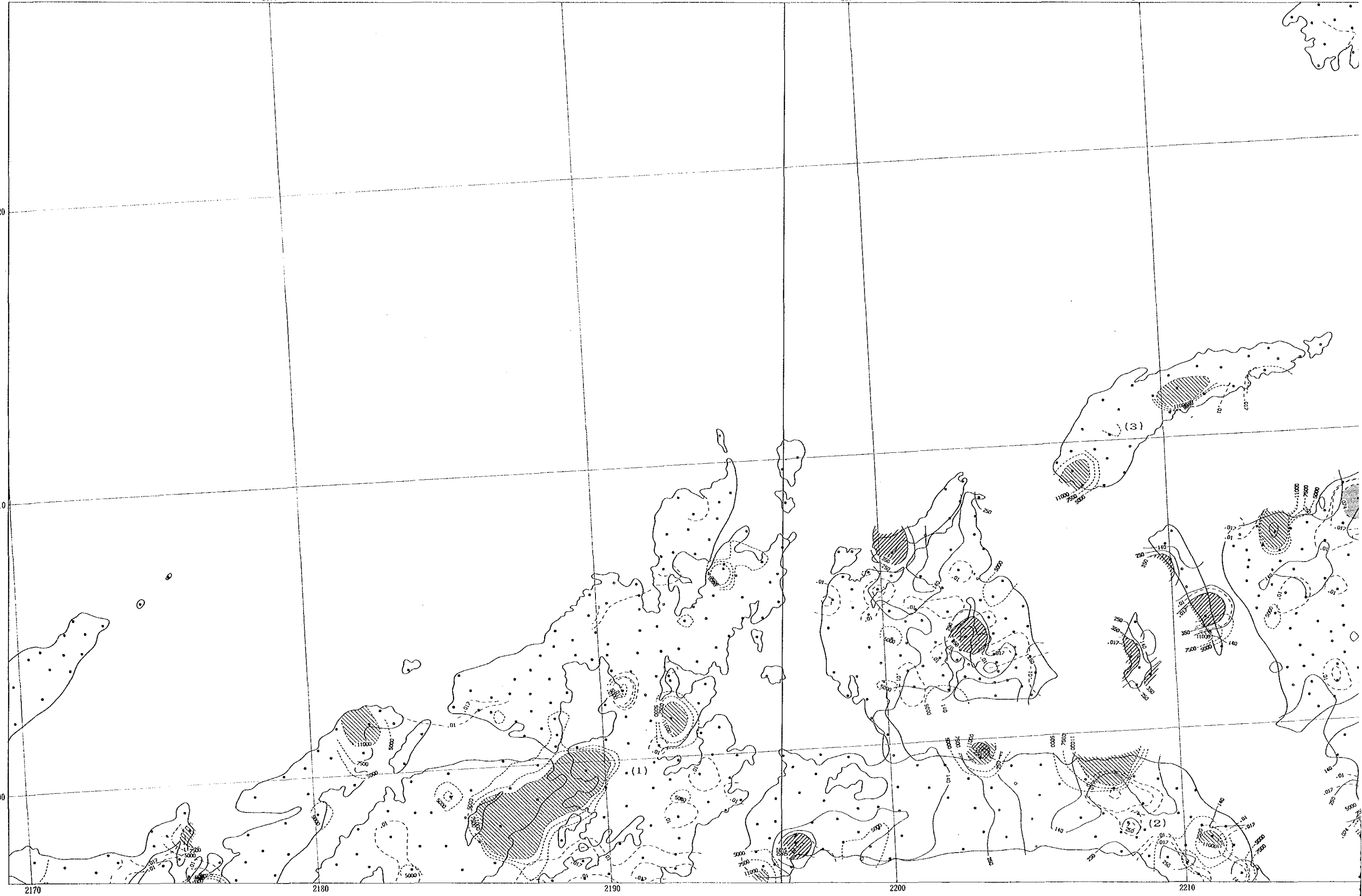
2170

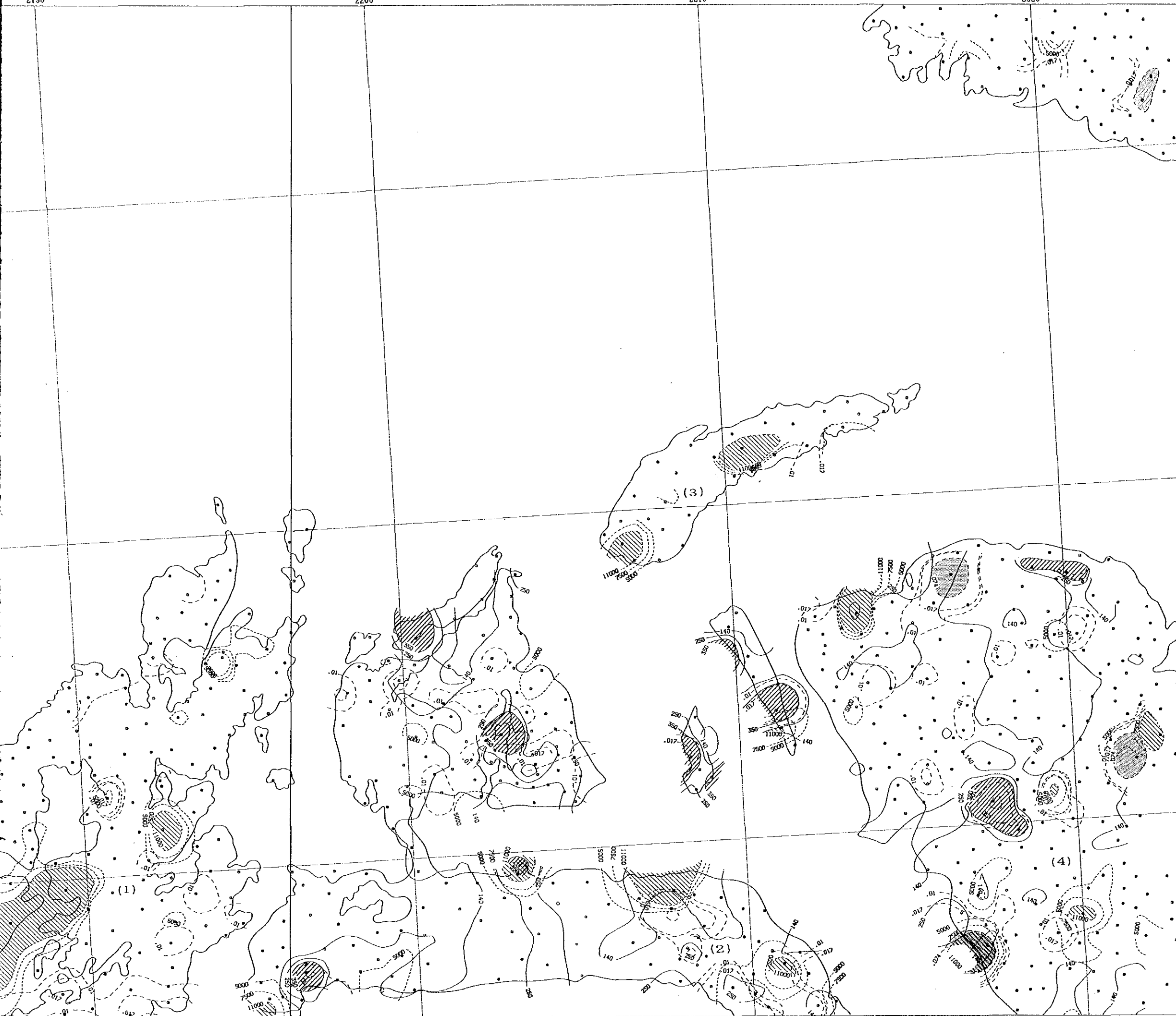
2180

2190

2200

2210





PL II-1-15

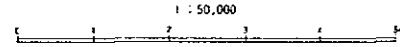
REPORT ON THE COOPERATIVE MINERAL EXPLORATION
 IN
 KHUZDAR AREA OF BALUCHISTAN
 IN
 THE ISLAMIC REPUBLIC OF PAKISTAN
 PHASE II
 GEOCHEMICAL ANOMALOUS AREA
 IN KHUZDAR SURVEY AREA (Phase II,
 [Ba, Mg, S])

AUGUST 1988

JAPAN INTERNATIONAL COOPERATION AGENCY
 METAL MINING AGENCY OF JAPAN

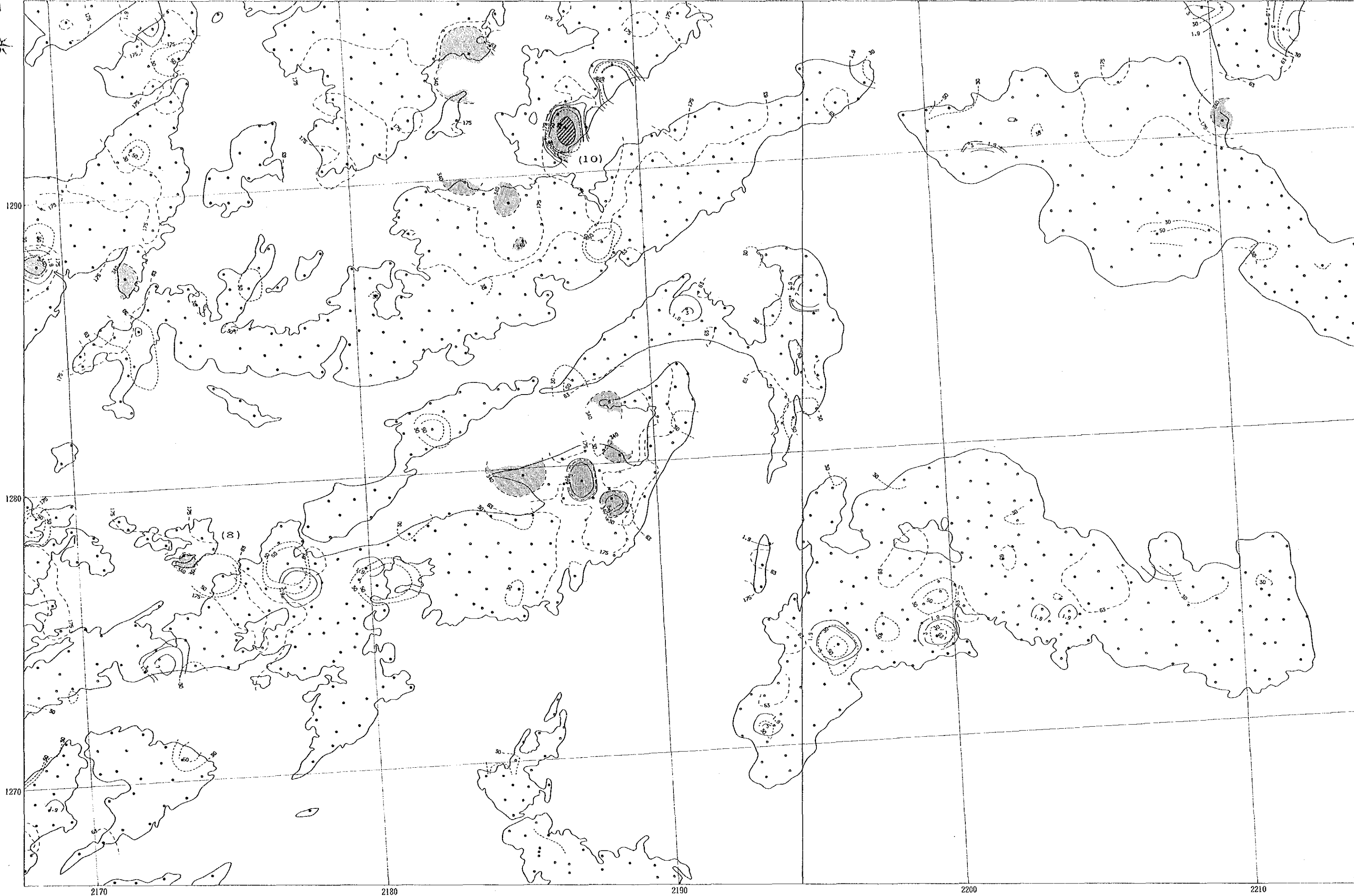
1 : 50,000

Geochemical and Geological Survey Area



LEGEND

- Ba-
- > 350 pps (Threshold)
- > 250 pps
- Mg-
- > 11,000 pps (Threshold)
- > 7,500 ppm (M-σ)
- > 5,000 ppm
- S-
- > 0.014% (Threshold)
- > 0.017% (M-2σ)
- > 0.010%
- : Location of Samples
- : Surveyed Area
- (No.) : Number of Anomalous Area





(10)

Pl. II-1-16

REPORT ON THE COOPERATIVE MINERAL EXPLORATION
 IN
 KHUZDAR AREA OF BALUCHISTAN
 IN
 THE ISLAMIC REPUBLIC OF PAKISTAN
 PHASE II
 GEOCHEMICAL ANOMALOUS AREA
 IN KHUZDAR SURVEY AREA (Phase II)
 (Pb, Zn, Hg)

AUGUST 1988

JAPAN INTERNATIONAL COOPERATION AGENCY
 METAL MINING AGENCY OF JAPAN

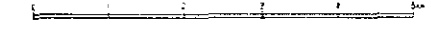
1 : 50,000

Geochemical and Geological Survey Area

AUGUST 1988

JAPAN INTERNATIONAL COOPERATION AGENCY
METAL MINING AGENCY OF JAPAN

1 : 50,000



LEGEND

- Pb -
- > 2.9 ppm (Threshold)
- > 7 ppm (M-e)
- > 3 ppm
- Zn -
- > 2.5 ppm (Threshold)
- > 5.6 ppm (M-e)
- > 3.0 ppm
- Hg -
- > 5.4 ppm (Threshold)
- > 1.7 ppm (M-2e)
- > 1.3 ppm (M-e)
- : Location of Samples
- : Surveyed Area
- (No.) : Number of Anomalous Area

2190

2200

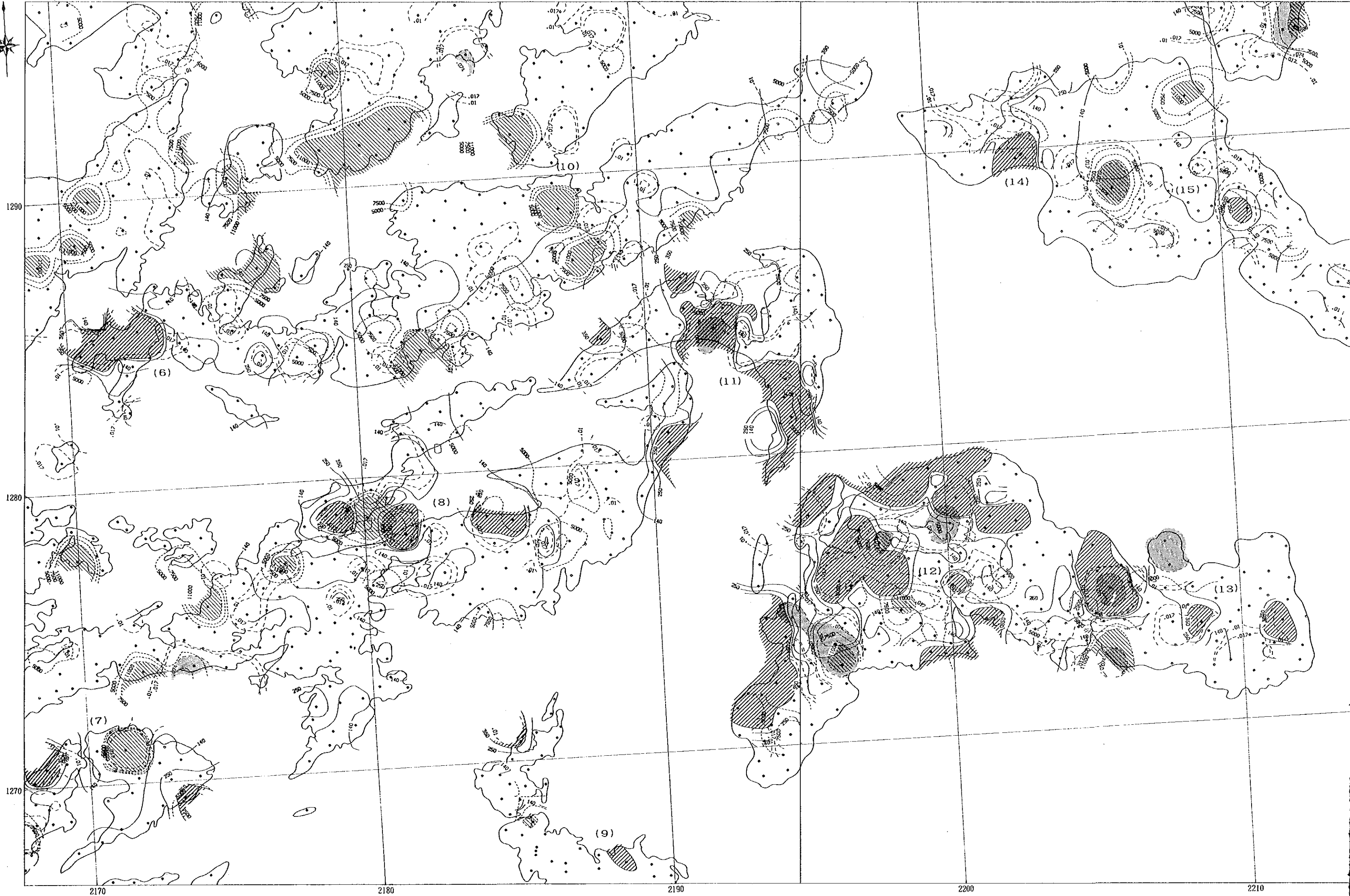
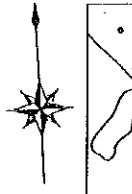
2210

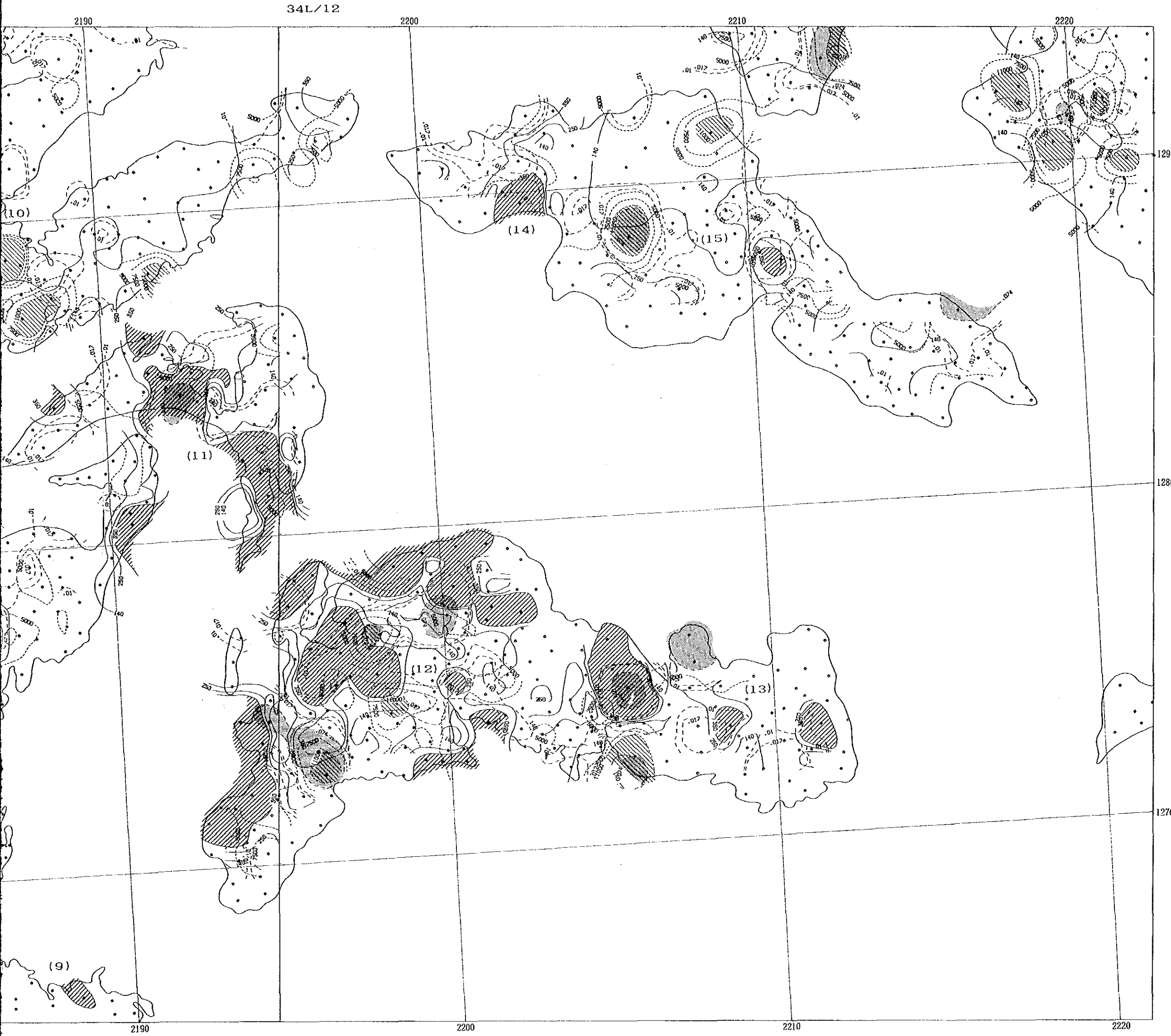
2220

1270

1280

1290





Pl. E-1-17

REPORT ON THE COOPERATIVE MINERAL EXPLORATION
IN
KHUZDAR AREA OF BALUCHISTAN
IN
THE ISLAMIC REPUBLIC OF PAKISTAN
PHASE II
GEOCHEMICAL ANOMALOUS AREA
IN KHUZDAR SURVEY AREA (Phase II)
(Ba, Mg, S)

AUGUST 1988

JAPAN INTERNATIONAL COOPERATION AGENCY
METAL MINING AGENCY OF JAPAN

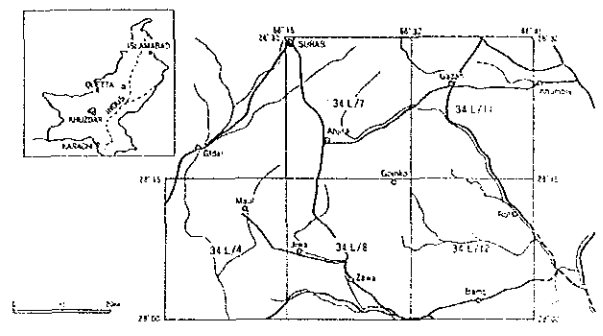
1 : 50,000

- LEGEND**
- Ba-
 > 350 ppm (Threshold)
 > 250 ppm
 - Mg-
 > 11,000 ppm (Threshold)
 > 7,500 ppm (M-σ)
 > 5,000 ppm
 - S-
 > 0.074% (Threshold)
 > 0.13% (M-σ)
 > 0.10%
 - : Location of Samples
 - : Surveyed Area
 - (No.) : Number of Anomalous Area

2190 2200 2210 2220

1290
1280
1270

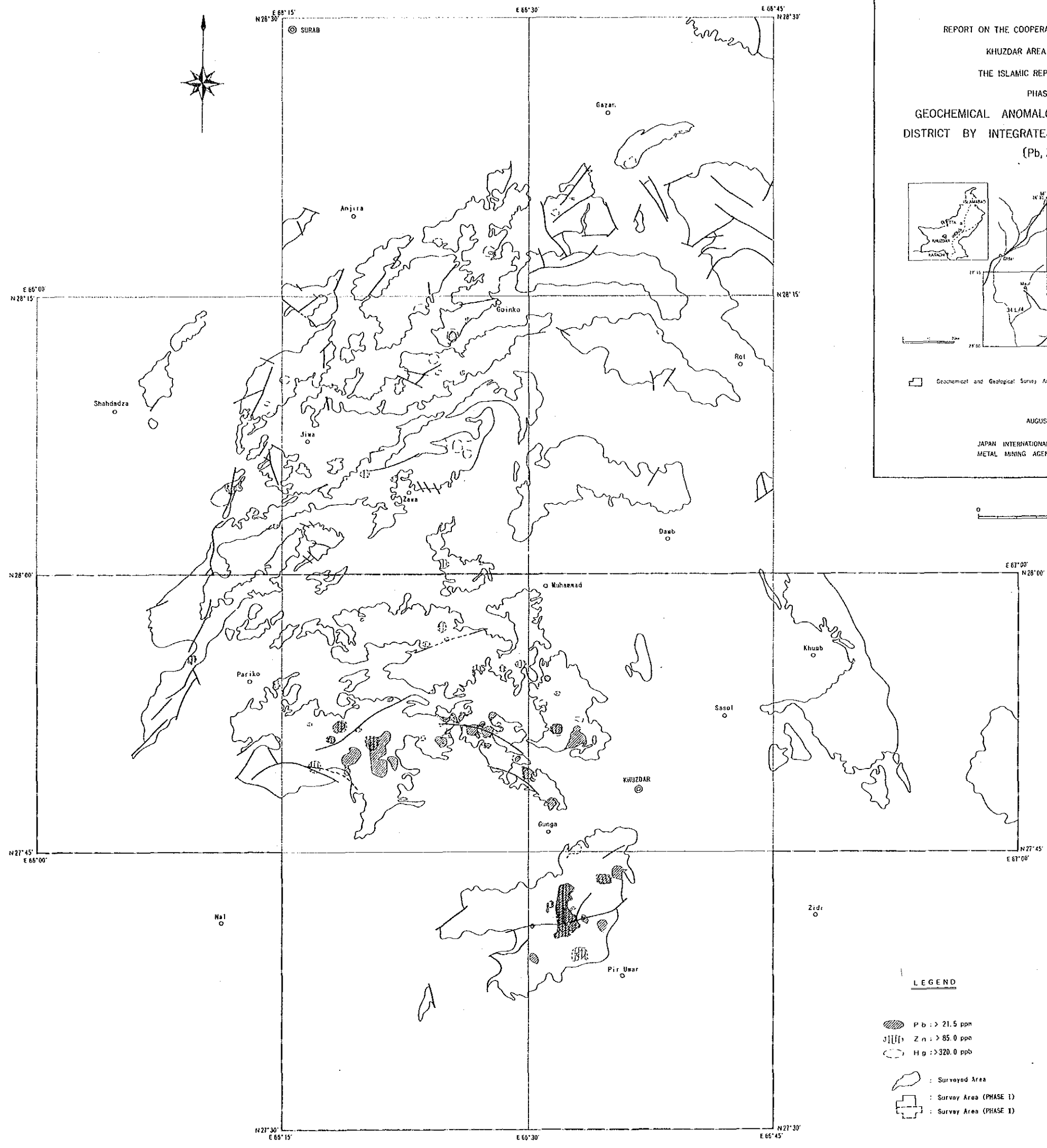
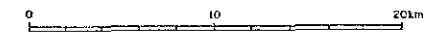
REPORT ON THE COOPERATIVE MINERAL EXPLORATION
 IN
 KHUZDAR AREA OF BALUCHISTAN
 IN
 THE ISLAMIC REPUBLIC OF PAKISTAN
 PHASE II
 GEOCHEMICAL ANOMALOUS AREA IN KHUZDAR
 DISTRICT BY INTEGRATED GEOCHEMICAL ANALYSIS
 (Pb, Zn, Hg)



Geochemical and Geological Survey Area

AUGUST 1986

JAPAN INTERNATIONAL COOPERATION AGENCY
 METAL MINING AGENCY OF JAPAN

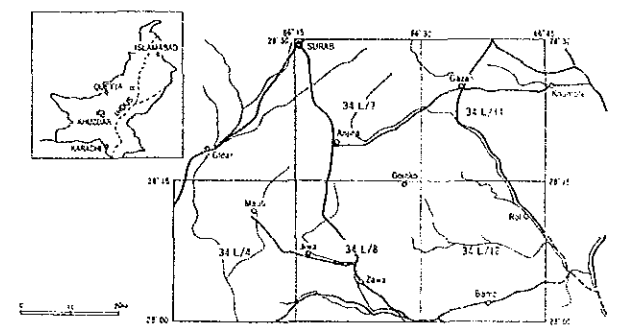


LEGEND

- Pb : > 21.5 ppm
- Zn : > 85.0 ppm
- Hg : > 320.0 ppb

- : Surveyed Area
- : Survey Area (PHASE I)
- : Survey Area (PHASE II)

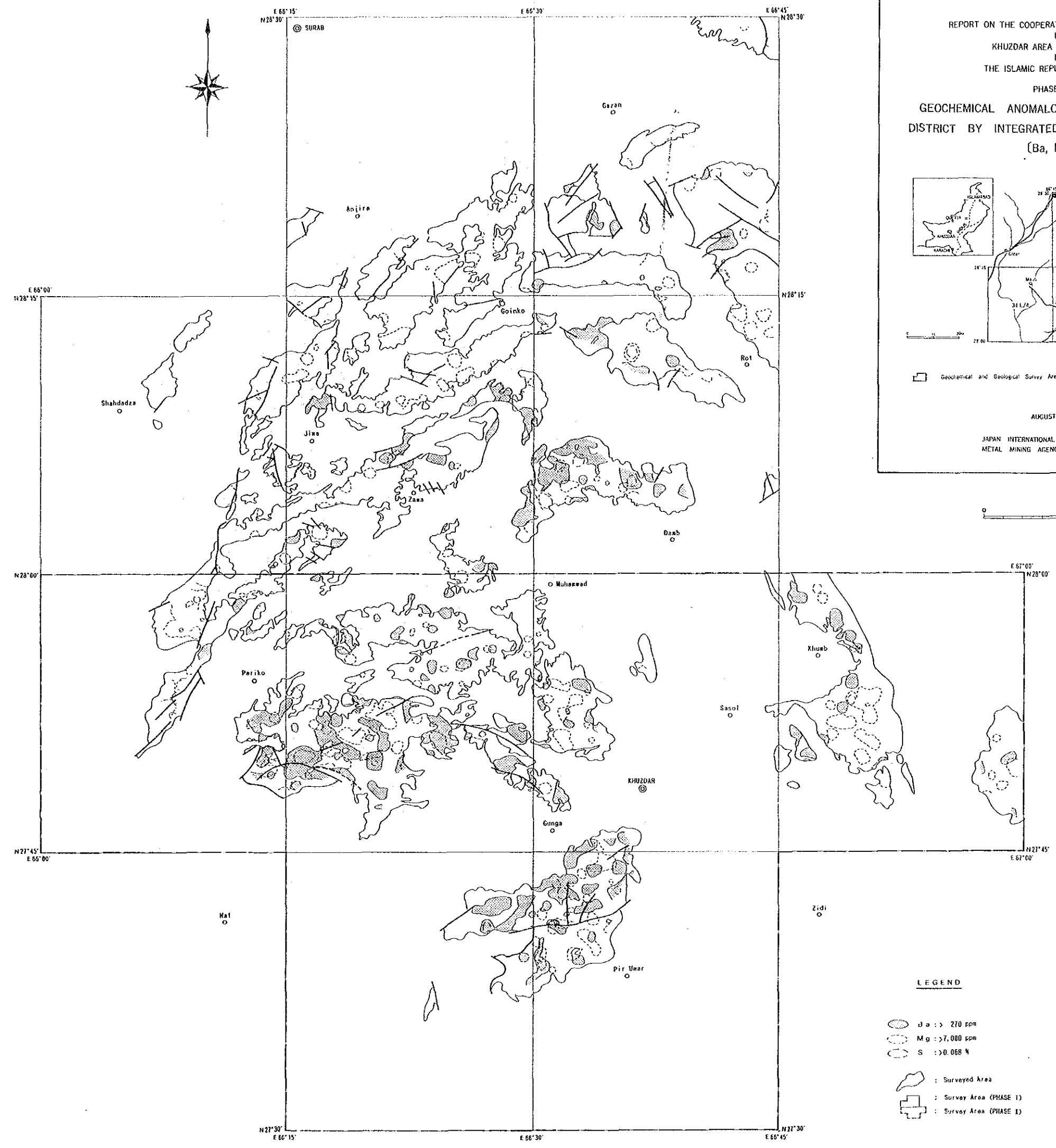
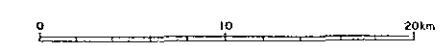
REPORT ON THE COOPERATIVE MINERAL EXPLORATION
 IN
 KHUZDAR AREA OF BALUCHISTAN
 IN
 THE ISLAMIC REPUBLIC OF PAKISTAN
 PHASE II
 GEOCHEMICAL ANOMALOUS AREA IN KHUZDAR
 DISTRICT BY INTEGRATED GEOCHEMICAL ANALYSIS
 (Ba, Mg, S)



Geochemical and Geological Survey Area

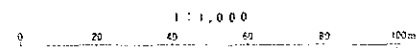
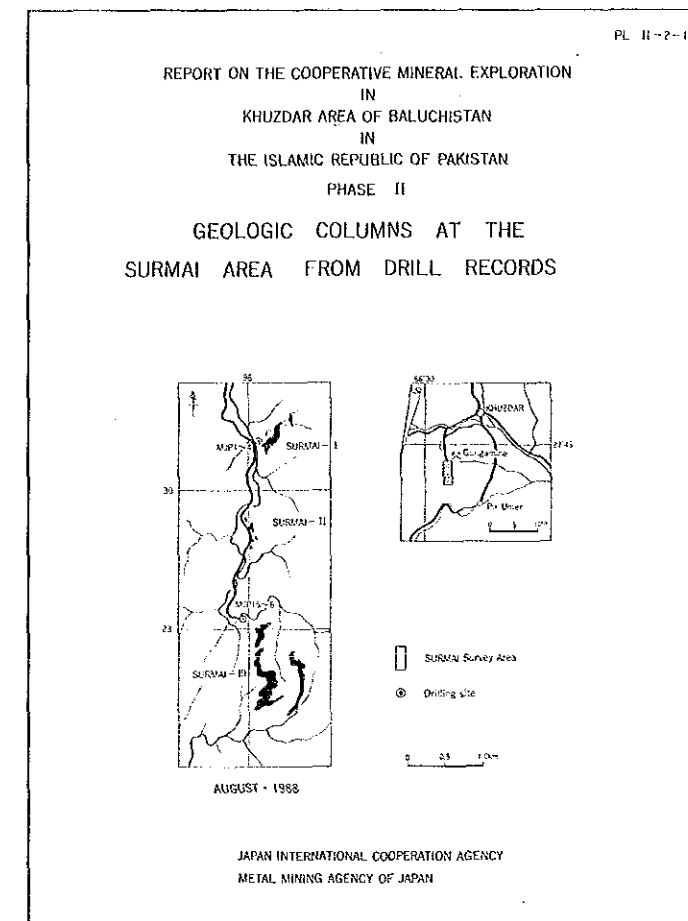
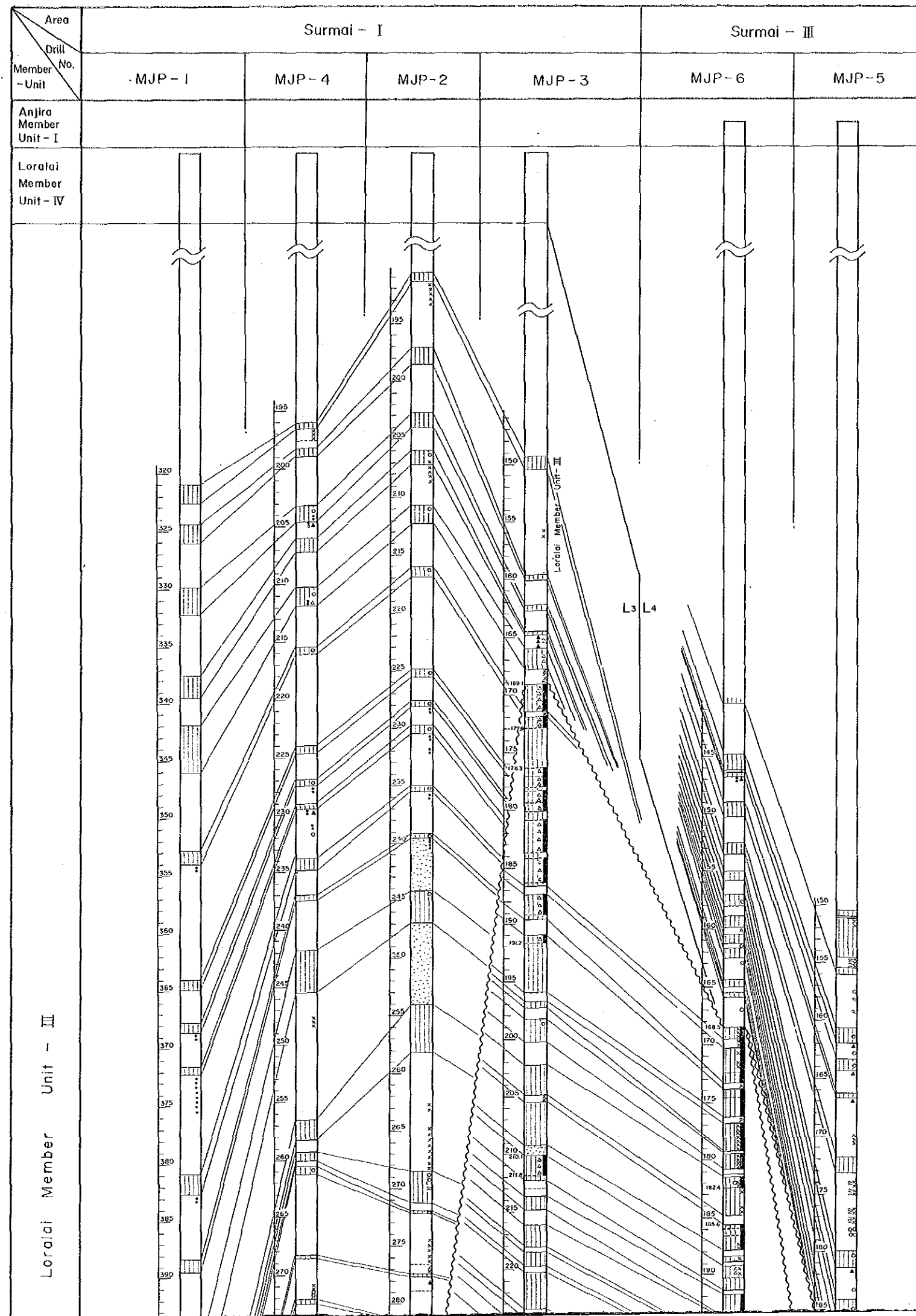
AUGUST 1988

JAPAN INTERNATIONAL COOPERATION AGENCY
 METAL MINING AGENCY OF JAPAN



LEGEND

- Ba > 270 ppm
- Mg > 7,000 ppm
- S > 0.068 %
- : Surveyed Area
- : Survey Area (PHASE I)
- : Survey Area (PHASE I)



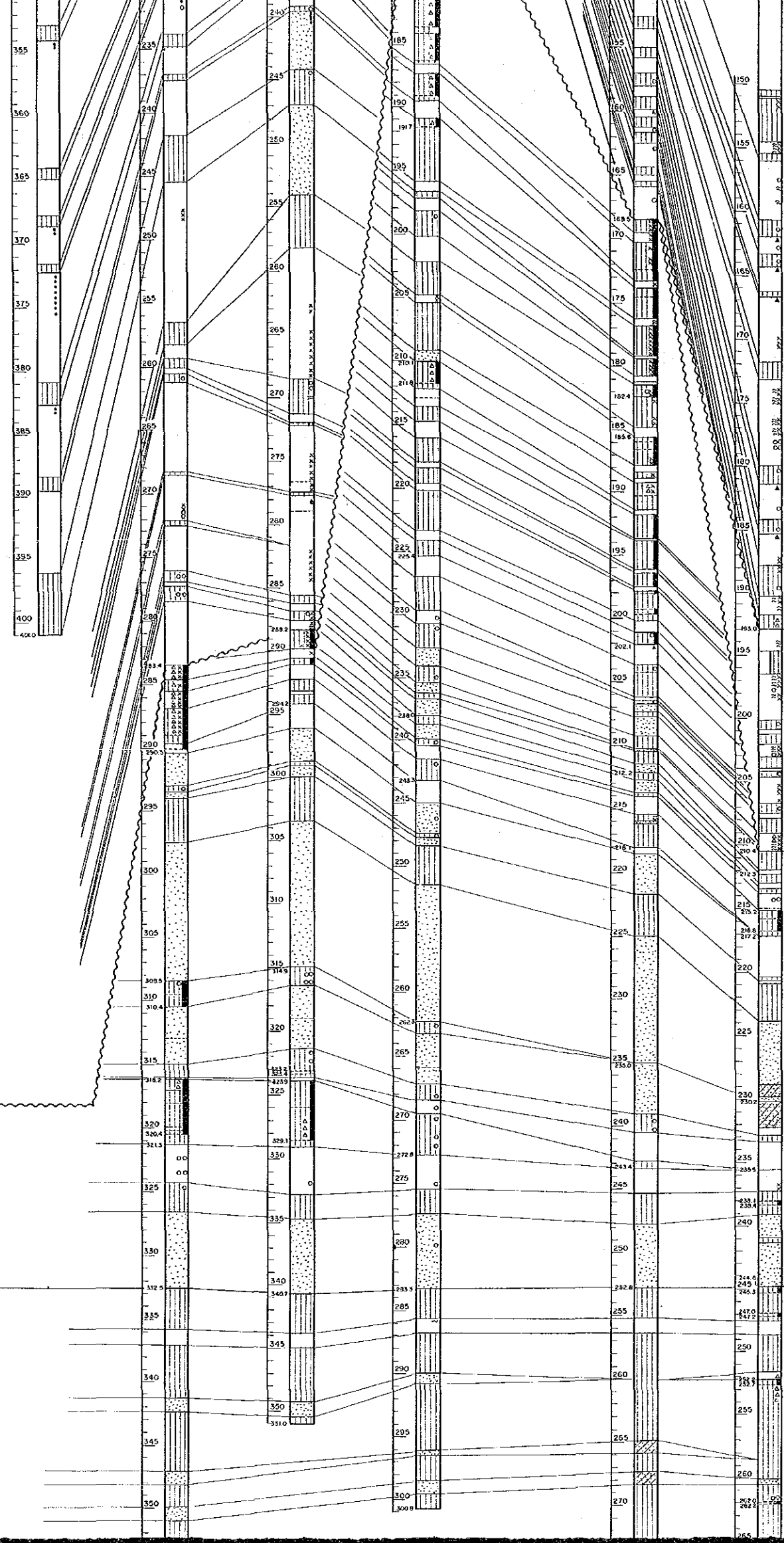
LEGEND

- Limestone
- Shale
- Alternation - A
- Alternation - B
- Sulphide Mineralization
- Fault
- Argillification
- Breccia
- Nodule of Limestone
- Crushed Rock
- Fossiliferous
- Coquina Bed
- Crawling Traces

Lordal Member Unit - III

Lordal Member Unit - II

Unit - I



- Sulphide Mineralization
- Fault
- Argillation
- Breccio
- Nodule of Limestone
- Crushed Rock
- Fossiliferous
- Coquina Bed
- Crawling Traces

Jsl4

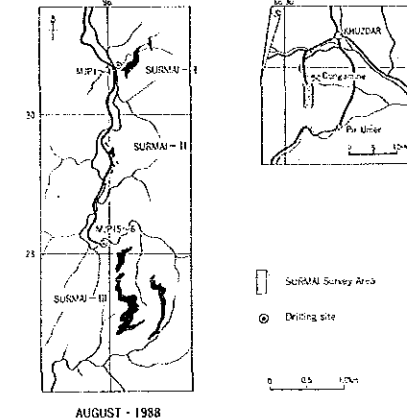
Fault

Jsl2

Jsl2

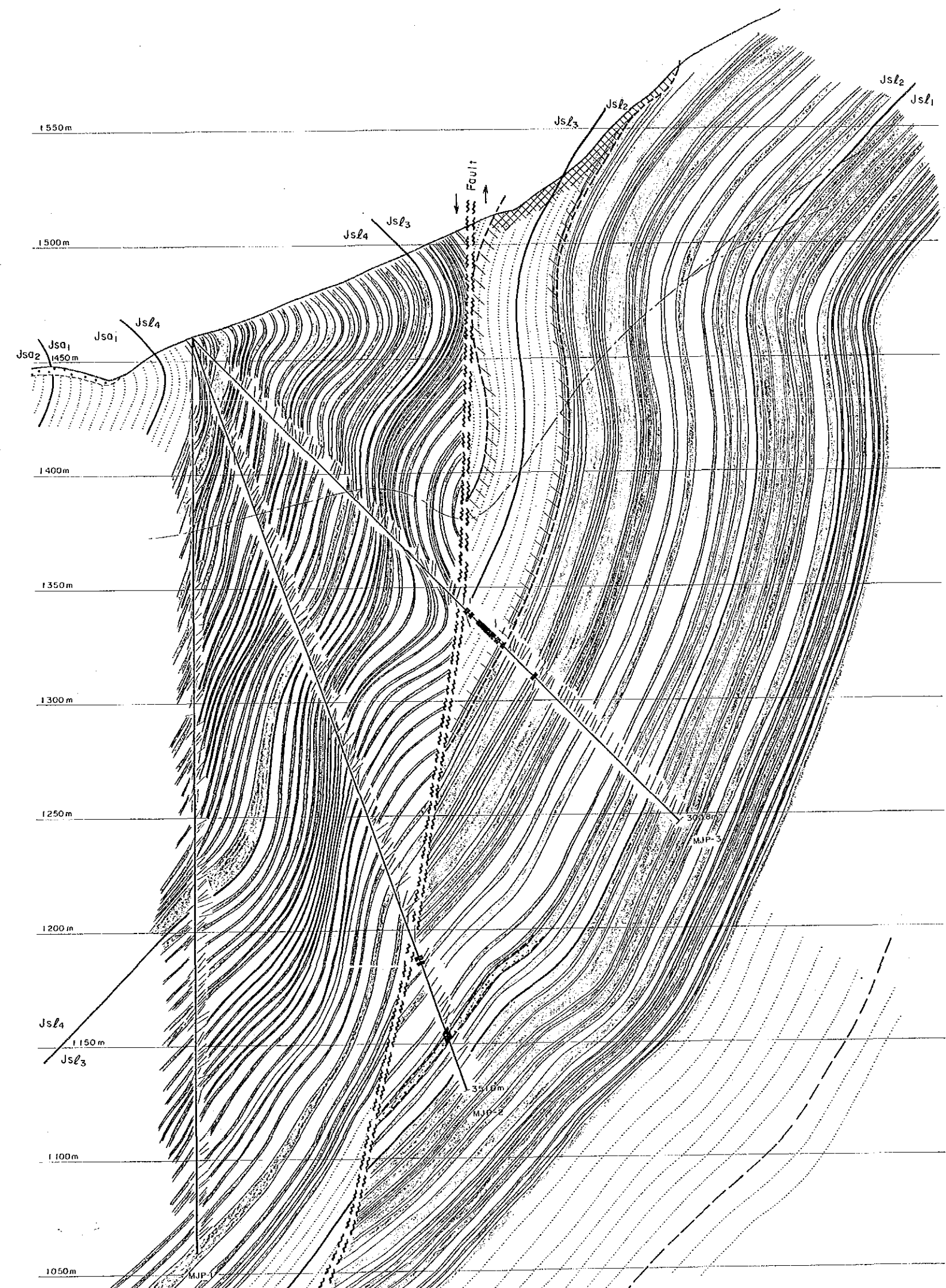
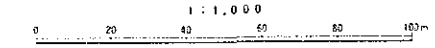
Jsl1

REPORT ON THE COOPERATIVE MINERAL EXPLORATION
IN
KHUZDAR AREA OF BALUCHISTAN
IN
THE ISLAMIC REPUBLIC OF PAKISTAN
PHASE II
GEOLOGIC PROFILE OF THE SURMAI-I
(MJP-1~MJP-3)



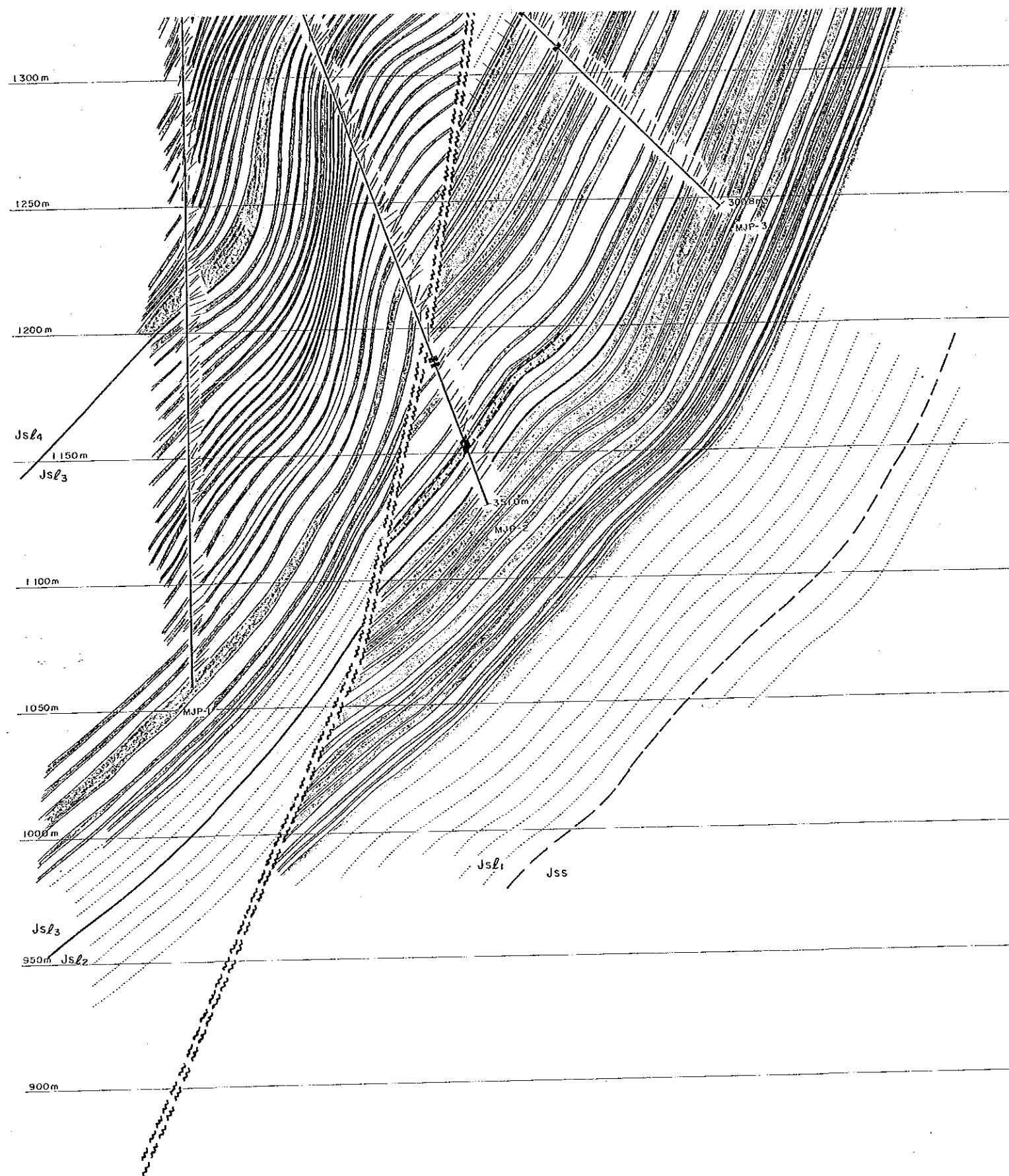
AUGUST - 1988

JAPAN INTERNATIONAL COOPERATION AGENCY
METAL MINING AGENCY OF JAPAN

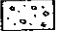
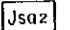
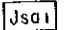
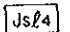
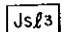
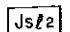
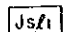
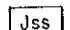
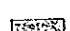
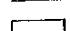
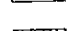
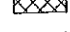



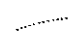
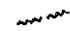



LEGEND

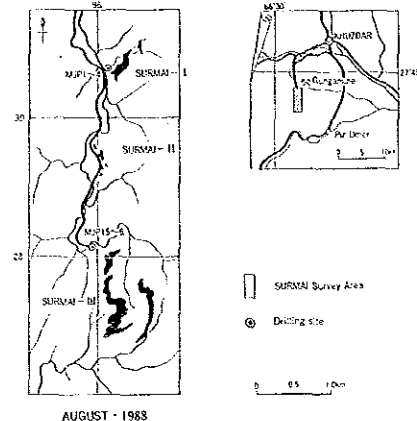
- : Talus
- : Angira Member II
- : Angira Member I
- : Loralai Member IV
- : Loralai Member III
- : Loralai Member II
- : Loralai Member I
- : Spingwar Member
- : Limestone
- : Shale
- : Mineralization (Oxide, Gossan)
- : Mineralization (Sulphide)
- : Mineralized zone (expected)
- : Boundary of Units
- : Bedding traces
- : Fault
- : Dip
- : Water table (Supposed)



LEGEND

-  : Talus
-  : Angira Member II
-  : Angira Member I
-  : Loralai Member IV
-  : Loralai Member III
-  : Loralai Member II
-  : Loralai Member I
-  : Spingwor Member
-  : Limestone
-  : Shale
-  : Mineralization (Oxide, Gossan)
-  : Mineralization (Sulphide)
-  : Mineralized zone (expected)
-  : Boundary of Units
-  : Bedding traces
-  : Fault
-  : Dip
-  : Water table (Supposed)

REPORT ON THE COOPERATIVE MINERAL EXPLORATION
IN
KHUZDAR AREA OF BALUCHISTAN
IN
THE ISLAMIC REPUBLIC OF PAKISTAN
PHASE II
GEOLOGIC PROFILE OF THE SURMAI-I
(MJP-1, MJP-4)

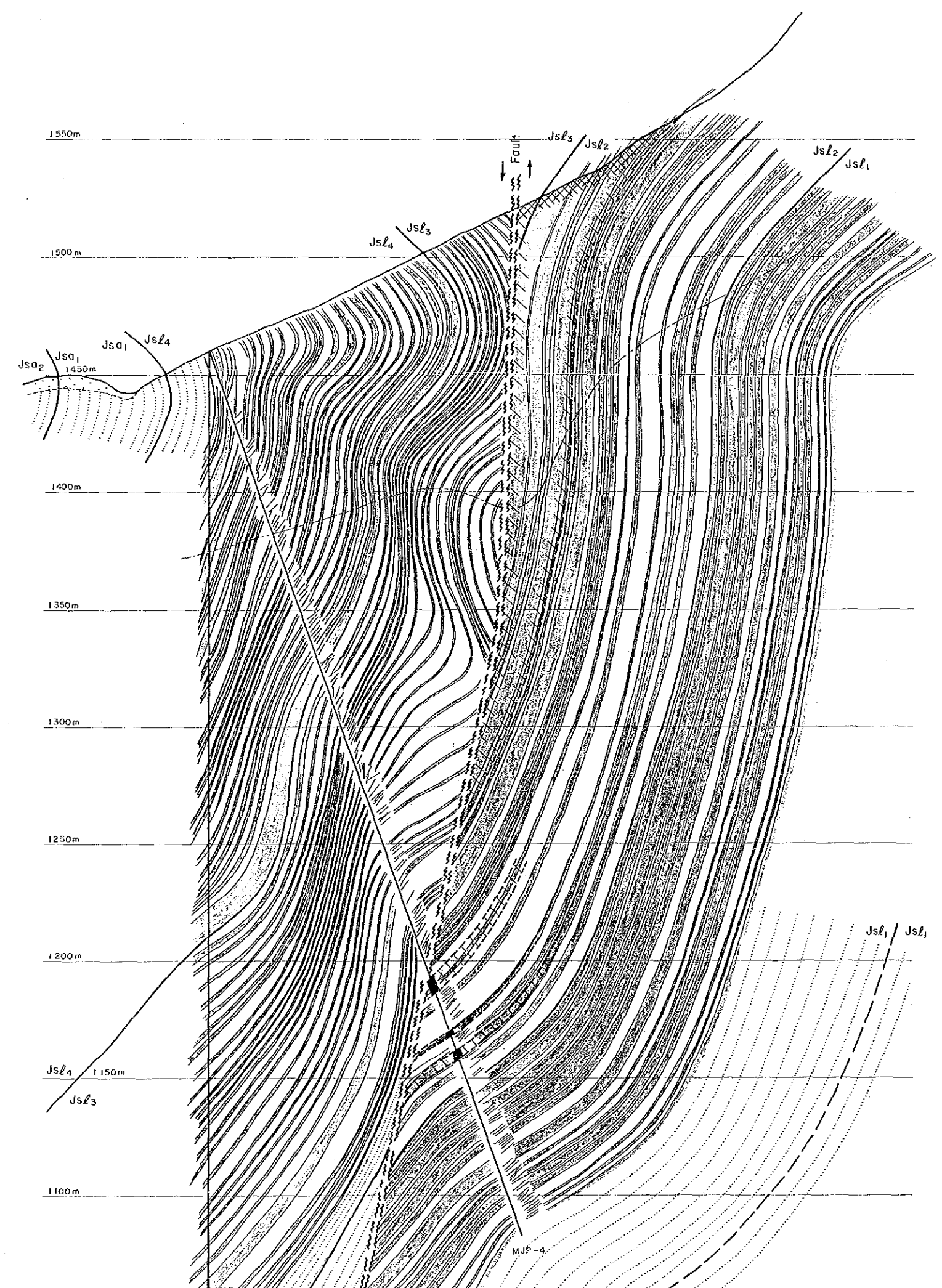


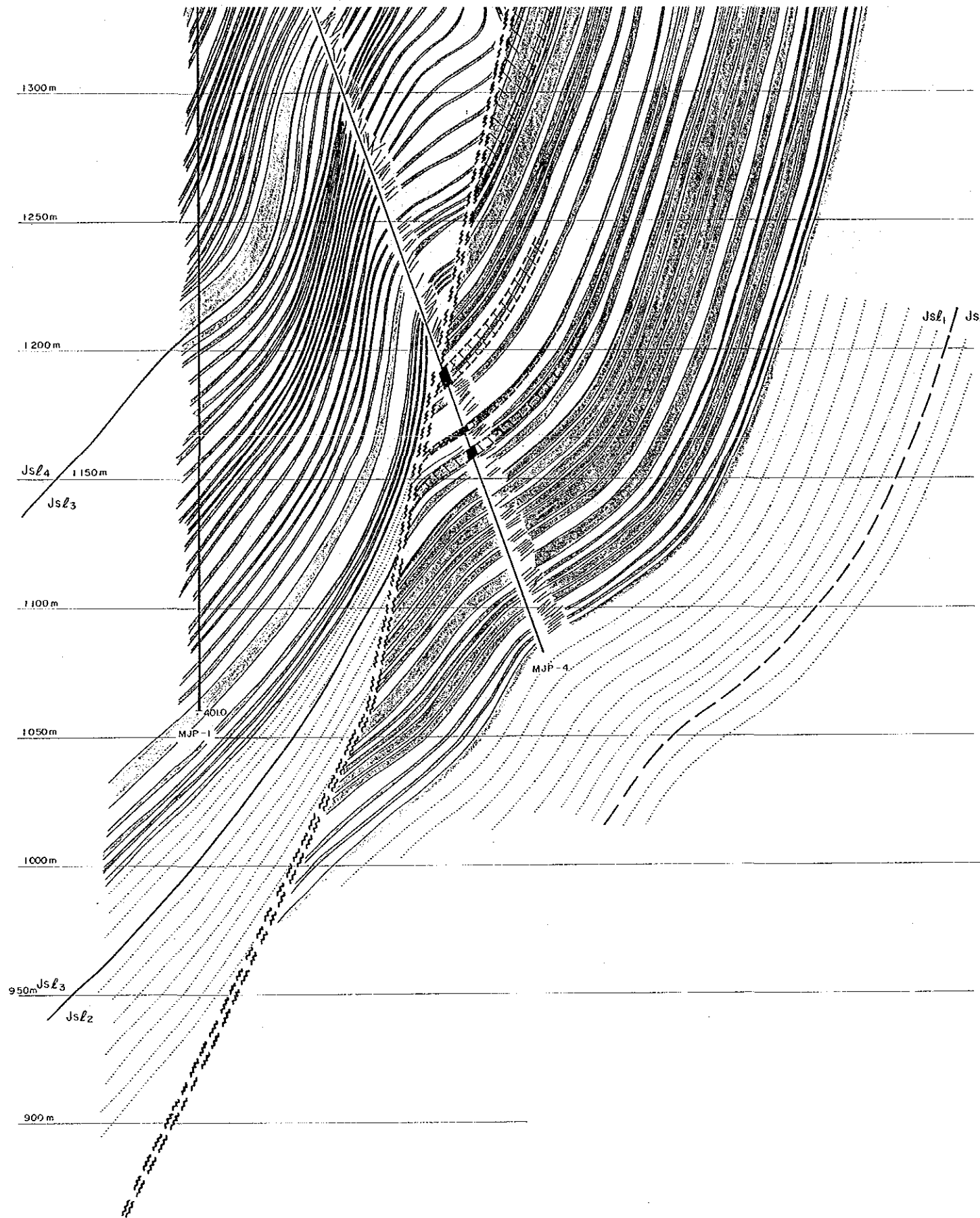
JAPAN INTERNATIONAL COOPERATION AGENCY
METAL MINING AGENCY OF JAPAN



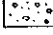
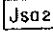
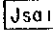
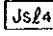
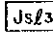
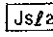
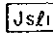
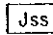


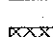


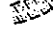
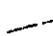

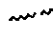

LEGEND

- : Talus
- : Angira Member II
- : Angira Member I
- : Loralai Member IV
- : Loralai Member III
- : Loralai Member II
- : Loralai Member I
- : Spingwar Member
- : Limestone
- : Shale
- : Mineralization (Oxide, Gossan)
- : Mineralization (Sulphide)
- : Mineralized zone (expected)
- : Boundary of Units
- : Bedding traces
- : Fault
- : Dip
- : Water table (Supposed)

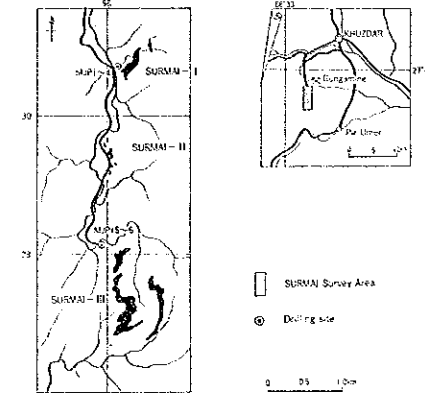




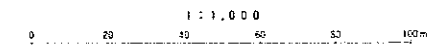
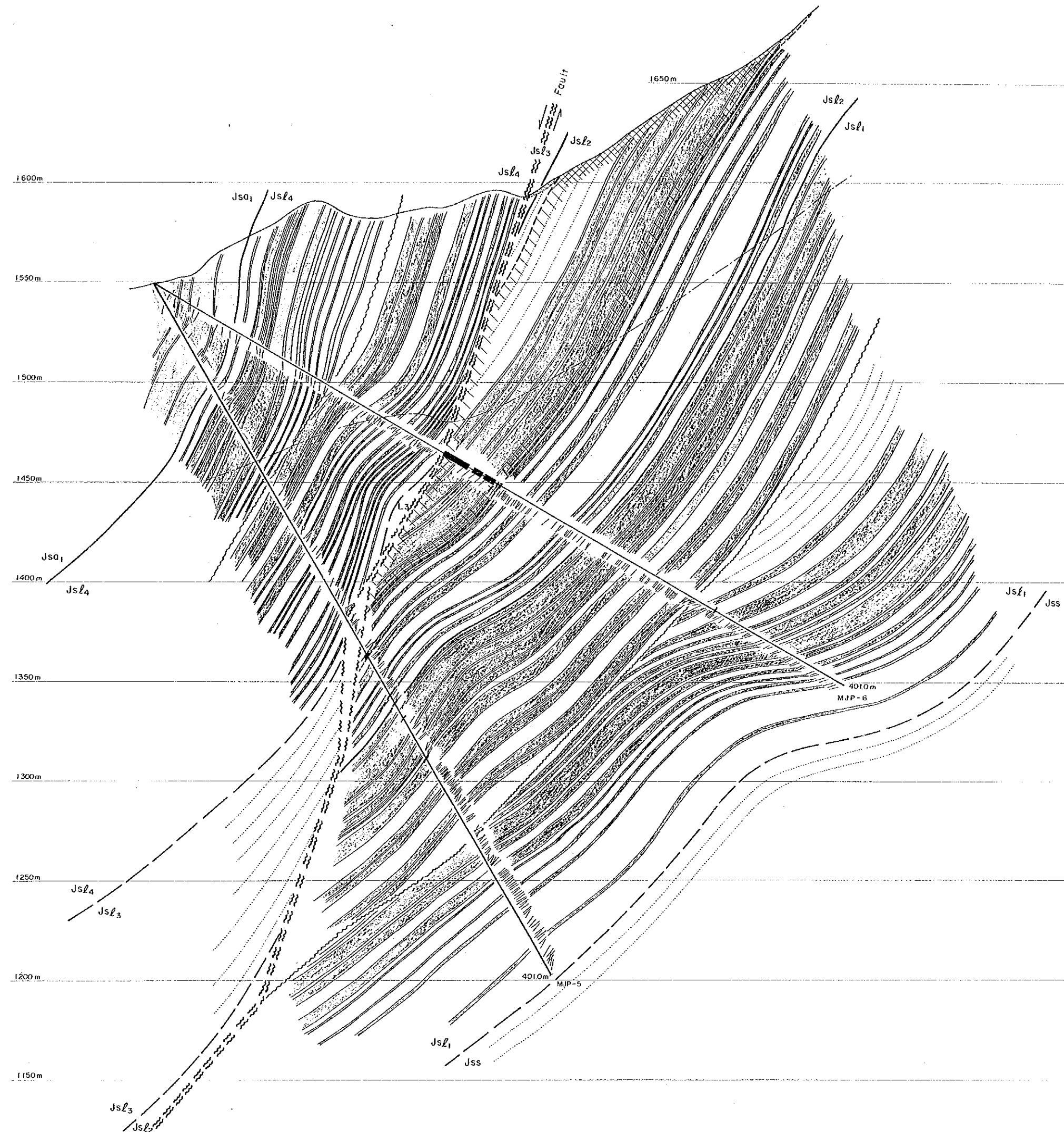
LEGEND

-  : Talus
-  : Angira Member II
-  : Angira Member I
-  : Loralai Member IV
-  : Loralai Member III
-  : Loralai Member II
-  : Loralai Member I
-  : Spingwar Member
-  : Limestone
-  : Shale
-  : Mineralization (Oxide, Gossan)
-  : Mineralization (Sulphide)
-  : Mineralized zone (expected)
-  : Boundary of Units
-  : Bedding traces
-  : Fault
-  : Dip
-  : Water table (Supposed)

REPORT ON THE COOPERATIVE MINERAL EXPLORATION
IN
KHUZDAR AREA OF BALUCHISTAN
IN
THE ISLAMIC REPUBLIC OF PAKISTAN
PHASE II
GEOLOGIC PROFILE OF THE SURMAI-III
(MJP-5~MJP-6)



JAPAN INTERNATIONAL COOPERATION AGENCY
METAL MINING AGENCY OF JAPAN



LEGEND

- : Talus
- : Angira Member II
- : Angira Member I
- : Loralai Member IV
- : Loralai Member III
- : Loralai Member II
- : Loralai Member I
- : Spingwar Member
- : Limestone
- : Shale
- : Mineralization (Oxide, Gossan)
- : Mineralization (Sulphide)
- : Mineralized zone (expected)
- : Boundary of Units
- : Bedding traces
- : Fault
- : Dip
- : Water table (Supposed)

