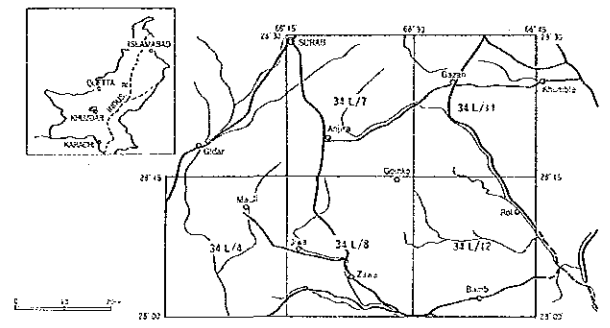


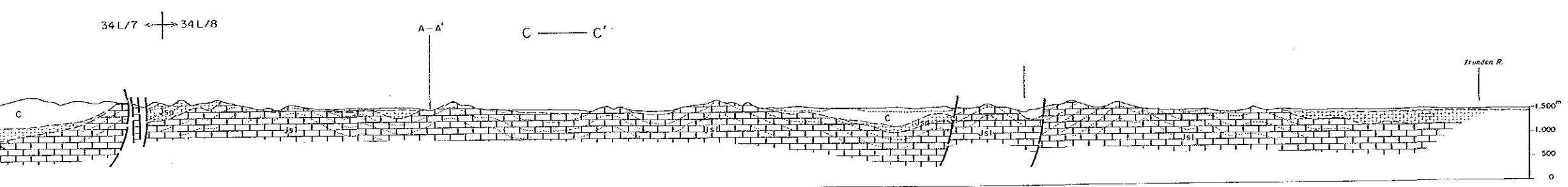
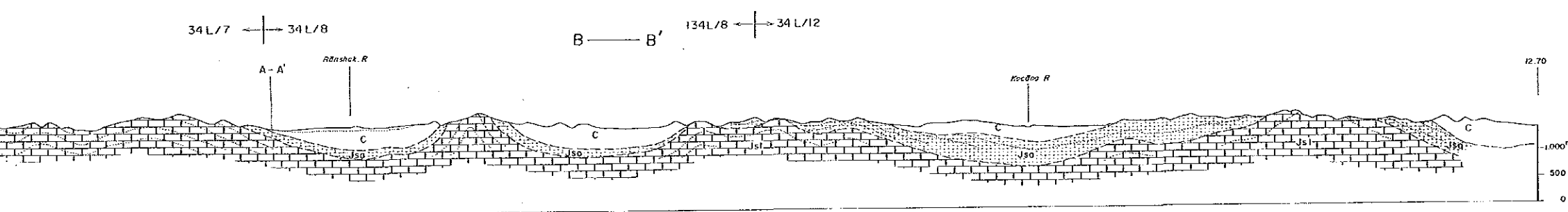
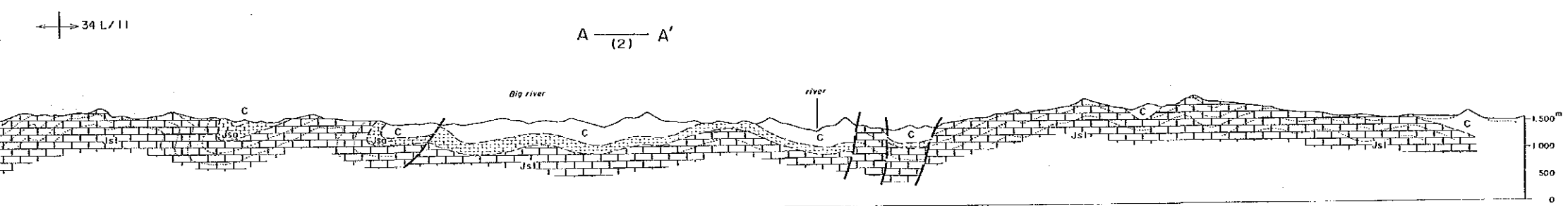
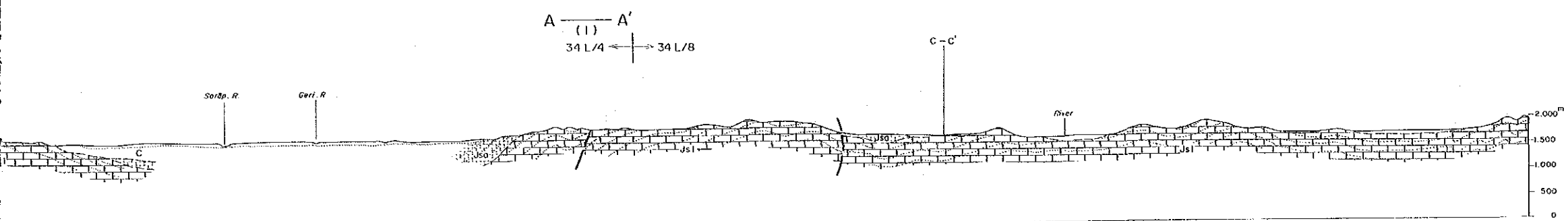
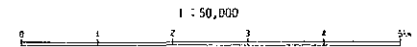
REPORT ON THE COOPERATIVE MINERAL EXPLORATION  
 IN  
 KHUZDAR AREA OF BALUCHISTAN  
 IN  
 THE ISLAMIC REPUBLIC OF PAKISTAN  
 PHASE II  
 GEOLOGICAL PROFILES  
 OF KHUZDAR SURVEY AREA



Geological and Geological Survey Area

AUGUST 1988

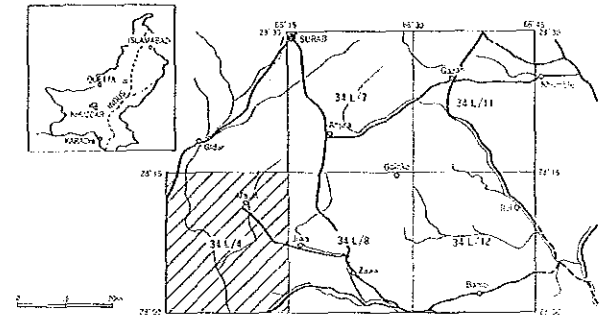
JAPAN INTERNATIONAL COOPERATION AGENCY  
 METAL MINING AGENCY OF JAPAN



LEGEND

Age	Member	Unit	Lithological description
Post the Jurassic		C	
Lower Jurassic	Anjira	Jsa	Limestone shale
	Loraloi	Jsl	Limestone shale
	Spingwar	Jss	Sandstone, shale and limestone
			Fault
			Bedding traces

REPORT ON THE COOPERATIVE MINERAL EXPLORATION  
IN  
KHUZDAR AREA OF BALUCHISTAN  
IN  
THE ISLAMIC REPUBLIC OF PAKISTAN  
PHASE II  
LOCATION MAP OF ROCK SAMPLES  
IN KHUZDAR SURVEY AREA  
(34 L/4)

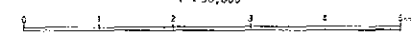


Geochemical and Geological Survey Area

AUGUST 1988

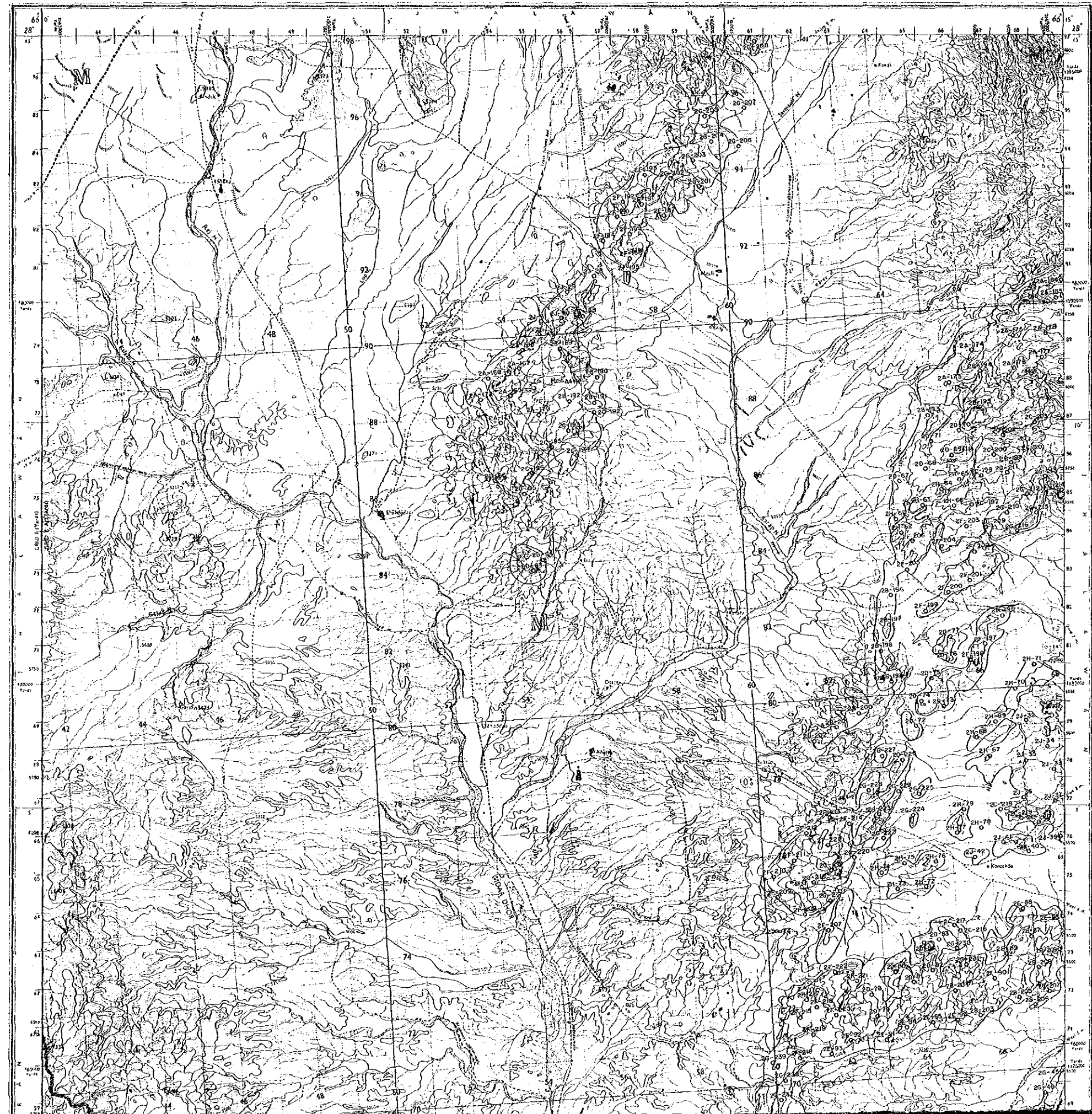
JAPAN INTERNATIONAL COOPERATION AGENCY  
METAL MINING AGENCY OF JAPAN

1 : 50,000

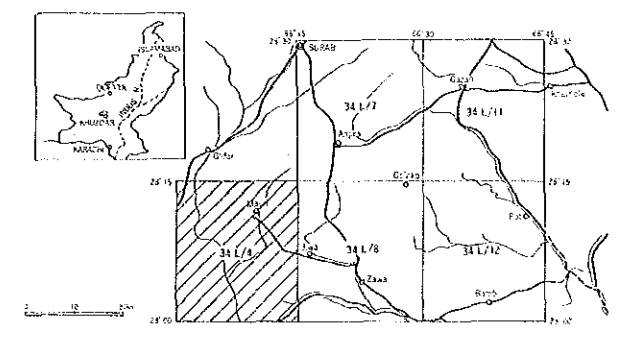


LEGEND

- 2A-100 Number and Location of Samples
- Surveyed Area



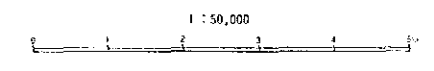
IN  
 THE ISLAMIC REPUBLIC OF PAKISTAN  
 PHASE II  
 LOCATION MAP OF ROCK SAMPLES  
 IN KHUZDAR SURVEY AREA  
 (34 L/4)



Geochemical and Geological Survey Area

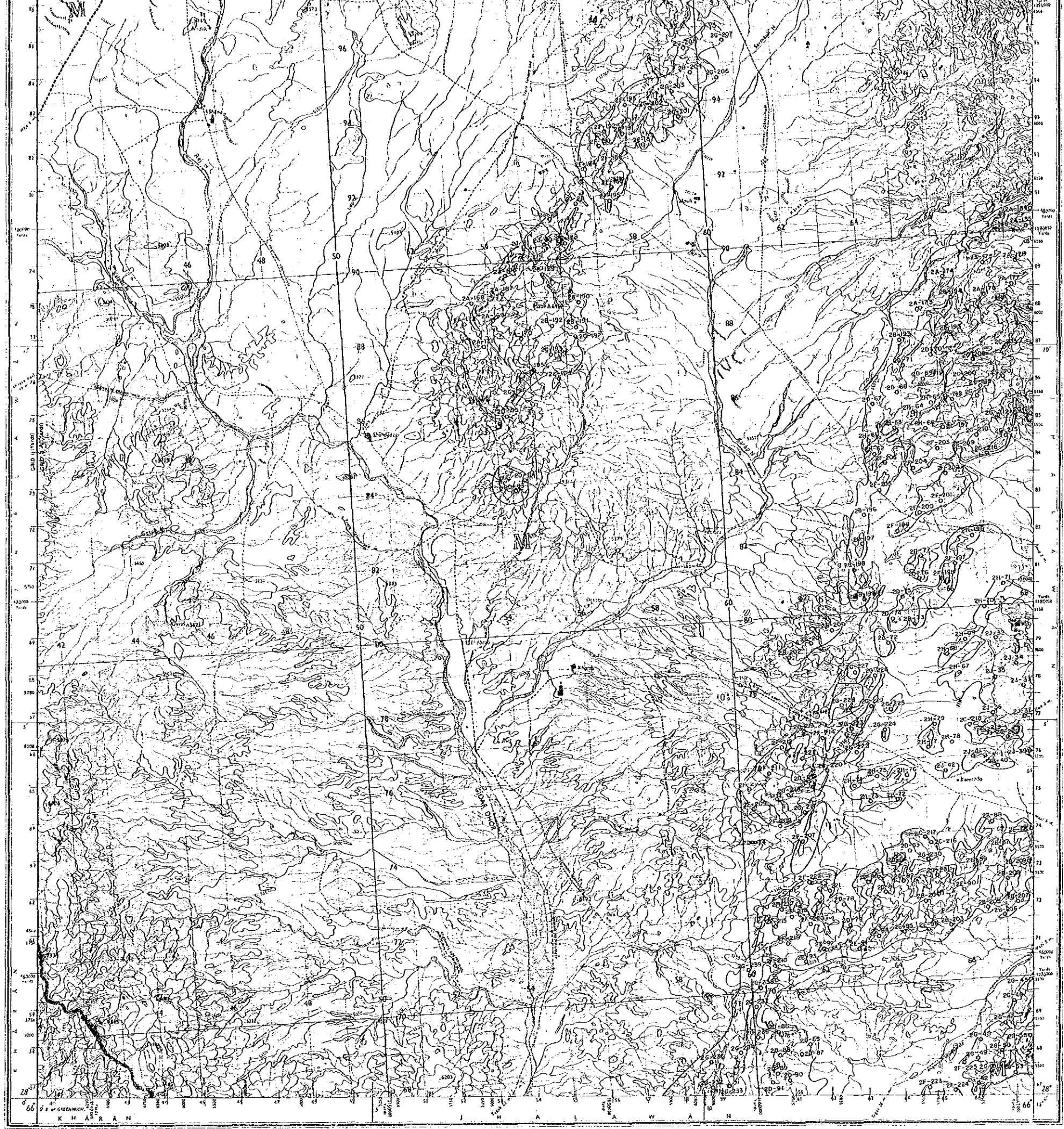
AUGUST 1988

JAPAN INTERNATIONAL COOPERATION AGENCY  
 METAL MINING AGENCY OF JAPAN



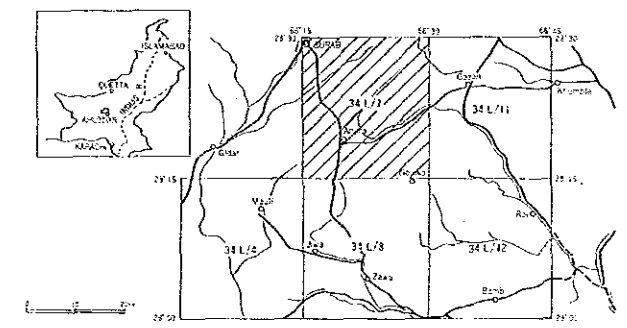
LEGEND

- 2A-100  
○ Number and Location of Samples
- Surveyed Area





REPORT ON THE COOPERATIVE MINERAL EXPLORATION  
IN  
KHUZDAR AREA OF BALUCHISTAN  
IN  
THE ISLAMIC REPUBLIC OF PAKISTAN  
PHASE II  
LOCATION MAP OF ROCK SAMPLES  
IN KHUZDAR SURVEY AREA  
(34 L/7)



Geochemical and Geological Survey Area

AUGUST 1988

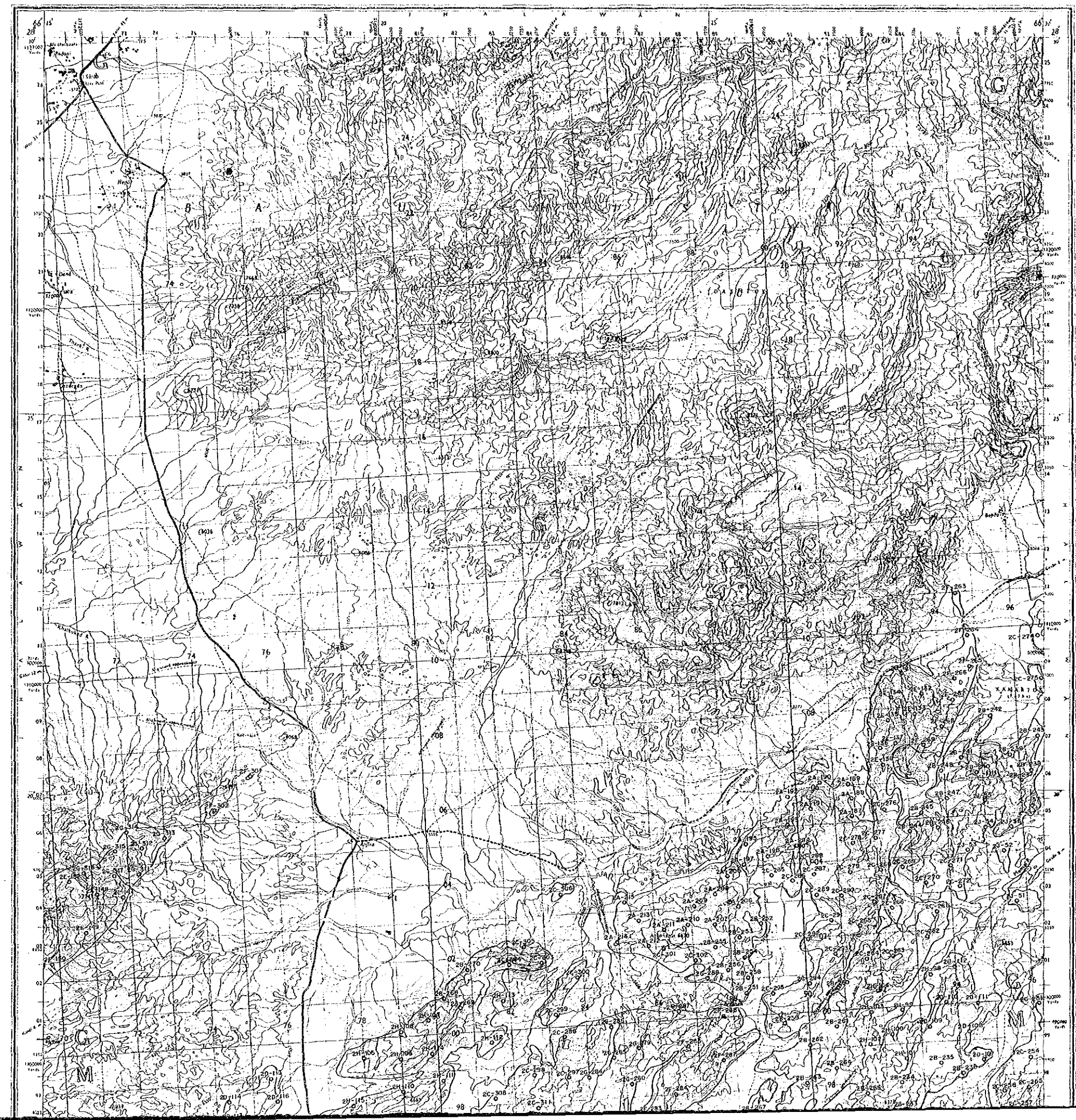
JAPAN INTERNATIONAL COOPERATION AGENCY  
METAL MINING AGENCY OF JAPAN

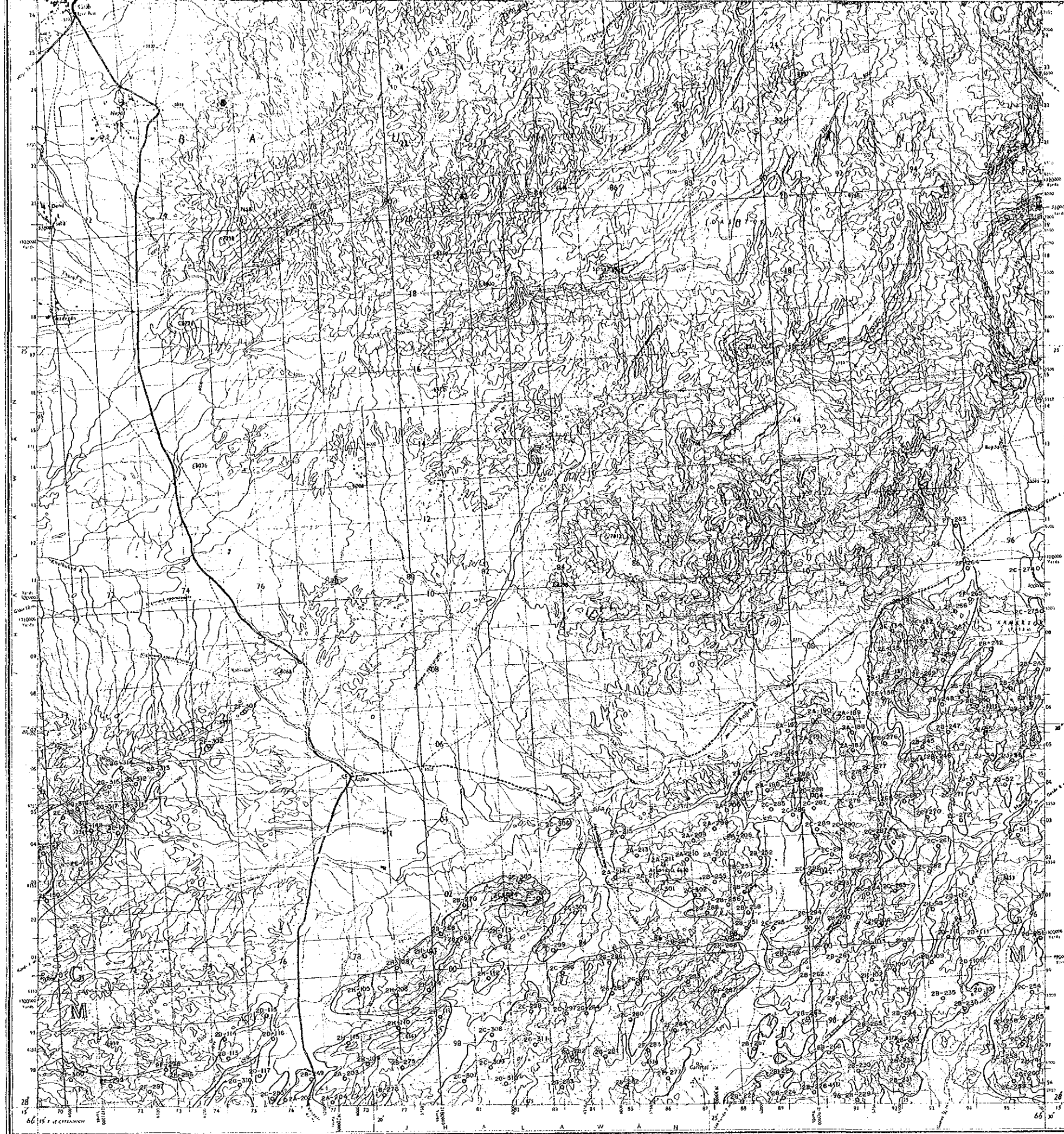
1 : 50,000



LEGEND

- 24-100 Number and Location of Samples
- Surveyed Area



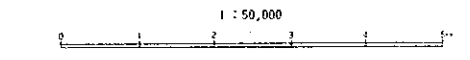


THE ISLAMIC REPUBLIC OF PAKISTAN  
 PHASE II  
 LOCATION MAP OF ROCK SAMPLES  
 IN KHUZDAR SURVEY AREA  
 (34 L/7)

Geochemical and Geological Survey Area

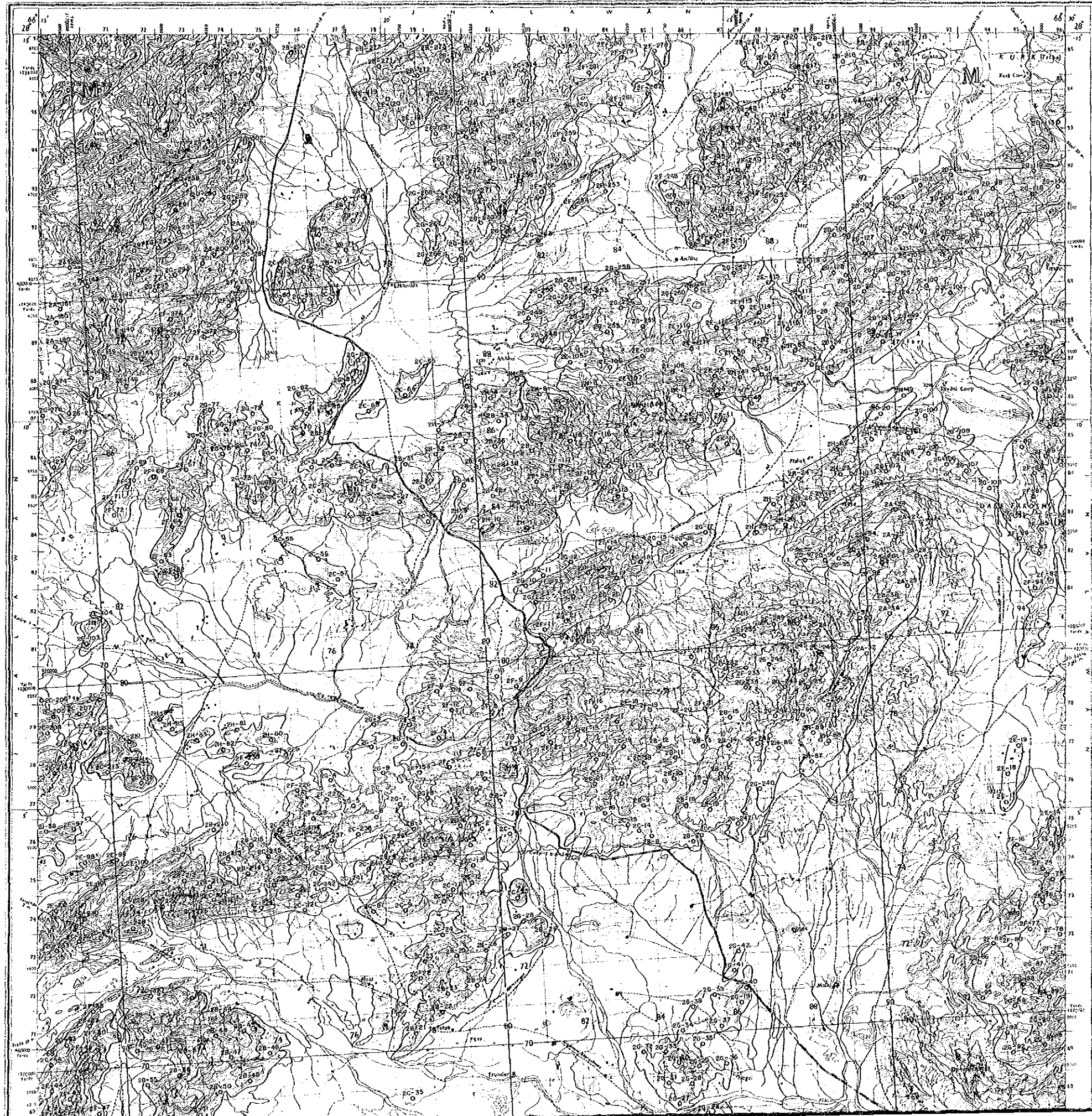
AUGUST 1968

JAPAN INTERNATIONAL COOPERATION AGENCY  
 METAL MINING AGENCY OF JAPAN

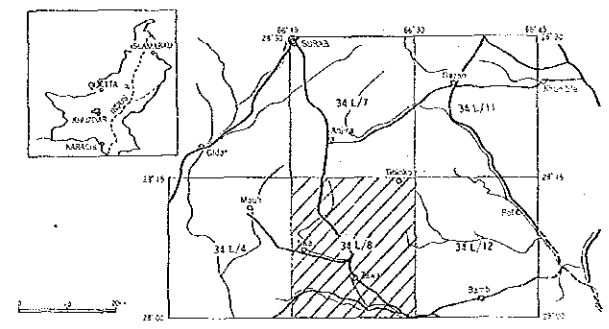


- LEGEND**
- 2A-100  
○ Number and Location of Samples
  - Surveyed Area





REPORT ON THE COOPERATIVE MINERAL EXPLORATION  
 IN  
 KHUZDAR AREA OF BALUCHISTAN  
 IN  
 THE ISLAMIC REPUBLIC OF PAKISTAN  
 PHASE II  
 LOCATION MAP OF ROCK SAMPLES  
 IN KHUZDAR SURVEY AREA  
 (34 L/8)

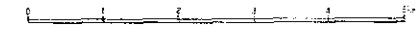


Geological and Geological Survey Area

AUGUST 1988

JAPAN INTERNATIONAL COOPERATION AGENCY  
 METAL MINING AGENCY OF JAPAN

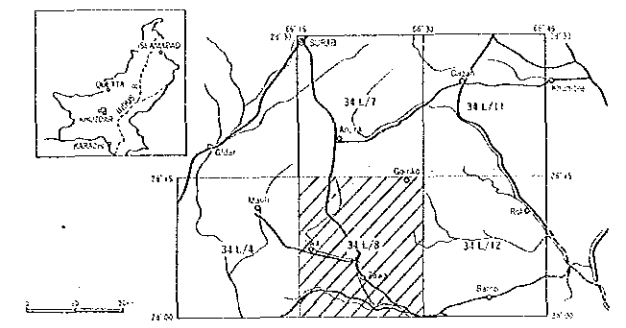
1 : 50,000



LEGEND

- 2A-100  
○ Number and Location of Samples
- Surveyed Area

PHASE II  
LOCATION MAP OF ROCK SAMPLES  
IN KHUZDAR SURVEY AREA  
(34 L/8)



Geobiochemical and Geological Survey Area

AUGUST 1988

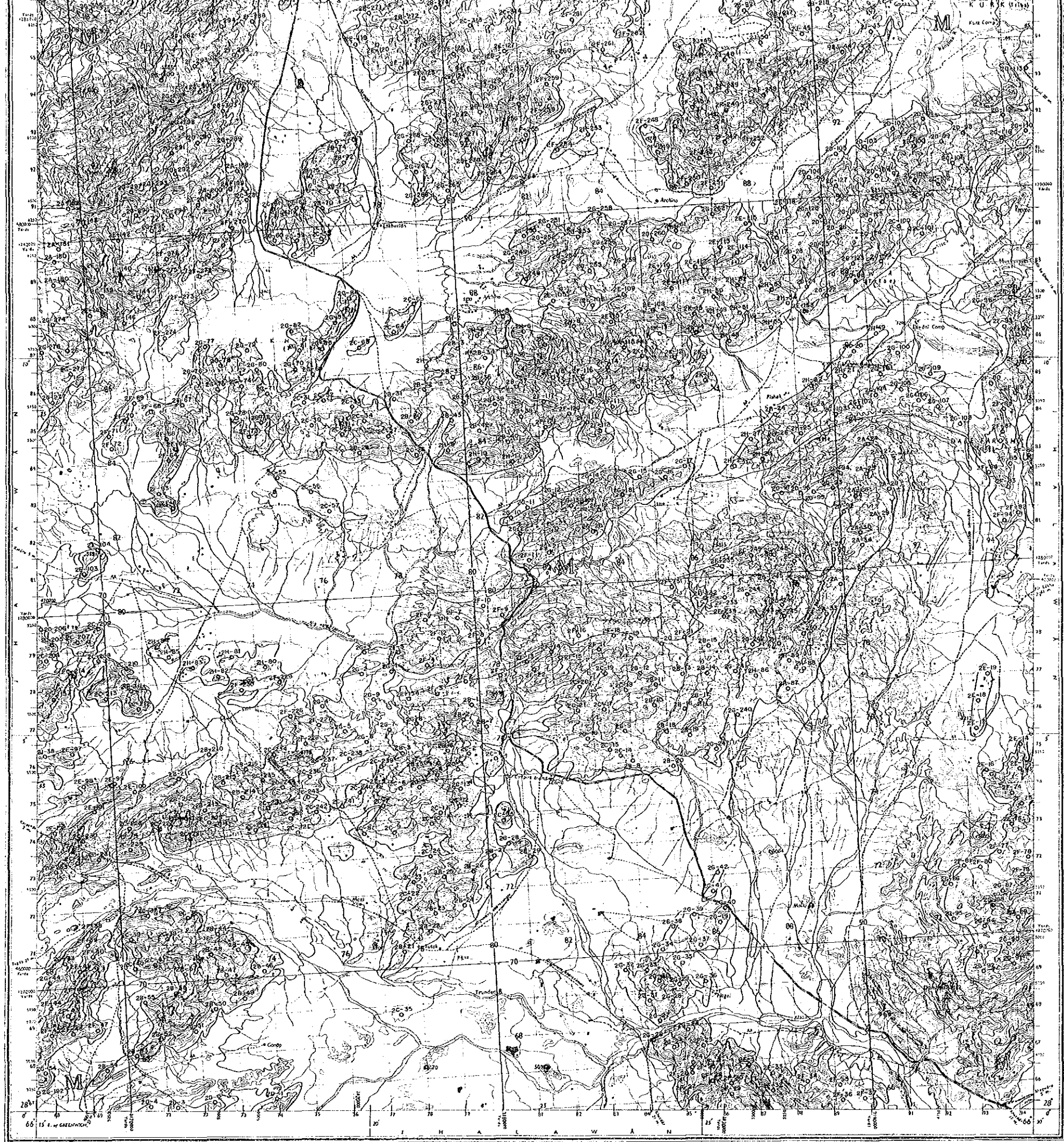
JAPAN INTERNATIONAL COOPERATION AGENCY  
METAL MINING AGENCY OF JAPAN

1 : 50,000

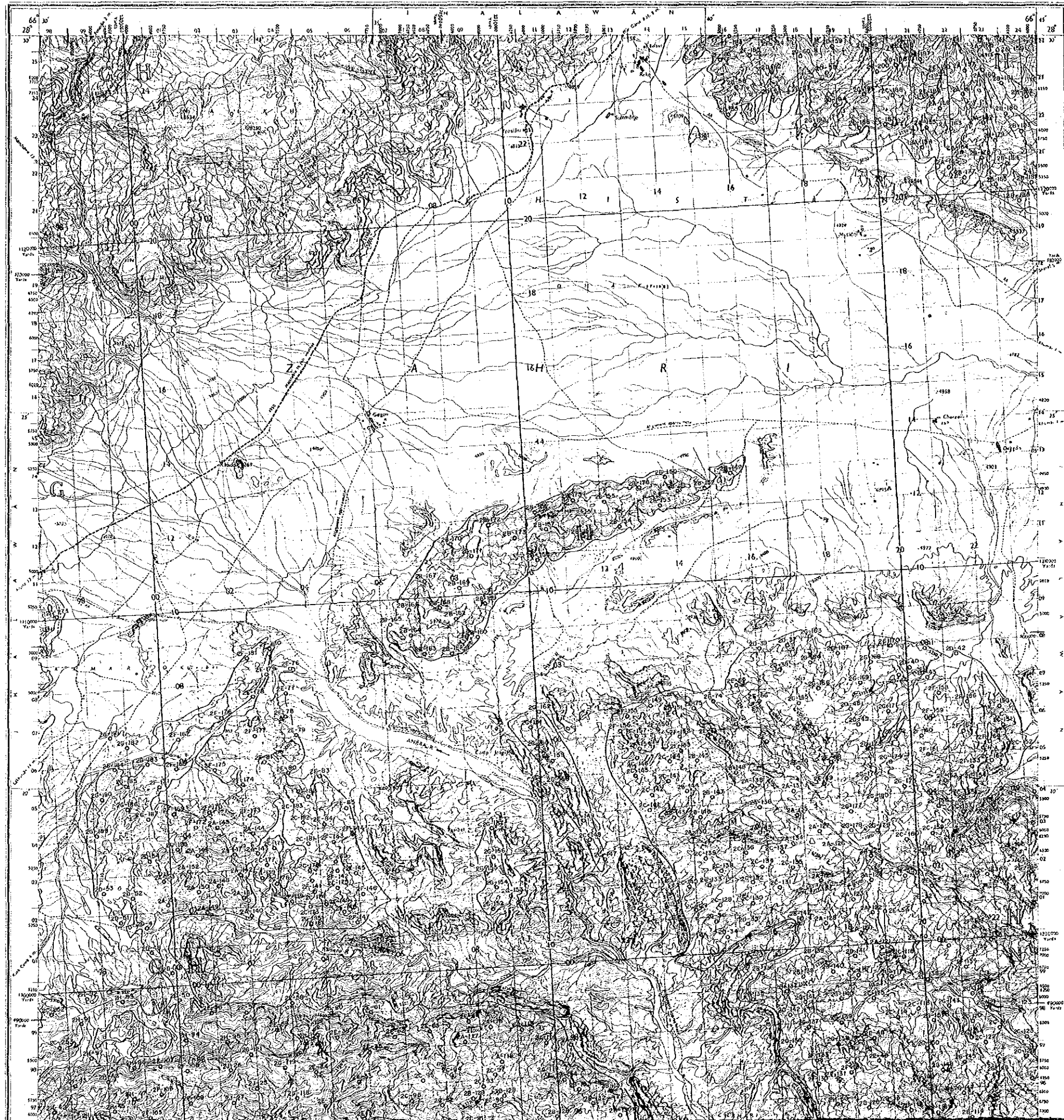


LEGEND

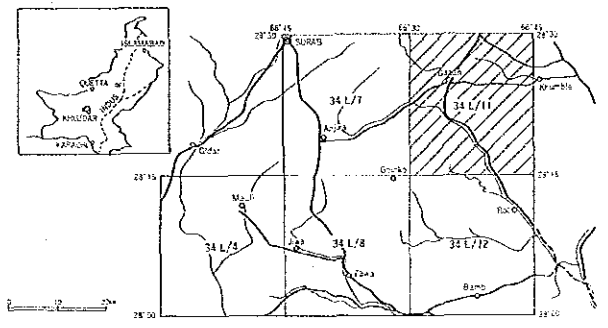
- Number and Location of Samples
- Surveyed Area







REPORT ON THE COOPERATIVE MINERAL EXPLORATION  
 IN  
 KHUZDAR AREA OF BALUCHISTAN  
 IN  
 THE ISLAMIC REPUBLIC OF PAKISTAN  
 PHASE II  
 LOCATION MAP OF ROCK SAMPLES  
 IN KHUZDAR SURVEY AREA  
 (34 L/11)



Geochemical and Geological Survey Area

AUGUST 1983

JAPAN INTERNATIONAL COOPERATION AGENCY  
 METAL MINING AGENCY OF JAPAN

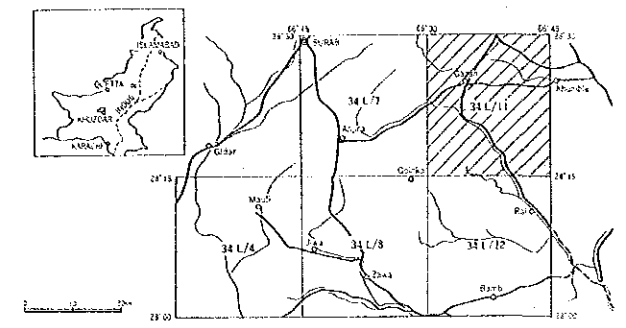
1 : 50,000



LEGEND

- 24-100 Number and Location of Samples
- Surveyed Area

IN  
 KHUZDAR AREA OF BALUCHISTAN  
 IN  
 THE ISLAMIC REPUBLIC OF PAKISTAN  
 PHASE II  
 LOCATION MAP OF ROCK SAMPLES  
 IN KHUZDAR SURVEY AREA  
 (34 L/11)

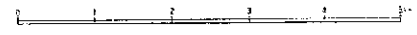


Geochemical and Geological Survey Area

AUGUST 1983

JAPAN INTERNATIONAL COOPERATION AGENCY  
 METAL MINING AGENCY OF JAPAN

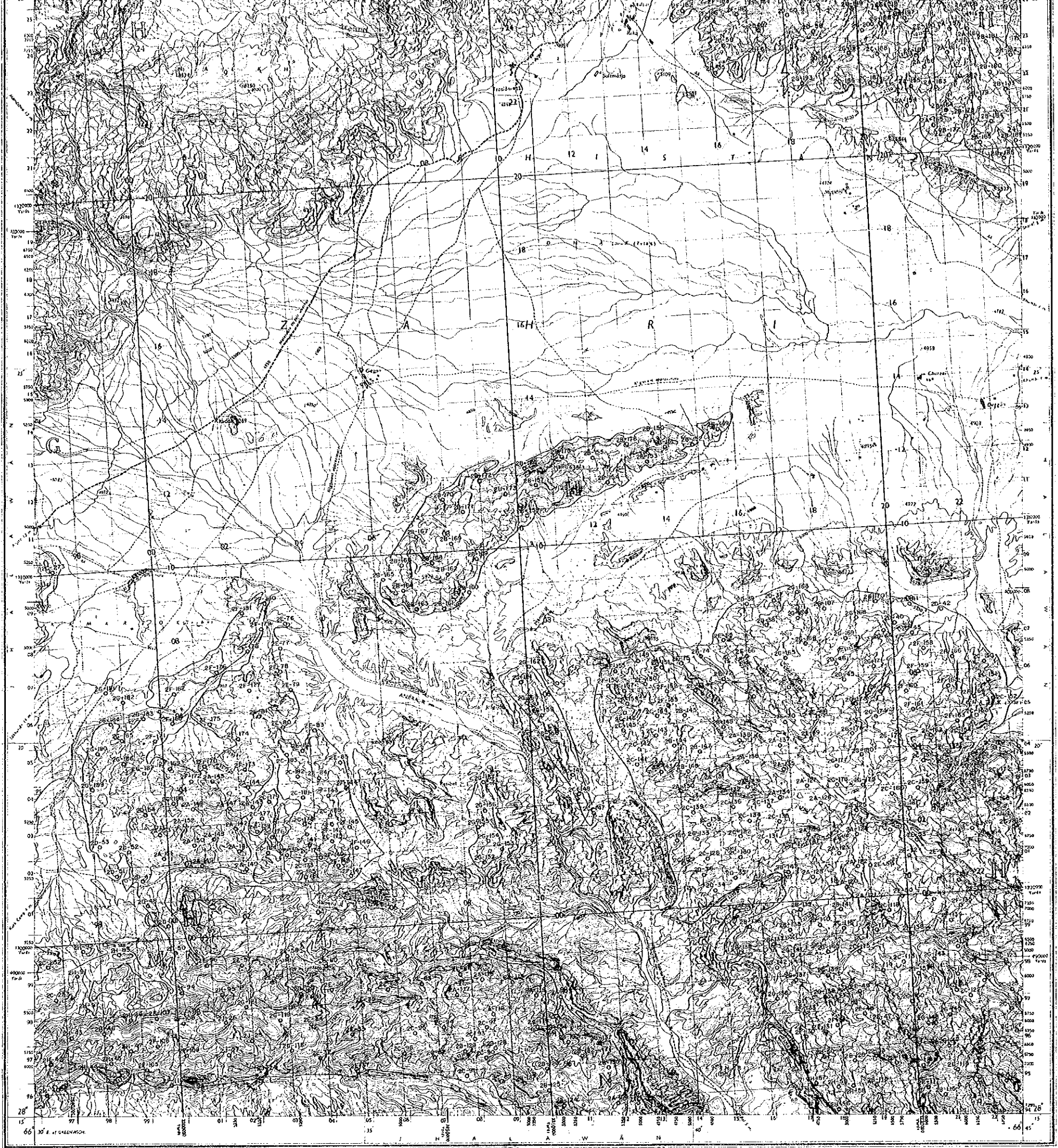
1 : 50,000



LEGEND

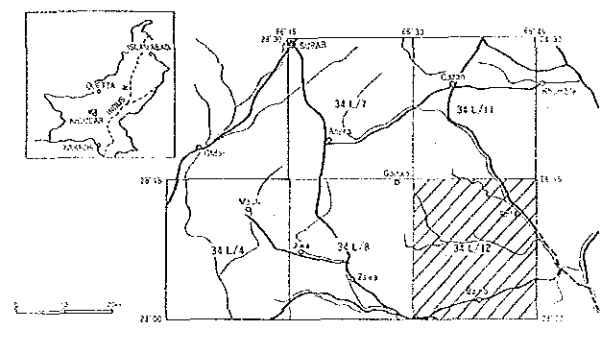
- 24-100  

 Number and Location of Samples
- Surveyed Area





REPORT ON THE COOPERATIVE MINERAL EXPLORATION  
IN  
KHUZDAR AREA OF BALUCHISTAN  
IN  
THE ISLAMIC REPUBLIC OF PAKISTAN  
PHASE II  
LOCATION MAP OF ROCK SAMPLES  
IN KHUZDAR SURVEY AREA  
(34 L/12)

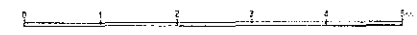


Geochemical and Geological Survey Area

AUGUST 1988

JAPAN INTERNATIONAL COOPERATION AGENCY  
METAL MINING AGENCY OF JAPAN

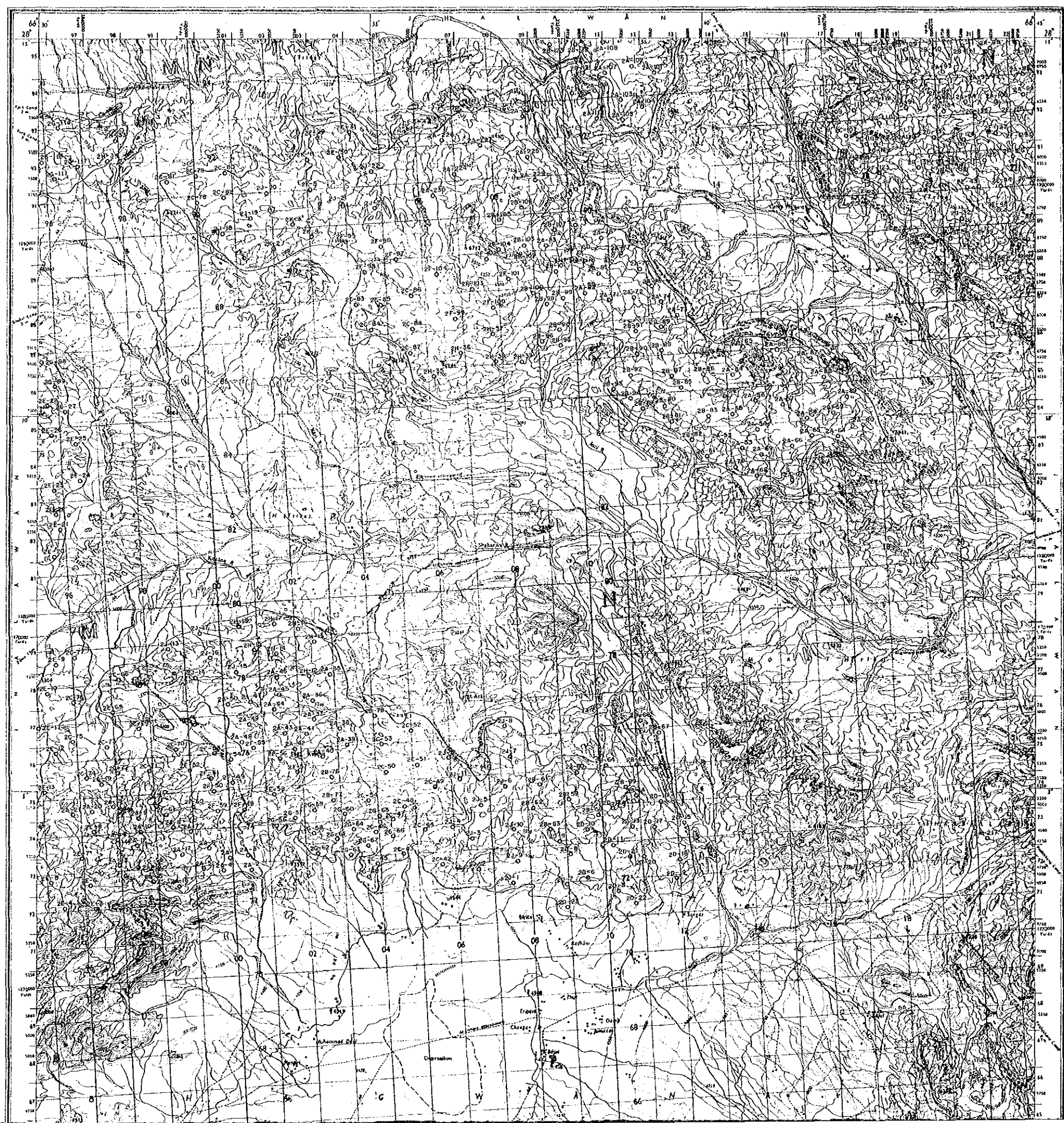
1 : 50,000

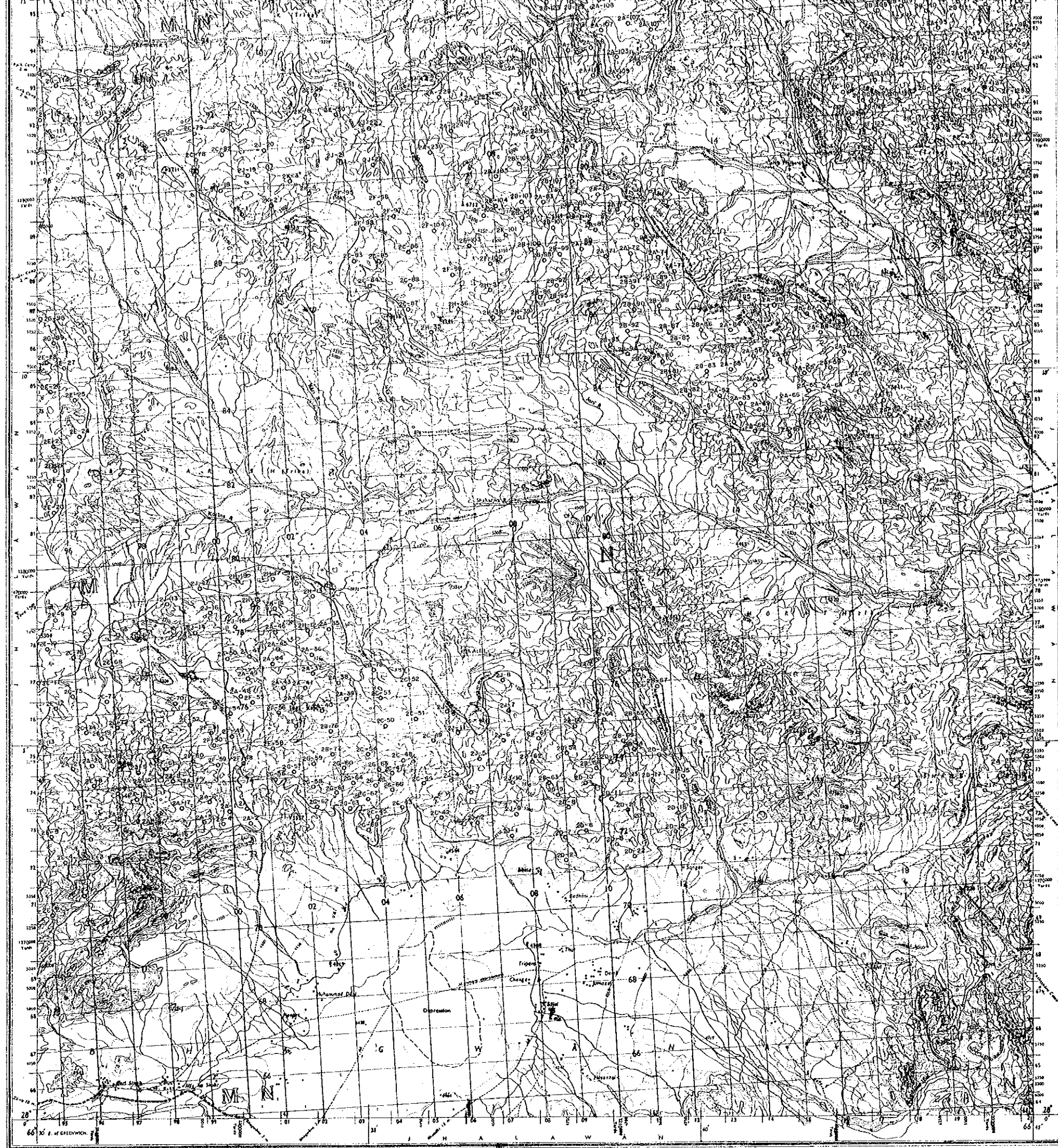


LEGEND

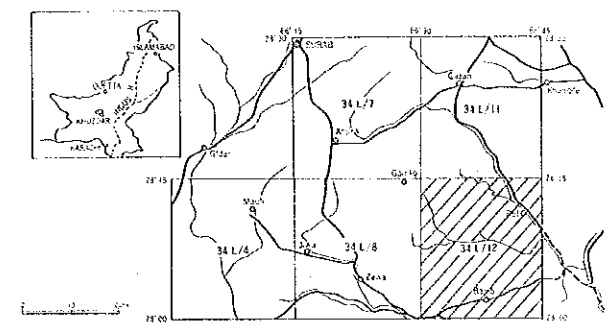
2A-100  
○ Number and Location of Samples

○ Surveyed Area





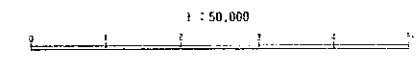
IN  
 KHUZDAR AREA OF BALUCHISTAN  
 IN  
 THE ISLAMIC REPUBLIC OF PAKISTAN  
 PHASE II  
 LOCATION MAP OF ROCK SAMPLES  
 IN KHUZDAR SURVEY AREA  
 (34 L/12)



Geophysical and Geological Survey Area

AUGUST 1958

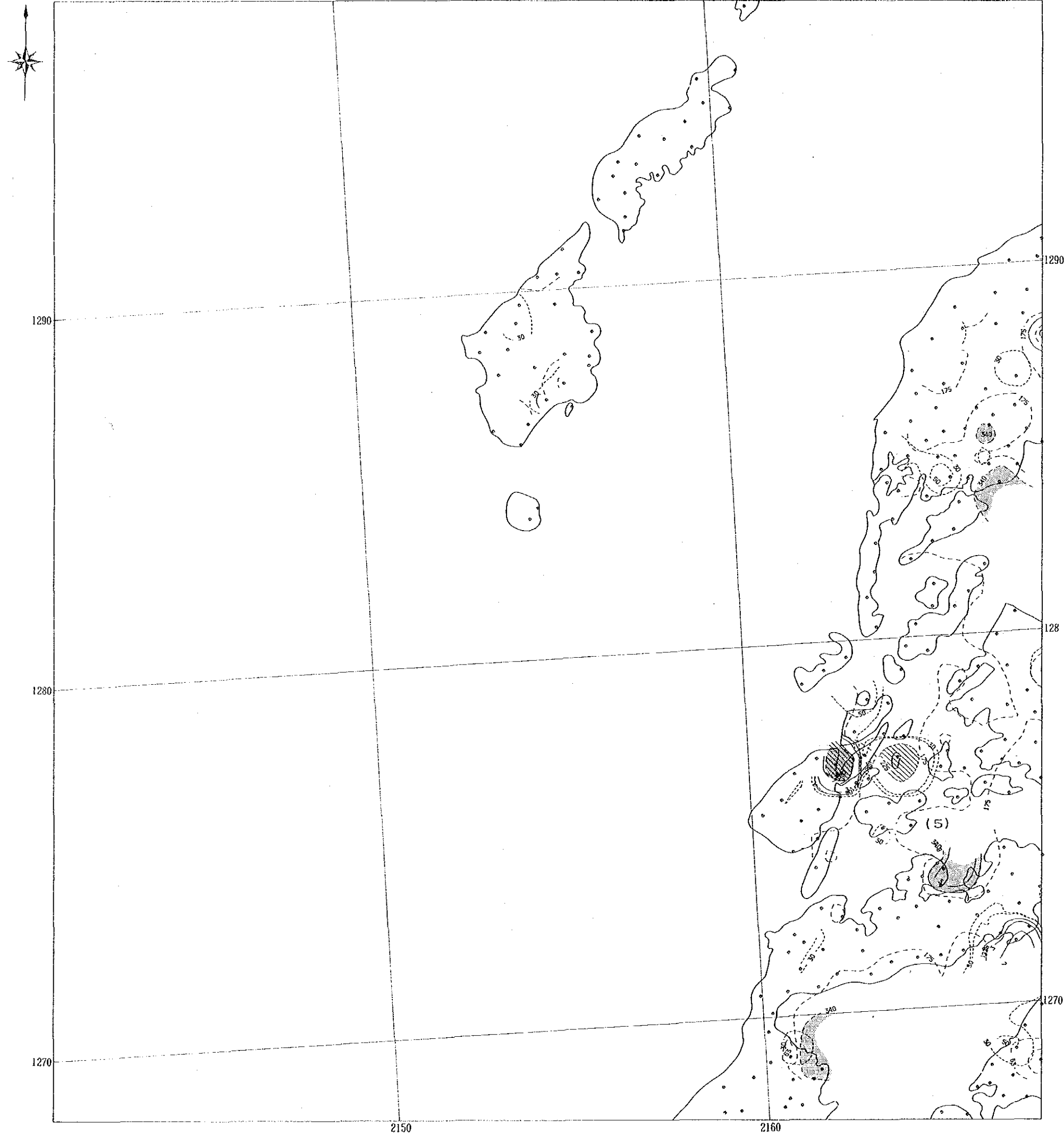
JAPAN INTERNATIONAL COOPERATION AGENCY  
 METAL MINING AGENCY OF JAPAN



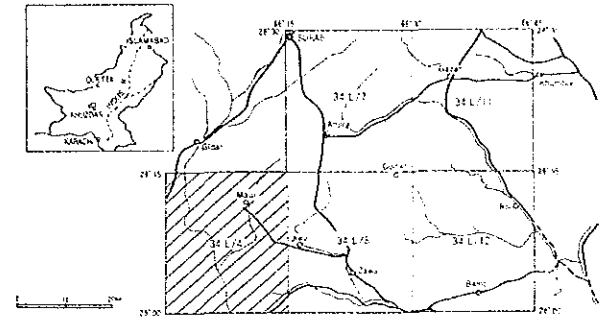
LEGEND

- 2A-100  
 ○ Number and Location of Samples
- Surveyed Area





REPORT ON THE COOPERATIVE MINERAL EXPLORATION  
 IN  
 KHUZDAR AREA OF BALUCHISTAN  
 IN  
 THE ISLAMIC REPUBLIC OF PAKISTAN  
 PHASE II  
 GEOCHEMICAL ANOMALOUS AREA  
 IN KHUZDAR SURVEY AREA (Phase II)  
 (Pb, Zn, Hg)



Geometrical and Geological Survey Area

AUGUST 1985

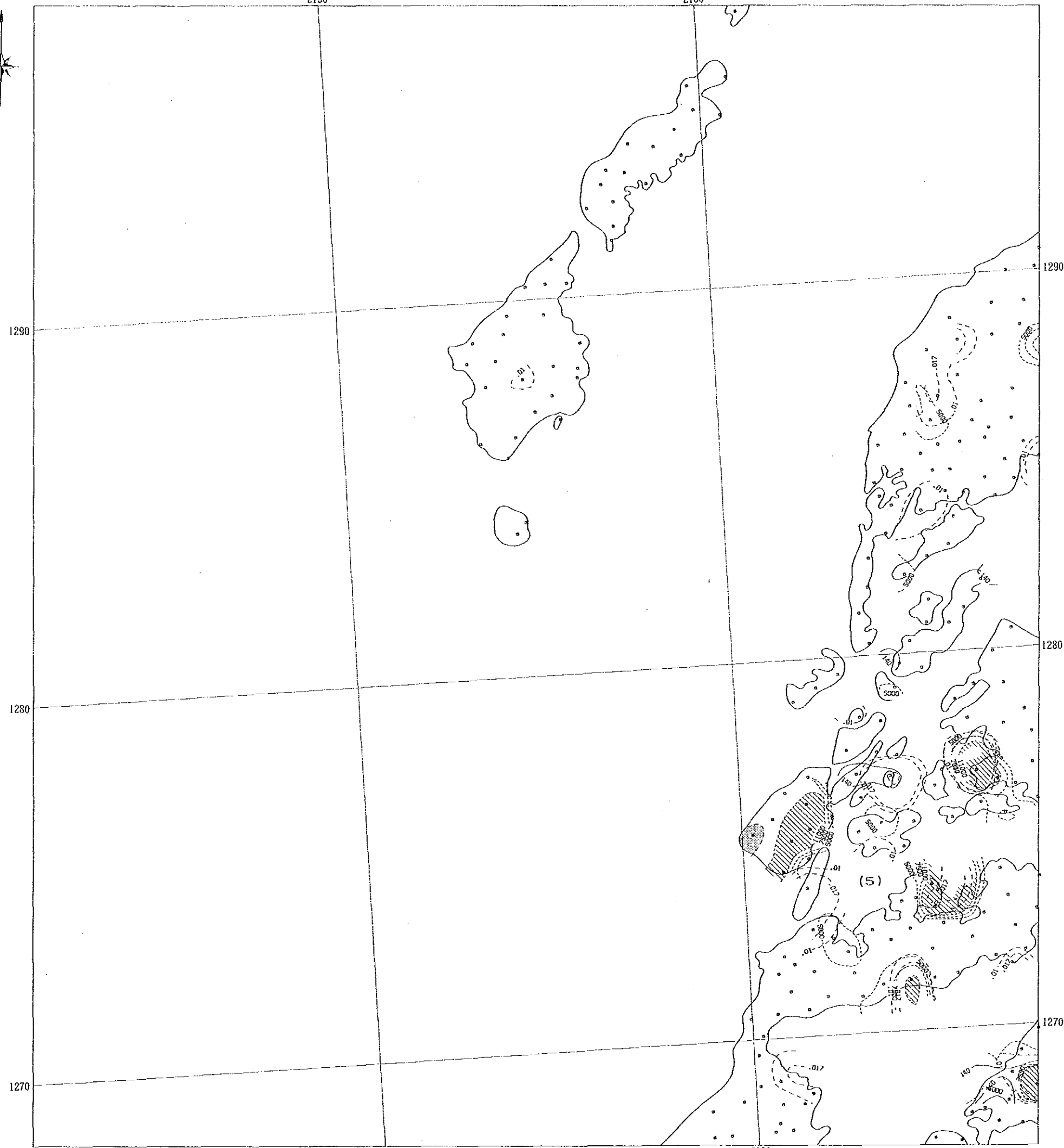
JAPAN INTERNATIONAL COOPERATION AGENCY  
 METAL MINING AGENCY OF JAPAN

1 : 50,000



LEGEND

- Pb -
- > 2.5 ppm (Threshold)
- > 1.12 (M-c)
- > 3 ppm
- Zn -
- > 2.5 ppm (Threshold)
- > 3.6 ppm (M-c)
- > 3 ppm
- Hg -
- > 3.4 ppm (Threshold)
- > 1.75 ppm (M-c)
- > 1.5 ppm (M-c)
- : Location of Samples
- : Surveyed Area
- (No.) : Number of Anomalous Area



1290

1290

1280

1280

1270

1270

2150

2160

P. II-1-13

REPORT ON THE COOPERATIVE MINERAL EXPLORATION  
IN  
KHUZDAR AREA OF BALUCHISTAN  
IN  
THE ISLAMIC REPUBLIC OF PAKISTAN  
PHASE II  
GEOCHEMICAL ANOMALOUS AREA  
IN KHUZDAR SURVEY AREA (Phase II)  
(Ba, Mg, S)

AUGUST 1985

JAPAN INTERNATIONAL COOPERATION AGENCY  
METAL MINING AGENCY OF JAPAN

1 : 50,000

Geochemical and Geological Survey Area

AUGUST 1985

JAPAN INTERNATIONAL COOPERATION AGENCY  
METAL MINING AGENCY OF JAPAN

1 : 50,000



LEGEND

- Ba -  
- 3.5 ppm Threshold -  
- 2.5 ppm
- Mg -  
- 1.0 ppm Threshold -  
- 7.5 ppm (M-0) -  
- 5.0 ppm
- S -  
- 0.74% Threshold -  
- 0.11% (M-0) -  
- 0.10%
- Location of Samples
- Surveyed Area
- Number of Anomalous Area





1320

1310

1300

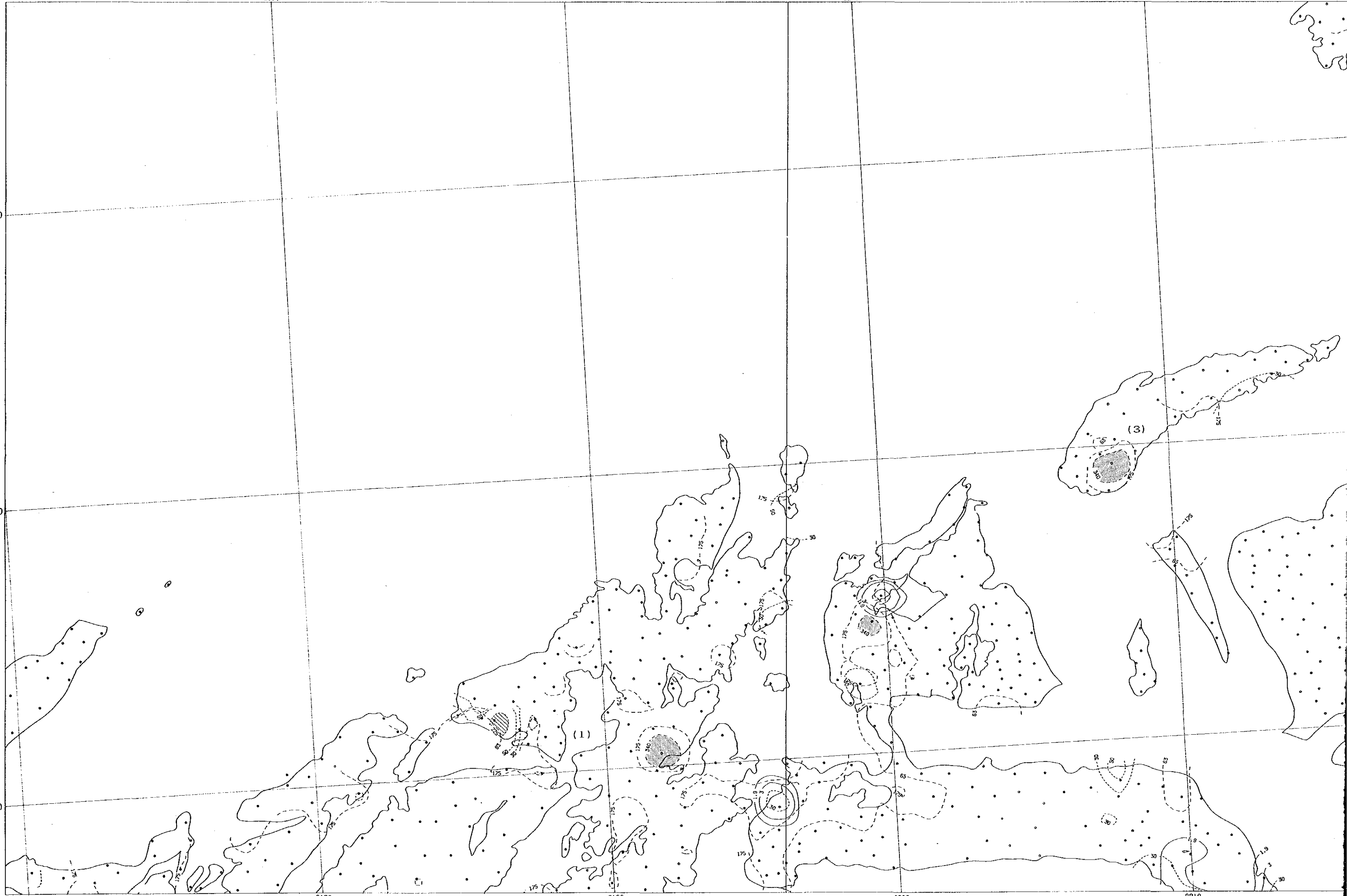
2170

2180

2190

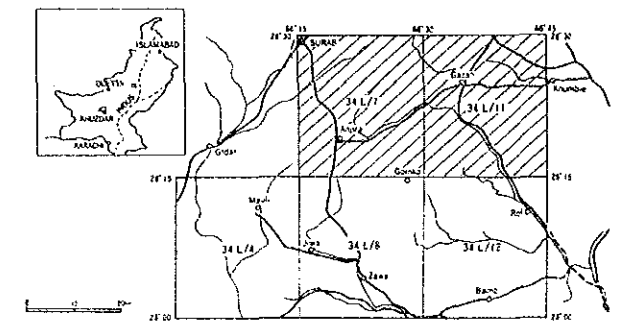
2200

2210





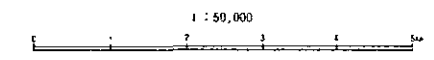
REPORT ON THE COOPERATIVE MINERAL EXPLORATION  
 IN  
 KHUZDAR AREA OF BALUCHISTAN  
 IN  
 THE ISLAMIC REPUBLIC OF PAKISTAN  
 PHASE II  
 GEOCHEMICAL ANOMALOUS AREA  
 IN KHUZDAR SURVEY AREA (Phase II)  
 (Pb, Zn, Hg)



Geochemical and Geological Survey Area

AUGUST 1988

JAPAN INTERNATIONAL COOPERATION AGENCY  
 METAL MINING AGENCY OF JAPAN



LEGEND

- Pb-
- > 2.9 ppb (Threshold)
- > 1 ppb (M+σ)
- > 3 ppb
- Zn-
- > 2.2 ppb (Threshold)
- > 5.0 ppb (M+σ)
- > 5.0 ppb
- Hg-
- > 3.4 ppb (Threshold)
- > 1.7 ppb (M+2σ)
- > 3.3 ppb (M+σ)
- : Location of Samples
- : Surveyed Area
- (No.) : Number of Anomalous Area