



Photo P-6
Muddy Sand

Seabed Photographs

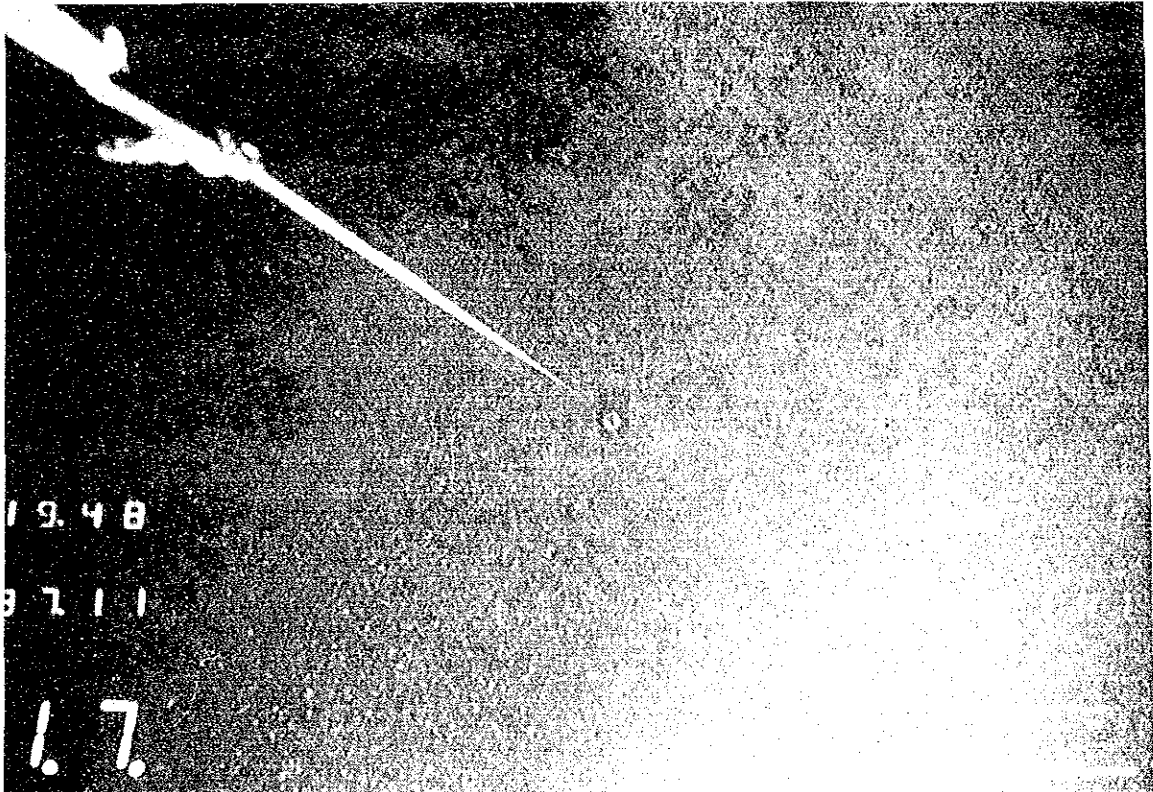
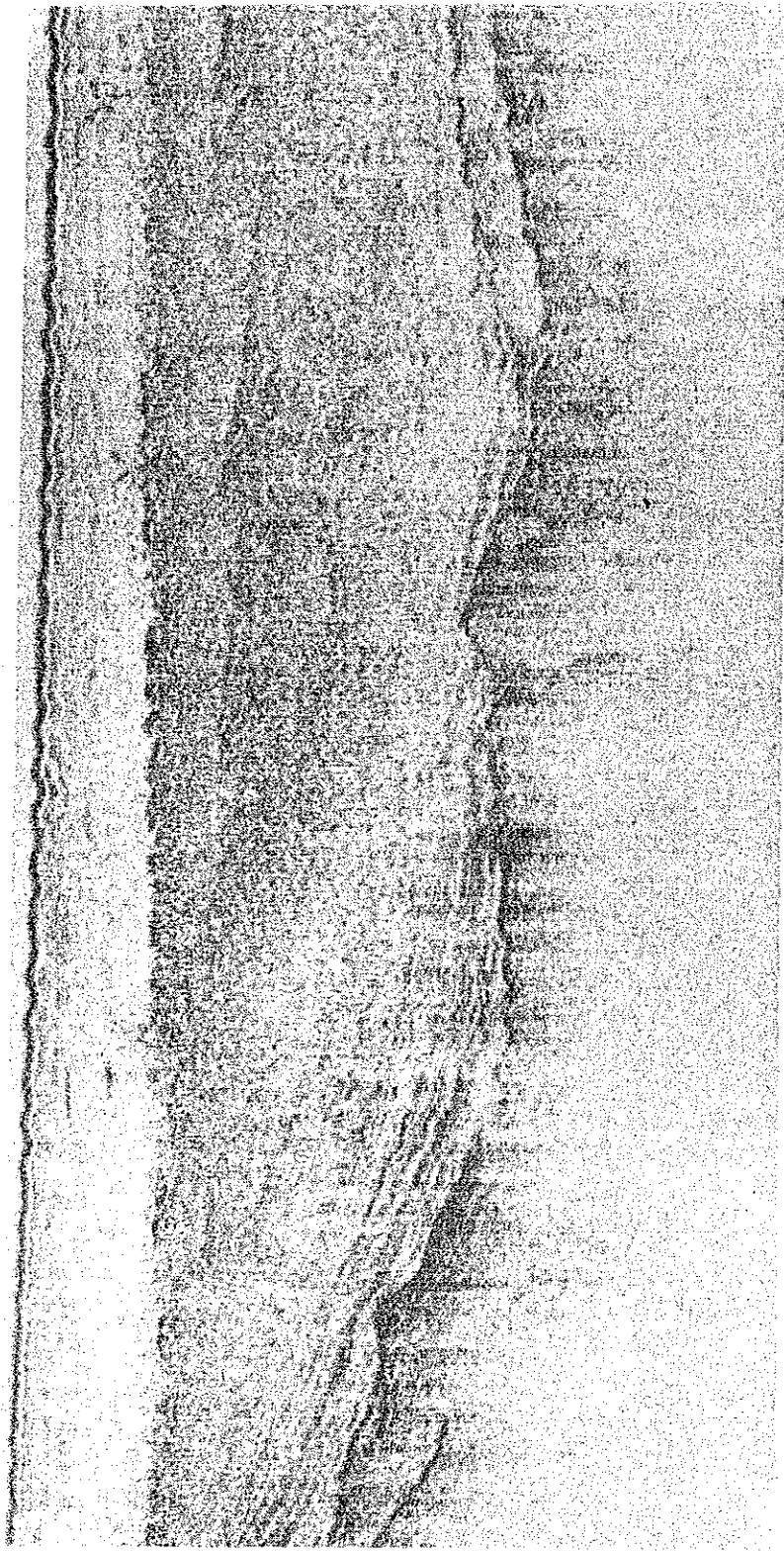


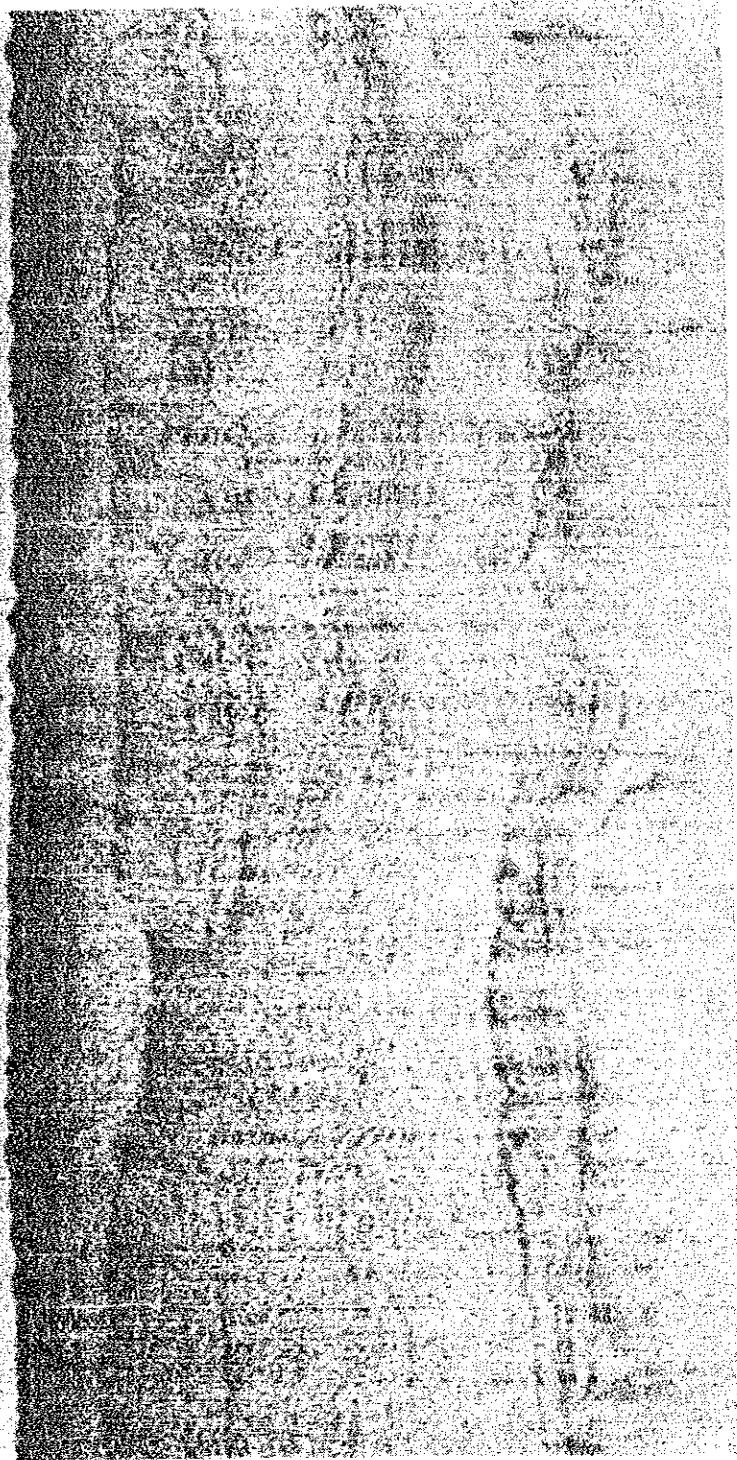
Photo P-17
Coral Sand

Seabed Photographs



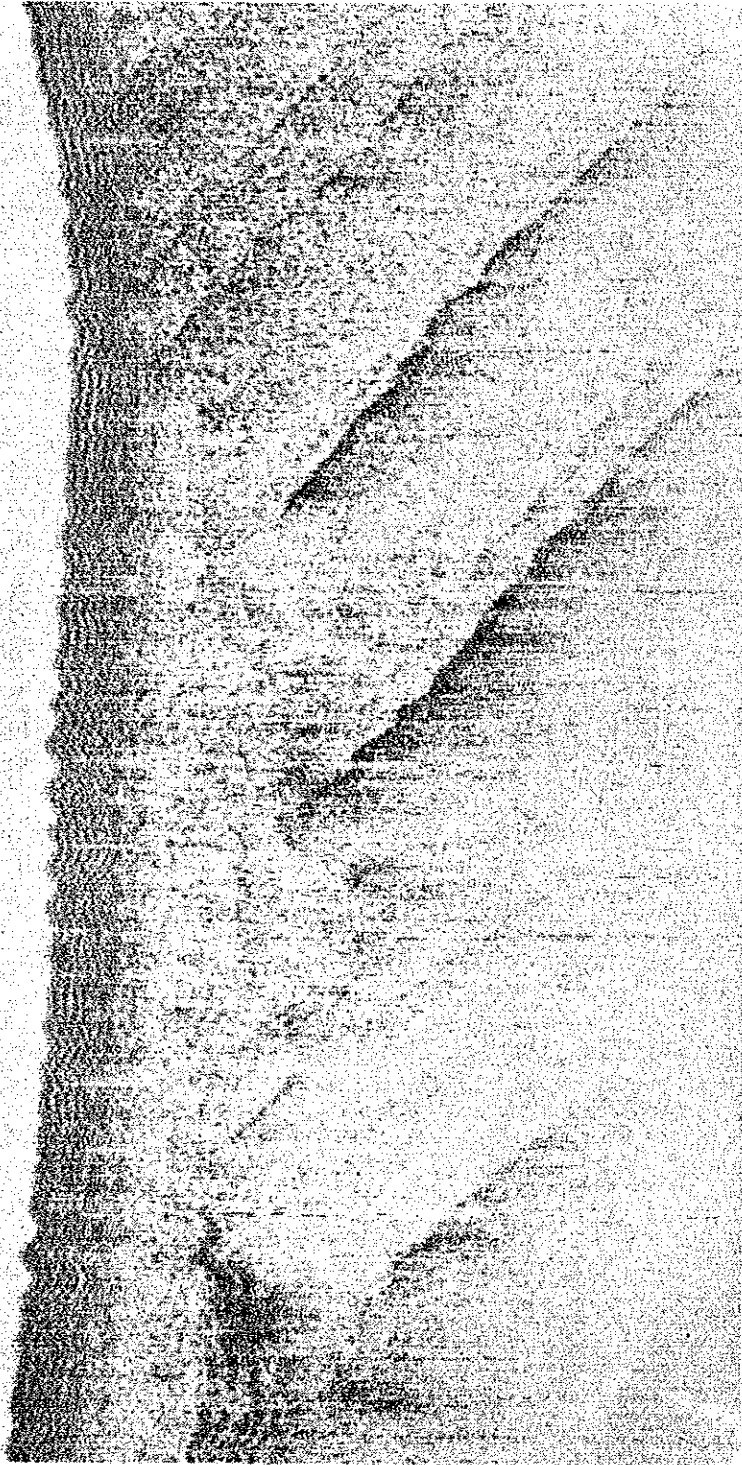
This record shows the thick sediment. The surface layer with the thickness of 3-4 m, seems to be muddy sediment with the transparent pattern, and to be stiff clay by the sampling result at P-1. The lower sediment layer seems to be mixed material of mud, sand and gravel with the sonic scattered pattern at the upper part and slumping structure at the left side.

Record of Sonoprobe 1



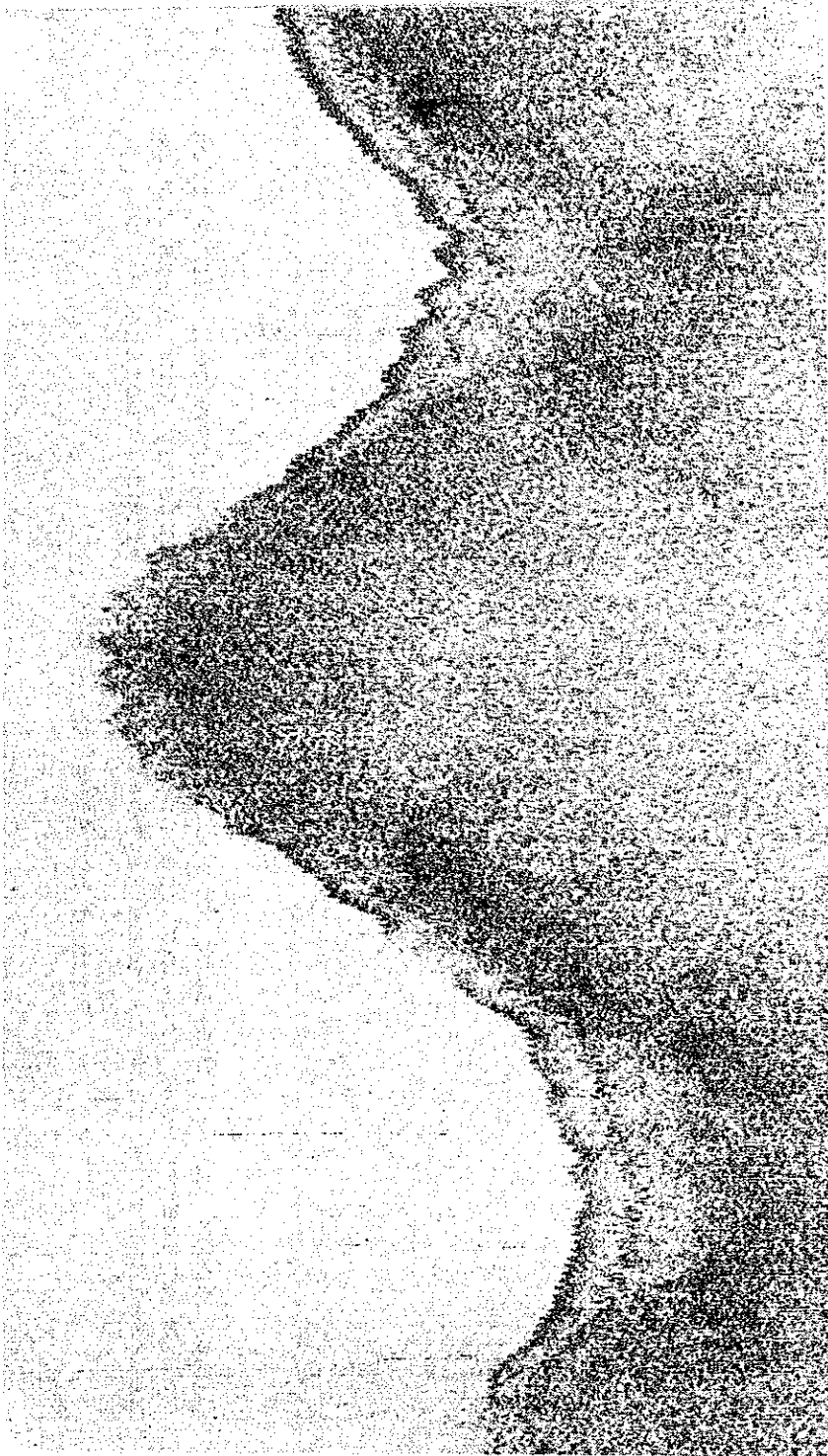
This record shows that the seabed is covered with a thick sediment. The surface layer with the thickness of 1-1.5 m, seems to consist of fine sand with the fine horizontal stripped pattern. The lower layers seem to consist of muddy sediment mainly with the transparent pattern, and stiff clay by sampling result at P-3.

Record of Sonoprobe 2



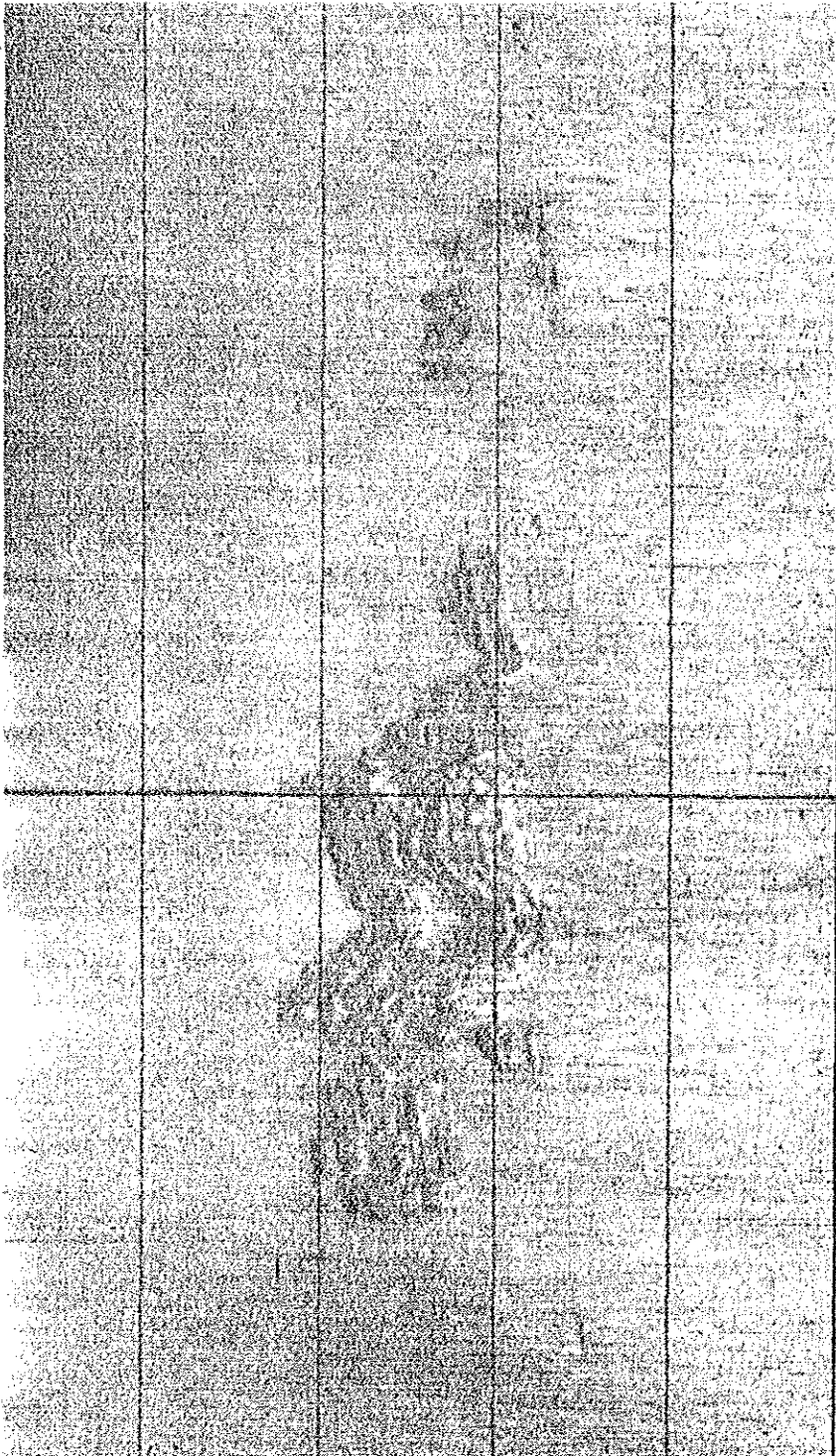
This record shows the three layers. The surface layer with the thickness of about 2 m, seems to be fine sand with the fine horizontal stripped pattern. The middle layer which appears left side with the thickness of about 3 m, seems to be muddy sediment by the transparent pattern. The lower layer seems to be mudstone with the clear bedding plane.

Record of Sonoprobe 3



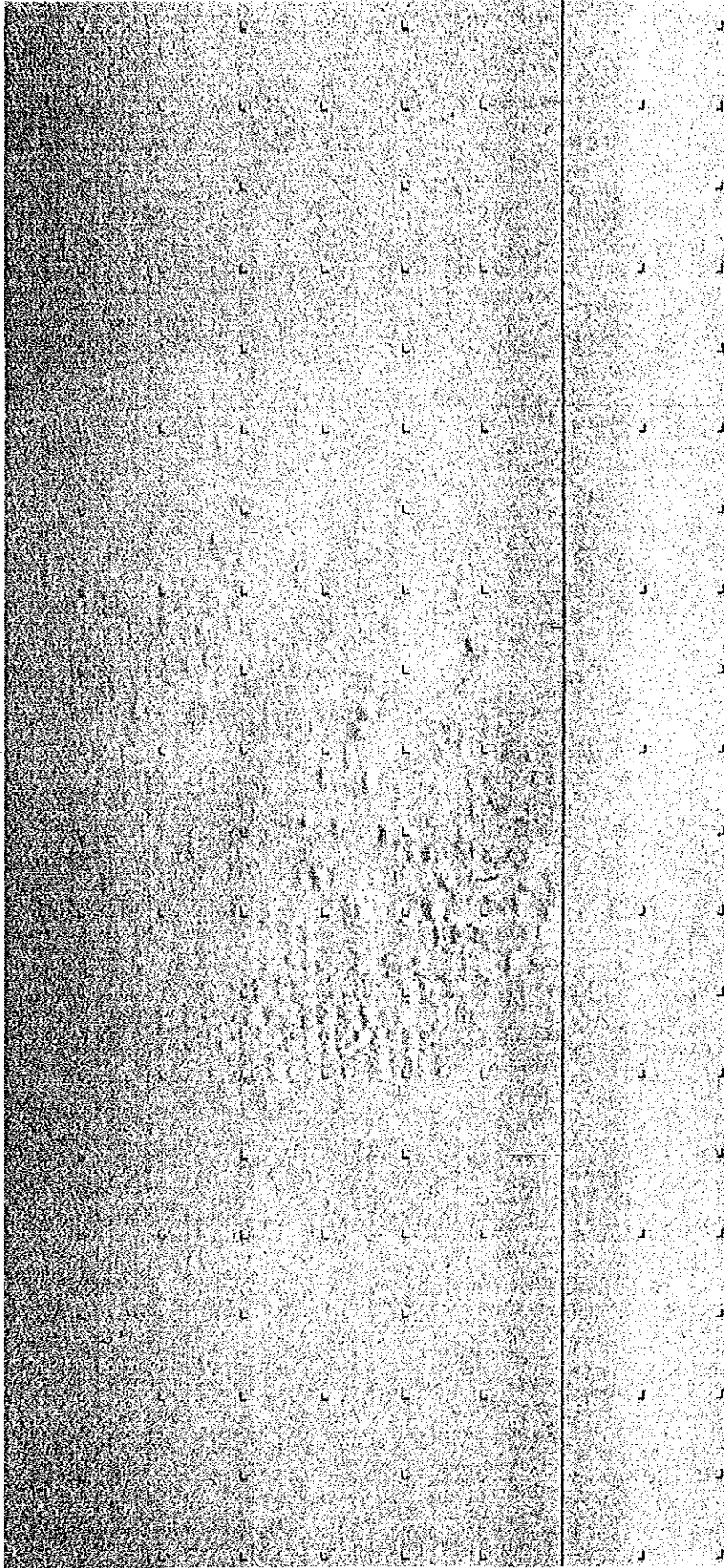
This record shows the condition of coral reef. The surface of rised portions has severe uneven, and the surface of depressed portions is covered with the sediments.

Record of Sonoprobe 4



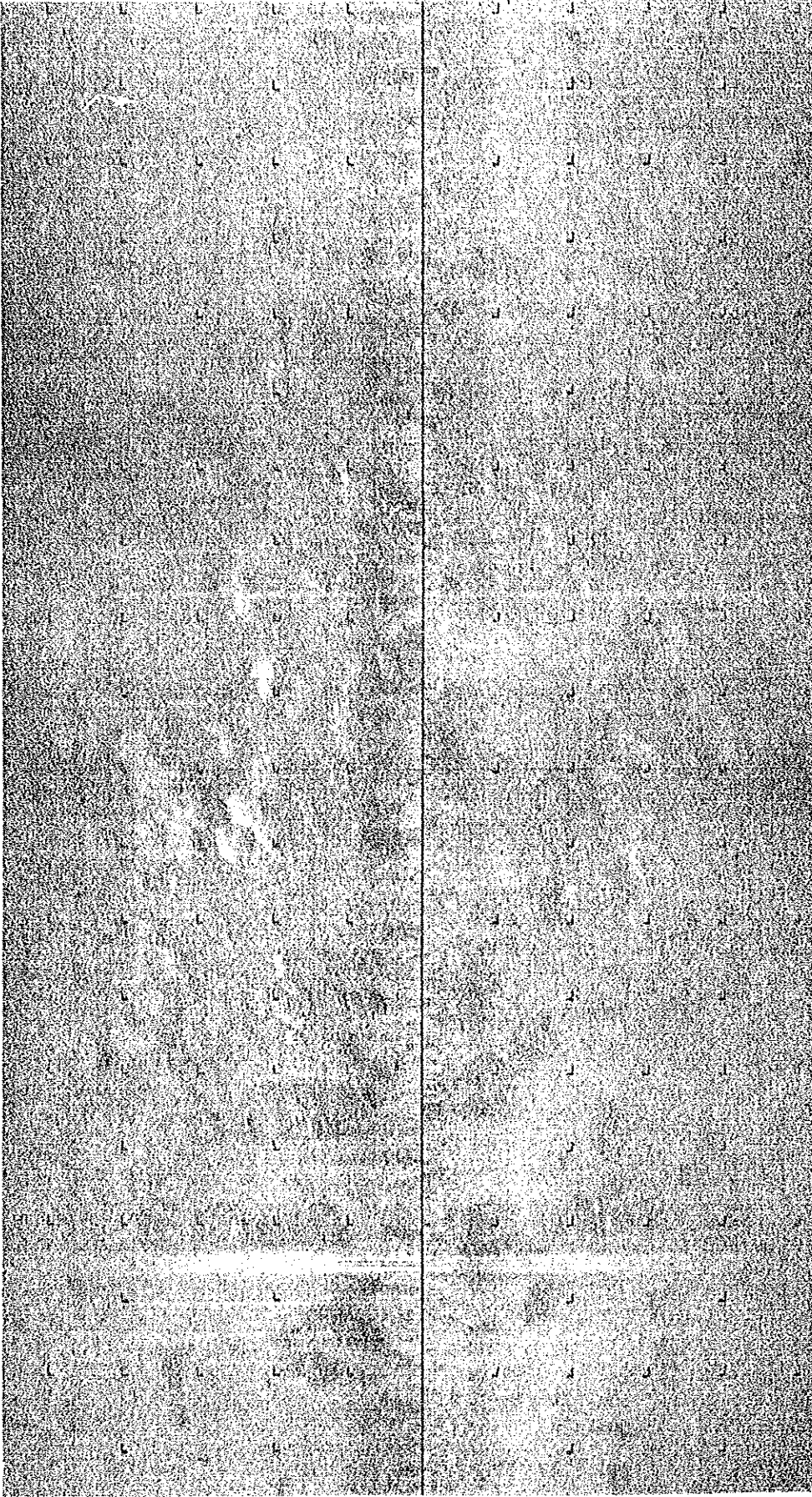
This record shows the outcrops of rock at Takisung inshore. This rock has a white shadow showing the unevenness of surface, and seems to be metasedimentary rock as same as that appearing around the shoreline.

Record of Side Scan Sonar 1



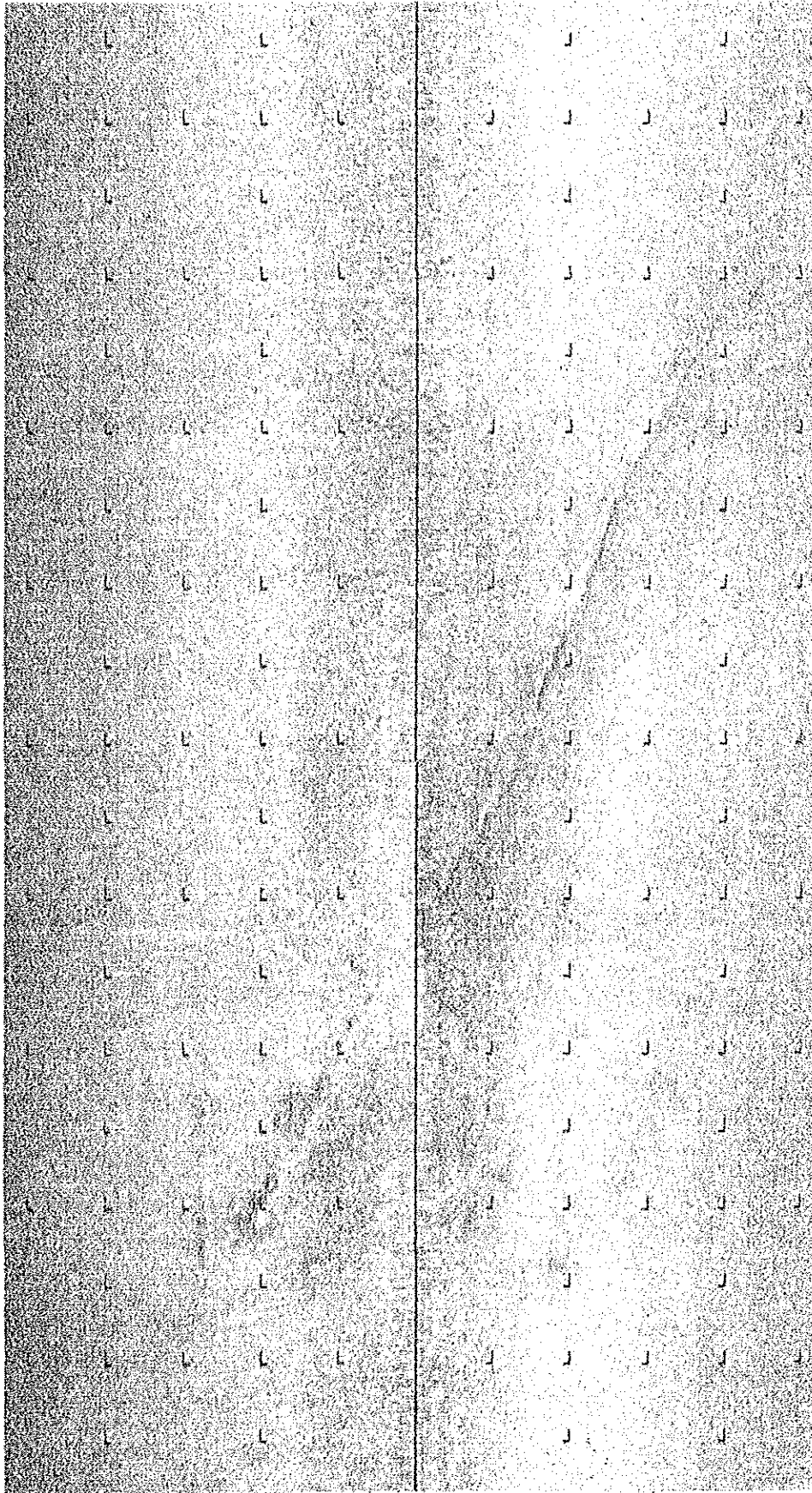
This record shows the concentrated dimples. The scale of each dimple is about 5 m in diameter, and the depth of almost of them is more than 1 m by calculation from white shadow.

Record of Side Scan Sonar 2



This record shows the outcrops of coral reef, and the white shadows of these outcrops show the severe unevenness of the surface. The black spots without shadows show the outcrops with very small relative height or the area covered with thin sediment.

Record of Side Scan Sonar 3



This record shows the groove by towing something as like an anchor.
The width of it is several m, and depth of it is less than 1 m by
calculation from the shadow.

Record of Side Scan Sonar 4

11