

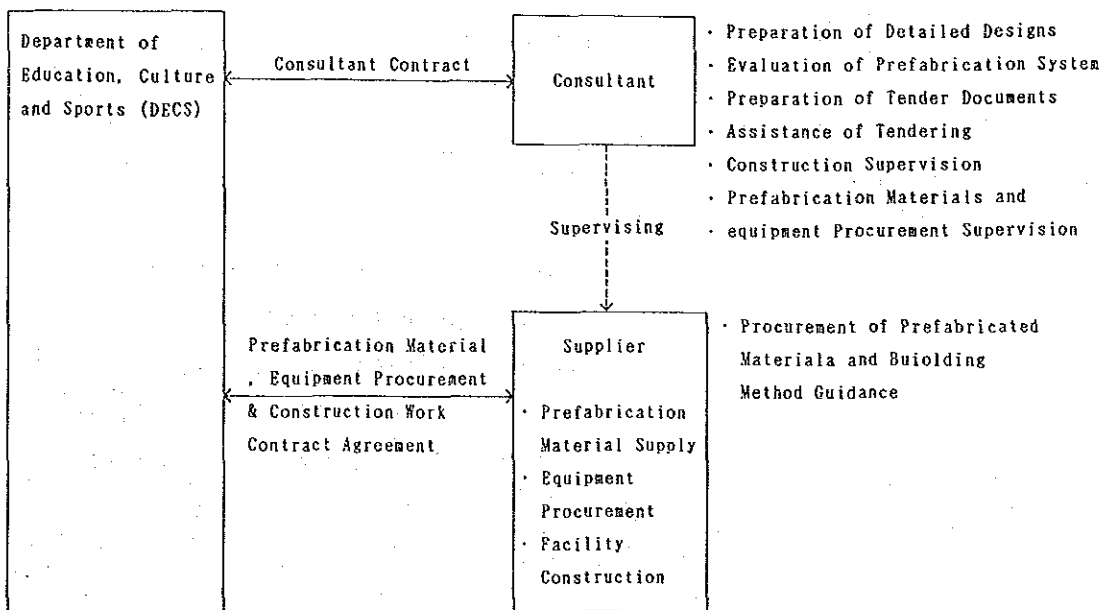
CHAPTER 6 PROJECT IMPLEMENTATION PLAN

CHAPTER 6: PROJECT IMPLEMENTATION PLAN

6-1 Project Implementation Organization

DECS will be the responsible agency for Project implementation. DPWH will be responsible for the Project construction work to be borne by the Philippines. The project implementation organization is shown in table 6-1.

Table 6-1 The Project Implementation Organization



- 1) Based on the rules of the Japanese grant aid cooperation system, a Japanese consultant company (Consultant) will make a contract agreement with DECS. The Consultant will evaluate the prefabrication system, prepare detailed designs and tender documents, assist tendering, and supervise facilities' construction work and the procurement of prefabrication materials and equipment.

- 2) After being awarded a prefabrication material procurement and construction work contract, a rewarded company will make a contract agreement with DECS. The rewarded company will procure, supply, and install prefabrication materials and equipment, and conduct the facilities' construction work under the supervision of the Consultant.

6-2 Boundary of the Responsibilities for Project Construction

The boundary of the responsibilities for Project construction to be undertaken by the Japanese Government and the Philippine Government is described below:

(1) Undertakings by the Japanese Government

A) Schoolbuilding Construction

- a) Primary Schools:
 - Classrooms
 - Offices
 - Toilets (for male and female), including septic tanks
 - Water Receiving Tanks
 - Elevated Water Tanks (including the installation of pressurizing pumps, if necessary)
- b) Secondary Schools:
 - Classrooms
 - Science Laboratories
 - Workshops
 - Toilets (for male and female), including septic tanks
 - Elevated Water Tanks (including the installation of pressurizing pumps, if necessary)

(B) Equipment Installation

a) Primary Schools

- * Classrooms:
 - Teachers' desks, chairs, and closets
 - Students' desk-chairs (large, medium, and small sizes)
 - Blackboards and bulletin boards
- * Offices:
 - Teachers' and clerks' desks, chairs, and closets
 - Lockers, blackboards, and bulletin boards

b) Secondary Schools:

- * Classrooms:
 - Teachers' desks, chairs, and closets
 - Students' desks, chairs, and closets
 - Blackboards and bulletin boards
- * Science Laboratories:
 - Experiment tables, pupils' chairs and closets
 - Teachers' demonstration workbenches
 - Storage shelves and steel shelves
 - Blackboards and bulletin boards
- * Workshops:
 - Students' tables, chairs, and closets
 - Teachers' demonstration workbenches
 - Storage shelves and steel shelves
 - Blackboards and bulletin boards

(2) Undertakings by the Philippine Government

1. To secure the sites for the Project
2. To clear, level and reclaim the site prior to the commencement of the construction
3. To undertake incidental outdoor work, such as gardening, fences, etc.
4. To construct access roads to the site prior to the commencement of construction (only in case it is not available)
5. To provide facilities for distribution of electricity, water supply, drainage and other facilities to the site when needed

6. To obtain building, occupancy and all necessary permits for the Project with respect to the laws and regulations in the Philippines
7. To ensure necessary budget and personnel for the proper and effective maintenance of the schools and equipment provided under the grant aid by the Japanese Government
8. To ensure prompt unloadings, tax exemptions, custom clearances at the port of disembarkation in the Philippines of the materials and the equipment provided under the grant aid
9. To exempt Japanese nationals involved in the Project from customs duties, internal taxes and other fiscal levies which may be imposed in the Philippines with respect to the supply of the equipment and services under the verified contracts
10. To accept Japanese nationals whose services may be required in connection with the supply of the products and the services under the verified contracts and secure their entry to the Philippines and stay therein for the execution of the Project
11. To bear commissions to the Japanese foreign exchange bank for the banking services based on the Banking Arrangement, in accordance with standard grant procedure
12. To bear all expenses other than those to be borne by the grant, necessary for the construction of the schools as well as for the transportation and installation of equipment

6-3 Project Implementation Plan

After the Exchange of Notes for the Project are signed, a selected Japanese consultant company (Consultant) will make a contract agreement with the Government of the Philippines for the consultant services for the Project. The Consultant will then prepare detailed designs and tender documents for the Project construction. For the Project implementation, representatives of the Japanese side, DECS, and DEPH will discuss and examine the entire Project construction schedule: particularly the times of clearing and leveling the sites, and the time of commencing the construction work on access roads to the sites.

The following aspects must be carefully examined prior to making the construction plan:

- 1) A uniqueness of the Project is the construction of the facilities for the 72 schools that are widely scattered throughout the Bicol Region in a very short period of time. The construction and plan must be made to meet this need.
- 2) Since school facilities presently exist on Project sites, such construction methods that will not create unnecessary noises, vibrations, dust, etc. must be selected in order not to disturb the daily school activities. More importantly, special attention must be paid to students' safety.
- 3) The construction plan carried out during the rainy season (October through January) must be carefully prepared. The plan must be examined to ensure that there will be no delays in construction work because of the effects of the rainy season.
- 4) The finished prefabrication materials (and their qualities) that are to be procured in Japan must be carefully inspected in Japan in order to avoid any problems in the Philippines.
- 5) Special countermeasures must be made to maintain security and to prevent burglaries at Project sites throughout the construction period.
- 6) For successful Project construction, cooperation is indispensable between the Japanese prime contractor and the specialized local contractors. Thus, a work structure must be organized by clarifying the boundaries of the responsibilities of the prime contractor and the subcontractors in order to establish a smooth management system.

7) The efficiency of local workers is almost the same as in other Southeast Asian countries, such as Thailand, Indonesia, etc. With proper guidance, the workers can accomplish a high level of work. By taking this fact into account, it will be necessary to secure a sufficient number of quality workers to meet the needs of each work category and the construction schedule.

6-4 Equipment and Material Procurement Plan

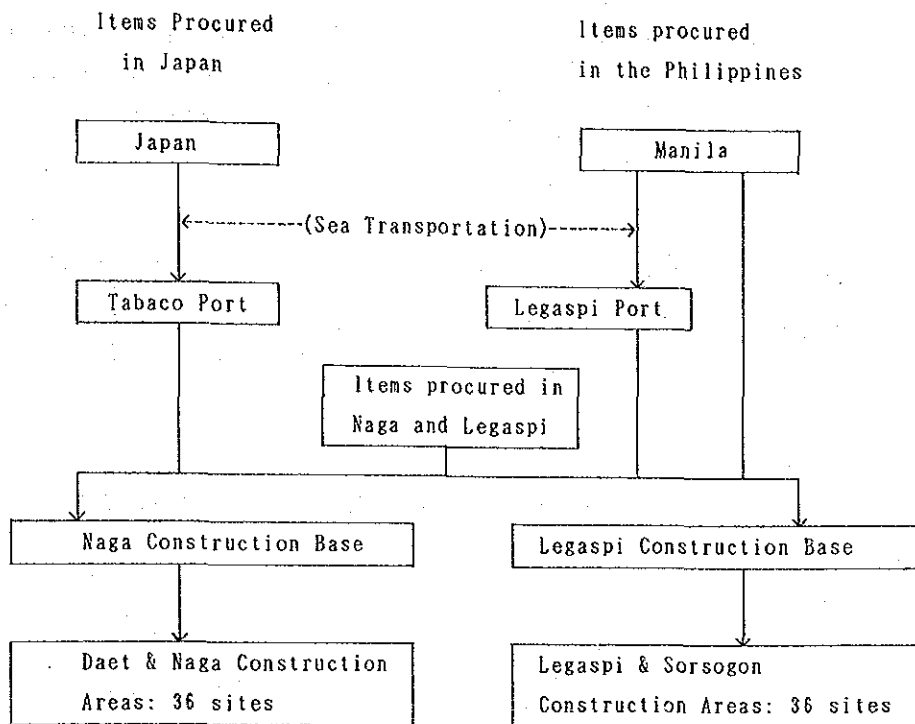
(1) Equipment and Material Procurement Policies

Prefabrication materials are indispensable in enabling the Project to secure typhoon-resistant capabilities. The prefabrication materials will be procured in Japan. All other materials and equipment necessary for Project will be procured locally for the sake of easy maintenance and management of the school facilities after the completion of the Project. Most of these materials and equipment are available in Naga City and Legaspi City. Some items that are required to be of higher grade or needed in large quantities will be procured in Manila, if they are not available in these cities.

For the work that requires special techniques, such as the assembling of prefabrication materials, it will be necessary to dispatch the manufacturer's engineers from Japan.

The transportation plan for procured equipment and materials is shown in Table 6-2.

Table 6-2 Transportation Plan for Procured Equipment and Materials



2) Material Procurement Situations in the Philippines

The qualities, specifications, and circulation situations of major construction materials to be procured in the Philippines are as follows:

a) Cement

Cement is manufactured in accordance with the standards of the American Society of Testing and Materials (ASTM). The quality of the cement is not quite uniform, but there is no problem concerning its strength. There are five or six cement manufacturers in the Philippines, but there are none in the Bicol Region. Thus, the necessary cement for the Project will be shipped from one of the factories to Legaspi Port and then transported to Project construction bases via land. The cement procurement plan must be carefully prepared with possible delay of the supply and the deterioration of quality.

b) Aggregate

A large amount of uniform quality gravel and river sand is produced in the Philippines. However, the amount of sand produced in the Bicol Region is very limited. Thus, sand produced in the northern areas is used in the Bicol Region.

c) Reinforcing Steel Bars

Available reinforcing steel bars in the Philippines are mainly inch sized deformed type made based on the standards of ASTM. They are sufficiently strong.

d) Ready Mixed Concrete

Ready Mixed Concrete is most commonly used in the Manila area. In the Bicol Region, however, ready mixed concrete plants do not exist. Therefore, the concrete necessary for Project construction will be made by mixers at the construction sites.

e) Concrete Blocks

In the Philippines, concrete blocks are widely used for the buildings' exterior walls, partition walls, etc. There are many manufacturers of concrete blocks. The manufacturers are mostly operating on a small scale. The quality of the products varies from manufacturer to manufacturer. Thus, concrete blocks for the Project must be carefully selected.

f) Timber and Wooden Furniture

Various types of timber for construction use is available at a low price in the Philippines. The technical level of wood workers is high. However, most furniture manufacturers in the Bicol Region have less than ten workers. Their production capabilities are low. Thus, the selection of furniture manufacturers for the Project must be given special attention.

g) Tiles

There are only a few varieties of tile colors and sizes. Compared with Japanese products, Philippine made tile is inferior in quality and accuracy of sizes. However, there will be no problem for practical use.

h) Paints

Paints produced in the Philippines are well improved to suite the Philippine climate. They have less excoriating problems than imported paints.

i) Electric Wires

Electric wires of JIS (Japan Industrial Standards) and IEC standards are available in the Philippines.

j) Electric Fixtures, such as Receptacles

Electric fixtures in the Philippines are mostly imported. They are easily available.

k) Lighting Fixtures

Lighting fixtures, except for incandescent lighting fixtures, are not manufactured in the Philippines. Imported items are easily available at relatively low prices.

l) Pipe Products

PVC and cement pipes are manufactured in the Philippines. The quality of the pipe is satisfactory.

m) Sanitary Fixtures

Although no decorative, sanitary fixtures are easily obtained.

n) FRP Water Tanks

FRP water tanks in the Philippines are mostly imported. They are available.

6-5 Project Implementation Schedule

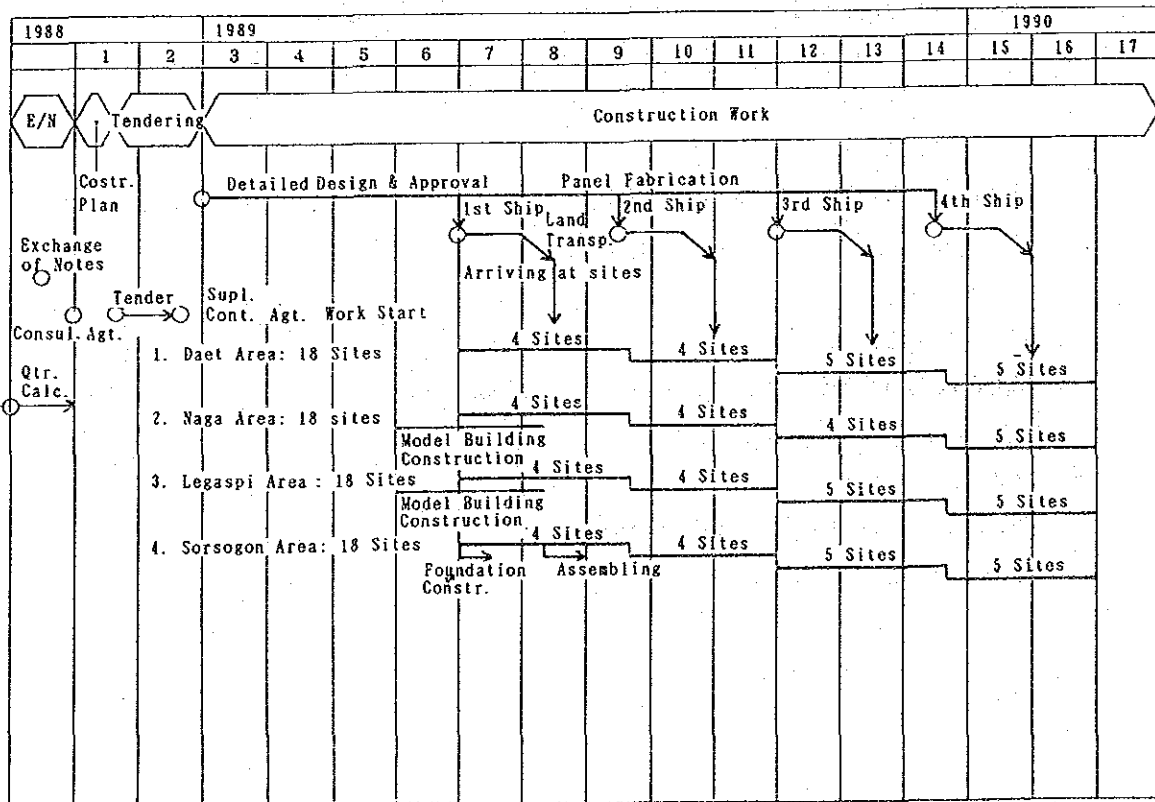
6-5-1 Project Implementation Schedule

The Project implementation schedule was made in accordance with the rules of the Japanese grant aid cooperation program and was also based on the premise that the construction work, and other related work, to be borne by the Japanese and Philippines would be smoothly carried out without delays.

Project sites were divided into four area groups -- Daet, Naga, Legaspi and Sorsogon. Each area group contains 18 of the total 72 schools. Construction work in each area will be undertaken by one work group. The total construction period was decided to be 11 months. It was planned to divide the 11 months into four work phases (approximately 3 months per each phase) and to construct the buildings for four or five school during each construction phase period.

Outline of the implementation schedule is shown in Table 6-3.

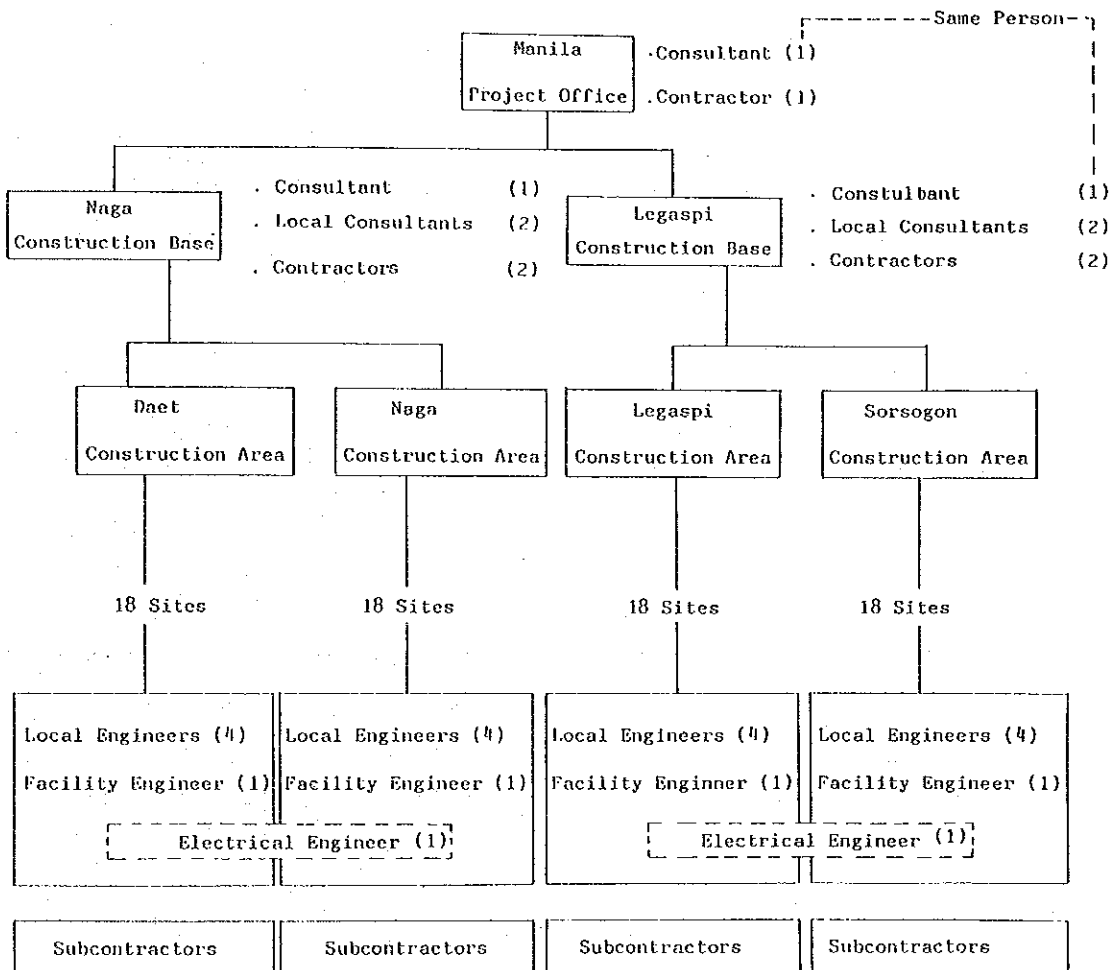
Table 6-3 Project Implimentation Schedule



6-5-2 Construction Management System

Since the 72 Project sites are widely scattered throughout the entire Bicol Region, the management of the construction schedule and quality control must be conducted under a firm organization system. The planned management system of the consultants (including local consultants) and contractors is shown in Table 6-4.

Table 6-4 Construction Management Organization Chart



6-6 Maintenance and Management System

The maintenance and management of the school facilities in the Bicol Region is undertaken by the Regional Office of DPWH. The budget for the school maintenance and management is provided to DECS. DECS pays the costs required for the school maintenance and management from the budget to DPWH. The appropriated 1988 budget for the school maintenance and management in the Bicol Region was approximately 11.24 million pesos. The appropriated budget for school facility restoration from natural calamities was approximately 442 million pesos throughout the entire Philippines.

In general, it is said that the annual maintenance and management costs of more than five-year-old schoolbuildings will be 3% of the building construction costs. The maintenance and management for school facilities (other than buildings) that are more than five year old will require annually 5% of the original construction costs. Furniture more than one year old will require annual maintenance and management costs of 2% of the purchase price.

The DPWH Bicol Regional Office's estimates of the maintenance and management costs of one schoolbuilding for a five year period are as shown in Table 6-5.

Since the main objective of the Project is to rebuild typhoon-destroyed school facilities, and school facilities were designed with a throughout examination on the principals of minimum maintenance and management costs, i.e., maintenance free facilities, new school facilities will be adequately maintained and managed by the present school staff and budget.

Table 6-5 Maintenance and Management Costs of One Schoolbuilding for a Five Year Period

Category	Item	Cost
Material Cost	Roof paint	12 gallons x 220 pesos/gal = 2,640 pesos
	Wall, window, floor paint	10 gallons x 220 pesos/gal = 2,200
	Wooden fixtures	Wooden jalousies, 3 sets: 17 m ² x 140 pesos/m ² = 2,380
	Subtotal	8,220 pesos
Labor Cost	Painting work:	
	• painters: 2	70 pesos/day x 5 days = 700 pesos
	• Carpenter: 1	70 pesos/day x 3 days = 210
	• Carpenter foremen: 1	100 pesos/day x 1 days = 100
	Subtotal	1,010
	Total	9,230 pesos

CHAPTER 7 PROJECT EVALUATION

CHAPTER 7. PROJECT EVALUATION

The Government of the Philippines has been promoting the educational and manpower development and has been making every effort to improve the educational conditions. However, the number of primary and secondary schools are still insufficient. Some 3.4 million school age children could not receive an education in 1985.

In addition to the above situations, typhoons, especially the ones in 1986 and 1987, inflicted serious damages to many primary and secondary schools. And now, the problem of classroom shortage has become more and more serious. The construction of primary and secondary schools is an urgent subject for the Government of the Philippines.

(1) Project Effects

Under the above mentioned situations, the construction of the schoolbuildings for 72 primary and secondary schools in the Bicol Region as the first phase of the Project for constructing 360 schools located throughout the country will have the following effects:

- a) A total of 237 classrooms will be constructed under the First Phase construction period -- 74 classrooms for primary schools and 163 classrooms for secondary schools. By assuming there will be 40 students per classroom, the classrooms will accommodate 9,480 students. The entire five-year plan will be able to accommodate 47,400 of the country's students. Thus, the five-year plan will contribute greatly to increase educational opportunities for many Filipino children.
- b) The schoolbuilding construction work at widely scattered sites throughout the country will provide employment opportunities for the areas' residents. The procurement of construction equipment and materials, except prefabrication materials, will contribute to the activation of the Philippine rural economies.

- c) School facilities of the Project are expected to be used not only for regular classes (including double or three-shift classes), but also for places of refuge for the areas' residents during natural calamity periods and for residents' meeting places.

(2) Appropriateness of the Project

As the school facilities will increase after the completion of the Project, it will be necessary to secure the proper number of teachers and workers to maintain and manage the facilities and the costs required for the facilities' maintenance and management work.

Since the Project was proposed as being a part of the Philippine Government's five-year schoolbuilding construction plan, the necessary staff and the maintenance and management for the Project facilities have already been included in the five-year plan. Furthermore, since the main objective of the Project is to rebuild typhoon-destroyed school facilities, new facilities will be adequately maintained and managed by the present school staff and budget. The selections of facilities (other than buildings) was made based on the principles of minimum maintenance and management costs, i.e., maintenance free facilities and equipment in order to allow maintenance and management work at the lowest cost.

In view of the above, Project implementation will bring various benefits and there will be no problems in terms of facilities' maintenance and management. Thus, the appropriateness of the Project is very high; it can be considered that the Project will contribute greatly to the achievement of the country's Medium-term Philippine Development Plan.

CHAPTER 8 CONCLUSION AND RECOMMENDATIONS

CHAPTER 8. CONCLUSION AND RECOMMENDATIONS

8-1 Conclusion

The chronic shortage of school facilities in the Philippines is a serious problem for the country. Furthermore, the problem has become intricated as a result of the damages inflicted on school facilities by the typhoons of 1986 and 1987.

To alleviate the school facility shortage and to provide equal educational opportunities to many children, the construction of buildings for 72 schools in the Bicol Region that were most severely damaged by typhoons will contribute significantly to the improvement of the Region's educational situations.

In the Medium-term Philippine Development Plan (1987-1992), the National Economics and Development Authority described that the improvement of school education is an important mainstay of the country's manpower resources development, and that it is of utmost importance to determine how best to improve the quality of education while, at the same time, promoting industrial development and economic growth.

It is believed that the implementation of the Project will be indispensable for the achievement of the country's education development plan; it will greatly contribute to the promotion of the national development plan. Thus, it will be appropriate and worthwhile to implement the Project with grant aid from the Government of Japan.

8-2 Recommendations

- (1) The Project shall be implemented with the cooperation and of both Japan and the Philippines. Therefore, it will be of great importance that the construction work to be borne by the Philippine side is definitely carried out for successful Project implementation. In particular, preparation of site and construction of the access roads to Project sites must be completed prior to the commencement of the construction of schoolbuildings. Furthermore, DECS and DPWH must maintain close cooperation and establish a solid Project implementation system.

- (2) Even though school facilities are designed with a throughout examination on the principals of the minimum maintenance and management cost, i.e., maintenance free facilities, it would be desirable to take a maintenance system into more consideration. For instance the students would clean the school facilities as a part of the school's education program.

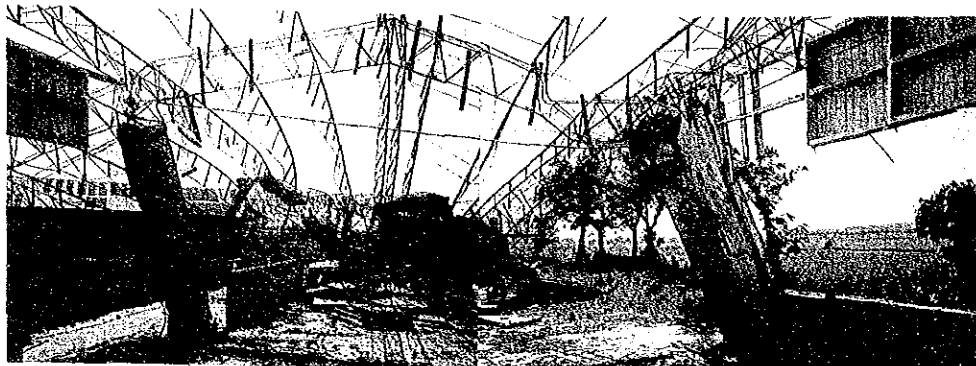
- (3) DECS is expecting to construct 40% of the schoolbuildings of the five-year School Building Program with grant aid from the Japanese Government. The future educational situations in the Philippines will greatly owe its success or failure to the remaining School Building Program. Therefore, it is extremely important to implement the entire five phase construction work. The Japanese grant aid for the Project implementation will become meaningful only after completing the five phase construction work.

APPENDICS

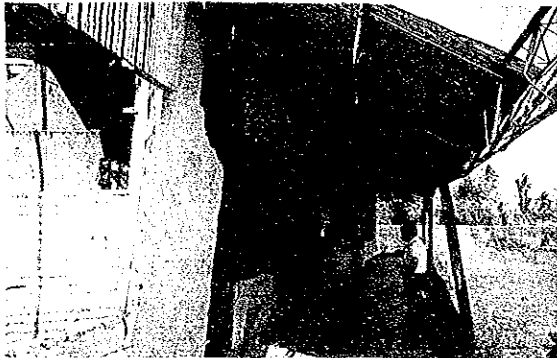
APPENDICES

1. Area Photographs
2. Member List of the Basic Design Study Team
3. Itineray of the Study Team
4. List of the Original Recipient Schools
5. Minutes of Discussions
6. List of Persons Interviewed
7. Collected Statistical Data

DAMAGE TO SCHOOLBUILDINGS BY TYPHOON (1)



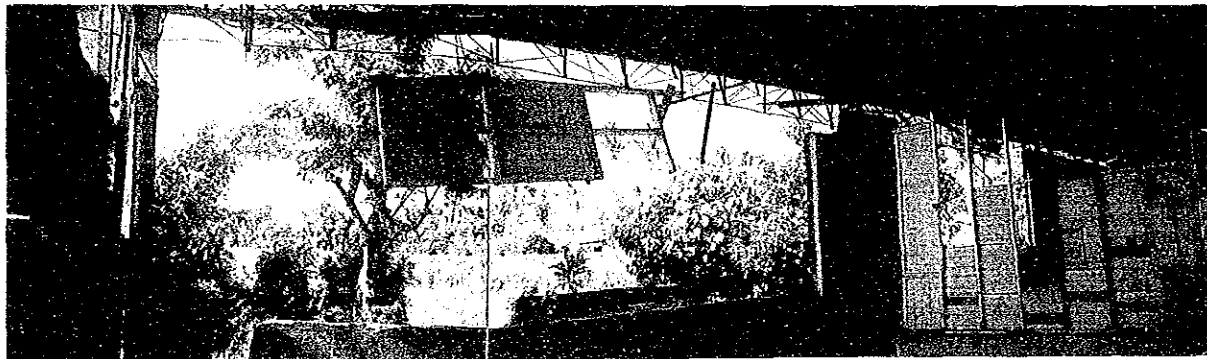
OAS MUNICIPAL POLYTECHNICS HIGH SCHOOL



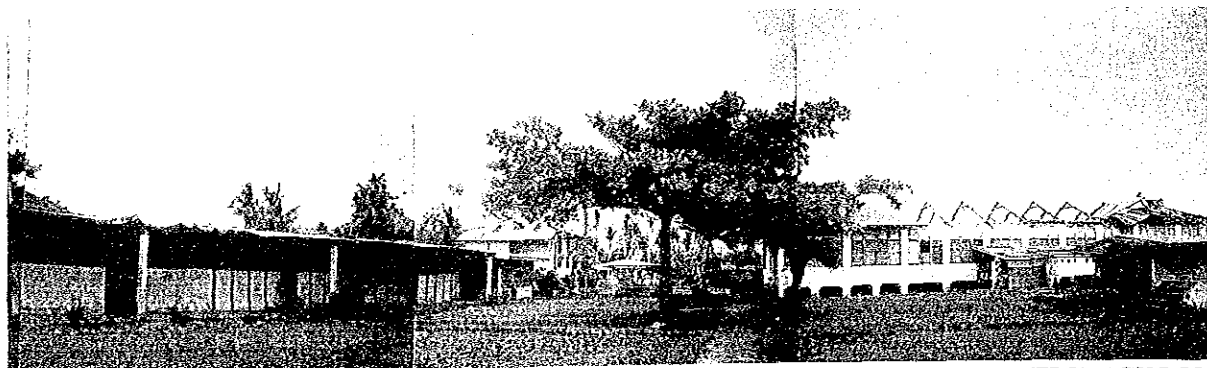
OAS MUNICIPAL POLYTECHNICS HIGH SCHOOL



OAS MUNICIPAL POLYTECHNICS HIGH SCHOOL

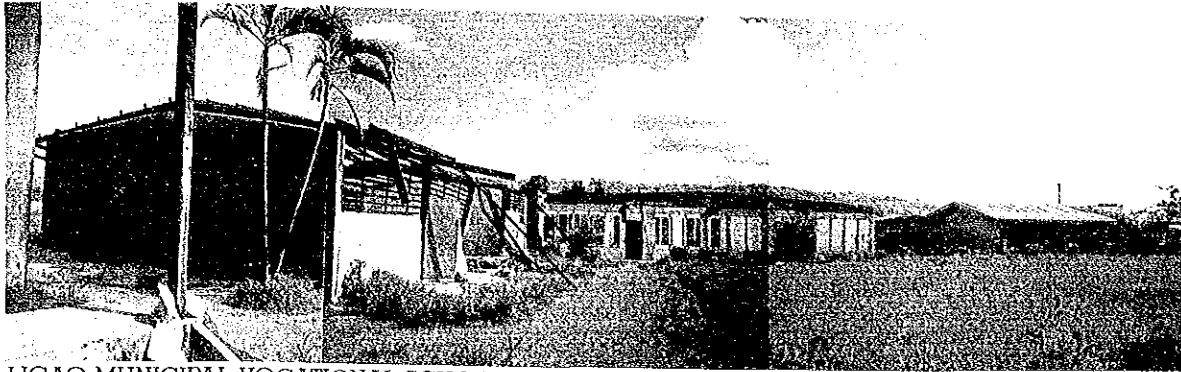


OAS MUNICIPAL POLYTECHNICS HIGH SCHOOL

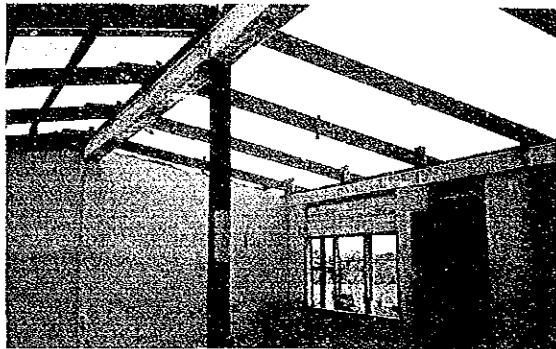


OAS SOUTH CENTRAL SCHOOL
(RECIPIENT SCHOOL)

DAMAGE TO SCHOOLBUILDINGS BY TYPHOON (2)



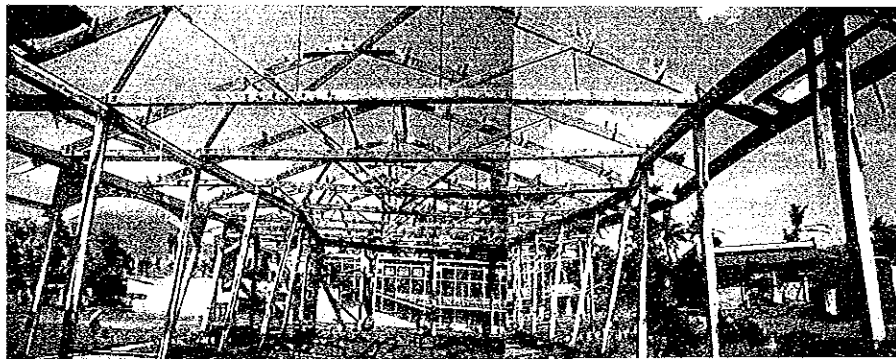
LIGAO MUNICIPAL VOCATIONAL SCHOOL



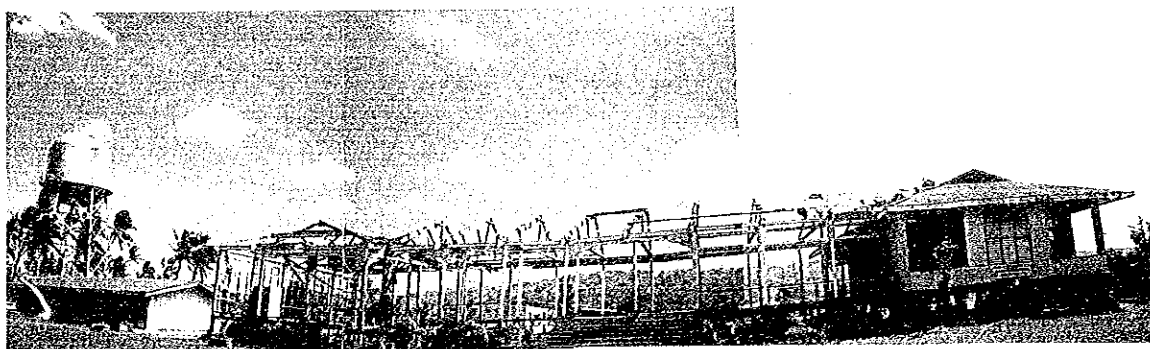
LIGAO MUNICIPAL VOCATIONAL SCHOOL



OAS SOUTH CENTRAL SCHOOL
(RECIPIENT SCHOOL)



LIGAO MUNICIPAL VOCATIONAL SCHOOL

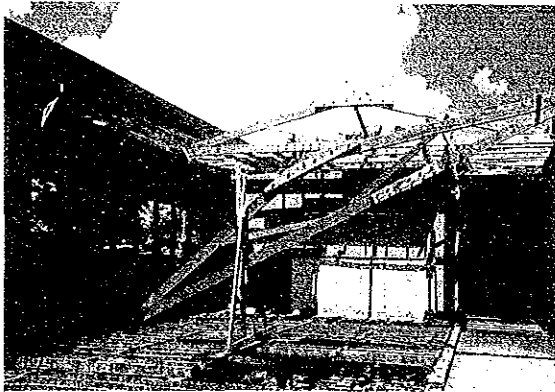


LIGAO MUNICIPAL VOCATIONAL SCHOOL

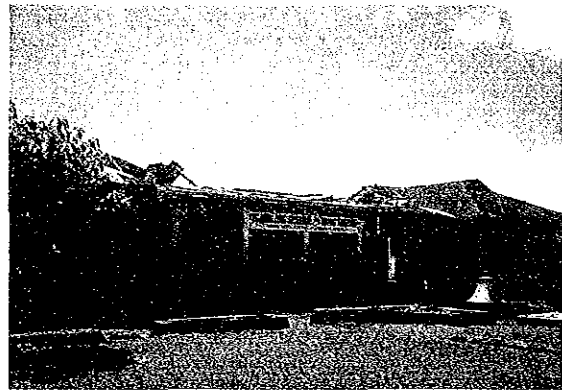
DAMAGE TO SCHOOLBUILDINGS BY TYPHOON (3)



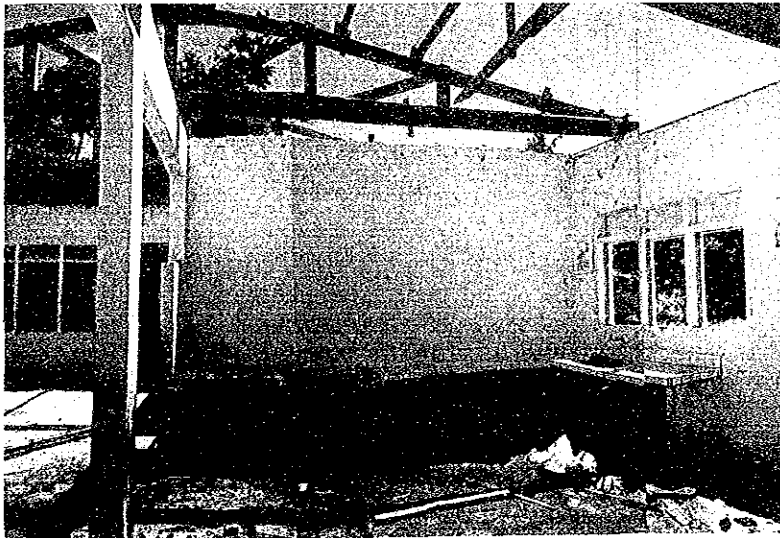
**MALABOG BARANGAI HIGH SCHOOL
(RECIPIENT SCHOOL)**



**TABACO NATIONAL HIGH SCHOOL
(RECIPIENT SCHOOL)**



**TABACO NATIONAL HIGH SCHOOL
(RECIPIENT SCHOOL)**



**DARAGA NORTH CENTRAL SCHOOL
(RECIPIENT SCHOOL)**

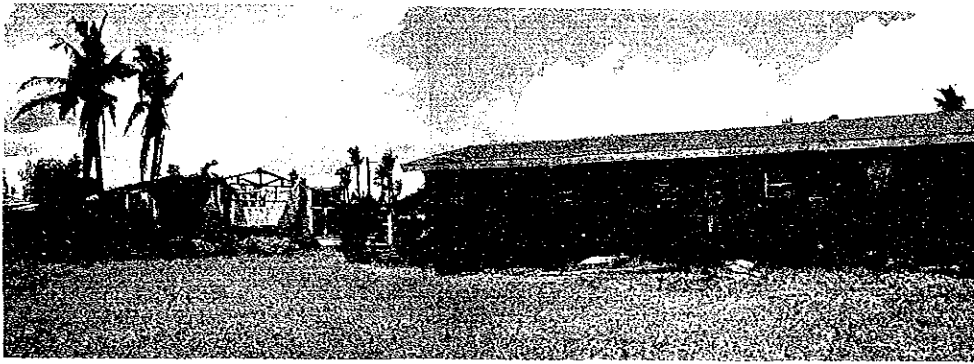


**POLANGUI GENERAL
COMPREHENSIVE HIGH SCHOOL
(RECIPIENT SCHOOL)**

DAMAGE TO SCHOOLBUILDINGS BY TYPHOON (4)



BALOGO ELEMENTARY SCHOOL
(RECIPIENT SCHOOL)



BALOGO ELEMENTARY SCHOOL
(RECIPIENT SCHOOL)



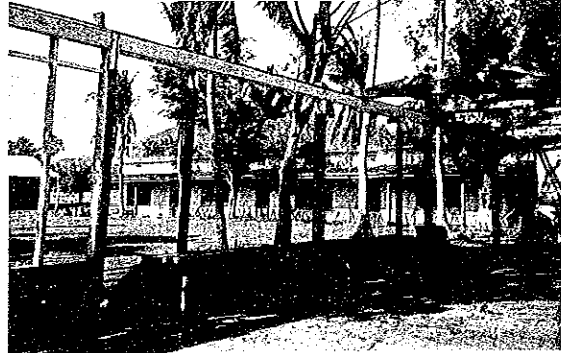
TABACO SOUTH CENTRAL SCHOOL
(RECIPIENT SCHOOL)



TABACO SOUTH CENTRAL SCHOOL
(RECIPIENT SCHOOL)



GUINOBEDAH EAST CENTRAL
ELEMENTARY SCHOOL



GUINOBEDAH EAST CENTRAL
ELEMENTARY SCHOOL

APPENDIX 2. Member List of the Basic Design Study Team

Name	Assignment	Affiliation
Mr. Juro CHIKARAISHI	Team leader	Second Basic Design Study Division Grant Aid Planning and Survey Department, Japan International Cooperation Agency
Mr. Tomohito AOKI	Building Material Supply planner	Economic Cooperation Division International Trade Policy Bureau Ministry of International Trade and Industry
Mr. Takenobu MOHRI	Architectural Planner	Mohri Architect & Associates, Inc.
Mr. Naotaka KUNITA	Cost Estimator	Mohri Architect & Associates, Inc.
Mr. Shiro SASAKI	Construction Planner	Mohri Architect & Associates, Inc.
Mr. Nobuhiro MOHRI	Architectural Planner	Mohri Architect & Associates, Inc.

APPENDIX 3. Itinerary of the Study Team

No.	Date	Itinerary	Activity
1	1988 Jun 15, Wed	10:00 Departed Tokyo (PR-431) 13:15 Arrived Manila 17:15 JICA Manila Office 17:45	• Discussion of the field survey schedule and policy (Mr. Miyamoto Resident Representative of JICA Manila Office and Mr. Oshima, Mr. Saitoh, Staff member of JICA Office.
2	Jun 16, Thu	9:00 DECS 12:00 14:15 JICA Manila Office 15:00 ADB	• Explained the Inception Report. • Discussed the contents of the Request and the field survey schedule. • Explained the contents of the Request. • Discussed the Grant Aid Program.
3	Jun 17, Fri	5:20 Departed Manila (PR-177) 6:10 Arrived Legaspi 6:30 Legaspi City 6:50 DECS, Regional V 7:20 8:25 DECS Sorsogon 9:15 9:25 Sorsogon, Albay 17:10	• Inspected a school site. • Discussed the contents of the Request. • Discussed the contents of the Request. • Inspected school sites.
4	Jun 18, Sat	10:20 Departed Legaspi (PR-431)	

Itinerary of the Study Team (Cont'd)

No.	Date	Itinerary	Activity
4	Jun 18, Sat (cont'd)	13:15 Arrived Manila 16:30 Manila City 18:30	•Collected data concerned with road situations.
5	Jun 19, Sun	10:00 At Hotel 15:00 At Hotel 19:00	•Classified collected data. •Held a meeting among study team members.
6	Jun 2, Mon	9:00 DECS 12:00 13:00 Manila City 17:00	•Discussed the Requested schoolbuildings. •Inspected schools.
7	Jun 21, Tue	9:00 DECS 12:00 12:00 Manila City 16:00 At Hotel	•Held a meeting concerning the contents of the Request. •Collected data relating to the project. •Classified and analyzed collected data.
8	Jun 22, Wed	9:00 DECS 12:00 13:00 Manila City 19:00 Manila City	•Discussed the contents of the Request and the field survey schedule. •Collected data related to construction. •Collected data related to the Project. •Study team members attended a dinner meeting with undersecretary Dr. Arcelo.

Itinerary of the Study Team (Cont'd)

No.	Date	Itinerary	Activity
9	Jun 23, Thu	10:00 DECS 12:00 18:00 At Hotel	<ul style="list-style-type: none"> •Held discussions concerning the Project. •Held a meeting among study team members. Classified and analyzed the collected data.
10	Jun 24, Fri	9:00 At Hotel 14:00 DECS 18:00 Manila City 20:00	<ul style="list-style-type: none"> •Held a meeting among study team members. Classified and analyzed the collected data. •Discussed and prepared the Minutes of Discussions. •The study team attended a dinner meeting with Undersecretaries Dr. Arcelo and Mr. Ordonez. The Minutes of Discussions were signed by the team leader, Mr. Chikaraishi, Dr. Arceo, and Mr. Ordonez.
11	Jun 25, Sat	9:00 At Hotel 12:00 13:00 Manila City 18:00 At Hotel	<ul style="list-style-type: none"> •Held a meeting among study team members. Team leader, Mr. Chikaraishi, and team member, Mr. Aoki, departed Manila for Tokyo. •Collected data related to construction costs. •Classified the collected data and held a meeting among the study team members.
12	Jun 26, Sun	9:00 At Hotel 11:00	<ul style="list-style-type: none"> •Held a meeting among study team members. •Collected pertinent data.

Itinerary of the Study Team (Cont'd)

No.	Date	Itinerary	Activity
12	Jun 26, Sun (cont'd)	13:00 At Hotel	•Classified and analyzed the collected data.
13	Jun 27, Mon	10:00 DECS 12:00 13:30 Manila City 17:00 18:00 At Hotel	•Discussed the requested schoolbuildings with officials concerned. •Collected data and held a meeting with members of a local consultant company. •Held a meeting among study team members and classified the collected data.
14	Jun 28, Tue	9:30 DECS 13:00 14:00 At Hotel 15:00	•Discussed the requested schoolbuildings with officials concerned. •Held a meeting among study team members. •Classified and analyzed collected data.
15	Jun 29, Wed	6:20 Departed Manila (PR-177) 7:10 Arrived Legaspi 9:00 DECS District Office 10:00 DPWH District Office 11:00 13:00 15:00	•Held a meeting with officials concerned and collected data related to construction costs. •Held discussions relating to the Project with officials concerned. •Inspected Tabaco Port. •Inspected Legaspi Port. •Held a meeting with officials concerned at the Legaspi Water Supply Bureau.

Itinerary of the Study Team (Cont'd)

No.	Date	Itinerary	Activity
15	Jun 29, Wed (cont'd)	16:30 DECS District Office	•Held a meeting relating to The Project with officials concerned.
16	Jun 30, Thu	8:00 DECS District Office 13:20 13:40 Departed Legaspi 14:30 Arrived Manila	•Collected school data sheets. •Held a discussion with District Supervisors.
17	Jul 1, Fri	9:30 DECS 12:00 13:00 DPWH 14:00 JICA Manila Office 15:00 DPWH	•Collected school data sheet. •Held a discussion with Architectural Division personnel. •Reported the progress of the field surveys. •Held a meeting with Architectural Division personnel.
18	Jul 2, Sat	9:00 DECS 12:00 13:00 AT Hotel 16:00 16:00	•Collect school data sheets. •Held a meeting among study team members. •Collected data related to construction costs. •Classified collected data.
19	Jul 3, Sun	9:00 At Hotel	•Held a meeting study team members, and classified collected data.

Itinerary of the Study Team (Cont'd)

No.	Date	Itinerary	Activity
19	Jun 3, Sun (cont'd)	13:00 Manila City	<ul style="list-style-type: none"> • Classified data related to construction costs. Classified collected data.
20	Jul 4, Mon	10:00 JICA Manila Office 14:20 Departed Manila (PR-432) 19:15 Arrived Tokyo	<ul style="list-style-type: none"> • Reported the results of the field surveys. • Team members (Mr. T. Mohri, Mr. Kunita, Mr. Sasaki, and Mr. N. Mohri) arrived at Japan.

APPENDIX 4. List of the Original Recipient Schools

Republic of the Philippines
 DEPARTMENT OF EDUCATION, CULTURE AND SPORTS
 Region V
 Legaspi City

JAPANESE GRANT-IN-AID SCHOOL BUILDING PROGRAM
 CY 1989

RECIPIENT SCHOOLS	DISTANCE IN KM. FROM THE TARIPO PORT	ENROLLMENT 1987-1989	EXPECTED ENROLLMENT 1988-1989	NO. OF CLASSES 1987-1988	NO. OF USABLE CLASSES 1987-1988	NO. OF EXISTING, DAMAGED BY RECENT EARTHQUAKE, OR UNUSABLE CLASSES	CLASSES DAMAGED BY RECENT EARTHQUAKE	ADDITIONAL CLASSES NEEDED	ADDITIONAL LENGTH-METERS OF AVAILABLE SITE	ADDITIONAL LENGTH-METERS OF CONSTRUCTION
1 BACDAY EAST C/S, ALBAY	120 KM.	1,376	1,914	36	50	41	11	150	11	150
2 DARAGA NORTH C/S, "	135 KM.	2,209	2,325	53	45	24	13	156	13	156
3 LISAO WEST C/S, (BI) *	162 KM.	1,979	1,943	56	52	49	29	150	29	150
4 DAS SOUTH C/S, "	167 KM.	698	930	28	36	33	15	157	15	157
5 DRET NORTH C/S, CEN. NEGRE	1230 KM.	1,766	1,850	48	34	4	12	173	12	173
6 VINONS C/S, "	1240 KM.	1,543	1,778	41	34	3	10	155	10	155
7 BATO SOUTH C/S, CAN. SUR	184 KM.	1,154	1,784	31	22	7	15	150	15	150
8 SAN JOSE E/S, (MARCOS STADIUM)	1122 KM.	453	718	18	18	8	8	158	8	158
9 NILADR C/S, CAN. SUR	1155 KM.	1,850	1,127	38	27	3	4	129	4	129
10 DALAGAN C/S, CAN. SUR	1147 KM.	1,877	1,154	30	30	12	12	150	12	150
11 VIJAO FILIT SCHOOL, (BTAMBUNES)	166 KM. (SEE)	950	903	27	21	8	7	150	7	150
12 CAROR C/S, SAN ANJEE	176 KM. "	488	534	18	12	6	5	150	5	150
13 TRAVESIA E/S, GUINGUINAY, ALENY	150 KM. "	927	1,200	24	20	14	14	150	14	150
14 MAGATE SOUTH C/S, "	1185 KM. "	2,790	2,318	73	53	19	10	175	10	175
15 ARREBY EAST C/S, "	1215 KM. "	421	505	12	11	11	12	150	11	150
16 BRZEN EAST C/S, BONGSON	191 KM.	848	698	24	13	33	11	150	11	150
17 BONGAL EAST C/S, "	188 KM.	1,118	1,229	35	22	27	13	150	13	150
18 BALOSO C/S, "	181 KM.	2,331	2,324	63	20	44	12	153	12	153
19 BUTAG E/S, BULAN SOUTH	1134 KM.	477	524	8	6	7	6	159	6	159
20 IRISA CITY C/S,	197 KM.	631	694	15	18	8	8	158	8	158
21 BANGRAYAN C/S, LEGASPI CITY	140 KM.	956	1,051	25	23	11	6	137	6	137
22 NAGA CITY NORTH C/S,	1138 KM.	3,468	3,184	74	73	24	12	156	12	156

DEPARTMENT OF EDUCATION, CULTURE AND SPORTS
Region V
Igazapi City

LIST OF SECONDARY SCHOOLS RECOMMENDED RECIPIENTS OF THE JAPAN TYPHOON-PROOF SCHOOL BUILDINGS

NAME OF SCHOOL	TYPE	MUNICIPALITY	SCHOOL SITE AREA IN HECTARES	TOTAL ENROLLMENT 1987-1988	NUMBER OF CLASSES	NUMBER OF TEACHERS	DISTANCE FROM TABACO PORT IN KILOMETERS	MEDIUM OF TRANSPORTATION	SITE PLAN SUBMITTED
BALEAY									
1 MARCIAL O. RAMOLA MEMORIAL SCHOOL	INAT.	IBUHIBATAN	8.03	2,759	60	91	45	LAND	/
2 POLANSUI GEN. COMPREHENSIVE H.S.	INAT.	IPOLANGUI	6.55	3,751	78	145	40	"	/
3 TABAGO NATIONAL HIGH SCHOOL	INAT.	ITABAGO	10.30	3,786	82	106	1	"	/
4 STC. DOMINGO MUNICIPAL HIGH SCHOOL	INM.	ISTO. DOMINGO	1.20	1,299	27	37	20	"	/
5 LIZON AERO-INDUSTRIAL HIGH SCHOOL	INM.	LIZON	0.84	232	9	14	45	"	/
6 LIGAO MUNICIPAL HIGH SCHOOL	INM.	LIGAO	1.07	1,017	22	23	32	"	/
7 GAS MUNICIPAL POLYTECHNIC H.S.	INM.	GAS	4.00	892	15	15	35	"	/
8 CARASAN BARANWAY HIGH SCHOOL	IBHS	IBACADAY	1.90	440	9	12	30	WATER	/
9 IYVELLAR BHS	IBHS	IYVELLAR	0.50	359	9	10	60	LAND	/
10 MALABOS BHS	IBHS	IMARASA	0.35	610	15	19	37	"	/
11 MALING BHS	IBHS	IBUHIBATAN	1.03	303	6	9	52	"	/
12 NATADON BHS	IBHS	IPOLANGUI	0.10	364	8	7	47	"	/
13 SAN ANTONIO BHS	IBHS	ITABAGO	1.04	403	9	13	7	"	/
14 SAN FRANCISCO BHS	IBHS	IMALILIPOT	1.30	544	12	19	5	"	/
15 SAN LORENZO BHS	IBHS	ITABAGO	0.20	625	10	12	3	"	/
16 VILLAHERMOSA BHS	IBHS	IGAZAPI-GAZU	2.00	342	9	10	45	WATER	/
IGANARINES NORTE									
1 YINZONG HIGH SCHOOL	IPROV.	YINZONG	9.80	1,631	20	37	215	LAND	/
2 PASUD BHS	IBHS	PASUD	1.00	788	15	19	174	"	/
3 BATABALANI BHS	IBHS	PARACALE	0.50	341	9	12	226	"	/
4 RIZAL BHS	IBHS	ISTA. ELENA	1.50	480	12	14	297	"	/

DEPARTMENT OF EDUCATION, CULTURE AND SPORTS

Region V

Legaspi City

LIST OF SECONDARY SCHOOLS RECOMMENDED RECIPIENTS OF THE JAPAN TYPHOON-PROOF SCHOOL BUILDINGS

NAME OF SCHOOL	MUNICIPALITY	SCHOOL SITE AREA IN SQUARE METERS	TOTAL ENROLLMENT 1987-1988	NUMBER OF CLASSES	NUMBER OF TEACHERS	DISTANCE FROM TABAGA PORT IN KILOMETERS	MEDIUM OF TRANSPORTATION	SITE PLAN SUBMITTED
COMARINES SUR								
1 HABUA NATIONAL HIGH SCHOOL	HABUA	18.00	3,759	83	105	50	LAND	/
2 COLACLING BHS	LUPIT	0.40	326	9	9	170	"	/
3 DEL SALLEDO BHS	DEL SALLEDO	0.50	467	12	11	200	"	/
4 MILAS BHS	MILAS	1.20	416	11	10	102	"	/
5 FALSONG BHS	ISULA	1.07	388	10	10	70	"	/
6 SALVACION BHS	BATO	1.00	378	10	9	70	"	/
7 SALVACION BHS	TIBSON	5.00	352	10	12	105	"	/
8 SAN FERNANDO BHS	SAN FERNANDO	1.00	421	11	9	115	"	/
9 SAN ISIDRO BHS	LIBRARIAN	1.09	528	14	12	135	"	/
10 SAN RAMON BHS	LAGORDY	1.00	353	10	13	115	"	/
11 STA. JUSTINA BHS	BOHI	1.00	303	10	9	97	"	/
12 STO. TOMAS BHS	CANALIGAN	1.00	515	14	13	105	"	/
13 SIKUHIPAN BHS	DEL SALLEDO	1.00	306	10	9	150	"	/
14 TARDOS BHS	CARABOAN	0.20	511	14	13	200	WATER	/
15 TINAMBAC BHS	TINAMBAC	4.00	687	15	21	150	LAND	/
CATANDUANES								
1 SUPANE-DATANG BHS	CARABOAN	1.00	285	6	10	170	WATER/LAND	/

LIST OF SECONDARY SCHOOLS RECOMMENDED RECIPIENTS OF THE JAPAN TYPHOON-PROOF SCHOOL BUILDINGS

NAME OF SCHOOL	TYPE	MUNICIPALITY	SCHOOL SITE AREA IN HECTARES	TOTAL ENROLLMENT 1987-1988	NUMBER OF CLASSES	NUMBER OF TEACHERS	DISTANCE FROM TABAGO PORT IN KILOMETERS	MEDIUM OF TRANSPORTATION	SITE PLAN SUBMITTED
MASBATE									
1 CATAINGAN NATIONAL HIGH SCHOOL	INAT.	CATAINGAN	9.02	1,102	23	30	300	R/LAND	/
2 DIMASALANG HIGH SCHOOL	PROV.	DIMASALANG	5.65	981	20	38	276	R/LAND	
3 ARROYO HIGH SCHOOL	PROV.	ARROYO	5.55	1,315	24	47	250	R/LAND	
4 NAWADAN BHS	BHS	NAWADAN	4.29	685	12	17	300	R/LAND	
5 PULANGUITA BHS	BHS	PULANGUITA	1.00	524	11	14	300	R/LAND	
6 SAN PASCUAL BHS	BHS	SAN PASCUAL	1.00	524	12	20	350	R/LAND	
SCSSESON									
1 PRIETO DIAZ HIGH SCHOOL	PROV.	PRIETO DIAZ	1.04	755	16	19	130	LAND	
2 STA. ROSALENA HIGH SCHOOL	PROV.	STA. ROSALENA	0.83	881	18	16	140	"	/
3 BARCELONA MUNICIPAL HIGH SCHOOL	MUN.	BARCELONA	4.19	985	19	21	105	"	
4 CUNEBERT MUNICIPAL HIGH SCHOOL	MUN.	CASTILLA	1.00	570	14	13	55	"	
5 PILAR PRODUCTIVITY BEVP T. H.S.	MUN.	PILAR	0.50	320	10	10	67	"	
6 BULACAO BHS	BHS	BULACAO	0.50	313	7	9	85	"	
7 SAN ISIBAO BHS	BHS	BULACAO	2.00	193	6	6	159	"	
LEZAPI CITY									
1 PAS-ASA NATIONAL HIGH SCHOOL	INAT.	LEZAPI CITY	0.56	1,120	23	33	28	LAND	/

PROPOSED RECIPIENTS OF TYPHOON-RESISTANT SCHOOLBUILDINGS FROM THE JAPANESE GRANT-IN-AID PROGRAM
PRIORITY LISTING OF SCHOOLS

PHASE II - DECS - REGIONS VIII, IV, II & I.

NAME OF SCHOOL	LOCATION	NO. OF PUPILS/STUDENTS (ENROLLMENT - 1987-1988)	NO. OF CLASSES	NO. OF TEACHERS	NO. OF CLASSROOMS NEEDED	PRIORITY NUMBER
1. F. ARRISO MEM. SCH. OF ARTS & TRADES/SHAWAN, EASTERN SAMAR		2,136	53	71	28	1
2. BALICUANTRO NATIONAL VOC. SCHOOL	VALLEN, NORTHERN SAMAR	1,031	28	35	24	2
3. SORSOGONO SCHOOL OF FISHERIES	TEGASOGON, ORIENTAL MINDORO	805	20	27	24	3
4. SAN. F. LEVISTE MEM. HIGH SCHOOL	HEMERY, BATAVANS	3,641	91	121	26	4
5. A. R. APACILE SCHOOL OF FISHERIES	INAGSERO, BATAVANS	1,341	34	45	29	5
6. CALLAPAN SCHOOL OF ARTS & TRADES	CALLAPAN, ORIENTAL MINDORO	1,413	25	47	25	6
7. BAYEAY HIGH SCHOOL	BAYEAY, LEYTE	2,009	50	67	25	7
8. SUNBURY AGRIC. IND. SCHOOL	PALAPAS, NORTHERN SAMAR	908	23	30	23	8
9. MARINQUE SCHOOL OF ARTS & TRADES	BOAC, MARINQUE	1,841	46	61	23	9
10. JESSE G. ELEZIAS SCH. OF FISHERIES	TAGAYARAN, QUEZON	657	16	22	23	10
11. NATUYAYVA AGRIC. HIGH SCHOOL	ITORINAS, MARINQUE	1,184	30	39	19	11
12. LOPEZ PROVINCIAL HIGH SCHOOL	LOPEZ, QUEZON	1,965	50	66	18	12
13. PEDRO BERRULLA MEM. AGRIC. COLLEGE	CATUSIS, NORTHERN SAMAR	671	17	23	17	13
14. CAPUL AGRIC. INDUSTRIAL SCHOOL	CAPUL, NORTHERN SAMAR	663	17	22	17	14
15. DELAG NATIONAL HIGH SCHOOL	DELAG, LEYTE	1,324	33	44	17	15
16. TANALAN SCH. OF CRAFTSMANSHIP & H.I. (TANAUAN, LEYTE		1,279	32	43	16	16
17. RIZAL NATIONAL HIGH SCHOOL	RIZAL, OCCIDENTAL MINDORO	849	21	28	16	17
18. LOGO NATIONAL HIGH SCHOOL	LOGO, ROMBLON	1,671	42	54	16	18
19. ARBOLON NATIONAL HIGH SCHOOL	ARBOLON, ROMBLON	1,500	38	50	16	19
20. SURACA NATIONAL HIGH SCHOOL	SURACA, QUEZON	2,217	53	74	14	20
21. SORLAYAN NATIONAL HIGH SCHOOL	SORLAYAN, OCCIDENTAL MINDORO	576	14	19	13	21
22. LUBANG VOCATIONAL HIGH SCHOOL	LUBANG, OCCIDENTAL MINDORO	546	14	18	13	22
23. MERIDA VOCATIONAL SCHOOL	MERIDA, LEYTE	1,078	27	36	13	23
24. INFANTA PROVINCIAL HIGH SCHOOL	INFANTA, QUEZON	1,587	40	53	12	24
25. BATO SCHOOL OF FISHERIES	BATO, LEYTE	976	24	33	12	25
26. PANGSAR AGRIC. HIGH SCHOOL	PINAMPALAYAN, ORIENTAL MINDORO	584	14	19	12	26
27. LEUTERGO AGRIC. HIGH SCHOOL	ISOGONO, ORIENTAL MINDORO	650	17	22	11	27
28. MARUSLOT AGRIC. HIGH SCHOOL	PINAMPALAYAN, ORIENTAL MINDORO	583	14	19	10	28
29. RECTO PROVINCIAL HIGH SCHOOL	TIAGUE, QUEZON	1,327	33	45	10	29
30. KANANSA MUNICIPAL HIGH SCHOOL	KANANSA, LEYTE	795	20	27	10	30

PROPOSED EXPENDITURES OF TYPHOON-RESISTANT SCHOOL BUILDINGS FROM JAPANESE GRANT-IN-AID PROGRAM
PRIORITY LISTING OF SCHOOLS

PHASE II - DECS - REGIONS VIII, IV, II AND I

NO. OF SCHOOL	LOCATION	NO. OF PUPILS/STUDENTS (ENROLLMENT - 1987-1988)	NO. OF CLASSES	NO. OF TEACHERS	NO. OF CLASSROOMS NEEDED	PRIORITY NUMBER
131.	BACHOTAN NATIONAL HIGH SCHOOL BACHOTAN, LA UNION	2,021	51	57	10	31
132.	MAXAPUYAT BRGY. HIGH SCHOOL STA. CRUZ, MARINQUE	498	12	17	9	32
133.	TALIPAN BRGY. HIGH SCHOOL PABELLAN, QUEZON	1,050	26	35	9	33
134.	WRIGHT VOCATIONAL SCHOOL WRIGHT, SAMAR	577	17	23	8	34
135.	BOSON SCHOOL OF FISHERIES BOSON, NORTHERN SAMAR	638	16	21	9	35
136.	STA. CRUZ MUNICIPAL HIGH SCHOOL STA. CRUZ, OCCIDENTAL MINDORO	403	10	13	8	36
137.	SAN AUSTIN BRGY. HIGH SCHOOL NAJUAN, ORIENTAL MINDORO	387	10	13	8	37
138.	PAWASAN BRGY. HIGH SCHOOL DATHANGAN, ORIENTAL MINDORO	352	9	12	8	38
139.	WENDELEB ISLANDO MCR. NAT. H. S. LUNZEL, BATANGAS	1,580	40	53	8	39
140.	VILLAREAL MUNICIPAL HIGH SCHOOL VILLAREAL, SAMAR	520	13	17	7	40
141.	BALANGIGH NATIONAL AGRIC. SCHOOL BALANGIGH, EASTERN SAMAR	560	14	19	7	41
142.	PAUNAN MUNICIPAL HIGH SCHOOL PAUNAN, OCCIDENTAL MINDORO	353	9	12	7	42
143.	SAN JOSE NAT. AGRIC. & IND. SCHOOL SAN JOSE, OCCIDENTAL MINDORO	333	8	11	3	43
144.	ILAYA BRGY. HIGH SCHOOL BOAC, MARINQUE	272	7	9	7	44
145.	MASAPNISI BRGY. HIGH SCHOOL BONGORONG, ORIENTAL MINDORO	288	7	10	7	45
146.	SAVAGYIN BRGY. HIGH SCHOOL BONGARIO, BATANGAS	340	9	11	7	46
147.	TALISAN BRGY. HIGH SCHOOL BONGARIO, BATANGAS	1,035	26	35	7	47
148.	VILLA PAS-ASA BRGY. HIGH SCHOOL BANGSUD, ORIENTAL MINDORO	274	7	9	6	48
149.	KALITASAN BRGY. HIGH SCHOOL BONGORONG, ORIENTAL MINDORO	238	5	9	6	49
150.	LUKSUHIN BRGY. HIGH SCHOOL ICLATASAN, BATANGAS	216	5	7	6	50
151.	PAVAPA BRGY. HIGH SCHOOL LEMERY, BATANGAS	458	11	15	6	51
152.	GUINAYANGAN BRGY. HIGH SCHOOL GUINAYANGAN, QUEZON	697	17	23	6	52
153.	LUSARAN BRGY. HIGH SCHOOL TIANG, QUEZON	762	19	25	6	53
154.	MAGTINANG BRGY. HIGH SCHOOL MAGTINANG, ROMBLON	643	16	21	6	54
155.	LUCO NAT'L. SCHOOL OF FISHERIES LUCO, OCCIDENTAL MINDORO	339	6	8	6	55
156.	TILIX BARRANGAY HIGH SCHOOL LUBANG, OCCIDENTAL MINDORO	237	6	8	6	56
157.	ILING BARRANGAY HIGH SCHOOL SAN JOSE, OCCIDENTAL MINDORO	279	6	8	6	57

PROPOS. RECIPIENTS OF TYPHOON-RESISTANT SCHOOL BUILDINGS FOR THE JAPANESE SAKAY-IN-AID PROGRAM
 PRIORITY LISTING OF SCHOOLS

PHASE II - DECS - REGIONS VIII, IV, II AND I

NAME OF SCHOOL	LOCATION	NO. OF PUPILS/STUDENTS - ENROLLMENT - 1987-1988	NO. OF CLASSES	NO. OF TEACHERS	NO. OF CLASSROOMS NEEDED	PRIORITY NUMBER
158. SAN VICENTE BRBY. HIGH SCHOOL	ISARAYAN, OCCIDENTAL MINDORO	192	5	5	5	58
159. TIGWI BARANGAY HIGH SCHOOL	TORREJOS, MARINQUE	264	7	9	6	59
160. TAPUH BARANGAY HIGH SCHOOL	STA. CRUZ, MARINQUE	240	6	8	6	60
161. DOLORES BARANGAY HIGH SCHOOL	STA. CRUZ, MARINQUE	230	6	8	6	61
162. SAN ISIDRO AGRIC. INDUSTRIAL SCHOOL	SAN ISIDRO, NORTHERN SAMAR	445	11	15	5	62
163. R. LENTEGAS MEM. SCHOOL OF FISHERIES	CALBAYOG CITY	467	12	16	6	63
164. SAMAR NAT'L. SCH. OF ARTS & TRADES	TAFT, EASTERN SAMAR	492	12	16	6	64
165. CSM-AID JUNIOR AGRICULTURAL COLLEGE	TAFT, EASTERN SAMAR	484	12	16	6	65
166. TUBAO BARANGAY HIGH SCHOOL	TUBAO, LA UNION	577	14	19	6	66
167. BAKARA MUNICIPAL HIGH SCHOOL	BANDARA, SAMAR	427	11	14	5	67
168. DEBERNO BARANGAY HIGH SCHOOL	BOHENDO, CALBAYOG CITY	431	11	14	5	68
169. GIPORLAS NATIONAL TRADE SCHOOL	GIPORLOS, EASTERN SAMAR	418	10	14	5	69
170. LAWAN SCH. OF CRAFTSMANSHIP & H. S.	ILAWAN, EASTERN SAMAR	400	10	13	5	70
171. LALAWIGAN NATIONAL HIGH SCHOOL	LALAWIGAN, EASTERN SAMAR	395	10	13	5	71
172. HERMANI MUNICIPAL HIGH SCHOOL	HERMANI, EASTERN SAMAR	378	9	13	5	72

PROPOSED IMPROVEMENTS OF TYPHOON-RESISTANT SCHOOLBUILDINGS FROM JAPANESE GRANT-IN-AID PROGRAM
 PRIORITY LISTING OF SCHOOLS

PHASE III - DECS - REGIONS III, X AND XI

NAME OF SCHOOL	LOCATION	NO. OF PUPILS/STUDENTS (ENROLLMENT - 1937-1938)	NO. OF CLASSES	NO. OF TEACHERS	NO. OF CLASSROOMS NEEDED	PRIORITY NUMBER
1. JOSE ARAD SANTOS HIGH SCHOOL	ISAN FERNANDO, PAMPANGA	9,435	233	315	80	1
2. SURIGAO DEL SUR INST. OF TECH.	ICANTILAK, SURIGAO DEL SUR	1,300	33	42	51	2
3. TABOR M. ESTRELLA BRGY. HIGH SCHOOL	IBISLIG, SURIGAO DEL SUR	2,141	54	71	31	3
4. ABUINO MEMORIAL HIGH SCHOOL	ICONCEPTION, TARLAC	3,642	91	121	30	4
5. ZARAGOZA HIGH SCHOOL	IZARAGOZA, NUEVA ECIIJA	1,784	32	43	24	5
6. DR. RANGON DE SANTOS NAT. HIGH SCHOOL	ICUPAYAO, NUEVA ECIIJA	1,000	25	33	19	6
7. CABAYO HIGH SCHOOL	ICARIÑO, NUEVA ECIIJA	2,900	72	97	18	7
8. MEMORIAL CACIYAD SANSANAY HIGH SCHOOL	IPARAYAT, PAMPANGA	623	20	27	17	8
9. CLAYTON NATIONAL HIGH SCHOOL	ISURIGAO DEL NORTE	744	19	25	15	9
10. VICTORIA HIGH SCHOOL	IVICTORIA, TARLAC	2,322	58	77	13	10
11. DUNAGAT MUNICIPAL HIGH SCHOOL	ISAN JOSE, SURIGAO DEL NORTE	1,240	31	51	11	11
12. SAN RICARDO NATIONAL HIGH SCHOOL	ITALAYERA, NUEVA ECIIJA	714	16	24	11	12
13. CARSWATH NAT'L. SCH. OF ARTS & TRADE	ICARSWATH, SURIGAO DEL SUR	320	6	11	11	13
14. J.P. ELPA PROVINCIAL HIGH SCHOOL	ITANDAG, SURIGAO DEL SUR	2,030	51	58	10	14
15. BEN. TINIO NATIONAL HIGH SCHOOL	IGEN. TINIO, NUEVA ECIIJA	1,992	47	63	10	15
16. STS. MARIA ROSARIS HIGH SCHOOL	INACASESE, PAMPANGA	475	12	16	10	16
17. EDUO ROSARIS HIGH SCHOOL	IFLOJIDABLANCA, PAMPANGA	448	11	15	10	17
18. SAN PABLO 2ND ZARANBAY HIGH SCHOOL	ILUSAO, PAMPANGA	1,150	29	38	3	18
19. EDNA JUANA CHICO BRGY. HIGH SCHOOL	ILUPAO, NUEVA ECIIJA	1,055	27	35	6	19
20. G. DONNELL SANSANAY HIGH SCHOOL	ICRITAS, TARLAC	685	17	23	8	20
21. TALANG SANSANAY HIGH SCHOOL	ICARDAGA, PAMPANGA	341	9	12	7	21
22. CANDINALA ZARANBAY HIGH SCHOOL	ISAPALIT, PAMPANGA	374	9	12	7	22
23. TALABUTAE NORTE BRGY HIGH SCHOOL	IGEN. NATIVIDAD, NUEVA ECIIJA	343	6	11	7	23
24. BETIS ZARANBAY HIGH SCHOOL	IGASUSA, PAMPANGA	755	18	25	5	24
25. PUTLOS SAN JOSE BRGY. HIGH SCHOOL	ITAMEN, NUEVA ECIIJA	600	15	20	6	25

PROPOSED RECIPIENTS OF TYPHOON-RESISTANT SCHOOLBUILDINGS FROM THE JAPANESE GRANT-IN-AID PROGRAM
PRIORITY LISTING OF SCHOOLS

PHASE III - BECS - REGIONS III, X AND XI

NO. OF PUPILS/STUDENTS INVOLVED - 1957-1958	NO. OF CLASSES	NO. OF TEACHERS	NO. OF CLASSROOMS NEEDED	PRIORITY NUMBER
126. STE. DOMINGO NAT. TRADE SCHOOL BALAC, NUEVA ECIIJA	16	22	6	26
127. UNIDAD BARANGAY HIGH SCHOOL CABANIT, SURIGAO DEL SUR	8	11	8	27
128. ANUNDO BARANGAY HIGH SCHOOL TARLAC, TARLAC	8	10	6	28
129. TIRANERO BARANGAY HIGH SCHOOL BACOLOR, PAMPANGA	8	9	8	29
130. SAN RUBEN DAN BARANGAY HIGH SCHOOL LUBAO, PAMPANGA	13	18	5	30
131. SURBOS BARANGAY HIGH SCHOOL CORTES, SURIGAO DEL SUR	13	18	5	31
132. SAN FRANCISCO BRBY. HIGH SCHOOL SAN ANTON, NUEVA ECIIJA	13	17	5	32
133. MALLERCA BARANGAY HIGH SCHOOL SAN FERRANDO, NUEVA ECIIJA	10	12	5	33
134. SAPANG BARANGAY HIGH SCHOOL MENCADA, TARLAC	6	8	5	34
135. BEN. LUNA BARANGAY HIGH SCHOOL ILLANERA, NUEVA ECIIJA	5	6	5	35
136. MARIE PROVINCIAL HIGH SCHOOL MADRID, SURIGAO DEL SUR	23	30	4	36
137. ALVINO-ABUSO BARANGAY HIGH SCHOOL TARLAC, TARLAC	13	18	4	37
138. LINGIG PROVINCIAL HIGH SCHOOL LINGIG, SURIGAO DEL SUR	13	17	4	38
139. SISON PUEBLACION BARANGAY HIGH SCHOOL SISON, SURIGAO DEL NORTE	11	15	4	39
140. NAKIT NATIONAL HIGH SCHOOL SURIGAO DEL NORTE	11	15	4	40
141. PULONG SANTO I BARANGAY HIGH SCHOOL FORAD, PAMPANGA	11	15	4	41
142. CALURANG TETE BARANGAY HIGH SCHOOL KACABEBE, PAMPANGA	11	14	4	42
143. CAMPO BARANGAY HIGH SCHOOL BACUNAG, SURIGAO DEL NORTE	10	13	4	43
144. TABUNAG BARANGAY HIGH SCHOOL BERENA, TARLAC	10	13	4	44
145. SISTRERO BARANGAY HIGH SCHOOL BACOLOR, PAMPANGA	10	14	4	45
146. MASOAO BARANGAY HIGH SCHOOL MALINOG, SURIGAO DEL NORTE	6	8	4	46
147. TIYAN BARANGAY HIGH SCHOOL MINATRAH, SURIGAO DEL SUR	4	5	4	47
148. BUEHLAG BARANGAY HIGH SCHOOL BERENA, TARLAC	4	5	4	48
149. BARCELOMA BARANGAY HIGH SCHOOL LINGIG, SURIGAO DEL SUR	4	5	4	49
150. AMBALAN BARANGAY HIGH SCHOOL STA. JENEDIA, TARLAC	3	5	4	50
151. TABASAKA BARANGAY HIGH SCHOOL MINATRAH, SURIGAO DEL SUR	3	4	4	51

PROPOSED RECIPIENTS OF TYPHOON-RESISTANT SCHOOLBUILDINGS FROM THE JAPANESE GRANT-IN-AID PROGRAM
PRIORITY LISTING OF SCHOOLS

PHASE III - DECS - REGIONS III, X AND XI

NAME OF SCHOOL	LOCATION	NO. OF PUPILS/STUDENTS - ENROLLMENT - 1967-1968	NO. OF CLASSES	NO. OF TEACHERS	NO. OF CLASSROOMS NEEDED	PRIORITY NUMBER
152. DONA CARMEN BARANSAY HIGH SCHOOL	ICARMEH, SURIGAO DEL SUR	125	3	3	4	52
153. LIBERTY BARANSAY HIGH SCHOOL	LORETO, SURIGAO DEL NORTE	85	2	2	3	53
154. RAMOS BARANSAY HIGH SCHOOL	IRAMOS, TARLAC	434	11	11	14	54
155. ALEBRIA BARANSAY HIGH SCHOOL	ALEBRIA, SURIGAO DEL NORTE	345	9	9	12	55
156. LORETO MUNICIPAL HIGH SCHOOL	LORETO, SURIGAO DEL NORTE	311	8	8	10	56
157. SALVACION BARANSAY HIGH SCHOOL	ISAN AGUSTIN, SURIGAO DEL SUR	104	3	3	3	57
158. TIBODS BARANSAY HIGH SCHOOL	TIBODS, SURIGAO DEL NORTE	838	21	21	28	58
159. ASA BARANSAY HIGH SCHOOL	ITAGARAN, SURIGAO DEL NORTE	771	19	19	26	59
160. MALINDOG BARANSAY HIGH SCHOOL	MALINDOG, SURIGAO DEL NORTE	694	17	17	23	60
161. TAG-ABACA BARANSAY HIGH SCHOOL	TAG-ABACA, SURIGAO DEL NORTE	506	13	13	17	61
162. CARRASCAL MUNICIPAL HIGH SCHOOL	CARRASCAL, SURIGAO DEL SUR	454	11	11	15	62
163. TITANOGA BARANSAY HIGH SCHOOL	TITANOGA, SURIGAO DEL NORTE	427	10	10	14	63
164. PURISIMA BARANSAY HIGH SCHOOL	ITAGO, SURIGAO DEL SUR	265	7	7	9	64
165. LARY BARANSAY HIGH SCHOOL	ICAPAS, TARLAC	229	6	6	8	65
166. CADIANAO BARANSAY HIGH SCHOOL	CADIANAO, SURIGAO DEL NORTE	258	6	6	9	66
167. MANGBE BARANSAY HIGH SCHOOL	LINGIB, SURIGAO DEL SUR	194	5	5	6	67
168. CORTAFAY BARANSAY HIGH SCHOOL	MALINDOG, SURIGAO DEL NORTE	178	4	4	6	68
169. BUENAVISTA BARANSAY HIGH SCHOOL	ITANDAP, SURIGAO DEL SUR	170	4	4	6	69
170. LAWISAR BARANSAY HIGH SCHOOL	ISISLIG, SURIGAO DEL SUR	120	3	3	4	70
171. RIZAL MUNICIPAL HIGH SCHOOL	IRITIAL, SURIGAO DEL NORTE	129	3	3	4	71
172. MELGAR BARANSAY HIGH SCHOOL	MELGAR, SURIGAO DEL NORTE	96	2	2	3	72

PHASE III - 72 UNITS

1. REGION III - NUEVA ECILIA, PANGASCA, TARLAC - 36
2. REGION X - SURIGAO DEL NORTE - 16
3. REGION XI - SURIGAO DEL SUR - 10

PROPOSED RECIPIENTS OF TYPHOON-RESISTANT SCHOOLBUILDINGS FROM THE JAPANESE GRANT-IN-AID PROGRAM
PRIORITY LISTING OF SCHOOLS

PHASE IV - DECS - REGION VI

NAME OF SCHOOL	LOCATION	NO. OF PUPILS/STUDENTS - ENROLLMENT - (1967-1968)	NO. OF CLASSES	NO. OF TEACHERS	NO. OF CLASSROOMS NEEDED	PRIORITY NUMBER
1. DUMALAB VOCATIONAL & TECH. SCHOOL	DUMALAB, ILOILO	1,642	41	53	62	1
2. ANTIQUE NATIONAL SCHOOL	SAN JOSE, ANTIQUE	4,653	116	153	58	2
3. SOUTHERN ILOILO POLYTECHNIC COLLEGE	MIASA, ILOILO	1,954	47	65	38	3
4. NORTHERN ANTIQUE VOCATIONAL SCHOOL	ICULASI, ANTIQUE	1,050	26	33	49	4
5. LEON NATIONAL COLLEGE & AGRIC.	LEON, ILOILO	1,115	20	37	42	5
6. ALTAVO NATIONAL HIGH SCHOOL	ALTAVO, Aklan	1,798	43	57	26	6
7. PANAYAN BARANGAY HIGH SCHOOL	PANAYAN, CAPIZ	1,156	29	39	25	7
8. JARE HIGH SCHOOL	ILOILO CITY	21,418	60	714	23	8
9. LAMUNGO INST. OF SCIENCE & TECH.	LAMUNGO, ILOILO	2,137	53	71	23	9
10. SAN JOAQUIN SCHOOL OF FISHERIES	SAN JOAQUIN, ILOILO	800	15	20	20	10
11. IVISAN NATIONAL HIGH SCHOOL	IVISAN, CAPIZ	800	15	20	20	11
12. PONTEARRA BARANGAY HIGH SCHOOL	PONTEARRA, CAPIZ	1,014	25	34	19	12
13. NUBANEA NATIONAL SCH. OF FISHERIES	ILOILO	444	11	15	19	13
14. CORTERO BARANGAY HIGH SCHOOL	CORTERO, CAPIZ	933	23	31	16	14
15. BUKUNGA VOCATIONAL SCHOOL	BUKUNGA, Aklan	846	16	22	17	15
16. MANDURIAO HIGH SCHOOL	ILOILO CITY	1,227	31	41	16	16
17. ANTIQUE COLLEGE OF AGRICULTURE	ANTIQUE, ANTIQUE	505	13	17	15	17
18. LA PAL HIGH SCHOOL	ILOILO CITY	1,691	42	56	14	18
19. MALINAO SCHOOL OF PHIL. CRAFTSMAN	MALINAO, Aklan	876	12	14	11	19
20. SIENA NATIONAL HIGH SCHOOL	SIENA, CAPIZ	1,243	31	41	10	20
21. VICTORIANO SALCEDO NAT'L HIGH SCHOOL	BARO, ILOILO	1,202	30	40	8	21
22. TUBUSAN MUNICIPAL HIGH SCHOOL	TUBUSAN, ILOILO	892	23	33	8	22
23. STA. JUSTA BARANGAY HIGH SCHOOL	TUBIDAO, ANTIQUE	385	10	13	7	23
24. CALUNA BARANGAY HIGH SCHOOL	CALUNA, ANTIQUE	350	9	12	7	24
25. LERERY NATIONAL HIGH SCHOOL	LERERY, ILOILO	858	21	28	5	25

PROPOSED REPAIRS OF TYPHOON-RESISTANT SCHOOLBUILDINGS FROM THE JAPANESE GRANT-IN-AID PROGRAM
 PRIORITY LISTING OF SCHOOLS

PHASE IV - DECS - REGION VI

NAME OF SCHOOL	LOCATION	NO. OF PUPILS/STUDENTS (ENROLLMENT - 1987-1988)	NO. OF CLASSES	NO. OF TEACHERS	NO. OF CLASSROOMS NEEDED	PRIORITY NUMBER
126. DON JOSE SUSTEYER NORFERT N. H. S. BAROTAC NUEVO, ILOILO		417	10	14	6	26
127. SAN NICOLAS NATIONAL HIGH SCHOOL ITAPAZ, CAPIZ		335	8	11	6	27
128. BARANS-BANG BARANSAY HIGH SCHOOL ISAN DENIBIG, ANTIGUE		298	7	10	6	28
129. LINARAN NORTE BARANSAY HIGH SCHOOL KALIBO, AKLAN		275	7	10	6	29
130. MAAYON BARANSAY HIGH SCHOOL MAAYON, CAPIZ		1,160	29	39	5	30
131. PALADA-BAKILLISAG BARANSAY HIGH SCH. MIASAG, ILOILO		360	9	12	5	31
132. MALONEY BARANSAY HIGH SCHOOL IDAD, CAPIZ		340	9	11	5	32
133. ASTUGA BARANSAY HIGH SCHOOL BUNARAG, CAPIZ		299	7	10	5	33
134. BELA PAZ BARANSAY HIGH SCHOOL ISMATE, ILOILO		230	6	8	5	34
135. DAVA BARANSAY HIGH SCHOOL BARSA, AKLAN		224	6	8	5	35
136. PALBERRAMA MUNICIPAL HIGH SCHOOL WALBERRAMA, ANTIGUE		230	6	8	5	36
137. BUNSUAN BARANSAY HIGH SCHOOL BUNARAG, CAPIZ		222	6	8	5	37
138. BARASSAN BARANSAY HIGH SCHOOL TEBIAS FORNER, ANTIGUE		252	6	8	5	38
139. BIELON BARANSAY HIGH SCHOOL TEBIAS FORNER, ANTIGUE		221	6	7	5	39
140. JOSE TORRERO BARANSAY HIGH SCHOOL BALETE, AKLAN		222	6	7	5	40
141. MILAN BARANSAY HIGH SCHOOL BLENEY, ILOILO		219	5	7	5	41
142. HIPONA BARANSAY HIGH SCHOOL PONTENERA, CAPIZ		699	17	23	4	42
143. BIRAWAN NATIONAL HIGH SCHOOL BINGARAN, ILOILO		644	16	21	4	43
144. COL. RUFERTO ABELLA BRGY. HIGH SCH. LAMARAN, ANTIGUE		519	13	17	4	44
145. PILI BARANSAY HIGH SCHOOL BAY, ILOILO		243	6	8	4	45
146. CASASALAN BARANSAY HIGH SCHOOL MAAYON, CAPIZ		214	5	7	4	46
147. DANIELARIA BARANSAY HIGH SCHOOL ITAPAZ WEST, CAPIZ		212	5	7	4	47
148. DON BENJAMIN DALANONI BRGY. H. S. IARRAGA		214	5	7	4	48
149. BELONOR MONTINELA BRGY. HIGH SCHOOL CABATUAN, ILOILO		150	4	5	4	49
150. LUDERE BARANSAY HIGH SCHOOL BUNINDAN, CAPIZ		175	4	6	4	50
151. GORONDO BRGY. HIGH SCHOOL NEW WASHINGTON, AKLAN		155	4	6	4	51

PROPOSED RECIPIENTS OF TYPHOON-RESISTANT SCHOOLBUILDINGS FROM THE JAPANESE GRANT-IN-AID PROGRAM
PRIORITY LISTING OF SCHOOLS

PHASE IV - DECS - REGION VI

NAME OF SCHOOL	LOCATION	NO. OF PUPILS-STUDENTS (ENROLLMENT - 1987-1988)	NO. OF CLASSES	NO. OF TEACHERS	NO. OF CLASSROOMS	NO. OF CLASSROOMS NEEDED	PRIORITY NUMBER
152. PANAYAKAN BARANGAY HIGH SCHOOL	PANAYAKAN, Aklan	129	3	3	4	4	52
153. CANGARANAN BARANGAY HIGH SCHOOL	ITAPAZ EAST, CAPIZ	133	3	3	4	4	53
154. PARTIDON MUNICIPAL HIGH SCHOOL	ISUGRAL, Iloilo	138	3	3	5	4	54
155. ZULO NATIONAL HIGH SCHOOL	ISAN REMEID, ANTIGUE	345	9	9	12	3	55
156. PANG-PANG BARANGAY HIGH SCHOOL	ISIBALON, ANTIGUE	350	8	8	11	3	56
157. BARDIANGAN BARANGAY HIGH SCHOOL	IRAGA, Aklan	200	5	5	7	3	57
158. UNION BARANGAY HIGH SCHOOL	LIBERTAD, ANTIGUE	200	5	5	7	3	58
159. MALE BARANGAY HIGH SCHOOL	IBRABAY, Aklan	177	4	4	6	3	59
160. SAN PEDRO PILOT BRGY. HIGH SCHOOL	ISAN JOSE, ANTIGUE	324	8	8	11	2	60
161. BANTAN BARANGAY HIGH SCHOOL	IBUNRAD, CAPIZ	314	8	8	10	2	61
162. BATAK NATIONAL HIGH SCHOOL	IBATAN, Aklan	275	7	7	9	2	62
163. BALIT BARANGAY HIGH SCHOOL	IBAMBUSA, CAPIZ	265	7	7	10	2	63
164. TINUGOC BARANGAY HIGH SCHOOL	IDULASI, ANTIGUE	243	6	6	8	2	64
165. UNIDOS BARANGAY HIGH SCHOOL	IBASSA, Aklan	191	5	5	6	2	65
166. WALDO BARANGAY HIGH SCHOOL	IBARUBAY, Aklan	208	5	5	7	2	66
167. CALIO BARANGAY HIGH SCHOOL	IBALETE, Aklan	160	4	4	5	2	67
168. SOUTHERN BUBAYONG BRGY. HIGH SCHOOL	IBUGAYONG, ANTIGUE	156	4	4	5	2	68
169. NATSUD BARANGAY HIGH SCHOOL	IBARAY, Aklan	135	3	3	5	2	69
170. ARAS-ARAS BARANGAY HIGH SCHOOL	ITORIAS FORMIER, ANTIGUE	104	3	3	3	2	70
171. ESCADO BARANGAY HIGH SCHOOL	ITORIAS FORMIER, ANTIGUE	70	2	2	2	2	71
172. PUTIAN BARANGAY HIGH SCHOOL	IPANITAN, CAPIZ	30	1	1	1	1	72

PHASE IV - REGION VI - 72 UNITS

1. ILOILO - 21
2. AKLAN - 15
3. CAPIZ - 18
4. ANTIGUE - 18

PHASE V - 72 SCHOOLS/BUILDINGS

REGION I - BENSUET, ABRAS, MT. PROVINCE

36 UNITS

REGION II - ISABELA, CAGAYAN

36 UNITS

PROPOSED RECIPIENTS OF TYPHOON-RESISTANT SCHOOLBUILDINGS FOR THE JAPANESE GRANT-IN-AID PROGRAM
PRIORITY LISTING OF SCHOOLS

NAME OF SCHOOL	LOCATION	NO. OF PUPILS/STUDENTS (ENROLLMENT - 1987-1988)	NO. OF CLASSES	NO. OF TEACHERS	NO. OF CLASSROOMS NEEDED	PRIORITY NUMBER
1. MT. PROVINCE GEN. COM. HIGH SCHOOL	EDONTAG, MT. PROVINCE	1,652	41	55	21	1
2. ABRAS SCHOOL OF ARTS AND TRADES	IBANGARAO, ABRAS	1,258	31	42	12	2
3. BALAYAN AGRICULTURE SCHOOL	IBALAYAN, BENSUET	1,097	27	36	11	3
4. LALLO HIGH SCHOOL	ILALLO, CAGAYAN	927	23	31	11	4
5. ST. THOMAS NATIONAL HIGH SCHOOL	ISTO, TOMAS, ISABELA	903	23	30	11	5
6. SAN MARIANO COMMUNITY HIGH SCHOOL	ISAN MARIANO, ISABELA	481	17	22	9	6
7. ANDARAYAN EST. HIGH SCHOOL	ISOLANA, CAGAYAN	445	11	15	9	7
8. SUCAY NATIONAL HIGH SCHOOL	ISUCAY, ABRAS	1,400	35	47	8	8
9. LEFANTO HIGH SCHOOL	LEFANTO, BENSUET	905	23	30	8	9
10. DON MARIANO MARCOS NATIONAL HS	LEDAGUE, ISABELA	636	16	21	8	10
11. SAN MATEO VOCATIONAL SCHOOL	ISAN MATEO, ISABELA	614	15	20	8	11
12. SASSAO EST. HIGH SCHOOL	ISASSAO, CAGAYAN	713	18	24	7	12
13. CALABAN EST. HIGH SCHOOL	ICATTARAN, CAGAYAN	446	11	15	7	13
14. SAN ISIDRO NATIONAL HS	ISAN ISIDRO, ISABELA	513	13	17	6	14
15. SOLANA FRESHWATER FISHERY SCHOOL	ISOLANA, CAGAYAN	439	11	15	6	15
16. KAGORA NATIONAL HIGH SCHOOL	IKAGAYAN, BENSUET	438	11	15	6	16
17. DON MARIANO MARCOS EST. HIGH SCHOOL	IGATTARAN, CAGAYAN	426	11	14	6	17
18. PIMSAO EST. HIGH SCHOOL	ISABANGAN, MT. PROVINCE	311	9	10	6	18
19. SAN JOSE CATADESAN EST. HS	ISANABO, ABRAS	289	7	10	6	19
20. LEFANTO PROVINCIAL HIGH SCHOOL	INANKAYAN, BENSUET	907	27	30	5	20
21. DORDOVA EST. HIGH SCHOOL	ISAMOLONG, CAGAYAN	413	10	14	5	21
22. MONJI EST. HIGH SCHOOL	ISREYES, ISABELA	400	10	13	5	22
23. MANRIJAN EST. HIGH SCHOOL	ISANABLANCA, CAGAYAN	392	10	13	5	23
24. CALLANS COMMUNITY HIGH SCHOOL	ISAN MANUEL, ISABELA	417	10	14	5	24
25. SOSI EST. HIGH SCHOOL	ITUGUESARAO, CAGAYAN	416	10	14	5	25

PHASE V - 72 SCHOOLBUILDINGS

REGION I - BENGUET, ABRA, MT. PROVINCE

36 UNITS

REGION II - ISABELA, CAGAYAN

36 UNITS

PROPOSED RECIPIENTS OF TYPOGRAPH-RESISTANT SCHOOLBUILDINGS FROM THE JAPANESE GRANT-IN-AID PROGRAM
PRIORITY LISTING OF SCHOOLS

NO. OF	NO. OF	NO. OF	NO. OF	NO. OF	NO. OF	PRIORITY
TEACHERS	CLASSES	TEACHERS	CLASSES	TEACHERS	CLASSES	NUMBER
NO. OF	NO. OF	NO. OF	NO. OF	NO. OF	NO. OF	NUMBER
PIUPILS/STUDENTS	PIUPILS/STUDENTS	PIUPILS/STUDENTS	PIUPILS/STUDENTS	PIUPILS/STUDENTS	PIUPILS/STUDENTS	NUMBER
1987-1988	1987-1988	1987-1988	1987-1988	1987-1988	1987-1988	NUMBER
126. APUKONGAN BOY. HIGH SCHOOL	256	6	9	5	26	26
127. NORTHERN ABRA NATIONAL HIGH SCHOOL	705	16	24	4	27	27
128. ABRA HIGH SCHOOL	511	13	17	4	28	28
129. BARLIG BOY. HIGH SCHOOL	355	10	12	4	29	29
130. APUKONGAN BOY. HIGH SCHOOL	348	9	12	4	30	30
131. STA. ANA BOY. HIGH SCHOOL	331	8	11	4	31	31
132. SAN AGUSTIN NATIONAL HIGH SCHOOL	300	8	10	4	32	32
133. URAO BOY. HIGH SCHOOL	306	8	10	4	33	33
134. SAN ANTONIO BOY. HIGH SCHOOL	285	7	10	4	34	34
135. REDONCA BOY. HIGH SCHOOL	181	5	6	4	35	35
136. EVELIO NAVIER BOY. HIGH SCHOOL	193	5	6	4	36	36
137. KIRURGAN NATIONAL HIGH SCHOOL	197	5	7	4	37	37
138. TABQUITOD BOY. HIGH SCHOOL	198	5	7	4	38	38
139. ORPATACAN BOY. HIGH SCHOOL	185	5	6	4	39	39
140. PANBITO BOY. HIGH SCHOOL	163	4	5	4	40	40
141. TIEMPO BOY. HIGH SCHOOL	142	4	5	4	41	41
142. MASLA BOY. HIGH SCHOOL	157	4	6	4	42	42
143. BUSUBIAS-100 HERO-IND. SCHOOL	1,644	41	55	3	43	43
144. MANKAYAN NATIONAL HIGH SCHOOL	787	20	26	3	44	44
145. ALEJO PADALZO BOY. HIGH SCHOOL	510	13	17	3	45	45
146. SUINZADAN BOY. HIGH SCHOOL	487	12	15	3	46	46
147. PILAR RURAL HIGH SCHOOL	343	9	11	3	47	47
148. EASTERN BONTOC NAT. AGR. VOC. SCHOOL	374	9	12	3	48	48
149. MACONACON TRADE BOY. HIGH SCHOOL	246	6	8	3	49	49
150. GABU BOY. HIGH SCHOOL	244	6	8	3	50	50
151. MARIATI BOY. HIGH SCHOOL	239	6	8	3	51	51

PHASE V - 72 SCHOOLBUILDINGS

REGION I - BENSUET, ARA, MT. PROVINCE

36 UNITS

REGION II - ISABELA, CASAYAN

36 UNITS

COSED RECIPIENTS OF TYPHOON-RESISTANT SCHOOLBUILDING FROM THE JAPANESE GRANT-IN-AID PROGRAM

PRIORITY LISTING OF SCHOOLS

	NAME OF SCHOOL	LOCATION	NO. OF PUPILS/STUDENTS - ENROLLMENT - 1987-1988	NO. OF CLASSES	NO. OF TEACHERS	NO. OF CLASSROOMS NEEDED	PRIORITY NUMBER
152.	RIDWANG BOY. HIGH SCHOOL	IPARLONA, CASAYAN	251	6	6	6	52
153.	DARLAY BOY. HIGH SCHOOL	ISANTIAGO, ISABELA	235	4	4	4	53
154.	SAN ISIRO BOY. HIGH SCHOOL	ISAN ISIRO, ARA	187	5	5	5	54
155.	DORANDA BOY. HIGH SCHOOL	ISAN ROUSTIN, ISABELA	202	5	5	5	55
156.	PALAYAN BOY. HIGH SCHOOL	IALICIA, ISABELA	215	6	7	7	56
157.	IPIL BOY. HIGH SCHOOL	ISKINSA, CASAYAN	166	4	6	6	57
158.	ILLUSO BOY. HIGH SCHOOL	IRIAL, CASAYAN	152	4	5	5	58
159.	SINAFSIP BOY. HIGH SCHOOL	IBAGUIAS, BENSUET	122	3	4	4	59
160.	BAKUN BOY. HIGH SCHOOL	IBAKUN CENTRAL, BENSUET	116	3	4	4	60
161.	BELELO BOY. HIGH SCHOOL	IPILAR, ARA	116	3	4	4	61
162.	BELEWAY BOY. HIGH SCHOOL	IBOLINAY, ARA	100	3	3	3	62
163.	TUBA MUNICIPAL HIGH SCHOOL	ITUBA, BENSUET	245	6	8	8	63
164.	SET. PROSPERO BELLO BOY. HS	IBURES, ISABELA	183	5	5	5	64
165.	CAGUBATAN BOY. HIGH SCHOOL	ITADIAN, MT. PROVINCE	208	5	7	7	65
166.	FRANZA BOY. HIGH SCHOOL	IBALUPTRIP, ILOBOS, BENSUET	200	5	7	7	66
167.	HADUTAY BOY. HIGH SCHOOL	IBALACAPAN, CASAYAN	154	4	5	5	67
168.	CIDALORIA BOY. HIGH SCHOOL	IBAGADAHAN, ISABELA	178	4	6	6	68
169.	INELIA MARCOS BOY. HIGH SCHOOL	ISCHARGE, ISABELA	165	4	6	6	69
170.	TADIAN SCHOOL OF ARTS AND TRADES	ITADIAN, MT. PROVINCE	583	15	19	19	70
171.	JOSE MENCIO NATIONAL HIGH SCHOOL	IBATOK, BENSUET	485	12	16	16	71
172.	BACCARI MAT. AGR. TRADE SCHOOL	IBACCARI, MT. PROVINCE	348	9	12	12	72

APPENDIX 5. Minutes of Discussions

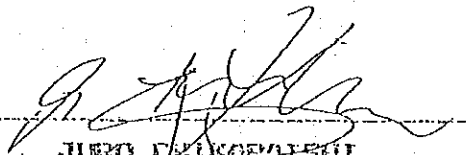
MINUTES OF DISCUSSIONS
ON
THE PROJECT FOR CONSTRUCTING PRIMARY
AND SECONDARY SCHOOLBUILDINGS
IN
THE REPUBLIC OF THE PHILIPPINES

MINUTES OF DISCUSSIONS
ON
THE PROJECT FOR CONSTRUCTING PRIMARY AND SECONDARY
SCHOOLBUILDINGS IN
THE REPUBLIC OF THE PHILIPPINES

In response to the request of the Government of the Republic of the Philippines, the Government of Japan decided to conduct a basic design study on the project for constructing primary and secondary schoolbuildings and the Japan International Cooperation Agency (JICA) sent to the Philippines the study team headed by Mr. Juro Chikaraishi, Second Basic Design Study Division, Grant Aid Planning & Survey Department, JICA from June 15 to July 4, 1988. The team had a series of discussions on the Project with the officials concerned of the Government of the Republic of the Philippines and conducted a field survey in Region V.

As a result of the study, both parties agreed to recommend to their respective Governments that the major points of understanding reached between them, attached herewith, should be examined towards the realization of the Project.

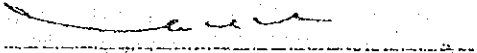
Manila, June 24, 1988



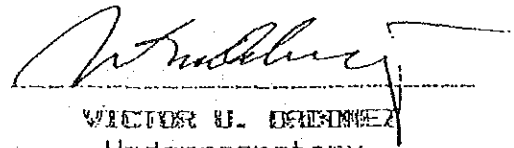
JURO CHIKARAISHI

Leader

Basic Design Study Team
Japan International Cooperation Agency



ADRIANO A. ARCELO
Undersecretary
DECS, Manila



VICTOR U. DALMACE
Undersecretary
DECS, Manila

ATTACHMENT

1. Project Title
The Project for Constructing Primary and Secondary Schoolbuildings
2. Objective of the Project
The objective of the Project is to construct typhoon-resistant pre fabricated schoolbuildings in Region V with basic furniture and equipment.
3. Related Organization
Responsible and Coordinating Agency for the Project:
Department of Education, Culture and Sports
Executing and Implementing Agency for the Project:
Department of Education, Culture and Sports
Department of Public Works and Highways
4. Names of the Schools where the schoolbuildings are to be Constructed
Proposed
Names of the primary and secondary schools where the schoolbuildings are to be constructed are as listed in Annex 1. *JK*
5. Project Sites
The project sites are located in areas shown in the map in Annex 2.
6. Major Items Requested for the Project
The major items requested for the Project are listed in Annex 3.
7. Tentative floor plans and perspective drawings for the primary and secondary schoolbuildings are shown in Annex 4.
8. Grant Aid Program
 - 1) The Philippine side has understood the system of Japan's Grant Aid Program and the principle for the use of Japanese consulting firm and contractor for the implementation of the Project.
 - 2) The team will convey to the Government of Japan the desire of the Government of the Philippines that the former takes necessary measures to cooperate in implementing the project and provides necessary facilities and equipment under the Japan's Grant Aid Program.
 - 3) The team confirmed that the Philippine Government would take necessary measures as listed in Annex 5 on condition that a Grant Aid by the Government of Japan would be extended to the Project.*MG* *JK*

ANNEX 1

PROPOSED RECIPIENTS OF TYPHOON RESISTANT BUILDINGS
FROM THE JAPANESE GRANT-IN AID PROGRAM
PHASE 1 -- REGION V (BICOL REGION)
FY 1989

NAME OF SCHOOL	LOCATION
<u>Elementary</u>	
1. Bacacay East Central School	Albay
2. Daraqa North Central School	Albay
3. Ligao West Central School (B)	Albay
4. Das South Central School	Albay
5. Daet North Central School	Camarines Norte
6. Vinzons Central School	Camarines Norte
7. Bato South Central School	Camarines Sur
8. San Jose E/S (Marcos Stadium)	Camarines Sur
9. Milaor Central School	Camarines Sur
10. Calabanga Central School	Camarines Sur
11. Sta. Magdalena Central School	Sorsogon
12. Irosin Central School	Sorsogon
13. Travesia Elementary School	Albay
14. Barcelona Central School	Sorsogon
15. Donsol East Central School	Camarines Sur
16. Bacon East Central School	Sorsogon
17. Bulan South Central School	Sorsogon
18. Balogo Elementary School	Sorsogon
19. Butag Elem. School	Sorsogon
20. Iriga City Central School	Camarines Sur
21. Bagumbayan Central School	Legaspi City
22. Naga City North Central Sch.	Camarines Sur

NAME OF SCHOOL	LOCATION
<u>Secondary Schools</u>	
1. Marcial D. Ranola Memorial School	Guinobatan, Albay
2. Polangui Gen. Comprehensive H.S.	Polangui, Albay
3. Tabaco National High School	Tabaco, Albay
4. School for Phil. Crafts	Albay
5. Catmon Egy. High School	Albay
6. Bariw Barangay High School	Albay
7. Cabasi Barangay High School	Albay
8. Cabasan Barangay High School	Albay
9. Libon Agro-Industrial High School	Libon, Albay
10. Malabog Barangay High School	Daraqa, Albay
11. Malipo Barangay High School	Guinobatan, Albay
12. Matacon Barangay High School	Polangui, Albay

- | | |
|--------------------------------------|-------------------------|
| 13. San Antonio Barangay High School | - Tabaco, Albay |
| 14. San Jose Barangay High School | - Albay |
| 15. San Lorenzo Barangay High School | - Tabaco, Albay |
| 16. Nagpanamba Barangay High School | - Albay |
| 17. Vinzons High School | - Camarines Norte (CN) |
| 18. Basud Barangay High School | - Camarines Norte |
| 19. Batobalani Barangay High School | - Paracale, C.N. |
| 20. Rizal Barangay High School | - Sta. Elena, C.N. |
| 21. Tulay Na Lupa Ergy. High Sch. | - Labo, Cam. Norte |
| 22. Nabua National High School | - Nabua, Cam. Sur (CS) |
| 23. Colaclang Barangay High Sch. | - Lupi, Cam. Sur |
| 24. Del Gallego Barangay High School | - Del Gallego, C.S. |
| 25. Milaor Barangay High School | - Milaor, Cam. Sur |
| 26. Falsong Barangay High School | - Bula, Cam Sur |
| 27. Salvacion Barangay High School | - Bato, Cam. Sur |
| 28. Salvacion Barangay High School | - Tigaon, Cam. Sur |
| 29. San Fernando Barangay High Sch. | - San Fernando, C.S. |
| 30. San Isidro Barangay High School | - Libmanan, Cam. Sur |
| 31. San Ramon Barangay High School | - Lagonoy, Cam. Sur |
| 32. Sta. Justina Barangay High Sch. | - Buhi, Cam. Sur. |
| 33. Sto. Tomas Barangay High School | - Camaligan, Cam. Sur. |
| 34. Sinuknipan Barangay High School | - Del Gallego, Cam. Sur |
| 35. Tawog Barangay High School | - Caramoan, Cam. Sur |
| 36. Tingubac Barangay High School | - Tinambac, Cam. Sur |
| 37. Malawag Barangay High School | - Nabua, Cam. Sur. |
| 38. Carolina Barangay High Sch. | - Naga City |
| 39. Hobo Barangay High School | - Naga City |
| 40. Barcelonita Fishery School | - Cam. Sur |
| 41. Bulan Voc. National H/S | - Bulan, Sorsogon |
| 42. Casiguran Voc. High School | - Casiguran, Sorsogon |
| 43. Gallanosa National H/S | - Irosin, Sorsogon |
| 44. Sorsogon National High School | - Sorsogon, Sorsogon |
| 45. Donsol Barangay High School | - Donsol, Sorsogon |
| 46. Magallanes School of Fisheries | - Magallanes, Sorsogon |
| 47. San Isidro Barangay High School | - Bulan, Sorsogon |
| 48. Pilar Productivity Dev't. School | - Pilar, Sorsogon |
| 49. San Francisco Barangay High Sch. | - Bulan, Sorsogon |
| 50. Pag-asa National High School | - Bulan, Sorsogon |

THE MAJOR ITEMS REQUESTED FOR THE PROJECT

1. Building and Equipment

(1) Primary School

Classrooms
Administration Office
Toilets (including septic tank)
Water Tank with Pump if necessary

(2) Secondary School

Classrooms
Science Laboratory with sinks
Workshop
Administration Office
Toilets (including septic tank)
Water Tank with Pump if necessary

2. Furniture

(1) Primary School

- Pupils' desks, chairs and side shelves
- Teachers' desks, chairs and closet
- Blackboards

(2) Secondary School

- Pupils' desks, chairs and side shelves
- Teachers' desks, chairs and closet
- Tables and stools for science laboratory
- Blackboards
- Work benches for workshop

THE MAJOR ITEMS REQUESTED FOR THE PROJECT

1. Building and Equipment

(1) Primary School

Classrooms
Administration Office
Toilets (including septic tank)
Water Tank with Pump if necessary

(2) Secondary School

Classrooms
Science Laboratory with sinks
Workshop
Administration Office
Toilets (including septic tank)
Water Tank with Pump if necessary

2. Furniture

(1) Primary School

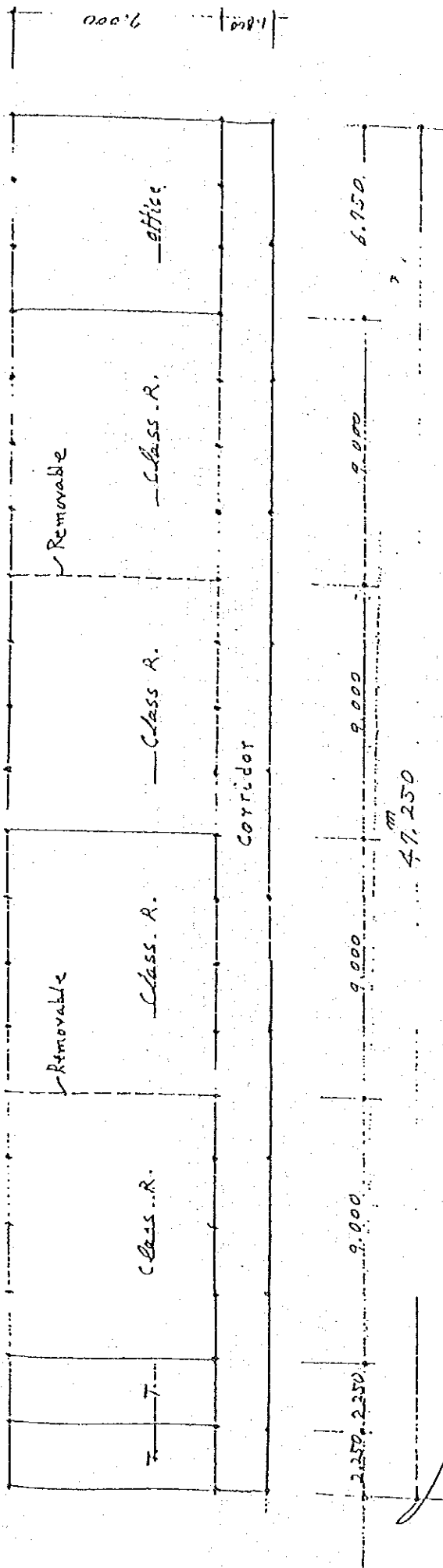
- Pupils' desks, chairs and side shelves
- Teachers' desks, chairs and closet
- Blackboards

(2) Secondary School

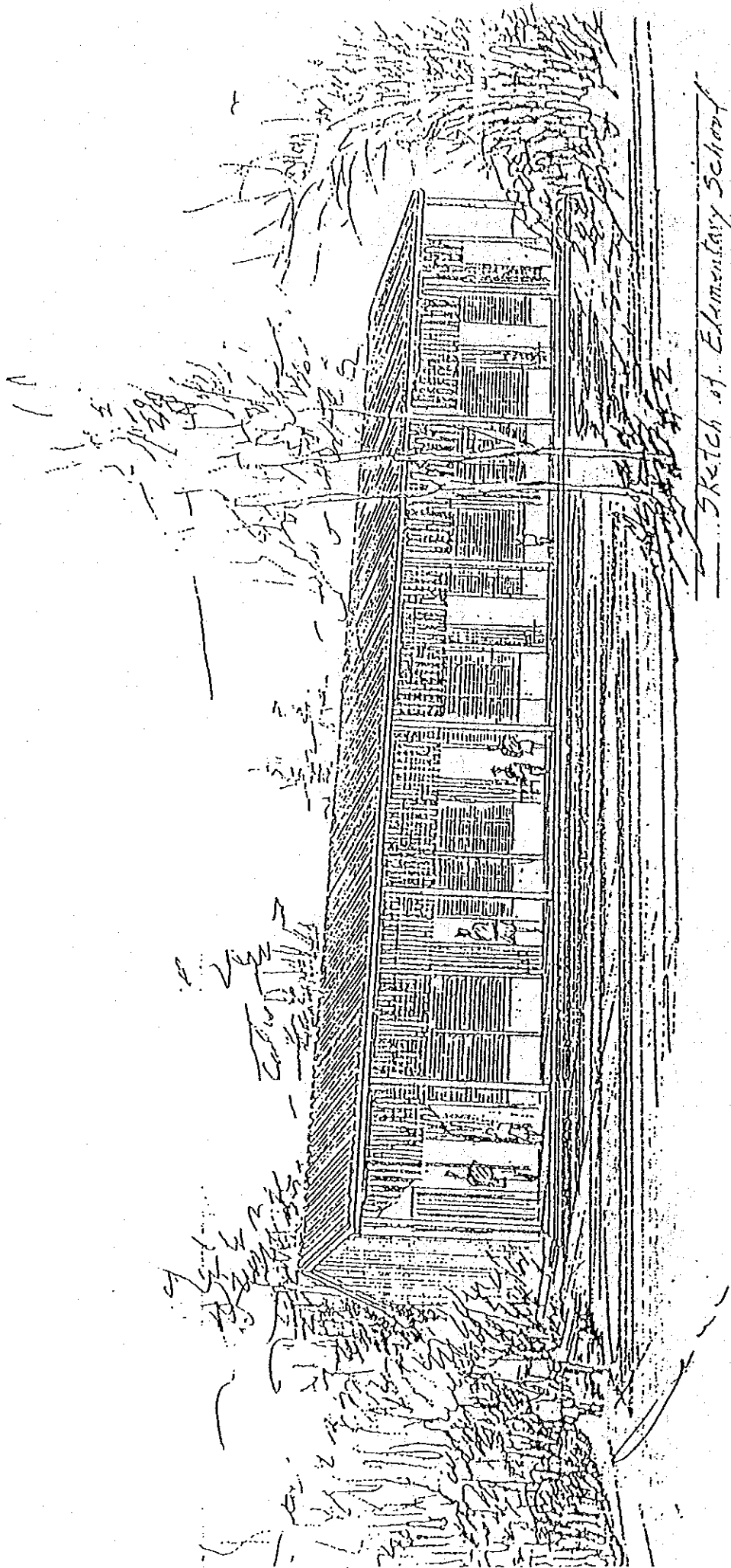
- Pupils' desks, chairs, and side shelves
- Teachers' desks, chairs and closet
- Tables, stools and workbenches for science laboratory and workshop
- Blackboards

Standard Type for Elementary School

ANNEX 4-1



JK



Sketch of Elementary School

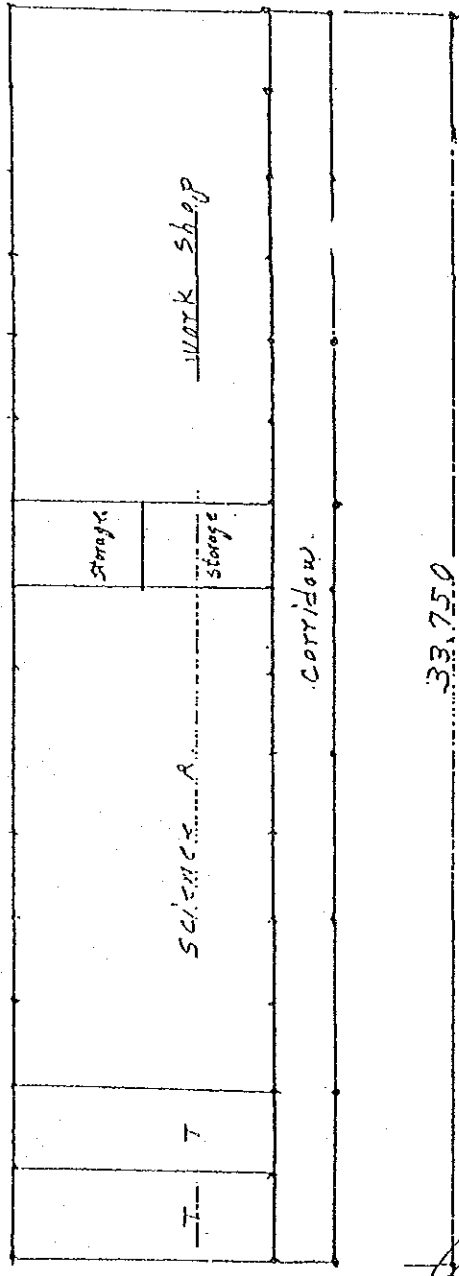
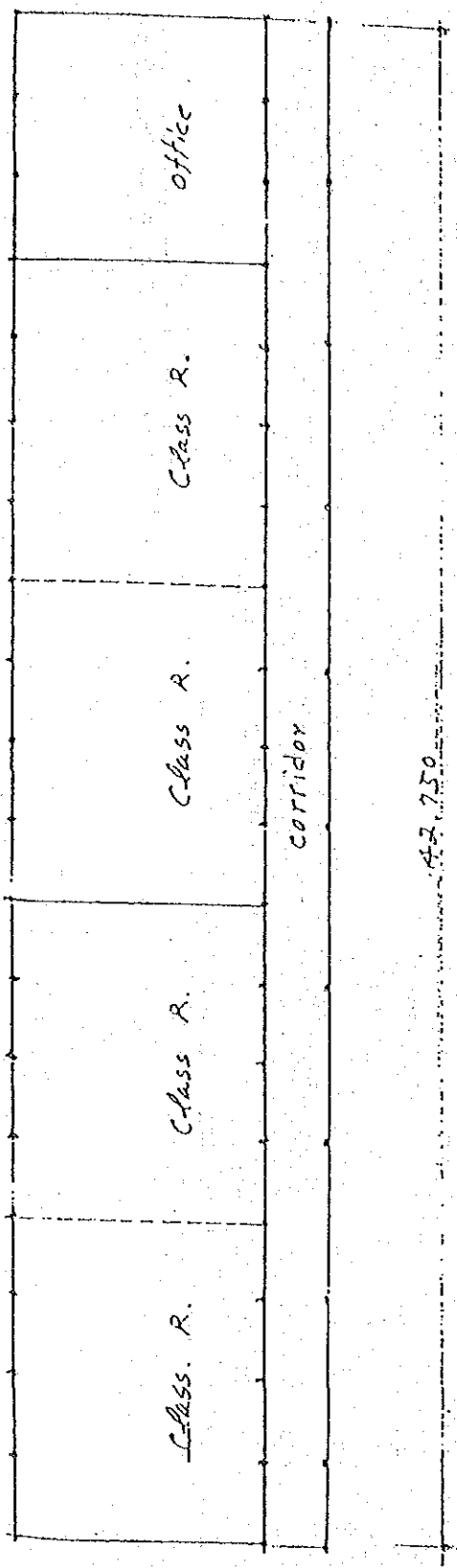
View

W

W

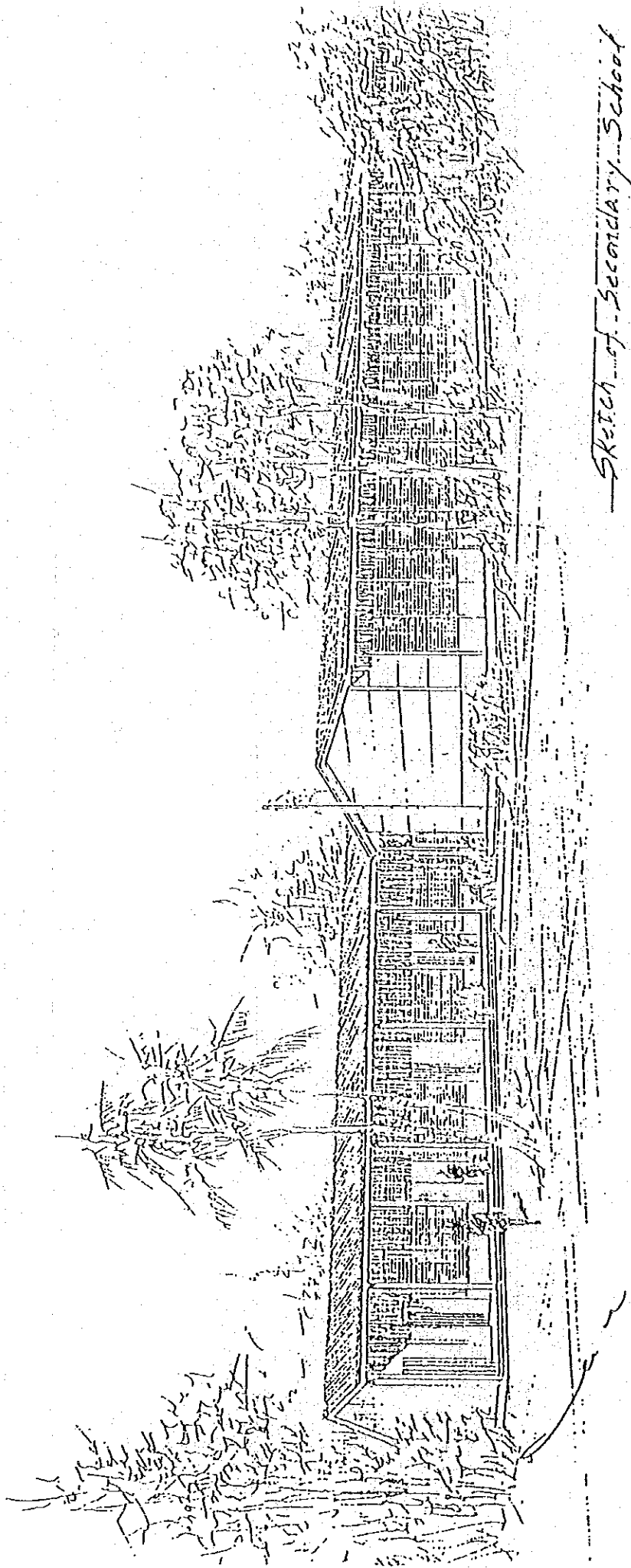
Standard Type for Secondary School

W



Handwritten signature or mark.

Handwritten signature or mark.



Sketch of Secondary School

[Handwritten signature]

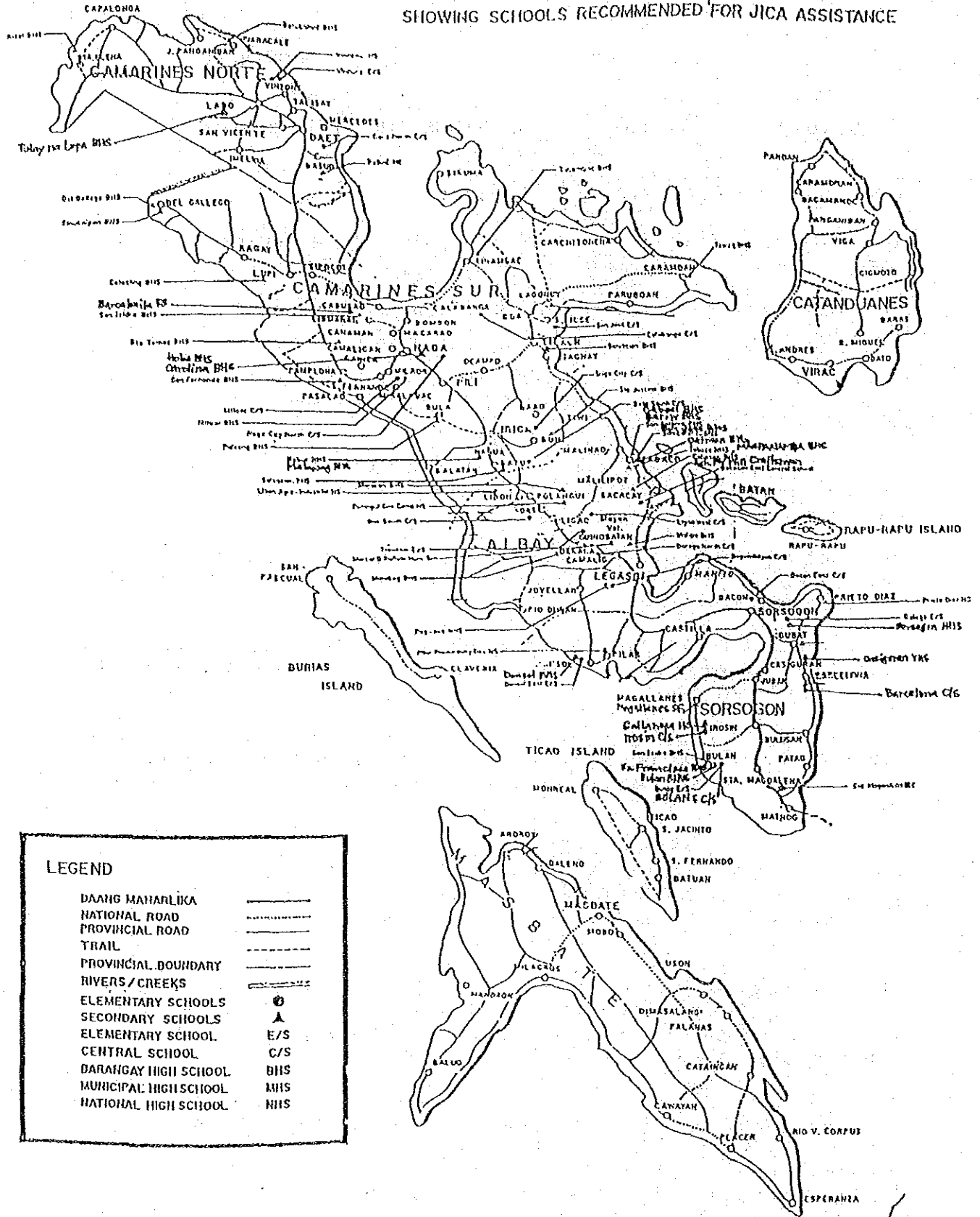
[Handwritten signature]

UNDERTAKINGS BY THE GOVERNMENT OF THE PHILIPPINES

1. To secure the sites for the Project
2. To clear, level and reclaim the site prior to the commencement of the construction.
3. To undertake incidental out-door works such as gardening, fencing, etc.
4. To construct access roads to the site prior to the commencement of construction (only in case it is not available).
5. To provide facilities for distribution of electricity, water supply, drainage and other incidental facilities to the site when needed.
6. To obtain building, occupancy and all necessary permits for the Project with respect to the laws and regulations in the Philippines.
7. To ensure necessary budget and personnel for the proper and effective maintenance of the schools and equipment provided under the Grant Aid.
8. To ensure prompt unloadings, tax exemptions, custom clearances at the port of disembarkation in the Philippines of the materials and the equipment provided under the Grant Aid.
9. To exempt Japanese nationals involved in the Project from customs duties, internal taxes and other fiscal levies which may be imposed in the Philippines with respect to supply of the equipment and services under the verified contracts.
10. To accord Japanese nationals whose services may be required in connection with the supply of the products and the services under the verified contracts such facilities as may be necessary for their entry to the Philippines and stay therein for the execution of the Project.
11. To bear commissions to the Japanese foreign exchange bank for the banking services based on the Banking Arrangement, *in accord with standard grant procedure.*
12. To bear all expenses other than those to be borne by the Grant, necessary for the construction of the schools as well as for the transportation and installation of equipment.

MAP OF REGION V

SHOWING SCHOOLS RECOMMENDED FOR JICA ASSISTANCE



LEGEND	
DAANG MAHARLIKA	—————
NATIONAL ROAD	—————
PROVINCIAL ROAD	—————
TRAIL	—————
PROVINCIAL BOUNDARY	—————
RIVERS / CREEKS	—————
ELEMENTARY SCHOOLS	○
SECONDARY SCHOOLS	▲
ELEMENTARY SCHOOL	E/S
CENTRAL SCHOOL	C/S
DARANGAY IIIII SCHOOL	BIIS
MUNICIPAL HIGH SCHOOL	MHS
NATIONAL HIGH SCHOOL	NHS

APPENDIX 6. List of Persons Interviewed

During the basic design study survey period, the Study Team interviewed the following personal:

1. Concerned personal of the Philippine

a) DECS

Mr. Victor U. Ordonez : Undersecretary
Dr. Adriano A. Arcelo : Undersecretary

• Office of the Planning Service (OPS)

Mr. Ramon C. Bacani : Assistant Secretary
Dr. Danilo G. Deterala : Senior Educational Planning Analyst
Mr. Felice M. Guiang : Coordinator, Project Technic Staff
Mr. Dominador Capinpin : Educational Project Evaluation Officer
Mr. Alberto M. Bantugan : Educational Planning Analyst

• Grants Administration Office

Ms. Ma. Lourdes T. Reyes : Head
Ms. Nori S. So : Project Officer

• Bureau of Elementary Education (BEE)

Dr. Juanita S. Guerrero : Director
Ms. Ida W. Matriano : Senior Educational Researcher

• Bureau of Secondary Education (BSE)

Mr. Faustino S. Nardo : Chief Educational Researcher
Mr. Augusto I. Virina : Senior Architect

b) Department of Public Works and Highways (DPWH)

Mr. Ramon V. Fontanilia, Jr. : Principal Architect
Mr. Lorenzo P. Espeleta : Chief Architect
Mr. Edillo C. Montemayor : Chief Civil Engineer
Mr. Gregorio O. Carrillo : Chief Civil Engineer
Mr. Renato T. Miraflores : Senior Civil Engineer Draftsman
Mr. Max B. Fajardo, Jr. : Project Manager IV

c) DECS, Region V

Ms. Desideria R. Rex : Regional Director
Mr. Honesto T. Aguilar : Assistant Chief TVED
Ms. Eleanor O. Padua : VES-1, Division of Legaspi City
Mr. Ernesto R. Bien : VES-1, Division of Camarines Sur
Mr. Manases O. Palamiano : GES-1, Division of Camarines Norte
Mr. Nicolas T. Amano : VES-1, Division of Albay
Mr. Bernardino F. Luces : GES-1, Division of Sorsogon
Mr. Jose J. Navol : VES-1, Division of Naga City

2. Resident representatives of the Japanese Government

a) Japanese Embassy in the Philippines

Mr. Yasuaki Tanizaki : First Secretary
Mr. Kazuyoshi Yamaguchi : Second Secretary

b) JICA Manila Office

Mr. Moriya Miyamoto : Resident Representative
Mr. Katsuhiko Oshima : Staff member
Mr. Tooru Saitoh : Staff member

APPENDIX 7. Collected Statistical Data

ELEMENTARY SCHOOL INFORMATION SHEET (Phase 1)

Recipient Schools	Expected Enrollment 1987/1988	No. of Teachers & Adm. Staff	No. of Pupil Classes	Ratio Science lab. Workshop	No. of Existing Usable Class Rms	No. of Existing Class Rms Damaged by Typhoon 1984-1986	No. of Existing Class Rms Damaged by Typhoon 1986	No. of Class Rms Needed	No. of Additional Class Rms Needed	Discribe Additional Water System in the School Class Bldgs.	School Building Program	
1. Ligo West C/S	1839/1877	78	2	1:28	23	0	33	2	2	Pipeline Service	14	33
2. Oas South C/S	883/ 878	39	28	1:35	18	1	22	10	10	& Deep Well	0	15
3. Milaor C/S	1017/1080	34	10	1:32	27	-	6	6	6	Deep Well	0	0
4. Calabanga Pilot C/S	944/1011	30	25	1:34	40	16	16	12	12	-	12	6
5. Travesia E/S	911/ 918	28	0	1:35	25	20	23	10	10	Pipeline	2	5
6. Bonsel East C/S	1095/1127	48	-	Prim. 1:34 Int. 1:26	26	13	27	2	2	Shallow Well Pump	0	1
7. Bacon East C/S	835/ 838	33	8	1:25	32	6	31	8	8	Pipeline	2	18
8. Balogo E/S	546/ 546	19	-	1:30	8	8	8	8	8	Pump Well	-	1
9. Butag E/S	492/539	16	-	1:36	12	0	4	7	7	Deep Well	-	H.E.
10. Bagumbayan C/S	1065	34	42	1:40	42	37	18	5	5	Well	3	6
11. Naga City North C/S	3068/3366	101	26	1:35	70	0	5	12	12	Deep Well w/ Pump & Water Tank	6	14
12. Vinzons Pilot E/S	1646/1658	50	-	1:34	39	20	19	10	10	Pipeline from Spring	-	17
13. Daet North C/S	2000/2200	68	1	1:30	48	3	3	13	13	Pipeline	-	-
14. Bato South C/S	1035/1092	37	0	1:40	26	10	4	6	6	Barowasa	0	0
15. Cogan C/S	894/980	32	8	1:29	27	27	13	8	8	Well Hand Pump	3	3
16. Bulan South C/S	2417/2438	69	16	1:37	35	35	12	13	13	Pipeline	4	10
17. San Jose E/S	617/720	21	0	1:40	17	14	12	6	6	Pipeline Available	0	0

ELEMENTARY SCHOOL INFORMATION SHEET (Phase 1)

Recipient Enrollment Expected Schools 1987/1988	No. of Teachers & Adm. Staff	No. of Existing Class Rms	Teacher No. of Pupil Ratio	No. of Existing Usable Class Rms	No. of Class Rms Damaged by the Typhoon 1984-1986	No. of Class Rms Damaged by the Typhoon 1986	No. of Class Rms Damaged by the Typhoon 1986	No. of Additional Class Rms Needed	Discribe Water System in the School	School Building Program
18. Bacacay East C/S	46	36	1:30	36	3	14	6	Pipeline	2	-
19. Daraga North C/S	64	48	1:38	36	23	24	15	Pipeline	1	22
20. Tabaco South C/S	78	64	1:41	14	0	54	14	Pipeline	2	3
21. Sta. Magdalena C/S	37	37	1:30	37	11	15	5	Pipeline	0	8
22. Pioduran West C/S	44	39	1:33	30	-	36	9	Well	0	12

ELEMENTARY SCHOOL INFORMATION SHEET (Phase 1)

RECIPIENT SCHOOLS	APPROXIMATE DIMENSION IN METERS	SITE AREA	SCHOOL SITE	OWNER	TERRAIN	SOIL/ROCKY	LEVELLING REQUIRED	ELECTRICITY AVAILABLE	TOTAL POPULATION 1988	DISTANCE TO SCHOOL	IF OTHER THAN TABACCO	MEDIUM OF TRANSPORTATION	ROAD CONDITION FROM THE PORT TO SCHOOL
			BY EXIST. SCHOOL		/HILLY /FLAT	/TYPE/SANDY /CLAYEY /OTHERS (SPECIFY)	/EXTENSIVE IN THE SCHOOL			THE TABACCO PORT IN KM.	SPECIFY THE NAME OF PORT A: AND DISTANCE B: TO SCHOOL.		
	LENGTH x WIDTH (M)	STRUCTURES PER SQ. M.	DECS	Flat	Clay Loam	None	Yes	Yes	1,877	28	Legaspi 30km.	A	A
1. Ligao West C/S	-	3,500	DECS	Flat	Clay Loam	None	Yes	Yes	1,877	28	Legaspi 30km.	A	A
2. Oas South C/S	145 x 75	1,557	DECS	Flat	Sandy	None	Yes	Yes	878	83	Legaspi 43km.	A	-
3. Milaor C/S	50 x 40	2,136	School	Flat	Clayey	None	Yes	Yes	1,096	143	Legaspi	A	A
4. Calabanga Pilot C/S	60 x 30	2,202	School	Flat	Clayey	Not Much	Yes	Yes	6,654	149	-	A	A
5. Travesia E/S	50 x 10	1,902	DECS	Flat	Sandy	None	Yes	Yes	916	-	Legaspi 20km.	A	A
6. Donsol East C/S	66 X 13	2,854	DECS	Flat	Sandy	None	Yes	Yes	1,127	82	-	A	A
7. Bacon East C/S	200 x 100	2,012	DECS	Flat	Locky & Sandy	None	Yes	Yes	838	97	None	A	A
8. Balogo E/S	70 x 20	992	DECS	Flat	Sandy & Clayey	None	Yes	Yes	546	96	-	A	A
9. Butag E/S	100 x 12	888	-	Flat	Sandy	None	Yes	Yes	2,700	162	-	A	A
10. Bagumbayan C/S	70 x 50	3,520	DECS	Flat	Sandy	None	Yes	Yes	1,065	28	Legaspi 2.5km.	A	A
11. Naga City North C/S	200 x 95	5,685	DECS	Flat	Clayey	None	Yes	Yes	3,467	102	None	-	-
12. Vinzons Pilot E/S	80 X 15	3,958	DECS	Flat	Sandy & Clayey	None	Yes	Yes	1,656	315	-	A	A
13. Daet North C/S	200 x 100	5,000	DECS	Flat	Loam Soil	Not Much	Yes	Yes	1,200 (Pupil)	199	-	-	-
14. Bato South C/S	253 x 125	1,588	School	Flat	Clayey	None	Yes	Yes	1,092	43	None	A	A
15. Gogon C/S	70 x 50	1,540	DECS	Flat	Sandy	None	Yes	Yes	990	26	-	-	-
16. Bulan South C/S	50 x 12	2,990	DECS	Flat	Sandy	None	Yes	Yes	2,438	145	None	A	A

ELEMENTARY SCHOOL INVESTIGATION

SCHOOLS	RECIPIENT APPROXIMATE SITE DIMENSION IN METERS		AREA SCHOOL SITE		SCHOOL SITE		OCCUPIED BY EXIST. SCHOOL	OWNER TERRAIN	SOIL/ROCKY TYPE/SANDY /CLAYEY /OTHERS (SPECIFY)	LEVELLING REQUIRED /EXTENSIVE IN /MUCH /NOT MUCH /NON	ELECTRICITY AVAILABLE IN THE SCHOOL	POPULATION 1988	TOTAL	DISTANCE TO IF OTHER SCHOOL FROM THE TABACO PORT IN KM.	NAME OF PORT A: BY LAND AND DISTANCE B: BY WATER TO SCHOOL	MEDIUM OF TRANS -PORTATION SITE	CONDITION FROM THE PORT TO SCHOOL
	LENGTH x WIDTH (M)		BLDG. & STRUCTURES PER SQ. M.	/HILLY /FLAT /ROLLING /OTHERS (SPECIFY)	DECS	DECS											
17. San Jose E/s	150 x 100		198		DECS	Flat	Clayey		Not Much	Yes	720 (Pupil)	116		Pasacao 35km.		A	B
18. Bacacay East C/S	60 x 10		3,398		-	Flat	Sandy		None	Yes	-	25		-		A	A
19. Daraga North C/S	268 x 104		2,576		Municipal	Flat	Sandy		Not Much	Yes	2,354	-		Legaspi 6km.		A	A
20. Tabaco South C/S	50 x 20		5,227		DECS	Flat	Sandy		None	Yes	3,237	1		-		A	A
21. Sta. Magdalena C/S	80 x 78		5,240		DECS	Flat	Sandy		Not Much	Yes	925	200		-		A	A
22. Pioduran West C/S	50 x 20		2,084		Decs	Flat	Clayey		Not Much	Yes	-	83		-		-	-

SECONDARY SCHOOL INFORMATION SHEET (Phase I)

Recipient Schools	Expected Enrollment 1987/1988	No. of Teachers & Adm. Staff	Teacher No. of -Pupil Ratio	No. of Existing Class Rms Science lab. Workshop	No. of Existing Class Rms Usable	No. of Class Rms Damaged by the Typhoon 1984-1986	No. of Class Rms. Damaged by the Typhoon 1984-1986	No. of Class Rms. Needed	Discribe Additional Water System in the School Class Bldgs.	School Building Program	
										Repair	
										Room	
										Room	
										Room	
1. Marcial O. 2529/2896 Renola M/S	3035	107	1:38	3	39	35	-	10	50	16	8
2. Malabog BHS	620/ 670	19	1:33	15	6	6	0	6	12	12	0
3. Colealing HS	327/ 327	9	1:35	-	2	2	2	2	6	-	-
4. Prieto Diaz HS	755	19	1:50	0	7	5	3	11	6	0	0
5. San Francisco BHS	284/ 307	7	1:44	2	0	0	5	5	8	-	-
6. Rizal BHS	480/ 600	14	-	1	9	7	2	2	5	-	-
7. Basud BHS	823/1200	19	-	1	12	10	-	2	4	-	-
8. San Lorenzo BHS	608/ 640	12	1:56	12	3	3	-	2	9	3	0
9. Pag-asa NHS	938/1415	47	1:44	0	14	14	-	4	9	0	4
10. Polangui Gen. Comp. HS	3347/3716	96	1:25	-	43	43	6	14	14	-	-
11. Salvaion BHS	375/ 391	8	1:50	0	0	0	4	8	10	0	0
12. Nabua NHS	3484/3779	130	1:58	71	24	24	-	12	44	56	17
13. Salvacion BHS	354/ 541	12	1:49	7	4	4	-	4	9	-	-
14. Tinambao BHS	687/ 900	20	1:45	0	6	6	8	12	15	0	0
15. San Ramon NHS	352/ 446	11	1:45	10	1	0	1	9	6	1	0
16. Del Gallego BHS	487/ 543	-	1:49	1	6	6	3	3	15	-	-
17. San Isidro BHS	528/ 665	12	1:55	1	7	7	4	1	10	0	0

SECONDARY SCHOOL INFORMATION SHEET (Phase 1)

Recipient Schools	Enrollment 1987/1988	Expected	No. of Teachers & Adm. Staff	No. of Classes	Ratio Science Lab. Workshop	No. of Existing Class Rms	No. of Existing Usable Class Rms	No. of Existing Class Rms Damaged by Typhoon 1984-1986	No. of Class Rms Needed	No. of Additional Class Rms. System in Construction	Discribe Additional Water	School Building Program
18. Milor NHS	424/480	490	11	10	1:50	2	2	-	8	2	Deep Well	0
19. Sinuknipan BHS	301/350	400	9	0	1:45	0	0	0	12	0	Not Available	0
20. Sta. Justina HS	305/305	350	9	0	1:34	0	0	0	8	0	Not Available	0
21. Palsong MSS	400/415	425	10	9	1:45	3	0	3	7	0	Pipeline	3
22. Sto. Tomas BHS	515/601	-	13	-	1:46	7	7	2	8	0	Well w/ Pump	0
23. Tawog HS	422/566	750	14	0	1:55	2	3	3	14	2	Well w/ Pump	3
24. San Fernando BHS	411/483	460	9	9	1:66	5	3	5	12	-	Not Available	-
25. San Isidro BHS	163/193	229	8	-	1:28	0	0	-	6	0	Pipeline	0
26. Pilar Prod. Dev't HS	383/628	928	16	1	1:6	7	7	7	11	4	Well w/ Pump	3
27. Casiguran Voc'l HS	933/980	1200	44	1	1:33	28	18	10	12	3	Spring Water	-
28. Bulan Voc'l HS	2050/2351	-	101	47	1:50	36	30	16	27	0	Pipeline	0
29. Masarawag HS	267/300	370	13	7	1:23	4	4	3	4	4	None	-
30. Libon A. I. HS	214/237	400	13	4	1:45	9	6	3	4	-	Deep Well w/ Pump	-
31. Saban HS	267/300	370	13	7	1:23	4	4	3	4	4	None	-
32. Malipo HS	- / 303	-	7	0	1:43	0	-	-	7	-	Well	-
33. Matacon HS	360/407	440	6	0	1:68	1	1	0	8	0	Well	0
34. San Antonio HS	- / 403	-	13	-	1:33	-	-	-	5	-	Pipeline	-

SECONDARY SCHOOL INFORMATION SHEET (Phase 1)

Recipient Schools	Expected Enrollment 1987/1988	No. of Teachers & Adm. Staff	Teacher No. of Ratio	No. of Existing Class Rms	No. of Existing Usable Class Rms	No. of Class Rms Damaged by Typhoon 1984-1986	No. of Class Rms. Damaged by the Typhoon 1984-1986	No. of Class Rms. Needed	Additional Class Rms. Needed	Discribe Water System in the School	School Building Program	
35. Gallanosa HS	2612/2794 2928	80	1:50	0	34	31	14	8	19	Deep Well	4	2
36. Batabalani HS	345/402 460	12	1:50	9	7	6	0	2	3	Available	-	-
37. Abuyog HS	160/174 200	6	1:30	0	0	0	0	3	4	None	4	0
38. Sorsogon NHS	4746/4631 5691	112	1:60	40	26	26	15	51	110	Pipeline	-	76
39. Vinzons HS	1027/1161 1300	39	1:45	19	19	18	4	2	10	Pipeline	10	19
40. Rizal HS	313/337 372	9	1:42	-	5	4	0	8	4	Well	8	0
41. Tabaco NHS	3786/3972 4000	126	1:40	14	60	60	10	13	30	Pipeline	9	15
42. Cavasi HS	250/260 400	6	-	-	3	3	-	-	7	Available	-	-
43. Macalaya HS	- / 225 250	6	1:40	0	6	2	4	2	4	Well w/ Pump	4	0
44. Robo HS	328/315 -	8	1:39	0	-	7	7	7	10	None	-	-
45. Bario HS	341/451 500	8	1:56	-	4	-	-	-	10	Well w/ Pump	0	0
46. Pautiba HS	- -	-	-	0	3	-	-	-	-	None	-	-
47. La Purisima HS	389/ - 450	12	1:32	10	-	4	-	2	10	Well w/ Pump	0	2
48. Malansad Niavo HS	231/231 260	6	1:43	0	0	0	0	0	10	Well w/ Pump	0	0
49. Matacong HS	161/217 300	8	1:31	No School Building yet								
50. Bagacay BHS	210/248 260	7	1:35	0	0	0	8	8	8	Well	0	0

SECONDARY SCHOOL INFORMATION SHEET (Phase 1)

SCHOOLS	RECIPIENT APPROXIMATE DIMENSION IN METERS	AREA OCCUPIED BY EXIST. SCHOOL	SCHOOL SITE OWNER TERRAIN	SOIL/ROCKY TYPE/SANDY /CLAYEY /OTHERS (SPECIFY)	LEVELLING REQUIRED /EXTENSIVE IN THE SCHOOL	ELECTRICITY AVAILABLE IN THE SCHOOL	POPULATION TOTAL 1988	DISTANCE TO SCHOOL FROM TABACO PORT IN KM.	IF OTHER THAN TABACO SPECIFY THE PORT NAME AND DISTANCE TO SCHOOL.	DESCRIBE THE ROAD CONDITION FROM THE PORT TO SCHOOL		
										MEDIUM OF TRANS -PORTATION SITE	BY LAND	BY WATER
1. Marcial O. Ranola MS	353 x 241	20,000	DECS Flat	Sandy	Not Much	Yes	3,035	45	-	A	A	A
2. Malabog BHS	120 x 30	0	PTA Flat	Sandy	Not Much	Yes	670	35	10	A	A	A
3. Cololing HS	200 x 100	96	School Flat	Clayey	None	No	327	170	-	-	-	-
4. Prieto Diaz HS	50 x 10	-	- Flat	Sandy	None	Yes	-	130	-	-	-	-
5. San Francisco BHS	100 x 100	0	School Flat	Clayey	None	Yes	307	144	Bulan Port	-	-	-
6. Rizal BHS	60 x 50	3,000	DECS Flat	Clayey	Not Much	Yes	600	297	-	-	-	-
7. Basud BHS	60 x 50	3,000	- Flat	Clayey	Not Much	Yes	1,080	124	-	-	-	-
8. San Lorenzo BHS	100 x 96	500	DECS Flat	Sandy	Not Much	Yes	640	2.5	None	A	A	A
9. Pag-asa NHS	74 x 74	900	PNHS Flat	Clayey	None	Yes	1,500	24	Legazpi 3km.	A	A	A
10. Polangui Gen. Comp. HS	50 x 10	1,650	PGCHS Flat	Sandy	Not Much	Yes	3,761	40	Legazpi	-	-	-
11. Salvaion BHS	100 x 100	0	DECS Hilly	Clayey	Extensive	Yes	391	50	-	A	A	A
12. Nabua NHS	60 x 15	20,000	DECS Flat	Clayey	Backfilling	Yes	3,779	60	Legazpi 42km.	A	A	A
13. Salvacion BHS	70 x 70	195	DECS Flat (Partially Locky)	Clayey	None	Yes	541	120	-	A	A	A
14. Tinambao BHS	400 x 100	432	TVBHS Flat	Sandy Loam	Not Much	Yes	900	135	Pasacao Cam. Sur. Port 82km.	A	A	A
15. San Ramon NHS	100 x 100	48	PTA Flat	Sandy	Not Much	Yes	446	175	-	A	A	A
16. Del Gallego BHS	69 x 7	-	DECS Flat	Clayey	Not Much	Yes	543	-	-	By Train	A	-
17. San Inidro BHS	60 x 14	456	DECS Flat	Clayey Roam	None	Yes	665	170	-	A	A	A

SECONDARY SCHOOL INFORMATION SHEET (Phase 1)

RECIPIENT SCHOOLS	APPROXIMATE DIMENSION IN METERS	SITE AREA BY EXIST. SCHOOL BLDG. & STRUCTURES (M) PER SQ. M.	SCHOOL SITE OCCUPIED OWNER	TERRAIN /HILLY /FLAT /ROLLING /OTHERS (SPECIFY)	SOIL/ROCKY TYPE/SANDY /CLAYEY /OTHERS (SPECIFY)	LEVELLING REQUIRED /EXTENSIVE IN TNE /NOT MUCH /NON	ELECTRICITY AVAILABLE IN TNE SCHOOL /YES /NO	ELEVATION	DISTANCE TO IF OTHER SCHOOL FROM THAN TABAGO THE TABAGO SPECIFY THE PORT IN KM. NAME OF PORT AND DISTANCE TO SCHOOL	MEDIUM OF TRANS -PORTATION SITE	CONDITION FROM THE PORT TO SCHOOL
18. Millaor NHS	125 x 100	84	School	Flat	Clayey	Elevation Yes	Yes	480	143	Legaspi	A
19. Sinuknipan BHS	175 x 57	0	DECS	Rolling	Clayey	Not Much	No	350	300	Pasacao	C
20. Sta Junstina HS	100 x 100		School	Flat	Clayey	None	No	305	97	-	-
21. Palsong NSS	90 x 6	48	DECS	Flat	Sandy	None	Yes	415	200	None	A
22. Sto. Tomas BHS	84 x 17	384	DECS	Flat	Clayey	None	Yes	601	180	None	A
23. Tawog HS	70 x 40	63	Donated	Flat	Clayey	None	Yes	566	100 (By Sea)	Sabang Port 50km. by Sea	A
24. San Fernando BHS	120 x 80	210	School	Flat	Clayey	None	Yes	460	113	Pasacao Port	A
25. San Isidro BHS	121 x 77	0	DECS	Flat	Clayey	None	No	-	136	-	A
26. Pilar Prod. Dev't HS	200 x 20	10,650	School	Rolling	Rocky, Clayey Loam	None	No	628	-	Legaspi Port 35km.	B
27. Casiguran Voc'l HS	100 x 50	2,000	DECS	Flat	Clayey	Not Much	Yes	980	100	Sorsogon 19km.	-
28. Bulan Voc'l HS	Irregular	15,000	DECS	Flat	Clayey	Not Much	Yes	2,351	80	-	-
29. Masarawag HS	202 x 50	0	DECS	Flat	Clayey	Not Much	Yes	258	45	-	A
30. Libon A. I. HS	139 x 85	572	DECS	Flat	Sandy	None	No	400	65	Legaspi Port 48km.	A
31. Saban HS	50 x 15	205	School	Flat	Sandy	None	No	300	50	-	-
32. Malipo BHS	50 x 20	0	DECS	Flat	Clayey	Not Much	Yes	303	52	-	-
33. Matacon HS	40 x 25	-	MBAS	Flat	Clayey	None	Yes	3,048	58	-	-

SECONDARY SCHOOL INFORMATION SHEET (Phase 1)

SCHOOLS	RECIPIENT APPROXIMATE SITE		AREA		SCHOOL SITE		SOIL/ROCKY TYPE/SANDY/CLAYEY/Others (SPECIFY)	LEVELLING REQUIRED /EXTENSIVE IN THE /MUCH /NOT MUCH /NON /NO	ELECTRICITY AVAILABLE IN THE SCHOOL	POPULATION 1988	DISTANCE TO IF OTHER THAN TABACO PORT IN KM.	MEDIUM OF TRANSPORTATION	CONDITION FROM THE PORT TO SCHOOL
	DIMENSION IN METERS	WIDTH (M)	STRUCTURES PER SQ. M.	OWNER	TERRAIN	TYPE/SANDY/CLAYEY/Others (SPECIFY)							
34. San Antonio HS	50 x 20	-	-	DECS	Flat	Clayey	Not Much	Yes	403	7	-	-	-
35. Gallanosa HS	-	1234	1234	DECS	Flat	Sandy Loam	Not Much	Yes	2,794	153	Bulan Port 21km.	-	-
36. Batobalani BHS	108 x 100	452	452	DECS	Flat	Clayey	None	Yes	402	223	-	-	-
37. Abuyog HS	50 x 15	189	189	School	Flat	Clayey	None	No	174	85	-	-	-
38. Sorsogon NHS	-	5,968	5,968	DECS	Flat	Sandy	None	Yes	4,631	80	-	-	-
39. Vinrons HS	500 x 280	30,000	30,000	DECS	Flat	Sandy Loam	Not Much	Yes	1,161	208	J. Paganiban 35km.	-	-
40. Rizal HS	50 x 40	210	210	DECS	Flat	Sandy	None	Yes	337	104	-	-	-
41. Tabaco NHS	70 x 25	40,000	40,000	DECS	Flat	Clayey	Not Much	Yes	-	1	-	-	-
42. Cavasi HS	-	48	48	School	Flat	Sandy	None	Yes	260	-	-	-	-
43. Macalaya HS	90 x 40	200	200	DECS	Flat	Sandy	Not Much	No	-	59	-	-	-
44. Hobo HS	200 x 100	0	0	School	Hilly	Clayey	Not Much	Yes	315	130	None	-	-
45. Bariw BHS	150 x 10	192	192	DECS	Flat	Clayey	Not Much	Yes	451	46	Legaspi 20km.	-	-
46. Pauiba BHS	-	-	-	School	Flat	Clayey	Not Much	Yes	-	43	-	-	-
47. La Purisima HS	100 x 50	96	96	School	Flat	Clayey	Not Much	Yes	389	90	None	-	-
48. Malansad Niveo HS	100 x 50	0	0	School	Flat	Sandy	None	No	231	125	-	-	-
49. Matacong HS	100 x 100	-	-	DECS	Flat	Clayey	Not Much	Yes	160	217	-	-	-
50. Bagacay BHS	-	-	-	School	Rolling	Clayey	Much	Yes	3,000	13	-	-	-

JICA