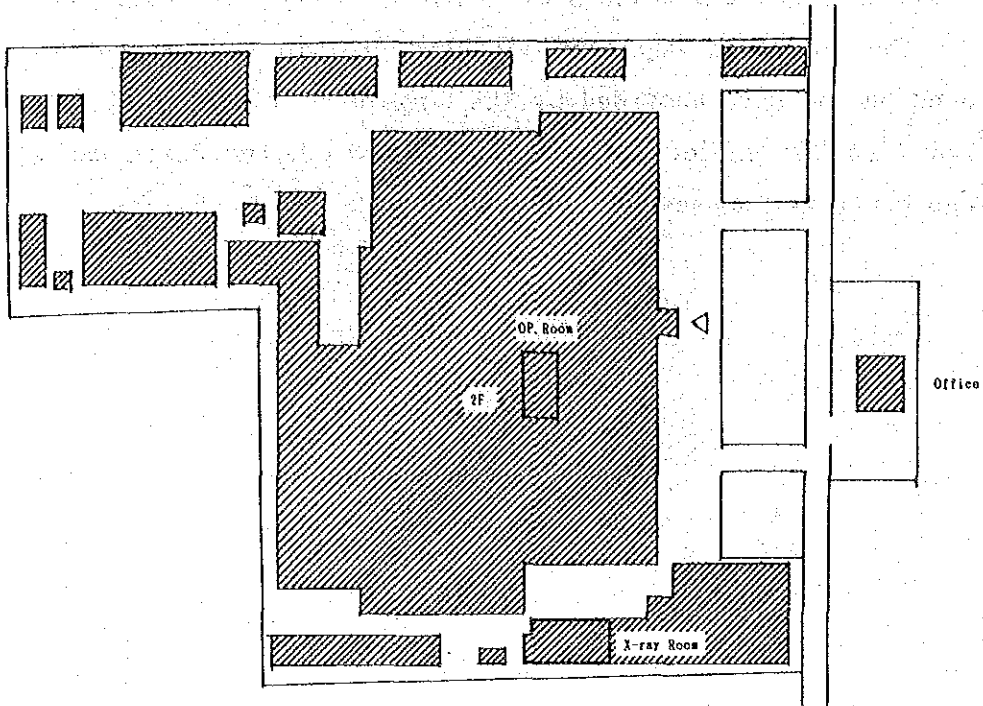


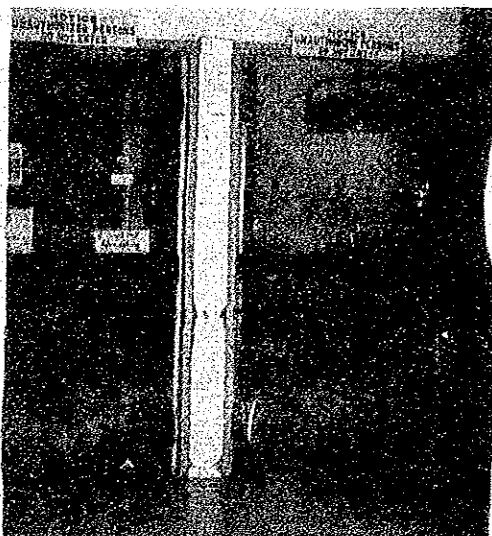
(4) Outline of Present Situation of the Other Subjected Facilities

The following maps and pictures explain the present situation based on the data provided by the Government of the Philippines with regard to the subjected facilities on which the Basic Design Study Team could not survey.

1. Gov. Teofilo Sison Memorial Hospital PLOT PLAN



Outward



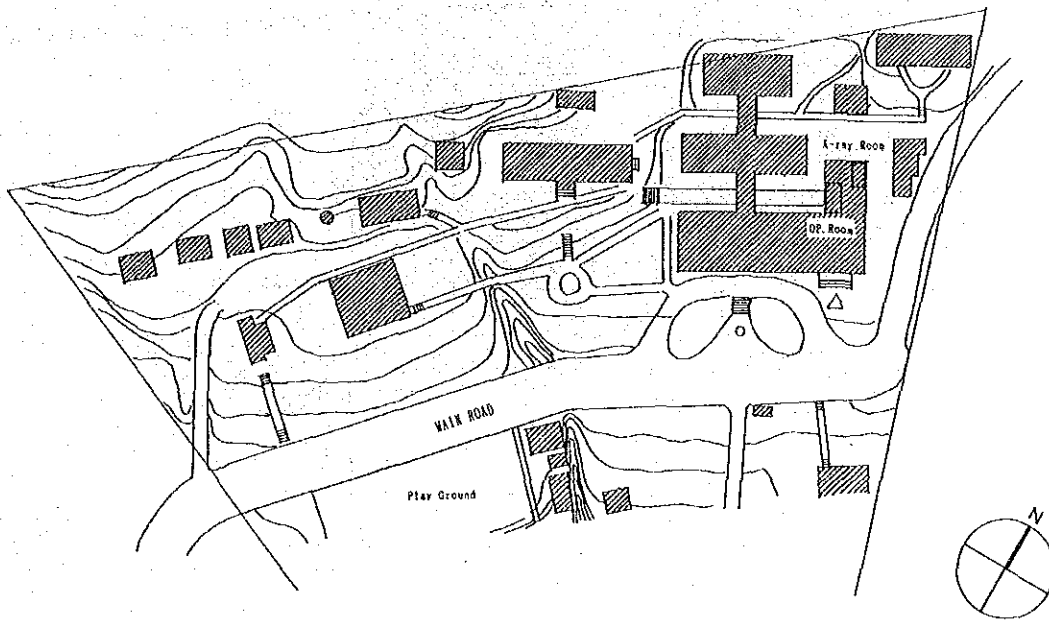
Operating Room



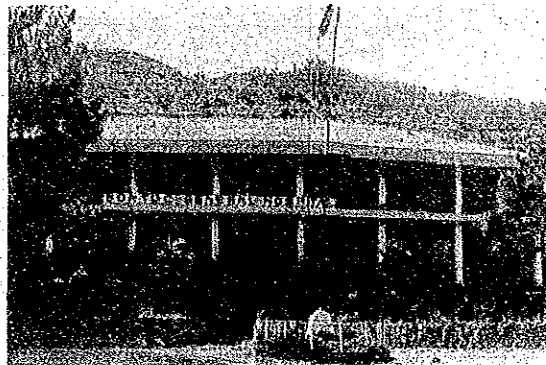
X-Ray Room

2. Bontoc General Hospital

PLOT PLAN



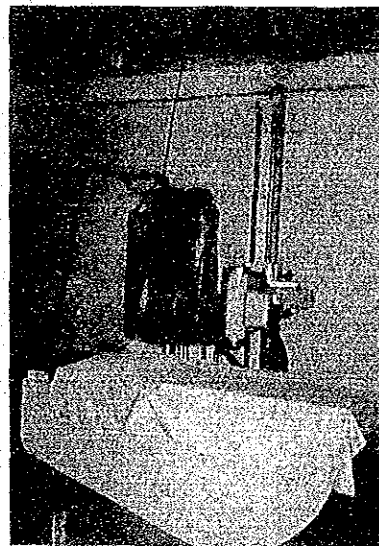
Outward



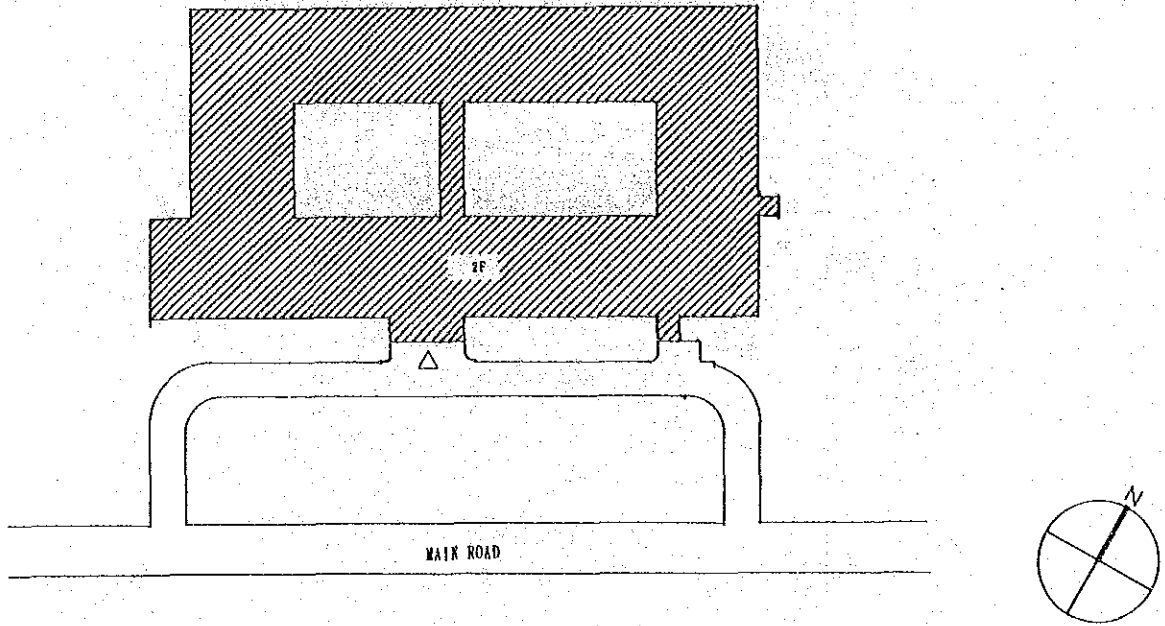
Operating Room



X-Ray Room



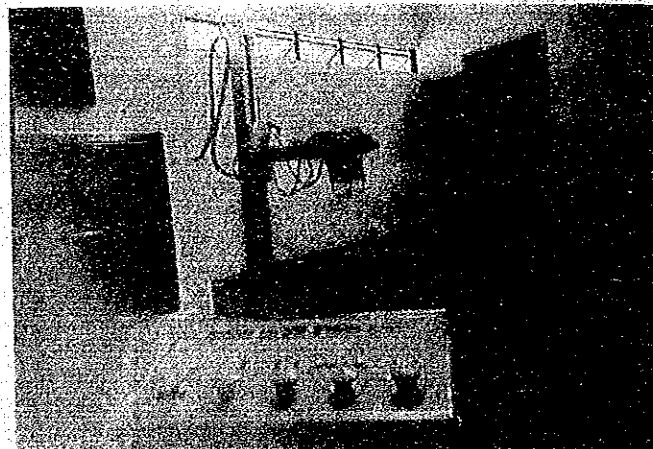
3. Ifugao General Hospital PLOT PLAN



Operating Room

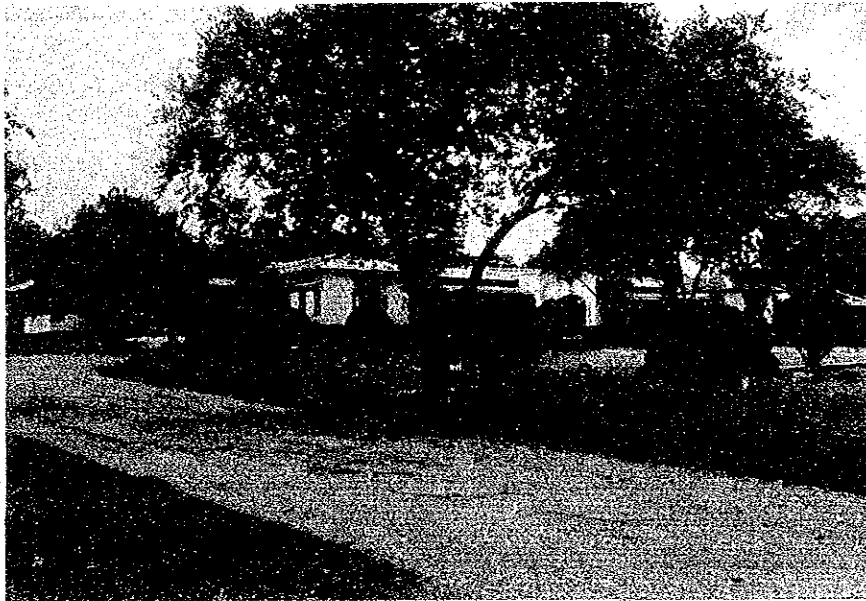
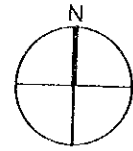
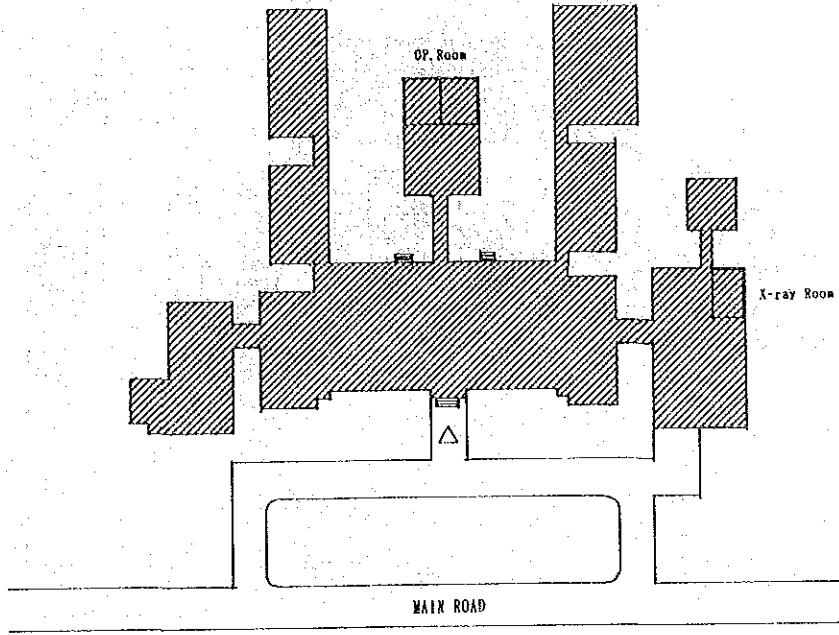


Outward

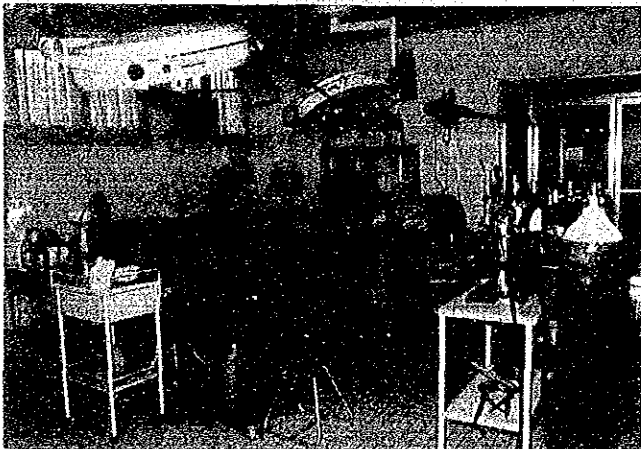


X-Ray Room

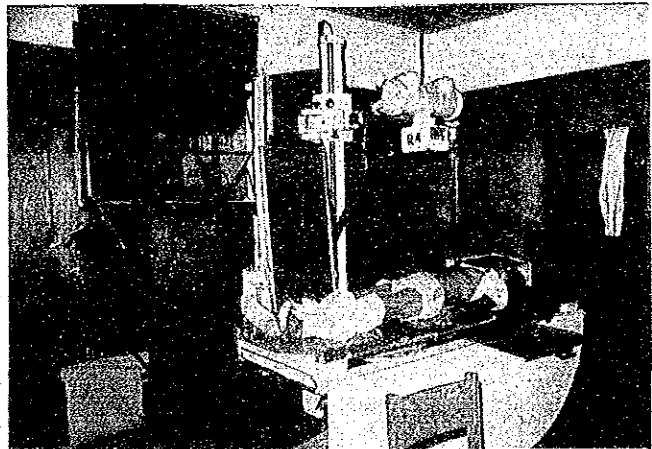
4. Isabela Provincial Hospital PLOT PLAN



Outward

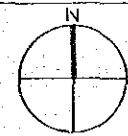
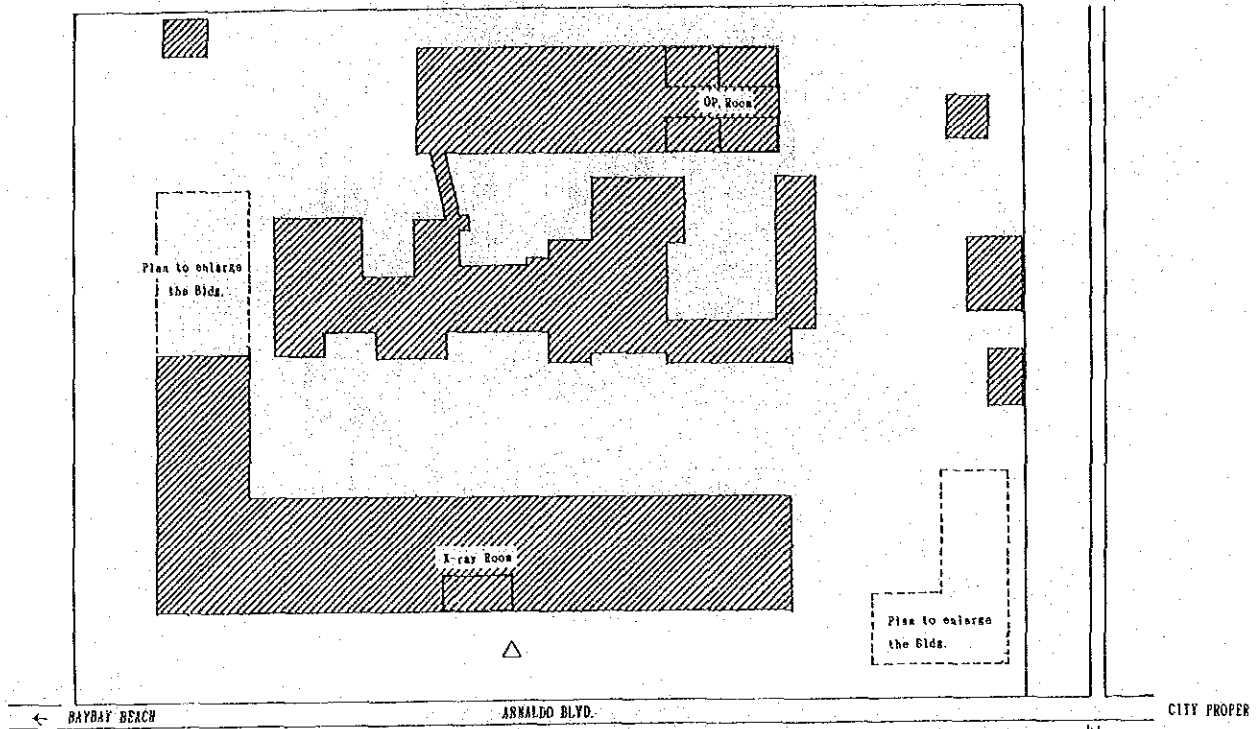


Operating Room

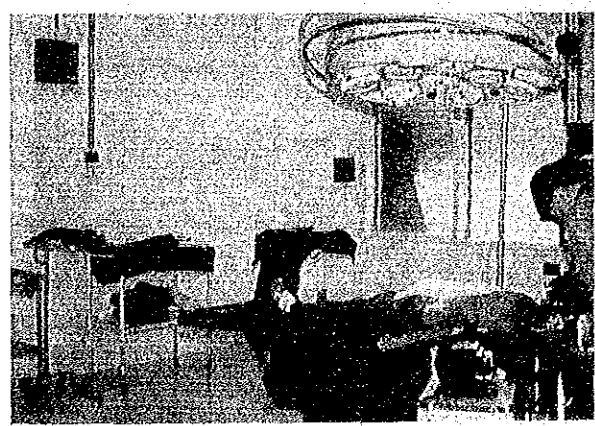


X-Ray Room

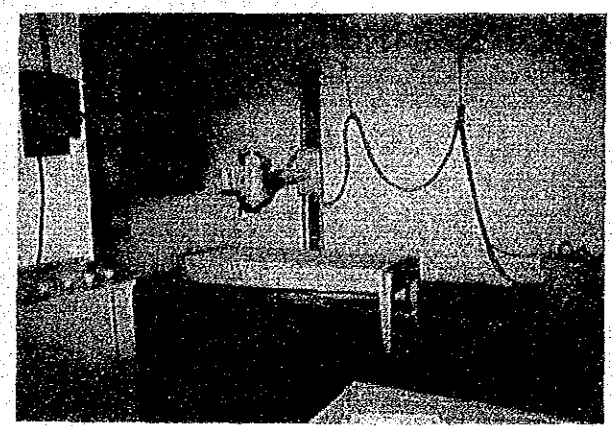
11. Roxas Memorial General Hospital PLOT PLAN



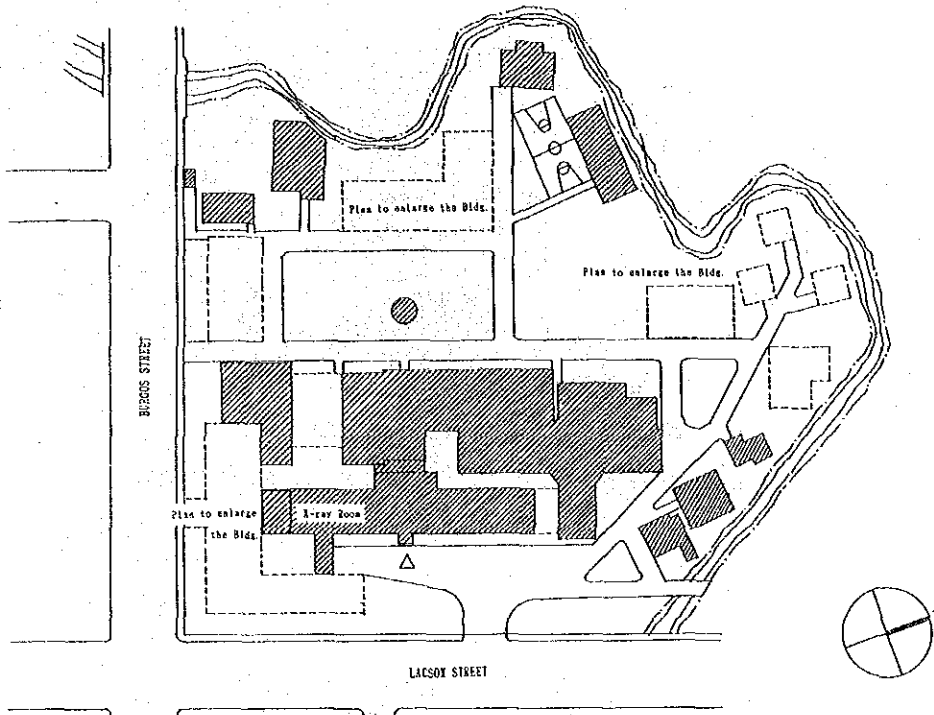
Outward



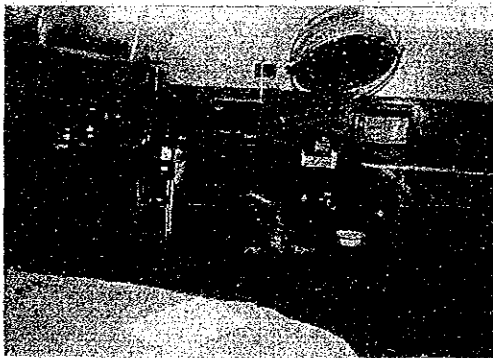
Operating Room



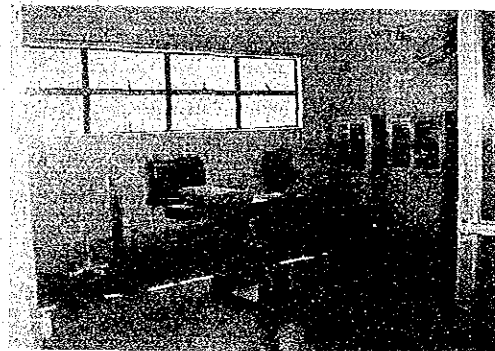
X-Ray Room



Outward

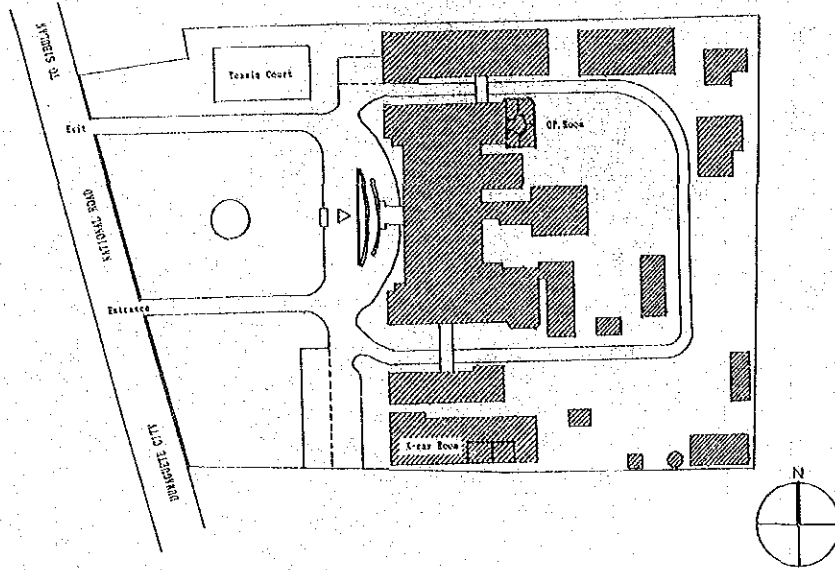


Operating Room



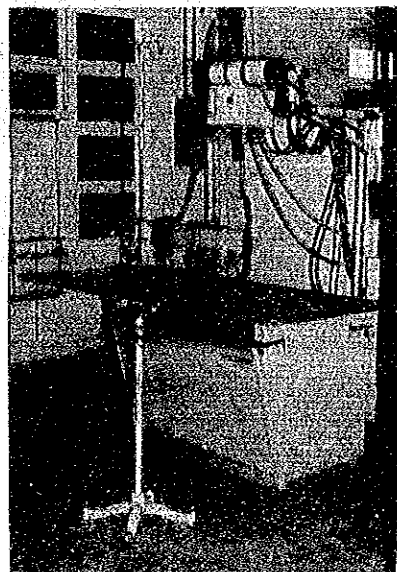
Operating Room

13, Negros Oriental Hospital PLOT PLAN



Outward

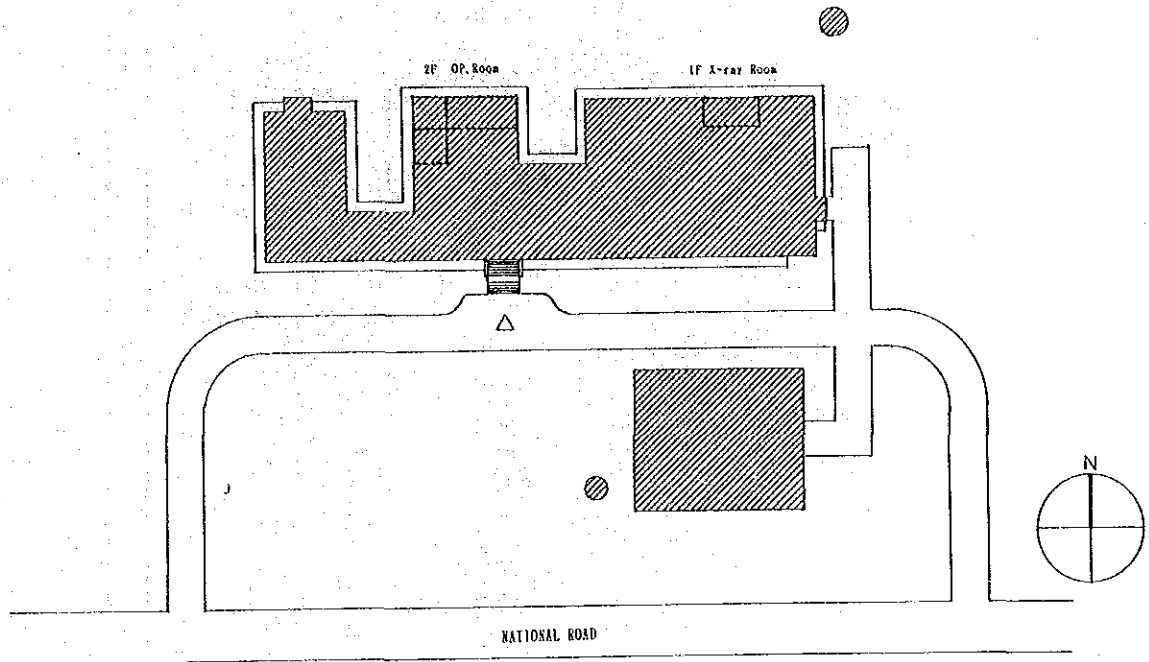
Operating Room



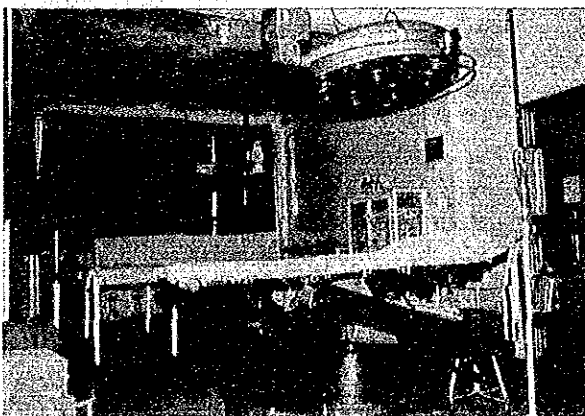
X-Ray Room

14. Southern Leyte Provincial Hospital

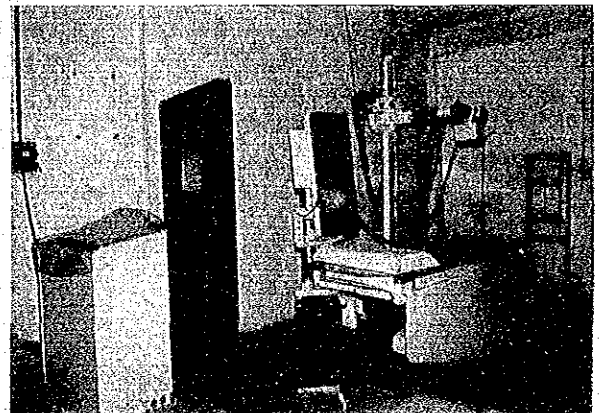
PLOT PLAN



Outward

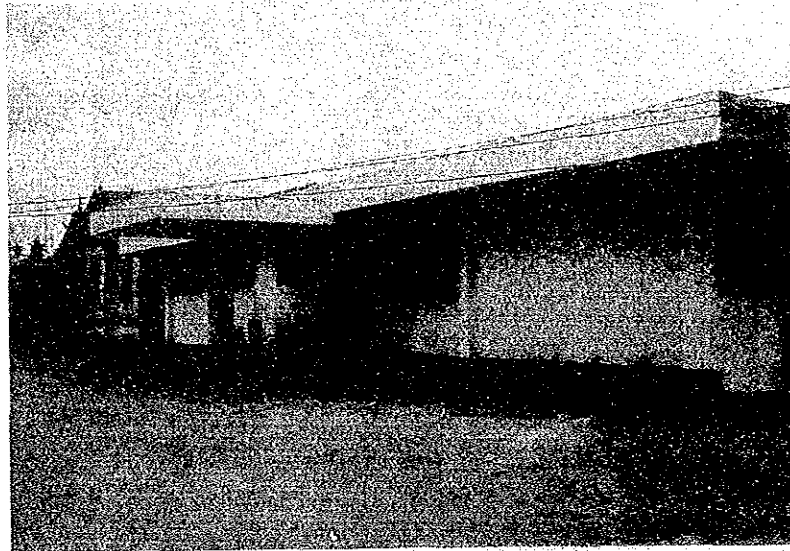
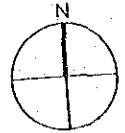
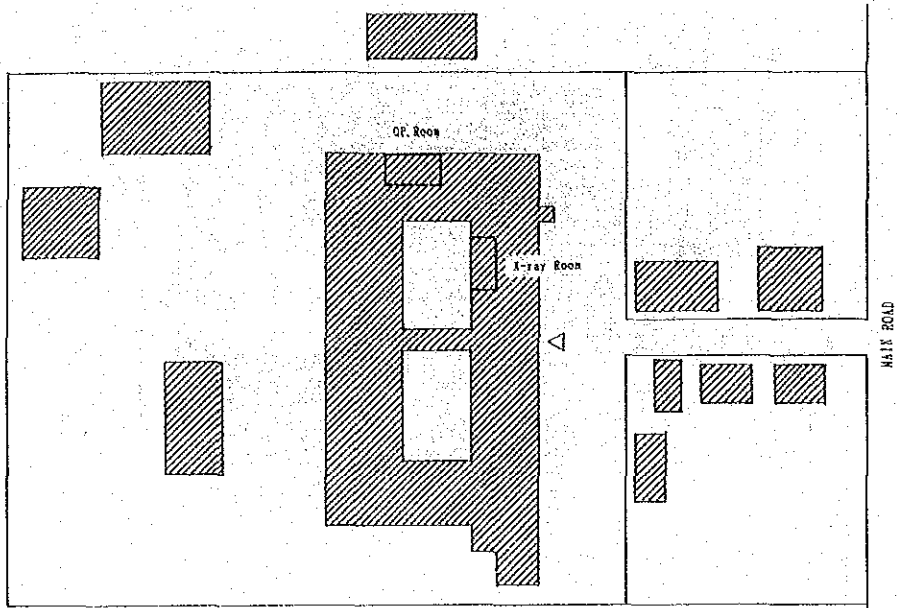


Operating Room

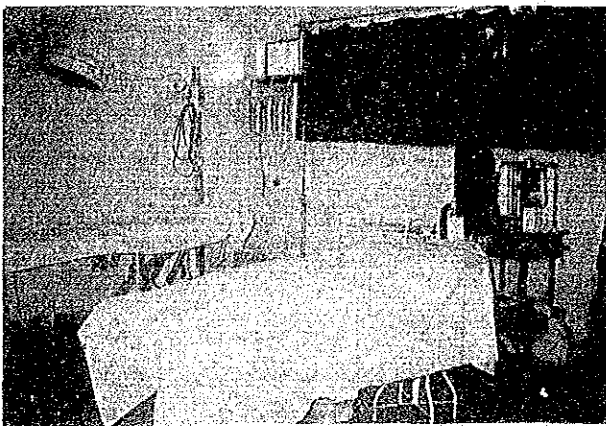


X-Ray Room

15. Eastern Samar Provincial Hospital PLOT PLAN



Outward

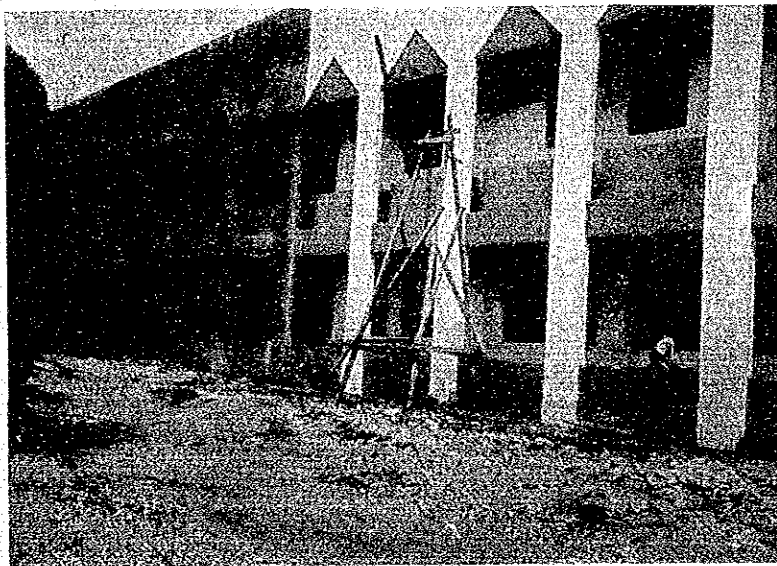
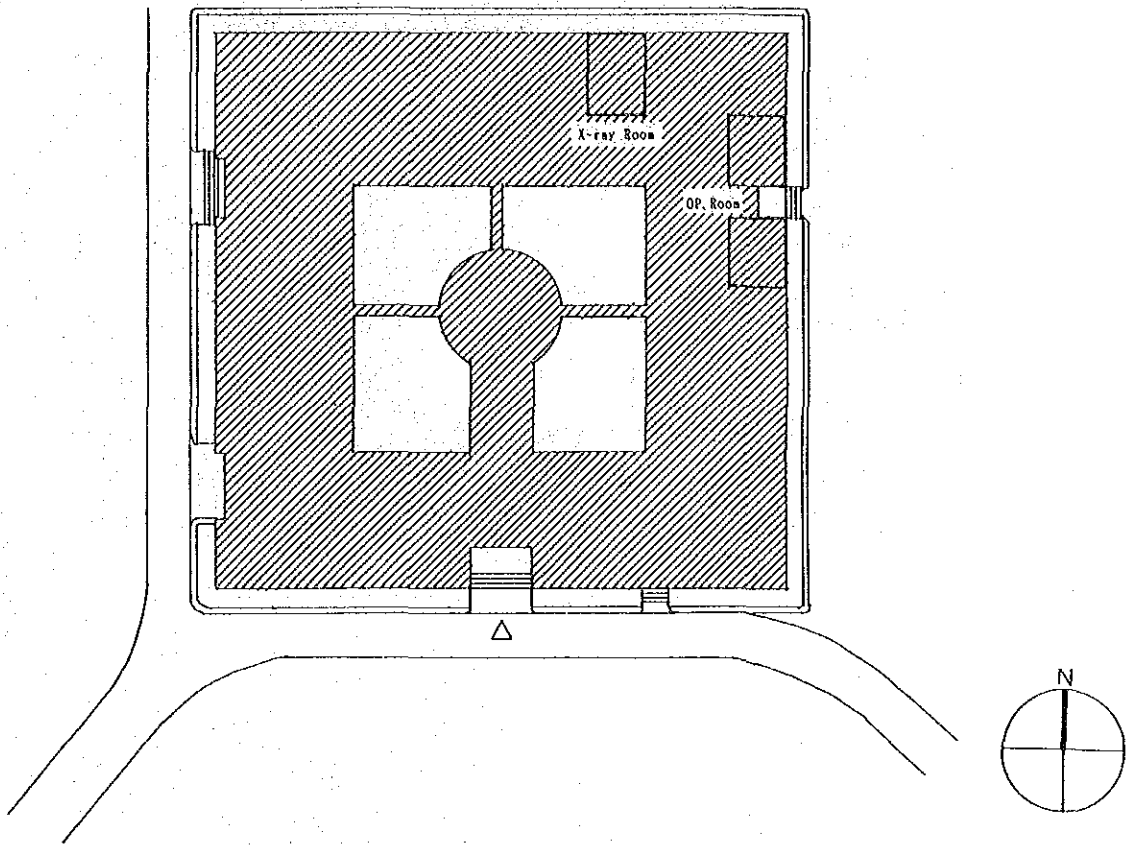


Operating Room

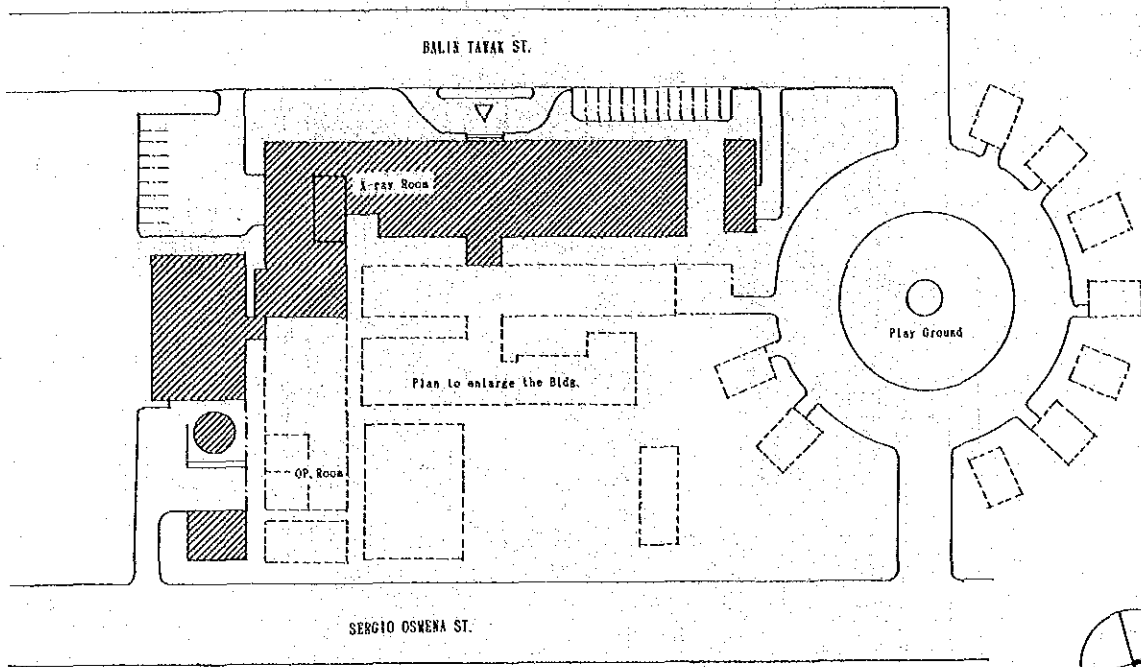


X-Ray Room

16. Sulu Hospital PLOT PLAN



Outward



Outward

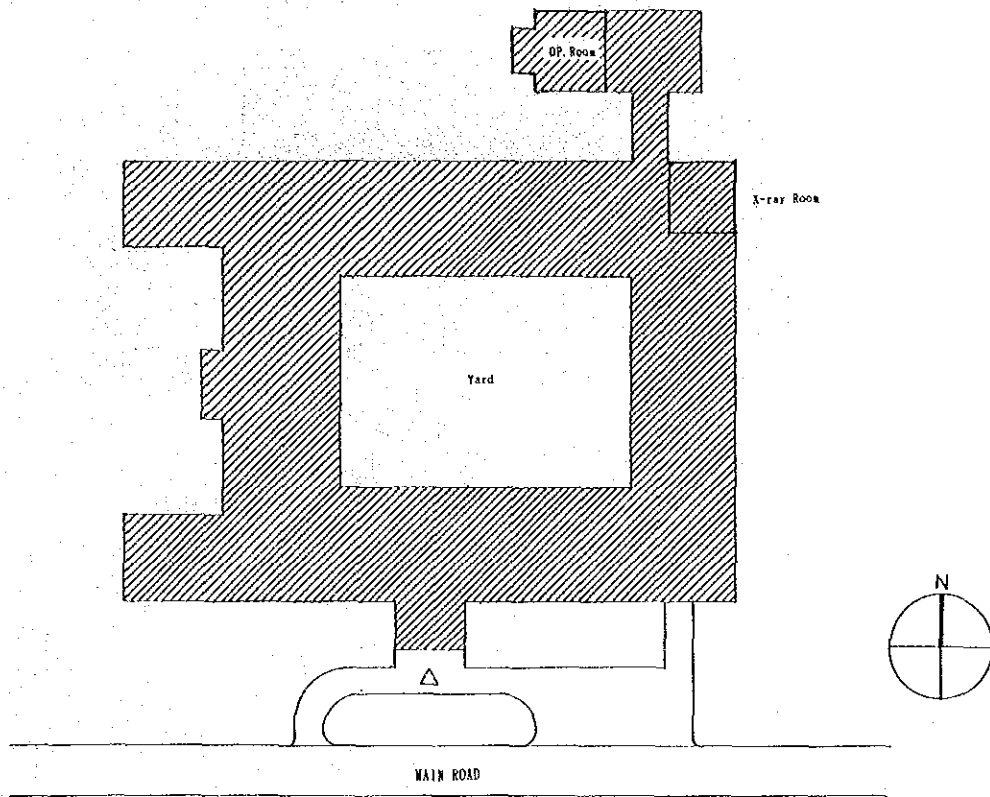


Operating Room

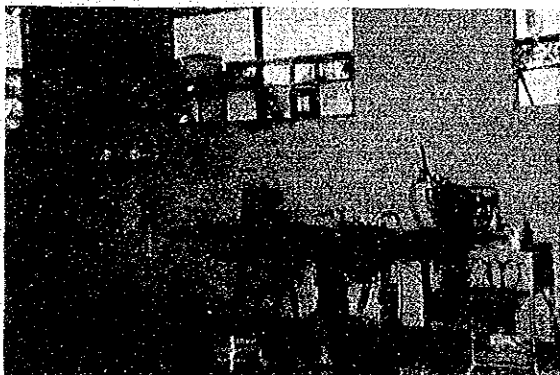


X-Ray Room

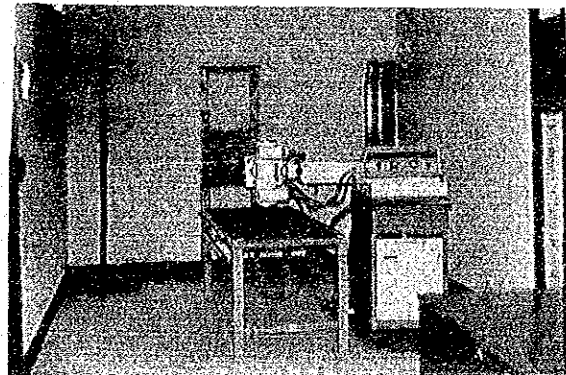
18. Datu Halun Sakilan Memorial Hospital PLOT PLAN



Outward

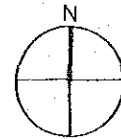
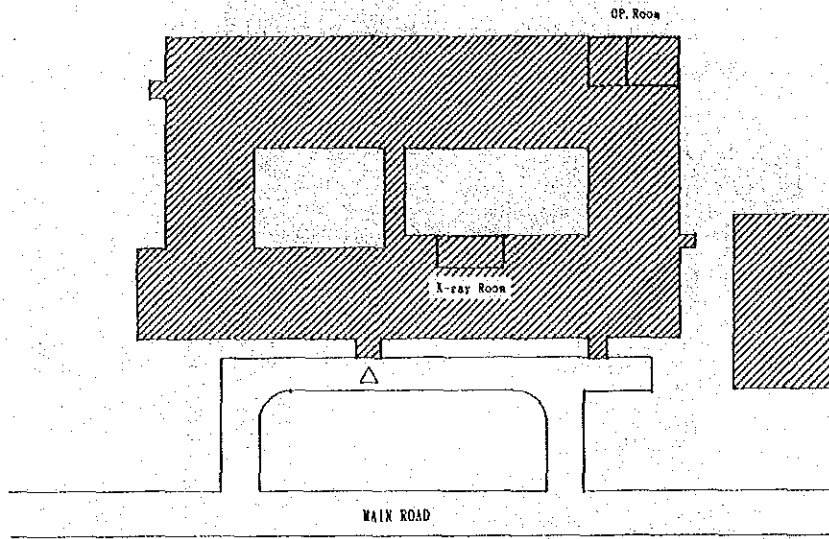


Operating Room

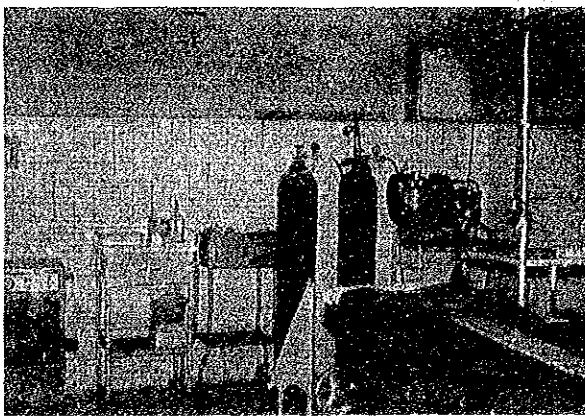


X-Ray Room

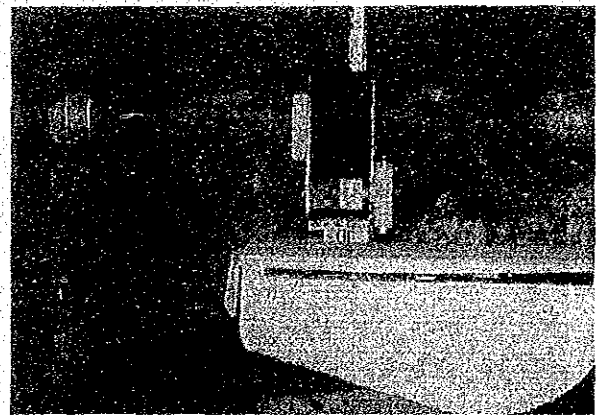
19. Butuan Hospital PLOT PLAN



Outward

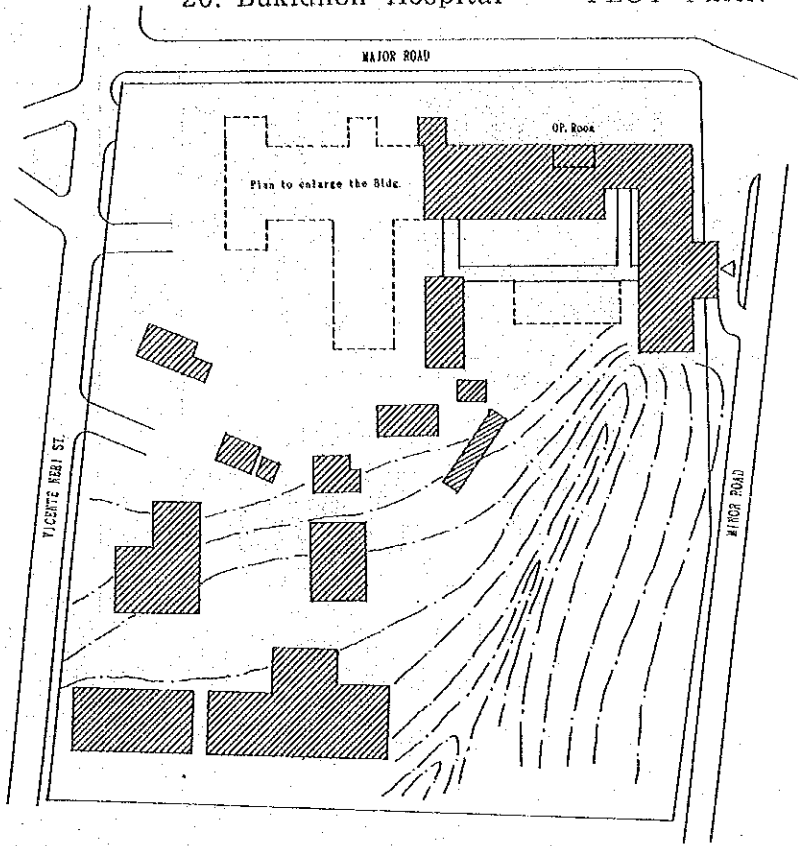


Operating Room

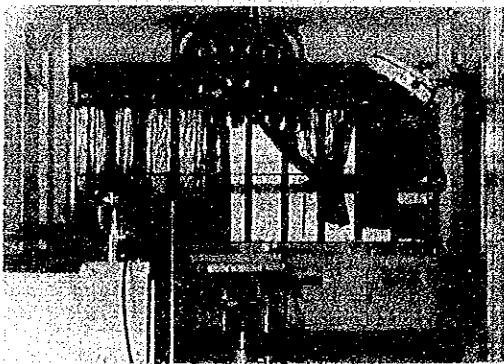


X-Ray Room

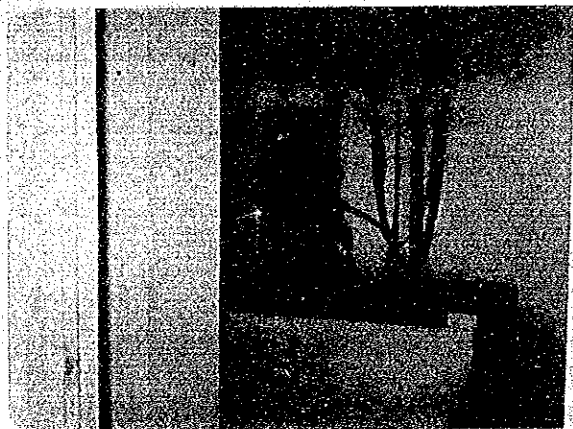
20. Bukidnon Hospital PLOT PLAN



Outward

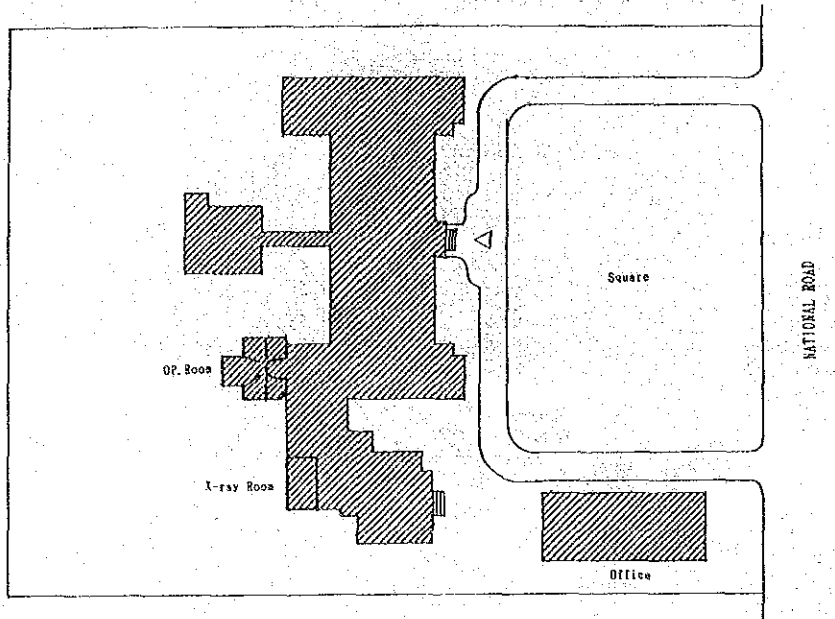


Operating Room

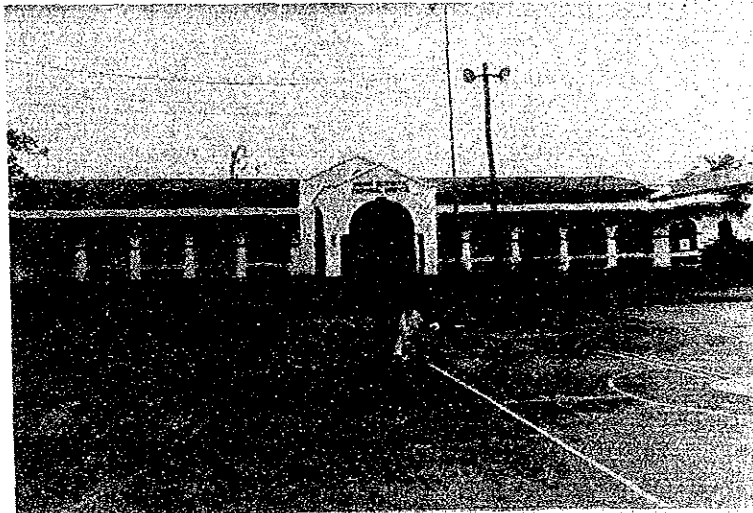


X-Ray Room

21. Misamis Occidental Provincial Hospital PLOT PLAN



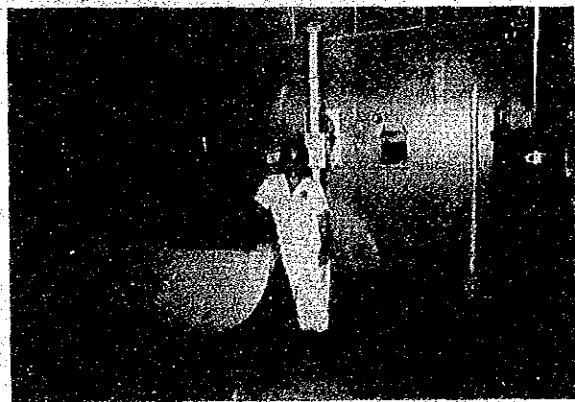
21. Misamis Occidental Provincial Hospital



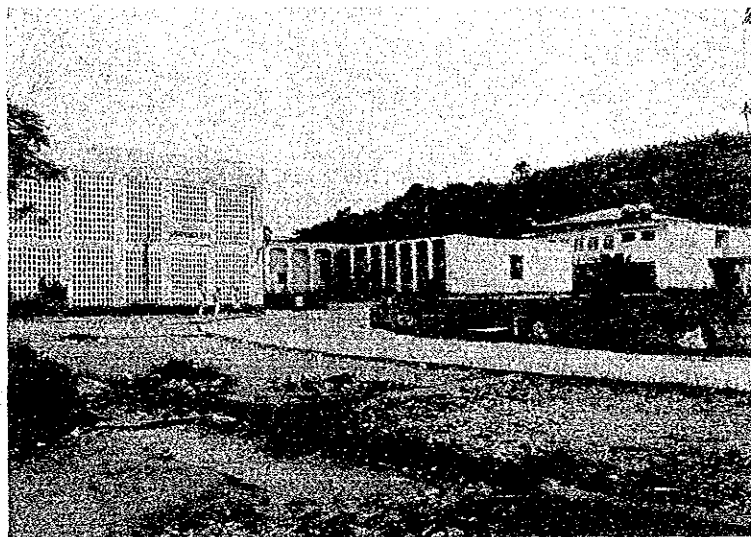
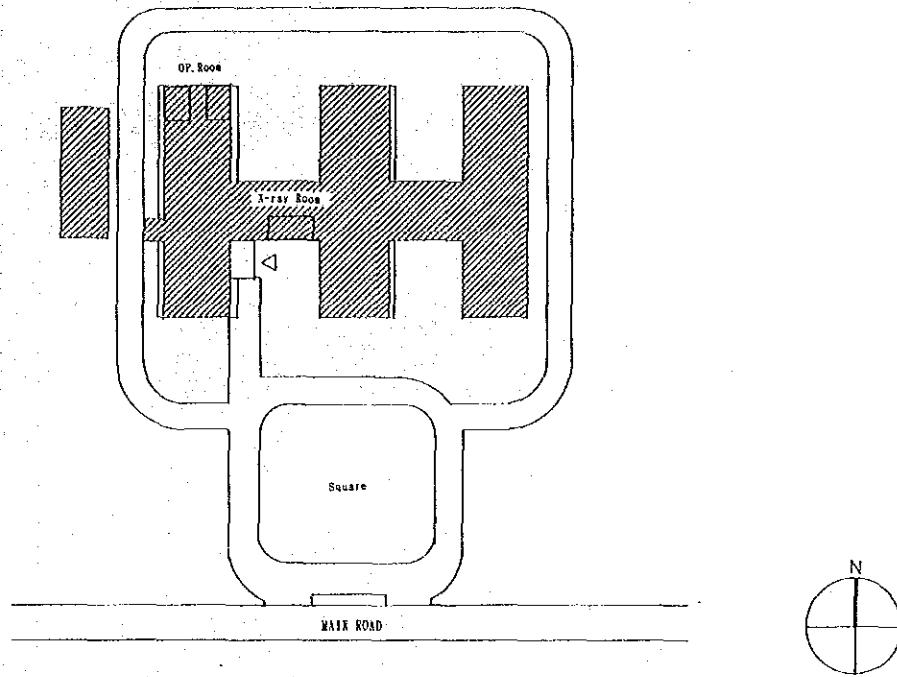
Outward



Operating Room



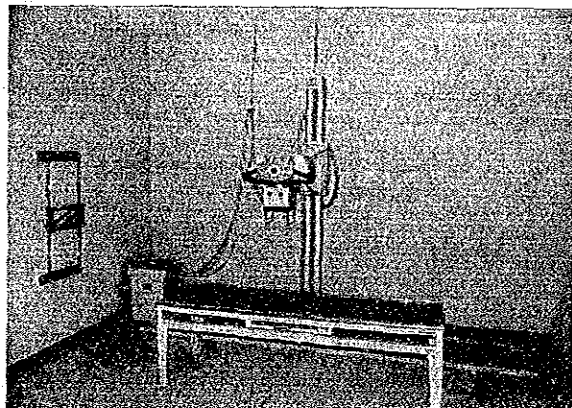
X-Ray Room



Outward

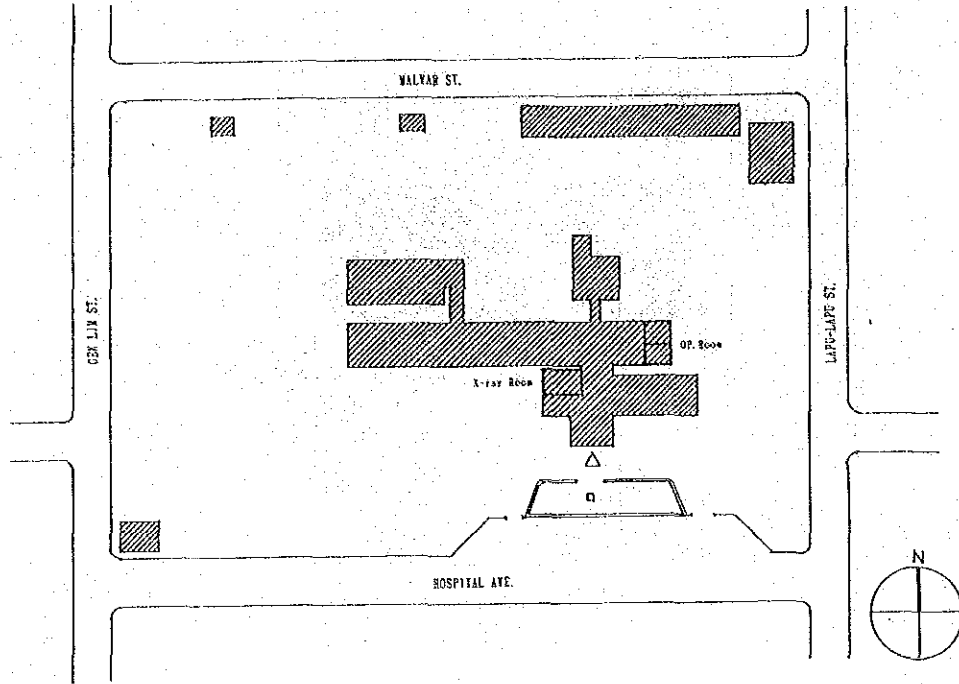


Operating Room

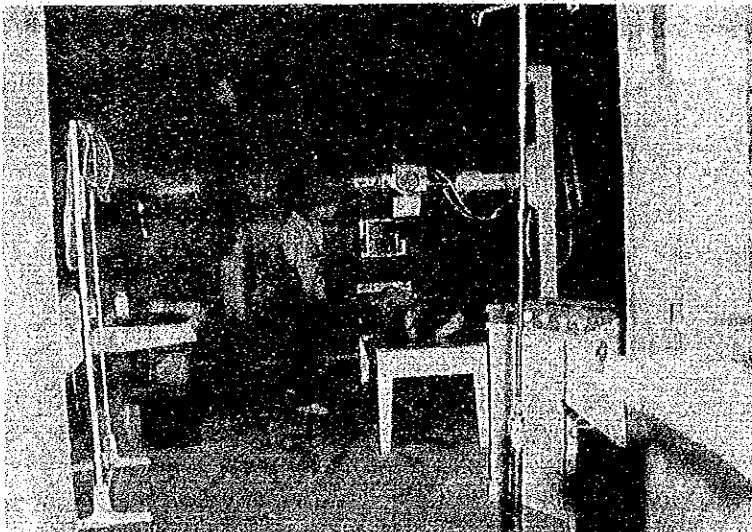


X-Ray Room

23. Davao del Sur Provincial Hospital PLOT PLAN

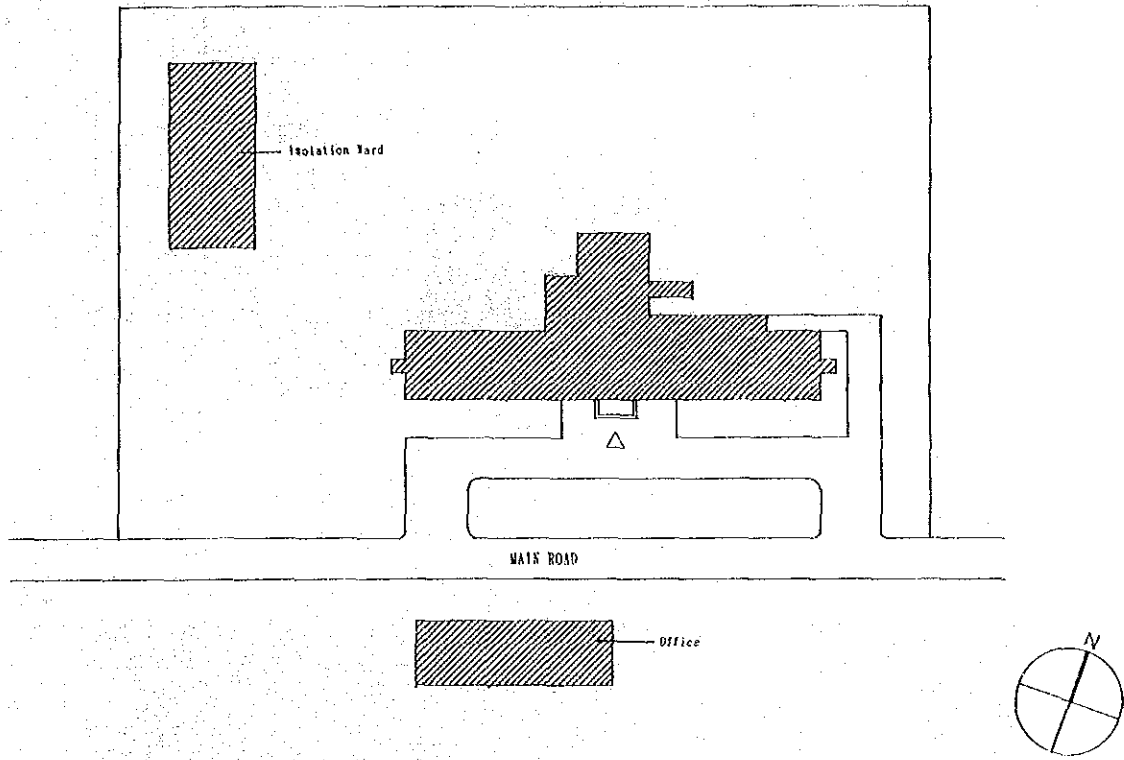


Outward

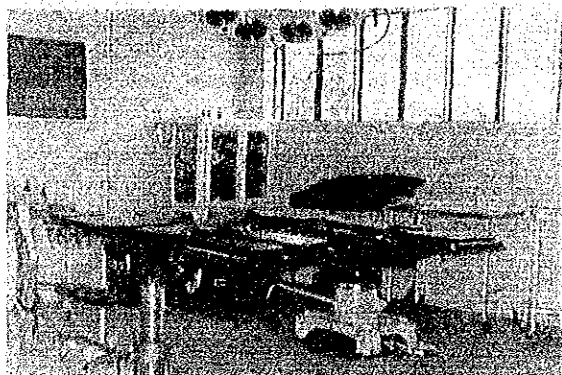
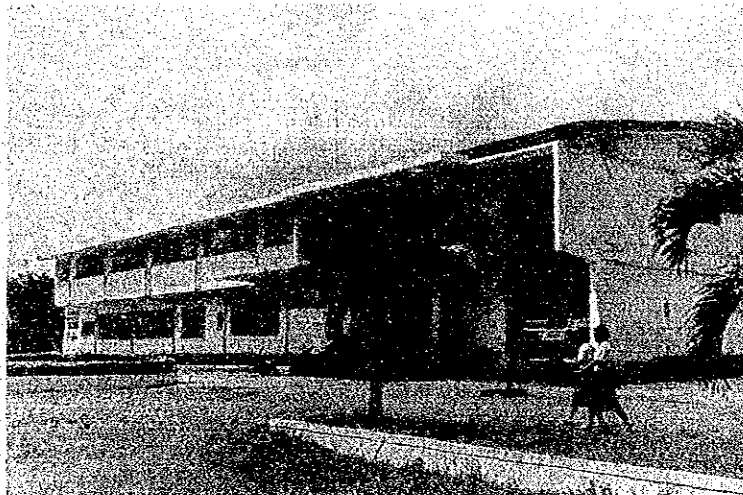


X-Ray Room

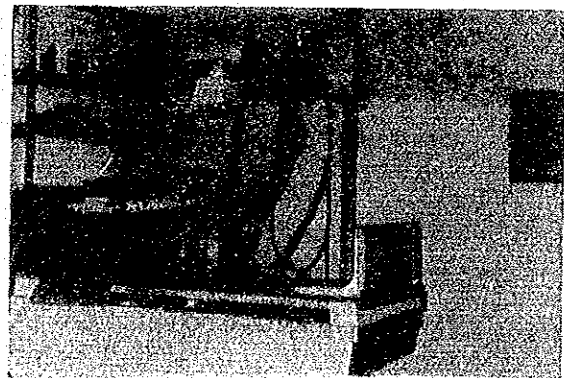
24. Surigao del Sur Provincial Hospital PLOT PLAN



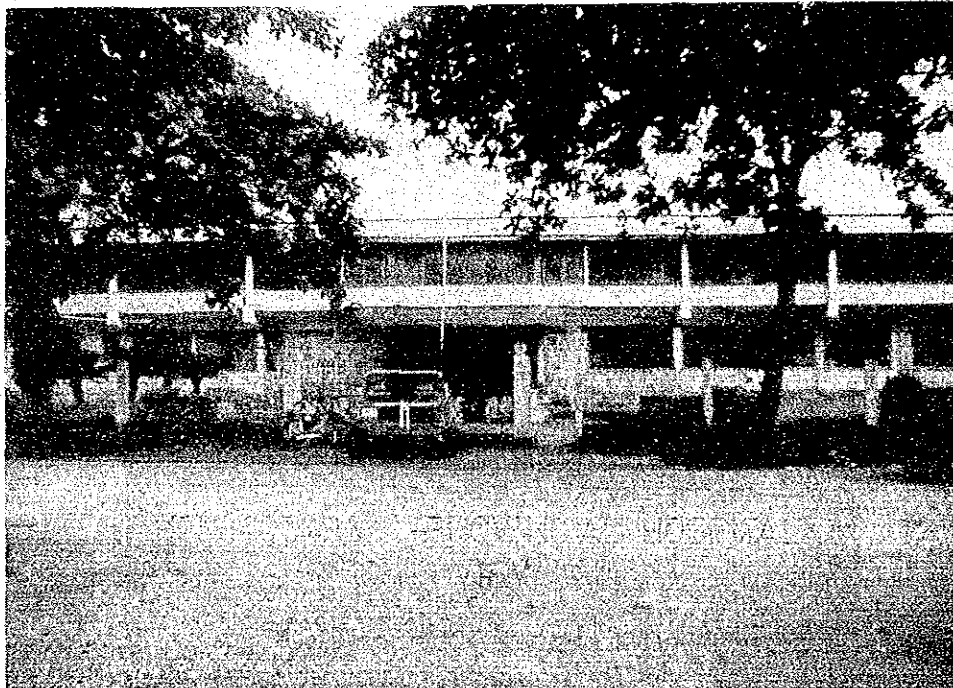
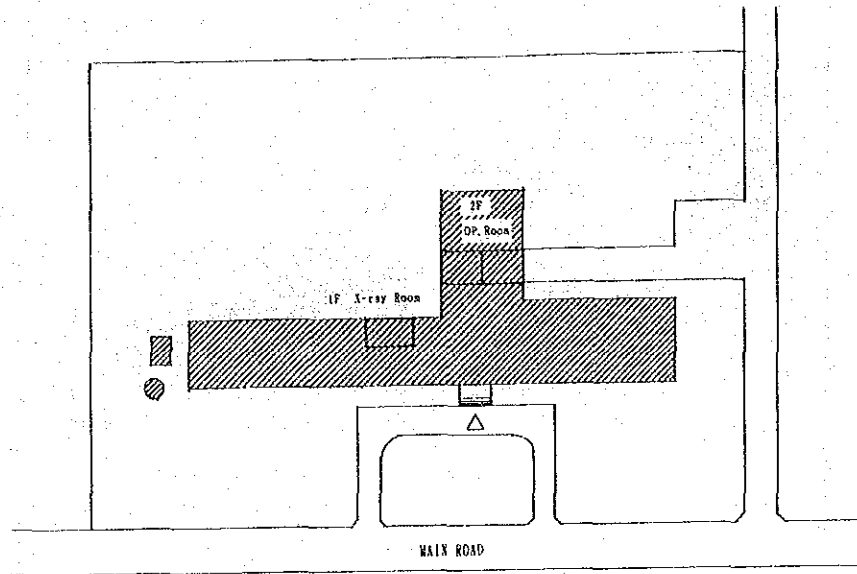
Outward



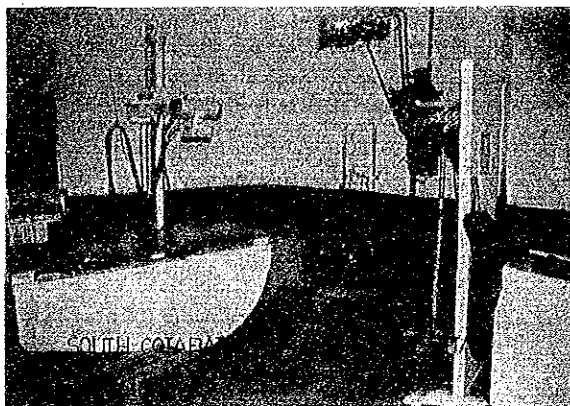
Operating Room



X-Ray Room



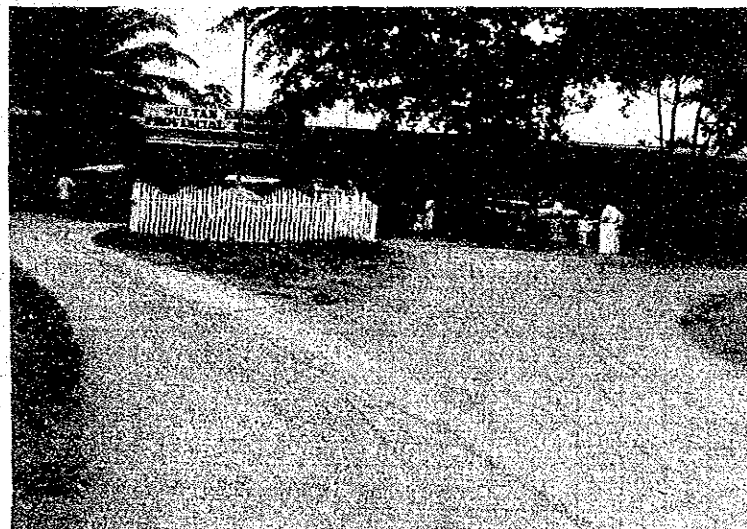
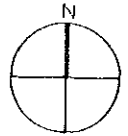
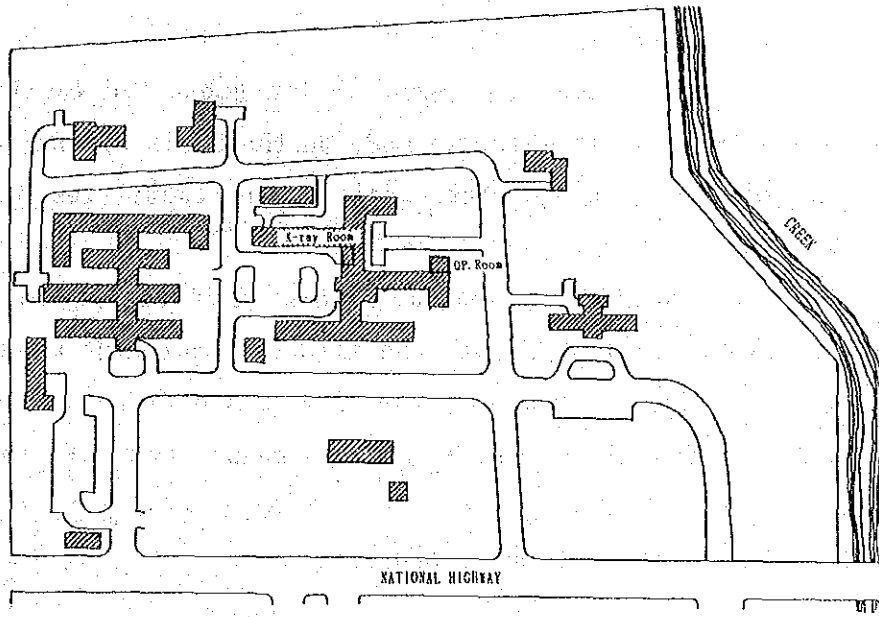
Outward



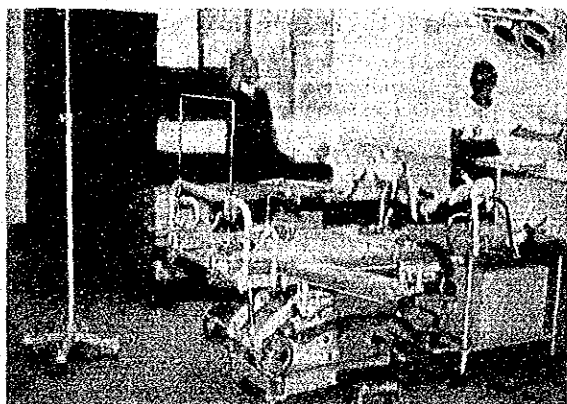
X-Ray Room



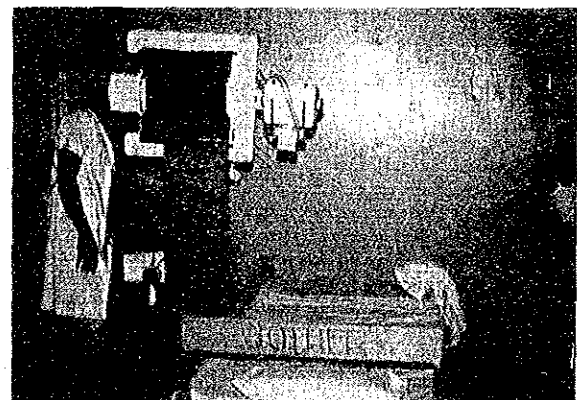
Operating Room



Outward



Operating Room



X-Ray Room

(5) Present Situation of Medical Equipment

1) Existing Medical Equipment

Existing main medical equipment in the subjected facilities are shown in the Table II-15 which is made on the basis of the results of interviews with responsible personnel of the facilities as well as the data obtained therefrom.

(Since no information was available with regard to the Datu Halun Sakilan Memorial Hospital, the existing equipment was listed up on the basis of the results of interview with officials concerned of Department of Health. Blank spaces mean lack of information concerned. Most of the equipment excluding some X-Ray units listed are not usable because of their old age.)

Existing Medical Equipment of
the Subjected facilities

Table II -15

	X-RAY UNIT	ULTRASOUND SCANNER	DEFIBRILATOR	ELECTROCARDIOGRAPH	O. R. LIGHT	O. R. TABLE	ANESTHESIA APPARATUS	ELECTRO-SURGICAL UNIT	INFANT INCUBATOR	SPECTRO PHOTOMETER	LAB. REFRIGIRATOR	AMBULANCE	POWER GENERATOR
1. Gov. Tefilo Sison Memorial Hospital	4	0		1	1	1		1	1			2	1
2. Bontoc General Hospital	1				2	2	2			1	1		1
3. Ifugao General Hospital	2			1	1	1			1			0	1
4. Isabelá Provincial Hospital	1	0			1	1	1	0	1	1		1	1
5. Bataan Provincial Hospital	1		1	1		1	1	0	2	1	1	2	1
6. Pres. Ramon Magsaysay Memorial Hosp.	3			1	1	1	2	1	1	1	3	3	1
7. Tarlac Provincial Hospital	2			1	2	2	1		3		2	1	1
8. Quezon Memorial Hospital	1		1	3		1	2		1	2	1	1	1
9. Albay Provincial Hospital	3			3	3	3	3	1			1	1	2
10. Sorsogon Provincial Hospstital	2	0	0	1	1	2	1	1	2		1	0	1
11. Roxas Memorial General Hospital	1			2	2	2	1	1	0	1		1	1
12. Corazon Locsin Montelibano Mem. Hosp.	1		2	1	5	5	3	1	1	1	1	1	1
13. Negros Oriental Hospital	1			1	2	2	2	2		1		1	1
14. Southern Leyte Provincial Hospital	1			1	2	2	1		1	1	1		1
15. Eastern Samar Provincial Hospital	1		0	1	1	1	1		1	1	1	0	1
16. Sulu Hospital	1		1	1		1	1		0			0	1
17. Zamboanga del Norte Provin. Hosp.	1		0	1	1	1	1	0	2			0	1
18. Datu Halun Sakilan Memorial Hospital	1				1	1							1
19. Butuan Hospital	1	0	0	1	1	1	1	0	0	1			1
20. Bukidnon Hospital	1			1	1	1	1	1			2	2	2
21. Misamis Occidental Provincial Hosp.	1				1	1	1		0	1		1	1
22. Surigao del Norte Provincial Hospital	1		2	1	1	1					1	1	1
23. Davao del Sur Provincial Hospital	2			1	1	1	1			1		1	1
24. Surigao del Sur Provincial Hospital	1				1	1			1	1		1	1
25. South Cotabato Provincial Hospital	1		0				1		0			0	1
26. Sultan Kudarat Provincial Hospital	1		0	0	1	1	1		0	1		0	1

2) Problems with regard to the Existing Equipment of the Subjected Facilities

The Provincial Hospitals being subjected facilities of the Project have been rendering not only primary health care but also secondary and tertiary health care in closer cooperation with the Rural Health Unit, Balangay Health Station and Medical Center which are positively activating in the front line of the primary health care of the country. Scale of the facilities, number of the beds and allocation of budgets covering the costs of operation and maintenance are to be decided by the Government of the Philippines in proportion to the size of population and area of respective provinces concerned. However, the amount of budget thus allocated by the Government which covers only the costs of personnel, necessary medicines and some extent of maintenance works, are not sufficient enough to procure the medical equipment necessary for enforcement of the facilities and up-grading of the level of health services in order to attain the goal of the National Health Program of the country, which is facing financial difficulties. As a result of the above, these facilities have not been able to render sufficient health service to the people concerned due to the facts that new equipment could hardly be obtained and that many of existing equipment are too old to function with their original ability. The equipment causing trouble in the subjected facilities are as follows:

X-Ray units : They are 300mA ~ 500mA types procured about 15 ~ 30 years ago. No abdominal diagnosis can be performed because of such low capacity as about one-third to one-fifth of standard capacity. As for diagnostic tables, patients can not take required position because of incapability of operation caused by rusts and erosions.

Operating lamp : Sufficient light for operation is not available because 2 ~ 3 bulbs per one lamp are burn out. In addition to this, supplementary bulbs for these old typed lamp are not

available in the country any more.

Lamps can not be fixed firmly due to malfunction of balancer caused by erosions. Furthermore, no repairing parts is available because of old-fashioned equipment.

Operating bed : Due to old-fashioned equipment of 20 ~ 40 years of age, it is impossible to fix various parts of patient's body as regulated.

It is impossible to make patients up-and-down and inclination movements due to erosions.

Mats on the beds have been worn-out during usage for long years, there were some beds of which metal structures are covered directly only by cloths and patients have to lie on them.

Operating Instruments:

Since such instruments as forceps, knives and scissors are to be replaced in about 3 to 4 years usage during which their functions get worse, they are regarded as consumables in a sense. Due to lack of additional supply, however, there are such problems that the tip of a forcep can not be sufficiently fixed, that knives can not cut well and that two tips of scissors can not be put together.

Boiling Sterilizer:

Cooking pans are being substituted.

Light therapy equipment:

Normal domestic fluorescent lamps hung on the new born infant are being used substitutvely.

Power Generator : Since most of power generators are made 20 to 40 years ago, they break down so often. Many power generators can not be operated due to inavailability of parts for repair.