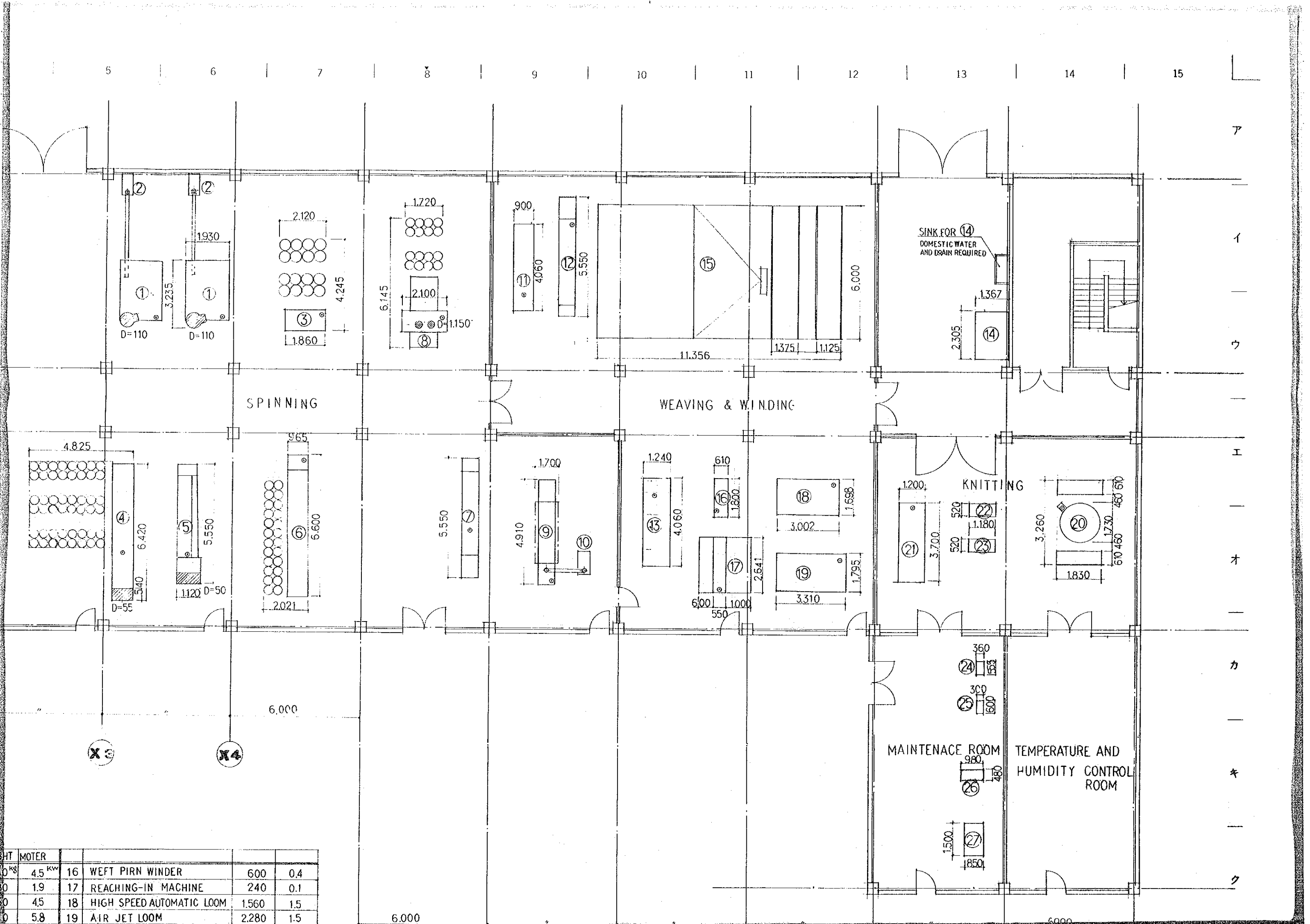


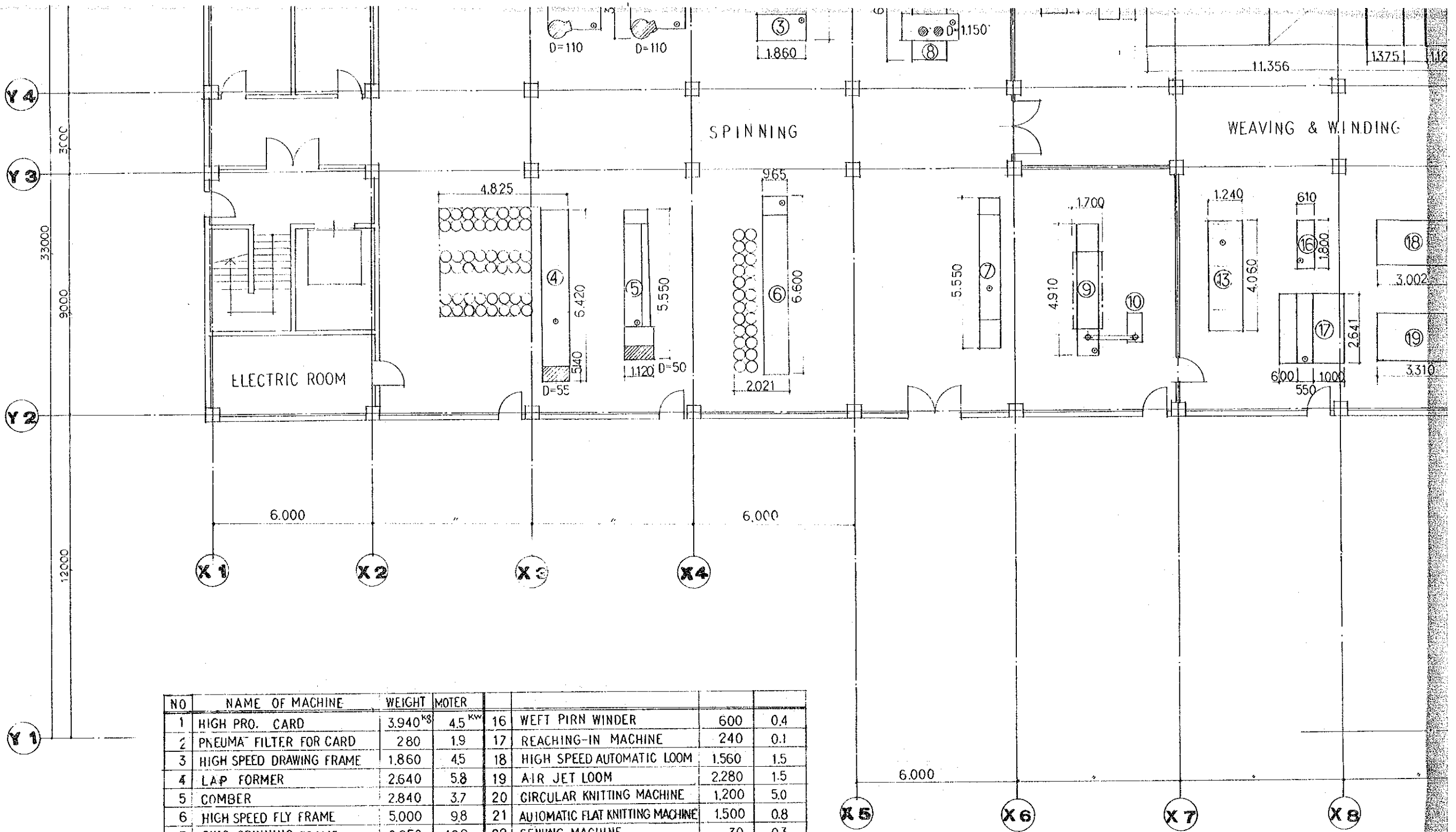
NO	NAME OF MACHINE	WEIGHT	MOTER			
1	HIGH PRO. CARD	3,940 ^{kg}	4.5 ^{kw}	16	WEFT PIRN WINDER	600 0.4
2	PNEUMA FILTER FOR CARD	280	1.9	17	REACHING-IN MACHINE	240 0.1
3	HIGH SPEED DRAWING FRAME	1,860	4.5	18	HIGH SPEED AUTOMATIC LOOM	1,560 1.5
4	LAP FORMER	2,640	5.8	19	AIR JET LOOM	2,280 1.5

6.000



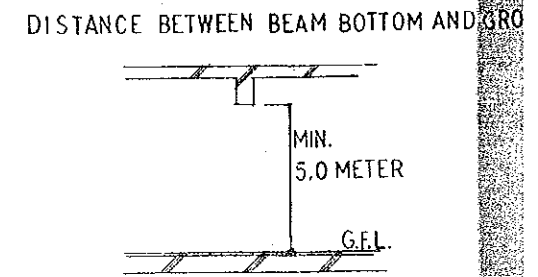
HT	MOTER				
40	4.5 KW	16	WEFT PIRN WINDER	600	0.4
80	1.9	17	REACHING-IN MACHINE	240	0.1
60	4.5	18	HIGH SPEED AUTOMATIC LOOM	1560	1.5
40	5.8	19	AIR JET LOOM	2280	1.5

ウ
—
エ
—
オ
—
カ
—
キ
—
ク
—
ケ
—
コ

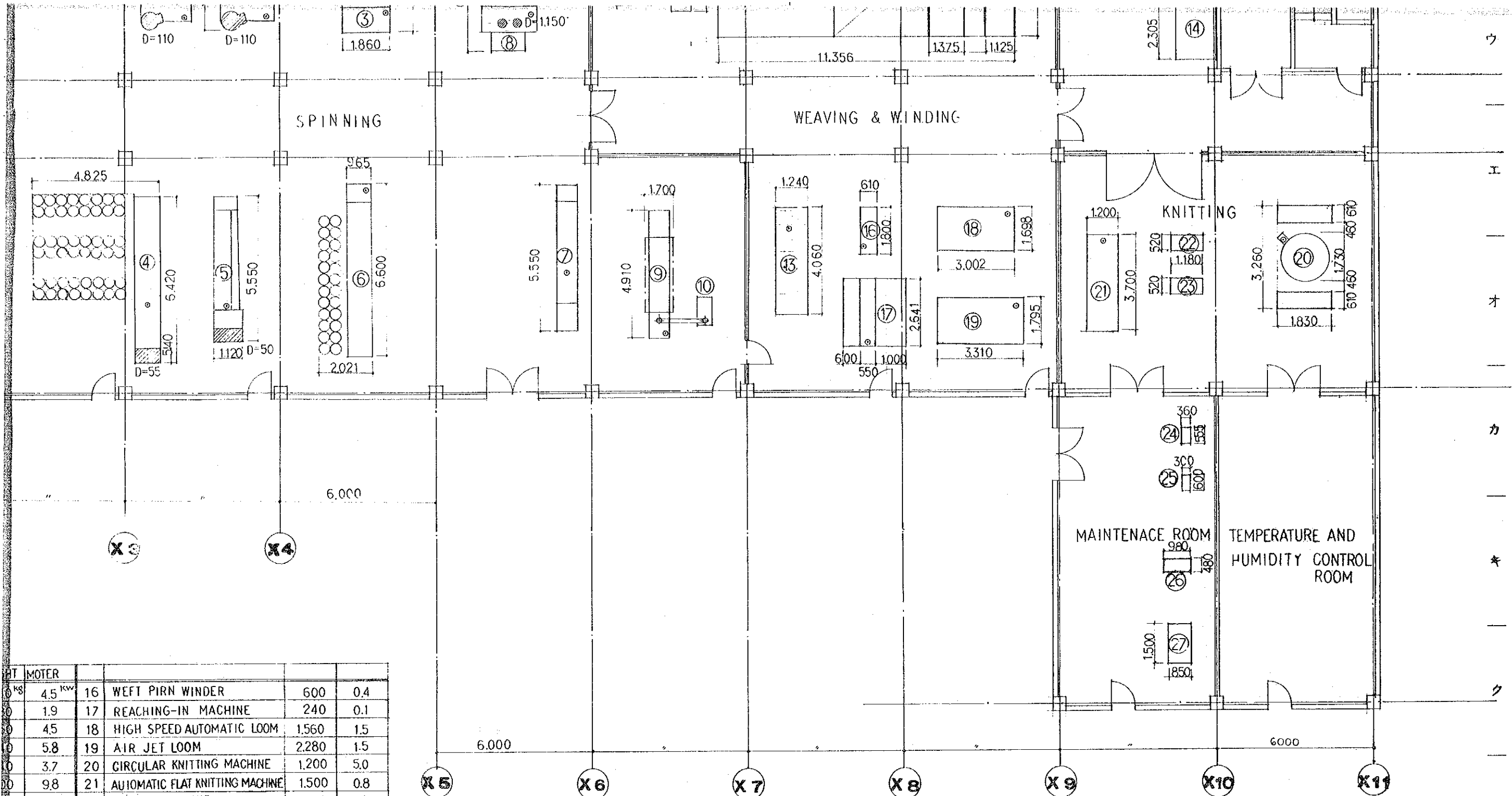


NO	NAME OF MACHINE	WEIGHT	MOTER			
1	HIGH PRO. CARD	3,940 ^{kg}	4.5 ^{kw}	16	WEFT PIRM WINDER	600 0.4
2	PNEUMA FILTER FOR CARD	280	1.9	17	REACHING-IN MACHINE	240 0.1
3	HIGH SPEED DRAWING FRAME	1,860	4.5	18	HIGH SPEED AUTOMATIC LOOM	1,560 1.5
4	LAP FORMER	2,640	5.8	19	AIR JET LOOM	2,280 1.5
5	COMBER	2,840	3.7	20	CIRCULAR KNITTING MACHINE	1,200 5.0
6	HIGH SPEED FLY FRAME	5,000	9.8	21	AUTOMATIC FLAT KNITTING MACHINE	1,500 0.8
7	RING SPINNING FRAME	2,650	16.9	22	SEWING MACHINE	30 0.3
8	HIGH SPEED DRAWING FRAME	2,800	5.3	23	OVERLOK SEWING MACHINE	30 0.3
9	OPEN-END SPINNING MACHINE	4,000	35.6	24	ELECTRIC WELDING MACHINE	32 6.0
10	PNEUMA FILTER FOR OE	280	1.9	25	TABLE GRINDING MACHIN	64 1.8
11	DOUBLING WINDER	2,060	1.5	26	TABLE DRILLING CUTTING MACHINE	75 0.2
12	RING TWISTING FRAME	2,600	15.0	27	LATHE MACHINE	500 1.5
13	CONE WINDER	1,580	1.5			
14	SIZING MACHINE	680	7.5			
15	SECTIONAL WARPERS	6,800	8.3			
					TOTAL	143.1 ^{kw}

FOOT NOTE ○ POSITION OF ELECTRIC SOURCE
 ▨ PIT



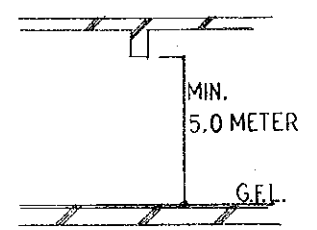
検 査 日 付 年 月 日	保 管 示 認 確 認 作 成 日 付 年 月 日	訂 正 日 付 年 月 日	特 記
---------------------------------	---	---------------------------------	--------



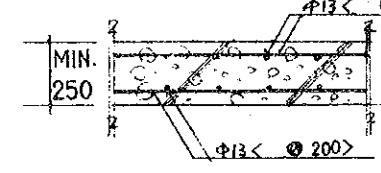
HT	MOTER				
0.45	4.5 KW	16	WEFT PIRN WINDER	600	0.4
0.19		17	REACHING-IN MACHINE	240	0.1
0.45		18	HIGH SPEED AUTOMATIC LOOM	1560	1.5
0.58		19	AIR JET LOOM	2280	1.5
0.37		20	CIRCULAR KNITTING MACHINE	1200	5.0
0.98		21	AUTOMATIC FLAT KNITTING MACHINE	1500	0.8
0.169		22	SEWING MACHINE	30	0.3
0.53		23	OVERLOK SEWING MACHINE	30	0.3
0.356		24	ELECTRIC WELDING MACHINE	32	6.0
0.19		25	TABLE GRINDING MACHIN	64	1.8
0.15		26	TABLE DRILLING CUTTING MACHINE	75	0.2
0.15		27	LATHE MACHINE	500	1.5
0.75					
0.83			TOTAL		143.1 KW

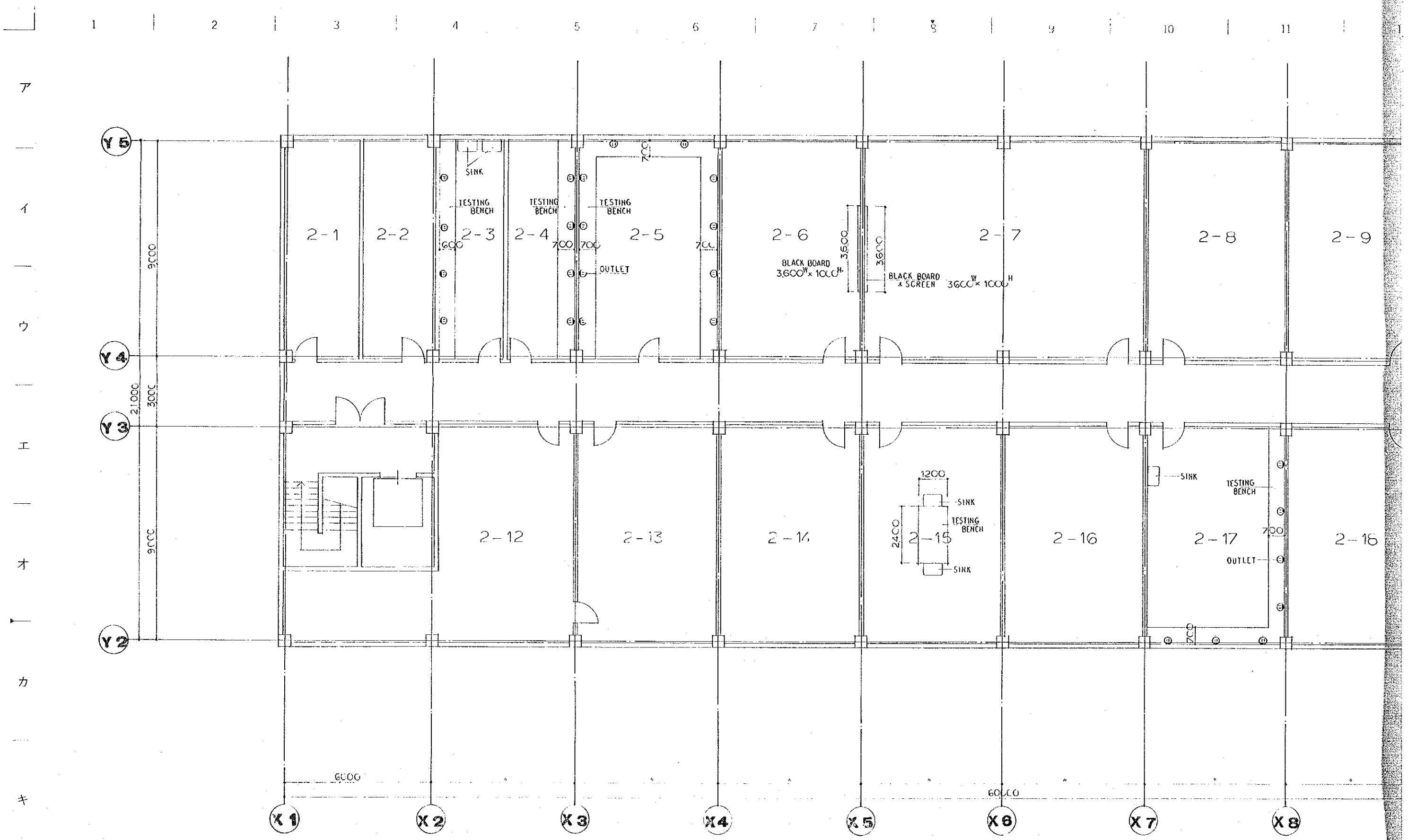
FOOT NOTE
 ○ POSITION OF ELECTRIC SOURCE
 ▨ PIT

DISTANCE BETWEEN BEAM BOTTOM AND GROUND FLOOR LINE

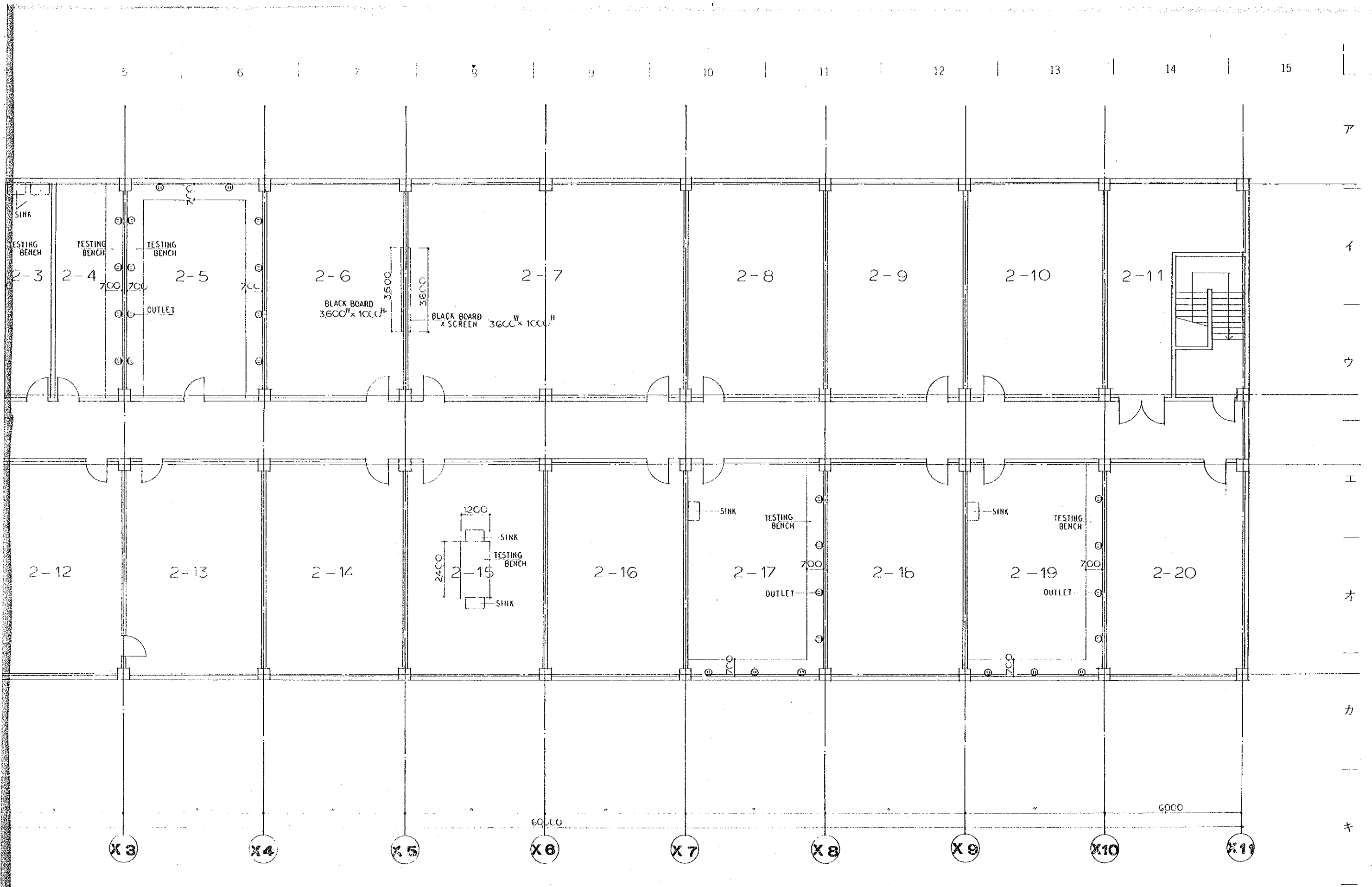


THICKNESS OF GROUND FLOOR SLAB

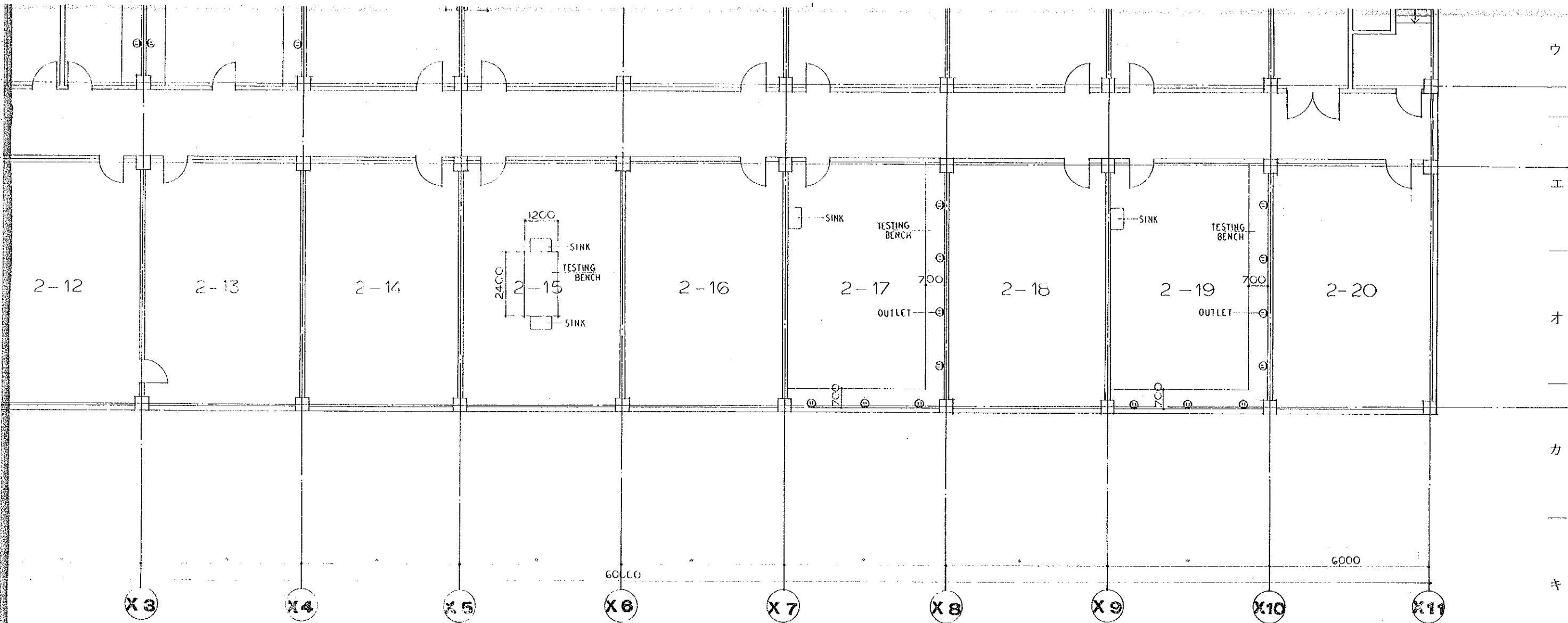




NO.	ROOM NAME	OUTLET	SINK	TESTINGBENCH	OTHERS	NO.	ROOM NAME	OUTLET	SINK	TESTINGBENCH	OTHERS
2-1	W.C (F)					2-17	SPINNING LABORATORY FOR EXPERIMENT	7	1	13000 x 700	PROPANEGAS
2-2	W.C (M)					2-18	WEAVING & KNITTING LABORATORY				
2-3	DARK ROOM	4	2	9000 x 600		2-19	WEAVING & KNITTING LAB. FOR EXPERIMENT	7	1	13000 x 700	PROPANEGAS
2-4	MESURMENT (1)	4		9000 x 700		2-20	MACHINE ROOM				
2-5	MESURMENT (2)	10		21000 x 700							
2-6	LECTURE				BLACK BOARD						

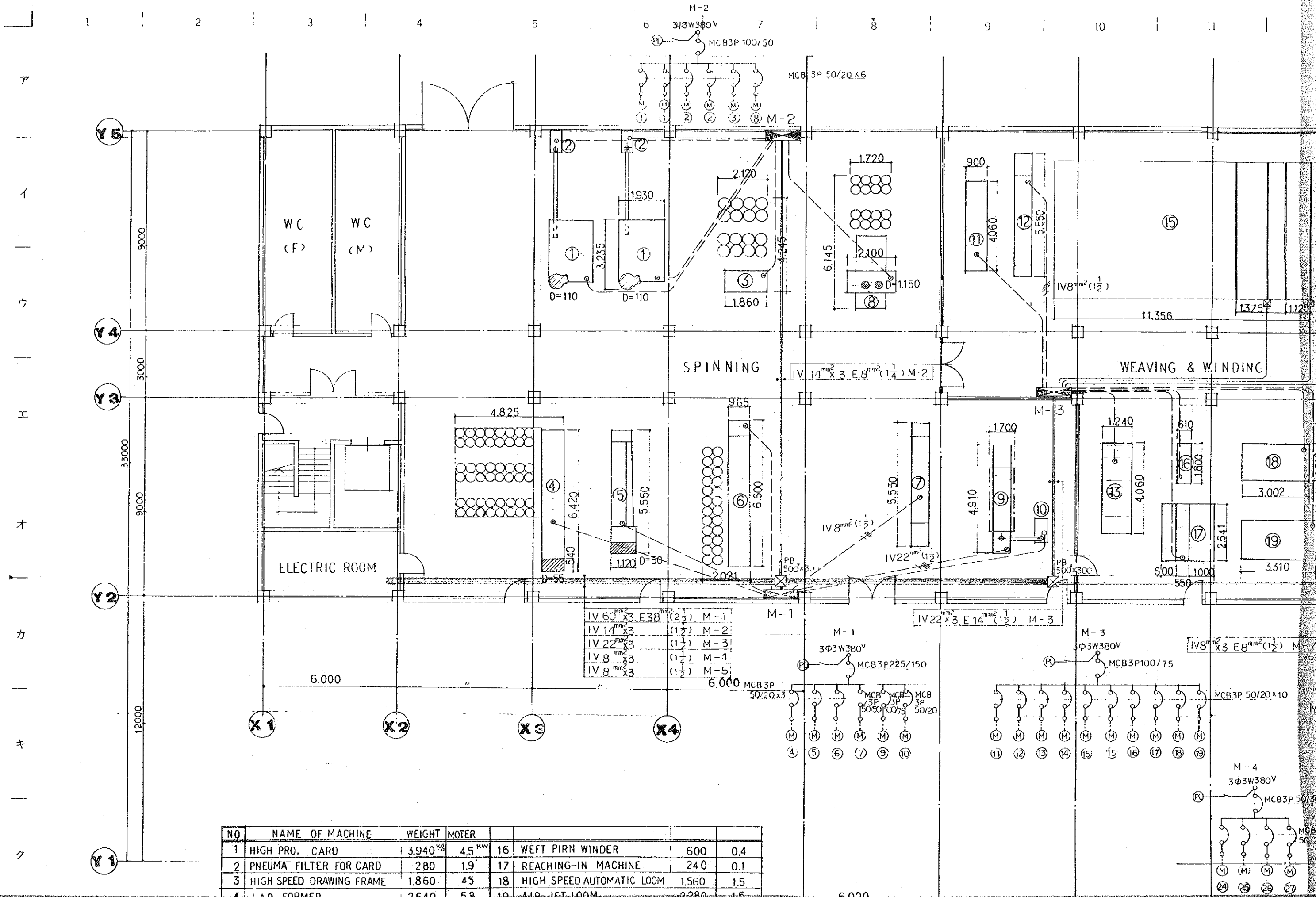


NO.	ROOM NAME	GUTLET	SINK	TESTINGBENCH	OTHERS	NO.	ROOM NAME	OUTLET	SINK	TESTINGBENCH	OTHERS
1	W.C (F)					2-17	SPINNING LABORATORY FOR EXPERIMENT	7	1	13000 x 700	PROPANE GAS
2	W.C (M)					2-18	WEAVING & KNITTING LABORATORY				
3	DARK ROOM	4	2	9000 x 600		2-19	WEAVING & KNITTING LAB. FOR EXPERIMENT	7	1	13000 x 700	PROPANE GAS
4	MESURMENT (1)	4		9000 x 700		2-20	MACHINE ROOM				
5	MESURMENT (2)	10		21000 x 700							

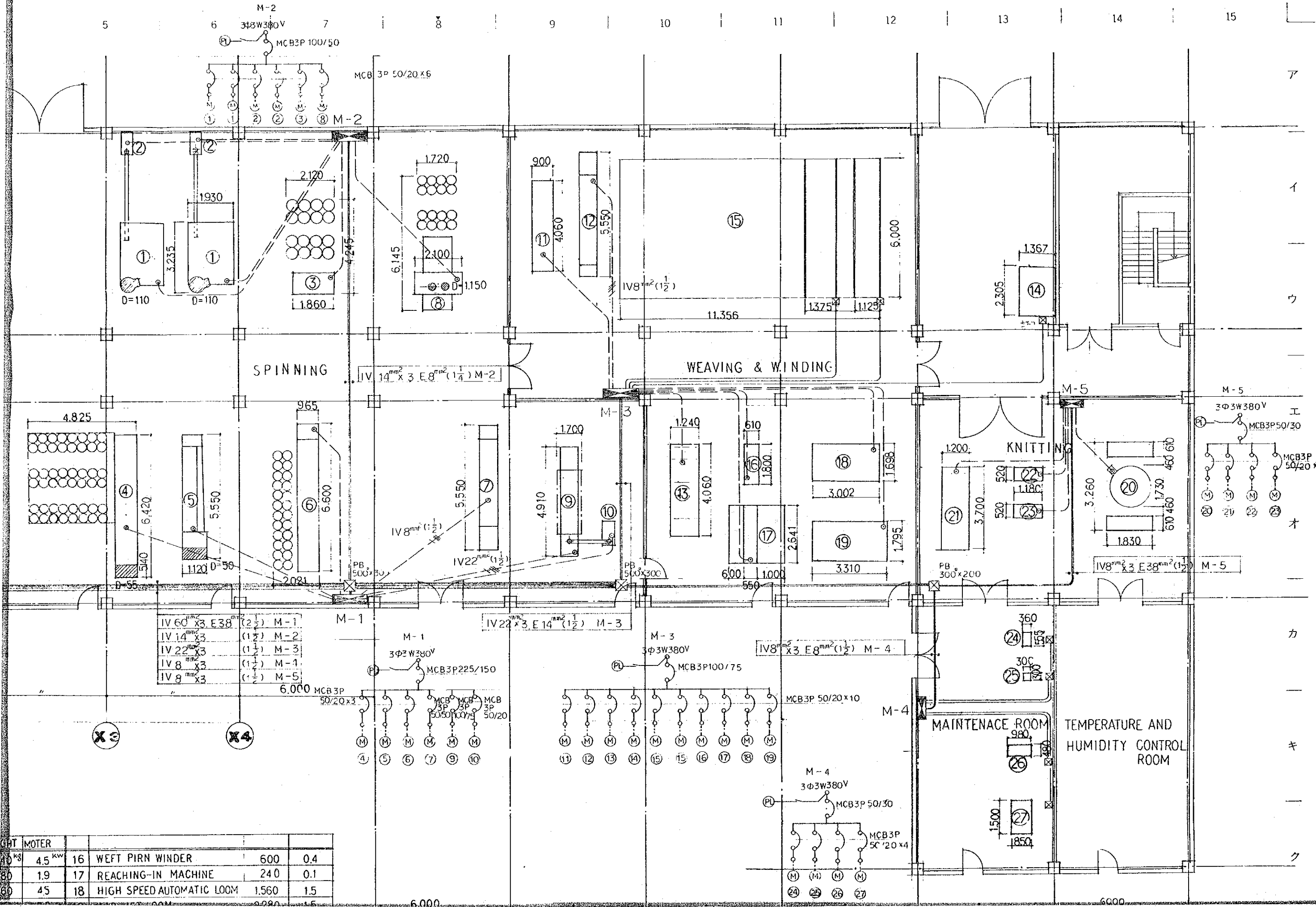


NO.	ROOM NAME	GUTLET	SINK	TESTINGBENCH	OTHERS	NO.	ROOM NAME	GUTLET	SINK	TESTINGBENCH	OTHERS
1	W.C (F)					2-17	SPINNING LABORATORY FOR EXPERIMENT	7	1	13000 x 700	PROPANE GAS
2	W.C (M)					2-18	WEAVING & KNITTING LABORATORY				
3	DARK ROOM	4	2	9000 x 600		2-19	WEAVING & KNITTING LAB. FOR EXPERIMENT	7	1	13000 x 700	PROPANE GAS
4	MESURMENT (1)	4		9000 x 700		2-20	MACHINE ROOM				
5	MESURMENT (2)	10		21000 x 700							
6	LECTURE				BLACK BOARD						
7	CONFERENCE				BLACK BOARD & SCREEN						
8	DIRECTOR										
9	DRAWING										
10	EXPERT										
11											
12	OFFICE										
13	STORAGE										
14	MATERIAL LABORATORY										
15	MATERIAL LABORATORY FOR EXPERIMENT		2	CENTER TABLE 2400 x 1200	PROPANE GAS						
16	SPINNING LABORATORY										

訂正 _____ _____ _____	特記 _____ _____	FIRST FLOOR PLAN (DRAFT) 縮尺 1/100	図面番号 2 板/内 区 分
-------------------------------	----------------------	---	----------------------



NO	NAME OF MACHINE	WEIGHT	MOTER			
1	HIGH PRO. CARD	3,940 ^{kg}	45 ^{kw}	16	WEFT PIRN WINDER	600 0.4
2	PNEUMA FILTER FOR CARD	280	1.9	17	REACHING-IN MACHINE	240 0.1
3	HIGH SPEED DRAWING FRAME	1,860	45	18	HIGH SPEED AUTOMATIC LOOM	1,560 1.5
4	A.P. FORMER	2,640	5.8	19	AIR JET LOOM	2,280 1.5

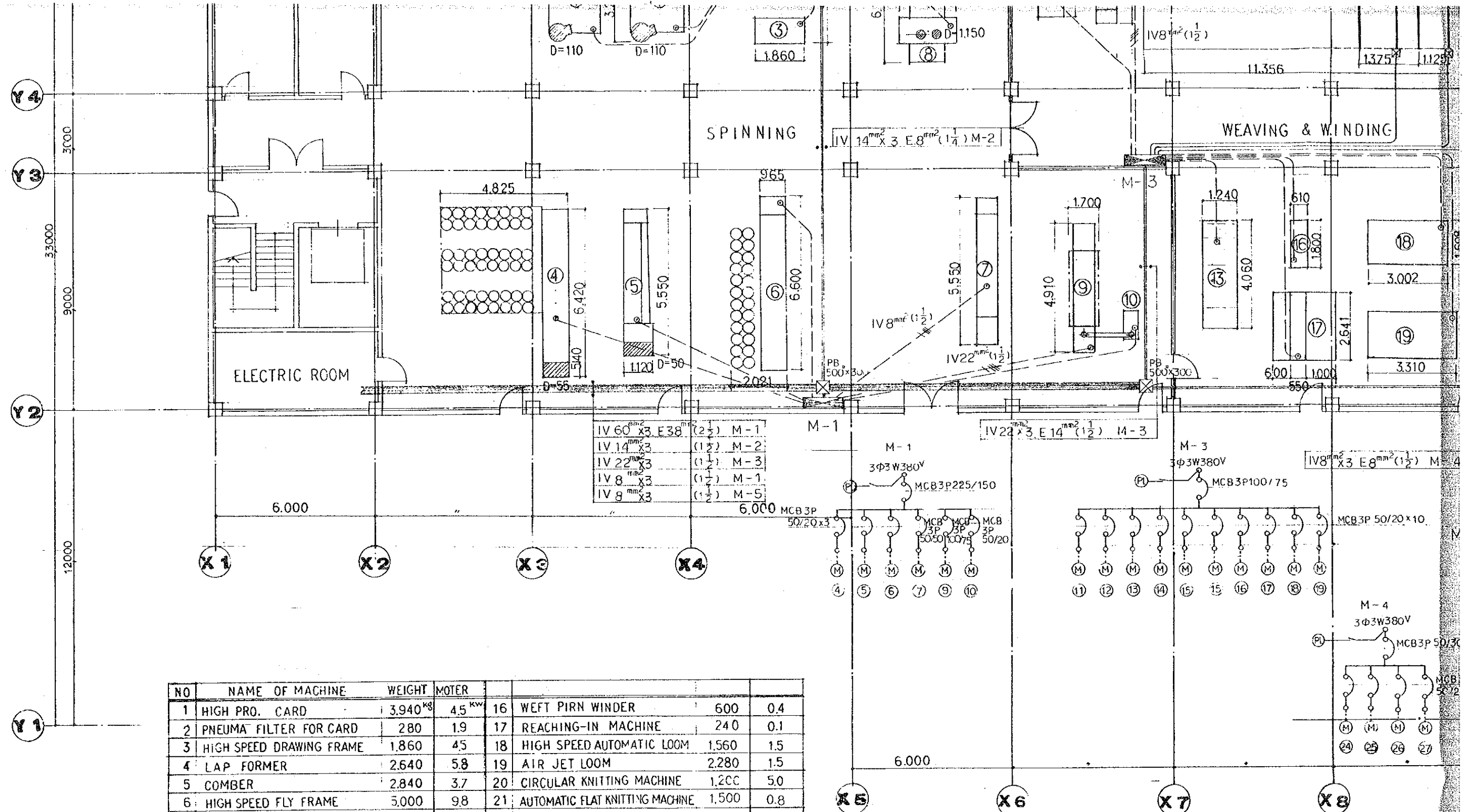


- IV 60 ^{mm²} x 3 E 38 ^{mm²} (2) M-1
- IV 14 ^{mm²} x 3 (1) M-2
- IV 22 ^{mm²} x 3 (1) M-3
- IV 8 ^{mm²} x 3 (1) M-4
- IV 8 ^{mm²} x 3 (1) M-5

HT	MOTOR			
10 kV	4.5 kW	16	WEFT PIRN WINDER	600 0.4
50	1.9	17	REACHING-IN MACHINE	240 0.1
50	45	18	HIGH SPEED AUTOMATIC LOOM	1560 1.5

ア
 イ
 ウ
 エ
 オ
 カ
 キ
 ク

ウ
—
エ
—
オ
—
カ
—
キ
—
ク
—
ケ
—
コ

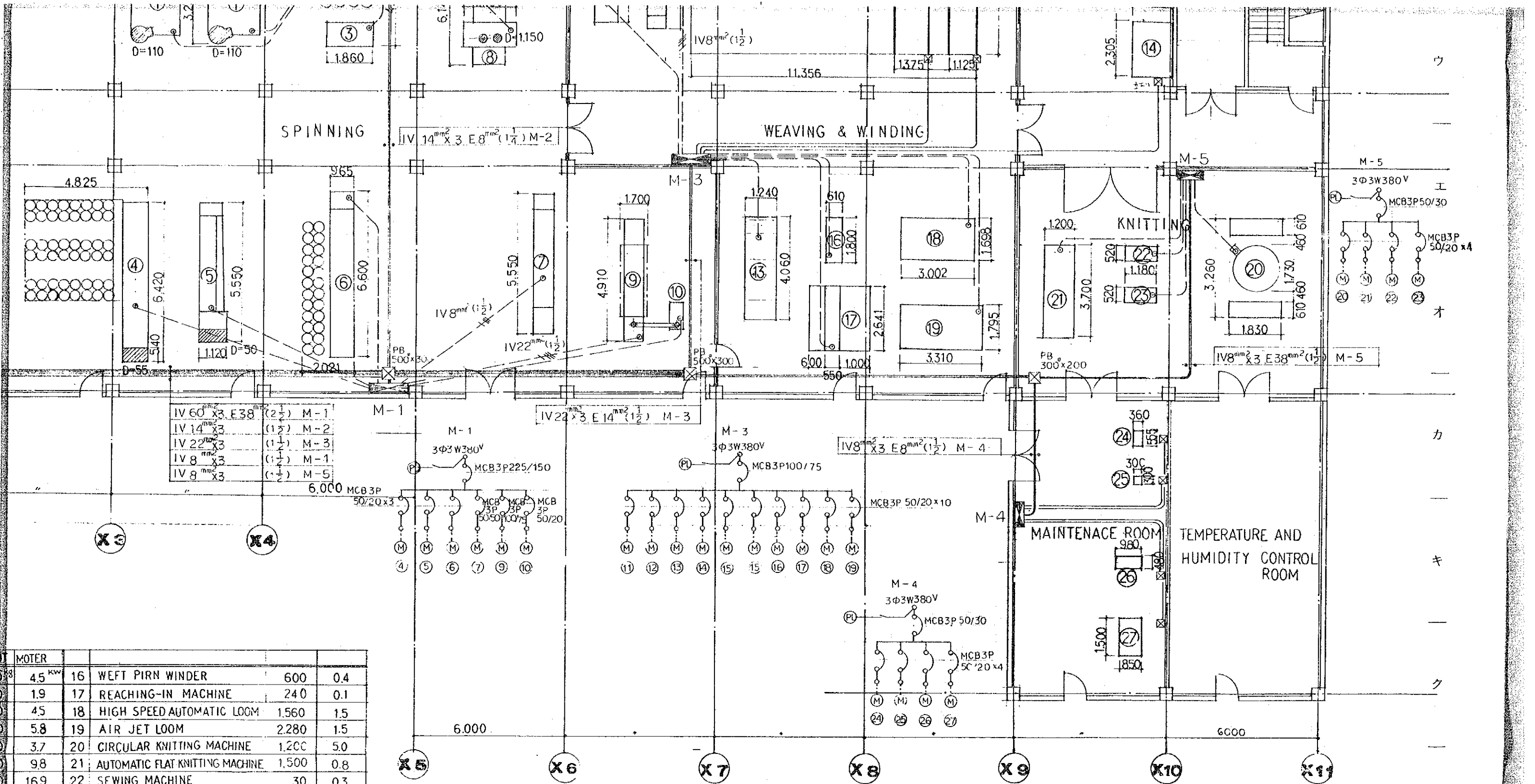


NO	NAME OF MACHINE	WEIGHT	MOTER			
1	HIGH PRO. CARD	3,940 ^{kg}	4.5 ^{kw}	16	WEFT PIRN WINDER	600 0.4
2	PNEUMA FILTER FOR CARD	280	1.9	17	REACHING-IN MACHINE	240 0.1
3	HIGH SPEED DRAWING FRAME	1,860	45	18	HIGH SPEED AUTOMATIC LOOM	1,560 1.5
4	LAP FORMER	2,640	5.8	19	AIR JET LOOM	2,280 1.5
5	COMBER	2,840	3.7	20	CIRCULAR KNITTING MACHINE	1,200 5.0
6	HIGH SPEED FLY FRAME	3,000	9.8	21	AUTOMATIC FLAT KNITTING MACHINE	1,500 0.8
7	RING SPINNING FRAME	2,650	16.9	22	SEWING MACHINE	30 0.3
8	HIGH SPEED DRAWING FRAME	2,800	5.3	23	OVERLOK SEWING MACHINE	30 0.3
9	OPEN-END SPINNING MACHINE	4,000	35.6	24	ELECTRIC WELDING MACHINE	32 6.0
10	PNEUMA FILTER FOR OE	280	1.9	25	TABLE GRINDING MACHINE	64 1.8
11	DOUBLING WINDER	2,060	1.5	26	TABLE DRILLING CUTTING MACHINE	75 0.2
12	RING TWISTING FRAME	2,600	15.0	27	LATHE MACHINE	500 1.5
13	CONE WINDER	1,580	1.5			
14	SIZING MACHINE	680	7.5			
15	SECTIONAL WAPER	6,800	8.3			

FOOT NOTE ⊙ POSITION OF ELECTRIC SOURCE
 ▨ PIT

SYMBOL	SYMBOL NAME
—	FEEDERS
⊙	MOTOR CONTROL PANEL
⊠	PULL BOX
---	CONDUIT RUN IN SLAB
---	CONDUIT RUN WALL AND CEILING
IV	INDOOR POLYVINYL CHLORIDE INS
MCB	MOTOR CIRCUIT BREAKER
(M)	MOTOR

1. 1/2 2. 1/2 3. 1/2 4. 1/2 5. 1/2 6. 1/2 7. 1/2 8. 1/2 9. 1/2 10. 1/2 11. 1/2 12. 1/2 13. 1/2 14. 1/2 15. 1/2 16. 1/2 17. 1/2 18. 1/2 19. 1/2 20. 1/2 21. 1/2 22. 1/2 23. 1/2 24. 1/2 25. 1/2 26. 1/2 27. 1/2	1. 1/2 2. 1/2 3. 1/2 4. 1/2 5. 1/2 6. 1/2 7. 1/2 8. 1/2 9. 1/2 10. 1/2 11. 1/2 12. 1/2 13. 1/2 14. 1/2 15. 1/2 16. 1/2 17. 1/2 18. 1/2 19. 1/2 20. 1/2 21. 1/2 22. 1/2 23. 1/2 24. 1/2 25. 1/2 26. 1/2 27. 1/2
--	--

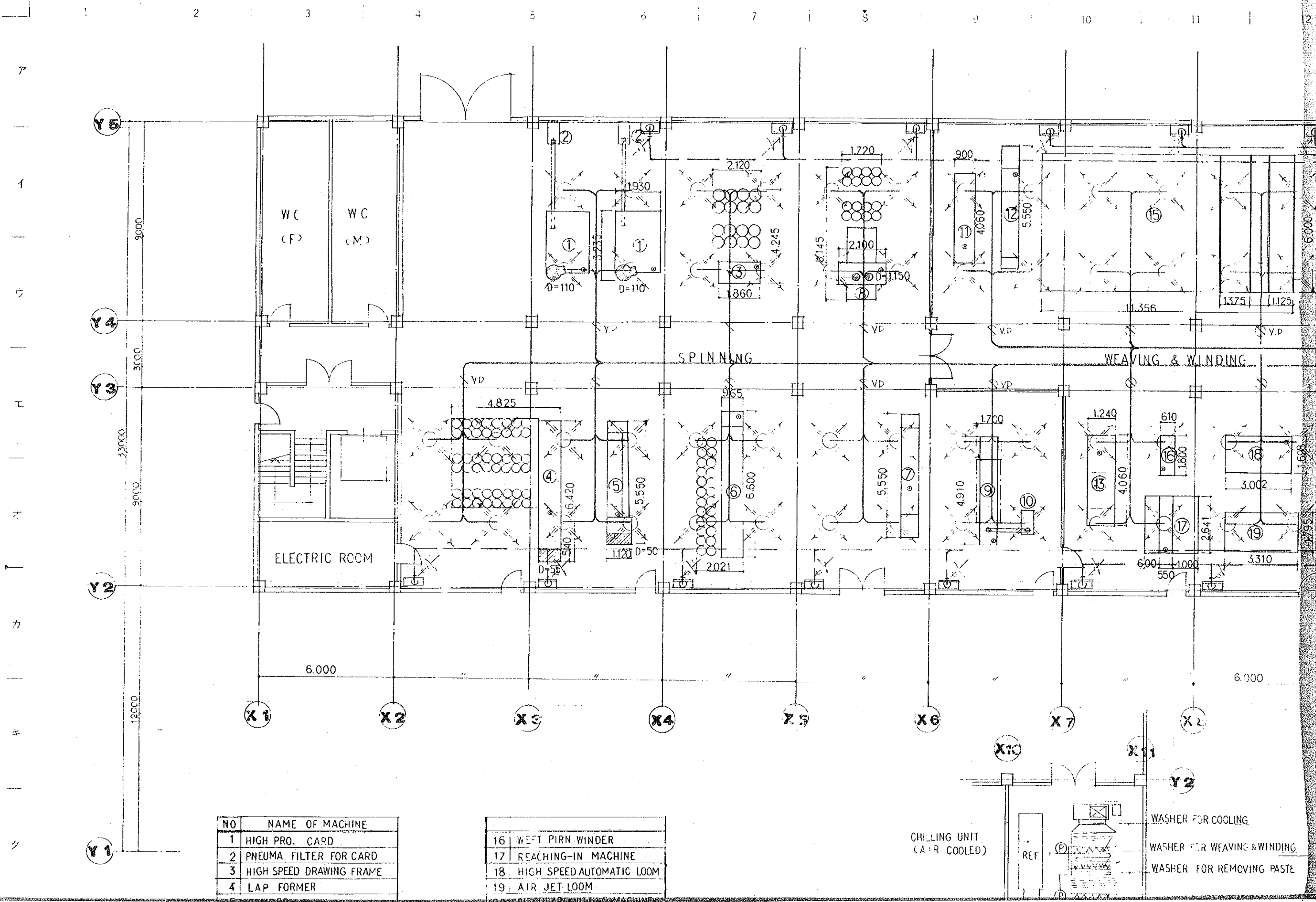


MOTER				
4.5	16	WEFT PIRN WINDER	600	0.4
1.9	17	REACHING-IN MACHINE	240	0.1
4.5	18	HIGH SPEED AUTOMATIC LOOM	1560	1.5
5.8	19	AIR JET LOOM	2280	1.5
3.7	20	CIRCULAR KNITTING MACHINE	1200	5.0
9.8	21	AUTOMATIC FLAT KNITTING MACHINE	1500	0.8
16.9	22	SEWING MACHINE	30	0.3
5.3	23	OVERLOK SEWING MACHINE	30	0.3
35.6	24	ELECTRIC WELDING MACHINE	32	6.0
1.9	25	TABLE GRINDING MACHINE	64	1.8
1.5	26	TABLE DRILLING CUTTING MACHINE	75	0.2
15.0	27	LATHE MACHINE	500	1.5
1.5				
7.5				
8.3				

FOOT NOTE ⊙ POSITION OF ELECTRIC SOURCE
 ▨ PIT

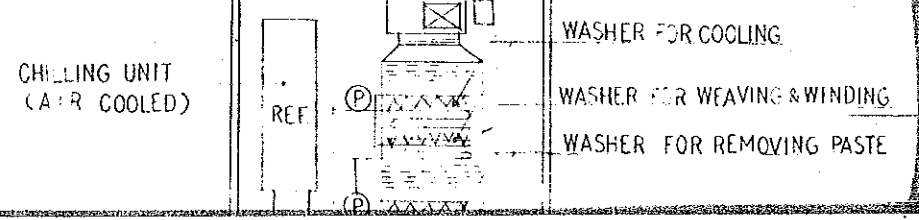
SYMBOL	SYMBOL NAME
	FEEDERS
	MOTOR CONTROL PANEL
	PULL BOX
	CONDUIT RUN IN SLAB
	CONDUIT RUN WALL AND CEILING
IV	INDOOR POLYVINYL CHLORIDE INSULATED WIRE
MCB	MOTOR CIRCUIT BREAKER
(M)	MOTOR

--- IV 20mm x 3 E 20mm (1)
 --- IV 20mm x 3 E 20mm (1)



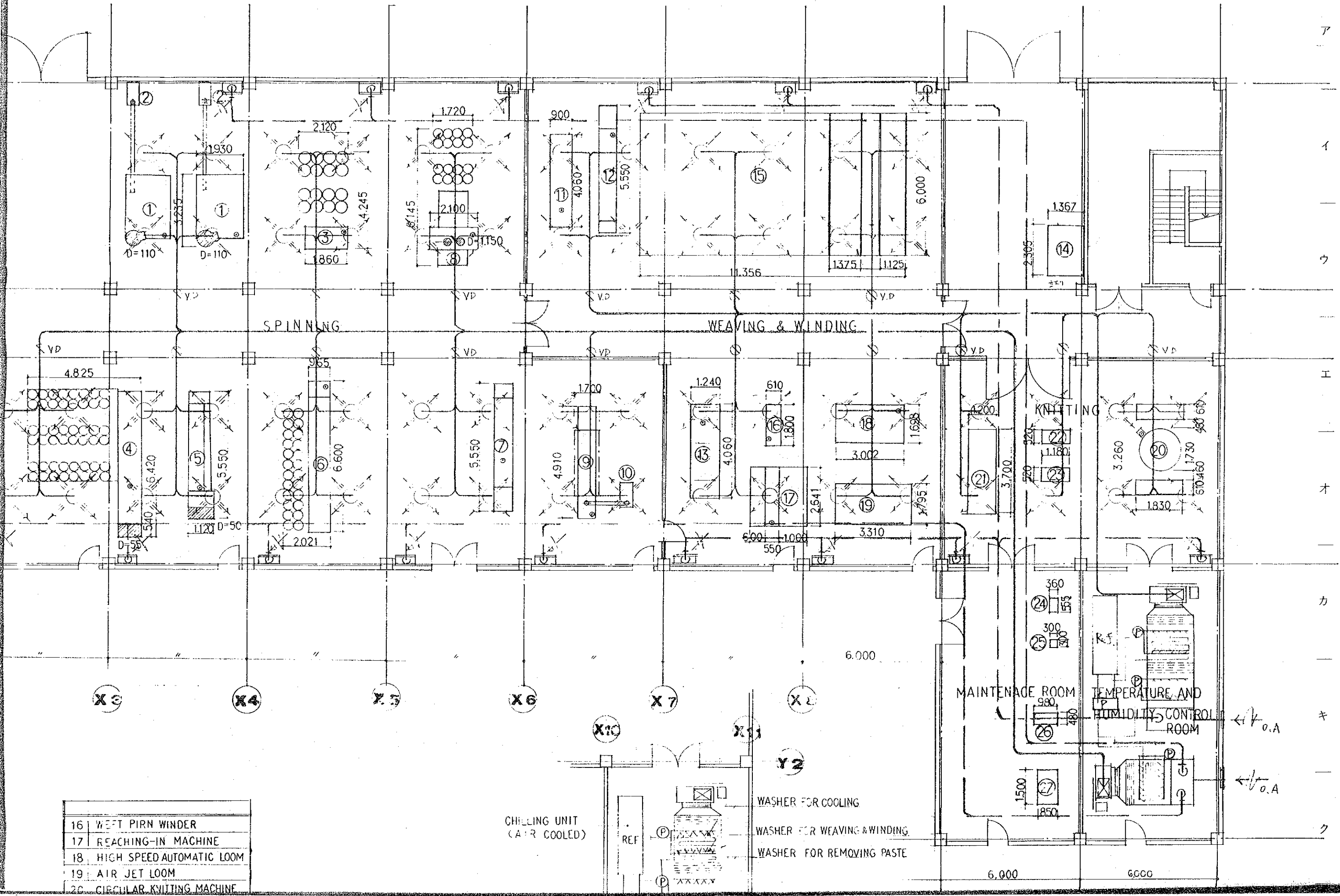
NO	NAME OF MACHINE
1	HIGH PRO. CARD
2	PNEUMA FILTER FOR CARD
3	HIGH SPEED DRAWING FRAME
4	LAP FORMER

16	WEFT PIRN WINDER
17	REACHING-IN MACHINE
18	HIGH SPEED AUTOMATIC LOOM
19	AIR JET LOOM



5 6 7 8 9 10 11 12 13 14 15

ア
イ
ウ
エ
オ
カ
キ
ク



16	WEFT PIRN WINDER
17	REACHING-IN MACHINE
18	HIGH SPEED AUTOMATIC LOOM
19	AIR JET LOOM
20	CIRCULAR KNITTING MACHINE

CHILLING UNIT
(AIR COOLED)

WASHER FOR COOLING
WASHER FOR WEAVING & WINDING
WASHER FOR REMOVING PASTE

MAINTENANCE ROOM

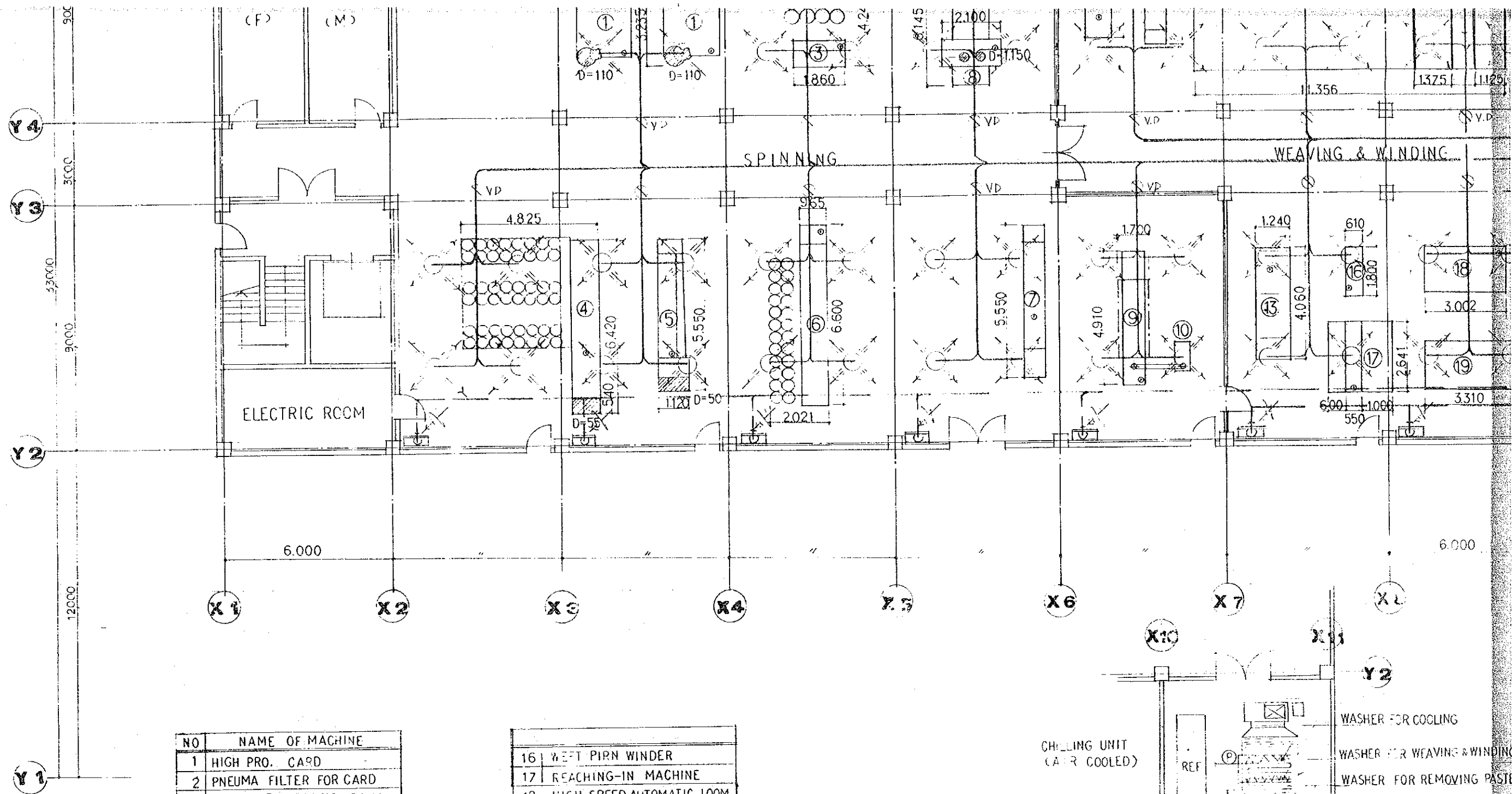
TEMPERATURE AND
HUMIDITY CONTROL ROOM

← 0.A

← 0.A

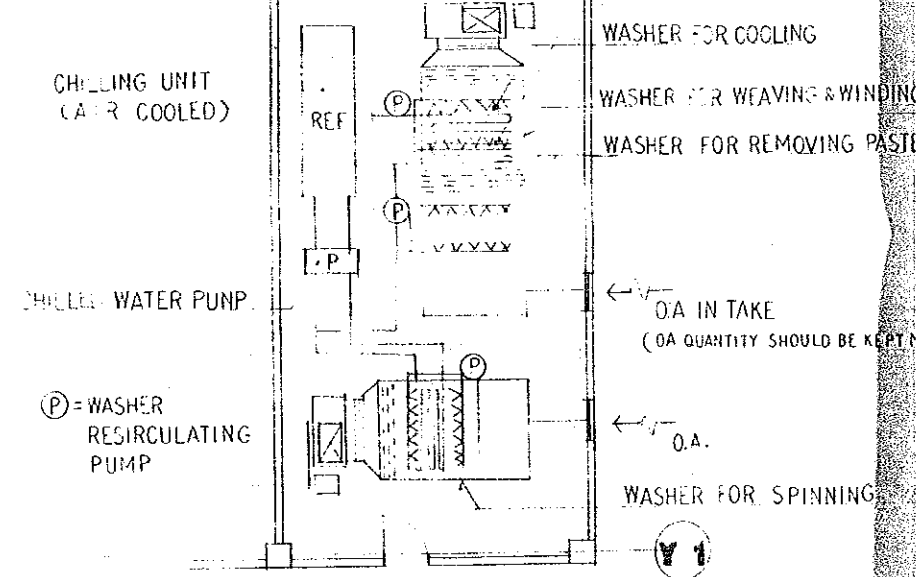
6,000

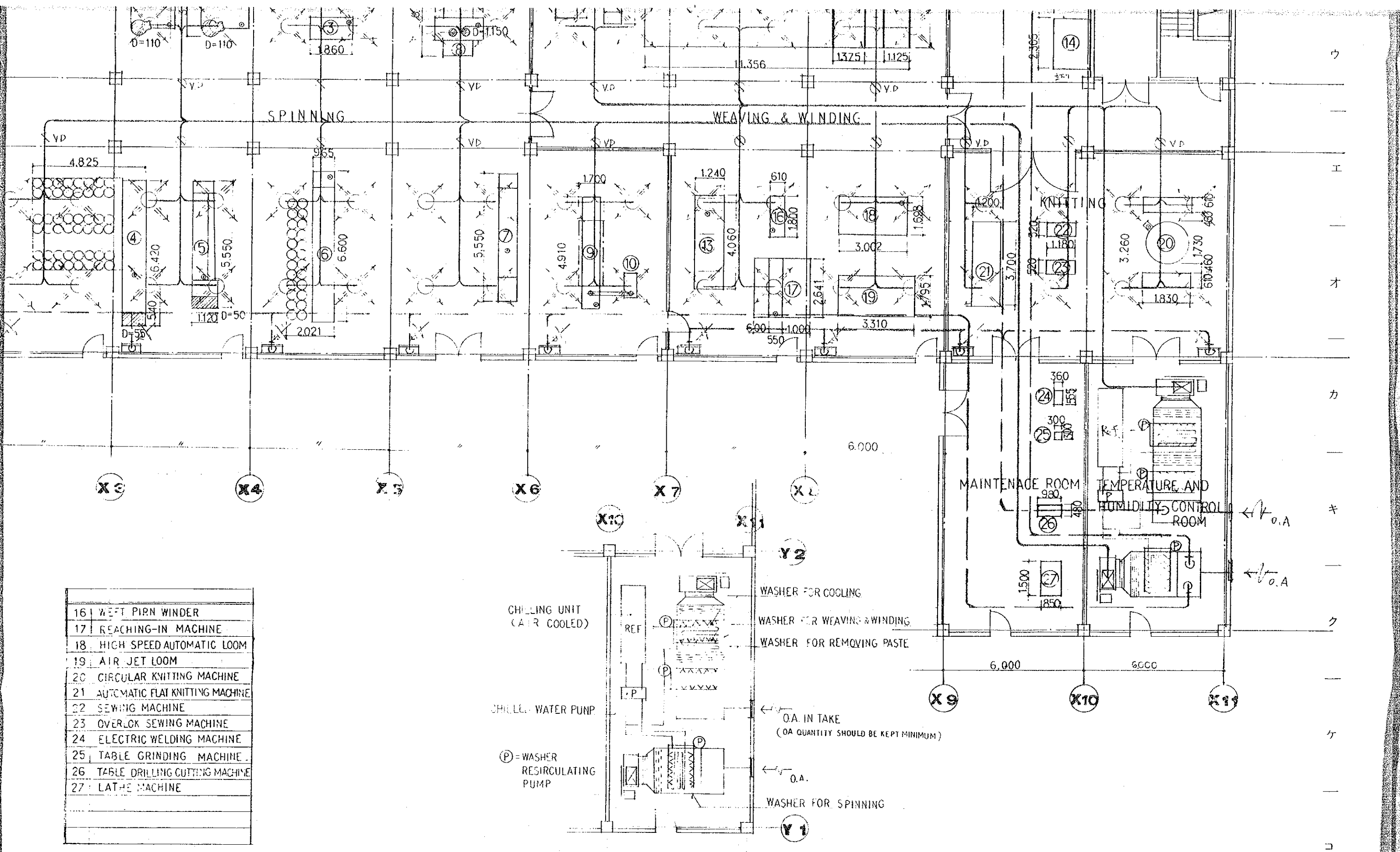
6,000



NO	NAME OF MACHINE
1	HIGH PRO. CARD
2	PNEUMA FILTER FOR CARD
3	HIGH SPEED DRAWING FRAME
4	LAP FORMER
5	COMBER
6	HIGH SPEED FLY FRAME
7	RING SPINNING FRAME
8	HIGH SPEED DRAWING FRAME
9	OPEN-END SPINNING MACHINE
10	PNEUMA FILTER FOR OE
11	DOUBLING WINDER
12	RING TWISTING FRAME
13	CONE WINDER
14	SIZING MACHINE
15	SECTIONAL WAPER

16	WEFT PIRN WINDER
17	REACHING-IN MACHINE
18	HIGH SPEED AUTOMATIC LOOM
19	AIR JET LOOM
20	CIRCULAR KNITTING MACHINE
21	AUTOMATIC FLAT KNITTING MACHINE
22	SEWING MACHINE
23	OVERLOCK SEWING MACHINE
24	ELECTRIC WELDING MACHINE
25	TABLE GRINDING MACHINE
26	TABLE DRILLING CUTTING MACHINE
27	LATHE MACHINE





16	WEFT PIRN WINDER
17	REACHING-IN MACHINE
18	HIGH SPEED AUTOMATIC LOOM
19	AIR JET LOOM
20	CIRCULAR KNITTING MACHINE
21	AUTOMATIC FLAT KNITTING MACHINE
22	SEWING MACHINE
23	OVERLOCK SEWING MACHINE
24	ELECTRIC WELDING MACHINE
25	TABLE GRINDING MACHINE
26	TABLE DRILLING CUTTING MACHINE
27	LATHE MACHINE

JICA