

NO	ITEM AND DESCRIPTION	UNITS	QUANTITIES	UNIT COST	TOTAL	REMARKS
7--2	COOLING WATER SYSTEM FOR COMPRESSOR (MATERIAL COSTS)					
	Cooling tower	Pcs.	1		418,000	
	Cooling capacity 20.0 R,T					
	Cooling water temperature inlet 40.0°C ~ outlet 50.0°C					
	Fan power consumption 3φ, 415V, 0.4 KW					
	Condensing water pump	"	1		120,700	
	50φ x 240L/M x 14.0M					
	3φ 415v 1.5KW					
	Foundation materials	Set	1		12,031	
	SGP (W-3)	m	4	231	924	
	20A	"	70	439	30,730	
	32A	"	7	505	3,535	
	40A	"	15	693	10,395	
	50A	"	41	993	40,713	
	65A	"	1		51,800	
	Fittings for above	"	1		13,000	
	Supports for above	"	1		5,760	
	Gate valves (JIS-5K) 20A	Pcs	6	960	5,760	
	32A	"	12	2,230	26,760	

NO	ITEM AND DESCRIPTION	UNITS	QUANTITIES	UNIT COST	TOTAL	REMARKS
	Gate valves (JIS-5K) 50A	Pcs	1		4,400	
	" 65A	"	1		8,710	
	Three way cock 65A	"	1		245,000	
	Flexible joints (rubber 10K) 32A	"	12	12,560	150,720	
	" 65A	"	2	21,678	43,356	
	Thermometers	"	12	3,200	38,400	
	Painting materials	Set	1		5,900	
	Miscellaneous materials	"	1		9,097	
	Cutting & fitting materials	"	1		4,400	
	Sleeves & inserts	"	1		4,669	
	Sub-Total				1,249,000	
	(LABOR COSTS)					
	Foundation works	Set	1		2,462	
	Carrying-in & installing works	"	1		11,544	
	Testing & adjusting works	"	1		55,073	
	Piping works	"	1		122,118	
	Instruments installing works	"	1		29,160	

NO	ITEM AND DESCRIPTION	UNITS	QUANTITIES	UNIT COST	TOTAL	REMARKS
	Painting works	Set	1		7,487	
	Cutting & patching works	M	1		4,374	
	Sleeves & inserts installing works	U	1		2,516	
	Testing works	M	1		2,916	
	Transportation	M	1		19,350	
	Sub-Total				257,000	
7-3	PACKING CHARGES	Set	1		101,000	
	Sub-Total				101,000	

NO	ITEM AND DESCRIPTION	UNITS	QUANTITIES	UNIT COST	TOTAL	REMARKS
8	HEAVY REPAIR SHOP					
8-1	Water supply system [Material costs Labor costs]	Set	1	1,676,000 993,000]	2,669,000	
8-2	Hot water supply system [Material costs Labor costs]	"	1	1,156,000 36,000]	1,192,000	
8-3	Drainage system [Material costs Labor costs]	"	1	851,000 432,000]	1,283,000	
8-4	Plumbing fixture [Material costs Labor costs]	"	1	865,000 157,000]	1,022,000	
8-5	Fire extinguisher [Material costs Labor costs]	"	1	233,000 6,000]	239,000	
8-6	Air lining works [Material costs]	"	1	1,797,000]	2,949,000	

NO	ITEM AND DESCRIPTION	UNITS	QUANTITIES	UNIT COST	TOTAL	REMARKS
8-7	[Labor costs Engine exhaust works	Set	1	1,152,000	358,000	
8-8	[Material costs [Labor costs Septic tank	"	1	200,000 158,000	3,947,430	
8-9	[Material costs [Labor costs Packing charges	"	1	2,573,186 1,374,244	799,500	
8-10	Field miscellaneous expenses	"	1		289,070	
	Total				14,748,000	

NO	ITEM AND DESCRIPTION	UNITS	QUANTITIES	UNIT COST	TOTAL	REMARKS
8-1	WATER SUPPLY SYSTEM (MATERIAL COSTS)					
	Polyvinyl-chloride lining pipe (W)					
	" 20A	M	246	473	116,358	
	" 25A	M	92	655	60,260	
	" 32A	M	25	865	21,625	
	" 40A	M	144	995	143,280	
	" 50A	M	55	1,340	73,700	
	" 65A	"	60	1,927	115,620	
	" 80A	"	100	2,291	229,100	
	" 100A	M	20	3,127	62,540	
	" 125A	M	4	3,836	15,344	
	Fittings for above	Set	1		587,000	
	Gate valves (JIS-5K)	Pcs	4	1,380	5,520	
	Y-Strainer (10K)	"	1		6,400	
Check valve (JIS-10K)	"	1		1,650		
Insulating materials	Set	1		1,739		
Painting materials	"	1		25,740		
Miscellaneous materials	"	1		84,000		

NO	ITEM AND DESCRIPTION	UNITS	QUANTITIES	UNIT COST	TOTAL	REMARKS
	Cutting & patching materials	Set	1		84,000	
	Sleeves & inserts	"	1		42,124	
	Sub-Total				1,676,000	
	(LABOR COSTS)					
	Piping works	Set	1		610,794	
	Excavating & back fulling works	"	1		81,328	
	Instruments installing works	"	1		2,340	
	Insulating works	"	1		719	
	Painting works	"	1		32,826	
	Cutting & patching works	"	1		120,000	
	Sleeves & inserts installing works	"	1		60,000	
	Testing works	"	1		60,000	
	Transportation	"	1		24,993	
	Sub-Total				993,000	

NO	ITEM AND DESCRIPTION	UNITS	QUANTITIES	UNIT COST	TOTAL	REMARKS
8-2	HOT WATER SUPPLY SYSTEM (MATERIAL COSTS)					
	Electric heater	Pcs	1		1,145,000	
	Copper pipe (M) 20A	M	2	356	712	
	" 25A	"	5	512	2,560	
	Fittings for above	Set	1		2,000	
	Supports for above	"	1		500	
	Gate valve (JIS-5K) 25A	Pcs	1		1,380	
	Insulating materials	Set	1		2,196	
	Painting materials	"	1		168	
	Miscellaneous materials	"	1		400	
	Cutting & patching materials	"	1		400	
	Sleeves & inserts	"	1		684	
	Sub-Total				1,156,000	
	(LABOR COSTS)					
	Carrying-in & installing works	Set	1		3,600	
	Testing & adjusting works	"	1		10,000	
	Piping works	"	1		2,399	

NO	ITEM AND DESCRIPTION	UNITS	QUANTITIES	UNIT COST	TOTAL	REMARKS
	Instruments installing works	Set	1		390	
	Insulating works	"	1		912	
	Painting works	M	1		214	
	Cutting & patching works	"	1		500	
	Sleeves & inserts installing works	M	1		300	
	Testing works	H	1		300	
	Transportation	M	1		17,385	
	Sub-Total				36,000	

NO	ITEM AND DESCRIPTION	UNTS	QUANTITIES	UNIT COST	TOTAL	REMARKS
8-3	DRAINAGE SYSTEM (MATERIAL COSTS)					
	Submersible waste pump 50φ x 250L/M x 4.0M	Pcs	2	68,900	137,800	
	3φ 415V 0.75KW					
	L P 40A	M	13	1,150	14,950	
	Junction fittings for above	Set	1		4,500	
	V P 30A	M	16	140	2,240	
	" 40A	"	147	204	29,988	
	" 50A	"	36	289	10,404	
	" 65A	"	121	369	44,649	
	" 75A	"	12	561	6,732	
	" 100A	"	69	860	59,340	
	" 150A	"	4	1,724	6,896	
	Fittings for above	Set	1		129,000	
	Gate valves (JIS-5K) 65A	Pcs	2	8,710	17,420	
	Check valves (JIS-10K) 65A	"	2	10,800	21,600	
	Clean-out (COA) 40A	"	3	1,500	4,500	
	" 50A	"	4	1,640	6,560	
	" 65A	"	6	2,130	12,780	

NO	ITEM AND DESCRIPTION	UNITS	QUANTITIES	UNIT COST	TOTAL	REMARKS
	Clean-out (COA) 100A	Pcs	8	3,940	31,520	
	Floor drains (T-5A) 50A	"	8	3,820	30,560	
	Drains (C) 40A	"	26	3,100	80,600	
	Vent caps (Buried type) 65A	"	2	1,550	3,100	
	Manhole covers (Air-tight & medium weight) 300φ	"	2	4,200	8,400	
	" 350φ	"	6	5,200	31,200	
	" 450φ	"	4	7,200	28,800	
	Soil manholes 360 square	"	6	5,708	34,248	
	Waste manholes 300 square	"	2	4,833	9,666	
	" 450 "	"	4	9,307	37,228	
	Painting materials	Set	1		350	
	Miscellaneous materials	"	1		18,969	
	Cutting & patching materials	"	1		18,000	
	Sleeves & inserts	"	1		9,000	
	Sub-Total				851,000	

NO	ITEM AND DESCRIPTION	UNITS	QUANTITIES	UNIT COST	TOTAL	REMARKS
	(LABOR COSTS)					
	Carrying-in & installing works	Set	1		8,100	
	Testing & adjusting works	"	1		1,400	
	Piping works	"	1		97,950	
	Concrete basin construction works	"	1		59,754	
	Excavating & back filling works	"	1		127,968	
	Instruments installing works	"	1		55,620	
	Painting works	"	1		450	
	Cutting & patching works	"	1		30,000	
	Sleeves & inserts installing works	"	1		23,000	
	Testing works	"	1		15,000	
	Transportation	"	1		12,758	
	Sub-Total				432,000	

NO	ITEM AND DESCRIPTION	UNITS	QUANTITIES	UNIT COST	TOTAL	REMARKS
8-4	PLUMBING FIXTURE (MATERIAL COSTS)					
	Turkish style closets C-97	Set	6	27,740	166,440	
	Urinals U-23 (T-60RN)	"	8	14,970	119,760	
	Lavatory basins L-221	"	4	22,760	91,040	
	Mirrors TS-119AE5	Pcs	4	9,760	39,040	
	Shelves S-3	"	4	1,550	6,200	
	Liquid soap-dispensers TS-126AS	"	4	3,030	12,120	
	Slop sinks SK-22A	Set	2	48,220	96,440	
	Shower set TM-15CM	"	1		12,900	
	" TGB-19C	"	5	13,610	68,050	
	Faucets T-23B-13	Pcs	6	1,330	7,980	
	" T-200-13	"	32	4,760	152,320	
	" T-27-13 (with box)	"	2	6,170	12,340	
	Miscellaneous materials	Set	1		40,000	
	Marking & inserting & curing materials	"	1		40,370	
	Sub-Total				865,000	

NO	ITEM AND DESCRIPTION	UNITS	QUANTITIES	UNIT COST	TOTAL	REMARKS
	(LABOR COSTS)					
	Instruments installing works	Set	1		119,720	
	Marking, inserting & curing works	"	1		12,000	
	Adjusting works	"	1		12,000	
	Transportation	"	1		13,280	
	Sub-Total				157,000	

NO	ITEM AND DESCRIPTION	UNITS	QUANTITIES	UNIT COST	TOTAL	REMARKS	
8-5	FIRE EXTINGUISHER (MATERIAL COSTS)						
	Fire extinguisher	Pcs.	1		233,000		
	Sub-Total					233,000	
	(LABOR COSTS)						
	Carrying-in & installing works	Set	1			2,100	
	Transportation	"	1			3,900	
Sub-Total					6,000		

NO	ITEM AND DESCRIPTION	UNITS	QUANTITIES	UNIT COST	TOTAL	REMARKS
8-6	AIR LINING WORKS (MATERIAL COSTS)					
	SGP (W-S) 15A	M	589	184	108,376	
	" 32A	M	83	439	36,437	
	" 40A	"	511	505	258,055	
	" 80A	"	3	1,167	3,507	
	Fittings for above	Set	1		244,000	
	Supports for above	"	1		122,000	
	Stop valves (16K) 15A	Pcs	152	4,430	673,360	
	" 32A	"	2	7,890	15,780	
	" 40A	"	8	9,400	75,200	
	Y-Strainers (16K) 15A	"	12	2,780	33,360	
	Traps 15A	"	12	8,200	98,400	
	Painting materials	Set	1		45,305	
	Miscellaneous materials	"	1		41,000	
	Cutting & patching materials	"	1		21,000	
	Sleeves & inserts	"	1		21,220	
	Sub-Total				1,797,000	

NO	ITEM AND DESCRIPTION	UNITS	QUANTITIES	UNIT COST	TOTAL	REMARKS
	(LABOR COSTS)					
	Piping works	Set	1		726,528	
	Excavating & back filling works	"	1		976	
	Instruments installing works	"	1		59,100	
	Painting works	"	1		57,701	
	Cutting & patching works	"	1		120,000	
	Sleeves & inserts installing works	"	1		80,000	
	Testing works	"	1		80,000	
	Transportation	"	1		27,695	
	Sub-Total				1,152,000	

NO	ITEM AND DESCRIPTION	UNITS	QUANTITIES	UNIT COST	TOTAL	REMARKS
8-7	ENGINE EXHAUST WORKS (MATERIAL COSTS)					
	SGP (W) 65A	M	82	993	81,426	
	Fittings for above	Set	1		49,000	
	Supports for above	"	1		25,000	
	Vermin proof nets 65A	Pcs	10	1,800	18,000	
	Painting materials	Set	1		3,644	
	Miscellaneous materials	"	1		9,000	
	Cutting & patching materials	"	1		9,000	
	Sleeves & inserts	"	1		4,930	
	Sub-Total				200,000	
	(LABOR COSTS)					
	Piping works	Set	1		101,598	
	Instruments installing works	"	1		9,000	
	Painting works	"	1		4,694	
	Cutting & patching works	"	1		17,000	
	Sleeves & inserts installing works	"	1		11,000	
	Testing works	"	1		11,000	

NO	ITEM AND DESCRIPTION	UNITS	QUANTITIES	UNIT COST	TOTAL	REMARKS
	Transportation Sub-Total	Set	1		3,708 158,000	

NO	ITEM AND DESCRIPTION	UNITS	QUANTITIES	UNIT COST	TOTAL	REMARKS
8-8	SEPTIC TANK (EAST) MATERIAL COSTS					
A.	Tank construction materials	Set	1		1,989	
	Materials for temporary works					
	Sand	m ³	2.9	2,070	6,003	
	Brick	"	2.0	7,650	15,300	
	Reinforced concrete	"	14.3	9,900	141,570	
	Drain concrete	"	0.7	9,900	6,930	
	Reinforcing bar	ton	1.6	63,500	101,600	
	Form wood	m ²	103.6	1,360	140,896	
	Mortar water proof	"	72.3	1,280	92,544	
	Mortar trowel	"	9.8	920	9,016	
	Check panel	Set	1		2,500	
	Manhole covers 450ϕ	Pcs	3	9,000	27,000	
	" 300ϕ	"	2	6,300	12,600	
	Partition plate	Set	1		21,600	
	Macadam	m ³	1.7	4,000	6,800	
	Net	m	6.5	250	1,625	
	Perlite mixed soil	m ³	2.3	10,000	23,000	

NO	ITEM AND DESCRIPTION	UNITS	QUANTITIES	UNIT COST	TOTAL	REMARKS
	Sub-Total				610,973	
B.	MECHANICAL WORKS					
	Submersible waste pumps 40Ax0,1m ³ /minx3Mx0,25KN	Pcs	2	46,000	92,000	
	Blower 20Ax0,17m ³ /minx0,15kg/cm ² x0,4KN	"	1		84,000	
	Chrolinator 75A x 300ℓ	"	1		30,000	
	Defusers 75A x 300 ℓ	"	2	4,000	8,000	
	Painting materials	Set	1		1,500	
	Sub-Total				215,500	
C.	PIPE INSTALLING WORKS					
	Gate valves BC 5K 40A	Pcs.	2	3,000	6,000	
	" BC 5K 20A	"	1		960	
	Check valves BC 10K 40A	"	2	3,600	7,200	
	VP 150A	M	4	1,724	6,896	
	" 40A	"	12	204	2,448	
	" 20A	"	8	80	640	
	Fittings for above	Set	1		6,982	

NO	ITEM AND DESCRIPTION	UNITS	QUANTITIES	UNIT COST	TOTAL	REMARKS
	Supports for above	Set	1		2,994	
	SubTotal				34,120	
D.	ELECTRIC WORKS					
	Control panel	Pcs	1		400,000	
	Level switches	N	2	10,000	20,000	
	Wire & pipe	Set	1		5,000	
	Materials for earthing work	M	1		1,000	
	SubTotal				426,000	
	Total				1,286,593	
	(LABOR COSTS)					
A.	Tank construction works					
	Temporary works	Set	1		37,791	
	Earth works	M	1		349,217	
	Concrete works	"	1		107,724	
	Plaster works	"	1		25,390	
	Fittings installing works	N	1		44,000	

NO	ITEM AND DESCRIPTION	UNITS	QUANTITIES	UNIT COST	TOTAL	REMARKS
	Macadam, net & Perlite	Set	1		38,000	
	Transportation	"	1		7,000	
	Sub-Total				609,122	
B.	MECHANICAL WORKS					
	Installing works	Set	1		36,000	
	Painting works	"	1		2,500	
	Sub-Total				38,500	
C.	PIPE INSTALLING WORKS					
	Installing works	Set	1		10,000	
	Painting works	"	1		500	
	Sub-Total				10,500	
D.	ELECTRIC WORKS					
	Board, pipe & wire installing works	Set	1		29,000	
	Sub-Total				29,000	

NO	ITEM AND DESCRIPTION	UNITS	QUANTITIES	UNIT COST	TOTAL	REMARKS
	Total				687,122	

NO	ITEM AND DESCRIPTION	UNITS	QUANTITIES	UNIT COST	TOTAL	REMARKS
A.	SEPTIC TANK (WEST) (MATERIAL COSTS)					
	Tank construction materials	Set	1		1,989	
	Materials for temporary works					
	Sand	m ³	2.9	2,070	6,003	
	Brick	"	2.0	7,650	15,300	
	Reinforced concrete	"	14.3	9,900	141,570	
	Drain concrete	"	0.7	9,900	6,930	
	Reinforcing bar	ton	1.6	63,500	101,600	
	Form wood	m ²	103.6	1,360	140,896	
	Mortar water proof	"	72.3	1,280	92,544	
	Mortar trowel	"	9.8	920	9,016	
	Check plate	Set	1		2,500	
	Manhole covers 450φ	Pcs	3	9,000	27,000	
	" 300φ	"	2	6,300	12,600	
	Partition plate	Set	1		21,600	
	Macadam	m ³	1.7	4,000	6,800	
	Net	m	6.5	250	1,625	
	Perlite mixed soil	m ³	2.3	10,000	23,000	

NO	ITEM AND DESCRIPTION	UNITS	QUANTITIES	UNIT COST	TOTAL	REMARKS
	Sub-Total				610,973	
B.	MECHANICAL WORKS					
	Submersible waste pump 40A x 0.1m ³ /min x 3m x 0.25KW	Pcs	2	46,000	92,000	
	Blower 20A x 0.17m ³ /min x 0.15kg/cm ² x 0.4KW	"	1		84,000	
	Chrolinator 75A x 300 ℓ	"	1		30,000	
	Defuser 75A x 300 ℓ	"	2	4,000	8,000	
	Painting materials	Set	1		1,500	
	Sub-Total				215,500	
C.	PIPE INSTALLING WORKS					
	Gate valves BC 5K 40A	Pcs	2	3,000	6,000	
	" BC 5K 20A	1			960	
	Check valves BC 10K 40A	"	2	3,600	7,200	
	VP 150A	m	4	1,724	6,896	
	" 40A	"	12	204	2,448	
	" 20A	"	8	80	640	
	Fittings for above	Set	1		6,982	

NO	ITEM AND DESCRIPTION	UNITS	QUANTITIES	UNIT COST	TOTAL	REMARKS
	Supports for above	Set	1		2,994	
	Sub-Total				34,120	
D.	ELECTRIC WORKS					
	Control panel	Pcs	1		400,000	
	Level switches	"	2	10,000	20,000	
	Wire & pipe	Set	1		5,000	
	Materials for earthing work	"	1		1,000	
	Sub-Total				426,000	
	Total				1,286,593	
	(LABOR COSTS)					
A.	Tank construction works					
	Temporary works	Set	1		37,791	
	Earth works	"	1		349,217	
	Concrete works	"	1		107,724	
	Plaster works	"	1		25,390	
	Fitting/installing works	"	1		44,000	

NO	ITEM AND DESCRIPTION	UNITS	QUANTITIES	UNIT COST	TOTAL	REMARKS
	Macadam, net, perlite	Set	1		38,000	
	Transportation	"	1		7,000	
	Sub-Total				609,122	
B.	MECHANICAL WORKS					
	Installing works	Set	1		36,000	
	Painting works	"	1		2,500	
	Sub-Total				38,500	
C.	PIPE INSTALLING WORKS					
	Installing works	Set	1		10,000	
	Painting works	"	1		500	
	Sub-Total				10,500	
D.	ELECTRIC WORKS					
	Board, pipe & wire installing works	Set	1		29,000	
	Sub-Total				29,000	
	Total				687,122	

NO	ITEM AND DESCRIPTION	UNITS	QUANTITIES	UNIT COST	TOTAL	REMARKS
8-9	PACKING CHARGES Sub-Total	Set	1		799,500 799,500	

NO	ITEM AND DESCRIPTION	UNITS	QUANTITIES	UNIT COST	TOTAL	REMARKS
9	PARTS STORAGE					
9-1	Water supply system [Material costs Labor costs]	Set	1	18,000 11,000]	29,000	
9-2	Drainage system [Material costs Labor costs]	"	1	43,000 23,000]	66,000	
9-3	Plumbing fixture [Material costs Labor costs]	"	1	145,000 19,000]	164,000	
9-4	Packing charges	"	1		12,300	
9-5	Field miscellaneous expenses	"	1		5,700	
	Total				277,000	

NO	ITEM AND DESCRIPTION	UNITS	QUANTITIES	UNIT COST	TOTAL	REMARKS
9-1	<p>WATER SUPPLY WORKS (MATERIAL COSTS)</p> <p>Polyvinyl-chloride lining pipe (W) 20A</p> <p>Fittings for above</p> <p>Painting materials</p> <p>Miscellaneous materials</p> <p>Cutting & patching materials</p> <p>Sleeves & inserts</p> <p>Sub-Total</p>	<p>M</p> <p>Set</p> <p>"</p> <p>"</p> <p>"</p> <p>"</p>	<p>18</p> <p>1</p> <p>1</p> <p>1</p> <p>1</p> <p>1</p>	<p>473</p>	<p>8,514</p> <p>6,000</p> <p>420</p> <p>1,566</p> <p>1,000</p> <p>500</p> <p>18,000</p>	
	<p>(LABOR COSTS)</p> <p>Piping works</p> <p>Excavating & back fulling works</p> <p>Painting works</p> <p>Testing works</p> <p>Transportation</p> <p>Sub-Total</p>	<p>Set</p> <p>"</p> <p>"</p> <p>"</p> <p>"</p>	<p>1</p> <p>1</p> <p>1</p> <p>1</p> <p>1</p>	<p>7,614</p> <p>1,674</p> <p>532</p> <p>800</p> <p>380</p> <p>11,000</p>		

NO	ITEM AND DESCRIPTION	UNITS	QUANTITIES	UNIT COST	TOTAL	REMARKS
9-2	DRAINAGE SYSTEM (MATERIAL COSTS)					
	V P 40A	M	14	204	2,856	
	" 100A	"	17	860	14,620	
	Fittings for above	Set	1		14,000	
	Manhole covers (Air tight & medium weight) 300ø	Pcs	1		4,200	
	Waste manholes 300 square	"	1		4,833	
	Miscellaneous materials	Set	1		2,491	
	Sub-Total				43,000	
	(LABOR COSTS)					
	Piping works	Set	1		6,768	
	Concrete basin construction works	"	1		3,924	
	Excavating & back fulling works	"	1		10,797	
	Testing works	"	1		700	
	Transportation	"	1		811	
	Sub-Total				23,000	

NO	ITEM AND DESCRIPTION	UNITS	QUANTITIES	UNIT COST	TOTAL	REMARKS
9-3	PLUMBING FIXTURE (MATERIAL COSTS)					
	Lavatories : L-221	Set	3	38,980	116,940	
	Liquid soap-dispensers TS-126AS	Pcs	3	3,030	9,090	
	Faucets T-27-13 (with box)	"	2	6,170	12,340	
	Miscellaneous materials	Set	1		6,630	
	Sub-Total				145,000	
	(LABOR COSTS)					
	Instruments installing works	Set	1		15,510	
	Adjusting works	"	1		1,600	
	Transportation	"	1		1,890	
	Sub-Total				19,000	
	TOTAL				164,000	
	TOTAL				183,000	
	TOTAL				183,000	
	TOTAL				183,000	
	TOTAL				183,000	
	TOTAL				183,000	
	TOTAL				183,000	

NO	ITEM AND DESCRIPTION	UNITS	QUANTITIES	UNIT COST	TOTAL	REMARKS
9-4	PACKING CHARGES	Set	1	12,300	12,300	
	Sub-Total:				12,300	

NO	ITEM AND DESCRIPTION	UNITS	QUANTITIES	UNIT COST	TOTAL	REMARKS
10	RETREADING AND METAL CASTING					
10-1	Water supply system	Set	1		347,000	
	Material costs			204,000		
	Labor costs			143,000		
10-2	Drainage system	"	1		1,003,000	
	Material costs			670,000		
	Labor costs			333,000		
10-3	Plumbing fixture	"	1		384,000	
	Material costs			311,000		
	Labor costs			73,000		
10-4	Fire extinguisher	Set	1		239,000	
	Material costs			233,000		
	Labor costs			6,000		
10-5	Air lining works	"			605,000	
	Material costs			395,000		
	Labor costs			210,000		

NO	ITEM AND DESCRIPTION	UNITS	QUANTITIES	UNIT COST	TOTAL	REMARKS
10-6	Oil supply system Material costs Labor costs	Set	1	2,878,000 476,000	3,354,000	
10-7	Industrial hot water system Material costs Labor costs	"	1	154,000 93,000	247,000	
10-8	Industrial steam system Material costs Labor costs	"	1	436,000 203,000	639,000	
10-9	Septic tank Material costs Labor costs	"	1	1,079,055 532,640	1,611,695	
10-10	Packing charges Material costs Labor costs	"	1		428,900	
10-11	Field miscellaneous works Material costs Labor costs	"	1		177,405	
	Total				9,034,000	

NO	ITEM AND DESCRIPTION	UNITS	QUANTITIES	UNIT COST	TOTAL	REMARKS
10-1	WATER SUPPLY SYSTEM (MATERIAL COSTS)					
	Polyvinyle-chloride 20A	M	105	473	49,665	
	lining pipes 25A	"	16	655	10,480	
	32A	"	19	865	16,435	
	40A	"	1		995	
	50A	"	5	1,340	6,700	
	65A	"	9	1,927	17,343	
	Fittings for above	Set	1		71,133	
	Gate valves (JIS-5K) 25A	pcs.	1		1,380	
	Painting materials	Set	1		4,410	
	Miscellaneous materials	"	1		10,216	
	Cutting for above	"	1		10,162	
	Sleeves & inserts	"	1		5,081	
	Sub-Total				204,000	
	(LABOR COSTS)					
	Piping works	Set	1		83,616	
	Excavating & back falling works	"	1		15,903	

NO	ITEM AND DESCRIPTION	UNITS	QUANTITIES	UNIT COST	TOTAL	REMARKS
	Instruments installing works	Set	1		390	
	Painting works	"	1		5,644	
	Cutting & patching works	"	1		17,000	
	Sleeves & inserts installing works	"	1		8,500	
	Testing works	"	1		8,500	
	Transportation	"	1		3,447	
	Sub-Total				143,000	
110-2	DRAINAGE SYSTEM (MATERIAL COSTS)					
	Summersible waste pump, (P-3)	pcs.	2	68,900	137,800	
	50 ϕ x250 L/Mx5.0M					
	3 ϕ 415V 0.7KW					
	SGP (W-S)	M	12	993	11,916	
	"	"	11	1,706	18,766	
	Fittings for above	Set	1		12,273	
	LP	M	5	1,150	5,750	
	Junction fittings for above	Set	1		1,725	

NO	ITEM AND DESCRIPTION	UNITS	QUANTITIES	UNIT COST	TOTAL	REMARKS
	VP 30A	M	5	140	700	
	" 40A	"	50	204	10,200	
	" 50A	"	60	289	17,340	
	" 65A	"	17	369	6,273	
	" 75A	"	9	561	5,049	
	" 100A	"	59	860	50,740	
	Fittings for above	Set	1		72,242	
	Gate valves (JIS-5K)					
	65A	pcs.	2	8,710	17,420	
	Check valves (JIS-10K)					
	65A	"	2	10,800	21,600	
	Clean-out, (COA)					
	40A	"	2	1,500	3,000	
	50A	"	3	1,640	4,920	
	65A	"	1		2,130	
	80A	"	1		2,810	
	100A	"	1		3,940	

NO	ITEM AND DESCRIPTION	UNTS	QUANTITIES	UNIT COST	TOTAL	REMARKS
	Floor drains (T-5A)					
	50A	Pcs.	3	3,820	11,460	
	Drains (C)	"	6	3,100	18,600	
	Drains (D)	"	4	1,175	4,700	
	Vent cap (Buried type)	"	1		1,550	
	65A					
	Manhole covers (Air tight & medium weight)					
	300φ	Pcs	1		4,200	
	"		2	5,200	10,400	
	"	"	1		7,200	
	"	"	3	11,500	34,500	
	Soil manholes 360 square	"	1		5,708	
	Plumbing manholes 300 square	"	1		4,833	
	"	"	1		6,554	
	"	"	1		9,307	
	"	"	2	12,735	25,470	

NO	ITEM AND DESCRIPTION	UNTS	QUANTITIES	UNIT COST	TOTAL	REMARKS
	Plumbing manholes 600 square	Pcs.	1		16,096	
	" 750 "	"	2	36,140	72,280	
	Painting materials					
	Miscellaneous materials	Set	1		12,401	
	Cutting & patching materials	"	1		12,098	
	Sleeves & inserts	"	1		6,049	
	Sub-Total				670,000	
	(LABOR COSTS)					
	Carring-in & installing works	Set	1		8,100	
	Testing & adjusting works	"	1		1,400	
	Piping works	"	1		85,089	
	Concrete basins construction works	"	1		78,574	
	Excavating & back falling works	"	1		73,581	
	Instruments installing works	"	1		24,120	
	Cutting & patching works	"	1		22,000	
	Sleeves & inserts installing works	"	1		17,000	
	Testing works	"	1		11,000	
	Transportation	"	1		12,136	
	Sub-Total				333,000	

NO	ITEM AND DESCRIPTION	UNITS	QUANTITIES	UNIT COST	TOTAL	REMARKS
10-3	PLUMBING FIXTURE (MATERIAL COSTS)					
	Turkish style closets C-97	Set	2	27,740	55,480	
	Urinals, U-23 (T-6ORN)	"	3	14,970	44,910	
	Mirrors, TS-119AES	Sheet	2	9,760	19,520	
	Shelves S-3	Pcs.	2	1,550	3,100	
	Liquid soap dispensers, TS-126AS	"	2	3,030	6,060	
	Slop sinks, SK-22A	Set	2	48,220	96,440	
	Shower sets, TGB-19C	"	1		13,610	
	Faucets, T-23BE-13	Pcs.	2	1,330	2,660	
	Faucets, T-200-13	"	6	4,760	28,560	
	Faucets, T27-13 (with box)	"	2	6,170	12,340	
	Miscellaneous materials	Set	1		14,186	
	Marking & inserting & curing materials	"	1		14,134	
	Sub-Total				311,000	
	(LABOR COSTS)					
	Instruments installing works	Set	1		56,601	
	Marking & carrying-in & curing works	"	1		6,000	
	Adjusting works	"	1		6,000	

NO	ITEM AND DESCRIPTION	UNITS	QUANTITIES	UNIT COST	TOTAL	REMARKS
10-4	Transportation	Set	1		4,399	
	Sub-Total				73,000	
	FIRE EXTINGUISHER (MATERIAL COSTS)					
	Fire extinguisher	Pcs.	1		233,000	
	Sub-Total				233,000	
10-5	(LABOR COSTS)					
	Carring-in & installing works	Set	1		2,100	
	Transportation	"	1		3,900	
	Sub-Total				6,000	
	AIR LINING WORKS (MATERIAL COSTS)					
	SGP (W-S)	M	136		184	25,024
	"	7		231	1,617	
	"	106		439	46,534	

NO	ITEM AND DESCRIPTION	UNITS	QUANTITIES	UNIT COST	TOTAL	REMARKS
	SGP (W-S) 50A	M	2	693	1,386	
	Fittings for above	Set	1		44,737	
	Supports for above	"	1		22,368	
	Stop valves (16K)					
	15A	Pcs.	40	4,430	177,200	
	" 20A	"	2	4,860	9,720	
	" 32A	"	2	7,890	15,780	
	Y-straineres (16K)					
	15A	"	2	2,780	5,560	
	Traps					
	15A	"	2	8,200	16,400	
	Painting materials	Set	1		9,486	
	Miscellaneous materials	"	1		8,004	
	Cutting & patching works	"	1		7,456	
	Sleeves & inserts	"	1		3,728	
	Sub-Total				395,000	
	(LABOR COSTS)					
	Piping works	Set	1		133,053	

NO	ITEM AND DESCRIPTION	UNITS	QUANTITIES	UNIT COST	TOTAL	REMARKS
	Instruments installing works	Set	1		14,820	
	Painting works	"	1		2,496	
	Cutting & patching works	"	1		23,000	
	Sleeves & inserts installing works	"	1		15,000	
	Testing works	"	1		15,000	
	Transportation	"	1		6,631	
	Sub-Total				210,000	
10-6	OIL SUPPLY SYSTEM (MATERIAL COSTS)					
	Oil tank, (OT-1) 16,580 l	Pcs	1		1,548,000	
	1.8φx6.8L					
	Oil service tank, (DT-2)	"	1		140,000	
	0.5W x 0.5L x 0.6H					
	Oil service tank, (DT-1)	"	1		496,000	
	0.7W x 0.7L x 0.8H					
	Construction materials	Set	1		433,614	
	Oil gear pump 1.5φ x 10L/M x 3.0kg/cm ²	Pcs.	1		50,900	
	3φ 415V 0.4KW					

NO	ITEM AND DESCRIPTION	UNITS	QUANTITIES	UNIT COST	TOTAL	REMARKS
	Painting materials	Pcs.	1		4,889	
	Foundation materials	"	1		6,117	
	SGP (B)	M	64	264	16,896	
	"	"	20	352	7,040	
	"	"	62	404	25,048	
	Fittings for above	Set	1		39,187	
	Supports for above	"	1		14,695	
	Malleabl valves (SV 10K)					
	25A	Pcs.	1		1,500	
	40A	"	2	3,260	6,520	
	Flexible joints (steel 10K)					
	25A	"	2	5,210	10,420	
	40A	"	1		7,822	
	Air vents	"				
	32A	"	3	2,600	7,800	
	Oil strainer (D)					
	25A	"	1		48,600	

NO	ITEM AND DESCRIPTION	UNITS	QUANTITIES	UNIT COST	TOTAL	REMARKS
	Miscellaneous materials	Pcs.	1		5,054	
	Cutting & patching materials	"	1		4,898	
	Sleeves & inserts	Set	1		3,000	
	Sub-Total				2,878,000	
	(LABOR COSTS)					
	Construction works	Set	1		218,388	
	Foundation works	"	1		2,306	
	Carring-in & installing works	"	1		37,296	
	Piping works	"	1		102,648	
	Instruments installing works	"	1		4,440	
	Excavating & back falling works	"	1		15,903	
	Painting works	"	1		6,209	
	Cutting & patching materials	"	1		22,000	
	Sleeves & inserts installing work	"	1		11,000	
	Testing works	"	1		11,000	
	Transportation	"	1		44,810	
	Sub-Total				476,000	

NO	ITEM AND DESCRIPTION	UNITS	QUANTITIES	UNIT COST	TOTAL	REMARKS
10-7	INDUSTRIAL HOT WATER SYSTEM					
	(MATERIAL COSTS)					
	SCP (W)					
	15A	M	50	184	9,200	
	32A	"	57	439	25,023	
	Fittings for above	Set	1		23,956	
	Supports for above	"	1		5,133	
	Gate valves, JIS-5K					
	15A	Pcs.	12	730	8,760	
	Thermometers	"	12	3,200	38,400	
	Insulating materials	Set	1		33,505	
	Painting materials	"	1		2,088	
	Miscellaneous materials	"	1		7,935	
	Sub-Total				154,000	
	(LABOR COSTS)					
	Piping works	Set	1		59,835	
	Instruments installing works	"	1		7,200	
	Insulating works	"	1		13,899	

NO	ITEM AND DESCRIPTION	UNITS	QUANTITIES	UNIT COST	TOTAL	REMARKS
	Painting works	Set	1		2,668	
	Testing works	"	1		7,000	
	Transportation	"	1		2,398	
	Sub-Total				93,000	
10-8	INDUSTRIAL STEAM SYSTEM (MATERIAL COSTS)					
	SGP (B)	M	23	143	3,289	
	15A	"	23	182	4,186	
	"	"	8	264	2,112	
	25A	"	6	352	2,112	
	32A	"	59	404	23,836	
	40A	"	60	555	33,300	
	50A	"				
	Fittings for above	Set	1		55,068	
	Supports for above	"	1		20,651	
	Stop valves (16K)	Pcs.	6	4,860	29,160	
	20A					

NO	ITEM AND DESCRIPTION	UNITS	QUANTITIES	UNIT COST	TOTAL	REMARKS
	Stop valves 25A	Pcs.	1		6,090	
	" 32A	"	1		7,890	
	Steam traps (SV 16K)					
	15A	Set	6	29,620	177,720	
	Pressure gages	Pcs.	6	2,800	16,800	
	Insulating works	Set	1		38,509	
	Painting works	"	1		8,017	
	Miscellaneous materials	"	1		7,260	
	Sub-Total				436,000	
	(LABOR COSTS)					
	Piping works	Set	1		134,844	
	Instruments installing works	"	1		18,900	
	Insulating works	"	1		15,958	
	Painting works	"	1		11,615	
	Testing works	"	1		15,000	
	Transportation	"	1		6,683	
	Sub-Total				203,000	

NO	ITEM AND DESCRIPTION	UNITS	QUANTITIES	UNIT COST	TOTAL	REMARKS
10-9	SEPTIC TANK (MATERIAL COSTS)					
A.	Tank construction materials					
	Materials for temporary works	Set	1		1,240	
	Sand	m ³	1.9	2,070	3,933	
	Brick	"	1.3	7,650	9,945	
	Reinforced concrete	"	8.2	9,900	81,180	
	Drain concrete	"	0.4	9,900	3,960	
	Reinforcing bar	ton	1.4	63,500	88,900	
	Form wood	m ²	67.9	1,360	92,344	
	Mortar water proof	"	47.6	1,280	60,928	
	Mortar trowl	"	7	920	6,440	
	Check plate	Set	1		2,500	
	Manhole covers, 450φ	Pcs	2	9,000	18,000	
	Manhole covers, 300φ	"	2	6,300	12,600	
	Partition plate	Set	1		15,000	
	Macudam	m ³	0.9	4,000	3,600	
	Net	m	6.4	250	1,600	
	Perlite mixed soil	m ³	1.1	10,000	11,000	

NO	ITEM AND DESCRIPTION	UNITS	QUANTITIES	UNIT COST	TOTAL	REMARKS
	Sub-Total				413,170	
B.	MECHANICAL WORKS					
	Submersible waste pumps 40Ax0.1m ³ /min.x3mx0.25KW	Pcs.	2	46,000	92,000	
	Blower 20Ax0.08m ³ /min.0.12kg/cm ² x0.4KW	"	1		84,000	
	Chrolinator 75A x 300 l	"	1		30,000	
	Defuser 75A x 300 l	"	1		4,000	
	Painting materials	Set	1		1,500	
	Sub-Total				211,500	
C.	PIP INSTALLING WORKS					
	Gate valves BC5K, 40A	Pcs	2	3,000	6,000	
	" BC5K, 20A	"	1		960	
	Check valves BC10K, 40A	"	2	3,600	7,200	
	VP 125A	M	4	1,126	4,504	
	40A	"	8	204	1,632	

NO	ITEM AND DESCRIPTION	UNITS	QUANTITIES	UNIT COST	TOTAL	REMARKS
	VP 20A	M	8	80	640	
	Fittings for above	Set	1		5,419	
	Supports for above	"	1		2,030	
	Sub-Total				28,385	
D.	ELECTRIC WORKS					
	Control panel	Pcs.	1		400,000	
	Level switches	"	2	10,000	20,000	
	Wire & pipe	Set	1		5,000	
	Materials for earthing works	"	1		1,000	
	Sub-Total				426,000	
	Total				1,079,055	

NO	ITEM AND DESCRIPTION	UNITS	QUANTITIES	UNIT COST	TOTAL	REMARKS
	(LABOR COSTS)					
A.	Tank construction works					
	Temporary works	Set	1		23,530	
	Earth works	"	1		248,722	
	Concrete works	"	1		81,546	
	Plaster works	"	1		16,842	
	Fittings installing works	"	1		42,000	
	Macadam, net, perlite	"	1		36,000	
	Transportation	"	1		6,000	
	Sub-Total				454,640	
B.	MECHANICAL WORKS					
	Installing works	Set	1		36,000	
	Painting works	"	1		2,500	
	Sub-Total				38,500	
C.	PIPE INSTALLING WORKS					
	Installing works	Set	1		10,000	

NO	ITEM AND DESCRIPTION	UNITS	QUANTITIES	UNIT COST	TOTAL	REMARKS
	Painting works	Set	1		500	
	Sub-Total				10,500	
D.	ELECTRIC WORKS					
	Board & pipe & wire installing works	Set	1		29,000	
	Sub-Total				29,000	
	Total				532,640	

NO	ITEM AND DESCRIPTION	UNITS	QUANTITIES	UNIT COST	TOTAL	REMARKS
10-10	Packing charges	Set	1		428,900	
	Sub-Total				428,900	

NO	ITEM AND DESCRIPTION	UNITS	QUANTITIES	UNIT COST	TOTAL	REMARKS
11	CAR WASH					
11-1	Water supply system Material costs Labor costs	Set	1	288,000 113,000	401,000	
11-2	Air lining works Material costs Labor costs	"	1	99,000 88,000	187,000	
11-3	Packing charges	"	1		27,200	
11-4	Field miscellaneous expenses	"	1		13,800	
	Total				629,000	

NO	ITEM AND DESCRIPTION	UNITS	QUANTITIES	UNIT COST	TOTAL	REMARKS
11-1	WATER SUPPLY SYSTEM (MATERIAL COSTS)					
	Polyvinyl-chloride 25A	M	79	655	51,745	
	lining pipe (W) 40A	"	8	995	7,960	
	" 50A	"	15	1,340	20,100	
	" 65A	"	6	1,927	11,562	
	" 80A	"	3	2,291	6,873	
	Fittings for above	Set	1		68,768	
	Gate valves (JIS-5K)					
	25A	Pcs.	8	1,380	11,040	
	Insulating materials	Set	1		6,783	
	Painting materials	"	1		4,494	
	Miscellaneous materials	"	1		98,675	
	Sub-Total				288,000	
	(LABOR COSTS)					
	Piping works	Set	1		77,343	
	Excavating & back falling works	"	1		11,997	
	Instruments installing works	"	1		3,120	
	Insulating works	"	1		2,805	

NO	ITEM AND DESCRIPTION	UNITS	QUANTITIES	UNIT COST	TOTAL	REMARKS
	Painting works	Set	1		5,605	
	Testing works	"	1		7,734	
	Transportation	"	1		4,396	
	Sub-Total				113,000	
11-2-	AIR LINING WORK (MATERIAL COSTS)					
	SGP (W-S)	M	20	330	6,600	
	"	"	33	1,169	38,577	
	Fittings for above	Set	1		27,106	
	Supports for above	"	1		13,553	
	Painting materials	"	1		1,792	
	Miscellaneous works	"	1		4,595	
	Cutting & patching works	"	1		4,518	
	Sleeves & inserts installing works	"	1		2,259	
	Sub-Total				99,000	
	(LABOR COSTS)					
	Piping works	Set	1		57,810	

NO	ITEM AND DESCRIPTION	UNITS	QUANTITIES	UNIT COST	TOTAL	REMARKS
	Excavating & back falling works	Set	1		5,859	
	Painting works	"	1		2,312	
	Cutting & patching works	"	1		8,672	
	Sleeves & inserts	"	1		5,716	
	Testing works	"	1		5,781	
	Transportation	"	1		1,850	
	Sub-Total				88,000	
11-3	Packing charges	Set	1		27,200	
	Sub-Total				27,200	

NO	ITEM AND DESCRIPTION	UNITS	QUANTITIES	UNIT COST	TOTAL	REMARKS
12	GENERAL WORKS					
12-1	Well works	Set	1		6,489,000	
	Material costs			2,739,000		
	Labor costs			3,750,000		
12-2	Water supply system	"	1		19,946,000	
	Material costs			15,377,000		
	Labor cost			4,569,000		
12-3	Drainage system	"	1		347,000	
	Material cost			273,000		
	Labor costs			74,000		
12-4	Air lining works	"	1		6,966,000	
	Material costs			5,932,000		
	Labor costs			1,034,000		
12-5	Packing charges	"	1		1,845,000	
12-6	Field miscellaneous	"	1		712,000	
	Total:				36,305,000	

NO	ITEM AND DESCRIPTION	UNITS	QUANTITIES	UNIT COST	TOTAL	REMARKS
12-1	WELL WORKS (MATERIAL COSTS)					
	Well pump 100φx800L/Hx35.0M 3φ 415 V 11KW	Pcs	1		1,070,500	
	Materials for well works	Set	1		1,247,900	
	Miscellaneous materials	"	1		420,600	
	Sub-Total:				2,739,000	
	(LABOR COSTS)					
	Well works	Set	1		3,435,000	
	Carring-in & installing works	"	1		11,000	
	Testing & adjusting works	"	1		262,000	
	Transportation		1		42,000	
Sub Total:				3,750,000		
12-2	WATER SUPPLY SYSTEM (MATERIAL COSTS)					
	FRP elevated tank 4.0Mx4.0Lx3.5H (T-2)	Pcs	1		4,930,000	
	Lift-pumps 100φx950L/Mx44.0M 3φ 415V 15KW	"	2	640,000	1,280,000	
	Foundation materials	Set	1		13,746	

NO	ITEM AND DESCRIPTION	UNITS	QUANTITIES	UNIT COST	TOTAL	REMARKS
	SGP (W-S) 100A	M	35	1,706	59,710	
	Fittings for above	Set	1		41,797	
	Polyvinyl-chloride W 20A lining pipe	M	87	473	41,151	
	" 25A	"	48	655	31,440	
	" 40A	"	42	995	41,790	
	" 50A	"	84	1,340	112,560	
	" 65A	"	85	1,927	163,795	
	" 80A	"	304	2,291	696,464	
	" 100A	"	611	3,127	1,910,597	
	" 125A	"	291	3,836	1,116,276	
	" 150A	"	6	5,182	31,092	
	Fittings for above	Set	1		2,901,616	
	Gate valves (JIS 5K) 20A	pcs	8	960	7,680	
	" 25A	"	2	1,380	2,760	
	" 40A	"	2	3,000	6,000	
	" 50A	"	2	4,400	8,800	
	" 65A	"	8	8,710	69,680	

NO	ITEM AND DESCRIPTION	UNITS	QUANTITIES	UNIT COST	TOTAL	REMARKS
	Gate valve (JIS 5K0) 80A	pcs	4	10,600	42,400	
	" 100A	"	2	14,900	29,800	
	" 125A	"	6	21,900	131,400	
	Flexible joints (rubber 10K)	"	2	38,052	76,104	
	Vermin proof net 150A	"	1		3,600	
	Valve boxes 50A max.	"	14	5,625	78,750	
	" 65A min.	"	17	14,000	238,000	
	Insulating materials	"	1		170,658	
	Painting materials	"	1		87,871	
	Miscellaneous materials	"	1		420,488	
	Cutting & patching materials	"	1		420,490	
	Sleeves & inserts	"	1		210,485	
	Sub-Total:				15,377,000	
	(LABOR COSTS)					
	Foundation works	set	1		4,136	
	Carring-in & installing works		1		180,450	
	Testing & adjusting works		1		622,375	
	Piping works		1		1,316,262	

NO	ITEM AND DESCRIPTION	UNITS	QUANTITIES	UNIT COST	TOTAL	REMARKS
	Excavating & back fulling works	Set	1		184,837	
	Instruments installing works	"	1		67,440	
	Insulating works	"	1		70,710	
	Painting works	"	1		112,149	
	Cutting & back-fulling works	"	1		263,252	
	Sleeves & inserts installing works	"	1		131,626	
	Testing works	"	1		1,383,702	
	Transportation	"	1		232,061	
	Sub-Total:				4,569,000	
12-3	DRINAGE SYSTEM (MATERIAL COSTS)					
	VP 50A	M	12	289	3,468	
	" 150A	"	36	1,724	62,064	
	" 200A	"	23	2,454	56,442	
	Fittings for above (D)	Set	1		97,579	
	Waste fittings 40A	pcs	2	925	1,850	
	Miscellaneous materials	Set	1		12,862	
	Manhole (air-tight & medium weight) covers 500φ	Pcs	2	13,000	26,000	

NO	ITEM AND DESCRIPTION	UNITS	QUANTITIES	UNIT COST	TOTAL	REMARKS
	Waste manholes 500 square	Pcs	1		12,735	
	Sub-Total:				273,000	
	(LABOR COSTS)					
	Piping works	Set	1		44,682	
	Excavating & back-filling works	"	1		10,397	
	Instruments installing works	"	1		1,800	
	Concrete basin construction works	"	1		8,154	
	Testing works	"	1		4,017	
	Transportation	"	1		4,950	
	Sub-Total:				74,000	
12-4	AIR LINING WORK (MATERIALS COSTS)					
	SGP (W-S) 15A	M	92	184	16,928	
	50A	"	284	693	196,812	
	80A	"	532	1,169	621,908	
	100A	"	13	1,706	22,178	
	Fittings for above	Set	1		514,696	
	Supports for above	"	1		257,348	

NO	ITEM AND DESCRIPTION	UNITS	QUANTITIES	UNIT COST	TOTAL	REMARKS
	Stop valves 15A	pcs	19	4,430	84,170	
	(16K)					
	" 50A	"	1		13,200	
	" 80A	"	1		34,900	
	Y-strainers 15A	"	19	2,780	52,820	
	Traps 15A	"	19	8,200	155,800	
	EXP-J 50A	"	7	188,180	1,317,260	
	" 80A	"	11	233,000	2,563,000	
	Painting materials	Set	1		25,424	
	Miscellaneous materials	"	1		55,556	
	Sub-Total:				5,932,000	
	(LABOR COSTS)					
	Piping works	Set	1		572,595	
	Instruments installing works	"	1		113,310	
	Painting works	"	1		57,912	
	Cutting & patching works	"	1		85,889	
	Sleeves & inserts installing works	"	1		57,234	
	Testing works	"	1		57,260	
	Transportation	"	1		89,800	

NO	ITEM AND DESCRIPTION	UNITS	QUANTITIES	UNIT COST	TOTAL	REMARKS
	Sub-Total:				1,034,000	
12-5	PACKING CHARGES	Set	1		1,845,000	
	Sub-Total:				1,845,000	

NO	ITEM AND DESCRIPTION	UNITS	QUANTITIES	UNIT COST	TOTAL	REMARKS
13.	SPARE PARTS					
13-1	Electric heater					
	Heaters	Pcs	2	44,800	89,600	
	15KW					
	Thermometer	"	1		10,000	
	Lamps	"	2	750	1,500	
	Second thermometers	"	1		4,500	
13-2	Pump					
	Grand	Set	3	1,300	3,900	
	packing					
	Coupling sets	"	3	15,000	45,000	
13-3	Well pump	unit	1		1,070,500	
	Total:				1,225,000	

NO	ITEM AND DESCRIPTION	UNITS	QUANTITIES	UNIT COST	TOTAL	REMARKS
1.	PLUMBING WORKS (PHASE II) Inspection factory	Set	1		1,617,000	
2.	Periodical repair factory	"	1		6,697,000	
3.	General works	"	1		1,429,000	
4.	Tool costs	"	1		3,816,000	
5.	Over head	"	1		678,000	
	Total:				14,237,000	

NO	ITEM AND DESCRIPTION	UNITS	QUANTITIES	UNIT COST	TOTAL	REMARKS
1.	INSPECTION FACTORY					
1-1	Water supply system ┌ Material costs └ Labor costs	Set	1	50,000 34,000	84,000	
1-2	Drainage system ┌ Material costs └ Labor costs	"	1	429,000 219,000	648,000	
1-3	Plumbing fixture ┌ Material costs └ Labor costs	"	1	13,000 4,000	17,000	
1-4	Fire extinguisher ┌ Material costs └ Labor costs	"	1	233,000 6,000	239,000	
1-5	Air lining works ┌ Materials costs └ Labor costs	"	1	296,000 220,000	516,000	

NO	ITEM AND DESCRIPTION	UNITS	QUANTITIES	UNIT COST	TOTAL	REMARKS
1-6	Packing charges	Set	1		80,900	
1-7	Field miscellaneous expenses	"	1		32,100	
	Total:				1,617,000	

NO	ITEM AND DESCRIPTION	UNITS	QUANTITIES	UNIT COST	TOTAL	REMARKS
1-1	WATER SUPPLY SYSTEM (MATERIAL COSTS)					
	Polyvinyl-chloride lining pipe	M	34	473	16,082	
	20A					
	" 25A	"	16	655	10,480	
	Fittings for above	Set	1		19,000	
	Painting materials	"	1		1,288	
	Miscellaneous materials	"	1		3,150	
	Sub-Total:				50,000	
	(LABOR COSTS)					
	Piping works	Set	1		23,406	
	Excavating & back filling works	"	1		5,580	
	Painting works	"	1		1,624	
	Testing works	"	1		2,300	
	Transportation	"	1		1,090	
	Sub-Total:				34,000	

NO	ITEM AND DESCRIPTION	UNITS	QUANTITIES	UNIT COST	TOTAL	REMARKS
1-2	DRAINAGE SYSTEM (MATERIAL COSTS)					
	Submersible waste pumps					
	50ϕ x 250L/M x 5.0M	pcs	2	68,900	137,800	
	3ϕ 415V 0.75KW					
	SGP (W-S) 65A	M	17	993	16,881	
	Fittings for above	Set	1		7,000	
	V.P.					
	40A	M	7	204	1,428	
	50A	"	75	289	21,675	
	65A	"	69	369	25,461	
	75A	"	4	561	2,244	
	100A	"	30	860	25,800	
	Fittings for above	Set	1		62,000	
	Gate valves (JIS-5K) 65A	pcs	2	8,710	17,420	
	Check valves (JIS-10K) 65A	"	2	10,800	21,600	
	Clean-out (COA) 40A	pcs	1		1,500	
	" 50A	"	6	1,640	9,840	

NO	ITEM AND DESCRIPTION	UNTS	QUANTITIES	UNIT COST	TOTAL	REMARKS
	Clean-out (COA) 65A	pcs	4	2,130	8,520	
	" 100A	"	2	3,940	7,880	
	Drains (C) 40A	"	6	3,100	18,600	
	Floor drains (D) 50A	"	10	1,175	11,750	
	" 100A	"	2	2,500	5,000	
	Painting works	Set	1		768	
	Miscellaneous materials	"	1		10,000	
	Cutting & patching materials	"	1		10,000	
	Sleeves & inserts	"	1		5,833	
	Sub-Total:				429,000	
	(LABOR COSTS)					
	Carrying-in & installing works	Set	1		8,100	
	Test & regulation works	"	1		1,400	
	Piping works	"	1		62,255	
	Excavating & back fulling works	"	1		66,783	
	Instruments installing works	"	1		32,220	

NO	ITEM AND DESCRIPTION	UNITS	QUANTITIES	UNIT COST	TOTAL	REMARKS
	Painting works	Set	1		992	
	Cutting & patching works	"	1		20,000	
	Sleeves & inserts installing works	"	1		10,000	
	Testing works	"	1		10,000	
	Transportation	"	1		7,250	
	Sub-Total:				219,000	

NO	ITEM AND DESCRIPTION	UNITS	QUANTITIES	UNIT COST	TOTAL	REMARKS
1-3	PLUMBING FIXTURE (MATERIALS COSTS) Faucets T-27-13 (with box)	pcs	2	6,170	12,340	
	Miscellaneous materials Sub-Total:	set	1		660 13,000	
	(LABOR COSTS) Instruments installing works Transportation Sub-Total:	set "	1 1		3,000 1,000 4,000	

NO	ITEM AND DESCRIPTION	UNITS	QUANTITIES	UNIT COST	TOTAL	REMARKS
1-4	FIRE EXTINGUISHER (MATERIALS COSTS)					
	Fire extinguisher	pcs	1		233,000	
	Sub-Total:				233,000	
	(LABOR COSTS)					
	Carrying-in & installing works	set	1		2,100	
	Transportation	"	1		3,900	
	Sub-Total:				6,000	

NO	ITEM AND DESCRIPTION	UNITS	QUANTITIES	UNIT COST	TOTAL	REMARKS
1-5	AIR LINING WORKS (MATERIAL COSTS)					
	SGP (W-S) 15A	M	86	184	15,824	
	" 25A	"	100	330	33,000	
	" 32A	"	16	439	7,024	
	" 40A	"	39	505	19,695	
	" 80A	"	1		1,169	
	Fittings for above	set	1		47,000	
	Supporters for above	"	1		24,000	
	Stop valves 15A	pcs	18	4,430	79,740	
	" 25A	"	3	6,090	18,270	
	Y-strainers (16K) 15A	"	2	2,780	5,560	
	Traps 15A	"	2	8,200	16,400	
	Painting materials	set	1		8,206	
	Miscellaneous materials	"	1		8,000	
	Cutting & patching materials	"	1		8,000	
	Sleeves & inserts	"	1		4,112	
	Sub-Total:				296,000	

NO	ITEM AND DESCRIPTION	UNITS	QUANTITIES	UNIT COST	TOTAL	REMARKS
	(LABOR COSTS)					
	Piping works	Set	1		135,882	
	Excavating & back fulling works	"	1		9,904	
	Instruments installing works	"	1		7,770	
	Painting works	"	1		10,508	
	Cutting & patching works	"	1		21,000	
	Sleeves & inserts installing works	"	1		15,000	
	Testing works	"	1		15,000	
	Transportation	"	1		4,936	
	Sub-Total:				220,000	
1-6	Packing charges	Set	1		80,900	
	Sub-Total:				80,900	

NO	ITEM AND DESCRIPTION	UNITS	QUANTITIES	UNIT COST	TOTAL	REMARKS
2.	PERIODICAL REPAIR FACTORY					
2-1	Water supply system [Material costs Labor costs]	Set	1	468,000 275,000]	743,000	
2-2	Drainage system [Material costs Labor costs]	"	1	351,000 231,000]	582,000	
2-3	Plumbing fixture [Material costs Labor costs]	"	1	635,000 133,000]	768,000	
2-4	Fire extinguisher [Material costs Labor costs]	"	1	233,000 6,000]	239,000	
2-5	Air lining works [Material cost Labor costs]	"	1	1,247,000 567,000]	1,814,000	

NO	ITEM AND DESCRIPTION	UNITS	QUANTITIES	UNIT COST	TOTAL	REMARKS
2-6	SEPTIC TANK [Material costs Labor costs]	Set	1	1,343,787 726,543	2,070,330	
2-7	PACKING CHARGES	"	1		349,600	
2-8	FIELD MISCELLANEOUS MATERIALS	"	1		131,070	
	Total:				6,697,000	

NO	ITEM AND DESCRIPTION	UNITS	QUANTITIES	UNIT COST	TOTAL	REMARKS
2-1	WATER SUPPLY SYSTEM (MATERIAL COSTS)					
	Polyvinyl-chloride lining pipe (W)					
	20A	M	74	473	35,002	
	"	"	24	655	15,720	
	"	"	24	865	20,760	
	"	"	16	995	15,920	
	"	"	11	1,340	14,740	
	"	"	35	1,927	67,445	
	"	"	29	2,291	66,439	
	Fitting for above	Set	1		165,218	
	Painting materials	"	1		7,012	
	Miscellaneous materials	"	1		24,340	
	Cutting & patching materials	"	1		23,603	
	Sleeves & inserts	"	1		11,801	
	Sub-Total:				468,000	

NO	ITEM AND DESCRIPTION	UNITS	QUANTITIES	UNIT COST	TOTAL	REMARKS
	(LABOR COSTS)					
	Piping works	Set	1		170,076	
	Excavating & back fulling works	"	1		20,367	
	Painting works	"	1		8,978	
	Cutting & patching works	"	1		34,000	
	Sleeves & inserts installing works	"	1		17,000	
	Testing works	"	1		17,000	
	Transportation	"	1		7,579	
	Sub-Total:				275,000	

NO	ITEM AND DESCRIPTION	UNITS	QUANTITIES	UNIT COST	TOTAL	REMARKS
2-2	DRAINAGE SYSTEM (MATERIAL COSTS)					
	SGP (W-S) 50A	M	1		693	
	" 100A	"	7	1,706	11,942	
	Fittings for above	Set	1		5,054	
	LP 40A	M	8	1,150	9,200	
	Junction fittings for above	Set	1		2,760	
	VP 30A	M	8	140	1,120	
	" 40A	"	92	204	18,768	
	" 50A	"	49	289	14,161	
	" 65A	"	38	369	14,022	
	" 100A	"	37	860	31,820	
	Fittings for above	Set	1		63,913	
	Clean-out(COA) 40A	pcs	6	1,500	9,000	
	" 50A	"	2	1,640	3,280	
	" 65A	"	4	2,130	8,520	
	" 100A	"	3	3,940	11,820	
	Floor drains(T-4A) 40A	pcs	8	2,810	22,480	
" 50A	"	5	3,820	19,100		

NO	ITEM AND DESCRIPTION	UNITS	QUANTITIES	UNIT COST	TOTAL	REMARKS
	Vent cap (buried type)	pcs	1		1,550	
	65A	"	1		13,000	
	Manhole covers 500φ	"	1		4,200	
	Manhole covers (air tight & medium weight)	"	4	5,200	20,800	
	300φ	"	3	5,708	17,124	
	Soil manholes 360 square	pcs	1		4,833	
	Waste manholes 300 "	"	1		6,554	
	360 "	"	1		9,307	
	450 "	"	1			
	Miscellaneous materials	"	1		10,720	
	Cutting & patching materials	"	1		10,173	
	Sleeves & inserts	"	1		5,086	
	Sub-Total:				351,000	
	(LABOR COSTS)					
	Piping works	Set	1		67,362	
	Concrete basin construction works	"	1		27,455	
	Excavating & back fulling works	"	1		74,381	

NO	ITEM AND DESCRIPTION	UNITS	QUANTITIES	UNIT COST	TOTAL	REMARKS
	Instruments installing works	Set	1		26,100	
	Cutting & patching works	"	1		14,000	
	Sleeves & inserts installing works	"	1		10,000	
	Testing works	"	1		7,000	
	Transportation	"	1		4,702	
	Sub-Total:				231,000	

NO	ITEM AND DESCRIPTION	UNITS	QUANTITIES	UNIT COST	TOTAL	REMARKS
2-3	PLUMBING FIXTURE (MATERIAL COSTS)					
	Turkish style closets (C-97)	Set	3	27,740	83,220	
	Urinal U-23 (T-60RN)	"	5	14,970	74,850	
	Lavatories L-221	"	7	22,760	159,320	
	Mirrors TS-119AE5	pcs	7	9,760	68,320	
	Shelves S-3	"	7	1,550	10,850	
	Liquid soap dispensers TS-126AS	"	7	3,030	21,210	
	Slop sink SK-22A	Set	1		48,220	
	Shower sets TGB-19C	pcs	3	13,610	40,830	
	Faucets T-23BE-13	"	8	1,330	10,640	
	Faucets T-200-13	"	2	4,760	9,520	
	Faucets T-27-13 (with box)	"	8	6,170	49,360	
	Miscellaneous materials	Set	1		29,843	
	Marking & inserting & curing materials	"	1		28,817	
	Sub-Total:				635,000	
	(LABOR COSTS)					
	Instruments installing works	Set	1		103,428	
	Marking & inserting & curing -works	"	1		10,000	

NO	ITEM AND DESCRIPTION	UNITS	QUANTITIES	UNIT COST	TOTAL	REMARKS
	Adjusting works	Set	1		10,000	
	Transportation	"	1		9,572	
	Sub-Total:				133,000	
2-4	FIRE EXTINGUISHER (MATERIAL COSTS)					
	Fire extinguisher	pcs	1		233,000	
	Sub-Total:				233,000	
	(LABOR COSTS)					
	Carring -in & installing works	Set	1		2,100	
	Transportation	"	1		3,900	
	Sub-Total:				6,000	

NO	ITEM AND DESCRIPTION	UNITS	QUANTITIES	UNIT COST	TOTAL	REMARKS
2-5	AIR LINING WORKS (MATERIAL COSTS)					
	SGP (W-S) 15A	M	319	184	58,696	
	" 40A	"	393	505	198,465	
	" 80A	"	5	1,169	5,845	
	Fittings for above	Set	1		157,804	
	Supports for above	"	1		78,902	
	Stop valves 15A	Pcs	87	4,430	385,410	
	" (16K) 40A	"	8	26,600	212,800	
	Y-strainers(16K) 15A	"	5	2,780	13,900	
	Traps 15A	"	5	8,200	41,000	
	Painting materials	Set	1		27,281	
	Miscellaneous materials	"	1		27,446	
	Cutting & patching materials	"	1		26,301	
	Sleeves & inserts	"	1		13,150	
	Sub-Total:				1,247,000	
	(LABOR COSTS)					
	Piping works	Set	1		339,528	
	Excavating & back fulling works	"	1		8,928	

NO	ITEM AND DESCRIPTION	UNITS	QUANTITIES	UNIT COST	TOTAL	REMARKS
	Instruments installing works	Set	1		34,380	
	Painting works	"	1		34,660	
	Cutting & patching works	"	1		56,000	
	Sleeves & inserts installing works	"	1		37,000	
	Testing works	"	1		37,000	
	Transportation	"	1		19,504	
	Sub-Total:				567,000	
2-6	SEPTIC TANK (MATERIAL COST)					
A.	Tank construction materials					
	Materials for temporary works	Set	1		2,125	
	Sand	m ³	3.3	2,070	6,831	
	Brick	"	2.2	7,650	16,830	
	Reinforced concrete	"	15.7	9,900	155,430	
	Drain concrete	"	0.7	9,900	6,930	
	Reinforcing bar	ton	1.7	63,500	107,950	
	Form wood	m ²	113	1,360	153,680	
	Mortar water proof	"	83	1,280	106,240	

NO	ITEM AND DESCRIPTION	UNITS	QUANTITIES	UNIT COST	TOTAL	REMARKS
	Mortal trowel	m ²	10.3	920	9,476	
	Check plate	Set	1		2,500	
	Manhole covers 450φ	pcs	3	9,000	27,000	
	" 300φ	"	2	6,300	12,600	
	Partition plate	Set	1		21,600	
	Macadam	m ³	2.1	4,000	8,400	
	Net	m	10.6	250	2,575	
	Perlite mixed soil	m ³	2.8	10,000	28,000	
	Sub-Total:				668,167	
	B. MACHANICAL WORKS					
	Submersible waste pumps 40A x 0.1m /min x 3m x 0.25KW	pcs	2	46,000	92,000	
	Blower 20A x 0.2m ³ /min x 0.15 ^{kg} / _{cm²} x 0.4KW	"	1		84,000	
	Chrolination plate 75A x 300%	"	1		30,000	
	Defusers 75A x 300%	"	2	4,000	8,000	
	Painting materials	Set	1		1,500	
	Sub-Total:				215,500	

NO	ITEM AND DESCRIPTION	UNITS	QUANTITIES	UNIT COST	TOTAL	REMARKS
C.	PIPE INSTALLING WORKS					
	Gate valves BC5K, 4CA	pcs	2	3,000	6,000	
	" BC5K, 20A	"	1		960	
	Check valves BC10K, 40A	"	2	3,600	7,200	
	VP 150A	M	4	1,724	6,896	
	" 40A	"	12	204	2,448	
	" 20A	"	8	80	640	
	Fittings for above	Set	1		6,982	
	Supports for above	"	1		2,994	
	Sub-Total:				34,120	
D.	ELECTRIC WORKS					
	Control panel	Pcs	1		400,000	
	Level switches	"	2	10,000	20,000	
	Wire & pipe	Set	1		5,000	
	Materials for earthing works	"	1		1,000	

NO	ITEM AND DESCRIPTION	UNITS	QUANTITIES	UNIT COST	TOTAL	REMARKS
	Sub-Total:				426,000	
	Total:				1,343,787	

NO	ITEM AND DESCRIPTION	UNITS	QUANTITIES	UNIT COST	TOTAL	REMARKS
A.	(LABOR COSTS)					
	Tank Construction Works	Set	1		40,375	
	Temporary works	"	1		370,279	
	Earth works	"	1		115,960	
	Concrete works	"	1		28,929	
	Plaster works	"	1		45,000	
	Fittings installing works	"	1		40,000	
	Macadam, net, Perlite	"	1		8,000	
	Transportation	"	1		648,543	
	Sub-Total:					
B.	MECHANICAL WORKS					
	Installing works	Set	1		36,000	
	Painting works	"	1		2,500	
	Sub-Total:				38,500	
C.	PIPE INSTALLING WORKS					
		Set	1		10,000	

NO	ITEM AND DESCRIPTION	UNITS	QUANTITIES	UNIT COST	TOTAL	REMARKS
	Sub-Total:	Set	1		500	
					10,500	
D.	ELECTRIC WORKS					
	Board & pipe & wire installing works	Set	1		29,000	
	Sub-Total:				29,000	
	Total:				726,543	

NO	ITEM AND DESCRIPTION	UNITS	QUANTITIES	UNIT COST	TOTAL	REMARKS
3.	GENERAL WORKS					
3-1	Air lining works	Set	1	1,320,000		
	[Material costs Labor costs]			1,096,000 224,000		
3-2	Packing charges	"	1		80,900	
3-3	Field miscellaneous works	"	1		28,100	
	Total:				1,429,000	

NO	ITEM AND DESCRIPTION	UNITS	QUANTITIES	UNIT COST	TOTAL	REMARKS
2-7	PACKING CHARGES	Set	1		349,600	
	Sub-Total:				349,600	

NO	ITEM AND DESCRIPTION	UNTS	QUANTITIES	UNIT COST	TOTAL	REMARKS
3-1	AIR LINING WORK (MATERIAL COSTS)					
	SGP (W-S) 15A	M	18	184	3,312	
	" 80A	"	205	1,169	239,645	
	Fittings for above	Set	1		145,774	
	Supports for above	"	1		72,887	
	Stop valves 15A	Pcs	4	4,430	17,720	
	" (16K)	"	2	34,900	69,800	
	" 80A	"	4	2,780	11,120	
	Y-strainers (16K) 15A	"	4	8,200	32,800	
	Traps 15A	"	2	233,000	466,000	
	EXP-J (D) 80A	"				
	Painting works	Set	1		12,053	
	Miscellaneous materials	"	1		24,889	
	Sub-Total:				1,096,000	
	(LABOR COSTS)					
	Piping works	Set	1		149,128	
	Instruments installing works	"	1		25,020	
	Painting works	"	1		15,419	

NO	ITEM AND DESCRIPTION	UNITS	QUANTITIES	UNIT COST	TOTAL	REMARKS
	Testing works	Set	1		18,000	
	Transportation	"	1		16,433	
	Sub-Total:				224,000	
3-2	PACKING EXCHARGES	Set	1		80,900	
	Sub-Total:				80,900	

NO	ITEM AND DESCRIPTION	UNTS	QUANTITIES	UNIT COST	TOTAL	REMARKS
	PLUMBING WORKS (PHASE III)					
1.	Paint & body factory	Set	1		4,924,000	
2.	General works	"	1		224,000	
3.	Tools	"	1		3,816,000	
4.	Over head	"	1		449,000	
	Total				9,413,000	

NO	ITEM AND DESCRIPTION	UNITS	QUANTITIES	UNIT COST	TOTAL	REMARKS
1.	PAINT AND BODY FACTORY					
1-1	Water supply system [Materials costs Labor costs]	Set	1	192,000 116,000]	308,000	
1-2	Drainage system [Material costs Labor costs]	"	1	276,000 194,000]	470,000	
1-3	Plumbing fixture [Material costs Labor costs]	"	1	746,000 118,000]	864,000	
1-4	Fire extinguisher [Material costs Labor costs]	"	1	233,000 6,000]	239,000	
1-5	Air lining works [Material costs Labor costs]	"	1	680,000 409,000]	1,089,000	

NO	ITEM AND DESCRIPTION	UNITS	QUANTITIES	UNIT COST	TOTAL	REMARKS
1-6	Septic tank	Set	1	1,611,695		
	[Material costs			1,079,055		
	[Labor costs			532,640		
1-7	Packing charges	"	1		246,000	
1-8	Field miscellaneous expenses	"	1		96,305	
	Total				4,924,000	

NO	ITEM AND DESCRIPTION	UNTS	QUANTITIES	UNIT COST	TOTAL	REMARKS
1-1	WATER SUPPLY SYSTEM (MATERIALS)					
	Polyvinyl chloride lining pipe 20A	M	60	473	28,380	
	"	"	11	655	7,205	
	"	"	8	865	6,920	
	"	"	13	1,340	17,420	
	"	"	19	1,927	36,613	
	Fittings for above	Set	1		67,577	
	Painting materials	"	1		3,364	
	Miscellaneous materials	"	1		10,040	
	Cutting & patching materials	"	1		9,654	
	Sleeves & inserts	"	1		4,827	
	Sub-Total				192,000	
	(LABOR COSTS)					
	Piping works	Set	1		71,967	
	Excavating & backfilling works	"	1		8,509	
	Painting works	"	1		4,270	
	Cutting & patching works	"	1		14,000	

NO	ITEM AND DESCRIPTION	UNTS	QUANTITIES	UNIT COST	TOTAL	REMARKS
	Sleeves & inserts installing works	Set	1		7,000	
	Testing works	"	1		7,000	
	Transportation	"	1		3,254	
	Sub-Total				116,000	
1-2	DRAINAGE SYSTEM (MATERIAL COSTS)					
	SGP (W-S) 40A	M	6	505	3,030	
	" 65A	"	4	993	3,972	
	" 100A	"	12	1,706	20,472	
	Fittings for above	Set	1		10,990	
	LP 40A	M	8	1,150	9,200	
	Junction fittings for above	Set	1		2,760	
	VP 30A	M	7	140	980	
	" 40A	"	11	204	2,244	
	" 50A	"	34	289	9,826	
	" 65A	"	20	369	7,380	
	" 75A	"	22	561	12,342	
	" 100A	"	37	860	31,820	

NO	ITEM AND DESCRIPTION	UNITS	QUANTITIES	UNIT COST	TOTAL	REMARKS
	Fittings for above	Set	1		51,674	
	Clean-out(COA) 50A	Pcs.	2	1,640	3,280	
	" 65A	"	2	2,130	4,260	
	" 80A	"	1		2,810	
	" 100A	"	3	3,940	11,820	
	Floor drains(T-5A) 50A	"	5	3,820	19,100	
	Drains (D) 100A	"	2	2,500	5,000	
	Vent caps(buried type) 65A	"	1		1,550	
	Manhole covers (air-tight & medium weight) 300ø	"	1		4,200	
	" 350ø	"	2	5,200	10,400	
	Soil manholes 360 square	"	2	5,708	11,416	
	Waste manholes 300 "	"	2	4,833	9,666	
	Miscellaneous materials	Set	1		10,618	
	Cutting & patching works	"	1		14,127	
	Sleeves & inserts	"	1		5,063	
	Sub-Total				276,000	

NO	ITEM AND DESCRIPTION	UNITS	QUANTITIES	UNIT COST	TOTAL	REMARKS
	(LABOR COSTS)					
	Piping works	Set	1		73,377	
	Concrete basin construction works	"	1		16,148	
	Excavating & back fulling works	"	1		44,388	
	Instruments installing works	"	1		14,400	
	Cutting & patching works	"			18,000	
	Sleeves & inserts installing works	"	1		14,000	
	Testing works	"	1		9,000	
	Transportation	"	1		4,687	
	Sub-Total				194,000	

NO	ITEM AND DESCRIPTION	UNITS	QUANTITIES	UNIT COST	TOTAL	REMARKS
1-3	PLUMBING FIXTURES (MATERIAL COSTS)					
	Turkish style closets C-97	Set	4	27,740	110,960	
	Urinals U-23 (T-60RN)	"	5	14,970	74,850	
	Lavatories L-221	"	5	22,760	113,800	
	Mirrors TS-119AE5	Pcs.	5	9,760	48,800	
	Shelves S-3	"	5	1,550	7,750	
	Liquid soil-dispensers TS-126AS	"	5	3,030	15,150	
	Slop sinks SK-22A	Set	5	48,220	241,100	
	Shower sets TGB-19C	"	3	13,610	40,830	
	Faucets T-23B-13	Pcs.	4	1,330	5,320	
	Faucets T-200-13	"	4	4,760	19,040	
	Miscellaneous materials	Set	1		34,520	
	Marking, inserting & curing materials	"	1		33,880	
	Sub-Total				746,000	
	(LABOR COSTS)					
	Instruments installing works	Set	1		89,133	
	Marking, inserting & curing works	"	1		9,000	

NO	ITEM AND DESCRIPTION	UNITS	QUANTITIES	UNIT COST	TOTAL	REMARKS
	Adjusting works	Set	1		9,000	
	Transportation	"	1		10,867	
	Sub-Total				118,000	

NO	ITEM AND DESCRIPTION	UNITS	QUANTITIES	UNIT COST	TOTAL	REMARKS
1-4	FIRE EXTINGUISHER (MATERIAL COSTS)					
	Fire extinguisher	Pc.	1		233,000	
	Sub-Total				233,000	
	(LABOR COSTS)					
	Carrying-in & installing works	Set	1		2,100	
	Transportation	"	1		3,900	
	Sub-Total				6,000	

NO	ITEM AND DESCRIPTION	UNITS	QUANTITIES	UNIT COST	TOTAL	REMARKS
1-5	AIR LINING WORK (MATERIAL COSTS)					
	SGP (W-S) 15A	M	174	184	32,016	
	" 25A	"	18	330	5,940	
	" 32A	"	25	439	10,975	
	" 40A	"	195	505	98,475	
	" 80A	"	5	1,169	5,845	
	Fittings for above	Set	1		91,951	
	Supports for above	"	1		45,975	
	Stop valves (16K) 15A	Pcs.	49	4,430	217,070	
	" 25A	"	1		6,090	
	" 40A	"	6	9,400	56,400	
	Y-Strainers(16K) 15A	"	5	2,780	13,900	
	Traps 15A	"	5	8,200	41,000	
	Painting materials	Set	1		16,125	
	Miscellaneous materials	"	1		15,250	
	Cutting & patching materials	"	1		15,325	
	Sleeves & inserts	"			7,663	
	Sub-Total				680,000	

NO	ITEM AND DESCRIPTION	UNITS	QUANTITIES	UNIT COST	TOTAL	REMARKS
	(LABOR COSTS)					
	Piping works	Set	1		257,217	
	Excavating & back fulling works	"	1		697	
	Instruments installing works	"	1		22,050	
	Painting works	"	1		20,520	
	Cutting & patching works	"	1		42,000	
	Sleeves & inserts installing works	"	1		28,000	
	Testing works	"	1		28,000	
	Transportation	"	1		10,516	
	Sub-Total				409,000	

NO	ITEM AND DESCRIPTION	UNITS	QUANTITIES	UNIT COST	TOTAL	REMARKS
1-6	SEPTIC TANK (MATERIAL COSTS)					
A.	Tank construction materials	Set	1		1,240	
	Materials for temporary works					
	Sand	m ³	1.9	2,070	3,933	
	Brick	"	1.3	7,650	9,945	
	Reinforced concrete	"	8.2	9,900	81,180	
	Drain concrete	"	0.4	9,900	3,960	
	Reinforcing bar	ton	1.4	63,500	88,900	
	Form wood	m ²	67.9	1,360	92,344	
	Mortar water proof	"	47.6	1,280	60,928	
	Mortar trowel	"	7	920	6,440	
	Check plate	Set	1		2,500	
	Manhole covers 450φ	Pcs.	2	9,000	18,000	
	" " 300φ	"	2	6,300	12,600	
	Partition plate	Set	1		15,000	
	Macadam	m ³	0.9	4,000	3,600	
	Net	m	6.4	250	1,600	
	Perlite mixed soil	m ³	1.1	10,000	11,000	

NO	ITEM AND DESCRIPTION	UNITS	QUANTITIES	UNIT COST	TOTAL	REMARKS
	Sub-Total				413,170	
B.	MECHANICAL WORKS					
	Submersible waste pumps 40A x 0.1m ³ /min x 3m x 0.25KW	Pcs.	2	46,000	92,000	
	Blower 20A x 0.08m ³ /min x 0.12kg/cm ² x 0.4KW	"	1		84,000	
	Chlorinator 75A x 300%	"	1		30,000	
	Defuser 75A x 300%	"			4,000	
	Painting materials	Set	1		1,500	
	Sub-Total				211,500	
C.	PIPE INSTALLING WORKS					
	Gate valves BC5K 40A	Pcs.	2	3,000	6,000	
	" BC5K 20A	"	1		960	
	Check valve BC10K 40A	"	2	3,600	7,200	
	VP 125A	M	4	1,126	4,504	
	" 40A	"	8	204	1,632	

NO	ITEM AND DESCRIPTION	UNITS	QUANTITIES	UNIT COST	TOTAL	REMARKS
	VP 20A	M	8	80	640	
	Fittings for above	Set	1		5,419	
	Supports for above	"	1		2,030	
	Sub-Total				28,385	
D.	ELECTRICAL WORKS					
	Control panel	Pcs.	1		400,000	
	Level switches	"	2	10,000	20,000	
	Wire & pipe	Set	1		5,000	
	Materials for earthing works	"	1		1,000	
	Sub-Total				426,000	
	Total				1,079,055	

NO	ITEM AND DESCRIPTION	UNITS	QUANTITIES	UNIT COST	TOTAL	REMARKS
A.	(LABOR COSTS)					
	Tank construction works					
	Temporary works	Set	1		23,530	
	Earth works	"	1		248,722	
	Concrete works	"	1		81,546	
	Plaster works	"	1		16,842	
	Fittings installing works	"	1		42,000	
	Macadam & net & perlite	"	1		36,000	
	Transportation	"	1		6,000	
	Sub-total					454,640
B.	MECHANICAL WORKS					
	Installing works	Set	1		36,000	
	Painting works	"	1		2,500	
	Sub-Total					38,500

NO	ITEM AND DESCRIPTION	UNITS	QUANTITIES	UNIT COST	TOTAL	REMARKS
C.	PIPE INSTALLING WORKS					
	Installing works	Set	1		10,000	
	Painting works	"	1		500	
	Sub-Total				10,500	
D.	ELECTRIC WORKS					
	Board, pipe & wire installing works	Set	1		29,000	
	Sub-Total					29,000
	Total				532,640	

NO	ITEM AND DESCRIPTION	UNITS	QUANTITIES	UNIT COST	TOTAL	REMARKS
1-7	PACKING CHARGES	Set	1		246,000	
	Sub-Total				246,000	

NO	ITEM AND DESCRIPTION	UNITS	QUANTITIES	UNIT COST	TOTAL	REMARKS
2.	GENERAL WORKS (3)					
2-1	Air lining works	Set	1	152,000		
	[Material costs			119,000		
	[Labor costs			33,000		
2-2	Packing charges	"	1	67,400		
2-3	Field miscellaneous expenses	"	1	4,600		
	Total			224,000		

NO	ITEM AND DESCRIPTION	UNITS	QUANTITIES	UNIT COST	TOTAL	REMARKS
2-1	AIR LINING WORKS (MATERIAL COSTS)					
	SGP (M-S) 80	M	35	1,169	40,915	
	Fittings for above	Set	1		24,549	
	Supports for above	"	1		12,275	
	Stop valves (16K) 80A	Pcs	1		34,900	
	Painting materials	Set	1		1,952	
	Miscellaneous materials	"	1		4,409	
	Sub-Total				119,000	
	(LABOR COSTS)					
	Piping works	Set	1		24,717	
	Instruments installing works	"	1		1,260	
	Painting works	"	1		2,496	
	Testing works	"	1		2,600	
	Transportation	"	1		1,927	
	Sub-Total				33,000	

NO	ITEM AND DESCRIPTION	UNITS	QUANTITIES	UNIT COST	TOTAL	REMARKS
2-2	PACKING CHARGES Sub-Total	Set	1		67,400 67,400	

NO.	ITEM AND DESCRIPTION	UNITS QUANTITIES	UNIT COST	TOTAL	REMARKS
1.	AUTOMOBILE REPAIR & MAINTENANCE WORKSHOP (FURNITURE) Phase I			49,571,600	
2.	Phase II			1,504,900	
3.	Phase III			1,137,000	
	Total			52,213,500	

NO	ITEM AND DESCRIPTION	UNITS	QUANTITIES	UNIT COST	TOTAL	REMARKS
1.	PHASE I WORK (Item) General office building				16,707,100	
2.	Class room & office building				7,640,700	
3.	Dormitory				9,624,000	
4.	Cafeteria				8,249,300	
5.	Check gate				1,437,400	
6.	Heavy repair factory				3,109,900	
7.	Parts storage				2,068,800	
8.	Retreading and metal casting factory				734,400	
	Total				49,571,600	

NO	ITEM AND DESCRIPTION	UNITS	QUANTITIES	UNIT COST	TOTAL	REMARKS
1.	GENERAL OFFICE BUILDING					
	Desk W D H 1,800 x 850 x 700		1		218,800	LLB-188M
	Chair		1		243,100	82-8073RPL
	Side board 1,800 x 450 x 760		1		151,500	LMB-184MG
	Wardrobe. 600 x 450 x 180		1		93,400	LWD-064M
	Cabinet 900 x 450 x 1,800		1		306,000	LWE-947G
	" 1,200 x 450 x 1,800		1		280,000	LWF-124M
	Lounge set Sofa		1		275,400	LEM-422
	" Armchair		2	117,800	235,600	LEM-421
	" Armless chair		2	76,500	153,000	LEM-423
	" Center table		1		142,300	LET-24C
	" Corner table		1		91,800	LET-23C
	" Side table		1		62,800	LET-22C
	Desk W D H 1,060 x 730 x 740		131	23,500	3,078,500	AS-251
	Chair		131	6,300	825,300	K-211A
	Storage cabinet 1,600 x 400 x 870		64	39,900	2,553,600	HS-3960
	" 1,600 x 400 x 870		64	32,800	2,099,200	HS-2960

NO	ITEM AND DESCRIPTION	UNITS	QUANTITIES	UNIT COST	TOTAL	REMARKS
	Storage cabinet base W D H 1,600 x 400 x 60		64	3,400	217,600	HSA-403
	Cabinet 900 x 400 x 1,040		8	40,600	324,800	HS-5191
	" 900 x 400 x 700		8	29,600	236,800	HS-8791
	" 1,400 x 700 x 700		8	2,800	22,400	HSA-401
	Desk		5	52,000	260,000	CN-1470
	Chair		5	38,400	192,000	KN-703C
	Lounge set Sofa		2	81,700	163,400	LEM-612
	" Armchair		4	48,100	192,400	LEM-611
	" Table		2	29,100	58,200	LET-540-11
	Shelf 940 x 360 x 1,878		2	16,400	32,800	EDN-183-1S
	" 900 x 360 x 1,878		8	13,200	105,600	EDN-183-OS
	" 940 x 680 x 1,878		4	29,000	116,000	EDN-183-1D
	" 900 x 680 x 1,878		6	24,400	146,400	EDN-183-OD
	Desk		6	18,000	108,000	TB-6201-11
	"		4	17,300	69,200	TB-5201-11
	Chair		26	3,400	88,400	KB 324
	Map case 1,375 x 989 x 414		2	62,900	125,800	AO-5N
	" 1,375 x 989 x 80		1		5,600	AO-BN

NO	ITEM AND DESCRIPTION	UNITS	QUANTITIES	UNIT COST	TOTAL	REMARKS
	Drafting board		3	102,000	306,000	
	Chair		3	17,300	51,900	KRG-730D
	Sub-Total				13,633,600	
	Package for export		1		3,073,500	
	Total				16,707,100	

NO	ITEM AND DESCRIPTION	UNITS	QUANTITIES	UNIT COST	TOTAL	REMARKS
2.	CLASSROOM					
	Wardrobe W D H 600 x 450 x 1,300		1		93,400	LWD-064M
	Cabinet 900 x 450 x 1,800		1		306,000	LWE-094HG
	" 1,200 x 450 x 1,800		1		280,000	LWF-124M
	Desk 1,060 x 730 x 740		34	23,500	799,000	AS-251
	Chair		34	6,300	214,200	K-211A
	Storage cabinet 1,600 x 400 x 870		18	39,900	718,200	HS-3960
	" 1,600 x 400 x 870		18	32,800	590,400	HS-2960
	" 1,600 x 400 x 60		18	3,400	61,200	HSA-403
	Cabinet 900 x 400 x 1,040		6	40,600	243,600	HS-5191
	" 900 x 400 x 700		6	29,600	177,600	HS-8791
	" 900 x 400 x 700		6	2,800	16,800	HSA-401
	Desk 1,600 x 800 x 700		1		52,700	CN-1620
	Lounge set Sofa 1,996 x 785 x 670		1		224,100	LEM-412
	" Armchair 769 x 785 x 670		2	107,900	215,800	LEM-411
	" Armless chair 600 x 785 x 670		2	83,400	166,800	LEM-413
	" Center table 1400 x 600 x 430		1		62,700	LET-24D

NO	ITEM AND DESCRIPTION	UNITS	QUANTITIES	UNIT COST	TOTAL	REMARKS	
	Lounge set Corner table	W 755 x	D 755 x	H 590	1	61,400	LET-23D
	Side table	785 x	450 x	590	1	59,700	LET-22D
	Desk	1,400 x	700 x	700	3	156,000	CW-1470
	Chair				3	115,200	KN-703C
	Student's desk	600 x	400 x	730	80	360,000	SDN-01
	Teacher's desk	915 x	635 x	740	4	808,000	AS-370N
	Chair				4	49,200	KD-650
	Student's chair				80	216,000	SKN-01
	Shelf	940 x	480 x	1,878	8	203,200	EDN-182-ID
	"	900 x	480 x	1,878	16	332,800	EDN-182-OD
	Reading table	1,500 x	600 x	700	14	242,200	TB5201-11
	Folding chair				28	92,400	KB-320
	Chair				1	43,700	KH-7030
	Sub-Total					6,235,100	
	Package for export				1	1,405,600	
	Total					7,640,700	

NO	ITEM AND DESCRIPTION	UNITS	QUANTITIES	UNIT COST	TOTAL	REMARKS
3.	DORMITORY					
	Desk W D H 1,060 x 730 x 740		2	23,500	47,000	AS-251
	Chair		82	6,300	516,600	K-211A
	Storage cabinet 1,600 x 400 x 870		2	39,900	79,800	HS-3960
	" 1,600 x 400 x 870		2	32,800	65,600	HS-2960
	" 1,600 x 400 x 60		2	3,400	6,800	HS-403
	Desk 915 x 635 x 740		80	22,900	1,832,000	AS-271
	Locker 455 x 515 x 1,790		80	15,000	1,200,000	1L7J
	Bed 1,980 x 910 x 1,800		40	49,800	1,992,000	with cotton mat
	Table 1,800 x 750 x 700		16	22,300	356,800	TB-6251-21
	Chair		83	4,300	356,900	KR-415D
	Table 850 x 850 x 700		4	90,000	360,000	303S
	Chair		16	65,000	1,040,000	1305B
	Sub-Total				7,853,500	
	Package for export				1,770,500	
	Total				9,624,000	

NO	ITEM AND DESCRIPTION	UNITS	QUANTITIES	UNIT COST	TOTAL	REMARKS
4.	CAFETERIA					
	Desk W D H 1,060 x 730 x 740		3	23,500	70,500	AS-251
	Chair		3	6,300	18,900	K-211A
	Storage cabinet		4	39,900	159,600	HS-3960
	"		4	32,800	131,200	HS-2960
	"		4	3,400	13,600	HSA-403
	Cabinet		3	40,600	121,800	HS-5191
	"		3	29,600	88,800	HS-8791
	"		3	2,800	8,400	HSA 401
	Chair		414	4,300	1,780,200	KR-415D
	"		32	65,000	2,080,000	1305B
	Table		69	22,300	1,538,700	TB 6251-61
	"		8	90,000	720,000	3035
	Sub-Total				6,731,700	
	Package for export				1,517,600	
	Total				8,249,300	

NO	ITEM AND DESCRIPTION	UNITS	QUANTITIES	UNIT COST	TOTAL	REMARKS
5.	CHECK GATE					
	Desk	W D H 1,060 x 730 x 740	11	23,500	258,500	AS-251
	Chair		11	6,300	69,300	K-211A
	Storage cabinet	1,600 x 400 x 870	8	39,900	319,200	HS-3960
	"	1,600 x 400 x 870	8	32,800	262,400	HS-2960
	"	1,600 x 400 x 60	8	3,400	27,200	HSA-403
	Cabinet	900 x 400 x 1,040	2	40,600	81,200	HS-5191
	"	900 x 400 x 700	2	29,600	59,200	HS-8791
	"	900 x 400 x 60	2	2,800	5,600	HS-401
	Desk	1,400 x 700 x 700	1		52,000	CN-1470
	Chair		1		38,400	KN-703C
		Sub-Total				1,173,000
	Package for export				264,400	
	Total				1,437,400	

NO	ITEM AND DESCRIPTION	UNITS	QUANTITIES	UNIT COST	TOTAL	REMARKS
6.	HEAVY REPAIR FACTORY					
	Desk	W D H 1,060 x 730 x 740	44	23,500	1,034,000	AS-251
	Chair		44	6,300	277,200	K-211A
	Storage cabinet	1,600 x 400 x 870	10	39,900	399,000	HS-3960
	"	1,600 x 400 x 870	10	32,800	328,000	HS-2960
	"	1,600 x 400 x 60	10	3,400	34,000	HSA-403
	Cabinet	900 x 400 x 1,040	8	40,600	324,800	HS-5191
	"	900 x 400 x 700	4	29,600	118,400	HS-8791
	"	900 x 400 x 60	8	2,800	22,400	HS-401
	Sub-Total				2,537,800	
Package for export				572,100		
	Total				3,109,900	

NO	ITEM AND DESCRIPTION	UNTS	QUANTITIES	UNIT COST	TOTAL	REMARKS
7.	PARTS STORAGE					
	Desk	W D H 1,060 x 730 x 740	19	23,500	446,500	AS-251
	Chair		19	6,300	119,700	K-211A
	Storage cabinet	1,600 x 400 x 870	7	39,900	279,300	HS-3960
	"	1,600 x 400 x 870	7	32,800	229,600	HS-2960
	"	1,600 x 400 x 60	7	3,400	23,800	HSA-403
	Work table	1,500 x 750 x 700	2	36,400	72,800	DTF-324R
	Counter	1,800 x 450 x 900	5	58,400	292,000	HC-1984
	Cabinet	900 x 400 x 700	5	33,800	169,000	HS-5791
	"	900 x 400 x 160	5	6,800	34,000	HHSA-201
	"	900 x 400 x 18	5	4,300	21,500	HSA-102
		Sub-Total			1,688,200	
		Package for export			380,600	
	Total			2,068,800		

NO	ITEM AND DESCRIPTION	UNITS	QUANTITIES	UNIT COST	TOTAL	REMARKS
8.	RETREADING & METAL CASTING FACTORY					
	Desk	W D H 1,060 x 730 x 740	10	23,500	235,000	AS-251
	Chair		10	6,300	63,000	K-211A
	Storage cabinet	1,600 x 400 x 870	3	39,900	119,700	HS-3960
	"	1,600 x 400 x 870	3	32,800	98,400	HS-2960
	"	1,600 x 400 x 60	3	3,400	10,200	HSA-402
	Cabinet	900 x 400 x 1,040	1		40,600	HS-5191
	"	900 x 400 x 700	1		29,600	HS-2960
	"	900 x 400 x 60	1		2,800	HSA-401
		Sub-total			599,300	
	Package for export				135,100	
	Total				734,400	

NO	ITEM AND DESCRIPTION	UNITS QUANTITIES	UNIT COST	TOTAL	REMARKS
1.	PHASE II WORK (Item) Inspection factory			679,600	
2.	Periodical repair factory			825,300	
	Total			1,504,900	

NO	ITEM AND DESCRIPTION	UNITS	QUANTITIES	UNIT COST	TOTAL	REMARKS
1.	INSPECTION FACTORY					
	Desk	W D H 1,060 x 730 x 740	6	23,500	141,000	AS-251
	Chair		6	6,300	37,800	K-211A
	Storage cabinet	1,600 x 400 x 870	4	39,900	159,600	HS-3960
	"	1,600 x 400 x 870	4	32,800	131,200	HS-2960
	"	1,600 x 400 x 60	4	3,400	13,600	HSA-403
	Cabinet	900 x 400 x 1,040	1		40,600	HS-5191
	"	900 x 400 x 700	1		29,600	HS-8791
	"	900 x 400 x 60	1		2,800	HSA-401
	Sub-Total				556,200	
	Package for export				123,400	
	Total				679,600	

NO	ITEM AND DESCRIPTION	UNITS	QUANTITIES	UNIT COST	TOTAL	REMARKS
2.	PERIODICAL REPAIR FACTORY					
	Desk W D H 1,060 x 730 x 740		10	23,500	235,000	AC-251
	Chair		10	6,300	63,000	K-211A
	Storage cabinet		4	39,900	159,600	HS-3960
	"		4	32,800	131,200	HS-2960
	"		4	3,400	13,600	HSA-403
	Cabinet		1		40,600	HS-5191
	"		1		29,600	HS-8791
	"		1		2,800	HSA-401
	Sub-Total				675,400	
	Package for export				149,900	
	Total				825,300	

NO	ITEM AND DESCRIPTION	UNITS	QUANTITIES	UNIT COST	TOTAL	REMARKS
1.	PHASE III WORK (Item) 1. Paint and body factory				1,137,000	
	Total				1,137,000	

NO	ITEM AND DESCRIPTION	UNITS	QUANTITIES	UNIT COST	TOTAL	REMARKS
1.	PAINT & BODY FACTORY					
	Desk W D H 1,060 x 730 x 740		11	23,500	258,500	AS-251
	Chair		11	6,300	69,300	K-211A
	Storage cabinet 1,600 x 400 x 870		6	39,900	239,400	HS-3960
	" 1,600 x 400 x 870		6	32,800	196,800	HS-2960
	" 1,600 x 400 x 60		6	3,400	29,400	HSA-403
	Cabinet 900 x 400 x 1,040		2	40,600	81,200	HS-5191
	" 900 x 400 x 700		2	29,600	59,200	HS-8791
	" 900 x 400 x 60		2	2,800	5,600	HSA-401
	Sub-Total				930,400	
	Package for export				206,600	
	Total				1,137,000	

NO	ITEM AND DESCRIPTION	UNITS	QUANTITIES	UNIT COST	TOTAL	REMARKS
	(MACHINE)					
	Phase - I work				945,377,465	
	Phase - II work				130,107,690	
	Phase - III work				64,228,205	
	Total				1,139,713,360	

NO	ITEM AND DESCRIPTION	UNITS	QUANTITIES	UNIT COST	TOTAL	REMARKS
	PHASE 1					
	(Item)					
1.	Training room	Set	1		104,888,650	
2.	Air compressor house	"	1		22,158,060	
3.	Heavy repair factory	"	1		405,397,350	
4.	Parts storage	"	1		29,275,180	
5.	Retreading & metal casting factory	"	1		274,675,000	
6.	Gas station	"	1		7,669,000	
7.	Car washer	"	1		25,524,960	
8.	Spare parts	"	1		40,349,265	
9.	Sending of supervisor	"	1		35,440,000	
	Total:				945,377,465	

NO	ITEM AND DESCRIPTION	UNITS	QUANTITIES	UNIT COST	TOTAL	REMARKS
1	TRAINING ROOM					
1-1	Machine				102,488,650	
1-2	Installation				2,400,000	
1-3	Spare parts				2,140,265	
	Total:				107,028,915	

NO	ITEM AND DESCRIPTION	UNITS	QUANTITIES	UNIT COST	TOTAL	REMARKS
1-1	MACHINE					
	Work bench T-1000		5	111,000	555,000	
	Vice UV-150		5	54,000	270,000	
	Rack 6367BB		2	32,200	64,400	
	Tool stand TS-34		10	26,500	265,000	
	Nozzle tester DT-60V		5	48,000	240,000	
	Fuel injection test bench 5760-050		2	5,572,000	11,144,000	
	Injection pump special tool DT-105A		2	75,000	150,000	
	Piston ring, compressor RC-30		5	1,320	6,600	
	Piston ring, compressor RT-40		5	3,400	17,000	
	Torque wrench 1300F		3	10,100	30,300	
	Torque wrench 2800F		3	13,400	40,200	
	" 5600F		3	26,800	80,400	
	Hand tool set CU-405/305/No.44S		5	100,000	500,000	
	Jib crane JD-2		1		615,400	
	Sling chain 2D-SS		3	15,660	46,980	

NO	ITEM AND DESCRIPTION	UNITS	QUANTITIES	UNIT COST	TOTAL	REMARKS
	T type wrench TW-8		5	560	2,800	
	" TW-9		5	560	2,800	
	" TW-10		5	560	2,800	
	" TW-11		5	610	3,050	
	" TW-13		5	680	3,400	
	" TW-14		5	680	3,400	
	" TW-17		5	790	3,950	
	" TW-19		5	870	4,350	
	" TW-21		5	990	4,950	
	" TW-23		5	1,160	5,800	
	Hex. wrench AW-50		2	250	500	
	" AW-90		2	2,500	5,000	
	" AW-100		2	2,360	4,720	
	Copper hammer CH-32		5	4,200	21,000	
	Soft hammer SPH-10		5	2,060	10,300	
	Mechanic tool set CU-405/305		3	84,000	252,000	
	Snap ring plier SPS-4		5	4,250	21,250	
	Air gun ABG-320 with hose 5m and connector		5	6,750	33,750	

NO	ITEM AND DESCRIPTION	UNITS	QUANTITIES	UNIT COST	TOTAL	REMARKS
	Working lamp WL-30		5	9,950	49,750	
	Outside micrometer set 15 25MB		2	83,000	166,000	
	Cylinder gauge BC-58		2	25,200	50,400	
	Surface plate SPA-28		2	351,900	703,800	
	Surface table SPT-150		2	222,600	445,200	
	V block B-100B		8	70,500	564,000	
	Magnetic base MB-B		8	7,000	56,000	
	Dial gauge 2109		8	12,500	100,000	
	Injection pump stand DT-65B		5	85,000	425,000	
	Injection pump special tool set DT-105A		5	75,000	375,000	
	Fuel tank FT-100		5	84,000	420,000	
	Radiator fan, combination ECS-60		5	2,000,000	10,000,000	
	Exhaust system EES-60		5	514,100	2,570,500	
	Batt. carrier 200AH x 4 w/carrier wheel BC-200		2	537,800	1,075,600	
	Engine test stand EDT-180		5	2,000,000	10,000,000	
	Universal puller set UP-5000		5	165,000	825,000	
	Outside micrometer set 15 25MB		5	83,000	415,000	

NO	ITEM AND DESCRIPTION	UNITS	QUANTITIES	UNIT COST	TOTAL	REMARKS
	Inside micrometer set No. 50N		5	21,000	105,000	
	" No. 150N		5	23,500	117,500	
	Carry tool stand RC-102		8	26,600	212,800	
	Parts washing stand WS-25		1		189,000	
	Thickness gauge No. 26		5	3,580	17,900	
	Piston feeder gauge No. 208		5	2,100	10,500	
	Hand tachometer HL		2	26,800	53,600	

NO	ITEM AND DESCRIPTION	UNITS	QUANTITIES	UNIT COST	TOTAL	REMARKS
	Work bench T-1000		10	111,000	1,110,000	
	Vice UV-150		10	54,000	540,000	
	Brake assembling stand BAS-15		5	3,218,300	16,091,500	
	Brake shoe grinder BSG-250MV		1		1,284,000	
	Air drill 211A w/hose 2m and connector		2	26,230	52,460	
	Bushing inserter & remover T-130		1		11,600	
	Tool stand TS-34		5	26,500	132,500	
	Air grinder w/hose 5m and connector		1		38,590	
	Mechanic tool set Cu-305		5	42,000	210,000	
	Torque wrench 1300F		2	10,100	20,200	
	" 2800F		2	13,400	26,800	
	" 5600F		2	26,800	53,600	
	Brake booster special tool BM-850		5	204,000	1,020,000	
	Surface plate SPC-12		1		357,200	
	Tool box TS-34		5	26,500	132,500	

NO	ITEM AND DESCRIPTION	UNITS	QUANTITIES	UNIT COST	TOTAL	REMARKS
	Inside caliper CI-30		20	1,210	24,200	
	Outside caliper CO-30		20	1,210	24,200	
	Rule R-600		20	880	17,600	
	Soft hammer SPH-5		100	1,140	114,000	
	Copper hammer CH-16		100	2,080	208,000	
	Ball plain hammer BH-16		100	730	73,000	
	Universal puller set UP-5000		5	165,000	825,000	
	Caddy tool stand RC-102		2	26,600	53,200	

NO	ITEM AND DESCRIPTION	UNITS	QUANTITIES	UNIT COST	TOTAL	REMARKS
	Circuit tester TH-20		5	8,950	44,750	
	Auto megger T-521-3		2	35,000	70,000	
	Volt ampere meter E-164		5	68,000	340,000	
	Electric soldering iron EI-10		5	5,300	26,500	
	" EI-30		5	10,050	50,250	
	Solder ROS		5	3,220	16,100	
	Soldering paste flux P-1B		5	920	4,600	
	Carbon cleaning set 750		5	9,700	48,500	
	Air drill AD-65A w/hose 5m and connector		5	34,090	170,450	
	Work bench T-1000		10	111,000	1,110,000	
	" T-1000		5	111,000	555,000	
	Vice UV-150		5	54,000	270,000	
	Universal tester ETB-500		1		3,850,000	
	Battery charger HRC-7520		1		93,200	
	Copper hammer CH-16		5	2,080	10,400	
	Mechanic tool set CU-305		5	42,000	210,000	

NO	ITEM AND DESCRIPTION	UNITS	QUANTITIES	UNIT COST	TOTAL	REMARKS
	Snapping plier set SPS-4		5	32,200	161,000	
	Arc welder AT-SS-500 w/accessories		2	201,700	403,400	
	Caddy tool stand RC-102		2	26,600	53,200	

NO	ITEM AND DESCRIPTION	UNITS	QUANTITIES	UNIT COST	TOTAL	REMARKS
	Mechanic tool set CU-305		5	42,500	210,000	
	Special tools for Mitsubishi		5	1,000,000	5,000,000	
	Special tools for Isuzu		5	1,000,000	5,000,000	
	Work bench I-1000		10	111,000	1,110,000	
	Vice UV-150		10	54,000	540,000	
	Copper hammer CH-32		5	4,200	21,000	
	Thickness gauge No. 26		5	3,580	17,900	
	Magnetic base MB-B		5	7,000	35,000	
	Dial indicator 2109		5	12,500	62,500	
	Hand spring balancer ST-10		5	2,000	10,000	
	Torque wrench 1300F		3	10,100	30,300	
	" 2800F		3	13,400	40,200	
	" 5600F		3	26,800	80,400	
	Diff. jack DJ-50		5	205,000	1,025,000	
	Hydraulic press HP-50E		1		352,000	
	Universal puller set UP-5000		5	165,000	825,000	
	Caddy tool stand RC-102		2	26,600	53,200	

NO	ITEM AND DESCRIPTION	UNITS	QUANTITIES	UNIT COST	TOTAL	REMARKS
	Transporation and package		1		14,810,000	
	Installation		1		2,400,000	
	Sub-Total:				104,888,650	

NO	ITEM AND DESCRIPTION	UNITS	QUANTITIES	UNIT COST	TOTAL	REMARKS
2	AIR COMPRESSOR HOUSE					
2-1	Machine				20,058,060	
2-2	Installation				2,100,000	
2-3	Spare parts				503,950	
	Total:				22,662,010	

NO	ITEM AND DESCRIPTION	UNITS	QUANTITIES	UNIT COST	TOTAL	REMARKS
2-1	MACHINE					
	Air compressor VD-2-22		5	3,620,000	18,100,000	
	Air piping and connection for 5 units air compressor		1		1,568,060	
	Transportation and package		1		390,000	
	Installation		1		2,100,000	
	Sub-Total:				22,158,060	

NO	ITEM AND DESCRIPTION	UNITS	QUANTITIES	UNIT COST	TOTAL	REMARKS
3	HEAVY REPAIR FACTORY					
3-1	Machine				396,997,350	
3-2	Installation				8,400,000	
3-3	Spare parts				30,479,600	
	Total:				435,876,950	

NO	ITEM AND DESCRIPTION	UNITS	QUANTITIES	UNIT COST	TOTAL	REMARKS
3-1	MACHINE					
	Air power rivetter MB-500		1		256,000	
	Working bench T-1000		4	110,000	440,000	
	Vice UV-150		3	54,000	162,000	
	Brake shoe grinder BSG-250MV		2	1,284,000	2,568,000	
	Hand truck No. 101		1		63,000	
	Air drill 211A w/hose 5m and connector		3	29,850	89,550	
	Brake booster test stand BTS-10S		1		3,280,000	
	Writing table 3616DE/2218ZZ w/seat		1		50,400	
	Bushing inserter & remover set T-130		1		11,600	
	Parts stand TS-34		3	26,500	79,500	
	Air grinder M-22-S w/hose 5m and connector PS		3	38,850	116,550	
	Mechanic set CU-305		6	42,000	252,000	

NO	ITEM AND DESCRIPTION	UNITS	QUANTITIES	UNIT COST	TOTAL	REMARKS
	(Transmission Shop)					
	Mission jack HUT-800B		5	96,500	482,500	
	Universal puller set UP-5000		2	165,000	330,000	
	Working bench T-1000		4	111,000	444,000	
	Vice UV-150		4	54,000	216,000	
	Parts washing stand WS-25		1		189,000	
	Dial couple novius DNC-15		4	12,900	51,600	
	Working lamp WL-30		4	9,950	39,800	
	Mechanic set CU-305		8	42,000	336,000	
	Cu. hammer CH-24		4	3,140	12,560	
	Soft hammer SPH-8		4	1,920	7,680	
	Snap ring plier SPS-4		4	4,250	17,000	
	Air gun w/hose 5m and connector		4	6,750	27,000	
	Writing table 3616DL/2218ZZ w/seat		1		45,100	
	Hand spring balance HSB-20		1		3,730	

NO	ITEM AND DESCRIPTION	UNITS	QUANTITIES	UNIT COST	TOTAL	REMARKS
	(Clutch & Prop. Shaft Shop)					
	Air power rivetter MB-500		1		256,000	
	Hydraulic press HP-300		1		190,000	
	Working table T-1000		2	111,000	222,000	
	Vice UV-150		2	54,000	108,000	
	Drilling machine ESD-460AF w/drill 1.0 - 23.0mm by 0.5mm		1		490,710	
	Working bench T-1000		1		111,000	
	Working table 3616DL/2218ZZ w/seat		1		45,100	
	Parts washing stand WS-25		1		189,000	
	Hand truck No. 101		1		63,000	
	Mechanic set CU-305		4	42,000	168,000	
	Snap ring piler set SPS-4		2	4,250	8,500	
	Bushing inserter & remover set T-130		1		11,600	
	Punch set 320		1		8,750	
	Clutch aligner HC-15		2	9,950	19,900	
	Air gun set ABG-320 w/hose 5m and connector		2	6,750	13,500	

NO	ITEM AND DESCRIPTION	UNITS	QUANTITIES	UNIT COST	TOTAL	REMARKS
	Spring tester 240B		1		75,600	
	Clutch rebuilder CRA-500		2	351,000	702,000	
	(Front & Rear Axle Shop)					
	Chassis spring changer SJ-1		3	80,000	240,000	
	Diff. jack DJ-50		5	205,000	1,025,000	
	Working bench T-1000		3	110,000	330,000	
	Vice UV-150		3	54,000	162,000	
	Tool stand TS-34		1		26,500	
	Hydraulic press EHP-200		1		2,620,000	
	Torque wrench 2800F		3	13,400	40,200	
	Surface plate with base SPB-46		1		365,690	
	Universal puller set UP-5000		1		165,000	
	Parts washing stand WS-25		3	189,000	567,000	
	Ring pin press set RP-500		1		100,000	
	Bushing inserter & remover SDE-1000		1		34,000	
	Hand spring balance		1		3,730	

NO	ITEM AND DESCRIPTION	UNITS	QUANTITIES	UNIT COST	TOTAL	REMARKS
	Writing table w/seat 3616DL/2218ZZ		2	45,100	90,200	
	Double face hammer DSH-12		3	4,800	14,400	
	Housing dies for I. uzu HP		1		35,800	
	Housing dies for Mitsubishi HP		1		35,800	
	Air grinder w/steel brush M-70S		2	62,380	124,760	
	Magnetic base YM-1		3	39,200	117,600	
	Dial gauge 1044		3	7,350	22,050	
	" No. 2		3	18,400	55,200	
	Mechanic set CU-305		13	42,000	546,000	
	Punch set 320		1		8,750	
	Air gun set w/hose 10m and connector ABG-320		3	10,750	32,250	

NO	ITEM AND DESCRIPTION	UNITS	QUANTITIES	UNIT COST	TOTAL	REMARKS
	GROUP ENGINE WASHING SHOP & ENGINE DISASSEMBLING SHOP					
	Parts washing stand WS-25		4	189,000	756,000	
	Snap ring plier SPS-4		2	4,250	8,500	
	Steam cleaner 1600		3	1,840,000	5,520,000	
	Impact wrench AW-1600 w/hose 10m and connector		7	55,250	386,750	
	Hose PWN-64 w/coupler and nozzle		2	14,725	29,750	
	Auto lift WSL-80		4	1,540,000	6,160,000	
	Air gun AGB-320		7	1,760	12,320	
	Coupler PS-20		7	990	6,930	
	Hose, 10M		16	8,000	128,000	
	Air impact wrench AW-1200 w/connector and hose 10m		7	50,250	351,750	
	Brush 250N		16	2,940	47,040	
	Engine jack EOT-180		10	2,000,000	20,000,000	
	Tool rack TBC-32		3	13,000	219,000	
	Work bench T-1000		1		111,000	

NO	ITEM AND DESCRIPTION	UNITS	QUANTITIES	UNIT COST	TOTAL	REMARKS
	Vice UV-150		1		54,000	
	Socket wrench set No. 30M		1		11,100	
	Valve lifter VL-500		6	15,100	90,600	
	Wire brush 765		10	495	4,950	
	" 766		10	215	2,150	
	Scraper SB-19		10	310	3,100	
	Electric pencil EP-A		1		35,000	
	Hand tool CU-405/305/No. 44S		9	100,000	900,000	
	Engine trolley EC-1000		10	453,000	4,530,000	
	Impact driver #2600		3	4,250	12,750	
	Pin punch C-25		1		420	
	" C-26		1		390	
	" C-27		1		570	
	" C-28		1		680	
	" C-29		1		1,010	
	Impact driver #2600		3	4,250	12,750	
	Writing table w/seat 3616DL/2218ZZ		1		45,100	

NO	ITEM AND DESCRIPTION	UNITS	QUANTITIES	UNIT COST	TOTAL	REMARKS
	Parts washing stand WS-25		10	189,000	1,890,000	
	Working table WT-80		10	243,280	2,432,800	
	Tool stand TS-34		10	26,500	265,000	
	" TS-34		10	26,500	265,000	
	Tool cabinet TB-100B		5	116,000	580,000	
	Piston ring compressor RC-30		5	1,320	6,600	
	Piston ring filling tool RT-40		5	3,400	17,000	
	Piston ring tool RT-45		10	715	7,150	
	Torque wrench 1300F		5	10,100	50,500	
	" 2800F		5	13,400	67,000	
	" 5600F		5	26,800	134,000	
	Fuel tank FT-100		10	84,000	840,000	
	Radiator fan combination ECS-60		10	2,000,000	20,000,000	
	Exhaust system EES-60		10	514,100	5,141,000	
	Batt. carrier BC-200 200AH x 2 w/cargo wheel		4	396,400	1,585,600	
	Jib crane JP-2		5	615,000	3,075,000	
	Sling chain ID-SS		5	10,660	53,300	

NO	ITEM AND DESCRIPTION	UNITS	QUANTITIES	UNIT COST	TOTAL	REMARKS
	Oil separate set		10	126,300	1,263,000	
	T wrench		10	560	5,600	
	"		10	560	5,600	
	"		10	560	5,600	
	"		10	610	6,100	
	"		10	610	6,100	
	"		10	680	6,800	
	"		10	680	6,800	
	"		10	790	7,900	
	"		10	870	8,700	
	"		10	990	9,900	
	"		10	1,160	11,600	
	Hex. wrench		10	250	2,500	
	"		10	2,500	25,000	
	"		10	2,360	23,600	
	Cu hammer		10	4,200	42,000	
	Soft hammer		10	2,060	20,600	
	Tool set		30	84,000	2,520,000	

NO	ITEM AND DESCRIPTION	UNITS	QUANTITIES	UNIT COST	TOTAL	REMARKS
	Writing table 3616DL/22T8ZZ		10	45,100	451,000	
	Snap ring plier SPS-4		20	6,750	135,000	
	Air gun ABG-320 w/hose 5m and connector		20	6,750	135,000	
	Oiler set AL-205 Lub. drum set		2	901,000	1,802,000	
	Working lamp WL-30		10	9,950	99,500	

NO	ITEM AND DESCRIPTION	UNITS	QUANTITIES	UNIT COST	TOTAL	REMARKS
	GROUP ELECTRIC SHOP					
	Electric universal tester ETB-500		1		3,850,000	
	Commutator mica cutter & lathe F-180		1		683,000	
	Dry oven DX-58		1		125,000	
	Working table T-1000		3	110,000	333,000	
	Auto megger E-17-4		1		22,000	
	Circuit tester TH-20		2	8,950	17,900	
	Batt charger HRC-7520		5	93,200	466,000	
	Table w/seat 3628ZL/2218Z3		2	43,900	87,800	
	Rack 6367BB		2	32,200	64,400	
	Vice UV-150		3	54,000	162,000	
	Mechanic set CU-305		3	42,000	126,000	
	" CU-405		1		42,000	
	Cu hammer CH-24		3	3,140	9,420	
	Impact driver #2600		3	4,250	12,750	
	Snap ring plier set SPS-4		1		4,250	
	Cutting Plier No. 205		6	2,350	14,100	

NO	ITEM AND DESCRIPTION	UNITS	QUANTITIES	UNIT COST	TOTAL	REMARKS
	Batt. hydrometer HM-100		2	5,950	11,900	
	Solderless terminal kit ST-140		3	6,750	20,250	
	Hex. wrench AW-50		1		250	
	" AW-90		1		2,500	
	" AW-100		1		2,360	
	Air drill AD-65A w/hose 5m and connector		2	34,350	68,700	
	Air grinder M-22S w/hose 5m and connector		1		38,850	
	Air grinder M-18S w/hose 5m and connector		1		33,850	
	" L-25S		2	34,850	69,700	
	Electric soldering iron EI-20		3	7,200	21,600	
	" EI-50		3	19,300	57,900	
	Solder ROS		6	3,220	19,320	
	Soldering paste flux P-1B		6	920	5,520	
	Electric pencil EPA		1		35,000	
	Letter punch LET-1		1		9,600	
	Figure punch FIG-1		1		3,200	
	Punch set 320		1		8,750	

NO	ITEM AND DESCRIPTION	UNITS	QUANTITIES	UNIT COST	TOTAL	REMARKS
	Air gun ABG-320 w/connector		2	2,750	5,500	
	Vacuum cleaner MC-2000		1		81,500	
	GROUP PUMP SHOP					
	Injection pump 5760-050		3	5,572,000	16,716,000	
	Tester bench w/tool set					
	Nozzle tester DT-60V w/adaptor		3	48,000	144,000	
	Injection pump stand DT-65B		3	85,000	255,000	
	Injection pump special tool set DT-105A		3	75,000	225,000	
	Working bench T-1000		6	111,000	666,000	
	Vice UV-150		3	54,000	162,000	
	Parts washing stand WS-25		2	189,000	378,000	
	Table w/seat 3616DE/2218ZZ		1		50,400	
	Open end wrench set BT-15		1		1,900	
	Open end wrench set BT-6A		1		3,350	

NO	ITEM AND DESCRIPTION	UNITS	QUANTITIES	UNIT COST	TOTAL	REMARKS
	GROUP STALLS (20 STALLS)					
	Hydraulic garage Jack M-1000M		10	170,000	1,700,000	
	" M-500M		10	114,000	1,140,000	
	Rigid rack M-15LB		80	19,500	1,560,000	
	Wheel dolly WD-1100		10	127,000	1,270,000	
	Hydraulic floor crane DC-H1000		5	417,000	2,085,000	
	Transmission jack HUI-800B		10	96,500	965,000	
	Air lift AL-400A		10	395,000	3,950,000	
	Arc welder AT-SS-500 w/accessories		4	201,700	806,800	
	Gas welder set B/GS-10		4	229,000	916,000	
	Air disc grinder M-70S		4	53,500	214,000	
	Hand truck No. 101		10	63,000	630,000	
	Service creeper SC-3B		40	12,900	516,000	
	Universal puller set UP-5000		4	165,000	660,000	
	Piston bearing, puller PB-100		20	3,600	72,000	
	Slide hammer puller G-60		20	13,700	274,000	
	Tube flaring & cutting tool TF-20010		4	20,200	80,800	

NO	ITEM AND DESCRIPTION	UNITS	QUANTITIES	UNIT COST	TOTAL	REMARKS
	Universal wheel hub puller T-75		20	19,800	396,000	
	Drum greaser DL-142		5	752,000	5,760,000	
	Universal jack UJ-500		10	84,000	840,000	
	Socket wrench set HD-290M		10	48,500	485,000	
	Diff. jack DJ-50		20	205,000	4,100,000	
	Gasket cutting punch set H-25		10	3,400	34,000	
	Transmission jack HUIJ-800B		20	96,500	1,930,000	
	Air chisel set D-210		10	71,000	710,000	
	Auto lub set AL-205		8	901,000	7,208,000	
	Pipe wrench PW-6		10	2,700	27,000	
	" PW-14		10	4,650	46,500	
	" PW-36		10	18,800	188,000	
	Working lamp WL-30		20	9,950	199,000	
	Air meter AT-300		4	88,800	355,200	
	U-bolt wrench UB-2224/2632		20	25,800	516,000	
	Air impact wrench AW-4000T		10	129,000	1,290,000	
	" AW-2000		10	64,000	640,000	
	" AW-1600T		10	44,500	445,000	

NO	ITEM AND DESCRIPTION	UNITS	QUANTITIES	UNIT COST	TOTAL	REMARKS
	Working bench T-1000		10	111,000	1,110,000	
	Vice UV-150		10	54,000	540,000	
	Fork lift FG-10		3	1,535,000	4,605,000	
	Tool stand TS-34		40	26,500	1,026,000	
	Drain cart DC-77		20	16,300	326,000	
	Electric pencil EP-A		1		35,000	
	Impact driver #2600		20	4,250	85,000	
	Writing table 3616DL/2218ZZ w/desk seat		10	50,400	504,000	
	Snap ring plier SPS-4		10	4,250	42,500	
	Mechanic tool set CU-305		100	42,000	4,200,000	
	Circuit tester TH-20		10	8,950	89,500	
	Tool cabinet set D-3000		5	318,000	1,590,000	

NO	ITEM AND DESCRIPTION	UNITS	QUANTITIES	UNIT COST	TOTAL	REMARKS
	GROUP GENERAL MACHINING SHOP					
	Crankshaft grinder MG-2100		3	44,520,000	133,560,000	
	Cylinder boring machine w/stand NWA-No.2		4	1,233,000	4,932,000	
	Cylinder boring machine MS-902		2	1,720,000	3,440,000	
	Valve refacer w/stand MB-145		2	675,000	1,350,000	
	Valve seat cutter set R-2500		6	430,000	2,580,000	
	Valve seat grinder EC-160		3	722,000	2,166,000	
	Hex. wrench set AW-50		1		250	
	" AW-90		1		2,500	
	" AW-100		1		2,360	
	Socket wrench set No.30		1		11,100	
	Socket wrench set No. 33S		1		11,000	
	Screw tap & dies set M-320		1		43,000	
	" T-412		1		13,400	
	Adjustable reamer set PL-44		1		97,000	
	Combination milling machine FX-800		1		2,700,000	
	Lathe TAL510 x 2000		1		4,170,000	

NO	ITEM AND DESCRIPTION	UNITS	QUANTITIES	UNIT COST	TOTAL	REMARKS
	Radiabor drilling machine HOR-1100		1		3,740,000	
	Turret lathe HTL-50E		1		2,450,000	
	Surface grinder SGW-4		1		1,900,000	
	Cutting grinder HCW-16M		1		96,000	
	Mechanical tool set D-3000		1		318,000	
	Brake drum lathe BDL-250N		1		1,720,000	
	Bench grinder SGK-T/PFK		1		73,400	
	Surface plate SPA-28		1		351,900	
	Working bench T-1000		13	111,000	1,443,000	
	Engineers' file set F-300S		2	5,300	10,600	
	Outside micrometer set 1525MB		2	83,000	166,000	
	Magnetic flaw detector MP-1		2	148,000	296,000	
	Pin hole honing machine w/stand PH-No. 10		1		785,000	
	Shaping machine NS-700		1		1,850,000	
	Vice UV-150		3	54,000	162,000	
	Writing table 3616DL/2218ZZ w/seat		2	45,100	90,200	
	Hydraulic press HP-50E		1		352,000	

NO	ITEM AND DESCRIPTION	UNITS	QUANTITIES	UNIT COST	TOTAL	REMARKS
	Snap ring plier SPS-4		2	4,250	8,500	
	Bush inserter & remover T-130		1		11,600	
	V-block B-100B		8	70,500	564,000	
	Torque wrench 2800F		1		13,400	
	Cylinder gauge set BC-58		2	25,200	50,400	
	Piston feeler gauge No. 208		2	2,100	4,200	
	Valve lapper T-510C w/hose 5m and connector		6	30,650	183,900	
	Valve lifter VL-500		6	15,100	90,600	
	Parts washing stand WS-25		3	189,000	567,000	
	Screw Extractor No. 1816		1		1,320	
	Stud remover SB-34A		2	2,680	5,360	
	Stud remover SB-34B		2	3,400	6,800	
	" SB-34D		2	5,650	11,300	
	Air drill AD-65A w/hose 20m and connector		3	52,140	156,420	
	Carbon brush 771		3	1,040	3,120	
	" 772		3	1,580	4,740	
	" 773		3	1,180	3,540	

NO	ITEM AND DESCRIPTION	UNITS	QUANTITIES	UNIT COST	TOTAL	REMARKS
	Carbon cleaning set 750		3	9,700	29,100	
	Wire brush 765		10	495	4,950	
	" 766		10	215	2,150	
	Scraper SB-19		10	310	3,100	
	Electric pencil EPA		1		35,000	
	Figure punch FIG-5		1		2,700	
	Letter punch LET-5		1		8,150	
	Oil stone, Alandam DSA 200		5	1,290	6,450	
	Oil stone white OSW200		5	4,000	20,000	
	Copper hammer CH-48		5	6,250	31,250	
	Hand tachometer HL		3	26,800	80,400	
	Hand spring balance ST-0.5		2	2,080	4,160	
	" ST-2		2	1,730	3,460	
	" ST-10		2	2,000	4,000	
	" ST-20		2	3,940	7,880	
	Scale spring balance SB-2		2	6,200	12,400	
	" SB-4		2	6,200	12,400	
	" SB-8		2	6,200	12,400	

NO	ITEM AND DESCRIPTION	UNITS	QUANTITIES	UNIT COST	TOTAL	REMARKS
	Scale spring balance SB-12		2	6,200	12,400	
	Magnetic base MB-B		3	7,000	21,000	
	Square SS-10		2	24,800	49,600	
	" SS-20		2	48,000	96,000	
	" SS-30		2	96,000	192,000	
	Combination square set #391		2	19,700	39,400	
	V-block B-100B		8	70,500	564,000	
	Straight edge SE-100		3	31,800	95,400	
	" SE-50		3	9,100	27,300	
	Iron bench level BL-30		1		2,980	
	" BL-60		1		4,750	
	" BL-90		1		15,600	
	Standard feeler gauge No. 65		5	3,400	17,000	
	Thickness gauge strips 0.01-1.00mm by 0.01mm x 3m		2	533,350	1,066,700	
	Ruler R-100		8	1,660	13,280	
	" R-30		12	360	4,320	
	Vernier caliper N-15		5	6,900	34,500	

NO	ITEM AND DESCRIPTION	UNITS	QUANTITIES	UNIT COST	TOTAL	REMARKS
	Vernier caliper N-30		5	20,800	104,000	
	Lever type indicator No.2		3	18,400	55,200	
	Abrasive cloth No.40,80,150,240,400		1		19,170	
	& paper No.80,50,240,400,600					
	Bushing cutter C-40		5	450	2,250	
	Value spring tester 240B		2	75,600	151,200	
	Transportation and package		1		40,780,000	
	Installation		1		8,400,000	
	Sub Total:				405,397,350	

NO	ITEM AND DESCRIPTION	UNITS	QUANTITIES	UNIT COST	TOTAL	REMARKS
4	PARTS STORAGE					
4-1	Machine				27,175,180	
4-2	Installation				2,100,000	
4-3	Spare parts				586,050	
	Total:				29,861,230	

NO	ITEM AND DESCRIPTION	UNITS	QUANTITIES	UNIT COST	TOTAL	REMARKS
4-1	MACHINE					
	Shelter 6450AE/6470AE	Set	17	278,790	4,739,430	
	1825x1070x2420mm x 2					
	1825x1070x2420mm x 1					
	" 6450AE/6470AE	"	15	495,690	7,435,350	
	1825x1070x2420mm x 2					
	1825x1070x2420mm x 3					
	" 6450AE/6470AE	"	10	712,590	7,125,900	
	1825x1070x2420mm x 2					
	1825x1070x2420mm x 5					
	" 6367BB	"	4	32,200	128,800	
	900x450x1800mm					
	" 6366KB	"	4	32,150	128,600	
	900x450x1800mm					
	" 6367KQ	"	10	12,800	628,000	
	1800x600x1800mm					
	Keyable stock 20-028	"	5	20,000	100,000	
	Hand truck No. 101	"	5	63,000	315,000	
	Writing table w/seat 3616DL/2218ZZ	"	17	50,400	856,800	
	Fork lift FBR-10		1		2,034,000	

NO	ITEM AND DESCRIPTION	UNITS	QUANTITIES	UNIT COST	TOTAL	REMARKS
	Vacuum cleaner MC-2000		2	81,500	163,000	
	Filing cabinet 4601ZZ		5	32,900	164,500	
	" 4498ZZ 4478ZZ		5	70,200	351,000	
	" 4488ZZ 4478ZZ		5	51,000	255,000	
	" 4418AZ		20	44,300	886,000	
	Bolt clipper NB-42		2	22,800	45,600	
	Hammer SPH-2		5	800	4,000	
	Nail hammer D-275		5	1,600	8,000	
	Drum spanner KSK-500		3	5,400	16,200	
	Drum carrier DC-250		2	45,000	90,000	
	Transportation and Package		1		1,700,000	
	Installation		1		2,100,000	
	Sub Total:				25,475,180	

NO	ITEM AND DESCRIPTION	UNITS	QUANTITIES	UNIT COST	TOTAL	REMARKS
5.	RETREADING AND METAL CASTING FACTORY					
5-1	Machine				263,675,000	
5-2	Instanation				11,000,000	
	Sub-Total				274,675,000	
5-3	Spare parts				3,325,000	
	Total				278,000,000	

NO	ITEM AND DESCRIPTION	UNITS	QUANTITIES	UNIT COST	TOTAL	REMARKS
5-1	MACHINE					
	Oil jack	Set	1		370,000	
	Tire separator	"	1		2,475,000	
	Inspection machine	"	1		3,610,000	
	Buffing machine	"	1		8,730,000	
	Buffing for bursted, cut prit					
	Trimmer table	Set	2	381,000	762,000	
	Working table	"	1		665,000	
	Spreader (section)	"	1		181,000	
	" (whole)	"	1		950,000	
	Flexible grinder	"	1		345,000	
	Cementing					
	Mixer	Set	1		420,000	
	Spraying machine	"	1		570,000	
	Sidewall of injured part repairing					
	Working table	Set	1		381,000	
	"	"	1		665,000	
	Spreader	"	1		181,000	

NO	ITEM AND DESCRIPTION	UNITS	QUANTITIES	UNIT COST	TOTAL	REMARKS
	Camel back rubber builder	Set	2	2,280,000	4,560,000	
	Curing	"				
	Retreading press bladden system	"	6	29,441,000	176,646,000	
	Matrix holder	"	6	1,330,000	7,980,000	
	Matrix w/ring	"	6	1,140,000	6,840,000	
	Hot water system	"	1		10,069,000	
	Trimming table	"	1		381,000	
	Utilities					
	Air compressor	Set	3	1,293,000	3,879,000	
	Boiler (4 ton/M)	"	1		27,500,000	
	Blower	"	1		548,000	
	Repair tools	"	1		3,615,000	
	Hanger	"	8	169,000	1,352,000	
	Installation	"	1		11,000,000	
	Spare Parts	"	1		3,325,000	
	Sub Total				278,000,000	

NO	ITEM AND DESCRIPTION	UNITS	QUANTITIES	UNIT COST	TOTAL	REMARKS
6	GAS STATION					
6-1	Machine				5,569,000	
6-2	Installation				2,100,000	
6-3	Spare parts				120,000	
	Sub-Total				7,669,000	
	Total:				7,789,000	

NO	ITEM AND DESCRIPTION	UNITS	QUANTITIES	UNIT COST	TOTAL	REMARKS
6-1	MACHINE Gas stand Diesel SH-23 w/tank 10,000 liter water separator and connector	Set	1		5,239,000	
	Transportation and Package		1		330,000	
	Installation		1		2,100,000	
	Sub. Total				7,669,000	

NO	ITEM AND DESCRIPTION	UNITS	QUANTITIES	UNIT COST	TOTAL	REMARKS
7.	CAR WASHER					
7-1	Machine	Set			23,424,960	
7-2	Installation	"			2,100,000	
7-3	Spare parts	Set			3,194,400	
	Sub-Total					
	Total:				28,719,360	

NO	ITEM AND DESCRIPTION	UNITS	QUANTITIES	UNIT COST	TOTAL	REMARKS
7-1	MACHINE					
	Steam cleaner 1600		12	1,840,000	22,080,000	
	Hose 20m WG-1920 w/coupler and nozzle		10	11,400	114,000	
	Brush 250N		8	2,940	23,520	
	Car washing brush AMG		12	620	7,440	
	Transportation and Package		1		1,200,000	
	Installation		1		2,100,000	
	Sub-Total				25,524,960	

NO	ITEM AND DESCRIPTION	UNITS	QUANTITIES	UNIT COST	TOTAL	REMARKS
8.	SPARE PARTS (PHASE I)					
8-1	Training room		1		2,140,265	
8-2	Air compressor house		1		503,950	
8-3	Heavy repair factory		1		30,479,600	
8-4	Parts storage		1		586,050	
8-5	Retreading and metal casting factory		1		3,325,000	
8-6	Gas station		1		120,000	
8-7	Car washer		1		3,194,400	
	Sub-Total				40,349,265	

NO	ITEM AND DESCRIPTION	UNITS	QUANTITIES	UNIT COST	TOTAL	REMARKS
8-1	TRAINING ROOM					
	Training institute Nozzle tester DT-60V					
	Pressure gauge		5	5,600	28,000	
	Nozzle		5	840	4,200	
	Injection pump test stand 5760-050					
	Pin 57634-230		2	1,000	2,000	
	V bolt 57958-260		6	1,200	7,200	
	" 57958-120		2	10,400	20,800	
	Filter element 52600-032		4	1,440	5,760	
	" 52600-042		4	700	2,800	
	Pipe 57805-222		24	4,800	115,200	
	Pump ass'y 57604-012		2	25,600	51,200	
	Valve 57210-032		4	3,200	12,800	
	O ring 16500-062		6	480	2,880	
	Bush 57660-270		6	60	360	
	DJ 32110-022		2	1,680	3,360	
	Gasket 32115-012		2	70	140	

NO	ITEM AND DESCRIPTION	UNITS	QUANTITIES	UNIT COST	TOTAL	REMARKS
	Spring 57664-030		2	320	640	
	Gasket 29330-602		2	30	60	
	Valve 57210-092		2	2,400	4,800	
	O ring 16500-202		2	130	260	
	" 29630-914		2	60	120	
	Pressure gauge 57955-210		2	11,520	23,040	
	Mess cylinder 57970-060		24	4,800	115,200	
	" 57970-070		24	4,800	115,200	
	Air pump 57820-012		2	76,800	153,600	
	Manometer 57820-150		2	88,000	176,000	
	Parts Washing stand WS-25					
	Pump ass'y		1		21,600	
	Tank		1		18,280	
	Brake shoe Grinder BSG-250MV					
	V belt A-31		1		700	
	Half nut		1		7,000	

NO	ITEM AND DESCRIPTION	UNITS	QUANTITIES	UNIT COST	TOTAL	REMARKS
	Bearing 6205ZZ		1		1,300	
	" 6206ZZ		2	1,440	2,880	
	Paper #36		20	2,500	50,000	
	" #60		20	2,500	50,000	
	Rubber tube		5	1,600	8,000	
	Air drill 211A					
	Drill 100-100mm by 0.50mm		20	12,179	243,400	
	Air grinder M-22S					
	Wheel 100φmm		15	1,880	28,200	
	Rubber pad		5	610	3,050	
	Wire brush		5	1,880	9,400	
	Buff		500	3,255	16,275	
	Circuit tester TH-20					
	Terminal cord		20	460	9,200	
	Battery		10	150	1,500	

NO	ITEM AND DESCRIPTION	UNITS	QUANTITIES	UNIT COST	TOTAL	REMARKS
	Volt ampere tester E-164					
	Meter		5	24,000	120,000	
	Toggle switch		5	620	3,100	
	Push button switch		5	860	4,300	
	Test cord		500	6,520	32,600	
	Grip cover black		5	260	1,300	
	" red		5	260	1,300	
	Clip 30A		10	280	2,800	
	Clip 10A		10	70	700	
	Clip cover, red		5	110	550	
	" black		5	100	500	
	Solder ROS					
	Solder		10	3,220	32,200	
	Soldering paste flux P-1B					
	Paste flux		10	920	9,200	
	Air drill AD-65A					

NO	ITEM AND DESCRIPTION	UNITS	QUANTITIES	UNIT COST	TOTAL	REMARKS
	Drill 1.00-6.5mm by 0.5mm		10	4,480	44,800	
	Electric Test Bench ETB-500		1		8,640	
	Ammeter for field coil		1		9,600	
	Cam angle meter		1		10,880	
	Voltage meter		1		27,100	
	Ampere meter		1		57,600	
	Revolution meter		1		9,600	
	Resistance meter		1		1,960	
	Neon tube		1		10,560	
	Motor switch		1		1,800	
	Oil for gear		5	190	950	
	Rubber for revolution meter		2	1,390	2,780	
	Relay		2	90	180	
	Fuse element 100A		5	50	250	
	" 10A		2	1,410	2,820	
	Clip 50A		10	80	800	
	" 10A					

NO	ITEM AND DESCRIPTION	UNITS	QUANTITIES	UNIT COST	TOTAL	REMARKS
	Pilot lamp 12V		3	180	540	
	" 18V		5	180	540	
	" 24V		1		180	
	" 6V		1		180	
	Volume for field coil		1		3,520	
	Transformer		1		14,720	
	Belt		1		2,050	
	Relay		1		12,160	
	Starter switch		1		1,090	
	V belt		2	1,080	2,160	
	Battery		1		3,170	
	Transister		1		110	
	Battery charger HRC-7520					
	Transformer		1		15,200	
	Ampere meter		1		4,200	
	Voltage meter		1		4,200	
	Silicon rectifier		1		1,720	

NO	ITEM AND DESCRIPTION	UNITS	QUANTITIES	UNIT COST	TOTAL	REMARKS
	DC cord		2	840	1,680	
	Breaker		1		1,800	
	Arc Welder AT-SS-500					
	Secondary cord	m	100	2,140	214,000	
	Earth cord	M	20	1,930	38,600	
	Earth clip		2	4,950	9,900	
	Safety holder		2	4,650	9,300	
	Helmet		2	2,080	4,160	
	Glove		10	1,130	11,300	
	Differential jack DJ-50					
	Front wheel		10	1,360	13,600	
	Coster wheel		10	3,960	39,600	
	Overhaul kit		5	610	3,050	
	Air cock		5	40	200	
	Hydraulic press HP-50E					

NO	ITEM AND DESCRIPTION	UNITS	QUANTITIES	UNIT COST	TOTAL	REMARKS
	Pressure gauge		1		9,240	
	Worm gear		1		2,120	
	Worm		1		1,620	
	Wire rope		1		540	
	Wire clip		2	90	180	
	Overhaul kit		1		2,760	
	Sub-Total:				2,140,265	

NO	ITEM AND DESCRIPTION	UNITS	QUANTITIES	UNIT COST	TOTAL	REMARKS
8-2	Air compressor VD-2-22 Overhaul kit		5 5	100,790	503,950	
	Sub-Total				503,950	

NO	ITEM AND DESCRIPTION	UNITS	QUANTITIES	UNIT COST	TOTAL	REMARKS
8-3	HEAVY REPAIR FACTORY					
	Air power rivetter MB-500		2	4,600	9,200	
	Cylinder packing set		2	860	1,720	
	Arm pin		2	200	400	
	Back spring		2	800	1,600	
	Pedal back spring		10	2,220	22,200	
	Punch set					
	Brake Shoe Grinder BSG-250MV					
	V belt A-31		2	700	1,400	
	Half nut		2	7,000	14,000	
	Bearing 6205ZZ		2	1,300	2,600	
	Bearing 6206ZZ		4	1,440	5,760	
	Paper #36		40	2,500	100,000	
	" #60		40	2,500	100,000	
	Rubber tube		10	1,600	16,000	
	Air drill 211A					

NO	ITEM AND DESCRIPTION	UNITS	QUANTITIES	UNIT COST	TOTAL	REMARKS
	Drill		30	12,170	365,100	
	1.00-10.0mm by 0.5 mm					
	Air Grinder		60	1,880	112,800	
	M-22S					
	Wheel		20	610	12,200	
	100φ					
	Rubber pad		20	1,880	37,600	
	Wire brush		20	3,255	65,100	
	Buff					
	Transmission jack		140	860	120,400	
	HUJ-800B					
	Bracket ass'y		35	1,720	60,200	
	Overhaul kit					
	Parts washing stand		10	21,600	216,000	
	WS-25					
	Pump ass'y		10	18,280	182,800	
	Tank					
	Hydraulic press		1		6,980	
	HP-30C					
	Pressure gauge		1		2,120	
	Worm gear		1		560	
	Wire rope		1			

NO	ITEM AND DESCRIPTION	UNITS	QUANTITIES	UNIT COST	TOTAL	REMARKS
	Wire clip		2	100	200	
	Overhaul kit		1		2,030	
	Electric drilling machine ESD-460AF					
	Drill chuck 2 1/2"		1		7,000	
	Arbor 2 1/2 x 2		1		2,000	
	Handle spring		2	1,600	3,200	
	V belt set		2	3,300	6,600	
	Push button switch		1		3,300	
	Drill 1.0-23.0mm by 0.5mm		10	137,190	1,371,900	
	Clutch rebuilder CRA-500					
	Packing set		2	4,000	8,000	
	Extension shaft		2	3,600	7,200	
	Shaft pin		12	3,360	40,320	
	Center shaft		2	7,600	15,200	
	Adjust bolt		12	720	8,640	
	Chassis spring change SJ-1					
	Air release cock		3	40	120	

NO	ITEM AND DESCRIPTION	UNITS	QUANTITIES	UNIT COST	TOTAL	REMARKS
	Caster wheel		9	1,500	13,500	
	Overhaul kit		3	480	1,440	
	Diff. jack DJ-50					
	Front wheel		10	1,360	13,600	
	Caster wheel		10	3,960	39,600	
	Overhaul kit		5	610	3,050	
	Air cock		5	40	200	
	Hydraulic press EHP-200					
	Pressure gauge 150φ		1		16,000	
	" 100φ		1		5,800	
	High pressure hose		1		6,000	
	Low pressure hose		1		5,000	
	Turbin oil	liter	18	400	7,200	
	Overhaul kit		1		25,700	
	Air grinder M-70S					
	Wheel 180φ		60	4,880	292,800	
	Rubber pad		30	2,500	75,000	

NO	ITEM AND DESCRIPTION	UNITS	QUANTITIES	UNIT COST	TOTAL	REMARKS
	Air impact wrench AW-1600					
	Anvil		7	3,080	21,560	
	Hammer		7	2,570	17,990	
	Motor case packing front		7	70	490	
	Rotor vane		35	70	2,450	
	Motor case packing rear		7	220	1,540	
	Auto lift WSL-80					
	V packing		8	1,600	12,800	
	Packing		16	1,680	26,880	
	Oil seat packing		8	1,260	10,080	
	Air valve		4	38,800	155,200	
	Oil valve		4	38,800	155,200	
	Air impact wrench AW-1200					
	Anvil		7	2,580	18,060	
	Hammer		7	2,200	15,400	
	Rotor vane		35	190	6,650	
	Motor case packing front		7	70	490	
	" rear		7	70	490	

NO	ITEM AND DESCRIPTION	UNITS	QUANTITIES	UNIT COST	TOTAL	REMARKS
	Oiler set AL-205		2	159,900	319,800	
	Siphon pump		2	65,000	130,000	
	Grip meter		2	17,420	34,840	
	Non-drip hose		2	20,300	40,600	
	Hose					
	Electric test bench ETB-500					
	Ammeter for field coil		1		8,640	
	Cam angle meter		1		9,600	
	Volt meter		1		10,880	
	Ampere meter		1		27,100	
	Revolution meter		1		57,600	
	Resistance meter		1		9,600	
	Neon tube		1		1,960	
	Motor switch		1		10,560	
	Oil for gear		1		1,800	
	Rubber for revolution meter		5	190	950	
	Relay		2	1,390	2,780	
	Fuse element 100A		2	90	180	

NO	ITEM AND DESCRIPTION	UNITS	QUANTITIES	UNIT COST	TOTAL	REMARKS
	Fuse element 10A		5	50	250	
	Clip for 50A		2	1,410	2,820	
	" for 10A		10	80	800	
	Pilot lamp for 12V		3	180	540	
	" for 18V		5	180	540	
	" for 24V		1		180	
	" for 6V		1		180	
	Volume for field coil		1		3,520	
	Transformer		1		14,720	
	Belt		1		2,050	
	Relay		1		12,160	
	Starter switch		1		1,090	
	V belt		2	1,080	2,160	
	Battery		1		3,170	
	Transister		1		110	
	Commutator mica cutter & lathe F-180					
	Bit for right		30	1,100	33,000	
	" for hole		10	2,640	26,400	

NO	ITEM AND DESCRIPTION	UNITS	QUANTITIES	UNIT COST	TOTAL	REMARKS
	Cutter blade		30	860	25,800	
	Cutter blade screw		5	240	1,200	
	Center		20	1,560	31,200	
	Dry oven DX-58					
	Heater				8,000	
	Lamp		1		600	
	Thermo regulator		1		30,000	
	Thermo meter		1		4,000	
	Switch		1		2,000	
	Circuit tester TH-20					
	Terminal cord		8	460	3,680	
	Battery		4	150	600	
	Battery charger HRC-7520					
	Transformer		5	15,200	76,000	
	Ampere meter		5	8,400	42,000	
	Volt meter		5	8,400	42,000	

NO	ITEM AND DESCRIPTION	UNITS	QUANTITIES	UNIT COST	TOTAL	REMARKS
	Silicon rectifier		5	1,720	8,600	
	DC cord		10	840	8,400	
	Breaker		5	1,800	9,000	
	Air drill AD-65A					
	Drill 1.0-6.5mm by 0.5mm		20	4,480	89,600	
	Air grinder M-18S					
	Disc paper set		15	2,500	37,500	
	Rubber pad		5	610	3,050	
	Air grinder L-25S					
	Stone set		1		9,000	
	Injection pump test stand 5760-050					
	Pin 57634-230		3	1,000	3,000	
	V belt 57958-260		9	1,200	10,800	
	" 57958-120		3	10,400	31,200	
	Filter element 52600-032		6	1,440	8,640	
	" 52600-042		6	700	4,200	

NO	ITEM AND DESCRIPTION	UNITS	QUANTITIES	UNIT COST	TOTAL	REMARKS
	Pipe 57805-2222		36	4,800	172,800	
	Pump ass'y 57604-012		3	25,600	76,800	
	Valve 57210-032		6	3,200	19,200	
	O ring 16500-062		9	480	4,320	
	Brush 57660-270		9	60	540	
	DV 32110-022		3	1,680	5,040	
	Gasket 32115-012		3	70	210	
	Spring 57664-030		3	320	960	
	Gasket 29330-602		3	30	90	
	Volume 57210-092		3	2,400	7,200	
	O ring 16500-202		3	130	390	
	" 29630-914		3	60	180	
	Pressure gauge 57955-210		3	11,520	34,560	
	Mess cylinder 57970-060		36	4,800	172,800	
	" 57970-070		36	4,800	172,800	
	Air pump 51820-012		3	76,800	230,400	
	Manometer 57820-150		3	88,000	264,000	

NO	ITEM AND DESCRIPTION	UNITS	QUANTITIES	UNIT COST	TOTAL	REMARKS
	Nozzle tester DT-60V		3	5,600	16,800	
	Pressure gauge		3	840	2,520	
	Nozzle					
	Hydraulic garage jack M-1000M		20	6,300	126,000	
	Caster bracket ass'y		10	500	5,000	
	Release valve		10	10,370	103,700	
	Overhaul kit					
	Hydraulic garage jack M-5-0M		20	3,600	72,000	
	Caster bracket ass'y		10	500	5,000	
	Release valve		10	9,940	99,400	
	Overhaul kit					
	Hydraulic floor crane OC-H1000		10	15,000	150,000	
	Front wheel		10	12,000	120,000	
	Rear wheel		10	9,680	96,800	
	Overhaul kit					

NO	ITEM AND DESCRIPTION	UNITS	QUANTITIES	UNIT COST	TOTAL	REMARKS
	Wire brush		30	8,880	266,400	

NO	ITEM AND DESCRIPTION	UNITS	QUANTITIES	UNIT COST	TOTAL	REMARKS
	Arc welder AT-SS-500					
	Secondary cord	m	200	2,140	428,000	
	Earth cord	m	40	1,930	77,200	
	Earth clip		4	4,950	19,800	
	Safety holder		4	4,650	18,600	
	Helmet		4	2,080	8,320	
	Glove		20	1,130	22,600	
	Drum greaser DL-142					
	Grease pump		13	189,800	2,467,400	
	High pressure gun		13	13,200	171,600	
	High pressure hose		13	32,000	416,000	
	Air chisel set D-210					
	Chisel set		10	82,700	827,000	
	Air meter AT-300					
	Motor assy		4	79,600	318,400	
	Air impact wrench AW-4000T					

NO	ITEM AND DESCRIPTION	UNITS	QUANTITIES	UNIT COST	TOTAL	REMARKS
	Anvil		10	13,160	131,600	
	Hammer		10	4,400	44,000	
	Motor case packing front		10	100	1,000	
	" rear		10	560	5,600	
	Rotor vane		50	120	6,000	
	Air impact wrench AW-2000					
	Anvil		10	4,800	48,000	
	Hammer		10	3,720	37,200	
	Motor case packing front		10	90	900	
	" rear		10	330	3,300	
	Rotor vane		50	90	4,500	
	Air impact wrench AW-1600T					
	Anvil		10	3,080	30,800	
	Hammer		10	2,570	25,700	
	Motor case packing front		10	70	700	
	" rear		10	70	700	
	Rotor vane		50	220	11,000	

NO	ITEM AND DESCRIPTION	UNITS	QUANTITIES	UNIT COST	TOTAL	REMARKS
	FORK LIFT FG-10					
	Radiator assy 91101-00100		3	118,000	354,000	
	Radiator hose 91101-00300		3	4,000	12,000	
	" 91101-00400		3	2,800	8,400	
	Radiator hose clamp MS666015		12	140	420	
	Timing belt 91201-10900		3	2,600	7,800	
	Fuel strainer 64303-20100		3	600	1,800	
	Fuel hose clamp MF-661-0006		12	100	1,200	
	Fuel hose 91264-00900		3	800	2,400	
	" 91264-00800		3	1,600	4,800	
	Packing 91264-00300		3	1,100	3,300	
	Lamp 05101-02100		6	5,400	32,400	
	Valve F8440-12450		6	280	1,680	
	Lamp front 05153-02700		6	5,000	30,000	
	Bulb MF820-183		6	220	1,320	
	" MF820-322		6	260	1,560	
	Lamp rear 05153-02900		6	8,000	48,000	
	Bulb MF820-362		6	300	1,800	

NO	ITEM AND DESCRIPTION	UNITS	QUANTITIES	UNIT COST	TOTAL	REMARKS
	Lens front 05153-03100		3	1,020	3,060	
	Lens rear 05153-03200		3	1,540	4,620	
	Back buzzer 05151-02000		3	9,900	29,700	
	Pressure plate 91221-05030		2	40,000	80,000	
	Clutch disc 91221-05100		3	19,000	57,000	
	Clutch shifter 91225-10700		3	8,800	26,400	
	Clutch bearing MZ 620330		3	5,800	17,400	
	Pilot bearing MD-002613		3	520	1,560	
	Rim assy 91443-00020		6	15,600	93,600	
	Tire 64343-40400		6	30,200	181,200	
	Rim assy 91243-00020		6	11,000	66,000	
	Tire 64343-10400		6	22,400	134,400	
	Wheel cylinder repair kit 91246-01810		3	1,700	5,100	
	Master cylinder repair kit 91246-10110		3	3,000	9,000	
	Shoe lining primary 91246-01900		6	4,800	28,800	
	Shoe lining secondary 91246-02100		6	4,800	28,800	

NO	ITEM AND DESCRIPTION	UNITS	QUANTITIES	UNIT COST	TOTAL	REMARKS
	Check cable 91251-12100		3	3,200	9,600	
	Parking cable 91246-02700		3	7,600	22,800	
	" 91246-02800		3	7,600	22,800	
	Tilt cylinder seal kit 94004-00100		6	8,600	51,600	
	" 94004-00120		6	9,700	58,200	
	Lift cylinder seal kit 94014-00110		3	9,000	27,000	
	Special Tool					
	Wrench 91268-00700		3	5,000	15,000	
	" 91268-00800		3	6,000	18,000	
	For Engine					
	Thermostat MD005371		3	1,900	5,700	
	Oil element MD001445		6	2,400	14,400	
	Water pump velt MM115231		3	1,200	3,600	
	Air element 91261-00700		3	9,000	27,000	
	Air gaverner MM115704		3	33,200	99,600	
	Point T100T-20871		3	880	2,640	
	Spark plug W14E-U		6	720	4,320	

NO	ITEM AND DESCRIPTION	UNITS	QUANTITIES	UNIT COST	TOTAL	REMARKS
	For oil					
	Engine oil		2	21,600	43,200	
	Hydraulic oil		4	12,600	50,400	
	Brake oil		2	3,000	6,000	
	Crankshaft grinding machine MA-2100					
	Workhead V belt A41		12	800	9,600	
	Work head V belt 417-7N		3	1,900	5,700	
	Grinding V belt		3	54,000	162,000	
	Table feed V belt		6	1,000	6,000	
	"		6	900	5,400	
	Grinding head oil seal		3	2,600	7,800	
	Grinder head oil seal		3	2,800	8,400	
	Diamond tool		3	30,000	90,000	
	Grinding stone		30	236,000	7,080,000	
	Fuse		6	1,200	7,200	
	Cylinder boring machine NWA-No.2					
	Bit set		40	6,330	253,200	
	Diamond wheel		4	24,200	96,800	

NO	ITEM AND DESCRIPTION	UNITS	QUANTITIES	UNIT COST	TOTAL	REMARKS
	Cylinder honing machine MS-902					
	Overhaul kit		2	8,820	17,640	
	Honing hone set		2	111,500	223,000	
	Honing stone set		10	25,750	257,500	
	Valve refacer MB-145					
	V belt for wheel		2	560	1,120	
	" for chuck		4	760	3,040	
	Collet chuck large		2	9,300	18,600	
	" small		2	8,500	17,000	
	Carbon brush		4	1,220	4,880	
	Stone VR-727T		20	1,960	39,200	
	Stone VR-736		10	1,900	19,000	
	Diamond resser		2	3,600	7,200	
	Cutting oil		6	900	5,400	
	Valve seat grinder EC-160					
	Eccentric shaft		3	15,000	45,000	
	Eccentric shaft bearing		6	1,100	6,600	

NO	ITEM AND DESCRIPTION	UNITS	QUANTITIES	UNIT COST	TOTAL	REMARKS
	Worm shaft		3	6,900	20,700	
	Worm shaft gear set		3	9,400	28,200	
	Carbon brush		6	640	3,840	
	Diamond dresser		3	11,600	34,800	
	Stone set		6	21,600	129,600	
	Combination milling machine FX-800					
	Fuse		15	700	10,500	
	Brake band		1		6,800	
	Dust cover		1		56,000	
	Nozzle		1		6,800	
	Meter cock		1		3,400	
	Universal dividing head with 3-jaw chuck		1		390,000	
	Rotary table 200mm		1		180,000	
	Boring head set		1		230,000	
	Milling chuck with collet and MT collet drill chuck		1		161,000	
	Face milling cutter with 20 tool bits and 1 set of face mill arbor		1		114,600	

NO	ITEM AND DESCRIPTION	UNITS	QUANTITIES	UNIT COST	TOTAL	REMARKS
	Machine vice with swivel base 155mm		1		113,200	
	Clamp kit with steel block		1		84,000	
	Lathe TAL 510 x 2000					
	Change gear		2	17,600	35,200	
	Contact point		1		6,800	
	Pilot lamp		5	440	2,200	
	Micro switch		2	3,000	6,000	
	Fuse		10	680	6,800	
	Thermal relay		1		5,600	
	Timer		1		19,600	
	V belt		4	3,500	14,000	
	Worm gear		1		20,600	
	Half nut		1		20,800	
	Lead scre2		2	16,900	83,800	
	Female screw		2	14,600	29,200	
	Taper jib		1		22,000	
	Brake band		1		8,000	

NO	ITEM AND DESCRIPTION	UNITS	QUANTITIES	UNIT COST	TOTAL	REMARKS
	Brake spring		1		1,800	
	Bit holder with bits		3		47,400	
	Radial drilling machine HOR-1100					
	Limit switch		1		40,000	
	Drill sleeve		1		25,000	
	Drill		2	671,000	1,342,000	
	23-50mm by 1mm					
	Boring holder with bits		1		700,000	
	Tap holder with bits		1		691,000	
	Turret lathe					
	HTL-50E					
	Chucking jaw		5	15,000	75,000	
	Jaw ring		5	12,000	60,000	
	Magnet switch		1		46,000	
	Contactator		18	800	14,400	
	Index pin		1		16,000	
	Clamp band		1		40,000	
	Spring		20	500	10,000	

NO	ITEM AND DESCRIPTION	UNITS	QUANTITIES	UNIT COST	TOTAL	REMARKS
	Surface grinder SGW-4		10	6,400	64,000	
	Grinding stone		1		6,800	
	Select switch		1		5,600	
	Push switch		1		7,000	
	Bolt for spindle		1		14,200	
	Hose		1		79,000	
	Dust cover set		1		18,000	
	Packing seat		1		14,400	
	Pressure gauge		1			
	Cutting grinder HCW-16M					
	Cutter wheel		10	41,400	414,000	

NO	ITEM AND DESCRIPTION	UNITS	QUANTITIES	UNIT COST	TOTAL	REMARKS
	Brake drum lathe BDL-250N					
	Spindle bearing set		1		10,000	
	Half nut set		1		21,800	
	Micro switch		2	1,900	3,800	
	V belt set		1		7,140	
	Arbor nut set		1		18,400	
	Silencer band		3	11,700	35,100	
	Bit lapping wheel		1		11,000	
	Bit for drum		20	3,600	72,000	
	" for flywheel		5	7,700	38,500	
	Bench grinder SGK-T/PPK					
	Stone		20	6,400	128,000	
	Eye shield		1		3,200	
	Magnetic flaw detector MP-1					
	Magnet flaw powder		20	10,900	218,000	
	Intermediate leg		2	17,400	34,800	
	Special leg		2	17,400	34,800	

NO	ITEM AND DESCRIPTION	UNITS	QUANTITIES	UNIT COST	TOTAL	REMARKS
	Solution		20	8,750	175,000	
	Shaping machine NS-700		1		24,000	
	Magnet switch		10	17,720	177,200	
	Bit set					
	Hydraulic press HP-50E		1		9,240	
	Pressure gauge		1		2,120	
	Worm gear		1		1,620	
	Worm		1		540	
	Wire rope		2	90	180	
	Wire clip		1		2,760	
	Overhaul kit					
	Air valve lapper T-510C		30	280	8,400	
	Rubber cap set					
	Sub Total				30,479,600	

NO	ITEM AND DESCRIPTION	UNITS	QUANTITIES	UNIT COST	TOTAL	REMARKS
8-4	PARTS STORAGE					
	Fork lift		1			
	FBR-10					
	Side shoe		4	4,400	17,600	
	4623-64161					
	Side shoe		2	5,400	10,800	
	4623-62442					
	Wiper ring		2	4,000	8,000	
	30191-04508					

NO	ITEM AND DESCRIPTION	UNITS	QUANTITIES	UNIT COST	TOTAL	REMARKS
	O ring		5	240	1,200	
	"		5	240	1,200	
	Piston ring		5	3,000	15,000	
	Nylon heel		2	3,600	7,200	
	U ring		2	3,600	7,200	
	"		2	4,000	8,000	
	Packing		2	520	1,040	
	O ring		5	170	850	
	Back up ring		10	290	2,900	
	Scraper		2	400	800	
	O ring		10	80	800	
	Back up ring		5	500	2,500	
	Wiper ring		2	3,000	6,000	
	U ring		1		4,000	
	Drive tyre		1		74,000	
	Bushing		2	4,800	9,600	
	"		2	5,600	11,200	
	..."		2	9,000	18,000	

NO	ITEM AND DESCRIPTION	UNITS	QUANTITIES	UNIT COST	TOTAL	REMARKS
	Bushing 4621-26541		2	7,200	14,400	
	Spring 0313-10002		1		4,800	
	" 0311-13002		1		4,000	
	Caster wheel comp 4621-27282		2	33,000	66,000	
	Load wheel 4621-30162		2	55,000	110,000	
	Micro switch 1910-52004		5	4,000	20,000	
	O ring 1902-01101		2	600	1,200	
	" 1902-03126		6	400	2,400	
	" 0350-00240		10	90	900	
	Back up ring 0352-00240		10	270	2,700	
	O ring 0350-00180		10	70	700	
	Back up ring 0352-00180		10	210	2,100	
	O ring 0350-00650		5	240	1,200	
	Suction filter 4623-82200		1		8,000	
	Oil filter 4210-83010		1		12,000	
	Brush 6172-70131		8	2,200	17,600	
	Contact 8250-00250		10	2,000	20,000	
	Sub contact 8250-40021		4	2,000	8,000	

NO	ITEM AND DESCRIPTION	UNITS	QUANTITIES	UNIT COST	TOTAL	REMARKS
	Ribbon wire 8250-00200		5	2,600	13,000	
	Blower comp 8254-60010		1		11,000	
	Microswitch 1910-52012		4	1,300	5,200	
	Actuator 1910-52013		4	380	1,520	
	Limiter fuse 1910-98002		2	7,600	15,200	
	" 1910-98003		2	7,600	15,200	
	Amp rup fuse 1910-33001		2	10,000	20,000	
	Fuse 1922-18003		2	520	1,040	
	Sub-Total				586,050	

NO	ITEM AND DESCRIPTION	UNITS	QUANTITIES	UNIT COST	TOTAL	REMARKS
8-5	RETRADING AND METAL CASTING FACTORY Spare parts		1		3,325,000	

NO	ITEM AND DESCRIPTION	UNITS	QUANTITIES	UNIT COST	TOTAL	REMARKS
8-6	Gas stand SH-23		1			
	Overhaul kit for fuel pump		1		120,000	
Sub Total						120,000

NO	ITEM AND DESCRIPTION	UNITS	QUANTITIES	UNIT COST	TOTAL	REMARKS
8-7	CAR WASHER					
	Steam cleaner 1600		6	400,000	2,400,000	
	Heat coil ass'y		6	2,000	12,000	
	Blower hose		12	1,600	19,200	
	V belt for pump		12	600	7,200	
	V belt for blower		12	6,000	72,000	
	Pump diaphragm		6	6,000	36,000	
	Pressure gauge		6	10,400	62,400	
	Safety valve		6	10,000	60,000	
	Float valve ass'y		6	1,200	7,200	
	Suction hose #1		6	1,400	8,400	
	" #2		6	1,000	6,000	
	Torch		6	60,000	360,000	
	Steam hose		6	24,000	144,000	
	Gun ass'y					
	Sub Total				3,194,400	

NO	ITEM AND DESCRIPTION	UNITS	QUANTITIES	UNIT COST	TOTAL	REMARKS
	PHASE II (Item)					
1.	Inspection Factory				22,005,800	
2.	Periodical Factory				80,035,550	
	Sub-Total				102,041,350	
3.	Spare Parts				13,426,340	
4.	Sending of Supervisor				14,640,000	
	Total				130,107,690	

NO	ITEM AND DESCRIPTION	UNITS	QUANTITIES	UNIT COST	TOTAL	REMARKS
1.	INSPECTION FACTORY					
1-1	Machine				15,405,800	
1-2	Installation				6,600,000	
	Sub-Total				22,005,800	
1-3	Spare parts				1,043,840	
	Total				23,049,640	

NO	ITEM AND DESCRIPTION	UNITS	QUANTITIES	UNIT COST	TOTAL	REMARKS
I-1	MACHINE Speedometer tester (SM-300-2)		2	1,310,000	2,620,000	
	Brake tester (BBT-204A)		2	1,920,000	3,840,000	
	Side ship tester (WG-300D-2)		2	510,650	1,021,300	
	Wheel alignment tester		2	132,250	264,500	
	Head light tester (HT-200)		2	437,000	874,000	
	Tool stand (TS-34)		1		26,500	
	Table w/seat (3616DL/2218ZZ)		1		45,100	
	Auto lift (WSL-80)		1		1,540,000	
	Tool stand (TS-34)		2	26,500	53,000	
	Auto lube (AL-205)		2	901,000	1,802,000	
	Grease (DL-142)		1		752,000	
	Table w/seat (3616DL/2218ZZ)		1		45,100	
	Touch up tool (No.1000M)		1		39,000	
	Water hose w/coupler and nozzle (WG-1920)		2	11,400	22,800	
	(Pre-Inspection)					
	Test hammer (TH-842)		4	740	2,960	
	Rubber hammer (RH-24)		4	1,270	5,080	
	Inspection lamp (WL-30)		4	9,950	39,800	

NO	ITEM AND DESCRIPTION	UNITS	QUANTITIES	UNIT COST	TOTAL	REMARKS
	Air gun (ABG-320)		4	1,500	6,000	
	Air hose w/coupler (CH-210)		4	9,250	37,000	
	Water hose w/coupler and nozzle (WG-1920)		2	11,400	22,800	
	Brush (250-N)		4	2,940	11,760	
	Table w/seat (3616DL/2218ZZ)		1		45,100	
	Transportation and package		1		2,290,000	
1-2	Installation		1		6,600,000	
	Total				22,005,800	

NO	ITEM AND DESCRIPTION	UNITS	QUANTITIES	UNIT COST	TOTAL	REMARKS
2	PERIODICAL FACTORY					
2-1	Machine				75,835,550	
2-2	Installation				4,200,000	
	Sub-total				80,035,550	
2-3	Spare parts				12,384,500	
	Total				92,200,050	

NO	ITEM AND DESCRIPTION	UNITS	QUANTITIES	UNIT COST	TOTAL	REMARKS
2-1	MACHINE Rigid rack (M-15LB)		100	19,500	1,950,000	
	Air hydraulic garage jack (MA-1500L)		12	346,000	4,152,000	
	Hydraulic garage jack (M-500M)		12	114,000	1,368,000	
	Parts washing stand (WS-25)		12	189,000	2,268,000	
	Transmission jack (HUI-800B)		25	96,500	2,412,500	
	Surface plate (SPC-11)		4	214,300	857,200	
	Wheel dolly (WD-1100)		12	127,000	1,524,000	
	Tool stand (TS-34)		25	26,500	662,500	
	Arc welder (AT-SS-500)		6	201,700	1,210,200	
	Gas cutting & regulator set (GS-10)		6	134,000	804,000	
	Lub-drum (DL-142)		8	752,000	6,016,000	
	Universal puller set (UP-5000)		8	165,000	1,320,000	
	Air meter (AT-300)		4	88,000	352,000	
	Work bench (T-1000)		12	111,000	1,332,000	
	Vice (UV-150)		4	54,000	216,000	
	Service creeper (SC-5B)		50	12,900	645,000	
	Pedestal grinding machine (SGK-T/FFK)		4	73,400	293,600	

NO	ITEM AND DESCRIPTION	UNITS	QUANTITIES	UNIT COST	TOTAL	REMARKS
	Brake fluid bleeder (BFB-25)		8	112,000	896,000	
	Bench drilling machine (ESD-350AF)		4	193,500	774,000	
	Hydraulic press (HP-100A)		1		975,000	
	Air disc grinder (M-70S)		4	53,500	214,000	
	Bushing installer & remover set (SDE-1000)		4	34,000	136,000	
	Vernier caliper (N-20)		4	10,400	41,600	
	Adjustable reamer set (PL-44)		4	97,000	388,500	
	Tap & dies set (M-320)		4	43,000	172,000	
	Circuit tester (TH-20)		25	8,950	223,750	
	Torque wrench (5600F)		10	26,800	268,000	
	" (2800F)		10	13,400	134,000	
	Air impact wrench (AW-4000T)		12	129,000	1,548,000	
	" (AW-1600T)		12	44,500	534,000	
	" (AW-2000)		12	64,000	768,000	
	Hand truck (No. 101)		12	63,000	756,000	
	Batt tester (EM-77)		4	43,000	172,000	
	Air drill (AD-100A)		4	34,000	136,000	
	Special tools for Isuzu		4	1,000,000	4,000,000	

NO	ITEM AND DESCRIPTION	UNITS	QUANTITIES	UNIT COST	TOTAL	REMARKS
	Special tools for Mitsubishi		4	1,000,000	4,000,000	
	Fork lift (FG-10)		2	1,535,000	3,070,000	
	Working lamp (WL-30)		25	9,950	248,750	
	Drain cart (DC-77)		25	16,300	407,500	
	Electric pencil (EP-A)		1		35,000	
	Tool cabinet (TB-100B)		1		116,000	
	Gasket punch set (H-75)		2	3,400	6,800	
	Chisel and punch set (320)		2	8,750	17,500	
	Impact driver (#2600)		25	4,250	106,250	
	Writing table w/seat (3616DL/2218ZZ)		12	45,100	541,200	
	Snap ring plier set (SPS-4)		12	4,250	51,000	
	Universal tool set (D-3000)		4	318,000	1,272,000	
	Mechanic tool set (CU-305)		150	42,000	6,300,000	
	Double slede hammer (DSH-6)		4	2,800	11,200	
	Drum greaser (DL-142)		12	752,000	9,024,000	
	Transportation and package		1		11,110,000	
2-2	Installation		1		4,200,000	
	Total				80,035,550	

NO	ITEM AND DESCRIPTION	UNITS	QUANTITIES	UNIT COST	TOTAL	REMARKS
3.	SPARE PARTS (PHASE II)					
3-1	Inspection Factory		1		1,043,840	
3-2	Periodical Factory		1		12,382,500	
	Sub-Total				13,426,340	

NO	ITEM AND DESCRIPTION	UNITS	QUANTITIES	UNIT COST	TOTAL	REMARKS
3-1	INSPECTION(SPARE PARTS)					
	Speedometer tester (SM-300-2)		16	4,090	65,440	
	Pillow block		4	34,960	139,840	
	Belows lift		16	600	9,600	
	Bearing		4	700	2,800	
	Rubber hose		8	4,000	32,000	
	Brake lining					
	Brake tester (BBT-204A)		4	4,000	16,000	
	Rack gear		4	6,000	24,000	
	Pinion set		8	4,000	32,000	
	Spring		2	3,600	7,200	
	Painter					
	Side slip tester (WG-300D-2)		16	820	13,120	
	Bearing seat for plate		16	1,080	17,280	
	Bearing for plate		8	1,340	10,720	
	Roller		8	1,900	15,200	
	Roller guide		4	1,340	5,360	
	Micro switch					

NO	ITEM AND DESCRIPTION	UNITS	QUANTITIES	UNIT COST	TOTAL	REMARKS
	Bell crank bar		2	7,940	15,880	
	Return bar		2	6,800	13,600	
	Spring for return bar		2	340	680	
	Snap switch		2	860	1,720	
	Pilot lamp		2	3,060	6,120	
	Auto lift (WSL-80)					
	V packing		2	1,600	3,200	
	Packing		4	1,680	6,720	
	Oil seat packing		2	1,260	2,520	
	Air valve		1		38,800	
	Oil valve		1		38,800	
	Auto lub (AL-205)					
	Siphon pump		2	159,900	319,800	
	Grip meter		2	65,000	130,000	
	Non-drip hose		2	17,420	34,840	
	Hose		2	20,300	40,600	
	Sub-Total				1,043,840	

NO	ITEM AND DESCRIPTION	UNITS	QUANTITIES	UNIT COST	TOTAL	REMARKS
3-2	PERIODICAL (SPARE PARTS)					
	PERIODICAL REPAIR					
	Air-hydraulic garage jack (MA-1500L)					
	Overhaul kit		12	1,600	19,200	
	Caster wheel set		24	7,000	168,000	
	Hydraulic garage jack (M-500M)					
	Caster bracket ass'y		24	3,600	86,400	
	Release valve		12	500	6,000	
	Overhaul kit		12	9,940	119,280	
	Parts washing stand (WS-25)					
	Pump ass'y		12	21,600	259,200	
	Tank		12	18,280	219,360	
	Transmission jack (HUI-800B)					
	Bracket ass'y		100	860	86,000	
	Overhaul kit		25	1,720	43,000	
	Arc welder					
	Secondary cord	m	300	2,140	642,000	
	Earth cord	"	60	1,930	115,800	

NO	ITEM AND DESCRIPTION	UNITS	QUANTITIES	UNIT COST	TOTAL	REMARKS
	Earth clip		6	4,950	29,700	
	Safety holder		6	4,650	27,900	
	Helmet		6	2,080	12,480	
	Glove		30	1,130	33,900	
	Lub drum (DL-142)					
	Grease pump		21	189,800	3,985,800	
	High pressure grease gun		21	13,200	277,200	
	High pressure hose		21	32,000	672,000	
	Air meter (AT-300)					
	"		4	79,600	318,400	
	Pedestal grinding machine (SGK-T/PPK)		4			
	Stone		40	6,400	256,000	
	Eye shield		4	3,200	12,800	
	Bench drilling machine (ESD-350AF)					
	Drill chuck		4	7,000	28,000	
	Handle spring		8	1,000	8,000	
	V belt		8	900	7,200	
	Round belt		8	800	6,400	

NO	ITEM AND DESCRIPTION	UNITS	QUANTITIES	UNIT COST	TOTAL	REMARKS
	Round belt		8	500	4,000	
	Switch		8	1,200	9,600	
	Drill 1.00 - 13mm by 0.5mm		40	29,000	1,160,000	
	Hydraulic press (HP-100A)		1		6,580	
	Overhaul kit		1		9,900	
	Pressure gauge		1		4,060	
	Worm gear		1		920	
	Wire rope		1		200	
	Wire clip		2	100		
	Air disc grinder (M-70S)				195,200	
	Wheel (180φmm)		40	4,880		
	Rubber pad		20	2,500	50,000	
	Wire brush		20	8,880	177,600	
	Circuit tester (TH-20)					
	Terminal cord		100	460	46,000	
	Battery		50	150	7,500	
	Air impact wrench (AW-4000T)					
	Anvil		12	13,160	157,920	

NO	ITEM AND DESCRIPTION	UNITS	QUANTITIES	UNIT COST	TOTAL	REMARKS
	Hammer		12	4,400	52,800	
	Motor case packing, front		12	100	1,200	
	Motor case packing, rear		12	560	6,720	
	Rotor vane		60	120	7,200	
	Air impact wrench (AW-1600T)					
	Anvil		12	3,080	36,960	
	Hammer		12	2,570	30,840	
	Motor case packing, front		12	70	840	
	Motor case packing, rear		12	70	840	
	Rotor vane		60	220	13,200	
	Air impact wrench (AW-2000)					
	Anvil		12	4,800	57,600	
	Hammer		12	3,720	44,640	
	Rotor vane		60	90	5,400	
	Motor case packing, front		12	330	3,960	
	Motor case packing, rear		12	90	1,080	
	Air drill (AD-100A)					
	Drill 1.0 - 10.0mm by 0.5mm		40	12,170	486,800	

NO	ITEM AND DESCRIPTION	UNITS	QUANTITIES	UNIT COST	TOTAL	REMARKS
	Fork lift (FG-10)		2	118,000	236,000	
	Radiator ass'y (91101-00100)		2	4,000	8,000	
	Radiator hose (91101-00300)		2	2,800	5,600	
	" (91101-00400)		8	140	1,120	
	Radiator hose clamp (MS666015)		2	2,600	5,200	
	Timing velt (91201-10900)		2	600	1,200	
	Fuel strainer (64303-20100)		8	100	800	
	Fuel hose clamp (MF-661-006)		2	800	1,600	
	Fuel hose (91264-00900)		2	1,600	3,200	
	" (91264-00800)		2	1,100	2,200	
	Packing (91264-00300)		4	5,400	21,600	
	Lamp (05101-02100)		4	280	1,120	
	Valve (F8440-12450)		4	5,000	20,000	
	Lamp front (05153-02700)		4	220	880	
	Bulb (MF820-183)		4	260	1,040	
	" (MF820-332)		4	8,000	32,000	
	Lamp rear (05153-02900)		4	300	1,200	
	Bulb (MF820-362)					

NO	ITEM AND DESCRIPTION	UNITS	QUANTITIES	UNIT COST	TOTAL	REMARKS
	Lens front (05153-03100)		2	1,020	2,040	
	Lens rear (05153-03200)		2	1,540	3,080	
	Back buzzer (05151-02000)		2	9,900	19,800	
	Pressure plate (91221-05030)		2	40,000	80,000	
	Clutch disc (91221-05100)		2	19,000	38,000	
	Clutch shifter (91225-10700)		2	8,800	17,600	
	Clutch bearing (MZ620330)		2	5,800	11,600	
	Pilot bearing (MD-002613)		2	520	1,040	
	Rim ass'y (91443-00020)		4	15,600	62,400	
	Tire (64343-40400)		4	30,200	120,800	
	Rim ass'y (91243-00020)		4	11,000	44,000	
	Tire (64343-10400)		4	22,400	89,600	
	Wheel cylinder repair kit (91246-01810)		2	1,700	3,400	
	Master cylinder repair kit (91246-10310)		2	3,000	6,000	
	Shoe lining primary (91246-01900)		4	4,800	19,200	
	Shoe lining secondary (91246-02100)		4	4,800	19,200	
	Choke cable (91251-12100)		2	7,600	15,200	

NO	ITEM AND DESCRIPTION	UNITS	QUANTITIES	UNIT COST	TOTAL	REMARKS
	Parking cable (91246-02700)		2	7,600	15,200	
	Parking cable (91246-02800)		2	7,600	15,200	
	Tilt cylinder seal kit (94004-00100)		4	8,600	34,400	
	Tilt cylinder seal kit (94004-00120)		4	9,700	38,800	
	Lift cylinder seal kit (94014-00110)		2	9,000	18,000	
	Special tool					
	Wrench (91268-00700)		2	5,000	10,000	
	" (91268-00800)		2	6,000	12,000	
	For engine					
	Engine oil	lit	40	21,600	864,000	
	Hydraulic oil	"	36	12,600	453,600	
	Brake oil	"	2	3,000	6,000	
	Sub-total				12,382,500	

NO	ITEM AND DESCRIPTION	UNITS	QUANTITIES	UNIT COST	TOTAL	REMARKS
1.	PAINT AND BODY SHOP					
1-1	Machine				42,011,650	
1-2	Instanation				8,400,000	
	Sub-Total				50,411,650	
1-3	Spare parts				4,056,555	
	Total				54,468,205	

NO	ITEM AND DESCRIPTION	UNITS	QUANTITIES	UNIT COST	TOTAL	REMARKS
	PHASE III (Item)					
1.	Paint and Body Shop				50,411,650	
	Sub-Total				50,411,650	
2.	Spare Parts				4,056,555	
3.	Sending of Supervisor				9,760,000	
	Total				64,228,205	

NO	ITEM AND DESCRIPTION	UNITS	QUANTITIES	UNIT COST	TOTAL	REMARKS
1-1	MACHINE SINGLE SIDE					
	Surface planer (PB-3)		1		650,000	
	Hand wood pleaner (L-450)		2	46,800	93,600	
	Band saw (JB-S70)		1		688,000	
	Circular saw (SEC-16)		2	361,000	722,000	
	Sewing machine (STW-28)		3	317,200	951,600	
	Air drill w/hose 10m and connector (AD-100A)		5	46,190	230,950	
	Air driver w/hose 10m (GT-P6MD)		5	70,990	354,950	
	Pipe Bender (D-443)		1		21,250	
	Arc welder w/accessories (MA-300E)		3	148,500	445,500	
	Gas welder set (GS-10)		6	229,000	1,374,000	
	Body fender tool set (TF-50A)		5	18,700	93,500	
	Hydraulic garage jack (M-500M)		5	114,000	570,000	
	Power pack (404HRL)		5	186,000	930,000	
	Air drill w/hose 10m and connector (211A)		5	35,190	175,950	
	Hole saw (1853HS)		6	25,200	151,200	
	Work bench w/vice (T-1000, UV-150)		5	165,000	825,000	

NO	ITEM AND DESCRIPTION	UNITS	QUANTITIES	UNIT COST	TOTAL	REMARKS
	Flexible file holder & blade (350R/350F/No.9)		5	7,710	38,550	
	Set of needle file set (F-150S)		5	1,450	7,250	
	Bench grinder (SGK-T/PFK)		3	68,400	205,200	
	Cast iron annil (AN-50)		5	30,500	153,000	
	C. lamp (CV-100)		5	3,160	15,800	
	" (CV-125)		5	4,150	20,750	
	" (CV-150)		5	5,250	26,250	
	" (CV-200)		5	8,050	40,250	
	Hydraulic press (HP-50E)		1		352,000	
	Surface plate (SPC-14)		5	1,096,200	5,481,000	
	Disc grinder (NSG-100)		5	17,200	86,000	
	Swage block (ISB-95)		5	59,000	295,000	
	Air impact wrench w/hose 10m and connector (AW-1200)		5	49,970	249,950	
	Frame straightener (FS-301)		1		12,939,000	
	Impact driver (#2600)		6	4,250	25,500	
	Double sledge hammer (DSH-12)		6	4,800	28,800	
	Tin shear (360SS)		3	5,200	15,600	

NO	ITEM AND DESCRIPTION	UNITS	QUANTITIES	UNIT COST	TOTAL	REMARKS
	Tin shear (360ST)		3	4,750	14,250	
	Roll cutter (RC-5)		2	48,000	96,000	
	Machine tool set (CU-305)		28	42,000	1,176,000	
	Infrared ray stand (TRB-6E)		6	86,000	516,000	
	Airless spray unit (YSE 160P 30SP)		6	252,000	1,512,000	
	Air regulator set (AR-303)		8	46,000	368,000	
	Auto lift (WSL-80)		1		1,540,000	
	Coater (YSE 65P20)		2	127,000	254,000	
	Hand truck (No.101)		6	63,000	378,000	
	Turbo plower (TB10)		5	250,000	1,250,000	
	Grafenite meltuigpot (No.250)		2	120,000	240,000	
	Transporation and package		1		6,410,000	(42,011,650)
	Installation		1		8,400,000	
	Sub-Total				50,411,650	

NO	ITEM AND DESCRIPTION	UNITS	QUANTITIES	UNIT COST	TOTAL	REMARKS
1-3	SPARE PARTS Paint and body shop		1		4,056,555	
	Sub-Total:				4,056,555	

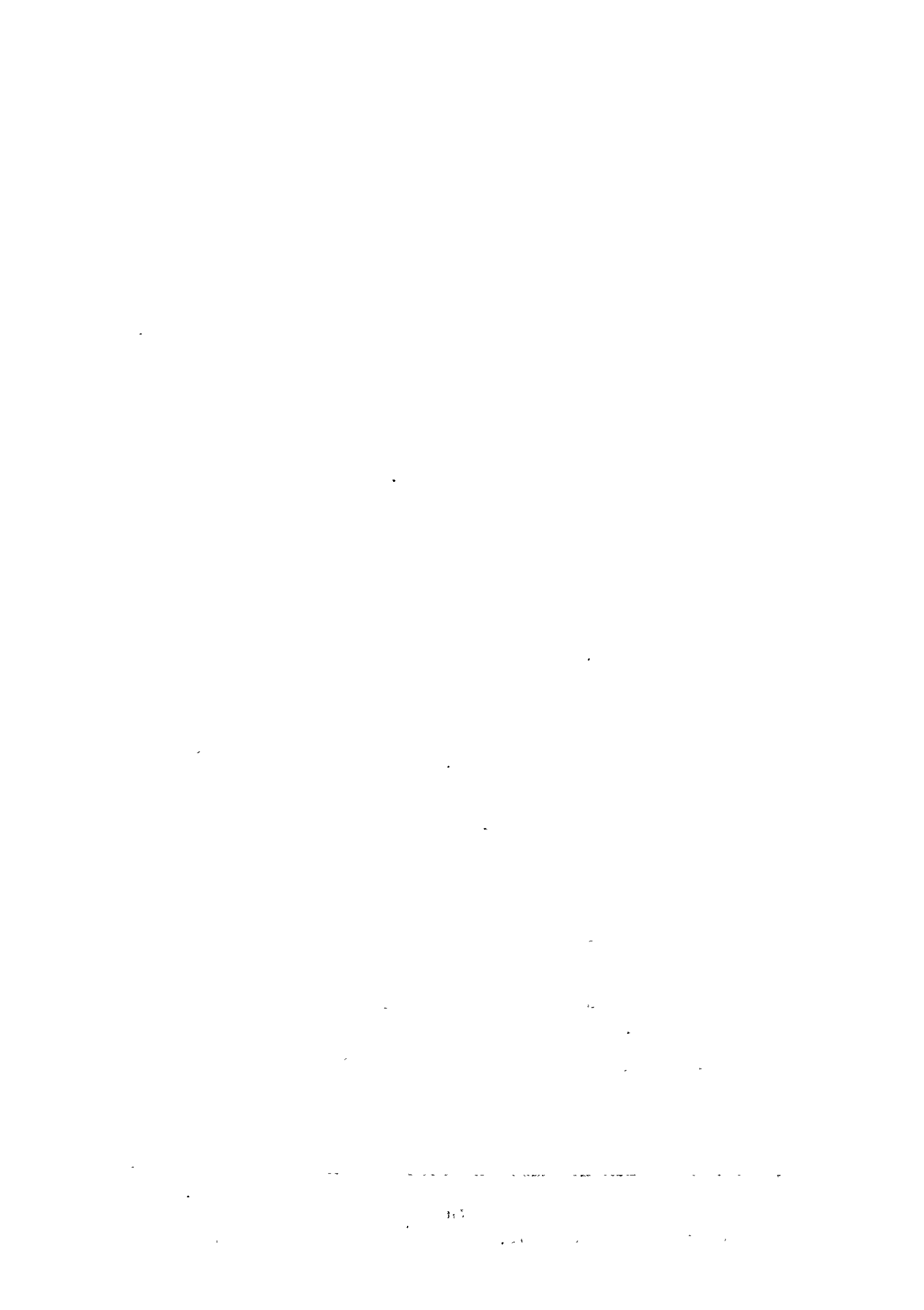
NO	ITEM AND DESCRIPTION	UNITS	QUANTITIES	UNIT COST	TOTAL	REMARKS
	SPARE PARTS					
	Single side surface planer (PB-3)					
	Cutter		15	9,640	144,600	
	Bolt nut		30	900	27,000	
	V belt		3	4,000	12,000	
	Hand wood planer (L-450)					
	Cutter		5	3,000	15,000	
	Carbon brush		5	480	2,400	
	Band saw (JB-S70)					
	Saw band		10	18,000	180,000	
	V belt		3	4,000	12,000	
	Circular saw (SEC-16)					
	Tip saw		4	18,000	72,000	
	V belt		2	4,000	8,000	
	Sewing machine (STW-28)					
	Needle		300	80	24,000	
	Hook		3	15,200	45,600	
	Feeder		6	4,800	28,800	

NO	ITEM AND DESCRIPTION	UNITS	QUANTITIES	UNIT COST	TOTAL	REMARKS
	Needle plate		3	3,600	10,800	
	Tension bracket		3	2,600	7,800	
	Thread controller disc		6	700	4,200	
	Thread take-up spring		36	120	4,320	
	Needle set-screw		30	60	1,800	
	Air drill (AD-100A)					
	Drill (1.0 - 10.0mm by 0.5mm)		50	12,170	608,500	
	Air driver (GT-P6MD)					
	Anvil		5	3,260	16,300	
	Hammer		5	2,160	10,800	
	Rotor vane		25	220	5,500	
	Arc welder (MA-300Z)					
	Secondary cord	m	150	1,710	256,500	
	Earth cord	"	30	1,435	43,050	
	Earth clip		3	2,680	8,040	
	Safety holder		3	3,940	11,820	
	Terminal		3	145	435	
	Helmet		3	2,080	6,240	

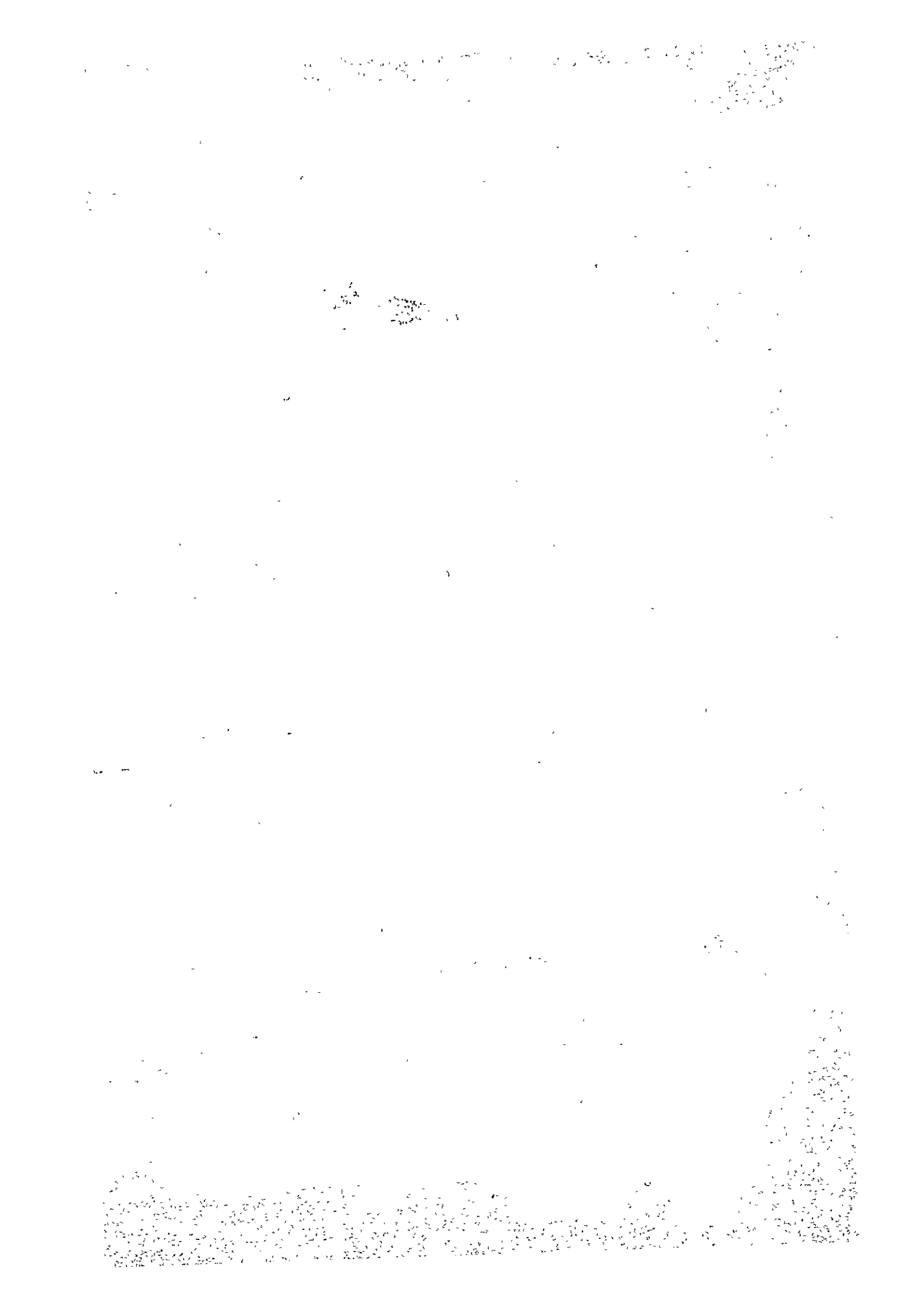
NO	ITEM AND DESCRIPTION	UNITS	QUANTITIES	UNIT COST	TOTAL	REMARKS
	Glove		15	1,130	16,950	
	Hydraulic garage jack (M-500M)					
	Caster bracket assy		10	3,600	36,000	
	Release valve		5	500	2,500	
	Overhaul kit		5	9,940	49,700	
	Air drill (211A)					
	Drill (1.00 - 10.0mm by 0.5mm)		50	12,170	608,500	
	Bench grinder (SGK-T/PEK)					
	Stone		30	6,400	192,000	
	Eye shield		3	3,200	9,600	
	Hydraulic press (HP-50E)					
	Pressure gauge		1		9,240	
	Worm		1		1,620	
	Worm gear		1		2,120	
	Wire rope		1		540	
	Wire clip		2	90	180	
	Overhaul kit		1		2,760	

NO	ITEM AND DESCRIPTION	UNITS	QUANTITIES	UNIT COST	TOTAL	REMARKS
	Disc grinder (USG-100)		100	335	33,500	
	Sanding disc (#30, #60, #100)		5	610	3,050	
	Rubber pad					
	Air impact wrench (AW-1200)		5	2,580	12,900	
	Anvil		5	2,200	11,000	
	Hammer		25	190	4,750	
	Rotor vane		5	70	350	
	Motor case packing, front		5	70	350	
	Motor case packing, rear					
	Infrared red stand (TRB-6E)		100	4,300	430,000	
	Bulb					
	Airless spray unit (YSE-160 P30SP)		6	58,700	352,200	
	Paint pump		6	26,000	156,000	
	Spray gun		6	3,000	18,000	
	Gun swivel		12	1,900	22,800	
	Tip filter		12	1,000	12,000	
	Line filter		6	11,000	66,000	
	Paint hose					

NO	ITEM AND DESCRIPTION	UNITS	QUANTITIES	UNIT COST	TOTAL	REMARKS
	Spray tip 3	ea.	6	21,000	126,000	
	Auto lift (WSL-80)		2	1,600	3,200	
	V packing		4	1,680	6,720	
	Packing		2	1,260	2,520	
	Oil seat packing		1		38,800	
	Air valve		1		38,800	
	Oil valve					
	Coater (YSE 65P20)		2	59,500	119,000	
	Paint pump		2	26,000	52,000	
	Spray gun		2	3,000	6,000	
	Gun swivel		6	1,900	11,400	
	Tip filter		2	8,000	16,000	
	Paint hose		2	7,000	14,000	
	Spray tip				4,056,555	
	Sub-Total					



Handwritten text at the bottom of the page, possibly a signature or date, which is mostly illegible due to blurring and fading.



JICA