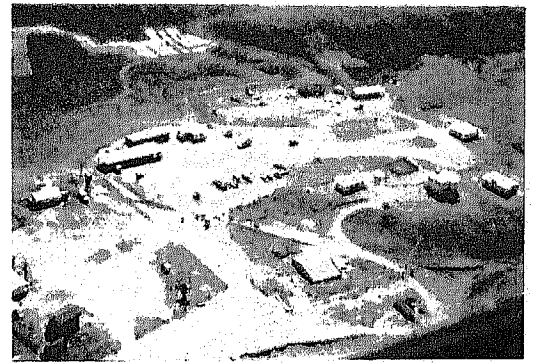


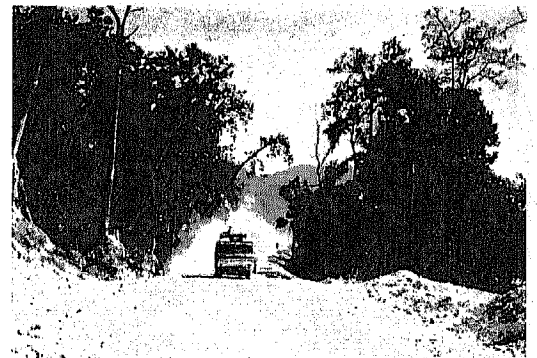
Sindhuli Road starts at Bardibas on East/West Highway.



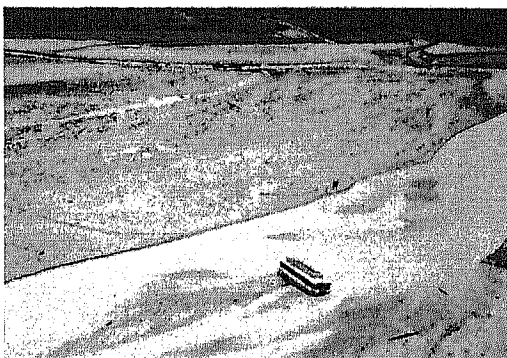
Main construction unit of DOR at Bardibas being responsible for Section I (Bardibas-Sindhuli Bazar).



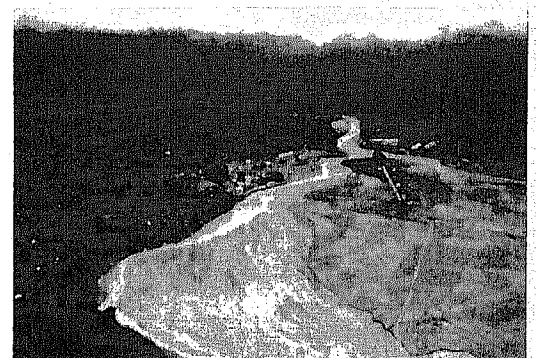
Present condition of the existing road in Section I.



Bus service being operated between Bardibas and Sindhuli Bazar.



Vehicle washed away by the flood of Ratu Khola.



End point of Section I at Sindhuli Bazar. Section II starts from this point.

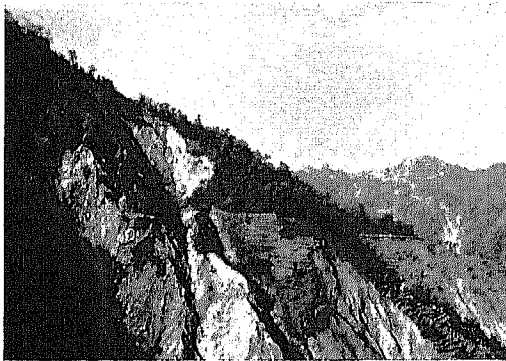




The route ascends on the steep slope of Mahabhrat Range.



A helipad located at the top of Sindhuli Garhi.



Landslide developed on the southern slope of Mahabhrat Range through which the route has to pass.



The northern slope route of the Mahabhrat Range. The route goes down making roops on this slope.



The Sun Kosi river which originates in Tibetan Plateau of China and flows down to Terai Plain.



The route runs on the right bank of Sun Kosi river in the section between Khurkot and Nepithok.

