

PL. 8

MINERAL EXPLORATION  
IN  
THE HOMA BAY AREA, REPUBLIC OF KENYA  
(PHASE I)

GEOLOGICAL MAP  
OF  
THE RANGWA AREA  
(SEMI-DETAILED SURVEY AREA)

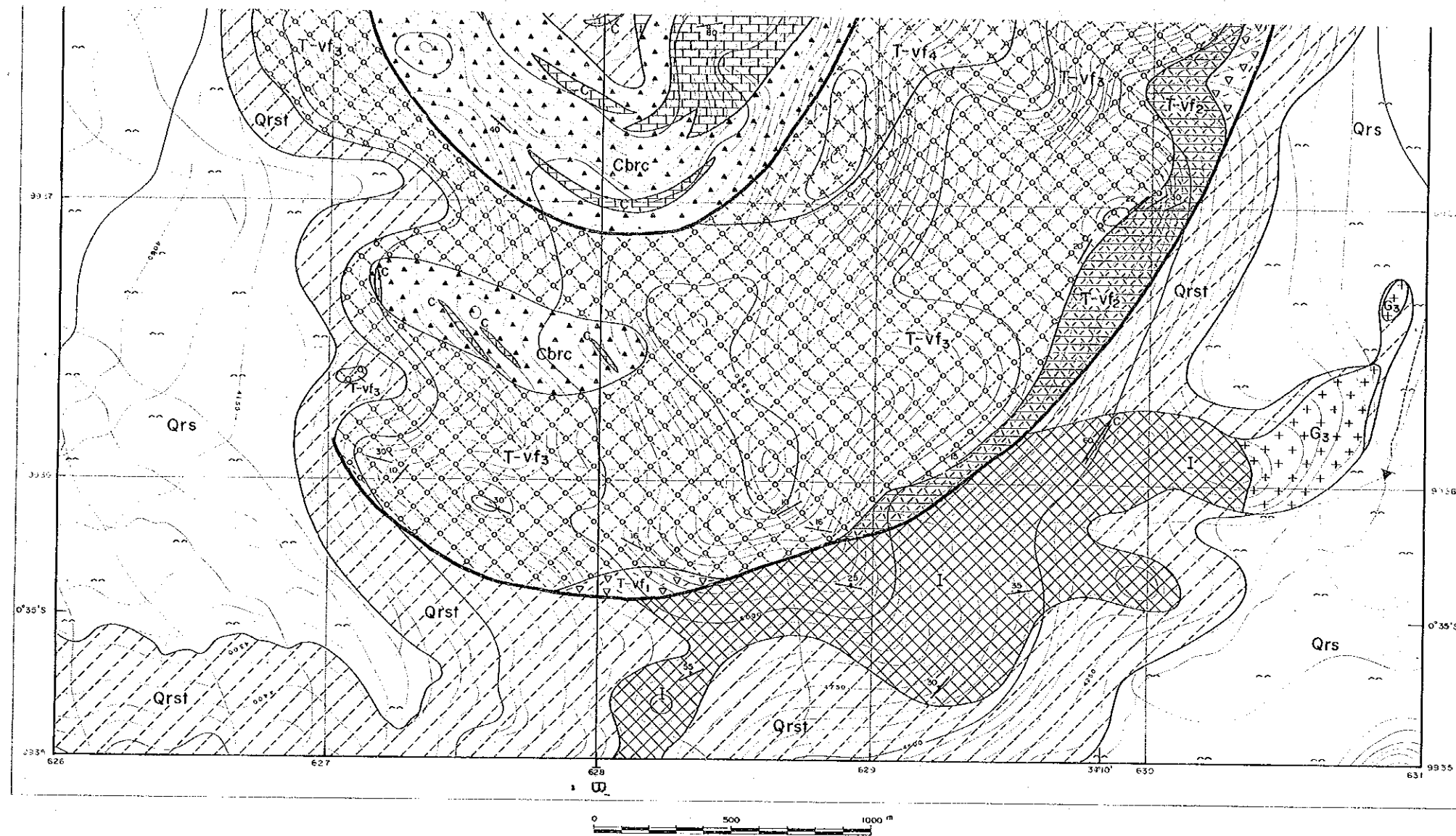
LOCATION INDEX

JAPAN INTERNATIONAL COOPERATION AGENCY  
METAL MINING AGENCY OF JAPAN  
February 1988

Scale 1:10,000

LEGEND

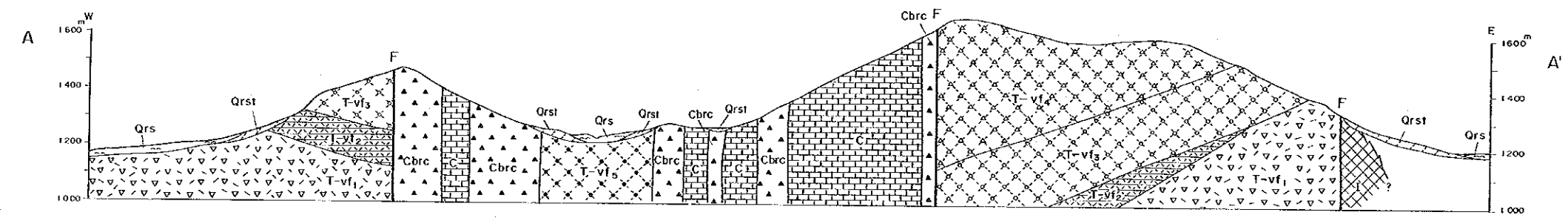
- |   |   |
|---|---|
| <p>Qrs</p> <p>Qrst</p> <p>T-vf<sub>5</sub></p> <p>C</p> <p>Cbrc</p> <p>T-vf<sub>4</sub></p> <p>T-vf<sub>3</sub></p> <p>T-vf<sub>2</sub></p> <p>T-vf<sub>1</sub></p> <p>I</p> <p>G<sub>3</sub></p> | <p>Surficial deposits</p> <p>Talus deposits</p> <p>Lapilli tuff, tuff breccia</p> <p>Carbonatite, mainly alvikite with subordinate ferrocarnatite</p> <p>Carbonatitic breccia with massive part of carbonatite</p> <p>Calcareous tuff breccia, volcanic breccia (Upper agglomerate)</p> <p>Banded calcareous tuff, lapilli tuff</p> <p>Bedded tuff</p> <p>Tuff breccia (Lower agglomerate)</p> <p>Ijolite, uncomphgrite</p> <p>Granite, granodiorite (Post Kavirondian)</p> |
|---|---|
- 
- |   |  |
|---|--|
| <p>—/—</p> <p>—/—</p> <p>—/—</p> <p>—/—</p> <p>—/—</p> <p>—/—</p> | <p>Strike and dip of bedding</p> <p>Strike and dip of flow banding</p> <p>Strike and dip of joint</p> <p>Dykes and sheets with dip</p> <p>Existing fault</p> <p>Inferred fault</p> |
|---|--|



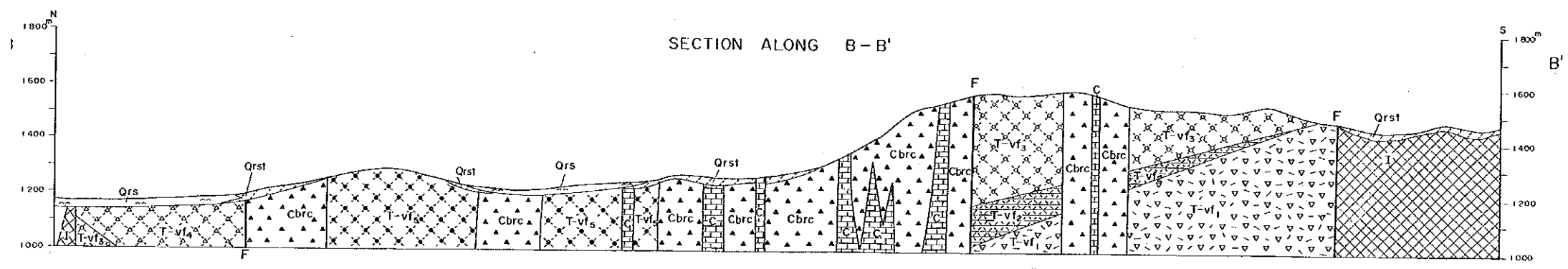
LEGEND

- Surficial deposits
- Talus deposits
- Lapilli tuff, tuff breccia
- Carbonatite, mainly olivite with subordinate ferrocarbonatite
- Carbonatitic breccia with massive part of carbonatite
- Calcareous tuff breccia, volcanic breccia (Upper agglomerate)
- Banded calcareous tuff, lapilli tuff
- Bedded tuff
- Tuff breccia (Lower agglomerate)
- Ijolite, uncompohgrite
- Granite, granodiorite (Post Kavirondian)
- Strike and dip of bedding
- Strike and dip of flow banding
- Strike and dip of joint
- Dykes and sheets with dip
- Existing fault
- Inferred fault
- Line of section

SECTION ALONG A - A'

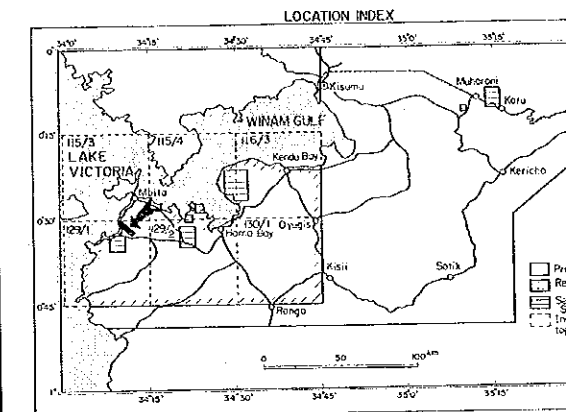


SECTION ALONG B - B'



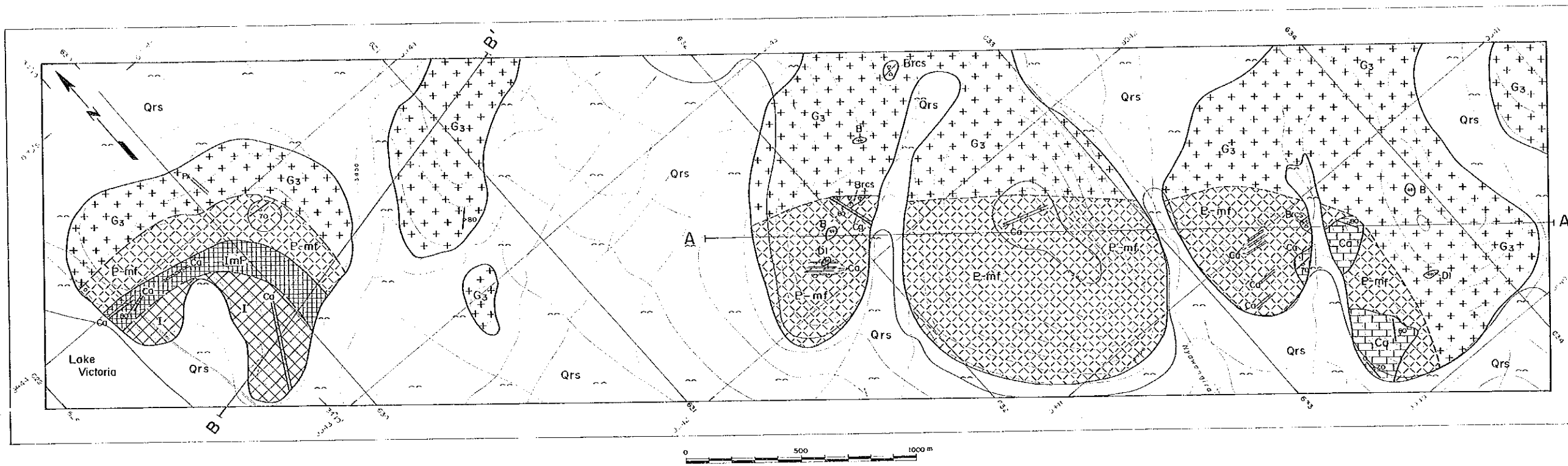
MINERAL EXPLORATION  
IN  
THE HOMA BAY AREA, REPUBLIC OF KENYA  
(PHASE I)

GEOLOGICAL MAP  
OF  
THE SAGARUME - NYAMGURKA AREA  
(SEMI-DETAILED SURVEY AREA)

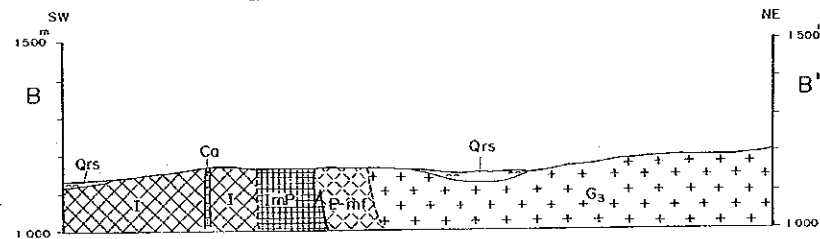


JAPAN INTERNATIONAL COOPERATION AGENCY  
METAL MINING AGENCY OF JAPAN  
February 1988

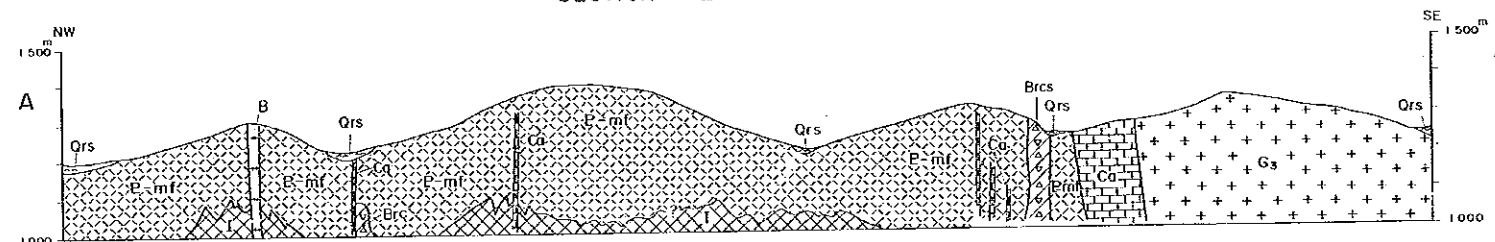
Scale 1:10,000



SECTION ALONG B - B'

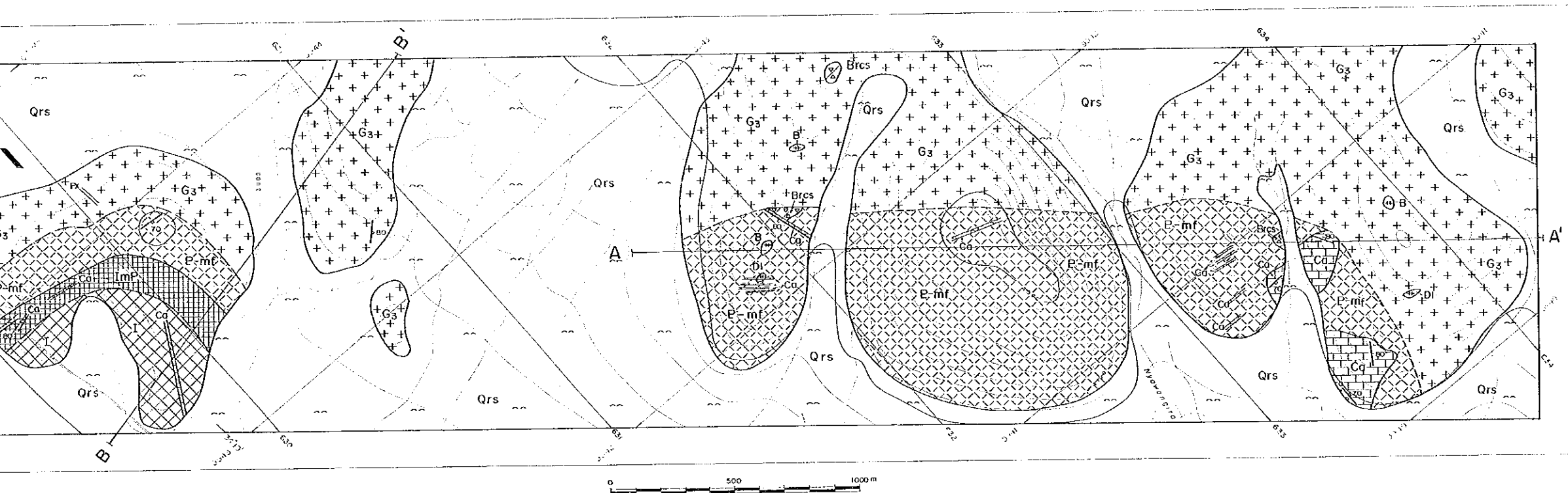


SECTION ALONG A - A'

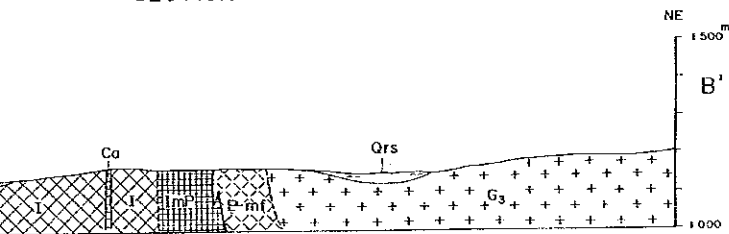


LEGEND

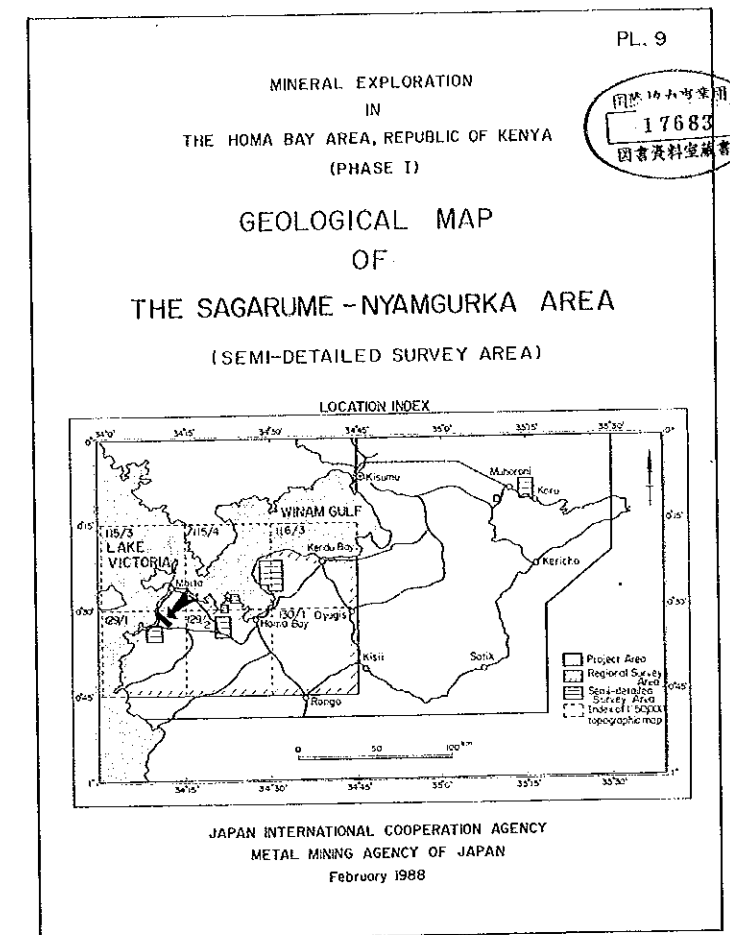
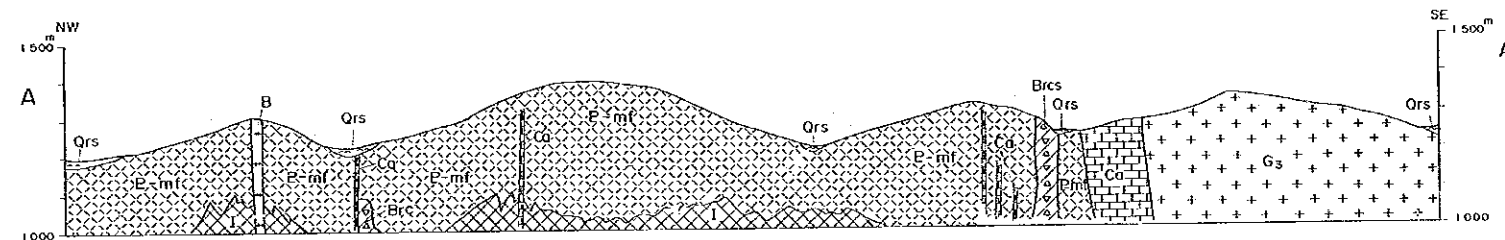
- |      |   |
|------|---|
| Qrs  | Surficial deposits                      |
| Co   | Aluvikite                               |
| Brcs | Siliceous breccia                       |
| ImP  | Micro-ijolite and pyroxenite            |
| I    | Ijolite                                 |
| P-mf | Fenitized granite and granodiorite (Fe) |
| G3   | Granite, granodiorite (Post Kavirond)   |
- 
- |         |                                      |
|---------|--------------------------------------|
| DI      | Dolerite dyke                        |
| B       | Gabbro dyke                          |
| Px      | Pyroxenite dyke                      |
| — —     | Strike and dip of bedding            |
| — —     | Strike and dip of foliation          |
| — —     | Strike and dip of joint              |
| — —     | Dykes and sheets with dip            |
| - - - - | Approximate boundary of fenitization |
| A — A'  | Line of section                      |



SECTION ALONG B - B'



SECTION ALONG A - A'



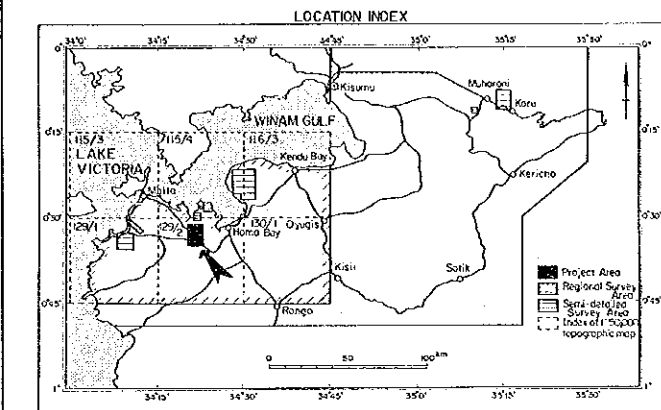
LEGEND

- |  |   |
|--|---|
| <p>Qrs</p> <p>Ca</p> <p>Brcs</p> <p>ImP</p> <p>I</p> <p>P-mf</p> <p>G3</p><br><p>D1</p> <p>B</p> <p>Px</p> <p>— / —</p> <p>— / —</p> <p>— / —</p> <p>— / —</p> <p>— / —</p> <p>— / —</p> <p>— / —</p> <p>— / —</p> <p>A — A'</p> | <p>Surficial deposits</p> <p>Aluvikite</p> <p>Siliceous breccia</p> <p>Micro-ijolite and pyroxenite</p> <p>Ijolite</p> <p>Fenitized granite and granodiorite (Fenite)</p> <p>Granite, granodiorite (Post Kavirondian)</p><br><p>Dolerite dyke</p> <p>Gabbro dyke</p> <p>Pyroxenite dyke</p> <p>Strike and dip of bedding</p> <p>Strike and dip of foliation</p> <p>Strike and dip of joint</p> <p>Dykes and sheets with dip</p> <p>Approximate boundary of fenitization area</p> <p>Line of section</p> |
|--|---|

MINERAL EXPLORATION  
IN  
THE HOMA BAY AREA, REPUBLIC OF KENYA  
(PHASE I)

国際協力事業団  
17683  
図書資料室蔵書

GEOLOGICAL MAP  
OF  
THE SOUTH RURI AND THE NORTH RURI AREAS  
(SEMI-DETAILED SURVEY AREA)



JAPAN INTERNATIONAL COOPERATION AGENCY  
METAL MINING AGENCY OF JAPAN  
February 1988

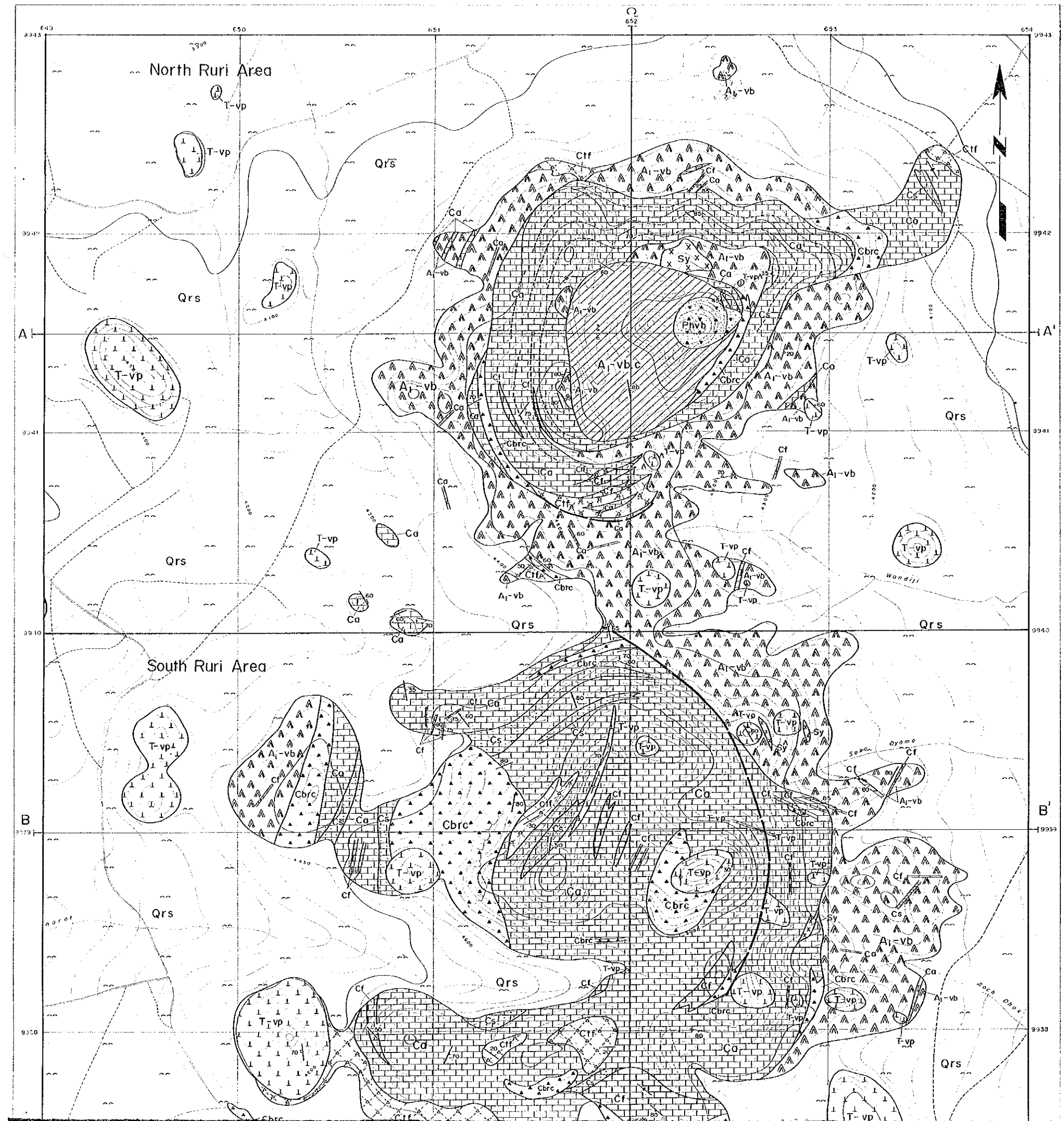
Scale 1:10,000

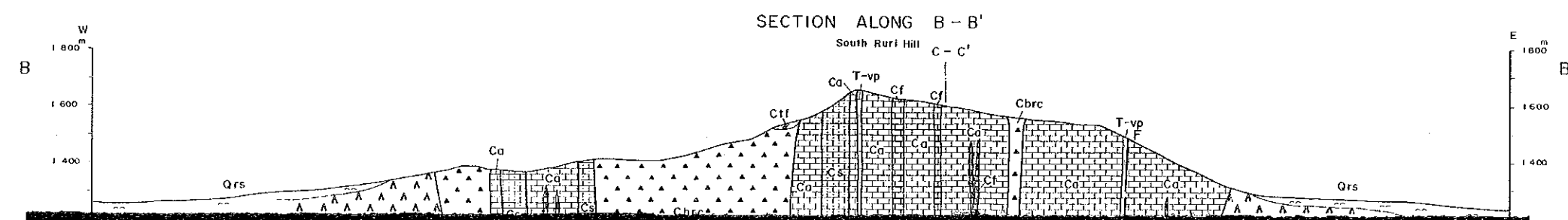
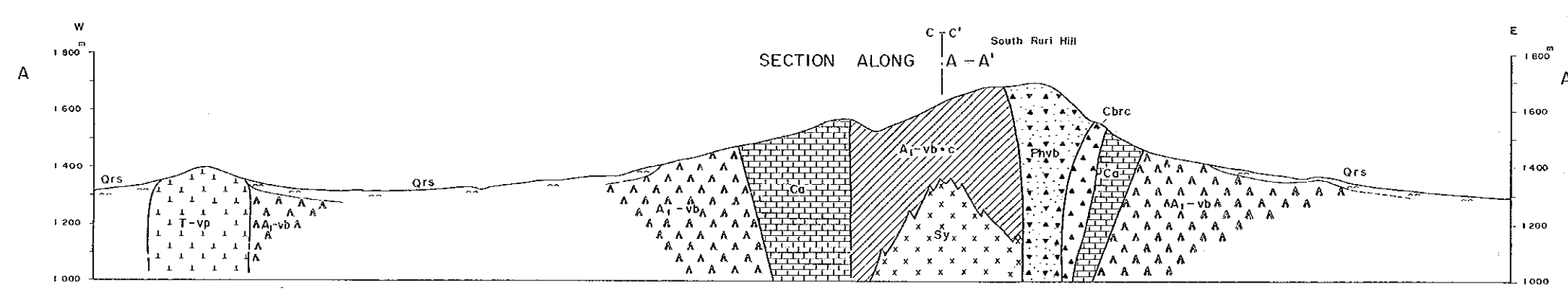
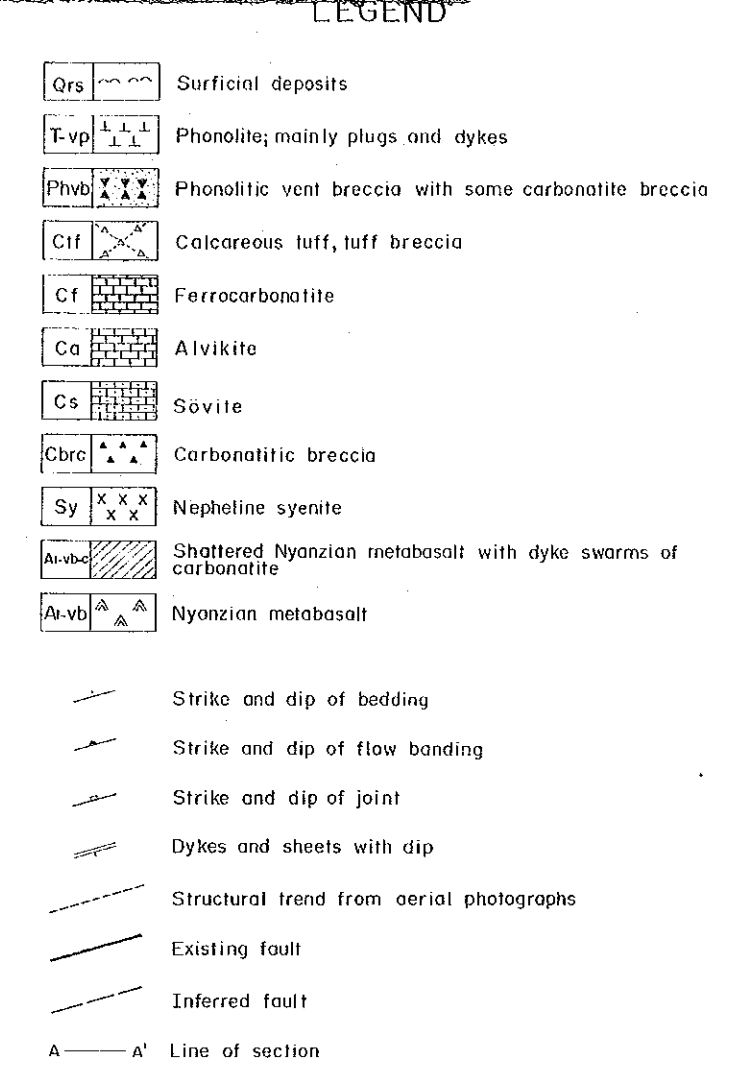
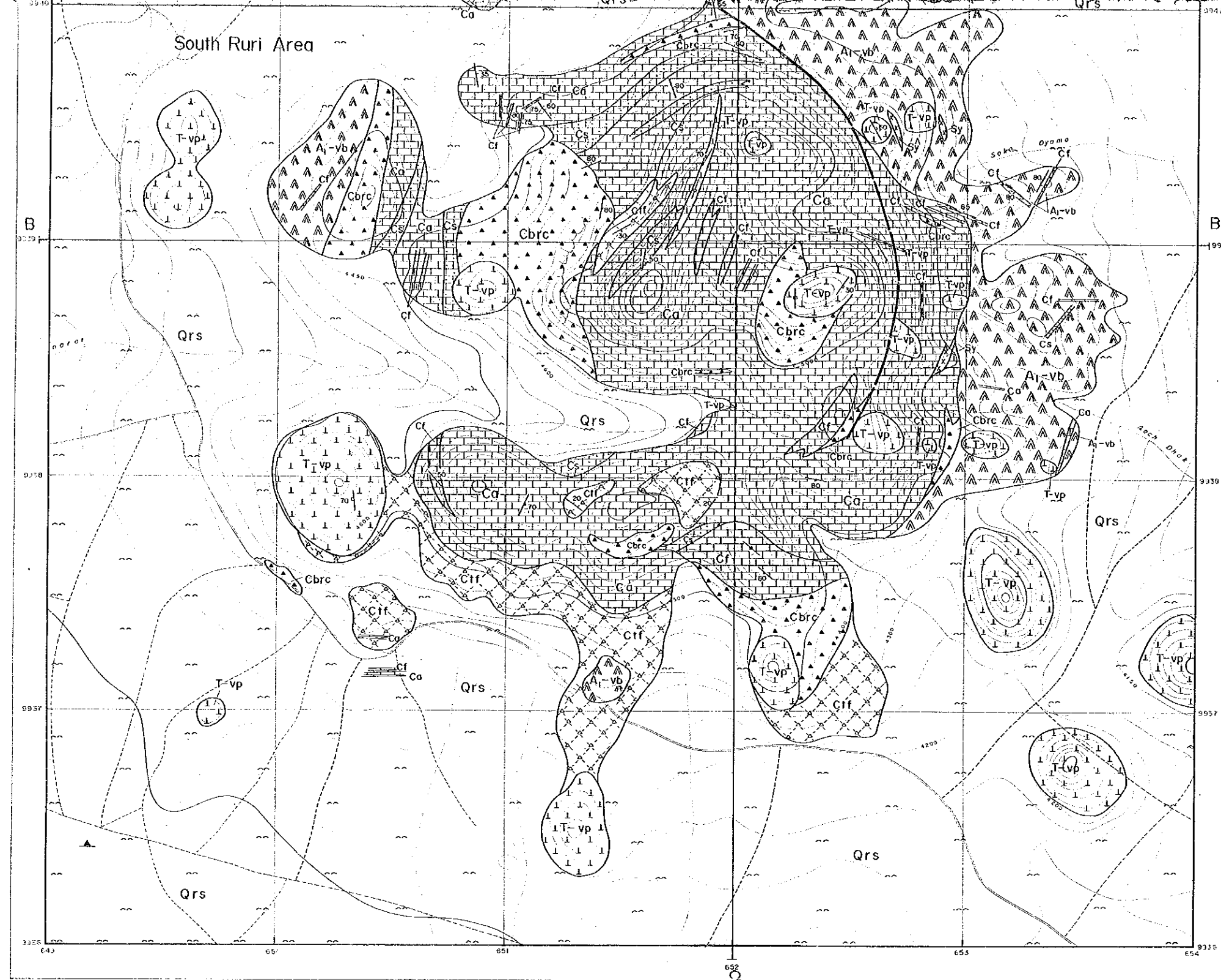


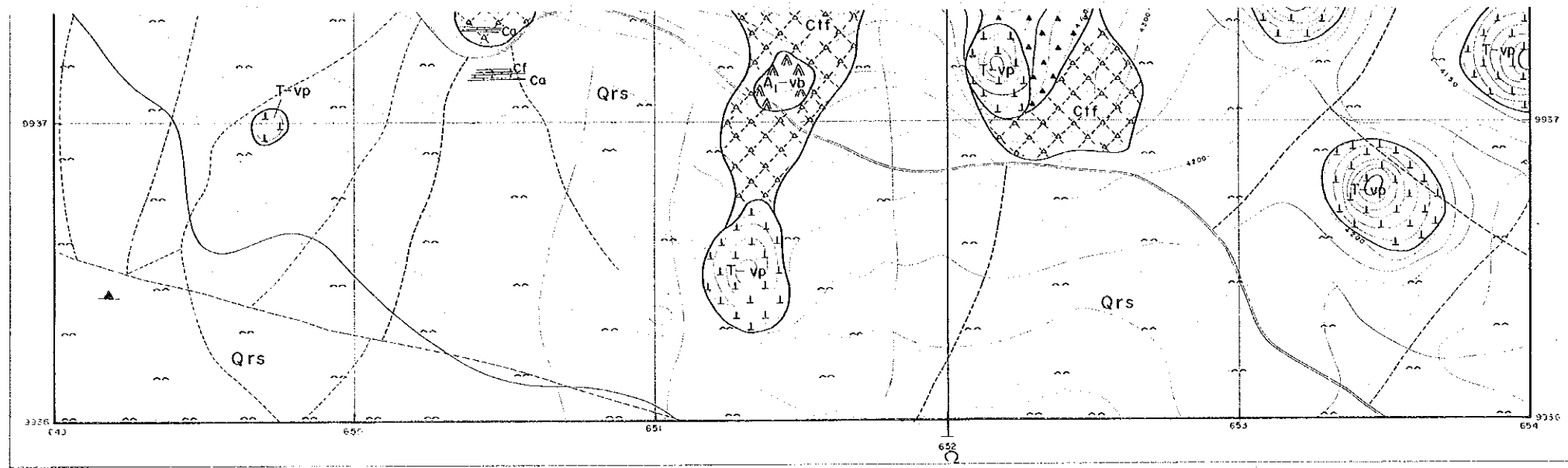
LEGEND

- Qrs Surficial deposits
- T-vp Phonolite; mainly plugs and dykes
- Phvb Phonolitic vent breccia with some carbonatite breccia
- Cif Calcareous tuff, tuff breccia
- Cf Ferrocyanatite
- Ca Alvikite
- Cs Sövite
- Cbrc Carbonatitic breccia
- Sy Nepheline syenite
- Ar-vbc Shattered Nyanzian metabasalt with dyke swarms of carbonatite
- Ar-vb Nyanzian metabasalt

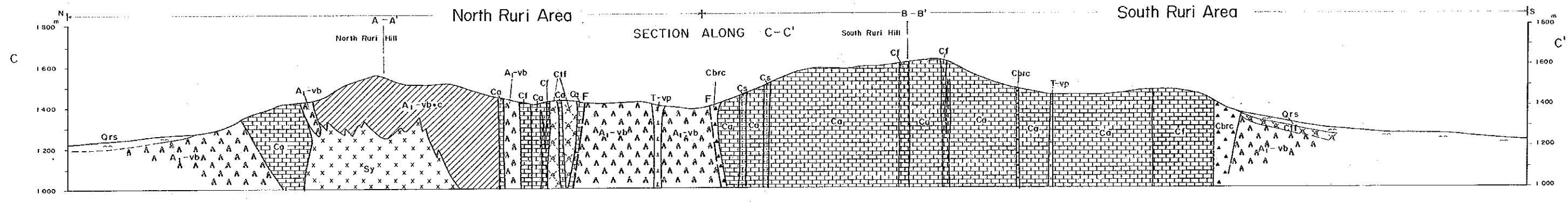
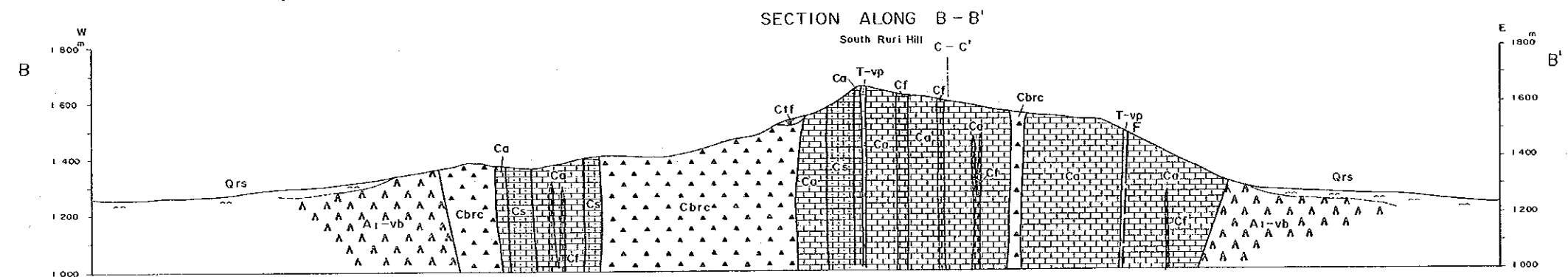
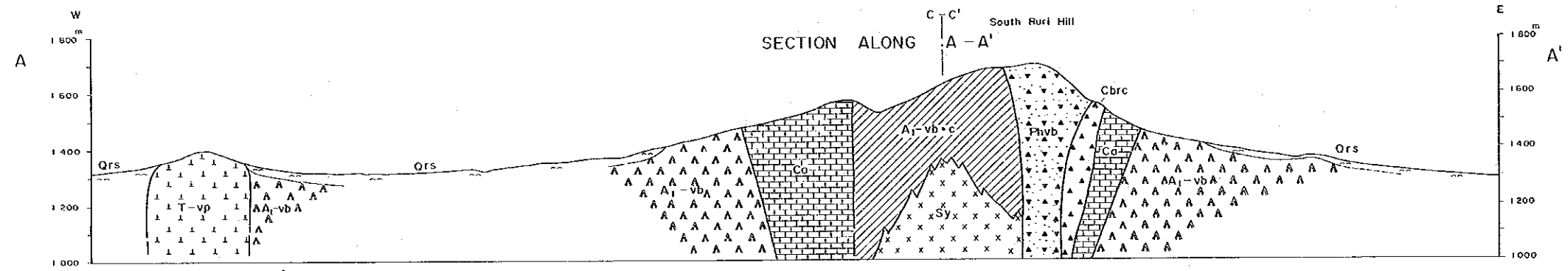
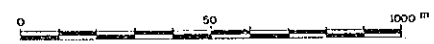
- Strike and dip of bedding
- Strike and dip of flow banding
- Strike and dip of joint
- Dykes and sheets with dip
- Structural trend from aerial photographs
- Existing fault

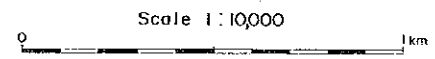
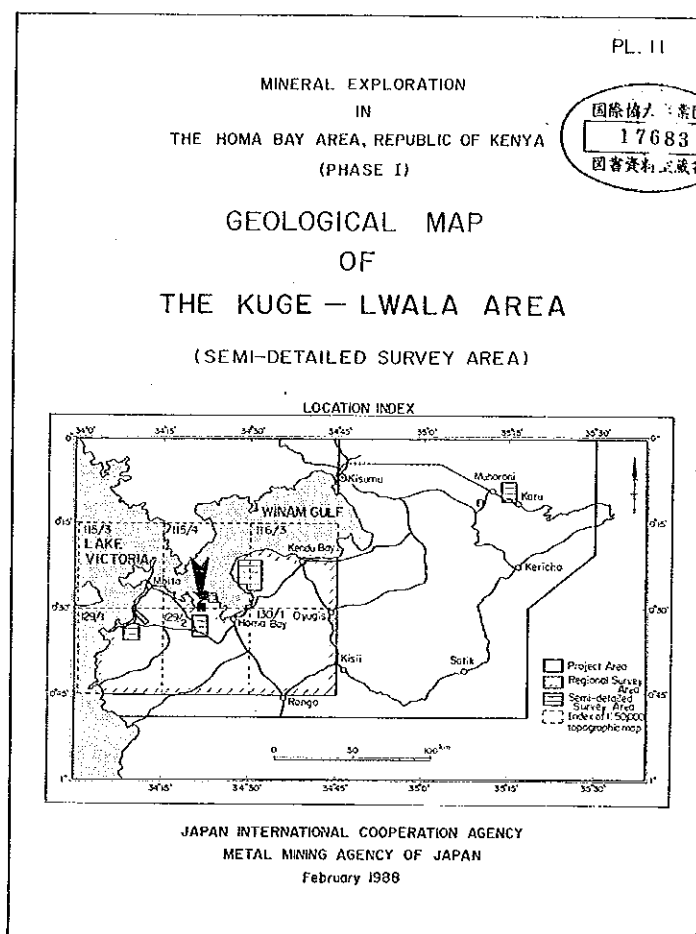
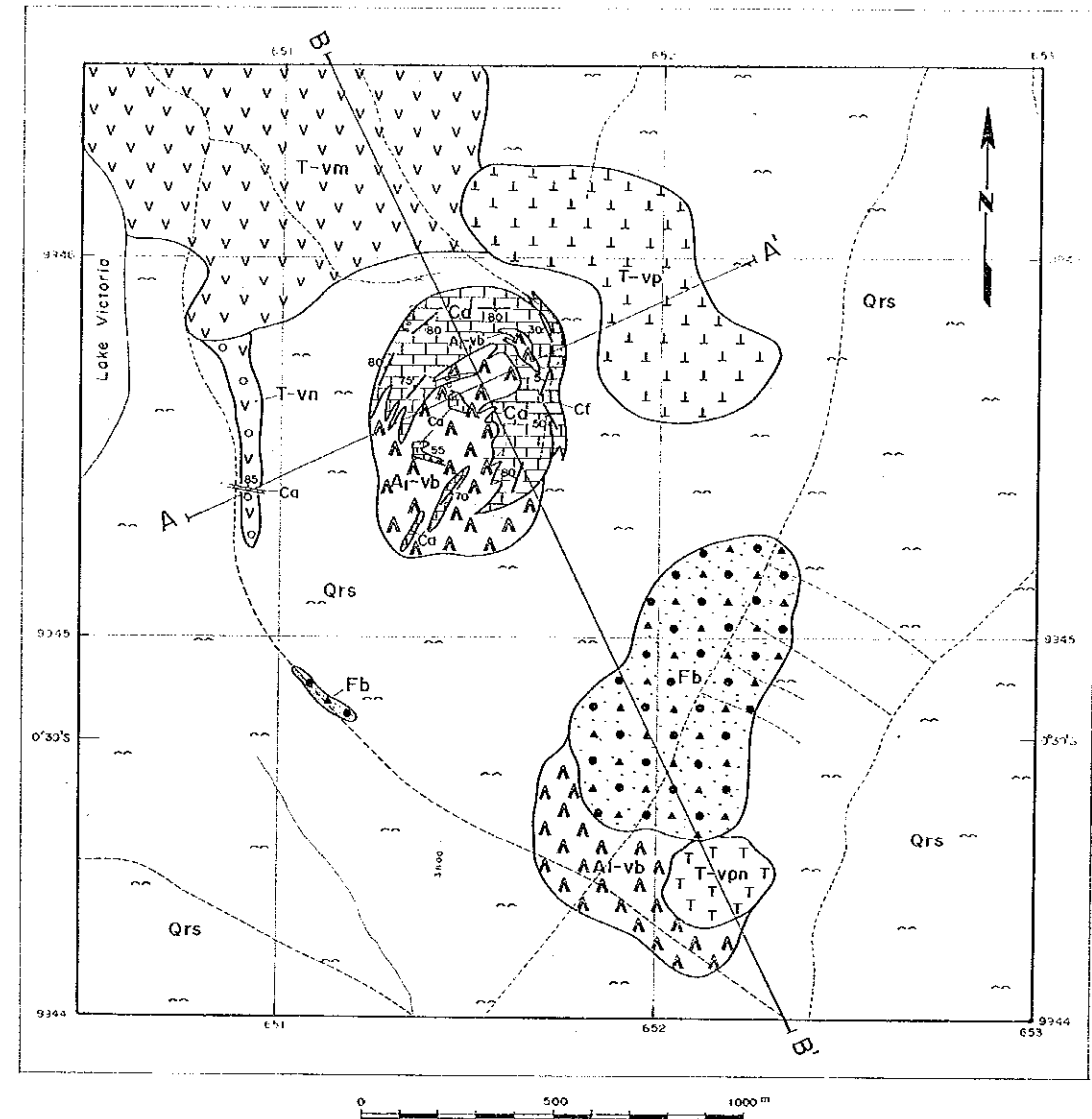




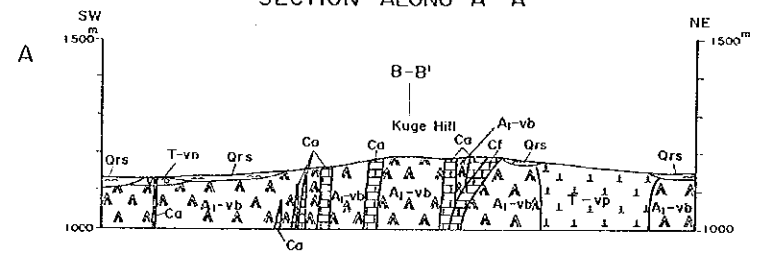


A — A' Line of section

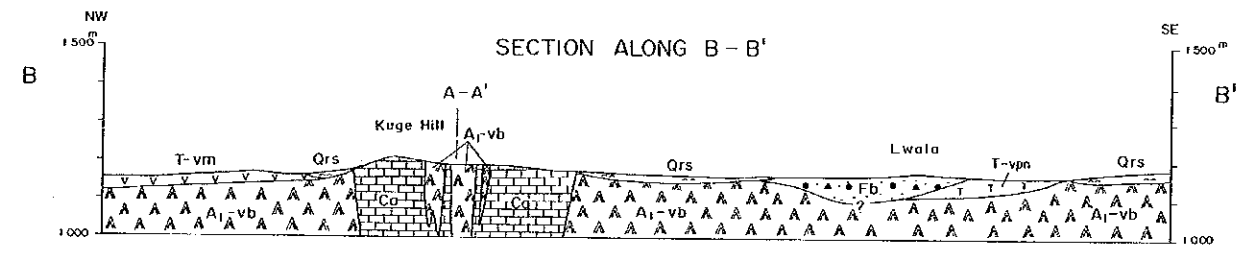




SECTION ALONG A - A'



SECTION ALONG B - B'

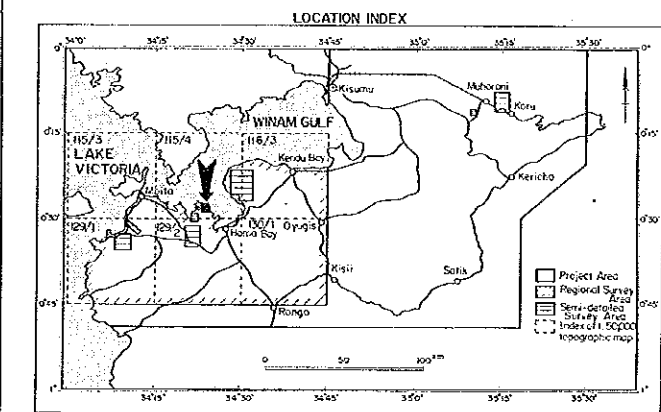


LEGEND

- |                                |                         |
|--------------------------------|-------------------------|
| Qrs                            | Surficial deposits      |
| Fb                             | Ferruginous breccia     |
| Cf                             | Ferrocarnotite          |
| Ca                             | Alvikite                |
| T-vpn                          | Phonolitic nephelinite  |
| T-vp                           | Porphyritic phonolite   |
| T-vm                           | Olivine melanephelinite |
| T-vn                           | Nephelinite agglomerate |
| A1-vb                          | Nyanzian metabasalt     |
| Strike and dip of bedding      |                         |
| Strike and dip of flow banding |                         |
| Dykes and sheets with dip      |                         |
| Line of section                |                         |

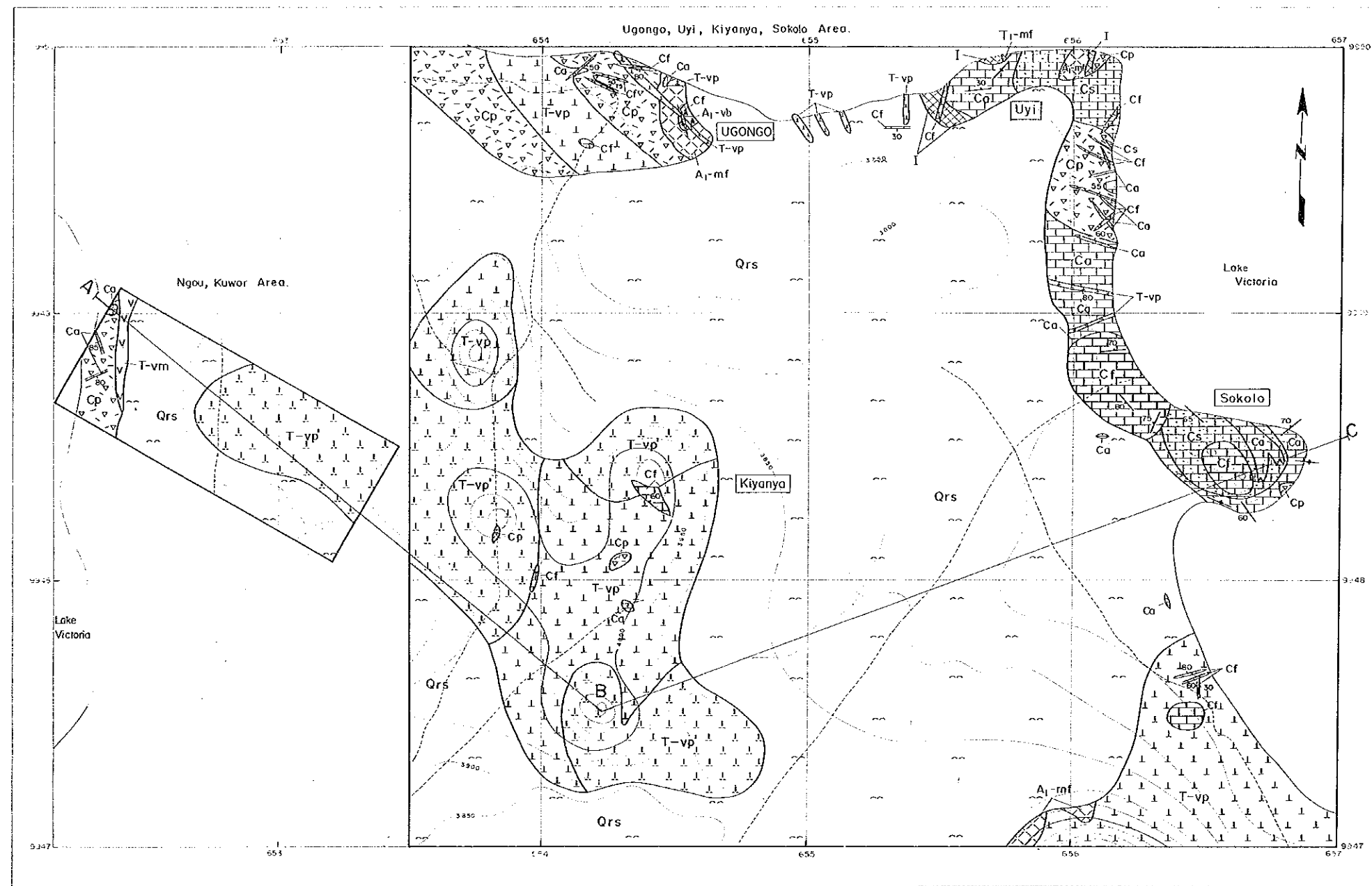


MINERAL EXPLORATION  
IN  
THE HOMA BAY AREA, REPUBLIC OF KENYA  
(PHASE I)  
  
GEOLOGICAL MAP  
OF  
THE UGONGO-UYI-KIYANYA-SOKOLO AREA,  
THE NGOU-KUWOR AREA  
(SEMI-DETAILED SURVEY AREA)



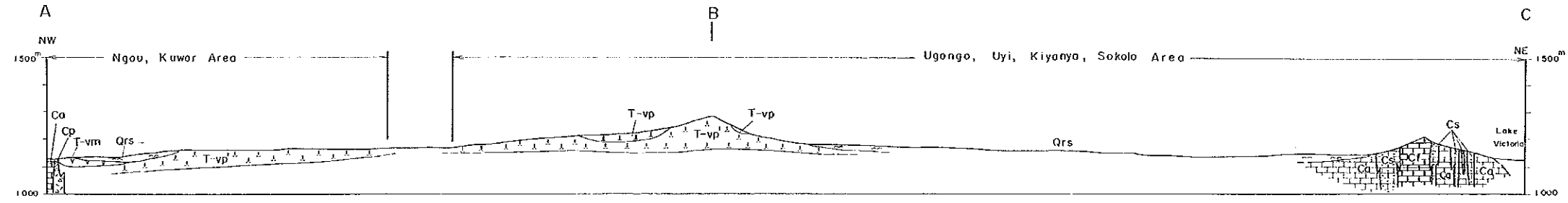
JAPAN INTERNATIONAL COOPERATION AGENCY  
METAL MINING AGENCY OF JAPAN  
February 1988

Scale 1:10,000



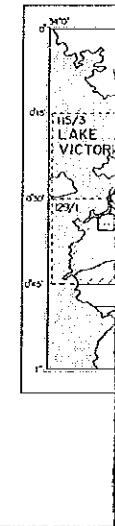
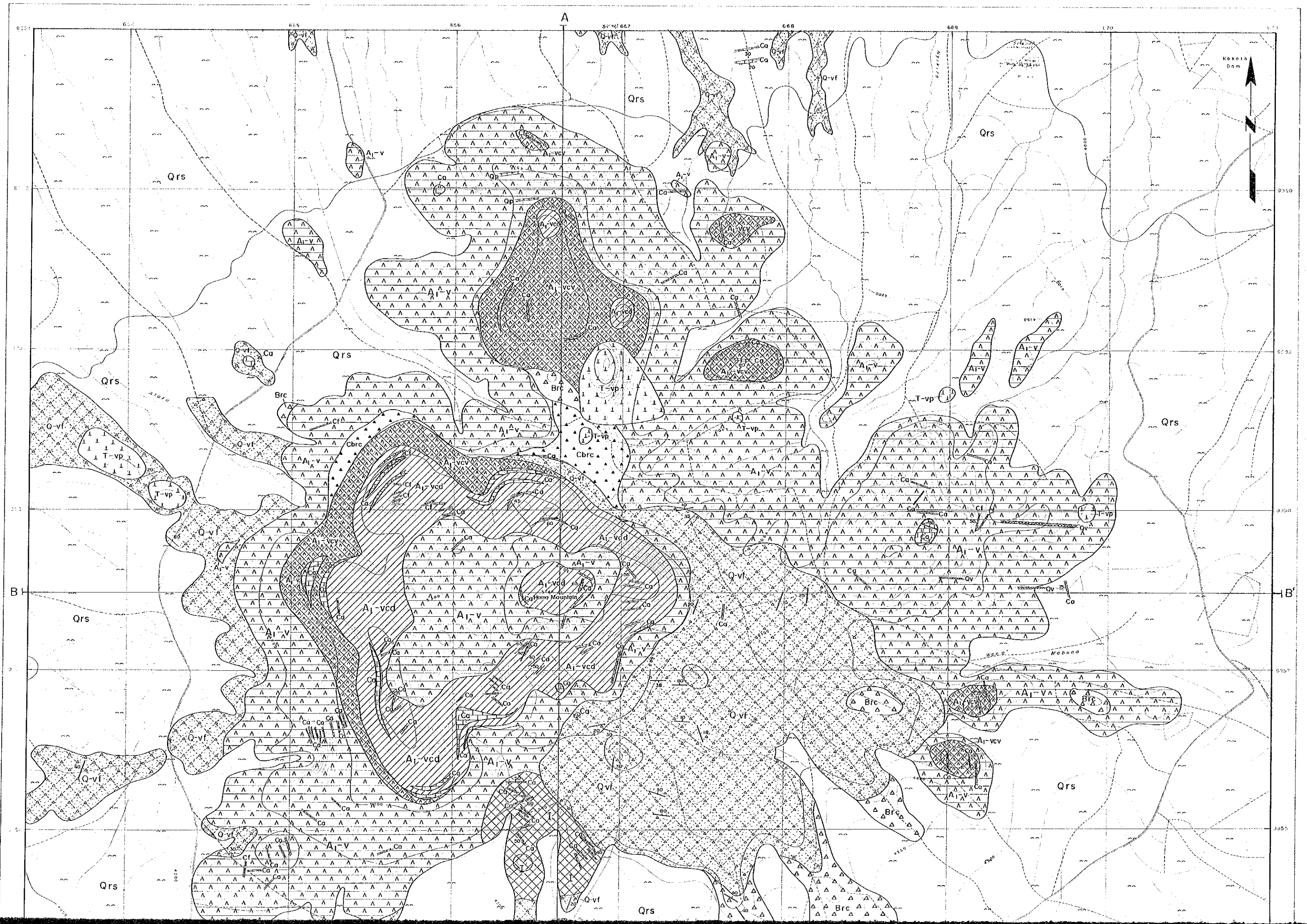
SECTION ALONG A - B

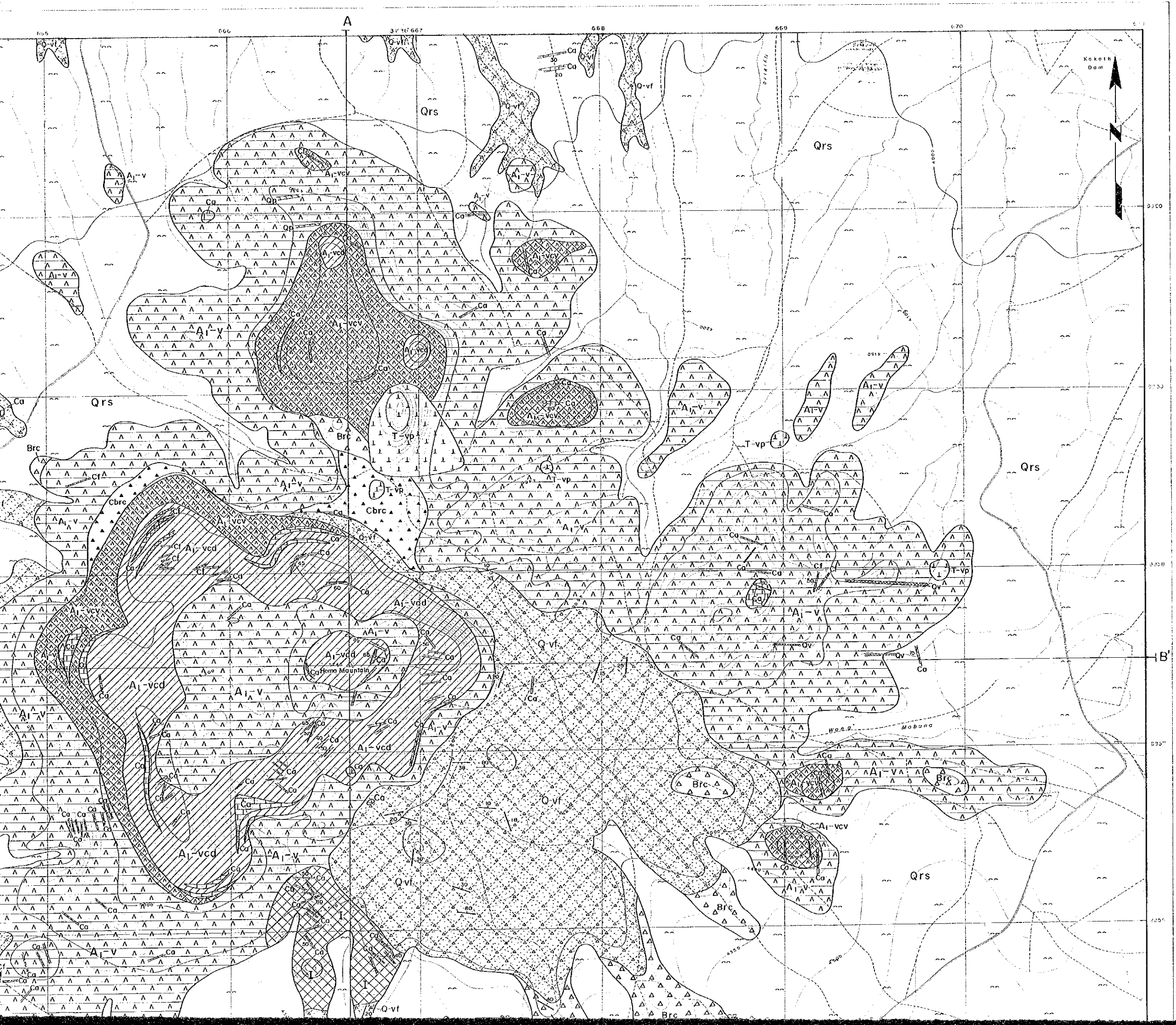
SECTION ALONG B - C



LEGEND

Qrs	Surficial deposits
T <sub>1</sub> -vp	Phonolite
T <sub>1</sub> -vp	Porphyritic phonolite
T <sub>1</sub> -vm	Melanephelinite
Cf	Ferrocarnatite
Cs	Sövite
Ca	Alvikite
Cp	Carbonatitic pyroclastic rocks
T <sub>1</sub> -mf	Fenitized rock
I	Nepheline syenite and ijolite
A <sub>1</sub> -mf	Fenitized Nyanzian rock
A <sub>1</sub> -vb	Nyanzian metabasalt
Strike and dip of flow banding	
Dykes and sheets with dip	
Line of section	





PL. 13

MINERAL EXPLORATION  
IN  
THE HOMA BAY AREA, REPUBLIC OF KENYA  
(PHASE I)

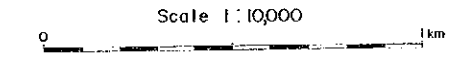
GEOLOGICAL MAP  
OF  
THE HOMA MOUNTAIN AREA  
(SEMI-DETAILED SURVEY AREA)

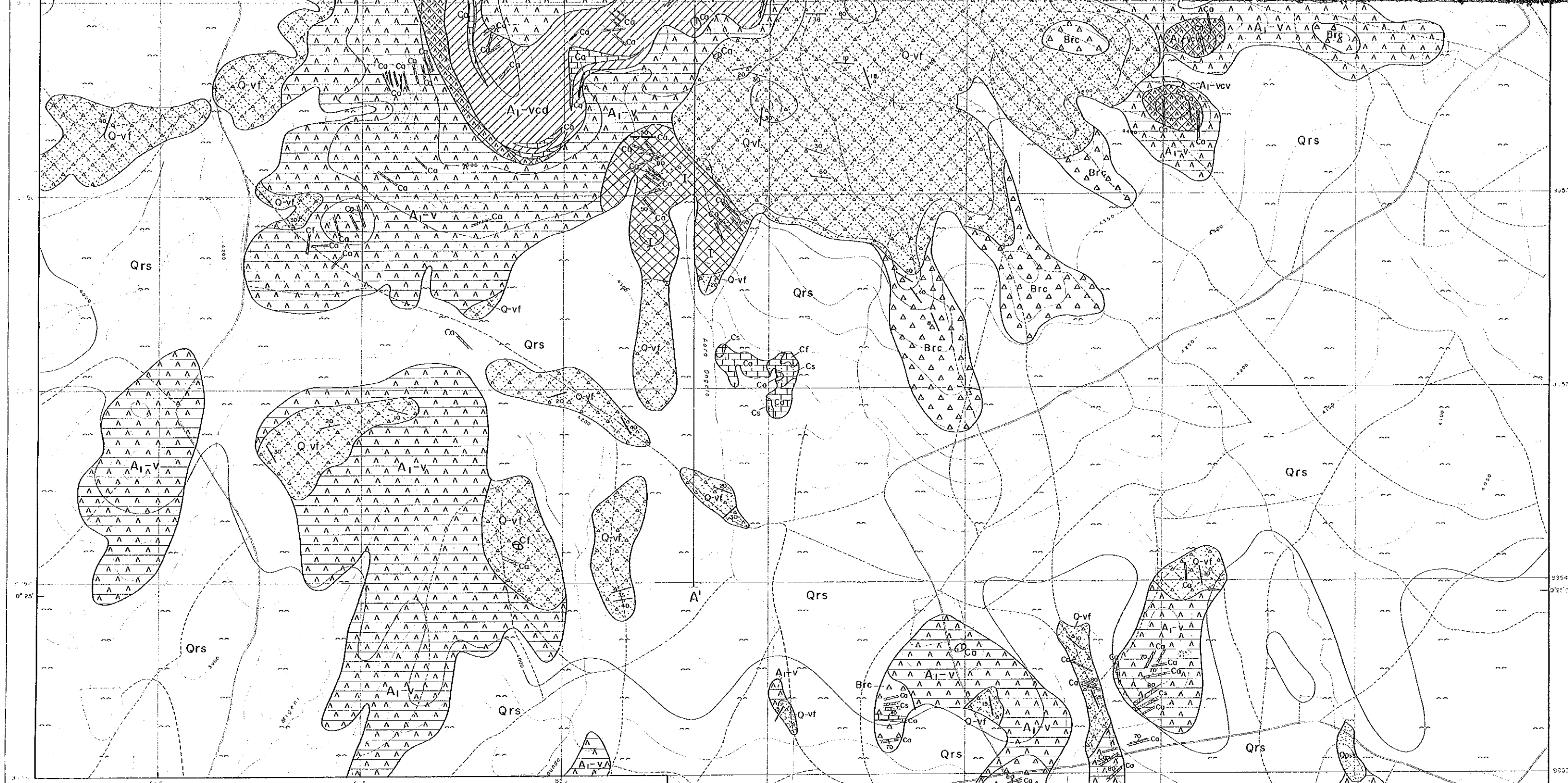
国際協力事業団  
17683  
図書資料室蔵書

LOCATION INDEX

JAPAN INTERNATIONAL COOPERATION AGENCY  
METAL MINING AGENCY OF JAPAN  
February 1988

Scale 1:10,000

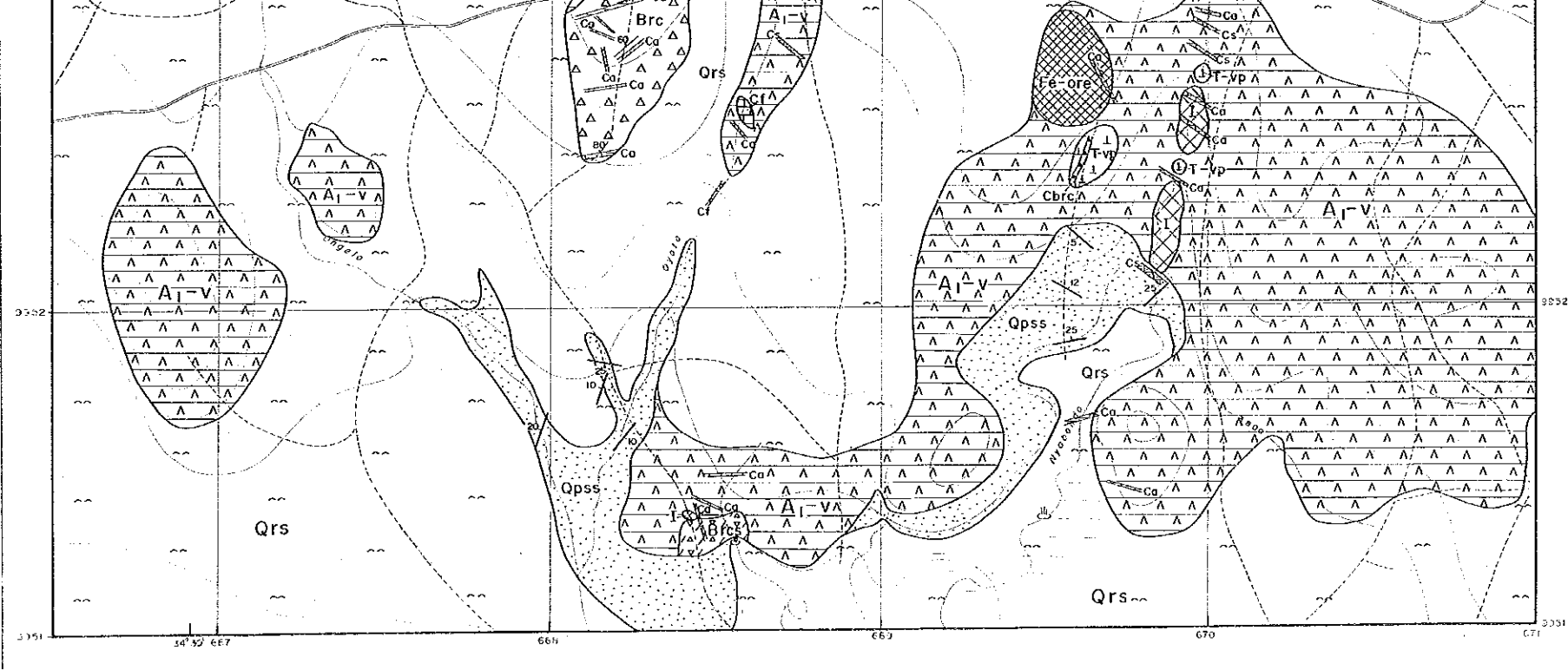


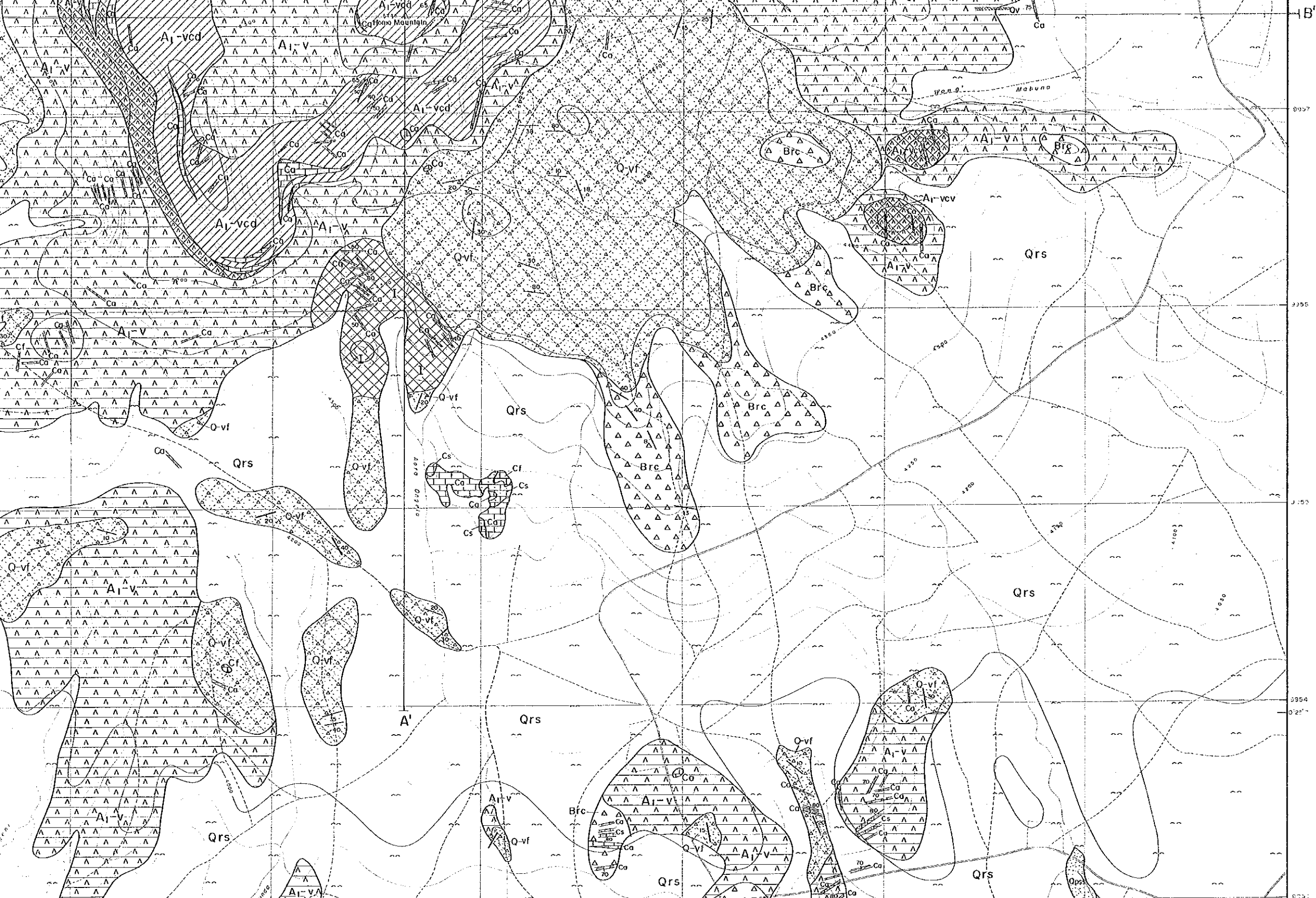


LEGEND	
Qrs	Surficial deposits
Qpss	Sandstone, siltstone and conglomerate ( Bala Series )
Q-vf	Calcareous tuff breccia ( partly bedded tuff )
T-vp	Phonolite, mainly plugs and dykes
Cf	Ferrocarnatite
Ca	Alvikite
Cs	Sövite
Cbrc	Carbonatitic breccia
Fe-ore	Iron ore ( scattered zone )
Qv	Quartz vein
Brc	Calcareous orchreous breccia
Brcs	Siliceous breccia
Qp	Quartz porphyry ( dyke )
T	Tjolite

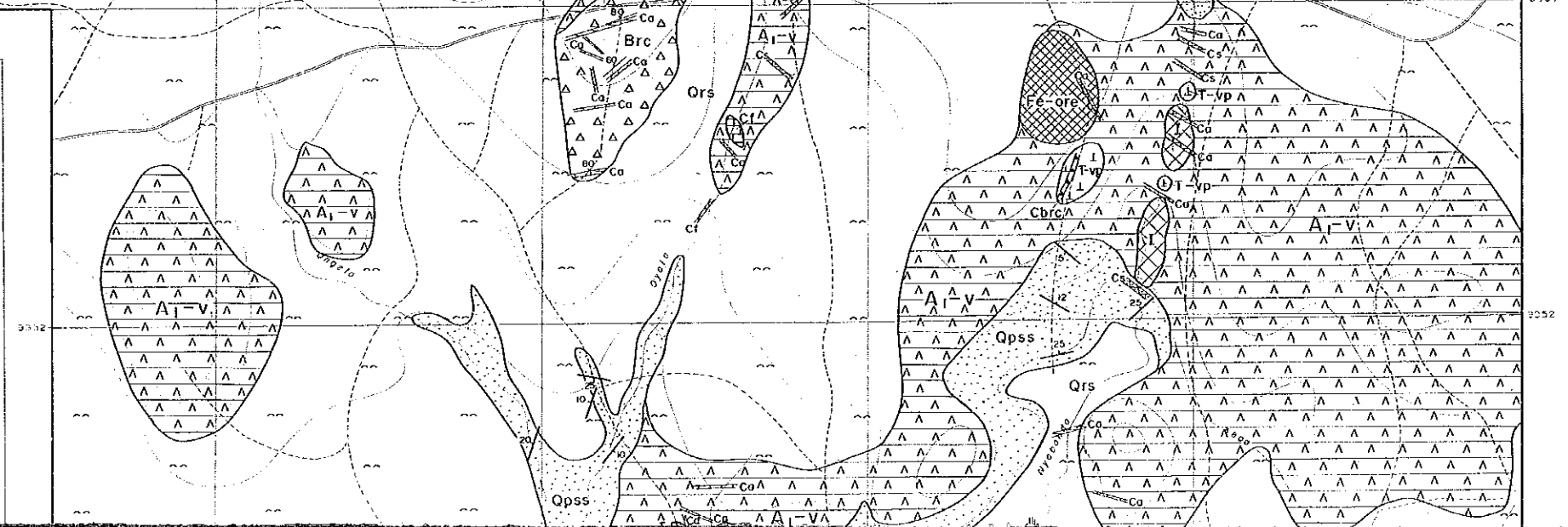
	Strike and dip of bedding
	Strike and dip of flow banding
	Strike and dip of joint
	Dykes and sheets with dip
	Hot spring
A-----A'	Line of section





**GEND**

- Strike and dip of bedding
- Strike and dip of flow banding
- Strike and dip of joint
- Dykes and sheets with dip
- Hot spring
- A—A' Line of section



18'

3357

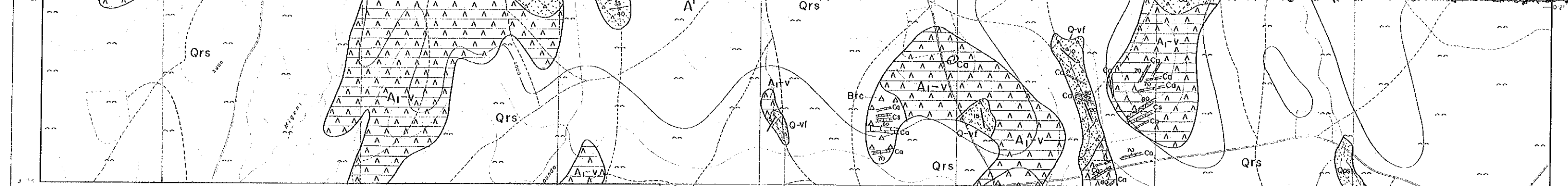
3395

3450

3554

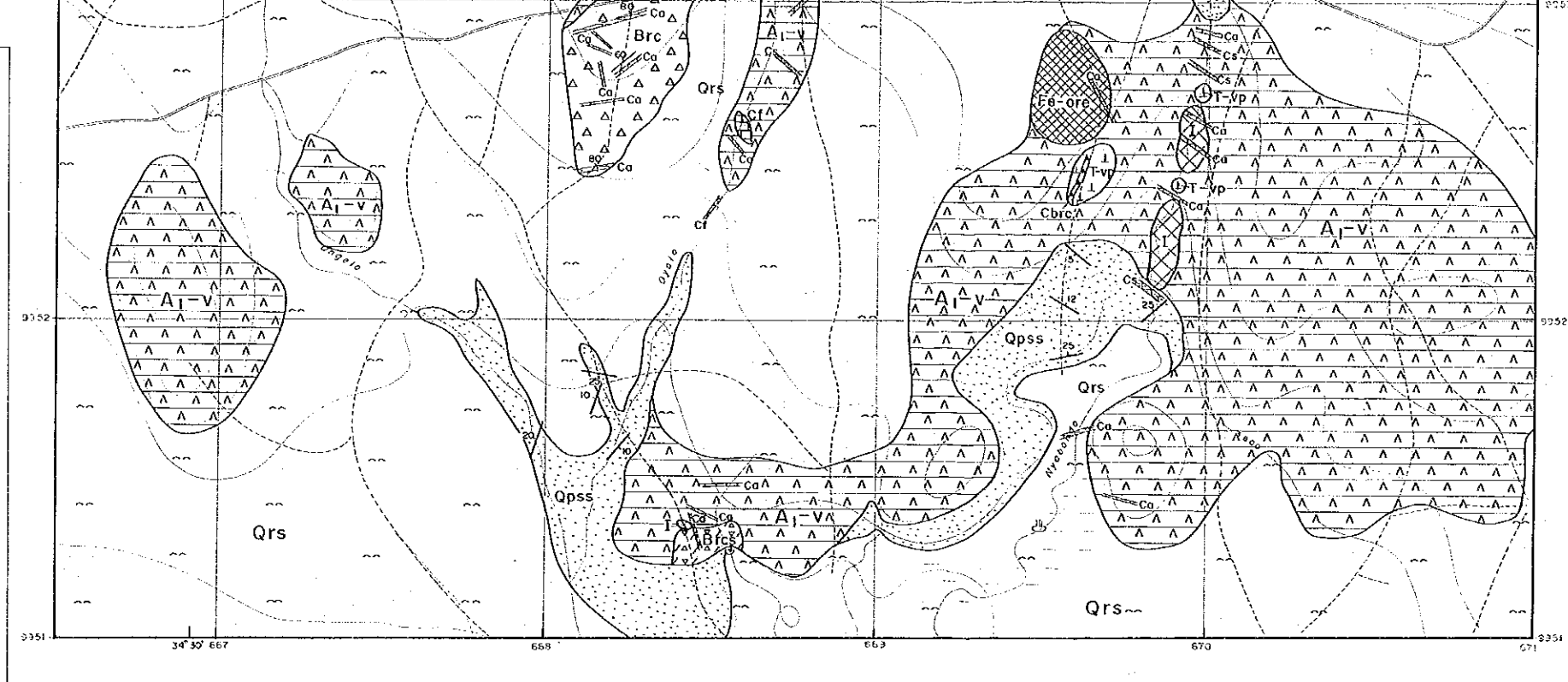
3572

3572

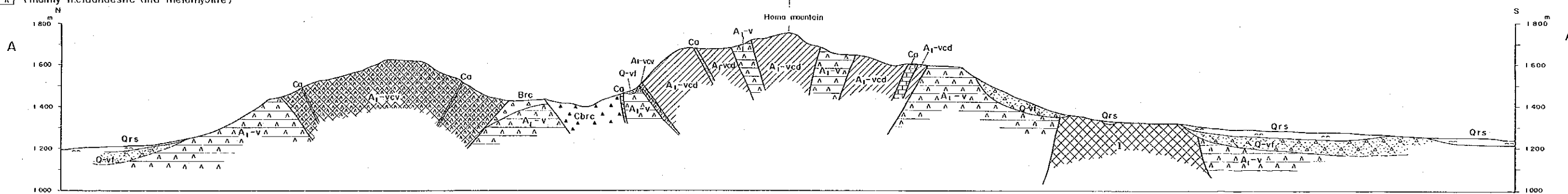


**LEGEND**

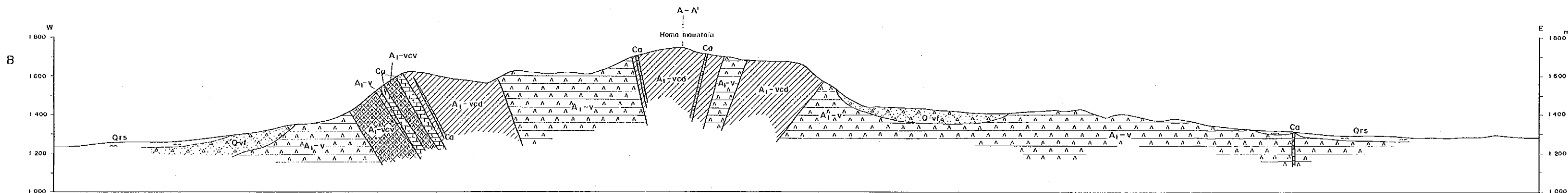
	Surficial deposits		Strike and dip of bedding
	Sandstone, siltstone and conglomerate ( Bala Series )		Strike and dip of flow banding
	Calcareous tuff breccia ( partly bedded tuff )		Strike and dip of joint
	Phonolite, mainly plugs and dykes		Dykes and sheets with dip
	Ferrocarbonatite		Hot spring
	Alvikite		A — A' Line of section
	Sövite		
	Carbonatitic breccia		
	Iron ore ( scattered zone )		
	Quartz vein		
	Calcareous archreous breccia		
	Siliceous breccia		
	Quartz porphyry ( dyke )		
	Tjolite		
	Shattered Nyanzian volcanic rocks with dyke swarms of carbonatite		
	Strongly shattered Nyanzian volcanic rocks with network veinlets of carbonatite		
	Shattered Nyanzian volcanic rocks ( mainly metaandesite and metarhyolite )		

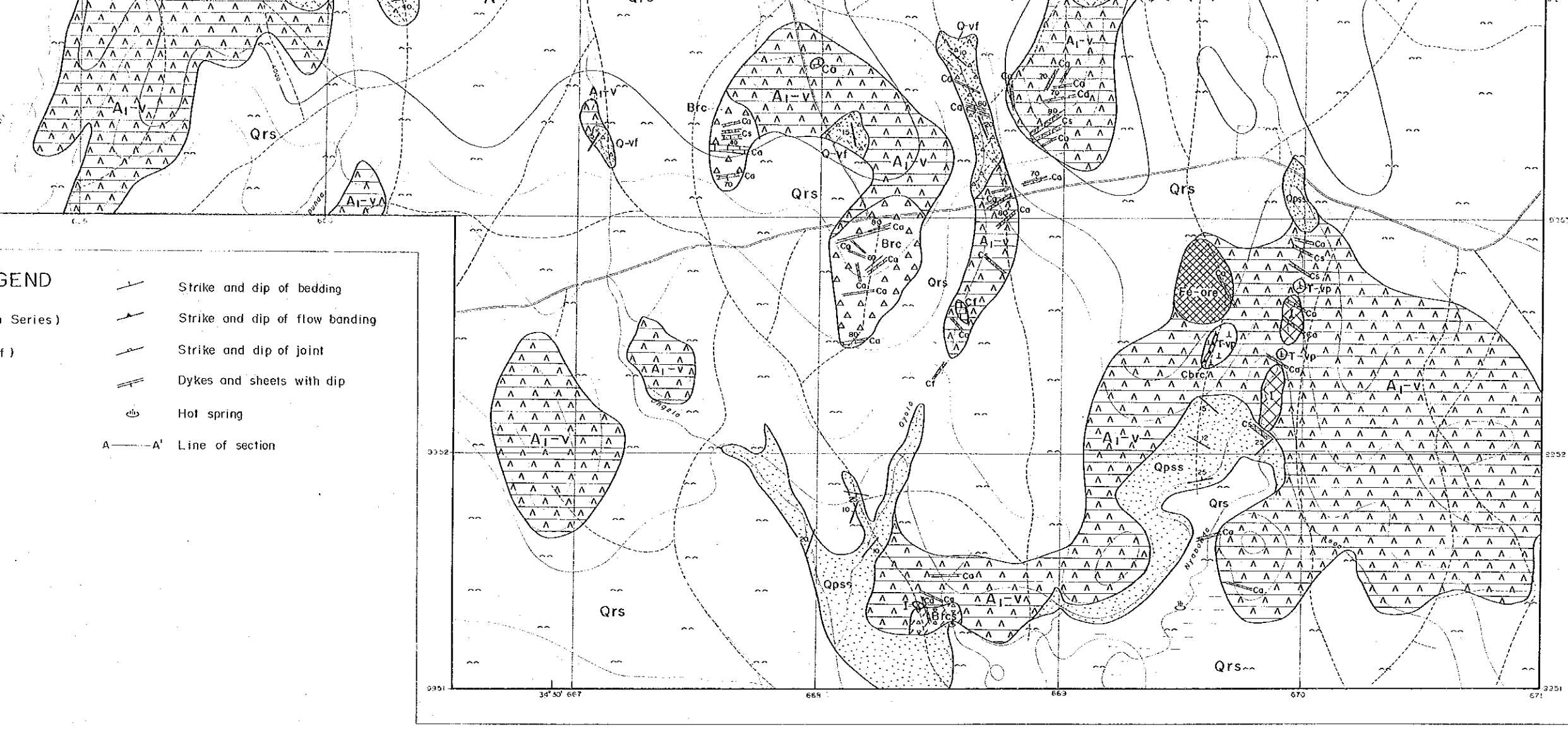


SECTION ALONG A - A'

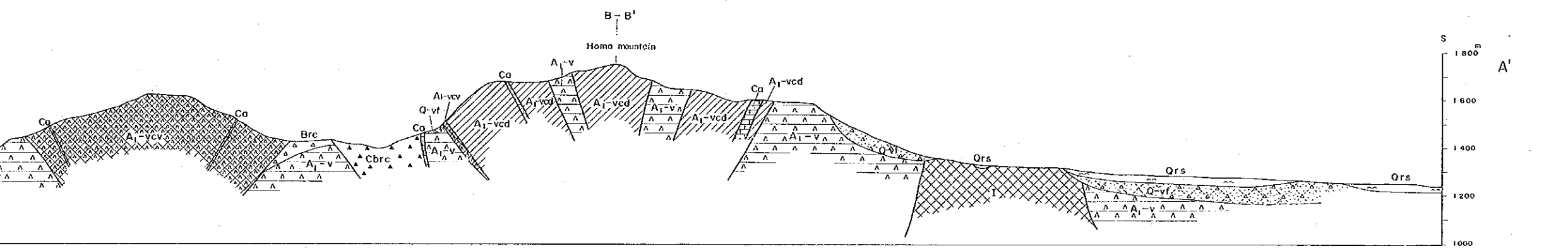


SECTION ALONG B - B'

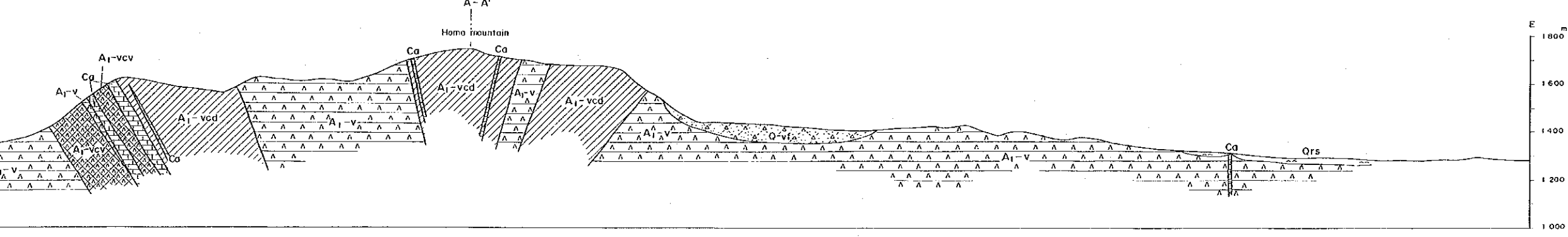


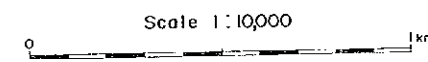
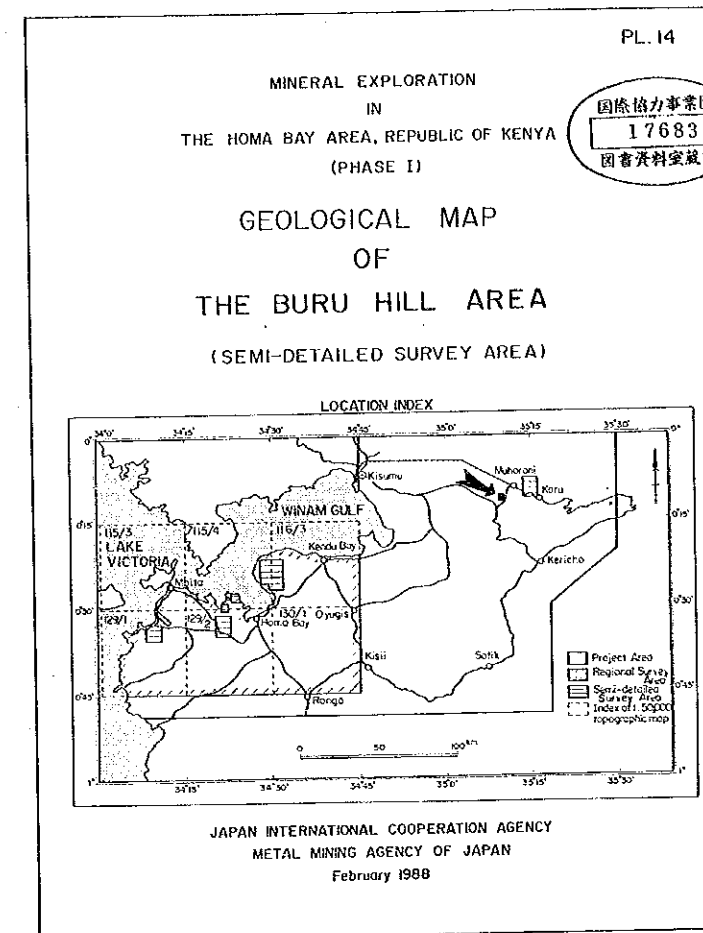
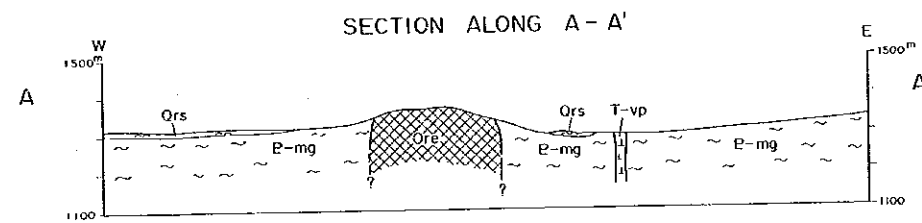
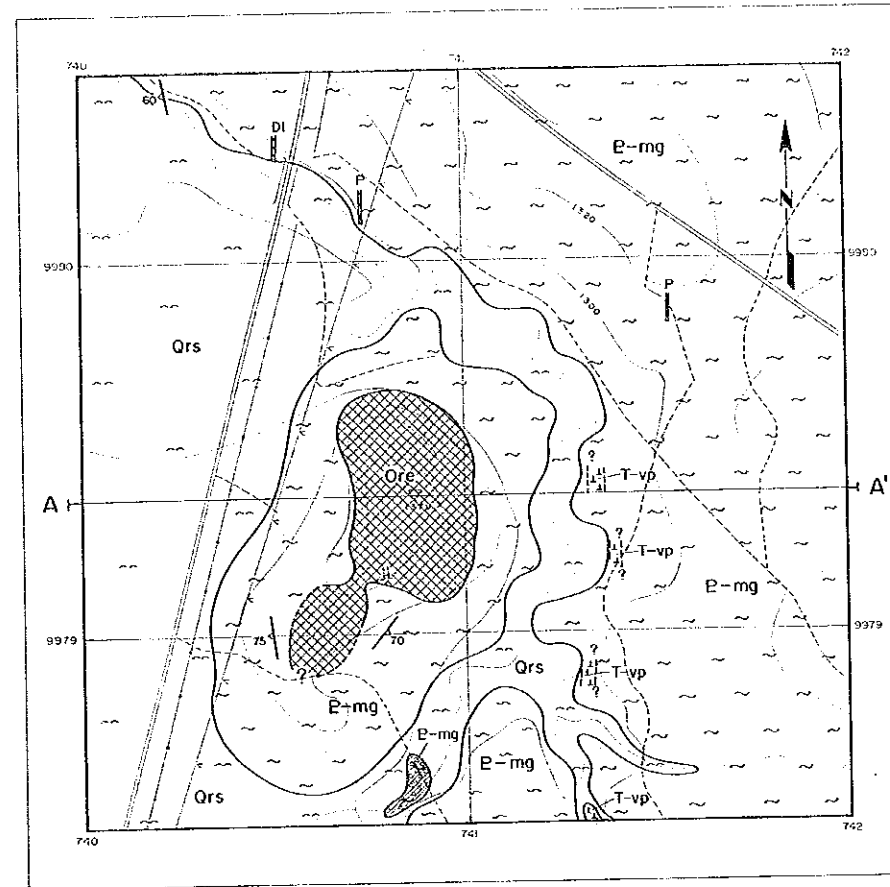


SECTION ALONG A - A'



SECTION ALONG B - B'





**LEGEND**

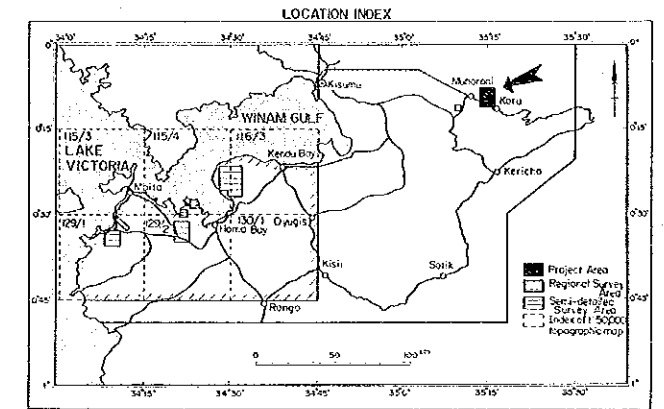
Qrs	~ ~ ~	Surficial deposits
T-vp		Phonolite
DI	+ + +	Dolerite dyke
P	x x x	Pegmatite and segregation veins
Ore	x x x	*ORE* (vent agglomerate)
E-mg	~ ~ ~	Granitoid gneiss
		Silicified and brecciated zone
		Strike and dip of gneissosity
		Portal of inclined shaft
A ——— A' Line of section		



MINERAL EXPLORATION  
IN  
THE HOMA BAY AREA, REPUBLIC OF KENYA  
(PHASE I)

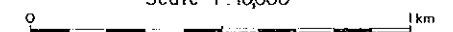
国際協力事業団  
17683  
図書資料室蔵書

GEOLOGICAL MAP  
OF  
THE LEGETET HILL AREA  
(SEMI-DETAILED SURVEY AREA)



JAPAN INTERNATIONAL COOPERATION AGENCY  
METAL MINING AGENCY OF JAPAN  
February 1988

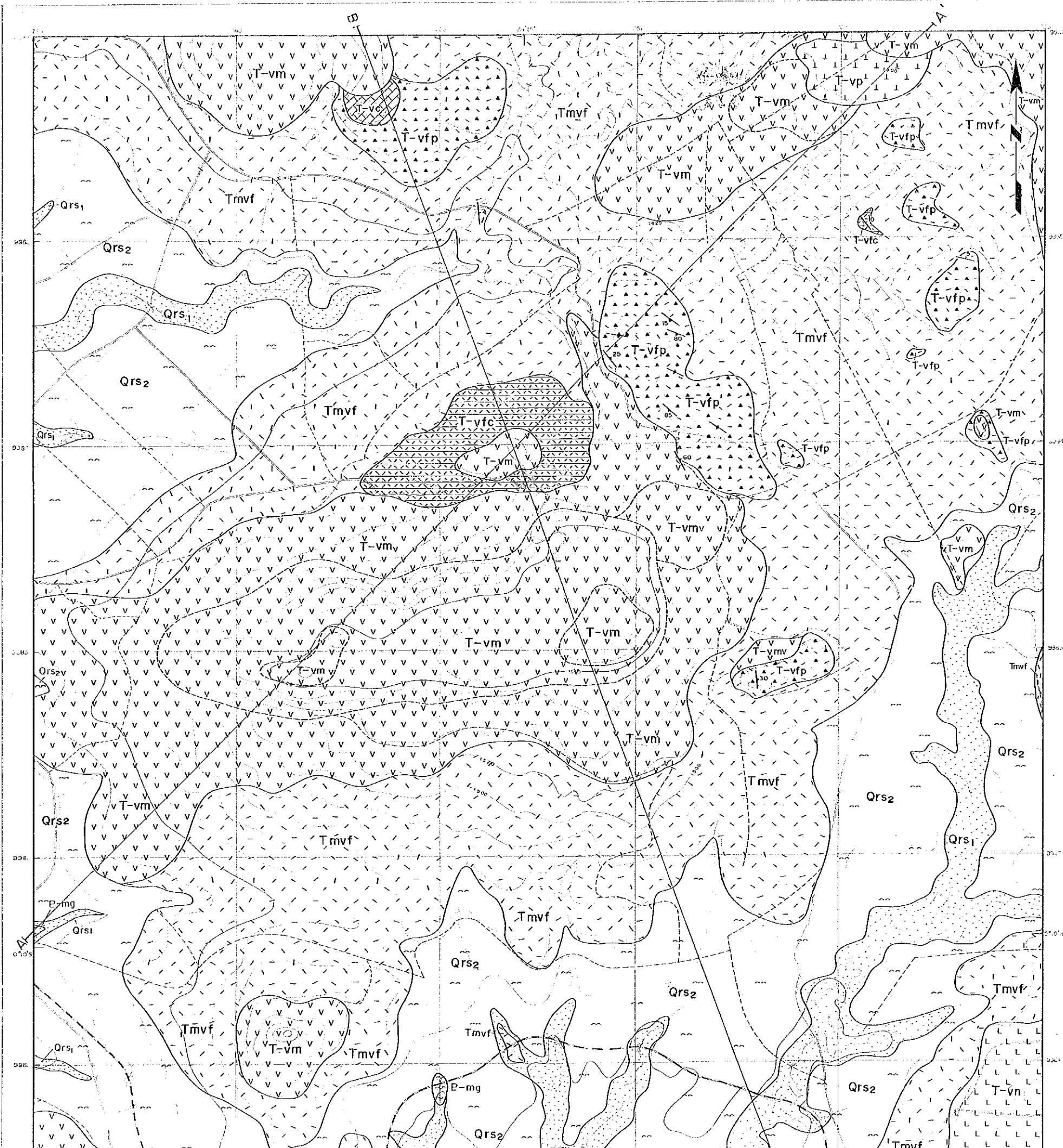
Scale 1:10000

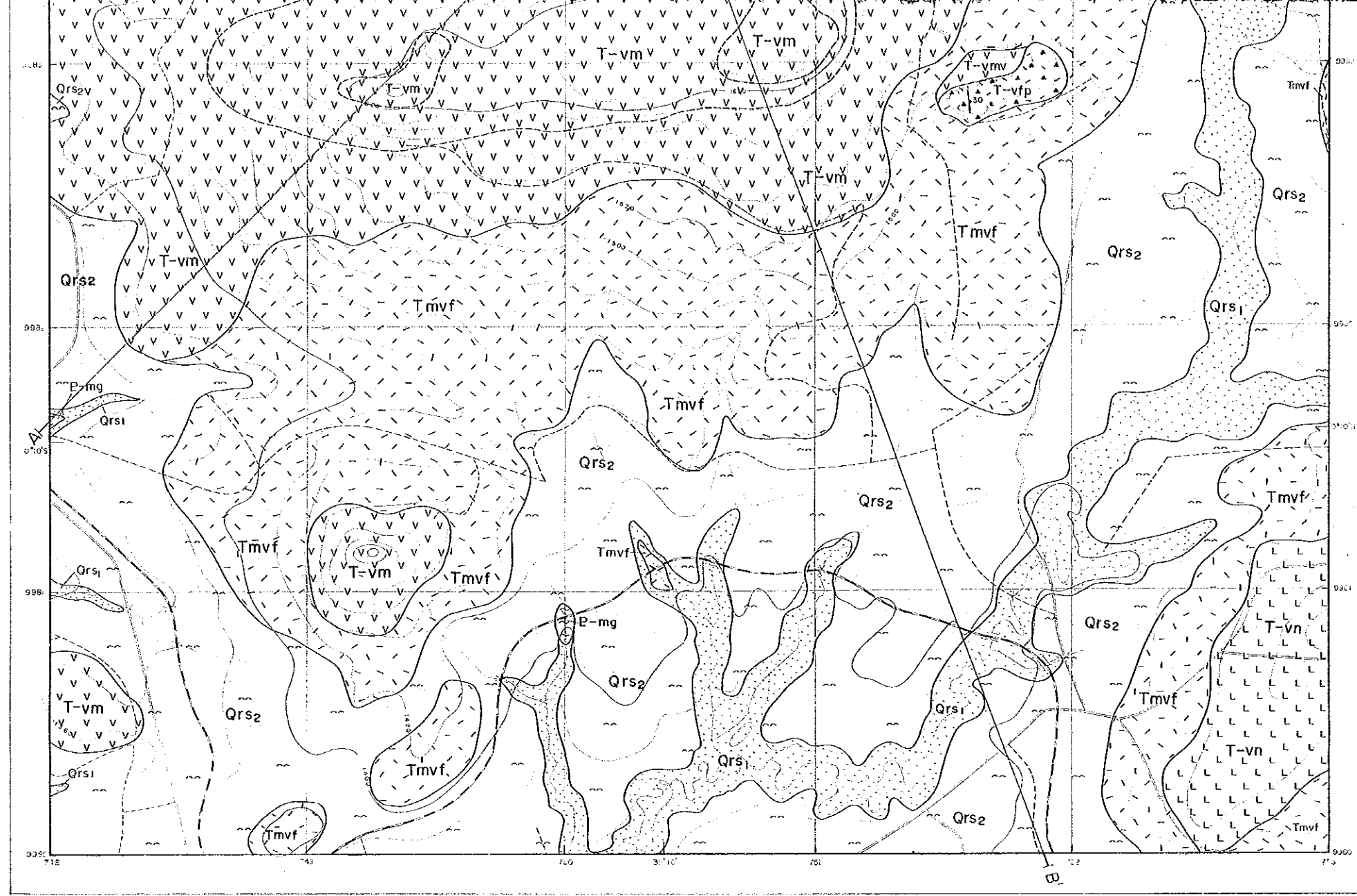


LEGEND

- Qrs<sub>1</sub> Alluvium
- Qrs<sub>2</sub> Colluvial sediments
- T-vp Phonotite
- T-vn Nephelinite
- T-vm Melanephelinite with subordinate agglomerate
- T-vfc Bedded carbonatitic tuff
- T-vc Carbonatite lava
- T-vfp Pyroclastic carbonatite (tuff, lapilli tuff, tuff breccia, volcanic breccia)
- T-mvf Tuff with minor granule conglomerate
- P-mg Granitoid gneiss (Mozambique Metamorphic Rocks)

- Strike and dip of bedding
- Strike and dip of flow banding
- Boundary of lava unit
- A—A' Line of section

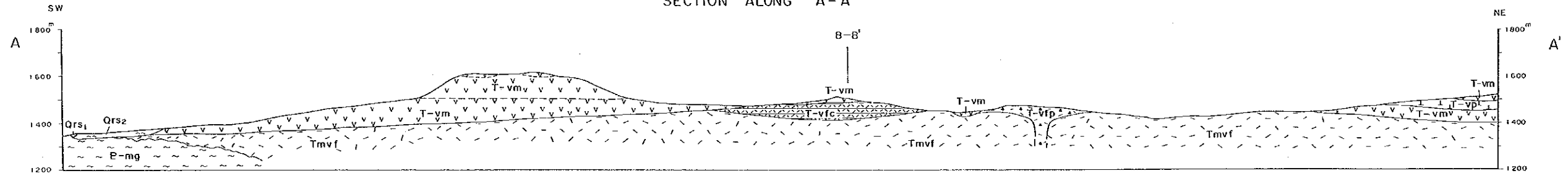




LEGEND

- Qrs1 Alluvium
  - Qrs2 Colluvial sediments
  - T-vm Melanephelinite with subordinate agglomerate
  - T-mvf Tuff with minor granule conglomerate
  - T-vn Nephellinite
  - T-vp Pyroclastic carbonatite (tuff, lapilli tuff, tuff breccia, volcanic breccia)
  - T-vc Carbonatite lava
  - T-vfc Bedded carbonatitic tuff
  - E-mg Granitoid gneiss (Mozambique Metamorphic Rocks)
- 
- Strike and dip of bedding
  - Strike and dip of flow banding
  - Boundary of lava unit
  - A-A' Line of section

SECTION ALONG A-A'



SECTION ALONG B-B'

