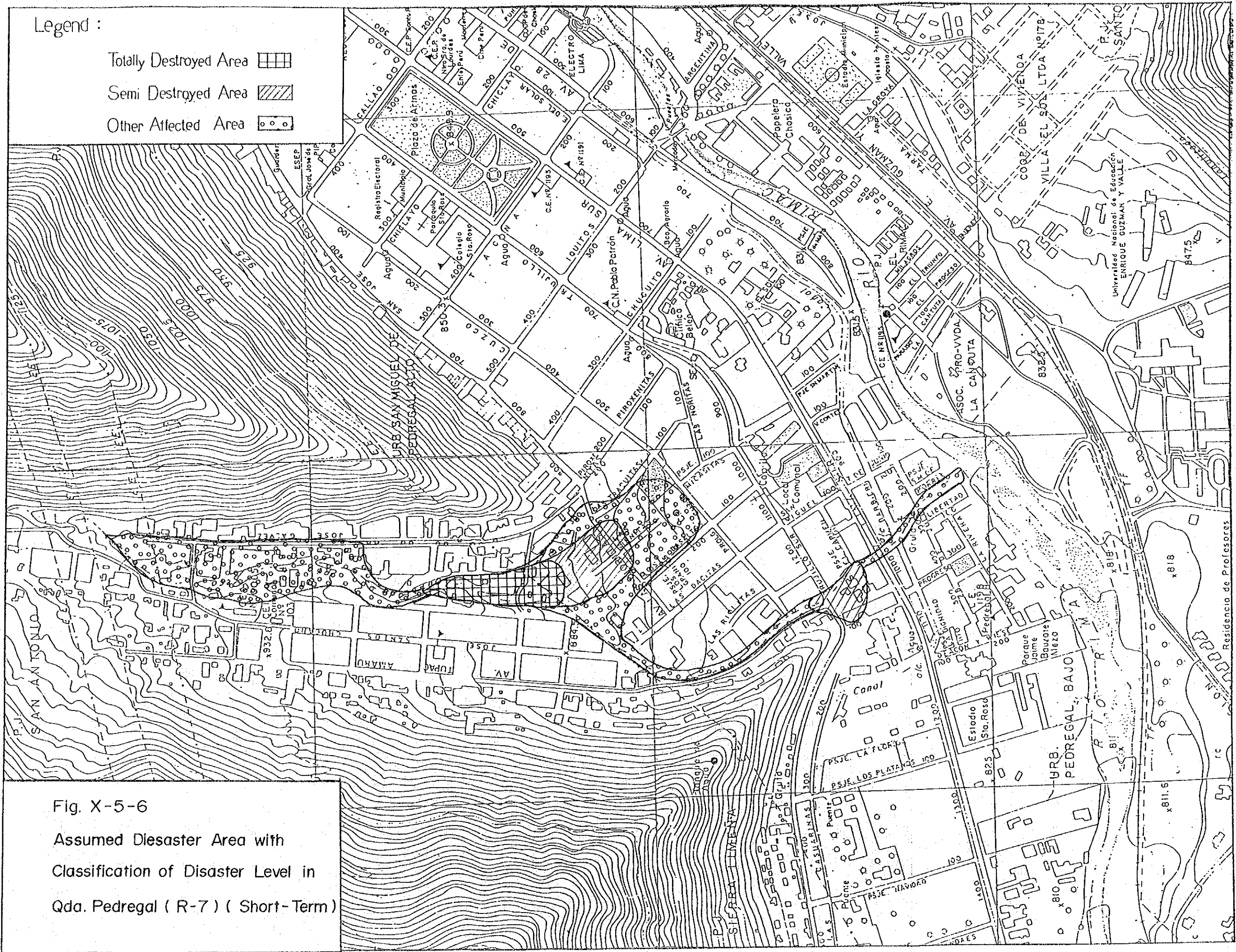
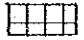


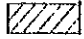
Fig. X-5-5

Assumed Disaster Area with  
 Classification of Disaster Level  
 in Qda Pedregal (R-7).  
 (Mid. Term)



Legend :

Totally Destroyed Area 

Semi Destroyed Area 

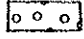

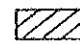
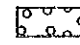
Other Affected Area 

Fig. X-5-6

Assumed Disaster Area with  
 Classification of Disaster Level in  
 Qda. Pedregal ( R-7 ) ( Short-Term )

Legend :

- Totally Destroyed Area 
- Semi Destroyed Area 
- Other Affected Area 

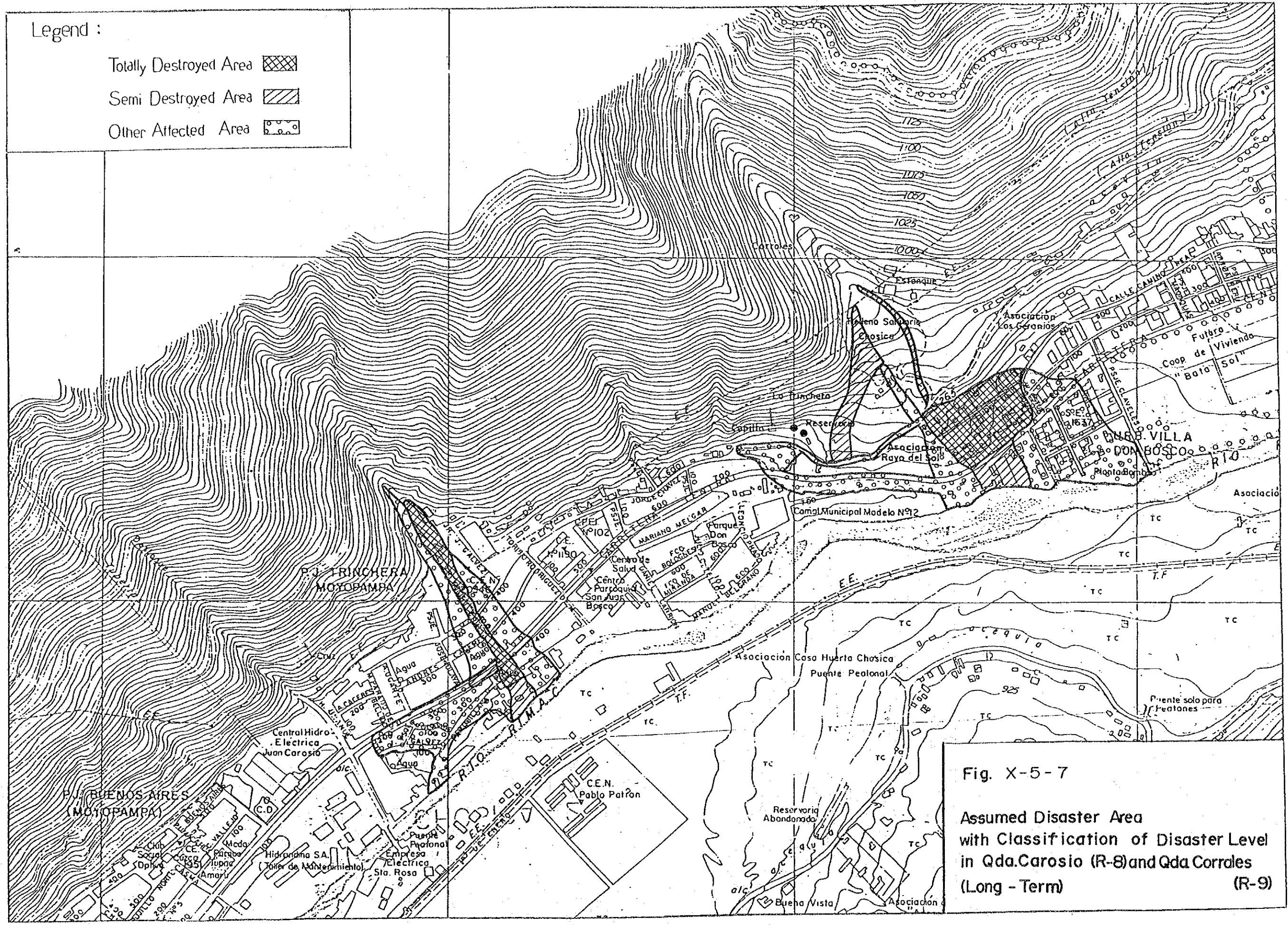
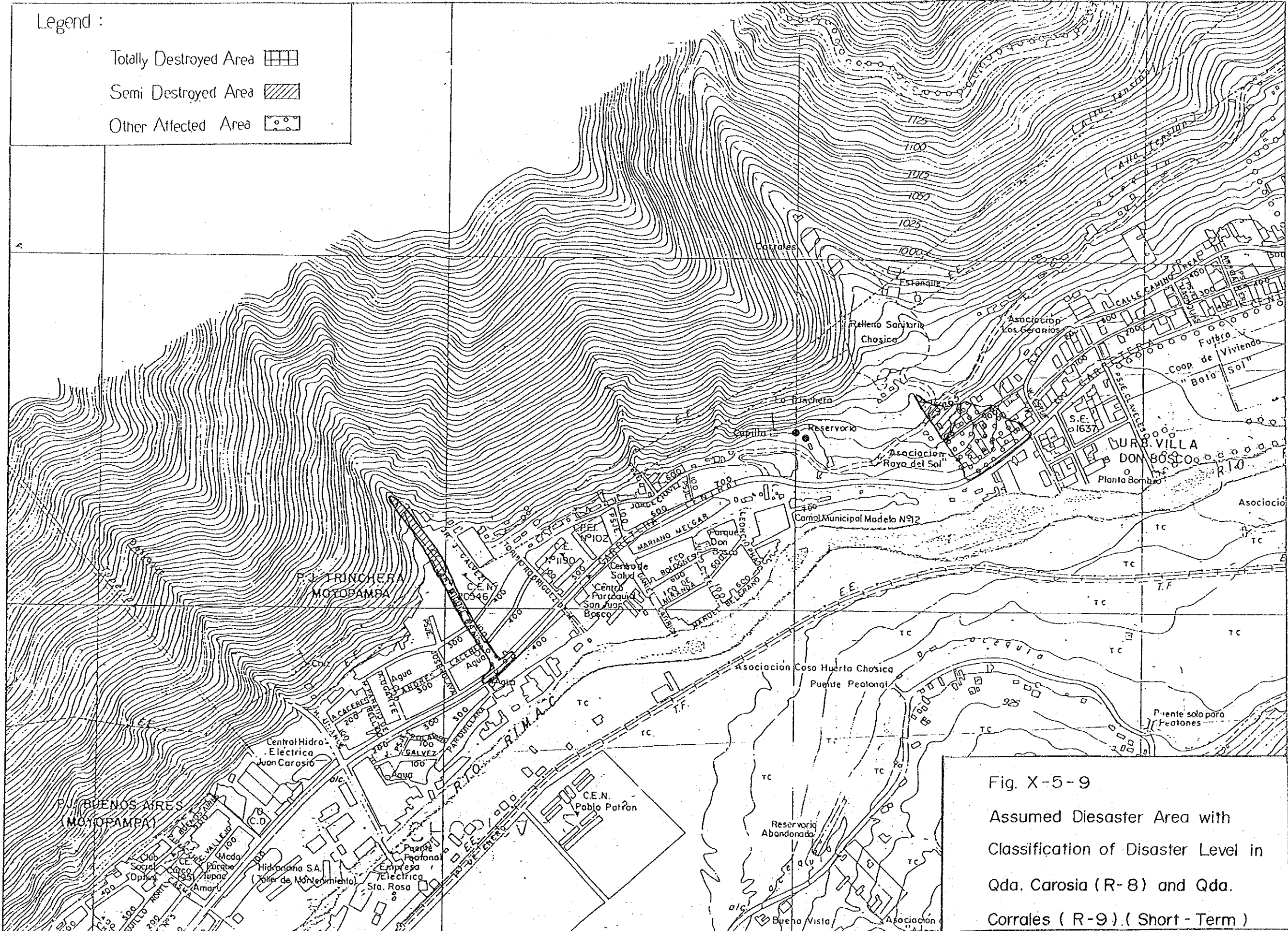


Fig. X-5-7

Assumed Disaster Area  
with Classification of Disaster Level  
in Qda. Carosio (R-8) and Qda. Corrales  
(Long - Term) (R-9)





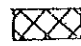
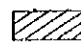
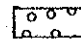
Legend :

- Totally Destroyed Area
- Semi Destroyed Area
- Other Affected Area

Fig. X-5-9  
 Assumed Disaster Area with  
 Classification of Disaster Level in  
 Qda. Carosia (R-8) and Qda.  
 Corrales (R-9). (Short - Term)



Legend :

- Totally Destroyed Area 
- Semi Destroyed Area 
- Other Affected Area 

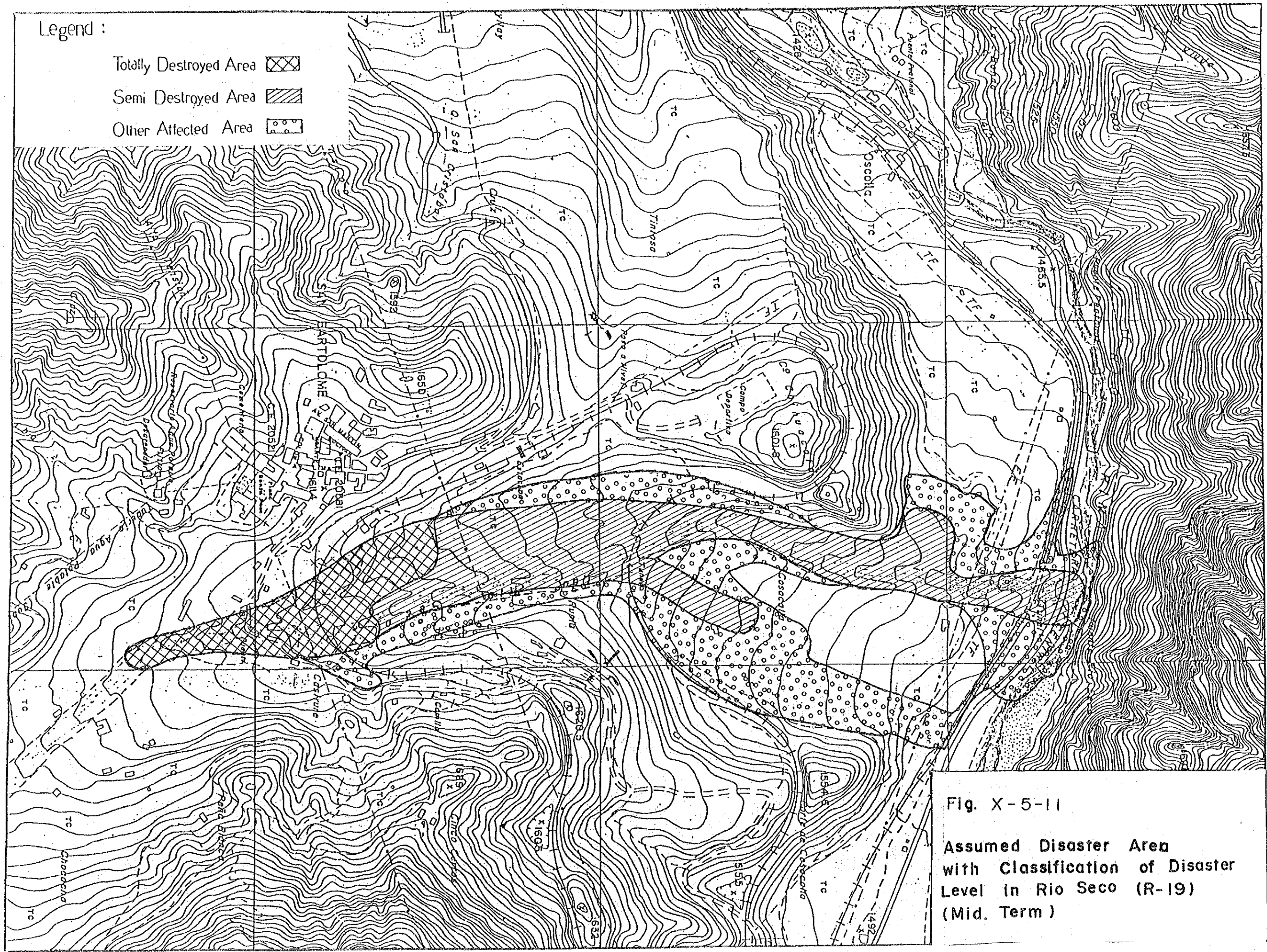
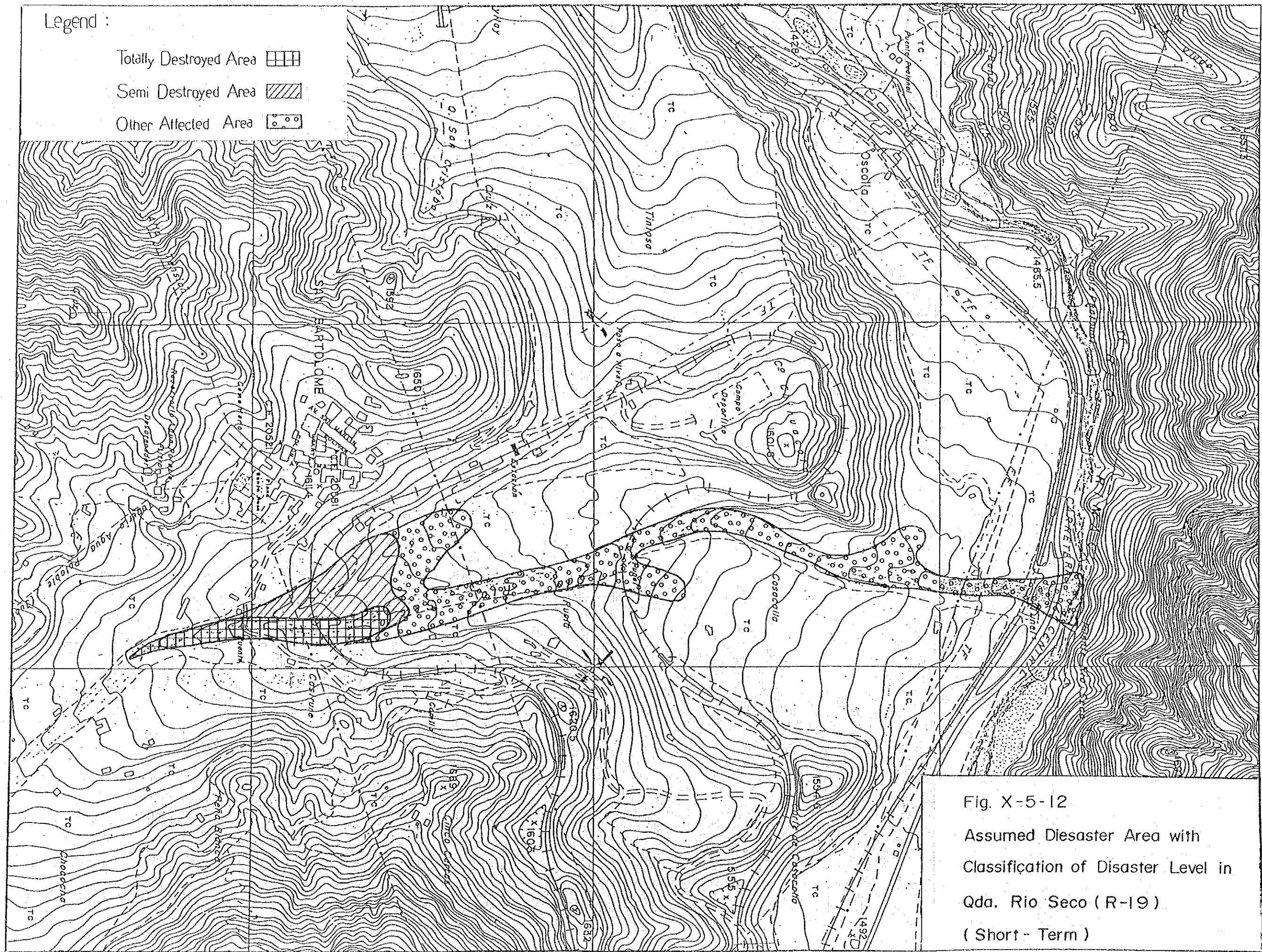


Fig. X-5-11  
Assumed Disaster Area  
with Classification of Disaster  
Level in Rio Seco (R-19)  
(Mid. Term)

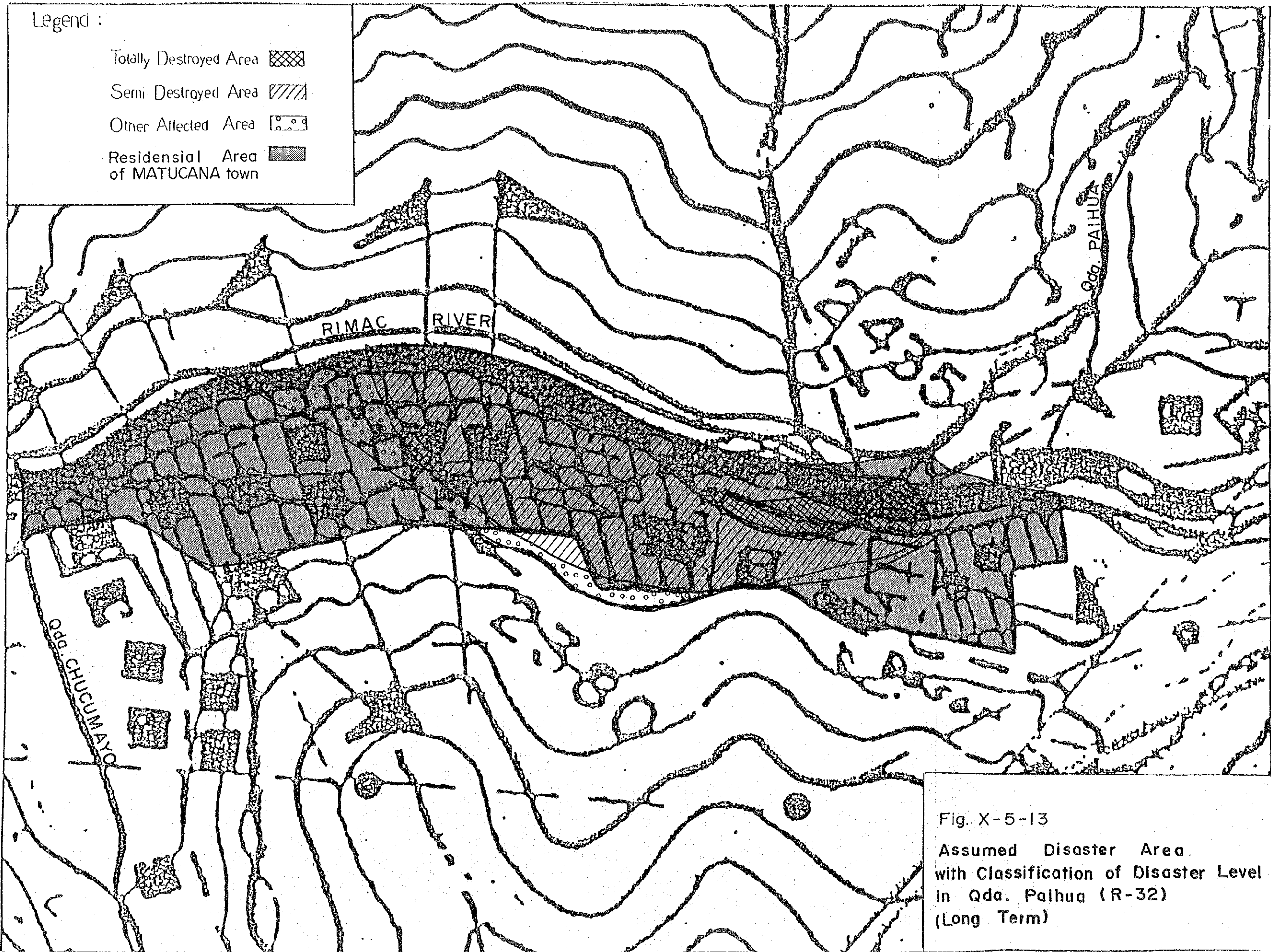


Legend :


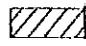
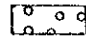

- Totally Destroyed Area
- Semi Destroyed Area
- Other Affected Area

Fig. X-5-12  
 Assumed Disaster Area with  
 Classification of Disaster Level in  
 Qda. Rio Seco (R-19)  
 ( Short - Term )





Legend :

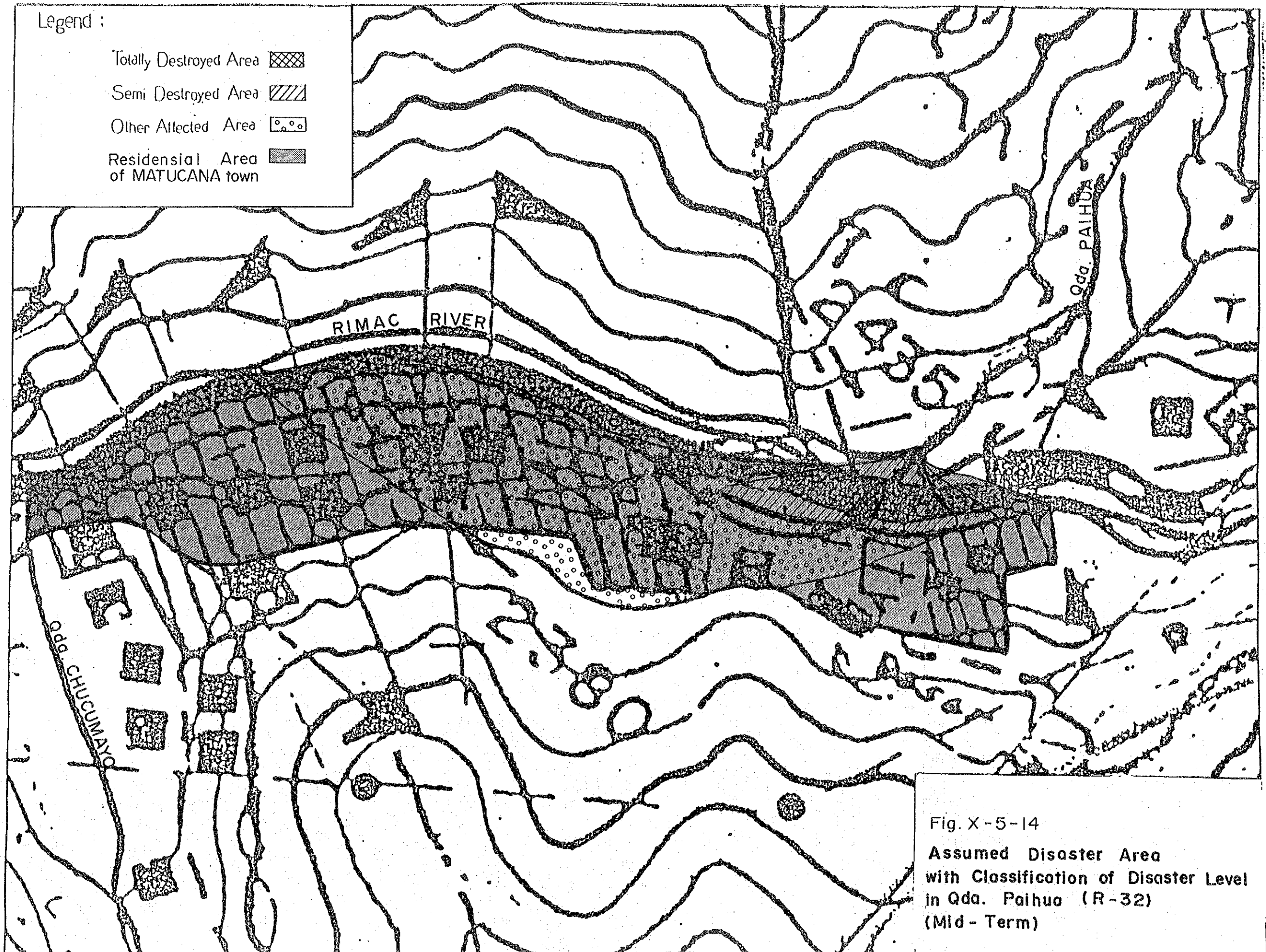
- Totally Destroyed Area 
- Semi Destroyed Area 
- Other Affected Area 
- Residential Area of MATUCANA town 

RIMAC RIVER

Qda. PAIHUA

Qda. CHUCUMAYO

Fig. X-5-13  
 Assumed Disaster Area  
 with Classification of Disaster Level  
 in Qda. Paihua (R-32)  
 (Long Term)



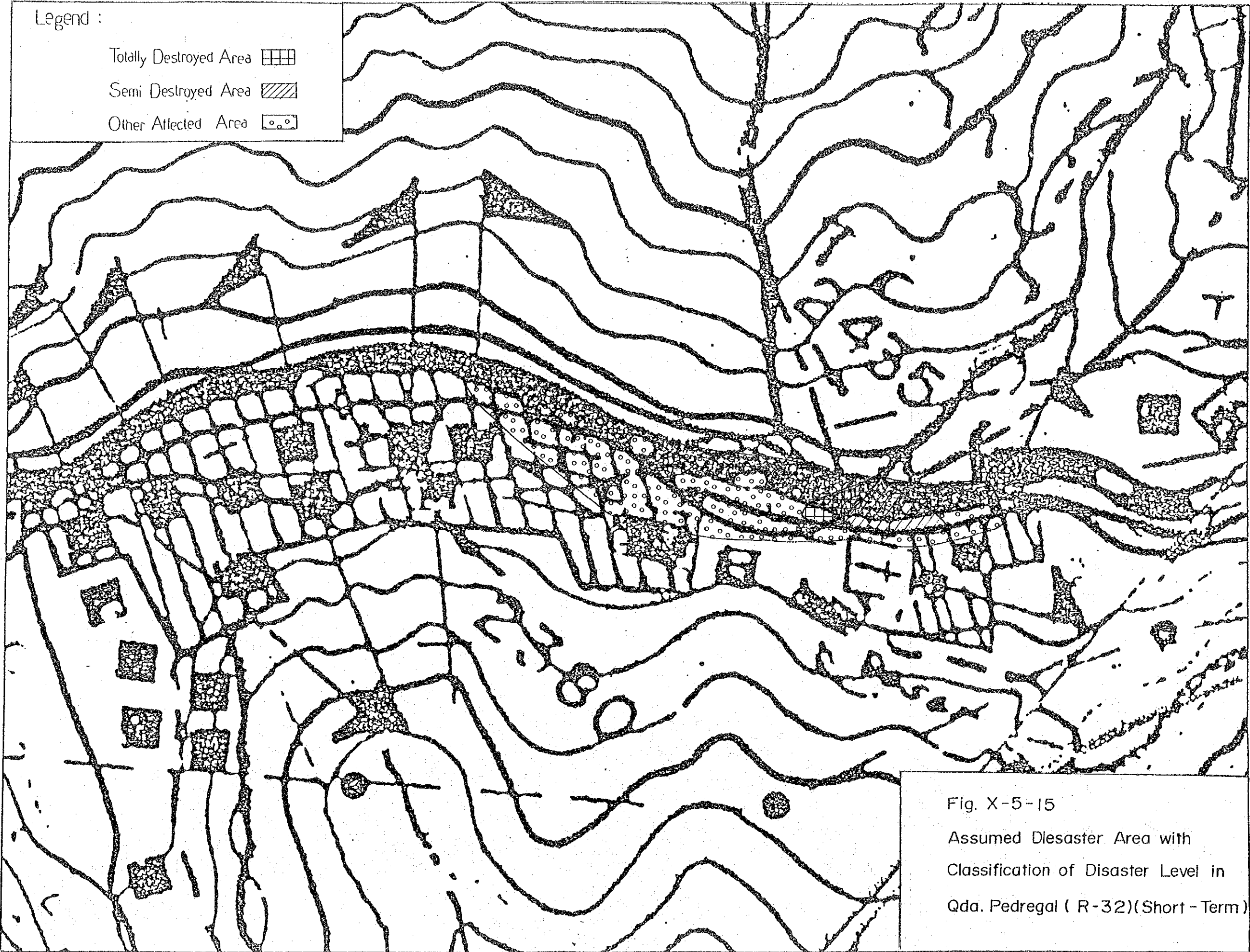


Fig. X-5-15  
Assumed Disaster Area with  
Classification of Disaster Level in  
Qda. Pedregal ( R-32)(Short - Term)



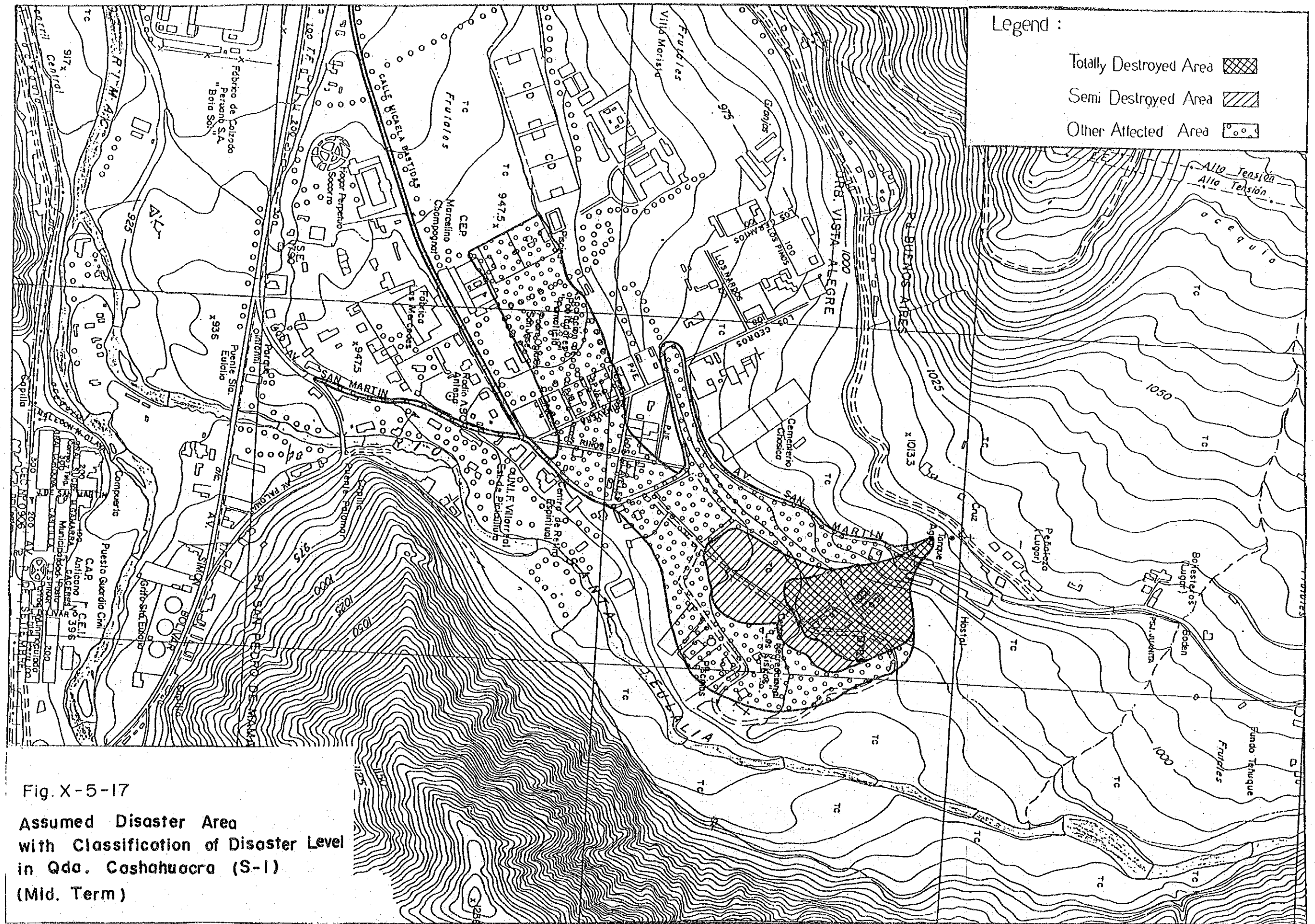


Fig. X-5-17

Assumed Disaster Area  
 with Classification of Disaster Level  
 in Qda. Cashahuacra (S-1)  
 (Mid. Term)