

REFERENCE

- . Akiyama Y. (1984): A case history - exploration, evaluation and development of the Mamut porphyry copper deposit, Geol. Soc. Malaysia, Bull. 17 P.237-225.
- . Bol, A. J. and Hoorn, B. (1980): Structural styles in Western Sabah offshore. Geol. Soc. Malaysia, Bull. 12, P.1-16.
- . Bull P.F. (1976): The Gunung Nungkok Copper Prospect. M. Sc thesis, University of London (Unpublished).
- . Chung S. K. (1978): Geological Survey of Malaysia, Ann. Report for 1978. Malaysia Geol. Surv., P.67-77, P.95-109.
- . Collenette P. (1958): The Geology and Mineral Resources of the Jesselton - Kinabalu area. North Borneo Brit. Borneo Geol Survey Memoir 6, P.1-194.
- . Collenette P. (1965): The geology and mineral resources of Pensiangan and upper Kinabatangan area, Sabah, Malaysia. Borneo Reg., Malaysia Geol. Surv. Mem. 12, P.1-150.
- . Collenette P. (1965): Geochemical Survey Labuk Area 1963-4, Borneo Reg., Malaysia Geol. Surv. Ann. Report for 1964, P.50-51.
- . Collenette P. (1965): The geology and mineral resources of Pensiangan and upper Kinabatangan area, Sabah, Malaysia. Borneo Reg. Malaysia Geol. Surv. Mem., 12, P.1-150.
- . Collenette P. (1965): Prospecting in Sabah by Borneo Mining Limited 1959-1963. Borneo Reg., Malaysia Geol. Surv. Ann. Report for 1964, P.57-61.
- . Cooper R. A., Woolf D. L. and Tooms J. S., (1964): A geochemical reconnaissance survey of part of the Labuk Valley, Sabah Borneo Region, Malaysia Geol Survey Ann. Report for 1963, P.176-185.

- . Collenette P. (1967): Labuk Valley, Mineral Investigation and Consequent Development, Borneo Reg., Malaysia Geol. Surv. Ann. Report for 1966, P.68-71.
- . Creasey S. C. (1977): Intrusives associated with porphyry copper deposits. Geol. Soc. Malaysia Bull. 9, P.51-66.
- . Fitch F. H. (1958): The Geology and Mineral Resources of the Sandakan Area, North Borneo. Borneo Region, Malaysia Geological Survey Memoir 9, P.115-152.
- . G. S. (1968): Geochemical Prospecting in the Semporna Peninsula, Borneo Reg., Malaysia Geol. Surv. Ann. Report for 1967, P.66-70.
- . Haile N. S. (1968): The northwest Borneo geosyncline in its geotectonic setting. Geol. Soc. Malaysia Bull. 1, P.59.
- . Haile N. S. (1969): Geosynclinal theory and the organizational pattern of the northwest Borneo geosyncline. Geol. Soc. London Quart. Jour., 124, P.171-194.
- . Hillebrand J. R. (1962): First quarter progress report Borneo Exploration Programme, GSJL 007/62 (Unpublished).
- . Hillebrand J. R. (1963): Report on Investigation of the Mankadai Mineral District, West Coast Residency, North Borneo, GSJL 007/65 (Unpublished).
- . Hoppe P., Weber H. S. & Yan A. (1981): Geochemical prospecting in Kinabalu - Ranau Paranchangan area, M.G.M & J.K.B.S. 81/4.
- . Hoppe P. (1982): Report on photogeology of the Paranchangan Sungai Paliu Area. M.G.M. & J.K.B.S. 82/2.
- . Hoppe P. (1982): Report on field check in Sungai Paliu Area, M.G.M. & J.K.B.S. 82/4 (Unpublished).

- Hutchison C. S. (1968): Tectogene hypothesis applied to the pre-tertiary of Sabah and the Philippines Geol. Soc. Malaysia Bull. 1, P.65-79.
- Hutchison C. S. (1975): Ophiolites in Southeast Asia. Geol. Soc. Am. Bull. 86, P.797-806.
- Hutchison C. S. (1978): Ophiolites metamorphism in northeast Borneo. Lithos 11, P.195-208.
- Jacobson G. (1970): Gunong Kinabalu area, Sabah, Malaysia. Geol. Surv. Malaysia Report, 8, P.1-111.
- Jacobson G. and Kim P. (1972): Some engineering properties of Sabah rocks. Malaysia Geol. Surv., Geol. Papers, Vol. 1, P.18-27.
- Kasama T., Akimoto H., Sada S. and Jacobson G. (1970): Geology of the Mt. Kinabalu area, Sabah, Malaysia Jour. Geoscience, Osaka City Univ., 13 (6), P.113-148.
- Kirk H. J. C. (1963): Cinnabar near Rabau. North Borneo Geol. Surv. Ann. Report for 1962, P.155-157.
- Kirk H. J. C. (1963): Igneous Rocks of North Borneo and Sarawaku Borneo Geol, Surv. Ann. Report for 1962, P.20-29.
- Kirk H. J. C. (1964): Igneous Rocks of North Borneo and Sarawaku Borneo Geol, Surv. Ann. Report for 1962, P.29-31, for 1963, P.82-89.
- Kirk H. J. C. (1964): Igneous Rocks of North Borneo and Sarawak Borneo Geol, Surv. Ann. Report for 1962, P.31-36, for 1963, P.89-94, P.176-185.
- Kirk H. J. C. (1965): Igneous Rocks of North Borneo and Sarawak Borneo Reg., Malaysia Geol. Surv. Ann. Report for 1964, P.87-91.
- Kirk H. J. C. (1966): The Mineralogy of Pinanduan Copper deposit, Sabah, Malaysia. Borneo Reg., Malaysia Geol. Surv. Ann. Report for 1965, P.196-204.

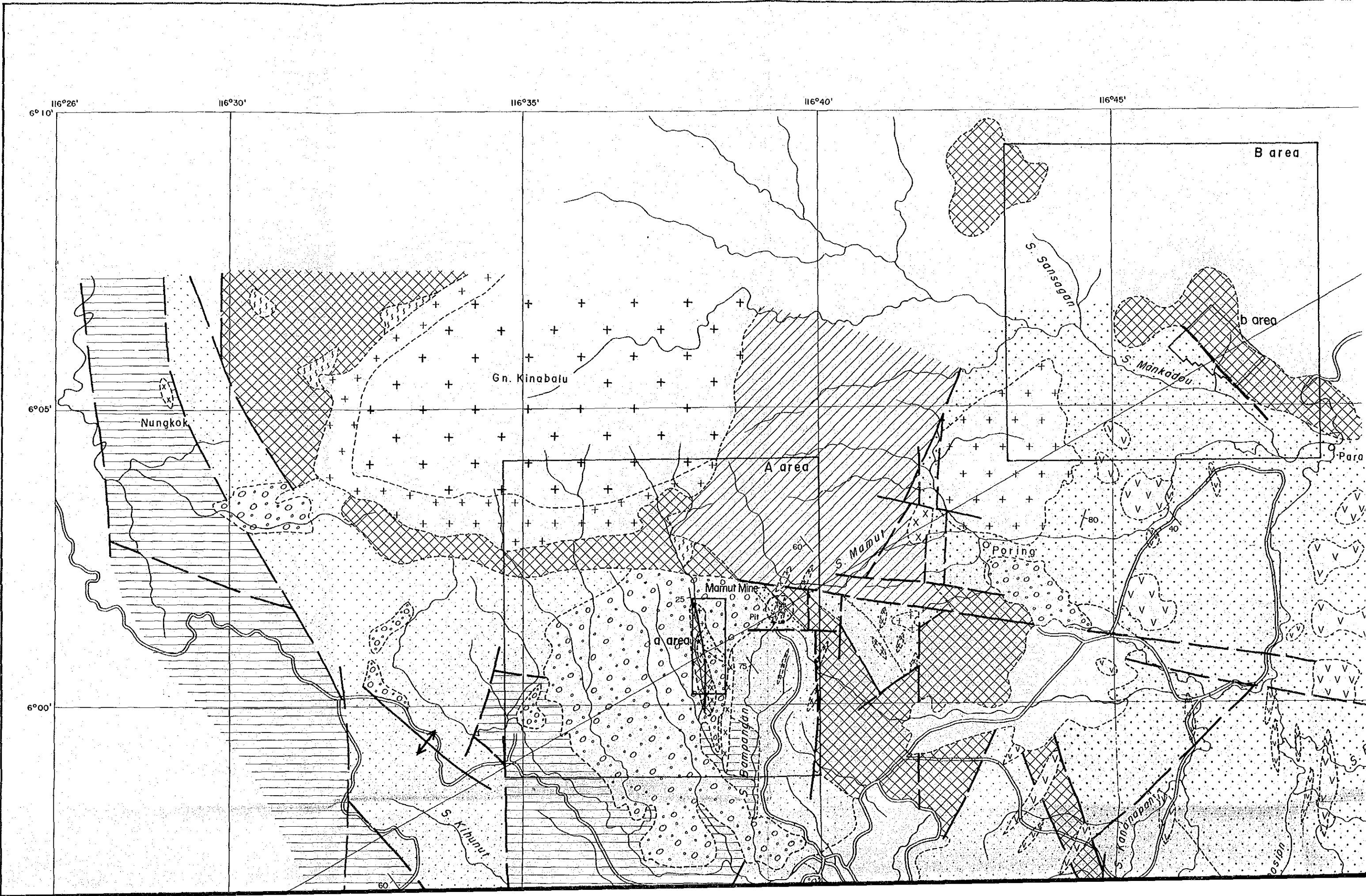
- . Kirk H. J. C. (1966): Hydrothermal mineralization and igneous rocks in East Malaysia. Borneo Reg., Malaysia Geol. Surv., Geol. Papers. Bull. 8, P.53-61, 1967.
- . Kirk H. J. C. (1967): The Mamut Copper Prospect, Kinabalu, Sabah Borneo Reg., Malaysia Geol. Surv., Geol. Papers 1966, Bull. 8, P.68-80.
- . Kirk H. J. C. (1967): Diamond Drilling Costs at the Mamut Prospect, Kinabalu, Kinabalu, Sabah, Borneo Reg., Malaysia Geol. Surv. Ann. Report for 1966.
- . Kirk H. J. C. (1967): Porphyry Copper Deposit in Northern Sabah, Malaysia Trns. Inst. Mining Metal (Section B: Appl. Earth Sci) Vol. 6. PB212-3.
- . Kirk H. J. C. (1968): The igneous rocks of Sabah and Sarawak, Borneo Reg., Malaysia Geol. Surv. Bull. 5, P.201 Kuching.
- . Koopmans B. N. and Stauffer P. H. (1967): Glacial Phenomena on Mount Kinabalu, Sabah. Borneo Reg., Malaysia Geol. Surv., Geol. Papers 1966, Bull. 8, P.25-35.
- . Kosaka H. and Wakita K. (1978): Some geologic features of the Mamut porphyry copper deposit. Econ. Geol. 73, P.618-627.
- . Lee D. (Chung S. K.) (1979): Geological Survey of Malaysia Ann. Report for 1979, Copper. Malaysia Geol. Surv. P.68-79, P.119-129.
- . Leong T. K. (1969): Clastic Sediments and Sedimentary rocks of the Ranau area, Sabah, East Malaysia. B. Sc. (Hons) thesis, University of Malaya Kuala Lumpur (Unpublished).
- . Leong Khee Meng (1970): Introduction to Geology of the Ranau - Paranchangan Area, Sabah, Malaysia Geol. Surv. Ann. Report, P.148-150.
- . Leong Khee Meng (1972): Ranau - Paranchangan Area. (Report 12), Malaysia Geol. Surv. Ann. Report.

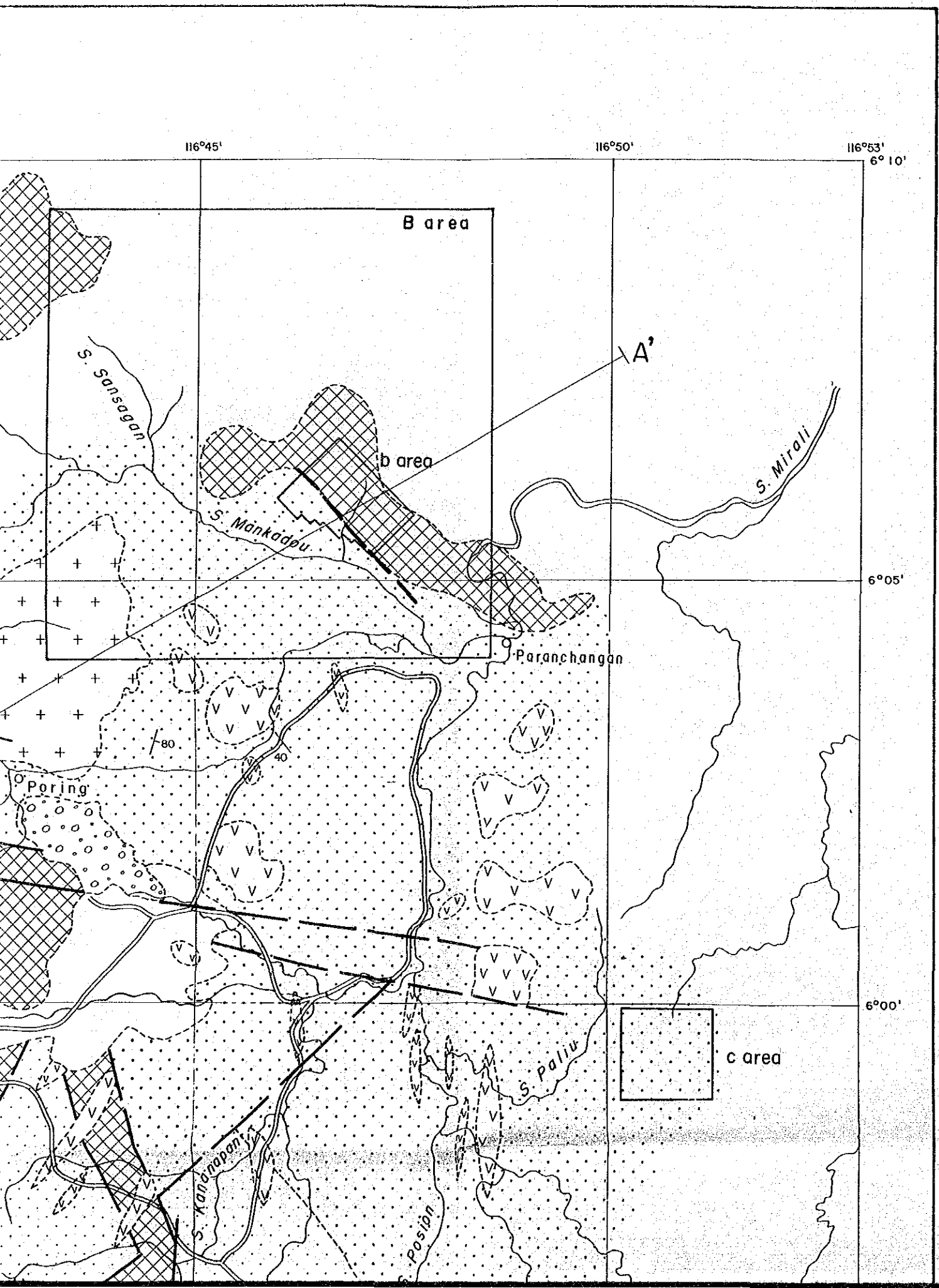
- Leong T. K. (1970): Bouldery mudflow deposit at Ranau, Sabah, East Malaysia. Geol. Soc. Malaysia Bull. 3, P.139-146.
- Leong K. M. (1974): The Geology and Mineral Resources of the upper Segama Valley and Darvel Bay Area Sabah, Malaysia Geol. Surv. Memoir 4.
- Leong K. M. (1977): New ages from radiolarian cherts of the Chert - Spilite Formation, Sabah. Geol. Soc. Malaysia Bull. 8, P.109-111.
- Lewis D. E. (1965): Case History of a Geochemical Anomalous Copper Zone in Pinanduan, Sabah, Malaysia, Borneo Reg., Malaysia Geol. Surv. Ann. Report for 1964, P.163-175.
- Lewis D. E. (1967): The Karang Copper Prospect, Karamuak Valley, Sabah, Malaysia Borneo Reg., Malaysia Geol. Surv., Geol. Papers Bull. 8, P62-67.
- Liechti P., Roe F. W. and Haile N. S. (1960): The Geology of Sarawak, Brunei and the western part of North Borneo. Brit. Borneo Geol. Surv., Bull. 3, P.360.
- Lim P. S. (1974): Geology and copper mineralization of the Mamut area, Sabah, East Malaysia. B. Sc. thesis, Univ. Malaya, P.1-117.
- Lim P. S. (1982): Geology of the Mankadau area, Merungin. Geol. Surv. of Malaysia Ann. Report, P.251-254.
- McManus J. and Tate R. B. (1986): Mud volcanoes and the origin of certain chaotic deposits in Sabah, East Malaysia. GEOSEA Proceeding Vol. I. Geol. Soc. Malaysia, Bull. 19 P.193-205.
- MMAJ (1970): Aeromagnetic Survey of the Kinabalu - Tambuyukon Area, Saba, Malaysia. Hunting Geology and Geophysics Ltd.
- Myers L. C. (1977): A weathering profile developed on ultrabasic rocks at Telupid, Sabah. Malaysia Geol. Surv., Geol. Papers Vol. 2, P.66-71.

- . Nagano K., Takenouchi S., Imai H. and Shoji T. (1977): Fluid inclusion study of the Mamut porphyry copper deposit, *Mining Geology (Japan)* Vol. 27, P.201-212.
- . Newton - Smith J. (1965): The Bidu - Bidu Hills, Sabah (Report 4), Borneo Reg., Malaysia Geol. Surv. Ann. Report for 1964, P.114-121.
- . Newton - Smith J. (1966): Geology and copper mineralization in the Mamut River area, Kinabalu. Borneo Reg., Malaysia Geol. Surv. Ann. Report for 1965, P.40-68, 88-96.
- . Newton - Smith J. (1967): Bidu - Bidu Hills Area, Sabah, East Malaysia Borneo Reg., Malaysia Geol. Surv. Report 4.
- . Newton - Smith J. (1977): Geology and mineralization at the Mamut Copper Prospect, Sabah, Malaysia Geol. Surv., Geol. Papers Vol. 2, P.55-65.
- . Nishiyama T. (1983): Minor elements in pyrite and chalcopyrite from the Mamut mine, Malaysia. *Mining Geol. (Japan)* 33, P.1-7.
- . O.M.R.D. Sabah (1981): Introducing Mamut Copper Mine, Sabah, Malaysia Sarawak Mining Industries Ass. Vol. 1, P.59-61.
- . Shoji T., Imai H. and Takenouchi S. (1977): Study on microprobe microanalysis of the ore minerals from the Mamut mine, Sabah, Malaysia. *Mining Geology (Japan)* Vol. 27, P.323-330.
- . Singh D. S. and Khoo T. T. (1977): A review of the progress in knowledge of the geology and mineral resources of Malaysia from 1972 to early 1975. *Geol. Soc. Malaysia Bull.* 8, 95-107.
- . Stauffer P. H. (1967): Studies in the Crocker Formation, Sabah, Borneo Reg., Malaysia Geol. Surv., Papers 1966, Bull. 8, P.1-13.
- . Stauffer P. H. (1968): Glaciation of Mount Kinabalu *Geol. Soc. Malaysia, Bull.* 1, P.63.

- Stauffer P. H. (1974): Malaya and Southeast Asia in the pattern of continental drift. Geol. Soc. Malaysia Bull. 7, P.89-138.
- Titley S. R. (1978): Copper, molybdenum, and gold content of some porphyry copper systems of the southwestern and western Pacific. Econ. Geol. 73, P.977-981.
- Tokuyama A. and Yoshida S. (1974): Kinabalu Fault, a large strike-slip fault in Sabah, East Malaysia. Geology and palaeontology of southeast Asia (Kobayashi T. and Toriyama R. eds) Univ. Tokyo Press. 14, P.175-188.
- Walker P. B. et al. (1961): Secondary Dispersion on Copper from the Karang Lode, North Borneo. Borneo Region, Malaysia Geological Survey Bull. 4, P.91-118.
- Walker P. B. (1961): Report on Geochemical Surveys in Karang and Tambuyukon Concession. GSJL 007/61 (Unpublished).
- Wilfred G. E. (1968): Notes on the geomorphology of Sabah, Borneo Reg., Malaysia Geol. Surv., Geol. Papers 1967, Bull. 9, P.1-22.
- Wilfred G. E. (1968): Iron and Nickel prospecting at Tavai Plateau 1962-64, Sabah Borneo Reg., Malaysia Geol. Surv., Geol. Papers 1967, Bull. 9, P.80-87.
- Winkler H. A. (1966): Geophysical Prospecting in the Kinabalu and River Sualong Area, Labuk Valley, Sabah. Borneo Reg., Malaysia Geol. Surv. Ann. Report for 1965, P.205-211.
- Wilford G. E. (1967): Geological map of Sabah, East Malaysia, 2nd ed., Borneo Reg., Malaysia Geol. Surv.
- Woolf D. L. (1965): Report on the Labuk Valley Natural Resources Survey: Geochemical Investigations 1963-1965. GSJL 210/13 P.80 (Unpublished).
- Woolf D. L., Tooms J. S. and Kirk H. J. C. (1966): Geochemical Survey in the Labuk valley, Sabah. Borneo Reg., Malaysia Geol. Surv. Ann. Report for 1965, P.212-226.

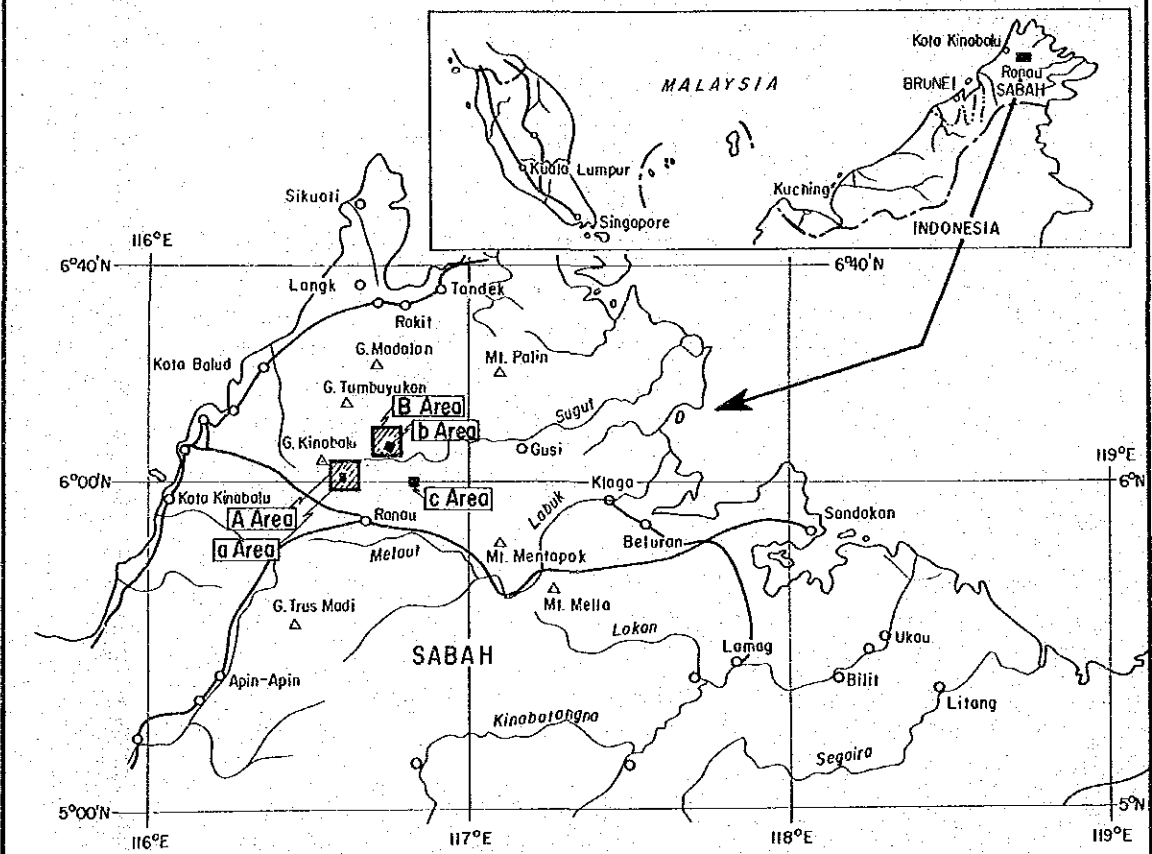
- Wong N. P. Y. (1967): Mount Silam Area, Sabah (Report 7) Borneo Reg., Malaysia Geol. Surv. Ann. Report for 1966, P.62-68.
- Wong N. P. Y. (1967): Geology and copper mineralization of the Bambang valley, Kina-
balu, Sabah. Borneo Reg., Malaysia Geol. Surv. Bull. 8, P.81-88.
- Wong N. P. Y. (1968): Segama - Darvel Bay area, Borneo Reg., Malaysia Geol. Surv. Ann.
Report for 1967, P.48-52.
- Wong N. P. Y. (1968): Geochemical Prospecting, Segama Area. Borneo Reg., Malaysia
Geol. Surv. Ann. Report for 1967.





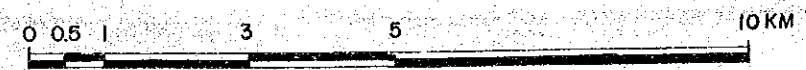
THE MINERAL EXPLORATION
IN
SABAH, MALAYSIA

Geological Map of KINABALU Area

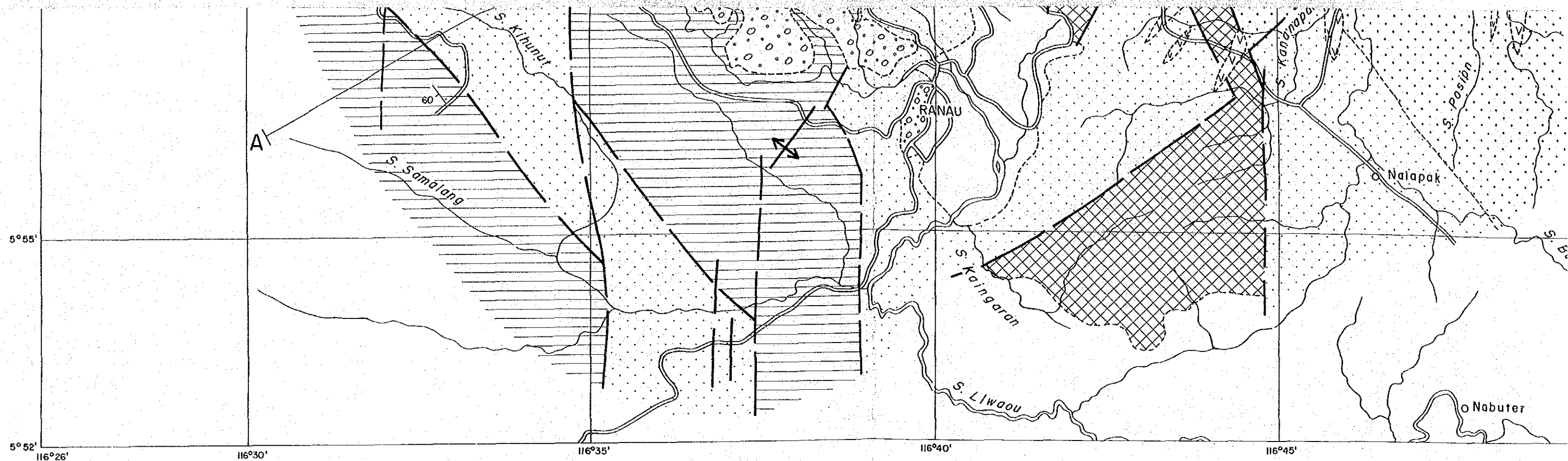


JAPAN INTERNATIONAL COOPERATION AGENCY
METAL MINING AGENCY OF JAPAN
GEOLOGICAL SURVEY OF MALAYSIA

1 : 100,000

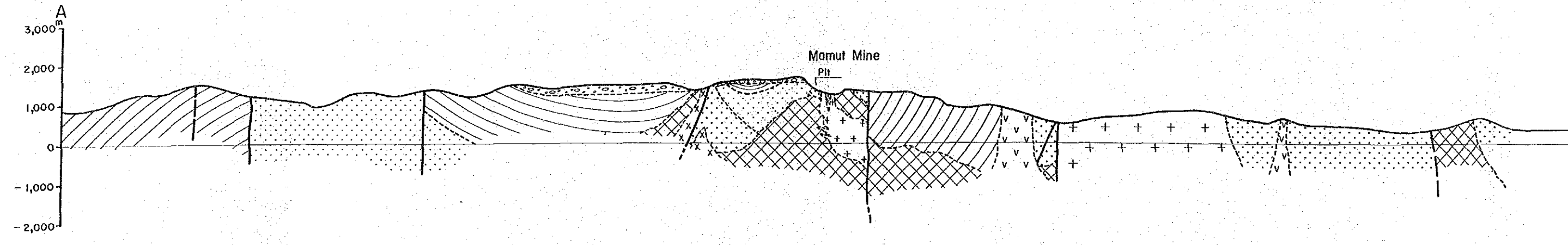


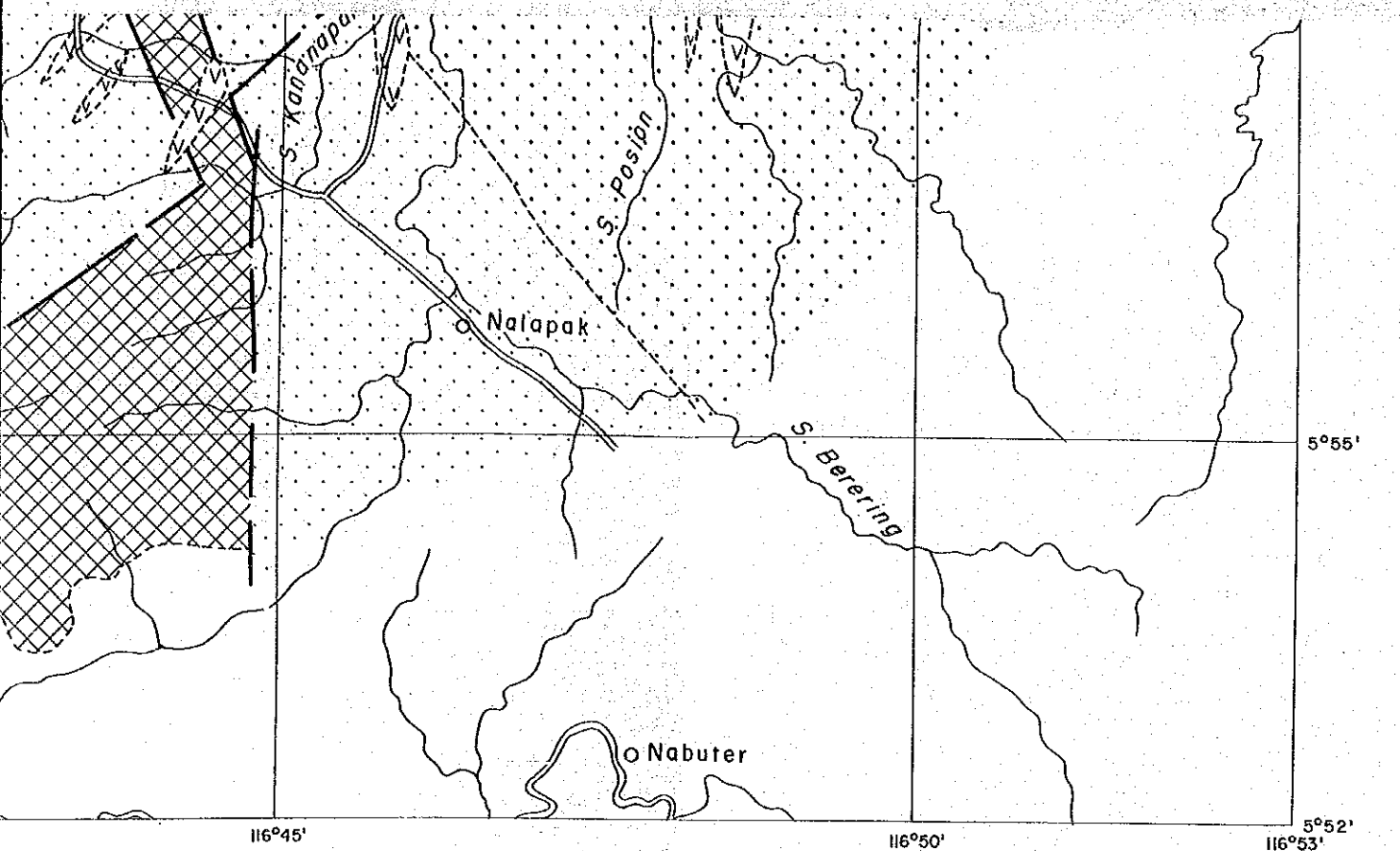
LEGEND



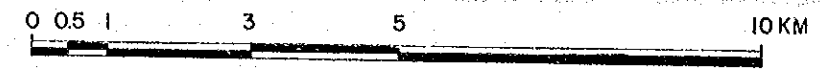
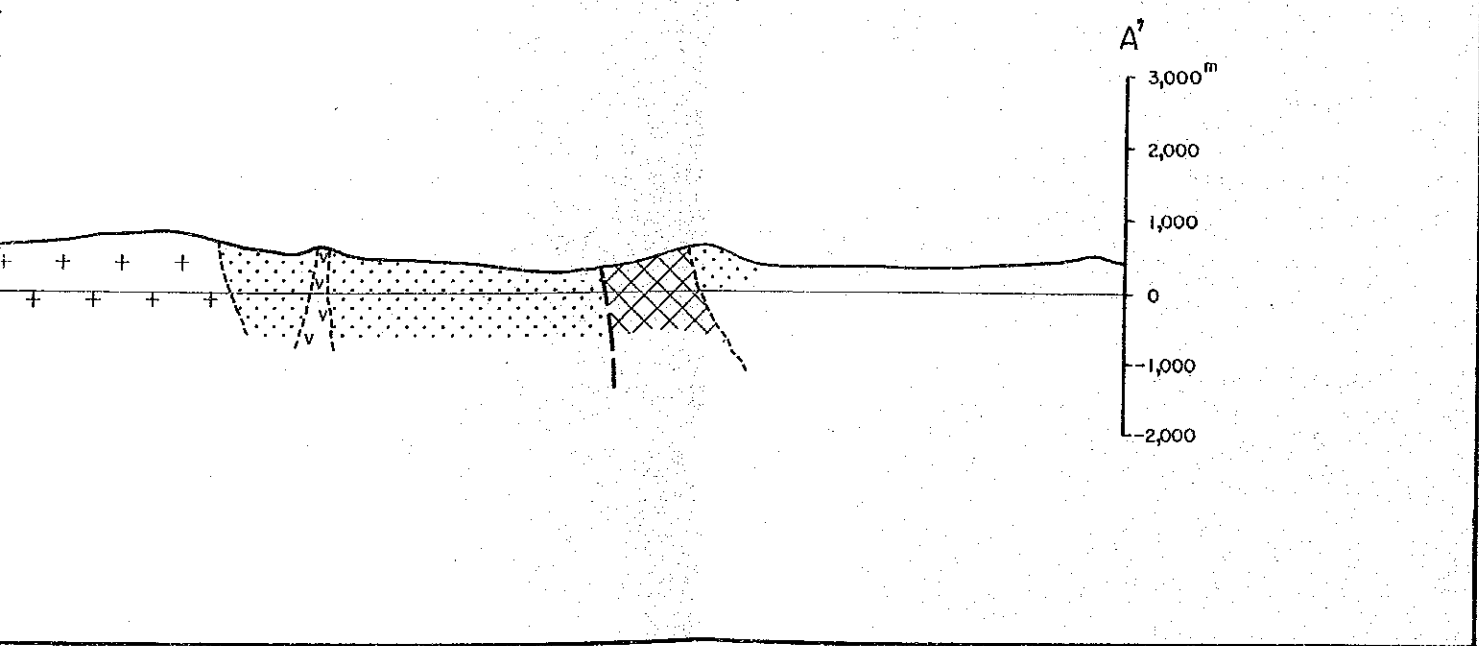
Compiled from Kos
BULI
JACC
and

SECTION A — A'



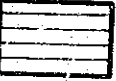



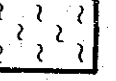




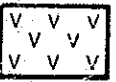
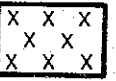
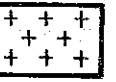


Compiled from KOSAKA and WAKITA (1978)
 BULL, P.F. 1976)
 JACOBSON G. (1970)
 and unpublished data

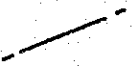
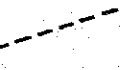
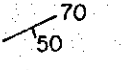
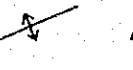
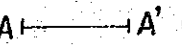
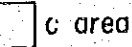


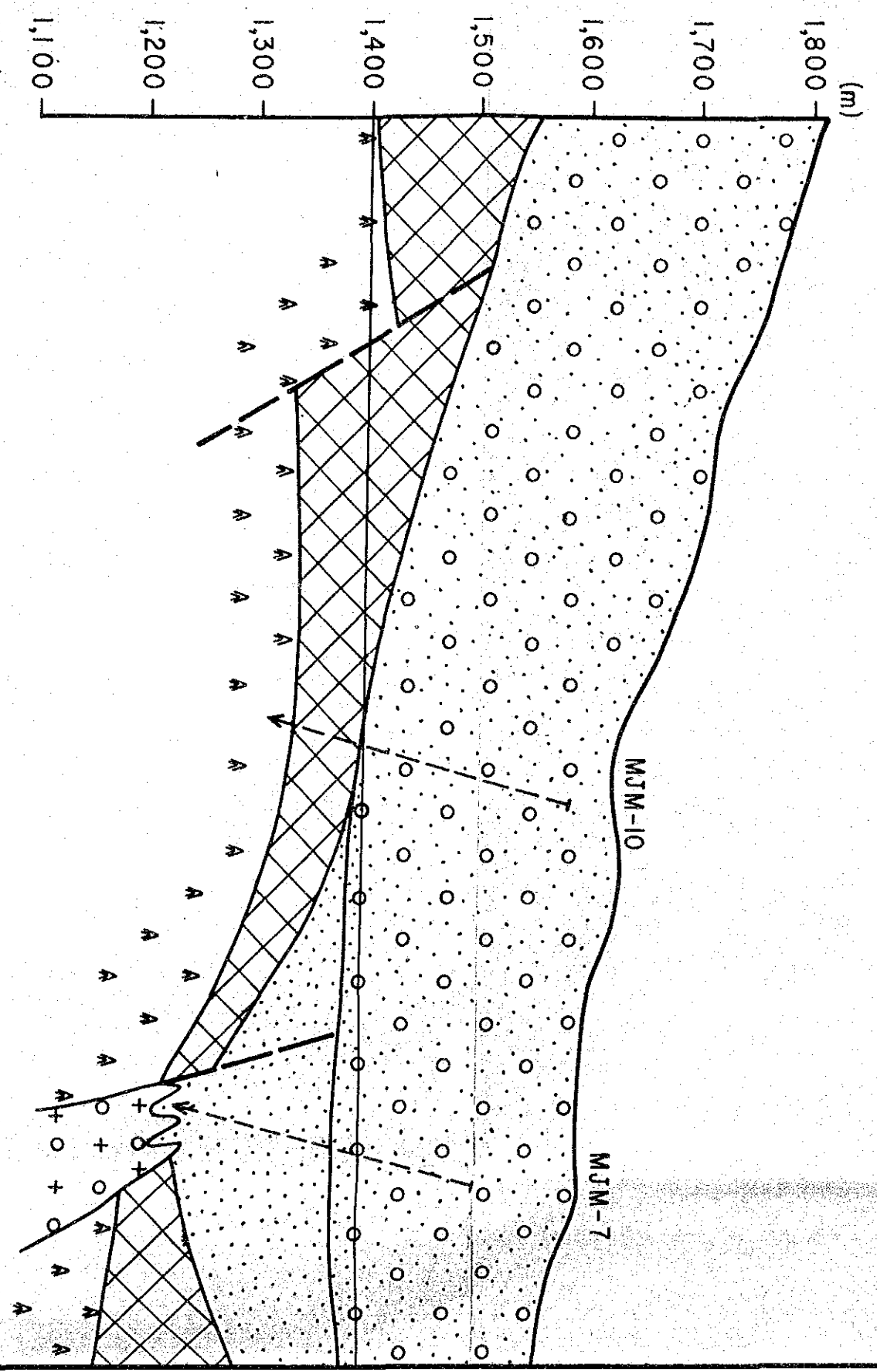
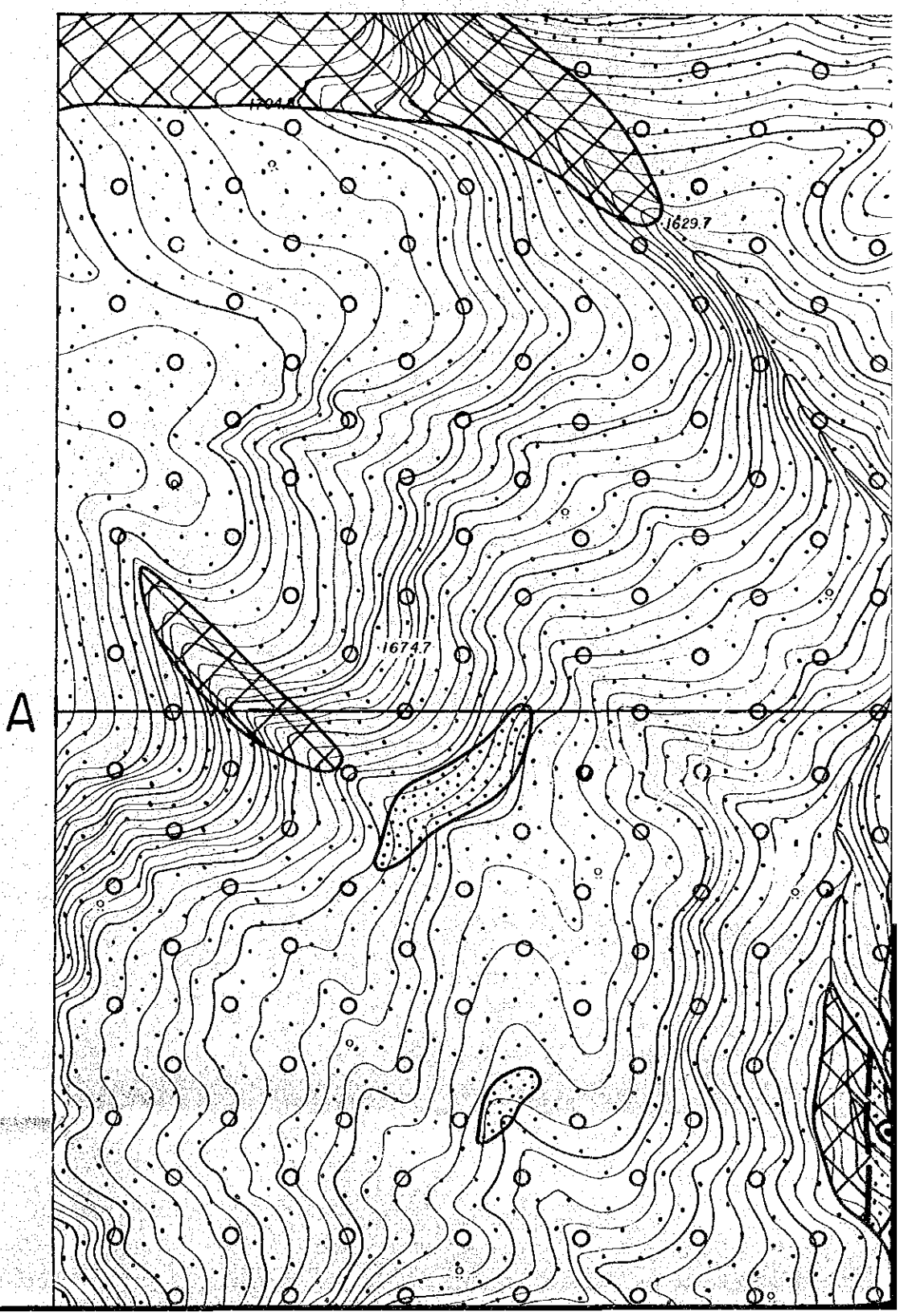
LEGEND

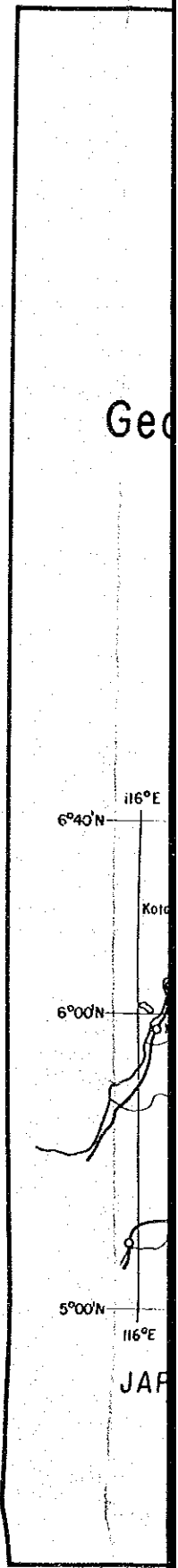
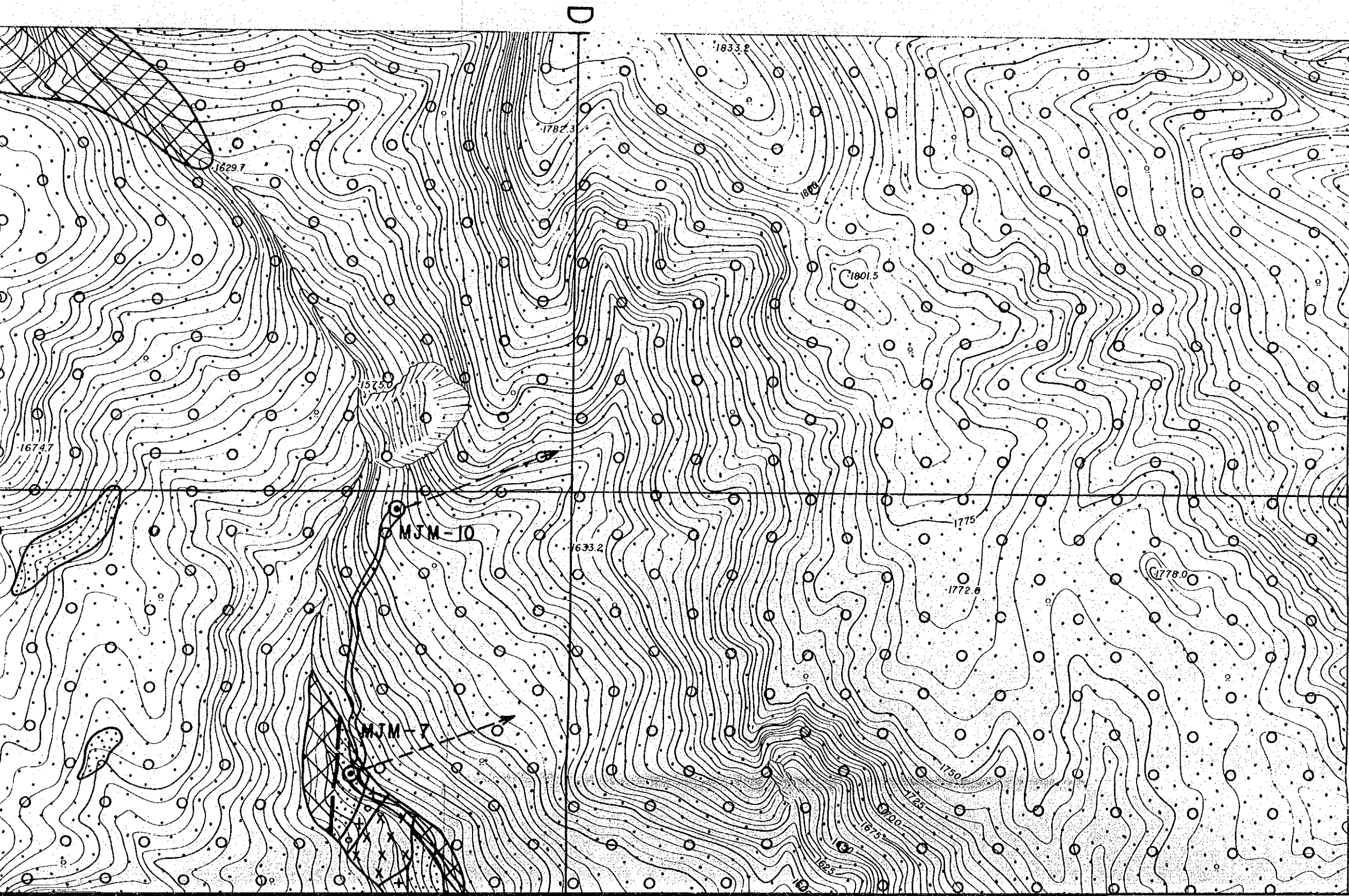
-  Alluvial deposits
-  Boulders and gravels
-  Sandstone, siltstone and mudstone
-  Sandstone, mudstone and spilite and its pyroclastics
-  Sandstone, mudstone and spilite and its pyroclastics
-  Undifferentiated sedimentary and metamorphic rocks
-  Schist and gneiss

Igneous Rock

-  Andesite and dacite
-  Microdiorite and Micro quartz diorite
-  Adamellite porphyry
-  Adamellite
-  Serpentinized peridotite

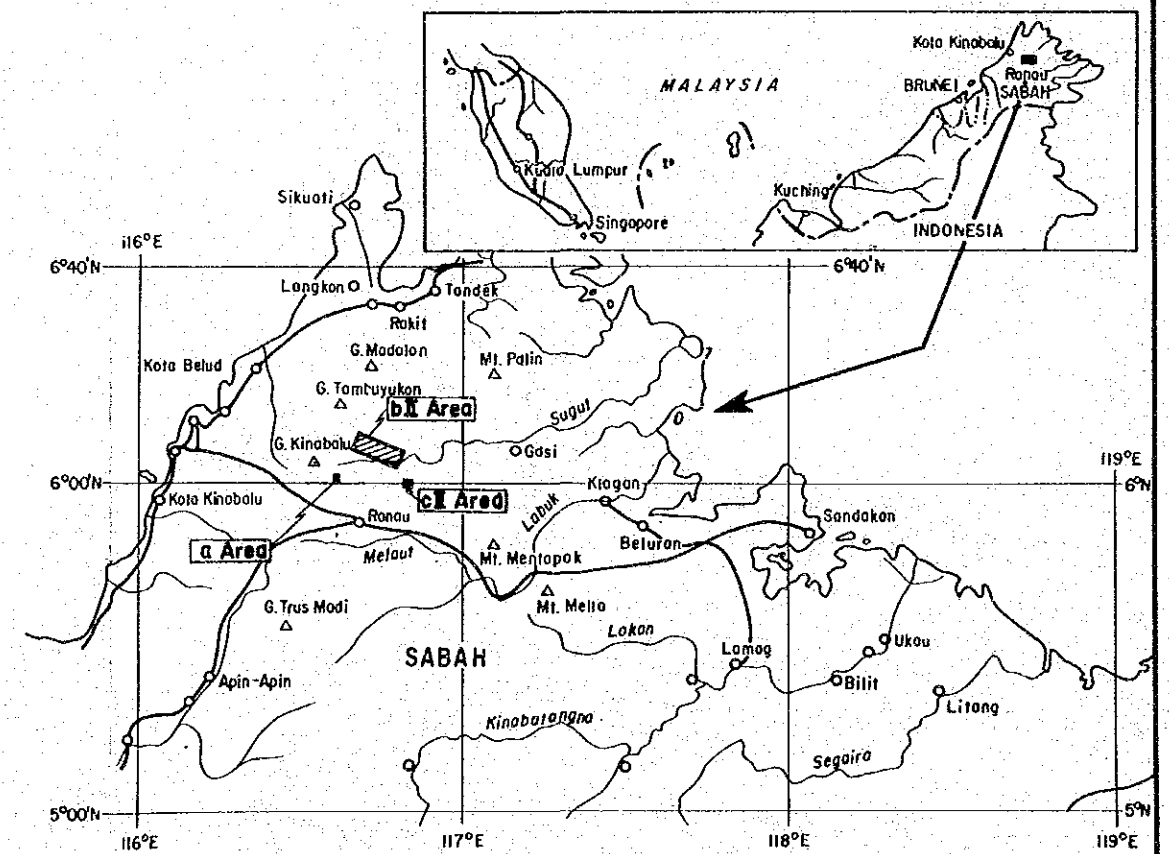
-  Fault (certain)
-  Fault (inferred)
-  Strike and dip
-  Anticline
-  Geological profile line
-  Survey area





THE MINERAL EXPLORATION
IN
SABAH, MALAYSIA

Geological Map of Bambang (a) Area

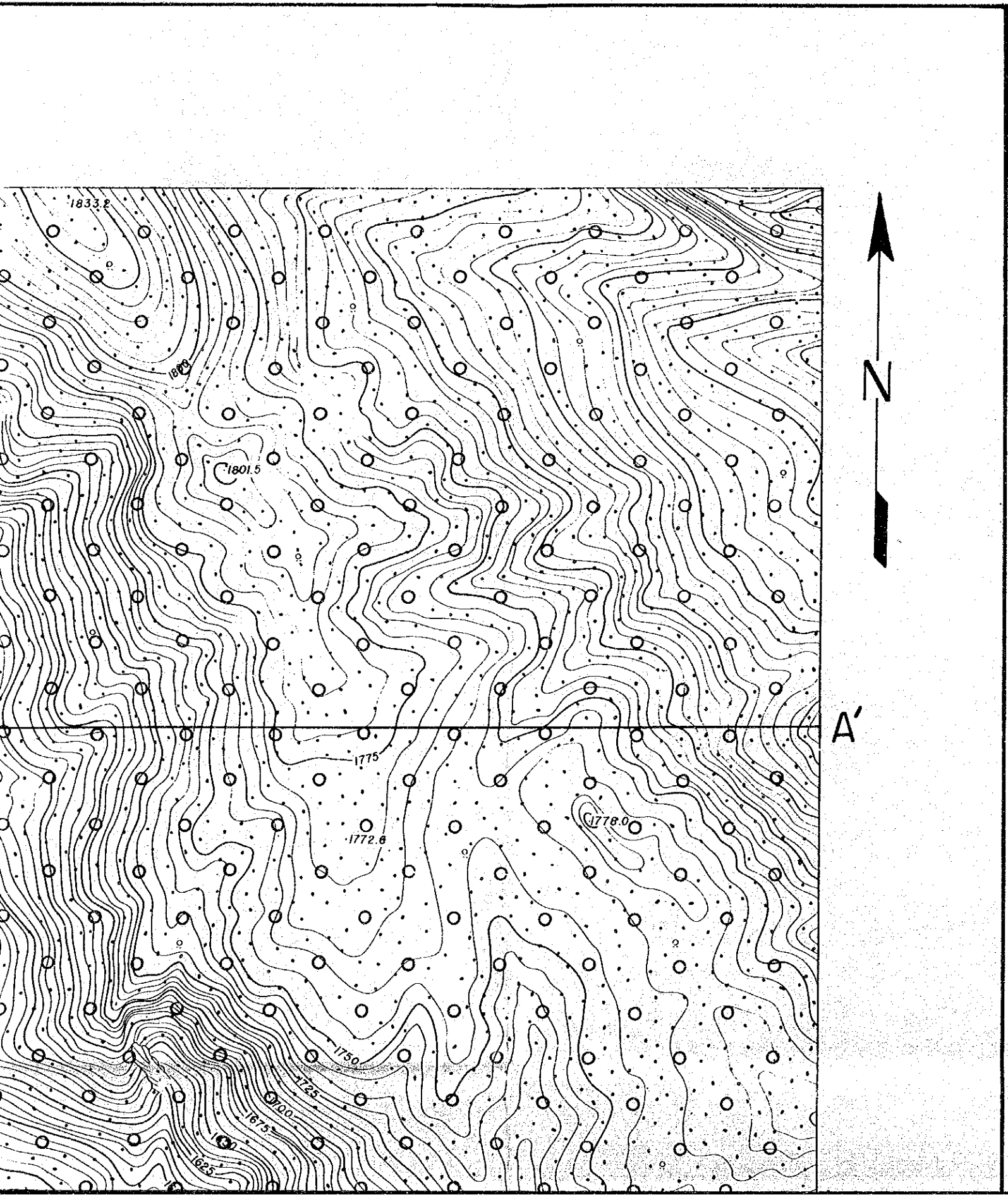


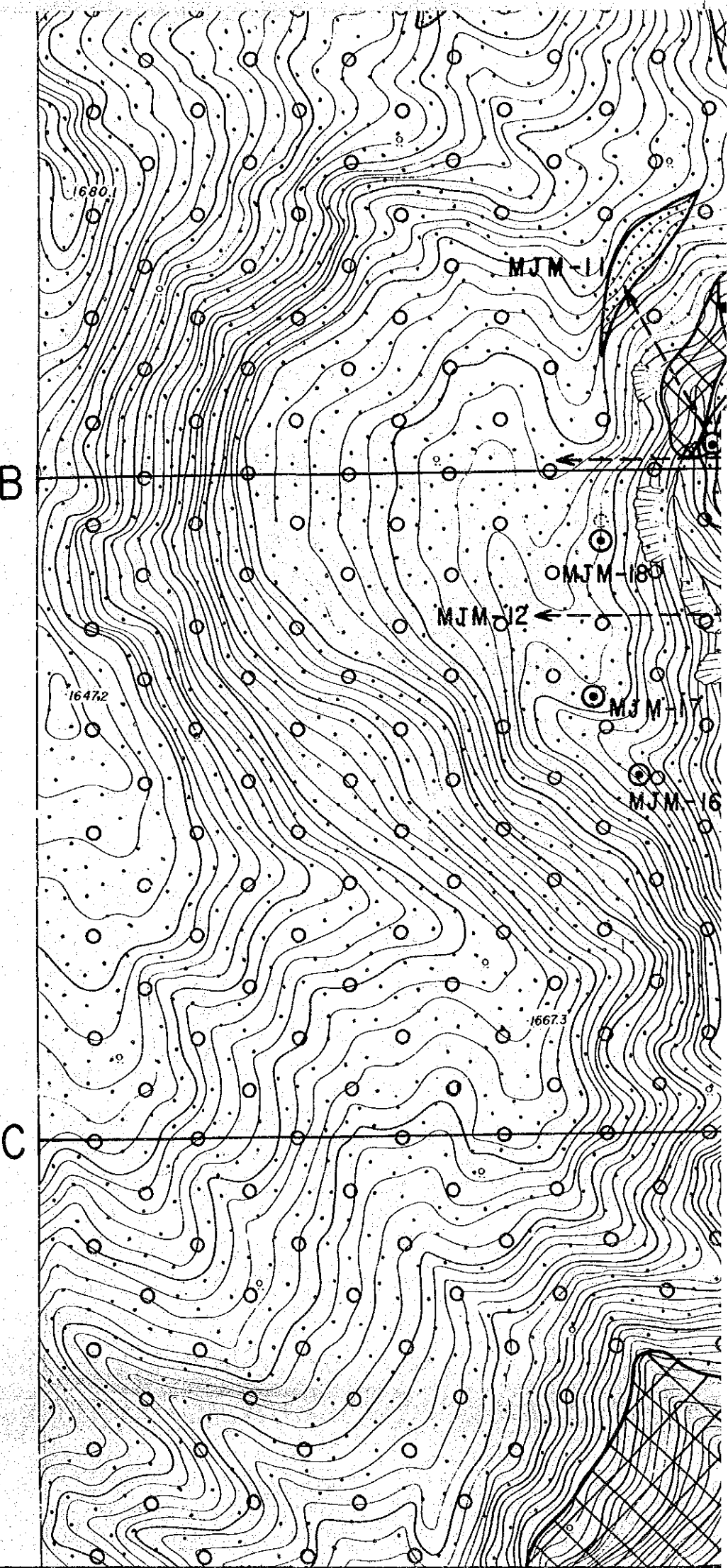
JAPAN INTERNATIONAL COOPERATION AGENCY
METAL MINING AGENCY OF JAPAN
GEOLOGICAL SURVEY OF MALAYSIA

1 : 5,000

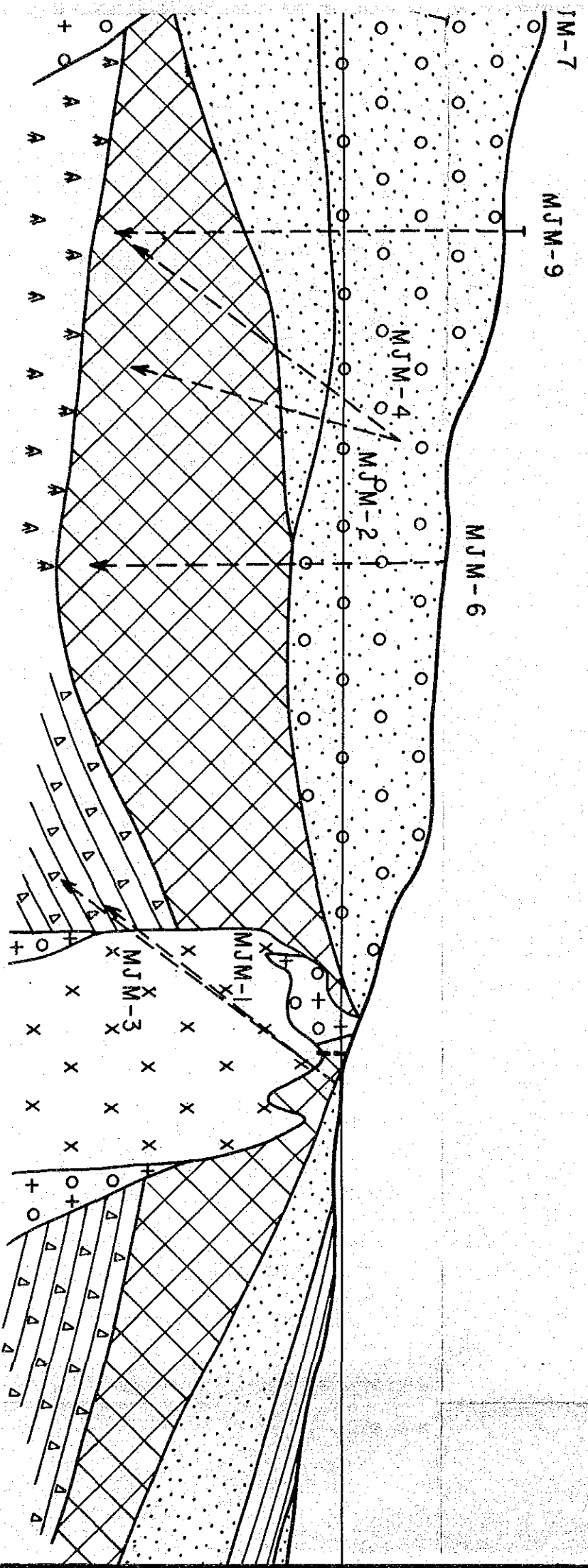
0

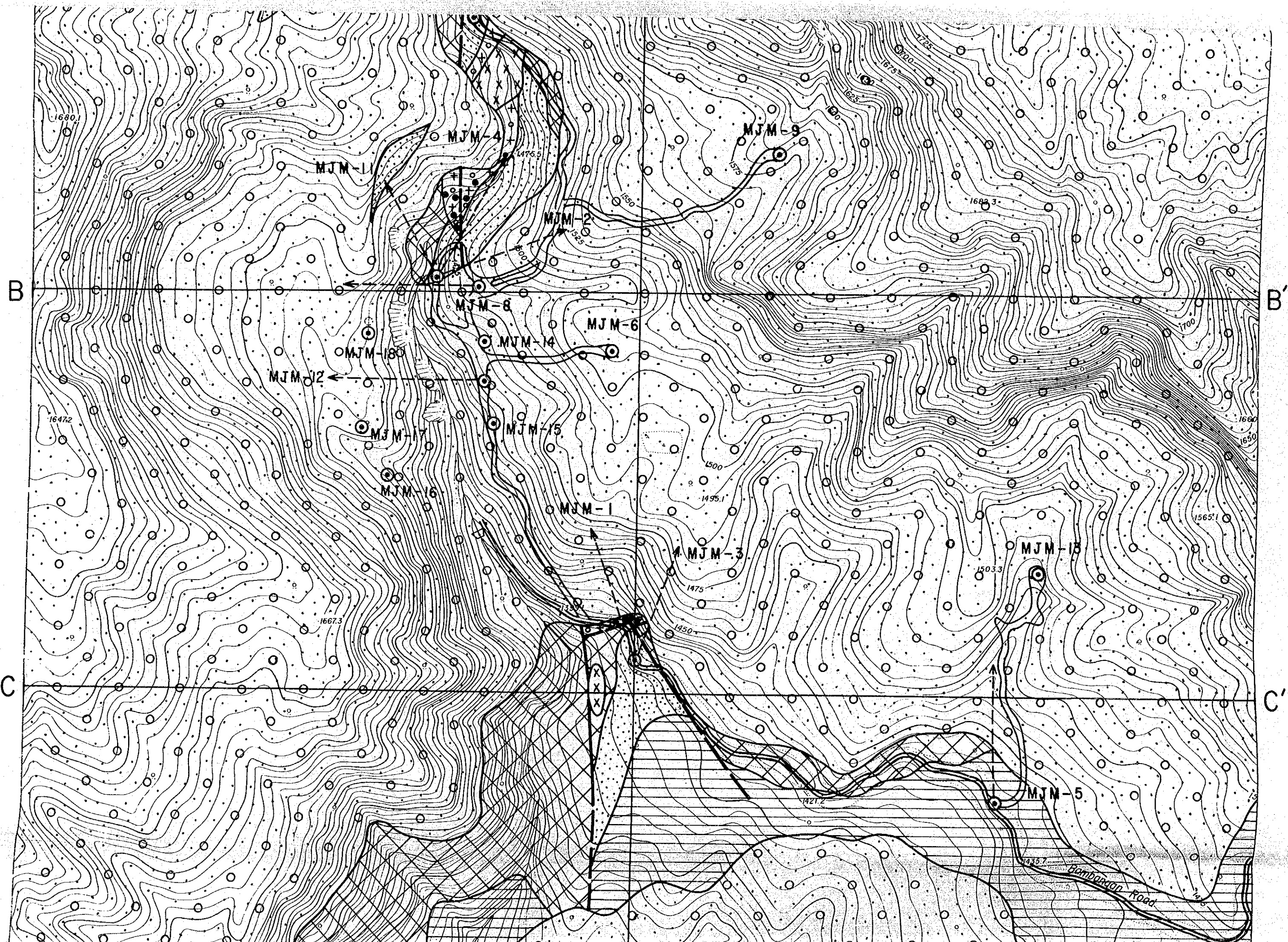
500m

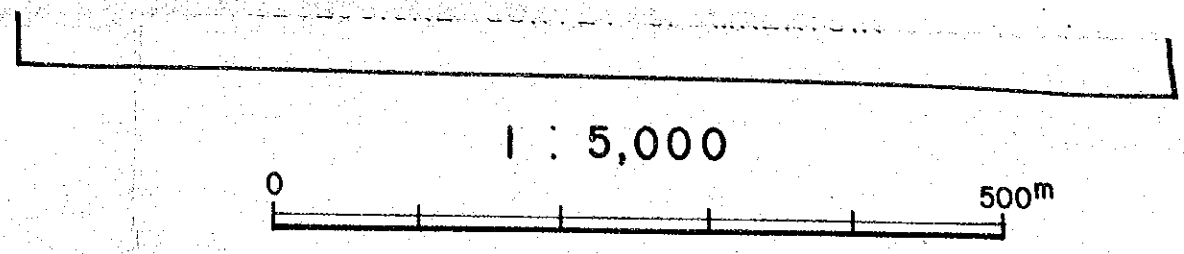
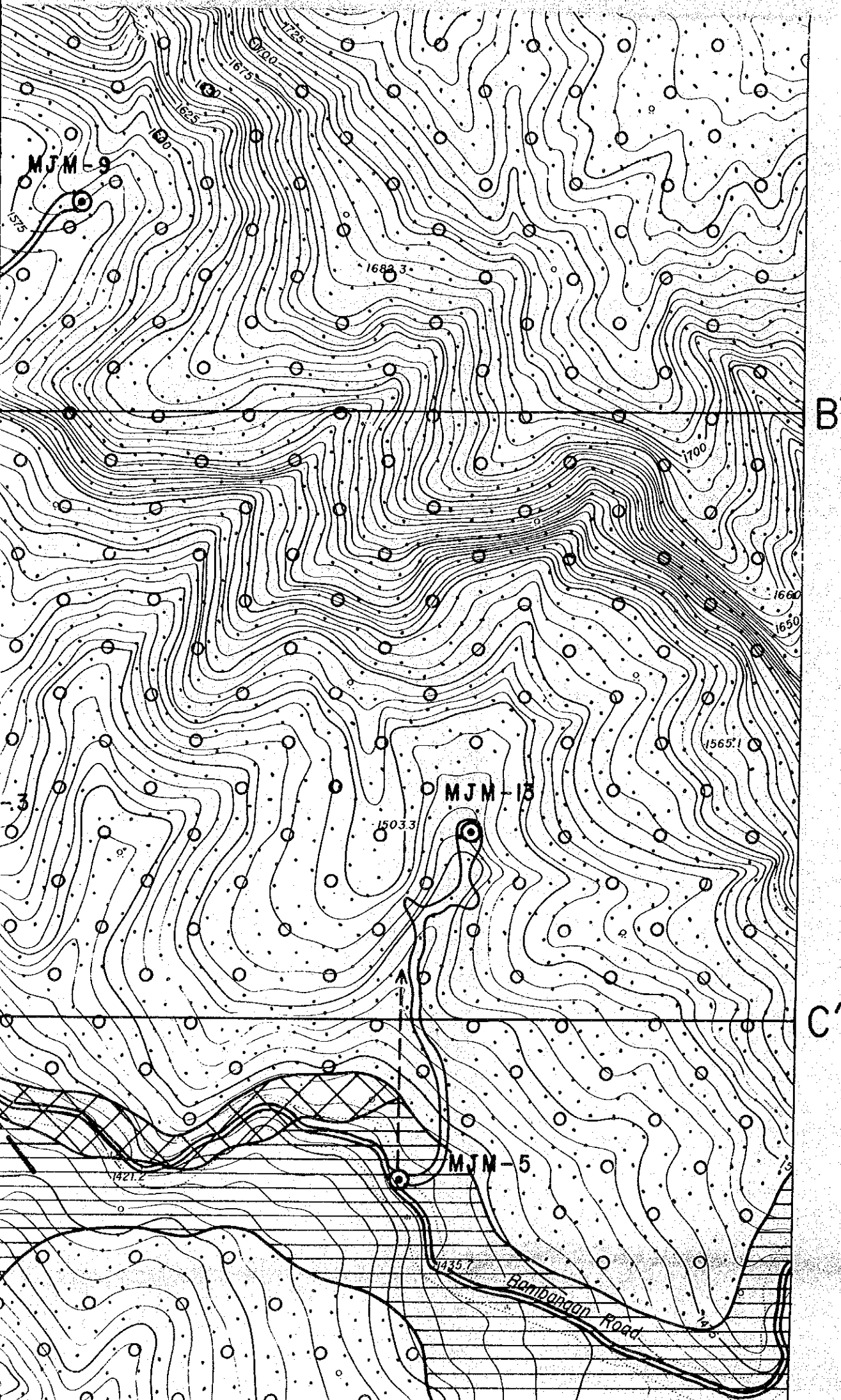




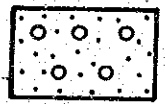

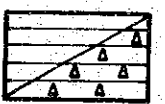
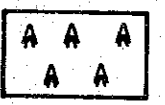
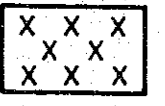
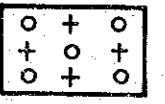



D-D' Profile

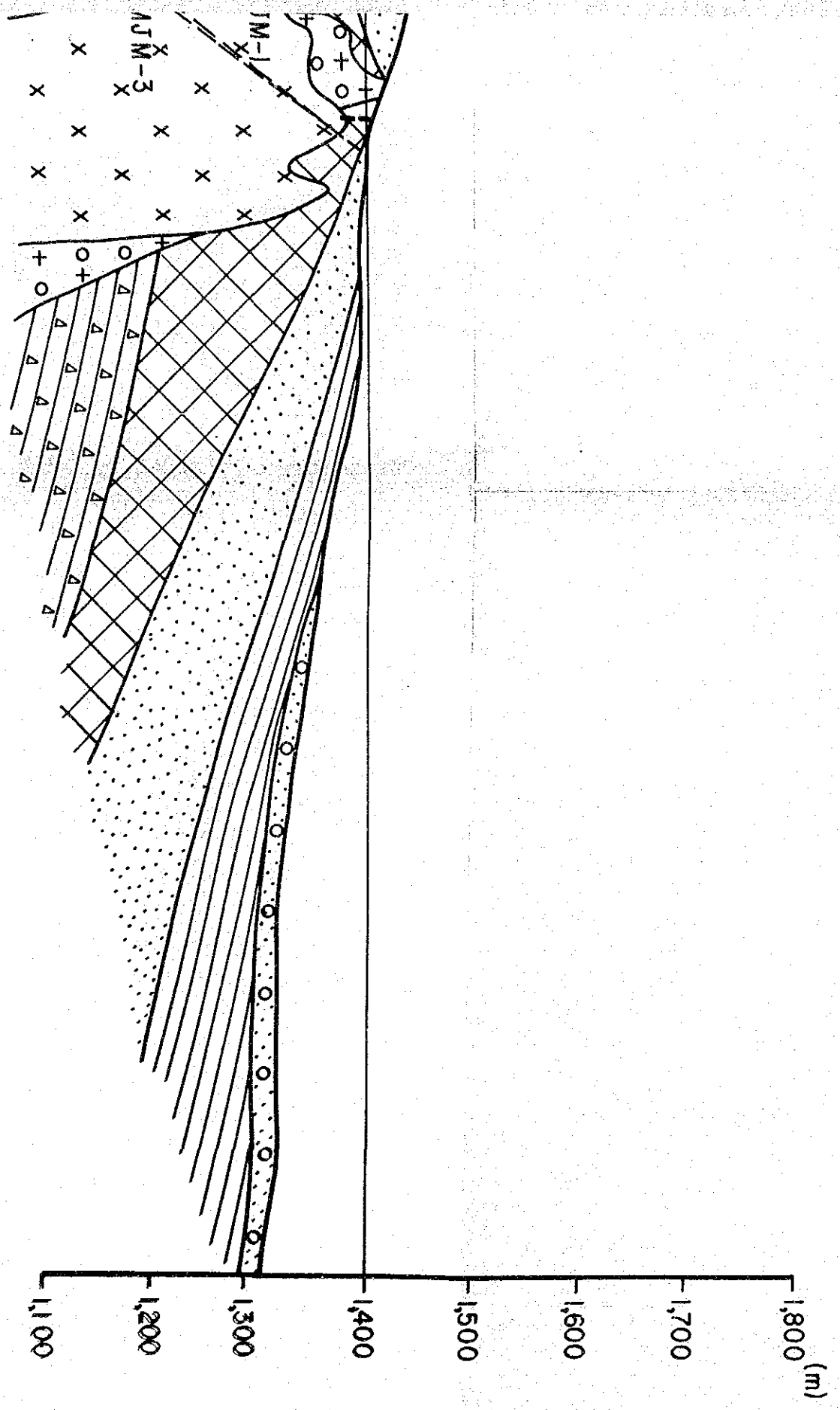
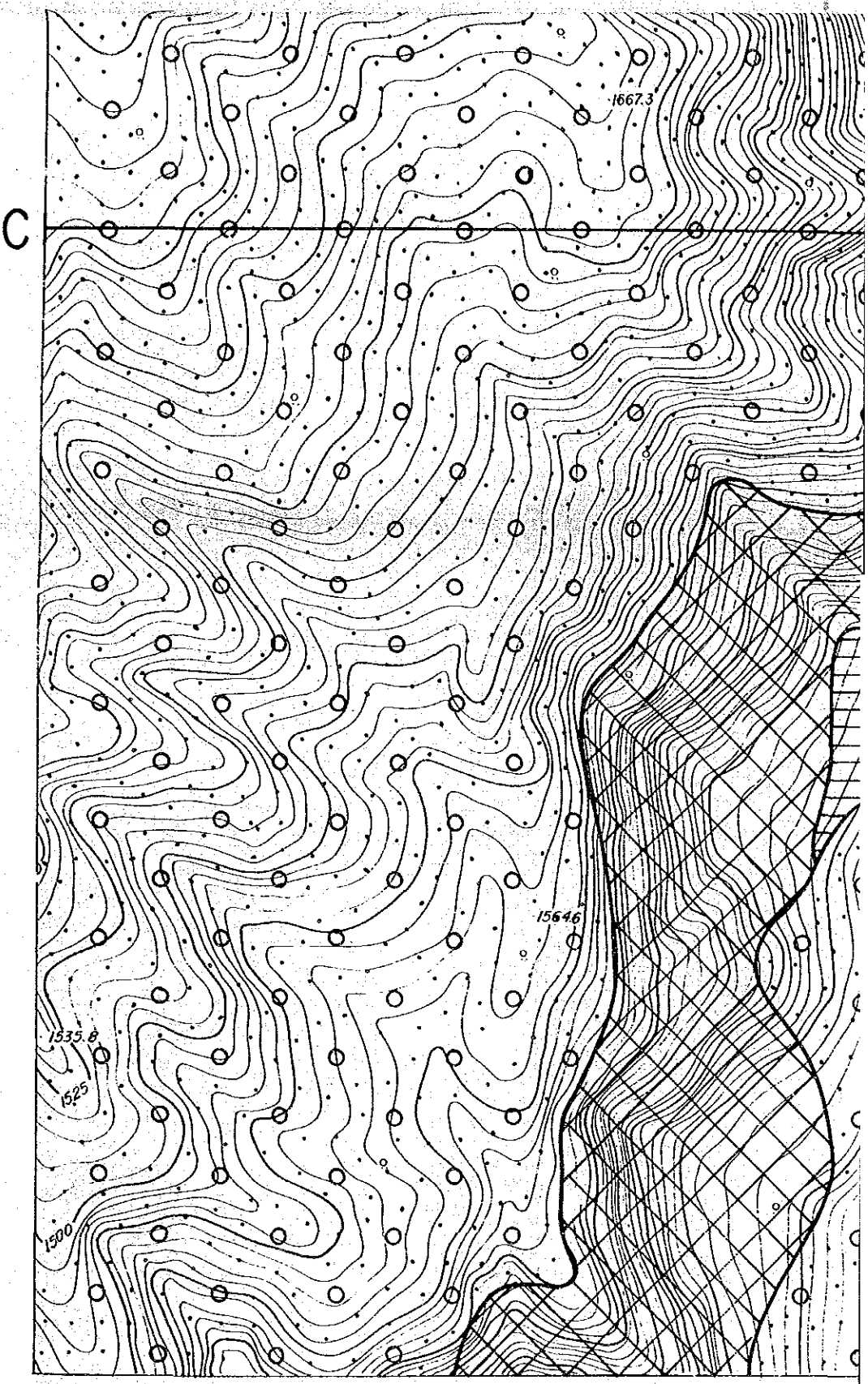


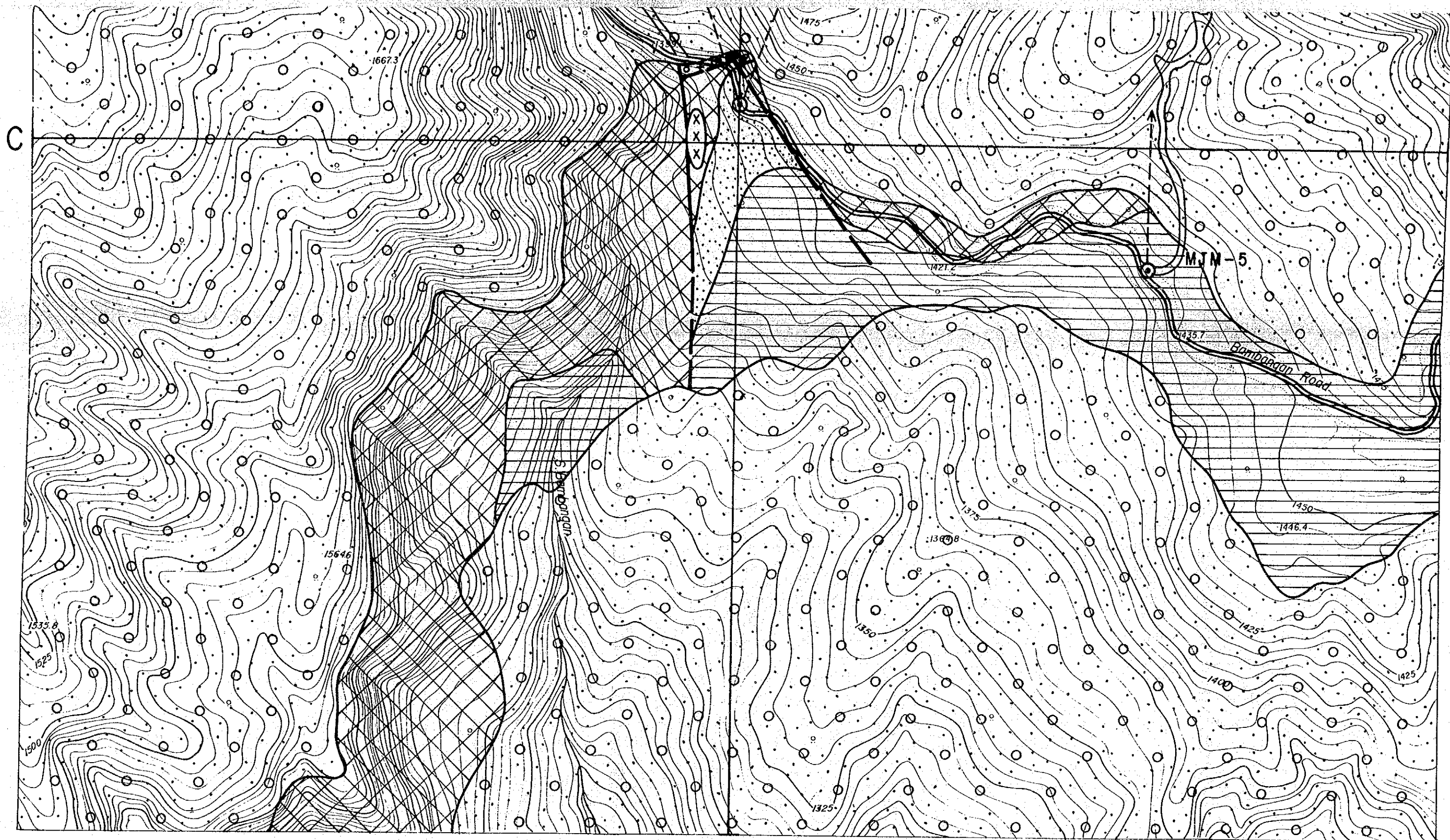


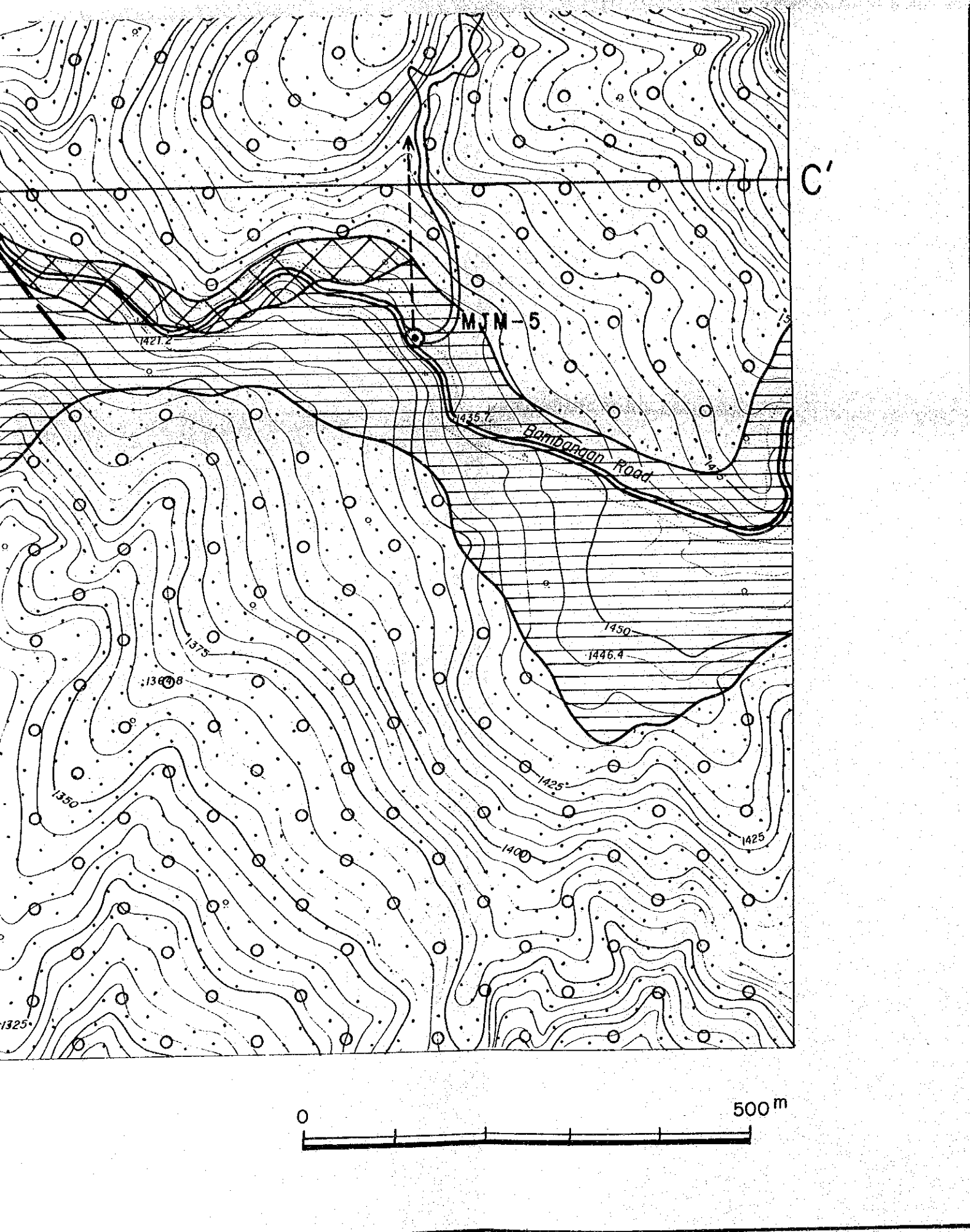


LEGEND

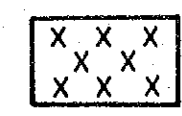
- Pinosuk Gravels  Gravels
- Trusmadi Formation  Sandstone (Hornfels)
-  Mudstone / Turbidite
- Chert-Spilitic Formation  Basalt Lava
- Intrusive Rock
 -  Microdiorite
 -  Adamellite porphyry
 -  Peridotite
-  Mineralization
-  Drill hole with mineralization



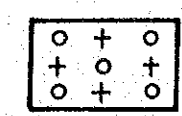




Intrusive Rock



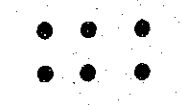
Microdiorite



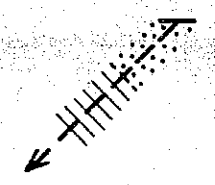
Adamellite porphyry



Peridotite



Mineralization



Drill hole
with mineralization

JICA