

## Table II-8 Topographical Correction

( ASSUMED DENSITY = 2.00 G/CM<sup>3</sup> )

RESCO 50

GRAVIMETRIC SURVEY OF HAUT MOULOUYA IN MOROCCO 1978

STATION-NO.		LATITUDE (Y)	LONGITUDE (X)	ALTITUDE	FAR	MIDDLE	NEAR	CLOSE-1	CLOSE-2	SEA	LAKE	TOTAL
NO.		METER	METER	METER	MGAL	MGAL	MGAL	MGAL	MGAL	MGAL	MGAL	MGAL
1	1	235700.0	548820.0	1532.28	0.43	0.03	0.03	0.00	0.00	0.00	0.00	0.55
2	2	235210.0	547910.0	1516.50	0.43	0.03	0.03	0.01	0.00	0.00	0.00	0.54
3	3	236730.0	547230.0	1492.43	0.43	0.03	0.04	0.00	0.00	0.00	0.00	0.55
4	4	237130.0	545740.0	1476.40	0.43	0.04	0.03	0.00	0.00	0.00	0.00	0.56
5	5	237650.0	546300.0	1473.17	0.47	0.04	0.02	0.00	0.00	0.00	0.00	0.54
6	6	237850.0	545830.0	1453.93	0.47	0.05	0.02	0.00	0.00	0.00	0.00	0.54
7	7	238690.0	545820.0	1455.53	0.45	0.05	0.02	0.00	0.00	0.00	0.00	0.56
8	8	239310.0	545470.0	1453.82	0.44	0.04	0.04	0.03	0.00	0.00	0.00	0.48
9	9	239370.0	545190.0	1470.83	0.42	0.03	0.02	0.02	0.00	0.00	0.00	0.43
10	10	239590.0	544760.0	1451.12	0.40	0.02	0.03	0.02	0.00	0.00	0.00	0.46
11	11	240090.0	544280.0	1482.85	0.49	0.01	0.03	0.02	0.00	0.00	0.00	0.43
12	12	240540.0	543330.0	1485.89	0.38	0.01	0.03	0.02	0.00	0.00	0.00	0.46
13	13	241100.0	543590.0	1485.31	0.36	0.01	0.01	0.00	0.00	0.00	0.00	0.39
14	14	241540.0	543840.0	1456.72	0.35	0.01	0.02	0.01	0.00	0.00	0.00	0.39
15	15	242020.0	543720.0	1492.02	0.36	0.01	0.01	0.00	0.00	0.00	0.00	0.38
16	16	242500.0	543590.0	1494.14	0.33	0.01	0.01	0.00	0.00	0.00	0.00	0.35
17	17	243090.0	543430.0	1494.35	0.32	0.01	0.02	0.01	0.00	0.00	0.00	0.36
18	18	243560.0	543350.0	1497.42	0.32	0.02	0.01	0.01	0.00	0.00	0.00	0.36
19	19	244010.0	543130.0	1497.01	0.32	0.02	0.01	0.00	0.01	0.00	0.00	0.39
20	20	244310.0	542700.0	1491.16	0.33	0.02	0.02	0.01	0.01	0.00	0.00	0.39
21	21	244900.0	542520.0	1485.01	0.33	0.02	0.03	0.01	0.00	0.00	0.00	0.38
22	22	245210.0	542320.0	1481.95	0.33	0.02	0.02	0.00	0.00	0.00	0.00	0.38
23	23	245810.0	542030.0	1473.13	0.33	0.03	0.02	0.00	0.00	0.00	0.00	0.40
24	24	245950.0	541780.0	1457.99	0.34	0.03	0.03	0.00	0.00	0.00	0.00	0.43
25	25	245420.0	541440.0	1459.60	0.35	0.05	0.02	0.02	0.00	0.00	0.00	0.47
26	26	247040.0	541080.0	1455.68	0.35	0.06	0.02	0.00	0.00	0.00	0.00	0.43
27	27	246680.0	540690.0	1430.56	0.35	0.06	0.04	0.04	0.00	0.00	0.00	0.49
28	28	246240.0	540400.0	1481.85	0.35	0.06	0.04	0.02	0.00	0.00	0.00	0.46
29	29	245920.0	540150.0	1483.97	0.35	0.06	0.04	0.02	0.00	0.00	0.00	0.46
30	30	245920.0	539840.0	1458.27	0.35	0.06	0.03	0.00	0.00	0.00	0.00	0.44
31	31	245100.0	539570.0	1473.36	0.34	0.06	0.03	0.00	0.00	0.00	0.00	0.44
32	32	244670.0	539400.0	1455.23	0.34	0.05	0.04	0.01	0.00	0.00	0.00	0.44
33	33	244230.0	539110.0	1496.16	0.31	0.05	0.05	0.04	0.00	0.00	0.00	0.47
34	34	243810.0	538870.0	1474.54	0.34	0.05	0.04	0.04	0.00	0.00	0.00	0.48
35	35	243390.0	538600.0	1495.15	0.34	0.05	0.03	0.02	0.00	0.00	0.00	0.44
36	36	242970.0	538310.0	1496.59	0.34	0.05	0.03	0.00	0.00	0.00	0.00	0.42
37	37	242450.0	538010.0	1494.15	0.33	0.05	0.03	0.01	0.00	0.00	0.00	0.44
38	38	242040.0	537750.0	1491.06	0.36	0.06	0.03	0.00	0.00	0.00	0.00	0.45
39	39	241610.0	537450.0	1491.71	0.36	0.06	0.03	0.01	0.00	0.00	0.00	0.49
40	40	241170.0	537140.0	1487.49	0.37	0.05	0.04	0.02	0.00	0.00	0.00	0.48
41	41	240770.0	536850.0	1483.39	0.39	0.06	0.04	0.01	0.00	0.00	0.00	0.47
42	42	240400.0	536510.0	1490.22	0.38	0.06	0.02	0.00	0.00	0.00	0.00	0.45
43	43	240190.0	536070.0	1495.85	0.38	0.06	0.02	0.00	0.00	0.00	0.00	0.43
44	44	239970.0	535590.0	1494.26	0.38	0.06	0.02	0.00	0.00	0.00	0.00	0.45
45	45	2396590.0	535130.0	1515.01	0.35	0.04	0.03	0.01	0.00	0.00	0.00	0.45
46	46	239440.0	534750.0	1510.65	0.36	0.05	0.03	0.03	0.00	0.00	0.00	0.48
47	47	239340.0	534240.0	1507.53	0.37	0.06	0.06	0.05	0.00	0.00	0.00	0.54
48	48	239270.0	533720.0	1501.43	0.39	0.07	0.09	0.07	0.00	0.00	0.00	0.62
49	49	239130.0	533240.0	1506.49	0.37	0.07	0.08	0.04	0.00	0.00	0.00	0.57
50	50	239770.0	532710.0	1506.19	0.37	0.05	0.09	0.07	0.00	0.00	0.00	0.60

( ASSUMED DENSITY = 2.00 G/CM<sup>3</sup> )

RESCO 51

GRAVIMETRIC SURVEY OF HAUT MOULOUYA IN MOROCCO 1978

STATION-NO.		LATITUDE (Y)	LONGITUDE (X)	ALTITUDE	FAR	MIDDLE	NEAR	CLOSE-1	CLOSE-2	SEA	LAKE	TOTAL
NO.		METER	METER	METER	MGAL	MGAL	MGAL	MGAL	MGAL	MGAL	MGAL	MGAL
51	51	239520.0	532310.0	1541.55	0.33	0.05	0.11	0.12	0.00	0.00	0.00	0.61
52	52	239540.0	531790.0	1542.14	0.33	0.05	0.08	0.04	0.00	0.00	0.00	0.49
53	53	239580.0	531420.0	1551.27	0.32	0.05	0.05	0.01	0.00	0.00	0.00	0.46
54	54	239690.0	530910.0	1570.05	0.33	0.05	0.03	0.04	0.00	0.00	0.00	0.47
55	55	239960.0	530440.0	1573.94	0.30	0.06	0.09	0.01	0.00	0.00	0.00	0.46
56	56	239210.0	529640.0	1578.11	0.30	0.06	0.08	0.01	0.00	0.00	0.00	0.45
57	57	239160.0	529500.0	1554.21	0.29	0.07	0.07	0.03	0.00	0.00	0.00	0.46
58	58	239700.0	529090.0	1538.19	0.28	0.09	0.06	0.03	0.00	0.00	0.00	0.46
59	59	239930.0	528600.0	1601.60	0.27	0.09	0.07	0.00	0.00	0.00	0.00	0.44
60	60	240390.0	527760.0	1626.90	0.25	0.09	0.32	0.06	0.00	0.00	0.00	0.73
61	61	240780.0	527290.0	1655.12	0.23	0.12	0.19	0.00	0.01	0.00	0.00	0.55
62	62	240500.0	526790.0	1691.51	0.23	0.13	0.16	0.02	0.00	0.00	0.00	0.56
63	63	240270.0	526210.0	1714.06	0.23	0.13	0.13	0.03	0.00	0.00	0.00	0.56
64	64	232390.0	526640.0	1591.74	0.35	0.04	0.03	0.00	0.00	0.00	0.00	0.45
65	65	232710.0	527060.0	1586.79	0.35	0.05	0.03	0.01	0.00	0.00	0.00	0.45
66	66	233000.0	527490.0	1572.17	0.35	0.07	0.03	0.01	0.00	0.00	0.00	0.47
67	67	233360.0	527720.0	1579.94	0.34	0.06	0.04	0.01	0.00	0.00	0.00	0.46
68	68	233830.0	527950.0	1599.35	0.34	0.05	0.07	0.00	0.00	0.00	0.00	0.45
69	69	234440.0	528090.0	1580.30	0.33	0.05	0.18	0.02	0.00	0.00	0.00	0.58
70	70	234950.0	528260.0	1573.74	0.33	0.06	0.37	0.08	0.00	0.00	0.00	0.83
71	71	235390.0	528150.0	1545.46	0.36	0.08	0.27	0.04	0.00	0.00	0.00	0.75
72	72	235870.0	528320.0	1516.67	0.39	0.13	0.46	0.15	0.03	0.00	0.00	1.16
73	73	236300.0	528610.0	1509.03	0.40	0.15	0.43	0.15	0.00	0.00	0.00	1.13
74	74	236740.0	528890.0	1505.97	0.39	0.15	0.19	0.03	0.00	0.00	0.00	0.76
75	75	236780.0	528420.0	1506.71	0.39	0.18	0.13	0.03	0.00	0.00	0.00	0.72
76	76	237190.0	528490.0	1505.41	0.37	0.17	0.09	0.05	0.00	0.00	0.00	0.69
77	77	237650.0	528970.0	1514.65	0.36	0.15	0.06	0.02	0.00	0.00	0.00	0.60
78	78	238250.0	528830.0	1523.59	0.34	0.14	0.19	0.02	0.00	0.00	0.00	0.69
79	79	238700.0	528800.0	1537.27	0.33	0.13	0.22	0.12	0.00	0.00	0.00	0.79
80	80	239250.0	528710.0	1557.10	0.31	0.11	0.29	0.22	0.00	0.00	0.00	0.92
81	81	239510.0	528420.0	1584.48	0.28	0.10	0.11	0.06	0.00	0.00	0.00	0.84
82	82	234810.0	548160.0	1522.27	0.52	0.03	0.02	0.00	0.00	0.00	0.00	0.56
83	83	234740.0	547650.0	1525.80	0.51	0.03	0.01	0.00	0.00	0.00	0.00	0.57
84	84	234690.0	547190.0	1525.73	0.51	0.04	0.01	0.00	0.00	0.00	0.00	0.56
85	85	234600.0	546620.0	1517.15	0.53	0.04	0.05	0.00	0.00	0.00	0.00	0.66
86	86	234530.0	546200.0	1517.51	0.53	0.04	0.04	0.00	0.00	0.00	0.00	0.64
87	87	234480.0	545790.0	1497.62	0.56	0.05	0.18	0.16	0.00	0.00	0.00	0.94
88	88	234420.0	545350.0	1513.74	0.54	0.04	0.03	0.02	0.00	0.00	0.00	0.62
89	89	234330.0	544830.0	1521.74	0.51	0.04	0.02	0.00	0.00	0.00	0.00	0.57
90	90	234680.0	544320.0	1515.40	0.51	0.03	0.04	0.01	0.00	0.00	0.00	0.59
91	91	234730.0	54389									



GRAVIMETRIC SURVEY OF HAUT MOULOUJA IN MOROCCO

1978

STATION-NO.	LATITUDE (°)	LONGITUDE (E)	ALTITUDE	FAR	MIDDLE	NEAR	CLOSE-1	CLOSE-2	SEA	LAKE	TOTAL
NO.	METER	METER	METER	MGAL	MGAL	MGAL	MGAL	MGAL	MGAL	MGAL	MGAL
101	101	230520.0	541520.0	1529.34	0.85	0.12	0.02	0.01	0.00	0.0	0.0
102	102	230019.0	541430.0	1539.57	0.67	0.13	0.04	0.02	0.0	0.0	0.86
103	103	229610.0	541020.0	1540.57	0.68	0.45	0.05	0.03	0.0	0.0	0.90
104	104	229270.0	540590.0	1535.29	0.69	0.18	0.06	0.04	0.05	0.0	1.02
105	105	228840.0	540290.0	1535.14	0.71	0.20	0.06	0.05	0.0	0.0	1.02
106	106	228380.0	539970.0	1531.39	0.74	0.22	0.04	0.00	0.03	0.0	1.01
107	107	227970.0	539620.0	1545.45	0.74	0.23	0.04	0.02	0.0	0.0	1.03
108	108	227620.0	539380.0	1550.44	0.73	0.24	0.06	0.04	0.01	0.0	1.08
109	109	227230.0	539170.0	1545.91	0.74	0.23	0.09	0.01	0.0	0.0	1.10
110	110	226830.0	53890.0	1549.99	0.75	0.23	0.14	0.01	0.0	0.0	1.23
111	111	226430.0	537370.0	1570.64	0.71	0.24	0.11	0.00	0.0	0.0	1.08
112	112	226030.0	537030.0	1568.19	0.70	0.27	0.11	0.01	0.0	0.0	1.04
113	113	225640.0	537440.0	1570.50	0.70	0.13	0.14	0.03	0.0	0.0	1.05
114	114	225270.0	537860.0	1580.76	0.69	0.14	0.14	0.05	0.0	0.0	1.03
115	115	224850.0	537630.0	1599.13	0.63	0.11	0.09	0.01	0.0	0.0	0.84
116	116	224410.0	529380.0	1504.69	0.39	0.14	0.15	0.03	0.0	0.0	0.72
117	117	223910.0	529910.0	1503.15	0.41	0.13	0.18	0.02	0.0	0.0	0.73
118	118	223420.0	530370.0	1501.51	0.41	0.12	0.19	0.03	0.0	0.0	0.74
119	119	222930.0	530860.0	1500.29	0.42	0.11	0.13	0.00	0.0	0.0	0.66
120	120	222470.0	531330.0	1499.09	0.42	0.10	0.07	0.00	0.0	0.0	0.61
121	121	222010.0	531780.0	1499.45	0.42	0.11	0.04	0.00	0.04	0.0	0.60
122	122	221590.0	532260.0	1507.17	0.42	0.05	0.03	0.01	0.02	0.0	0.55
123	123	221190.0	532690.0	1518.63	0.41	0.06	0.04	0.01	0.0	0.0	0.52
124	124	220800.0	533170.0	1524.96	0.41	0.05	0.02	0.00	0.0	0.0	0.43
125	125	220430.0	533540.0	1529.69	0.42	0.05	0.02	0.00	0.0	0.0	0.49
126	126	220070.0	533930.0	1521.94	0.43	0.05	0.01	0.01	0.0	0.0	0.50
127	127	219720.0	534360.0	1513.53	0.43	0.04	0.02	0.01	0.01	0.0	0.52
128	128	219380.0	534830.0	1527.40	0.42	0.04	0.01	0.00	0.0	0.0	0.47
129	129	219050.0	535310.0	1531.89	0.42	0.04	0.02	0.03	0.0	0.0	0.51
130	130	218740.0	535790.0	1529.80	0.43	0.04	0.01	0.00	0.0	0.0	0.43
131	131	218440.0	536190.0	1526.61	0.44	0.04	0.01	0.00	0.0	0.0	0.49
132	132	218140.0	536630.0	1533.65	0.43	0.04	0.04	0.03	0.0	0.0	0.54
133	133	217850.0	537050.0	1538.91	0.44	0.04	0.03	0.02	0.0	0.0	0.53
134	134	217570.0	537420.0	1529.36	0.46	0.04	0.01	0.00	0.01	0.0	0.52
135	135	217300.0	537810.0	1532.95	0.45	0.04	0.02	0.02	0.0	0.0	0.54
136	136	217040.0	537770.0	1608.52	0.56	0.09	0.09	0.01	0.0	0.0	0.77
137	137	216790.0	537750.0	1609.35	0.54	0.09	0.11	0.02	0.0	0.0	0.76
138	138	216540.0	537590.0	1592.74	0.53	0.09	0.07	0.01	0.0	0.0	0.69
139	139	216300.0	537570.0	1593.80	0.51	0.07	0.07	0.03	0.0	0.0	0.68
140	140	216070.0	537390.0	1586.33	0.50	0.07	0.07	0.02	0.0	0.0	0.63
141	141	215850.0	537570.0	1585.89	0.53	0.05	0.05	0.02	0.0	0.0	0.63
142	142	215630.0	537760.0	1593.45	0.53	0.05	0.04	0.03	0.0	0.0	0.65
143	143	215420.0	537850.0	1591.81	0.51	0.05	0.05	0.05	0.0	0.0	0.65
144	144	215220.0	538110.0	1599.40	0.50	0.05	0.01	0.00	0.0	0.0	0.56
145	145	215030.0	538270.0	1534.42	0.49	0.04	0.01	0.01	0.0	0.0	0.55
146	146	214850.0	538470.0	1525.79	0.48	0.04	0.01	0.00	0.0	0.0	0.52
147	147	214680.0	538660.0	1529.08	0.46	0.03	0.02	0.01	0.0	0.0	0.52
148	148	214520.0	538530.0	1522.59	0.46	0.03	0.01	0.00	0.0	0.0	0.50
149	149	214370.0	539170.0	1531.70	0.44	0.03	0.01	0.00	0.0	0.0	0.45
150	150	214230.0	539500.0	1541.59	0.42	0.03	0.02	0.01	0.0	0.0	0.48

GRAVIMETRIC SURVEY OF HAUT MOULOUJA IN MOROCCO

1978

STATION-NO.	LATITUDE (°)	LONGITUDE (E)	ALTITUDE	FAR	MIDDLE	NEAR	CLOSE-1	CLOSE-2	SEA	LAKE	TOTAL
NO.	METER	METER	METER	MGAL	MGAL	MGAL	MGAL	MGAL	MGAL	MGAL	MGAL
151	151	235950.0	539920.0	1541.24	0.42	0.03	0.01	0.00	0.0	0.0	0.46
152	152	236100.0	540160.0	1543.09	0.41	0.03	0.01	0.00	0.0	0.0	0.44
153	153	236260.0	540560.0	1537.61	0.41	0.02	0.01	0.00	0.0	0.0	0.44
154	154	236560.0	541110.0	1531.90	0.42	0.02	0.01	0.00	0.0	0.0	0.45
155	155	236890.0	541500.0	1529.70	0.43	0.02	0.03	0.02	0.0	0.0	0.49
156	156	237350.0	541980.0	1521.93	0.43	0.02	0.00	0.00	0.0	0.0	0.48
157	157	237810.0	542350.0	1514.65	0.44	0.02	0.04	0.01	0.0	0.0	0.50
158	158	238340.0	542880.0	1505.96	0.45	0.02	0.03	0.02	0.0	0.0	0.51
159	159	238930.0	543480.0	1495.20	0.45	0.03	0.03	0.01	0.00	0.0	0.47
160	160	239590.0	544330.0	1484.35	0.44	0.03	0.04	0.00	0.00	0.0	0.51
161	161	240310.0	543760.0	1492.45	0.43	0.02	0.05	0.00	0.01	0.0	0.51
162	162	241090.0	544160.0	1473.62	0.44	0.03	0.04	0.00	0.0	0.0	0.51
163	163	241940.0	544610.0	1457.49	0.44	0.04	0.04	0.00	0.0	0.0	0.52
164	164	242770.0	544940.0	1470.33	0.43	0.03	0.03	0.01	0.0	0.0	0.49
165	165	243600.0	545330.0	1539.43	0.27	0.11	0.17	0.10	0.0	0.0	0.65
166	166	244430.0	545690.0	1551.36	0.29	0.13	0.13	0.10	0.0	0.0	0.65
167	167	245270.0	545920.0	1528.17	0.32	0.19	0.29	0.07	0.0	0.0	0.80
168	168	246110.0	545990.0	1557.93	0.29	0.14	0.23	0.07	0.0	0.0	0.72
169	169	246950.0	545990.0	1599.42	0.25	0.09	0.03	0.00	0.0	0.0	0.45
170	170	247810.0	545910.0	1619.91	0.24	0.09	0.08	0.01	0.0	0.0	0.41
171	171	248690.0	545950.0	1634.18	0.23	0.09	0.10	0.00	0.0	0.0	0.42
172	172	249590.0	545930.0	1637.94	0.23	0.09	0.07	0.02	0.0	0.0	0.41
173	173	250520.0	545910.0	1649.71	0.23	0.10	0.09	0.01	0.0	0.0	0.43
174	174	251490.0	545930.0	1642.47	0.23	0.10	0.00	0.00	0.0	0.0	0.59
175	175	252500.0	545970.0	1625.01	0.23	0.12	0.23	0.06	0.0	0.0	0.66
176	176	253550.0	545930.0	1611.44	0.24	0.14	0.12	0.03	0.02	0.0	0.73
177	177	254630.0	545850.0	1596.39	0.24	0.19	0.15	0.15	0.0	0.0	1.05
178	178	255740.0	545810.0	1619.52	0.23	0.12	0.15	0.12	0.02	0.0	1.15
179	179	256880.0	545830.0	1643.21	0.22	0.11	0.20	0.23	0.0	0.0	0.86
180	180	258050.0	545920.0	1674.22	0.21	0.12	0.04	0.02	0.0	0.0	0.38
181	181	259250.0	545900.0	1673.96	0.21	0.12	0.03	0.00	0.0	0.0	0.36
182	182	260480.0	545700.0	1660.34	0.22	0.12	0.05	0.01	0.0	0.0	0.49
183	183	261750.0	545930.0	1656.61	0.23	0.12	0.07	0.02	0.0	0.0	0.45
184	184	263080.0	546250.0	1651.93	0.23	0.13	0.14	0.11	0.0	0.0	0.61
185	185	264470.0	546440.0	1659.53	0.23	0.12	0.25	0.03	0.0	0.0	0.64
186	186	265920.0	546560.0	1649.92	0.23	0.13	0.35	0.02	0.0	0.0	0.76
187	187	267430.0	546230.0	1623.93	0.24	0.15	0.55	0.00	0.0	0.0	0.94
188	188	268990.0	546190.0	1627.34	0.24	0.15	1.40	0.01	0.0	0.0	1.81
189	189	270610.0	546300.0	1626.22	0.24	0.17	1.33	0.03	0.0	0.0	1.62
190	190	272290.0	546920.0	1656.94	0.22	0.16	2.69	0.20	0.0	0.0	3.27
191	191	274030.0	546850.0	1471.00	0.36	0.03	0.03	0.02	0.0	0.0	0.43
192	192	275830.0	546370.0	1470.55	0.35	0.04	0.02	0.00	0.0	0.0	0.43
193	193	277690.0	546190.0	1467.59	0.38	0.04	0.03	0.02	0.0	0.0	0.45
194	194	279610.0	546550.0	1467.04	0.38	0.04	0.03	0.01	0.0	0.0	0.44
195	195	281590.0	546760.0	1470.01	0.36	0.04	0.02	0.01			



TERRAIN CORRECTIONS

( ASSUMED DENSITY = 2.00 G/CM<sup>3</sup> )

MESCO 54

GRAVIMETRIC SURVEY OF HAUT MOULOUYA IN MOROCCO

1978

STATION-NO.	LATITUDE (N)	LONGITUDE (E)	ALTITUDE	FAR	MIDDLE	NEAR	CLOSE-1	CLOSE-2	SEA	LAKE	TOTAL
NO.	METER		METER	MGAL	MGAL	MGAL	MGAL	MGAL	MGAL	MGAL	MGAL
201	311	24490.0	540120.0	1493.05	0.37	0.02	0.02	0.00	0.0	0.0	0.41
202	312	239950.0	539940.0	1478.14	0.38	0.02	0.03	0.01	0.0	0.0	0.43
203	313	239560.0	539900.0	1505.27	0.37	0.02	0.05	0.01	0.0	0.0	0.45
204	314	239100.0	539900.0	1515.35	0.37	0.02	0.04	0.01	0.0	0.0	0.43
205	315	238570.0	539740.0	1514.61	0.37	0.02	0.04	0.02	0.0	0.0	0.44
206	316	238100.0	539530.0	1535.31	0.36	0.02	0.01	0.00	0.0	0.0	0.40
207	317	237640.0	539510.0	1532.56	0.37	0.02	0.01	0.00	0.0	0.0	0.40
208	318	237180.0	539450.0	1536.42	0.38	0.02	0.01	0.00	0.0	0.0	0.40
209	319	236740.0	539370.0	1539.31	0.40	0.02	0.01	0.00	0.0	0.0	0.42
210	320	240510.0	543620.0	1493.03	0.36	0.01	0.01	0.00	0.0	0.0	0.39
211	321	241250.0	543170.0	1495.53	0.35	0.01	0.01	0.00	0.0	0.0	0.37
212	322	241120.0	542650.0	1495.92	0.35	0.01	0.01	0.00	0.0	0.0	0.38
213	323	240790.0	542330.0	1495.34	0.37	0.01	0.02	0.00	0.0	0.0	0.40
214	324	240540.0	541900.0	1495.45	0.38	0.01	0.02	0.00	0.0	0.0	0.41
215	325	240550.0	541400.0	1497.56	0.37	0.02	0.02	0.00	0.0	0.0	0.41
216	326	240370.0	540910.0	1495.11	0.38	0.02	0.02	0.00	0.0	0.0	0.42
217	327	240230.0	540450.0	1495.42	0.35	0.02	0.03	0.00	0.0	0.0	0.42
218	328	240150.0	540470.0	1493.01	0.34	0.02	0.02	0.00	0.0	0.0	0.37
219	329	240190.0	54010.0	1492.74	0.35	0.02	0.01	0.00	0.0	0.0	0.39
220	330	240620.0	541560.0	1491.84	0.35	0.02	0.01	0.01	0.0	0.0	0.39
221	331	240360.0	541230.0	1493.59	0.35	0.03	0.01	0.00	0.0	0.0	0.39
222	332	240750.0	541260.0	1473.67	0.36	0.03	0.03	0.02	0.0	0.0	0.44
223	333	240540.0	541640.0	1474.07	0.36	0.03	0.03	0.02	0.0	0.0	0.43
224	334	240250.0	541970.0	1481.15	0.35	0.02	0.02	0.02	0.0	0.0	0.40
225	335	240200.0	542400.0	1484.54	0.34	0.01	0.01	0.01	0.0	0.0	0.37
226	336	241700.0	542850.0	1495.65	0.34	0.01	0.01	0.01	0.0	0.0	0.37
227	337	240200.0	542100.0	1506.06	0.33	0.01	0.04	0.01	0.0	0.0	0.43
228	338	239740.0	542320.0	1521.36	0.36	0.02	0.02	0.00	0.0	0.0	0.41
229	339	239230.0	542610.0	1525.79	0.36	0.02	0.02	0.00	0.0	0.0	0.40
230	340	238860.0	542600.0	1525.61	0.37	0.02	0.02	0.00	0.0	0.0	0.41
231	341	238470.0	542840.0	1523.21	0.37	0.02	0.03	0.00	0.0	0.0	0.42
232	342	238050.0	542850.0	1516.48	0.37	0.01	0.04	0.00	0.0	0.0	0.42
233	343	238320.0	542310.0	1523.61	0.37	0.02	0.02	0.02	0.0	0.0	0.42
234	344	238760.0	541800.0	1529.08	0.37	0.02	0.02	0.03	0.0	0.0	0.44
235	345	238650.0	541250.0	1529.09	0.36	0.02	0.02	0.00	0.0	0.0	0.41
236	346	238730.0	540750.0	1523.25	0.36	0.02	0.02	0.01	0.0	0.0	0.41
237	347	238550.0	539770.0	1496.12	0.39	0.06	0.01	0.00	0.0	0.0	0.47
238	348	238550.0	539700.0	1497.64	0.40	0.06	0.02	0.00	0.0	0.0	0.48
239	349	238200.0	539280.0	1492.89	0.40	0.05	0.02	0.00	0.0	0.0	0.47
240	350	238170.0	539250.0	1492.56	0.40	0.04	0.02	0.00	0.0	0.0	0.46
241	351	238350.0	538720.0	1489.17	0.40	0.04	0.02	0.00	0.0	0.0	0.47
242	352	238540.0	538050.0	1490.50	0.41	0.05	0.04	0.01	0.0	0.0	0.51
243	353	240260.0	538500.0	1472.93	0.40	0.04	0.03	0.01	0.0	0.0	0.49
244	354	240600.0	539000.0	1473.13	0.39	0.04	0.03	0.01	0.0	0.0	0.47
245	355	240380.0	539300.0	1491.32	0.38	0.03	0.03	0.00	0.0	0.0	0.43
246	356	241730.0	538120.0	1490.74	0.37	0.05	0.03	0.01	0.0	0.0	0.46
247	357	241470.0	538500.0	1476.21	0.38	0.06	0.02	0.00	0.0	0.0	0.45
248	358	241600.0	538830.0	1475.50	0.38	0.05	0.01	0.00	0.0	0.0	0.44
249	359	240300.0	538400.0	1471.40	0.36	0.05	0.04	0.01	0.0	0.0	0.46
250	360	240350.0	539320.0	1496.09	0.34	0.05	0.02	0.00	0.0	0.0	0.41

TERRAIN CORRECTIONS

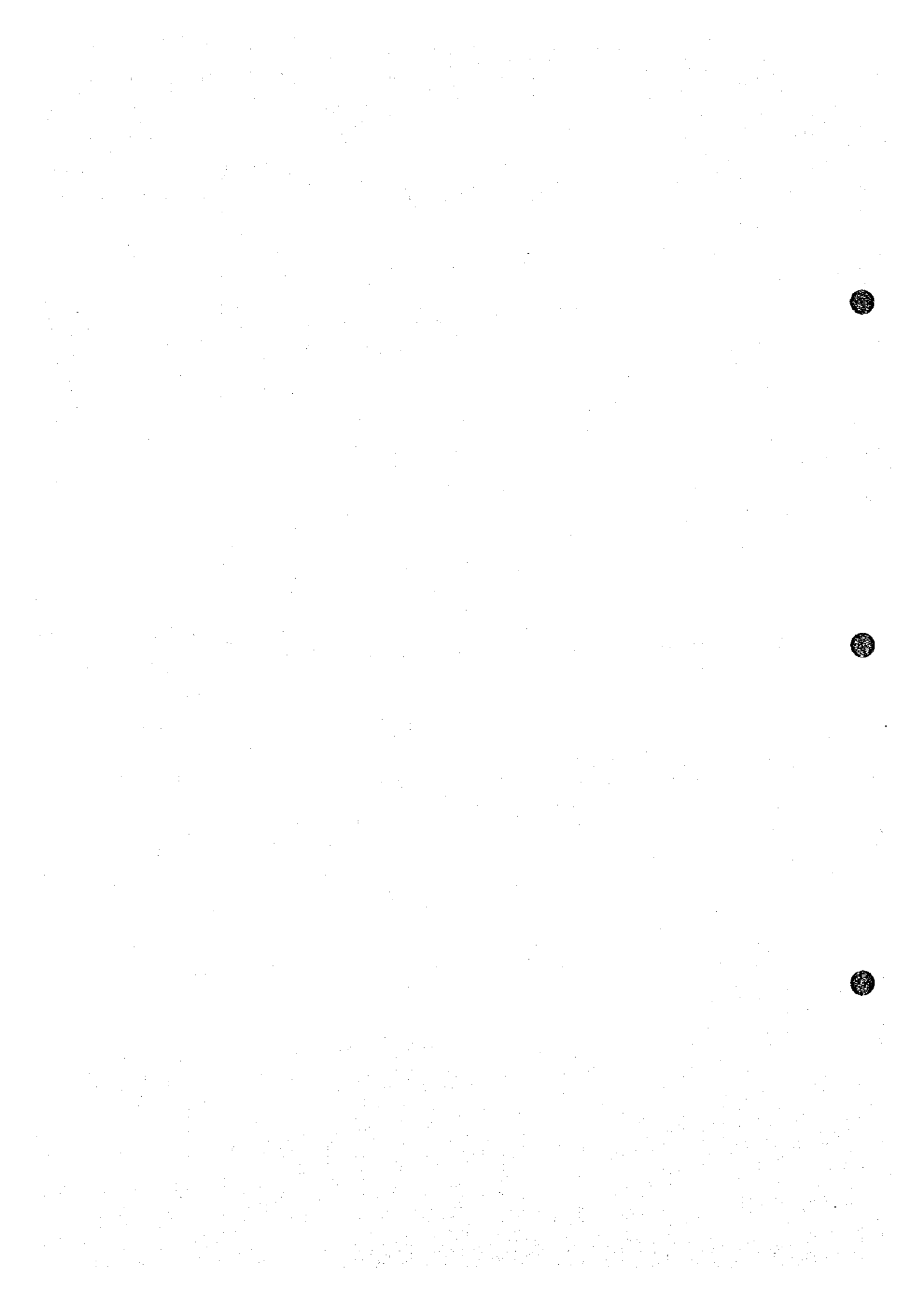
( ASSUMED DENSITY = 2.00 G/CM<sup>3</sup> )

MESCO 55

GRAVIMETRIC SURVEY OF HAUT MOULOUYA IN MOROCCO

1978

STATION-NO.	LATITUDE (N)	LONGITUDE (E)	ALTITUDE	FAR	MIDDLE	NEAR	CLOSE-1	CLOSE-2	SEA	LAKE	TOTAL
NO.	METER		METER	MGAL	MGAL	MGAL	MGAL	MGAL	MGAL	MGAL	MGAL
251	361	244730.0	540100.0	1474.89	0.34	0.05	0.02	0.02	0.0	0.0	0.43
252	362	244260.0	540230.0	1459.56	0.36	0.05	0.05	0.04	0.0	0.0	0.50
253	363	238100.0	532550.0	1542.13	0.33	0.04	0.13	0.02	0.0	0.0	0.56
254	364	237700.0	532690.0	1532.40	0.35	0.04	0.05	0.03	0.0	0.0	0.49
255	365	237430.0	532900.0	1503.71	0.39	0.07	0.05	0.03	0.0	0.0	0.56
256	366	236260.0	530780.0	1539.50	0.30	0.05	0.09	0.01	0.0	0.0	0.45
257	367	238140.0	530430.0	1535.14	0.31	0.06	0.06	0.05	0.0	0.0	0.47
258	368	237310.0	530170.0	1552.53	0.33	0.06	0.03	0.03	0.0	0.0	0.50
259	369	238530.0	538440.0	1493.90	0.40	0.04	0.02	0.01	0.0	0.0	0.47
260	370	238140.0	538760.0	1493.15	0.39	0.04	0.01	0.00	0.0	0.0	0.44
261	371	238330.0	538260.0	1499.07	0.40	0.05	0.02	0.01	0.0	0.0	0.49
262	372	238300.0	538090.0	1493.15	0.41	0.05	0.03	0.01	0.0	0.0	0.50
263	373	237860.0	538420.0	1494.73	0.40	0.05	0.02	0.01	0.0	0.0	0.48
264	374	237460.0	538920.0	1491.27	0.41	0.06	0.02	0.00	0.0	0.0	0.50
265	375	237390.0	538450.0	1490.70	0.42	0.06	0.02	0.00	0.0	0.0	0.51
266	376	237360.0	538090.0	1491.34	0.42	0.07	0.02	0.00	0.0	0.0	0.51
267	377	237120.0	538640.0	1495.38	0.42	0.04	0.01	0.00	0.0	0.0	0.50
268	378	236730.0	538260.0	1495.54	0.42	0.03	0.02	0.00	0.0	0.0	0.52
269	379	236540.0	538500.0	1476.45	0.42	0.08	0.03	0.00	0.0	0.0	0.54
270	380	236450.0	538430.0	1495.22	0.42	0.09	0.02	0.00	0.0	0.0	0.54
271	381	237270.0	539370.0	1527.21	0.39	0.02	0.02	0.00	0.0	0.0	0.44
272	382	237490.0	538710.0	1518.72	0.39	0.02	0.02	0.00	0.0	0.0	0.44
273	393	237760.0	538260.0	1509.53	0.40	0.02	0.03	0.01	0.0	0.0	0.45
274	384	238030.0	537980.0	1505.62	0.40	0.02	0.02	0.01	0.0	0.0	0.45
275	385	238370.0	537700.0	1498.63	0.40	0.03	0.02	0.00	0.0	0.0	0.45
276	386	238220.0	538470.0	1513.11	0.45	0.03	0.01	0.00	0.0	0.0	0.50
277	387	238460.0	538470.0	1515.47	0.48	0.03	0.02	0.02	0.0	0.0	0.53
278	388	238670.0	538550.0	1511.45	0.45	0.04	0.02	0.03	0.0	0.0	0.51
279	389	238900.0	538050.0	1527.41	0.45	0.04	0.04	0.05	0.0	0.0	0.58
280	390	236200.0	538810.0	1504.58	0.45	0.04	0.04	0.01	0.0	0.0	0.54
281	391	236700.0	538410.0	1501.74	0.43	0.04	0.03	0.00	0.0	0.0	0.51
282	392	236690.0	538020.0	1502.62	0.41	0.04	0.01	0.00	0.0	0.0	0.53
283	393	236330.0	538720.0	1514.59	0.42	0.04	0.01	0.01	0.0	0.0	0.47
284	394	235750.0	538500.0	1519.14	0.42	0.04	0.01	0.00	0.0	0.0	0.47
285	395	235360.0	538520.0	1526.65	0.42	0.04	0.03	0.00	0.0	0.0	0.46
286	396	240500.0	540580.0	1450.22	0.35	0.06	0.02	0.00	0.0	0.0	0.43
287	397	242670.0	539330.0	1474.91	0.39	0.06	0.04	0.03	0.0	0.0	0.49
288	398	242350.0	539470.0	1473.15	0.35	0.05	0.02	0.00	0.0	0.0	0.44
289	399	242300.0	538510.0	1485.50	0.40	0.05	0.03	0.02	0.0	0.0	0.51
290	400	238320.0	538640.0	1491.29	0.39	0.06	0.02	0.01	0.0	0.0	0.49
291	401	238910.0	542250.0	1522.37	0.36	0.05	0.03	0.03	0.0	0.0	0.66
292	402	238540.0	541940.0	1520.87	0.38	0.05	0.02	0.03	0.0	0.0	0.69
293	403	238100.0	542500.0	1529.50	0.41	0.06	0.01	0.01	0.0	0.0	0.69
294	404	238000.0	542030.0	1521.10	0.42	0.06	0.01	0.00	0.0	0.0	0.69
295	405	238400.0	546520.0	1521.72	0.42	0.06	0.02	0.01	0.0	0.0	0.71



GRAVIMETRIC SURVEY OF HAUT MZOUZJA IN MOROCCO

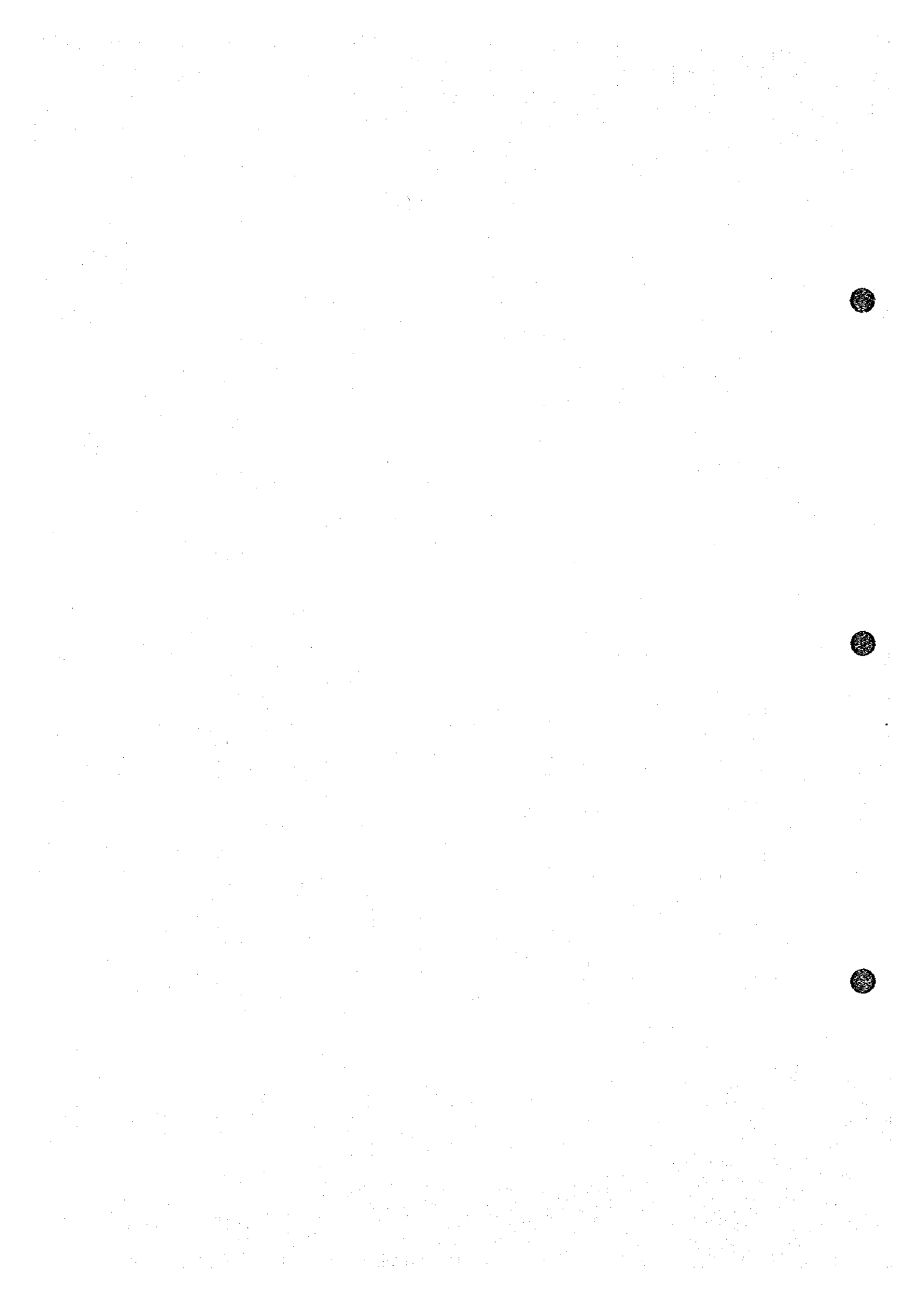
1978

STATION-NO.	LATITUDE (°)	LONGITUDE (E)	ALTITUDE	FAR	MIDDLE	NEAR	CLOSE-1	CLOSE-2	SEA	LAKE	TOTAL
NO.	METER	METER	METER	MGAL	MGAL	MGAL	MGAL	MGAL	MGAL	MGAL	MGAL
301	411	231450.0	544160.0	1524.99	0.66	0.09	0.01	0.00	0.0	0.0	0.76
302	412	231320.0	543740.0	1526.46	0.66	0.10	0.01	0.00	0.0	0.0	0.77
303	413	231180.0	543360.0	1525.44	0.66	0.11	0.01	0.00	0.0	0.0	0.79
304	414	230920.0	542930.0	1526.52	0.67	0.11	0.02	0.01	0.0	0.0	0.81
305	415	230740.0	542430.0	1528.28	0.67	0.12	0.03	0.02	0.0	0.0	0.83
306	416	230540.0	542000.0	1532.79	0.66	0.11	0.04	0.02	0.0	0.0	0.83
307	417	230390.0	543950.0	1439.20	0.52	0.04	0.07	0.02	0.0	0.0	0.65
308	418	230300.0	544080.0	1439.58	0.51	0.04	0.06	0.03	0.02	0.0	0.66
309	419	230350.0	544420.0	1439.43	0.51	0.03	0.05	0.03	0.0	0.0	0.64
310	420	230430.0	544450.0	1439.77	0.51	0.05	0.03	0.00	0.0	0.0	0.60
311	421	230820.0	544950.0	1441.57	0.49	0.05	0.03	0.00	0.0	0.0	0.63
312	422	230330.0	544950.0	1455.17	0.47	0.06	0.03	0.01	0.0	0.0	0.57
313	423	230720.0	545180.0	1455.17	0.46	0.13	0.09	0.02	0.02	0.0	0.72
314	424	228100.0	538200.0	1591.38	0.71	0.18	0.08	0.02	0.0	0.0	0.93
315	425	228150.0	538720.0	1559.17	0.55	0.08	0.04	0.00	0.0	0.0	0.65
316	426	230350.0	538690.0	1584.01	0.56	0.08	0.04	0.00	0.0	0.0	0.73
317	427	230470.0	538550.0	1559.73	0.53	0.08	0.05	0.03	0.0	0.0	0.72
318	428	230440.0	538090.0	1561.19	0.53	0.08	0.05	0.01	0.0	0.0	0.75
319	429	230310.0	53920.0	1568.70	0.61	0.10	0.03	0.09	0.0	0.0	0.83
320	430	230220.0	540290.0	1531.94	0.64	0.13	0.04	0.02	0.0	0.0	0.76
321	431	230200.0	541190.0	1517.57	0.64	0.07	0.02	0.09	0.03	0.0	0.86
322	432	232150.0	540600.0	1525.34	0.61	0.05	0.02	0.00	0.0	0.0	0.68
323	433	232280.0	540000.0	1529.50	0.59	0.06	0.02	0.00	0.0	0.0	0.66
324	434	232540.0	539400.0	1539.93	0.56	0.05	0.01	0.00	0.0	0.0	0.62
325	435	232540.0	539900.0	1539.93	0.56	0.05	0.01	0.00	0.0	0.0	0.60
326	436	232710.0	538440.0	1541.65	0.53	0.05	0.01	0.00	0.0	0.0	0.59
327	437	235050.0	538990.0	1535.58	0.44	0.05	0.01	0.00	0.0	0.0	0.49
328	438	234050.0	540420.0	1527.82	0.47	0.03	0.02	0.01	0.0	0.0	0.53
329	439	234050.0	540710.0	1519.37	0.50	0.04	0.02	0.01	0.0	0.0	0.57
330	440	234040.0	541230.0	1516.45	0.52	0.04	0.01	0.00	0.0	0.0	0.57
331	441	235110.0	540830.0	1532.17	0.45	0.02	0.01	0.00	0.0	0.0	0.49
332	442	235150.0	541180.0	1526.41	0.47	0.02	0.02	0.00	0.0	0.0	0.51
333	443	235250.0	541550.0	1530.40	0.47	0.02	0.07	0.03	0.0	0.0	0.56
334	444	235340.0	542060.0	1511.73	0.49	0.02	0.02	0.00	0.0	0.0	0.54
335	445	234240.0	543310.0	1515.45	0.52	0.03	0.08	0.03	0.0	0.0	0.66
336	446	233810.0	543330.0	1507.44	0.55	0.04	0.01	0.00	0.0	0.0	0.62
337	447	233390.0	544170.0	1513.84	0.58	0.05	0.01	0.01	0.0	0.0	0.65
338	448	232970.0	544370.0	1515.91	0.60	0.06	0.01	0.01	0.0	0.0	0.68
339	449	232600.0	544580.0	1520.09	0.63	0.06	0.01	0.00	0.0	0.0	0.70
340	450	231690.0	545050.0	1530.73	0.67	0.09	0.01	0.01	0.0	0.0	0.78
341	451	231170.0	545250.0	1540.01	0.68	0.11	0.01	0.00	0.0	0.0	0.82
342	452	230710.0	545510.0	1550.15	0.65	0.13	0.01	0.00	0.0	0.0	0.89
343	453	230280.0	545650.0	1551.85	0.69	0.14	0.01	0.03	0.0	0.0	0.97
344	454	229790.0	545750.0	1551.85	0.71	0.17	0.06	0.04	0.0	0.0	1.00
345	455	229390.0	545690.0	1559.65	0.73	0.21	0.04	0.02	0.0	0.0	1.00
346	456	228720.0	546410.0	1597.16	0.75	0.24	0.05	0.02	0.0	0.0	1.06
347	457	228700.0	547110.0	1593.51	0.75	0.25	0.04	0.01	0.0	0.0	1.03
348	458	228550.0	547950.0	1595.00	0.75	0.26	0.04	0.01	0.0	0.0	1.07
349	459	227950.0	548200.0	1610.47	0.78	0.32	0.05	0.00	0.0	0.0	1.15
350	460	227660.0	547780.0	1624.98	0.75	0.37	0.07	0.04	0.0	0.0	1.23

GRAVIMETRIC SURVEY OF HAUT MZOUZJA IN MOROCCO

1978

STATION-NO.	LATITUDE (°)	LONGITUDE (E)	ALTITUDE	FAR	MIDDLE	NEAR	CLOSE-1	CLOSE-2	SEA	LAKE	TOTAL
NO.	METER	METER	METER	MGAL	MGAL	MGAL	MGAL	MGAL	MGAL	MGAL	MGAL
351	451	228390.0	547600.0	1639.06	0.73	0.43	0.06	0.04	0.0	0.0	1.26
352	452	228720.0	545740.0	1593.96	0.75	0.23	0.07	0.03	0.0	0.0	1.08
353	453	228520.0	545100.0	1595.41	0.74	0.22	0.05	0.03	0.0	0.0	1.08
354	454	235320.0	544920.0	1494.30	0.52	0.04	0.05	0.00	0.0	0.0	0.61
355	455	235770.0	545400.0	1499.61	0.51	0.03	0.09	0.05	0.02	0.0	0.73
356	456	235960.0	545710.0	1517.44	0.50	0.02	0.05	0.03	0.03	0.0	0.69
357	457	235930.0	545100.0	1512.43	0.59	0.02	0.05	0.01	0.0	0.0	0.68
358	458	236350.0	546430.0	1490.72	0.51	0.03	0.05	0.01	0.0	0.0	0.60
359	459	236180.0	542970.0	1539.49	0.67	0.14	0.03	0.00	0.0	0.0	0.86
360	460	229590.0	542930.0	1551.43	0.69	0.16	0.04	0.02	0.0	0.0	0.91
361	461	229380.0	542730.0	1561.09	0.70	0.18	0.06	0.03	0.0	0.0	0.97
362	462	229370.0	542420.0	1551.04	0.72	0.20	0.07	0.03	0.0	0.0	1.02
363	463	228430.0	543410.0	1610.64	0.70	0.21	0.17	0.07	0.0	0.0	1.15
364	464	228150.0	543900.0	1629.05	0.73	0.23	0.07	0.01	0.0	0.0	1.04
365	465	227640.0	544040.0	1624.69	0.71	0.26	0.06	0.09	0.0	0.0	1.04
366	466	227370.0	544500.0	1633.71	0.71	0.29	0.06	0.01	0.0	0.0	1.07
367	467	228030.0	542490.0	1586.77	0.75	0.22	0.05	0.01	0.0	0.0	1.03
368	468	227390.0	541840.0	1586.72	0.75	0.22	0.05	0.01	0.0	0.0	1.03
369	469	227150.0	540350.0	1564.90	0.72	0.22	0.06	0.03	0.0	0.0	1.03
370	470	226990.0	540370.0	1599.55	0.69	0.23	0.12	0.04	0.0	0.0	1.08
371	471	232600.0	545550.0	1526.46	0.64	0.07	0.01	0.00	0.0	0.0	0.72
372	472	232020.0	547290.0	1517.54	0.67	0.08	0.01	0.00	0.0	0.0	0.76
373	473	231850.0	547450.0	1545.35	0.67	0.10	0.01	0.00	0.0	0.0	0.78
374	474	230990.0	547610.0	1559.34	0.69	0.12	0.01	0.00	0.0	0.0	0.81
375	475	236340.0	542590.0	1483.59	0.49	0.03	0.03	0.02	0.0	0.0	0.57
376	476	235910.0	542870.0	1534.22	0.49	0.03	0.03	0.02	0.0	0.0	0.57
377	477	234800.0	542870.0	1499.39	0.56	0.05	0.03	0.01	0.0	0.0	0.65
378	478	234090.0	541200.0	1503.04	0.53	0.04	0.04	0.02	0.0	0.0	0.62
379	479	244310.0	543490.0	1531.67	0.51	0.02	0.03	0.02	0.0	0.0	0.58
380	480	244410.0	543340.0	1509.25	0.50	0.02	0.02	0.01	0.0	0.0	0.56
381	481	244530.0	544330.0	1507.65	0.50	0.02	0.02	0.03	0.0	0.0	0.57
382	482	244920.0	544240.0	1501.45	0.51	0.02	0.03	0.03	0.0	0.0	0.59
383	483	244220.0	545370.0	1506.43	0.51	0.02	0.01	0.00	0.0	0.0	0.54
384	484	244030.0	545750.0	1522.67	0.52	0.02	0.01	0.00	0.0	0.0	0.55
385	485	243800.0	546300.0	1502.73	0.52	0.02	0.01	0.01	0.0	0.0	0.56
386	486	243510.0	545740.0	1501.23	0.51	0.02	0.02	0.02	0.0	0.0	0.58
387	487	243310.0	547180.0	1509.29	0.53	0.02	0.01	0.01	0.0	0.0	0.54
388	488	243070.0	547610.0	1494.10	0.52	0.02	0.05	0.03	0.0	0.0	0.58
389	489	242730.0	545130.0	1459.33	0.51	0.02	0.01	0.00	0.0	0.0	0.51
390	490	247090.0	547890.0	1459.75	0.51	0.02	0.02	0.01	0.0	0.0	0.55
391	491	246940.0	547450.0	1459.20	0.51	0.02	0.02	0.00	0.0	0.0	0.54
392	492	246540.0	547110.0	1471.01	0.50	0.02	0.02	0.00	0.0	0.0	0.54
393	493	246310.0	548750.0	1450.59	0.50	0.02	0.02	0.00	0.0	0.0	0.54
394	494	245950.0	548330.0	1491.73	0.50	0.02	0.02	0.00	0.0	0.0	0.54
395	495	24570.0	545550.0	1496.89	0.50	0.02	0.04	0.04	0.		





GRAVIMETRIC SURVEY OF HAITI MOULOUYA IN MOROCCO

1978

STATION-NO.	LATITUDE (N)	LONGITUDE (E)	ALTITUDE	FAR	MIDDLE	NEAR	CLOSE-1	CLOSE-2	SEA	LAKE	TOTAL
NO.	METER	METER	METER	MGAL	MGAL	MGAL	MGAL	MGAL	MGAL	MGAL	MGAL
401	523	243690.0	545090.0	1493.94	0.32	0.01	0.02	0.02	0.0	0.0	0.37
402	524	243150.0	545090.0	1495.35	0.32	0.01	0.01	0.01	0.0	0.0	0.36
403	525	243390.0	545300.0	1501.04	0.32	0.01	0.01	0.01	0.0	0.0	0.35
404	526	242620.0	545070.0	1490.35	0.33	0.01	0.01	0.03	0.0	0.0	0.41
405	527	242260.0	545300.0	1497.04	0.31	0.01	0.01	0.03	0.0	0.0	0.37
406	528	243600.0	545070.0	1494.01	0.46	0.05	0.02	0.01	0.0	0.0	0.54
407	529	243520.0	545490.0	1497.50	0.44	0.04	0.04	0.09	0.0	0.0	0.60
408	530	243320.0	545550.0	1470.95	0.44	0.03	0.02	0.01	0.0	0.0	0.51
409	531	243340.0	547260.0	1472.80	0.44	0.03	0.02	0.01	0.0	0.0	0.49
410	532	243510.0	547770.0	1478.04	0.43	0.03	0.02	0.01	0.0	0.0	0.48
411	533	243200.0	549260.0	1492.71	0.43	0.01	0.01	0.00	0.0	0.0	0.39
412	534	242910.0	544410.0	1497.95	0.39	0.02	0.02	0.00	0.0	0.0	0.41
413	535	242990.0	546720.0	1495.32	0.39	0.01	0.01	0.00	0.0	0.0	0.41
414	536	242630.0	545400.0	1470.87	0.40	0.02	0.01	0.00	0.0	0.0	0.44
415	537	242430.0	545400.0	1470.87	0.40	0.02	0.01	0.00	0.0	0.0	0.44
416	538	242000.0	545590.0	1470.87	0.40	0.02	0.01	0.00	0.0	0.0	0.44
417	539	245410.0	544930.0	1445.76	0.42	0.03	0.03	0.02	0.0	0.0	0.50
418	540	245930.0	544930.0	1445.76	0.42	0.03	0.03	0.02	0.0	0.0	0.50
419	541	245740.0	544930.0	1445.76	0.42	0.03	0.03	0.02	0.0	0.0	0.50
420	542	245770.0	543910.0	1515.05	0.28	0.04	0.05	0.07	0.0	0.0	0.43
421	543	245700.0	543450.0	1523.34	0.27	0.05	0.03	0.01	0.0	0.0	0.36
422	544	245770.0	543910.0	1515.05	0.28	0.04	0.02	0.01	0.0	0.0	0.35
423	545	245900.0	543450.0	1505.73	0.29	0.03	0.03	0.00	0.0	0.0	0.30
424	546	242080.0	545050.0	1495.56	0.31	0.02	0.05	0.02	0.0	0.0	0.42
425	547	243530.0	545120.0	1495.56	0.31	0.02	0.05	0.02	0.0	0.0	0.42
426	548	245650.0	546740.0	1455.69	0.30	0.02	0.02	0.01	0.0	0.0	0.35
427	549	245350.0	547160.0	1455.69	0.30	0.02	0.02	0.01	0.0	0.0	0.35
428	501	240520.0	535950.0	1537.74	0.35	0.05	0.03	0.00	0.0	0.0	0.44
429	502	240810.0	535380.0	1537.74	0.35	0.05	0.03	0.00	0.0	0.0	0.44
430	503	240800.0	534950.0	1515.40	0.34	0.06	0.05	0.02	0.0	0.0	0.47
431	504	240950.0	534950.0	1515.40	0.34	0.06	0.05	0.02	0.0	0.0	0.47
432	505	241110.0	534950.0	1515.40	0.34	0.06	0.05	0.02	0.0	0.0	0.47
433	506	241120.0	533630.0	1533.65	0.32	0.08	0.11	0.04	0.0	0.0	0.55
434	507	241760.0	533320.0	1533.65	0.32	0.08	0.11	0.04	0.0	0.0	0.55
435	508	242230.0	533060.0	1533.65	0.32	0.08	0.11	0.04	0.0	0.0	0.55
436	509	242660.0	532870.0	1579.34	0.27	0.07	0.09	0.01	0.0	0.0	0.42
437	510	243090.0	532450.0	1610.03	0.24	0.03	0.11	0.02	0.0	0.0	0.45
438	511	243200.0	532370.0	1624.97	0.24	0.09	0.13	0.06	0.01	0.0	0.50
439	512	244040.0	531940.0	1610.13	0.25	0.08	0.15	0.03	0.0	0.0	0.48
440	513	244160.0	531500.0	1611.95	0.25	0.08	0.15	0.03	0.0	0.0	0.48
441	514	244930.0	529510.0	1607.43	0.25	0.13	0.17	0.06	0.0	0.0	0.57
442	515	244610.0	529510.0	1607.43	0.25	0.13	0.17	0.06	0.0	0.0	0.57
443	516	244280.0	530210.0	1576.54	0.28	0.13	0.19	0.04	0.0	0.0	0.53
444	517	244230.0	530520.0	1576.54	0.28	0.13	0.19	0.04	0.0	0.0	0.53
445	518	243280.0	529360.0	1629.32	0.25	0.09	0.08	0.03	0.0	0.0	0.45
446	519	243240.0	529550.0	1618.74	0.25	0.09	0.08	0.03	0.0	0.0	0.47
447	520	242800.0	529770.0	1611.48	0.25	0.06	0.06	0.07	0.0	0.0	0.38
448	521	242500.0	530240.0	1610.93	0.25	0.09	0.05	0.00	0.0	0.0	0.39
449	522	242260.0	530530.0	1605.27	0.25	0.03	0.06	0.01	0.0	0.0	0.39
450	523	242040.0	530970.0	1596.36	0.25	0.07	0.05	0.01	0.0	0.0	0.38

GRAVIMETRIC SURVEY OF HAITI MOULOUYA IN MOROCCO

1978

STATION-NO.	LATITUDE (N)	LONGITUDE (E)	ALTITUDE	FAR	MIDDLE	NEAR	CLOSE-1	CLOSE-2	SEA	LAKE	TOTAL
NO.	METER	METER	METER	MGAL	MGAL	MGAL	MGAL	MGAL	MGAL	MGAL	MGAL
451	524	241840.0	531190.0	1590.63	0.26	0.07	0.04	0.01	0.0	0.0	0.33
452	525	241520.0	531510.0	1577.97	0.27	0.07	0.04	0.01	0.0	0.0	0.33
453	526	241220.0	531940.0	1555.29	0.28	0.05	0.04	0.02	0.0	0.0	0.40
454	527	241040.0	531550.0	1573.26	0.28	0.04	0.05	0.02	0.0	0.0	0.41
455	528	240910.0	531240.0	1584.35	0.29	0.06	0.05	0.01	0.0	0.0	0.39
456	529	240540.0	530920.0	1577.16	0.29	0.07	0.05	0.00	0.0	0.0	0.41
457	530	240160.0	530570.0	1581.25	0.34	0.10	0.16	0.03	0.00	0.0	0.53
458	531	239780.0	530250.0	1565.43	0.33	0.07	0.12	0.05	0.0	0.0	0.50
459	532	239390.0	530820.0	1533.77	0.34	0.05	0.03	0.01	0.0	0.0	0.43
460	533	238950.0	532570.0	1544.07	0.32	0.05	0.09	0.00	0.0	0.0	0.41
461	534	240200.0	532370.0	1559.73	0.31	0.05	0.09	0.00	0.0	0.0	0.39
462	535	240690.0	531870.0	1555.54	0.29	0.06	0.03	0.00	0.0	0.0	0.38
463	536	240550.0	532300.0	1561.93	0.37	0.06	0.02	0.00	0.0	0.0	0.38
464	537	240440.0	532140.0	1546.10	0.32	0.06	0.04	0.03	0.0	0.0	0.45
465	538	240420.0	532280.0	1533.07	0.33	0.06	0.05	0.02	0.0	0.0	0.46
466	539	245500.0	531440.0	1459.72	0.35	0.07	0.05	0.03	0.0	0.0	0.51
467	540	245870.0	531300.0	1450.93	0.33	0.07	0.02	0.01	0.0	0.0	0.43
468	541	245160.0	532650.0	1481.74	0.34	0.09	0.04	0.01	0.0	0.0	0.46
469	542	245450.0	532200.0	1502.45	0.32	0.07	0.02	0.00	0.0	0.0	0.42
470	543	245700.0	532780.0	1519.32	0.32	0.03	0.02	0.00	0.0	0.0	0.42
471	544	242970.0	532390.0	1515.02	0.31	0.09	0.04	0.01	0.0	0.0	0.46
472	545	246860.0	536850.0	1533.53	0.29	0.03	0.05	0.00	0.0	0.0	0.43
473	546	246350.0	536450.0	1534.02	0.29	0.03	0.05	0.04	0.0	0.0	0.51
474	547	246010.0	536900.0	1559.53	0.29	0.09	0.11	0.03	0.0	0.0	0.48
475	548	245800.0	535800.0	1573.59	0.25	0.03	0.10	0.01	0.0	0.0	0.45
476	549	245530.0	535720.0	1555.35	0.25	0.03	0.14	0.05	0.0	0.0	0.53
477	550	245050.0	534750.0	1593.96	0.25	0.03	0.20	0.03	0.0	0.0	0.56
478	551	244800.0	534510.0	1622.56	0.24	0.11	0.17	0.01	0.0	0.0	0.53
479	552	244100.0	534520.0	1601.94	0.26	0.03	0.19	0.00	0.0	0.0	1.06
480	553	243610.0	534110.0	1594.71	0.26	0.08	0.11	0.04	0.0	0.0	0.59
481	554	243340.0	534650.0	1599.52	0.26	0.09	0.13	0.03	0.0	0.0	0.60
482	555	243000.0	533990.0	1624.31	0.26	0.09	0.11	0.02	0.0	0.0	0.66
483	556	242700.0	533370.0	1532.49	0.27	0.07	0.10	0.05	0.0	0.0	0.49
484	557	242940.0	537430.0	1525.55	0.33	0.05	0.02	0.00	0.0	0.0	0.41
485	558	243200.0	537520.0	1516.28	0.32	0.05	0.04	0.00	0.0	0.0	0.42
486	559	243400.0	537170.0	1533.31	0.33	0.05	0.06	0.01	0.0	0.0	0.43
487	560	243650.0	536750.0	1547.39	0.29	0.03	0.12	0.01	0.0	0.0	0.48
488	561	243730.0	536340.0	1574.34	0.27	0.03	0.18	0.03	0.0	0.0	0.48
489	562	243520.0	535470.0	1554.91	0.26	0.03	0.19	0.07	0.0	0.0	0.59
490	563	243310.0	535890.0	1555.32	0.28	0.04	0.19	0.10	0.0	0.0	0.63
491	564	243110.0	535720.0	1533.78	0.30	0.06	0.43	0.33	0.0	0.0	1.13
492	565	242730.0	535570.0	1533.50	0.30	0.04	0.33	0.25	0.01	0.0	0.95
493	566	242300.0	536190.0	1531.54	0.30	0.05	0.09	0.00	0.0	0.0	0.45
494	567	241900.0	536420.0	1521.00	0.32	0.05	0.05	0.00	0.0	0.0	0.42
495	568	241350.0	535410.0	1497.45	0.35	0.06	0.05	0.03	0.0		



GRAVIMETRIC SURVEY OF HAUT MOULOUYA IN MOROCCO

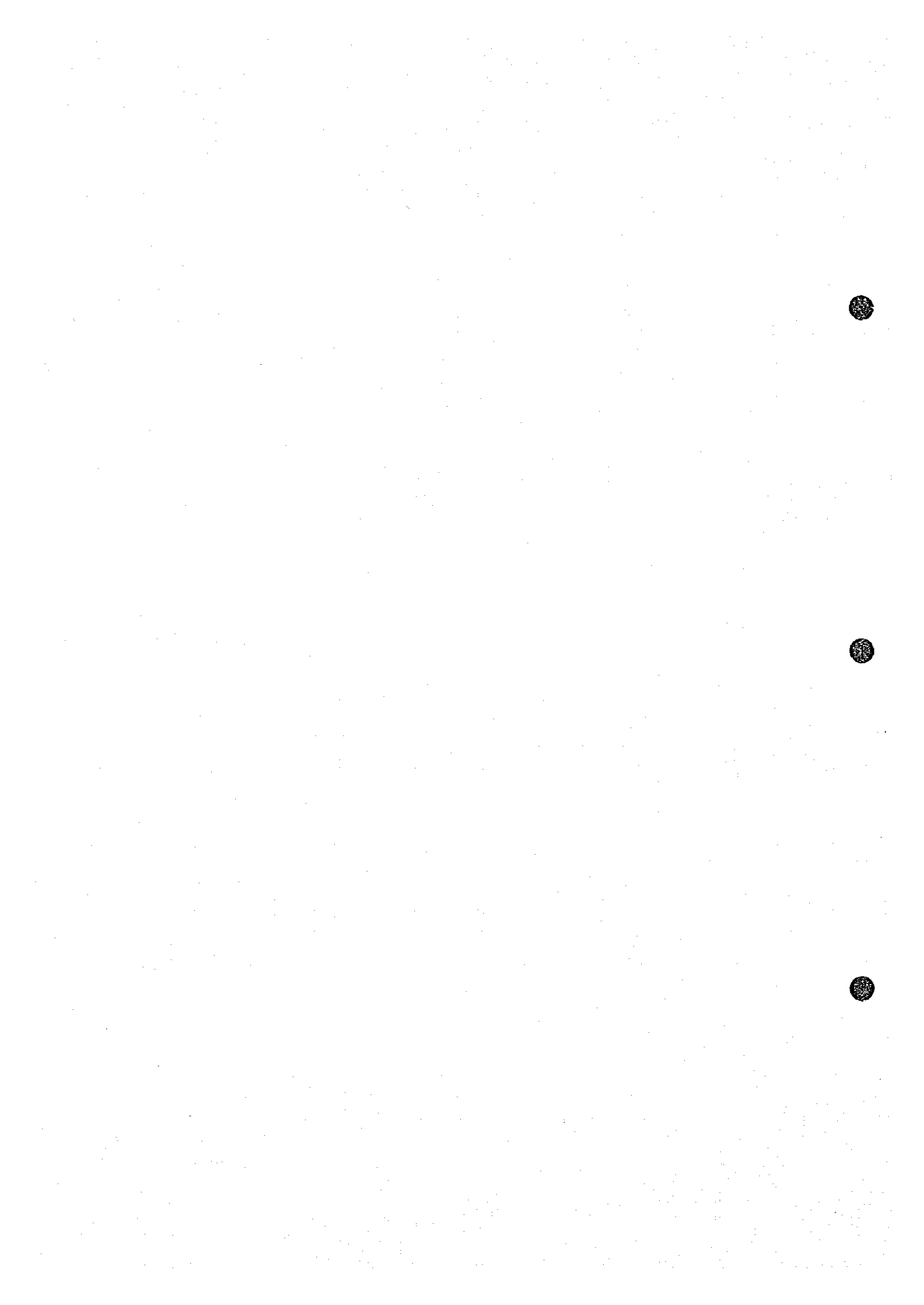
1973

STATION-NO.	LATITUDE (Y)	LONGITUDE (X)	ALTITUDE	FAR	MIDDLE	NEAR	CLOSE-1	CLOSE-2	SEA	LAKE	TOTAL
NO.	METER	METER	METER	MGAL	MGAL	MGAL	MGAL	MGAL	MGAL	MGAL	MGAL
501	674	245210.0	532790.0	1626.27	0.23	0.03	0.22	0.12	0.0	0.0	0.66
502	675	245610.0	532890.0	1642.50	0.22	0.10	0.10	0.08	0.0	0.0	0.51
503	676	245760.0	533370.0	1647.18	0.22	0.12	0.06	0.01	0.0	0.0	0.41
504	677	246070.0	533590.0	1622.21	0.24	0.09	0.14	0.05	0.0	0.0	0.52
505	678	245970.0	533030.0	1656.16	0.22	0.12	0.03	0.00	0.0	0.0	0.38
506	679	245950.0	532500.0	1657.30	0.21	0.13	0.05	0.00	0.0	0.0	0.39
507	680	245950.0	532070.0	1674.99	0.21	0.16	0.05	0.01	0.0	0.0	0.41
508	681	245990.0	531650.0	1671.19	0.21	0.12	0.05	0.02	0.0	0.0	0.40
509	682	246100.0	531290.0	1656.94	0.21	0.11	0.03	0.01	0.0	0.0	0.37
510	683	246490.0	531000.0	1662.54	0.21	0.11	0.04	0.00	0.0	0.0	0.36
511	684	246790.0	530670.0	1650.45	0.22	0.11	0.05	0.01	0.0	0.0	0.39
512	685	247300.0	530290.0	1655.25	0.22	0.11	0.05	0.01	0.0	0.0	0.41
513	686	244300.0	533770.0	1595.40	0.33	0.05	0.04	0.02	0.0	0.0	0.43
514	687	244520.0	533000.0	1516.75	0.32	0.05	0.02	0.00	0.0	0.0	0.45
515	688	244700.0	532730.0	1524.85	0.31	0.06	0.04	0.02	0.0	0.0	0.43
516	689	244920.0	532440.0	1524.34	0.31	0.07	0.03	0.00	0.0	0.0	0.48
517	690	244990.0	531950.0	1543.42	0.28	0.07	0.03	0.01	0.0	0.0	0.44
518	691	245150.0	531650.0	1559.97	0.27	0.09	0.10	0.01	0.0	0.0	0.45
519	692	245320.0	531300.0	1645.14	0.23	0.13	0.09	0.00	0.0	0.0	0.45
520	693	245700.0	530800.0	1553.62	0.29	0.07	0.10	0.04	0.0	0.0	0.51
521	694	246140.0	530200.0	1575.31	0.27	0.09	0.05	0.00	0.0	0.0	0.40
522	695	246200.0	531320.0	1554.52	0.25	0.10	0.13	0.02	0.00	0.0	0.40
523	696	246300.0	531500.0	1554.52	0.25	0.10	0.13	0.02	0.00	0.0	0.44
524	697	246480.0	529700.0	1525.21	0.36	0.17	0.37	0.16	0.0	0.0	0.84
525	698	246430.0	529770.0	1523.20	0.35	0.15	0.26	0.07	0.02	0.0	0.66
526	701	246380.0	529580.0	1633.34	0.23	0.11	0.20	0.12	0.0	0.0	1.00
527	702	246370.0	528200.0	1621.74	0.23	0.12	0.35	0.26	0.0	0.0	1.06
528	703	246370.0	527690.0	1613.33	0.24	0.13	0.52	0.17	0.0	0.0	1.06
529	704	246390.0	527590.0	1618.76	0.24	0.14	0.53	0.18	0.0	0.0	0.84
530	705	244110.0	527300.0	1624.31	0.24	0.14	0.39	0.09	0.0	0.0	0.81
531	706	244260.0	527020.0	1631.06	0.23	0.13	0.39	0.05	0.0	0.0	1.00
532	707	244430.0	526650.0	1657.84	0.22	0.12	0.47	0.16	0.0	0.0	1.05
533	708	244570.0	526250.0	1690.41	0.22	0.12	0.47	0.24	0.0	0.0	0.59
534	709	244470.0	525830.0	1739.49	0.22	0.13	0.17	0.05	0.0	0.0	2.25
535	710	245890.0	524300.0	1625.71	0.23	0.19	1.55	0.78	0.0	0.0	2.26
536	711	246050.0	523900.0	1615.26	0.23	0.19	1.11	0.73	0.01	0.0	2.23
537	712	246190.0	523440.0	1623.41	0.22	0.19	0.99	0.81	0.02	0.0	2.01
538	713	246260.0	524450.0	1613.93	0.24	0.15	0.35	0.75	0.02	0.0	1.60
539	714	242540.0	526790.0	1606.52	0.24	0.15	0.70	0.43	0.08	0.0	1.74
540	715	242510.0	527190.0	1590.29	0.26	0.13	0.58	0.37	0.06	0.0	1.59
541	716	242500.0	527560.0	1555.03	0.27	0.21	0.93	0.53	0.03	0.0	1.82
542	717	242320.0	527340.0	1547.91	0.26	0.23	0.51	0.36	0.14	0.0	1.16
543	718	242200.0	528240.0	1545.83	0.29	0.22	0.53	0.08	0.0	0.0	1.20
544	719	241850.0	528470.0	1537.47	0.30	0.23	0.55	0.13	0.0	0.0	0.93
545	720	241440.0	528150.0	1539.89	0.31	0.17	0.53	0.07	0.01	0.0	0.84
546	721	236460.0	527910.0	1513.53	0.33	0.17	0.55	0.00	0.01	0.0	0.82
547	722	236510.0	527400.0	1521.36	0.37	0.15	0.06	0.00	0.0	0.0	0.63
548	723	236600.0	528360.0	1535.87	0.35	0.16	0.11	0.00	0.0	0.0	0.84
549	724	236700.0	528310.0	1558.00	0.34	0.12	0.15	0.03	0.0	0.0	0.56
550	725	236700.0	525960.0	1622.13	0.30	0.03	0.13	0.01	0.0	0.0	0.56

GRAVIMETRIC SURVEY OF HAUT MOULOUYA IN MOROCCO

1973

STATION-NO.	LATITUDE (Y)	LONGITUDE (X)	ALTITUDE	FAR	MIDDLE	NEAR	CLOSE-1	CLOSE-2	SEA	LAKE	TOTAL
NO.	METER	METER	METER	MGAL	MGAL	MGAL	MGAL	MGAL	MGAL	MGAL	MGAL
551	726	237200.0	529720.0	1619.73	0.27	0.03	0.18	0.03	0.0	0.0	0.55
552	727	237700.0	529390.0	1633.39	0.25	0.09	0.24	0.09	0.0	0.0	0.62
553	728	238090.0	529100.0	1572.05	0.34	0.07	0.03	0.00	0.0	0.0	0.45
554	729	238340.0	528780.0	1559.01	0.36	0.09	0.10	0.02	0.0	0.0	0.57
555	730	238380.0	528450.0	1549.09	0.32	0.12	0.17	0.15	0.0	0.0	0.81
556	731	238400.0	528100.0	1539.14	0.38	0.14	0.31	0.01	0.0	0.0	0.63
557	732	238580.0	528100.0	1515.58	0.40	0.23	0.15	0.03	0.0	0.0	0.78
558	733	238800.0	528520.0	1539.34	0.40	0.23	0.05	0.16	0.03	0.0	0.19
559	734	237300.0	527590.0	1521.61	0.36	0.19	0.06	0.00	0.0	0.0	0.60
560	735	237310.0	527360.0	1527.60	0.34	0.19	0.19	0.02	0.0	0.0	0.74
561	736	235090.0	527130.0	1546.77	0.32	0.16	0.42	0.14	0.0	0.0	1.04
562	737	235990.0	527100.0	1538.07	0.29	0.13	0.84	0.19	0.0	0.0	1.28
563	738	235720.0	526560.0	1620.99	0.23	0.15	0.21	0.01	0.0	0.0	0.60
564	801	232170.0	527260.0	1582.99	0.38	0.07	0.01	0.00	0.0	0.0	0.45
565	802	231720.0	527520.0	1516.02	0.33	0.07	0.01	0.00	0.0	0.0	0.45
566	803	231340.0	527790.0	1597.67	0.37	0.08	0.03	0.02	0.0	0.0	0.48
567	804	230990.0	528120.0	1632.31	0.37	0.06	0.07	0.05	0.0	0.0	0.55
568	805	230280.0	528100.0	1606.69	0.37	0.01	0.04	0.02	0.0	0.0	0.49
569	806	229790.0	527470.0	1611.86	0.38	0.07	0.03	0.00	0.0	0.0	0.48
570	807	229210.0	527900.0	1623.68	0.38	0.07	0.03	0.02	0.0	0.0	0.50
571	808	228100.0	527820.0	1635.04	0.39	0.07	0.04	0.03	0.00	0.0	0.52
572	809	228110.0	527860.0	1647.56	0.40	0.07	0.04	0.01	0.0	0.0	0.52
573	810	227630.0	527680.0	1658.61	0.40	0.07	0.04	0.01	0.0	0.0	0.53
574	811	227040.0	527650.0	1681.80	0.39	0.07	0.05	0.00	0.0	0.0	0.52
575	812	226930.0	528580.0	1592.47	0.39	0.08	0.04	0.03	0.0	0.0	0.51
576	813	226980.0	528500.0	1622.75	0.39	0.07	0.03	0.00	0.0	0.0	0.49
577	814	226020.0	529110.0	1621.45	0.41	0.09	0.05	0.01	0.0	0.0	0.55
578	815	226030.0	529430.0	1633.58	0.42	0.07	0.02	0.01	0.0	0.0	0.56
579	816	226000.0	529780.0	1637.60	0.44	0.07	0.08	0.03	0.0	0.0	0.52
580	817	227340.0	529530.0	1633.70	0.44	0.07	0.16	0.09	0.0	0.0	0.76
581	818	228310.0	530160.0	1654.58	0.44	0.07	0.09	0.01	0.0	0.0	0.61
582	819	226750.0	530470.0	1635.65	0.43	0.07	0.07	0.01	0.0	0.0	0.59
583	820	229170.0	530790.0	1625.95	0.42	0.07	0.06	0.09	0.0	0.0	0.56
584	821	229590.0	531270.0	1621.73	0.42	0.07	0.06	0.00	0.0	0.0	0.56
585	822	228230.0	533430.0	1639.50	0.45	0.11	0.02	0.00	0.0	0.0	0.62
586	823	226690.0	533850.0	1639.36	0.50	0.14	0.01	0.00	0.0	0.0	0.62
587	824	227190.0	534410.0	1624.55	0.50	0.13	0.01	0.01	0.0	0.0	0.63
588	825	227130.0	535000.0	1673.12	0.50	0.11	0.02	0.01	0.0	0.0	0.65
589	826	226050.0	535100.0	1673.33	0.51	0.12	0.03	0.01	0.0	0.0	0.67
590	827	225540.0	535710.0	1670.34	0.49	0.12	0.04	0.03	0.0	0.0	0.69
591	828	225990.0	535940.0	1657.99	0.48	0.13	0.07	0.04	0.0	0.0	0.73
592	829	226430.0	536210.0	1655.12	0.45	0.14	0.03	0.01	0.0	0.0	0.69
593	830	225910.0	535490.0	1681.37	0.45	0.14	0.12	0.00	0.0	0.0	0.72
594	831	226450.0	536710.0	1637.90	0.44	0.14	0.25	0.05	0.0	0.0	0.88
595	832	230910.0	537020.0	1614.99	0.47	0.06	0.13				



TERRAIN CORRECTIONS

( ASSUMED DENSITY = 2.00 G/CM<sup>3</sup> )

MESCO 62

GRAVIMETRIC SURVEY OF HAUT MOUJOUYA IN MOROCCO

1978

STATION-NO.	LATITUDE (Y)	LONGITUDE (X)	ALTITUDE	FAR	MIDDLE	NEAR	CLOSE-1	CLOSE-2	SEA	LAKE	TOTAL
NO.	METER	METER	METER	MGAL	MGAL	MGAL	MGAL	MGAL	MGAL	MGAL	MGAL
601	838	233310.0	530130.0	1546.99	0.41	0.07	0.23	0.09	0.0	0.0	0.79
602	839	232950.0	529650.0	1551.92	0.41	0.07	0.20	0.03	0.0	0.0	0.71
603	640	232540.0	529060.0	1559.80	0.40	0.03	0.08	0.02	0.0	0.0	0.57
604	841	232210.0	529410.0	1563.21	0.42	0.03	0.06	0.01	0.0	0.0	0.57
605	842	231740.0	529590.0	1577.52	0.41	0.07	0.03	0.02	0.0	0.0	0.53
606	843	231200.0	530340.0	1593.96	0.49	0.06	0.03	0.04	0.0	0.0	0.58
607	844	230570.0	530440.0	1602.93	0.49	0.06	0.05	0.09	0.0	0.0	0.52
608	845	230540.0	530860.0	1590.29	0.42	0.03	0.04	0.09	0.0	0.0	0.54
609	846	230240.0	531210.0	1691.93	0.41	0.07	0.06	0.02	0.0	0.0	0.57
610	847	230030.0	531710.0	1674.16	0.41	0.07	0.10	0.05	0.0	0.0	0.63
611	848	229950.0	532220.0	1628.15	0.41	0.07	0.16	0.10	0.0	0.0	0.74
612	849	229570.0	532630.0	1639.46	0.43	0.07	0.09	0.02	0.0	0.0	0.61
613	850	229210.0	533080.0	1628.95	0.46	0.07	0.09	0.00	0.0	0.0	0.62
614	851	228790.0	533560.0	1619.51	0.45	0.11	0.14	0.05	0.0	0.0	0.75
615	852	228490.0	534000.0	1619.45	0.48	0.11	0.04	0.01	0.0	0.0	0.63
616	853	228110.0	534440.0	1679.49	0.59	0.11	0.01	0.00	0.0	0.0	0.63
617	854	227640.0	535620.0	1673.92	0.52	0.12	0.04	0.01	0.0	0.0	0.68
618	855	227130.0	536200.0	1669.06	0.53	0.12	0.11	0.02	0.0	0.0	0.78
619	856	226490.0	536680.0	1532.97	0.40	0.07	0.02	0.01	0.0	0.0	0.49
620	857	226220.0	532050.0	1541.44	0.39	0.05	0.02	0.00	0.0	0.0	0.48
621	858	226090.0	532570.0	1551.93	0.39	0.05	0.02	0.00	0.0	0.0	0.46
622	859	223410.0	532590.0	1556.43	0.40	0.06	0.02	0.00	0.0	0.0	0.48
623	860	222910.0	532500.0	1559.16	0.42	0.06	0.02	0.00	0.0	0.0	0.50
624	861	222450.0	532290.0	1561.17	0.43	0.07	0.02	0.01	0.0	0.0	0.52
625	862	223540.0	533040.0	1531.56	0.41	0.05	0.02	0.00	0.0	0.0	0.49
626	863	223000.0	533520.0	1551.01	0.43	0.05	0.04	0.04	0.0	0.0	0.57
627	864	222810.0	534080.0	1556.98	0.45	0.06	0.03	0.01	0.0	0.0	0.55
628	865	222500.0	534500.0	1540.36	0.45	0.06	0.02	0.00	0.0	0.0	0.55
629	866	222030.0	534930.0	1575.40	0.45	0.06	0.04	0.01	0.0	0.0	0.58
630	867	221500.0	535320.0	1591.91	0.45	0.06	0.10	0.07	0.0	0.0	0.69
631	868	221270.0	535780.0	1592.23	0.45	0.06	0.09	0.03	0.0	0.0	0.64
632	869	221130.0	536290.0	1594.77	0.47	0.07	0.10	0.04	0.0	0.0	0.67
633	870	221690.0	536870.0	1585.46	0.49	0.06	0.05	0.01	0.0	0.0	0.61
634	871	221110.0	530540.0	1550.24	0.39	0.06	0.12	0.01	0.0	0.0	0.57
635	872	224490.0	530160.0	1579.19	0.36	0.05	0.16	0.03	0.0	0.0	0.53
636	873	223450.0	528420.0	1593.43	0.34	0.03	0.16	0.02	0.0	0.0	0.57
637	874	223090.0	528780.0	1572.82	0.37	0.05	0.16	0.04	0.0	0.0	0.61
638	875	221080.0	531360.0	1591.22	0.42	0.08	0.03	0.01	0.0	0.0	0.53
639	876	221370.0	531780.0	1575.75	0.43	0.07	0.03	0.01	0.0	0.0	0.53
640	877	224330.0	528670.0	1632.97	0.29	0.10	0.23	0.02	0.0	0.0	0.68
641	878	223060.0	529990.0	1621.07	0.30	0.08	0.14	0.01	0.0	0.0	0.52
642	879	222760.0	533450.0	1619.26	0.44	0.07	0.08	0.01	0.0	0.0	0.60
643	880	220220.0	533260.0	1626.97	0.44	0.07	0.08	0.01	0.0	0.0	0.61
644	881	220320.0	533310.0	1615.52	0.44	0.07	0.10	0.02	0.0	0.0	0.63
645	882	223310.0	534010.0	1603.40	0.44	0.07	0.12	0.07	0.0	0.0	0.69
646	883	221680.0	534450.0	1596.93	0.45	0.05	0.07	0.05	0.0	0.0	0.64
647	884	223080.0	534520.0	1551.37	0.45	0.05	0.03	0.02	0.0	0.0	0.55
648	885	223500.0	534500.0	1549.44	0.44	0.06	0.02	0.01	0.0	0.0	0.53
649	886	223970.0	534550.0	1539.11	0.43	0.06	0.01	0.00	0.0	0.0	0.50
650	887	224440.0	534360.0	1526.32	0.43	0.05	0.01	0.00	0.0	0.0	0.49

TERRAIN CORRECTIONS

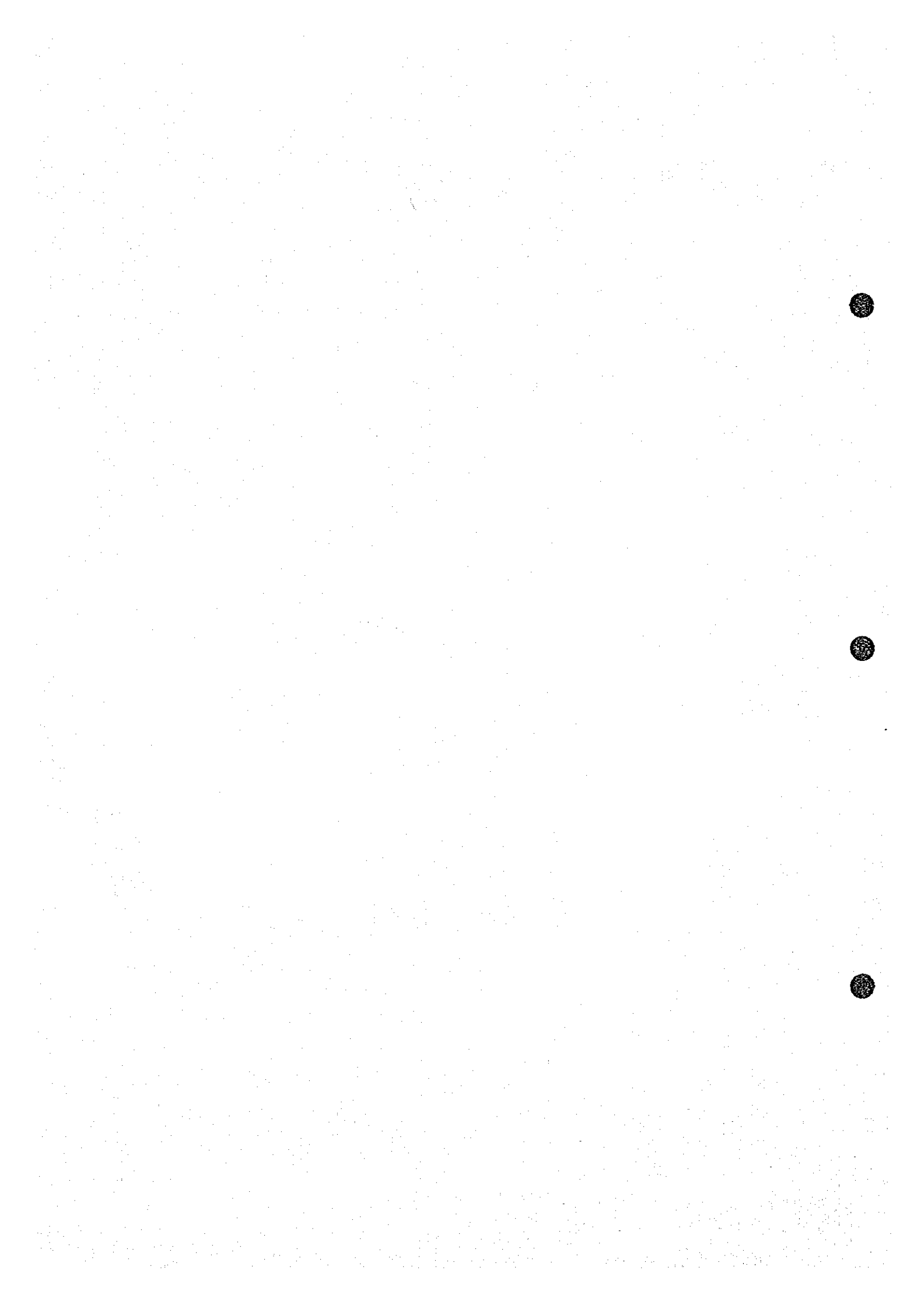
( ASSUMED DENSITY = 2.00 G/CM<sup>3</sup> )

MESCO 63

GRAVIMETRIC SURVEY OF HAUT MOUJOUYA IN MOROCCO

1978

STATION-NO.	LATITUDE (Y)	LONGITUDE (X)	ALTITUDE	FAR	MIDDLE	NEAR	CLOSE-1	CLOSE-2	SEA	LAKE	TOTAL
NO.	METER	METER	METER	MGAL	MGAL	MGAL	MGAL	MGAL	MGAL	MGAL	MGAL
651	20015	254520.0	540200.0	1522.55	0.31	0.44	0.0	0.02	0.00	0.0	0.77
652	2001	254520.0	540200.0	1522.55	0.31	0.44	0.0	0.02	0.00	0.0	0.77
653	2002	240190.0	528180.0	1608.67	0.27	0.09	0.14	0.01	0.01	0.0	0.52
654	20025	240190.0	528180.0	1608.67	0.27	0.09	0.14	0.01	0.01	0.0	0.52
655	20035	226330.0	538790.0	1558.13	0.73	0.27	0.06	0.02	0.01	0.0	1.08
656	2008	226830.0	538790.0	1559.13	0.73	0.27	0.06	0.02	0.01	0.0	1.08
657	20045	234900.0	549320.0	1542.65	0.53	0.05	0.03	0.00	0.00	0.0	0.58
658	2004	224990.0	549320.0	1542.65	0.53	0.05	0.03	0.00	0.00	0.0	0.58



# A-3 Altitude Correction and Latitude Correction

BOUGUER ANOMALIES FOR SIX DENSITIES

MSCD 64

GRAVIMETRIC SURVEY OF HAUT MOULOUYA IN MOROCCO

1978

STATION-NO	LATITUDE (Y)	LONGITUDE (X)	ALTITUDE	G.V.-S.V.	2.00	2.30	2.40	2.50	2.67	2.80
NO.	METER	METER	METER	MGAL	MGAL	MGAL	MGAL	MGAL	MGAL	MGAL
1	235700.0	543420.0	1532.29	-425.47	-80.44	-99.64	-104.04	-112.43	-122.30	-131.81
2	236210.0	547910.0	1516.51	-423.48	-80.04	-99.02	-103.34	-111.87	-122.43	-132.05
3	236730.0	547230.0	1492.43	-416.42	-80.38	-99.06	-105.28	-113.51	-122.09	-132.19
4	237130.0	546740.0	1476.40	-413.61	-80.64	-99.11	-105.27	-113.43	-121.59	-129.91
5	237450.0	546300.0	1473.17	-412.46	-81.15	-99.59	-105.73	-113.87	-122.32	-130.31
6	237650.0	545830.0	1453.93	-411.31	-81.68	-100.00	-106.11	-114.21	-122.59	-130.53
7	237690.0	545620.0	1450.53	-409.58	-81.84	-100.65	-106.12	-114.19	-122.52	-130.41
8	23819.0	545470.0	1458.62	-410.21	-81.73	-100.00	-106.08	-114.17	-122.51	-130.42
9	239370.0	545190.0	1470.83	-412.77	-81.54	-100.66	-106.24	-114.34	-122.77	-130.75
10	239650.0	544760.0	1451.12	-415.45	-82.05	-100.61	-106.30	-114.38	-122.49	-131.53
11	240650.0	544280.0	1452.66	-416.19	-82.63	-101.00	-107.16	-114.37	-122.90	-131.94
12	240540.0	544130.0	1455.39	-416.93	-82.47	-101.03	-107.28	-114.39	-124.04	-132.10
13	241100.0	543980.0	1459.32	-417.38	-82.42	-101.07	-107.29	-114.50	-124.07	-132.15
14	241540.0	543940.0	1456.72	-416.85	-82.27	-100.90	-107.11	-114.32	-123.88	-131.95
15	242020.0	543720.0	1452.02	-417.97	-82.21	-100.91	-107.14	-114.37	-123.97	-132.07
16	242560.0	543590.0	1434.14	-416.35	-82.11	-100.34	-107.03	-114.33	-123.94	-132.05
17	243090.0	543490.0	1496.35	-418.19	-81.90	-100.63	-106.88	-114.12	-123.79	-131.85
18	243560.0	543300.0	1497.42	-419.87	-81.99	-100.54	-106.92	-114.11	-123.81	-131.94
19	244010.0	543130.0	1499.01	-419.17	-81.82	-100.61	-106.87	-114.14	-123.73	-131.92
20	244310.0	542700.0	1491.17	-416.76	-81.15	-99.84	-106.07	-114.30	-122.59	-130.93
21	244600.0	542520.0	1484.01	-415.24	-80.79	-99.61	-105.62	-114.82	-122.37	-130.44
22	245210.0	542320.0	1491.95	-414.17	-80.55	-99.23	-105.42	-114.61	-122.13	-130.18
23	245610.0	542030.0	1478.14	-413.23	-80.51	-99.09	-105.26	-114.44	-121.93	-129.95
24	245550.0	541730.0	1467.93	-412.93	-80.55	-98.97	-105.19	-114.23	-121.65	-129.62
25	246420.0	541440.0	1459.60	-409.22	-80.67	-98.96	-105.45	-114.14	-121.50	-129.43
26	247040.0	541060.0	1455.35	-408.49	-80.74	-98.97	-105.05	-114.12	-121.45	-129.35
27	246680.0	540650.0	1469.56	-409.34	-80.58	-98.87	-104.97	-114.07	-121.44	-129.34
28	246240.0	540440.0	1461.35	-409.32	-80.71	-99.01	-105.14	-114.21	-121.59	-129.51
29	245920.0	540350.0	1463.97	-410.61	-81.05	-99.38	-105.49	-114.60	-121.99	-129.94
30	246370.0	539940.0	1463.27	-411.55	-81.17	-99.55	-105.69	-114.82	-122.24	-129.21
31	245100.0	539570.0	1473.36	-413.14	-81.49	-99.95	-106.10	-114.25	-122.41	-129.70
32	244690.0	539490.0	1465.23	-416.92	-81.70	-100.33	-106.30	-114.40	-123.24	-131.31
33	244230.0	539140.0	1496.14	-418.44	-81.87	-100.41	-106.45	-114.52	-123.51	-131.62
34	243810.0	538790.0	1494.56	-419.52	-82.07	-100.79	-107.02	-114.74	-123.87	-131.98
35	243380.0	538400.0	1495.15	-418.89	-82.44	-101.17	-107.42	-114.84	-124.27	-132.39
36	242930.0	538100.0	1498.59	-419.50	-82.65	-101.40	-107.65	-114.90	-124.53	-132.65
37	242460.0	538010.0	1494.15	-419.53	-82.70	-101.91	-108.15	-114.39	-124.99	-133.10
38	242040.0	537750.0	1491.06	-419.22	-83.59	-102.26	-108.49	-114.71	-125.29	-133.39
39	241610.0	537450.0	1491.71	-419.62	-83.82	-102.50	-108.73	-114.95	-125.54	-133.64
40	241170.0	537140.0	1487.43	-419.45	-84.61	-103.23	-109.44	-115.65	-126.20	-134.27
41	240770.0	536950.0	1488.30	-420.21	-85.16	-103.79	-110.01	-116.22	-126.78	-134.85
42	240460.0	536510.0	1490.22	-421.53	-86.05	-104.72	-110.94	-117.16	-127.73	-135.82
43	240150.0	536070.0	1495.85	-423.15	-86.43	-105.17	-111.41	-117.55	-128.27	-136.39
44	239950.0	535560.0	1494.26	-423.22	-86.83	-105.54	-111.23	-118.06	-128.66	-136.77
45	239680.0	535130.0	1515.01	-426.27	-87.25	-106.29	-112.55	-118.68	-129.56	-137.66
46	239440.0	534750.0	1510.65	-427.71	-87.53	-106.55	-112.86	-119.16	-129.89	-138.08
47	239340.0	534260.0	1507.63	-427.43	-87.97	-106.84	-113.13	-119.42	-130.11	-138.29
48	239270.0	533790.0	1501.43	-426.47	-89.33	-107.11	-113.37	-119.83	-130.27	-138.41
49	239130.0	533240.0	1506.49	-427.39	-89.16	-107.01	-113.90	-119.55	-130.26	-138.43
50	239770.0	532710.0	1506.19	-427.85	-89.53	-107.53	-113.76	-120.06	-130.74	-138.91

BOUGUER ANOMALIES FOR SIX DENSITIES

MSCD 65

GRAVIMETRIC SURVEY OF HAUT MOULOUYA IN MOROCCO

1978

STATION-NO	LATITUDE (Y)	LONGITUDE (X)	ALTITUDE	G.V.-S.V.	2.00	2.30	2.40	2.50	2.67	2.80
NO.	METER	METER	METER	MGAL	MGAL	MGAL	MGAL	MGAL	MGAL	MGAL
51	236520.0	532310.0	1541.56	-436.92	-88.87	-108.15	-114.58	-121.01	-131.94	-140.29
52	236540.0	531780.0	1542.17	-436.33	-89.16	-108.47	-114.91	-121.34	-132.29	-140.65
53	236550.0	531420.0	1551.27	-438.63	-89.27	-108.70	-115.18	-121.65	-132.57	-141.09
54	236690.0	530910.0	1570.65	-442.35	-89.93	-109.60	-115.15	-121.71	-132.85	-141.37
55	236660.0	530440.0	1573.95	-442.53	-88.25	-107.97	-114.54	-121.11	-132.24	-140.83
56	236210.0	529950.0	1578.11	-443.21	-88.00	-107.77	-114.36	-120.95	-132.15	-140.72
57	236460.0	529500.0	1584.21	-444.02	-87.43	-107.27	-113.88	-120.50	-131.76	-140.34
58	236700.0	529030.0	1588.19	-444.97	-86.93	-106.76	-113.31	-120.04	-131.32	-140.04
59	236530.0	528650.0	1601.60	-446.75	-86.28	-105.95	-112.63	-119.32	-130.49	-139.79
60	240390.0	528780.0	1628.90	-451.19	-88.92	-108.29	-112.08	-118.87	-130.41	-139.23
61	240360.0	528350.0	1644.81	-457.51	-82.42	-103.28	-110.23	-117.19	-129.01	-138.05
62	240500.0	52790.0	1591.51	-452.82	-82.01	-103.19	-110.25	-117.31	-129.31	-138.49
63	240270.0	526210.0	1714.06	-467.01	-81.12	-102.57	-109.25	-116.18	-129.04	-138.34
64	232190.0	526640.0	1591.75	-453.21	-84.94	-104.85	-121.53	-129.17	-139.47	-149.11
65	232710.0	527050.0	1588.73	-451.70	-84.55	-104.42	-121.65	-129.68	-139.94	-149.55
66	233000.0	527400.0	1572.17	-449.34	-84.44	-104.13	-120.70	-129.26	-139.42	-149.05
67	233300.0	527720.0	1579.95	-449.62	-84.01	-103.80	-120.40	-129.00	-139.21	-148.79
68	233330.0	527900.0	1589.35	-451.06	-83.33	-103.24	-119.88	-126.52	-137.60	-148.43
69	234440.0	528090.0	1589.30	-449.13	-83.30	-103.03	-119.68	-126.27	-137.48	-148.05
70	234960.0	528260.0	1573.74	-447.51	-82.50	-102.50	-119.11	-125.66	-136.80	-147.32
71	235390.0	528150.0	1543.46	-441.71	-83.54	-102.95	-119.29	-125.73	-136.67	-147.04
72	235570.0	528320.0	1516.47	-435.59	-83.53	-102.41	-119.71	-125.01	-135.71	-146.89
73	236300.0	528810.0	1509.83	-433.63	-83.25	-102.05	-119.32	-124.58	-135.24	-146.36
74	236740.0	529580.0	1509.97	-431.97	-82.67	-101.49	-118.76	-124.03	-134.69	-145.85
75	236790.0	528420.0	1508.71	-431.92	-82.50	-101.33	-118.51	-123.89	-134.56	-145.72
76	237190.0	528490.0	1508.41	-431.30	-81.52	-100.32	-117.46	-122.95	-133.58	-144.82
77	237650.0	528070.0	1514.85	-432.19	-81.04	-100.99	-116.66	-122.95	-133.63	-144.80
78	238250.0	528130.0	1523.58	-433.25	-80.14	-100.20	-115.55	-121.90	-132.70	-144.04
79	238700.0	528430.0	1537.27	-435.62	-80.85	-100.04	-114.46	-120.16	-131.74	-143.04
80	239250.0	528710.0	1557.10	-438.72	-80.74	-100.20	-113.68	-120.16	-131.17	-142.59
81	239560.0	528420.0	1584.43	-443.71	-86.97	-104.81	-113.42	-120.03	-131.27	-142.87
82	234810.0	543150.0	1522.27	-423.59	-80.81	-99.86	-105.21	-112.56	-123.35	-131.60
83	234740.0	542650.0	1525.80	-424.18	-80.61	-99.71	-105.67	-112.44	-123.26	-131.53
84	234680.0	542150.0	1525.73	-424.26	-80.72	-99.81	-106.17	-112.54	-123.35	-131.63
85	234600.0	541600.0	1517.15	-422.65	-80.94	-99.91	-106.24	-112.56	-123.31	-131.53
86	234530.0	541000.0	1517.51	-422.92	-81.04	-100.02	-106.32	-112.67	-123.43	-131.65
87	234420.0	540400.0	1497.62	-419.42	-81.81	-100.59	-106.72	-112.95	-123.54	-131.84
88	234420.0	540350.0	1513.74	-422.53	-81.59	-100.53	-106.11	-113.15	-123.68	-132.09
89	234330.0	54030.0	1521.74	-424.47	-81.52	-100.85	-107.21	-113.56	-124.35	-132.60
90	234680.0	540320.0	1516.40	-423.53	-82.04	-101.01	-107.33	-113.66	-124.45	-132.69
91	234730.0	540300.0	1497.25	-417.96	-82.79	-101.33	-107.59	-113.79	-124.	





## GRAVIMETRIC SURVEY OF HAUT MOULOUYA IN MOROCCO

1978

STATION-NO	LATITUDE (Y)	LONGITUDE (X)	ALTITUDE	G.V.-S.V.	2.00	2.30	2.40	2.50	2.67	2.80
NO.	METER	METER	METER	MGAL	MGAL	MGAL	MGAL	MGAL	MGAL	MGAL
101	230520.0	541520.0	1529.34	-428.52	-84.00	-103.10	-109.47	-115.84	-126.64	-134.94
102	230310.0	541430.0	1537.57	-430.92	-83.96	-103.19	-109.59	-116.00	-127.99	-135.22
103	229810.0	541020.0	1540.57	-431.55	-84.36	-103.53	-109.99	-116.40	-127.30	-135.63
104	229270.0	540590.0	1535.25	-430.71	-84.56	-103.71	-110.09	-116.47	-127.32	-135.62
105	228340.0	540290.0	1535.14	-430.74	-84.62	-103.77	-110.15	-116.53	-127.39	-135.67
106	228380.0	539970.0	1539.37	-431.77	-84.93	-104.12	-110.51	-116.91	-127.79	-136.09
107	227970.0	539520.0	1545.45	-433.24	-84.79	-104.26	-110.49	-116.91	-127.93	-136.18
108	227620.0	539330.0	1550.44	-434.49	-84.77	-104.59	-110.54	-116.93	-127.93	-136.31
109	227230.0	538970.0	1545.91	-433.50	-84.87	-104.14	-110.56	-116.95	-127.93	-136.25
110	226390.0	537930.0	1549.93	-434.94	-85.10	-104.48	-110.91	-117.34	-128.28	-136.64
111	226300.0	547370.0	1570.64	-438.97	-84.01	-104.39	-110.91	-117.44	-128.54	-137.02
112	226390.0	537630.0	1565.19	-438.68	-85.31	-104.84	-111.38	-117.90	-128.95	-137.45
113	224420.0	53740.0	1570.60	-439.63	-85.47	-105.05	-111.59	-118.12	-129.22	-137.71
114	227970.0	537840.0	1590.78	-442.15	-85.73	-105.47	-112.04	-118.61	-129.78	-138.33
115	228580.0	537830.0	1598.13	-446.25	-85.92	-105.90	-112.56	-119.21	-130.53	-139.19
116	236910.0	529330.0	1594.69	-431.23	-92.25	-111.06	-117.33	-123.59	-134.25	-142.40
117	236810.0	529910.0	1503.15	-430.56	-92.24	-111.03	-117.29	-123.55	-134.20	-142.34
118	236520.0	530370.0	1501.51	-430.87	-92.58	-111.34	-117.60	-123.85	-134.49	-142.81
119	236380.0	530860.0	1500.29	-430.94	-93.01	-111.77	-118.02	-124.27	-134.90	-143.03
120	236270.0	531330.0	1499.09	-430.90	-93.20	-111.95	-118.20	-124.46	-135.08	-143.21
121	236170.0	531780.0	1493.45	-431.01	-93.33	-112.09	-118.34	-124.55	-135.22	-143.35
122	236090.0	532250.0	1507.17	-432.17	-93.20	-111.65	-117.95	-124.24	-134.93	-143.10
123	235950.0	532690.0	1515.83	-434.12	-92.21	-111.23	-117.56	-123.90	-134.67	-142.91
124	235780.0	533170.0	1524.58	-435.39	-92.10	-111.20	-117.57	-123.89	-134.75	-143.03
125	235620.0	533650.0	1523.89	-435.03	-92.02	-111.10	-117.46	-123.82	-134.63	-142.90
126	235310.0	533930.0	1521.04	-434.09	-91.66	-110.70	-117.05	-123.40	-134.19	-142.44
127	235170.0	534360.0	1513.53	-432.26	-91.68	-110.43	-116.74	-123.06	-133.80	-142.01
128	234980.0	534830.0	1527.60	-434.50	-91.03	-110.16	-116.53	-122.91	-133.75	-142.04
129	234770.0	535310.0	1534.60	-436.06	-90.53	-109.75	-116.15	-122.56	-133.45	-141.78
130	234610.0	535790.0	1529.33	-434.55	-90.27	-109.43	-115.82	-122.20	-133.06	-141.36
131	234540.0	536190.0	1526.42	-433.30	-90.13	-109.24	-115.62	-121.99	-132.82	-141.11
132	234440.0	536630.0	1538.65	-435.83	-89.40	-108.68	-115.08	-121.50	-132.42	-140.77
133	234360.0	537050.0	1538.51	-435.63	-89.15	-108.41	-114.83	-121.25	-132.17	-140.52
134	234260.0	537420.0	1528.85	-432.85	-88.68	-107.80	-114.16	-120.56	-131.41	-139.70
135	234220.0	537810.0	1532.95	-433.15	-88.03	-107.21	-113.61	-120.00	-130.58	-139.19
136	229130.0	537770.0	1608.52	-448.35	-85.98	-106.08	-112.78	-119.43	-130.87	-139.58
137	228650.0	537750.0	1609.35	-448.75	-86.25	-106.36	-113.07	-119.77	-131.17	-139.89
138	230220.0	537590.0	1592.74	-445.41	-86.58	-106.50	-113.24	-119.87	-131.16	-139.79
139	230740.0	537370.0	1593.50	-445.91	-86.94	-106.37	-113.52	-120.18	-131.45	-140.09
140	231100.0	537190.0	1586.34	-444.85	-87.59	-106.43	-113.65	-120.65	-131.80	-140.49
141	231310.0	53700.0	1586.91	-444.44	-87.57	-106.17	-113.70	-120.23	-131.34	-139.93
142	232310.0	537760.0	1558.45	-438.57	-87.58	-106.07	-113.57	-120.06	-131.11	-139.55
143	232700.0	537850.0	1557.99	-438.22	-87.35	-106.83	-113.33	-119.82	-130.86	-139.31
144	232600.0	538110.0	1539.49	-434.06	-87.44	-106.71	-113.13	-119.55	-130.47	-138.92
145	232630.0	538270.0	1531.42	-432.50	-87.42	-106.62	-113.02	-119.42	-130.31	-138.63
146	232600.0	538470.0	1526.77	-431.10	-87.35	-106.47	-112.84	-119.21	-130.04	-138.32
147	232510.0	538690.0	1523.03	-431.47	-87.21	-106.35	-112.73	-119.11	-129.95	-138.26
148	232500.0	538830.0	1522.07	-429.56	-87.00	-106.06	-112.41	-118.76	-129.56	-137.62
149	232420.0	539170.0	1531.70	-431.55	-86.74	-105.92	-112.32	-118.71	-129.53	-137.65
150	232550.0	539500.0	1541.69	-433.54	-86.49	-105.60	-112.24	-118.67	-129.61	-137.96

## GRAVIMETRIC SURVEY OF HAUT MOULOUYA IN MOROCCO

1978

STATION-NO	LATITUDE (Y)	LONGITUDE (X)	ALTITUDE	G.V.-S.V.	2.00	2.30	2.40	2.50	2.67	2.80
NO.	METER	METER	METER	MGAL	MGAL	MGAL	MGAL	MGAL	MGAL	MGAL
151	235960.0	53920.0	1541.24	-439.17	-86.25	-105.55	-111.99	-118.42	-129.36	-137.73
152	236130.0	540140.0	1543.00	-439.41	-86.10	-105.43	-111.87	-118.32	-129.27	-137.64
153	236120.0	540560.0	1537.41	-434.88	-85.79	-105.05	-111.47	-117.87	-128.80	-137.15
154	236060.0	541010.0	1531.91	-432.00	-85.17	-104.36	-110.75	-117.15	-128.02	-136.36
155	236090.0	541500.0	1529.71	-428.99	-84.62	-103.78	-110.16	-116.55	-127.40	-135.70
156	236350.0	541940.0	1521.88	-424.55	-84.05	-103.31	-109.66	-115.82	-126.62	-134.88
157	236910.0	542390.0	1514.65	-424.74	-83.75	-102.72	-109.04	-115.36	-126.11	-134.32
158	236540.0	542850.0	1505.06	-422.10	-83.31	-102.19	-108.46	-114.74	-125.42	-133.58
159	237230.0	543140.0	1485.20	-418.17	-83.57	-102.17	-108.37	-114.57	-125.12	-133.18
160	237590.0	543630.0	1484.33	-417.76	-83.58	-102.18	-108.35	-114.54	-125.07	-133.13
161	238010.0	543760.0	1482.35	-416.65	-82.91	-101.65	-107.65	-113.83	-124.35	-132.39
162	238090.0	544160.0	1473.62	-414.97	-82.29	-100.73	-106.85	-113.03	-123.49	-131.48
163	238340.0	544610.0	1467.49	-412.45	-82.05	-100.42	-106.54	-112.67	-123.07	-131.03
164	239770.0	544940.0	1470.38	-412.33	-81.89	-100.21	-106.34	-112.48	-122.81	-130.89
165	240600.0	545390.0	1509.41	-443.00	-83.55	-104.93	-111.55	-118.10	-129.45	-138.07
166	240810.0	545850.0	1501.36	-437.15	-83.51	-105.04	-111.55	-118.06	-129.45	-137.58
167	241020.0	546210.0	1528.24	-450.83	-85.83	-106.91	-113.26	-119.82	-130.70	-138.70
168	241510.0	546790.0	1557.99	-463.56	-84.52	-104.09	-110.58	-117.07	-128.11	-136.55
169	242010.0	547390.0	1599.43	-484.91	-84.01	-104.05	-110.73	-117.41	-128.76	-137.45
170	242410.0	54810.0	1619.91	-498.72	-83.38	-103.46	-110.22	-116.59	-128.50	-137.29
171	242830.0	548950.0	1634.18	-494.57	-82.09	-102.55	-109.39	-115.82	-127.82	-136.69
172	243390.0	549930.0	1637.94	-499.72	-81.10	-101.83	-108.47	-115.32	-126.95	-135.84
173	243920.0	549180.0	1649.71	-491.66	-80.38	-101.05	-107.94	-114.83	-126.54	-135.50
174	244430.0	549930.0	1642.45	-489.95	-80.13	-100.69	-107.54	-114.49	-126.44	-134.95
175	244890.0	54970.0	1628.01	-486.24	-80.06	-100.40	-107.18	-113.96	-125.49	-134.30
176	245090.0	548330.0	1611.54	-482.29	-79.27	-99.42	-106.13	-112.85	-124.27	-133.00
177	245530.0	548150.0	1594.33	-478.94	-78.69	-98.46	-105.04	-111.63	-122.83	-131.40
178	245910.0	548245.0	1619.52	-483.95	-78.73	-98.71	-105.84	-112.37	-123.91	-132.55
179	245700.0	548430.0	1643.21	-490.66	-78.40	-98.73	-105.77	-112.61	-124.24	-133.14
180	245200.0	548290.0	1674.22	-494.07	-77.32	-98.31	-105.31	-112.30	-124.20	-133.29
181	245510.0	548500.0	1673.94	-493.71	-77.04	-98.03	-105.02	-112.02	-123.91	-133.01
182	247030.0	549700.0	1669.35	-490.77	-76.52	-97.34	-104.27	-111.21	-123.00	-132.02
183	247500.0	549530.0	1656.81	-489.03	-76.77	-96.93	-103.85	-110.77	-122.53	-131.53
184	248320.0	550260.0	1651.33	-487.71	-75.76	-96.43	-103.33	-110.22	-121.93	-130.89
185	24820.0	550640.0	1659.83	-489.01	-75.29	-96.05	-102.97	-109.90	-121.65	-130.66
186	248350.0	550930.0	1649.92	-486.75	-75.09	-95.71	-102.59	-109.66	-121.15	-130.09
187	248330.0	551230.0	1628.63	-480.92	-74.94	-95.41	-102.97	-109.71	-121.11	-129.06
188	249850.0	551790.0	1627.84	-469.70	-72.96	-93.15	-99.88	-105.61	-118.05	-126.60
189	250040.0	551350.0	1626.22	-469.91	-72.52	-92.69	-99.42	-105.16	-117.57	-126.31
190	250300.0	550920.0	1650.54	-465.74	-70.99	-90.33	-91.11	-103.89	-115.41	-124.23
191	245230.0	541630.0	1471.00	-412.69	-80.96	-99.41	-105.55	-111.69	-122.13	-130.12
192										



## GRAVIMETRIC SURVEY OF HAUT MOULOUYA IN MOROCCO

1978

STATION-NO	LATITUDE (N)	LONGITUDE (E)	ALTITUDE	G.V.-S.V.	2.00	2.30	2.40	2.50	2.67	2.80	
NO.	METER	METER	METER	MGAL	MGAL	MGAL	MGAL	MGAL	MGAL	MGAL	
201	311	240499.0	540120.0	1499.05	-419.96	-83.91	-102.62	-108.86	-115.09	-125.69	-133.80
202	312	239889.0	539940.0	1499.14	-421.65	-84.25	-103.01	-109.27	-115.52	-126.16	-134.29
203	313	239360.0	539900.0	1505.27	-423.45	-84.63	-103.49	-109.77	-116.06	-126.74	-134.91
204	314	238710.0	539800.0	1513.37	-425.35	-85.05	-104.01	-110.33	-116.85	-127.39	-135.61
205	315	238070.0	539740.0	1518.61	-427.65	-85.44	-104.67	-111.02	-117.60	-128.15	-136.40
206	316	237400.0	539630.0	1533.12	-431.35	-85.89	-105.13	-111.54	-118.95	-128.85	-137.19
207	317	236800.0	539510.0	1535.89	-431.80	-86.15	-105.40	-111.81	-119.49	-129.39	-137.73
208	318	236160.0	539450.0	1539.42	-432.21	-86.40	-105.65	-112.07	-119.80	-129.73	-137.89
209	319	235740.0	539370.0	1539.31	-432.74	-86.26	-105.55	-111.92	-119.49	-129.39	-137.69
210	320	240340.0	543620.0	1499.93	-420.18	-82.83	-101.62	-107.88	-114.14	-124.78	-132.92
211	321	241250.0	543170.0	1498.45	-419.85	-83.14	-101.90	-108.15	-114.43	-125.04	-133.16
212	322	241120.0	542650.0	1498.92	-420.19	-83.50	-102.06	-108.32	-114.72	-125.20	-133.33
213	323	240790.0	542650.0	1498.34	-420.31	-83.55	-102.28	-108.53	-114.78	-125.40	-133.53
214	324	240440.0	541950.0	1498.45	-420.30	-83.49	-102.24	-108.40	-114.73	-125.36	-133.40
215	325	240550.0	541450.0	1498.56	-420.44	-83.38	-102.14	-108.39	-114.65	-125.29	-133.41
216	326	240350.0	540510.0	1498.11	-420.37	-83.63	-102.37	-108.62	-114.87	-125.49	-133.61
217	327	240230.0	540450.0	1498.42	-420.82	-84.00	-102.75	-108.99	-115.24	-125.87	-133.99
218	328	243950.0	542700.0	1483.01	-416.36	-81.49	-100.14	-105.35	-112.57	-123.13	-131.22
219	329	243750.0	542010.0	1482.74	-415.26	-81.55	-100.13	-106.33	-112.52	-123.05	-131.10
220	330	243820.0	541560.0	1481.84	-415.12	-81.62	-100.15	-106.39	-112.57	-123.09	-131.13
221	331	243380.0	541230.0	1480.69	-415.14	-81.89	-100.45	-106.63	-112.82	-123.33	-131.37
222	332	242750.0	541260.0	1479.47	-413.93	-82.25	-100.73	-105.96	-113.01	-123.47	-131.47
223	333	242540.0	541640.0	1478.03	-415.92	-82.32	-101.84	-107.01	-113.15	-123.65	-131.70
224	334	242250.0	541970.0	1484.15	-416.50	-82.45	-101.05	-107.25	-113.44	-123.98	-132.04
225	335	242020.0	542400.0	1494.84	-419.24	-82.93	-101.56	-107.81	-113.45	-123.98	-132.04
226	336	241700.0	542850.0	1485.55	-419.54	-83.05	-101.19	-107.04	-113.45	-123.98	-132.04
227	337	240200.0	542130.0	1508.05	-428.15	-83.70	-102.57	-108.88	-115.14	-125.84	-134.01
228	338	239740.0	542300.0	1521.35	-428.15	-83.74	-102.93	-109.13	-115.51	-126.31	-134.57
229	339	239290.0	542300.0	1525.59	-428.04	-83.64	-102.76	-109.13	-115.51	-126.34	-134.62
230	340	238840.0	542800.0	1525.51	-428.56	-83.50	-102.61	-108.98	-115.35	-126.19	-134.47
231	341	238470.0	542840.0	1523.23	-428.32	-83.49	-102.53	-108.92	-115.28	-126.10	-134.37
232	342	238050.0	542920.0	1516.49	-424.91	-83.54	-102.53	-108.86	-115.14	-125.95	-134.19
233	343	237620.0	542310.0	1528.61	-427.95	-83.90	-103.05	-109.43	-115.62	-126.67	-134.97
234	344	237400.0	541800.0	1529.02	-429.14	-84.17	-103.32	-109.71	-116.09	-126.94	-135.25
235	345	237160.0	541250.0	1529.09	-428.37	-84.73	-103.99	-110.27	-116.65	-127.52	-135.82
236	346	237190.0	540750.0	1529.25	-428.10	-84.92	-104.08	-110.45	-116.85	-127.71	-136.01
237	347	236950.0	536770.0	1486.12	-421.03	-85.51	-105.15	-111.35	-117.55	-128.10	-136.18
238	348	236950.0	537010.0	1480.55	-420.29	-85.95	-105.50	-111.68	-117.86	-128.36	-136.40
239	349	237250.0	537250.0	1482.69	-420.93	-86.21	-105.65	-111.97	-118.05	-128.58	-136.63
240	350	237170.0	537350.0	1492.56	-423.15	-87.21	-105.91	-112.14	-118.33	-128.86	-136.93
241	351	237190.0	537450.0	1485.11	-421.35	-86.35	-104.58	-111.20	-117.41	-127.97	-136.04
242	352	237160.0	537050.0	1483.80	-419.14	-85.74	-104.28	-110.46	-116.64	-127.14	-135.18
243	353	240260.0	538050.0	1479.51	-418.37	-85.60	-103.73	-109.90	-116.08	-126.58	-134.61
244	354	240600.0	539000.0	1477.53	-417.15	-84.35	-102.90	-109.07	-115.24	-125.73	-133.75
245	355	240580.0	539350.0	1484.32	-426.13	-84.35	-103.09	-109.33	-115.57	-126.15	-134.29
246	356	241130.0	538120.0	1480.74	-417.40	-84.07	-102.62	-108.80	-114.98	-125.49	-133.52
247	357	241470.0	538500.0	1476.21	-418.22	-83.91	-102.40	-108.56	-114.72	-125.20	-133.21
248	358	241400.0	538380.0	1475.59	-415.93	-83.77	-102.25	-108.41	-114.57	-125.04	-133.05
249	359	243390.0	539400.0	1471.40	-414.20	-82.97	-101.40	-107.54	-113.69	-124.13	-132.11
250	360	243350.0	539320.0	1485.07	-417.15	-82.67	-101.25	-107.49	-113.70	-124.25	-132.32

## GRAVIMETRIC SURVEY OF HAUT MOULOUYA IN MOROCCO

1978

STATION-NO	LATITUDE (N)	LONGITUDE (E)	ALTITUDE	G.V.-S.V.	2.00	2.30	2.40	2.50	2.67	2.80	
NO.	METER	METER	METER	MGAL	MGAL	MGAL	MGAL	MGAL	MGAL	MGAL	
251	361	244790.0	549100.0	1474.89	-413.51	-81.63	-100.10	-106.26	-112.42	-122.89	-130.89
252	362	244260.0	549230.0	1489.96	-411.72	-81.62	-100.13	-106.28	-112.39	-122.82	-130.79
253	363	243800.0	548550.0	1542.13	-436.68	-89.43	-108.73	-115.16	-121.60	-132.53	-140.89
254	364	243700.0	548490.0	1532.40	-435.44	-89.49	-109.63	-116.07	-122.47	-133.35	-141.65
255	365	243430.0	548900.0	1500.71	-429.33	-89.42	-110.20	-116.48	-122.72	-133.50	-141.70
256	366	243260.0	548950.0	1509.50	-427.88	-89.32	-109.92	-116.12	-122.40	-133.24	-141.74
257	367	243150.0	548430.0	1509.14	-421.77	-89.46	-109.67	-115.60	-122.13	-133.24	-141.74
258	368	242810.0	548970.0	1488.81	-423.84	-89.31	-109.33	-115.81	-122.29	-133.30	-141.73
259	369	242550.0	548950.0	1493.10	-425.21	-89.38	-109.74	-115.00	-121.96	-132.99	-141.62
260	370	242300.0	548260.0	1489.07	-423.86	-88.62	-109.27	-113.49	-119.70	-130.28	-139.34
261	371	242190.0	548900.0	1489.46	-424.63	-89.31	-109.76	-114.17	-120.39	-130.95	-139.04
262	372	242130.0	548420.0	1494.73	-426.20	-89.70	-109.42	-114.66	-120.50	-131.51	-139.62
263	373	242450.0	549200.0	1491.07	-425.90	-90.20	-108.87	-115.10	-121.32	-131.90	-139.99
264	374	242390.0	549450.0	1490.70	-426.05	-90.44	-109.10	-115.32	-121.54	-132.12	-140.20
265	375	242360.0	549040.0	1491.34	-426.73	-90.96	-109.63	-115.86	-122.05	-132.65	-140.75
266	376	242120.0	548640.0	1498.38	-426.41	-91.52	-110.26	-116.50	-122.75	-133.36	-141.48
267	377	241920.0	548260.0	1496.34	-429.00	-91.96	-110.69	-116.94	-123.18	-133.80	-141.92
268	378	241840.0	548950.0	1496.49	-429.33	-92.30	-111.31	-117.35	-123.60	-134.21	-142.35
269	379	241650.0	548490.0	1498.22	-429.55	-92.54	-111.29	-117.54	-123.79	-134.42	-142.55
270	380	241210.0	548970.0	1527.21	-436.94	-85.59	-105.72	-112.10	-118.47	-129.32	-137.61
271	381	241190.0	548970.0	1527.21	-436.94	-85.59	-105.72	-112.10	-118.47	-129.32	-137.61
272	382	241490.0	548710.0	1519.72	-426.65	-86.90	-105.83	-112.17	-118.51	-129.32	-137.61
273	383	241760.0	548950.0	1509.59	-426.37	-87.96	-105.96	-112.06	-118.45	-129.13	-137.40
274	384	241930.0	548950.0	1505.62	-425.94	-87.02	-105.98	-112.16	-118.45	-129.13	-137.40
275	385	242030.0	548950.0	1505.62	-425.94	-87.02	-105.98	-112.16	-118.45	-129.13	-137.40
276	386	242220.0	548950.0	1505.62	-425.94	-87.02	-105.98	-112.16	-118.45	-129.13	-137.40
277	387	242410.0	548950.0	1505.62	-425.94	-87.02	-105.98	-112.16	-118.45	-129.13	-137.40
278	388	242600.0	548950.0	1505.62	-425.94	-87.02	-105.98	-112.16	-118.45	-129.13	-137.40
279	389	242790.0	548950.0	1505.62	-425.94	-87.02	-105.98	-112.16	-118.45	-129.13	-137.40
280	390	242980.0	548950.0	1505.62	-425.94	-87.02	-105.98	-112.16	-118.45	-129.13	-137.40
281	391	243170.0	548950.0	1505.62	-425.94	-87.02	-105.98	-112.16	-118.45	-129.13	-137.40
282	392	243360.0	548950.0	1505.62	-425.94	-87.02	-105.98	-112.16	-118.45	-129.13	-137.40
283	393	243550.0	548950.0	1505.62	-425.94	-87.02	-105.98	-112.16	-118.45	-129.13	-137.40
284	394	243740.0	548950.0	1505.62	-425.94	-87.02	-105.98	-112.16	-118.45	-129.13	-137.40
285	395	243930.0	548950.0	1505.62	-425.94	-87.02	-105.98	-112.16	-118.45	-129.13	-137.40
2											



GRAVIMETRIC SURVEY OF HAUT MOULOUYA IN MOROCCO

1976

STATION-NO	LATITUDE (N)	LONGITUDE (E)	ALTITUDE	G.V.-S.V.	2.00	2.30	2.40	2.50	2.67	2.80	
NO.	METER	METER	METER	MGAL	MGAL	MGAL	MGAL	MGAL	MGAL	MGAL	
301	411	231600.0	544100.0	1524.99	-429.55	-52.38	-101.13	-107.45	-113.64	-124.63	-132.89
302	412	231320.0	543740.0	1524.46	-426.19	-52.27	-101.34	-107.69	-114.05	-124.86	-133.12
303	413	231000.0	543350.0	1523.94	-422.77	-52.15	-101.51	-107.87	-114.22	-125.03	-133.29
304	414	230920.0	542910.0	1523.42	-426.72	-52.76	-101.82	-109.13	-114.53	-125.34	-133.60
305	415	230740.0	542480.0	1522.78	-427.55	-53.19	-102.29	-109.64	-115.00	-125.82	-134.09
306	416	230640.0	542000.0	1522.74	-423.93	-52.44	-102.53	-109.93	-115.34	-126.19	-134.48
307	417	230500.0	541850.0	1489.30	-419.04	-52.59	-101.21	-107.42	-113.63	-124.18	-132.25
308	418	230430.0	541500.0	1488.56	-418.07	-52.75	-101.39	-107.59	-113.80	-124.35	-132.41
309	419	230350.0	541420.0	1488.43	-417.29	-52.05	-100.67	-106.87	-113.08	-123.63	-131.69
310	420	230430.0	541450.0	1479.77	-419.51	-52.27	-100.69	-106.87	-112.95	-123.51	-131.55
311	421	230560.0	541920.0	1487.96	-412.58	-51.55	-100.31	-106.48	-112.55	-123.19	-131.25
312	422	231730.0	544950.0	1481.57	-411.05	-51.84	-100.23	-106.39	-112.42	-123.06	-131.12
313	423	231720.0	545190.0	1455.17	-419.52	-51.83	-100.03	-106.10	-112.17	-122.79	-130.83
314	424	231800.0	545200.0	1521.17	-416.11	-51.73	-100.44	-112.02	-118.40	-129.79	-138.34
315	425	231600.0	543720.0	1521.17	-416.11	-51.73	-100.44	-112.02	-118.40	-129.79	-138.34
316	426	231600.0	543720.0	1521.17	-416.11	-51.73	-100.44	-112.02	-118.40	-129.79	-138.34
317	427	231600.0	543720.0	1521.17	-416.11	-51.73	-100.44	-112.02	-118.40	-129.79	-138.34
318	428	231600.0	543720.0	1521.17	-416.11	-51.73	-100.44	-112.02	-118.40	-129.79	-138.34
319	429	231600.0	543720.0	1521.17	-416.11	-51.73	-100.44	-112.02	-118.40	-129.79	-138.34
320	430	232220.0	542900.0	1521.17	-416.11	-51.73	-100.44	-112.02	-118.40	-129.79	-138.34
321	431	232230.0	541170.0	1517.97	-428.24	-54.32	-103.28	-109.60	-116.91	-127.85	-136.14
322	432	232150.0	540600.0	1525.34	-422.23	-54.63	-103.70	-110.06	-116.41	-127.22	-135.48
323	433	232220.0	543700.0	1526.53	-428.57	-55.08	-104.21	-110.58	-116.85	-127.80	-136.09
324	434	232440.0	539430.0	1533.99	-431.35	-55.69	-105.07	-111.47	-117.37	-128.71	-137.00
325	435	232540.0	539500.0	1538.99	-432.93	-56.27	-105.52	-111.94	-117.85	-129.27	-137.61
326	436	232710.0	538160.0	1541.55	-433.97	-56.31	-105.10	-112.55	-118.46	-129.82	-138.16
327	437	233050.0	535930.0	1535.59	-431.96	-56.19	-105.44	-112.96	-118.86	-129.89	-138.23
328	438	233650.0	540420.0	1527.97	-429.79	-55.79	-104.93	-111.29	-117.53	-129.42	-137.40
329	439	234050.0	543710.0	1517.37	-426.94	-55.24	-104.23	-110.56	-116.85	-127.65	-135.87
330	440	234040.0	541230.0	1516.43	-426.94	-55.24	-104.23	-110.56	-116.85	-127.65	-135.87
331	441	233110.0	540630.0	1512.17	-432.41	-54.51	-103.70	-111.09	-117.49	-128.36	-136.67
332	442	233150.0	541150.0	1526.41	-428.45	-54.51	-103.96	-110.33	-116.70	-127.53	-135.81
333	443	233240.0	542000.0	1530.41	-428.76	-54.16	-103.31	-109.70	-116.05	-126.93	-135.23
334	444	233240.0	542000.0	1531.73	-424.12	-53.75	-102.47	-109.99	-115.28	-126.00	-134.20
335	445	232440.0	543710.0	1515.45	-424.16	-52.82	-101.77	-109.09	-114.40	-125.14	-133.35
336	446	233110.0	543300.0	1507.44	-422.27	-52.78	-101.54	-107.92	-114.21	-124.89	-133.14
337	447	233350.0	544170.0	1513.65	-423.57	-52.56	-101.59	-107.92	-114.21	-124.89	-133.14
338	448	232720.0	544370.0	1516.91	-424.21	-52.53	-101.59	-107.92	-114.21	-124.89	-133.14
339	449	232600.0	544580.0	1520.09	-424.76	-52.37	-101.37	-107.70	-114.04	-124.63	-132.94
340	450	231500.0	545050.0	1533.73	-428.62	-53.72	-102.35	-107.22	-113.60	-124.43	-132.72
341	451	231170.0	545260.0	1543.01	-428.14	-51.15	-100.39	-106.80	-113.22	-124.16	-132.45
342	452	230710.0	545510.0	1550.15	-429.45	-50.15	-99.59	-105.98	-112.42	-123.39	-131.78
343	453	230220.0	545650.0	1561.99	-431.17	-49.18	-98.55	-105.13	-111.65	-122.33	-131.13
344	454	229720.0	545800.0	1573.65	-433.32	-48.14	-97.59	-104.31	-111.01	-121.76	-130.32
345	455	229180.0	545920.0	1583.66	-434.64	-47.14	-96.79	-103.43	-110.07	-121.35	-129.98
346	456	228720.0	545110.0	1597.15	-436.91	-46.19	-95.99	-102.52	-109.74	-121.01	-129.62
347	457	228700.0	547110.0	1593.51	-436.89	-46.12	-95.50	-102.12	-109.43	-120.70	-129.32
348	458	228650.0	547350.0	1595.09	-435.50	-45.17	-94.50	-102.50	-109.43	-120.70	-129.32
349	459	227980.0	548230.0	1510.47	-438.24	-45.06	-94.82	-101.82	-108.51	-119.69	-128.56
350	460	227440.0	547730.0	1524.93	-441.15	-44.62	-94.37	-101.61	-108.36	-119.63	-128.60

GRAVIMETRIC SURVEY OF HAUT MOULOUYA IN MOROCCO

1978

STATION-NO	LATITUDE (N)	LONGITUDE (E)	ALTITUDE	G.V.-S.V.	2.00	2.30	2.40	2.50	2.67	2.80	
NO.	METER	METER	METER	MGAL	MGAL	MGAL	MGAL	MGAL	MGAL	MGAL	
351	461	226990.0	547600.0	1639.06	-444.00	-74.28	-94.69	-101.50	-108.30	-119.87	-128.72
352	462	228720.0	545740.0	1593.97	-436.71	-72.31	-97.18	-103.81	-110.43	-121.69	-130.31
353	463	228620.0	545100.0	1595.41	-437.35	-72.63	-97.53	-104.16	-110.79	-122.06	-130.68
354	464	233920.0	544920.0	1454.30	-416.74	-81.75	-100.32	-106.31	-112.69	-123.22	-131.26
355	465	233770.0	545400.0	1493.61	-418.59	-80.98	-99.70	-105.95	-112.19	-122.90	-131.92
356	466	233960.0	545710.0	1517.44	-422.51	-80.76	-99.76	-106.07	-112.39	-123.15	-131.37
357	467	233930.0	545100.0	1512.36	-421.12	-80.56	-99.48	-105.79	-112.10	-122.92	-131.02
358	468	233780.0	546430.0	1490.72	-416.97	-80.35	-99.00	-105.22	-111.43	-122.00	-130.08
359	469	233180.0	542570.0	1539.99	-428.99	-82.94	-102.17	-108.58	-114.99	-125.88	-134.22
360	470	229590.0	542730.0	1551.43	-432.05	-82.41	-101.78	-109.23	-114.69	-125.65	-134.05
361	471	229080.0	542710.0	1556.09	-434.90	-81.77	-101.31	-107.83	-114.34	-125.41	-133.82
362	472	228570.0	542820.0	1581.04	-437.41	-80.95	-100.70	-107.27	-113.81	-124.92	-133.65
363	473	228490.0	543410.0	1610.59	-442.75	-79.53	-99.59	-106.30	-112.99	-124.36	-133.06
364	474	228150.0	543900.0	1629.06	-441.59	-78.87	-98.91	-105.43	-112.32	-123.70	-132.39
365	475	227640.0	544000.0	1624.69	-444.32	-78.05	-98.31	-105.07	-111.82	-123.31	-132.09
366	476	227170.0	544500.0	1633.72	-445.32	-76.99	-97.36	-104.15	-110.94	-122.49	-131.32
367	477	226800.0	542450.0	1584.77	-439.64	-80.90	-100.70	-107.29	-113.69	-125.11	-133.68
368	478	227190.0	541840.0	1586.72	-439.52	-81.80	-101.59	-108.18	-114.78	-126.00	-134.57
369	479	227350.0	543150.0	1564.80	-435.76	-80.94	-100.46	-109.96	-116.47	-127.53	-135.93
370	480	226930.0	540970.0	1598.85	-439.23	-82.72	-102.66	-109.31	-115.95	-127.25	-135.89
371	481	232690.0	545960.0	1528.48	-425.15	-81.27	-100.35	-106.71	-113.07	-123.88	-132.15
372	482	232020.0	547290.0	1537.54	-426.44	-80.04	-99.26	-105.65	-112.07	-122.95	-131.28
373	483	231480.0	547450.0	1545.35	-427.28	-79.10	-98.41	-104.85	-111.28	-122.22	-130.59
374	484	230790.0	547630.0	1550.85	-427.60	-78.45	-97.93	-104.28	-110.74	-121.72	-130.11
375	485	230340.0	542690.0	1465.99	-416.74	-83.53	-102.16	-109.37	-114.56	-125.33	-133.20
376	486	230100.0	542870.0	1504.22	-422.07	-83.35	-102.18	-109.45	-114.73	-125.39	-133.55
377	487	230100.0	542300.0	1493.39	-420.24	-83.85	-102.55	-109.78	-115.00	-125.59	-133.63
378	488	230490.0	541300.0	1509.05	-424.02	-84.40	-103.26	-109.55	-115.44	-126.53	-134.70
379	501	244310.0	543190.0	1501.67	-419.36	-81.40	-100.27	-106.18	-112.48	-123.20	-131.40
380	502	244170.0	543910.0	1509.23	-420.59	-80.95	-99.87	-105.18	-111.49	-122.30	-130.40
381	503	244330.0	544380.0	1501.85	-420.00	-80.70	-99.60	-105.90	-112.20	-122.90	-131.09
382	504	244330.0	544360.0	1501.45	-418.65	-80.74	-99.55	-105.82	-112.10	-122.76	-130.91
383	505	244220.0	545370.0	1506.40	-419.42	-80.45	-99.33	-105.63	-111.92	-122.62	-130.81
384	506	244030.0	545750.0	1502.67	-418.65	-80.19	-99.33	-105.61	-111.69	-122.56	-130.72
385	507	243800.0	545300.0	1502.79	-418.50	-80.31	-99.15	-105.43	-111.71	-122.35	-130.55
386	508	243510.0	545740.0</								



## GRAVIMETRIC SURVEY OF HAUT MOULOUYA IN MADRCCO

1973

STATION-NO	LATITUDE (E)	LONGITUDE (E)	ALTITUDE	S.V.-S.V.	2.00	2.30	2.40	2.50	2.57	2.80	
NO.	METER	METER	METER	MGAL	MGAL	MGAL	MGAL	MGAL	MGAL	MGAL	
401	523	243690.0	545090.0	1499.94	-418.31	-85.99	-99.77	-106.03	-112.29	-122.94	-131.05
402	524	243150.0	545030.0	1495.35	-417.77	-81.03	-99.79	-106.04	-112.29	-122.92	-131.05
403	525	243050.0	545050.0	1501.04	-418.66	-80.97	-99.59	-105.96	-112.23	-122.89	-131.05
404	526	242620.0	545070.0	1490.36	-418.33	-80.95	-99.62	-105.54	-112.07	-122.85	-130.74
405	527	242280.0	545350.0	1487.04	-418.53	-80.92	-99.54	-105.75	-111.95	-122.52	-130.59
406	528	238690.0	545070.0	1484.01	-419.87	-81.87	-99.65	-105.75	-111.79	-122.19	-129.89
407	529	239200.0	545490.0	1467.80	-411.67	-81.11	-99.47	-105.59	-111.41	-122.11	-130.01
408	530	239200.0	545350.0	1470.55	-412.39	-81.15	-99.56	-105.70	-111.94	-122.27	-130.25
409	531	239200.0	545350.0	1472.91	-412.55	-80.97	-99.41	-105.56	-111.71	-122.15	-130.14
410	532	238800.0	545240.0	1473.04	-413.39	-80.58	-99.08	-105.25	-111.42	-121.91	-129.93
411	533	238800.0	545240.0	1472.71	-413.91	-80.12	-98.68	-104.87	-111.06	-121.58	-129.62
412	534	240910.0	544410.0	1457.66	-416.77	-82.02	-100.55	-106.87	-113.09	-123.65	-131.73
413	535	240920.0	544720.0	1463.32	-411.61	-81.54	-99.91	-105.03	-112.15	-122.56	-130.52
414	536	240630.0	545450.0	1473.37	-412.76	-81.67	-100.09	-104.23	-112.33	-122.82	-130.80
415	537	240430.0	545550.0	1473.95	-412.97	-81.75	-100.17	-104.31	-112.45	-122.99	-130.87
416	538	240600.0	545420.0	1465.14	-411.74	-81.93	-100.25	-104.43	-112.52	-122.91	-130.86
417	539	245110.0	544930.0	1513.06	-410.95	-79.99	-98.53	-105.14	-111.45	-122.19	-130.40
418	540	245930.0	544910.0	1515.05	-420.75	-79.76	-98.74	-105.07	-111.39	-122.15	-130.37
419	541	245760.0	544350.0	1523.44	-422.54	-79.78	-98.59	-105.25	-111.62	-122.44	-130.71
420	542	245790.0	543910.0	1516.00	-421.14	-80.00	-99.00	-105.34	-111.81	-122.44	-130.67
421	543	245700.0	543550.0	1506.73	-419.14	-80.08	-99.45	-105.25	-111.55	-122.26	-130.44
422	544	245770.0	542950.0	1484.55	-414.75	-80.17	-99.50	-105.01	-111.21	-121.77	-129.84
423	545	242590.0	545070.0	1485.45	-415.90	-81.41	-100.03	-106.24	-112.44	-123.03	-131.07
424	546	242680.0	545050.0	1485.08	-414.50	-81.67	-100.21	-106.39	-112.57	-123.09	-131.07
425	547	242680.0	545120.0	1475.90	-413.92	-81.63	-100.10	-106.26	-112.43	-122.90	-130.92
426	548	242680.0	545120.0	1455.60	-413.90	-79.55	-98.21	-104.41	-110.62	-121.37	-129.24
427	549	242680.0	547160.0	1485.54	-414.30	-79.73	-98.42	-104.64	-110.85	-121.41	-129.49
428	550	242620.0	535950.0	1509.24	-425.35	-85.63	-104.54	-110.84	-117.14	-127.85	-136.05
429	551	240210.0	535330.0	1514.40	-426.48	-85.55	-104.52	-110.84	-117.16	-127.91	-136.13
430	552	240300.0	524850.0	1515.52	-427.05	-85.83	-104.30	-111.12	-117.45	-128.19	-136.42
431	553	240350.0	534420.0	1518.42	-427.08	-85.19	-104.19	-110.53	-116.86	-127.83	-136.07
432	554	241110.0	534040.0	1523.16	-423.00	-85.05	-104.12	-110.47	-116.53	-127.63	-135.85
433	555	241220.0	533630.0	1530.63	-429.37	-84.75	-103.90	-110.29	-116.47	-127.53	-135.83
434	556	241760.0	533320.0	1538.72	-430.62	-84.15	-103.65	-109.87	-116.29	-127.21	-135.55
435	557	242230.0	533000.0	1553.55	-433.37	-83.50	-102.95	-109.43	-115.92	-126.94	-135.36
436	558	242450.0	532870.0	1579.55	-436.39	-82.92	-102.62	-109.22	-115.82	-126.83	-135.36
437	559	243700.0	532650.0	1610.00	-444.33	-81.95	-102.13	-108.85	-115.51	-126.60	-135.14
438	560	243520.0	532370.0	1624.87	-447.16	-81.35	-101.81	-108.49	-115.41	-126.40	-135.14
439	561	244040.0	531540.0	1610.33	-443.34	-80.88	-101.64	-107.74	-114.68	-124.80	-134.42
440	562	244180.0	531300.0	1611.95	-443.67	-80.51	-100.85	-107.36	-114.03	-124.29	-134.22
441	563	244430.0	529850.0	1607.43	-442.19	-79.54	-99.55	-106.72	-112.89	-124.23	-134.50
442	564	244430.0	529850.0	1592.13	-439.37	-79.99	-99.79	-106.38	-112.98	-124.20	-134.77
443	565	244280.0	530210.0	1576.54	-436.33	-80.94	-100.60	-107.16	-113.73	-124.85	-135.37
444	566	244320.0	530420.0	1572.61	-435.78	-81.35	-100.95	-107.52	-114.06	-125.15	-135.49
445	567	243280.0	529350.0	1629.93	-440.33	-81.60	-102.03	-109.54	-115.65	-127.23	-136.06
446	568	243040.0	529530.0	1611.74	-435.07	-82.31	-102.50	-109.23	-115.96	-127.40	-136.15
447	569	242200.0	529470.0	1611.48	-435.40	-82.67	-102.86	-109.58	-116.31	-127.75	-136.50
448	570	242510.0	530240.0	1610.93	-435.42	-82.90	-103.09	-109.93	-116.55	-128.00	-136.75
449	571	242280.0	530530.0	1605.27	-434.47	-83.22	-103.34	-109.64	-116.75	-128.15	-136.87
450	572	242040.0	530370.0	1594.35	-432.89	-83.45	-103.45	-110.13	-116.50	-128.14	-136.81

## GRAVIMETRIC SURVEY OF HAUT MOULOUYA IN MADRCCO

1978

STATION-NO	LATITUDE (E)	LONGITUDE (E)	ALTITUDE	S.V.-S.V.	2.00	2.30	2.40	2.50	2.57	2.80	
NO.	METER	METER	METER	MGAL	MGAL	MGAL	MGAL	MGAL	MGAL	MGAL	
451	624	241640.0	531190.0	1590.63	-441.71	-83.76	-103.70	-110.34	-116.99	-126.29	-136.93
452	625	241520.0	531510.0	1579.97	-439.39	-84.78	-104.09	-110.69	-117.29	-126.93	-137.17
453	626	241220.0	531640.0	1588.95	-447.72	-84.75	-104.72	-110.97	-117.52	-127.51	-137.17
454	627	241040.0	531560.0	1573.25	-439.19	-85.05	-104.76	-111.34	-117.91	-127.82	-137.62
455	628	240910.0	531240.0	1584.04	-441.70	-85.21	-105.07	-111.48	-118.30	-128.55	-138.15
456	629	240540.0	530920.0	1570.16	-439.93	-85.70	-105.57	-111.93	-118.49	-128.44	-138.16
457	630	240160.0	530670.0	1531.20	-432.15	-87.26	-106.40	-112.78	-119.17	-130.01	-138.31
458	631	239740.0	530250.0	1545.64	-435.66	-87.84	-106.98	-113.42	-119.87	-130.83	-138.21
459	632	239370.0	530870.0	1530.77	-432.30	-87.78	-106.95	-113.33	-119.74	-130.61	-138.92
460	633	239790.0	530570.0	1545.07	-431.95	-86.98	-106.35	-112.81	-119.27	-130.25	-138.66
461	634	240200.0	530350.0	1559.73	-437.22	-86.41	-105.95	-112.46	-118.97	-130.04	-138.50
462	635	240690.0	531070.0	1585.55	-439.90	-85.59	-105.21	-111.75	-118.29	-129.41	-137.91
463	636	240580.0	530300.0	1561.03	-437.13	-85.83	-105.39	-111.92	-118.44	-129.52	-138.00
464	637	240440.0	530840.0	1545.43	-433.54	-85.76	-105.13	-111.59	-118.04	-129.02	-137.61
465	638	240420.0	530290.0	1536.07	-431.91	-86.04	-105.28	-111.69	-118.01	-129.01	-137.35
466	639	240500.0	531440.0	1469.72	-412.35	-81.65	-105.85	-112.58	-119.11	-127.56	-136.51
467	640	240590.0	531130.0	1430.93	-414.49	-81.16	-105.97	-112.09	-118.59	-127.59	-136.63
468	641	240180.0	530650.0	1431.74	-414.71	-81.15	-105.97	-112.09	-118.59	-127.59	-136.64
469	642	240150.0	530220.0	1502.49	-418.75	-80.57	-105.67	-111.95	-118.45	-127.61	-136.77
470	643	240760.0	530760.0	1510.32	-420.52	-80.55	-105.50	-111.81	-118.32	-127.94	-136.94
471	644	240700.0	530250.0	1515.02	-421.39	-80.39	-105.32	-111.79	-118.31	-127.92	-136.94
472	645	240680.0	530580.0	1530.58	-424.81	-80.31	-105.48	-111.76	-118.26	-127.88	-136.64
473	646	240550.0	530450.0	1534.02	-425.65	-80.28	-105.50	-111.80	-118.30	-127.88	-136.51
474	647	240610.0	530600.0	1520.54	-429.10	-80.05	-105.47	-111.84	-118.42	-127.82	-136.83
475	648	240500.0	530440.0	1578.53	-435.23	-79.93	-105.31	-111.89	-118.40	-127.82	-136.83
476	649	240530.0	530220.0	1595.33	-439.01	-79.84	-105.41	-111.93	-118.45	-127.81	-136.81
477	650	240590.0	530760.0	1599.97	-440.55	-80.32	-105.35	-111.87	-118.30	-127.80	-136.73
478	651	240600.0	530410.0	1622.56	-445.45	-80.21	-105.52	-111.93	-118.30	-127.80	-136.73
479	652	240180.0	530520.0	1601.94	-441.99	-80.72	-105.70	-112.33	-118.02	-127.54	-136.00
480	653	240310.0	530410.0	1594.71	-440.57	-81.10	-105.70	-112.33	-118.02	-127.54	-136.29
481	654	240340.0	530950.0	1599.52	-441.87	-81.50	-105.74	-112.33	-118.01	-127.53	-136.79
482	655	240400.0	530690.0	1604.31	-443.30	-82.19	-105.29	-111.99	-117.93	-127.07	-136.78
483	656	240200.0	530370.0	1582.49	-438.99	-82.76	-105.58	-112.19	-117.79	-127.02	-136.61
484	657	240240.0	530350.0	1595.59	-441.97	-82.98	-105.76	-112.33	-117.94	-127.04	-136.62
485	658	240250.0	53050.0	1514.28	-423.50	-84.60	-107.93	-114.26	-120.03	-129.26	-139.26
486	659	240600.0	530760.0	1531.31	-423.33	-85.81	-108.42				





## GRAVIMETRIC SURVEY OF HAUT MAJAOUYA IN MOROCCO

1978

STATION-NO	LATITUDE (Y)	LONGITUDE (X)	ALTITUDE	S.V.-S.V.	2.00	2.30	2.40	2.50	2.67	2.80	
NO.		METER	METER	MSAL	MSAL	MSAL	MSAL	MSAL	MSAL	MSAL	
501	674	245218.0	532770.0	1426.27	-445.89	-79.45	-99.79	-104.57	-113.35	-124.83	-133.69
502	675	245177.0	532899.0	1422.55	-444.10	-79.04	-99.61	-104.47	-113.32	-124.93	-133.59
503	676	245143.0	533027.0	1417.15	-442.44	-78.64	-99.68	-104.56	-113.44	-125.14	-134.09
504	677	245102.0	533155.0	1412.24	-440.77	-78.23	-99.39	-104.16	-112.93	-124.44	-133.24
505	678	245061.0	533283.0	1407.33	-439.10	-77.83	-99.41	-104.33	-113.25	-125.01	-134.01
506	679	245020.0	533411.0	1402.42	-437.43	-77.43	-99.23	-104.25	-113.21	-125.06	-134.11
507	680	245000.0	533539.0	1397.51	-435.76	-77.03	-99.02	-104.02	-113.02	-124.92	-134.01
508	681	245000.0	533667.0	1392.60	-434.09	-76.63	-98.83	-103.81	-112.89	-124.76	-133.84
509	682	245000.0	533795.0	1387.69	-432.42	-76.23	-98.68	-103.59	-112.69	-124.73	-133.79
510	683	245000.0	533923.0	1382.78	-430.75	-75.83	-98.55	-103.37	-112.48	-124.59	-133.62
511	684	245000.0	534051.0	1377.87	-429.08	-75.43	-98.41	-103.15	-112.27	-124.45	-133.45
512	685	245000.0	534179.0	1372.96	-427.41	-75.03	-98.28	-102.93	-112.06	-124.31	-133.28
513	686	245000.0	534307.0	1368.05	-425.74	-74.63	-98.15	-102.71	-111.85	-124.17	-133.11
514	687	245000.0	534435.0	1363.14	-424.07	-74.23	-98.02	-102.49	-111.64	-124.03	-132.94
515	688	245000.0	534563.0	1358.23	-422.40	-73.83	-97.89	-102.27	-111.43	-123.89	-132.77
516	689	245000.0	534691.0	1353.32	-420.73	-73.43	-97.76	-102.05	-111.22	-123.75	-132.60
517	690	245000.0	534819.0	1348.41	-419.06	-73.03	-97.63	-101.83	-111.01	-123.61	-132.43
518	691	245000.0	534947.0	1343.50	-417.39	-72.63	-97.50	-101.61	-110.80	-123.47	-132.26
519	692	245000.0	535075.0	1338.59	-415.72	-72.23	-97.37	-101.39	-110.59	-123.33	-132.09
520	693	245000.0	535203.0	1333.68	-414.05	-71.83	-97.24	-101.17	-110.38	-123.19	-131.92
521	694	245000.0	535331.0	1328.77	-412.38	-71.43	-97.11	-100.95	-110.17	-123.05	-131.75
522	695	245000.0	535459.0	1323.86	-410.71	-71.03	-96.98	-100.73	-109.96	-122.91	-131.58
523	696	245000.0	535587.0	1318.95	-409.04	-70.63	-96.85	-100.51	-109.75	-122.77	-131.41
524	697	245000.0	535715.0	1314.04	-407.37	-70.23	-96.72	-100.29	-109.54	-122.63	-131.24
525	698	245000.0	535843.0	1309.13	-405.70	-69.83	-96.59	-100.07	-109.33	-122.49	-131.07
526	699	245000.0	535971.0	1304.22	-404.03	-69.43	-96.46	-99.85	-109.12	-122.35	-130.90
527	700	245000.0	536099.0	1299.31	-402.36	-69.03	-96.33	-99.63	-108.91	-122.21	-130.73
528	701	245000.0	536227.0	1294.40	-400.69	-68.63	-96.20	-99.41	-108.70	-122.07	-130.56
529	702	245000.0	536355.0	1289.49	-399.02	-68.23	-96.07	-99.19	-108.49	-121.93	-130.39
530	703	245000.0	536483.0	1284.58	-397.35	-67.83	-95.94	-98.97	-108.28	-121.79	-130.22
531	704	245000.0	536611.0	1279.67	-395.68	-67.43	-95.81	-98.75	-108.07	-121.65	-130.05
532	705	245000.0	536739.0	1274.76	-394.01	-67.03	-95.68	-98.53	-107.86	-121.51	-129.88
533	706	245000.0	536867.0	1269.85	-392.34	-66.63	-95.55	-98.31	-107.65	-121.37	-129.71
534	707	245000.0	536995.0	1264.94	-390.67	-66.23	-95.42	-98.09	-107.44	-121.23	-129.54
535	708	245000.0	537123.0	1260.03	-389.00	-65.83	-95.29	-97.87	-107.23	-121.09	-129.37
536	709	245000.0	537251.0	1255.12	-387.33	-65.43	-95.16	-97.65	-107.02	-120.95	-129.20
537	710	245000.0	537379.0	1250.21	-385.66	-65.03	-95.03	-97.43	-106.81	-120.81	-129.03
538	711	245000.0	537507.0	1245.30	-384.00	-64.63	-94.90	-97.21	-106.60	-120.67	-128.86
539	712	245000.0	537635.0	1240.39	-382.33	-64.23	-94.77	-96.99	-106.39	-120.53	-128.69
540	713	245000.0	537763.0	1235.48	-380.66	-63.83	-94.64	-96.77	-106.18	-120.39	-128.52
541	714	245000.0	537891.0	1230.57	-379.00	-63.43	-94.51	-96.55	-105.97	-120.25	-128.35
542	715	245000.0	538019.0	1225.66	-377.33	-63.03	-94.38	-96.33	-105.76	-120.11	-128.18
543	716	245000.0	538147.0	1220.75	-375.66	-62.63	-94.25	-96.11	-105.55	-119.97	-128.01
544	717	245000.0	538275.0	1215.84	-374.00	-62.23	-94.12	-95.89	-105.34	-119.83	-127.84
545	718	245000.0	538403.0	1210.93	-372.33	-61.83	-93.99	-95.67	-105.13	-119.69	-127.67
546	719	245000.0	538531.0	1206.02	-370.66	-61.43	-93.86	-95.45	-104.92	-119.55	-127.50
547	720	245000.0	538659.0	1201.11	-369.00	-61.03	-93.73	-95.23	-104.71	-119.41	-127.33
548	721	245000.0	538787.0	1196.20	-367.33	-60.63	-93.60	-95.01	-104.50	-119.27	-127.16
549	722	245000.0	538915.0	1191.29	-365.66	-60.23	-93.47	-94.79	-104.29	-119.13	-126.99
550	723	245000.0	539043.0	1186.38	-364.00	-59.83	-93.34	-94.57	-104.08	-118.99	-126.82
551	724	245000.0	539171.0	1181.47	-362.33	-59.43	-93.21	-94.35	-103.87	-118.85	-126.65
552	725	245000.0	539299.0	1176.56	-360.66	-59.03	-93.08	-94.13	-103.66	-118.71	-126.48
553	726	245000.0	539427.0	1171.65	-359.00	-58.63	-92.95	-93.91	-103.45	-118.57	-126.31
554	727	245000.0	539555.0	1166.74	-357.33	-58.23	-92.82	-93.69	-103.24	-118.43	-126.14
555	728	245000.0	539683.0	1161.83	-355.66	-57.83	-92.69	-93.47	-103.03	-118.29	-125.97
556	729	245000.0	539811.0	1156.92	-354.00	-57.43	-92.56	-93.25	-102.82	-118.15	-125.80
557	730	245000.0	539939.0	1152.01	-352.33	-57.03	-92.43	-93.03	-102.61	-118.01	-125.63
558	731	245000.0	540067.0	1147.10	-350.66	-56.63	-92.30	-92.81	-102.40	-117.87	-125.46
559	732	245000.0	540195.0	1142.19	-349.00	-56.23	-92.17	-92.59	-102.19	-117.73	-125.29
560	733	245000.0	540323.0	1137.28	-347.33	-55.83	-92.04	-92.37	-101.98	-117.59	-125.12
561	734	245000.0	540451.0	1132.37	-345.66	-55.43	-91.91	-92.15	-101.77	-117.45	-124.95
562	735	245000.0	540579.0	1127.46	-344.00	-55.03	-91.78	-91.93	-101.56	-117.31	-124.78
563	736	245000.0	540707.0	1122.55	-342.33	-54.63	-91.65	-91.71	-101.35	-117.17	-124.61
564	737	245000.0	540835.0	1117.64	-340.66	-54.23	-91.52	-91.49	-101.14	-117.03	-124.44
565	738	245000.0	540963.0	1112.73	-339.00	-53.83	-91.39	-91.27	-100.93	-116.89	-124.27
566	739	245000.0	541091.0	1107.82	-337.33	-53.43	-91.26	-91.05	-100.72	-116.75	-124.10
567	740	245000.0	541219.0	1102.91	-335.66	-53.03	-91.13	-90.83	-100.51	-116.61	-123.93
568	741	245000.0	541347.0	1098.00	-334.00	-52.63	-91.00	-90.61	-100.30	-116.47	-123.76
569	742	245000.0	541475.0	1093.09	-332.33	-52.23	-90.87	-90.39	-100.09	-116.33	-123.59
570	743	245000.0	541603.0	1088.18	-330.66	-51.83	-90.74	-90.17	-99.88	-116.19	-123.42
571	744	245000.0	541731.0	1083.27	-329.00	-51.43	-90.61	-89.95	-99.67	-116.05	-123.25
572	745	245000.0	541859.0	1078.36	-327.33	-51.03	-90.48	-89.73	-99.46	-115.91	-123.08
573	746	245000.0	541987.0	1073.45	-325.66	-50.63	-90.35	-89.51	-99.25	-115.77	-122.91
574	747	245000.0	542115.0	1068.54	-324.00	-50.23	-90.22	-89.29	-99.04	-115.63	-122.74
575	748	245000.0	542243.0	1063.63	-322.33	-49.83	-90.09	-89.07	-98.83	-115.49	-122.57
576	749	245000.0	542371.0	1058.72	-320.66	-49.43	-89.96	-88.85	-98.62	-115.35	-122.40
577	750	245000.0	542499.0	1053.81	-319.00	-49.03	-89.83	-88.63	-98.41	-115.21	-122.23
578	751	245000.0	542627.0	1048.90	-317.33	-48.63	-89.70	-88.41	-98.20	-115.07	-122.06
579	752	245000.0	542755.0	1043.99	-315.66	-48.23	-89.57	-88.19	-97.99	-114.93	-121.89
580	753	245000.0	542883.0	1039.08	-314.00	-47.83	-89.44	-87.97	-97.78	-114.79	-121.72
581	754	245000.0	543011.0	1034.17	-312.33	-47.43	-89.31	-87.75	-97.57	-114.65	-121.55
582	755										



GRAVIMETRIC SURVEY OF HAUT MOULOUYA IN MADAGASCAR

1978

STATION-NO	LATITUDE (Y)	LONGITUDE (X)	ALTITUDE	S.V.-S.V.	2.00	2.30	2.40	2.50	2.67	2.80	
NO.	METER	METER	METER	MGAL	MGAL	MGAL	MGAL	MGAL	MGAL	MGAL	
601	638	233310.0	523130.0	1545.99	-442.57	-94.01	-113.34	-119.78	-126.23	-137.18	-145.55
602	639	232950.0	528650.0	1551.52	-443.65	-94.09	-113.49	-119.96	-126.42	-137.41	-145.82
603	640	232540.0	528150.0	1559.80	-445.63	-94.42	-113.94	-120.44	-126.95	-139.01	-146.47
604	641	232210.0	529410.0	1563.21	-446.53	-94.53	-114.15	-120.67	-127.19	-139.27	-146.75
605	642	231740.0	529590.0	1577.52	-449.33	-94.72	-114.47	-121.05	-127.63	-139.83	-147.38
606	643	231200.0	530500.0	1599.94	-454.59	-94.51	-114.52	-121.19	-127.86	-139.20	-147.87
607	644	231670.0	530440.0	1592.93	-455.21	-94.38	-114.43	-121.42	-127.91	-139.18	-147.89
608	645	230540.0	530860.0	1590.29	-452.08	-94.04	-113.95	-120.55	-127.82	-139.50	-147.83
609	646	230240.0	531210.0	1601.83	-459.52	-94.26	-113.91	-119.99	-126.67	-139.04	-146.72
610	647	230030.0	531710.0	1614.16	-458.15	-92.66	-112.85	-119.59	-126.32	-139.76	-146.51
611	648	229930.0	532220.0	1626.15	-454.23	-91.98	-112.31	-118.09	-125.87	-139.39	-146.20
612	649	229790.0	532830.0	1639.45	-459.10	-91.28	-111.72	-119.54	-125.35	-139.64	-146.79
613	650	229690.0	533030.0	1628.95	-457.45	-90.44	-111.02	-117.82	-124.51	-135.15	-145.00
614	651	229490.0	533560.0	1679.52	-466.72	-88.41	-109.41	-116.41	-123.41	-135.31	-144.41
615	652	229450.0	534040.0	1679.45	-455.71	-87.54	-108.55	-115.55	-122.56	-134.47	-143.58
616	653	229110.0	534440.0	1677.49	-454.73	-86.55	-107.59	-114.60	-121.60	-133.51	-142.62
617	654	228740.0	535620.0	1673.92	-452.21	-85.30	-106.24	-113.22	-120.20	-132.09	-141.14
618	655	228130.0	535200.0	1669.06	-451.00	-83.01	-105.87	-112.83	-119.78	-131.60	-140.64
619	656	231450.0	531630.0	1532.57	-439.50	-73.49	-112.65	-119.07	-125.47	-136.35	-144.66
620	657	231220.0	532050.0	1541.44	-440.19	-73.17	-112.50	-118.93	-125.37	-136.31	-144.67
621	658	231090.0	532570.0	1551.03	-442.31	-73.17	-112.60	-119.07	-125.55	-136.55	-144.97
622	659	230910.0	532500.0	1556.63	-443.30	-72.93	-112.42	-118.92	-125.41	-136.45	-144.94
623	660	232910.0	532500.0	1559.76	-444.04	-92.91	-112.48	-119.95	-125.45	-136.53	-144.99
624	661	232450.0	532290.0	1564.37	-445.13	-92.99	-112.58	-119.10	-125.63	-136.73	-145.22
625	662	232540.0	533040.0	1551.54	-442.49	-92.21	-112.46	-119.12	-125.59	-136.60	-145.02
626	663	232300.0	533520.0	1551.01	-442.34	-92.09	-112.36	-118.97	-125.44	-136.44	-144.95
627	664	232100.0	534060.0	1556.56	-442.85	-92.43	-111.97	-118.45	-124.96	-136.00	-144.44
628	665	232500.0	534500.0	1560.36	-443.30	-92.34	-111.57	-118.10	-124.61	-135.68	-144.15
629	666	232200.0	534930.0	1575.59	-445.94	-91.16	-110.99	-117.46	-124.03	-135.21	-143.75
630	667	231800.0	535320.0	1571.51	-448.95	-90.33	-110.24	-116.97	-123.51	-134.79	-143.42
631	668	231570.0	535760.0	1592.23	-448.26	-89.49	-109.63	-116.25	-122.59	-134.19	-142.93
632	669	231530.0	535290.0	1594.17	-447.37	-88.59	-108.64	-115.28	-121.93	-133.23	-141.88
633	670	231650.0	535370.0	1585.46	-445.18	-88.16	-108.00	-114.91	-121.73	-132.47	-141.07
634	671	231410.0	535940.0	1590.24	-442.57	-90.50	-112.91	-119.37	-125.84	-136.93	-145.24
635	672	231490.0	536150.0	1579.20	-447.74	-93.16	-112.92	-119.51	-126.10	-137.30	-145.96
636	673	231450.0	535420.0	1588.43	-451.16	-93.49	-113.37	-120.00	-126.62	-137.89	-146.50
637	674	233050.0	525730.0	1572.32	-445.13	-93.99	-113.47	-120.23	-126.77	-137.91	-146.47
638	675	231080.0	531360.0	1581.22	-450.01	-94.02	-113.32	-120.42	-127.02	-138.23	-146.91
639	676	231370.0	531730.0	1576.75	-446.55	-93.86	-113.40	-120.18	-126.76	-137.95	-146.50
640	677	231820.0	528700.0	1632.07	-459.61	-92.05	-112.46	-119.26	-126.07	-137.63	-146.48
641	678	231500.0	529090.0	1621.07	-457.14	-92.20	-112.50	-119.27	-125.03	-137.54	-146.33
642	679	229760.0	533150.0	1619.26	-455.97	-91.35	-111.62	-118.38	-125.13	-136.42	-145.40
643	680	229720.0	533200.0	1606.97	-453.75	-91.49	-112.00	-118.70	-125.40	-136.53	-145.51
644	681	230820.0	533910.0	1615.50	-453.75	-91.56	-111.77	-118.51	-125.25	-136.70	-145.46
645	682	231110.0	534010.0	1609.61	-452.94	-91.73	-111.93	-118.52	-125.20	-136.57	-145.26
646	683	231690.0	534450.0	1589.59	-448.93	-91.42	-111.47	-118.09	-124.70	-135.95	-144.55
647	684	233000.0	534520.0	1551.37	-441.35	-92.03	-113.50	-117.97	-124.44	-135.45	-143.86
648	685	233500.0	534500.0	1540.44	-432.91	-92.09	-111.36	-117.81	-124.23	-135.16	-143.52
649	686	233970.0	534500.0	1533.11	-437.17	-92.03	-111.22	-117.82	-124.02	-134.90	-143.21
650	687	234400.0	534500.0	1526.32	-435.47	-91.86	-110.98	-117.35	-123.72	-134.55	-142.33

GRAVIMETRIC SURVEY OF HAUT MOULOUYA IN MADAGASCAR

1978

STATION-NO	LATITUDE (Y)	LONGITUDE (X)	ALTITUDE	S.V.-S.V.	2.00	2.30	2.40	2.50	2.67	2.80	
NO.	METER	METER	METER	MGAL	MGAL	MGAL	MGAL	MGAL	MGAL	MGAL	
651	20015	234920.0	549200.0	1522.45	-419.03	-75.97	-94.69	-101.34	-107.60	-118.46	-126.70
652	2001	234920.0	549200.0	1522.45	-416.00	-75.94	-94.94	-101.30	-107.65	-118.43	-126.67
653	2002	234910.0	548130.0	1608.67	-447.43	-85.48	-105.62	-112.34	-119.05	-130.47	-139.20
654	20025	234910.0	548130.0	1609.47	-447.41	-85.47	-105.51	-112.33	-119.04	-130.45	-139.18
655	20035	234830.0	548290.0	1558.13	-435.13	-84.78	-104.20	-112.68	-117.15	-128.16	-136.58
656	2003	234830.0	548190.0	1558.13	-436.09	-84.74	-104.17	-112.64	-117.12	-128.12	-136.54
657	20045	234850.0	549320.0	1542.95	-427.65	-80.21	-99.52	-105.95	-112.39	-123.33	-131.65
658	2004	234990.0	549320.0	1542.95	-427.52	-80.19	-99.49	-105.93	-112.36	-123.31	-131.67



Table II-10 Photographs

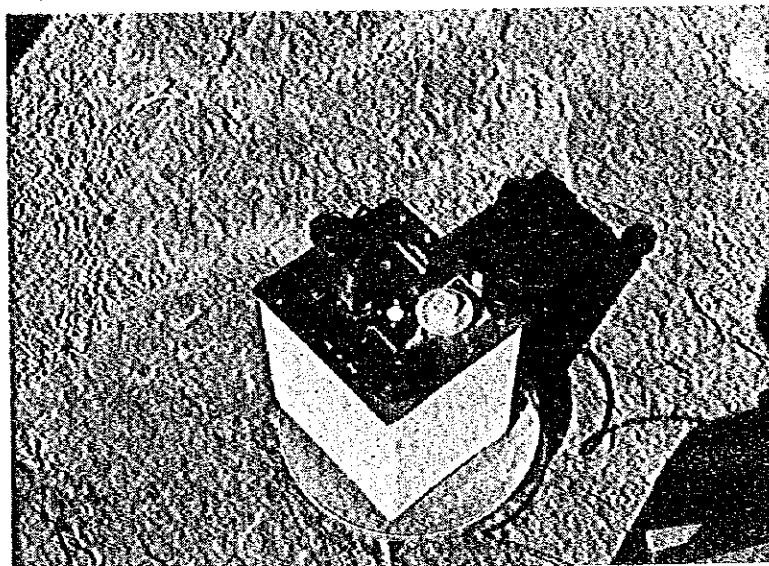


Photo. 1 Gravity Meter  
La Coste & Romberg G-366



Photo. 2 Standard Base Station B-7



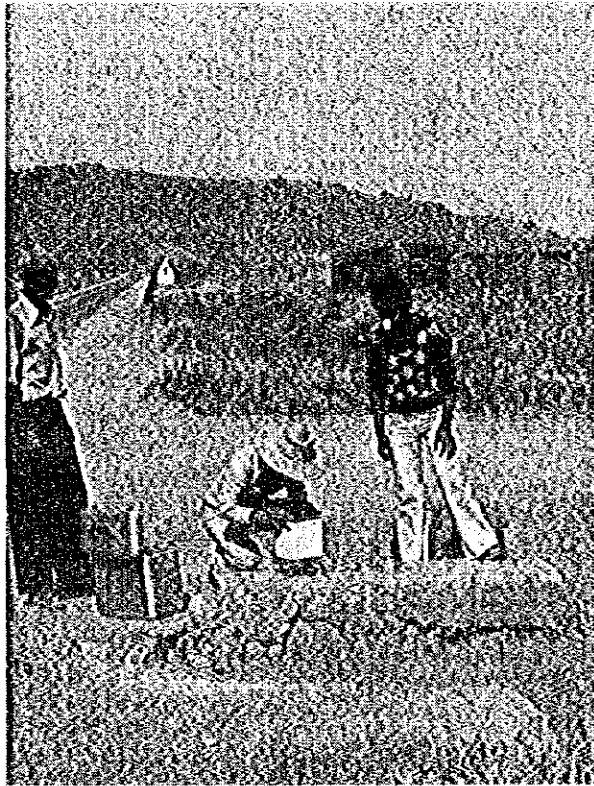


Photo. 3 Gravity Observation at  
Sub-base Station No.2002

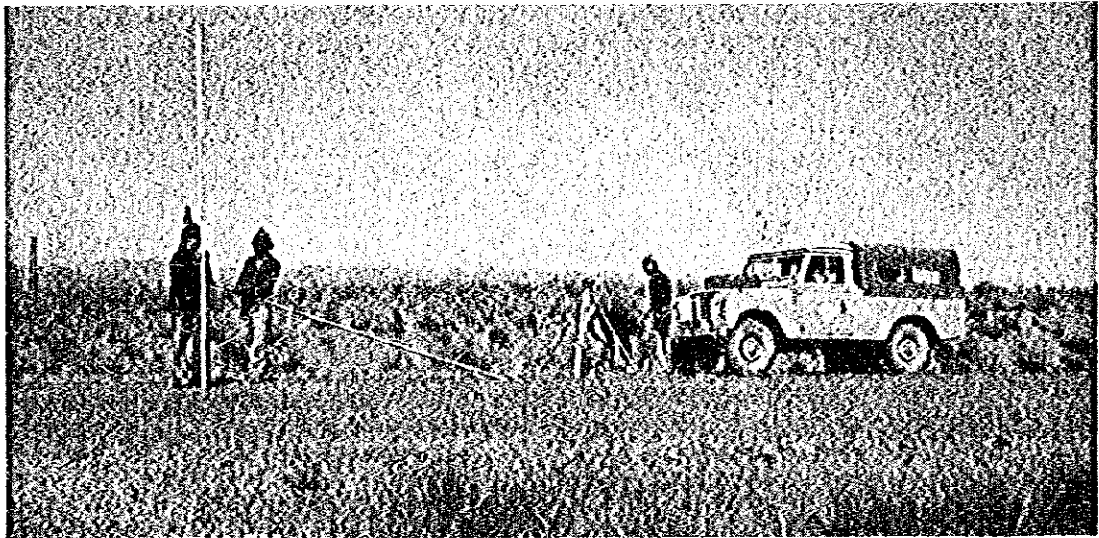


Photo. 4 Preparation of Leveling Survey







Photo. 5 Gravity Survey and Leveling  
Survey

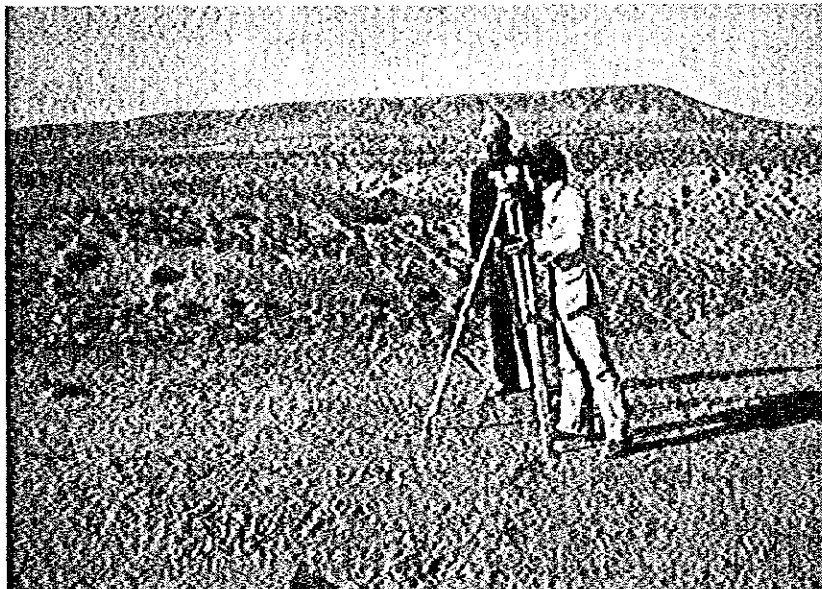


Photo. 6 Measurement of Station Elevation  
by B-2 Automatic Levelmeter

