

Table II-8 Topographical Correction

TERRAIN CORRECTIONS			(ASSUMED DENSITY = 2.00 G/CM ³)							HESCO 50	
GRAVIMETRIC SURVEY OF HAUT MOULOUYA IN MOROCCO											
1978											
STATION-NO.	LATITUDE (Y)	LONGITUDE (X)	ALTITUDE	FAR	MIDDLE	NEAR	CLOSE-1	CLOSE-2	SEA	LAKE	TOTAL
NO.	METER	METER	METER	MGAL	MGAL	MGAL	MGAL	MGAL	MGAL	MGAL	MGAL
1	235700.0	548420.0	1532.28	0.48	0.03	0.03	0.00	0.00	0.00	0.00	0.55
2	236210.0	547910.0	1516.50	0.48	0.03	0.03	0.01	0.00	0.00	0.00	0.54
3	236730.0	547230.0	1492.43	0.48	0.03	0.04	0.00	0.00	0.00	0.00	0.55
4	237130.0	546740.0	1476.40	0.48	0.34	0.03	0.00	0.00	0.00	0.00	0.56
5	237450.0	546300.0	1473.17	0.47	0.04	0.02	0.00	0.00	0.00	0.00	0.54
6	237850.0	545830.0	1463.93	0.47	0.05	0.02	0.00	0.00	0.00	0.00	0.54
7	238400.0	545620.0	1455.53	0.46	0.05	0.02	0.00	0.00	0.00	0.00	0.54
8	238910.0	545470.0	1458.62	0.44	0.04	0.04	0.03	0.00	0.00	0.00	0.56
9	239370.0	545190.0	1470.83	0.42	0.03	0.02	0.02	0.00	0.00	0.00	0.48
10	239690.0	544760.0	1481.12	0.40	0.02	0.01	0.00	0.00	0.00	0.00	0.46
11	240090.0	544280.0	1482.66	0.40	0.02	0.03	0.02	0.00	0.00	0.00	0.44
12	240540.0	544130.0	1485.89	0.38	0.01	0.01	0.00	0.00	0.00	0.00	0.39
13	241100.0	543980.0	1488.31	0.36	0.01	0.02	0.01	0.00	0.00	0.00	0.39
14	241540.0	543840.0	1486.72	0.35	0.01	0.01	0.00	0.00	0.00	0.00	0.36
15	242020.0	543720.0	1492.02	0.35	0.01	0.01	0.00	0.00	0.00	0.00	0.35
16	242500.0	543590.0	1494.14	0.34	0.01	0.01	0.00	0.00	0.00	0.00	0.36
17	243090.0	543430.0	1494.35	0.32	0.01	0.02	0.01	0.00	0.00	0.00	0.36
18	243560.0	543300.0	1497.42	0.32	0.02	0.01	0.01	0.00	0.00	0.00	0.36
19	244010.0	543130.0	1499.01	0.32	0.02	0.01	0.00	0.01	0.00	0.00	0.36
20	244310.0	542700.0	1491.16	0.33	0.02	0.02	0.01	0.01	0.00	0.00	0.39
21	244800.0	542520.0	1486.01	0.33	0.02	0.03	0.01	0.00	0.00	0.00	0.39
22	245210.0	542320.0	1481.95	0.33	0.02	0.02	0.00	0.00	0.00	0.00	0.38
23	245610.0	542030.0	1478.13	0.33	0.03	0.02	0.00	0.00	0.00	0.00	0.38
24	245950.0	541780.0	1467.99	0.34	0.03	0.02	0.00	0.00	0.00	0.00	0.40
25	246420.0	541440.0	1459.60	0.35	0.05	0.03	0.00	0.00	0.00	0.00	0.47
26	247040.0	541060.0	1455.88	0.35	0.06	0.02	0.02	0.01	0.00	0.00	0.47
27	246680.0	540690.0	1460.56	0.35	0.06	0.02	0.00	0.00	0.00	0.00	0.49
28	246240.0	540400.0	1461.85	0.35	0.06	0.04	0.04	0.00	0.00	0.00	0.46
29	245820.0	540150.0	1463.97	0.35	0.06	0.05	0.03	0.00	0.00	0.00	0.44
30	245370.0	539840.0	1468.27	0.35	0.06	0.06	0.03	0.00	0.00	0.00	0.44
31	245100.0	539670.0	1473.36	0.34	0.06	0.04	0.01	0.00	0.00	0.00	0.44
32	244670.0	539400.0	1485.23	0.34	0.05	0.05	0.04	0.00	0.00	0.00	0.47
33	244230.0	539110.0	1496.18	0.34	0.05	0.05	0.05	0.04	0.00	0.00	0.48
34	243810.0	538760.0	1494.54	0.34	0.05	0.04	0.04	0.00	0.00	0.00	0.48
35	243350.0	538600.0	1495.15	0.34	0.05	0.03	0.02	0.00	0.00	0.00	0.44
36	242930.0	538310.0	1496.59	0.34	0.05	0.03	0.00	0.00	0.00	0.00	0.42
37	242460.0	538010.0	1494.15	0.35	0.05	0.03	0.01	0.00	0.00	0.00	0.44
38	242040.0	537750.0	1491.06	0.36	0.06	0.03	0.00	0.00	0.00	0.00	0.45
39	241610.0	537450.0	1491.71	0.36	0.06	0.03	0.01	0.00	0.00	0.00	0.46
40	241170.0	537140.0	1487.40	0.37	0.06	0.04	0.02	0.00	0.00	0.00	0.49
41	240770.0	536850.0	1488.30	0.38	0.06	0.03	0.01	0.00	0.00	0.00	0.48
42	240400.0	536510.0	1490.22	0.38	0.06	0.02	0.00	0.00	0.00	0.00	0.47
43	240190.0	536070.0	1495.85	0.38	0.06	0.02	0.00	0.00	0.00	0.00	0.45
44	239970.0	535560.0	1494.26	0.38	0.07	0.03	0.01	0.00	0.00	0.00	0.48
45	239660.0	535130.0	1515.01	0.36	0.04	0.03	0.01	0.00	0.00	0.00	0.45
46	239440.0	534750.0	1510.65	0.36	0.05	0.03	0.05	0.00	0.00	0.00	0.48
47	239340.0	534260.0	1507.63	0.37	0.06	0.06	0.05	0.00	0.00	0.00	0.54
48	239270.0	533720.0	1501.43	0.37	0.06	0.07	0.09	0.00	0.00	0.00	0.62
49	239130.0	533240.0	1506.49	0.37	0.07	0.08	0.04	0.00	0.00	0.00	0.57
50	238770.0	532710.0	1506.19	0.37	0.09	0.09	0.07	0.00	0.00	0.00	0.60

TERRAIN CORRECTIONS			(ASSUMED DENSITY = 2.00 G/CM ³)							HESCO 51	
GRAVIMETRIC SURVEY OF HAUT MOULOUYA IN MOROCCO											
1978											
STATION-NO.	LATITUDE (Y)	LONGITUDE (X)	ALTITUDE	FAR	MIDDLE	NEAR	CLOSE-1	CLOSE-2	SEA	LAKE	TOTAL
NO.	METER	METER	METER	MGAL	MGAL	MGAL	MGAL	MGAL	MGAL	MGAL	MGAL
51	238520.0	532310.0	1541.56	0.33	0.05	0.11	0.12	0.00	0.00	0.00	0.61
52	238540.0	531780.0	1542.16	0.33	0.05	0.08	0.04	0.00	0.00	0.00	0.49
53	238580.0	531420.0	1551.27	0.32	0.05	0.05	0.01	0.00	0.00	0.00	0.44
54	238690.0	530910.0	1570.05	0.30	0.05	0.08	0.04	0.00	0.00	0.00	0.47
55	239060.0	530440.0	1573.96	0.30	0.06	0.09	0.04	0.00	0.00	0.00	0.46
56	239210.0	529760.0	1573.11	0.30	0.06	0.08	0.01	0.00	0.00	0.00	0.45
57	239450.0	529500.0	1584.21	0.29	0.07	0.06	0.01	0.00	0.00	0.00	0.45
58	239700.0	529030.0	1538.19	0.28	0.08	0.06	0.03	0.00	0.00	0.00	0.46
59	239930.0	528600.0	1601.60	0.27	0.09	0.07	0.00	0.00	0.00	0.00	0.44
60	240390.0	527760.0	1628.90	0.25	0.09	0.32	0.06	0.00	0.00	0.00	0.73
61	240780.0	527290.0	1656.12	0.23	0.12	0.19	0.00	0.01	0.00	0.00	0.55
62	240900.0	526790.0	1691.51	0.23	0.15	0.16	0.02	0.00	0.00	0.00	0.56
63	240270.0	526210.0	1714.06	0.23	0.13	0.13	0.03	0.00	0.00	0.00	0.56
64	232390.0	526640.0	1591.74	0.36	0.06	0.03	0.00	0.00	0.00	0.00	0.45
65	232710.0	527050.0	1595.73	0.35	0.06	0.03	0.01	0.00	0.00	0.00	0.45
66	233000.0	527400.0	1572.17	0.36	0.07	0.03	0.01	0.00	0.00	0.00	0.47
67	233360.0	527720.0	1579.94	0.34	0.06	0.04	0.01	0.00	0.00	0.00	0.44
68	233830.0	527900.0	1539.35	0.33	0.05	0.07	0.00	0.00	0.00	0.00	0.45
69	234440.0	528090.0	1580.30	0.33	0.05	0.10	0.02	0.00	0.00	0.00	0.58
70	234960.0	528260.0	1573.74	0.33	0.06	0.37	0.08	0.00	0.00	0.00	0.63
71	235390.0	528150.0	1545.46	0.36	0.08	0.27	0.04	0.00	0.00	0.00	0.75
72	235870.0	528320.0	1516.47	0.39	0.13	0.46	0.15	0.03	0.00	0.00	1.16
73	236300.0	528610.0	1509.03	0.40	0.15	0.43	0.15	0.00	0.00	0.00	1.13
74	236740.0	528850.0	1505.97	0.39	0.15	0.19	0.03	0.00	0.00	0.00	0.76
75	236790.0	528420.0	1506.71	0.39	0.18	0.13	0.03	0.00	0.00	0.00	0.72
76	237190.0	528490.0	1509.41	0.37	0.17	0.09	0.05	0.00	0.00	0.00	0.69
77	237650.0	528870.0	1514.65	0.36	0.15	0.06	0.02	0.00	0.00	0.00	0.60
78	238250.0	528830.0	1523.59	0.34	0.14	0.10	0.02	0.00	0.00	0.00	0.61
79	238700.0	528800.0	1537.27	0.33	0.13	0.22	0.12	0.00	0.00	0.00	0.79
80	239250.0	528710.0	1557.10	0.31	0.11	0.29	0.22	0.00	0.00	0.00	0.92
81	239560.0	528420.0	1584.48	0.28	0.10	0.11	0.06	0.00	0.00	0.00	0.54
82	234810.0	548160.0	1522.27	0.52	0.03	0.02	0.00	0.00	0.00	0.00	0.57
83	234740.0	547660.0	1525.80	0.51	0.03	0.01	0.01	0.00	0.00	0.00	0.56
84	234680.0	547150.0	1525.73	0.51	0.04	0.01	0.00	0.00	0.00	0.00	0.56
85	234600.0	546620.0	1517.15	0.53	0.04	0.04	0.05	0.00	0.00	0.00	0.66
86	234530.0	546200.0	1517.51	0.53	0.04	0.04	0.04	0.00	0.00	0.00	0.64
87	234480.0	545700.0	1497.62	0.56	0.05	0.13	0.16	0.00	0.00	0.00	0.75
88	234420.0	545350.0	1513.74	0.54	0.04	0.03	0.02	0.00	0.00	0.00	0.62
89	234530.0	544830.0	1521.74	0.51	0.03	0.02	0.00	0.00	0.00	0.00	0.57
90	234680.0	544320.0	1516.40	0.51	0.03	0.04	0.01	0.00	0.00	0.00	0.59
91	234730.0	543800.0	1437.75	0.54	0.05	0.07	0.02	0.00	0.00	0.00	0.68
92	234710.0	543350.0	1491.18	0.53	0.05	0.03	0.02	0.00	0.00	0.00	0.62
93	234310.0	543110.0	1491.01	0.55	0.05	0.03	0.00	0.00	0.00	0.00	0.63
94	233800.0	542790.0	1494.42	0.57	0.06	0.02	0.00	0.00	0.00	0.00	0.64
95	233300.0	542700.0	1501.59	0.59	0.06	0.01	0.01	0.00	0.0		

TERRAIN CORRECTIONS

(ASSUMED DENSITY = 2.00 G/CM³)

MESCO 52

GRAVIMETRIC SURVEY OF HAUT MOULOUYA IN MOROCCO

1978

STATION-NO.	LATITUDE (Y)	LONGITUDE (X)	ALTITUDE	FAR	MIDDLE	NEAR	CLOSE-1	CLOSE-2	SEA	LAKE	TOTAL	
NO.	METER	METER	METER	MGAL	MGAL	MGAL	MGAL	MGAL	MGAL	MGAL	MGAL	
101	101	230520.0	541520.0	1529.34	0.66	0.12	0.02	0.01	0.00	0.0	0.0	0.82
102	102	230010.0	541430.0	1539.57	0.67	0.13	0.04	0.02	0.0	0.0	0.0	0.86
103	103	229610.0	541020.0	1540.57	0.68	0.15	0.05	0.03	0.0	0.0	0.0	0.90
104	104	229270.0	540590.0	1535.29	0.69	0.18	0.06	0.04	0.05	0.0	0.0	1.02
105	105	228840.0	540290.0	1535.14	0.71	0.20	0.06	0.05	0.0	0.0	0.0	1.01
106	106	228380.0	539970.0	1538.39	0.74	0.22	0.04	0.00	0.01	0.0	0.0	1.03
107	107	227970.0	539620.0	1545.45	0.74	0.23	0.04	0.02	0.0	0.0	0.0	1.08
108	108	227620.0	539380.0	1550.44	0.73	0.24	0.06	0.04	0.01	0.0	0.0	1.10
109	109	227230.0	538970.0	1545.91	0.74	0.23	0.08	0.01	0.0	0.0	0.0	1.23
110	110	226390.0	537980.0	1570.64	0.71	0.26	0.11	0.00	0.0	0.0	0.0	1.08
111	111	226300.0	537630.0	1568.19	0.70	0.22	0.11	0.01	0.0	0.0	0.0	1.04
112	112	226930.0	537370.0	1549.98	0.75	0.32	0.14	0.01	0.0	0.0	0.0	1.05
113	113	22440.0	53740.0	1570.80	0.70	0.13	0.14	0.03	0.0	0.0	0.0	1.03
114	114	227970.0	537840.0	1590.78	0.69	0.14	0.14	0.06	0.0	0.0	0.0	0.84
115	115	228580.0	537880.0	1599.13	0.63	0.11	0.09	0.01	0.0	0.0	0.0	0.72
116	116	236910.0	529380.0	1504.69	0.39	0.14	0.15	0.03	0.0	0.0	0.0	0.73
117	117	236810.0	529910.0	1503.15	0.41	0.13	0.18	0.02	0.0	0.0	0.0	0.74
118	118	236620.0	530370.0	1501.51	0.41	0.12	0.19	0.03	0.0	0.0	0.0	0.66
119	119	236380.0	530860.0	1500.29	0.42	0.11	0.13	0.00	0.0	0.0	0.0	0.61
120	120	236270.0	531330.0	1499.09	0.42	0.11	0.07	0.00	0.0	0.0	0.0	0.60
121	121	236170.0	531780.0	1499.45	0.42	0.10	0.04	0.00	0.04	0.0	0.0	0.55
122	122	236090.0	532260.0	1507.17	0.42	0.08	0.03	0.01	0.02	0.0	0.0	0.52
123	123	235990.0	532690.0	1518.63	0.41	0.06	0.02	0.00	0.0	0.0	0.0	0.48
124	124	235700.0	533170.0	1524.96	0.41	0.05	0.02	0.00	0.0	0.0	0.0	0.49
125	125	235500.0	533540.0	1523.68	0.42	0.05	0.01	0.01	0.0	0.0	0.0	0.50
126	126	235310.0	533930.0	1521.04	0.43	0.05	0.02	0.00	0.01	0.0	0.0	0.52
127	127	235170.0	534360.0	1513.53	0.43	0.06	0.02	0.01	0.01	0.0	0.0	0.47
128	128	234960.0	534830.0	1527.60	0.42	0.04	0.01	0.00	0.0	0.0	0.0	0.51
129	129	234770.0	535310.0	1534.90	0.42	0.04	0.02	0.03	0.0	0.0	0.0	0.48
130	130	234610.0	535790.0	1529.80	0.43	0.04	0.01	0.00	0.0	0.0	0.0	0.49
131	131	234540.0	536190.0	1526.61	0.44	0.04	0.01	0.00	0.0	0.0	0.0	0.54
132	132	234440.0	536630.0	1538.65	0.43	0.04	0.04	0.03	0.0	0.0	0.0	0.53
133	133	234360.0	537050.0	1538.91	0.44	0.04	0.03	0.02	0.0	0.0	0.0	0.52
134	134	234280.0	537420.0	1529.86	0.46	0.04	0.01	0.00	0.01	0.0	0.0	0.54
135	135	234220.0	537810.0	1532.96	0.46	0.04	0.02	0.02	0.0	0.0	0.0	0.77
136	136	234130.0	537770.0	1600.52	0.29	0.09	0.09	0.01	0.0	0.0	0.0	0.69
137	137	229650.0	537750.0	1699.35	0.54	0.09	0.11	0.02	0.0	0.0	0.0	0.68
138	138	230220.0	537590.0	1592.74	0.53	0.09	0.07	0.01	0.0	0.0	0.0	0.66
139	139	230740.0	537570.0	1593.80	0.51	0.07	0.01	0.03	0.0	0.0	0.0	0.66
140	140	231140.0	537380.0	1586.35	0.50	0.07	0.02	0.02	0.0	0.0	0.0	0.65
141	141	231910.0	537570.0	1565.00	0.53	0.06	0.05	0.04	0.03	0.0	0.0	0.66
142	142	232310.0	537760.0	1553.45	0.53	0.06	0.05	0.04	0.03	0.0	0.0	0.66
143	143	232700.0	538110.0	1557.89	0.51	0.05	0.06	0.05	0.0	0.0	0.0	0.56
144	144	233200.0	53850.0	1539.40	0.50	0.05	0.01	0.00	0.0	0.0	0.0	0.55
145	145	233630.0	538270.0	1534.42	0.49	0.04	0.01	0.01	0.0	0.0	0.0	0.52
146	146	234100.0	538470.0	1526.79	0.48	0.04	0.01	0.00	0.0	0.0	0.0	0.52
147	147	234510.0	538660.0	1529.08	0.46	0.03	0.02	0.01	0.0	0.0	0.0	0.50
148	148	234900.0	538830.0	1522.09	0.46	0.03	0.01	0.00	0.0	0.0	0.0	0.48
149	149	235240.0	539170.0	1531.70	0.44	0.03	0.01	0.00	0.0	0.0	0.0	0.48
150	150	235550.0	539500.0	1541.69	0.42	0.03	0.02	0.01	0.0	0.0	0.0	0.48

TERRAIN CORRECTIONS

(ASSUMED DENSITY = 2.00 G/CM³)

MESCO 53

GRAVIMETRIC SURVEY OF HAUT MOULOUYA IN MOROCCO

1978

STATION-NO.	LATITUDE (Y)	LONGITUDE (X)	ALTITUDE	FAR	MIDDLE	NEAR	CLOSE-1	CLOSE-2	SEA	LAKE	TOTAL	
NO.	METER	METER	METER	MGAL	MGAL	MGAL	MGAL	MGAL	MGAL	MGAL	MGAL	
151	151	235960.0	539920.0	1541.24	0.42	0.03	0.01	0.00	0.0	0.0	0.0	0.46
152	152	236410.0	540140.0	1543.00	0.41	0.03	0.01	0.00	0.0	0.0	0.0	0.44
153	153	236620.0	540560.0	1537.61	0.41	0.02	0.01	0.00	0.0	0.0	0.0	0.44
154	154	236660.0	541010.0	1531.90	0.42	0.02	0.01	0.00	0.0	0.0	0.0	0.46
155	155	236690.0	541500.0	1529.70	0.43	0.02	0.03	0.02	0.0	0.0	0.0	0.49
156	156	236550.0	541940.0	1521.83	0.43	0.02	0.02	0.00	0.0	0.0	0.0	0.48
157	157	236910.0	542390.0	1514.65	0.44	0.02	0.02	0.01	0.0	0.0	0.0	0.50
158	158	236840.0	542880.0	1509.06	0.45	0.02	0.04	0.01	0.0	0.0	0.0	0.51
159	159	237230.0	543340.0	1489.20	0.45	0.03	0.03	0.02	0.0	0.0	0.0	0.52
160	160	237690.0	543430.0	1434.33	0.44	0.03	0.04	0.00	0.0	0.0	0.0	0.51
161	161	238010.0	543760.0	1482.35	0.43	0.02	0.05	0.00	0.01	0.0	0.0	0.51
162	162	238090.0	544160.0	1473.62	0.44	0.03	0.04	0.00	0.0	0.0	0.0	0.52
163	163	238340.0	544610.0	1467.49	0.44	0.04	0.04	0.00	0.0	0.0	0.0	0.49
164	164	238770.0	544940.0	1470.33	0.43	0.03	0.03	0.01	0.0	0.0	0.0	0.65
165	165	240600.0	528380.0	1589.41	0.27	0.11	0.17	0.10	0.0	0.0	0.0	0.65
166	166	240810.0	528960.0	1561.36	0.29	0.13	0.13	0.10	0.0	0.0	0.0	0.88
167	167	241020.0	529210.0	1526.17	0.32	0.19	0.29	0.07	0.0	0.0	0.0	0.72
168	168	241510.0	529190.0	1557.90	0.29	0.14	0.23	0.07	0.0	0.0	0.0	0.45
169	169	242010.0	529390.0	1599.42	0.25	0.09	0.08	0.03	0.0	0.0	0.0	0.41
170	170	242410.0	529110.0	1619.91	0.24	0.09	0.06	0.01	0.0	0.0	0.0	0.42
171	171	242830.0	529550.0	1634.16	0.23	0.09	0.10	0.00	0.0	0.0	0.0	0.41
172	172	243390.0	529930.0	1637.94	0.23	0.09	0.07	0.02	0.0	0.0	0.0	0.43
173	173	243920.0	528910.0	1649.71	0.23	0.10	0.09	0.01	0.0	0.0	0.0	0.59
174	174	244290.0	529030.0	1642.47	0.23	0.10	0.20	0.06	0.0	0.0	0.0	0.66
175	175	244690.0	528970.0	1626.01	0.23	0.12	0.23	0.06	0.0	0.0	0.0	0.73
176	176	245090.0	528830.0	1611.84	0.24	0.14	0.32	0.02	0.02	0.0	0.0	1.65
177	177	245550.0	528650.0	1594.33	0.24	0.14	0.29	0.04	0.0	0.0	0.0	1.15
178	178	245310.0	529240.0	1619.52	0.23	0.12	0.46	0.32	0.02	0.0	0.0	0.86
179	179	245700.0	529430.0	1643.21	0.22	0.11	0.29	0.23	0.0	0.0	0.0	0.38
180	180	246200.0	529290.0	1674.22	0.21	0.12	0.04	0.02	0.0	0.0	0.0	0.36
181	181	246610.0	529500.0	1673.94	0.21	0.12	0.03	0.00	0.0	0.0	0.0	0.40
182	182	247050.0	529700.0	1660.34	0.22	0.12	0.05	0.01	0.0	0.0	0.0	0.45
183	183	247500.0	529930.0	1656.61	0.23	0.12	0.07	0.02	0.0	0.0	0.0	0.61
184	184	247820.0	530250.0	1651.83	0.23	0.13	0.14	0.11	0.0	0.0	0.0	0.66
185	185	248220.0	530440.0	1659.63	0.23	0.12	0.25	0.03	0.0	0.0	0.0	0.76
186	186	248600.0	530960.0	1649.92	0.23	0.13	0.38	0.02	0.0	0.0	0.0	0.94
187	187	249030.0	531230.0	1623.83	0.24	0.15	0.55	0.00	0.0	0.0	0.0	1.61
188	188	249680.0	531190.0	1627.84	0.24	0.16	1.40	0.01	0.0	0.0	0.0	1.62
189	189	250040.0	531300.0	1626.22	0.24	0.17	1.39	0.03	0.0	0.0	0.0	

TERRAIN CORRECTIONS

(ASSUMED DENSITY = 2.00 G/CM**3)

MESCO 54

GRAVIMETRIC SURVEY OF HAUT MOULOUYA IN MOROCCO

1978

STATION-NO.	LATITUDE (Y)	LONGITUDE (X)	ALTITUDE	FAR	MIDDLE	NEAR	CLOSE-1	CLOSE-2	SEA	LAKE	TOTAL
NO.	METER	METER	METER	MGAL	MGAL	MGAL	MGAL	MGAL	MGAL	MGAL	MGAL
201	311	240490.0	540120.0	1493.05	0.37	0.02	0.02	0.00	0.00	0.00	0.41
202	312	239980.0	539940.0	1498.34	0.38	0.02	0.03	0.01	0.00	0.00	0.43
203	313	239580.0	539900.0	1505.27	0.37	0.02	0.05	0.01	0.00	0.00	0.45
204	314	239100.0	539900.0	1513.36	0.37	0.02	0.04	0.01	0.00	0.00	0.43
205	315	238570.0	539740.0	1519.61	0.37	0.02	0.04	0.02	0.00	0.00	0.44
206	316	238100.0	539630.0	1535.11	0.36	0.02	0.01	0.00	0.00	0.00	0.40
207	317	237660.0	539510.0	1535.80	0.37	0.02	0.01	0.00	0.00	0.00	0.40
208	318	237180.0	539450.0	1536.42	0.38	0.02	0.01	0.00	0.00	0.00	0.42
209	319	236740.0	539770.0	1539.31	0.40	0.02	0.01	0.01	0.00	0.00	0.44
210	320	240840.0	543620.0	1498.90	0.36	0.01	0.01	0.00	0.00	0.00	0.38
211	321	241250.0	543170.0	1496.59	0.35	0.01	0.01	0.00	0.00	0.00	0.37
212	322	241120.0	542650.0	1496.92	0.35	0.01	0.01	0.00	0.00	0.00	0.38
213	323	240790.0	542330.0	1496.34	0.37	0.01	0.02	0.00	0.00	0.00	0.40
214	324	240640.0	541900.0	1496.45	0.38	0.01	0.02	0.00	0.00	0.00	0.41
215	325	240550.0	541400.0	1497.56	0.37	0.02	0.02	0.00	0.00	0.00	0.41
216	326	240390.0	540910.0	1496.11	0.38	0.02	0.02	0.00	0.00	0.00	0.42
217	327	240230.0	540450.0	1496.42	0.38	0.02	0.03	0.00	0.00	0.00	0.42
218	328	243950.0	542470.0	1488.01	0.34	0.02	0.02	0.00	0.00	0.00	0.37
219	329	243790.0	542010.0	1482.74	0.35	0.02	0.01	0.00	0.00	0.00	0.39
220	330	243620.0	541560.0	1481.84	0.35	0.02	0.01	0.01	0.00	0.00	0.39
221	331	243360.0	541230.0	1480.69	0.35	0.03	0.01	0.00	0.00	0.00	0.39
222	332	242750.0	541260.0	1473.47	0.36	0.03	0.03	0.02	0.00	0.00	0.44
223	333	242540.0	541640.0	1478.07	0.36	0.03	0.03	0.02	0.00	0.00	0.43
224	334	242290.0	541970.0	1484.15	0.35	0.02	0.02	0.02	0.00	0.00	0.41
225	335	242020.0	542400.0	1494.84	0.34	0.01	0.01	0.01	0.00	0.00	0.37
226	336	241700.0	542860.0	1495.65	0.34	0.01	0.01	0.01	0.00	0.00	0.37
227	337	240200.0	542100.0	1506.06	0.38	0.01	0.04	0.01	0.00	0.00	0.43
228	338	239740.0	542320.0	1521.36	0.36	0.02	0.02	0.00	0.00	0.00	0.41
229	339	239290.0	542610.0	1525.79	0.36	0.02	0.02	0.00	0.00	0.00	0.40
230	340	238860.0	542600.0	1525.61	0.37	0.02	0.02	0.00	0.00	0.00	0.41
231	341	238470.0	542840.0	1523.21	0.37	0.02	0.03	0.00	0.00	0.00	0.42
232	342	238050.0	542880.0	1516.48	0.39	0.01	0.04	0.00	0.02	0.00	0.47
233	343	238820.0	542310.0	1528.61	0.37	0.02	0.02	0.02	0.00	0.00	0.42
234	344	238760.0	541800.0	1529.08	0.37	0.02	0.02	0.03	0.00	0.00	0.44
235	345	238660.0	541250.0	1529.09	0.36	0.02	0.02	0.00	0.00	0.00	0.41
236	346	238780.0	540750.0	1529.25	0.36	0.02	0.02	0.01	0.00	0.00	0.41
237	347	239960.0	536770.0	1486.12	0.39	0.06	0.01	0.00	0.00	0.00	0.47
238	348	239550.0	537010.0	1490.64	0.40	0.06	0.02	0.00	0.00	0.00	0.48
239	349	239230.0	537260.0	1482.89	0.40	0.05	0.02	0.00	0.00	0.00	0.47
240	350	238770.0	537360.0	1492.56	0.40	0.04	0.02	0.00	0.00	0.00	0.45
241	351	239390.0	537720.0	1488.17	0.40	0.04	0.03	0.00	0.00	0.00	0.47
242	352	239660.0	538060.0	1480.80	0.41	0.05	0.04	0.01	0.00	0.00	0.51
243	353	240260.0	538500.0	1479.91	0.40	0.04	0.03	0.01	0.00	0.00	0.49
244	354	240600.0	539000.0	1478.13	0.39	0.04	0.03	0.01	0.00	0.00	0.47
245	355	240380.0	539300.0	1494.32	0.38	0.04	0.03	0.00	0.00	0.00	0.43
246	356	241730.0	538120.0	1480.74	0.37	0.06	0.03	0.01	0.00	0.00	0.46
247	357	241470.0	538500.0	1476.21	0.38	0.06	0.02	0.00	0.00	0.00	0.45
248	358	241400.0	538830.0	1475.50	0.38	0.05	0.01	0.00	0.00	0.00	0.44
249	359	243300.0	539840.0	1471.40	0.36	0.05	0.04	0.01	0.00	0.00	0.46
250	360	243350.0	539320.0	1486.09	0.34	0.05	0.02	0.00	0.00	0.00	0.41

TERRAIN CORRECTIONS

(ASSUMED DENSITY = 2.00 G/CM**3)

MESCO 55

GRAVIMETRIC SURVEY OF HAUT MOULOUYA IN MOROCCO

1978

STATION-NO.	LATITUDE (Y)	LONGITUDE (X)	ALTITUDE	FAR	MIDDLE	NEAR	CLOSE-1	CLOSE-2	SEA	LAKE	TOTAL
NO.	METER	METER	METER	MGAL	MGAL	MGAL	MGAL	MGAL	MGAL	MGAL	MGAL
251	361	244790.0	540100.0	1474.89	0.34	0.05	0.02	0.02	0.00	0.00	0.43
252	362	244280.0	540230.0	1469.86	0.36	0.05	0.05	0.04	0.00	0.00	0.50
253	363	238100.0	532550.0	1542.13	0.33	0.04	0.11	0.08	0.00	0.00	0.56
254	364	237700.0	532690.0	1532.40	0.35	0.04	0.06	0.03	0.00	0.00	0.49
255	365	237430.0	532900.0	1500.71	0.39	0.07	0.05	0.03	0.00	0.00	0.56
256	366	236260.0	530760.0	1569.30	0.30	0.05	0.08	0.01	0.00	0.00	0.45
257	367	236140.0	530430.0	1555.14	0.31	0.06	0.06	0.05	0.00	0.00	0.47
258	368	237810.0	530170.0	1552.53	0.33	0.06	0.08	0.03	0.00	0.00	0.50
259	369	238530.0	536990.0	1483.80	0.40	0.04	0.02	0.01	0.00	0.00	0.47
260	370	238140.0	536760.0	1498.18	0.39	0.04	0.01	0.00	0.00	0.00	0.44
261	371	238030.0	536260.0	1489.07	0.40	0.05	0.02	0.01	0.00	0.00	0.49
262	372	237790.0	535890.0	1489.45	0.41	0.05	0.03	0.01	0.00	0.00	0.50
263	373	237610.0	535420.0	1494.73	0.40	0.05	0.02	0.00	0.00	0.00	0.48
264	374	237460.0	534920.0	1491.07	0.41	0.06	0.02	0.00	0.00	0.00	0.50
265	375	237390.0	534450.0	1490.70	0.42	0.07	0.02	0.00	0.00	0.00	0.51
266	376	237360.0	534090.0	1491.34	0.42	0.07	0.02	0.00	0.00	0.00	0.51
267	377	237120.0	533640.0	1496.38	0.42	0.07	0.01	0.00	0.00	0.00	0.50
268	378	236790.0	533260.0	1496.54	0.42	0.03	0.02	0.00	0.00	0.00	0.52
269	379	236540.0	532850.0	1496.48	0.42	0.08	0.03	0.00	0.00	0.00	0.54
270	380	236450.0	532430.0	1498.22	0.42	0.09	0.02	0.00	0.00	0.00	0.54
271	381	236210.0	530970.0	1527.21	0.39	0.02	0.02	0.00	0.00	0.00	0.44
272	382	237490.0	538710.0	1518.72	0.39	0.02	0.02	0.00	0.00	0.00	0.44
273	383	237760.0	538720.0	1509.58	0.40	0.02	0.03	0.01	0.00	0.00	0.46
274	384	238030.0	537980.0	1505.62	0.40	0.02	0.02	0.01	0.00	0.00	0.45
275	385	238370.0	537700.0	1498.63	0.40	0.03	0.02	0.00	0.00	0.00	0.45
276	386	238270.0	538470.0	1518.17	0.46	0.03	0.01	0.00	0.00	0.00	0.50
277	387	238460.0	537970.0	1515.47	0.46	0.03	0.02	0.02	0.00	0.00	0.53
278	388	238670.0	537550.0	1511.45	0.46	0.04	0.02	0.00	0.00	0.00	0.51
279	389	238800.0	537060.0	1507.41	0.45	0.04	0.04	0.05	0.00	0.00	0.58
280	390	236200.0	536810.0	1504.58	0.45	0.04	0.04	0.01	0.00	0.00	0.54
281	391	236760.0	536610.0	1501.74	0.43	0.04	0.04	0.03	0.00	0.00	0.53
282	392	236690.0	536020.0	1509.62	0.41	0.04	0.01	0.01	0.00	0.00	0.47
283	393	236330.0	535720.0	1514.59	0.42	0.04	0.01	0.01	0.00	0.00	0.47
284	394	235750.0	535570.0	1519.14	0.42	0.04	0.01	0.01	0.00	0.00	0.48
285	395	235300.0	535520.0	1526.65	0.42	0.04	0.00	0.00	0.00	0.00	0.46
286	396	245600.0	540630.0	1460.22	0.35	0.06	0.02	0.00	0.00	0.00	0.43
287	397	242670.0	539130.0	1474.81	0.36	0.06	0.04	0.03	0.00	0.00	0.49
288	398	242360.0	539470.0	1473.15	0.36	0.05	0.02	0.00	0.00	0.00	0.44
289	399	235300.0	535510.0	1496.50	0.40	0.06	0.03	0.02	0.00	0.00	0.51
290	400	238320.0	535040.0	1491.29	0.39	0.06	0.02	0.01	0.00	0.00	0.49
291	401	233910.0	548250.0	1522.37	0.36	0.05	0.03	0.03	0.00	0.00	0.66
292	402	233540.0	547940.0	1520.87	0.38	0.05	0.02	0.03	0.00	0.00	0.69
293	403	233100.0	547570.0	1520.50	0.61	0.06	0.01	0.01	0.00	0.00	0.69
294	404	233000.0	547030.0	1521.10	0.62	0.06	0.01	0.00	0.00	0.00	0.69

TERRAIN CORRECTIONS (ASSUMED DENSITY = 2.00 G/CM**3) NESCO 56

GRAVIMETRIC SURVEY OF HAUT MOULOUYA IN MOROCCO 1978

STATION-NO.	LATITUDE (Y)	LONGITUDE (X)	ALTITUDE	FAR	MIDDLE	NEAR	CLOSE-1	CLOSE-2	SEA	LAKE	TOTAL
NO.	METER	METER	METER	HGAL	HGAL	HGAL	HGAL	HGAL	HGAL	HGAL	HGAL
301	411	231660.0	544160.0	1524.99	0.66	0.09	0.01	0.00	0.0	0.0	0.76
302	412	231320.0	543740.0	1526.46	0.66	0.10	0.01	0.00	0.0	0.0	0.77
303	413	231080.0	543360.0	1525.94	0.66	0.11	0.01	0.00	0.0	0.0	0.79
304	414	230920.0	542930.0	1526.52	0.67	0.11	0.02	0.01	0.0	0.0	0.81
305	415	230740.0	542480.0	1528.28	0.67	0.12	0.03	0.02	0.0	0.0	0.83
306	416	230640.0	542000.0	1532.73	0.66	0.11	0.04	0.02	0.0	0.0	0.83
307	417	235190.0	543050.0	1489.29	0.52	0.04	0.07	0.02	0.0	0.0	0.65
308	418	235630.0	544080.0	1488.58	0.51	0.04	0.06	0.03	0.02	0.0	0.66
309	419	235850.0	544420.0	1438.43	0.51	0.03	0.05	0.06	0.0	0.0	0.64
310	420	236430.0	544450.0	1470.77	0.51	0.05	0.03	0.00	0.0	0.0	0.60
311	421	236880.0	544820.0	1467.86	0.50	0.05	0.06	0.03	0.02	0.0	0.63
312	422	237330.0	544960.0	1461.57	0.49	0.05	0.03	0.00	0.0	0.0	0.57
313	423	237920.0	545180.0	1455.17	0.47	0.06	0.03	0.01	0.0	0.0	0.63
314	424	228400.0	538200.0	1581.38	0.66	0.13	0.09	0.02	0.02	0.0	0.99
315	425	223160.0	538720.0	1558.17	0.71	0.18	0.08	0.02	0.0	0.0	0.92
316	426	230380.0	538090.0	1584.01	0.56	0.08	0.04	0.00	0.0	0.0	0.66
317	427	230470.0	538550.0	1569.73	0.56	0.08	0.06	0.03	0.0	0.0	0.73
318	428	230440.0	539090.0	1561.19	0.58	0.08	0.05	0.01	0.0	0.0	0.72
319	429	230310.0	539440.0	1546.70	0.61	0.10	0.03	0.00	0.0	0.0	0.75
320	430	230220.0	540290.0	1531.94	0.64	0.13	0.04	0.02	0.0	0.0	0.83
321	431	232030.0	541190.0	1517.57	0.64	0.07	0.02	0.00	0.03	0.0	0.76
322	432	232150.0	540600.0	1525.34	0.61	0.06	0.02	0.00	0.0	0.0	0.68
323	433	232280.0	540000.0	1529.50	0.58	0.06	0.02	0.00	0.0	0.0	0.66
324	434	232440.0	539400.0	1533.99	0.56	0.05	0.01	0.00	0.0	0.0	0.62
325	435	232540.0	538960.0	1538.90	0.54	0.05	0.01	0.00	0.0	0.0	0.60
326	436	232710.0	538440.0	1541.66	0.53	0.05	0.01	0.00	0.0	0.0	0.59
327	437	235050.0	539980.0	1535.58	0.44	0.03	0.01	0.01	0.0	0.0	0.49
328	438	234650.0	540420.0	1527.87	0.47	0.03	0.02	0.01	0.0	0.0	0.53
329	439	234090.0	540710.0	1517.37	0.50	0.04	0.02	0.01	0.0	0.0	0.57
330	440	234040.0	541200.0	1516.63	0.52	0.04	0.01	0.00	0.0	0.0	0.49
331	441	235110.0	540630.0	1532.17	0.45	0.02	0.01	0.00	0.0	0.0	0.51
332	442	235150.0	541190.0	1526.41	0.47	0.02	0.02	0.00	0.0	0.0	0.51
333	443	235250.0	542060.0	1530.40	0.47	0.02	0.02	0.00	0.0	0.0	0.58
334	444	235340.0	54280.0	1511.73	0.49	0.02	0.02	0.00	0.0	0.0	0.54
335	445	235340.0	543710.0	1515.45	0.52	0.03	0.08	0.03	0.0	0.0	0.66
336	446	235310.0	543330.0	1507.44	0.56	0.04	0.01	0.00	0.0	0.0	0.62
337	447	233390.0	544170.0	1513.64	0.58	0.05	0.01	0.00	0.0	0.0	0.65
338	448	232970.0	544370.0	1516.91	0.60	0.06	0.01	0.01	0.0	0.0	0.68
339	449	232600.0	544530.0	1520.09	0.63	0.06	0.01	0.00	0.0	0.0	0.70
340	450	231690.0	545050.0	1530.73	0.67	0.09	0.01	0.01	0.0	0.0	0.78
341	451	231170.0	545260.0	1540.01	0.68	0.11	0.01	0.00	0.0	0.0	0.79
342	452	230710.0	545510.0	1550.15	0.69	0.13	0.01	0.00	0.0	0.0	0.82
343	453	230280.0	545650.0	1561.83	0.69	0.14	0.03	0.03	0.0	0.0	0.89
344	454	229780.0	545860.0	1573.65	0.71	0.17	0.06	0.04	0.0	0.0	0.97
345	455	229180.0	546090.0	1582.66	0.73	0.21	0.04	0.02	0.0	0.0	1.00
346	456	228720.0	546410.0	1597.16	0.75	0.24	0.05	0.02	0.0	0.0	1.06
347	457	228700.0	547110.0	1593.51	0.75	0.25	0.04	0.01	0.0	0.0	1.05
348	458	228650.0	547550.0	1595.00	0.75	0.26	0.04	0.01	0.0	0.0	1.07
349	459	227950.0	548200.0	1610.47	0.78	0.32	0.05	0.00	0.0	0.0	1.15
350	460	227440.0	547780.0	1624.98	0.75	0.37	0.07	0.04	0.0	0.0	1.23

TERRAIN CORRECTIONS (ASSUMED DENSITY = 2.00 G/CM**3) NESCO 57

GRAVIMETRIC SURVEY OF HAUT MOULOUYA IN MOROCCO 1978

STATION-NO.	LATITUDE (Y)	LONGITUDE (X)	ALTITUDE	FAR	MIDDLE	NEAR	CLOSE-1	CLOSE-2	SEA	LAKE	TOTAL
NO.	METER	METER	METER	HGAL	HGAL	HGAL	HGAL	HGAL	HGAL	HGAL	HGAL
351	461	226890.0	547600.0	1637.06	0.73	0.43	0.06	0.04	0.0	0.0	1.26
352	462	228720.0	54740.0	1593.96	0.75	0.23	0.07	0.03	0.0	0.0	1.08
353	463	228620.0	545100.0	1595.41	0.74	0.22	0.08	0.03	0.0	0.0	1.08
354	464	235920.0	544920.0	1494.30	0.52	0.04	0.05	0.00	0.0	0.0	0.61
355	465	235770.0	545400.0	1498.61	0.51	0.03	0.09	0.05	0.02	0.0	0.73
356	466	235960.0	545710.0	1517.44	0.50	0.02	0.05	0.01	0.05	0.0	0.63
357	467	236030.0	546100.0	1512.36	0.50	0.02	0.05	0.01	0.0	0.0	0.58
358	468	236360.0	546430.0	1490.72	0.51	0.03	0.05	0.01	0.0	0.0	0.60
359	469	230180.0	542570.0	1539.98	0.67	0.14	0.03	0.02	0.0	0.0	0.86
360	470	229590.0	542730.0	1551.43	0.69	0.16	0.04	0.02	0.0	0.0	0.91
361	471	229060.0	542710.0	1566.09	0.70	0.18	0.06	0.03	0.0	0.0	0.97
362	472	229570.0	542820.0	1531.04	0.72	0.20	0.07	0.03	0.0	0.0	1.02
363	473	228400.0	543410.0	1610.64	0.70	0.21	0.17	0.07	0.0	0.0	1.15
364	474	228150.0	543900.0	1609.06	0.73	0.23	0.07	0.01	0.0	0.0	1.04
365	475	227640.0	544040.0	1624.69	0.71	0.26	0.06	0.00	0.0	0.0	1.04
366	476	227370.0	544600.0	1633.71	0.71	0.24	0.06	0.01	0.0	0.0	1.07
367	477	228030.0	542490.0	1586.77	0.75	0.22	0.05	0.01	0.0	0.0	1.03
368	478	227390.0	541840.0	1586.72	0.75	0.22	0.05	0.01	0.0	0.0	1.03
369	479	227650.0	540350.0	1564.90	0.72	0.22	0.06	0.03	0.0	0.0	1.03
370	480	226990.0	540370.0	1598.85	0.69	0.23	0.12	0.04	0.0	0.0	1.08
371	481	232600.0	546860.0	1526.48	0.64	0.07	0.01	0.00	0.0	0.0	0.72
372	482	232020.0	547290.0	1537.54	0.67	0.09	0.01	0.00	0.0	0.0	0.76
373	483	231480.0	547450.0	1545.35	0.67	0.10	0.01	0.00	0.0	0.0	0.78
374	484	230990.0	547630.0	1550.84	0.68	0.12	0.01	0.00	0.0	0.0	0.81
375	485	236340.0	542690.0	1488.59	0.49	0.03	0.03	0.02	0.0	0.0	0.57
376	486	235910.0	542870.0	1504.22	0.49	0.02	0.04	0.02	0.0	0.0	0.57
377	487	234100.0	542300.0	1493.39	0.56	0.05	0.03	0.01	0.0	0.0	0.65
378	488	234090.0	541700.0	1503.04	0.53	0.04	0.03	0.02	0.0	0.0	0.62
379	501	244310.0	543490.0	1501.67	0.31	0.02	0.03	0.02	0.0	0.0	0.38
380	502	244410.0	543940.0	1509.25	0.30	0.02	0.02	0.01	0.0	0.0	0.36
381	503	244530.0	544380.0	1507.65	0.30	0.02	0.02	0.01	0.0	0.0	0.37
382	504	244330.0	544810.0	1501.45	0.31	0.02	0.02	0.03	0.0	0.0	0.39
383	505	244220.0	545370.0	1506.40	0.31	0.02	0.02	0.03	0.0	0.0	0.34
384	506	244030.0	545750.0	1502.67	0.32	0.02	0.01	0.00	0.0	0.0	0.35
385	507	243900.0	546300.0	1502.79	0.32	0.02	0.01	0.01	0.0	0.0	0.36
386	508	243810.0	546740.0	1501.23	0.31	0.02	0.02	0.02	0.0	0.0	0.38
387	509	243310.0	547140.0	1508.28	0.30	0.02	0.01	0.01	0.0	0.0	0.34
388	510	243070.0	547610.0	1494.10	0.32	0.02	0.05	0.03	0.0	0.0	0.41
389	511	247330.0	548130.0	1459.33	0.31	0.02	0.01	0.00	0.0	0.0	0.35
390	512	247090.0	547800.0	1460.75	0.31	0.02	0.02	0.01	0.0	0.0	0.35
391	513	246940.0	547460.0	1465.20	0.31	0.02	0.02	0.00	0.0	0.0	0.35
392	514	246640.0	547110.0	1471.01	0.30	0.02	0.02	0.00	0.0	0.0	0.34
393	515	246310.0	546750.0	1480.83	0.30	0.02	0.02	0.00	0.0	0.0	0.34
394	516	245950.0	546330.0	1491.73	0.29	0.02	0.02	0.01	0.0	0.0	0.34
395	517	245570.0	545950.0	1496.89	0.30	0.02	0.02	0.04	0.0	0.0	0.39
396	518	245170.0	545550.0	1501.21	0.30	0.02	0.02	0.01	0.0	0.0	0.35
397	519	244800.0	545030.0	1509.25	0.30	0.02	0.01	0.00	0.0	0.0	0.33
398	520	242620.0	547490.0	1438.23	0.33	0.02					

TERRAIN CORRECTIONS

(ASSUMED DENSITY = 2.00 G/CM**3)

MESCO 50

GRAVIMETRIC SURVEY OF HAUT MOULOUYA IN MOROCCO

1978

STATION-NO.	LATITUDE (Y)	LONGITUDE (X)	ALTITUDE	FAR	MIDDLE	NEAR	CLOSE-1	CLOSE-2	SEA	LAKE	TOTAL
NO.	METER	METER	METER	MGAL	MGAL	MGAL	MGAL	MGAL	MGAL	MGAL	MGAL
401	523	243690.0	545090.0	1498.94	0.32	0.01	0.02	0.02	0.0	0.0	0.37
402	524	243150.0	545080.0	1496.35	0.32	0.01	0.01	0.01	0.0	0.0	0.36
403	525	243090.0	545800.0	1501.04	0.32	0.01	0.01	0.01	0.0	0.0	0.35
404	526	242620.0	546070.0	1490.35	0.33	0.01	0.04	0.03	0.0	0.0	0.41
405	527	242260.0	546300.0	1487.04	0.34	0.01	0.04	0.03	0.0	0.0	0.41
406	528	238600.0	546070.0	1454.01	0.46	0.05	0.02	0.01	0.0	0.0	0.54
407	529	239520.0	546490.0	1467.80	0.44	0.04	0.04	0.09	0.0	0.0	0.60
408	530	238320.0	546850.0	1470.95	0.44	0.03	0.02	0.01	0.0	0.0	0.51
409	531	238310.0	547260.0	1472.80	0.44	0.03	0.02	0.01	0.0	0.0	0.49
410	532	238510.0	547790.0	1478.04	0.43	0.03	0.02	0.01	0.0	0.0	0.48
411	533	238200.0	548260.0	1482.71	0.43	0.03	0.01	0.00	0.0	0.0	0.39
412	534	240910.0	544410.0	1487.85	0.37	0.01	0.02	0.00	0.0	0.0	0.44
413	535	240700.0	546720.0	1466.32	0.39	0.02	0.02	0.00	0.0	0.0	0.44
414	536	240630.0	546400.0	1470.87	0.40	0.02	0.01	0.00	0.0	0.0	0.45
415	537	240430.0	545780.0	1470.95	0.41	0.02	0.01	0.01	0.0	0.0	0.50
416	538	240000.0	545420.0	1465.76	0.42	0.03	0.03	0.02	0.0	0.0	0.35
417	539	245410.0	544980.0	1510.94	0.29	0.03	0.03	0.01	0.0	0.0	0.43
418	540	245930.0	544910.0	1515.05	0.28	0.04	0.05	0.07	0.0	0.0	0.36
419	541	245760.0	544380.0	1523.34	0.27	0.05	0.03	0.01	0.0	0.0	0.35
420	542	245790.0	543910.0	1516.00	0.28	0.04	0.02	0.01	0.0	0.0	0.35
421	543	245700.0	543450.0	1506.73	0.29	0.03	0.03	0.00	0.0	0.0	0.35
422	544	245770.0	542980.0	1486.56	0.31	0.02	0.05	0.02	0.0	0.0	0.40
423	545	242590.0	545070.0	1486.48	0.34	0.01	0.04	0.03	0.0	0.0	0.42
424	546	242060.0	545050.0	1480.09	0.35	0.01	0.03	0.01	0.0	0.0	0.41
425	547	241580.0	545120.0	1475.90	0.36	0.02	0.02	0.01	0.0	0.0	0.42
426	548	245650.0	546740.0	1485.60	0.30	0.02	0.02	0.01	0.0	0.0	0.35
427	549	245350.0	547160.0	1486.58	0.30	0.02	0.01	0.00	0.0	0.0	0.33
428	601	240620.0	535830.0	1509.24	0.35	0.05	0.03	0.00	0.0	0.0	0.44
429	602	240810.0	535380.0	1514.40	0.34	0.05	0.05	0.02	0.0	0.0	0.47
430	603	240800.0	534850.0	1515.52	0.34	0.06	0.07	0.05	0.0	0.0	0.53
431	604	240960.0	534420.0	1513.42	0.34	0.07	0.09	0.05	0.0	0.0	0.55
432	605	241110.0	534060.0	1523.16	0.34	0.07	0.10	0.03	0.0	0.0	0.54
433	606	241420.0	533630.0	1530.65	0.32	0.08	0.11	0.04	0.0	0.0	0.55
434	607	241760.0	533320.0	1539.72	0.31	0.09	0.12	0.02	0.0	0.0	0.53
435	608	242230.0	533060.0	1553.85	0.29	0.07	0.14	0.06	0.0	0.0	0.56
436	609	242660.0	532870.0	1579.84	0.27	0.07	0.08	0.01	0.0	0.0	0.42
437	610	243090.0	532650.0	1610.00	0.24	0.08	0.11	0.02	0.0	0.0	0.45
438	611	243520.0	532370.0	1624.87	0.24	0.09	0.13	0.06	0.01	0.0	0.52
439	612	244040.0	531940.0	1610.13	0.25	0.08	0.15	0.03	0.0	0.0	0.50
440	613	244160.0	531500.0	1611.96	0.25	0.08	0.24	0.23	0.0	0.0	0.80
441	614	244930.0	529510.0	1607.43	0.25	0.13	0.57	0.36	0.0	0.0	1.30
442	615	244610.0	529550.0	1592.13	0.26	0.13	0.66	0.40	0.01	0.0	1.47
443	616	244280.0	530210.0	1576.54	0.28	0.13	0.66	0.17	0.00	0.0	1.04
444	617	244230.0	530620.0	1572.61	0.28	0.13	0.45	0.14	0.0	0.0	0.93
445	618	243280.0	529360.0	1629.32	0.24	0.09	0.38	0.14	0.0	0.0	0.39
446	619	243040.0	529630.0	1611.74	0.25	0.09	0.08	0.03	0.0	0.0	0.45
447	620	242800.0	529970.0	1611.48	0.25	0.08	0.06	0.07	0.0	0.0	0.47
448	621	242500.0	530240.0	1610.93	0.25	0.06	0.05	0.00	0.0	0.0	0.38
449	622	242260.0	530530.0	1605.27	0.25	0.08	0.06	0.01	0.0	0.0	0.39
450	623	242040.0	530970.0	1596.36	0.25	0.07	0.05	0.01	0.0	0.0	0.38

TERRAIN CORRECTIONS

(ASSUMED DENSITY = 2.00 G/CM**3)

MESCO 59

GRAVIMETRIC SURVEY OF HAUT MOULOUYA IN MOROCCO

1978

STATION-NO.	LATITUDE (Y)	LONGITUDE (X)	ALTITUDE	FAR	MIDDLE	NEAR	CLOSE-1	CLOSE-2	SEA	LAKE	TOTAL
NO.	METER	METER	METER	MGAL	MGAL	MGAL	MGAL	MGAL	MGAL	MGAL	MGAL
451	624	241840.0	531190.0	1590.63	0.26	0.07	0.04	0.01	0.0	0.0	0.38
452	625	241520.0	531510.0	1579.87	0.27	0.07	0.04	0.01	0.0	0.0	0.38
453	626	241220.0	531940.0	1565.29	0.26	0.06	0.04	0.02	0.0	0.0	0.40
454	627	241040.0	531560.0	1573.28	0.28	0.05	0.05	0.02	0.0	0.0	0.41
455	628	240910.0	531240.0	1584.06	0.28	0.06	0.05	0.01	0.0	0.0	0.39
456	629	240540.0	530920.0	1570.16	0.29	0.07	0.05	0.00	0.0	0.0	0.41
457	630	240160.0	530670.0	1591.20	0.34	0.10	0.16	0.07	0.00	0.0	0.68
458	631	239740.0	530250.0	1545.63	0.33	0.07	0.12	0.05	0.0	0.0	0.58
459	632	239370.0	530280.0	1530.77	0.34	0.07	0.05	0.03	0.01	0.0	0.43
460	633	239890.0	532570.0	1546.07	0.32	0.05	0.03	0.00	0.0	0.0	0.41
461	634	240200.0	532390.0	1558.78	0.31	0.05	0.03	0.00	0.0	0.0	0.39
462	635	240680.0	531870.0	1565.54	0.29	0.06	0.03	0.00	0.0	0.0	0.38
463	636	240560.0	532300.0	1561.00	0.30	0.06	0.02	0.00	0.0	0.0	0.38
464	637	240440.0	532940.0	1546.40	0.32	0.06	0.04	0.03	0.0	0.0	0.45
465	638	240420.0	53260.0	1536.67	0.33	0.06	0.05	0.02	0.0	0.0	0.46
466	639	245500.0	539440.0	1469.72	0.35	0.07	0.06	0.03	0.0	0.0	0.51
467	640	245890.0	539130.0	1480.83	0.33	0.07	0.02	0.01	0.0	0.0	0.43
468	641	246160.0	538650.0	1491.74	0.35	0.09	0.04	0.01	0.0	0.0	0.46
469	642	246450.0	538220.0	1502.48	0.32	0.07	0.02	0.00	0.0	0.0	0.42
470	643	246760.0	537780.0	1510.32	0.32	0.08	0.02	0.00	0.0	0.0	0.42
471	644	247070.0	537230.0	1515.02	0.31	0.09	0.04	0.01	0.0	0.0	0.46
472	645	246660.0	536650.0	1530.58	0.29	0.09	0.05	0.00	0.0	0.0	0.43
473	646	246350.0	536450.0	1534.02	0.29	0.09	0.10	0.04	0.0	0.0	0.51
474	647	246010.0	536000.0	1550.53	0.28	0.08	0.11	0.03	0.0	0.0	0.48
475	648	245800.0	535640.0	1573.53	0.25	0.08	0.10	0.01	0.0	0.0	0.45
476	649	245530.0	535220.0	1595.38	0.25	0.08	0.14	0.06	0.0	0.0	0.53
477	650	245090.0	534760.0	1599.94	0.25	0.04	0.20	0.03	0.0	0.0	0.56
478	651	244600.0	534510.0	1622.56	0.24	0.11	0.17	0.01	0.0	0.0	0.53
479	652	244100.0	534520.0	1601.94	0.26	0.03	0.53	0.19	0.0	0.0	1.06
480	653	243610.0	534410.0	1594.71	0.26	0.08	0.41	0.14	0.0	0.0	0.89
481	654	243240.0	534050.0	1599.52	0.26	0.08	0.33	0.13	0.0	0.0	0.80
482	655	243000.0	533690.0	1604.31	0.26	0.08	0.11	0.02	0.0	0.0	0.46
483	656	242700.0	533370.0	1582.49	0.27	0.07	0.10	0.05	0.0	0.0	0.49
484	657	242940.0	537530.0	1506.59	0.33	0.05	0.02	0.00	0.0	0.0	0.41
485	658	243200.0	537530.0	1516.28	0.32	0.05	0.04	0.00	0.0	0.0	0.42
486	659	243400.0	537170.0	1533.31	0.30	0.05	0.06	0.01	0.0	0.0	0.43
487	660	243650.0	536760.0	1547.39	0.29	0.06	0.12	0.01	0.0	0.0	0.48
488	661	243730.0	536340.0	1574.34	0.27	0.05	0.18	0.03	0.0	0.0	0.56
489	662	243620.0	535930.0	1584.91	0.26	0.05	0.19	0.07	0.0	0.0	0.59
490	663	243510.0	535540.0	1556.22	0.28	0.06	0.39	0.10	0.0	0.0	0.83
491	664	243110.0	535709.0	1533.78	0.30	0.06	0.30	0.13	0.01	0.0	1.13
492	665	242730.0	535970.0	1530.50	0.30	0.06	0.33	0.25	0.01	0.0	0.95
493	666	242430.0	536180.0	1531.54	0.30	0.05	0.09	0.00	0.0	0.0	0.45
494	667	241900.0	536420.0	1521.00	0.32	0.05	0.05	0.00	0.0	0.0	0.42
495	668	241350.0	536610.0	1497.65	0.35	0.06	0.06	0.03	0.0	0.0	0.50
496	669	241190.0	535150.0	1520.44	0.						

TERRAIN CORRECTIONS

(ASSUMED DENSITY = 2.00 G/CM**3)

MESCO 60

GRAVIMETRIC SURVEY OF HAUT HOULOUYA IN MOROCCO

1978

STATION-NO.	LATITUDE (Y)	LONGITUDE (X)	ALTITUDE	FAR	MIDDLE	NEAR	CLOSE-1	CLOSE-2	SEA	LAKE	TOTAL
NO.	METER	METER	METER	MGAL	MGAL	MGAL	MGAL	MGAL	MGAL	MGAL	MGAL
501	674	245210.0	532790.0	1626.27	0.23	0.09	0.22	0.12	0.0	0.0	0.66
502	675	245610.0	532890.0	1642.50	0.22	0.10	0.10	0.09	0.0	0.0	0.51
503	676	245740.0	533390.0	1647.18	0.22	0.12	0.06	0.01	0.0	0.0	0.41
504	677	246070.0	533680.0	1622.21	0.24	0.09	0.14	0.06	0.0	0.0	0.52
505	678	245870.0	533030.0	1656.30	0.22	0.12	0.03	0.00	0.0	0.0	0.38
506	679	245950.0	532500.0	1647.30	0.21	0.15	0.05	0.00	0.0	0.0	0.39
507	680	245950.0	532070.0	1674.99	0.21	0.14	0.05	0.01	0.0	0.0	0.41
508	681	245990.0	531860.0	1671.19	0.21	0.12	0.05	0.02	0.0	0.0	0.40
509	682	245100.0	531290.0	1666.94	0.21	0.11	0.03	0.01	0.0	0.0	0.37
510	683	246480.0	531000.0	1662.54	0.21	0.11	0.04	0.00	0.0	0.0	0.36
511	684	246790.0	530670.0	1660.46	0.22	0.11	0.03	0.02	0.0	0.0	0.38
512	685	247060.0	530290.0	1656.25	0.22	0.11	0.03	0.01	0.04	0.0	0.41
513	686	244300.0	538770.0	1506.40	0.33	0.05	0.04	0.02	0.0	0.0	0.43
514	687	244520.0	538440.0	1508.06	0.33	0.05	0.04	0.04	0.0	0.0	0.46
515	688	244700.0	538060.0	1516.75	0.32	0.06	0.02	0.00	0.0	0.0	0.40
516	689	244820.0	537670.0	1524.85	0.31	0.06	0.04	0.02	0.0	0.0	0.43
517	690	244930.0	537160.0	1524.34	0.31	0.07	0.07	0.03	0.0	0.0	0.48
518	691	245150.0	536750.0	1543.42	0.28	0.07	0.08	0.01	0.0	0.0	0.44
519	692	245320.0	536300.0	1558.97	0.27	0.08	0.10	0.01	0.0	0.0	0.45
520	693	245700.0	534180.0	1645.14	0.29	0.07	0.10	0.04	0.0	0.0	0.51
521	694	241440.0	532540.0	1553.62	0.29	0.07	0.08	0.05	0.00	0.0	0.40
522	695	242200.0	531320.0	1575.31	0.27	0.08	0.10	0.02	0.00	0.0	0.54
523	696	242550.0	531500.0	1554.52	0.28	0.10	0.13	0.02	0.00	0.0	0.54
524	697	240810.0	529700.0	1525.21	0.34	0.17	0.37	0.16	0.0	0.0	1.04
525	698	240480.0	529970.0	1523.20	0.35	0.15	0.26	0.07	0.02	0.0	0.84
526	701	243680.0	528580.0	1633.34	0.23	0.11	0.20	0.12	0.0	0.0	0.66
527	702	243670.0	528200.0	1621.74	0.23	0.12	0.39	0.26	0.0	0.0	1.00
528	703	243770.0	527690.0	1613.33	0.24	0.13	0.52	0.17	0.0	0.0	1.06
529	704	243930.0	527590.0	1616.74	0.24	0.14	0.50	0.18	0.0	0.0	1.06
530	705	244110.0	527300.0	1624.31	0.24	0.14	0.39	0.08	0.0	0.0	0.84
531	706	244260.0	527020.0	1634.06	0.23	0.13	0.39	0.06	0.0	0.0	0.81
532	707	244430.0	526650.0	1657.84	0.22	0.12	0.47	0.15	0.0	0.0	1.00
533	708	244570.0	526250.0	1690.41	0.22	0.12	0.47	0.24	0.0	0.0	1.05
534	709	244470.0	525830.0	1738.89	0.22	0.15	0.17	0.05	0.0	0.0	0.59
535	710	245880.0	528400.0	1605.71	0.23	0.19	1.05	0.78	0.0	0.0	2.25
536	711	246060.0	527900.0	1615.76	0.23	0.19	1.11	0.73	0.01	0.0	2.26
537	712	246190.0	527440.0	1615.76	0.23	0.19	0.99	0.81	0.02	0.0	2.23
538	713	242660.0	526480.0	1613.93	0.24	0.15	0.85	0.75	0.02	0.0	2.01
539	714	242540.0	526390.0	1606.52	0.24	0.15	0.70	0.43	0.08	0.0	1.60
540	715	242510.0	527190.0	1580.29	0.26	0.19	0.68	0.37	0.06	0.0	1.74
541	716	242500.0	527540.0	1565.03	0.27	0.21	0.93	0.53	0.03	0.0	1.96
542	717	242320.0	527940.0	1547.91	0.28	0.23	0.81	0.36	0.14	0.0	1.82
543	718	242200.0	528240.0	1546.23	0.29	0.22	0.58	0.08	0.0	0.0	1.16
544	719	241880.0	528470.0	1537.47	0.30	0.23	0.55	0.13	0.0	0.0	1.20
545	720	241440.0	528760.0	1533.69	0.31	0.21	0.36	0.10	0.0	0.0	0.98
546	721	236660.0	527910.0	1513.63	0.38	0.17	0.03	0.00	0.01	0.0	0.64
547	722	236510.0	527400.0	1521.36	0.37	0.12	0.06	0.00	0.01	0.0	0.62
548	723	236660.0	526760.0	1536.67	0.35	0.16	0.11	0.00	0.0	0.0	0.63
549	724	236300.0	526310.0	1559.00	0.34	0.12	0.15	0.03	0.0	0.0	0.64
550	725	236700.0	525960.0	1690.13	0.30	0.08	0.13	0.01	0.0	0.0	0.56

TERRAIN CORRECTIONS

(ASSUMED DENSITY = 2.00 G/CM**3)

MESCO 61

GRAVIMETRIC SURVEY OF HAUT HOULOUYA IN MOROCCO

1978

STATION-NO.	LATITUDE (Y)	LONGITUDE (X)	ALTITUDE	FAR	MIDDLE	NEAR	CLOSE-1	CLOSE-2	SEA	LAKE	TOTAL
NO.	METER	METER	METER	MGAL	MGAL	MGAL	MGAL	MGAL	MGAL	MGAL	MGAL
551	726	237200.0	525720.0	1613.78	0.27	0.08	0.15	0.01	0.0	0.0	0.55
552	727	237700.0	525380.0	1638.39	0.25	0.09	0.24	0.03	0.0	0.0	0.62
553	728	233090.0	526670.0	1572.95	0.36	0.07	0.03	0.00	0.0	0.0	0.45
554	729	233480.0	526710.0	1558.01	0.36	0.09	0.10	0.02	0.0	0.0	0.57
555	730	233830.0	526450.0	1544.09	0.37	0.12	0.17	0.15	0.0	0.0	0.81
556	731	234090.0	526100.0	1538.14	0.38	0.14	0.11	0.01	0.0	0.0	0.63
557	732	234580.0	526100.0	1515.66	0.30	0.21	0.15	0.03	0.0	0.0	0.78
558	733	234800.0	526520.0	1509.34	0.40	0.21	0.40	0.16	0.03	0.0	1.19
559	734	237030.0	527590.0	1521.64	0.38	0.19	0.08	0.00	0.0	0.0	0.60
560	735	237510.0	527360.0	1527.60	0.34	0.19	0.18	0.02	0.0	0.0	0.74
561	736	238050.0	527130.0	1546.77	0.32	0.16	0.22	0.14	0.0	0.0	1.04
562	737	238590.0	527100.0	1568.97	0.29	0.13	0.66	0.19	0.0	0.0	1.28
563	738	23820.0	526560.0	1690.99	0.23	0.15	0.21	0.01	0.0	0.0	0.60
564	801	232170.0	527260.0	1582.99	0.38	0.07	0.01	0.00	0.0	0.0	0.46
565	802	231720.0	527520.0	1584.02	0.38	0.07	0.01	0.00	0.0	0.0	0.46
566	803	231340.0	527790.0	1592.67	0.37	0.06	0.03	0.02	0.0	0.0	0.48
567	804	230590.0	528120.0	1602.31	0.37	0.06	0.07	0.05	0.0	0.0	0.55
568	805	230280.0	528100.0	1606.68	0.37	0.07	0.04	0.02	0.0	0.0	0.49
569	806	229720.0	527570.0	1611.86	0.38	0.07	0.03	0.00	0.0	0.0	0.48
570	807	229210.0	527900.0	1623.68	0.36	0.07	0.03	0.02	0.0	0.0	0.50
571	808	228700.0	527820.0	1635.84	0.39	0.07	0.04	0.01	0.00	0.0	0.52
572	809	228160.0	527860.0	1647.56	0.40	0.07	0.04	0.01	0.0	0.0	0.52
573	810	227630.0	527860.0	1658.61	0.40	0.07	0.04	0.01	0.0	0.0	0.53
574	811	227040.0	527650.0	1664.50	0.39	0.07	0.05	0.02	0.0	0.0	0.52
575	812	226960.0	528560.0	1599.47	0.39	0.08	0.04	0.00	0.0	0.0	0.51
576	813	226480.0	528900.0	1622.75	0.39	0.07	0.03	0.00	0.0	0.0	0.49
577	814	226020.0	529110.0	1621.45	0.41	0.08	0.05	0.01	0.0	0.0	0.55
578	815	226430.0	529430.0	1653.58	0.42	0.07	0.04	0.01	0.0	0.0	0.59
579	816	226000.0	529780.0	1667.60	0.44	0.07	0.08	0.03	0.0	0.0	0.62
580	817	223480.0	529530.0	1663.70	0.44	0.07	0.16	0.09	0.0	0.0	0.76
581	818	229310.0	530160.0	1654.58	0.44	0.07	0.09	0.01	0.0	0.0	0.61
582	819	228750.0	530470.0	1635.65	0.43	0.07	0.07	0.01	0.0	0.0	0.59
583	820	229170.0	530380.0	1625.95	0.42	0.07	0.06	0.00	0.0	0.0	0.56
584	821	229530.0	531270.0	1621.73	0.42	0.07	0.06	0.00	0.0	0.0	0.56
585	822	226230.0	533480.0	1695.58	0.45	0.11	0.02	0.00	0.0	0.0	0.62
586	823	226650.0	533690.0	1689.36	0.50	0.11	0.01	0.00	0.0	0.0	0.62
587	824	227160.0	534410.0	1684.65	0.50	0.11	0.01	0.00	0.0	0.0	0.63
588	825	227730.0	535000.0	1678.12	0.50	0.11	0.02	0.01	0.0	0.0	0.65
589	826	228050.0	535410.0	1673.33	0.51	0.12	0.03	0.01	0.0	0.0	0.67
590	827	228540.0	535710.0	1670.04	0.49	0.12	0.04	0.03	0.0	0.0	0.69
591	828	228990.0	535940.0	1657.99	0.48	0.13	0.07	0.04	0.0	0.0	0.71
592	829	229430.0	536210.0	1665.12	0.46	0.14	0.03	0.01	0.0	0.0	0.69
593	830	229910.0	536490.0	1661.37	0.45	0.14	0.12	0.00	0.0	0.0	0.72
594	831	230450.0	536710.0	1657.90	0.44	0.14	0.25	0.05	0.0	0.0	0.88
595	832	230910.0	537020.0	1614.98	0.47	0.08	0.13	0.02	0.0	0	

TERRAIN CORRECTIONS

(ASSUMED DENSITY = 2.00 G/CM**3)

MESCO 62

GRAVIMETRIC SURVEY OF HAUT MOULOUYA IN MOROCCO

1978

STATION-NO.	LATITUDE (Y)	LONGITUDE (X)	ALTITUDE	FAR	MIDDLE	NEAR	CLOSE-1	CLOSE-2	SEA	LAKE	TOTAL
NO.	METER	METER	METER	MGAL	MGAL	MGAL	MGAL	MGAL	MGAL	MGAL	MGAL
601	838	233310.0	530130.0	1546.99	0.41	0.07	0.23	0.09	0.0	0.0	0.79
602	839	232950.0	529650.0	1551.82	0.41	0.07	0.20	0.03	0.0	0.0	0.71
603	840	232540.0	529060.0	1559.80	0.40	0.08	0.08	0.02	0.0	0.0	0.57
604	841	232210.0	529410.0	1563.21	0.42	0.08	0.06	0.01	0.0	0.0	0.57
605	842	231740.0	529690.0	1577.52	0.41	0.07	0.03	0.02	0.0	0.0	0.53
606	843	231200.0	530040.0	1598.94	0.40	0.06	0.08	0.04	0.0	0.0	0.58
607	844	230870.0	530440.0	1602.93	0.40	0.06	0.05	0.00	0.0	0.0	0.52
608	845	230540.0	530860.0	1590.29	0.42	0.08	0.04	0.00	0.0	0.0	0.54
609	846	230240.0	531210.0	1601.83	0.41	0.07	0.06	0.02	0.0	0.0	0.57
610	847	230030.0	531710.0	1614.16	0.41	0.07	0.10	0.05	0.0	0.0	0.63
611	848	229950.0	532220.0	1626.15	0.41	0.07	0.16	0.10	0.0	0.0	0.74
612	849	229570.0	532630.0	1633.46	0.43	0.07	0.09	0.02	0.0	0.0	0.61
613	850	229210.0	533090.0	1628.95	0.46	0.07	0.09	0.00	0.0	0.0	0.62
614	851	228790.0	533560.0	1679.51	0.45	0.11	0.14	0.05	0.0	0.0	0.75
615	852	228490.0	534000.0	1679.45	0.48	0.11	0.14	0.05	0.0	0.0	0.63
616	853	228110.0	534440.0	1679.49	0.50	0.11	0.04	0.01	0.0	0.0	0.63
617	854	227440.0	535620.0	1673.92	0.52	0.12	0.04	0.01	0.0	0.0	0.68
618	855	227130.0	536200.0	1669.06	0.53	0.12	0.11	0.02	0.0	0.0	0.78
619	856	234490.0	531680.0	1532.57	0.40	0.07	0.02	0.01	0.0	0.0	0.49
620	857	234220.0	532050.0	1541.44	0.39	0.06	0.02	0.00	0.0	0.0	0.48
621	858	234090.0	532570.0	1551.03	0.39	0.05	0.02	0.00	0.0	0.0	0.46
622	859	233410.0	532590.0	1556.43	0.40	0.06	0.02	0.00	0.0	0.0	0.48
623	860	232910.0	532500.0	1559.76	0.42	0.06	0.02	0.00	0.0	0.0	0.50
624	861	232450.0	532290.0	1564.17	0.43	0.07	0.02	0.01	0.0	0.0	0.52
625	862	233540.0	533040.0	1551.54	0.41	0.06	0.02	0.00	0.0	0.0	0.49
626	863	233200.0	533520.0	1551.01	0.43	0.06	0.04	0.04	0.0	0.0	0.57
627	864	232810.0	534080.0	1556.58	0.45	0.06	0.03	0.01	0.0	0.0	0.55
628	865	232500.0	534500.0	1560.36	0.46	0.06	0.02	0.00	0.0	0.0	0.58
629	866	232200.0	534930.0	1575.80	0.46	0.06	0.04	0.01	0.0	0.0	0.69
630	867	231800.0	535320.0	1591.91	0.45	0.06	0.10	0.07	0.0	0.0	0.64
631	868	231570.0	535780.0	1592.23	0.46	0.06	0.09	0.03	0.0	0.0	0.67
632	869	231530.0	536290.0	1594.77	0.47	0.07	0.10	0.04	0.0	0.0	0.61
633	870	231690.0	536870.0	1585.46	0.49	0.06	0.05	0.01	0.0	0.0	0.57
634	871	234110.0	530540.0	1550.24	0.38	0.06	0.12	0.01	0.0	0.0	0.58
635	872	234490.0	530160.0	1579.19	0.34	0.05	0.16	0.03	0.0	0.0	0.57
636	873	233450.0	528420.0	1583.43	0.34	0.05	0.16	0.02	0.0	0.0	0.61
637	874	233090.0	528790.0	1572.82	0.37	0.06	0.16	0.04	0.0	0.0	0.53
638	875	231090.0	531360.0	1591.22	0.42	0.08	0.03	0.01	0.0	0.0	0.53
639	876	231370.0	531780.0	1576.75	0.43	0.07	0.03	0.01	0.0	0.0	0.68
640	877	234930.0	528670.0	1632.07	0.29	0.10	0.28	0.02	0.0	0.0	0.52
641	878	235060.0	529090.0	1621.07	0.30	0.08	0.14	0.01	0.0	0.0	0.60
642	879	229760.0	533150.0	1619.26	0.44	0.07	0.02	0.01	0.0	0.0	0.61
643	880	230220.0	533260.0	1606.97	0.44	0.07	0.09	0.01	0.0	0.0	0.63
644	881	230820.0	533910.0	1615.50	0.44	0.07	0.10	0.02	0.0	0.0	0.69
645	882	231310.0	534010.0	1603.60	0.44	0.07	0.12	0.07	0.0	0.0	0.64
646	883	231680.0	534460.0	1536.59	0.46	0.06	0.07	0.05	0.0	0.0	0.55
647	884	233080.0	534520.0	1551.37	0.45	0.06	0.03	0.02	0.0	0.0	0.53
648	885	233500.0	534500.0	1540.44	0.44	0.06	0.02	0.01	0.0	0.0	0.50
649	886	233970.0	534550.0	1533.11	0.43	0.06	0.01	0.00	0.0	0.0	0.49
650	887	234440.0	534360.0	1526.32	0.43	0.06	0.01	0.00	0.0	0.0	0.49

TERRAIN CORRECTIONS

(ASSUMED DENSITY = 2.00 G/CM**3)

MESCO 63

GRAVIMETRIC SURVEY OF HAUT MOULOUYA IN MOROCCO

1978

STATION-NO.	LATITUDE (Y)	LONGITUDE (X)	ALTITUDE	FAR	MIDDLE	NEAR	CLOSE-1	CLOSE-2	SEA	LAKE	TOTAL
NO.	METER	METER	METER	MGAL	MGAL	MGAL	MGAL	MGAL	MGAL	MGAL	MGAL
651	20015	234520.0	540200.0	1522.65	0.31	0.44	0.0	0.02	0.00	0.0	0.77
652	2001	234520.0	540200.0	1522.65	0.31	0.44	0.0	0.02	0.00	0.0	0.77
653	2002	240190.0	528130.0	1608.67	0.27	0.09	0.14	0.01	0.01	0.0	0.52
654	20025	240190.0	528130.0	1608.67	0.27	0.09	0.14	0.01	0.01	0.0	0.52
655	20035	226830.0	538790.0	1558.13	0.73	0.27	0.06	0.00	0.01	0.0	1.08
656	2003	226830.0	538790.0	1558.13	0.73	0.27	0.06	0.00	0.01	0.0	1.08
657	20045	234990.0	549320.0	1542.95	0.50	0.05	0.03	0.00	0.00	0.0	0.58
658	2004	234990.0	549320.0	1542.95	0.50	0.05	0.03	0.00	0.00	0.0	0.58

A-3 Altitude Correction and Latitude Correction

BOUGUER ANOMALIES FOR SIX DENSITIES				MESCO 64							
GRAVIMETRIC SURVEY OF HAUT MOULOUYA IN MOROCCO											
1978											
STATION-NO	LATITUDE (Y)	LONGITUDE (X)	ALTITUDE	G.V.-S.V.	2.00	2.30	2.40	2.50	2.67	2.80	
NO.	METER		METER	MGAL	MGAL	MGAL	MGAL	MGAL	MGAL	MGAL	
1	1	235700.0	549420.0	1532.29	-425.47	-80.46	-99.64	-106.04	-112.43	-123.30	-131.61
2	2	236210.0	547910.0	1516.51	-421.49	-80.04	-99.02	-105.34	-111.67	-122.43	-130.65
3	3	236730.0	547230.0	1492.43	-416.42	-80.38	-99.06	-105.28	-111.51	-122.09	-130.19
4	4	237130.0	546740.0	1476.40	-413.09	-80.64	-99.11	-105.27	-111.43	-121.90	-129.91
5	5	237450.0	546300.0	1473.17	-412.86	-81.15	-99.58	-105.73	-111.87	-122.32	-130.31
6	6	237850.0	545830.0	1463.93	-411.31	-81.68	-100.00	-106.11	-112.21	-122.59	-130.53
7	7	238400.0	545620.0	1455.53	-409.56	-81.84	-100.05	-106.12	-112.19	-122.52	-130.41
8	8	238910.0	545470.0	1458.62	-410.21	-81.75	-100.00	-106.08	-112.17	-122.51	-130.42
9	9	239370.0	545190.0	1470.83	-412.77	-81.64	-100.04	-106.26	-112.34	-122.77	-130.75
10	10	239790.0	544760.0	1491.12	-415.45	-82.06	-100.61	-106.80	-112.98	-123.49	-131.53
11	11	240200.0	544280.0	1482.66	-416.19	-82.43	-101.00	-107.18	-113.37	-123.90	-131.94
12	12	240540.0	544130.0	1495.39	-416.93	-82.47	-101.08	-107.28	-113.49	-124.04	-132.10
13	13	241100.0	543980.0	1488.32	-417.38	-82.42	-101.07	-107.29	-113.50	-124.07	-132.15
14	14	241540.0	543840.0	1486.72	-416.88	-82.27	-100.90	-107.11	-113.32	-123.88	-131.95
15	15	242020.0	543720.0	1492.02	-417.97	-82.21	-100.91	-107.14	-113.37	-123.97	-132.07
16	16	242500.0	543590.0	1494.14	-418.35	-82.11	-100.84	-107.08	-113.33	-123.94	-132.05
17	17	243090.0	543430.0	1494.35	-418.19	-81.90	-100.63	-106.88	-113.12	-123.73	-131.85
18	18	243560.0	543300.0	1497.42	-419.87	-81.89	-100.66	-106.92	-113.17	-123.81	-131.94
19	19	244010.0	543130.0	1499.01	-419.17	-81.82	-100.61	-106.87	-113.14	-123.78	-131.92
20	20	244310.0	542700.0	1491.17	-416.76	-81.15	-99.84	-106.07	-112.30	-122.89	-130.98
21	21	244800.0	542520.0	1486.01	-415.24	-80.79	-99.41	-105.62	-111.82	-122.37	-130.44
22	22	245210.0	542320.0	1481.95	-414.17	-80.65	-99.23	-105.42	-111.61	-122.13	-130.18
23	23	245610.0	542030.0	1478.15	-413.23	-80.56	-99.09	-105.26	-111.44	-121.93	-129.96
24	24	245950.0	541750.0	1467.99	-410.93	-80.58	-98.97	-105.10	-111.23	-121.65	-129.62
25	25	246420.0	541440.0	1459.60	-409.22	-80.67	-98.96	-105.05	-111.14	-121.50	-129.43
26	26	247040.0	541060.0	1459.89	-408.49	-80.74	-98.97	-105.05	-111.12	-121.45	-129.35
27	27	246680.0	540950.0	1460.56	-409.34	-80.58	-98.87	-104.97	-111.07	-121.44	-129.36
28	28	246240.0	540840.0	1461.35	-409.82	-80.71	-99.01	-105.11	-111.21	-121.59	-129.51
29	29	245820.0	540150.0	1463.97	-410.61	-81.05	-99.38	-105.49	-111.60	-121.99	-129.94
30	30	245370.0	539540.0	1463.27	-411.65	-81.17	-99.56	-105.69	-111.82	-122.24	-130.21
31	31	245100.0	539670.0	1473.36	-413.14	-81.49	-99.99	-106.10	-112.25	-122.71	-130.70
32	32	244670.0	539400.0	1485.23	-416.02	-81.70	-100.30	-106.50	-112.70	-123.24	-131.31
33	33	244230.0	539110.0	1496.16	-418.47	-81.67	-100.41	-106.65	-112.90	-123.51	-131.63
34	34	243810.0	53870.0	1494.54	-418.52	-82.07	-100.79	-107.02	-113.26	-123.87	-131.98
35	35	243380.0	538600.0	1495.15	-418.99	-82.44	-101.17	-107.42	-113.66	-124.27	-132.39
36	36	242930.0	538310.0	1496.59	-419.50	-82.65	-101.40	-107.65	-113.90	-124.53	-132.65
37	37	242460.0	538010.0	1494.15	-419.52	-83.20	-101.91	-108.15	-114.39	-124.99	-133.10
38	38	242040.0	537750.0	1491.06	-419.22	-83.59	-102.26	-108.49	-114.71	-125.29	-133.39
39	39	241610.0	537450.0	1491.71	-419.62	-83.82	-102.50	-108.73	-114.96	-125.54	-133.64
40	40	241170.0	537140.0	1487.40	-419.48	-84.61	-103.23	-109.44	-115.65	-126.20	-134.27
41	41	240770.0	536850.0	1488.30	-420.21	-85.16	-103.79	-110.01	-116.22	-126.78	-134.85
42	42	240400.0	536510.0	1490.22	-421.53	-86.06	-104.72	-110.94	-117.16	-127.73	-135.82
43	43	240150.0	536070.0	1492.85	-422.15	-86.43	-105.17	-111.41	-117.68	-128.27	-136.39
44	44	239970.0	535860.0	1494.26	-423.27	-86.89	-105.54	-111.93	-118.06	-128.66	-136.77
45	45	239840.0	535130.0	1515.01	-428.27	-87.25	-106.23	-112.56	-118.68	-129.63	-137.86
46	46	239440.0	534750.0	1510.65	-427.71	-87.63	-106.55	-112.66	-118.88	-129.88	-138.08
47	47	239440.0	534260.0	1507.63	-427.43	-87.97	-106.84	-113.13	-119.42	-130.11	-138.29
48	48	239270.0	533720.0	1501.43	-426.47	-88.33	-107.11	-113.37	-119.63	-130.27	-138.41
49	49	239130.0	53240.0	1506.49	-427.39	-88.16	-107.01	-113.30	-119.58	-130.26	-138.43
50	50	239770.0	532710.0	1506.19	-427.85	-88.66	-107.50	-113.78	-120.06	-130.74	-138.91

BOUGUER ANOMALIES FOR SIX DENSITIES				MESCO 65							
GRAVIMETRIC SURVEY OF HAUT MOULOUYA IN MOROCCO											
1978											
STATION-NO	LATITUDE (Y)	LONGITUDE (X)	ALTITUDE	G.V.-S.V.	2.00	2.30	2.40	2.50	2.67	2.80	
NO.	METER		METER	MGAL	MGAL	MGAL	MGAL	MGAL	MGAL	MGAL	
51	51	238520.0	532310.0	1541.56	-436.02	-88.87	-108.15	-114.56	-121.01	-131.94	-140.29
52	52	238540.0	531780.0	1542.17	-436.33	-89.16	-108.47	-114.91	-121.34	-132.29	-140.65
53	53	238580.0	531420.0	1551.27	-439.24	-89.77	-108.70	-115.18	-121.66	-132.67	-141.09
54	54	238690.0	530910.0	1570.05	-442.35	-88.93	-108.60	-115.15	-121.71	-132.85	-141.37
55	55	238960.0	529950.0	1573.96	-442.53	-88.25	-107.97	-114.54	-121.11	-132.28	-140.83
56	56	239210.0	529500.0	1578.11	-443.21	-88.00	-107.77	-114.36	-120.95	-132.15	-140.72
57	57	239460.0	529500.0	1584.21	-444.02	-87.43	-107.27	-113.88	-120.50	-131.74	-140.34
58	58	239700.0	529030.0	1588.19	-444.37	-86.38	-106.78	-113.41	-120.04	-131.32	-139.94
59	59	239530.0	528600.0	1601.60	-446.75	-86.28	-106.35	-113.03	-119.72	-131.09	-139.79
60	60	240390.0	527760.0	1628.90	-451.83	-84.92	-105.29	-112.08	-118.87	-130.41	-139.23
61	61	240760.0	527290.0	1666.12	-457.51	-82.42	-103.28	-110.23	-117.19	-129.01	-138.05
62	62	240500.0	526790.0	1691.51	-462.92	-82.01	-103.19	-110.25	-117.31	-129.31	-138.49
63	63	240270.0	526210.0	1714.06	-467.01	-81.12	-102.57	-109.73	-116.88	-129.04	-138.34
64	64	232390.0	526640.0	1591.75	-453.21	-84.94	-114.88	-121.53	-128.17	-139.47	-149.11
65	65	232710.0	527060.0	1586.73	-451.70	-84.55	-114.42	-121.05	-127.68	-138.94	-148.55
66	66	233000.0	527400.0	1572.17	-448.34	-84.44	-114.13	-120.70	-127.40	-138.42	-148.09
67	67	233360.0	527720.0	1579.94	-449.62	-84.01	-113.68	-120.40	-127.00	-138.21	-147.79
68	68	233830.0	527900.0	1589.35	-451.06	-83.93	-113.24	-119.68	-126.27	-137.48	-146.05
69	69	234440.0	528090.0	1580.30	-447.51	-83.30	-112.54	-119.29	-125.66	-136.80	-145.32
70	70	234960.0	528260.0	1573.74	-445.46	-84.11	-112.85	-119.29	-125.73	-136.67	-145.04
71	71	235390.0	528150.0	1545.46	-435.59	-83.53	-112.41	-118.71	-125.01	-135.71	-143.89
72	72	235870.0	528320.0	1516.47	-433.61	-83.25	-112.05	-118.32	-124.58	-135.24	-143.38
73	73	236300.0	52810.0	1509.04	-431.97	-82.67	-111.49	-117.76	-124.03	-134.69	-142.85
74	74	236740.0	528890.0	1505.97	-431.92	-82.50	-111.33	-117.61	-123.89	-134.56	-142.72
75	75	236790.0	528420.0	1506.71	-431.30	-81.52	-110.38	-116.66	-122.95	-133.63	-141.80
76	76	237190.0	528490.0	1508.41	-432.13	-81.04	-109.99	-116.30	-122.62	-133.36	-141.57
77	77	237650.0	528070.0	1514.65	-433.25	-80.14	-109.20	-115.55	-121.90	-132.70	-140.96
78	78	238250.0	528330.0	1523.58	-435.22	-80.85	-108.05	-114.46	-120.86	-131.74	-140.06
79	79	238700.0	528600.0	1537.27	-438.72	-80.76	-107.20	-113.68	-120.16	-131.17	-139.59
80	80	239250.0	528710.0	1557.10	-443.71	-80.97	-106.81	-113.42	-120.03	-131.27	-139.67
81	81	239560.0	528420.0	1584.48	-448.58	-80.81	-106.21	-112.56	-119.44	-129.35	-139.60
82	82	234810.0	548160.0	1522.27	-423.58	-80.81	-106.21	-112.56	-119.44	-129.35	-139.60
83	83	234740.0	547660.0	1525.80	-424.18	-80.61	-106.07	-112.44	-119.37	-129.26	-139.53
84	84	234680.0	547150.0	1525.73	-424.26	-80.72	-106.07	-112.54	-119.44	-129.36	-139.63
85	85	234600.0	546620.0	1517.15	-422.65	-80.72	-106.07	-112.56	-119.44	-129.35	-139.60
86	86	234530.0	546200.0	1517.55	-422.82	-81.04	-106.02	-112.67	-119.55	-129.43	-139.65
87	87	234480.0	545700.0	1497.62	-419.42	-81.81	-106.50	-112.95	-119.83	-129.74	-139.96
88	88	234420.0	545350.0	1513.74	-422.5						

GRAVIMETRIC SURVEY OF HAUT MOULOUYA IN MOROCCO

1978

Table with columns: STATION-NO, LATITUDE (Y), LONGITUDE (X), ALTITUDE, G.V.-S.V., 2.00, 2.30, 2.40, 2.50, 2.67, 2.80. Rows 101-150.

GRAVIMETRIC SURVEY OF HAUT MOULOUYA IN MOROCCO

1978

Table with columns: STATION-NO, LATITUDE (Y), LONGITUDE (X), ALTITUDE, G.V.-S.V., 2.00, 2.30, 2.40, 2.50, 2.67, 2.80. Rows 151-200.

GRAVIMETRIC SURVEY OF HAUT MOULOUYA IN MOROCCO

1978

STATION-NO	LATITUDE (Y)	LONGITUDE (X)	ALTITUDE	G.V.-S.V.	2.00	2.30	2.40	2.50	2.67	2.80	
NO.	METER	METER	METER	MGAL	MGAL	MGAL	MGAL	MGAL	MGAL	MGAL	
201	311	240490.0	540120.0	1493.05	-419.96	-83.91	-102.62	-105.66	-115.09	-125.69	-132.60
202	312	239980.0	539940.0	1498.14	-421.46	-84.25	-103.01	-109.27	-115.52	-126.16	-134.29
203	313	239560.0	539900.0	1505.27	-423.46	-84.63	-103.49	-109.77	-116.06	-126.74	-134.91
204	314	239160.0	539900.0	1513.37	-425.65	-85.05	-104.01	-110.33	-116.65	-127.39	-135.61
205	315	238570.0	539740.0	1519.61	-427.68	-85.64	-104.67	-111.02	-117.36	-128.15	-136.40
206	316	238100.0	539630.0	1535.12	-431.33	-85.89	-105.13	-111.54	-117.95	-128.85	-137.19
207	317	237660.0	539510.0	1535.80	-431.90	-86.15	-105.40	-111.81	-118.23	-129.13	-137.47
208	318	237160.0	539450.0	1536.42	-432.21	-86.40	-105.65	-112.07	-118.49	-129.39	-137.73
209	319	236740.0	539770.0	1539.31	-432.74	-86.26	-105.55	-111.96	-118.40	-129.33	-137.69
210	320	240840.0	543620.0	1493.90	-420.16	-82.83	-101.42	-107.68	-114.14	-124.78	-132.92
211	321	241250.0	543170.0	1496.60	-419.95	-83.14	-101.90	-108.15	-114.41	-125.04	-133.16
212	322	241120.0	542650.0	1496.92	-420.13	-83.30	-102.06	-109.32	-114.57	-125.20	-133.33
213	323	240790.0	542330.0	1496.34	-420.30	-83.45	-102.24	-109.48	-114.73	-125.36	-133.53
214	324	240640.0	541900.0	1496.45	-420.44	-83.33	-102.14	-109.39	-114.65	-125.28	-133.41
215	325	240550.0	541400.0	1497.56	-420.37	-83.63	-102.37	-109.62	-114.87	-125.49	-133.61
216	326	240390.0	540950.0	1496.42	-420.82	-84.00	-102.75	-109.99	-115.24	-125.87	-133.99
217	327	240230.0	540450.0	1488.01	-416.36	-81.49	-100.14	-106.35	-112.57	-123.13	-131.22
218	328	243950.0	542470.0	1482.74	-415.26	-81.59	-100.13	-106.33	-112.52	-123.05	-131.10
219	329	243790.0	542010.0	1482.74	-415.12	-81.62	-100.19	-106.38	-112.57	-123.09	-131.13
220	330	243620.0	541560.0	1481.84	-415.14	-81.89	-100.45	-106.63	-112.82	-123.33	-131.37
221	331	243460.0	541230.0	1480.69	-413.93	-82.25	-100.71	-106.86	-113.01	-123.47	-131.47
222	332	242750.0	541260.0	1473.47	-413.93	-82.25	-100.71	-106.86	-113.01	-123.47	-131.47
223	333	242540.0	541640.0	1478.03	-415.02	-82.32	-100.84	-107.01	-113.19	-123.68	-131.70
224	334	242290.0	541970.0	1484.15	-416.50	-82.45	-101.05	-107.25	-113.44	-123.93	-131.94
225	335	242020.0	542400.0	1494.84	-419.24	-82.83	-101.56	-107.61	-114.05	-124.67	-132.74
226	336	241700.0	542860.0	1495.65	-419.64	-83.05	-101.79	-107.86	-114.29	-124.91	-133.03
227	337	240200.0	542100.0	1506.06	-422.70	-83.70	-102.80	-109.16	-115.51	-126.31	-134.57
228	338	239740.0	542320.0	1521.36	-426.15	-83.14	-102.80	-109.16	-115.50	-126.34	-134.62
229	339	239290.0	542610.0	1525.79	-427.04	-83.64	-103.06	-109.32	-115.55	-126.39	-134.67
230	340	238860.0	542800.0	1525.61	-426.86	-83.50	-102.61	-109.08	-115.35	-126.19	-134.47
231	341	238470.0	542800.0	1524.21	-426.32	-83.49	-102.56	-109.02	-115.28	-126.10	-134.37
232	342	238050.0	542800.0	1518.49	-424.91	-83.54	-102.53	-108.86	-115.19	-125.96	-134.19
233	343	238820.0	542090.0	1528.61	-427.95	-83.90	-103.05	-109.43	-115.82	-126.67	-134.97
234	344	238760.0	541800.0	1529.09	-428.34	-84.17	-103.32	-109.71	-116.09	-126.94	-135.25
235	345	238640.0	541250.0	1529.09	-428.34	-84.73	-103.89	-110.27	-116.66	-127.52	-135.82
236	346	238780.0	540750.0	1529.25	-425.10	-84.92	-104.06	-110.46	-116.85	-127.71	-136.01
237	347	239460.0	536770.0	1486.12	-421.05	-86.54	-103.51	-111.35	-117.55	-128.10	-136.16
238	348	239590.0	537010.0	1480.65	-420.29	-86.96	-103.50	-111.68	-117.86	-128.36	-136.40
239	349	239230.0	537269.0	1482.89	-420.93	-87.11	-103.68	-111.87	-118.06	-128.58	-136.63
240	350	239770.0	537360.0	1492.56	-423.19	-87.21	-103.91	-112.14	-118.37	-128.86	-136.91
241	351	239390.0	537720.0	1488.17	-421.35	-86.35	-104.95	-111.20	-117.44	-127.97	-136.04
242	352	239860.0	539660.0	1480.80	-419.14	-85.74	-104.28	-110.46	-116.48	-127.14	-135.16
243	353	240260.0	538500.0	1479.91	-419.37	-85.20	-103.73	-109.90	-116.03	-126.58	-134.61
244	354	240660.0	539000.0	1478.13	-417.15	-84.35	-103.73	-109.90	-116.03	-126.58	-134.61
245	355	240560.0	539300.0	1494.32	-420.73	-84.36	-103.09	-109.33	-115.57	-126.18	-134.29
246	356	241730.0	538120.0	1480.74	-417.40	-84.07	-102.62	-108.60	-114.96	-125.49	-133.52
247	357	241470.0	538500.0	1476.50	-416.22	-83.91	-102.40	-108.56	-114.72	-125.20	-133.21
248	358	241400.0	538900.0	1475.50	-415.90	-83.77	-102.25	-108.41	-114.57	-125.04	-133.05
249	359	243300.0	539840.0	1471.42	-414.20	-82.97	-101.44	-107.54	-113.68	-124.13	-132.11
250	360	243350.0	539320.0	1486.09	-417.15	-82.67	-101.28	-107.49	-113.70	-124.25	-132.32

GRAVIMETRIC SURVEY OF HAUT MOULOUYA IN MOROCCO

1978

STATION-NO	LATITUDE (Y)	LONGITUDE (X)	ALTITUDE	G.V.-S.V.	2.00	2.30	2.40	2.50	2.67	2.80	
NO.	METER	METER	METER	MGAL	MGAL	MGAL	MGAL	MGAL	MGAL	MGAL	
251	361	244790.0	540100.0	1474.89	-413.51	-81.83	-100.10	-106.26	-112.42	-122.89	-130.89
252	362	244280.0	540230.0	1469.86	-412.65	-81.72	-100.13	-106.26	-112.39	-122.82	-130.79
253	363	238100.0	532550.0	1542.13	-436.66	-89.43	-108.73	-115.16	-121.60	-132.53	-140.89
254	364	237760.0	532690.0	1532.40	-435.46	-89.40	-109.62	-116.07	-122.47	-133.35	-141.66
255	365	237430.0	532900.0	1500.71	-429.33	-91.42	-110.20	-116.44	-122.72	-133.36	-141.50
256	366	237260.0	530780.0	1569.60	-442.66	-89.32	-108.99	-115.54	-122.10	-133.24	-141.76
257	367	238140.0	530430.0	1565.54	-441.77	-89.46	-109.07	-115.60	-122.10	-133.24	-141.76
258	368	237610.0	530170.0	1552.53	-439.39	-89.58	-109.33	-115.81	-122.13	-133.24	-141.74
259	369	238530.0	536990.0	1488.81	-422.93	-87.77	-104.42	-112.63	-118.29	-133.30	-141.73
260	370	238140.0	536760.0	1498.13	-423.21	-87.98	-104.74	-113.00	-118.55	-129.41	-137.45
261	371	238040.0	536200.0	1489.07	-423.86	-88.62	-107.27	-113.48	-119.26	-129.89	-138.02
262	372	237790.0	535690.0	1489.46	-424.63	-89.31	-107.96	-114.17	-120.39	-130.95	-139.04
263	373	237610.0	535420.0	1494.73	-426.20	-89.70	-108.42	-114.66	-120.90	-131.51	-139.62
264	374	237460.0	534920.0	1491.07	-425.90	-90.20	-108.87	-115.10	-121.32	-131.90	-139.99
265	375	237390.0	534450.0	1490.70	-426.05	-90.44	-109.10	-115.32	-121.54	-132.12	-140.20
266	376	237360.0	534090.0	1491.34	-426.73	-90.96	-109.63	-115.86	-122.08	-132.66	-140.75
267	377	237120.0	533640.0	1496.38	-428.41	-91.52	-110.26	-116.50	-122.75	-133.36	-141.46
268	378	236750.0	533260.0	1496.54	-429.90	-91.96	-110.69	-116.94	-123.18	-133.80	-141.92
269	379	236540.0	532890.0	1496.48	-429.33	-92.38	-111.11	-117.36	-123.60	-134.21	-142.33
270	380	236450.0	532430.0	1498.22	-429.88	-92.54	-111.29	-117.54	-123.79	-134.42	-142.55
271	381	237210.0	539070.0	1527.21	-430.34	-86.59	-105.72	-112.10	-118.47	-129.32	-137.61
272	382	237490.0	533710.0	1518.72	-428.65	-86.80	-105.83	-112.17	-118.51	-129.29	-137.54
273	383	237760.0	538320.0	1509.58	-428.87	-87.06	-105.96	-112.16	-118.45	-129.28	-137.47
274	384	239030.0	537920.0	1505.62	-425.94	-87.02	-105.88	-112.23	-118.49	-129.13	-137.30
275	385	238370.0	537700.0	1498.63	-424.55	-87.21	-105.98	-112.84	-119.20	-129.97	-138.21
276	386	235220.0	533470.0	1518.17	-429.30	-87.52	-106.53	-113.86	-119.50	-130.33	-138.55
277	387	235460.0	533970.0	1515.47	-429.17	-87.96	-106.93	-113.26	-119.53	-130.33	-138.55
278	388	235670.0	533750.0	1511.45	-429.85	-88.57	-107.49	-113.80	-120.10	-130.83	-139.05
279	389	235900.0	533550.0	1507.41	-428.25	-88.64	-107.70	-113.99	-120.28	-130.97	-139.14
280	390	236200.0	533080.0	1504.58	-427.71	-88.94	-107.78	-114.05	-120.33	-131.00	-139.16
281	391	236700.0	538610.0	1501.75	-427.08	-88.95	-107.75	-114.02	-120.28	-130.94	-139.08
282	392	236690.0	538020.0	1509.62	-425.08	-88.24	-108.15	-114.45	-120.75	-131.47	-139.66
283	393	236330.0	535720.0	1514.55	-430.81	-89.85	-108.62	-115.14	-121.47	-132.22	-140.44
284	394	235750.0	535570.0	1519.14	-431.94	-89.97	-108.99	-115.33	-121.67	-132.45	-140.70
285	395	235300.0	535520.0	1526.65	-433.81	-90.15	-109.28	-115.65	-122.02	-132.86	-141.14
286											

GRAVIMETRIC SURVEY OF HAUT MOULOUYA IN MOROCCO

1976

STATION-NO	LATITUDE (Y)	LONGITUDE (X)	ALTITUDE	G.V.-S.V.	2.00	2.30	2.40	2.50	2.67	2.80	
NO.	METER	METER	METER	MGAL	MGAL	MGAL	MGAL	MGAL	MGAL	MGAL	
301	411	231660.0	544160.0	1524.99	-425.66	-82.08	-101.13	-107.46	-113.64	-124.63	-132.89
302	412	231720.0	543740.0	1526.46	-426.19	-82.27	-101.34	-107.69	-114.05	-124.86	-133.12
303	413	231090.0	543360.0	1525.94	-426.27	-82.45	-101.51	-107.87	-114.22	-125.03	-133.29
304	414	230520.0	542930.0	1526.52	-426.72	-82.76	-101.82	-103.15	-114.53	-125.34	-133.60
305	415	230740.0	542480.0	1528.23	-427.58	-83.19	-102.28	-103.64	-114.55	-125.82	-134.09
306	416	230640.0	542000.0	1532.74	-423.93	-83.44	-102.58	-103.96	-115.34	-126.19	-134.48
307	417	235150.0	543850.0	1489.30	-410.04	-82.59	-101.21	-107.42	-113.63	-124.18	-132.45
308	418	235630.0	544060.0	1488.56	-412.07	-82.78	-101.39	-107.59	-113.80	-124.35	-132.61
309	419	235550.0	544420.0	1488.43	-417.29	-82.05	-100.67	-106.87	-113.08	-123.63	-131.69
310	420	236430.0	544450.0	1470.77	-413.51	-81.29	-100.69	-106.82	-112.95	-123.38	-131.35
311	421	236580.0	544920.0	1467.86	-412.56	-81.25	-100.31	-106.43	-112.55	-122.95	-130.91
312	422	237330.0	544960.0	1461.57	-411.09	-81.94	-100.23	-106.33	-112.42	-122.78	-130.71
313	423	237920.0	545180.0	1455.17	-409.52	-81.83	-100.03	-106.10	-112.17	-122.49	-130.38
314	424	238400.0	533200.0	1581.38	-442.11	-85.70	-105.44	-112.02	-118.60	-129.79	-138.34
315	425	228160.0	533720.0	1583.17	-443.75	-85.46	-104.90	-111.38	-117.86	-129.87	-137.29
316	426	230380.0	538590.0	1539.50	-434.26	-86.51	-106.32	-112.93	-119.53	-130.76	-139.34
317	427	230470.0	538590.0	1568.73	-439.48	-86.10	-105.71	-112.24	-118.78	-129.89	-136.39
318	428	230440.0	539090.0	1561.19	-437.51	-85.34	-105.35	-111.86	-118.36	-129.42	-137.88
319	429	230310.0	539620.0	1546.70	-433.94	-85.50	-104.83	-111.27	-117.71	-128.67	-137.04
320	430	230220.0	540290.0	1531.94	-430.33	-85.12	-104.25	-110.63	-117.01	-127.85	-136.14
321	431	230200.0	541190.0	1517.57	-426.24	-84.32	-103.28	-109.60	-115.92	-126.67	-134.89
322	432	232150.0	540600.0	1529.34	-423.21	-84.63	-103.70	-110.06	-116.41	-127.22	-135.48
323	433	232280.0	540300.0	1529.50	-429.57	-85.08	-104.21	-110.58	-116.96	-127.80	-136.09
324	434	232440.0	539400.0	1533.77	-431.35	-85.89	-105.07	-111.47	-117.37	-128.74	-137.06
325	435	232540.0	539960.0	1538.90	-432.81	-86.27	-105.52	-111.94	-118.35	-129.27	-137.61
326	436	232710.0	539440.0	1541.65	-433.97	-86.81	-106.10	-112.53	-118.96	-129.89	-138.25
327	437	232050.0	539930.0	1535.58	-431.86	-86.18	-105.41	-111.32	-118.23	-129.12	-137.46
328	438	234500.0	540420.0	1527.87	-429.70	-85.70	-104.93	-111.20	-117.58	-128.42	-136.70
329	439	234050.0	540710.0	1517.37	-426.91	-85.24	-104.23	-110.54	-116.89	-127.65	-135.87
330	440	234600.0	541700.0	1516.63	-426.31	-84.91	-103.78	-110.11	-116.44	-127.19	-135.42
331	441	235110.0	540630.0	1532.17	-429.45	-85.51	-104.70	-111.09	-117.49	-128.36	-136.67
332	442	235150.0	541190.0	1526.41	-428.49	-84.45	-103.96	-110.33	-116.70	-127.53	-135.81
333	443	235250.0	541650.0	1530.41	-428.76	-84.16	-103.31	-109.70	-116.08	-126.93	-135.23
334	444	235340.0	541170.0	1511.73	-424.12	-83.75	-102.67	-108.98	-115.28	-126.00	-134.20
335	445	234240.0	542060.0	1515.45	-424.16	-82.82	-101.77	-108.09	-114.40	-125.14	-133.35
336	446	233910.0	543390.0	1507.44	-422.27	-82.78	-101.64	-107.92	-114.21	-124.89	-133.66
337	447	233350.0	544170.0	1513.65	-423.57	-82.66	-101.59	-107.90	-114.21	-124.93	-133.14
338	448	232970.0	544370.0	1516.91	-424.21	-82.53	-101.50	-107.82	-114.14	-124.89	-133.11
339	449	232600.0	544590.0	1520.09	-424.70	-82.37	-101.37	-107.70	-114.04	-124.80	-133.04
340	450	231650.0	545050.0	1530.73	-426.62	-81.72	-100.35	-107.22	-113.60	-124.43	-132.72
341	451	221170.0	545260.0	1540.01	-426.14	-81.15	-100.39	-106.86	-113.22	-124.12	-132.45
342	452	230710.0	545510.0	1550.15	-429.45	-80.15	-99.51	-105.96	-112.42	-123.39	-131.78
343	453	230290.0	545650.0	1561.83	-431.17	-79.18	-98.66	-105.18	-111.68	-122.73	-131.13
344	454	229780.0	545360.0	1573.65	-433.02	-79.29	-97.92	-104.47	-111.01	-122.14	-130.65
345	455	229180.0	546090.0	1583.66	-434.64	-77.84	-97.39	-103.98	-110.56	-121.76	-130.32
346	456	228720.0	546410.0	1597.16	-436.97	-76.37	-96.79	-103.43	-110.07	-121.35	-129.95
347	457	228700.0	547110.0	1593.51	-435.89	-76.52	-96.50	-103.12	-109.74	-121.01	-129.62
348	458	228650.0	547950.0	1595.03	-435.50	-76.28	-96.17	-102.90	-109.43	-120.70	-129.32
349	459	227900.0	548200.0	1610.47	-438.24	-75.06	-95.13	-101.82	-106.51	-119.89	-128.58
350	460	227440.0	547730.0	1624.93	-441.15	-74.62	-94.87	-101.61	-108.36	-119.83	-128.60

GRAVIMETRIC SURVEY OF HAUT MOULOUYA IN MOROCCO

1978

STATION-NO	LATITUDE (Y)	LONGITUDE (X)	ALTITUDE	G.V.-S.V.	2.00	2.30	2.40	2.50	2.67	2.80	
NO.	METER	METER	METER	MGAL	MGAL	MGAL	MGAL	MGAL	MGAL	MGAL	
351	461	226890.0	547600.0	1639.06	-444.00	-74.28	-94.69	-101.50	-108.30	-119.87	-128.72
352	462	228720.0	545740.0	1593.97	-438.71	-77.31	-97.18	-103.81	-110.43	-121.69	-130.31
353	463	228620.0	545100.0	1595.41	-437.36	-77.63	-97.53	-104.16	-110.79	-122.06	-130.68
354	464	235920.0	544920.0	1484.30	-416.04	-81.75	-100.32	-106.51	-112.69	-123.22	-131.26
355	465	235770.0	545400.0	1498.61	-418.59	-80.98	-99.70	-105.95	-112.19	-122.80	-130.92
356	466	235960.0	545710.0	1517.44	-422.51	-80.76	-99.74	-106.07	-112.39	-123.15	-131.37
357	467	236030.0	546100.0	1512.36	-421.12	-80.56	-99.48	-105.79	-112.10	-122.82	-131.02
358	468	236380.0	546430.0	1490.72	-416.07	-80.35	-99.00	-105.22	-111.43	-122.00	-130.08
359	469	230180.0	542570.0	1539.98	-429.99	-82.94	-102.17	-108.58	-114.99	-125.88	-134.22
360	470	229590.0	542730.0	1551.43	-432.05	-82.41	-101.78	-108.23	-114.69	-125.66	-134.05
361	471	229060.0	542710.0	1566.09	-434.80	-81.77	-101.31	-107.83	-114.34	-125.41	-133.88
362	472	226570.0	542820.0	1581.04	-437.41	-80.98	-100.70	-107.27	-113.84	-125.02	-133.58
363	473	228400.0	543410.0	1610.64	-442.75	-79.53	-99.60	-106.30	-112.99	-124.36	-133.06
364	474	228150.0	543900.0	1609.06	-441.63	-79.37	-98.94	-105.63	-112.32	-123.70	-132.39
365	475	227640.0	544040.0	1624.89	-444.32	-78.05	-98.31	-105.07	-111.82	-123.31	-132.39
366	476	227370.0	544600.0	1633.72	-445.32	-76.99	-97.36	-104.15	-110.94	-122.49	-131.32
367	477	228090.0	545710.0	1587.77	-438.64	-80.90	-100.70	-107.29	-113.89	-125.11	-133.66
368	478	227890.0	545840.0	1586.72	-439.52	-81.80	-101.59	-108.18	-114.78	-126.00	-134.57
369	479	227650.0	540150.0	1564.90	-436.76	-83.94	-103.46	-109.96	-116.47	-127.53	-135.98
370	480	226990.0	540370.0	1598.85	-443.23	-82.72	-102.66	-109.31	-115.95	-127.25	-135.89
371	481	232600.0	546860.0	1526.48	-425.15	-81.27	-100.35	-106.71	-113.07	-123.88	-132.15
372	482	232020.0	547290.0	1537.54	-426.44	-80.04	-99.26	-105.66	-112.07	-122.95	-131.28
373	483	231460.0	547450.0	1545.35	-427.28	-79.10	-98.41	-104.85	-111.28	-122.22	-130.59
374	484	230990.0	547630.0	1550.85	-427.90	-78.45	-97.83	-104.28	-110.74	-121.72	-130.11
375	485	236340.0	542690.0	1458.59	-416.74	-83.53	-102.16	-103.37	-114.58	-125.13	-133.20
376	486	235910.0	542370.0	1504.22	-422.07	-83.36	-102.18	-108.45	-114.73	-125.39	-133.55
377	487	234100.0	542300.0	1493.39	-420.24	-83.38	-102.55	-108.78	-115.00	-125.59	-133.68
378	488	234090.0	541700.0	1503.05	-424.02	-84.40	-103.26	-109.55	-115.84	-126.53	-134.70
379	501	244310.0	543490.0	1501.67	-419.36	-81.40	-100.22	-106.49	-112.76	-123.43	-131.58
380	502	244410.0	543940.0	1509.25	-420.59	-80.95	-99.87	-106.18	-112.48	-123.20	-131.40
381	503	244530.0	544380.0	1507.65	-420.00	-80.70	-99.60	-105.90	-112.20	-122.90	-131.09
382	504	244330.0	544940.0	1501.45	-418.65	-80.74	-99.55	-105.82	-112.10	-122.76	-130.91
383	505	244220.0	545370.0	1506.40	-419.42	-80.45	-99.33	-105.63	-111.92	-122.62	-130.81
384	506	244030.0	545750.0	1502.67	-418.65	-80.49	-99.33	-105.61	-111.89	-122.56	-130.72
385	507	243800.0	546300.0	1502.79	-418.50	-80.31	-99.15	-105.43	-111.71	-122.33	-130.54
386	508	243510.0	54670.0	1501.23	-418.16	-80.31	-99.12	-105.40			

GRAVIMETRIC SURVEY OF HAUT MOULOUYA IN MOROCCO

1978

STATION-NO	LATITUDE (Y)	LONGITUDE (X)	ALTITUDE	S.V.-S.V.		2.00	2.30	2.40	2.50	2.67	2.80
				MGAL	MGAL	MGAL	MGAL	MGAL	MGAL		
NO.	METER	METER	METER								
401	243690.0	545090.0	1498.94	-418.31	-80.98	-99.77	-106.03	-112.29	-122.94	-131.06	
402	243150.0	545030.0	1496.35	-417.77	-81.03	-99.79	-106.04	-112.29	-122.92	-131.05	
403	243090.0	545000.0	1501.04	-418.66	-80.87	-99.69	-105.96	-112.23	-122.89	-131.05	
404	242620.0	546070.0	1490.36	-416.39	-80.95	-99.62	-105.84	-112.07	-122.65	-130.74	
405	242280.0	546300.0	1487.04	-415.63	-80.92	-99.54	-105.75	-111.96	-122.52	-130.59	
406	238500.0	546070.0	1454.01	-408.37	-81.47	-99.66	-105.73	-111.79	-122.10	-129.99	
407	238520.0	546490.0	1467.80	-411.67	-81.11	-99.47	-105.59	-111.71	-122.11	-130.07	
408	238320.0	546850.0	1470.95	-412.33	-81.15	-99.56	-105.70	-111.84	-122.27	-130.25	
409	238340.0	547260.0	1472.31	-412.55	-80.97	-99.41	-105.56	-111.71	-122.15	-130.14	
410	238510.0	547790.0	1478.04	-413.33	-80.58	-99.08	-105.25	-111.42	-121.91	-129.93	
411	238530.0	548260.0	1482.71	-413.91	-80.12	-98.68	-104.87	-111.06	-121.58	-129.62	
412	240910.0	544410.0	1487.86	-416.97	-82.02	-100.66	-106.03	-112.38	-122.82	-130.80	
413	240900.0	548720.0	1465.32	-411.61	-81.78	-99.91	-106.03	-112.15	-122.56	-130.52	
414	240630.0	546400.0	1470.67	-412.87	-81.75	-100.17	-106.31	-112.45	-122.89	-130.87	
415	240430.0	545960.0	1470.95	-412.87	-81.75	-100.17	-106.31	-112.45	-122.89	-130.87	
416	240600.0	545420.0	1465.74	-411.94	-81.93	-100.23	-106.40	-112.52	-122.91	-130.80	
417	24510.0	544930.0	1510.94	-419.90	-79.89	-98.83	-105.14	-111.46	-122.19	-130.40	
418	245930.0	544910.0	1515.05	-420.78	-79.74	-98.74	-105.07	-111.39	-122.15	-130.37	
419	245760.0	544370.0	1523.34	-422.59	-79.79	-98.89	-105.25	-111.62	-122.44	-130.71	
420	245760.0	543910.0	1516.00	-421.14	-80.00	-99.00	-105.34	-111.67	-122.44	-130.67	
421	245760.0	543450.0	1506.73	-419.14	-80.08	-98.96	-105.26	-111.55	-122.26	-130.44	
422	245760.0	542980.0	1486.56	-414.75	-80.17	-98.80	-105.01	-111.21	-121.77	-129.84	
423	245760.0	542520.0	1486.56	-414.75	-80.17	-98.80	-105.01	-111.21	-121.77	-129.84	
424	242590.0	545070.0	1485.48	-415.96	-81.41	-100.03	-106.24	-112.44	-123.00	-131.12	
424	242600.0	545050.0	1480.09	-414.80	-81.37	-100.21	-106.39	-112.57	-123.08	-131.12	
425	241580.0	545120.0	1475.90	-413.82	-81.61	-100.10	-106.26	-112.43	-122.90	-130.92	
426	245650.0	546740.0	1485.60	-413.90	-81.30	-98.21	-104.64	-110.62	-121.17	-129.24	
427	245350.0	547160.0	1486.50	-414.30	-79.79	-98.42	-104.64	-110.85	-121.41	-129.49	
428	240670.0	535880.0	1509.24	-425.35	-85.63	-104.54	-110.84	-117.14	-127.85	-136.05	
429	240810.0	535380.0	1514.40	-426.48	-85.55	-104.52	-110.84	-117.16	-127.91	-136.13	
430	240800.0	534850.0	1515.52	-427.05	-85.83	-104.80	-111.12	-117.45	-128.19	-136.42	
431	240800.0	534420.0	1518.42	-427.08	-85.19	-104.19	-110.53	-116.86	-127.63	-135.87	
432	241110.0	534040.0	1523.16	-429.00	-95.05	-104.12	-110.47	-116.83	-127.63	-135.89	
433	241420.0	533630.0	1530.66	-429.39	-84.75	-103.90	-110.29	-116.67	-127.53	-135.83	
434	241760.0	533270.0	1538.72	-430.62	-84.19	-103.45	-109.87	-116.29	-127.21	-135.55	
435	242230.0	533060.0	1553.85	-433.37	-83.50	-102.95	-109.43	-115.92	-126.94	-135.36	
436	242660.0	532870.0	1579.35	-438.39	-82.82	-102.62	-109.22	-115.82	-127.03	-135.61	
437	243090.0	532650.0	1610.00	-444.23	-81.96	-102.13	-109.85	-115.57	-127.00	-135.74	
437	243250.0	532370.0	1624.87	-447.16	-81.36	-101.71	-108.49	-115.28	-126.80	-135.62	
438	244040.0	531940.0	1610.13	-443.34	-80.86	-101.04	-107.76	-114.48	-125.91	-134.65	
439	244166.0	531500.0	1611.96	-443.67	-80.51	-100.65	-107.36	-114.08	-125.49	-134.22	
441	244930.0	529510.0	1607.43	-442.19	-79.54	-99.55	-106.22	-112.89	-124.23	-132.90	
442	244610.0	529850.0	1592.13	-439.37	-79.99	-99.79	-106.38	-112.98	-124.20	-132.77	
443	244290.0	530210.0	1576.54	-436.39	-80.94	-100.60	-107.16	-113.71	-124.85	-133.37	
444	244230.0	529620.0	1572.61	-435.75	-81.35	-100.98	-107.16	-113.71	-124.85	-133.37	
445	243280.0	529360.0	1629.83	-448.38	-81.60	-102.02	-108.84	-115.65	-127.23	-136.08	
446	243040.0	529630.0	1611.74	-445.07	-82.31	-102.50	-109.23	-115.96	-127.40	-136.15	
447	242800.0	529970.0	1611.48	-445.40	-82.67	-102.86	-109.58	-116.31	-127.75	-136.50	
448	242500.0	530240.0	1610.93	-445.47	-82.90	-103.09	-109.83	-116.56	-128.00	-136.75	
449	242260.0	530530.0	1609.27	-444.47	-83.22	-103.34	-110.04	-116.75	-128.15	-136.87	
450	242040.0	530870.0	1596.36	-442.69	-83.45	-103.46	-110.13	-116.80	-128.14	-136.81	

GRAVIMETRIC SURVEY OF HAUT MOULOUYA IN MOROCCO

1978

STATION-NO	LATITUDE (Y)	LONGITUDE (X)	ALTITUDE	S.V.-S.V.		2.00	2.30	2.40	2.50	2.67	2.80
				MGAL	MGAL	MGAL	MGAL	MGAL	MGAL		
NO.	METER	METER	METER								
451	241840.0	531190.0	1590.63	-441.71	-83.76	-103.70	-110.34	-116.99	-128.29	-136.93	
452	241520.0	531510.0	1579.33	-439.33	-84.29	-104.09	-110.69	-117.99	-128.51	-137.09	
453	241220.0	531940.0	1568.29	-437.72	-84.76	-104.42	-110.97	-117.52	-128.65	-137.17	
454	241040.0	531560.0	1573.25	-439.13	-85.05	-104.76	-111.34	-117.91	-129.08	-137.62	
455	240910.0	531240.0	1584.06	-441.70	-85.21	-105.07	-111.68	-118.30	-129.55	-138.15	
456	240560.0	530920.0	1570.16	-439.05	-85.70	-105.37	-111.93	-118.49	-129.64	-138.16	
457	240160.0	530670.0	1531.20	-432.15	-87.26	-106.40	-112.78	-119.17	-130.01	-138.31	
458	239740.0	530250.0	1545.64	-435.66	-87.84	-106.98	-113.42	-119.87	-130.83	-139.21	
459	239370.0	532830.0	1530.77	-432.33	-87.78	-106.96	-113.35	-119.84	-130.81	-139.21	
460	239890.0	532570.0	1548.07	-435.95	-88.98	-108.36	-115.91	-119.27	-130.25	-138.64	
461	240200.0	532390.0	1553.78	-437.22	-88.41	-108.99	-112.46	-118.97	-130.04	-138.50	
462	240680.0	532160.0	1559.76	-437.96	-85.59	-105.21	-111.75	-118.29	-129.41	-137.91	
463	240590.0	531670.0	1545.03	-437.13	-85.83	-105.39	-111.92	-118.44	-129.52	-138.00	
464	240480.0	532300.0	1546.40	-433.94	-85.76	-105.13	-111.59	-118.04	-129.02	-137.41	
465	240420.0	533290.0	1536.07	-431.81	-86.04	-105.28	-111.69	-118.11	-129.01	-137.35	
466	245500.0	539440.0	1469.72	-412.35	-81.45	-99.85	-105.98	-112.11	-122.54	-130.51	
467	245890.0	539130.0	1480.83	-414.48	-81.16	-99.71	-105.89	-112.08	-122.59	-130.63	
468	246160.0	538650.0	1491.74	-414.71	-81.15	-99.71	-105.99	-112.08	-122.59	-130.64	
469	246450.0	539220.0	1502.19	-418.75	-80.57	-99.40	-105.67	-111.95	-122.61	-130.77	
470	246760.0	537780.0	1510.32	-420.52	-80.56	-99.50	-105.81	-112.12	-122.84	-131.04	
471	247070.0	537230.0	1515.02	-421.38	-80.34	-99.32	-105.64	-111.97	-122.72	-130.94	
472	246660.0	536650.0	1530.53	-424.31	-80.31	-99.48	-105.87	-112.26	-123.13	-131.44	
473	246350.0	536450.0	1534.02	-425.85	-80.29	-99.50	-105.90	-112.30	-123.18	-131.51	
474	246010.0	536000.0	1550.54	-429.10	-80.05	-99.47	-105.94	-112.42	-123.42	-131.83	
475	245800.0	535640.0	1578.53	-435.23	-79.93	-99.71	-106.30	-112.89	-124.10	-132.67	
476	245530.0	535220.0	1593.38	-439.01	-79.84	-99.81	-106.47	-113.13	-124.45	-133.11	
477	245090.0	534760.0	1599.27	-440.95	-80.32	-100.35	-107.02	-113.70	-125.05	-133.73	
478	244600.0	534510.0	1601.94	-445.45	-80.21	-100.52	-107.30	-114.07	-125.58	-134.38	
479	244100.0	534510.0	1601.94	-445.45	-80.21	-100.52	-107.30	-114.07	-125.58	-134.38	
480	243610.0	534200.0	1601.94	-445.45	-80.21	-100.52	-107.30	-114.07	-125.58	-134.38	
481	243340.0	534050.0	1599.52	-443.30	-81.50	-101.48	-108.14	-114.81	-126.13		

GRAVIMETRIC SURVEY OF HAUT MOULOUYA IN MOROCCO

1978

STATION-NO	LATITUDE (Y)	LONGITUDE (X)	ALTITUDE	G.V.-S.V.		2.00	2.30	2.40	2.50	2.67	2.80
				MGAL	MGAL	MGAL	MGAL	MGAL	MGAL		
NO.	METER	METER	METER	MGAL	MGAL	MGAL	MGAL	MGAL	MGAL	MGAL	MGAL
501	674	245210.0	532790.0	1626.27	-445.67	-79.45	-99.79	-105.57	-113.35	-124.88	-133.69
502	675	245260.0	532890.0	1642.50	-443.79	-79.04	-99.61	-106.47	-113.32	-124.98	-133.89
503	676	245740.0	533390.0	1647.18	-449.74	-79.04	-99.68	-106.56	-113.44	-125.14	-134.09
504	677	246070.0	533680.0	1622.21	-451.27	-79.08	-99.39	-106.16	-112.93	-124.44	-133.24
505	678	245970.0	533030.0	1656.16	-451.32	-78.64	-98.41	-106.33	-113.25	-125.01	-134.01
506	679	245950.0	532500.0	1667.30	-453.59	-78.38	-99.23	-106.25	-113.21	-125.06	-134.11
507	680	245950.0	532070.0	1674.99	-454.96	-78.03	-99.02	-106.02	-113.02	-124.92	-134.01
508	681	245990.0	531290.0	1671.19	-454.06	-77.96	-98.93	-105.91	-112.89	-124.76	-133.84
509	682	246100.0	531290.0	1666.94	-453.16	-78.06	-98.96	-105.92	-112.89	-124.73	-133.79
510	683	246400.0	531090.0	1662.54	-451.34	-77.74	-98.58	-105.53	-112.43	-124.29	-133.32
511	684	246740.0	530670.0	1660.40	-450.77	-77.12	-97.93	-104.87	-111.81	-123.61	-132.63
512	685	247060.0	529290.0	1656.25	-449.55	-76.81	-97.57	-104.49	-111.41	-123.17	-132.17
513	686	244300.0	539770.0	1566.40	-420.63	-81.61	-100.48	-106.77	-113.06	-123.75	-131.93
514	687	244520.0	538440.0	1509.06	-420.92	-81.44	-100.33	-106.62	-112.92	-123.62	-131.80
515	688	244700.0	539060.0	1516.75	-422.33	-81.47	-100.47	-106.81	-113.14	-123.91	-132.15
516	689	244820.0	537670.0	1524.85	-424.56	-81.34	-100.44	-106.61	-113.19	-124.01	-132.28
517	690	244920.0	537160.0	1524.34	-424.53	-81.38	-100.47	-106.61	-113.19	-124.01	-132.28
518	691	245150.0	536750.0	1543.42	-428.45	-81.06	-100.39	-106.62	-113.14	-124.00	-132.66
519	692	245320.0	536300.0	1559.57	-431.50	-80.59	-100.12	-106.62	-113.13	-124.99	-132.92
520	693	245700.0	534180.0	1645.14	-449.24	-80.49	-99.57	-106.44	-113.31	-124.99	-133.96
521	694	241140.0	532540.0	1553.62	-434.25	-84.49	-103.94	-110.42	-116.91	-127.93	-136.08
522	695	242260.0	531320.0	1575.31	-434.25	-84.49	-103.94	-110.42	-116.91	-127.93	-136.08
523	696	242550.0	531500.0	1594.52	-433.26	-83.27	-102.73	-109.21	-115.70	-126.73	-135.16
524	697	240810.0	529700.0	1525.22	-429.96	-86.06	-105.08	-111.41	-117.75	-128.53	-136.77
525	698	240480.0	529590.0	1523.20	-429.96	-86.07	-105.72	-112.06	-118.40	-129.18	-137.42
526	701	243660.0	529590.0	1633.34	-468.56	-80.72	-101.15	-107.96	-114.77	-126.35	-135.20
527	702	243670.0	528200.0	1621.74	-446.30	-80.74	-100.97	-107.72	-114.44	-125.93	-134.70
528	703	243770.0	527890.0	1613.33	-443.18	-79.44	-99.56	-106.27	-112.97	-124.33	-133.09
529	704	243930.0	527590.0	1616.74	-443.51	-79.01	-99.17	-105.90	-112.62	-124.04	-133.01
530	705	244110.0	527300.0	1624.31	-444.39	-78.90	-99.19	-105.95	-112.72	-124.02	-133.01
531	706	244260.0	527020.0	1634.06	-446.18	-78.03	-98.45	-105.22	-112.06	-123.64	-132.48
532	707	244430.0	526850.0	1657.84	-451.52	-77.64	-98.53	-105.42	-112.32	-124.04	-133.62
533	706	244470.0	526250.0	1690.41	-459.44	-77.38	-98.47	-105.81	-113.06	-125.40	-134.83
534	709	244700.0	525830.0	1738.89	-468.28	-76.78	-98.55	-105.81	-113.06	-125.40	-134.83
535	710	245980.0	525400.0	1605.71	-441.08	-77.81	-97.72	-104.33	-110.95	-122.19	-130.79
536	711	246060.0	527500.0	1615.29	-443.03	-77.45	-97.62	-104.27	-110.93	-122.24	-130.85
537	712	246190.0	527440.0	1628.41	-445.18	-77.45	-97.62	-104.27	-110.93	-122.24	-130.85
538	713	242660.0	526480.0	1613.93	-445.20	-80.39	-100.37	-107.03	-113.69	-125.02	-133.68
539	714	242500.0	526790.0	1606.52	-443.56	-80.92	-100.87	-107.52	-114.17	-125.48	-134.13
540	715	242510.0	527190.0	1606.29	-439.67	-82.63	-102.23	-109.82	-115.35	-126.46	-134.90
541	716	242500.0	527840.0	1565.03	-436.50	-82.72	-102.10	-108.56	-115.02	-126.00	-134.40
542	717	242500.0	527940.0	1547.91	-433.72	-83.93	-103.11	-109.51	-115.90	-126.78	-135.09
543	718	242500.0	528240.0	1546.84	-432.86	-83.97	-103.24	-109.67	-115.09	-127.01	-135.36
544	719	241880.0	528470.0	1537.47	-431.30	-84.48	-103.62	-110.00	-116.39	-127.23	-135.53
545	720	241440.0	528760.0	1533.69	-430.78	-85.02	-104.16	-110.53	-116.91	-127.75	-136.04
546	721	243640.0	527910.0	1513.46	-433.22	-92.32	-111.25	-117.56	-123.87	-134.59	-142.80
547	722	246510.0	527490.0	1521.36	-434.26	-91.04	-110.67	-117.01	-123.36	-134.14	-142.26
548	723	246660.0	526780.0	1536.87	-437.06	-91.00	-110.22	-116.63	-123.04	-133.83	-142.26
549	724	246360.0	526310.0	1558.00	-441.89	-91.00	-110.49	-116.99	-123.46	-134.52	-142.97
550	725	246700.0	525950.0	1500.13	-449.14	-83.36	-108.39	-115.57	-122.25	-133.60	-142.28

GRAVIMETRIC SURVEY OF HAUT MOULOUYA IN MOROCCO

1978

STATION-NO	LATITUDE (Y)	LONGITUDE (X)	ALTITUDE	G.V.-S.V.		2.00	2.30	2.40	2.50	2.67	2.80
				MGAL	MGAL	MGAL	MGAL	MGAL	MGAL		
NO.	METER	METER	METER	MGAL	MGAL	MGAL	MGAL	MGAL	MGAL	MGAL	MGAL
551	726	237200.0	525720.0	1515.78	-451.62	-87.17	-107.43	-114.19	-120.95	-132.43	-141.21
552	727	237700.0	525380.0	1638.39	-455.03	-86.11	-106.61	-115.44	-120.28	-131.89	-140.78
553	728	233090.0	525870.0	1572.05	-448.53	-94.85	-114.37	-120.94	-127.50	-138.66	-147.19
554	729	233480.0	526710.0	1558.01	-445.23	-94.42	-113.92	-120.42	-126.92	-137.97	-146.42
555	730	233830.0	526450.0	1554.09	-442.29	-94.37	-113.66	-120.08	-126.51	-137.44	-145.80
556	731	234090.0	526100.0	1538.14	-440.98	-94.57	-113.81	-120.23	-126.64	-137.54	-145.88
557	732	234560.0	526100.0	1515.66	-436.16	-94.66	-113.59	-119.90	-126.21	-136.94	-145.15
558	733	234800.0	526520.0	1509.34	-435.35	-94.85	-113.65	-119.91	-126.18	-136.83	-144.97
559	734	237030.0	527590.0	1521.64	-433.76	-91.09	-110.13	-116.48	-122.82	-133.61	-141.86
560	735	237510.0	527360.0	1527.60	-434.01	-89.87	-108.96	-115.32	-121.69	-132.50	-140.78
561	736	238050.0	527130.0	1546.78	-437.36	-88.81	-107.90	-114.33	-120.76	-131.69	-140.04
562	737	238590.0	527100.0	1568.07	-441.07	-87.26	-106.80	-113.31	-119.81	-130.87	-139.33
563	738	239720.0	526560.0	1690.99	-463.18	-82.45	-103.61	-110.67	-117.72	-129.72	-138.89
564	801	232170.0	527260.0	1582.99	-451.26	-94.94	-114.77	-121.38	-127.99	-139.23	-147.82
565	802	231720.0	527520.0	1584.02	-452.02	-95.47	-115.31	-121.92	-128.54	-139.78	-148.38
566	803	231340.0	527790.0	1592.67	-453.68	-95.37	-115.32	-121.97	-128.62	-139.92	-148.57
567	804	230890.0	528120.0	1602.31	-455.86	-95.12	-115.18	-121.86	-128.55	-139.91	-148.61
568	805	230280.0	528100.0	1606.63	-456.85	-95.18	-115.30	-122.01	-128.72	-140.12	-148.84
569	806	229720.0	527970.0	1611.88	-457.36	-95.03	-115.21	-121.94	-128.67	-140.11	-148.84
570	807	229210.0	527900.0	1623.66	-460.37	-94.86	-115.20	-121.97	-128.75	-140.28	-149.09
571	808	228700.0	527820.0	1635.34	-462.77	-94.51	-114.99	-121.82	-128.65	-140.26	-149.14
572	809	228160.0	527680.0	1647.56	-464.82	-93.93	-114.56	-121.44	-128.32	-140.01	-148.95
573	810	227630.0	527600.0	1658.62	-466.94	-93.55	-114.32	-121.25	-128.17	-139.94	-148.94
574	811	227040.0	527650.0	1664.80	-467.70	-92.94	-113.79	-120.74	-127.69	-139.50	-148.54
575	812	226960.0	528560.0	1599.47	-454.37	-94.80	-114.83	-121.50	-128.18	-139.53	-148.21
576	813	229480.0	528900.0	1622.75	-458.64	-93.35	-113.67	-120.45	-127.22	-138.74	-147.55
577	814	229020.0	529110.0	1621.49	-459.63	-93.62	-113.92	-120.69	-127.46	-138.96	-147.76
578	815	228430.0	529430.0	1653.56	-464.90	-92.59	-113.28	-120.18	-127.08	-138.81	-147.78
579	816	228000.0	529780.0	1667.60	-466.30	-91.38	-112.23	-119.18	-126.14	-137.97	-147.01
580	817	227340.0	529930.0	1663.70	-464.91	-90.15	-110.95	-117.89	-124.82	-136.61	-145.62
581	818	228310.0	530160.0	1654.59	-464.11	-91.55	-112.26	-119.16	-126.06	-137.80	-146.77
582	819	226750.0	530470.0	1635.65	-460.35	-92.07	-111.54	-119.37	-126.19	-137.79	-146.66
583	820	229170.0	530780.0	1625.95	-458.28	-92.18	-112.54	-119.32	-126.11	-137.64	-146.46
584	821	229530.0	531270.0	1621.73	-457.65	-92.53	-112.83	-119.59	-126.36	-137.87	-146.66
585	822	226230.0	533480.0	1695.53	-465.93	-84.14	-109.37	-112.4			

BOUGUER ANOMALIES FOR SIX DENSITIES

HESEO 76

GRAVIMETRIC SURVEY OF HAUT MOULOUYA IN MOROCCO

1978

STATION-NO	LATITUDE (Y)	LONGITUDE (X)	ALTITUDE	S.V.-S.V.	2.00	2.30	2.40	2.50	2.67	2.80	
NO.	METER	METER	METER	MGAL	MGAL	MGAL	MGAL	MGAL	MGAL	MGAL	
601	838	233310.0	530130.0	1546.99	-442.57	-94.01	-113.34	-119.78	-126.23	-137.18	-145.55
602	835	232950.0	529650.0	1551.82	-443.65	-94.09	-113.49	-119.96	-126.42	-137.41	-145.82
603	840	232540.0	529400.0	1559.80	-445.63	-94.42	-113.94	-120.44	-126.95	-138.01	-146.47
604	841	232210.0	529410.0	1563.21	-446.56	-94.58	-114.15	-120.67	-127.19	-136.27	-146.75
605	842	231740.0	529690.0	1577.52	-449.38	-94.72	-114.47	-121.05	-127.63	-138.83	-147.38
606	843	231200.0	530040.0	1598.94	-454.53	-94.51	-114.52	-121.19	-127.86	-139.20	-147.87
607	844	230570.0	530440.0	1602.93	-455.21	-94.38	-114.43	-121.12	-127.81	-139.18	-147.88
608	845	230540.0	530860.0	1590.29	-453.92	-94.04	-113.95	-120.56	-127.22	-138.50	-147.13
609	846	230240.0	531210.0	1601.83	-457.06	-94.26	-113.31	-119.99	-126.67	-138.04	-146.72
610	847	230030.0	531710.0	1614.16	-456.15	-92.66	-112.80	-119.59	-126.32	-137.76	-146.51
611	848	229950.0	532220.0	1626.15	-458.24	-91.98	-112.31	-119.09	-125.87	-137.39	-146.20
612	849	229570.0	532630.0	1633.46	-459.10	-91.28	-111.72	-118.54	-125.35	-136.94	-145.79
613	850	229410.0	533030.0	1623.95	-457.45	-90.64	-111.02	-117.82	-124.61	-136.16	-145.00
614	851	229190.0	533560.0	1679.52	-466.72	-88.41	-109.41	-116.41	-123.41	-135.31	-144.41
615	852	228450.0	534000.0	1679.46	-465.71	-87.54	-108.55	-115.56	-122.56	-134.47	-143.58
616	853	228110.0	534440.0	1679.49	-464.75	-86.56	-107.59	-114.60	-121.60	-133.51	-142.62
617	854	227440.0	534820.0	1673.92	-462.27	-85.30	-106.24	-113.22	-120.20	-132.06	-141.14
618	855	227130.0	535200.0	1669.06	-461.00	-85.01	-105.87	-112.83	-119.78	-131.60	-140.64
619	856	234450.0	531690.0	1532.57	-439.50	-93.45	-112.68	-119.07	-125.47	-136.35	-144.86
620	857	234220.0	532050.0	1541.44	-440.19	-93.19	-112.50	-118.93	-125.37	-136.31	-144.87
621	858	234090.0	532570.0	1551.03	-442.31	-93.17	-112.60	-119.07	-125.55	-136.56	-144.97
622	859	233410.0	532590.0	1556.43	-443.30	-92.93	-112.42	-118.92	-125.41	-136.46	-144.91
623	860	232910.0	532560.0	1559.76	-444.04	-92.91	-112.44	-118.95	-125.46	-136.53	-144.94
624	861	232450.0	532290.0	1564.17	-445.13	-92.99	-112.53	-119.10	-125.63	-136.73	-145.22
625	862	232540.0	533040.0	1551.54	-442.49	-92.99	-112.64	-119.12	-125.59	-136.60	-145.02
626	863	233200.0	533520.0	1551.01	-442.49	-93.21	-112.64	-119.12	-125.44	-136.44	-144.85
627	864	23230.0	534500.0	1560.36	-442.95	-92.48	-111.97	-119.44	-124.76	-136.00	-144.44
628	865	23250.0	534530.0	1575.30	-445.93	-91.16	-110.89	-117.46	-124.03	-135.21	-143.75
629	866	23260.0	535320.0	1591.91	-448.85	-90.33	-110.24	-116.87	-123.51	-134.79	-143.42
630	867	23160.0	535780.0	1592.23	-446.26	-89.69	-109.61	-116.25	-122.89	-134.18	-142.81
631	868	23150.0	536290.0	1594.77	-447.37	-88.69	-108.64	-115.26	-121.93	-133.23	-141.88
632	869	231650.0	536370.0	1585.46	-445.18	-88.16	-108.00	-114.61	-121.23	-132.47	-141.07
633	870	231450.0	530540.0	1550.27	-442.57	-93.50	-112.91	-119.37	-125.84	-136.83	-145.24
634	871	231110.0	530160.0	1579.20	-443.74	-93.16	-112.92	-119.51	-126.10	-137.30	-145.86
635	872	233450.0	528420.0	1588.43	-451.14	-93.49	-113.37	-120.00	-126.62	-137.89	-146.50
636	873	233090.0	528730.0	1572.82	-448.10	-93.99	-113.67	-120.23	-126.79	-137.94	-146.47
637	874	231080.0	531360.0	1581.22	-450.01	-94.02	-113.82	-120.42	-127.02	-138.23	-146.81
638	875	231370.0	531730.0	1576.75	-448.95	-93.86	-113.60	-120.18	-126.76	-137.95	-146.50
639	876	234880.0	528570.0	1632.07	-459.61	-92.05	-112.45	-119.26	-126.07	-137.63	-146.46
640	877	235000.0	529090.0	1621.07	-457.14	-92.20	-112.50	-119.27	-126.03	-137.54	-146.33
641	878	229760.0	533150.0	1619.26	-455.97	-91.36	-111.62	-118.38	-125.13	-136.62	-145.40
642	879	230220.0	533260.0	1616.97	-453.75	-91.39	-111.62	-118.38	-125.13	-136.62	-145.40
643	880	230820.0	533910.0	1615.50	-455.36	-91.56	-111.77	-118.51	-125.25	-136.70	-145.46
644	881	231310.0	534010.0	1603.61	-452.96	-91.78	-111.83	-118.52	-125.20	-136.57	-145.25
645	882	231690.0	534450.0	1586.59	-446.93	-91.62	-111.47	-118.09	-124.70	-135.95	-144.55
646	883	233690.0	534520.0	1551.37	-441.35	-92.03	-111.50	-117.97	-124.44	-135.45	-143.86
647	884	233500.0	534530.0	1540.44	-438.91	-92.09	-111.36	-117.81	-124.23	-135.16	-143.52
648	885	233970.0	534550.0	1533.11	-437.17	-92.03	-111.22	-117.62	-124.02	-134.90	-143.21
649	886	234440.0	534950.0	1526.32	-435.47	-91.86	-110.95	-117.35	-123.72	-134.55	-142.83

BOUGUER ANOMALIES FOR SIX DENSITIES

HESEO 77

GRAVIMETRIC SURVEY OF HAUT MOULOUYA IN MOROCCO

1978

STATION-NO	LATITUDE (Y)	LONGITUDE (X)	ALTITUDE	S.V.-S.V.	2.00	2.30	2.40	2.50	2.67	2.80	
NO.	METER	METER	METER	MGAL	MGAL	MGAL	MGAL	MGAL	MGAL	MGAL	
851	20015	254920.0	540200.0	1522.65	-419.03	-75.97	-94.99	-101.34	-107.68	-118.46	-126.70
852	2001	254520.0	540200.0	1522.85	-419.00	-75.94	-94.96	-101.30	-107.65	-118.43	-126.67
853	2002	240190.0	528130.0	1608.67	-447.63	-85.46	-105.62	-112.34	-119.05	-130.47	-139.20
854	20023	240190.0	528130.0	1608.67	-447.61	-85.47	-105.61	-112.33	-119.04	-130.45	-139.18
855	20035	226830.0	539750.0	1558.13	-436.13	-84.78	-104.20	-110.68	-117.15	-128.16	-136.56
856	2003	226830.0	539790.0	1558.13	-436.09	-84.74	-104.17	-110.64	-117.12	-128.12	-136.54
857	20045	234950.0	549320.0	1542.95	-427.65	-80.21	-99.52	-105.95	-112.39	-123.33	-131.65
858	2004	234990.0	549320.0	1542.95	-427.62	-80.19	-99.49	-105.93	-112.36	-123.31	-131.67

Table II--10 Photographs

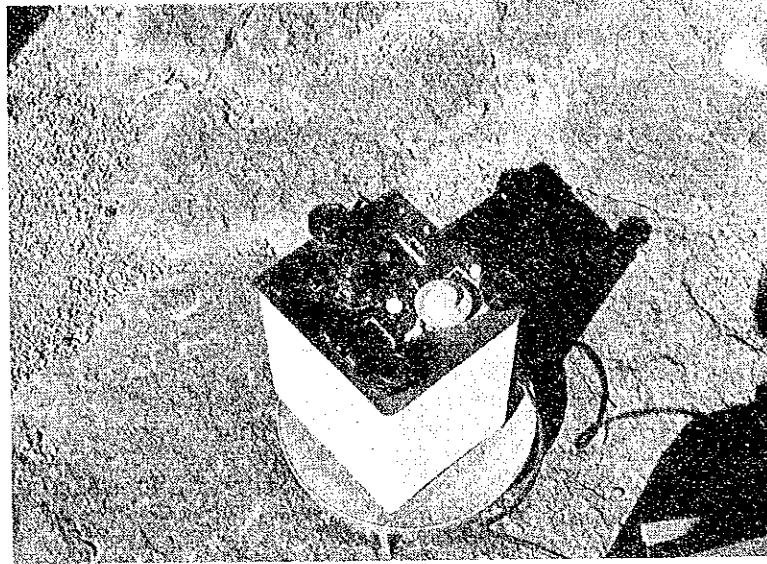


Photo. 1 Gravity Meter
La Coste & Romberg G-366

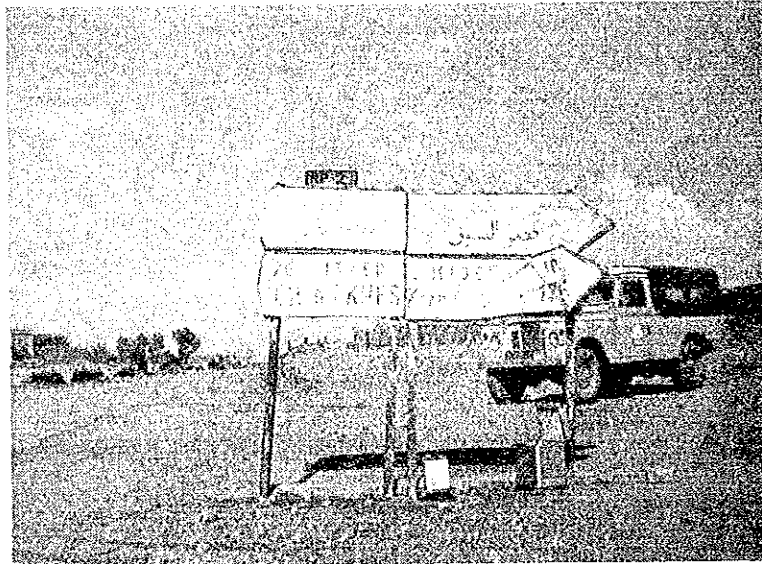


Photo. 2 Standard Base Station B-7

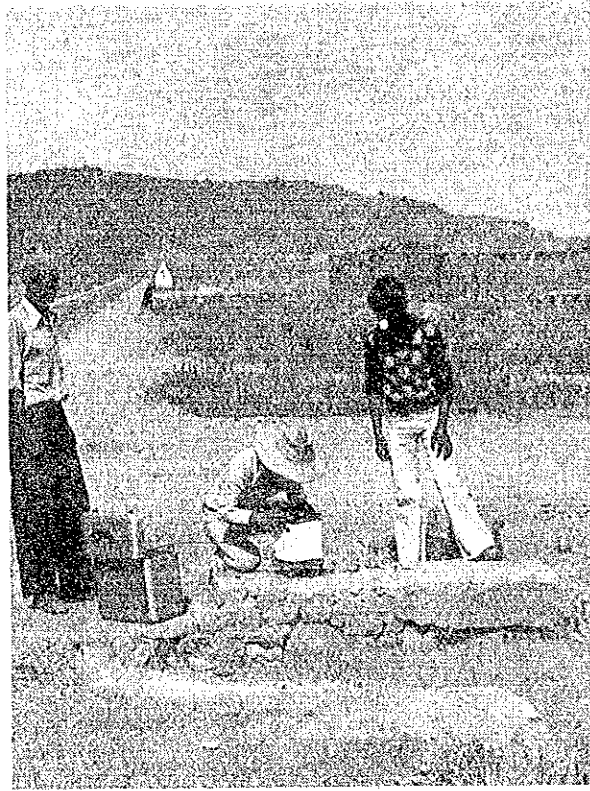


Photo. 3 Gravity Observation at
Sub-base Station No.2002

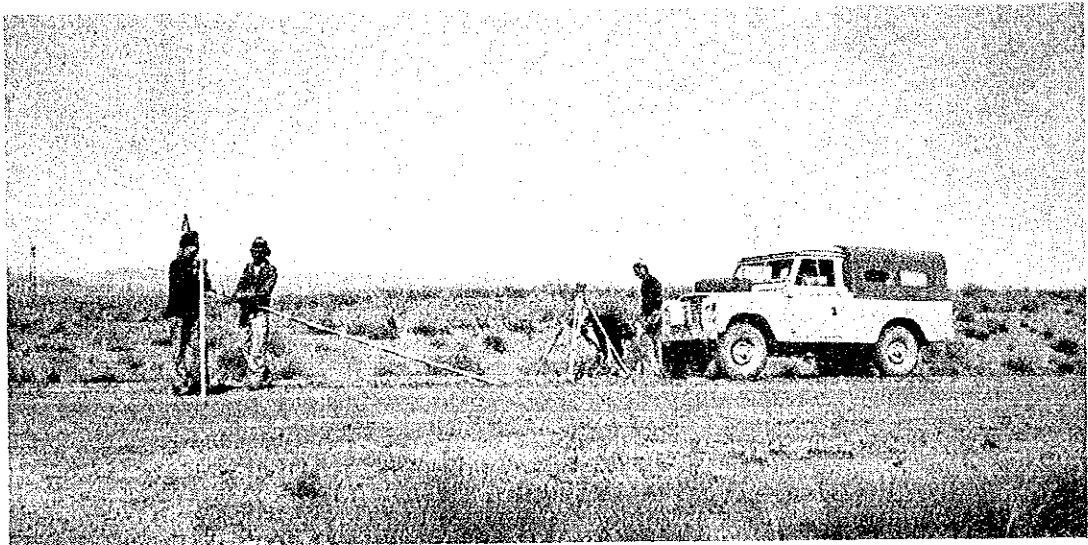


Photo. 4 Preparation of Leveling Survey

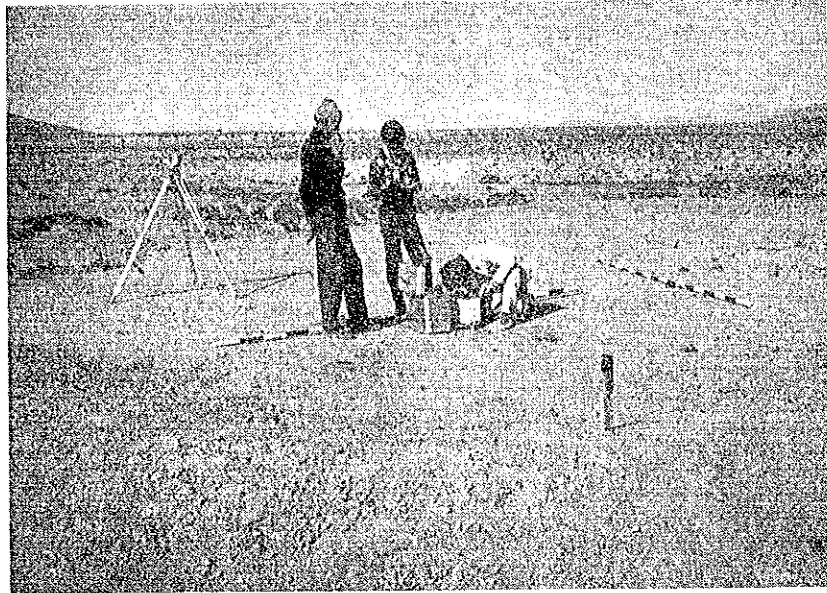


Photo. 5 Gravity Survey and Leveling
Survey

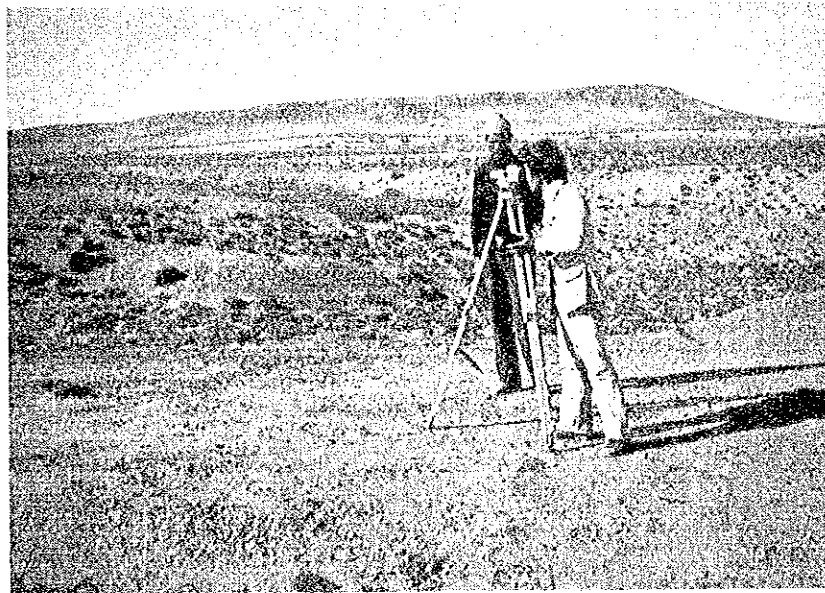


Photo. 6 Measurement of Station Elevation
by B-2 Automatic Levelmeter

