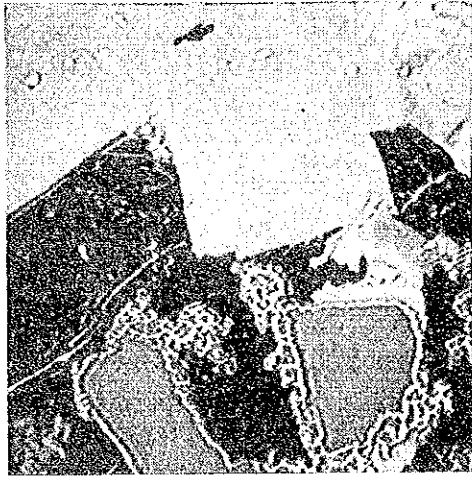


Table I—9 Photomicrographs of X-ray microanalysis



Absorbed electron image

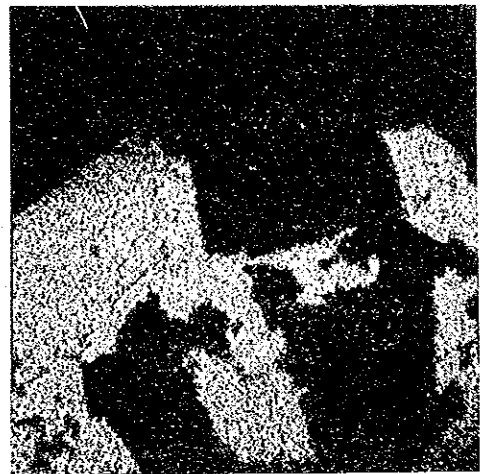


Ca X-ray image

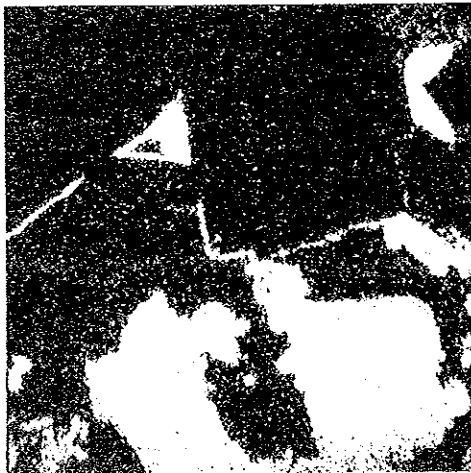
330 μ



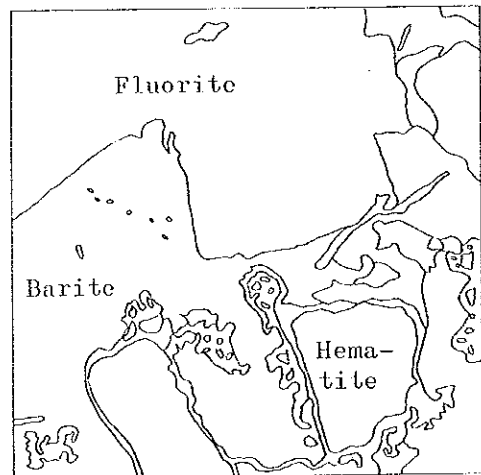
Ba X-ray image



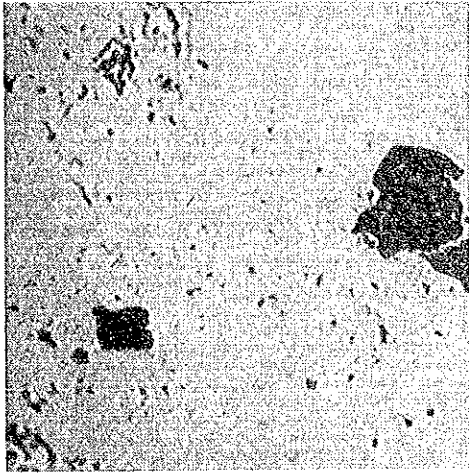
S X-ray image



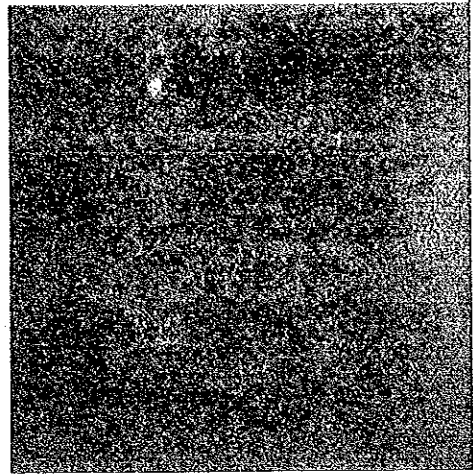
Fe X-ray image



Sample No. 1D15
Accelerating voltage: 25KV
Absorbed electron current: 0.2 μ A
Magnification: X300

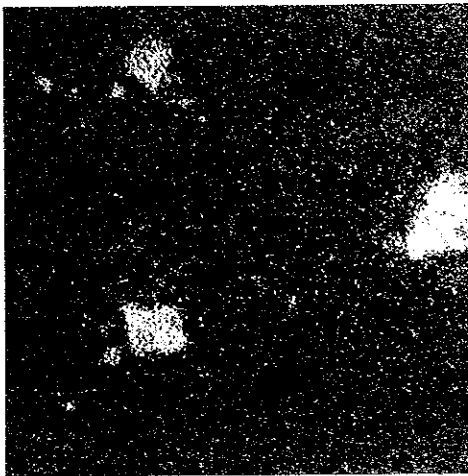


Absorbed electron image

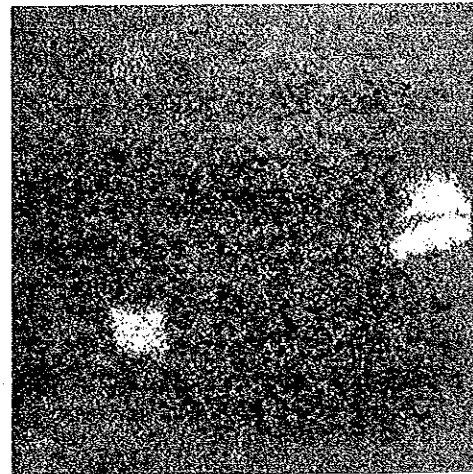


Pb X-ray image

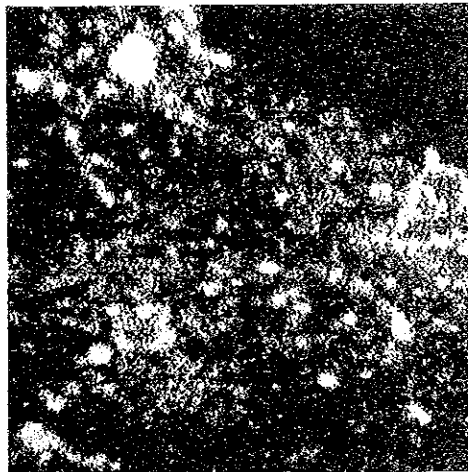
160 μ



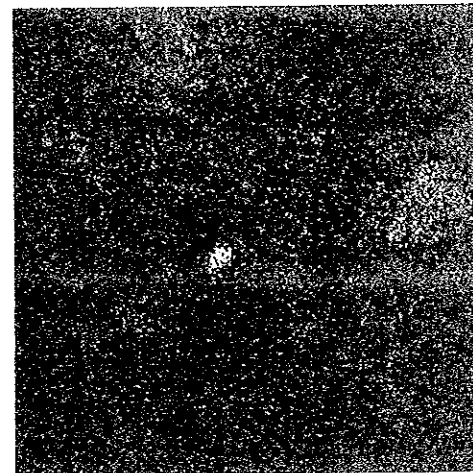
V X-ray image



U X-ray image

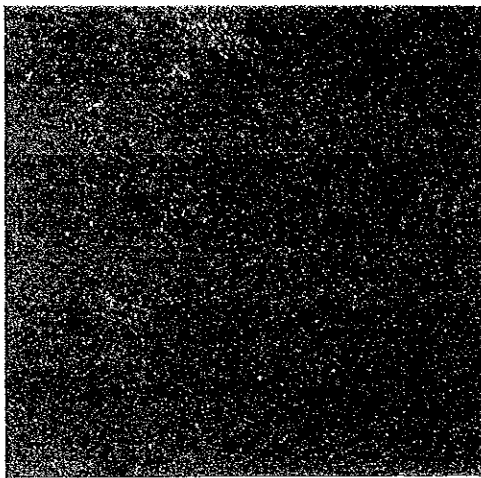


Fe X-ray image

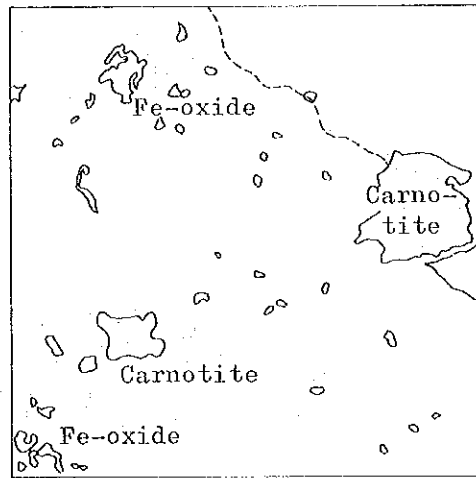


K X-ray image

Sample No. 2A13
Accelerating voltage: 25KV
Absorbed electron current: $0.2 \mu A$
Magnification: X600



600 μ

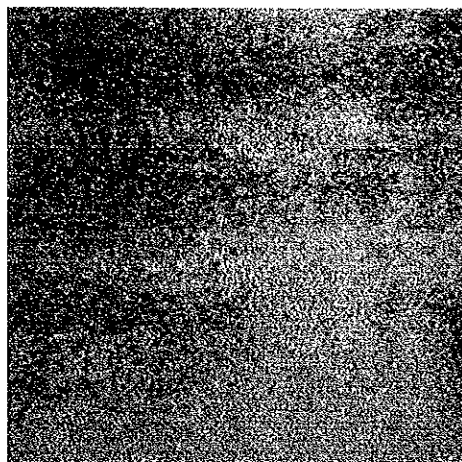


Ca X-ray image

Sample No. 2A13
Accelerating voltage: 25KV
Absorbed electron current: 0.2 μ A
Magnification: X600

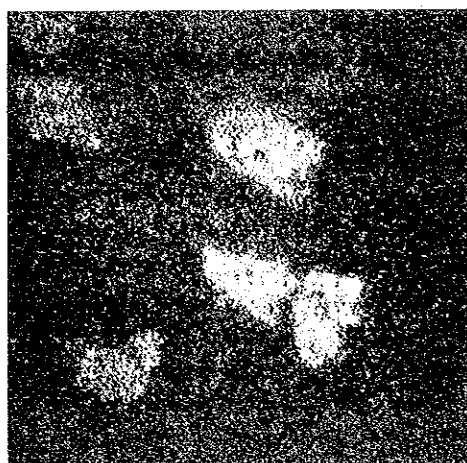


Absorbed electron image

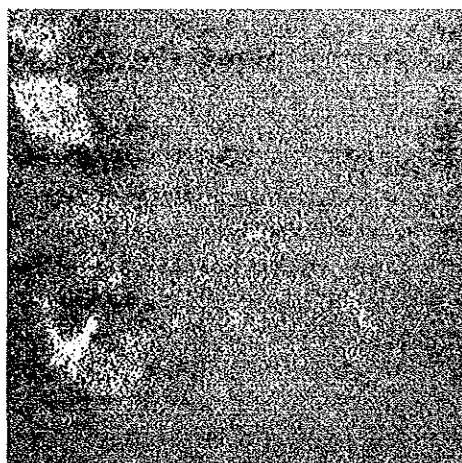


Pb X-ray image

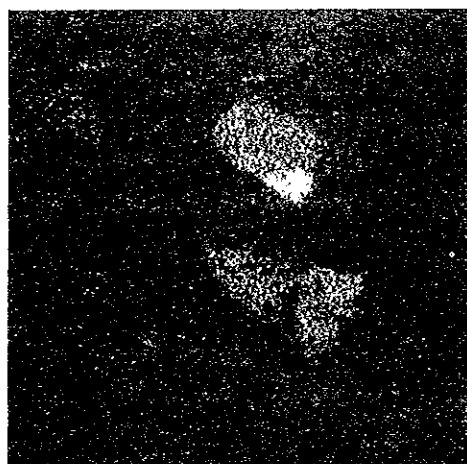
160 μ



U X-ray image



V X-ray image

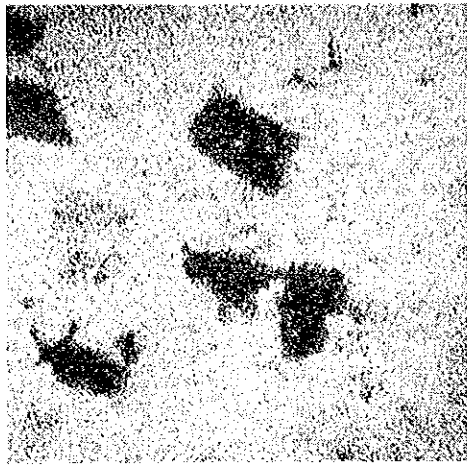


Ca X-ray image



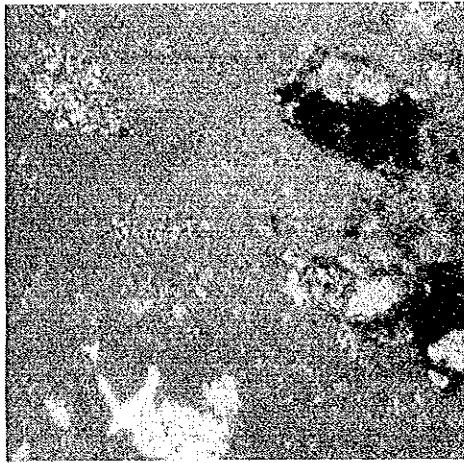
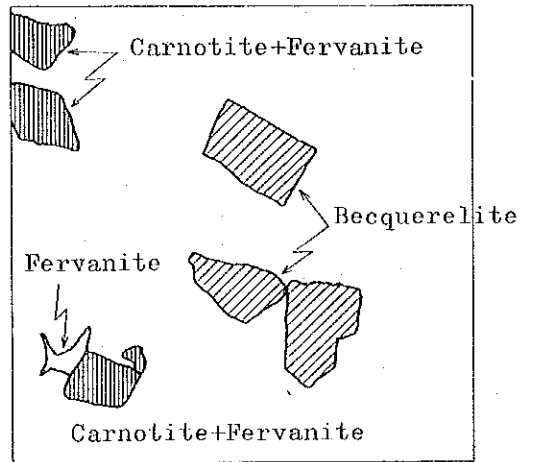
Fe X-ray image

Sample No. 1D13
 Accelerating voltage: 25KV
 Absorbed electron current: 0.2 μ A
 Magnification: x600



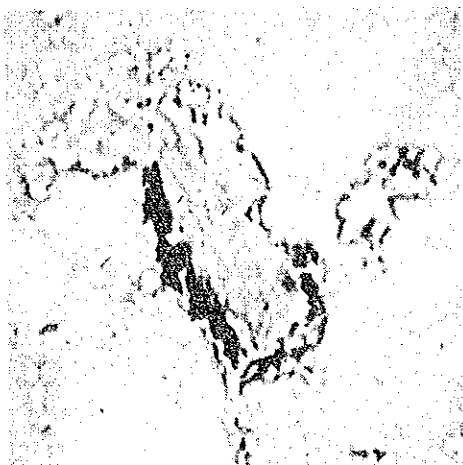
Si X-ray image

160 μ

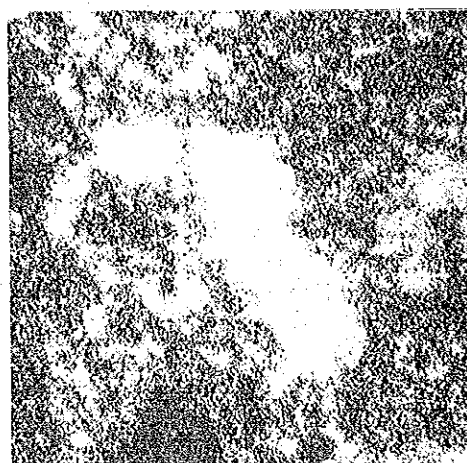


Photograph

Sample No. 1D13
Accelerating voltage: 25KV
Absorbed electron current: 0.2 μ A
Magnification: x600

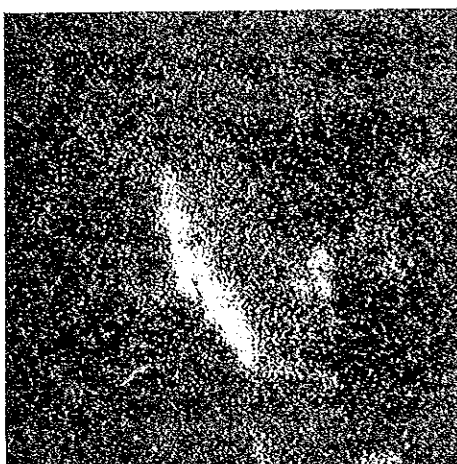


Absorbed electron image



Fe X-ray image

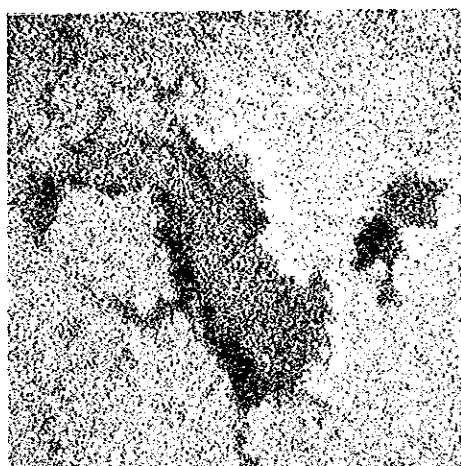
160 μ



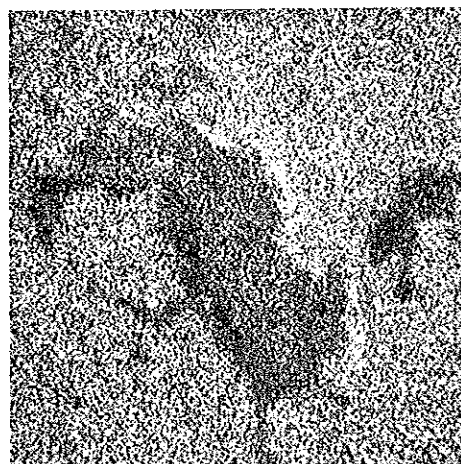
U X-ray image



V X-ray image

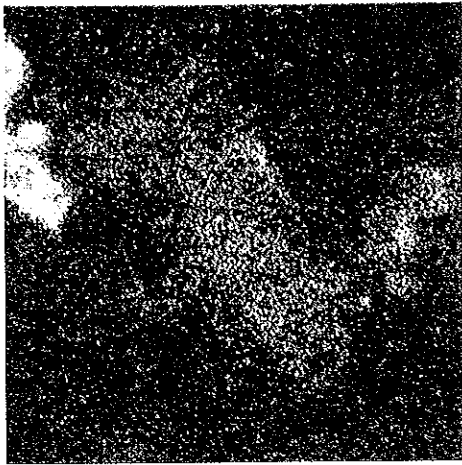


Si X-ray image

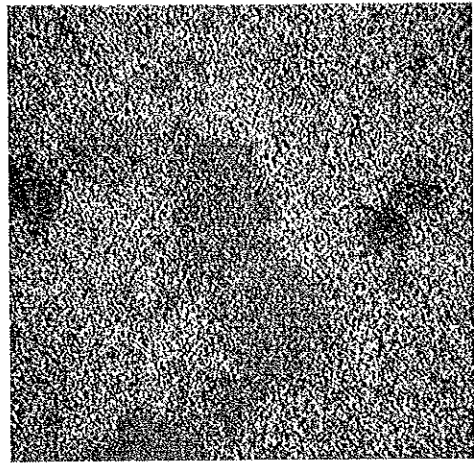


Al X-ray image

Sample No. 1K08	
Accelerating voltage:	25KV
Absorbed electron current:	0.2 μ A
Magnification:	x600

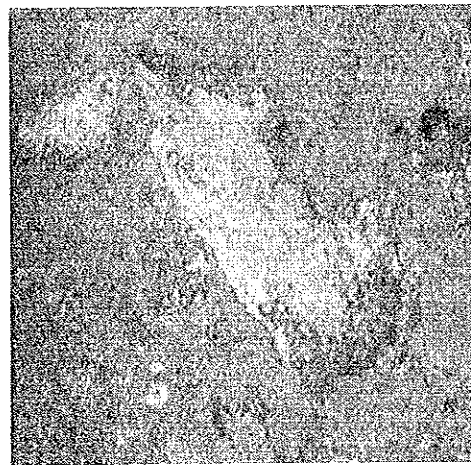
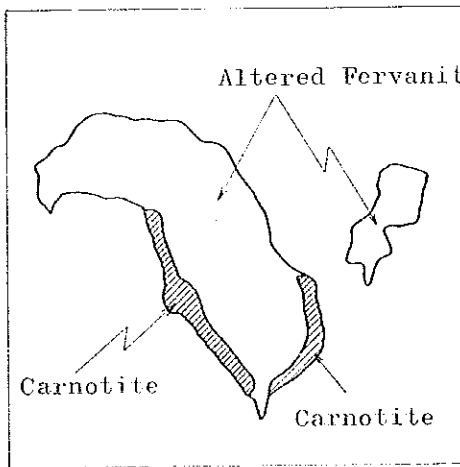


Ca X-ray image



K X-ray image

160 μ



Photograph

Sample No. 1K08
 Accelerating voltage: 25KV
 Absorbed electron current: 0.2 μ A
 Magnification: x600

Table I-10 List of Pb-Cu-Ba Mineralizations in the Surveyed Area

Name	Location	Kind of Ore	Host Rock		Type	Amount of Ore Body	Unit Ore Body		Ore Minerals	Samples		Assay					
			Formation	Rock			Area Length (m)	Thickness (m)		Dip	No.	*	Pb (%)	Cu (%)	Ag (ppm)	Au (ppm)	Ba (%)
Bou Tsakourt	SE of Zayda	Pb, Ba	paleozoic	granite	vein	6	200-500	0.1-2	NS09E-NS00W	80°N	1E07-1E12	P	14.2	0.13	93	<0.1	
Sidi Saïd	N of Midalt	Cu	P-T	sandstone	impregnation	1	15x15	0.2	-	-	1F05	P	6.2	0.70	42	<0.1	
Assaka Ijdily	do	Pb, Ba	paleozoic	granite	vein	3	500	0.1-4	NS09E-NS00W	90°	1E01, 1E14	P	8.8	0.08	35	<0.1	
Ich sft	do	Cu, Pb, Ba	do	do	do	1	5	0.1	N60°W	90°	1F14	P	0.44	3.15	24	<0.1	
Ait Saïd	N of Bou Mia	Pb, Ba	P-T	arkose sandstone	stratiform	1		1-1.8	horizontal		2A07-2A12	C	1.30				2.12
Tabelkirt	SW of Bou Mia	do	paleozoic	granite	vein	1	500	0.3-0.7	N60°E	90°	2B06, 2B07	C					
Tamarout	W of Bou Mia	do	do	do	do	2	50	0.3	N84°W	90°	2B20, 2B21	C	0.13				3.20
do	do	do	P-T	arkose sandstone	stratiform		30x50	0.6	horizontal		2B25, 2B26	C	1.26				2.22
Zayda	near Zayda	do	do	arkose sandstone	do	66	Max. 3x10	2.5-10	do		1A12, 1D01, 1D19	P	3.76	0.02			4.14
Anc	N of Midalt	Cu, Pb, Ba	J,	dolomite	mississippi valley	many	10x10	0.1-0.2	-	-	4I04-4I06	P	16.9	0.94	195	<0.1	
Mibladane	Mibladane	Pb, Ba	J, & K, em, ?	do	do	do	200-300	0.1-0.3	-	-	4J14-4J17	P	11.2	0.05	38	<0.1	
Sidi Ayyad	Marabout	do	precambrian-paleozoic		vein	5	500-1000	1.5	NS09W-EW	80°S-90°	1K31, 1K32	P	22.5	0.04	62		

Note : Samples * C: channelled sample, P: piece sample

Table I-11 Chemical Analysis of Ore Minerals

No.	B.R.P.M. No.	Sample No.	Location	Composition				
				Pb (%)	Cu (%)	Ba (%)	Ag (ppm)	Au (ppm)
1	46389	2A07	aït Sáid	0.24		4.20		
2	46390	2A08	do	4.20		2.40		
3	46391	2A09	do	0.19		2.08		
4	46392	2A10	do	0.94		0.60		
5	46393	2A11	do	1.15		0.96		
6	46394	2A12	do	1.40		1.84		
7	46395	2A24	Tarougout	0.06		8.00		
8	46396	2A25	do	0.16		1.68		
9	46397	2B06	Tabelkirt	0.34		14.40		
10	46398	2B07	do	0.44		0.24		
11	46399	2B20	Tamarout	0.14		3.40		
12	46400	2B21	do	0.12		3.00		
13	46401	2B25	do	2.40		3.40		
14	46402	2B26	do	0.12		1.04		
15	46403	1D01	Paneau-1	4.20		0.28		
16	46404	1D19	Zayda	0.08		8.00		
17	46405	1E07	Bou Tsakourt	21.00	0.03		50	< 0.1
18	46406	1E08	do	17.50	0.22		52	< 0.1
19	46407	1E09	do	1.15	0.36		300	< 0.1
20	46408	1E10	do	9.00	0.05		32	< 0.1
21	46409	1E11	do	22.00	0.05		74	< 0.1
22	46410	1E12	do	14.50	0.05		52	< 0.1
23	46411	1E14	Ich áft	2.60	0.06		12	< 0.1
24	46412	1E01	Assaka Ijdiy	15.00	0.10		58	< 0.1
25	46413	1F05	Sidi Sáid	6.20	0.70		42	< 0.1
26	46414	1F14	Assaka Ijdiy	0.44	3.15		24	< 0.1
27	46415	1A12	Zayda Mine No54	7.00	0.02		22	< 0.1
28	46416	4I04	Anc Mine	30.50	0.04		500	< 0.1
29	46417	4I05	do	0.45	2.75		8	< 0.1
30	46418	4I06	do	19.60	0.02		78	< 0.1
31	46419	4J14	Mibladane	5.00	0.02		8	< 0.1
32	46420	4J15	do	13.50	0.07		48	< 0.1
33	46421	4J16	do	5.40	0.02		24	< 0.1
34	46422	4J17	do	21.00	0.08		70	< 0.1
35	46423	1K31	Sidi Ayyad	16.00	0.04		40	< 0.1
36	46424	1K32	do	29.00	0.04		84	< 0.1

Table I-12 List of Radioactive Mineralizations

A. Vein-like Type

Area	Vein No.	Structure		Radioactive Mineralization			Remarks
		Length (m)	Width (m)	max. Length(m)	max. Width(m)	max. Radio-activity(c/s)	
Sidi Ayyad	F-1	600+	0.05-3	30	3	8,000	strike NE-SW
	F-2	200+ (being many veins)	0.05-0.1	10(?) except F-1, F-2)	0.1	2,000	strike N30°W-S30°E
Ifzwane	1	100+	1	5+	0.1	600	strike N17°W-S17°E
Imnayn-n- Aït Rahhou	1	30+	0.05	2 - 3	0.05	1,500	} strike NE-SW
	2	30+	0.05	2 - 3	0.05	2,500	
	3	1,000+	10	40-50	1	500	strike NE-SW
Pancan-1	1	500+	3	2+	1	7,000	} strike NE-SW
	2	100(?)	?	20(?)	1(?)	3,000	
	3	?	?	20(?)	1(?)	3,000	
	4	300+	1-3.5	1	0.05	300	
	5	100	1	10(?)	1	2,500	
Granite Porphyry	1	1,000+	10	5±	0.05	2,800	strike NE-SW
Assaka-n - Tabhirt	1	200+	0.1	10	0.1	13,500	} strike N40°E S40°W
	2	200+	0.1	5	0.15	3,000	
	3	500+	2	3+	1(?)	300	} strike NE-SW
	4	100+	1	3+	1(?)	400	
Dique	1	40+	4	10+	0.4	3,500	strike N25°E-S25°W

B. Sandstone and Carapace Type

Area	Anomaly No.	Structure		Radioactive Mineralization			Remarks
		Length (m)	Width (m)	max. Length(m)	max. Width(m)	max. Radio-activity (c/s)	
Assaka Ijdiy	1	1,000	250	300+	40+	2,000	graben structure
Aït Saïd	1	?	3+	3	0.3	1,600	carapace

C. Quaternary Sedimentary Type

Area	Anomaly No.	Structure		Radioactive Mineralization			Remarks
		Length (m)	Width (m)	max. Length(m)	max. Width(m)	max. Radio-activity (c/s)	
Pancan-1	1					1,500	conglomerate floats
	2			5±	0.1	2,000	anomaly within black and white sediments on granite surface
Assaka-n- Tabhirt	1			3±	0.2-0.3	400	anomaly in the river sand with black materials

Table I-13 Chemical Analysis of Rock Samples for U. Th. V.

No.	Sample No.	Rock Name	Location	Composition			Remarks
				U (%)	Th (%)	V (%)	
1	1A02	Porphyritic granite	Ilaghmane -n- 'Amar	0.045	<0.002		900 c/s
2	1A07	Fe-quartz vein	Assaka -n- Tabhirt	0.004	<0.002		350 c/s
3	1A11	Aplitic granite	Zayda	<0.002 *(0.0008)	0.003		
4	1A14	Limonitized sheared granite porphyry	Dique vein	0.071	<0.002		3,500 c/s
5	1B04	Contaminated granite	Tighbouba -n- Ouzour	<0.002	0.003		120 c/s
6	1B05	Aplitic granite	do	<0.002 *(0.0008)	0.004		175 c/s
7	1B09	Granite porphyry	South of Paneau-1	<0.002	0.003		2,000 c/s
8	1C02	Contaminated granite	Aït Toughuch	<0.002	<0.002		
9	1C12	Aplitic granite	Bou Issamsad	<0.002	0.002		200 c/s
10	1D05	Arkose sandstone	Ilaghmane -n- 'Amar	<0.002	<0.002	0.003	60 c/s
11	1D10	Granite porphyry	G-P vein	<0.002	<0.002		200 c/s
12	1D13	do	Assaka -n- Tabhirt	0.139	<0.002		1,000 c/s
13	1D14	Arkose sandstone	Paneau-1	0.005	0.003	0.015	3,000 c/s
14	1D15	do	do	0.061	<0.002	0.003	7,000 c/s
15	1D16	Granite porphyry	G-P vein	0.008	<0.002		1,500 c/s
16	1D18	Red siltstone	North of Dique	<0.002	<0.002	0.003	130 c/s
17	1D20	Porphyritic granite	Assaka -n- Tabhirt	<0.002	<0.002		
18	1F11	Calcareous siltstone	Assaka Ijdiy	<0.002	<0.002	0.003	500 c/s
19	1F12	Muddy siltstone	do	0.005	<0.002	0.007	400 c/s
20	1F13	do	do	0.004	<0.002	0.016	2,000 c/s
21	1G12	Fe-quartz vein	Immayn -n- Aït Rahhou	<0.002	<0.002		1,500 c/s
22	1G15	do	do	<0.002	<0.002		500 c/s
23	1G19	do	Ifzwane	0.024	<0.002		600 c/s
24	1J18	Granite	Bou Archicha	<0.002 *(0.0012)	<0.002		50 c/s
25	1K08	Fe-quartz vein	Sidi Ayyad	0.188	<0.002		2,000 c/s
26	1K09	Granodiorite	do	<0.002	<0.002		
27	1K22	Microgranodiorite	F-1 vein (Sidi Ayyad)	0.085	<0.002		2,500 c/s
28	2A04	Aplitic granite	Bou Mia	<0.002	<0.002		150 c/s
29	2A13	Aplitic granite (carapace)	Aït Saïd	0.072	<0.002	0.030	1,600 c/s
30	2B24	Aplitic granite	Tamarout	<0.002	<0.002		
31	2B28	Aplite	do	<0.002	0.003		160 c/s
32	2B29	Porphyritic granite	Bou Mia	<0.002	<0.002		200 c/s
33	2B30	Granite porphyry	do	<0.002	0.002		180 c/s
34	2B31	do	do	<0.002	0.002		180 c/s
35	3R05	Arkose sandstone	Jbel Talaghine	<0.002	<0.002		150 c/s
36	3R06	do	do	<0.002	<0.002		
37	3R08	do	do	<0.002	<0.002		
38	3R09	do	do	<0.002	<0.002		
39	3R11	do	do	<0.002	<0.002		
40	3R12	do	do	<0.002	<0.002		100 c/s
41	3R13	do	do	<0.002	<0.002		100 c/s
42	3R14	do	do	<0.002	<0.002		
43	3R15	do	do	<0.002	<0.002		100 c/s

The above samples are rock pieces.

Remarks: Radioactivity (c/s) is on the sampling point.

* : Results of checked chemical analysis

Table I—14 Charts of X-ray Diffraction Test

Sample No.	Minerals
M008	Quartz > Dolomite > Muscovite > Orthoclase > Chlorite
M009	Quartz > Dolomite > Muscovite > Orthoclase > Chlorite

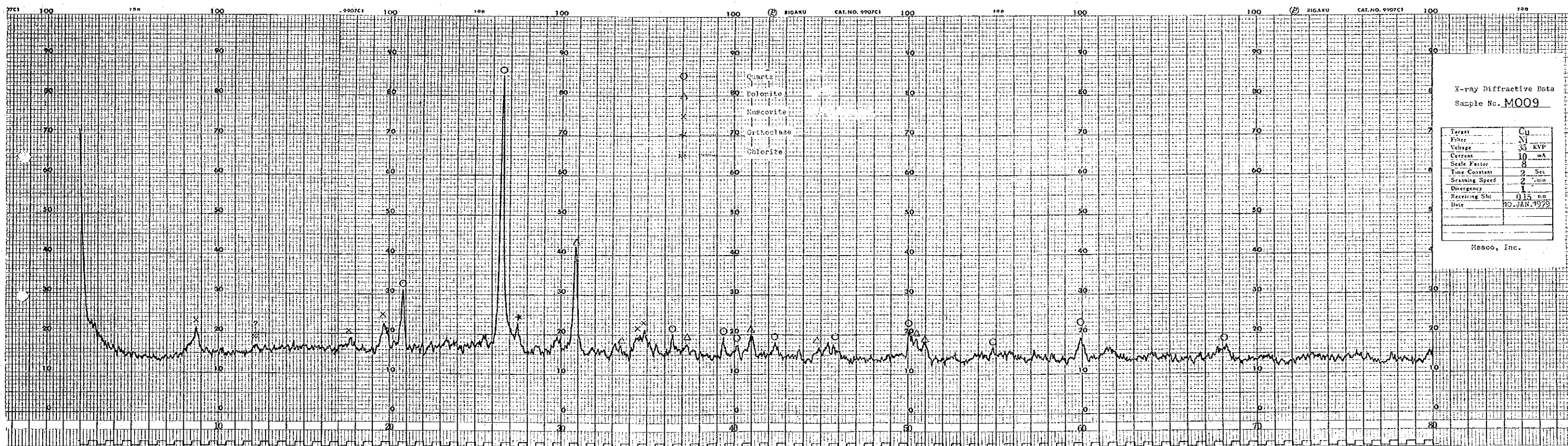
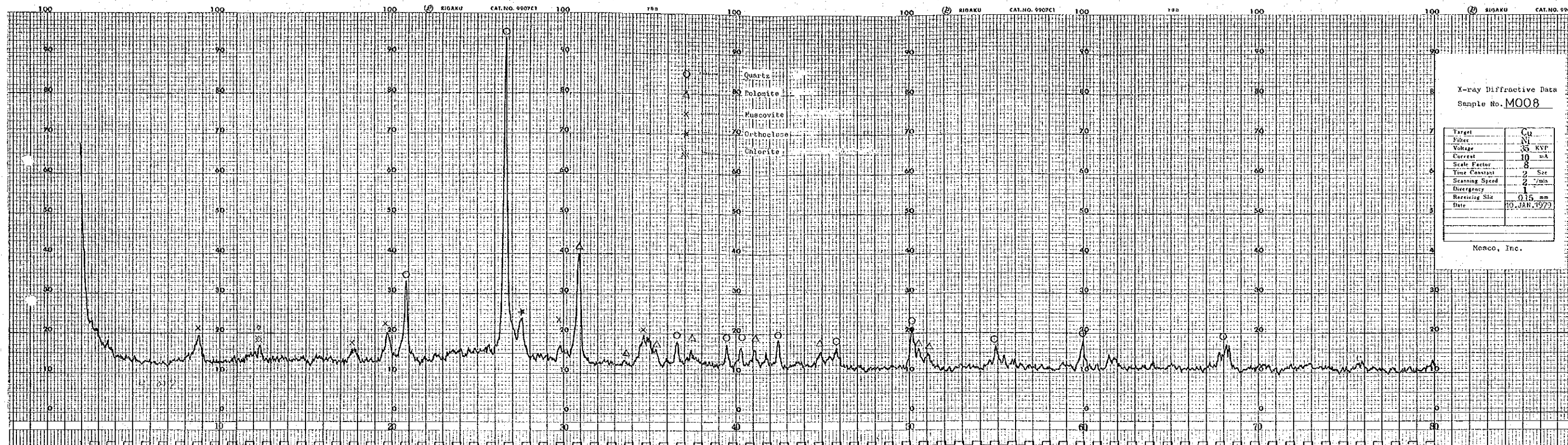
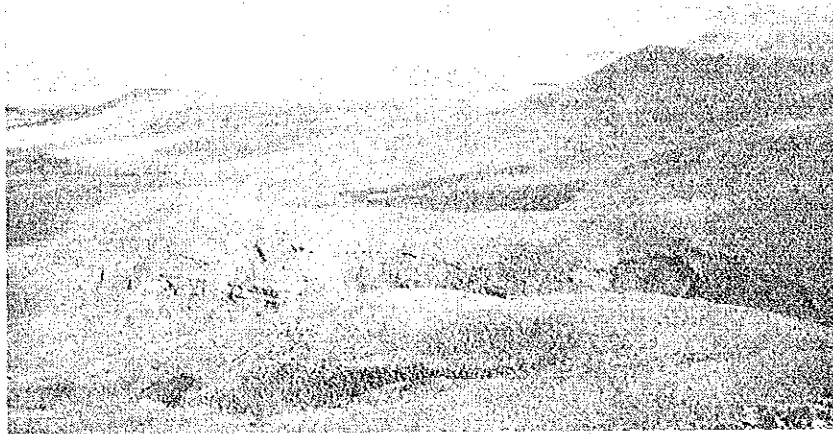
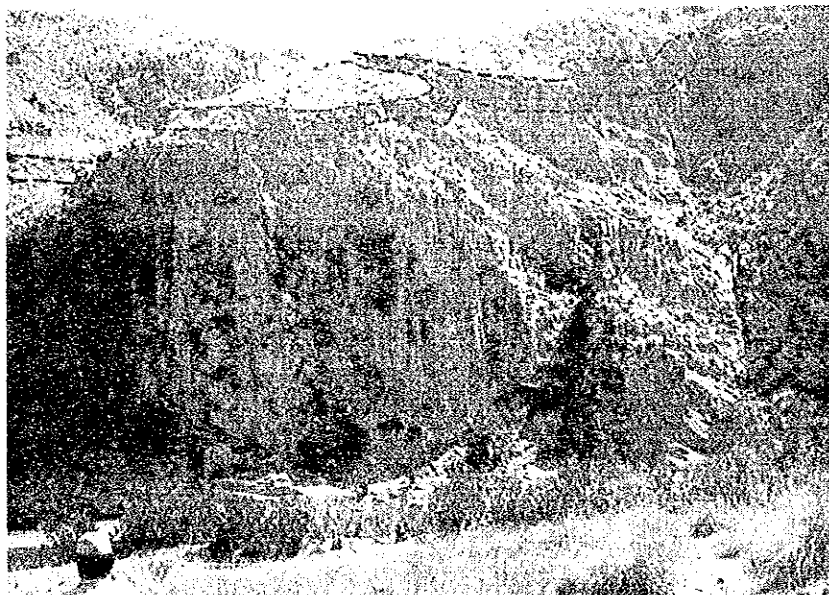


Table I-15 Photographs



← β P-T Basalt lava

Phot. 1 Bou Mia Granite Body and β P-T Basalt lava.
Photo is viewing to north at the southeastern
part of Bou Mia area.



Phot. 2 The occurrence of aplitic granite.
Photo shows flat aplitic granite dyke
whose strike is almost E-W, dip is about
 10° to north and thickness is about 10^m ,
at Tijante, the Ansagmir river.



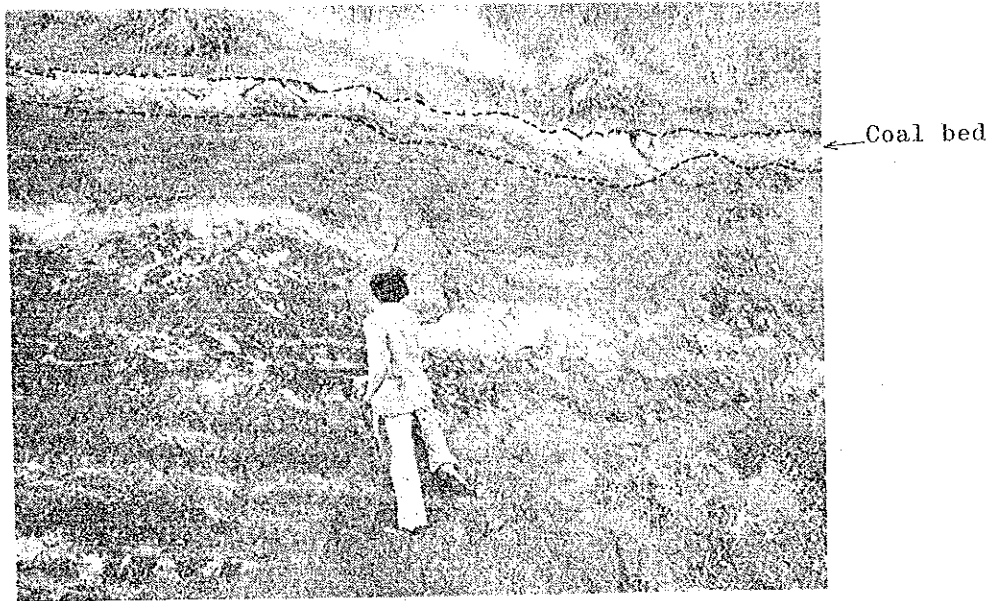
← P-T Red Sandstone
Formation

← Crystalline schists

Phot. 3 P-T Red Sandstone Formation covering the Crystalline schists, at the point of 13^{km} northeast from Karrouchan.



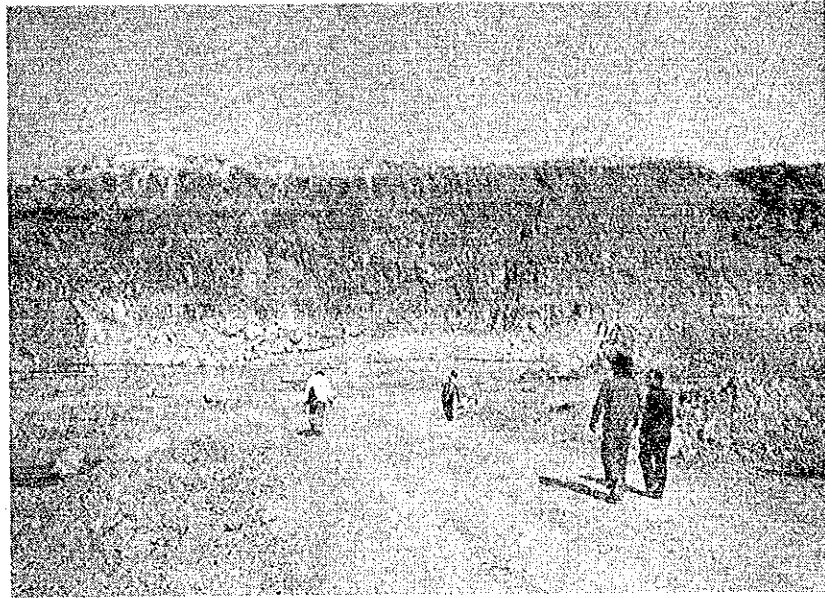
Phot. 4 Arkose sandstone, belonging to P-T Red Sandstone Formation, distributed upon the granite, at the west of Bou Mia.



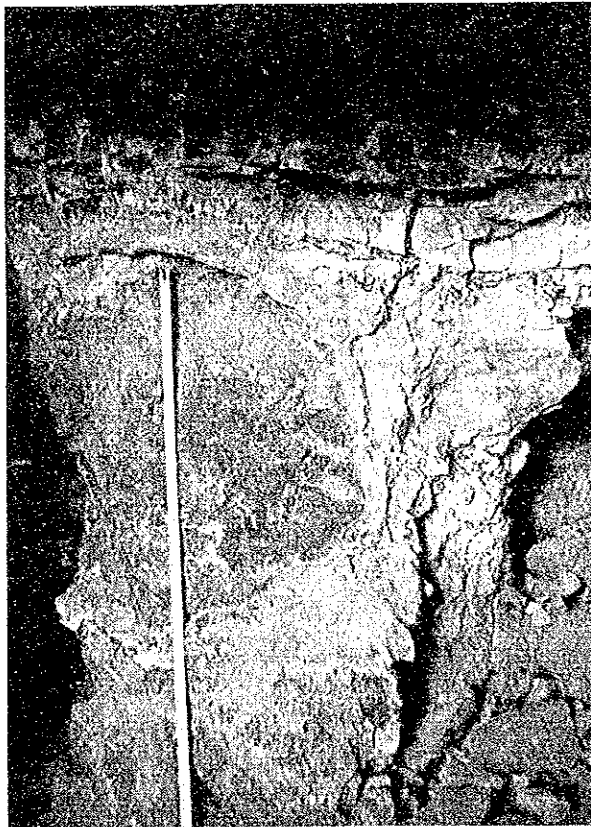
Phot. 5 Coal bed with no anomalous radioactivity in the red sandstone of P-T Red Sandstone Formation, at the west of Bou Mia.
Radioactivity: 30-50 c/s in coal bed, 50 \pm c/s in red sandstone.



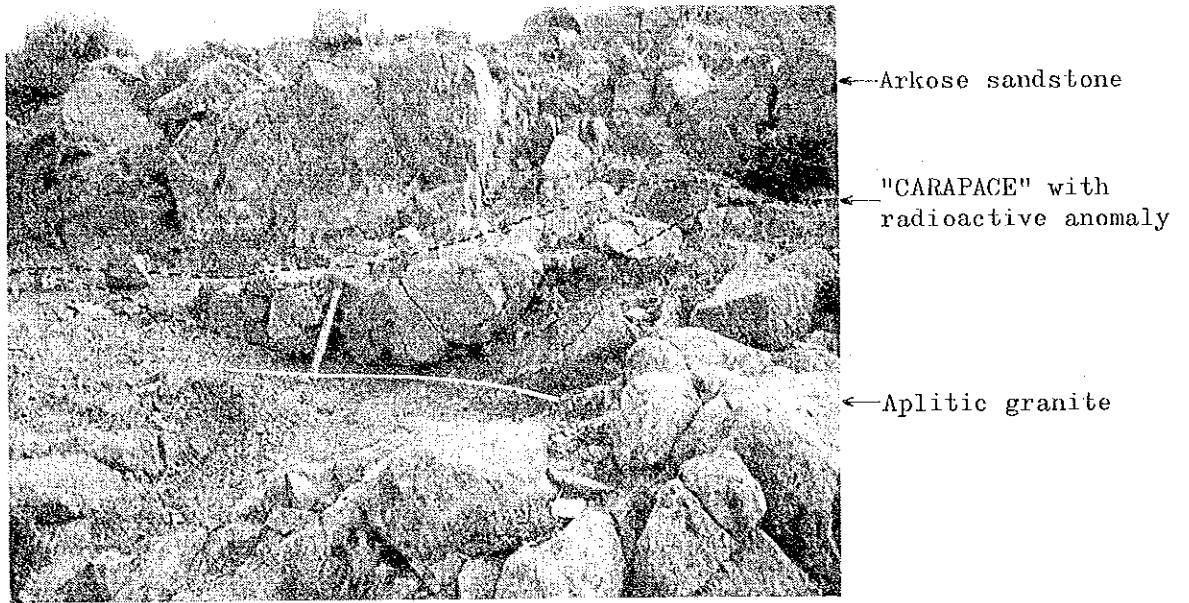
Phot. 6 Cross-beddings in arkose sandstone of P-T Red Sandstone Formation, at the northeast of Karrouchan.



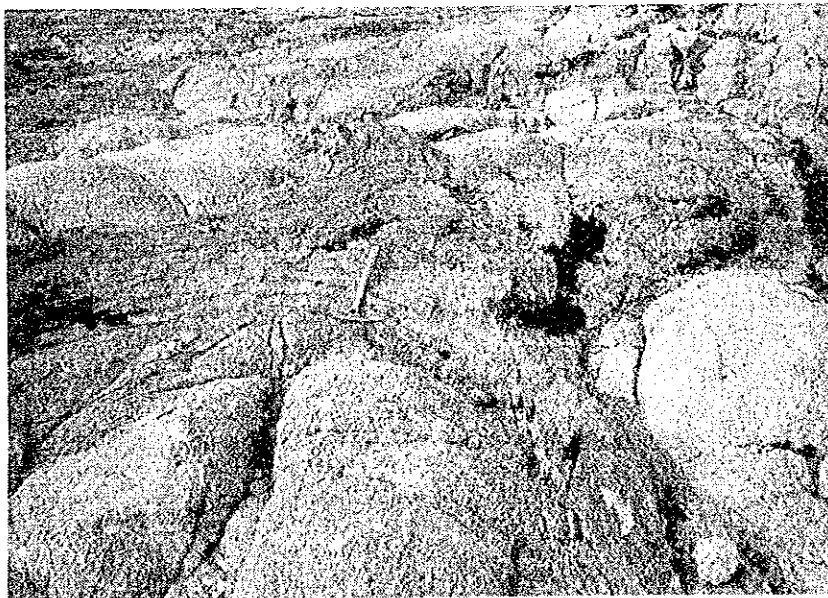
Phot. 7 Open pit of No. 54 Ore Body, Zayda Mine.



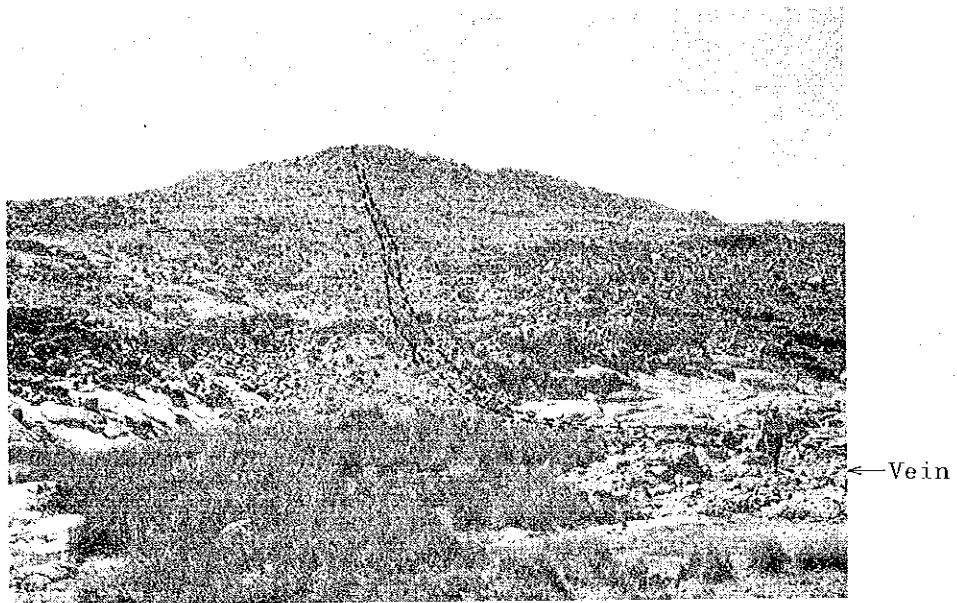
Phot. 8 T-Oest pit, Mibladane Mine.
Photo shows the occurrences
of lead and barite mineralization.



Phot. 9 Radioactive anomaly of "CARAPACE" type, at Sidi Sáid.



Phot. 10 CARAPACE upon granite, at the northwestern of Bou Mia.



Phot. 11 Outcrop of vein partly with anomalous radioactivity in Pancau-1 sector, the northeast of Zayda.



Block material

Phot. 12 Radioactive anomaly, "Quaternary sedimentary type", at the north side of the Moulouya river, the south of Peneau-1. Photo shows black materials with radioactivity of 400-2,000 c/s upon granite.

Table II-7 Earth Tide Correction and Drift Correction

HESCO 1

NUMBER OF STANDARD STATION = 2
 DIFFERENCE IN TIME = -5
 NUMBER OF GRAVITY MEASUREMENTS = 2
 DENSITY OF CLOSE TERRAIN CORRECTION = 2.00

STANDARD STATION NO.	STATION NO.	GRAVITY VALUE	LATITUDE	LONGITUDE	HEIGHT
1	2000	975.155410	32491494	-4573913	1462.000
2	3000	979.152892	32485514	-4572730	1469.000

GRAVITY VALUE (CORRECTED TIDAL EFFECT, INSTRUMENT HEIGHT AND DRIFT) GRAVIMETRIC SURVEY OF HAUT MOULOUYA IN MOROCCO 1978													HESCO 3
GRAVITY VALUE LACROSIE 366													
Y	M	D	NO	TIME	READING	INST. H	X FACT.	ETCOR	INST. COR	+ COR	DRIFT COR	GRVTY DIF.	GRVTY VAL.
				D H S		CM	MGAL	MGAL	MGAL	MGAL	MGAL	MGAL	GAL
53	9	19											
0			2000	19 9 53	2702.470	29.	2557.573	-0.041	0.089	2557.622	0.0	0.0	979.155410
1			2002	19 10 28	2666.576	32.	2613.251	-0.021	0.099	2613.328	0.008	-44.286	979.111124
2			2003	19 13 28	2662.070	14.	2614.636	0.064	0.043	2614.945	0.050	-42.628	979.112782
3			2004	19 14 13	2675.660	28.	2629.236	0.062	0.066	2629.365	0.060	-28.177	979.127233
4				19 14 25	2676.210	26.	2631.913	0.059	0.056	2632.059	0.063	-25.501	979.129909
5				19 14 32	2682.320	25.	2636.272	0.057	0.069	2636.419	0.065	-21.139	979.134271
6				19 14 40	2687.440	29.	2641.720	0.055	0.069	2641.665	0.066	-15.691	979.139719
7				19 14 49	2690.910	29.	2645.349	0.052	0.069	2645.491	0.068	-12.063	979.143347
8				19 14 54	2691.360	29.	2645.625	0.050	0.069	2645.965	0.069	-11.588	979.143822
9				19 14 58	2693.100	29.	2647.666	0.049	0.069	2647.804	0.070	-9.747	979.145663
10				19 15 2	2695.130	26.	2649.614	0.047	0.080	2649.941	0.071	-7.610	979.147800
11				19 15 7	2694.900	24.	2649.570	0.045	0.074	2649.689	0.072	-7.860	979.147550
12				19 15 12	2692.790	28.	2647.338	0.043	0.086	2647.467	0.074	-10.081	979.145329
13				19 15 16	2696.490	25.	2644.905	0.041	0.077	2645.023	0.074	-12.525	979.142885
14				19 15 20	2690.070	24.	2644.460	0.039	0.074	2644.573	0.075	-12.973	979.142437
15				19 15 24	2665.690	25.	2644.055	0.037	0.077	2644.172	0.076	-13.373	979.142037
16				19 15 29	2669.670	20.	2644.031	0.034	0.062	2644.133	0.077	-13.411	979.141999
17				19 15 34	2690.440	27.	2644.852	0.032	0.071	2644.955	0.079	-12.589	979.142821
18				19 15 39	2685.740	26.	2644.111	0.029	0.080	2644.220	0.080	-13.322	979.142088
19				19 15 43	2685.730	22.	2644.101	0.027	0.068	2644.195	0.081	-13.346	979.142064
20				19 15 50	2690.270	25.	2644.672	0.023	0.059	2644.764	0.082	-12.756	979.142654
21				19 15 55	2689.980	21.	2644.265	0.020	0.065	2644.450	0.083	-13.089	979.142321
22				19 15 59	2690.000	25.	2644.366	0.017	0.066	2644.490	0.084	-13.048	979.142362
23				19 16 3	2692.500	24.	2647.021	0.015	0.074	2647.120	0.085	-10.417	979.144993
24				19 16 8	2694.260	25.	2646.914	0.012	0.077	2649.003	0.086	-8.532	979.146878
25				19 16 12	2695.570	26.	2650.279	0.009	0.080	2650.369	0.087	-7.166	979.148244
26				19 16 17	2696.750	25.	2651.528	0.006	0.077	2651.611	0.089	-5.923	979.149487
27				19 16 21	2699.110	24.	2654.024	0.003	0.074	2654.102	0.089	-3.431	979.151979
28				19 16 26	2701.110	26.	2656.134	0.000	0.080	2656.215	0.091	-1.317	979.154093
29				19 16 32	2702.230	29.	2657.319	-0.004	0.069	2657.405	0.092	-0.125	979.155285
0			2000	19 16 37	2702.350	29.	2657.446	-0.007	0.069	2657.529	0.093	-0.000	979.155410
6 44											DRIFT RATE (PER AN HOUR)	0.0138	

GRAVITY VALUÉ (CORRECTED TIDAL EFFECT, INSTRUMENT HEIGHT AND DRIFT)
 LACOSTE 366 GRAVIMETRIC SURVEY OF HAUT MOULOUYA IN MOROCCO 1976

HESCO 4

Y	M	D	NO	TIME	READING	INST.H	X FAC1.	ETCOR	INST.CDR		DRIFTCOR	GRVY DIF.	GRVY VAL.
									MGAL	MGAL			
53	9	20		D H M		CM	MGAL	MGAL	MGAL	MGAL	MGAL	MGAL	GAL
0			2000	20 7 46	2702.240	29.	2857.330	-0.054	0.089	2857.365	0.0	0.0	979.155410
30				20 7 57	2701.020	24.	2856.103	-0.057	0.074	2856.120	0.004	-1.241	979.154169
31				20 8 2	2700.200	28.	2855.277	-0.058	0.086	2855.306	0.007	-2.052	979.153358
32				20 8 7	2699.260	27.	2854.163	-0.059	0.083	2854.207	0.009	-3.148	979.152262
33				20 8 12	2697.930	28.	2852.776	-0.060	0.086	2852.802	0.012	-4.551	979.150859
34				20 8 17	2696.370	26.	2851.126	-0.061	0.080	2851.145	0.014	-6.206	979.149204
35				20 8 21	2695.350	26.	2849.931	-0.061	0.077	2849.950	0.016	-9.399	979.146011
36				20 8 26	2690.720	25.	2845.148	-0.062	0.080	2844.806	0.019	-12.183	979.143272
37				20 8 31	2690.360	26.	2844.788	-0.062	0.080	2844.806	0.021	-12.538	979.142872
38				20 8 36	2689.630	27.	2843.995	-0.063	0.083	2844.016	0.024	-13.326	979.142084
39				20 8 41	2688.830	27.	2843.149	-0.063	0.083	2843.169	0.026	-14.170	979.141200
40				20 8 45	2688.480	27.	2842.776	-0.063	0.083	2842.799	0.028	-14.538	979.140872
41				20 8 50	2688.470	27.	2842.766	-0.063	0.083	2842.766	0.030	-14.546	979.140864
42				20 8 55	2687.800	26.	2842.059	-0.062	0.080	2842.077	0.033	-15.256	979.140154
43				20 9 0	2687.640	25.	2841.890	-0.062	0.077	2841.905	0.035	-15.425	979.139985
44				20 9 5	2686.660	24.	2840.853	-0.062	0.074	2840.865	0.038	-16.462	979.138948
45				20 9 9	2685.150	25.	2839.255	-0.061	0.077	2839.271	0.040	-18.054	979.137356
46				20 9 14	2683.460	26.	2837.467	-0.061	0.080	2837.487	0.042	-19.836	979.135574
47				20 9 19	2683.200	25.	2837.192	-0.060	0.077	2837.210	0.045	-20.111	979.135299
48				20 9 24	2678.250	25.	2831.955	-0.059	0.077	2831.974	0.047	-25.346	979.130066
49				20 9 26	2678.630	25.	2832.357	-0.056	0.077	2832.376	0.049	-24.940	979.130470
50				20 9 32	2678.620	26.	2832.556	-0.057	0.080	2832.561	0.051	-24.733	979.130677
51				20 9 37	2679.670	27.	2833.436	-0.056	0.083	2833.465	0.053	-23.627	979.131583
52				20 9 41	2678.710	26.	2832.442	-0.055	0.080	2832.467	0.055	-24.843	979.130567
53				20 9 46	2678.020	24.	2831.712	-0.054	0.074	2831.732	0.056	-25.575	979.129835
54				20 9 50	2670.120	25.	2823.354	-0.053	0.077	2823.375	0.060	-33.927	979.121483
55				20 9 54	2669.440	25.	2823.058	-0.051	0.077	2823.064	0.062	-34.220	979.121190
56				20 9 58	2667.490	23.	2820.995	-0.050	0.071	2821.016	0.064	-36.286	979.119124
57				20 10 2	2664.250	25.	2817.144	-0.049	0.077	2817.172	0.066	-40.127	979.115283
58				20 10 6	2664.270	25.	2817.165	-0.047	0.074	2817.192	0.068	-40.106	979.115304
59				20 10 11	2663.200	24.	2816.606	-0.046	0.074	2816.696	0.070	-40.599	979.114811
60				20 10 15	2663.200	27.	2816.633	-0.044	0.083	2816.072	0.072	-41.221	979.114189
61				20 10 19	2662.030	28.	2815.652	-0.043	0.086	2815.897	0.074	-41.394	979.114016
62				20 10 23	2660.940	26.	2813.642	-0.041	0.080	2813.661	0.076	-43.608	979.111802
63				20 10 27	2656.470	24.	2806.913	-0.039	0.074	2808.948	0.078	-48.339	979.107071
64				20 10 31	2651.260	21.	2803.526	-0.037	0.065	2803.556	0.081	-53.728	979.101682
65				20 10 40	2646.130	29.	2797.974	-0.034	0.089	2798.029	0.084	-59.251	979.096159
66				20 10 47	2642.010	27.	2793.615	-0.031	0.083	2792.667	0.088	-63.610	979.091800
67				20 12 12	2649.480	25.	2801.518	0.010	0.086	2801.614	0.129	-55.622	979.099788
68				20 12 18	2651.130	28.	2803.263	0.012	0.086	2803.362	0.132	-53.670	979.101540
69				20 12 23	2654.500	26.	2806.829	0.015	0.086	2806.930	0.135	-50.301	979.105109
70				20 12 28	2653.540	26.	2805.813	0.017	0.080	2805.916	0.137	-51.218	979.104092
71				20 12 32	2652.500	28.	2804.713	0.018	0.080	2804.811	0.139	-52.414	979.102996
72				20 12 36	2654.750	25.	2807.093	0.020	0.077	2807.190	0.141	-50.034	979.105376
73				20 12 40	2656.630	29.	2809.682	0.021	0.089	2809.193	0.143	-48.029	979.107381
74				20 12 45	2662.470	23.	2815.218	0.023	0.071	2815.312	0.146	-41.907	979.113503
75				20 12 49	2668.530	25.	2821.672	0.025	0.086	2821.763	0.147	-35.435	979.119975
76				20 12 54	2670.690	30.	2823.957	0.026	0.093	2824.076	0.150	-33.139	979.122271
77				20 13 0	2672.530	32.	2825.904	0.028	0.099	2826.031	0.152	-31.162	979.124228
78				20 13 3	2672.620	29.	2825.999	0.029	0.089	2826.116	0.154	-31.093	979.124317
79				20 13 7	2673.500	25.	2826.930	0.030	0.077	2827.038	0.156	-30.171	979.125239
80				20 13 12	2673.020	28.	2826.422	0.032	0.086	2826.541	0.159	-30.666	979.124744
81				20 13 16	2672.090	24.	2825.756	0.033	0.074	2825.663	0.161	-31.342	979.124066
82				20 13 21	2670.640	24.	2824.116	0.034	0.074	2824.224	0.163	-22.978	979.122432
83				20 13 25	2667.910	24.	2821.016	0.035	0.074	2821.125	0.165	-26.075	979.119335
84				20 13 29	2663.410	23.	2816.755	0.036	0.071	2816.362	0.167	-40.636	979.114574
0			2000	20 13 57	2701.980	29.	2857.055	0.040	0.089	2857.184	0.181	-0.000	979.155410

DRIFT RATE (PER AN HOUR) 0.0294

GRAVITY VALUE (CORRECTED TIDAL EFFECT, INSTRUMENT HEIGHT AND DRIFT) MESCO 5
 LACOSTE 366 GRAVIMETRIC SURVEY OF HAUT MOULOUYA IN MOROCCO 1978

Y	M	D	NO	TIME	READING	INST.H	X FACT.	ETCOR	INST.COR	+ COR	DRIFTCOR	GRVTY DIF.	GRVTY VAL.
				D H M	CM	MGAL	MGAL	MGAL	MGAL	MGAL	MGAL	MGAL	GAL
53	9	21	0	2000	2701.870	29.	2856.939	-0.021	0.089	2857.007	0.0	0.0	979.155410
			85	62	2701.831	29.	2832.485	-0.037	0.089	2832.735	0.004	-24.265	979.131145
			86	63	2678.330	29.	2832.040	-0.039	0.089	2832.090	0.004	-24.912	979.130498
			87	64	2676.210	29.	2831.913	-0.041	0.089	2831.962	0.005	-25.040	979.130370
			88	65	2679.680	28.	2833.468	-0.042	0.089	2833.512	0.005	-23.489	979.131921
			89	66	2679.480	28.	2833.257	-0.044	0.089	2833.293	0.006	-23.707	979.131703
			90	67	2682.680	28.	2836.621	-0.045	0.086	2836.663	0.007	-20.337	979.135073
			91	68	2679.700	28.	2833.489	-0.046	0.086	2833.530	0.007	-23.469	979.131941
			92	69	2677.920	28.	2831.606	-0.046	0.086	2831.646	0.008	-25.352	979.130058
			93	70	2676.930	28.	2832.675	-0.047	0.086	2832.715	0.008	-24.284	979.131126
			94	71	2664.320	28.	2838.377	-0.047	0.089	2838.411	0.009	-18.587	979.136823
			95	72	2683.340	27.	2837.340	-0.047	0.083	2837.377	0.009	-19.621	979.135789
			96	73	2682.740	27.	2836.708	-0.047	0.083	2836.742	0.010	-20.255	979.135155
			97	74	2681.470	28.	2835.362	-0.046	0.086	2835.402	0.011	-21.594	979.133816
			98	75	2679.370	28.	2833.140	-0.045	0.086	2833.182	0.012	-23.813	979.131597
			99	76	2678.030	29.	2831.722	-0.044	0.089	2831.769	0.013	-25.225	979.130185
100	97	21	10	31	2677.240	29.	2830.287	-0.041	0.089	2830.334	0.014	-26.059	979.129351
101	98	21	10	32	2675.690	29.	2829.247	-0.041	0.089	2829.295	0.014	-27.697	979.127713
102	99	21	10	33	2674.650	27.	2827.935	-0.039	0.083	2827.979	0.015	-29.013	979.126397
103	100	21	10	34	2672.910	29.	2826.306	-0.038	0.089	2826.356	0.016	-30.633	979.124777
104	101	21	11	3	2671.200	27.	2824.457	-0.035	0.083	2824.545	0.016	-32.446	979.122964
105	102	21	11	10	2666.660	29.	2821.810	-0.034	0.089	2821.865	0.017	-35.124	979.120286
106	103	21	11	19	2667.760	28.	2820.857	-0.031	0.086	2820.913	0.018	-36.076	979.119334
107	104	21	11	25	2666.340	29.	2821.471	-0.029	0.089	2821.531	0.018	-35.457	979.119953
108	105	21	11	31	2666.020	27.	2821.132	-0.026	0.083	2821.168	0.019	-35.809	979.119610
109	106	21	11	39	2666.720	28.	2819.757	-0.025	0.086	2819.816	0.019	-37.169	979.118241
110	107	21	11	46	2665.040	29.	2817.980	-0.023	0.089	2818.046	0.020	-38.940	979.116470
111	108	21	11	53	2663.740	27.	2816.604	-0.021	0.082	2816.636	0.020	-40.350	979.115060
112	109	21	12	0	2654.220	28.	2817.176	-0.018	0.086	2817.244	0.021	-39.742	979.115668
113	110	21	12	3	2662.410	28.	2815.197	0.020	0.089	2815.279	0.022	-41.701	979.113709
114	111	21	12	12	2658.440	28.	2810.997	0.004	0.086	2811.085	0.027	-45.892	979.109518
115	112	21	12	19	2658.960	28.	2811.547	0.008	0.086	2811.640	0.028	-45.339	979.110071
116	113	21	12	27	2658.600	27.	2811.186	0.006	0.083	2811.256	0.028	-45.720	979.109690
117	114	21	12	33	2658.540	28.	2809.040	0.010	0.086	2809.136	0.029	-47.842	979.107568
118	115	21	12	40	2652.120	29.	2805.379	0.011	0.089	2805.480	0.029	-51.497	979.103913
			C	2006	2701.870	29.	2856.864	0.018	0.089	2856.972	0.034	-0.000	979.155410

5 52 DRIFT RATE (PER AN HOUR) 0.0050

GRAVITY VALUE (CORRECTED TIDAL EFFECT, INSTRUMENT HEIGHT AND DRIFT) MESCO 6
 LACOSTE 366 GRAVIMETRIC SURVEY OF HAUT MOULOUYA IN MOROCCO 1976

Y	M	D	NO	TIME	READING	INST.H	X FACT.	ETCOR	INST.COR	+ COR	DRIFTCOR	GRVTY DIF.	GRVTY VAL.
				D H M	CM	MGAL	MGAL	MGAL	MGAL	MGAL	MGAL	MGAL	GAL
53	5	22	0	2000	2701.640	29.	2856.695	0.017	0.089	2856.802	0.0	0.0	979.155410
			119	116	2673.000	27.	2828.401	0.002	0.082	2828.457	0.002	-30.313	979.125097
			120	117	2672.260	27.	2826.676	0.000	0.083	2826.760	0.003	-30.039	979.125371
			121	118	2673.140	28.	2826.549	-0.002	0.086	2826.634	0.003	-30.165	979.125245
			122	119	2672.560	16.	2826.359	-0.004	0.081	2826.385	0.004	-30.413	979.124997
			123	120	2672.550	27.	2825.355	-0.007	0.083	2825.435	0.004	-30.363	979.125047
			124	121	2672.670	29.	2826.073	-0.010	0.089	2826.153	0.005	-30.645	979.124765
			125	122	2671.540	29.	2824.856	-0.012	0.089	2824.923	0.005	-31.863	979.123547
			126	123	2669.630	28.	2822.836	-0.014	0.086	2822.902	0.006	-33.895	979.121515
			127	124	2668.220	28.	2821.344	-0.017	0.085	2821.417	0.006	-35.379	979.120031
			128	125	2666.440	28.	2821.577	-0.019	0.071	2821.629	0.007	-35.186	979.120244
			129	126	2669.180	28.	2822.360	-0.020	0.086	2822.426	0.007	-35.389	979.121031
			130	127	2670.220	27.	2824.085	-0.022	0.082	2824.156	0.007	-32.639	979.122771
			131	128	2669.170	28.	2821.291	-0.024	0.084	2821.354	0.008	-35.440	979.119970
			132	129	2669.540	29.	2819.990	-0.025	0.089	2820.034	0.008	-36.740	979.118670
			133	130	2668.180	29.	2821.281	-0.028	0.089	2821.343	0.009	-35.450	979.119920
			134	131	2668.520	28.	2822.085	-0.029	0.086	2822.142	0.010	-34.650	979.120760
			135	132	2668.930	28.	2819.979	-0.030	0.089	2820.039	0.010	-36.753	979.118657
			136	133	2668.060	24.	2820.132	-0.031	0.074	2820.181	0.011	-36.610	979.118800
			137	134	2669.610	28.	2822.815	-0.032	0.086	2822.889	0.011	-33.922	979.121488
			138	135	2669.210	29.	2822.465	-0.034	0.089	2822.522	0.011	-34.266	979.121142
			139	136	2651.400	28.	2803.545	-0.032	0.086	2803.601	0.013	-53.187	979.102223
			140	137	2651.340	29.	2803.486	-0.034	0.086	2803.536	0.014	-53.251	979.102159
			141	138	2654.930	29.	2807.284	-0.034	0.089	2807.339	0.014	-49.449	979.105961
			142	139	2654.220	28.	2807.167	-0.034	0.086	2807.219	0.014	-49.566	979.105842
			143	140	2656.320	24.	2808.754	-0.034	0.074	2808.794	0.015	-47.993	979.107417
			144	141	2660.810	28.	2813.505	-0.034	0.086	2813.557	0.015	-43.230	979.112180
			145	142	2662.350	29.	2815.662	-0.034	0.089	2815.718	0.016	-41.086	979.114342
			146	143	2663.450	29.	2816.299	-0.034	0.089	2816.353	0.016	-40.433	979.114977
			147	144	2657.740	26.	2820.156	-0.034	0.086	2820.213	0.016	-35.903	979.119507
			148	145	2669.130	27.	2822.307	-0.032	0.083	2822.357	0.017	-34.429	979.120951
			149	146	2671.170	23.	2824.455	-0.035	0.071	2824.503	0.017	-32.282	979.123126
			150	147	2671.060	28.	2824.370	-0.032	0.080	2824.430	0.024	-32.446	979.123062
			151	148	2673.060	25.	2826.465	-0.039	0.077	2826.523	0.024	-30.255	979.125155
			152	149	2671.510	28.	2824.825	-0.038	0.080	2824.887	0.024	-31.890	979.123520
			153	150	2669.240	25.	2823.056	-0.037	0.077	2823.116	0.025	-33.659	979.121751
			154	151	2670.470	27.	2823.724	-0.036	0.083	2823.792	0.025	-32.985	979.122425
			155	152	2670.550	29.	2823.809	-0.035	0.089	2823.862	0.025	-32.893	979.122517
			156	153	2672.140	26.	2825.491	-0.035	0.086	2825.563	0.026	-31.213	979.124197
			157	154	2673.550	27.	2827.406	-0.034	0.083	2827.476	0.026	-29.300	979.126110

GRAVITY VALUE (CORRECTED TIDAL EFFECT, INSTRUMENT HEIGHT AND DRIFT)
 LACOSTE 366 GRAVIMETRIC SURVEY OF HAUT MOULOUYA IN MOROCCO 1978

MESCO 7

Y	M	D	NO	TIME	READING	INST.H	X FACT.	ETCOR	INST.COR	+ COR	DRIFTCOR	GRVTY DIF.	GRVTY VAL.
				D H M		CM	MGAL	MGAL	MGAL	MGAL	MGAL	MGAL	GAL
53	9	23	0	2000	23 7 51	2701.460	29.	2856.505	0.046	0.089	2856.643	0.0	979.155410
			166		23 8 34	2664.270	26.	2817.169	0.030	0.086	2817.282	0.004	979.116053
			169		23 9 5	2669.956	29.	2823.174	0.017	0.089	2823.281	0.006	979.122055
			170		23 9 11	2676.646	26.	2830.252	0.015	0.080	2830.347	0.007	979.129121
			171		23 9 19	2671.950	25.	2825.301	0.012	0.077	2825.390	0.007	979.124164
			172		23 9 25	2664.320	24.	2817.218	0.009	0.074	2817.301	0.008	979.116077
			173		23 9 31	2661.086	29.	2813.790	0.007	0.089	2813.887	0.008	979.112662
			174		23 9 37	2659.360	24.	2811.971	0.005	0.074	2812.049	0.009	979.110826
			175		23 9 43	2659.850	25.	2812.531	0.003	0.077	2812.611	0.009	979.111388
			176		23 9 48	2656.420	27.	2810.976	0.001	0.083	2811.060	0.010	979.109837
			177		23 9 53	2666.290	30.	2812.954	-0.001	0.093	2813.046	0.010	979.111823
			178		23 9 58	2664.060	29.	2816.964	-0.003	0.089	2817.051	0.010	979.115829
			179		23 10 3	2666.100	28.	2821.217	-0.005	0.086	2821.299	0.011	979.120077
			180		23 10 12	2671.560	25.	2824.899	-0.007	0.077	2824.966	0.012	979.123748
			181		23 10 36	2666.690	29.	2819.725	-0.015	0.089	2819.800	0.014	979.118581
			182		23 10 43	2662.530	27.	2815.324	-0.017	0.086	2815.376	0.014	979.114157
			183		23 10 49	2657.760	27.	2810.276	-0.018	0.071	2810.331	0.015	979.109113
			184		23 10 55	2656.320	26.	2810.934	-0.019	0.080	2810.994	0.015	979.109777
			185		23 11 0	2662.046	25.	2814.806	-0.021	0.077	2814.862	0.016	979.113645
			186		23 11 5	2663.420	29.	2816.266	-0.022	0.089	2816.334	0.016	979.115117
			187		23 11 9	2664.690	28.	2817.821	-0.023	0.086	2817.885	0.016	979.116669
			188		23 11 16	2663.940	27.	2816.816	-0.024	0.083	2816.875	0.017	979.115860
			189		23 11 22	2666.340	28.	2819.355	-0.025	0.086	2819.416	0.017	979.118201
			190		23 11 28	2672.150	28.	2825.562	-0.026	0.086	2825.562	0.018	979.124347
			191		23 11 35	2672.610	29.	2826.200	-0.027	0.089	2826.262	0.018	979.125048
			192		23 11 41	2673.620	24.	2827.269	-0.028	0.074	2827.315	0.019	979.126101
			193		23 11 48	2666.490	25.	2821.630	-0.029	0.077	2821.676	0.020	979.120465
			194	2001	23 14 12	2696.676	26.	2851.442	-0.029	0.086	2851.501	0.031	979.150300
			0	2000	23 15 27	2701.490	29.	2856.536	-0.021	0.089	2856.605	0.038	979.155410

7 36

DRIFT RATE (PER AN HOUR) 0.0049

GRAVITY VALUE (CORRECTED TIDAL EFFECT, INSTRUMENT HEIGHT AND DRIFT)
 LACOSTE 366 GRAVIMETRIC SURVEY OF HAUT MOULOUYA IN MOROCCO 1978

MESCO 8

Y	M	D	NO	TIME	READING	INST.H	X FACT.	ETCOR	INST.COR	+ COR	DRIFTCOR	GRVTY DIF.	GRVTY VAL.
				D H M		CM	MGAL	MGAL	MGAL	MGAL	MGAL	MGAL	GAL
53	9	25	0	2000	25 7 50	2701.090	24.	2856.113	0.092	0.089	2856.295	0.0	979.155410
			195		25 8 1	2696.310	29.	2851.062	0.092	0.089	2851.243	0.002	979.150361
			196		25 8 7	2695.980	29.	2850.712	0.091	0.089	2850.894	0.004	979.150012
			197		25 8 12	2696.310	28.	2850.745	0.091	0.086	2850.922	0.005	979.150041
			198		25 8 17	2695.340	29.	2850.026	0.090	0.089	2850.215	0.006	979.149336
			199		25 8 22	2694.410	29.	2849.052	0.089	0.089	2849.231	0.007	979.148352
			200		25 8 29	2693.260	29.	2847.878	0.088	0.089	2848.055	0.008	979.147176
			201		25 8 35	2692.730	26.	2847.275	0.086	0.086	2847.447	0.010	979.146572
			202		25 9 5	2689.860	29.	2844.238	0.079	0.089	2844.407	0.016	979.143538
			203		25 9 13	2687.260	28.	2841.465	0.077	0.086	2841.651	0.018	979.140784
			204		25 9 21	2687.970	26.	2842.259	0.074	0.086	2842.399	0.020	979.141534
			205		25 9 26	2685.550	28.	2839.475	0.073	0.086	2839.837	0.021	979.138973
			206		25 9 33	2683.750	25.	2837.616	0.070	0.077	2837.964	0.022	979.137101
			207		25 9 39	2681.660	27.	2835.300	0.068	0.083	2835.651	0.024	979.134789
			208		25 9 44	2679.180	25.	2832.939	0.066	0.080	2833.092	0.025	979.132231
			209		25 9 49	2676.930	25.	2830.559	0.064	0.077	2830.760	0.026	979.129840
			210		25 9 54	2673.100	27.	2826.507	0.062	0.083	2826.652	0.027	979.125794
			211		25 9 59	2672.410	22.	2825.777	0.060	0.088	2825.904	0.028	979.125047
			212		25 10 4	2671.690	23.	2825.045	0.057	0.071	2825.144	0.029	979.124287
			213		25 10 9	2670.620	24.	2824.158	0.055	0.074	2824.266	0.030	979.123432
			214		25 11 20	2665.620	29.	2839.753	0.020	0.089	2839.862	0.045	979.139022
			215		25 11 27	2666.120	27.	2840.252	0.017	0.083	2840.361	0.047	979.139543
			216		25 11 33	2665.860	28.	2839.943	0.014	0.086	2840.043	0.048	979.139206
			217		25 11 38	2665.470	24.	2839.594	0.011	0.074	2839.679	0.049	979.138843
			218		25 11 43	2665.370	27.	2839.486	0.008	0.080	2839.560	0.050	979.138745
			219		25 11 48	2665.186	26.	2839.287	0.006	0.088	2839.373	0.051	979.138539
			220		25 11 53	2665.156	22.	2839.255	0.003	0.086	2838.760	0.054	979.138494
			221		25 11 59	2664.600	25.	2838.973	0.000	0.083	2845.524	0.062	979.137929
			222		25 12 6	2664.420	27.	2845.639	-0.046	0.086	2846.510	0.083	979.145120
			223		25 12 13	2662.350	28.	2846.673	-0.049	0.086	2846.923	0.083	979.146107
			224		25 12 17	2662.360	29.	2846.683	-0.050	0.089	2846.923	0.083	979.146121
			225		25 12 21	2662.170	28.	2846.682	-0.051	0.086	2846.716	0.084	979.145917
			226		25 12 29	2662.650	28.	2847.433	-0.052	0.086	2847.466	0.086	979.146669
			227		25 12 34	2661.710	26.	2846.196	-0.053	0.080	2846.223	0.087	979.145425
			228		25 12 39	2660.130	26.	2844.524	-0.053	0.086	2844.557	0.088	979.143760
			229		25 12 45	2667.250	29.	2841.583	-0.054	0.089	2841.615	0.090	979.140823
			230		25 12 51	2666.720	27.	2840.948	-0.054	0.083	2840.977	0.091	979.140163
			0	2000	25 15 9	2701.140	29.	2856.166	-0.055	0.089	2856.200	0.095	979.155410

7 19

DRIFT RATE (PER AN HOUR) 0.0129

GRAVITY VALUE (CORRECTED TIDAL EFFECT, INSTRUMENT HEIGHT AND DRIFT)
 LACOSTE 366 GRAVIMETRIC SURVEY OF HAUT MOULOUYA IN MOROCCO 1978

HESCO 9

Y	M	D	NO	TIME	READING	INST.H	X FACT.	EFCOR	INST.COR	* COR	DRIFCOR	GRVTY DIF.	GRVTY VAL.
				D H M	CM	MGAL	MGAL	MGAL	MGAL	MGAL	MGAL	MGAL	GAL
53	9	26	0	2000	26 7 35	2700.910	29.	2655.923	0.093	0.069	2856.105	0.0	979.155410
			231	401	26 6 15	2677.060	29.	2830.718	0.100	0.089	2830.907	0.007	-25.191
			232	402	26 6 20	2676.810	24.	2830.432	0.101	0.077	2830.606	0.008	-25.491
			233	403	26 8 25	2676.670	23.	2830.284	0.101	0.071	2830.456	0.008	-25.641
			234	404	26 8 30	2676.310	26.	2829.903	0.101	0.080	2830.084	0.009	-26.011
			235	405	26 8 34	2676.000	24.	2829.575	0.101	0.074	2829.750	0.010	-26.345
			236	406	26 8 39	2675.070	18.	2828.591	0.101	0.056	2828.748	0.011	-27.346
			237	407	26 8 44	2675.660	24.	2829.215	0.101	0.074	2829.390	0.012	-26.703
			238	408	26 8 46	2674.930	21.	2828.443	0.101	0.065	2828.609	0.012	-27.484
			239	409	26 8 53	2674.430	17.	2827.914	0.101	0.052	2828.067	0.013	-28.025
			240	410	26 8 56	2674.310	17.	2827.914	0.100	0.069	2827.977	0.014	-28.114
			241	411	26 9 3	2673.600	29.	2827.247	0.100	0.089	2827.437	0.015	-28.653
			242	412	26 9 8	2673.090	26.	2826.496	0.099	0.062	2826.657	0.016	-29.432
			243	413	26 9 13	2672.630	25.	2826.221	0.099	0.077	2826.397	0.017	-29.692
			244	414	26 9 18	2672.290	26.	2825.650	0.098	0.080	2825.828	0.017	-30.260
			245	415	26 9 23	2671.370	22.	2824.677	0.097	0.068	2824.841	0.016	-31.265
			246	416	26 9 28	2670.100	26.	2823.333	0.096	0.086	2823.515	0.019	-32.571
			247	417	26 10 17	2663.480	26.	2837.489	0.080	0.060	2837.649	0.027	-18.429
			248	418	26 10 22	2663.760	24.	2837.785	0.078	0.074	2837.937	0.028	-18.140
			249	419	26 10 27	2664.640	29.	2838.716	0.076	0.069	2838.861	0.029	-17.195
			250	420	26 10 33	2660.610	30.	2842.916	0.073	0.093	2843.062	0.030	-12.993
			251	421	26 10 36	2669.630	29.	2844.207	0.071	0.089	2844.367	0.031	-11.707
			252	422	26 10 44	2691.550	26.	2848.026	0.068	0.066	2848.181	0.032	-9.892
			253	423	26 10 53	2693.440	27.	2848.026	0.063	0.063	2848.173	0.033	-7.699
			254	20045	26 11 25	2674.260	26.	2827.734	0.066	0.066	2827.866	0.039	-26.200
			255	501	26 13 42	2686.670	25.	2842.979	-0.034	0.077	2843.022	0.062	-13.021
			256	502	26 13 49	2687.570	26.	2841.616	-0.038	0.086	2841.864	0.063	-14.178
			257	503	26 13 54	2688.220	26.	2842.503	-0.040	0.080	2842.544	0.064	-13.497
			258	504	26 13 58	2689.360	23.	2843.709	-0.042	0.071	2843.739	0.065	-12.302
			259	505	26 14 2	2688.540	27.	2842.642	-0.043	0.083	2842.682	0.065	-13.158
			260	506	26 14 7	2689.150	25.	2843.467	-0.045	0.077	2843.519	0.066	-12.520
			261	507	26 14 12	2689.120	26.	2843.455	-0.047	0.086	2843.494	0.067	-12.544
			262	508	26 14 16	2689.230	25.	2843.572	-0.049	0.089	2843.612	0.068	-12.425
			263	509	26 14 20	2687.370	26.	2841.604	-0.050	0.086	2841.640	0.068	-14.297
			264	510	26 14 39	2690.270	26.	2844.672	-0.057	0.066	2844.702	0.071	-11.332
			0	2000	26 16 38	2700.970	29.	2655.985	-0.062	0.069	2655.013	0.092	-0.000

DRIFT RATE (PER AN HOUR) 0.0101

GRAVITY VALUE (CORRECTED TIDAL EFFECT, INSTRUMENT HEIGHT AND DRIFT)
 LACOSTE 366 GRAVIMETRIC SURVEY OF HAUT MOULOUYA IN MOROCCO 1978

HESCO 10

Y	M	D	NO	TIME	READING	INST.H	X FACT.	EFCOR	INST.COR	* COR	DRIFCOR	GRVTY DIF.	GRVTY VAL.
				D H M	CM	MGAL	MGAL	MGAL	MGAL	MGAL	MGAL	MGAL	GAL
53	10	2	0	2000	2 7 46	2699.740	25.	2854.691	-0.065	0.059	2854.713	0.0	979.155410
			265	424	2 9 23	2654.760	25.	2867.125	0.064	0.089	2867.216	0.000	-47.494
			266	425	2 9 29	2655.700	26.	2812.330	0.065	0.086	2812.425	0.000	-42.267
			267	426	2 9 45	2655.060	25.	2807.421	0.021	0.089	2807.522	0.000	-47.160
			268	427	2 9 53	2658.710	22.	2811.263	0.025	0.066	2811.377	0.000	-43.334
			269	428	2 9 59	2660.550	18.	2813.229	0.032	0.056	2813.317	0.000	-41.395
			270	429	2 10 7	2663.800	25.	2816.668	0.028	0.069	2816.796	0.000	-37.917
			271	430	2 10 17	2667.140	26.	2820.201	0.046	0.089	2820.333	0.000	-36.379
			272	431	2 10 29	2672.260	29.	2825.615	0.054	0.089	2825.761	0.000	-28.951
			273	432	2 10 35	2676.490	24.	2823.746	0.058	0.074	2823.877	0.000	-30.635
			274	433	2 10 40	2669.310	20.	2822.497	0.061	0.062	2822.620	0.000	-32.093
			275	434	2 10 45	2667.730	21.	2820.625	0.064	0.065	2820.954	0.000	-33.756
			276	435	2 10 50	2666.410	23.	2819.425	0.067	0.071	2819.567	0.000	-35.146
			277	436	2 10 55	2665.450	19.	2818.413	0.069	0.059	2818.541	0.000	-36.171
			278	437	2 11 12	2669.040	24.	2822.212	0.077	0.074	2822.362	0.000	-32.249
			279	438	2 11 16	2670.810	43.	2824.084	0.060	0.071	2824.235	0.000	-30.477
			280	439	2 11 23	2673.030	25.	2826.433	0.062	0.089	2826.604	0.001	-28.108
			281	440	2 11 28	2673.960	22.	2827.015	0.064	0.068	2827.166	0.001	-27.546
			282	441	2 12 51	2670.410	26.	2823.661	0.068	0.086	2823.835	0.001	-30.877
			283	442	2 12 55	2672.260	25.	2825.535	0.065	0.077	2825.803	0.001	-28.909
			284	443	2 13 0	2672.070	26.	2825.417	0.065	0.086	2825.589	0.001	-29.123
			285	444	2 13 18	2676.540	26.	2830.146	0.079	0.086	2830.311	0.001	-24.401
			286	520	2 15 20	2689.600	27.	2843.963	-0.055	0.083	2844.041	0.001	-10.670
			287	521	2 15 25	2690.680	23.	2845.106	-0.069	0.071	2845.187	0.001	-5.544
			288	522	2 15 34	2694.420	25.	2849.592	-0.077	0.086	2849.681	0.001	-5.080
			0	2000	2 16 0	2699.710	29.	2854.659	-0.057	0.069	2854.712	0.001	-0.000

DRIFT RATE (PER AN HOUR) 0.0001

GRAVITY VALUE (CORRECTED TIDAL EFFECT, INSTRUMENT HEIGHT AND DRIFT) LACOSTE 366 GRAVIMETRIC SURVEY OF HAUT MOULOUYA IN MOROCCO 1978													11	
Y	M	D	NO	TIME	READING	INST.H	X FACT.	ETCOR	INST.COR	+ COR	DRIFTCOR	GRVTY DIF.	GRVTY VAL.	
				D H M		CM	MGAL	MGAL	MGAL	MGAL	MGAL	MGAL	GAL	
53	10	4	0	3000	4 7 45	2697.160	29.	2851.961	-0.086	0.089	2851.965	0.0	0.0	979.152892
			0	20015	4 8 6	2694.680	28.	2849.338	-0.084	0.086	2849.340	0.001	-2.624	979.150268
			0	20025	4 11 6	2657.600	28.	2810.108	0.009	0.086	2810.204	0.005	-41.756	979.111136
			0	519	4 13 32	2687.150	27.	2841.371	0.055	0.083	2841.510	0.009	-10.446	979.142446
			0	518	4 13 55	2689.310	26.	2843.656	0.052	0.080	2843.789	0.010	-8.167	979.144725
			0	517	4 14 14	2690.800	29.	2845.233	0.047	0.089	2845.369	0.010	-6.586	979.146306
			0	516	4 14 33	2692.230	25.	2846.746	0.040	0.089	2846.875	0.011	-5.079	979.147813
			0	515	4 14 52	2694.600	26.	2849.253	0.032	0.086	2849.371	0.011	-2.583	979.150309
			0	514	4 15 6	2696.690	29.	2851.464	0.025	0.089	2851.579	0.012	-0.375	979.152517
			0	513	4 15 19	2698.050	25.	2852.903	0.018	0.077	2852.998	0.012	1.045	979.153937
			0	512	4 15 30	2698.750	26.	2853.644	0.011	0.086	2853.741	0.012	1.788	979.154680
			0	511	4 15 44	2699.440	26.	2854.374	0.003	0.080	2854.456	0.012	2.504	979.155396
			0	3000	4 16 11	2697.080	29.	2851.877	-0.014	0.089	2851.952	0.013	-0.000	979.152892
											DRIFT RATE (PER AN HOUR)	0.0016		

GRAVITY VALUE (CORRECTED TIDAL EFFECT, INSTRUMENT HEIGHT AND DRIFT) LACOSTE 366 GRAVIMETRIC SURVEY OF HAUT MOULOUYA IN MOROCCO 1978													12	
Y	M	D	NO	TIME	READING	INST.H	X FACT.	ETCOR	INST.COR	+ COR	DRIFTCOR	GRVTY DIF.	GRVTY VAL.	
				D H M		CM	MGAL	MGAL	MGAL	MGAL	MGAL	MGAL	GAL	
53	10	5	0	3000	5 7 29	2697.050	29.	2851.856	-0.065	0.089	2851.880	0.0	0.0	979.152892
			0	523	5 11 28	2687.610	29.	2841.858	-0.008	0.089	2841.939	0.025	-9.915	979.142977
			0	524	5 11 33	2687.756	26.	2842.006	-0.006	0.080	2842.061	0.026	-9.774	979.143118
			0	525	5 11 38	2686.860	26.	2841.064	-0.003	0.086	2841.148	0.026	-10.706	979.142186
			0	526	5 11 42	2688.670	27.	2842.979	-0.001	0.083	2843.061	0.027	-8.792	979.144100
			0	527	5 11 47	2689.120	29.	2843.466	0.001	0.089	2843.557	0.027	-8.296	979.144596
			0	528	5 13 10	2692.930	29.	2847.486	0.021	0.089	2847.606	0.036	-4.237	979.148655
			0	529	5 13 15	2690.230	26.	2844.630	0.032	0.086	2844.748	0.037	-7.096	979.145796
			0	530	5 13 20	2689.470	27.	2843.826	0.033	0.083	2843.942	0.037	-7.901	979.144991
			0	531	5 13 24	2689.270	27.	2843.614	0.033	0.083	2843.731	0.038	-8.112	979.144780
			0	532	5 13 29	2688.660	23.	2842.969	0.034	0.071	2843.073	0.038	-8.768	979.144124
			0	533	5 13 33	2687.860	27.	2842.144	0.034	0.083	2842.261	0.038	-9.580	979.143312
			0	534	5 13 49	2686.960	27.	2841.191	0.035	0.083	2841.310	0.040	-10.530	979.142362
			0	3000	5 14 59	2696.930	29.	2851.718	0.025	0.089	2851.832	0.048	-0.000	979.152892
											DRIFT RATE (PER AN HOUR)	0.0063		

GRAVITY VALUE (CORRECTED TIDAL EFFECT, INSTRUMENT HEIGHT AND DRIFT) LACOSTE 366 GRAVIMETRIC SURVEY OF HAUT MOULOUYA IN MOROCCO 1978													13	
Y	M	D	NO	TIME	READING	INST.H	X FACT.	ETCOR	INST.COR	+ COR	DRIFTCOR	GRVTY DIF.	GRVTY VAL.	
				D H M		CM	MGAL	MGAL	MGAL	MGAL	MGAL	MGAL	GAL	
53	10	6	0	3000	6 7 30	2696.920	29.	2851.707	-0.032	0.089	2851.765	0.0	0.0	979.152892
			0	445	6 8 9	2675.450	26.	2826.993	-0.046	0.086	2829.032	0.002	-22.731	979.130161
			0	446	6 8 14	2676.930	30.	2830.559	-0.049	0.093	2830.602	0.002	-21.161	979.131731
			0	447	6 8 19	2675.420	26.	2826.961	-0.051	0.080	2826.991	0.002	-22.772	979.130120
			0	448	6 8 24	2674.520	26.	2828.009	-0.052	0.080	2828.037	0.002	-23.725	979.129167
			0	449	6 8 29	2673.720	27.	2827.163	-0.053	0.083	2827.193	0.003	-24.569	979.128323
			0	450	6 8 35	2671.360	25.	2824.666	-0.055	0.077	2824.689	0.003	-27.073	979.125819
			0	451	6 8 40	2669.550	26.	2822.751	-0.056	0.086	2822.782	0.003	-28.980	979.123912
			0	452	6 8 46	2667.990	29.	2821.101	-0.057	0.089	2821.134	0.003	-30.628	979.122264
			0	453	6 8 53	2666.060	29.	2819.059	-0.057	0.089	2819.091	0.004	-32.670	979.120222
			0	454	6 8 57	2663.970	28.	2816.848	-0.058	0.086	2816.876	0.004	-34.885	979.118007
			0	455	6 9 2	2662.020	26.	2814.785	-0.058	0.086	2814.813	0.004	-36.948	979.115944
			0	456	6 9 6	2659.500	27.	2812.119	-0.059	0.083	2812.143	0.004	-39.617	979.113275
			0	457	6 9 14	2660.510	25.	2813.187	-0.059	0.077	2813.205	0.005	-38.555	979.114537
			0	458	6 9 20	2660.450	26.	2813.124	-0.059	0.086	2813.151	0.005	-38.609	979.114283
			0	461	6 9 35	2651.570	29.	2803.729	-0.058	0.089	2803.766	0.005	-47.999	979.104893
			0	460	6 9 42	2654.670	20.	2807.009	-0.056	0.082	2807.013	0.006	-44.746	979.108146
			0	459	6 9 46	2657.780	24.	2810.299	-0.057	0.074	2810.316	0.006	-41.443	979.111449
			0	462	6 10 4	2659.770	16.	2812.404	-0.055	0.049	2812.399	0.007	-39.359	979.113533
			0	463	6 10 15	2659.050	28.	2811.643	-0.053	0.086	2811.676	0.007	-40.061	979.112811
			0	3000	6 12 46	2696.860	29.	2851.665	-0.004	0.089	2851.751	0.014	-0.000	979.152892
											DRIFT RATE (PER AN HOUR)	0.0026		

GRAVITY VALUE (CORRECTED TIDAL EFFECT, INSTRUMENT HEIGHT AND DRIFT)
LACOSTE 366 GRAVIMETRIC SURVEY OF HAUT MOULOUYA IN MOROCCO 1978

MESCO 14

Y	M	D	NO	TIME		READING	INST.H	X FACT.	ETCOR	INST.COR	+ COR		DRIFTCOR	GRVTY DIF.	GRVTY VAL.
				D	H						MGAL	MGAL			
53	10	7	3000	7	26	2696.820	29.	2651.602	0.009	0.089	2851.700	0.0	0.0	979.152892	
			331	7	8	2680.886	30.	2834.738	-0.008	0.093	2834.823	0.005	-16.872	979.136020	
			332	7	8	2677.310	25.	2830.964	-0.010	0.077	2831.028	0.006	-20.666	979.132226	
			333	7	8	2676.160	22.	2829.744	-0.014	0.068	2829.798	0.007	-21.894	979.130998	
			334	7	8	2676.030	24.	2829.607	-0.018	0.074	2829.662	0.009	-22.029	979.130863	
			335	7	8	2676.270	25.	2829.861	-0.020	0.077	2829.917	0.010	-21.773	979.131119	
			336	7	8	2677.360	29.	2830.950	-0.024	0.089	2831.016	0.011	-20.673	979.132219	
			337	7	9	2674.980	25.	2828.496	-0.032	0.077	2828.541	0.015	-23.144	979.129748	
			338	7	9	2674.570	26.	2828.062	-0.037	0.080	2828.105	0.018	-23.577	979.129315	
			339	7	9	2674.000	26.	2827.459	-0.041	0.080	2827.498	0.021	-24.181	979.128711	
			340	7	9	2673.870	26.	2827.322	-0.043	0.080	2827.359	0.023	-24.318	979.128574	
			341	7	10	2684.200	29.	2838.250	-0.045	0.089	2838.294	0.030	-13.375	979.139517	
			342	7	10	2681.650	24.	2835.595	-0.045	0.074	2835.624	0.032	-16.044	979.136848	
			343	7	11	2676.090	32.	2831.786	-0.044	0.099	2831.841	0.034	-19.826	979.133066	
			344	7	11	2679.470	27.	2833.246	-0.043	0.083	2833.286	0.035	-18.378	979.134514	
			345	7	11	2684.480	28.	2838.546	-0.043	0.086	2838.590	0.036	-13.073	979.139819	
			0	3000	7	14	2696.770	29.	2851.549	-0.007	0.089	2851.632	0.066	-0.000	979.152892

7 13

DRIFT RATE (PER AN HOUR) 0.0095

GRAVITY VALUE (CORRECTED TIDAL EFFECT, INSTRUMENT HEIGHT AND DRIFT)
LACOSTE 366 GRAVIMETRIC SURVEY OF HAUT MOULOUYA IN MOROCCO 1978

MESCO 15

Y	M	D	NO	TIME		READING	INST.H	X FACT.	ETCOR	INST.COR	+ COR		DRIFTCOR	GRVTY DIF.	GRVTY VAL.
				D	H						MGAL	MGAL			
53	10	9	3000	9	19	2696.510	29.	2851.274	0.076	0.089	2851.441	0.0	0.0	979.152892	
			346	9	8	2691.566	15.	2848.037	0.057	0.059	2848.153	0.011	-5.278	979.147614	
			347	9	8	2690.270	25.	2844.572	0.049	0.060	2844.601	0.014	-6.626	979.146266	
			348	9	9	2690.030	27.	2844.418	0.042	0.053	2844.543	0.017	-6.881	979.146011	
			349	9	9	2690.610	28.	2845.032	0.033	0.065	2845.151	0.020	-6.270	979.146622	
			350	9	10	2686.670	29.	2841.075	0.011	0.069	2841.176	0.028	-10.227	979.142655	
			351	9	10	2686.420	28.	2840.599	0.004	0.060	2840.663	0.031	-10.727	979.142165	
			352	9	10	2684.590	26.	2838.663	-0.004	0.050	2838.739	0.034	-12.668	979.140224	
			353	9	11	2685.990	25.	2840.144	-0.011	0.077	2840.210	0.037	-11.194	979.141698	
			354	9	11	2687.620	28.	2842.060	-0.016	0.066	2842.149	0.040	-9.253	979.143639	
			355	9	11	2692.010	32.	2846.513	-0.027	0.099	2846.584	0.044	-4.813	979.148079	
			356	9	12	2678.430	29.	2832.146	-0.048	0.089	2832.187	0.062	-19.192	979.133700	
			357	9	12	2677.520	26.	2831.163	-0.049	0.080	2831.215	0.063	-20.164	979.132728	
			358	9	13	2676.540	31.	2830.569	-0.049	0.096	2830.618	0.064	-20.761	979.132131	
			359	9	13	2677.040	28.	2830.375	-0.049	0.080	2830.708	0.064	-20.670	979.132222	
			360	9	13	2676.270	28.	2829.661	-0.049	0.086	2829.698	0.065	-21.478	979.131414	
			361	9	14	2675.170	29.	2828.697	-0.049	0.089	2828.737	0.066	-22.638	979.130254	
			362	9	14	2674.240	29.	2827.713	-0.049	0.089	2827.753	0.066	-23.622	979.129270	
			363	9	14	2672.010	17.	2825.354	-0.049	0.052	2825.357	0.068	-26.017	979.126875	
			364	9	14	2667.540	23.	2820.625	-0.049	0.071	2820.646	0.069	-30.726	979.122166	
			365	9	14	2662.220	25.	2814.996	-0.049	0.077	2815.024	0.069	-36.347	979.116545	
			366	9	14	2655.640	28.	2812.478	-0.049	0.086	2812.516	0.070	-38.855	979.114037	
			367	9	14	2663.860	13.	2816.721	-0.049	0.040	2816.723	0.071	-34.647	979.118245	
			368	9	14	2663.560	29.	2816.435	-0.045	0.089	2816.476	0.072	-34.893	979.117999	
			0	3000	9	15	2696.550	29.	2851.316	-0.044	0.089	2851.362	0.079	-0.000	979.152892

8 5

DRIFT RATE (PER AN HOUR) 0.0098

GRAVITY VALUE (CORRECTED TIDAL EFFECT, INSTRUMENT HEIGHT AND DRIFT)
LACOSTE 366 GRAVIMETRIC SURVEY OF HAUT MOULOUYA IN MOROCCO 1978

HESCO 16

Y	M	D	NO	TIME	READING	INST.H	X FACT.	ETCOR	INST.COR	+ COR	DRIFTCOR	GRVTY DIF.	GRVTY VAL.
				D H M		CM	MGAL	MGAL	MGAL	MGAL	MGAL	MGAL	GAL
53	10	10	3000	10 7 38	2696.360	29.	2851.115	0.058	0.069	2851.293	0.0	0.0	979.152892
362	701	10 8 19	2656.450	26.	2811.005	0.064	0.050	2811.172	-0.004	-40.124	-0.004	-40.124	979.112768
370	702	10 8 26	2660.560	25.	2813.261	0.063	0.077	2813.421	-0.004	-37.875	-0.004	-37.875	979.115017
371	703	10 8 32	2663.600	27.	2816.456	0.062	0.083	2816.621	-0.005	-34.676	-0.005	-34.676	979.118216
372	704	10 8 39	2663.390	30.	2816.234	0.060	0.093	2816.407	-0.005	-34.891	-0.005	-34.891	979.118001
373	705	10 8 45	2662.220	29.	2814.996	0.079	0.089	2815.165	-0.006	-36.134	-0.006	-36.134	979.116758
374	706	10 8 52	2661.110	28.	2813.322	0.077	0.086	2813.985	-0.007	-37.314	-0.007	-37.314	979.115578
375	707	10 9 2	2656.190	26.	2808.617	0.074	0.080	2808.771	-0.008	-42.529	-0.008	-42.529	979.110363
376	708	10 9 10	2649.760	24.	2801.814	0.072	0.074	2801.960	-0.008	-49.341	-0.008	-49.341	979.103551
377	709	10 9 25	2640.400	22.	2791.912	0.067	0.068	2792.046	-0.010	-59.254	-0.010	-59.254	979.093636
378	710	10 9 56	2667.060	29.	2820.132	0.054	0.089	2820.261	-0.012	-31.023	-0.012	-31.023	979.121869
379	711	10 10 4	2665.370	28.	2818.329	0.050	0.086	2818.466	-0.013	-32.840	-0.013	-32.840	979.120052
380	712	10 10 14	2663.450	24.	2816.296	0.046	0.074	2816.417	-0.014	-34.889	-0.014	-34.889	979.118003
381	614	10 10 30	2665.350	24.	2818.350	0.034	0.086	2818.440	-0.016	-32.838	-0.016	-32.838	979.120054
382	615	10 10 45	2667.830	26.	2820.931	0.030	0.089	2821.051	-0.017	-30.258	-0.017	-30.258	979.122634
383	616	10 10 53	2670.430	29.	2823.662	0.026	0.089	2823.795	-0.017	-27.512	-0.017	-27.512	979.125380
384	617	10 11 4	2676.980	27.	2824.243	0.020	0.086	2824.350	-0.018	-26.961	-0.018	-26.961	979.125931
385	618	10 11 44	2656.430	27.	2810.967	-0.001	0.083	2811.069	-0.022	-40.245	-0.022	-40.245	979.112647
386	619	10 11 50	2661.390	26.	2814.118	-0.004	0.086	2814.201	-0.023	-37.114	-0.023	-37.114	979.115778
387	620	10 11 57	2660.920	24.	2813.621	-0.007	0.086	2813.700	-0.023	-37.616	-0.023	-37.616	979.115276
388	621	10 12 52	2660.710	29.	2813.299	-0.023	0.089	2813.455	-0.028	-37.865	-0.028	-37.865	979.115027
389	622	10 12 57	2661.440	29.	2814.171	-0.035	0.089	2814.226	-0.028	-37.096	-0.028	-37.096	979.115796
390	623	10 13 2	2662.960	26.	2815.800	-0.037	0.080	2815.844	-0.029	-35.478	-0.029	-35.478	979.117414
391	624	10 13 7	2662.770	27.	2816.036	-0.039	0.083	2816.680	-0.029	-34.641	-0.029	-34.641	979.118251
392	625	10 13 11	2665.330	26.	2818.267	-0.040	0.080	2818.326	-0.030	-32.996	-0.030	-32.996	979.119896
393	626	10 13 16	2667.110	27.	2820.170	-0.042	0.083	2820.211	-0.030	-31.112	-0.030	-31.112	979.121780
394	627	10 13 21	2665.660	18.	2818.657	-0.044	0.086	2818.666	-0.031	-29.655	-0.031	-29.655	979.120237
395	628	10 13 26	2663.130	28.	2815.959	-0.046	0.086	2816.000	-0.031	-29.975	-0.031	-29.975	979.119917
396	629	10 13 30	2665.360	25.	2818.316	-0.047	0.077	2818.349	-0.032	-26.320	-0.032	-26.320	979.126572
397	630	10 13 35	2671.550	26.	2824.973	-0.048	0.080	2825.005	-0.032	-26.159	-0.032	-26.159	979.122733
398	631	10 13 41	2668.020	27.	2821.137	-0.050	0.083	2821.166	-0.032	-27.089	-0.032	-27.089	979.125803
399	632	10 13 53	2670.920	29.	2824.201	-0.053	0.089	2824.237	-0.033	-29.324	-0.033	-29.324	979.123568
400	633	10 13 56	2666.650	27.	2821.989	-0.054	0.086	2822.003	-0.034	-31.366	-0.034	-31.366	979.121526
401	634	10 14 2	2666.880	29.	2819.926	-0.055	0.089	2819.961	-0.034	-31.695	-0.034	-31.695	979.121197
402	635	10 14 6	2666.570	25.	2819.596	-0.056	0.089	2819.632	-0.035	-31.012	-0.035	-31.012	979.121880
403	636	10 14 11	2667.220	28.	2820.260	-0.057	0.086	2820.315	-0.036	-27.811	-0.036	-27.811	979.125081
404	637	10 14 16	2670.250	27.	2823.492	-0.058	0.082	2823.517	-0.036	-25.798	-0.036	-25.798	979.127094
405	638	10 14 21	2672.160	25.	2825.512	-0.059	0.077	2825.531	-0.036	-15.419	-0.036	-15.419	979.137473
406	347	10 14 37	2661.970	26.	2835.691	-0.061	0.080	2835.911	-0.038	-14.927	-0.038	-14.927	979.137965
407	248	10 14 42	2662.430	24.	2836.375	-0.061	0.086	2836.403	-0.038	-15.810	-0.038	-15.810	979.137082
408	349	10 14 49	2661.660	27.	2835.500	-0.061	0.082	2835.521	-0.038	-16.112	-0.038	-16.112	979.134482
409	350	10 14 56	2679.140	28.	2832.657	-0.062	0.086	2832.922	-0.039	-18.410	-0.039	-18.410	979.136780
410	351	10 15 5	2661.210	29.	2835.193	-0.062	0.089	2835.220	-0.040	-13.550	-0.040	-13.550	979.139342
411	352	10 15 10	2663.720	33.	2837.742	-0.062	0.102	2837.783	-0.041	-12.490	-0.041	-12.490	979.140402
412	353	10 15 16	2664.740	27.	2836.822	-0.062	0.083	2836.843	-0.041	-11.020	-0.041	-11.020	979.141872
413	354	10 15 21	2666.130	27.	2840.292	-0.061	0.083	2840.314	-0.042	-14.765	-0.042	-14.765	979.138127
414	355	10 15 26	2662.590	27.	2835.547	-0.061	0.083	2835.569	-0.044	0.000	-0.044	0.000	979.152892
0	3060	10 15 47	2696.540	29.	2851.305	-0.059	0.089	2851.336	-0.044				

DRIFT RATE (PER AN HOUR) -0.0054

GRAVITY VALUE (CORRECTED TIDAL EFFECT, INSTRUMENT HEIGHT AND DRIFT)
LACOSTE 366 GRAVIMETRIC SURVEY OF HAUT MOULOUYA IN MOROCCO 1978

HESCO 17

Y	M	D	NO	TIME	READING	INST.H	X FACT.	ETCOR	INST.COR	+ COR	DRIFTCOR	GRVTY DIF.	GRVTY VAL.
				D H M		CM	MGAL	MGAL	MGAL	MGAL	MGAL	MGAL	GAL
53	10	11	3000	11 7 45	2694.320	29.	2851.073	0.066	0.089	2851.246	0.0	0.0	979.152892
415	545	11 7 45	2688.350	28.	2842.673	0.093	0.086	2842.852	-0.003	-8.399	-0.003	-8.399	979.144493
416	546	11 8 43	2689.130	27.	2843.466	0.094	0.083	2843.643	-0.004	-7.609	-0.004	-7.609	979.145283
417	547	11 9 58	2689.730	26.	2844.101	0.093	0.080	2844.274	-0.005	-6.979	-0.005	-6.979	979.145913
418	556	11 9 40	2688.470	26.	2840.852	0.087	0.080	2840.819	-0.007	-10.437	-0.007	-10.437	979.142455
419	557	11 9 55	2687.410	27.	2841.646	0.083	0.083	2841.812	-0.008	-9.444	-0.008	-9.444	979.143714
420	558	11 10 9	2687.670	26.	2841.921	0.078	0.080	2842.080	-0.009	-8.080	-0.009	-8.080	979.146812
421	559	11 10 23	2690.600	28.	2845.021	0.072	0.086	2845.179	-0.010	-6.992	-0.010	-6.992	979.146900
422	360	11 10 42	2687.630	30.	2842.112	0.064	0.093	2842.266	-0.012	-4.390	-0.012	-4.390	979.148502
423	361	11 12 28	2652.320	24.	2846.441	-0.034	0.074	2846.681	-0.023	-3.807	-0.023	-3.807	979.149085
424	362	11 13 34	2692.860	29.	2847.412	-0.038	0.089	2847.464	-0.024	-32.359	-0.024	-32.359	979.120533
425	363	11 13 50	2665.690	29.	2816.868	-0.045	0.089	2816.978	-0.024	-31.451	-0.024	-31.451	979.121441
426	364	11 13 59	2666.740	36.	2819.778	-0.049	0.093	2819.821	-0.025	-25.526	-0.025	-25.526	979.127366
427	365	11 14 6	2672.250	28.	2825.713	-0.070	0.083	2813.042	-0.028	-36.234	-0.028	-36.234	979.114658
428	366	11 15 2	2660.360	27.	2813.028	-0.071	0.071	2813.844	-0.029	-37.434	-0.029	-37.434	979.115458
429	367	11 15 8	2661.130	24.	2815.960	-0.072	0.074	2815.982	-0.030	-35.296	-0.030	-35.296	979.115796
430	368	11 15 19	2662.150	24.	2815.960	-0.073	0.089	2851.279	-0.031				
6	3060	11 15 43	2696.560	29.	2851.263	-0.073							

DRIFT RATE (PER AN HOUR) -0.0039

GRAVITY VALUE (CORRECTED TIDAL EFFECT, INSTRUMENT HEIGHT AND DRIFT) MESCO 18
LACOSTE 366 GRAVIMETRIC SURVEY OF HAUT MOULOUYA IN MOROCCO 1978
Y M D NO TIME READING INST.H X FACT. ETOR INST.COR + COR DRIFCOR GRVY DIF. GRVY VAL.

GRAVITY VALUE (CORRECTED TIDAL EFFECT, INSTRUMENT HEIGHT AND DRIFT) MESCO 19
LACOSTE 366 GRAVIMETRIC SURVEY OF HAUT MOULOUYA IN MOROCCO 1978
Y M D NO TIME READING INST.H X FACT. ETOR INST.COR + COR DRIFCOR GRVY DIF. GRVY VAL.

GRAVITY VALUE (CORRECTED TIDAL EFFECT, INSTRUMENT HEIGHT AND DRIFT) MESCO 20
LACOSTE 366 GRAVIMETRIC SURVEY OF HAUT MOULOUYA IN MOROCCO 1978
Y M D NO TIME READING INST.H X FACT. ETOR INST.COR + COR DRIFCOR GRVY DIF. GRVY VAL.

GRAVITY VALUE (CORRECTED TIDAL EFFECT, INSTRUMENT HEIGHT AND DRIFT)
LAGOSTE 366 GRAVIMETRIC SURVEY OF HAUT MOULOUYA IN MOROCCO 1978

MESCO 21

Y	M	D	NO	TIME	READING	INST.H	X FACT.	ETCOR	INST.COR	+ COR	DRIFTCOR	GRVY DIF.	GRVY VAL.
53	10	17		D H M		CM	MGAL	MGAL	MGAL	MGAL	MGAL	MGAL	GAL
			0	3000	17 7 34	2696.300	29.	2851.052	-0.091	0.089	2851.050	0.0	979.152892
			498	839	17 8 10	2693.840	28.	2848.449	-0.062	0.080	2848.448	-0.005	979.150285
			497	840	17 8 15	2692.110	22.	2846.619	-0.080	0.068	2846.607	-0.005	979.148444
			495	841	17 8 20	2692.090	21.	2846.598	-0.077	0.065	2846.585	-0.006	979.148421
			499	842	17 8 25	2688.480	19.	2842.778	-0.075	0.059	2842.762	-0.007	979.144597
			500	843	17 8 30	2686.950	29.	2841.160	-0.073	0.089	2841.176	-0.007	979.143011
			501	844	17 8 35	2686.410	24.	2840.588	-0.071	0.074	2840.592	-0.008	979.142426
			502	845	17 8 52	2682.670	25.	2836.843	-0.062	0.077	2836.859	-0.010	979.138691
			503	846	17 9 1	2681.660	24.	2835.775	-0.056	0.074	2835.792	-0.012	979.137623
			504	847	17 9 11	2678.360	25.	2832.072	-0.050	0.077	2832.099	-0.013	979.139928
			505	846	17 9 19	2672.490	28.	2825.766	-0.045	0.086	2825.807	-0.014	979.127636
			506	849	17 9 28	2668.660	29.	2821.788	-0.039	0.089	2821.838	-0.017	979.123666
			507	850	17 9 41	2666.860	31.	2819.905	-0.031	0.096	2819.970	-0.017	979.121795
			508	851	17 9 50	2661.860	29.	2814.615	-0.025	0.089	2814.680	-0.018	979.116504
			509	852	17 9 58	2664.900	28.	2817.832	-0.019	0.086	2817.899	-0.019	979.119782
			510	853	17 10 6	2665.610	28.	2818.794	-0.014	0.086	2818.867	-0.020	979.120689
			511	854	17 10 12	2664.420	18.	2817.324	-0.010	0.056	2817.369	-0.021	979.119191
			512	855	17 10 16	2662.000	27.	2815.610	-0.006	0.083	2815.687	-0.022	979.117508
			513	856	17 10 24	2666.860	30.	2819.694	-0.002	0.083	2819.775	-0.023	979.121595
			514	869	17 11 12	2676.900	27.	2832.643	0.026	0.093	2832.762	-0.029	979.134575
			515	370	17 12 13	2676.470	25.	2830.072	0.049	0.077	2830.199	-0.037	979.132004
			516	371	17 12 19	2677.670	26.	2831.342	0.050	0.080	2831.472	-0.038	979.133277
			517	372	17 12 29	2676.760	29.	2830.379	0.052	0.089	2830.520	-0.039	979.132323
			518	373	17 12 35	2675.160	29.	2828.666	0.052	0.089	2828.828	-0.040	979.130631
			519	374	17 12 40	2675.240	28.	2828.677	0.053	0.086	2829.016	-0.041	979.130818
			520	375	17 12 45	2675.150	27.	2828.676	0.053	0.083	2829.817	-0.041	979.130613
			521	376	17 12 50	2674.510	22.	2827.999	0.053	0.086	2828.119	-0.042	979.129920
			522	377	17 12 55	2672.750	24.	2826.137	0.053	0.074	2826.264	-0.043	979.128063
			523	378	17 13 0	2672.010	29.	2825.254	0.053	0.089	2825.496	-0.043	979.127295
			524	375	17 13 5	2671.470	27.	2824.787	0.052	0.083	2824.918	-0.044	979.126716
			525	380	17 13 10	2670.910	20.	2824.190	0.052	0.082	2824.303	-0.045	979.126101
			526	381	17 13 40	2670.960	25.	2824.264	0.045	0.077	2824.386	-0.049	979.126180
			527	382	17 13 45	2672.860	17.	2826.189	0.043	0.052	2826.285	-0.049	979.128076
			528	383	17 13 45	2674.650	26.	2828.147	0.042	0.080	2828.269	-0.050	979.130062
			529	384	17 13 54	2675.730	23.	2829.269	0.040	0.071	2829.401	-0.051	979.131192
			530	385	17 13 59	2677.250	20.	2830.940	0.036	0.062	2831.040	-0.051	979.132831
			0	3000	17 14 24	2696.240	29.	2850.988	0.027	0.089	2851.104	-0.054	979.152892

DRIFT RATE (PER AN HOUR) -0.0080

GRAVITY VALUE (CORRECTED TIDAL EFFECT, INSTRUMENT HEIGHT AND DRIFT)
LAGOSTE 366 GRAVIMETRIC SURVEY OF HAUT MOULOUYA IN MOROCCO 1978

MESCO 22

Y	M	D	NO	TIME	READING	INST.H	X FACT.	ETCOR	INST.COR	+ COR	DRIFTCOR	GRVY DIF.	GRVY VAL.
53	10	20		D H M		CM	MGAL	MGAL	MGAL	MGAL	MGAL	MGAL	GAL
			0	3000	20 7 48	2696.220	29.	2850.967	-0.041	0.089	2851.015	0.0	979.152892
			531	833	20 8 47	2667.230	27.	2820.297	-0.060	0.063	2820.320	-0.000	979.122197
			532	834	20 8 53	2663.580	28.	2816.435	-0.061	0.086	2816.461	-0.000	979.118337
			533	835	20 9 1	2662.200	24.	2814.975	-0.062	0.074	2814.987	-0.000	979.118364
			534	836	20 9 8	2660.120	26.	2812.775	-0.063	0.060	2812.792	-0.001	979.114688
			535	837	20 9 14	2658.390	27.	2810.944	-0.063	0.083	2810.965	-0.001	979.112841
			536	838	20 9 20	2656.500	9.	2809.262	-0.063	0.028	2809.227	-0.001	979.111103
			537	839	20 9 28	2655.490	21.	2807.876	-0.063	0.065	2807.878	-0.001	979.109754
			538	840	20 9 52	2653.310	29.	2805.576	-0.062	0.089	2805.597	-0.001	979.107473
			539	841	20 10 13	2652.220	22.	2804.417	-0.059	0.088	2804.425	-0.001	979.106301
			540	842	20 10 19	2648.760	21.	2800.756	-0.058	0.065	2800.763	-0.001	979.102638
			541	843	20 10 25	2643.970	29.	2795.469	-0.057	0.077	2795.708	-0.001	979.097584
			542	844	20 10 30	2643.090	26.	2794.757	-0.056	0.080	2794.782	-0.001	979.096657
			543	845	20 10 37	2645.520	27.	2797.646	-0.054	0.083	2797.675	-0.001	979.095550
			544	846	20 10 43	2643.860	29.	2795.572	-0.053	0.089	2795.609	-0.001	979.097484
			545	847	20 10 50	2641.630	21.	2793.213	-0.051	0.065	2793.227	-0.001	979.095100
			546	848	20 10 56	2639.550	21.	2791.012	-0.049	0.065	2791.028	-0.001	979.092903
			547	849	20 11 2	2638.510	23.	2789.912	-0.048	0.071	2789.935	-0.001	979.091811
			548	850	20 11 7	2639.620	20.	2791.298	-0.046	0.062	2791.314	-0.001	979.093189
			549	851	20 12 53	2630.710	25.	2781.660	-0.011	0.086	2781.735	-0.002	979.086310
			550	852	20 13 0	2631.460	24.	2782.453	-0.009	0.074	2782.518	-0.002	979.084393
			551	853	20 13 6	2632.090	28.	2783.120	-0.008	0.086	2783.199	-0.002	979.085073
			552	854	20 13 15	2633.970	28.	2785.109	-0.005	0.060	2785.184	-0.002	979.087058
			553	855	20 13 33	2634.950	27.	2785.146	-0.002	0.083	2786.227	-0.002	979.088102
			0	3000	20 14 36	2696.180	29.	2850.925	0.006	0.089	2851.018	-0.003	979.152892

DRIFT RATE (PER AN HOUR) -0.0004

GRAVITY VALUE (CORRECTED TIDAL EFFECT, INSTRUMENT HEIGHT AND DRIFT)
LAGOSTE 366 GRAVIMETRIC SURVEY OF HAUT MOULOUYA IN MOROCCO 1978

MESCO 23

Y	M	D	NO	TIME	READING	INST.H	X FACT.	ETCOR	INST.COR	+ COR	DRIFTCOR	GRVY DIF.	GRVY VAL.
53	10	21		D H M		CM	MGAL	MGAL	MGAL	MGAL	MGAL	MGAL	GAL
			0	3000	21 8 19	2696.160	25.	2850.903	-0.024	0.089	2850.969	0.0	979.152892
			554	857	21 9 1	2662.650	25.	2836.522	-0.040	0.077	2836.859	0.002	979.138784
			555	858	21 9 7	2661.220	29.	2835.098	-0.042	0.089	2835.145	0.002	979.137070
			556	859	21 9 16	2678.110	24.	2821.607	-0.045	0.074	2821.837	0.003	979.135762
			557	860	21 9 51	2675.410	28.	2826.951	-0.051	0.086	2826.966	0.004	979.130913
			558	861	21 10 2	2670.200	28.	2823.439	-0.052	0.086	2823.473	0.004	979.125400
			559	862	21 10 11	2667.760	24.	2820.857	-0.053	0.089	2820.879	0.005	979.122806
			560	863	21 10 24	2673.220	29.	2826.176	-0.053	0.086	2826.712	0.005	979.128640
			561	864	21 10 44	2675.680	22.	2829.448	-0.053	0.086	2829.463	0.006	979.131392
			562	865	21 10 59	2677.190	30.	2830.634	-0.052	0.093	2830.874	0.007	979.132804
			563	866	21 11 13	2678.600	25.	2830.210	-0.051	0.077	2830.236	0.008	979.132166
			564	867	21 11 21	2678.210	26.	2831.913	-0.050	0.080	2831.943	0.008	979.133874
			565	868	21 11 31	2682.050	15.	2835.976	-0.046	0.059	2835.966	0.008	979.137917
			0	3000	21 11 57	2696.170	29.	2850.514	-0.044	0.089	2850.960	0.009	979.152892

DRIFT RATE (PER AN HOUR) 0.0026

GRAVITY VALUE (CORRECTED TIDAL EFFECT, INSTRUMENT HEIGHT AND DRIFT)
LACOSTE 366 GRAVIMETRIC SURVEY OF HAUT MOULOUYA IN MOROCCO 1978 MESCO 24

Y	M	D	NO	TIME	READING	INST.H	X FACT.	ETCOR	INST.COR	+ COR	DRIFTCOR	GRVTY DIF.	GRVTY VAL.
				D H M		CM	MGAL	MGAL	MGAL	MGAL	MGAL	MGAL	GAL
53	10	25	0	3000	25 8 14	2695.980	29.	2850.713	0.076	0.089	2850.881	0.0	979.152892
566	734	25	9	38	2667.430	28.	2820.508	0.055	0.086	2820.650	-0.001	-30.232	979.122660
567	735	25	9	44	2667.530	29.	2820.614	0.053	0.089	2820.756	-0.001	-30.126	979.122766
568	736	25	9	51	2664.740	29.	2817.662	0.050	0.089	2817.801	-0.001	-33.081	979.119811
569	737	25	10	0	2661.620	29.	2814.361	0.046	0.089	2814.497	-0.001	-36.386	979.116506
570	856	25	11	19	2661.220	28.	2813.938	0.004	0.080	2814.023	-0.002	-36.860	979.116032
571	857	25	11	27	2659.440	28.	2812.055	0.000	0.086	2812.142	-0.002	-38.742	979.114150
572	858	25	11	38	2657.350	28.	2809.844	-0.006	0.086	2809.924	-0.003	-40.959	979.111933
573	859	25	11	52	2655.950	27.	2808.363	-0.013	0.083	2808.433	-0.003	-42.451	979.110441
574	860	25	12	4	2654.900	29.	2807.252	-0.020	0.089	2807.322	-0.003	-43.562	979.109330
575	861	25	13	33	2653.580	29.	2805.855	-0.056	0.089	2805.889	-0.004	-44.996	979.107896
576	862	25	14	4	2656.650	27.	2809.315	-0.053	0.083	2809.335	-0.005	-41.550	979.111342
577	863	25	14	14	2656.780	20.	2809.241	-0.065	0.062	2809.238	-0.005	-41.648	979.111244
578	864	25	14	23	2655.910	28.	2808.321	-0.066	0.080	2808.335	-0.005	-42.551	979.110341
579	865	25	14	31	2655.290	24.	2807.665	-0.067	0.074	2807.672	-0.005	-43.214	979.109678
580	866	25	14	40	2652.620	25.	2804.840	-0.067	0.077	2804.850	-0.005	-46.036	979.106856
581	867	25	14	50	2649.590	27.	2801.634	-0.067	0.083	2801.651	-0.005	-49.236	979.103656
582	868	25	15	2	2650.020	26.	2802.089	-0.067	0.080	2802.103	-0.005	-48.789	979.104109
583	869	25	15	13	2650.370	24.	2802.459	-0.066	0.074	2802.468	-0.005	-48.419	979.104473
584	870	25	15	26	2653.010	27.	2805.252	-0.064	0.083	2805.272	-0.006	-45.615	979.107277
0	3000	25	16	17	2696.110	29.	2850.851	-0.053	0.089	2850.887	-0.006	0.000	979.152892
8 3													
DRIFT RATE (PER AN HOUR) -0.0008													

GRAVITY VALUE (CORRECTED TIDAL EFFECT, INSTRUMENT HEIGHT AND DRIFT)
LACOSTE 366 GRAVIMETRIC SURVEY OF HAUT MOULOUYA IN MOROCCO 1978 MESCO 25

Y	M	D	NO	TIME	READING	INST.H	X FACT.	ETCOR	INST.COR	+ COR	DRIFTCOR	GRVTY DIF.	GRVTY VAL.
				D H M		CM	MGAL	MGAL	MGAL	MGAL	MGAL	MGAL	GAL
53	10	26	0	3000	26 8 2	2695.960	29.	2850.692	0.079	0.089	2850.860	0.0	979.152892
585	669	26	8	42	2676.130	23.	2829.712	0.081	0.071	2829.865	0.004	-20.991	979.131901
586	670	26	8	50	2675.780	22.	2829.342	0.081	0.068	2829.491	0.005	-21.364	979.131528
587	671	26	9	0	2674.540	24.	2828.030	0.080	0.074	2828.185	0.006	-22.669	979.130223
588	672	26	9	53	2664.410	20.	2817.313	0.088	0.062	2817.443	0.012	-33.405	979.119487
589	673	26	10	3	2663.160	27.	2816.012	0.065	0.083	2816.160	0.013	-34.682	979.118205
590	674	26	10	11	2661.610	26.	2814.563	0.062	0.080	2814.704	0.014	-36.142	979.116750
591	675	26	10	17	2659.170	25.	2811.769	0.059	0.077	2811.996	0.015	-38.940	979.113952
592	676	26	10	25	2658.350	29.	2810.902	0.056	0.089	2811.047	0.016	-39.797	979.113095
593	677	26	10	31	2663.750	28.	2816.615	0.053	0.086	2816.754	0.017	-34.089	979.118803
594	678	26	10	40	2656.950	28.	2809.421	0.049	0.086	2809.556	0.018	-41.287	979.11605
595	679	26	10	46	2654.880	28.	2807.231	0.046	0.077	2807.354	0.018	-43.488	979.109404
596	680	26	12	36	2653.610	25.	2805.587	-0.026	0.086	2805.954	0.031	-44.876	979.108016
597	681	26	12	45	2654.510	27.	2806.839	-0.024	0.083	2806.899	0.031	-43.930	979.108962
598	682	26	12	50	2655.450	25.	2807.834	-0.027	0.077	2807.884	0.032	-42.944	979.109948
599	683	26	12	56	2656.960	26.	2809.431	-0.030	0.080	2809.481	0.033	-41.346	979.111546
600	684	26	13	3	2658.190	28.	2810.733	-0.034	0.086	2810.785	0.033	-40.042	979.112850
601	685	26	13	9	2659.530	29.	2812.150	-0.037	0.089	2812.202	0.034	-38.624	979.114258
0	3000	26	14	36	2696.050	29.	2850.796	-0.071	0.089	2850.816	0.044	-0.000	979.152892
6 34													
DRIFT RATE (PER AN HOUR) 0.0067													

GRAVITY VALUE (CORRECTED TIDAL EFFECT, INSTRUMENT HEIGHT AND DRIFT)
LACOSTE 366 GRAVIMETRIC SURVEY OF HAUT MOULOUYA IN MOROCCO 1978 MESCO 26

Y	M	D	NO	TIME	READING	INST.H	X FACT.	ETCOR	INST.COR	+ COR	DRIFTCOR	GRVTY DIF.	GRVTY VAL.
				D H M		CM	MGAL	MGAL	MGAL	MGAL	MGAL	MGAL	GAL
53	10	27	0	3000	27 8 10	2695.940	29.	2850.671	0.068	0.089	2850.828	0.0	979.152892
602	485	27	8	45	2681.050	25.	2834.918	0.078	0.077	2835.073	-0.005	-15.761	979.137131
603	486	27	8	53	2677.590	28.	2831.257	0.079	0.086	2831.423	-0.007	-19.412	979.133480
604	487	27	9	10	2678.060	29.	2831.754	0.081	0.089	2831.925	-0.009	-18.913	979.133979
605	488	27	9	23	2674.460	29.	2827.967	0.082	0.089	2828.136	-0.011	-22.702	979.130190
606	386	27	11	3	2670.330	26.	2823.576	0.057	0.080	2823.713	-0.027	-27.142	979.125750
607	387	27	11	18	2670.640	24.	2823.904	0.049	0.074	2824.027	-0.029	-26.830	979.126062
608	388	27	11	26	2671.110	19.	2824.402	0.044	0.059	2824.504	-0.030	-26.355	979.126537
609	389	27	11	37	2671.720	27.	2825.047	0.038	0.083	2825.189	-0.032	-25.692	979.127200
610	390	27	11	46	2672.550	28.	2825.925	0.032	0.086	2826.043	-0.033	-24.619	979.128073
611	391	27	11	57	2673.530	18.	2826.962	0.025	0.056	2827.043	-0.035	-23.820	979.129072
612	392	27	12	4	2671.620	24.	2824.941	0.022	0.074	2825.037	-0.036	-25.828	979.127064
613	393	27	13	21	2669.850	24.	2823.018	-0.029	0.074	2823.061	-0.048	-27.816	979.125076
614	394	27	13	31	2668.330	23.	2821.440	-0.035	0.071	2821.496	-0.049	-29.382	979.123510
615	395	27	13	40	2668.250	27.	2819.260	-0.041	0.083	2819.303	-0.051	-31.577	979.121315
616	871	27	14	7	2657.170	28.	2809.654	-0.055	0.086	2809.685	-0.055	-41.199	979.111693
617	872	27	14	23	2651.620	25.	2803.762	-0.063	0.077	2803.796	-0.057	-47.089	979.105803
618	873	27	14	59	2648.640	27.	2800.629	-0.075	0.083	2800.637	-0.063	-50.254	979.102638
619	874	27	15	8	2651.200	25.	2803.336	-0.078	0.077	2803.337	-0.064	-47.536	979.105336
0	3000	27	16	2	2696.110	29.	2850.893	-0.081	0.089	2850.901	-0.072	0.000	979.152892
7 52													
DRIFT RATE (PER AN HOUR) -0.0092													

GRAVITY VALUE (CORRECTED TIDAL EFFECT, INSTRUMENT HEIGHT AND DRIFT) LAGOSTE 366 GRAVIMETRIC SURVEY OF HAUT MOULOUYA IN MOROCCO 1978												MESCO 27	
Y	M	D	ND	TIME	READING	INST.H	X FACT.	ETCOR	INST.COR	* COR	DRIFTCOR	GRVY DIF.	GRVY VAL.
53	10	28	0	D H M		CM	MGAL	MGAL	MGAL	MGAL	MGAL	MGAL	GAL
0	3000	28	8	0	2696.050	29.	2850.787	0.040	0.089	2850.916	0.0	0.0	979.152892
620	684	26	8	49	2684.870	27.	2838.959	0.063	0.083	2839.106	-0.003	-11.813	979.141079
621	687	26	9	5	2684.790	28.	2838.874	0.069	0.066	2839.030	-0.003	-11.890	979.141002
622	683	26	9	22	2663.100	26.	2837.086	0.074	0.086	2837.247	-0.004	-13.674	979.139218
623	689	26	9	40	2681.556	27.	2835.447	0.077	0.083	2835.607	-0.005	-15.314	979.137578
624	690	26	10	4	2681.660	26.	2835.563	0.079	0.080	2835.722	-0.006	-15.200	979.137692
625	691	26	10	26	2678.110	26.	2831.807	0.077	0.080	2831.965	-0.008	-18.959	979.133933
626	692	28	10	46	2675.350	28.	2828.867	0.074	0.086	2829.048	-0.009	-21.877	979.131015
627	396	28	11	40	2696.110	26.	2850.851	0.053	0.080	2850.984	-0.011	0.057	979.152949
628	397	28	13	51	2689.030	26.	2843.360	-0.033	0.080	2843.408	-0.018	-7.528	979.145366
629	398	28	14	6	2689.170	26.	2843.508	-0.044	0.080	2843.545	-0.019	-7.390	979.145502
630	399	28	15	30	2677.920	25.	2831.606	-0.082	0.077	2831.601	-0.023	-19.338	979.133554
631	400	28	15	48	2676.740	26.	2830.358	-0.086	0.080	2830.352	-0.024	-20.588	979.132304
0	3000	28	17	1	2696.190	29.	2850.935	-0.081	0.089	2850.944	-0.028	0.000	979.152892
DRIFT RATE (PER AN HOUR)												-0.0031	

GRAVITY VALUE (CORRECTED TIDAL EFFECT, INSTRUMENT HEIGHT AND DRIFT) LAGOSTE 366 GRAVIMETRIC SURVEY OF HAUT MOULOUYA IN MOROCCO 1978												MESCO 28	
Y	M	D	ND	TIME	READING	INST.H	X FACT.	ETCOR	INST.COR	* COR	DRIFTCOR	GRVY DIF.	GRVY VAL.
53	10	30	0	D H M		CM	MGAL	MGAL	MGAL	MGAL	MGAL	MGAL	GAL
0	3000	30	8	51	2696.100	29.	2850.840	0.006	0.089	2850.936	0.0	0.0	979.152892
632	693	30	9	57	2656.900	26.	2811.484	0.045	0.086	2811.615	-0.007	-39.328	979.113584
633	694	30	10	16	2670.090	28.	2823.322	0.053	0.086	2823.462	-0.009	-27.483	979.125409
634	695	30	10	30	2667.110	26.	2820.170	0.058	0.086	2820.314	-0.011	-30.633	979.122259
635	696	30	10	40	2671.820	21.	2825.153	0.060	0.065	2825.276	-0.012	-25.670	979.127222
636	697	30	11	16	2673.710	27.	2827.152	0.065	0.053	2827.301	-0.016	-23.651	979.129241
637	698	30	11	34	2673.500	27.	2826.930	0.064	0.056	2827.062	-0.016	-23.692	979.129000
638	738	30	13	9	2641.600	29.	2793.161	0.064	0.089	2793.300	-0.029	-57.664	979.095228
639	548	30	14	12	2692.320	28.	2844.841	-0.014	0.086	2844.913	-0.036	-4.058	979.148834
640	549	30	14	31	2691.740	28.	2844.227	-0.026	0.086	2844.286	-0.038	-4.688	979.148204
0	3000	30	15	29	2696.210	29.	2850.956	-0.066	0.089	2850.980	-0.044	0.000	979.152892
DRIFT RATE (PER AN HOUR)												-0.0067	

GRAVITY VALUE (CORRECTED TIDAL EFFECT, INSTRUMENT HEIGHT AND DRIFT) LAGOSTE 366 GRAVIMETRIC SURVEY OF HAUT MOULOUYA IN MOROCCO 1978												MESCO 29	
Y	M	D	ND	TIME	READING	INST.H	X FACT.	ETCOR	INST.COR	* COR	DRIFTCOR	GRVY DIF.	GRVY VAL.
53	11	1	0	D H M		CM	MGAL	MGAL	MGAL	MGAL	MGAL	MGAL	GAL
0	3000	1	6	35	2696.320	29.	2851.073	-0.067	0.089	2851.095	0.0	0.0	979.152892
641	817	1	10	15	2681.490	33.	2782.485	-0.008	0.102	2782.581	-0.016	-68.530	979.084362
642	818	1	10	40	2632.930	26.	2784.009	0.009	0.080	2784.098	-0.021	-67.018	979.085874
643	819	1	11	1	2636.780	26.	2788.062	0.019	0.080	2788.181	-0.024	-62.938	979.089954
644	820	1	11	20	2639.050	26.	2790.463	0.027	0.080	2790.591	-0.027	-60.532	979.092360
645	821	1	11	39	2639.670	27.	2791.351	0.034	0.083	2791.466	-0.030	-59.658	979.093234
646	875	1	12	30	2646.150	25.	2800.153	0.030	0.077	2800.261	-0.049	-50.883	979.102009
647	876	1	13	47	2649.500	25.	2801.539	0.024	0.077	2801.640	-0.051	-49.506	979.103886
648	877	1	14	57	2641.630	24.	2793.424	-0.014	0.074	2793.485	-0.063	-57.673	979.095219
649	878	1	15	18	2644.320	15.	2796.059	-0.027	0.059	2796.091	-0.066	-55.071	979.097821
0	3000	1	16	20	2696.390	29.	2851.147	-0.064	0.089	2851.172	-0.077	0.000	979.152892
DRIFT RATE (PER AN HOUR)												-0.0099	

GRAVITY VALUE (CORRECTED TIDAL EFFECT, INSTRUMENT HEIGHT AND DRIFT) LAGOSTE 366 GRAVIMETRIC SURVEY OF HAUT MOULOUYA IN MOROCCO 1978												MESCO 30	
Y	M	D	ND	TIME	READING	INST.H	X FACT.	ETCOR	INST.COR	* COR	DRIFTCOR	GRVY DIF.	GRVY VAL.
53	11	2	0	D H M		CM	MGAL	MGAL	MGAL	MGAL	MGAL	MGAL	GAL
0	3000	2	8	15	2696.390	29.	2851.147	-0.088	0.089	2851.149	0.0	0.0	979.152892
650	879	2	10	3	2641.710	26.	2793.298	-0.042	0.080	2793.336	-0.008	-57.821	979.095071
651	880	2	10	23	2644.120	27.	2795.847	-0.031	0.083	2795.900	-0.009	-55.258	979.097634
652	881	2	10	40	2643.010	27.	2794.673	-0.021	0.083	2794.735	-0.011	-56.424	979.096468
653	882	2	11	2	2645.600	28.	2797.413	-0.009	0.086	2797.490	-0.012	-53.671	979.092211
654	883	2	11	27	2649.670	26.	2801.719	0.003	0.080	2801.802	-0.014	-49.361	979.103531
655	884	2	13	25	2657.770	25.	2810.288	0.025	0.077	2810.391	-0.023	-40.780	979.112112
656	885	2	13	43	2660.410	20.	2813.061	0.023	0.082	2813.166	-0.024	-38.007	979.114885
657	886	2	13	55	2662.370	26.	2815.155	0.019	0.080	2815.254	-0.025	-35.919	979.116973
658	887	2	14	16	2664.320	22.	2817.216	0.014	0.088	2817.300	-0.026	-33.875	979.119017
0	3000	2	15	1	2696.340	25.	2851.094	-0.005	0.089	2851.178	-0.029	0.000	979.152892
DRIFT RATE (PER AN HOUR)												-0.0044	