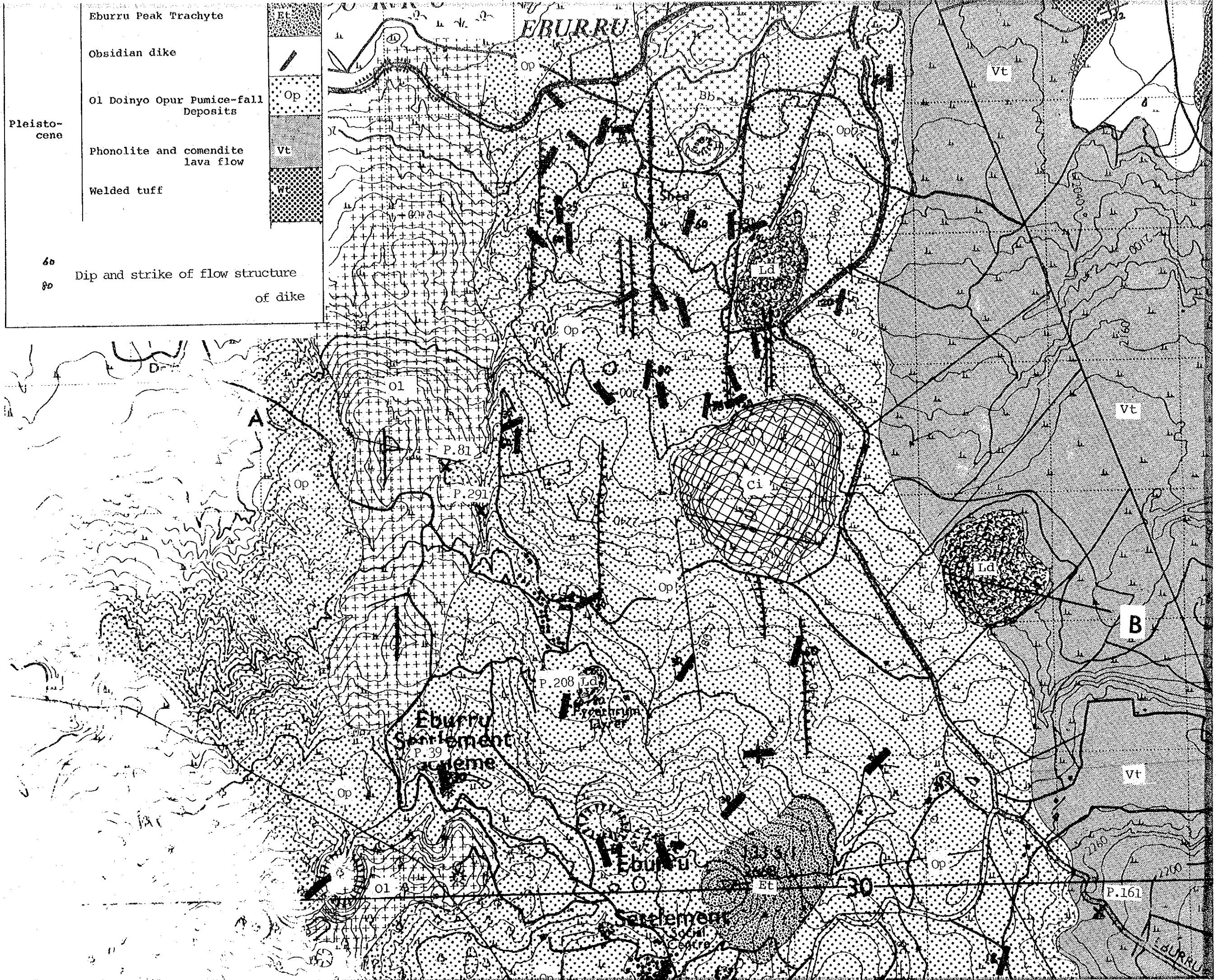


Pleistocene	Eburru Peak Trachyte	Et
	Obsidian dike	[Symbol: diagonal line]
	Ol Doiyo Opur Pumice-fall Deposits	Op
	Phonolite and comendite lava flow	Vt
	Welded tuff	Wt
60	Dip and strike of flow structure of dike	
80		



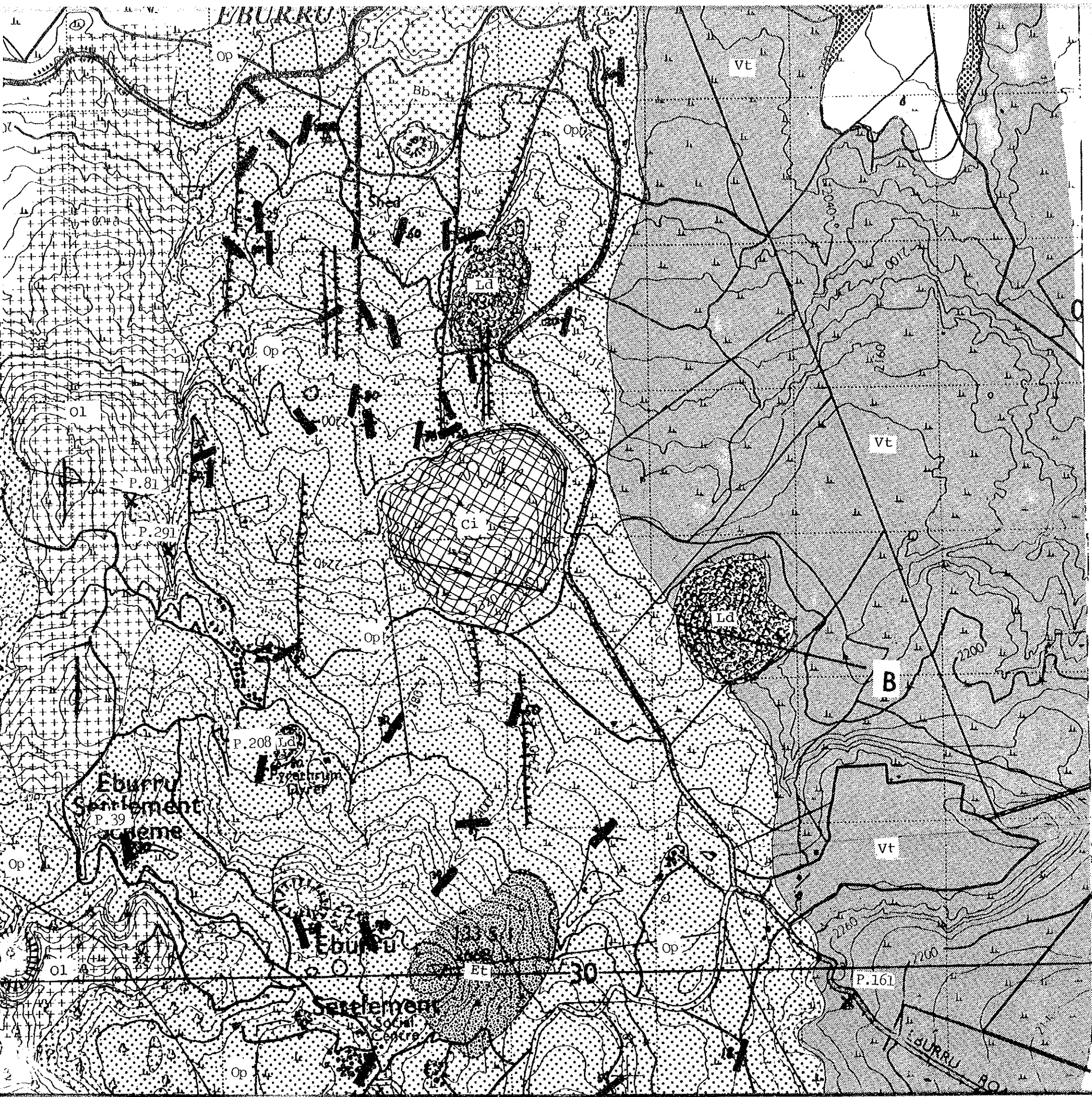
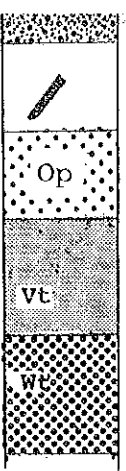
dike

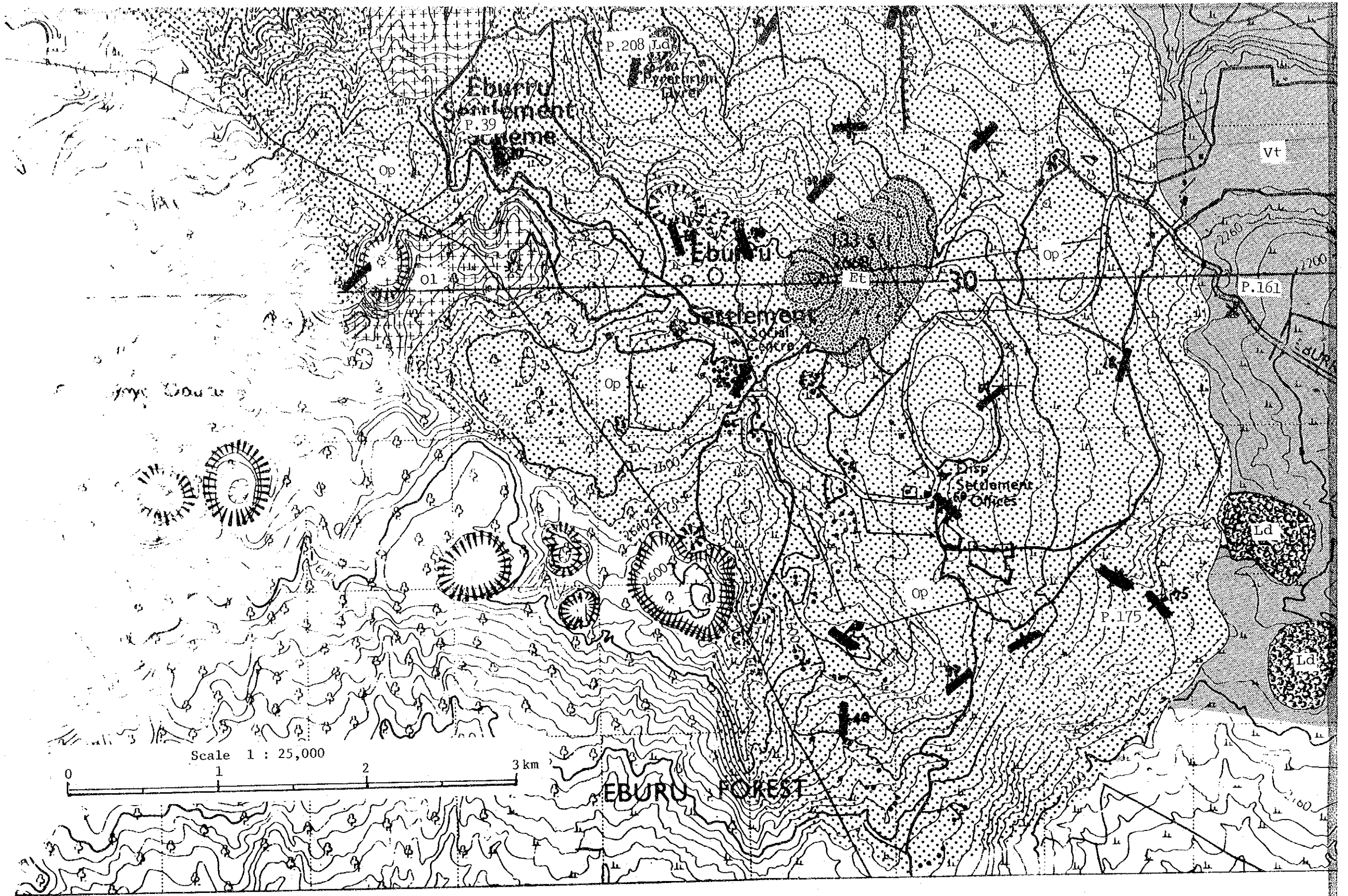
Opur Pumice-fall Deposits

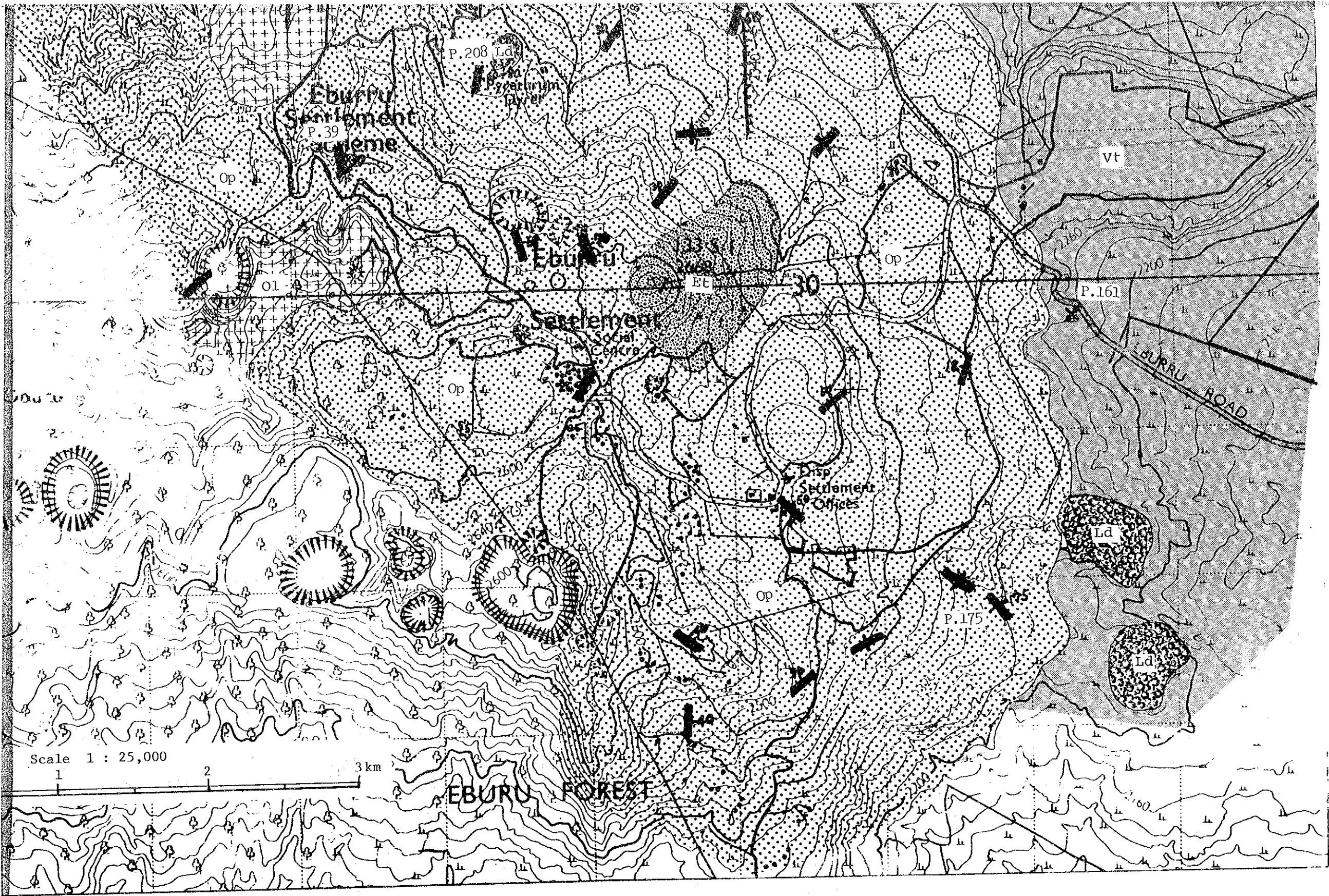
te and comendite lava flow

suff

strike of flow structure of dike







Scale 1 : 25,000

1 2 3 km

EBURRU FOREST

vt

P.161

P.175

Ld

Ld

Eburru  
Settlement  
P. 39  
Ld

Eburru

Settlement  
Social  
Centre

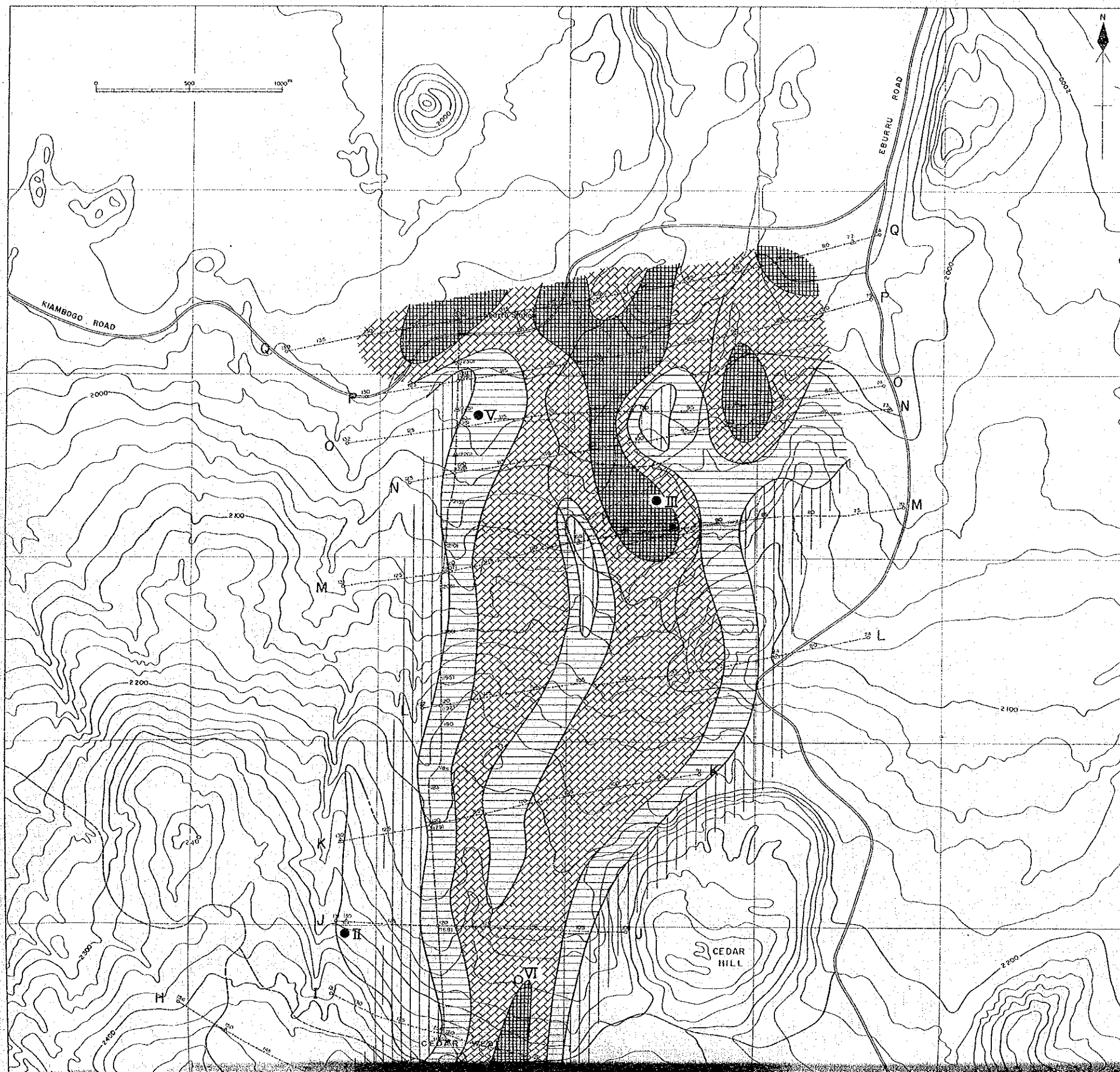
Settlement  
Offices

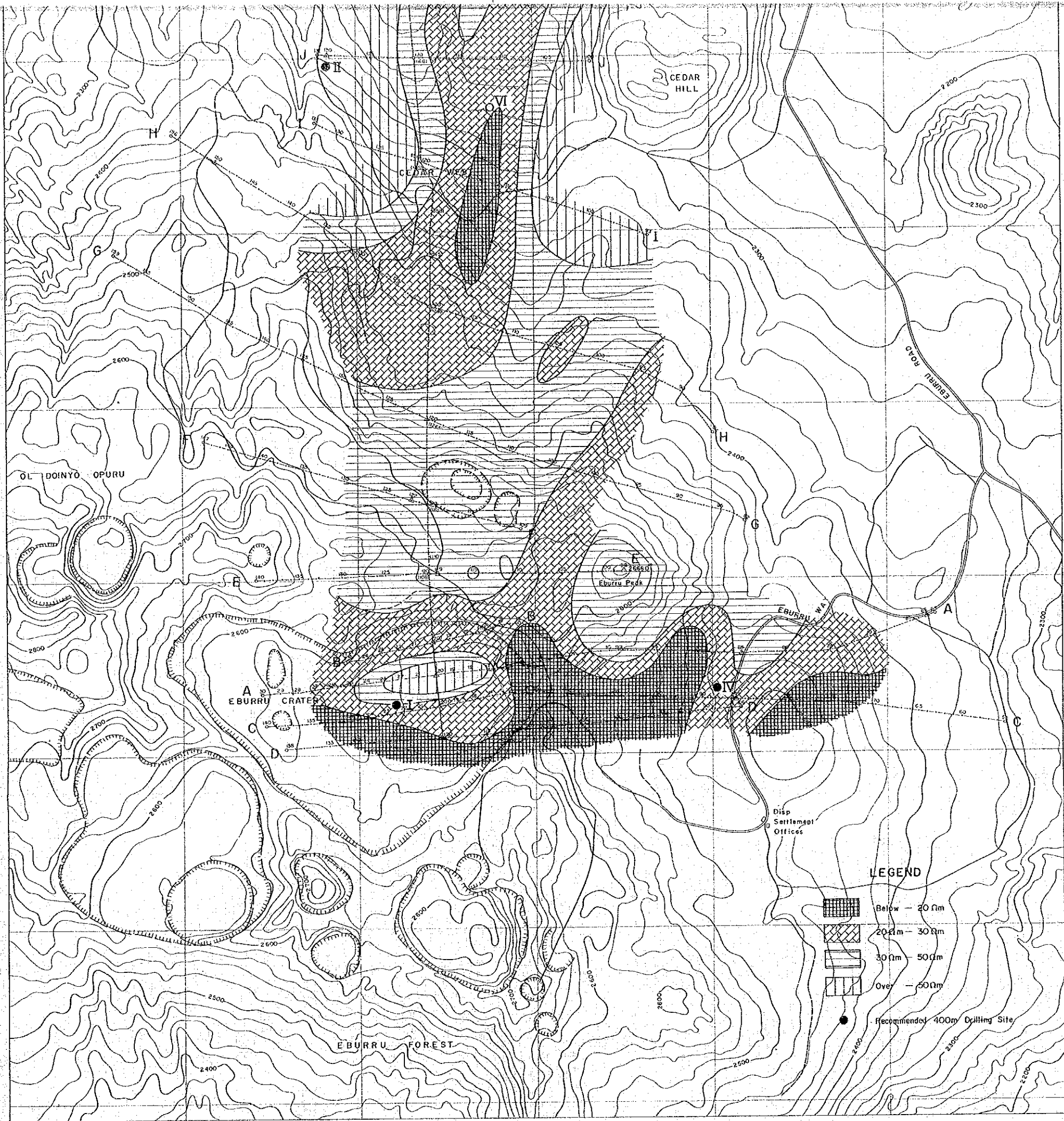
EBURRU ROAD

P. 208 Ld



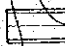
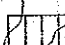
Et 30

Fig. IV-3 DISTRIBUTION OF APPARENT RESISTIVITIES AT  $AB/2 = 500m$





**LEGEND**

-  Below - 20 fm
-  20 fm - 30 fm
-  30 fm - 50 fm
-  Over - 50 fm


 Recommended 400m Drilling Site

Fig. IV-5-(1) Apparent Resistivity Section.

LINE A

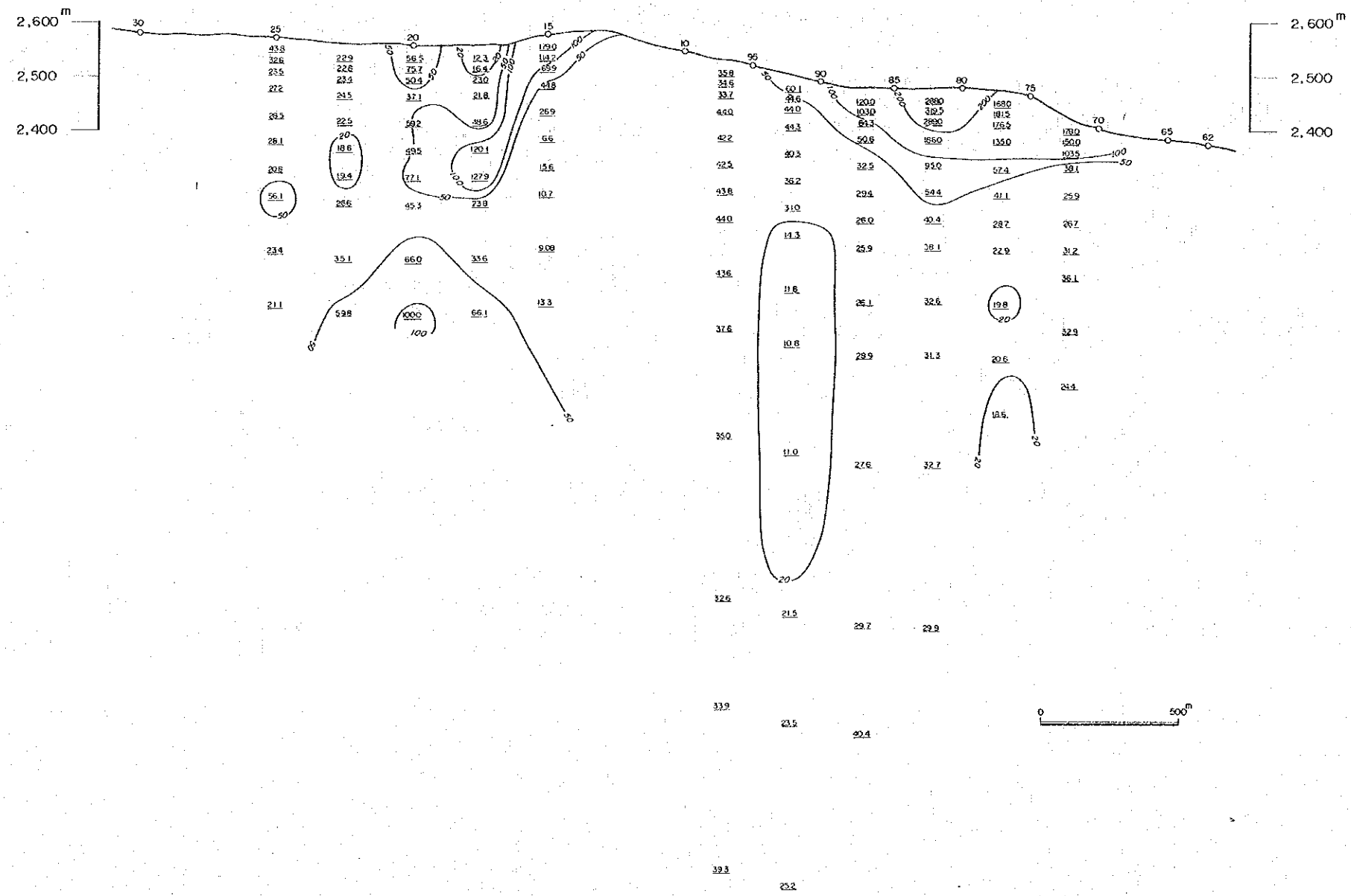






Fig. IV-5-(3) Apparent Resistivity Section.

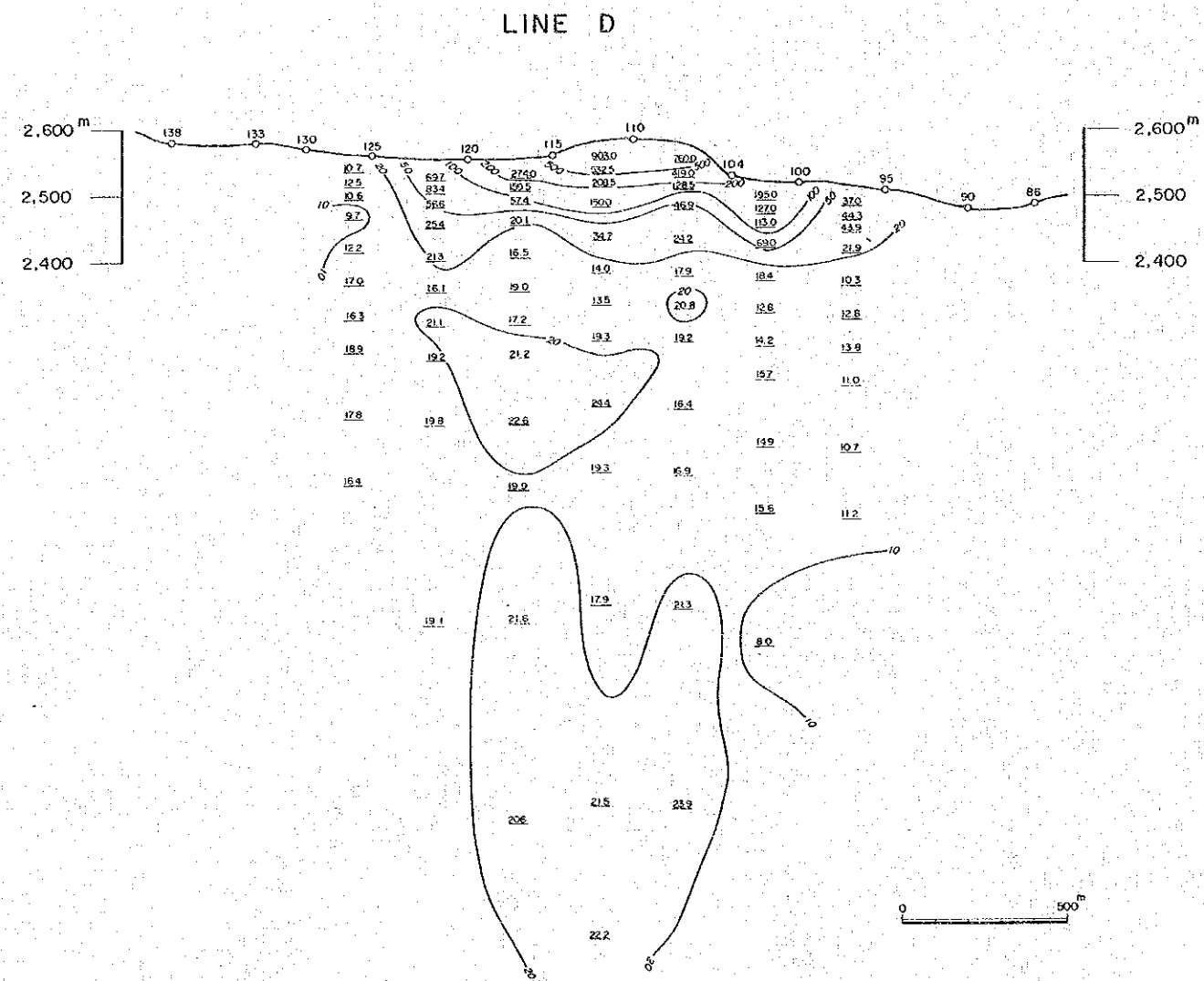
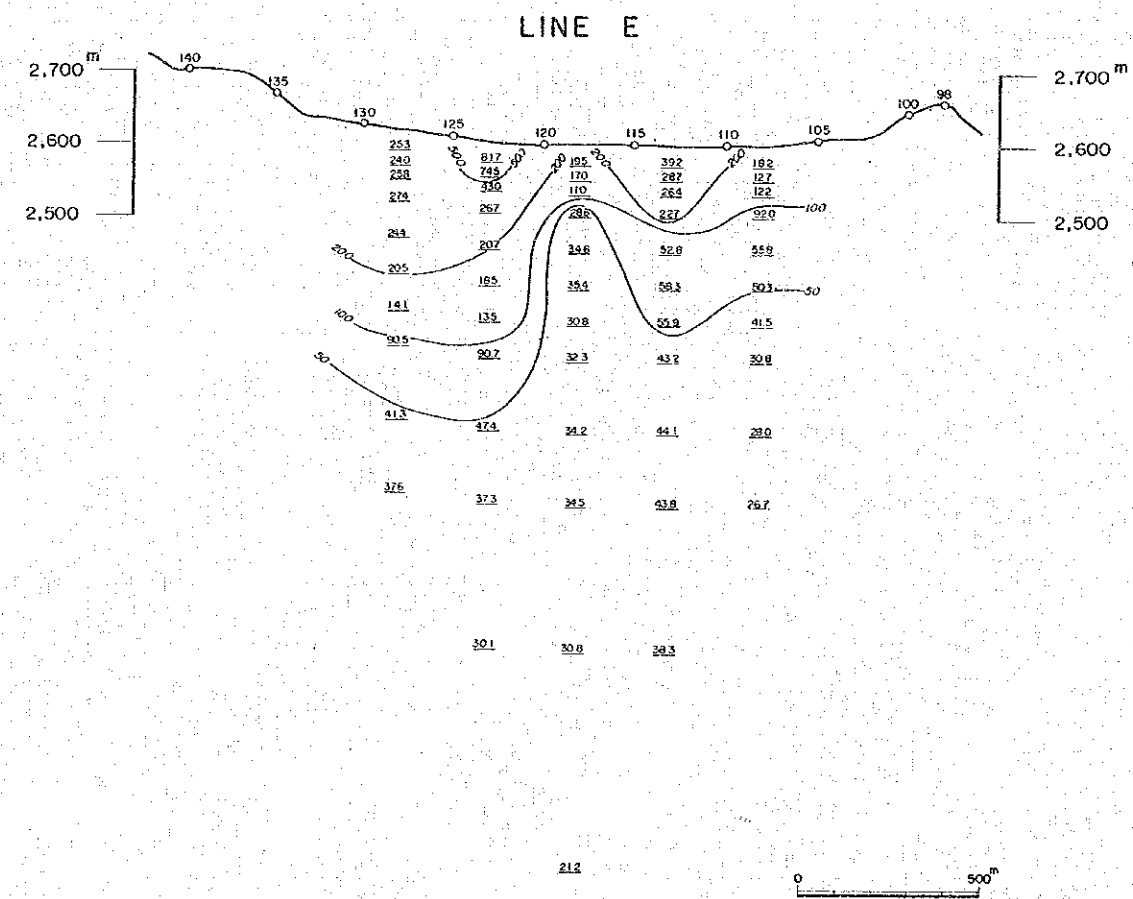
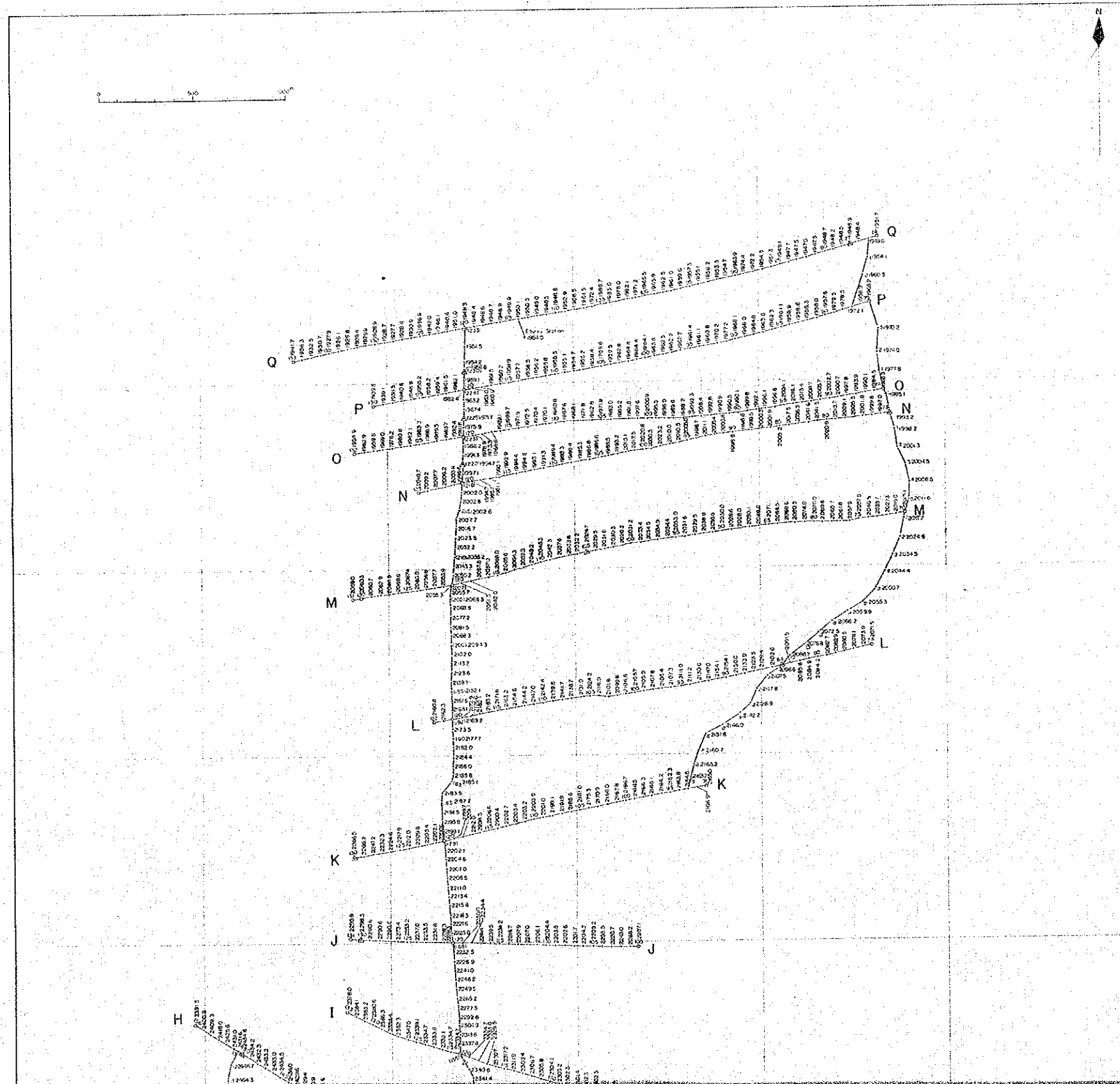


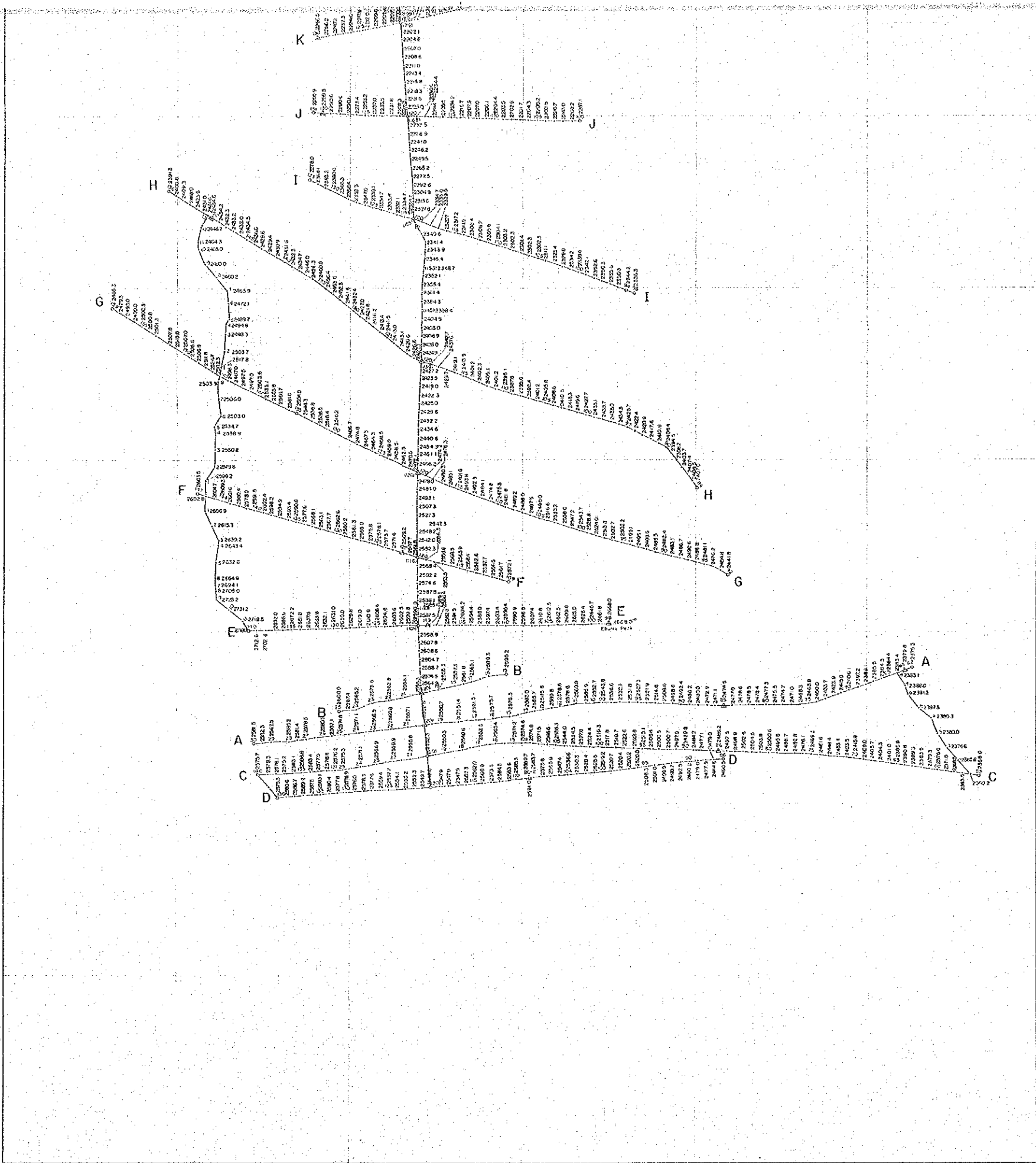
Fig. IV-5-(4) Apparent Resistivity Section.



# PL. III-1 SURVEY LINES AND STATIONS

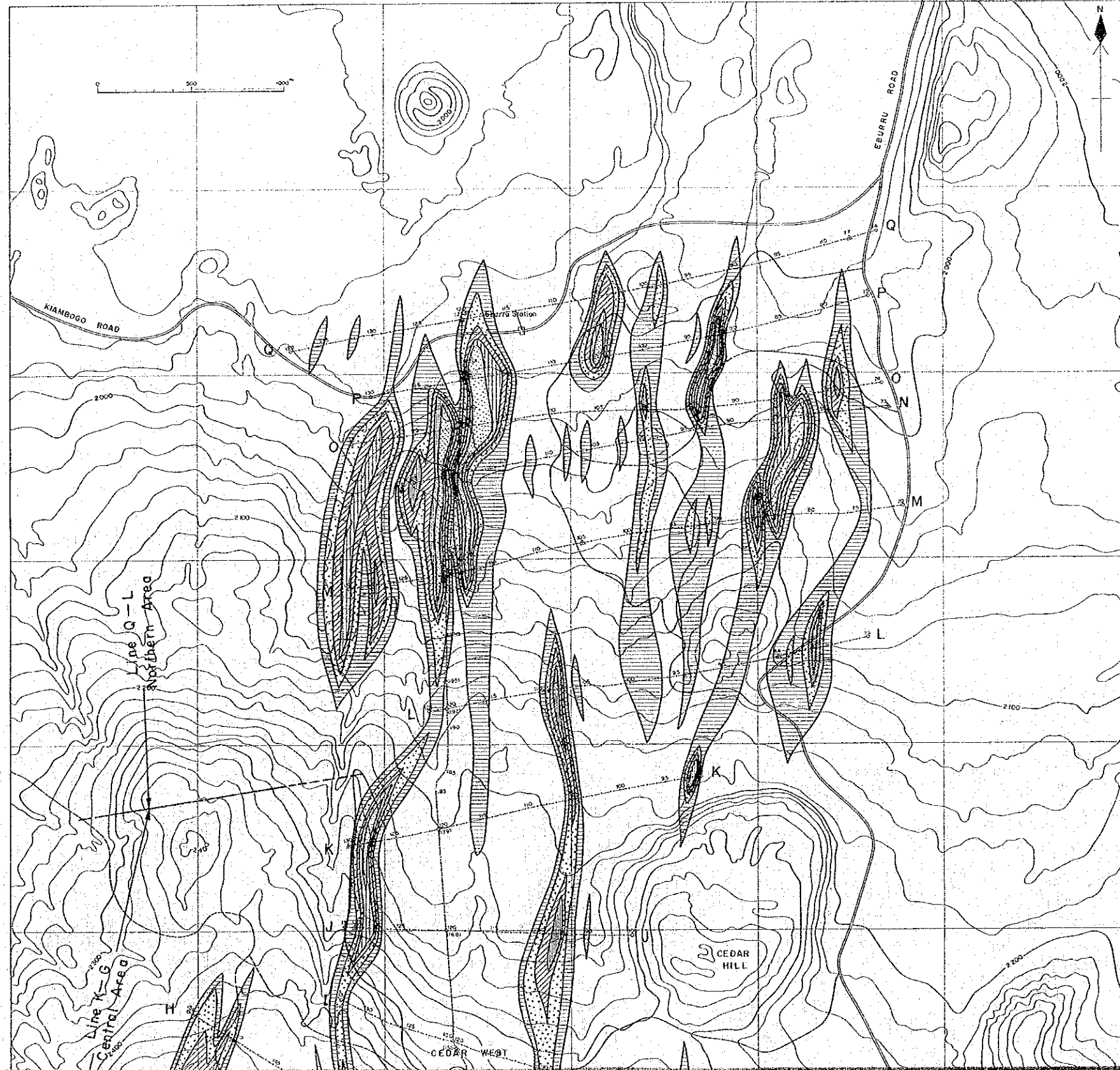
Above Sea Level (meter)

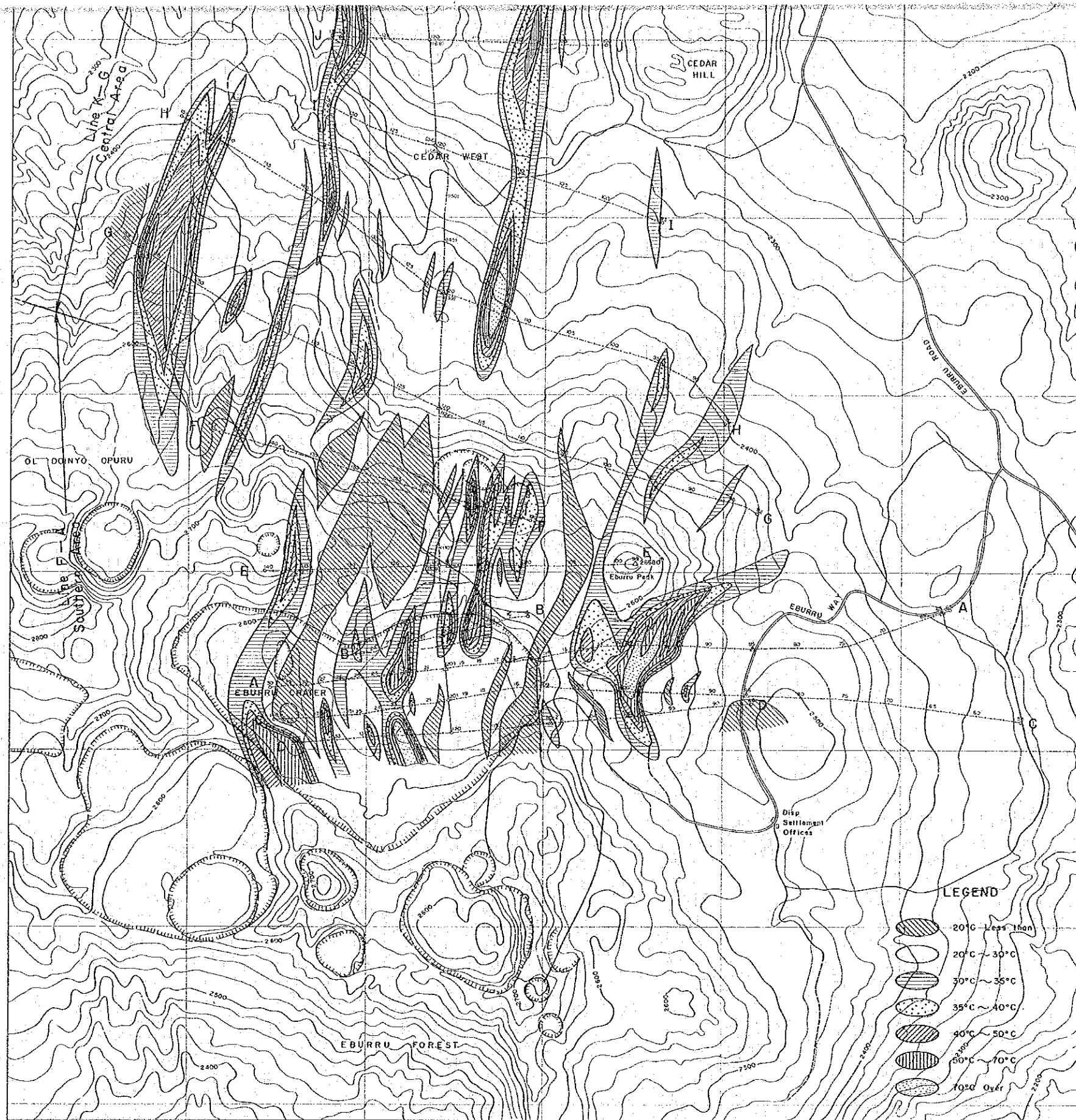




# PL. III-2 DISTRIBUTION OF 1 METER DEPTH GROUND TEMPERATURE

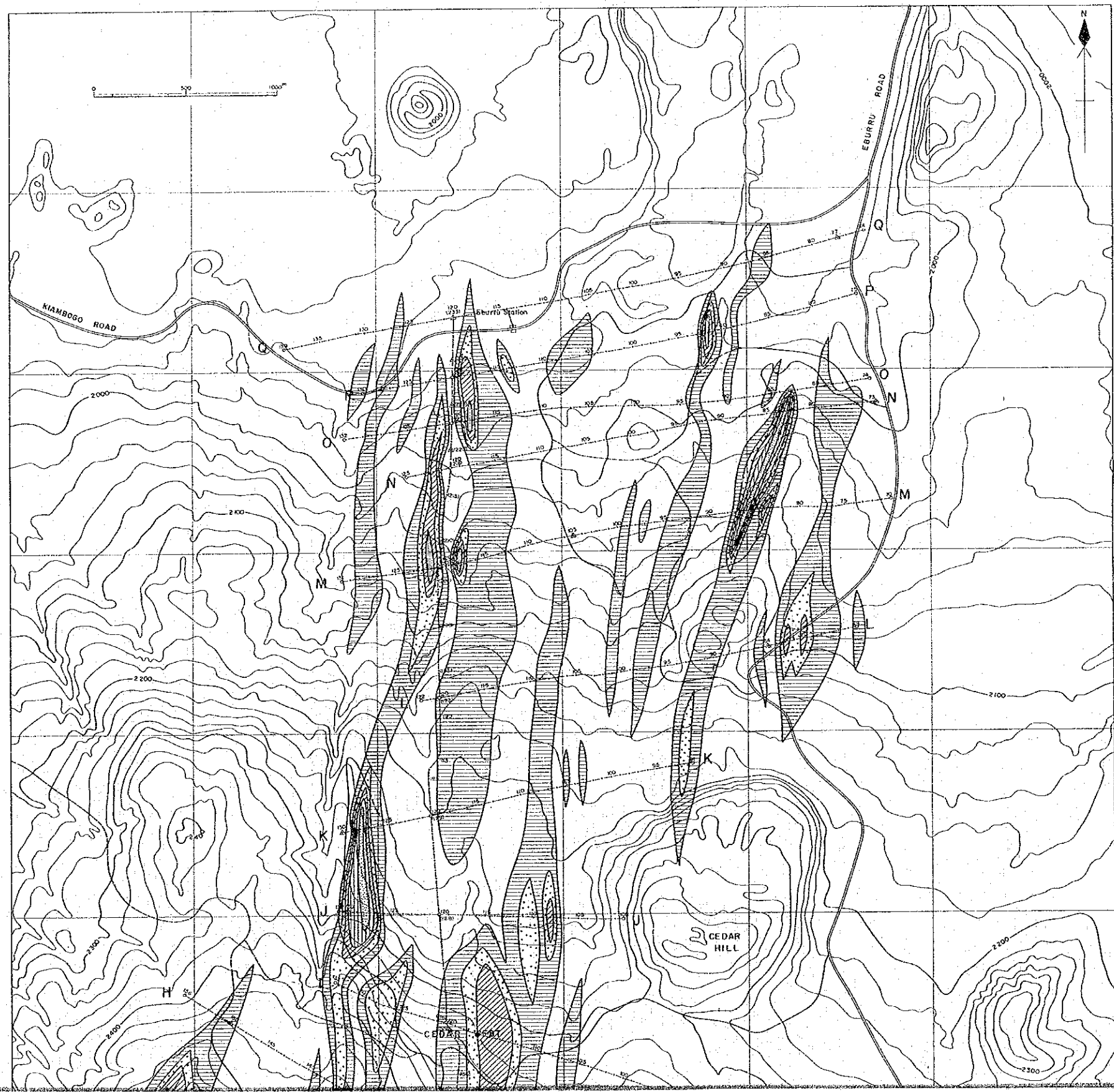
1 m Depth Ground Temperature (°C)

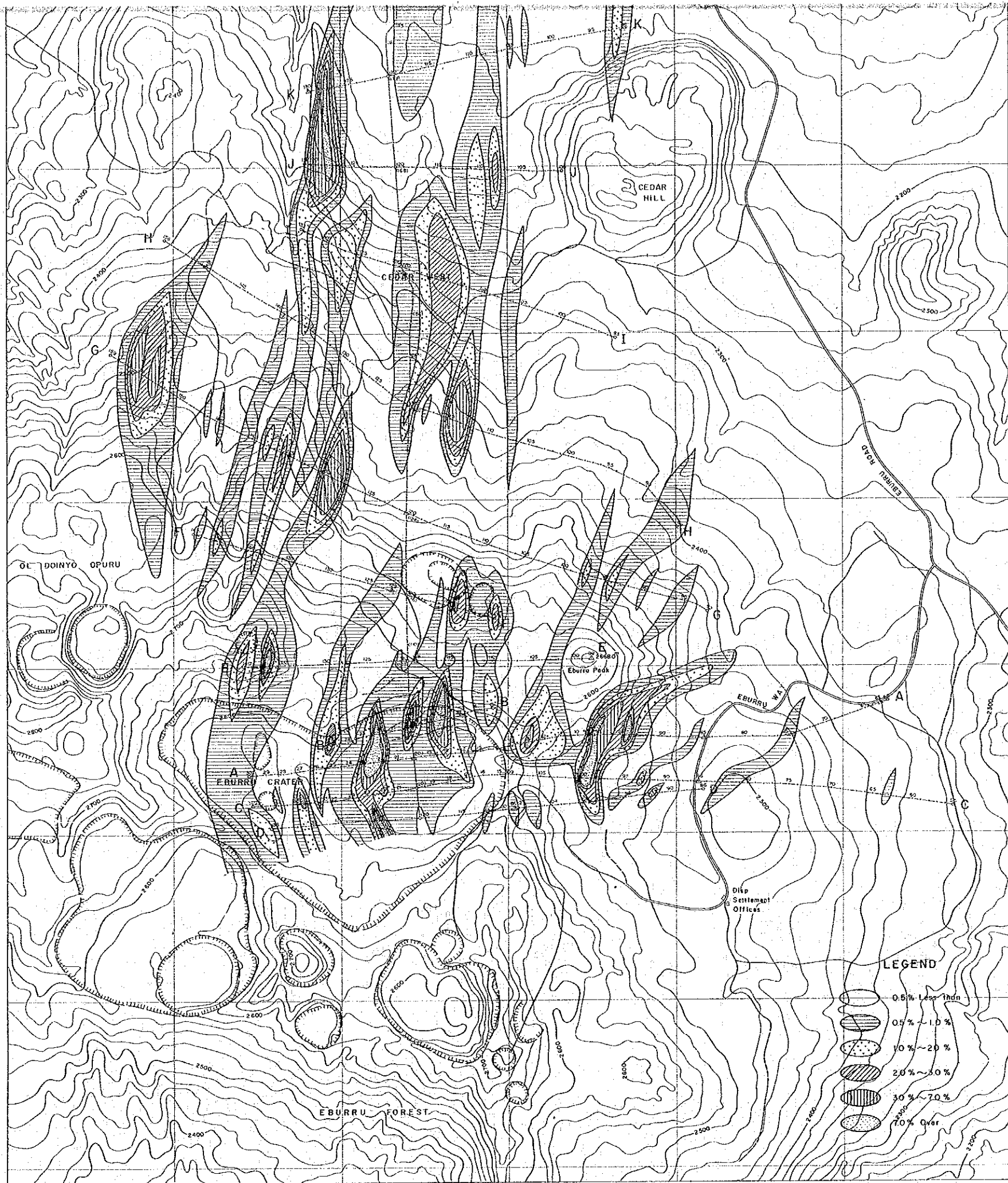




PL. III-3 DISTRIBUTION OF CO<sub>2</sub> CONTENT IN SOIL AIR

Soil Air CO<sub>2</sub> (%)



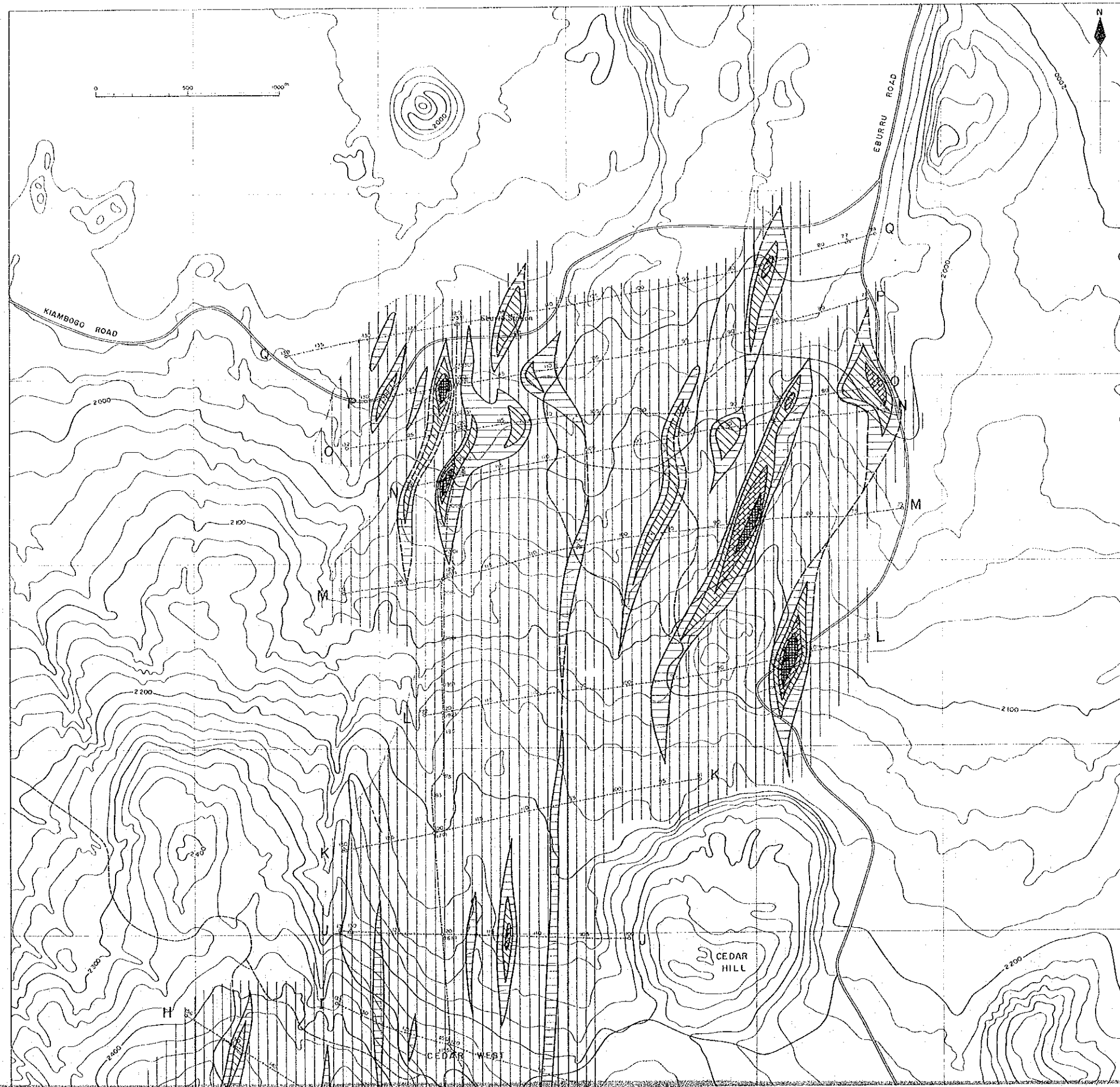


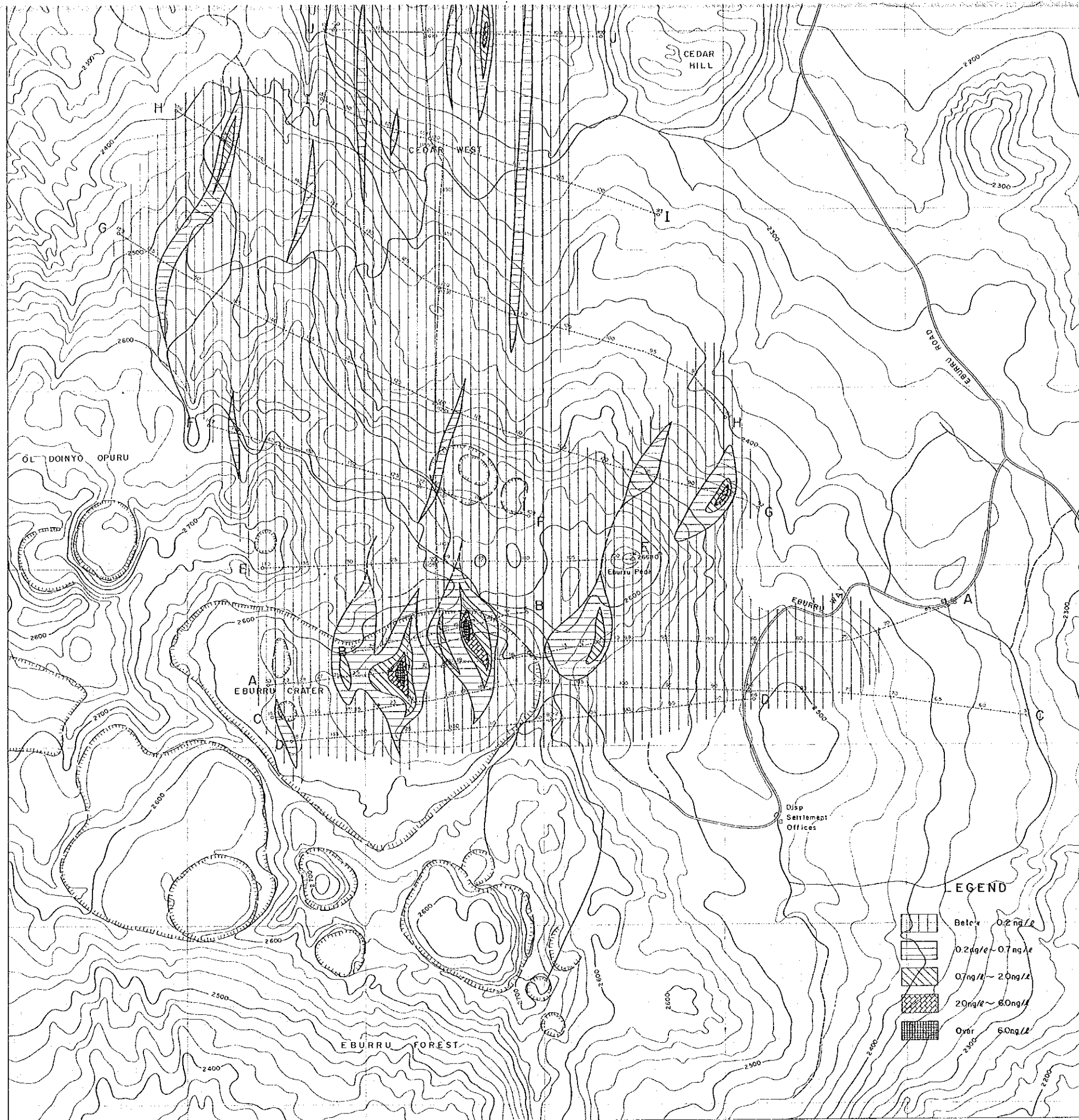
LEGEND

- 0.5% Less than
- 0.5% ~ 1.0%
- 1.0% ~ 2.0%
- 2.0% ~ 3.0%
- 3.0% ~ 7.0%
- 7.0% Over


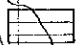
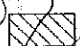

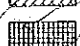


# PL. III-4 DISTRIBUTION OF MERCURY CONTENT IN SOIL AIR

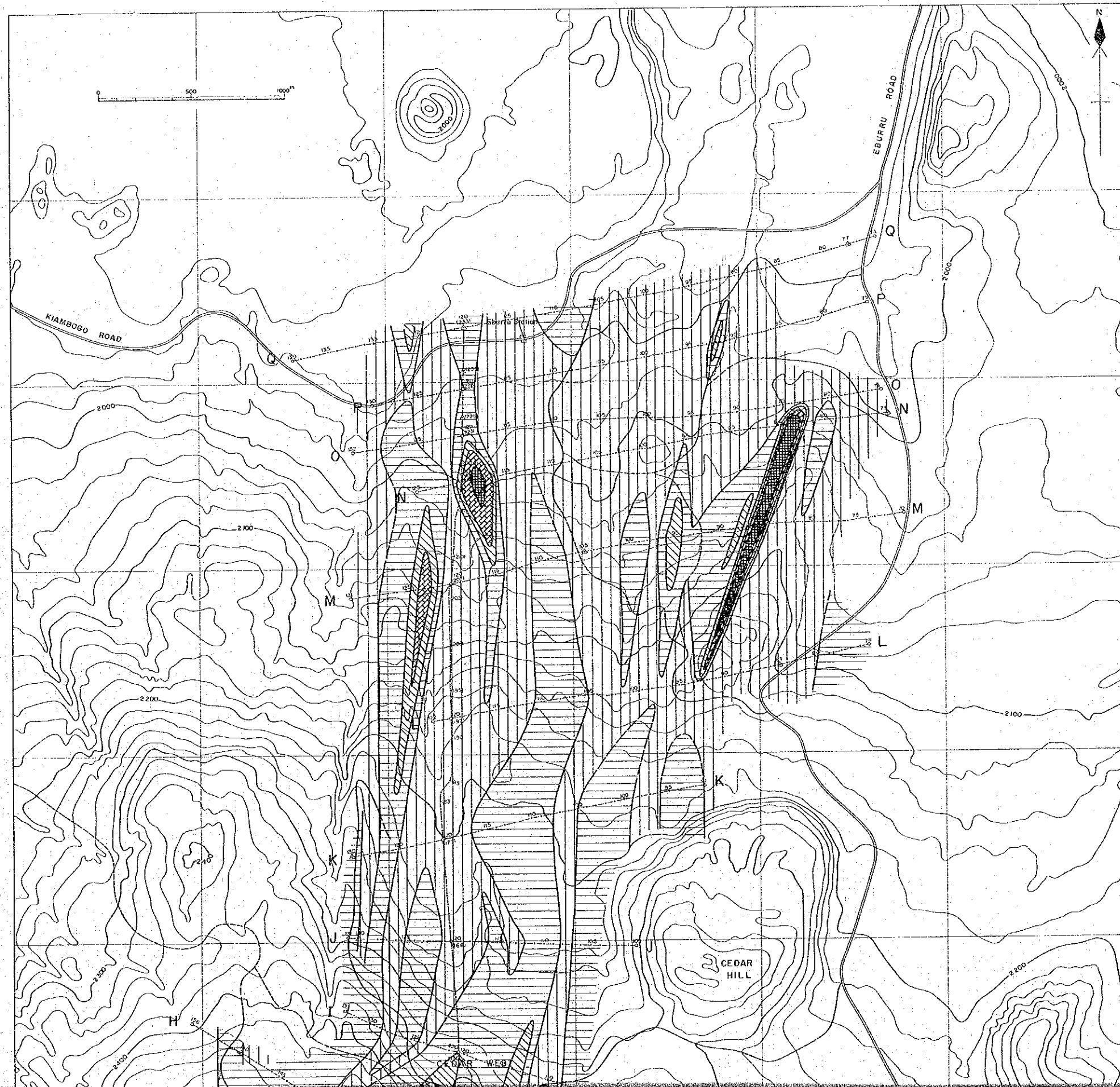


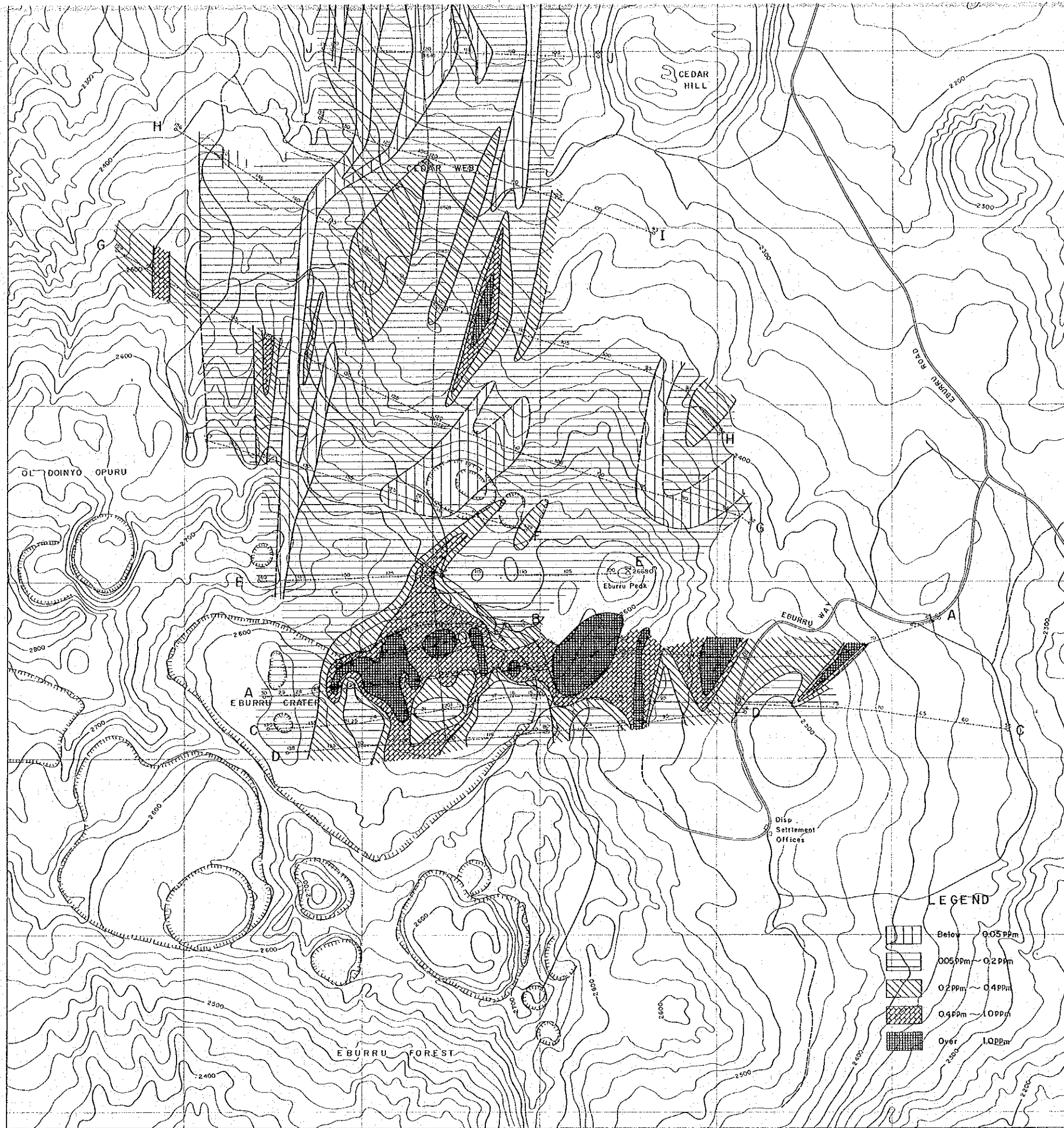


**LEGEND**

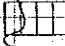
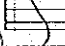
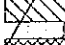


- 
 Below 0.2 ng/l
- 
 0.2 ng/l - 0.7 ng/l
- 
 0.7 ng/l - 2.0 ng/l
- 
 2.0 ng/l - 6.0 ng/l
- 
 Over 6.0 ng/l

# PL. III-5 DISTRIBUTION OF MERCURY CONTENT IN SOIL





**LEGEND**

-  Below 0.05 ppm
-  0.05 ppm - 0.2 ppm
-  0.2 ppm - 0.4 ppm
-  0.4 ppm - 1.0 ppm
-  Over 1.0 ppm

# PL. III-6 COMPILED GEOCHEMICAL

