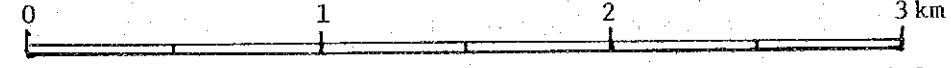
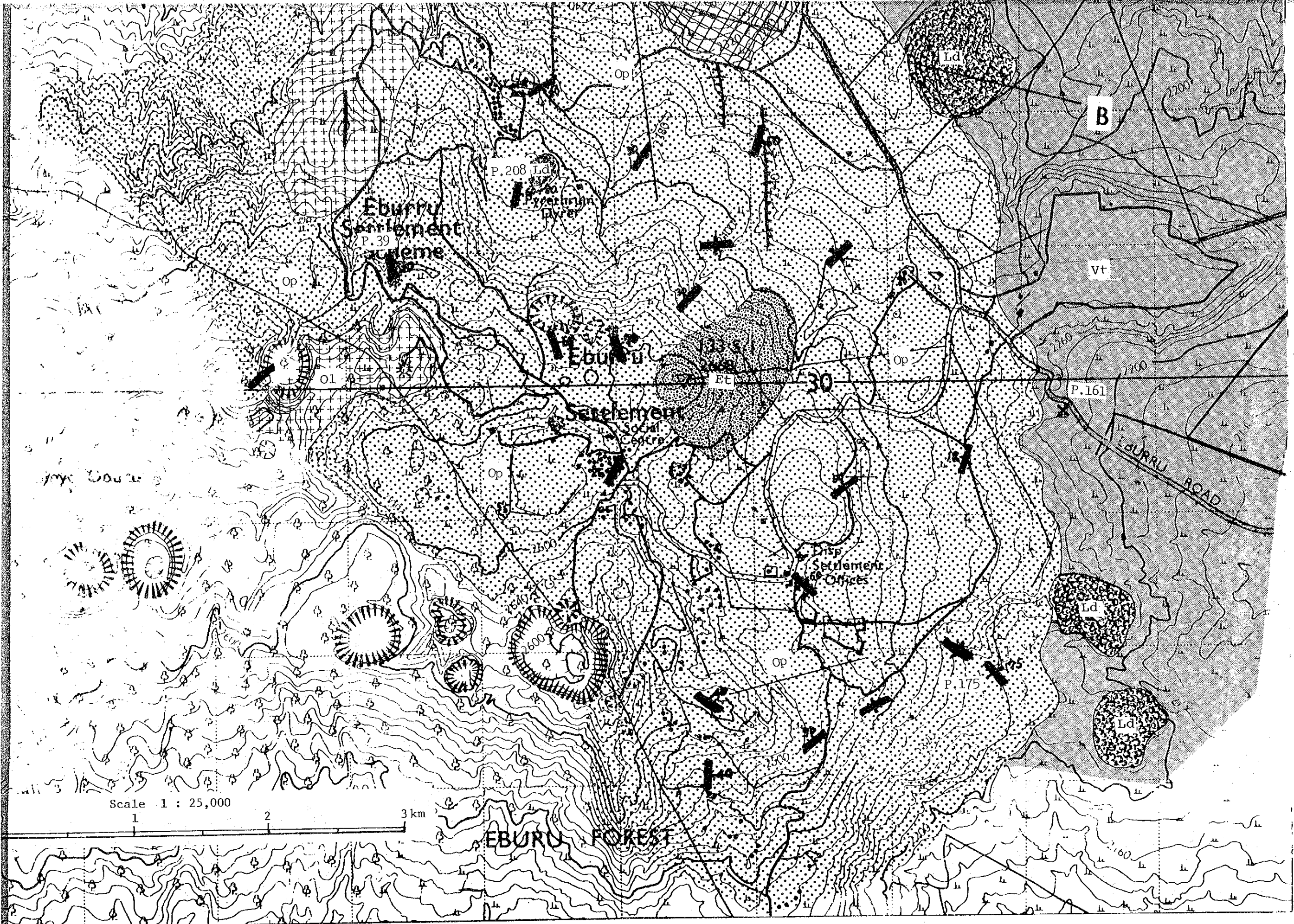


Scale 1 : 25,000



EBURRU FOREST



Eburru
Settlement
P. 39
Settlement
Settlement

Eburru

Settlement

Disp
Settlement
Offices

B

Vt

P. 161

EBURRU ROAD

Ld

Ld

Scale 1 : 25,000

1

2

3 km

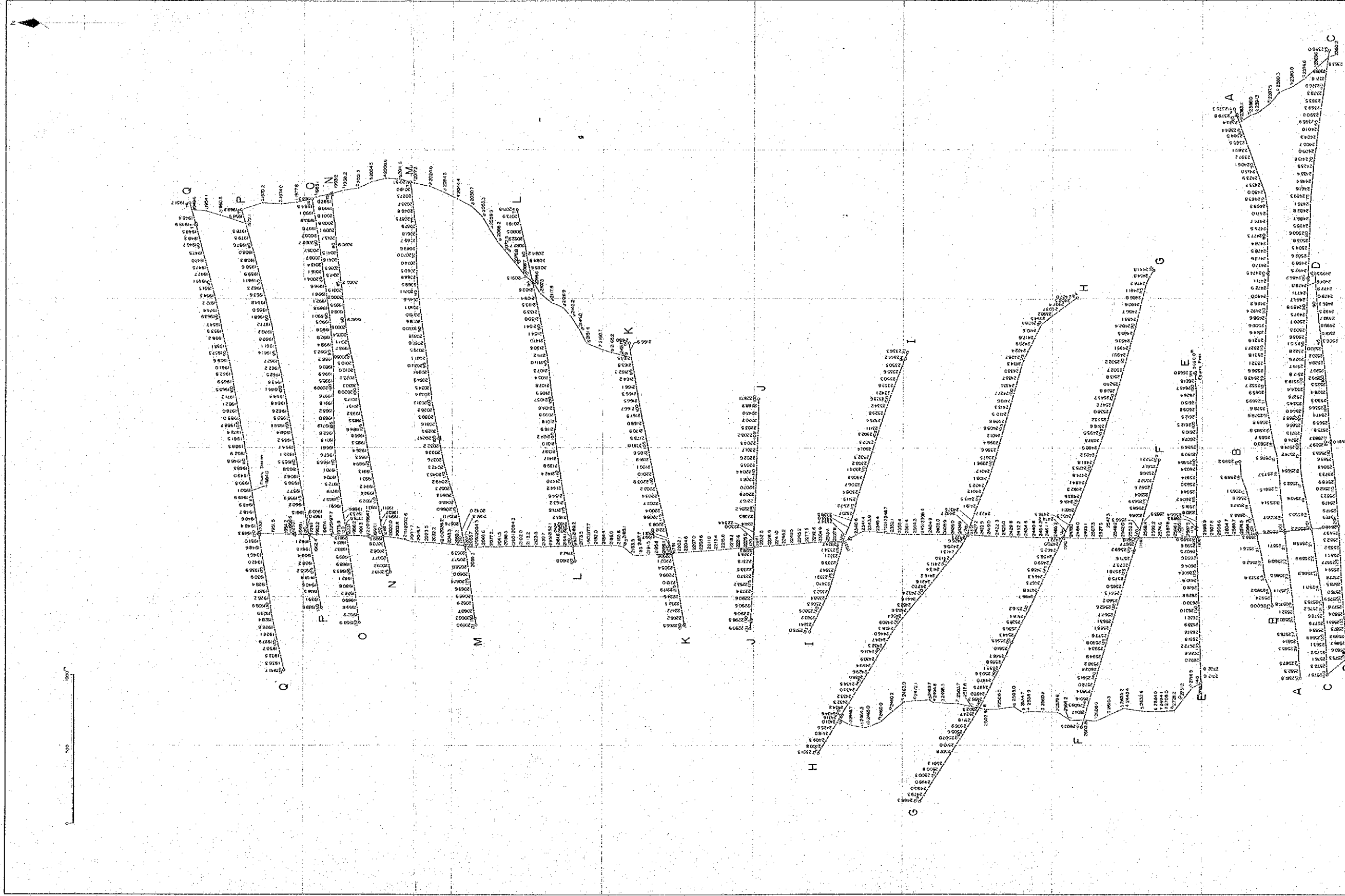
EBURRU FOREST

P. 175

2160

PL. III-I SURVEY LINES AND STATIONS

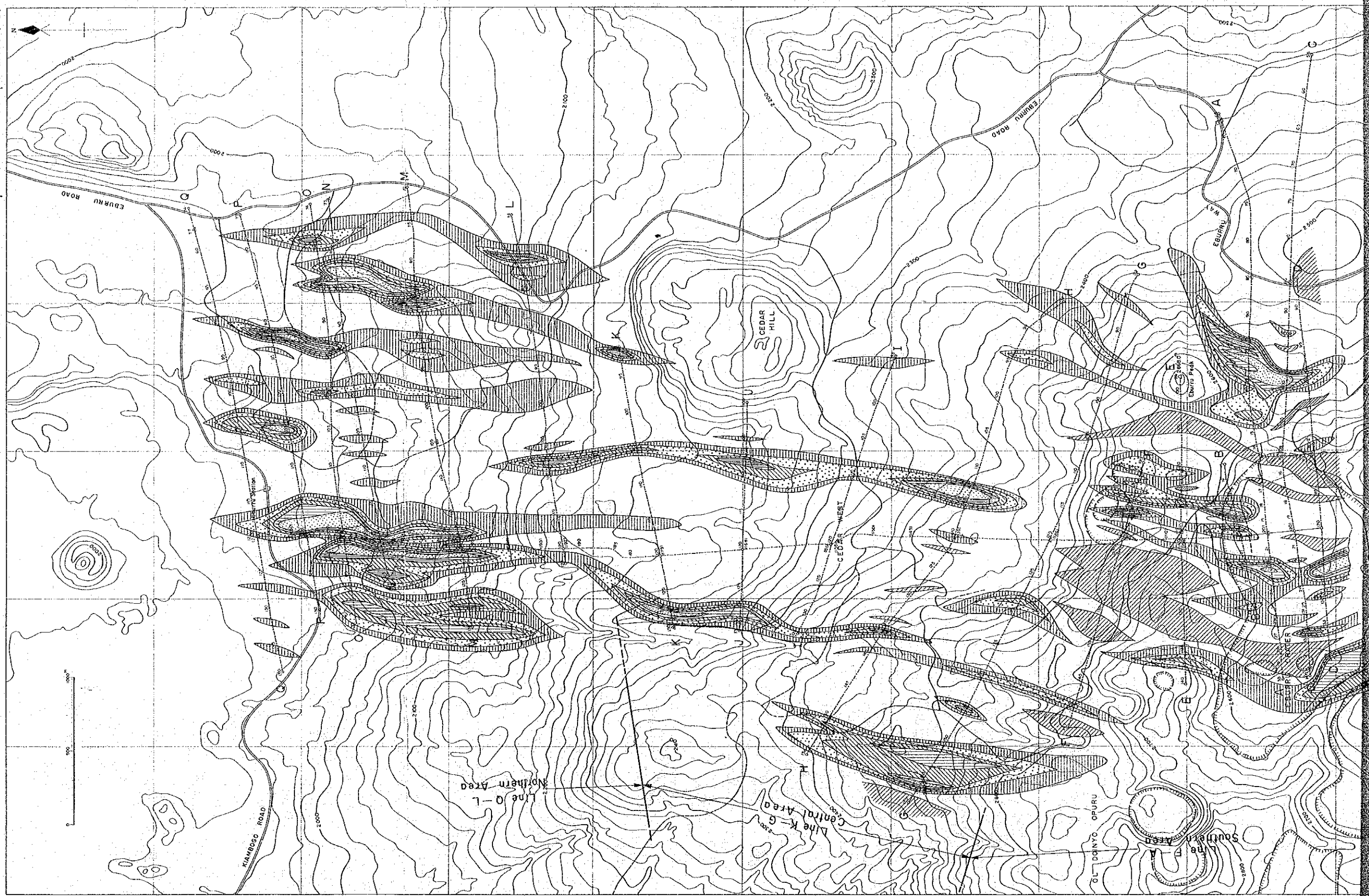
Above Sea Level (meter)

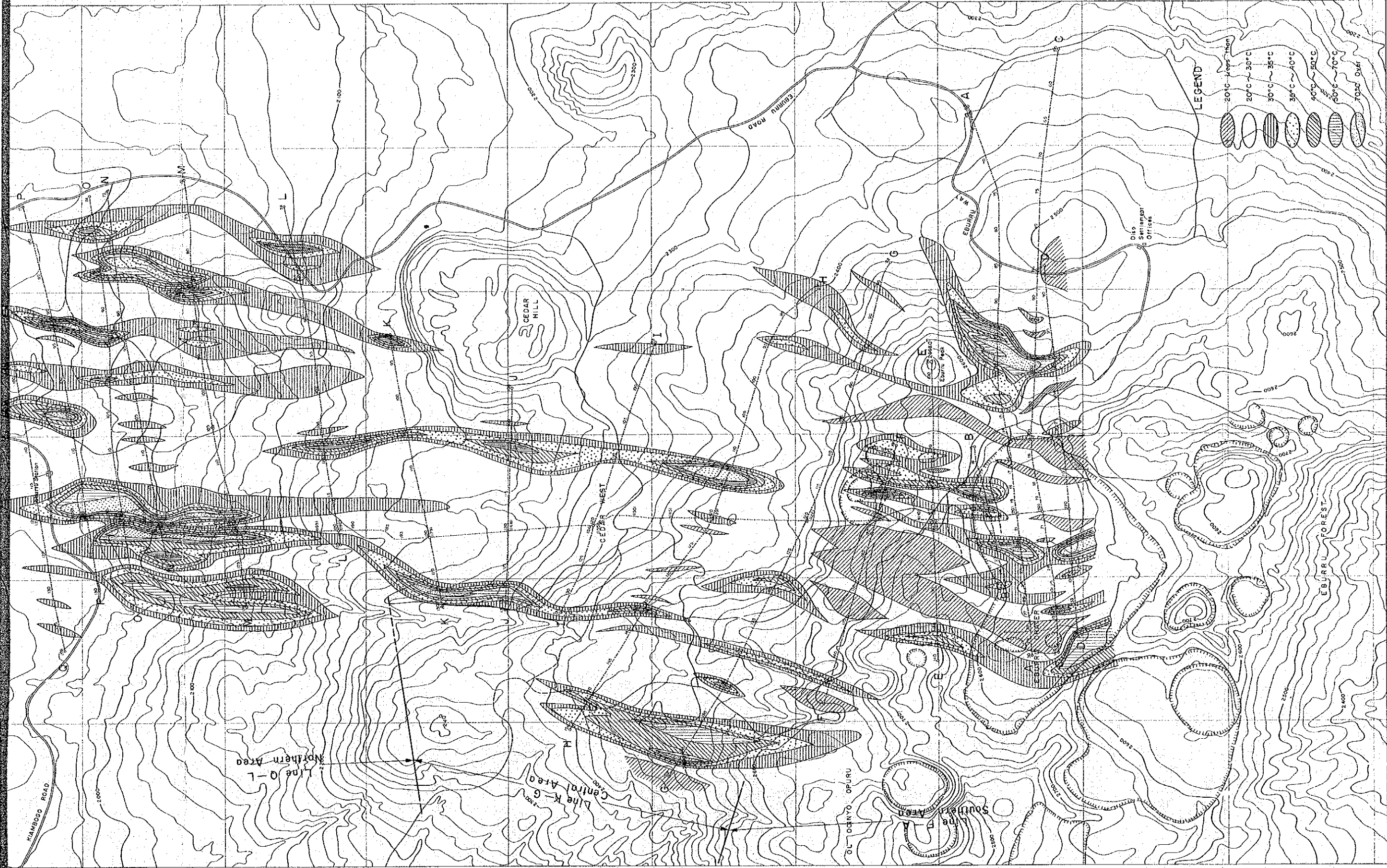




PL. III-2 DISTRIBUTION OF 1 METER DEPTH GROUND TEMPERATURE

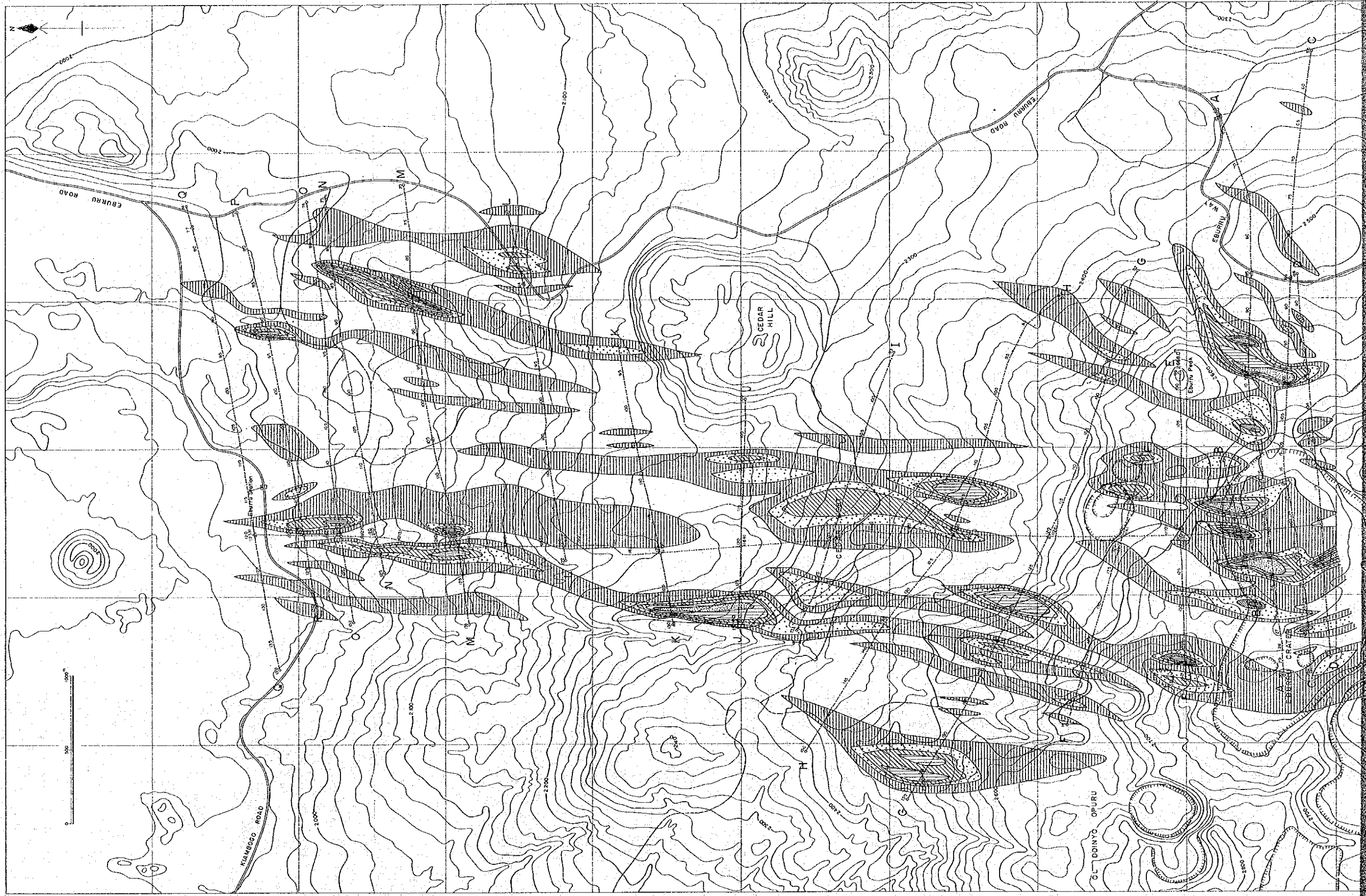
1 m Depth Ground Temperature (°C)



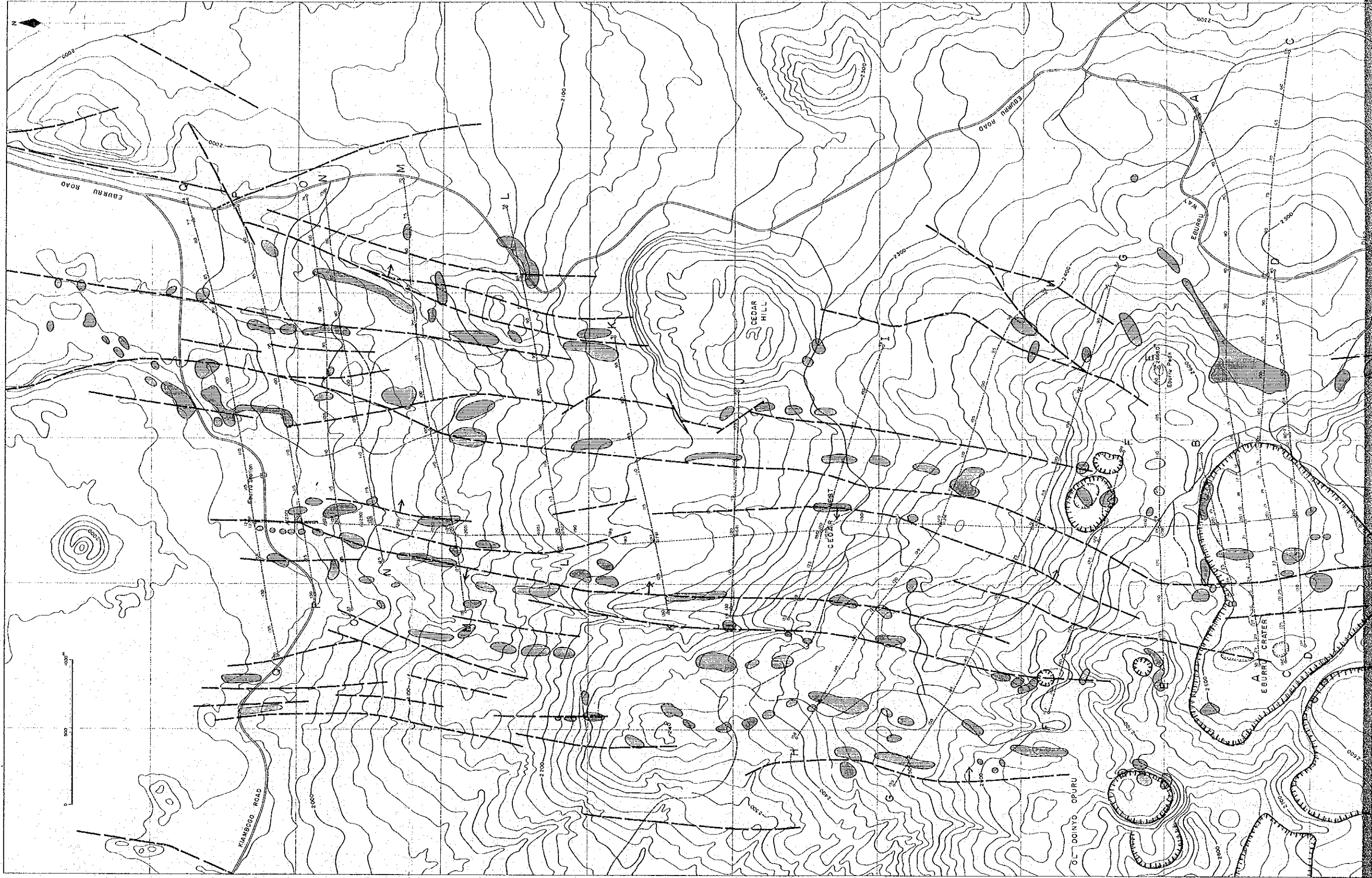


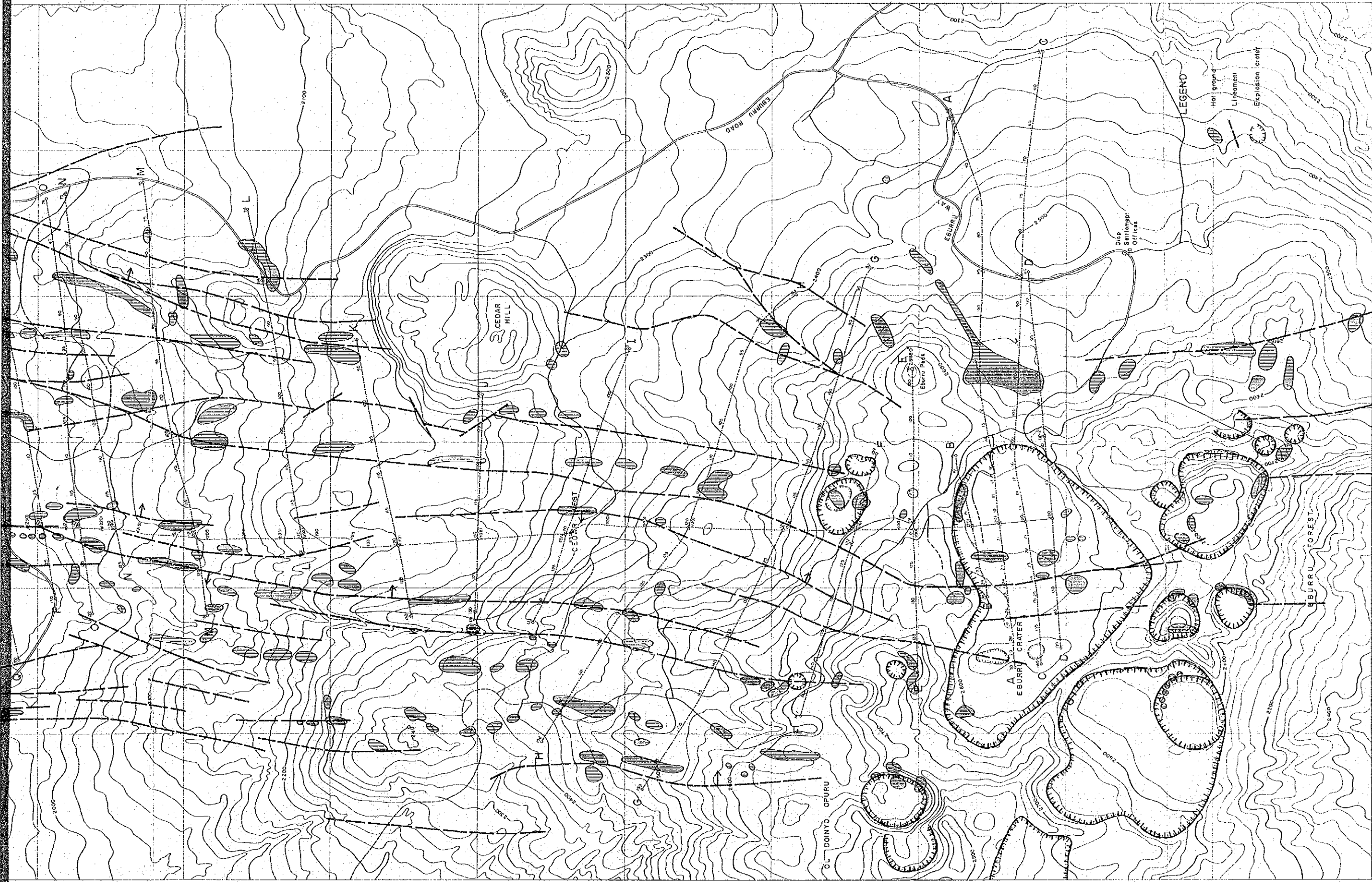
PL. III-3 DISTRIBUTION OF CO₂ CONTENT IN SOIL AIR

Soil Air CO₂ (%)



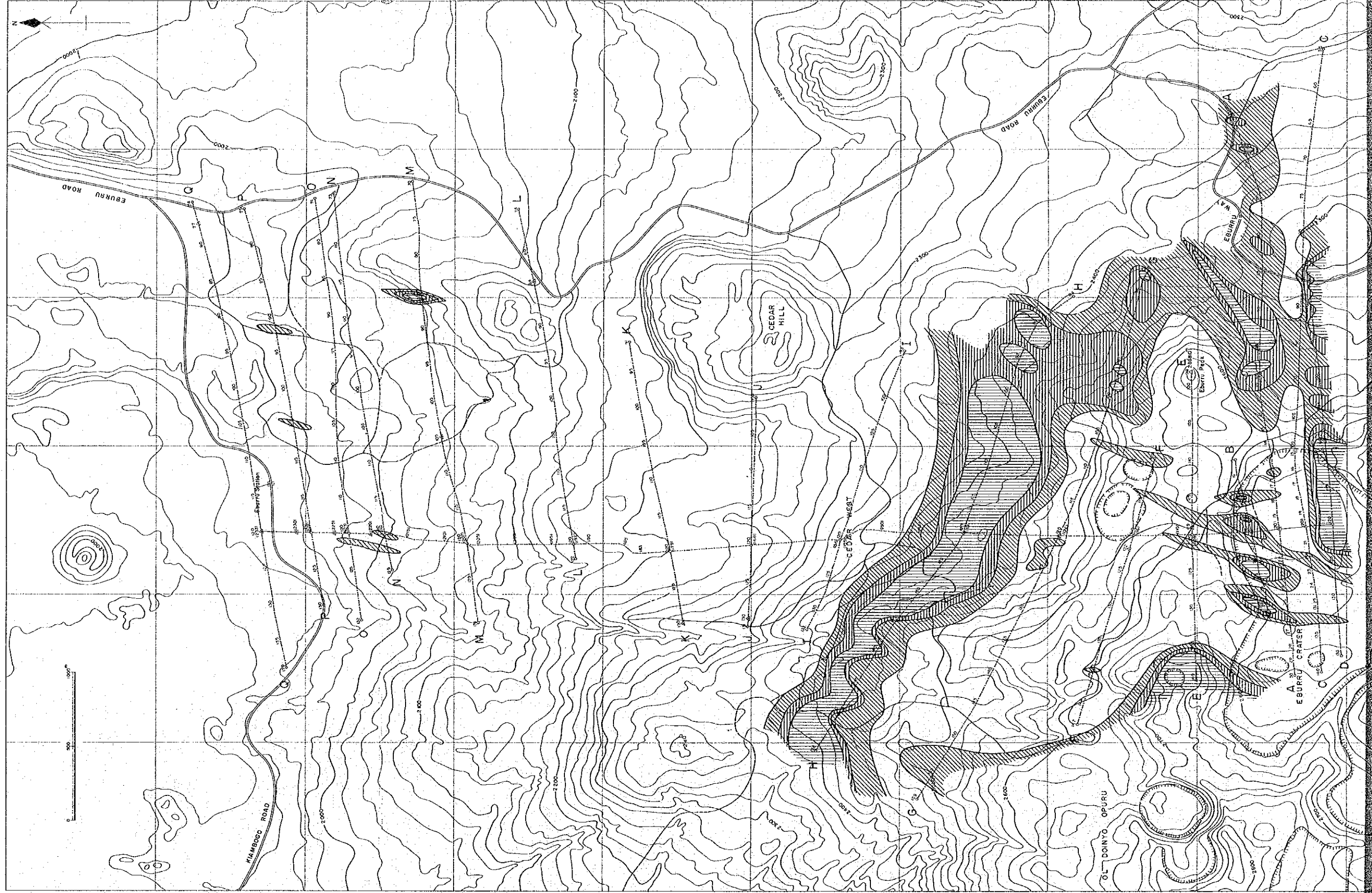
PL. III-4 LINEAMENT MAP OF THE PROSPECT

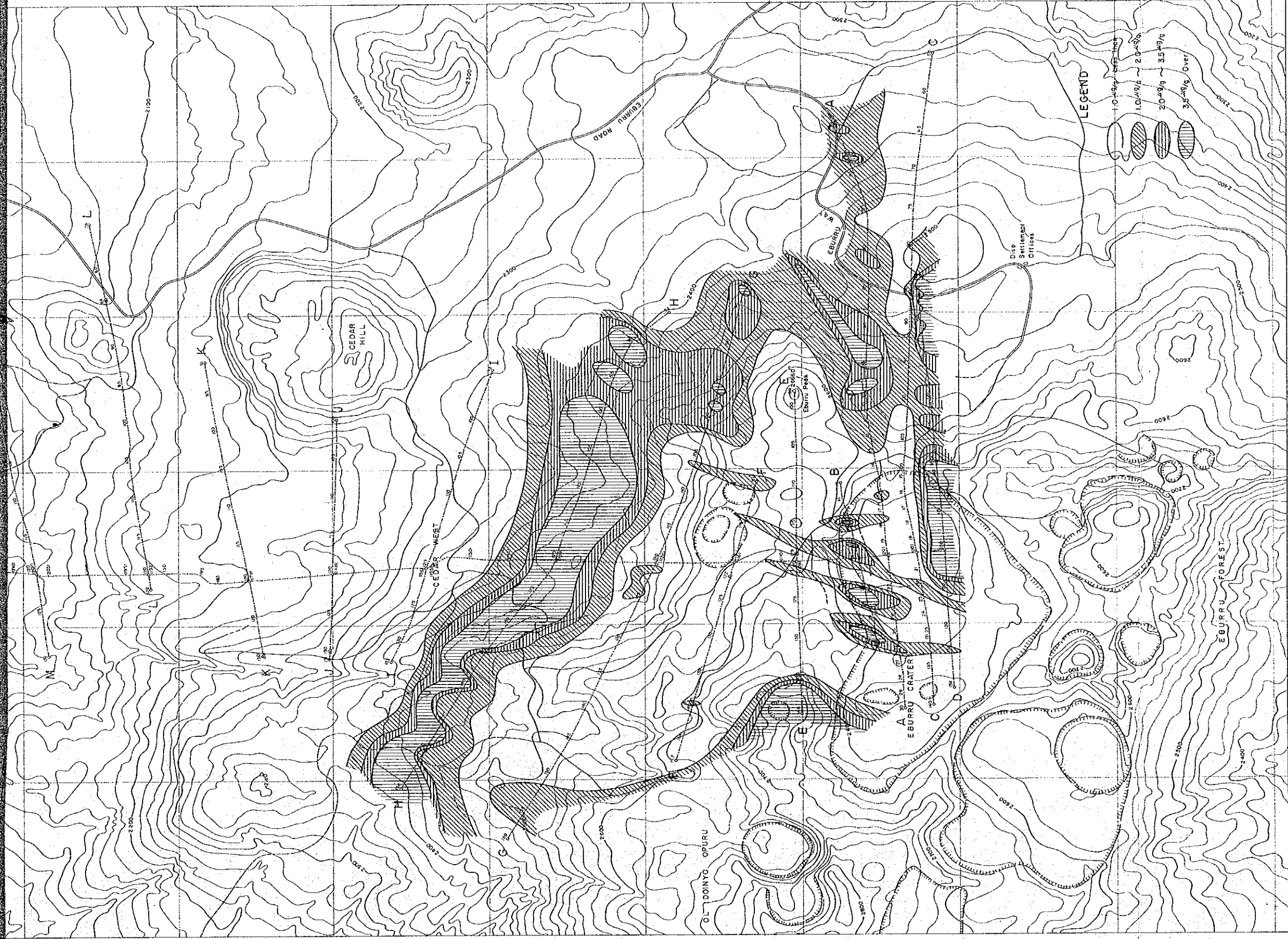




PL. III-5 DISTRIBUTION OF Hg IN SOIL AIR

Soil-Hg ($\mu\text{g/g}$)



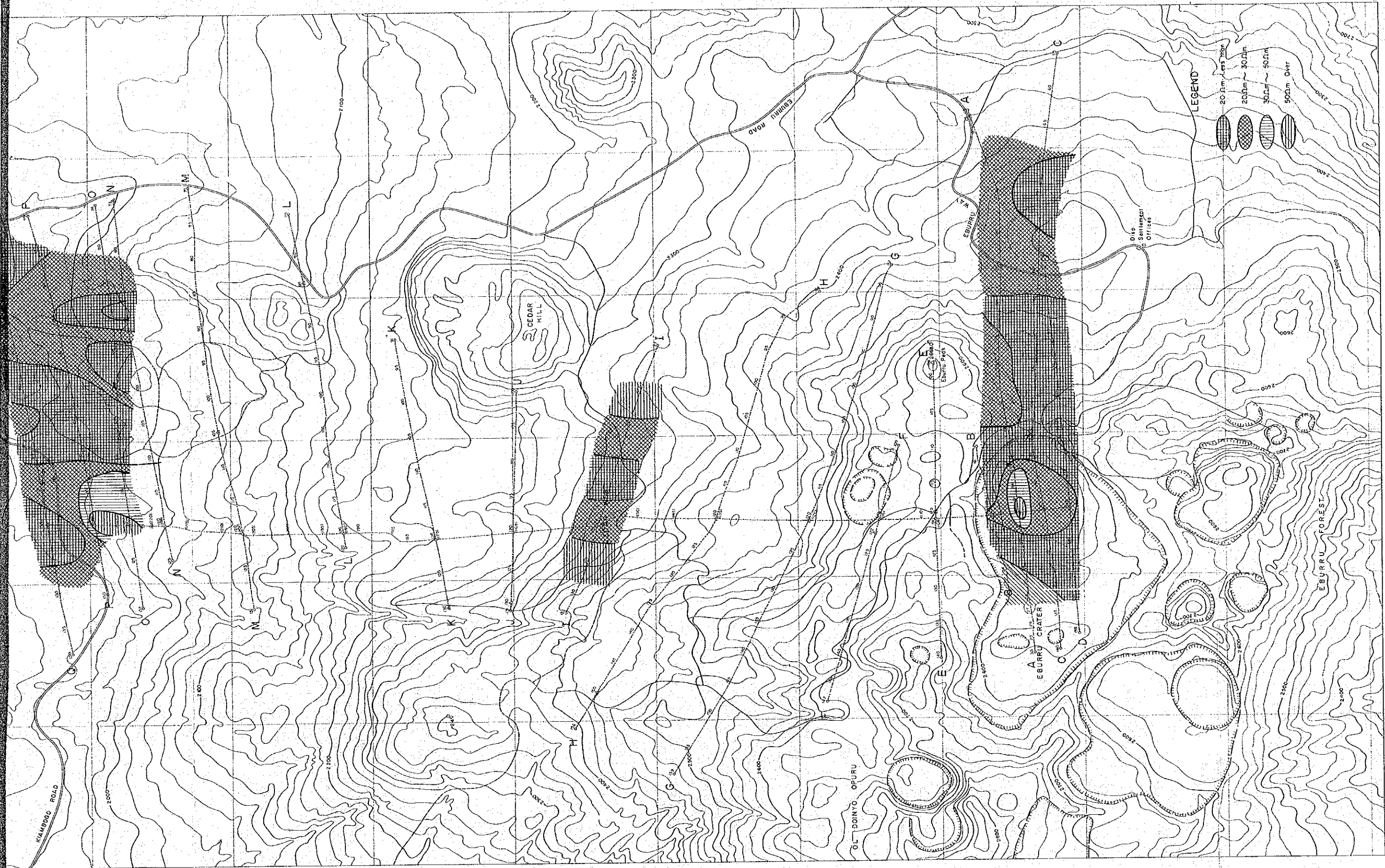


LEGEND

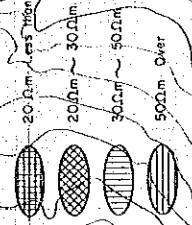
- 1-0-49g, 1-0-49g, 1-0-49g
- 1-0-49g, 1-0-49g
- 2-0-49g, 2-0-49g
- 3-0-49g, 3-0-49g
- 4-0-49g, 4-0-49g

Fig. IV-3 DISTRIBUTION OF APPARENT RESISTIVITIES (AT AB/2 = 500m)





LEGEND



Disp. Settlements: Officers

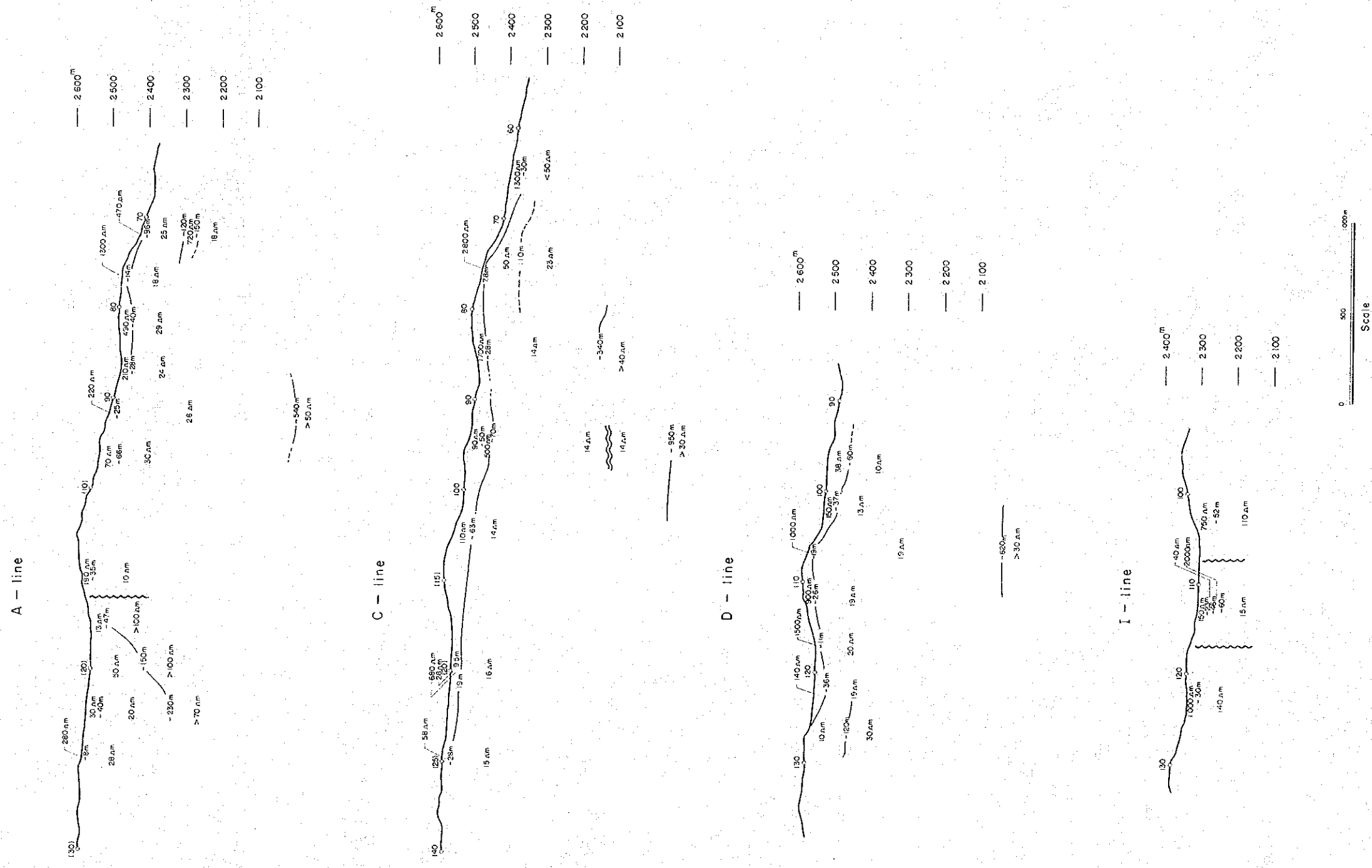


Fig IV-4 Resistivity Sections (I)

PL.V-1 Distribution map of hot grounds detected
by IR survey of the UNDP

