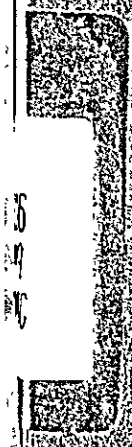




**REPORT OF BOTANICAL SURVEY
IN WEST NEPAL ON 1963**

Kazuhiro Itoh

Overseas Technical Cooperation Agency



国際協力事業団

受入 月日	'84. 3. 23	116
		99
登録No.	01944	MC

Phone: 11-564
Tele Gram: 'VANASPATI'
Kathmandu

HIS MAJESTY'S GOVERNMENT OF NEPAL
D E P A R T M E N T O F M E D I C I N A L P L A N T S

Thapathali
Kathmandu, Nepal

Dated: 2nd May, 65

Ref. No. B316-2(4188)22

Subject:

TO WHOM IT MAY CONCERN

This is to certify that Mr. K. Itoh, Colombo Plan expert from Japan, who served in this department for two years (May '63 to May '65) in the botanical survey work has done commendable work for His Majesty's Government of Nepal. He is returning home after successful completion of his assignment and we are highly thankful to the Government of Japan.

Prof. K. Itoh
Senior Botanist

JICA LIBRARY



1060631E7J



King Mahendra who inspecting Farm of insect flowers cultivation.



Mr. chittaratna who dealer of Himalayan Crua Drugs.

I N D E X

Report of Botanical Survey in West Nepal on 1963	3
Plants from Western Nepal	8
Botanical Name and Vernacular Name of Crude Drugs in Nepal	17
Illustration	40

Report of Botanical Survey in West Nepal on 1963
(July - October)

Dept. of Medicinal Plants
H. M. Government of Nepal
Colombo Plan Expert
Kazuhiro Itoh

1. Object of our Botanical Survey

Object of our Botanical survey was collection of general plants from West Nepal, and especially there was need to make collection of medicinal plants.

Therefore, first time we went Nepalganj which is a big market center of crud drugs in Nepal, then we visited Mt. Ghurchi (3000 m) and Khaptar (3300 m) where many kinds of medicinal plants are found.

During our survey, about 1000 plants specimens were collected.

I also took a photograph about 1000 sheets including colour film.

2. Plant collectors in West Nepal

In 1932, Bis Ram with Basant Lal Dooji collected plants the West side of the Karnalis. (Forest Bulletin Dehra Dun Vol. 76. 1932: Parker-List of Plants collected in West Nepal).

In 1936, Col. Baileys collectors visited Simikot, Jumla, and Silgarhi.

In 1952 (March - October), the British Museum party, the Members of the party being O. Polunin, W. R. Syker and L. H. J. William, made large collection over 5,000 plants.

This expedition was based on Jumula. The area covered by the expedition included Simikot and Mugu to the north and the upper Bheri Valley and Charka to the East. (Journal of the Royal Horticultural Society Vol. 78. part 9 1953: the 1952

Expedition to West Nepal).

In 1952-53, Japanese Kyoto University Expedition Members collected plants from the Upper Kali Valley adjacent to the east.

(Scientific results of the Japanese Expedition to Nepal Himalaya, Kyoto University, 1956).

In 1953, J. Tyson made a collection in the vicinity of Api.

(Alpine Journal vol. 59, No. 289, 1954: Exploring the Api and Nampa group).

In 1954, M. Arnold made another collection from the Api and Nampa group. (Oxford University Expedition Club Bulletin No. 7, 1955).

In the same years (1954), British Museum expeditions covered the southern side of the Dhaulagiri massif and from the Upper Kali Valley adjacent to the east (Journal of the Royal Horticultural Society Vol. 80 & 81, 1955/6 by Sykes).

From 10th April 1963, to 31st July, Mr. J. D. A. Stainton of British museum collected plants from the Nepalganj, Salyana, Jajarkot, Kaigaon Jumula, Tibrikot, Sya gomba, Phijor, Tingje, Chorca, Jomson, Tukucha and Pokhara. (Notes on a journey in West Nepal 1963)

3. Our Itinerary

From 10th July to 11th October, we made botanical survey in West Nepal. Its Itinerary is as under:

10 - 13, July

By the road of the Tribhuban Raj Path from Kathmandu to Raxaul station by Jeep. From Raxaul Station to Nepalganj Road Station we travelled by train. From Nepalganj Road Station to Nepalganj city we travelled by horse wagon. Then our all members (6 persons) stayed in Guest House of Nepal Govt. at Nepalganj (240 m).

14 - 20, July

We stayed Nepalganj for about a week to make necessary arrangements of food and porters for our tour.

Some of our members purchased our food (Sugar, rice, Kerosene etc.). But we could not get any porter, because all rivers are very dangerous during the monsoon season.

During the time, sometimes I went to the Bazar of Medicinal plants and collected 30 species of crude drugs.

On 19th we could employ 5 horses and horse men but this day, the rain was very heavy. On 20th, it was also heavily raining but our 3 members went out to Brabai river course with our all goods and horses.

21 - 26, July (Terai Area)

On 21st, we left Nepalganj by Jeep, we reached Nanpara Station where then we got the train at 9:30 O'clock, then we reached Nishangara Station on 11:54 O'clock. We get down at this Station then we began to proceed from the Janjuli of the Terai forest and after we have crossed it, we came to some villages (Martpan, Mazurau). We reached Bandabaria (180 m) on this evening and stayed there in the house of the village Panchayat.

Next day, we gathered some members then we started. We crossed Sainpuru, Banbir, Buligan, and then reached Barati. Again we on though Ambaraiya then we finally reached Terepani Khola (540m).

27, July - 8, August (Churia & Machbarat Range)

In the morning 27th July, it was very heavy rain, but our all members crossed Telepani Khola. That day we stayed at Telepani-Prichyogi village (1200 m).

In this area, we collected about 10 species of medicinal plants. 29th July we crossed Bheri River. This River's current is very strong in the Monsoon season.

Then after we came across Rakapani (1450 m), Gotikara (1500 m), Ratanagara (2180 m), Ramimata, and Dailekh (1300 m).

Then we passed Gohati (1700 m), Pausin (240 m).

9, August - 15, September (Himalaya Range)

On 9th August, we crossed Mt. Mahabui (3600 m). This Mountain is very big and the route are very difficult.

Then after, we passed Dillikot (2200 m) Wada, Chilka Magisera (2180 m) Lehe (2250 m) and we reached Jumula on 15th August.

On 18th August, we left Jumula then beyond it, and we came across Mt. Danffee (3300 m) and Padmara (3000 m), Bumara (2800 m), and at last we reached Ghurchi.

There are no village at Ghurchi, but it is very famous as the collection place of medicinal plants.

We stayed this place two days, and we collected famous medicinal plants like Athisi, Nirbishi, etc.

After then we left this place, and passed Pina village and came to Rara lake (2800 m), Kherin (2200 m), Sukari, Kholty, then we crossed Karnali river by rope bridge.

This day we saw many wild *Buphrbia royleana*.

29th August we crossed one of mountainside. There was a dangerous land slide in our route. Soft muds along with big stones were falling down. I was caused by the heavy monsoon rain.

After that we can reached Jilly (2150 m). This area's people do not want supply any food.

On 1st September we crossed Buriganga Khola.

The method of crossing the river was very interesting. I was tied by a strong rope around my body and was suspended from another rope. On the next side of the river another man pulled the rope and I was slowly carried to the next side.

To transport all of our goods and people is took about 3 hours. We had to pay 6 rupees for this transportation.

During our course, we passed through Jungaro, Sudaro, Dani (1900 m) Dogri (1900 m), Goukhali and finally we reached Ghatkhola village on 6th September.

We also went Mt. Kapter (3300 m), and we passed Ricara (1300 m) then reached to Siligli Douti. on 13th September.

At Mt. Kapter we collected PACH AULE (*Orchis incarnata*), and PADMCHAR (*Rheum emodi*).

16, September - 11, October (Back course)

From Siligli Douti, we passed through Dandedura, Baitadi, and went to Jhulaghat. From this place I could not pass to Pithoragarh. Therefore only I and one of our member go back to Baitadi, then after we through Soliana village (1900 m), Tallodehi (1800 m), Nalgari (1200 m), Lupal (1480 m), Tapura (1650 m), and reached Brahmadir (290 m). From Brahmadir we came to Banabasa where we could get the Bus. The Bus took us to Pilibith. From this place we could get train to Lucknow. From Lucknow we travelled by Air to Kathmandu via Patna.

PLANTS FROM WESTERN NEPAL (Collected by Mr. K. Itoh & S. B. Rajbhandari 1963)

<u>Name & Botanical Name</u>	<u>Locality</u>	<u>Altitude</u>	<u>Field Notes</u>	<u>Date of Collection</u>
1101. <i>Stephania rotunda</i> . Lour	Telpani	1200m.	Parianth light-green	28 July '63
1102.	"	"	"	"
1103. <i>Cynoglossum zeylanicum</i> Thunb.	"	"	Herb, fls blue	"
1104. <i>Smilax leucophylla</i> Blume	"	"	Twiner, fls green	"
1106.	Bhotikanda	1250m.	Herb	"
1112. <i>Notochaeta hamosa</i> . Benth	Ratikhola	1800m.	Herb, fls white	3 Aug. '63
1113.	Lale	1400m.	Herb, fls white	"
1114. <i>Scrophularia</i> <i>urticaefolia walllich</i>	"	"	Herb, fls white	"
1115.	Ratanangla	2000m.	Herb, fls yellow	"
1119. <i>Polygonum</i> <i>vacciniifolium, Wall.</i>	Mahabu lekh.	11500ft.	Herb, fls pink	9
1120.	"	"	Herb, fls white	"
1121.	"	"	Herb, fls violet	"
1122. <i>Potentilla Leuconata</i> . Don.	"	"	Herb, fls yellow	"
1123. <i>Onosma bicolor</i> . Wall.	"	"	Herb, fls white	"
1125. <i>Leontopodium alpinum</i> . Cass.	"	"	"	"
1126. <i>Scutellaria discolor</i> . Colebr.	Telpani	1200m.	Herb, fls pink	28 July '63
1127. <i>Argostemma Sarmentosum</i> . Wall.	"	"	Herb, fls white	"

<u>Name & Botanical Name</u>	<u>Locality</u>	<u>Altitude</u>	<u>Field Notes</u>	<u>Date of Collection</u>
1128. <i>Oenothera rosea</i> Ait.	Telpani	1200m.	Herb, fls pink	28 July '63
1129. <i>Chenopodium umbrosum</i> . (M.B.) C. Koch.	"	"	Herb, fls pink	" "
1130. <i>Geniosporum coloratum</i> (Don) Brig.	Srichaur	900m.	Herb, fls pink	" "
1131.	"	"	Herb, fls purple	" "
1133. <i>Ajuga bracteosa</i> . Wall	"	800m.	Herb, fls pink	" "
1134. <i>Euphorbia hirta</i> . L.	"	"	Weed	" "
1135. <i>Agrostemma verticillium</i> Wall.	Telpani	1200m.	Herb, fls white	28 "
1136.	Bokikanda	1700m.	Herb, fls white	" "
1137. <i>Galium rotundifolium</i> . L.	Ratanangla	1900m.		Aug. '63
1138. <i>Lysimachia</i> <i>alternifolia</i> . Wall.	Lala.	1800m.	Herb, fls yellow	14 "
1139. <i>Euphorbia sikkimensis</i> . Boiss.	Ratanangla	2100m.	Herb, fls yellow	" "
1140. <i>Boeninghausenia</i> <i>albiflora</i> Reichb.	"	"	Herb, fls white	" "
1141. <i>Leptodermis griftithi</i> . Hk. f. (<i>L. lanceolata</i> Wall.)	Botikanda	1700m.	Shrub fls white	July '63
1142. <i>Ranunculus diffusus</i> DC.	"	2100m.	Herb, fls yellow	" "
1143. <i>Begonia picta</i> smith	"	"	Herb, fls pink	" "
1145. <i>Androssace sarmentosa</i> . Wall.	Lale	"	Herb, fls pink	" "
1146. <i>Mazus rugosus</i> Lour.	Ratanangla	"	Herb, fls pink	" "
1147. <i>Geranium Wallichianum</i> D. Don.	Ranimata	2200m.	Herb, trailing	" "
1148. <i>Impatiens scabrida</i>	Lale	2000m.	Herb, trailing fls yellow	Aug. '63

<u>Name & Botanical Name</u>	<u>Locality</u>	<u>Altitude</u>	<u>Field Notes</u>	<u>Date of Collection</u>
1149. Agrimonia eupatorium L. var. Pelosa Makino	Ranimata	2000m.	Herb, trailing fls yellow	July '63
1150. Indigofera dosua. Buch-ham.	Ratanangla	"	Shrub, fls pink	"
1158. Polygonum avicula. L	Jumla	9000ft.	Herb, fls pink	17 Aug. '63
1159.	"	"	Herb with bed smell	"
1160.	"	"	Herb	"
1161. Amphicome arguta. Lindley	"	"	Herb, fls pink	"
1162. Potentilla fructicosa L.	"	"	Herb, fls pink	"
1163. Salvia moorcroftiana Wall. Ex. Benth	Rara	1200ft.	Herb, fls pink	25
1164. Potentilla griffithii Hk. f.	"	"	Herb, fls yellow	"
1165. Campanula colorata Wall.	"	"	Herb, fls blue	"
1166. Ephedra gerardiana. var. Sikkimensis Staf.	Jumla	900ft.	Wild fruit deep red	17
1167. Origanum vulgare L.	"	"	Herb, fls white	"
1168. Rosa sericea Lindl.	"	"	Shrub, fruit red	"
1169.	"	"	Herb, fls white	"
1170. Pedicularis frevifolia Don.	"	"	Herb, fls violet	"
1171.	"	"	Herb, fls blue	"
1172. Pedicularis carnosae Wall.	"	"	Herb, fls purple	"
1173. Anaphalis triplinervis Clarke.	"	"	Herb, fls white	"

		Jumla	900ft.	Twiner fls white	17 Aug. '63
1174.	<i>Polygonum</i> sp.	"	"	Twiner fls white	"
1175.	<i>Satyrium</i> Nepalense.	"	"	Twiner fls white	"
1176.	D. Don.	"	"	Ground orchid	"
1177.	<i>Desmodium tibialaeifolium</i> G. Don.	"	"	fls pink shrub, fls pink	"
1178.	<i>Spinnea Gauvenscens</i> D. Don.	"	"	Shrub, fls white	"
1179.	<i>Halenia Elliptica</i> . D. Don.	Patnara	12000ft.	Herb, fls blue	18
1180.	<i>Corydalis Cachemiriana</i> . Royle.	"	"	Herb, fls yellow	"
1181.	<i>Anaphalis Araneos</i> De.	"	"	Herb, fls white	"
1182.	<i>Nephorodium filix-mas</i> . L. Var: <i>Shimperianum</i> . Hocht.	"	"	Fern	"
1183.	<i>Elshottzia fructicos</i> (Don) Rehrd.	"	"	Shrub fls	"
1184.	<i>Campanula Colorala</i> . Wall.	"	"	Herb, fls violet	"
1185.	<i>Stachys mellissaeifolia</i> . Danfe hill	"	13000ft.	Herb, fls pink	19
1186.	<i>Saxifraga diversifoba</i> . Wall.	"	"	Herb, fls yellow	"
1187.	<i>Taraxacum officinalis</i> . Wigs.	"	"	Herb, fls	"
1188.	<i>Nepela laevigala</i> D. Don.	"	"	Herb, fls blue	"
1189.	<i>Polygonum polystychyum</i> . Wall.	"	"	Herb, fls blue	"
1190.	<i>Polygonum fillicanb</i> Wall.	"	"	Herb, fls pink	"
1191.	<i>Polygonum fillicanb</i> Wall.	"	"	Herb, fls pink	"

<u>Name & Botanical Name</u>	<u>Locality</u>	<u>Altitude</u>	<u>Field Notes</u>	<u>Date of Collection</u>
1192. <i>Ligularia ampbsicanlis</i> . Ghurchi De	"	12000ft.	Herb, fls yellow	21 Aug. '63
1193. <i>Aster pseudomellus</i> . Hk. f.	"	"	Herb, fls pink	" "
1194. <i>Cyananthus cobatus</i> , Wall.	"	"	Herb, fls pink	" "
1195. <i>Parnassia nubicola</i> , Wall.	"	"	Herb, fls white	" "
1196. <i>Potentilla fulgens</i> . Wall.	"	"	Herb, fls yellow	" "
1197. <i>Bupburum Candollii</i> . Wall.	"	10000ft.	Tree fruit sour	21 Aug. '63
1198. <i>Gnaphalium hypoliucum</i> . De.	"	12000ft.	Herb, fruit white	" "
1199. <i>Anaphalis Contorla</i> . Hk. f.	"	"	Herb, fruit yellow	" "
1200. <i>Anaphalis araneosa</i> De.	"	"	Herb, fruit white	" "
1201. <i>Scutellaria violacea</i> Pina Heyne.	"	10000ft.	Herb, fruit white	23 "
1202. <i>Picea Smithiana</i> (Wall.) Boissier	"	"	Conifer femalecone 6"	" "
1203. <i>Syngamme Vestila</i> Wall	"	"	Fern make cide 2"	" "
1210. Rara	"	12000ft.	Herb, fls yellow	26 "
1211. <i>Euphorbia officianalis</i> .L.	"	"	Herb, fls white	" "
1212. <i>Geranium Wallichianum</i> . Sweet	"	"	Herb, fls pink	" "
1213. <i>Cyananthus incanus</i> Hk. f.	"	"	Herb, fls violet	" "
1214. <i>Hertminium josephi</i> , Richbb	"	"	Ground orchid fls white	" "
1215. <i>Habenaria stenantha</i> Hk. f.	"	"	Ground orchid fls yellow	" "

<u>Name & Botanical Name</u>	<u>Locality</u>	<u>Altitude</u>	<u>Field Notes</u>	<u>Date of Collection</u>
1216. <i>Lotus Corniculatus</i> L.	Rara	12000ft.	Herb, fls yellow	
1217. <i>Saxifraga filicaulis</i> Wall.	"	"	Herb, fls yellow	25 Aug. '63
1218. <i>Habenaria densa</i> Wall.	"	"	Land orchid fls pink	" "
1219.	"	"	Land orchid fls pink	" "
1221. <i>Acacia fornesiana</i> Willd	Kolli	5000ft.	Shrub, fls yellow	29 "
1222. <i>Chenopodium botrys</i> L.	"	"	Herb, fls yellow	" "
1223. <i>Zizyphus zujuha</i> Mill. var. <i>inermis</i> Rehd	"	"	Shrub, fls yellow	" "
1224. <i>Celosia argenlee</i> . L.	"	"	Herb, fls pink	" "
1225. <i>Tsusa dumosa</i> Lond	Parke pass	11000ft.	Conifer fls pink	Aug. '63
1233. <i>Impatiens radiata</i> . Hk. f.	"	"	Herb, fls pink	" "
1234. <i>Parnassia wightiana</i> . Wall.	"	"	Herb, fls white	" "
1235. <i>Quercus semecarpifolia</i> Wall.	"	"	Tree	" "
1236. <i>Lyonia ovalifolia</i> (Wall.) orude	"	"	Tree fruit berry	" "
1237. <i>Aesculus indica</i> Linn. f.	"	"	Tree brown capsule	" "
1238. <i>Cyattwla tomentosa</i> Miquel.	Angpani	9000ft.	Tree shrub	" "
1239. <i>Impatiens</i> sp.	"	"	Herb, fls pink	" "
1240. <i>Colquhounia Coccinea</i> . Wall.	"	"	Herb, fls red	" "
1241. <i>Begonia</i> sp.	Buriganga	5000ft.	Herb, fls pink	1 Sept. '63

<u>Name & Botanical Name</u>	<u>Locality</u>	<u>Altitude</u>	<u>Field Notes</u>	<u>Date of Collection</u>
1242. <i>Origanum Vulgare</i> . L.	Buriganga	5000ft.	Herb, fls white	1 Sept. '63
1243. <i>Scripus erectus</i> . Poir.	"	"	Herb	"
1244. <i>Adenoslemma lavenia</i>	"	"	Herb, fls white	"
1245. <i>Buchnera hispida</i> . R. Br. Ham.	"	"	Herb, fls pink	"
1246. <i>Centranthera hispida</i> R. Br. (<i>C. nepalensis</i> D. Don)	"	"	Herb, fls pink	"
1247. <i>Lippia nodiflora</i> Rich. (<i>Phyla nodiflora</i> greene)	"	"	Herb, fls white	"
1248. <i>Polygala triphylla</i> Buch-Ham (<i>Salomonina</i> <i>Ciliata</i> A.P. DC.)	"	"	Herb, fls pink	"
1249. <i>Swertia angustifolia</i> Buch-Ham. Mamilt	Thama pass	8000ft.	Herb, fls white	"
1250. <i>Anaphalis contorta</i> Hk. f.	"	"	Herb, fls white	1
1251. <i>Galium hirtifolium</i> Wall. Requier	"	"	Creeper fls white	"
1252. <i>Rubia cordifolia</i> L.	"	"	Climber	"
1253. <i>Andrachene cordifolia</i> Muell.	"	"	Shrub	"
1254. <i>Fraxinus floribunda</i> Wall.	Danigaun	"	Tree	2
1255. <i>Oldenlandia coccinea</i> Royle	Gorkhalingaun	7000ft.	Herb, fls bright red	4
1256. <i>Acchmanthera walliichi</i> Nees (<i>Swertia</i> <i>angustifolia</i> Hamilton)	"	"	Herb, fls violet	"

1258.	<i>Bidens bipinnata</i> L.	Gorkhaligaun	6000ft.	Herb, fls yellow	4 Sept. '63
1259.	<i>Siegesbeckia orientalis</i> L.	"	"	Herb, fls yellow	" "
1260.	<i>Bidens pilosa</i> L.	"	"	Herb, fls white	" "
1261.	<i>Clematis buchananiana</i> Dc.	Khaptad	12000ft.	Twiner fls white	7 "
1262.	<i>Potentilla fruticosa</i> L.	"	"	Herb, fls yellow	" "
1263.	<i>Polygonum Paleaceum</i> Wall.	"	"	Herb, fls pink	" "
1264.	<i>Aconitum spieatum</i> Stapf.	"	"	Herb, fls blue	" "
1265.	<i>Swertia Purpurascens</i> Wall.	"	"	Herb, fls white	" "
1266.	<i>Epilobium Williamsii</i> Raven	"	"	Herb, fls pink	" "
1267.	<i>Euphrasia officinalis</i> L.	"	"	Herb, fls white	" "
1268.	<i>Anaphalis triplinervis</i> Clarke	"	"	Herb, fls white	" "
1269.	<i>Senecio ligularia</i> Hk. f.	"	"	Herb, fls yellow	" "
1270.	<i>Lactua macrorhiza</i> Hk. f.	"	"	Herb, fls blue	7 Sept. '63
1271.	<i>Swertia Petiolata</i> Royle	"	"	Herb, fls yellow	" "
1272.	<i>Tanacetum senecionis</i> Gray.	"	"	Herb, fls yellow	" "
1274.	<i>Cynanthus lobatus</i> Wall.	"	"	Herb, fls blue	" "
1276.	<i>Ranunculus diffusus</i> DC.	"	"	Herb, fls yellow	" "

<u>Name & Botanical Name</u>	<u>Locality</u>	<u>Altitude</u>	<u>Field Notes</u>	<u>Date of Collection</u>
1278. <i>Taxus wallichiana</i> zuec.	Khaptad	12000ft.	Tree	7 Sept. '63
1279. <i>Abies speciabilis</i> Spach	"	"	Tree Confer	" "
1280. <i>Rubus Pedunculosus</i> D. Don	"	"	Shmb. fruit red berry	" "
1281. <i>Sida rhomifolia</i> Linn.	Dipali	3000ft.	Shmb. fls yellow	" "
1282. <i>Rhus parviflora</i> Roxb.	"	"	Shmb. fls white	" "
1283. <i>Desmodium triflorum</i> DC.	"	"	Herb, fls pink	" "
1285. <i>Munosa rubicaulis</i> , Lank	"	"	Shmb. fls pink	" "
1288. <i>Triumfetta bartramina</i> L.	"	"	Shmb. fls yellow	" "

Vernacular Name	Botanical Name	Useful Portion
Aak	<i>Calotropis gigantea</i> (Linn.) R. Br. ex Ait	Fruit
Aduwa, (Sutho)	<i>Zingiber officinale</i> Roxb.	Dry Rhizome
Agamota, Agnimantha, Ajamoda	<i>Trachyspermum ammi</i> (Linn.) sprague	Seed
Agasti	<i>Sesbania grandiflora</i> (Linn.) Pers.	-
Agur	See Krishna Agur	-
Ainselu ko-zara	<i>Rubus sp.</i> (R. Moluccanus L.)	Root
Akash velli ko-lahara	<i>Cuscuta reflexa</i> Roxb.	Stem
Alaichi, (Alenchi)	<i>Amomum subulatum</i> Roxb.	Fruit
Alas	<i>Linum usitatissimum</i> Linn.	Seed
Alenchi	See Alaichi	-
Amala ko-sukuti	<i>Emblica Officinalis</i> Gaertn.	Fruit
Amal bed, chulti omils	<i>Rheum emodi</i> Wall.	Stem
Amal tash	See Raj-Briksha.	-
Amba ko-bot-ko bokra	<i>Psidium guajava</i> Linn.	Bark
Amp ko-khoya	<i>Mangifera indica</i> Linn.	Seed
Anar ko-biz	<i>Punica granatum</i> Linn.	Seed
Andela arend	<i>Richinus communis</i> Linn.	Seed
Ankhali ghans	<i>Equisetum sp.</i>	Stem
Apamarga	<i>Achyranthus aspera</i> Linn.	Herb

Aparagita	Clitoria ternatea Linn.	-
Aphim	Papaver somniferum Linn.	-
Arel ko-zara	-	Wood
Arroroot	Maranta arundinacea Linn.	Tuber
Ashibala	See Atibala	Seed
Asok ko-bokra	Saraca Indica Linn.	Bark
Asuro	Adhatoda vasica Nees	Flower & Top leaf
Aswagandha, (Asvahandika)	Withonia somnifera Dunal	Root
Atibala, (Ashibala)	Sida rhombifolia	Seed
Atish	Delphinium denudatum Wall.	Tuber
	Parnassia nubicola Wall.	Fruit
Auralo	-	all portion
Babari	? Ocimum basilicum Linn.	Bark
Babur, Babhur ko-bokara, Bubu.	Acacia arabica Willd.	Seed
Badaher	Artocarpus heterophyllus Lam.	Seed
Badam	Prunus amygdalus Batsch	Wood
Bair	Zizyphus jujuba Lam.	Fruit
Bakainu ko-geda	Melia Azedarach Linn.	Wood
Bakainu ko-zara	" "	Seed
Bakchi	Psoralea Corylifolia Linn.	Root
Balacharia	? Nardostacys	

Balchand ko-biz	Aerva tomentosa Forsk	Seed
Balu	Sida spinosa Linn.	
Bamsha lachan	CaCo ₃ (From Bamboo stik)	Mineral
Bandhale	Curcuma aromatica Salisb	
Banlasum	Allium wallichii kunth.	Bulb
Banso	-	
Ban mula	-	Root
Bar, bor	Ficus bengalensis Linn.	
Barchi Meda	See Tatela ko kosa ko phal	
Bare mal	Ficus Bengalensis Linn.	Root
Barro	Terminalia belerica Roxb.	Fruit
Basfaiz	See Bisfez.	
Batulepati	Stephania rotunda Lous.	Root
Bayer, Bayar	See Bair (zizyphus jujulia Lam.)	Wood
Bayubirang		Fruit
Bazradanti	Potentilla sp.	Root
Barzuli		Root
Behein, Bihee	Solanum Khasianum Linn.	Fruit
Bel Bokra	Aegle marmelos Coor.	Wood
Bel ko-chara	Aegle marmelos. Corr:	Fruit
Bel Patra	Aegle marmelos. Corr.	Leaf

Bezor	See Fatthar.	Animal
Bhaki amiloo, (See Vakiamilo)	Rhus sp.	Fruit
Bhalayo	Semicarpus anacardium Linn.	Nut
Bhang	Cannabis sativa Linn. var. indica	Leaf
Bhairung pate (Bhairum pate)	Jumipers communis Linn.	Leaf
Bhalu ko- pitta	Bear Bil.	Animal
Bharat keshar		Root & Stem
Bhargi, (Bharangi)	Clerodendrum indicum (Linn.) Ktze.	Bark of Root
	Clerodendrum serratum spreng.	
Bhazuri	Selinum tenuifolium Wall.	Root
Bhenda Singi	Geranium nepalense	Fruit
	Zizyphus rugosa	
Bhirkoulo (Boiufu Swan)	Coix Lachry-ma-Jobi Linn.	
Bhogati	-	
Bhojpatra, Utis ko-Zora	Betula utilis D. Don.	Bark
Bhojapatra		
Bhorlo		Climber Stem
Bhringa Raj	Eclipta alba Hook.	Herb
Bhumiamalaki (Iasi)	Nephrolepis cordifolia Presl.	Whole Harb
Bhutkesh	Corydalis govaniana Wall.	Root
Bhuyudhayan	-	Harb
Badarikanda	See Biralikand Biralipuna.	

Bikhama, Bikh	Aconitum Palmatum. Aconitum Ferax.	Tuber Tuber
Biralikand (Biralipuma)	Pueraria tuberosa DC.	Root
Bisfez (Basfaiz)	Polypodium vurgare Linn.	Root, Rhizon
Bojho (Bojha)	Acorus calamus Linn.	Root
Bomba bari ko-biz	Phaseolus adananthus G. F. Meyer.	Seed
Bor	See Bar.	
Bramki	? Bacopa monniera (Linn.) Wettst.	Herb
Casiuri	Musk Deer	
Chaba (Chava)	Piper chaba Hunter.	Fruit
Chabo	See chaba.	
Chakramandi	See Taper ko-biz	Seed
Chambo, Chabo	See chaba	Root
Chameli ful ko-pat	Jasminum officinale Roxb.	Leaf
Chameli ko-ful (jee swa)	Jasminum officinale Roxb.	Flower
Chamsur ko-biz	Lepidium sativum Linn.	Seed
Chanda maruva	See Sarpagandha.	Root
Chari amilo	Oxalis acetosella Linn.	Herb
Chatiwana	See Chhatiwana.	
Chhadila Bodhna, Chhadila	Lichen	Liken
Chatiwan Chhatiwana	Alstonia Scholaris R. Br.	Bark

Chhuimui	<i>Mimosa pudica</i> Linn.	
Chhyapi	<i>Allium ascalonicum</i> Linn.	Tuber
Chichinda	<i>Trichosanthes anguina</i> Linn.	-
Chhiki Chhiki Bun	<i>Crotalaria verrucosa</i> Linn.	Seed
Chikon Lapa	meet of Bat	Animal Bat
Chiraita	<i>Swertia chairaita</i> Buch. - Ham	Herb
Chitu	See kalo chitu.	Stem
Chok	See Thahal ko-zaro.	
Chopcini (Chobchinee)	<i>Smilax</i> sp.	Root
Chulti omilo, Amal bed	<i>Rheum emodi</i> Wall.	Stem
Chutro	<i>Berberis aristata</i> Roxb.	Bark
Dalchini	<i>Cinnamon zeylanicum</i> Blum.	Bark
Dampate		
Danti	? <i>Baliospermum montaneum</i> Muell-Arg.	Wood
Deodaru ko-bokra	<i>Cedrus deodara</i> (Roxb) Loud.	Bark
Dhaiyero ko-ful	See Dhoara ko-ful.	
Dhainaro ko-ful	<i>Woodfordia fruticosa</i> Kurt.	Flower
Dhania (Dhaniya)	<i>Coriandrum sativum</i> Linn.	Seed
Dhaturo	<i>Datura</i> sp.	Leaf
Dhoara ko-ful	See Dhanaro ko-ful.	
Dhulo oakhati	See Thulo oakhati.	

Dhupi	Junipers sp. (J. marcopoda Boiss.)	Wood
Dhurughan, Dhruughyan	-	Herb
Dopahariya	? Pentapetes Phoenicea Linn.	Seed
Drona puspa ko-biz (Druna puspa)	Leucas cephalotes spreng.	Herb
Drona Puspa (Druna Puspa)	Lucas Cephalotes Spreng	Herb
Dudhe ghans	-	Nut
Dungero ko-ful	-	Stem with leaf
Duralambha (Dur-labha)	Alhagi Pseud-alhagi A. Ca.	Herb
Durey	Pergularia sp.	Fruit
Ela.	Elettaria cardamomum Matom.	Leaf
Gagima	See Bhang.	Fruit
Gajpipla	See chaba	Tuber
Camdol, Salep misri	Orchis mascula Linn.	Mineral
Gandhak	Sulfa.	Root
Gannaino	-	Rhizom
Gat	Zingiber officinele	Leaf
Gandhe, Orontsa	Houttuynia cordata Thumb.	Herb
Ghiu kumari	Aloe vera Touru et Linn.	Leaf
Ghora tapre	Centella asiatica (Linn.) Urban.	Herb
Ghue kumari	See Ghiu Kumari	Leaf

Gire sag	<i>Lactuca sativa</i> Linn.	All parts
Gineri, Ginari	<i>Premna integrifolia</i> Linn.	Bark
Gokhuṛ	<i>Tribulus terrestris</i> Linn.	
Gue	See Supari.	
Gulaban Pusa	<i>Rosa alba</i> Linn.	Herb
Gulab ko-ful (Phuol ful)	" "	Flower
Gun chulo (Guthulo)	-	Herb graminea
Gunja, Rati	<i>Abrus Precatoris</i> Linn.	Seed
Gunlava		Tuber (Liliaceae)
Gurju ko-sattic	white solid from bamboo	Mineral
Garjo	<i>Tinospora cordifolia</i> (Wild) Miers	Wood or Root
Gurzu ko-lahara	-	Root
Gwayaljawa Fuspa	-	Root
Hachhitu jhar	<i>Dicrocephala latifolia</i> DC.	Herb
Hahikan ko-ful	<i>Opuntia</i> sp.	Fruit
Haledo Kalo Haledo	<i>Curcuma domestica</i> valetton.	Rhizome
Hal hale ko-sag	-	Leaf Leguminosae
Harichur	-	Root
Hariyo dubu, Seto duboo	? <i>Cynodon dactylon</i> .	Herb

Harro (Thulo harro)	Terminalia chebula Retz	Fruit
Hhahober	-	Fruit
Himal ko-ful	-	Herb & Stem & Leaf
Hirakasi	Fe Se 4	Mineral
Imali (Titispon)	Tamarindus indica Linn.	Seed
Indrajar, Indrajan, Kurchi	Holarrhena antidysenterica Wall.	Seed
Indrajar ko-bokra	" "	Bark
Indrayani	Citrullus colocynthis Schraeder	Root
Ismogal, Isabghol	Plantago amplexicaulis cav.	Seed
Jaipatri	Myristica fiangra Houtt.	Flower
Jamanemandro	Mahonia Napaulensis DC.	Bark
Jamuna	Syzgium Cumini Skeels.	Fruit
Jamuna ko-pat	" "	Leaf
Janma dosha haru	" "	Herb Compo- sitae.
Japapuspi ko-pat	Hibiscus rosa-sinensis Linn.	Leaf
Jaringo	-	Stem
Jatamansi	Nardostacys jatamansi DC.	Root
Jayanti ful ko-lahara	Sesbania sesban Merr.	Stem
	Quamoclit pennota Bojer	
Jeera, Jira, Zira	Cuminum Cyminum Linn.	Seed

Jethi madhu	<i>Glycerrhiza glabra</i> Linn.	Root
Jhuse Til, Niger	<i>Guizotia abyssinica</i> Cass.	Seed
Jibaka	See gunlava.	
Jibanti, (Sun gava)	<i>Coelogyne cristata</i> Lindl	Stem
Jotismoti ko-biya	<i>Cardiospermum halicacabum</i> Linn.	Fruit
Jugali harro (Horro)	<i>Terminaria chebula</i> Retz.	Nut
Jugmasi	See Kagghuchi	Seed
Jumuna ko-pat	See Jamuna	
Jwanu, Zuan, juwann	<i>Trachyspermum ammi</i> (Linn.) Sprangue	Seed
Jyamir ko-biyan	<i>Citrus limon</i> (Linn.) Burm. f.	Seed
Jyapu ghain	<i>Gnaphalium lutea-albo</i> Linn.	Herb
Kabhro, Kadhro	<i>Ficus lacor</i> Buch Ham. Syn. F. <i>inbestorga</i>	
Kachur	<i>Curcum Zedoaria</i> Rose	Root
Kafal bokra, Kafal ko-Bokra	<i>Myrica Nagi</i> Thumb.	Bark
Kagghuchi	? <i>Syzygium operculatum</i> Gamble.	Fruit
Kakanasika, Kanwazhali	<i>Leea aequota</i> Linn.	-
Kairo Zar	<i>Gnaphalium luteo-album</i> Linn.	Herb
Kaita	-	Nut
Kakar singhi	See Karkat Singhji.	
Kakoli	<i>Pleone praecox</i> Don.	Bulb
Kakuro ko-biz	<i>Cucumis sativus</i> Linn.	Seed
Kalo chitu	? <i>Plumbago zeylanica</i> Linn.	Cut of Stem

Kalo Dhuturo ko-biz	<i>Datura</i> sp.	Seed
Kalo haledo, Haledo	See Haledo	Rhizon
Kalo Kauso ko-biz	<i>Mucuna prurita</i> Hook. (Black seed)	Seed
Kalo vashak	<i>Athrotoda vasica</i> Nees	Leaf
Kamal	<i>Nelumbium nucifera</i> Gaertn.	Seed
Kanamasi	See jatamacy	Root
Kaner ko-pat ko-biz	? <i>Nerium indicum</i> Mill.	Fruit
Kantakari	<i>Solanum xanthocarpum</i> Schrad & Wardl.	Fruit
Kao cho	See Kauso, Kaccho	Seed
Kapur	<i>Cinnamomum Camphora</i> T. Nees.	Crystal
Karam	-	Rosin
Karanda ko-pat	? <i>Feronia limonia</i> swingle	Herb
Karelo Karela	<i>Momordica charantia</i> Linn.	-
Karouda, Krounda	<i>Carissa Carandas</i> Linn.	-
Karengi, Damar	<i>Pongamia pinnata</i> (Linn.) Merr.	Seed
Karkat singhji	<i>Pistacia integerrima</i> Stew. et Brandis	Gall
Kas ko-zar	<i>Vetiveria zizanioides</i> Nash.	Root
Kasturi	Musk	Animal
Kasur	<i>Scirpus kysoor</i> Roxb.	Tuber
Kaula ko-bokra	? <i>Cuculbita pepo</i> Linn.	Bark
Kauso, Kaccho	<i>Mucuna prurita</i> Hook (white seed)	Seed

Keyo ko-bokra	? Cinnamomum Parthenoxylon Meissn	Bark
Khamari	Gmelina arborea Linn.	Bark
Khanayo	Ficus cunia Ham. ex. Roxb.	Bark
Khari ko-bokra	Celtis Australis Rich.	Extract
Khayer	Acasia Cathetu Willd.	Bark
Khayer ko-bokra	" " "	
Khareto	-	
Khicha Bokra	? Lycium ruthenicum Murr.	Leaf
Khursani ajowan	Hyoscyamus niger Linn.	Seed
Khursani	Capsicum annuum Linn.	Fruit
Koeral (Koirala ko-bokra)	Bauhinia variegata Linn.	Bark
Koiral	Bauhinia purpurea Linn.	
Kousoli	See Supari.	Nut
Krishna agur	Vepris bilocularis Engler.	Wood
Krishna jeerah	Nigella sativa Linn.	Seed
Kuberakcha	Stereospermum suaveolens DC.	Seed
Kubhindo	Benincasa hispida (Thumb.) Cogn.	Fruit
Kuchila	Strychuos Nux-Vomica Linn.	Seed
Kukhi Taj, Nakali Dalchini	See Dalchini.	Bark
Kukurdania (Desi chopchinee)	Smilax sp.	
Kumkum	Didymocarpus aromatica Wall.	Leaf

Kush ko-zara	-	Herb
Kut 'biz	-	Bark
Kut	Saussurea lappa C.B. Clarke.	Root
Kukurdaina	smilex sp.	Rkizom
Kutki	Picrorhiza kurroa Royle. ex. Benth.	Root
Kyamuna ko-ful	Helicteres sp.	Flower
Kyamuna ko-pat	? Helicteres sp.	Leaf
Kyamuna ko-bokra	Helicteres sp.	Bark
Lalani ko-zara, Lalagia	? Striga gesneroides (Willd) Watke.	Herb
Lali Mohana (Lalmokhana)	-	Seed
Lapsi	Spondias axillaris.	Fruit
Lasi	Nephrolepis cordifolia. Presh.	All parts
Lata Karange	Caesalpinia crista Linn.	-
Latiya betu	1. Amaranthus sp. 2. Colebrookea oppositifolia Sm.	Seed
Lazzabati, Lazzawati	Aesculus hippocastanum	Stem
Lekh Pangara	Symplocos paniculate Wall.	Seed
Lodh	Pinus Roxburghii Sargent	Bark
Lohan Loban	" Walllichiana	Resin
Madesi Sonf, Madesi sonp	Foeniculum vulgare Mill.	Seed
Main, Mein	Bees Wax.	wax

Maimphal	Randia dumetrum Lam.	Nut
Maha bala, Kapas	Gossypium arboreum Linn.	-
Maharangifol	Onosma emodi Wall.	Bark of Root
Majitag gath, Majitha ko Iahara	Rubia Cordifolia Linn.	Root
Mamira	1. Coptis Teeta Wall. 2. Pilli zara (original plant not sure)	Rhizom
Marich	Piper nigrum Linn.	Fruit
Masparni, Mashparne	Mucuna Prurita Hook.	Herb
Mazanfall, Mazu Fal		Gall
Meda, Maha Meda	? Litsea Polyantha Juss Luvunga scandens Buch-Ham.	Herb
Mein	Bees Wax.	Wax
Methi	Trigonela foemum graecum Linn.	Seed
Moola	See Muliki biz.	
Moo-swan	-	Leaf & Stem
Moorga Purne	See Mudgaparni	Herb
Moorgauth	-	Root
Mothe	Gyperus rotundus Linn.	-
Mudilo	Gentiana kurrooa Royle.	Root
Maagaparni	-	Herb
Mugrelo	Nigella sativa Linn.	Seed

Mugi	Phaseolus mungo Linn.	-
Mula	See Mulki Biz.	
Mulki biz, Moola	Raphanus sativa Linn.	Seed
Munesori ko-ful	? Mimusops elengi Linn.	Herb
Musali	-	
Mushaber	-	Extract
Nagar muta	Cyperus scariosus R. Br.	Root
Nagbhala, Nagbala	? Sida spinosa Linn.	Seed
Nag Keshar	-	Bud
Nag Keshar	-	Stem in Flower
Nang sagar	N H ₄ C L	Mineral
Nariora	See Gur.	Nut
Naru, Naroo	Aesculus indica Colebr.	Seed
Neem ko-pat (Nim ko-pat)	Picrasma sp. (not Melia)	Leaf
Nilkamal (Nirkamal)	Nymphaea stellata Willd.	Flower
Nil moli	? Strychnos Potatorum Linn.	Seed
Nim Kat	Azadirachta indica A. juss.	Wood
Nirbishi	Delphinium denudatum Wall.	Tuber
Niswanto	-	Root
Okhar ko-bokra	Juglans regia Linn.	Bark
Ola	Amorphophallus campanulatus Bl.	-

Paan	Piper betle Linn.	Root
Padari	Stereospermum tetragonum DC.	Bark
Padma Pashar	Nelumbium nucifera.	Flower
Padmakeser	Nelumbium nucifera	Stigma
Padmachar	Rheum emodi Wall.	Root
Painya ko biz	Prunus cerasoides D. don.	Seed
Painya ko bokra, (Bayn ko-Bokra)	Prunus cerasoides D. Don.	Bark
Pakhan bet (Pashanabheda)	Bergenia ligulata (Wall.) Engl.	Root
Palans ko-biz	Butea monosperma (Lam.) Kuntze.	Seed
Palas ko phul	Butea monosperma (Lam.) Kuntze.	Flower
Panchu aunle	Orchis incarnata (Linn.) Willd.	Tuber or Root
Prabal, Paroval, Parwal	Trichosanthes dioica Roxb.	Fruit Bark
Pridram (Pyrethrum)	See Pyrethrum.	Flower
Patha	See Batule Pati	
Patthar	Gall stone	Animal
Pipal ko-zara	Ficus religiosa Linn.	Root
Pipla (Pipala)	Pipel longum Iinn.	Fruit
Pipla mul	" " "	Herb
Pipal ko-pat	Pipal longum Linn.	Leaf & Stem.
Pire ghas	1. Cymbopogon citratus. stapf 2. Polygonom sp.	Herb

Pitta papada, Pit papra	Naregamia alata W. & A.	Herb
Piyale	Fritillaria roylei.	Bulb
Podophyllum	Podophyllum emodi Wall.	-
Postakari, (yatsua-gumboo)	Cordyceps sinensis	All stem
Postak dana (Postokadana)	Papaver somniferum Linn.	Seed
Pouder	Lycopodium clavatum Linn.	Sporen
Prangali	-	Root
Priyangu, Priyangu	? Aglaia Roxburghiana Miq.	Seed
Pudina	Mentha aevensis Linn.	Leaf
Punarnaba	Boerhaavia diffusa Linn.	Stem
Pushkara mool	-	Stem
Pyrethrum, Paridram	Chrythemum cinerarifolium Visiani	Flower
Rai, Rayo	Brassica nigra (Linn.) Koch.	Seed
Raj Briksha	Cassia fistula Linn.	Seed
Rakta chandan	Pterocarpus santalinus Linn.	Wood
Rahar	Cajanus cajan (Linn.) Millsp.	Seed
Ram patri	See Jaipatri.	Flower
Ranighans	Cheilanthes argentea (Gmel.) Kunze.	Herb
Rasna ko-Zara	-	Root
Rasna (Rasula)	-	Seed
Rati	See Gunja.	Seed

Rato musli	Curculigo orchicoides Gaertn.	Tuber
Renuka ko-ful	? Piper aurantiacum Wall.	Stem & Leaf
Riddi (Raddhi) ko-ful	? Iuvunga scandens Ham.	Tuber
Ritha, Rittha	Sapindus mukoross Gaertn.	Fruit
Rohini	See Sindhure.	
Rowan (Iwang)	Syzgium caryophyllatum Gaertn.	Bud
Rudilo	Nyctanthus arbortristis Linn.	Herb
Rudilo	" " "	Wood
Rugahk	" " "	Root
Runimastki, Runimasthi	-	Rosin
Ruk Kesar (Rukh)	Mesua ferrea Linn.	Stigma
Sahachar, Saachar	Saccharum officinarum Linn.	Stem
Safed musli	? Chlorophytum aurundinaceum Baker.	Tuber
Sagiba ko-biya	See Sajiwa.	Nut
Sajikhar	Fe S	Mineral
sajiwa	Jatropha Curcus Linn.	Nut
Salawamisri, Salmimi	Orchis sp.	Tuber
Salap misri	Orchis muscula	Tuber
Salparni, (Prishni-parni)	Desmodium gangeticum DC.	Herb
Samudar feeng	Shield of cuttlefish	Fish
Samudra phal, Samudra ful,	1. Barringtonia acutanguala Gaertn	Nut
Sumundra	2. Avicennia officinalis	

Sano pipala	Piper sp.	Fruit
Sano harro	Terminalia sp.	Nut
Sariba, Sariwa	Ichnocarpus frutescens R. Br.	Fruit
Sarpagandha	Rauwolfia serpentina Benth ex. Kurz	Root
Sarsoo, Toori ko-Biya	Brassica campestris Linn. var. rapa (Linn.) Hartm.	Seed
Sashi	? Crotalaria burhia Buch. - Ham.	Fruit
Satavari	Asparagus racemosus Willd.	Root
Satisal	Dalbergia latifolia Roxb.	Wood
Satuwal	Paris Polyphylla Smith.	Root
Sawr ko-bokra	? Vallisneria spiralis Linn.	Bark
Sermindu (Serbindu)	See Shyok.	Root
Seto dhaturu ko biz	1. Datura metel Linn. 2. Datura stramonium Linn.	Seed
Seto duboo,	See Hariyo duboo	
Shalaparni, Salparni	See Sal parni (D. ganzeticum DC.)	
Shanapushpi	See chiki chiki Bum.	Seed
Shobhanjan	See Sobanijan ko phal	
Shrikhand ko-dhuboo	Santalum album Linn.	Powder
Shyak, Sermindu	? Altrais sp.	Root
Sigara	Trapa bispinosa Roxb.	Fruit
Sakai	Acacia consinna DC.	Fruit

Silajit	-	Mineral					
Siltimur	Zanthoxylum acanthopodium DC.	Fruit					
Simal	Salmalia malabarica schoot & Endl.	Latex					
Simal ko-chop	" "	Bark					
Simal ko-ful	" "	Flower					
Simal ko-zara	" "	Root					
Simki	Chrysantheneum sp.	Harb					
Sindhure, Rohini	Mallotus philippinensis Muell-Arg.	Fruit					
Siplekan k-munta	Lagerstroemia speciosa (Linn.) Pers.	Herb					
Siplikan	Lagerstroemia speciosa (Linn.) Pers.	Fruit					
Sisno ko-zara	<table border="0" style="margin-left: 20px;"> <tr> <td style="border-left: 1px solid black; padding-left: 5px;">1. Urtica dioica Linn.</td> <td rowspan="3" style="font-size: 3em; padding: 0 10px;">}</td> <td rowspan="3" style="vertical-align: middle;">Root</td> </tr> <tr> <td style="border-left: 1px solid black; padding-left: 5px;">2. Fragaria sp.</td> </tr> <tr> <td style="border-left: 1px solid black; padding-left: 5px;">3. Dalbelgia sisso Roxb. ex sisu.</td> </tr> </table>	1. Urtica dioica Linn.	}	Root	2. Fragaria sp.	3. Dalbelgia sisso Roxb. ex sisu.	
1. Urtica dioica Linn.	}	Root					
2. Fragaria sp.							
3. Dalbelgia sisso Roxb. ex sisu.							
Siuri ko-kanda	Euphorbia royleana Boies	Stem					
Siva Linga, (Shiba)	Bryonopsis laciniosa (Linn.) Navd.	Fruit					
Siwali nirgundi	? Vetex negundo Lium.	Leaf & Herb					
Siyah musli	Aneilema scapiflorum Wight	Root					
Sobanjan ko-phal	Moringa oleifera Lam.	Seed					
Somal gatta Somalata	Ephedra Gerardiana Wall.	Herb & Root					
Soyo ko-biya (Suf)	Anethum graveolens L.	Fruit					
Suf, Soupha	See Soyo-ko-Biya						

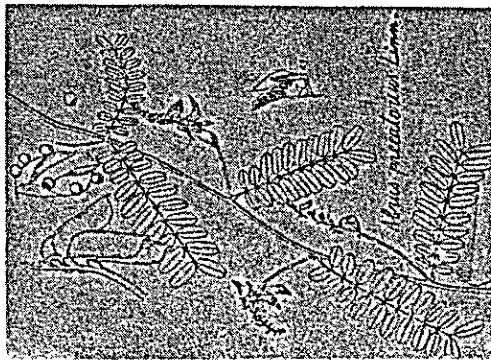
Sugandha bal	Valeriana Wallichii DC.	Root
Sugandha kokila	? Cinnamomum glanduliferum Meissn	Fruit
Suhaga	Borax	Mineral
Suibhabacha, Suye-Bhagacha	Gynandropsis gynandra (Linn.) Briquet	Seed
Sukmel	-	Fruit
Sumundra phal (Samudra)	See Samudra	Nut
Sungava, (Jibanti)	Coelogyne cristata Lindl.	Bulb & Stem
Supari, Kousoli	Areca Catechu Linn.	Nut
Sutho, (aduwa)	Zingiber officinale Roscoe	Rhizon
Suye Bhagacha	See (Suibhabocha)	
Takosi	-	Nut
Talis	-	Stem
Talispatra	-	Stem
Talmakhana	Asteracantha longifolia Nees.	Seed
Tang	-	Fruit
Tangahaj, Tanga Raj	? Eclipta alba Hassk.	Herb
Tapre ko-Biz chakramandi	Cassia tora Linn.	Seed
Tapre	Cassia sophera	-
Tatela, Tatelo	Oroxylum indica vent.	Bark
Tatela ko Kosa ko-ful	Oroxylum indica Vent.	Seed
Barchi Medha		

Taulo Oushadhi	See Thulo ouk ati	
Tejipat	Cinnamomum tamala Nees & Ebern	Leaf
Tejipat ko-bokra	Cinnamomum tamala Nees & Ebern	Bark
Thakal	Argemone mexicana Linn.	Herb
Thakal ko-jara (chok)		
Thulo harro	Terminaria chebura Retz.	Nut
Thulo oukhati	Astilbe rivalaris Benthian ex Don	Root
Thulo pipala, (chaba)	Piper cubeba Linn. f.	Fruit
Timur, Timura, Tambur	Zanthoxylum oxyphyllum Edgew.	Fruit
Tinger	Zanthoxylum serra Turcz	Fruit
Titepati	1. Artemisia vulgaris Linn. 2. Chrisanthe sp.	Herb
Titkankri	See Thotne	Fruit
Toori ko-biya	See Sarsoo	
Tuki ful	Taraxacum officinale Weber	Root
Tulsi patra	Ocimum sanctum Linn.	Stem, Leaf & Herb
Ukhu ko-Zara	Saccharum officinarum Linn.	Root
Uneu ko-gsans (Unnu)	-	Herb
Usir, Ushir	-	Herb
Utis ko-Zara	Betula utilis D. Don.	Root
Vargi ko-Zara Maharangi	See Maharangi	Root

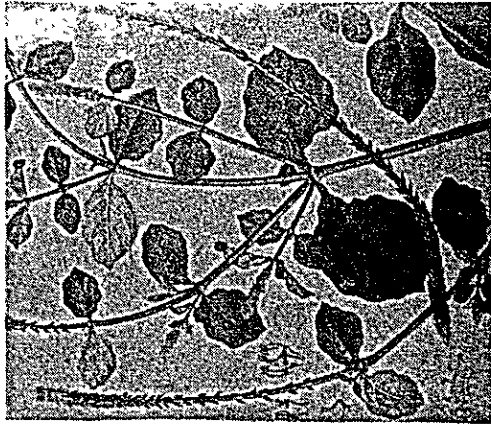
Vethu ko-sag	? 1. <i>Chenopodium murale</i> 2. <i>Chenopodium album</i> Lium.	Herb
Vhate vetu	<i>Chenopodium album</i> L, var <i>centrorubrum</i>	Seed
Vimiro	<i>Citrus medica</i> var. <i>medica</i>	-
Yatsa gumbu	See Postakari	
Yekh bir	<i>Lobelia Pyramidalis</i> Wall.	Herb (stem & leaf)
Yurolamba	? <i>Alhagi camelorum</i>	Herb
Zamanehandro	See jamanemondro	Root
Zamamhandro, jamanemandrs	See jama mandro	Bark
Zatamoshi	See jatamosi	
Zira (Jeera)	See jeera.	
Zuan	-	Seed
Zuze til	-	Seed
Zyamuro ko-byan	-	Seed

Botanical Name and Vernacular Name

of Crude Drugs in Nepal



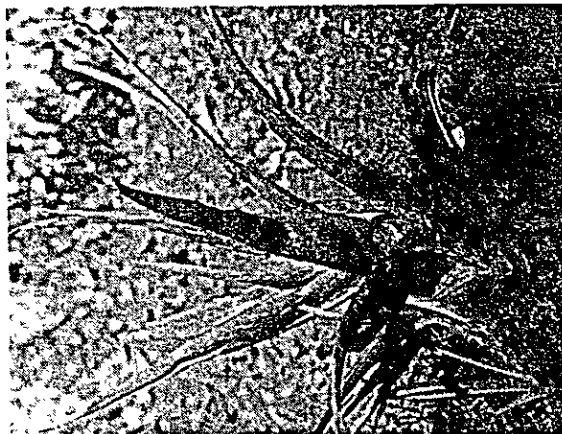
1 *Abrus precatorius* Linn.



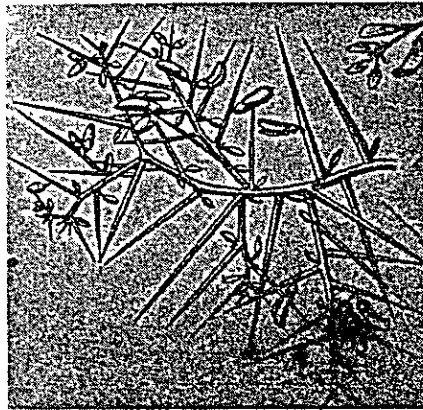
2 *Achyranthus aspera* Linn.



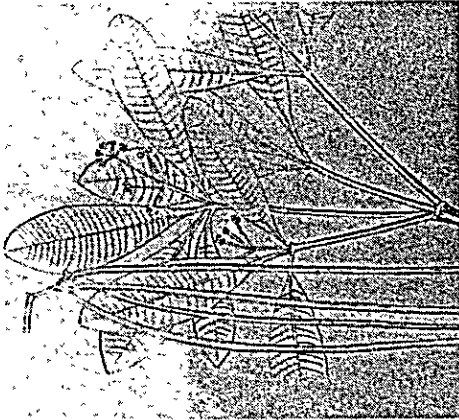
3 *Adhatoda vasica* Nees



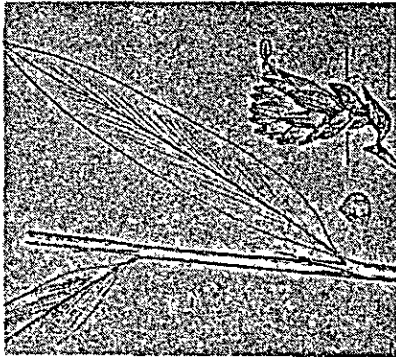
4 *Aloe vera* Toww et Linn.



5 *Alhagi pseud-alhagi* A. Ca.



6 *Alstonia scholaris* R. Br.



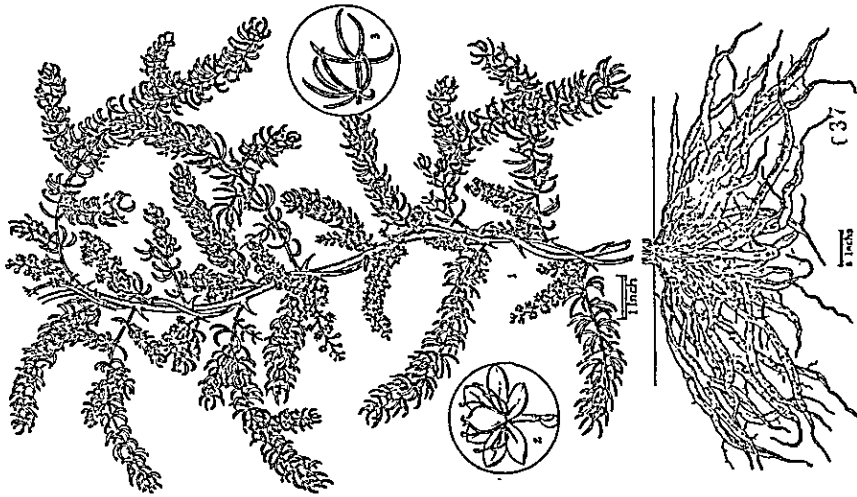
7 *Aromum Cardamomum* Linn.



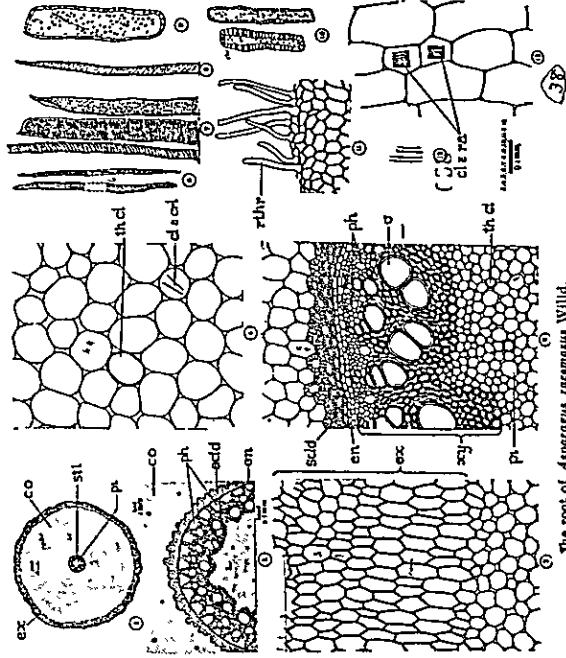
8 *Argemone mexicana* Linn.



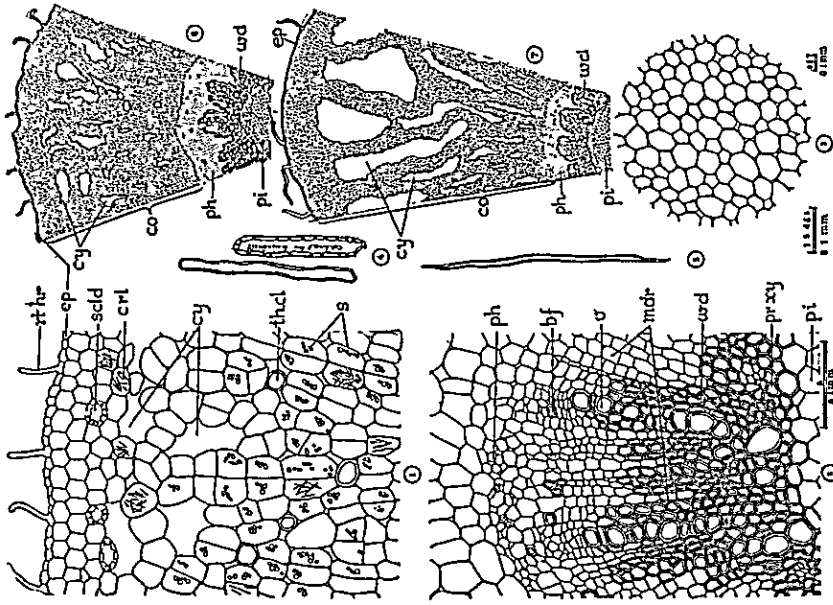
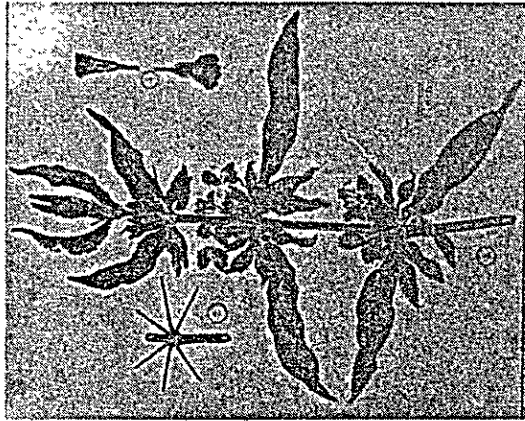
9 *Artocarpus retzophyllus* Lam.



1 Flowering top
Asparagus racemosus Willd.
 2 A single flower 3 A portion of racemate enlarged



The root of *Asparagus racemosus* Willd.



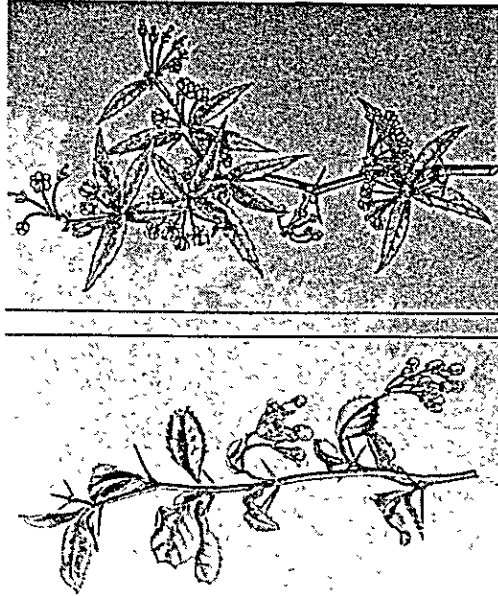
The root of *Asteracantha longifolia* Nees.

1. Epidermis and the cortex.
2. Details of structure of cortex.
3. Phloem fibre.
4. Diagrammatic sketch of T. S. of the root of a plant growing on fairly dry soil.
5. A phloem fibre.
6. Diagrammatic sketch of the T. S. of the root of a plant growing in marsh soil.
7. Diagrammatic sketch of the T. S. of the root of a plant growing in marsh soil.

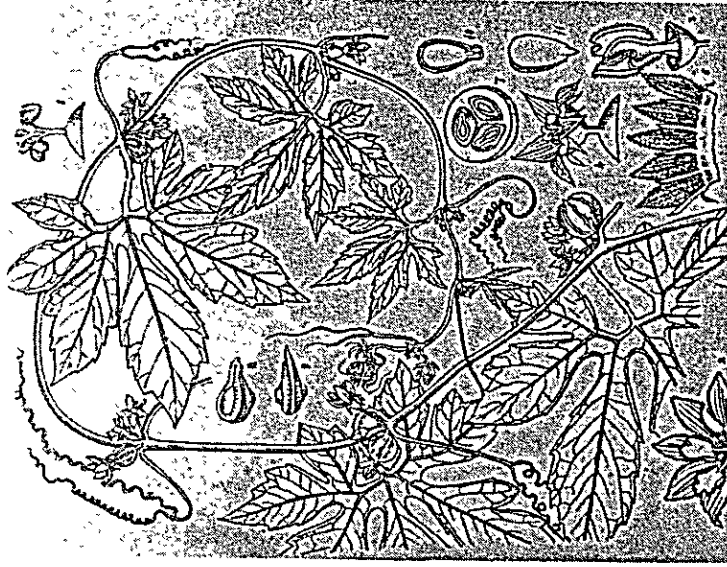
11 *Asteracantha longifolia* Nees.



13 *Bergenia ligulata* (Wall.) Engl.



12 *Berberis aristata* Roxb.



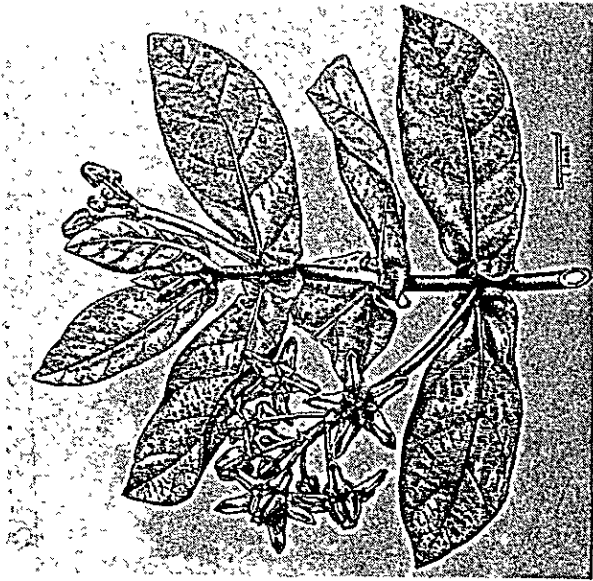
14 *Bryonopsis laciniosa* Havd.



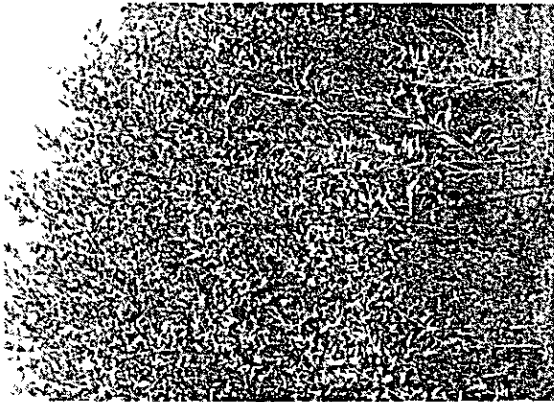
16 *Caesalpinia seppan* Linn.



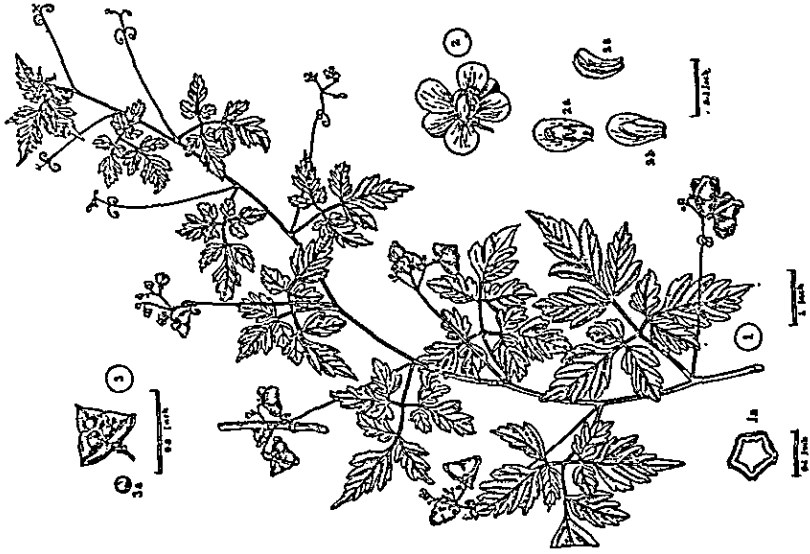
15 *Butea monosperma* Kuntze



17 *Calotropis gigantea* R. Br. et Ait

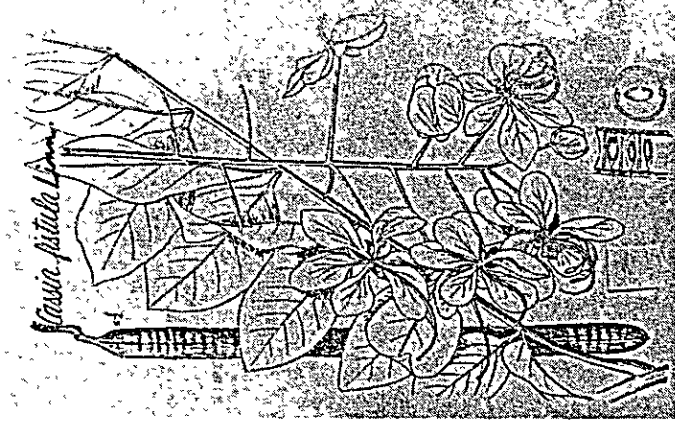


18 *Cajanus cajan* (Linn.) Millsp.



Cardiospermum halicacabum Linn.
 1. A flower
 2. C. S. of a fruit
 3a. Seed
 3b. Seed
 4a. Petiole
 4b. Stipule
 5. St. Petiole
 6. A leaflet

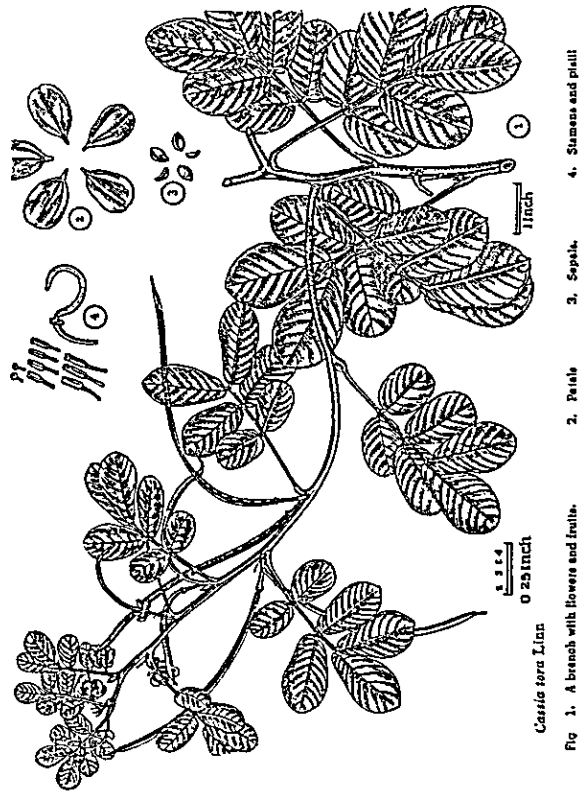
19 *Cardiospermum halicacabum* Linn.



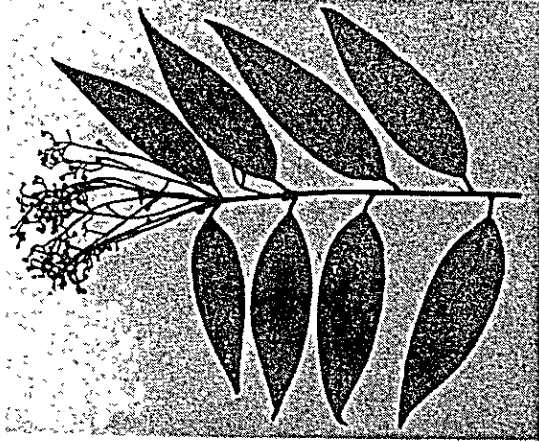
20 *Cassia fistula* Linn.



21 *Cassia sophera* Linn.



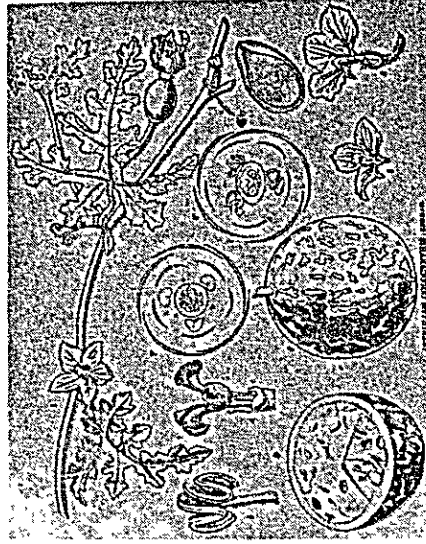
22 *Cassia tora* Linn.



24 *Cinnamomum tamala* Nees & Eberh



23 *Cheilanthes tenuifolia* Swartz.



26 *Citrullus colocynthis* schrad



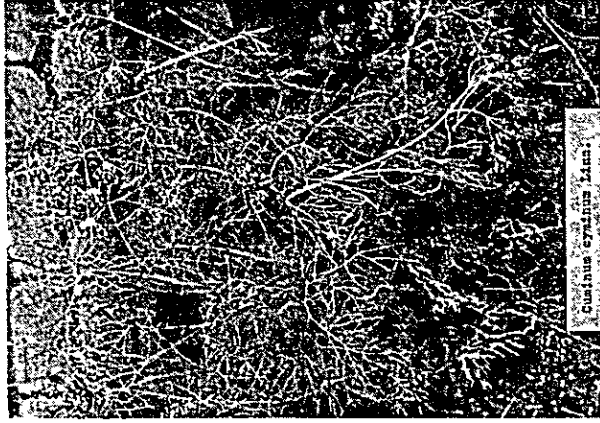
25 *Cinnamomum zeylanicum* Blume



27 *Citrus medica* Linn.



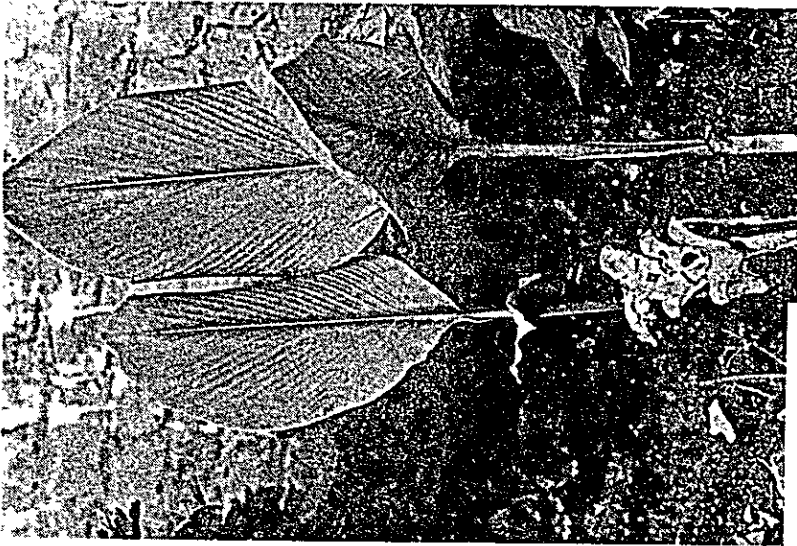
28 *Coelogyne cristata* Lindl.



30 *Cuminum cyminum* Linn.



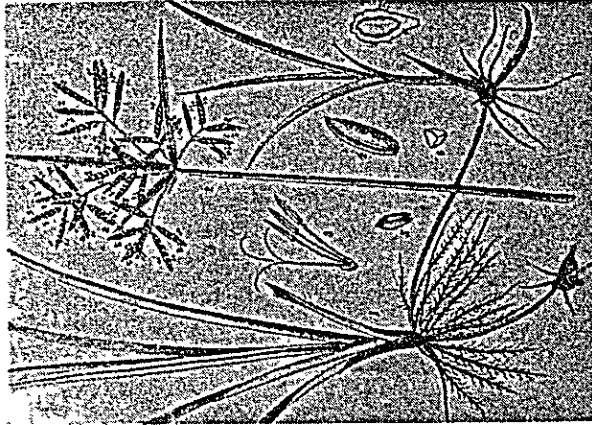
29 *Cordyceps sinensis* Linn.



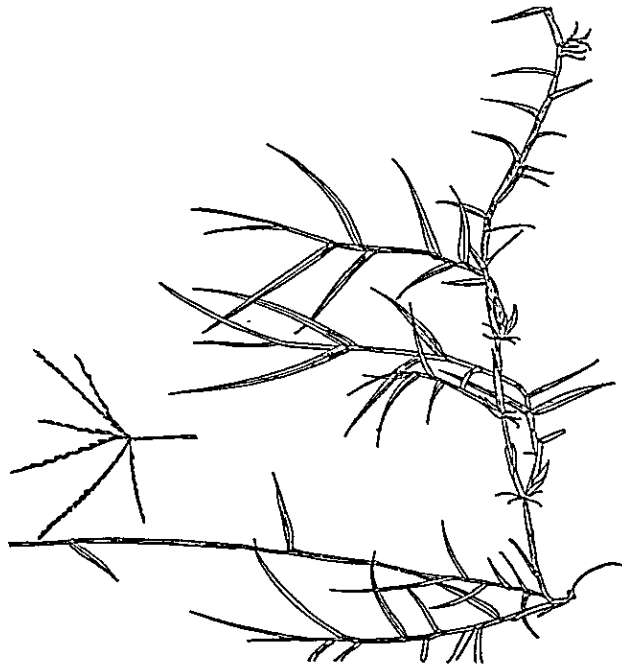
31 *Curcuma zedoaria* Rosc.



32 *Cuscuta reflexa* Roxb.



34 *Cyperus rotundus* Linn.



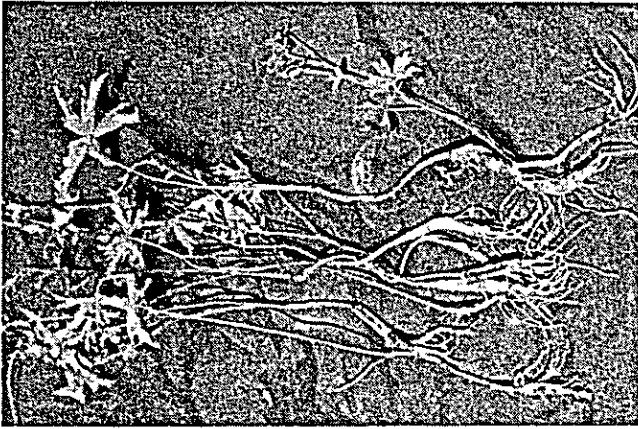
33 *Cynodon dactylon* Pers.



36 *Didymocarpus aromatica* Wall.



37 *Euphorbia royleana* Boies



35 *Delphinium denticulatum* Wall.

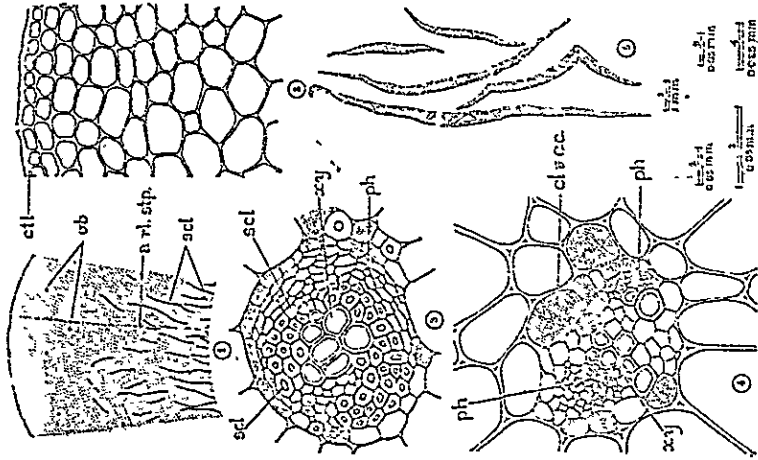
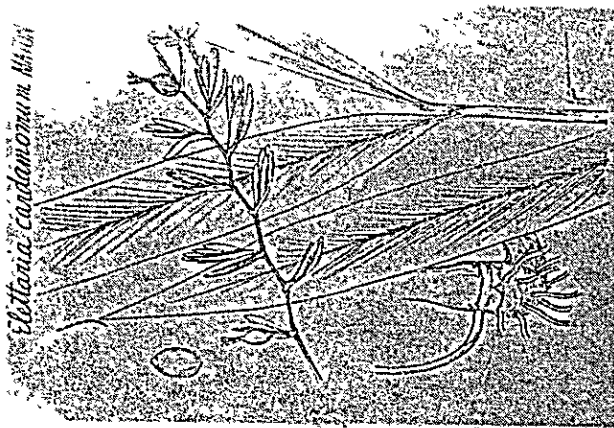
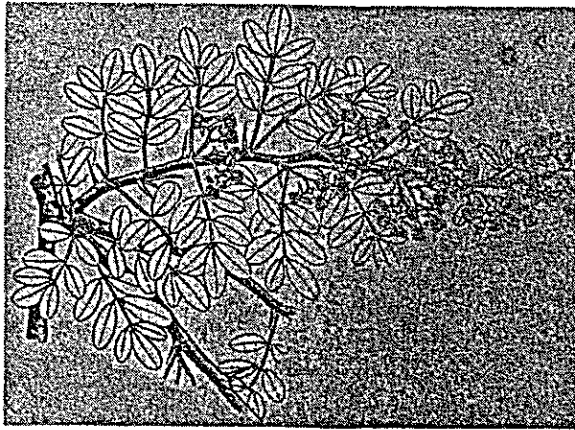
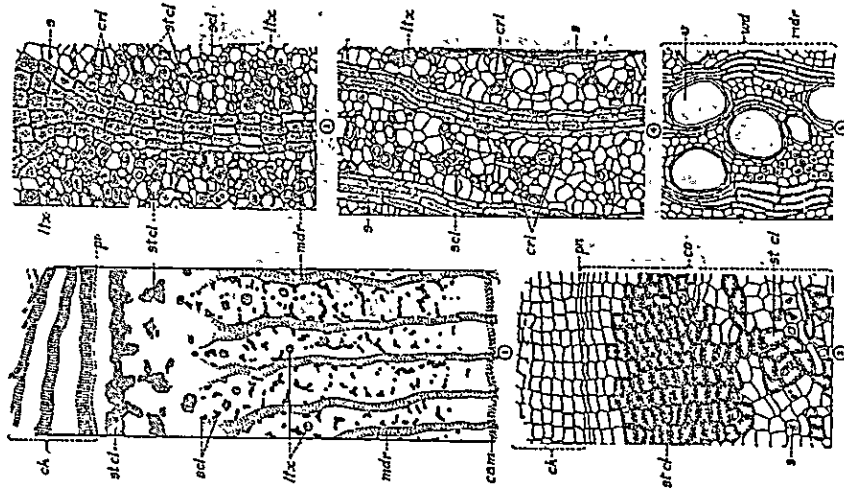


Fig. 1. Diagrammatic sketch of the T. S. of the stem.
 2. Details of the peripheral part of the stem.
 3. & 4. Two vascular bundles.
 5. Fibres.

38 *Elettaria candanomonum* Maton



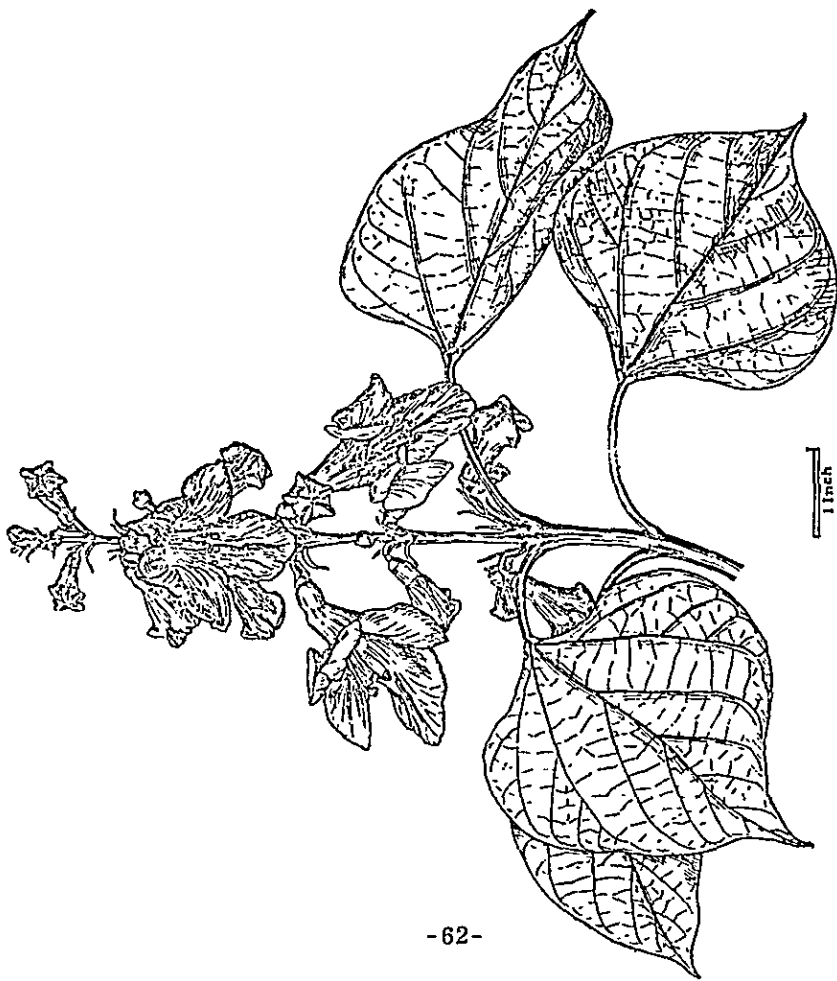
39 *Feronia limonia* Swingle



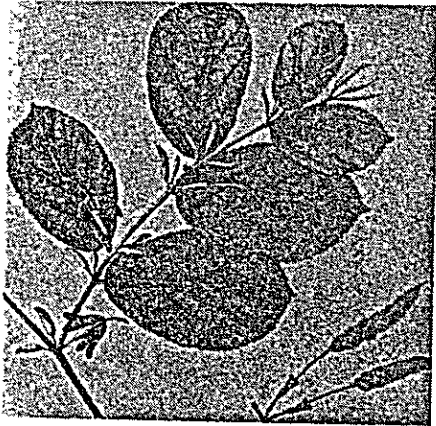
40 *Ficus religiosa* Linn.



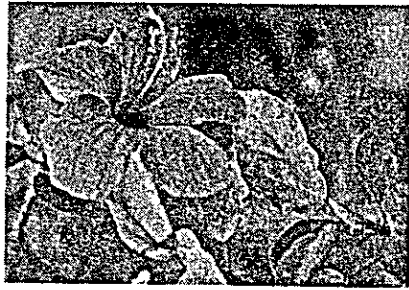
42 *Guizotia abyssinica* Cass.



41 *Gmelina arborea* Roxb.



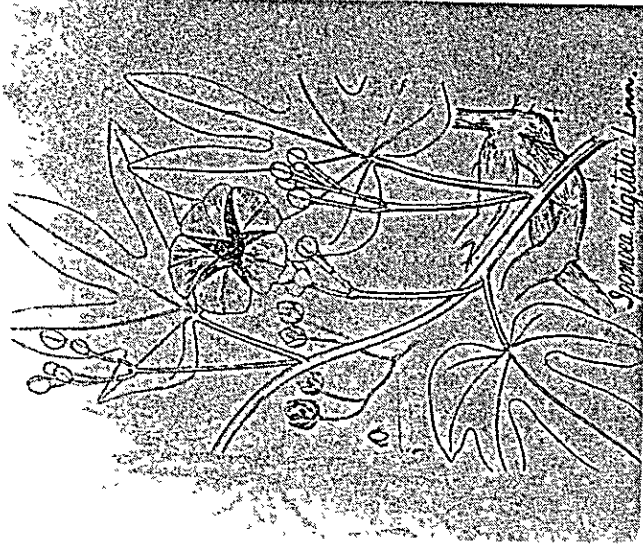
43 *Helicteres isora* Linn.



44 *Hibiscus rosa-sinensis* Linn.



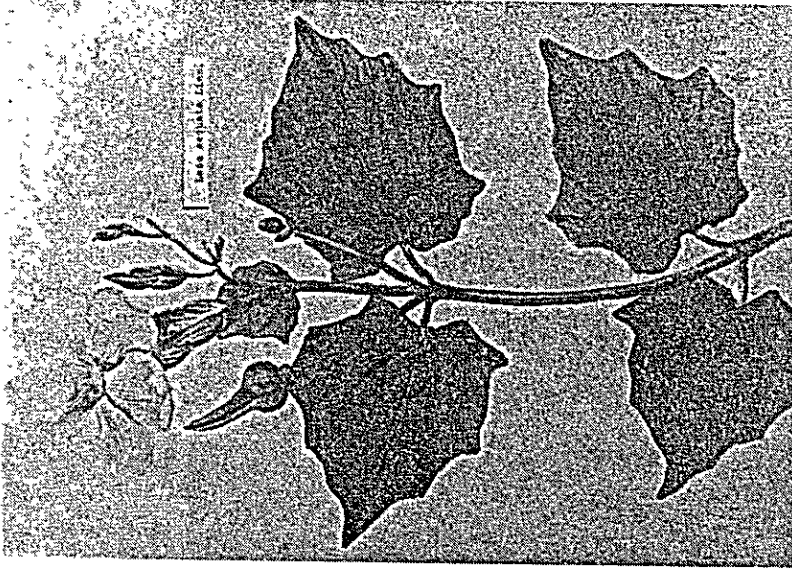
45 *Ichnocarpus frutescens* R. Br.



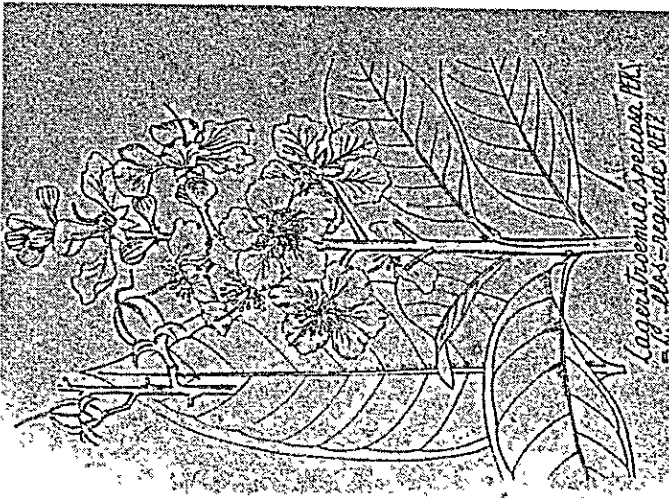
47 *Ipomoea digitata* Linn.



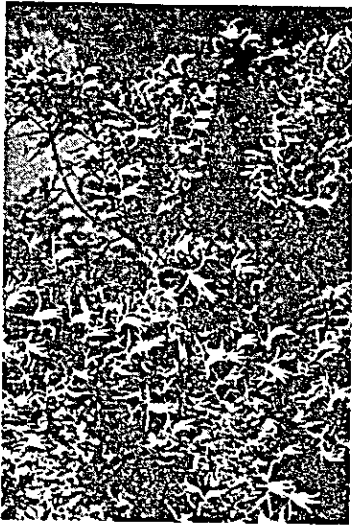
46 *Jatropha curcus* Linn.



49 *Leea aquata* Linn.



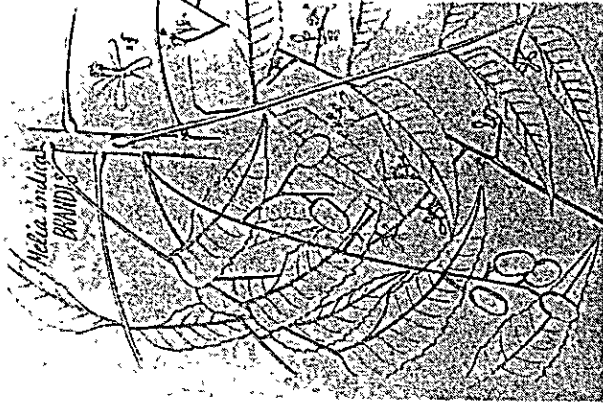
48 *Lagerstromia speciosa* Pers



50 *Lobelia pyramidalis* Wall.



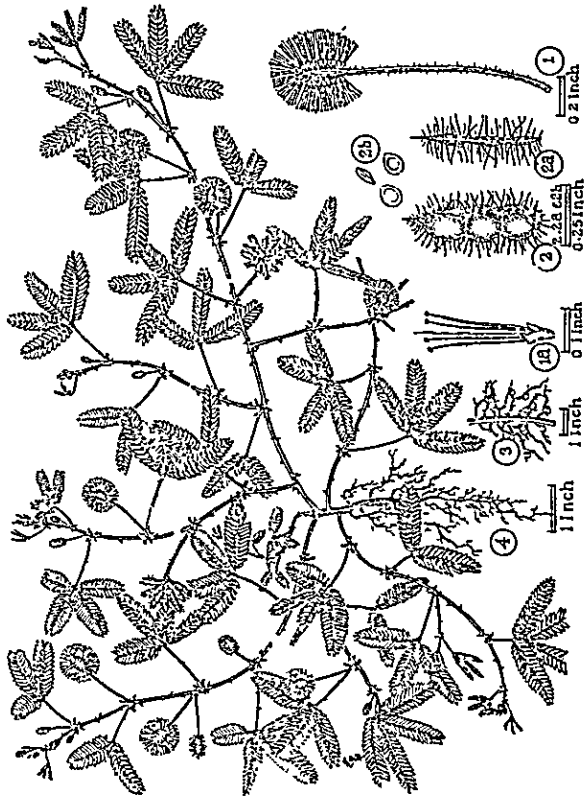
52 *Mesua ferrea* Linn.



51 *Melia indica* Brandis



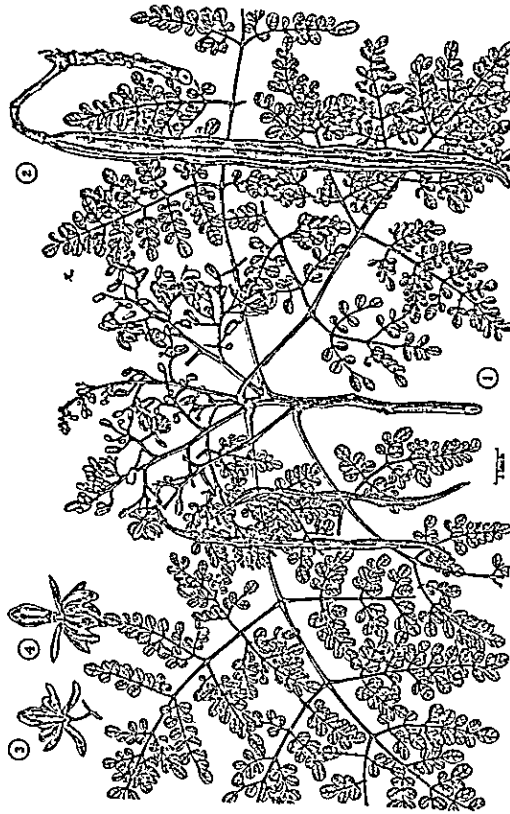
53 *Mimosa pudica* Linn.



Mimosa pudica Linn.

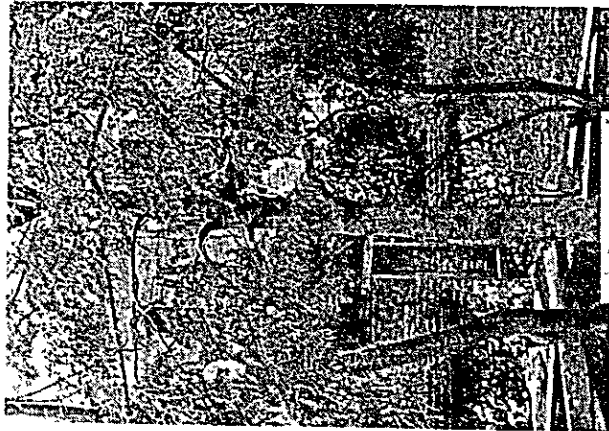
- 1. L. fl. of an inflorescence
- 2. L. fl. of an inflorescence
- 3. Part of a rootlet with root nodules.
- 4. The plant
- 5a. 5b. Magnified views of fruit
- 5c. Magnified views of seeds

54 *Mimosa pudica* Linn.



Moringa oleifera, Lamk.

1. Flowering twig 2. Fruit.
Front view (3) and back view (4) of a flower.



55 *Moringa oleifera* Lam.



56 *Macuna prurita* Hook.



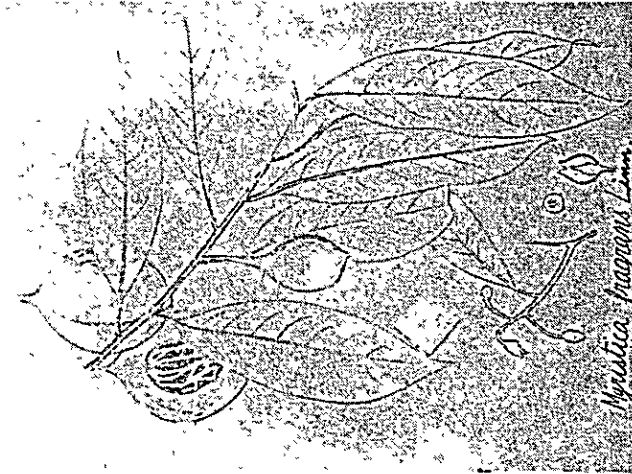
57 Musk



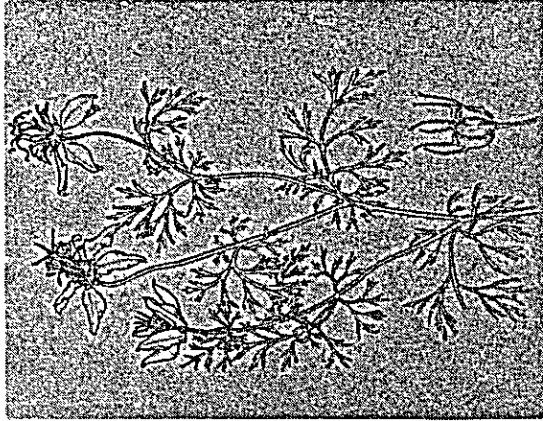
58 *Myrica nagi* Thunb.



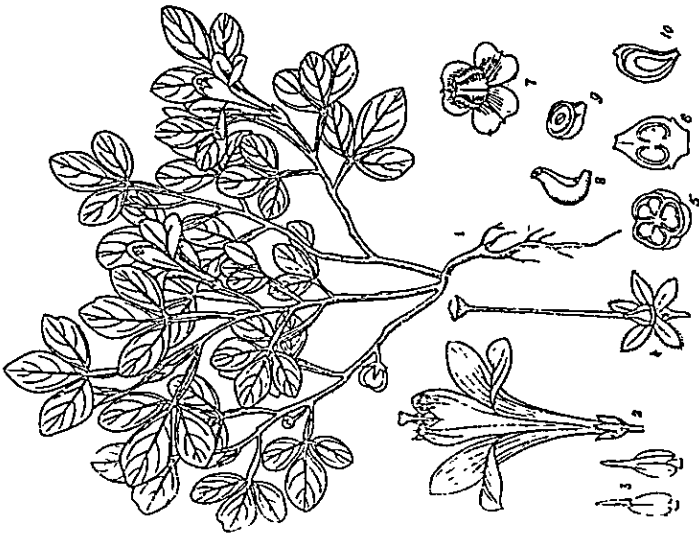
60 *Nardostacys jatamansi* DC.



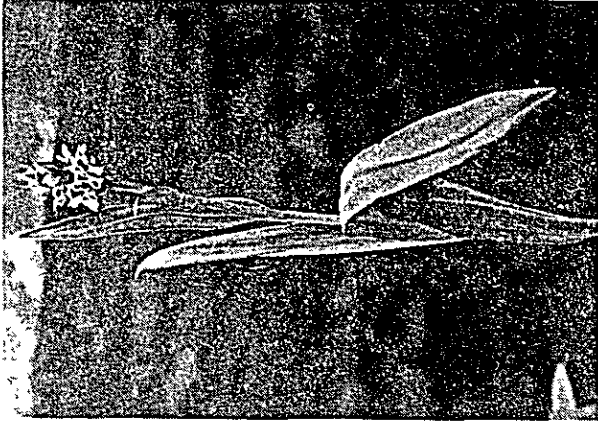
59 *Myristica fragrans* Linn.



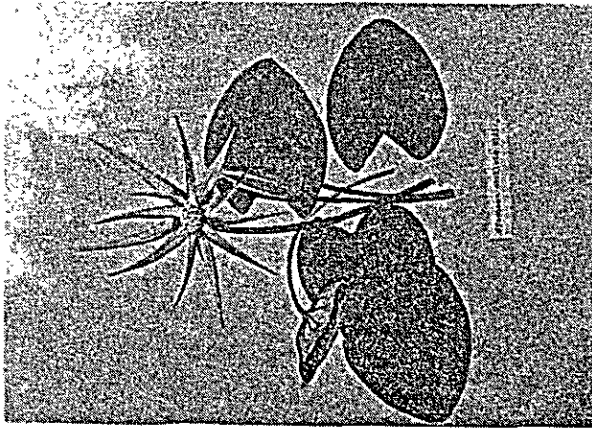
62 *Nigella sativa*



61 *Naregama alata* W. & A.



64 *orchis incarnata* Linn.



63 *Nymphaea stellata* Willd.



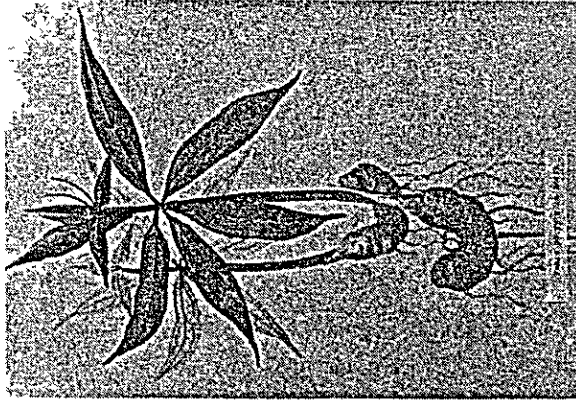
65 *oroxyllum indicum* Vent.



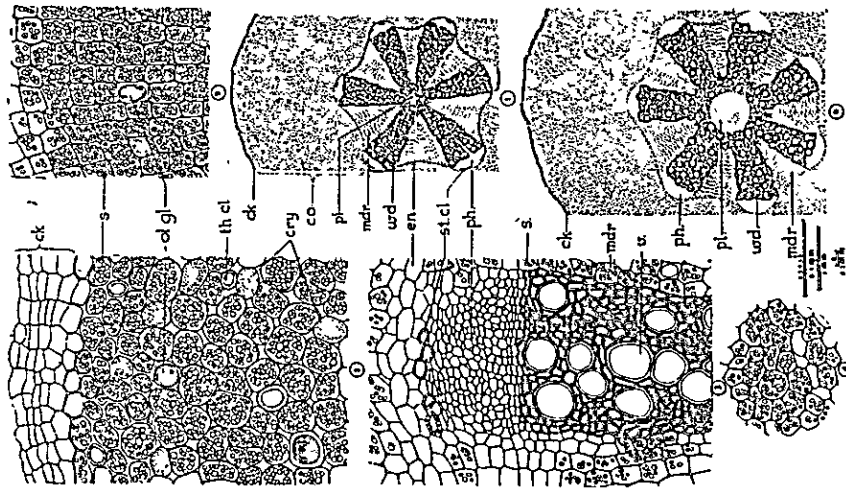
68 *Piper longum* Linn.



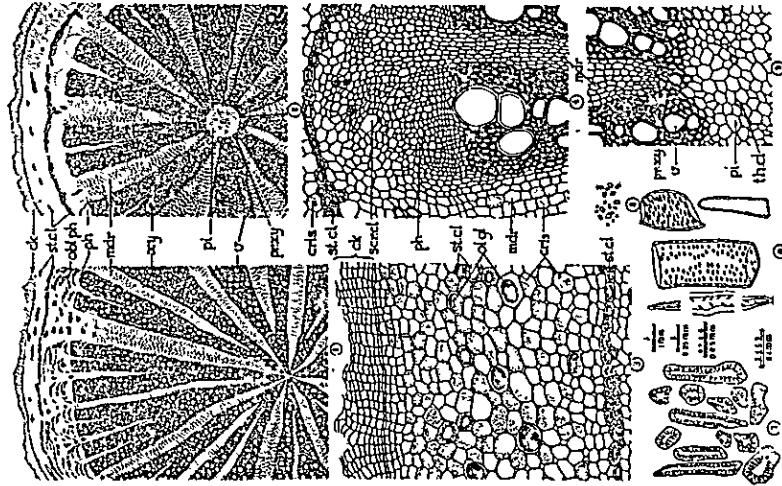
67 *Farnassia rubicola* Will.



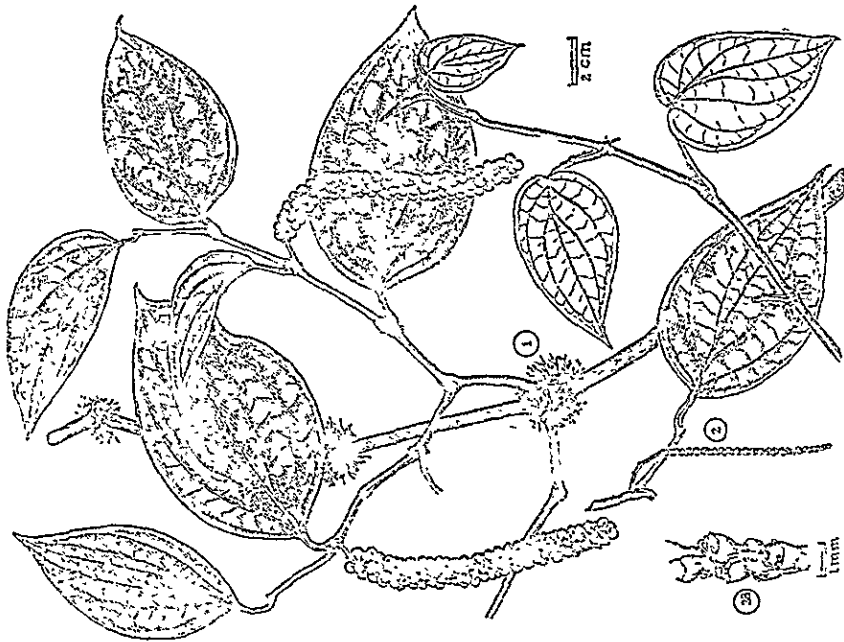
66 *Paris polyphylla* Smith



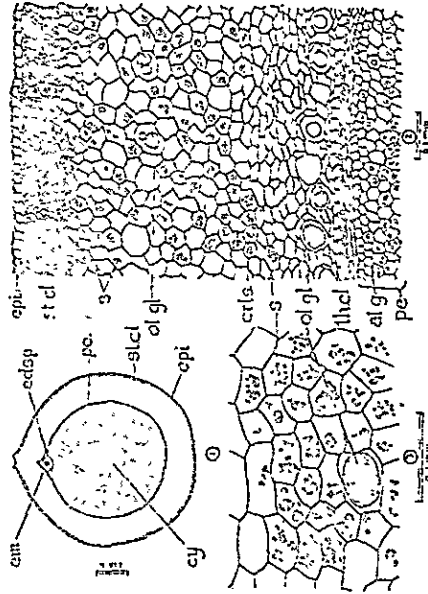
The Root of *Piper longum* Linn.
 1 Diagrammatic sketch of the T. S. of the root. 2. Cork and cortex. 3. Portion of a strip of vascular bundle along with the endodermis 4. Pith. 5. Portion of a vascular bundle with medullary rays. 6. Diagrammatic sketch of the T. S. of the root of a banyan variety.



The root of *Piper nigrum* Linn.
 1. Diagrammatic sketch of a sector of the T. S. of a very old root.—2.—Diagrammatic sketch of a portion of the T. S. of a mature root. 3. Cork and cortex. 4. A portion of a vascular strand with medullary rays 5. A portion of the pith and a primary xylem bundle with the adjacent tissue 6. Cells from the wood after maceration 7. Stone cells. 8. Crystals.

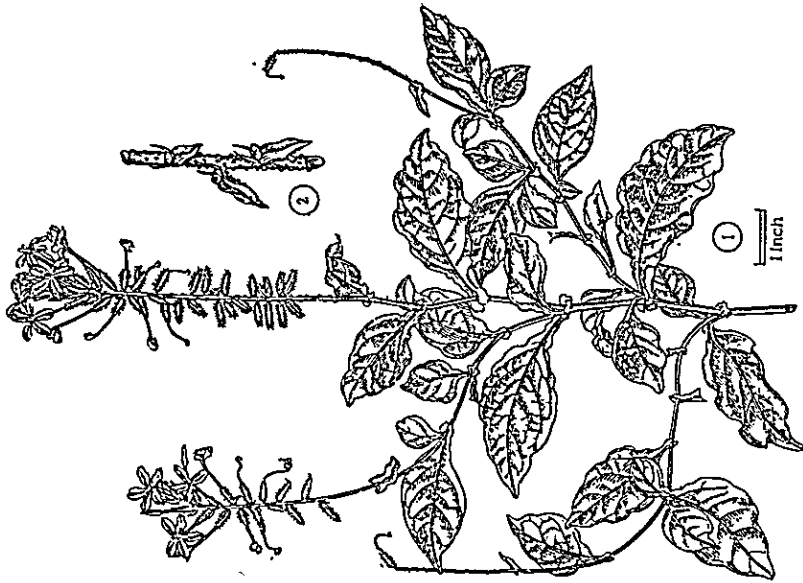


Piper nigrum Linn.
 1. A twig with fruits 2. An inflorescence 3. A portion of the unit, resting embryo



The fruit of *Piper nigrum* Linn.
 Fig. 1. Diagrammatic sketch of the L. S. of the fruit.
 2. A portion of the T. S. of the stem.
 3. A portion of the pericarp.

69 *Piper nigrum* Linn.

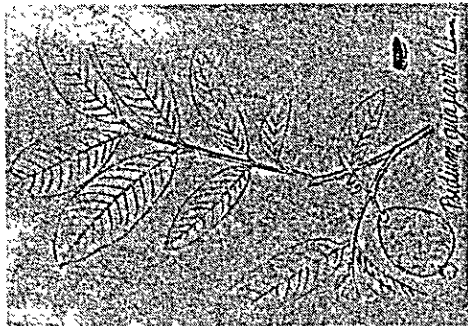


Plumbago zeylanica Linn.
 1. Flowering twig 2. Bracts and bracteoles showing glands

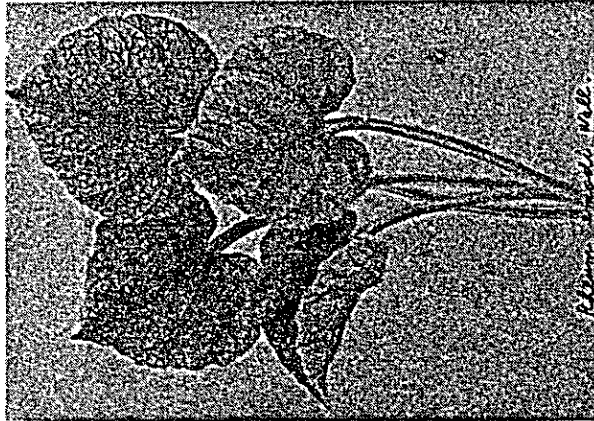
70 *Plumbago zeylanica* Linn.



71 *Podophyllum emodi* Wall.



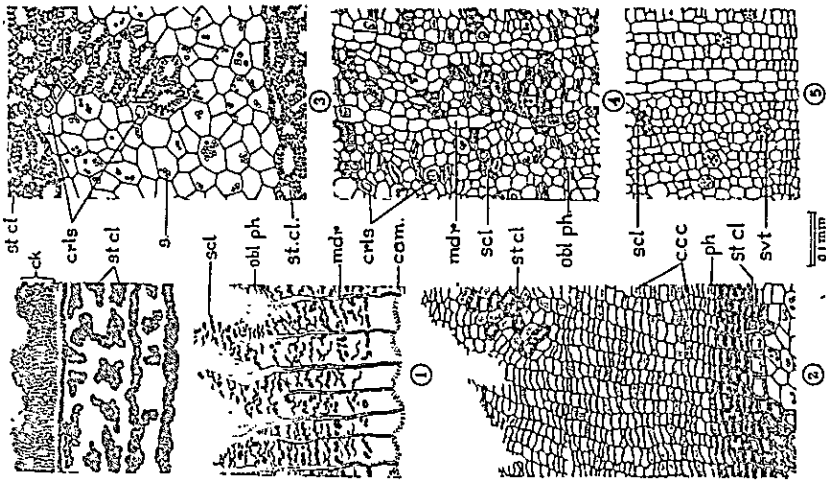
72 *Psidium guajava* Linn.



73 *Rheum emodi* Wall.



74 *Santalum album* Linn.

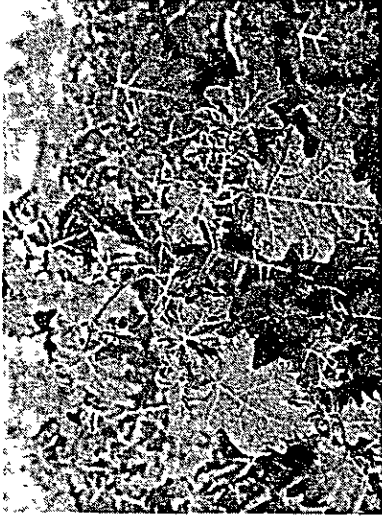


75 *Saraca indica*

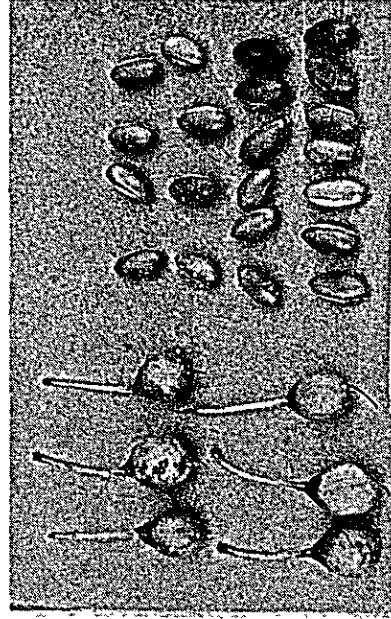
The stem bark of *Saraca indica*, Linn.
 1. Diagrammatic sketch of T S of stem bark.
 2. Cork, phellogen and developing stone cell layer just within.
 3. Portion of middle bark showing parenchymatous tissue, and stone cell groups.
 4. Inner bark. Part of old bast showing medullary rays, sclerenchyma groups and crushed strips of phloem. 5. Young bast.



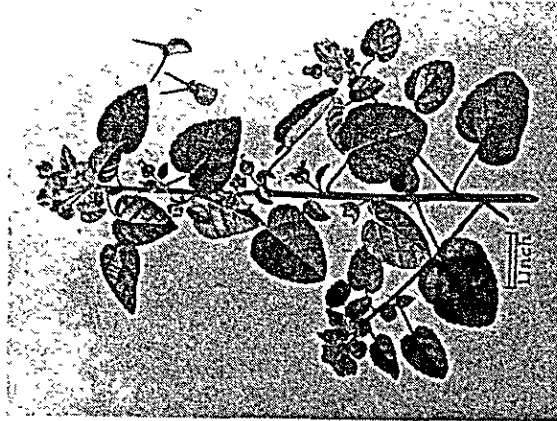
76 *Shorea robusta* Gaertn.



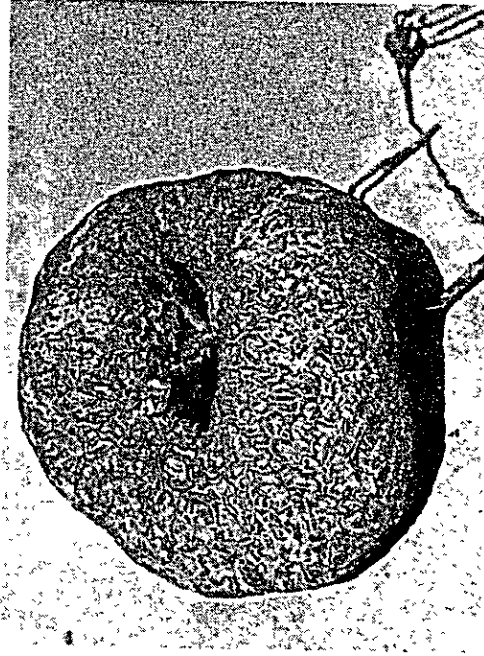
78 *Solanum Xanthocarpum* schrad & warl.



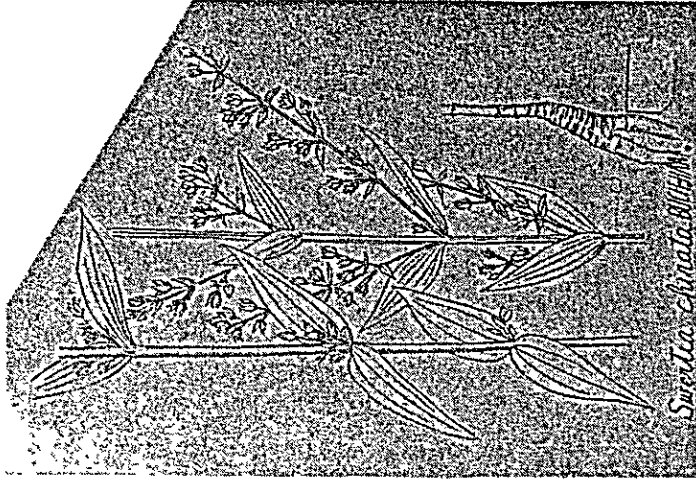
79 *Spondias axillaris*



77 *Sida cordifolia* Linn.



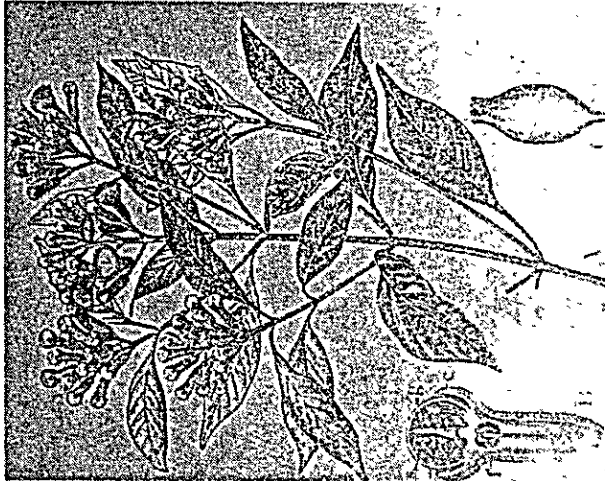
80 *Stephania rotunda* Lour.



81 *Swertia chirata* Buch.-Ham.



83 *Terminalia bellierica* Roxb.



82 *Syzgium caryophyllatum* Gaertn.

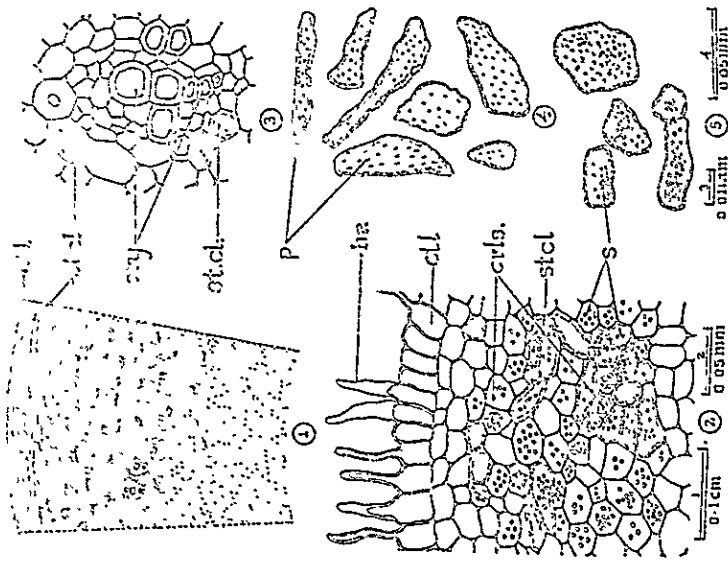
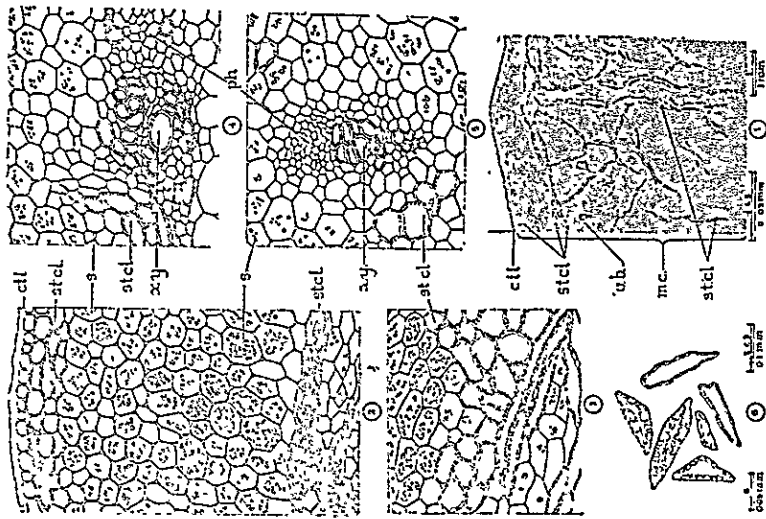


Fig. 1. Diagrammatic sketch of the T. S. of the stem. 2. Epitheloid end mesocarp. 3. A vesicular bundle in the mesocarp. 1. Stone cell. 2. Stone cells with starch granules.





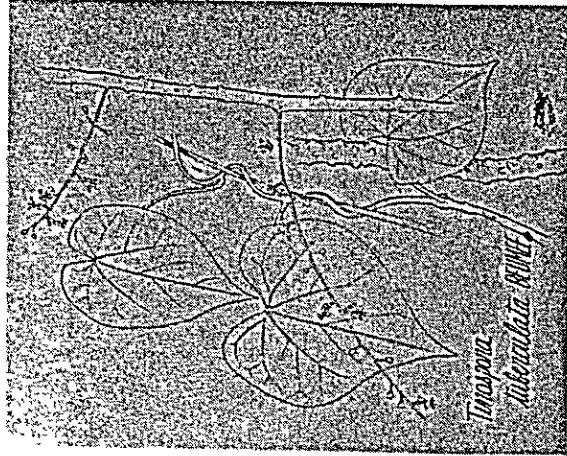
The fruit of *Terminalia chebula* Retz.

Fig 1. Diagrammatic sketch of T. S. of the fruit.

2. & 3. Skin and fleshy mesocarp with the stone cell group.

4. - 5. Vascular bundles. 5. Isolated stone cells.

84 *Terminalia chebula* Retz.



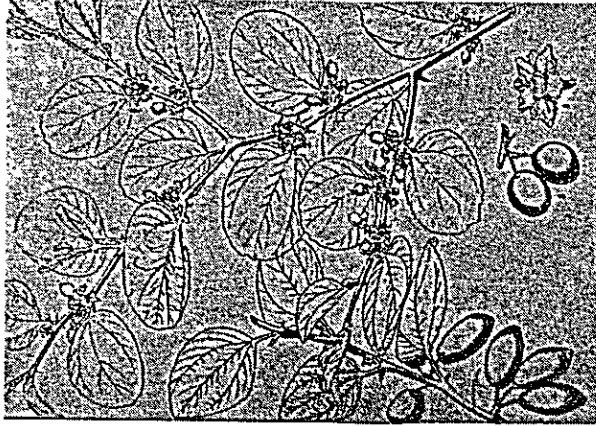
85 *Tinospora tubereulata* Blume.



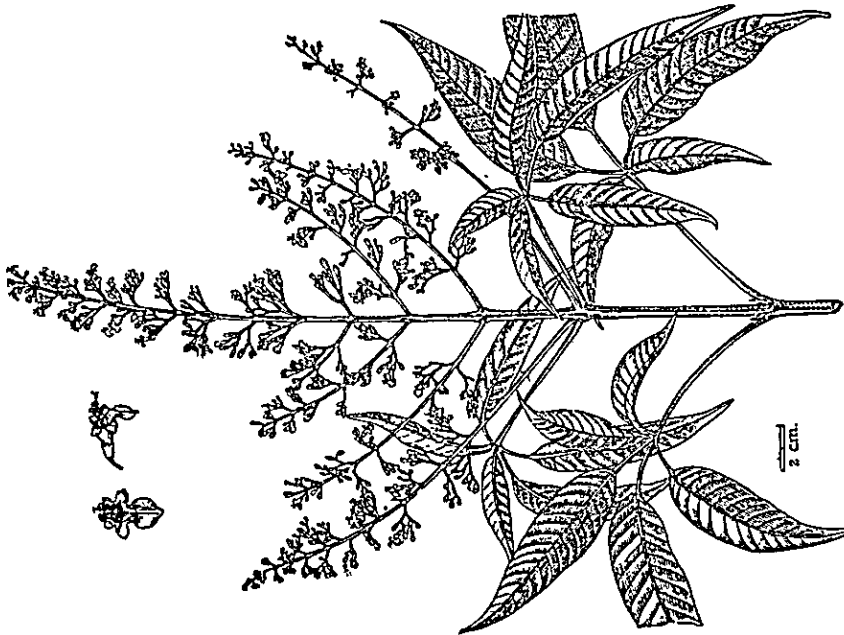
86 *Trigonella boeum gracum* Linn.



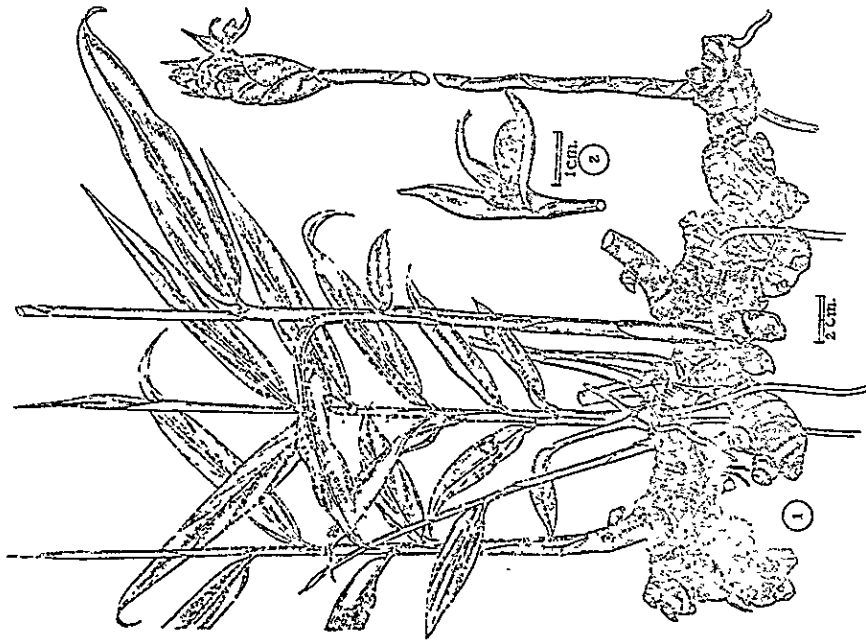
87 *Valeriana Wallichii* DC.



89 *Zizyphus jujuba* Lari.

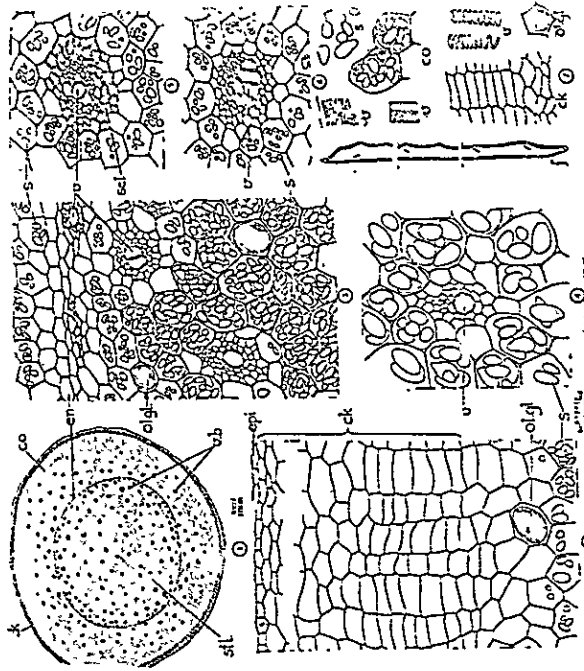


88 *Vitex negundo* Linn.



Zingiber officinale Rosc.

Fig 1 Rhizome with the young plants and an inflorescence 2. A flower



The rhizome of *Zingiber officinale* Rosc.

Fig 1. Diagrammatic sketch of the T. S. of the rhizome
 2. A portion of the cork and cortex
 3. A portion of the epidermis and stela
 4. A vascular bundles of the cortex
 5 & 6. Vascular bundles from the pith
 7. Fragments from the powder of dried ginger

