

## APPENDICES

tables

Questionnaires

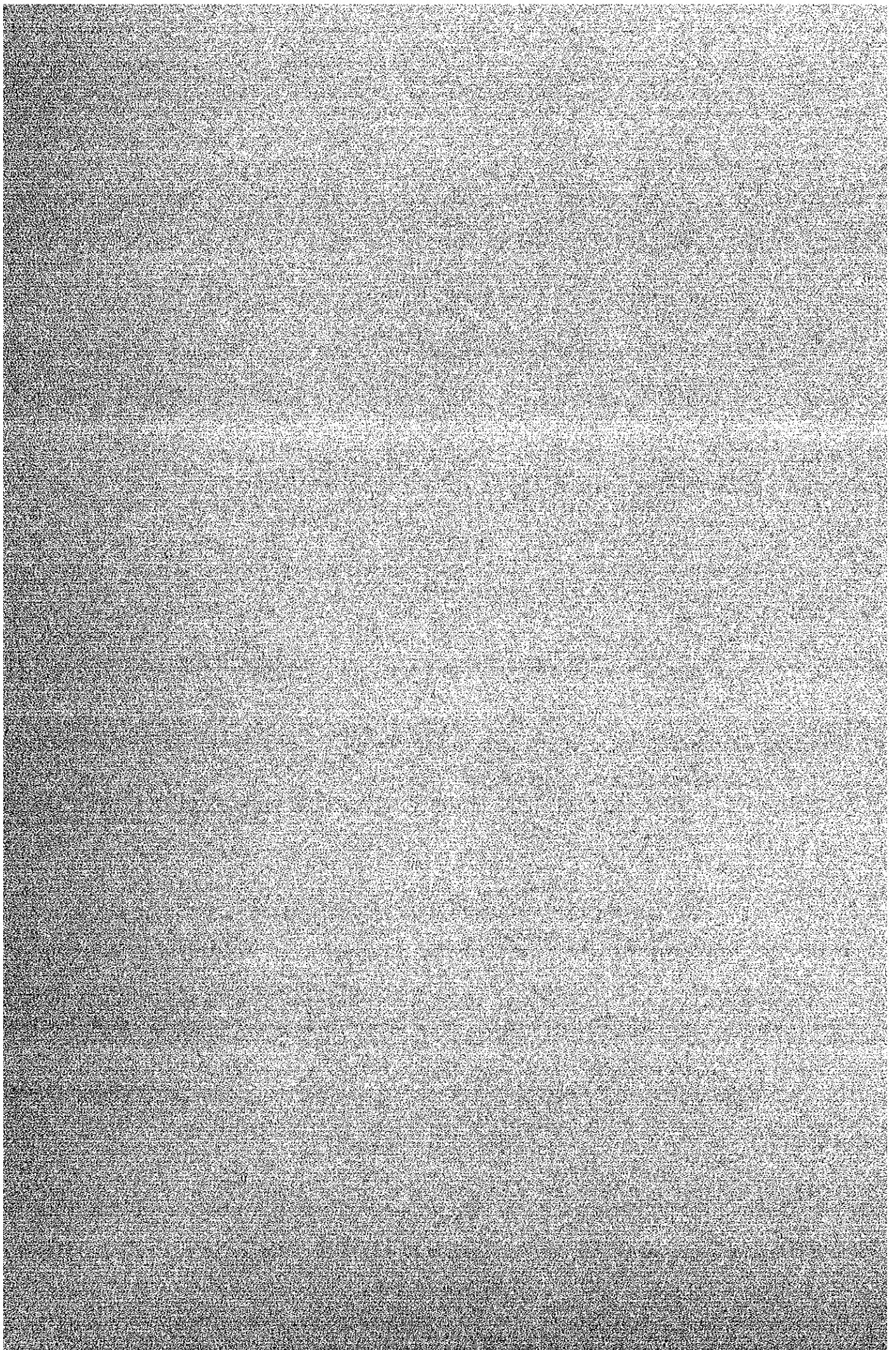




Table 1 : Population Distribution by Age, Sex and Marital Status

DISTRICT : KAVREPALANCHOK

A G E	M A L E																F E M A L E																T O T A L															
	TOTAL	EVER MARRIED?								TOTAL	EVER MARRIED?								TOTAL	EVER MARRIED?								TOTAL	EVER MARRIED?																			
		A	B	C	D	E	F	G	H		A	B	C	D	E	F	G	H		A	B	C	D	E	F	G	H																					
0	151	120	-	23	151	-	-	-	-	140	110	1	35	145	1	-	-	-	-	297	230	1	58	296	1	-	-	-																				
1-4	593	553	1	149	591	-	2	-	-	459	350	1	146	498	1	2	-	-	-	1,032	733	2	297	1,027	1	4	-	-																				
5-9	817	825	1	195	813	1	3	-	-	838	472	-	218	635	-	3	-	-	-	1,255	845	1	409	1,245	1	8	-	-																				
10-14	605	13	12	574	555	10	40	-	-	578	6	13	597	525	12	39	-	-	-	1,181	25	25	1,331	1,040	22	79	-	-																				
15-19	408	-	61	347	322	21	25	-	-	473	3	162	308	291	161	15	2	1	881	3	223	655	618	272	40	2	1																					
20-24	330	4	193	123	122	183	7	-	2	401	4	341	58	57	333	3	-	2	721	8	534	179	179	528	10	-	4																					
25-29	250	1	212	37	37	205	7	-	1	317	3	303	11	12	299	-	4	2	567	4	516	45	49	504	7	4	2																					
30-34	217	1	205	13	12	201	2	-	2	261	4	248	9	8	237	-	3	7	418	5	451	22	20	438	2	9	9																					
35-39	201	3	195	5	6	189	3	-	3	237	8	228	3	4	211	-	17	5	438	3	421	8	10	400	3	17	8																					
40-44	225	2	217	6	7	214	3	-	1	227	8	208	11	8	188	1	29	1	452	10	425	17	15	402	4	23	2																					
45-49	162	1	159	2	1	153	7	-	1	135	5	129	1	2	59	2	23	4	237	6	237	4	5	252	9	28	5																					
50-54	170	3	163	2	3	148	17	-	2	212	9	212	6	3	170	1	50	3	397	12	372	8	6	318	18	50	5																					
55-59	127	2	121	4	4	110	13	-	-	104	4	87	3	2	57	1	33	5	231	6	218	7	8	167	14	33	5																					
60-64	90	-	89	1	1	79	9	1	-	135	6	125	4	3	75	-	56	1	225	6	214	5	4	154	9	57	1																					
65+	188	6	180	2	1	128	55	5	1	163	11	158	2	5	55	3	105	1	357	17	338	4	6	181	58	110	2																					
UNKNOWN	6	1	3	2	1	2	2	-	1	5	1	4	-	1	-	-	4	-	11	2	7	2	2	2	2	4	1																					
TOTAL	4,270	977	1,810	1,483	2,367	1,688	195	6	14	4,550	532	2,227	1,521	2,220	1,906	70	343	32	6,820	1,923	4,037	2,854	4,567	3,533	265	349	48																					

DISTRICT : DHANUSA

A G E	M A L E																F E M A L E																T O T A L															
	TOTAL	EVER MARRIED?								TOTAL	EVER MARRIED?								TOTAL	EVER MARRIED?								TOTAL	EVER MARRIED?																			
		A	B	C	D	E	F	G	H		A	B	C	D	E	F	G	H		A	B	C	D	E	F	G	H																					
0	120	114	-	6	120	-	-	-	-	132	122	-	10	129	-	3	-	-	252	236	-	18	245	-	3	-	-																					
1-4	521	462	-	59	515	-	6	-	-	506	448	-	60	497	-	9	-	-	1,027	908	-	119	1,012	-	15	-	-																					
5-9	685	585	1	106	674	1	14	-	-	606	554	6	58	595	6	5	-	-	1,285	1,117	7	151	1,269	1	19	-	-																					
10-14	513	19	13	481	448	11	56	-	-	414	9	56	319	307	58	51	-	-	827	28	69	830	753	67	102	-	-																					
15-19	304	3	73	225	202	75	27	-	-	259	2	195	62	49	194	15	-	1	553	5	271	287	251	269	42	-	1																					
20-24	275	1	198	76	71	195	7	1	1	374	1	365	8	8	260	-	-	-	649	2	593	84	79	581	7	1	1																					
25-29	378	-	343	35	27	332	15	-	4	356	-	351	5	5	340	-	3	2	704	-	634	49	32	678	15	3	6																					
30-34	290	-	283	7	4	277	8	1	2	320	-	319	1	1	311	1	6	1	610	-	602	8	5	589	7	7	3																					
35-39	327	-	322	5	3	318	4	2	-	223	-	223	-	1	203	-	14	-	550	-	545	5	4	536	4	16	-																					
40-44	186	-	185	1	1	176	8	1	-	177	1	176	-	-	163	-	12	2	363	1	361	1	1	359	8	13	2																					
45-49	167	2	165	-	2	158	8	1	-	129	2	126	-	-	101	-	26	1	235	4	231	-	2	227	8	27	1																					
50-54	147	-	147	-	-	135	9	2	1	232	2	229	1	2	183	1	45	1	379	2	376	1	2	318	10	47	2																					
55-59	133	-	138	1	1	128	8	2	-	132	1	123	2	-	96	2	34	-	271	1	267	3	1	224	10	36	-																					
60-64	153	-	152	1	-	134	14	4	1	116	4	113	1	1	49	2	66	-	271	4	265	2	1	183	16	70	1																					
65+	130	1	128	1	-	110	20	-	-	105	2	101	2	1	26	1	77	-	235	3	223	3	1	156	21	77	-																					
UNKNOWN	4	1	2	1	2	1	1	-	-	2	-	2	-	2	-	-	-	6	1	4	1	2	3	1	-	-																						
TOTAL	4,543	1,186	2,153	1,604	2,068	2,043	203	14	9	4,084	1,128	2,391	567	1,598	2,107	30	233	8	6,427	2,312	4,514	1,571	3,664	4,156	231	297	17																					

A ; Inapplicable, B ; Married, C ; Unmarried, D ; Inapplicable, E ; Currently Married, F ; Widower, G ; Widow, H ; Divorce/Separated

Table 2: Distribution by Type of Family and Number of Persons in the Family

DISTRICT : KAVREPALANCHOK

FAMILY SIZE	FAMILY TYPE				TOTAL
	NUCLEAR	STEM	JOINT	UNKNOWN	
1	60	1	-	1	62
2	106	14	2	1	123
3	112	21	8	2	143
4	151	41	11	1	204
5	164	66	25	1	256
6	127	78	32	-	237
7	90	56	31	-	177
8	44	60	34	-	138
9	18	30	24	-	72
10	7	23	22	-	52
11	1	7	16	-	24
12	1	4	15	-	20
13	-	2	9	-	11
14	1	3	5	-	9
15	-	-	2	-	2
16	1	-	3	-	4
17	-	1	3	-	4
18	-	-	-	-	-
19	-	-	1	-	1
20	-	-	-	-	-
21	-	-	1	-	1
22	-	-	1	-	1
23	-	-	1	-	1
24	-	-	1	-	1
25	-	-	-	-	-
26	-	-	1	-	1
27	-	-	-	-	-
28	-	-	-	-	-
29	-	-	-	-	-
30	-	-	-	-	-
UNKNOWN	-	-	-	49	49
TOTAL	883	407	248	55	1,593

DISTRICT : DHANUSA

FAMILY SIZE	FAMILY TYPE				TOTAL
	NUCLEAR	STEM	JOINT	UNKNOWN	
1	35	-	-	4	39
2	115	7	2	2	126
3	190	29	2	-	221
4	168	75	11	-	254
5	175	85	23	-	283
6	131	102	16	-	249
7	49	80	35	1	165
8	15	38	35	-	88
9	7	28	26	-	61
10	1	17	18	-	36
11	-	7	17	-	24
12	-	5	8	-	13
13	-	1	4	-	5
14	-	2	4	-	6
15	-	-	5	-	5
16	-	-	-	-	-
17	-	-	3	-	3
18	-	-	1	-	1
19	-	-	1	-	1
20	-	-	-	-	-
21	-	-	-	-	-
22	-	1	-	-	1
23	-	-	1	-	1
24	-	-	-	-	-
25	-	-	-	-	-
26	-	-	1	-	1
27	-	-	-	-	-
28	-	-	-	-	-
29	-	-	-	-	-
30	-	-	-	-	-
UNKNOWN	-	-	-	31	31
TOTAL	886	477	213	38	1,614

Table 3 : Distribution of Head of the Household by Educational Attainment and Occupation

DISTRICT : KAVREPALANCHOK										DISTRICT : DHANUSA									
		OCCUPATION										OCCUPATION							
EDUCATION OF H.H.	TOTAL	A	B	C	D	E	F	G	H	EDUCATION OF H.H.	TOTAL	A	B	C	D	E	F	G	H
INAPPLICABLE	633	24	566	38	10	6	31	8	8	INAPPLICABLE	1,116	24	469	565	6	34	7	5	7
ONE YEAR	570	14	405	29	68	26	7	18	3	ONE YEAR	257	2	161	42	10	32	2	5	3
TWO YEARS	16	-	12	2	1	1	-	-	-	TWO YEARS	12	-	8	3	-	1	-	-	-
THREE YEARS	28	-	21	1	2	4	-	-	-	THREE YEARS	15	-	8	4	-	3	-	-	-
FOUR YEARS	30	-	20	2	5	2	1	-	-	FOUR YEARS	18	-	14	1	1	2	-	-	-
FIVE YEARS	31	-	18	1	8	3	-	1	-	FIVE YEARS	17	-	10	5	1	1	-	-	-
SIX YEARS	20	-	13	1	1	3	-	1	1	SIX YEARS	17	-	8	3	2	3	-	-	1
SEVEN YEARS	28	-	20	1	5	2	-	-	-	SEVEN YEARS	28	-	20	2	4	1	-	1	-
EIGHT YEARS	26	-	16	-	2	8	-	-	-	EIGHT YEARS	14	1	7	2	2	2	-	-	-
NINE YEARS	8	-	6	-	1	1	-	-	-	NINE YEARS	9	-	8	-	1	-	-	-	-
TEN YEARS OR S.L.C	65	1	19	-	38	6	1	-	-	TEN YEARS OR S.L.C	56	1	27	2	17	7	1	1	-
I.A.	16	-	1	-	14	1	-	-	-	I.A.	13	-	6	-	5	1	-	-	1
B.A.	7	-	-	-	7	-	-	-	-	B.A.	5	-	2	-	3	-	-	-	-
M.A.	-	-	-	-	-	-	-	-	-	M.A.	1	-	-	-	1	-	-	-	-
NOT STATED	55	-	5	1	-	-	-	-	49	NOT STATED	36	-	1	1	-	-	-	-	34
TOTAL	1,533	39	1,122	76	162	65	40	28	61	TOTAL	1,614	28	748	630	53	87	10	12	46

A : No Job, B : Agriculture, C : Labour, D : Service, E : Business, F : House Work, G : Others  
H : Not Stated

Table 4: Distribution of Household by Possession of Land, Source of Drinking Water and Availability of Latrine

DISTRICT : KAVREPALANCHOK

ROPANIES	TOTAL	WATER									LATRINE		
		A	B	C	D	E	F	G	H	I	J	K	L
0	34	13	-	16	-	-	1	-	-	4	5	24	5
1 ~ 4	486	156	37	185	1	3	77	2	25	-	80	406	-
5 ~ 9	366	140	29	143	-	-	42	-	12	-	74	290	2
10 ~ 14	230	74	14	102	-	-	36	1	2	1	60	170	-
15 ~ 19	153	60	15	49	-	-	26	1	2	-	26	127	-
20 ~ 24	87	32	7	36	-	-	11	1	-	-	20	67	-
25 ~ 29	53	12	5	24	-	-	9	1	2	-	17	36	-
30 ~ 34	37	10	1	16	-	-	9	-	1	-	13	24	-
35 ~ 39	15	4	-	7	-	1	1	-	2	-	2	13	-
40 ~ 44	29	12	-	13	-	1	2	-	1	-	8	21	-
45 ~ 49	6	-	-	4	-	-	2	-	-	-	-	6	-
50 ~ 54	15	6	1	5	-	-	3	-	-	-	3	12	-
55 ~ 59	1	1	-	-	-	-	-	-	-	-	-	1	-
60 ~ 64	7	4	-	1	-	-	2	-	-	-	-	7	-
65 ~ 69	5	-	-	4	-	-	1	-	-	-	-	5	-
70 ~ 74	3	1	-	2	-	-	-	-	-	-	2	1	-
75 ~ 79	2	1	-	1	-	-	-	-	-	-	1	1	-
80 ~ 84	3	1	-	2	-	-	-	-	-	-	2	1	-
85 ~ 89	-	-	-	-	-	-	-	-	-	-	-	-	-
90 ~ 94	1	1	-	-	-	-	-	-	-	-	-	1	-
95 ~ 97	1	1	-	-	-	-	-	-	-	-	-	1	-
98	-	-	-	-	-	-	-	-	-	-	-	-	-
99	59	1	-	4	-	-	3	-	1	50	-	9	50
TOTAL	1,593	530	109	614	1	5	225	6	48	55	319	1,223	57

A : Kuwa  
 B : Khola  
 C : Kaldhara  
 D : Pokhari  
 E : Tubewell  
 F : Dhungedhara  
 G : Inar  
 H : Others  
 I : Not Stated  
 J : Yes  
 K : No  
 L : Not Stated

DISTRICT : DHANUSA

ROPANIES	TOTAL	WATER									LATRINE		
		A	B	C	D	E	F	G	H	I	J	K	L
0	443	-	6	-	-	239	1	184	11	2	1	436	6
1 ~ 4	318	2	-	21	-	128	1	151	14	1	1	316	1
5 ~ 9	222	2	4	4	-	95	1	104	12	-	1	218	3
10 ~ 14	156	2	4	7	-	72	-	67	4	-	5	150	1
15 ~ 19	50	-	-	-	-	27	1	21	1	-	1	49	-
20 ~ 24	61	1	3	1	-	26	-	30	-	-	-	61	-
25 ~ 29	98	1	5	2	-	33	1	53	2	1	4	93	1
30 ~ 34	40	1	-	-	-	10	-	27	2	-	2	37	1
35 ~ 39	69	1	2	1	-	39	1	25	-	-	7	62	-
40 ~ 44	-	-	-	-	-	-	-	-	-	-	-	-	-
45 ~ 49	3	-	-	-	-	3	-	-	-	-	-	3	-
50 ~ 54	41	1	1	2	-	19	-	18	-	-	6	35	-
55 ~ 59	2	-	-	-	-	1	-	1	-	-	1	1	-
60 ~ 64	1	-	-	1	-	-	-	-	-	-	-	1	-
65 ~ 69	23	-	-	2	-	9	1	11	-	-	4	19	-
70 ~ 74	-	-	-	-	-	-	-	-	-	-	-	-	-
75 ~ 79	12	-	-	-	-	8	-	4	-	-	3	9	-
80 ~ 84	-	-	-	-	-	-	-	-	-	-	-	-	-
85 ~ 89	-	-	-	-	-	-	-	-	-	-	-	-	-
90 ~ 94	-	-	-	-	-	-	-	-	-	-	-	-	-
95 ~ 97	35	-	-	-	-	16	-	19	-	-	11	24	-
98	3	-	-	-	-	-	-	2	1	-	-	3	-
99	37	-	-	-	-	2	-	1	-	34	-	3	34
TOTAL	1,614	11	25	41	-	727	7	718	47	38	47	1,520	47

Table 5 : Distribution of Eligible Women by 5 Year Age Group, Literacy and Educational Attainment

DISTRICT : KAVREPALANCHOK

AGE	READ & WRITE		SCHOOL		YEARS OF SCHOOLING										I.A.	D.A.	M.A.+	NOT STATED		
	NO STATED	YES	NO	0	1	2	3	4	5	6	7	8	9	10 (S.L.C.)						
~14	3	-	-	-	3	-	-	-	-	-	-	-	-	-	-	-	-	-	-	-
15 ~ 19	114	-	15	3	116	-	3	3	3	1	-	1	1	-	3	-	-	-	-	1
20 ~ 24	243	-	23	6	250	1	2	3	4	3	4	-	1	-	4	-	-	-	-	-
25 ~ 29	260	-	20	8	268	-	2	3	4	5	2	-	-	2	2	-	-	-	-	1
30 ~ 34	219	-	9	3	224	-	-	2	1	1	1	1	1	1	1	-	-	-	-	-
35 ~ 39	179	-	4	9	188	1	1	-	1	1	-	-	-	1	-	-	-	-	-	1
40 ~ 44	170	1	1	2	176	1	-	-	1	-	-	-	-	-	-	-	-	-	-	1
45 ~ 49	85	-	1	-	85	1	-	-	-	-	-	-	-	-	-	-	-	-	-	1
50+	3	-	-	-	3	-	-	-	-	-	-	-	-	-	-	-	-	-	-	-
NOT STATED	3	83	-	-	3	-	-	-	-	-	-	-	-	-	-	-	-	-	-	83
TOTAL	1,279	84	73	31	1,316	4	8	11	14	11	7	2	3	4	10	-	-	-	-	88

DISTRICT : DHANUSA

AGE	READ & WRITE		SCHOOL		YEARS OF SCHOOLING										I.A.	D.A.	M.A.+	NOT STATED		
	NO STATED	YES	NO	0	1	2	3	4	5	6	7	8	9	10 (S.L.C.)						
~14	1	-	-	-	1	-	-	-	-	-	-	-	-	-	-	-	-	-	-	-
15 ~ 19	124	-	13	-	124	-	2	2	3	1	2	1	-	1	1	-	-	-	-	-
20 ~ 24	259	-	21	3	260	-	1	3	1	4	3	6	1	-	2	-	-	-	-	-
25 ~ 29	293	-	10	1	294	1	-	2	-	2	1	2	-	2	-	1	-	-	-	-
30 ~ 34	267	-	11	3	269	-	2	2	2	1	1	1	-	-	1	-	-	-	-	1
35 ~ 39	188	1	5	2	190	-	1	-	2	1	-	1	-	-	1	-	-	-	-	-
40 ~ 44	132	-	4	2	142	-	-	1	1	1	-	1	-	-	-	-	-	-	-	1
45 ~ 49	94	-	1	1	95	-	-	-	-	1	-	-	-	-	-	-	-	-	-	-
50+	-	-	-	-	-	-	-	-	-	-	-	-	-	-	-	-	-	-	-	-
NOT STATED	3	32	-	-	3	-	-	-	-	-	-	-	-	-	-	-	-	-	-	32
TOTAL	1,361	33	65	12	1,378	1	6	10	9	11	7	12	1	3	5	1	-	-	-	34

Table 6 : Distribution of Eligible Women by 5 Year Age Group and Occupation

DISTRICT : KAVREPALANCHOK

AGE	TOTAL	O C C U P A T I O N								
		A	B	C	D	E	F	G	H	I
~14	3	-	3	-	-	-	-	-	-	-
15 ~ 19	132	1	115	-	2	1	13	-	-	-
20 ~ 24	272	-	244	2	1	1	23	1	-	-
25 ~ 29	289	-	256	1	2	-	29	1	-	-
30 ~ 34	233	-	205	3	-	5	20	-	-	-
35 ~ 39	194	2	174	2	-	6	10	-	-	-
40 ~ 44	179	5	158	1	-	5	9	-	-	1
45 ~ 49	87	-	78	1	-	3	5	-	-	-
50+	3	-	3	-	-	-	-	-	-	-
NOT STATED	86	-	2	-	-	-	1	-	-	83
TOTAL	1,478	8	1,238	10	5	21	110	2	-	84

DISTRICT : DHANUSA

AGE	TOTAL	O C C U P A T I O N								
		A	B	C	D	E	F	G	H	I
~14	1	-	-	-	-	-	1	-	-	-
15 ~ 19	137	-	3	10	1	2	121	-	-	-
20 ~ 24	281	-	10	21	1	-	246	-	1	2
25 ~ 29	305	1	3	26	-	-	274	-	-	1
30 ~ 34	280	-	9	26	2	3	237	2	-	1
35 ~ 39	196	-	4	14	1	3	174	-	-	-
40 ~ 44	147	8	3	20	1	-	114	-	-	1
45 ~ 49	96	-	3	6	-	3	83	1	-	-
50+	-	-	-	-	-	-	-	-	-	-
NOT STATED	35	-	-	-	-	-	3	-	-	32
TOTAL	1,478	9	35	123	6	11	1,253	3	1	37

A : No Job. B : Agriculture. C : Labour. D : Service. E : Business. F : House Work. G : Others. H : Don't Know.  
I : Not Stated





Table 8 : Distribution of Respondents' Husbands by Occupation

DISTRICT : KAVREPALANCHOK

AGE OF HUSBAND	O C C U P A T I O N   O F   H U S B A N D									
	TOTAL	A	B	C	D	E	F	G	H	I
~14	1	-	1	-	-	-	-	-	-	-
15 ~ 19	50	8	29	1	6	1	3	2	-	-
20 ~ 24	202	10	117	9	52	9	1	2	-	2
25 ~ 29	218	3	128	17	58	7	1	3	-	1
30 ~ 34	210	1	127	13	55	9	-	4	-	1
35 ~ 39	203	3	135	14	40	8	-	3	-	-
40 ~ 44	214	1	163	10	24	13	-	3	-	-
45 ~ 49	132	-	103	3	17	5	-	2	-	2
50+	148	2	112	4	18	7	3	1	-	1
NOT STATED	100	6	7	1	2	-	-	-	-	84
TOTAL	1,478	34	922	72	272	59	8	20	-	91

DISTRICT : DHANUSA

AGE OF HUSBAND	O C C U P A T I O N   O F   H U S B A N D									
	TOTAL	A	B	C	D	E	F	G	H	I
~14	-	-	-	-	-	-	-	-	-	-
15 ~ 19	30	5	10	12	-	3	-	-	-	-
20 ~ 24	130	4	50	58	6	8	1	2	-	1
25 ~ 29	253	5	112	93	25	15	1	1	-	1
30 ~ 34	268	3	105	128	14	15	-	3	-	-
35 ~ 39	295	3	135	108	20	24	2	2	-	1
40 ~ 44	158	1	86	50	9	8	1	3	-	-
45 ~ 49	139	1	79	42	7	10	-	-	-	-
50+	153	1	97	45	-	6	2	1	-	1
NOT STATED	52	9	4	4	2	-	-	-	-	33
TOTAL	1,478	32	678	540	83	89	7	12	-	37

A : No Job, B : Agriculture, C : Labour, D : Service, E : Business, F : House Work, G : Others, H : Don't Know, I : Not Stated

Table 9: Age at Marriage and Number of Years of Cohabitation of Respondents by Education

DISTRICT : KAVREPALANCHOK

EDUCATION READ & WRITE	AGE AT MARRIAGE												MEAN	LIVE TOGETHER											MEAN
	TOTAL	10	11	12	13	14	15	16	17	18	19	20		TOTAL	0	1	2	3	4	5	6	7	8	9	
NO	845	33	34	52	84	86	141	118	97	101	48	53	15.42	1,279	1,171	19	15	15	19	7	5	5	1	22	0.22
NOT STATED	-	-	-	-	-	-	-	-	-	-	-	-	-	84	-	-	-	-	-	-	-	-	-	84	-
SCHOOL YES	32	-	2	3	5	-	6	6	6	2	1	1	15.18	73	70	-	-	-	1	-	-	-	-	2	0.06
NO	18	1	-	-	1	3	1	3	2	3	3	1	16.28	31	28	-	-	-	-	-	-	1	1	1	0.50

DISTRICT : DHANUSA

EDUCATION READ & WRITE	AGE AT MARRIAGE												MEAN	LIVE TOGETHER											MEAN
	TOTAL	10	11	12	13	14	15	16	17	18	19	20		TOTAL	0	1	2	3	4	5	6	7	8	9	
NO	946	231	33	150	80	127	126	84	33	35	10	32	13.32	1,361	543	170	163	115	78	105	45	36	29	74	1.90
NOT STATED	1	1	-	-	-	-	-	-	-	-	-	-	10.00	33	-	-	-	-	1	-	-	-	-	32	5.00
SCHOOL YES	38	3	3	2	4	2	9	8	1	3	3	-	14.68	65	54	8	1	1	-	-	-	1	-	-	0.31
NO	7	2	-	3	-	1	-	-	-	1	-	-	12.57	12	6	-	2	2	-	1	1	-	-	-	1.75

Table 10: Number of Live Births of Last Year of Respondents by 5 Year Age Group and Age Specific Fertility Rate, and Proportion of Respondents Who Are Currently Pregnant by 5 Year Age Group

DISTRICT : KAVREPALANCHOK

AGE	NO. OF LIVE BIRTHS LAST YEAR				ASFR	PREGNANCY			
	TOTAL	A	B	C		YES	NO	DON'T KNOW	NOT STATED
~14	2	1	1	-	0.50	-	1	-	1
15 ~ 19	128	102	25	1	0.21	21	103	3	4
20 ~ 24	271	190	80	1	0.30	46	221	2	1
25 ~ 29	287	200	86	1	0.31	43	237	4	-
30 ~ 34	232	190	42	-	0.18	28	201	-	-
35 ~ 39	194	163	30	1	0.16	14	177	2	-
40 ~ 44	176	162	13	1	0.09	5	164	1	3
45 ~ 49	87	84	3	-	0.03	-	86	-	-
50+	3	2	1	-	0.33	-	3	-	-
NOT STATED	3	2	1	-	0.33	-	3	-	83
TOTAL	1,383	1,096	282	5	0.21	157	1,196	12	92

A : Inapplicable

B : Yes

C : No

DISTRICT : DHANUSA

AGE	NO. OF LIVE BIRTHS LAST YEAR				ASFR	PREGNANCY			
	TOTAL	A	B	C		YES	NO	DON'T KNOW	NOT STATED
~14	1	1	-	-	-	-	1	-	-
15 ~ 19	130	114	16	-	0.12	14	110	1	6
20 ~ 24	281	216	64	1	0.23	35	241	5	-
25 ~ 29	305	233	70	2	0.24	32	270	1	1
30 ~ 34	278	229	48	1	0.18	23	254	1	1
35 ~ 39	195	174	21	-	0.11	18	176	1	-
40 ~ 44	141	133	8	-	0.06	2	133	1	6
45 ~ 49	96	91	5	-	0.05	2	94	-	-
50+	-	-	-	-	-	-	-	-	-
NOT STATED	3	3	-	-	-	-	3	-	32
TOTAL	1,430	1,194	232	4	0.17	126	1,282	10	46

Table 11 : Number of Live Births, Currently Living Children, Miscarriages and Still Births by 5 Year Age Group of Respondents

DISTRICT : KAVREPALANCHOK

AGE	LIVE BIRTH								NO. OF CURRENTLY LIVING CHILDREN								MISCARRIAGE							STILL BIRTH								
	0	1	2	3	4	5	6	7	0	1	2	3	4	5	6	7	0	1	2	3	4	5	6	7	0	1	2	3	4	5	6	7
-14	1	-	1	-	-	-	-	-	1	-	1	-	-	-	-	-	1	-	1	-	-	-	-	-	1	-	1	-	-	-	-	-
15 - 19	86	34	6	1	-	-	-	-	88	54	8	1	-	-	-	-	127	1	-	-	-	-	-	-	128	1	1	-	-	-	-	-
20 - 24	65	95	77	24	8	1	1	-	80	105	67	17	3	-	-	-	257	13	1	-	-	-	-	-	262	7	1	-	-	-	-	-
25 - 29	13	56	73	65	52	31	11	1	17	48	88	65	38	13	2	-	258	25	5	1	-	-	-	-	277	8	4	-	-	-	-	-
30 - 34	5	4	19	47	64	37	23	13	5	14	33	65	64	27	17	6	203	16	5	1	1	-	-	-	215	14	3	1	-	-	-	-
35 - 39	7	8	7	21	28	35	38	21	8	7	17	37	38	43	26	14	159	23	7	4	-	-	-	-	179	15	-	-	-	-	-	-
40 - 44	7	4	4	20	14	24	28	27	9	7	10	28	27	41	25	19	134	26	8	6	1	1	-	-	161	9	5	1	-	-	-	-
45 - 49	1	-	7	11	5	12	8	15	3	1	14	11	14	17	11	8	71	11	4	-	1	-	-	-	80	4	2	-	1	-	-	-
50+	-	-	1	-	-	1	-	-	-	1	-	-	-	1	-	1	1	2	-	-	-	-	-	-	3	-	-	-	-	-	-	-
NOT STATED	-	1	-	-	1	1	-	-	-	1	-	-	1	1	-	-	3	-	-	-	-	-	-	-	3	-	-	-	-	-	-	-
TOTAL	185	180	195	189	177	142	115	77	209	214	234	214	165	143	81	48	1,270	117	31	12	3	1	-	-	1,507	58	17	2	1	-	-	-

DISTRICT : DHANUSA

AGE	LIVE BIRTH								NO. OF CURRENTLY LIVING CHILDREN								MISCARRIAGE							STILL BIRTH								
	0	1	2	3	4	5	6	7	0	1	2	3	4	5	6	7	0	1	2	3	4	5	6	7	0	1	2	3	4	5	6	7
-14	-	-	-	-	-	1	-	-	-	-	-	-	1	-	-	-	1	-	-	-	-	-	-	-	1	-	-	-	-	-	-	-
15 - 19	84	37	7	2	1	-	-	-	89	38	3	-	1	-	-	-	129	2	-	-	-	-	-	-	131	-	-	-	-	-	-	-
20 - 24	73	107	63	22	12	1	2	-	87	113	58	21	1	-	1	-	264	15	2	-	-	-	-	-	268	9	2	-	1	1	-	-
25 - 29	26	40	70	87	46	25	8	2	35	60	83	88	31	6	1	-	284	11	7	2	-	-	-	-	297	5	2	-	-	-	-	-
30 - 34	12	18	40	53	64	44	24	15	18	26	61	74	66	25	8	1	249	23	4	3	-	-	-	-	257	13	5	1	1	-	1	1
35 - 39	5	8	18	22	42	39	28	22	6	21	25	52	44	28	14	5	178	14	2	2	-	-	-	-	184	9	2	1	-	-	-	-
40 - 44	9	-	7	15	18	27	24	21	14	3	19	24	34	25	12	9	131	9	1	-	-	-	-	-	126	13	2	-	-	-	-	-
45 - 49	1	1	8	8	10	22	22	13	2	3	17	22	24	14	11	2	90	3	3	-	-	-	-	-	88	5	2	-	1	-	-	-
50+	-	-	-	-	-	-	-	-	-	-	-	-	-	-	-	-	-	-	-	-	-	-	-	-	-	-	-	-	-	-	-	-
NOT STATED	2	-	1	-	-	-	-	-	2	-	1	-	-	-	-	-	3	-	-	-	-	-	-	-	3	-	-	-	-	-	-	-
TOTAL	212	211	214	209	133	153	106	73	253	264	267	279	205	98	47	17	1,329	77	19	7	-	-	-	-	1,355	54	15	2	3	1	1	1

Table 12: Distribution of Respondents Who Are Currently Pregnant by Their Preference for The Place of Delivery

DISTRICT : KAVREPALANCHOK

PLACE OF DELIVERY	P R E G N A N C Y		NO	DON' T KNOW	NOT STATED
	YES	( % )			
0	2	( 1.3 )	1,191	12	-
HOSPITAL	8	( 5.1 )	-	-	-
HEALTH POST	-	( - )	2	-	-
AT HOME	138	( 87.9 )	3	-	-
OTHERS	-	( - )	-	-	-
NOT STATED	9	( 5.7 )	-	-	92
TOTAL	157	(100.0)	1,196	12	92

DISTRICT : DHANUSA

PLACE OF DELIVERY	P R E G N A N C Y		NO	DON' T KNOW	NOT STATED
	YES	( % )			
0	-	( - )	1,281	10	-
HOSPITAL	1	( 0.8 )	-	-	-
HEALTH POST	3	( 2.4 )	1	-	-
AT HOME	111	( 88.1 )	-	-	-
OTHERS	-	( - )	-	-	-
NOT STATED	11	( 8.7 )	-	-	46
TOTAL	126	(100.0)	1,282	10	46



Table 13: Ideal Number of Children (Sons and Daughters) by 5 Year Age Group of Respondents

DISTRICT : KAVREPALANCHOK

AGE	IDEAL NO. OF CHILDREN							IDEAL NO. OF SONS							IDEAL NO. OF DAUGHTERS									
	0	1	2	3	4	5	6	7	0	1	2	3	4	5	6	7	0	1	2	3	4	5	6	7
~14	-	-	-	2	-	-	-	-	-	-	2	-	-	-	-	-	-	2	-	-	-	-	-	-
15 ~ 19	1	2	46	53	19	5	2	-	1	47	73	6	1	-	-	3	98	24	3	-	-	-	-	
20 ~ 24	-	4	86	130	44	4	1	-	1	77	184	5	2	-	-	25	188	55	1	-	-	-	1	
25 ~ 29	1	5	92	125	51	10	4	-	2	89	179	16	3	-	-	27	194	61	7	-	-	-	-	
30 ~ 34	1	1	53	89	70	10	3	1	1	55	153	18	4	-	-	14	127	79	8	3	-	-	1	
35 ~ 39	-	1	58	67	50	9	6	2	1	53	120	15	3	1	1	10	119	54	8	1	-	-	1	
40 ~ 44	2	2	39	71	50	4	4	2	1	38	123	10	1	1	-	13	99	53	7	1	1	-	-	
45 ~ 49	1	-	16	31	31	5	2	1	-	17	58	9	1	1	-	-	50	33	3	-	1	-	-	
50+	-	-	1	1	1	-	-	-	-	1	2	-	-	-	-	-	2	1	-	-	-	-	-	
UNKNOWN	-	-	1	1	-	1	-	-	-	1	1	1	-	-	-	-	2	1	-	-	-	-	-	
TOTAL	6	15	392	570	316	48	22	6	7	378	896	80	15	3	1	2	92	881	361	37	5	2	-	3

DISTRICT : DHANUSA

AGE	IDEAL NO. OF CHILDREN							IDEAL NO. OF SONS							IDEAL NO. OF DAUGHTERS									
	0	1	2	3	4	5	6	7	0	1	2	3	4	5	6	7	0	1	2	3	4	5	6	7
~14	-	-	-	1	-	-	-	-	-	-	1	-	-	-	-	-	1	-	-	-	-	-	-	
15 ~ 19	4	1	12	84	26	1	1	-	4	10	98	16	-	-	7	109	16	2	1	-	-	-		
20 ~ 24	-	1	37	179	49	7	1	3	-	29	213	24	7	3	17	224	32	2	1	-	-	3		
25 ~ 29	1	6	28	169	79	12	2	2	4	31	222	33	7	2	17	217	59	5	2	-	-	1		
30 ~ 34	2	5	25	137	87	15	4	-	1	26	194	45	8	2	9	188	71	5	4	-	-	-		
35 ~ 39	-	1	18	113	50	12	1	-	-	22	138	32	3	-	8	141	45	1	-	-	-	-		
40 ~ 44	4	-	6	79	38	10	1	2	4	8	97	25	5	1	8	96	39	2	-	1	-	1		
45 ~ 49	-	3	7	48	25	11	1	-	1	7	64	18	4	1	1	69	21	4	-	-	-	-		
50+	-	-	-	-	-	-	-	-	-	-	-	-	-	-	-	-	-	-	-	-	-	-		
UNKNOWN	-	-	-	1	1	-	-	-	-	-	2	-	-	-	-	1	1	-	-	-	-	-		
TOTAL	11	17	133	811	355	68	11	7	14	133	1,029	193	34	9	2	5	67	1,040	278	21	8	1	-	5

Table 14: Mean and Currently Living Number of Children and Mean and Desired Number of Children by Educational Level of Respondents

DISTRICT : KAVREPALANCHOK

EDUCATION READ & WRITE	NO. OF CURRENTLY LIVING CHILDREN										MEAN	DESIRED NO. OF CHILDREN										MEAN	DIFFERENCE
	TOTAL	0	1	2	3	4	5	6	7+	TOTAL		0	1	2	3	4	5	6	7				
NO	1,275	178	191	226	219	172	139	76	74	2.90	1,266	5	14	353	519	301	46	22	6	3.07	0.17		
NOT STATED	-	-	-	-	-	-	-	-	-	-	-	-	-	-	-	-	-	-	-	-	-		
SCHOOL YES	71	21	18	6	12	9	-	3	2	2.68	71	-	1	29	31	9	1	-	-	2.72	0.04		
NO	31	7	4	3	11	2	2	2	-	2.35	31	-	-	9	16	5	1	-	-	2.94	0.59		

DISTRICT : DHANUSA

EDUCATION READ & WRITE	NO. OF CURRENTLY LIVING CHILDREN										MEAN	DESIRED NO. OF CHILDREN										MEAN	DIFFERENCE
	TOTAL	0	1	2	3	4	5	6	7+	TOTAL		0	1	2	3	4	5	6	7				
NO	1,354	238	250	260	259	193	90	44	20	2.35	1,335	8	14	119	767	344	66	10	7	3.27	0.92		
NOT STATED	1	-	-	-	-	-	1	-	-	5.00	1	-	-	1	-	-	-	-	-	3.00	2.00		
SCHOOL YES	65	12	13	6	15	9	7	3	-	2.45	64	-	3	12	38	8	2	1	-	2.95	0.50		
NO	12	-	2	2	6	2	-	-	-	2.67	12	-	-	3	7	2	-	-	-	2.92	0.25		



Table 16: Additional Number of Children Desired (Sons and Daughters) by Number of Living Children (Sons and Daughters)

DISTRICT : KAVREPALANCHOK																											
NO. OF ADDITIONAL CHILDREN	NO. OF CURRENTLY CHILDREN								NO. OF CURRENTLY SONS								NO. OF CURRENTLY DAUGHTERS										
	0	1	2	3	4	5	6	7+	0	1	2	3	4	5	6	7+	0	1	2	3	4	5	6	7+			
0	21	38	120	180	148	132	79	73	41	194	301	166	53	23	9	4	135	260	186	124	58	20	8	2			
1	5	47	59	46	23	9	2	2	64	93	21	12	2	-	-	1	54	58	43	23	10	4	1	-			
2	69	80	41	11	10	2	-	1	141	58	10	4	-	-	-	-	113	61	25	9	5	1	-	-			
3	63	32	7	2	1	-	-	-	85	13	7	-	-	-	-	-	80	22	2	1	-	-	-	-			
4	36	10	4	2	2	-	-	-	42	10	2	-	-	-	-	-	43	6	4	1	-	-	-	-			
5	8	3	-	2	-	-	-	-	10	2	1	-	-	-	-	-	9	3	1	-	-	-	-	-			
6	1	1	1	-	-	-	-	-	1	1	1	-	-	-	-	-	3	-	-	-	-	-	-	-			
7	2	-	-	-	-	-	-	-	2	-	-	-	-	-	-	-	2	-	-	-	-	-	-	-			
SONS																											
0	19	46	130	194	151	132	79	75	40	202	315	179	54	23	9	4	162	266	186	125	58	21	8	2			
1	61	69	60	34	21	9	2	1	128	117	8	2	1	-	-	1	105	71	43	23	10	4	1	-			
2	107	70	38	13	10	2	-	-	193	32	14	1	-	-	-	-	134	61	29	11	5	-	-	-			
3	8	4	-	1	-	-	-	-	10	3	-	-	-	-	-	-	11	1	1	-	-	-	-	-			
4	1	4	-	-	-	-	-	-	4	1	-	-	-	-	-	-	2	3	-	-	-	-	-	-			
5	-	-	-	-	-	-	-	-	-	-	-	-	-	-	-	-	-	-	-	-	-	-	-	-			
6	-	-	1	-	-	-	-	-	-	1	-	-	-	-	-	-	-	1	-	-	-	-	-	-			
7	7	20	4	1	3	-	-	-	11	18	6	-	-	-	-	-	24	8	3	-	-	-	-	-			
DAUGHTERS																											
0	34	97	192	220	175	143	81	74	168	278	311	169	54	23	9	4	165	340	249	156	70	25	9	1			
1	116	82	30	17	3	-	-	2	153	62	21	12	1	-	-	1	194	54	3	2	-	-	-	-			
2	44	11	5	3	3	-	-	-	50	13	3	-	-	-	-	-	53	6	5	1	1	-	-	-			
3	2	1	-	1	1	-	-	-	2	1	1	1	-	-	-	-	3	2	-	-	-	-	-	-			
4	-	1	1	-	-	-	-	-	1	-	1	-	-	-	-	-	1	1	-	-	-	-	-	-			
5	-	-	-	-	-	-	-	-	-	-	-	-	-	-	-	-	-	-	-	-	-	-	-	-			
6	-	-	-	-	-	-	-	-	-	-	-	-	-	-	-	-	-	-	-	-	-	-	-	-			
7	7	20	5	2	3	-	-	-	12	19	6	-	-	-	-	-	24	8	5	-	-	-	-	-			
DISTRICT : DHANUSA																											
NO. OF ADDITIONAL CHILDREN	NO. OF CURRENTLY CHILDREN								NO. OF CURRENTLY SONS								NO. OF CURRENTLY DAUGHTERS										
	0	1	2	3	4	5	6	7+	0	1	2	3	4	5	6	7+	0	1	2	3	4	5	6	7+			
0	31	36	105	196	170	92	41	19	54	157	293	131	42	10	3	-	155	249	171	70	32	9	3	1			
1	5	11	57	40	20	2	5	1	22	89	25	2	1	2	-	-	25	54	33	22	4	1	-	2			
2	30	124	67	26	9	2	1	-	152	113	14	-	-	-	-	-	104	94	36	18	5	1	-	1			
3	127	67	21	4	1	1	-	-	166	47	7	-	1	-	-	-	169	40	11	1	-	-	-	-			
4	42	16	9	7	2	-	-	-	55	15	3	3	-	-	-	-	53	15	6	2	-	-	-	-			
5	8	2	-	2	-	-	-	-	9	3	-	-	-	-	-	-	10	-	1	1	-	-	-	-			
6	-	1	1	-	-	-	-	-	-	2	-	-	-	-	-	-	1	1	-	-	-	-	-	-			
7	2	2	2	1	-	-	-	-	2	4	1	-	-	-	-	-	4	3	-	-	-	-	-	-			
SONS																											
0	26	38	116	198	169	92	40	17	50	162	302	130	40	9	3	-	159	252	171	70	31	9	3	1			
1	24	64	56	35	18	1	3	1	52	134	14	1	-	1	-	-	81	62	33	20	3	1	-	2			
2	144	117	64	30	9	3	-	-	269	82	15	-	1	-	-	-	194	106	42	20	5	-	-	-			
3	26	12	3	3	3	-	-	-	33	7	3	3	1	-	-	-	36	9	2	-	-	-	-	-			
4	2	3	1	1	-	-	-	-	3	3	-	1	-	-	-	-	5	2	-	-	-	-	-	-			
5	-	2	-	1	-	-	-	-	-	2	1	-	-	-	-	-	2	1	-	-	-	-	-	-			
6	-	-	-	-	-	-	1	-	-	-	-	-	1	-	-	-	-	-	1	-	-	-	-	-			
7	23	26	27	10	4	2	3	2	37	47	9	1	1	2	-	-	46	28	13	5	3	1	-	1			
DAUGHTERS																											
0	37	100	186	249	192	94	43	18	162	266	309	131	38	10	3	-	176	354	230	105	38	10	3	-			
1	161	127	39	8	1	1	-	-	206	107	20	3	1	-	-	-	269	61	6	1	-	-	-	-			
2	23	7	11	6	4	-	-	-	35	11	4	-	1	-	-	-	27	11	10	3	-	-	-	-			
3	2	2	2	3	2	1	-	1	5	4	-	2	2	-	-	-	5	4	1	1	2	-	-	-			
4	-	-	1	2	-	-	-	-	-	2	1	-	-	-	-	-	-	-	-	-	-	-	-	-			
5	-	-	-	-	-	-	-	-	-	-	-	-	-	-	-	-	-	-	-	-	-	-	-	-			
6	-	-	-	-	-	-	-	-	-	-	-	-	-	-	-	-	-	-	-	-	-	-	-	-			
7	23	26	28	10	4	2	3	1	37	47	10	-	1	2	-	-	47	28	13	5	2	1	-	-			

Table 17: Distribution of Respondents Who Had Ever Been Pregnant by Place They Went for Check-up and Whether or Not They Were Satisfied with the Check-up

PANCHAYAT CODE & SATISFACTION	CHECK UP PLAN						TOTAL (1-4)	
	INAPPLI- CABLE (0)	HOSPITAL (1)	HEALTH POST (2)	T. B. A. (3)	OTHERS (4)			
1 ~ 3								
A	354	-	-	-	-	-	-	1 - 3 : Bhumlutar
B	-	19	4	-	1	24	4 - 5 : Dapcha	
C	-	4	-	-	-	4	6 - 8 : Khopasi	
4 ~ 5								
A	243	1	3	-	-	4	9 - 10 : Nala	
B	-	7	1	-	2	10	11 - 13 : Godar	
C	-	1	-	-	-	1	14 - 15 : Godhaghas	
6 ~ 8								
A	391	-	2	-	1	3	16 - 18 : Sabaila	
B	-	30	1	1	3	35	19 - 20 : Tarapatti	
C	1	2	2	-	-	4	A : Inapplicable	
9 ~ 10								
A	276	-	-	-	-	-	B : Yes	
B	-	18	-	1	1	20	C : No	
C	-	1	-	-	1	2		
SUB-TOTAL								
A	1,264	1	5	-	1	7		
B	-	74	6	2	7	89		
C	1	8	2	-	1	11		
11~13								
A	368	-	-	-	-	-		
B	-	9	1	-	2	12		
C	-	1	-	-	-	1		
14~15								
A	284	4	3	-	-	7		
B	-	7	-	-	8	15		
C	-	2	1	-	-	3		
16~18								
A	426	-	7	-	-	7		
B	1	6	5	-	9	20		
C	-	1	1	1	-	3		
19~20								
A	259	-	1	-	-	1		
B	-	7	3	-	4	14		
C	1	5	-	-	2	7		
SUB-TOTAL								
A	1,337	4	11	-	-	15		
B	1	29	9	-	23	61		
C	1	9	2	1	2	14		
TOTAL								
A	2,601	5	16	-	1	22		
B	1	103	15	2	30	150		
C	2	17	4	1	3	25		

Table 18: Distribution of Respondents by Place of Delivery of Last Child

PANCHAYAT CODE	THE PLACE OF DELIVERY OF LAST CHILD					
	TOTAL	HOSPITAL	HEALTH POST	HOME	OTHERS	
1 ~ 3	337	17	1	319	-	
4 ~ 5	223	8	2	213	-	1 - 3 : Bhumlutar
6 ~ 8	369	14	4	351	-	4 - 5 : Dapcha
9 ~ 10	261	9	1	251	-	6 - 8 : Khopasi
SUB-TOTAL	1,190	48	8	1,134	-	9 - 10 : Nala
11 ~ 13	336	4	-	331	1	11 - 13 : Godar
14 ~ 15	262	8	1	252	1	14 - 15 : Godhaghas
16 ~ 18	389	12	2	374	1	16 - 18 : Sabaila
19 ~ 20	241	12	3	226	-	19 - 20 : Tarapatti
SUB-TOTAL	1,228	36	6	1,183	3	
TOTAL	2,418	84	14	2,317	3	

Table 19: Distribution of Respondents by Reasons for Having Check-up

PANCHAYAT CODE	THE REASON TO GO				
	TOTAL	A	B	C	
1 ~ 3	28	10	16	2	1 - 3 : Bhumlutar
4 ~ 5	13	7	6	-	4 - 5 : Dapcha
6 ~ 8	41	17	21	3	6 - 8 : Khopasi
9 ~ 10	23	12	7	4	9 - 10 : Nala
SUB-TOTAL	105	46	50	9	11 - 13 : Godar
11 ~ 13	14	9	2	3	14 - 15 : Godhaghas
14 ~ 15	23	14	8	1	16 - 18 : Sabaila
16 ~ 18	23	11	10	2	19 - 20 : Tarapatti
19 ~ 20	21	10	11	-	
SUB-TOTAL	81	44	31	6	A : Regular Check-up
TOTAL	186	90	81	15	B : Due to Complication
					C : Regular Check-up and Complication



Table 20: Distribution of Respondents by Types of Check-up Done (Multiple Answer)

PANCHAYAT CODE	TOTAL	Type of Check-up						
		A	B	C	D	E	F	
1 ~ 3	84	16	18	18	13	16	3	1 - 3 : Bhumlutar
4 ~ 5	45	10	11	9	11	2	2	4 - 5 : Dapcha
6 ~ 8	110	21	26	24	21	11	7	6 - 8 : Khopasi
9 ~ 10	62	12	11	10	16	9	4	9 - 10 : Nala
SUB-TOTAL	301	59	66	61	61	38	16	11-13 : Godar
11 ~ 13	42	7	10	9	10	6	-	14-15 : Godhaghas
14 ~ 15	44	5	11	7	7	9	5	16-18 : Sabaila
16 ~ 18	58	7	10	9	16	9	7	19-20 : Tarapatti
19 ~ 20	42	4	8	7	9	12	2	A : Weighted
SUB-TOTAL	186	23	39	32	42	36	14	B : Blood Pressure
TOTAL	487	82	105	93	103	74	30	C : Urine Exam.
								D : Chest
								E : Use of Stethoscope
								F : Others

Table 21: Distribution of Respondents by Type of Persons Who Advised for Medical Check-up During Pregnancy

PANCHAYAT CODE	TOTAL	Advisor								
		HEALTH WORKER	SPOUSE	FAMILY MEMBER	FRIEND	RADIO	NEWS- PAPER	MOTHER'S CLUB	OTHERS	
1 ~ 3	29	2	2	18	4	-	-	-	3	1 - 3 : Bhumlutar
4 ~ 5	12	-	3	5	3	-	-	-	1	4 - 5 : Dapcha
6 ~ 8	40	2	4	26	3	-	-	-	5	6 - 8 : Khopasi
9 ~ 10	22	1	4	16	-	-	-	-	1	9 - 10 : Nala
SUB-TOTAL	103	5	13	65	10	-	-	-	10	11-13 : Godar
11 ~ 13	13	4	1	7	1	-	-	-	-	14-15 : Godhaghas
14 ~ 15	18	1	4	12	-	-	-	-	1	16-18 : Sabaila
16 ~ 18	24	1	3	19	-	-	-	-	1	19-20 : Tarapatti
19 ~ 20	21	-	2	15	1	-	-	-	3	
SUB-TOTAL	76	6	10	53	2	-	-	-	5	
TOTAL	179	11	23	118	12	-	-	-	15	

Table 22 : Distribution of Respondents by Type of Persons Who Assisted at the Time of Last Delivery

TYPE OF PERSON	DISTRICT	
	KAVREPALANCHOK	DHANUSA
DOCTOR/ NURSE	7	24
T.B.A.	71	1026
FAMILY MEMBER	717	69
NEIGHBORS	145	21
OTHERS	24	1

Table 23 : Distribution of Respondents by Whether or Not They had Post-Natal Check-up for the Last Child

CHECK-UP	DISTRICT	
	KAVREPALANCHOK	DHANUSA
YES	46	30
No	1151	1188

Table 24 : Distribution of Respondents (Who Had Post-natal Check-up after the Last Delivery) by Whether or Not They Were Satisfied with the Check-up

SATISFACTION	DISTRICT	
	KAVREPALANCHOK	DHANUSA
YES	40	23
No	7	9

Table 25 : Distribution of Respondents by Knowledge of Family Planning, Different Methods of Contraceptive and At Least One Modern Method of Contraceptive by 5 Year Age Group

DISTRICT : KAVREPALANCHOK

AGE	KNOWLEDGE FOR FAMILY PLANNING									AT LEAST ONE
	FAMILY PLANNING	PILL	CONDOM	IUD	DEPO	MALE STERIL.	FEMALE STERIL.	TRAD. METHOD	OTHERS	
~14	2	1	-	1	1	2	2	1	-	2
15 ~ 19	99	83	38	39	56	83	84	2	-	94
20 ~ 24	242	197	77	81	142	206	213	8	2	234
25 ~ 29	251	209	79	87	155	223	226	8	-	245
30 ~ 34	202	162	74	74	124	176	171	8	4	195
35 ~ 39	176	146	52	58	94	158	153	5	3	175
40 ~ 44	154	131	46	51	74	139	130	5	3	154
45 ~ 49	67	55	20	23	37	59	58	2	1	67
50+	2	2	1	-	2	2	2	-	-	2
NOT STATED	3	2	-	-	1	3	3	-	-	3
TOTAL	1,198	988	387	414	686	1,051	1,042	39	13	1,171

DISTRICT : DHANUSA

AGE	KNOWLEDGE FOR FAMILY PLANNING									AT LEAST ONE
	FAMILY PLANNING	PILL	CONDOM	IUD	DEPO	MALE STERIL.	FEMALE STERIL.	TRAD. METHOD	OTHERS	
~14	1	-	-	-	-	1	1	-	-	1
15 ~ 19	115	60	38	11	39	95	111	4	-	113
20 ~ 24	261	145	82	31	107	232	260	4	1	260
25 ~ 29	282	163	79	27	106	255	281	6	2	285
30 ~ 34	268	179	78	20	107	247	268	8	-	269
35 ~ 39	183	91	41	15	59	156	182	1	-	182
40 ~ 44	129	71	27	8	56	117	125	7	-	126
45 ~ 49	90	43	20	7	35	84	91	2	1	91
50+	-	-	-	-	-	-	-	-	-	-
NOT STATED	2	-	-	-	-	1	2	-	-	2
TOTAL	1,331	752	365	119	509	1,188	1,321	32	4	1,329

Table 26 : Distribution of Respondents by Knowledge of Family Planning, Different Methods of Contraceptive by Educational Level

DISTRICT : KAVREPALANCHOK

	KNOWLEDGE FOR FAMILY PLANNING								
	FAMILY PLANNING	PILL	CONDOM	IUD	DEPO	MALE STERIL.	FEMALE STERIL.	TRAD. METHOD	OTHERS
READ & WRITE NO	1,093	887	325	351	604	956	946	30	11
NOT STATED	-	-	-	-	-	-	-	-	-
SCHOOL YES	70	68	44	44	57	64	65	5	1
NO	30	28	14	15	21	26	25	2	1
READ & WRITE NO	-	54	6	4	17	127	78	-	-
NOT STATED	-	-	-	-	-	-	-	-	-
SCHOOL YES	-	6	2	-	2	5	7	-	-
NO	-	2	1	1	2	4	4	-	1

DISTRICT : DHANUSA

	KNOWLEDGE FOR FAMILY PLANNING								
	FAMILY PLANNING	PILL	CONDOM	IUD	DEPO	MALE STERIL.	FEMALE STERIL.	TRAD. METHOD	OTHERS
READ & WRITE NO	1,257	695	319	89	466	1,123	1,249	30	4
NOT STATED	1	-	-	-	1	1	1	-	-
SCHOOL YES	64	48	38	24	34	55	62	1	-
NO	11	9	7	6	7	11	11	1	-
READ & WRITE NO	-	33	10	2	8	30	229	1	-
NOT STATED	-	-	-	-	-	-	1	-	-
SCHOOL YES	-	1	1	-	-	4	16	-	-
NO	-	-	-	-	-	3	5	-	-

Table 27 : Distribution of Respondents by Ever-Use of Contraception by Methods and Age (5 Year Age Group)

DISTRICT : KAVREPALANCHOK

AGE	EVER USED							
	PILL	CONDOM	IUD	DEPO	MALE STERIL.	FEMALE STERIL.	TRAD. METHOD	OTHERS
~14	-	-	-	-	-	-	-	-
15 ~ 19	3	-	-	-	1	1	-	-
20 ~ 24	10	5	-	6	8	6	-	-
25 ~ 29	13	1	-	5	26	20	-	-
30 ~ 34	10	-	1	4	27	25	-	-
35 ~ 39	10	1	1	3	36	21	-	1
40 ~ 44	12	2	2	1	35	14	-	-
45 ~ 49	4	-	1	2	3	3	-	-
50+	-	-	-	-	1	-	-	-
NOT STATED	-	-	-	-	-	-	-	-
TOTAL	62	9	5	21	137	90	-	1

DISTRICT : DHANUSA

AGE	EVER USED							
	PILL	CONDOM	IUD	DEPO	MALE STERIL.	FEMALE STERIL.	TRAD. METHOD	OTHERS
~14	-	-	-	-	-	-	-	-
15 ~ 19	1	1	-	1	4	8	1	-
20 ~ 24	7	4	-	1	6	19	-	-
25 ~ 29	5	-	1	2	2	39	-	-
30 ~ 34	12	3	1	2	3	78	-	-
35 ~ 39	5	2	-	2	8	56	-	-
40 ~ 44	4	1	-	-	9	30	-	-
45 ~ 49	-	-	-	-	4	19	-	-
50+	-	-	-	-	-	-	-	-
NOT STATED	-	-	-	-	-	-	-	-
TOTAL	34	11	2	8	36	249	1	-

Table 28: Distribution of Respondents by Current Use of Contraception by Methods and Age (5 Year Age Group)

DISTRICT : KAVREPALANCHOK

AGE	METHOD CURRENTLY USED									
	PILL.	CONDOM	IUD	DEPO	MALE STERIL.	FEMALE STERIL.	TRAD. METHOD	OTHERS	NO USE	NOT STATED
~14	-	-	-	-	-	-	-	-	-	1
15 ~ 19	-	-	-	-	-	-	-	-	43	8
20 ~ 24	1	2	-	6	7	4	-	-	76	8
25 ~ 29	2	1	-	3	20	14	-	-	68	10
30 ~ 34	3	-	-	2	24	23	-	-	59	5
35 ~ 39	3	-	-	-	32	17	-	1	50	3
40 ~ 44	3	-	1	-	34	11	-	-	39	13
45 ~ 49	2	-	-	2	3	3	-	-	25	3
50+	-	-	-	-	-	-	-	-	-	1
NOT STATED	-	-	-	-	-	-	-	-	3	83
TOTAL	14	3	1	13	120	72	-	1	363	135

DISTRICT : DHANUSA

AGE	METHOD CURRENTLY USED									
	PILL	CONDOM	IUD	DEPO	MALE STERIL.	FEMALE STERIL.	TRAD. METHOD	OTHERS	NO USE	NOT STATED
~14	-	-	-	-	-	-	-	-	-	-
15 ~ 19	-	2	-	-	-	1	-	-	10	8
20 ~ 24	-	2	-	1	2	11	-	-	32	3
25 ~ 29	-	-	-	-	1	36	-	-	13	4
30 ~ 34	2	-	-	-	1	75	-	-	15	4
35 ~ 39	1	-	-	1	3	50	-	-	6	2
40 ~ 44	-	-	-	-	10	27	-	-	6	8
45 ~ 49	-	-	-	-	3	17	-	-	2	1
50+	-	-	-	-	-	-	-	-	-	-
NOT STATED	-	-	-	-	-	-	-	-	-	33
TOTAL	3	4	-	2	20	217	-	-	84	63



Table 29 : Distribution of Respondents by Current Use of Contraception by Methods and Educational Level

DISTRICT : KAVREPALANCHOK

	METHOD CURRENTLY USED							
	PILL	CONDOM	IUD	DEPO	MALE STERIL.	FEMALE STERIL.	TRAD. METHOD	OTHERS
READ & WRITE								
NO	13	1	--	11	112	64	--	--
NOT STATED	--	--	--	--	--	--	--	--
SCHOOL								
YES	1	2	--	1	5	6	--	--
NO	--	--	1	1	2	1	--	1

DISTRICT : DHANUSA

	METHOD CURRENTLY USED							
	PILL	CONDOM	IUD	DEPO	MALE STERIL.	FEMALE STERIL.	TRAD. METHOD	OTHERS
READ & WRITE								
NO	3	4	--	2	17	196	--	--
NOT STATED	--	--	--	--	--	1	--	--
SCHOOL								
YES	--	--	--	--	2	16	--	--
NO	--	--	--	--	1	4	--	--

Table 30 : Distribution of Respondents by Current Use of Contraception by Methods and Number of Living Children

DISTRICT : KAVREPALANCHOK

NO. OF LIVING CHILDREN	METHOD CURRENTLY USED									
	PILL	CONDOM	IUD	DEPO	MALE STERIL.	FEMALE STERIL.	TRAD. METHOD	OTHERS	NO USE	NOT STATED
0	-	-	-	-	3	-	-	-	61	6
1	1	1	-	4	2	1	-	-	59	9
2	2	1	-	2	14	9	-	-	54	9
3	2	1	1	2	35	21	-	1	64	9
4	3	-	-	3	30	15	-	-	50	3
5	-	-	-	1	24	13	-	-	33	4
6	2	-	-	-	9	8	-	-	21	2
7+	4	-	-	1	3	5	-	-	20	2
NOT STATED	-	-	-	-	-	-	-	-	1	91
TOTAL	14	3	1	13	120	72	-	1	363	135

DISTRICT : DHANUSA

NO. OF LIVING CHILDREN	METHOD CURRENTLY USED									
	PILL	CONDOM	IUD	DEPO	MALE STERIL.	FEMALE STERIL.	TRAD. METHOD	OTHERS	NO USE	NOT STATED
0	-	-	-	-	-	2	-	-	20	5
1	-	2	-	1	1	4	-	-	25	2
2	1	1	-	-	3	23	-	-	17	5
3	-	1	-	1	5	69	-	-	10	1
4	1	-	-	-	6	67	-	-	4	2
5	1	-	-	-	4	30	-	-	4	3
6	-	-	-	-	1	16	-	-	3	-
7+	-	-	-	-	-	6	-	-	1	-
NOT STATED	-	-	-	-	-	-	-	-	-	45
TOTAL	3	4	-	2	20	217	-	-	84	63

Table 31 : Distribution of Respondents by Their Future Intentions to Use Contraception by Methods and Age (5 Year Age Group)

DISTRICT : KAVREPALANCHOK

AGE	METHOD OF FUTURE USE								NOT STATED
	PILL	CONDOM	IUD	DEPO	MALE STERIL.	FEMALE STERIL.	OTHERS	(8)	
~14	1	-	-	-	-	-	-	-	1
15 ~ 19	16	-	1	9	14	20	-	2	6
20 ~ 24	25	2	-	12	44	52	3	3	11
25 ~ 29	27	1	-	19	25	48	4	2	7
30 ~ 34	14	2	1	10	20	20	1	2	7
35 ~ 39	11	1	-	9	8	12	-	-	4
40 ~ 44	6	-	1	6	1	2	1	-	7
45 ~ 49	1	1	-	2	-	-	-	-	3
50+	-	-	-	-	-	-	-	-	-
NOT STATED	-	-	-	-	-	-	-	-	83
TOTAL	101	7	3	67	112	154	9	9	129

DISTRICT : DHANUSA

AGE	METHOD OF FUTURE USE								NOT STATED
	PILL	CONDOM	IUD	DEPO	MALE STERIL.	FEMALE STERIL.	OTHERS	(8)	
~14	-	-	-	-	-	-	-	-	-
15 ~ 19	2	-	-	-	5	42	2	3	8
20 ~ 24	3	-	-	4	3	117	1	5	4
25 ~ 29	7	-	-	5	6	97	3	5	4
30 ~ 34	5	-	1	5	2	66	2	2	1
35 ~ 39	3	-	-	2	2	38	-	-	1
40 ~ 44	3	-	-	1	2	11	-	-	9
45 ~ 49	1	-	1	-	-	2	1	-	-
50+	-	-	-	-	-	-	-	-	-
NOT STATED	-	-	-	-	-	-	-	-	33
TOTAL	24	-	2	17	20	373	9	15	60

Table 32 : Distribution of Respondents by Reason for Not Using Any Methods of Contraception

DISTRICT : KAVREPALANCHOK

AGE	TOTAL	THE REASON FOR NOT USING FAMILY PLANNING											
		A	B	C	D	E	F	G	H	I	J	K	
~14	2	1	1	-	-	-	-	-	-	-	-	-	-
15 ~ 19	91	80	7	1	1	-	-	-	-	1	-	1	
20 ~ 24	204	132	40	5	1	1	2	5	2	-	6	10	
25 ~ 29	191	83	59	5	22	5	5	3	-	2	13	14	
30 ~ 34	129	13	22	7	37	1	3	5	-	3	17	21	
35 ~ 39	113	8	15	2	36	2	7	4	2	8	11	18	
40 ~ 44	92	4	3	-	24	6	1	2	12	10	13	17	
45 ~ 49	50	1	3	-	8	3	-	1	19	10	4	1	
50+	-	-	-	-	-	-	-	-	-	-	-	-	
NOT STATED	3	1	1	-	-	-	-	-	1	-	-	-	
TOTAL	875	303	151	20	129	18	18	20	36	34	64	82	

A : Desire of Additional Children  
 B : Desire of Sons  
 C : Desire of Daughters  
 D : Health Reason  
 E : Religious Reason  
 F : Husband's Disapproval  
 G : Husband Away  
 H : Menopause  
 I : No Fertility  
 J : Contraception Not Available  
 K : Other Reason

DISTRICT : DHANUSA

AGE	TOTAL	THE REASON FOR NOT USING FAMILY PLANNING										
		A	B	C	D	E	F	G	H	I	J	K
~14	1	-	-	-	-	-	-	-	1	-	-	-
15 ~ 19	110	85	3	-	-	1	1	2	-	-	-	18
20 ~ 24	243	169	43	2	-	7	5	-	-	1	2	14
25 ~ 29	237	113	67	4	13	8	7	-	-	4	3	18
30 ~ 34	184	68	36	3	21	8	8	-	1	10	3	26
35 ~ 39	122	23	19	2	22	10	8	-	12	7	1	18
40 ~ 44	82	11	9	2	5	5	8	-	21	13	-	8
45 ~ 49	69	3	8	-	6	3	4	-	27	12	-	6
50+	-	-	-	-	-	-	-	-	-	-	-	-
NOT STATED	2	1	-	-	-	-	-	-	-	-	-	1
TOTAL	1,050	473	185	13	67	42	41	2	62	47	9	109

Table 33 : Distribution of Respondents With Regard to What They Usually Do When Someone in The Household Is Sick and by Reasons for Not Treating the Patient

PANCHAYAT CODE	TREATMENT			TOTAL	THE REASON FOR NOT (MULTIPLE ANSWER)				TOTAL
	TO TREAT	NOT TO TREAT	NOT STATED		A	B	C	D	
1 ~ 3	380	7	19	406	6	3	1	2	12
4 ~ 5	255	1	23	279	1	-	-	1	2
6 ~ 8	430	5	42	477	4	2	2	1	9
9 ~ 10	299	-	5	304	-	1	-	1	2
SUB-TOTAL	1,364	13	89	1,466	11	6	3	5	25
11 ~ 13	379	7	5	391	5	1	-	-	6
14 ~ 15	305	2	2	309	1	-	-	1	2
16 ~ 18	448	9	11	468	5	2	1	2	10
19 ~ 20	278	6	19	303	4	-	-	2	6
SUB-TOTAL	1,410	24	37	1,471	15	3	1	5	24
TOTAL	2,774	37	126	2,937	26	9	4	10	49

1 - 3 : Bhumlutar  
 4 - 5 : Dapcha  
 6 - 8 : Khopasi  
 9 - 10 : Nala  
 11 - 13 : Godar  
 14 - 15 : Godhaghas  
 16 - 18 : Sabaila  
 19 - 20 : Tarapatti

A : Financial Problems. B : No Belief In Treatment. C : Long Distance.

D : Bad Treatment In Health Institution

Table 34 : Distribution of Respondents by Places Contacted for Treatment

PANCHAYAT CODE	THE PLACE TO TREAT							
	A	B	C	D	E	F	G	H
1 ~ 3	9	234	4	139	-	-	3	19
4 ~ 5	1	160	10	85	1	4	-	22
6 ~ 8	6	267	20	130	6	7	3	41
9 ~ 10	1	138	12	124	13	11	2	4
SUB-TOTAL	17	799	46	478	20	22	8	86
11 ~ 13	8	155	133	5	-	48	39	6
14 ~ 15	4	136	156	1	10	4	2	1
16 ~ 18	9	198	185	3	-	48	9	10
19 ~ 20	2	133	137	2	3	5	1	20
SUB-TOTAL	23	622	621	11	13	105	51	37
TOTAL	40	1,421	667	489	33	127	59	123

1 - 3 : Bhumlutar  
 4 - 5 : Dapcha  
 6 - 8 : Khopasi  
 9 - 10 : Nala  
 11 - 13 : Godar  
 14 - 15 : Godhaghas  
 16 - 18 : Sabaila  
 19 - 20 : Tarapatti

A : Inapplicable. B : Hospital/Health Center. C : Doctor/Other Health Worker/Nurse. D : Dharni/Jankri.  
 E : Kaviraj. F : Quack. G : Others. H : Not Stated

Table 35 : Distribution of Respondents by Frequency of Health Workers Visit Reported

PANCHAYAT CODE	FREQUENCY OF VISIT OF HEALTH WORKER							
	A	B	C	D	E	F	G	H
1 ~ 3	1	9	9	29	343	-	-	29
4 ~ 5	4	4	9	10	294	-	-	22
6 ~ 8	4	22	25	29	353	-	-	47
9 ~ 10	1	5	8	5	291	-	-	5
SUB-TOTAL	10	40	51	67	1,211	-	-	97
11 ~ 13	3	291	17	12	61	-	-	10
14 ~ 15	4	89	34	30	156	-	2	5
16 ~ 18	4	237	43	36	134	-	-	18
19 ~ 20	-	85	40	59	93	-	-	20
SUB-TOTAL	11	696	134	137	450	-	2	53
TOTAL	21	736	185	204	1,661	-	2	150

1 - 3 : Bhumlutar  
 4 - 5 : Dapcha  
 6 - 8 : Khopasi  
 8 - 10 : Nafa  
 11-13 : Godar  
 14-15 : Godhaghas  
 16-18 : Sabaila  
 19-20 : Tarapatti  
 A : Inapplicable  
 B : Once a Month  
 C : Once Every Three Months  
 D : Once A Year  
 E : Does Not Come  
 F : Others  
 G : Don't Know  
 H : Not Stated

Table 36 : Distribution of Respondents Who Talked with Health Worker by Contents Talked with Health Worker and Frequency of His/Her Visit

DISTRICT : KAVREPALANCHOK

TALK ABOUT	FREQUENCY OF VISIT OF HEALTH WORKER				
	A	B	C	D	E
F.P.	34	28	39	4	-
HEALTH OF CHILDREN	32	19	32	1	-
ART	23	14	22	-	-
WORMS	22	19	22	-	-
BREASTFEEDING	21	11	17	-	-
BIRTH SPACING	23	16	17	1	-
DIARRHOEA/ORT	27	24	27	1	-
IMMUNIZATION	29	24	50	1	-
HEALTH EDUCATION	24	15	26	-	-
NUTRITION	20	8	20	1	-
PRE & POSTNATAL CARE	24	12	18	-	-
MEDICINE	25	17	25	1	-
POSTERS/PAMPHLETS	8	1	10	-	-

A : Once A Month  
 B : Once Every Three Months  
 C : Once A Year  
 D : Does Not Come  
 E : Others

DISTRICT : DHANUSA

TALK ABOUT	FREQUENCY OF VISIT OF HEALTH WORKER				
	A	B	C	D	E
F.P.	661	129	134	2	-
HEALTH OF CHILDREN	414	44	23	1	-
ART	218	21	9	1	-
WORMS	308	59	40	-	-
BREASTFEEDING	268	18	13	1	-
BIRTH SPACING	281	34	31	1	-
DIARRHOEA/ORT	381	64	47	1	-
IMMUNIZATION	366	47	27	1	-
HEALTH EDUCATION	242	13	9	-	-
NUTRITION	255	13	9	1	-
PRE & POSTNATAL CARE	278	17	17	-	-
MEDICINE	337	37	18	1	-
POSTERS/PAMPHLETS	106	26	7	-	-



Table 37 : Distribution of Respondents by Knowledge of Diarrhoea by 5 Year Age Group

DISTRICT : KAVREPALANCHOK

KNOWLEDGE OF DIARRHOEA

AGE	YES	NO
~14	2	-
15 ~ 19	105	16
20 ~ 24	252	18
25 ~ 29	277	12
30 ~ 34	220	12
35 ~ 39	188	5
40 ~ 44	167	6
45 ~ 49	80	7
50+	3	-
NOT STATED	2	1
TOTAL	1,296	77

DISTRICT : DHANUSA

KNOWLEDGE OF DIARRHOEA

AGE	YES	NO
~14	-	1
15 ~ 19	91	34
20 ~ 24	235	43
25 ~ 29	255	45
30 ~ 34	235	39
35 ~ 39	171	22
40 ~ 44	114	22
45 ~ 49	78	16
50+	-	-
NOT STATED	1	1
TOTAL	1,180	223

Table 38 : Distribution of Respondents by Their Knowledge About Causes of Diarrhoea by 5 Year Age Group

DISTRICT : KAVREPALANCHOK

AGE	THE REASON									
	A	B	C	D	E	F	G	H	I	J
~14	1	-	1	-	-	-	-	-	-	-
15 ~ 19	36	5	9	-	10	4	4	1	34	-
20 ~ 24	92	21	19	6	20	14	12	1	57	-
25 ~ 29	101	16	25	4	20	14	19	2	72	1
30 ~ 34	70	17	15	3	18	12	9	3	63	2
35 ~ 39	60	12	19	2	15	15	11	1	52	-
40 ~ 44	43	14	17	2	16	8	15	1	41	1
45 ~ 49	22	5	5	2	7	2	6	1	29	-
50+	1	1	-	-	1	-	-	-	-	-
NOT STATED	1	-	-	-	-	-	-	-	1	-
TOTAL	427	91	110	19	107	69	76	10	349	4

- A : Inapplicable
- B : Indigestible Food Eaten/Over Eating
- C : Superstition
- D : Stomach Disorder
- E : Stale Food
- F : Dirty Food
- G : Food With Flies
- H : Stagnant Water
- I : Don't Know
- J : Not Stated

DISTRICT : DHANUSA

AGE	THE REASON									
	A	B	C	D	E	F	G	H	I	J
~14	-	-	-	-	-	-	-	-	-	-
15 ~ 19	64	6	1	-	7	2	-	-	8	-
20 ~ 24	142	18	11	-	11	5	-	-	42	-
25 ~ 29	174	14	8	-	15	2	-	1	37	-
30 ~ 34	127	21	15	1	20	3	1	-	42	-
35 ~ 39	97	14	7	3	11	5	-	-	31	-
40 ~ 44	72	5	6	1	7	3	-	-	18	-
45 ~ 49	48	9	4	1	5	-	-	1	8	-
50+	-	-	-	-	-	-	-	-	-	-
NOT STATED	1	-	-	-	-	-	-	-	-	-
TOTAL	725	87	52	6	76	20	1	2	186	-

Table 39 : Distribution of Respondents by Their Attitude Towards Types of Treatment of Diarrhoea

DISTRICT : KAVREPALANCHOK

AGE	TREATMENTS								
	A	B	C	D	E	F	G	H	I
~14	-	-	-	2	-	-	-	-	-
15 ~ 19	5	11	5	20	6	30	12	13	3
20 ~ 24	12	40	16	62	16	63	22	16	5
25 ~ 29	9	49	18	70	26	68	30	5	1
30 ~ 34	6	33	6	46	19	76	28	5	1
35 ~ 39	12	15	3	60	14	46	29	6	3
40 ~ 44	5	16	5	42	7	58	26	7	1
45 ~ 49	4	6	1	23	6	27	12	-	1
50+	-	-	-	2	-	1	-	-	-
NOT STATED	-	-	-	-	-	1	1	-	-
TOTAL	53	170	54	327	94	370	160	52	15

A : No Treatment  
 B : Rehydration With Jeevan Jal  
 C : Rehydration (With Salt Sugar Water) Solution  
 D : Medicine (Modern)  
 E : Medicine (Ayurvedic)  
 F : Other Traditional Treatment  
 G : Other Treatment  
 H : Don't Know  
 I : Not Stated

DISTRICT : DHANUSA

AGE	TREATMENTS								
	A	B	C	D	E	F	G	H	I
~14	-	-	-	-	-	-	-	-	-
15 ~ 19	3	15	1	32	6	3	13	15	3
20 ~ 24	13	46	3	99	16	9	27	17	4
25 ~ 29	14	44	3	117	16	8	37	13	3
30 ~ 34	10	47	5	100	19	6	30	14	4
35 ~ 39	7	37	1	72	10	3	25	12	4
40 ~ 44	2	18	3	56	6	6	20	2	1
45 ~ 49	3	9	-	43	3	2	11	6	1
50+	-	-	-	-	-	-	-	-	-
NOT STATED	-	-	-	-	-	-	1	-	-
TOTAL	52	216	16	519	76	37	164	79	20

Table 40: Distribution of Respondents by Their Knowledge of "Jeevan Jal"

PANCHAYAT CODE	HEARD OF "JEEVAN JAL"		
	YES	NO	NOT STATED
1 ~ 3	232	154	22
4 ~ 5	193	66	23
6 ~ 8	356	73	48
9 ~ 10	195	104	5
SUB-TOTAL	976	397	98
11 ~ 13	229	151	10
14 ~ 15	228	76	5
16 ~ 18	240	214	17
19 ~ 20	190	89	20
SUB-TOTAL	887	530	52
TOTAL	1,863	927	150

1 - 3 : Bhumlutar  
 4 - 5 : Dapcha  
 6 - 8 : Khopasi  
 9 - 10 : Nala  
 11 - 13 : Godar  
 14 - 15 : Godhaghas  
 16 - 18 : Sabaila  
 19 - 20 : Tarapatti

Table 41 : Distribution of Respondents (Who Knew About "Jeevan Jal") by Source of Information about "Jeevan Jal" and Age (5 Year Age Group)

DISTRICT : KAVREPALANCHOK

AGE	SOURCE OF INFORMATION (JEEVAN JAL)							
	HEALTH WORKER	SPOUSE	FAMILY MEMBER	FRIENDS	RADIO	NEWS-PAPER	MOTHERS' CLUB	OTHERS
~14	-	-	1	-	-	-	-	1
15 ~ 19	2	2	2	2	66	-	-	8
20 ~ 24	7	2	9	5	163	-	-	25
25 ~ 29	23	8	3	3	142	1	2	31
30 ~ 34	12	7	4	2	104	-	-	38
35 ~ 39	8	5	4	3	78	-	-	29
40 ~ 44	8	-	3	2	86	-	-	15
45 ~ 49	2	1	5	4	34	-	-	9
50+	-	-	-	-	1	-	-	-
NOT STATED	-	-	-	-	1	-	-	1
TOTAL	62	25	31	21	675	1	2	157

DISTRICT : DHANUSA

AGE	SOURCE OF INFORMATION (JEEVAN JAL)							
	HEALTH WORKER	SPOUSE	FAMILY MEMBER	FRIENDS	RADIO	NEWS-PAPER	MOTHERS' CLUB	OTHERS
~14	-	-	-	-	-	-	-	-
15 ~ 19	24	1	3	2	22	-	1	12
20 ~ 24	72	4	19	2	32	-	1	42
25 ~ 29	59	1	21	7	43	2	2	47
30 ~ 34	75	4	16	10	30	-	4	47
35 ~ 39	54	-	12	2	23	-	3	35
40 ~ 44	31	-	6	9	13	1	3	24
45 ~ 49	19	-	9	4	3	1	-	17
50+	-	-	-	-	-	-	-	-
NOT STATED	-	-	-	-	-	-	-	1
TOTAL	334	10	86	36	166	4	14	225

Table 42: Distribution of Respondents (Who Knew About "Jeevan Jal") by Whether Or Not They Have Right Knowledge of Preparing It

	DISTRICT	
	KAVREPALANCHOK	DHANUSA
CORRECT WAY	156	136
WRONG WAY	245	384
DON'T KNOW	581	366
NOT STATED	95	51

Table 43: Distribution of Respondents (Who Knew About "Jeevan Jal") by Their Knowledge About Amount to Be Given to Diarrhoea Patients

	DISTRICT	
	KAVREPALANCHOK	DHANUSA
CORRECT WAY	98	123
WRONG WAY	302	446
DON'T KNOW	585	319
NOT STATED	95	54

Table 44 : Distribution of Respondents (Who Knew About Medicine Water) by Their Source of Information about Medicine Water and Age (5 Year Age Group)

DISTRICT : KAVREPALANCHOK

AGE	SOURCE OF INFORMATION (SALT, SUGAR, WATER SOLUTION)										TOTAL (1-8)
	INAPPLI- CABLE (0)	NOT STATED (9)	HEALTH WORKER (1)	SPOUSE (2)	FAMILY MEMBER (3)	FRIENDS (4)	RADIO (5)	NEWS- PAPER (6)	MOTHERS' CLUB (7)	OTHERS (8)	
~14	1	1	-	-	1	-	-	-	-	-	1
15 ~ 19	31	4	1	2	1	3	89	-	-	1	97
20 ~ 24	44	4	2	1	1	1	210	-	-	9	224
25 ~ 29	58	1	2	1	4	1	199	-	2	21	230
30 ~ 34	46	1	6	1	3	1	163	-	-	12	186
35 ~ 39	50	2	5	-	3	2	123	-	-	11	142
40 ~ 44	39	4	-	-	1	2	125	-	-	8	136
45 ~ 49	23	-	1	1	4	-	53	-	-	5	64
50+	1	-	-	-	-	-	2	-	-	-	2
NOT STATED	2	83	-	-	-	-	1	-	-	-	1
TOTAL	295	100	15	6	18	10	965	-	2	67	1,083

DISTRICT : DHANUSA

AGE	SOURCE OF INFORMATION (SALT, SUGAR, WATER SOLUTION)										TOTAL (1-8)
	INAPPLI- CABLE (0)	NOT STATED (9)	HEALTH WORKER (1)	SPOUSE (2)	FAMILY MEMBER (3)	FRIENDS (4)	RADIO (5)	NEWS- PAPER (6)	MOTHERS' CLUB (7)	OTHERS (8)	
~14	1	-	-	-	-	-	-	-	-	-	-
15 ~ 19	82	10	10	-	5	2	20	-	-	8	45
20 ~ 24	181	-	34	2	12	1	34	-	1	16	100
25 ~ 29	201	1	41	-	6	3	34	1	2	16	103
30 ~ 34	168	2	35	2	11	7	36	-	1	18	110
35 ~ 39	116	1	24	1	4	2	27	-	2	19	79
40 ~ 44	86	9	18	2	2	2	15	1	1	11	52
45 ~ 49	62	1	12	1	3	2	10	-	-	5	33
50+	-	-	-	-	-	-	-	-	-	-	-
NOT STATED	2	33	-	-	-	-	-	-	-	-	-
TOTAL	899	57	174	8	43	19	176	2	7	33	522

Table 45 : Distribution of Respondents (Who Knew About Medicine Water) by Whether or Not They Have Right Knowledge of Preparing It

	DISTRICT	
	KAVREPALANCHOK	DHANUSA
CORRECT WAY	195	109
WRONG WAY	347	175
DON'T KNOW	538	229
NOT STATED	101	67

Table 46 : Distribution of Respondents by Their Attitude Towards Giving Fluid to Diarrhoea Patient As Usual

	DISTRICT	
	KAVREPALANCHOK	DHANUSA
YES	1185	927
NO	193	417
DON'T KNOW	2	64
NOT STATED	94	57

Table 47 : Distribution of Respondents (Who Said That Fluids Should Not Be Given To Diarrhoea Patients) by Reason for Not Giving Fluids

	DISTRICT	
	KAVREPALANCHOK	DHANUSA
WORSEN DIARRHOEA	146	372
CUSTOMARY	3	3
UNADVISABLE TO GIVE	1	4
DON'T KNOW	6	23
NOT STATED	129	98

Table 48 : Distribution of Respondents by Their Attitude Towards Breastfeeding to Diarrhoea Patients

	DISTRICT	
	KAVREPALANCHOK	DHANUSA
ADVISABLE TO BREASTFEED		
YES	1344	1324
NO	30	29
DON'T KNOW	2	51
NOT STATED	96	57



Table 49 : Distribution of Respondents by Knowledge Of Immunization

	DISTRICT	
	KAVREPALANCHOK	DHANUSA
YES	1110	1210
NO	267	206
DON'T KNOW	1	2
NOT STATED	97	52

Table 50 : Distribution of Respondents by Knowledge of Preventable Disease Through Immunization

DISTRICT: KAVREPALANCHOK

	YES	NO	DON'T KNOW	NOT STATED
TETANUS	110	871	125	96
POLIO	113	870	124	95
DIPHThERIA	112	871	124	95
WHOOPING COUGH	277	707	124	95
MEASLES	499	485	124	95
TUBERCULOSIS	186	797	124	96
OTHERS	142	527	432	98

DISTRICT: DHANUSA

	YES	NO	DON'T KNOW	NOT STATED
TETANUS	592	473	135	65
POLIO	133	933	127	64
DIPHThERIA	68	999	127	64
WHOOPING COUGH	142	923	127	64
MEASLES	188	878	127	64
TUBERCULOSIS	121	945	127	64
OTHERS	3	682	512	67

Table 51 : Distribution of Respondents by Source of Information About Immunization

PANCHAYAT CODE	SOURCE OF INFORMATION (IMMUNIZATION)										TOTAL (1-9)
	INAPPLI- CABLE (0)	HEALTH WORKER (1)	SPOUSE (2)	FAMILY MEMBER (3)	FRIENDS (4)	RADIO (5)	NEWS- PAPER (6)	MOTHERS' CLUB (7)	IMMUNI. CAMP (8)	OTHERS (9)	
1 ~ 3	114	38	4	4	2	10	-	1	154	81	294
4 ~ 5	51	24	8	4	2	18	-	-	117	59	232
6 ~ 8	68	24	14	7	5	32	-	1	222	107	412
9 ~ 10	42	16	10	3	6	24	-	-	151	53	263
SUB-TOTAL	275	102	36	18	15	84	-	2	644	300	1,201
11 ~ 13	69	23	5	7	2	-	-	2	262	24	325
14 ~ 15	34	24	4	3	2	1	-	1	177	68	280
16 ~ 18	94	17	9	3	1	-	1	2	305	40	378
19 ~ 20	30	27	1	-	2	-	-	-	170	73	273
SUB-TOTAL	227	91	19	13	7	1	1	5	914	205	1,256
TOTAL	502	193	55	31	22	85	1	7	1,558	505	2,457

1 - 3 : Bhumlutar  
 4 - 5 : Dapcha  
 6 - 8 : Khopasi  
 9 - 10 : Nala  
 11 - 13 : Godar  
 14 - 15 : Godhaghas  
 16 - 18 : Sabaila  
 19 - 20 : Tarapatti

Table 52 : Incidence of Immunization of B. C. G., D. P. T., Polio and Measles

PANCHAYAT CODE	B. C. G.				D. P. T.					POLIO					MEASLES			
	A	B	C	D	E	F	G	H	D	E	F	G	H	D	A	B	C	D
1 ~ 3	3	67	61	30	41	56	20	7	38	66	38	14	4	40	2	61	70	29
4 ~ 5	2	43	48	22	32	41	11	9	22	39	28	14	8	26	6	54	33	22
6 ~ 8	16	84	67	50	40	69	39	21	54	77	45	19	17	59	14	87	65	51
9 ~ 10	19	54	31	6	36	32	18	15	9	51	23	11	15	10	19	44	41	6
SUB-TOTAL	40	248	207	108	149	198	82	52	123	233	134	58	44	135	41	246	209	108
11 ~ 13	3	161	12	21	12	46	40	79	20	15	49	34	78	21	16	121	39	21
14 ~ 15	4	127	13	19	21	20	29	73	20	25	25	28	65	20	10	72	61	20
16 ~ 18	5	152	31	29	22	46	50	69	30	45	45	39	57	31	10	120	55	32
19 ~ 20	5	131	4	28	17	20	30	73	28	22	26	26	65	29	20	79	42	27
SUB-TOTAL	17	571	60	97	72	132	149	234	98	107	145	127	265	101	56	392	197	100
TOTAL	57	819	267	205	221	330	231	346	221	340	279	185	309	236	97	638	406	208

1 - 3 : Bhumlutar  
 4 - 5 : Dapcha  
 6 - 8 : Khopasi  
 9 - 10 : Nala  
 11 - 13 : Godar  
 14 - 15 : Godhaghas  
 16 - 18 : Sabaila  
 19 - 20 : Tarapatti

A : Inapplicable  
 B : Yes  
 C : No  
 D : Not Stated  
 E : Never Done  
 F : Once  
 G : Twice  
 H : Three Times

Table 53 : Distribution of Children Immunized by Place of Taking Immunization

PANCHAYAT CODE	THE PLACE FOR IMMUNIZATION						NOT STATED
	INAPPLI- CABLE HOSPITAL	HEALTH POST	IMMUNI. CAMP	FP CLINIC	OTHERS		
1 ~ 3	245	13	16	102	-	-	31
4 ~ 5	172	4	21	58	-	1	23
6 ~ 8	271	8	8	138	1	1	53
9 ~ 10	199	10	10	75	-	3	8
SUB-TOTAL	887	35	55	373	1	5	115
11 ~ 13	198	11	7	161	-	1	15
14 ~ 15	150	25	4	123	-	1	11
16 ~ 18	260	5	3	180	-	2	22
19 ~ 20	129	14	3	133	-	-	24
SUB-TOTAL	737	55	17	597	-	4	72
TOTAL	1,624	90	72	970	1	9	187

1 - 3 : Bhumlutar  
 4 - 5 : Dapcha  
 6 - 8 : Khopasi  
 9 - 10 : Nala  
 11 - 13 : Godar  
 14 - 15 : Godhaghas  
 16 - 18 : Sabaila  
 19 - 20 : Tarapatti

Table 54 : Distribution of Respondents (Who Had at Least A Child Under 5 and Have Not Immunized Their Child/ren) by Reasons for Not Immunizing the Children (Multiple Answer)

PANCHAYAT CODE	THE REASON FOR NOT IMMUNIZATION						TOTAL
	A	B	C	D	E	F	
1 ~ 3	44	2	5	3	7	3	64
4 ~ 5	28	1	2	2	3	2	38
6 ~ 8	52	4	2	6	7	3	74
9 ~ 10	50	-	5	1	1	2	59
SUB-TOTAL	174	7	14	12	18	10	235
11 ~ 13	14	-	-	1	6	1	22
14 ~ 15	9	2	3	2	7	-	23
16 ~ 18	18	1	4	3	8	3	37
19 ~ 20	6	1	3	2	8	3	23
SUB-TOTAL	47	4	10	8	29	7	105
TOTAL	221	11	24	20	47	17	340

1 - 3 : Bhumlutar  
 4 - 5 : Dapcha  
 6 - 8 : Khopasi  
 9 - 10 : Nala  
 11 - 13 : Godar  
 14 - 15 : Godhaghas  
 16 - 18 : Sabaila  
 19 - 20 : Tarapatti

A : Service Not Available  
 B : Cost  
 C : Not Accessible  
 D : Don't Know The Source  
 E : Service Not Needed  
 F : Don't Know Its Need

Table 55 : Duration of Breastfeeding of Respondents by Months and Age of Respondents  
(5 Year Age Group)

DISTRICT : KAVREPALANCHOK												
MONTHS	A G E									STILL CONT.	TOTAL	
	~14	15-19	20-24	25-29	30-34	35-39	40-44	45-49	50+			
1	-	-	4	3	-	2	-	-	-	-	-	9
2	-	-	1	2	1	-	-	1	-	-	-	5
3	-	-	-	1	-	-	-	1	-	-	-	2
4	-	-	-	-	-	-	-	-	-	-	-	-
5	-	-	-	-	-	-	-	-	-	-	-	-
6	-	-	-	1	1	-	-	-	-	-	-	2
7	-	-	-	1	-	-	1	-	-	-	-	2
8	-	-	2	-	-	-	-	-	-	-	-	2
9	-	-	-	3	1	-	-	1	-	-	-	5
10	-	-	-	-	-	-	-	-	-	-	-	-
11	-	-	1	1	-	-	-	-	-	-	-	2
12	-	-	3	4	2	2	3	2	-	-	-	16
13	-	-	2	-	-	-	-	-	-	-	-	2
14	-	-	-	-	-	-	-	-	-	-	-	-
15	-	-	-	1	-	-	-	-	-	-	-	1
16	-	-	-	-	1	-	-	-	-	-	-	1
17	-	-	-	-	-	-	1	-	-	-	-	1
18	-	-	1	2	4	4	6	2	-	-	-	19
19	-	-	-	-	-	-	-	-	-	-	-	-
20	-	-	-	1	-	1	1	-	-	-	-	3
21	-	-	-	-	-	-	-	-	-	-	-	-
22	-	-	-	-	-	-	-	-	-	-	-	-
23	-	-	-	-	-	-	-	-	-	-	-	-
24	-	2	9	20	16	20	17	8	-	-	-	92
25	-	-	-	-	1	-	-	-	-	-	-	1
26	-	-	1	1	1	1	1	-	-	-	-	5
27	-	-	-	-	-	-	-	-	-	-	-	-
28	-	-	-	1	-	1	-	-	-	-	-	2
29	-	-	-	-	-	-	-	-	-	-	-	-
30	-	-	2	3	1	5	1	-	-	-	-	12
31	-	-	-	-	-	-	-	-	-	-	-	-
32	-	-	-	-	1	-	-	-	-	-	-	1
33	-	-	-	-	-	-	-	-	-	-	-	-
34	-	-	-	1	-	1	-	-	-	-	-	2
35	-	-	-	-	-	-	-	-	-	-	-	-
88	1	58	170	191	140	98	64	12	1	2	-	726
TOTAL	1	41	199	258	203	161	116	56	2	2	-	1,039

DISTRICT : DHANUSA												
MONTHS	A G E									STILL CONT.	TOTAL	
	~14	15-19	20-24	25-29	30-34	35-39	40-44	45-49	50+			
1	-	1	1	3	-	1	-	-	-	-	-	6
2	-	-	1	1	-	1	2	-	-	-	-	5
3	-	1	1	-	-	-	1	1	-	-	-	4
4	-	-	-	-	-	-	-	-	-	-	-	-
5	-	-	1	-	-	-	-	-	-	-	-	1
6	-	-	-	-	2	-	1	-	-	-	-	3
7	-	-	-	-	-	-	-	-	-	-	-	-
8	-	-	-	-	-	1	-	-	-	-	-	1
9	-	-	1	-	-	1	-	1	-	-	-	3
10	-	-	1	-	-	1	-	-	-	-	-	2
11	-	-	1	1	-	-	1	-	-	-	-	3
12	-	-	1	1	5	2	1	1	-	-	-	11
13	-	-	-	-	1	-	-	-	-	-	-	1
14	-	-	-	-	-	-	-	-	-	-	-	-
15	-	-	1	-	-	-	1	-	-	-	-	2
16	-	-	-	-	-	-	-	-	-	-	-	-
17	-	-	-	1	-	-	-	-	-	-	-	1
18	-	1	2	5	4	4	3	1	-	-	-	20
19	-	-	-	-	-	-	-	-	-	-	-	-
20	-	-	2	-	-	-	-	-	-	-	-	2
21	-	-	-	-	-	-	-	-	-	-	-	-
22	-	-	-	-	1	-	-	-	-	-	-	1
23	-	-	-	1	-	-	-	-	-	-	-	1
24	-	-	10	10	15	10	11	5	-	-	-	61
25	-	-	-	-	-	1	1	-	-	-	-	2
26	-	-	-	1	-	-	-	-	-	-	-	1
27	-	-	-	-	-	-	-	-	-	-	-	-
28	-	-	-	-	-	-	-	3	-	-	-	3
29	-	-	-	1	-	-	1	1	-	-	-	3
30	-	-	2	4	3	5	1	3	-	-	-	18
31	-	-	-	-	-	-	-	-	-	-	-	-
32	-	-	-	1	-	-	-	-	-	-	-	1
33	-	-	-	-	-	-	-	-	-	-	-	-
34	-	-	-	1	-	-	-	-	-	-	-	1
35	-	-	-	-	-	-	-	-	-	-	-	-
88	-	41	163	195	171	86	39	19	-	1	-	715
TOTAL	-	44	190	241	228	148	89	54	-	1	-	995

Table 56: Distribution of Respondents by Practice of Breastfeeding to the Last Child

	DISTRICT	
	KAVREPALANCHOK	DHANUSA
YES	1186	1191
NO	13	22
NOT STATED	96	54

Table 57: Distribution of Respondents by Reasons for Discontinuing Breastfeeding

	DISTRICT	
	KAVREPALANCHOK	DHANUSA
CHILD GREW UP	204	207
MOTHER'S MILK DRIED OUT	54	66
MOTHER'S POOR HEALTH	29	13
MOTHER'S CONCERN FOR BEAUTY	-	1
CHILD DIED	40	49
WORKING MOTHER	4	3
DUE TO NEXT PREGNANCY	53	49
DON'T KNOW	66	80
NOT STATED	106	57

Table 58: Distribution of Respondents by Reasons for Not Breastfeeding the Last Child

	DISTRICT	
	KAVREPALANCHOK	DHANUSA
CHILD DIED	18	9
MOTHER'S HEALTH	13	4
NO MILK	-	2
DON'T KNOW	-	1
NOT STATED	100	64

Table 59 : Distribution of Respondents by Their Attitudes Towards Feeding the First Milk

	DISTRICT	
	KAVREPALANCHOK	DHANUSA
YES	846	434
NO	335	778
DON'T KNOW	-	4
NOT STATED	98	54

Table 60 : Distribution of Respondents by Practice of Feeding the Colostrum

	DISTRICT	
	KAVREPALANCHOK	DHANUSA
YES	833	421
NO	19	24
DON'T KNOW	3	7
NOT STATED	110	95

Table 61 : Distribution of Respondents by Reasons for the Colostrum

	DISTRICT	
	KAVREPALANCHOK	DHANUSA
NOT GOOD FOR HEALTH	165	259
NOT CUSTOMARY	26	25
NOT GOOD APPEAL	31	305
DIFFICULT TO DIGEST	20	32
UNADVISABLE TO FEED	37	14
DON'T KNOW	12	48
NOT STATED	160	117

Table 62 : Distribution of Respondents by Performance of Rice-feeding Ceremony

	DISTRICT	
	KAVREPALANCHOK	DHANUSA
YES	1198	89
NO	173	1327
DON'T KNOW	2	-
NOT STATED	99	54

Table 63 : Distribution of Respondents by Incidence of Giving Supplementary Food Before the Ceremony

	DISTRICT	
	KAVREPALANCHOK	DHANUSA
YES	829	27
NO	351	55
DON'T KNOW	1	1
NOT STATED	117	59

Table 64 : Distribution of Respondents by Types of Solid Foods Given to Children

PANCHAYAT CODE	SAMBOTTAM PITHO	KHIR	SOLID FOODS								MEATS & FISH	
			EGGS	DRIED BEANS	FRUITS	RICE WITH MILK	DAI. & RICE	GREEN VEGETABLE	KHICHADE JALLO, KHOLE			
1 ~ 3	29	1	14	24	11	287	309	81	79	22		
4 ~ 5	6	4	2	20	4	194	213	102	54	3	1 - 3 : Bhumlutar	
6 ~ 8	28	3	12	19	13	312	336	132	86	18	4 - 5 : Dapcha	
9 ~ 10	7	6	7	15	3	259	249	70	31	11	6 - 8 : Khopasi	
SUB-TOTAL	70	14	35	78	31	1,052	1,107	385	250	54	9 - 10 : Nala	
11 ~ 13	50	19	22	36	40	198	365	70	155	53	11 - 13 : Godar	
14 ~ 15	-	1	-	1	2	101	239	53	46	1	14 - 15 : Godhaghas	
16 ~ 18	24	58	11	15	26	296	442	76	109	45	16 - 18 : Sabaila	
19 ~ 20	5	5	-	1	7	135	264	38	78	7	19 - 20 : Tarapatti	
SUB-TOTAL	79	83	33	53	75	730	1,370	237	388	106		
TOTAL	149	97	68	131	106	1,782	2,477	622	638	160		

Table 65: Distribution of Respondents by Their Attitude Towards Breastfeeding after the Child Has Started Taking Solid Food

	DISTRICT	
	KAVREPALANCHOK	DHANUSA
YES	1320	1247
NO	32	31
DON'T KNOW	20	72
NOT STATED	98	56

Table 66: Distribution of Respondents by Their Attitude Towards Giving Additional Food to Pregnant Women and by Type of Food

PANCHAYAT CODE	SUPPLEMENTARY FOOD FOR PREGNANT WOMAN							
	PROTEIN	FRUITS	GREEN VEGETABLES	BEANS	EGGS	MILK	GHEE	OTHERS
1 ~ 3	66	28	11	14	7	37	40	62
4 ~ 5	33	21	6	10	6	23	11	45
6 ~ 8	87	40	26	29	26	45	27	80
9 ~ 10	41	25	10	8	5	26	12	41
SUB-TOTAL	227	114	53	61	44	131	90	228
11 ~ 13	43	16	25	-	5	30	8	12
14 ~ 15	19	22	5	1	6	47	2	48
16 ~ 18	31	19	10	4	1	56	6	50
19 ~ 20	22	15	5	5	2	50	2	43
SUB-TOTAL	115	72	45	10	14	183	18	153
TOTAL	342	186	98	71	58	314	108	381

1 - 3 : Bhumlutar  
 4 - 5 : Dapcha  
 6 - 8 : Khopasi  
 9 - 10 : Nala  
 11 - 13 : Godar  
 14 - 15 : Godhaghas  
 16 - 18 : Sabaila  
 19 - 20 : Tarapatti



Table 67 : Distribution of Respondents by Their Attitude Towards Giving Additional Food to Breastfeeding Mother by Type of Food

PANCHAYAT CODE	SUPPLEMENTARY FOOD FOR BREASTFEEDING MOTHER							
	PROTEIN	GREEN FRUITS	VEGETABLES	BEENS	EGGS	MILK	GHEE	OTHERS
1 ~ 3	83	16	23	12	8	48	51	84
4 ~ 5	46	14	22	11	7	35	31	82
6 ~ 8	102	29	29	28	11	55	56	120
9 ~ 10	76	6	11	9	3	39	37	91
SUB-TOTAL	307	65	85	60	29	177	175	377
11 ~ 13	21	9	21	1	4	35	3	49
14 ~ 15	9	8	4	11	7	106	1	126
16 ~ 18	15	9	24	7	2	85	2	96
19 ~ 20	20	11	7	15	3	89	3	88
SUB-TOTAL	65	37	56	34	16	315	9	359
TOTAL	372	102	141	94	45	492	184	736

1 - 3 : Bhumlutar  
 4 - 5 : Dapcha  
 6 - 8 : Khopasi  
 9 - 10 : Nala  
 11 - 13 : Godar  
 14 - 15 : Godhaghas  
 16 - 18 : Sabaila  
 19 - 20 : Tarapatti

Table 68 : Distribution of Respondents by Knowledge About "Runche" or "Sukenash"

	DISTRICT	
	KAVREPALANCHOK	DHANUSA
YES	1054	843
NO	326	574
DON'T KNOW	-	1
NOT STATED	97	56

Table 69 : Distribution of Respondents by Their Knowledge of Knowing "Runche" or "Sukenash" and by Reasons for Having It

	DISTRICT	
	KAVREPALANCHOK	DHANUSA
PHYSICAL CONTACT WITH PREGNANT MOTHER	358	21
PHYSICAL CONTACT WITH AN INFANT	52	12
OTHER SUPERSTITIOUS REASON	381	316
CHILD IF MALNOURISHED	25	53
DON'T KNOW	5	7
NOT STATED	120	86

Table 70: Distribution of Respondents by Their Knowledge About Treatment of "Runche" or "Sukenash" and by Type of Treatment

	DISTRICT	
	KAVREPALANCHOK	DHANUSA
MORNING BATH	47	13
SPRINKLING COWS' URINE	25	6
SPRINKLING COWS' MILK	11	16
FAITH HEALER/TRADITIONAL TREAT.	724	461
MODERN TREATMENT	65	86
AYURVEDIC TREATMENT	5	23
PROVIDE NOURISHMENT	9	14
DON'T KNOW	13	10
NOT STATED	105	58

Table 71: Distribution of Respondents by Incidence of Eye Problem and Nightblindness to Children

PANCHAYAT CODE	EYE PROBLEM YES	THE KIND OF EYE PROBLEM								NIGHT BLINDNESS			
		0	1	2	3	4	5	6	NOT STATED	0	1	2	9
1 ~ 3	44	335	19	1	-	-	-	24	29	52	1	326	29
4 ~ 5	27	218	17	1	1	-	1	7	38	27	3	215	38
6 ~ 8	29	379	11	-	-	1	1	14	74	49	4	355	72
9 ~ 10	31	266	16	1	-	-	3	12	7	44	1	249	11
SUB-TOTAL	131	1,198	63	3	1	1	5	57	148	172	9	1,145	150
11 ~ 13	7	339	1	1	-	1	-	4	48	50	5	284	55
14 ~ 15	27	273	12	1	-	-	-	14	13	47	16	237	14
16 ~ 18	31	399	15	3	3	-	-	10	42	85	12	333	42
19 ~ 20	32	244	10	1	-	-	1	20	27	45	22	210	26
SUB-TOTAL	97	1,255	38	6	3	1	1	48	130	227	55	1,064	137
TOTAL	228	2,453	101	9	4	2	6	105	278	399	64	2,209	287

1 - 3 : Bhumlta. 4 - 5 : Dapcha. 6 - 8 : Khopasi. 9 - 10 : Nala. 11 - 13 : Godar. 14 - 15 : Godhaghas.  
16 - 18 : Sabaila. 19 - 20 : Tarapatti

Table 72: Distribution of Nutritional Status of Children

DISTRICT : KAVREPALANCHOK

	NUTRITIONAL STATUS		
	A	B	C
LAST CHILD	110	269	431
LAST BUT ONE CHILD	18	85	163
LAST BUT TWO CHILD	2	7	15
TOTAL	130	361	609

DISTRICT : DHANUSA

	NUTRITIONAL STATUS		
	A	B	C
LAST CHILD	166	275	325
LAST BUT ONE CHILD	13	56	122
LAST BUT TWO CHILD	3	5	5
TOTAL	182	336	452

A : Malnourished  
 B : Slightly Undernourished  
 C : Well Nourished

Table 73 : Number of Deaths by 5 Year Age Group.

AGE	DISTRICT	
	KAVREPALANCHOK	DHANUSA
0	44	43
1 ~ 4	12	18
5 ~ 9	7	6
10 ~ 14	4	4
15 ~ 19	2	1
20 ~ 24	3	2
25 ~ 29	2	-
30 ~ 34	1	1
35 ~ 39	2	4
40 ~ 44	1	3
45 ~ 49	3	4
50 ~ 54	7	1
55 ~ 59	4	1
60 ~ 64	9	1
65+	19	27
UNKNOWN	1	1
TOTAL	121	117

Table 74 : Incidence of Diarrhoea, Measles, Worms, Whooping Cough, A. R. I. and Diphtheria among Children under Five.

PANCHAYAT CODE	DIARRHOEA		MEASLES		WORMS		WHOOPING COUGH		A. R. I.		DIPHThERIA	
	YES	NO	YES	NO	YES	NO	YES	NO	YES	NO	YES	NO
1 ~ 3	174	77	31	217	105	144	98	152	115	135	15	234
4 ~ 5	111	48	28	129	59	99	66	92	61	97	5	152
6 ~ 8	188	75	55	203	98	163	69	192	100	158	11	247
9 ~ 10	147	41	47	140	81	107	54	133	63	124	12	173
SUB-TOTAL	620	241	161	689	343	513	287	569	339	514	43	806
11 ~ 13	141	79	18	197	47	173	26	194	39	180	3	217
14 ~ 15	123	52	22	151	80	92	44	130	135	40	8	157
16 ~ 18	149	113	26	229	56	206	52	208	82	180	4	243
19 ~ 20	114	61	17	156	53	129	39	136	110	65	2	163
SUB-TOTAL	527	305	85	733	236	584	161	668	366	465	17	780
TOTAL	1,147	546	246	1,422	579	1,107	448	1,237	705	979	60	1,586

1-3 : Bhumlutar, 4-5 : Dapcha, 6-8 : Khopasi, 9-10 : Nala, 11-13 : Godar, 14-15 : Godhaghas,  
16-18 : Sabaila, 19-20 : Tarapatti

Table 75: Distribution of Children by Type of Treatment Received for Diarrhoea, Measles, Worms, Whooping Cough, A. R. I. and Diphtheria

DISTRICT : KAVREPALANCHOK

	THE PLACE FOR TREATMENT						
	NOT TREATED	AT HOME	H. P. / HOSPITAL	FP CLINIC	DHAMI / JHANKRI	KAVIRAJ / VAIDYA	OTHERS
DIARRHOEA (LAST BUT TWO CHILD)	112	96	158	2	121	39	43
MEASLES (ANY CHILDREN)	72	37	19	-	8	5	7
WORMS (LAST CHILD)	47	35	68	22	17	19	42
WHOOPING COUGH (LAST CHILD)	74	44	78	1	6	18	20
A. R. I. (LAST CHILD)	134	48	63	1	27	16	18
DIPHThERIA (LAST CHILD)	8	7	8	-	3	4	5

DISTRICT : DHANUSA

	THE PLACE FOR TREATMENT						
	NOT TREATED	AT HOME	H. P. / HOSPITAL	FP CLINIC	DHAMI / JHANKRI	KAVIRAJ / VAIDYA	OTHERS
DIARRHOEA (LAST BUT TWO CHILD)	72	185	41	8	2	52	127
MEASLES (ANY CHILDREN)	38	30	3	-	-	1	5
WORMS (LAST CHILD)	29	62	16	3	8	22	50
WHOOPING COUGH (LAST CHILD)	34	42	10	-	1	22	34
A. R. I. (LAST CHILD)	96	133	15	2	4	23	63
DIPHThERIA (LAST CHILD)	4	7	1	-	-	-	2

1 HOUSEHOLD INFORMATION

Name of Panchayat: \_\_\_\_\_ District: \_\_\_\_\_  
 Ward No: \_\_\_\_\_ Questionnaire No: \_\_\_\_\_  
 Household No: \_\_\_\_\_ Sample No: \_\_\_\_\_

Attempt No.	1	2	3	4
Date				
Interviewer				
Result (In code)*				

- \* Result type Code
- Interview completed 1
  - No responsible respondent at house 2
  - Appointment for later date fixed 3
  - (Note time & date of appointment)
  - Refuse (also specify reason if possible) 4
  - Other (specify) 5

HOUSEHOLD SCHEDULE:

NAMES OF USUAL RESIDENTS AND VISITORS	RELATIONSHIP	RESIDENCE	SEX	AGE IN COMPLETED YEARS	MARITAL STATUS (ASK ONLY TO THOSE AGED 16 YEARS AND ABOVE)	ELIGIBILITY		
PLEASE GIVE ME THE NAME OF THE PERSON WHO USUALLY LIVE IN YOUR HOUSEHOLD ?	WHAT IS THE RELATIONSHIP OF THIS PERSON TO THE HEAD OF THE HOUSEHOLD ?	DOES THIS PERSON USUALLY LIVE HERE	DID THIS PERSON SLEEP HERE LAST NIGHT?	IS THIS PERSON MALE OR FEMALE?	HOW OLD IS THIS PERSON ?	IS THIS PERSON MARRIED	IS THIS PERSON MARRIED ? UNMARRIED - U MARRIED - M WIDOWED - W DIVORCED - D SEPERATED - S	TICK ALL MARRIED WOMEN ELIGIBLE FOR INTERVIEW.
(1)	(2)	(YES/ NO) (3)	(YES/ NO) (4)	(MALE FEMALE) (5)	(6)	(YES/ NO ) (7)	(8)	(9)
01								
02								
03								
04								
05								
06								
07								
08								
09								
10								

\* IF CONTINUATION SHEET USED, TICK HERE [ ]

2 SOCIO-ECONOMIC STATUS OF THE HOUSEHOLD:

INTERVIEWER: INFORMATION IN THIS SECTION OF THE QUESTIONNAIRE SHOULD BE COLLECTED FROM ANY KNOWLEDGEABLE ADULT MEMBER OF THE HOUSEHOLD WHO CAN PROVIDE THESE INFORMATION.

2.1 What is the level of education (i.e. highest grade passed) of the head of the household ? \_\_\_\_\_

2.2 What is the highest level of education ever received by a member of the family ? \_\_\_\_\_

2.3 What is the occupation of the head of the household (i.e. The activity he or she spent most of his time ?  
\_\_\_\_\_

2.4 Do you or your family have an land ?  
Yes :\_\_\_; No :\_\_\_;  
‡ (SKIP to Q. 2.5)

2.4.1 How much ? \_\_\_\_\_  
(specify the unit)

2.5 What is the main source of drinking water ?  
Tub Well :\_\_\_; Tap :\_\_\_;  
Spring :\_\_\_; Lake :\_\_\_;  
River :\_\_\_; Well :\_\_\_;  
Deep Well :\_\_\_; Other (specify) \_\_\_\_\_

2.6 Is there a fixed latrine for the exclusive use of this household?  
Yes :\_\_\_; No :\_\_\_;

2.7 Has there been any live birth in this house during the past 12 months ? Yes :\_\_\_; No :\_\_\_;  
‡  
2.7.1 How many ? \_\_\_\_\_

2.8 Has there been any death in this house during the past 12 months?  
Yes :\_\_\_; No :\_\_\_;  
‡  
2.8.1 How many ? \_\_\_\_\_

INSTRUCTION: If there are any deaths reported please fill in the following table .

Items	Number of deceased :	1	2	3
Age at death	:	:	:	:
Sex	:	:	:	:
Cause of death	:	:	:	:

**INDIVIDUAL QUESTIONNAIRE**

(Only for 15 to 49 aged married women)

Name of Panchayat: \_\_\_\_\_ District: \_\_\_\_\_  
 Ward No: \_\_\_\_\_ Respondent's serial No: \_\_\_\_\_  
 Household No: \_\_\_\_\_ Questionnaire No: \_\_\_\_\_

Attempt No	1	2	3	4
Date				
Interviewer				
Result (in code)*				

* Result type	Code
Interview completed	1
Respondent not at home	2
Appointment for later date fixed (note time & date of appointment)	3
Refusal(also specify reason if possible)	4
Incomplete interview	5
Other (specify)	6

Form Checked  Supervisor present  Edited  Coded   
 Name of \_\_\_\_\_ at the time of \_\_\_\_\_  
 Editor: \_\_\_\_\_ interview / \_\_\_\_\_  
 Date: \_\_\_\_\_ reinterview By: \_\_\_\_\_ By: \_\_\_\_\_  
 Name of Super- Name of Supervisor: Date: \_\_\_\_\_ Date: \_\_\_\_\_  
 visor: \_\_\_\_\_  
 Date: \_\_\_\_\_ Date: \_\_\_\_\_

**3 BACKGROUND INFORMATION OF THE RESPONDENT**

- 3.1 What is your date of birth ? (to write in U.S. Era.)  
 \_\_\_\_\_ Year \_\_\_\_\_ month, Don't know
- 3.1.1 How old are you ? \_\_\_\_\_ ( Age in completed years ).
- 3.2 Can you read and write ?  
 Yes  No
- 3.2.1 Have you ever attended school ?  
 Yes  No
- 3.2.1.1 What was the highest class attended ? \_\_\_\_\_
- 3.3 What is your occupation ? \_\_\_\_\_
- 3.4 How old is your husband ? \_\_\_\_\_ ( Age in completed years ).
- 3.5 Can he read and write ?  
 Yes  No
- 3.5.1 Did he attend school ?  
 Yes  No
- 3.5.1.1 What was the highest class attended ? \_\_\_\_\_
- 3.6 What is his occupation ? \_\_\_\_\_



3.7 Which is the nearest Hospital / Health centre / Health post from here ?

Name: \_\_\_\_\_ Don't know:

Distance (in mile) \_\_\_\_\_

3.8 What do you usually do when someone in this house becomes ill ?

Go for treatment:  Don't go for treatment:

†

Why? \_\_\_\_\_

\_\_\_\_\_ (skip to Section 4.)

3.9 Where do you take the patient for treatment ?

1. Hospital / Health centre / Health post:  Skip to 3.10.

2. Doctor / Health Assistant / Nurse:

3. Dhawi / Jhankri:  Skip to

4. Kabiraj:  Section 4.

5. Other (Specify) \_\_\_\_\_

3.10 Are you satisfied or not from the service you receive from Hospital / Health centre / Health post ?

Yes:  No:

#### 4 FERTILITY HISTORY.

4.1 How old were you when you had your first menstruation ?

\_\_\_\_\_ Don't know:

Completed age. Not yet started:

(Stop to take interview).

4.2 In what month and year did you get married ?

\_\_\_\_\_ year. \_\_\_\_\_ month. Don't know:

†

4.2.1 How old were you when you got married ?

\_\_\_\_\_ Completed age.

4.3 Did you start living with your husband immediately after marriage?

Yes:  No:

†

4.3.1 After how many years did you start living together ?

\_\_\_\_\_ Years. ( If they are still not live together, then stop to take interview ).

4.4 Have you ever had any live born child ?

Yes:  No:

†

(Skip to Q.No 1.6)

4.4.1 How many of your children were born alive ?

( Total \_\_\_\_\_, Sons \_\_\_\_\_, Daughters \_\_\_\_\_ ).

4.4.2 How many of them are now alive ?

( Total \_\_\_\_\_, Sons \_\_\_\_\_, Daughters \_\_\_\_\_ ).

4.5 In the past one year (from 16th Nov. 1985 to 15th Nov. 1986) did you have any live born child ?

Yes  No

4.5.1 How many \_\_\_\_\_

4.5.2 In what month and year were they born ?

1st born, \_\_\_\_\_ month \_\_\_\_\_ year.

2nd born, \_\_\_\_\_ month \_\_\_\_\_ year.

4.6 Did any of your pregnancy result in non-live birth ?

Yes  No

4.6.1 Number of miscarriages \_\_\_\_\_

4.7 Did you have any still birth ?

Yes  No

4.7.1 How many ? \_\_\_\_\_

4.8 Are you pregnant now ?

Yes  No  Don't know

4.8.1 For how long have you been pregnant ? \_\_\_\_\_ months.

4.8.2 Where would you go for delivery ? \_\_\_\_\_

(Skip to Q No. 4.10)

4.9 When did you have your last menstruation ?

( Year \_\_\_\_\_ month \_\_\_\_\_ )

4.10 Do you want to have (additional) children ?

Yes  No  Don't know

4.10.1 How many (additional) children do you want to have?

( Total \_\_\_\_\_ , Sons \_\_\_\_\_ , Daughters \_\_\_\_\_ . )

Don't know

4.11 In your opinion what would be an ideal number of children for a couple ?

( Total \_\_\_\_\_ , Sons \_\_\_\_\_ , Daughters \_\_\_\_\_ . )

4.12 In your opinion what will be correct spacing between two children ?

5 ANTE-NATAL AND POST-NATAL CARE:

[ FILTER: If 'No' in Q. 4.4; 'No' in Q. 4.6; 'No' in 4.7; and 'No' or 'Don't know' in 4.8; then tick in "Never pregnant" box otherwise tick in "ever pregnant" box.]

Ever pregnant :\_\_\_: Never pregnant :\_\_\_:  
: : (Skip to next section)

5.1 Did you go for medical check-up due to pregnancy ?

Yes :\_\_\_: No :\_\_\_:  
: : (Skip to Q.No 5.1)

5.1.1 Where did you go for check-up ?

Hospital, :\_\_\_:  
Health Post, :\_\_\_: (ask Q.No 5.1.2)  
T.B.A. :\_\_\_: (ask Q.No 5.2)  
Other (specify) \_\_\_\_\_

5.1.2 What for ?

Routine, :\_\_\_:  
Complication, :\_\_\_:  
Both, :\_\_\_:

5.1.3 What kind of check-up did you have ?

Weight, :\_\_\_:  
Blood Pressure, :\_\_\_:  
Urene test, :\_\_\_:  
Palpation, :\_\_\_:  
Other (specify) \_\_\_\_\_

5.2 Who advised you to have check-up ?

Health Worker :\_\_\_: Family Member :\_\_\_:  
Friend :\_\_\_: Other (specify) \_\_\_\_\_

5.3 Is the check-up satisfactory ?

Yes :\_\_\_: No :\_\_\_:

5.4 Did you take Tetanus Toxoid Immunization ?

Yes :\_\_\_: No :\_\_\_:

[ FILTER: If 'No' in Q. 4.4; and Q. 4.7; then tick in "No delivery" otherwise tick in "at least one delivery" box. ]

At least one delivery :\_\_\_: No delivery :\_\_\_:  
: : (Skip to section 5)

5.5 Where did you go for last delivery ? \_\_\_\_\_

[ FILTER: If they give answer at 'hospital' in Q.5.5, ask Q.5.7 ]

5.6 Did anybody assist you in the last delivery ?

Yes :\_\_\_: No :\_\_\_:  
: : (skip to Q. \_\_\_)

5.6.1 Who assisted you ?

Doctor/ Nurse :\_\_\_:  
T.B.A. :\_\_\_:  
Other (specify) \_\_\_\_\_

5.7 Did you go to Hospital / Health centre / Health post for check-up after delivery ?

Yes  No

5.7.1 Were you satisfied with it ?

Yes  No

**6 FAMILY PLANNING**

1. Have you heard of Family Planning ?

Yes  No

TABLE NO 1

Q 6.2, Have you heard of \_\_\_\_\_ ; Q6.3, Have you or your spouse ever used the method \_\_\_\_\_ ; Q6.4, Are you or your spouse currently using any of the \_\_\_\_\_ (read out all the names of the methods one by one serially).

Q6.2, Have you or your spouse ever used the method \_\_\_\_\_ (read out all the methods that are marked by "Yes" only in Q6.2. IF 'No' tick the appropriate box.)

METHOD	Yes	No	Yes	No	Yes	No
01Pill	<input type="checkbox"/>	<input type="checkbox"/>	<input type="checkbox"/>	<input type="checkbox"/>	<input type="checkbox"/>	<input type="checkbox"/>
02Condom	<input type="checkbox"/>	<input type="checkbox"/>	<input type="checkbox"/>	<input type="checkbox"/>	<input type="checkbox"/>	<input type="checkbox"/>
03Loop	<input type="checkbox"/>	<input type="checkbox"/>	<input type="checkbox"/>	<input type="checkbox"/>	<input type="checkbox"/>	<input type="checkbox"/>
04Injectable	<input type="checkbox"/>	<input type="checkbox"/>	<input type="checkbox"/>	<input type="checkbox"/>	<input type="checkbox"/>	<input type="checkbox"/>
05Vasectomy	<input type="checkbox"/>	<input type="checkbox"/>	<input type="checkbox"/>	<input type="checkbox"/>	<input type="checkbox"/>	<input type="checkbox"/>
06Female sterilization	<input type="checkbox"/>	<input type="checkbox"/>	<input type="checkbox"/>	<input type="checkbox"/>	<input type="checkbox"/>	<input type="checkbox"/>
07Traditional	<input type="checkbox"/>	<input type="checkbox"/>	<input type="checkbox"/>	<input type="checkbox"/>	<input type="checkbox"/>	<input type="checkbox"/>
08Other (specify)	<input type="checkbox"/>	<input type="checkbox"/>	<input type="checkbox"/>	<input type="checkbox"/>	<input type="checkbox"/>	<input type="checkbox"/>
					<input type="checkbox"/>	Currently using
					<input type="checkbox"/>	no method.

FILTER: If they are still using any FP methods then don't have to ask Q.No. 6.5 and 6.6.

[ FILTER: Ask the following questions to those who have knowledge of Family Planning Methods, but have never used F.P. methods ]

6.5 What is the reason for not using any F.P. methods till now ?

- 6.5.1 Desire for more children.
- 6.5.2 Want to have son.
- 6.5.3 Want to have daughter.
- 6.5.4 Due to health reason.
- 6.5.5 Due to religion.
- 6.5.6 Husband does not like.
- 6.5.7 husband away.
- 6.5.8 Too old.
- 6.5.9 Due to infecundity.
- 6.5.10 Unavailability of F.P. methods.
- 6.5.11 Others (specify) \_\_\_\_\_

6.6 Do you expect to use any F.P. methods in future ?

Yes           No   

†

6.6.1 what method do you want to use ?

- Pill,                                       Depoprovera,
- Condom,                                   Male Sterilization,
- IUD,                                       Female Sterilization,
- Other (specify) \_\_\_\_\_

6.7 How often does the health worker visit you ?

Once a month           Once three months     
Once a year             Never visited       

(Skip to next Section).

6.8 Does he talk about F.P. methods ?

Yes           No   

6.9 Does he talk about child care ?

Yes           No   

6.10 Does he talk about ARI ?

Yes           No   

6.11 Does he talk about Deworming ?

Yes           No   

6.12 Does he talk about Breastfeeding ?

Yes           No   

6.13 Does he talk about child spacing ?

Yes           No   

6.14 Does he talk about O.R.T. ?

Yes           No   

6.15 Does he talk about immunization ?

Yes           No   

6.16 Does he talk about health education ?

Yes           No   

6.17 Does he talk about Nutrition ?

Yes           No

6.18 Does he talk about Anti-natal and Post-natal care of the mother?

Yes :\_\_\_: No :\_\_\_:

6.19 Does he distribute the medicine ?

Yes :\_\_\_: No :\_\_\_:

6.20 Does he show the pictures when he talk about above subjects ?

Yes :\_\_\_: No :\_\_\_:

7 Q.R.T.

7.1 Do you know what diarrhoea is ?

Yes :\_\_\_: No :\_\_\_:

(Skip to Q No 7.4)

7.1.1 What is diarrhoea ?

-----

7.2 Do you know what can cause diarrhoea ?

Yes :\_\_\_: No :\_\_\_:

†

7.2.1 What are these ?

-----

7.3 What treatment would you give when your child suffers from diarrhoea ?

-----

7.4 Have you ever heard of "Jeevan Jul" ?

Yes :\_\_\_: No :\_\_\_:

†

(Ask Q.No 7.5)

7.4.1 How did you come to know about it ?

-----

7.4.2 How do you prepare it ?

-----

7.4.3 In what quantity will you provide the solution to the sick ?

-----

7.5 Have you ever heard of medicine water (sugar salt solution) ?

Yes  No

7.5.1 How did you come to know about it ?

7.5.2 How do you prepare it ?

7.6 Do you provide the child with regular amount of liquid food / water when your child is suffering from diarrhoea ?

Yes  No

7.6.1 Why ?

7.7 Do you continue breastfeeding if the child suffers from diarrhoea?

Yes  No

7.7.1 Why ?

#### 8 IMMUNIZATION

8.1 Have you ever heard of immunization ?

Yes  No

(Skip to next Section)

8.2 How did you know about it ?

8.3 What are the disease that can be prevented from immunization ?

Tetanus,  Whooping cough,

Polio,  Measles,

Diphtheria,  T.B.

Other (specify) \_\_\_\_\_

[ INTERVIEWER: If the respondent has the children below 5 year of age, ask following questions, otherwise skip to Section 9.

8.4 Have you immunized your children ?

Yes  No

(Skip to Q.No 8.5)

8.4.1 What are they and how many times did you immunized ?

[ INTERVIEWER: Write the name of childrens orderly from young one. ]

#### Immunization History

Name of child	D.C.G.	D.P.T.	Polio.	Measles.
01. _____	---	1.2.3.	1.2.3.	---
02. _____	---	1.2.3.	1.2.3.	---
03. _____	---	1.2.3.	1.2.3.	---

8.4.2 Where did you immunize your children ?

Hospital,

Health post,

Immunization camp,

Other (specify), \_\_\_\_\_

8.5 Why have not you immunized your child ?

-----  
-----

**9 BREAST FEEDING**

[ INTERVIEWER: Tick one of the following boxes by referring Q.No 4.4.

At least one live birth       No live birth   
(Continue)      (Skip to next section.)

9.1 Did you breast feed your last child ?

Yes       No   
↓ (Skip to question no 9.2.)

9.1.1 For how many month did you breastfeed him/her ?

Months \_\_\_\_\_,      Still continuing   
↓      ↓

9.1.1.1 Why did you  
discontinue  
breastfeeding ?

9.1.1.2 How old is the  
child ?

-----  
(ask Q. No 9.3)

-----  
(Completed months).  
(ask Q. No 9.3)

9.2 Why did not you breastfeed this child ?

-----  
-----



9.3 After delivery is the first milk (Colostrum) usually feed to the child ?

Yes  No

9.3.1 Did you feed the first milk to your child ?

Yes  No

9.3.2 Why ? \_\_\_\_\_

9.4. What are the advantages of Breastfeeding ?

-----  
 -----

**10 NUTRITION, FOOD AND FEEDING HABIT**

10.1 Do you perform a rice feeding ceremony in your family ?

Yes  No

(Skip to Q.No 10.2)

10.1.1 At what age do you usually perform this ceremony ?

1) Boy \_\_\_\_\_ months, 2) Girl \_\_\_\_\_ months,

10.1.2 Do you provide any supplementary food (Moraa khana) before the rice feeding ceremony ?

Yes  No

10.2 After how many months do you usually start giving solid food ?  
 \_\_\_\_\_ months.

10.3 What kind of foods do you usually give as supplementary food?

[ Tick mark in appropriate box. ]

ITEMS		ITEMS	
Sarbotam pitho,	<input type="checkbox"/>	Milk/ Rice,	<input type="checkbox"/>
Rice Pudding,	<input type="checkbox"/>	Dal/ Bhat,	<input type="checkbox"/>
Leguas,	<input type="checkbox"/>	Green Vegetable,	<input type="checkbox"/>
EGG,	<input type="checkbox"/>	Khichadi/ Jaulo/	<input type="checkbox"/>
Fresh Fruit	<input type="checkbox"/>	Khole,	<input type="checkbox"/>
		Meat/ Fish	<input type="checkbox"/>
Other (Specify) _____			

10.4 Should a mother continue breast-feeding even after the child starts taking solid food ?

Yes  No  Don't know

↓ ↓

10.4.1 How long should the mother continue breast-feeding after giving solid food ?  
\_\_\_\_\_ months.

10.4.2 Why do you think so ?  
\_\_\_\_\_  
\_\_\_\_\_

10.5 Do you supplement the child with other milk ?

Yes  No

↓

10.5.1 What kind of milk ?

Cow

Buffalo

Goat

Tin (commercial)

Other: \_\_\_\_\_

10.6 Are pregnant mothers provided with special food during the pregnancy period ?

Yes  No  Don't know

↓

10.6.1 What food do you usually provide ?

1. \_\_\_\_\_

2. \_\_\_\_\_

3. \_\_\_\_\_

10.7 What kind of food is usually not given to pregnant mothers ?

a) Name of food:

b) Reason ?

1. \_\_\_\_\_

1. \_\_\_\_\_

2. \_\_\_\_\_

2. \_\_\_\_\_

3. \_\_\_\_\_

3. \_\_\_\_\_

Don't know

10.8 Are lactating mothers provided with extra food ?

Yes  No  Don't know

↓

10.8.1 What food items ?

1. \_\_\_\_\_

2. \_\_\_\_\_

3. \_\_\_\_\_

10.9 What kind of foods are usually not given to lactating mothers ?

a) Name of food:

b) Reason ?

1. \_\_\_\_\_

1. \_\_\_\_\_

2. \_\_\_\_\_

2. \_\_\_\_\_

3. \_\_\_\_\_

3. \_\_\_\_\_

Don't know

10.10 Have you heard of "Runche" or "Sukenash" ?

Yes  No  Don't Know

Note:- INTERVIEWERS; show photograph of malnourished child, and ask local name and repeat the earlier question again ?

10.10.1 Do you know why this "Runche" or "Sukenash" happens ?

Yes  No

10.10.1.1 Why ?

- 1) \_\_\_\_\_
2) \_\_\_\_\_

10.10.1.2 Do you know how to prevent "Runche" and "Sukenash" ?

Yes  No

10.10.1.2.1 Do you know how to treat "Runche" and "Sukenash" ?

Yes  No

10.11 Do you know how to prepare weaning food ?

Yes  No

10.11.1 What is the composition of weaning food;

Table with 2 columns: Name of food, Proportion. Rows 1, 2, 3.

[ INTERVIEWER: Ask mothers, who have children. ]

10.12 Does your child have any eye vision problem ?

Yes  No

10.12.1 What problem ?

10.13 Do you think your child's vision in the evening or night is normal ?

Yes  No

10.13.1 How many children have night vision problem ?

10.14 Measure the nutritional status of the each child ( 6 months - under 5 years ) using arm circumference tape. If there are no children in this age group tick the box; No children

(Skip to next Section)

Table for nutritional status measurement with columns for Age, Name, Year/month, Sex, and nutritional status (malnourished, slightly undernourished, well nourished).

11 MORBIDITY AND CAUSES OF ILLNESS.

Tick ( ) appropriate box:

The woman:

has children under five years. Does not have children under five years.

\_\_\_\_\_

(Terminate Interview).

Name (orderly from young one), age,

1. \_\_\_\_\_
2. \_\_\_\_\_
3. \_\_\_\_\_

11.1 During the last 12 months (from 16th Nov. 1985 to 15th Nov. 1986) did any of your children have diarrhoea?

Yes \_\_\_\_\_ No \_\_\_\_\_

↓

11.1.1 How many of them had diarrhoea? \_\_\_\_\_

11.1.2 How many times did they have diarrhoea?

	1st	2nd	3rd
	_____	_____	_____

11.1.3 Where did you go for the treatment?

	_____	_____	_____
No treatment,	_____	_____	_____
At home,	_____	_____	_____
H.P./ Hospital,	_____	_____	_____
MCH Clinic,	_____	_____	_____
Faith healers,	_____	_____	_____
other(specify),	_____		

11.2 During the last 12 months (from 16th Nov. 1985 to 15th Nov. 1986) did any of your children have measles?

Yes \_\_\_\_\_ No \_\_\_\_\_

↓

11.2.1 How many of them had measles? \_\_\_\_\_

11.2.2 Where did you go for treatment?

	1st	2nd	3rd
No treatment,	_____	_____	_____
At home,	_____	_____	_____
H.P./ Hospital,	_____	_____	_____
MCH Clinic,	_____	_____	_____
Faith healers,	_____	_____	_____
other(specify)	_____		

11.3 During the last 12 months (from 16th Nov. 1985 to 15th Nov. 1986) did any of your children have worms?

Yes \_\_\_\_\_ No \_\_\_\_\_

↓

11.3.1 How many of them had worms? \_\_\_\_\_

11.3.2 How many times did they have worms?

	1st	2nd	3rd
	_____	_____	_____

11.3.3 Where did you go for treatment?

	_____	_____	_____
No treatment,	_____	_____	_____
At home,	_____	_____	_____
H.P./ Hospital,	_____	_____	_____
MCH Clinic,	_____	_____	_____
Faith healers,	_____	_____	_____
other(specify)	_____		

11.4 During the last 12 months (from 16th Nov. 1985 to 15th Nov. 1986)  
did any of your children have whooping cough ?

Yes  No

↓

11.4.1 How many of them had whooping cough ? \_\_\_\_\_

11.4.2 How many times did they have whooping cough ?

	1st	2nd	3rd
	<input type="checkbox"/>	<input type="checkbox"/>	<input type="checkbox"/>

11.4.3 Where did you go for treatment ?

	<input type="checkbox"/>	<input type="checkbox"/>	<input type="checkbox"/>
No treatment,			
At home,			
H.P./ Hospital,			
MCH Clinic,			
Faith healers,			
other(specify) _____			

11.5 During the last 12 months (from 16th Nov. 1985 to 15th Nov. 1986)  
did any of your children have ARI (explain) ?

Yes  No

↓

11.5.1 How many of them had ARI ? \_\_\_\_\_

11.5.2 How many times did they have ARI ?

	1st	2nd	3rd
	<input type="checkbox"/>	<input type="checkbox"/>	<input type="checkbox"/>

11.5.3 Where did you go for treatment ?

	1st	2nd	3rd
No treatment,	<input type="checkbox"/>	<input type="checkbox"/>	<input type="checkbox"/>
At home,	<input type="checkbox"/>	<input type="checkbox"/>	<input type="checkbox"/>
H.P./ Hospital,	<input type="checkbox"/>	<input type="checkbox"/>	<input type="checkbox"/>
MCH Clinic,	<input type="checkbox"/>	<input type="checkbox"/>	<input type="checkbox"/>
Faith healers,	<input type="checkbox"/>	<input type="checkbox"/>	<input type="checkbox"/>
other(specify) _____			

11.6 During the last 12 months (from 16th Nov. 1985 to 15th Nov. 1986)  
did any of your children have diphtheria (explain) ?

Yes  NO

↓

11.6.1 How many of them had diphtheria ? \_\_\_\_\_

11.6.2 How many times did they have diphtheria ?

	1st	2nd	3rd
	<input type="checkbox"/>	<input type="checkbox"/>	<input type="checkbox"/>

11.6.3 Where did you go for treatment ?

	<input type="checkbox"/>	<input type="checkbox"/>	<input type="checkbox"/>
No treatment,			
At home,			
H.P./ Hospital,			
MCH Clinic,			
Faith healers,			
other(specify) _____			

11.7 During the last 12 months (from 16th Nov. 1985 to 15th Nov. 1986) did any of your children have any diseases other than mentioned above ?

Yes  No

11.7.1 What sort of disease ? \_\_\_\_\_

11.7.2 How many of them had ..... ? \_\_\_\_\_

11.7.3 How many times did they have 

1st	2nd	3rd
_____	_____	_____

 ?

11.7.4 Where did you go for treatment ? 

1st	2nd	3rd
_____	_____	_____

No treatment,

At home,

H.P./ Hospital,

MCH clinic,

Faith healers,

other(specify) \_\_\_\_\_

**12 HEALTH POST INFORMATION.**

Background Information.

Name :- \_\_\_\_\_

Designation :- \_\_\_\_\_

Total Number of years served in different Post :- \_\_\_\_\_

Duration of stay in this Health Post :- \_\_\_\_\_

Qualifications :- \_\_\_\_\_

Information of Health Post/Centre;

1. How many panchayats does this Health post serve for ?  
No of panchayats: \_\_\_\_\_
2. What is the farthest Panchayat served by this health post ?  
Panchayat \_\_\_\_\_ Distance \_\_\_\_\_ Km.
3. Does this health post have its own building ?  
Yes  No
4. On an average, how many patients visit this health post per day ?  
Average No \_\_\_\_\_

5. What are the most common diseases in this area among children five ?

- 1) \_\_\_\_\_
- 2) \_\_\_\_\_
- 3) \_\_\_\_\_
- 4) \_\_\_\_\_
- 5) \_\_\_\_\_

6. What is the major cause of death of children under five ?

- 1) Diarrhoea :\_\_\_;                      2) Measles :\_\_\_;
- 3) Tetanus :\_\_\_;                        4) A R I :\_\_\_;
- 5) Other (specify) \_\_\_\_\_

7. In your opinion, is the drug supply adequate at this health post?

- Yes :\_\_\_;                      No :\_\_\_;                      Don't know :\_\_\_;

8. Is there any drug store in this locality ?

- Yes :\_\_\_;                      No :\_\_\_;

9. Are there private practitioners in this locality ?

- Yes :\_\_\_;                      No :\_\_\_;

10. Is there a health committee in this locality ?

- Yes :\_\_\_;                      No :\_\_\_;

10.1 Is this helpful or not ?

- Yes :\_\_\_;                      No :\_\_\_;

11. Do you practice outside the health post ?

- Yes :\_\_\_;                      No :\_\_\_;

12. How many posts are sanctioned and filled in at this health post/now ?

Post:	Number Sanctioned:	Number Filled in:	Number Vacant:
1. _____	---	---	---
2. _____	---	---	---
3. _____	---	---	---
4. _____	---	---	---
5. _____	---	---	---
6. _____	---	---	---
7. _____	---	---	---

13. Do you think the existing manpower is enough ?

- Yes :\_\_\_;                      No :\_\_\_;

14. Do you have storage facility in your health post ?

- Yes :\_\_\_;                      No :\_\_\_;

15. Do you have necessary equipment in your health post ?

- Yes :\_\_\_;                      No :\_\_\_;

16. Is there any problem at your health post ?

- Yes :\_\_\_;                      No :\_\_\_;

16.1 What are they ?

- 1) \_\_\_\_\_
- 2) \_\_\_\_\_
- 3) \_\_\_\_\_
- 4) \_\_\_\_\_

आय १. घर सगत प्रश्नावली

पंचायत:-  
 गाई नं:-  
 घर नं:-

जिल्हा:-  
 प्रश्नावली नं:-  
 सव्ह संख्या:-

अन्तरवार्ता दिन गणने पट्टक	१	२	३	४
मिति				
अन्तरवार्ता दिनेचे मास				
परिणाम (संकेतमा)				

परिणामाचे संकेत

परिणाम	संकेत
अन्तरवार्ता पूरा झाले	१
बयस्क उत्तरदाता घरला नसले	२
पॉष्ठ अन्तरवार्ता दिवसे आधी समय सिएले	३
अन्तरवार्ता दिन दबाहेले	४
अन्य (सुनावणे)	५

घरला घास जसो वसने सवा आयन्नुपडरुके मास	माता (सम्बन्ध)	बसोबास दिवशी		दिन	उमेर	बैवाहिक रिचयि (१५ वर्ष भन्दा पापिकुनार्ई घास सोझे)			अन्तरवार्ता गोरु पुने सबै पोल्लाहरुके मासि टिक लागउनु होस (✓) (१५-४९ वर्ष दिवसा) गए यती सुनेके	
		दुपया सघाईके घरला घासबसो वसने घासिहरुके मास भयो	घरपुगीके दिवसन के सम्बन्ध छ?			दिन हुने जसो घडी नै वसनु हुन्छ? हु:छ। हु:न	दिन हिजे यती घरला सुनु भएजे गियो? थियो। थिएन	दिन पुरुष कि महिला पु./म.		दिनके उमेर कति भयो?
०१										०१
०२										०२
०३										०३
०४										०४
०५										०५
०६										०६
०७										०७
०८										०८
०९										०९
१०										१०

घर सगतके मासि कन्टीन्युएशन सीट प्रयोग गरेके भए वास आकलनमा चिन्ती नगानु होस



खण्ड २. गरिवारको सामाजिक तथा आर्थिक विवरण

- २.१ घर मूनीले कति पढ्नु भएको छ?.....  
 २.२ धेरै घरमा सब भन्दा धेरै पढ्नेले कति कक्षा सम्म पढ्नु भएको छ?.....  
 २.३ घर मूनीले कति गर्नु हुन्छ? (विभिन्न काम गर्ने भए कुन चाँहि काम बढी समय गर्नु हुन्छ उल्लेख गर्नुहोस्).....  
 २.४ तपाईंहरूको आफ्नै जग्गा छ?

छ

छैन

(२.५ मोड्युल)

२.४.१ जग्गा कति छ?.....

२.५ पिउने पानी कहाँबाट ल्याउनुहुन्छ?

कुवा

दुधबनेल

खोला

बुगेधारा

कलघारा

इनार

पोखरी

अन्य.....

२.६ तपाईंको आफ्नै चर्पी छ?

छ

छैन

२.७ गएको १ वर्षमा (०४२ साल मंसिर १ गते देखी ०४३ साल कार्तिक महान्त सम्म) यस घरमा कुनै बच्चा (जिवित) जन्मेको थियो?

थियो  थिएन

२.७.१ कति जना?.....

२.८ गएको १ वर्षमा (०४२ साल मंसिर १ गते देखी ०४३ साल कार्तिक महान्त सम्म) यस घरमा कुनै ब्यक्ति भएको थियो?

थियो  थिएन

२.८.१ कति जना?.....

नोट:- यदि कसैको मृत्यु भएको भए, तालको तालिका भरने:-

विवरण	भूतको कर्मिक		
	१	२	३
भूतको उमेर			
भूतको लिंग			
भूतको कारण			

**व्यक्तिगत प्रश्नावली**  
(१५ वर्षीय ४९ वर्ष सम्मको विवाह भइसकेका महिलाहरूको लागि मात्र)

परिचयगतक विवरण

गाईं पं:- गाउँ पन्नायत:-  
 जिल्ला:- घर संख्या:-  
 समूह संख्या:-  
 उक्त महिलाको क्रमांक:-

अन्तरवार्ता दिन गएको पटक	१	२	३	४
मिति				
परिणाम				

परिणाम संकेत:-  
 १. अन्तरवार्ता पूरा भएको  
 २. उक्त व्यक्ति घरमा नभएको  
 ३. अन्तरवार्ता पछि दिने  
 ४ अन्तरवार्ता दिन नमानेको  
 ५ भाषा भन्न सकिएको  
 ६ अन्य (सुवाएर लेख्ने)

अन्तरवार्ता फारमको बीच गरेको इडिटरको नाम: मिति: सुपरभाइजरको नाम: मिति:	पुनः अन्तरवार्ता गरेको वा अन्तरवार्ता गरेको छ/उँमा आफै उपस्थित भएको नाम:- मिति:-	केन्द्रमा सम्पादन नाम:- मिति:-	खोड गरेको नाम:- मिति:-
<input type="checkbox"/>	<input type="checkbox"/>	<input type="checkbox"/>	<input type="checkbox"/>

**खण्ड ३. उत्तरवाताको प्रश्नसूची**

३.१ तपाईंको जन्म कहिले भएको हो? (निकट सम्बन्धमा लेख्ने)

सान..... पहिला..... पाहा ठाँउ

३.१.१ तपाईं कति वर्षको हुनु भयो?  
(पूछ गरेको वर्ष लेख्ने)

३.२ तपाईं लेख पढ गर्न सक्नु हुन्छ?

सक्छ  सक्दैन

३.२.१ तपाईंले कहिल्यै स्कूलमा पढ्नु भएको थियो?

थियो  थिएन

३.२.१.१ तपाईंले कति कक्षा पास गर्नु भएको छ?.....

३.३ तपाईं के काम गरि जिबिका चलाउनु हुन्छ?

३.४ तपाईंको श्रीमानको उमेर कति थियो?

३.५ के वहाँ लेख पढ गर्न सक्नु हुन्छ?

सक्नु हुन्छ  सक्नु हुँदैन

३.५.१ के वहाँले स्कूलमा पढ्नु भएको थियो?

थियो  थिएन

३.५.१.१. वहाँले कति कक्षा पास गर्नु भएको छ?.....

३.६ तपाईंको श्रीमान के काम गर्नु हुन्छ?.....

३.७ यहाँबाट सबभन्दा नजिकको स्वास्थ्य केन्द्र कुन हो र यहाँबाट त्यो कति टाढा पर्यछ?

नाम..... थुपि (माइलमा)..... याहा छैन

३.८ घरमा केही विरामी हुँदा तपाईं प्रायः के गर्नु हुन्छ?

उपचार गर्ने  केही पनि गर्ने

३.९ कित्त?.....  
सण्ड Y मा जाने

३.९ विरामीलाई औषधी गण्डजन कहाँ लै जानु हुन्छ?

१) स्वास्थ्य केन्द्र । अस्पताल  ३.१० याजाने

२) बाइटर । अरु स्वास्थ्य कर्मकर्ता । मर्त

३) धामी । ज्ञान्ति  सण्ड Y मा जाने

४) कथिराज । वैद्य

५) अरु (उल्लेख गर्ने)

३.१० स्वास्थ्य केन्द्रबाट पाएको सेवाबाट के उपचाई सन्तुष्ट हुनुहुन्छ?

छ  छैन

**खण्ड ४. प्रजनन**

४.१ पहिलो पटक महिनावापी हुँदा तपाईं कति वर्षको हुनुहुन्थ्यो?

वर्ष..... याहा छैन  शुरु नै भएको

(अन्तरबार्ता टुप्याउने)

४.२ तपाईंको विवाह कुन साल र महिनामा भएको हो?

साल..... महिना..... याहा छैन.....

४.२.१ कति वर्षको हुँदा तपाईंको विवाह भएको थियो?

वर्ष.....

४.३ विवाह भएको लगत्तै पछि तपाईं आफ्नो श्रीमान संगै बस्नु भयो कि बस्नु भएन?

बसे  बसिन

४.३.१ विवाह भएको कति वर्ष पछि संगै बस्नु भाल्नु भएको हो?

वर्ष/महिना  
(हाल सम्म पनि संगै नबसेको भए अन्तरबार्ता टुप्याउने)

४.४ तपाईंने (जिवीत) बच्चा जन्माउनु भएको छ?

छ  छैन

प्र.नं. ४.६ सोछे

४.४.१ तपाइने हाल सम्म कति जना (निवित) छोरा छोरी जन्माउनु भएको छ जम्मा..... छोरा..... छोरी.....

४.४.२ तपाईंको हाल कति जना छोरा छोरीहरू छन्? जम्मा..... छोरा..... छोरी.....

४.१ गर्भको एक वर्ष भित्रमा (०४२ साल भन्दा १ गते देखि ०४३ साल कार्तिक मसान्त सम्ममा) तपाईंले कुनै बच्चा जन्माउनु भएक्यो छ?

छ  छैन

४.१.१ कति जना.....  
 ४.१.२ कुन सास र महिला जन्मेको थिए?  
 १ सास ----- महिला-----  
 २ सास ----- महिला-----

४.६ तपाईंको कुनै गर्भहरू खेर गएक्यो थियो?

थियो  थिएन

४.६.१ कति वटा गर्भहरू खेर गएक्यो थियो?

४.७ तपाईंको कुनै बच्चा मरेको जन्मेको पनि थियो?

थियो  थिएन

४.७.१ कति जना?.....

४.८ तपाईं हास गर्भवती हुनु हुन्छ?

छ  छैन  या हा छैन

४.८.१ तपाईंको गर्भ रहेको कति महिला थियो?.....  
 ४.८.२ तपाईंले यो बच्चा जन्माउन कहाँ जाने बिचार गर्नु भएक्यो छ?.....  
 प्र. नं. ४.१० सोध्ने

४.९ तपाईंको पछिल्लो परिनावारी कहाँले भएक्यो थियो?

सास  महिला

४.१० तपाईंलाई (बहु) सन्तानको इच्छा छ?

छ  छैन  या हा छैन

४.१०.१ तपाईंलाई (बहु) कति जना सन्तानको इच्छा छ?  
 जम्मा..... छोरा..... छोरी.....  
 ने भए पनि हुन्छ

४.११ तपाईंको विचारमा एउटा दम्पतीको कति जना छोरा छोरी भए बेस होला?

जम्मा..... छोरा..... छोरी.....

४.१२ तपाईंको विचारमा कति वर्षको फरकमा बच्चा जन्माउनु बेस होला?.....

खण्ड ५ गर्भवती तथा सुत्केरी महिलाहरूको हेरचाह

प्रश्नकर्ता: यदि प्रश्न नं. ४.४, ४.६, ४.९, ४.१० मा छैन भने ४.८ मा "छैन" वा "भाइलाह" भने बाकसमा चिन्हो लगाएकै भए तलको "कहिल्यै" "गर्भवती नभएको" बाकसमा चिन्हो लगाउने बरु भने "कुनै बेला गर्भवती भएको" भने बाकसमा चिन्हो लगाउने।

कुनै बेला गर्भवती भएको  कहिल्यै गर्भवती नभएको

(खण्ड ६ सोध्ने)

५.१ गर्भवती हुँदा तपाईं गर्भ सम्बन्धी जीवन गराउन जानु भएको थियो  
थियो  थिएन

प्र.नं. ५.४ सोध्नुपर्

५.१.१ कहाँ जानु भएको थियो?

अस्पताल	-----	प्र.नं. ५.१.२ सोध्ने
स्वास्थ्य चौकी	-----	प्र.नं. ५.१.२ सोध्ने
सुडेनी	-----	प्र.नं. ५.२ सोध्ने
अन्य (उल्लेख गर्ने).....		

५.१.२ के समस्या भएर जाँच गराउनु भएको थियो?

गर्भ सम्बन्धी साधारण जाँच	<input type="checkbox"/>
गर्भ सम्बन्धी समस्या भएर	<input type="checkbox"/>
साधिका दुई कारणले	<input type="checkbox"/>

५.१.३ के के जाँच गरेको थियो?

१ लोज सिपरी	<input type="checkbox"/>
२ रक्त चाँप	<input type="checkbox"/>
३ पिसाब	<input type="checkbox"/>
४ छाती तथा पेटमा	<input type="checkbox"/>
आना लगाएकै	<input type="checkbox"/>
५ अन्य (सुझाउने)	<input type="checkbox"/>

५.२ तपाईंलाई गर्भ सम्बन्धि स्वास्थ्य जाँचाउने सल्लाह कसले दिएको थियो?

स्वास्थ्य कार्यकर्ता  बाक्को परिवार   
साथी  अन्य (उल्लेख गर्ने).....

५.३ स्वास्थ्य जाँचबाट तपाईं संतोष हुनु भयो?

भए  भएन

५.४ के तपाईंले धनुष्येन्द्रको सुई लिनु भएको थियो?

थिए  थिएन

प्रश्न कर्ता: यदि प्रश्न नं. ५.४ र ५.७ मा "थिएन" भने जवाफ आएको भए "सुत्केरी नभएको" भने "बाकसमा" चिन्हो (✓) दिने अन्यथा "कर्मितामा एक पटक सुत्केरी भएकी" भने बाकसमा चिन्हो (✓) लगाउने।

कर्मितामा एकपटक

सुत्केरी भएकी  सुत्केरी नभएकी

खण्ड ६ सोध्नुपर्

५.५ सबभन्दा पछिल्लो बच्चा तपाईंले कहाँ जन्माउनु भयो?.....

प्रश्नकर्ता: प्र.नं. ५.५ मा अस्पताल भने जवाफ आएमा प्र.नं. ५.७ सोध्ने।

५.६ सबभन्दा पछिल्लो पटक सुत्केरी हुँदा तपाईंलाई कसैले मद्दत गरेको थियो?

थियो  थिएन

५.६.१ कसले मद्दत गरेको थियो?

डाक्टर / नर्स	<input type="checkbox"/>
सुडेनी	<input type="checkbox"/>
अन्य (सुझाउने).....	

५.७ के तपाईने सुत्केरी भए पछि स्वास्थ्य चौक गठजन अस्थातास। स्वास्थ्य केन्द्र। स्वास्थ्य चौकीमा जानु भएको थियो।

भए  गहन

५.७.१ स्वास्थ्य चौकबाट तपाईं सन्तुष्ट हुनु भयो?  
 भए  भएन

खण्ड ६. परिवार नियोजन

६.१ के तपाईंले परिवार नियोजन बारे सुन्नु भएको छ?

सुनेको छु  सुनेको छैन

तालिका १

साधन	६.२ के तपाईंले..... (प्रत्येक साधनको नाम लिएर एक एक गरि सोध्नु) बारे सुन्नु भएको छ। "छु" भन्ने उत्तर आएमा "छु" मा गोली लगाउने र "छैन" भन्ने जन्क आएमा "छैन" मा गोली लगाउने	६.३ के तपाईं वा तपाईंको जहानले..... प्रयोग गर्नुभएको थियो? (प्र.नं. ६.२ मा सुनेको छु मा गोली बेरेको प्रत्येक साधनको एक एक गरी सोध्नु	६.४ के तपाईं वा तपाईंको जहानले हाल कुनै साधन प्रयोग गरिरहनु भएको छ? छ भने कुन साधन हो सो साधनको "छु" भन्नेमा गोलीले बेरी दिने यदि हाल कुनै साधन नभएपनि भए हाल कुनै साधन प्रयोग नगरेको याकसमा चिन्हो लगाउने।		
०.१ खाने बख्की	छु	छैन	धिए	धिएन	छु
०.२ कण्डोम	छु	छैन	धिए	धिएन	छु
०.३ लुप	छु	छैन	धिए	धिएन	छु
०.४ मुई	छु	छैन	धिए	धिएन	छु
०.५ पुरुष बन्ध्याकरण	छु	छैन	धिए	धिएन	छु
भ्यानेटोमी	छु	छैन	धिए	धिएन	छु
०.६ म. बन्ध्या (स्वाप्रोत्सोरी)	छु	छैन	धिए	धिएन	छु
०.७ गाउँ घरमा पाइने	छु	छैन	धिए	धिएन	छु
०.८ अन्य.....	छु	छैन	धिए	धिएन	छु
उत्तरेख गर्ने					हाल कुनै साधन प्रयोग नगरेको <input type="checkbox"/>

प्रश्नकर्ता: हालसम्म कुनै साधन प्रयोग गरिराहेको भए वा प्र.नं. ६.२ को कुनै पनि उत्तरको "छु" मा गोली नलगाएको भए प्र.नं. ६.७ मा जान्ने।

प्रश्नकर्ता:- परिवार नियोजनको कुनै साधनबारे सान भएक तर कहिल्यै पनि प्रयोग नगरेका महिलाहरूलाई निम्न प्रश्नहरू सोध्नु।

६.५ हाल सभ्य परिवार नियोजनको कुनै पनि साधन प्रयोग नगर्नाको कारण के होला?

- ६.५.१ अरु साधनको इच्छा भएकोले
- ६.५.२ छोटाको इच्छा भएकोले
- ६.५.३ छोटीको इच्छा भएकोले
- ६.५.४ स्वास्थ्यको कारणले
- ६.५.५ धर्मको कारणले
- ६.५.६ श्रीमानले मत नपराउने
- ६.५.७ श्रीमान यहाँ नभएकोले
- ६.५.८ कुटी भै सकेकोले
- ६.५.९ बच्चा नै नहुने
- ६.५.१० प.नि. साधन प्राप्त नहुने
- ६.५.११ अन्य (उल्लेख गर्ने).....

६.६ के तपाईं वा तपाईंको श्रीमानले भविष्यमा परिवार नियोजनको कुनै साधन अपनाउने विचार गर्नु भएको छ?

छ  छैन

६.६.१ कुन साधन अपनाउने विचार गर्नु भएको छ?

सानो बच्चा  सुई

कण्डोम  पु. बन्ध्याकरण

सुप  म. बन्ध्याकरण

अन्य (उल्लेख गर्ने).....

६.७ कति दिनको फरकमा स्वास्थ्य कार्यकर्ता तपाईंको आउछ?

महिनामा एकपटक  तिन महिना एक पटक

सानमा एक पटक  कहिले पनि नआउने

खण्ड ७ मा जाने

- ६.८ के उसले परिवार नियोजन बारे कुरा गर्छ?
- गर्छ  गर्दैन
- ६.९ के उसले बच्चाको स्वास्थ्य बारे कुरा गर्छ?
- गर्छ  गर्दैन
- ६.१० के उसले स्वास्थ्य प्रस्ताव सम्बन्धी रोग बारे कुरा गर्छ?
- गर्छ  गर्दैन
- ६.११ के उसले जुकाको औषधी बारे कुरा गर्छ?
- गर्छ  गर्दैन
- ६.१२ के उसले बच्चालाई लामाको दूध खाउने बारे कुरा गर्छ?
- गर्छ  गर्दैन
- ६.१३ के उसले गर्भसाईं पर सार्ने बारे कुरा गर्छ?
- गर्छ  गर्दैन
- ६.१४ के उसले टिपम पखाला बारे कुरा गर्छ?
- गर्छ  गर्दैन
- ६.१५ के उसले खोप सम्बन्धी कुरा गर्छ?
- गर्छ  गर्दैन
- ६.१६ के उसले स्वास्थ्य शिक्षा बारे कुरा गर्छ?
- गर्छ  गर्दैन
- ६.१७ के उसले पोषण बारे कुरा गर्छ?
- गर्छ  गर्दैन
- ६.१८ के उसले गर्भवती तथा सुत्केरी आमाहरूको स्वास्थ्य बारे कुरा गर्छ?
- गर्छ  गर्दैन
- ६.१९ के उसले कुनै औषधी पनि बोल्छ?
- बोल्छ  बोल्दैन
- ६.२० माथिको विषयमा कुरा गर्दा कुनै थिक्छ किन देखाउँछ?
- देखाउँछ  देखाउँदैन

अध्याय ७ पुर्नजीवित उपचार

७.१ तपाईंलाई दिसा । पखासा बारे थाहा छ?

थाहा छ

थाहा छैन

प्र.नं. ७.४ सोध्ने

७.१.१ दिसा । पखासा लाग्दा के हुन्छ?

.....  
.....

७.२ दिसा पखासा के कारणले लाग्छ तपाईंलाई थाहा छ?

थाहा छ

थाहा छैन

७.२.१ के कारणले लाग्छ?

.....

७.३ बच्चालाई दिसा पखासा लागेकोमा के उपचार गरिन्छ?

.....  
.....

७.४ के तपाईंले जीवन बसबारे सुन्न भएको छ?

छ

छैन

प्र.नं. ७.५ सोध्ने

७.४.१ तपाईंले यो कसरी थाहा पाउनु भयो?

७.४.२ जीवनजल कसरी बचाउनु पर्छ?

७.४.३ दिसा । पखासा लागेको विद्युतीलाई जीवनजल  
सति कति ख्याउनु पर्छ?

.....  
.....  
.....

७.५ तपाईंले औवधी पानी (नून । चिनी । पानी) बारे सुन्न भएको छ?

छ

छैन

७.५.१ तपाईंले यो कसरी थाहा पाउनु भयो?

७.५.२ नून । चिनी । पानी, कसरी बचाउनु पर्छ?

.....  
.....

७.६ बच्चालाई दिसा । पखासा लागेको बेलासा पानी । शौच खाना साधिक सँ ख्याउनु हुन्छ कि हुँदैन?

हुन्छ

हुँदैन

७.६.१ किन ख्याउनु हुन्छ?

.....

७.७ बच्चालाई दिसा । पखासा लागेको बेलासा आमाको दुध ख्याउनु हुन्छ कि हुँदैन?

हुन्छ

हुँदैन

७.७.१ किन ख्याउनु हुन्छ?

.....



खण्ड ८. सोप

८.१ तपाईंले सोप बारे मनु भएके छ

छ  छैन

(खण्ड ९ सोछे)

८.२ तपाईंले ये कसरी धाहा पाउनु भयो? -----  
 ८.३ सोपबाट रोकथाम गर्न सकिने रोगहरू कुन कुन हुन्?

टिडानस  सहरि सोपी   
 पोभियो  दादुरा   
 भ्यागुतेयोग  धावरोग

अन्य (सुताउने).....

प्रश्नकर्ता: ५ वर्ष भन्दीको केटाकेटीहरू धएक महिलाहरूलाई तलक प्रश्नहरूगोछे। अन्यथा खण्ड ९ जाने

८.४ तपाईंले आफ्नो केटाकेटीहरूलाई सोधाउनु भएकेछ?

छ  छैन

( ८.५ सोछे )

८.५.१ कुन कुन सोप कति कति पटक दिन भएके छ?

सोपको विवरण (नाम लेख्न सत्रभन्दा पछिल्लो (कम्छे) बच्चादेखि लेख्ने)

नाम	बच्चाको उमेर	दि सि बि	डि पी टि	पोसीयो	दादुरा
१			१ २ ३	१ २ ३	
२			१ २ ३	१ २ ३	
३			१ २ ३	१ २ ३	

८.५.२ तपाईंले सोप कहाँबाट दिन लगाउनु भयो?

अस्पताल  सोप टोली   
 हेल्थपोट  अरु खुलाउने.....

८.५ तपाईंले आफ्नो केटाकेटीहरूलाई किन नसोधाउनु भएके हो?

खण्ड ९. आमाको दुध खाउने

प्रश्नकर्ता: प्र.नं. ४.४ हेरी उपयुक्त कोठाभा चिन्ह (✓) लगाउनु होस।

जिवीत बच्चा जन्मेके  जिवित बच्चा नजन्मेके   
 (प्र.नं. ९.१ देखि सोछे) (खण्ड १० सोछे)

९.१ के तपाईंले सबै भन्दा कन्दछे। कन्दछी बच्चालाई आफ्नो दुध खाउनु भयो?

खाए  खाइन

९.१.१ तपाईंले उक्त बच्चालाई जन्मा कति महिना आफ्नो दुध खाउनु भयो?

महिना । हात सम्म ह्याइरहेके

९.१.१.१ तपाईंले दुध । ९.१.१.२ तपाईंले उक्त बच्चा खाउन छुटाउनुके कारण। कति महिनाके भयो?

-----

महिला  
 प्र.नं. ९.३ प्र.नं. ९.३ सोछे

९.२ तपाईंले उक्त बच्चालाई किन आफ्नो दुध नखाउनु भएके?

९.३ बच्चा पाए पछि गुरुमा आउने नाम्तो किसिमके दुध बच्चालाई खाउनु पर्छ कि फाल्नु पर्छ?

खाउनु पर्छ  फाल्नु पर्छ

९.३.१ आफ्नो बच्चालाई खाउनु भयो कि भएन? खाए <input type="checkbox"/> खाइने <input type="checkbox"/>	९.३.२ किन फाल्नु पर्छ? ----- -----
--	--

९.४ आमाको दुध खाउनाले के के फाइदाहरू हुन्छन्?.....

अध्याय १०. पोषण, खाना र खानेको घसस

१०.१ के तपाईंको परिवारमा बच्चाको पालनी गर्ने चलन छ?

छ                       छैन   
प्र.नं. १०.२ सोध्ने

<p>१०.१.१ बच्चा कति महिना पुगेपछि पालनी गर्नु हुन्छ?</p> <p>१) छैस..... महिना.....</p> <p>२) छैरी..... महिना.....</p> <p>१०.१.२ पालनी गर्नु भन्दा पहिले पनि बच्चासाईं कुनै तरप खाना खाउनु हुन्छ कि हुन्छ?</p> <p>हुन्छ <input type="checkbox"/>                      हुँदैन <input type="checkbox"/></p>
--

१०.२ बच्चा कति महिना पुगेपछि छेस रहना (बाल भात तरकारी आदी) खाउनु शुरू गर्नु हुन्छ..... महिना।

१०.३ साधारणतया बच्चासाईं खाउने खाताहरू के के हुन्?  
(सम्बन्धीत कोषमा चिन्हो लगाउने)

सानैकुराहरू	सानैकुराहरू
सबैतम पीठो <input type="checkbox"/>	दुध भात <input type="checkbox"/>
खीर <input type="checkbox"/>	दाब भात <input type="checkbox"/>
नेदागुडी <input type="checkbox"/>	हरियो तरंगपाल <input type="checkbox"/>
फूल <input type="checkbox"/>	खीचडी, जाउलो, खोच <input type="checkbox"/>
फलफूल <input type="checkbox"/>	भाउा मासु <input type="checkbox"/>
अन्य खाउने .....	

१०.४ तपाईंको विचारमा बच्चाको सामान्य खाना खाने थाले पछि पनि बच्चासाईं आमाको दुध खाइ राख्नु पर्छ?

पर्छ                       पर्दैन                       बाह्य छैन

<p>१०.४.१ कहिलेसम्म आमाको दुध खाइ राख्नु पर्छ?</p> <p>.....महिना</p>	<p>१०.४.२ आमाको दुध खाइ राख्नु पर्दैन किन?</p> <p>.....</p>
--	---

१०.५ तपाईंले बच्चासाईं (आमाको दुधको साथ साथै) के अरु कुनै दुध पनि खाउनु हुन्छ?

खाउछु                       खाउदैन

<p>१०.५.१ के कुनै दुध खाउनु हुन्छ?</p> <p>१ माईको दुध <input type="checkbox"/></p> <p>२ भैसिको दुध <input type="checkbox"/></p> <p>३ बाखीको दुध <input type="checkbox"/></p> <p>४ बट्टाको दुध <input type="checkbox"/></p> <p>५ अरु कुनै <input type="checkbox"/></p>
---

१०.६ गर्भवत्याको आमासाईं घरमा सधैँ पाक्ने खाना बाहेक अरु थप खाना खाउनु पर्छ?

पर्छ                       पर्दैन                       बाह्य छैन

<p>साधारणतया के के खाना दिनु पर्छ?</p> <p>१.....</p> <p>२.....</p> <p>३.....</p>
--

१०.७ गर्भवती आमाते खान नहुने कारणहरू (खाना) के के हुन्?

खाने कुराहरू नाम कारण

१.....

२.....

३..... पाहा छैन

१०.८ बच्चालाई दुध खाउने गरेकी आमाहरूलाई घट्या तयै पार्ने खाना बाहेक अरु पच खाना दिनु पर्छ?

पर्छ  पर्दैन  पाहा छैन

१०.८.१ के के खाना दिनु पर्छ?

-----

-----

-----

१०.९ बच्चालाई दुध खाउने आमाते खान नहुने कारणहरू के के हुन्?

नाम खान नहुने कारण

१.....

२.....

३..... पाहा छैन

१०.१० के तपाइले "रुन्ने" अथवा "सुकैनास" भन्ने सुन्न भएको छ?

सुनेकी छु  सुनेकी छैन

प्र.नं. १०.११ सोच्ने

प्रश्नकर्ता: कुपोषण भएको बच्चाको तस्वीर महिलालाई देखाएर स्थानीय आचामा के भन्नु सोझोसो त्यस पछि केही माथिको प्रश्न दोहोचएर सोझोसो।

१०.१०.१ बच्चालाई "रुन्ने" अथवा "सुकैनास" किन लाग्छ?

के तपाईंलाई पाहा छ?

पाहा छ  पाहा छैन

१०.१०.१.१ किन लाग्छ?

-----

१०.१०.१.२ बच्चालाई "रुन्ने" अथवा "सुकैनास" लाग्नबाट बचाउन के गर्नु पर्छ के तपाईंलाई पाहा छ?

छ  छैन

१०.१०.१.२.१ बच्चालाई "सुकैनास" अथवा "रुन्ने" लागेमा के औषधि गर्नु हुन्छ?

-----

१०.११ के तपाईंले बच्चाको साथि सितो जाउलो वा बच्चाते पचाउन सक्ने अरु कुनै खाना बनाउन जान्नु भएको छ?

छ  छैन

१०.११.१. त्यो खाना बनाउन के के कारणहरू भिसाउनु पर्छ?

के साथि

१.....

२.....

३.....

प्रवक्तृता:- बच्चा भएकै महिलाहरूलाई मात्र सोध्ने नभने सण्ड ११ मा जाने

१०.१२ के तपाईंको बच्चालाई औंसा सम्बन्धी केही समस्या वा खेम छ?

छ  छैन

१०.१२.१ के समस्या छ?  
.....  
.....

१०.१३ के तपाईंको बच्चालाई रतन्धी भएकै छ? (राती देख्न नसकिने)

भएकै छ  भएकै छैन

१०.१३.१ कति जनालाई?  
.....

१०.१४ उक्त उत्तरदाताकै ६ महिना देखि पौन वर्ष भित्रका सधैं बच्चाहरूको पाखुराको नाप लिनु होस् र तलको तालिकामा भर्नु होस् यदी की उमेरका एउटा पनि बच्चा छैन भने "बच्चा छैनन्" शर्त बाकसमा (✓) चिन्हो लगाउनु होस् र सण्ड ११ मा जानु होस्।

बच्चा छैनन्

... सण्ड ११ मा जाने

बच्चाको नाम	उमेर		लिंग	रातो कुपेधित	पहेलो केहीमान कुपेधित	हरियो रातो
	वर्ष	महिना				

खण्ड ११. रोगको अवस्था र विरामी हुने कारणहरू

प्रश्नकर्ता: उपयुक्त भाकतमा (✓) चिन्हो लगाउनु होस्

महिलाको पाँच वर्ष  
मुनीक छेय छेय छुन्

महिलाको पाँच वर्ष  
मुनीक छेय छेय छुन्

बच्चाको नाम	उमेर
१.....	.....
२.....	.....
३.....	.....

उत्तरशतालाई धन्यवाद दिदि  
अन्तरवाता मही टुयाउने।

११.१ गाएको १ वर्ष भित्र (०४२ साल मंसिर १ गते देखि ०४३ साल कार्तिक मसान्त सम्म) के तपाईस कुनै केटा केटीलाई दिशा पसाला लागेको थियो?

थियो  भिएन

११.१.१ कति जनालाई दिशा पसाला लागेको थियो?..... जना

११.१.२ कस कसलाई कति कति पटक दिशा पसाला लागेको थियो?

बच्चाहरूको सि. नं.

	१	२	३
११.१.३ दिशा पसालाको औषधि कहाँ गराउनु भयो?			
औषधि नै नगराएको	<input type="checkbox"/>	<input type="checkbox"/>	<input type="checkbox"/>
घरेमा	<input type="checkbox"/>	<input type="checkbox"/>	<input type="checkbox"/>
हे.पो/अस्पताल	<input type="checkbox"/>	<input type="checkbox"/>	<input type="checkbox"/>
प.नि. क्लिनिक	<input type="checkbox"/>	<input type="checkbox"/>	<input type="checkbox"/>
धामी/साजी	<input type="checkbox"/>	<input type="checkbox"/>	<input type="checkbox"/>
अन्य (खुलाउनु होस)	<input type="checkbox"/>	<input type="checkbox"/>	<input type="checkbox"/>

११.२ गाएको १ वर्ष भित्र (०४२ साल मंसिर १ गतेदेखि ०४३ साल कार्तिक मसान्त सम्म) के तपाईस कुनै केटा केटीहरूलाई दादुरा आएको थियो?

थियो  भिएन

११.२.१ कति जनालाई दादुरा आएको थियो?..... जना

११.२.२ दादुराको औषधि कहाँ गराउनु भयो?

	१	२	३
औषधि नै नगराएको	<input type="checkbox"/>	<input type="checkbox"/>	<input type="checkbox"/>
घरेमा	<input type="checkbox"/>	<input type="checkbox"/>	<input type="checkbox"/>
हे.पो/अस्पताल	<input type="checkbox"/>	<input type="checkbox"/>	<input type="checkbox"/>
प.नि. क्लिनिक	<input type="checkbox"/>	<input type="checkbox"/>	<input type="checkbox"/>
धामी । साजी	<input type="checkbox"/>	<input type="checkbox"/>	<input type="checkbox"/>
अन्य खुलाउने	<input type="checkbox"/>	<input type="checkbox"/>	<input type="checkbox"/>

११.३. गएको १ वर्ष भित्र (०४२ साल मंसिर १ गतेदेखि ०४३ साल कार्तिक मसान्त सम्म) के तपाईंका कुनै केटा/केटीलाई जुकन परेको थियो?

थियो  भिएन

११.३.१ कति जनालाई जुकन परेको थियो? ... जना

११.३.२ कस कसलाई कति कति पटक जुकन परेको थियो?

	१	२	३
११.३.३	<input type="checkbox"/>	<input type="checkbox"/>	<input type="checkbox"/>
जुकाको औषधि कहाँ गराउनु भयो	<input type="checkbox"/>	<input type="checkbox"/>	<input type="checkbox"/>
औषधि नै नगराएको	<input type="checkbox"/>	<input type="checkbox"/>	<input type="checkbox"/>
परैमा	<input type="checkbox"/>	<input type="checkbox"/>	<input type="checkbox"/>
हे.पो/अस्पताल	<input type="checkbox"/>	<input type="checkbox"/>	<input type="checkbox"/>
प.नि. क्लिनिक	<input type="checkbox"/>	<input type="checkbox"/>	<input type="checkbox"/>
घामी । झाडी	<input type="checkbox"/>	<input type="checkbox"/>	<input type="checkbox"/>
अन्य(खुलाउनु)	<input type="checkbox"/>	<input type="checkbox"/>	<input type="checkbox"/>

११.४. गएको १ वर्ष भित्र (०४२ साल मंसिर १ गतेदेखि ०४३ साल कार्तिक मसान्त सम्म) के तपाईंका कुनै केटा/केटीलाई नहरे सोकी लागेको थियो?

थियो  भिएन

११.४.१ कति जनालाई नहरे सोकी लागेको थियो? ... जना।

११.४.२ कस कसलाई कति कति पटक नहरे सोकी आएको थियो?

	१	२	३
११.४.३ नहरे सोकी औषधि कहाँ गराउनु भयो?	<input type="checkbox"/>	<input type="checkbox"/>	<input type="checkbox"/>
औषधि नै नगराएको	<input type="checkbox"/>	<input type="checkbox"/>	<input type="checkbox"/>
परैमा	<input type="checkbox"/>	<input type="checkbox"/>	<input type="checkbox"/>
हे.पो/अस्पताल	<input type="checkbox"/>	<input type="checkbox"/>	<input type="checkbox"/>
प.नि. क्लिनिक	<input type="checkbox"/>	<input type="checkbox"/>	<input type="checkbox"/>
घामी । झाडी	<input type="checkbox"/>	<input type="checkbox"/>	<input type="checkbox"/>
अन्य(खुलाउनु)	<input type="checkbox"/>	<input type="checkbox"/>	<input type="checkbox"/>

११.५. गएको १ वर्ष भित्र (०४२ साल मंसिर १ गते देखि ०४३ साल कार्तिक मसान्त सम्म) के तपाईंका कुनै केटा/केटीलाई स्वास प्रस्वास सम्बन्धी रोग (जस्तै: नाक बन्द हुने वा सिंगान । पानी बग्ने, घाटी दुख्ने, धार प्यार गर्नु, क्यान दुख्ने वा कानबाट पानी आउने, छोकी लाग्ने, मास केरेको परैबाट सुनीने, छिटो छिटो सास फेर्ने, नाकको पोर हलिन न र कोखा हारि) लागेको थियो?

थियो  भिएन

११.५.१ कति जनालाई स्वास प्रस्वास सम्बन्धी रोग लागेको थियो? ... जना

११.५.२ कस कसलाई कति कति पटक स्वास प्रस्वास सम्बन्धी रोग लागेको थियो?

	१	२	३
११.५.३ स्वास प्रस्वास सम्बन्धी रोगको औषधि कहाँ गराउनु भयो?	<input type="checkbox"/>	<input type="checkbox"/>	<input type="checkbox"/>
औषधि नै नगराएको	<input type="checkbox"/>	<input type="checkbox"/>	<input type="checkbox"/>
परैमा	<input type="checkbox"/>	<input type="checkbox"/>	<input type="checkbox"/>
हे.पो/अस्पताल	<input type="checkbox"/>	<input type="checkbox"/>	<input type="checkbox"/>
प.नि. क्लिनिक	<input type="checkbox"/>	<input type="checkbox"/>	<input type="checkbox"/>
घामी । झाडी	<input type="checkbox"/>	<input type="checkbox"/>	<input type="checkbox"/>
अन्य(खुलाउनु)	<input type="checkbox"/>	<input type="checkbox"/>	<input type="checkbox"/>

११.६ एकको १ वर्ष भित्र (०४२ साल मसिर १ गते देखि ०४३ साल कार्तिक मसान्त सम्म) के तपार्इको कुने केटा केटीहरूलाई भ्यागुने रोग लागेको थियो?

थियो  थिएन

११.६.१ कति जनालाई भ्यागुने रोग लागेको थियो?..... जना	१	२	३
११.६.२ कुन कसलाई कति कति पटक भ्यागुने रोग लागेको थियो?	<input type="checkbox"/>	<input type="checkbox"/>	<input type="checkbox"/>
११.६.३ भ्यागुने रोगको औषधि कहाँ पराउनु भयो?	१	२	३
औषधि नै नगरिएको	<input type="checkbox"/>	<input type="checkbox"/>	<input type="checkbox"/>
घरेलू	<input type="checkbox"/>	<input type="checkbox"/>	<input type="checkbox"/>
हे.पो/अस्पताल	<input type="checkbox"/>	<input type="checkbox"/>	<input type="checkbox"/>
प.मि चिकित्सक	<input type="checkbox"/>	<input type="checkbox"/>	<input type="checkbox"/>
धार्मी : झाडी	<input type="checkbox"/>	<input type="checkbox"/>	<input type="checkbox"/>
अन्य खुवाउने	<input type="checkbox"/>	<input type="checkbox"/>	<input type="checkbox"/>

११.७ एकको १ वर्ष भित्र (०४२ साल मसिर १ गतेदेखि ०४३ साल कार्तिक मसान्त सम्म) के तपार्इका केटाकेटीलाई माथि सोधिएका रोगहरू बाहेक अरु कुनै रोग पनि लागेको थियो?

थियो  थिएन  उत्तरदातालाई धन्यवाद दिइ अनुरवार्ता यही टुंग्याउने।

११.७.१ के रोग लागेको थियो? .....	१	२	३
११.७.२ ..... रोग कति जनालाई लागेको थियो? ..... जनालाई	<input type="checkbox"/>	<input type="checkbox"/>	<input type="checkbox"/>
११.७.३ कस कसलाई कति कति पटक ..... रोग लागेको थियो ?	<input type="checkbox"/>	<input type="checkbox"/>	<input type="checkbox"/>
११.७.४ ..... रोगको औषधि कहाँ पराउनु भयो?	१	२	३
औषधि नै नगरिएको	<input type="checkbox"/>	<input type="checkbox"/>	<input type="checkbox"/>
घरेलू	<input type="checkbox"/>	<input type="checkbox"/>	<input type="checkbox"/>
हे.पो/अस्पताल	<input type="checkbox"/>	<input type="checkbox"/>	<input type="checkbox"/>
प.मि चिकित्सक	<input type="checkbox"/>	<input type="checkbox"/>	<input type="checkbox"/>
धार्मी : झाडी	<input type="checkbox"/>	<input type="checkbox"/>	<input type="checkbox"/>
अन्य खुवाउनु	<input type="checkbox"/>	<input type="checkbox"/>	<input type="checkbox"/>

उत्तरदातालाई धन्यवाद दिइ अनुरवार्ता यही टुंग्याउने।

स्वास्थ्य चौकी प्रवर्धित खवाहर ।

पुरुषुभि वा पत्निय ।

१. पी. हन्वार्डको नाम :- .....

पद :- .....

विभिन्न पदमा वसि सार काम गरेको अवधि :- .....  
( वर्षमा )

कस हे.पी. मा काम गरेको अवधि :- .....  
( वर्ष ) ( महिना )

हे.पी.को योग्यता :- .....

स्वास्थ्य चौकी प्रवर्धित खवाहर ।

१. कस स्वास्थ्य चौकीबाट कति पंजापकार्ड सेवा पुगर्जने गरेको छ ? .....
२. यो स्वास्थ्य चौकीले सेवा पु-याउने सबभन्दा टाढाको पंजापत कुन हो र यो कति टाढा पर्दछ ?

पंजापको नाम :- ..... दुरि :- .....  
( छि मि )

३. कस स्वास्थ्य चौकीको आय-ने भवन छ ?  
क  केन
४. कस स्वास्थ्य चौकीमा सप्ताह सब दिनमा कति जना विरामीहरू आउँछन् ?  
..... जना ।
५. कस भेसमा ५ वर्ष मुनिका बच्चाहरूलाई प्राक्काको ठागने रोगहरू के के हुन् ?  
१. ....  
२. ....  
३. ....  
४. ....  
५. ....

६. कस भेसमा मुस्कतया कुन रोगबाट ५ वर्ष मुनिका बच्चाहरू भने गर्दछन् ?  
१ दिडा पठाठा  २ दादा   
३ धनुष्टका  ४ स्वास प्रस्वास   
( टिटानस ) ( ए.आर.आई )  
५ अन्य :- .....  
( उल्लेख गर्नु )

७. तपासको विनामा कस स्वास्थ्य चौकीको निमित्त पठाएको औषधीहरू पर्याप्त हुन्छ ?  
हुन्छ  हुँदैन
८. कस भेसमा कुनै औषधी फल छ ?  
क  केन
९. कस भेसमा निजी चिकित्सकहरू कोही छन् ?  
छन्  केन
१०. कस भेसमा स्वास्थ्य कमिटी छ ?  
क  केन

१०.१ फले मडउ गर्छ ?  
गर्छ  गर्दैन

११. के तपासले स्वास्थ्य चौकी बाहेक बाहिर पनि प्राक्कास गर्नु हुन्छ ?  
गर्छ  गर्दैन



१२. कस स्वास्थ्य बीबीको निम्न के कति दखन्दीरु कनु त त्यस मध्ये कति पुर्ति भएका कनु ?

पद	दखन्दी निम्नमा	पुर्ति भएका	पाठी
१. हे, अ, तिस, उ, दे, व,	---	---	---
२. अ, ऐ, ए,	---	---	---
३. अ, न, पी,	---	---	---
४. ग्रा, खा, वा,	---	---	---
५. ....	---	---	---
६. ....	---	---	---
७. ....	---	---	---
८. ....	---	---	---

१३. के हाउ पुर्ति भएका जनशक्ति पर्याप्त क ?

क  केन

१४. के कस स्वास्थ्य बीबीमा भण्डाको निम्न ठाउं क ?

क  केन

१५. के कस स्वास्थ्य बीबीमा आवश्यक पर्ने औजार कनु ?

कनु  केननु

१६. के कस स्वास्थ्य बीबी सम्बन्धमा केश समस्या कनु ?

कनु  केननु

उज दातालाई धर्यापद दिई  
कन्सालाई दंग्याउने ।

१६. १ ति के के छ ?

१. ....
२. ....
३. ....
४. ....
५. ....





JICA