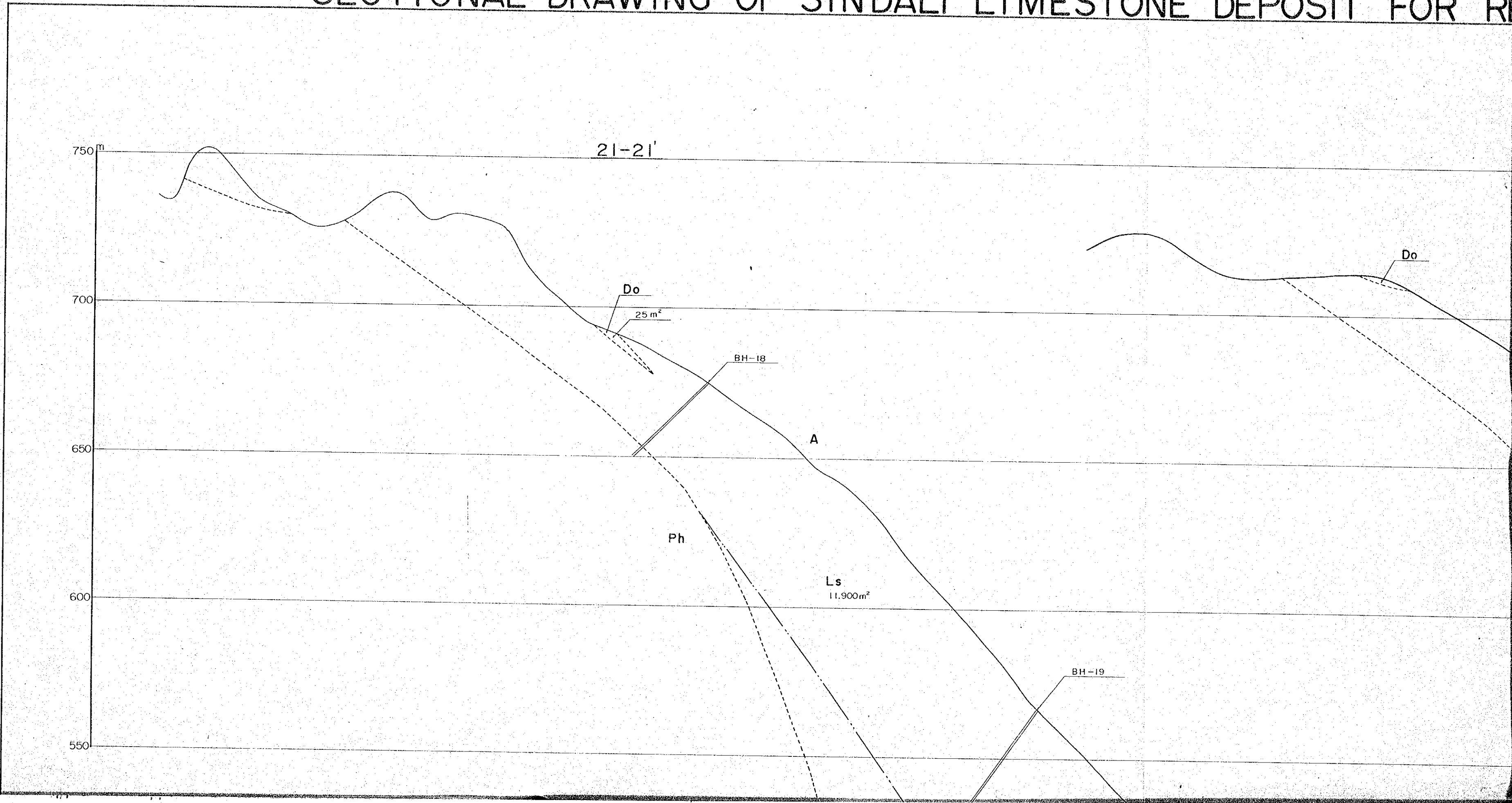
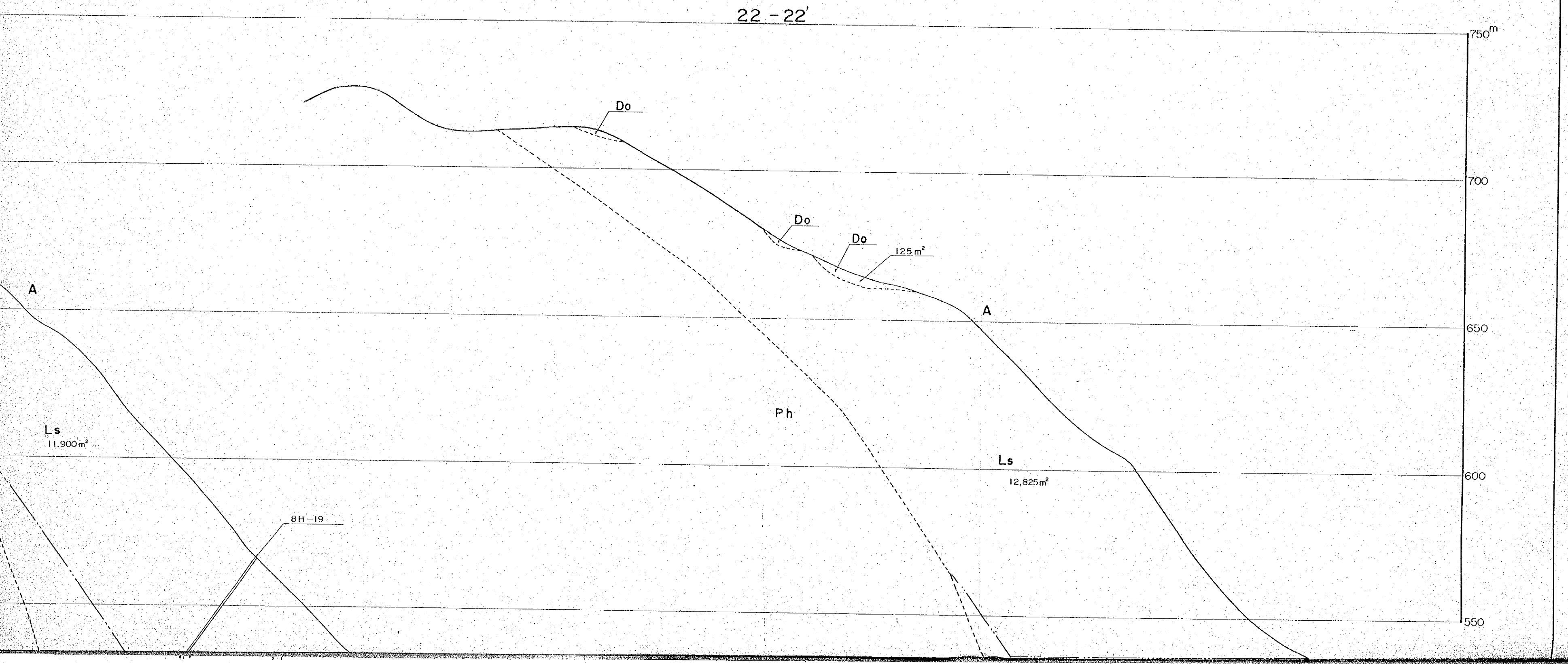


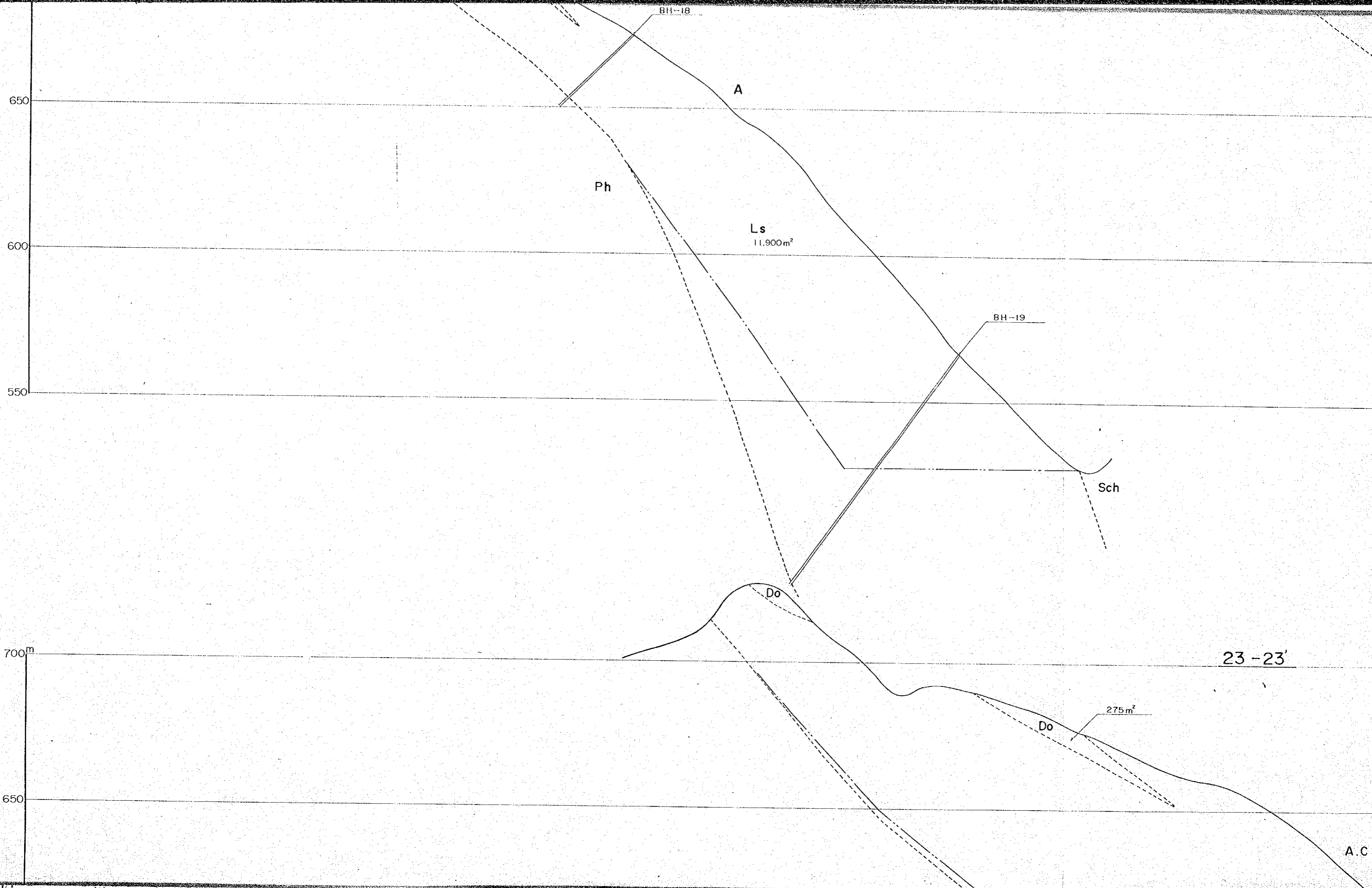
SECTIONAL DRAWING OF SINDALI LIMESTONE DEPOSIT FOR RE

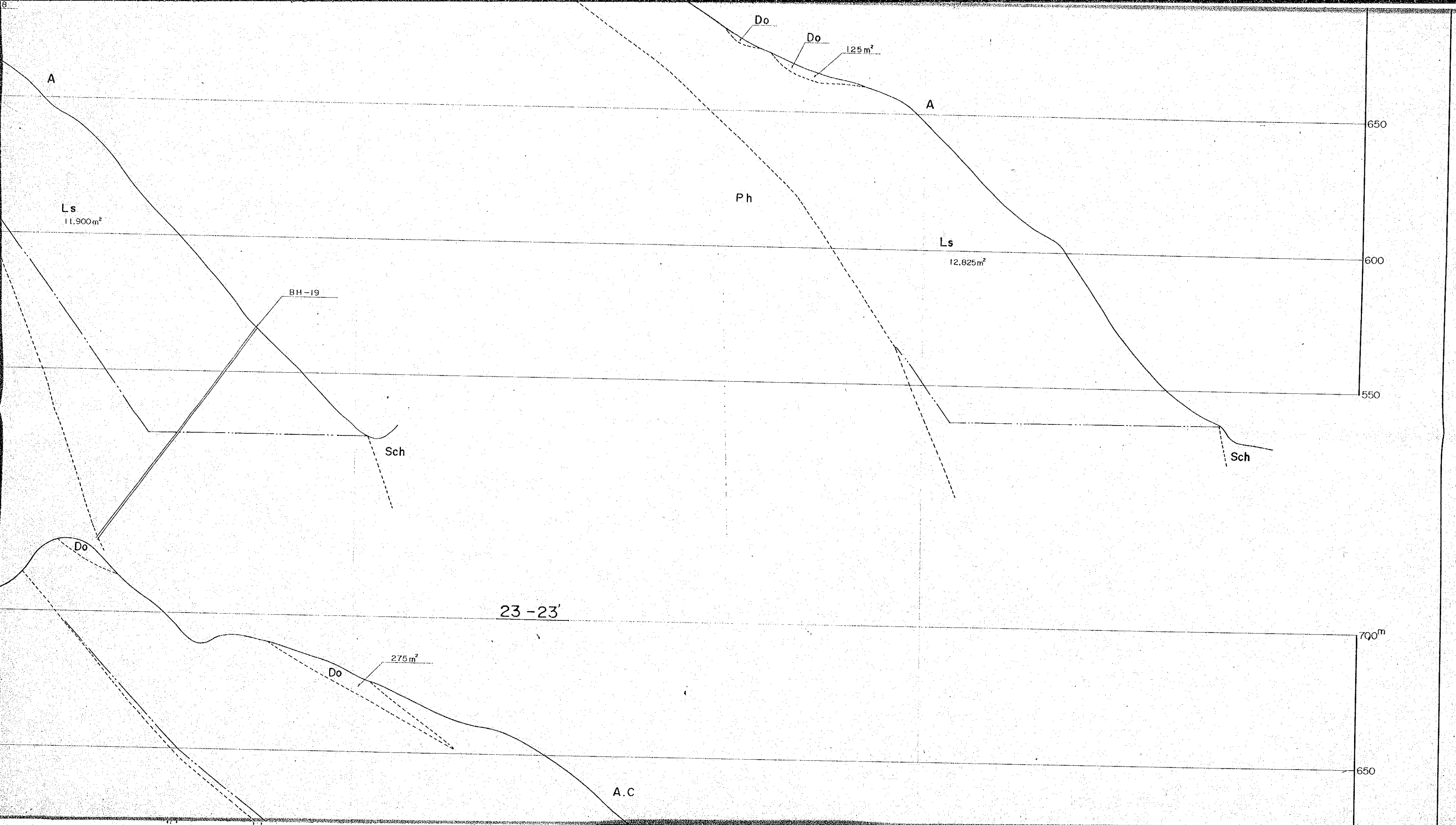


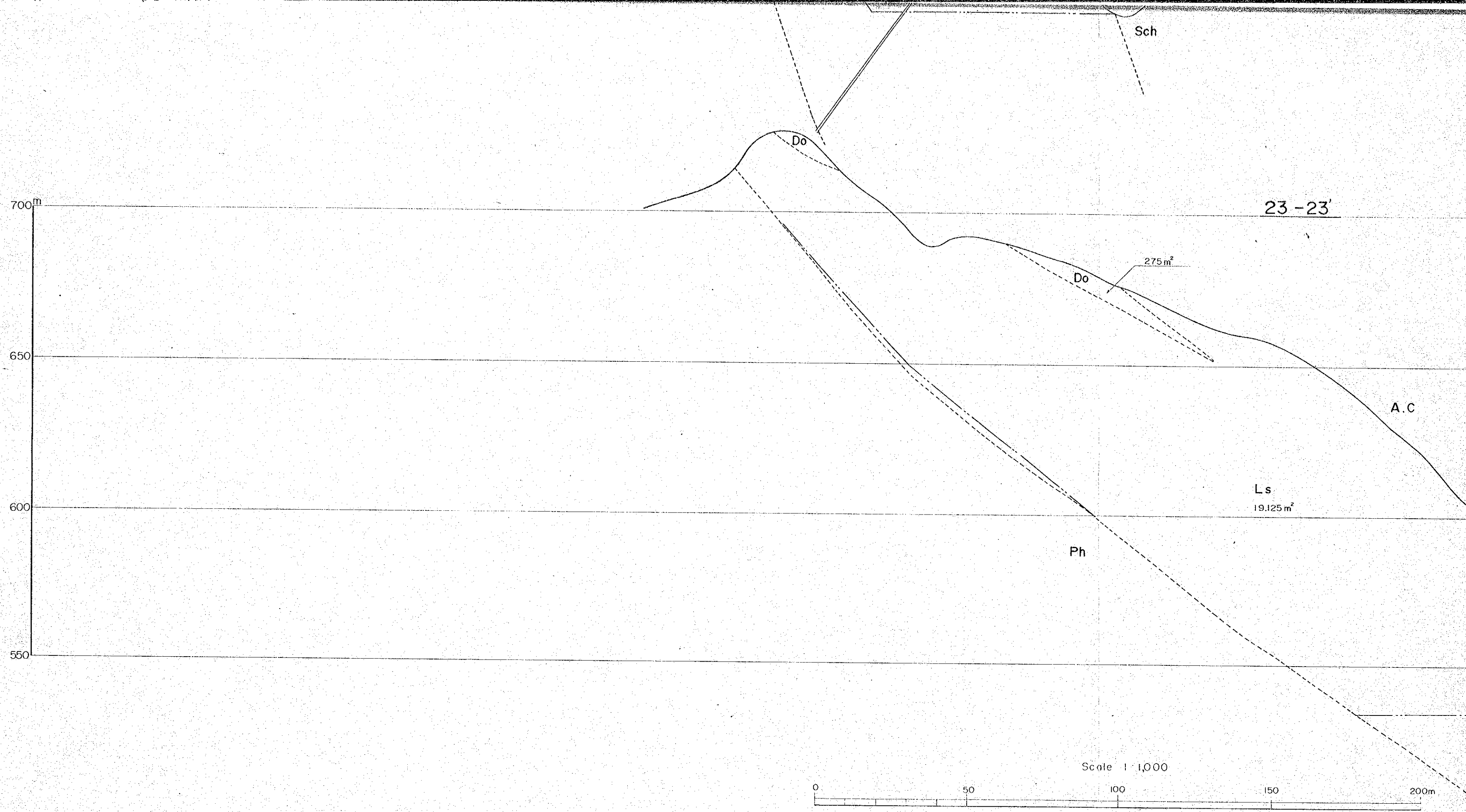
SINDALI LIMESTONE DEPOSIT FOR RESERVES CALCULATION No.14

G-16

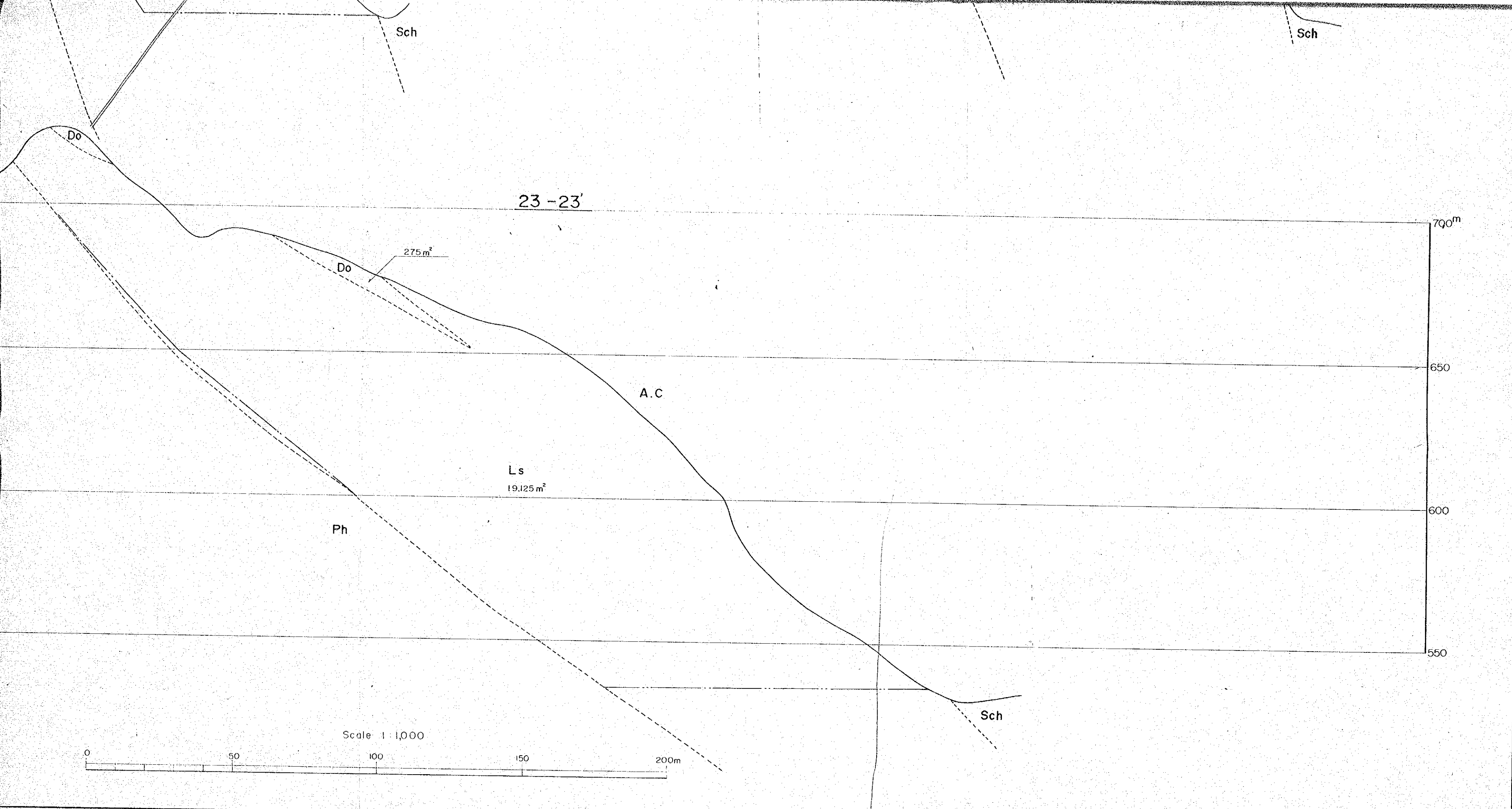




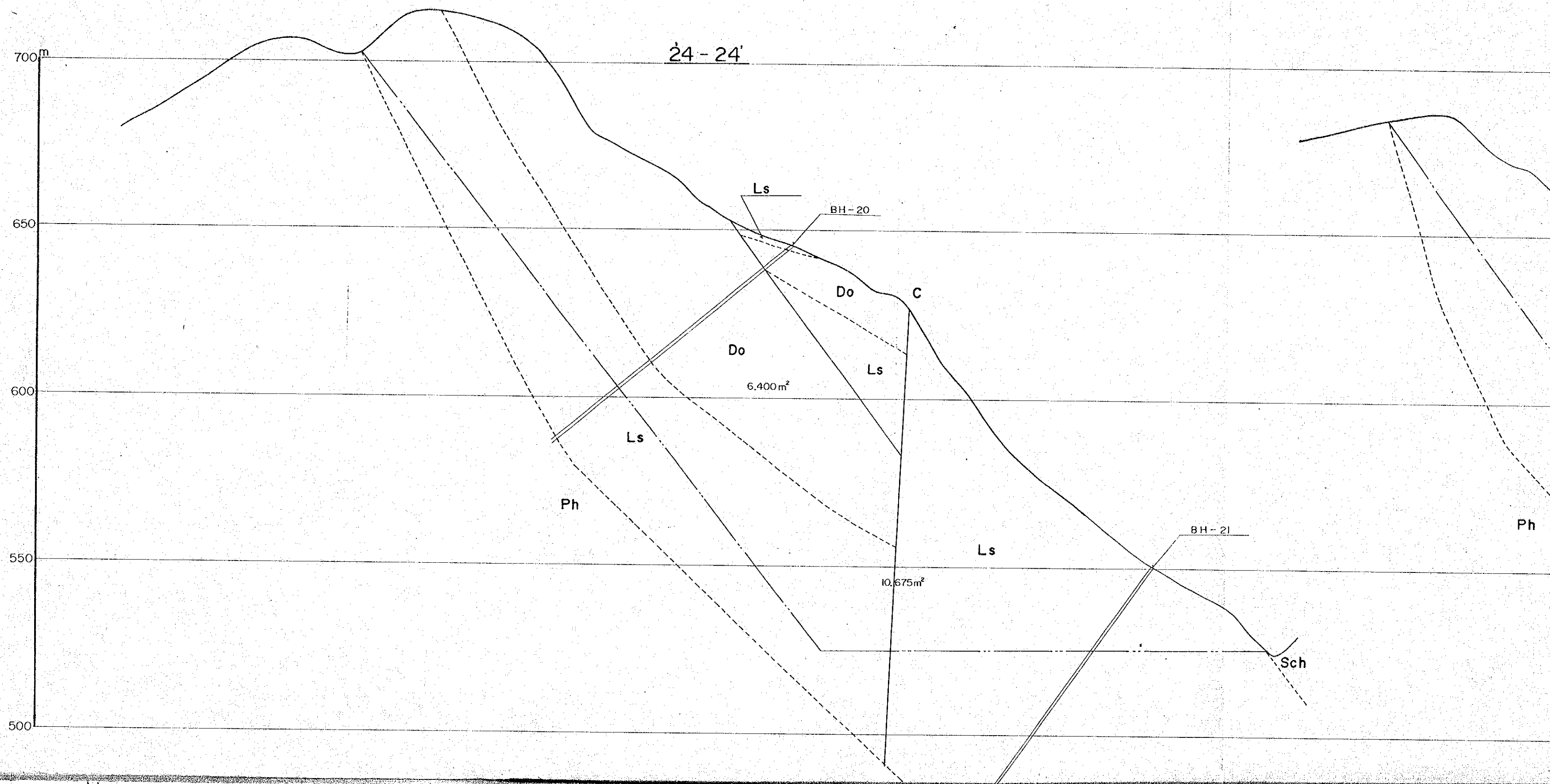




MARCH, 1978

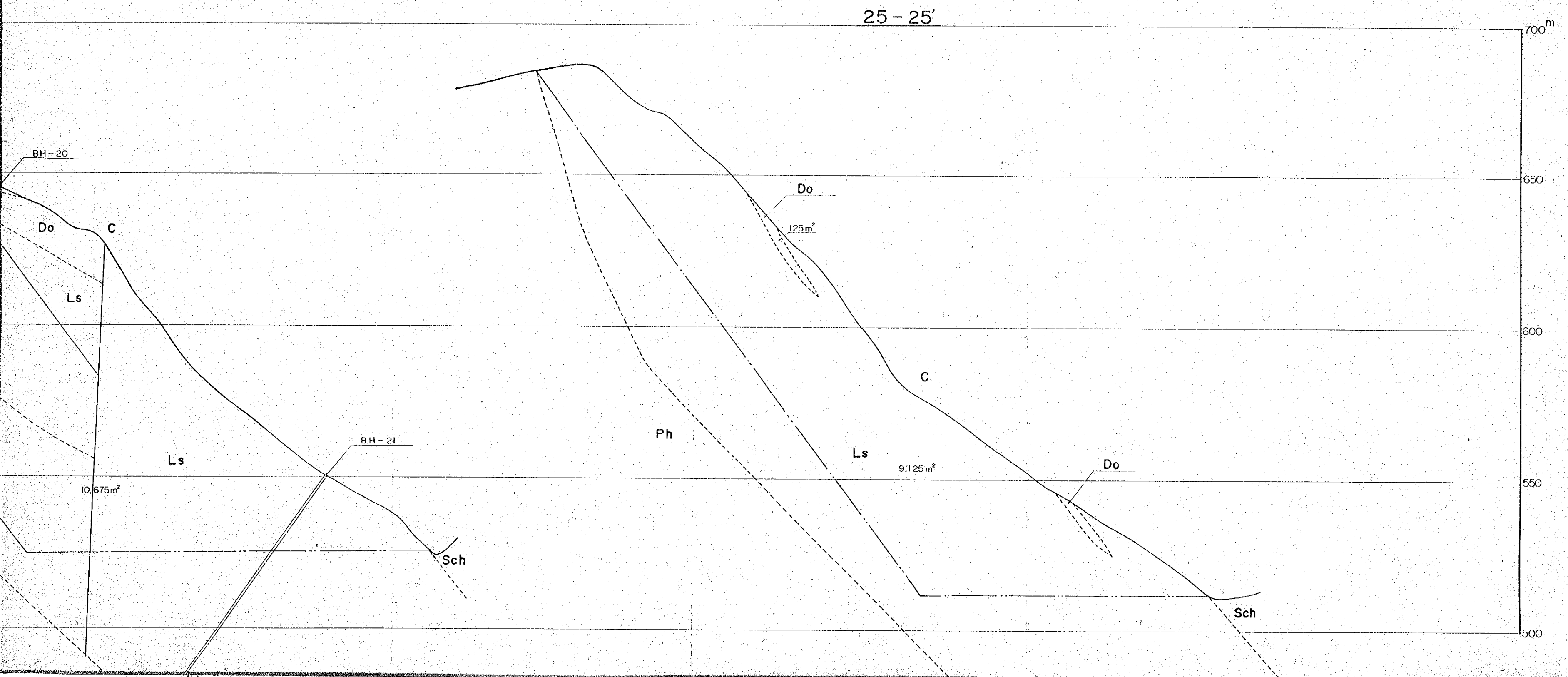


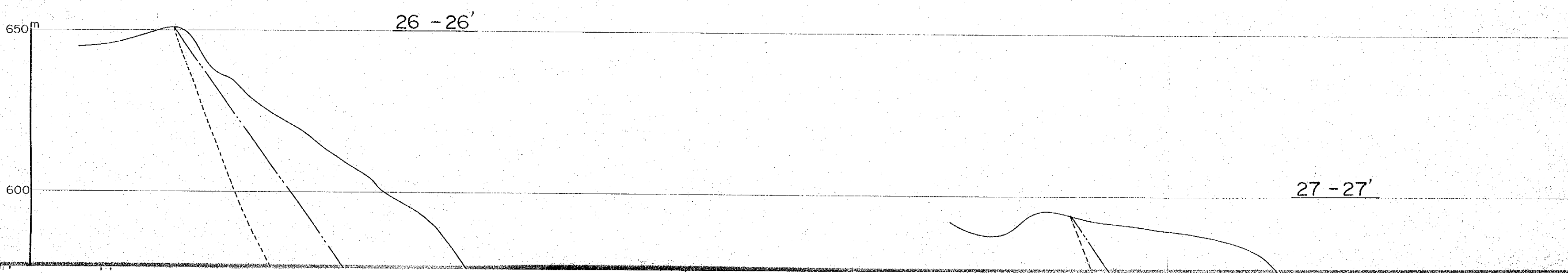
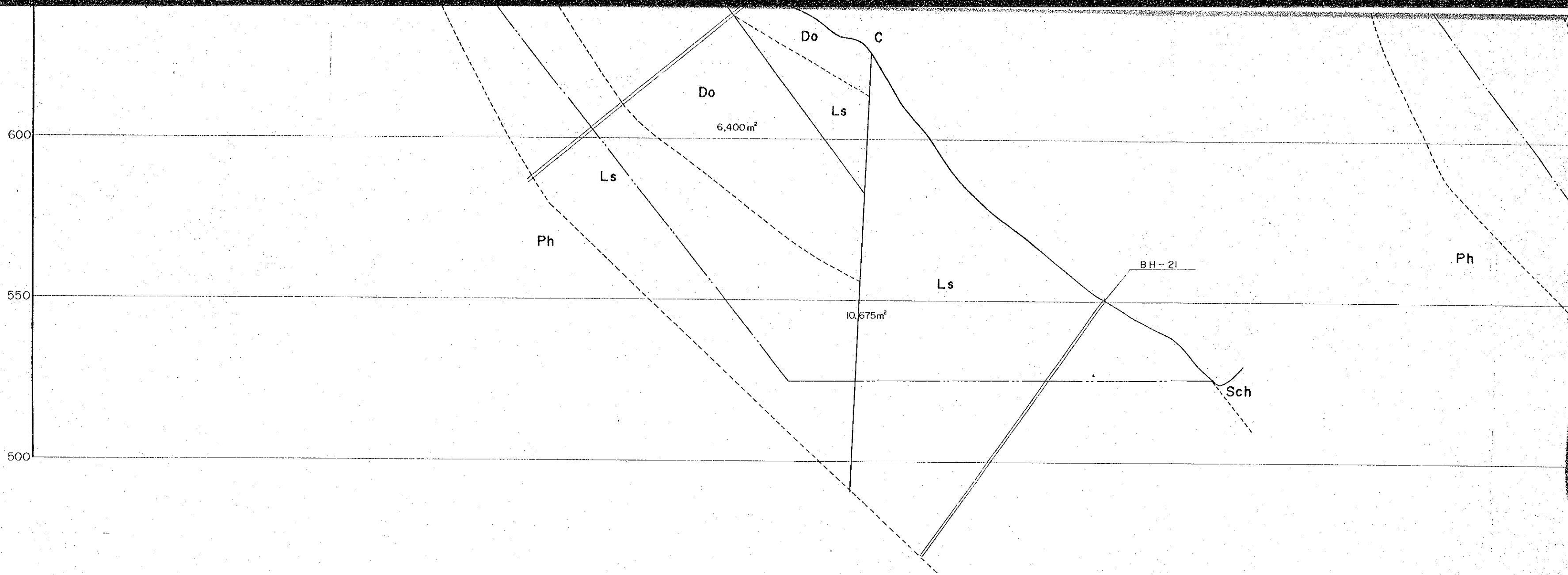
SECTIONAL DRAWING OF SINDALI LIMESTONE DEPOSIT FOR F

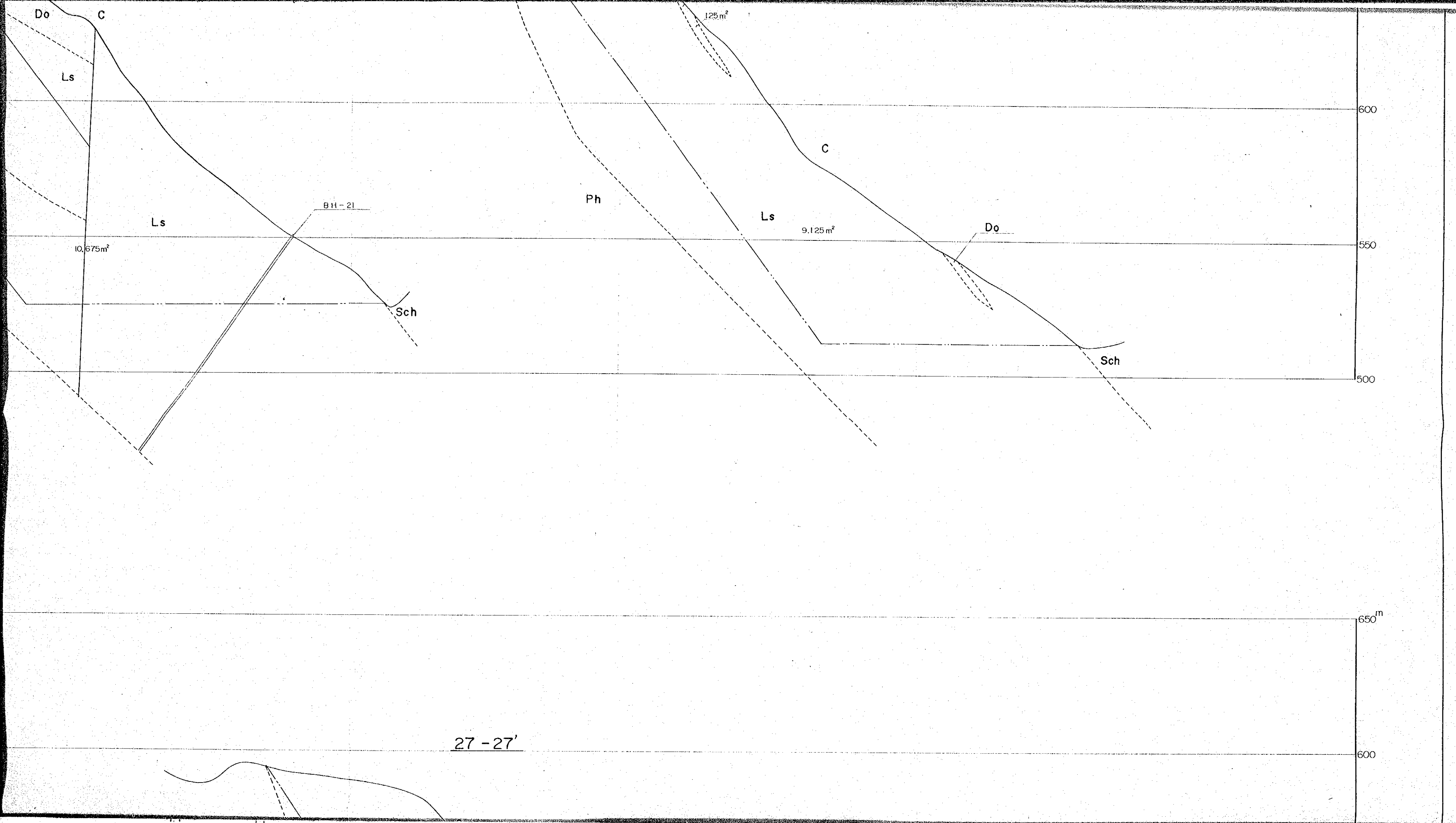


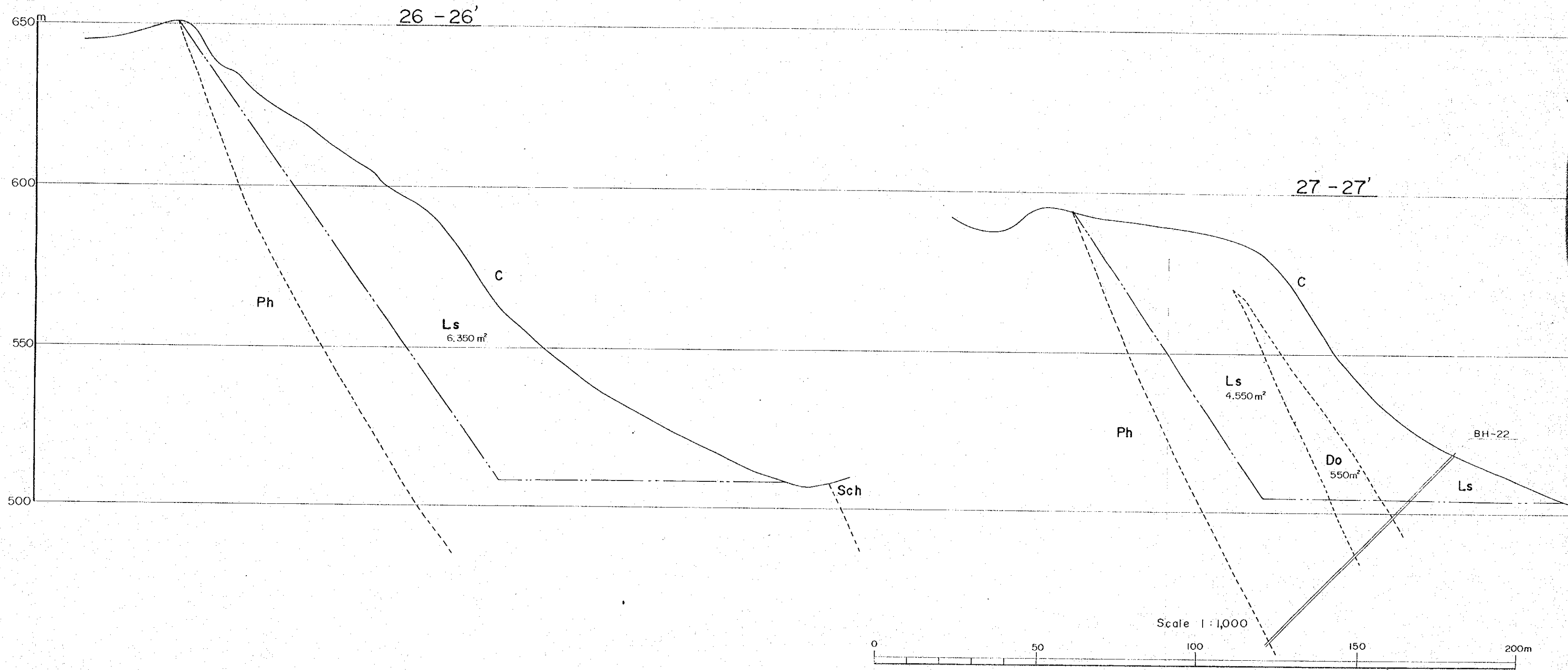
SINDALI LIMESTONE DEPOSIT FOR RESERVES CALCULATION No.15

G-17

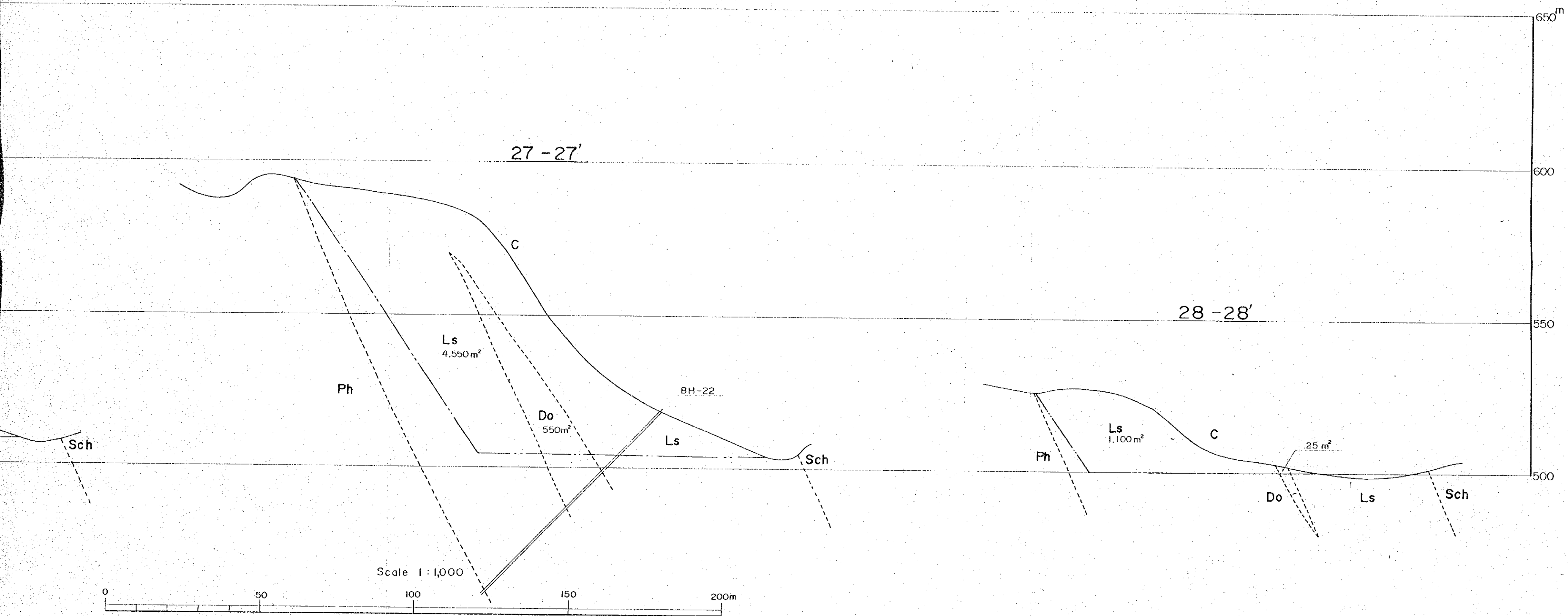






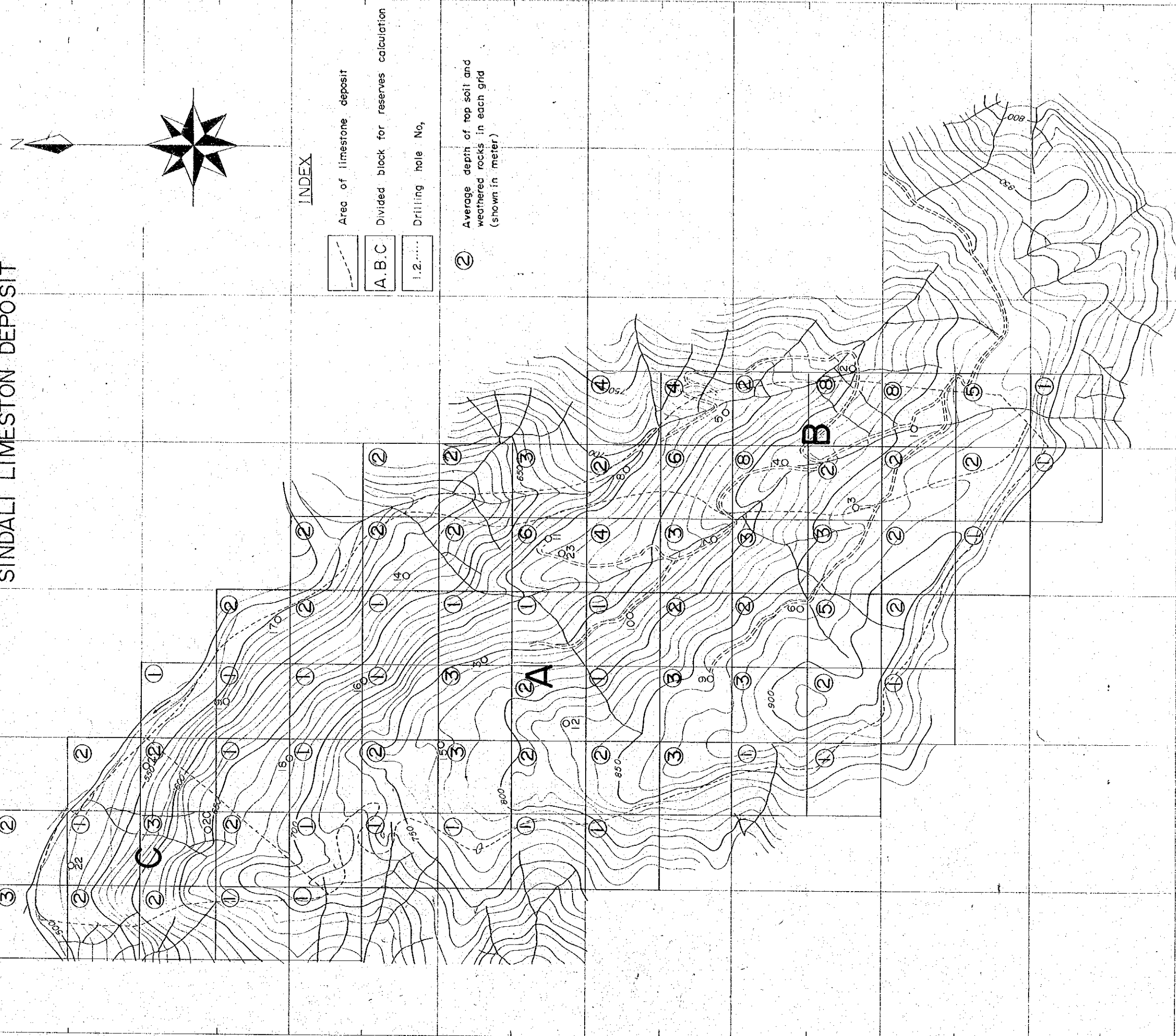


MARCH, 1978

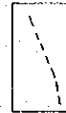

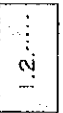



MAP FOR QUANTITY CALCULATION OF TOP SOIL AND WEATHERED ROCK
 SINDALI LIMESTONE DEPOSIT

G-18

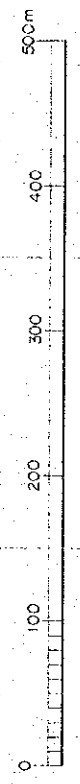


INDEX

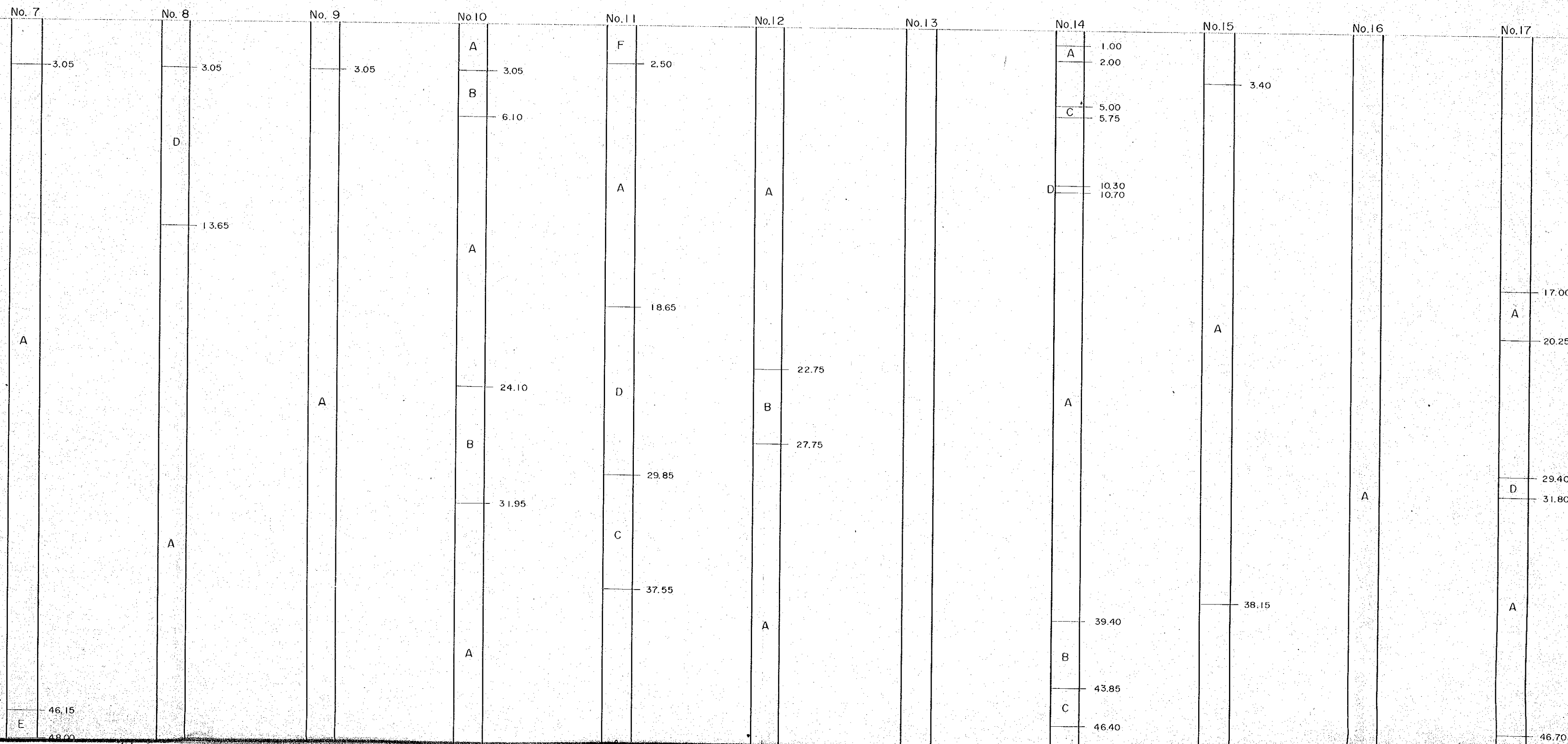
-  Area of limestone deposit
-  Divided block for reserves calculation
-  Drilling hole No.
-  Average depth of top soil and weathered rocks in each grid (shown in meter)

NOTE
 J.I.C.A. compiled this index map based on
 the topographic map made by D.M.G. of Nepal.

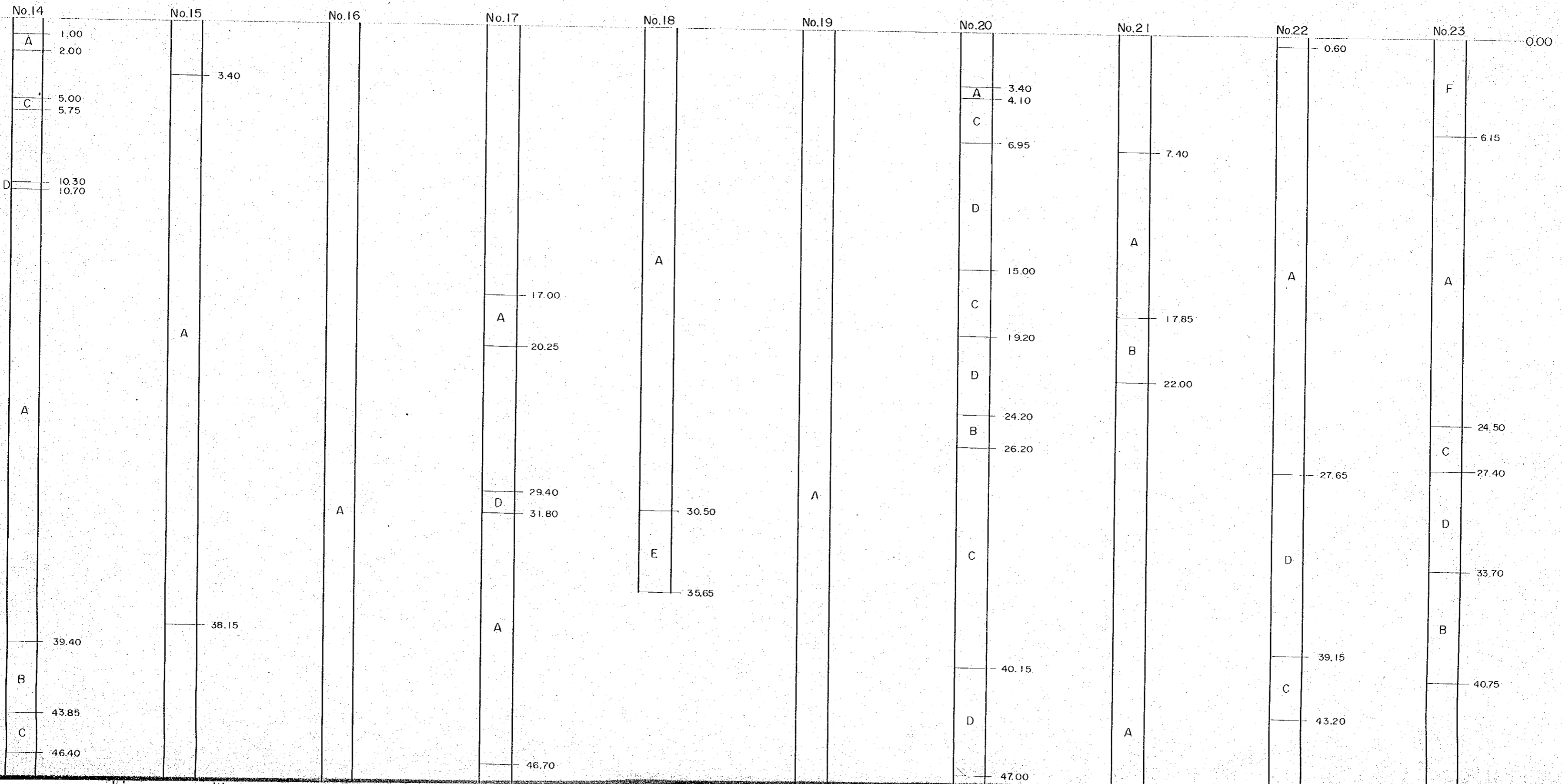
SCALE : 1 : 5,000



DRILLING LOGS SINDALI LIMESTONE DEPOSIT



ESTONE DEPOSIT



	48.60
E	49.95

	47.00
D	
	51.00
A	
	59.10
E	
	61.75

	56.45
E	
	59.55

	71.80
A	
	72.45
E	
	74.65

	44.60
B	
A	
	55.10
C	
	57.10
E	
	58.45

	48.00
E	
	49.60

	46.15
E	
	48.00

	55.50
E	
	56.55

	50.50
E	
	53.00

	51.15
B	
	55.85
A	
	68.30
E	
	69.35

E	46.15
E	48.00

E	55.50
E	56.55

E	50.50
E	53.00

B	51.15
B	55.85
E	68.30
E	69.35

A	58.35
B	63.10
A	67.75
B	74.90
A	90.55
E	94.00
A	97.85

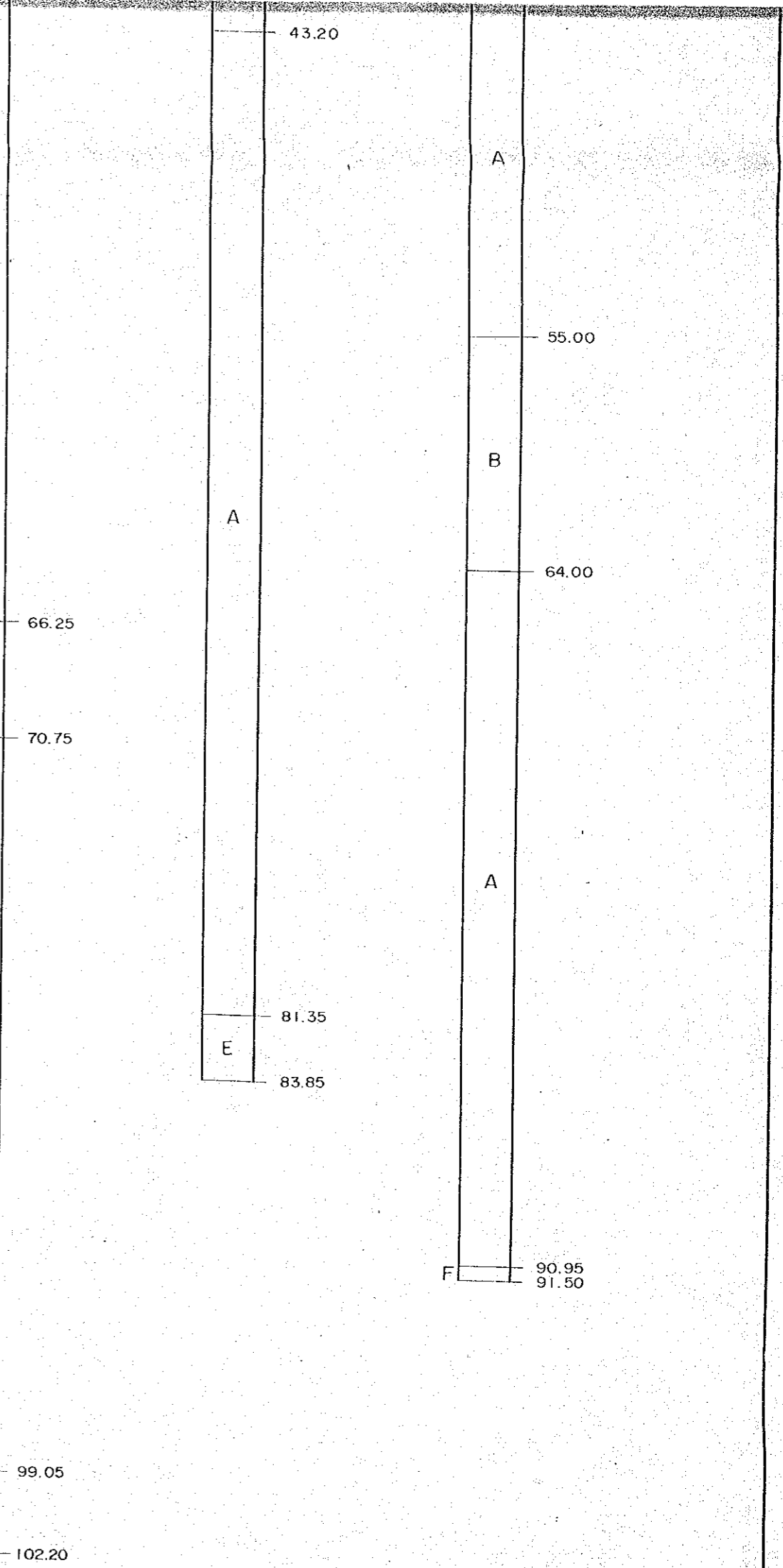
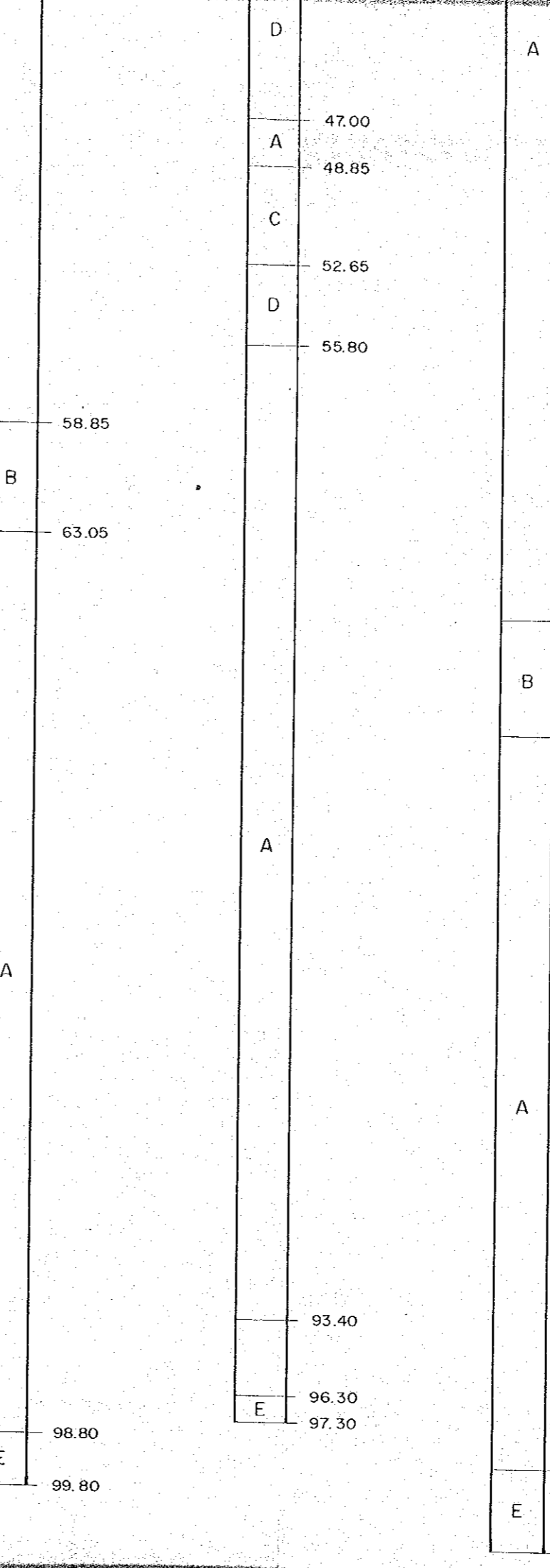
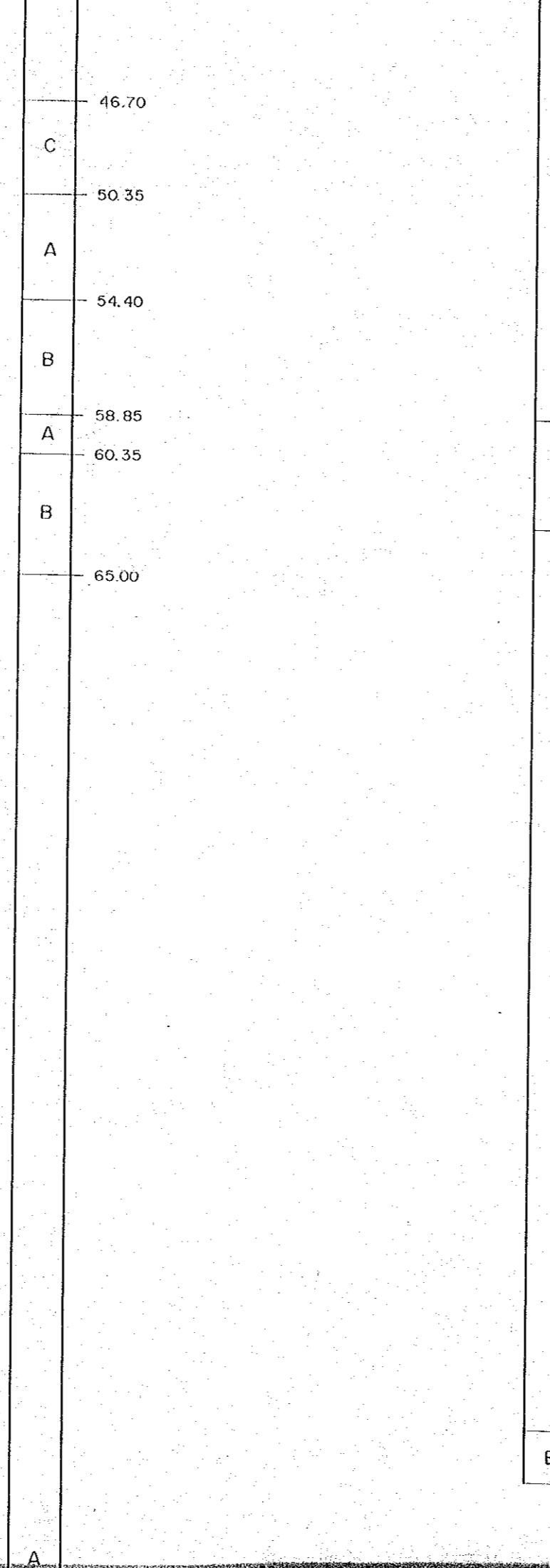
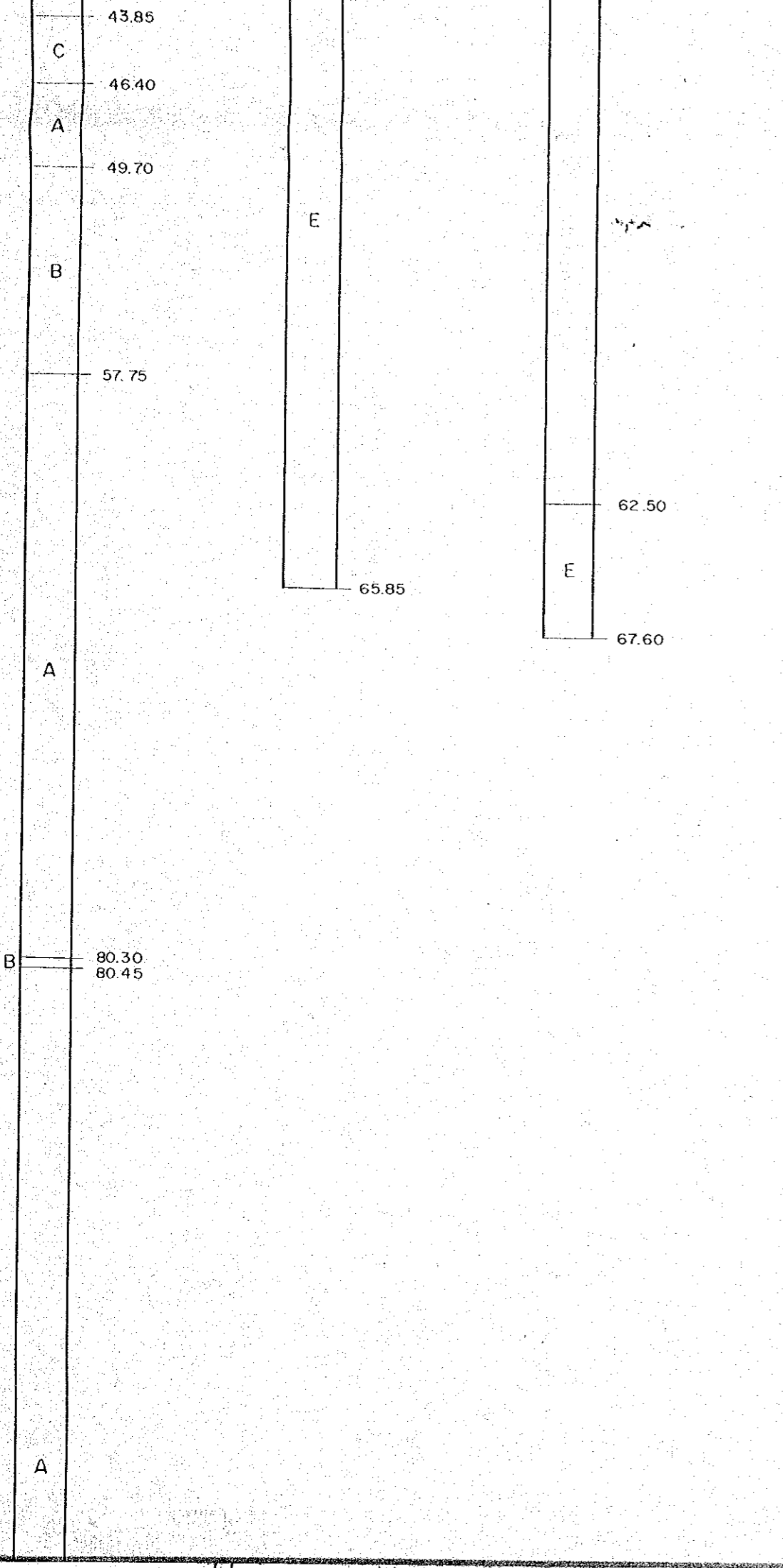
C	50.80
B	52.85
B	57.50
A	73.85
E	76.50

A	43.85
A	46.40
A	49.70
B	57.75
A	80.30
B	80.45
A	

E	65.85
---	-------

E	62.50
E	67.60

C	46.70
A	50.35
B	54.40
A	58.85
B	60.35
B	65.00



E 97.85

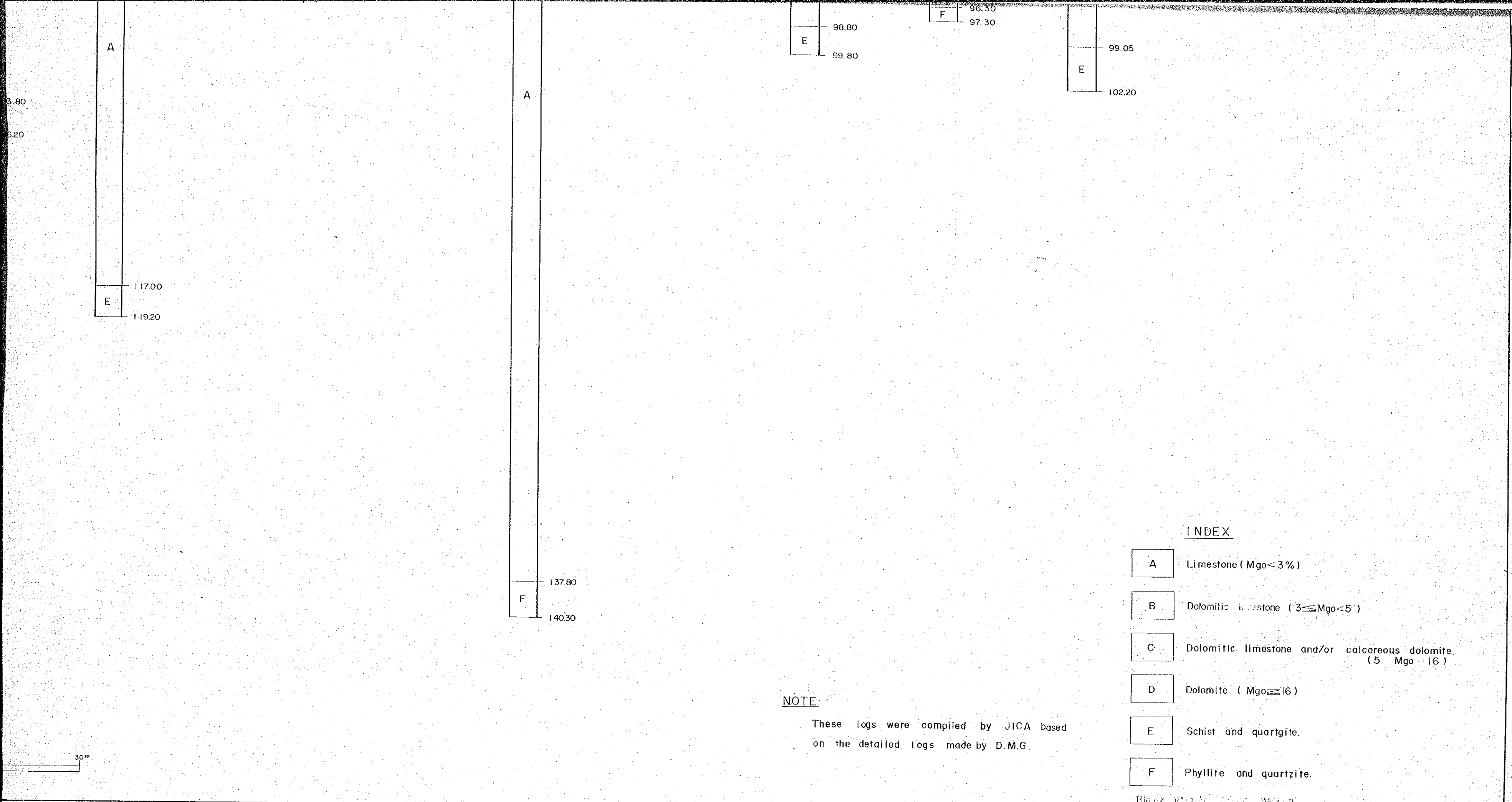
E 103.80
106.20

A
E 117.00
119.20

A
E 137.80
140.30

Scale : 1 : 200





INDEX

- A Limestone (Mgo < 3%)
- B Dolomitic limestone (3 ≤ Mgo < 5)
- C Dolomitic limestone and/or calcareous dolomite.
(5 Mgo 16)
- D Dolomite (Mgo ≥ 16)
- E Schist and quartzite.
- F Phyllite and quartzite.

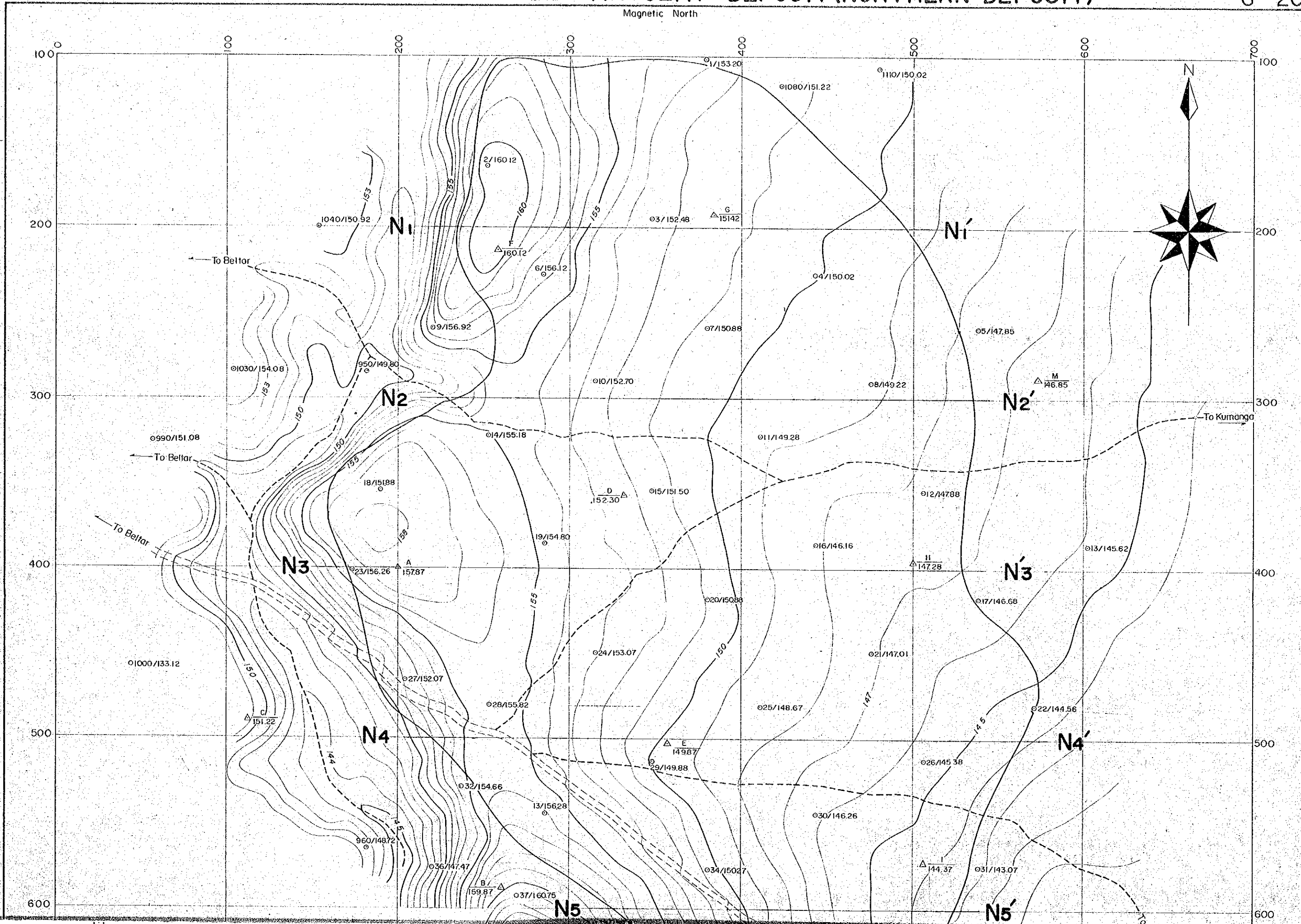
NOTE

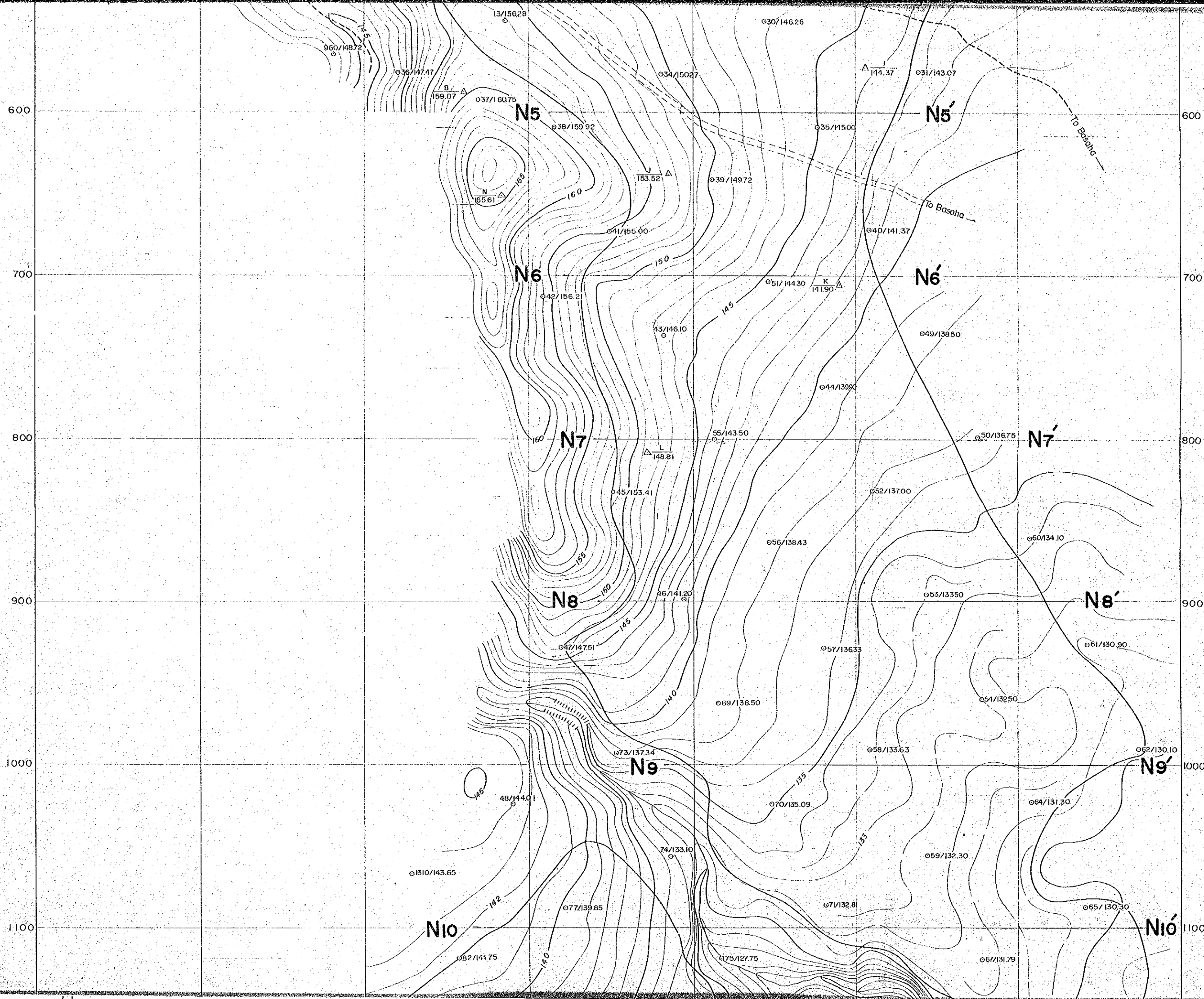
These logs were compiled by JICA based on the detailed logs made by D.M.G.

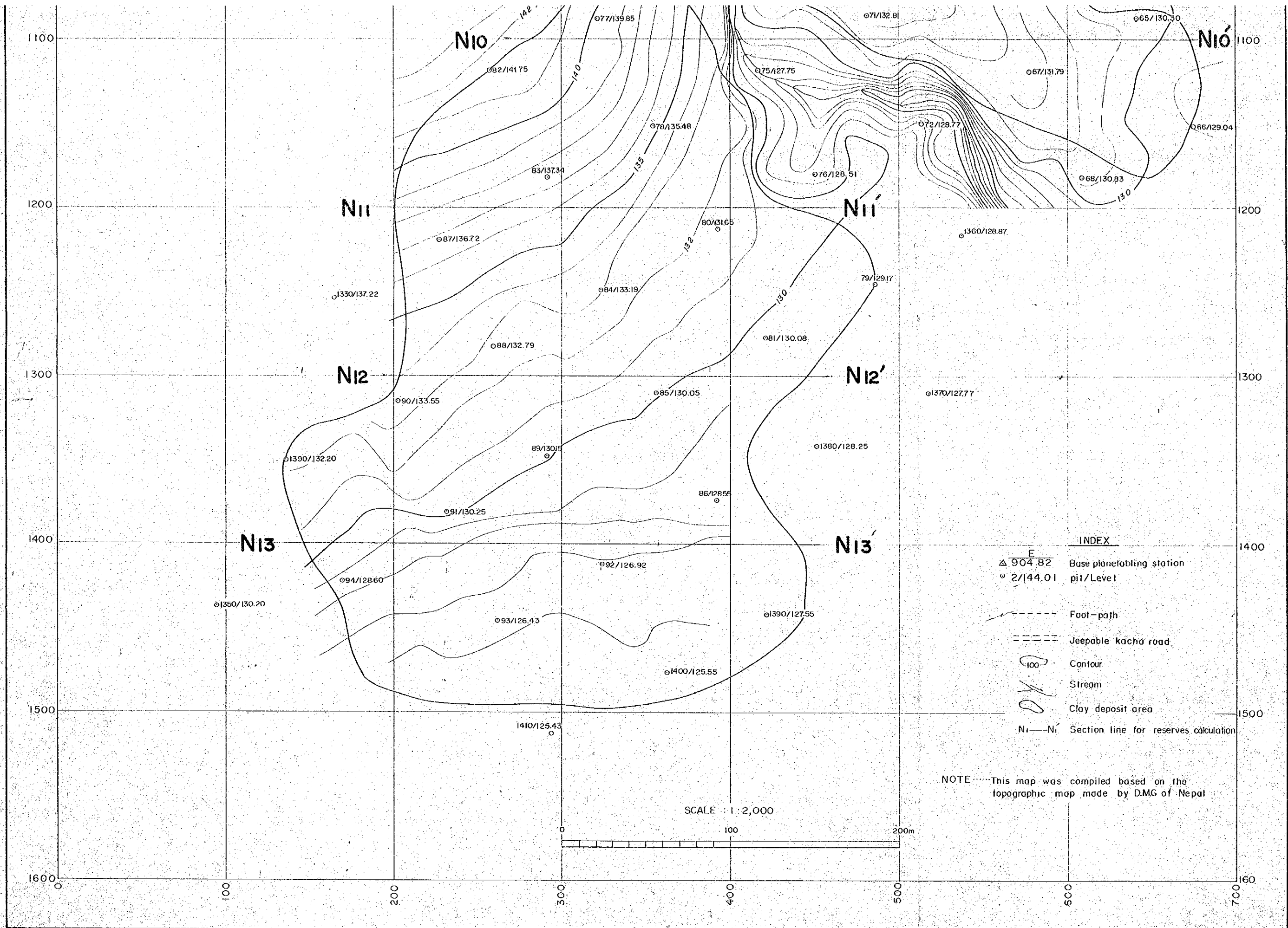
Black part of logs are not shown

TOPOGRAPHICAL MAP OF BELTAR CLAY DEPOSIT (NORTHERN DEPOSIT)

G-20







MARCH, 1978

JAPAN INTERNATIONAL COOPERATION AGENCY, TOKYO JAPAN