

ネパール王国ウダイプールセメント工場

建設計画調査報告書

(第II巻 図面)

昭和53年6月

国際協力事業団

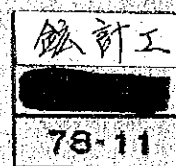


TABLE OF CONTENTS

VOLUME TWO (DRAWINGS)

Drawing No.	Title	Scale
G - 01	Index map of Sindali limestone deposit	1 : 5,000
G - 02	Topographic and geological map of Sindali limestone	1 : 1,000
G - 03	Sectional drawing of Sindali limestone deposit (1)	1 : 1,000
G - 04	Sectional drawing of Sindali limestone deposit (2)	1 : 1,000
G - 05	Sectional drawing of Sindali limestone deposit (3)	1 : 1,000
G - 06	Sectional drawing of Sindali limestone deposit (4)	1 : 1,000
G - 07	Sectional drawing of Sindali limestone deposit (5)	1 : 1,000
G - 08	Sectional drawing of Sindali limestone deposit (6)	1 : 1,000
G - 09	Sectional drawing of Sindali limestone deposit (7)	1 : 1,000
G - 10	Sectional drawing of Sindali limestone deposit (8)	1 : 1,000
G - 11	Sectional drawing of Sindali limestone deposit (9)	1 : 1,000
G - 12	Sectional drawing of Sindali limestone deposit (10)	1 : 1,000
G - 13	Sectional drawing of Sindali limestone deposit (11)	1 : 1,000
G - 14	Sectional drawing of Sindali limestone deposit (12)	1 : 1,000
G - 15	Sectional drawing of Sindali limestone deposit (13)	1 : 1,000
G - 16	Sectional drawing of Sindali limestone deposit (14)	1 : 1,000
G - 17	Sectional drawing of Sindali limestone deposit (15)	1 : 1,000
G - 18	Map for quantity calculation of top soil and weathered rock in Sindali limestone deposit	1 : 5,000
G - 19	Drilling logs - Sindali limestone deposit	1 : 200
G - 20	Topographical map of Beltar clay deposit (Northern deposit)	1 : 2,000
G - 21	Plan of Beltar clay deposit (Southern and eastern deposit)	1 : 2,000
G - 22	Beltar clay deposit (Location of the test pits and auger holes between northern deposit and southern deposit)	1 : 2,000
G - 23	Section of pits - Beltar clay deposit (Northern deposit)	1 : 100
G - 24	Section of pits and hand auger drilling - Beltar clay deposit (Southern deposit and surrounding area)	1 : 100
G - 25	Sectional drawing of Beltar clay deposit for reserves calculation (Northern deposit)	longitudinal 1 : 200 lateral 1 : 2,000

JICA LIBRARY



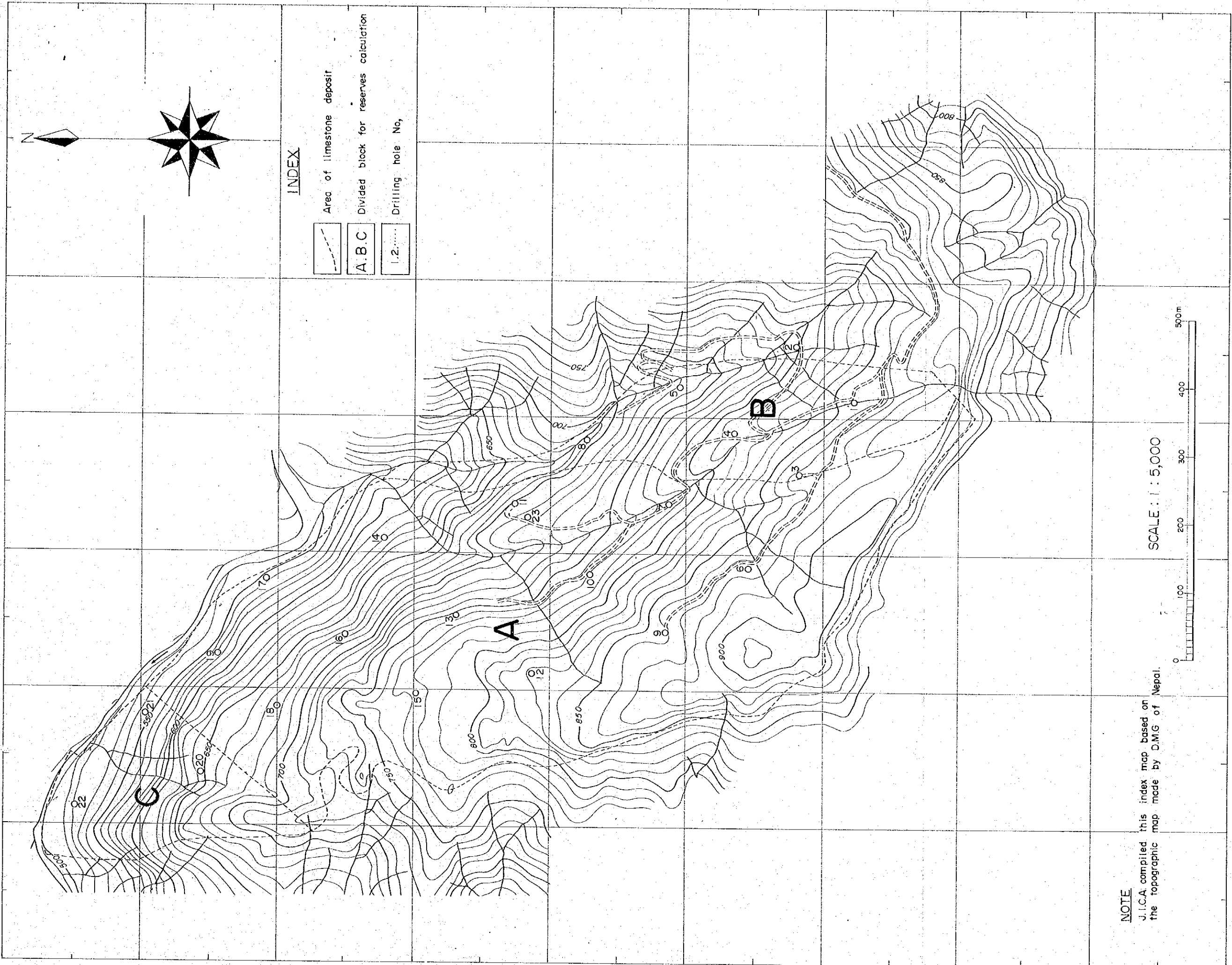
1060366[8]

Drawing No.	Title	Scale
G - 26	Sectional drawing of Beltar clay deposit for reserves calculation (Southern deposit) No. 1	longitudinal 1 : 200 lateral 1 : 2,000
G - 27	Sectional drawing of Beltar clay deposit for reserves calculation (Southern deposit) No. 2	longitudinal 1 : 200 lateral 1 : 2,000
M - 01	Limestone quarry development plan	1 : 10,000
M - 02	Mining plan in Sindali limestone deposit	1 : 2,000
P - 01	Cement plant flow sheet	-
P - 02	Cement plant layout	1 : 1,000
C - 01	Nepal road network	1 : 1,000,000
C - 02	Location map of limestone, clay and silica sand deposit, and proposed plant site of Udaipur Cement Project	1 : 50,000
C - 03	Topographic map of proposed plant site of Udaipur Cement Project	1 : 2,000
* C - 04	Section of limestone and clay storage	1 : 600
* C - 05	Section of dryer department	1 : 600
* C - 06	Section of raw material grinding department	1 : 600
* C - 07	Section of kiln department	1 : 600
* C - 08	Section of cement mill house	1 : 600
* C - 09	Section of cement packing house	1 : 600
* C - 10	Section of coal storage	1 : 600
* C - 11	Section of workshop and elevation of laboratory, engineering office and administration office	1 : 600
E - 01	Single line diagram	

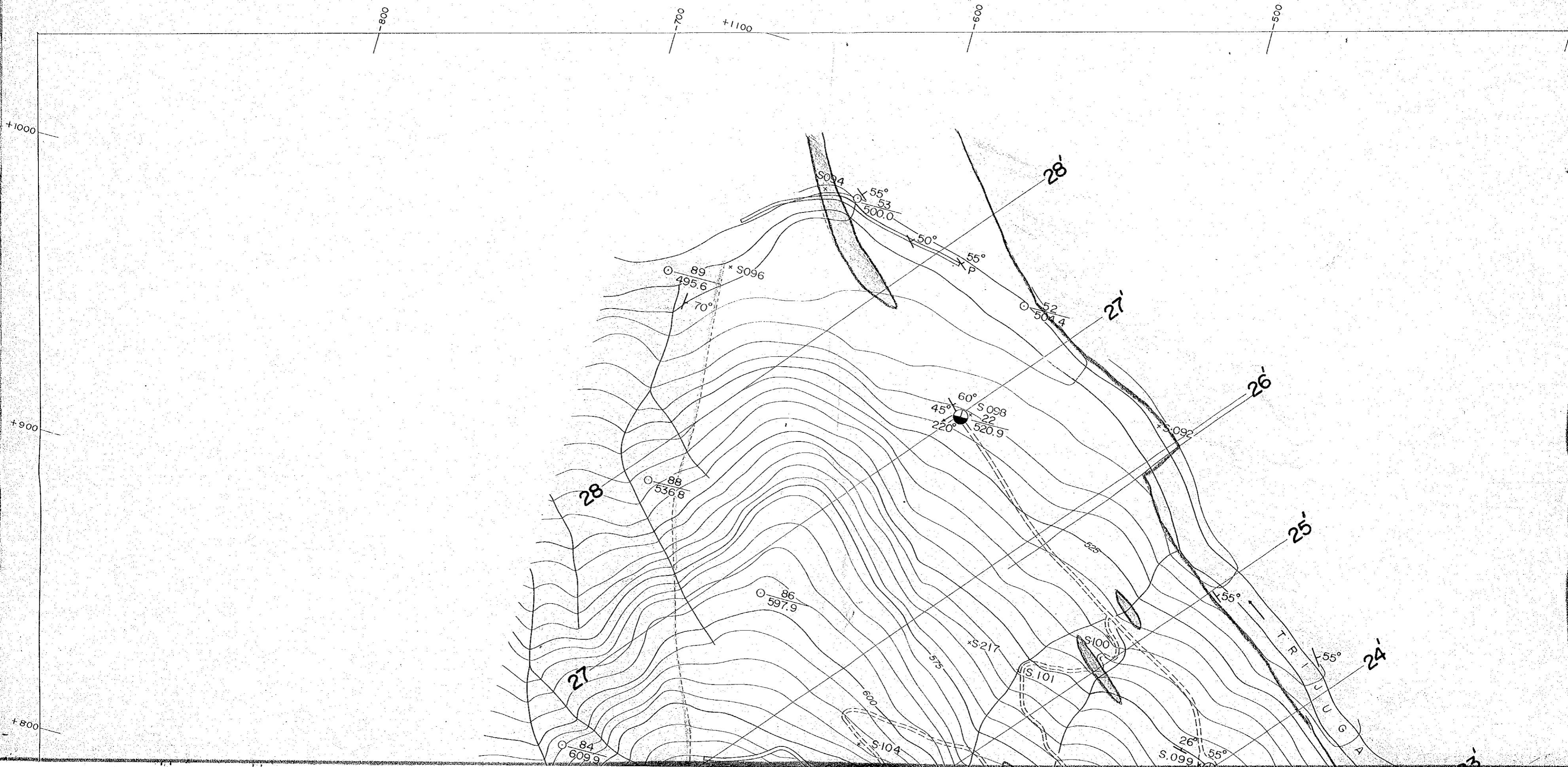
Note. The drawings of the asterisked No. are attached to the end of Vol. I.

国際協力事業団	
受入 月日 84. 4. 30	116
登録No. 04059	38.3 MPI

INDEX MAP OF SINDALI LIMESTONE DEPOSIT G-01

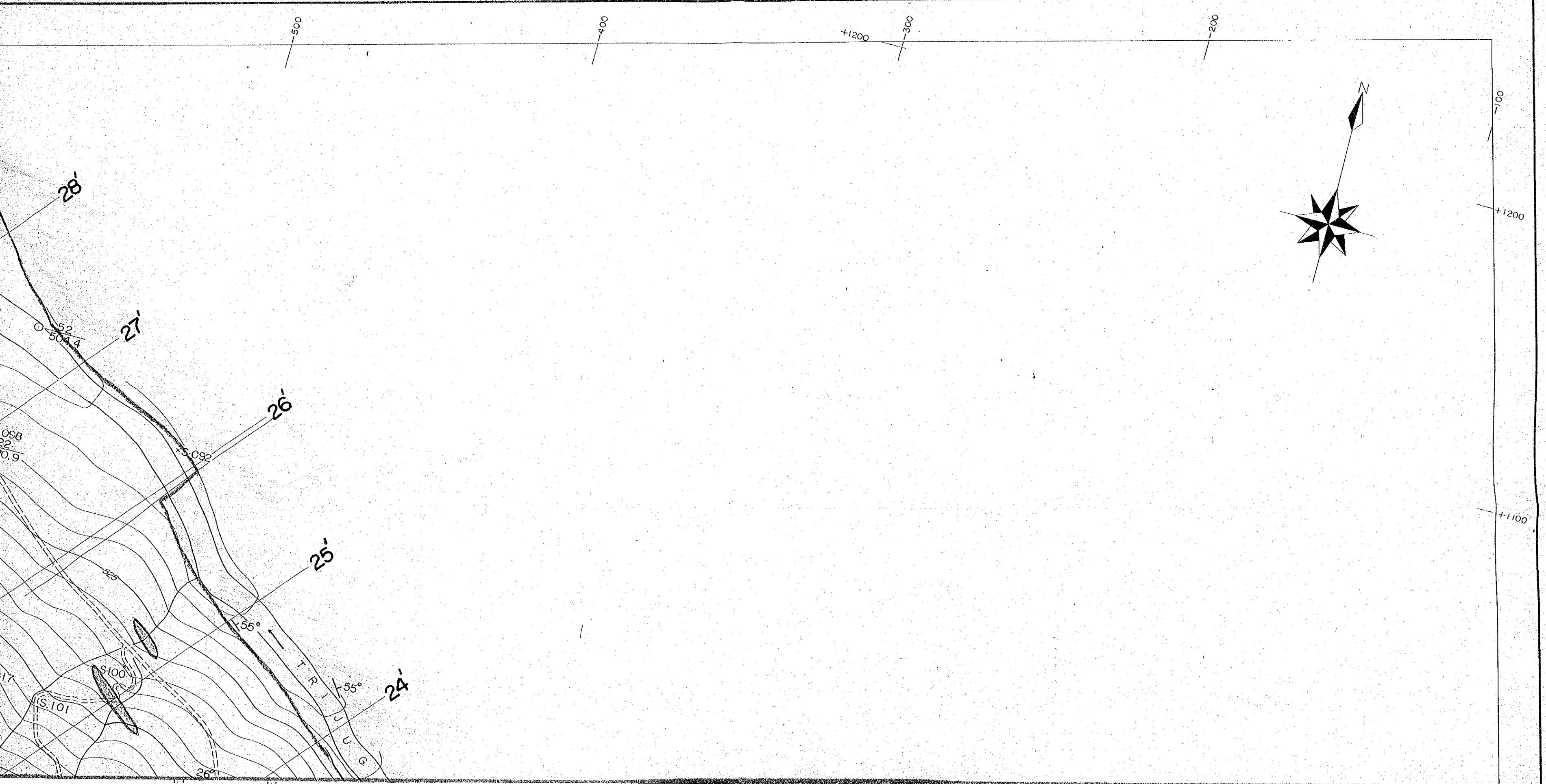


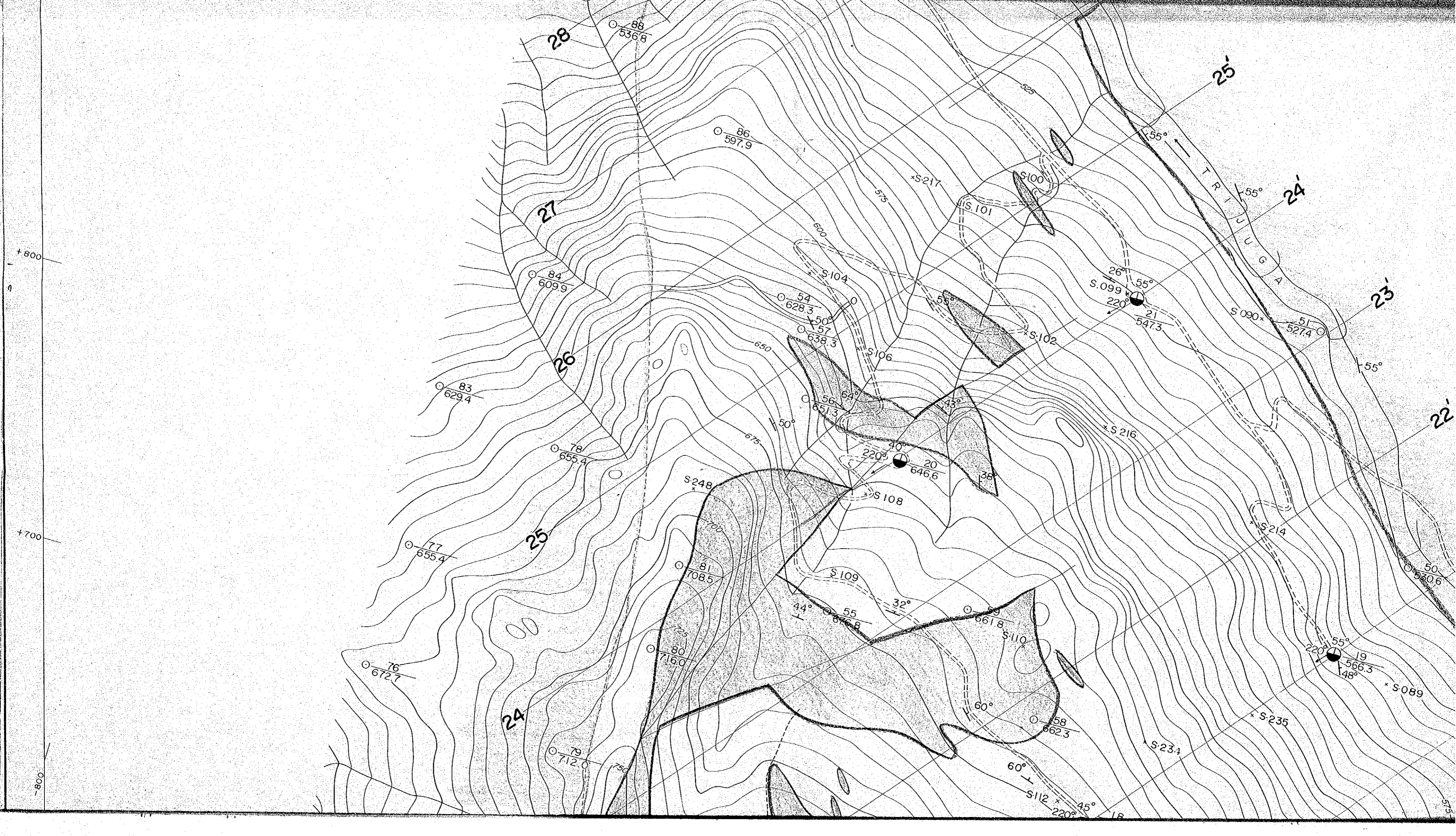
TOPOGRAPHIC AND GEOLOGICAL MAP OF S

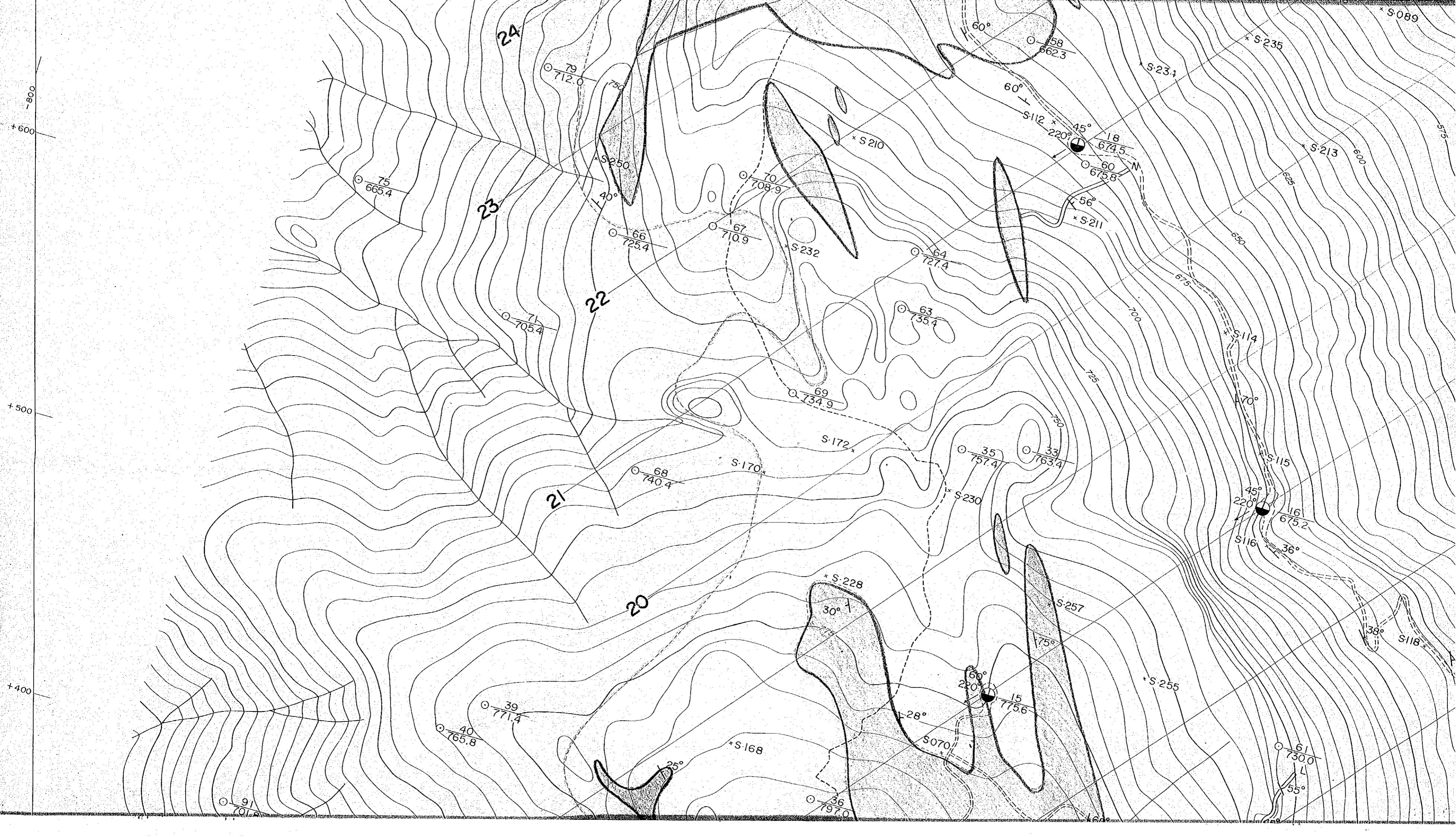


GEOLOGICAL MAP OF SINDALI LIMESTONE

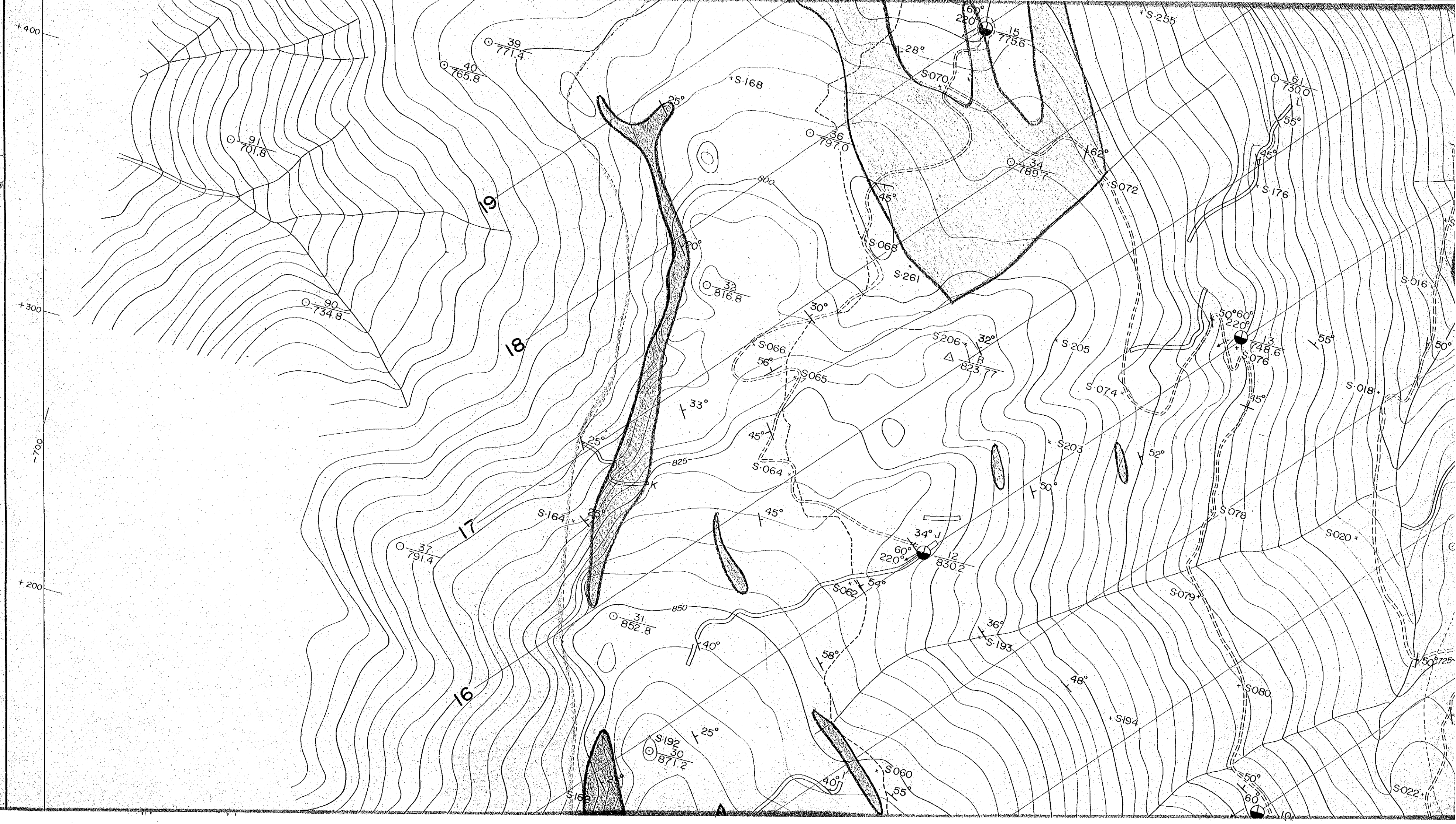
G-02

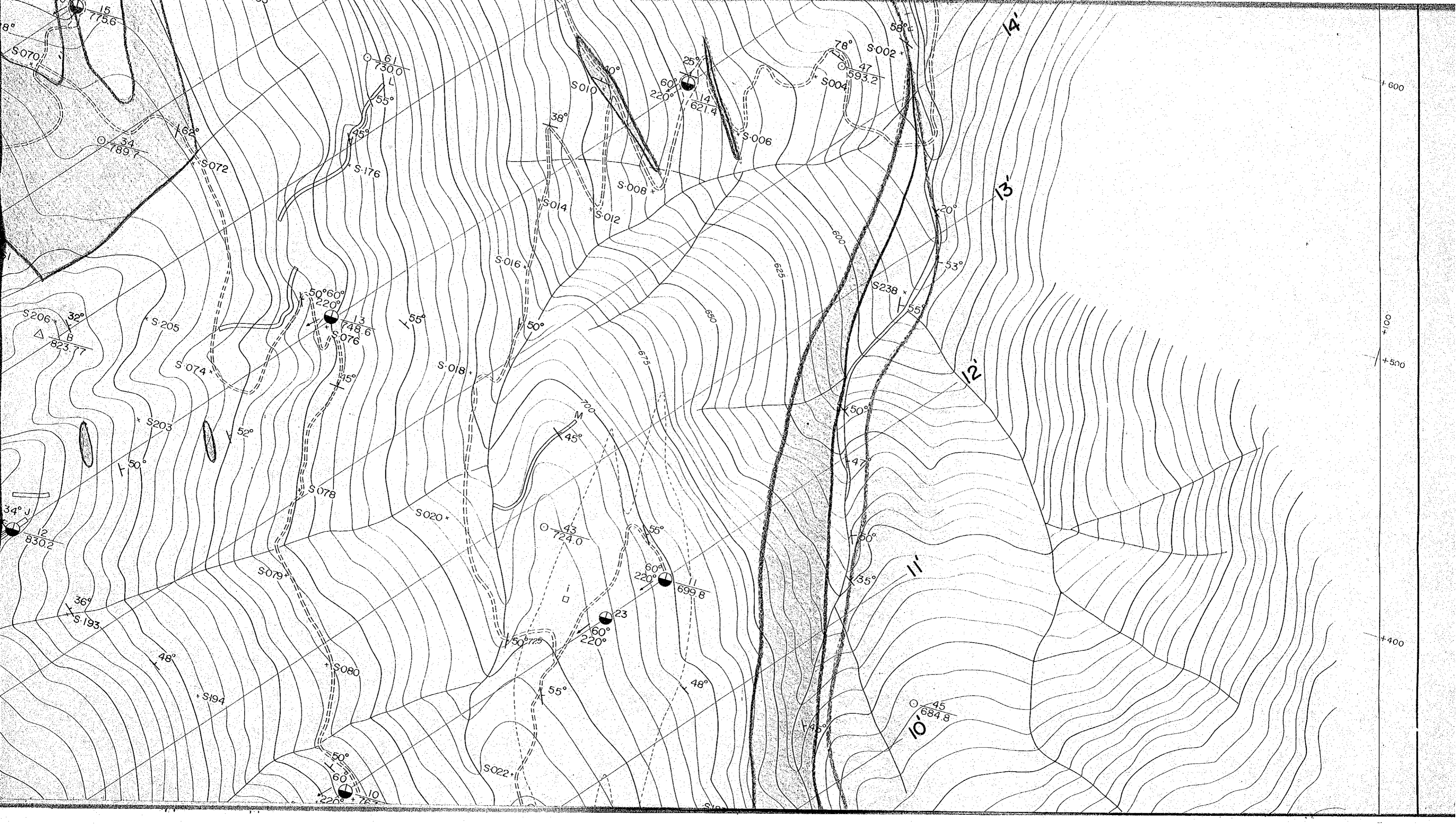


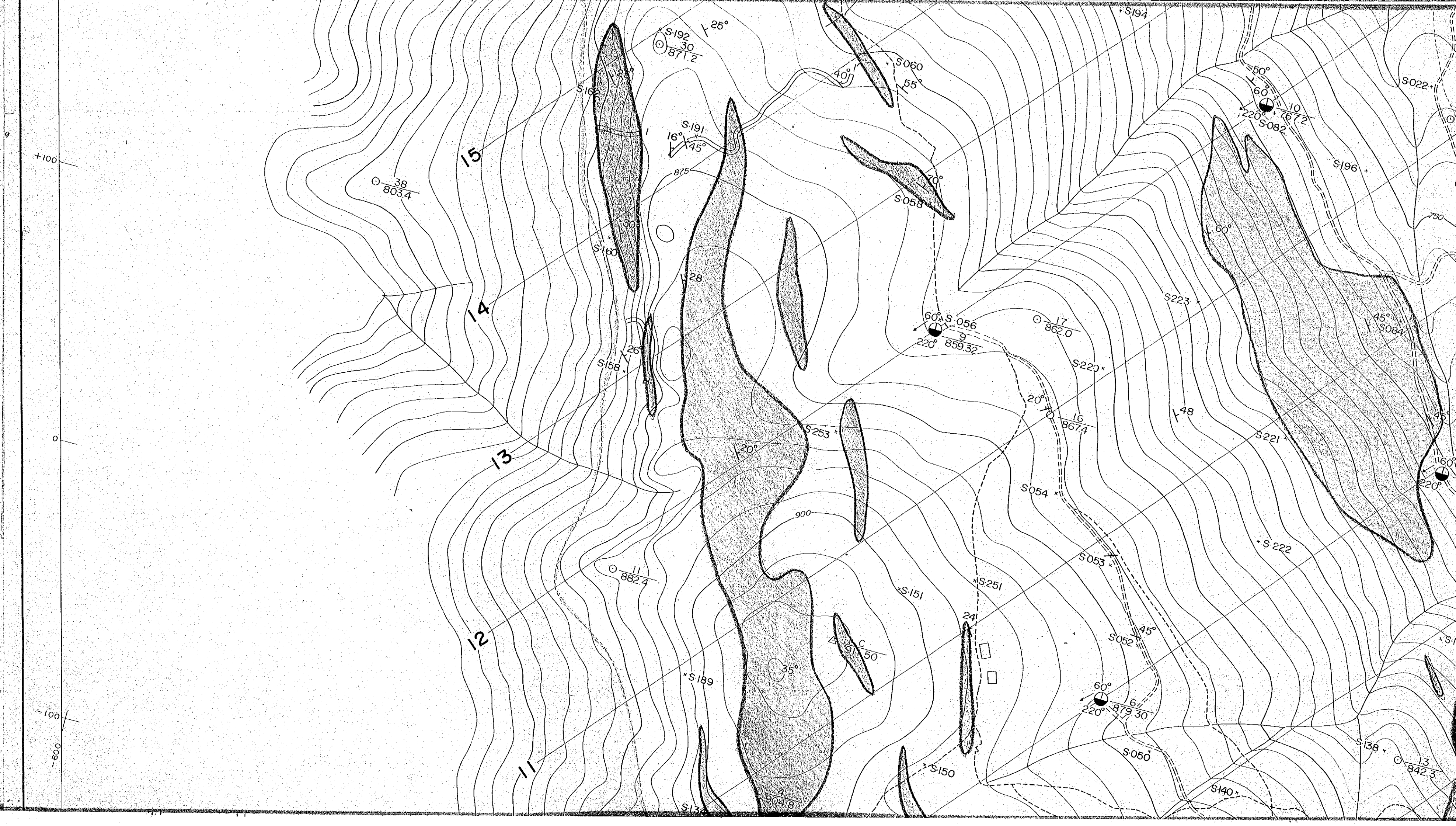


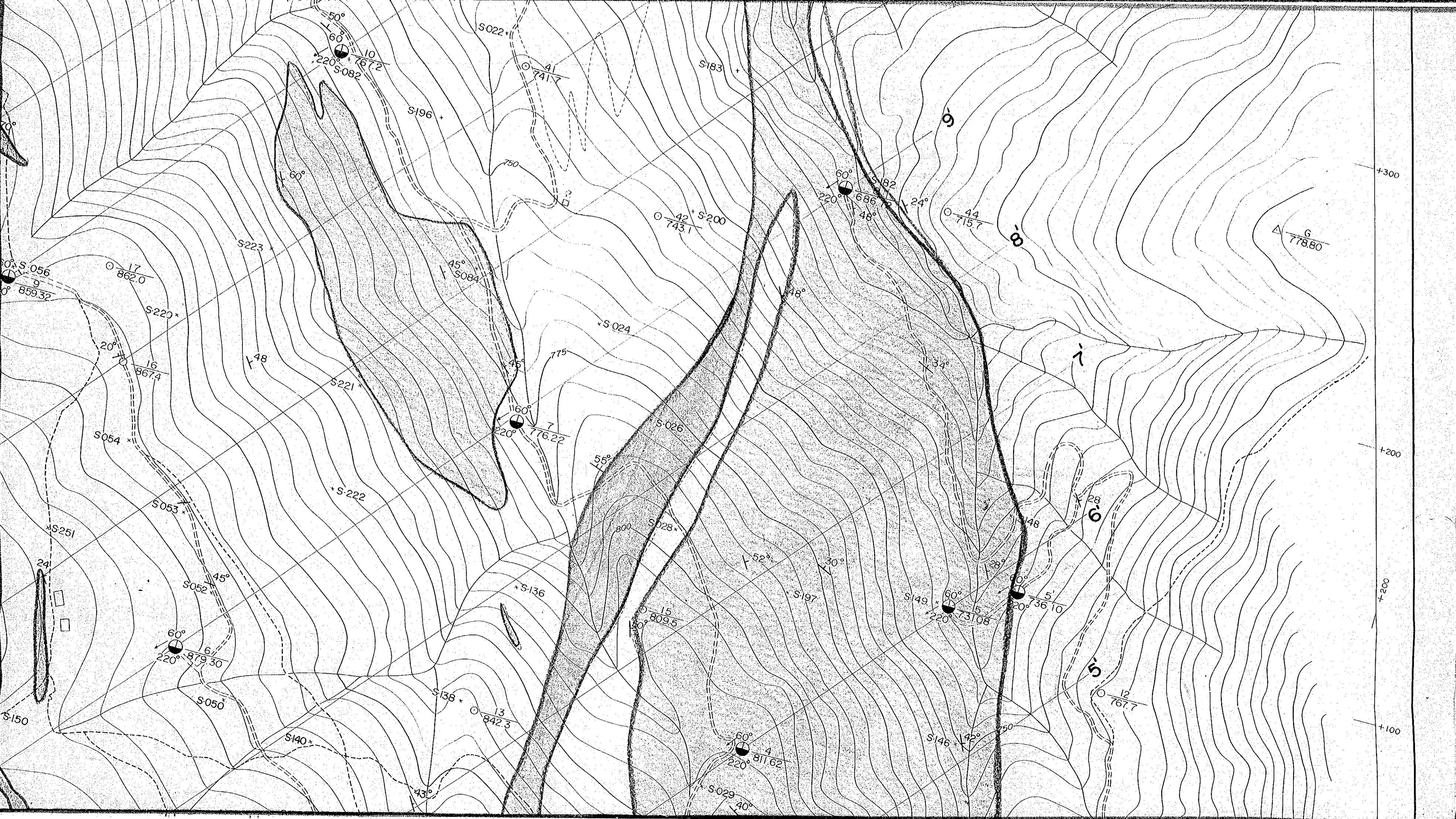




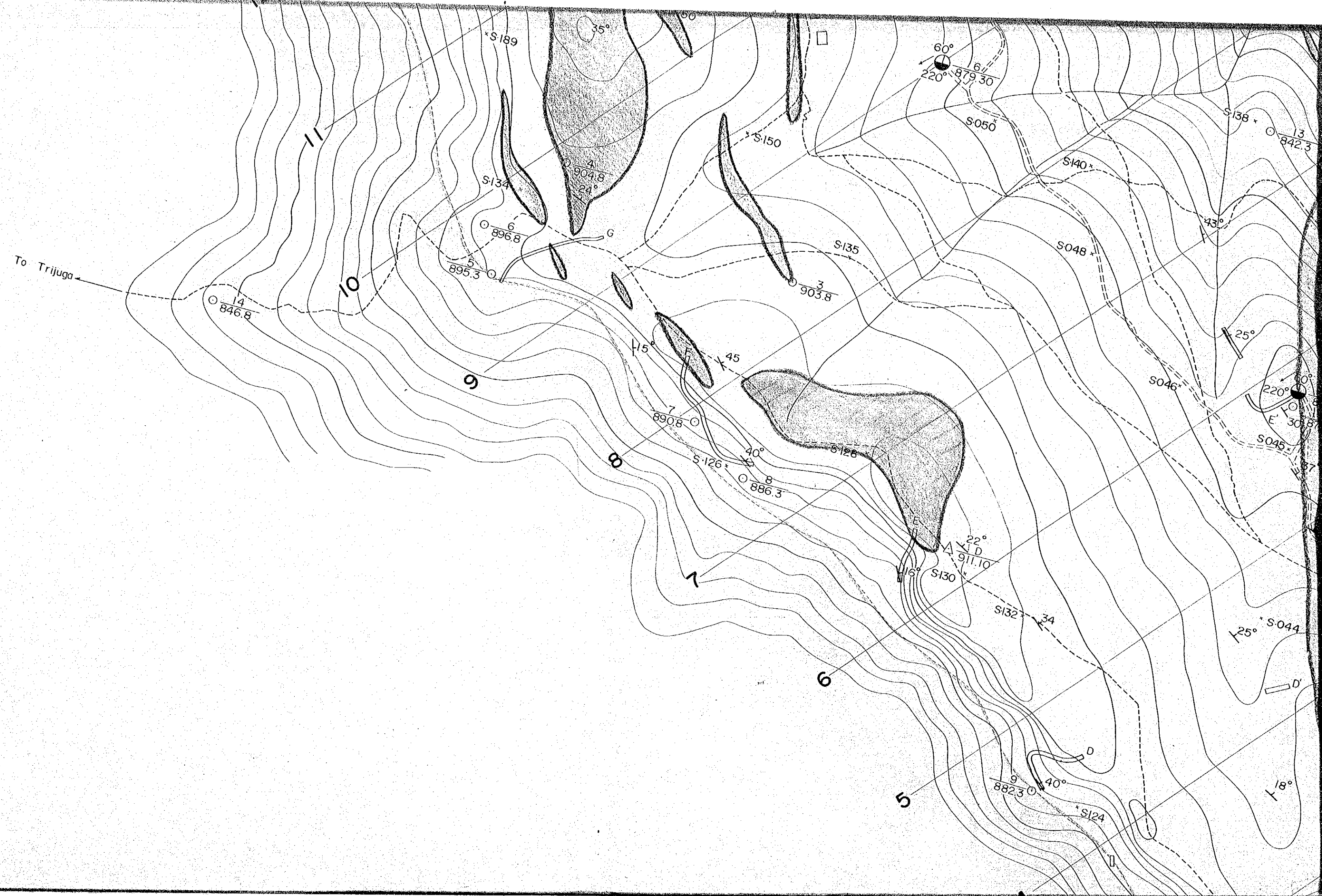


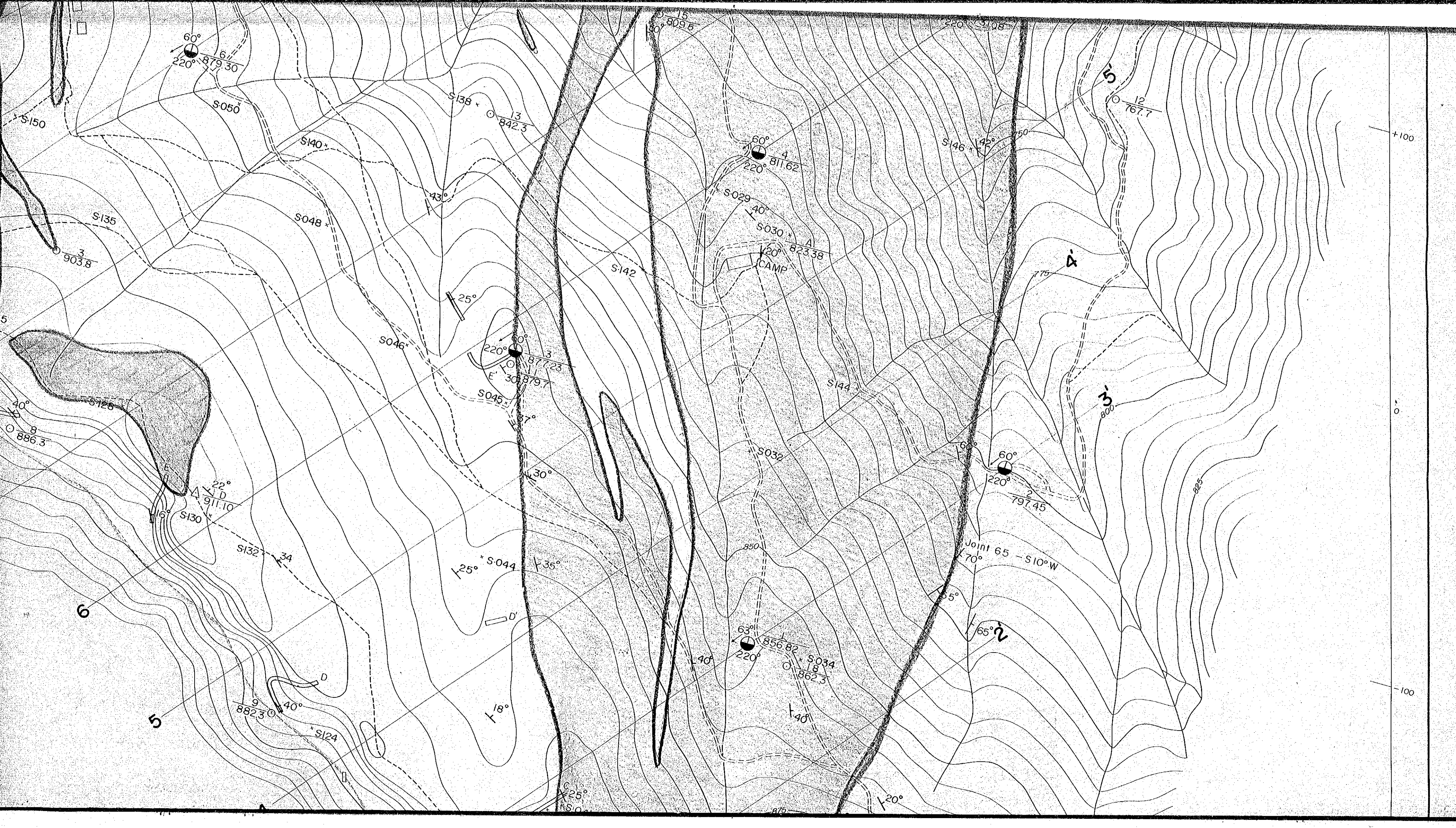






100
-600
200
-200
300
-300



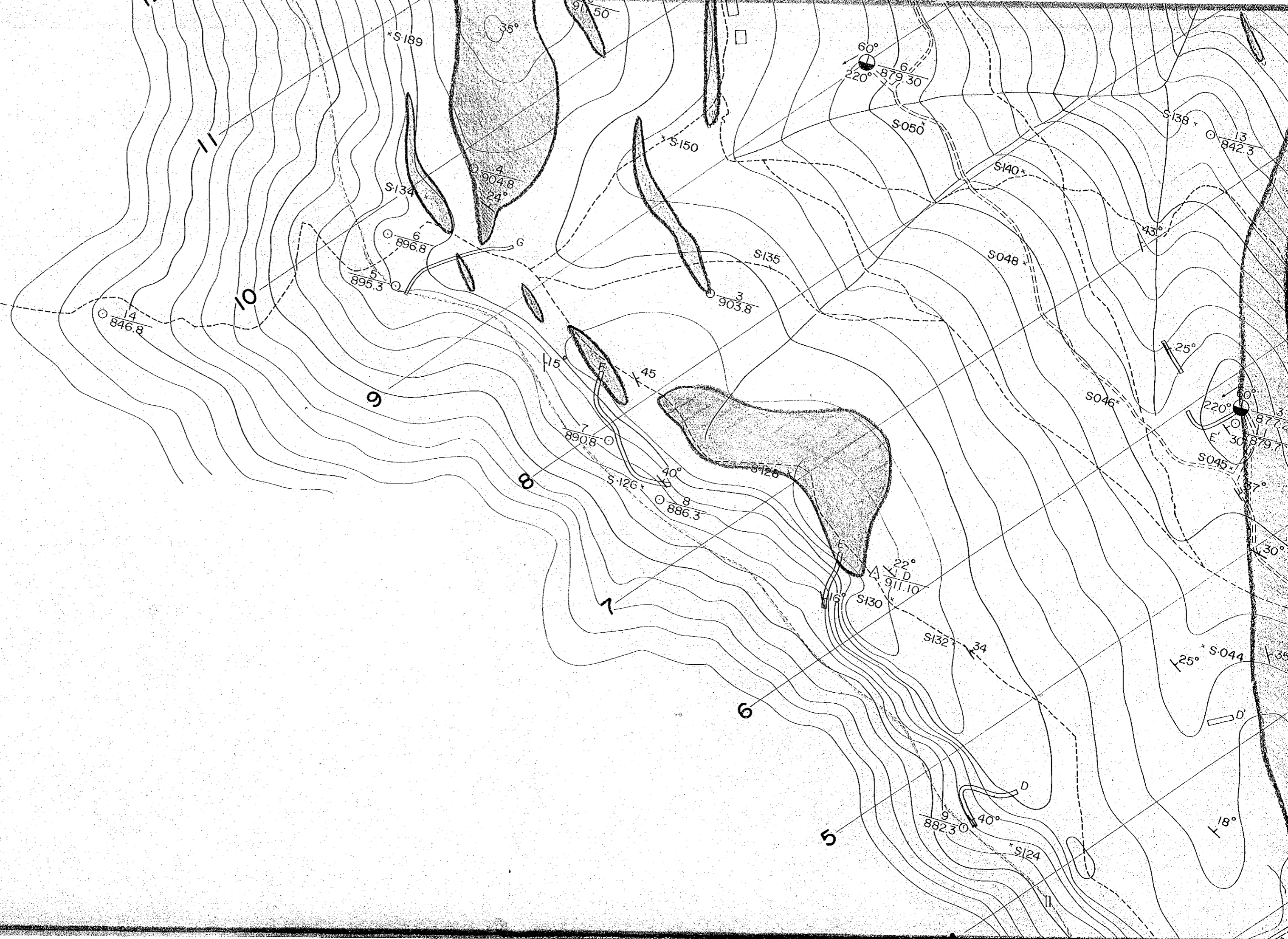


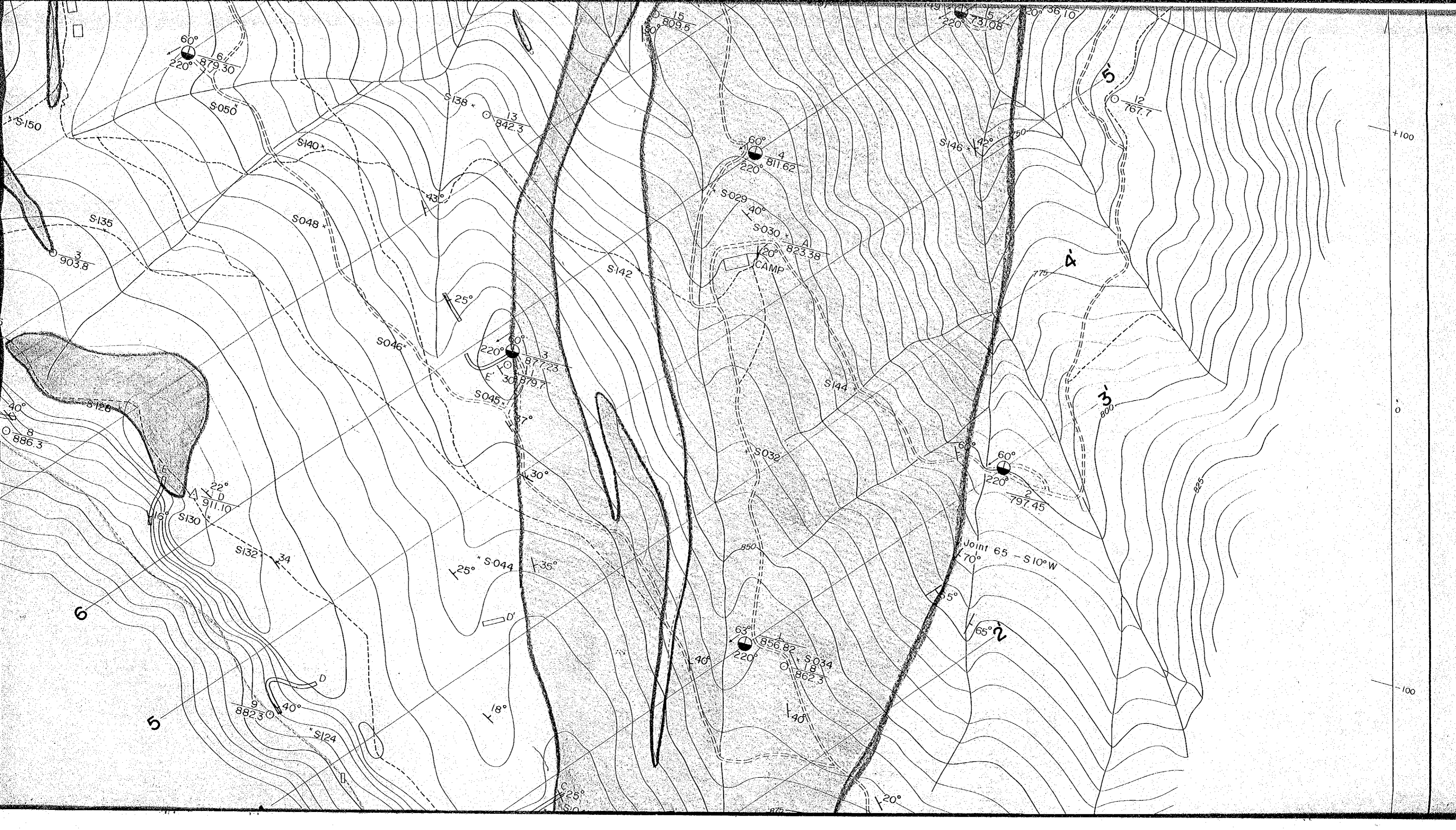
-100
-600

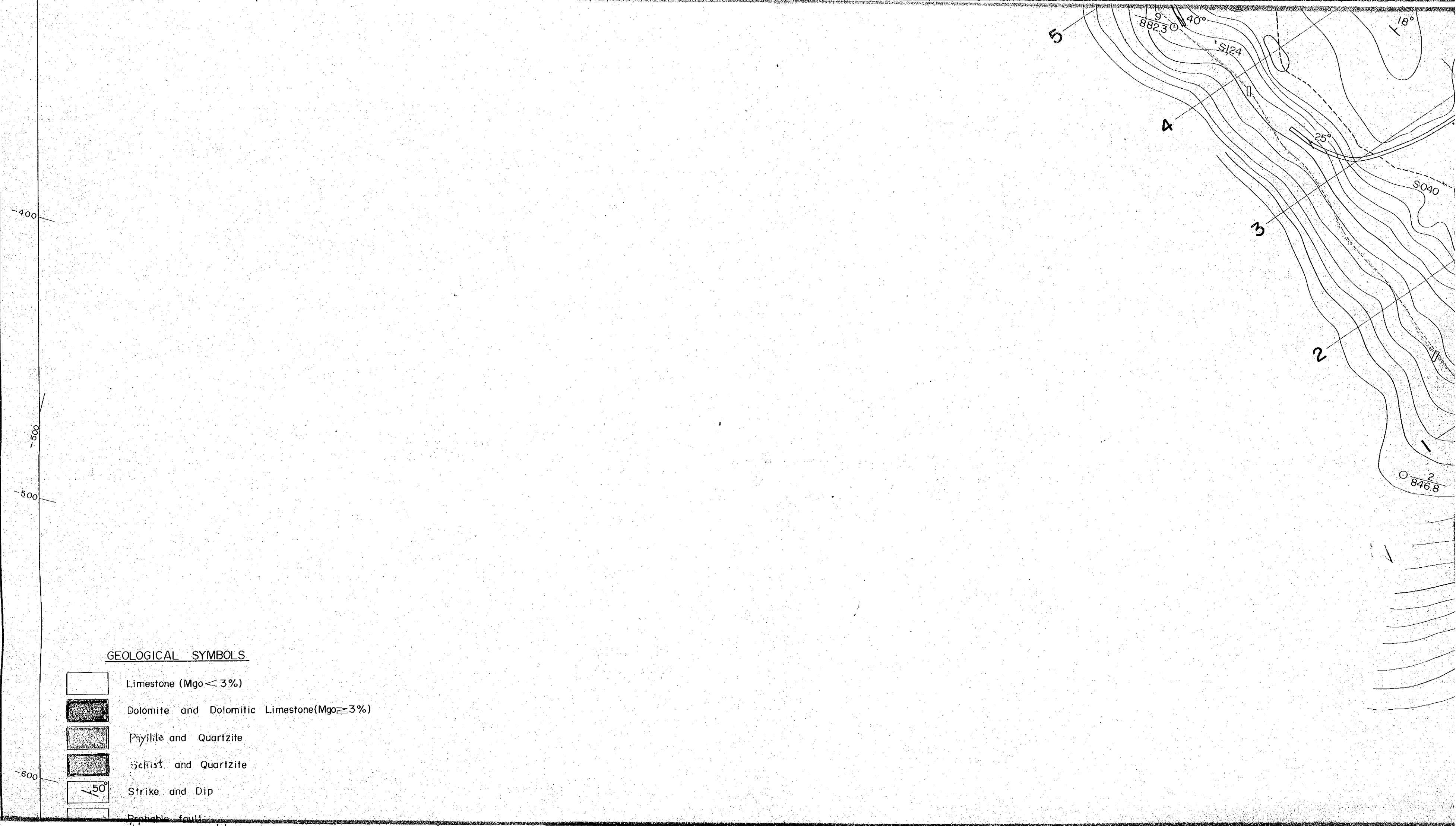
-200

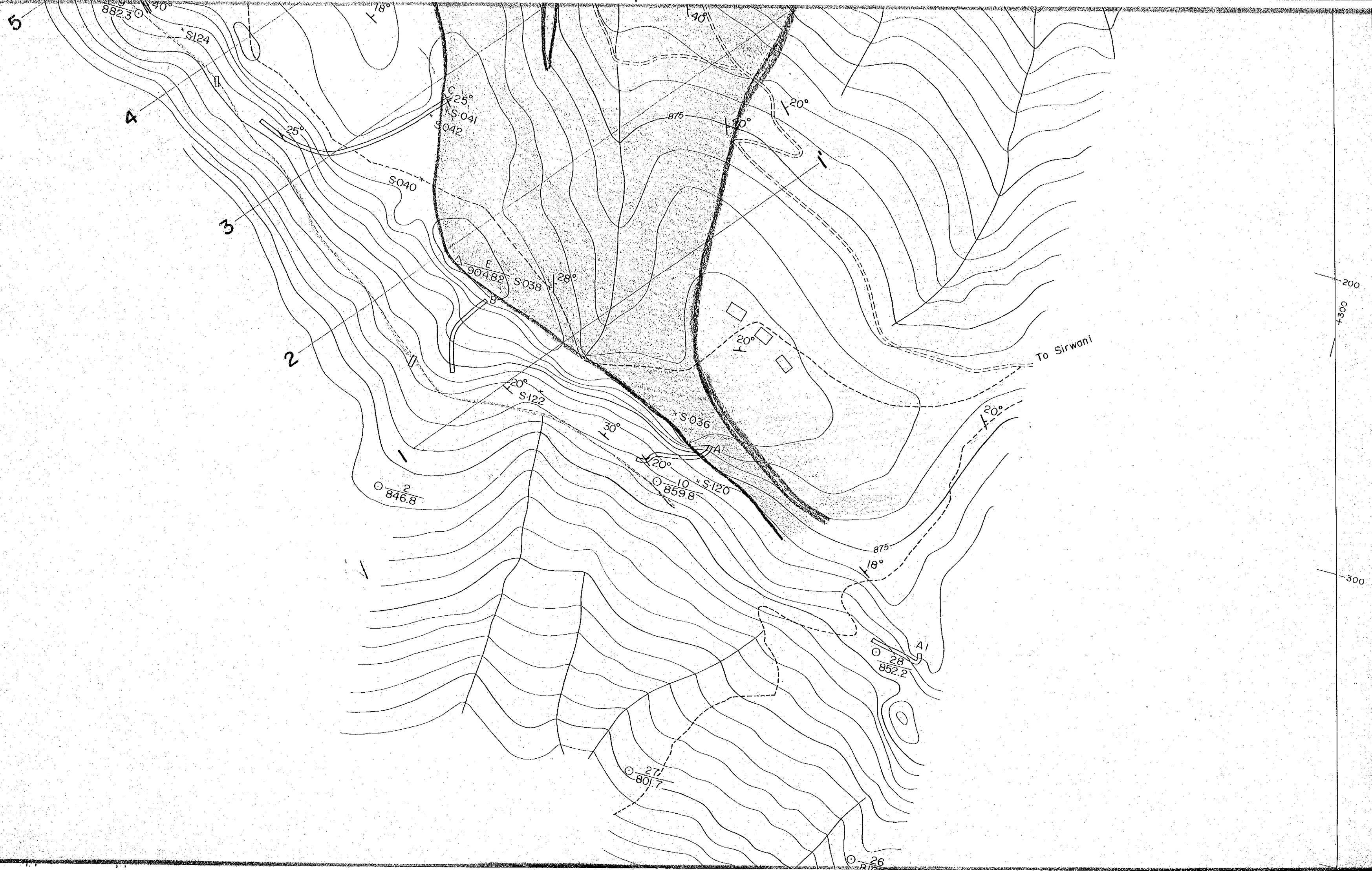
-300

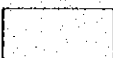



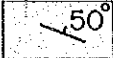


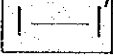
To Trijuga



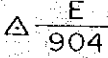
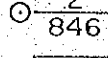
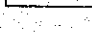
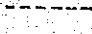
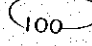
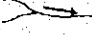
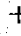
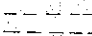




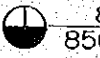
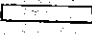

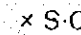


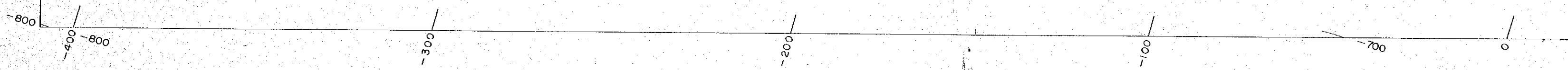
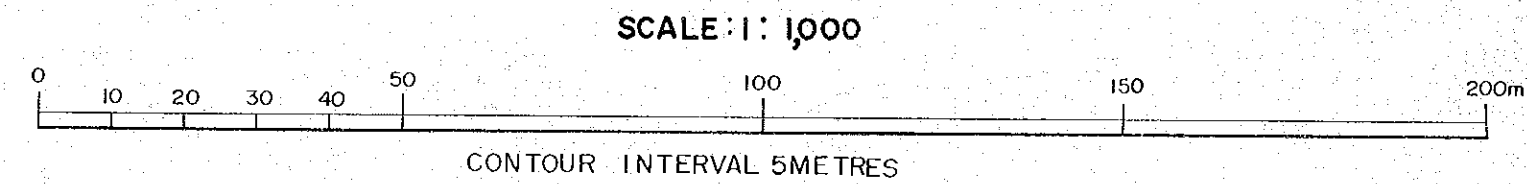
-  Limestone (Mgo < 3%)
-  Dolomite and Dolomitic Limestone (Mgo ≥ 3%)
-  Phyllite and Quartzite
-  Schist and Quartzite
-  Strike and Dip
-  Probable fault
-  Drill hole angle/direction
-  Section line

OTHER SYMBOLS

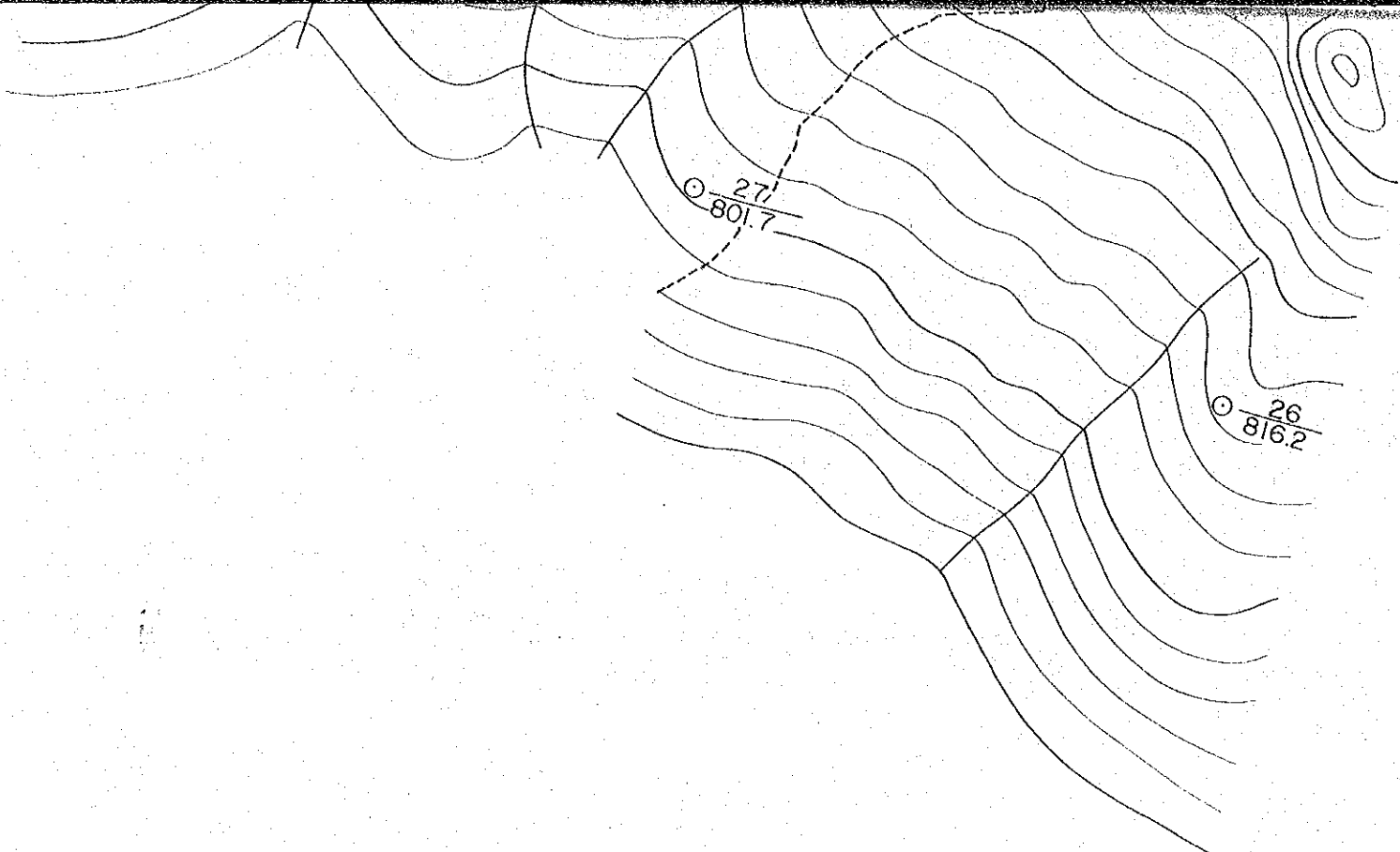
-  Triangulation station / BM
-  Plane-table station / Level
-  Hut
-  Foot-path
-  Contour
-  Stream
-  Spring
-  Service-path

PHYSICAL SYMBOLS

-  Drill hole NO. / height
-  Trench
-  Test-pit
-  Locality of analyzed grad-sample no.



MARCH, 1978



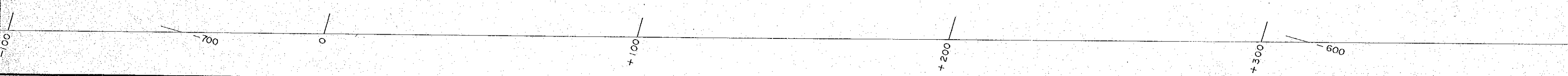
SCALE: 1: 1,000



CONTOUR INTERVAL 5 METRES

NOTES

- Topographic map was made by DMG of Nepal, 1974-1975.
- Geological map was prepared by co-operation of JICA(Japan) and DMG(Nepal), 1978.



JAPAN INTERNATIONAL COOPERATION AGENCY, TOKYO JAPAN