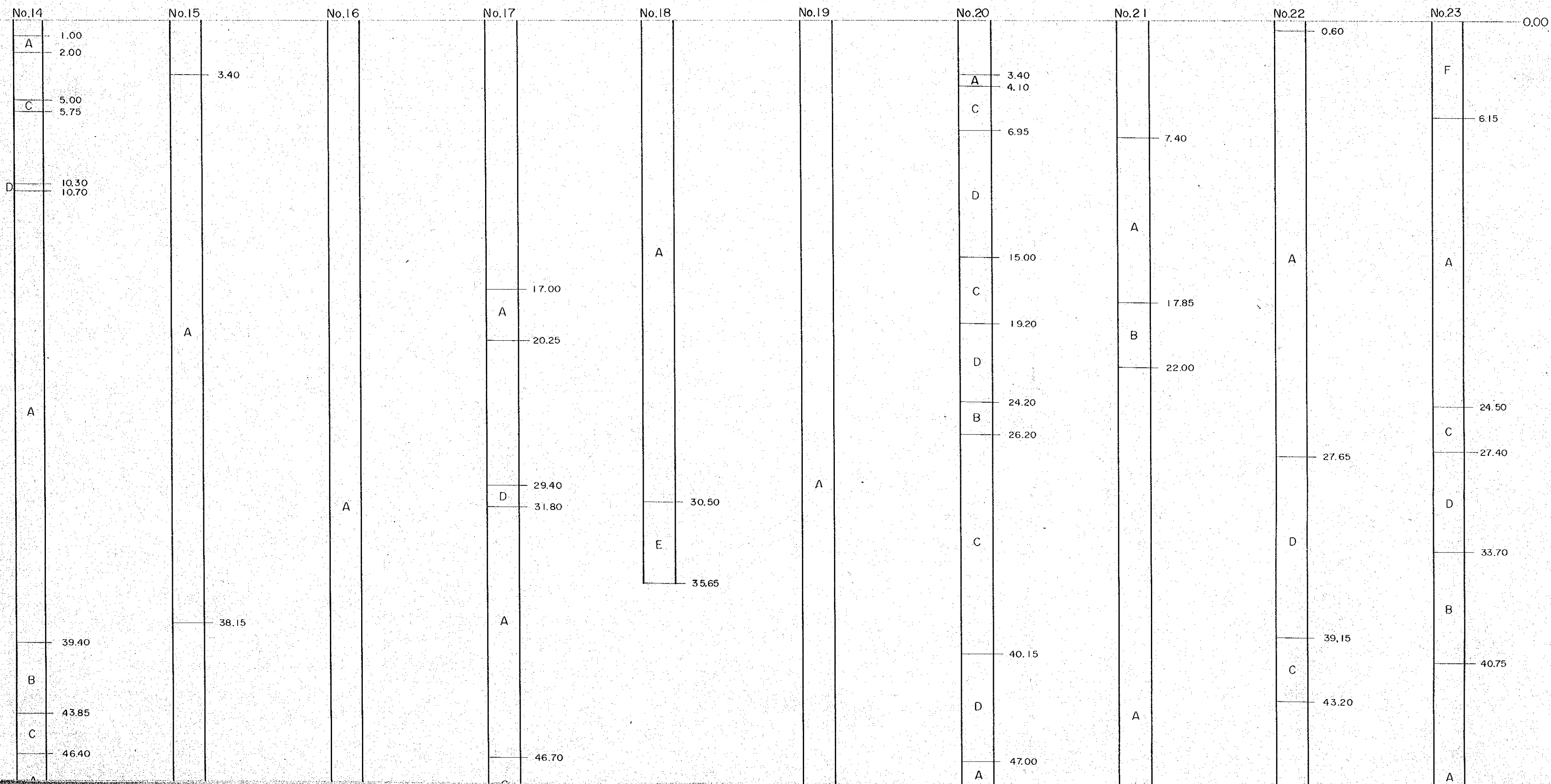






# STONE DEPOSIT



E	48.60 49.95

	47.00
D	
	51.00
A	
	59.10
E	
	61.75

	56.45
E	
	59.55

C	41.80
A	
E	72.45
	74.65

B	44.60
A	
C	55.10
E	57.10
	58.45

	48.00
E	
	49.60

	46.15
E	
	48.00

	55.50
E	
	56.55

	50.50
E	
	53.00

A	51.15
B	
A	
E	68.30
	69.35

E 46.15  
48.00

E 50.50  
53.00

E 55.50  
56.55

B 51.15  
55.85  
A  
E 68.30  
69.35

A  
58.35  
B  
63.10  
A  
67.75  
B  
74.90  
A  
90.55  
94.00  
E  
97.85

C 50.80  
52.85  
B 57.50  
A  
73.85  
E 76.50

A

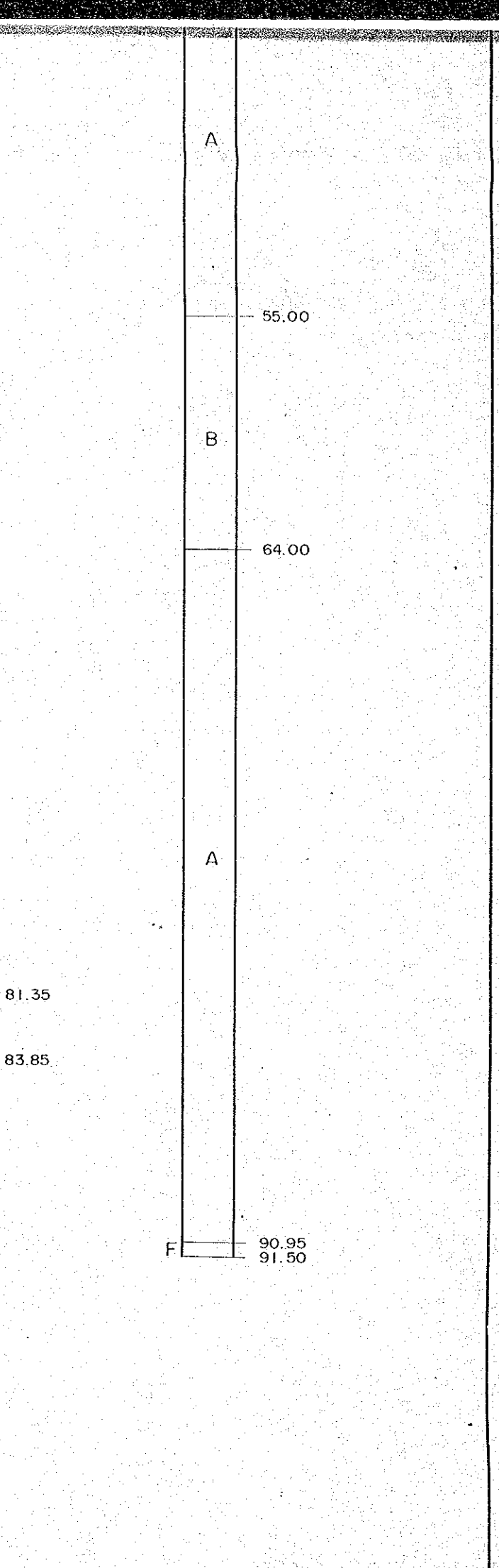
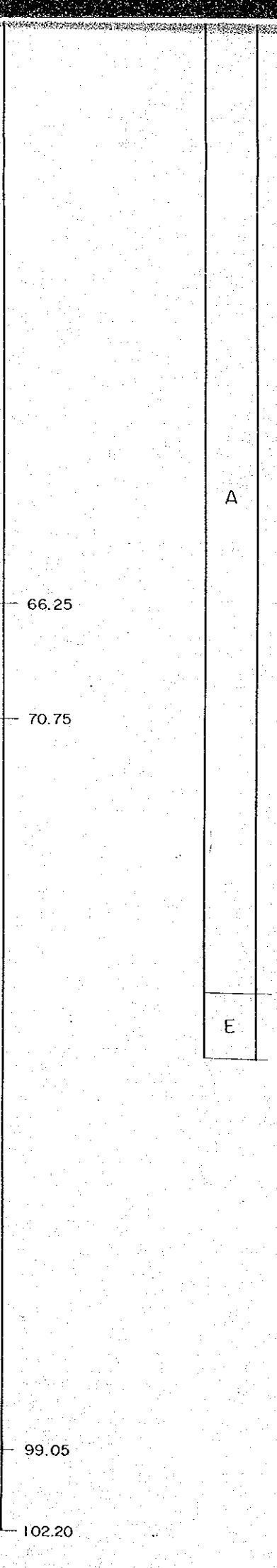
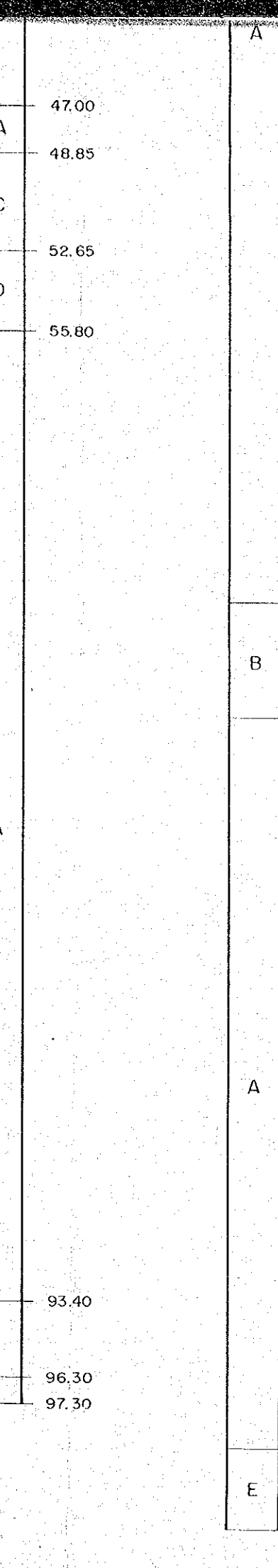
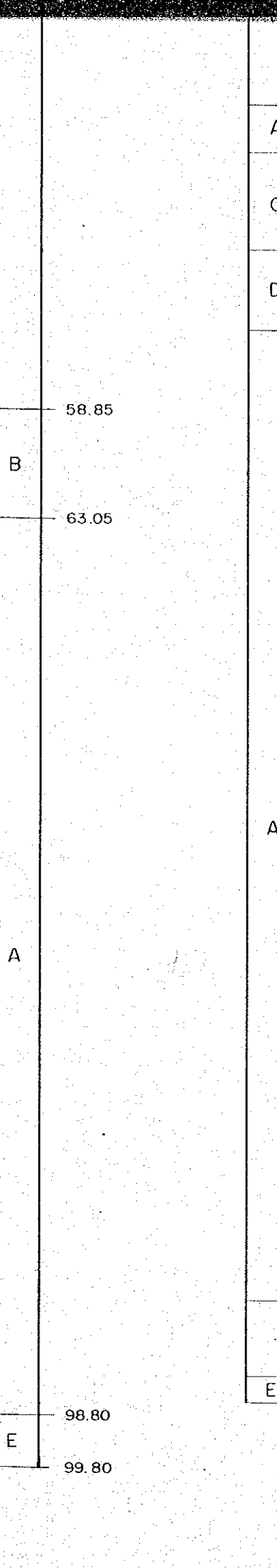
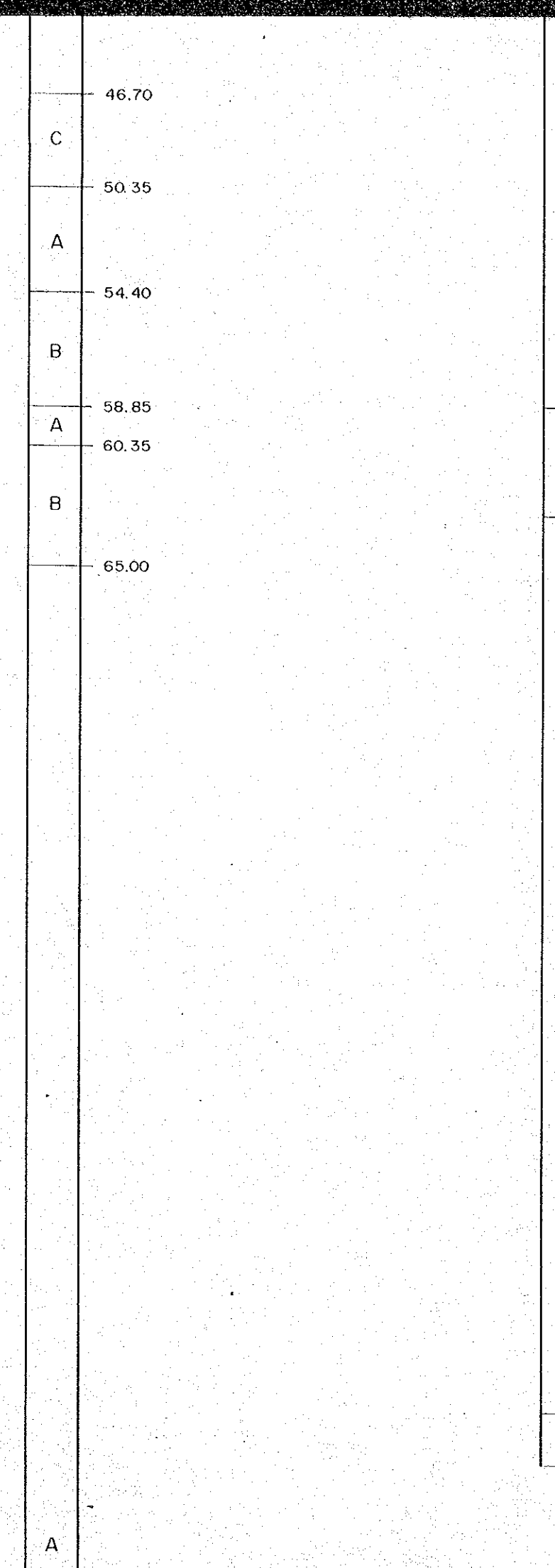
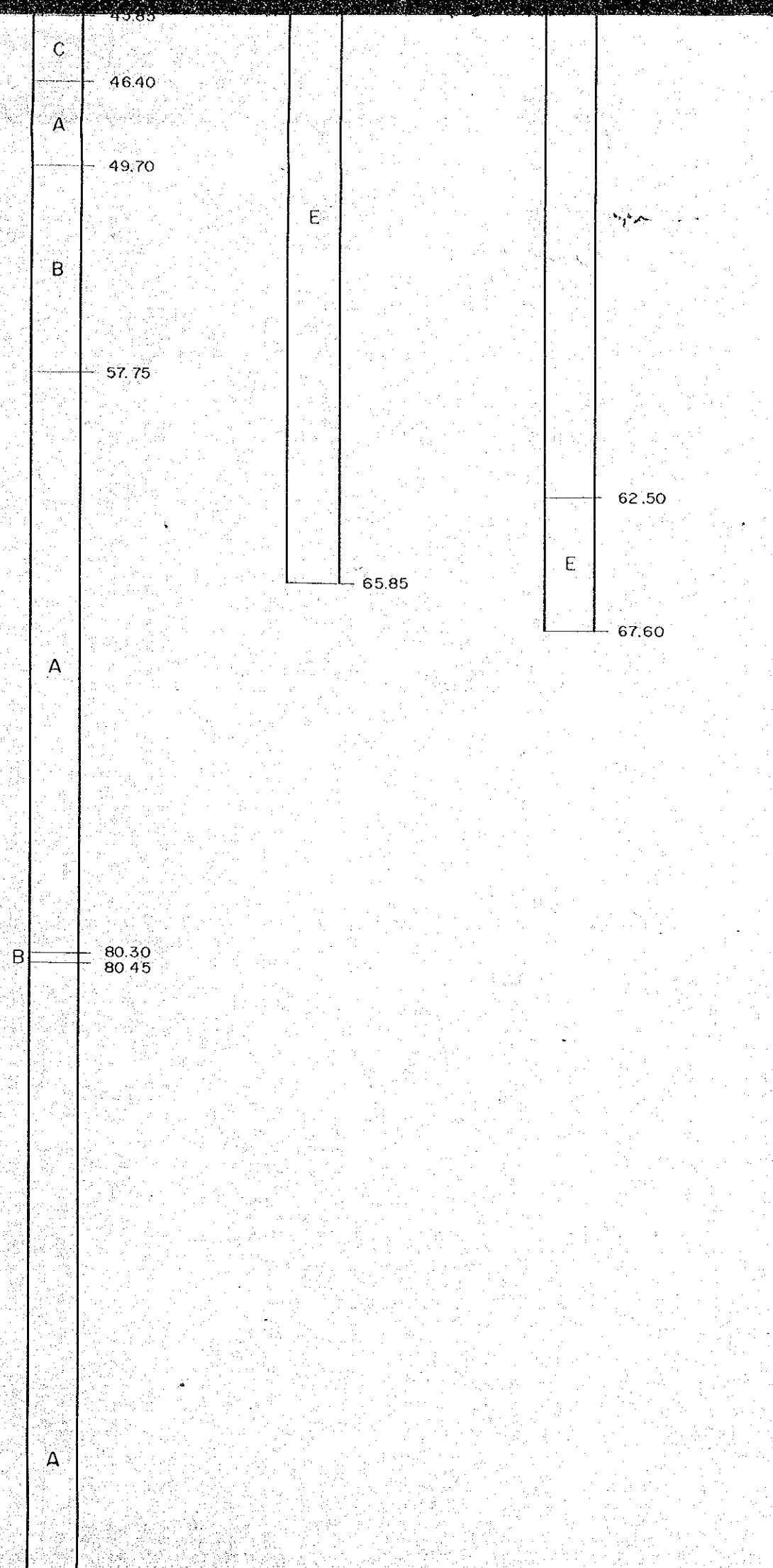
43.85  
C  
46.40  
A  
49.70  
B  
57.75  
A  
B 80.30  
80.45  
A

E

65.85

62.50  
E  
67.60

46.70  
C  
50.35  
A  
54.40  
B  
58.85  
A  
60.35  
B  
65.00  
A





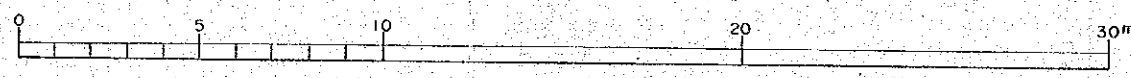
97 85

E  
103.80  
106.20

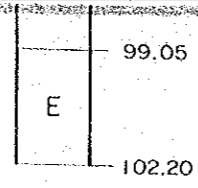
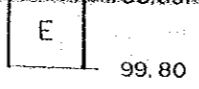
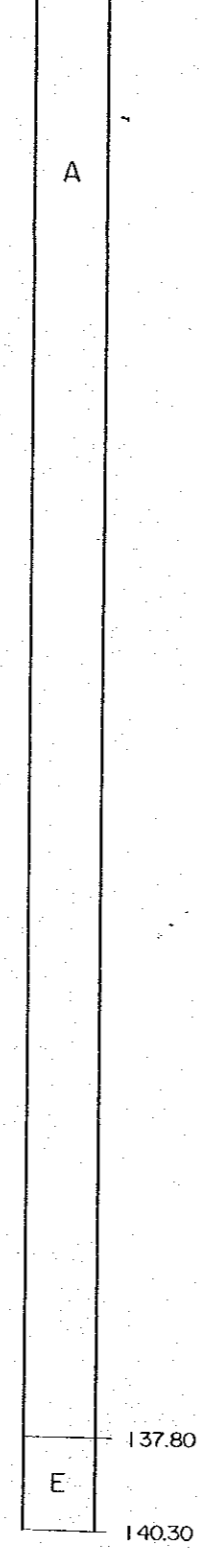
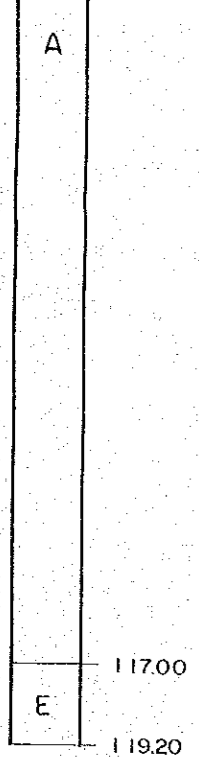
A  
E  
117.00  
119.20

A  
E  
137.80  
140.30

Scale : 1 : 200







INDEX

- A Limestone (Mgo < 3%)
- B Dolomitic limestone (3 ≤ Mgo < 5)
- C Dolomitic limestone and/or calcareous dolomite. (5 Mgo 16)
- D Dolomite (Mgo ≥ 16)
- E Schist and quartzite.
- F Phyllite and quartzite.

Blank portion shows no data

NOTE

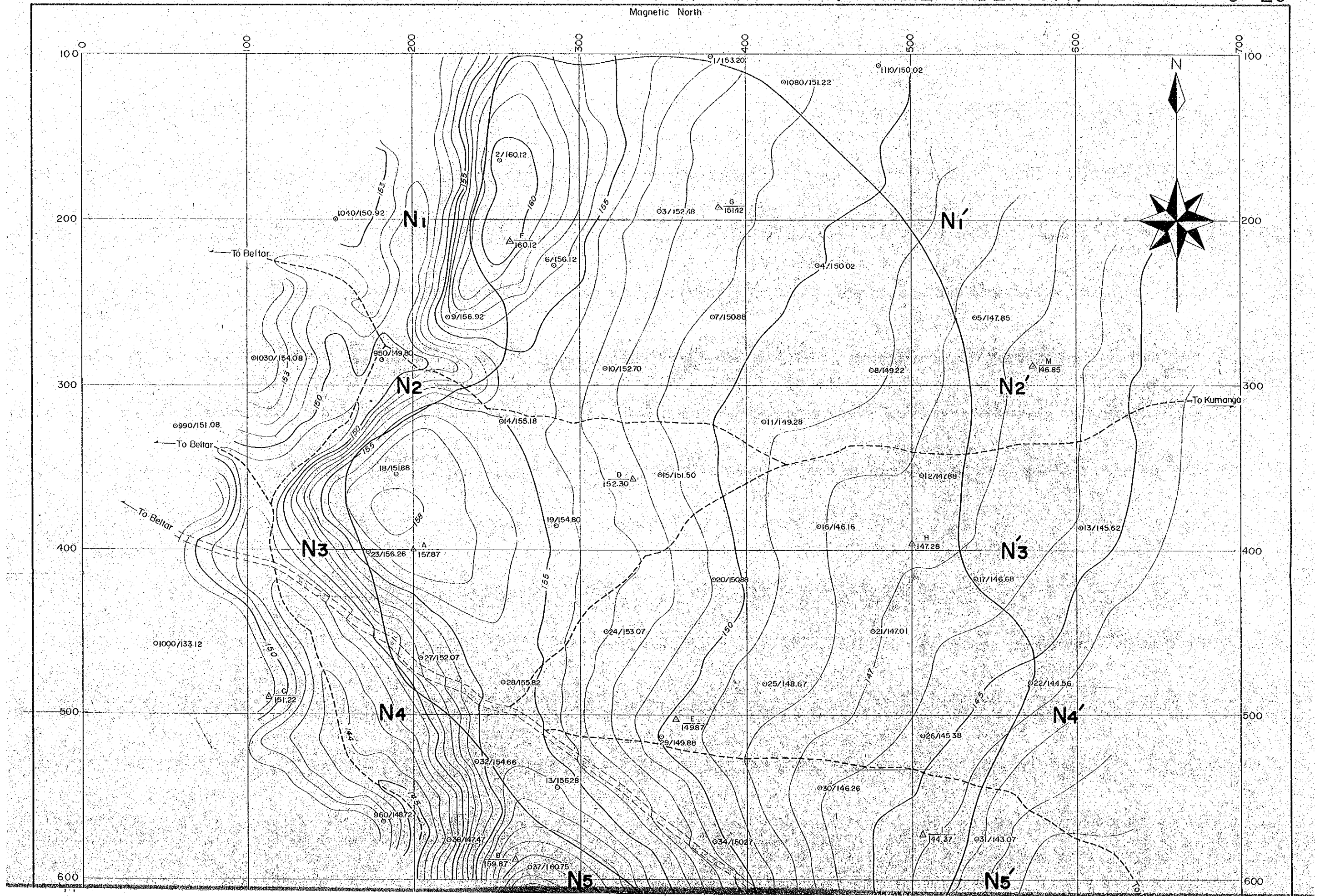
These logs were compiled by JICA based on the detailed logs made by D.M.G.

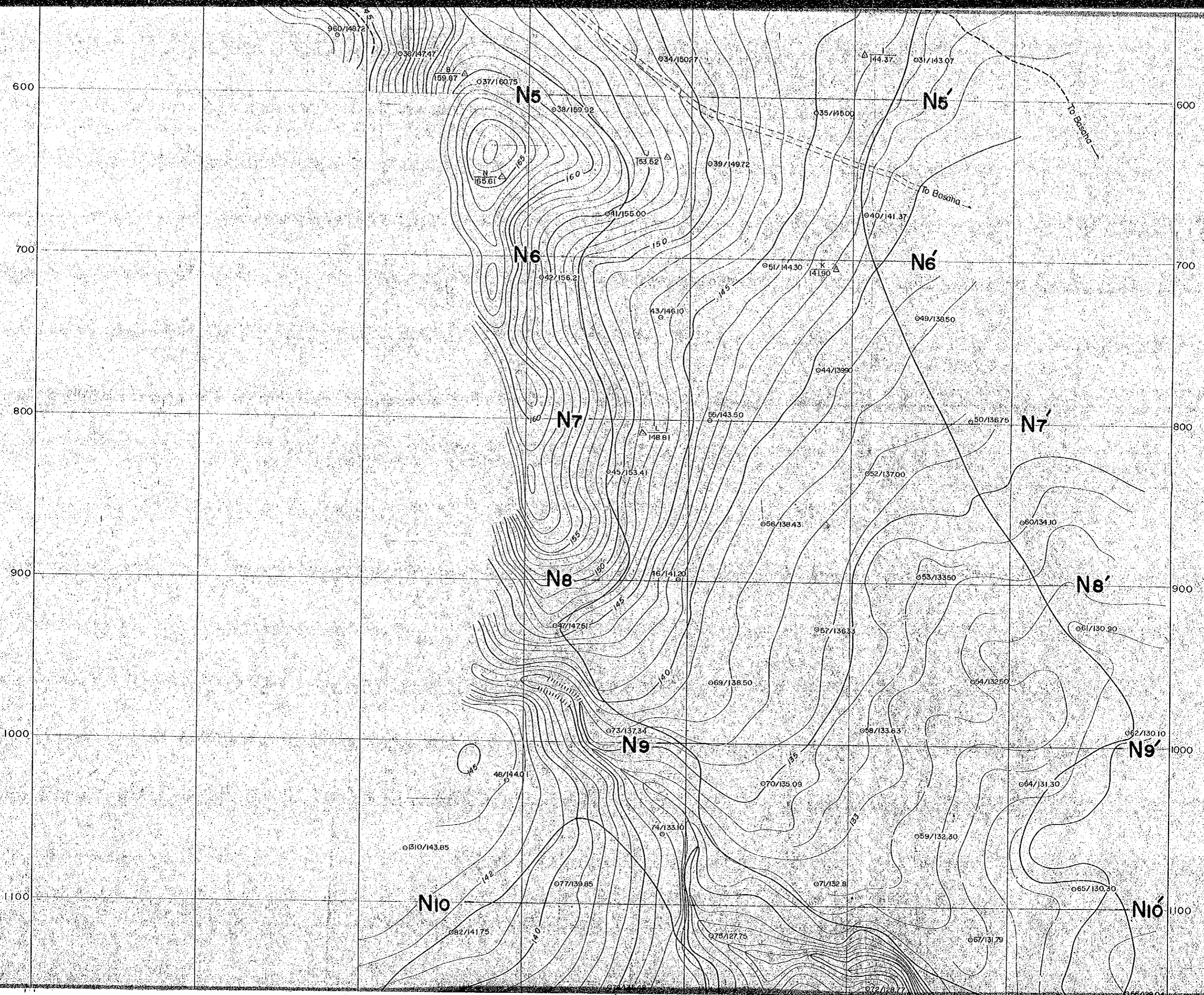
30m

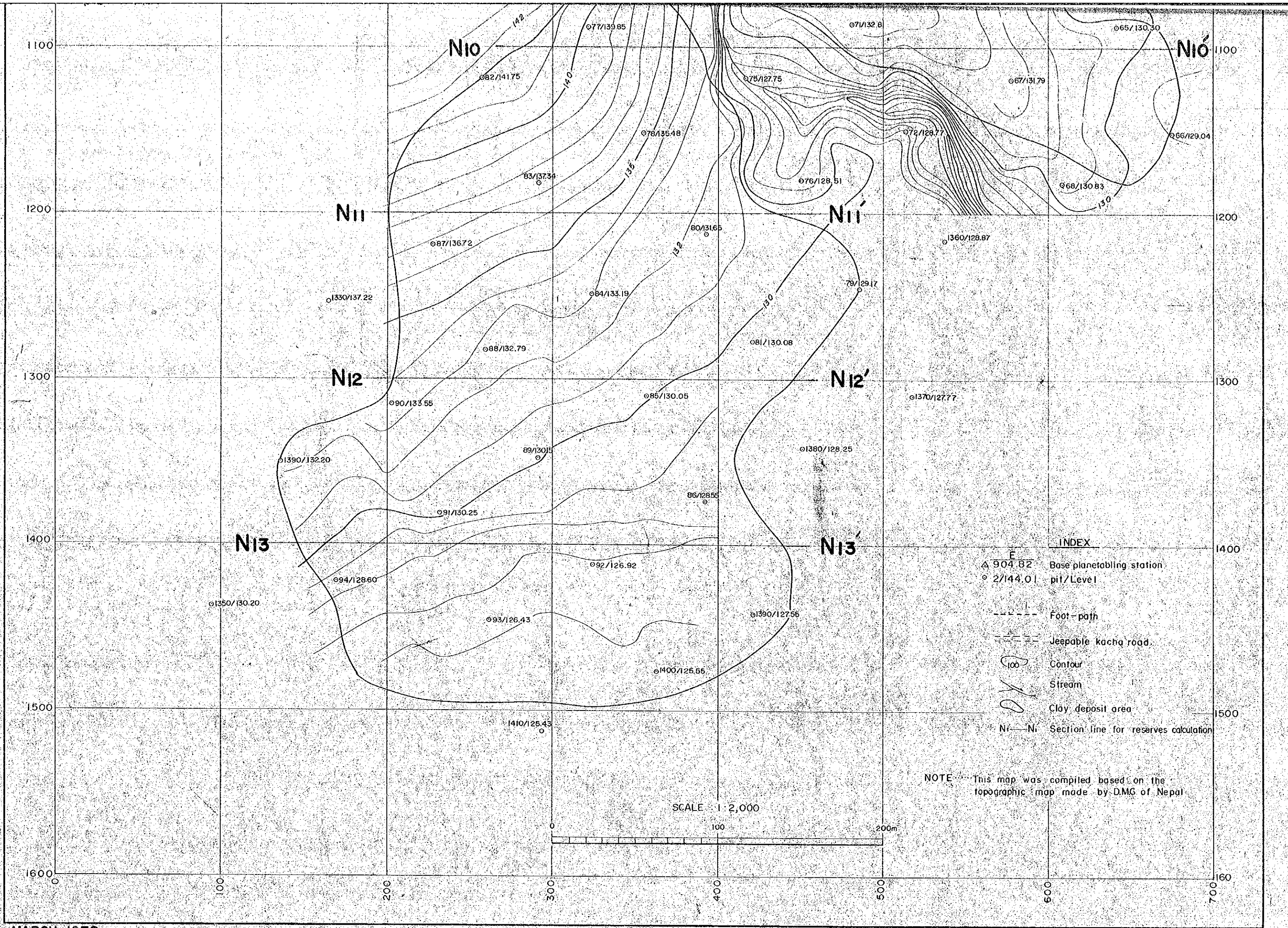
# TOPOGRAPHICAL MAP OF BELTAR CLAY DEPOSIT (NORTHERN DEPOSIT)

G-20

Magnetic North



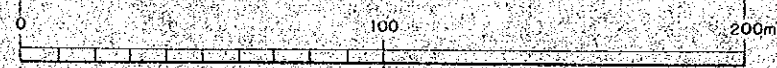




INDEX	
$\Delta$ 904.82	Base planablating station
o 2/144.01	pit/Level
---	Foot-path
---	Jeepable kacha road
100	Contour
~	Stream
o	Clay deposit area
Ni-Ni	Section line for reserves calculation

NOTE: This map was compiled based on the topographic map made by DMG of Nepal

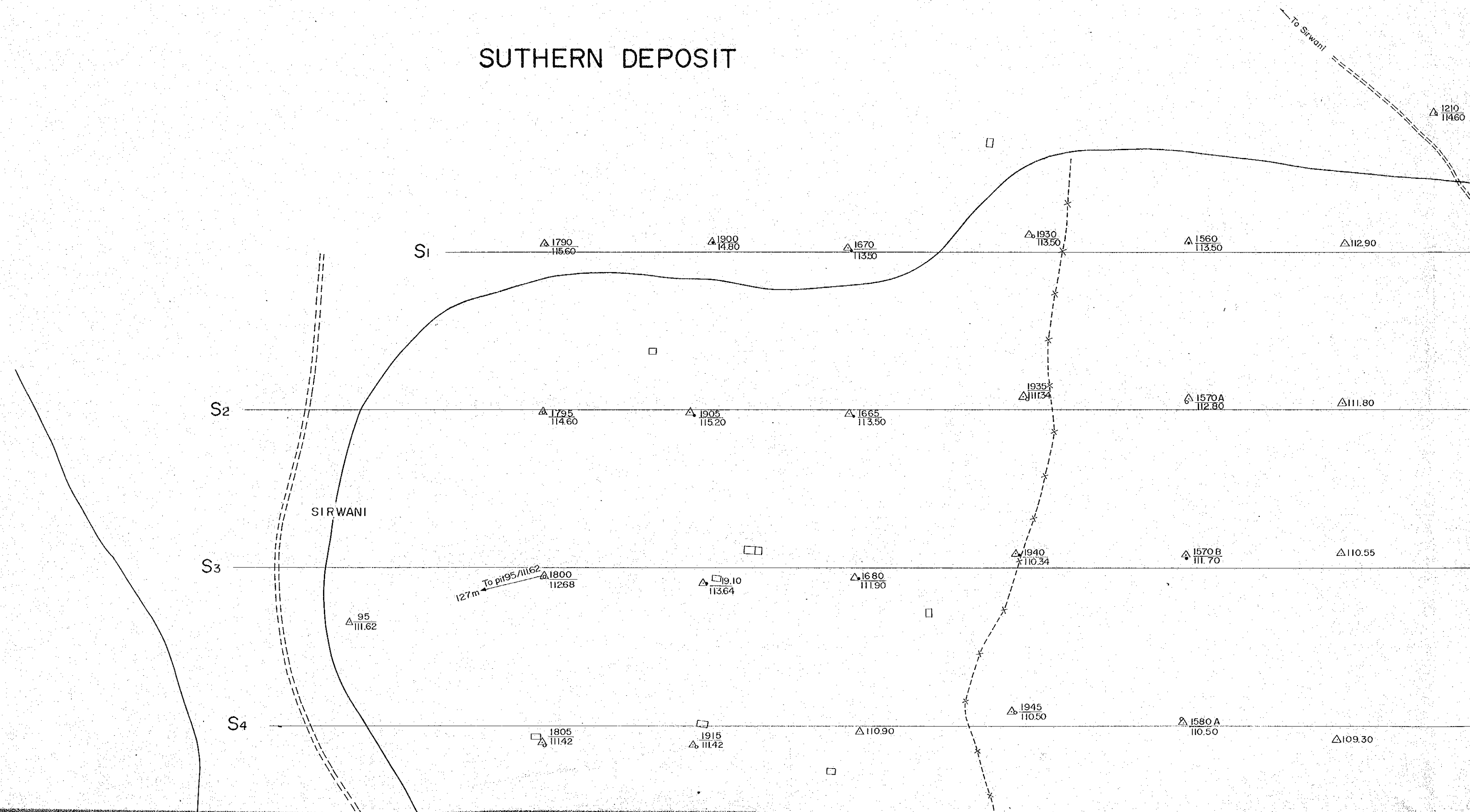
SCALE 1:2,000



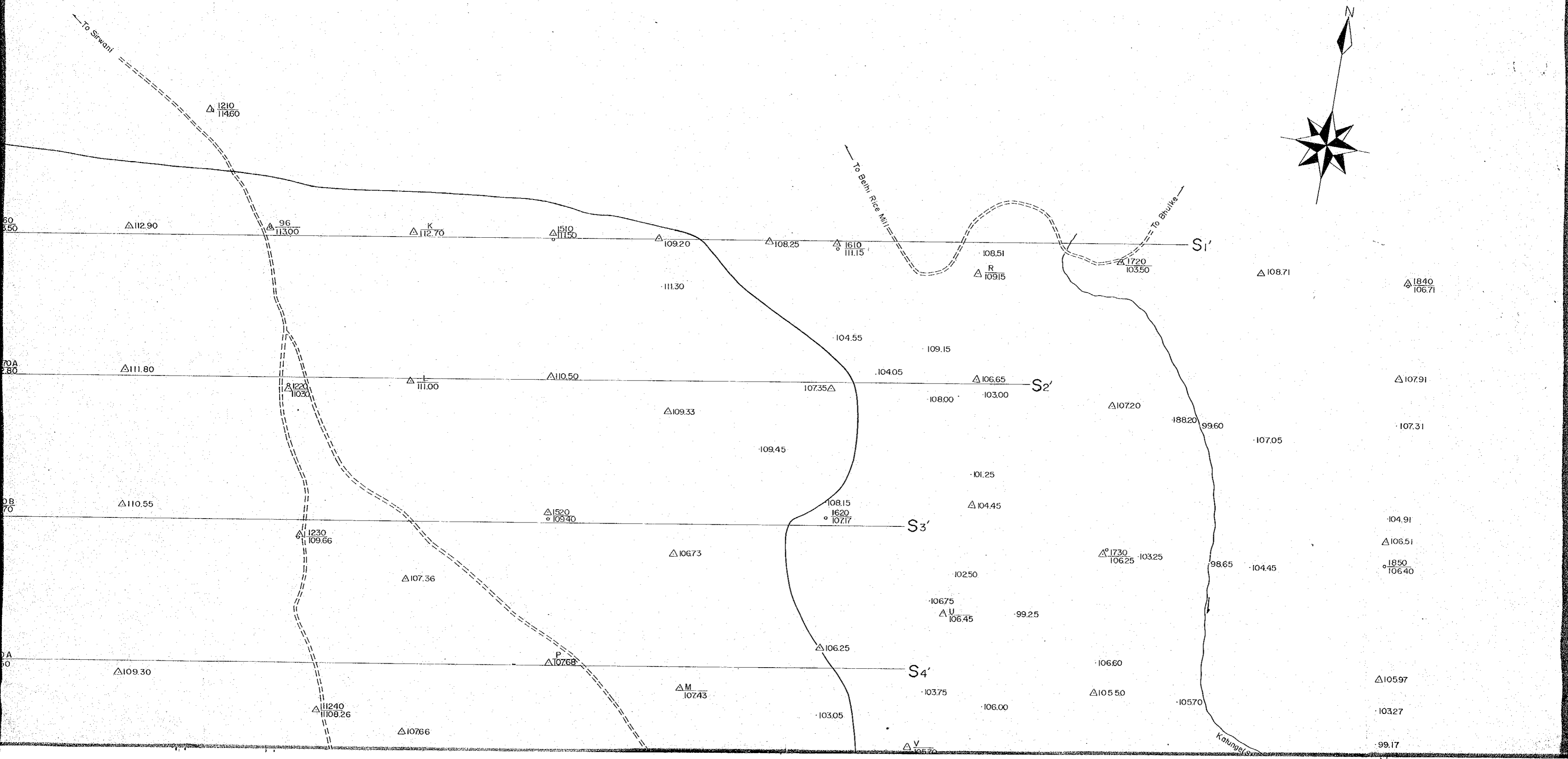
MARCH, 1978

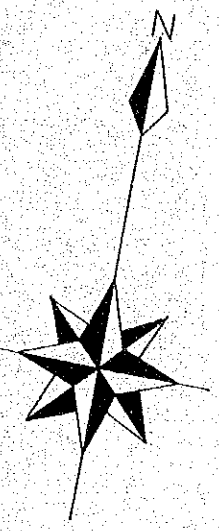
JAPAN INTERNATIONAL COOPERATION AGENCY, TOKYO JAPAN

# SUTHERN DEPOSIT



# PLAN OF BELTAR CLAY DEPOSIT





# EASTERN DEPOSIT

△ 1840  
106.71

△ 10791

107.31

104.91

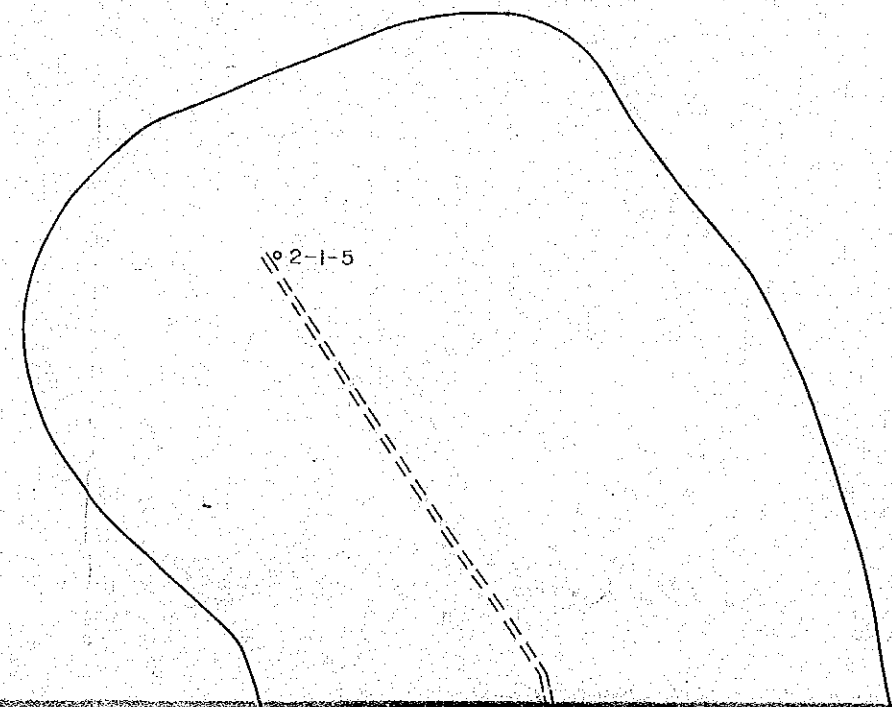
△ 10651

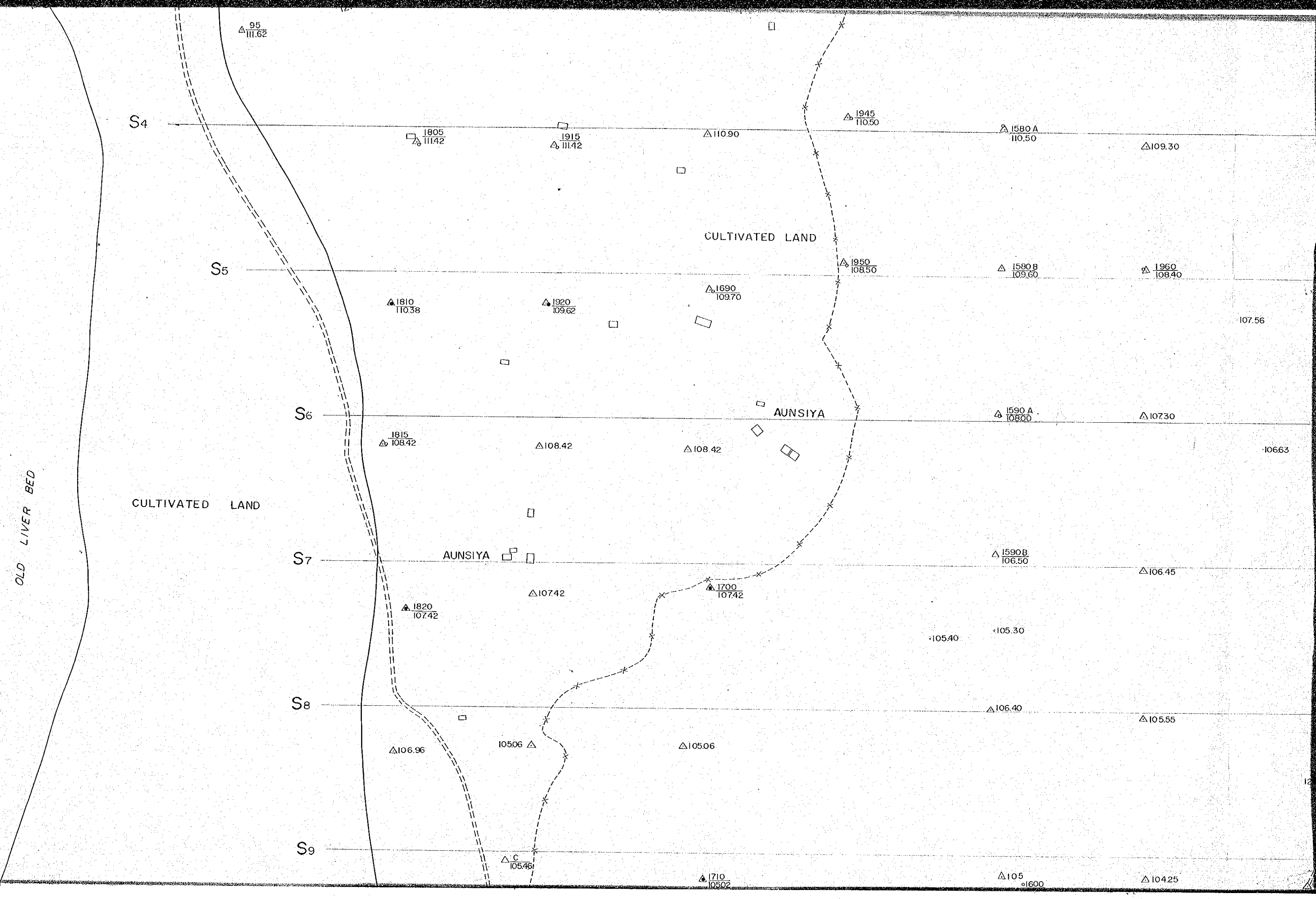
○ 1850  
106.40

△ 10597

10327

99.17









104.91

△106.51

○1850  
106.40

△105.97

103.27

99.17

○2-1-5

○2-1-4

Khola

96.77

△1860  
97.17

95.70

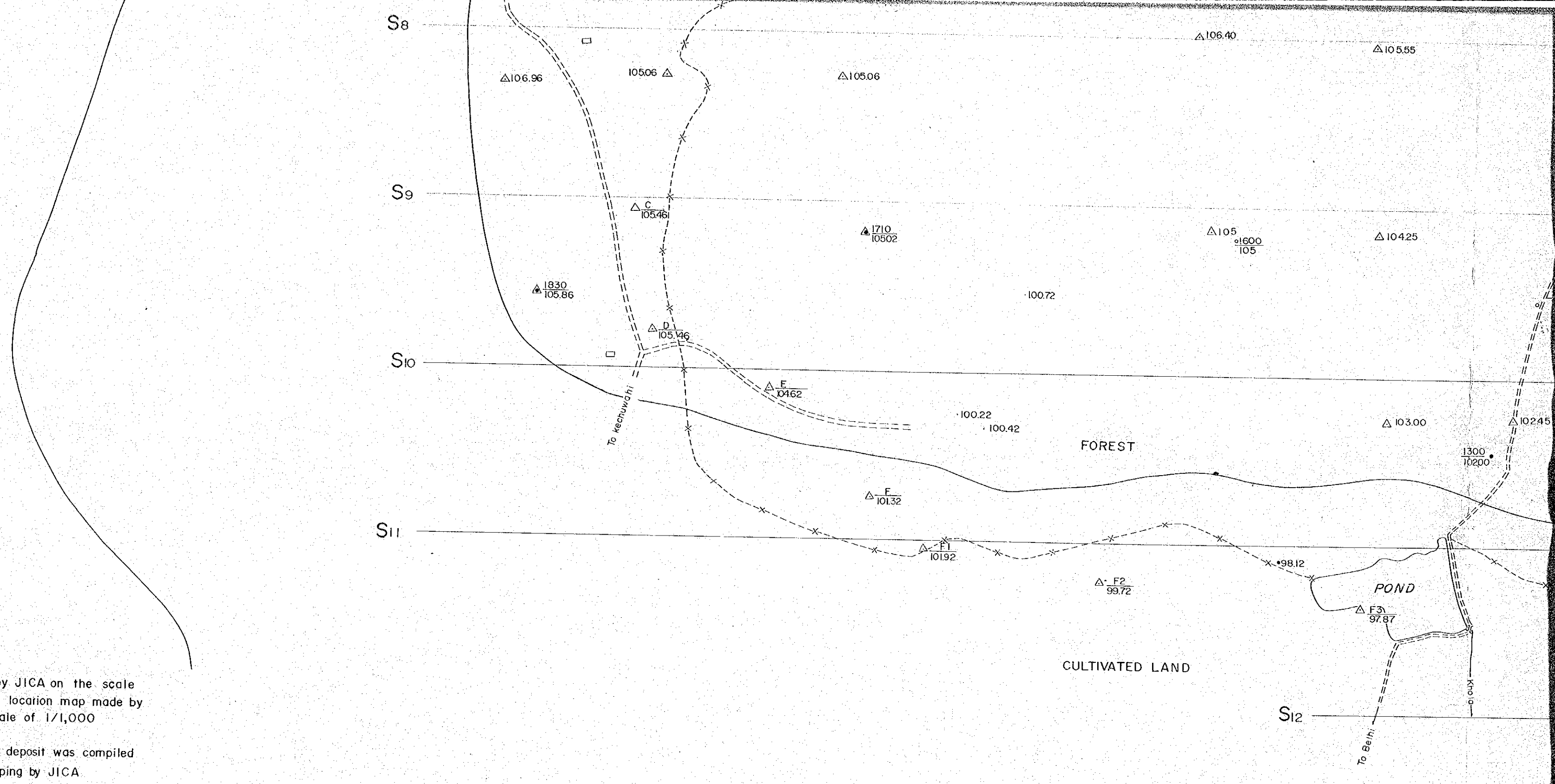
△X  
96.07

△1870  
96.07

△96.47

NOTE

— This map was compiled with field sketch  
and mapping by JICA



**NOTES**

- This map was compiled by JICA on the scale of 1/2,000 based on the location map made by DMG of Nepal on the scale of 1/1,000
- The western part of this deposit was compiled with field sketch and mapping by JICA

**INDEX**

Height



△ 96.47

387

△ 1880  
9417  
katunja Stream/khola

△ 101.17

1890  
10027

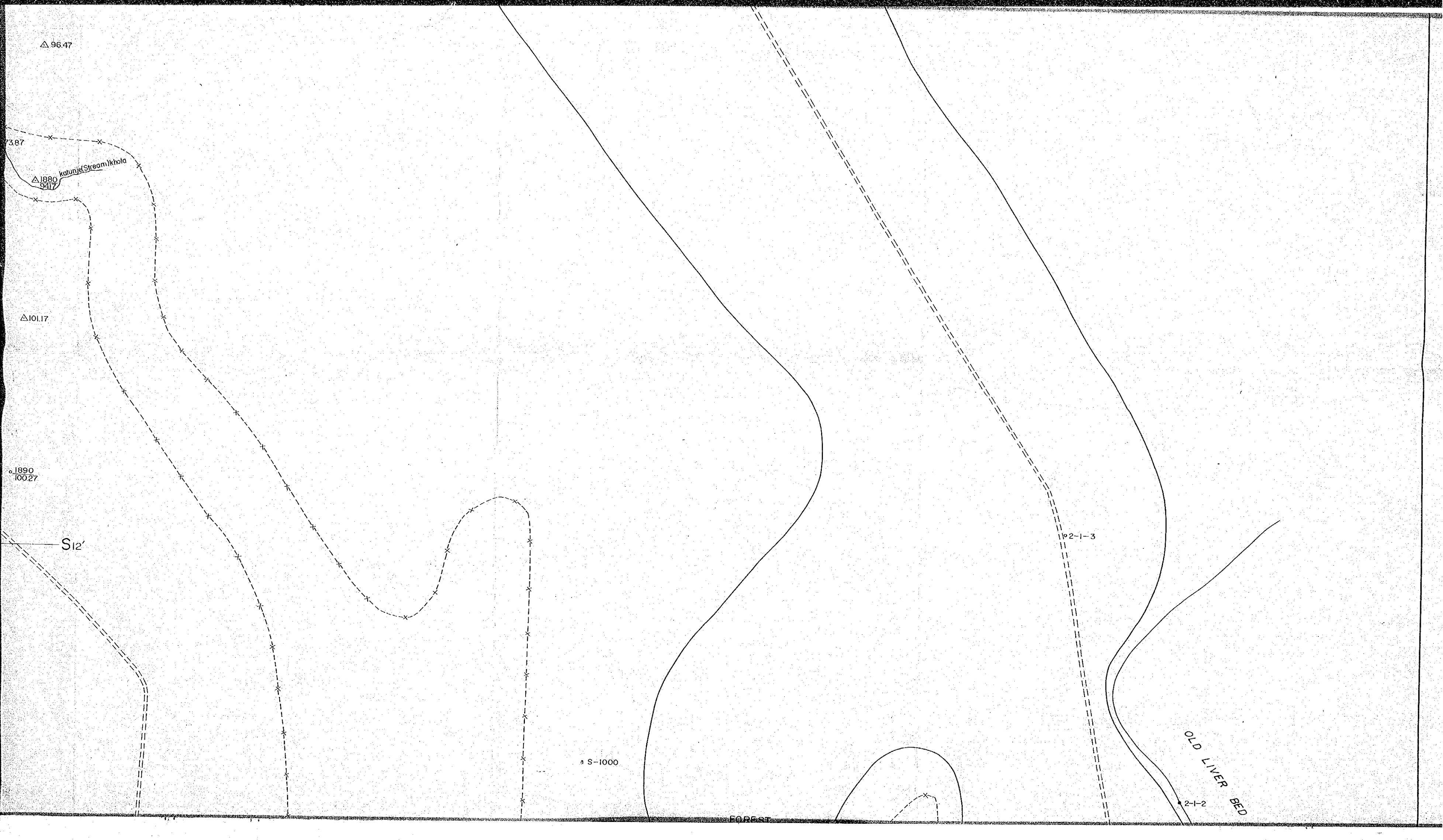
S12'

△ S-1000

2-1-3

OLD LIVER BED  
2-1-2

FOREST

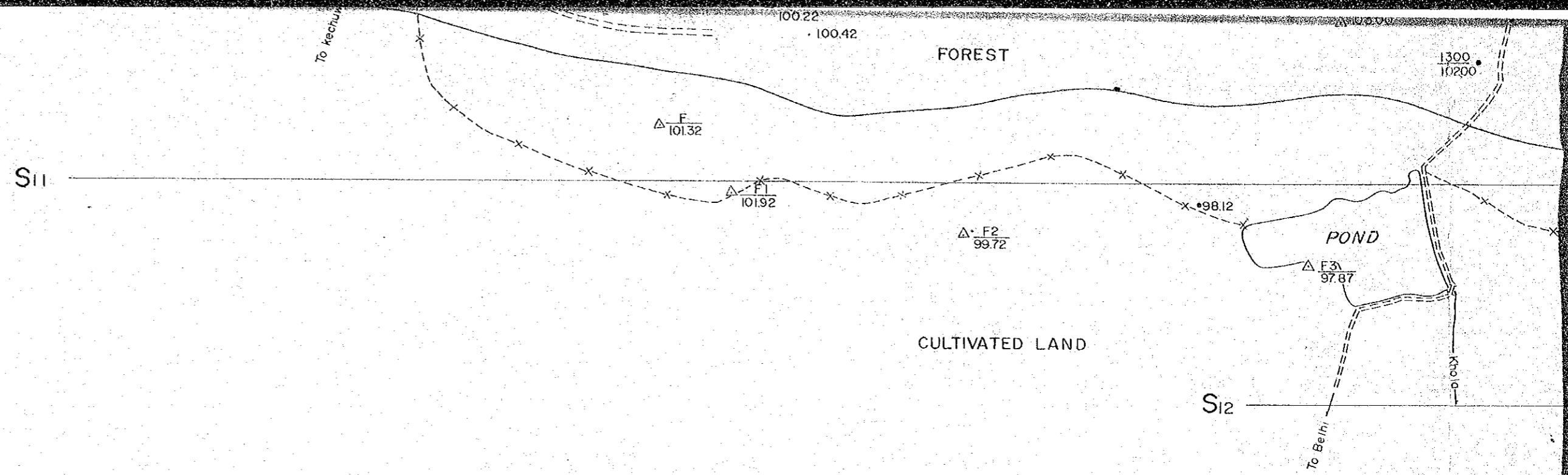


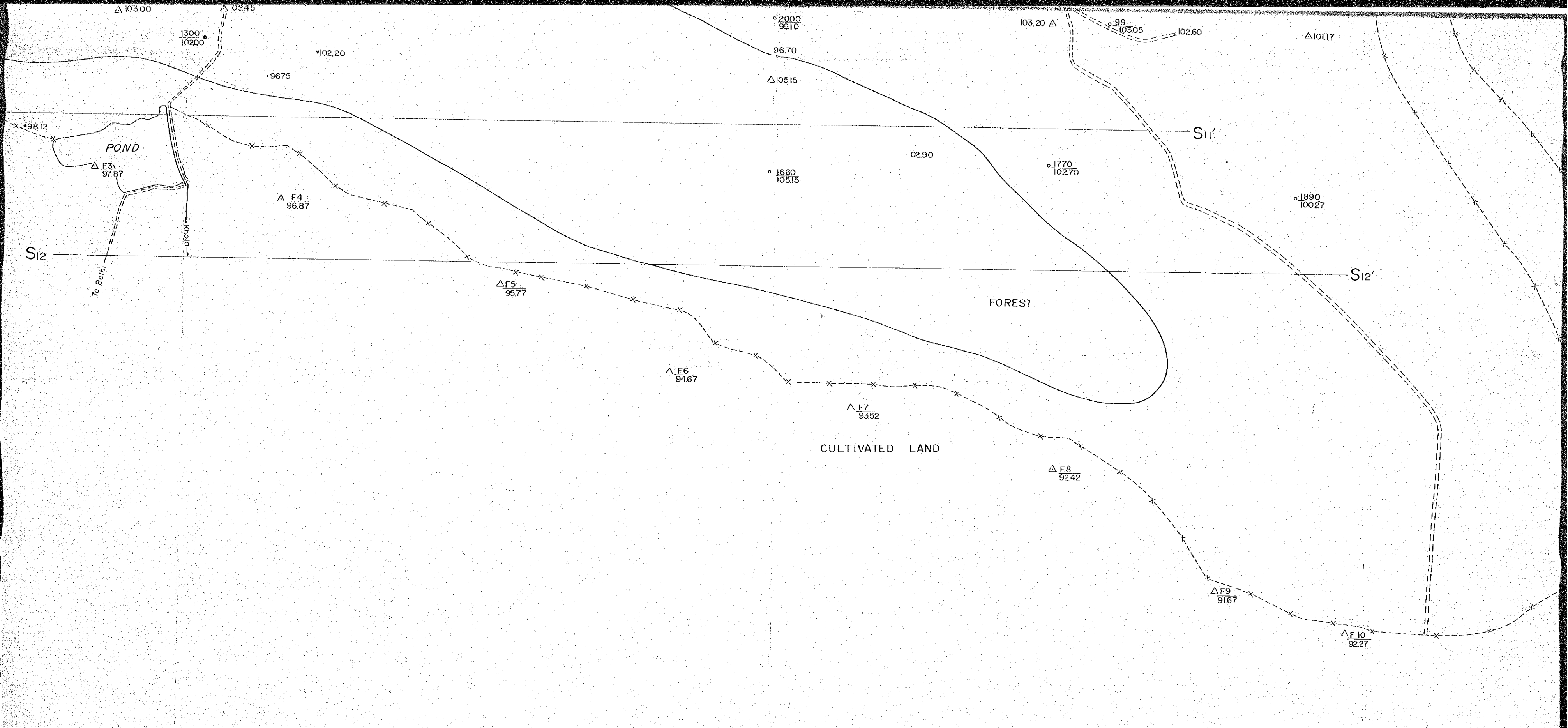
**NOTES**

- This map was compiled by JICA on the scale of 1/2,000 based on the location map made by DMG of Nepal on the scale of 1/1,000
- The western part of this deposit was compiled with field sketch and mapping by JICA

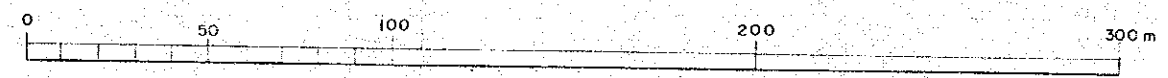
**INDEX**

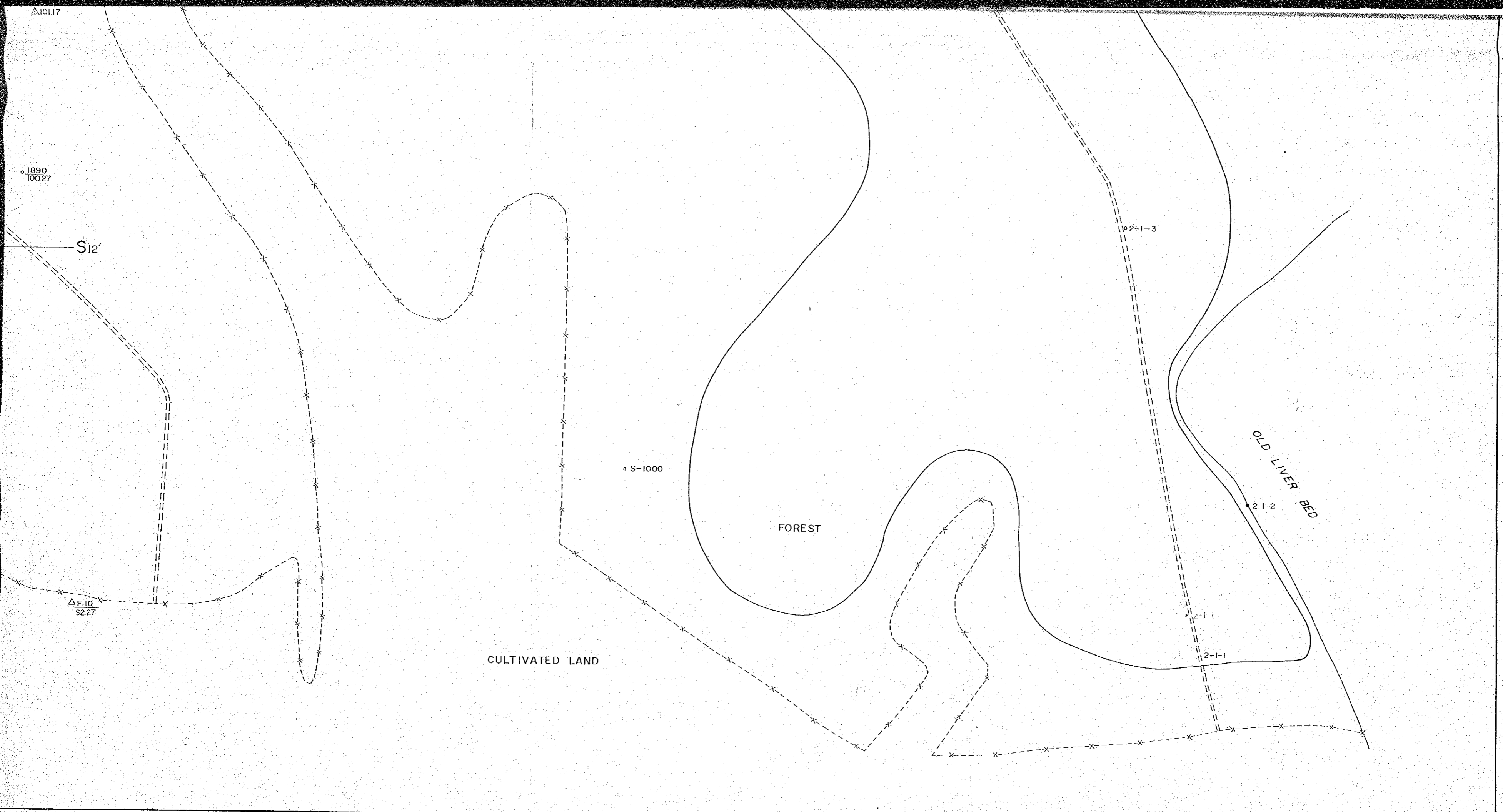
- Height
- Pit No. height
- △ Planetable point
- x-x-x- Forest & cultivated land bdy
- House
- Pond
- ==== Cart-track
- ~~~~ Stream
- Auger hole No. height
- Area of clay deposit
- - - - Section line for reserves calculation





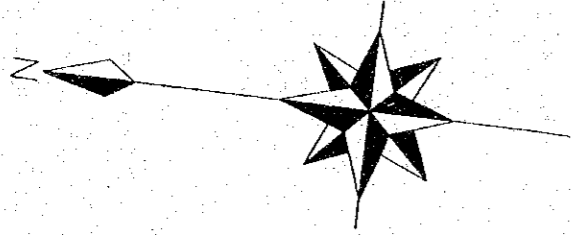
Scale: 1:2,000







# BELTAR CLAY DEPOSIT (LOCATION OF THE TEST PITS AND AUGER HOLES BETWEEN NORTHERN DEPOSIT AND SOUTHERN DEPOSIT)



94  
128-60

93  
126-46

92  
125-60

91  
125-40

90  
124-60

89  
123-60

88  
122-40

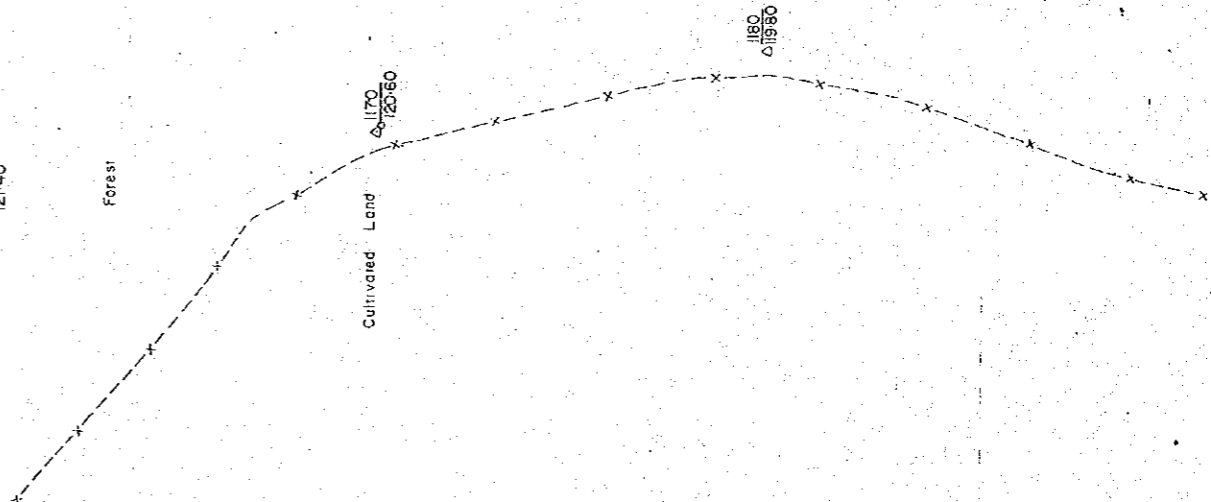
87  
121-40

86  
120-60

85  
119-60

84  
118-20

83  
115-40



△1130  
12460

△1140  
12360

△1150  
12240

△1160  
12140

Forest

△1170  
12060

Cultivated Land

1180  
11980

△1180  
11820

△11540

△1210  
11460

△1500  
11380

△135  
11300

△K  
11230

**NOTE**  
This map was compiled by J.I.C.A.  
on the scale of 1/2,000  
based on the location map  
made by D.M.G. of Nepal  
on the scale of 1/1,000

**INDEX**

Plane Table Point. △

Forest & Cultivated Land Bdy. X - - - X - - - X -

Upper 1000

SCALE : 1 : 2,000

