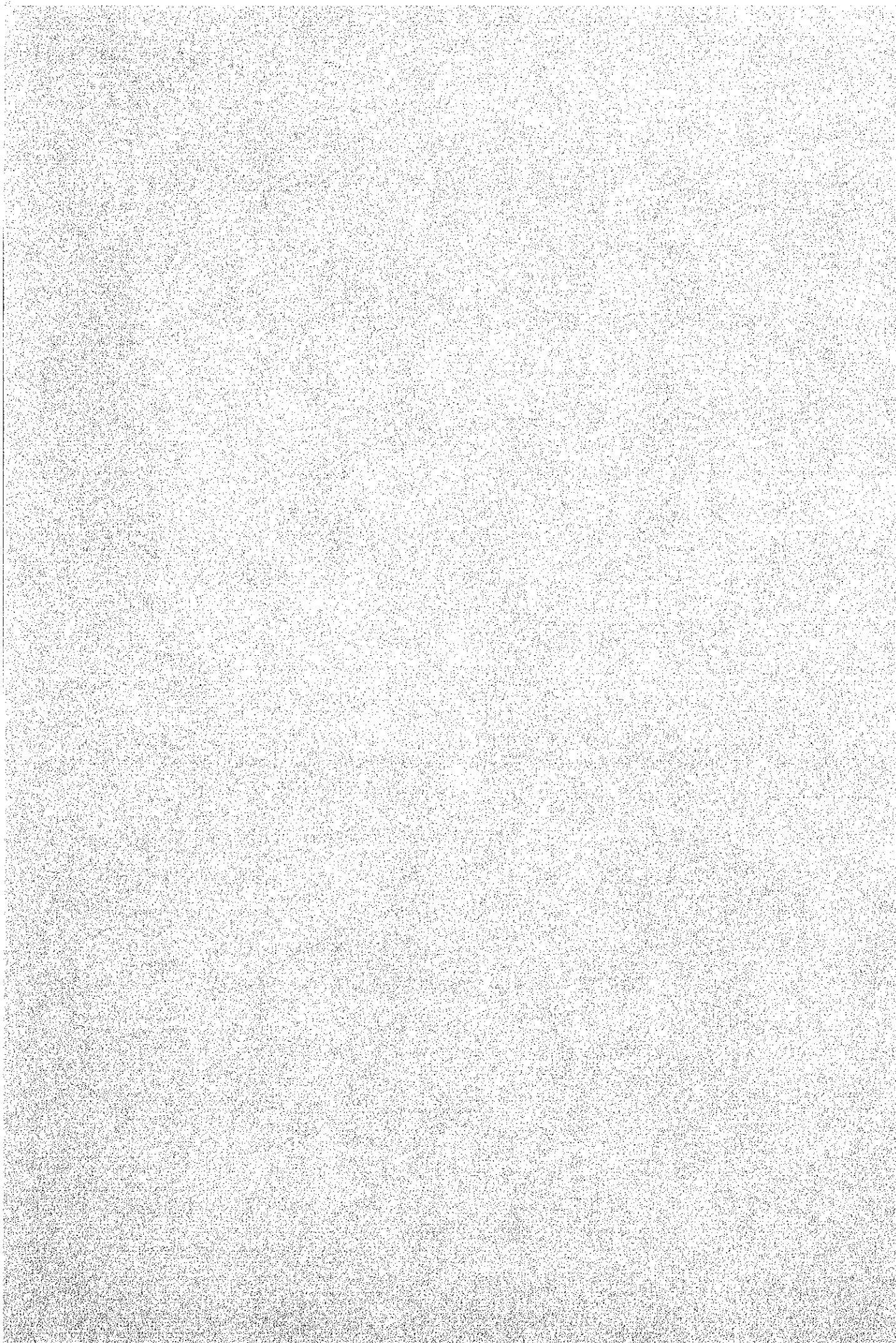


I T E M	UNIT	QUANTITY	LOCAL (RUPEE)		JAPAN (YEN)		(YEN)
			UNIT PRICE	AMOUNT	UNIT PRICE	AMOUNT	
(B) 放送用配管設備等 Piping for Studio							
電線 H-70L Wire & Cable							
IV 16mm LM	LM	40					
電線管 Conduit Tube							
19φ 3.66 m.l.	pc	1					
25φ "	"	3					
31φ "	"	34					
同上附屬品 Accessory for the Above Lot	Lot	1					
電線管 Conduit Tube Band							
31φ	pc	8					
出口箱 Outlet Box							
M shallow	pc	6					
表示灯 Studio Indicator							
Type O	pc	3					

ITEM	UNIT	QUANTITY	LOCAL (RUPEE)		JAPAN (YEN)		(YEN) TOTAL
			UNIT PRICE	AMOUNT	UNIT PRICE	AMOUNT	
29.24 分配盤	Distribution Board						
	for Studio B-1	1					
端子盤	TERMINAL BOARD						
	80P	1					
金属ダクト	WIRING DUCT						
	300 W x 100 D x 750 H	2					
配管支持材	Supporting Materials	1					
塗料	PAINT	1					
接地材	Earthing Materials	1					
雑材等	Miscellaneous Materials	1					
小計	Sub Total						
労務費	labor						
	Electrician	1					
計	Total						



C. PLUMBING WORK

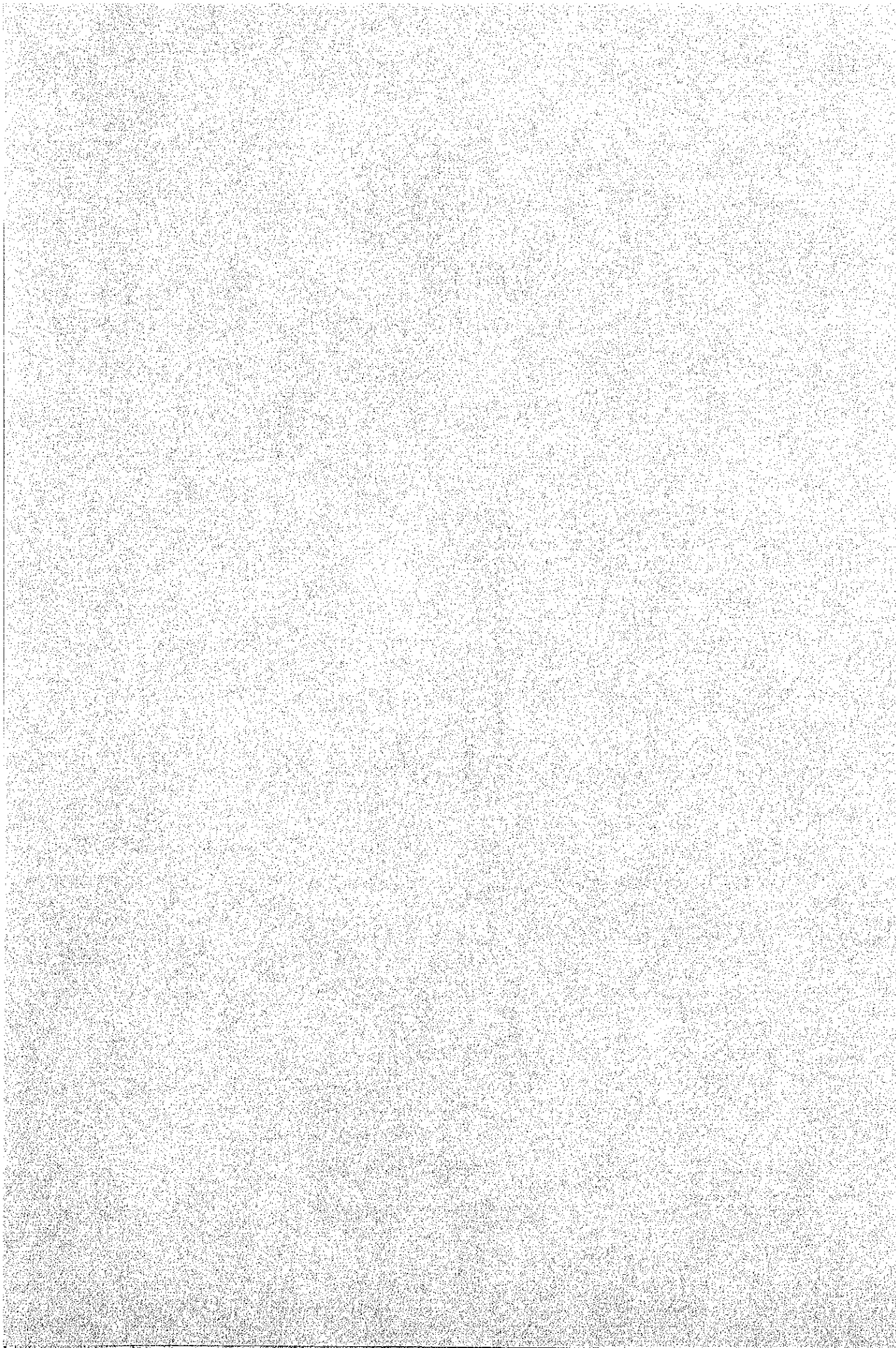


ITEM	UNIT	QUANTITY	LOCAL (RUPEE)		JAPAN (YEN)		(YEN) TOTAL
			UNIT PRICE	AMOUNT	UNIT PRICE	AMOUNT	
C PLUMING WORK							
C-1 KATHMANDU STUDIO CENTRE	LOT	1					
C-2 KATHMANDU TRANSMITTING STATION	LOT	1					
C-3 POKHARA TRANSMITTING STATION	LOT	1					
合計							



C-1 Kathmandu Studio Centre  
Plumbing Work





ITEM	UNIT	QUANTITY	LOCAL (RUPEE)		JAPAN (YEN)		(YEN) TOTAL
			UNIT PRICE	AMOUNT	UNIT PRICE	AMOUNT	
<b>KATHMANDU STUDIO CENTRE</b>							
<b>PLUMBING WORK</b>							
(1) 給水設備	LOT	/					
	WATER SUPPLY SYSTEM						
(2) 排水通気設備工事	LOT	/					
	DRAINAGE AND VENT WORK						
(3) 衛生器具設備工事	LOT	/					
	SANITARY FIXTURE WORK						
(4) 油タンク設備工事	LOT	/					
	OIL TANK INSTALLATION WORK						
	SUB TOTAL						
	計						
<del>(5) 粗仕上</del>	<del>LOT</del>	<del>/</del>					
<del>(6) 仮設木工事</del>	<del>LOT</del>	<del>/</del>					
<del>(7) 粗仕上</del>	<del>LOT</del>	<del>/</del>					
	TOTAL						

I T E M	UNIT	QUANTITY	LOCAL (RUPEE)		JAPAN (YEN)		(YEN) TOTAL
			UNIT PRICE	AMOUNT	UNIT PRICE	AMOUNT	
C-1 KATHMANDU STUDIO CENTRE							
(1) 給水設備							
SYSTEM							
[材料]							
圧力タンク及びポンプ	SET	1					
PUMP							
PUMP 40 <sup>HP</sup> 150 <sup>mm</sup> x 2.2							
TANK 500 <sup>L</sup>							
増設ビルエレベーター鋼管							
P.T.C. LINID STEEL PIPE							
20A	LM	49					
25A	LM	55					
32A	LM	11					
40A	LM	22					
50A	LM	44					
合工 送手類	LOT	1					
合工 支持金物	LOT	1					

I T E M	UNIT	QUANTITY	LOCAL (RUPEE)		JAPAN (YEN)		(YEN)	
			UNIT PRICE	AMOUNT	UNIT PRICE	AMOUNT	AMOUNT	TOTAL
丁-上弁 (5K)								
GATE VALVE (5K)								
20A	PC	4						
25A	PC	1						
32A	PC	1						
50A	PC	2						
ボ-149.7°								
BALL COCK								
37A	PC	1						
7K三ノ业様手								
FLIXIBLE JOINT								
40	PC	2						
50	PC	2						
消火栓ボ-77								
FIRE HYDRANT BOX								
(埋込型)	SET	1						
消火栓								
FIRE HYDRANT								
40	PC	1						
消火器								
EXTINGUISHER								
A.B.C-4型	PC	6						
ABC-4TYPE								

I T E M	UNIT	QUANTITY	LOCAL (RUPEE)		JAPAN (YEN)		(YEN) TOTAL
			UNIT PRICE	AMOUNT	UNIT PRICE	AMOUNT	
保温工事材料	INSULATION MATERIALS	LOT					
塗装工事材料	PAINTING MATERIALS	LOT					
消耗品雑材料	MISCELLANEOUS MATERIALS	LOT					
スリット材	SLEEVE AND INSERT MATERIALS	LOT					
穴明補修資材	CHIPPING MATERIALS	LOT					
基礎工事材料	FOUNDATION MATERIALS	LOT					
小計	SUB TOTAL						
[工費]	[LABOR COST]						
搬入据付費	TRANSPORT AND INSTALLATION FOR EQUIPMENT	LOT					

I T E M	UNIT	QUANTITY	LOCAL (RUPEE)		JAPAN (YEN)		(YEN) TOTAL
			UNIT PRICE	AMOUNT	UNIT PRICE	AMOUNT	
配管工費	LOT	/					
器具取灯有	LOT	/					
保温工事	LOT	/					
塗装工事	LOT	/					
穴明補修費	LOT	/					
スリット工	LOT	/					
試験費	LOT	/					
運搬費	LOT	/					
小計							
計							

ITEM	UNIT	QUANTITY	LOCAL (RUPEE)		JAPAN (YEN)		(YEN)
			UNIT PRICE	AMOUNT	UNIT PRICE	AMOUNT	
(2) 排水通気設備工事							
DRAINAGE AND VENT							
XORK							
{材料}							
[ MATERIALS ]							
亜鉛鍍鋼管(排水)							
GALVANIZED STEEL							
PIPE FOR DRAINAGE							
40A	LM	27					
50	LM	33					
65	LM	11					
80	LM	5					
100	LM	5					
全上道手類	LOT	1					
FITTINGS FOR DITTO							
全上支持金物	LOT	1					
SUPPORT AND HANGER							
亜鉛鍍鋼管(通気)							
GALVANIZED STEEL							
PIPE FOR VENT							
40A	LM	5					
50	LM	16					
全上道手類	LOT	1					
FITTINGS FOR DITTO							

I T E M	UNIT	QUANTITY	LOCAL (RUPEE)		JAPAN (YEN)		(YEN) TOTAL
			UNIT PRICE	AMOUNT	UNIT PRICE	AMOUNT	
全工支持金物	SUPPORT AND HANGER	LRT					
		1					
排水斜鐵管 (17=014)	CAST IRON PIPE						
	MECHANICAL JOINT TYPE						
	75 x 1600 <sup>L</sup>	PC					
	75 x 600 <sup>L</sup>	PC					
	100 x 1600 <sup>L</sup>	PC					
	100 x 400 <sup>L</sup>	PC					
		3					
全工異型管	FITTINGS FOR DITTO						
	LY 100x100	PC					
		2					
	LY 100x75	PC					
		2					
	LY 75x40	PC					
		3					
	ST 100x50	PC					
		2					
	ST 75x50	PC					
		1					
	90°SB 100	PC					
		2					
	90°SB 75	PC					
		1					
	GS 100	PC					
		2					
	GS 75	PC					
		1					
	GS 50	PC					
		2					
	GS 50x40	PC					
		1					



I T E M	UNIT	QUANTITY	LOCAL (RUPEE)		JAPAN (YEN)		(YEN) TOTAL
			UNIT PRICE	AMOUNT	UNIT PRICE	AMOUNT	
全工接合材料	LOT	1					
CONNECTING							
MATERIALS FOR DITTO							
全工支持金物	LOT	1					
SUPPORTERS FOR DITTO							
鉛管							
LEAD PIPE							
30A	LM	7					
40	LM	7					
65	LM	1					
75	LM	4					
100	LM	4					
全工接合材料	LOT	1					
CONNECTING							
MATERIALS FOR DITTO							
排気管 (P-V管)	LM	12					
VINYL PIPE FOR VENT							
200φ							
全工工事材料	LOT	1					
FITTINGS FOR DITTO							
全工支持金物	LOT	1					
SUPPORT AND HANGER							

I T E M	UNIT	QUANTITY	LOCAL (RUPEE)		JAPAN (YEN)		(YEN)	
			UNIT PRICE	AMOUNT	UNIT PRICE	AMOUNT	TOTAL	TOTAL
ビュム管								
CONCRETE PIPE								
100 <sup>ø</sup>	PC	5						
合上接合材料								
CONNECTING	LOI	1						
MATERIALS FOR DITTO								
掃除口								
CLEAN OUT								
100 COA	PC	2						
80 COA	PC	1						
65 COA	PC	1						
50 COA	PC	2						
左排水金勾								
FLOOR DRAIN	PC	2						
SOT5A								
ベントキャップ								
VENT CAP								
50	PC	1						

I T E M	UNIT	QUANTITY	LOCAL (RUPEE)		JAPAN (YEN)		(YEN) TOTAL
			UNIT PRICE	AMOUNT	UNIT PRICE	AMOUNT	
防虫ネット	PC	1					
ANTI INSECTS NET 50	PC	1					
水中排水ポンプ							
UNDER WATER DRAINAGE PUMP							
40 <sup>φ</sup> × 100 <sup>H</sup> × 15 <sup>M</sup> × 15 <sup>KW</sup>	SET	2					
チェックバルブ	PC	2					
CHECK VALVE 40	PC	2					
導入管							
INTRODUCTION PIPE 100	PC	1					
汚水坑							
SOIL PIT 450 × 450	EA	4					
排水坑							
WASTE PIT 450 × 450	EA	3					

I T E M	UNIT	QUANTITY	LOCAL (RUPEE)		JAPAN (YEN)		(YEN)	
			UNIT PRICE	AMOUNT	UNIT PRICE	AMOUNT	UNIT PRICE	TOTAL
マンホールの蓋	PC	7						
MANHOLE COVER 450φ	PC	7						
浄化槽	LOT	1						
SEPTIC TANK	LOT	1						
保温工事材料	LOT	1						
INSULATION MATERIALS	LOT	1						
塗装工事材料	LOT	1						
PAINTING MATERIALS	LOT	1						
消耗品雑材料	LOT	1						
MISCELLANEOUS MATERIALS	LOT	1						
スリット挿入材料	LOT	1						
SLEEVE AND INSERT MATERIALS	LOT	1						
穴明補修材料	LOT	1						
CHIPPING MATERIALS	LOT	1						
小計								
SUB TOTAL								

I T E M	UNIT	QUANTITY	LOCAL (RUPEE)		JAPAN (YEN)		(YEN)	TOTAL
			UNIT PRICE	AMOUNT	UNIT PRICE	AMOUNT		
(工費)	LABOR COST							
配管工費	PIPING LABOR COST	1						
器具取付費	FIXTURE INSTALLATION	1						
保温工事	INSULATION WORK	1						
塗装工事	PAINTING WORK	1						
穴明補修費	CHIPPING AND MAKING GOOD	1						
掘削及埋戻	EXCAVATING AND BACK FILLING	1						
スリット取付工費	SLEEVE INSTALLATION	1						



I T E M	UNIT	QUANTITY	LOCAL (RUPEE)		JAPAN (YEN)		(YEN)	TOTAL
			UNIT PRICE	AMOUNT	UNIT PRICE	AMOUNT		
(3) 衛生器具設備工事								
SANITARY FIXTURE								
WORK								
大便器								
CLOSET								
C-14	SET	2						
C-97 (T150NNV4)	SET	2						
小便器								
URINAL								
U-57 (T60P)	SET	3						
洗面器								
LAVATORY								
L-230D	SET	4						
掃除流し								
SLOP SINK								
SK-22A	SET	1						
鏡								
MIRROR								
TSU9AS5	PC	4						
水栓								
FAUCET								
B-T-27 (M/BOX)	PC	1						

I T E M	UNIT	QUANTITY	LOCAL (RUPEE)		JAPAN (YEN)		(YEN) TOTAL
			UNIT PRICE	AMOUNT	UNIT PRICE	AMOUNT	
消耗品材料	LOT	/					
MISCELLANEOUS MATERIALS							
箱入小卷生材料	LOT	/					
SLEEVE MATERIALS							
1. 計							
SUB TOTAL							
[工費]							
器具取付費	LOT	/					
FIXTURE INSTALLATION							
箱入小卷生費	LOT	/					
SLEEVE WORK							
定明補修費	LOT	/					
CHIPPING AND MAKING							
GOOD							
器具調整費	LOT	/					
ADJUSTING WORK							
運搬費	LOT	/					
TRANSPORTATION							
計							
SUB TOTAL							
計							
TOTAL							

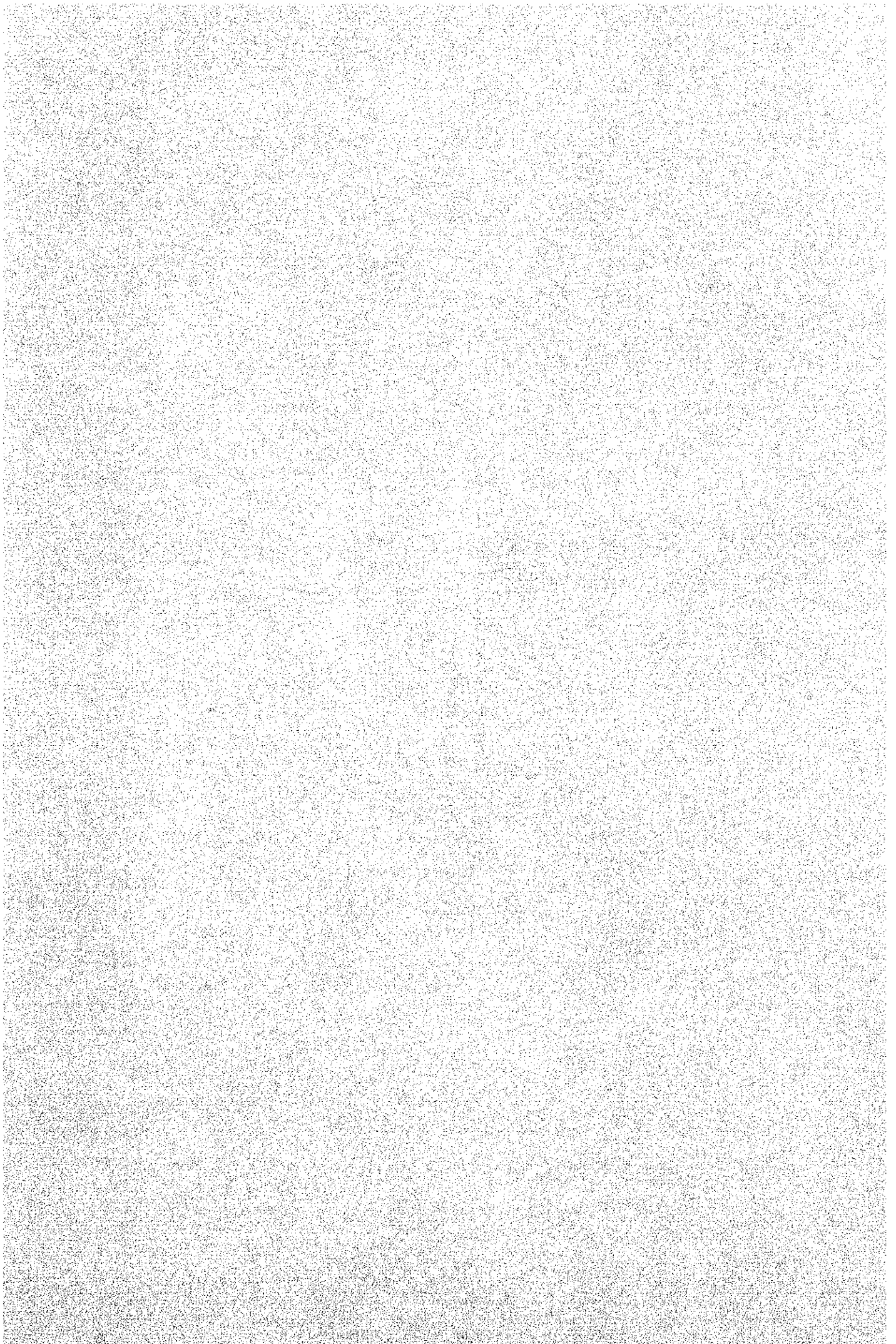


I T E M	UNIT	QUANTITY	LOCAL (RUPEE)		JAPAN (YEN)		TOTAL
			UNIT PRICE	AMOUNT	UNIT PRICE	AMOUNT	
(4) オイルタンク設備工事	OIL TANK INSTALLATION						
	WORK						
[材料]	[ MATERIALS ]						
オイルタンク	OIL TANK 2000L	1					
地下埋設形	UNDER GROUND TYPE						
カバー付	WITH MANHOLE COVER						
タンクレベル計	TANK LEVEL METER						
全工用躯体工事	CONSTRUCTION FOR	1					
	DITTO						
黒カス管	STEEL PIPE						
	65A	5.5					
	50	5.5					
	40	22					
	32	22					
全工継手類	FITTING FOR DITTO	1					
全工支持金物	SUPPORTERS FOR DITTO	1					

I T E M	UNIT	QUANTITY	LOCAL (RUPEE)		JAPAN (YEN)		(YEN) TOTAL
			UNIT PRICE	AMOUNT	UNIT PRICE	AMOUNT	
塗料工事材料	LOT	/					
消耗品雜材料	LOT	/					
定期補修費材料	LOT	/					
小計	SUB TOTAL						
[工費]	[LABOR COST]						
搬入据付費	LOT	/					
配管工事	PIPING LABOR COST	/					
塗料工事	PAINTING WORK	/					
定期補修費	CHIPPING AND MAKING	/					
試驗費	GOOD TEST						
運搬費	TRANSPORTATION	/					
小計	SUB TOTAL						
計	TOTAL						



C-2 Kathmandu Transmitting Station  
Plumbing Work



ITEM	UNIT	QUANTITY	LOCAL (RUPEE)		JAPAN (YEN)		(YEN) TOTAL
			UNIT PRICE	AMOUNT	UNIT PRICE	AMOUNT	
2 <del>C</del> KATHMANDU TRANSMITTING STATION							
PLUMBING WORK							
(1) 給水設備工事	LOT	/					
WATER SUPPLY SYSTEM							
(2) 給湯設備工事	LOT	/					
HOT WATER SUPPLY SYSTEM							
(3) 排水通気設備工事	LOT	/					
DRAINAGE AND VENT WORK							
(4) 衛生器具設備工事	LOT	/					
SANITARY FIXTURE WORK							
(5) 油タンク設備工事	LOT	/					
OIL TANK INSTALLATION WORK							
計							
SUB TOTAL							
<del>(1) 預かり金</del>							
<del>(6) 仮設費工事</del>	LOT	/					
TEMPORARY WORK							
<del>(7) 雑費</del>	LOT	/					
EXPENSE							
合計							
TOTAL							

ITEM	UNIT	QUANTITY	LOCAL (RUPEE)		JAPAN (YEN)		(YEN) TOTAL
			UNIT PRICE	AMOUNT	UNIT PRICE	AMOUNT	
2 C-20 KATHMANDU TRANSMITTING STATION							
(1) 給水設備							
WATER SUPPLY SYSTEM							
[材料]							
ポンプ及びホッパ	SET	1					
PUMP							
PUMP 40 <sup>HP</sup> × 150 <sup>mm</sup> × 2.2 <sup>m</sup>							
TANK 500 <sup>L</sup>							
塩化ビニルライニング鋼管							
PVC LINID STEEL PIPE							
20A	LM	44					
25A	LM	49					
32A	LM	33					
40A	LM	11					
50A	LM	16					
金工継手類	LOT	1					
金工支持金物	LOT	1					

I T E M	UNIT	QUANTITY	LOCAL (RUPEE)		JAPAN (YEN)		(YEN)
			UNIT PRICE	AMOUNT	UNIT PRICE	AMOUNT	
5-1号 (5K)							
GATE VALVE (5K)							
20A	PC	2					
25A	PC	3					
32A	PC	1					
50A	PC	2					
木-149.07°							
BALL COCK							
37A	PC	1					
フレキシブル継手							
FLIXIBLE JOINT							
40	PC	2					
50	PC	1					
消火栓ボックス (埋込型)							
FIRE HYDRANT BOX (CLOSED)	SET	1					
消火器							
EXTINGUISHER							
ABC-4型	PC	4					
ABC-4TYPE							



I T E M	UNIT	QUANTITY	LOCAL (RUPEE)		JAPAN (YEN)		(YEN) TOTAL
			UNIT PRICE	AMOUNT	UNIT PRICE	AMOUNT	
保温工事材料	INSULATION MATERIALS	LOT					
塗装工事材料	PAINTING MATERIALS	LOT					
消耗品雑材料	MISCELLANEOUS MATERIALS	LOT					
スリット板材料	SLEEVE AND INSERT MATERIALS	LOT					
穴明補修費材料	CHIPPING MATERIALS	LOT					
基礎工事材料	FOUNDATION MATERIALS	LOT					
小計	SUB TOTAL						
[工券]	[LABOR COST]						
搬入据付費	TRANSPORT AND INSTALLATION FOR EQUIPMENT	LOT					

I T E M	UNIT	QUANTITY	LOCAL (RUPEE)		JAPAN (YEN)		(YEN) TOTAL
			UNIT PRICE	AMOUNT	UNIT PRICE	AMOUNT	
配管工事	lot	1					
器具取付等	lot	1					
保温工事	lot	1					
塗装工事	lot	1					
配管補修等	lot	1					
スリーブ取付等	lot	1					
試験等	lot	1					
運搬等	lot	1					
小計							
計							

ITEM	UNIT	QUANTITY	LOCAL (RUPEE)		JAPAN (YEN)		(YEN)	
			UNIT PRICE	AMOUNT	UNIT PRICE	AMOUNT	TOTAL	
(2) 給湯設備								
HOT WATER SUPPLY SYSTEM								
[材料]								
[MATERIALS]								
電気湯沸器	SET	1						
ELECTRIC WATER HEATER (30KW)								
CAPACITY 25°C U.P.								
17.2 g/min								
銅管								
COPPER PIPE								
20A	LM	5						
25	LM	10						
金工継手類	LOT	1						
FITTINGS FOR DITIO								
金工支持金物	LOT	1						
SUPPORT AND HANGER								
保溫工事材料	LOT	1						
INSULATION MATERIALS								
塗装工事材料	LOT	1						
PAINTING MATERIALS								

I T E M	UNIT	QUANTITY	LOCAL (RUPEE)		JAPAN (YEN)		TOTAL
			UNIT PRICE	AMOUNT	UNIT PRICE	AMOUNT	
消磁器材料	MISCELLANEOUS MATERIALS	LOT	/				
スリット加工材料	SLEEVE AND INSERT MATERIALS	LOT	/				
定明補修材料	CHIPPING MATERIALS	LOT	/				
合計	SUB TOTAL						
[工費]	[LABOR COST]						
配管工費	PIPING LABOR COST	LOT	/				
器具取付費	FIXTURE INSTALLATION	LOT	/				
保温工事	INSULATION WORK	LOT	/				
塗装工事	PAINTING WORK	LOT	/				
定明補修費	CHIPPING AND MAKING GOOD	LOT	/				

ITEM	UNIT	QUANTITY	LOCAL (RUPEE)		JAPAN (YEN)		(YEN)
			UNIT PRICE	AMOUNT	UNIT PRICE	AMOUNT	
試験費	LOT	1					
運送料	LOT	1					
合計							
計							