

I T E M	UNIT	QUANTITY	LOCAL (RUPEE)		JAPAN (YEN)		(YEN)	TOTAL
			UNIT PRICE	AMOUNT	UNIT PRICE	AMOUNT		
(2) 電力敷設工事 Power Winding Installation								
電線 H-71L Wire & Cable	LM	364						
600x14 1.6mm	"	930						
" 2.0mm	"	12						
600x14 2.5-AC	"	6						
" 2.5-AC	"	16						
600x14 2.5-2C	"							
電線管 Conduit Tube	PC	12						
100 3.66 ML	"	42						
25φ	"	4						
31φ	"	6						
39φ	"	2						
22φ PE Coating 3.66 ML	"	3						
28φ	"							
同上材料 Accessory for the Above	Lot	1						

I T E M	UNIT	QUANTITY	LOCAL (RUPEE)		JAPAN (YEN)		(YEN) TOTAL
			UNIT PRICE	AMOUNT	UNIT PRICE	AMOUNT	
1-2116バシ							
Conduit Tube Bend							
31P	PC	2					
39P	"	4					
39P PE Coating	"	2					
7916バシ							
Pull Box							
300x300x100	PC	2					
2116バシ							
Outlet Box							
M shallow	PC	6					
2116バシ							
Blind plate	"	6					
電極棒							
Flea-less Switch							
3-poles	PC	1					
5-poles	"	1					
警報機							
Alarm Indicator	PC	1					
電力制御盤							
Power Control Board							
P-1	PC	1					

I T E M	UNIT	QUANTITY	LOCAL (RUPEE)		JAPAN (YEN)		(YEN)
			UNIT PRICE	AMOUNT	UNIT PRICE	AMOUNT	
	pc	1					
P-2	"	1					
P-3							
配管支持板	Supporting Materials	Lot					
接地板	Earthing Materials						
塗料	PAINT	Lot					
雜項消耗品	MISCELLANEOUS MATERIAL	Lot					
小計	SUB TOTAL						
前務費	LABOR	Lot					
匯工	ELECTRICIAN						
人夫	COOLIE						
計	TOTAL						

I T E M	UNIT	QUANTITY	LOCAL (RUPEE)		JAPAN (YEN)		(YEN) TOTAL
			UNIT PRICE	AMOUNT	UNIT PRICE	AMOUNT	
(3) 接地設備工事	Earthing Installation						
電線	Wire						
	600V IV 60mm ² LM	52					
	Vinyl Pipe						
	22φ 4m L pc.	17					
同口径電線	Accessory for the Above Lot	1					
接地棒	Earthing Materials Set	4					
	(Cu. Plate 2 ^m x 0.5 ^m - 16)						
	(Cu. Rod 10φ x 3 ^m - 8)						
接地端子箱	Earthing Terminal Box For 3 Terminals	1					
接地設備材料	Miscellaneous Materials Lot	1					
小計	Sub Total						

I T E M	UNIT	QUANTITY	LOCAL (RUPEE)		JAPAN (YEN)		(YEN)	
			UNIT PRICE	AMOUNT	UNIT PRICE	AMOUNT	TOTAL	
(4) 燈具及安裝工程 Lighting & Socket- outlet Installation								
(A) 燈具及安裝工程 Lighting Fixture Installation								
照明器具 Lighting Fixture	PC	14						
A1 Type	"	2						
A2 "	"	3						
A3 "	"	9						
B "	"	2						
D "	"	3						
E "	"	43						
F "	"	4						
G "	"	6						
H "	"	2						
I "	"	2						
J "	"	2						
K "	"	2						
L "	"	1						

I T E M	UNIT	QUANTITY	LOCAL (RUPEE)		JAPAN (YEN)		(YEN) TOTAL
			UNIT PRICE	AMOUNT	UNIT PRICE	AMOUNT	
(B) 配管配線工事							
Piping & Wiring Works							
電線 H-Fil							
Wire & Cable							
600V 1V 16mm	LM	11317					
" " 20mm	"	721					
600V EP 20-2C	"	91					
電線管							
Conduit Tube							
19φ 366 ml	pc	164					
25φ "	"	66					
同上附屬品							
Accessory for the Above	Lot	1					
出口用付属品							
Outlet Box							
M Shallow	pc	150					
L Deep	"	25					
出口							
Socket Outlet							
230V 2P15A x 2	pc	29					

I T E M	UNIT	QUANTITY	LOCAL (RUPEE)		JAPAN (YEN)		TOTAL
			UNIT PRICE	AMOUNT	UNIT PRICE	AMOUNT	
スイッチ							
Switch, Flask Mounting							
IP-10A	pc	13					
" , 2gang	"	11					
" , 3gang	"	1					
2way-10A. 2gang	"	2					
Photo switch 3A	"	1					
スイッチ							
分電盤							
Lighting Panel							
L-1	"	1					
配管支持材	Lot	1					
Supporting Materials							
接地板	"	1					
Earthing Materials							
雑材料等程起	"	1					
Miscellaneous Materials							
小計	Sub Total						

I T E M	UNIT	QUANTITY	LOCAL (RUPEE)		JAPAN (YEN)		(YEN) TOTAL
			UNIT PRICE	AMOUNT	UNIT PRICE	AMOUNT	
(5) 電話配線設備工事 TELEPHONE CONDUIT INSTALLATION							
電線、ケーブル WIRE & CABLE							
600V IV 5.5 mm ²	KM	15					
導管 Conduit Tube							
PP 3.66 ML	PC	15					
PP PE Coating 3.66 ML	"	11					
ビニルパイプ VINYL PIPE	PC						
16φ 4ML	"	5					
配管付属品 ACCESSORY FOR THE ABOVE LOT		1					
1-300パイプ Conduit Tube Bend							
36φ PE Coating	PC	2					
300パイプ Outlet Box							
M shallow	"	8					
300パイプ Telephone Cord Outlet	"	2					
配管 Low-Tension	"	6					

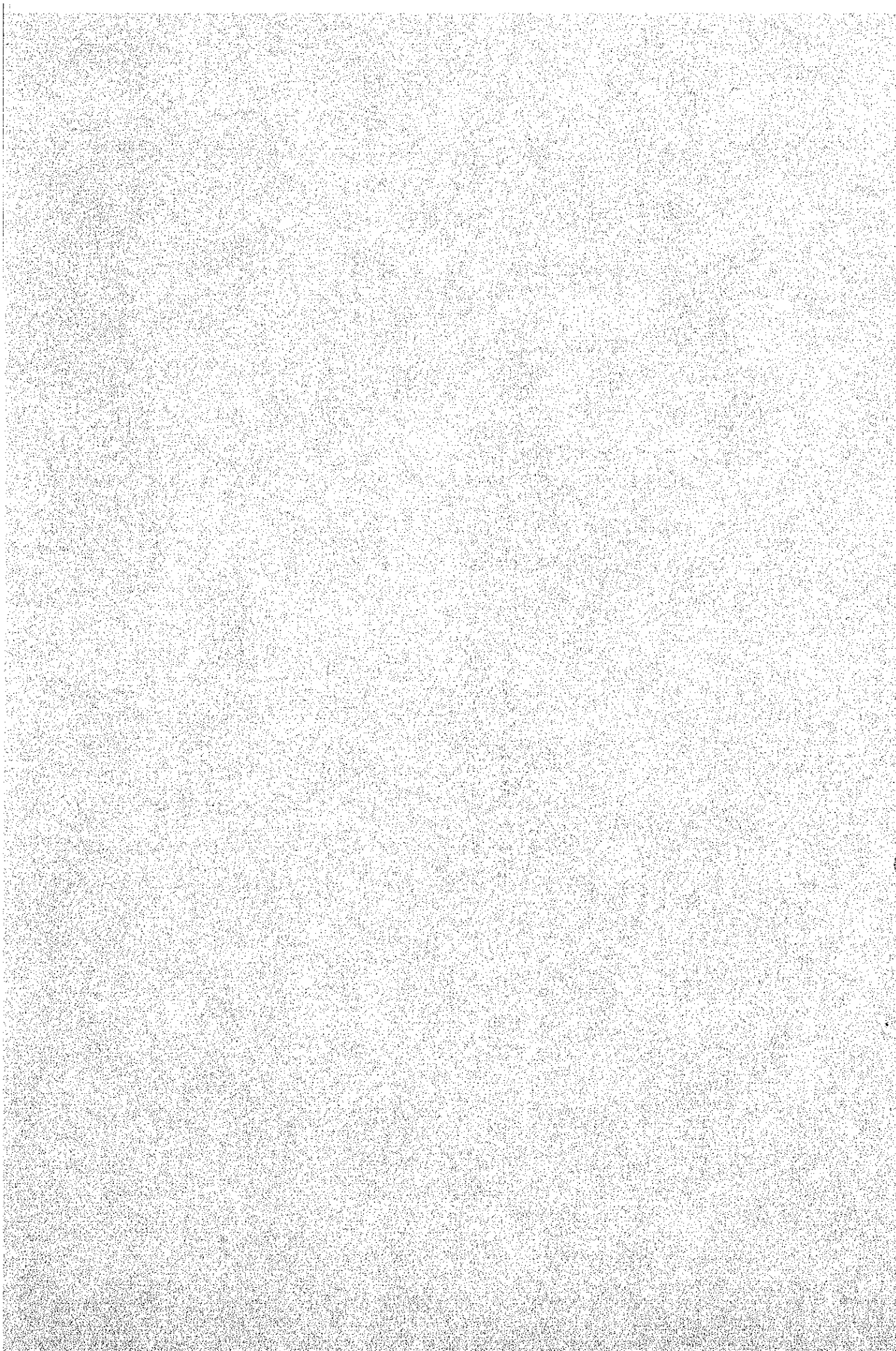
I T E M	UNIT	QUANTITY	LOCAL (RUPEE)		JAPAN (YEN)		(YEN)	TOTAL
			UNIT PRICE	AMOUNT	UNIT PRICE	AMOUNT		
電話端子箱	Telephone-Terminal Box							
	IT	1						
	pc							
ハンドホール	Hand-Hole							
	900.900x1500	1						
	w/middle weight lid							
配管支持板	Supporting Materials	1						
	Lot							
接地板	Earthing Materials	1						
	Lot							
材料消耗品	Miscellaneous Materials	1						
	Lot							
小計	Sub Total							
労務費	Labor							
	electrician	1						
	Lot							
	coolie	1						
	Lot							
計	Total							

I T E M	UNIT	QUANTITY	LOCAL (RUPEE)		JAPAN (YEN)		(YEN) TOTAL
			UNIT PRICE	AMOUNT	UNIT PRICE	AMOUNT	
611-A-10 設備工事 Interphone Installation							
配線管 Conduit Tube	pc	157					
25φ 366ml							
同工付属品 Accessory for the above	Lot	1					
出口ボックス Outlet Box	pc	8					
M Shallow							
1210 出口 Telephone Cord Outlet	pc	8					
配管支持材 Supporting Materials	Lot	1					
雜材料消耗品 Miscellaneous Materials	Lot	1					
小計 Sub Total							
労務費 Labor	Electrician	1					

ITEM	UNIT	QUANTITY	LOCAL (RUPEE)		JAPAN (YEN)		(YEN) TOTAL
			UNIT PRICE	AMOUNT	UNIT PRICE	AMOUNT	
(17) 报警装置工事							
Fire Alarm System Installation							
导线, H=1.2							
Wire & Cable							
600x1.2mm LM	LM	377					
" H=1.2mm "	"	104					
管槽							
Conduit Tube							
120 3.6mm	pc	42					
250 "	"	3					
附件							
Accessory for the above	lot	1					
出口箱							
Outlet Box							
M shallow	pc	35					
控制盘							
Control Panel							
P-type 1st class	pc	1					
5-ZONES							

I T E M	UNIT	QUANTITY	LOCAL (RUPEE)		JAPAN (YEN)		(YEN)	
			UNIT PRICE	AMOUNT	UNIT PRICE	AMOUNT	AMOUNT	TOTAL
組合箱	lot	1						
感烟器								
探测器								
普通防汽水	pc	12						
抗潮式	"	2						
	"	21						
配管材料	lot	1						
雜項材料	lot	1						
小計	Sub Total							
勞務費	Electrician	1						
計	Total							

B-3 Pokhara Transmitting Station
Electric Work



ITEM	UNIT	QUANTITY	LOCAL (RUPEE)		JAPAN (YEN)		TOTAL
			UNIT PRICE	AMOUNT	UNIT PRICE	AMOUNT	
B-3 POKHARA TRANSMITTING STATION							
ELECTRIC WORK							
(1) 新線敷設工事 Feeder wiring Installation	lot	1					
(2) 電力敷設工事 Power wiring Installation	lot	1					
(3) 接地敷設工事 Earthing Installation	lot	1					
(4) 燈具取付・コンセント Lighting & socket outlet Installation	lot	1					
(5) 電話配線敷設工事 Telephone Conduit Installation	lot	1					
(6) 1-A-10 配線工事 Interphone Installation	lot	1					
(7) 火災警報敷設工事 Fire Alarm System	lot	1					

I T E M	UNIT	QUANTITY	LOCAL (RUPEE)		JAPAN (YEN)		(YEN) TOTAL
			UNIT PRICE	AMOUNT	UNIT PRICE	AMOUNT	
B-3 POKHARA TRANSMITTING STATION							
(1) 饋線設備工事							
Installation							
電線, H-710							
Wire & Cable							
600V IV 5.5mm ²	LM	73					
" 14mm ²	"	60					
" 22mm ²	"	58					
" 38mm ²	"	5					
600V CV 5.5-AC	"	33					
" 5.5-3C	"	39					
" 5.5-2C	"	25					
" 8-4C	"	50					
" 38-3C	"	18					
600V FP 22-2C	"	25					
H-710-217							
Cable Rack	LM						
600W	"	18					
900W	"	34					
200W	"	3					

ITEM	UNIT	QUANTITY	LOCAL (RUPEE)		JAPAN (YEN)		(YEN) TOTAL
			UNIT PRICE	AMOUNT	UNIT PRICE	AMOUNT	
同工代金 Accessory for the Above Lot	Lot	1					
同工代金 4.5" Branch Bend for Cable Rack							
E-Bend 400w	pc	1					
" 200w	"	1					
T-Branch 600w	"	1					
" 400w	"	3					
+ Branch 600w	"	1					
同工代金 Lenduit Tube							
19φ 3.66ML	pc	5					
25φ "	"	1					
31φ "	"	4					
39φ "	"	1					
51φ "	"	1					
54φ PE Coating 3.66ML	"	3					
92φ "	"	4					
同工代金 Accessory for the Above Lot	Lot	1					

ITEM	UNIT	QUANTITY	LOCAL (RUPEE)		JAPAN (YEN)		(YEN) TOTAL
			UNIT PRICE	AMOUNT	UNIT PRICE	AMOUNT	
1-210-61	Conduit Tube Bend						
	3/4"	7					
	3/4"	1					
	5/4"	1					
	WAP RECOATING	2					
	82"	4					
Outlet Box							
L Deep		1					
CUPPER PLATE							
銅板							
	0.3t	18					
WIRING DUCT							
金屬ダクト							
	450" x 200" x 2.750"	1					
	700" x 150" x 2.750"	1					
配管支持材	SUPPORTING MATERIALS	LOT					
接地材	EARTHING MATERIALS	LOT					
塗料	PAINT	LOT					
雜材消費品	HISCELLANEOUS MATERIALS	LOT					
小計	SUB TOTAL						

ITEM	UNIT	QUANTITY	LOCAL (RUPEE)		JAPAN (YEN)		(YEN)	
			UNIT PRICE	AMOUNT	UNIT PRICE	AMOUNT	TOTAL	TOTAL
(2) 動力設備工事	Power Wiring Installation							
電線工二日	Wire & Cable							
	600V IV 1.6mm	LM		656				
	" 2.0mm	"		052				
	" 5.5mm ²	"		28				
	600V CV 35 ^o -4C	"		20				
	" 2 ^o -4C	"		13				
電線工	600V 2 ^o -2C	"		16				
	" 2 ^o -3C	"		8				
	Conduit Tube							
電線工	190 3.66 ML	PC		18				
	250 "	"		57				
	310 "	"		4				
	510 "	"		3				
	220 PE Coating 3.66 ML	"		4				
280 "	"		12					
同上工價品	Accessory for the Above	Lot		1				

I T E M	UNIT	QUANTITY	LOCAL (RUPEE)		JAPAN (YEN)		(YEN)	
			UNIT PRICE	AMOUNT	UNIT PRICE	AMOUNT	UNIT PRICE	TOTAL
1-2ILベンド								
Conduit Tube bend								
31P	pc	2						
51P	"	2						
200 PE Coating	"	6						
71ILベンド								
Pull Box								
450 x 450 x 700	pc	1						
300 x 300 x 100	"	2						
Outlet Box								
M shallow	pc	6						
Blind plate	pc	6						
Float-less switch								
3-peles	pc	1						
5-peles	"	1						
Alarm Indicator	pc	1						

I T E M	UNIT	QUANTITY	LOCAL (RUPEE)		JAPAN (YEN)		(YEN) TOTAL
			UNIT PRICE	AMOUNT	UNIT PRICE	AMOUNT	
電力制御盤 Power Control Board							
	P-1	1					
	P-2	1					
	P-3	1					
配線材料 Supporting Materials	Lot	1					
接地板	"	1					
塗料	"	1					
消耗品	MISCELLANEOUS MATERIALS	1					
小計	Sub Total	1					
労務費	Labor						
職工	Electrician	1					
人夫	Coolie	1					
計	Total						

ITEM	UNIT	QUANTITY	LOCAL (RUPEE)		JAPAN (YEN)		(YEN) TOTAL
			UNIT PRICE	AMOUNT	UNIT PRICE	AMOUNT	
(3) 接地装置工事	Earthing Installation						
電線	Wire						
	box 1/10mm ² LM	52					
H=10x70	Vinyl Pipe						
	22P 4m L pc	17					
台口設置	Accessory for the Above Lot	1					
接地板	Earthing Materials Set	4					
	(Cu. Plate 2 ^m x 0.5 ^m = 16)						
	(Cu. Rod 100 x 3 ^m = 8)						
接地端子箱	Earthing Terminal Box For 3 Terminals	1					
接地装置	Miscellaneous Materials Lot	1					
小計	Sub Total						

I T E M	UNIT	QUANTITY	LOCAL (RUPEE)		JAPAN (YEN)		(YEN)
			UNIT PRICE	AMOUNT	UNIT PRICE	AMOUNT	
(4) 燈具及配線工程 Lighting & Socket outlet Installation							
(A) 燈具及配線工程 Lighting Fixture Installation							
照明器具 Lighting Fixture							
A1 Type	PC	18					
A2 "	"	2					
A3 "	"	4					
B "	"	8					
C "	"	3					
D "	"	5					
E "	"	3					
F "	"	4					
G "	"	4					
H "	"	6					
I "	"	2					
J "	"	2					
K "	"	2					
L "	"	1					

I T E M	UNIT	QUANTITY	LOCAL (RUPEE)		JAPAN (YEN)		(YEN)	
			UNIT PRICE	AMOUNT	UNIT PRICE	AMOUNT	AMOUNT	TOTAL
(B)配管配線工事 Piping & Wiring Works								
電線 H-7IL Wire & Cable	LM	1281						
600x12 1.6mm	"	716						
" 2.0mm	"	91						
600x12 2.0-2C	"							
電線管 Conduit Tube	pc	165						
19φ 3.66 M.L								
25φ "		62						
同上附屬品 Accessory for the Above Lot	Lot	1						
電圧器収納箱 Ballast Box	pc	1						
200x200x100								
224x127x72 Outlet Box	pc	152						
H shallow	"	24						
L Deep								

I T E M	UNIT	QUANTITY	LOCAL (RUPEE)		JAPAN (YEN)		(YEN) TOTAL
			UNIT PRICE	AMOUNT	UNIT PRICE	AMOUNT	
ソケット	Socket Outlet						
	200 2P15A x 2	357					
	PC						
スイッチ	Switch, Flush Mounting						
	1P-10A	14					
	" 2gang	10					
	" 3 "	1					
	2way-10A 2gang	2					
光スイッチ	Photo switch 3A	1					
水道管	Lead Lock Pipe						
	1/4"	5					
分電盤	Lighting Panel						
	L-1	1					
配管支持材	Supporting Materials	1					
接地材	Earthing Materials	1					

ITEM	UNIT	QUANTITY	LOCAL (RUPEE)		JAPAN (YEN)		(YEN)	TOTAL
			UNIT PRICE	AMOUNT	UNIT PRICE	AMOUNT		
(5) 電話配管敷設工事	TELEPHONE CONDUIT							
	INSTALATION							
電線、ケーブル	WIRE & CABLE							
	600V 11.55°	LM		15				
電線管	Conduit Tube							
	250 2.66 1/2	PC		14				
	360 PE Coating 3.66 1/2	"		11				
ビニルパイプ	VINYL PIPE							
	160 4ML	PC		5				
同工用材料	ACCESSORY FOR THE ABOVE LOT			1				
1-216-1-1	Conduit tube Bend							
	360 PE Coating	PC		2				
出口ボックス	Outlet Box							
	M shallow	PC		7				
12210-70-1	Telephone Cord Outlet	PC		3				
口-5-1-1	Low-Tention	PC		4				

I T E M	UNIT	QUANTITY	LOCAL (RUPEE)		JAPAN (YEN)		(YEN)	
			UNIT PRICE	AMOUNT	UNIT PRICE	AMOUNT	AMOUNT	TOTAL
電話端子箱	Telephone-Terminal Box							
	IT	1						
	pc							
ハンドホール	Hand-Hole							
	900 x 900 x 1500 ^φ	1						
	w/middle weight lid							
配線支持板	Supporting Materials	1						
	Lot							
接地板	Earthing Materials	1						
	Lot							
雑材消耗品	Miscellaneous Materials	1						
	Lot							
小計	Sub Total							
労務費	Labor							
	Electrician	1						
	coolie	1						
	Lot							
合計	Total							

I T E M	UNIT	QUANTITY	LOCAL (RUPEE)		JAPAN (YEN)		(YEN) TOTAL
			UNIT PRICE	AMOUNT	UNIT PRICE	AMOUNT	
(b) 室内配線工事	Interphone Installation						
電線管	Conduit Tube						
	25φ 3.6 M/L	16					
同上材料	Accessory for the Above	1					
配線箱	Outlet Box						
	H shallow	6					
12il outlet	Telephone Cord outlet	6					
配線支持材	Supporting Materials	1					
雑材料等	Miscellaneous Materials	1					
小計	sub Total						
労務費	Labor						
	electrician	1					

ITEM	UNIT	QUANTITY	LOCAL (RUPEE)		JAPAN (YEN)		TOTAL
			UNIT PRICE	AMOUNT	UNIT PRICE	AMOUNT	
(17) 火警設備工事 Fire Alarm System Installation							
電線, H-21C Wire & Cable	LM	2072					
600x14 1.2mm " H1V 1.2mm	"	104					
電線管 Conduit Tube	pc	42					
19φ 3.66mL 25φ "	"	3					
同上附屬品 Accessory for the Above Lot		1					
アクトボックス Outlet Box	pc	35					
M shallow							
受信機 Control Panel	pc	1					
P-Type 1st. Class 5-Zones							

I T E M	UNIT	QUANTITY	LOCAL (RUPEE)		JAPAN (YEN)		(YEN) TOTAL
			UNIT PRICE	AMOUNT	UNIT PRICE	AMOUNT	
組合箱	Combination Box Lot	1					
感知器	Fire Detector						
定温式	Fixed-Temperature						
	Spot type, 1st class pc	12					
	Ditto, Water-proof pc	2					
花道防水	Rate-of-Rise Spot						
感知器	type, 2nd Class pc	21					
波音管	Sound lock pipe						
	(1A) pc	2					
支撑材料	Supporting Materials Lot	1					
雜項材料	Miscellaneous Materials Lot	1					
小計	Sub Total						
勞務費	Labor						
	Electrician Lot	1					

