

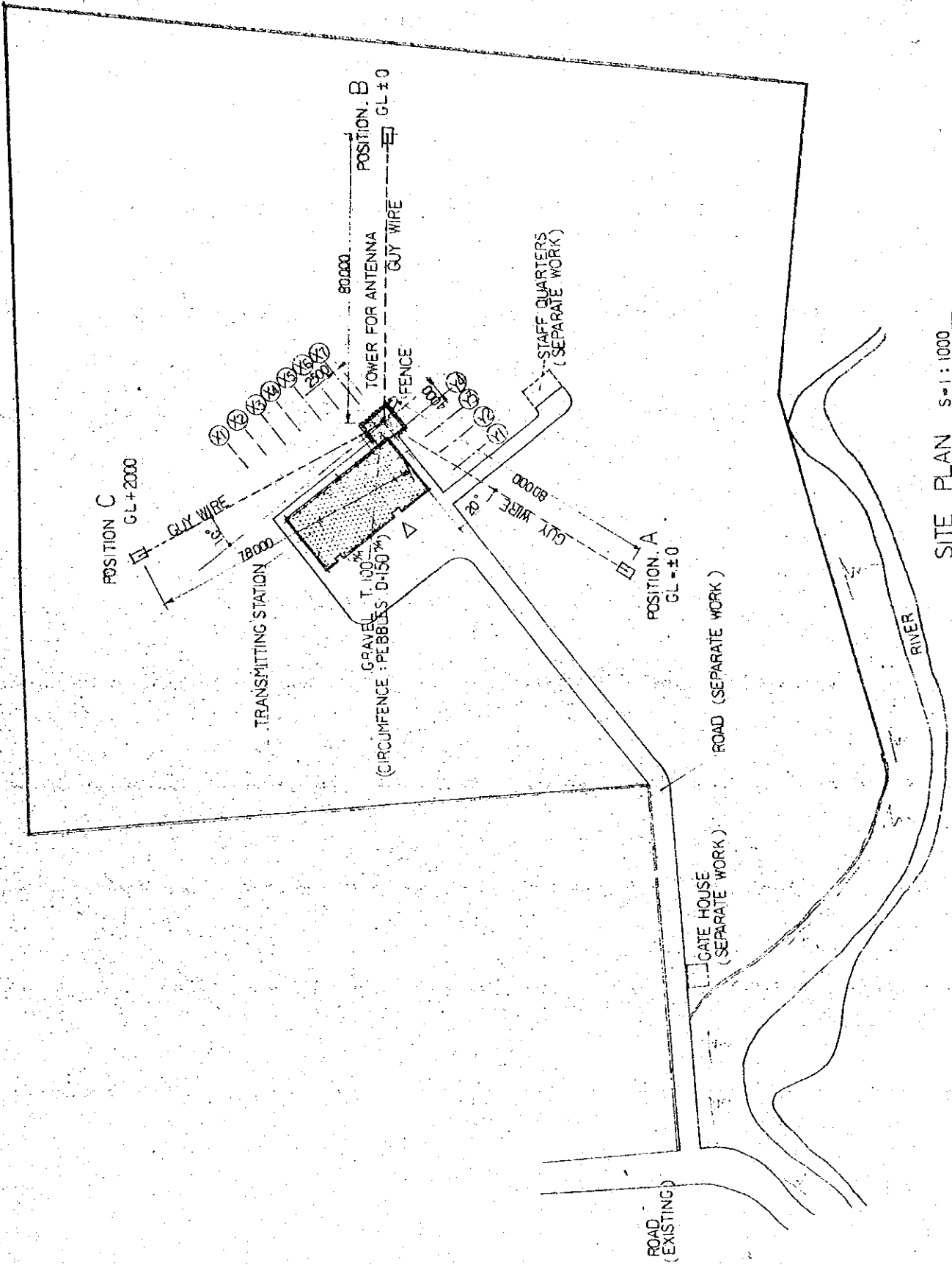
LIST OF PIT

| SOIL PIT |                 |                    |
|----------|-----------------|--------------------|
| NO       | SIZE            | MANHOLE COVER SIZE |
| 1        | 450 x 450 x 550 | 450                |
| 2        | 450 x 450 x 550 |                    |
| 3        | 450 x 450 x 700 |                    |

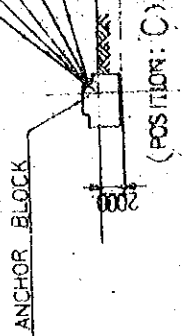
| WASTE PIT |                 |                    |
|-----------|-----------------|--------------------|
| NO        | SIZE            | MANHOLE COVER SIZE |
| 1         | 450 x 450 x 500 | 450                |
| 2         | 450 x 450 x 590 |                    |
| 3         | 600 x 600 x 840 | 500                |
| 4         | 600 x 500 x 900 |                    |
| 5         | 450 x 450 x 500 | 450                |

(A) ABC EXTINGUISHER - TYPE 4

|                                  |             |             |
|----------------------------------|-------------|-------------|
| THE ESTABLISHMENT PROGRAMME      |             |             |
| MEDIUM WAVE BROADCASTING NETWORK |             |             |
| IN THE KINGDOM OF NEPAL          |             |             |
| POKHARA TRANSMITTING STATION     | DRAWING NO. | P--303      |
| TITLE OF DRAWING                 | SCALE       | 1:100 (M/M) |
| GROUND FLOOR PLAN OF PIPING      | DATE        | JAN 1981    |

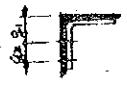


SITE PLAN S=1:1000

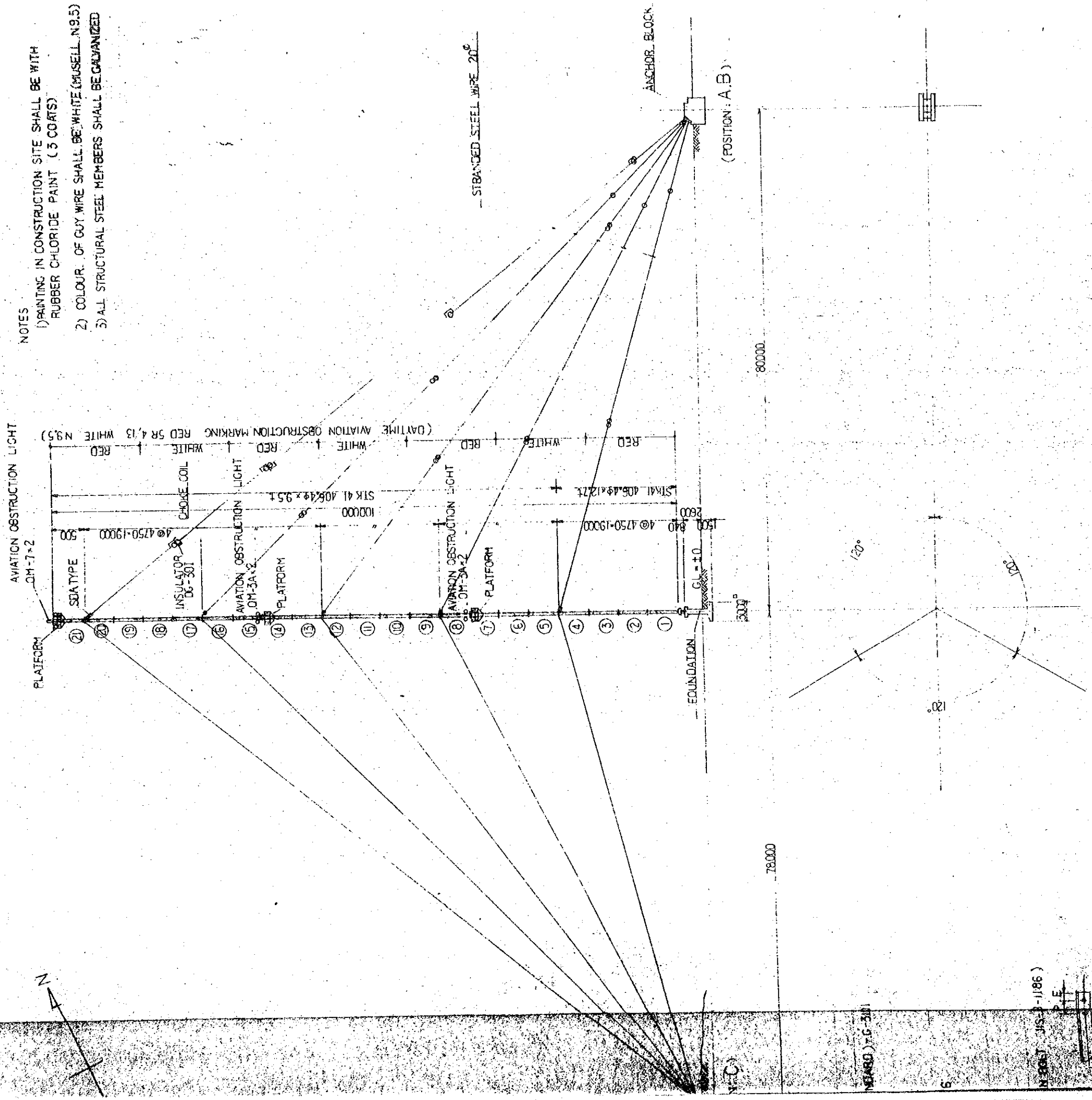


GENERAL NOTES FOR STEELWORK

- 1 MATERIAL  
 STRUCTURAL STEEL JIS (JAPANESE INDUSTRIAL STANDARD)  
 ANGLE STEEL : SS41  
 PIPE : STK41  
 PLATE : SS41
- 2 PLATE THICKNESS UNLESS OTHERWISE NOTED P-6
- 3 GAUGE OF ANGLE STEEL  
 L-125x75x10 g1=50 g2=35  
 L-65x65x6 g1=35  
 L-50x50x6 g1=30
- 4 UNLESS OTHERWISE SPECIFIED --- BOLT (HIGH TENSION BOLT)  
 PITCH AND LOCATION OF BOLT (STANDARD)  
 M16 P=55 E=35 L-50x6  
 M20 P=65 E=40 L-125-75x6 L-65x6



- NOTES
- 1) PAINTING IN CONSTRUCTION SITE SHALL BE WITH RUBBER CHLORIDE PAINT (3 COATS)
  - 2) COLOUR OF GUY WIRE SHALL BE WHITE (MUSELL N.9.5)
  - 3) ALL STRUCTURAL STEEL MEMBERS SHALL BE GALVANIZED



THE ESTABLISHMENT PROGRAMME  
OF  
MEDIUM WAVE BROADCASTING NETWORK  
IN  
THE KINGDOM OF NEPAL

|                  |       |          |
|------------------|-------|----------|
| DRAWING NO.      | T-301 |          |
|                  | SCALE | UNIT     |
| TITLE OF DRAWING |       | MM       |
| DATE             |       | JAN.1981 |

SITE PLAN. TOWER FOR ANTENNA

GENERAL VIEW S=1:400

NS 480) 75-301

NS 480) 75-301

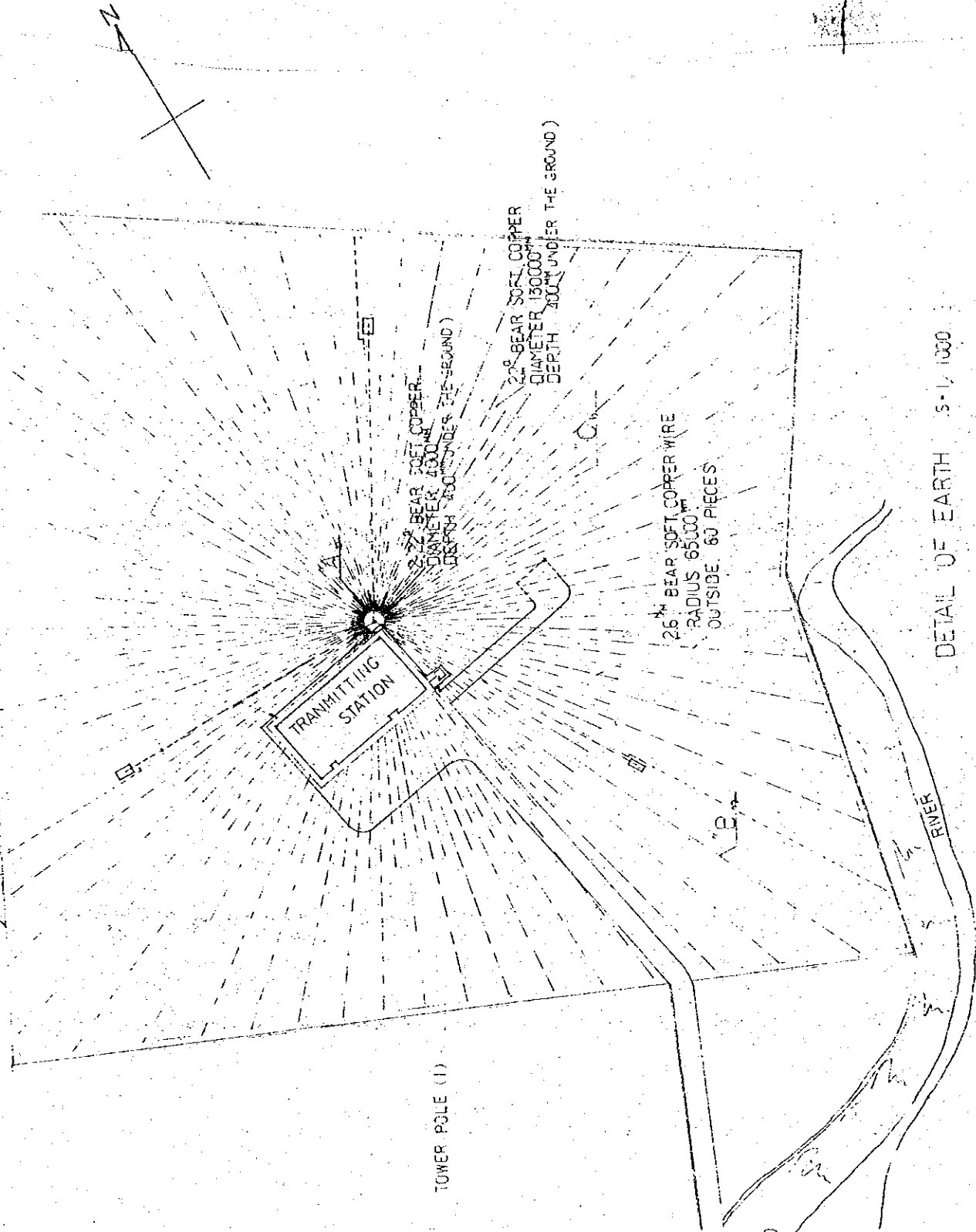




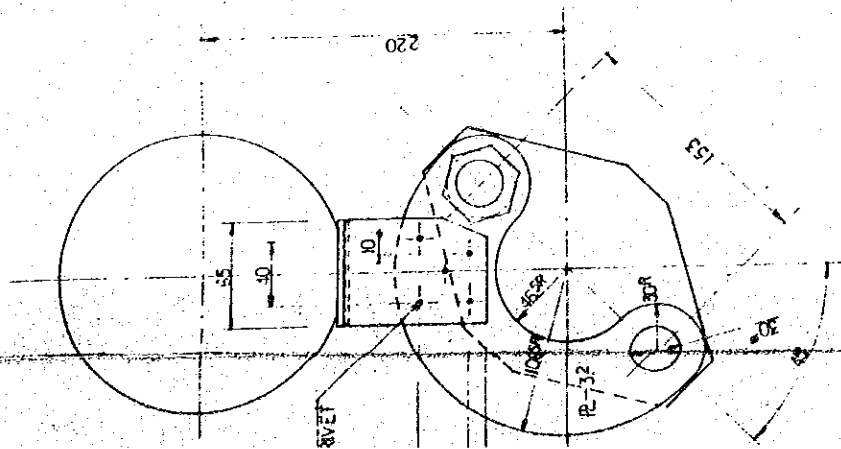
CIRCUMFERENCE OF BUILDING  
22<sup>g</sup> BAER SOFT COPPER

22<sup>g</sup> BAER SOFT COPPER  
DEPTH 400<sup>mm</sup> UNDER THE GROUND

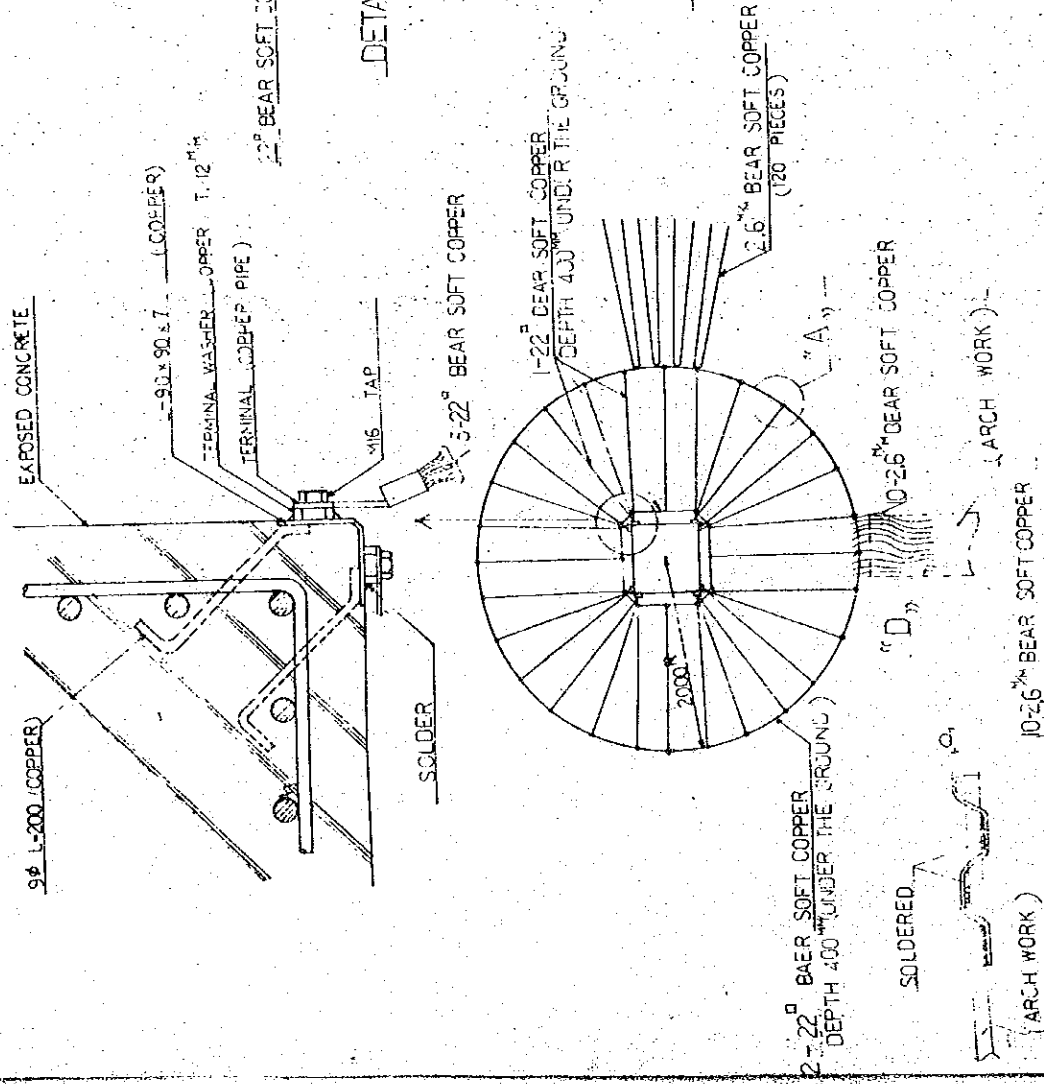
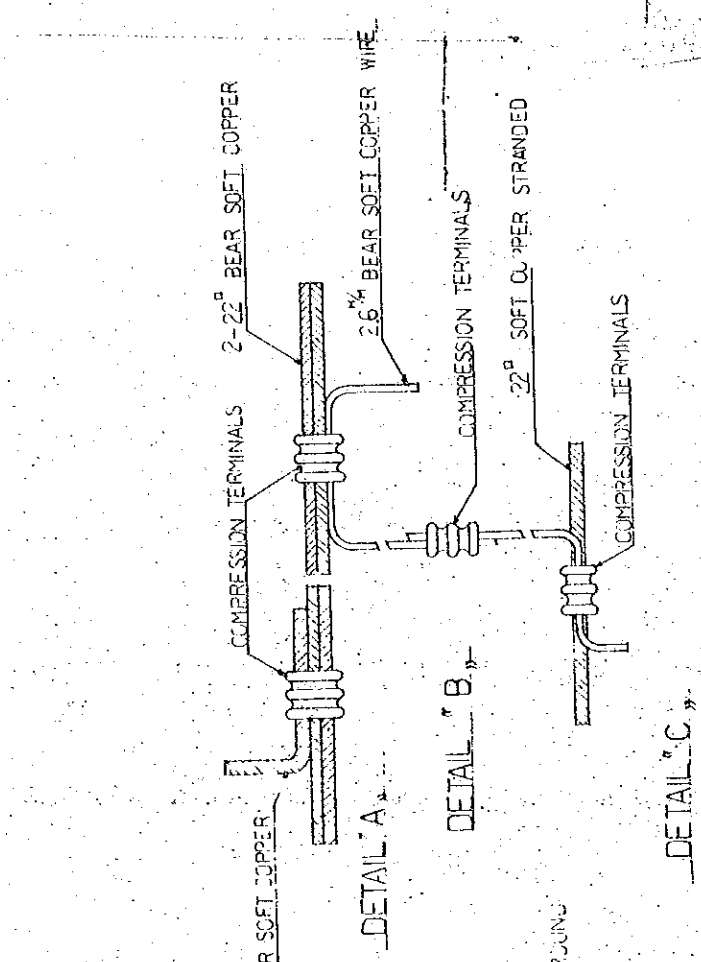
PROPERTY LINE



DETAIL OF EARTH S-1/1000



2 FITTINGS OF CHOKECOIL S-1/30  
(FOR SOCKET)



|   |  |             |           |
|---|--|-------------|-----------|
| THE ESTABLISHMENT PROGRAMME<br>OF<br>MEDIUM WAVE BROADCASTING NETWORK<br>IN<br>THE KINGDOM OF NEPAL |  | DRAWING NO. | T-310     |
| POKHARA TRANSMITTING STATION  |  | SCALE       | 1/30      |
| TITLE OF DRAWING  |  | UNIT        | MM        |
| DETAIL OF BALL CAP<br>CHOKECOIL AND EARTH   |  | DATE        | JAN. 1981 |

JIGA