

Annex (I)

QUESTIONNAIRE (II)

Data/Information/Materials to be collected by  
the Full Scale Study Team

Detailed data, informations and materials on the following items are required during the visit of the study team coming to Malaysia.

The preliminary survey team would like to know, which data, informations and materials are available in your country.

I. Social/Economic Data

1. Present Situation and Forecasting

- (1) Annual report/yearbook/statistics on national and regional economy and economic indicators, such as (a) GNP, (b) consumption, (c) population, (d) outputs of agriculture, (e) mining products, (f) manufacturing products, (g) transportation activities (commodity flow, modal split of passenger and cargo traffic, traffic volumes and number of vehicles and rolling stocks).

We want the national, regional data of the latest five years.

- (2) Materials of latest national/regional economic development plans/programs

(a) Investment schedule relating to the industrial development (including energy, mining, etc.)

(b) Development Programs of transportation facilities (road, railways, ports, etc.)

2. Other Reports/Publications/Maps

(1) Maps/Marine Charts of Peninsula Malaysia

(2) Studies/Reports on Ports/Transportation so far carried out

(3) Port Traffic, Port management system and Port Regulations

3. Regional development in Perlis State and its vicinity

What is the present situation, future plan and implementing strategy of the regional development?

- (1) the present situation and the problems in each region  
(population, economy, employment opportunity, environment, etc.)
- (2) the basic idea of the regional development region-wise priority

4. Industrial development in the Perlis State and its vicinity

What is the present situation, future plan and implementing strategy of the industrial development?

(especially about the manufacture of cement, sugar and rubber)

- (1) the type, scale and developing schedule of industry which is to be the core of the industrial development
- (2) relation to the resources
  - (a) contents, quantity, regional distribution, transporting methods of the domestic resources
  - (b) contents of the resources to be imported
  - (c) important products to be exported
- (3) related plan for strategy  
(ports, other infrastructures, regional development, etc.)
- (4) the basic idea of the industrial development

5. Agriculture in Perlis State and its vicinity

What is the present situation and future plan of agricultural development?

- (1) contents and quantity of agricultural products
- (2) distribution and transporting methods of main agricultural products

6. Fishing (species)

- (1) Landing of fish catch at K. Perlis ports and in Perlis State.  
(for recent five years)
- (2) Location of fishing activity in the vicinity of K. Perlis port
- (3) Distribution area of landed fish
- (4) Size, type, and number of fishing boats at K. Perlis port
- (5) Location of fishermen's house at K. Perlis port and its vicinity

7. Coastal leisure activities in Perlis State and Langkawi Island

- (1) Beach for bathing and any other coastal leisures
- (2) Size, type and number of pleasure boats and yachts
- (3) Origin, and number of visiting tourists to Langkawi  
(for recent five years)
- (4) Attractive forces for tourists

II. Data/Information of major Ports in Peninsula Malaysia and minor ports in Perlis, Kedah and Kelantan

1. Existing port facilities

(1) Maps

a) Layout of existing port facilities

b) Port plans in future

(2) Latest data of accomodations

(a) Depth, width and length of channels and basins

(b) Depth, length and construction year of each berth

(c) Area and informations about transit sheds, ware-house and open storage areas

(d) Typical structures of port facilities

(e) Type, capacity and manufacturing year of cargo handling equipment

(f) Type capacity and some other major information of port facilities not mentioned above

2. Tariff

(1) Port tariff(for only major ports)

(2) Freigh tariff(for coastal shipping)

3. Port activities

(1) Cargo traffic (annual data for recent five years)

(a) Cargo traffic by export/import by main routes and by commodity

(b) Cargo traffic by inward/outward(domestic)by commodity

(c) Cargo traffic between ports and their hinterlands, by mode and by commodity (for only K. Perlis Port, Penang Port and Alor Setar Port)

(2) Ship arrivals (for recent five years)  
Number by ship tonnage and by ship type

(3) Port Congestion (for recent three years)

(a) Average waiting time of ships

(b) Berth occupancy rate

III. Data/Information of Kuala Perlis Port (excluding the data mentioned above)

1. Existing port facilities

- (1) Layout and latest data of existing navigation aid facilities, and utility facilities
- (2) Structure of existing port facilities, and utility facilities

2. Ferry boat

- (1) Passenger and cargo traffic  
(annual data for recent five years)
- (2) Sailing schedule
- (3) Number, Tonnage, draft capacity and age of the vessels
- (4) Owner and operator
- (5) Information of traffic purpose of passenger

3. Surrounding conditions

- (1) City plan or Land use plan in the vicinity of K. Perlis Port
- (2) Fishery activities and fishery right at K. Perlis Port and its vicinity
- (3) Environmental factors to be considered
- (4) Data/Information of port administration and port operation
  - a) Organization, function and the number of personnels in each section concerning K. Perlis Port

- (b) Annual budget (income and expenditure) for recent five years  
(including subsidy from the government, if any)
  - (c) Relating government offices and relating enterprises
  - (d) Procedures to use port
  - (e) Map of port district, port limits and area of K. Perlis Port
4. Construction of port facilities
- (1) Construction and maintenance work carried out for recent five years
  - (2) Materials for construction of port facilities  
(stones, sand, cement, etc.)
    - (a) Supplying conditions of materials
    - (b) Unit cost of materials
  - (3) Labor conditions of port construction
    - (a) Supply and demand condition of construction labors in the vicinity of K. Perlis Port
    - (b) Wages of construction labors in the vicinity of K. Perlis Port
  - (4) Construction machinery
    - (a) Type, capacity and number of working crafts such as dredgers in Malaysia
    - (b) Type, capacity, number and rental cost of construction machinery such as bulldozers in the vicinity of K. Perlis Port
    - (c) Type, capability and rental cost of the boring machines in Malaysia



(5) Recent example of the cost for construction of port facilities in the vicinity, if any

5. The basic idea of the central and the local government concerning the role of K. Perlis Port

(1) commercial aspect  
(hinterland, kinds of cargo, present problem)

(2) fishing port  
(hinterland, present problem)

(3) others  
(industry, leisure activity, agriculture)

(4) urgent matters

(5) study on the development of K. Perlis Port

IV. Roads

1. Road facilities in Peninsula Malaysia  
(including road development plan)

(1) Maps

(2) Latest data of accommodations

a) Width, capacities and some other major informations of  
each route

b) Sites and capacities of freight truck terminals at vicinity of  
K. Perlis Port, if any

(3) List of charges

2. Others

Would you submit us any other informations for roads and truck  
terminals?

V. Railroads

1. Railroads facilities in Peninsula Malaysia  
(including development plan)

(1) Maps

(2) Latest data of accomodations

a) Capacity of each route

(3) List of charges

2. Others

Would you submit us ay other informations for railroads?

2. 面会者リスト

◦ Economic Planning Unit ( EPU )

1. ABDUL RAHMAY PIN  
Deputy Director General.
2. ALI ABUL HASSAN B. SLAIMAN  
Director , Infrastructure & Utility Section.
3. SITI HADGAR MOHD ISMAIL  
Assit Director, Infrastructure & Utility Section.
4. G. PARAMESWARAN  
Principal Assit. Director I&U Section
5. AB. RAHIM KASIM Staff I&U Section
6. MHD. AMINADDIN HASHIM Staff. Foreign Affairs Section
7. LIM BOONKAN, Technical Section

◦ MINISTRY OF TRANSPORT (MOT)

MARITIME DIVISION

1. MOHD SIDIK SHAIK OSMAN  
Principal Assit. Director
2. LIM YUK HUA  
Staff
3. ZAMUDDIN RAWE, Staff

◦ PUBLIC WORKS DEPARTMENT (PWD)

1. LADUCHUMANAN MIN  
Director , Research Division
2. YOON SHEE LENG  
Deputy Director R. Div.,
3. HO KHYE GIM  
Assit. Director R. Div.,

◦ STATE GOVERNMENT, PERLIS

1. AZMEER

◦ PERLIS STATE ECONOMIC PLANNING UNIT (SEPU)

1. SAFFIE BAKAR  
Asst. State Secretary

◦ KEDAH/PERLIS HARBOUR

1. MHD. NASIR ABPUL WAHAB

Deputy Harbour Master

2. MHD. SAIR HAJI BASRI

Asst. Fishery Officer

◦ PERLIS STATE DEVELOPMENT CORPORATION

1. NAZIN BIN ABD. RAHMAN

General Manager

2. MARIZAM B. ABDLILLAH

Technical Member

3. HARUN B. MAHMUD Technical Member

◦ 在「マレーシア」国日本大使館

1. KUNIHICO TAKADA Ist Secretary

◦ JICAクアラルンプール事務所

1. 阿部信司 所長

2. 山本雅生 次長

3. 荒金恵一 所員

◦ 在シンガポール国日本大使館

1. 竹内正敏 一等書記官

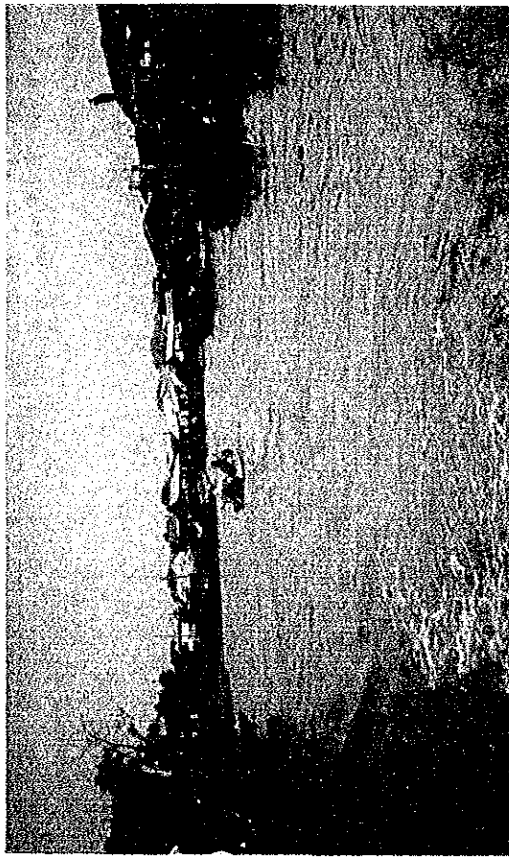
JICAシンガポール事務所

1. 溝淵高生 所長

3. 収集資料リスト

資 料 名	形態	入 手 先
ペルリス州地形図	Map	Survey Departmentより購入
ケダ州地形図	Map	同 上
上記州地質図	Map	同 上
LAPURAN TAHUNAN	Book	同 上
Perlis Planning and Development Map	Map	SEPU作成
航空写真位置図	Map	国内入手(鉄道調査団)
クアラ・ペルリス港港湾計画予備調査報告書	Book	同上 (OCDI)
マレーシア事情	Book	同上 (外務省)

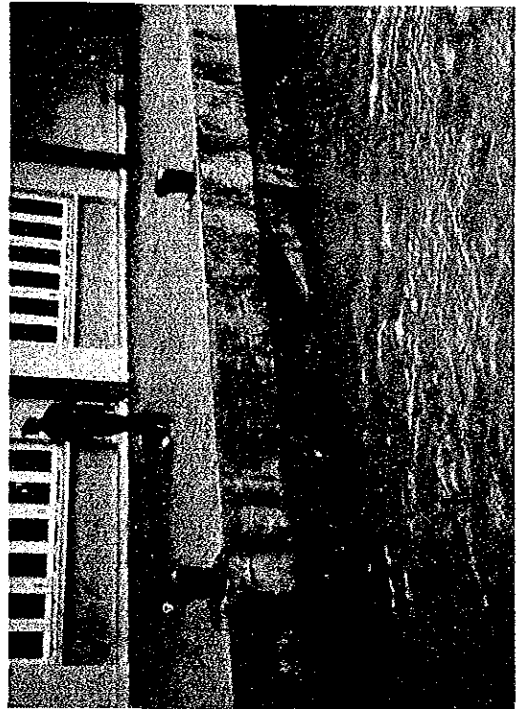




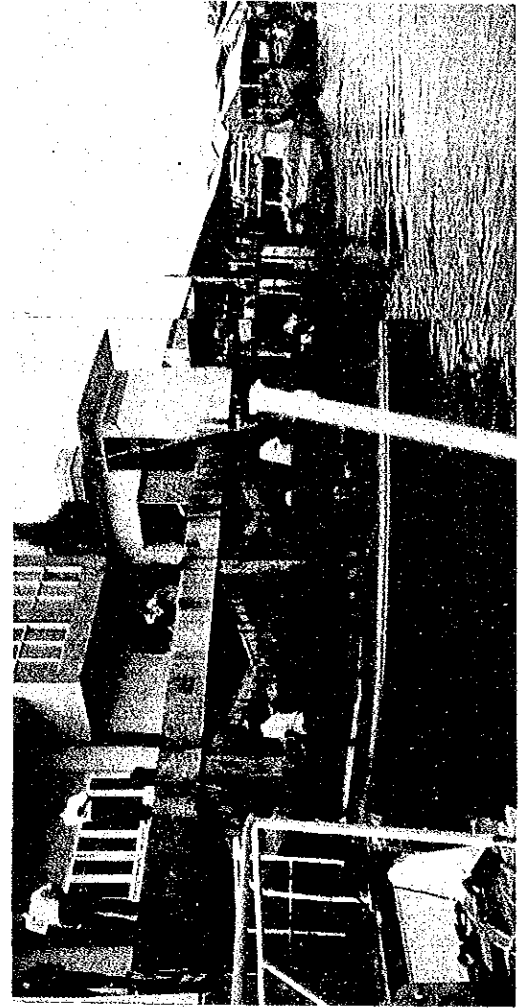
クアラベルリス港 ノースチャネル



フェリーふ頭全景



フェリーふ頭棧橋（満潮時）



フェリーふ頭棧橋（干潮時）







クアラベルリス港（左方 河口部 右方 上流部）

ペルリス州



ペルリス州の幹線道路

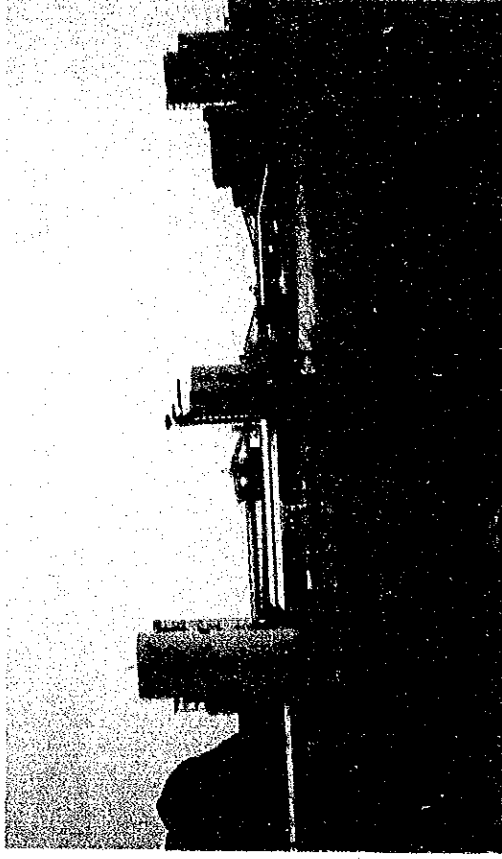


ジェジャウィ工業団地

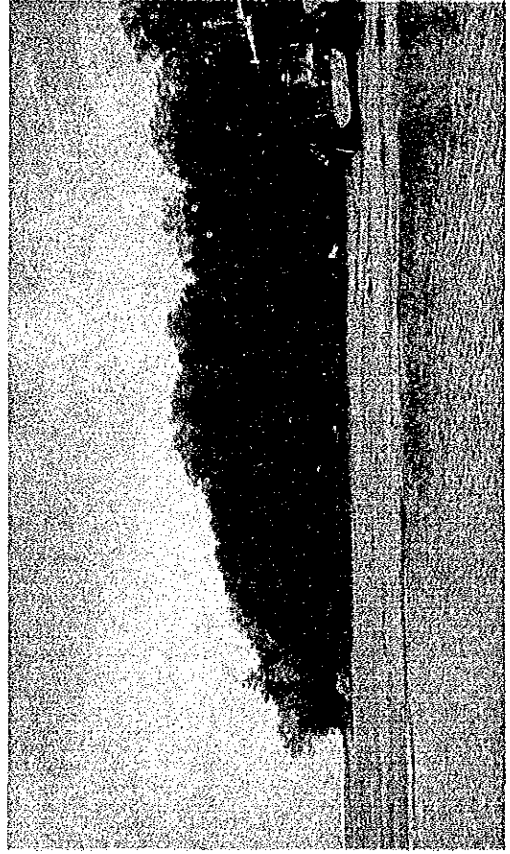




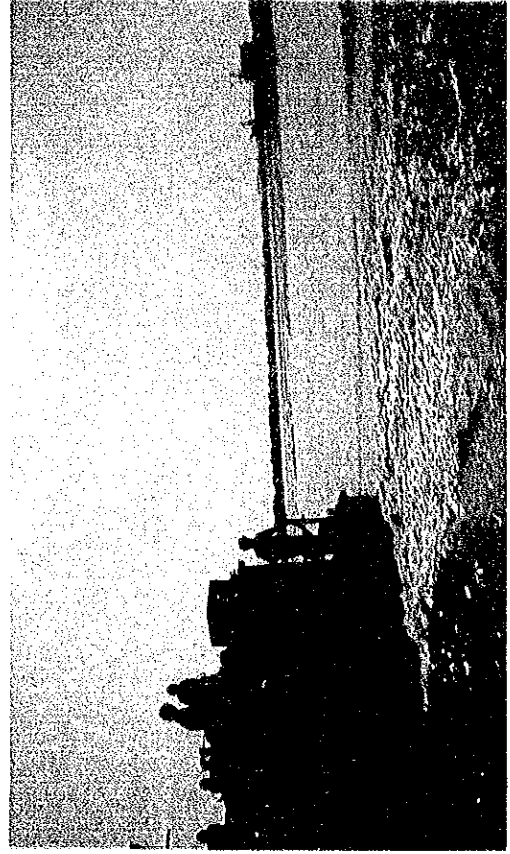
砂糖工場



セメント工場



ベルリス川河口部（マングローブの島）



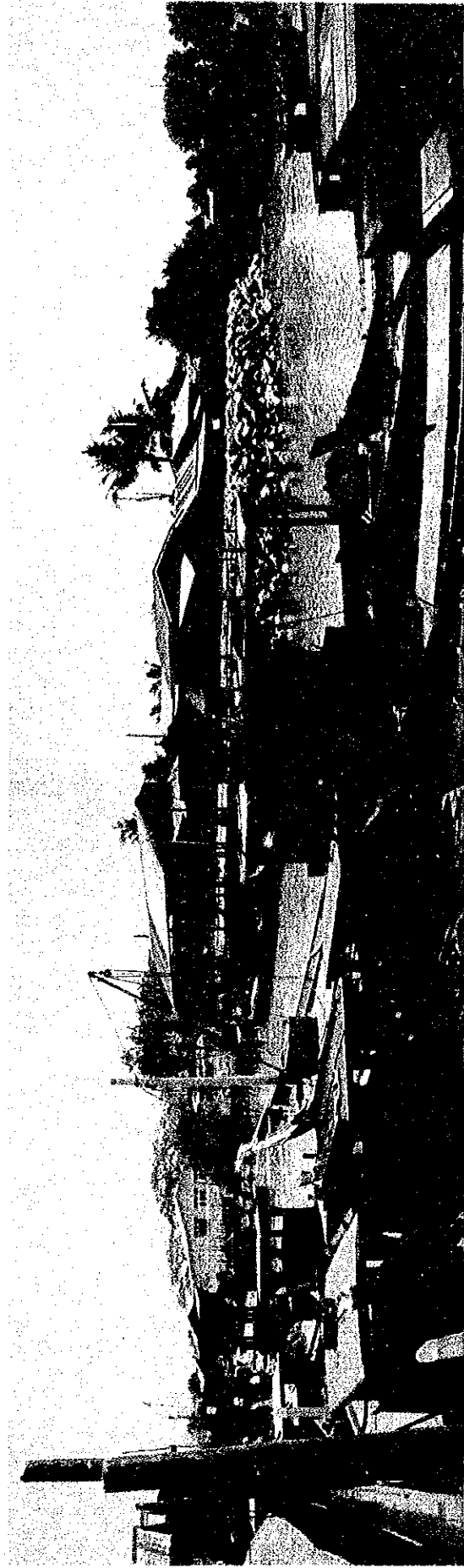
フェリーボート（左手）と、干潟に座礁した漁船



クアラサラン港



漁港施設（下流を臨む）



漁港施設





JICA