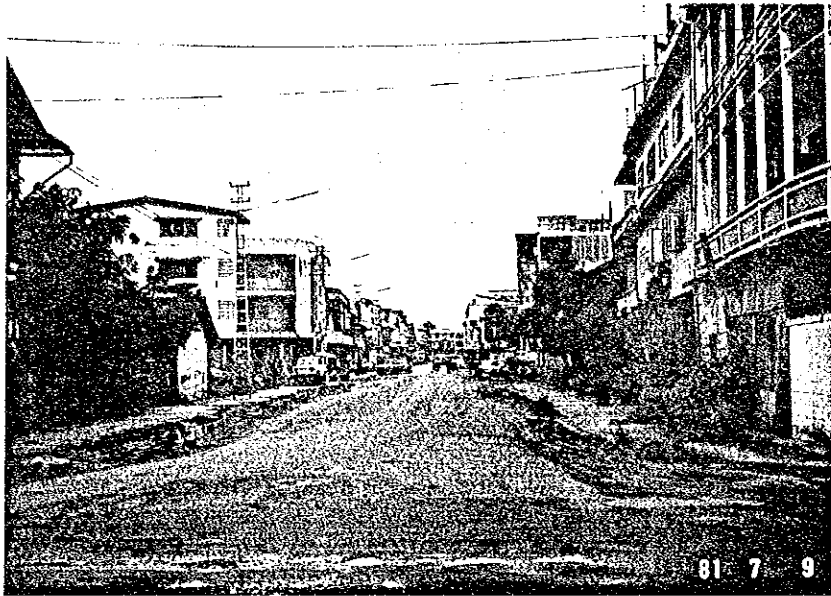


PHOTOS  
FOR  
EXISTING FACILITIES  
AND  
PROPOSED RESERVOIR SITES



CITY OF VIENTIANE

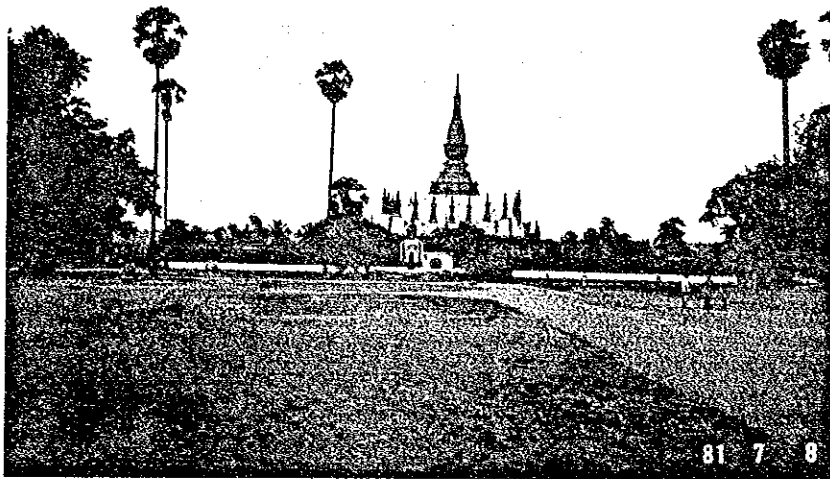


Downtown of Vientiane

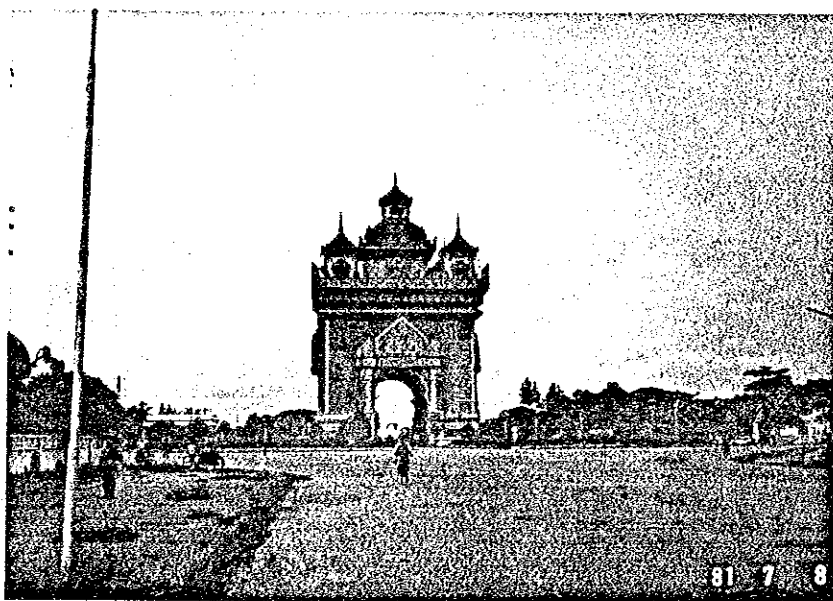


Morning Market



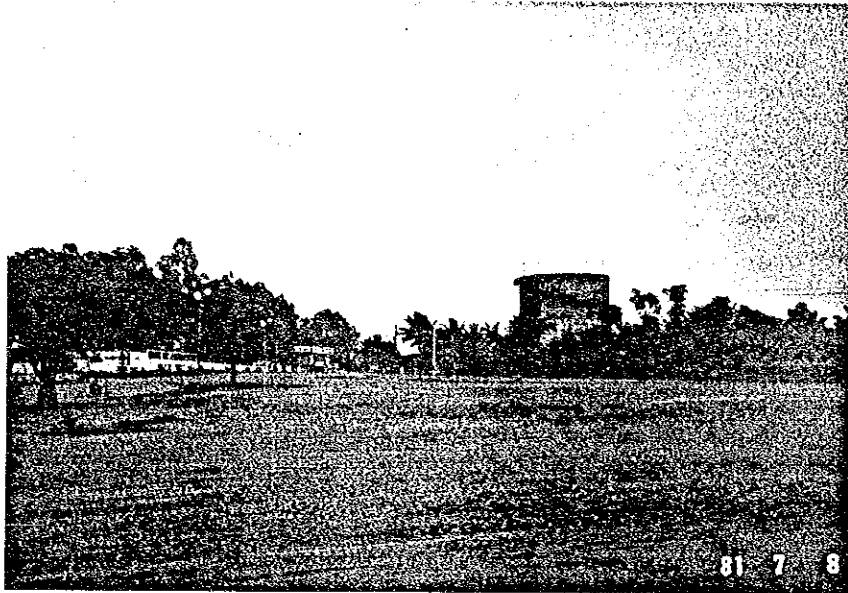


That Luang Temple

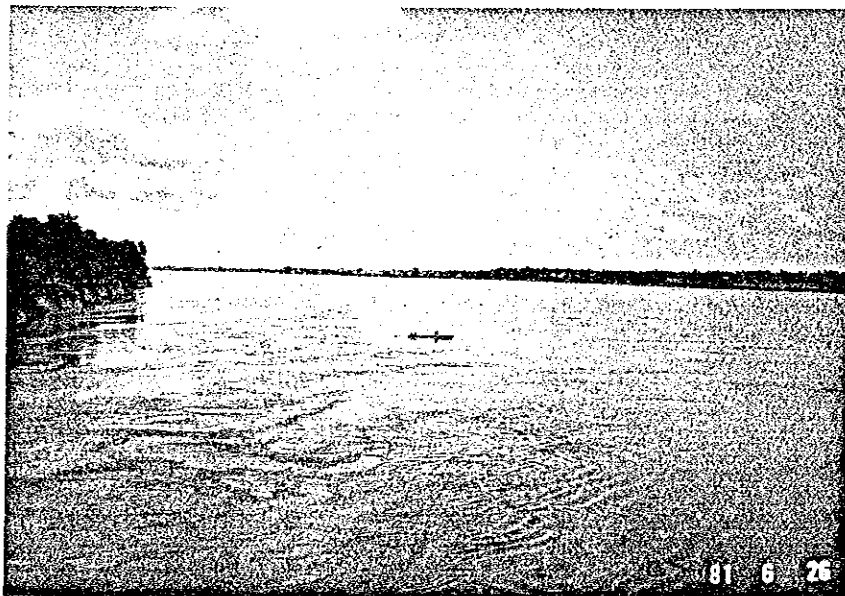


Memorial Tower





Existing Elevated Reservoir at Phone Khene

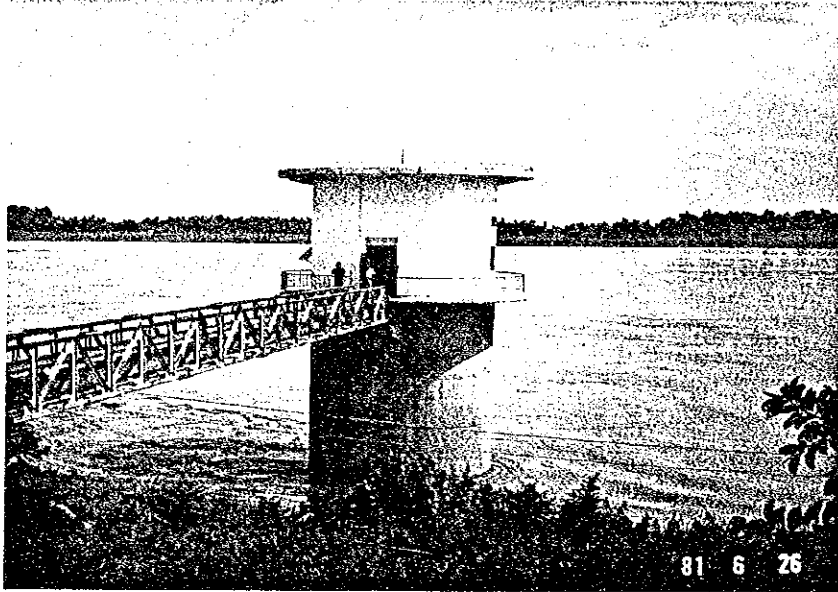


Mekong River  
(Vientiane at lift-hand side)

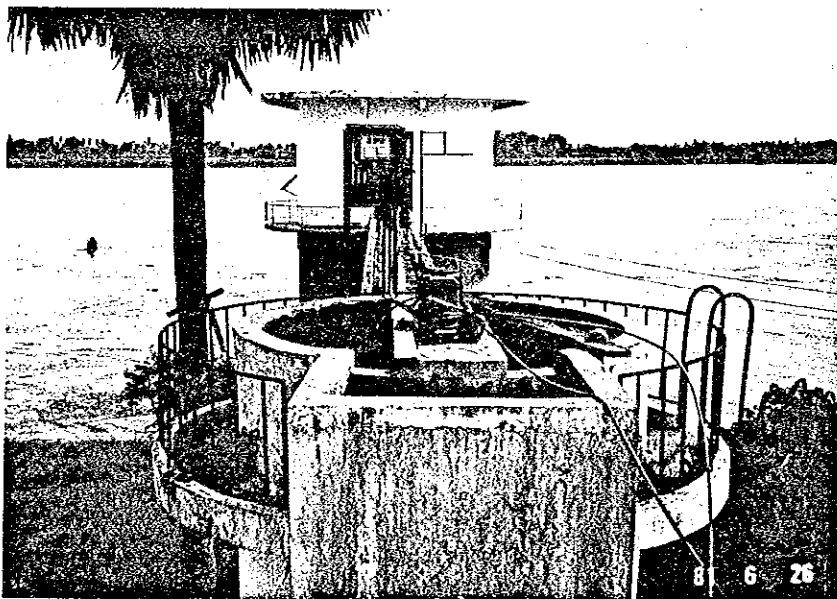




KAOLIEO TREATMENT PLANT

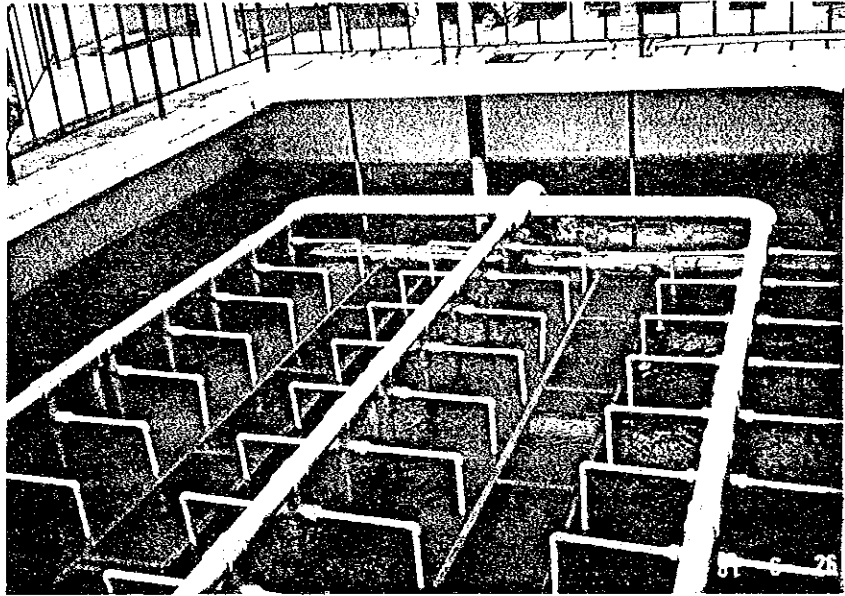


Mekong River and Intake Tower

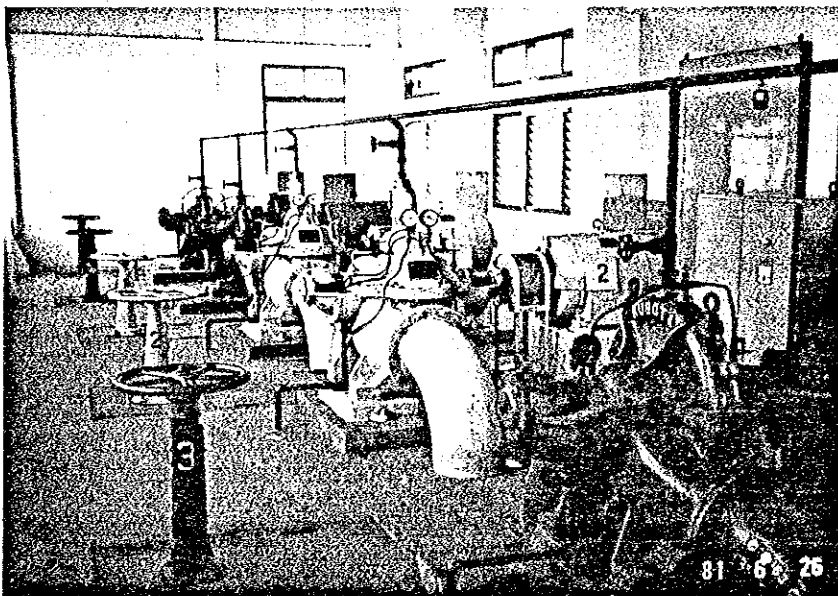


Chemical Mixing Chamber



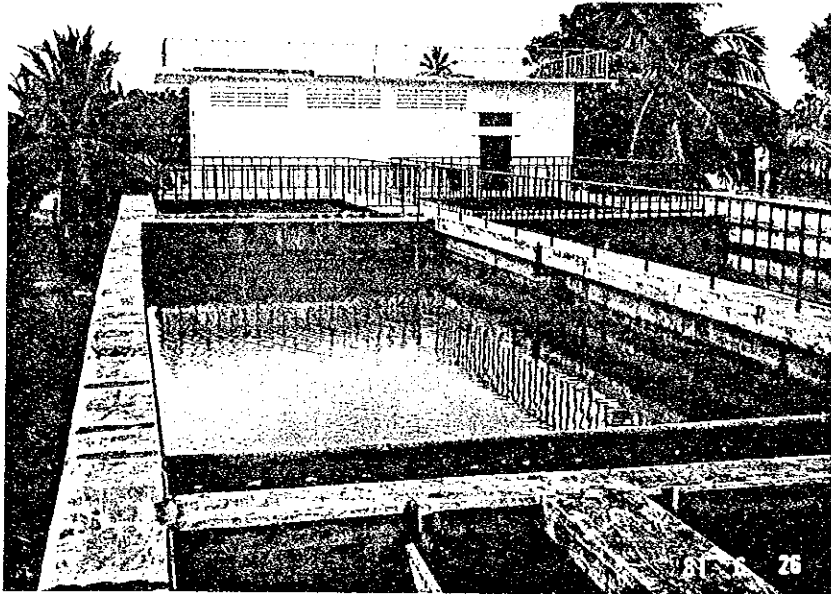


Filter and Surface Wash Diffuser

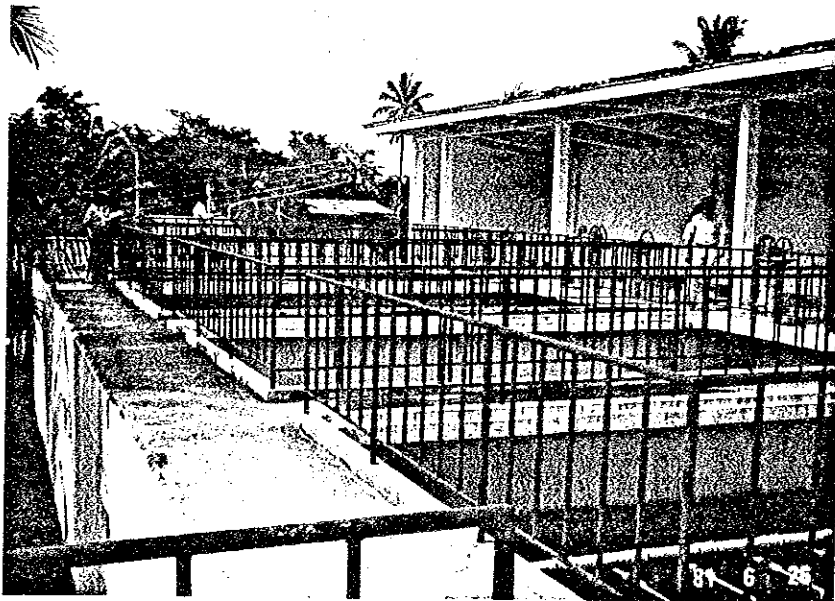


Distribution and Backwash Pumps





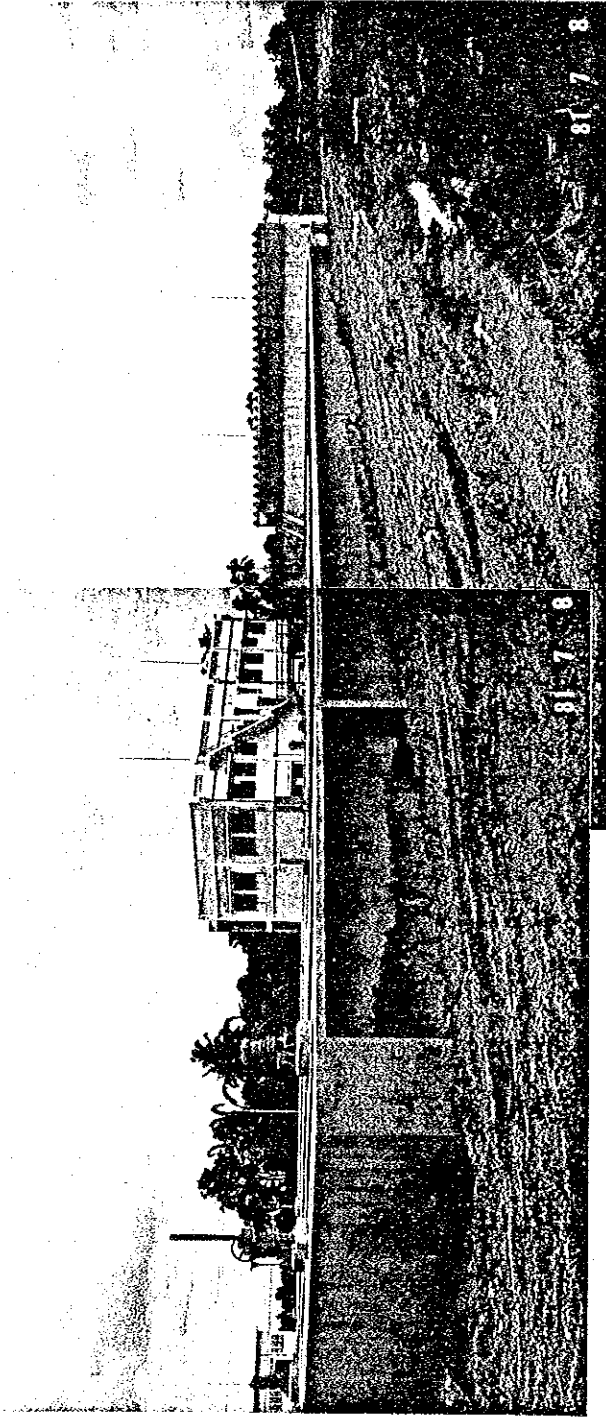
Sedimentation Basins



Filters

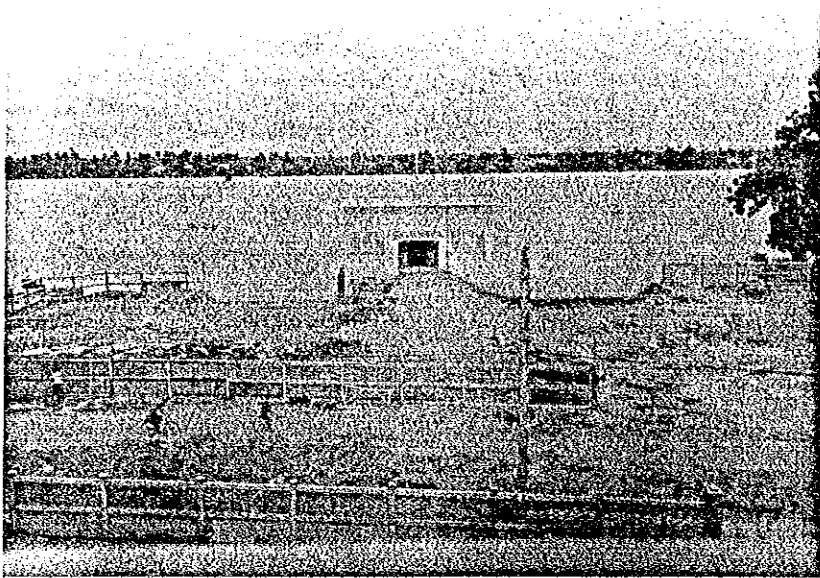


CHINAIMO TREATMENT PLANT

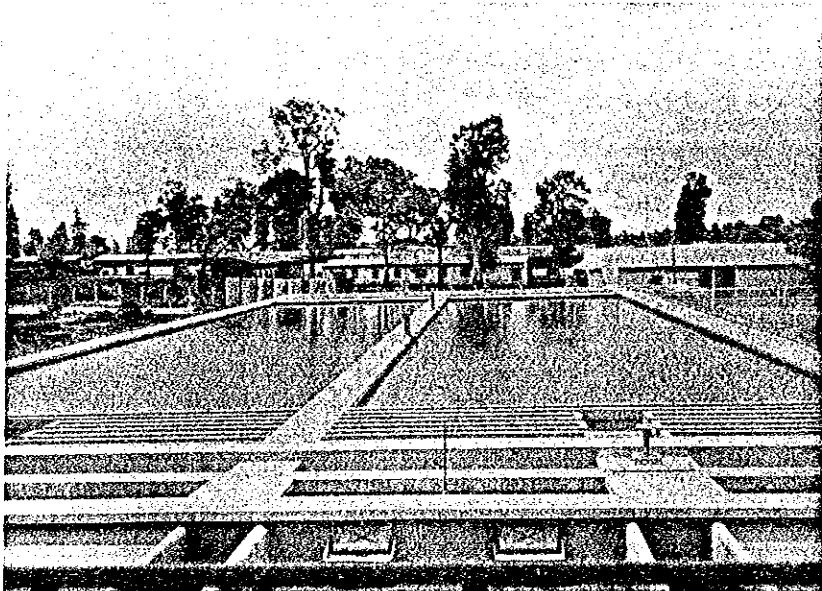






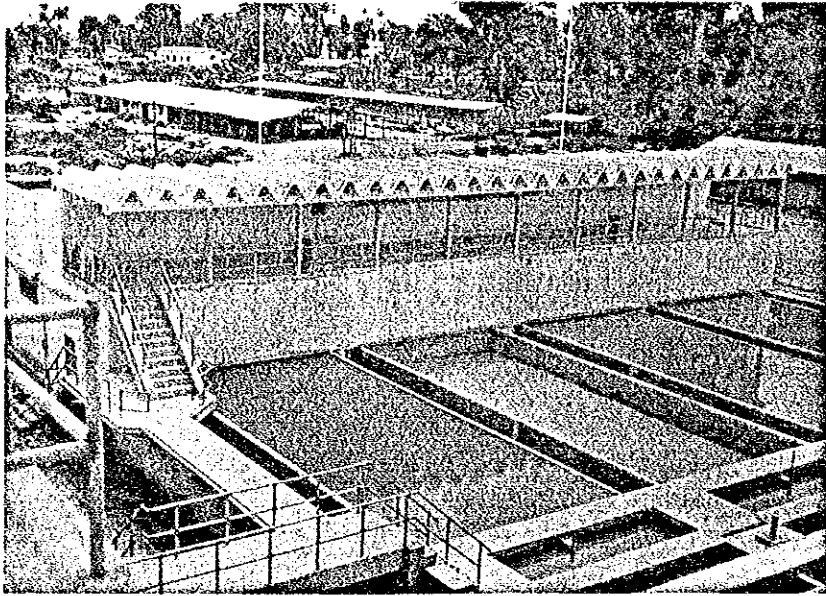


Mekong River and Intake Tower

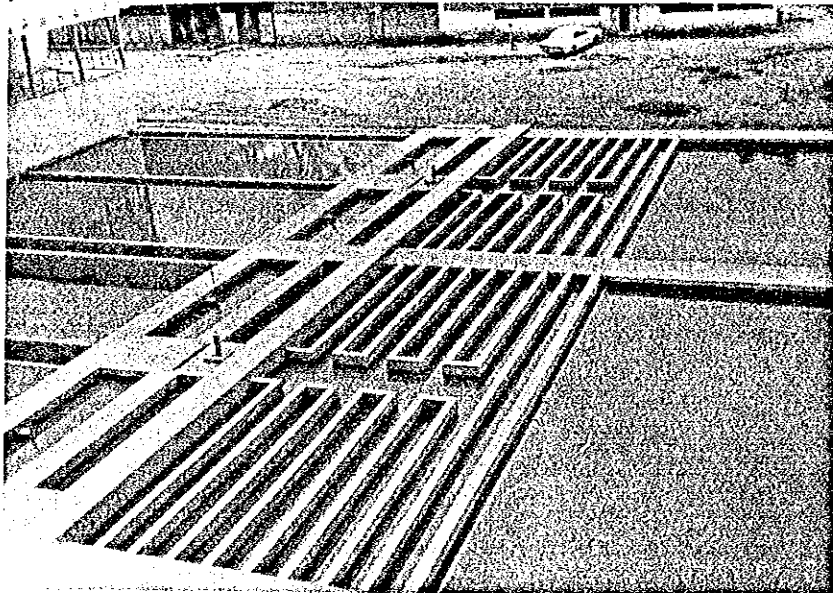


Sedimentation Basin





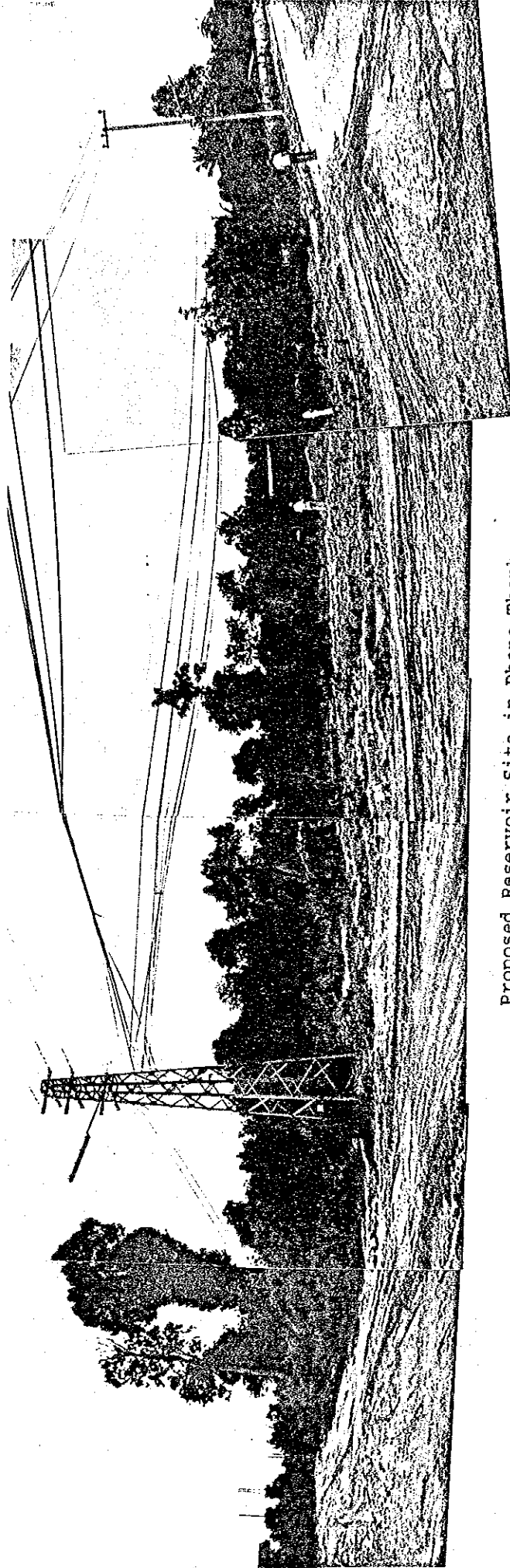
Filters and Pump House



Sedimentation Basins to Filters

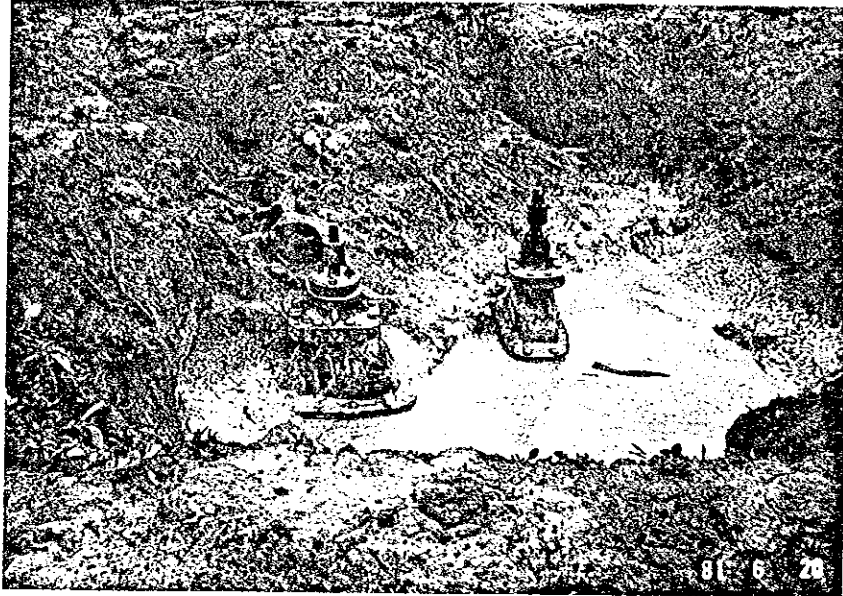


PROPOSED RESERVOIR SITES

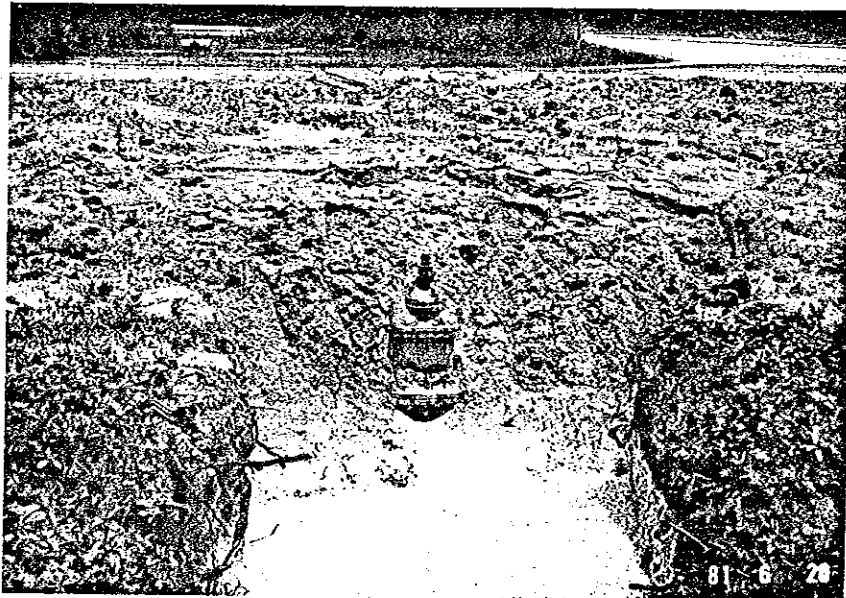


Proposed Reservoir Site in Phone Thanh





Inlet and Bypass Valves Installed at  
Phone Thanh Reservoir Site



Outlet Valve Installed at  
Phone Thanh Reservoir Site







Proposed Reservoir Site in Phone Tong  
(Right-hand side)



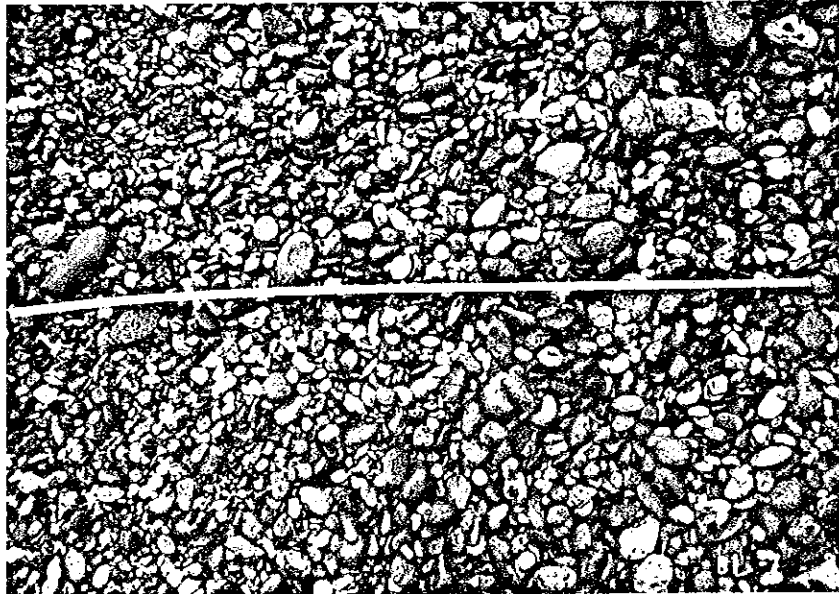
Proposed Reservoir Site in Phone Tong



CONCRETE MATERIALS



Gravel and Sand Producing Site  
at Thin Thon



Concrete Gravel





