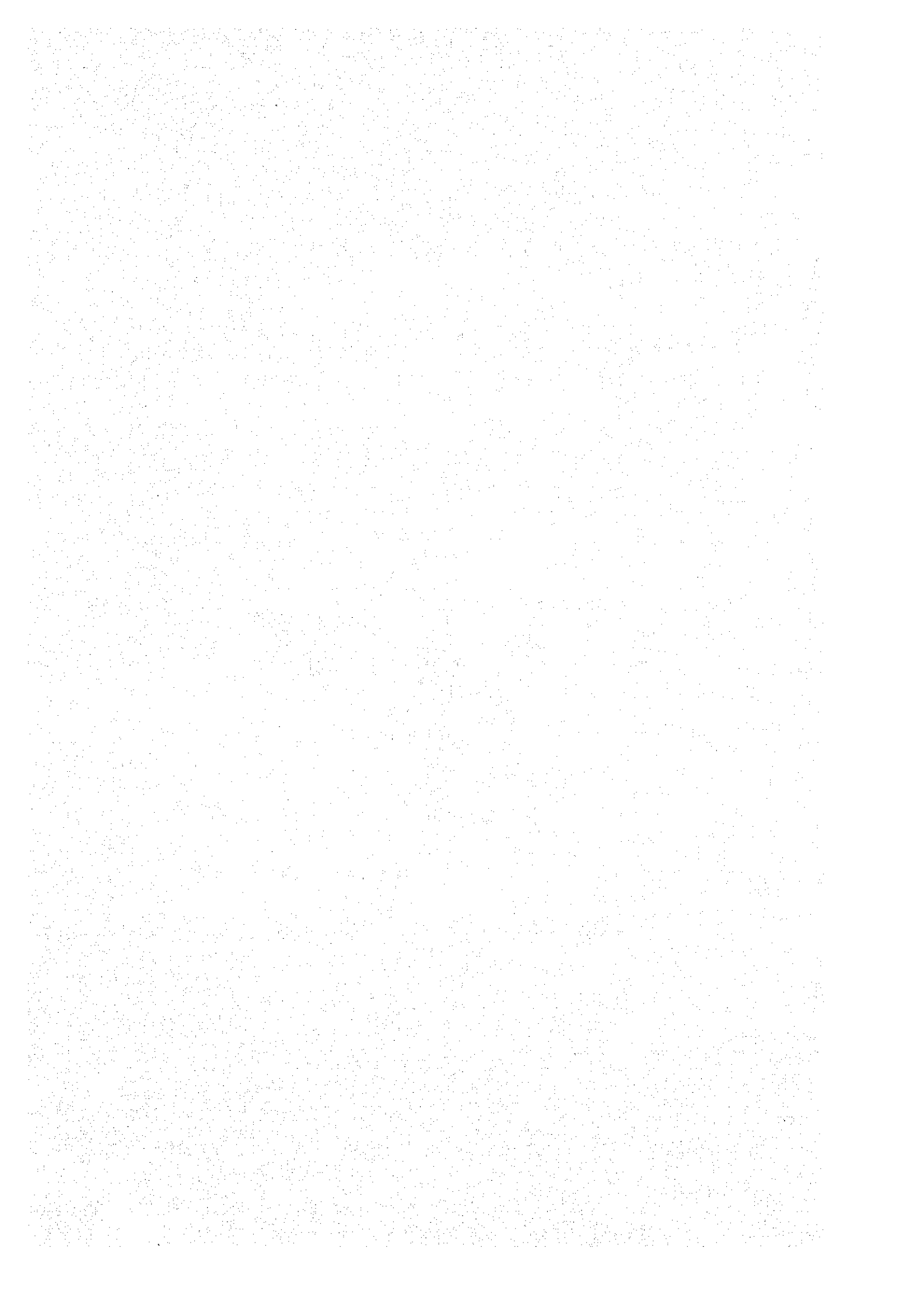
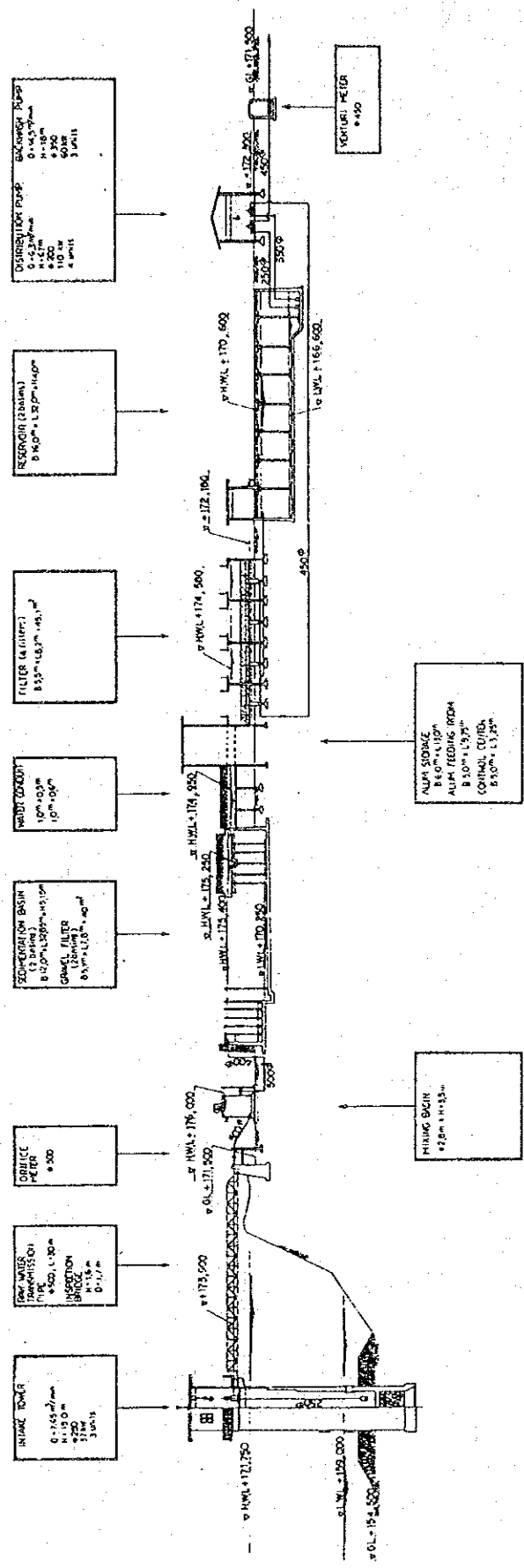


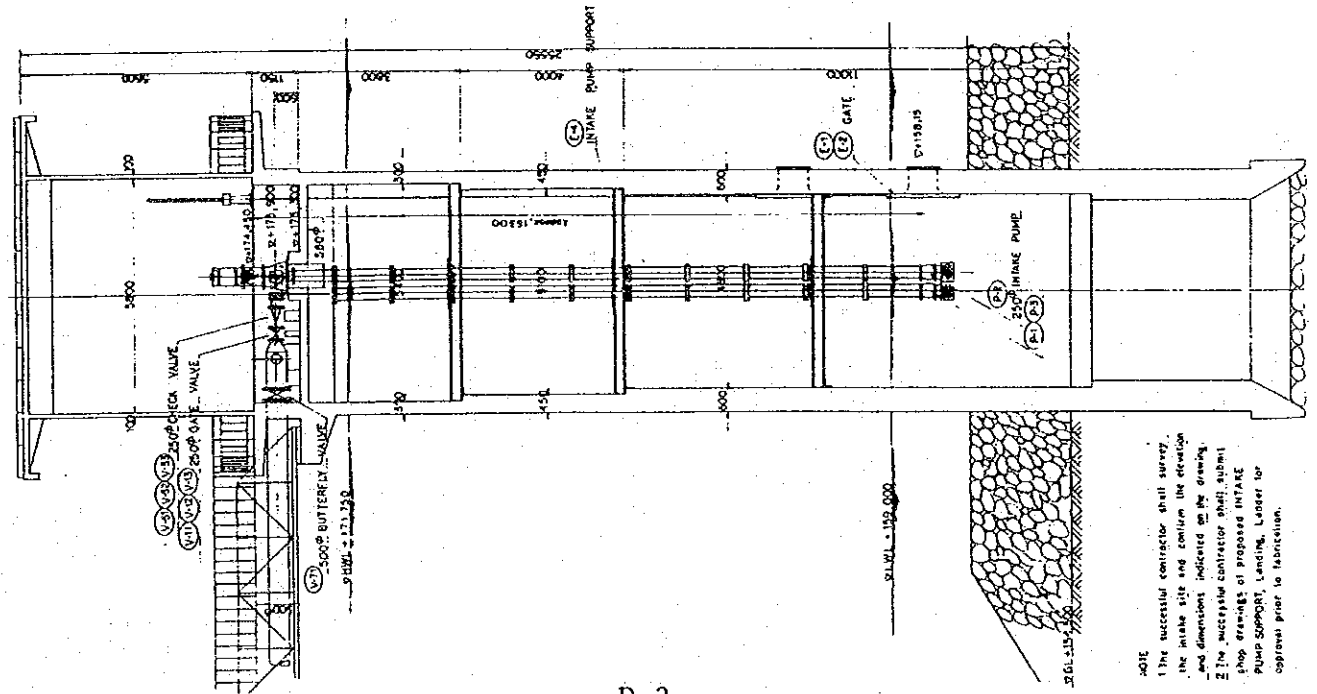
圖 面 集



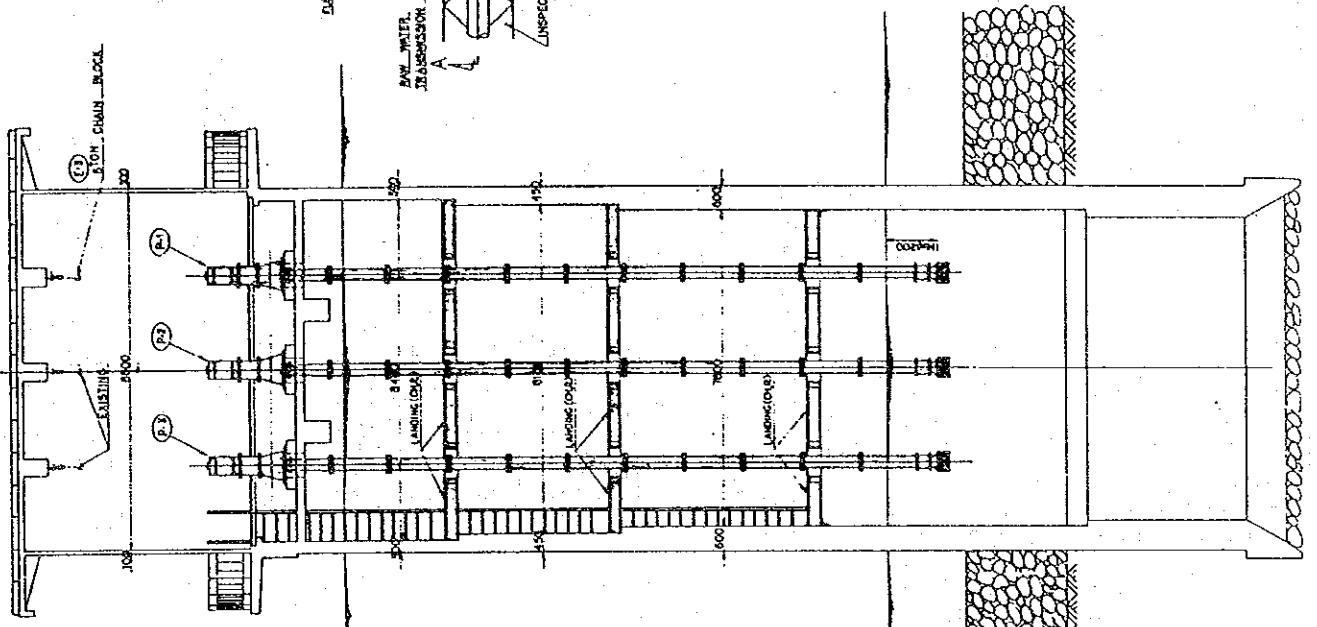


HYDRAULIC PROFILE
OF
KAOLIEO TREATMENT PLANT

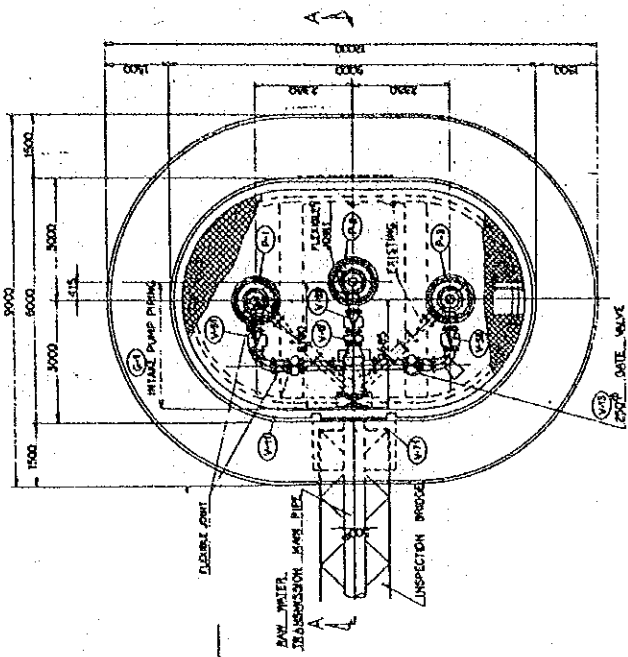
SECTION A-A 1/8"



SECTION B-B 1/8"



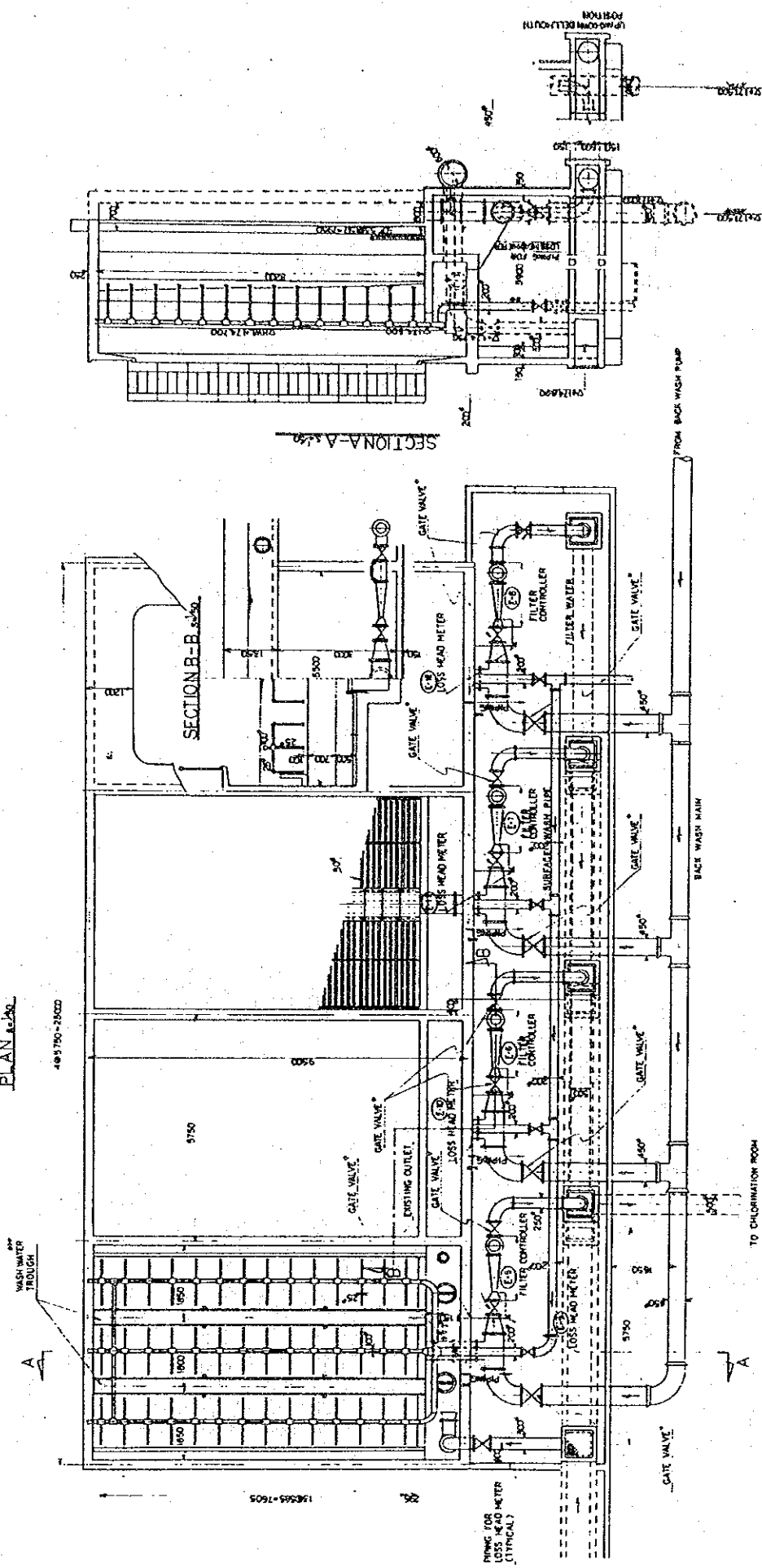
PLAN 1/8"



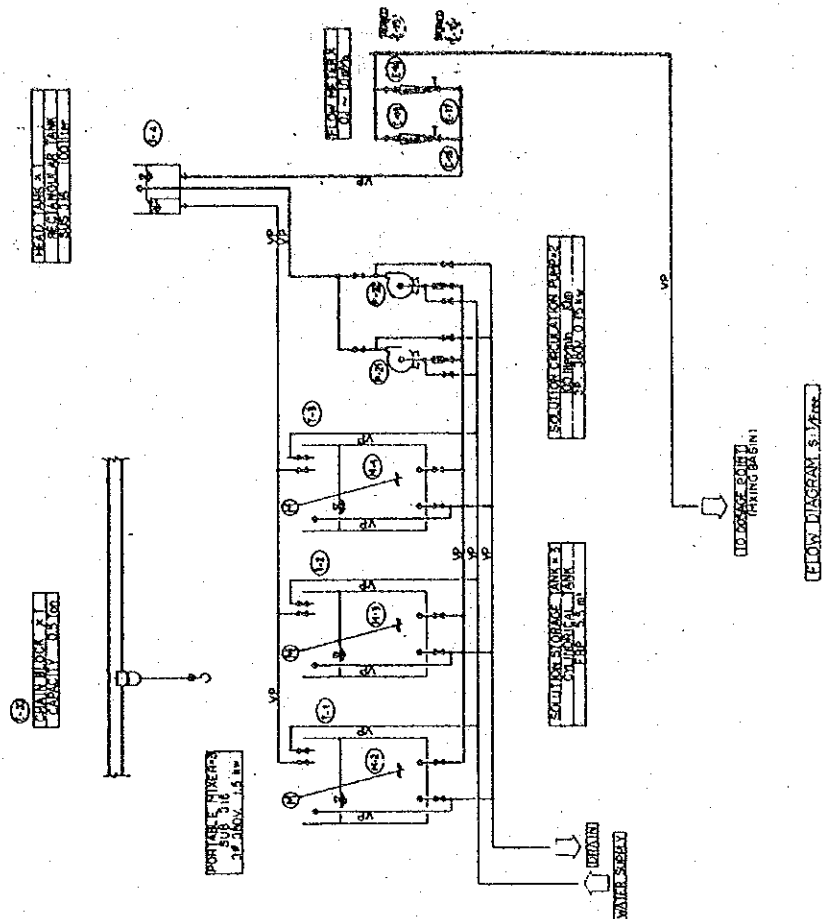
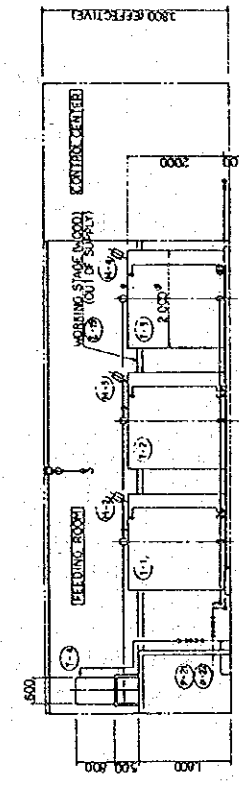
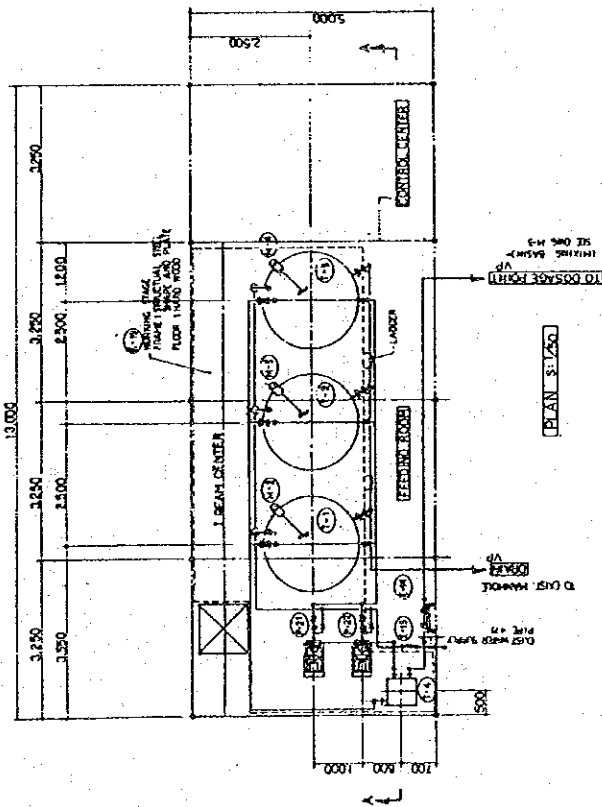
INTAKE TOWER AND INTAKE PUMP HOUSE
OF
KAOLIEO TREATMENT PLANT

NOTE
 1 The successful contractor shall survey the intake site and confirm the elevation and dimensions indicated on the drawing.
 2 The successful contractor shall submit shop drawings of proposed INTAKE PUMP SUPPORT, Landing, Ladder or aprons prior to fabrication.

PLAN 1629

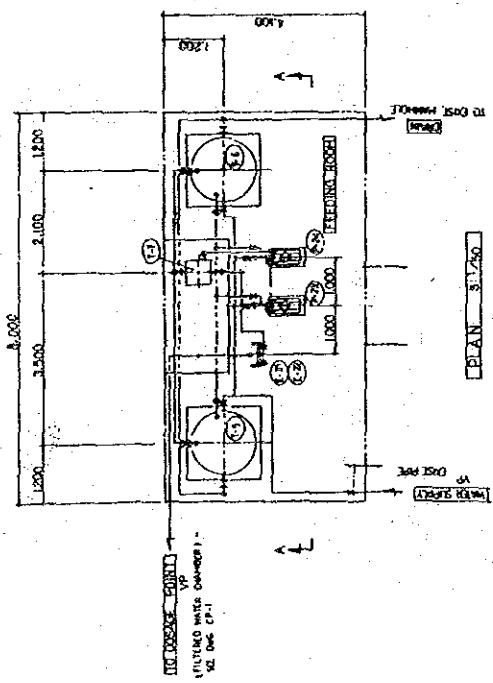


RAPID SAND FILTER
OF
KAO LEO TREATMENT PLANT

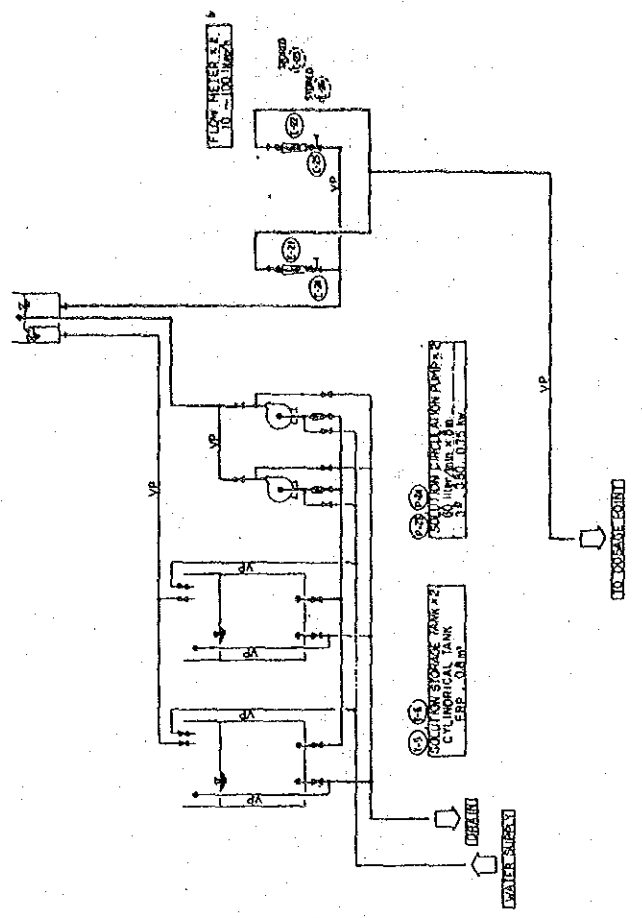


ALUM FEEDING SYSTEM
OF
KAOLIEO TREATMENT PLANT

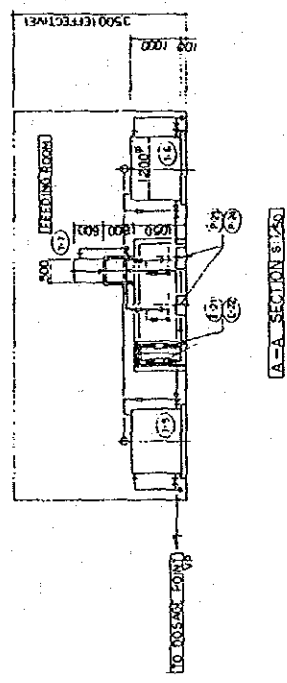
NOTE: Contractor shall provide all necessary piping including valves to complete the system specified and shown on the drawing. The size of the feeding pipe is maximum 4 inches. The contractor shall submit shop drawings for approval prior to fabrication and installation of the materials.



12
 READ TANK -
 FEEDING ROOM
 FOR LINE



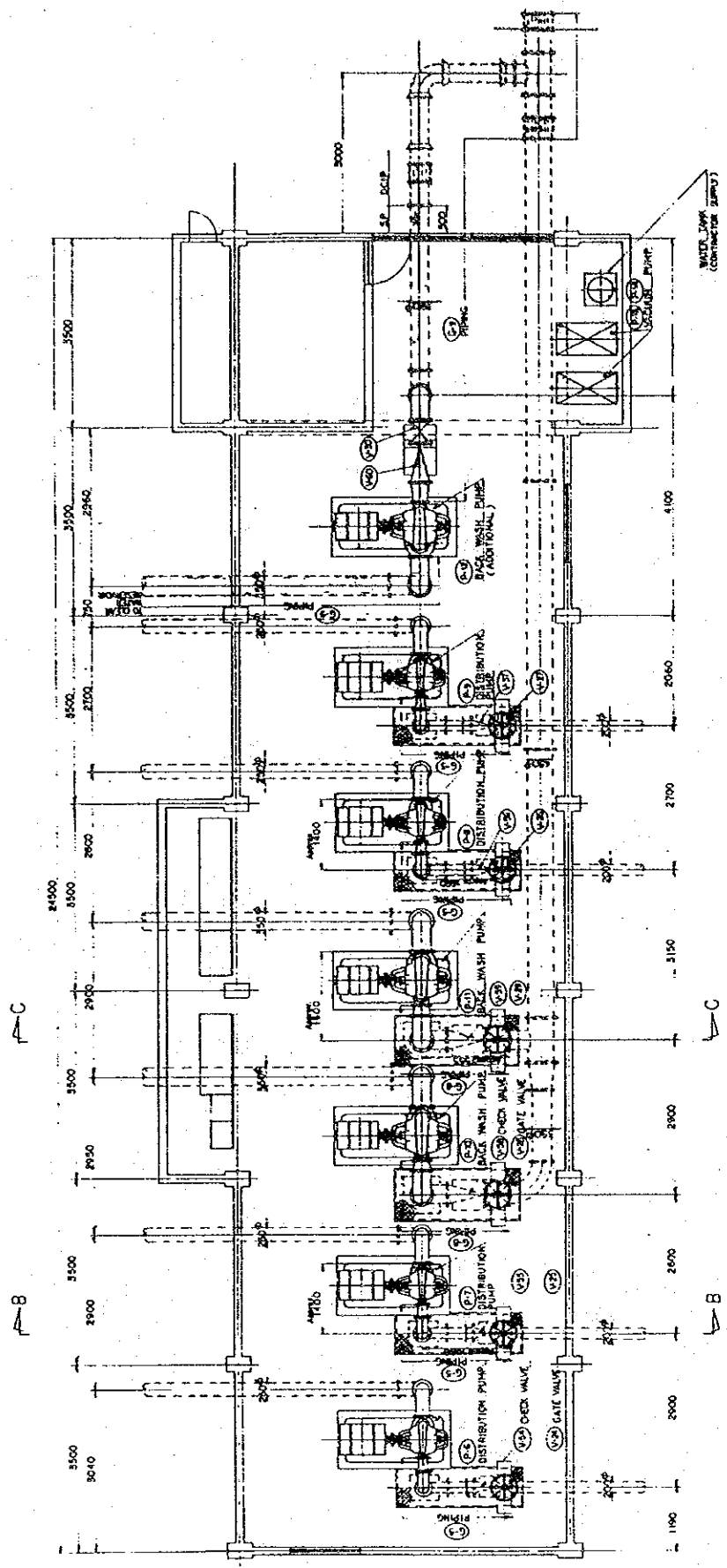
FLOW DIAGRAM 3.1260



HYPPOCHLORITE FEEDING SYSTEM
 OF
 KAOLIED TREATMENT PLANT

NOTE: Contractor shall provide all necessary piping including valves to complete the system specified and shown on the drawing. The size of the feeding pipe is contractor's option. The contractor shall submit shop drawings for approval prior to fabrication and installation of the materials.

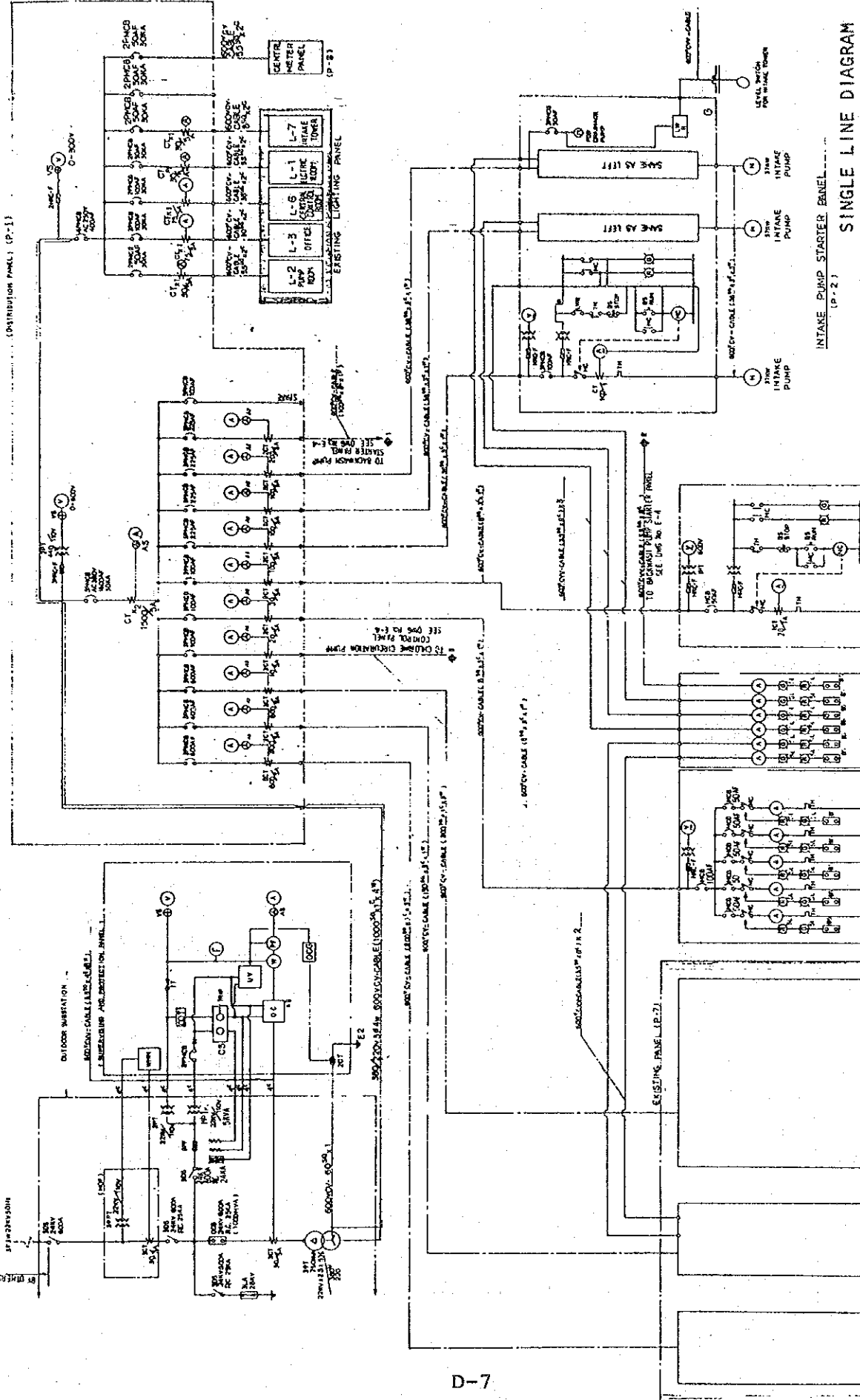
PLAN 2-1/40



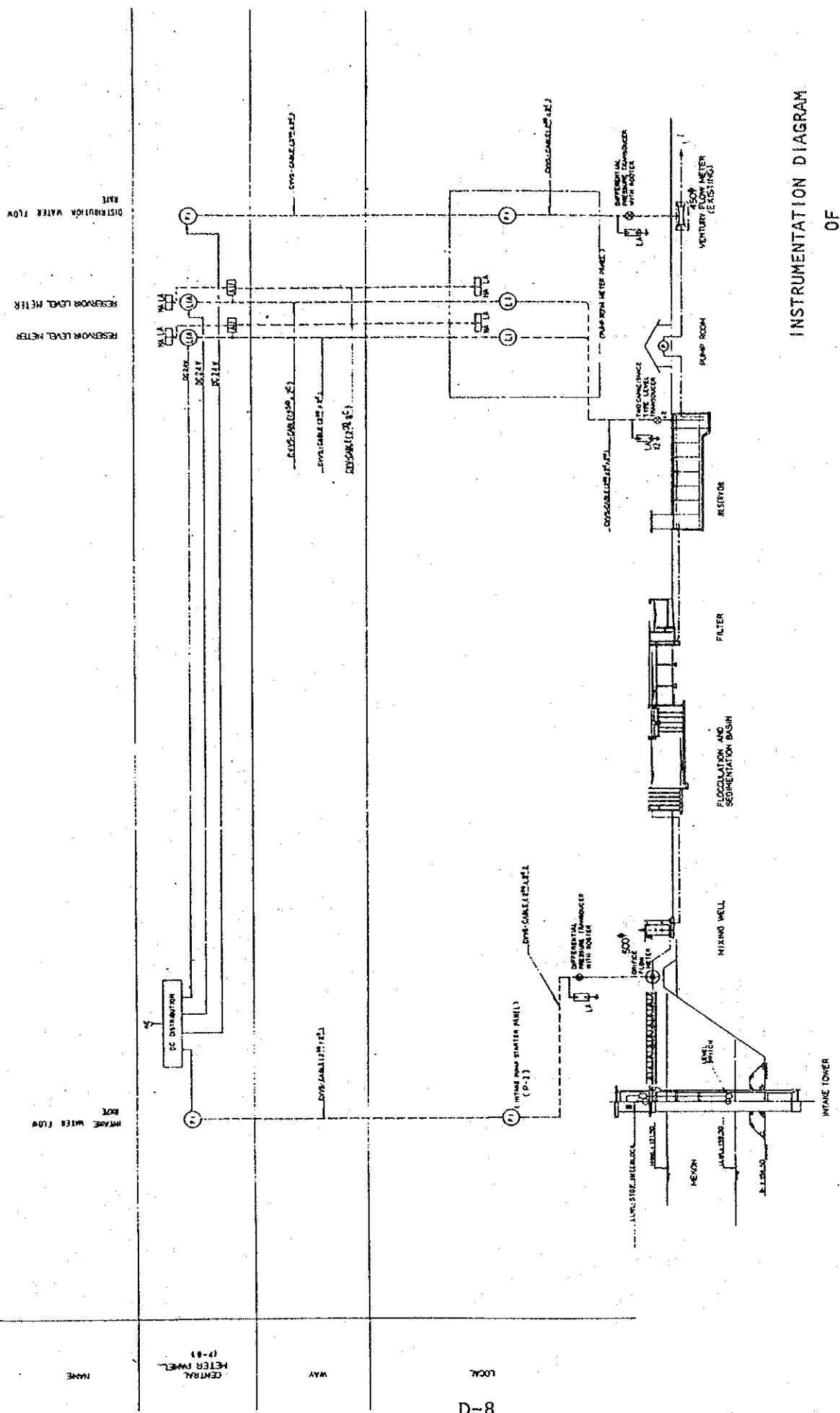
D-6

FLEXIBLE JOINT

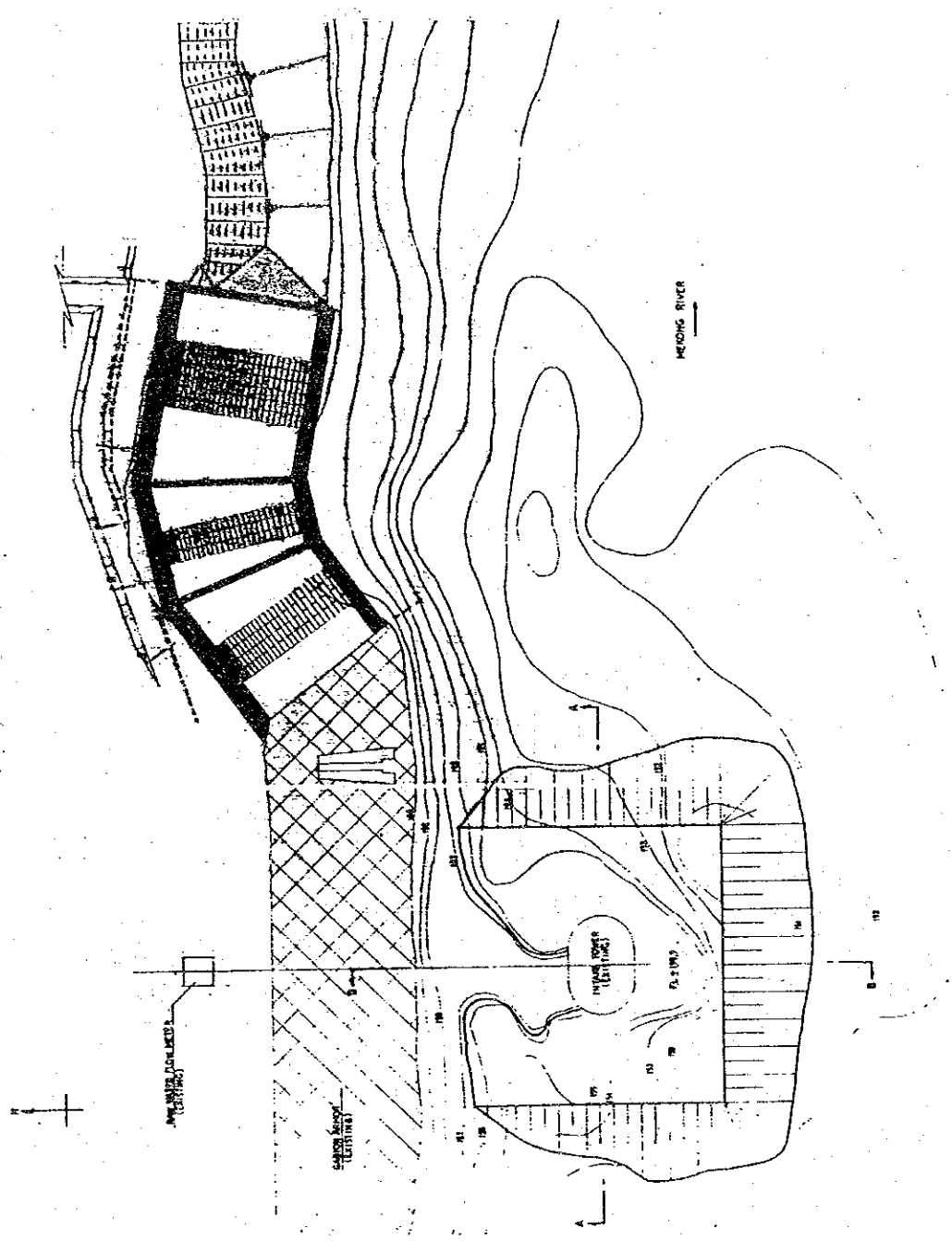
DISTRIBUTION PUMP HOUSE
OF
KAOLIEO TREATMENT PLANT



SINGLE LINE DIAGRAM
 OF
 KAOLIEO TREATMENT PLANT

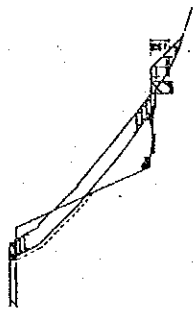


INSTRUMENTATION DIAGRAM
OF
KAOLIED TREATMENT PLANT

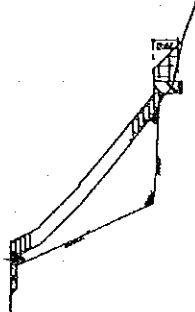


PLAN OF BANK AND RIVERBED PROTECTION
 OF
 KAOLIEO TREATMENT PLANT

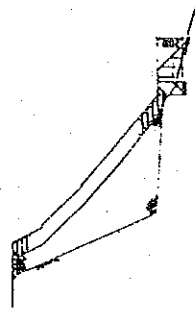
TYPICAL SECTION OF BANK PROTECTION
5-11-200



SECTION A-A

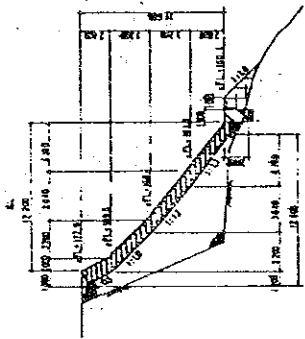


SECTION B-B

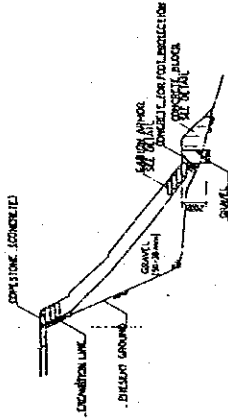


SECTION C-C

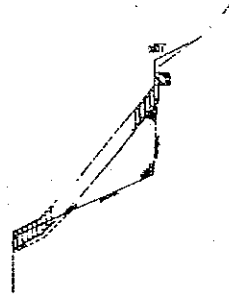
SECTION OF BANK AND RIVERBED PROTECTION
OF
KAOLIEO TREATMENT PLANT



SECTION D-D

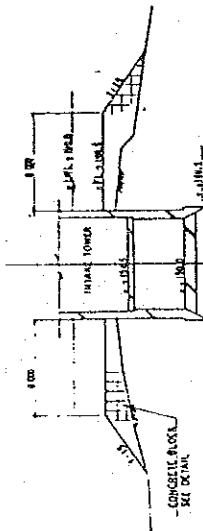


SECTION E-E

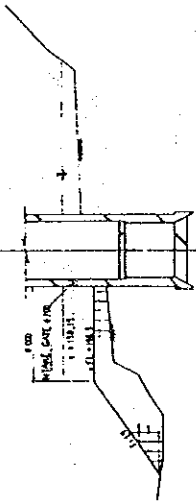


SECTION F-F

TYPICAL SECTION OF RIVERBED SKIFFLEMENT
AROUND INTAKE TOWER 5-11-200



SECTION G-G

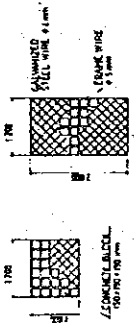


SECTION H-H

TYPICAL CARBON ARMOR DETAIL
5-11-200

TYPE I

TYPE II



PLAN

SECTION

CONCRETE BLOCK DETAIL
5-11-200

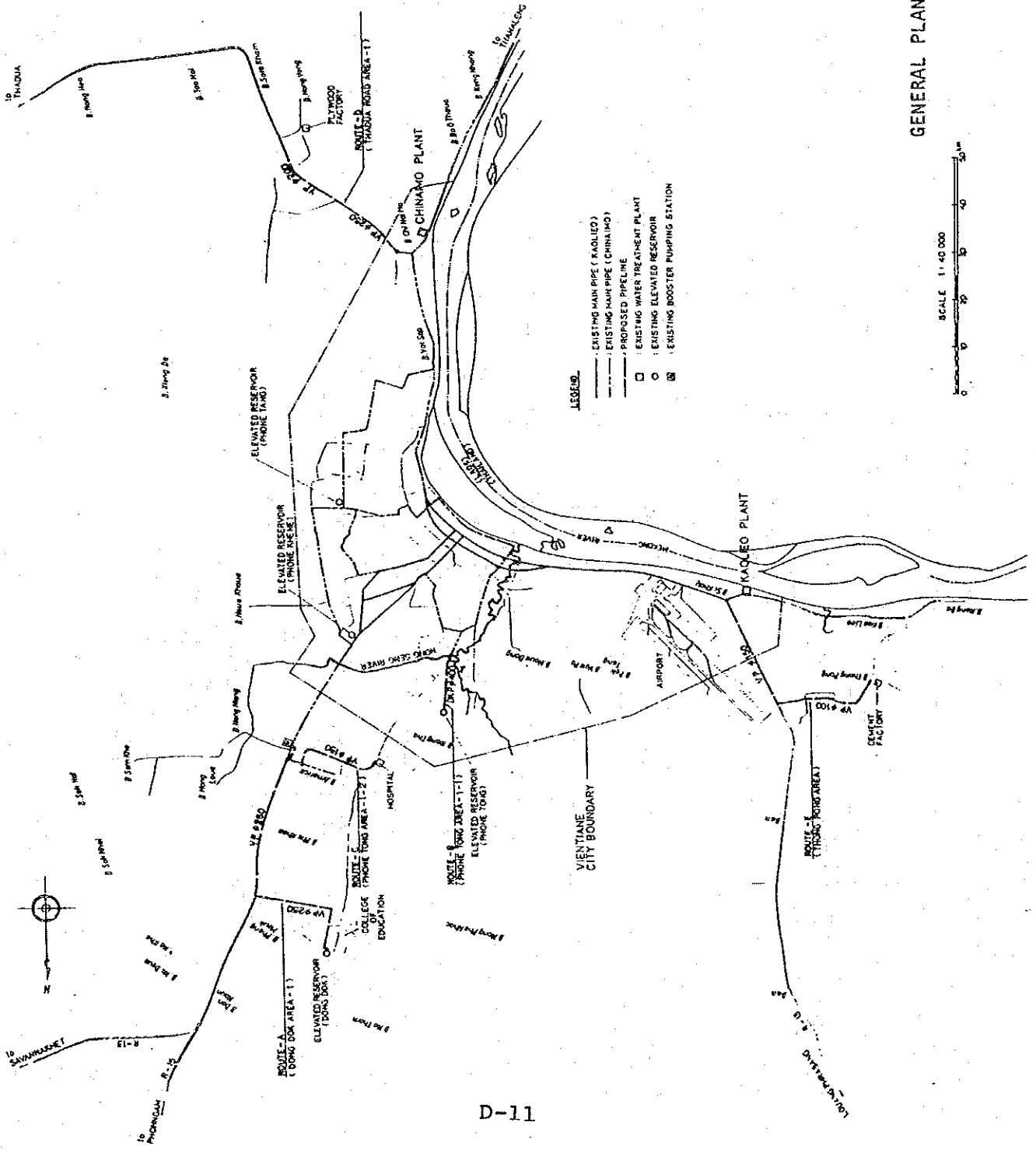


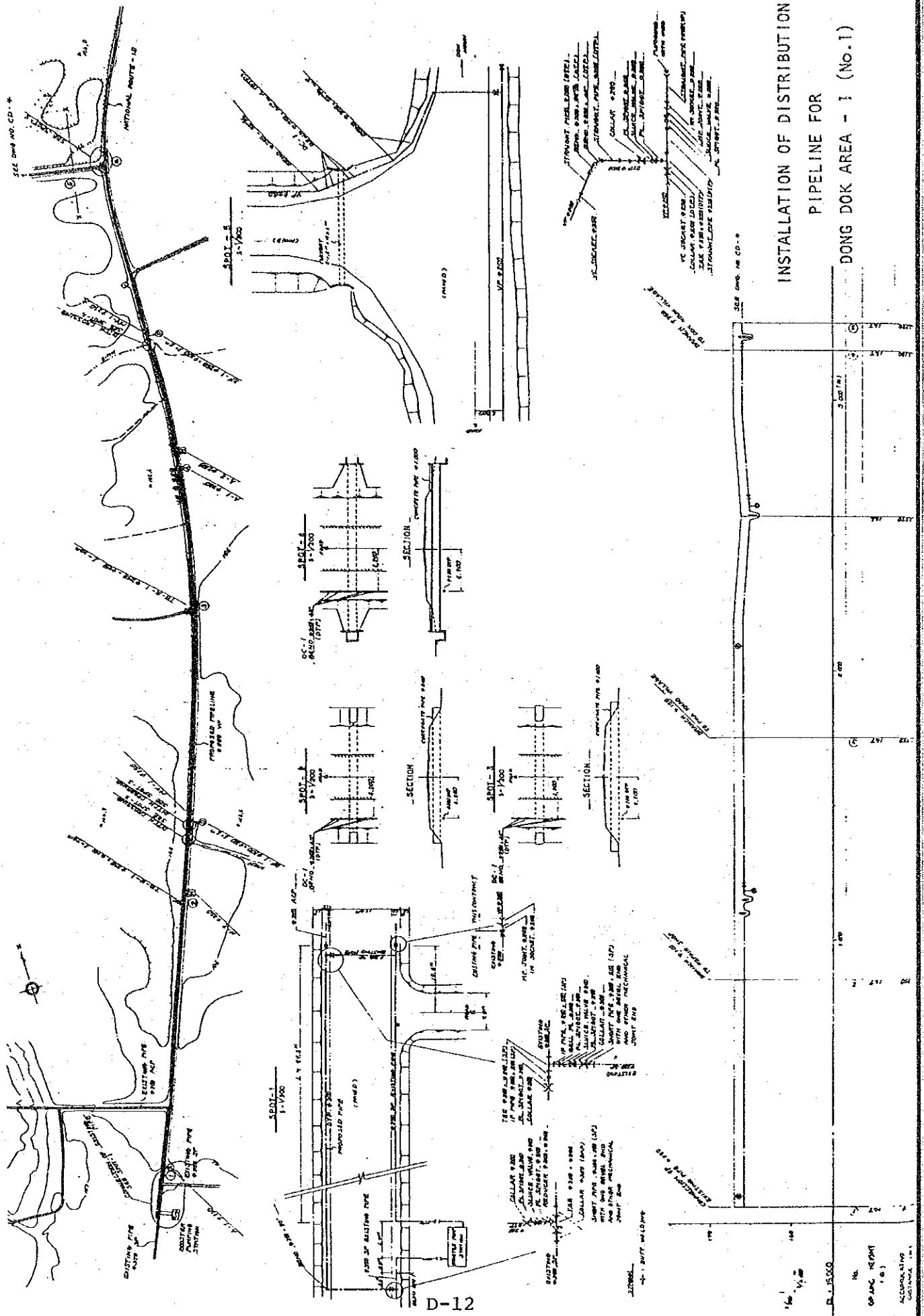
PLAN

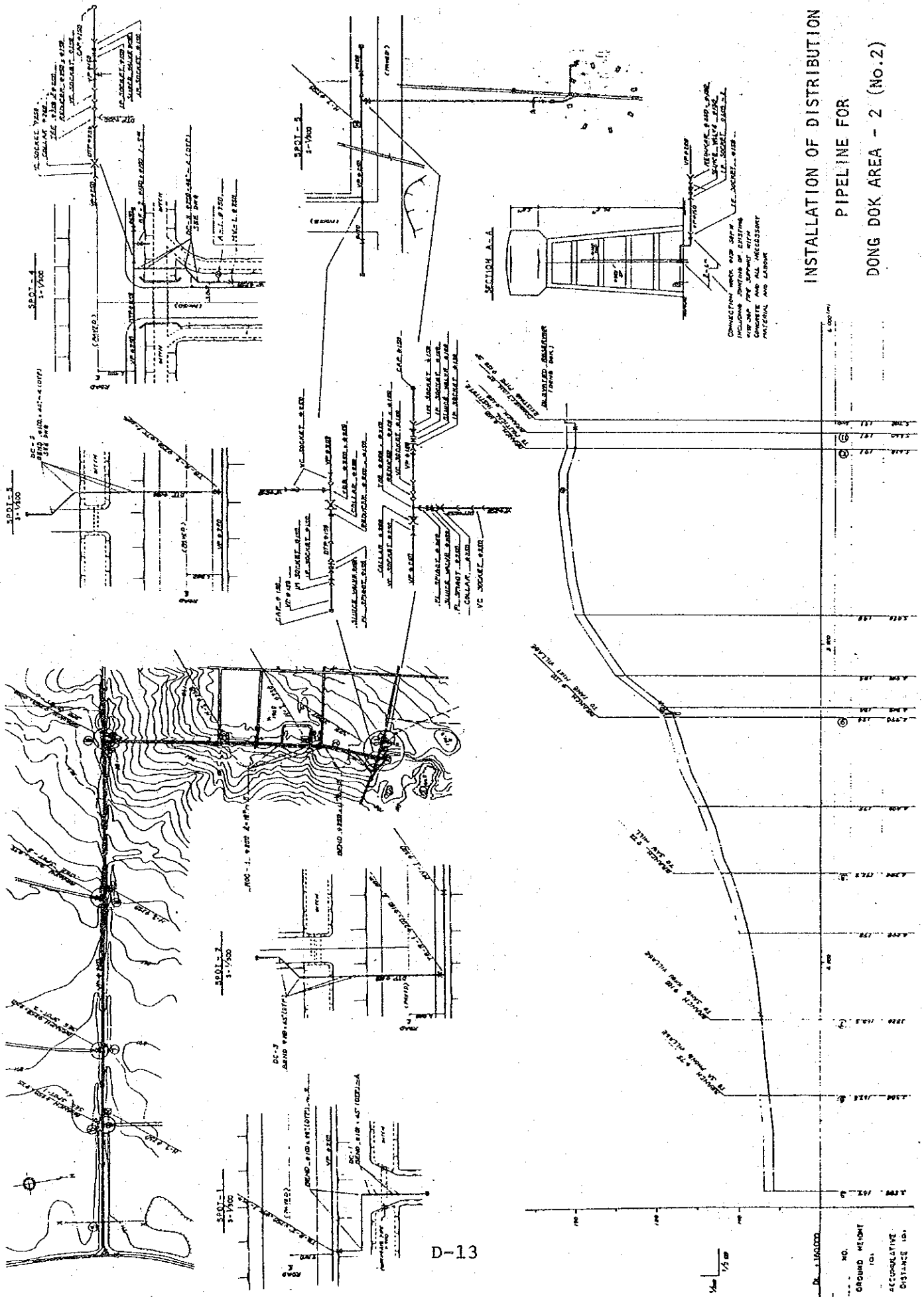


SECTION

GENERAL PLAN OF DISTRIBUTION PIPELINE





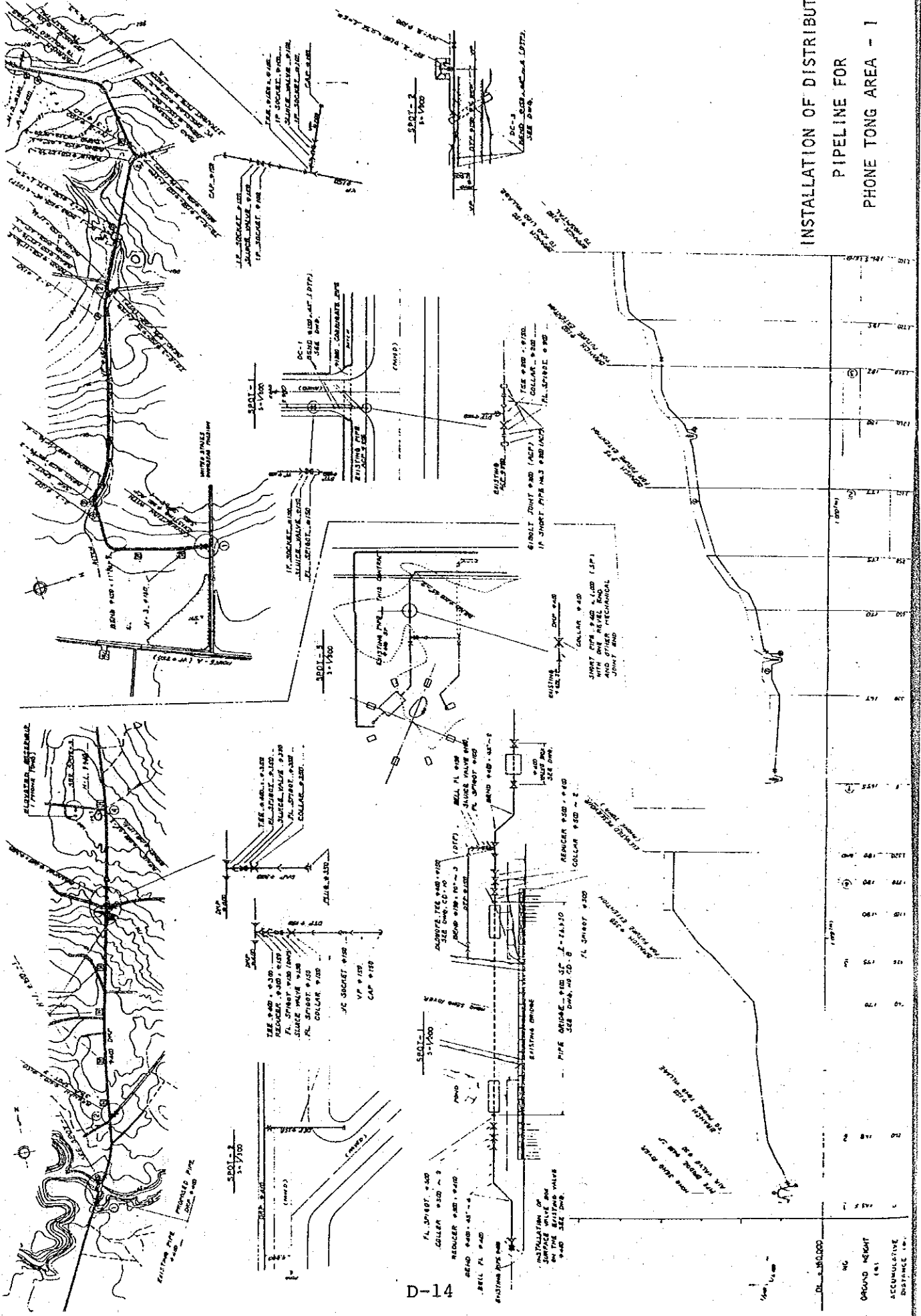


INSTALLATION OF DISTRIBUTION
PIPELINE FOR
DONG DOK AREA - 2 (NO. 2)

D-13

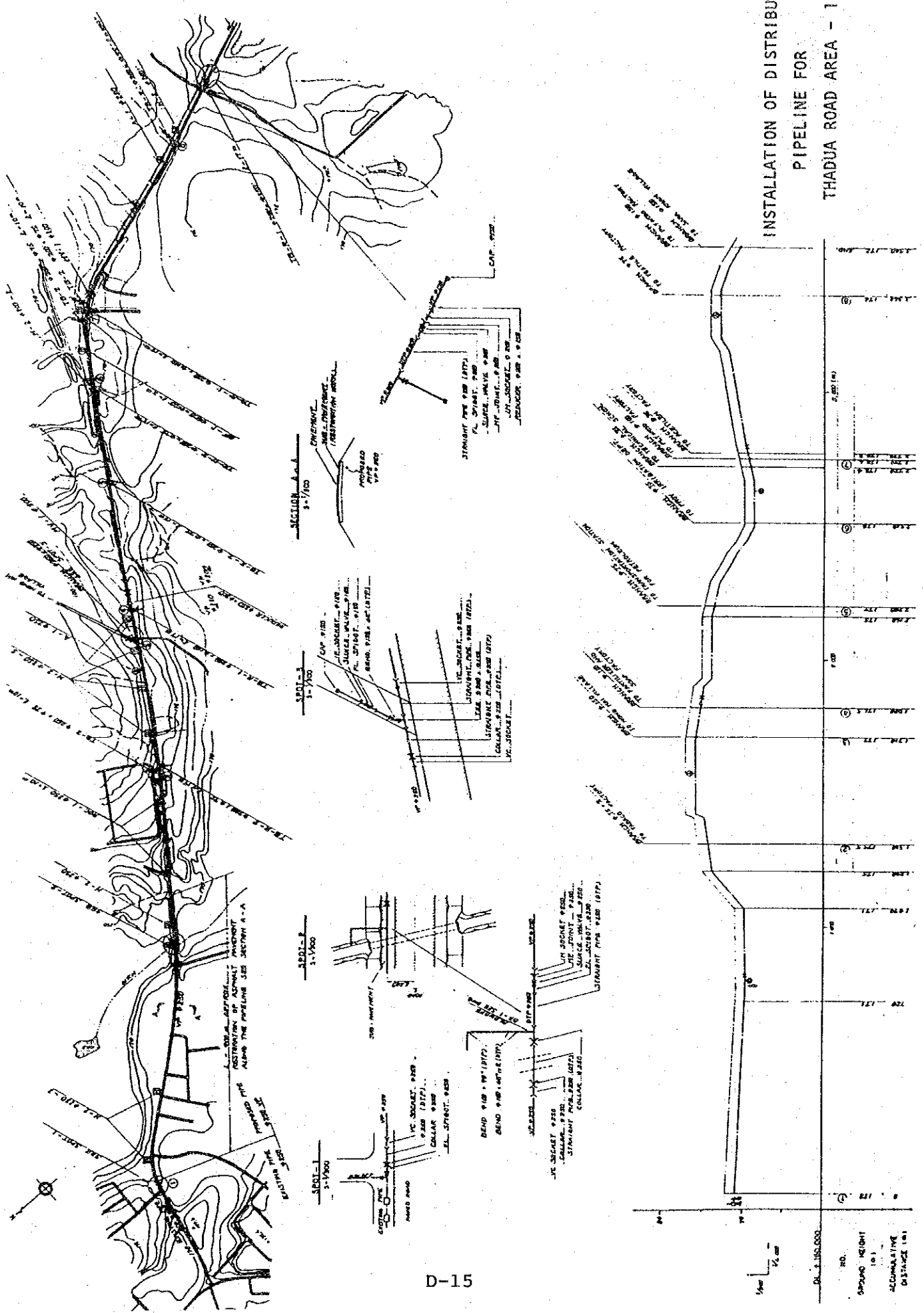
NO.	GROUND HEIGHT	ACCUMULATIVE	DISTANCE (ft.)
1	128.0	128.0	0.0
2	127.5	255.5	100.0
3	127.0	382.5	200.0
4	126.5	509.0	300.0
5	126.0	635.0	400.0
6	125.5	760.5	500.0
7	125.0	885.5	600.0
8	124.5	1010.0	700.0
9	124.0	1134.0	800.0
10	123.5	1257.5	900.0
11	123.0	1380.5	1000.0
12	122.5	1503.0	1100.0
13	122.0	1625.0	1200.0
14	121.5	1746.5	1300.0
15	121.0	1867.5	1400.0
16	120.5	1988.0	1500.0
17	120.0	2108.0	1600.0
18	119.5	2227.5	1700.0
19	119.0	2346.5	1800.0
20	118.5	2465.0	1900.0
21	118.0	2583.0	2000.0
22	117.5	2700.5	2100.0
23	117.0	2817.5	2200.0
24	116.5	2934.0	2300.0
25	116.0	3050.0	2400.0
26	115.5	3165.5	2500.0
27	115.0	3280.5	2600.0
28	114.5	3395.0	2700.0
29	114.0	3509.0	2800.0
30	113.5	3622.5	2900.0
31	113.0	3735.5	3000.0
32	112.5	3848.0	3100.0
33	112.0	3960.0	3200.0
34	111.5	4071.5	3300.0
35	111.0	4182.5	3400.0
36	110.5	4293.0	3500.0
37	110.0	4403.0	3600.0
38	109.5	4512.5	3700.0
39	109.0	4621.5	3800.0
40	108.5	4730.0	3900.0
41	108.0	4838.0	4000.0
42	107.5	4945.5	4100.0
43	107.0	5052.5	4200.0
44	106.5	5159.0	4300.0
45	106.0	5265.0	4400.0
46	105.5	5370.5	4500.0
47	105.0	5475.5	4600.0
48	104.5	5580.0	4700.0
49	104.0	5684.0	4800.0
50	103.5	5787.5	4900.0
51	103.0	5890.5	5000.0
52	102.5	5993.0	5100.0
53	102.0	6095.0	5200.0
54	101.5	6196.5	5300.0
55	101.0	6297.5	5400.0
56	100.5	6398.0	5500.0
57	100.0	6498.0	5600.0
58	99.5	6597.5	5700.0
59	99.0	6696.5	5800.0
60	98.5	6795.0	5900.0
61	98.0	6893.0	6000.0
62	97.5	6990.5	6100.0
63	97.0	7087.5	6200.0
64	96.5	7184.0	6300.0
65	96.0	7279.0	6400.0
66	95.5	7373.5	6500.0
67	95.0	7467.5	6600.0
68	94.5	7561.0	6700.0
69	94.0	7654.0	6800.0
70	93.5	7746.5	6900.0
71	93.0	7838.5	7000.0
72	92.5	7930.0	7100.0
73	92.0	8021.0	7200.0
74	91.5	8111.5	7300.0
75	91.0	8201.5	7400.0
76	90.5	8291.0	7500.0
77	90.0	8380.0	7600.0
78	89.5	8468.5	7700.0
79	89.0	8556.5	7800.0
80	88.5	8644.0	7900.0
81	88.0	8731.0	8000.0
82	87.5	8817.5	8100.0
83	87.0	8903.5	8200.0
84	86.5	8989.0	8300.0
85	86.0	9074.0	8400.0
86	85.5	9158.5	8500.0
87	85.0	9242.5	8600.0
88	84.5	9326.0	8700.0
89	84.0	9409.0	8800.0
90	83.5	9491.5	8900.0
91	83.0	9573.5	9000.0
92	82.5	9655.0	9100.0
93	82.0	9736.0	9200.0
94	81.5	9816.5	9300.0
95	81.0	9896.5	9400.0
96	80.5	9976.0	9500.0
97	80.0	10055.0	9600.0
98	79.5	10133.5	9700.0
99	79.0	10211.5	9800.0
100	78.5	10289.0	9900.0

INSTALLATION OF DISTRIBUTION PIPELINE FOR PHONE TONG AREA - 1

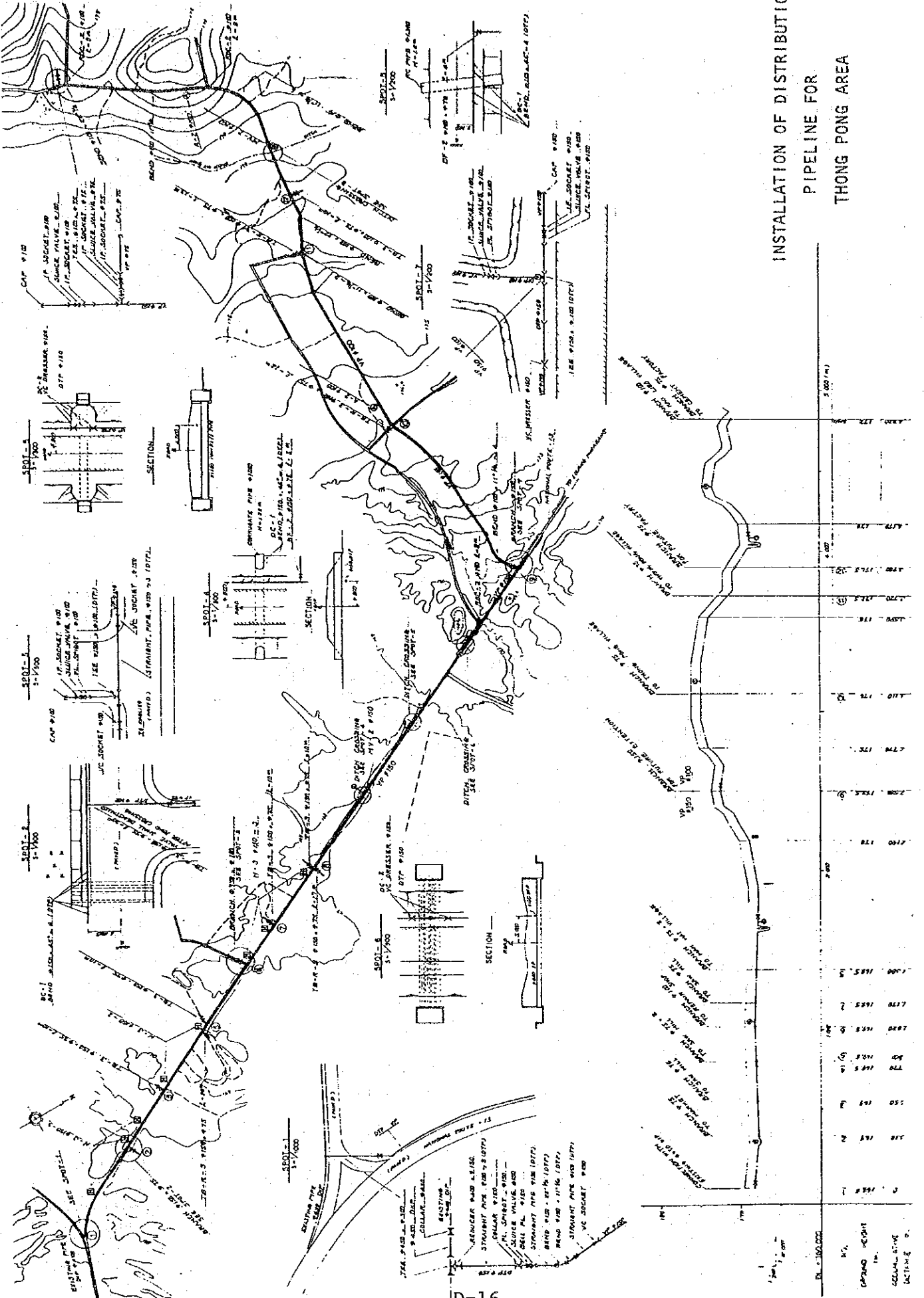


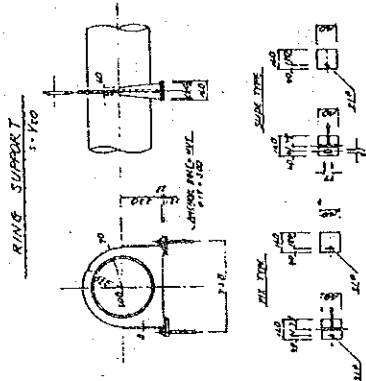
STATION	GROUND ELEVATION	PIPE ELEVATION	ACCUMULATED DISTANCE
1+00	100.00	98.00	0.00
1+10	101.00	99.00	10.00
1+20	102.00	100.00	20.00
1+30	103.00	101.00	30.00
1+40	104.00	102.00	40.00
1+50	105.00	103.00	50.00
1+60	106.00	104.00	60.00
1+70	107.00	105.00	70.00
1+80	108.00	106.00	80.00

INSTALLATION OF DISTRIBUTION
PIPELINE FOR
THADUA ROAD AREA - 1

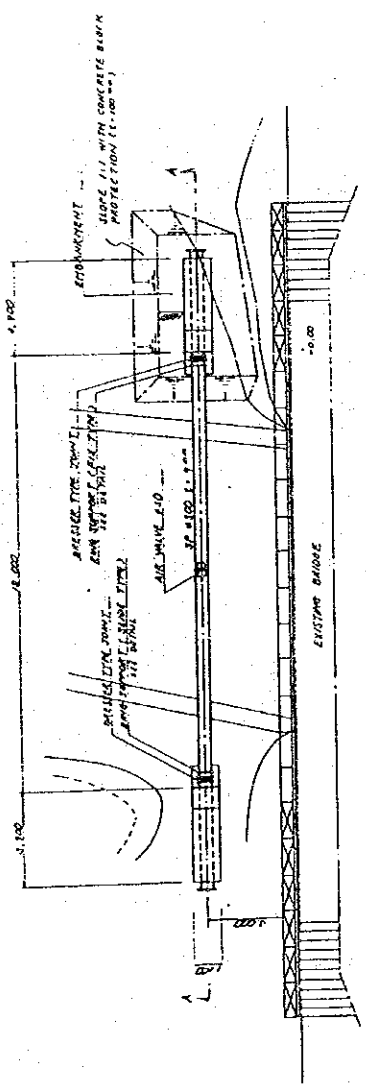


INSTALLATION OF DISTRIBUTION PIPELINE FOR THONG PONG AREA

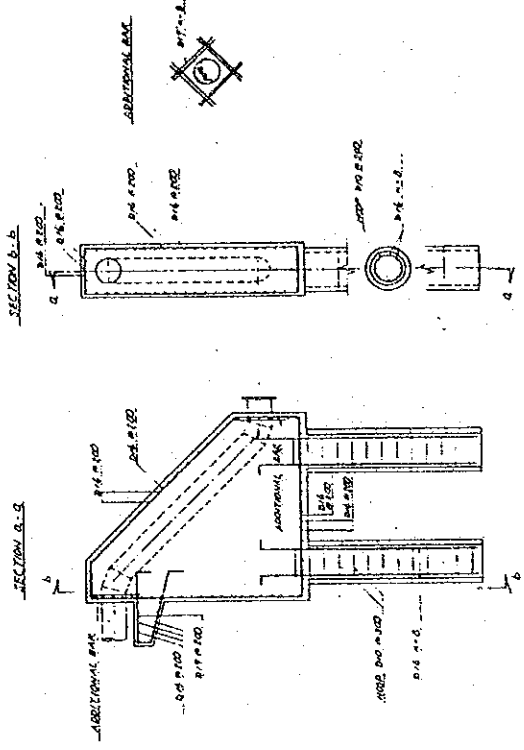




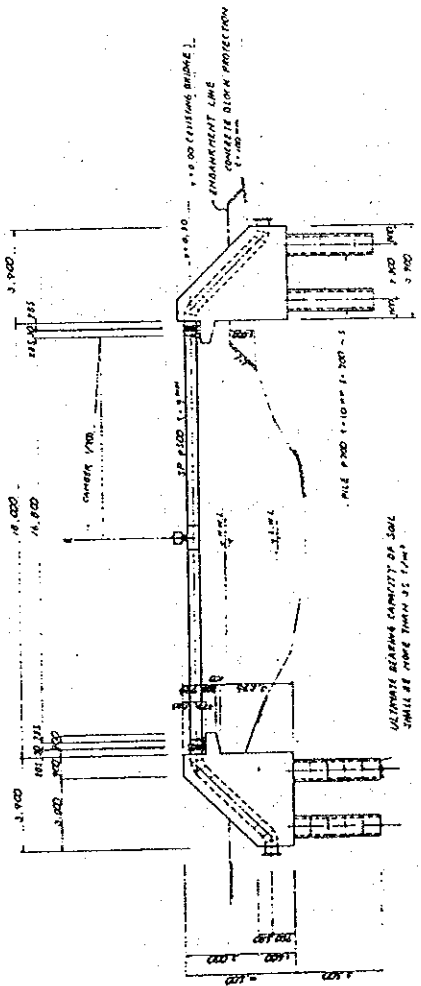
PLAN
3-1/100



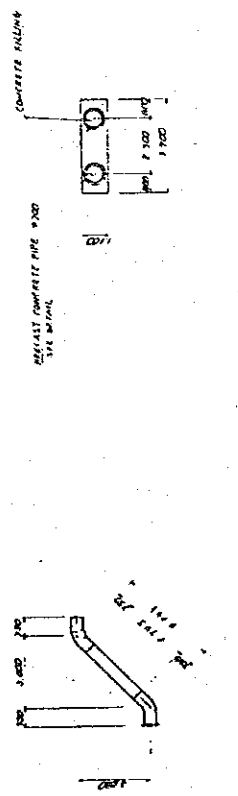
REINFORCEMENT LAYOUT OF ABUTMENT
1:1/100



SECTION A-A
3-1/100



PRECAST CONCRETE PIPE 9 1/200

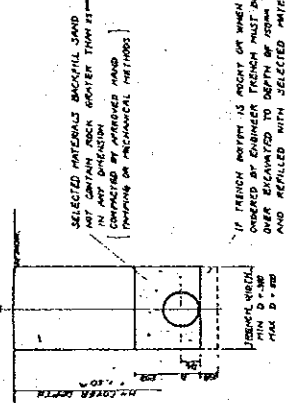
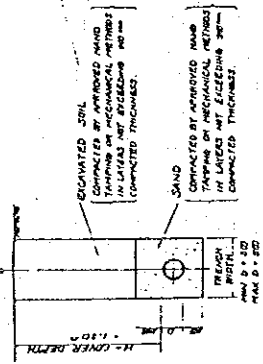


INSTALLATION OF DISTRIBUTION
PIPELINE FOR
PIPE BRIDGE (HONG SENG RIVER)

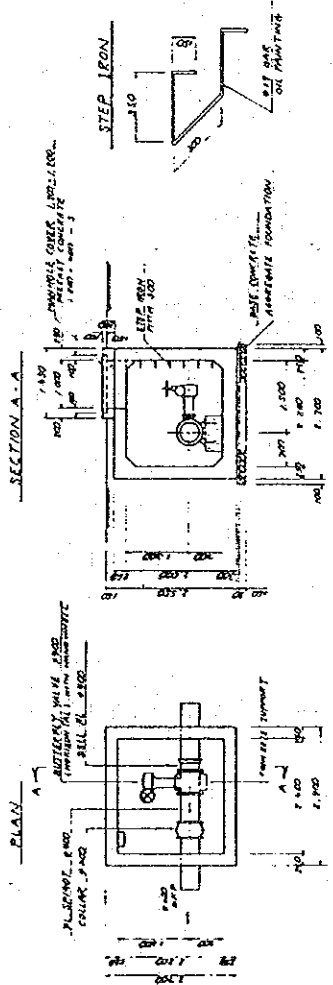
TYPICAL TRENCH DETAIL

PIPE DIA. 24" - 36" (V. PIPE)

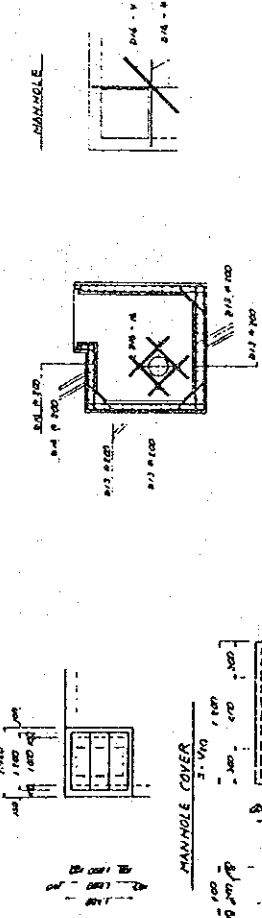
PIPE DIA. 36" (H. PIPE)



8'00" BUTTERFLY VALVE CHAMBER
S-1750



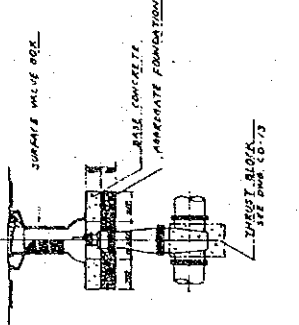
REINFORCEMENT LAYOUT



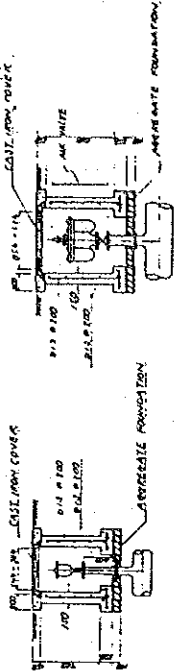
VALVE BOX

D-11 - 200

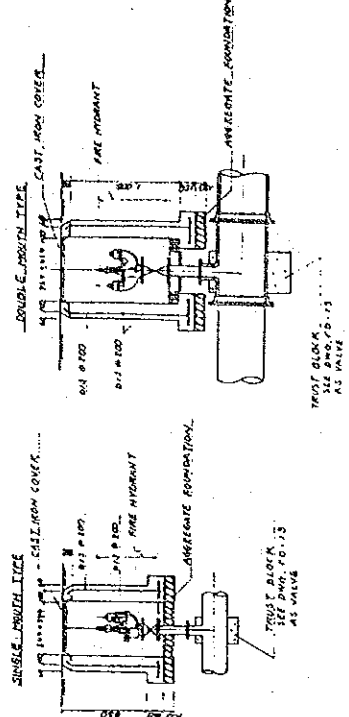
D-250 - 150



AIR VALVE CHAMBER



FIRE HYDRANT CHAMBER



TYPICAL TRENCH WORK, VALVE BOX, VALVE CHAMBER,
AIR VALVE CHAMBER AND FIRE HYDRANT CHAMBER

JICA

