

APPENDIX I

Topographic Map

APPENDIX II

Table 1 : Actual and interpretation values of stand height,
number of trees and volume per hectare.

Table 2 : The total of area and volume.

Table 3 : volume of each age class.

Fig 1 : Graph of tree height H_A and H_I

Fig 2 : Graph of number of trees N_A and N_I

Fig 3 : Graph of volume V_A and V_I

Table 1 : Actual and interpretation values of stand height,
number of trees and volume per hectar

PLOT NO.	VOLUME		TREE HEIGHT		NUMBER OF TREES/HA	
	V _A m ³	V _I m ³	H _A m	H _I m	N _A pc's	N _I pc's
1	117	131	12	8	680	670
2	112	198	12	11	808	798
3	121	206	12	13	796	715
4	90	160	11	11	680	624
5	102	199	11	11	788	805
6	227	253	16	15	992	806
7	234	292	23	22	424	561
8	-	-	-	-	-	-
9	329	261	22	19	904	601
10	274	212	24	19	456	367
11	252	304	24	26	412	370
12	256	282	22	23	604	450
13	301	255	24	21	468	449
14	150	228	24	22	260	257
15	42	92	11	11	300	299
16	108	147	12	11	704	556
17	195	232	19	20	444	401
18	134	167	13	12	708	593
19	86	128	13	13	456	345
20	97	130	12	11	656	481
21	-	-	-	-	-	-
22	42	90	10	9	320	415
23	176	189	20	19	304	263
24	151	160	20	17	268	253
25	59	88	11	11	512	282
26	59	99	11	12	492	273
27	74	129	12	13	528	350
28	214	269	22	22	544	452
29	169	230	14	16	692	640
30	214	259	22	20	592	530
31	-	-	-	-	-	-
32	132	293	22	25	372	382
33	314	285	26	26	328	283
34	359	316	28	29	260	244
35	292	320	27	29	252	258
36	124	146	14	13	480	434
37	278	307	28	28	244	258
38	327	283	26	25	320	329
39	359	338	29	31	232	222
40	158	269	28	27	132	141
41	141	291	31	30	72	63
42	346	336	28	30	284	273
43	237	269	29	27	176	136
44	164	156	16	12	736	544

V_A, H_A, N_A, ***** Actual value

V_I, H_I, N_I, ***** Interpretation value

1-11

Table 1 : Actual and interpretation values of stand height,
number of trees and volume per hectare

PLOT NO.	VOLUME		TREE HEIGHT		NUMBER OF TREES/HA	
	V _A m ³	V _I m ³	H _A m	H _I m	N _A pc's	N _I pc's
45	202	288	21	22	640	541
46	82	126	12	11	492	460
47	113	168	15	15	588	407
48	120	173	16	16	572	373
49	230	266	21	21	680	500
50	126	217	22	21	344	273
51	157	228	23	22	332	263
52	-	-	-	-	-	-
53	153	244	24	23	276	267
54	150	244	26	25	168	149
55	263	262	28	26	188	171
56	220	257	21	22	680	395
57	213	229	21	18	816	509
58	251	252	18	19	600	559
59	184	227	17	18	644	499
60	239	230	27	22	272	270
61	-	-	-	-	-	-
62	251	312	27	29	268	222
63	266	284	27	27	276	213
64	250	282	26	24	424	393
65	327	254	26	22	380	376
66	-	-	-	-	-	-
67	-	-	-	-	-	-
68	206	303	21	21	636	610
69	123	217	22	21	332	273
70	-	-	-	-	-	-
71	208	289	23	24	480	422
72	252	275	24	23	460	423
73	90	140	14	15	292	281
74	201	247	18	21	528	410
75	331	249	25	21	508	418
76	247	279	22	21	636	556
77	219	258	28	26	160	149
78	191	279	27	27	188	189
79	175	194	19	18	376	345
80	233	231	19	19	532	524
81	208	275	22	22	504	478
82	165	247	22	21	440	409
83	220	255	27	25	236	204
84	221	272	27	22	212	118
85	-	-	-	-	-	-
86	124	177	26	20	152	143
87	219	271	24	23	436	404
88	79	176	13	19	232	204

V_A, H_A, N_A, ***** Actual value

V_I, H_I, N_I, ***** Interpretation value

Table 2 : The total of area and volume
BAGIAN HUTAN: B.T.K.

NO. COMPART-MENT	NO. SUB COMPART-MENT	AGE CLASS	AREA (Ha.)	VOLUME (M ³)
38	a, b, c d	V III	137.75 3.00	15686.35 91.71
39	a	III	20.25	882.27
40		III	8.50	794.21
41	a b	III V	44.00 38.25	5638.86 7852.60
42	a, b	V	41.75	7195.28
43	a, b	V	78.75	16588.29
44		III	25.00	926.51
45	a, c	III	100.25	4604.27
46	b c	III IV	6.50 4.50	105.22 348.98
47	a b	III IV	24.00 68.50	1886.53 6493.98
49	b	III	40.25	3300.29
51	b	III V	11.50 5.50	1022.72 514.09
54	b	III	7.50	438.59
55	a b	IV V	64.50 6.75	10300.32 1606.69
56	a b	IV V	7.50 22.75	1053.32 4230.45
58	a	III	63.75	2095.18

NO. COMPART-MENT	NO. SUB COMPART-MENT	AGE CLASS	AREA (Ha.)	VOLUME (M ³)
3	b	III	4.25	168.11
4		III	4.25	303.38
6		III V	4.25 11.75	583.10 2197.97
9	a b	III IV	16.00 3.75	943.57 291.83
10	b, c a	III V	108.00 3.50	11783.84 247.21
11		III IV V	14.50 4.00 7.00	1148.26 584.52 415.45
13	b	IV	5.25	1267.04
14	b	IV	24.50	4308.33
15	a	III	47.75	6164.04
16	a	III	46.50	562.60
28	b	III	4.00	15.88
30	b	IV	38.50	2611.20
32		III	14.25	770.48
33		V	4.75	534.54
34	b	V	43.00	6975.77
35	b	V	34.75	7573.33
37	a b	V III	95.50 173.50	18911.35 40907.25

Table 2 : The total of area and volume
BAGIAN HUTAN: B.T.K.

NO. COMPART-MENT	NO. SUB-COMPART-MENT	AGE CLASS	AREA (Ha.)	VOLUME (M ³)
62	b	V	25.25	2418.30
63	b	V	7.75	684.64
79	a	III	19.25	590.33
80	a	III	48.75	1808.33
81	c	III	6.75	177.39
82	b	III	18.75	593.10
89	a	III	10.75	391.21
90	a,b	III	127.00	9760.17
93	a	III	33.25	1034.31
94	b	III	36.00	5366.09
95	a,b	III	54.00	2020.04
96	b,c	III	89.50	6391.08
100	a	III	33.00	238.50
105	a	V	16.00	1320.73
106	a	V	24.00	3318.50
	TOTAL		2094.50	239259.68

BAGIAN HUTAN: B.J.

NO. COMPART-MENT	NO. SUB-COMPART-MENT	AGE CLASS	AREA (Ha.)	VOLUME (M ³)
5		III	47.25	1188.16
8	c	IV	42.25	5217.84
9	b	III	46.50	34.75
10	b d	IV III	42.50 47.50	413.05 230.66
12	a	IV	28.75	1222.55
13	a b e f	III V V V	11.00 25.75 6.50 8.25	410.52 1106.11 283.24 491.68
14	b,c	III	185.75	5736.32
15	b	V	17.00	1869.86
16	e e g	V V III	11.75 6.25 25.25	563.06 513.88 929.98
17	a b c e	V III V IV	6.50 12.75 6.00 16.25	1629.10 1745.48 493.32 414.66
18	a b c	V III V	46.00 53.25 5.75	11528.98 7289.93 725.31
19	a c	V III	25.75 55.75	3140.62 6569.06
20	b	V	25.75	5623.22

NO. COMPART- MENT	NO. SUB COMPART- MENT	AGE CLASS	AREA (Ha.)	VOLUME (M ³)
31	b	V	12.50	36.22
	c	VIII	9.75	998.99
	d	V	27.00	1982.88
	e	IV	14.25	503.68
32	b	VIII	9.50	971.38
	c	VI	36.50	3066.64
	d	III	44.00	155.33
33	a	VI	9.25	986.24
	e	V	13.50	850.73
	f	V	4.75	292.32
	g	V	37.25	3072.08
34	b	V	11.50	255.54
	c	III	55.50	131.72
	d	V	18.25	849.89
	e	V	17.25	516.39
35	a	V	11.00	823.95
	d	V	5.25	124.58
36	b	V	5.50	17.66
	c	III	5.75	7.76
	d	III	15.00	561.13
	e	IV	9.25	1377.05
37	c	IV	23.25	3461.23
	e	III	7.75	7.21
	g	V	10.75	1087.53
38	a	III	37.75	33.02

NO. COMPART- MENT	NO. SUB COMPART- MENT	AGE CLASS	AREA (Ha.)	VOLUME (M ³)
21	a	V	16.75	1621.20
	c	III	41.50	1299.69
	d	VI	5.75	212.28
22	b	III	19.50	471.24
	c	V	6.25	299.50
23	b	V	8.25	682.03
	d	V	30.25	2826.53
	e,f	III	78.75	5138.98
	g	V	22.50	2431.69
24	a	V	11.25	930.04
	b	VI	12.50	1234.00
	d	V	49.50	4092.17
	e	III	11.25	778.16
25	a	III	38.00	2412.01
	d	IV	11.50	898.23
26	a	III	7.75	402.87
	b	V	23.50	2961.45
	d	III	6.00	34.91
27	a	IV	8.00	652.08
	c	VI	8.00	493.76
	d	III	53.25	797.25
	e	VI	5.00	12.90
	f	IV	11.75	870.21
28	a	V	19.25	2210.82
29	c	V	33.75	1935.28
30	a	V	38.25	3449.77
	b	V	8.25	744.07

BAGIAN HUTAN: B.J.

NO. COMPART-MENT	NO. SUB-COMPART-MENT	AGE CLASS	AREA (Ha.)	VOLUME (M3)
45	a	III	30.25	885.06
	b	IX	17.00	2829.78
	c	VI	14.75	1804.91
	f	VIII	48.75	7487.90
	g	VI	4.50	225.50
	h,i	VI	12.50	1063.91
	j	VI	16.00	2439.10
	k	VI	6.25	593.75
	l	VIII	11.50	2890.07
	o	IX	29.75	7033.92
46	a	IX	8.25	1396.90
	c	IX	8.25	1535.91
	d	IX	6.00	1688.88
	e,f	IX	17.50	2621.48
	g	VI	20.50	3110.90
	j	VIII	10.00	1464.27
	l	VIII	4.50	361.17
	a	V	13.50	1225.63
	b	V	10.25	762.83
	c	IV	31.75	1861.78
d	V	16.00	1211.19	
49	a	IV	29.50	4144.67
	b	V	15.00	346.79
50	a	V	52.00	3586.09
	b,c,e	III	60.75	4592.09
	g,h	IV	40.00	8646.37
	i	V	13.25	945.23
51	a,c	III	87.25	6578.07
	d,e			
52	a,d	IV	23.00	4001.38
	b	III	24.50	1083.29
	e	IV	3.00	237.96

BAGIAN HUTAN: B.J.

NO. COMPART-MENT	NO. SUB-COMPART-MENT	AGE CLASS	AREA (Ha.)	VOLUME (M3)
39	a	III	10.50	14.68
	b	IV	34.50	461.51
	e	V	4.75	359.15
	f	IV	29.25	3280.91
40	b	IV	10.25	213.92
	c	V	27.25	306.98
	d	IV	4.50	26.24
	e	V	2.75	53.79
41	b	III	67.50	4664.58
	d	V	37.00	629.66
42	a	VI	18.25	3223.72
	b	V	17.00	2648.79
	d	IV	14.00	2634.49
	e	VI	54.50	8107.63
	f	VIII	6.50	1087.87
	g,h,i	VIII	57.50	10459.97
	j	V	20.50	3859.04
	k	V	46.00	6552.70
	a	VII	13.25	2563.21
	b,d	VI	84.25	18207.27
c	V	15.50	2207.98	
f	VII	20.50	4051.83	
g	VIII	14.50	3296.58	
h,i	V	2.75	391.74	
44	a	VII	2.00	328.43
	b	VIII	8.50	1092.35
	d,g	VIII	23.75	4495.03
	e	V	5.00	289.05
	f	VI	3.50	844.38
	h	V	4.00	729.20
	i	VI	27.50	4450.33
j	VII	14.75	2593.54	

BAGIAN HUTAN: B.J.

NO. COMPART-MENT	NO. SUB COMPART-MENT	AGE CLASS	AREA (Ha)	VOLUME (M ³)	
63	a	III	4.25	262.44	
	b	VIII	3.75	406.03	
	c	VIII	6.50	700.55	
	g	VIII	7.00	321.58	
65	a	VI	17.75	2514.06	
	b	V	19.75	3101.83	
	e	V	60.50	10204.49	
66	d	IV	43.50	8208.15	
	e	V	32.25	5385.42	
	f	VII	13.50	1894.19	
	g	V	23.25	3075.17	
	h	VI	5.75	806.78	
	i	VII	7.75	1087.40	
	j	V	49.00	4966.87	
	67	a	VII	21.25	3649.60
		b	VI	23.75	3357.78
		c	VII	24.75	2144.13
d		V	134.25	32725.58	
68	b	VII	34.00	7768.04	
	c	V	13.75	2384.81	
	d	VII	31.00	6134.34	
	e	III	31.25	1816.27	
	h	VI	12.00	1757.40	
	i	VI	13.00	1805.31	
	j	VI	25.25	4930.91	
	k,m,o	V	48.75	5480.43	
	n	VI	7.00	1117.48	

BAGIAN HUTAN: B.J.

NO. COMPART-MENT	NO. SUB COMPART-MENT	AGE CLASS	AREA (Ha)	VOLUME (M ³)
53	a,c,e	III	76.25	3667.43
	b,d	V	23.50	1111.62
	f	V	16.75	1764.31
54	a,o	III	16.25	662.54
	d	V	38.25	4720.91
55	a	III	6.25	1212.73
	c	III	4.00	399.25
	e	VI	4.00	507.50
	g,h	VI	10.75	1508.12
56	a	VI	6.25	913.38
	c	V	3.50	253.16
57	d	VI	21.75	2991.14
58	o	IV	3.50	607.92
59	a	VIII	0.50	77.64
	b	III	4.00	429.08
	c	VIII	4.00	618.70
	d	III	22.50	1565.81
	f	III	11.50	879.11
	g	VIII	7.25	852.11
60	a	III	14.00	1070.86
	b	VIII	13.75	2070.25
	c	III	8.25	631.04
	d	V	32.00	4206.40
	f	VI	1.25	164.31
	g	VIII	1.50	210.47
	h	IV	6.25	762.56
	61	a	V	10.25
d		V	28.50	3746.33
g		V	4.00	525.80

BAGIAN HUTAN: B.J.

NO. COMPART-MENT	NO. SUB COMPART-MENT	AGE CLASS	AREA (Ha)	VOLUME (M ³)
77	b	V	7.75	439.96
78	b	III	96.00	3733.35
84	d	V	6.25	909.56
85		V	19.25	175.56
86		VI	125.00	32520.04
87	a	V	20.75	2489.65
	b	V	30.00	3722.23
	c	V	15.50	2344.97
	d	III	28.00	3523.80
	f	V	16.75	2438.35
	g	VI	7.75	1423.13
	h	III	10.25	608.95
	i,j	IV	40.25	7241.88
	k	VI	67.50	17046.92
	l	V	10.25	2498.24
	m	VI	13.25	1923.53
	88	a	VI	4.25
j,k		III	41.75	2805.35
89	a	V	19.00	4414.83
	b	III	12.75	933.39
	e	VI	40.75	11609.38
90	e	V	10.25	1027.77
91	a	VI	63.00	19645.24
	b	VI	15.25	2955.29
	c	IV	61.50	13413.41

BAGIAN HUTAN: B.J.

NO. COMPART-MENT	NO. SUB COMPART-MENT	AGE CLASS	AREA (Ha)	VOLUME (M ³)
69	a	VI	16.25	2466.13
	b	VIII	12.00	1837.96
	c	VIII	5.50	525.74
	d	VIII	24.25	2363.46
	e	VIII	7.25	993.32
	f	V	10.75	1310.21
	g	VIII	4.25	546.33
	h	VI	33.25	3782.74
	i	V	24.50	3550.29
70	a	VIII	6.00	1618.08
	c	VI	16.75	2570.57
	f	III	3.25	200.69
71	a	VIII	2.00	276.66
	b	VIII	4.25	566.73
	e,f,h	VIII	10.00	1306.30
	g	III	13.50	1086.08
72	a	V	18.75	2215.47
	c	IV	3.75	249.86
	e	VII	7.50	846.63
	i	VI	16.25	1602.84
	g,h	III	29.00	2201.65
73	a	V	14.00	1706.22
	b	V	29.50	3644.49
	d	V	3.00	112.74
74		VI	88.50	19504.95
75	b	V	22.25	3699.20
	c	VI	11.00	1487.79
76	a,b,c	V	97.50	9331.13

NO. COMPART-MENT	NO. SUB COMPART-MENT	AGE CLASS	AREA (Ha.)	VOLUME (M ³)
98	a, b	VI	38.75	2554.31
	e, f	V	15.50	821.97
	i	VI	22.25	435.47
100	b	VI	8.75	1158.42
	f	VI	9.00	794.35
TOTAL			6526.00	780650.89
GRAND TOTAL			8,620.50ha	1,019,910.57m ³

NO. COMPART-MENT	NO. SUB COMPART-MENT	AGE CLASS	AREA (Ha.)	VOLUME (M ³)	
92	a	V	14.75	1478.98	
	d	III	81.00	15395.85	
	f	VI	35.25	7268.21	
	i	V	10.00	2224.69	
93	a	V	22.00	2557.20	
	c	V	3.50	394.81	
	d	V	6.25	1260.04	
94	a	V	5.00	604.50	
	c	V	61.75	6530.07	
	f	VI	38.50	5992.08	
	g	V	8.00	801.78	
95	b	V	17.00	2972.51	
	c	V	22.00	4335.82	
	d	V	5.25	974.91	
	e	V	5.00	707.62	
	f	V	24.75	4518.80	
96	a	VIII	9.75	1120.82	
	b	VII	13.50	1297.18	
	c	V	33.75	3566.10	
	d	V	42.00	2170.68	
	e	VI	38.25	4355.84	
	f	VII	25.75	2589.27	
	h	V	11.50	647.87	
97	a, b, c	VIII	35.75	2134.34	
	d	VI	21.50	1199.38	
	e	VI	33.50	4425.86	
	f	VII	20.25	3172.09	
	g, h	VIII	69.00	13747.21	
	i	VI	28.00	3624.10	
	j	VI	10.75	587.90	
	k	V	11.25	689.15	

Table 3. Volume of each age class

BAGIAN HUTAN: BANTARKWUNG

AGE CLASS	AREA (Ha)	VOLUME (m ³)	AVERAGE VOLUME (m ³ /Ha)
III	1,268.75	113,507.62	89.46
IV	221.00	27,480.52	124.35
V	604.75	98,271.54	162.50
TOTAL	2,094.50	239,259.68	114.23

BAGIAN HUTAN: BUMIJAWA

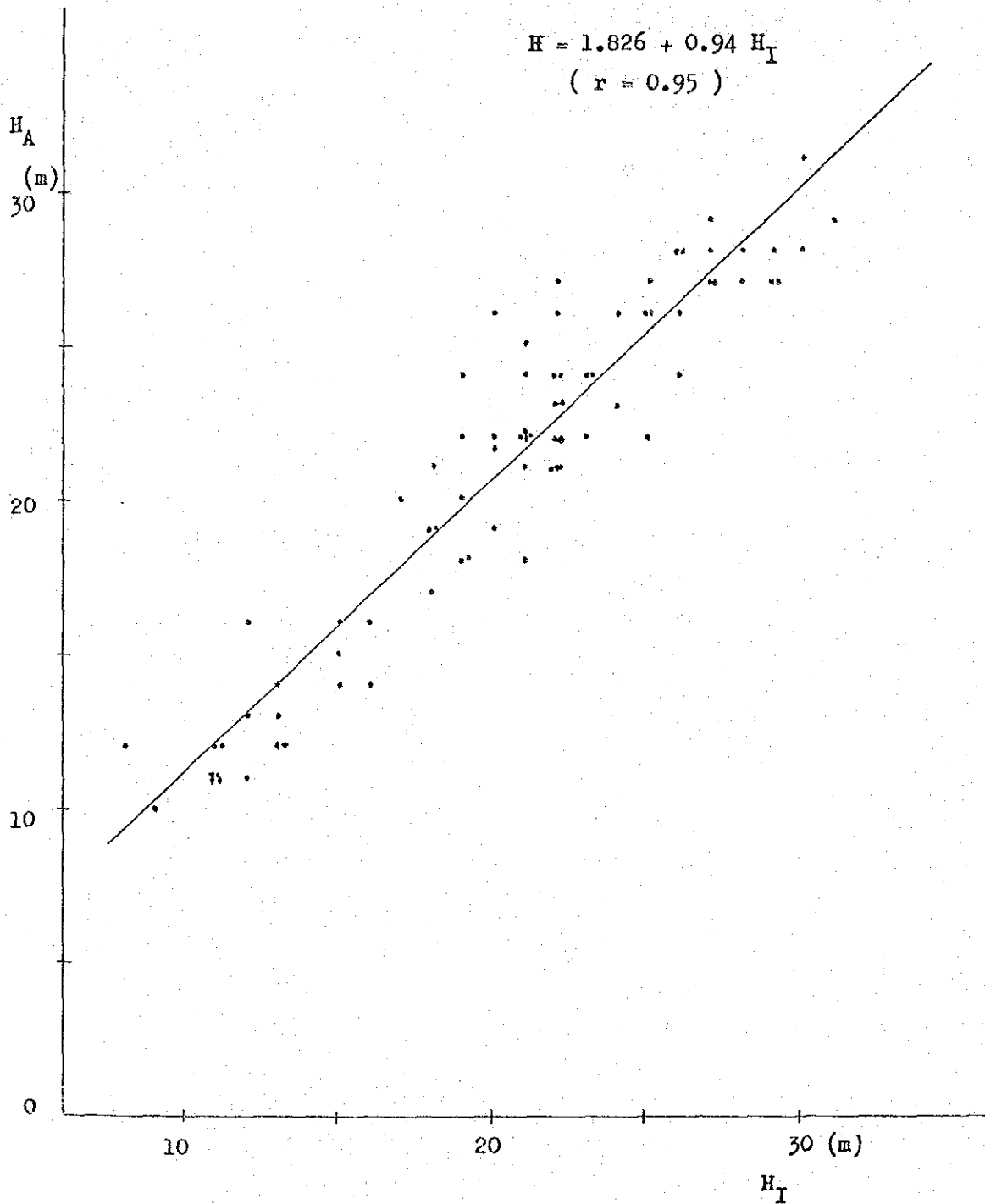
AGE CLASS	AREA (Ha)	VOLUME (m ³)	AVERAGE VOLUME (m ³ /Ha)
III	1,733.25	97,646.79	56.34
IV	554.50	69,161.81	124.73
V	2,169.50	266,439.39	122.81
VI	1,293.25	223,276.29	172.65
VII	249.75	40,119.88	160.64
VIII	439.00	66,899.86	152.39
IX	86.75	17,106.87	197.62
TOTAL	6,526.00	780,650.89	119.62

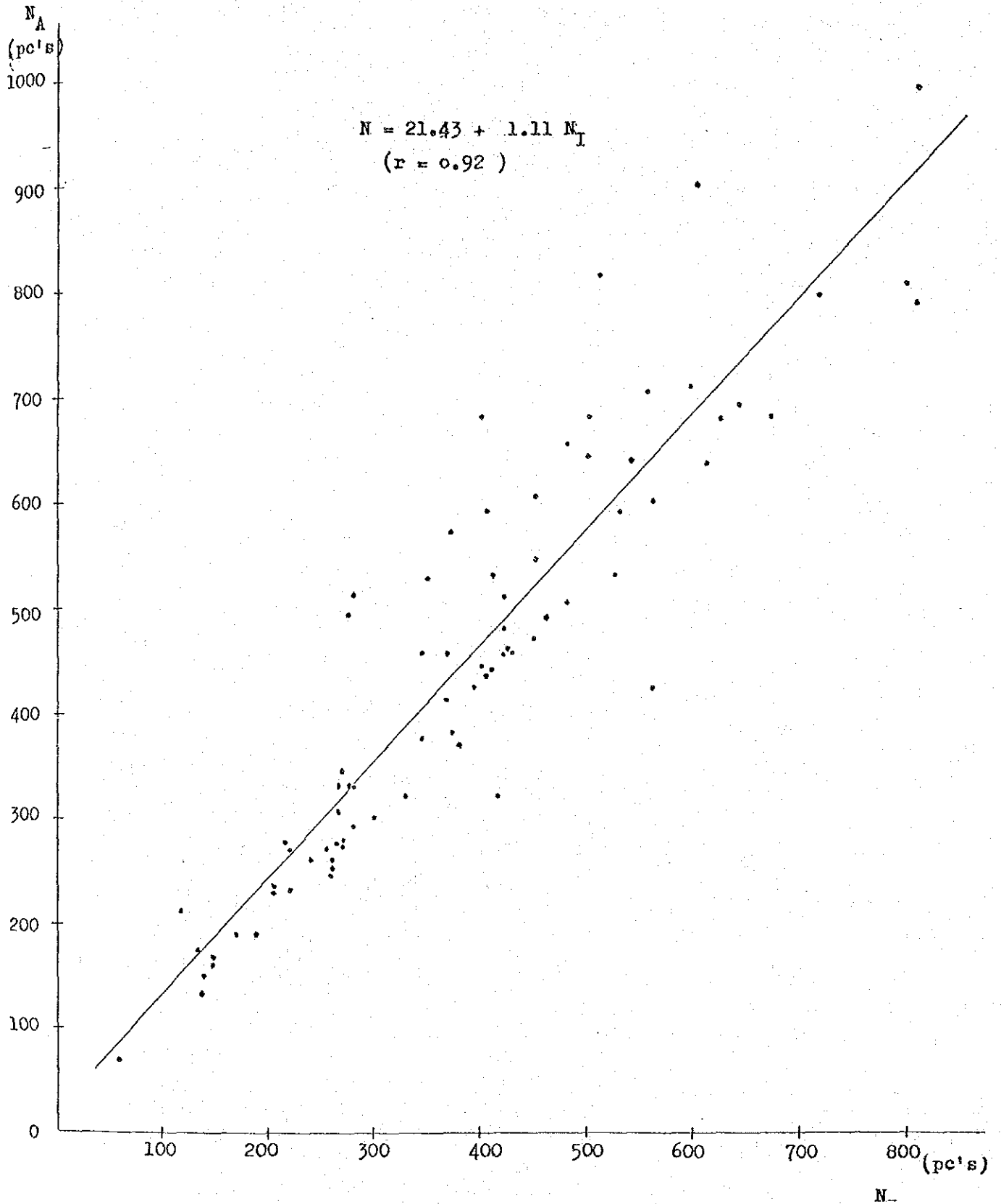
TOTAL AREA: 8,620.50 Ha

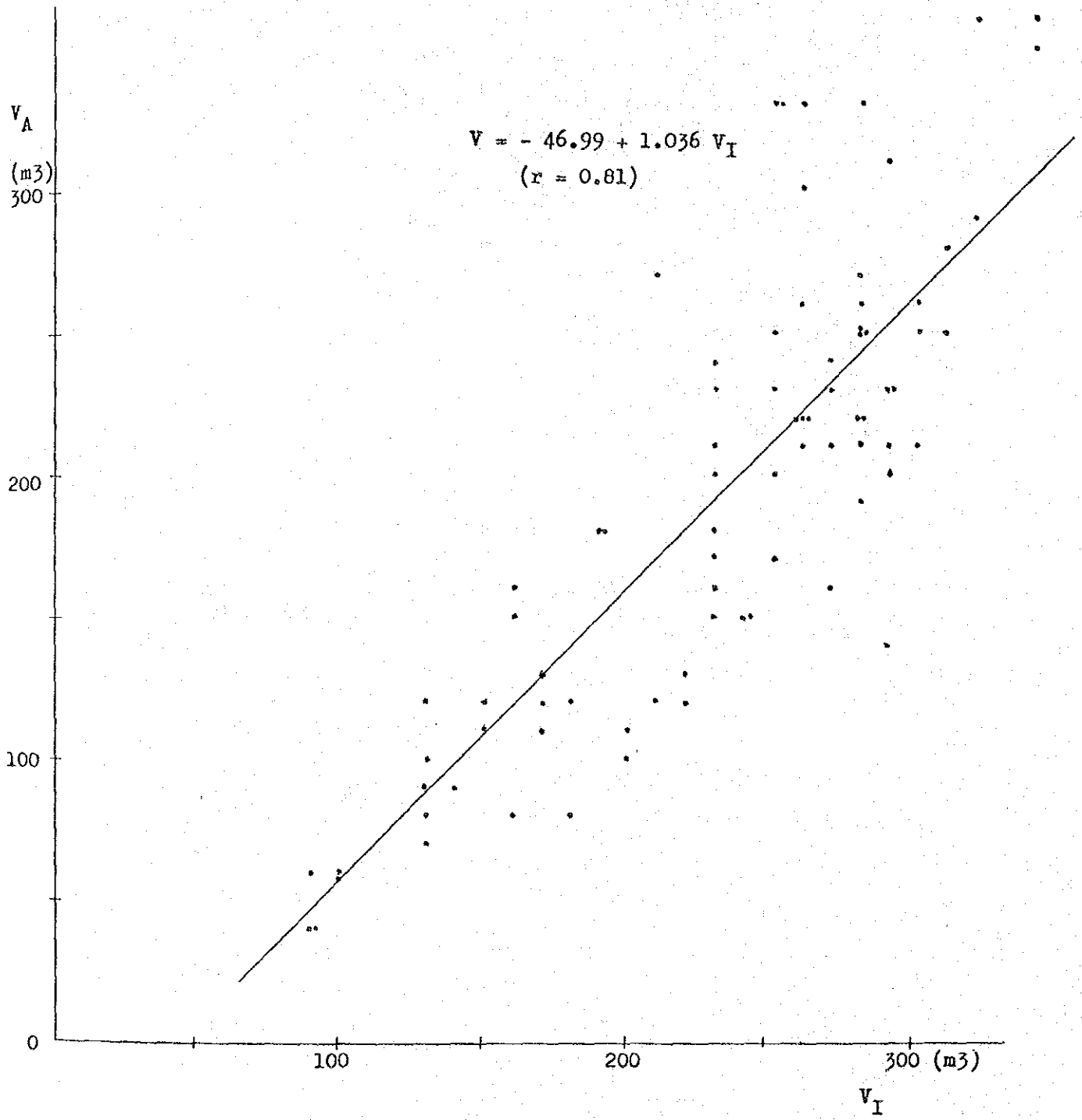
TOTAL VOLUME: 1,019,910.57 m³

AVERAGE VOLUME: 118.31 m³/Ha

Fig. : 1 Actual (H_A) and interpretation (H_I) value of tree height







APPENDIX III

Forest type map

APPENDIX IV

Forest inventory book

APPENDIX V

TABLE OF VOLUME CALCULATION

TABLE OF VOLUME CALCULATION

B. H. BANTAR KAWUNG

&

B. H. BUMI JAWA

PEKALONGAN BARAT

B. H. BANTAR KAWUNG
PEKALONGAN BARAT

VOLUME CALCULATION TABLE

Photo/ Run No.	Age Class/ Forest Type No.		Base Balance Length (A ₀ -A)	Δpx.	Number of Dots.	Slope (%)	Area (Ha)	H _I	N _I	
16 - I	05/	1	86	3140	0.48	8	40	2.00	17	55
		2			0.53	12	32	3.00	19	89
		3			0.46	45	45	2.50	17	27
		4			0.60	2	45	0.50	22	287
		5			0.47	5	40	1.25	17	48
		6			0.50	2	40	0.50	18	123
		7			0.45	6	45	1.50	16	43
16 - I	05/	1	86	3140	0.54	3	36	0.75	19	103
		2			0.40	7	40	1.75	14	82
		3			0.58	25	40	6.25	21	199
		4			0.56	3	35	0.75	20	144
		5			0.60	5	32	1.25	22	109
		6			0.42	10	40	2.50	15	295
		7			0.42	6	45	1.50	15	20
		8			0.43	12	45	3.00	16	171
		9			0.39	8	32	2.00	14	34
		10			0.50	8	30	2.00	18	157
		11			0.37	4	45	1.00	13	20
		12			0.47	3	35	0.75	17	82
11 - II	03	1	72	3053	0.30	52	50	13.00	13	39
		2			0.56	25	45	6.25	24	85
		3			0.32	9	70	2.25	13	78
		4			0.29	10	45	2.50	12	72
		5			0.25	16	32	4.00	11	98
		6			0.29	4	40	1.00	12	20
		7			0.28	12	59	3.00	12	183
		8			0.36	20	75	5.00	11	33
		9			0.42	4	70	1.00	18	223
		10			0.34	26	59	6.50	14	111
		11			0.30	22	59	5.50	13	190
		12			0.36	18	40	4.50	15	275
		13			0.38	7	45	1.75	16	33
		14			0.30	16	50	4.00	13	46
		15			0.29	19	32	4.75	12	183
		16			0.30	4	32	1.00	13	52
		17			0.32	11	59	2.75	11	164
13 - II	03	1	tidak dapat diukur tingginya			22	26	5.50	10	32
13 - II	04	2			-	94	26	23.50	16	32
		3			-	23	10	5.75	16	127
		4			-	21	21	5.25	16	253
		5			-	2	32	0.50	16	32
		6			-	8	32	2.00	16	127
		7			-	6	26	1.50	16	32

VOLUME CALCULATION TABLE

Photo/ Run No.	Age Class/ Forest Type No.	Base Length (A ₀ -A)	Balance $\Delta px.$	Number of Dots.	Slope (%)	Area (Ha)	H _I	N _I
14 - II	03/	90	2878	0.30	9	30	12	114
				0.30	47	25	12	298
				0.26	5	25	11	266
18 - II	03/	91	2850	estimate	66	40	9	312
				tinggi	12	45	9	81
					6	40	9	100
					102	40	9	100
16 -III	03/	83	3225	0.30	2	20	12	185
				0.38	4	26	15	52
				0.34	20	15	13	594
				0.34	12	26	13	303
				0.37	12	20	14	97
				0.34	15	45	13	336
				0.26	63	15	10	387
				-	44	15	11	481
				0.50	6	45	19	90
				0.37	22	32	14	368
				0.24	8	40	9	110
				0.40	10	15	15	115
				0.44	4	15	17	187
				0.35	6	10	13	226
				0.37	9	10	14	297
				0.40	9	10	15	84
				0.26	10	15	10	71
				0.32	32	45	11	129
				0.32	4	45	11	129
				0.32	4	32	11	103
				0.27	26	21	10	413
				0.27	3	21	10	136
03	03/	85	3225	0.34	22	26	12	232
				0.34	9	32	12	39
				0.38	14	40	15	290
				0.37	8	15	14	71
				0.34	9	15	13	245
				0.36	20	15	14	32
				0.36	16	25	14	142
				0.36	68	10	14	45
				0.37	7	15	14	278
				0.34	4	26	13	97
				0.34	26	32	13	97
				0.34	8	10	13	39

VOLUME CALCULATION TABLE

Photo/ Run No.	Age Class/ Forest Type No.	Base Length (A ₀ -A)	Balance	Δ px.	Number of Dots.	Slope (%)	Area (Ha)	H _I	N _I
17 - III	03/	88	3150	0.38	12	30	3.00	13	189
				0.28	4	28	1.00	10	323
				0.28	15	26	3.75	10	539
				0.36	9	26	2.25	13	27
				0.33	12	20	3.00	12	394
	05/			0.52	11	27	2.75	18	168
				0.50	40	27	10.00	17	94
18 - III	05/	92	2725	0.68	8	21	2.00	20	115
				0.68	4	32	1.00	20	58
				0.75	14	26	3.50	22	231
				0.70	21	26	5.25	21	122
				0.55	3	21	0.75	16	29
				0.70	4	21	1.00	21	79
				0.24	31	32	7.75	7	462
				0.68	8	26	2.00	20	115
				0.40	10	15	2.50	12	158
				0.74	15	32	3.75	22	549
				0.43	9	15	2.25	13	58
				0.43	8	15	2.00	13	144
				0.60	7	40	1.75	18	180
				0.60	15	40	3.75	18	361
				0.65	3	40	0.75	19	87
	04/	92	2725	0.63	2	40	0.50	18	55
				0.63	2	32	0.58	18	55
				0.63	3	32	0.75	18	27
				0.76	18	32	4.50	22	501
				0.54	24	45	6.00	16	310
				0.33	61	59	15.25	10	742
				0.26	33	45	8.25	8	302
				0.35	27	45	6.75	10	535
				0.38	4	40	1.00	11	62
19-III	03/	84	2670	0.77	36	70	9.00	24	586
				0.68	12	55	3.00	21	175
				0.70	5	63	1.25	22	640
				0.70	9	59	2.25	22	162
				0.65	9	45	2.25	21	47

PEKALONGAN BARAT

B.K.F.H. : BANTAR KAWUNG

Page : 4

VOLUME CALCULATION TABLE

Photo/ Run No.	Age Class/ Forest Type No.	Base Length (A ₀ -A)	Balance	$\Delta px.$	Number of Dots.	Slope (%)	Area (Ha)	H _I	N _I
05/	1	84	2670	0.52	4	45	1.00	16	377
	2			0.68	7	45	1.75	21	148
	3			0.72	8	32	2.00	23	256
	4			0.75	4	32	1.00	24	121
	5			0.70	6	50	1.50	22	108
	6			0.56	9	30	2.25	18	20
	7			0.80	6	30	1.50	25	323
	8			0.75	8	45	2.00	24	175
	9			0.82	52	45	13.00	26	607
	10			0.70	22	45	5.50	22	101
	11			0.82	18	26	4.50	26	310
	12			0.78	4	60	1.00	23	108
	13			0.66	10	59	2.50	21	424
	14			0.66	9	45	1.25	21	148
	15			0.58	27	45	6.75	18	61
	16			0.74	9	26	2.25	23	364

VOLUME CALCULATION TABLE

Photo/ Run No.	Age Class/ Forest Type No.	Base Length	Balance (A ₀ -A)	Δpx.	Number of Dots.	Slope (%)	Area (Ha)	H _I	N _I
19-III	17	84	2670	0.74	14	45	3.50	23	236
	18			0.60	10	45	2.50	19	323
20-III 05	1	88	2750	0.42	3	32	0.75	13	27
	2			0.60	6	32	1.50	19	34
	3			0.60	5	26	1.25	19	130
	4			0.62	15	26	3.75	19	254
	5			0.75	17	15	4.25	23	460
	6			0.51	10	10	2.50	16	41
	7			0.47	8	10	2.00	15	267
	8			0.56	32	32	8.00	17	48
	9			0.72	23	32	5.75	23	130
	10	0.30	8	45	2.00	10	69		
	11	0.65	13	40	2.25	20	274		
	12	0.65	6	10	1.50	20	82		
	13	0.53	4	10	1.00	17	21		
	14	0.53	14	21	3.50	17	69		
	15	0.60	2	21	0.50	19	336		
	16	0.53	3	15	0.75	17	117		
	17	0.72	6	26	1.50	23	96		
	18	0.80	16	32	4.00	25	206		
21-III 03	1	83	2850	0.34	80	15	20.00	12	694
	2			0.31	7	15	1.75	11	455
	3			0.31	4	20	1.00	11	101
	4.			0.48	28	35	7.00	16	484
05	1	83	2850	0.38	4	15	1.00	13	375
	2			0.47	10	20	2.50	16	238
	3			0.25	95	32	23.75	8	380
	4			0.39	21	26	5.25	13	116
	5			0.58	6	35	1.50	19	274
	6			0.42	43	45	10.75	14	43
	7			0.79	8	20	2.00	24	180
05	1	88	2750	0.84	11	20	3.75	26	224
	2			-	177 x)	20	44.25	19	367
	3			0.34	9	15	2.25	11	534
	4			0.38	6	15	1.50	12	375
	5			0.62	5	15	1.25	20	274
	6			0.72	32	26	8.00	23	390
	7	0.37	2	32	0.50	12	253		
	8	0.40	4	10	1.00	13	87		
	9	0.40	8	10	2.00	13	159		
	10	0.37	3	32	0.75	12	140		
	11	0.45	3	32	0.75	15	325		

VOLUME CALCULATION TABLE

Photo/ Run No.	Age Class/ Forest Type No.	Base Length	Balance (A ₀ -A)	Δpx.	Number of Dots.	Slope (%)	Area (Ha)	H _I	N _I
22-III	05	82	2890	0.54	7	95	1.75	21	144
				0.63	7	59	4.25	22	693
				0.57	32	32	8.00	20	630
				0.50	8	30	2.00	17	621
				0.50	7	45	1.75	17	29
				0.57	3	59	0.75	20	310
				0.50	2	26	0.50	17	22
				0.64	16	86	4.00	22	520
				0.60	9	20	2.25	21	58
				0.47	3	20	0.75	16	577
				0.54	8	20	2.00	19	491
				0.53	4	10	1.00	19	87
				0.38	4	30	1.00	13	505
				0.42	4	32	1.00	15	318
					03	82	2890	0.43	4
0.36	14	26	3.50					12	680
0.36	5	26	0.75					12	285
0.34	34	21	0.50					12	557
0.40	6	21	1.50					14	197
0.30	5	32	1.25					11	170
0.41	2	15	0.50					14	115
0.41	4	21	1.00					14	256
0.41	6	26	1.50					14	177
0.41	2	26	0.50					14	47
0.36	10	15	2.50					13	442
0.39	2	10	0.50					14	251
0.53	8	30	2.00					19	251
0.54	10	30	2.50					19	217
	03	82	2890					0.47	3
				0.32	2	45	0.50	11	48
				0.30	6	32	1.50	10	260
				0.32	7	32	1.75	11	180
				0.26	2	35	0.50	9	68
				0.26	2	40	0.50	9	20
				0.31	2	45	0.50	11	137
				0.24	3	25	0.75	8	75
				0.24	6	25	1.50	8	198
				0.26	3	25	0.75	9	82
				0.26	3	45	0.75	9	27
				0.47	3	45	0.75	16	96
				0.47	2	32	0.50	16	116

VOLUME CALCULATION TABLE

Photo/ Run No.	Age Class/ Forest Type No.	Base Length (A ₀ -A)	Balance Δpx.	Number of Dots.	Slope (%)	Area (Ha)	H _I	N _I		
26-III	03	90	2850	0.42	138	20	34.50	13	727	
				0.43	6	30	1.50	13	68	
				0.42	22	25	5.50	13	54	
				0.43	11	15	2.75	13	54	
				0.41	14	15	3.50	13	136	
	04	1	90	2850	0.53	98	35	24.50	16	570
	04	1	90	2850	0.57	21	35	5.25	17	806
	03	1	90	2850	-	13	32	3.25	11	805
					0.53	16	32	4.00	16	435
	03	1	90	2800	-	95	20	21.25	11	798
					0.46	4	20	1.00	14	266
					0.46	5	20	1.25	14	44
					0.56	8	25	2.00	17	570
					0.44	13	25	3.25	14	298
					0.40	19	26	4.75	12	165
					0.35	8	15	2.00	11	36
					-	155	15	38.75	12	624
					0.38	10	10	2.50	12	336
0.28					8	10	2.00	12	66	
0.42					4	10	1.00	13	107	
0.37					2	20	0.50	11	567	
0.40					10	35	2.50	12	298	
0.38					13	35	3.25	12	190	
0.39					4	40	1.00	12	146	
0.39					9	35	2.25	12	44	
0.48					8	20	2.00	15	25	
0.52					4	15	1.00	16	177	
05	1	90	2600	0.50	2	35	0.50	14	39	
				0.57	4	45	1.00	16	234	
				0.42	3	45	0.75	12	52	
				0.52	12	32	3.00	15	169	
				0.49	3	35	0.75	14	45	
				0.46	2	35	0.50	13	78	
				0.54	12	45	3.00	15	195	
				0.47	5	45	1.25	13	45	
27-III	03	90	2650	0.43	4	15	1.00	12	552	
				0.38	5	35	1.25	11	364	
				0.42	9	45	2.25	12	39	
				0.26	55	45	13.75	8	682	
				0.38	4	32	1.00	11	415	
				0.24	9	32	2.25	8	338	
				0.27	5	40	1.25	8	243	
				0.43	3	32	0.75	13	221	
				0.36	5	35	1.25	10	162	
				0.29	2	40	0.50	8	58	

VOLUME CALCULATION TABLE

Photo/ Run No.	Age Class/ Forest Type No.	Base Length (A ₀ -A)	Balance	$\Delta px.$	Number of Dots.	Slope (%)	Area (Ha)	H _I	N _I
27-III	03 1	99	2600	0.39	7	32	1.75	11	552
	05 1	88	2600	0.62	22	70	5.50	18	71
27-III	05 1	90	2600	0.50	2	32	0.50	14	39
	2			0.57	4	25	1.00	16	234
	3			0.42	3	25	0.75	12	52
	4			0.52	12	21	3.00	15	169
	5			0.49	3	23	0.75	14	45
	6			0.46	2	26	0.50	13	78
	7			0.54	12	25	3.00	15	195
	8			0.47	5	30	1.25	13	45
28-III	03 1	89	2600	0.50	13	30	-	15	175
	2			0.52	7	30	-	15	459
	3			0.44	4	25	-	13	78
	4			0.40	8	27	0.15	12	149
	5			0.37	8	27	0.10	11	26
	6			0.46	10	25	-	13	116
	7			0.37	2	30	-	11	39
	03 1	89	2500	0.64	4	50	1.00	18	144
	2			0.50	4	30	1.00	14	225
	04 1	89	2600	0.49	15	31	35	14	248
4-IV	03/ 1	72	2450	0.38	7	75	1.75	13	526
	2			0.38	4	71	1.00	13	696
	3			0.36	6	73	1.50	12	513
	4			0.32	3	0	0.75	11	57
	5			0.35	6	0	1.50	12	414
	6			0.32	4	0	1.00	11	414
	7			0.32	4	0	1.00	11	442
	8			0.27	4	0	1.00	9	257
	9			0.27	3	0	0.75	9	457
	10			0.30	6	0	1.50	10	271
	11			0.30	4	0	1.00	10	471
	05/12			0.54	12	75	3.00	18	213
	13			0.63	16	71	4.00	21	606
	14			0.50	5	74	1.25	17	177
	15			0.47	6	72	1.50	16	821
	16			0.54	7	70	1.75	18	392
	17			0.42	1	73	0.25	14	285

VOLUME CALCULATION TABLE

Photo/ Run No.	Age Class/ Forest Type No.		Base Length	Balance (A ₀ -A)	Δpx.	Number of Dots.	Slope (%)	Area (Ha)	H _I	N _I
6-IV	03/	1	71	2600	0.34	10	35	2.50	12	428
		2			0.34	2	34	0.50	12	294
		3			0.34	1	34	0.25	12	334
		4			0.26	1	47	0.25	9	374
		5			0.26	3	60	0.75	9	494
8-IV	03/	1	78	3050	0.35	3	31	0.75	14	47
		2			0.38	4	27	1.00	15	305
		3			0.28	2	30	0.50	11	94
		4			0.28	4	29	1.00	11	391
		5			0.46	6	32	1.50	18	38
		6			0.38	4	27	1.00	15	47
		7			0.38	2	33	0.50	15	372
9-IV	03/	1	78	2850	0.35	8	28	2.00	13	357
		2			0.27	5	27	1.25	10	34
		3			0.27	1	30	0.25	10	138
		4			0.32	6	31	1.50	12	149
		5			0.32	1	24	0.25	12	242
		6			0.35	19	25	4.75	13	287
		7			0.27	7	29	1.75	10	276
		8			0.25	5	31	1.25	9	91
		9			0.33	3	29	0.75	12	138
		10			0.33	55	30	13.75	12	473
		11			0.30	1	32	0.25	11	69
		12			0.25	3	24	0.75	9	46
		13			0.26	7	22	1.75	9	335
		14			0.26	7	25	1.75	9	209
		15			0.26	11	30	2.75	9	323
		16			0.23	8	31	2.00	8	92
		17			0.26	3	29	0.75	9	288
		18			0.32	2	32	0.50	12	138
		19			0.26	2	24	0.50	9	11
		20			0.27	4	25	1.00	10	57
		21			0.32	15	27	3.75	12	369
		22			0.28	12	28	3.00	10	276
		23			0.26	10	23	2.50	9	34
		24			0.26	4	28	1.00	9	34
		25			0.26	5	32	1.25	9	34
		26			0.24	5	30	1.25	8	69
		27			0.30	2	29	0.50	11	34
		28			0.33	5	24	1.25	12	208
		29			0.28	7	30	1.75	10	11
		30			0.35	5	28	1.25	13	172

VOLUME CALCULATION TABLE

Photo/ Run No.	Age Class/ Forest Type No.	Base Length (A ₀ -A)	Balance Δpx.	Number of Dots.	Slope (%)	Area (Ha)	H _I	N _I				
11-IV	05/	1	78	2550	0.50	2	40	0.50	18	23		
		2			0.56	6	44	1.50	20	444		
		3			0.56	7	36	1.75	20	71		
		4			0.47	7	37	1.75	17	71		
		5			0.48	1	42	0.25	17	108		
		6			0.56	6	40	1.50	20	263		
		7			0.48	3	39	0.75	17	59		
		8			0.51	22	41	5.50	18	59		
		9			0.40	16	76	4.00	14	57		
		10			0.40	8	77	2.00	14	126		
		11			0.46	20	74	5.00	16	229		
		12			0.49	10	73	2.50	17	286		
		13			0.58	210	77	52.50	21	539		
		14			0.56	14	78	3.50	19	711		
		15			0.48	6	76	1.50	17	23		
		16			0.48	20	74	5.00	17	803		
		17			0.58	20	75	5.00	20	780		
		18			0.56	4	77	1.00	19	46		
		19			0.49	3	73	0.75	17	183		
13-IV	05/	1	83	2700	0.42	9	17	2.25	14	236		
		2			0.38	21	12	5.25	12	349		
		3			0.60	17	16	4.25	19	281		
		4			0.60	4	14	1.00	19	33		
		5			0.47	6	13	1.50	15	123		
		6			0.67	11	18	2.75	22	281		
		7			0.55	5	20	1.25	18	55		
		8			0.55	21	19	5.25	18	225		
		9			0.65	54	21	13.50	21	417		
		10			0.56	12	13	3.00	18	247		
		11			0.37	7	17	1.75	12	55		
		12			0.53	12	16	3.00	17	190		
		13			0.37	11	20	2.75	12	349		
		14			0.53	4	17	1.00	17	168		
		15			0.52	16	19	4.00	17	327		
		16			0.64	3	21	0.75	20	281		
		17			0.37	18	19	4.50	12	55		
		18			0.52	17	18	4.25	17	225		
		19	05/				0.43	9	17	2.25	14	439
		20					0.43	4	16	1.00	14	315
		21					0.37	32	8.00	12	157	
		22					0.34	18	4.50	11	55	
		23					0.40	7	1.75	13	281	
		24					0.30	9	2.25	10	236	
		25					0.30	8	2.00	10	259	
		26					0.37	13	3.25	12	123	

VOLUME CALCULATION TABLE

Photo/ Run No.	Age Class/ Forest Type No.	Base Length (A ₀ -A)	Balance	$\Delta px.$	Number of Dots.	Slope (%)	Area (Ha)	H _I	N _I
	05/ 27	83	2800	0.69	52	19	13.00	23	462
	28			0.65	24	20	6.00	22	349
	29			0.48	20	21	5.00	16	33
	30			0.48	2	20	0.50	16	11
	31			0.57	4	18	1.00	19	123
	32			0.63	6	17	1.50	21	157
	33			0.50	4	16	1.00	17	44
	34			0.36	2	13	0.50	12	89
	35			0.29	14	20	3.50	10	327
	36			0.48	8	21	2.00	16	22
	37			0.36	6	14	1.25	12	349
	38			0.30	3	16	0.75	10	281
	39			0.30	5	17	1.25	10	214
	40			0.57	12	15	3.00	19	439
	41			0.67	13	21	3.25	22	281
	42			0.50	7	20	0.75	17	22
	43			0.65	28	14	7.00	22	439
	44			0.71	4	13	1.00	24	203
	45			0.46	66	17	16.50	15	44
	46			0.54	5	18	1.25	18	552
	03/ 47	83	2800	0.71	164	16	41.00	22	569
	48			0.71	12	17	3.00	24	214
	49			0.68	30	18	7.50	23	22
	50			0.71	10	20	2.50	24	123
	51			0.71	3	21	0.75	24	338
	52			0.64	9	19	2.25	21	349
	53			0.53	3	13	0.75	18	55
14-IV	04/ 1	83	2700	0.64	87	49	21.75	20	396
	2			0.49	29	50	7.25	17	136
	3			0.40	4	48	1.00	14	384
	4			0.49	60	47	15.00	16	309
	5								
15-IV	05/ 1	80	3000	0.36	6	21	1.50	13	266
	2			0.41	4	17	1.00	15	235
	3			0.41	9	20	2.25	15	153
	4			0.45	19	25	4.75	17	133
	5			0.36	6	18	1.50	13	399
	6			0.37	7	19	1.75	14	297
	7			0.43	4	22	1.00	16	235
	8			0.36	1	23	0.25	13	204
	9			0.36	5	25	1.25	13	225
	10			0.50	8	22	2.00	18	225
	11			0.52	17	18	4.25	19	276
	12			0.42	52	43	13.00	16	54
	13			0.42	11	39	2.75	16	153

PEKALONGAN BARAT

B.K.P.H. : BANTAR KAWUNG

Page : 12

VOLUME CALCULATION TABLE

Photo/ Run No.	Age Class/ Forest Type No.	Base Length	Balance (A ₀ -A)	$\Delta px.$	Number of Dots.	Slope (%)	Area (Ha)	H _I	N _I	
15-IV	05/	14	80	3000	0.47	19	44	4.75	17	383
					0.42	6	42	1.50	16	131
					0.45	7	41	1.75	17	229
					0.40	3	43	0.75	15	43
					0.52	8	40	2.00	19	248
					0.45	36	39	9.00	17	54
					0.45	8	40	2.00	17	248
16-IV	03/	1	73	2750	0.30	2	47	0.50	11	27
					0.30	2	43	0.50	11	27
					0.30	5	42	1.25	11	27
					0.38	5	48	1.25	14	430
					0.43	3	50	0.75	16	27
					0.30	50	47	12.50	11	750
					0.38	60	46	15.00	14	707
					0.40	21	22	5.25	15	358
					0.40	26	31	6.50	15	406
					0.40	34	24	8.50	15	579
					0.40	42	28	20.50	15	455
17-IV	03/	1	98	3100	0.32	28	43	7.00	10	68
					0.36	12	38	3.00	11	258
					0.32	20	40	5.00	10	78
					0.32	9	44	2.25	10	197
					0.28	24	45	6.00	9	49
					0.37	11	43	2.75	12	366
					0.36	15	40	3.75	11	168
					0.37	6	41	1.50	12	296
					0.32	5	42	1.25	10	187
25-IV	03/	1	79	3050	0.23	17	46	4.75	9	481
					0.23	5	50	1.25	9	99
					0.25	3	41	0.75	10	99
					0.25	6	44	1.50	10	401
					0.25	8	50	2.00	10	250
					0.23	4	49	1.00	9	200
					0.25	16	44	4.00	10	420
					0.27	12	46	3.00	10	441
					0.27	14	47	3.50	10	99
					0.30	8	50	2.00	12	430
					0.25	4	45	1.00	10	381
					0.27	4	40	1.00	10	69
					0.25	19	41	4.75	10	351

VOLUME CALCULATION TABLE

Photo/ Run No.	Age Class/ Forest Type No.	Base Length (A ₀ -A)	Balance	Δ PX.	Number of Dots.	Slope (%)	Area (Ha)	H _I	N _I	
25-IV	03/	14	79	3050	0.25	9	50	2.25	10	220
		15			0.27	5	51	1.25	10	401
		16			0.27	5	46	1.25	10	120
		17			0.23	7	47	1.75	9	290
		18			0.25	2	44	0.50	10	99
		19			0.27	24	48	6.00	10	250
		20			0.23	4	42	1.00	9	49
		21			0.19	14	46	3.50	7	99
		22			0.19	17	32	4.25	7	250
		23			0.19	1	31	0.25	7	140
4-V	03/	1	78	2650	0.45	37	22	9.25	15	345
		2			0.37	8	18	2.00	13	307
		3			0.40	8	20	2.00	14	320
		4			0.40	6	24	1.50	14	307
		5			0.34	4	21	1.00	12	230
		6			0.41	10	19	2.50	14	166
		7			0.36	11	26	2.75	12	140
		8			0.40	23	23	5.75	14	256
		9			0.36	5	25	1.25	12	217
		10			0.45	25	24	6.25	15	256
		11			0.43	17	22	4.25	15	64
5-V	03/	1	80	2650	0.38	19	26	4.75	13	258
		2			0.35	6	30	1.50	12	90
		3			0.38	9	27	2.25	12	206
		4			0.34	3	24	0.75	11	77
		5			0.44	39	21	9.75	14	477
		6			0.34	9	27	2.25	11	25
		7			0.40	6	28	1.50	13	309
		8			0.31	7	30	1.75	10	322
		9			0.44	19	22	4.75	14	180
		10			0.47	26	29	6.50	15	180
		11			0.46	23	30	5.75	15	25
		12			0.40	4	23	1.00	13	581
	04/	13	83	2650	0.52	7	26	1.75	15	193
		14			0.52	8	24	2.00	16	297
		15			0.40	5	31	1.25	13	25
		16			0.49	33	29	8.25	16	426
		17			0.46	7	23	1.75	15	284
		18			0.46	3	24	0.75	15	180
		19			0.42	10	26	2.50	14	451
		20			0.50	11	25	2.75	16	167
		21			0.57	8	30	2.00	18	167
		22			0.54	8	27	2.00	17	297
		23			0.54	25	22	6.25	17	374

PEKALONGAN BARAT

B.K.P.H. : BANTAR KAWUNG

Page : 14

VOLUME CALCULATION TABLE

Photo/ Run No.	Age Class/ Forest Type No.	Base Length (A ₀ -A)	Balance	Δ px.	Number of Dots.	Slope (%)	Area (Ha)	H _I	N _I	
5-V	04/	24	80	2650	0.43	11	21	2.75	14	606
		25			0.53	9	30	1.75	17	180
		26			0.42	8	29	2.00	13	51
		27			0.43	16	23	4.00	14	606
		28			0.54	14	24	3.50	17	348
		29			0.43	3	26	0.75	14	439
		30			0.43	7	27	1.75	14	387
		31			0.50	7	25	1.75	16	413
		32			0.52	16	28	4.00	16	38
		33			0.46	2	23	0.50	15	12
6-V	03/	1	86	2800	0.35	20	20	4.00	11	340
		1 a			0.49	5	16	1.25	16	169
		2			0.45	22	17	5.50	15	317
		3			0.41	46	18	11.50	13	78
		4			0.24	8	19	2.00	8	453
		5			0.28	3	20	0.75	9	67
		6	0.45	32	23	8.00	15	306		
		7	83	2700	0.43	3	16	0.75	14	11
		8			0.38	2	17	0.50	12	271
		9			0.35	3	24	0.75	11	11
		10			0.43	3	22	0.75	14	135
		11			0.38	4	15	1.00	12	33
		12			0.35	13	19	3.25	11	22
		13	86	2800	0.35	12	22	3.00	11	180
		14			0.41	6	20	1.50	13	396
		14 a			0.36	21	24	5.25	12	124
15	0.45	35			17	8.75	15	249		
16	0.28	23	18	5.75	9	283				
15-V	03/	1	78	2800	0.26	4	36	1.00	9	263
		2			0.26	6	38	1.50	9	299
		3			0.26	4	40	1.00	9	35
		4			0.31	9	37	2.25	11	179
		5			0.35	10	39	2.50	13	263
		6			0.35	5	41	1.25	13	371
		7			0.30	8	43	2.00	11	263
		8			0.30	8	45	2.00	11	23
		9			0.32	8	36	2.00	11	275
		10			82	2800	0.32	8	32	2.00
		11	0.27	2			42	0.50	9	503
		12	0.36	4			44	1.00	12	203
		13	0.32	18			45	4.50	11	468
		14	0.30	7	40	1.75	10	11		

PEKALONGAN BARAT

B.K.P.H. : BANTAR KAWUNG

Page : 15

VOLUME CALCULATION TABLE

Photo/ Run No.	Age Class/ Forest Type No.	Base Length	Balance (A ₀ -A)	Δpx.	Number of Dots.	Slope (%)	Area (Ha)	H _I	N _I
		78	2800	0.39	10	41	2.50	14	143
				0.32	2	42	0.50	11	275
				0.30	29	43	7.25	11	395
				0.30	1	39	0.25	11	83
				0.32	8	42	2.00	11	35
				0.32	31	44	7.75	11	731
				0.36	8	36	2.00	13	203
				0.32	28	38	7.00	11	324
				0.36	19	40	4.75	13	540
				0.29	12	41	3.00	10	263
				0.33	9	44	2.25	12	251
				0.26	78	39	19.50	9	59
				0.26	78	40	19.50	9	179
16-v	03/	90	2800	0.35	13	20	3.25	12	234
				0.35	2	15	0.50	12	85
				0.35	10	19	2.50	12	184
				0.31	2	21	0.50	10	135
				0.40	43	24	10.75	12	578
				0.33	10	23	2.50	10	283
				0.28	8	16	2.00	9	215
				0.28	6	17	1.50	9	396
				0.33	5	20	1.25	10	169
				0.28	3	19	0.75	9	56
				0.28	5	18	1.25	9	78
				0.36	8	24	2.00	12	124
				0.31	2	17	0.50	10	329
				0.40	47	20	11.75	13	374
				0.31	15	21	3.75	10	135
17-v	03/	90	2800	0.23	15	57	3.75	7	88
				0.25	15	60	3.75	8	230
				0.25	14	54	3.50	8	38
				0.20	18	56	4.50	6	653
				0.25	24	61	6.00	8	153
				0.25	9	59	2.25	8	63
				0.34	34	56	8.50	11	409
				0.45	4	58	1.00	14	230
				0.30	4	55	1.00	9	115
				0.33	2	60	0.50	10	63
				0.33	3	61	0.75	10	281
				0.33	7	55	1.75	10	115
				0.25	4	57	1.00	8	115

PEKALONGAN BARAT

B.K.P.H. : BANTAR KAWUNG

Page : 16

VOLUME CALCULATION TABLE

Photo/ Run No.	Age Class/ Forest Type No.	Base Balance Length (A ₀ -A)	Δpx.	Number of Dots.	Slope (%)	Area (Ha)	H _I	N _I
19-V	03/	85	2950	20	57	5.00	14	46
				29	56	7.25	11	254
				26	34	6.50	11	184
20-V	03/	83	2900	48	50	12.00	13	224
				7	46	1.75	9	67
				40	51	10.00	11	392
				11	47	2.75	9	246
				55	52	13.75	9	67
				29	49	7.25	11	313
				48	50	12.00	12	201
				21	48	5.25	13	33
21-V	03/	92	2950	10	43	2.50	9	207
				25	45	6.25	12	272
				24	40	6.00	8	43
				16	44	4.00	12	262
				4	39	1.00	10	43
				6	47	1.50	10	98
				4	46	1.00	13	120

B. H. BUMI JAWA
PEKALONGAN BARAT

VOLUME CALCULATION TABLE

Photo/ Run No.	Age Class/ Forest Type No.	Base Length (A _o -A)	Balance Δpx.	Number of Dots.	Slope (%)	Area (Ha)	H _I	N _I
2.3/VI	03/1 - 13	82	3363	out side the forest block.				
	14		0.35	32	-	8.00	14	341
	15		0.15	5 ¹ / ₂	14	1.40	6	104
	16		0.30	7 ¹ / ₂	28	1.90	12	612
	17		0.15	51	25	12.75	6	106
	18		0.25	4	-	1.00	10	424
	19		0.35	3 ¹ / ₂	-	0.60	14	290
	20		0.25	16	-	4.00	10	372
	21		0.35	4	-	1.00	14	548
	22		0.20	10	-	2.50	8	320
	23		0.30	95	-	23.75	12	610
	24		0.15	4	40	1.00	6	212
	25		0.20	6	-	1.50	8	218
	26		0.30	76	-	19.00	12	382
	27		0.35	19	-	4.75	14	506
	28		0.25	5	19	1.25	10	358
	29		0.35	13	23	3.25	14	500
	30		0.25	20	28	5.13	10	280
	31		0.30	40	19	10.00	12	348
	32		0.35	38	15	9.50	14	350
	33		0.25	30	30	7.50	10	530
	34		0.35	41	-	1.13	14	592
	35		0.25	40	11	10.00	10	218
	36		0.30	45	26	11.25	12	462
	37		-	-	-	-	-	-
	38		0.35	51	11	1.40	14	424
	39		0.35	27	19	1.75	14	370
	40		0.25	34	29	8.50	10	170
	41		0.15	59	-	14.75	7	298
	42							
2,3,4/VI	03	86	3313	13	-	-	12	223
	1		0.30	-	-	-	-	-
	2		-	-	-	-	-	-
	3		-	-	-	-	-	-
	4		-	-	-	-	-	-
	5		0.35	3 ¹ / ₂	-	-	13	564
	6		0.35	64	-	-	13	522
	7		0.25	9	-	-	10	330
	8		0.15	20	29	-	6	110
	9		0.30	5 ¹ / ₂	-	-	12	572
	10		0.30	9	-	-	12	544

VOLUME CALCULATION TABLE

Photo/ Run No.	Age Class/ Forest Type No.	Base Balance Length (A ₀ -A)	Δ px.	Number of Dots.	Slope (%)	Area (Ha)	H _I	N _I
11			0.25	13½	--	--	10	330
12			0.20	10	--	--	12	458
13			0.15	23	--	--	11	86
14			0.20	61	--	--	12	512
15			0.25	98	38	--	20	530
16			0.20	144	--	--	12	448
17			0.20	86	--	--	7	298
18			0.20	5	--	--	11	352
19			0.15	5	23	5	5	462
20			0.15	8	26	8	5	252
21			0.15	18	--	18	5	96
22			0.20	12	19	12	7	380
23			0.20	20	75	20	11	520
24			0.20	56	28	56	7	254
25			0.25	35	24	35	9	362
26			0.25	21	75	21	9	458
27			0.20	14½	75	14½	11	362
28			0.35	23	70	23	12	474
29			0.20	13	75	13	7	236
30			0.35	91	--	91	12	362
31			0.20	7	--	7	11	86
32			0.20	16	--	16	11	288
33)								
34)								
35)								
36)								
37			0.20	11	--	11	11	246
38			0.20	53	--	53	11	438
37 a			0.20	7	48	7	11	314
38 a			0.20	--	--	--	12	--
39			0.25	10	--	10	10	95
40			0.35	57	--	57	12	501
41			0.25	33	23	3	9	175
42			0.15	23	50	23	10	98
43			0.35	32	46	32	12	169
44			0.20	15	45	15	11	142
45			0.25	4	34	4	10	67
46			0.35	34	25	34	12	159
47			0.20	5	38	5	11	132
48			0.25	5	71	5	10	75

out side the forest block.

VOLUME CALCULATION TABLE

Photo/ Run No.	Age Class/ Forest Type No.	Base Balance Length (A ₀ -A)	Δpx.	Number of Dots.	Slope (%)	Area (Ha)	H _I	N _I	
3,4/VI	05	100	3138	0.25	8	50	2.33	8	316
	1			0.40	21	38	5.25	13	362
	2			0.50	27	30	6.75	16	436
	3				-	25	-	16	-
	4	overlap with 46. 41. 3 0.50							
	03			0.25	3	31	0.75	8	306
	5			0.55	18	29	4.50	9	450
	6			0.30	9	17	2.25	9	546
	7			0.20	32	50	8.00	8	352
	8			0.20	28	75	7.00	8	426
	9								
	04			0.40	7	17	1.75	13	522
	10			0.25	13	19	3.25	8	318
	11			0.25	18	20	4.50	8	232
	12			0.20	3	45	0.75	8	110
	13			0.25	5 $\frac{1}{2}$	-	1.40	8	190
	14			0.20	1 $\frac{1}{2}$	-	0.40	10	106
	15			0.50	6	-	1.50	16	286
	16			0.40	14 $\frac{1}{2}$	25	3.60	13	336
	17			0.50	34 $\frac{1}{2}$	45	8.60	16	450
	18			0.40	4	38	1.00	13	208
	19			0.25	5 $\frac{1}{2}$	34	1.40	8	210
	20			0.20	3	17	0.75	6	122
	21			0.50	107	-	26.75	16	415
	22								
	05			0.20	5	20	1.25	6	84
	23			0.50	6	38	1.50	16	376
	24			0.15	11	29	2.75	5	124
	25			0.65	178	-	44.50	21	510
	26			0.20	6	24	1.50	6	262
	27			0.25	3	60	0.75	8	272
	28			0.50	8	24	2.00	16	336
	29								
4,5,6/VI	04	93	3288	0.50	34	47	8.50	18	611
	1)								
	2)			0.15	12	19	3.00	15	66
	3			0.50	7	31	1.75	18	465
	4			0.30	23	-	4.75	16	248
	5			0.50	6	60	1.50	18	385
	6			0.30	21	45	5.25	16	327
	7								

VOLUME CALCULATION TABLE

Photo/ Run No.	Age Class/ Forest Type No.	Base Balance Length (A ₀ -A)	Apx.	Number of lots.	Slope (%)	Area (Ha)	H _I	N _I
03								
8			0.15	38	17	9.50	5	99
9			0.25	52	23	13.00	9	205
10	Bare Land		-	-	-	-	-	-
11			-	-	-	-	-	-
12			0.40	8	34	2.00	14	378
13			0.40	6	45	1.50	14	384
14			0.30	5	45	1.25	14	432
15			0.40	212	-	53.00	11	313
16			0.15	63	47	15.75	5	122
17			0.30	10	-	2.50	11	292
18			0.20	6	23	1.50	7	220
19			0.20	30	25	7.50	7	211
20			0.15	3	28	0.75	5	56
21			0.20	8	20	2.00	7	584
22			0.15	4	23	1.00	5	78
23			0.30	5	20	1.25	11	485
24			0.15	25	13	6.25	5	108
25			0.25	5	-	1.25	9	108
26			0.15	8	0	2.00	5	248
04								
27			0.25	12	23	3.00	9	256
5,6,7/VI	03	88	3288					
	1		0.30	52	46	13.00	11	354
	2		0.15	15	41	3.75	6	252
	3		0.10	28½	56	7.13	4	92
	4		0.30	14½	-	3.60	11	346
05								
5			0.43	8	18	2.00	16	320
6			-	-	-	-	-	-
7			0.35	23½	28	5.90	14	101
8			0.55	36	-	9.00	17	357
9			0.43	3	20	0.75	16	211
10			0.50	16	-	4.00	19	367
11			0.25	38	-	9.50	9	227
12			0.50	15	31	3.75	19	329
13			0.40	6½	41	1.60	15	276
13 a			0.40	38	-	9.50	15	324
14			0.43	14	25	3.50	16	89
14 a			0.43	16	25	4.00	16	100
15			0.50	10	28	2.50	19	78
16			0.43	2	28	0.50	16	68

VOLUME CALCULATION TABLE

Photo/ Run No.	Age Class/ Forest Type No.	Base Balance Length (A ₀ -A)	Δp_x .	Number of Dots.	Slope (%)	Area (Ha)	H _I	N _I
03	17		0.15	3	-	0.75	6	108
	18		0.18	58	-	14.50	7	184
	19		0.19	32	-	8.00	7	227
	20		0.35	17	-	4.25	13	238
	21		0.19	26	-	6.50	7	173
	22		0.15	4	17	1.00	6	109
	23		0.35	12	-	3.00	13	357
	24		-	-	-	-	-	-
	25		0.40	15½	-	3.90	15	390
	26		0.15	14	-	3.50	6	54
	27		0.19	28	-	7.00	7	205
	28		0.15	7	18	1.75	6	76
	29		0.25	13	-	3.25	9	184
	30		0.15	14	-	3.50	6	65
	31		0.25	17	-	4.25	9	97
	32		0.25	7½	-	1.90	9	206
	33		0.25	7½	20	1.90	9	177
	34		0.25	44	-	11.00	9	270
	35		0.25	8	-	2.00	9	87
	36		0.25	8	-	2.00	9	65
	37		0.15	33	-	8.25	6	108
	38		0.25	4	-	1.00	9	206
	39		0.35	3	-	0.75	13	281
	40		0.25	4	-	1.00	9	184

7,8/VI 03 1 - ,23 out side the forest block.

03	24	59	3538	0.20	3	-	0.75	8	93
	25			0.25	2	-	0.50	10	242
	26			0.20	6	-	1.50	8	84
	27			0.30	4	-	1.00	12	232
	28			0.20	5	-	1.25	8	65
	29			0.25	30	-	7.50	10	288
	30			0.15	3	-	0.75	6	56
	31			0.30	7½	-	1.90	12	372
	32			0.20	4	14	1.00	8	178
	33			0.30	36	14	9.00	12	310
	34			0.20	6	-	1.50	8	186
	35			0.30	6½	-	1.60	12	363
	36			0.20	5	30	1.25	8	174
	37			0.15	4	30	1.00	6	77

VOLUME CALCULATION TABLE

Photo/ Run No.	Age Class/ Forest Type No.	Base Length (A ₀ -A)	Balance $\Delta px.$	Number of Dots.	Slope (%)	Area (Ha)	H _I	N _I	
7,8,9/VI									
03	1	90	3173	0.15	2	20	0.50	5	203
	2			0.30	4	17	1.00	11	391
	3			0.30	7	33	1.75	11	336
	3 a			0.30	18	35	4.50	11	313
	4			0.15	5	34	1.25	5	87
	4 a			0.15	7	38	1.75	5	332
	5			0.15	29	-	7.25	5	290
	6			0.30	4	-	1.00	11	453
	7			0.20	35	20	8.75	7	275
	8			0.30	15	31	3.75	11	320
	9			0.20	10½	27	2.60	7	254
	10			0.15	2	27	0.50	5	278
	11			0.20	9	43	2.25	7	276
	12			0.15	4	19	1.00	5	84
	13			0.20	5	38	1.25	7	211
	14			0.30	9½	43	2.40	11	342
	15			0.30	15	-	3.75	11	372
	16			0.15	18	-	4.50	5	116
	17			0.30	9½	-	2.40	11	290
	18			0.15	4	13	1.00	5	117
	19			0.20	5	13	1.25	7	267
	20			0.20	3	11	0.75	7	244
	21			0.30	5½	-	1.40	11	546
	22			0.30	3	21	0.75	11	335
	23			0.20	4	13	1.00	7	246
	24			0.15	12	13	3.00	5	116
12-VII									
03	1	91.50	3088	0.35	2	25	0.50	12	625
	2)								
	3)								
	4)								
	5)								
	6)								
	7)								
	8)								
	9)								
	10			0.40	17	16	7.25	13	48
	11			0.40	11	20	2.75	13	192
	12)								
	13)								
	14)								

VOLUME CALCULATION TABLE

Photo/ Run No.	Age Class/ Forest Type No.	Base Balance Length (A ₀ -A)	Δpx.	Number of Dots,	Slope (%)	Area (Ha)	H _I	N _I
06								
15) Young stand		0.50	18	34	4.50	17	396
16			-	-	-	-	-	-
17			0.50	4	26	1.00	17	323
05								
18			0.35	7	..	1.75	12	607
19			0.15	5	16	1.25	15	74
20			0.45	21	-	5.25	15	193
21			0.25	16	-	4.00	18	92
22			0.15	7	26	1.75	15	531
23			0.15	21/2	26	0.60	15	95
24			0.15	50	-	12.50	15	92
25			0.40	8	25	2.00	13	246
26			0.55	5	17	1.25	18	260
27			0.55	4	39	1.00	18	277
28			0.50	140	17	35.00	17	251
29			0.13	25	17	6.25	15	93
30			0.70	17	-	4.25	23	322
31			0.47	10	-	2.50	16	286
32			-	-	-	-	-	-
33			0.40	10	-	2.50	13	239
34			0.60	3	-	0.75	20	175
35			0.30	6	10	1.50	10	92
36			0.30	3	25	0.75	18	147
37			0.15	11	17	2.75	15	74
38			0.20	5	26	1.25	18	184
06								
39			0.65	318	-	79.50	22	470
40			0.60	41/2	25	1.13	20	157
41			0.60	3	-	0.75	20	138
42			0.60	4	-	1.00	20	92
43			0.60	11	-	2.75	20	157
44			0.60	113	-	28.25	20	442
45			0.60	12	-	3.00	20	249
6-7/VIII	05	86	2991					
1			0.42	26	-	6.50	15	117
2			0.25	6	25	1.50	9	242
3			0.40	13	-	3.25	14	257
4			0.60	103	11	25.75	21	418
5			0.40	10	-	2.50	14	222
6			0.42	1	16	0.25	15	79
7			0.40	4	-	1.00	14	222
8			0.25	6	-	1.50	9	183
9			0.42	9	-	2.25	15	104
10			0.30	5	-	1.25	10	313
11			0.42	6	-	1.50	15	91

VOLUME CALCULATION TABLE

Photo/ Run No.	Age Class/ Forest Type No.	Base Length (A ₀ -A)	Balance Δpx.	Number of Dots.	Slope (%)	Area (Ha)	H _I	N _I	
06									
12			0.42	3	-	0.75	15	78	
13		Replaced to no. 39		Run 12	-	-	-	-	
14			0.40	3	-	0.75	14	248	
15			0.42	11	-	2.75	15	91	
16			0.50	3	-	0.75	17	156	
17			-	-	-	-	-	-	
18			0.40	7	1.75	14	235		
8-9/VIII 1 - 5 Young stand									
08/6		93	2789	0.50	7	-	1.75	15	406
7				0.40	3	-	0.75	12	135
8				0.45	5	-	1.25	13	285
9									
07/10 Young stand									
07/10			0.60	47	32	11.75	18	284	
11		-							
12		-							
13			0.50	15	-	3.75	15		
14									
15									
16									
17									
06/18 Young stand									
06/18			0.35	6	-	1.50	10	315	
19			0.70	12	-	3.00	21	436	
07/20 Young stand									
07/20			0.60	6	-	1.50	18	421	
21			0.57	3	-	0.75	17	225	
22			0.47	5	-	1.25	14	135	
23									
24									
05/25 Young stand									
05/25			0.30	5	55	1.25	9	596	
26			0.20	2	55	0.50	6	261	
27			0.35	4	63	1.00	10	240	
03/29 Young stand									
03/29			0.40	28	80	7.00	12	2044	
30			0.20	4	80	1.00	6	522	
14,15,16/VIII 05									
1		106	2754	0.52	17	-	4.25	14	586
2				0.45	3	-	0.75	12	355
3				0.60	117	-	29.25	16	432
4				0.35	15	-	3.75	9	324
5				0.45	29	-	7.25	12	407
6				0.15	-	-	-	-	-
7				0.60	40	-	10.00	16	463
8				0.30	11	-	2.75	8	324

PEKALONGAN BARAT

B.K.P.H. : BUMI JAWA

Page : 9

VOLUME CALCULATION TABLE

Photo/ Run No.	Age Class/ Forest Type No.	Base Length	Balance (A ₀ -A)	Δpx.	Number of Dots.	Slope (%)	Area (Ha)	H _I	N _I
15,16,17/VIII									
	1 - 13	Young stand							
	05/14			0.25	6	20	1.50	8	283
	15			0.40	6	35	1.50	12	333
	16			0.50	9	55	2.25	15	722
	17			0.44	4	20	1.00	13	157
	18			0.25	5	44	1.25	8	363
	19			0.40	7	36	3.75	12	474
	20			0.44	2	34	0.50	13	129
	21			0.55	35	-	8.75	17	494
	22			0.40	14	41	3.50	12	483
	23			0.44	9	55	2.25	13	161
	24			0.35	11	53	2.75	8	264
	25			0.44	1	72	0.25	13	202
11,12/VIII									
	06/ 1	92	2599	1.00	29	-	7.25	28	285
	2			0.40	10	21	2.50	11	147
	3			0.50	10	21	2.50	14	181
	4			1.05	19	-	4.75	29	242
	09/ 5			0.25	3	21	0.75	7	158
	6			0.50	11	15	2.75	14	69
	7			0.50	7	-	1.75	14	86
	8			0.50	4	-	1.00	14	86
	9			1.00	236	-	59.00	28	285
	10			1.00	5	-	1.25	28	260
	11			0.30	7	-	1.75	8	74
	12			0.50	5	-	1.25	14	200
	13			0.20	2	-	0.50	6	130
	14			0.20	184	-	46.00	6	69
	15			0.55	11	-	2.75	15	156
	16			0.50	2	-	0.50	14	130
	17			0.50	7	-	1.75	14	78
	18			1.05	104	-	26.00	29	225
	19			0.40	2	-	0.50	11	199
	20			0.20	11	-	2.75	6	43
	21			0.40	7	33	1.75	11	157
	22			0.50	11	17	2.75	14	122
	23			0.20	8	33	2.00	6	83
	24			0.70	9	-	2.25	20	138

VOLUME CALCULATION TABLE

Photo/ Run No.	Age Class/ Forest Type No.	Base Length (A ₀ -A)	Balance	Δ Px.	Number of Dots.	Slope (%)	Area (Ha)	H _I	N _I
11,12,13/VIII									
09/	1	96	2638	0.65	21	-	5.25	18	185
	2			0.80	48	-	12.00	22	285
06/	3			0.85	67	-	16.75	23	479
	4			0.20	3	24	0.75	5	43
	5			0.30	2	-	0.50	8	134
05/	6			0.80	21	-	5.25	22	227
	7			0.50	3	-	0.75	14	193
07/	8			0.80	25	-	6.25	22	210
	9			0.25	5	-	1.25	7	84
	10			1.20	7	70	1.75	32	280
	11	Young stand		-	-	-	5.00	-	-
07/	12			1.00	12	15	3.00	27	185
	13			0.85	3	-	0.75	232	227
	13 a			0.50	16	-	4.00	14	75
	14	Young stand		-	-	-	-	-	-
08/	15	0.80		0.80	7	-	1.75	22	160
	16			0.85	54	-	13.50	23	134
	17			0.80	15	-	3.75	22	160
	18			0.55	4	-	1.00	15	118
	19			0.50	4	60	1.00	14	92
	20			0.60	44	40	11.00	16	135
	21			0.60	6	-	1.50	16	135
	22			0.47	9	-	2.25	13	50
	23			0.50	15	15	3.75	14	151
	24			0.85	38	-	9.50	23	219
	25			0.55	12	35	3.00	15	116
	26			0.50	8	35	2.00	14	89
06/	27			0.45	22	60	5.50	12	246
03/	28			0.25	15	38	3.75	7	445
	29			-	-	-	-	-	-
	30			0.15	4	38	1.00	4	245
	31			0.15	3	50	0.75	4	250
	32			0.50	96	-	24.00	14	480
	33			0.15	5	15	1.25	4	118
	34	Young stand.							
	35	Young stand.							
	36	Young stand.							
	37	Young stand.							
	38	Young stand.							

PEKALONGAN BARAT

B.K.P.H. : BUMI JAWA

Page : 11

VOLUME CALCULATION TABLE

Photo/ Run No.	Age Class/ Forest Type No.	Base Balance Length ($A_0 - A$)	Δ px.	Number of Dots.	Slope (%)	Area (Ha)	H_I	N_I
	09/ 39		1.05	19	20	4.75	29	244
	40		0.80	11	-	2.75	22	210
	41		0.25	8	-	2.00	7	126
	42		0.80	7	-	1.75	22	210
	43		0.75	5	-	1.25	20	1.85
	44		0.15	23	-	5.75	4	76
	45		0.40	4	-	1.00	11	177
	46		0.70	30	45	7.50	19	320
	47		0.25	6	35	1.50	7	71
	48		0.40	11	25	2.75	11	113
	49		0.15	6	-	1.50	4	67
	50		0.70	12	30	3.00	19	166
	51		1.00	13	-	3.25	27	96
	52		0.15	4	48	1.00	4	162
	53		0.10	17	40	4.25	3	219
	54		0.30	5	-	1.25	8	160
	55		0.60	94	-	23.50	16	177
	56		0.30	9	-	2.25	8	219
	57		0.35	6	-	1.50	10	177
	58		0.30	18	30	4.50	8	210
	59		0.10	22	35	5.50	3	82
	60		0.60	11	35	2.75	16	227
	61		-	-	-	-	-	-
	62		0.75	13	-	3.25	20	118
	63		-	10	-	2.50	-	-
	64		0.85	30	-	7.50	23	135
	65		0.30	11	25	2.75	8	190
	66		0.25	24	-	6.00	7	84
	67		0.35	22	-	5.50	10	160
	68		0.95	9	-	2.25	26	193
	69		0.50	4	18	1.00	14	118
	70		0.30	2	35	0.50	8	227
	71		0.80	14	33	3.50	22	235
	72		1.05	37	-	9.25	29	284

VOLUME CALCULATION TABLE

Photo/ Run No.	Age Class/ Forest Type No.	Base Length (A ₀ -A)	Balance Δpx.	Number of Dots.	Slope (%)	Area (Ha)	H _I	N _I	
16,17,18/VIII									
03	1	83	2873	0.65	5	-	1.25	22	592
	2			0.20	5	-	1.25	7	177
	3			0.35	9	-	2.25	12	212
	4) Rwplaced		0.65	-	54	-	22	641
	5) to another parts		0.37	-	-	-	13	119
	6			0.38	5	-	1.25	13	106
	7			0.20	3	-	0.75	7	156
	8			0.30	21/2	-	0.60	10	206
	05/9			0.40	16	38	4.00	14	268
	10			0.48	5	38	1.25	17	123
	04/11			0.30	43	37	10.75	10	245
	12			0.49	18	37	4.50	17	214
	13			-	-	-	-	-	-
	14			0.40	10	38	2.50	14	237
	15			0.65	241	-	60.25	22	538
	16			0.39	21/2	-	0.60	13	64
	17			0.20	61/2	-	1.60	7	149
	18			0.33	14	17	3.50	11	149
	19			0.20	12	16	3.00	7	121

VOLUME CALCULATION TABLE

Photo/ Run No.	Age Class/ Forest Type No.	Base Length	Balance (A ₀ -A)	Δ px.	Number of dots.	Slope (%)	Area (Ha)	H _I	N _I
3-5/IX	03								
	1	81	3840	0.085	46	50	11.50	4	256
	2	81	3840	0.085	8	40	2.00	4	248
	3	81	3340	0.085	91	5	22.75	4	202
	4	81	3840	0.085	18	30	4.50	4	48
	5	81	3840	0.085	12,5	50	3.13	4	328
	6	81	3340	0.085	5	40	1.25	4	213
5-7/IX	03								
	1	80	3570	0.175	182	50	45.50	8	218
	2	80	3570	0.175	64	20	16.00	8	261
	3	80	3570	0.17	89	10	22.25	8	128
	4	80	3570	0.17	91	50	22.75	8	346
	5	80	3570	0.17	10	60	2.50	8	211
	6	80	3570	0.17	525	20	131.25	8	399
	7	80	3570	0.17	6	60	1.50	8	299
	8=	79	3570	0.17	95	5	23.75	8	324
	9	79	3570	0.17	2	-	0.50	-	-
	10	79	3570	0.17	6	40	1.25	8	51
	11	79	3570	0.17	18	35	4.50	8	200
7-9/IX	12	79	3570	0.17	-	-	-	-	-
	13	79	3570	0.17	10	20	2.50	8	254
	14	79	3570	0.17	23	25	5.75	8	215
	15	79	3570	0.17	23	15	5.75	8	436
	16	79	3570	0.17	156	5	39.00	8	391
	17	79	3570	0.17	31	20	7.75	8	241
		05							
	18	80	3570	0.35	33	20	8.25	16	481
	19	79	3570	0.32	8	50	2.0	14	98
	20	79	3570	0.30	126	40	31.50	13	174
	21	79	3570	0.35	6	10	1.50	16	141
	22	79	3570	0.33	20	15	5.00	15	95
	23	79	3570	0.33	7	30	1.75	15	211
9-11/IX	03								
	1	81	3090	0.2	48	50	12.0	8	368
	2	81	3090	0.2	7	10	1.75	8	213
	3	81	3090	0.2	10	40	2.50	8	260
	4	81	3090	0.2	3	15	0.75	8	215
	5	81	3090	0.2	335	20	83.75	8	433
	6	81	3090	0.2	6	10	1.50	8	176
	7	81	3090	0.2	3	10	0.75	8	118
	8	81	3090	0.2	19	10	4.75	8	353
	9	81	3090	0.2	3	5	0.75	8	37
10	81	3090	0.2	5	5	1.25	8	146	

VOLUME CALCULATION TABLE

Photo/ Run No.	Age Class/ Forest Type No.	Base Length	Balance ($A_0 - A$)	$\Delta px.$	Number of Dots.	Slope (%)	Area (Ha)	H_I	N_I
	11	81	3090	0.2	11	20	2.75	8	75
	12	81	3090	0.2	5	20	1.25	8	134
	13	81	3090	0.34	8	5	2.00	12	7
	14	81	3090	0.27	19	5	4.75	12	439
	15	81	3090	0.27	6	15	1.50	12	80
	16	81	3090	0.27	63	25	15.75	11	272
	17	81	3090	0.27	6	15	1.50	11	111
	18	86	3090	0.27	7	15	1.75	11	311
	19	86	3090	0.27	6	70	1.50	11	98
	20	86	3090	0.27	138	0	34.50	11	417
	21	86	3090	0.27	47	40	11.75	11	244
	22	86	3090	0.27	60	10	15.00	11	330
	05								
	23	81	3090	0.34	15	15	3.75	13	125
	24	86	3090	0.35	30	5	7.50	13	190
	25	86	3090	0.35	4	5	1.00	13	15
	26	86	3090	0.35	114	50	28.50	13	270
	03								
	27	86	3090	0.15	24	60	6.00	5	239
	28	86	3090	0.15	31	15	7.75	5	288
	29	86	3090	0.15	5	10	1.25	5	162
	30	86	3090	0.15	63	60	15.75	5	222
	31	86	3090	0.15	20	10	5.00	5	316
	32	86	3090	0.28	21	55	5.25	12	475
	33	89	3090	0.18	27	70	6.75	6	402
11-13/IX	05								
	34	89	2940	0.27	40	70	10.0	11	214
	35	89	2940	0.18	47	70	11.75	6	125
	36	89	2940	0.18	4	50	1.0	6	164
	37	89	2940	0.18	7	40	1.75	6	87
	38	89	2940	-	-	-	-	-	-
	39	89	2940	0.17	17	60	4.25	6	307
	40	89	2940	0.17	24	70	6.00	6	152
	41	89	2940	0.30	22	70	5.5	11	188
	42	89	2940	0.30	17	40	4.25	11	87
	43	89	2940	0.15	42	5	10.50	5	66
	44	84	2940	0.15	6	5	1.5	5	95
	45	84	2940	0.20	8	40	2.00	7	386
	46	91	2940	0.28	24	40	6.00	13	486
	47	91	2940	0.27	60	40	15.00	10	289
	48	91	2940	0.29	25	40	6.25	10	322

VOLUME CALCULATION TABLE

Photo/ Run No.	Age Class/ Forest Type No.	Base Length (A ₀ -A)	Balance Δpx.	Number of Dots.	Slope (%)	Area (Ha)	H _I	N _I	
13-15/IX	04 1	77	2890	0.31	205	10	51.25	12	377
	06 2	77	2890	0.45	50	50	12.50	17	173
	6 6	78	2890	0.42	26	60	6.50	15	181
	7 7	77	2890	0.44	35	60	8.75	16	219
	8 8	77	2890	0.40	30	60	7.50	15	86
	9 9	77	2890	0.42	60	50	15.00	15	256
	03 3	78	2890	0.14	138	40	34.50	5	431
	4 4	78	2890	-	1	60	0.25	-	-
	5 5	78	2890	-	9	60	2.25	-	-
	10 10	77	2890	0.15	10	30	2.50	6	230
	11 11	77	2890	0.15	20	30	25.00	6	332
	12 12	77	2890	0.15	52	20	13.00	6	333
	13 13	77	2890	0.15	9	20	2.25	6	266
	14 14	77	2890	-	39	-	9.75	-	-
	15 15	80	2890	0.26	6	25	2.25	9	286
	16 16	80	2890	0.26	25	25	6.25	9	235
	17 17	80	2890	0.26	69	25	17.25	9	295
	18 18	80	2890	0.26	11	25	2.75	9	252
04 20	88	2890	0.47	37	25	9.25	17	177	
15-17/IX	05 22	87	2890	0.41	218	60	54.50	14	150
	23 23	87	2890	0.40	93	25	23.25	13	236
	24 24	87	2890	0.44	13	15	3.25	15	132
	06 25	87	2890	0.45	25	40	6.25	15	317
	09 26	84	2890	0.47	27	50	6.75	16	319
	27 27	84	2890	0.47	32	50	8.00	16	319
	28 28	84	2890	0.47	46	60	11.50	16	247
	04 29	84	2890	0.20	21	60	5.25	7	190
	30 30	84	2890	0.20	21	60	5.25	7	48
	31 31	84	2890	0.22	11	70	2.75	8	259
	32 32	82	2890	0.22	8	80	2.00	8	115
	33 33	82	2890	0.22	9	80	2.25	8	105

PEKALONGAN BARAT

B.K.P.H. : BUMI JAWA

Page : 16

VOLUME CALCULATION TABLE

Photo/ Run No.	Age Class/ Forest Type No.	Base Length (A ₀ -A)	Balance Δpx.	Number of Dots.	Slope (%)	Area (Ha)	H _I	N _I	
	34	82	2890	0.20	55	70	13.75	7	458
	35	82	2890	0.29	16	60	4.00	10	152
	36	82	2890	0.29	40	60	10.00	10	513
	37	82	2890	0.29	52	40	13.00	10	457
	39	82	2890	0.30	94	30	23.50	11	375
17-19/IX	06								
	1	80	2840	0.60	441	50	110.25	21	327
	2	80	2840	0.55	-	-	-	-	-
	3	80	2840	0.60	30	20	7.50	21	139
	4	80	2840	0.50	22	40	5.50	18	56
	5	80	2840	0.45	25	40	6.25	16	56
	6	76	2840	0.45	15	5	3.75	17	157
	7	76	2840	0.45	28	70	7.00	17	511
	8	76	2840	0.35	81	75	20.25	13	327
	9	76	2840	0.60	103	20	25.75	22	299
	10	76	2840	0.27	7	30	1.75	10	306
	04								
	11	76	2840	0.40	45	50	1.13	15	105
	03								
	12	76	2840	0.40	13	50	3.25	15	164
	13	76	2840	0.60	78	5	19.50	22	439
	14	76	2840	0.58	33	20	8.25	21	373
	15	76	2840	0.58	65	20	1.63	21	96
	16	76	2840	0.58	29	40	7.25	21	34
	17	80	2840	0.60	9	35	2.25	21	111
	18	80	2840	0.60	14	35	3.50	21	222
	19	78	2840	0.60	105	30	26.25	22	142
	20	78	2840	0.65	3	30	0.75	23	98
	07								
	21	78	2840	0.65	31	30	7.75	23	218
	22	78	2840	0.65	12	30	3.00	23	393
	23	78	2840	0.65	10	20	2.50	23	32
	05								
	24	87	2590	0.60	148	65	37.00	18	137
19-21/IX	06								
	25	86	2840	0.62	351	10	87.75	20	505
	07								
	26	86	2840	0.62	77	35	19.25	20	421
	03								
	27	86	2840	0.70	70	15	17.50	23	370

VOLUME CALCULATION TABLE

Photo/ Run No.	Age Class/ Forest Type No.	Base Length (A ₀ -A)	Balance Δ PX.	Number of Dots.	Slope (%)	Area (Ha)	H _I	N _I	
	05								
	23	87	2840	0.50	514	0	128.50	16	418
	22	87	2840	0.53	175	60	4.38	19	207
	30	89	2840	0.63	60	60	15.00	19	390
	31	89	2840	0.63	26	40	6.50	19	462
	32	89	2640	0.63	21	20	5.25	19	117
	33	87	2790	0.63	34	25	8.50	20	615
	07								
	34	87	2790	0.63		15		25	148
	35	78	2790	0.70	71	60	17.75	25	420
	36	78	2790	0.70	4	70	1.00	22	179
	37	78	2790	0.62	12	40	3.00	22	158
	38	78	2790	0.62	14	50	3.50	22	58
	39	78	2790	0.62	9	50	2.25	22	292
	40	78	2790	0.62	38	50	9.50	22	468
	41	78	2790	0.62	18	50	4.50	22	70
	42	78	2790	0.62	11	50	2.75	22	327
	03								
	43	78	2790	0.35	33	40	8.25	12	361
	44	78	2790	0.35	9	30	2.25	12	44
	45	78	2790	0.35	16	60	4.00	12	439
	46	78	2790	0.35	6	40	1.50	12	68
	47	78	2790	0.35	12	60	3.00	12	476
	48	95	2590	0.56	50	40	12.50	15	270
	49	95	2590	0.58	18	30	4.50	15	360
	50	95	2590	0.58	89	20	22.25	15	235
21-23/IX	09								
	1	84	3050	0.65	10	45	2.50	23	299
	2	84	3050	0.80	30	45	7.50	29	102
	08								
	3	84	3050	0.65	14	45	3.50	23	401
	4	84	3050	0.78	7	45	1.75	28	425
	5	84	3050	0.78	5	40	1.25	28	39
	6	84	3050	0.78	21	40	5.25	28	275
	7	84	3050	0.78	165	45	4.13	28	291
	8	84	3050	0.78	3	45	0.75	28	260
	9	84	3050	0.78	75	40	1.25	28	206
	10	84	3050	0.78	7	40	1.75	28	173
	06								
	12	86	2890	0.57	6	60	1.50	19	284
	13	86	2890	0.57	5	55	1.25	19	188
	14	86	2890	0.57	137	55	34.25	19	310

VOLUME CALCULATION TABLE

Photo/ Run No.	Age Class/ Forest Type No.	Base Length (A ₀ -A)	Balance $\Delta px.$	Number of Dots.	Slope (%)	Area (Ha)	H _I	N _I	
	07								
	15	86	2890	0.57	89	14	22.25	19	166
	16	86	2890	0.60	56	17	14.00	20	160
	17	86	2890	0.60	9	17	2.25	20	44
	18	86	2890	0.60	6	17	1.50	20	22
	19	83	2890	0.60	5	17	1.25	21	44
	06								
	20	83	2890	0.60	27	14	6.75	21	131
	21	83	2890	0.59	57	14	14.25	20	44
	22	83	2890	0.59	8	15	2.00	20	116
	23	83	2890	0.59	30	15	7.50	20	275
	07								
	24	83	2890	0.65	15.5	15	3.88	22	224
	25	83	2890	0.65	27.5	15	6.88	22	253
	26	83	2890	0.63	12.5	20	3.13	22	73
	27	83	2890	0.65	6	20	1.50	22	15
	05								
	28	83	2890	0.57	5	40	1.25	20	92
	29	83	2890	0.57	156	38	39.00	20	191
	30	83	2890	0.75	2	50	0.50	26	80
23-25/IX	08								
	1	88	3140	0.80	6	30	1.50	29	90
	2	88	3140	0.80	7	60	1.75	29	232
	3	88	3140	0.80	10	60	2.50	29	217
	06								
	4	88	3140	0.60	115	10	28.75	21	247
	6	88	3140	0.48	15	60	3.75	17	23
	7	88	3140	0.40	7	40	1.75	14	43
	8	88	3140	0.60	15	60	3.75	21	240
	08								
	9	88	3140	0.60	11	60	2.75	21	116
	10	88	3140	0.60	17	80	4.38	21	212
	11	88	3140	0.46	21	70	5.25	16	97
	12	90	3140	0.46	4	70	1.00	16	73
	14	90	3140	0.56	57	40	14.25	19	207
	15	90	3140	0.60	21	50	5.25	21	126
	16	90	3140	0.57	19	50	4.75	19	52
	17	90	3140	0.57	12	50	3.00	19	104
	19	90	3140	0.57	7	30	1.75	19	194
	21	90	3140	0.48	12	40	3.00	17	136
	22	90	3140	0.48	9	60	2.25	17	108

VOLUME CALCULATION TABLE

Photo/ Run No.	Age Class/ Forest Type No.	Base Length (A ₀ -A)	Balance Length (A ₀ -A)	Δpx.	Number of Dots.	Slope (%)	Area (Ha)	H _I	N _I
	06								
	23	90	3140	0.52	65	15	1.63	18	128
	24	90	3190	0.47	136.5	10	34.13	17	240
	03								
	27	87	3290	0.30	32	30	8.00	11	361
	28	87	3190	0.37	19	30	4.75	13	444
	08								
	29	87	3190	0.55	16	30	4.00	20	160
	30	87	3190	-	3	-	0.75	-	-
	03								
	31	84	3190	0.33	70	25	17.50	12	384
	32	84	3190	0.33	5	60	1.25	12	85
	08								
	33	84	3190	0.30	6	80	1.50	11	289
	34	84	3190	0.60	32	50	9.00	22	97
	35	84	3190	0.60	22	60	5.50	22	93
	36	84	3190	0.60	17	50	4.25	22	104
	40	84	3190	0.49	15	60	4.00	18	147
	04								
	41	84	3190	0.40	25	60	6.25	15	387
	42	84	3190	0.35	5	50	1.25	13	82
	43	84	3190	0.33	11	50	2.75	12	171
	44	84	3190	0.33	154	35	38.50	12	366
	45	84	3190	0.40	36	40	9.00	15	386
25-27/IX	05								
	1	93	3190	0.42	308	30	77.00	14	492
	3	93	3190	0.42	6	30	1.50	14	492
	4	93	3190	0.42	6	30	1.50	14	492
30-31/X	05								
	1	44	2710	0.226	29	10	7.25	14	258
	04								
	2	44	2710	0.243	91	50	22.75	15	380
	3	44	2710	0.243	5	50	1.25	15	62
	4	44	2710	0.243	27	40	6.75	15	202
	5	44	2710	0.30	142	30	35.50	19	261
	01/02								
	6	44	2710	0.15	30	50	7.50	9	272
	7	44	2710	0.15	30	50	7.50	9	272
	8	44	2710	0.15	5	40	1.25	9	389
	9	44	2710	0.15	5	50	1.25	9	39
25-29/X	03								
	1	41	2690	0.06	85	10	2.13	4	390
	2	41	2690	0.06	32	20	3.0	4	198
	3	41	2690	-	75	-	1.83	-	-
	4	41	2690	0.06	21	15	0.25	4	354
	5	41	2690	-	17	-	4.25	-	-
	6	41	2690	0.06	52	15	13.00	4	259

PEKALONGAN BARAT

B.K.P.H. : BUMI JAJA

Page : 20

VOLUME CALCULATION TABLE

Photo/ Run No.	Age Class/ Forest Type No.	Base Length	Balance ($A_0 - A$)	ΔP_x .	Number of Dots.	Slope (%)	Area (Ha)	H_I	N_I
	7	41	2690	0.06	35	50	8.75	4	387
	05 3) 9) 10)	41	2690	0.23	96	55	24.00	15	166
	05 11	41	2690	0.10	6	0	1.50	7	125
	12	41	2690	-	-	-	-	-	-
	13	41	2690	0.11	44	0	11.00	7	242
	14	41	2690	0.28	21	5	5.50	18	55
26-27/X	05 1	44	2440	0.25	12	80	3.00	14	107
	2	44	2440	0.25	52	15	13.00	14	270
	3	44	2440	0.25	42	60	10.50	14	58
	4	44	2440	0.25	16	20	4.00	14	196
	5	44	2440	0.25	5	10	1.25	14	101
	6	44	2440	-	-	-	-	-	-
	7	44	2440	0.25	47	15	11.75	14	220
	8	44	2440	-	-	-	-	-	-
	9	44	2440	-	-	-	-	-	-
	10	44	2440	0.12	25	10	6.25	7	327
	01/02 11	44	2440	-	-	-	8.00	-	-
39-40/X	04 1	34	3710	0.17	16	10	40	18	159
	2	34	3710	0.135	17	15	4.25	20	215
	3	34	3710	0.17	38 $\frac{1}{2}$	10	9.63	18	291
	4	34	3710	0.17	2	40	0.5	18	205
	5	34	3710	0.17	10	40	2.5	18	230
	6	34	3710	0.17	10	40	2.5	18	230
	7	34	3710	0.16	4	30	1.0	17	143
	8	34	3710	0.14	9	40	2.25	15	94
34-35/X	04 1	109	2810	0.38	10	70	2.50	10	351
	2	109	2810	0.38	12	20	3.00	10	181
	3	109	2810	0.38	16	40	4.00	10	298
	05 4	109	2810	0.41	7	80	1.75	11	213
	5	109	2810	0.41	19	70	4.75	11	372

PEKALONGAN BARAT

B.K.P.H. : EUMI JAWA

Page : 21

VOLUME CALCULATION TABLE

Photo/ Run No.	Age Class/ Forest Type No.	Base Length	Balance (A ₀ -A)	Δpx.	Number of Dots.	Slope (%)	Area (Ha)	H _I	N _I
	04								
	6	109	2810	0.38	6	50	1.50	10	210
	7	106	2810	0.38	55	20	13.75	10	232
32-34/X	05								
	9	106	2810	0.46	14	40	3.50	12	107
	10	106	2810	0.46	18	30	4.50	12	64
	11	107	2810	0.45	18	10	4.50	12	216
	12	107	2810	0.46	4	15	1.00	12	39
	04								
	13	107	2810	0.30	19	0	4.75	8	282
	05								
	14	106	2810	0.42	68	30	17.0	11	104
	15	106	2810	0.46	2	20	0.5	12	40
	16	106	2810	0.46	5	15	1.25	12	90
	17	106	2810	0.46	16	40	4.00	12	167
22-23/X	04								
	1	33	2790	0.18	13	30	3.25	17	13
	2	33	2790	0.24	138	30	34.50	23	235
	3	33	2790	0.24	138	30	34.50	23	300
	05								
	4	33	2790	0.28	175	30	43.75	27	254
	5	33	2790	0.28	488	15	122.00	27	209
	6	33	2790	0.28	6	40	1.50	27	162
	7	33	2790	0.28	19	15	4.75	27	88
	8	33	2790	0.28	32	15	8.13	27	114
	9	33	2790	0.24	9	20	2.25	27	38
14-15/X	06								
	1	37	2940	0.24	19	30	4.75	19	97
	2	37	2940	0.24	10	20	2.50	19	220
	3	37	2940	0.24	10	20	2.50	19	152
	4	37	2940	0.24	11	15	2.75	19	188
	5	37	2940	0.24	11	15	2.75	19	230
	6	37	2940	0.24	10	10	1.9	161	
	7	37	2940	0.20	11	20	2.75	16	147
	8	37	2940	0.22	7	20	1.75	17	178
	9	37	2940	0.20	2	25	0.50	16	138
	10	37	2940	0.23	8	20	2.00	17	42
	11	32	2940	0.20	2	20	0.50	16	178
	12	37	2940	0.23	5	20	1.25	17	63
	13	37	2990	0.16	7	30	1.75	14	473
	14	35	3040	0.16	3	20	0.75	14	273

VOLUME CALCULATION TABLE

Photo/ Run No.	Age Class/ Forest Type No.	Base Length	Balance (A ₀ -A)	Δpx.	Number of Dots.	Slope (%)	Area (Ha)	H _I	N _I
	15	35	3040	0.24	13	20	3.25	21	168
	16	35	3040	0.24	11	25	2.75	21	111
	17	35	3040	0.20	-	-	-	-	-
	13	35	3040	0.20	1	15	0.25	17	166
	19	35	3040	0.20	3	15	0.75	17	78
	20	35	3040	0.20	4	15	1.00	17	156
	21	35	3040	0.20	12	15	3.00	17	177
11,12,13/XA	05								
	1	80	2559	0.37	10	-	2.50	12	152
	2			0.44	7	-	1.75	14	224
	3			0.19	10	-	2.50	6	89
	4			0.28	3	-	0.75	9	143
	5			0.50	21	-	5.25	16	161
	6			0.43	3	-	0.75	14	63
	7			0.50	28	15	7.00	16	108
	8			0.50	11	15	2.75	16	163
	9			0.50	16	15	4.00	16	226
	10			0.14	2	16	0.50	4	36
	11			0.45	5	16	1.25	13	45
5,6,7/X ^A	1 - 13	Young Stand							
	06	14	99	2859	12	-	3.00	14	50
		15		0.45	9	-	2.25	13	107
		16		0.49	12	-	3.00	14	172
		17		0.44	11	-	2.75	13	158
		13		0.36	9	-	2.25	10	43
		19		0.59	20	-	5.00	17	200
		20		0.58	11	-	2.75	17	329
		21		0.60	22	-	5.50	17	215
		22		0.45	17	-	4.25	13	100
		23		0.49	11	-	2.75	14	265
		24	Young Stand						
		25		0.36	8½	-	2.13	10	150
		26		0.51	11	-	2.75	14	158
		27		0.44	21	-	5.25	13	165
		28		0.35	20	-	5.00	10	115
	05	29		0.41	21	-	5.25	12	308
		30		0.36	6	-	1.50	10	186
		31		0.34	15	24	3.75	10	110
		32		0.59	12	-	3.00	17	222
		33		0.40	2	-	0.50	12	165

VOLUME CALCULATION TABLE

Photo/ Run No.	Age Class/ Forest Type No.	Base Balance Length (A ₀ -A)	Δpx.	Number of Dots.	Slope (%)	Area (Ha)	H _I	N _I	
	34			-	-	-	-	-	
06/	35		0.50	5	-	1.25	14	179	
	36		0.31	7	-	1.75	9	115	
	37		0.35	6	-	1.50	10	158	
	38		-	-	-	-	-	-	
	39		0.50	18	-	4.50	14	172	
	40		0.35	14	-	3.50	10	79	
	41		0.41	5	-	1.25	12	122	
08/	42		0.40	22	-	5.50	12	143	
	43		0.45	51	-	12.75	13	222	
	44		0.30	20	-	5.00	9	136	
	45		0.50	7	-	1.75	14	236	
	46		0.30	8	-	2.00	9	143	
	47		0.40	13	-	3.25	12	193	
	48		-	-	-	-	-	-	
	49		0.15	30	-	7.50	4	72	
	50		0.40	8	-	2.00	12	172	
06/	51		0.40	20	14	5.00	12	65	
	52		0.50	12	14	3.00	14	174	
	53		0.35	16	15	4.00	10	101	
	54		0.55	14	15	3.50	16	217	
	55		0.50	16	15	4.00	14	130	
	56		0.40	4	15	1.00	12	51	
	57		0.70	6	16	1.50	20	166	
	58		0.35	8	15	2.00	10	116	
7,8,9/X ^A	06/ 1	94	2809	0.59	28	-	7.00	18	148
	2			0.61	10	-	2.50	18	245
	3			0.60	47	17	11.75	18	120
	4			0.64	73	17	18.25	19	277
	5			0.29	4	15	1.00	9	45
	6			0.60	21	15	0.60	18	141
07/	7			0.74	41	14	10.25	22	156
	8			0.71	13	14	3.25	21	119
	9			0.61	13	14	3.25	18	89
	10			0.75	22	30	5.50	22	119
08/11	11			0.70	9	17	2.25	21	45
	12			0.89	21	17	5.25	27	202
	13			0.78	123	-	30.75	24	186
	14			0.79	67	✓	16.75	24	178
	15			0.76	44	10	11.00	22	111
	16			0.81	21	23	5.25	24	96
	17			0.81	10	15	2.50	24	141

PEKALONGAN BARAT

B.K.P.H. HUKI JAJA

Page : 2

VOLUME CALCULATION TABLE

Photo/ Run No.	Age Class/ Forest Type No.	Base Length (A ₀ -A)	Balance Δpx.	Number of Dots.	Slope (%)	Area (Ha)	H _I	N _I
	06/18		0.69	21	-	5.25	21	111
	19		0.91	18	33	4.50	27	157
	20		0.56	24	27	6.00	16	123
	21		0.60	61	26	1.60	18	177
	22		0.41	30	26	7.50	12	131
	23	Replaced to No.44	X A	-	-	-	-	-
	24		0.64	7	26	1.75	19	108
	25		0.81	10	24	2.50	24	229
	26		-	-	-	-	-	-
	27		0.81	3	27	0.75	24	123
9,10,11/X A	07/ 1	83	2559	8	17	2.00	8	46
	2		0.60	8	-	2.00	18	277
	3		0.45	8½	-	2.13	14	107
	4		0.50	9	-	2.25	15	206
	5		0.60	14	27	3.50	18	177
	6		0.55	6	17	1.50	17	146
	05/ 7		0.55	58	17	14.50	17	401
	8		0.15	2	17	0.50	5	55
	9		0.15	2	20	0.50	5	55
	10		0.50	9	-	2.25	15	288
	11		0.50	111	27	27.75	15	195
	12		0.50	9	27	2.25	15	195
	13		0.30	6	27	1.50	9	93
	14		0.50	5	47	1.25	15	145
	15		0.25	8	27	2.00	8	65
	16		0.45	28	28	7.00	14	214
	17		0.25	27	27	6.75	8	177
	18		0.50	9	39	2.25	15	224
	19		0.50	14	30	3.50	15	253
	20		0.30	11	-	2.75	9	54
	21		0.35	7	-	1.75	11	143
	22		0.30	8	25	2.00	9	65
	23		0.30	3	17	0.75	9	45
	24		0.30	5	20	1.25	9	56
	25		0.50	2½	20	0.60	15	158
	26		0.40	2½	20	0.60	12	167
	27		0.35	10	19	2.50	11	46

VOLUME CALCULATION TABLE

Photo/ Run No.	Age Class/ Forest Type No.	Base Balance Length (A ₀ -A)	Δpx.	Number of Dots.	Slope (%)	Area (Ha)	H _I	N _I
06/	29		0.45	5	15	1.25	14	155
	29		0.60	139	24	34.75	18	344
	30		0.20	19	24	4.75	6	56
	31		0.45	9 ¹ / ₂	24	2.40	14	149
	32		0.20	2 ¹ / ₂	24	0.60	6	56
	33		0.45	14	24	4.50	14	195
	34		0.45	6	24	1.50	14	149
	35		0.45	2	24	0.50	14	158
08/	36		0.15	3	20	0.75	5	46
	37		0.60	5 ¹ / ₂	20	1.40	18	138
	38		0.15	10	20	2.50	5	55
	39		0.60	18	20	4.50	20	138
06/	40		0.45	13	17	3.25	14	264
	41		0.30	8	-	2.00	9	125
	42		0.45	7	17	1.75	14	157
	43		0.30	14	20	3.50	9	55
	44		0.55	27	27	6.75	17	214

VOLUME CALCULATION TABLE

Photo/ Run No.	Age Class/ Forest Type No.	Base Length (A ₀ -A)	Balance Δpx.	Number of Dots.	Slope (%)	Area (Ha)	H _I	N _I	
3,4,5,/XI	06/ 1	88	3100	0.20	34	-	8.50	7	121
	2			0.35	7	-	1.75	12	377
	3			0.55	5	-	1.25	19	255
	4			0.65	347	-	86.75	23	530
	5			0.50	1½	-	0.40	18	170
	6			0.50	4	30	1.00	18	278
	7			0.45	9	36	2.25	16	309
	8			0.45	5	51	1.25	16	308
	9			0.60	6	50	1.50	21	378
	10			0.30	2	50	0.50	11	42
	11			0.65	8½	-	2.13	23	170
	12			0.65	4	-	1.00	23	195
	13			0.40	3	36	0.75	14	77
	14			0.55	7½	35	1.90	19	181
	15			0.40	3	-	0.75	14	61
	16			0.50	3	41	0.75	18	199
	17			0.40	14	56	3.50	14	102
	18			0.60	3	-	0.75	21	243
	19			0.65	226	-	56.50	23	572
	19a			0.60	4	42	1.00	21	278
	20			0.25	10	59	2.50	19	60
	21			0.45	23	50	5.75	16	322
	22			0.70	69	-	17.25	24	511
	23			0.50	6	51	1.50	18	294
	24			0.25	13	46	3.25	19	81
	25			0.40	3	65	0.75	14	366
	26								
	05/ 26			0.35	6	51	1.50	12	252
	27			0.45	23	28	5.75	16	253
	28			0.50	18	36	4.50	18	400
	29			0.43	3	63	0.75	15	237
	30			0.40	12	35	3.00	21	348
	31			0.40	12	65	3.00	14	271
	32			0.43	12	32	3.00	15	494
	03/ 33			0.35	13	55	3.25	12	526
	34			0.40	46	-	11.50	15	499
	35			0.35	7½	45	1.90	12	292
	36			-	-	-	-	-	-

VOLUME CALCULATION TABLE

Photo/ Run No.	Age Class/ Forest Type No.	Base Balance Length (A ₀ -A)	Δpx.	Number of Dots.	Slope (%)	Area (Ha)	H _I	N _I		
	37		0.15	5½	75	1.40	15	180		
	38		0.30	3½	63	0.90	11	649		
	39		0.30	12	51	3.00	11	267		
	40		0.40	9	-	2.25	14	499		
04/	41		0.60	3	60	0.75	21	362		
	42		0.50	6	65	1.50	18	159		
	43		0.50	11	21	2.75	18	548		
	44		-	36	-	9.00	18	528		
	45		0.45	19	46	4.75	16	177		
	46		0.50	8	15	2.00	18	342		
	47		0.20	5	15	1.25	17	442		
4,5,6/XI	05/ 33		0.35	13	55	3.25	12	526		
	34		0.40	46	-	11.50	15	499		
	35		0.35	7½	45	1.90	12	292		
	36		-	-	-	-	-	-		
	37		0.15	5½	75	1.40	15	180		
	38		0.30	3½	63	0.90	11	649		
	39		0.30	12	57	3.00	11	267		
	40		0.40	9	-	2.25	14	499		
04/	41		0.60	3	60	0.75	21	362		
	42		0.50	6	65	1.50	18	159		
	43		0.50	11	21	2.75	18	548		
	44		-	36	-	9.00	18	528		
	45		0.45	19	46	4.75	16	177		
	46		0.50	8	15	2.00	18	342		
	47		0.20	5	15	1.25	17	442		
4.5.6/XI	05	1	89	3050	0.55	5	60	1.25	18	110
		2			0.50	6	40	1.50	17	461
		3			0.50	4	-	1.00	17	452
		4			0.55	5	-	1.25	18	213
		5			0.58	8	45	2.00	19	50
		6			0.65	4	51	1.00	22	289
		6a			0.65	51	-	12.75	22	578
		7			0.60	10	-	2.50	20	176
		8			0.65	4	15	1.00	22	213

VOLUME CALCULATION TABLE

Photo/ Run No.	Age Class/ Forest Type No.	Base Length (A ₀ -A)	Balance	Δpx.	Number of Dots.	Slope (%)	Area (Ha)	H _I	N _I
	8a			0.65	2½	27	0.60	22	248
	9 } 10 } 11 }	Young Stand							
	12			0.80	24	20	6.00	27	346
	13			0.70	34	20	6.50	24	256
	14			0.95	6	20	1.50	32	359
	15			0.95	17	34	4.25	32	333
	16			0.80	17	40	4.25	27	285
	17			0.80	8	54	2.00	27	220
	18			0.80	288	-	72.00	27	515
	19			0.90	6	23	1.50	31	298
5,6,7/XI	06	1	87 2800	0.60	16	20	4.00	19	250
		2		0.60	179	-	44.75	19	478
	04	3		0.50	7	-	1.75	16	269
		4		0.65	36	-	9.00	21	642
		5		0.50	4	45	1.00	16	217
		6		0.70	8	-	2.00	22	433
		7		0.65	7	37	1.75	21	395
		8		0.65	20	55	5.00	21	255
		9		0.47	18	53	4.50	15	158
		10		0.50	9	45	2.25	16	401
		11		0.50	3	-	0.75	16	373
6,7,8/XI	03	1	91 2750		6	60	1.50	18	271
		2			11	20	2.75	20	678
		3			43	55	10.75	11	464
		4			9	53	2.25	16	54
	06	5			-	-	-	-	-
		6			61	-	15.25	22	410
		7			-	-	-	-	-
		8			7	38	1.75	22	331
		9			5	-	1.25	15	232
		10			29	-	7.25	18	294
		11			19	60	4.75	25	541
		12			23	90	5.75	22	391
		13			7	-	1.75	18	247
	05	14			25	-	6.25	25	503
		15			12½	35	3.13	15	213

VOLUME CALCULATION TABLE

Photo/ Run No.	Age Class/ Forest Type No.	Base Length (A ₀ -A)	Balance Δpx.	Number of dots.	Slope (%)	Area (Ha)	H _I	N _I		
7,8,9/XI	05	1	90	2700	0.65	5½	34	1.40	19	170
		2			0.75	8	32	2.00	22	391
		3			0.74	20½	29	2.60	22	440
		4			0.55	3	-	0.75	16	353
		5			0.35	5	80	1.25	10	240
		6			0.60	11	80	2.75	18	417
		7			0.45	7½	78	1.90	13	308
		8			0.50	12	45	3.00	15	417
		9			0.60	2	45	0.50	18	714
		10			0.35	5	48	1.25	10	337
		11			0.50	3	39	0.75	15	364
		12			0.50	3	35	0.75	15	442
		13			0.55	8	27	2.00	16	450
		14			0.30	1	33	0.25	9	919
		15			0.60	63	-	15.75	18	851
		16			0.30	42	68	10.50	9	652
		17			0.20	10	40	2.50	6	423
		18			0.30	14	35	3.50	9	476
		19			0.34	4	35	1.00	10	834
06/		20			0.59	2	55	0.50	18	568
		21			0.59	43	-	10.75	18	658
		22			0.48	11	47	2.75	15	562
		23			0.60	15	-	3.75	18	481
		24			0.61	14	-	3.50	18	513
05/		25			0.48	3	30	0.75	15	67
		26			-	-	-	-	-	-
		27			0.49	26	37	6.50	15	520
		28			0.21	3	37	0.75	6	86
		29			0.51	42	38	10.50	15	676
		30			0.50	23	38	5.75	15	849
04/		31			0.49	16	73	4.00	15	698
		32			0.60	10	70	2.50	18	457
05/		33			0.50	9	33	2.25	15	697
		34			0.50	24	34	6.00	15	527
		35			0.60	19	33	4.75	10	570
		36			0.55	5	33	1.25	17	714
		37			0.55	35	33	0.75	17	501
		38			0.55	20	32	5.00	17	770
		39			0.55	4	57	1.00	17	885
		40			0.35	11½	50	2.90	10	183
		41			0.35	7	34	1.75	10	493
		42			0.50	12	30	3.00	15	963

VOLUME CALCULATION TABLE

Photo/ Run No.	Age Class/ Forest Type No.	Base Length (A ₀ -A)	Balance Δpx.	Number of Dots.	Slope (%)	Area (Ha)	H _I	N _I		
3,4/XII	05/	99	3288	0.20	38	61	9.50	7	68	
				0.30	14	53	3.50	10	122	
				0.45	4	53	1.00	15	225	
				0.35	4	24	1.00	11	24	
				0.20	2	25	0.50	7	178	
				0.30	6	30	1.50	10	57	
				0.30	7	61	1.75	10	110	
				0.65	34	33	8.50	21	166	
				0.40	6	46	1.50	13	55	
				0.45	17	52	4.25	15	115	
				12 - 29 Replaced to another part						
05/	30			0.20	3	-	0.75	7	32	
				0.60	68	-	17.00	20	168	
				0.50	8	52	2.00	17	45	
				0.50	6	-	1.50	17	32	
				0.50	5	21	1.25	17	88	
				0.60	19	-	4.75	20	103	
				-	-	-	-	-	-	
				0.50	8	41	2.00	17	42	
				0.55	11	42	2.75	18	24	
				0.45	5	37	1.25	15	82	
05/	40			0.60	30	19	7.50	20	166	
4,5/XII	06/	90	3338	0.60	47	16	11.75	22	233	
				0.25	3	21	0.75	19	37	
	03/				0.25	9	25	2.25	9	157
					0.30	11	-	2.75	11	289
					0.25	25	21	6.25	9	96
					0.25	14½	27	3.60	9	257
					0.25	8	-	2.00	9	257
					0.20	14	14	3.50	7	48
					0.25	1½	10	0.40	9	252
					0.60	10	10	2.50	21	221
0.25	4	-	1.00	9	326					
11 - 17 Replaced to no. 33 - 40 XI - 4										
03/	18	"	to no. 45	XI - 4.						
					0.60	7	-	1.75	20	110
					0.60	20	-	5.00	20	194
					0.55	5½	-	1.40	19	150
					0.50	6	-	1.50	17	173
					0.45	7	-	1.75	15	121

VOLUME CALCULATION TABLE

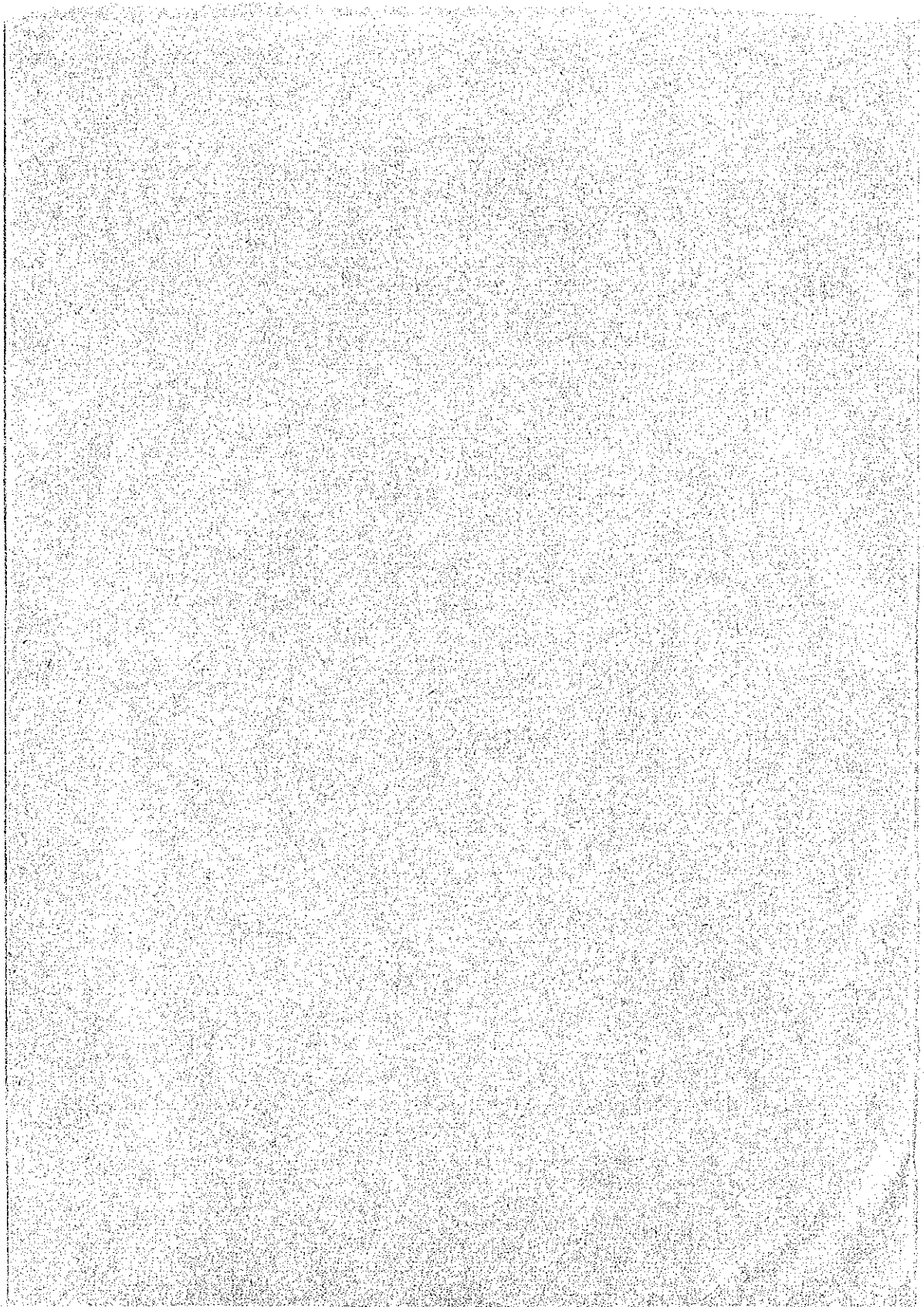
Photo/ Run No.	Age Class/ Forest Type No.	Base Balance Length (A ₀ -A) Δpx.	Number of Dots.	Slope (%)	Area (Ha)	H _I	N _I			
	24	0.40	17	21	4.25	14	198			
	25a	0.50	18	-	4.50	17	110			
	25	0.40	11	50	2.75	14	24			
	26	0.45	11	-	2.75	15	163			
	27	0.50	10½	50	2.60	17	30			
	28	0.40	19	28	4.75	14	142			
	29	0.40	5	-	1.25	14	236			
	30	0.40	12	-	3.00	14	226			
	31	0.35	4	-	1.00	12	184			
	32	0.30	6	40	1.50	10	92			
	33	0.30	4	35	1.00	10	150			
	34	0.25	9	34	2.25	9	33			
	35	0.30	6	28	1.50	10	71			
	36	0.30	3	22	0.75	10	112			
	37	0.60	4	19	1.00	20	198			
	38	0.55	6	19	1.50	19	182			
	39	0.60	45	-	11.25	20	142			
	40	0.50	4	40	1.00	17	206			
	41	0.30	3	19	0.75	10	80			
	42	0.40	5	25	1.25	14	76			
06/	43	0.30	8	23	2.00	10	49			
	44	0.35	10	44	2.50	12	140			
05/	45	0.25	2½	25	0.60	19	38			
	46	0.25	6	25	1.50	19	32			
	47	0.65	34	-	8.50	22	205			
	47a	0.65	25	-	6.25	22	205			
6,7/XII	05/	1	78	3138	0.40	56	-	14.00	16	226
		2			0.40	15	44	3.75	16	382
		3			0.50	5	32	1.25	20	436
		4			0.55	9	68	2.25	22	350
		5			0.45	7	40	1.75	18	480
		6			0.45	2	45	0.50	18	50
		7			0.60	36	-	9.00	24	700
		8			0.40	3	28	0.75	16	270
		9			0.48	15	-	3.75	19	546
		10			0.60	16	36	4.00	24	484
		11			0.45	6	56	1.50	18	296
		12			0.60	28	36	7.00	24	718
		13			0.45	6	50	1.50	18	120

VOLUME CALCULATION TABLE

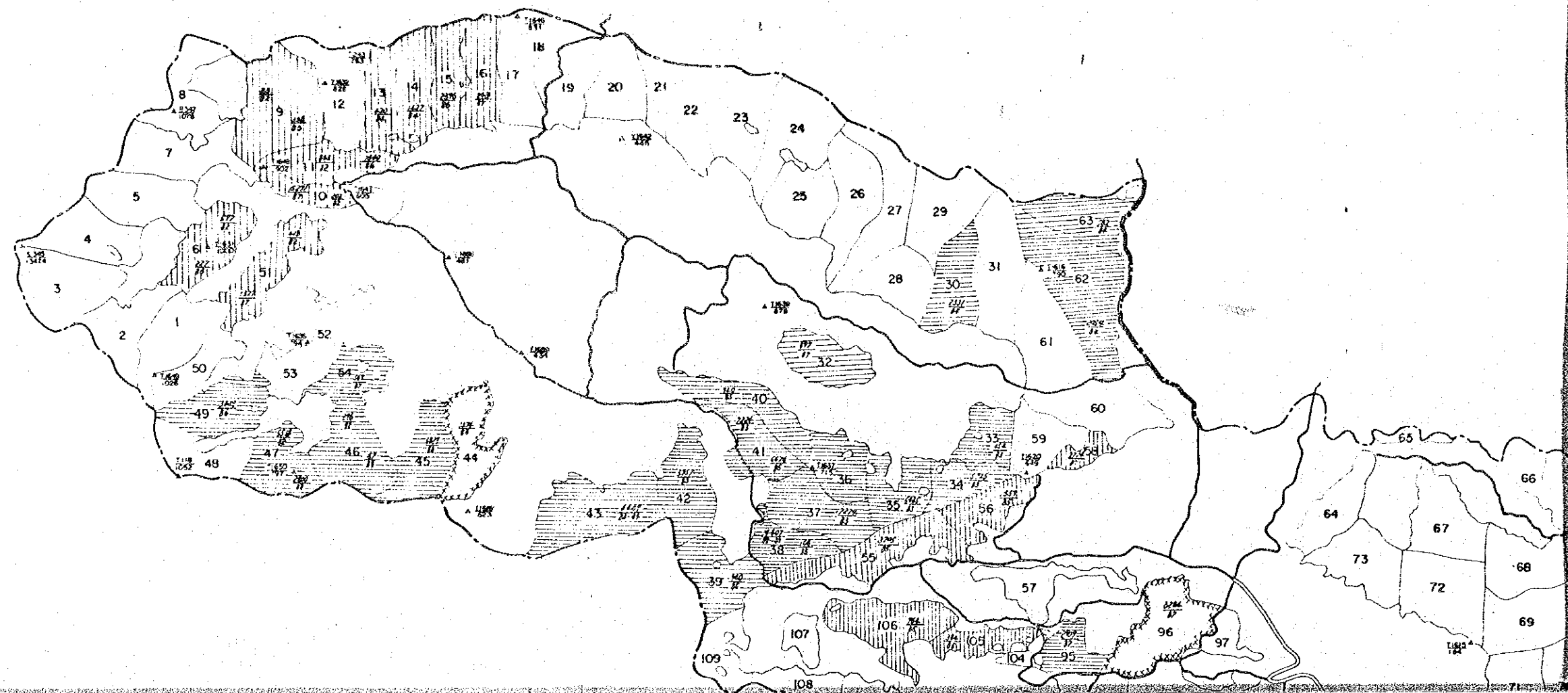
Photo/ Run No.	Age Class/ Forest Type No.	Base Length (A ₀ -A)	Balance Δpx.	Number of Dots.	Slope (%)	Area (Ha)	H _I	N _I	
	14		0.40	13	40	3.25	16	182	
	15		0.45	9	32	2.25	18	462	
	16		0.45	12	26	3.00	18	98	
	17		0.50	15	72	3.75	20	648	
	18		0.45	9	66	2.25	18	80	
7.8/XII	1-8 05/	out side the forest block							
	9	97	3188	0.25	11½	50	2.90	8	132
	10			0.45	70	41	17.50	14	414
	11			0.43	8	41	2.00	14	263
	12			0.40	8	25	2.00	13	427
	13			0.55	9	37	2.25	18	236
	14			0.40	11	34	2.75	13	456
	15			0.55	2	29	0.50	18	203
	16			0.40	58	-	14.50	13	506
	17			0.55	3	25	0.75	18	94
	18			0.35	6½	42	1.60	11	456
	18a			0.25	5	38	1.25	8	584
	19			0.25	8	55	2.00	8	124
	20			0.30	7	58	1.75	10	347
	21			0.45	19	40	4.75	14	941
	22			0.30	3	30	0.75	10	401
	23	Reploded to		XII	89	-			
	24			0.55	4	16	1.00	18	284
	25			0.50	9	46	2.25	16	117
	26			0.55	11	47	2.75	18	325
	27			0.60	24	47	6.00	19	322
8.9/XII	05/	i } 2 } Out side to forest block 3 } 4 }							
	5	89	2888	0.45	2	72	0.50	14	295
	6			0.50	33½	72	8.40	16	358
	7			0.40	4	50	1.00	13	148
	8			0.47	19	-	4.75	15	232
	9			0.35	3½	-	0.90	11	218
	10			0.40	4	-	1.00	13	176
	11			0.50	7	-	1.75	16	35
	12			0.55	65	57	16.25	17	354
	13			0.45	46	52	11.50	14	224

VOLUME CALCULATION TABLE

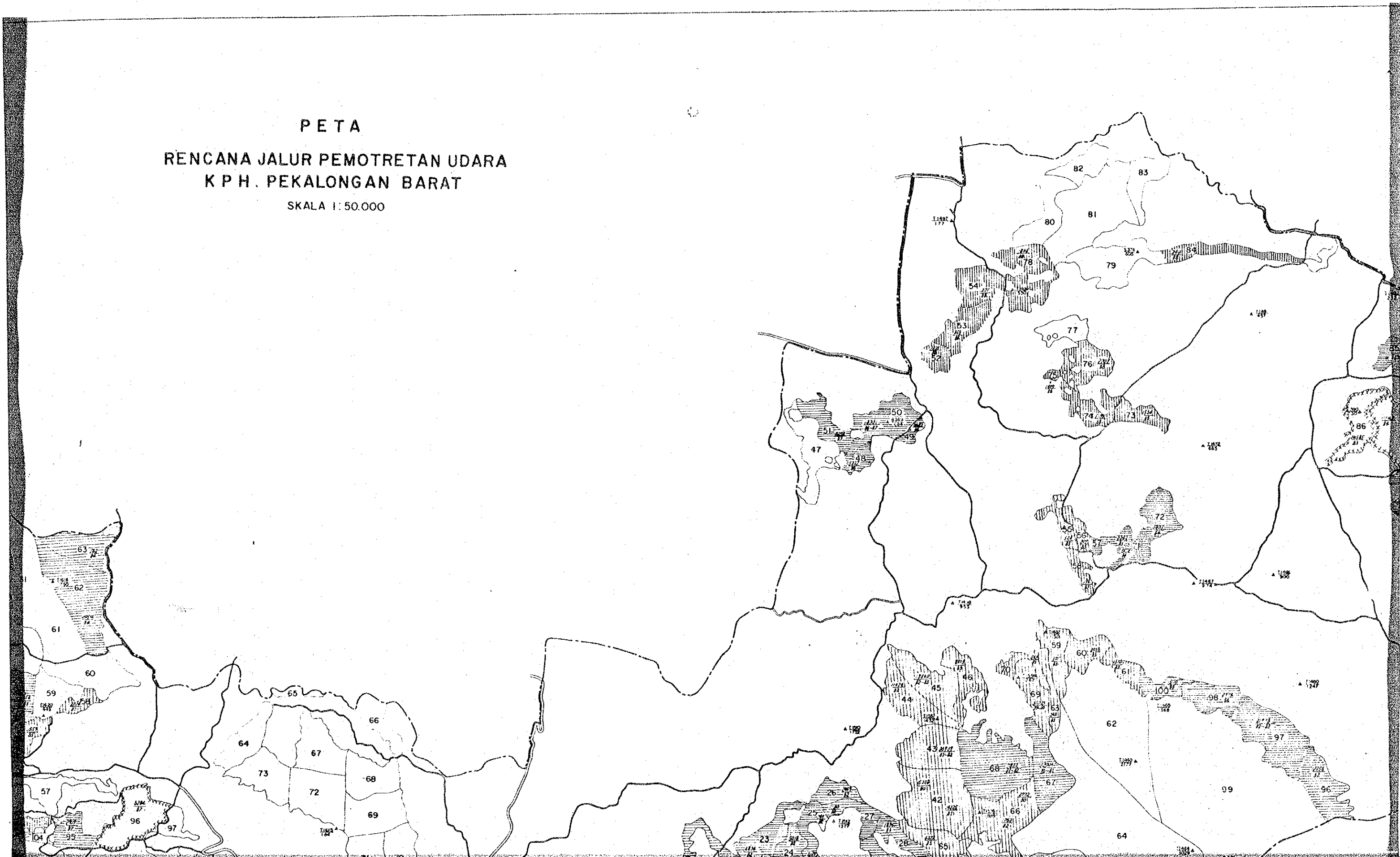
Photo/ Run No.	Age Class/ Forest Type No.	Base Balance Length (A ₀ -A)	ΔPX.	Number of Dots.	Slope (%)	Area (Ha)	H _I	N _I
	14		0.40	10	52	2.50	13	41
	15		0.50	5	-	1.25	16	306
06/	16		0.40	19	17	4.75	13	128
	17		0.65	28	35	7.00	20	278
	18		0.35	17	44	4.25	11	118
	19		0.20	16	47	4.00	6	32
	20		0.30	6	65	1.50	9	168
	21		0.60	13	23	3.25	19	150
05/	22		0.60	14	37	3.50	19	240
	23		0.60	7½	47	1.90	19	224
	24		0.50	6	47	1.50	16	64
	25		0.50	1	52	0.25	16	166
	26		0.60	8	30	2.00	19	236
	27		0.40	5	67	1.25	13	200



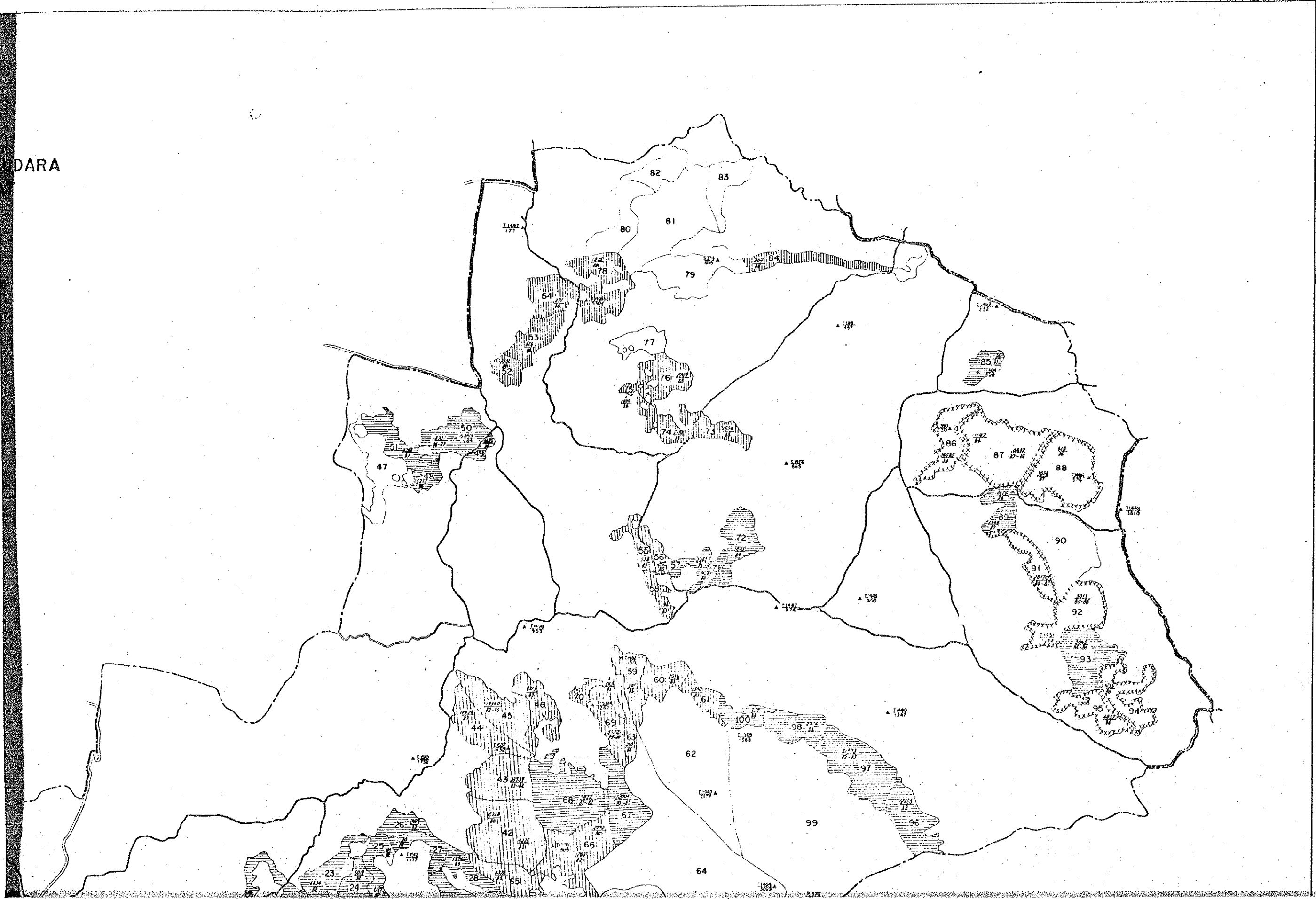
PETA
RENCANA JALUR PEMOTRE
K P H. PEKALONGAN
SKALA 1:50.000

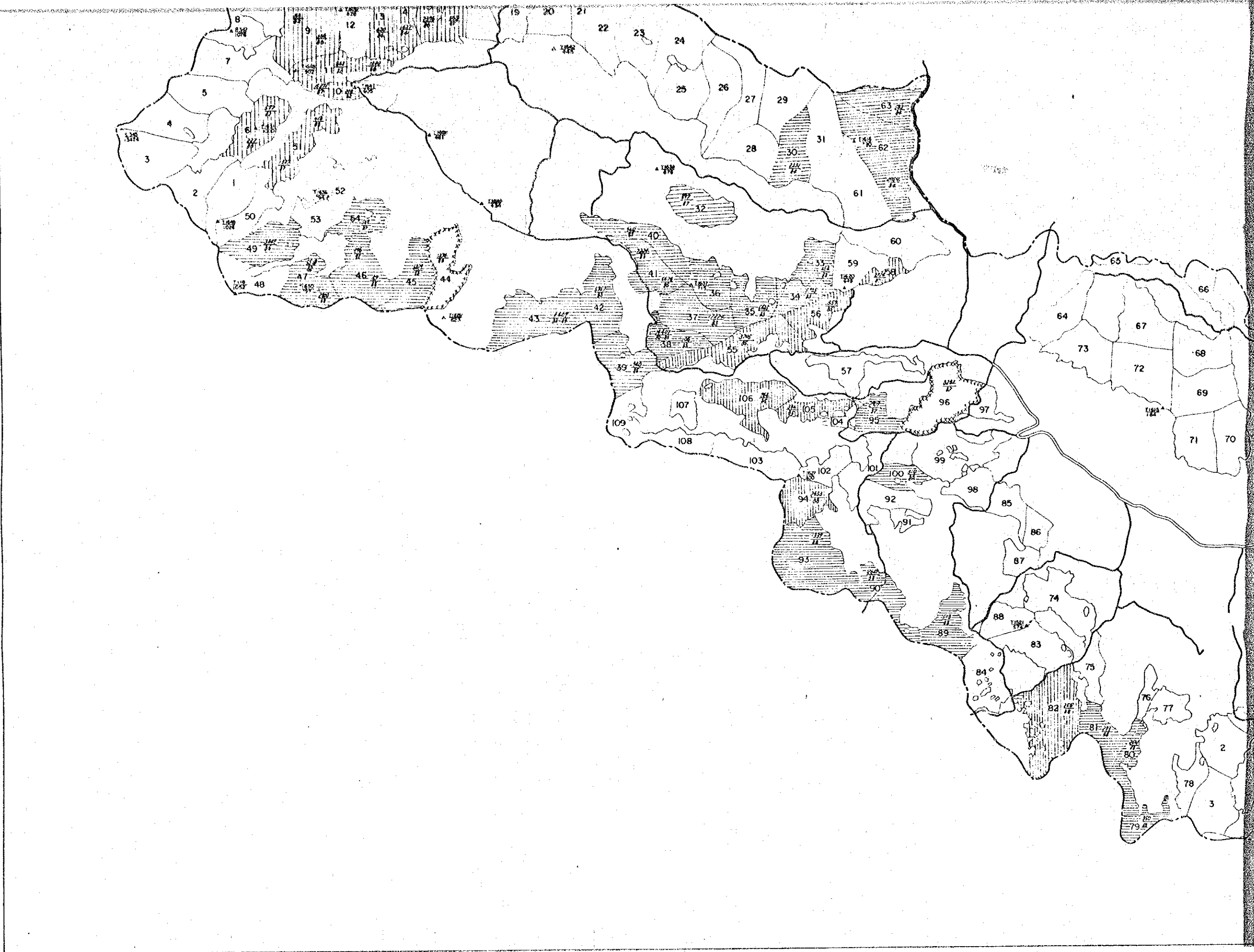


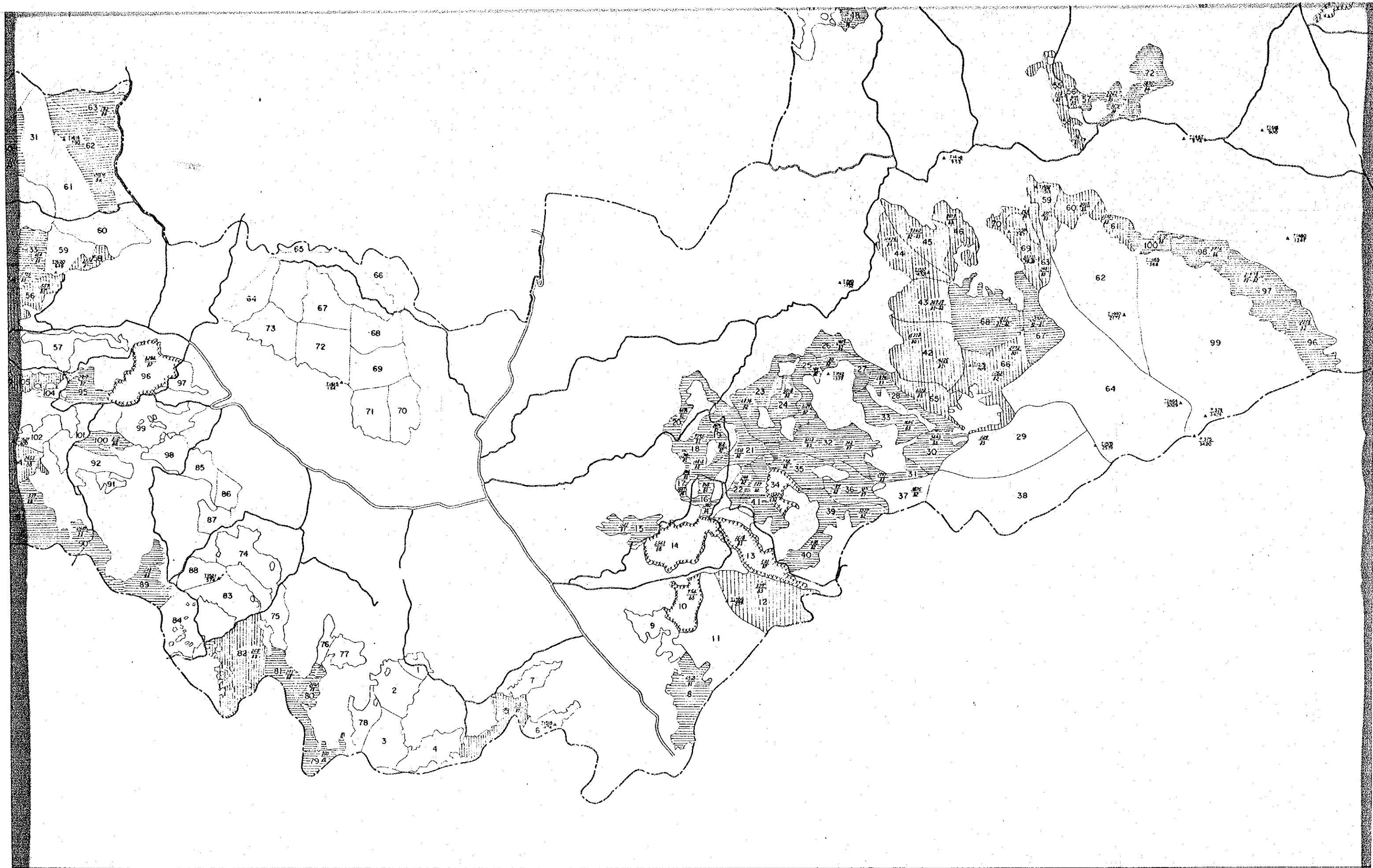
PETA
RENCANA JALUR PEMOTRETAN UDARA
K P H. PEKALONGAN BARAT
SKALA 1 : 50.000



DARA







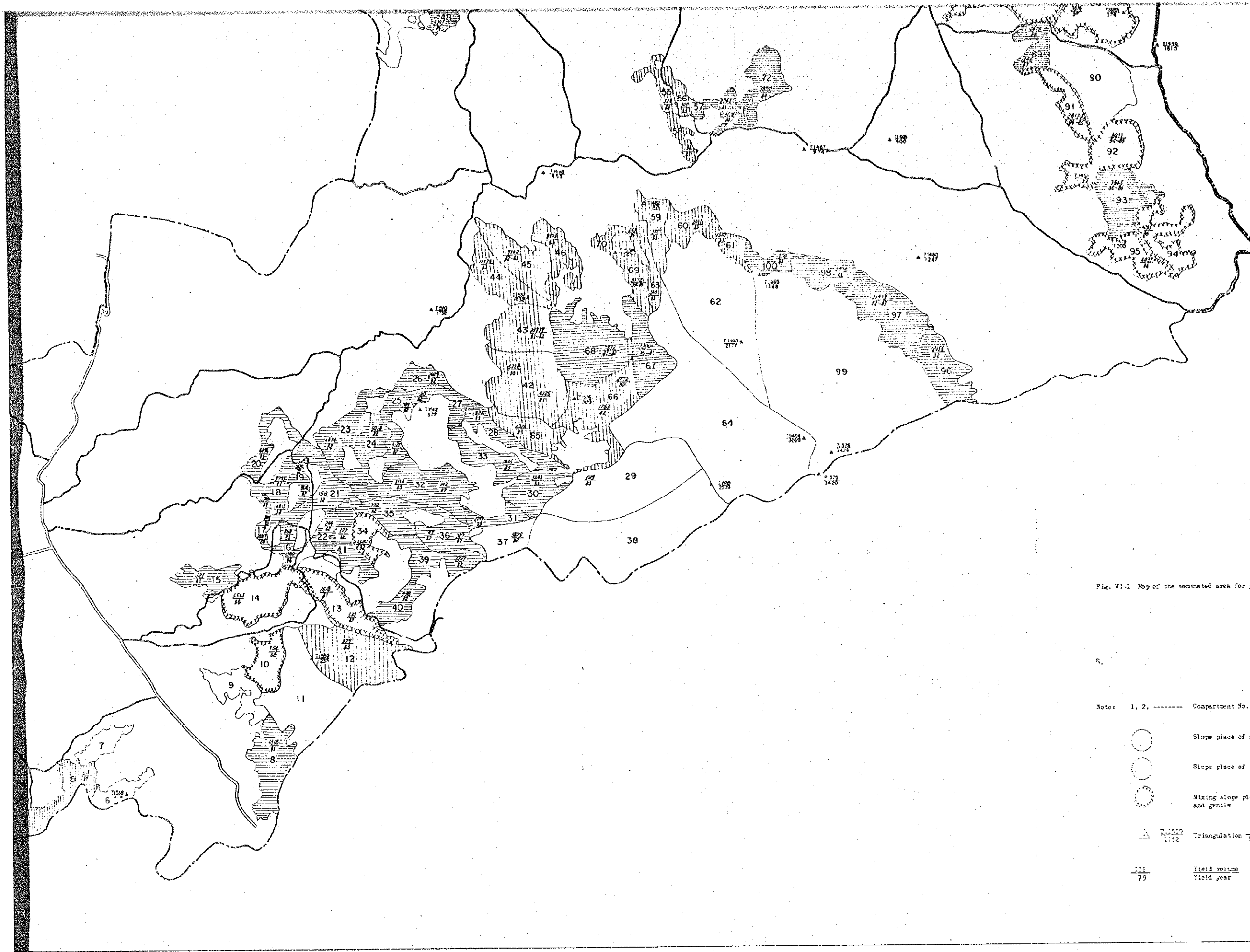


Fig. VI-1. Map of the nominated area for yielding.

Note: 1, 2, Compartment No.

○ Slope place of more than 30°

○ Slope place of less than 30°

○ Mixing slope places of steep and gentle

△ Triangulation No. / Elevation

$\frac{11}{79}$ Yield volume / Yield year

