

(A.F) 51-90

F52.1

REPORT
ON
THE FOREST INVENTORY FOR MANAGEMENT
AND LOGGING IN CENTRAL-JAVA

APRIL 1978

JAPAN INTERNATIONAL COOPERATION AGENCY

JICA LIBRARY



1056389[8]

REPORT
ON
THE FOREST INVENTORY FOR MANAGEMENT
AND LOGGING IN CENTRAL-JAVA

APRIL 1978

JAPAN INTERNATIONAL COOPERATION AGENCY

国際協力事業団

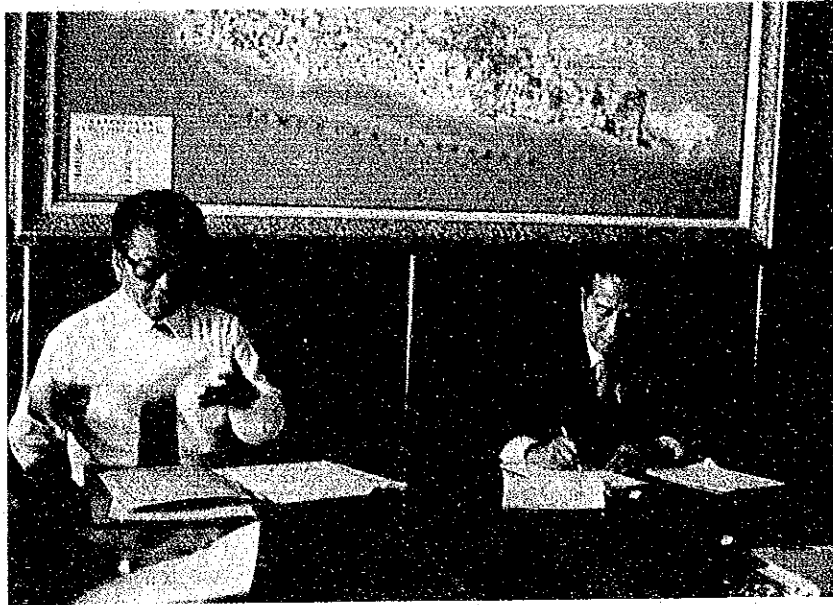
受入 月日 '84. 5. 16	108
登録No. 04861	88
	EDD

Contents

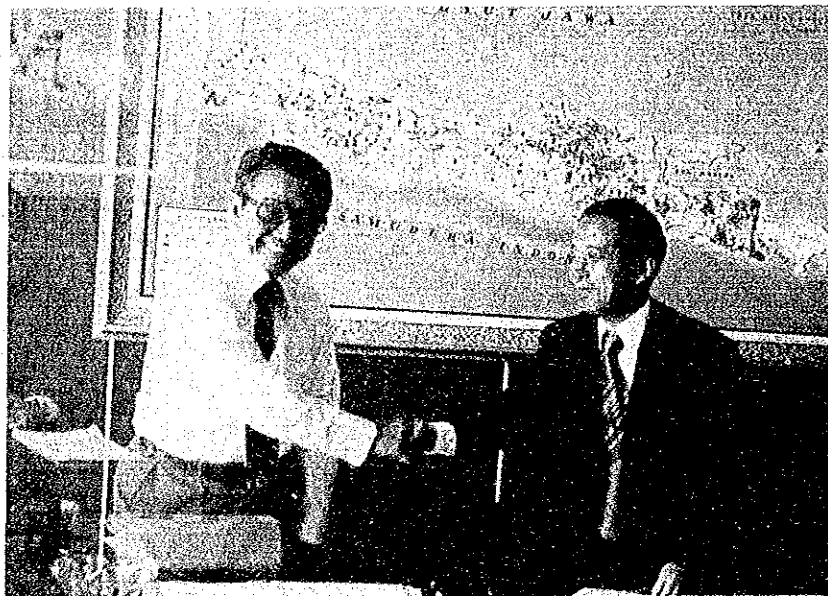
I	Foreword	3
II	General aspects of the nominated place	5
II-1	Natural conditions	5
II-2	Social and economical conditions	6
II-3	Stand conditions	6
III	Design of yielding system	8
III-1	Selection of model place	8
III-2	The felling and bucking operations in the model places	11
III-3	The outline of skyline system	12
III-3-1	Yarder	13
(1)	Outline of construction	14
(2)	Frame	15
(3)	Prime mover	15
(4)	System of power transmission	15
(5)	Transmission	16
(6)	Drum	17
(7)	Main clutch	17
(8)	Drum clutch (First, Second & Endless drums)	19
(9)	Drum brake (First & Second drums)	21
(10)	Drum brake (Endless drum)	22
(11)	Arrangement of operating levers and pedals	24
(12)	Lubricating system	25
(13)	Electric system	27
III-3-2	Accessaries of yarder	27
III-3-3	Wire rope	31
III-3-4	Nylon rope	34
III-3-5	Skyline setting and its special terms	34
III-3-6	Process of skyline setting	36
(1)	Preparation	39
(2)	Bringing in the yarder	39
(3)	Setting of yarder	45
(4)	Constructing the spar	46
(5)	Extending of rope (Lead rope, Haul back line, Skyline, Heel line etc.)	56
(6)	Removal operation	70

III-3-7	Fundamental type of skyline setting system and its characteristics	73
III-3-8	Calculating method about the skyline designing	78
III-3-9	Checking the design of skyline system	83
III-3-10	Practical designing process of skyline system	87
(1)	Fundamental conditions	88
(2)	Calculation of safety coefficient of skyline	89
(3)	Calculation of safety coefficient of operating line.	90
III-4	Design of the model skyline system	100
III-4-1	Specification of yarder	100
III-4-2	Drawing of the designed skyline system	103
III-4-3	Example of calculation for the skyline system	105
III-5	Operation process and its efficiency of skyline system	109
III-6	Operation cost of skyline system	110
III-7	Skidding by tractor	114
III-7-1	Tractor	115
III-7-2	Operation process of tractor skidding	118
III-8	Operating efficiency of tractor skidding	121
III-9	Cost of tractor skidding	122
III-10	Constructing platform	124
IV	Management of machines	127
IV-1	Introducing machines	127
IV-2	Maintenance control	127
IV-3	Renewal of machines	128
IV-4	Safety control of yarding operation by skyline system	129
V	Arrangement of forest road and strip road	133
V-1	Fundamental considerations	133
V-2	Consideration upon designing forest road	133
V-3	Strip road	135
VI	Yielding plan and its cost for successive calender years ...	136
VI-1	Yielding volume for successive calender years	136
VI-2	Yearly cost for logging operation	136
	Supplement: Table of Felling Plan	148

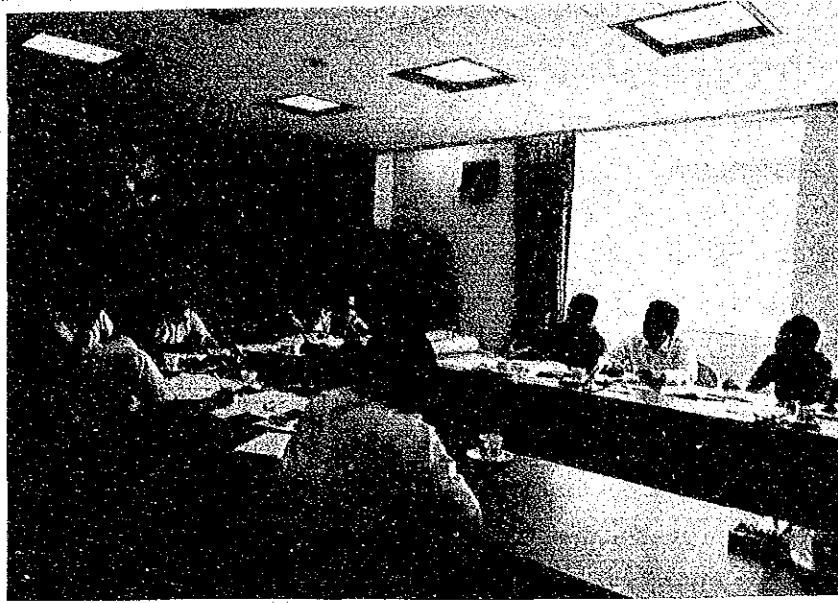
VII	Aerial-Photo Interpretation and Mapping of Pinus	
	Merkusii Forest	163
VII-1	Material	163
VII-2	Interpretation of forested area	164
VII-3	Stratification	164
VII-4	Mapping	164
VII-5	Stand height estimation	165
VII-6	Number of trees per hectare estimation	166
VII-7	Volume estimation	166
VII-8	Forest inventory book	168
	Appendices :	169



Signing to "the Scope of Work"



Just after the signing



Discussion at Sumarang Office



Study on the spot

I. Foreword

Government of Indonesia decided to establish a paper-mill in Notog, 40 Km inland from the Cilacap port on the southern coast of Central Java, and as the result about 150,000 m³ of pine logs per year becomes necessary.

Perum Perhutani is going to be responsible for supply of these logs.

To supply these logs, Perum Perhutani is going to promote the felling of the Pinus merkusii and the reforestation of it in turn, in about 100,000 ha forests of the District Forest Offices of West Pekalongan, East Banyumas and West Banyumas.

Therefore, Japanese Government was proposed to give the technical assistance about the yielding plan, for the time being, around the nominated production areas of 35,000 ha in the domain of West Pekalongan District Forest Office.

To meet this proposal, Japanese Forestry survey team organized by the Japan International Cooperation Agency, had sent the preliminary surveying mission consisting of five members to Java from 29th November to 18th December 1976, and according to its results, sent again the surveying mission group of following members from 18th, March to 26th, April 1977, and carried out the designing operations of yielding system, based on the survey of the forest resources.

Chief: Mr. Tadao Mishina

President of Japan Federation of Logging Association.

Member: Mr. Shinichi Miyakawa

Consultant of Japan Federation of Logging Association.

Member: Mr. Masaharu Takeuchi

Consultant of Japan Federation of Logging Association.

Member: Mr. Masao Dobashi

Consultant of Japan Federation of Logging Association.

Technical assistant: Mr. S. Kudo

And also the co-operated members of the Indonesian Government Officials are as follows.

Ir. Yunus Kartasubrata

Production Director Perum Perhutani.

Ir. Sediono Dharmawan

Perum Perhutani.

- Ir. R.J.S Pramoedibyo S
Deputy Regional Manager Unit I Central Java.
- Ir. Suroso
Semarang Regional Office
- Ir. Atang Soemaatmadja
Deputy Chief of Planning section
- Ir. Zulkarnain N.A.
Chief of Road Planning.
- Ir. Soesilotomo
Planning Division, Pekalongan.
- Ir. Soelarso
Chief of Forest District of West Pekalongan.
- Mr. Karyadi
Vice Chief of Forest District of West Pekalongan.
- Ir. B.W. Soerjo Soebagjo
(Counter Part.)
- Mr. Djasmadi
(Counter Part.)

II General Aspects of the Nominated Place

II-1 Natural conditions

The forests under control of the District Forest Office West Pekalongan are about 45,000 ha, and are located in the mountainous region around Mt. Slamet (3,428 m)

The details are as follows

15,000 ha Pine planted forest.

10,000 ha Reserved for plantation of pine.

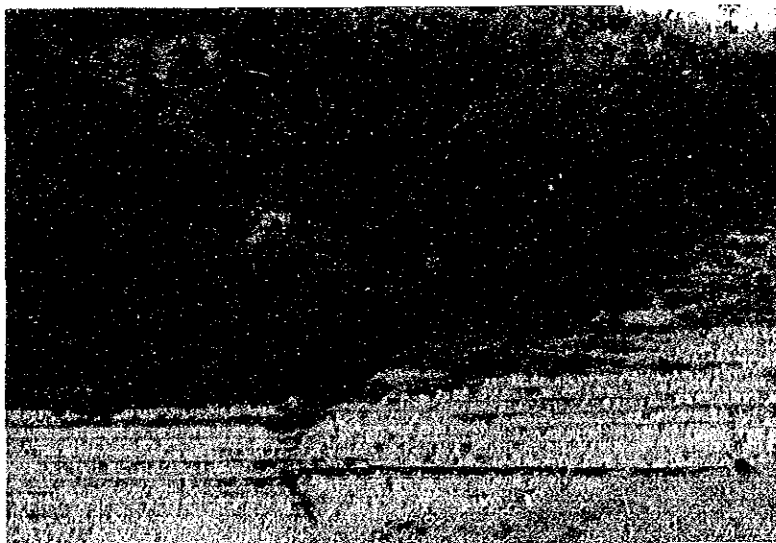
20,000 ha Protection forest. (But 10,000 ha of them are intended to be changed into pine planted forest in the future.)

These forests are almost in steep slope and neighboring to the agricultural land, and moreover the surface soils are so thin that erosions caused by the cutting of trees are likely to occur.

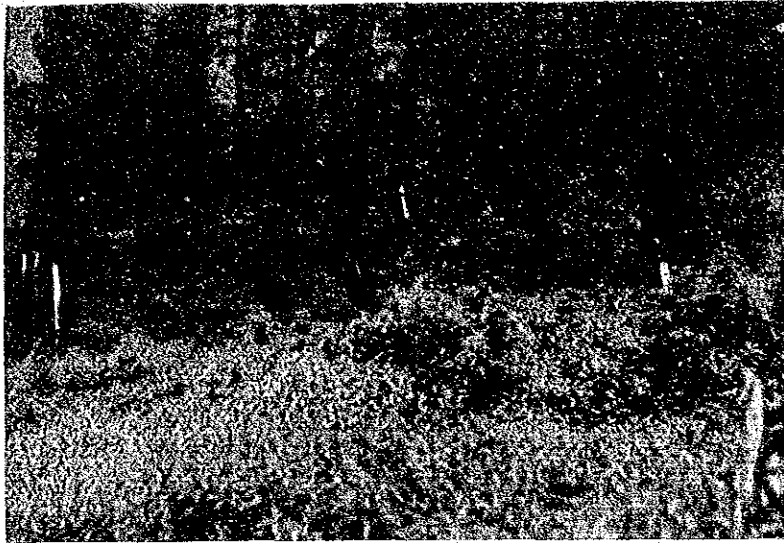
Still more the mean climatic temperature throughout the year is 28°C, the total rain fall per year is 3,000 m/m, and the mean rainy days per year are 157 days, thus leaving the zone as of the climate of high temperature and high humidity.

Therefore we must pay attention to the labouring hours and its terms.

Merkusii pine forest



Scared part of pine trunk by rosin tapping



II-2 Social and economical conditions

Most of the inhabitants around the nominated places for felling and yarding are the farmers, cultivating paddy rice fields or farms and raising cattles, and are all of the small scales.

Therefore, the supply of labor would be easy, and the wages are comparatively low also, for instance, the standard amount per day for them are 200 RP for light labor, 250 RP for medium, and 300 RP for heavy.

Thus abundant labor and low wages can be expected, but they are almost side-work laborers and can not be expected to work continuously throughout year.

II-3 Stand conditions

Topographical condition of the nominated places for felling as full of steep slopes of more than 15 degrees and many of them are also neighboring the farm land, that the preventions of erosion and the destructions of farm land also must be kept in our mind seriously.

Regardless of the total distribution of standing stocks of pine, because of restriction of cutting of the forest neighboring farming or easy eroding lands, averaged yielding volume per ha throughout the total forests might be lower than 100 m^3 .

In addition to the above element, season by season and here and there pine trees, which have weakness of scared trunk for resin tapping, are being lost by wind blow.