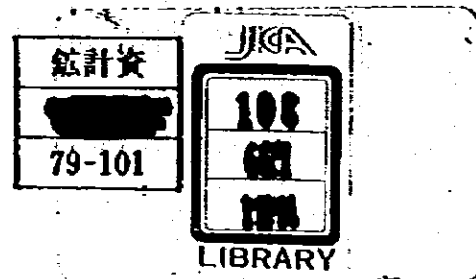


JICA

インドネシア共和国
オンビリシ
石炭開発計画調査
地質調査報告書

79年11月

国際協力事業団



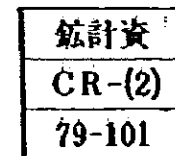
No. 4

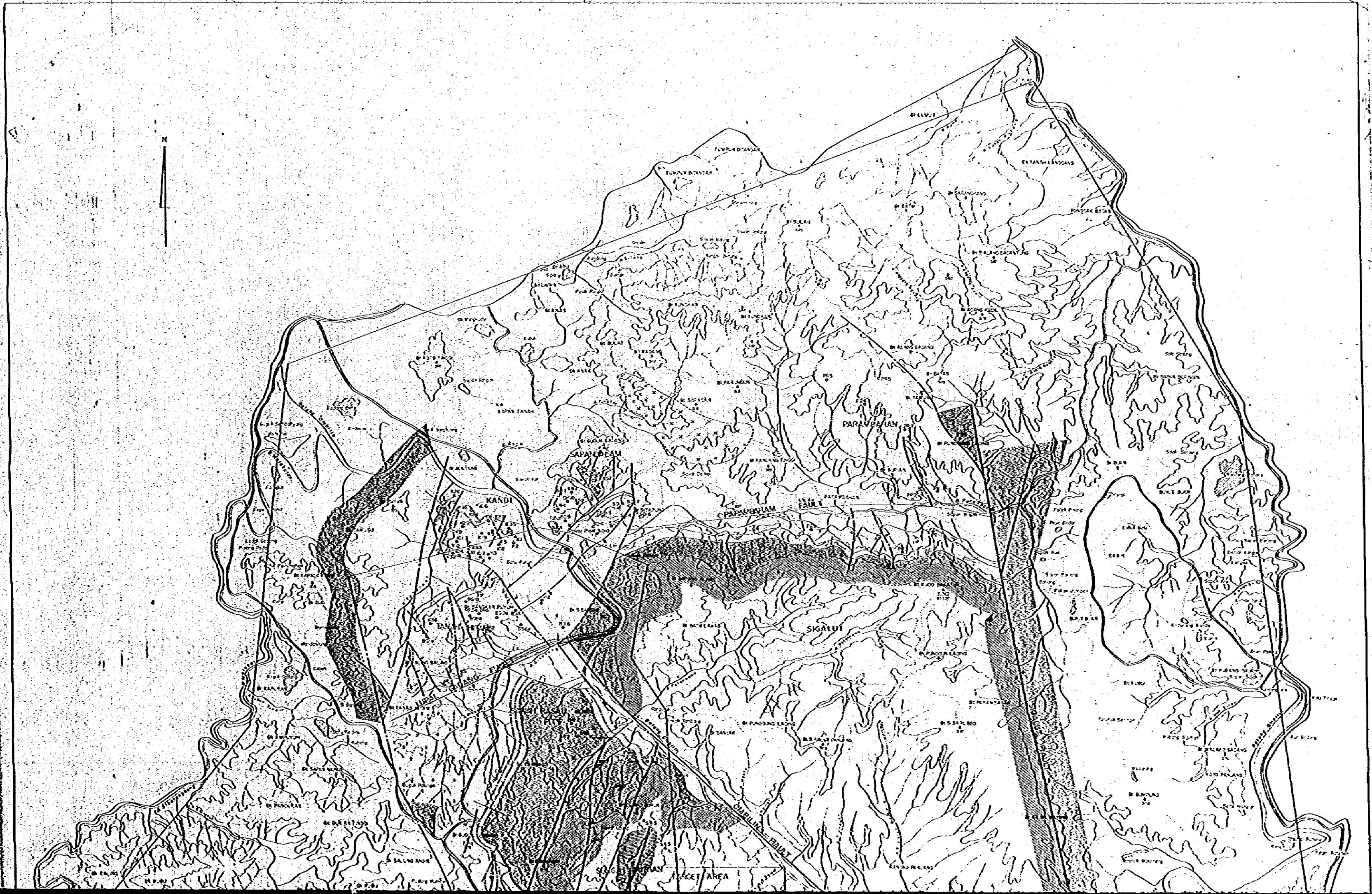
インドネシア共和国オンビリシ石炭開発計画調査

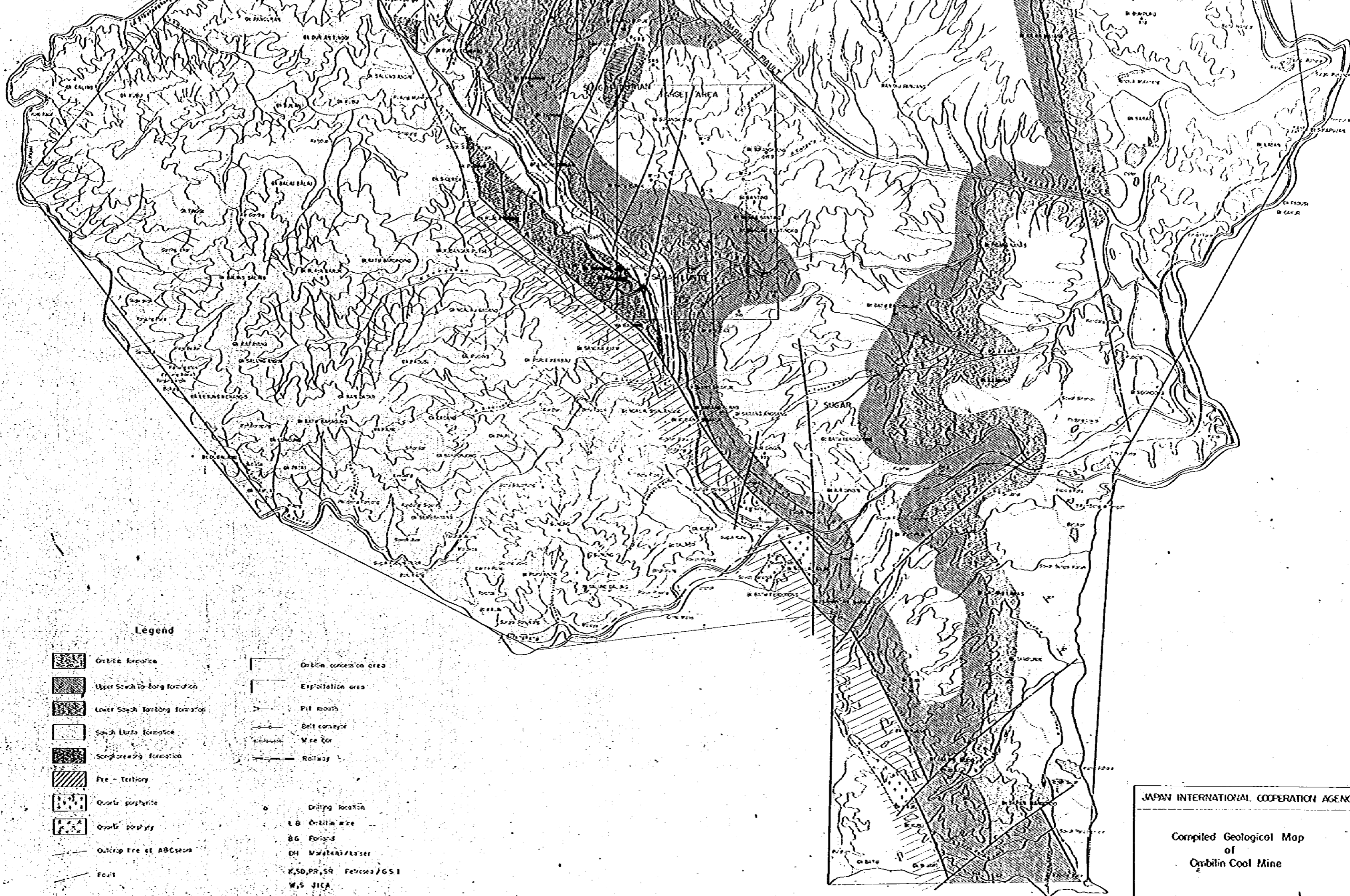
地質調査報告書

1979年11月

国際協力事業団







Legend

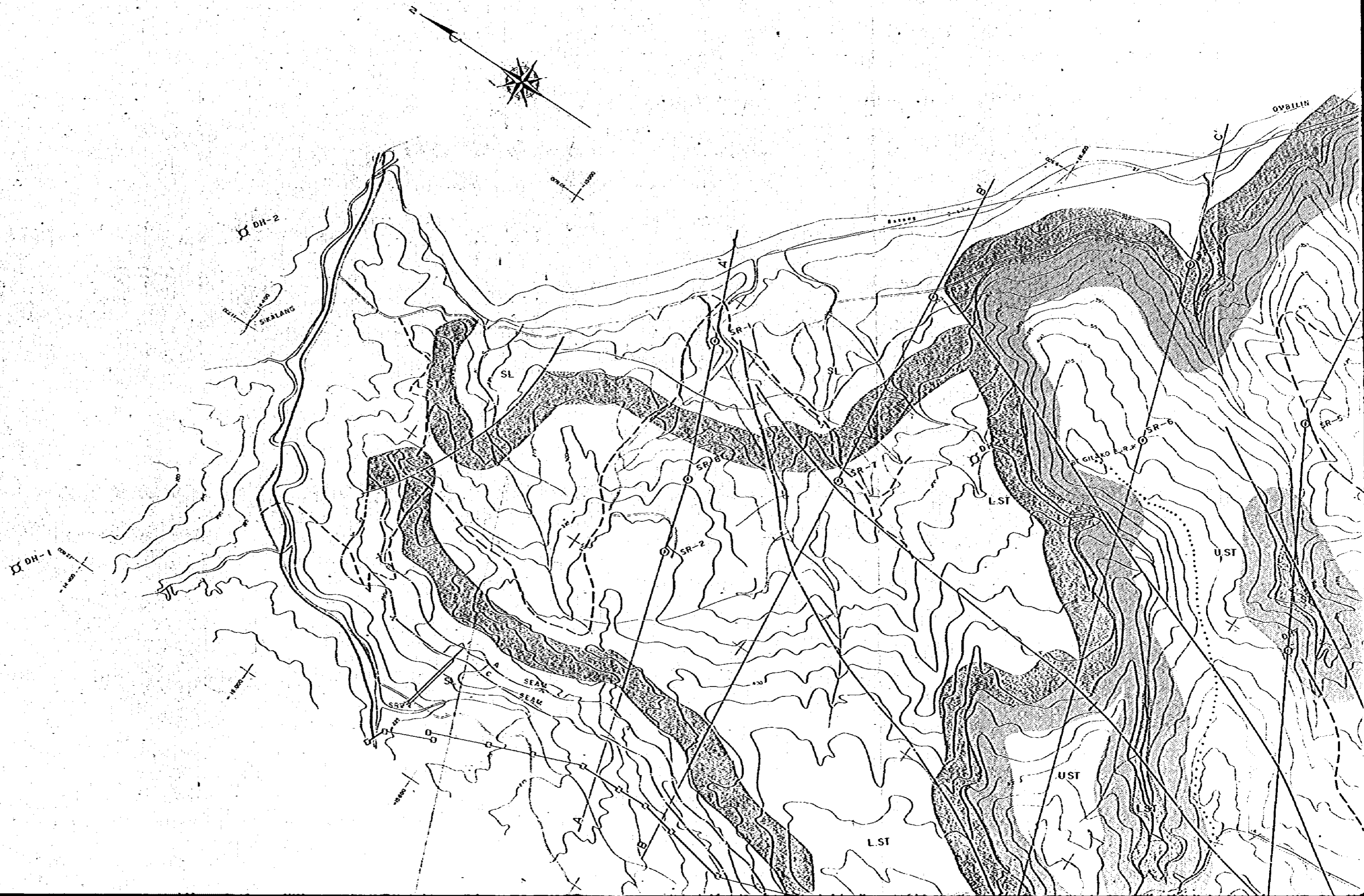
- | | | | |
|--|--------------------------------|--|----------------------------|
| | Ombilin formation | | Ombilin concession area |
| | Upper South Tombokan formation | | Exploitation area |
| | Lower South Tombokan formation | | Pit mouth |
| | South Ulu formation | | Belt conveyor |
| | Sengalean formation | | Wire for |
| | Pre-Tertiary | | Railway |
| | Ombilin porphyrite | | Drilling location |
| | Ombilin porphyry | | LB Ombilin wire |
| | Outcrop line of ABC section | | BC Ponds |
| | Fault | | OH Waterfall/Passer |
| | | | R, SD, PR, SR Fences/G.S.I |
| | | | W, S JICA |

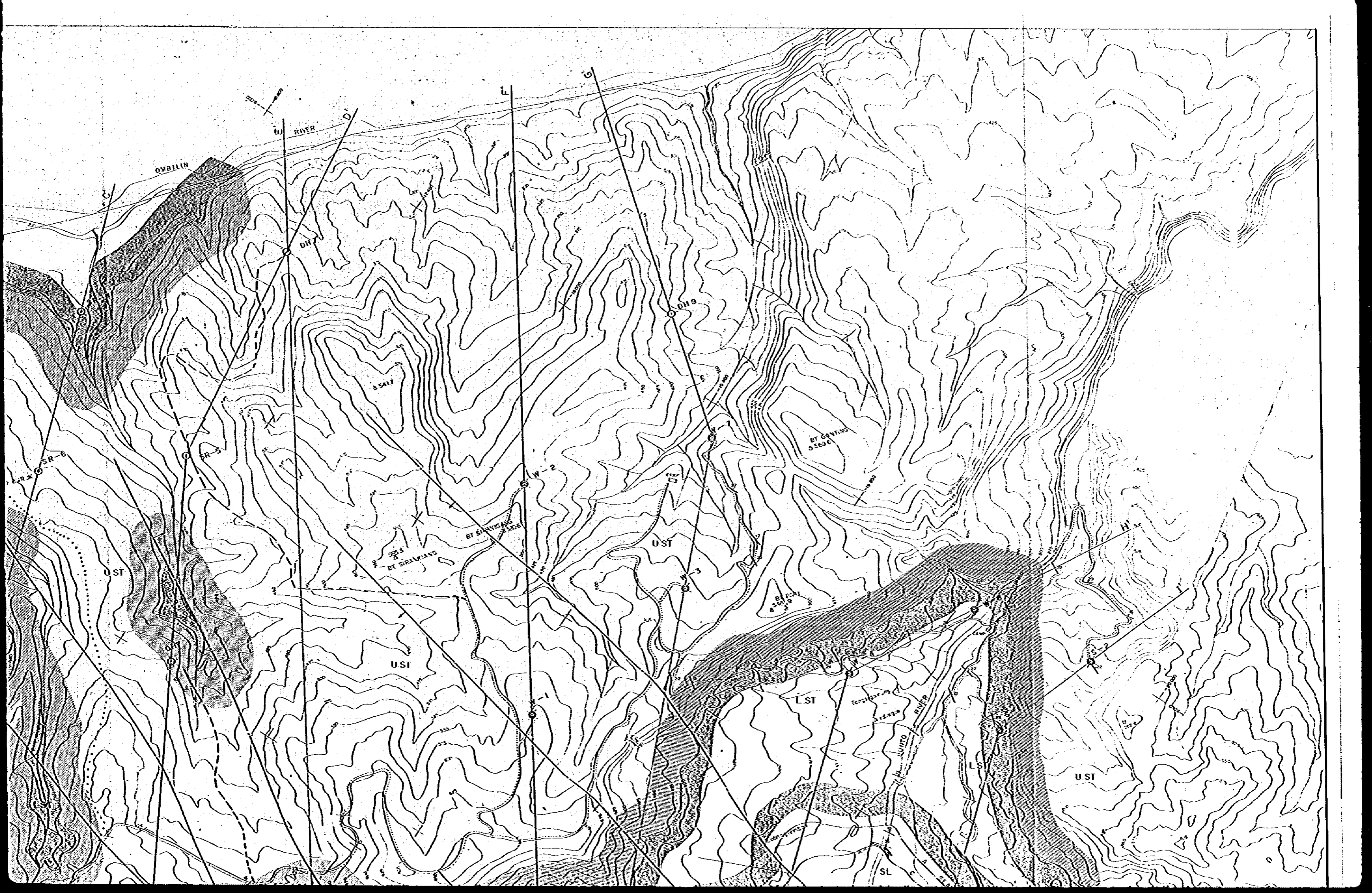
JAPAN INTERNATIONAL COOPERATION AGENCY

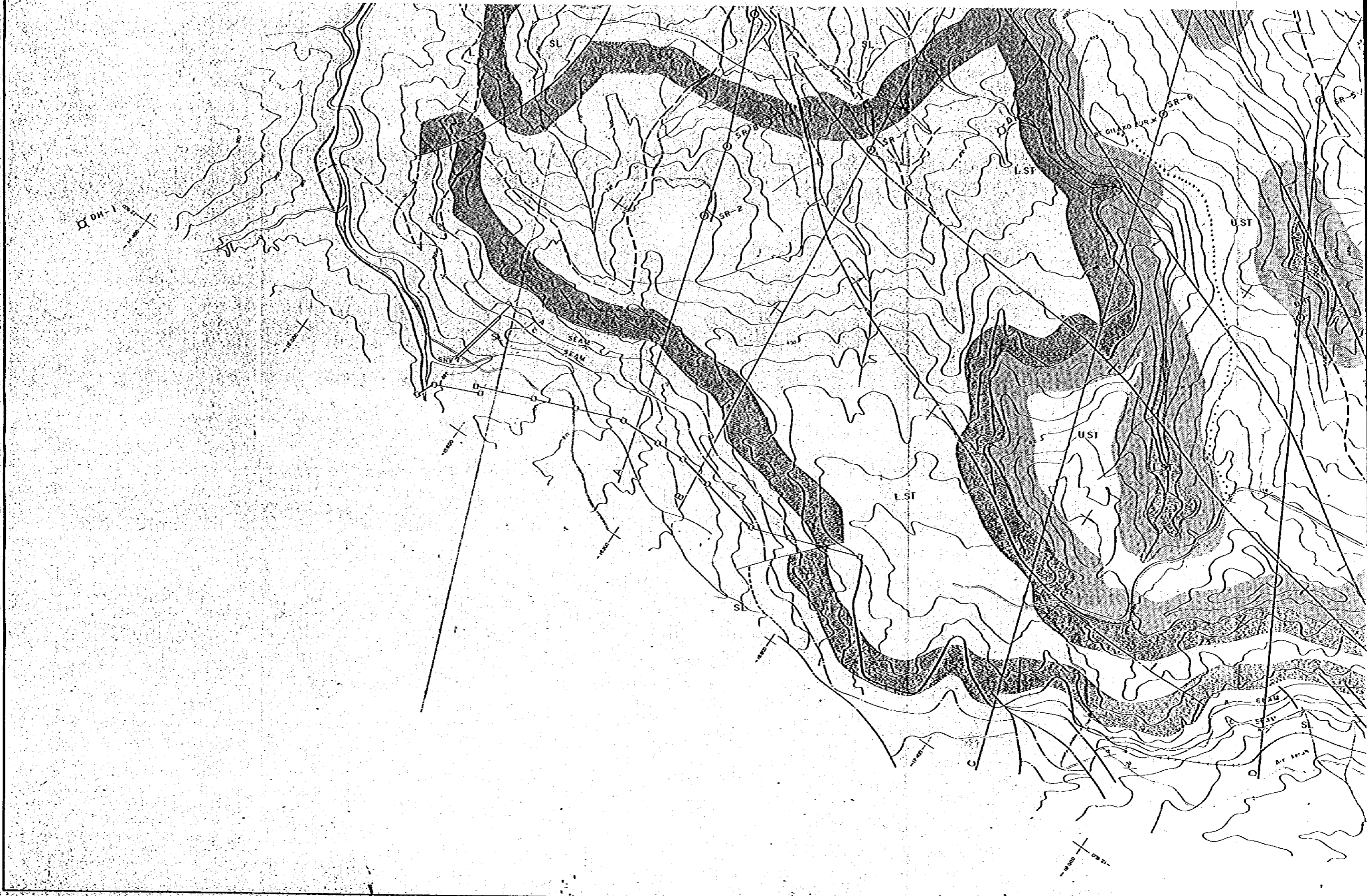
Compiled Geological Map of Ombilin Coal Mine

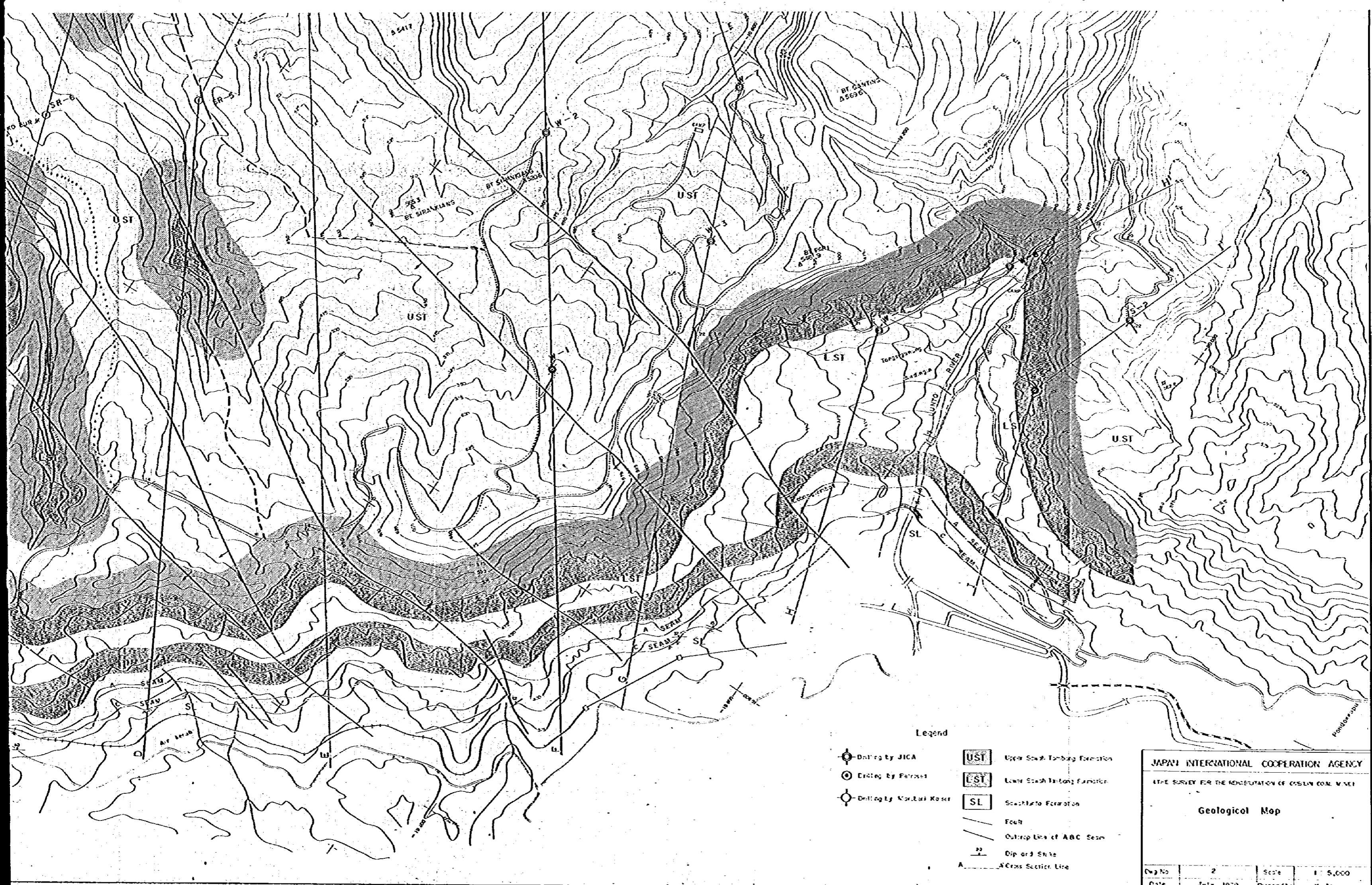
Drawn by	I	Scale	1:20,000
Date	July, 1979	Prepared by	K. Ito

This map is compiled based on the previous survey of Marubeni-Kaiser and G.S.I together with the current survey by JICA









Legend

- Drilling by JICA
- Drilling by Ferriss
- Drilling by Marukai Kasei
- Upper South Tombok Formation
- Lower South Tombok Formation
- Southkato Formation
- Fault
- Outcrop Line of ABC Seam
- Dip and Strike
- A Cross Section Line

JAPAN INTERNATIONAL COOPERATION AGENCY
 AT THE SURVEY FOR THE ACQUISITION OF OCEAN COAL MINES

Geological Map

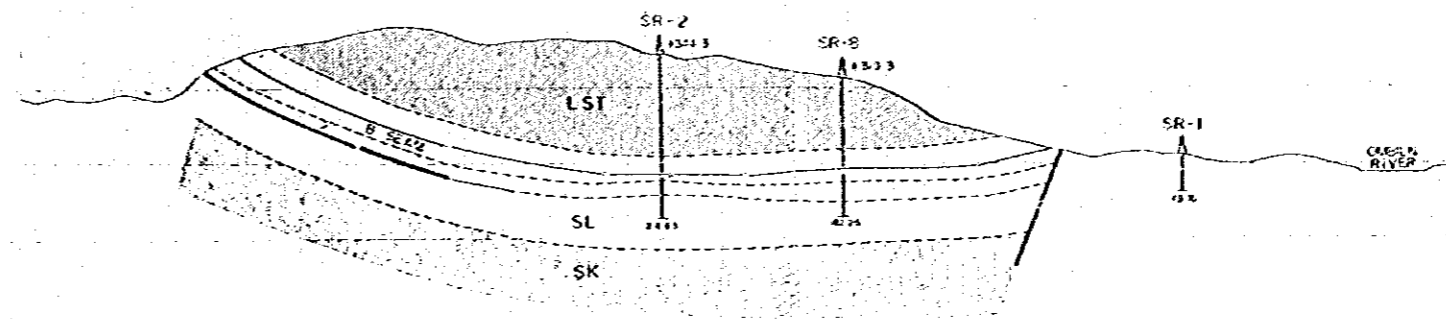
Map No.	2	Scale	1 : 5,000
Date	July, 1979	Prepared by	K. Ito

A

1300

1200

1100



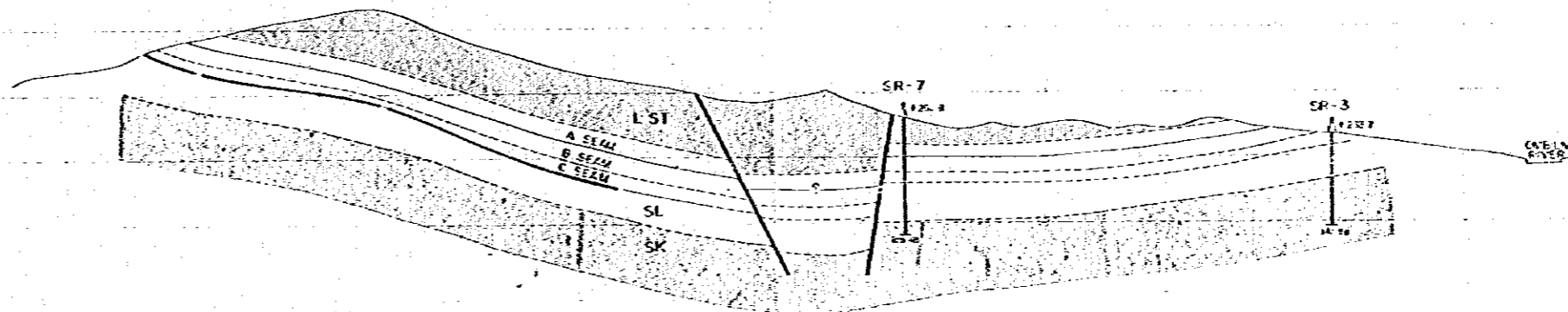
B

1400

1300

1200

1100



C

1500

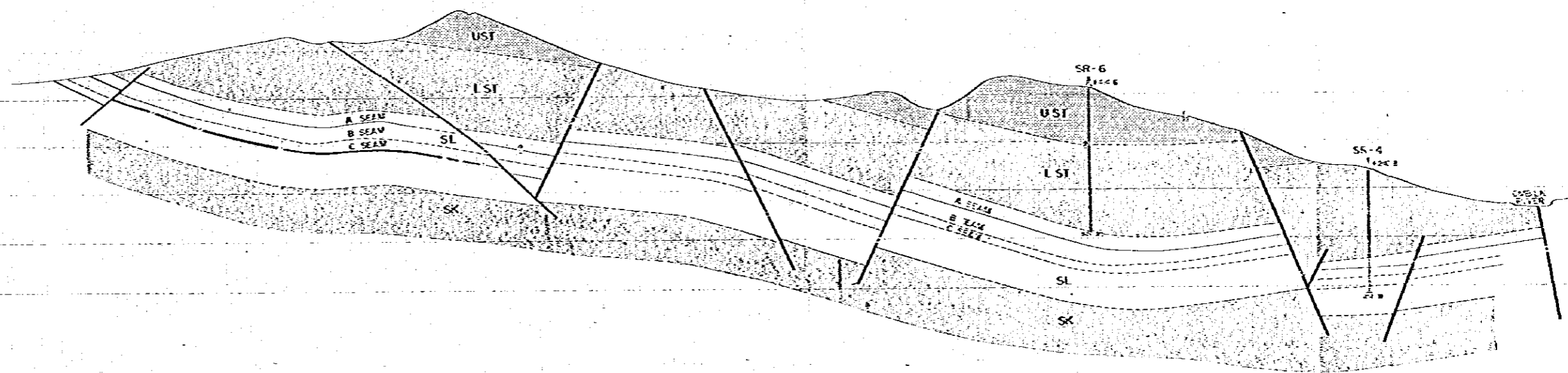
1400

1300

1200

1100

100



D

1600

1500

1400

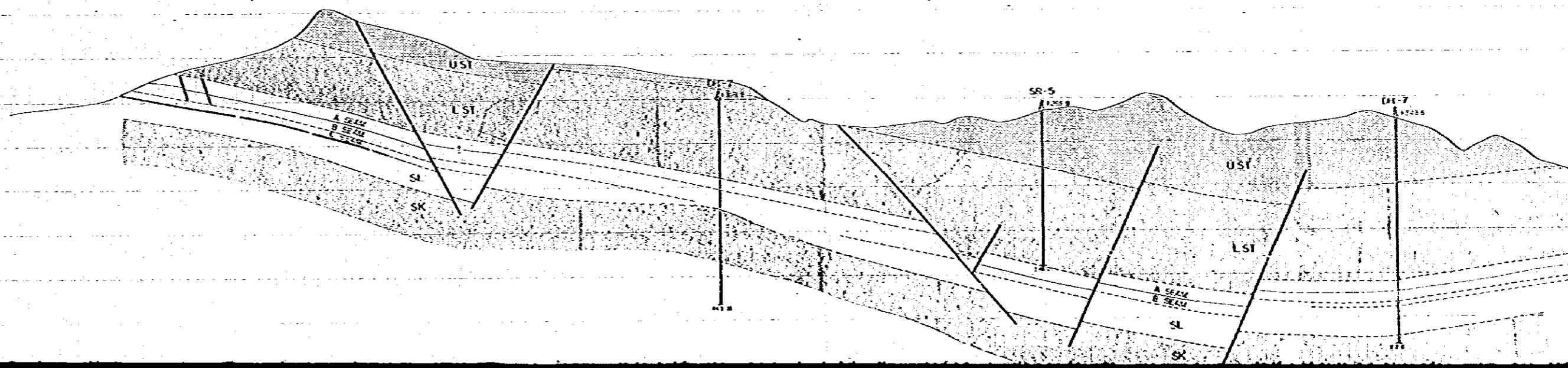
1300

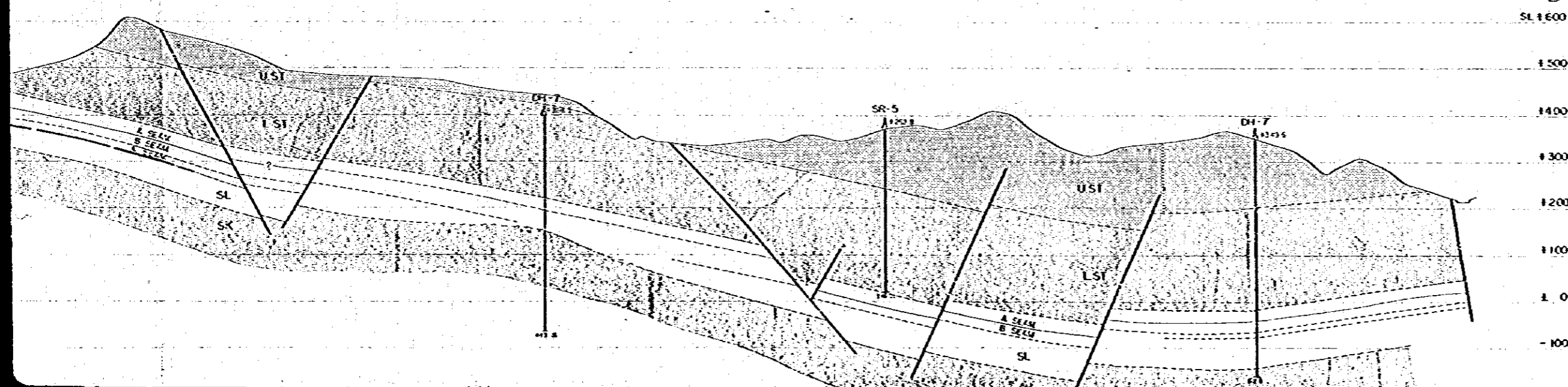
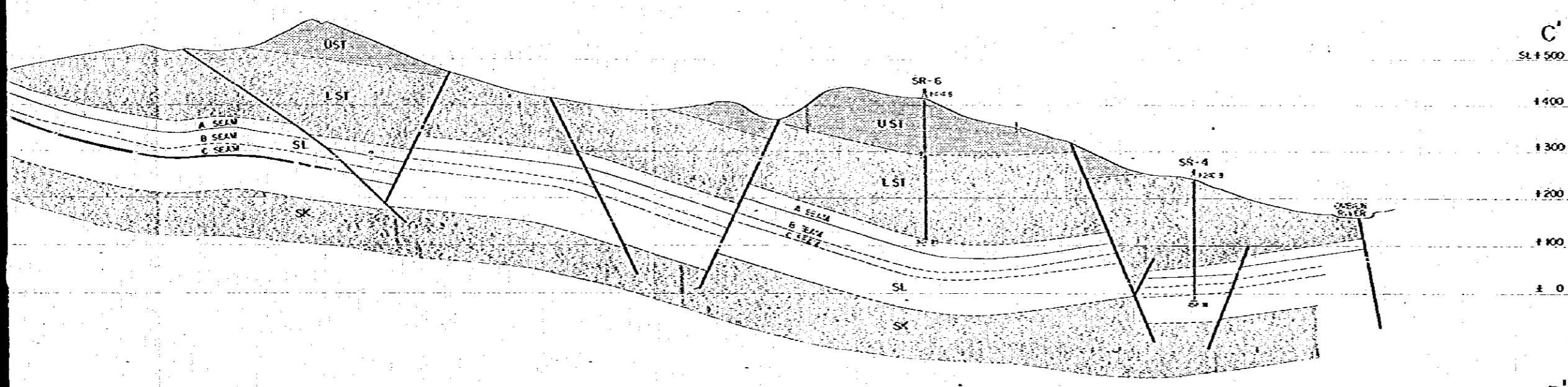
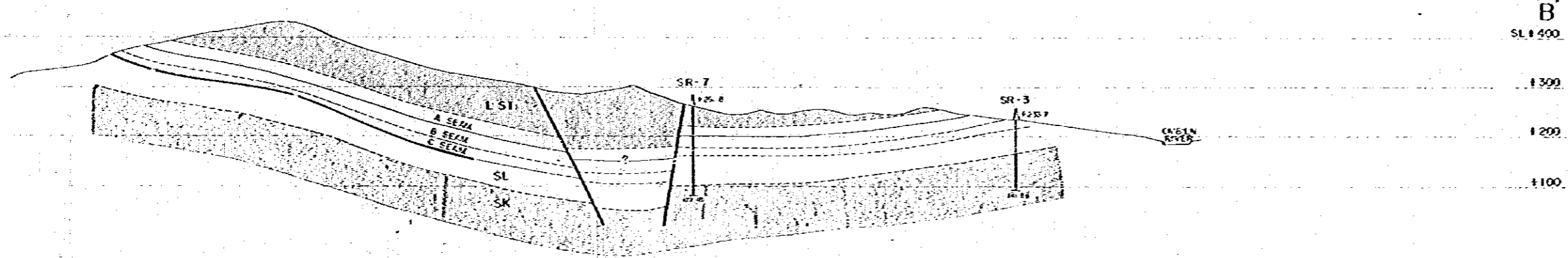
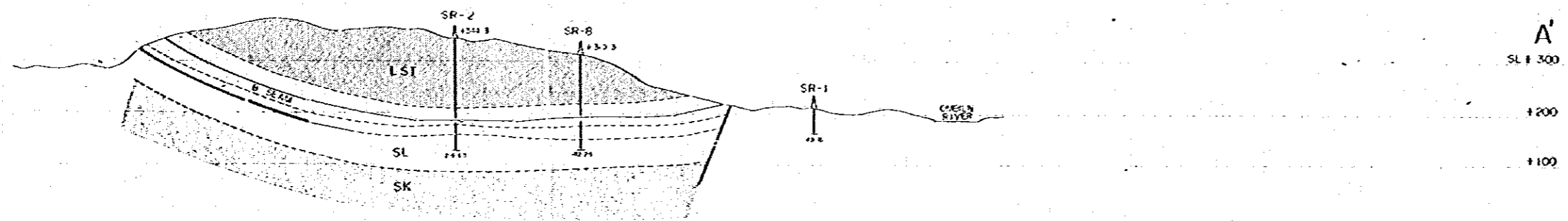
1200

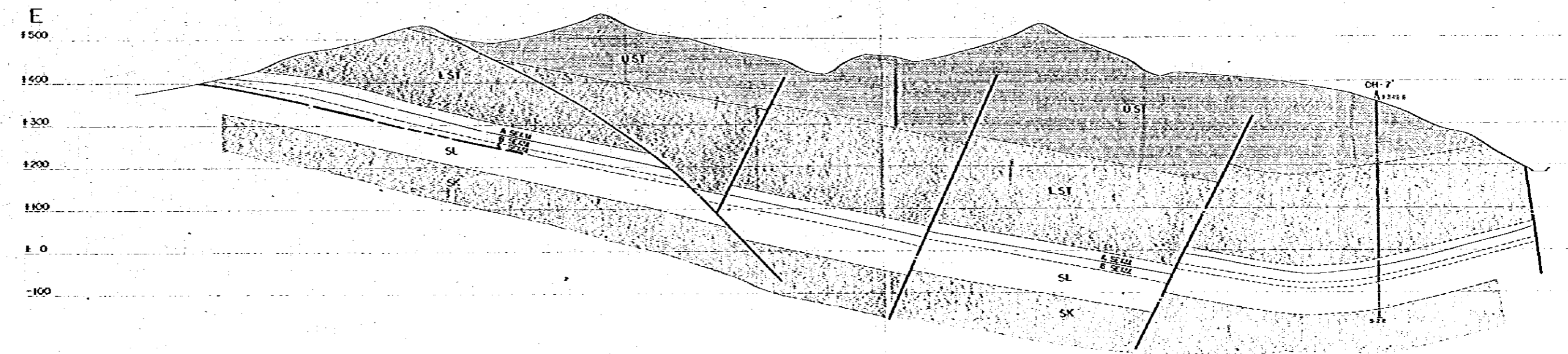
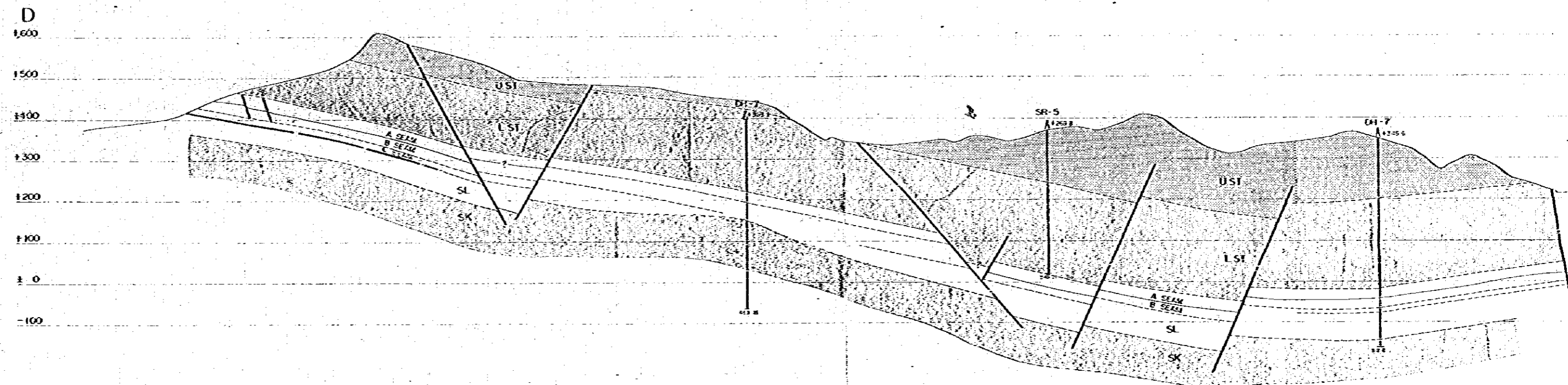
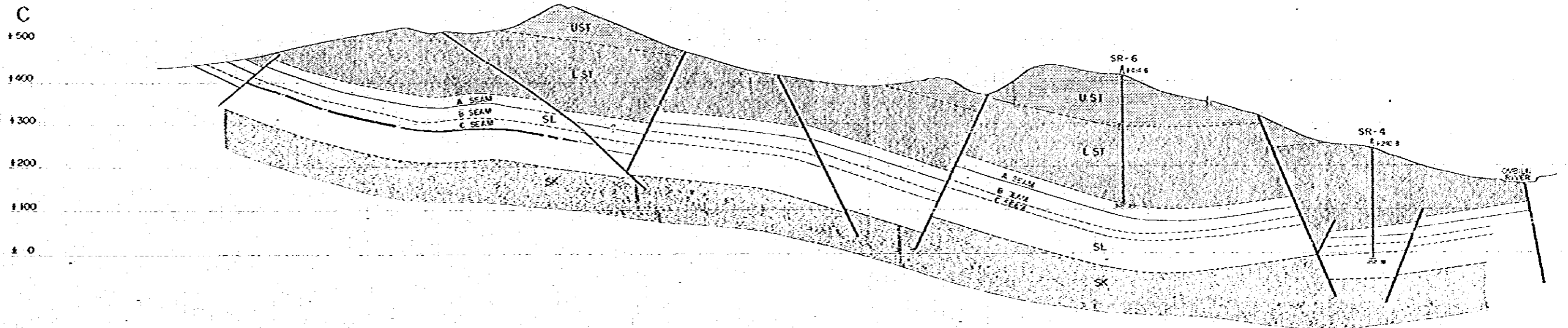
1100

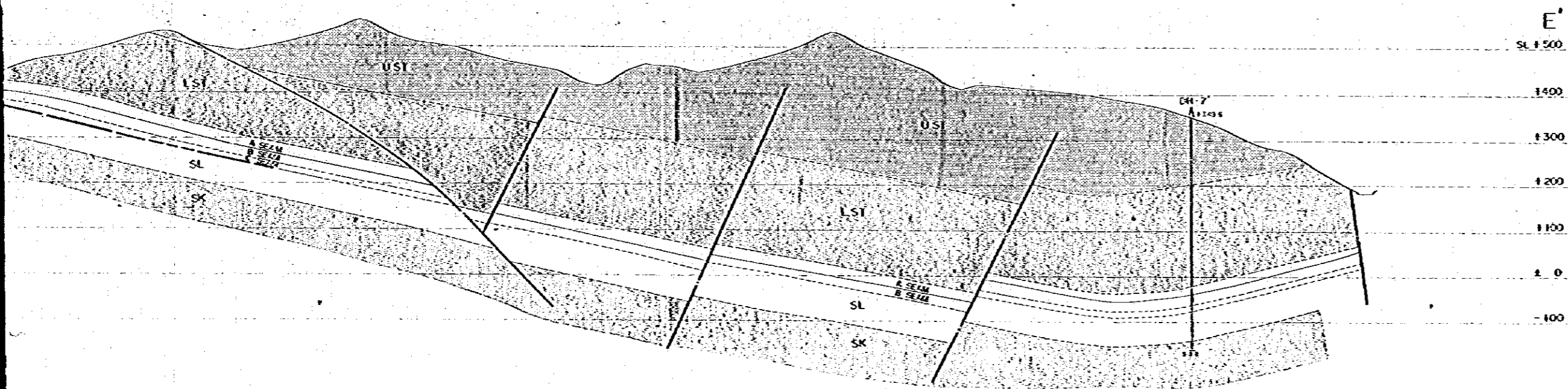
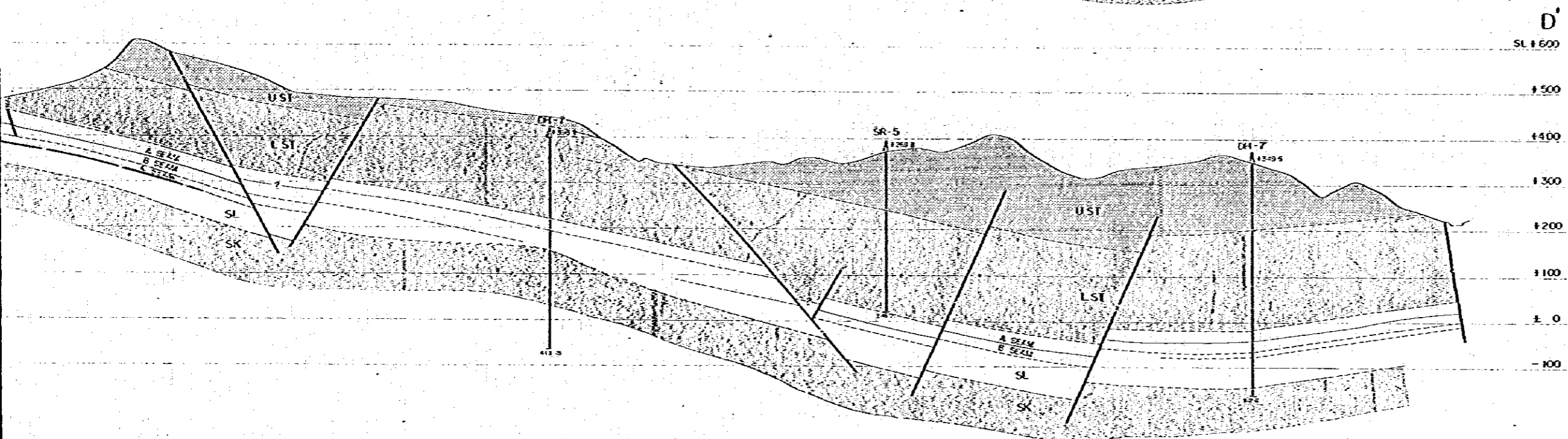
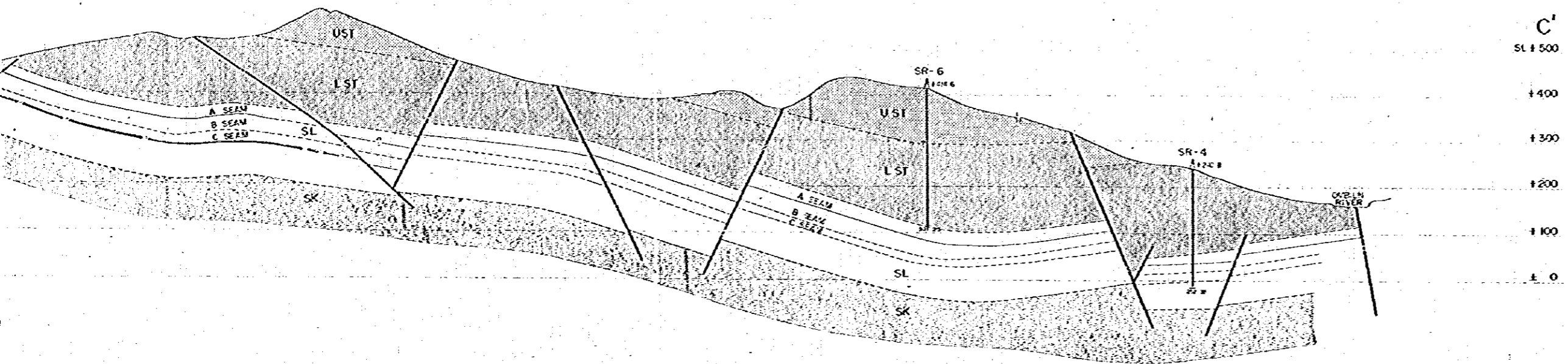
100

-100









Legend

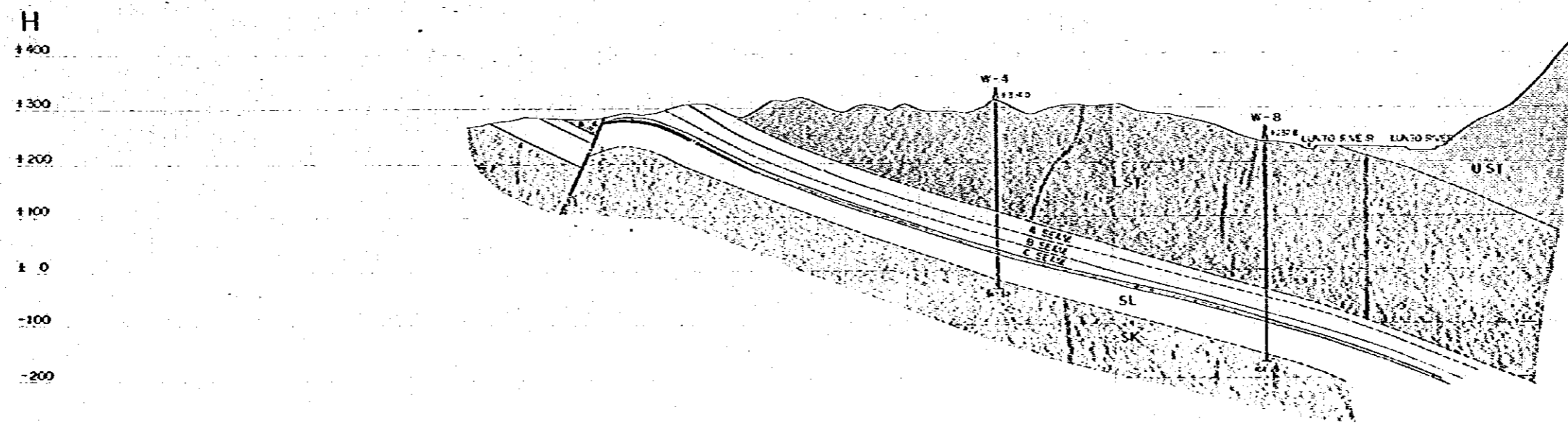
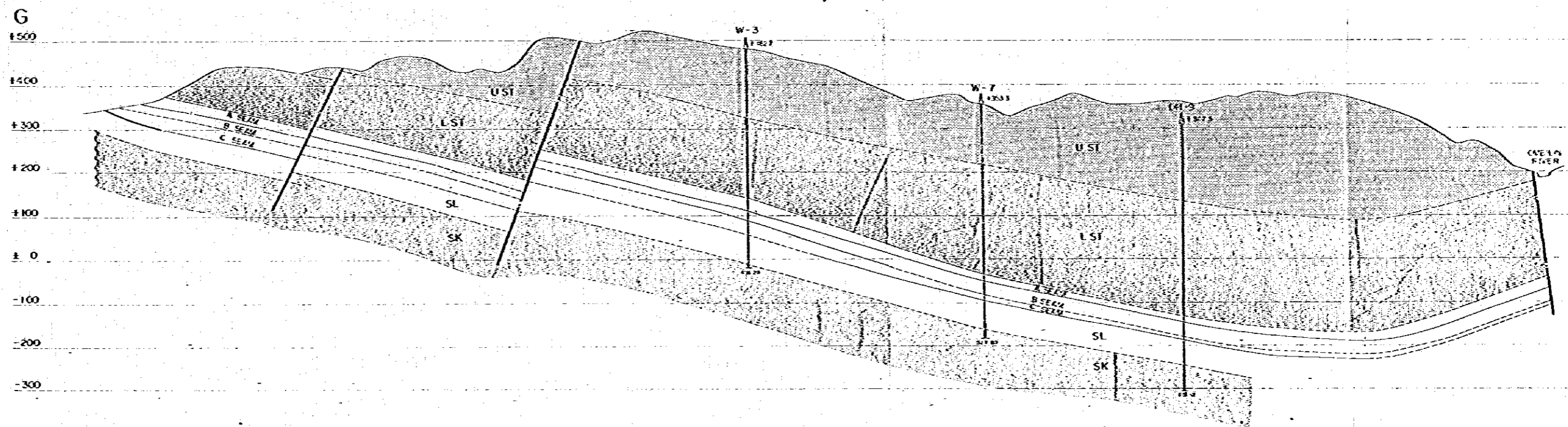
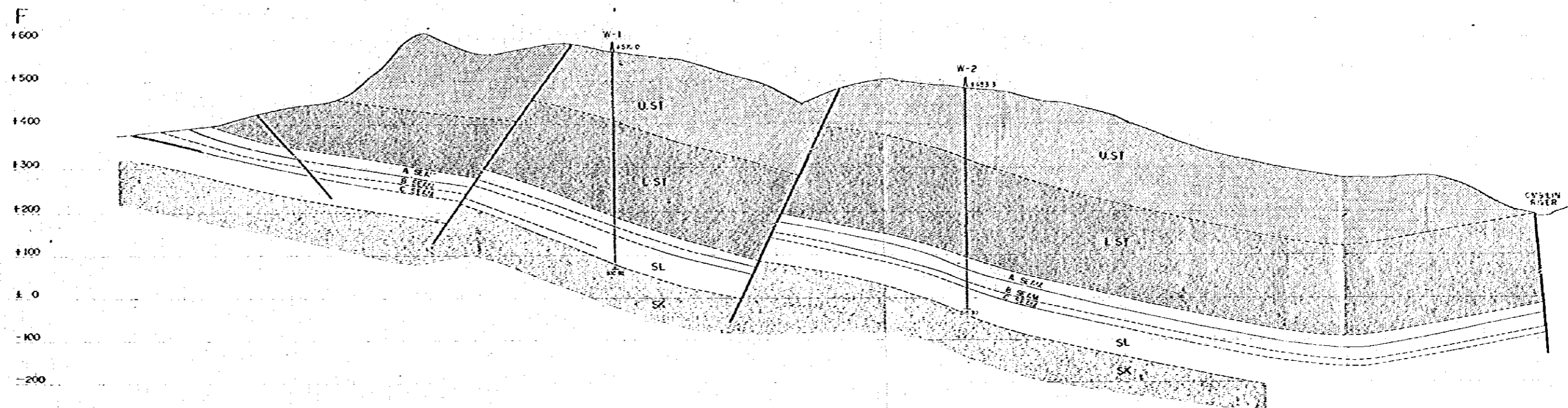
- UST** Upper Szech Tenbing Formation
- LST** Lower Szech Tenbing Formation
- SL** Szechuense Formation
- SK** Songhsiang Formation
- Coal Seam indicated
- Coal Seam available
- Coal Seam traceable

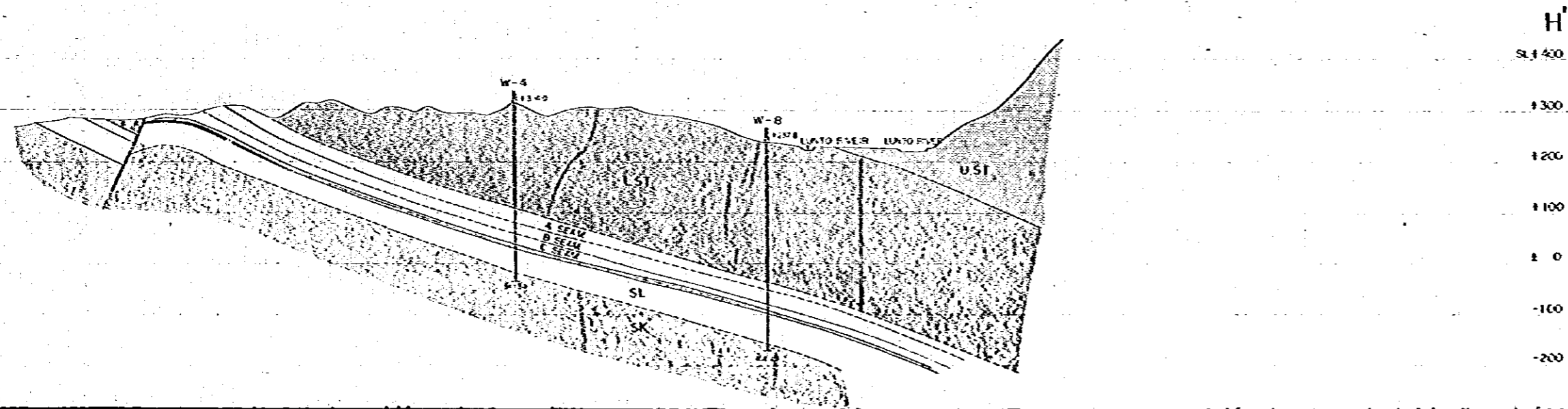
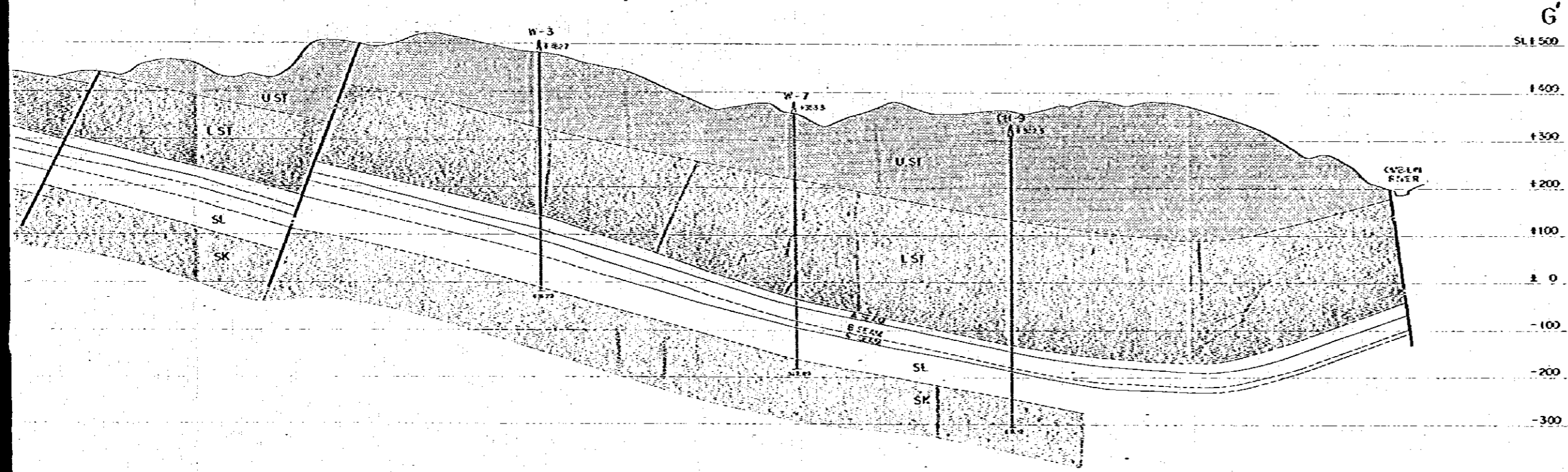
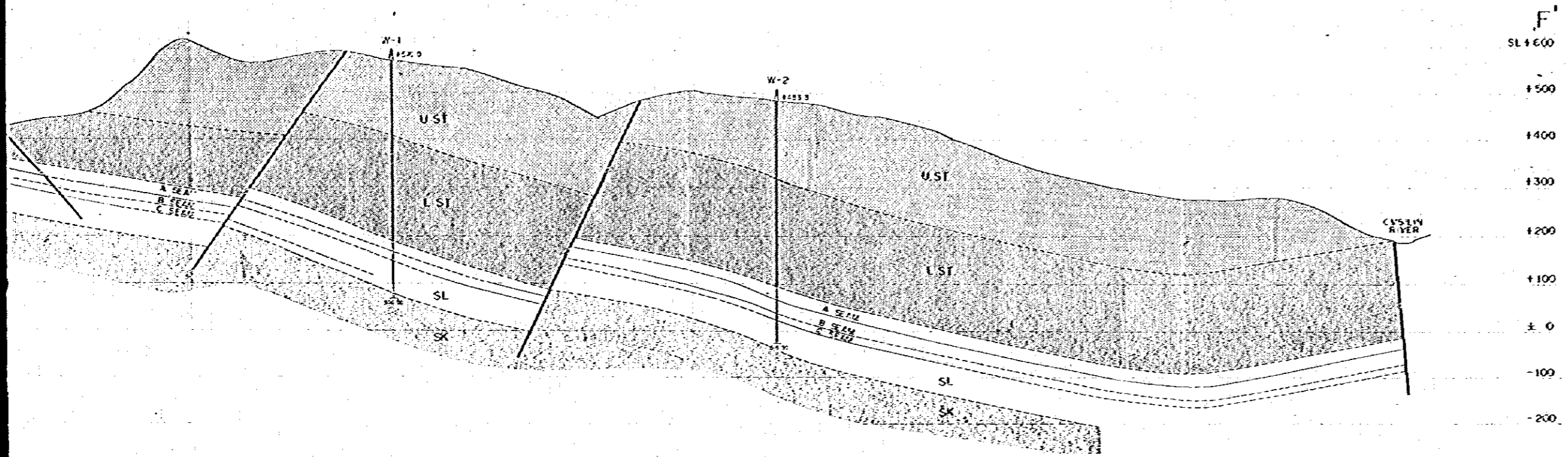
JAPAN INTERNATIONAL COOPERATION AGENCY

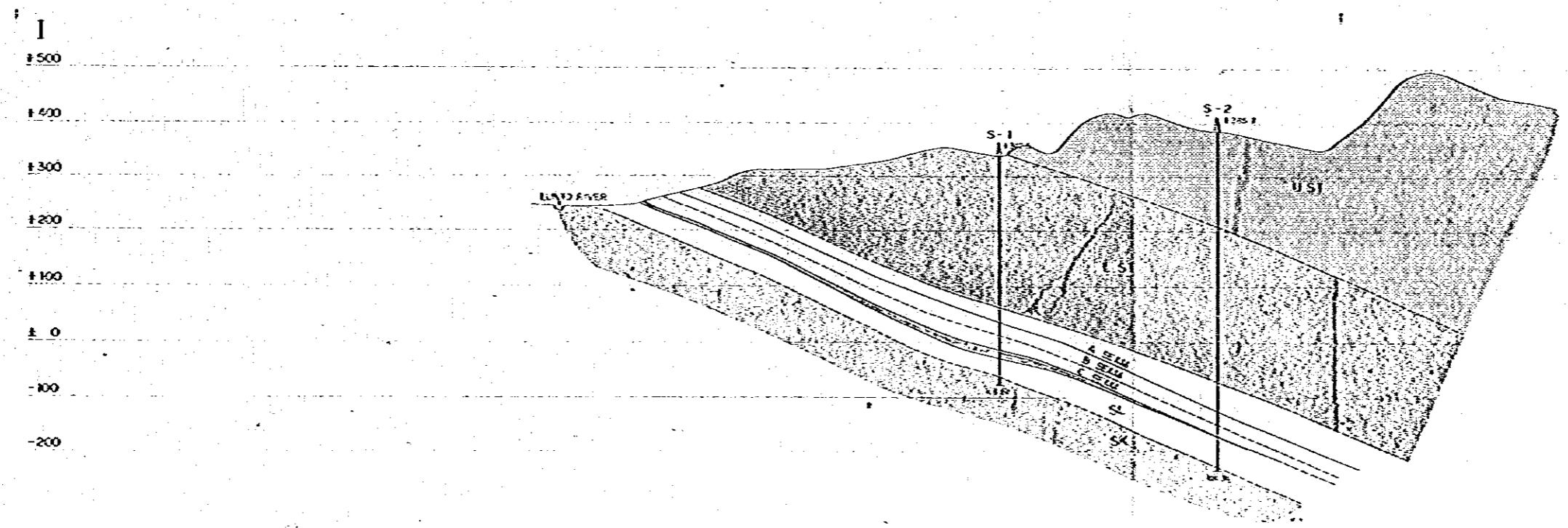
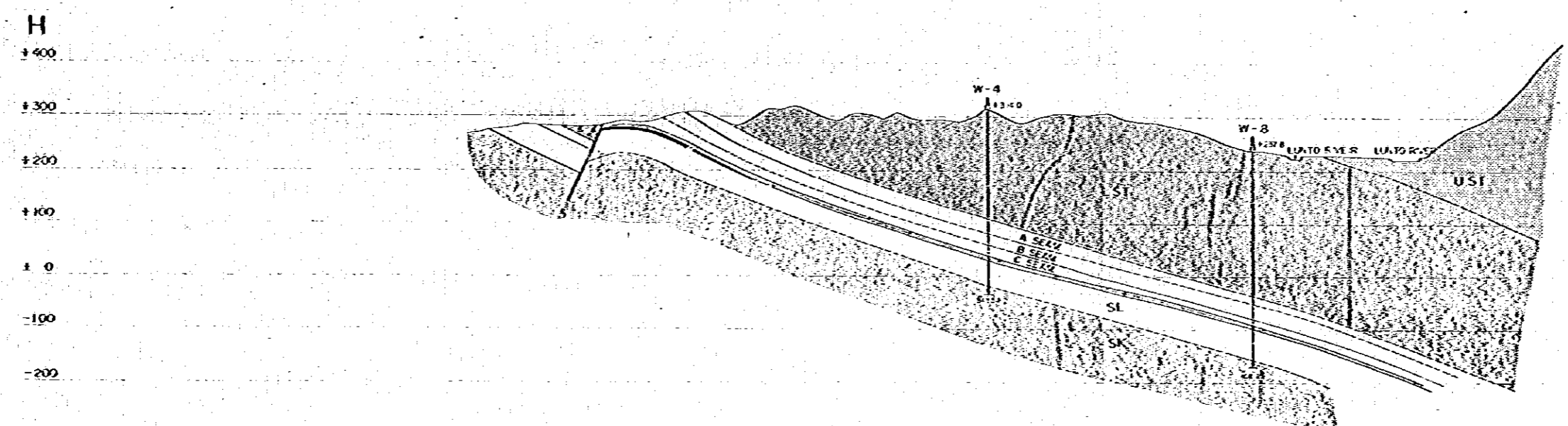
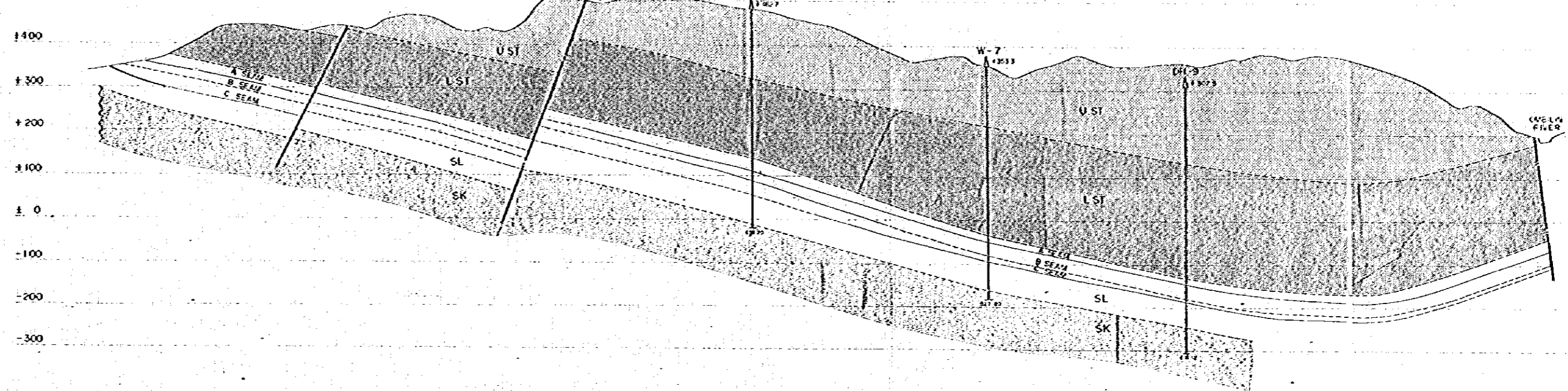
THE SURVEY FOR THE REHABILITATION OF COALIN COAL MINES

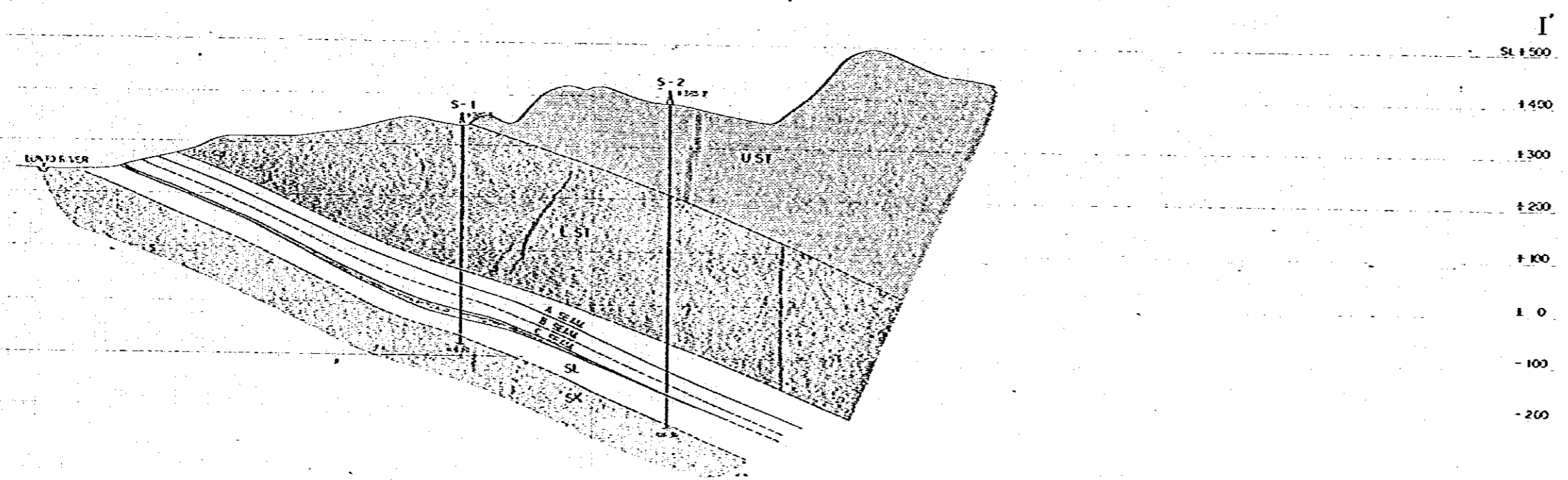
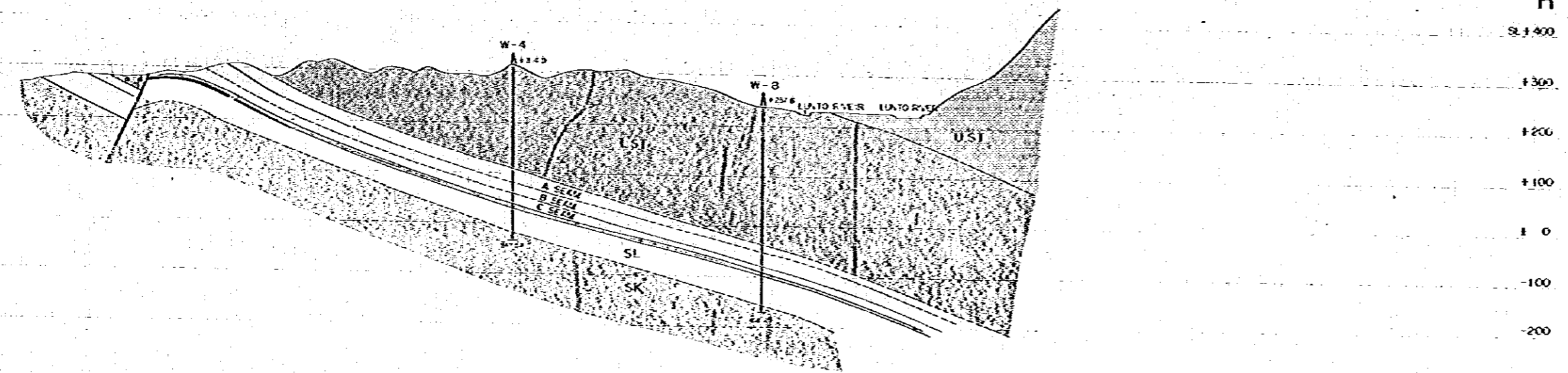
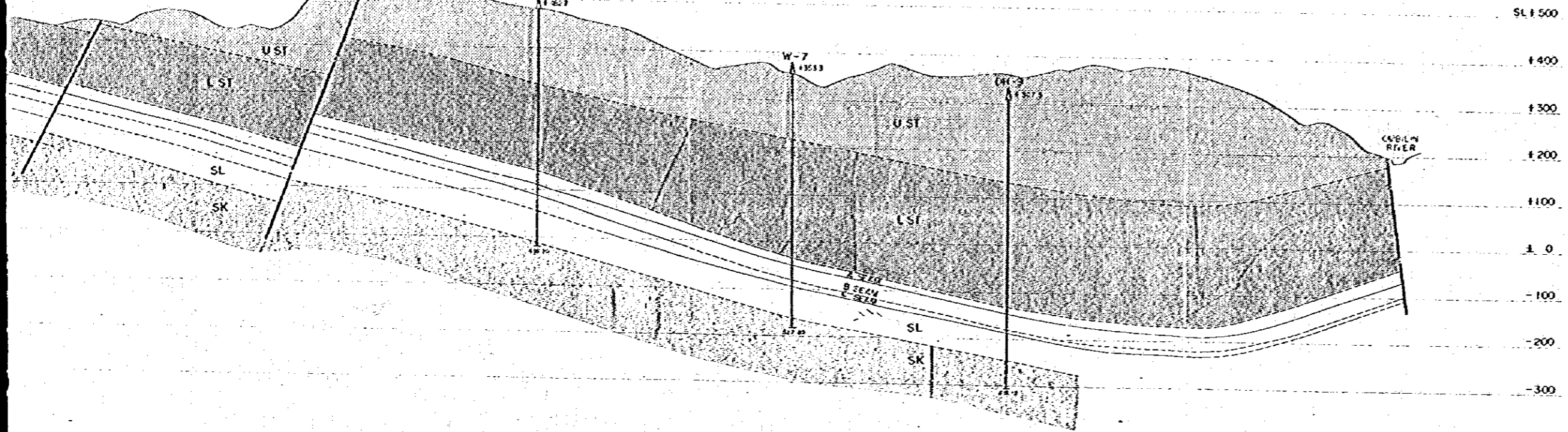
Geological Cross Sections

Fig. No.	39	Scale	1:5,000
Date	July, 1979	Prepared by	N. Ito









- Legend**
- UST Upper Szechwan Formation
 - LST Lower Szechwan Formation
 - SL Sandstone Formation
 - SK Sandstone Formation
 - Coal Seam mined out
 - Coal Seam available
 - Coal Seam unminable

JAPAN INTERNATIONAL COOPERATION AGENCY
 AT THE SURVEY FOR THE REHABILITATION OF QUELUN COAL MINE
Geological Cross Sections

Page No.	34	Scale	1" = 5,000'
Date	July, 1979	Prepared by	K. Ito