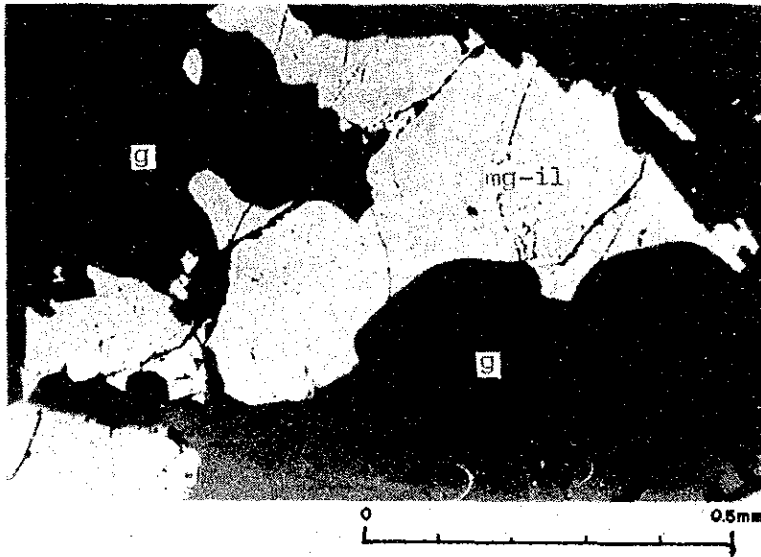


Sample No. : RE-12
 Locality : S. Kitan
 Name of ore : Disseminated
 pyrrhotite

mg : magnetite
 po : pyrrhotite

Open nicol

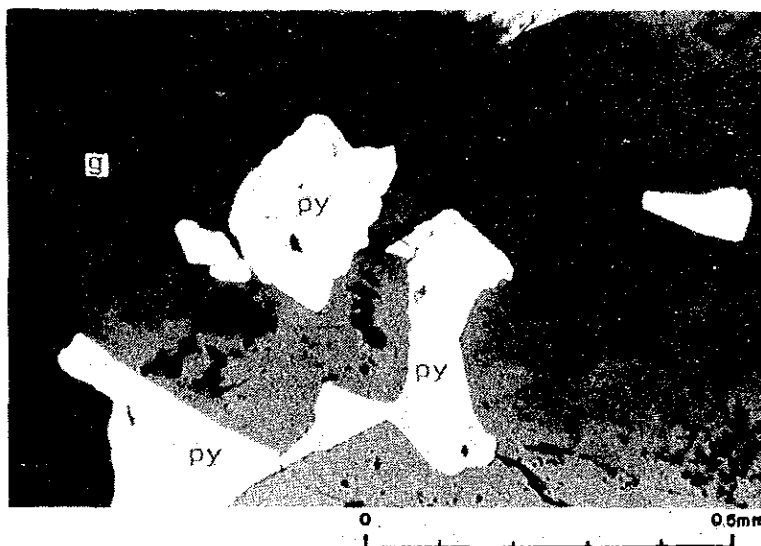


Sample No. : RD-27
 Locality : S. Napoi
 Name of ore : Disseminated
 chalcopyrite

mg-il : magnetite and
 ilmenite

g : gangue

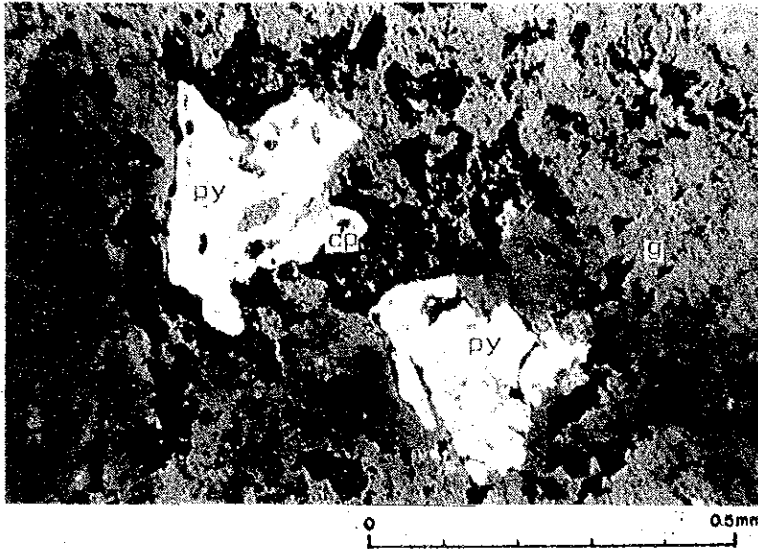
Open nicol



Sample No. : RA-27
 Locality : S. Lintong
 Name of ore : Disseminated
 pyrite

py : pyrite
 g : gangue

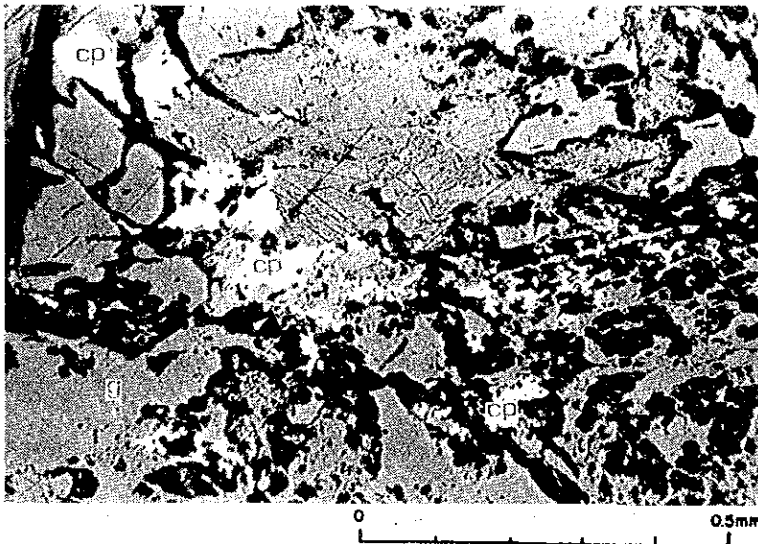
Open nicol



Sample No. : RB-46
 Locality : S.Raea
 Rock name : Disseminated
 pyrite

cp : chalcopryite
 Py : Pyrite
 g : gangue

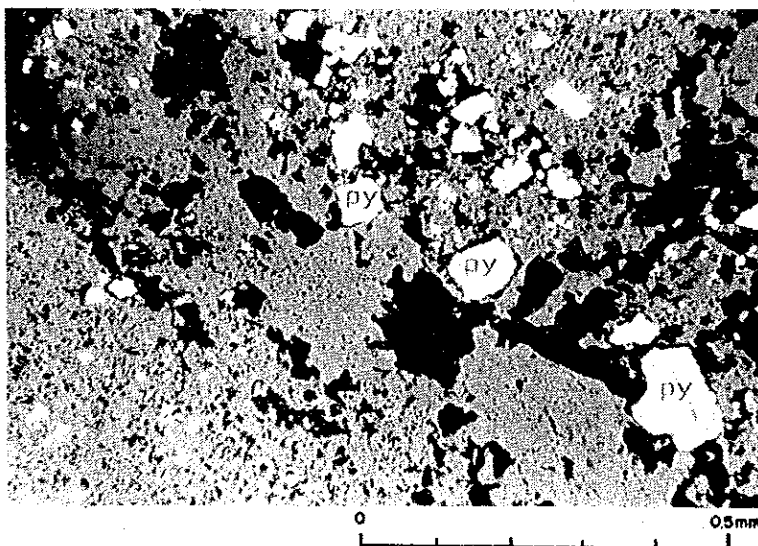
Open nicol



Sample No. : RB-59
 Locality : S.Miri
 Rock name : Disseminated
 chalcopryite

cp : chalcopryite
 g : gangue

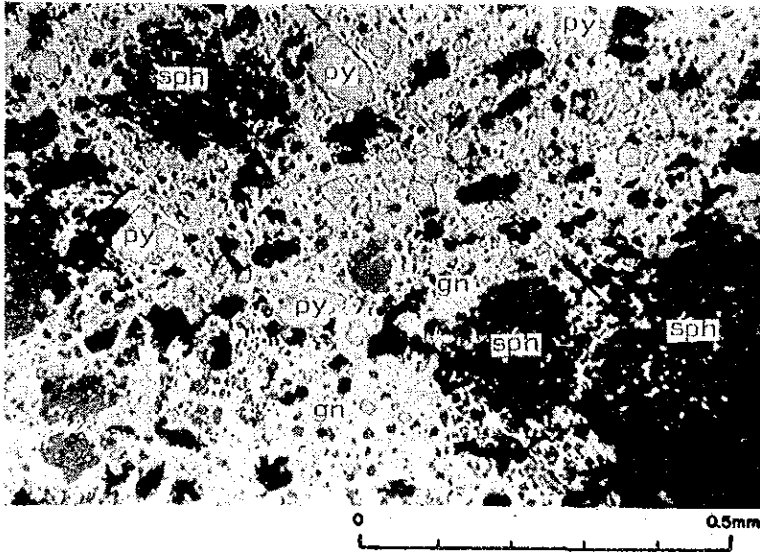
Open nicol



Sample No. : RC-83B
 Locality : S.Morandoi
 Rock name : Brecciated
 and dis-
 seminated
 pyrite

py : pyrite

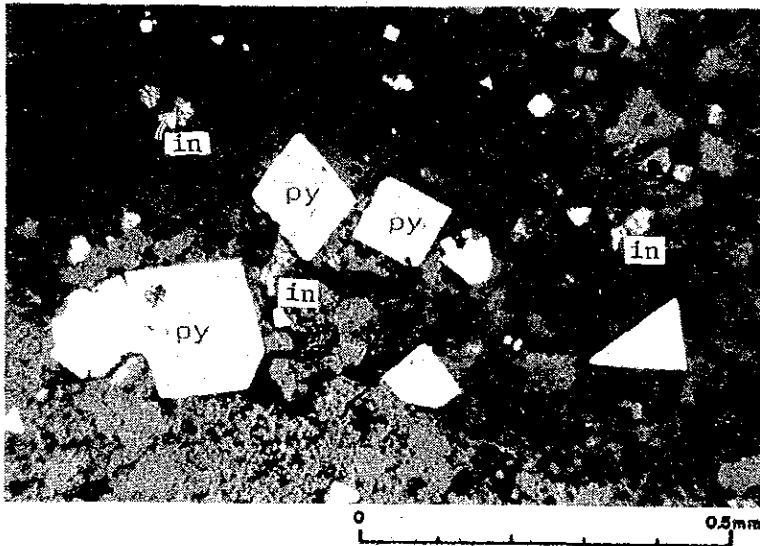
Open nicol



Sample No. : RF-5
 Locality : S.Piton
 Rock name : Gold and
 silver-
 bearing
 galena-
 sphalerite-
 pyrite

sph : sphalerite
 gn : galena
 py : pyrite

Open nicol



Sample No. : RF-38
 Locality : S.Sonang
 Rock name : Disseminated
 pyrite-
 chalcopyrite

py : pyrite
 in : iron hydroxide
 mineral

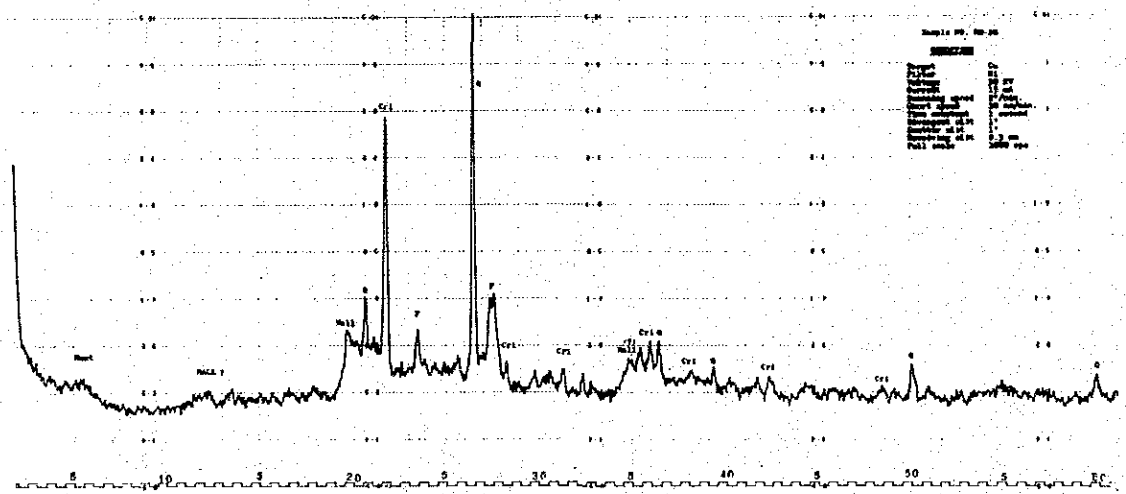
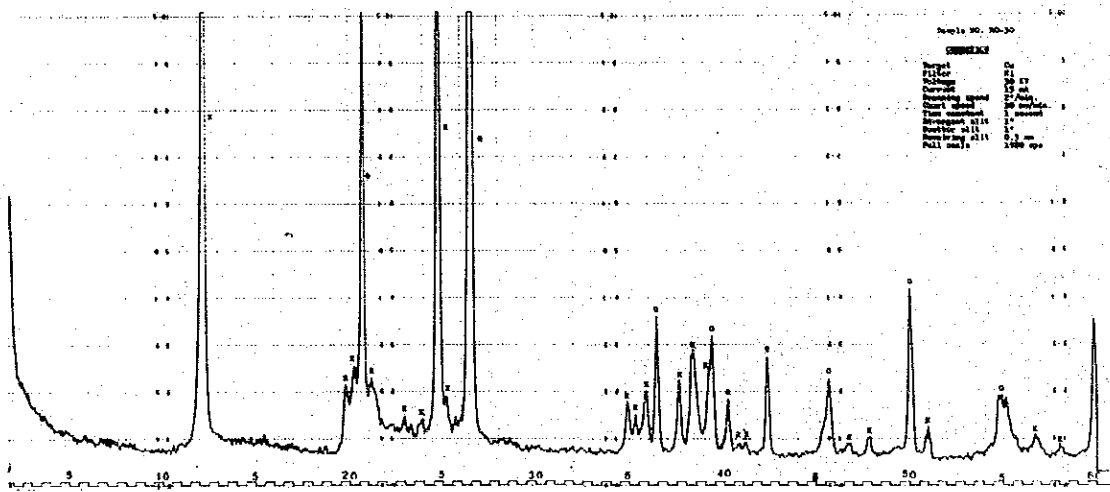
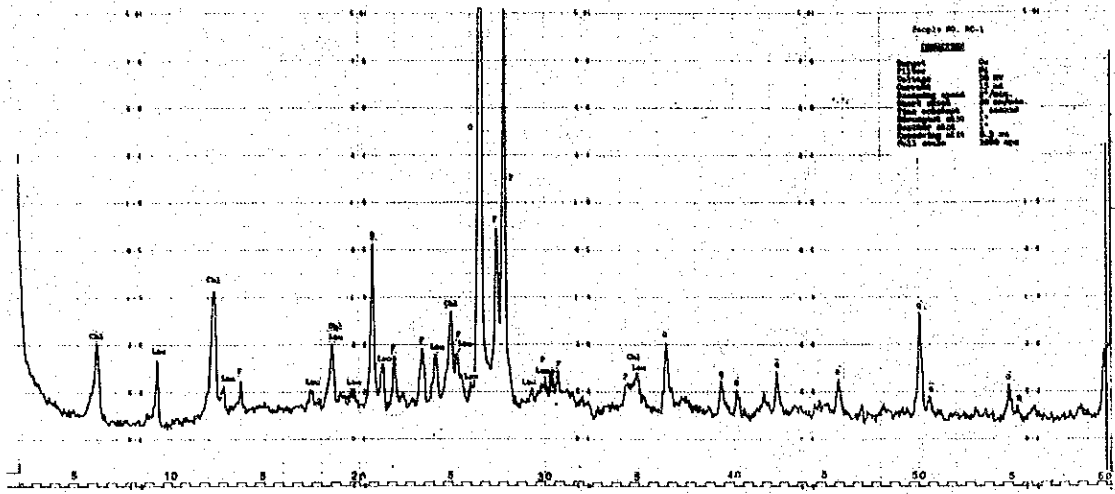
Open nicol

Appendix 7 Summary of X-ray Powder Diffractometry

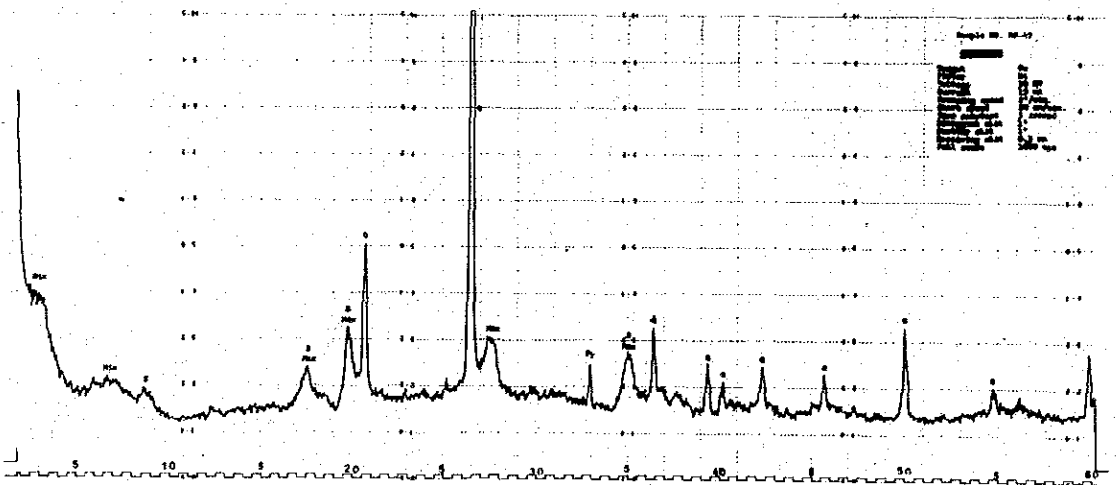
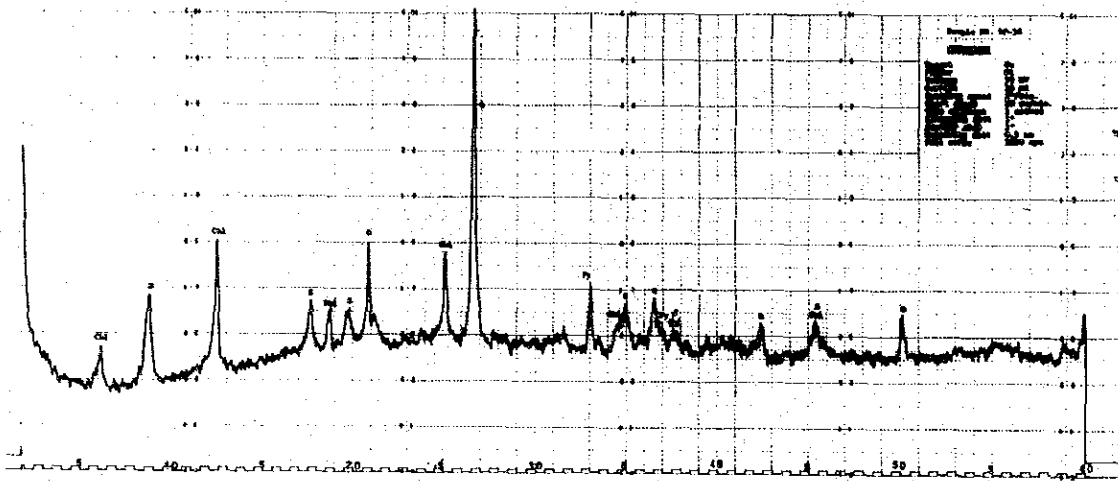
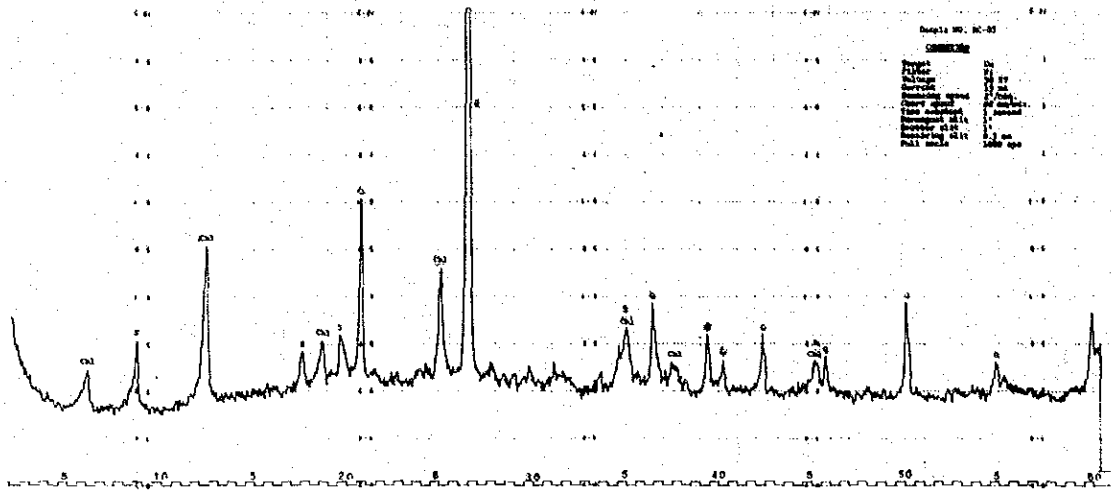
Sample No.	Type of rock	Formation or Intrusion	Locality	Quartz.	Feldspar	Chlorite	Kaolinite	Sericite	Montmorillonite	Alunite	Laumontite	Pyrite	Remarks
RC-1	Chlorite tonalite	Napoi Tonalite	S. Pejangoi	+++	+++	++					++		
RD-30	White altered rock	Napoi Tonalite	S. Napoi	+++			+++						Source rock : Tonalite.
RD-28	Weathered porous dacite	Dike in Napoi Tonalite	S. Napoi	+++	++	++			+				Cristobalite +++ Halloysite ?+
RC-85	Green altered dacite	Dike in Napoi Tonalite	S. Morandoi	++++		+++		++					
RF-36	Rhyolite	Dike in Sonang Mudstone-Shale Member	S. Sonang	++++		+++		++				++	Pyrite dissemination.
RF-47	Rhyolite	Dike in Sonang Mudstone-Shale Member	S. Sonang	++++				+				++	Mixed layer Mineral ++ (long cycle)
RF-62	Conglomerate	Sonang Mudstone - Shale Member	S. Kahongoi	++++				++				+	Pyrite dissemination.
RH-29	Clay	Sian Andesite	S. Hamputung	++++	+	++		++				++	Fault zone. Pyrite dissemination.
RH-31	White altered rock	Sian Andesite	S. Pitu	+++			+++				+++		
RH-32	Silicified rock	Sian Andesite	S. Pitu	++++				++				+	Pyrite dissemination.
RH-33	Clay	Sian Andesite	S. Pitu	++++		++	++		++			++	* either chlorite or kaolinite
RG-35	Argillized andesite	Sian Andesite	S. Hamputung	++++		++		+				+	
RG-14	Argillized andesite	Sian Andesite	S. Popoy besar	+++	++				+++				
RG-16	White clay	Sian Andesite	S. Pikor	++++					+++				
RG-34	Propylitic andesite	Sian Andesite	S. Bahoy	+++	++				++		+++	+	

+++ Abundant ++ A little
 +++ Common + Rare

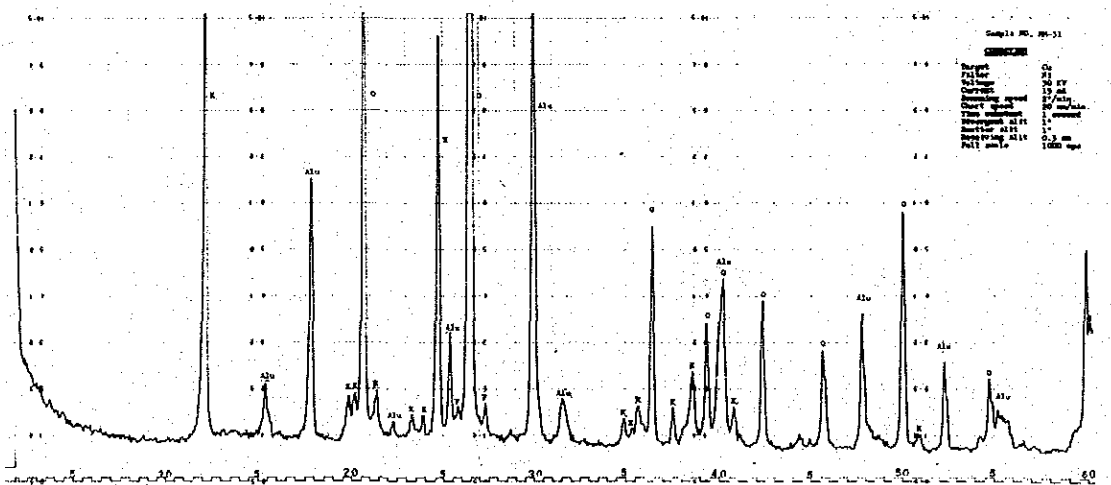
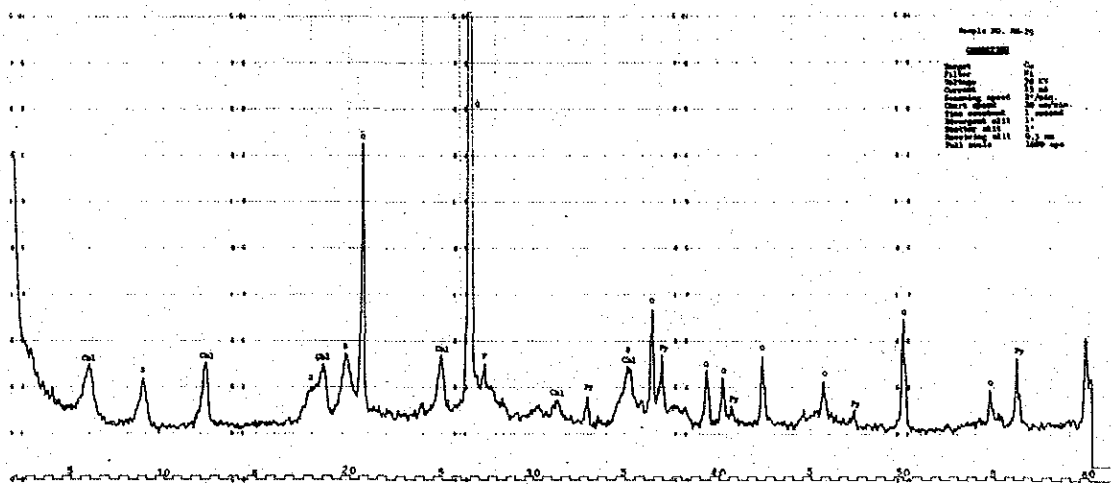
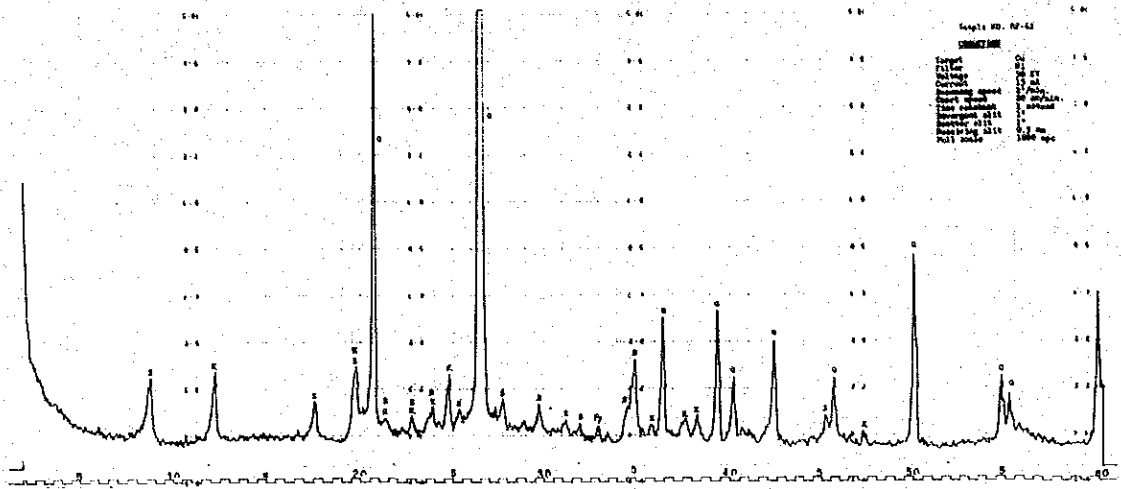
Appendix 8-1 Charts of X-Ray Analysis



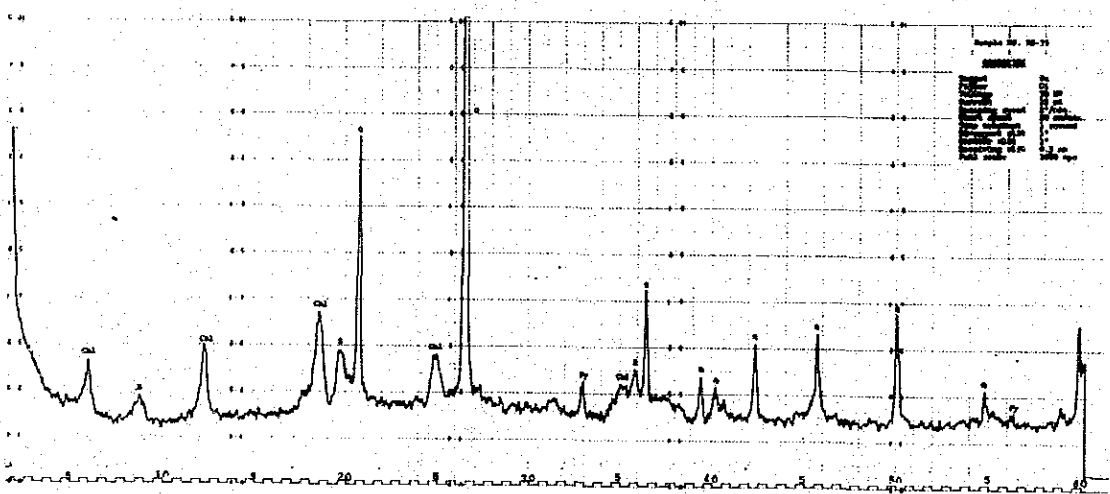
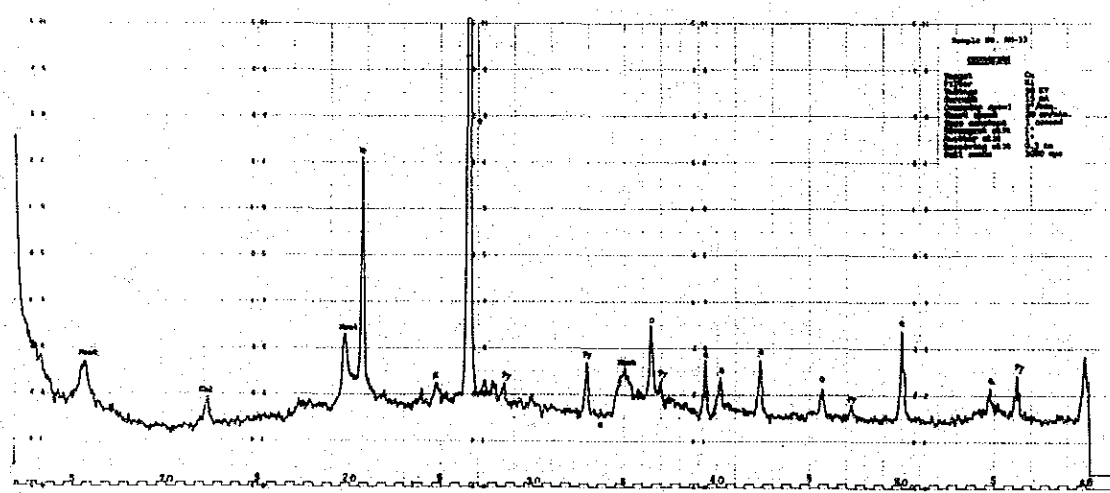
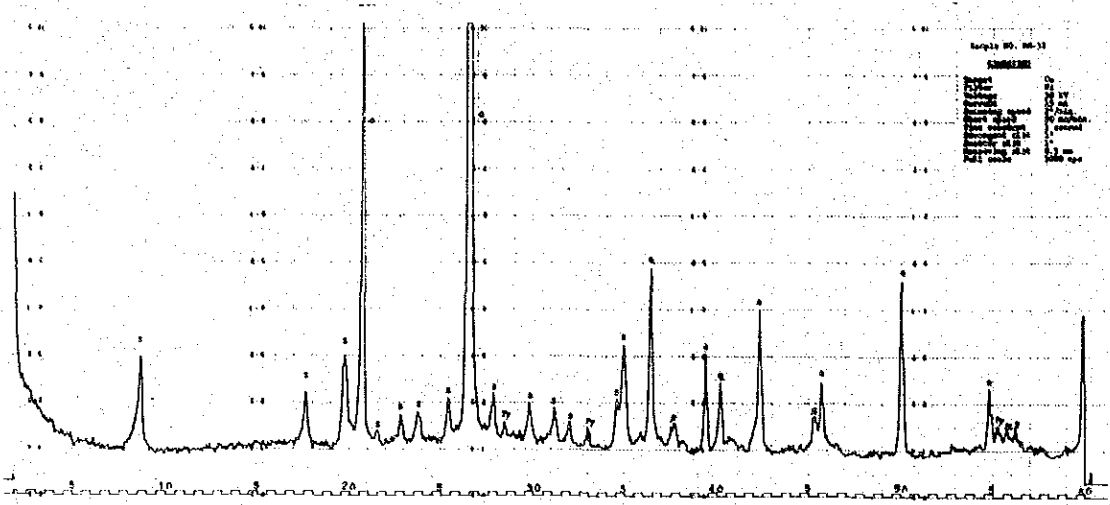
Appendix 8-2 Charts of X-Ray Analysis



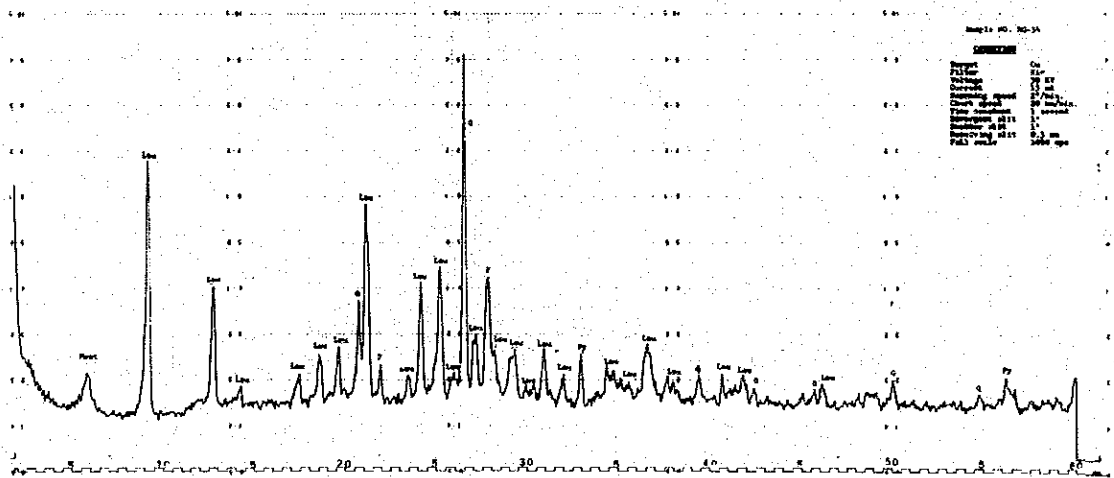
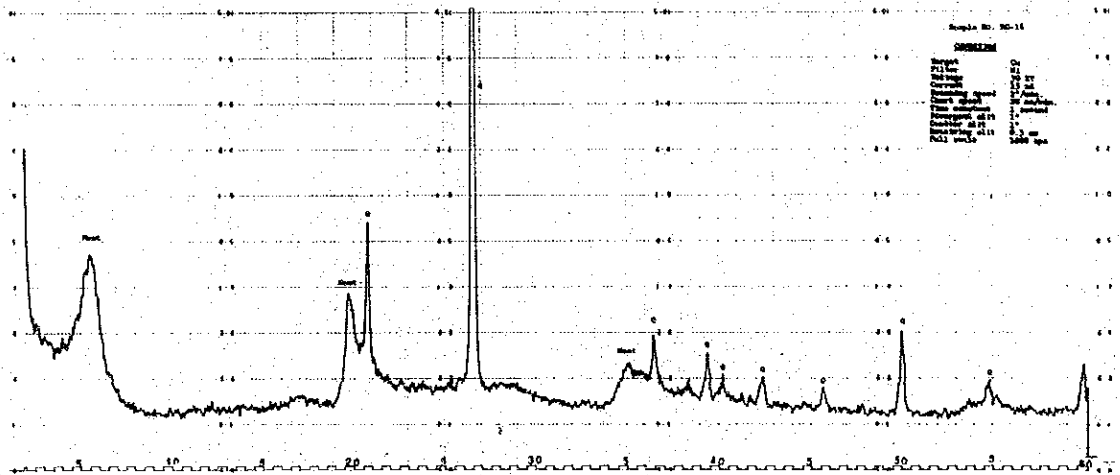
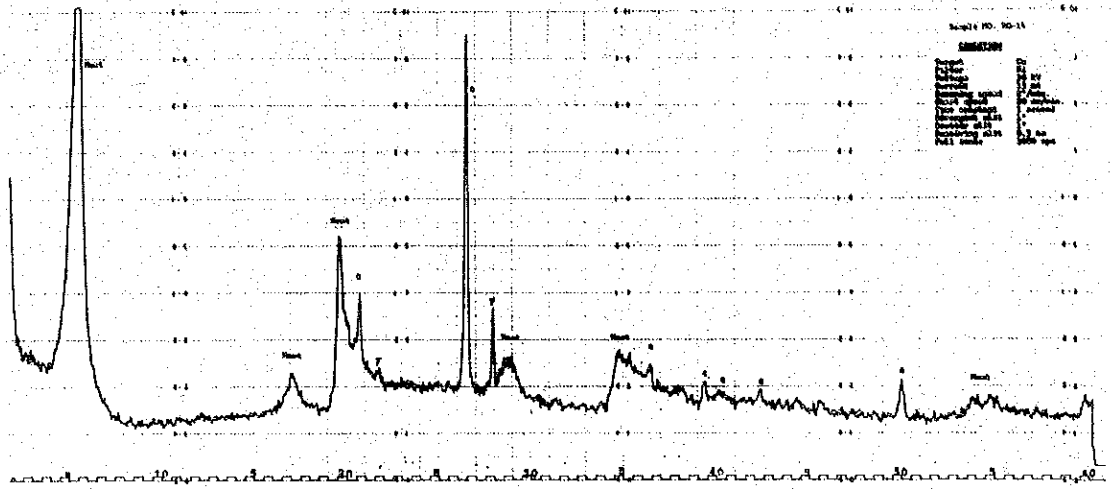
Appendix 8-3 Charts of X-Ray Analysis



Appendix 8-4 Charts of X-Ray Analysis



Appendix 8-5 Charts of X-Ray Analysis



Appendix 9 Assay Results of Geochemical Samples

Serial No.	Sample No.	Location		Assay Results (ppm)				Type of Sample	Remarks
		Grid	River or Creek	Cu	Pb	Zn	Mo		
1	CA-2	J.11	S. Pearioi	27	17	21	<1	Stream sediment	
2	3	"	"	34	21	109	<1		
3	4	"	"	47	25	49	2		
4	5	"	"	23	12	73	1		
5	6	"	S. Miri	31	13	45	1		
6	7	"	"	46	<10	29	2		
7	8	I.11	"	74	21	12	2		
8	9	"	"	130	13	39	2		
9	10	"	"	38	19	95	2		
10	11	"	S. Koto	38	23	42	2		
11	12	"	"	28	21	29	1		
12	13	"	S. Miri	36	26	45	2		
13	14	"	"	36	26	121	1		
14	15	"	"	31	25	29	<1		
15	16	"	S. Ketinun	28	57	111	1		
16	17	"	S. Miri	18	27	49	1		
17	18	I.12	"	18	19	90	1		
18	20	I.11	S. Kaburan	31	38	83	1		
19	21	H.11	S. Onguk	38	22	61	<1		
20	22	"	S. Miri	42	19	96	1		
21	23	"	"	76	25	40	2		
22	24	H.12	"	51	17	43	1		
23	26	"	"	96	13	33	2		
24	28	"	S. Ngahukup	70	16	53	2		
25	29	"	"	25	11	33	<1		
26	30	"	"	162	11	27	2		
27	31	"	S. Miri	41	21	36	2		
28	32	"	"	142	10	10	2		
29	33	H.11	S. Pari	136	13	12	3		
30	34	"	"	48	<10	10	1		

Assay Results of Geochemical Samples

Serial No.	Sample No.	Location		Assay Results (ppm)				Type of Sample	Remarks
		Grid	River or Creek	Cu	Pb	Zn	Mo		
31	CA-36	H.12	S. Miri	54	10	20	2		
32	37	G.12	"	27	73	91	<1		
33	40	"	"	40	50	140	<1		
34	41	"	"	25	50	48	1		
35	42	"	"	36	58	95	1		
36	43	"	"	25	56	54	1		
37	44	"	"	28	30	61	1		
38	45	"	"	34	70	99	1		
39	46	"	"	30	37	65	<1		
40	47	"	"	39	128	144	1		
41	48	"	"	41	166	100	1		
42	49	"	"	23	28	63	1		
43	50	"	"	28	54	55	2		
44	51	"	"	31	58	57	2		
45	56	F.12	S. Dahugoi	13	14	14	2		
46	57	"	"	12	19	17	1		
47	58	"	"	15	16	43	3		
48	59	G.12	S. Miri	23	43	54	<1		
49	60	F.12	"	35	28	52	2		
50	64	"	"	24	28	32	1		
51	65	"	"	73	21	58	2		
52	66	"	"	47	29	53	2		
53	67	"	"	76	44	72	2		
54	69	"	"	27	24	43	2		
55	70	"	"	129	23	34	1		
56	73	"	"	23	26	49	2		
57	75	"	"	17	19	58	2		
58	77	"	"	20	23	40	1		
59	78	"	"	33	67	49	2		
60	81	"	"	14	16	14	1		

Assay Results of Geochemical Samples

Serial No.	Sample No.	Location		Assay Results (ppm)				Type of Sample	Remarks
		Grid	River or Creek	Cu	Pb	Zn	Mo		
61	CA-82	F.12	S. Miri	14	23	20	2		
62	84	"	"	10	18	43	5		
63	85	"	"	14	17	29	3		
64	87	"	S.Monobalang	30	51	62	1		
65	88	"	"	23	26	60	<1		
66	89	"	"	20	64	74	<1		
67	92	"	"	30	19	43	1		
68	93	F.11	"	18	20	38	<1		
69	94	"	"	19	22	40	1		
70	95	F.12	"	38	130	133	1		
71	97	F.11	"	24	124	84	1		
72	98	G.11	"	26	37	49	<1		
73	99	"	"	30	156	79	<1		
74	101	G.12	S.Kahungoi	17	16	20	1		
75	103	"	"	22	161	107	<1		
76	104	"	"	14	16	21	<1		
77	106	"	"	13	14	46	<1		
78	107	"	"	18	15	76	1		
79	108	"	"	13	11	45	1		
80	109	F.12	"	22	21	81	2		
81	110	F.13	"	16	12	54	<1		
82	112	"	"	16	13	63	<1		
83	116	"	"	18	19	69	<1		
84	119	"	"	24	15	47	2		
85	120	"	"	20	18	67	1		
86	121	"	"	17	15	54	1		
87	122	"	"	19	21	70	2		
88	123	"	"	14	15	59	<1		
89	124	"	"	13	14	65	3		
90	126	"	"	16	17	61	1		

Assay Results of Geochemical Samples

Serial No.	Sample No.	Location		Assay Results (ppm)				Type of Sample	Remarks
		Grid	River or Creek	Cu	Pb	Zn	Mo		
91	CA-127	F.13	S.Kahungoi	18	17	65	1		
92	128	"	"	13	14	60	1		
93	129	"	"	22	21	72	2		
94	130	J.11	S. Miri	31	18	70	<1		
95	131	"	S. Jeraan	19	14	43	<1		
96	132	"	S. Miri	32	21	63	<1		
97	133	J.10	"	24	17	49	2		
98	134	J.11	"	27	16	55	2		
99	135	J.10	"	20	13	66	1		
100	136	J.11	S. Pengnon	22	13	54	1		
101	137	"	"	34	18	74	<1		
102	138	J.10	S. Miri	14	11	40	1		
103	139	"	"	18	12	70	<1		
104	140	"	"	17	13	46	<1		
105	141	K.10	"	20	14	62	<1		
106	142	"	S. Merowoi	18	11	55	<1		
107	143	K.11	"	30	19	91	<1		
108	144	"	"	22	21	65	<1		
109	145	K.10	S. Horongonoi	30	19	70	4		
110	147	"	"	20	16	51	<1		
111	CB- 1	J.11	S. Merangai	41	24	101	<1		
112	2	"	S. Takonyit	24	20	45	<1		
113	3	"	S. Bekel	22	14	25	1		
114	4	"	S. Dangan	33	20	25	1		
115	5	"	S. Pengaharan	26	17	11	<1		
116	7	J.12	S. Karaman- gun	10	10	34	<1		
117	8	K.12	"	31	17	73	1		
118	9	"	"	12	10	18	2		
119	10	"	"	29	17	21	5		
120	11	"	"	14	15	46	2		

Assay Results of Geochemical Samples

Serial No.	Sample No.	Location		Assay Results (ppm)				Type of Sample	Remarks
		Grid	River or Creek	Cu	Pb	Zn	Mo		
121	CB- 13	K.12	S.Karaman-gun	23	17	14	2		
122	14	"	"	26	16	63	2		
123	15	"	"	<10	<10	45	2		
124	16	"	"	<10	<10	45	1		
125	17	"	"	<10	<10	37	<1		
126	18	"	"	12	10	39	2		
127	19	"	"	19	15	52	1		
128	20	"	"	32	19	73	2		
129	21	"	"	13	10	43	1		
130	22	J.12	S.Merangai	14	12	22	1		
131	23	"	"	18	13	27	2		
132	24	"	"	12	<10	44	1		
133	25	"	"	13	11	11	1		
134	26	"	"	14	12	30	<1		
135	27	"	"	<10	<10	10	<1		
136	30	"	"	<10	<10	28	1		
137	31	"	S. Huoi	15	12	90	2		
138	32	"	S. Merangai	33	18	91	1		
139	33	I.12	S. Huoi	15	10	48	2		
140	34	"	"	21	14	23	1		
141	35	"	"	16	12	40	<1		
142	37	"	S. Huoi	30	17	47	2		
143	39	"	"	18	12	62	1		
144	40	"	"	28	14	47	<1		
145	42	"	"	29	17	50	<1		
146	44	"	"	20	16	25	<1		
147	45	"	"	23	19	59	1		
148	46	J.12	S. Marau	15	19	43	<1		
149	47	"	"	18	19	76	2		
150	48	"	"	11	14	43	1		

Assay Results of Geochemical Samples

Serial No.	Sample No.	Location		Assay Results (ppm)				Type of Sample	Remarks
		Grid	River or Creek	Cu	Pb	Zn	Mo		
151	CB- 50	J.13	S. Bacun	19	19	37	2		
152	52	"	"	23	20	40	2		
153	53	"	"	25	20	42	2		
154	54	"	S. Marau	13	16	46	1		
155	56	"	"	15	19	43	1		
156	57	"	"	16	20	87	2		
157	58	"	"	19	21	72	2		
158	59	"	"	16	17	42	2		
159	60	"	S. Seburung	22	21	37	3		
160	61	"	"	20	17	76	2		
161	62	"	"	23	18	27	2		
162	63	"	"	15	15	51	3		
163	64	"	"	18	18	76	2		
164	65	"	S. Marau	19	16	29	2		
165	66	K.13	"	17	18	34	2		
166	67	"	"	12	11	36	<1		
167	68	"	"	20	23	80	3		
168	69	"	"	18	18	54	2		
169	70	"	"	21	22	62	2		
170	71	"	"	21	23	40	2		
171	72	"	"	20	21	82	2		
172	73	"	"	21	23	99	2		
173	74	"	"	21	25	60	3		
174	75	"	"	22	22	25	3		
175	76	"	"	23	27	30	2		
176	77	"	"	17	22	24	3		
177	78	"	"	22	25	18	3		
178	79	"	"	27	27	83	<1		
179	80	"	"	17	19	74	<1		
180	81	"	"	18	18	84	<1		

Assay Results of Geochemical Samples

Serial No.	Sample No.	Location		Assay Results (ppm)				Type of Sample	Remarks
		Grid	River or Creek	Cu	Pb	Zn	Mo		
181	CB- 82	K.13	S. Marau	22	25	95	<1		
182	83	J.12	S. Merangai	49	27	81	<1		
183	84	"	"	35	19	71	<1		
184	87	J.13	S. Kahau	31	19	119	<1		
185	88	"	- "	23	13	71	<1		
186	89	I.13	"	19	15	66	<1		
187	90	J.13	"	26	17	69	<1		
188	91	"	"	28	19	83	<1		
189	92	"	"	26	19	69	<1		
190	93	"	"	27	19	83	<1		
191	94	"	"	36	19	89	<1		
192	95	"	S. Merangai	21	15	58	<1		
193	96	I.13	"	13	<10	51	<1		
194	97	"	"	17	10	54	<1		
195	98	"	"	29	15	75	<1		
196	99	"	"	26	12	63	<1		
197	100	"	"	20	10	61	<1		
198	102	"	"	39	19	77	<1		
199	103	"	"	27	15	66	<1		
200	105	"	"	11	10	43	<1		
201	106	"	"	20	13	59	<1		
202	107	"	"	20	10	80	<1		
203	108	"	"	25	15	68	<1		
204	109	I.11	S. Moto	35	19	78	<1		
205	110	"	"	29	15	66	<1		
206	111	"	"	27	15	68	<1		
207	112	"	"	23	12	65	<1		
208	113	"	"	27	12	72	<1		
209	114	"	"	27	17	64	<1		
210	115	"	"	22	12	55	<1		

Assay Results of Geochemical Samples

Serial No.	Sample No.	Location		Assay Results (ppm)				Type of Sample	Remarks
		Grid	River or Creek	Cu	Pb	Zn	Mo		
211	CB-116	I.12	S. Moto	26	15	61	<1		
212	117	"	"	24	12	60	<1		
213	118	"	"	20	<10	52	<1		
214	119	"	"	38	17	80	<1		
215	120	"	"	17	<10	53	<1		
216	121	"	"	22	10	57	<1		
217	122	"	"	26	10	62	<1		
218	123	H.12	S. Raea	127	<10	36	<1		
219	125	"	"	37	19	44	<1		
220	127	"	"	45	15	51	<1		
221	129	"	"	47	19	68	<1		
222	131	G.11	"	52	<10	47	<1		
223	132	H.11	"	128	<10	33	<1		
224	135	G.11	"	31	10	26	<1		
225	136	"	"	46	<10	22	<1		
226	137	"	"	44	<10	18	<1		
227	139	"	"	42	19	59	<1		
228	140	"	"	47	13	33	<1		
229	141	"	"	17	12	32	<1		
230	142	"	"	24	10	27	<1		
231	143	"	"	53	15	71	<1		
232	144	"	"	39	<10	28	<1		
233	145	"	"	45	13	45	<1		
234	146	"	"	48	13	57	<1		
235	148	"	"	37	13	65	<1		
236	149	"	"	32	42	127	<1		
237	150	"	"	25	23	65	<1		
238	151	"	"	27	23	82	<1		
239	152	"	"	17	12	63	<1		
240	153	"	"	44	12	59	<1		

Assay Results of Geochemical Samples

Serial No.	Sample No.	Location		Assay Results (ppm)				Type of Sample	Remarks
		Grid	River or Creek	Cu	Pb	Zn	Mo		
241	CB-154	G.11	S. Raea	10	<10	30	<1		
242	155	"	"	24	23	81	<1		
243	156	"	"	24	15	51	<1		
244	158	"	"	16	13	58	<1		
245	159	"	"	19	15	64	<1		
246	160	"	"	19	12	50	<1		
247	161	"	"	42	19	73	<1		
248	163	H.12	S. Miri	66	27	68	<1		
249	164	"	"	107	47	126	<1		
250	165	"	"	88	23	65	<1		
251	166	"	"	34	27	78	<1		
252	167	G.12	"	28	25	92	<1		
253	168	"	"	22	27	77	<1		
254	169	"	S. Magan	66	42	82	<1		
255	171	"	"	20	19	66	<1		
256	172	"	"	53	38	106	<1		
257	173	"	"	47	35	97	<1		
258	175	"	"	59	31	82	<1		
259	176	"	"	16	21	66	<1		
260	177	H.12	"	9	23	65	<1		
261	178	"	"	25	19	82	<1		
262	179	"	"	25	13	96	<1		
263	180	"	"	27	23	76	<1		
264	182	H.13	"	18	21	79	<1		
265	184	"	"	14	31	82	<1		
266	185	G.12	S. Jeranoi	36	<10	40	<1		
267	186	"	"	18	29	145	<1		
268	189	"	"	21	29	90	<1		
269	190	"	"	22	54	114	<1		
270	191	"	"	18	13	125	<1		

Assay Results of Geochemical Samples

Serial No.	Sample No.	Location		Assay Results (ppm)				Type of Sample	Remarks
		Grid	River or Creek	Cu	Pb	Zn	Mo		
271	CB-193	G.12	S. Jeranoi	21	31	90	<1		
272	194	"	"	22	29	88	<1		
273	195	"	"	19	23	116	<1		
274	196	G.13	"	21	27	112	<1		
275	198	"	"	18	12	74	<1		
276	199	"	"	12	27	86	<1		
277	200	"	"	17	12	109	<1		
278	201	"	"	16	54	140	<1		
279	205	"	"	29	17	76	<1		
280	206	"	"	24	19	77	<1		
281	207	"	"	19	15	86	<1		
282	208	"	"	22	17	78	<1		
283	209	"	"	18	15	61	<1		
284	210	"	"	24	23	96	<1		
285	211	K.10	S.Kambangan	24	19	74	<1		
286	212	"	S. Miri	14	<10	32	<1		
287	213	"	S. Impa	11	12	46	<1		
288	214	"	"	21	44	98	<1		
289	215	K.9	S. Miri	37	15	70	<1		
290	216	"	"	24	15	75	<1		
291	217	"	"	43	12	46	<1		
292	218	"	S.Hatogo	23	13	62	<1		
293	219	"	S.Sakon	23	12	58	<1		
294	220	"	S.Pasian	21	12	50	<1		
295	221	"	"	14	10	42	<1		
296	222	"	S.Romukon	25	10	60	<1		
297	223	"	S.Hanyoi	15	12	54	<1		
298	224	"	"	12	21	59	<1		
299	225	"	"	18	35	69	<1		
300	CC- 2	H.7	S.Pejangoi	51	24	100	3		

Assay Results of Geochemical Samples

Serial No.	Sample No.	Location		Assay Results (ppm)				Type of Sample	Remarks
		Grid	River or Creek	Cu	Pb	Zn	Mo		
301	CC- 4	H.7	S.Pejangoi	75	24	82	2		
302	5	"	"	55	24	76	2		
303	6	"	"	67	20	65	2		
304	7	H.8	"	67	28	88	2		
305	8	"	"	63	20	76	2		
306	9	"	"	71	28	76	2		
307	11	"	"	83	20	76	2		
308	16	"	"	55	24	76	2		
309	17	"	"	55	20	65	2		
310	18	"	"	59	32	76	2		
311	19	"	"	71	24	82	2		
312	20	"	"	83	20	65	2		
313	22	H.9	"	79	24	100	1		
314	24	"	"	87	20	100	3		
315	25	"	"	51	20	76	2		
316	26	"	"	59	20	82	3		
317	28	"	"	83	36	100	3		
318	29	"	"	87	20	100	3		
319	30	"	"	59	24	85	3		
320	31	"	"	60	26	76	<1		
321	32	G.9	"	42	28	71	<1		
322	33	"	"	54	26	105	<1		
323	34	"	"	36	20	67	<1		
324	35	H.9	"	60	23	81	<1		
325	36	H.10	"	24	28	76	<1		
326	37	G.10	"	24	23	71	<1		
327	38	"	"	36	37	110	<1		
328	39	"	"	42	37	119	<1		
329	40	"	"	24	31	105	<1		
330	42	"	"	63	31	124	<1		

Assay Results of Geochemical Samples

Serial No.	Sample No.	Location		Assay Results (ppm)				Type of Sample	Remarks
		Grid	River or Creek	Cu	Pb	Zn	Mo		
331	CC-43	G.10	S.Pejangoi	42	23	81	<1		
332	45	"	"	42	34	95	<1		
333	46	"	"	99	26	95	2		
334	47	"	"	21	26	90	<1		
335	48	"	"	36	20	62	<1		
336	49	"	"	12	20	43	<1		
337	50	"	"	24	26	81	<1		
338	51	H.9	"	63	20	86	<1		
339	52	"	"	57	26	76	<1		
340	54	"	"	75	25	70	2		
341	55	"	"	85	31	96	1		
342	56	"	"	62	26	66	1		
343	57	"	"	81	31	89	1		
344	58	"	"	83	28	91	1		
345	61	H.8	"	42	14	183	<1		
346	62	H.7	"	61	30	66	<1		
347	63	H.8	"	77	21	61	1		
348	64	H.7	"	72	24	73	1		
349	66	"	"	75	22	52	1		
350	67	"	"	67	20	54	1		
351	68	"	"	86	24	54	1		
352	69	J.9	S.Masukih	22	28	89	<1		
353	70	J.8	"	18	24	82	1		
354	71	J.9	"	6	24	56	2		
355	72	"	S.Mecang	26	31	73	1		
356	73	"	S.Masukih	6	24	73	<1		
357	74	"	S.Bahanon	48	24	80	2		
358	75	"	S.Masukih	19	28	82	1		
359	77	"	"	11	26	73	1		
360	78	"	S.Horuwu	17	25	96	<1		

Assay Results of Geochemical Samples

Serial No.	Sample No.	Location		Assay Results (ppm)				Type of Sample	Remarks
		Grid	River or Creek	Cu	Pb	Zn	Mo		
361	CC- 79	J.9	S.Masukih	78	30	86	1		
362	80	J.10	S.Horuwu	39	23	91	<1		
363	81	J.9	S.Masukih	22	18	68	<1		
364	83	J.10	"	19	23	59	<1		
365	84	"	"	39	25	73	<1		
366	85	"	S.Toros	42	27	100	<1		
367	86	"	S.Awong	31	30	86	<1		
368	88	"	S.Masukih	42	27	77	<1		
369	89	"	S. Mentagoi	22	27	77	<1		
370	90	"	S.Masukih	25	27	82	<1		
371	91	"	S.Rasuhun	31	32	73	<1		
372	92	I.10	S.Masukih	22	25	86	<1		
373	93	"	"	19	27	82	<1		
374	94	"	S. Hakiro	19	25	64	<1		
375	95	"	S.Masukih	39	34	86	1		
376	96	"	"	19	18	59	1		
377	97	"	"	22	20	73	1		
378	98	H.10	"	31	30	73	1		
379	99	H.11	"	33	100	265	1		
380	101	H.9	S.Pejangoi	28	32	86	3		
381	103	H.10	"	28	30	81	3		
382	106	"	"	37	25	81	2		
383	107	"	"	31	23	73	2		
384	108	"	"	31	39	99	2		
385	110	"	"	31	23	71	2		
386	111	G.10	"	42	34	124	3		
387	113	"	"	34	25	111	2		
388	114	"	"	17	25	86	2		
389	118	G.9	"	71	25	64	2		
390	119	"	"	26	18	56	2		

Assay Results of Geochemical Samples

Serial No.	Sample No.	Location		Assay Results (ppm)				Type of Sample	Remarks
		Grid	River or Creek	Cu	Pb	Zn	Mo		
391	CC-120	G.9	S.Pejangoi	28	18	60	2		
392	122	"	"	71	23	60	2		
393	123	"	"	65	20	60	2		
394	124	"	"	45	25	73	2		
395	127	"	"	11	20	39	2		
396	128	"	"	17	16	64	4		
397	129	H.8	"	71	20	64	5		
398	130	"	"	45	16	60	5		
399	132	"	"	69	21	56	21		
400	134	"	"	83	28	78	4		
401	135	"	"	64	23	56	27		
402	136	"	"	72	23	69	8		
403	137	"	"	66	21	53	4		
404	139	G.8	"	74	20	50	8		
405	140	"	"	72	23	59	<1		
406	141	"	"	66	21	56	<1		
407	142	H.10	S.Masukih	48	34	100	<1		
408	143	"	"	69	21	62	<1		
409	144	"	"	41	26	100	<1		
410	146	"	"	36	21	75	<1		
411	148	"	"	29	19	56	<1		
412	149	H.11	"	43	38	103	<1		
413	151	"	"	66	38	103	<1		
414	152	"	"	41	33	112	<1		
415	154	"	"	34	27	72	<1		
416	155	"	"	46	39	97	<1		
417	156	"	"	50	38	156	<1		
418	157	"	"	43	38	119	1		
419	158	"	"	43	75	207	1		
420	159	I.11	S.Menerian	38	225	602	2		

Assay Results of Geochemical Samples

Serial No.	Sample No.	Location		Assay Results (ppm)				Type of Sample	Remarks
		Grid	River or Creek	Cu	Pb	Zn	Mo		
421	CC-160	I.11	S.Menerian	47	106	175	1		
422	161	"	"	41	72	207	1		
423	162	"	"	38	106	175	1		
424	163	I.10	S.Manyoi	26	19	88	1		
425	164	I.9	"	32	19	84	2		
426	165	I.10	"	32	25	103	1		
427	166	"	"	21	19	72	2		
428	167	"	"	32	31	96	1		
429	168	"	"	34	25	72	1		
430	169	H.10	"	39	25	80	1		
431	170	"	"	38	25	88	1		
432	171	"	"	41	25	88	2		
433	180	J.10	S.Masukih	68	25	103	1		
434	181	"	"	22	25	80	1		
435	182	"	"	77	25	80	2		
436	183	"	"	26	25	96	1		
437	184	"	S.Uwan	68	25	72	2		
438	185	J.9	"	47	25	92	4		
439	186	"	"	62	25	67	4		
440	187	J.8	S.Miri	18	16	58	4		
441	188	"	"	23	28	83	4		
442	189	"	"	27	19	67	4		
443	190	"	"	31	25	83	4		
444	191	"	"	35	31	83	4		
445	192	"	"	39	31	92	3		
446	193	K.8	"	31	25	92	4		
447	194	J.8	"	23	25	67	4		
448	201	H.11	S.Masukih	47	69	217	4		
449	202	"	"	49	44	125	4		
450	203	"	"	31	25	83	3		

Assay Results of Geochemical Samples

Serial No.	Sample No.	Location		Assay Results (ppm)				Type of Sample	Remarks
		Grid	River or Creek	Cu	Pb	Zn	Mo		
451	CC-207	H.10	S.Masukih	39	25	67	4		
452	208	"	"	31	25	83	4		
453	209	"	"	27	19	75	3		
454	210	"	"	33	19	75	3		
455	211	"	"	35	25	83	3		
456	212	H.11	"	54	31	125	2		
457	214	"	"	62	31	117	3		
458	215	"	"	49	31	103	<1		
459	216	"	"	45	49	150	2		
460	218	H.10	"	20	56	103	2		
461	219	"	"	40	24	87	<1		
462	220	I.10	"	28	24	95	<1		
463	221	"	"	24	63	87	1		
464	222	"	"	24	21	79	1		
465	223	"	"	24	28	87	1		
466	224	"	"	24	21	87	1		
467	226	"	"	20	21	87	1		
468	228	"	"	36	24	87	1		
469	229	"	S. Manyoi	28	24	95	1		
470	231	J.10	S.Masukih	20	21	79	<1		
471	233	"	"	24	17	63	<1		
472	234	"	"	28	24	71	1		
473	235	"	"	20	17	71	1		
474	236	J.7	S.Miri	16	17	63	<1		
475	237	"	"	20	31	87	<1		
476	238	"	"	20	52	118	<1		
477	CD- 1	I.6	S. Haking	28	28	71	1		
478	2	I.7	S.Soi besar	8	20	61	2		
479	3	"	S.Soi besar	32	29	96	2		
480	4	I.6	S. Parot	20	12	34	3		

Assay Results of Geochemical Samples

Serial No.	Sample No.	Location		Assay Results (ppm)				Type of Sample	Remarks
		Grid	River or Creek	Cu	Pb	Zn	Mo		
481	CD- 5	I.7	S. Metol	40	32	89	2		
482	6	K.8	S. Bahanyi	40	40	109	2		
483	7	K.9	"	36	32	96	2		
484	8	"	S. Siwau	55	46	82	3		
485	9	"	S. Pejam	28	46	96	2		
486	10	"	S. Pari	40	26	68	2		
487	11	"	"	12	35	96	2		
488	12	"	S. Ratau	32	32	82	2		
489	13	J.8	S. Bakau	40	23	89	2		
490	14	K.8	S. Bahangan	63	29	82	2		
491	15	J.8	S. Miri	12	17	61	2		
492	16	"	S. Calang	12	23	61	2		
493	17	J.6	S. Koroi	20	23	55	2		
494	18	"	"	36	20	55	2		
495	19	I.6	"	40	29	82	2		
496	20	I.7	S.Kotohoi	16	20	61	2		
497	21	"	"	20	23	68	2		
498	22	I.6	S.Mecong	34	28	72	5		
499	23	"	S. Bakoi	38	22	90	3		
500	24	I.7	"	11	22	78	5		
501	25	"	S. Daroi	15	25	90	3		
502	26	"	S.Piringkoik	30	22	90	3		
503	27	"	S.Piring- hanyo	52	34	90	3		
504	28	"	S.Keurunyai	52	31	90	2		
505	29	"	S.Rowong	64	31	78	1		
506	30	H.7	S. Hangoi	15	22	66	2		
507	32	"	S.Korompat	49	28	78	1		
508	33	"	S. Suling	64	25	66	1		
509	34	"	S. Korotoi	38	28	72	1		
510	36	"	S. Usop	56	28	66	1		

Assay Results of Geochemical Samples

Serial No.	Sample No.	Location		Assay Results (ppm)				Type of Sample	Remarks
		Grid	River or Creek	Cu	Pb	Zn	Mo		
511	CD-37	H.7	S. Usop	41	25	90	1		
512	38	"	S. Jealeiwan	60	22	60	1		
513	40	G.7	S. Awang	49	28	78	1		
514	41	"	S. Napoi	52	22	48	1		
515	42	"	S. Kemusoh	68	22	60	2		
516	43	"	S. Potungkoi	71	25	60	1		
517	44	"	"	82	28	78	2		
518	45	"	S. Petung- besar	71	21	54	2		
519	46	"	S. Kawit	87	37	179	<1		
520	47	"	S. Logai	64	15	46	1		
521	48	"	S. Ambung	77	21	64	<1		
522	49	"	S. Rud	74	23	80	<1		
523	51	G.8	S. Boreniak	84	28	64	<1		
524	52	"	S. Kolop	84	28	77	<1		
525	53	"	S. Sapan	84	24	61	<1		
526	54	"	S. Napoi	74	21	67	<1		
527	55	"	"	71	24	86	<1		
528	56	"	"	77	31	83	<1		
529	57	"	S. Iuah	77	26	67	<1		
530	58	"	S. Napoi	90	24	61	<1		
531	59	"	"	77	28	70	<1		
532	61	"	S. Marabahan	84	24	67	<1		
533	63	"	"	84	24	58	<1		
534	65	"	"	87	24	64	<1		
535	66	G.9	S. Rihat	87	28	72	<1		
536	67	"	"	90	28	67	<1		
537	68	"	S. Marabahan	97	34	65	<1		
538	69	"	"	92	26	60	6		
539	70	G.8	S. Napoi	90	26	85	1		
540	71	"	S. Mandoi	12	14	27	4		

Assay Results of Geochemical Samples

Serial No.	Sample No.	Location		Assay Results (ppm)				Type of Sample	Remarks
		Grid	River or Creek	Cu	Pb	Zn	Mo		
541	CD-72	G.9	S.Taring	39	21	60	2		
542	73	"	S.Hanyo	85	26	80	1		
543	74	F.9	"	8	19	31	2		
544	75	"	S.Benuang	5	16	31	1		
545	76	"	S. Patu	5	16	26	1		
546	77	"	S.Pekai	14	16	34	2		
547	78	"	S. Iko	6	16	27	2		
548	80	"	S.Burud	15	19	36	2		
549	81	"	S. Keu	15	23	43	1		
550	84	"	S. Donga	14	16	31	1		
551	85	"	S. Naboi	16	14	39	1		
552	86	"	S. Tosah	13	16	42	1		
553	87	G.9	S.Berniad	28	19	53	<1		
554	88	"	"	74	26	95	1		
555	90	"	S.Ouhian	85	23	59	1		
556	92	"	S. Honyo	90	23	62	1		
557	93	"	S.Hanyokiri	72	40	150	1		
558	94	G.8	S. Bahangoi	67	34	75	2		
559	95	"	S.Tebilung	75	31	70	1		
560	96	"	S. Lipan	83	28	64	3		
561	99	"	S. Bahangoi	75	31	64	1		
562	100	"	"	75	43	80	1		
563	102	"	"	67	31	70	1		
564	104	"	S. Bahangoikiri	58	28	64	1		
565	105	I.7	S. Robakoi	33	34	91	<1		
566	106	"	"	33	31	80	<1		
567	107	"	"	42	31	80	2		
568	109	"	"	50	31	75	<1		
569	112	I.8	S. Robakoi (Ngahukup)	58	31	107	2		
570	114	"	S. Robakoi (Torong)	108	31	86	1		

Assay Results of Geochemical Samples

Serial No.	Sample No.	Location		Assay Results (ppm)				Type of Sample	Remarks
		Grid	River or Creek	Cu	Pb	Zn	Mo		
571	CD-115	H.8	S. Robakoi (Nyatong)	58	28	80	1		
572	117	I.8	" (Beruhu)	67	28	70	<1		
573	119	H.8	"	67	24	59	<1		
574	121	"	" (Sunakai)	67	28	75	<1		
575	123	"	"	75	24	86	<1		
576	126	"	"	50	11	57	3		
577	127	"	"	57	12	62	3		
578	128	H.9	"	65	14	73	3		
579	131	"	"	78	19	97	3		
580	134	"	" (Tosah)	50	19	71	2		
581	135	"	"	72	21	73	4		
582	138	I.9	"	57	17	63	2		
583	139	H.9	"	66	18	71	1		
584	140	"	"	56	18	75	4		
585	142	"	" (Sunakai)	64	20	77	2		
586	143	"	"	62	16	46	2		
587	144	"	" (Sarang)	54	17	76	2		
588	146	I.7	S. Tosah	41	18	50	2		
589	147	I.8	"	28	19	81	2		
590	148	"	"	38	16	68	3		
591	149	"	"	50	16	67	2		
592	151	"	"	18	18	54	<1		
593	152	"	"	37	14	60	2		
594	154	"	S. Nusa	53	13	63	4		
595	156	"	S. Tosah	61	17	78	1		
596	157	"	"	69	18	56	1		
597	158	"	"	63	21	49	1		
598	159	"	"	70	18	65	1		
599	163	"	"	70	20	83	2		
600	164	"	"	76	20	92	2		

Assay Results of Geochemical Samples

Serial No.	Sample No.	Location		Assay Results (ppm)				Type of Sample	Remarks
		Grid	River or Creek	Cu	Pb	Zn	Mo		
601	CD-165	I.8	S. Tosah	77	22	82	3		
602	168	"	"	51	16	77	<1		
603	169	I.9	"	41	12	69	<1		
604	170	"	"	68	21	82	1		
605	171	"	"	60	15	78	1		
606	173	"	"	51	13	59	<1		
607	174	I.8	"	60	16	55	<1		
608	176	I.9	S. Koroh	58	20	83	1		
609	177	"	S. Emang	63	21	50	3		
610	178	"	S. Haton	63	17	74	2		
611	179	"	S. Manyoi	70	21	62	4		
612	180	"	S. Belanda	55	20	74	2		
613	181	"	S. Piray	46	21	79	2		
614	182	"	"	43	18	92	3		
615	183	"	"	63	20	75	3		
616	185	"	"	31	20	72	1		
617	187	"	"	49	17	67	2		
618	188	"	"	36	16	117	2		
619	189	J.8	S. Pinong	46	17	53	2		
620	190	"	S. Nyohokop	45	19	88	3		
621	191	"	S. Pilang	30	16	53	2		
622	192	"	S. Manyoi	15	16	60	2		
623	193	"	S. Karawoi	22	15	83	2		
624	194	"	S. Manyoi	<10	13	76	1		
625	195	J.7	S. Anoi	19	19	74	1		
626	196	"	"	24	16	68	1		
627	197	"	"	32	26	78	1		
628	198	"	"	25	34	102	2		
629	199	"	"	30	30	64	1		
630	200	"	S. Torik	19	17	77	1		

Assay Results of Geochemical Samples

Serial No.	Sample No.	Location		Assay Results (ppm)				Type of Sample	Remarks
		Grid	River or Creek	Cu	Pb	Zn	Mo		
631	CD-201	J.7	S. Torik	21	20	77	1		
632	202	"	"	37	25	89	1		
633	203	"	"	15	14	53	2		
634	204	"	"	30	20	92	1		
635	205	"	S. Moratoi	27	21	78	1		
636	CE- 1	G.4	S. Keloka	9	<10	24	<1		
637	2	"	S. Kacang	16	10	25	<1		
638	3	"	"	30	10	39	<1		
639	5	"	Branch of S. Tekaoi	38	15	70	<1		
640	6	"	S. Kacang	47	<10	18	<1		
641	7	"	"	23	<10	34	<1		
642	8	"	"	35	<10	16	<1		
643	9	"	S. Toman	17	12	58	<1		
644	10	"	"	12	12	51	<1		
645	11	"	"	6	<10	20	<1		
646	12	"	"	9	<10	23	<1		
647	13	"	S. Perahu	35	19	64	<1		
648	14	"	S. Jalanau kecil	9	<10	34	<1		
649	15	"	S. Jalanau- besar	12	12	38	<1		
650	16	G.5	S. Bawun	16	10	51	<1		
651	17	"	"	13	<10	41	<1		
652	18	"	Branch of S. Tekaoi	39	19	71	<1		
653	19	"	S. Pelanoluk	22	12	48	<1		
654	20	G.4	S. Siwou	8	10	25	<1		
655	21	G.5	Branch of S. Tekaoi	9	<10	27	<1		
656	22	G.4	"	23	15	57	<1		
657	23	"	S. Suman	10	<10	35	<1		
658	24	"	"	14	12	58	<1		
659	25	G.5	S. Koroi	21	<10	51	<1		
660	27	"	S. Darit	14	10	50	<1		

Assay Results of Geochemical Samples

Serial No.	Sample No.	Location		Assay Results (ppm)				Type of Sample	Remarks
		Grid	River or Creek	Cu	Pb	Zn	Mo		
661	CE-28	G.5	S.Kambin	42	17	74	2		
662	29	"	S. Au	16	13	35	<1		
663	30	"	S. Kitan	6	<10	27	<1		
664	31	"	S. Soko	13	12	29	<1		
665	32	"	S. Belawan	27	29	43	<1		
666	33	"	S. Liang	10	12	21	<1		
667	34	"	S. Rung besar	18	<10	34	<1		
668	35	"	S. Rung kecil	19	<10	37	<1		
669	36	"	S. Pecang kecil	28	<10	43	<1		
670	37	"	S. pecang besar	16	12	44	<1		
671	38	"	Branch of S. Tekaoi	34	12	53	<1		
672	39	G.6	S. Tang	15	<10	32	<1		
673	40	"	S. Tang kecil	22	12	43	<1		
674	41	"	S. Torung	17	<10	32	<1		
675	42	"	S. Mino	22	12	40	<1		
676	43	"	S. Silu	25	<10	33	<1		
677	44	"	Branch of S. Tekaoi	41	10	40	<1		
678	45	G.7	Branch of S. Monuku	25	<10	38	<1		
679	46	"	"	51	12	43	<1		
680	47	"	"	50	<10	42	<1		
681	48	"	"	38	<10	36	<1		
682	49	"	"	44	10	55	<1		
683	50	"	"	46	<10	47	1		
684	51	"	S. Monuku	40	20	63	<1		
685	52	"	Branch of S. Monuku	18	<10	28	<1		
686	53	"	Branch of S. Tekaoi	28	12	44	<1		
687	55	F.4	S. Nyonyang	24	20	62	<1		
688	56	"	S. Howaw	37	35	77	<1		
689	57	"	S. Ongai	39	35	74	<1		
690	58	"	S. Suluh	47	45	94	1		

Assay Results of Geochemical Samples

Serial No.	Sample No.	Location		Assay Results (ppm)				Type of Sample	Remarks
		Grid	River or Creek	Cu	Pb	Zn	Mo		
691	CE-59	F.4	S. Belanga	27	24	64	<1		
692	60	"	S. Meramoi	26	24	68	<1		
693	61	"	S. Batang	28	24	60	<1		
694	62	"	S. Pucol	21	22	50	<1		
695	63	"	S. Serahau	35	27	68	<1		
696	64	"	S. Hakat	30	24	62	<1		
697	65	"	S. Karang	43	37	83	<1		
698	66	"	S. Piping	53	45	96	<1		
699	67	"	S. Morus	25	22	53	<1		
700	68	F.5	"	33	27	72	<1		
701	69	"	S. Mopoy	30	29	63	<1		
702	71	F.4	S. Poran	15	14	46	<1		
703	72	"	S. Raung	11	<10	21	<1		
704	73	"	S. Penganon	13	12	32	<1		
705	74	"	S. Sahai	15	12	32	<1		
706	75	"	"	11	<10	25	<1		
707	76	"	S. Ranpang	13	14	34	<1		
708	77	"	S. Yansen	15	12	32	<1		
709	78	"	S. Batuuwung	13	16	29	<1		
710	79	"	S. Kandan	19	20	36	<1		
711	80	"	S. Arun	17	14	29	<1		
712	81	"	S. Lapis	13	12	32	<1		
713	82	"	S. Lunuk	11	<10	21	<1		
714	83	"	S. Patong	15	17	33	<1		
715	84	"	S. Tunoi	17	12	32	<1		
716	85	"	S. Hagjan	13	12	24	<1		
717	86	"	S. Sahai	13	10	24	<1		
718	87	"	S. Haran	10	<10	21	<1		
719	88	"	S. Koyod	7	<10	15	<1		
720	89	"	S. Randung	10	<10	27	<1		

Assay Results of Geochemical Samples

Serial No.	Sample No.	Location		Assay Results (ppm)				Type of Sample	Remarks
		Grid	River or Creek	Cu	Pb	Zn	Mo		
721	CE-90	F.4	S. Piter	15	12	35	<1		
722	91	"	S. Minjei	17	15	36	<1		
723	92	"	S. Howaw	14	12	32	<1		
724	93	"	S. Ajuang	22	21	44	<1		
725	94	"	S. Banpan	23	19	42	<1		
726	95	E.4	S. Pacang	13	<10	23	<1		
727	96	"	S. Nokan	8	<10	10	<1		
728	97	"	S. Manjangan	16	12	28	<1		
729	98	"	S. Pakan	13	12	33	<1		
730	99	"	S. Liang	15	12	31	<1		
731	100	"	S. Jahi	16	17	37	<1		
732	101	"	S. Kurik	15	<10	26	<1		
733	102	"	S. Bahang	15	12	27	<1		
734	103	F.4	S. Howa	13	12	31	<1		
735	104	J.4	S. Batu	11	12	40	<1		
736	105	"	S. Mabar	11	12	40	<1		
737	106	"	S. Batutulis	29	42	90	<1		
738	107	J.5	S. Muning	26	21	85	<1		
739	108	"	S. Habong Burou	24	42	90	<1		
740	109	J.6	S. Nyaetu	41	25	90	<1		
741	110	"	S. Nishikawa	18	12	66	<1		
742	111	"	S. Idik	19	23	81	<1		
743	112	"	S. Grodon	24	27	105	<1		
744	114	"	S. Udeng	15	10	67	<1		
745	115	"	Branch of S. Nyaetu	22	25	78	<1		
746	116	"	S. Habongohnyatu	31	50	105	<1		
747	117	K.6	S. Habaon	37	29	88	<1		
748	118	"	S. Ahem	22	46	70	<1		
749	119	"	S. Buhig	27	42	101	<1		
750	120	"	S. Hito	16	21	78	<1		

Assay Results of Geochemical Samples

Serial No.	Sample No.	Location		Assay Results (ppm)				Type of Sample	Remarks
		Grid	River or Creek	Cu	Pb	Zn	Mo		
751	CE-121	J.6	S. Badak	38	33	95	<1		
752	122	"	S. Duging	21	21	71	<1		
753	123	"	S. Helat	28	27	69	<1		
754	124	"	S.Habaongoh-nyatukuri	28	25	83	<1		
755	125	J.4	S. Bunut	22	23	98	<1		
756	126	"	S. Sating	23	31	74	<1		
757	127	"	S. Manuku	16	21	49	<1		
758	128	J.3	S. Harou	23	27	75	<1		
759	129	"	S. Daho	21	33	70	<1		
760	131	"	S.Bangkam	20	37	62	<1		
761	132	"	S. Pokou	13	33	71	<1		
762	133	"	S.Leman	23	33	81	<1		
763	CF- 1	F.6	S. Piton	11	12	32	<1		
764	2	"	S. Uhat	10	<10	23	<1		
765	3	"	S.Pitonlup Hreaml	15	<10	33	<1		
766	4	"	S. Piton	21	55	70	<1		
767	5	"	S.Piton Kurik	13	<10	33	<1		
768	6	"	S.Tambarang-besar	18	32	60	1		
769	8	"	S. Bindjai	17	<10	27	<1		
770	9	"	S.Saraukecil	19	11	36	<1		
771	10	"	S.Sarau S.Tukat	14	16	51	<1		
772	11	"	S. Sarau	27	16	47	<1		
773	12	"	"	12	<10	31	<1		
774	13	"	S. Horun	17	<10	25	<1		
775	14	"	S. Kelp	13	<10	25	<1		
776	15	F.5	S.Nyahaung	13	<10	19	<1		
777	16	"	S. Doha	33	18	66	<1		
778	17	"	S.Hapitbesar	12	<10	38	<1		
779	18	"	S.Bahiobesar	24	155	160	<1		
780	19	"	S.Bahiokecil	21	<10	46	<1		

Assay Results of Geochemical Samples

Serial No.	Sample No.	Location		Assay Results (ppm)				Type of Sample	Remarks
		Grid	River or Creek	Cu	Pb	Zn	Mo		
781	CF-20	F.6	S.Turang kecil	9	<10	31	<1		
782	21	"	S.Turang besar	13	<10	27	<1		
783	22	"	S. Manyoi	38	<10	50	<1		
784	23	"	S. Hiang	65	55	166	<1		
785	24	"	S. Rawang	18	14	40	<1		
786	25	F.7	S.Herebahan	52	45	117	<1		
787	26	"	S.Takoung	33	27	116	<1		
788	27	"	S. Sangin	58	18	79	<1		
789	28	"	S.Tuniang	9	<10	22	<1		
790	29	"	S.Belawan	12	<10	37	<1		
791	30	"	S. Gomi	47	<10	54	<1		
792	31	E.7	S.Sonang	68	57	122	<1		
793	32	"	S.Jobanes	56	77	159	<1		
794	33	"	S. Ibang	35	32	139	<1		
795	34	"	S. Yoko	21	<10	52	<1		
796	35	"	S. Donny	53	41	142	<1		
797	36	F.7	S.Sudiron	46	27	99	<1		
798	37	"	S.Sonang	51	45	132	<1		
799	38	"	S. Sahai	25	14	48	<1		
800	39	F.6	S. Rousung	27	14	41	<1		
801	40	F.5	S.Hatas	15	14	31	<1		
802	41	"	S.Hahirang	30	20	62	<1		
803	43	"	S. Punyoi	15	14	36	<1		
804	44	"	S. Kuhai	19	14	55	<1		
805	45	"	S.Habawo	18	16	68	<1		
806	46	"	S. Tapon	15	11	53	<1		
807	47	"	S.Sepoi kecil	15	14	46	<1		
808	48	"	S.Sepoibesar	38	43	166	<1		
809	49	E.5	S.Kamburoi	9	14	36	<1		
810	50	"	S. Osam	117	47	66	<1		

Assay Results of Geochemical Samples

Serial No.	Sample No.	Location		Assay Results (ppm)				Type of Sample	Remarks
		Grid	River or Creek	Cu	Pb	Zn	Mo		
811	CF-51	E.5	S. Babui	22	16	69	<1		
812	52	"	S.Kumpang	7	<10	22	<1		
813	53	"	S. Risum	55	36	117	4		
814	54	"	S. Johi	9	10	25	<1		
815	55	"	S.Sakontia	11	<10	36	<1		
816	56	E.6	S.Sakon Kecil	40	17	28	4		
817	57	"	S. Sakon	22	24	97	<1		
818	58	E.5	S. Sakon	18	14	69	<1		
819	59	"	S.Bangas	20	10	52	<1		
820	60	"	S.Duriankanan	11	<10	29	<1		
821	61	"	S.Durian kiri	9	<10	24	<1		
822	62	"	S.Durian kecil	9	19	33	<1		
823	63	E.6	S.Samuobesar	20	12	40	<1		
824	64	"	S. Daron	13	14	76	<1		
825	65	"	S.Samuo I	14	10	36	1		
826	66	"	S.Samuo II	14	<10	30	<1		
827	67	"	S.Samuobesar	18	14	57	<1		
828	68	"	S.Samuo kecil	6	14	31	<1		
829	69	"	S.Sebagang I	8	<10	26	<1		
830	70	"	S. Puduk	8	<10	25	<1		
831	71	"	S.Puduk kecil	12	10	47	<1		
832	72	"	S.Seba kang	8	<10	19	<1		
833	73	"	S.Kesuai kecil	2	<10	7	<1		
834	74	E.5	S.Kesuai besar	4	10	15	<1		
835	76	E.6	S. Uber	7	<10	22	<1		
836	77	"	S.Kumbang	16	14	47	<1		
837	80	"	S. Lemas	15	39	40	<1		
838	81	"	S.Tongang	26	39	77	<1		
839	82	"	S. Makau	20	41	83	<1		
840	83	"	S. Lang	15	10	57	<1		

Assay Results of Geochemical Samples

Serial No.	Sample No.	Location		Assay Results (ppm)				Type of Sample	Remarks
		Grid	River or Creek	Cu	Pb	Zn	Mo		
841	CF-84	E.6	S. Biru	68	72	121	<1		
842	85	"	S. Kahungoi	78	101	147	2		
843	86	"	S. Keleka	30	14	51	<1		
844	87	"	S. Kacang	13	10	34	<1		
845	88	"	S. Duri	18	<10	44	<1		
846	89	"	S. Busung	28	17	54	<1		
847	90	"	S. Tombak	37	19	69	<1		
848	91	"	S. Nokan	49	22	56	<1		
849	92	"	S. Bonjit	23	<10	57	<1		
850	93	"	S. Buhi	13	10	33	<1		
851	94	"	S. Torung	26	17	71	<1		
852	95	"	"	27	10	63	<1		
853	97	"	S. Matahan	112	<10	31	<1		
854	99	E.5	S. Tengarong	17	10	59	<1		
855	100	F.5	S. Baken	22	19	54	<1		
856	101	J.5	S. Kebahon	33	77	129	<1		
857	102	"	"	24	24	93	<1		
858	103	"	"	17	34	78	<1		
859	104	"	"	34	10	43	<1		
860	105	"	"	21	19	75	<1		
861	106	"	"	19	22	94	<1		
862	107	"	"	22	14	57	<1		
863	108	"	"	18	19	69	<1		
864	109	J.6	"	41	31	78	<1		
865	110	"	"	40	93	117	<1		
866	111	J.5	S. Habaon	19	31	56	<1		
867	112	"	S. Bulaw	19	18	59	<1		
868	113	"	"	167	27	91	<1		
869	114	"	"	43	20	80	<1		
870	115	"	S. Habango I	19	38	70	<1		

Assay Results of Geochemical Samples

Serial No.	Sample No.	Location		Assay Results (ppm)				Type of Sample	Remarks
		Grid	River or Creek	Cu	Pb	Zn	Mo		
871	CF-116	J.4	S.Membaru	10	13	27	< 1		
872	117	"	S.Habungo kecil	15	18	45	< 1		
873	118	"	S.Sepanhabungo	14	18	52	< 1		
874	119	"	"	11	13	47	< 1		
875	120	"	"	12	< 10	45	< 1		
876	121	"	"	33	18	52	2		
877	122	"	S.Sepanepi	19	27	67	1		
878	123	"	"	9	20	45	1		
879	124	"	"	8	< 10	22	< 1		
880	125	"	"	28	36	75	1		
881	126	"	S.Badak 1	13	22	36	< 1		
882	127	"	S.Badak 2	17	24	52	< 1		
883	CG- 1	I.5	S. Karung	16	< 10	37	1		
884	2	I.4	S.Mahasau	4	< 10	20	< 1		
885	3	"	Branch of S.Mahasou	4	< 10	21	< 1		
886	4	"	S. Uhat	11	< 10	45	< 1		
887	5	"	S.Pinoi kecil	24	< 10	64	< 1		
888	6	"	S. Pinoi	16	16	56	1		
889	7	"	S.Popoi kecil	9	< 10	51	< 1		
890	8	H.4	Up stream of S.Popoi kecil	13	< 10	57	< 1		
891	9	"	" "	5	< 10	30	< 1		
892	11	I.4	Up stream of S.Popoi besar	86	162	222	< 1		
893	12	"	" "	77	186	201	< 1		
894	13	"	" "	59	92	139	< 1		
895	14	"	S.Kercong	19	25	79	< 1		
896	15	"	S.Popoi Uong	9	16	69	< 1		
897	17	"	Branch of SPopoi besar	18	< 10	72	< 1		
898	18	"	S.Sanganlong	11	18	49	1		
899	19	"	S.Tajungan	14	< 10	53	< 1		
900	20	H.4	S. Pikot	5	< 10	30	< 1		

Assay Results of Geochemical Samples

Serial No.	Sample No.	Location		Assay Results (ppm)				Type of Sample	Remarks
		Grid	River or Creek	Cu	Pb	Zn	Mo		
901	CG-21	H.4	Branch of S. Pikot	14	<10	41	1		
902	22	"	S. Pikot	4	<10	26	1		
903	24	"	S.Masaos	13	16	66	<1		
904	25	"	S.Hanungu	14	<10	56	2		
905	26	"	S. Lapan	12	18	68	<1		
906	27	H.3	S.Hantawar	23	<10	100	2		
907	28	"	S.Darit	13	<10	55	1		
908	29	"	S.Bahio	20	13	76	<1		
909	30	"	S.Mangui	17	13	49	1		
910	31	"	S.Suwung	16	29	146	<1		
911	33	J.4	S.Baruk	10	34	75	1		
912	35	"	S. Sian	36	49	99	1		
913	36	"	Branch of S. Sian	13	25	83	<1		
914	37	J.5	Up stream of S. Sian	45	67	151	<1		
915	38	I.4	Middle of S. Sian	101	164	247	<1		
916	39	"	S.Nonep	13	31	65	1		
917	40	"	S.Kesuai Besar	14	36	51	<1		
918	41	"	S. Arut	15	27	77	<1		
919	42	I.3	S. Asu	9	43	151	<1		
920	43	"	S.Kaliman	15	11	60	1		
921	44	"	Mouth of S. Sian	15	29	81	<1		
922	45	H.3	S.Bahotong	23	11	51	<1		
923	46	I.3	S. Antai	19	13	48	1		
924	47	"	S. Brung	9	<10	38	<1		
925	48	I.2	S. Taroy	10	<10	27	1		
926	49	H.2	S. Pongi	14	13	41	<1		
927	50	J.2	S. Paraoi	4	<10	39	<1		
928	51	"	S.Habaon	10	27	81	1		
929	52	J.3	S. Tajo	13	38	86	<1		
930	53	"	S. Hiang	9	36	81	<1		

Assay Results of Geochemical Samples

Serial No.	Sample No.	Location		Assay Results (ppm)				Type of Sample	Remarks
		Grid	River or Creek	Cu	Pb	Zn	Mo		
931	CG-54	J.2	Branch of S.Habaon	13	34	75	1		
932	55	"	S. Pagang	11	27	62	1		
933	56	"	S. Kebutim	6	25	79	<1		
934	57	"	S. Tawang	11	27	54	<1		
935	58	"	S. Tangon	15	34	82	<1		
936	59	J.1	S.Serangon	11	22	76	<1		
937	60	"	S.Hampuroy	8	<10	25	<1		
938	61	I.1	S. Bahoy	15	11	42	<1		
939	62	J.2	S. Katiak	11	20	58	<1		
940	63	I.2	S. Riang	13	11	42	<1		
941	CH- 1	G.2	S. Bohio	12	22	23	1		
942	2	"	S. Isoo	28	18	43	1		
943	3	"	S.Hamputung	19	27	30	1		
944	4	"	"	19	22	38	<1		
945	5	G.3	"	16	13	29	1		
946	6	"	S. Kolop	30	18	84	<1		
947	7	F.3	S. Lapis	13	<10	31	<1		
948	8	"	S. Pitu	9	11	38	1		
949	9	F.2	S. Endas	10	18	43	<1		
950	10	F.3	S.Temarui	8	13	34	2		
951	11	"	S. Hanyo	13	<10	31	<1		
952	12	"	S. Deegan	15	13	33	1		
953	13	"	S.Semakoi	8	13	22	<1		
954	14	G.3	S.Ratang Kotoi	34	22	77	<1		
955	15	G.4	S.Tajunganvinding	35	20	63	<1		
956	16	"	S.Tajungan	9	<10	26	<1		
957	17	F.3	S. Pucó	6	<10	19	1		
958	18	"	S. Toi	18	<10	25	<1		
959	19	"	S. Kalan	12	<10	20	<1		
960	20	"	"	9	<10	23	<1		

Assay Results of Geochemical Samples

Serial No.	Sample No.	Location		Assay Results (ppm)				Type of Sample	Remarks
		Grid	River or Creek	Cu	Pb	Zn	Mo		
961	CH-21	G.3	S. Hotai	24	22	57	<1		
962	22	"	S. Sendong	36	31	38	1		
963	23	"	S. Hamputung	11	31	45	1		
964	24	G.4	S. Manubing	10	13	23	<1		
965	25	G.2	S. Uut	9	20	29	<1		
966	26	"	S. Doho	11	<10	51	<1		
967	27	"	S. Teng	6	<10	12	<1		
968	28	"	S. Labato	22	<10	34	<1		
969	29	"	S. Miri	10	11	26	<1		
970	30	"	S. Anai	11	<10	26	<1		
971	31	F.2	S. Marikoi	7	<10	12	<1		
972	33	"	S. Hale	12	13	39	<1		
973	34	"	S. Jehoi	9	<10	21	<1		
974	35	"	S. Madraun	7	<10	22	<1		
975	36	"	S. Tagungan	6	17	21	<1		
976	37	"	S. Kohak	9	11	25	<1		
977	38	"	S. Sian	8	<10	24	<1		
978	39	E.2	S. Kroman	17	20	44	<1		
979	40	"	S. Tenggorung	4	<10	16	<1		
980	41	F.2	S. Habato	7	<10	29	<1		
981	42	"	S. TonoI	14	15	41	<1		
982	43	"	S. Umbing	6	<10	27	<1		
983	44	"	S. Jeraw	11	17	52	<1		
984	45	E.2	S. Pusu Ngukup	11	13	30	<1		
985	46	"	S. Pusu Bonue	14	<10	39	<1		
986	47	E.3	S. Pusuhehu- ang	13	<10	35	<1		
987	48	"	S. Nuso	8	<10	29	<1		
988	49	"	S. Pusu	10	<10	28	<1		
989	50	E.2	S. Koiop	7	<10	30	<1		
990	51	E.1	S. Mangoi	12	<10	30	<1		

Assay Results of Geochemical Samples

Serial No.	Sample No.	Location		Assay Results (ppm)				Type of Sample	Remarks
		Grid	River or Creek	Cu	Pb	Zn	Mo		
991	CH-52	E.1	S. Meraya	9	<10	35	<1		
992	53	E.2	S.Mentawah	14	24	54	2		
993	54	"	S.Mahoko	9	<10	23	1		
994	55	G.2	S.Antang	8	<10	25	1		
995	56	H.2	S. Lewu	9	13	33	<1		
996	57	"	S. Mention	9	13	31	<1		
997	58	"	S.Bombon	13	13	30	<1		
998	59	G.2	S. Bawui	7	<10	20	2		
999	60	G.1	S. Kraho	10	<10	25	1		
1000	61	"	S.Tebelian	7	<10	25	<1		
1001	62	"	S.Kanaran	6	<10	12	1		
1002	63	G.2	S.Kararewan- botung	10	<10	25	<1		
1003	64	"	S.Karawan- kurik	11	<10	25	<1		
1004	65	"	S. Uwung	9	<10	42	1		
1005	66	"	S.Sowang	4	<10	11	<1		
1006	67	H.1	S.Pesongan	7	<10	18	<1		
1007	68	"	S.Tejawan	5	<10	19	<1		
1008	69	"	S. Luning	27	<10	42	<1		
1009	70	I.2	S.Hompurut	13	15	36	<1		
1010	71	F.1	S.Bengoueng	8	11	39	<1		
1011	72	"	S.Marikoi	9	<10	17	<1		
1012	Cf- 1	I.6	S. Ocam	13	<10	70	<1		
1013	2	"	S.RiakSingit	13	<10	43	<1		
1014	4	"	S. Onei	10	<10	25	<1		
1015	5	"	"	33	<10	65	<1		
1016	6	"	S. Nanap	25	<10	65	<1		
1017	7	"	S. Ai 1	13	<10	50	<1		
1018	11	H.6	S. Rembagun	13	<10	43	<1		
1019	13	"	S. Lunuk	20	<10	70	<1		
1020	15	"	S. Hangoi	20	<10	43	<1		

Assay Results of Geochemical Samples

Serial No.	Sample No.	Location		Assay Results (ppm)				Type of Sample	Remarks
		Grid	River or Creek	Cu	Pb	Zn	Mo		
1021	Cf-17	I.5	S. Maaf	22	<10	91	<1		
1022	18	H.6	S. Lawang-bulau	30	<10	80	<1		
1023	19	I.5	S. Bori	<10	<18	25	<1		
1024	21	"	S. Arut	55	<10	100	<1		
1025	23	"	S. Sirukbesar	126	120	480	<1		
1026	24	"	S. Antis	30	<10	75	<1		
1027	25	"	S. Korong	62	50	120	<1		
1028	26	"	S. SirukKecil	62	50	270	<1		
1029	28	I.4	S. Mahasau	10	<10	40	<1		
1030	29	I.5	S. Murnpi	22	50	70	<1		

Appendix 10 Measurement Results of Radioactivities

Serial No.	Sample No.	Location		Measurement Result $\mu\text{R/h}$	Back Ground $\mu\text{R/h}$	Remarks
		Grid	River or Creek			
1	UA- 1	J.11	S.Pearioi	5	5	
2	2	"	"	3	3	
3	3	"	"	3	2	
4	4	"	"	5	4	
5	5	"	"	4	4	
6	6	"	S. Miri	3	2	
7	7	"	"	3	2	
8	8	"	"	2	2	
9	9	I.11	"	3	3	
10	10	"	S.Koto	5	5	
11	11	"	S.Miri	4	3	
12	12	"	"	3	3	
13	13	"	"	2	2	
14	14	"	"	5	5	
15	15	"	"	4	4	
16	16	"	"	3	3	
17	17	H.11	"	7	5	
18	18	"	"	3	3	
19	19	"	S.Limtong	2	2	
20	20	H.12	S.Ngahukup	2	2	
21	21	"	S.Pari	2	2	
22	22	"	S.Miri	3	3	
23	23	G.12	"	2	2	
24	24	"	"	2	2	
25	25	"	"	3	2	
26	26	"	"	4	4	
27	27	"	"	4	4	
28	28	"	"	3	3	
29	29	"	"	3	3	
30	30	"	"	4	4	

Measurement Results of Radioactivities

Serial No.	Sample No.	Location		Measurement Result $\mu\text{R/h}$	Back Ground $\mu\text{R/h}$	Remarks
		Grid	River or Creek			
31	UA-31	G-12	S. Miri	5	5	
32	32	"	S.Dahugoi	5	5	
33	33	"	"	5	5	
34	34	F-12	"	3	3	
35	35	"	"	2	2	
36	36	"	S. Miri	3	3	
37	37	"	"	3	3	
38	38	"	"	3	3	
39	39	"	"	3	3	
40	40	"	"	3	3	
41	41	"	"	3	3	
42	42	"	"	3	3	
43	43	"	"	4	4	
44	44	"	"	3	3	
45	45	"	"	2	2	
46	46	"	"	2	2	
47	47	"	"	3	3	
48	48	"	"	3	3	
49	49	"	"	3	3	
50	50	"	S.Monobalang	2	2	
51	51	F-11	"	3	3	
52	52	F-12	"	3	3	
53	53	G-12	"	5	5	
54	54	F-12	"	3	3	
55	55	"	"	5	5	
56	56	F-11	"	4	4	
57	57	G-11	"	3	3	
58	58	"	"	3	3	
59	59	G-12	S.Kahungoi	3	3	
60	60	"	"	4	4	

Measurement Results of Radioactivities

Serial No.	Sample No.	Location		Measurement Result $\mu\text{R/h}$	Back Ground $\mu\text{R/h}$	Remarks
		Grid	River or Creek			
61	UA-61	G-12	S.Kahungoi	3	3	
62	62	F-12	"	2	2	
63	63	"	"	3	3	
64	64	F-13	"	3	3	
65	65	"	"	3	3	
66	66	"	"	4	4	
67	67	"	"	3	3	
68	68	"	"	3	3	
69	69	"	"	4	4	
70	70	"	"	3	3	
71	71	"	"	3	3	
72	72	G-12	S. Miri	4	4	
73	73	"	"	3	3	
74	74	"	"	2	2	
75	75	H-12	"	2	2	
76	76	"	"	2	2	
77	77	"	"	2	2	
78	78	"	"	3	3	
79	79	"	"	3	3	
80	80	H-11	"	2	2	
81	81	"	"	2	2	
82	82	"	"	2	2	
83	83	I-11	"	3	3	
84	84	"	"	3	3	
85	85	"	"	3	3	
86	86	J-11	"	3	3	
87	87	"	"	2	2	
88	88	"	"	2	2	
89	89	"	"	3	3	
90	90	"	S. Jeranoi	2	2	

Measurement Results of Radioactivities

Serial No.	Sample No.	Location		Measurement Result $\mu\text{R/h}$	Back Ground $\mu\text{R/h}$	Remarks
		Grid	River or Creek			
91	UA-91	J-11	S. Miri	3	3	
92	92	"	"	3	3	
93	93	"	"	2	2	
94	94	J-10	"	2	2	
95	95	J-11	"	2	2	
96	96	J-10	"	3	3	
97	97	J-11	"	3	3	
98	98	"	"	3	3	
99	99	J-10	"	2	2	
100	100	"	"	2	2	
101	101	"	"	2	2	
102	102	"	"	3	3	
103	103	"	"	3	3	
104	104	K-10	"	3	3	
105	105	"	S. Merowoi	2	2	
106	106	"	"	2	2	
107	107	K-11	"	3	3	
108	108	"	"	3	3	
109	109	K-10	S. Horongonoi	2	2	
110	110	"	"	3	3	
111	111	"	"	3	3	
112	112	"	S. Kembangan	2	2	
113	113	"	S. Miri	2	2	
114	114	"	"	3	3	
115	115	"	"	3	3	
116	116	"	"	3	3	
117	117	"	S. Impa	2	2	
118	118	"	S. Miri	2	2	
119	119	"	"	3	3	
120	120	K-9	"	3	3	

Measurement Results of Radioactivities

Serial No.	Sample No.	Location		Measurement Result $\mu\text{R/h}$	Back Ground $\mu\text{R/h}$	Remarks
		Grid	River or Creek			
121	UB- 1	J-11	S. Merangai	3	3	
122	2	"	S. Okong	3	3	
123	3	"	S. Takonyit	3	2	
124	4	"	S. Dangai	3	3	
125	5	J-12	S. Karamangun	2	2	
126	6	"	"	5	4	
127	7	K-12	"	3	3	
128	8	"	S. Hawas	5	3	
129	9	"	S. Karamangun	3	3	
130	10	"	"	3	3	
131	11	"	"	4	4	
132	12	"	"	4	3	
133	13	"	"	6	5	
134	14	"	"	3	3	
135	15	"	"	3	3	
136	16	"	"	2	2	
137	17	"	"	3	3	
138	18	J-12	S. Merangai	3	3	
139	19	"	"	6	3	
140	20	"	"	3	3	
141	21	"	"	6	3	
142	22	"	"	3	3	
143	23	"	"	4	3	
144	24	"	"	3	3	
145	25	"	"	3	3	
146	26	I-12	S. Huoi	4	3	
147	27	"	"	3	3	
148	28	"	"	3	3	
149	29	"	"	3	3	
150	30	"	"	3	2	

Measurement Results of Radioactivities

Serial No.	Sample No.	Location		Measurement Result $\mu\text{R/h}$	Back Ground $\mu\text{R/h}$	Remarks
		Grid	River or Creek			
151	UB-31	I-12	S. Huoi	2	2	
152	32	J-13	S. Marau	3	2	
153	33	J-12	"	3	2	
154	34	J-13	"	3	3	
155	35	"	S. Bacun	3	3	
156	36	"	"	3	3	
157	37	"	S. Marau	3	3	
158	38	"	"	3	3	
159	39	"	"	3	3	
160	40	"	"	3	3	
161	41	"	"	3	3	
162	42	"	"	3	2	
163	43	"	S. Seburung	4	3	
164	44	"	"	2	2	
165	45	"	"	2	2	
166	46	"	S. Marau	3	2	
167	47	K-13	"	4	3	
168	48	"	"	3	2	
169	49	"	"	3	3	
170	50	I-13	S. Kahan	2	2	
171	51	"	S. Merangai	2	2	
172	52	"	"	2	2	
173	53	"	"	2	2	
174	54	I-11	S. Moto	1	1	
175	55	"	"	2	2	
176	56	"	"	2	1	
177	57	"	"	2	2	
178	58	I-12	"	2	2	
179	59	"	"	3	2	
180	60	"	"	3	2	

Measurement Results of Radioactivities

Serial No.	Sample No.	Location		Measurement Result $\mu\text{R/h}$	Back Ground $\mu\text{R/h}$	Remarks
		Grid	River or Creek			
181	UB-61	I-12	S. Moto	3	2	
182	62	"	"	3	2	
183	63	"	"	2	2	
184	64	"	"	2	1	
185	65	"	"	4	3	
186	66	"	"	3	3	
187	67	H-12	S. Miri	1	1	
188	68	"	S. Raea	1	1	
189	69	"	"	1	1	
190	70	"	"	2	1	
191	71	"	"	1	1	
192	72	"	"	1	1	
193	73	"	"	1	1	
194	74	"	"	1	1	
195	75	"	"	1	1	
196	76	H-11	"	3	3	
197	77	G-11	"	2	2	
198	78	"	"	2	2	
199	79	"	"	2	2	
200	80	"	"	2	2	
201	81	"	"	2	2	
202	82	"	"	2	2	
203	83	"	"	1	1	
204	84	"	"	2	2	
205	85	"	"	2	1	
206	86	"	"	2	1	
207	87	"	"	2	2	
208	88	"	"	2	1	
209	89	"	"	2	2	
210	90	"	"	2	2	

Measurement Results of Radioactivities

Serial No.	Sample No.	Location		Measurement Result $\mu\text{R/h}$	Back Ground $\mu\text{R/h}$	Remarks
		Grid	River or Creek			
211	UB-91	G-11	S. Raea	2	1	
212	92	"	"	2	2	
213	93	"	"	2	2	
214	94	"	"	2	2	
215	95	"	"	2	2	
216	96	"	"	2	2	
217	97	"	"	2	2	
218	98	"	"	2	2	
219	99	"	"	2	2	
220	100	"	"	2	2	
221	101	"	"	2	2	
222	102	"	"	2	2	
223	103	H-12	S. Miri	3	2	
224	104	"	"	2	2	
225	105	"	"	3	2	
226	106	"	"	2	2	
227	107	"	"	2	2	
228	108	"	"	3	2	
229	109	G-12	"	2	2	
230	110	"	"	2	2	
231	111	"	S. Magan	2	1	
232	112	"	"	1	1	
233	113	"	"	1	1	
234	114	"	"	1	1	
235	115	"	"	1	1	
236	116	"	"	2	2	
237	117	"	"	1	1	
238	118	"	"	2	2	
239	119	"	"	2	1	
240	120	"	"	3	2	

Measurement Results of Radioactivities

Serial No.	Sample No.	Location		Measurement Result $\mu\text{R/h}$	Back Ground $\mu\text{R/h}$	Remarks
		Grid	River or Creek			
241	UB-121	G-12	S. Magan	2	2	
242	122	"	"	2	1	
243	123	"	"	2	2	
244	124	"	"	2	1	
245	125	"	"	2	1	
246	126	"	"	2	2	
247	127	"	"	2	2	
248	128	H-12	"	2	2	
249	129	"	"	1	1	
250	230	"	"	2	2	
251	131	"	"	2	2	
252	132	H-13	"	1	1	
253	133	"	"	2	1	
254	134	"	"	2	2	
255	135	"	"	2	2	
256	136	"	"	1	1	
257	137	"	"	2	2	
258	138	"	"	2	2	
259	139	"	"	2	2	
260	140	G-12	S. Jeranoi	2	2	
261	141	"	"	2	2	
262	142	"	"	2	2	
263	143	"	"	1	1	
264	144	"	"	1	1	
265	145	"	"	2	2	
266	146	"	"	2	2	
267	147	"	"	1	1	
268	148	"	"	1	1	
269	149	G-13	"	2	2	
270	150	"	"	1	1	

Measurement Results of Radioactivities

Serial No.	Sample No.	Location		Measurement Result $\mu\text{R/h}$	Back Ground $\mu\text{R/h}$	Remarks
		Grid	River or Creek			
271	UB-151	G-13	S. Jeranoi	1	1	
272	152	"	"	1	1	
273	153	"	"	2	2	
274	154	"	"	2	2	
275	155	"	"	2	2	
276	156	"	"	2	2	
277	157	"	"	1	1	
278	158	"	"	2	2	
279	159	"	"	2	2	
280	160	"	"	2	2	
281	161	"	"	2	2	
282	162	"	"	2	2	
283	163	"	"	2	2	
284	164	"	"	2	2	
285	165	K-10	S. Miri	1	1	
286	166	"	"	1	1	
287	167	"	"	1	1	
288	168	"	"	1	1	
289	169	K-9	"	100	50	
290	170	"	"	50	20	
291	171	"	"	30	20	
292	172	"	"	75	30	
293	173	"	"	75	40	
294	174	"	"	30	20	
295	175	"	S. Hatogo	25	5	
296	176	"	S. Miri	15	2	
297	177	"	S. Sakon	2	2	
298	178	"	S. Pasian	17	10	
299	179	"	S. Miri	15	6	
300	180	"	S. Romukon	20	6	

Measurement Results of Radioactivities

Serial No.	Sample No.	Location		Measurement Result $\mu\text{R/h}$	Back Ground $\mu\text{R/h}$	Remarks
		Grid	River or Creek			
301	UB-181	K-9	S. Hanyoi	13	3	
302	182	"	"	10	5	
303	183	"	"	17	10	
304	UC- 1	H-7	S. Pejangoi	6	3	
305	2	"	"	6	3	
306	3	"	"	2	2	
307	4	"	"	2	2	
308	5	"	"	1	1	
309	6	"	"	3	2	
310	7	H-8	"	3	2	
311	8	"	"	3	1	
312	9	"	"	2	2	
313	10	"	"	2	1	
314	11	"	"	2	2	
315	12	"	"	2	2	
316	13	"	"	2	1	
317	14	"	"	2	1	
318	15	"	"	2	1	
319	16	"	"	2	1	
320	17	"	"	2	1	
321	18	"	"	1	1	
322	19	"	"	2	1	
323	20	H-9	"	5	3	
324	21	"	"	2	2	
325	22	"	"	2	2	
326	23	"	"	3	2	
327	24	"	"	3	2	
328	25	"	"	3	2	
329	26	"	"	3	2	
330	27	"	"	5	3	

Measurement Results of Radioactivities

Serial No.	Sample No.	Location		Measurement Result $\mu\text{R/h}$	Back Ground $\mu\text{R/h}$	Remarks
		Grid	River or Creek			
331	UC-28	H-9	S. Pejangoi	4	3	
332	29	"	"	4	3	
333	30	"	"	6	3	
334	31	"	"	4	3	
335	32	"	"	5	3	
336	33	"	"	5	3	
337	34	H-10	"	5	3	
338	35	G-10	"	11	3	
339	36	"	"	6	3	
340	37	"	"	5	3	
341	38	"	"	5	3	
342	39	"	"	7	3	
343	40	"	"	4	3	
344	41	"	"	13	3	
345	42	"	"	5	3	
346	43	"	"	16	5	
347	44	"	S. Tosah	8	4	
348	45	H-9	S. Hutoi	5	3	
349	46	H-8	S. Jukan	2	2	
350	47	"	"	2	1	
351	48	H-7	"	1	1	
352	51	J-8	S. Masukih	6	2	
353	52	"	"	6	3	
354	53	J-9	"	4	3	
355	54	"	"	5	3	
356	55	"	"	5	2	
357	56	"	"	7	4	
358	57	"	"	5	2	
359	58	"	"	4	2	
360	59	"	"	3	2	

Measurement Results of Radioactivities

Serial No.	Sample No.	Location		Measurement Result $\mu\text{R/h}$	Back Ground $\mu\text{R/h}$	Remarks
		Grid	River or Creek			
361	UC-60	J-9	S. Masukih	4	3	
362	61	"	"	3	2	
363	62	"	"	4	2	
364	63	"	"	4	2	
365	64	"	"	4	2	
366	65	J-10	"	3	2	
367	66	J-9	"	3	1	
368	67	J-10	"	3	2	
369	68	"	"	2	2	
370	69	"	"	4	2	
371	70	"	"	10	5	
372	71	"	"	5	2	
373	72	"	"	4	2	
374	73	"	"	4	2	
375	74	"	"	4	2	
376	75	"	"	3	2	
377	76	"	S. Awong	2	2	
378	77	"	S. Masukih	6	2	
379	78	"	"	3	2	
380	79	"	"	2	1	
381	80	"	"	2	1	
382	81	"	"	3	1	
383	82	"	"	4	2	
384	83	"	"	3	2	
385	84	"	"	4	2	
386	85	"	"	3	2	
387	86	"	"	2	1	
388	87	"	"	3	2	
389	88	"	"	2	2	
390	89	I-10	"	2	2	

Measurement Results of Radioactivities

Serial No.	Sample No.	Location		Measurement Result $\mu\text{R/h}$	Back Ground $\mu\text{R/h}$	Remarks
		Grid	River or Creek			
391	UC-90	I-10	S. Masukih	4	2	
392	91	"	"	3	2	
393	92	"	"	2	1	
394	95	"	"	2	2	
395	96	"	"	2	1	
396	97	"	"	1	1	
397	98	"	"	2	1	
398	99	"	"	2	1	
399	100	"	"	2	1	
400	101	"	"	2	1	
401	102	"	"	4	2	
402	103	"	"	2	2	
403	104	"	S. Pahano	3	2	
404	105	"	S. Masukih	3	2	
405	106	"	"	4	2	
406	107	"	"	3	2	
407	108	"	"	3	1	
408	109	"	"	3	2	
409	110	H-11	"	3	1	
410	111	"	"	2	1	
411	112	"	"	2	1	
412	113	"	S. Nunuk	2	1	
413	114	"	S. Masukih	3	2	
414	115	"	"	2	2	
415	116	"	"	2	2	
416	117	H-10	"	2	1	
417	118	"	"	3	1	
418	119	"	"	3	1	
419	120	"	"	4	2	
420	121	H-11	"	2	2	

Measurement Results of Radioactivities

Serial No.	Sample No.	Location		Measurement Result $\mu\text{R/h}$	Back Ground $\mu\text{R/h}$	Remarks
		Grid	River or Creek			
421	UC-122	H-11	S. Masukih	3	2	
422	123	"	S. Kayu	1	1	
423	124	H-10	"	3	1	
424	125	"	"	2	2	
425	126	"	"	2	2	
426	127	"	"	2	2	
427	128	"	"	2	2	
428	129	"	"	2	2	
429	130	"	"	2	2	
430	131	"	"	2	1	
431	132	I-10	S. Manyoi	2	1	
432	133	"	"	2	1	
433	134	"	"	1	1	
434	135	"	"	2	1	
435	136	"	"	3	1	
436	137	"	"	2	1	
437	138	"	"	2	2	
438	139	"	"	4	2	
439	140	"	"	2	2	
440	141	"	"	2	2	
441	142	"	S. Sopang	2	1	
442	143	"	"	2	1	
443	144	"	"	3	1	
444	145	"	"	3	1	
445	146	"	"	3	1	
446	147	"	"	2	2	
447	148	"	"	2	2	
448	149	"	"	2	2	
449	150	"	"	2	2	
450	151	"	"	2	2	

Measurement Results of Radioactivities

Serial No.	Sample No.	Location		Measurement Result $\mu\text{R/h}$	Back Ground $\mu\text{R/h}$	Remarks
		Grid	River or Creek			
451	UC-152	I-10	S. Sopang	3	2	
452	153	"	S. Masukih	2	2	
453	154	"	"	2	1	
454	155	J-10	S. Mentasoi	2	2	
455	156	"	"	3	2	
456	157	"	"	1	1	
457	158	"	"	2	2	
458	159	J-7	S. Morandoi	2	1	
459	160	"	"	4	2	
460	161	"	"	4	2	
461	UD- 1	I-6	S. Miri	12	6	
462	2	"	"	2	1	
463	3	"	"	13	7	
464	4	"	"	9	7	
465	5	"	"	9	7	
466	6	K-8	"	45	15	
467	7	K-9	"	30	8	
468	8	"	"	70	15	
469	9	"	"	30	7	
470	10	"	"	9	8	
471	11	"	"	15	8	
472	12	"	"	15	12	
473	13	"	"	6	6	
474	14	"	"	15	10	
475	15	"	"	9	6	
476	16	J-8	"	10	3	
477	17	"	"	5	3	
478	18	J-6	"	5	3	
479	19	"	S. Napoi	50	9	
480	20	I-6	"	8	7	

Measurement Results of Radioactivities

Serial No.	Sample No.	Location		Measurement Result $\mu\text{R/h}$	Back Ground $\mu\text{R/h}$	Remarks
		Grid	River or Creek			
481	UD-21	I-6	S. Napoi	15	7	
482	22	"	"	20	10	
483	23	"	"	10	6	
484	24	I-7	"	4	3	
485	25	"	"	4	3	
486	26	"	"	9	5	
487	27	"	"	6	3	
488	28	"	"	7	5	
489	29	"	"	5	3	
490	30	H-7	"	10	5	
491	31	"	"	4	3	
492	32	"	"	6	5	
493	33	"	"	6	3	
494	34	"	"	5	3	
495	35	"	"	3	3	
496	36	"	"	3	3	
497	37	"	"	6	4	
498	38	"	"	4	2	
499	39	"	"	6	3	
500	40	"	"	3	3	
501	41	"	"	9	2	
502	42	G-7	"	4	4	
503	43	"	"	4	3	
504	44	"	"	3	2	
505	45	"	"	2	1	
506	46	"	"	2	2	
507	47	"	"	3	2	
508	48	"	"	4	3	
509	49	"	"	4	2	
510	50	G-8	"	2	2	

Measurement Results of Radioactivities

Serial No.	Sample No.	Location		Measurement Result $\mu\text{R/h}$	Back Ground $\mu\text{R/h}$	Remarks
		Grid	River or Creek			
511	UD-51	G-8	S. Napoi	6	3	
512	52	"	"	3	2	
513	53	"	"	2	2	
514	54	"	"	2	2	
515	55	"	"	2	2	
516	56	"	"	3	2	
517	57	"	"	3	2	
518	58	"	"	2	2	
519	59	G-9	"	3	2	
520	60	G-8	"	7	3	
521	61	"	"	7	2	
522	62	"	"	5	2	
523	63	"	"	3	2	
524	64	G-9	"	3	2	
525	65	"	"	3	2	
526	66	"	"	2	2	
527	67	F-9	"	3	2	
528	68	"	"	5	4	
529	69	"	"	6	2	
530	70	"	"	7	3	
531	71	"	"	4	3	
532	72	"	"	4	3	
533	73	"	"	4	3	
534	74	"	"	5	4	
535	75	"	"	4	3	
536	76	"	"	4	3	
537	77	"	"	3	3	
538	78	G-9	"	3	2	
539	79	"	"	3	2	
540	80	G-8	"	2	1	

Measurement Results of Radioactivities

Serial No.	Sample No.	Location		Measurement Result $\mu\text{R/h}$	Back Ground $\mu\text{R/h}$	Remarks
		Grid	River or Creek			
541	UD-81	G-8	S. Napoi	2	1	
542	82	"	"	3	1	
543	83	F-8	"	3	2	
544	84	"	"	3	2	
545	85	I-7	"	4	3	
546	86	"	Robakoi	3	3	
547	87	"	"	3	2	
548	88	"	"	2	2	
549	89	"	"	2	2	
550	90	"	"	3	1	
551	91	"	"	2	2	
552	92	"	"	2	2	
553	93	"	"	1	1	
554	94	"	"	2	2	
555	95	"	"	2	1	
556	96	I-8	"	2	1	
557	97	"	"	2	1	
558	98	"	"	2	2	
559	99	"	"	2	2	
560	100	"	"	2	2	
561	101	H-8	"	1	1	
562	102	"	"	3	2	
563	103	"	"	2	2	
564	104	"	"	1	1	
565	105	"	"	2	2	
566	106	"	"	1	1	
567	107	"	"	2	1	
568	108	"	"	1	1	
569	109	"	"	1	1	
570	110	"	"	2	1	

Measurement Results of Radioactivities

Serial No.	Sample No.	Location		Measurement Result $\mu\text{R/h}$	Back Ground $\mu\text{R/h}$	Remarks
		Grid	River or Creek			
571	UD-111	H-9	Robakoi	2	2	
572	112	"	"	1	1	
573	113	"	"	2	1	
574	114	"	"	2	1	
575	115	"	"	2	1	
576	116	"	"	2	1	
577	117	"	"	2	2	
578	118	I-9	"	2	2	
579	119	"	"	3	2	
580	120	"	"	2	2	
581	121	"	"	2	1	
582	122	"	"	2	1	
583	123	"	"	3	2	
584	124	I-7	Tosah	4	2	
585	125	"	"	1	1	
586	126	"	"	3	2	
587	127	I-8	"	2	1	
588	128	"	"	2	1	
589	129	"	"	2	1	
590	130	"	"	3	2	
591	131	"	"	3	2	
592	132	"	"	2	2	
593	133	"	"	1	1	
594	134	"	"	1	1	
595	135	"	"	1	1	
596	136	"	"	1	1	
597	137	"	"	1	1	
598	138	"	"	1	1	
599	139	"	"	1	1	
600	140	"	"	1	1	

Measurement Results of Radioactivities

Serial No.	Sample No.	Location		Measurement Result $\mu\text{R/h}$	Back Ground $\mu\text{R/h}$	Remarks
		Grid	River or Creek			
601	UD-141	I-8	Tosah	1	1	
602	142	"	"	1	1	
603	143	"	"	1	1	
604	144	"	"	1	1	
605	145	"	"	1	1	
606	146	"	"	1	1	
607	147	"	"	1	1	
608	148	"	"	1	1	
609	149	"	"	1	1	
610	150	"	"	1	1	
611	151	I-9	"	1	1	
612	152	"	"	2	1	
613	153	I-8	"	1	1	
614	154	I-9	"	1	1	
615	155	"	Manyoi	3	1	
616	156	"	"	2	1	
617	157	"	"	2	1	
618	158	"	"	1	1	
619	159	"	"	1	1	
620	160	"	"	1	1	
621	161	"	"	1	1	
622	162	"	"	3	1	
623	163	"	"	1	1	
624	164	"	"	1	1	
625	165	"	"	3	1	
626	166	"	"	2	1	
627	167	J-9	"	1	1	
628	168	J-8	"	1	1	
629	169	"	"	3	1	
630	170	"	"	2	1	

Measurement Results of Radioactivities

Serial No.	Sample No.	Location		Measurement Result $\mu\text{R/h}$	Back Ground $\mu\text{R/h}$	Remarks
		Grid	River or Creek			
631	UD-171	J-8	Manyoi	2	1	
632	172	"	"	2	1	
633	173	"	"	3	1	
634	174	"	"	3	1	
635	175	"	"	2	1	
636	176	"	"	1	1	
637	177	"	"	2	1	
638	178	"	"	3	1	
639	179	"	"	1	1	
640	180	"	"	3	1	
641	UE- 1	G-4	S. Tekaoi	5	3	
642	2	"	"	5	3	
643	3	"	S. Kacang	6	3	
644	4	"	"	12	9	
645	5	"	"	8	5	
646	6	"	"	10	6	
647	7	"	"	11	5	
648	8	"	S. Toman	14	5	
649	9	"	S. Tekaoi	9	3	
650	10	"	"	6	6	
651	11	"	"	6	4	
652	12	"	"	6	4	
653	13	"	"	5	4	
654	14	G-5	"	8	5	
655	15	"	"	5	3	
656	16	"	"	6	3	
657	17	G-4	"	6	3	
658	18	"	S. Suman	5	3	
659	19	"	S. Tekaoi	5	4	
660	20	G-5	"	6	3	

Measurement Results of Radioactivities

Serial No.	Sample No.	Location		Measurement Result $\mu\text{R/h}$	Back Ground $\mu\text{R/h}$	Remarks
		Grid	River or Creek			
661	UE-21	G-5	S. Tekaoi	6	4	
662	22	"	"	6	5	
663	23	"	"	11	5	
664	24	"	"	5	4	
665	25	"	S. Kambin	5	4	
666	26	"	S. Au	3	3	
667	27	"	S. Tekaoi	7	3	
668	28	"	S. Kitan	2	1	
669	29	"	S. Tekaoi	3	3	
670	30	"	"	4	3	
671	31	"	"	4	3	
672	32	"	"	5	3	
673	33	"	S. Liang	5	3	
674	34	"	S. Tekaoi	4	3	
675	35	"	"	5	3	
676	36	"	"	3	3	
677	37	"	"	4	3	
678	38	"	"	3	2	
679	39	G-6	"	4	3	
680	40	"	S. Tang	4	2	
681	41	"	S. Tekaoi	3	2	
682	42	"	"	4	3	
683	43	"	"	3	2	
684	44	G-7	S. Monuk	3	3	
685	45	"	"	3	2	
686	46	"	"	4	2	
687	47	"	"	4	3	
688	48	"	"	3	3	
689	49	"	"	3	2	
690	50	"	"	3	2	

Measurement Results of Radioactivities

Serial No.	Sample No.	Location		Measurement Result $\mu\text{R/h}$	Back Ground $\mu\text{R/h}$	Remarks
		Grid	River or Creek			
691	UE-51	G-7	S. Monuk	3	2	
692	52	"	"	3	2	
693	53	"	"	2	1	
694	54	"	S. Tekaoi	3	1	
695	55	"	"	3	1	
696	56	"	"	4	2	
697	57	G-6	"	2	2	
698	58	"	"	3	2	
699	59	"	"	3	2	
700	60	F-4	S. Hamputung	2	1	
701	61	"	"	1	1	
702	62	"	"	3	2	
703	63	"	"	3	2	
704	64	"	"	2	2	
705	65	"	"	2	2	
706	66	"	S. Maramoi	3	1	
707	67	"	S. Kurik	3	2	
708	68	"	S. Hamputung	3	2	
709	69	"	"	2	2	
710	70	"	"	2	1	
711	71	"	"	3	1	
712	72	"	"	2	1	
713	73	F-5	"	3	2	
714	74	F-4	S. Kurik	3	2	
715	75	"	"	3	3	
716	76	"	"	3	2	
717	77	"	"	2	2	
718	78	"	"	3	2	
719	79	"	"	2	1	
720	80	"	"	2	1	

Measurement Results of Radioactivities

Serial No.	Sample No.	Location		Measurement Result $\mu\text{R/h}$	Back Ground $\mu\text{R/h}$	Remarks
		Grid	River or Creek			
721	UE-81	F-4	S. Haran	3	1	
722	82	"	"	1	1	
723	83	"	"	2	1	
724	84	"	S. Potong	2	2	
725	85	"	S. Haran	2	1	
726	86	"	"	2	2	
727	87	"	"	2	2	
728	88	"	S. Sahai	2	1	
729	89	"	S. Kurik	2	2	
730	90	"	"	2	2	
731	91	"	"	3	2	
732	92	"	"	3	2	
733	93	"	"	3	2	
734	94	E-4	"	2	2	
735	95	"	"	3	2	
736	96	"	S. Nokan	2	2	
737	97	"	"	2	2	
738	98	"	S. Kurik	2	2	
739	99	"	"	2	1	
740	100	"	"	1	1	
741	101	"	S. Pakan	2	2	
742	102	"	S. Kurik	1	1	
743	103	"	S. Liang	2	2	
744	104	"	S. Bahang	2	2	
745	105	J-4	S. Habaon	3	3	
746	106	"	"	3	3	
747	107	"	"	4	3	
748	108	"	"	4	3	
749	109	J-5	"	2	2	
750	110	"	"	3	3	

Measurement Results of Radioactivities

Serial No.	Sample No.	Location		Measurement Result $\mu\text{R/h}$	Back Ground $\mu\text{R/h}$	Remarks
		Grid	River or Creek			
751	UE-111	J-5	S. Habaon	4	3	
752	112	"	"	3	3	
753	113	J-6	S. Nyaetu	4	2	
754	114	"	"	2	2	
755	115	"	"	2	2	
756	116	"	"	2	2	
757	117	"	"	3	2	
758	118	"	"	2	2	
759	119	"	"	3	2	
760	120	"	"	2	2	
761	121	"	S. Habaon	2	2	
762	122	K-6	"	2	2	
763	123	"	"	3	2	
764	124	"	"	2	2	
765	125	"	"	3	3	
766	126	J-6	"	2	2	
767	127	"	"	2	2	
768	128	"	"	3	3	
769	129	J-5	"	3	3	
770	130	J-1	S. Kahayan	3	3	
771	131	"	"	3	3	
772	132	"	"	3	2	
773	133	I-1	"	3	3	
774	134	I-2	"	3	3	
775	135	"	"	4	3	
776	136	"	"	4	3	
777	UF-- 1	F-6	S. Sonang S. Piton	8	8	
778	2	"	"	13	7	
779	3	"	"	9	6	
780	4	"	"	7	6	

Measurement Results of Radioactivities

Serial No.	Sample No.	Location		Measurement Result $\mu\text{R/h}$	Back Ground $\mu\text{R/h}$	Remarks
		Grid	River or Creek			
781	UF- 5	F-6	S.Sonang S.Piton	12	8	
782	6	"	"	8	8	
783	7	"	"	10	6	
784	8	"	"	15	8	
785	9	"	"	6	6	
786	10	"	"	6	6	
787	11	"	"	18	8	
788	12	"	"	15	8	
789	13	"	"	13	9	
790	14	"	"	12	8	
791	15	"	"	6	6	
792	16	"	"	10	6	
793	17	"	"	14	8	
794	18	"	S. Sonang	7	4	
795	19	"	"	5	4	
796	20	"	S. Tambarang besar	4	4	
797	21	"	S. Sonang	4	4	
798	22	"	"	5	4	
799	23	F-6	S. Bindjai	8	6	
800	24	"	S. Sonang	5	5	
801	25	"	"	6	5	
802	26	"	"	11	5	
803	27	"	"	18	6	
804	28	"	S. Sarau	12	8	
805	29	"	"	15	7	
806	30	"	"	17	11	
807	31	"	S. Sonang	6	5	
808	32	"	S. Harun	5	5	
809	33	F-5	S. Nyahaung	6	5	
810	34	"	S. Sonang	9	6	

Measurement Results of Radioactivities

Serial No.	Sample No.	Location		Measurement Result $\mu\text{R/h}$	Back Ground $\mu\text{R/h}$	Remarks
		Grid	River or Creek			
811	UF-35	F-5	S. Sonang	10	8	
812	36	"	"	15	8	
813	37	"	S. Doho	5	5	
814	38	"	S. Hapit bear	6	5	
815	39	"	S. Sonang	5	5	
816	40	"	"	13	9	
817	41	"	S. Bahio besar	5	5	
818	42	"	"	7	6	
819	43	"	S. Bahio kecil	11	5	
820	44	"	"	7	6	
821	45	F-6	S. Sonang	13	6	
822	46	"	"	12	3	
823	47	"	"	5	4	
824	48	"	"	5	5	
825	49	"	S. Manyai	4	4	
826	50	"	S. Hiang	5	5	
827	51	"	S. Sonang	5	4	
828	52	"	"	4	4	
829	53	"	S. Rawang	4	4	
830	54	"	S. Sonang	4	4	
831	55	F-7	S. Marebahan	3	3	
832	56	"	"	3	3	
833	57	"	S. Sonang	2	2	
834	58	"	"	6	4	
835	59	"	"	2	2	
836	60	"	"	2	2	
837	61	"	S. Gomi	7	6	
838	62	E-7	S. Sonang	10	8	
839	63	"	"	10	8	
840	64	"	"	9	9	

Measurement Results of Radioactivities

Serial No.	Sample No.	Location		Measurement Result $\mu\text{R/h}$	Back Ground $\mu\text{R/h}$	Remarks
		Grid	River or Creek			
841	UF-65	E-7	S. Sonang, S. Johannes	6	6	
842	66	"	S. Sonang	5	5	
843	67	"	"	6	6	
844	68	"	S. Ibung	14	8	
845	69	"	S. Yoko	5	5	
846	70	"	S. Sonang	5	5	
847	71	F-7	S. Johnny	10	7	
848	72	"	S. Sadilan	4	4	
849	73	"	"	8	6	
850	74	"	"	8	7	
851	75	"	S. Sonang	8	7	
852	76	"	"	130	6	
853	77	"	"	7	5	
854	78	"	S. Rowung	3	3	
855	79	F-5	S. Hatas	10	5	
856	80	"	S. Sonang	5	5	
857	81	"	"	10	5	
858	82	"	"	7	5	
859	83	"	S. Hamputung	5	4	
860	84	"	"	8	5	
861	85	"	"	7	5	
862	86	"	"	5	4	
863	87	"	S. Hamputung, S. Jaramai	7	5	
864	88	"	" "	6	4	
865	89	"	" "	8	5	
866	90	E-5	S. Kohongoi	9	5	
867	91	"	"	5	4	
868	92	"	"	6	4	
869	93	"	"	5	4	
870	94	"	"	15	7	

Measurement Results of Radioactivities

Serial No.	Sample No.	Location		Measurement Result $\mu\text{R/h}$	Back Ground $\mu\text{R/h}$	Remarks
		Grid	River or Creek			
871	UF- 95	E-5	S.Kohongoi, S.Sakon	15	6	
872	96	"	"	12	7	
873	97	E-6	"	7	6	
874	98	"	"	4	4	
875	99	E-5	"	9	7	
876	100	"	"	9	7	
877	101	E-6	"	8	6	
878	102	E-5	S.Kohongoi, S.Durian	12	6	
879	103	"	"	7	6	
880	104	"	"	6	6	
881	105	"	S.Durian Kin	4	4	
882	106	E-6	S.Samno besar	5	5	
883	107	"	"	4	4	
884	108	"	"	6	6	
885	109	"	"	6	5	
886	110	"	"	12	4	
887	111	"	S.Samno kecil	4	3	
888	112	"	S.Puduke	8	7	
889	113	"	S. Sebakang	5	4	
890	114	"	S. Kesuai	6	4	
891	115	E-5	S. Kohongoi	8	6	
892	116	E-6	"	4	4	
893	117	"	S. Uber	5	4	
894	118	"	"	3	3	
895	119	"	S. Kumbang	7	6	
896	120	"	"	9	7	
897	121	"	S. Kohongoi	7	5	
898	122	"	"	3	3	
899	123	"	S. Pukus	8	6	
900	124	"	"	8	8	

Measurement Results of Radioactivities

Serial No.	Sample No.	Location		Measurement Result $\mu\text{R/h}$	Back Ground $\mu\text{R/h}$	Remarks
		Grid	River or Creek			
901	UF-125	E-6	S. Kohongoi	9	6	
902	126	"	S. Makau	11	6	
903	127	"	S. Kohongoi	6	5	
904	128	"	S. Keleka	3	2	
905	129	"	S. Torung	4	3	
906	130	"	S. Kacang	5	4	
907	131	"	S. Basung	3	3	
908	132	"	S. Tambak	3	2	
909	133	"	S. Buhí	4	4	
910	134	E-7	S. Nunnun	8	6	
911	135	"	"	10	7	
912	136	E-5	S. Kohongoi	6	5	
913	137	"	"	4	4	
914	138	"	"	8	5	
915	139	"	"	11	8	
916	140	"	"	5	4	
917	141	"	"	5	4	
918	142	"	"	7	4	
919	143	"	"	15	9	
920	144	"	"	7	6	
921	145	"	"	8	5	
922	146	F-5	"	4	4	
923	147	"	"	4	4	
924	148	"	S. Sepoi besar	5	4	
925	149	"	S. Kohongoi	5	3	
926	150	"	"	5	4	
927	151	J-4	S. Habaon	5	5	
928	152	"	"	5	5	
929	153	"	"	5	5	
930	154	"	"	6	5	

Measurement Results of Radioactivities

Serial No.	Sample No.	Location		Measurement Result $\mu\text{R/h}$	Back Ground $\mu\text{R/h}$	Remarks
		Grid	River or Creek			
931	UF-155	J-4	S. Habaon	5	4	
932	156	"	S. Badak-1	8	6	
933	157	"	S. Habaon	5	4	
934	158	"	"	5	4	
935	159	"	"	3	3	
936	160	"	"	3	2	
937	161	"	"	2	2	
938	162	"	"	2	2	
939	163	"	"	4	3	
940	164	"	"	4	3	
941	165	J-3	"	3	3	
942	166	"	"	2	2	
943	167	"	"	1	1	
944	168	"	"	0	0	
945	169	"	"	3	3	
946	170	"	"	4	3	
947	171	"	"	3	3	
948	172	"	"	1	1	
949	173	"	"	0	0	
950	174	"	"	4	3	
951	175	"	"	8	6	
952	176	"	"	8	6	
953	177	"	"	4	3	
954	178	"	"	4	3	
955	179	"	"	3	3	
956	180	"	"	1	1	
957	181	"	"	4	3	
958	182	"	"	2	1	
959	183	"	"	4	4	
960	184	"	"	8	5	

Measurement Results of Radioactivities

Serial No.	Sample No.	Location		Measurement Result $\mu\text{R/h}$	Back Ground $\mu\text{R/h}$	Remarks
		Grid	River or Creek			
961	UF-185	J-3	S. Habaon	5	4	
962	186	J-2	"	5	4	
963	187	"	"	3	2	
964	188	"	"	3	3	
965	189	"	"	7	6	
966	190	"	"	3	3	
967	191	"	"	3	2	
968	192	"	"	4	3	
969	193	"	"	4	3	
970	194	"	"	4	3	
971	195	"	"	3	2	
972	196	"	"	3	3	
973	197	"	"	5	4	
974	198	"	"	4	3	
975	199	"	"	4	3	
976	200	"	"	4	3	
977	201	"	"	3	3	
978	202	J-1	"	3	3	
979	203	"	"	4	3	
980	204	"	"	4	2	
981	UG- 1	I-4	S. Miri	2	2	
982	2	"	"	5	5	
983	3	"	"	3	3	
984	4	"	S. Pinoi	4	3	
985	5	H-4	S. Miri	3	3	
986	6	"	"	3	3	
987	7	"	"	3	3	
988	8	H-3	"	3	3	
989	9	I-3	"	2	2	
990	10	H-3	"	2	2	

Measurement Results of Radioactivities

Serial No.	Sample No.	Location		Measurement Result $\mu\text{R/h}$	Back Ground $\mu\text{R/h}$	Remarks
		Grid	River or Creek			
991	UG-11	I-3	S. Ahep	2	2	
992	12	"	S. Miri	4	4	
993	13	"	"	3	3	
994	14	"	"	3	3	
995	15	"	"	2	2	
996	16	"	"	4	4	
997	17	"	"	3	3	
998	18	I-2	"	4	3	
999	19	"	S. Tatoy	4	4	
1000	20	H-2	S. Miri	3	3	
1001	21	"	"	3	3	
1002	22	"	"	4	4	
1003	23	"	"	2	2	
1004	UH- 1	G-2	S. Hamputung	3	2	
1005	2	"	"	3	2	
1006	3	"	"	5	3	
1007	4	G-3	"	2	2	
1008	5	"	"	3	1	
1009	6	"	"	3	1	
1010	7	"	"	2	1	
1011	8	"	"	2	1	
1012	9	"	S. Hanyo	4	3	
1013	10	"	S. Kolop	6	2	
1014	11	F-3	S. Lopis	3	2	
1015	12	F-2	S. Hanyo	2	2	
1016	13	F-3	S. Temarui	2	2	
1017	14	"	S. Hanyo	1	1	
1018	15	G-3	S. Ratang kotoi	2	1	
1019	16	G-4	S. Tojungan	2	1	
1020	17	G-3	"	3	1	

Measurement Results of Radioactivities

Serial No.	Sample No.	Location		Measurement Result $\mu\text{R/h}$	Back Ground $\mu\text{R/h}$	Remarks
		Grid	River or Creek			
1021	UH-18	G-3	S. Pori	4	3	
1022	19	F-3	"	3	2	
1023	20	"	S. Toi	3	2	
1024	21	"	S. Pori	3	2	
1025	22	G-3	S. Hamputung	5	3	
1026	23	"	"	5	2	
1027	24	"	"	3	2	
1028	25	"	"	3	2	
1029	26	"	"	2	1	
1030	27	"	"	3	1	
1031	28	G-4	"	3	2	
1032	29	"	S. Manuhing	2	1	
1033	30	"	S. Hamputung	3	2	
1034	31	"	"	2	1	
1035	32	"	"	2	1	
1036	34	"	"	4	3	
1037	35	G-2	S. Kahayan	2	2	
1038	36	"	"	2	1	
1039	37	"	"	2	1	
1040	38	"	"	1	1	
1041	39	F-2	S. Marikoi	2	1	
1042	40	"	"	2	1	
1043	41	"	"	2	1	
1044	42	"	"	2	2	
1045	43	"	"	3	1	
1046	44	"	"	2	1	
1047	45	"	"	2	1	
1048	46	"	S. Marikoi	1	1	
1049	47	"	S. Kahayan	2	1	
1050	48	"	"	2	1	

Measurement Results of Radioactivities

Serial No.	Sample No.	Location		Measurement Result $\mu\text{R/h}$	Back Ground $\mu\text{R/h}$	Remarks
		Grid	River or Creek			
1051	UH-49	F-2	S. Kahayan	3	1	
1052	50	"	"	2	1	
1053	51	"	"	2	1	
1054	52	"	"	3	2	
1055	53	"	"	2	1	
1056	54	"	"	1	1	
1057	55	"	"	3	1	
1058	56	E-2	"	2	1	
1059	57	"	"	2	1	
1060	58	F-2	S. Tonai	3	2	
1061	59	"	S. Habato	2	2	
1062	60	"	S. Tonai	3	2	
1063	61	"	"	4	1	
1064	62	"	"	4	2	
1065	63	"	"	2	2	
1066	64	E-2	S. Pusu	4	3	
1067	65	"	S.Pusun Ngukup	3	2	
1068	66	"	S. Pusu	8	3	
1069	67	"	"	6	3	
1070	68	"	"	4	3	
1071	69	"	"	9	4	
1072	70	"	"	10	4	
1073	71	"	S.Pusu Bonut	8	4	
1074	72	E-3	S. Pusu	2	2	
1075	73	"	S.Pusu behuang	2	1	
1076	74	E-1	S. Mongoi	5	3	
1077	75	E-2	S.Mentawah	4	3	
1078	76	"	S.Kahayan	2	2	
1079	77	"	"	5	1	
1080	78	"	"	2	1	

Measurement Results of Radioactivities

Serial No.	Sample No.	Location		Measurement Result $\mu\text{R/h}$	Back Ground $\mu\text{R/h}$	Remarks
		Grid	River or Creek			
1081	UH-79	E-2	S. Mahoko	2	1	
1082	80	"	S. Kahayan	2	1	
1083	81	"	"	3	1	
1084	82	"	"	2	1	
1085	83	"	S. Kahayan	2	1	
1086	84	G-2	S. Kahayan	4	2	
1087	85	"	"	3	3	
1088	86	"	"	4	2	
1089	87	"	"	3	2	
1090	88	"	"	2	2	
1091	89	"	"	3	1	
1092	90	"	"	3	1	
1093	91	"	"	3	2	
1094	92	"	"	2	2	
1095	93	"	"	3	2	
1096	94	"	S. Kahayan	3	2	
1097	95	"	"	5	2	
1098	96	"	"	6	4	
1099	97	H-2	"	2	1	
1100	98	"	"	2	1	
1101	99	"	"	2	1	
1102	100	"	"	2	1	
1103	101	"	"	2	1	
1104	102	G-2	S. Kanaron	3	2	
1105	103	"	"	2	2	
1106	104	"	"	3	2	
1107	105	"	"	3	2	
1108	106	G-1	"	3	2	
1109	107	"	"	10	4	
1110	108	"	"	3	2	

Measurement Results of Radioactivities

Serial No.	Sample No.	Location		Measurement Result $\mu\text{R/h}$	Back Ground $\mu\text{R/h}$	Remarks
		Grid	River or Creek			
1111	UH-109	G-1	S. Kanaron	5	2	
1112	110	"	"	4	3	
1113	111	"	"	6	3	
1114	112	G-2	"	3	2	
1115	113	"	"	2	2	
1116	114	H-2	"	7	2	
1117	115	"	"	4	2	
1118	116	"	"	4	2	
1119	117	"	"	4	3	
1120	118	"	"	7	3	
1121	119	"	"	6	2	
1122	120	"	"	3	2	
1123	121	I-2	S. Pesangon	3	2	
1124	122	H-1	"	4	2	
1125	123	"	"	4	3	
1126	124	"	"	3	2	
1127	125	"	"	3	2	
1128	126	"	"	3	1	
1129	127	"	"	6	3	
1130	128	"	"	4	3	
1131	129	"	"	5	2	
1132	130	"	"	8	3	
1133	131	"	"	5	3	
1134	132	I-2	"	4	2	
1135	133	"	"	4	1	
1136	134	"	"	4	2	
1137	135	F-2	S. Marikoi	3	2	
1138	136	"	"	2	2	
1139	137	"	"	3	2	
1140	138	"	"	3	2	

Measurement Results of Radioactivities

Serial No.	Sample No.	Location		Measurement Result $\mu\text{R/h}$	Back Ground $\mu\text{R/h}$	Remarks
		Grid	River or Creek			
1141	UH-139	F-2	S. Marikoi	3	2	
1142	140	"	"	2	2	
1143	141	F-1	"	3	2	
1144	142	"	"	3	2	
1145	143	"	"	5	1	
1146	144	"	"	2	1	
1147	145	"	"	2	1	
1148	146	"	"	5	2	
1149	147	"	"	3	2	
1150	148	"	"	3	1	
1151	149	"	"	3	2	
1152	150	"	"	7	2	
1153	151	"	"	5	3	
1154	152	"	"	4	2	
1155	153	"	"	3	2	
1156	154	"	"	5	2	
1157	155	"	"	8	5	
1158	156	"	"	7	4	
1159	157	"	"	7	3	
1160	UF- 1	I-6	S. Miri	7	3	
1161	2	"	"	4	3	
1162	3	"	"	3	3	
1163	4	"	"	3	3	
1164	5	"	"	5	5	
1165	6	"	"	6	5	
1166	7	H-5	"	7	5	
1167	8	H-6	"	3	3	
1168	9	I-5	"	5	3	
1169	10	"	"	3	3	
1170	11	"	"	5	4	

Measurement Results of Radioactivities

Serial No.	Sample No.	Location		Measurement Result MR/h	Back Ground MR/h	Remarks
		Grid	River or Creek			
1171	UF-12	I-5	S. Maaf	10	5	
1172	13	I-6	S. Miri	3	2	
1173	14	H-5	"	2	2	
1174	15	I-5	S. Miri	5	2	
1175	16	"	"	9	2	

