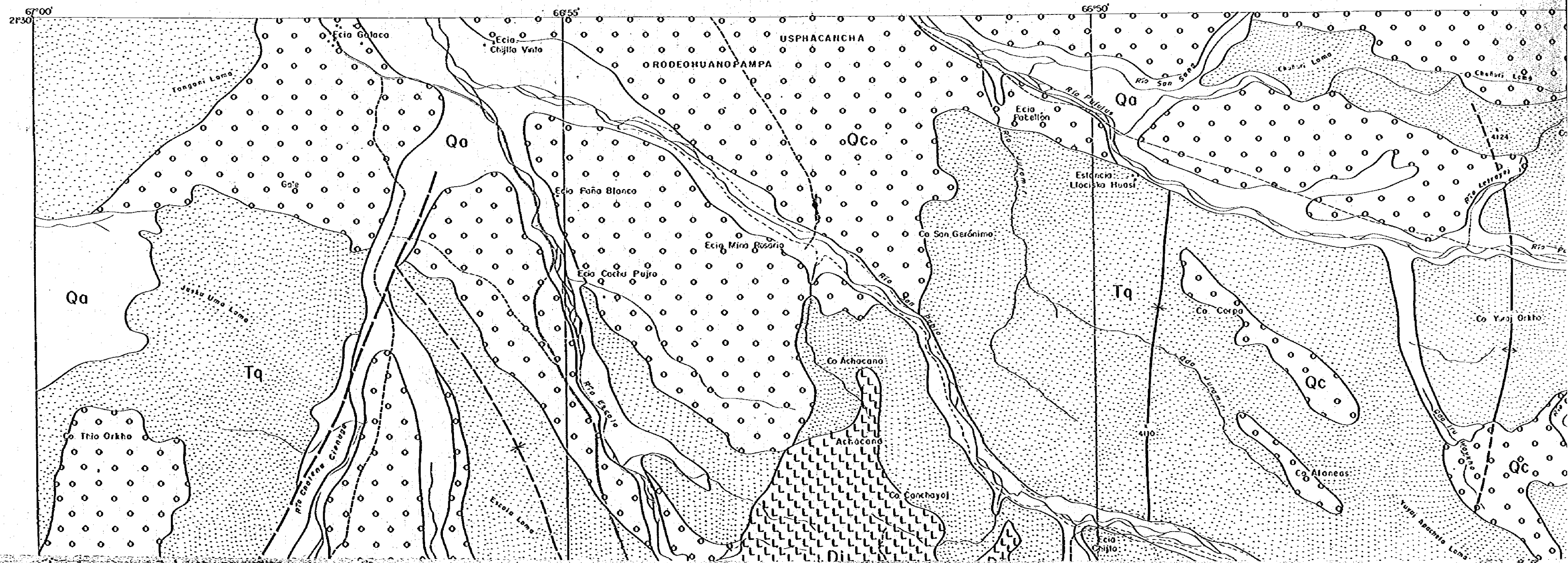
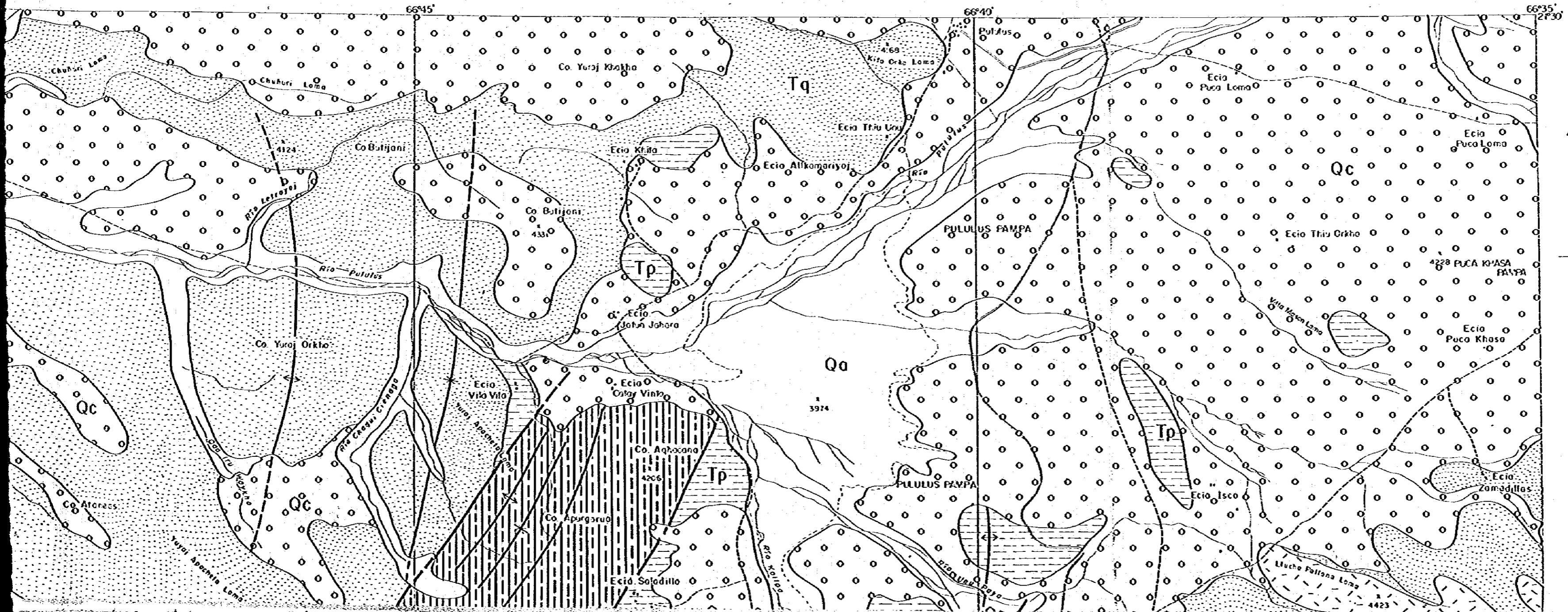


MAPA GEOLOGICO DE LA REGION



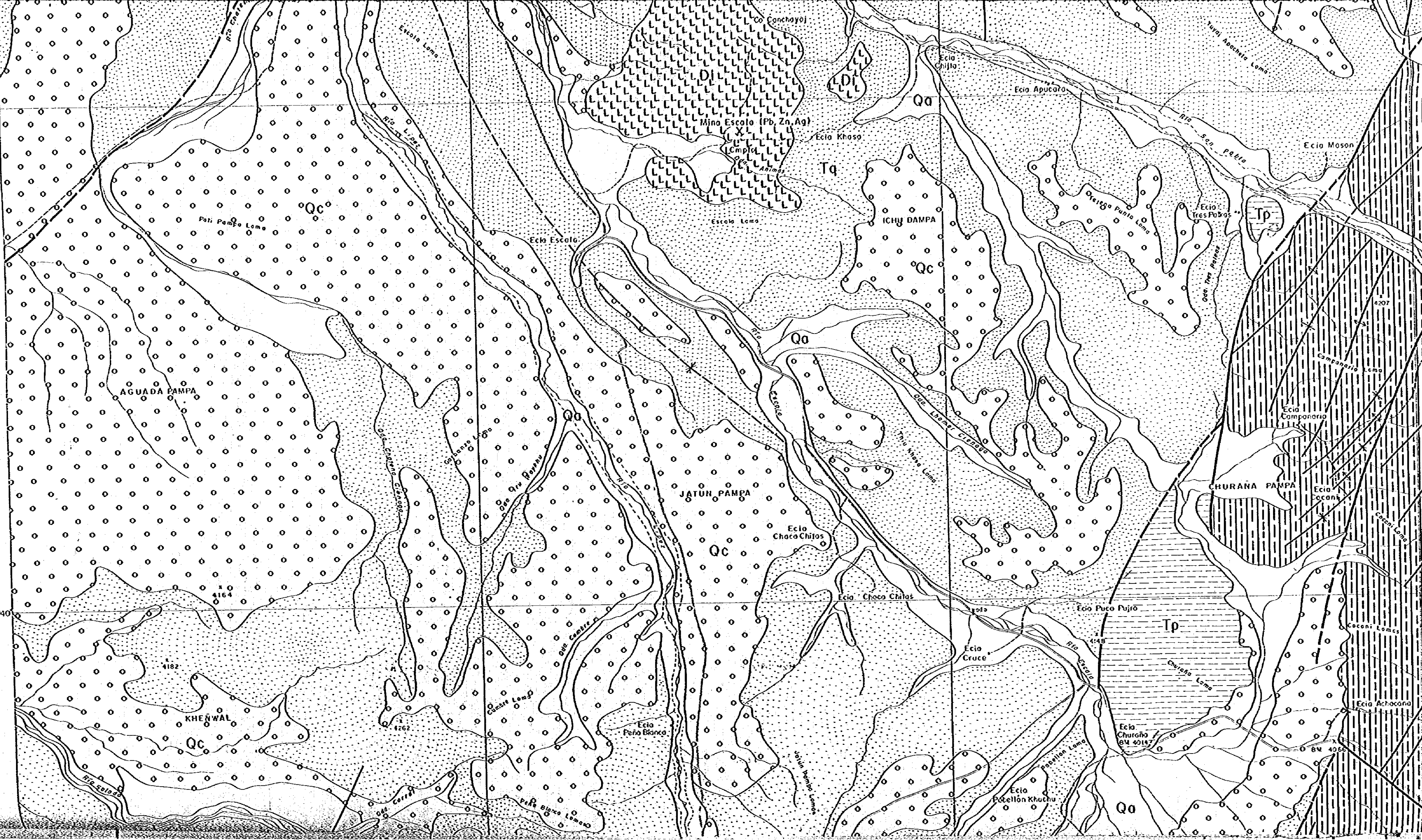
A REGION DE SUR LIPEZ (I)

(Pl. I)



2P35

240





21°35'

21°40'

Ecia Mason

Ecia Solodillo

QC

Qa

Co. Molto Pañuna

Tp

Ecia Salar

SALARIOS PAMPA

Tp

Tq

Ecia Campanario

Ecia Pojos Vinto

Ecia Salar

Co Negro

Co Petallón

CHURANA PAMPA

Ecia Cocani

Co Khuchu Cienega

Co Señorita

Co Acacheta Cuervo

Tp

Qi

Co Lompaya

Co Poco Chiqui

4684

Puco Fuiro

Tp

Cocani Lomas

Cocani Lomas

4268

4324

Tp

Ecia Polito

4258

Tq

Qc

Coloza

Co Poco Chiqui

4684

Ecia Charaña

Ecia Achocana

Ecia Polito

LAGUNA KOLLEPA

6M X 4158

Rio Salado Pampa

San Pablo de Lipez

Rio Chichasuyu

Qa

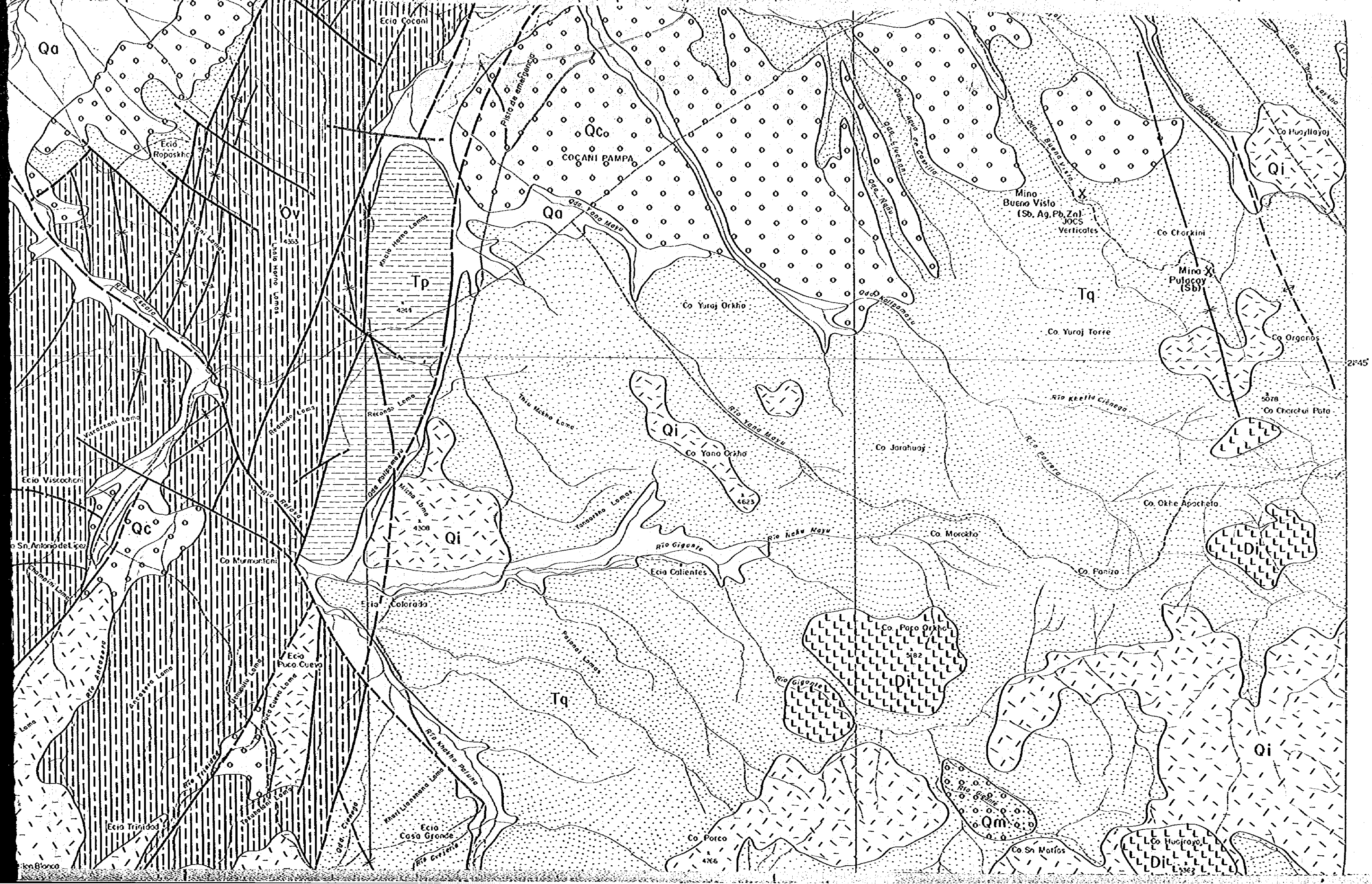
Ecia Cocani

6M X 4068

Rio Chichasuyu

Rio Chichasuyu

Rio Salado



Qa

Ov

Tp

Qa

Qc

COCANI PAMPA

Tq

Qi

Mina Buena Vista
(Sb, Ag, Pb, Zn)
JOCES
Verticales

Co Chorkini

Mina XI
Pulgocoy
(Sb)

Co Yuraj Torre

Co Organos

28°45'

5078
Co Chorchani Pata

Co Yuraj Orkha

Co Yana Orkha

Co Jarahuay

Co Okhe Apacheta

Ezio Viscocochani

Qc

Qi

Ezio Colientes

Co Morokho

Co Panizo

Co Sn. Antonio del Pozo

Co Murmurichani

Ezio Colorado

Tq

Co Pocho Orkha

Qi

Rio Anaresco

Ezio Puzco Cueva

Ezio Casa Grande

Co Porco

Co Sn Matias

Co Huayllayo

Escuela Blanca

5363

PIEDADE AMERGENCA

Ezio Cocani

Ezio Roposkha

Co Huayllayo

Ezio La Loma

Mhala Horno Lomas

4353
Lhala Horno Lomas

4254

Oca Lana Mayu

Oca Nueva

Oca Buena Vista

Rio Zorba

Rio Pulgocoy

Rio Escala

Rio Tiro

Rio Horno Lomas

Rio Yana Mayu

Rio Yana Mayu

Rio Keella Crenaga

Rio Parara

Yana Horno Loma

Yana Horno Lomas

Rio Naku Mayu

Rio Gigaite

Rio Tiro

Rio Anaresco

Rio Tiro

Rio Tiro

Ezio Trinidad

Escuela Blanca

Chamain Loma

Chamain Loma

Chamain Loma

Chamain Loma

Chamain Loma

Chamain Loma

Chamain Loma

Chamain Loma

Chamain Loma

Chamain Loma

Chamain Loma

Chamain Loma

Chamain Loma

Chamain Loma

Chamain Loma

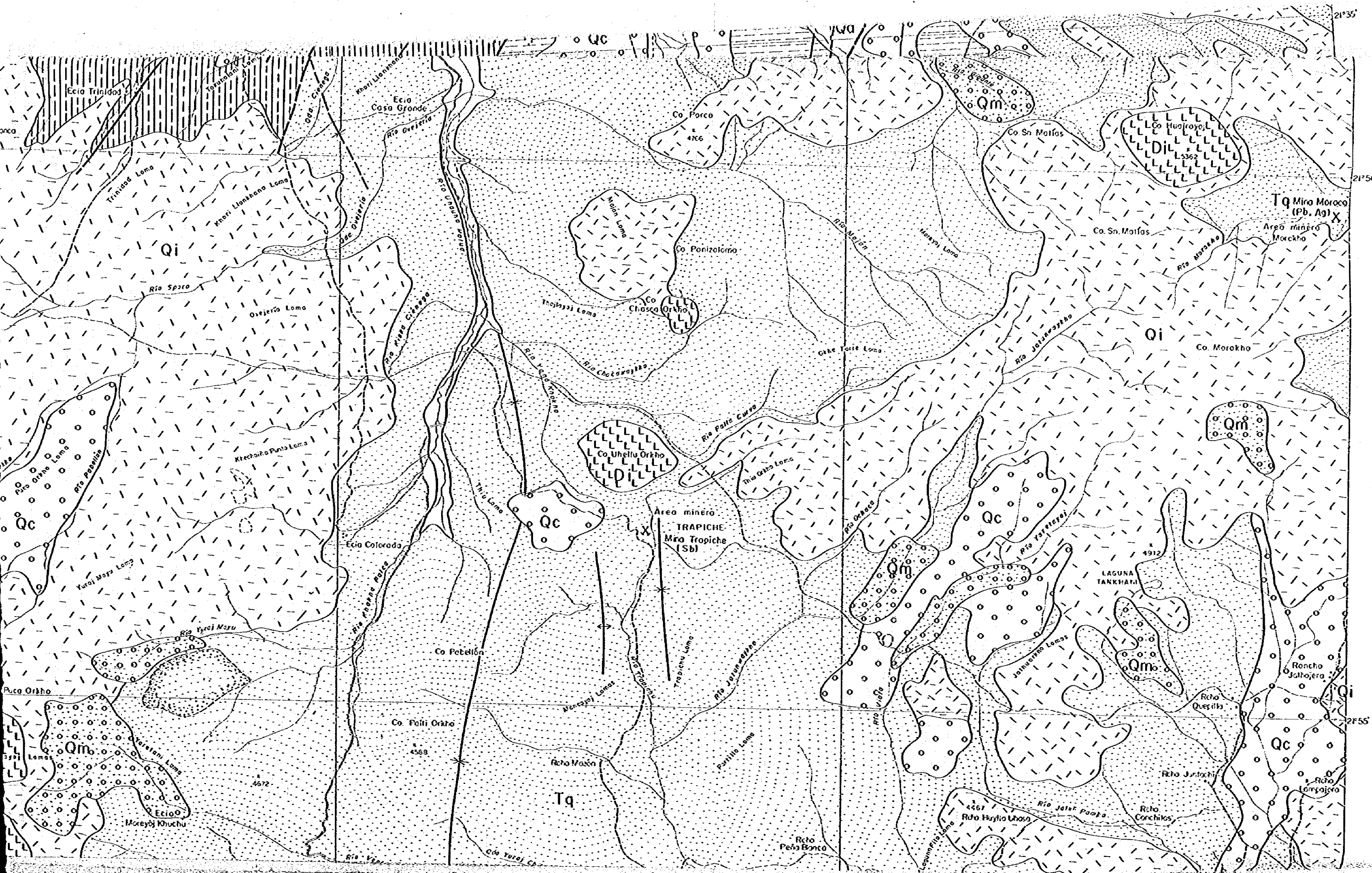
Chamain Loma

Chamain Loma

Chamain Loma

Chamain Loma

Chamain Loma



21°35'

21°50'

21°55'

Cerro Trinidad

Cerro Casa Grande

Co. Porco
4166

Co. Sn. Matías

Co. Huajirayo
L 5362

Tq Miro Moroco
(Pd. Ag) x
Área minera Morokho

Qi

Co. Ponizoloma

Co. Sn. Matías

Co. Morokho

Qm

Qc

Ketchaifio Punta Loma

Co. Uhellu Orkho
L 4672

Área minera TRAPICHE
Mro Trapiche (Sb)

LAGUNA TANKHANI
4912

Cerro Colorado

Co. Petellón

Co. Orkho

Qm

Co. Palti Orkho
4588

Rcho Mañón

Tq

Qm

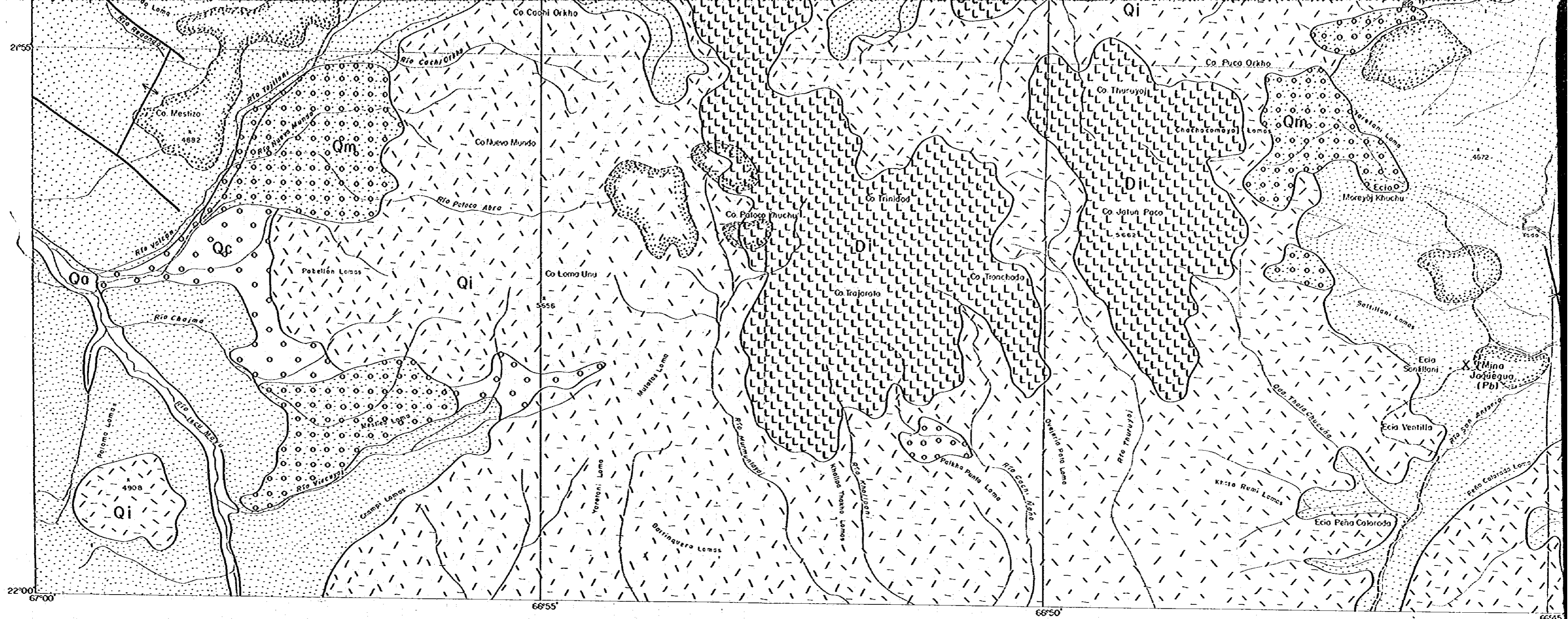
Rancho Jaltocera

Qc

Cerro Moneyo Khuchu

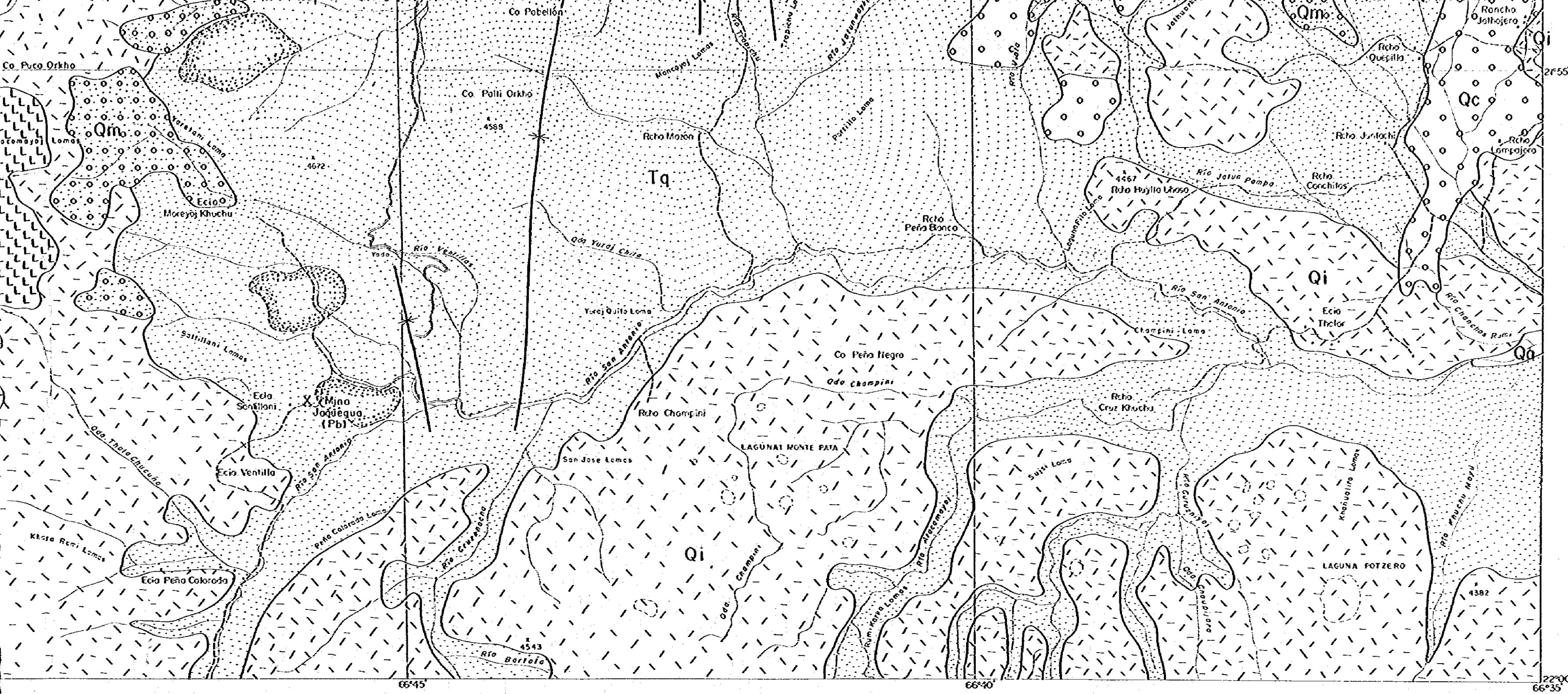
Cerro Peña Bonta

Rcho Jaltocera
Rcho Quequik
Rcho Juntachi
Rcho Cochinos



1 : 50,000





1 : 50,000



Cuaternario

Qo	Aluviales
Qc	Coluviales
Qm	Morrenas
Qi	Ignimbritos

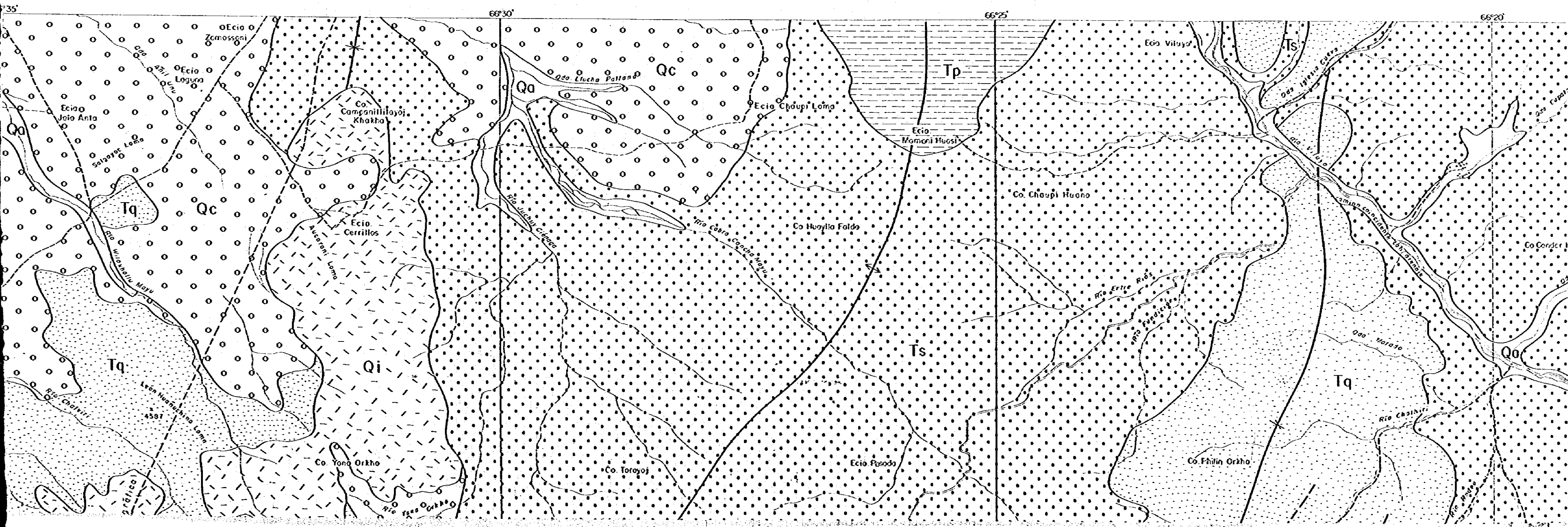
LEYENDA

Terciario

Di	Intrusivo de dacito	Cr	Cretácico
Al	Lava de andesito	Or	Ordovícico
Dlv	Lava de dacita		
Tq	Formación Quehua		
Tr	Formación Rondal		
Ts	Formación San Vicente		
Tp	Formación Potoco		

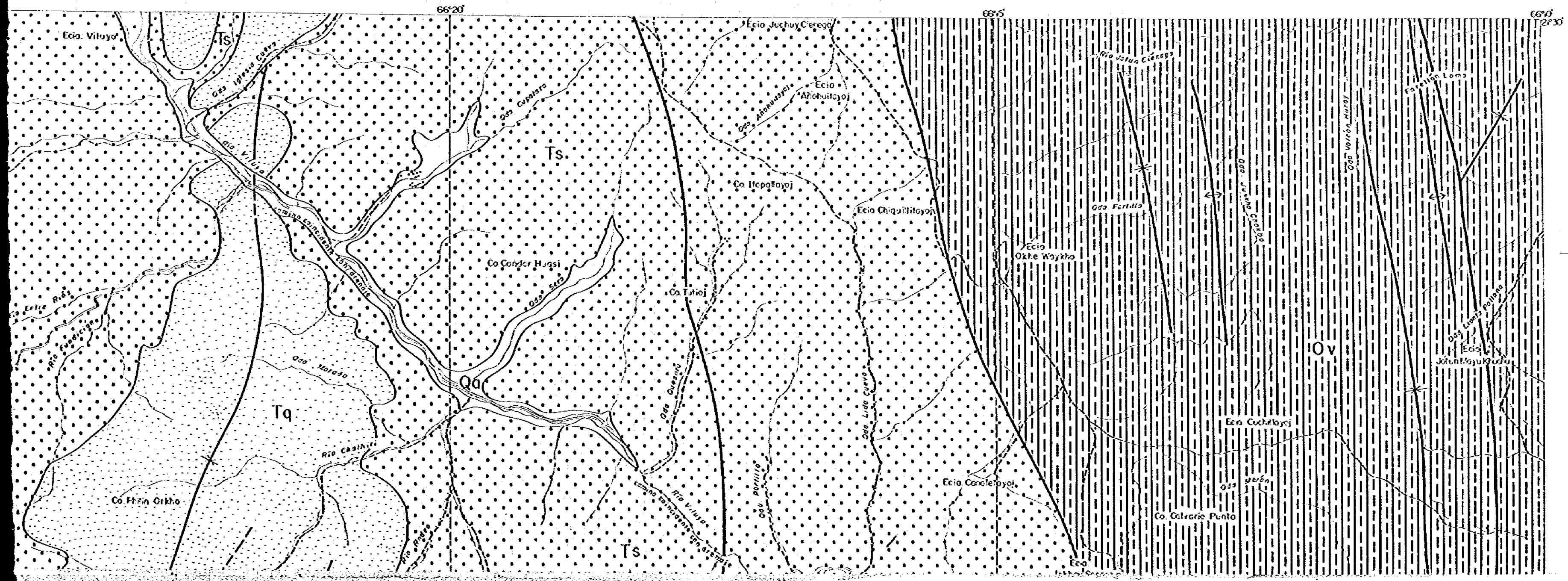
- Eje Anticlinal
- Eje Sinclinal
- Falla
- Contacto
- Zona de alteración

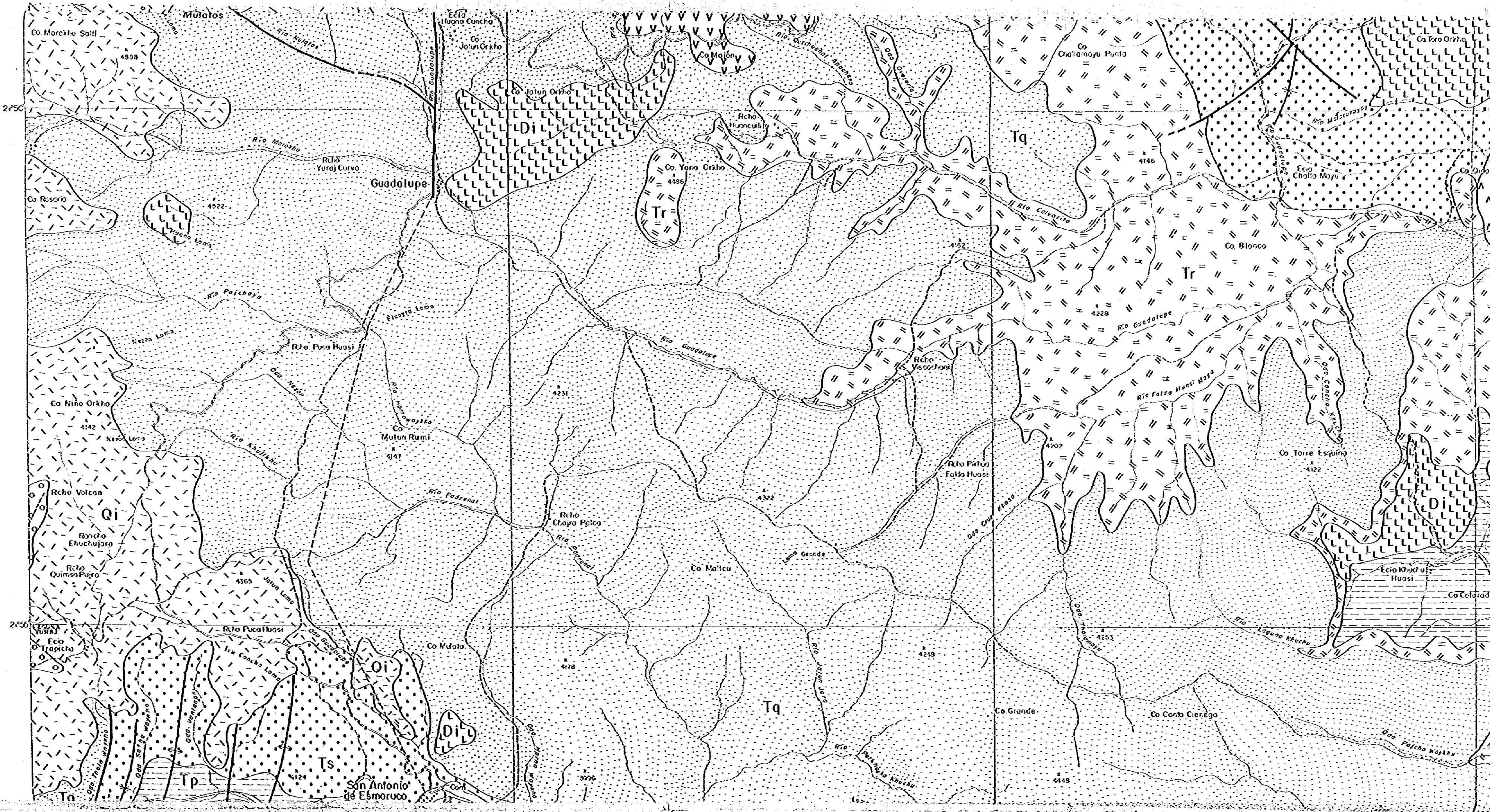
MAPA GEOLOGICO DE LA REGION

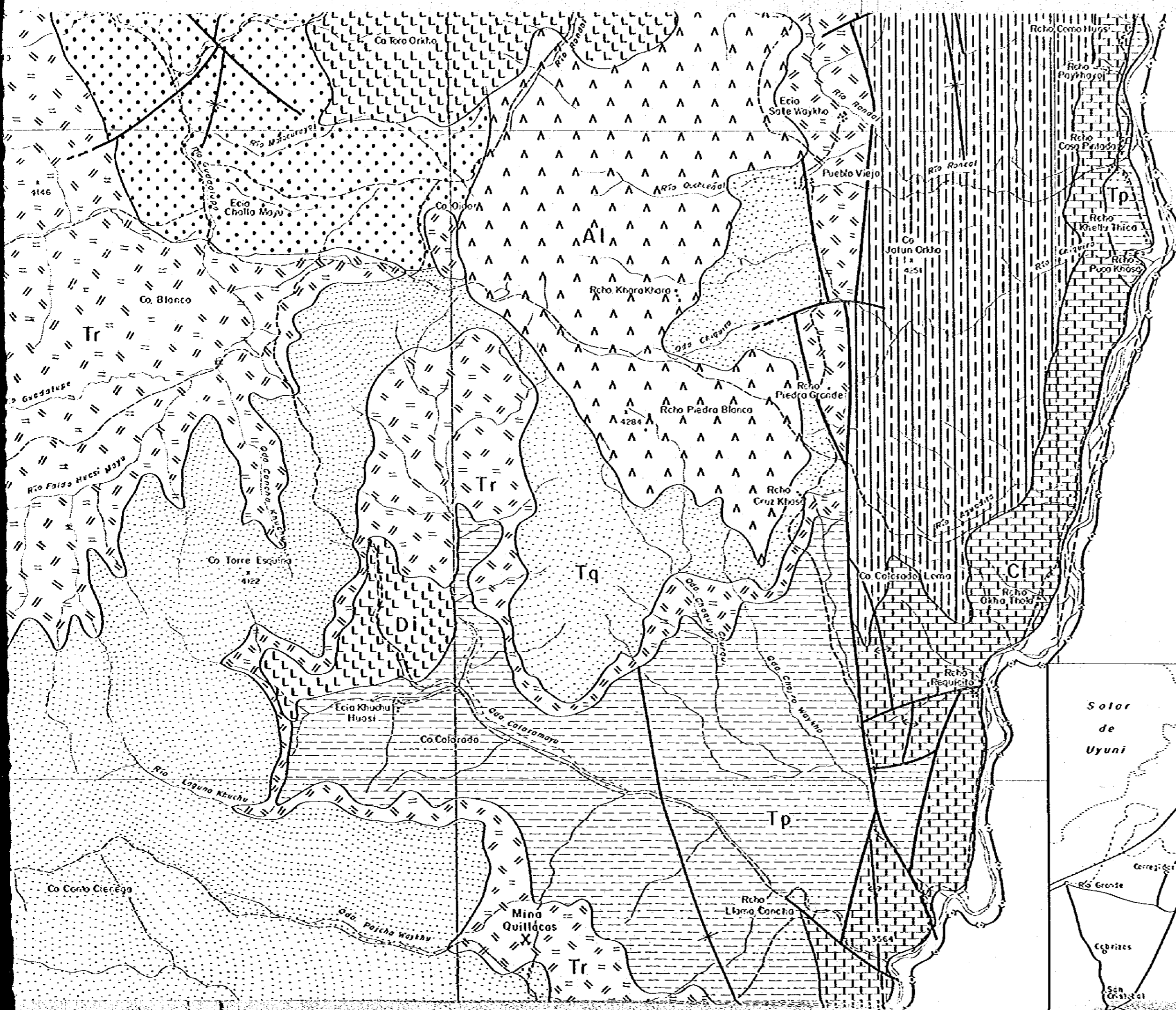


LA REGION DE SUR LIPEZ (2)

(Pl. 2)

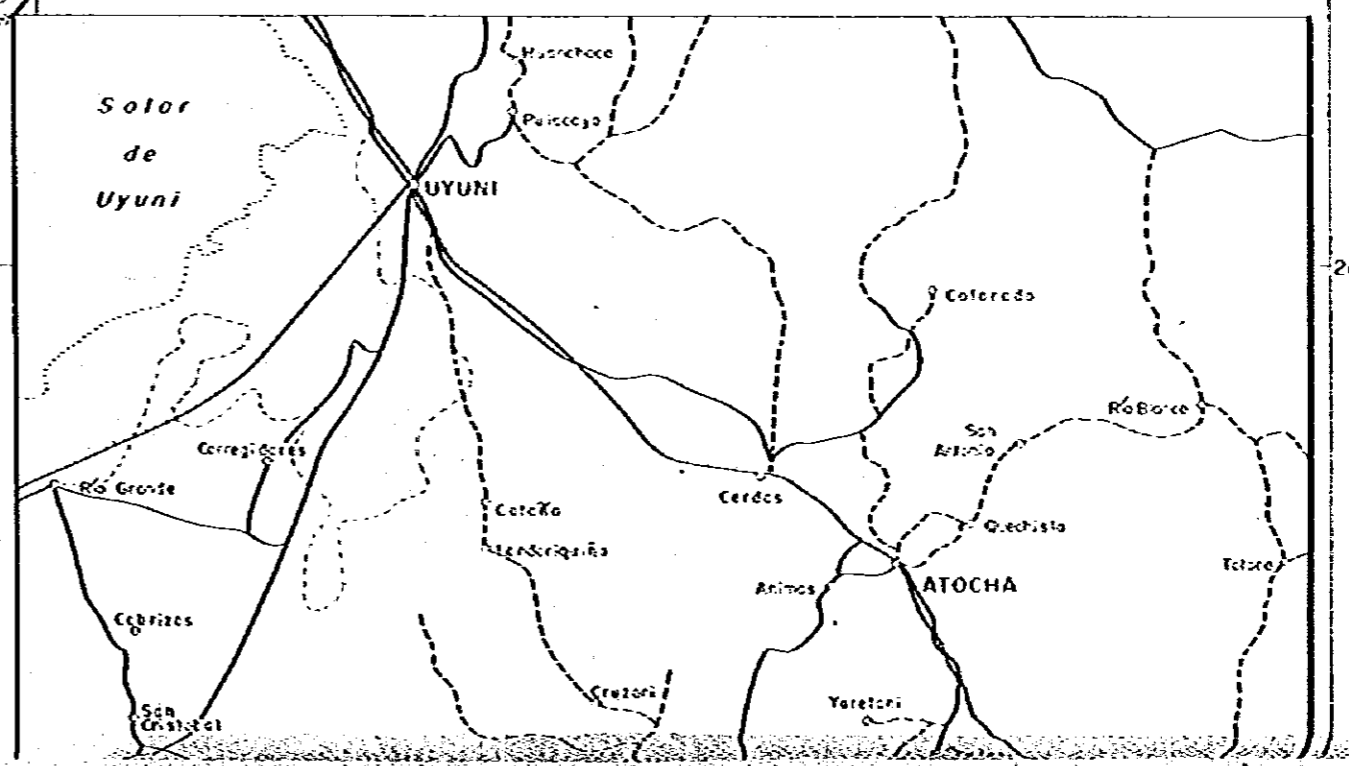


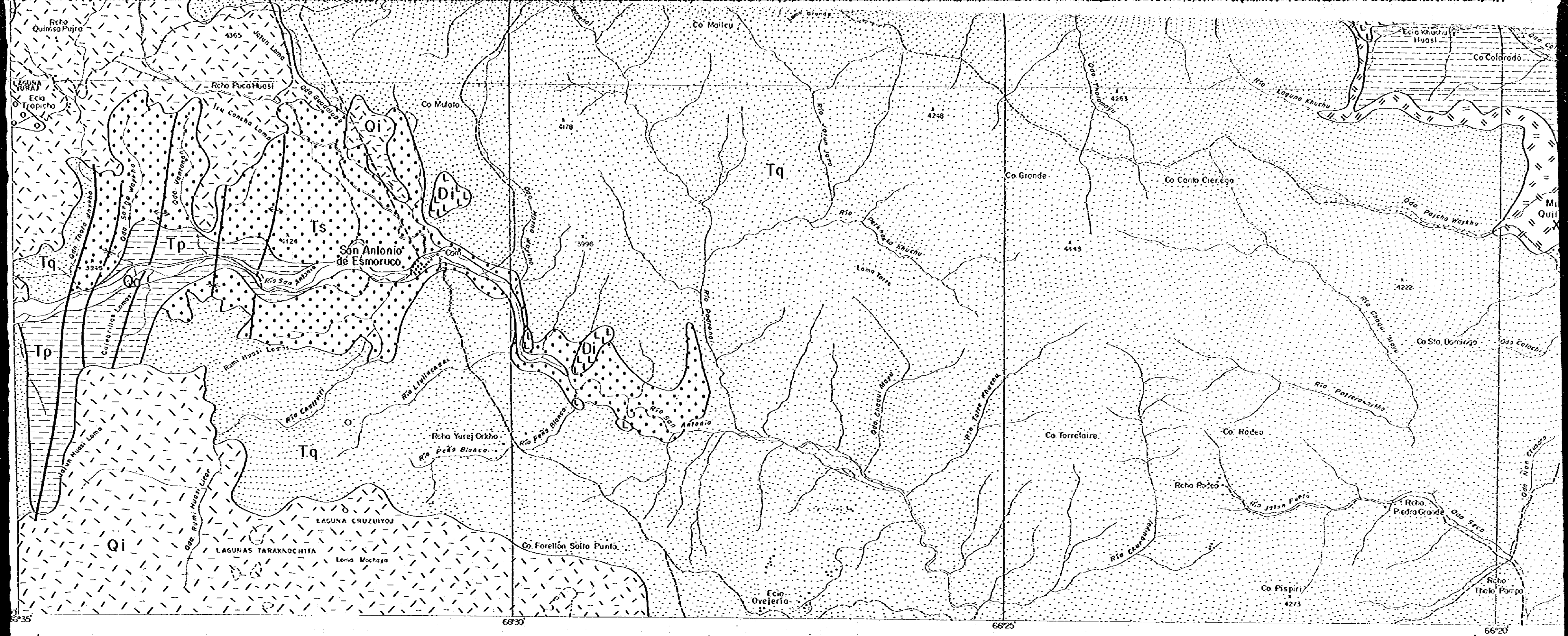




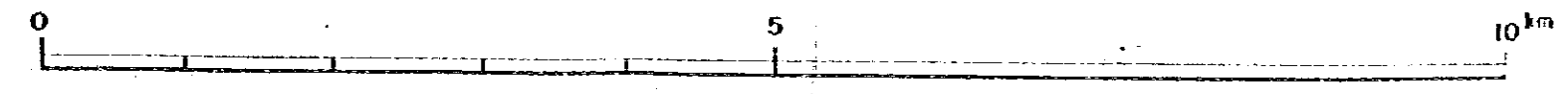
REPUBLICA DE ARGENTINA

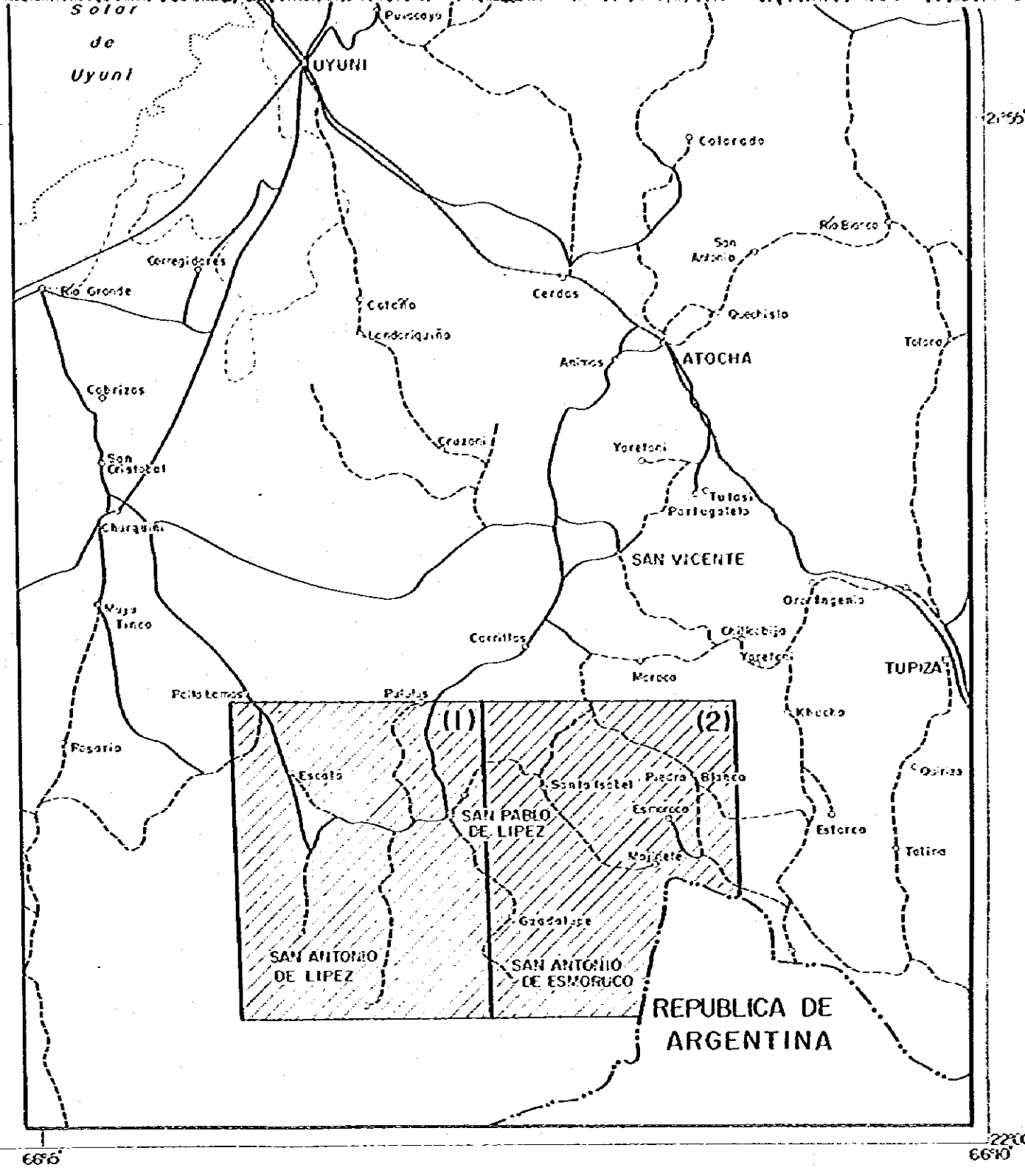
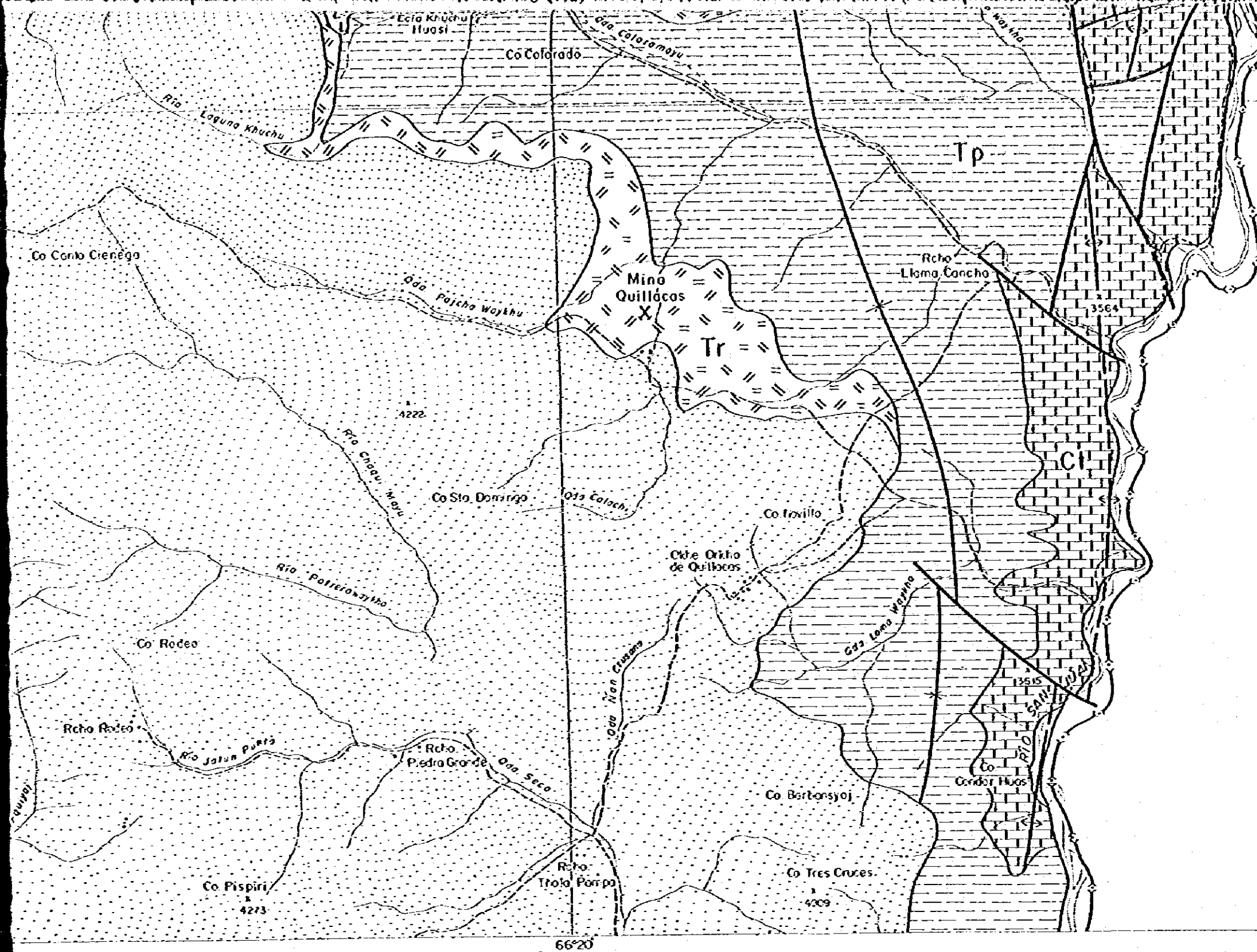
UBICACION



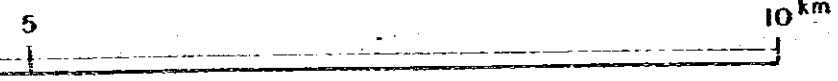


1 : 50,000





1 : 50,000



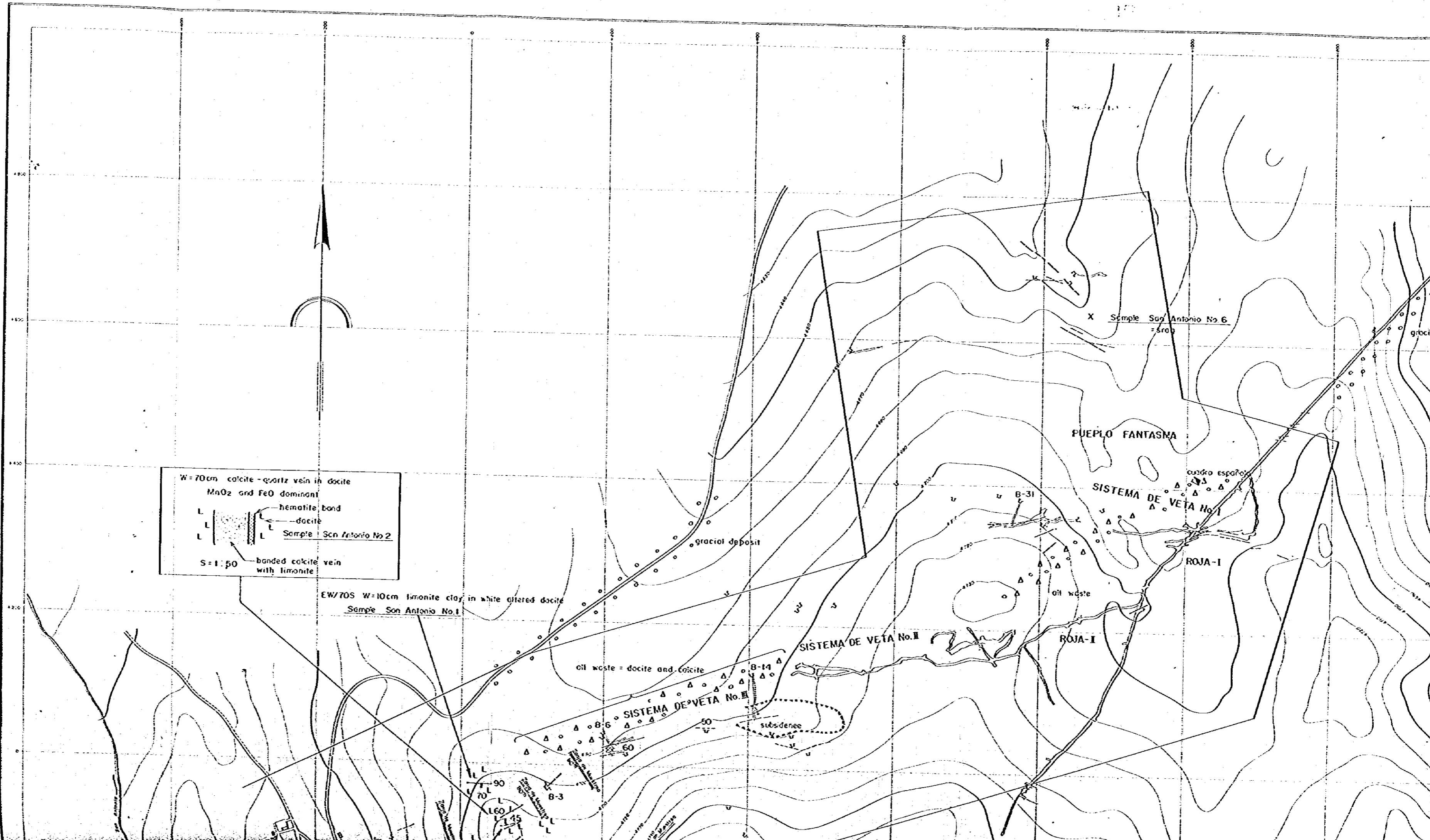
- Cuaternario**
- Qo Aluviales
 - Qc Coluviales
 - Qm Morrenas
 - Qi Ignimbritos

L E Y E N D A

- Terciario**
- Di Intrusivo de dacito
 - Al Lava de andesito
 - Dl Lava de dacito
 - Tq Formación Quehua
 - Tr Formación Rondal
 - Ts Formación San Vicente
 - Tp Formación Poloco

- Cl Cretácico
- Ov Ordovícico

- Eje Anticlinol
- Eje Sinclinal
- Fallo
- Contacto
- Zona de alluvación



W = 70cm calcite - quartz vein in dacite
 MnO₂ and FeO dominant
 hematite band
 dacite
 Sample San Antonio No. 2
 S = 1:50
 banded calcite vein
 with limonite

EW/70S W = 10cm limonite clay in white altered dacite
 Sample San Antonio No. 1

oil waste = dacite and calcite

SISTEMA DE VETA No. II

subsidence

PUEPLO FANTASMA

SISTEMA DE VETA No. I

ROJA-I

ROJA-I

SISTEMA DE VETA No. II

SISTEMA DE VETA No. III

70

160

145

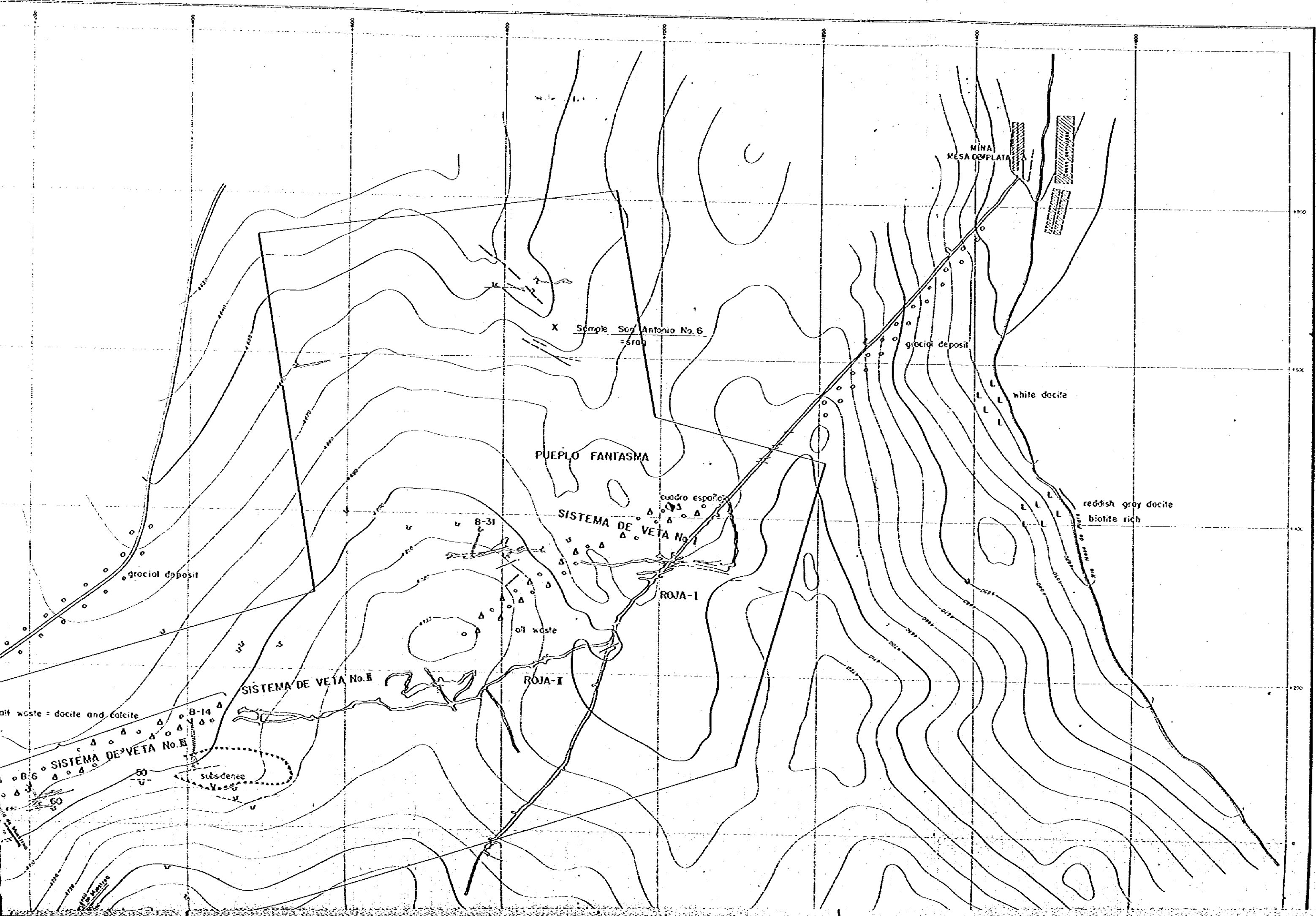
8-3

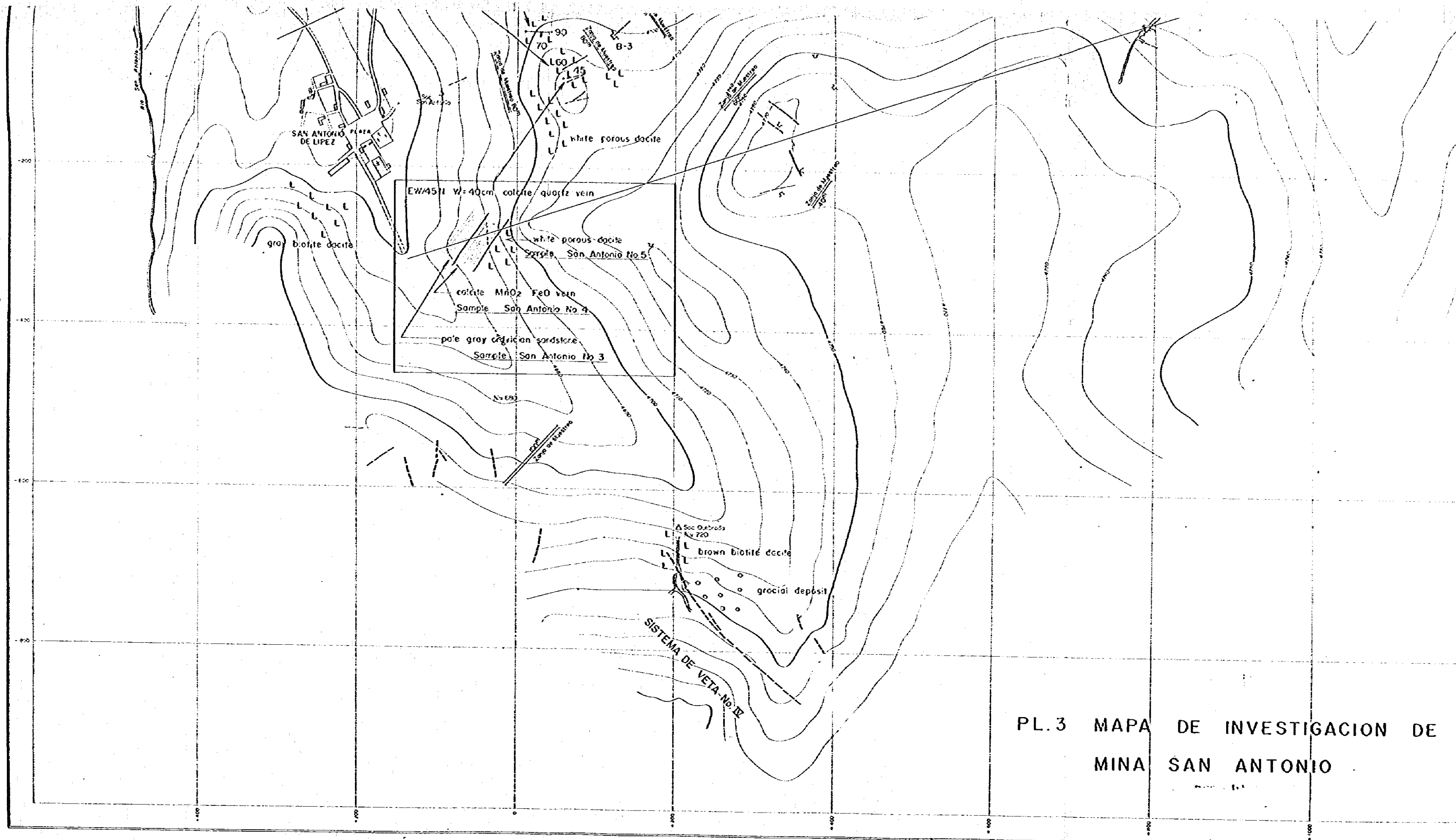
8-14

B-31

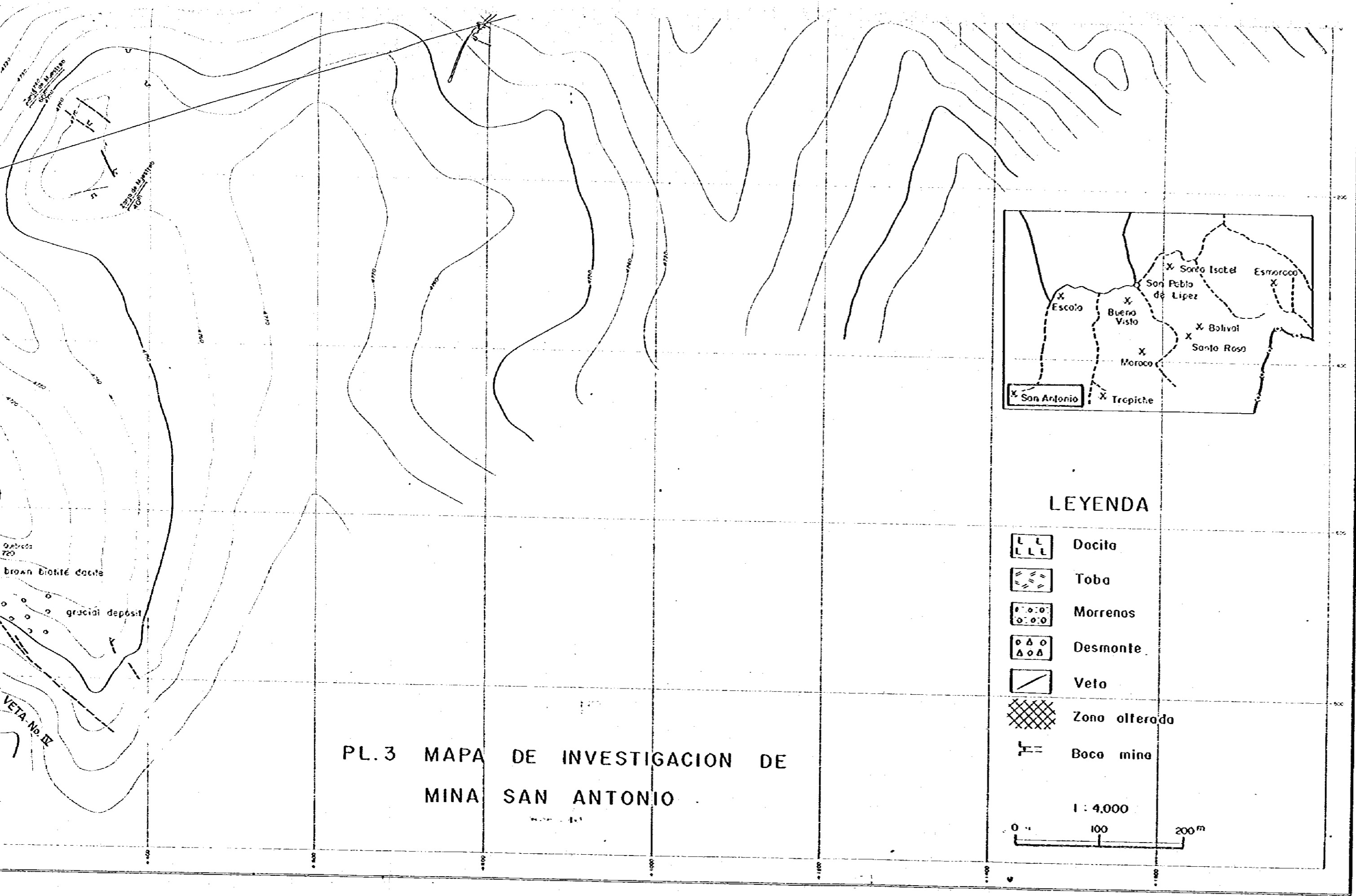
X Sample San Antonio No. 6 = 5.00



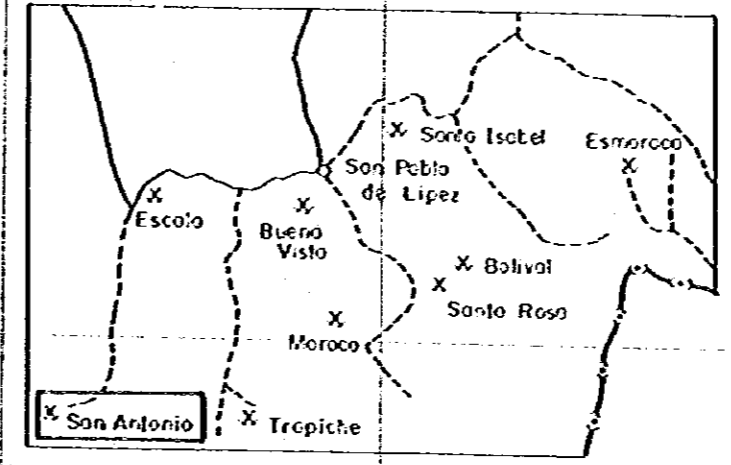




PL.3 MAPA DE INVESTIGACION DE
 MINA SAN ANTONIO



PL.3 MAPA DE INVESTIGACION DE MINA SAN ANTONIO



LEYENDA

-  Dacite
-  Toba
-  Morrenos
-  Desmonte
-  Veto
-  Zona alterada
-  Boca mina

1 : 4,000

