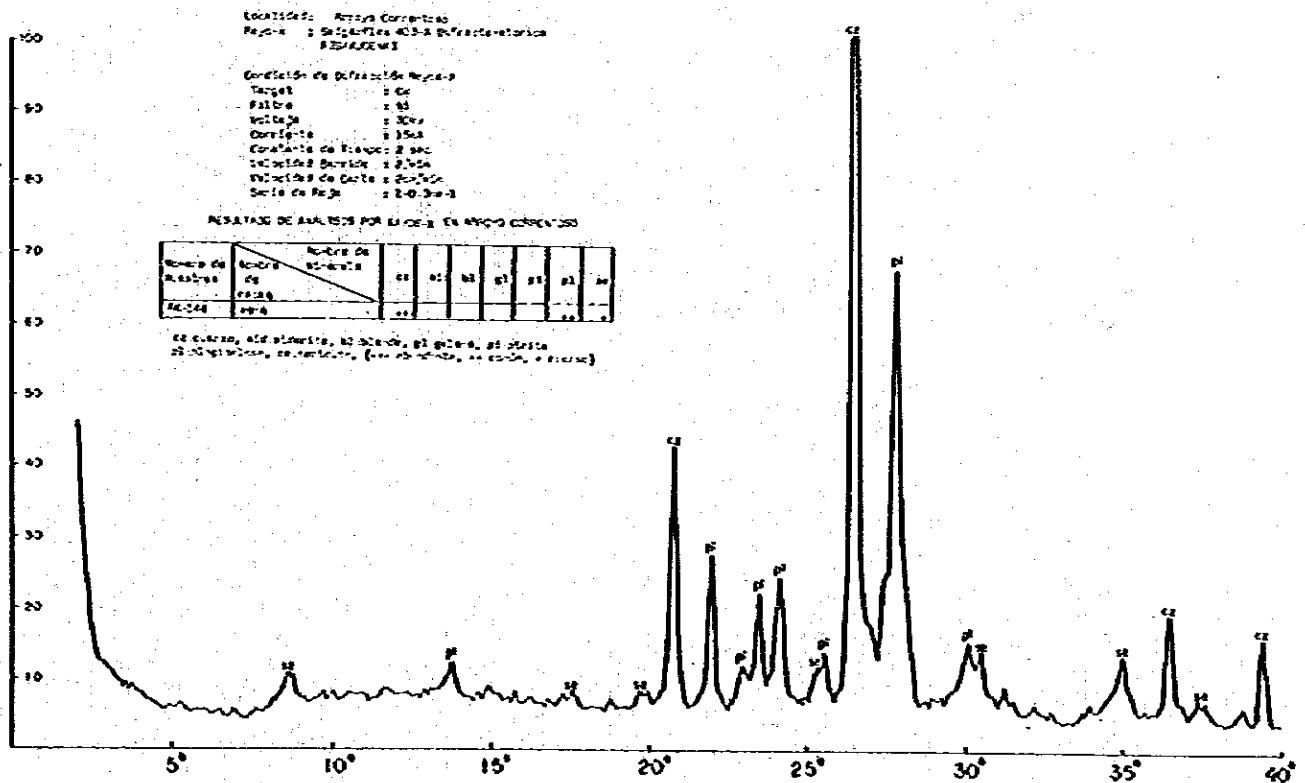
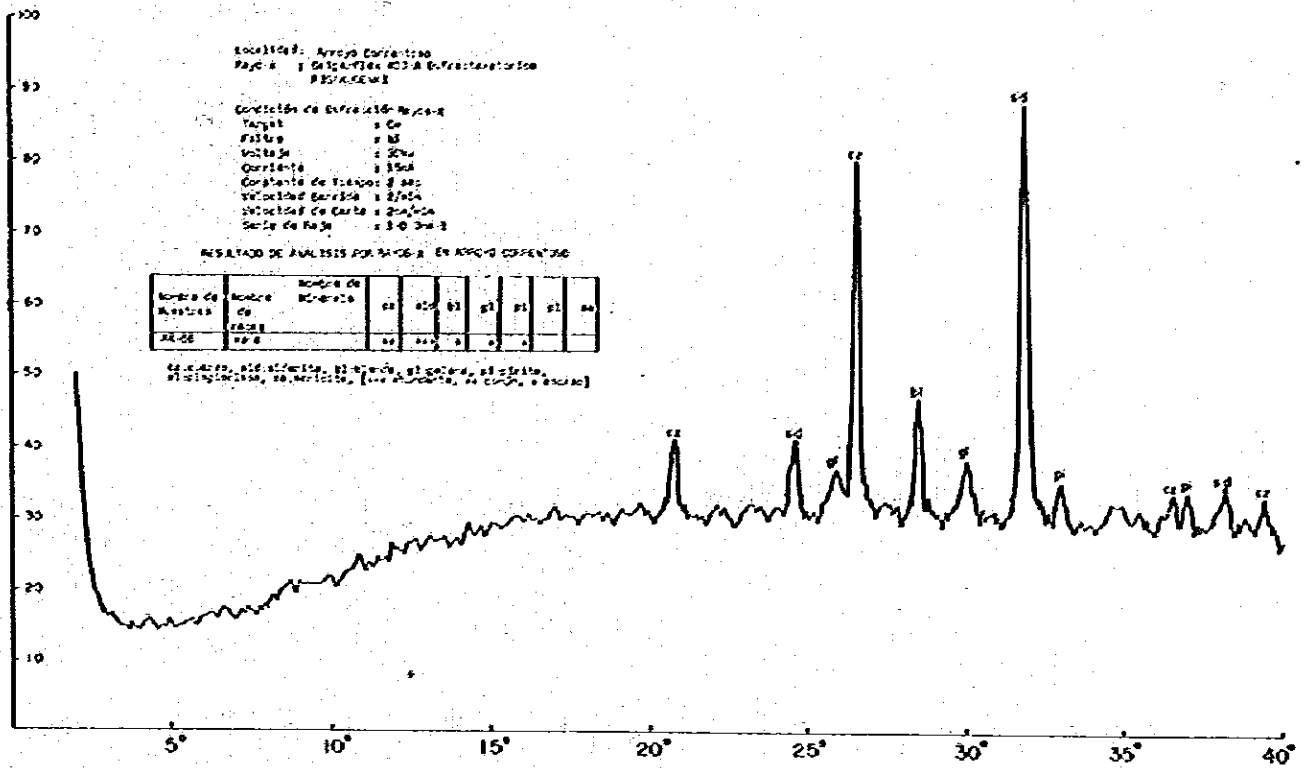
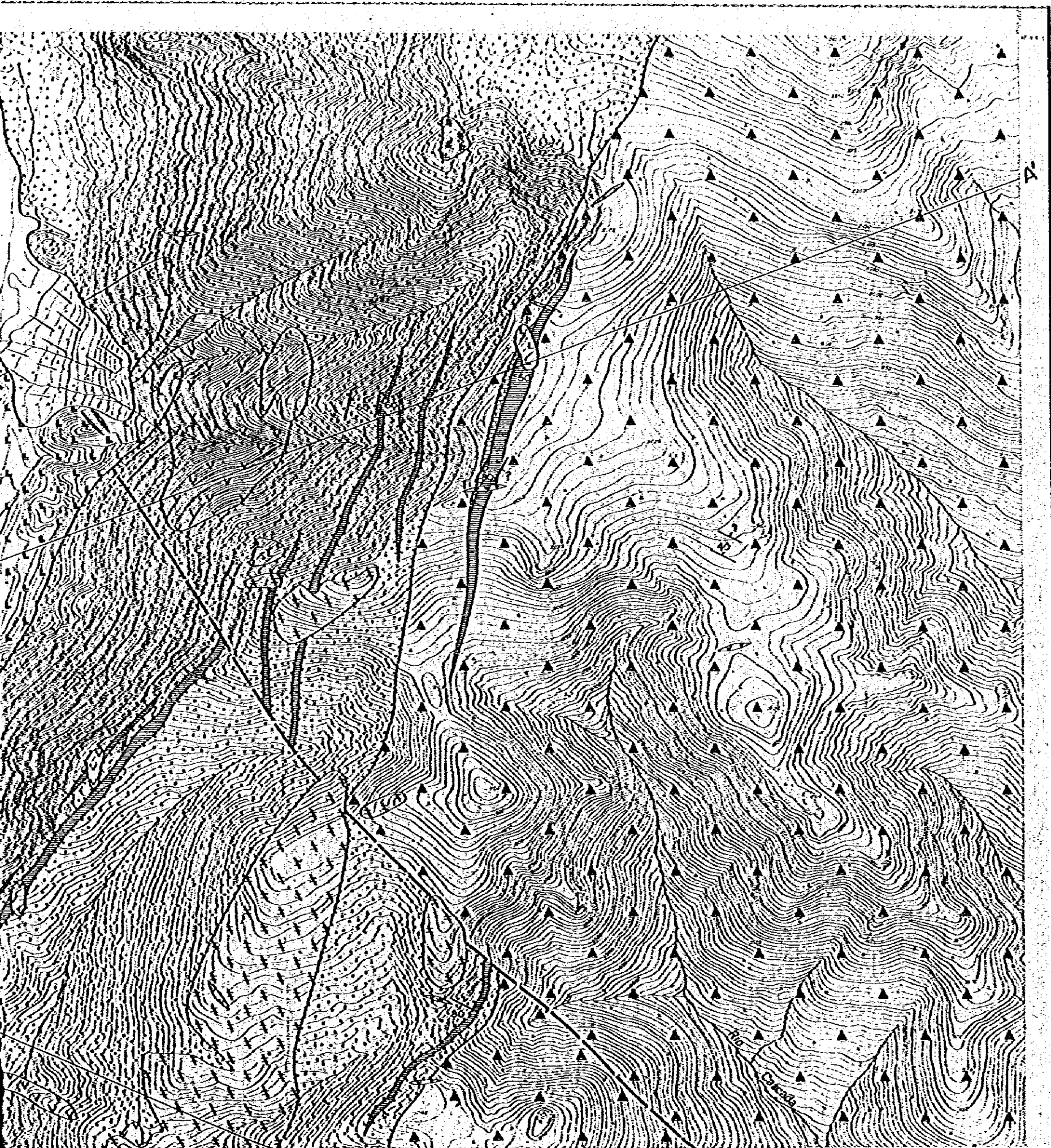


### Apendice 3-2 RESULTADO DE ANALISIS POR RAYOS-X







PL. I

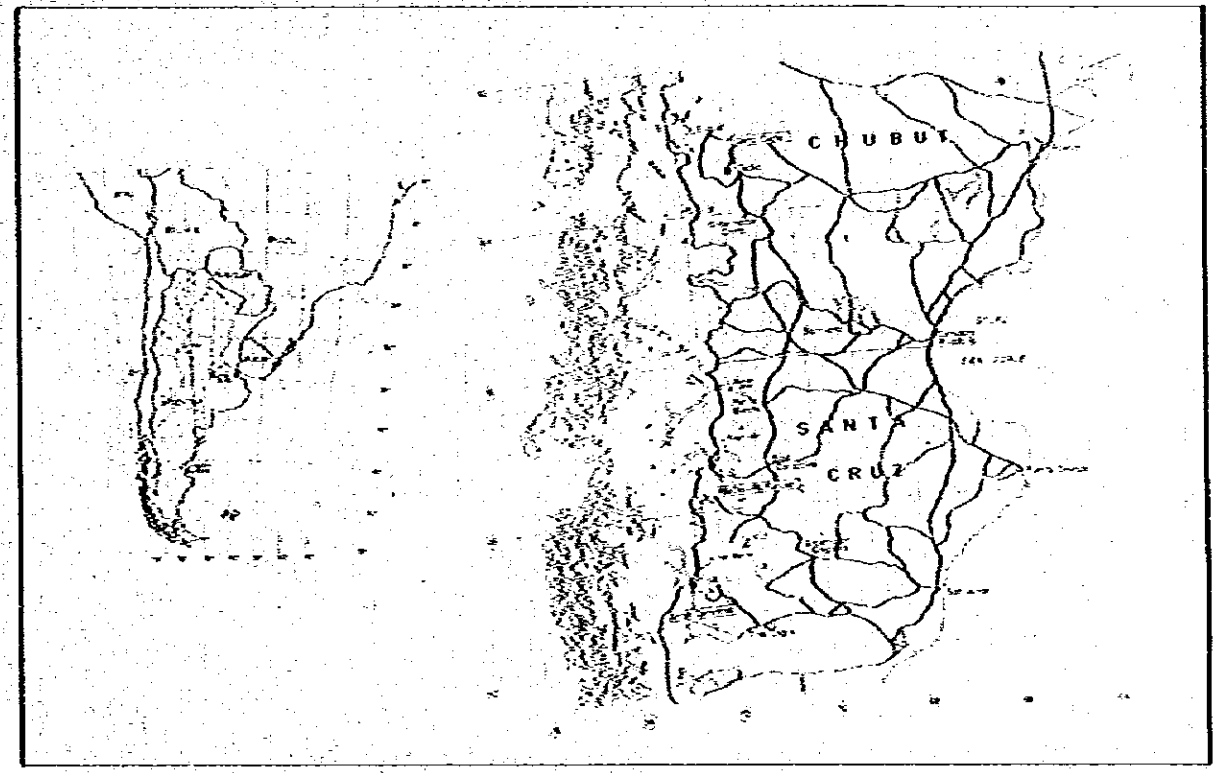
ESTUDIO GEOLOGICO  
 EN  
 LA REPUBLICA ARGENTINA  
 FASE IV

国際協力事業団  
 08457  
 図書資料室蔵書

PLANO GEOLOGICO Y  
 SECCIONES GEOLOGICAS

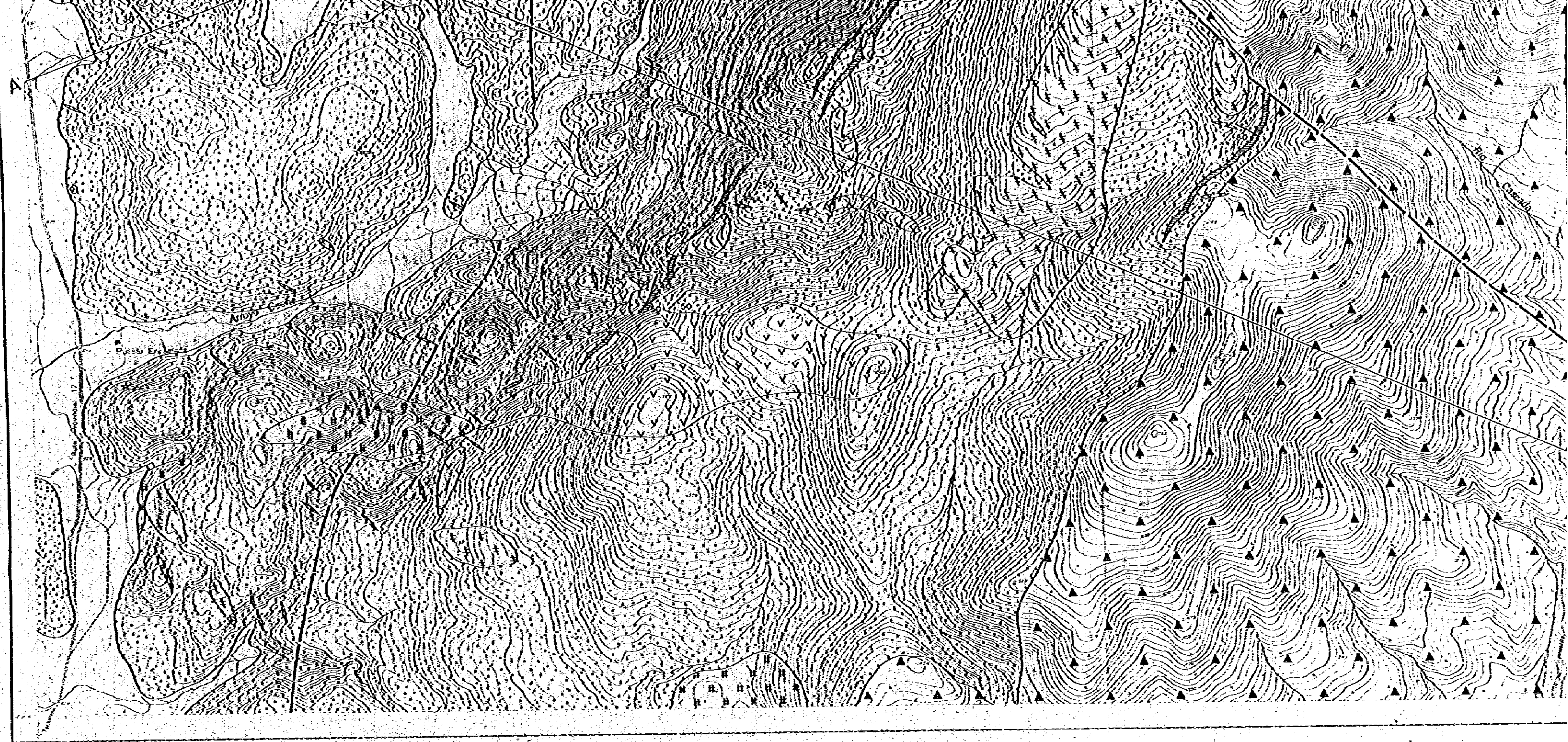
SECTOR  
 CERRO CUCHE

ESCALA 1:20,000  
 0 10 20km



ORGANIZACION MINERA METALICA DEL JAPON SECRETARIA DE ESTADO DE MINERIA  
 AGENCIA DE COOPERACION INTERNACIONAL  
 DEL JAPON  
 GOBIERNO DEL JAPON GOBIERNO DE LA REPUBLICA ARGENTINA

MARZO 1981

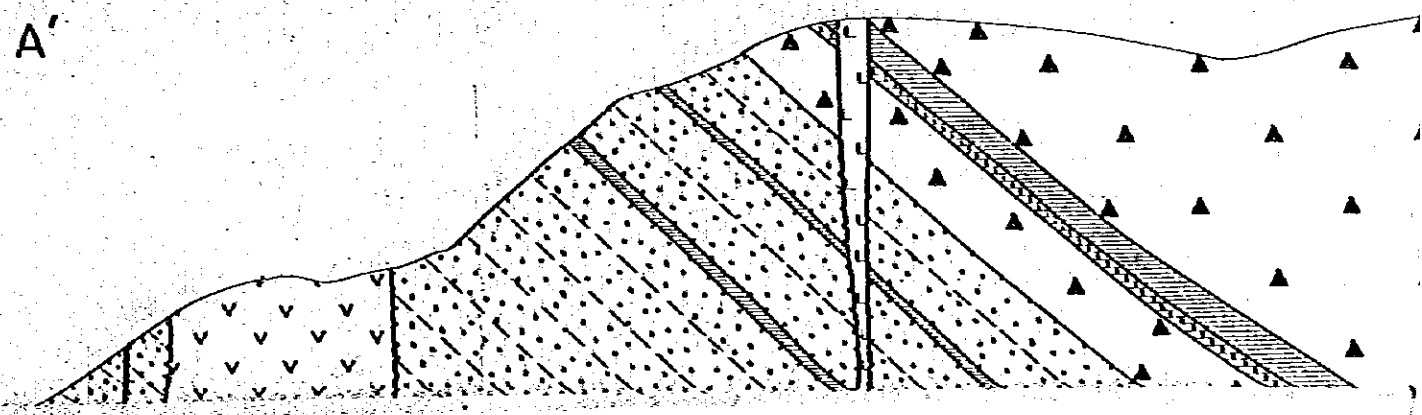


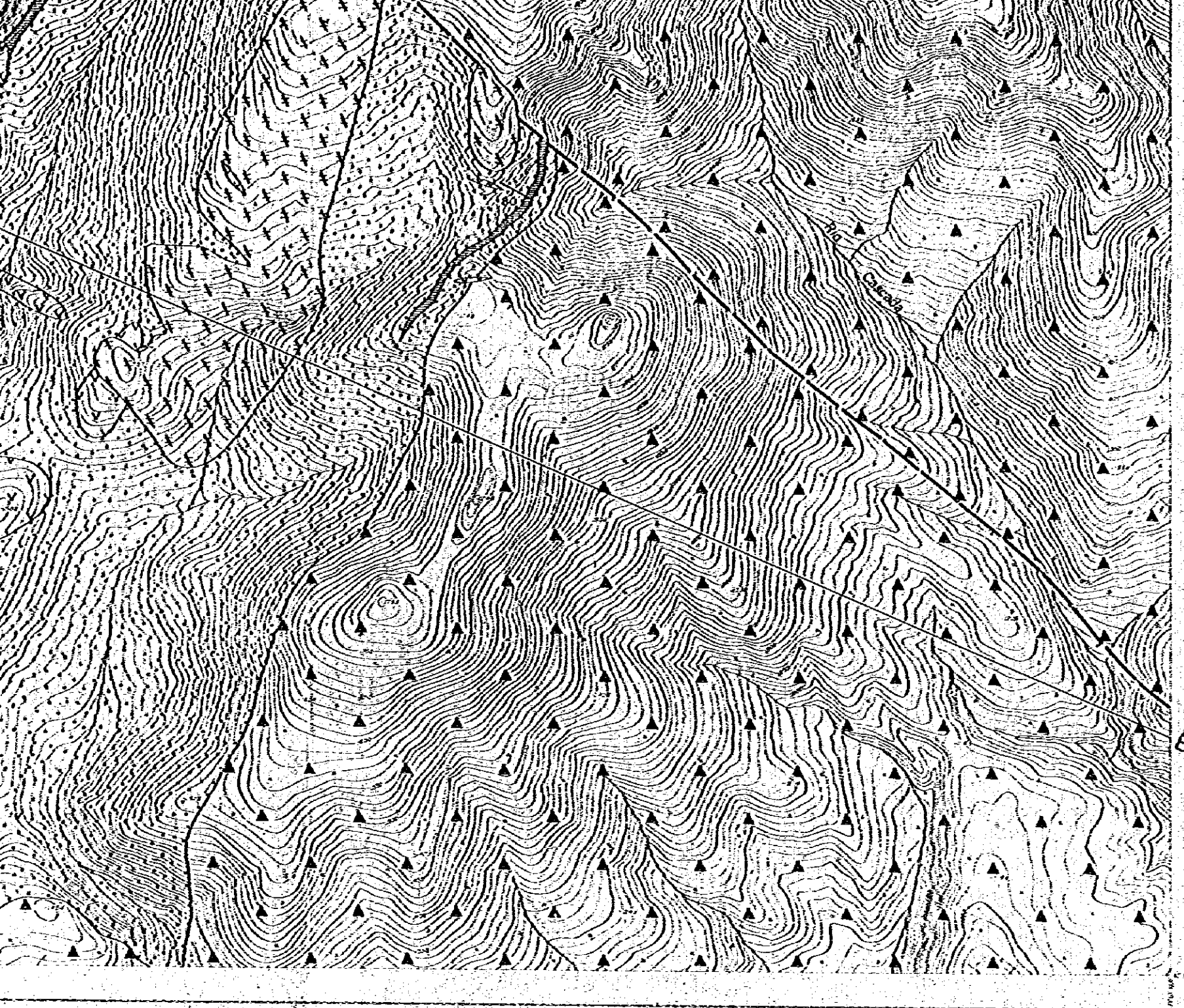
2000<sup>m</sup>

Auto Provincia 17

— Sección B - B' —

A - A'





ORGANIZACION MINERA METALICA DEL JAPON SECRETARIA DE ESTADO DE MINERIA  
 AGENCIA DE COOPERACION INTERNACIONAL  
 DEL JAPON

GOBIERNO DEL JAPON

GOBIERNO DE LA REPUBLICA ARGENTINA

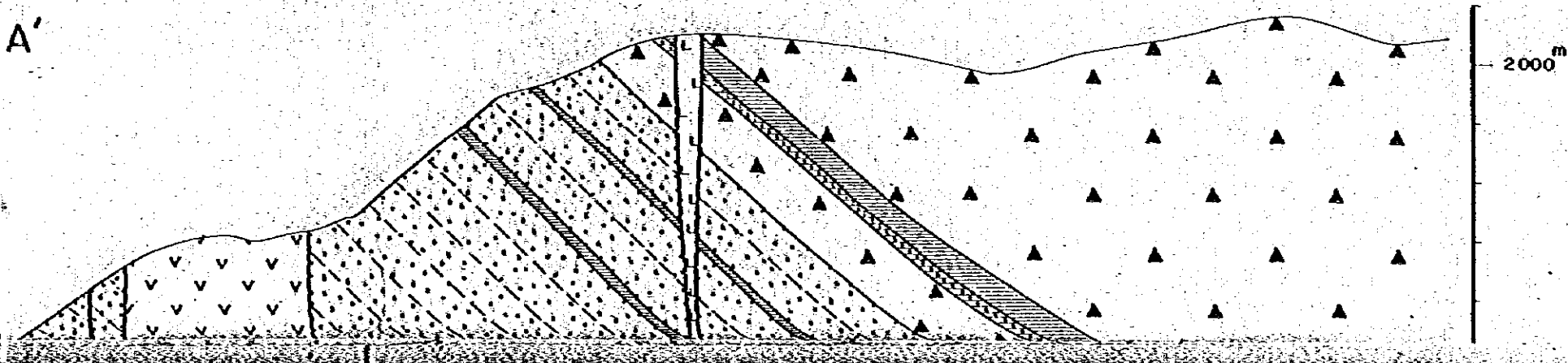
MARZO 1981

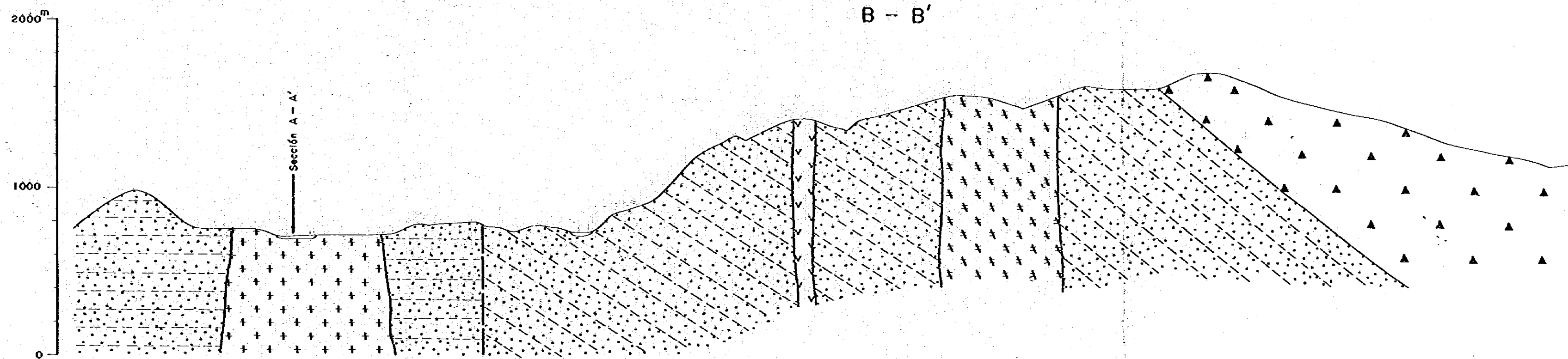
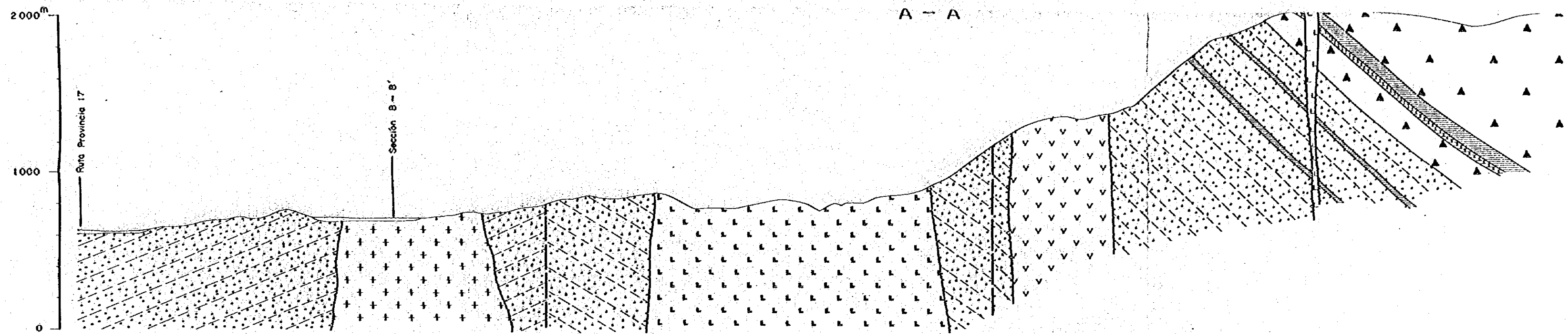
### REFERENCIAS

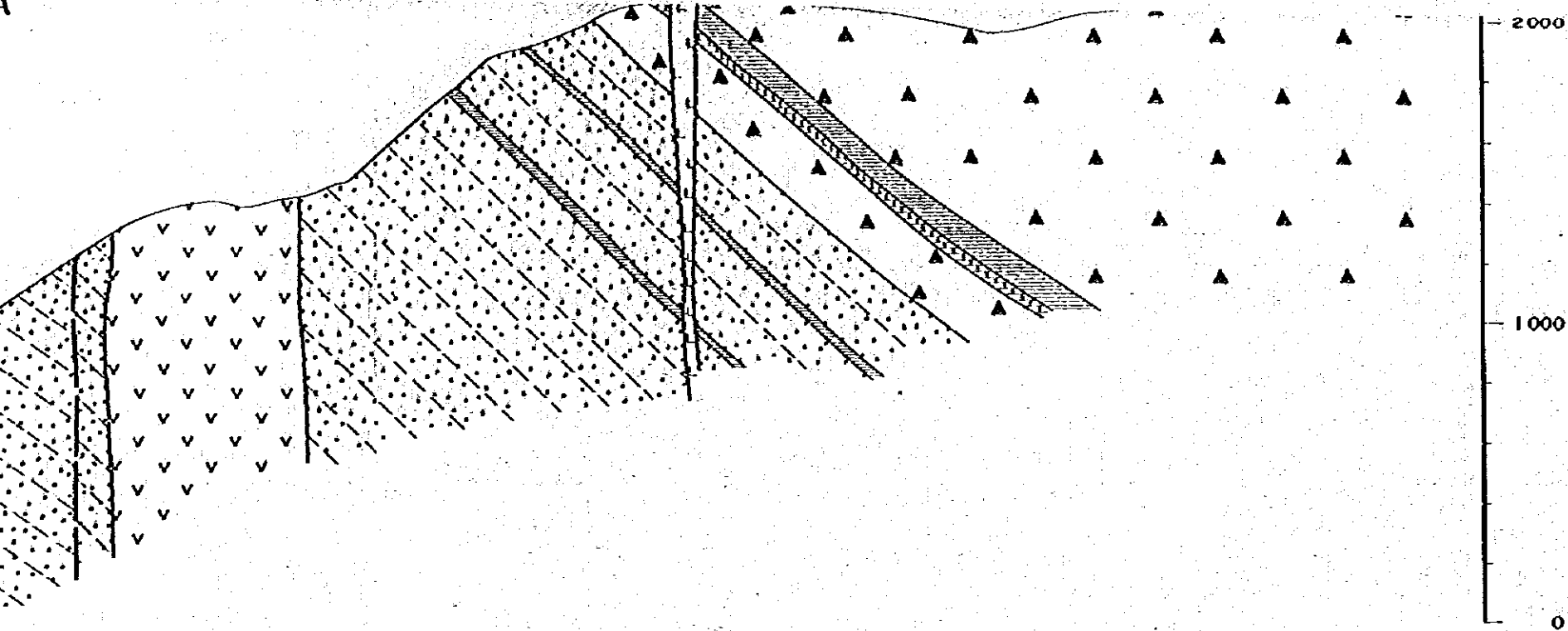
#### Geología

- |                                       |  |  |                   |
|---------------------------------------|--|--|-------------------|
| Cuartario                             |  | Déposito aluvial   | } F.-Arroyo Cajón |
|                                       |  | Deposito de cono   |                   |
| Mesozóico                             |  | Alternación de rocas piroclásticas y lavas (principalmente andesítica) |                   |
|                                       |  | Caliza   |                   |
|                                       |  | Fongólito  |                   |
|                                       |  | Arenisco   |                   |
| Rocas Intrusivas (Cretácico Superior) |  | Andesito   |                   |
|                                       |  | Dolerito   |                   |
|                                       |  | Diorito cuarzoso - pórfido   |                   |
|                                       |  | Diorito  |                   |
|                                       |  | Pórfido cuarcifero   |                   |
|                                       |  | Riolito  |                   |
|                                       |  | Pórfido diorítico  |                   |
|                                       |  | Granito (Granito Corcovado)  |                   |

#### Estructura y otras

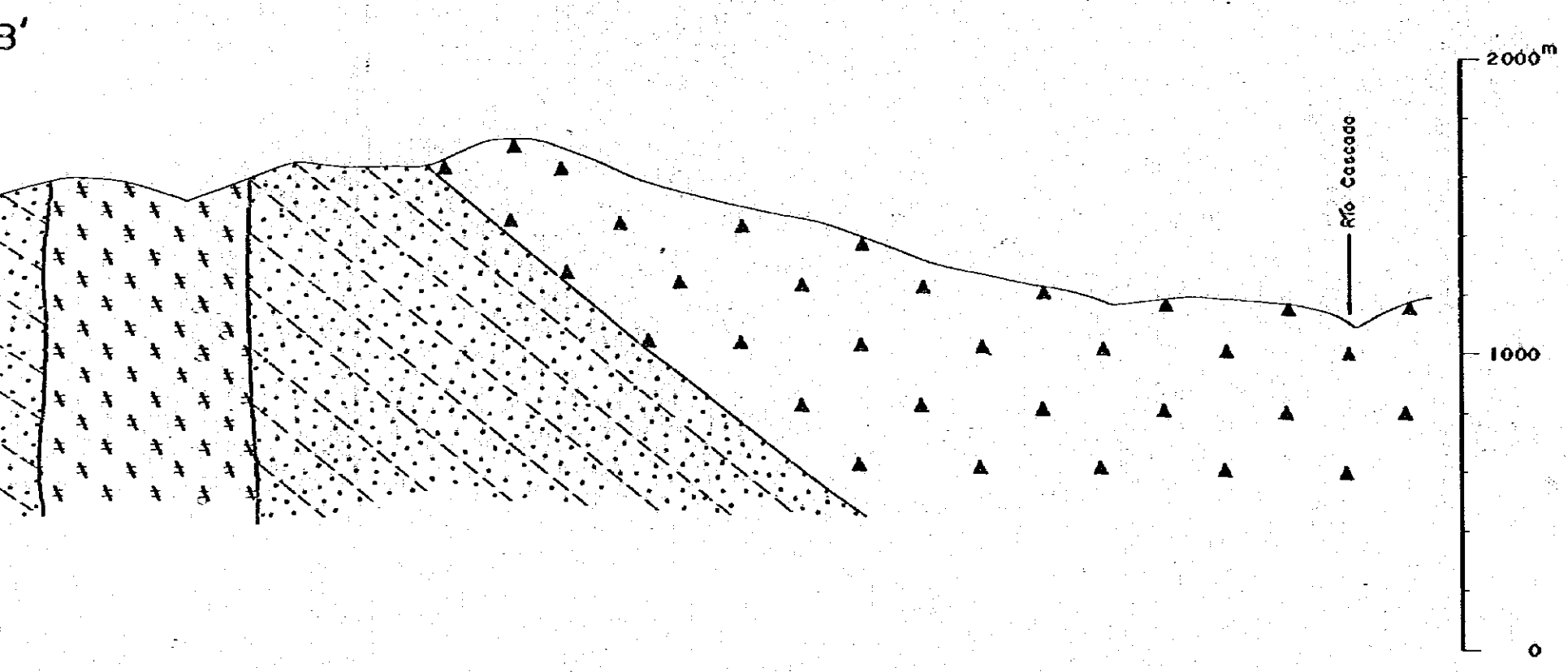


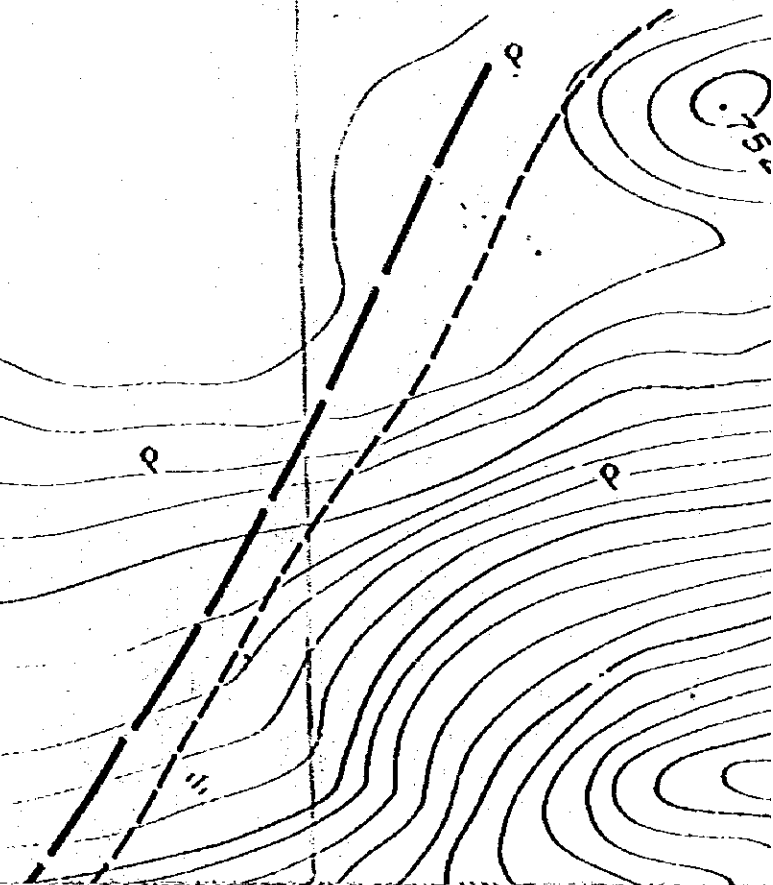
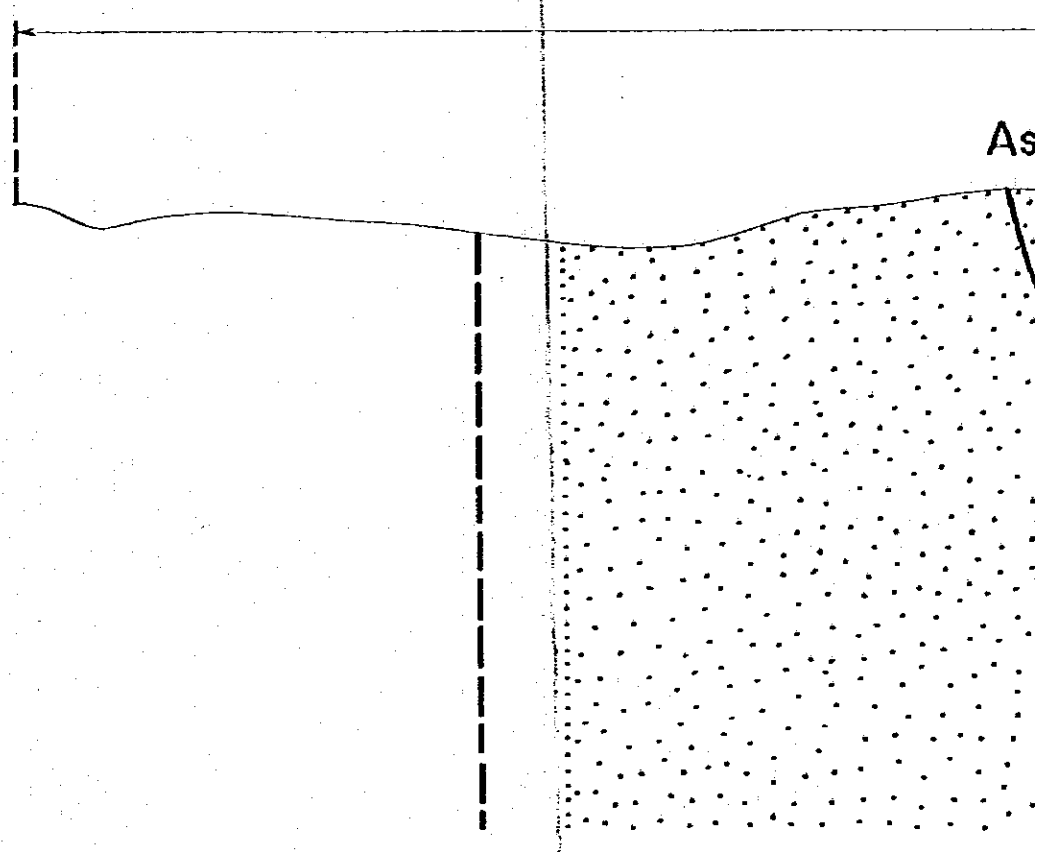
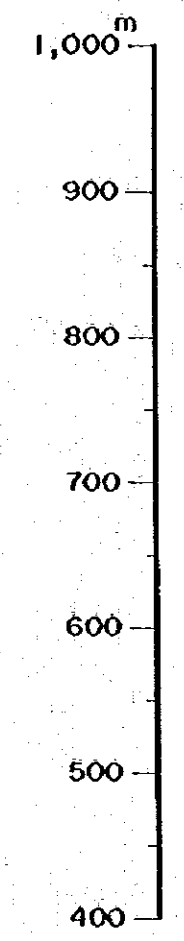
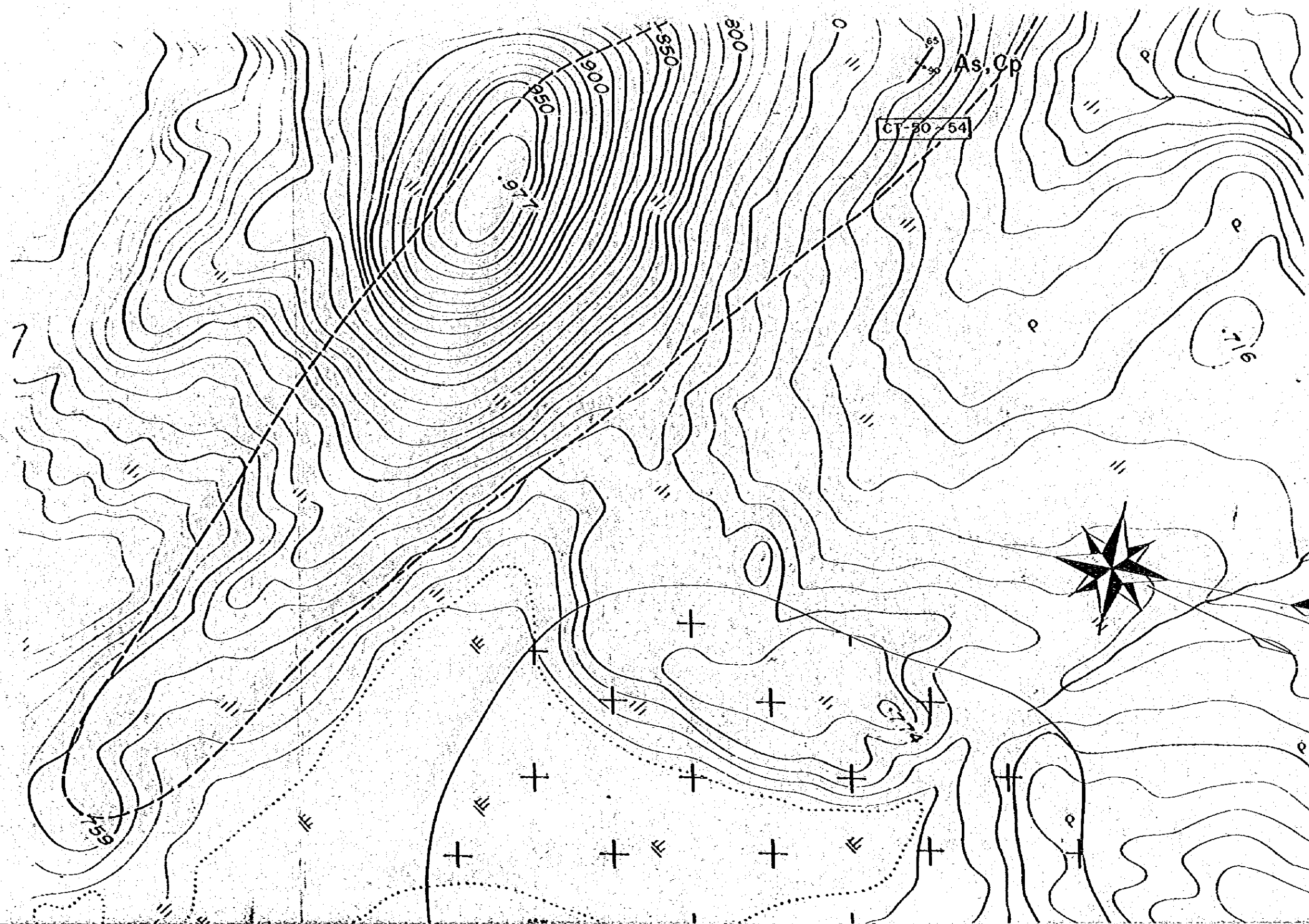




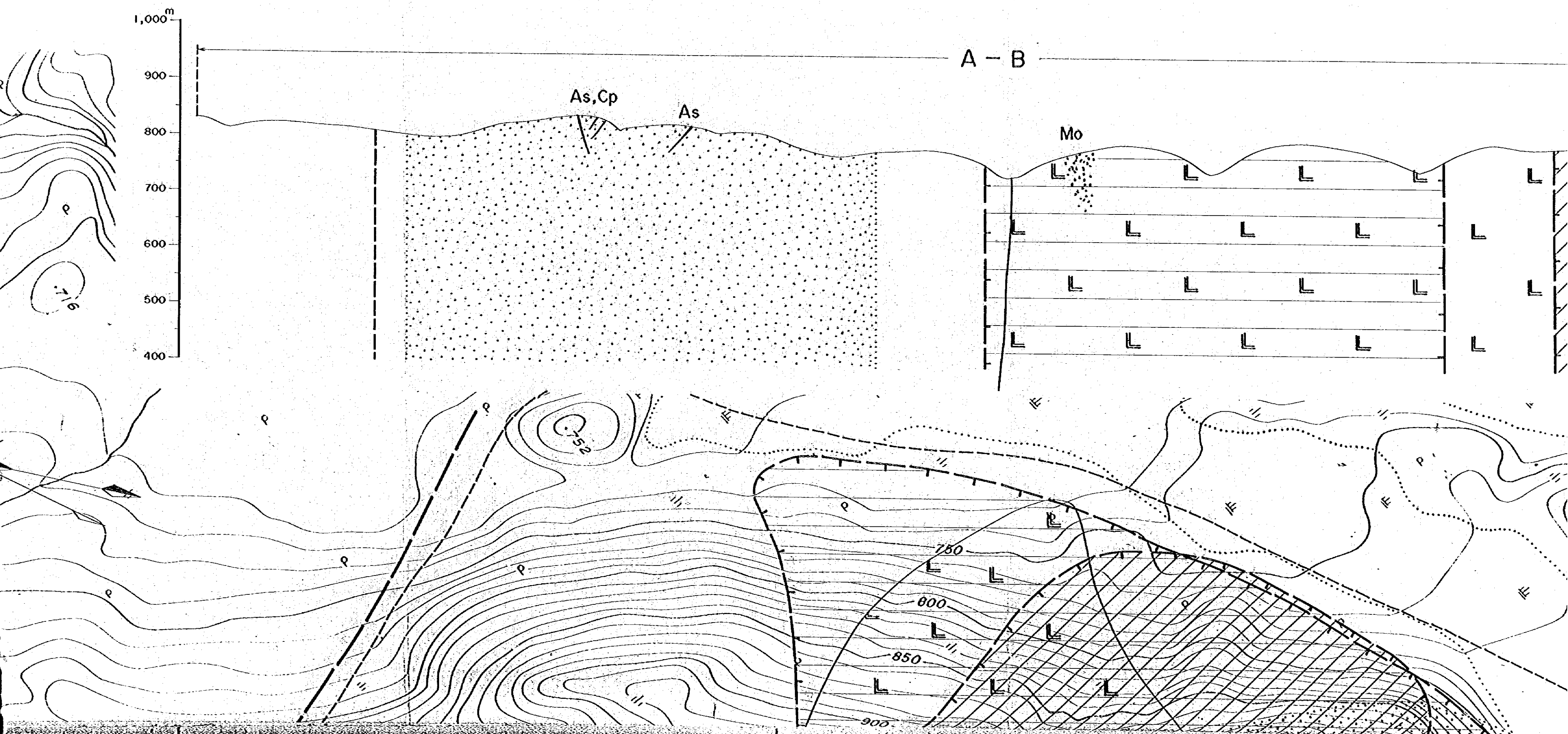
- Rocas (Cretecio)
- Pórfido diorítico
  - Granito (Granito Corcovado)

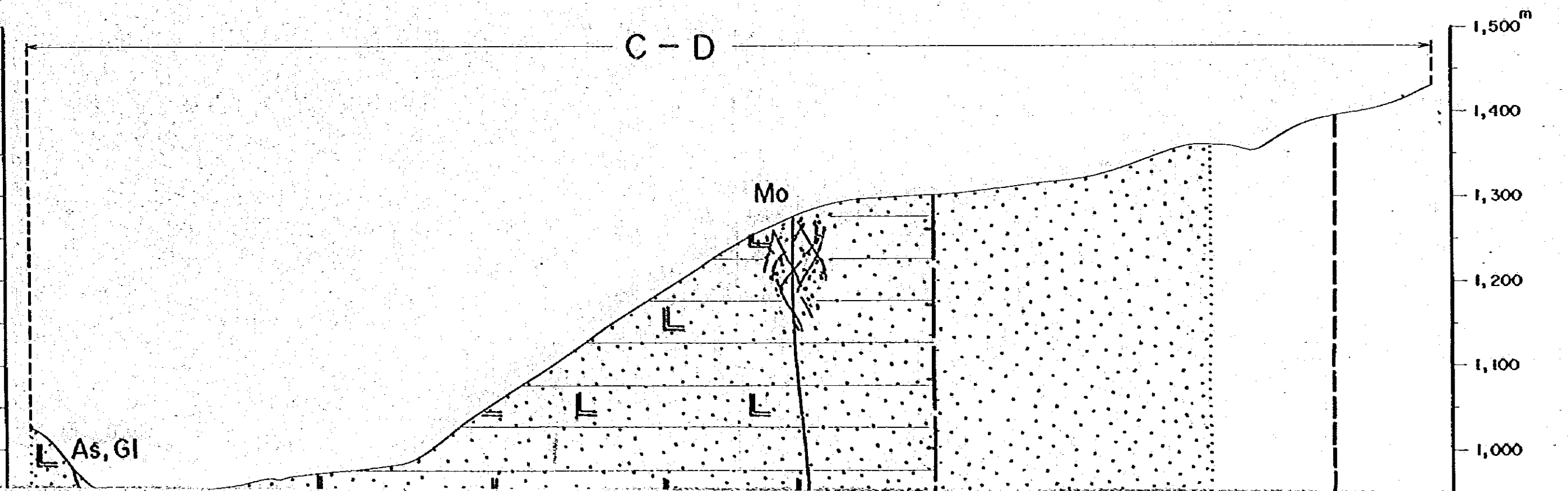
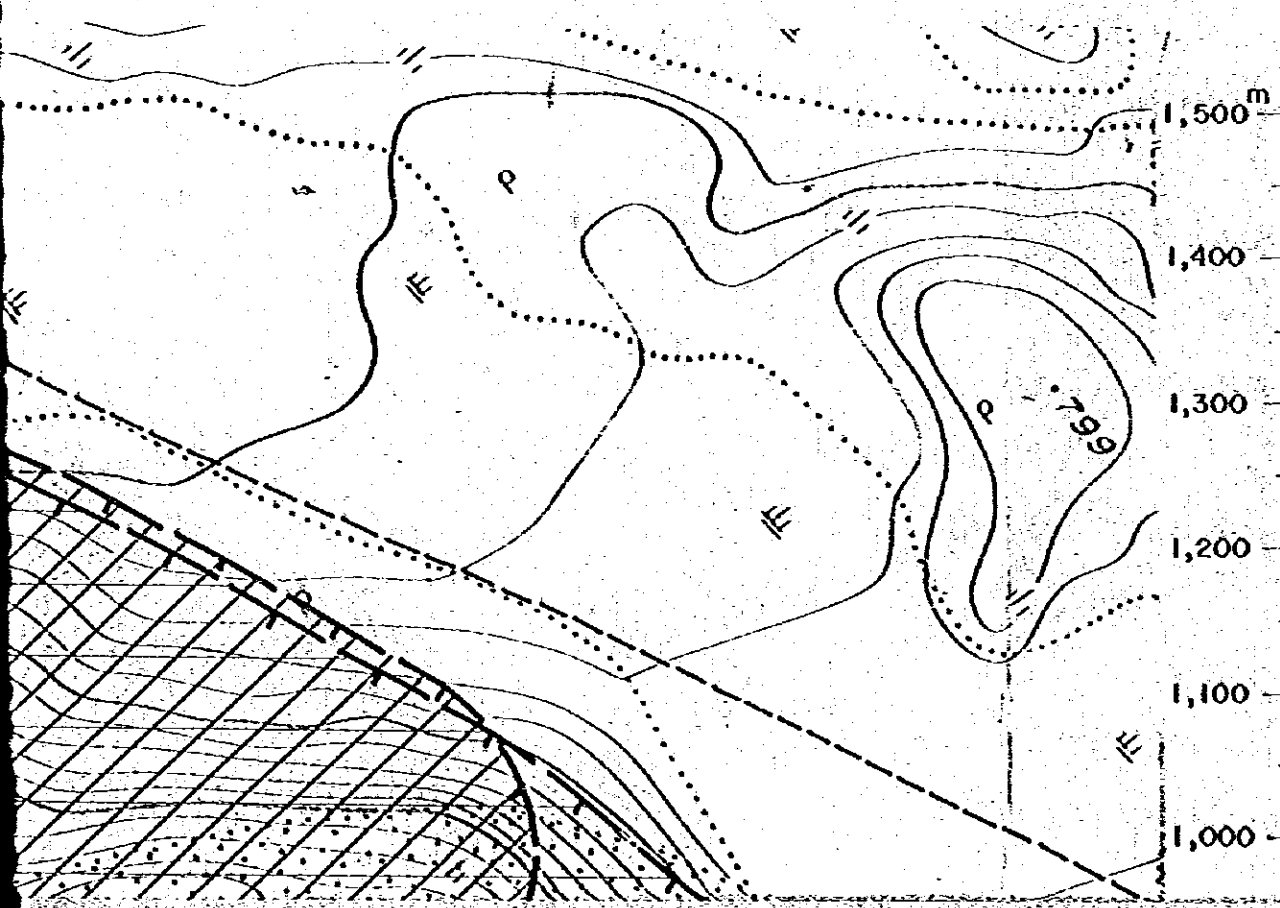
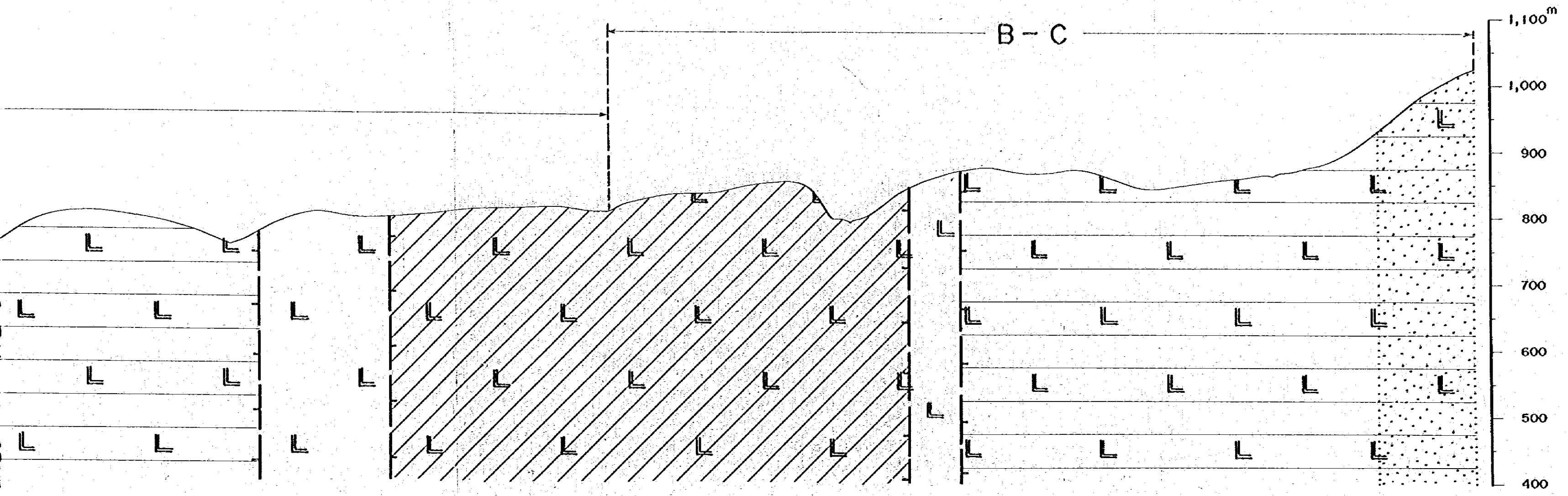
- Estructura y otras
- Rumbo y buzamiento
  - Contacto litológico
  - Falta supuesto
  - Líneo indicando buzamiento de arenisco
  - Líneo de sección geológica











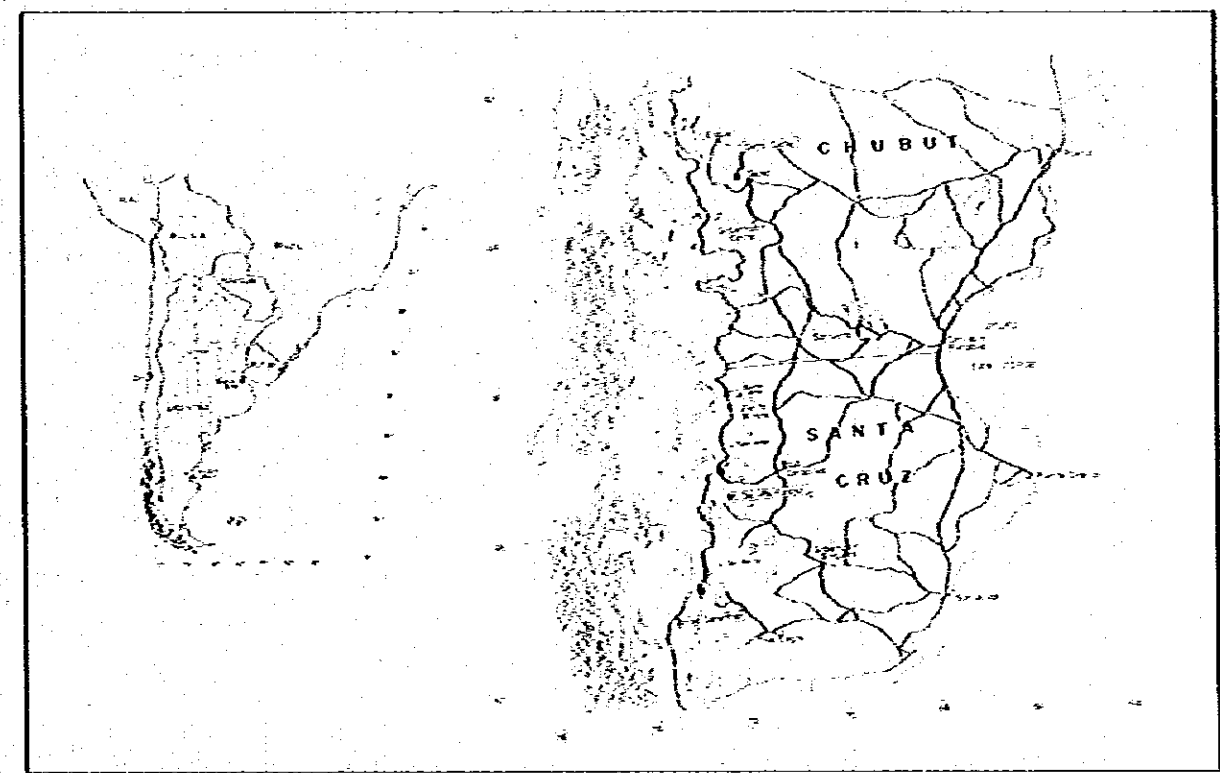
ESTUDIO GEOLOGICO  
EN  
LA REPUBLICA ARGENTINA  
FASE IV

国際協力事業団  
08457  
図書資料室蔵書

PLANO Y SECCION-RELACION ENTRE  
ZONA MINERALIZADA Y ESTRUCTURA  
GEOLOGICA

SECTOR  
CERRO CUCHE

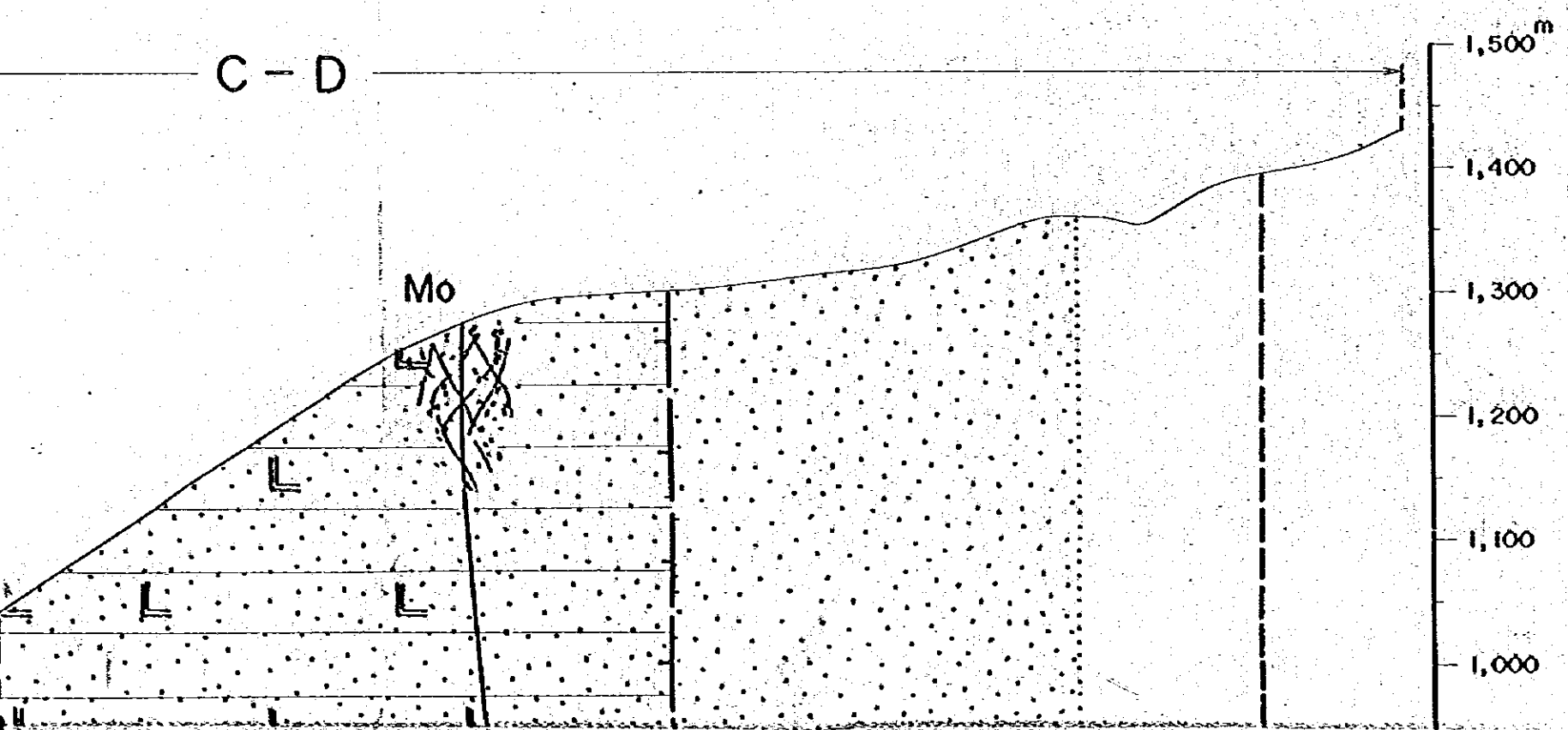
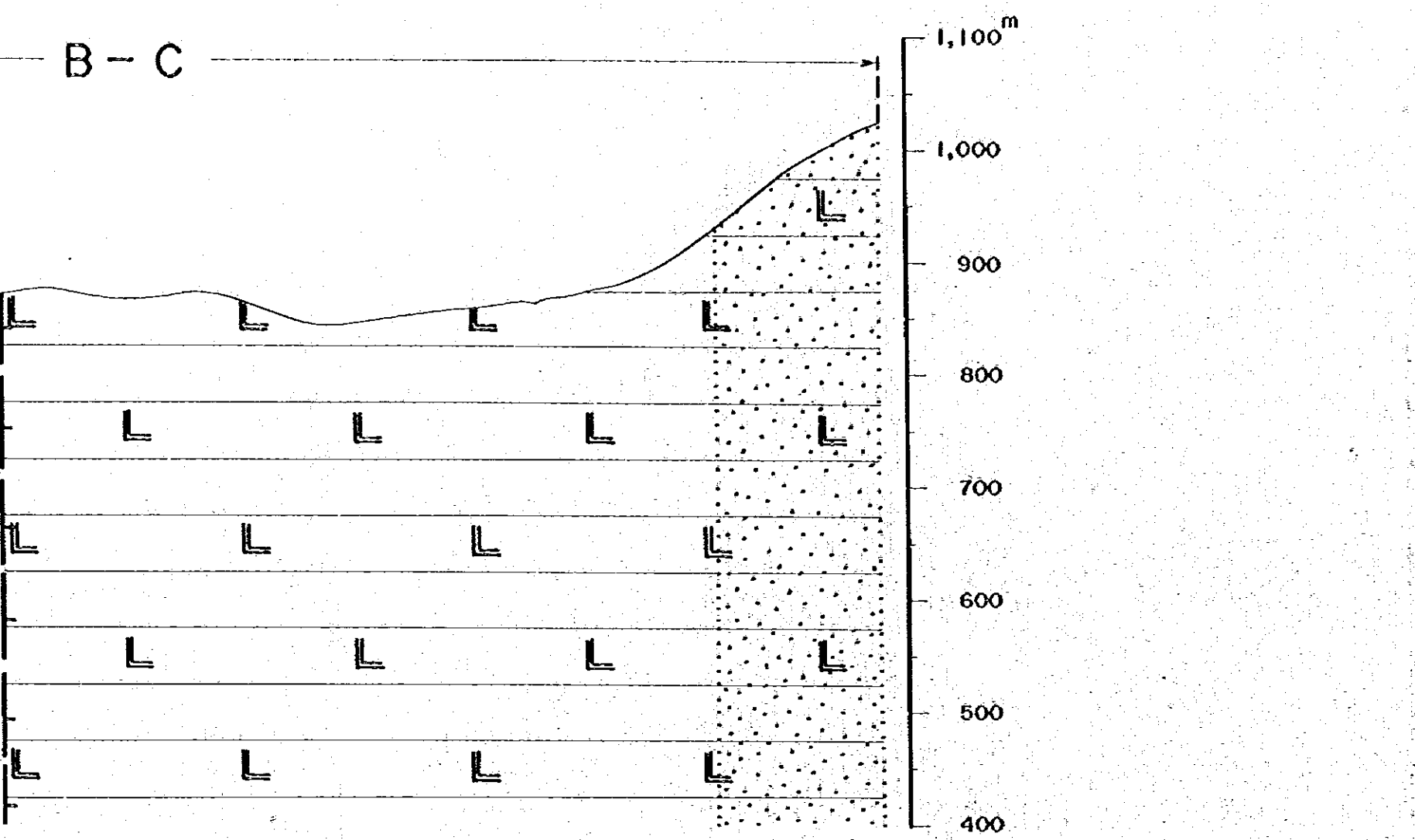
ESCALA 1:5,000  
0 100 200 300 400 500m

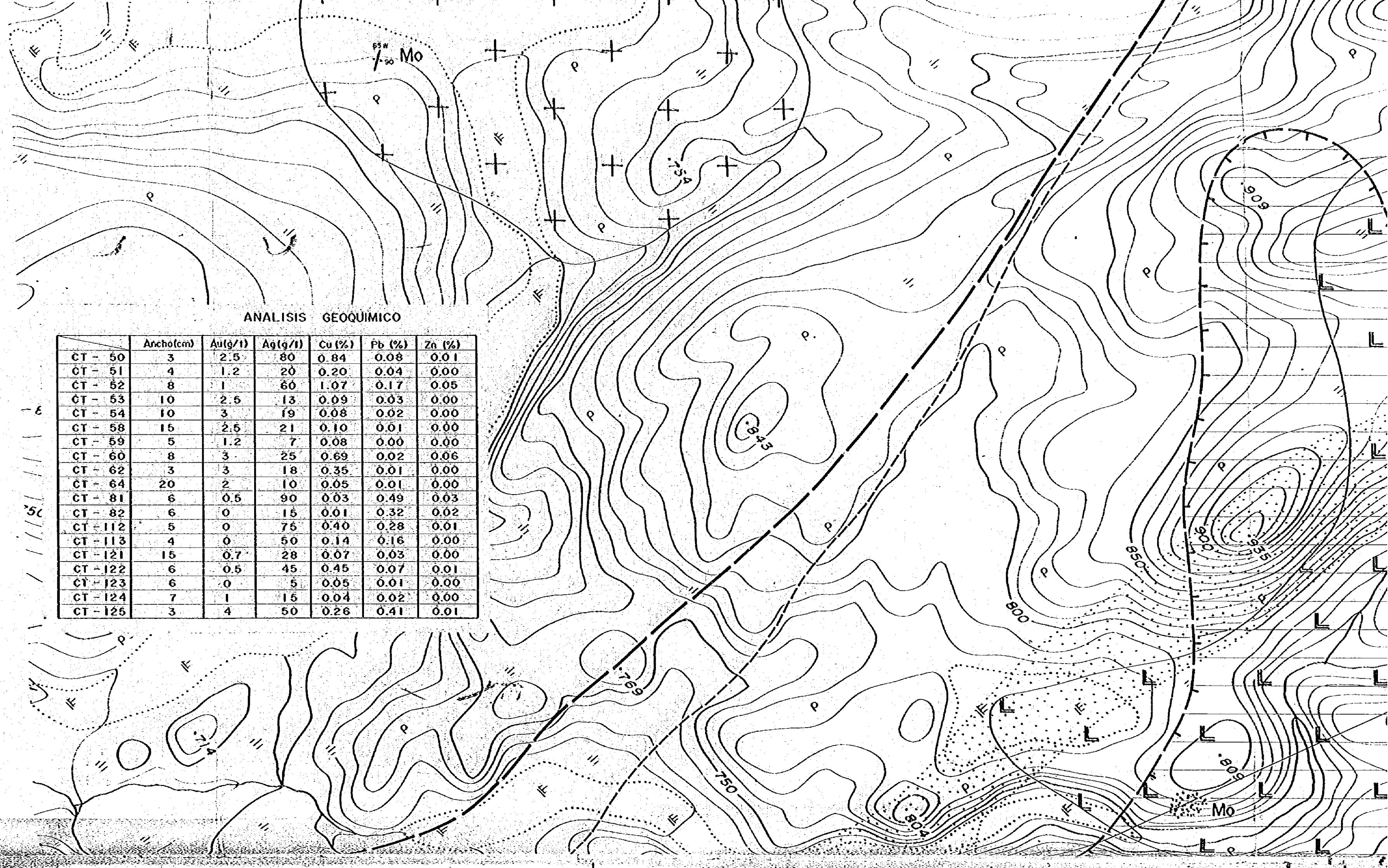


ORGANIZACION MINERA METALICA DEL JAPON SECRETARIA DE ESTADO DE MINERIA  
AGENCIA DE COOPERACION INTERNACIONAL  
DEL JAPON

GOBIERNO DEL JAPON GOBIERNO DE LA REPUBLICA ARGENTINA

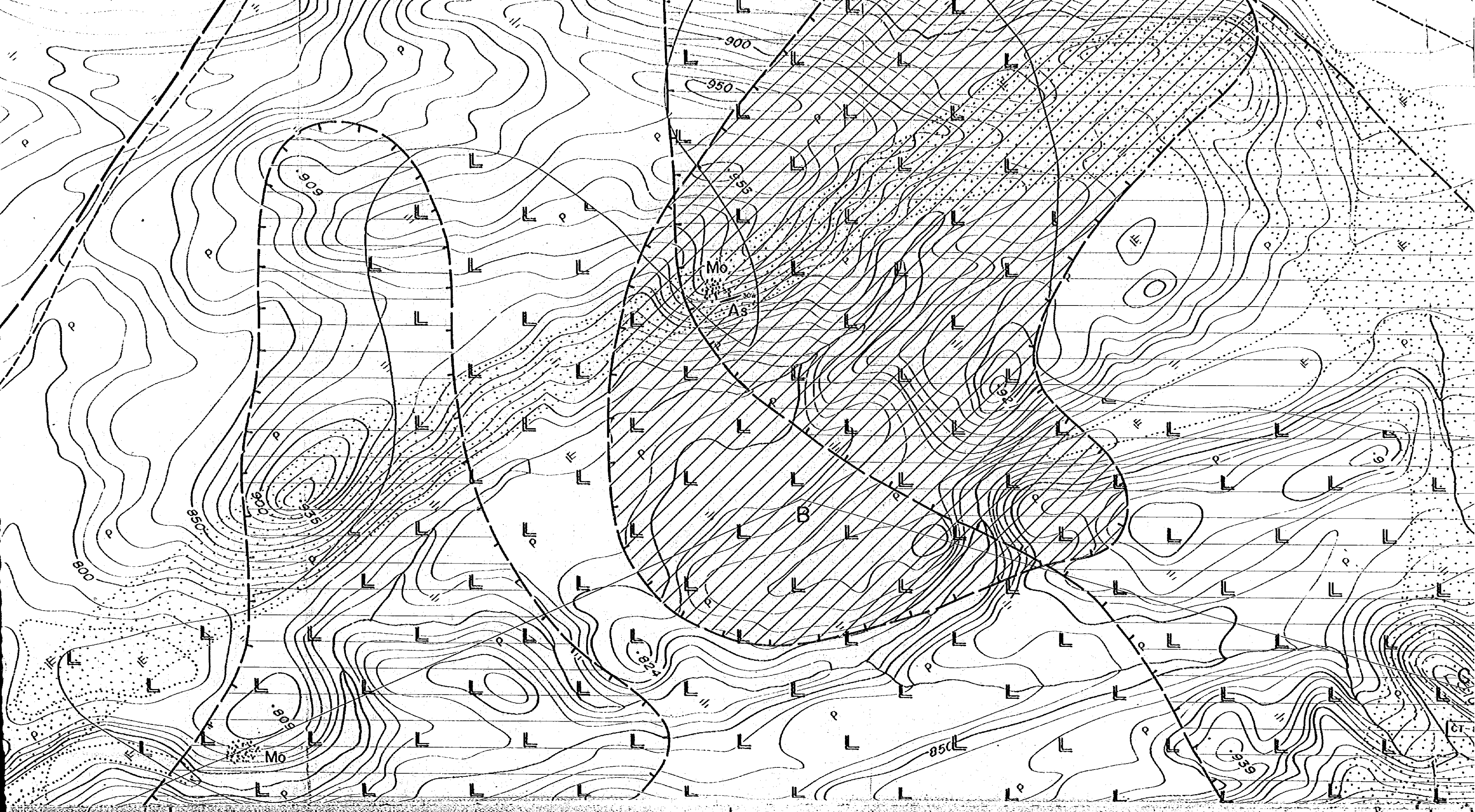
MARZO 1981.

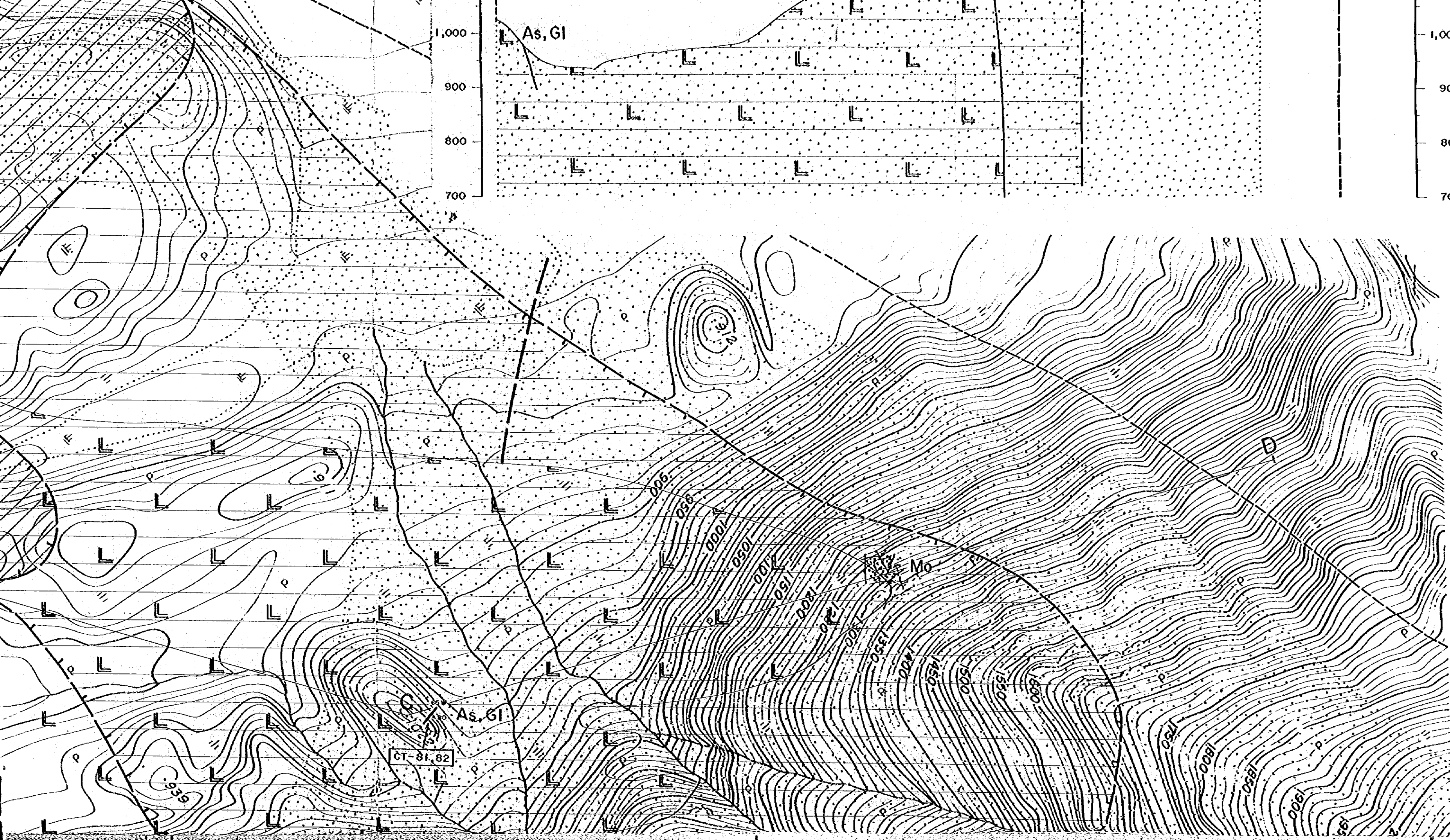




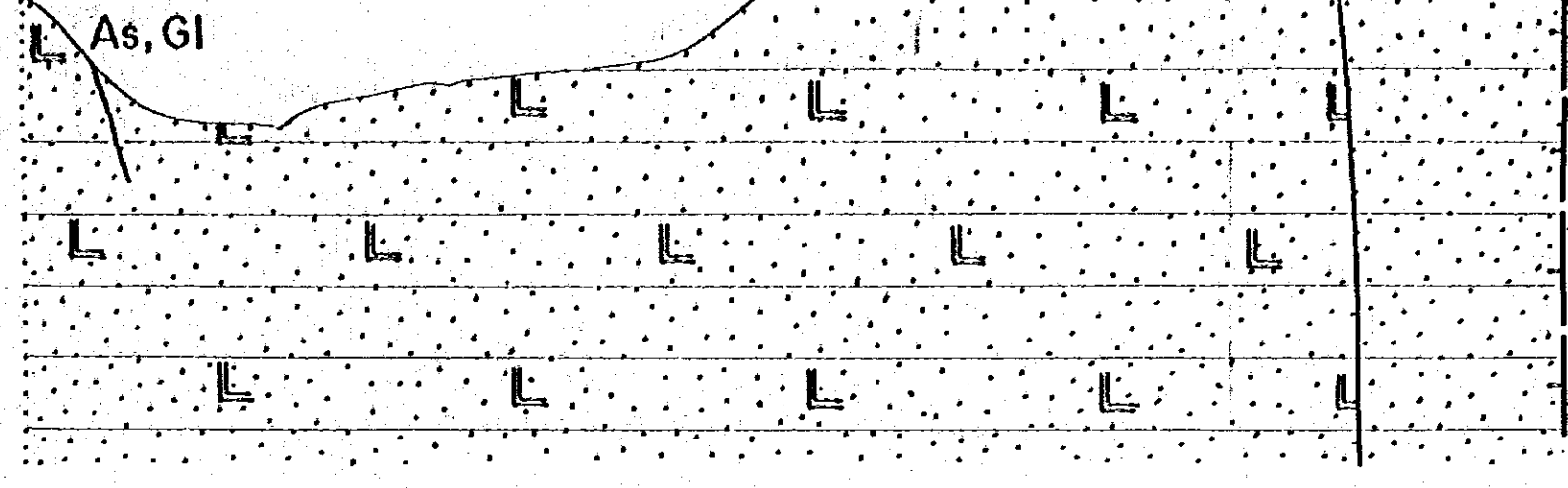
ANALISIS GEOQUIMICO

	Ancho(cm)	Au(g/l)	Ag(g/l)	Cu (%)	Pb (%)	Zn (%)
CT - 50	3	2.5	80	0.84	0.08	0.01
CT - 51	4	1.2	20	0.20	0.04	0.00
CT - 52	8	1	60	1.07	0.17	0.05
CT - 53	10	2.5	13	0.09	0.03	0.00
CT - 54	10	3	19	0.08	0.02	0.00
CT - 58	15	2.5	21	0.10	0.01	0.00
CT - 59	5	1.2	7	0.08	0.00	0.00
CT - 60	8	3	25	0.69	0.02	0.06
CT - 62	3	3	18	0.35	0.01	0.00
CT - 64	20	2	10	0.05	0.01	0.00
CT - 81	6	0.5	90	0.03	0.49	0.03
CT - 82	6	0	15	0.01	0.32	0.02
CT - 112	5	0	75	0.40	0.28	0.01
CT - 113	4	0	50	0.14	0.16	0.00
CT - 121	15	0.7	28	0.07	0.03	0.00
CT - 122	6	0.5	45	0.45	0.07	0.01
CT - 123	6	0	5	0.05	0.01	0.00
CT - 124	7	1	15	0.04	0.02	0.00
CT - 125	3	4	50	0.26	0.41	0.01

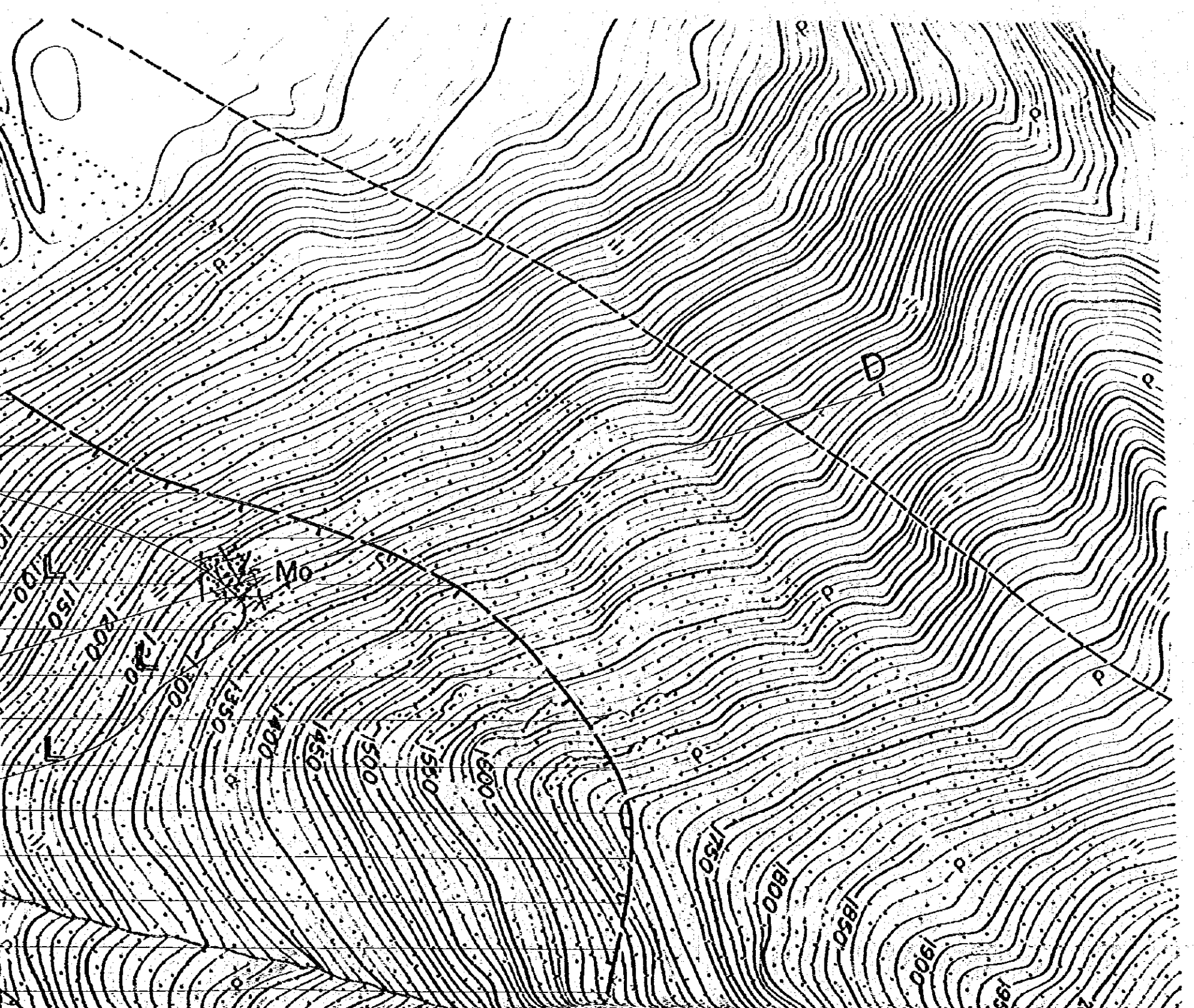
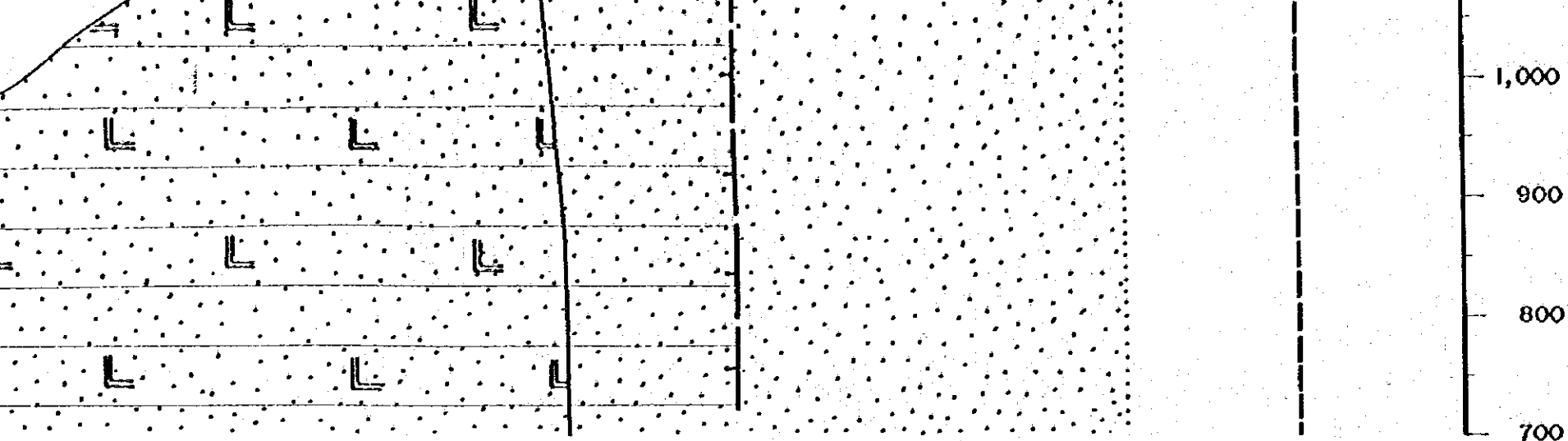




1,000  
900  
800  
700



1,000  
900  
800  
700



## REFERENCIAS

### Alteración

- Pirilización y silicificación
  - Pirilización
  - Silicificación
  - Turmalinización (diseminación y como vetillo con cuarzo)
- } fuerte relativamente

### Geología

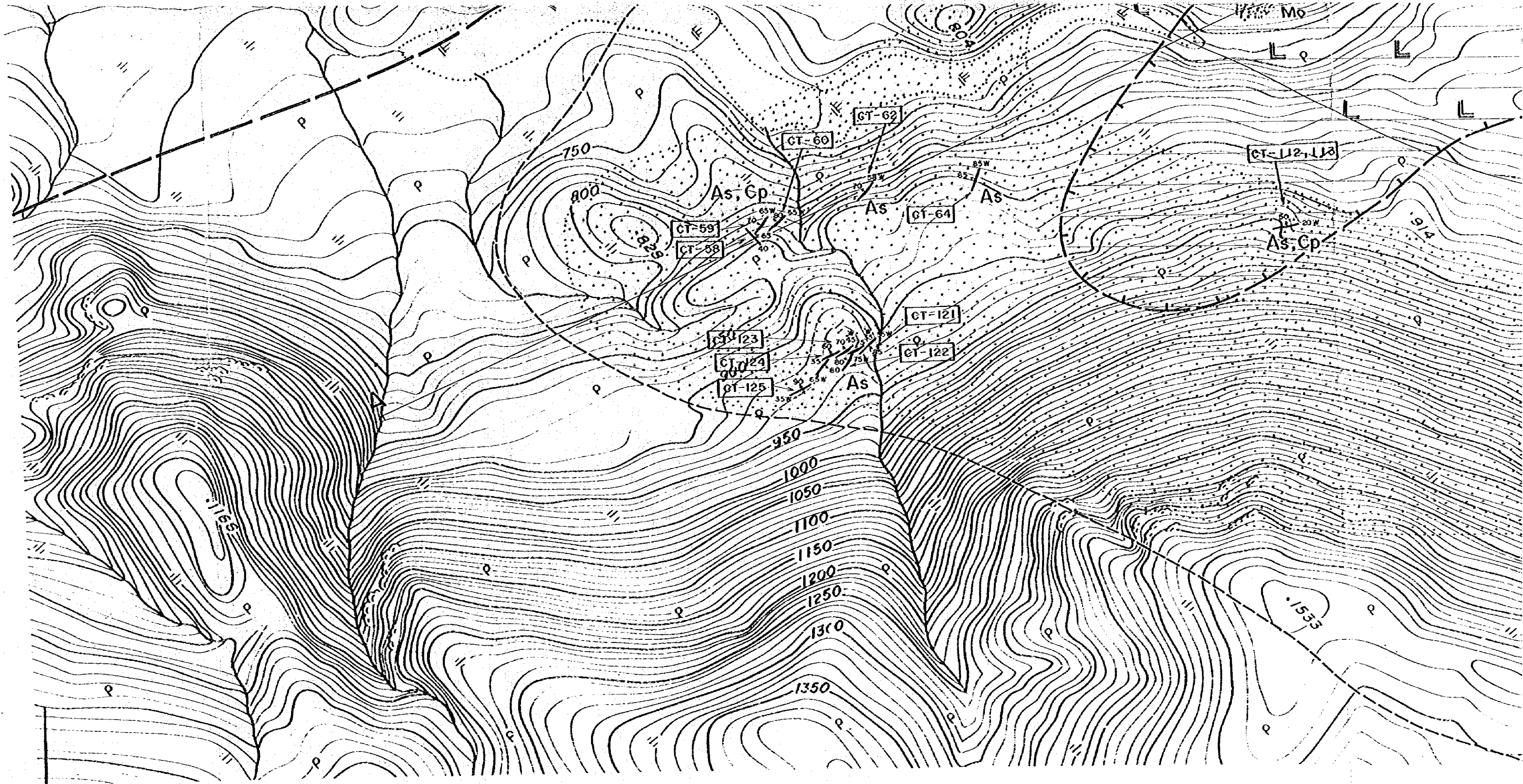
- Porfido cuarcífero
- Riólito
- Granito
- Arenisco

### Mineralización

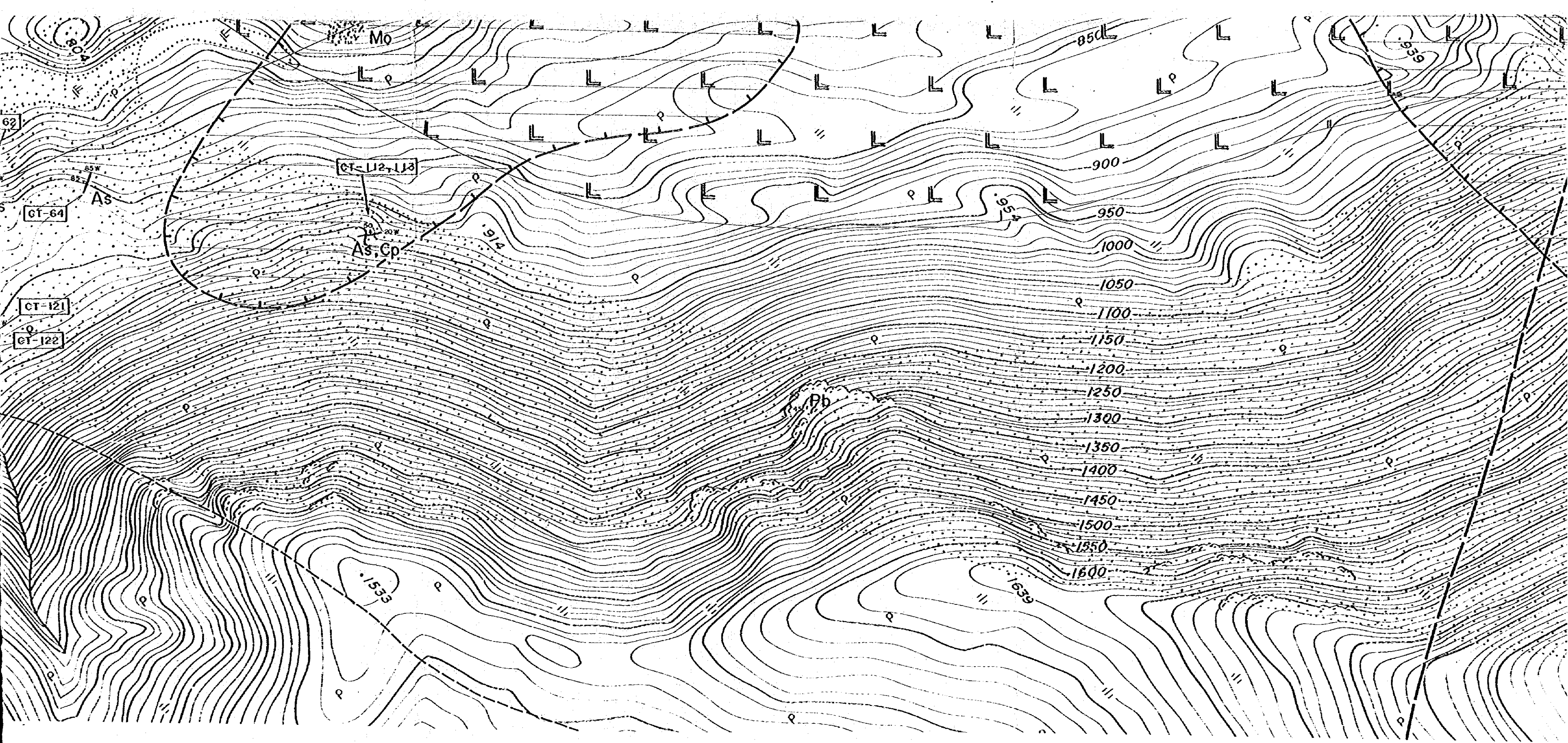
- Veta indicando rumbo y buzamiento
- Diseminación
- Red olveolar
- Cp    Calcopirita
- Gl    Galeno
- Bl    Blendo
- Mo    Molibdenito
- As    Arsenopirita

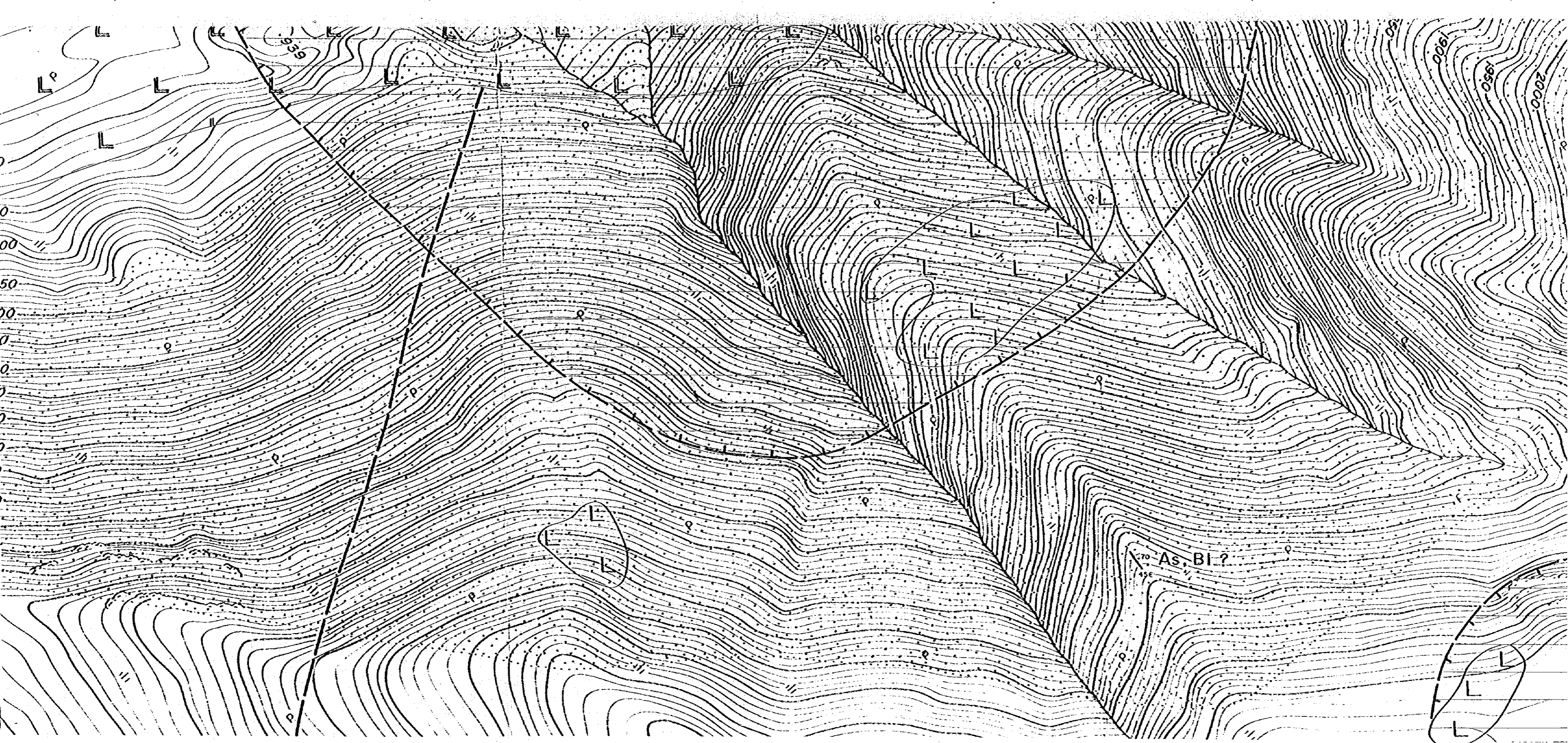
### Estructura y otras

- Contacto litológico
- Falla supuesto
- Muestra para análisis geoquímico
- Línea de sección









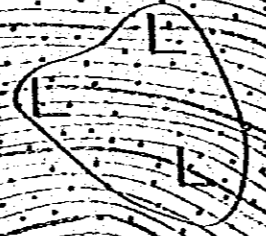
1950

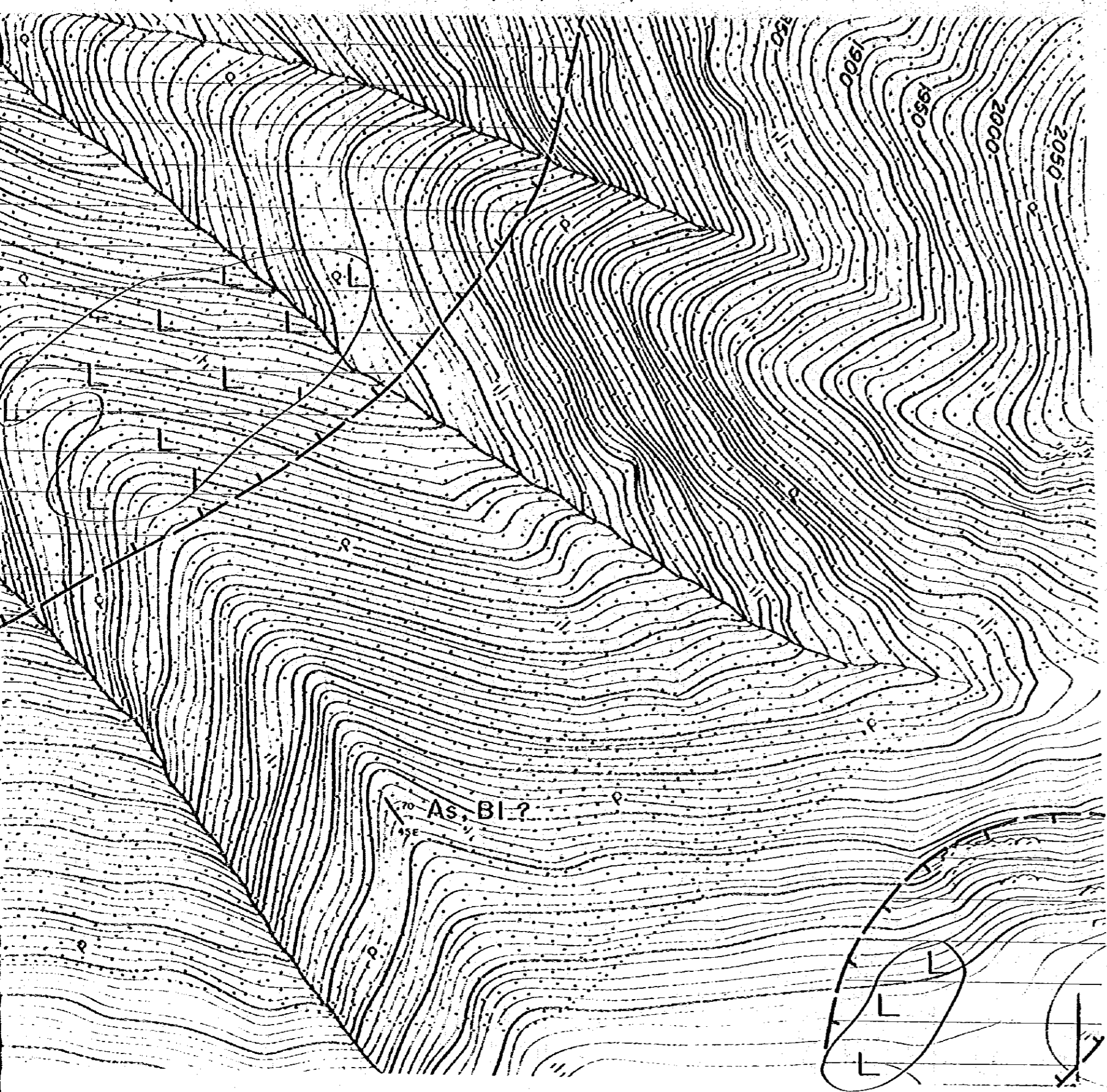
1900

1950

2000

As. BI ?





LINEA DE SECCION

