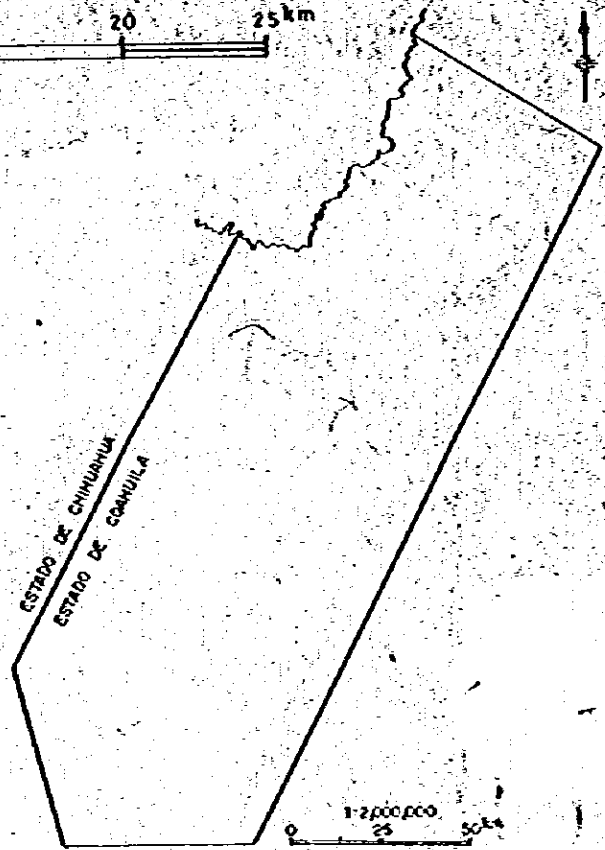


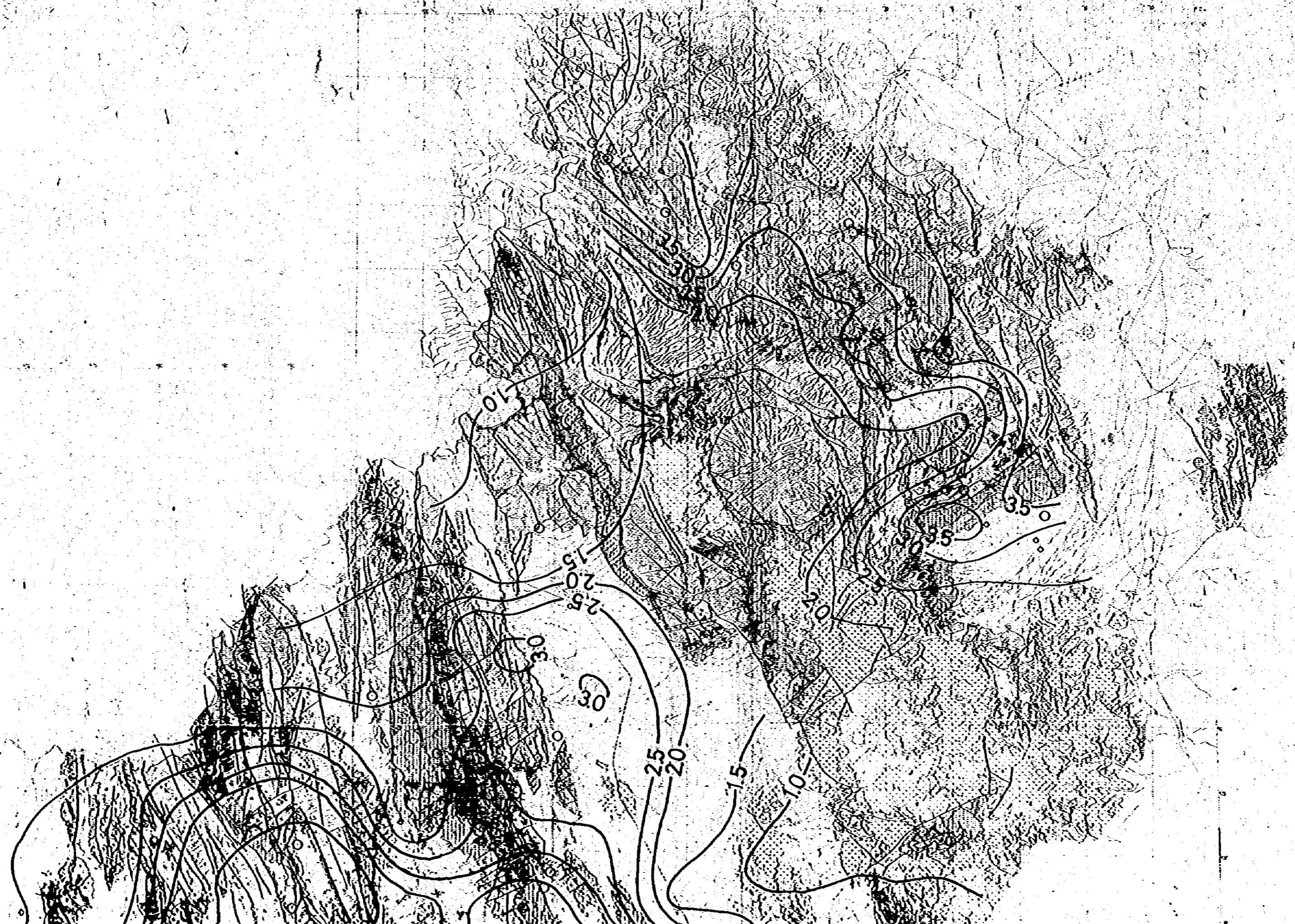
PL-VI-4

GEOLOGICAL SURVEY  
OF  
THE COAHUILA AREA, NORTHERN MEXICO  
PHASE II  
REGIONAL GEOCHEMICAL SURVEY  
Ag ANOMALY MAP

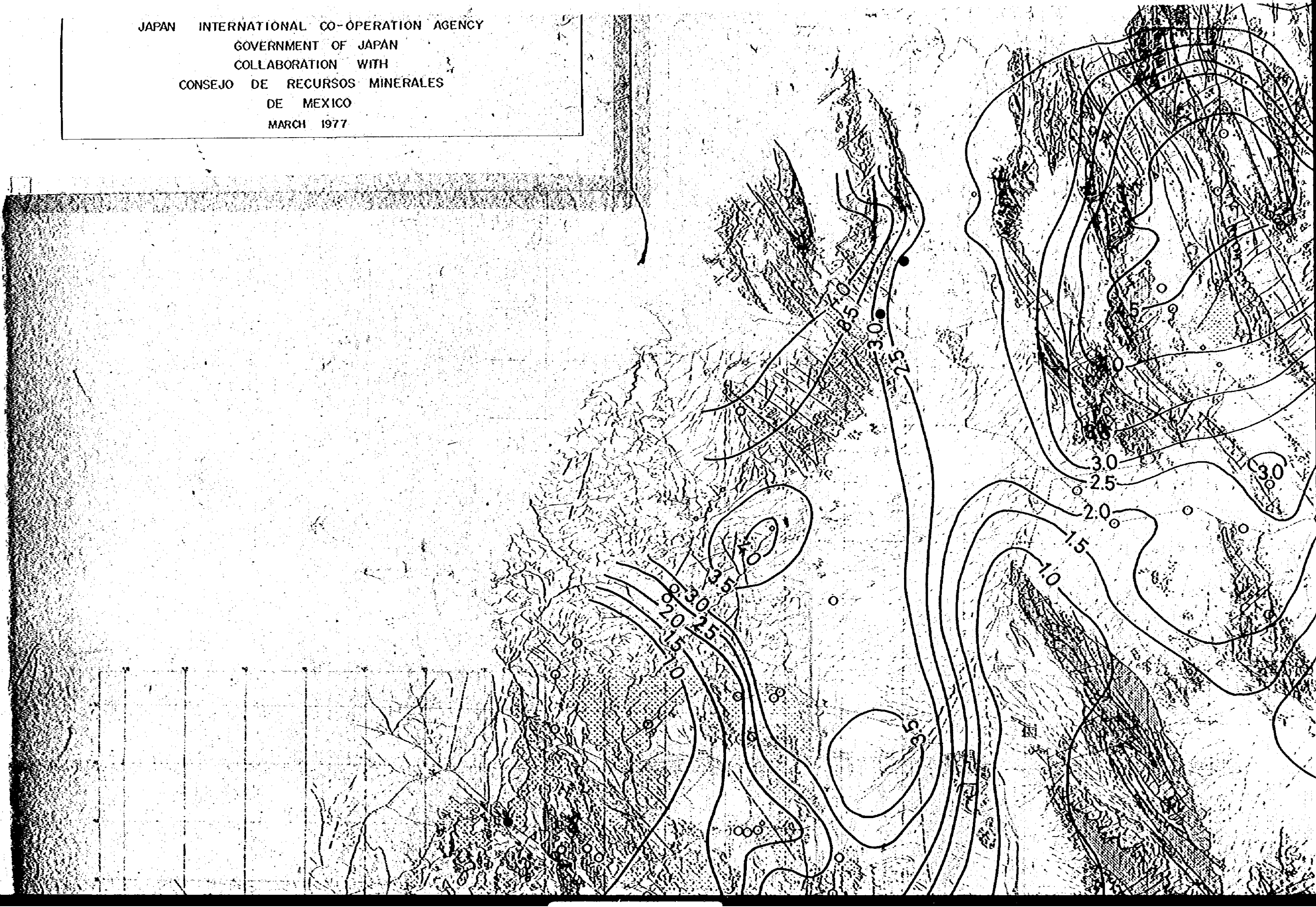
SCALE 1:250,000

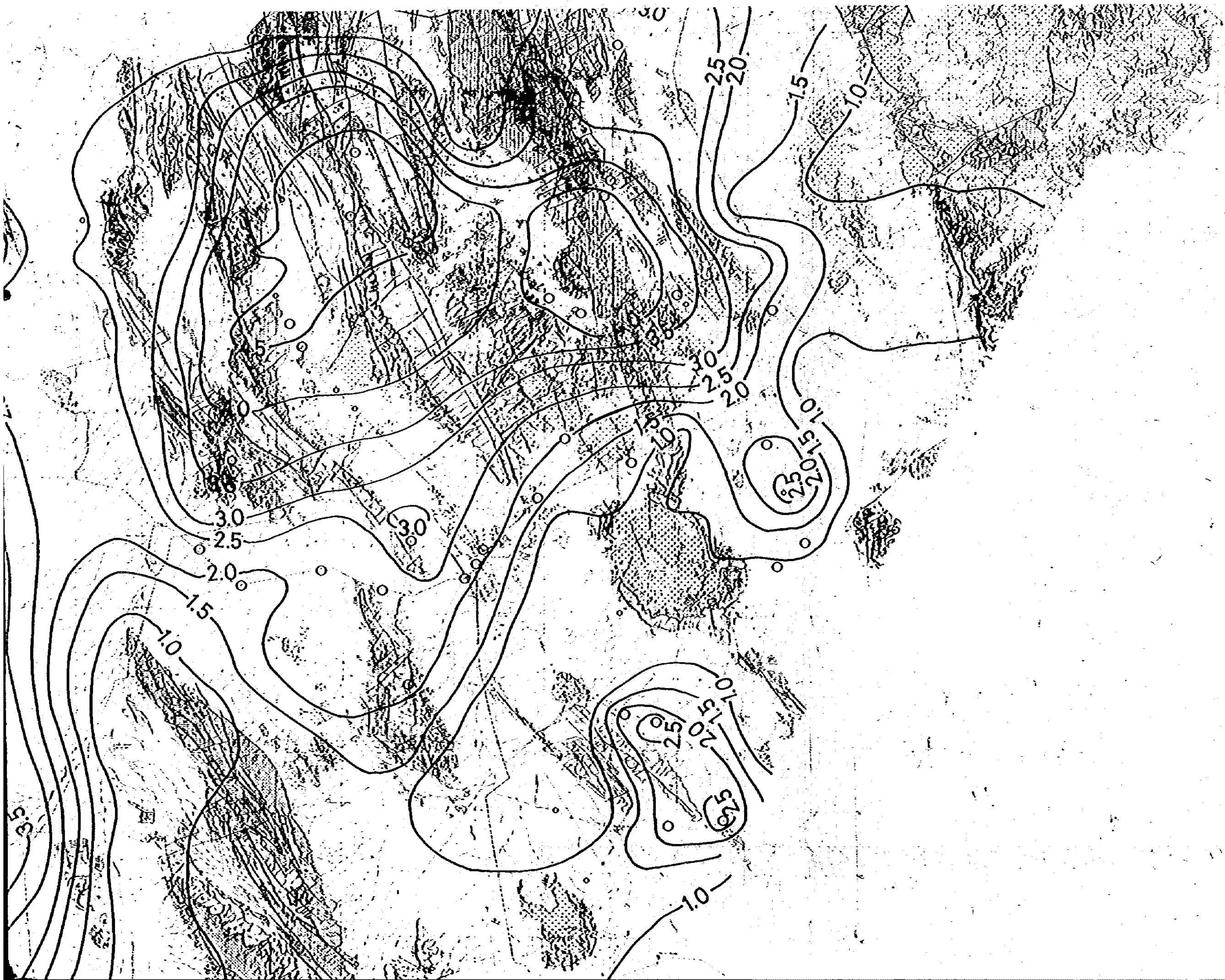


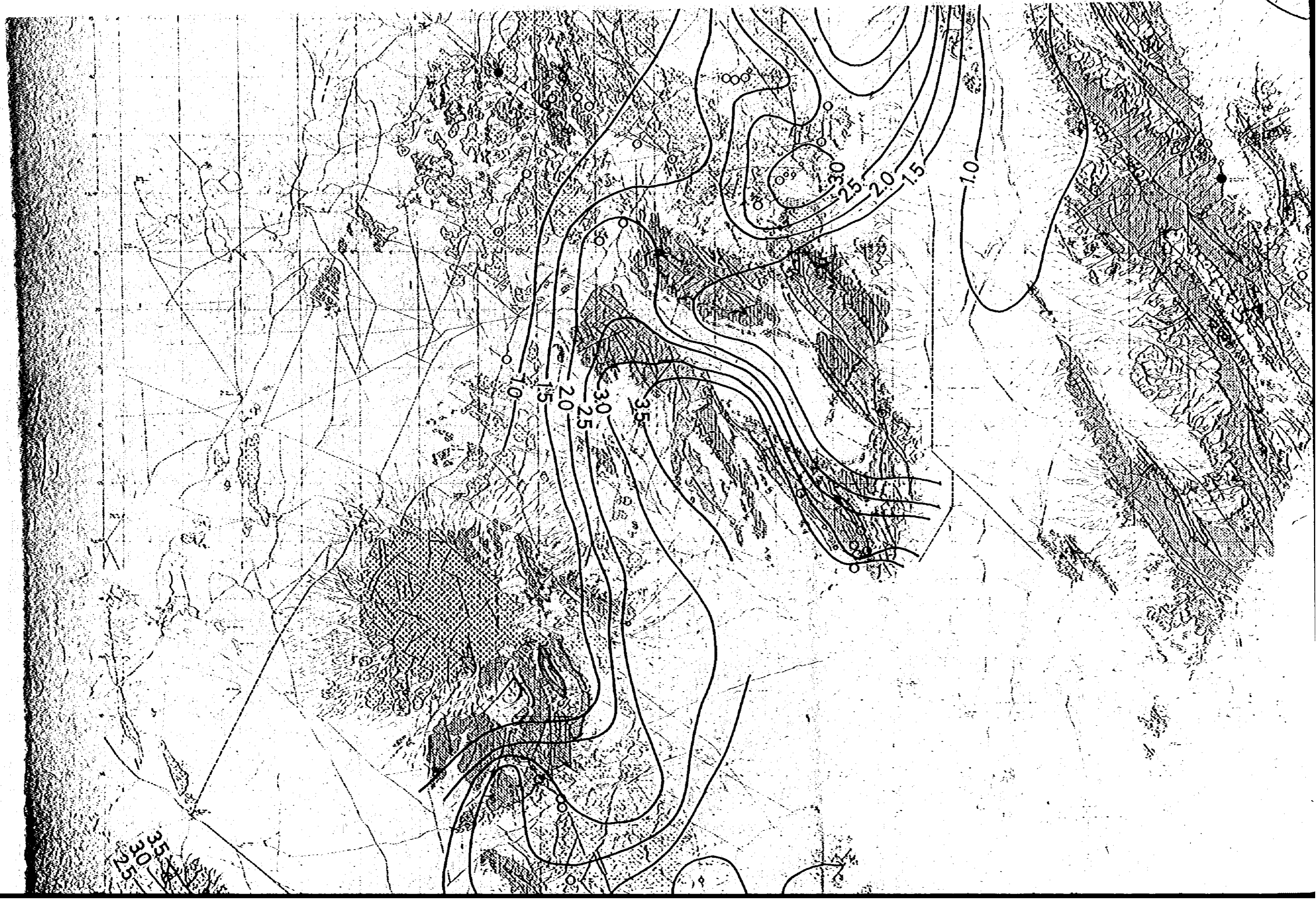
METAL MINING AGENCY OF JAPAN  
JAPAN INTERNATIONAL CO-OPERATION AGENCY  
GOVERNMENT OF JAPAN  
COLLABORATION WITH  
CONSEJO DE RECURSOS MINERALES  
DE MEXICO  
MARCH 1977



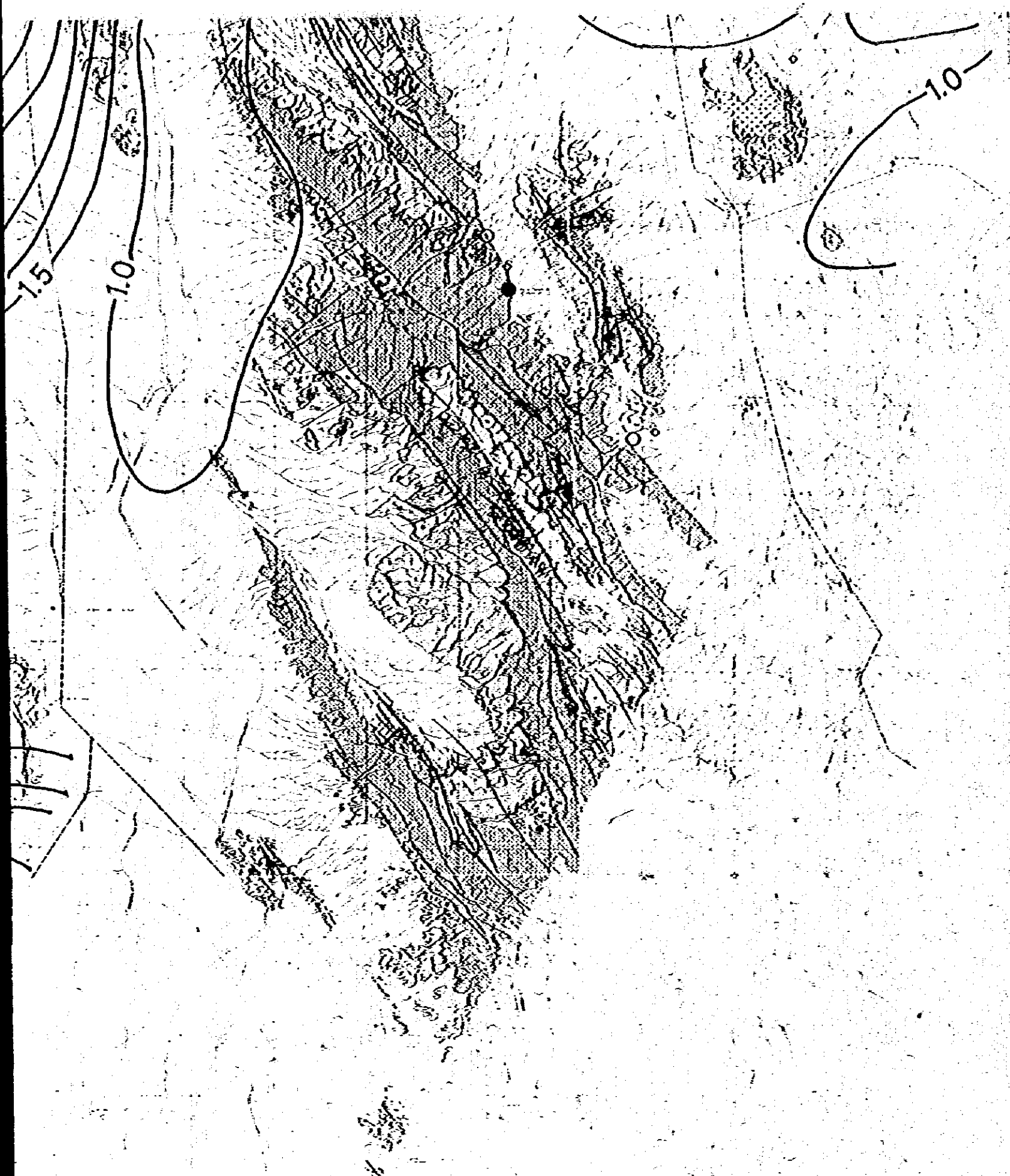
JAPAN INTERNATIONAL CO-OPERATION AGENCY  
GOVERNMENT OF JAPAN  
COLLABORATION WITH  
CONSEJO DE RECURSOS MINERALES  
DE MEXICO  
MARCH 1977



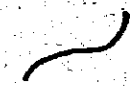




305  
325  
355

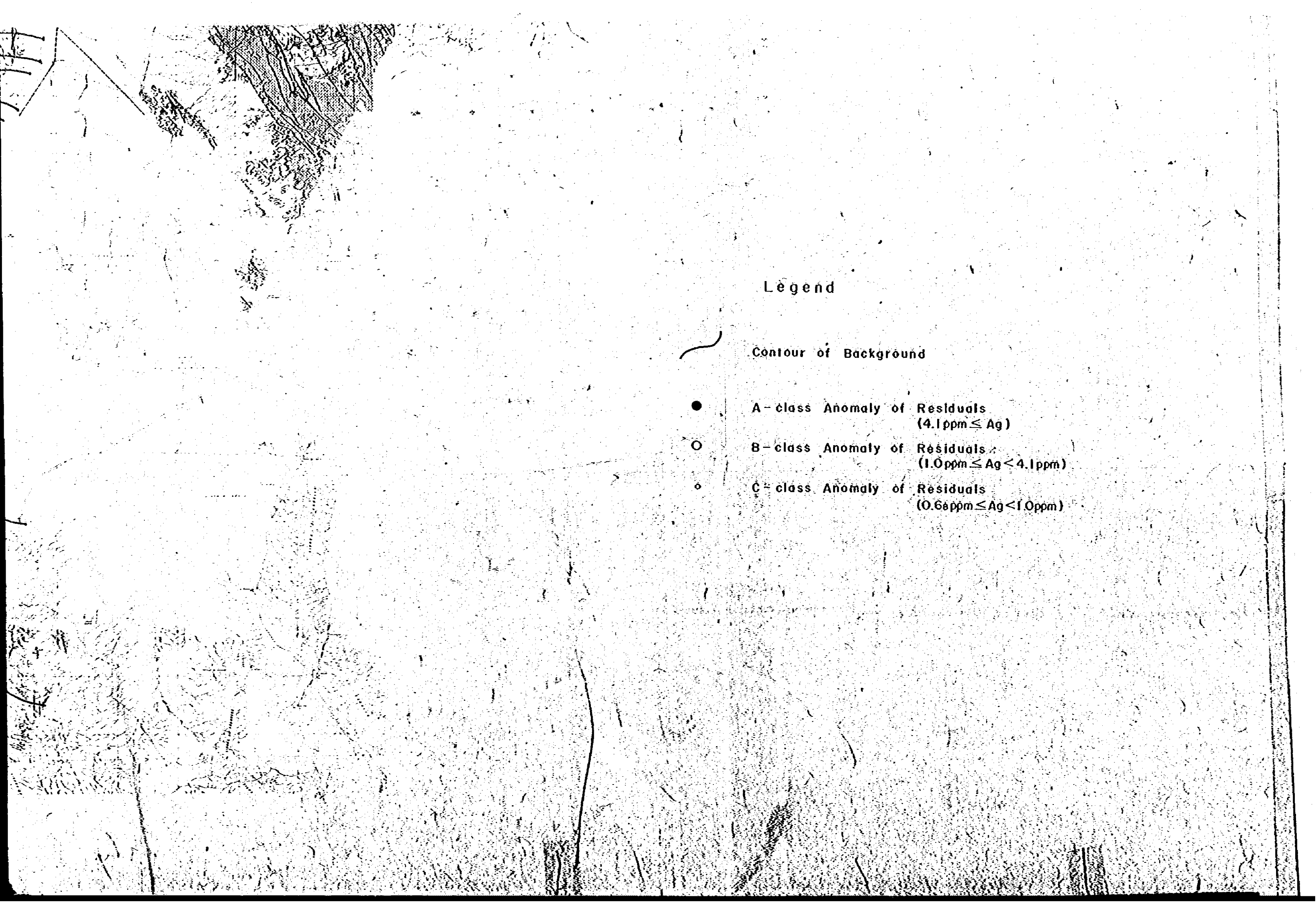


Legend

 Contour of Background

 A-class Anomaly of Residuals





Legend

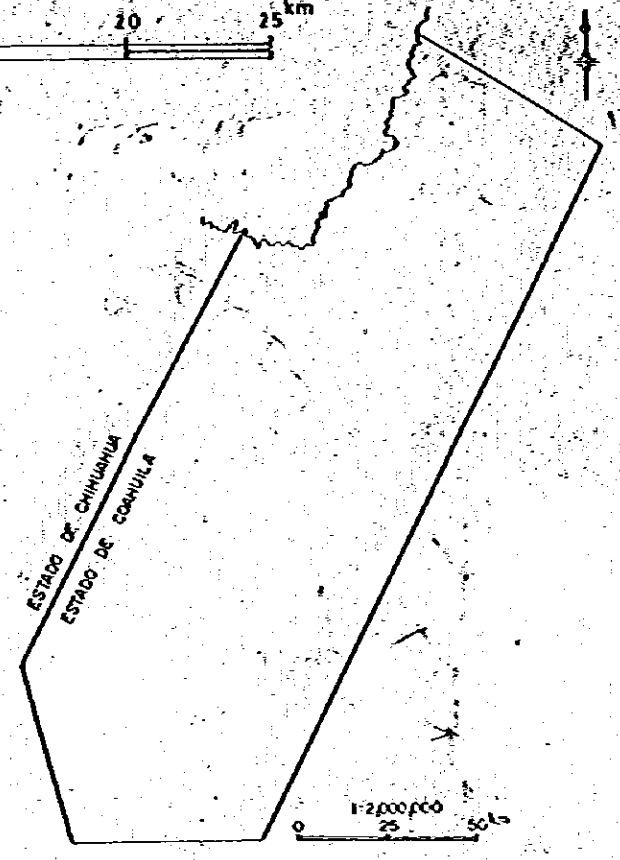
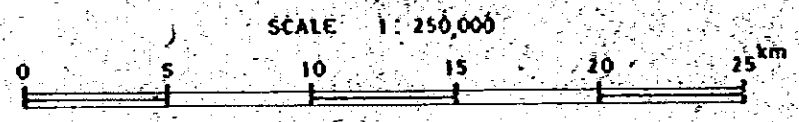
— Contour of Background

- A - class Anomaly of Residuals  
( $4.1 \text{ ppm} \leq Ag$ )
- B - class Anomaly of Residuals  
( $1.0 \text{ ppm} \leq Ag < 4.1 \text{ ppm}$ )
- C - class Anomaly of Residuals  
( $0.6 \text{ ppm} \leq Ag < 1.0 \text{ ppm}$ )

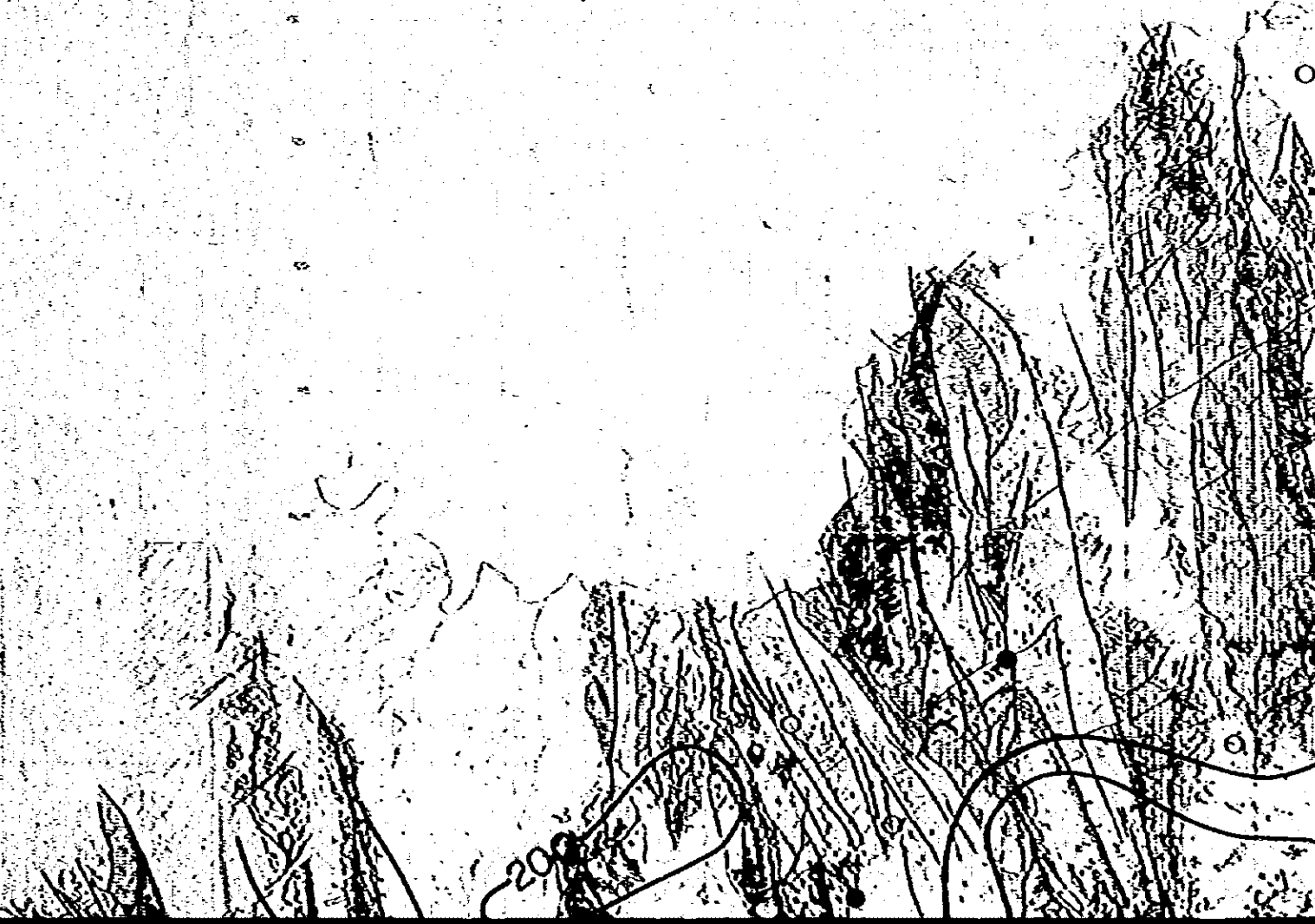


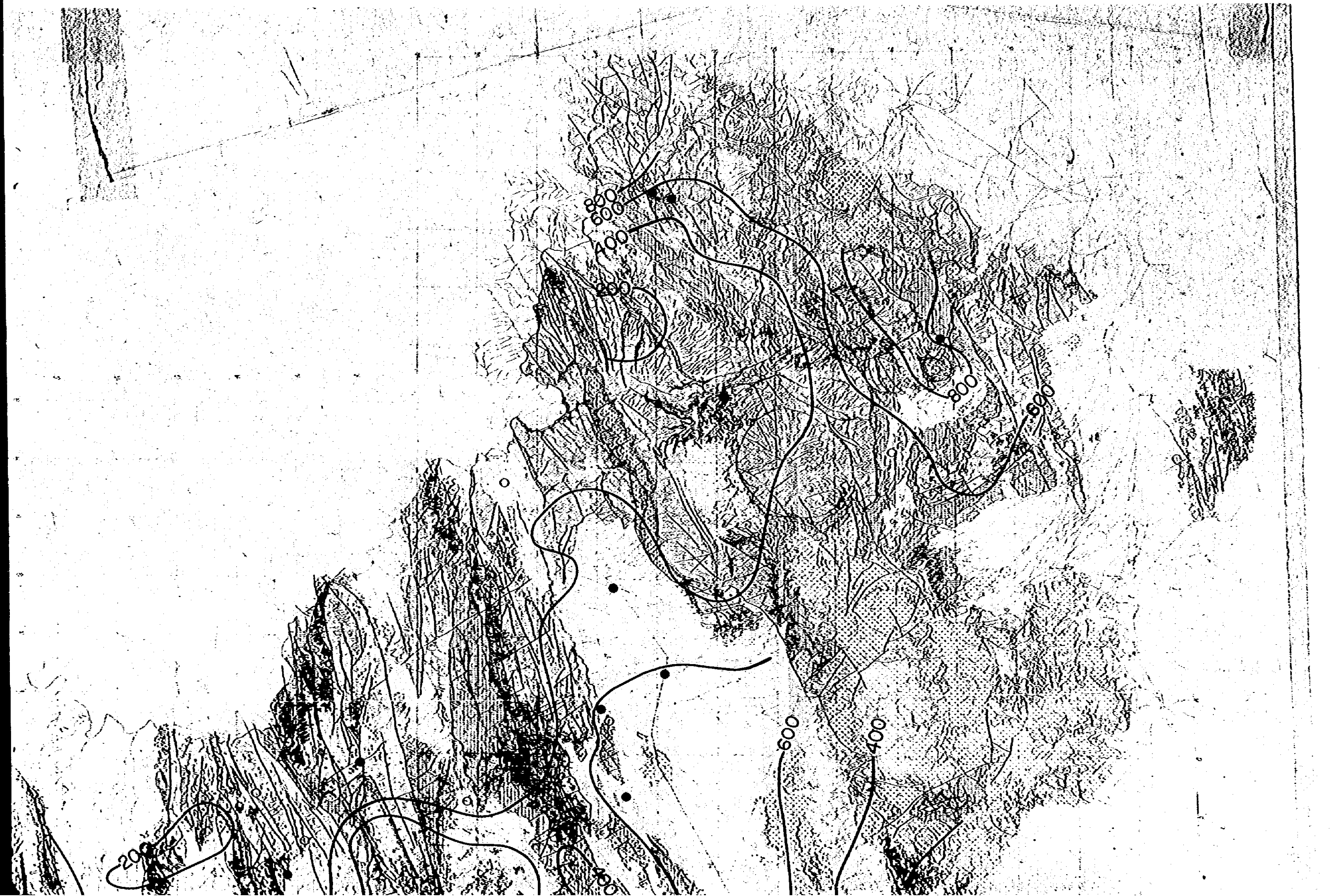
PL-VI-5

GEOLOGICAL SURVEY  
OF  
THE COAHUILA AREA, NORTHERN MEXICO  
PHASE II  
REGIONAL GEOCHEMICAL SURVEY  
F ANOMALY MAP



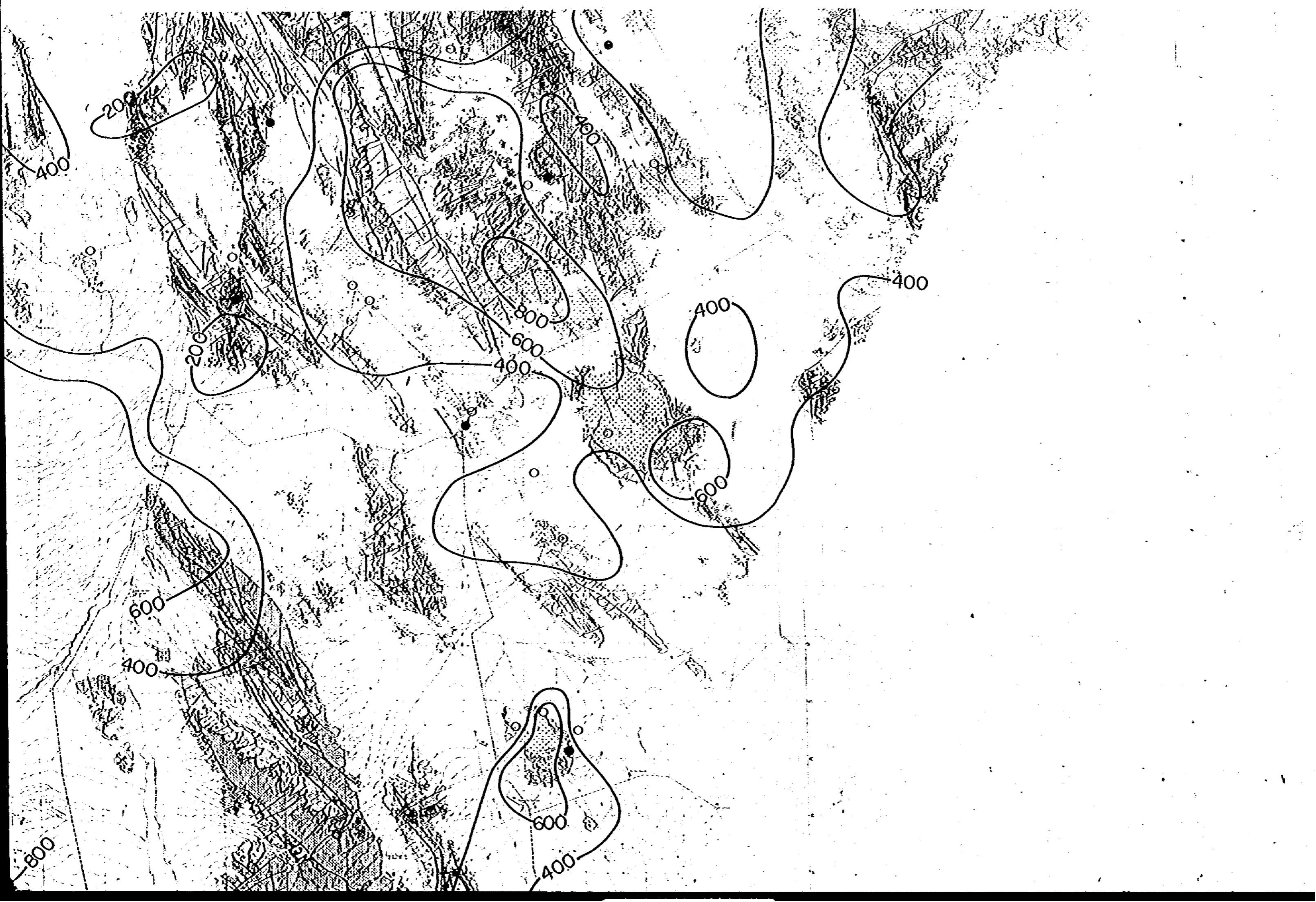
METAL MINING AGENCY OF JAPAN  
JAPAN INTERNATIONAL CO-OPERATION AGENCY  
GOVERNMENT OF JAPAN  
COLLABORATION WITH  
CONSEJO DE RECURSOS MINERALES  
DE MEXICO  
MARCH 1977

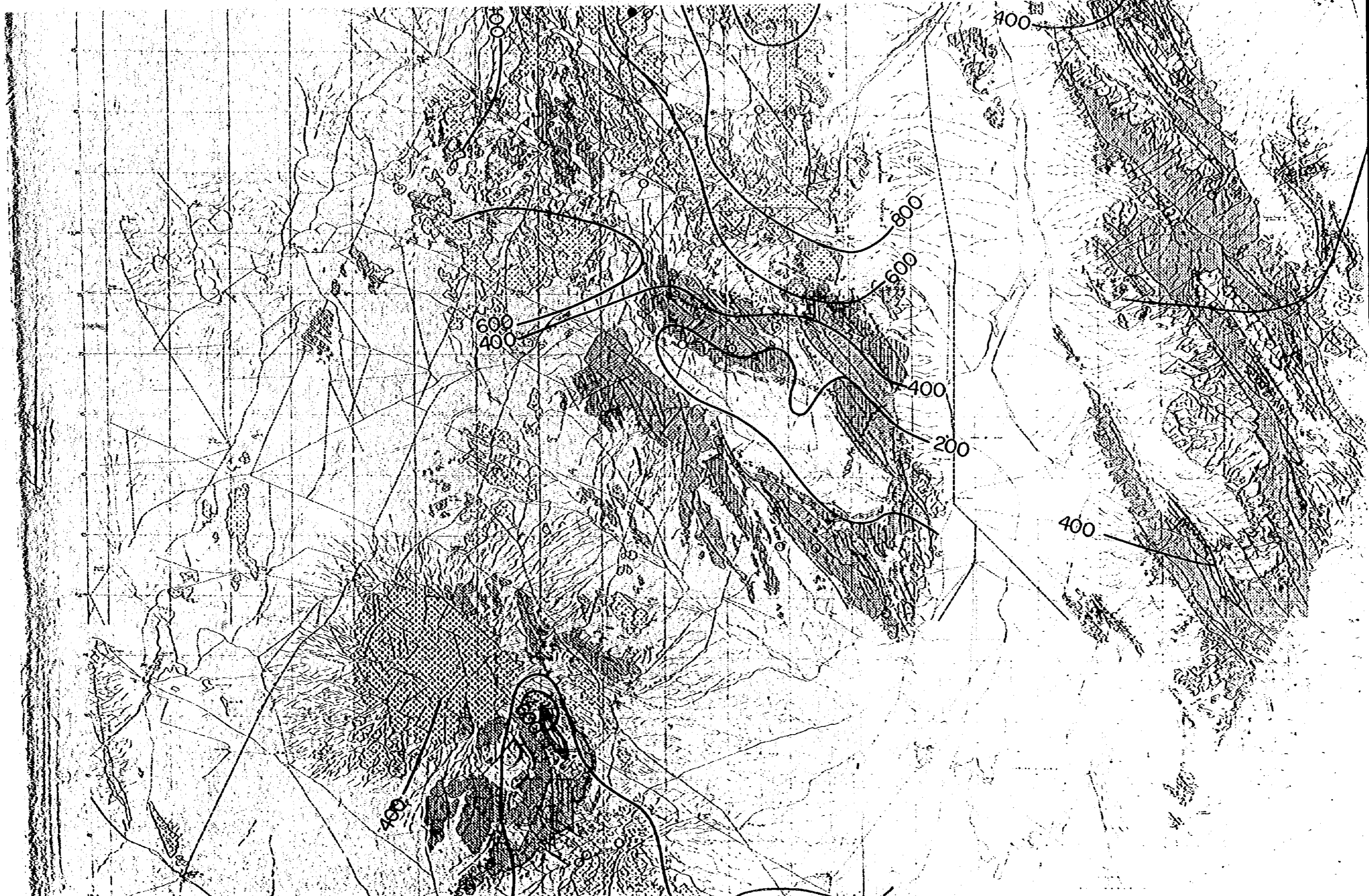


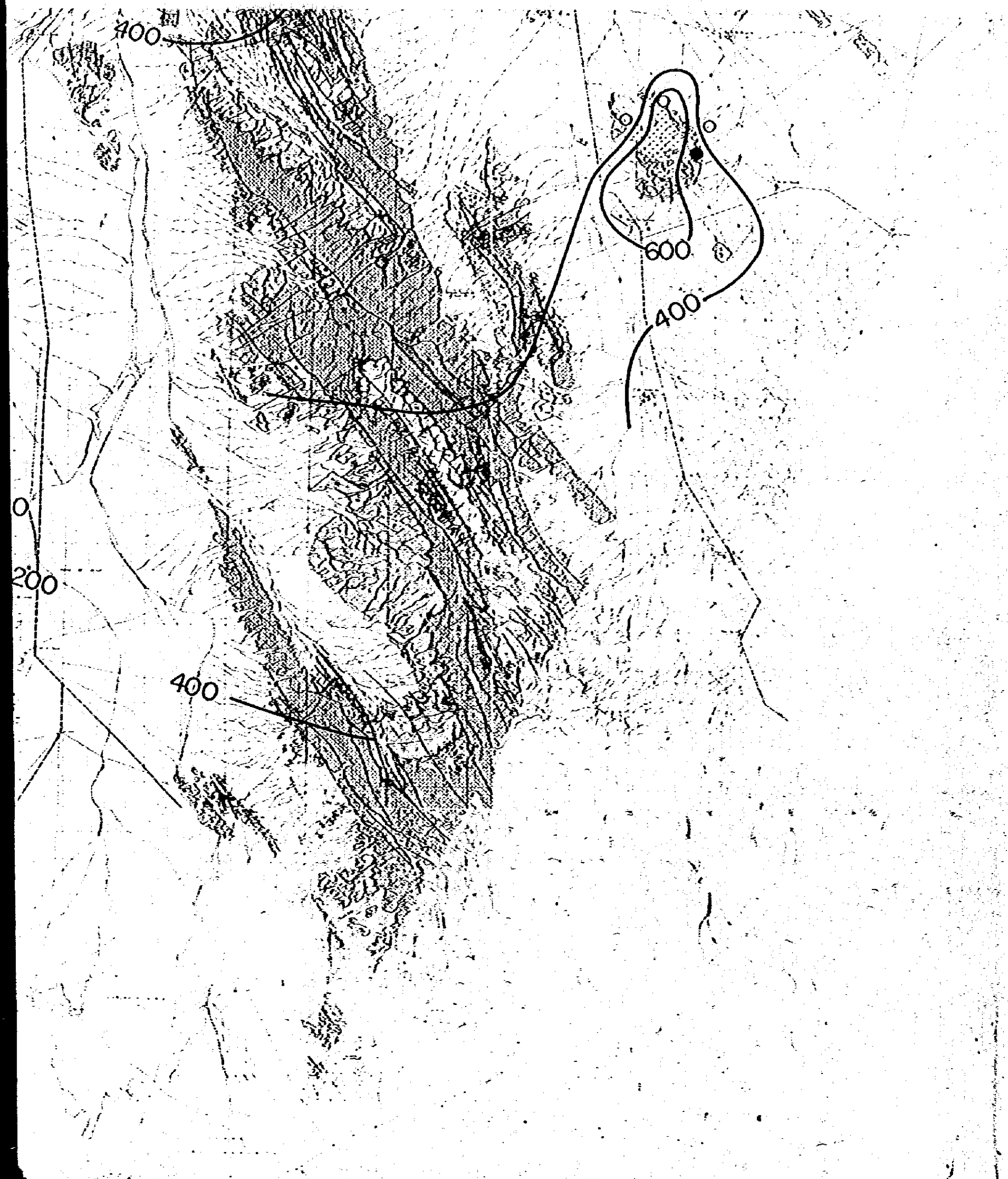


DE MEXICO  
MARCH 1977









**Legend**

— Contour of Background

● A-class Anomaly of Residuals  
( $470\text{ppm} \leq F$ )

○ B-class Anomaly of Residuals  
( $110\text{ppm} \leq F < 470\text{ppm}$ )



400

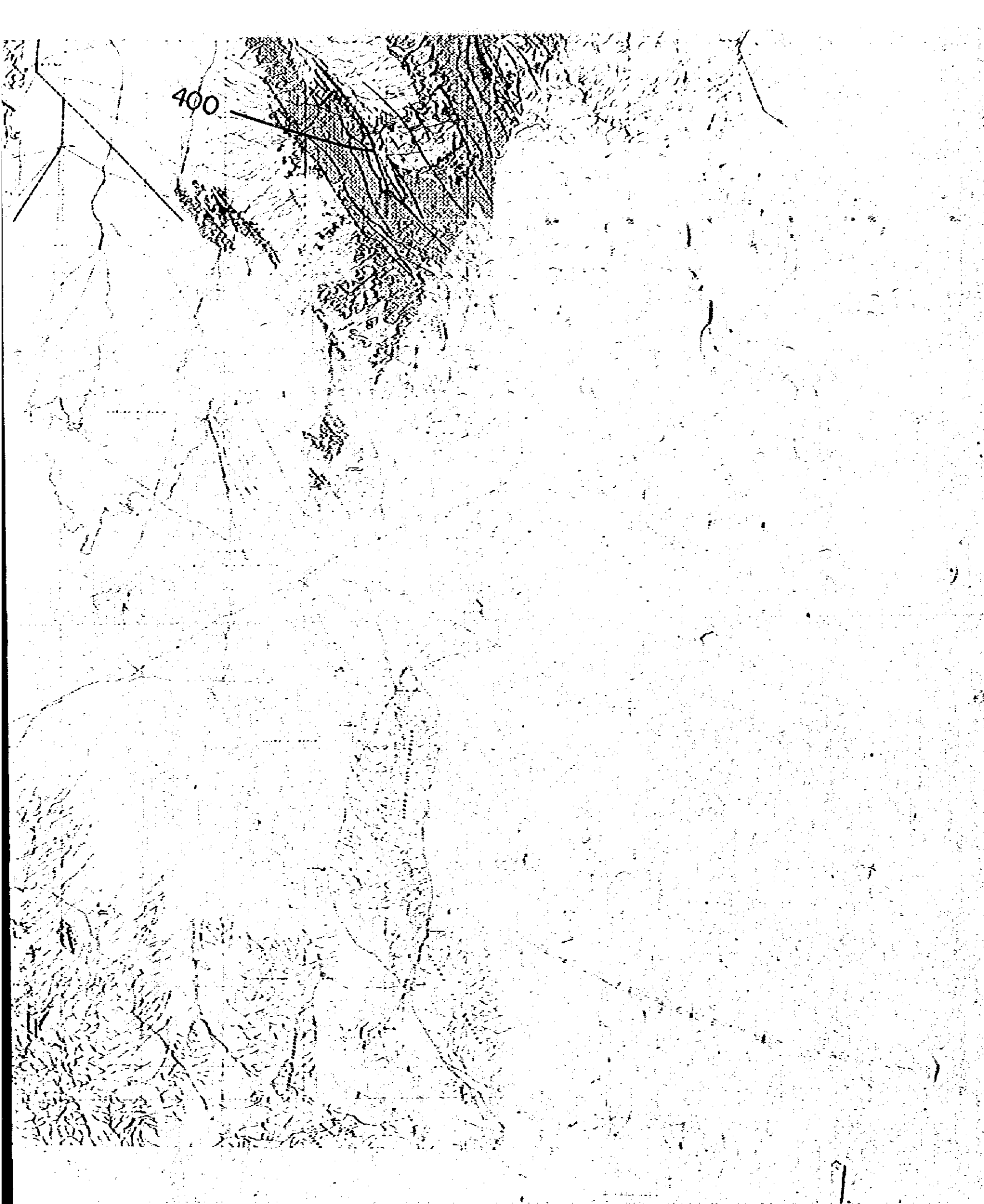
400

400




600

400

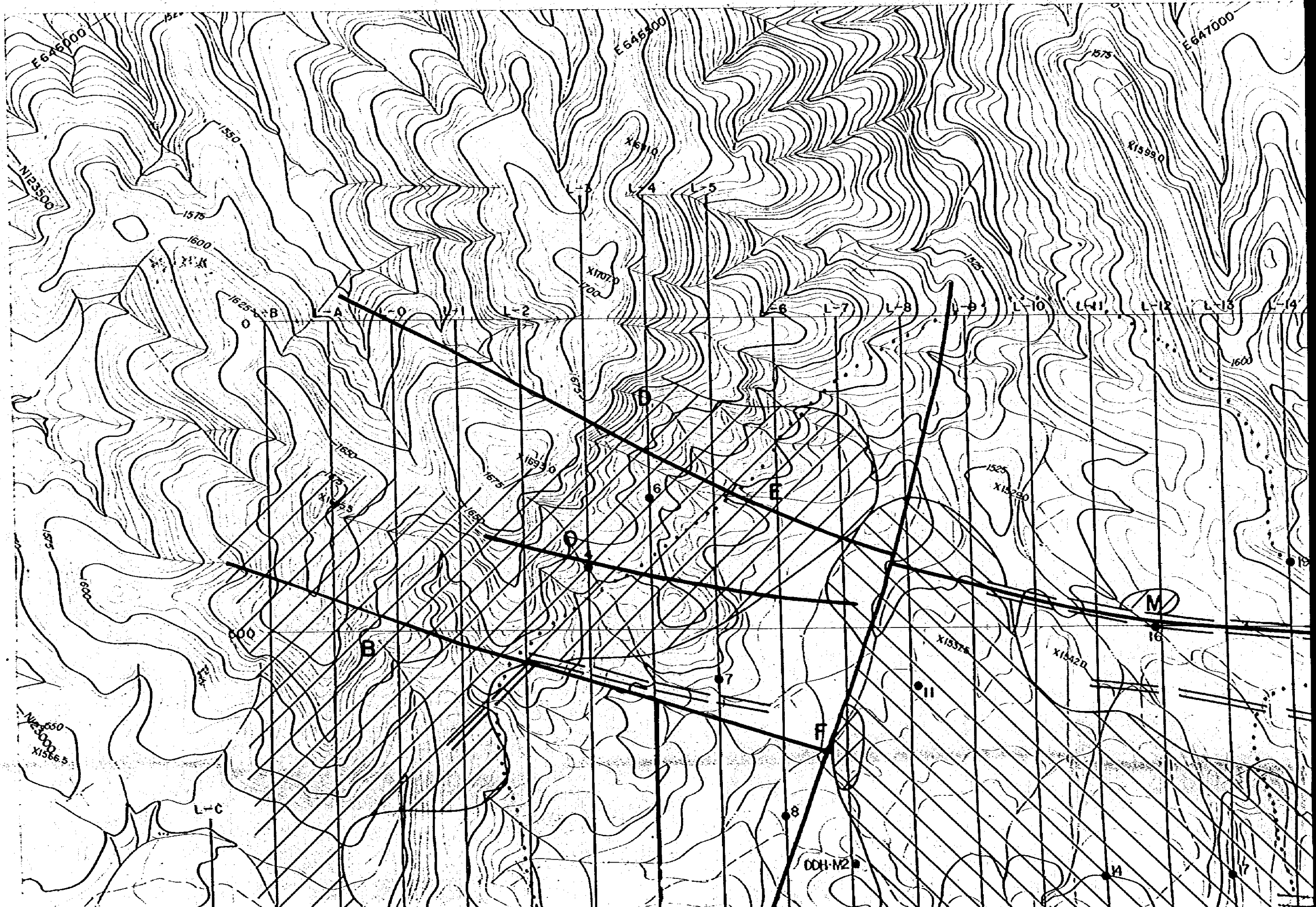
600

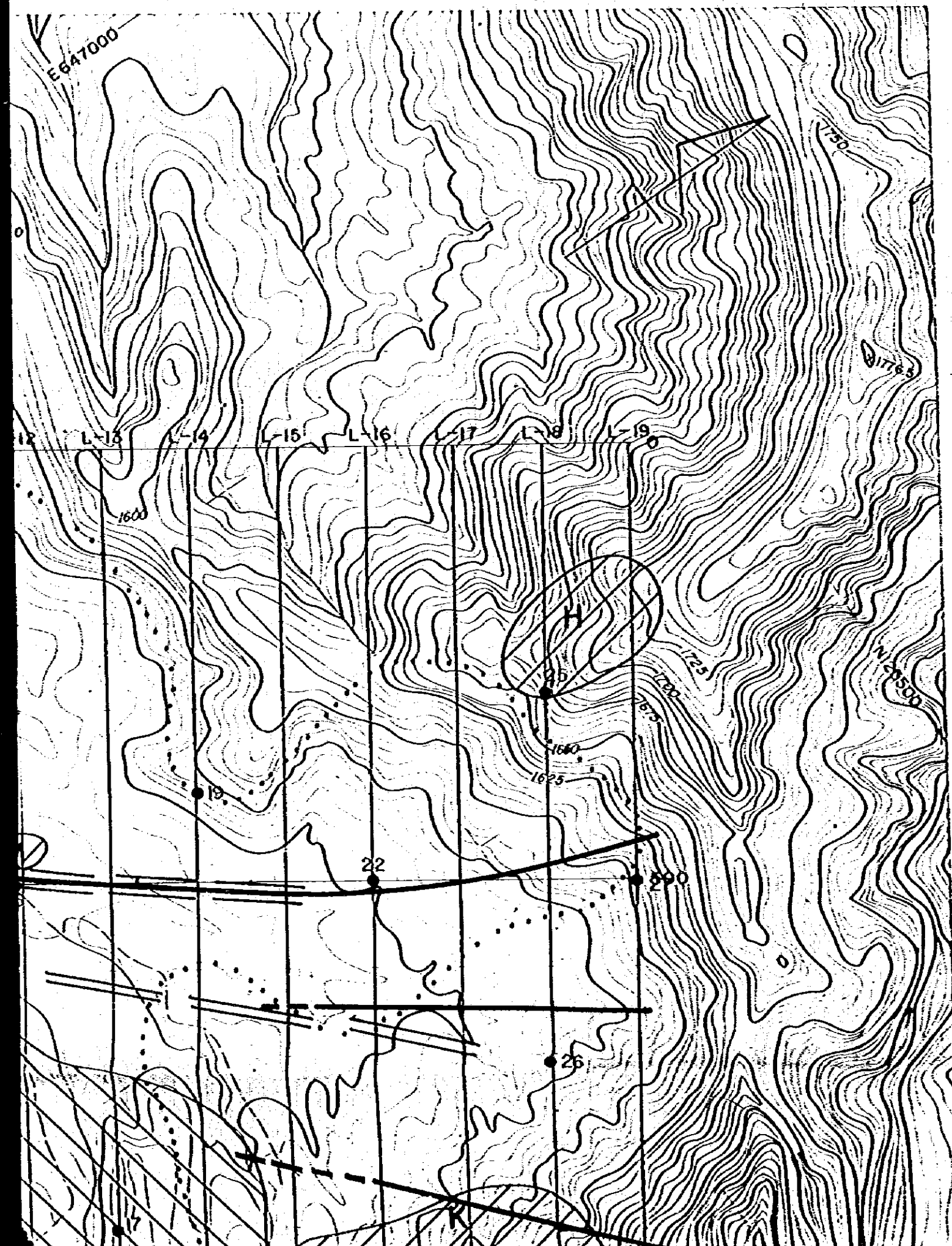


**Legend**

-  Contour of Background
  
-  A-class Anomaly of Residuals  
( $470 \text{ ppm} \leq F$ )
  
-  B-class Anomaly of Residuals  
( $110 \text{ ppm} \leq F < 470 \text{ ppm}$ )





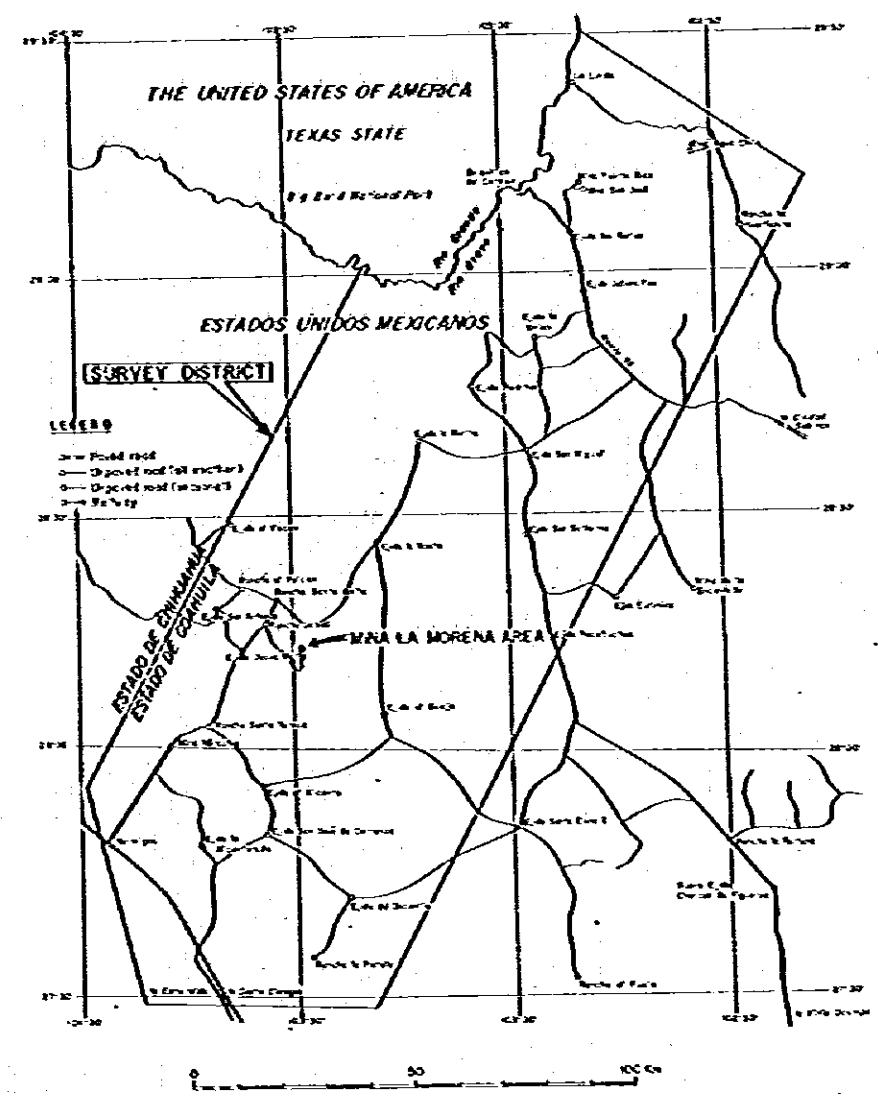


PL-VII-1

GEOLOGICAL SURVEY  
OF  
THE COAHUILA AREA, NORTHERN MEXICO  
PHASE IV

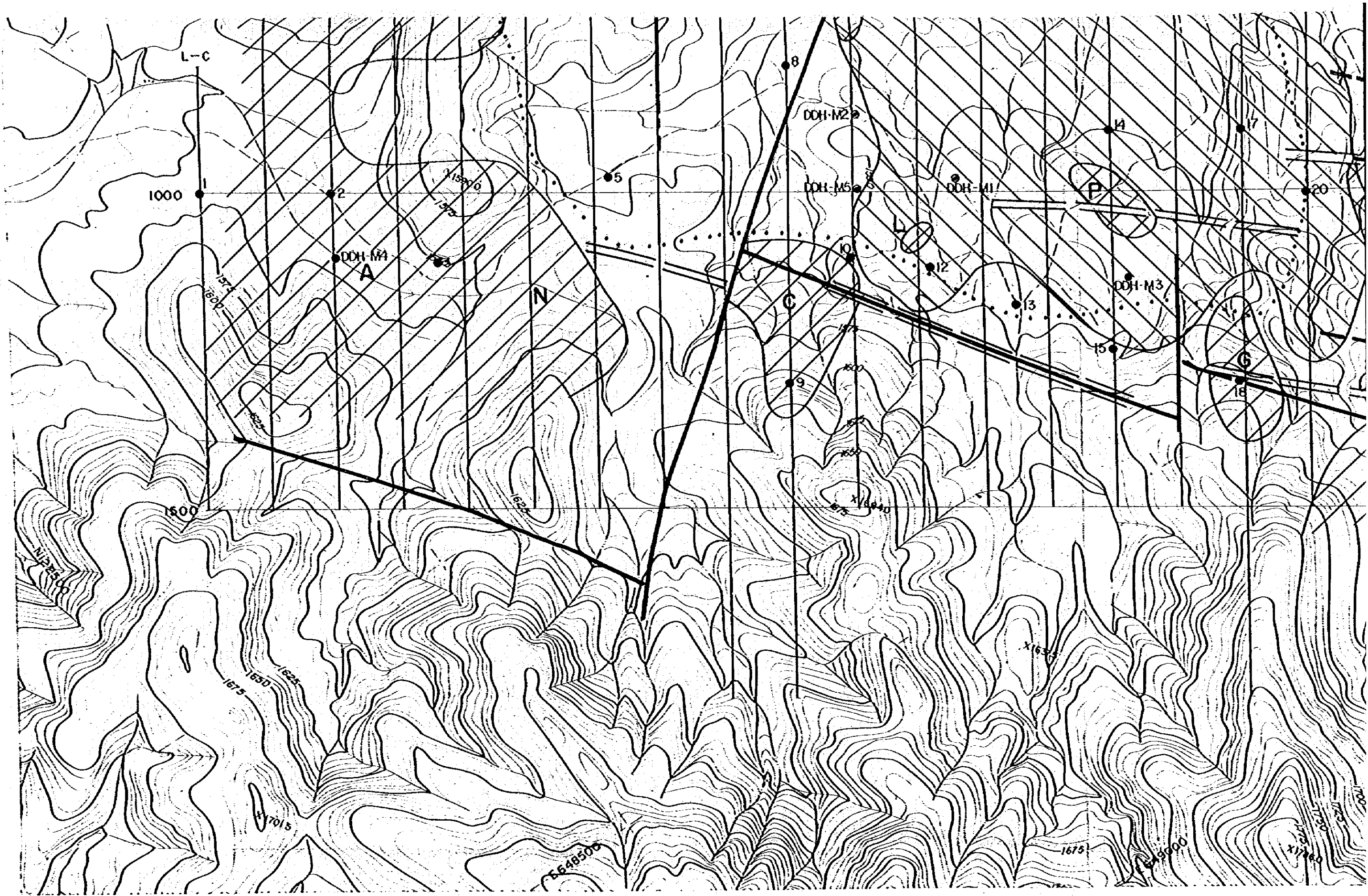
INTERPRETATION MAP OF IP SURVEY

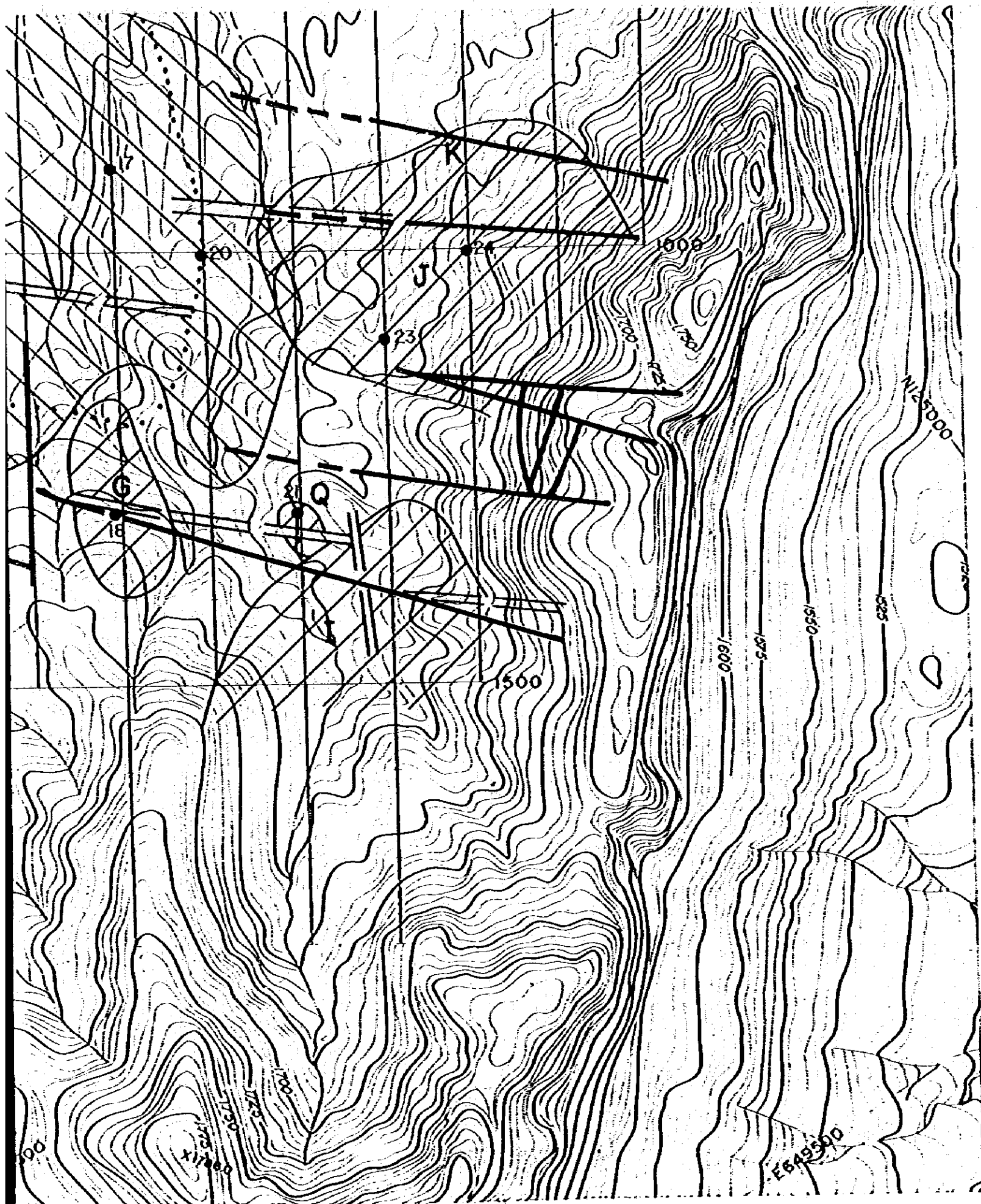
S = 1:5,000



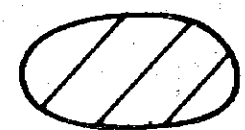
JAPAN INTERNATIONAL COOPERATION AGENCY AND  
METAL MINING AGENCY OF JAPAN, GOVERNMENT OF JAPAN  
COLLABORATION WITH  
CONSEJO DE RECURSOS MINERALES DE MEXICO  
FEBRUARY 1979

EXPLANATION





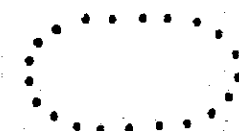
## EXPLANATION



Anomalous zone of chargeability



High apparent resistivity zone  
more than 10,000  $\Omega$ -m approximately



Recrystallized zone

A, B;

Name of chargeability anomaly



Fault



Fault inferred by IP survey



Location of rock sample and  
its number



Location of drilling and its number