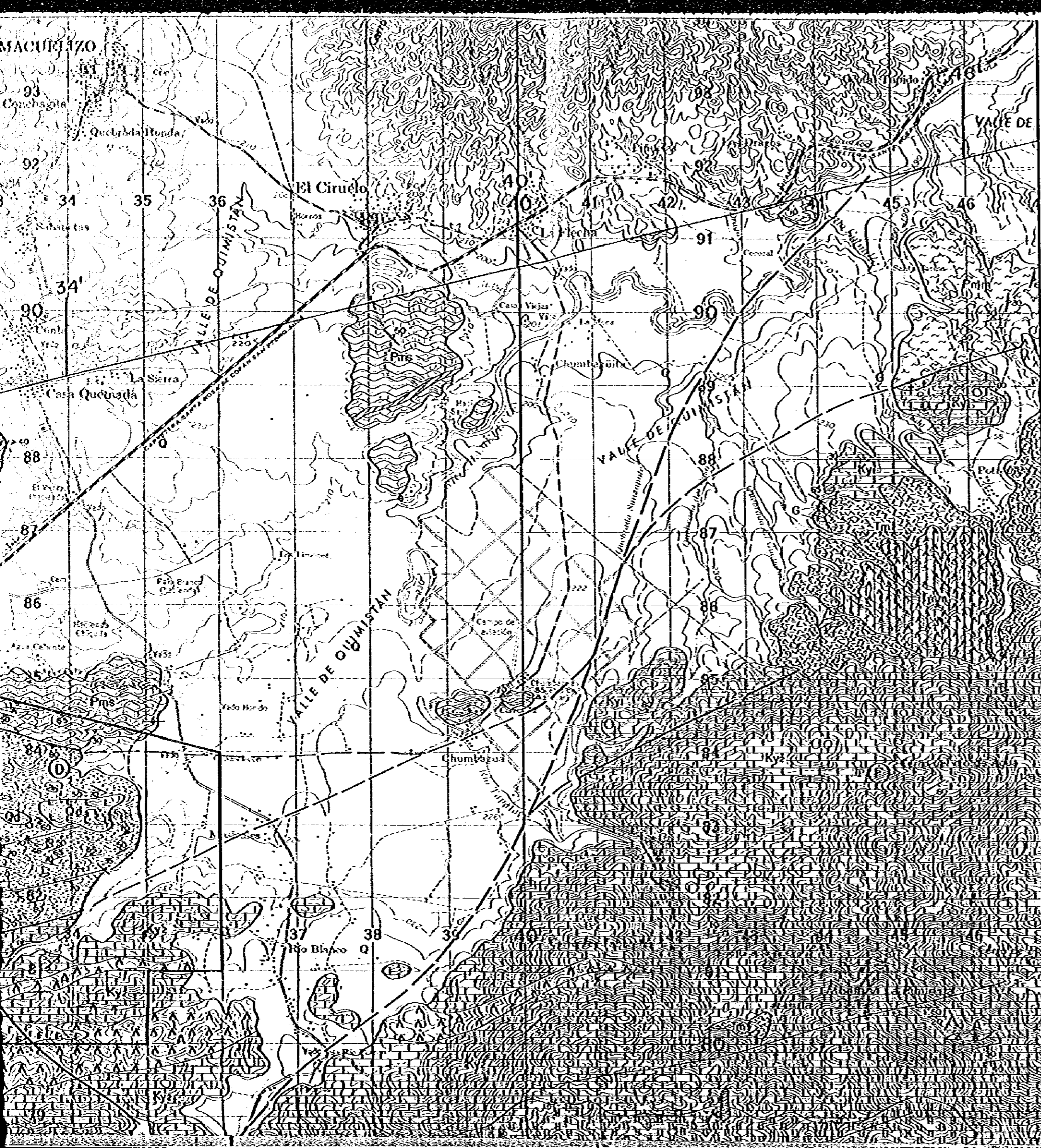


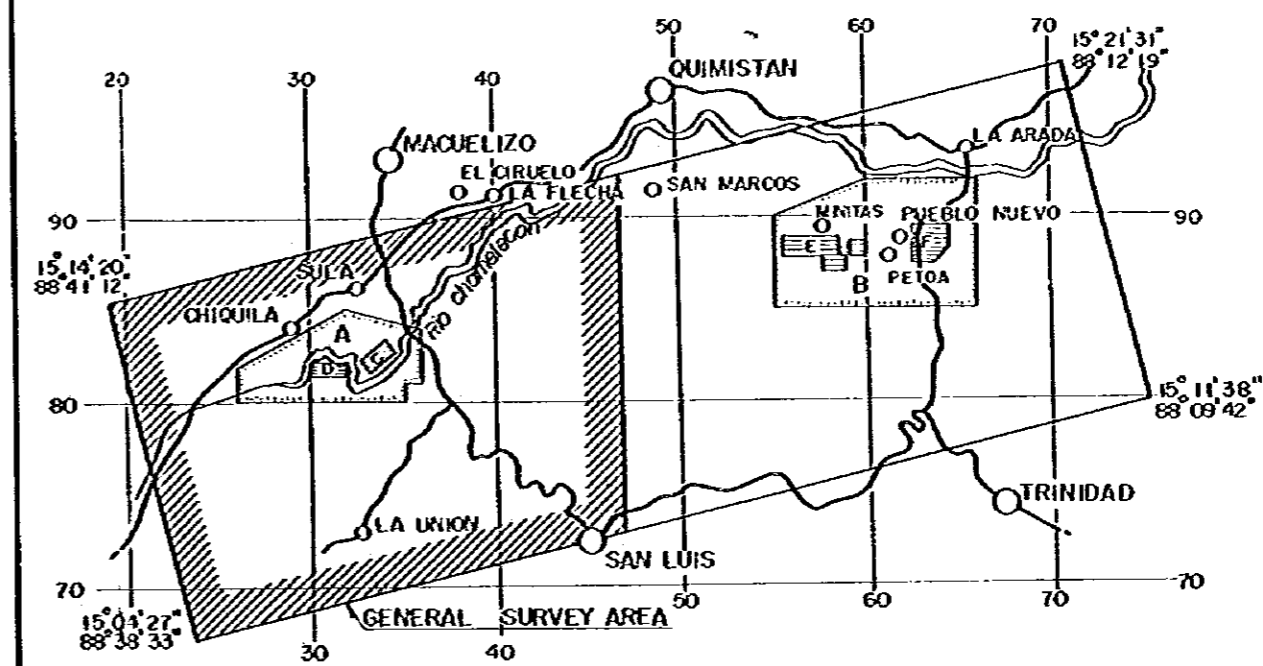
List of Plate

- PL. I - 1 Geological Map of the General Surveyed Area
(Western Part) Scale 1 : 50,000
- PL. I - 2 Geological Map of the General Surveyed Area
(Eastern Part) Scale 1 : 50,000
- PL. I - 3 Geological Profiles of the General Surveyed Area
Scale 1 : 50,000
- PL. III-I-1 Geological Map of the Vueltas del Río Sector
Scale 1 : 5,000
- PL. III-I-2 Geological Map of the Laguna Seca Sector
Scale 1 : 5,000
- PL. III-I-3 Geological Map of the Minitas Sector
Scale 1 : 5,000
- PL. III-I-4 Geological Map of the Pueblo Nuevo Sector
Scale 1 : 5,000
- PL. III-I-5 Geological Profiles of the Vueltas del Río Sector
Scale 1 : 5,000
- PL. III-I-6 Geological Profiles of the Laguna Seca Sector
Scale 1 : 5,000
- PL. III-I-7 Geological Profiles of the Minitas Sector
Scale 1 : 5,000
- PL. III-I-8 Geological Profiles of the Pueblo Nuevo Sector
Scale 1 : 5,000
- PL. III-I-13 Geological Sketch of the Macutalo Outcrop in the Minitas Sector
Scale 1 : 2,000
- PL. III-I-18 Geochemical Map by UNDP in the Vueltas del Río Sector
Scale 1 : 5,000



GEOLOGICAL SURVEY
OF
THE WESTERN AREA, REPUBLIC OF HONDURAS
PHASE I

GEOLOGICAL MAP OF THE
GENERAL SURVEYED AREA
(WESTERN PART)

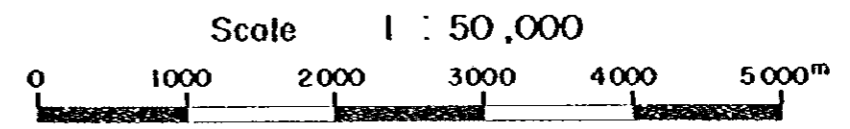


- A** AREA OF SEMIDETAILED SURVEY (Chorelecon Area)
- B** AREA OF SEMIDETAILED SURVEY (Petoo Area)
- C** AREA OF DETAILED SURVEY (Vuelcos del Rio Sector)
- D** AREA OF DETAILED SURVEY (Zopotol II Sector)
- E** AREA OF DETAILED SURVEY (Minitos Sector)
- F** AREA OF DETAILED SURVEY (Pueblo Nuevo Sector)

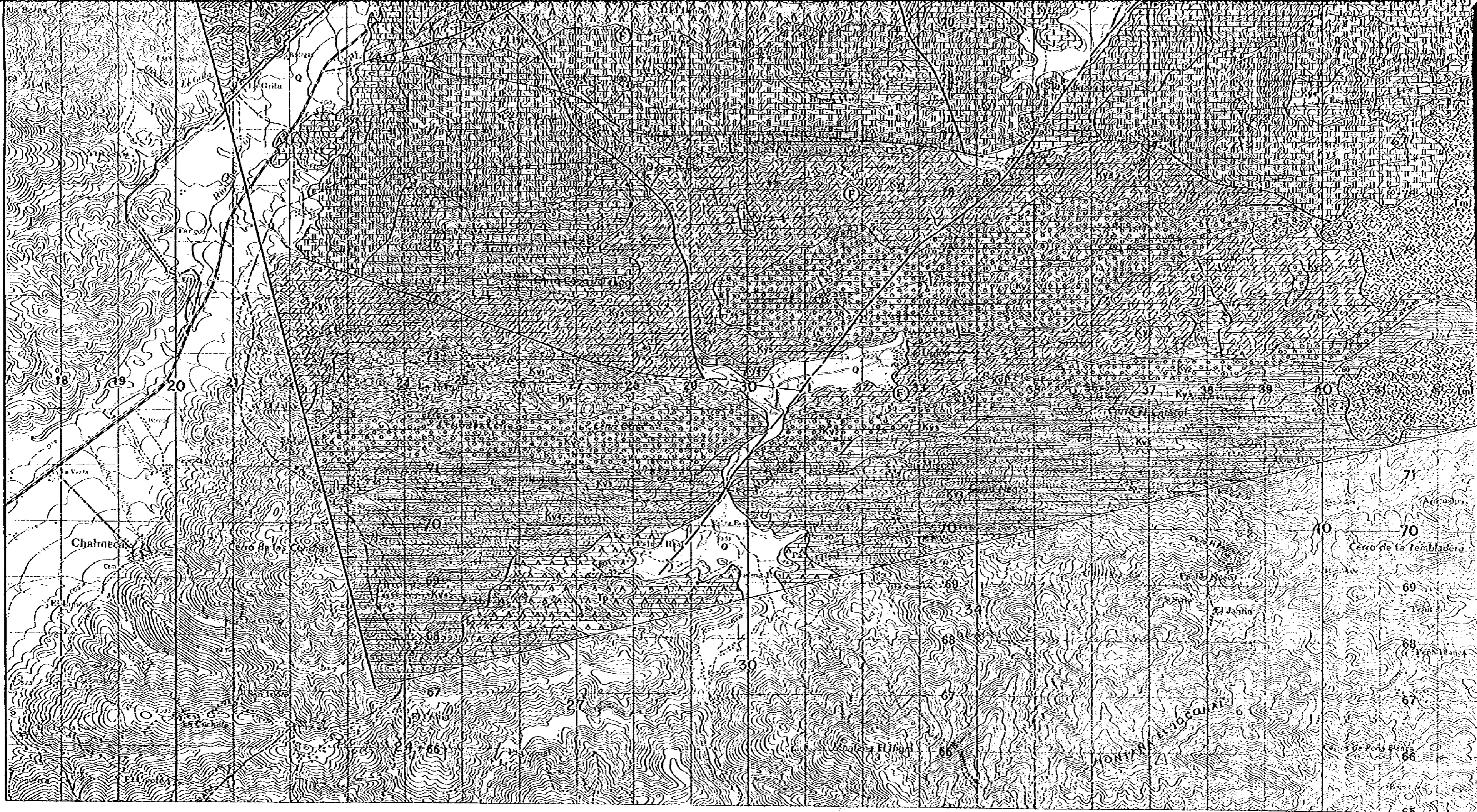
METAL MINING AGENCY OF JAPAN
JAPAN INTERNATIONAL COOPERATION AGENCY
GOVERNMENT OF JAPAN

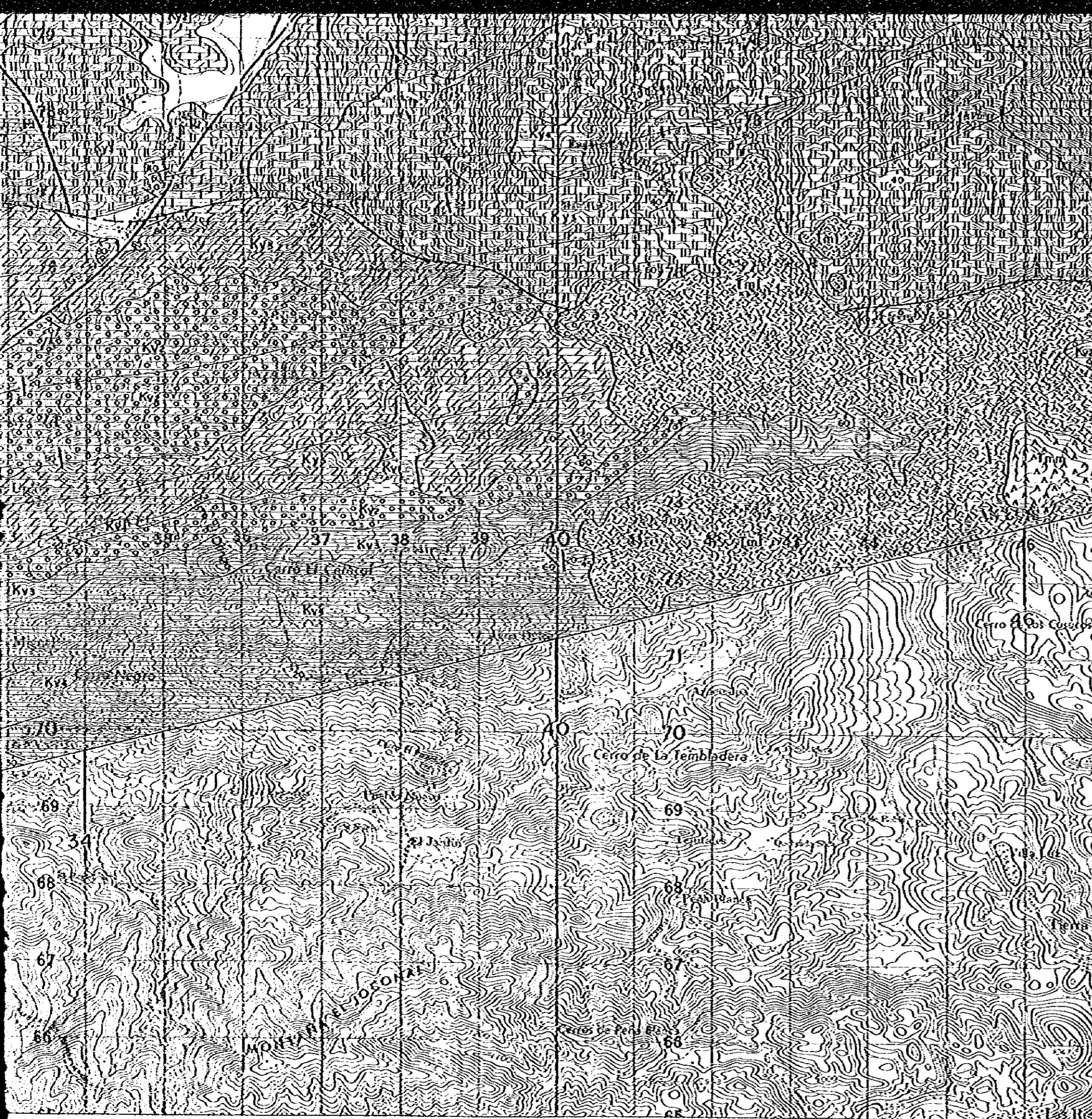
JANUARY 1978

prepared by MESCO, INC.



Geological age	Formation	Stratigraphical		Lithology
		Mark	Symbol	

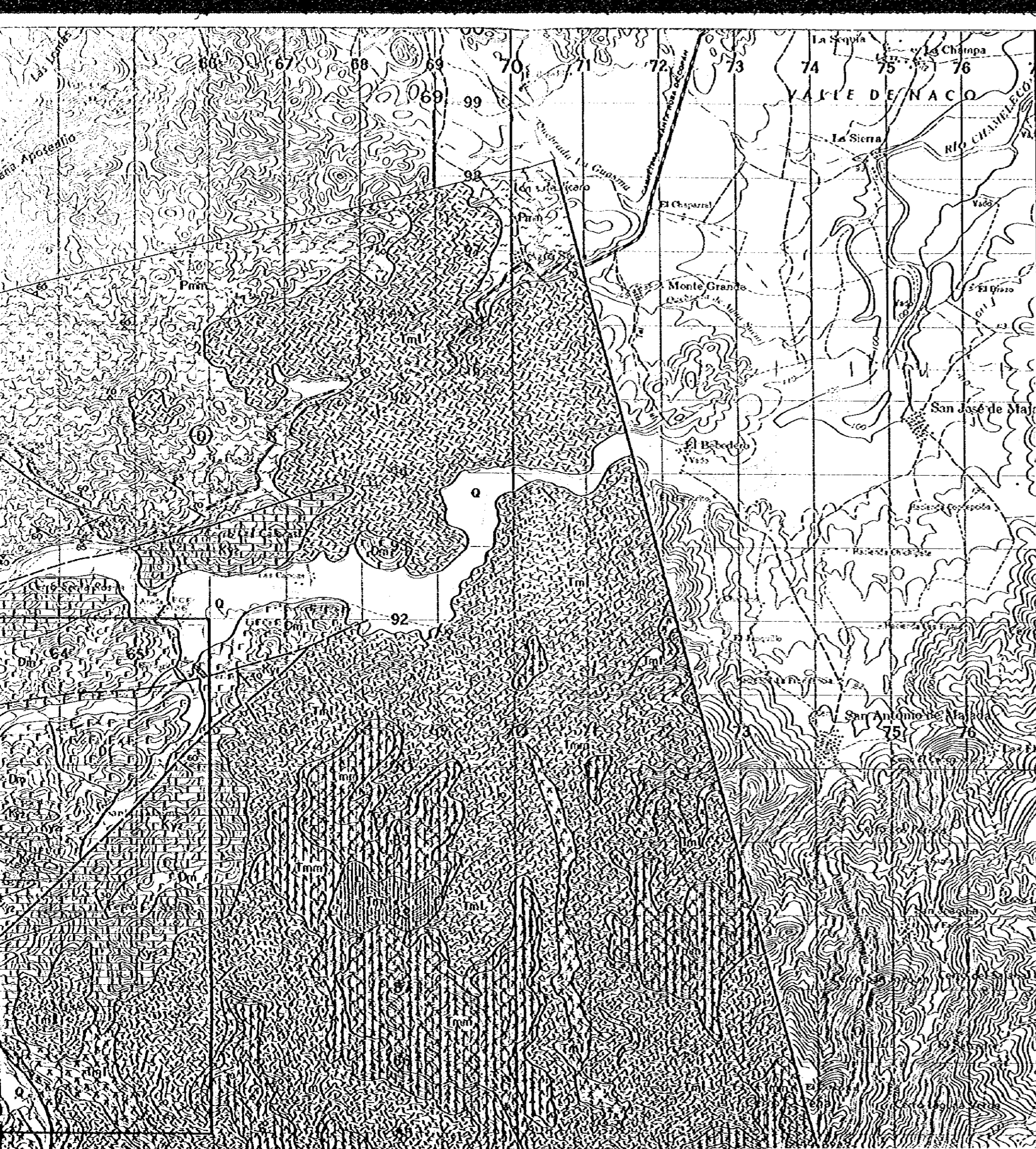




Geological age	Formation	Stratigraphical		Lithology		
		Mark	Symbol			
CENOZOIC	Quaternary	Alluvium		Q	gravel, sand, clay	
	Tertiary	Padre Miguel F.		Tp	andesite, sedimentary rocks	
		Matagalpa F.		Tm	rhyolite	
					pyroclastic rocks (lower, middle, upper)	
					andesite (lower, middle, upper)	
MESOZOIC	Upper Cretaceous	Valle de Angeles F.		Kv4	shale, sandstone, limestone	
				Kv3	shale	
				Kv2	limestone, conglomerate	
				Kv1	sandstone, shale, limestone	
	Lower Cretaceous	Yojoa Group	Guare F.		Ky5	banded limestone, shale
					Ky4	shale, banded limestone
			Alimo F.		Ky3	banded limestone, shale, minor sandstone
					Ky2	massive limestone, minor shale
					Ky1	shale, massive & banded limestone
Jurassic	Vueltos del Rio F.		Jv	shale, meta volcanics, pyroclastics, phyllite, diabase		
PALEOZOIC	Chiquila-La Arada Group		Pms	sericite schist (predominant)		
			Pmg	sericite-graphite schist (predominant)		
			Pme	epidote-chlorite schist		
			Pmc	calcareous schist, crystalline limestone		
			Pmb	biotite-hornblende schist		
			Pmm	biotite-muscovite schist, gneiss		
Intrusive rocks		G	granite			
		Gd	granodiorite			
		Om	diorite (medium-grained), meta volcanics, pyroclastics			
		Df	diorite (fine-grained)			
		A	andesite			
		D	diabase (dolerite)			
		Qd	quartz-diorite porphyry			

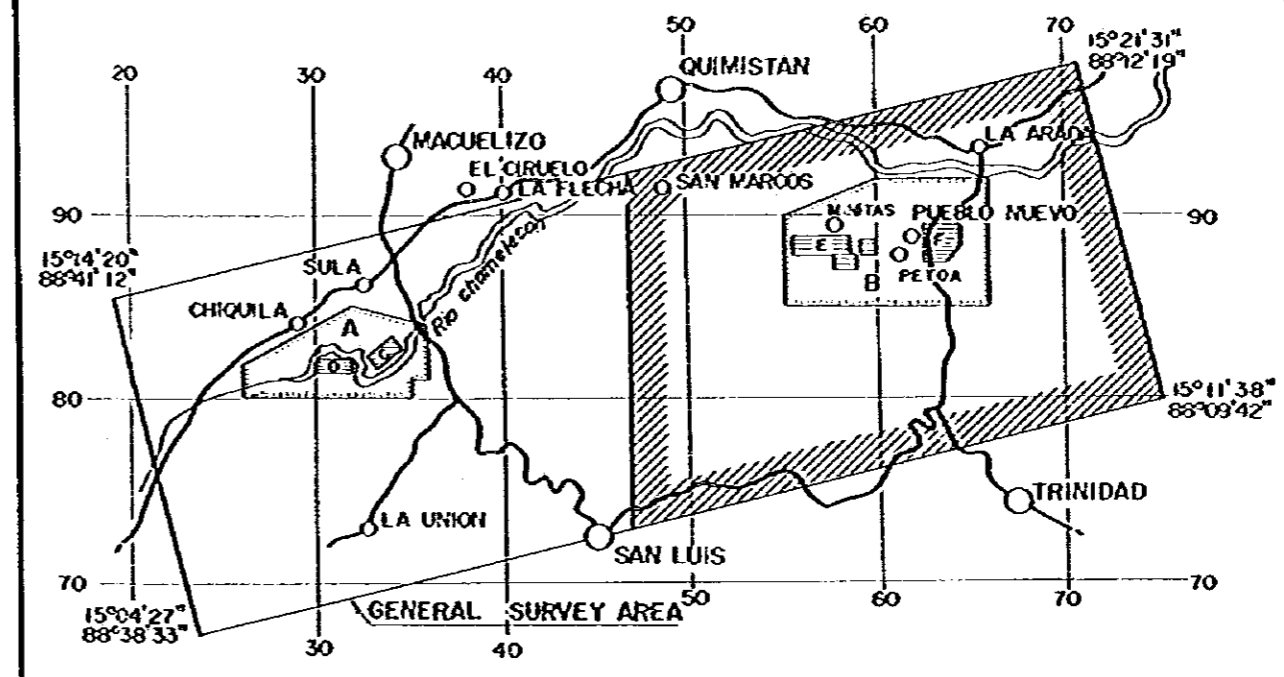
	bedding		foliation		geological profile line
	joint		fault defined/estimated		locality of determined fossil
	schistosity		anticlinal/synclinal axis		locality of age determination sample





GEOLOGICAL SURVEY
OF
THE WESTERN AREA, REPUBLIC OF HONDURAS
PHASE I

GEOLOGICAL MAP OF THE
GENERAL SURVEYED AREA
(EASTERN PART)

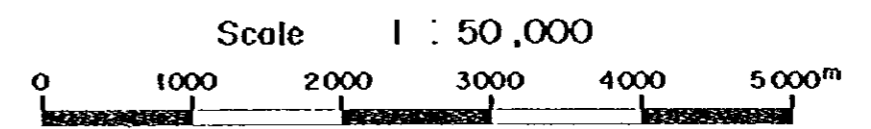


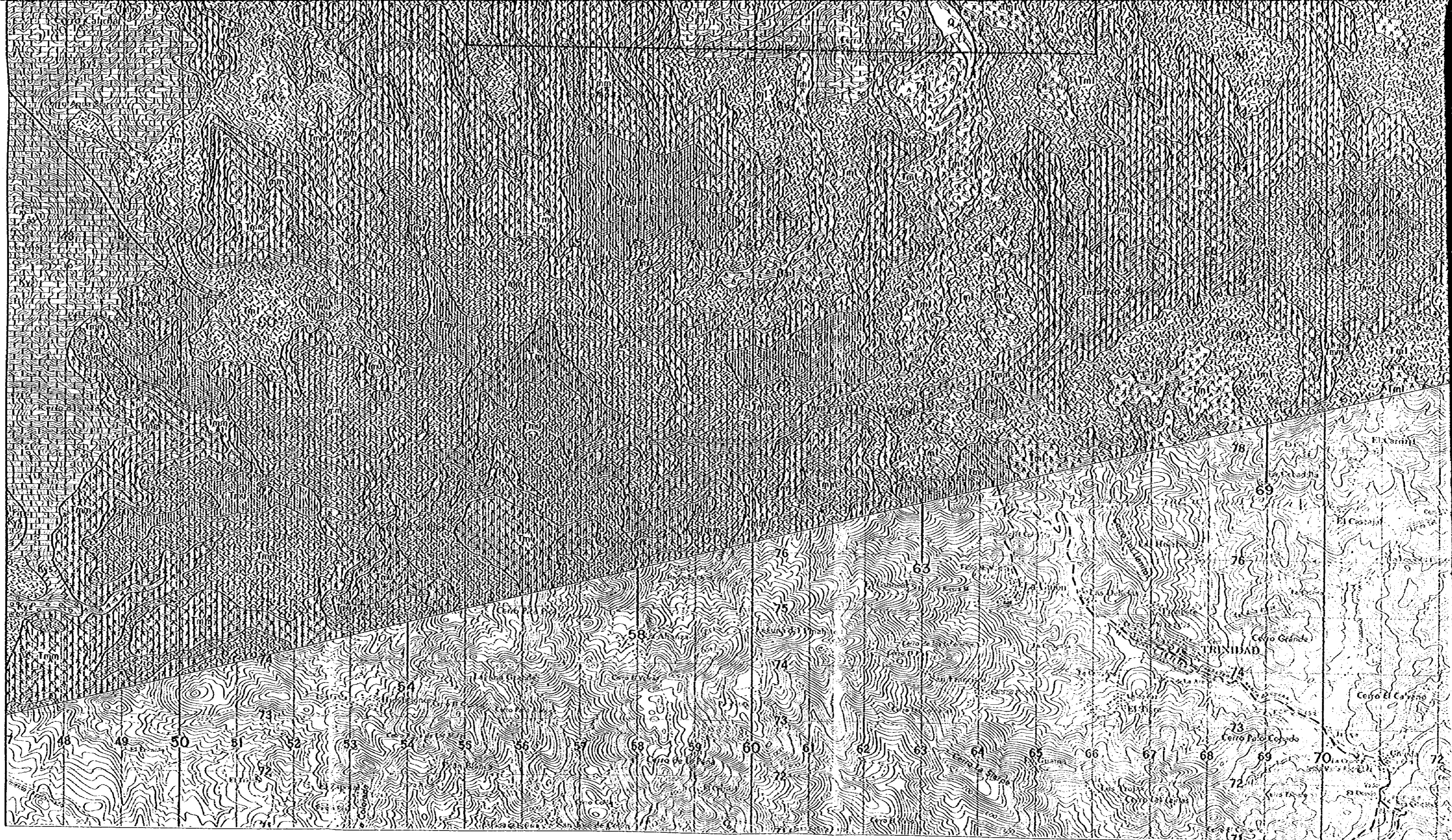
- | | |
|--|--|
| AREA OF SEMIDETAILED SURVEY
(Chorolecon Area) | AREA OF SEMIDETAILED SURVEY
(Petoo Area) |
| AREA OF DETAILED SURVEY
(Vuetos del Rio Sector) | AREA OF DETAILED SURVEY
(Zapotot II Sector) |
| AREA OF DETAILED SURVEY
(Minilos Sector) | AREA OF DETAILED SURVEY
(Pueblo Nuevo Sector) |

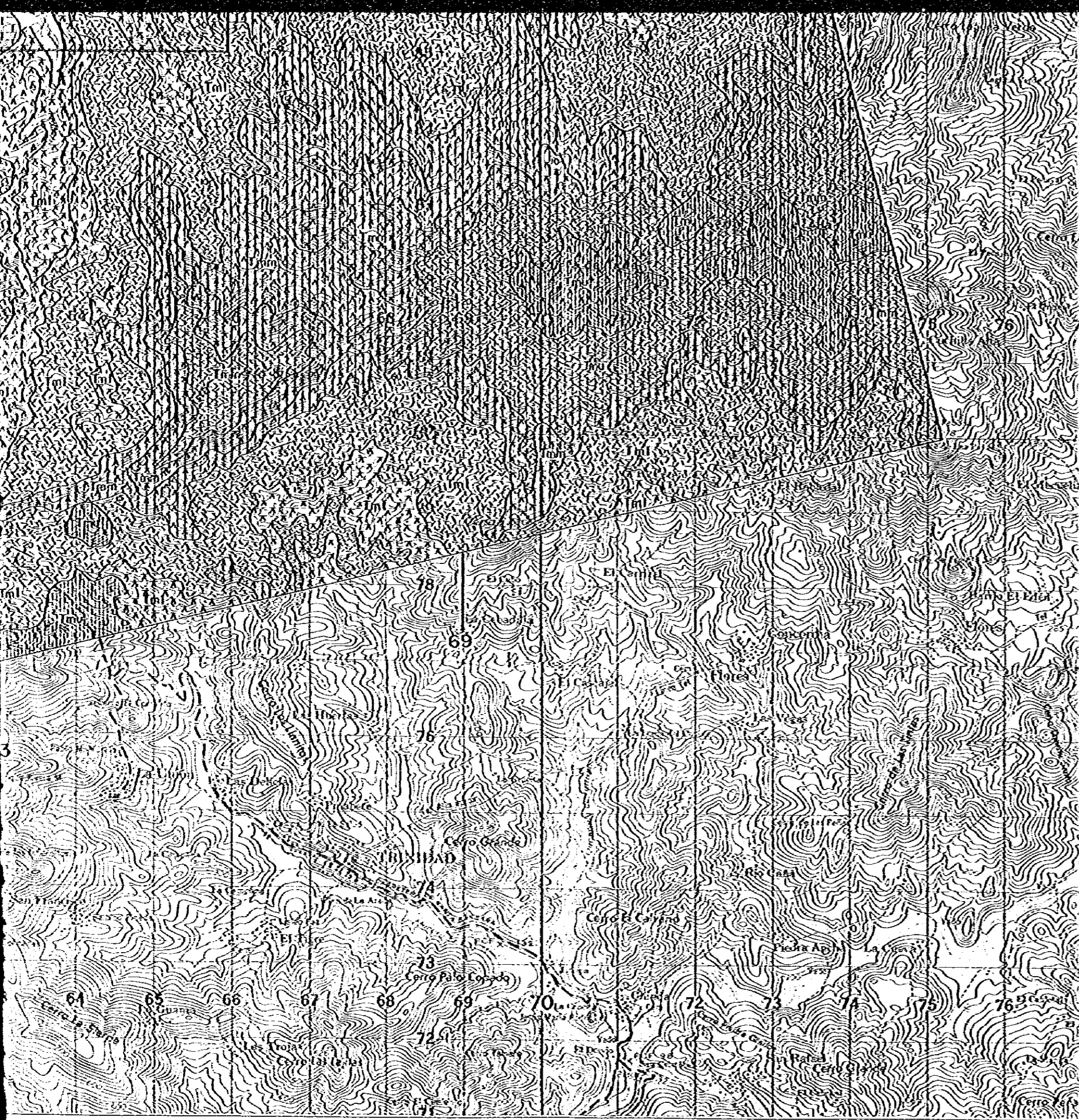
METAL MINING AGENCY OF JAPAN
JAPAN INTERNATIONAL COOPERATION AGENCY
GOVERNMENT OF JAPAN

JANUARY 1978

prepared by MESCO, INC.







Geological age	Formation	Stratigraphical		Lithology		
		Mark	Symbol			
CENOZOIC	Quaternary	Alluvium		Q	gravel, sand, clay	
	Tertiary	Padre Miguel F.		Tp	andesite, sedimentary rocks	
		Matagalpa F.		Tm	rhyolite	
					pyroclastic rocks (lower, middle, upper)	
					andesite (lower, middle, upper)	
	basalt (lower, middle, upper)					
MESOZOIC	Upper Cretaceous	Valle de Angeles F.		Kv ₄	shale, sandstone, limestone	
				Kv ₃	shale	
				Kv ₂	limestone, conglomerate	
				Kv ₁	sandstone, shale, limestone	
	Lower Cretaceous	Yojoa Group	Guare F.		Ky ₅	banded limestone, shale
					Ky ₄	shale, banded limestone
					Ky ₃	banded limestone, shale, minor sandstone
					Ky ₂	massive limestone, minor shale
			Corrales F.		Ky ₁	shale, massive & banded limestone
Jurassic			Vueltes del Rio F.		Jv	shale, meta volcanics, pyroclastics, phyllite, diabase
PALEOZOIC	Chiquila-La Arada Group		Pms	sericite schist (predominant)		
			Pmg	sericite-graphite schist (predominant)		
			Pme	epidote-chlorite schist		
			Pmc	calcareous schist, crystalline limestone		
			Pmb	biotite-hornblende schist		
			Pmm	biotite-muscovite schist, gneiss		
	Intrusive rocks		G	granite		
			Gd	granodiorite		
			Dm	diorite (medium-grained), meta volcanics, pyroclastics		
			Df	diorite (fine-grained)		
			A	andesite		
			D	diabase (dolerite)		
			Qd	quartz-diorite porphyry		

- bedding
- joint
- schistosity
- foliation
- fault defined / estimated
- anticline / synclinal axis
- geological profile line
- locality of determined fossil
- locality of age determination sample